



Wisconsin Department of Transportation

March 31, 2016

Division of Transportation Systems Development

Bureau of Project Development
4802 Sheboygan Avenue, Rm 601
P O Box 7916
Madison, WI 53707-7916

Telephone: (608) 266-1631
Facsimile (FAX): (608) 266-8459

NOTICE TO ALL CONTRACTORS:

Proposal #3: 5698-00-74, WISC 2016 088
CTH G - Mifflin
Pecatonica River Bridge,
B-25-0170
CTH E
Iowa County

5979-00-76, WISC 2016 089
CTH G – Mifflin
Town Road 46 to Log Town Road
CTH E
Iowa County

Letting of April 12, 2016

This is Addendum No. 01, which provides for the following:

Special Provisions

Added Special Provisions	
Article No.	Description
30	Notice to Contractor – Archaeological Sites

Plan Sheets

Revised Plan Sheets	
Plan Sheet	Plan Sheet Title (brief description of changes to sheet)
38	Miscellaneous Quantities Sheet – Earthwork Table (Added Fill to P.E./C.E. Line); Decreased Waste on Project(s)
56	Plan & Profile Sheet – Earthwork Table – Revision to Fill Needed for P.E./C.E. and Decrease Waste on Project(s)
147	Earthwork Table Sheet (Section 9) – Revision to Fill Needed for P.E./C.E. and Decrease Waste on Project(s)

The responsibility for notifying potential subcontractors and suppliers of these changes remains with the prime contractor.

Sincerely,

Mike Coleman

Proposal Development Specialist
Proposal Management Section

ADDENDUM NO. 1
5698-00-74 & 5979-00-76
March 31, 2016

Special Provisions

30. Notice to Contractor – Archaeological Sites.

Supplement standard spec 107.25 as follows:

Un-cataloged burial site(s) exist in the project area on CTH E from Station 15+00 to Station 39+00.

Provide two week's notice to the Environmental Services Section (ESS) before doing any work in the areas of these sites. ESS will provide a qualified archaeologist to be present to monitor all project-related ground-disturbing activities within the boundaries of the burial site(s). Note: An archaeologist qualified to excavate human burial sites (per Wis. Stats. 157.70 (1) and Wis. Admin Code § HS 2.04 (6) (a)) will oversee the monitoring activities.

The contact at ESS is Jim Becker, (608) 261-0137 or Lynn Cloud, (608) 266-0099.

If human bone is discovered during construction, WisDOT will cease work activities immediately and will contact the Wisconsin Historical Society for compliance with Wis. Stat. 157.70 regarding the protection of human burial sites.

Plan Sheets

The following 8½ x 11-inch sheets are attached and made part of the plans for this proposal:
Revised: 38, 56, and 147

END OF ADDENDUM

ALL BID ITEMS ARE CATEGORY 000 UNLESS OTHERWISE NOTED

REMOVING PAVEMENT
 PROJECT ID 5979-00-76
 STATION LOCATION
 18+60 MAINLINE RT
 TOTAL = 80

REMOVING CONCRETE SIDEWALK
 PROJECT ID 5979-00-76
 STATION STATION LOCATION
 20+28-38+25 MAINLINE LT
 20+36 MAINLINE LT
 20+38 MAINLINE LT
 21+62 MAINLINE LT
 23+10 MAINLINE LT
 23+59 MAINLINE LT
 25+09 MAINLINE RT
 25+92 MAINLINE RT
 25+97 MAINLINE LT
 28+61 MAINLINE LT
 27+17 MAINLINE LT
 27+28 MAINLINE LT
 27+46 MAINLINE RT
 28+10 MAINLINE RT
 TOTAL = 740

REMOVING SMALL PIPE CULVERTS
 PROJECT ID 5979-00-76
 PROJECT ID 5898-00-74
 REMOVING SMALL PIPE CULVERTS
 STATION LOCATION
 12+80 MAINLINE RT
 14+57 MAINLINE LT
 14+37 MAINLINE LT
 15+54 MAINLINE RT
 17+84 MAINLINE RT
 18+60 MAINLINE RT
 18+95 MAINLINE LT
 19+61 MAINLINE RT
 20+15 MAINLINE LT
 22+13 MAINLINE LT
 22+42 MAINLINE RT
 22+80 MAINLINE LT
 24+79 MAINLINE LT
 26+15 MAINLINE LT
 28+29 MAINLINE LT
 28+43 MAINLINE LT
 28+48 MAINLINE RT
 29+07 MAINLINE LT
 33+94 MAINLINE LT
 36+64 MAINLINE LT
 40+67 MAINLINE RT
 200+06 LOWER MIFFLIN RD
 TOTAL = 1

REMOVING SMALL PIPE CULVERTS
 PROJECT ID 5979-00-76
 PROJECT ID 5898-00-74
 REMOVING SMALL PIPE CULVERTS
 STATION LOCATION
 12+80 MAINLINE RT
 14+57 MAINLINE LT
 14+37 MAINLINE LT
 15+54 MAINLINE RT
 17+84 MAINLINE RT
 18+60 MAINLINE RT
 18+95 MAINLINE LT
 19+61 MAINLINE RT
 20+15 MAINLINE LT
 22+13 MAINLINE LT
 22+42 MAINLINE RT
 22+80 MAINLINE LT
 24+79 MAINLINE LT
 26+15 MAINLINE LT
 28+29 MAINLINE LT
 28+43 MAINLINE LT
 28+48 MAINLINE RT
 29+07 MAINLINE LT
 33+94 MAINLINE LT
 36+64 MAINLINE LT
 40+67 MAINLINE RT
 200+06 LOWER MIFFLIN RD
 TOTAL = 1

CLEARING & GRUBBING
 PROJECT ID 5979-00-76
 PROJECT ID 5898-00-74
 GRUBBING
 STATION LOCATION
 10+95 MAINLINE LT
 14+22 MAINLINE RT
 14+54 MAINLINE RT
 14+62 MAINLINE RT
 18+02 MAINLINE RT
 19+80 MAINLINE LT
 20+05 MAINLINE RT
 26+83 MAINLINE LT
 30+55 MAINLINE RT
 32+00 - 33+00 MAINLINE
 34+50 - 37+50 MAINLINE
 37+50 - 38+00 MAINLINE
 40+00 - 41+50 MAINLINE
 41+50 - 45+00 MAINLINE
 200+00 - 201+00 LOWER MIFFLIN RD
 TOTALS = 8 240 3

REMOVING SMALL PIPE CULVERTS
 PROJECT ID 5979-00-76
 PROJECT ID 5898-00-74
 REMOVING SMALL PIPE CULVERTS
 STATION LOCATION
 12+80 MAINLINE RT
 14+57 MAINLINE LT
 14+37 MAINLINE LT
 15+54 MAINLINE RT
 17+84 MAINLINE RT
 18+60 MAINLINE RT
 18+95 MAINLINE LT
 19+61 MAINLINE RT
 20+15 MAINLINE LT
 22+13 MAINLINE LT
 22+42 MAINLINE RT
 22+80 MAINLINE LT
 24+79 MAINLINE LT
 26+15 MAINLINE LT
 28+29 MAINLINE LT
 28+43 MAINLINE LT
 28+48 MAINLINE RT
 29+07 MAINLINE LT
 33+94 MAINLINE LT
 36+64 MAINLINE LT
 40+67 MAINLINE RT
 200+06 LOWER MIFFLIN RD
 TOTAL = 1

3

3

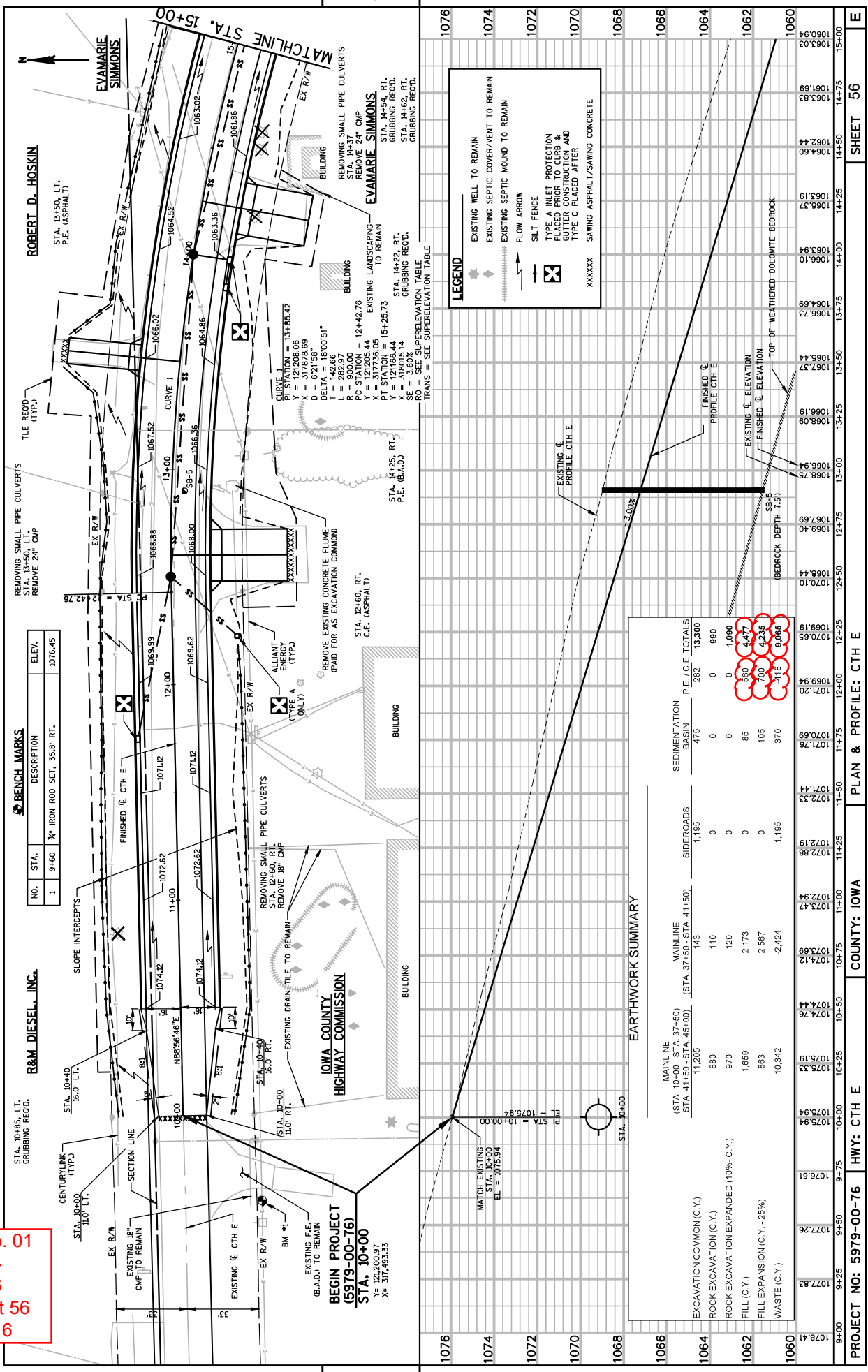
EARTHWORK SUMMARY

CATEGORY / STATION - STATION	PROJECT ID 5979-00-76		PROJECT ID 5898-00-74		PROJECT ID 5979-00-76		PROJECT ID 5898-00-74		PROJECT ID 5979-00-76		PROJECT ID 5898-00-74		PROJECT ID 5979-00-76		PROJECT ID 5898-00-74		PROJECT ID 5979-00-76		PROJECT ID 5898-00-74		PROJECT ID 5979-00-76			
	COMMON EXCAVATION CUT (CY)	COMMON EXCAVATION FILL (CY)	COMMON EXCAVATION CUT (CY)	COMMON EXCAVATION FILL (CY)	COMMON EXCAVATION CUT (CY)	COMMON EXCAVATION FILL (CY)	COMMON EXCAVATION CUT (CY)	COMMON EXCAVATION FILL (CY)	EXPANDED ROCK	EXPANDED EBS	EXPANDED IN FILL	EXPANDED ROCK	EXPANDED EBS	EXPANDED IN FILL	EXPANDED ROCK	EXPANDED EBS	EXPANDED IN FILL	EXPANDED ROCK	EXPANDED EBS	EXPANDED IN FILL	EXPANDED ROCK	EXPANDED EBS	EXPANDED IN FILL	
010 10+00 - 37+50 MAINLINE	10835	-	-	-	10835	-	-	-	10835	-	-	-	-	10835	-	-	-	10835	-	-	-	-	-	-
37+50 - 41+50 MAINLINE	-	370	-	-	-	370	-	-	-	370	-	-	-	-	370	-	-	-	370	-	-	-	-	-
41+50 - 45+00 MAINLINE	-	160	-	-	-	160	-	-	-	160	-	-	-	-	160	-	-	-	160	-	-	-	-	-
100+00 - 100+56 SOUTH OAK ST	-	230	-	-	-	230	-	-	-	230	-	-	-	-	230	-	-	-	230	-	-	-	-	-
100+88 - 101+75 NORTH OAK ST	-	405	-	-	-	405	-	-	-	405	-	-	-	-	405	-	-	-	405	-	-	-	-	-
199+90 - 200+86 LOWER MIFFLIN RD	-	400	-	-	-	400	-	-	-	400	-	-	-	-	400	-	-	-	400	-	-	-	-	-
201+17 - 202+00 CTHG	-	475	-	-	-	475	-	-	-	475	-	-	-	-	475	-	-	-	475	-	-	-	-	-
34+06 - 35+50 SEDIMENTATION BASIN	-	-	-	-	-	-	-	-	-	-	-	-	-	-	-	-	-	-	-	-	-	-	-	-
TOTALS =	13100	0	200	0	13300	0	0	0	1090	0	0	0	0	1090	0	0	0	1090	0	0	0	0	0	0

NOTES:
 1.) COMMON EXCAVATION IS THE SUM OF THE CUT AND EBS EXCAVATION COLUMNS. ITEM NUMBER 205.0100
 2.) SALVAGED/UNUSABLE PAVEMENT MATERIAL IS INCLUDED IN CUT
 3.) EBS EXCAVATION TO BE BACKFILLED WITH SELECT CRUSHED MATERIAL
 4.) SALVAGED/UNUSABLE PAVEMENT MATERIAL
 5.) AVAILABLE MATERIAL = CUT - SALVAGED/UNUSABLE PAVEMENT MATERIAL
 6.) ROCK EXCAVATION ITEM NUMBER 205.0200
 7.) REDUCED EBS IN FILL - EXCAVATED EBS MATERIAL IS USEABLE IN FILLS OUTSIDE 1:1 SLOPE. EBS IN FILL REDUCTION FACTOR = 0.8
 8.) EXPANDED EBS BACKFILL - THIS IS TO BE FILLED WITH SELECT CRUSHED MATERIAL. EBS BACKFILL FACTOR = 1.3. ITEM NUMBER 312.0115
 9.) EXPANDED ROCK FACTOR = 1.1
 10.) EXPANDED FILL FACTOR 1:25. EXPANDED FILL = (UNEXPANDED FILL * (ROCK * ROCK FACTOR) * 1.25
 11.) THE MASS ORDINATE+ OR - QTY CALCULATED FOR THE DIVISION. PLUS QUANTITY INDICATES AN EXCESS OF MATERIAL WITHIN THE CATEGORY. MINUS INDICATES A SHORTAGE OF MATERIAL WITHIN THE CATEGORY.

Addendum No. 01
 ID 5698-00-74
 ID 5979-00-76
 Revised Sheet 38
 March 31, 2016

Addendum No. 01
 ID 5698-00-74
 ID 5979-00-76
 Revised Sheet 56
 March 31, 2016



PROJECT NO: 5979-00-76 HWY: CTH E COUNTY: IOWA
 SHEET 56
 PLAN & PROFILE: CTH E
 PLOT DATE: 3/22/16
 PLOT BY: GABRIEL, MICHAEL
 PLOT SCALE: 0.32831

