



# Wisconsin Department of Transportation

May 5, 2016

**Division of Transportation Systems Development**

Bureau of Project Development  
 4802 Sheboygan Avenue, Rm 601  
 P O Box 7916  
 Madison, WI 53707-7916

Telephone: (608) 266-1631  
 Facsimile (FAX): (608) 266-8459

**NOTICE TO ALL CONTRACTORS:**

**Proposal #12: 1060-34-83, N/A**  
**Zoo IC – IH 894 SB Auxiliary Lanes**  
**Oklahoma Ave to National Ave**  
**IH 894**  
**Milwaukee County**

**Letting of May 10, 2016**

This is Addendum No. 02, which provides for the following:

**Special Provisions**

Deleted Special Provisions	
Article No.	Description
74	Asphaltic Pavement Repair Special, Item SPV.0195.0110

**Schedule of Items**

Revised Bid Item Quantities					
Bid Item	Item Description	Unit	Old Quantity	Revised Quantity	Proposal Total
455.0605	Tack Coat	GAL	1295	1305	1305
460.2000	Incentive Density HMA Pavement	DOL	2777	2822	2822
460.7223	HMA Pavement 3 HT 58-28 S	TON	3752	3823	3823
611.8110	Adjusting Manhole Covers	EACH	1	3	3

Added Bid Item Quantities					
Bid Item	Item Description	Unit	Old Quantity	Revised Quantity	Proposal Total
611.8115	Adjusting Inlet Covers	EACH	0	6	6
653.0900	Adjusting Pull Boxes	EACH	0	1	1

Deleted Bid Item Quantities					
Bid Item	Item Description	Unit	Old Quantity	Revised Quantity	Proposal Total
SPV.0195.0110	Asphaltic Pavement Repair Special	TON	85	0	0

## Plan Sheets

<b>Revised Plan Sheets</b>	
Plan Sheet	Plan Sheet Title (brief description of changes to sheet)
18	Plan Details – Removed Asphaltic Pavement Repair Special from legend
19	Plan Details – Replaced Asphaltic Pavement Repair Special with standard bid items
21	Plan Details – Replaced Asphaltic Pavement Repair Special with standard bid items
22	Plan Details – Replaced Asphaltic Pavement Repair Special with standard bid items
23	Plan Details – Replaced Asphaltic Pavement Repair Special with standard bid items
25	Plan Details – Replaced Asphaltic Pavement Repair Special with standard bid items
45	Storm Sewer – Added Adjusting Manhole/Inlet Covers
46	Storm Sewer – Added Adjusting Manhole/Inlet Covers
47	Storm Sewer – Added Adjusting Manhole/Inlet Covers
112	Miscellaneous Quantities – Adjusted Asphaltic Items quantity table
114	Miscellaneous Quantities – Updated Adjusting Structures quantity table
124	Miscellaneous Quantities – Added Adjusting Pull Boxes

<b>Added Plan Sheets</b>	
Plan Sheet	Plan Sheet Title (brief description of why sheet was added)
41A	New detail for Adjusting Manhole or Inlet Covers

<b>Deleted Plan Sheets</b>	
Plan Sheet	Plan Sheet Title (brief description of why sheet was deleted)
9	Construction Details – Removed associated item Asphaltic Pavement Repair Special

## Special Provisions

74. DELETED.

## Schedule of Items

Attached, dated May 5, 2016, are the revised Schedule of Items Pages 2, 4, and 15.

## Plan Sheets

The following 8½ x 11-inch sheets are attached and made part of the plans for this proposal:

Revised: 18, 19, 21, 22, 23, 25, 45, 46, 47, 112, 114, 124

Added: 41A

Deleted: 9

The responsibility for notifying potential subcontractors and suppliers of these changes remains with the prime contractor.

Sincerely,

*Mike Coleman*

Proposal Development Specialist  
Proposal Management Section

END OF ADDENDUM

Addendum No. 02  
ID 1060-34-83  
Revised Sheet 18  
May 5, 2016

LEGEND

- (A) HMA PAVEMENT 4 SMA 58-28 H, 2-INCH OVER
- HMA PAVEMENT 3 HT 58-28 S, 6 1/2-INCH
- (B) HMA PAVEMENT 3 HT 58-28 S, 7 1/2-INCH



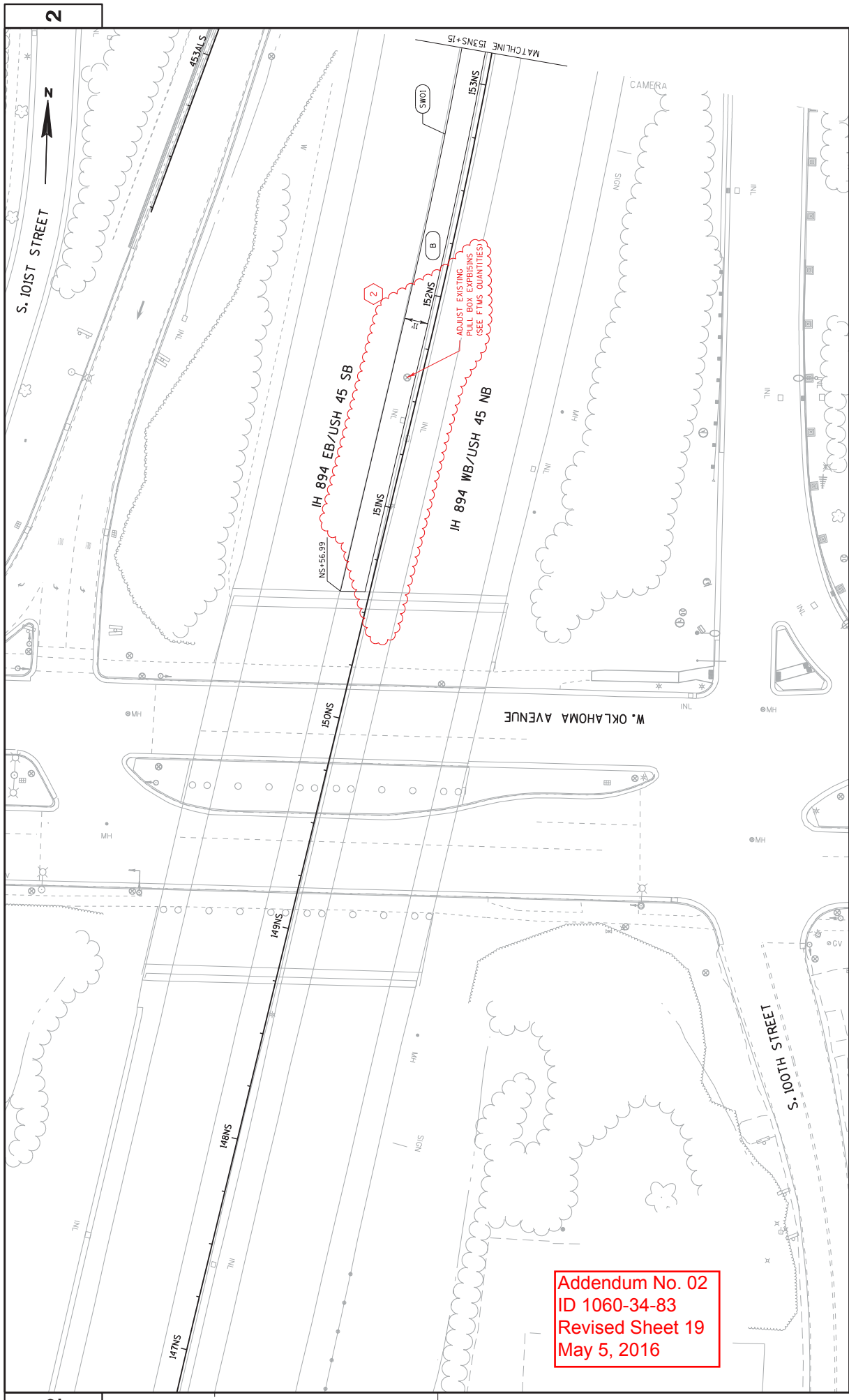
- (CB02) CONCRETE BARRIER TYPE S42
- (CB06) CONCRETE BARRIER TYPE S42C
- (CB07) CONCRETE BARRIER TYPE S56C
- (CB40) CONCRETE BARRIER TRANSITION TYPE S36 TO S42
- (CB49) CONCRETE BARRIER TRANSITION TYPE S42 TO S56
- (CB72) CONCRETE BARRIER TRANSITION TYPE NJ32SF TO S36

- (SW01) SAWING ASPHALT
- (SW02) SAWING CONCRETE

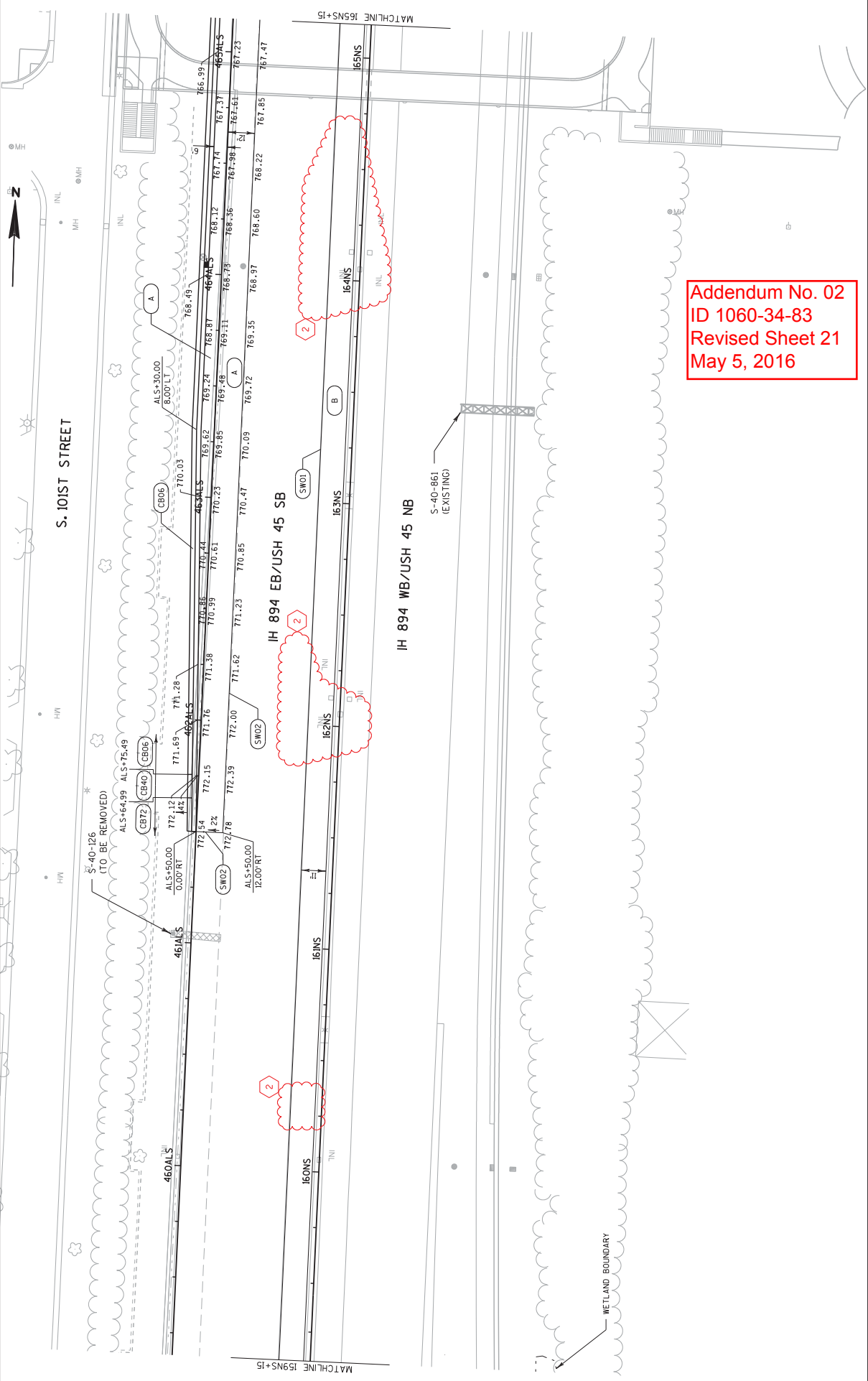
NOTES

1. SEE CONSTRUCTION DETAIL "SINGLE SLOPE ROADSIDE RETAINING WALL DOUBLE COLD JOINT HEIGHT TRANSITION"
2. SEE GENERAL NOTES FOR ADDITIONAL INFORMATION ON HMA PAVEMENT LAYERS

PROJECT NO: 1060-34-83	HWY: IH 894	COUNTY: MILWAUKEE	PLAN DETAILS	SHEET 18	E
FILE NAME : \\nwke31fp1\w3200\Cadd\N\10603483_ALS\Foods\Cadd\N\021200.dwg					
PLOT DATE : 02-MAY-2016 14:50					
PLOT BY : MSCDYB					
PLOT NAME : 021200.dwg					
PLOT SCALE : 40:1					
WISDOT/CADDIS SHEET 42					

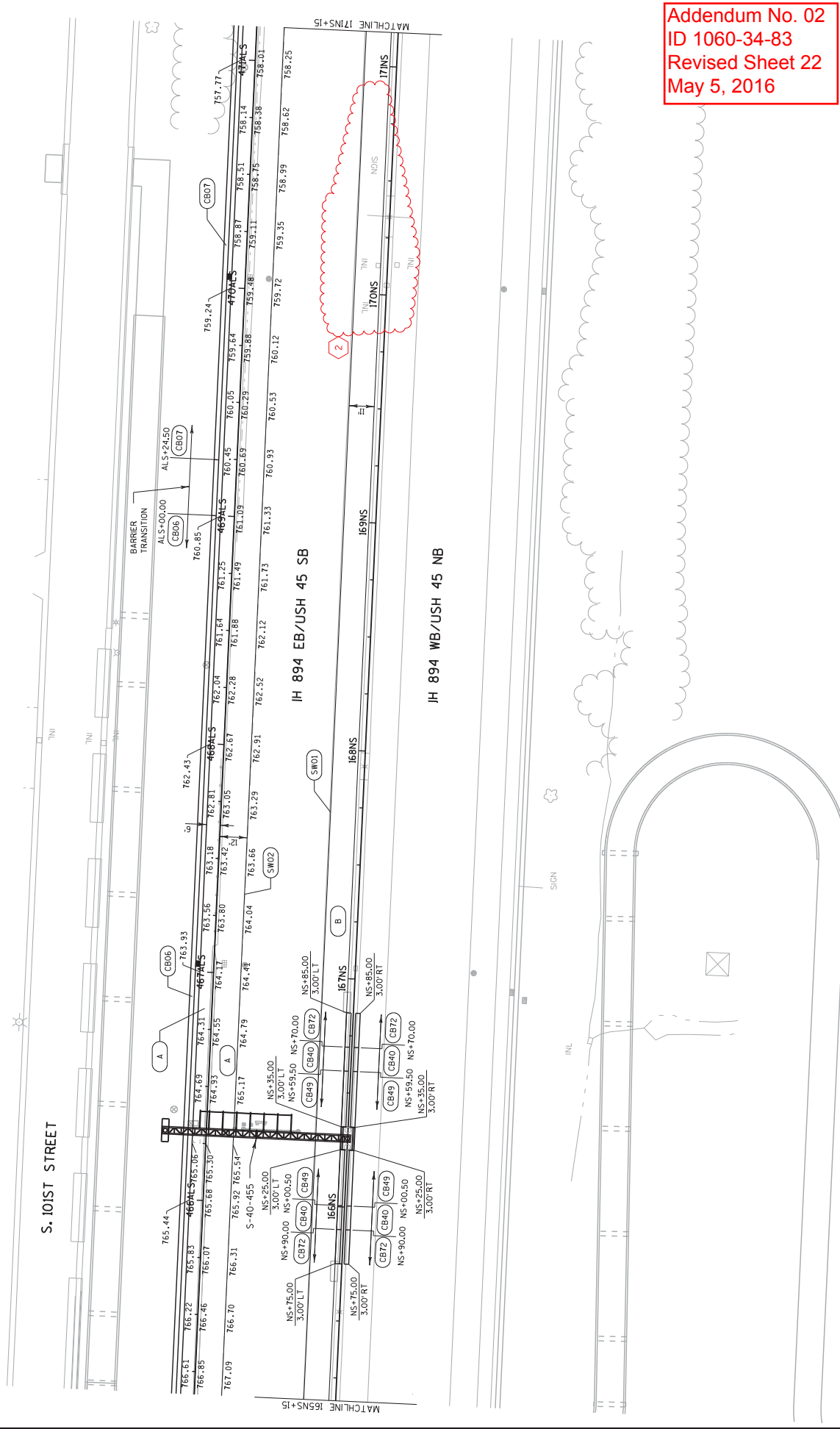


Addendum No. 02  
 ID 1060-34-83  
 Revised Sheet 19  
 May 5, 2016



Addendum No. 02  
 ID 1060-34-83  
 Revised Sheet 21  
 May 5, 2016

<b>PROJECT NO:</b> 1060-34-83	<b>COUNTY:</b> MILWAUKEE	<b>PLAN DETAILS</b>	<b>SHEET</b> 21
<small>FILE NAME : \\nwae31fp1\w3200\Cadda\F_ino1\10603483_ALS\Floods\Cadd\021203.dwg</small>	<small>HWY:</small> IH 894	<small>PLOT DATE :</small> 02-MAY-2016 14:50	<small>PLOT SCALE :</small> 40:1
<small>FILE NAME : \\nwae31fp1\w3200\Cadda\F_ino1\10603483_ALS\Floods\Cadd\021203.dwg</small>	<small>PLOT BY :</small> MSCDNB	<small>PLOT NAME :</small> 1021203.Lpd	<small>WISDOT/CADDIS SHEET</small> 42

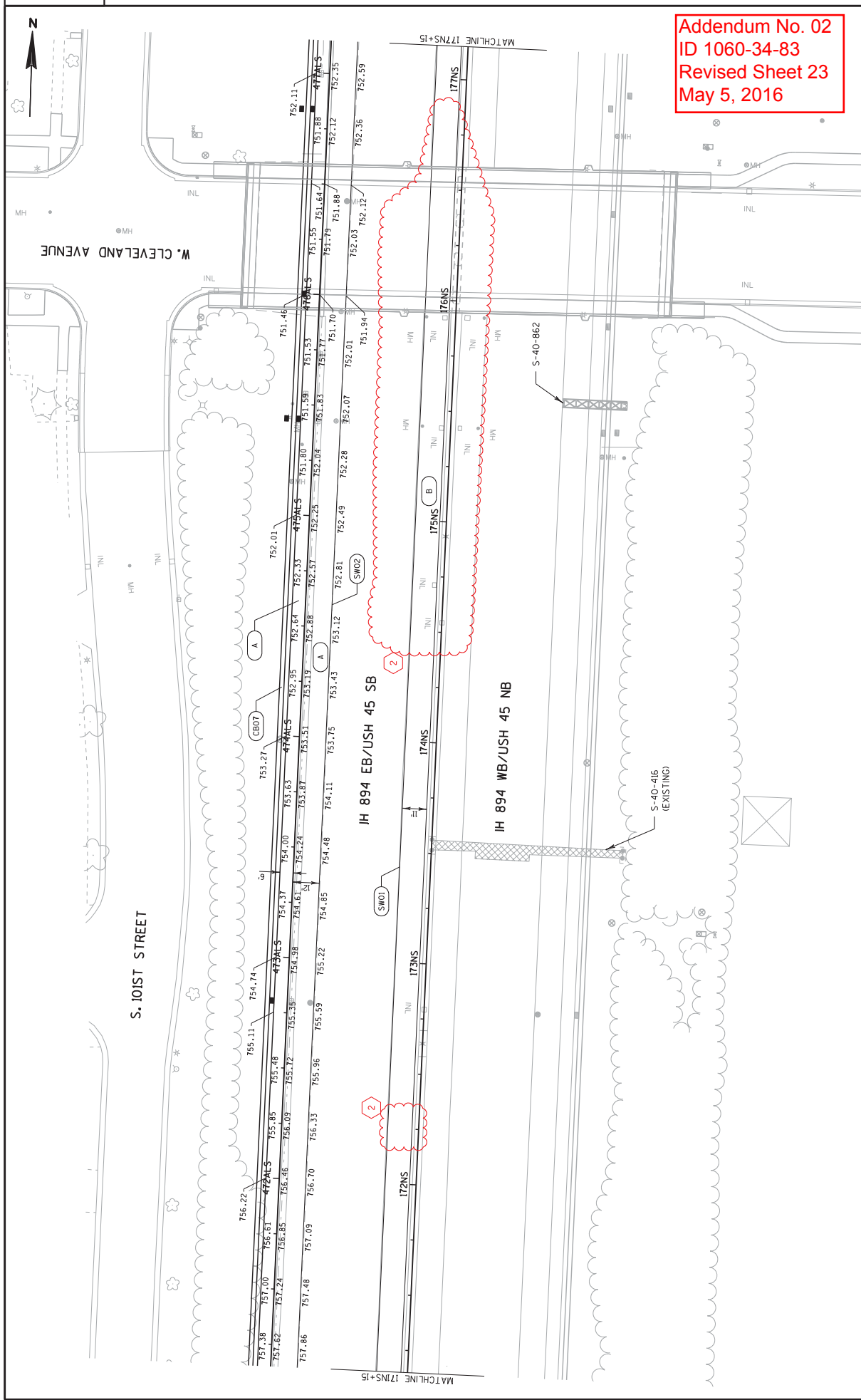


Addendum No. 02  
 ID 1060-34-83  
 Revised Sheet 22  
 May 5, 2016

S. 101ST STREET

IH 894 EB/USH 45 SB

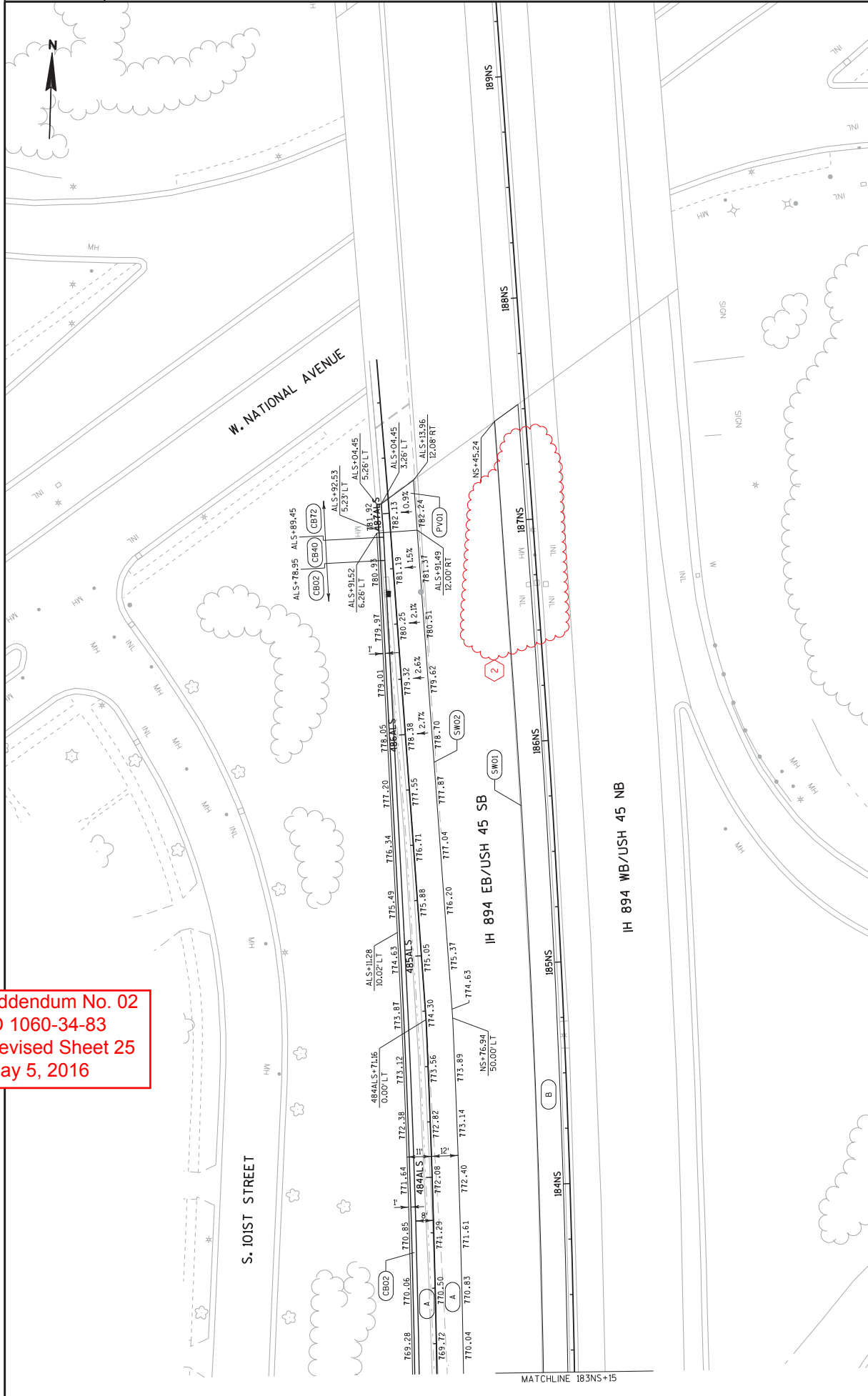
IH 894 WB/USH 45 NB



PROJECT NO: 1060-34-83	HWY: IH 894	COUNTY: MILWAUKEE	PLAN DETAILS	SHEET 23	E
------------------------	-------------	-------------------	--------------	----------	---

FILE NAME : \\nke31fp1\w3200\Cadd\N\10603483\_ALS\Foods\Cadd\021205\_dwd.dgn PLOT DATE : 02-MAY-2016 14:50 PLOT BY : MSCDYB PLOT NAME : 021205.Lpd PLOT SCALE : 40:1 WISDOT/CADDIS SHEET 42

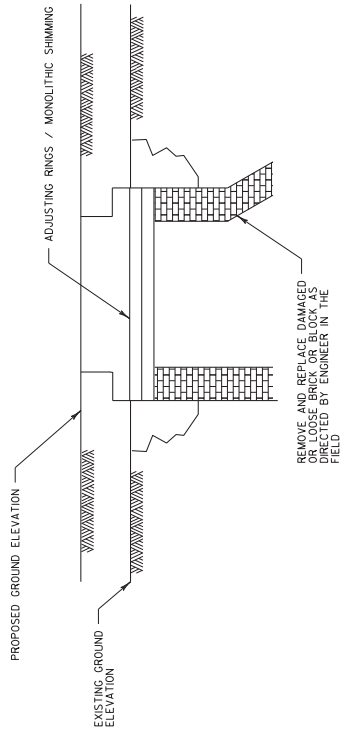
Addendum No. 02  
 ID 1060-34-83  
 Revised Sheet 25  
 May 5, 2016



<b>PROJECT NO:</b> 1060-34-83	<b>COUNTY:</b> MILWAUKEE	<b>PLAN DETAILS</b>	<b>SHEET</b> 25
<small>FILE NAME: F:\wke31\p1\w3200\Caddes\Final\10603483_ALS\Foods\Caddes\021207.dwg</small>	<small>PLOT DATE:</small> 02-MAY-2016 14:50	<small>PLOT BY:</small> MSC/DVB	<small>PLOT SCALE:</small> 40:1
<b>HWY:</b> IH 894		<b>E</b>	

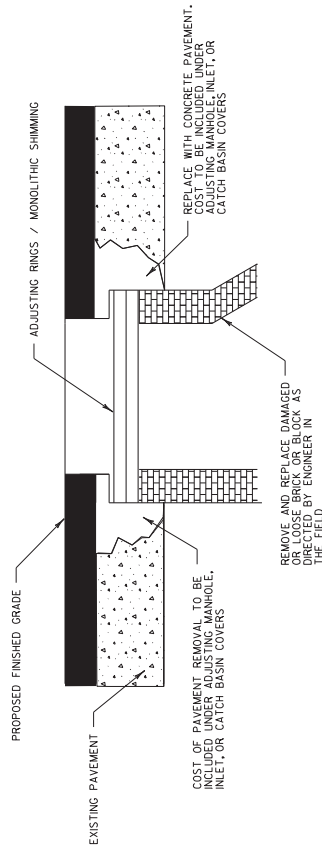


Addendum No. 02  
 ID 1060-34-83  
 Added Sheet 41A  
 May 5, 2016



**NON-PAVED LOCATION**

- NOTES**
1. IF EXISTING PAVEMENT REMOVAL IS NOT SHOWN IN THE REMOVAL PLANS AND A SAWCUT IS REQUIRED THE SAWCUT SHALL BE CONSIDERED INCIDENTAL TO ADJUSTING MANHOLE OR INLET COVERS.
  2. ADJUST CHIMNEY WITH PROPER SIZE CONCRETE MONOLITHIC SHIMMING. THE SIZE OF THE SHIMMING IN FRAME OR MONOLITHIC CONCRETE SHIMMING AND BRICK OR BLOCK SHALL BE DETERMINED BY THE ENGINEER. BACKFILL AND OTHER WORK TO BE DONE IN ACCORDANCE WITH ITEM ADJUSTING INLET COVERS.



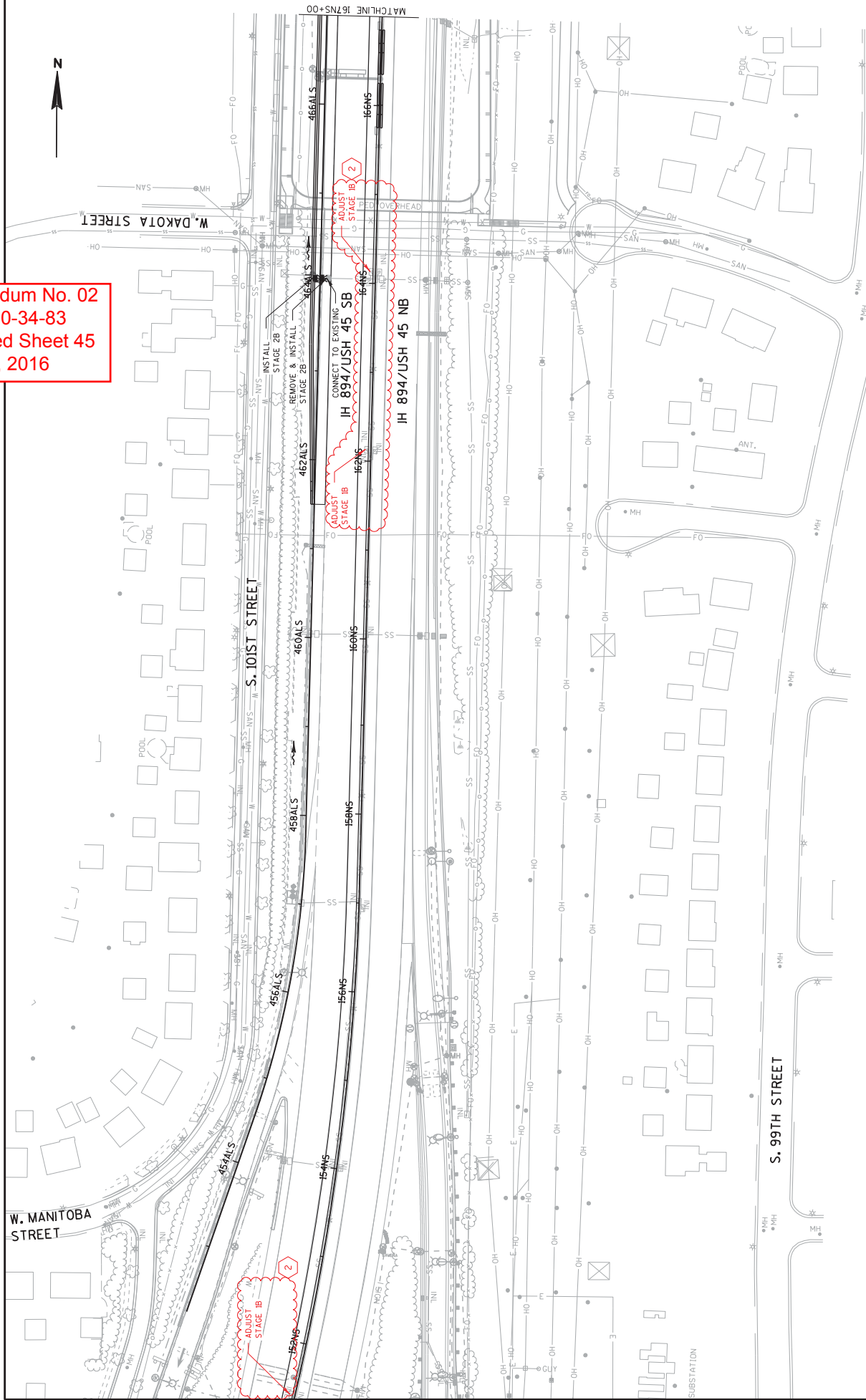
**PAVED LOCATION**

**ADJUSTING MANHOLE OR INLET COVERS**

PROJECT NO: 1060-34-83	HWY: IH 894	COUNTY: MILWAUKEE	STORM SEWER - CONSTRUCTION DETAILS	SHEET 41A	E
FILE NAME : W:\Cadd\VF\final\10603483_ALS\Roads\ccbs\022400_sss.dgn					
PLOT SCALE : 2:1					
PLOT NAME : 022400_s82					
PLOT BY : MSCDIS					
PLOT DATE : 04-MAY-2016 13:12					
WISDOT/CADDIS SHEET 42					



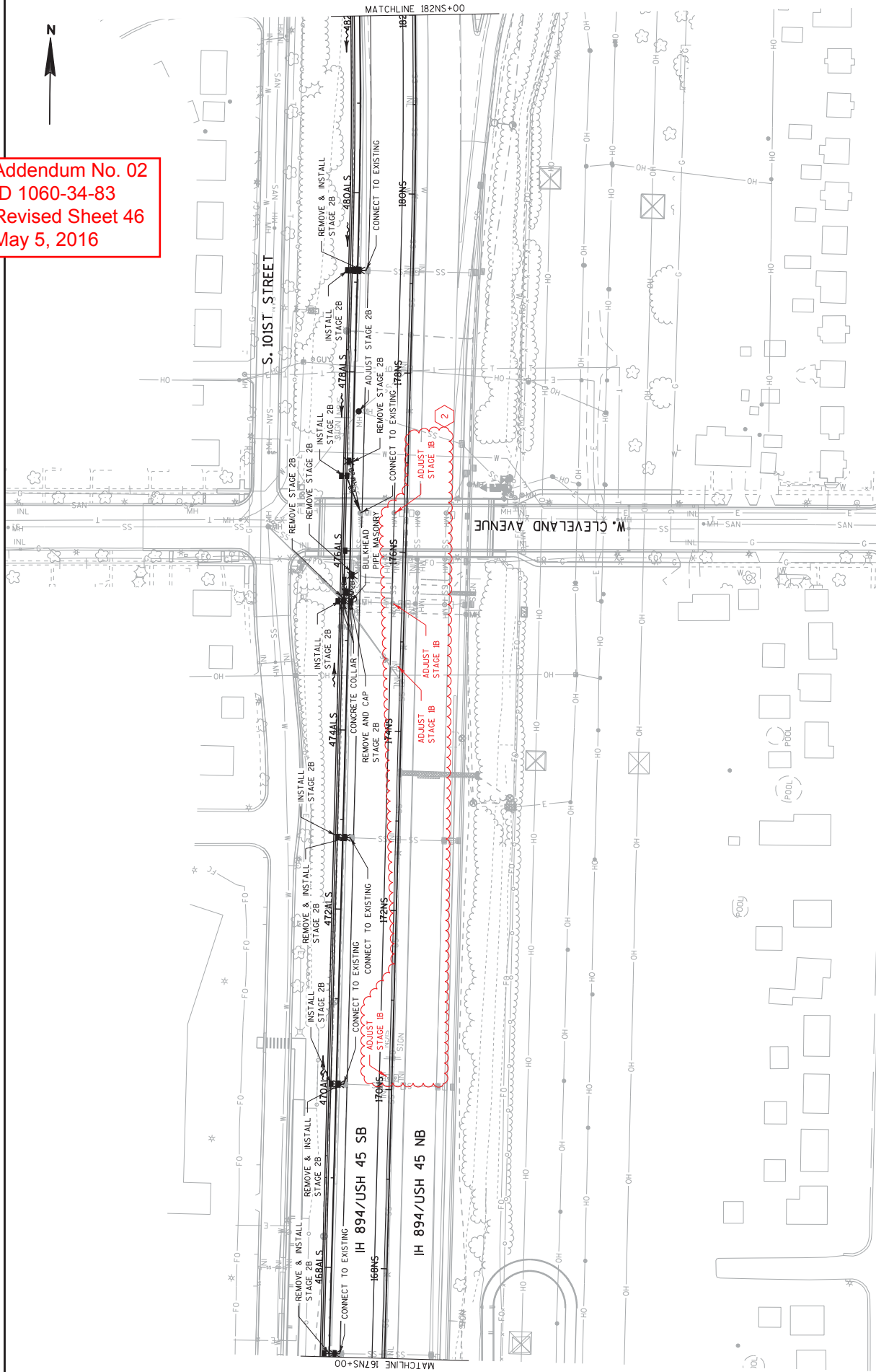
Addendum No. 02  
ID 1060-34-83  
Revised Sheet 45  
May 5, 2016



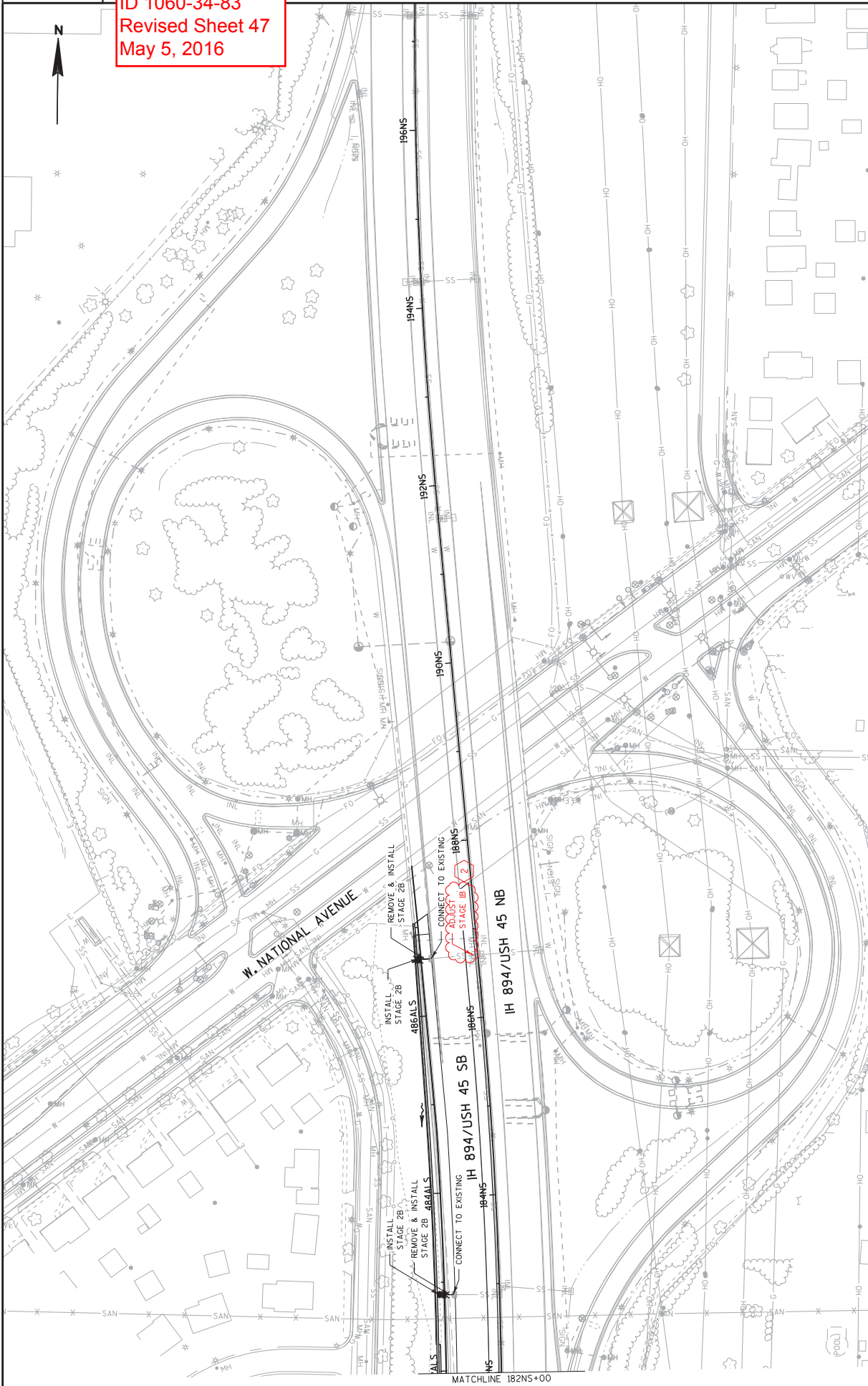
PROJECT NO: 1060-34-83	HWY: IH 894	COUNTY: MILWAUKEE	STORM SEWER - STAGING	SHEET 45	E
------------------------	-------------	-------------------	-----------------------	----------	---

FILE NAME : W:\Cadd\VF\proj\_10603483\_ALS\Roads\ccss\022401\_1.sss.dgn PLOT DATE : 04-MAY-2016 14:22 PLOT BY : MSCDJS PLOT NAME : 022401.sss FILE SCALE : 100.0000:1 WISDOT/CADDIS SHEET 45

Addendum No. 02  
 ID 1060-34-83  
 Revised Sheet 46  
 May 5, 2016



Addendum No. 02  
ID 1060-34-83  
Revised Sheet 47  
May 5, 2016



MATCHLINE 182NS+00

PROJECT NO: 1060-34-83	COUNTY: MILWAUKEE	STORM SEWER - STAGING	SHEET 47	E
FILE NAME : W:\Cadd\VF\proj\10603483_ALS\Roads\ccss\022403_sss.dgn	PLOT DATE : 04-MAY-2016 14:22	PLOT BY : MSCDIS	PLOT NAME : 022403.s	PLOT SCALE : 100.0002:1
HWY: IH 894				

BASE AGGREGATE ITEMS

CATEGORY	STAGE	ROADWAY	STATION	TO	STATION	TON	312.0115 SELECT CRUSHED MATERIAL CY
1000	1	IH 894/USH 45 SB	479ALS+25	-	485ALS+00	489	--
			150NS+57	-	187NS+53	1,568	--
		<b>MAINLINE</b>				2,057	--
<b>SUBTOTALS</b>							
1000	2	IH 894/USH 45 SB	461ALS+50	-	486ALS+92	5,997	2,964
		<b>MAINLINE</b>				5,997	2,964
		<b>TOTALS</b>				8,054	2,964

AGGREGATE UNIT WEIGHTS USED	
Base Aggregate Dense (TONS/CY)	2.0
Select Crushed Material (TONS/CY)	1.9

ASPHALTIC ITEMS

CATEGORY	STAGE	ROADWAY	STATION	TO	STATION	DOL	INCENTIVE RI RIDE COAT	TACK HMA PAVEMENT	DENSITY 3 HT 58-28 S	4 SMA 58-28 H PAVEMENT	TON	460.8424 HMA PAVEMENT
1000	1	IH 894/USH 45 SB	479ALS+25	-	485ALS+00	182	34				284	
			150NS+57	-	187NS+53	1,049	226				1,639	
		<b>MAINLINE</b>				1,231	260				1,923	
<b>SUBTOTALS</b>												
1000	2	IH 894/USH 45 SB	461ALS+50	-	486ALS+92	1,591	1,045				1,900	586
		<b>MAINLINE</b>				1,591	1,045				1,900	586
		<b>TOTALS</b>				2,822	1,305				3,823	586

MATERIAL UNIT WEIGHTS USED	
HMA Pavement	112 LB/(SY*IN)

Addendum No. 02  
ID 1060-34-83  
Revised Sheet 112  
May 5, 2016

**CONCRETE COLLARS FOR PIPE**

STAGE	ROADWAY	STATION	OFFSET	PIPE D	SIZE (IN)	EACH
2B	<b>MAINLINE</b>					
	IH 894/USH 45 SB					
		475ALS+41	3LT	PE1675	30	1
		475ALS+43	2LT	PE1631	18	1
	475ALS+45	7LT	PE1681	30	1	
<b>TOTAL</b>						3

**PIPE CONNECTION TO EXISTING STRUCTURE**

STAGE	ROADWAY	D	STATION	OFFSET	EACH
2B	<b>MAINLINE</b>				
	IH 894/USH 45 SB				
		AE1540	464ALS+04	8RT	1
		AE1642	467ALS+04	12RT	1
		AE1648	470ALS+05	8RT	1
		AE1666	472ALS+80	8RT	1
		AE1625	476ALS+45	10RT	1
		AE1719	479ALS+13	10RT	1
		AE1686	482ALS+86	10RT	1
		AE1684	486ALS+64	10RT	1
<b>TOTAL</b>					8

ALL ITEMS CATEGORY 1000

ALL ITEMS CATEGORY 1000

Addendum No. 02  
ID 1060-34-83  
Revised Sheet 114  
May 5, 2016

**SEALING PIPES**

STAGE	ROADWAY	STATION	OFFSET	EACH
2B	<b>MAINLINE</b>			
	IH 894/USH 45 SB			
		476ALS+45	3RT	1
<b>TOTAL</b>				1

**ADJUSTING STRUCTURES**

STAGE	LOCATION	ID	STATION	FT	EXISTING RM ELEVATION	PROPOSED RM ELEVATION	ADJUSTING MANHOLE COVERS EACH	ADJUSTING INLET COVERS EACH	
1B	<b>MAINLINE</b>								
	IH 894/USH 45 SB								
		151NS+41	3LT	753.49	753.27	753.27	---	1	
		162NS+13	3LT	753.49	753.27	753.27	---	1	
		164NS+13	3LT	753.49	753.27	753.27	---	1	
		170NS+13	3LT	753.49	753.27	753.27	---	1	
		174NS+71	3LT	753.49	753.27	753.27	---	1	
		178NS+43	11LT	753.49	753.27	753.27	1	---	
		178NS+44	12LT	753.49	753.27	753.27	1	---	
		186NS+71	3LT	753.49	753.27	753.27	---	1	
	<b>SUBTOTALS</b>							2	6
	2B	<b>MAINLINE</b>							
IH 894/USH 45 SB									
		AG1733	477ALS+56	5RT	753.49	753.27	1	---	
<b>SUBTOTALS</b>							1	0	
<b>TOTALS</b>							3	6	

ALL ITEMS CATEGORY 1000

ALL ITEMS CATEGORY 1000

PROJECT NO: 1060-34-83

HWY: IH 894

COUNTY: MILWAUKEE

MISCELLANEOUS QUANTITIES

SHEET: 114



FTMS PULL BOXES & COMMUNICATION VAULTS

CATEGORY	ROADWAY	ITEM ID	LOCATION	STATION	OFFSET	EXISTING ITEM	CONDUIT INTO	INSTALL	653.0140* FULL BOXES	STEEL	653.0900	
											ADJUSTING	PULL BOXES
											ADJUSTING	PULL BOXES
											EACH	EACH
1300	IH894	FB164NS	464ALS+07	22' LT	--	1	--	1	--	1	--	--
		FB166NS	466ALS+22	24' LT	--	1	--	1	--	1	--	--
		FB166NS-1	466ALS+06	22' LT	--	1	--	1	--	1	--	--
		EXCV166NS	466ALS+18	142' RT	1	--	--	1	--	1	--	--
		FB476G	476G+44	51' RT	--	1	--	1	--	1	--	--
		EXRB2601	476G+51	52' RT	1	--	--	1	--	1	--	--
		FB474G	474G+01	52' RT	--	1	--	1	--	1	--	--
		EXCV2601	474G+00	9' LT	1	--	--	1	--	1	--	--
		EXFB151NS	151NS+60	7' LT	--	1	--	1	--	1	--	--
TOTALS											3	5

\*ADDITIONAL QUANTITIES FOUND ELSEWHERE

FTMS CONDUIT AND TRACER WIRE

CATEGORY	ROADWAY	ITEM ID	LINEAR	DISTANCE	652.0125*		652.0225*		652.0235*					
					METALLIC	RIGID	CONDUIT RIGID	CONDUIT RIGID	CONDUIT RIGID	CONDUIT RIGID				
											2-INCH	40 2-INCH	40 3-INCH	3-INCH
											LF	LF	LF	LF
1300	IH894	FB164NS - FB166NS-1	200	--	--	--	200	--	--	--				
		FB166NS-1 - CB-DMS-40-0015	25	5	--	--	25	--	--	--				
		CB-DMS-40-0015 - FB166NS-1	10	--	20	--	--	--	--	--				
		FB166NS - EXCV166NS	170	--	--	--	--	--	--	340				
		CB-DMS-40-0110 - EXRB2601	10	5	10	--	--	--	--	--				
		CB-DMS-40-0110 - FB476G	20	--	--	40	--	--	--	480				
		FB476G - PB474G	245	--	--	--	--	--	--	130				
		PB474G - EXCV2601	65	--	--	--	--	--	--	--				
TOTALS											10	30	265	960

\*ADDITIONAL QUANTITIES FOUND ELSEWHERE

FTMS CABLE AND WIRE

CATEGORY	ROADWAY	ITEM ID	LINEAR	DISTANCE	655.0510		655.0635		674.0400					
					ELECTRICAL	WIRE	ELECTRICAL	WIRE	REINSTALL	CABLE				
											12 AWG	2 AWG	2 AWG	LF
											LF	LF	LF	LF
1300	IH894	EXMB164NS - FB164NS	20	--	--	80	--	--	--	--				
		FB164NS - FB166NS-1	200	--	--	800	--	--	--	--				
		FB166NS-1 - CB-DMS-40-0015	25	--	--	100	--	--	--	--				
		CB-DMS-40-0015 - FB166NS	10	19	--	--	--	--	--	--				
		FB166NS - EXCV166NS	170	--	179	--	--	--	--	--				
		CB-DMS-40-0110 - EXRB2601	10	--	--	--	10	--	--	--				
		CB-DMS-40-0110 - FB476G	20	29	--	--	--	--	--	--				
		PB476G - PB474G	245	254	--	--	--	--	--	--				
		PB474G - EXCV2601	95	104	--	--	--	--	--	--				
TOTALS											585	980	10	

\*ADDITIONAL QUANTITIES FOUND ELSEWHERE

FTMS CABLE

CATEGORY	ROADWAY	ITEM ID	LINEAR	DISTANCE	678.0006		
					INSTALL FIBER	OPTIC CABLE	
							OUTDOOR
							PLANT
							6-CT
							LF
1300	IH894	EXCB-DMS-40-0015 - PB166NS	10	--	60	--	
		PB166NS - EXCV166NS	170	--	270	--	
		CB-DMS-40-0110 - PB476G	20	70	--	--	
		PB476G - PB474G	245	295	--	--	
		PB474G - EXCV2601	95	195	--	--	
TOTALS							890

\*ADDITIONAL QUANTITIES FOUND ELSEWHERE

Addendum No. 02  
ID 1060-34-83  
Revised Sheet 124  
May 5, 2016

## SCHEDULE OF ITEMS

REVISED:

CONTRACT:  
20160510012PROJECT(S):  
1060-34-83FEDERAL ID(S):  
N/A

CONTRACTOR : \_\_\_\_\_

LINE NO	ITEM DESCRIPTION	APPROX. QUANTITY AND UNITS	UNIT PRICE		BID AMOUNT	
			DOLLARS	CTS	DOLLARS	CTS
0110	204.0280 Sealing Pipes	1.000 EACH	.		.	
0120	205.0100 Excavation Common	12,490.000 CY	.		.	
0130	209.0100 Backfill Granular	800.000 CY	.		.	
0140	305.0120 Base Aggregate Dense 1 1/4-Inch	8,054.000 TON	.		.	
0150	312.0115 Select Crushed Material	2,964.000 CY	.		.	
0160	415.0410 Concrete Pavement Approach Slab	33.000 SY	.		.	
0170	440.4410 Incentive IRI Ride	963.000 DOL	1.00000		963.00	
0180	455.0605 Tack Coat	1,305.000 GAL	.		.	
0190	460.2000 Incentive Density HMA Pavement	2,822.000 DOL	1.00000		2822.00	
0200	460.7223 HMA Pavement 3 HT 58-28 S	3,823.000 TON	.		.	
0210	460.8424 HMA Pavement 4 SMA 58-28 H	586.000 TON	.		.	



## SCHEDULE OF ITEMS

REVISED:

CONTRACT:  
20160510012PROJECT(S):  
1060-34-83FEDERAL ID(S):  
N/A

CONTRACTOR : \_\_\_\_\_

LINE NO	ITEM DESCRIPTION	APPROX. QUANTITY AND UNITS	UNIT PRICE		BID AMOUNT	
			DOLLARS	CTS	DOLLARS	CTS
0330	611.0642 Inlet Covers Type MS	3.000 EACH	.		.	
0340	611.0654 Inlet Covers Type V	10.000 EACH	.		.	
0350	611.2006 Manholes 6-FT Diameter	1.000 EACH	.		.	
0360	611.3003 Inlets 3-FT Diameter	9.000 EACH	.		.	
0370	611.3901 Inlets Median 1 Grate	3.000 EACH	.		.	
0380	611.8110 Adjusting Manhole Covers	3.000 EACH	.		.	
0390	614.0905 Crash Cushions Temporary	3.000 EACH	.		.	
0400	619.1000 Mobilization	1.000 EACH	.		.	
0410	623.0200 Dust Control Surface Treatment	15,100.000 SY	.		.	
0420	624.0100 Water	71.000 MGAL	.		.	
0430	628.1504 Silt Fence	618.000 LF	.		.	

SCHEDULE OF ITEMS

REVISED:

CONTRACT:  
20160510012

PROJECT(S):  
1060-34-83

FEDERAL ID(S):  
N/A

CONTRACTOR : \_\_\_\_\_

LINE NO	ITEM DESCRIPTION	APPROX. QUANTITY AND UNITS	UNIT PRICE		BID AMOUNT	
			DOLLARS	CTS	DOLLARS	CTS
1490	SPV.0180 Special 0200. Topsoil Special	2,766.000 SY	.	.	.	.
1510	SPV.0195 Special 0120. HMA Longitudinal Joint Repair	40.000 TON	.	.	.	.
1520	203.0200 Removing Old Structure (station) 0001. 476ALS+25	LUMP	LUMP	.	.	.
1530	630.0120 Seeding Mixture No. 20	78.000 LB	.	.	.	.
1540	611.8115 Adjusting Inlet Covers	6.000 EACH	.	.	.	.
1550	653.0900 Adjusting Pull Boxes	1.000 EACH	.	.	.	.
	SECTION 0001 TOTAL				.	.
	TOTAL BID				.	.