



# Wisconsin Department of Transportation

May 4, 2016

**Division of Transportation Systems Development**

Bureau of Project Development  
 4802 Sheboygan Avenue, Rm 601  
 P O Box 7916  
 Madison, WI 53707-7916

Telephone: (608) 266-1631  
 Facsimile (FAX): (608) 266-8459

**NOTICE TO ALL CONTRACTORS:**

**Proposal #24: 4992-01-71  
 C Menasha, Third St  
 Lake Winnebago Slough & Approaches  
 Loc St  
 Winnebago County**

**Letting of May 10, 2016**

This is Addendum No. 01, which provides for the following:

**Special Provisions**

Added Special Provisions	
Article No.	Description
30	Parapet Concrete Type 'TX', Item SPV.0090.01.

**Schedule of Items**

Revised Bid Item Quantities					
Bid Item	Item Description	Unit	Old Quantity	Revised Quantity	Proposal Total
502.0100	Concrete Masonry Bridges	CY	227	-13	214
505.0600	Bar Steel Reinforcement HS Coated Structures	LB	26,810	-2,870	23,940

Added Bid Item Quantities					
Bid Item	Item Description	Unit	Old Quantity	Revised Quantity	Proposal Total
628.1905	Mobilizations Erosion Control	Each	0	5	5
628.1910	Mobilizations Emergency Erosion Control	Each	0	2	2
SPV.0090.01	Parapet Concrete Type TX	LF	121	121	121

Deleted Bid Item Quantities					
Bid Item	Item Description	Unit	Old Quantity	Revised Quantity	Proposal Total
550.0500	Pile Points	Each	16	-16	0

## Plan Sheets

Revised Plan Sheets	
Plan Sheet	Plan Sheet Title (brief description of changes to sheet)
32	Structure B-70-323 General Plan – Update notes
34	Structure B-70-323 Quantities and Notes – Quantity Revisions
38	Structure B-70-323 West Abutment Bill of Bars - Update notes and Bill of Bars
41	Structure B-70-323 East Abutment Bill of Bars - Update notes and Bill of Bars
42	Structure B-70-323 Superstructure – Update Bill of Bars

The responsibility for notifying potential subcontractors and suppliers of these changes remains with the prime contractor.

Sincerely,

*Mike Coleman*

Proposal Development Specialist  
Proposal Management Section

**ADDENDUM NO. 01**

**4992-01-71**

**May 4, 2016**

**Special Provisions**

**30. Parapet Concrete Type 'TX', Item SPV.0090.01.**

**A Description**

This special provision describes construction of a decorative concrete parapet in accordance with section 501, 502, and 505 of the Standard Specifications, as shown on the plans, and as hereinafter provided. The concrete mix used for this parapet shall include polypropylene fibers.

**B Materials**

The polypropylene fibers shall be engineered synthetic reinforcing fibers of 100% polypropylene collated fibers.

The physical properties of the fibers shall be as follows:

Specific Gravity:	0.91
Denier:	Less than 100
Modulus of Elasticity:	0.5x10 <sup>6</sup> to 0.7x10 <sup>6</sup> psi
Tensile Strength:	70 to 110 ksi
Length:	1/2 to 2-1/2 inches

The polypropylene fiber manufacturer shall certify in writing that all polypropylene fibers are specifically manufactured for use in concrete from virgin polypropylene and the physical properties are within the limits specified above.

If the fiber manufacturer is other than the brand name listed on the literature and/or packaging, the certification must be from the original manufacturer of the polypropylene fibers.

The fiber length shall be determined by the manufacturer to be compatible with the concrete mix design.

**C Construction**

The polypropylene fiber manufacturer or authorized distributor shall provide the services of a qualified engineer or employee for a pre-construction meeting and initial job start up.

Use polypropylene fibers at the rate of one bag weighing 1.5 to 1.6 pounds per cubic yard of concrete. The fibers may be added with the fine and coarse aggregates or in the mixer after all ingredients have been blended and mixed in accordance with manufacturer's recommendations.

**D Measurement**

The department will measure Parapet Concrete Type 'TX' by the linear foot of parapet acceptably completed.

**E Payment**

The department will pay for measured quantities at the contract unit price under the following bid item:

ITEM NUMBER	DESCRIPTION	UNIT
SPV.0090.01	Parapet Concrete Type 'TX'	LF

Payment is full compensation for furnishing all labor, tools, equipment, materials, and incidentals necessary to complete the work.

**Schedule of Items**

Attached, dated May 4, 2016, are the revised Schedule of Items Pages 1 – 8.

**Plan Sheets**

The following 8½ x 11-inch sheets are attached and made part of the plans for this proposal:  
Revised: 32, 34, 38, 41, and 42.

END OF ADDENDUM

**DESIGN DATA**

**LIVE LOAD:**  
 DESIGN LOADING: HL-93  
 INVENTORY RATING FACTOR: 1.16  
 WISCONSIN STANDARD PERMIT VEHICLE (MS-SPV) = 250 KIPS  
 STRUCTURE IS DESIGNED FOR A FUTURE WEARING SURFACE OF 20" ± 5/8" F.

**MATERIAL PROPERTIES:**  
 CONCRETE MASONRY (ALL OTHER) SUPERSTRUCTURE f'c = 4,000 P.S.I.  
 HIGH STRENGTH BAR STEEL REINFORCEMENT (GRADE 60) f'y = 60,000 P.S.I.

**HYDRAULIC DATA:**

100-YEAR FLOOD  
 DRAINAGE AREA = 3.1 sq. mi.  
 V = 4.7 f.p.s.  
 O<sub>10</sub> = 572 c.f.s.  
 HIGH WATER<sub>100</sub> EL. 748.9  
 HIGH WATER<sub>2</sub> EL. 748.7  
 RWDY. OVERFLOW = N/A  
 SCOUR CRITICAL CODE = 8  
 LAKE WINNEBAGO REG. EL. 749.5

**FOUNDATION DATA:**

ABUTMENTS TO BE SUPPORTED ON HP 10 x 42 STEEL PILING WITH PILE POINTS DRIVEN TO A REQUIRED DRIVING RESISTANCE OF 130 TONS ± PER PILE, AS DETERMINED BY MOHR'S DRIVING FORMULA. ESTIMATED LENGTH 12'-0" AT EACH ABUTMENT. PRE-BORE PILING 10'-FEET.  
 \* THE FACTORED AXIAL RESISTANCE OF PILES IN COMPRESSION USED FOR DESIGN IS 130 TONS ± PER PILE, AS DETERMINED BY A RESISTANCE FACTOR OF 0.5 USING MODIFIED GATES TO DETERMINE DRIVEN PILE CAPACITY.

**TRAFFIC DATA:**

A.D.T. = 290 (2016)  
 A.D.T. = 330 (2036)  
 R.D.S. = 30 M.P.H.

FOR TYPICAL SECTIONS  
SEE SHEET 2

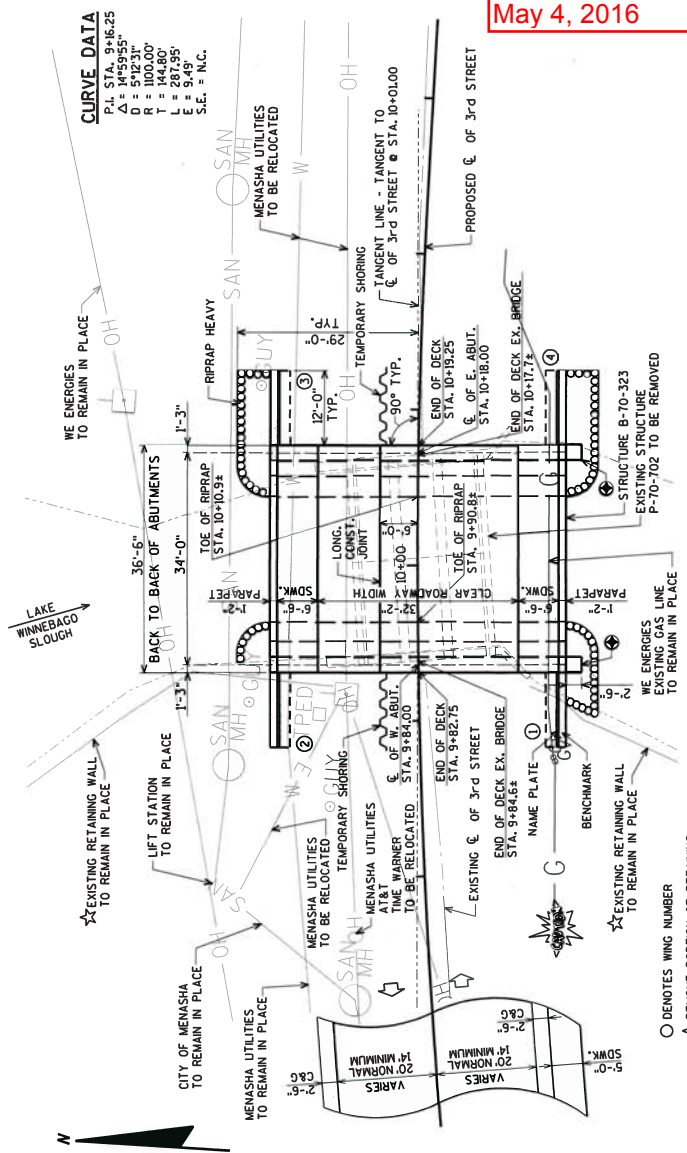
NO.	DATE	REVISION	BY
5/16		UPDATE TX RAIL AND REMOVE PILE POINTS	AYRES



5/3/16

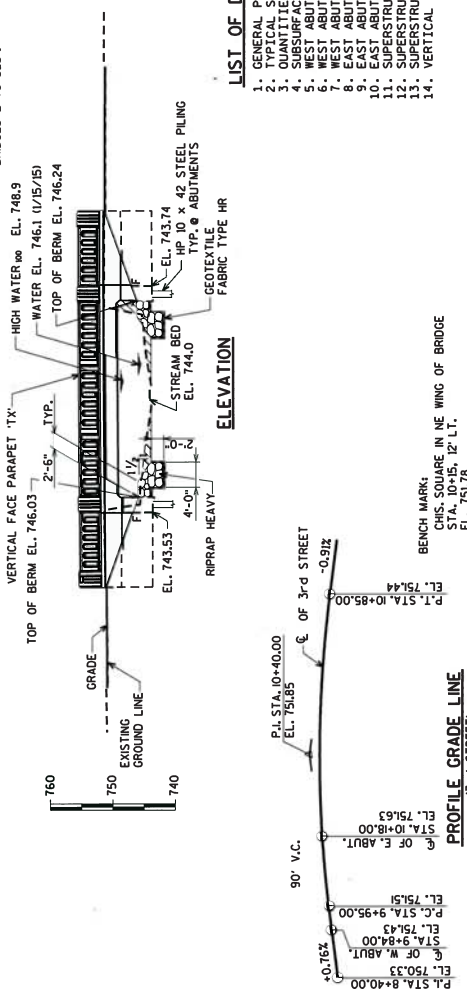
**LIST OF DRAWINGS**

- GENERAL PLAN
- QUANTITIES AND NOTES
- SUBSURFACE EXPLORATION
- WEST ABUTMENT
- EAST ABUTMENT
- EAST ABUTMENT WING DETAILS
- SUPERSTRUCTURE PLAN
- SUPERSTRUCTURE PARAPET 'X'



**PLAN**

COST OF EXCAVATION IN THE HATCHED AREAS SHALL BE INCLUDED IN THE CONTRACT LUMP SUM PRICE OF EXCAVATION FOR STRUCTURES BRIDGES B-70-323.



**ELEVATION**

**PROFILE GRADE LINE (3rd STREET)**

Addendum No. 01  
 ID 4992-01-71  
 Revised Sheet 32  
 May 4, 2016

*William C. Decker* SR

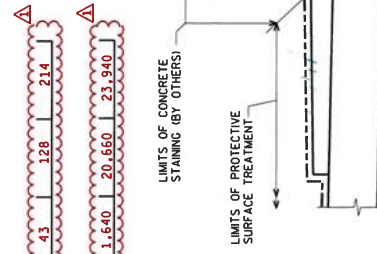
05/04/16

BRIDGE OFFICE CONTACT:  
 WILLIAM DREHER  
 608-266-9495

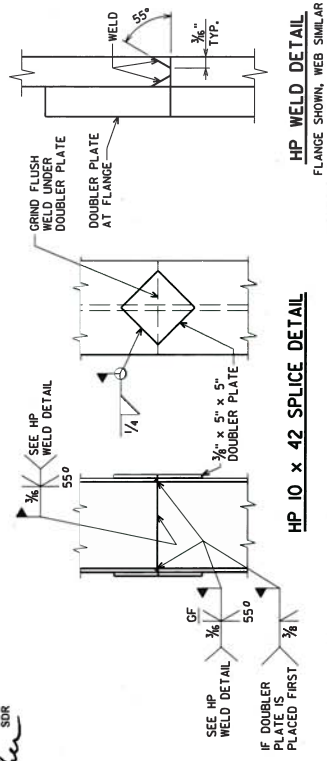
CONSULTANT CONTACT:  
 CHRIS CAMPHOR  
 (715) 837-3161

TOTAL ESTIMATED QUANTITIES

BID ITEM NUMBER	BID ITEMS	UNIT	W. ABUT.	E. ABUT.	SUPER.	TOTAL
203.0600-S	REMOVING OLD STRUCTURE OVER WATERWAY WITH MINIMAL DEBRIS STATION 10+00	LS	-----	-----	-----	1
208.1000	EXCAVATION FOR STRUCTURES BRIDGES B-70-323	LS	-----	-----	-----	1
208.3000	COFFERDAMS B-70-323	LS	-----	-----	-----	286
210.0100	BACKFILL STRUCTURE	CT	2849	2849	-----	5698
202.0100	CONCRETE MASONRY BRIDGES	CT	16	16	-----	32
502.0100	CONCRETE MASONRY BRIDGES	ST	198	198	-----	396
502.0102	MASONRY ANCHORS TYPE 1/2" INCH	EA	-----	-----	-----	146
505.0400	BAR STEEL REINFORCEMENT HS STRUCTURES	LB	2-5066	2-5066	-----	10132
505.0600	BAR STEEL REINFORCEMENT HS STRUCTURES	LB	2-5066	2-5066	-----	10132
505.0905	BAR COUPLERS NO. 5	EA	1600	1600	-----	3200
505.0906	BAR COUPLERS NO. 6	EA	18	18	-----	36
511.1200	TEMPORARY SHORING B-70-323	SV	55	55	-----	110
515.0500	RUBBERIZED MEMBRANE WATERPROOFING	SV	15	15	-----	30
550.0200	PIPE-BORING ROCK OR CONSOLIDATED MATERIAL	EA	80	80	-----	160
560.0500	REINFORCING STEEL 10" INCH x 42 LB	EA	36	36	-----	72
560.0500	REINFORCING STEEL 10" INCH x 42 LB	EA	36	36	-----	72
606.0300	RIPPRAP HEAVY	CY	35	50	-----	85
612.0406	PIPE UNDERDRAIN WRAPPED 6" INCH	LF	30	30	-----	180
640.0100	GEOTEXTILE FABRIC TYPE 1X	EA	24	24	-----	48
SPV.0090.01	PARAPET CONCRETE TYPE 1X	LF	24	24	-----	121
	NON-BID ITEMS	SIZE	-----	-----	-----	1/2" & 3/4"
	FILLER					



SURFACE TREATMENT DETAIL



William C. Decker SDR  
05/04/16

**GENERAL NOTES**

DRAWINGS SHALL NOT BE SCALED.

BAR STEEL REINFORCEMENT SHALL BE EMBEDDED 2" CLEAR UNLESS SHOWN OR NOTED OTHERWISE.

THE FIRST DIGIT OF A THREE DIGIT BAR NO. AND THE FIRST TWO DIGITS OF A FOUR DIGIT BAR NO. SIGNIFIES THE BAR SIZE.

ALL REINFORCEMENT SHALL BE CONFORM TO THE REQUIREMENTS OF A.A.S.H.T.O. DESIGNATION M 213, TYPE 1, II OR III OR THE SLOPE OF THE FILL IN FRONT OF THE ABUTMENTS SHALL BE COVERED WITH RIPRAP HEAVY TO THE EXTENT DEEMED NECESSARY.

SLAB FALSEWORK SHALL BE SUPPORTED ON PILES OR THE SUBSTRUCTURES UNLESS OTHERWISE APPROVED BY THE ENGINEER.

THE EXISTING GROUND LINE SHALL BE THE UPPER LIMIT FOR EXCAVATION FOR STRUCTURES.

THE EXISTING STRUCTURE P-70-105, TO BE REMOVED, IS A SINGLE STRUCTURE, P-70-105 BRIDGE, 33.0 FT. LONG WITH A 19.0 FT. CLEAR ROADWAY WIDTH.

AT BACKFACE OF ABUTMENTS ALL EXCAVATED VOLUME NOT OCCUPIED BY THE NEW STRUCTURE SHALL BE BACKFILLED WITH BACKFILL STRUCTURE.

PROTECTIVE SURFACE TREATMENT IS TO BE APPLIED AS SHOWN IN DETAIL ON THIS SHEET.

THE QUANTITY OF BACKFILL STRUCTURE, BID ITEM 210.0100, IS CALCULATED BASED ON APPLICABLE FIGURES 26.65 AND 12.12 FROM THE WISCONSIN DEPARTMENT OF TRANSPORTATION BRIDGE MANUAL.

Addendum No. 01  
ID 4992-01-71  
Revised Sheet 34  
May 4, 2016

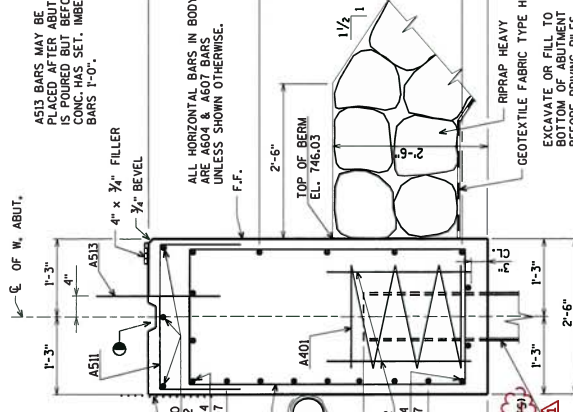
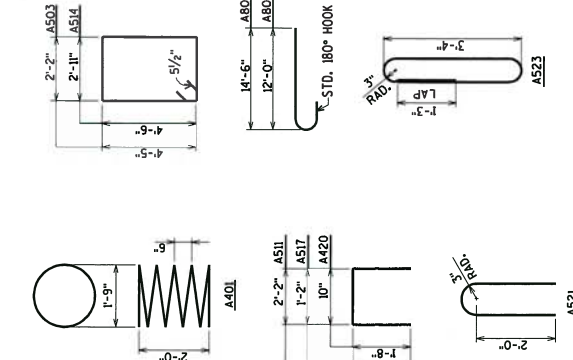
5/16	UPDATE TX RAIL AND REMOVE PILE POINTS	AYRES	BY
NO. DATE	REVISION		
STATE OF WISCONSIN DEPARTMENT OF TRANSPORTATION			
STRUCTURE B-70-323			
DRAWN BY	SCALE	PLANS	AEB
QUANTITIES AND NOTES			SHEET 3 OF 14
			34



ORIGINAL PLANS PREPARED BY  
AYRES ASSOCIATES  
3433 Oakwood Hills Parkway  
Eau Claire, WI 54601  
www.ayresassociates.com

**BILL OF BARS**

BAR NO.	COATED BAR	N.O. REQ'D.	LENGTH	BENT BAR	BAR SERIES	LOCATION
A401		8	28'-0"	X	BAR	● PILES
A402		16	2'-3"		BODY	● PILES
A503		62	13'-10"	X	BODY VERT.	STAGE 2
A604		11	32'-2"		BODY HORIZ.	STAGE 2
A805		7	15'-8"	X	BODY HORIZ.	● WING 1 B.F. STAGE 2
A606		7	22'-9"	X	BODY HORIZ.	BETW. WINGS B.F. STAGE 2
A607		11	17'-6"	X	BODY HORIZ.	STAGE 1
A808		7	13'-2"	X	BODY HORIZ.	● WING 2 B.F. STAGE 1
A609		7	10'-7"	X	BODY HORIZ.	BETW. WINGS B.F. STAGE 1
A510		3	13'-7"		BODY VERT.	TOP STAGE 2
A411		16	5'-4"	X	BODY DOWELS	
A412		3	1'-5"		WINGS VERT.	TOP STAGE 1
A513		46	2'-0"		WINGS HORIZ.	F.F.
A514		24	15'-6"	X	WINGS VERT.	F.F.
A515		12	14'-2"		WINGS HORIZ.	F.F.
A616		16	14'-2"		WINGS HORIZ.	F.F.
A517		34	9'-11"	X	WINGS VERT.	
A418		16	11'-8"		WINGS HORIZ.	E.F.F.
A619		4	11'-8"		WINGS HORIZ.	E.F.F.
A420		34	4'-0"	X	WINGS VERT.	
A521		34	4'-4"	X	PARAPET VERT.	
A522		4	11'-8"		PARAPET HORIZ.	BOT.
A523		34	8'-6"	X	PARAPET VERT.	
A724		4	11'-8"		PARAPET HORIZ.	TOP



AS13 BARS MAY BE PLACED AFTER ABUT. IS POURED BUT BEFORE CONC. HAS SET. IMBED BARS 1'-0".

ALL HORIZONTAL BARS IN BODY ARE A604 & A607 BARS UNLESS SHOWN OTHERWISE.

4" x 3/4" FILLER 3/4" BEVEL

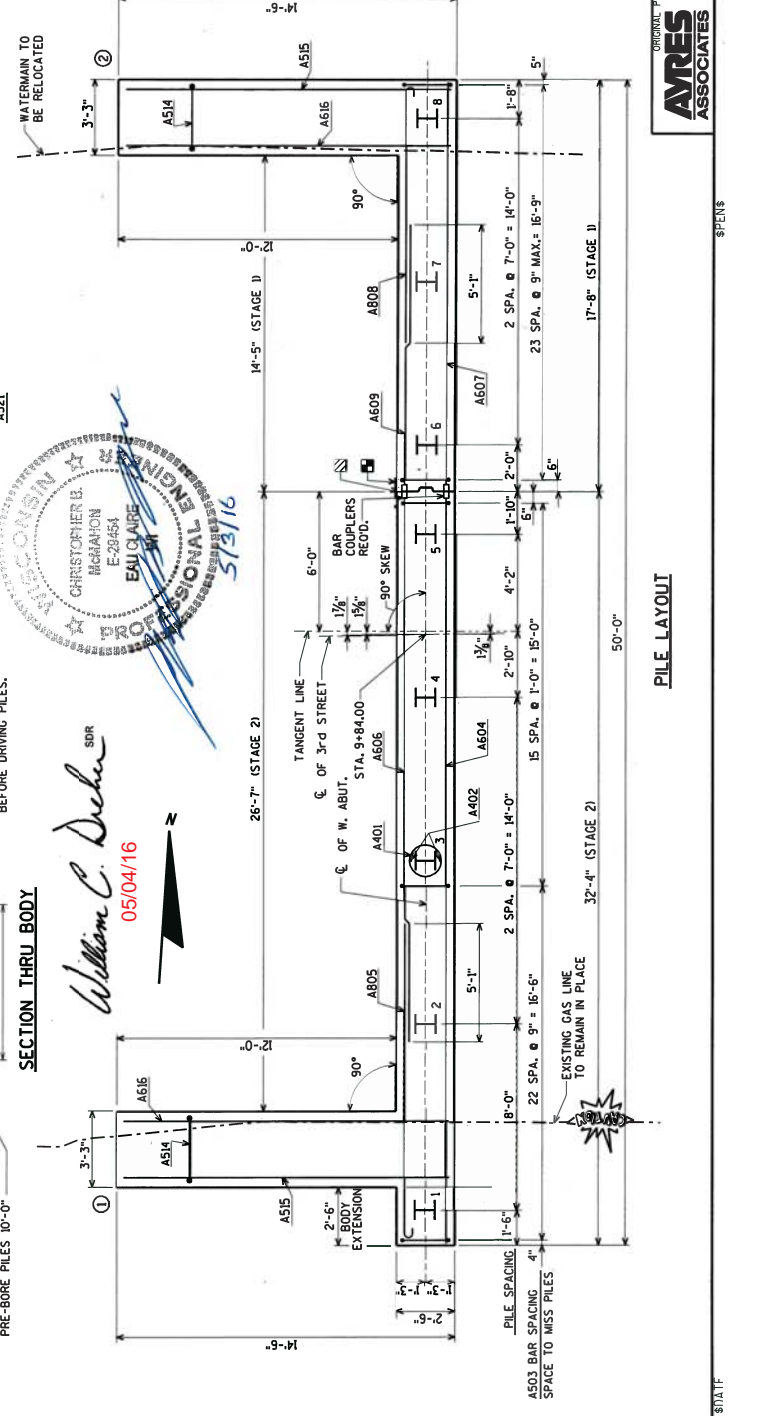
18" RUBBERIZED MEMBRANE WRAPPING BETH. WINGS

ABUTMENT TO BE SUPPORTED ON HP 10 x 42 STEEL PILING (WITH PILE POINTS) TO REMAIN IN PLACE. RESISTANCE OF 135 TONS PER PILE. ESTIMATED LENGTH 12'-0". PRE-BORE PILES 10'-0".

WATERMAN TO BE RELOCATED



*William C. Decker* SOR  
05/04/16



18" RUBBERIZED MEMBRANE WATERPROOFING FROM BOTTOM OF ABUT. TO TOP OF SUPERSTRUCTURE

VERT. CONST. J.T. KEYWAY FORMED BY RUBBERIZED MEMBRANE WRAPPING EDGES 1/2" SEAL JOINT AS BACK FACE WITH 18" RUBBERIZED MEMBRANE WATERPROOFING

BAR COUPLER REQUIRED. BAR LENGTHS ARE TO BE MODIFIED TO THE BAR COUPLER MANUFACTURERS RECOMMENDATIONS.

KEYED CONST. JOINT - FORMED BY A BEVELED 2" x 6"

PIPE UNDERDRAIN WRAPPED 6-INCH. SLOPE 0.5% MIN. TO SUITABLE DRAINAGE. ATTACH RODENT SHIELD AT ENDS OF PIPE UNDERDRAIN. FOR RODENT SHIELD DETAIL SEE SHEET 6.

FOR PILE SPLICE DETAIL SEE SHEET 3

B.F. DENOTES BACK FACE

E.F. DENOTES FRONT FACE

F.F. DENOTES FRONT FACE

UPDATE TX, RAIL AND REMOVE PILE POINTS

AYRES

NO. DATE REVISION

STATE OF WISCONSIN DEPARTMENT OF TRANSPORTATION

STRUCTURE B-70-323

WEST ABUTMENT BILL OF BARS

DRAIN BY CLS  
PLANS GWS - AEB

SHEET 7 OF 14

38

Addendum No. 01  
ID 4992-01-71  
Revised Sheet 38  
May 4, 2016

**BILL OF BARS**

BAR NO.	COATED BAR	NO. REIN.	LENGTH	BAR SERIES	LOCATION
B401	1600	8	28'-0"	X	BODY @ PILES
B402	1600	16	2'-3"	X	BODY @ PILES
B503	1600	62	13'-10"	X	BODY VERT.
B604	1600	11	17'-6"	X	BODY HORIZ. STAGE 1
B605	1600	7	13'-2"	X	BODY HORIZ. & WING 3 B.F. STAGE 1
B606	1600	7	10'-7"	X	BODY HORIZ. & WING 3 B.F. STAGE 2
B607	1600	11	32'-2"	X	BODY HORIZ. & WING 4 B.F. STAGE 2
B608	1600	7	15'-8"	X	BODY HORIZ. & WING 4 B.F. STAGE 2
B609	1600	7	22'-9"	X	BODY HORIZ. & WING 4 B.F. STAGE 2
B610	1600	3	13'-7"	X	BODY HORIZ. TOP STAGE 2
B611	1600	16	5'-4"	X	BODY VERT. TOP STAGE 2
B612	1600	3	1'-5"	X	BODY DOWELS
B513	1600	46	2'-0"	X	WINGS VERT.
B514	1600	24	15'-6"	X	WINGS HORIZ. F.F.
B515	1600	12	14'-2"	X	WINGS HORIZ. F.F.
B616	1600	16	14'-2"	X	WINGS HORIZ.
B517	1600	34	9'-11"	X	WINGS VERT.
B618	1600	16	11'-8"	X	WINGS HORIZ. E.F.
B619	1600	4	11'-8"	X	WINGS HORIZ. E.F.
B420	1600	34	4'-0"	X	WINGS VERT.
B521	1600	34	4'-4"	X	PARAPET VERT.
B522	1600	4	11'-8"	X	PARAPET HORIZ. BOT.
B523	1600	34	8'-6"	X	PARAPET VERT.
B724	1600	4	11'-8"	X	PARAPET HORIZ. TOP

BENDING DIMENSIONS ARE OUT TO OUT OF BARS.

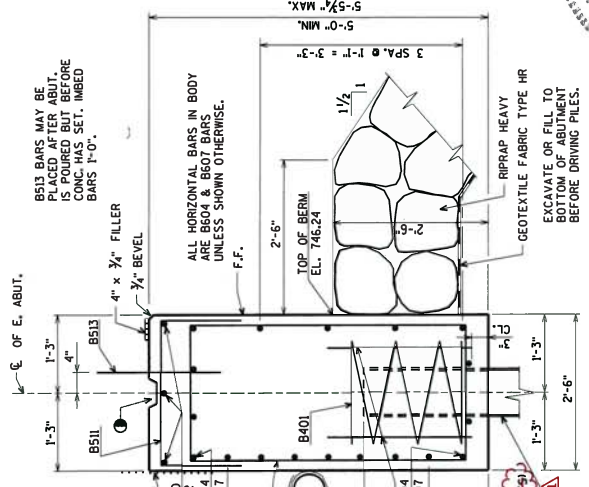
\*\*\* WEIGHT INCLUDED WITH BID ITEM "CONCRETE PARAPET TYPE TX" (600' COATED)

B513 BARS MAY BE PLACED AFTER ABUT. IS POURED BUT BEFORE CONC. HAS SET. IMBED BARS 1'-0".

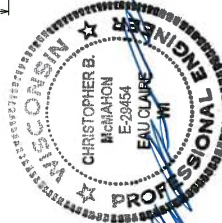
ALL HORIZONTAL BARS IN BODY ARE B604 & B607 BARS UNLESS SHOWN OTHERWISE.

ABUTMENT TO BE SUPPORTED ON HP 10 x 42 STEEL PILING (WITH PILE POINTS) DRIVEN TO BED. DRIVING ESTIMATED LENGTH 12'-0". PRE-BORE PILES 10'-0".

Addendum No. 01  
ID 4992-01-71  
Revised Sheet 41  
May 4, 2016

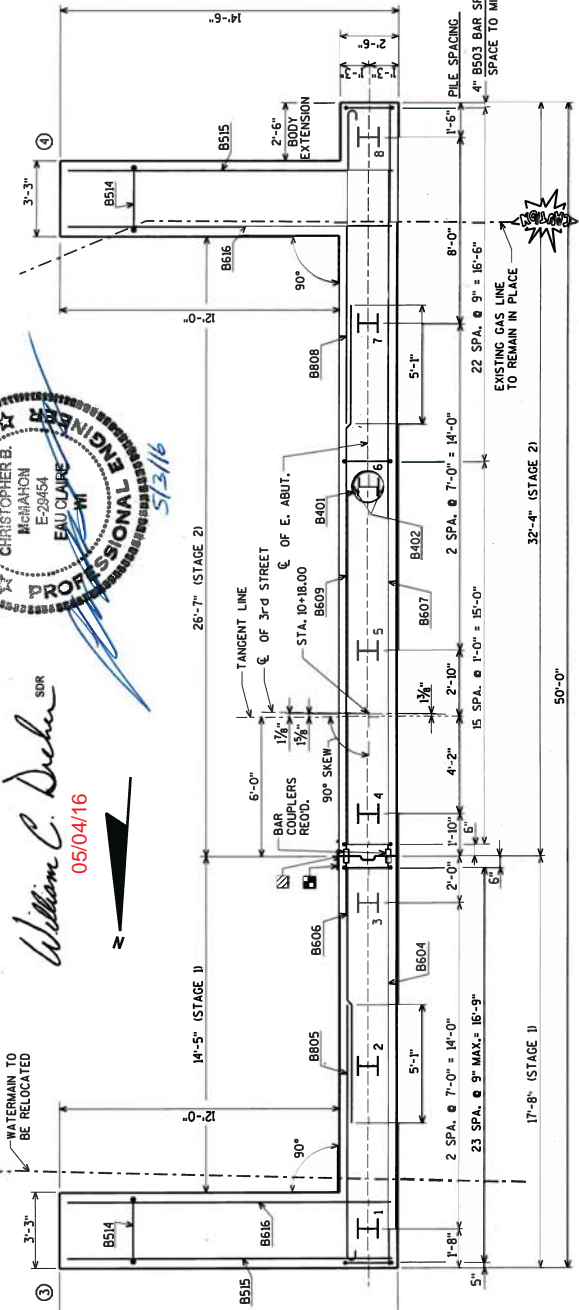


**SECTION THRU BODY**



*William C. Dehn* SR  
05/04/16

WATERMAN TO BE RELOCATED



**PILE LAYOUT**

- 18" RUBBERIZED MEMBRANE WATERPROOFING FROM BOTTOM OF ABUT. TO TOP OF SUPERSTRUCTURE
- VERT. CONST. 1/4" KEYWAY FORMED BY 1/2" KEYWAY REINFORCING BARS EDGES TO SEAL JOINT AT BACK FACE WITH 18" RUBBERIZED MEMBRANE WATERPROOFING
- BAR COUPLER REQUIRED. BAR LENGTHS ARE TO BE MODIFIED TO THE BAR COUPLER MANUFACTURERS RECOMMENDATIONS.
- KEYED CONST. JOINT - FORMED BY A BEVELED 2" x 6"
- PIPE UNDERDRAIN WRAPPED 6-INCH. SLOPE 0.5% MIN. TO SUITABLE DRAINAGE. ATTACH RODENT SHIELD AT ENDS OF PIPE UNDERDRAIN. FOR RODENT SHIELD DETAIL SEE SHEET 'S'
- FOR PILE SPLICE DETAIL SEE SHEET 3
- B.F. DENOTES BACK FACE
- E.F. DENOTES FRONT FACE
- F.F. DENOTES FRONT FACE

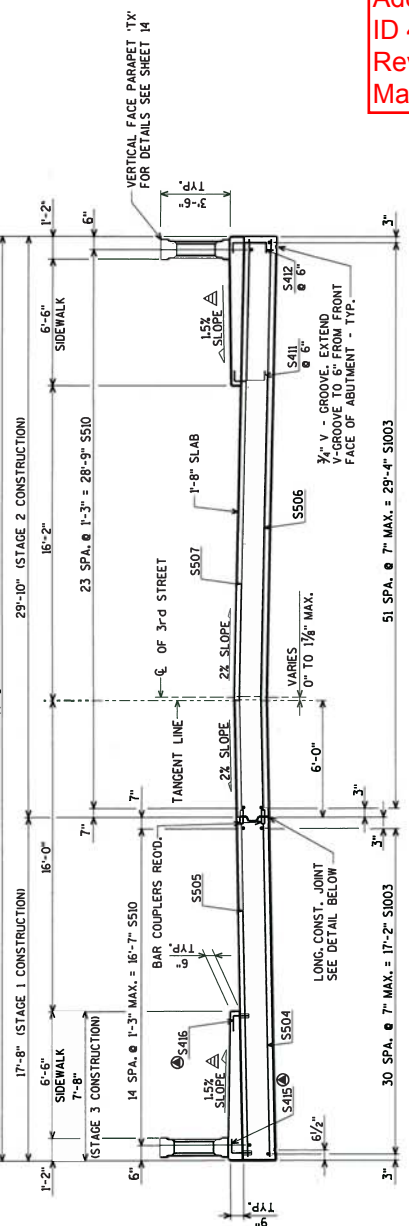
5/16 UPDATE TX RAIL AND REMOVE PILE POINTS  
NO. DATE REVISION  
STATE OF WISCONSIN  
DEPARTMENT OF TRANSPORTATION

STRUCTURE B-70-323  
DRAIN BY: CLS  
PLANS BY: AEB  
SHEET 10 OF 14

EAST ABUTMENT  
BILL OF BARS  
41

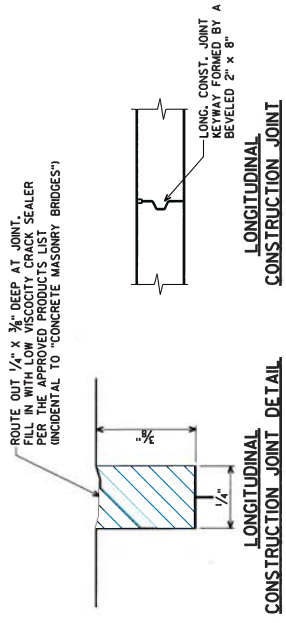
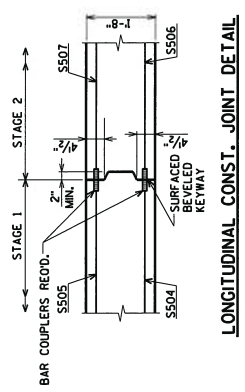
ORIGINAL PLANS PREPARED BY  
3433 Oakwood Hills Parkway  
Eau Claire, WI 54601  
AVRES ASSOCIATES www.avresassociates.com





Addendum No. 01  
ID 4992-01-71  
Revised Sheet 42  
May 4, 2016

**CROSS SECTION THRU BRIDGE**  
(LOOKING EAST)

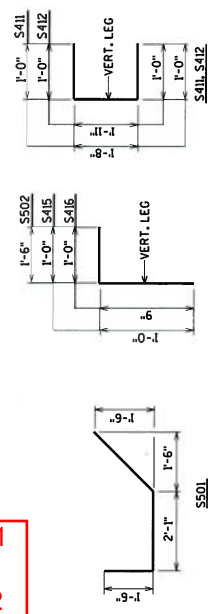


**BILL OF BARS**

BAR NO.	COATED BAR	NO. REQ'D.	LENGTH	BAR SERIES	LOCATION
S501	X	98	5-7	X	SLAB @ ABUT.
S502	X	88	3-4	X	SLAB @ ABUT.
S503	X	83	31-4	X	SLAB LONG. BOT.
S504	X	52	17-6	X	SLAB TRANS. BOT. STAGE 1
S505	X	48	17-6	X	SLAB TRANS. TOP STAGE 1
S506	X	52	29-8	X	SLAB TRANS. BOT. STAGE 2
S507	X	48	29-8	X	SLAB TRANS. TOP STAGE 2
S508	X	39	3-6	X	SLAB LONG. TOP
S509	X	73	3-6	X	SLAB @ SDWK. STAGE 2
S510	X	73	3-9	X	SLAB @ SDWK. STAGE 2
S511	X	146	7-3	X	SDWK. TRANS. TOP
S512	X	22	36-2	X	SDWK. LONG. TOP
S513	X	73	1-11	X	SLAB @ SDWK. STAGE 3
S514	X	73	1-8	X	SLAB @ SDWK. STAGE 3
S515	X	98	3-4	X	PARAPEL VERT. @ SDWK.
S516	X	4	36-2	X	PARAPEL HORIZ. BOT.
S517	X	100	8-6	X	PARAPEL VERT.
S518	X	4	36-2	X	PARAPEL HORIZ. TOP
S519	X	4	36-2	X	PARAPEL HORIZ. TOP
S520	X	4	36-2	X	PARAPEL HORIZ. TOP

BENDING DIMENSIONS ARE OUT TO OUT OF BARS.

\*\*\* WEIGHT INCLUDED WITH BID ITEM "CONCRETE PARAPEL TYPE TX" (L6/70" COATED)



*William C. Decker*  
SDR  
05/04/16

- ⊗ BAR COUPLER REQUIRED. BAR LENGTHS ARE COMPUTED TO BE CONSTRUCTION JOINTS AND SHALL BE MODIFIED TO THE BAR COUPLER MANUFACTURERS RECOMMENDATIONS.
- ⊙ MASONRY ANCHORS TYPE 5 1/2-INCH.
- ⊕ 0.5% CONSTRUCTION TOLERANCE IN SIDEWALK CROSS SLOPE. THE SIDEWALK CROSS SLOPE SHALL NOT EXCEED 2% WITHOUT PRIOR APPROVAL FROM THE ENGINEER.
- ⊖ TOP TRANSVERSE BARS IN SLAB SHALL BE SUPPORTED BY INDIVIDUAL BAR CHAIRS AT APPROXIMATELY 3'-0" CENTERS EACH WAY. BOTTOM LONGITUDINAL BARS SHALL BE SUPPORTED BY CONTINUOUS BAR CHAIRS AT APPROXIMATELY 4'-0" CENTERS.
- ⊗ ALL SLAB THICKNESS DIMENSIONS ARE MINIMUM. ANY TOLERANCES NECESSARY TO CORRECT CONSTRUCTION DISCREPANCIES ARE TO BE PLUS (+).
- ⊙ PARAPETS AND SIDEWALKS SHOWING PLACED ON TOP OF THE SLAB SHALL BE POURED AFTER FALSEWORK HAS BEEN RELEASED.

NO. DATE

REVISION

STATE OF WISCONSIN  
DEPARTMENT OF TRANSPORTATION

STRUCTURE B-70-323

DRAWN: CLS  
CHECKED: AEB  
PERMITS: AEB

NO. DATE

REVISION

STATE OF WISCONSIN  
DEPARTMENT OF TRANSPORTATION

STRUCTURE B-70-323

DRAWN: CLS  
CHECKED: AEB  
PERMITS: AEB

SHEET 11 OF 14

SUPERSTRUCTURE

42

ORIGINAL PLANS PREPARED BY  
3433 Oakwood Hills Parkway  
Eau Claire, WI 54701  
www.ayrassociates.com

SCHEDULE OF ITEMS

REVISED:

CONTRACT:  
20160510024

PROJECT(S):  
4992-01-71

FEDERAL ID(S):  
N/A

CONTRACTOR : \_\_\_\_\_

LINE NO	ITEM DESCRIPTION	APPROX. QUANTITY AND UNITS	UNIT PRICE		BID AMOUNT	
			DOLLARS	CTS	DOLLARS	CTS

SECTION 0001 Roadway Items

0010	201.0205 Grubbing	4.000 STA	.	.	.	.
0020	203.0600.S Removing Old Structure Over Waterway With Minimal Debris (station) 01. 10+00	LUMP	LUMP	.	.	.
0030	204.0150 Removing Curb & Gutter	160.000 LF	.	.	.	.
0040	204.0155 Removing Concrete Sidewalk	17.000 SY	.	.	.	.
0050	204.0170 Removing Fence	130.000 LF	.	.	.	.
0060	205.0100 Excavation Common	475.000 CY	.	.	.	.
0070	206.1000 Excavation for Structures Bridges (structure) 01. B-70-323	LUMP	LUMP	.	.	.
0080	206.5000 Cofferdams (structure) 01. B-70-323	LUMP	LUMP	.	.	.
0090	210.0100 Backfill Structure	220.000 CY	.	.	.	.

## SCHEDULE OF ITEMS

REVISED:

CONTRACT:  
20160510024PROJECT(S):  
4992-01-71FEDERAL ID(S):  
N/A

CONTRACTOR : \_\_\_\_\_

LINE NO	ITEM DESCRIPTION	APPROX. QUANTITY AND UNITS	UNIT PRICE		BID AMOUNT	
			DOLLARS	CTS	DOLLARS	CTS
0100	305.0110 Base Aggregate Dense 3/4-Inch	20.000 TON	.		.	
0110	305.0120 Base Aggregate Dense 1 1/4-Inch	300.000 TON	.		.	
0120	305.0130 Base Aggregate Dense 3-Inch	560.000 TON	.		.	
0130	416.0160 Concrete Driveway 6-Inch	60.000 SY	.		.	
0140	416.0610 Drilled Tie Bars	4.000 EACH	.		.	
0150	455.0605 Tack Coat	45.000 GAL	.		.	
0160	460.4000 HMA Cold Weather Paving	50.000 TON	.		.	
0170	460.5223 HMA Pavement 3 LT 58-28 S	115.000 TON	.		.	
0180	460.5224 HMA Pavement 4 LT 58-28 S	90.000 TON	.		.	
0190	465.0120 Asphaltic Surface Driveways and Field Entrances	15.000 TON	.		.	
0200	465.0125 Asphaltic Surface Temporary	35.000 TON	.		.	

## SCHEDULE OF ITEMS

REVISED:

CONTRACT:  
20160510024PROJECT(S):  
4992-01-71FEDERAL ID(S):  
N/A

CONTRACTOR : \_\_\_\_\_

LINE NO	ITEM DESCRIPTION	APPROX. QUANTITY AND UNITS	UNIT PRICE		BID AMOUNT	
			DOLLARS	CTS	DOLLARS	CTS
0210	502.0100 Concrete Masonry Bridges	214.000 CY	.		.	
0220	502.3200 Protective Surface Treatment	190.000 SY	.		.	
0230	502.6102 Masonry Anchors Type S 1/2-Inch	146.000 EACH	.		.	
0240	505.0400 Bar Steel Reinforcement HS Structures	5,800.000 LB	.		.	
0250	505.0600 Bar Steel Reinforcement HS Coated Structures	23,940.000 LB	.		.	
0260	505.0905 Bar Couplers No. 5	100.000 EACH	.		.	
0270	505.0906 Bar Couplers No. 6	36.000 EACH	.		.	
0280	511.1200 Temporary Shoring (structure) 01. B-70-323	110.000 SF	.		.	
0290	516.0500 Rubberized Membrane Waterproofing	30.000 SY	.		.	
0300	550.0020 Pre-Boring Rock or Consolidated Materials	160.000 LF	.		.	
0320	550.1100 Piling Steel HP 10-Inch X 42 Lb	192.000 LF	.		.	

## SCHEDULE OF ITEMS

REVISED:

CONTRACT:  
20160510024PROJECT(S):  
4992-01-71FEDERAL ID(S):  
N/A

CONTRACTOR : \_\_\_\_\_

LINE NO	ITEM DESCRIPTION	APPROX. QUANTITY AND UNITS	UNIT PRICE		BID AMOUNT	
			DOLLARS	CTS	DOLLARS	CTS
0330	601.0411 Concrete Curb & Gutter 30-Inch Type D	325.000 LF	.	.	.	.
0340	602.0405 Concrete Sidewalk 4-Inch	580.000 SF	.	.	.	.
0350	603.8000 Concrete Barrier Temporary Precast Delivered	330.000 LF	.	.	.	.
0360	603.8125 Concrete Barrier Temporary Precast Installed	530.000 LF	.	.	.	.
0370	606.0300 Riprap Heavy	85.000 CY	.	.	.	.
0380	612.0406 Pipe Underdrain Wrapped 6-Inch	180.000 LF	.	.	.	.
0390	616.0700.S Fence Safety	300.000 LF	.	.	.	.
0400	619.1000 Mobilization	1.000 EACH	.	.	.	.
0410	624.0100 Water	10.000 MGAL	.	.	.	.
0420	625.0100 Topsoil	550.000 SY	.	.	.	.
0430	628.1504 Silt Fence	350.000 LF	.	.	.	.

## SCHEDULE OF ITEMS

REVISED:

CONTRACT:  
20160510024PROJECT(S):  
4992-01-71FEDERAL ID(S):  
N/A

CONTRACTOR : \_\_\_\_\_

LINE NO	ITEM DESCRIPTION	APPROX. QUANTITY AND UNITS	UNIT PRICE		BID AMOUNT	
			DOLLARS	CTS	DOLLARS	CTS
0440	628.1520 Silt Fence Maintenance	1,400.000 LF	.	.	.	.
0450	628.2006 Erosion Mat Urban Class I Type A	550.000 SY	.	.	.	.
0460	628.6005 Turbidity Barriers	170.000 SY	.	.	.	.
0470	628.7015 Inlet Protection Type C	2.000 EACH	.	.	.	.
0480	628.7020 Inlet Protection Type D	2.000 EACH	.	.	.	.
0490	628.7570 Rock Bags	20.000 EACH	.	.	.	.
0500	629.0210 Fertilizer Type B	0.600 CWT	.	.	.	.
0510	630.0140 Seeding Mixture No. 40	15.000 LB	.	.	.	.
0520	630.0200 Seeding Temporary	10.000 LB	.	.	.	.
0530	638.2602 Removing Signs Type II	4.000 EACH	.	.	.	.
0540	638.3000 Removing Small Sign Supports	2.000 EACH	.	.	.	.

## SCHEDULE OF ITEMS

REVISED:

CONTRACT:  
20160510024PROJECT(S):  
4992-01-71FEDERAL ID(S):  
N/A

CONTRACTOR : \_\_\_\_\_

LINE NO	ITEM DESCRIPTION	APPROX. QUANTITY AND UNITS	UNIT PRICE		BID AMOUNT	
			DOLLARS	CTS	DOLLARS	CTS
0550	642.5001 Field Office Type B	1.000 EACH	.		.	
0560	643.0100 Traffic Control (project) 01. 4992-01-71	1.000 EACH	.		.	
0570	643.0300 Traffic Control Drums	2,650.000 DAY	.		.	
0580	643.0420 Traffic Control Barricades Type III	650.000 DAY	.		.	
0590	643.0705 Traffic Control Warning Lights Type A	960.000 DAY	.		.	
0600	643.0715 Traffic Control Warning Lights Type C	975.000 DAY	.		.	
0610	643.0900 Traffic Control Signs	3,000.000 DAY	.		.	
0620	645.0120 Geotextile Type HR	165.000 SY	.		.	
0630	649.0400 Temporary Pavement Marking Removable Tape 4-Inch	540.000 LF	.		.	
0640	649.1400 Temporary Pavement Marking Stop Line Removable Tape 24-Inch	60.000 LF	.		.	
0650	650.4500 Construction Staking Subgrade	244.000 LF	.		.	

## SCHEDULE OF ITEMS

REVISED:

CONTRACT:  
20160510024PROJECT(S):  
4992-01-71FEDERAL ID(S):  
N/A

CONTRACTOR : \_\_\_\_\_

LINE NO	ITEM DESCRIPTION	APPROX. QUANTITY AND UNITS	UNIT PRICE		BID AMOUNT	
			DOLLARS	CTS	DOLLARS	CTS
0660	650.5000 Construction Staking Base	244.000 LF	.	.	.	.
0670	650.5500 Construction Staking Curb Gutter and Curb & Gutter	325.000 LF	.	.	.	.
0680	650.6500 Construction Staking Structure Layout (structure) 01. B-70-323	LUMP	LUMP	.	.	.
0690	650.9910 Construction Staking Supplemental Control (project) 01. 6498-05-71	LUMP	LUMP	.	.	.
0700	650.9920 Construction Staking Slope Stakes	244.000 LF	.	.	.	.
0710	690.0150 Sawing Asphalt	225.000 LF	.	.	.	.
0720	690.0250 Sawing Concrete	10.000 LF	.	.	.	.
0730	715.0502 Incentive Strength Concrete Structures	1,362.000 DOL	1.00000	.	1362.00	.
0740	SPV.0060 Special 01. Utility Line Opening	2.000 EACH	.	.	.	.
0750	SPV.0060 Special 02. Adjusting Sanitary Manhole Cover	2.000 EACH	.	.	.	.



SCHEDULE OF ITEMS

REVISED:

CONTRACT:  
20160510024

PROJECT(S):  
4992-01-71

FEDERAL ID(S):  
N/A

CONTRACTOR : \_\_\_\_\_

LINE NO	ITEM DESCRIPTION	APPROX. QUANTITY AND UNITS	UNIT PRICE		BID AMOUNT	
			DOLLARS	CTS	DOLLARS	CTS
0760	628.1905 Mobilizations Erosion Control	5.000 EACH	.		.	
0770	628.1910 Mobilizations Emergency Erosion Control	2.000 EACH	.		.	
0780	SPV.0090 Special 01. Parapet Concrete Type TX	121.000 LF	.		.	
	SECTION 0001 TOTAL				.	
	TOTAL BID				.	