



# Wisconsin Department of Transportation

May 2, 2016

## Division of Transportation Systems Development

Bureau of Project Development  
4802 Sheboygan Avenue, Rm 601  
P O Box 7916  
Madison, WI 53707-7916

### NOTICE TO ALL CONTRACTORS:

Telephone: (608) 266-1631  
Facsimile (FAX): (608) 266-8459

**Proposal #43: 1023-02-76, WISC 2016 184**  
**Osseo – Black River Falls**  
**West County Line to STH 95 (EB & WB)**  
**IH 94**  
**Jackson County**

### Letting of May 10, 2016

This is Addendum No. 01, which provides for the following:

#### Special Provisions

Revised Special Provisions	
Article No.	Description
3	Prosecution and Progress

#### Schedule of Items

Added Bid Item Quantities					
Bid Item	Item Description	Unit	Old Quantity	Revised Quantity	Proposal Total
603.8000	Concrete Barrier Temporary Precast Delivered	LF	0	350	350
603.8125	Concrete Barrier Temporary Precast Installed	LF	0	700	700

#### Plan Sheets

Added Plan Sheets	
Plan Sheet	Plan Sheet Title (brief description of why sheet was added)
69A – 69H	SDD – Concrete Barrier Temporary Precast, 12'-6"
69I – 69M	SDD – Crash Cushion/Sand Barrel Array And Other Temporary Barrier Layout Details
101A	SDD – Traffic Control, Lane Closure, Speeds Greater Than 40 M.P.H With Barrier

The responsibility for notifying potential subcontractors and suppliers of these changes remains with the prime contractor.

Sincerely,

*Mike Coleman*

Proposal Development Specialist  
Proposal Management Section

**ADDENDUM NO. 01**

**1023-02-76**

**May 2, 2016**

**Special Provisions**

**3. Prosecution and Progress**

*Add the following to section titled Lane Closure Restrictions:*

Continuous temporary single-lane closures will be permitted from 6:00 AM Tuesday, September 6, 2016 to 11:00 AM Friday, September 16, 2016 to complete the concrete overlay on structure B-27-0021. The concrete overlay will be permitted to be done in halves. The contractor will be subject to Lane Rental Fee Assessment as described in Article 4 of the special provisions for a closure beyond 11:00 AM Friday, September 16, 2016.

**Schedule of Items**

Attached, dated May 2, 2016, are the revised Schedule of Items Pages 10 and 11.

**Plan Sheets**

The following 8½ x 11-inch sheets are attached and made part of the plans for this proposal:  
Added: 69A – M and 101A

END OF ADDENDUM

**GENERAL NOTES**

THESE GENERAL NOTES APPLY TO SHEETS 14B7-14(a) THRU 14B7-14(d).

DO NOT INTERMIX CONCRETE BARRIER TEMPORARY PRECAST, 12'-6" (CSD1212.5) WITH OTHER TEMPORARY CONCRETE BARRIERS.

USE ASTM A-615, GRADE 60, DEFORMED STEEL BARS FOR BARS 4A1, 6A2, 5B1 AND 4C1 IN THE BARRIER SECTION AND FOR 4V1, 4V2, 4V3, 4V4, 4V5, 4V6, 4F1, 4F2, AND 5F3 IN THE BARRIER TAPER SECTION.

LOOP BARS 6D1, 6D2 AND 6D3 SHALL BE 3/4" SMOOTH STEEL BARS WITH A MINIMUM YIELD STRENGTH OF 60 KSI. A TENSILE STRENGTH OF NOT LESS THAN 1.25 TIMES THE YIELD STRENGTH BUT A MINIMUM OF 80 KSI, A MINIMUM 14% ELONGATION IN 8 INCHES AND PASSING A 180 DEGREE BEND TEST USING A 3/16" PIN BEND DIAMETER FOR BEND TESTS; THE LOOPS SHALL BE INSTALLED WITHIN 1/8" OF THE PLAN DIMENSION.

CONSTRUCT LIFTING SLOTS AS SPECIFIED ON THE PLANS TO FACILITATE THE DRAINAGE OF WATER AFTER INSTALLATION.

PLACE BARRIER ON A PAVED SURFACE. REMOVE ALL LOOSE DIRT AND SAND FROM THE ROADWAY SURFACE PRIOR TO PLACEMENT OF THE BARRIER.

INSTALL MECHANICAL OR ADHESIVE ANCHORS PER MANUFACTURER'S RECOMMENDATIONS. PROVIDE MANUFACTURER'S INFORMATION TO PROJECT ENGINEER.

1 MARK ONE END OF EACH BARRIER PERMANENTLY BY FORMING INTO THE BARRIER THE FOLLOWING INFORMATION:

- a. TYPE: W/CBTP
- b. MANUFACTURER
- c. DATE MANUFACTURED (MONTH AND YEAR)

2 T CHAMFER TO PREVENT SPALLING.

3 A 3/8" HOLE IN THE CONNECTION PIN, AT THE LOCATION SHOWN, IS ACCEPTABLE, BUT NOT REQUIRED.

4 1/4" NOTCH IS OPTIONAL.

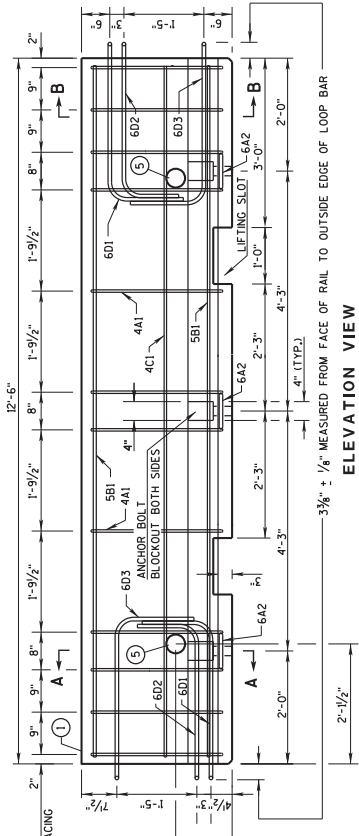
5 THE 4" DIAMETER, 11 GAUGE STEEL, ROUND MECHANICAL TUBING SLEEVE FOR LIFTING (OPTIONAL).

6 NEVER USE LOOP BARS 6D1, 6D2 OR 6D3 TO LIFT, MOVE OR REPOSITION THE BARRIER.

7 USE DELINEATORS, CONFORMING TO SECTION 633 OF THE STANDARD SPECIFICATIONS. CONTRACTOR MAY USE ALTERNATE SHAPES AND HOUSING. INSTALL DELINEATORS ACCORDING TO MANUFACTURER'S INSTRUCTIONS. INSTALL YELLOW REFLECTORS WHEN BARRIER IS LOCATED TO THE LEFT OF TRAFFIC AND WHITE REFLECTORS WHEN BARRIER IS LOCATED TO THE RIGHT OF TRAFFIC. SPACE DELINEATORS A MAXIMUM OF 25 FEET APART. PROVIDE TOP MOUNTED DELINEATORS IN ADDITION TO THE SIDE MOUNTED DELINEATORS ON ALL BARRIER INSTALLATIONS LOCATED ON A CURVED ALIGNMENT LONGER THAN 200 FEET AND ON BARRIERS USED TO SEPARATE OPPOSING TRAFFIC.

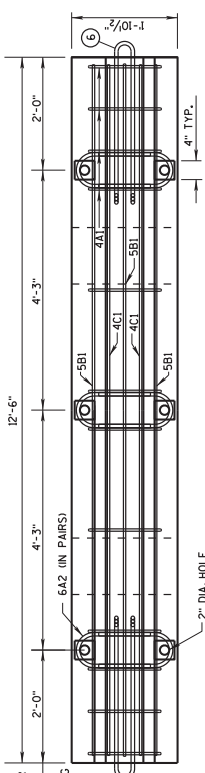
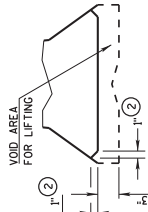
8 SEE SHEET D FOR ANCHORING CRITERIA.

9 T CHAMFER OPTIONAL.

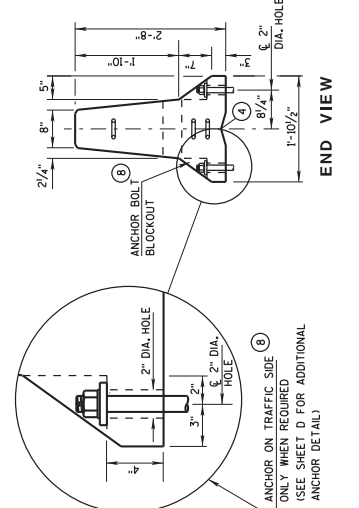


**ELEVATION VIEW**

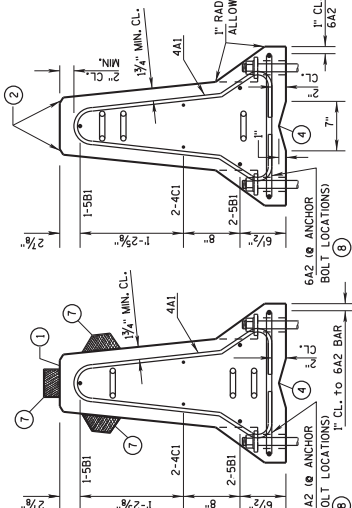
**DETAIL "B" LIFTING SLOT DETAIL**



**PLAN VIEW**



**END VIEW**

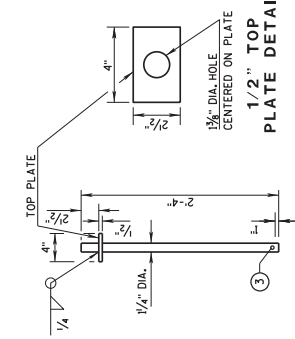


**SECTION A-A (STRIPPUP PLACEMENT)**

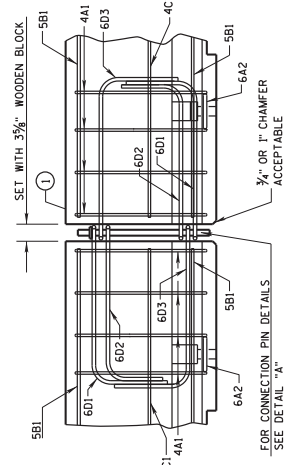


**SECTION B-B (STRIPPUP PLACEMENT)**

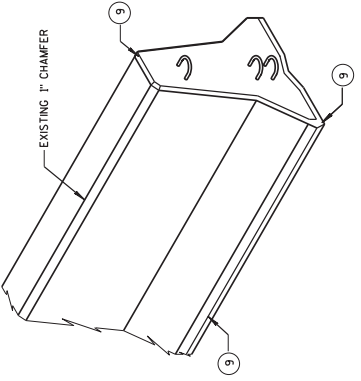
**DETAILS OF BARRIER SECTION**



**DETAIL "A" CONNECTION PIN**  
(436 STEEL (10.3 LB EACH))



**DETAILS OF BARRIER CONNECTION**



**CONCRETE BARRIER**  
**TEMPORARY PRECAST, 12'-6"**

STATE OF WISCONSIN  
DEPARTMENT OF TRANSPORTATION

**Addendum No. 01**  
**ID 1023-02-76**  
**Added Sheet 69A**  
**May 2, 2016**

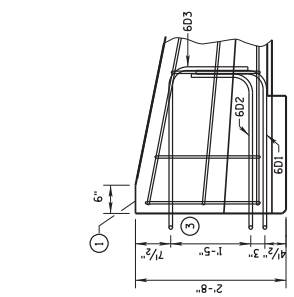
Addendum No. 01  
 ID 1023-02-76  
 Added Sheet 69B  
 May 2, 2016

CONCRETE BARRIER  
 TEMPORARY PRECAST, 12'-6"

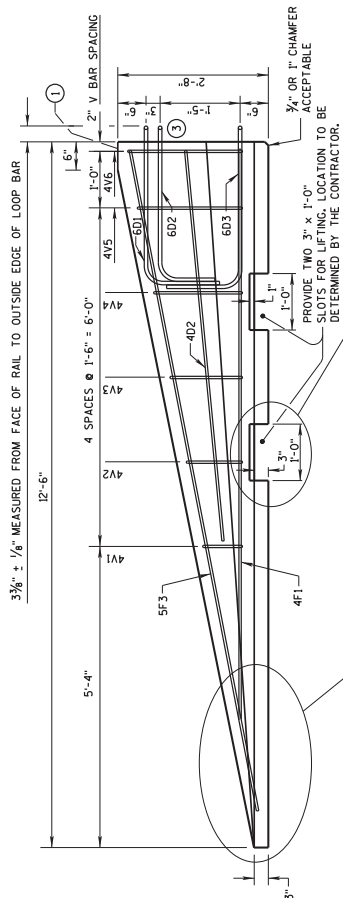
STATE OF WISCONSIN  
 DEPARTMENT OF TRANSPORTATION

**GENERAL NOTES**

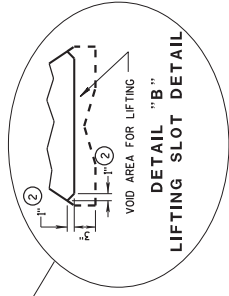
- ① MARK ONE END OF EACH BARRIER PERMANENTLY BY FORMING INTO THE BARRIER THE FOLLOWING INFORMATION:  
 a. TYPE W/CBTP  
 b. MANUFACTURER  
 c. DATE MANUFACTURED (MONTH AND YEAR)
- ② 1" CHAMFER TO PREVENT SPALLING.
- ③ NEVER USE LOOP BARS (601, 602 OR 603) TO LIFT, MOVE OR REPOSITION THE BARRIER.



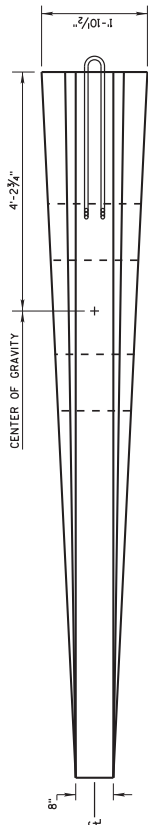
**SIDE ELEVATION**  
 LOOP BAR ASSEMBLY INVERTED  
 FOR OPPOSITE END.  
 (FOR CONNECTION TO RIGHT END OF BARRIER)



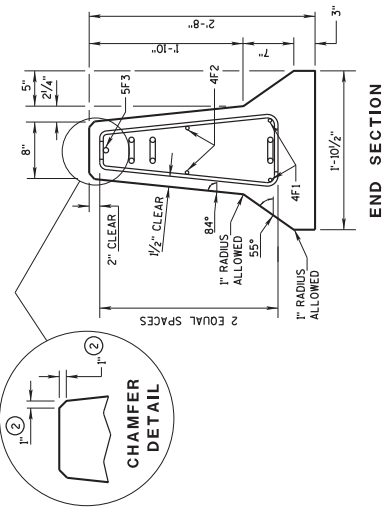
**SIDE ELEVATION**  
 (FOR CONNECTION TO LEFT END OF BARRIER)



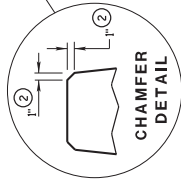
**DETAIL "B"**  
 LIFTING SLOT DETAIL



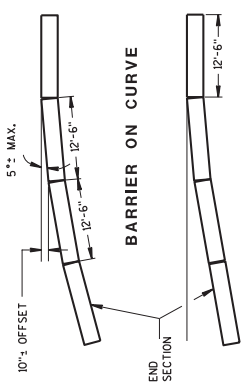
**PLAN VIEW**



**END SECTION**

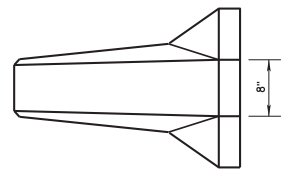


**CHAMFER DETAIL**



POSTED SPEED, (MPH)	FLARE RATE
40 OR LESS	6:1
45 OR GREATER	8:1

**BARRIER ON CURVE**  
**FLARE AT BARRIER END**



**FRONT ELEVATION**

**DETAILS OF BARRIER TAPER SECTION**

**GENERAL NOTES**

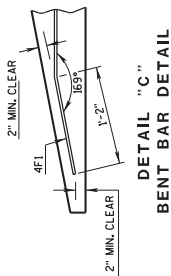
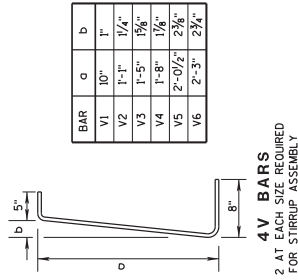
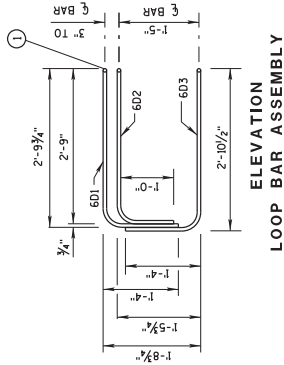
① NEVER USE LOOP BARS (601, 602 OR 603) TO LIFT, MOVE OR REPOSITION THE BARRIER.

**BARRIER TAPER SECTION  
BILL OF MATERIALS**  
(PER 12'-6" BARRIER TAPER SECTION)

BAR	BAR SIZE	NO. OF BARS	LENGTH FT.
4V1	4	2	1'-11"
4V2	4	2	2'-2"
4V3	4	2	2'-5"
4V4	4	2	2'-9"
4V5	4	2	3'-2"
4V6	4	2	3'-4"
4F1	4	2	12'-0"
4F2	4	2	7'-6"
5F3	5	1	11'-9"

LOOP ASSEMBLY		
601	6	1
602	6	1
603	6	1



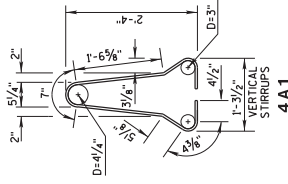
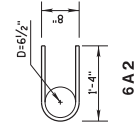
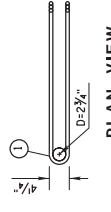
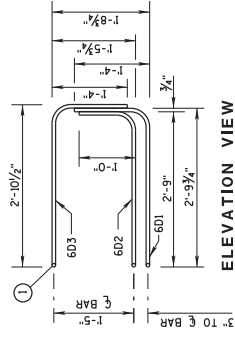
**TAPER BARRIER SECTION**

**BARRIER SECTION  
BILL OF MATERIALS**  
(PER 12'-6" BARRIER SECTION)

BAR	BAR SIZE	NO. OF BARS	LENGTH FT.
4A1	4	12	6'-0"
6A2	6	6	2'-11"
5B1	5	3	12'-2"
4C1	4	2	12'-2"

LOOP ASSEMBLY		
601	6	2
602	6	2
603	6	2



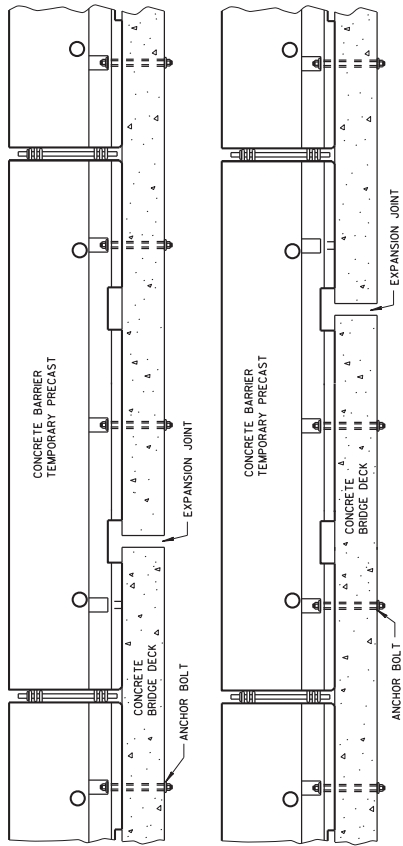
**BARRIER SECTION**

Addendum No. 01  
ID 1023-02-76  
Added Sheet 69C  
May 2, 2016

CONCRETE BARRIER  
TEMPORARY PRECAST, 12'-6"  
STATE OF WISCONSIN  
DEPARTMENT OF TRANSPORTATION

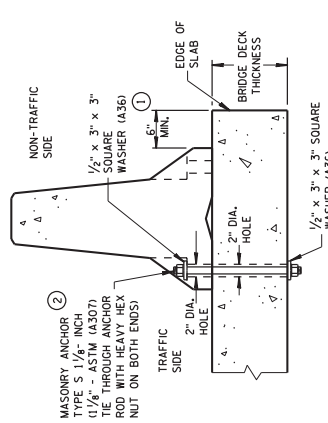
**GENERAL NOTES**

- CONCRETE BARRIER TEMPORARY PRECAST, 12'-6" SHALL BE ANCHORED IF THE DISTANCE FROM THE EDGE OF THE BRIDGE DECK OR DROPOFF IS STEEPER THAN 3H : 4V. FOR EXAMPLE, THE EDGE OF A BRIDGE DECK OR DROPOFF AT THE EDGE OF PAVEMENT, IS LESS THAN 4 FEET FROM THE SIDE OF THE BARRIER CLOSEST TO THE DROPOFF AND THE POSTED SPEED IS 45 MPH OR GREATER, OR THE DISTANCE TO A 2 FOOT OR GREATER DROPOFF THAT IS STEEPER THAN 3H : 4V. FOR EXAMPLE THE EDGE OF A BRIDGE DECK OR A DROPOFF AT THE EDGE OF PAVEMENT, IS LESS THAN 2 FEET FROM THE SIDE OF THE BARRIER CLOSEST TO THE DROPOFF AND THE POSTED SPEED IS 40 MPH OR LESS.
- ANCHORING IS INCIDENTAL TO CONCRETE BARRIER TEMPORARY PRECAST. WITH THE APPROVAL OF THE ENGINEER, REMOVABLE ADHESIVE BONDED ANCHOR BOLT INSTALLATION MAY BE USED IN LIEU OF THROUGH BOLTED ANCHOR INSTALLATION. THE ADHESIVE BONDED ANCHOR BOLT MUST BE REMOVABLE. USE ASTM (A307) MASONRY ANCHORS TYPE S 1 1/8-INCH, EMBEDDED TO A DEPTH SUFFICIENT TO DEVELOP THE ULTIMATE CAPACITY OF THE ANCHOR BOLT AND PROVIDE DOCUMENTATION TO CONFIRM THIS. UPON REMOVAL OR RELOCATION OF THE BARRIER UNITS, REMOVE ALL ANCHOR BOLTS AND COMPLETELY FILL IN THE REMAINING HOLES IN CONCRETE BRIDGE DECKS, CONCRETE APPROACH SLABS AND CONCRETE PAVEMENTS THAT ARE TO REMAIN, WITH A NON-SHRINK COMMERCIAL GROUT OR MATERIAL IDENTIFIED ON THE CURRENT WISDOT APPROVED PRODUCTS LIST.
- 1/8" DIAMETER A307 THREADED ROD, 1/2" x 3" x 3" SQUARE PLATE WASHER WITH ASTM A36 STEEL, ASTM A563A HEAVY HEX NUT.
- ADHESIVE ANCHORS WITH A MINIMUM BOND STRENGTH OF 1,800 PSI AND 5/4" EMBEDMENT. SEE 603.2 AND 603.3.12 OF THE WISCONSIN STANDARD SPECIFICATIONS FOR MORE INFORMATION ON ADHESIVE ANCHORS.



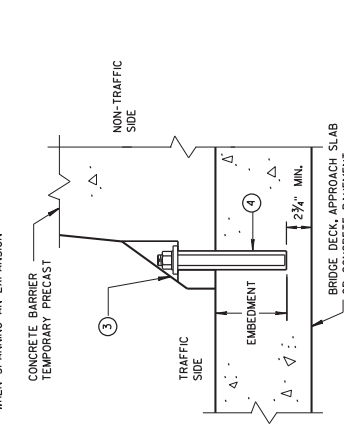
**TREATMENT AT BRIDGE DECK EXPANSION JOINTS**

(NO SINGLE CONCRETE BARRIER SECTION SHALL BE ANCHORED TO BOTH THE BRIDGE DECK AND THE APPROACH SLAB. ALL ANCHOR BOLT LOCATIONS SHALL BE ANCHORED TO THE DECK IN ACCORDANCE WITH THE DETAIL. NO MORE THAN ONE ANCHOR BOLT SHALL BE ELIMINATED FROM A BARRIER SECTION WHEN SPANNING AN EXPANSION JOINT.)



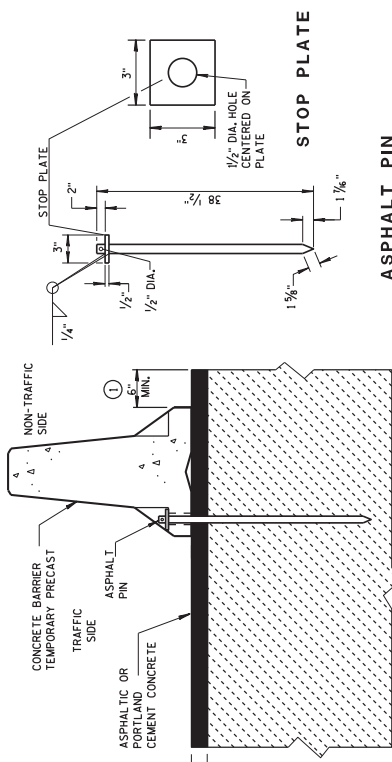
**THROUGH BOLTED ANCHOR INSTALLATION ON BRIDGE DECK**

(DO NOT USE ON CONCRETE BRIDGE DECK WITH ASPHALT OVERLAY)



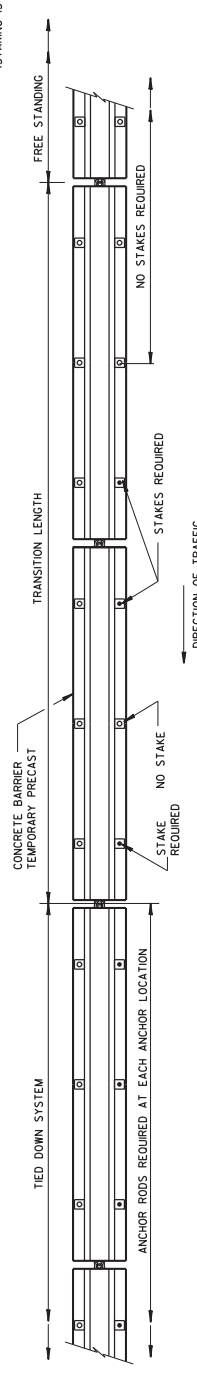
**REMOVABLE ADHESIVE BONDED ANCHOR INSTALLATION ON CONCRETE BRIDGE DECK, CONCRETE APPROACH SLAB, OR CONCRETE PAVEMENT**

(DO NOT USE ON CONCRETE WITH AN ASPHALTIC OVERLAY)



**STAKE DOWN INSTALLATION FOR ASPHALTIC OR PORTLAND CEMENT CONCRETE SURFACE**

(STAKING IS INCIDENTAL TO CONCRETE BARRIER TEMPORARY PRECAST)



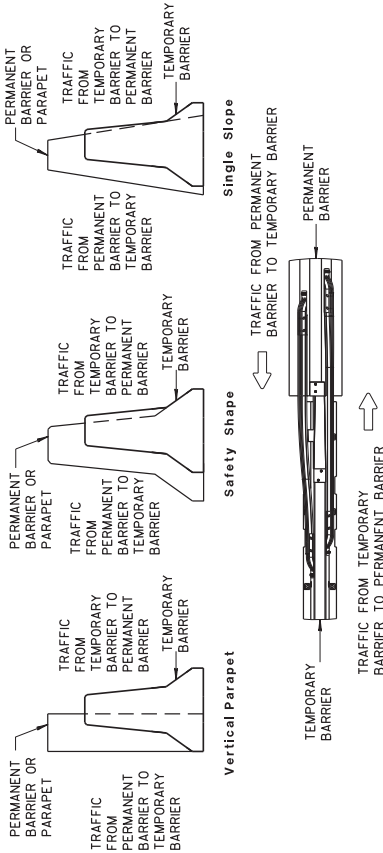
**FREE STANDING TRANSITION TO TIED-DOWN SYSTEM**

(PLACE TRANSITION IN A TANGENT SECTION OF BARRIER PARALLEL TO THE ROADWAY. IF TRANSITION OCCURS ON STRUCTURAL SLAB, ANCHOR AS SHOWN.)

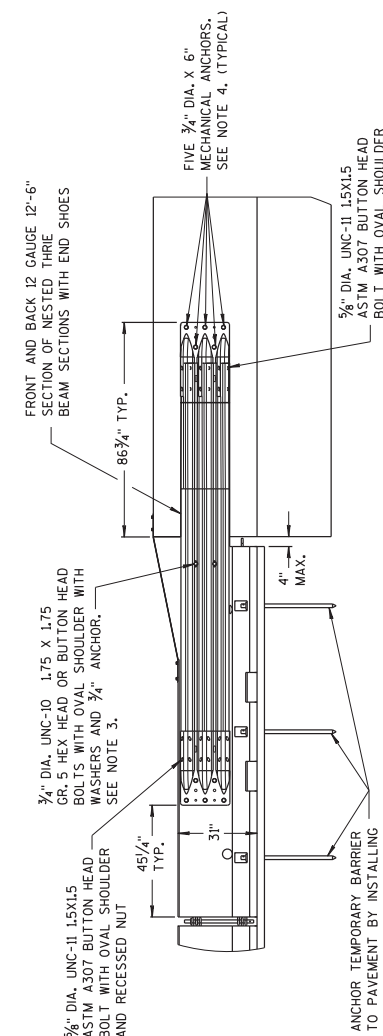
Addendum No. 01  
ID 1023-02-76  
Added Sheet 69D  
May 2, 2016

CONCRETE BARRIER  
TEMPORARY PRECAST, 12'-6"

STATE OF WISCONSIN  
DEPARTMENT OF TRANSPORTATION

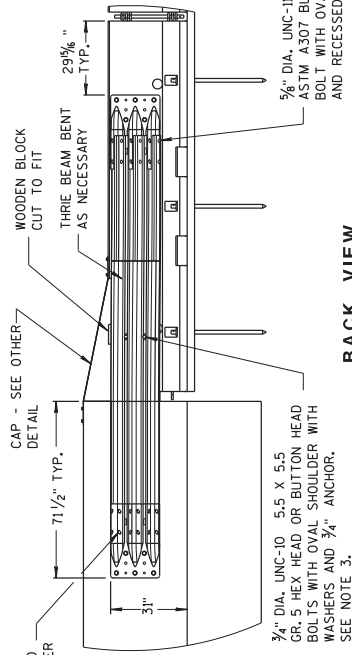


**TEMPORARY BARRIER PLACEMENT FOR BI-DIRECTIONAL TRANSITION TO TIED-DOWN SYSTEM**

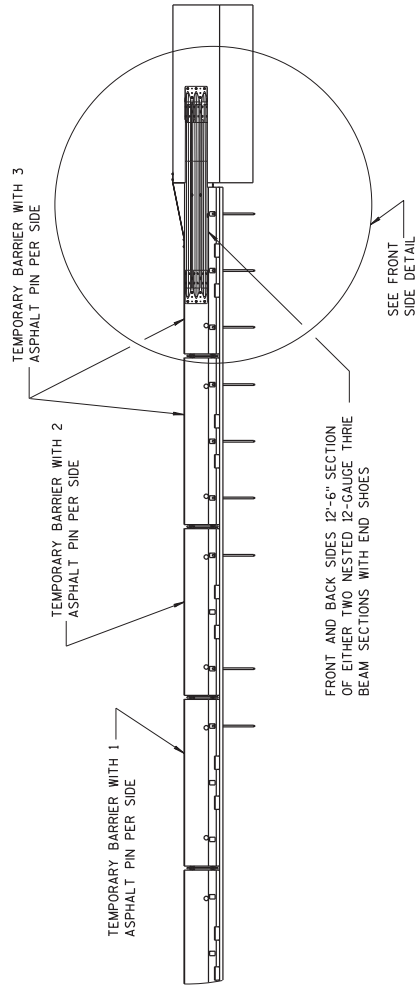


**FRONT VIEW**

- NOTES**
- NESTED THREE BEAM IS REQUIRED ON BOTH SIDES OF THE TEMPORARY BARRIER FOR ALL INSTALLATIONS.
1. CAP END PLATE PLACED FLUSH WITH UPSTREAM END OF PERMANENT BARRIER OR PARAPET.
  2. THREE BEAM PIECES ARE OFFSET 15/16" TO PREVENT INTERFERENCE FROM THE ANCHORS ON OPPOSING SIDES.
  3. MINIMUM MECHANICAL OR ADHESIVE ANCHOR STRENGTH REQUIREMENTS: ULTIMATE TENSILE LOAD 9.48 KIPS AND ULTIMATE SHEAR LOAD 10.48 KIPS.
  4. MINIMUM MECHANICAL OR ADHESIVE ANCHOR STRENGTH REQUIREMENTS: ULTIMATE TENSILE LOAD 17.9 KIPS AND ULTIMATE SHEAR LOAD 21.96 KIPS.
  5. MAY BE USED ON CONCRETE OR ASPHALT PAVEMENTS. ASPHALT OPTION SHOWN FOR CONCRETE OPTION SEE OTHER DETAILS.
  6. MINIMUM MECHANICAL OR ADHESIVE ANCHOR STRENGTH REQUIREMENTS: ULTIMATE TENSILE LOAD 12.14 KIPS AND ULTIMATE SHEAR LOAD 17.5 KIPS.



**BACK VIEW**

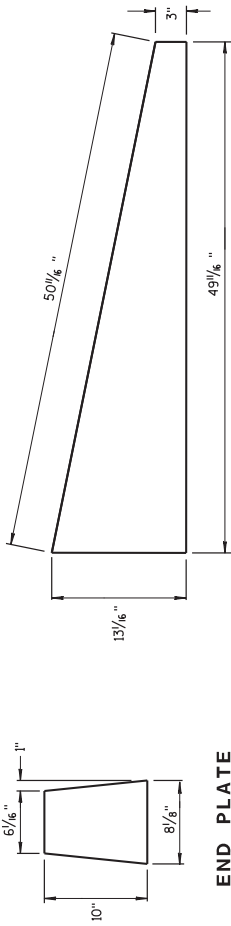


**FRONT VIEW**

Addendum No. 01  
ID 1023-02-76  
Added Sheet 69E  
May 2, 2016

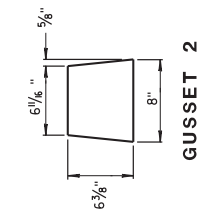
CONCRETE BARRIER  
TEMPORARY PRECAST, 12'-6"

STATE OF WISCONSIN  
DEPARTMENT OF TRANSPORTATION

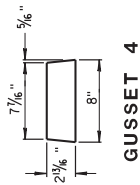


SIDE PLATE

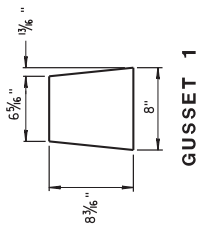
END PLATE



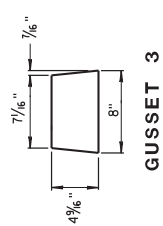
GUSSET 2



GUSSET 4

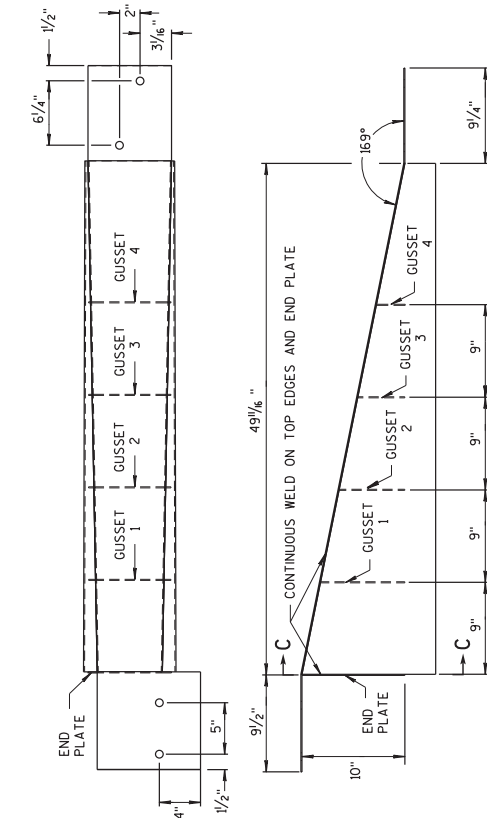


GUSSET 1



GUSSET 3

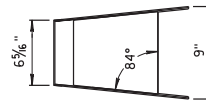
GUSSETS



TOP PLATE

SIDE, TOP AND END PLATES FOR CAP FROM TEMPORARY CONCRETE BARRIER TO 42" PERMANENT CONCRETE BARRIER

SIDE PLATES, TOP PLATE, END PLATE AND GUSSETS ARE 12 GAUGE ASTM A36 GALVANIZED STEEL.



SECTION C-C

NOTES

1. FOUR GUSSETS AND END PLATE ARE STITCH WELDED ON THREE SIDES.
2. TWO TRIANGULAR SIDE PLATES ARE STITCH WELDED TO TOP PLATE, END PLATE, AND GUSSETS.

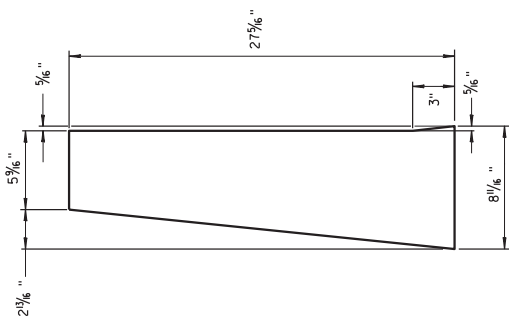
CAP DETAILS FOR TEMPORARY CONCRETE BARRIER TO 42" PERMANENT CONCRETE BARRIER

CONCRETE BARRIER  
TEMPORARY PRECAST, 12'-6"

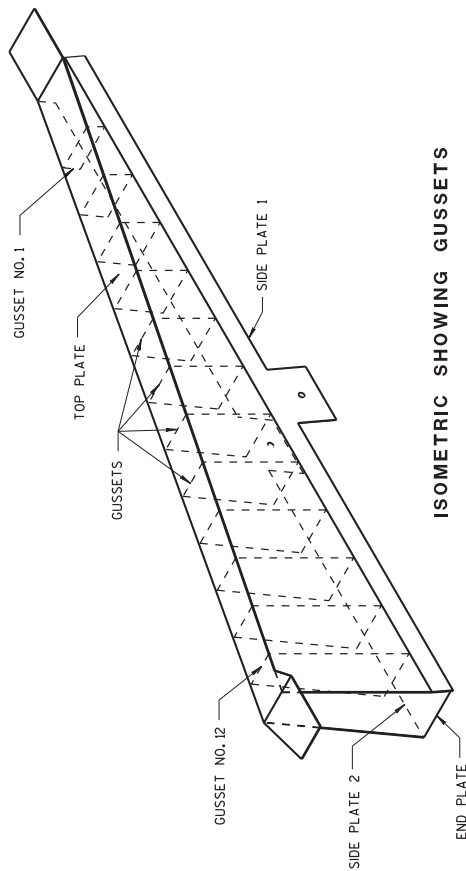
STATE OF WISCONSIN  
DEPARTMENT OF TRANSPORTATION

Addendum No. 01  
ID 1023-02-76  
Added Sheet 69F  
May 2, 2016

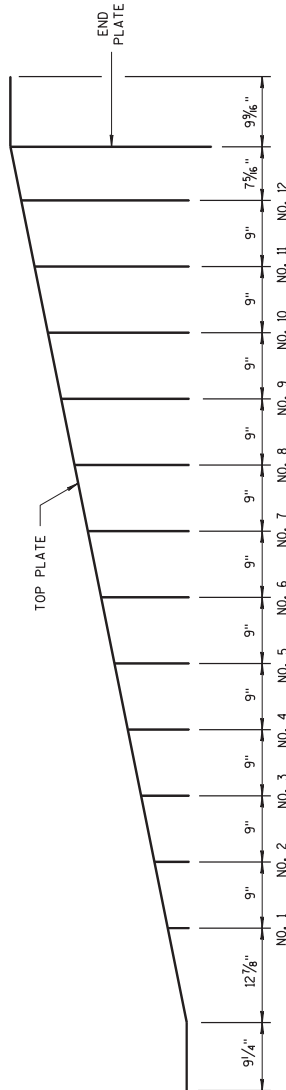




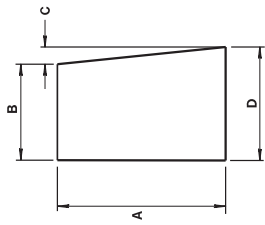
**END PLATE**  
1/8" STEEL PLATE



**ISOMETRIC SHOWING GUSSETS**



**GUSSET LOCATION**



**GUSSETS 1 - 12**  
ALL GUSSETS 1/8" STEEL PLATE

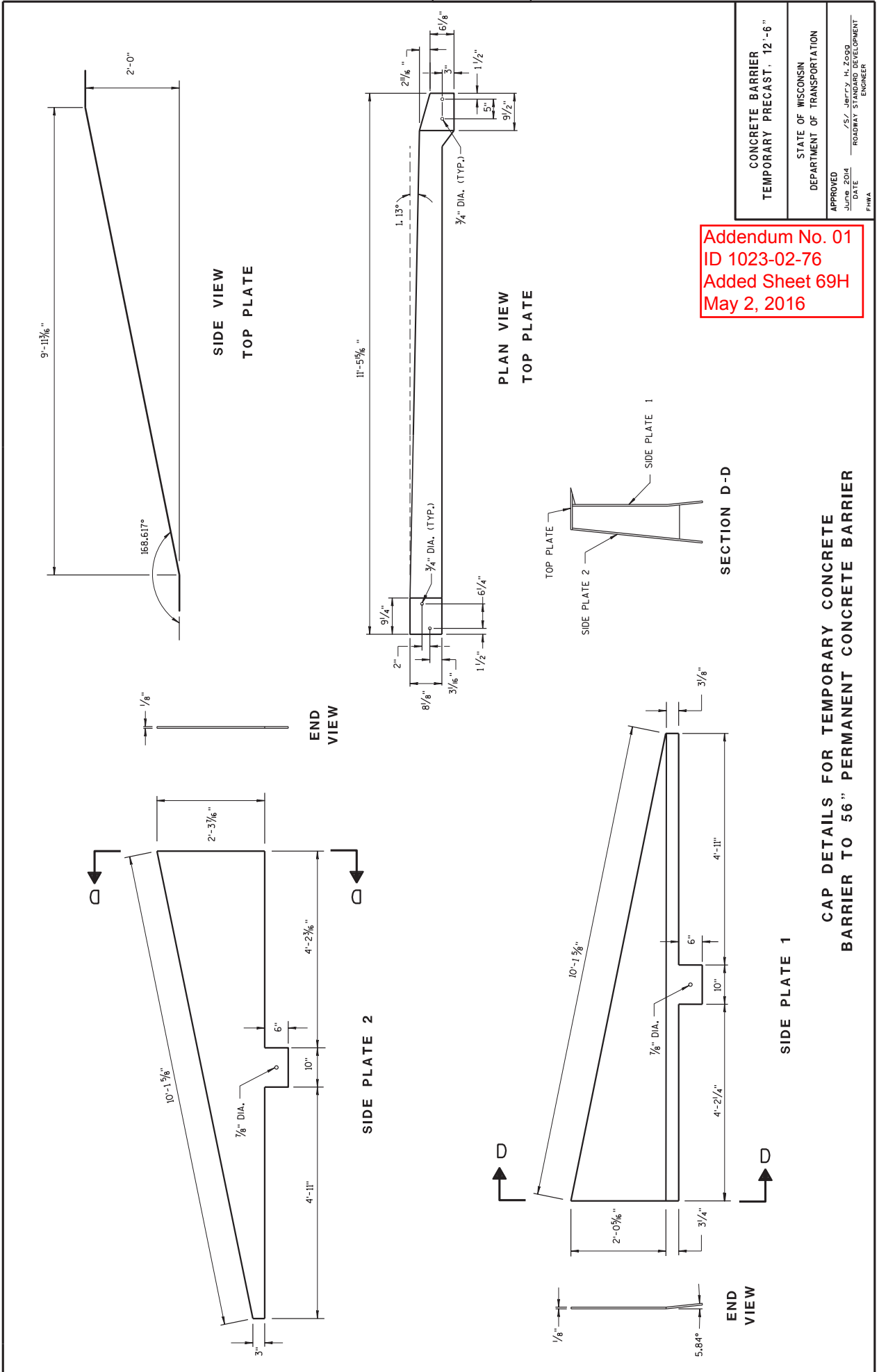
GUSSET DIMENSIONS			
GUSSET NO.	A	B	C D
1	2 7/8"	7 3/4"	1/4" 8
2	4 1/8"	7 3/8"	1/2" 8
3	6 1/2"	7 7/8"	1/4" 8/16"
4	8 5/8"	7 3/8"	7/8" 8/16"
5	10 7/8"	7"	1 1/16" 8/16"
6	11 1/8"	6 1/8"	1 1/4" 8/16"
7	13 3/4"	6 5/8"	1 7/8" 8/16"
8	15 3/8"	6 7/8"	1 3/4" 8/16"
9	17 3/8"	6 1/4"	1 9/16" 8/16"
10	19 3/8"	6 1/8"	1 5/8" 8/16"
11	21"	5 7/8"	2 3/8" 8/16"
12	22 1/8"	5 1/8"	2 5/8" 8/16"

SIDE PLATES, TOP PLATE, END PLATE AND GUSSETS ARE 12 GAUGE ASTM A36 STEEL AND GALVANIZED.  
GUSSETS AND END PLATE ARE STITCH WELDED ON 3 SIDES.  
TWO TRIANGULAR SIDE PLATES ARE STITCH WELDED TO TOP PLATE, END PLATE AND GUSSETS.

Addendum No. 01  
ID 1023-02-76  
Added Sheet 69G  
May 2, 2016

**CAP DETAILS FOR TEMPORARY CONCRETE BARRIER TO 56" PERMANENT CONCRETE BARRIER**

CONCRETE BARRIER  
TEMPORARY PRECAST: 12'-6"  
STATE OF WISCONSIN  
DEPARTMENT OF TRANSPORTATION



S.D.D. 14 B 7-14

6

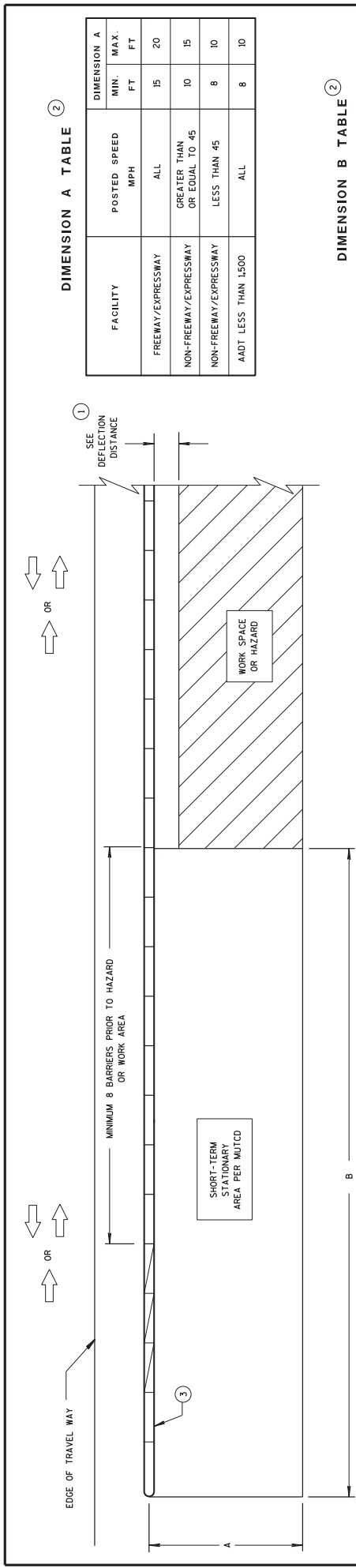
Addendum No. 01  
 ID 1023-02-76  
 Added Sheet 69H  
 May 2, 2016

CONCRETE BARRIER TEMPORARY PRECAST, 12'-6"	
STATE OF WISCONSIN DEPARTMENT OF TRANSPORTATION	
APPROVED June 2014	/S/ Jerry H. Zogg ROADWAY STANDARD DEVELOPMENT ENGINEER
FHWA	

S.D.D. 14 B 7-14h

69H

CAP DETAILS FOR TEMPORARY CONCRETE  
 BARRIER TO 56" PERMANENT CONCRETE BARRIER



**DIMENSION A TABLE**

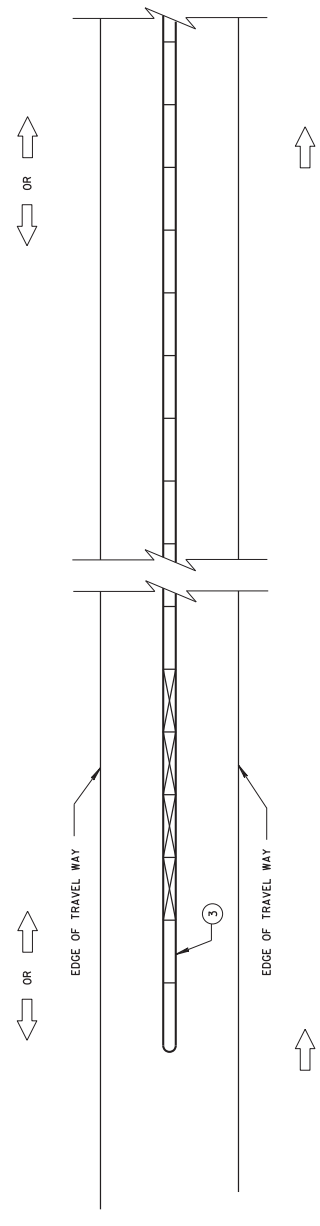
FACILITY	POSTED SPEED MPH	DIMENSION A	
		MIN. FT	MAX. FT
FREEMWAY/EXPRESSWAY	ALL	15	20
NON-FREEMWAY/EXPRESSWAY	GREATER THAN OR EQUAL TO 45	10	15
NON-FREEMWAY/EXPRESSWAY	LESS THAN 45	8	10
AADT LESS THAN 1500	ALL	8	10

**DIMENSION B TABLE**

POSTED SPEEDS MPH	DIMENSION B FT
20	115
25	155
30	200
35	250
40	305
45	360
50	425
55	495
60	570
65	645

Addendum No. 01  
ID 1023-02-76  
Added Sheet 691  
May 2, 2016

**CRASH CUSHION/SAND BARREL ARRAY AND TEMPORARY BARRIER INSTALLATION FOR TRAFFIC ON ONE SIDE OF BARRIER**

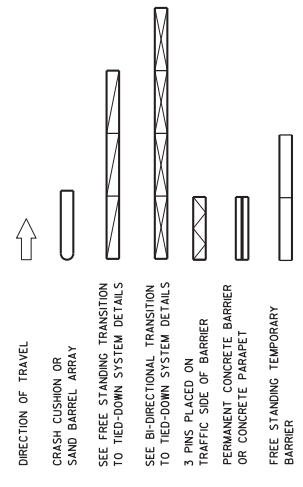


**CRASH CUSHION/SAND BARREL ARRAY AND TEMPORARY BARRIER INSTALLATION FOR TRAFFIC ON BOTH SIDES OF BARRIER**

**GENERAL NOTES**

- SEE STANDARD DETAIL DRAWING 1487 FOR MORE INFORMATION.
- DETAILS PROVIDE A GENERAL LAYOUT OF TEMPORARY CONCRETE BARRIER, CRASH CUSHIONS, SAND BARREL ARRAYS AND TIE DOWN TRANSITIONS. DETAILS PROVIDED MAY NOT FIT ALL POSSIBLE SITUATIONS OR SITE CONDITIONS. SEE OTHER SECTIONS OF THE CONTRACT OR PROJECT ENGINEER FOR MORE DETAILS.
- ADDITIONAL TEMPORARY BARRIER MAY BE REQUIRED TO PROTECT TRAVELING PUBLIC FROM HAZARDS. CONTRACTOR'S OPERATIONS OR TO CONTROL TRAFFIC.
- TEMPORARY BARRIER MAY BE REQUIRED TO BE ANCHORED TO PAVEMENT OR BRIDGE DECK.
- FOR DETAILS ON CRASH CUSHION OR SAND BARREL ARRAYS SEE OTHER SECTIONS OF THE PLAN AND MANUFACTURE'S DETAILS.
- SLOPES LEADING TO TEMPORARY BARRIER, CRASH CUSHION OR SAND BARREL ARRAY ARE 10:1 OR LESS.
- FOR DEFLECTION INFORMATION SEE STANDARD DETAIL DRAWING 1487.
- VALUES PROVIDED MAY NOT FIT ALL POSSIBLE SITUATIONS OR SITE CONDITIONS. SEE OTHER SECTIONS OF THE CONTRACT OR PROJECT ENGINEER FOR MORE DETAILS.
- ANCHOR TEMPORARY BARRIER ACCORDING TO CRASH CUSHION OR SAND BARREL MANUFACTURE'S RECOMMENDATIONS. MANUFACTURER'S RECOMMENDATIONS ARE NOT PROVIDED, ANCHOR 3 PINS ON TRAFFIC SIDE.

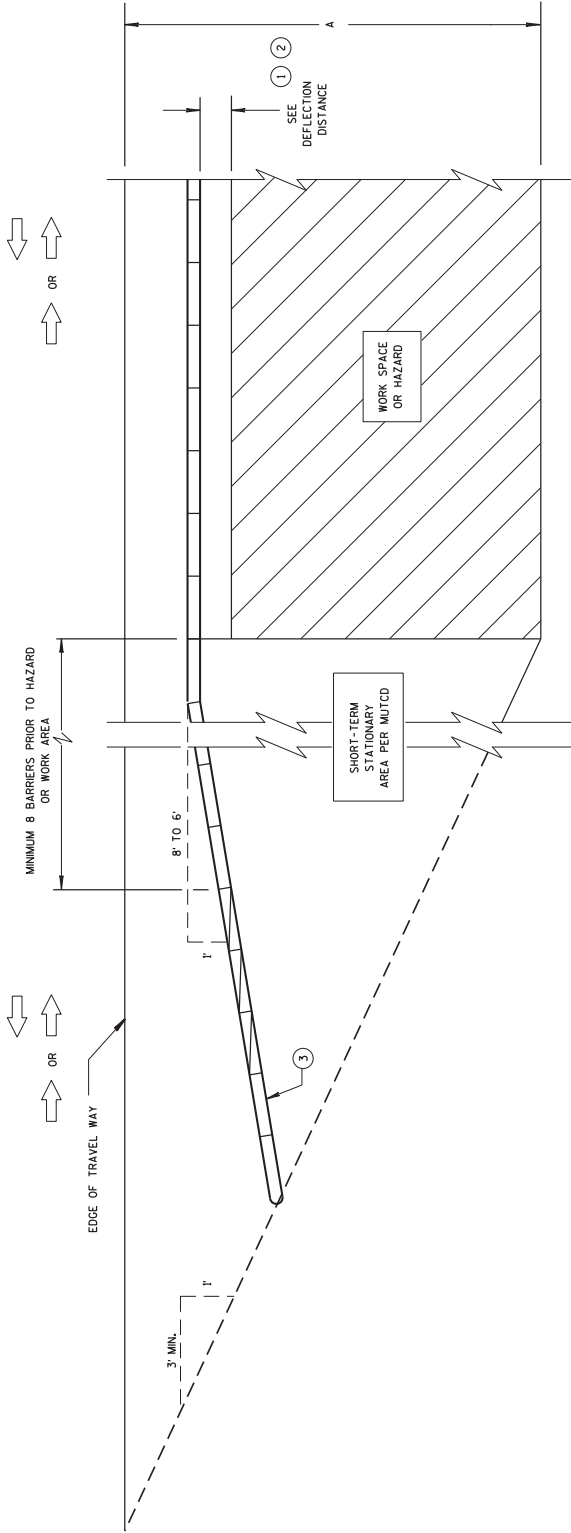
**LEGEND**



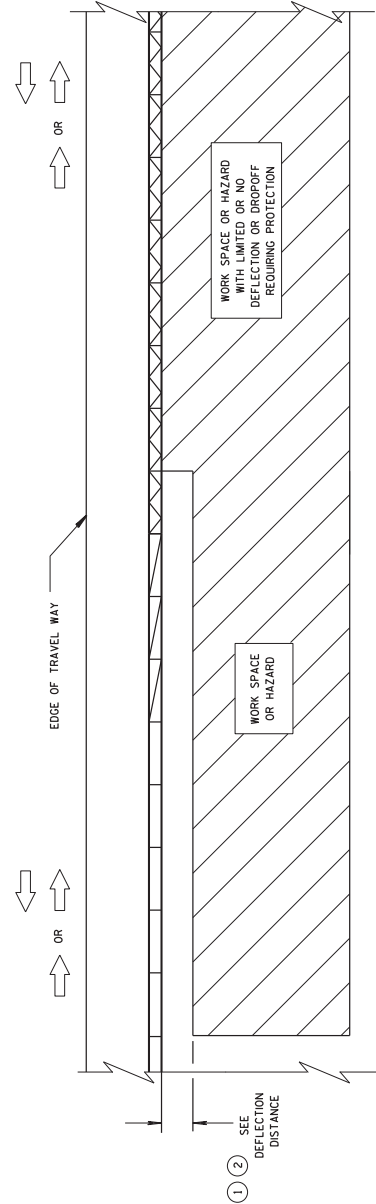
**CRASH CUSHION/SAND BARREL ARRAY AND OTHER TEMPORARY BARRIER LAYOUT DETAILS**

STATE OF WISCONSIN  
DEPARTMENT OF TRANSPORTATION

Addendum No. 01  
 ID 1023-02-76  
 Added Sheet 69J  
 May 2, 2016



**CRASH CUSHION/SAND BARREL ARRAY AND TEMPORARY BARRIER  
 INSTALLATION FOR TRAFFIC ON ONE SIDE - FLARED INSTALLATION**



**TRANSITION FROM FREE STANDING TEMPORARY BARRIER  
 TO ANCHORED BARRIER**

**LEGEND**

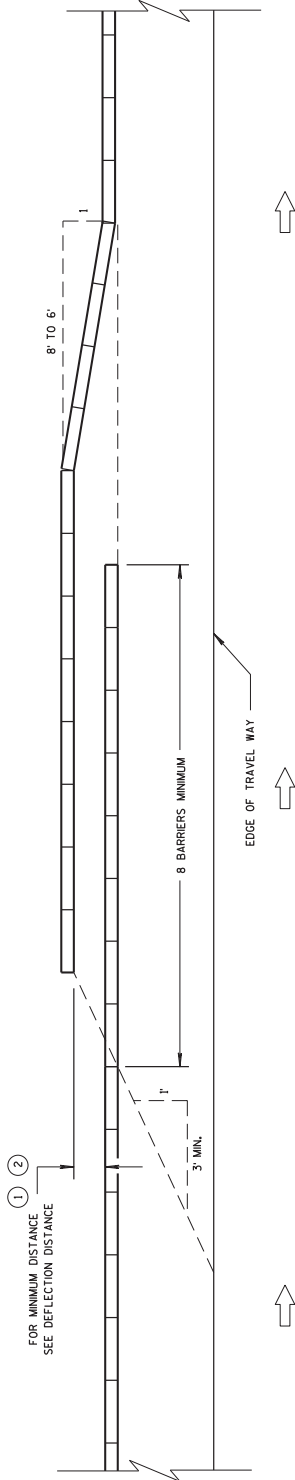
- DIRECTION OF TRAVEL
- CRASH CUSHION OR SAND BARREL ARRAY
- SEE FREE STANDING TRANSITION TO TIED-DOWN SYSTEM DETAILS
- SEE BI-DIRECTIONAL TRANSITION TO TIED-DOWN SYSTEM DETAILS
- 3 PINS PLACED ON TRAFFIC SIDE OF BARRIER
- PERMANENT CONCRETE BARRIER OR CONCRETE PARAPET
- FREE STANDING TEMPORARY BARRIER

CRASH CUSHION/SAND BARREL  
 ARRAY AND OTHER TEMPORARY  
 BARRIER LAYOUT DETAILS

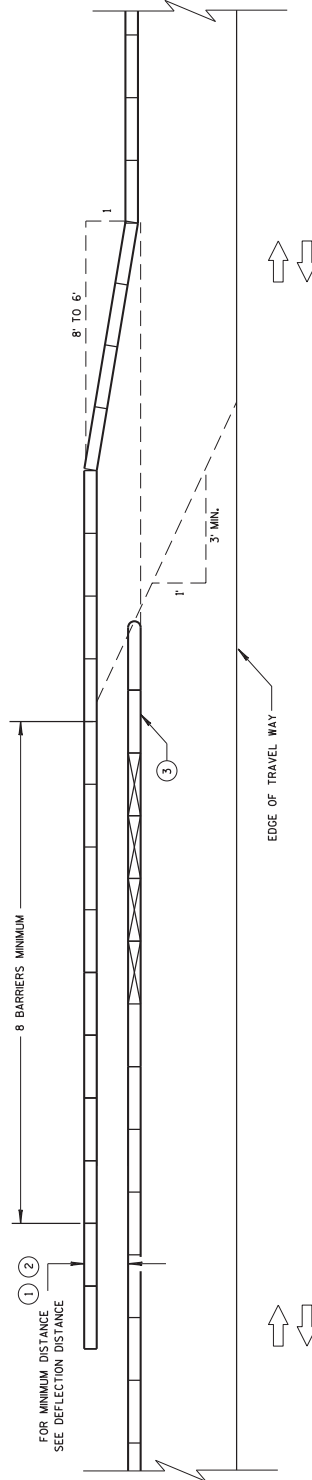
STATE OF WISCONSIN  
 DEPARTMENT OF TRANSPORTATION

Addendum No. 01  
ID 1023-02-76  
Added Sheet 69K  
May 2, 2016

CRASH CUSHION/SAND BARREL  
ARRAY AND OTHER TEMPORARY  
BARRIER LAYOUT DETAILS  
STATE OF WISCONSIN  
DEPARTMENT OF TRANSPORTATION

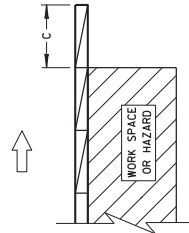
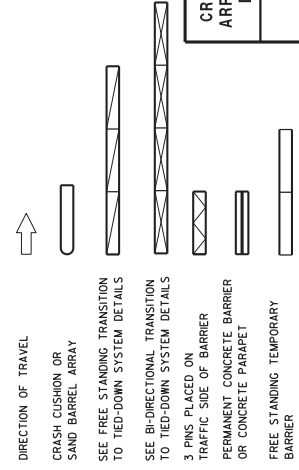


TEMPORARY BARRIER OVERLAP - ONE-WAY TRAFFIC

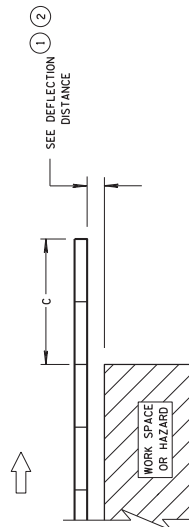


TEMPORARY BARRIER OVERLAP - TWO-WAY TRAFFIC

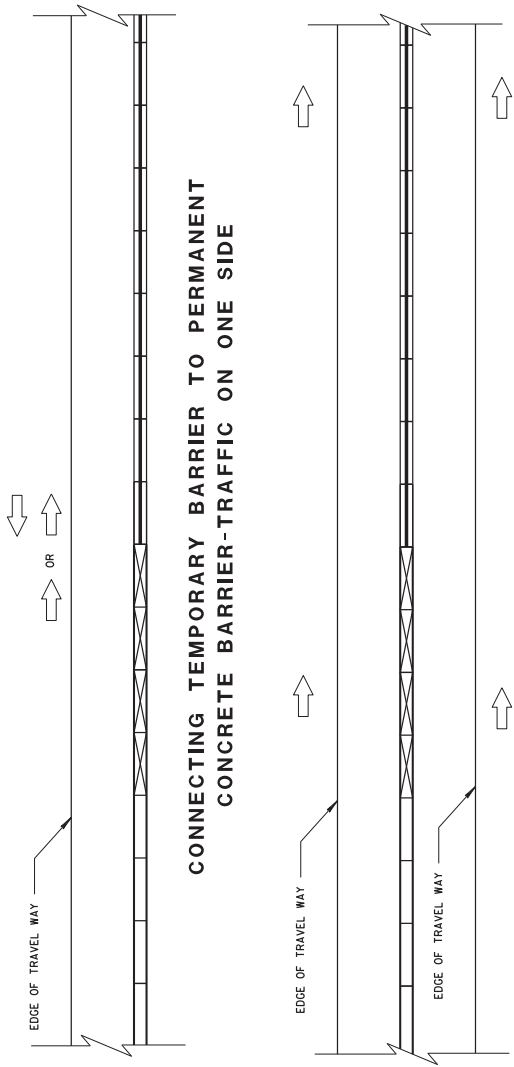
LEGEND



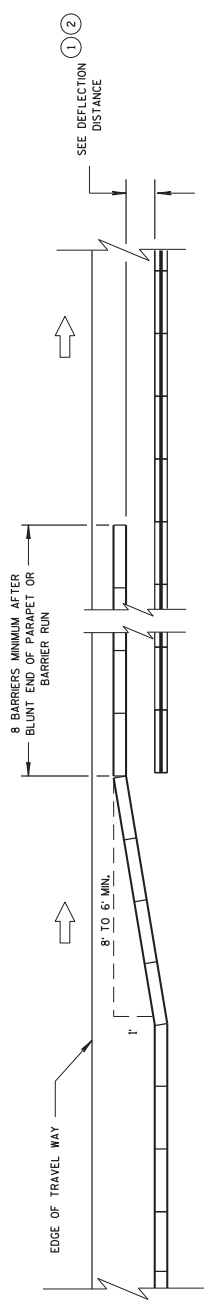
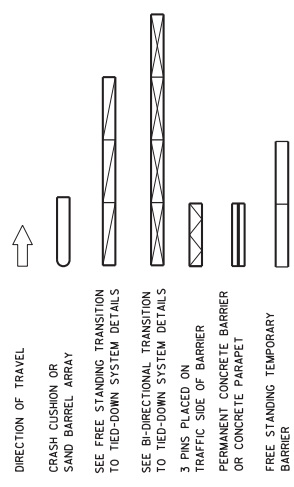
ENDING TEMPORARY BARRIER  
DOWNSTREAM - ANCHORED



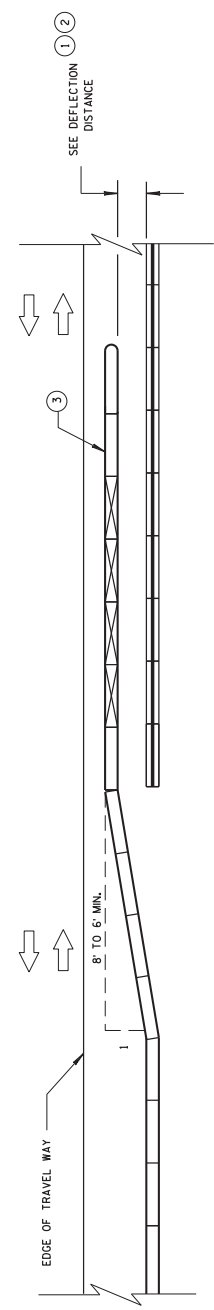
ENDING TEMPORARY BARRIER  
DOWNSTREAM - UNANCHORED



**LEGEND**



**OVERLAPPING TEMPORARY BARRIER AND PERMANENT BARRIER - ONE WAY TRAFFIC**



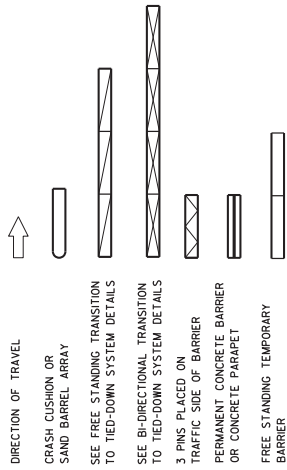
**OVERLAPPING TEMPORARY BARRIER AND PERMANENT BARRIER - TWO WAY TRAFFIC**

Addendum No. 01  
ID 1023-02-76  
Added Sheet 69L  
May 2, 2016

CRASH CUSHION/SAND BARREL ARRAY AND OTHER TEMPORARY BARRIER LAYOUT DETAILS

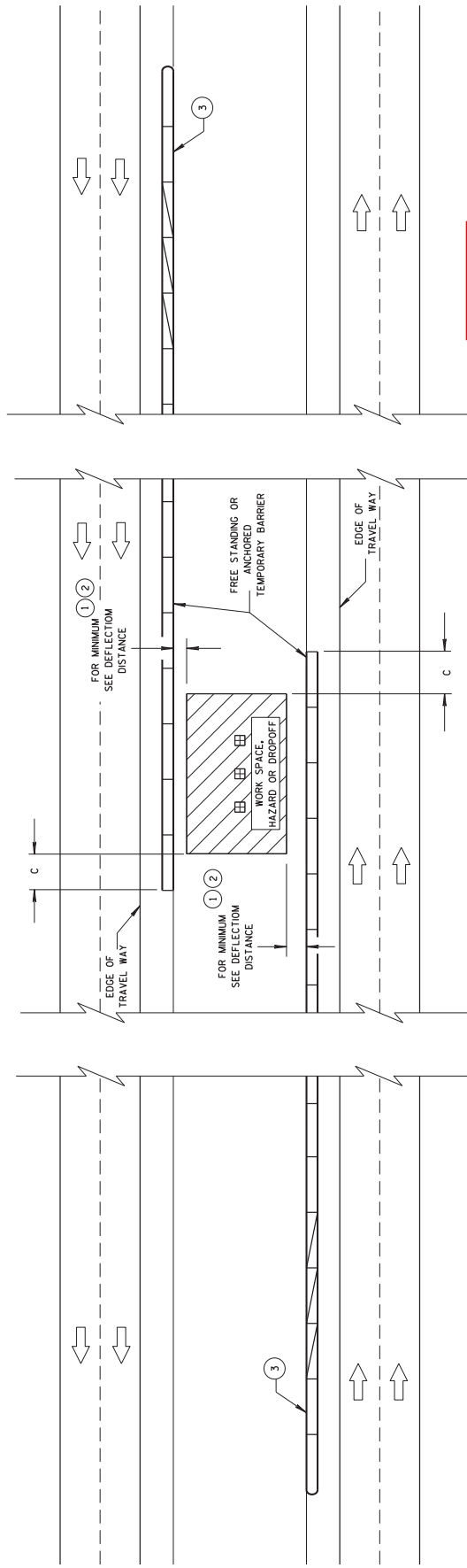
STATE OF WISCONSIN  
DEPARTMENT OF TRANSPORTATION

**LEGEND**



**DIMENSION C TABLE** (2)

AVAILABLE DEFLECTION DISTANCE	MINIMUM LENGTH OF BARRIER BEYOND HAZARD FT
GREATER THAN 8'	12.5
LESS THAN OR EQUAL TO 8' BUT GREATER THAN 4'	50
LESS THAN OR EQUAL TO 4'	100



Addendum No. 01  
 ID 1023-02-76  
 Added Sheet 69M  
 May 2, 2016

CRASH CUSHION/SAND BARREL  
 ARRAY AND OTHER TEMPORARY  
 BARRIER LAYOUT DETAILS

STATE OF WISCONSIN  
 DEPARTMENT OF TRANSPORTATION

APPROVED  
 June, 2015 DATE  
 /s/ Jerry H. Zogg  
 ROADWAY STANDARDS DEVELOPMENT  
 ENGINEER

Addendum No. 01  
 ID 1023-02-76  
 Added Sheet 101A  
 May 2, 2016

**GENERAL NOTES**

THIS LANE CLOSURE IS TYPICAL FOR CLOSING RIGHT LANE - REVERSE FOR CLOSING LEFT LANE.

THE EXACT NUMBER, LOCATION, AND SPACING OF ALL SIGNS AND DEVICES SHALL BE ADJUSTED TO FIT FIELD CONDITIONS AS APPROVED BY THE ENGINEER.

THE SPACING BETWEEN SIGNS SHOULD BE ADJUSTED TO NOT CONFLICT WITH AND TO PROVIDE A MINIMUM OF 200 FEET ( 500 FEET DESIRABLE ) CLEARANCE TO EXISTING SIGNS.

ALL SIGNS ARE 48"x48" UNLESS OTHERWISE NOTED.

"W0" IS THE SAME AS "W" EXCEPT THE BACKGROUND IS ORANGE.

ANY SIGNS, TEMPORARY OR EXISTING, WHICH CONFLICT WITH TRAFFIC CONTROL "IN USE" SHALL BE REMOVED OR COVERED AS NEEDED OR AS APPROVED BY THE ENGINEER.

CONSIDER ROADWAY GEOMETRICS WHEN LOCATING SIGNS AND ARROW BOARD SO THE DRIVER HAS A CLEAR VIEW OF THE ARROW BOARD AND LANE CLOSURE DRUMS FOR A MINIMUM 1500 FEET IN FRONT OF DRUM TAPER.

FOR A LANE CLOSURE THAT IS IN PLACE LESS THAN 7 CONTINUOUS DAYS AND NIGHTS, THE ADVANCED WARNING SIGNS MAY BE MOUNTED ON PORTABLE SUPPORTS.

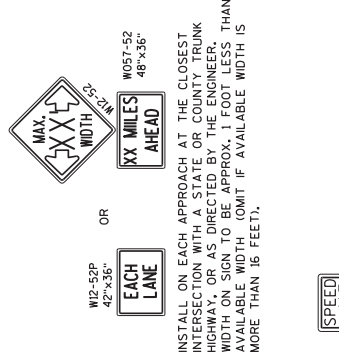
REMOVE PAVEMENT MARKINGS IF LANE CLOSURE IS TO BE IN PLACE FOR 4 OR MORE CONTINUOUS DAYS AND NIGHTS.

IF THE HORIZONTAL ALIGNMENT IS SUCH THAT A CURVE MAY REQUIRE ADDITIONAL DELINEATION, THE DEVICE SPACING MAY BE DECREASED TO 50 FEET.

ADJUSTMENTS IN BUFFER SPACE NEED TO BE INCORPORATED WHEN THE LANE CLOSURE OCCURS NEAR AN INTERCHANGE EXIT OR ENTRANCE RAMP OR INTERSECTION; THE LANE CLOSURE MUST TAKE PLACE FAR ENOUGH IN ADVANCE OF AN EXIT OR ENTRANCE RAMP TO STILL ALLOW FOR ADEQUATE BUFFER SPACE. THE MINIMUM LENGTH OF THE BUFFER SPACE SHALL BE 150 FEET FOR INTERCHANGES AND 100 FEET FOR INTERSECTIONS. THE ENTRANCE RAMP SHOULD BE CLOSED BY THE ORIGINAL BUFFER SPACE LENGTH OF 800 FEET DESIRABLE PRIOR TO ANOTHER TRAFFIC CONTROL CHANGE SUCH AS A CROSSOVER MANEUVER.

IF THE REGULATORY SPEED HAS BEEN REDUCED, A SPEED LIMIT SIGN SHALL BE LOCATED 1500 FEET BEYOND THE END OF THE ACCELERATION LANE OF EACH ENTRANCE RAMP. THERE SHOULD BE A SPEED LIMIT SIGN INCORPORATED A MINIMUM OF EVERY 2 OR 3 MILES.

\* INCLUDE RESUME SPEED LIMIT SIGN A MINIMUM OF 200 FEET (500 FEET DESIRABLE) AFTER END ROAD WORK SIGNS.



INSTALL ON EACH APPROACH AT THE CLOSEST INTERSECTION WITH A STATE OR COUNTY TRUNK HIGHWAY, OR AS DIRECTED BY THE ENGINEER, WIDTH ON SIGN TO BE APPROX. 1 FOOT LESS THAN AVAILABLE WIDTH. OMIT IF AVAILABLE WIDTH IS MORE THAN 18 FEET.

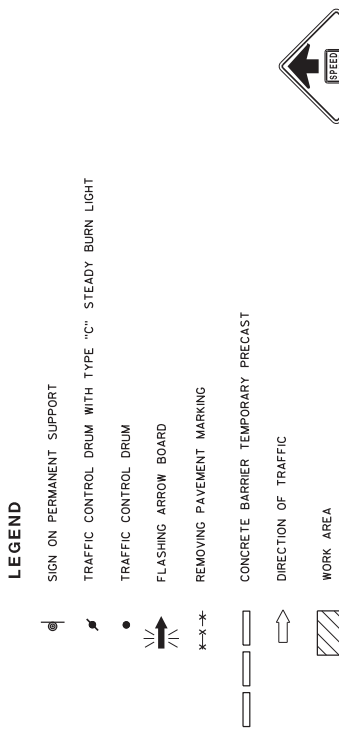
W2-52P  
42"x36"  
EACH LANE

W07-52  
48"x36"  
MAX. WIDTH

SPEED LIMIT 60

SPEED LIMIT 55

R2-1  
48"x60"  
LOCATED 2600 FEET IN ADVANCE OF 500 FEET BEYOND THE "END OF WORK" SIGN.

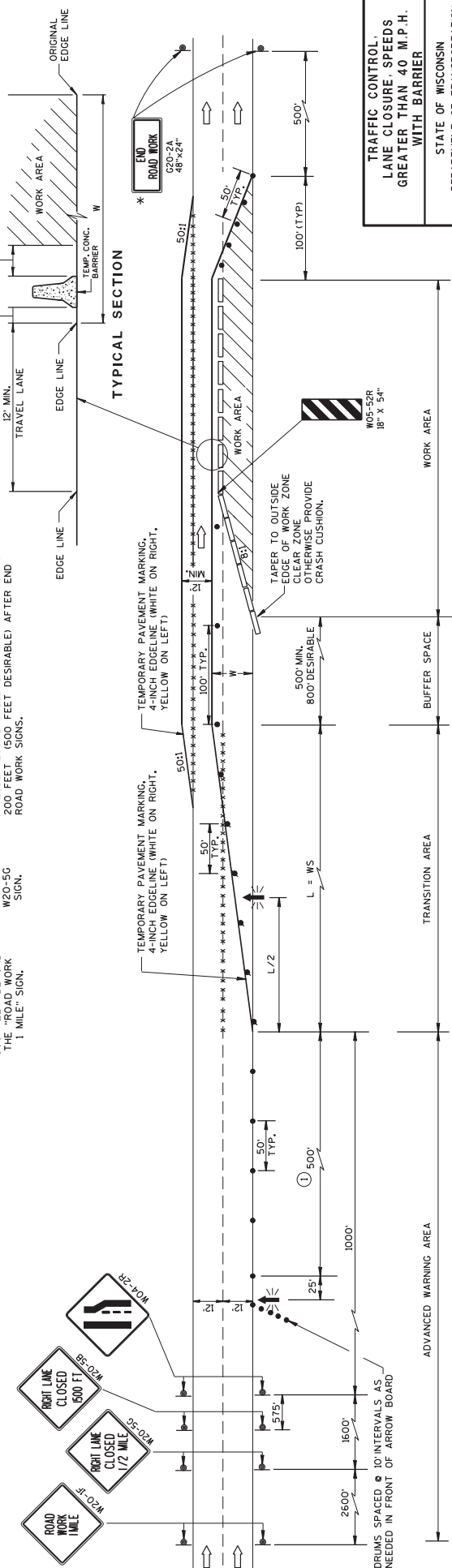


LOCATED 2600 FEET IN ADVANCE OF 500 FEET BEYOND THE "END OF WORK" SIGN.

R2-1 SIGN AND "END OF WORK" SIGN.

1 MILE "S" SIGN.

SPEED (MPH)	L. TAPER LENGTH (MPH)																
	10	11	12	13	14	15	16	17	18	19	20	22	24	26	28	30	35
45	450	495	540	585	630	675	720	765	810								
50	500	550	600	650	700	750	800	850	900								
55	550	605	660	715	770	825	880	935	990								
60	600	660	720	780	840	900	960	1020	1080								
65	650	715	780	845	910	975	1040	1105	1170								
70	700	770	840	910	980	1050	1120	1190	1260								



**TYPICAL SECTION**

TRAFFIC CONTROL:  
 LANE CLOSURE - SPEEDS GREATER THAN 40 M.P.H.  
 WITH BARRIER

STATE OF WISCONSIN  
 DEPARTMENT OF TRANSPORTATION

APPROVED  
 March 2016 /S/ Peter AmickObs Atepp  
 DATE STATEWORK ZONE TRAFFIC SAFETY NUMBER  
 P.W.A.



## SCHEDULE OF ITEMS

REVISED:

CONTRACT:  
20160510043PROJECT(S):  
1023-02-76FEDERAL ID(S):  
WISC 2016184

CONTRACTOR : \_\_\_\_\_

LINE NO	ITEM DESCRIPTION	APPROX. QUANTITY AND UNITS	UNIT PRICE		BID AMOUNT	
			DOLLARS	CTS	DOLLARS	CTS
0970	SPV.0035 Special 02. Concrete Masonry Deck Patching	4.000 CY	.		.	
0980	SPV.0045 Special 01. Portable Changeable Message Sign (PMCS) Cellular Communications	338.000 DAY	.		.	
0990	SPV.0060 Special 01. Cleaning Ditch	4.000 EACH	.		.	
1000	SPV.0090 Special 01. Sawing Pavement Deck Preparation Areas	85.000 LF	.		.	
1010	SPV.0105 Special 01. Milling And Removing Temporary Joint 1023-02-76	LUMP	LUMP		.	
1020	SPV.0105 Special 02. Material Transfer Vehicle 1023-02-76	LUMP	LUMP		.	
1030	SPV.0105 Special 03. Preparation Of Foundation For Asphaltic Paving Special 1023-02-76	LUMP	LUMP		.	
1040	SPV.0165 Special 01. Fiber Wrap Pier Reinforcing	1,860.000 SF	.		.	
1050	SPV.0195 Special 01. HMA Pavement Type SMA-Special	50,910.000 TON	.		.	
1060	SPV.0195 Special 02. SMA Pavement Compaction Acceptance	50,910.000 TON	.		.	

SCHEDULE OF ITEMS

REVISED:

CONTRACT:  
20160510043

PROJECT(S):  
1023-02-76

FEDERAL ID(S):  
WISC 2016184

CONTRACTOR : \_\_\_\_\_

LINE NO	ITEM DESCRIPTION	APPROX. QUANTITY AND UNITS	UNIT PRICE		BID AMOUNT	
			DOLLARS	CTS	DOLLARS	CTS
1070	603.8000 Concrete Barrier Temporary Precast Delivered	350.000 LF	.		.	
1080	603.8125 Concrete Barrier Temporary Precast Installed	700.000 LF	.		.	
	SECTION 0001 TOTAL				.	
	TOTAL BID				.	