

Wisconsin Department of Transportation

April 25, 2016

Division of Transportation Systems Development

Bureau of Project Development
4802 Sheboygan Avenue, Rm 601
P O Box 7916
Madison, WI 53707-7916

NOTICE TO ALL CONTRACTORS:

Telephone: (608) 266-1631
Facsimile (FAX): (608) 266-8459

Proposal #58: 1517-07-74
USH 10 – USH 10/STH 441
County CB – Oneida Street
I-41 (STH 441 - CTH II)
USH 10
Winnebago County

Letting of May 10, 2016

This is Addendum No. 2, which provides for the following:

Schedule of Items

Revised Bid Item Quantities					
Bid Item	Item Description	Unit	Old Quantity	Revised Quantity	Proposal Total
506.0605	Structural Steel HS	LB	411,600	-46,200	365,400

Plan Sheets

Revised Plan Sheets	
Plan Sheet	Plan Sheet Title (brief description of changes to sheet)
493	Structure B-70-131 Quantities, Notes and Alignments (Quantity for Structural Steel HS)

Schedule of Items

Attached, dated April 25, 2016, are the revised Schedule of Items Page 6.

Plan Sheets

The following 8½ x 11-inch sheets are attached and made part of the plans for this proposal:
Revised: 493

The responsibility for notifying potential subcontractors and suppliers of these changes remains with the prime contractor.

Sincerely,

Mike Coleman

Proposal Development Specialist
Proposal Management Section

END OF ADDENDUM

Addendum No. 02
ID 1517-07-74
Revised Sheet 493
April 25, 2016

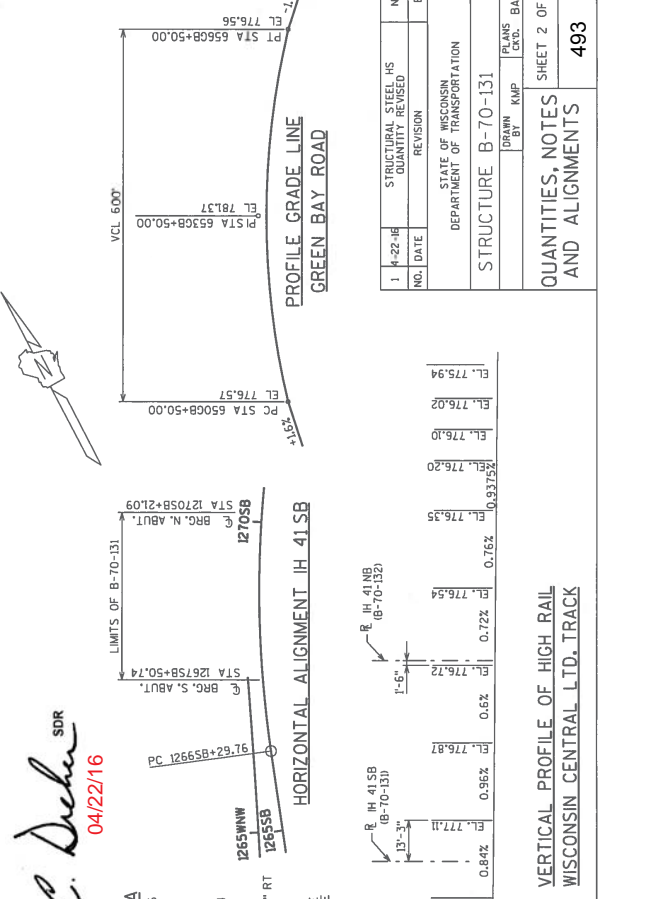
TOTAL ESTIMATED QUANTITIES

BID ITEM NO.	BID ITEM	UNIT	SUPER.	S. ABUT.	PIER	N. ABUT.	TOTAL
203.0200.002	REMOVING OLD STRUCTURE STA. 126758+50	LS	1				1
203.0225.S.001	DEBRIS CONTAINMENT STRUCTURE B-70-131	LS	1				1
206.1000.002	EXCAVATION FOR STRUCTURES BRIDGES B-70-131	LS	1				1
210.0100	BACKFILL STRUCTURE	CY	213	55	15	383	383
501.0100.S	ICE HOT WEATHER CONCRETING	LS	2,605	293	345	3,300	3,573
502.3100.001	EXPANSION DEVICE B-70-131	LS	1				1
502.3210	PIGMENTED SURFACE SEALER	SY	142				142
502.5002	MASONRY ANCHORS TYPE L NO. 4 BARS	EACH				10	10
502.5010	MASONRY ANCHORS TYPE L NO. 6 BARS	EACH				14	14
502.5025	MASONRY ANCHORS TYPE L NO. 9 BARS	EACH				9	9
505.0400	BAR STEEL REINFORCEMENT HS COATED STRUCTURES	LB	22,980	3,150	10,970	4,120	27,740
505.0600	STRUCTURAL STEEL HS	LB	149,600				149,600
506.3015	WELDED STUD SHEAR CONNECTORS 7/8 X 6-INCH	EACH			2		2
506.5000.001	BEARING ASSEMBLIES FIXED B-70-131	EACH			2		2
506.6000.001	POLYMER OVERLAY	SY	1,197				1,197
509.5100.S	TEMPORARY SHORING B-70-131	SF	1,197	375	260	270	905
511.0200.002	RUBBERIZED MEMBRANE WATERPROOFING	SY			6		6
516.0500	PAINTING EPOXY SYSTEM B-70-131	LS	1				1
517.0600.001	STRUCTURE OVERCOATING CLEANING AND PRIMING B-70-131	LS	1				1
517.4000.S.001	CONTAINMENT AND COLLECTION OF WASTE MATERIALS B-70-131	LS	1				1
550.0020	PRE-BORING ROCK OR CONSOLIDATED MATERIALS	LF			63		63
550.0500	PILE POINTS	EACH			6		6
550.1000	PIILING STEEL HP 10-INCH X 42 LB	LF			225	340	290
604.0400	SLOPE PAVING CONCRETE	SY			94		94
604.0600	SLOPE PAVING SELECT CRUSHED MATERIAL	SY			132		132
612.0406	PIPE UNDERDRAIN WRAPPED 6-INCH	LF			79		45
652.0225	CONDUIT RIGID METALLIC 2-INCH	LF	145				145
652.0225	CONDUIT RIGID NONMETALLIC SCHEDULE 40 2-INCH	LF	1120				1120
653.0220	JUNCTION BOXES 18X6X6-INCH	EACH	1				1
SPV.0035.700	MODIFIED HIGH PERFORMANCE CONCRETE (HPC) MASONRY BRIDGES	CY	347	39	46	44	476
SPV.0060.701	JUNCTION BOXES STAINLESS STEEL 24X18X6-INCH	EACH	1				1
SPV.0060.702	CLEANING AND PAINTING BEARINGS	EACH	27				27
	NON BID ITEMS						
	FILLER	SIZE					1/2" & 3/4"
	NAME PLATE	EACH					1
	EXPANDED POLYSTYRENE	SIZE					1"

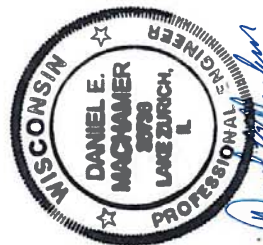
GENERAL NOTES

DO NOT SCALE DRAWINGS.
 DIMENSIONS FOR EXISTING STRUCTURE ARE BASED ON THE ORIGINAL DESIGN PLANS.
 EMBED BAR STEEL REINFORCEMENT 2" CLEAR UNLESS SHOWN OR NOTED OTHERWISE.
 THE FIRST OR FIRST TWO DIGITS OF THE BAR MARK SIGNIFIES THE BAR SIZE.
 ALL ELEVATIONS REFERENCED TO NGVD 29.
 CONSIDER THE EXISTING GROUND LINE AS UPPER LIMITS OF EXCAVATION FOR STRUCTURES.
 VARIATIONS TO THE NEW GRADE LINE OVER 1/4" MUST BE SUBMITTED BY THE FIELD ENGINEER TO THE STRUCTURAL ENGINEER FOR REVIEW.
 THE EXISTING STRUCTURE (B-70-131) IS A TWO SPAN STEEL GIRDER BRIDGE WITH AN OVERALL LENGTH OF 281'-5". REMOVE EXISTING DECK TO LIMITS SHOWN, AND FASCIA SIDE WINDWALLS AND PARAPETS, WEDEN PIER, ABUTMENTS AND SUPERSTRUCTURE ON FASCIA SIDE, ADD TWO GIRDER LINES AND PROVIDE NEW DECK AND PARAPET.
 MAKE ALL FIELD CONNECTIONS WITH 3/4" DIAMETER FRICTION TYPE A325 HIGH-TENSILE STRENGTH BOLTS UNLESS SHOWN OR NOTED OTHERWISE.
 SPOT PAINT EXISTING STRUCTURAL STEEL AS DIRECTED BY THE ENGINEER WITH EPOXY PAINT SYSTEM WITH COLOR TO MATCH EXISTING.
 ALL NEW STRUCTURAL STEEL SHALL BE PAINTED. PAINT SHALL BE EPOXY. COLOR SHALL BE BROWN, FEDERAL COLOR NO. 2022.
 EXPANSION JOINT ASSEMBLY, INCLUDING ANCHOR STUDS AND HARDWARE SHALL BE PAID FOR IN THE LUMP SUM PRICE BID AS "EXPANSION DEVICE B-70-131".
 ALL CONCRETE REMOVAL SHALL BE DEFINED BY A 1-INCH DEEP SAW CUT.
 MONITOR SAW CUTTING OF EXISTING BRIDGE DECK AND BLADE DEPTH SO THAT EXISTING UNDERLYING STEEL IS NOT DAMAGED. EXERCISE CARE NOT TO GOUGE THE TOP FLANGES WITH JACKHAMMER OR OTHER TOOLS.
 BEFORE SAW CUTTING THE CONCRETE DECK, ACCURATELY MARK ALL STEEL FRAMING ON THE TOP OF THE DECK BY DRILLING HOLES FROM BELOW OR USING AN EQUIVALENTLY ACCURATE LOCATING METHOD TO ENSURE THAT THE EXISTING STEEL WILL NOT BE DAMAGED DURING SAW CUTTING.
 SEAL THE LONGITUDINAL CONSTR. JT. IN THE DECK AND IN THE PIER CAP WITH AN APPROVED POURABLE CRACK SEALER PER SECTIONS 502.2.11 AND 502.3.13.11 OF THE STANDARD SPECIFICATION. WORK IS INCIDENTAL TO THE BID ITEM "MODIFIED HIGH PERFORMANCE CONCRETE (HPC) MASONRY BRIDGES".
 THE EXISTING STRUCTURE PLANS ARE AVAILABLE FOR CONTRACTORS REVIEW AT THE WISDOT EXTRANET WEB SITE FOR HIGHWAY STRUCTURES INFORMATION SYSTEM.
 REUSE EXISTING SHEAR CONNECTORS AND STRUCTURAL STEEL EXERCISE CAUTION NOT TO DAMAGE EXISTING SHEAR CONNECTORS OR THE STRUCTURAL STEEL FRAMING IN THE PROCESS OF DECK REMOVAL. REPAIR OR REPLACE ANY STEEL COMPONENTS DAMAGED TO THE SATISFACTION OF THE ENGINEER AT NO ADDITIONAL COST TO THE DEPARTMENT.
 THE TYPE OF EXISTING SHEAR CONNECTORS SHOWN ARE FOR INFORMATION ONLY. THE ACTUAL TYPE OF SHEAR CONNECTORS MAY BE OF DIFFERENT TYPE THAN SHOWN HERE.
 THE CONTRACTOR SHALL SUPPLY A NEW NAME PLATE IN ACCORDANCE WITH SECTION 502.3.11 OF THE STANDARD SPECIFICATIONS AND THE STANDARD DETAIL DRAWINGS. NAME PLATE TO SHOW ORIGINAL CONSTRUCTION YEAR (1994).
 UTILIZE EXISTING BAR STEEL REINFORCEMENT WHERE SHOWN AND EXTEND 24 BAR DIAMETERS INTO NEW WORK, UNLESS SPECIFIED OTHERWISE.
 IN THE SLOPE OF THE FILL IN FRONT OF THE ABUTMENTS SHALL BE COVERED WITH SLOPE PAVING MATERIAL TO THE EXTENT SHOWN ON SHEET 1 AND IN THE SLOPE PAVING SHEETS.

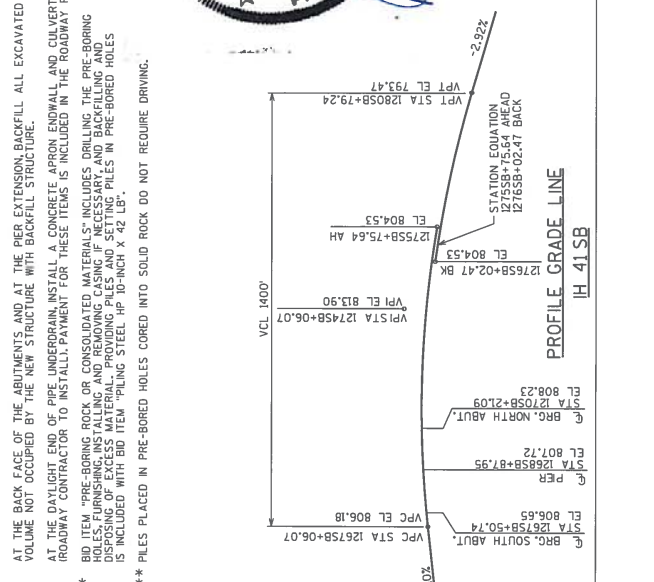
STATE PROJECT NUMBER
 1517-07-74



William C. Decker SDR
 04/22/16



Daniel E. Macnamer
 4-22-2016



SCHEDULE OF ITEMS

REVISED:

CONTRACT:
20160510058PROJECT(S):
1517-07-74FEDERAL ID(S):
N/A

CONTRACTOR : _____

LINE NO	ITEM DESCRIPTION	APPROX. QUANTITY AND UNITS	UNIT PRICE		BID AMOUNT	
			DOLLARS	CTS	DOLLARS	CTS
0520	502.3200 Protective Surface Treatment	522.000 SY	.		.	
0530	502.3210 Pigmented Surface Sealer	1,973.000 SY	.		.	
0540	502.5002 Masonry Anchors Type L No. 4 Bars	30.000 EACH	.		.	
0550	502.5010 Masonry Anchors Type L No. 6 Bars	118.000 EACH	.		.	
0560	502.5025 Masonry Anchors Type L No. 9 Bars	27.000 EACH	.		.	
0570	503.0155 Prestressed Girder Type I 54W-Inch	412.000 LF	.		.	
0580	504.0500 Concrete Masonry Retaining Walls	1,121.000 CY	.		.	
0590	505.0400 Bar Steel Reinforcement HS Structures	6,380.000 LB	.		.	
0600	505.0600 Bar Steel Reinforcement HS Coated Structures	326,650.000 LB	.		.	
0610	506.0605 Structural Steel HS	365,400.000 LB	.		.	
0620	506.2605 Bearing Pads Elastomeric Non-Laminated	8.000 EACH	.		.	