



# Wisconsin Department of Transportation

May 3, 2016

**Division of Transportation Systems Development**

Bureau of Project Development  
 4802 Sheboygan Avenue, Rm 601  
 P O Box 7916  
 Madison, WI 53707-7916

Telephone: (608) 266-1631  
 Facsimile (FAX): (608) 266-8459

**NOTICE TO ALL CONTRACTORS:**

**Proposal #58: 1517-07-74**  
**USH 10 – USH 10/STH 441**  
**County CB – Oneida Street**  
**I-41 (STH 441 - CTH II)**  
**USH 10**  
**Winnebago County**

**Letting of May 10, 2016**

This is Addendum No. 04, which provides for the following:

**Special Provisions**

Revised Special Provisions	
Article No.	Description
2.1	Prosecution and Progress

Added Special Provisions	
Article No.	Description
10.5	General Requirements for Blasting Rock.

Deleted Special Provisions	
Article No.	Description
7.3	Hauling Restrictions

**Schedule of Items**

Revised Bid Item Quantities					
Bid Item	Item Description	Unit	Old Quantity	Revised Quantity	Proposal Total
204.0100	Removing Pavement	SY	28,327	64	28,391
205.0100	Excavation Common	CY	88,711	-15,000	73,711
415.0070	Concrete Pavement 7-Inch	SY	289	288	577
416.0610	Drilled Tie Bars	EACH	5,371	16	5,387
416.0620	Drilled Dowel Bars	EACH	287	80	367
608.0315	Storm Sewer Pipe Reinforced Concrete Class III 15-Inch	LF	327	120	447

608.0324	Storm Sewer Pipe Reinforced Concrete Class III 24-Inch	LF	3,046	2,329	5,375
608.0330	Storm Sewer Pipe Reinforced Concrete Class III 30-Inch	LF	1,267	1,129	2,396
611.0410	Reconstructing Catch Basins	EACH	1	1	2
611.8115	Adjusting Inlet Covers	EACH	5	1	6
625.0100	Topsoil	SY	59,788	11,475	71,263
625.0500	Salvaged Topsoil	SY	19,975	3,825	23,800
627.0200	Mulching	SY	79,613	15,287	94,900
629.0210	Fertilizer Type B	CWT	63	10	73
630.0120	Seeding Mixture No. 20	LB	2,105	414	2,519
630.0200	Seeding Temporary	LB	2,144	414	2,558
643.0300	Traffic Control Drums	Days	44,707	3,846	48,553
643.0420	Traffic Control Barricades Type III	Days	1,946	97	2,043
643.0715	Traffic Control Warning Lights Type C	Days	5,343	232	5,575
643.0800	Traffic Control Arrow Broads	Days	493	26	519
643.0900	Traffic Control Signs	Days	13,880	1,048	14,928
652.0800	Conduit Loop Detector	LF	140	170	310
655.0700	Loop Detector Lead In Cable	LF	450	80	530
655.0800	Loop Detector Wire	LF	460	510	970
690.0250	Sawing Concrete	LF	13,685	144	13,829
SPV.0060.201	Repositioning Traffic Control Devices for Mainline Closures	EACH	68	10	78
SPV.0120.001	Water for Seeded Areas	MGAL	1,786	342	2,128
SPV.0180.001	Removing Rumble Strips	SY	2,720	1,355	4,075

Added Bid Item Quantities					
Bid Item	Item Description	Unit	Old Quantity	Revised Quantity	Proposal Total
416.1710	Concrete Pavement Repair	SY	0	64	64
608.0312	Storm Sewer Pip Reinforced Concrete Class III 12-Inch	LF	0	35	35
611.0420	Reconstructing Manholes	EACH	0	1	1
653.0105	Pull boxes Steel 12x24 Inch	EACH	0	2	2

## Plan Sheets

Revised Plan Sheets	
Plan Sheet	Plan Sheet Title (brief description of changes to sheet)
37	Construction Details (change removing rumble strips to 36" wide Mill)
140A	Storm Sewer (Added reconstructing inlets call out)
187B	Traffic Signal (updated plan loop detection)
187C	Traffic Signal (updated plan loop detection)
187D	Traffic Signal (updated plan loop detection)
268	Miscellaneous Quantities (updated removing rumble strip quantities)
269	Miscellaneous Quantities (Added quantities for loop 21 & 61 pavement removal)
270	Miscellaneous Quantities (Added adjusting storm sewer quantities)
271	Miscellaneous Quantities (Updated Earthwork)
273	Miscellaneous Quantities (Updated 7-Inch Pavement)
277	Miscellaneous Quantities (Added missing storm sewer quantities)
281	Miscellaneous Quantities (updated traffic control quantities)
283	Miscellaneous Quantities (updated landscaping quantities for Pond 6)
285	Miscellaneous Quantities (Added single lane and two lane closures for stage 3 for overlays)

290	Miscellaneous Quantities (Added quantities for loop 21 & 61 pavement repair)
301A	Miscellaneous Quantities (Added quantities for pull boxes)
301B	Miscellaneous Quantities (Added quantities for loop detection)
317	Plan & Profile (removed note that referenced a wall that does not exist)
318	Plan & Profile (removed note that referenced a wall that does not exist)

<b>Added Plan Sheets</b>	
Plan Sheet	Plan Sheet Title (brief description of why sheet was added)
277A	Miscellaneous Quantities (Added in missing storm sewer quantities)
345E	SDD – Loop Detector Installed in New Concrete Pavement Round CSCP Pullbox
345F	SDD – Loop Detector Installed in Base Course with Pull (Splice) Box Off Roadway (Option 1)

**Other**

Revise the contract time for completion from May 31, 2017 to June 23, 2017 (an increase of 23 calendar days).

The responsibility for notifying potential subcontractors and suppliers of these changes remains with the prime contractor.

Sincerely,

*Mike Coleman*

Proposal Development Specialist  
Proposal Management Section

## **ADDENDUM NO. 04**

**1517-07-74**

**May 3, 2016**

### **Special Provisions**

#### **2.1 Prosecution and Progress**

*Replace paragraph under section titled **Liquidated Damages** with the following:*

If the contractor fails to open four lanes of IH 41 SB, once IH 41 SB has been reduced to three lanes for B-70-131 superstructure construction, within 55 consecutive calendar days the department will assess the contractor \$2,500 in interim liquidated damages for each calendar day over the deadline after 12:01 AM, after the 55<sup>th</sup> day. An entire calendar day will be charged for any period of time within a calendar day that the road remains closed beyond 12:01 AM for the remainder of the contract.

#### **7.3 DELETED.**

#### **10.5 General Requirements for Blasting Rock.**

*Add the following to standard spec 205.3.7:*

Perform all blasting in compliance with the Wisconsin Administrative Code Department of Safety and Professional Services SPS 307.43.

##### **Blasting Plan Submittal**

Not less than two weeks prior to commencing blasting operations, or at any time when changes to the drilling and blasting methods are proposed, submit a Blasting Plan to the engineer for review. The blasting plan shall contain full details of the drilling and blasting patterns and controls proposed for both the controlled and production blasting. Include the following minimum information in the blasting plan:

1. Station limits of proposed shot.
2. Plan and section views of proposed drill pattern including free face, burden, blasthole spacing, blasthole diameters, blasthole angles, lift height, and subdrill depth.
3. Loading diagram showing type and amount of explosives, primers, initiators, and location and depth of stemming.
4. Initiation sequence of blastholes including delay times and delay system.
5. Manufacturer's data sheets for all explosives, primers, and initiators to be employed.

The blasting plan submittal is for quality control and record keeping purposes. Review of the blasting plan by the engineer does not relieve the contractor of responsibility for the accuracy and adequacy of the plan when implemented in the field.

##### **Safety**

Immediately notify the engineer of any incidents of fly rock, damage to any personal property, or existing roadway that is open to traffic, and any violations of the Wisconsin Administrative Code Department of Safety and Professional Services SPS 307.43. Failure to do so shall be considered a safety violation under standard spec 107 and all work on the project may be stopped under standard spec 105.1(1).

Notify the engineer of the station, location, and 'size' of all blasts at least one hour prior to the blast.

Observe the entire blast area for a minimum of five minutes following a blast to guard against rock or debris fall before commencing work in the area.

The engineer has the authority to prohibit or halt the contractor's blasting operations if it is apparent that through the methods being employed, the required slopes are not being obtained in a stable condition, the safety and convenience of the traveling public is being jeopardized, or vibration levels above the allowable levels occur.

### **Condition Surveys**

Conduct and document pre-blast and post-blast surveys of any nearby buildings or structures as required by the scaled-distance equation specified in the Wisconsin Administrative Code Department of Safety and Professional Services SPS 307.43. Make right of entry arrangements with the property owners for these condition surveys. Prior to any blasting, make the pre-blast survey records available to the engineer for review. After completion of blasting operations, perform a post-blast survey and make these records available to the engineer for review. The contractor shall be responsible for any damage resulting from blasting.

These condition surveys shall consist of visually inspecting and recording all existing defects in the structures before and after blasting operations. Photographs and/or videotape may be used to assist in documentation. Submit a written report to the department detailing the visual and photographic investigation of potentially affected structures. This report will include copies of the pre-blast and post-blast surveys and discuss any discrepancies and findings of these surveys.

If at any time during the progress of the work, the methods of drilling and blasting do not produce the desired result of a uniform slope and shear face, within the tolerances specified, drill, blast, and excavate in short sections, not exceeding 100 feet in length, until a technique is arrived at that will produce the desired results. Extra cost resulting from this requirement shall be borne by the contractor.

### **Vibration Control and Monitoring**

All vibration control and monitoring shall comply with Wisconsin Administrative Code Department of Safety and Professional Services SPS 307.43, Instrumentation and SPS 307.44, Control of Adverse Effects.

Whenever there is a potential for vibration damage to adjacent buildings, structures, or utilities, monitor each blast with an approved seismograph located, as approved, between the blast area and the closest structure subject to blast damage, and as close as practical to the subject structure. Peak particle velocity shall not be allowed to exceed the safe limits of the nearest structure subject to vibration damage.

A vibration specialist, approved by the engineer, shall perform vibration monitoring. The vibration specialist shall monitor vibration levels according to the Wisconsin Administrative Code Department of Safety and Professional Services SPS 307.43 and interpret the seismograph records to ensure that the seismograph data shall be effectively utilized in the control of the blasting operations with respect to the existing structures and utilities.

According to the Wisconsin Administrative Code Department of Safety and Professional Services SPS 307.43 consult with the owner of any structure or utility not listed in SPS 307.43 to establish maximum allowable limits on ground vibrations. In no case shall these vibration limits exceed the following criteria:

<b>Structure Type</b>	<b>Maximum Peak Particle Velocity (inches/second)</b>
Reinforced Concrete, Structures, Unoccupied	4.0
Steel Structures, Unoccupied	4.0
Buried Utilities	2.0

Wells and Aquifers	2.0
Green Concrete (Less than 7 days)	1.0

Furnish data recorded for each shot to the engineer prior to the next blast; the data shall include the following:

1. Identification of vibration monitoring instrument used.
2. Name of qualified observer and interpreter.
3. Distance and direction of recording station from blast area.
4. Type of ground at recording station and material on which the instrument is sitting.
5. Peak particle velocity and principal frequency in each component.
6. A dated and signed copy of records of seismograph readings.
7. A comparison of measured seismograph readings to maximum allowable readings identified in the Wisconsin Administrative Code Department of Safety and Professional Services SPS 307.43 or as specified in this special provision.

If the recorded vibration data exceeds the allowable levels established in the Wisconsin Administrative Code Department of Safety and Professional Services SPS 307.43 or as specified in this special provision, immediately halt blasting operations. Submit a revised blasting plan to the engineer and do not resume blasting operations until the engineer approves the revised plan.

All costs associated with the work described herein shall be considered included in the bid item  
Excavation Rock.  
205-050 (20141107)

#### **Schedule of Items**

Attached, dated May 3, 2016, are the revised Schedule of Items Pages 1 – 33.

#### **Plan Sheets**

The following 8½ x 11-inch sheets are attached and made part of the plans for this proposal:

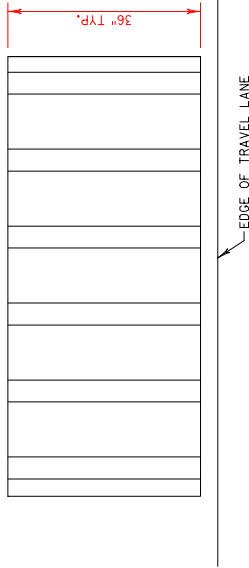
Revised: 37, 140A, 187B, 187C, 187D, 268, 269, 270, 271, 273, 277, 281, 283, 285, 290, 301A, 301B, 317, and 318

Added: 277A, 345E, and 345F

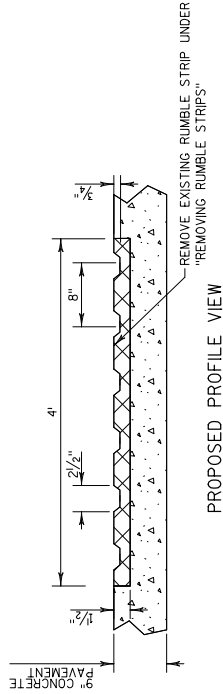
END OF ADDENDUM

Addendum No. 04  
 ID 1517-07-74  
 Revised Sheet 37  
 May 3, 2016

NOTES:  
 1) RUMBLE STRIPS ARE LONGITUDINALLY SPACED 20' CENTER TO CENTER.  
 2) MILL CONTIGUOUS STRIP FROM SOUTH LIMIT TO NORTH LIMIT.



PLAN VIEW



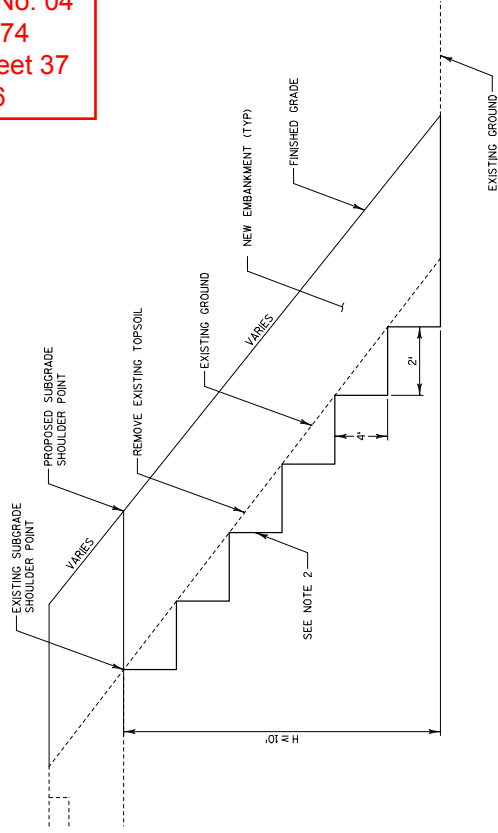
PROPOSED PROFILE VIEW

PLACE HMA PAVEMENT 4 MT 58-28 S FLUSH WITH REMAINING SHOULDER. PAY LIMITS ARE AREA OF EXISTING RUMBLE STRIP. PAID UNDER "REMOVING RUMBLE STRIPS".



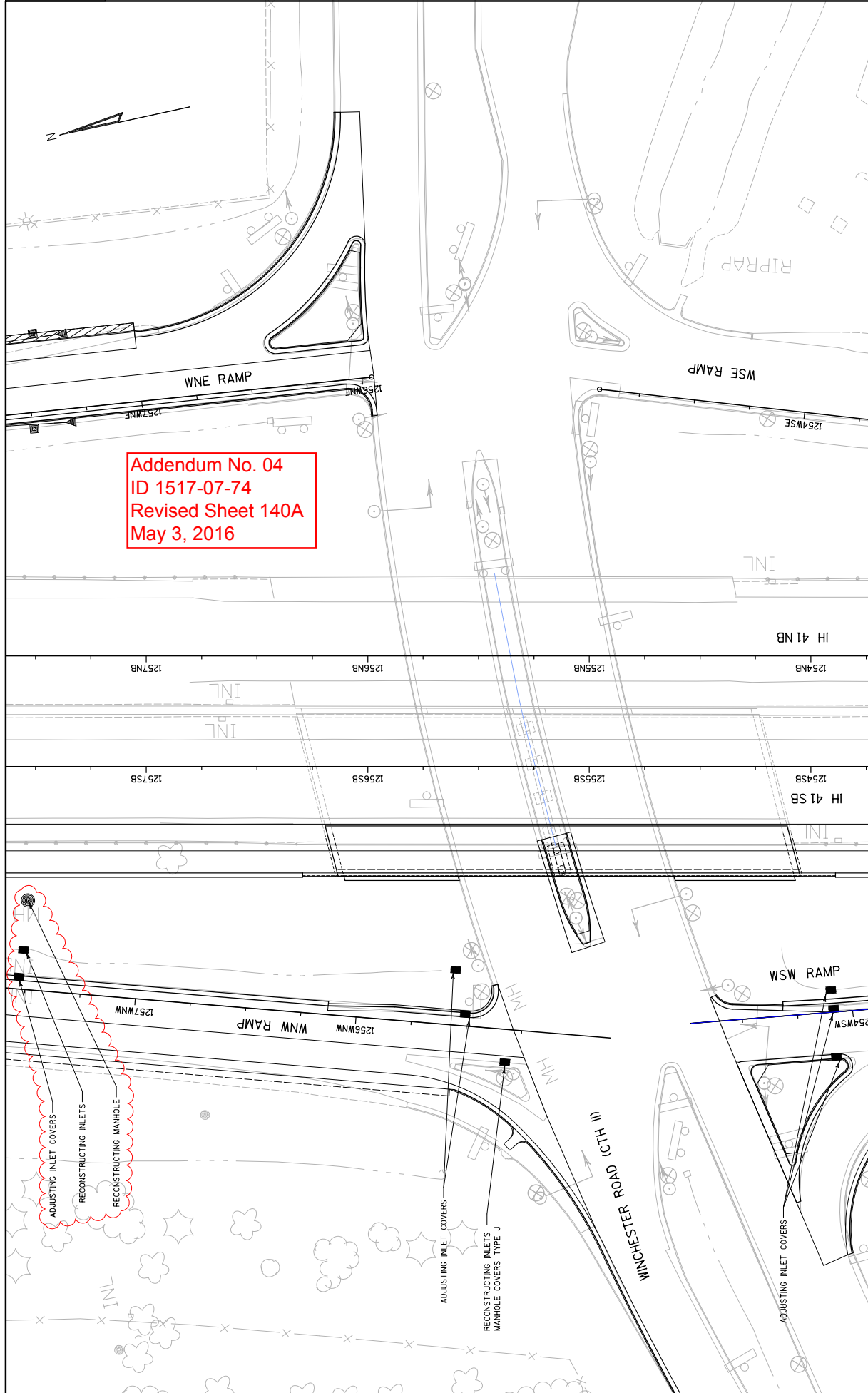
PROPOSED PROFILE VIEW

REMOVING RUMBLE STRIPS



STEPPED EMBANKMENT

NOTES:  
 1) EMBANKMENT PLACED IN LAYERS AND COMPACTED PER SPECIFICATIONS  
 2) BENCH AS REQUIRED TO FACILITATE CONSTRUCTION FILLING OPERATIONS (4' BENCH DEPTH, INCIDENTAL).  
 3) EBS AS REQUIRED IN THE PLANS OR DIRECTED BY THE ENGINEER SHALL BE PAID UNDER THE ITEM "EXCAVATION COMMON".  
 4) USE AT SHOULDER WIDENING LOCATIONS ALONG IH 41 SB.

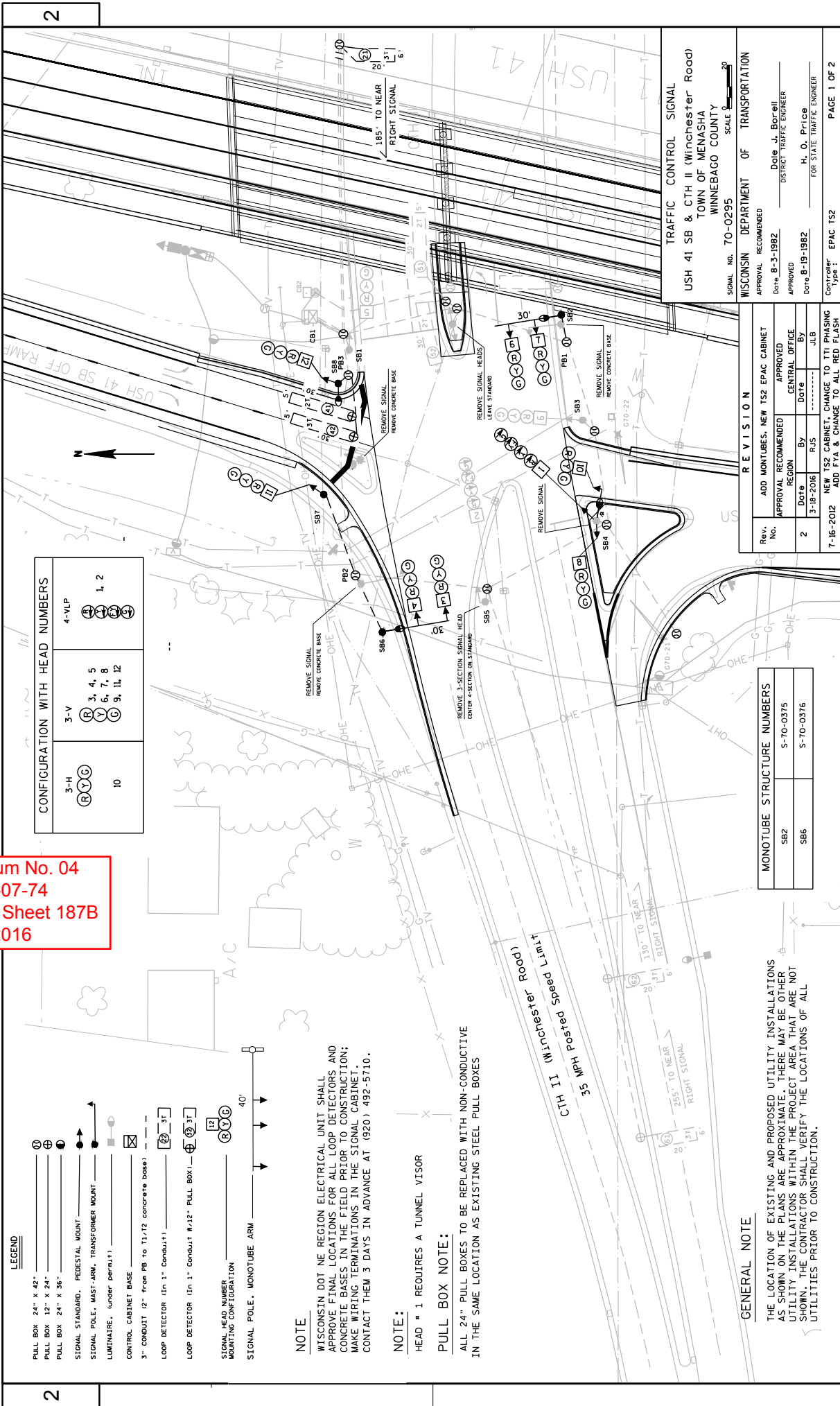


**Addendum No. 04**  
**ID 1517-07-74**  
**Revised Sheet 140A**  
**May 3, 2016**

PROJECT NO: 1517-07-74	HWY: IH 41	COUNTY: WINNEBAGO	STORM SEWER - WNW RAMP & WSW RAMP	SHEET 140A	E
FILE NAME : \\S1102K306\Projects\Transport\Ionus_10_MIS_441\CADD\Sheets\15170774\022514_sss.dgn					
PLOT DATE : 4/28/2016					
PLOT BY : rick-becker					
PLOT SCALE : 40,0000 sf / in.					
WISDOT/CADD SHEET 42					



Addendum No. 04  
 ID 1517-07-74  
 Revised Sheet 187B  
 May 3, 2016



**CONFIGURATION WITH HEAD NUMBERS**

3-H (R) (Y) (G)	3-V (R) 3, 4, 5 (Y) 6, 7, 8 (G) 9, 11, 12	4-VLP (1) (2)
10		1, 2

**LEGEND**

- PULL BOX 24" x 42"
- ⊕ PULL BOX 12" x 24"
- ⊖ PULL BOX 24" x 36"
- SIGNAL STANDARD, PEDESTAL MOUNT
- ⬆ SIGNAL POLE, MAST-ARM, TRANSFORMER MOUNT
- ⬆ LUMINAIRE, UNDER-PANEL
- ⊠ CONTROL CABINET BASE
- 3" CONDUIT (2" from PB to T1; 1/2" concrete base)
- ⊠ LOOP DETECTOR (in 1" Conduit)
- ⊠ LOOP DETECTOR (in 1" Conduit #12" PULL BOX)
- ⊠ SIGNAL HEAD NUMBER MOUNTING CONFIGURATION
- ⊠ SIGNAL POLE, MONOTUBE ARM

**NOTE**  
 WISCONSIN DOT NE REGION ELECTRICAL UNIT SHALL APPROVE FINAL LOCATIONS FOR ALL LOOP DETECTORS AND CONCRETE BASES IN THE FIELD PRIOR TO CONSTRUCTION; MAKE WIRING TERMINATIONS IN THE SIGNAL CABINET. CONTACT THEM 3 DAYS IN ADVANCE AT (920) 492-5710.

**NOTE:**  
 HEAD # 1 REQUIRES A TUNNEL VISOR

**PULL BOX NOTE:**  
 ALL 24" PULL BOXES TO BE REPLACED WITH NON-CONDUCTIVE IN THE SAME LOCATION AS EXISTING STEEL PULL BOXES

**GENERAL NOTE**  
 THE LOCATION OF EXISTING AND PROPOSED UTILITY INSTALLATIONS AS SHOWN ON THE PLANS ARE APPROXIMATE. THERE MAY BE OTHER UTILITY INSTALLATIONS WITHIN THE PROJECT AREA THAT ARE NOT SHOWN. THE CONTRACTOR SHALL VERIFY THE LOCATIONS OF ALL UTILITIES PRIOR TO CONSTRUCTION.

**MONOTUBE STRUCTURE NUMBERS**

SB2	S-70-0375
SB6	S-70-0376

**REVISION**

Rev. No.	APPROVAL REGION	RECOMMENDED	APPROVED
2	3-18-2016	By: RJS	By: JLB
1	7-16-2012	ADD TS2 CABINET, CHANGE TO T1 PHASING	ADD FYA & CHANGE TO ALL RED FLASH

**TRAFFIC CONTROL SIGNAL**  
 USH 41 SB & CTH II Winchester Road  
 TOWN OF MENASHA  
 WINNEBAGO COUNTY  
 SIGNAL NO. 70-0295  
 SCALE 1/8" = 1'-0"

WISCONSIN DEPARTMENT OF TRANSPORTATION  
 APPROVAL RECOMMENDED  
 Date: 8-3-1982  
 DISTRICT TRAFFIC ENGINEER  
 Dole, J. Borrelli

APPROVED  
 Date: 8-19-1982  
 H. O. PriCo  
 FOR STATE TRAFFIC ENGINEER

CONTRACTOR  
 Type: EPAC TS2  
 PAGE 1 OF 2

CONTROLLER LOGIC

PHASE NUMBER	PHASE LOCKING	DUAL ENTRY # / Ø	PHASE RECALL	PHASE ACTIVE
1				
2			MIN	X
3				
4				X
5			MIN	X
6				
7				
8				

TYPE OF INTERCONNECT/COMMUNICATION	
CELL MODEM	
CLOSED LOOP	
TWISTED PAIR*	
FIBER OPTIC*	X
FIBER OPTIC (ETHERNET)	
RADIO	

TYPE OF COORDINATION	
NONE	
TBC	X
TRAFFIC RESPONSIVE	
ADAPTIVE	
*LOCATION OF MASTER CONTROLLER NO:	S70-0295
SIGNAL SYSTEM #:	S570-0002

Addendum No. 04  
ID 1517-07-74  
Revised Sheet 187C  
May 3, 2016

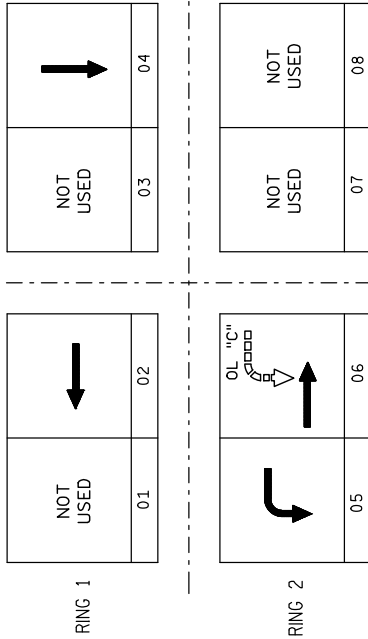
TYPE OF LIGHTING	
BY OTHER AGENCY	
IN TRAFFIC SIGNAL CABINET	X
IN SEPARATE DOT LIGHTING CABINET	

TYPE OF PRE-EMPT	
NONE	X
RAILROAD	
EMERGENCY VEHICLE	
GTT	
TOMAR	
HARDWARE	
3M	
LIFT BRIDGE	
QUEUE DETECTOR	

OVERLAP SPECIAL	
Protected	Permissive
OL "A"	
OL "B"	
OL "C"	5
OL "D"	6

I41 SB & CTH II (Winchester Rd.)  
TOWN OF MENASHA  
WINNEBAGO COUNTY

SIGNAL NO. 70-0295  
Controller Type: EPAC TS2  
Date: -----  
**187C**



DETECTOR LOGIC

RACK # 1										RACK # 2									
DETECTOR CHANNEL	3	1	7	5	11	9	15	13	19	17	23	21	27	25	31	29			
PLAN LOOP DETECTOR "HS"	21	41	51	61															
ASSIGNED PHASE	2	4	5	6															
OPERATION MODE	Veh	Veh	Veh	Veh															
SWITCH TO PHASE																			
EXTEND																			
DELAY																			
DETECTOR CHANNEL	4	2	8	6	12	10	16	14	20	18	24	22	28	26	32	30			
PLAN LOOP DETECTOR "HS"	42	52	62																
ASSIGNED PHASE	4		5	6															
OPERATION MODE	Veh	Veh	Veh	Veh															
SWITCH TO PHASE																			
EXTEND																			
DELAY																			

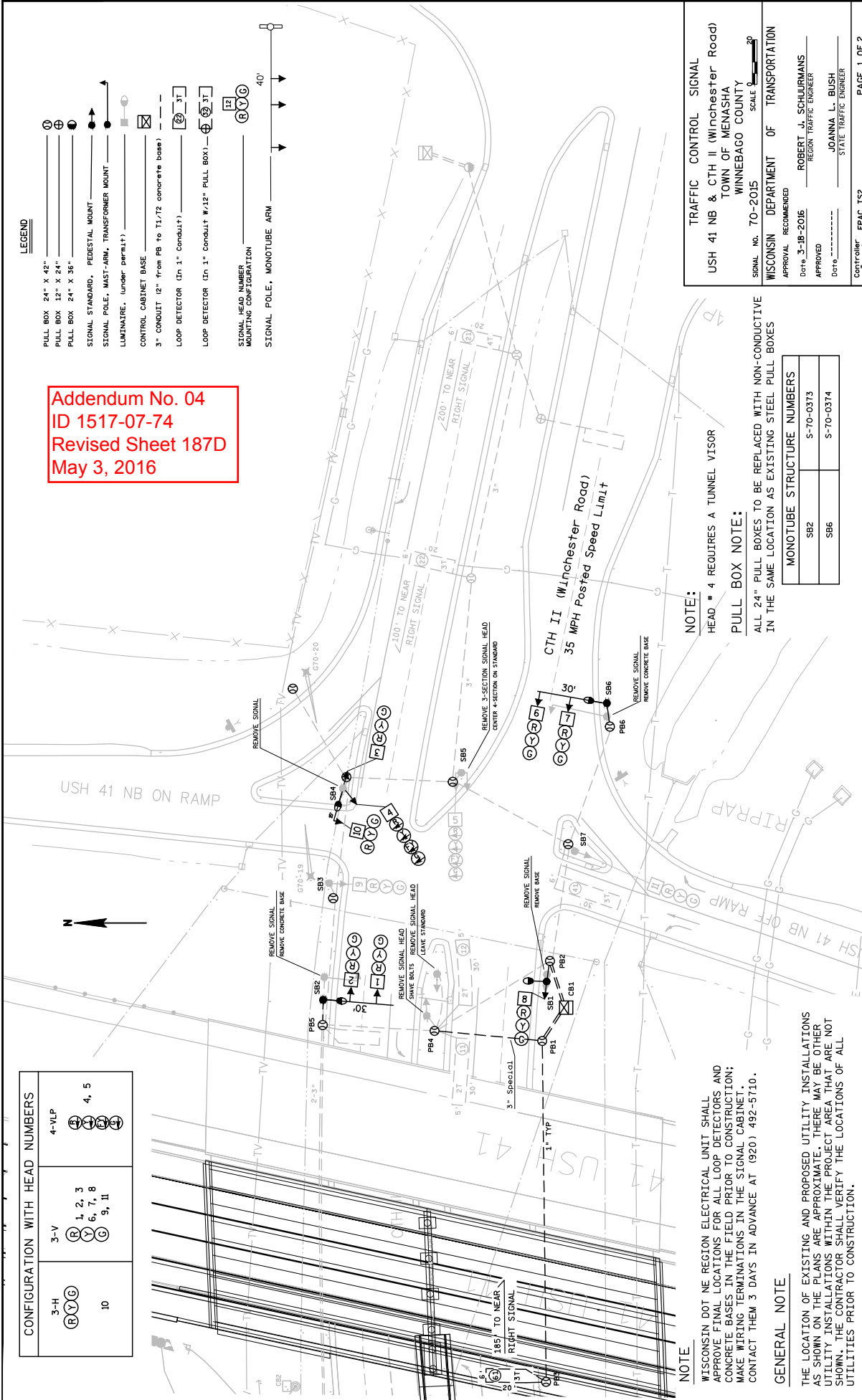
GENERAL NOTES:  
1. PROVIDE FOR HAND CONTROL.

LEGEND

- PULL BOX 24" X 42"
- PULL BOX 24" X 24"
- PULL BOX 24" X 36"
- SIGNAL STANDARD, PEDESTAL MOUNT
- SIGNAL POLE, MAST-ARM, TRANSFORMER MOUNT
- LUMINAIRE, (under permit)
- CONTROL CABINET BASE
- 3" CONDUIT (2" from PB to 11,72 concrete base)
- LOOP DETECTOR (In 1" Conduit)
- LOOP DETECTOR (In 1" Conduit w/12" PULL BOX)
- SIGNAL HEAD NUMBER MOUNTING CONFIGURATION
- SIGNAL POLE, MONOTUBE ARM

Addendum No. 04  
 ID 1517-07-74  
 Revised Sheet 187D  
 May 3, 2016

CONFIGURATION WITH HEAD NUMBERS	
3-H 	4-VLP 
3-V 	1, 2, 3 
	4, 5 
	5, 7, 8 
	9, 10, 11 



**NOTE**  
 WISCONSIN DOT NE REGION ELECTRICAL UNIT SHALL APPROVE FINAL LOCATIONS FOR ALL LOOP DETECTORS AND CONCRETE BASES IN THE FIELD PRIOR TO CONSTRUCTION; MAKE WIRING TERMINATIONS IN THE SIGNAL CABINET. CONTACT THEM 3 DAYS IN ADVANCE AT (920) 492-5710.

**GENERAL NOTE**  
 THE LOCATION OF EXISTING AND PROPOSED UTILITY INSTALLATIONS AS SHOWN ON THE PLANS ARE APPROXIMATE. THERE MAY BE OTHER UTILITY INSTALLATIONS WITHIN THE PROJECT AREA THAT ARE NOT SHOWN. THE CONTRACTOR SHALL VERIFY THE LOCATIONS OF ALL UTILITIES PRIOR TO CONSTRUCTION.

**TRAFFIC CONTROL SIGNAL**  
 USH 41 NB & CTH II (Winchester Road)  
 TOWN OF MENASHA  
 WINNEBAGO COUNTY  
 SIGNAL NO. 70-2015  
 SCALE

**WISCONSIN DEPARTMENT OF TRANSPORTATION**  
 APPROVAL RECOMMENDED  
 DATE: 3-18-2016  
 APPROVED: ROBERT J. SCHURMANS  
 REGION TRAFFIC ENGINEER  
 DATE: -----  
 APPROVED: JOANNA L. BUSH  
 STATE TRAFFIC ENGINEER  
 Controller: EPAC TSE  
 Type: PAGE 1 OF 2

**MONOTUBE STRUCTURE NUMBERS**

SB2	S-70-0373
SB6	S-70-0374

**REMOVING GUARDRAIL**

LOCATION	STATION	STATION	STATION	OFFSET	LF
IH 41 NB	1260NB+00	-	1270NB+00	RT	530
IH 41 NB	1270NB+00	-	1280NB+00	RT	985
IH 41 NB	1280NB+00	-	1290NB+00	RT	250
IH 41 NB	1290NB+00	-	1300NB+00	RT	405
IH 41 SB	1251SB+45	-	1254SB+06	LT	275
IH 41 SB	1256SB+17	-	1263SB+02	LT	685
WNW RAMP	1259WNW+54	-	1267WNW+73	LT	820
IH 41 SB	1270SB+75	-	1299SB+47	LT	2,905
IH 41 SB	1306SB+15	-	1307SB+70	LT	95
FWS RAMP	108FWS+79	-	110FWS+38	RT	90
<b>TOTAL</b>					<b>7,040</b>

**SURVEY PROJECT**

SPV.0105.001  
SURVEY PROJECT

LOCATION	EACH
UNDISTRIBUTED	1
<b>PROJECT 1517-07-74 TOTAL</b>	<b>1</b>

**REMOVING CONCRETE APRON ENDWALL FOR PIPE UNDERDRAIN**

204.0060.S.001  
REMOVING CONCRETE APRON ENDWALL FOR PIPE UNDERDRAIN

LOCATION	EACH
UNDISTRIBUTED	2
<b>PROJECT 1517-07-74 TOTAL</b>	<b>2</b>

**REMOVING CURB & GUTTER**

204.0150  
REMOVING CURB & GUTTER

LOCATION	STATION	STATION	OFFSET	LF
AMERICAN DRIVE	9AD+90	-	8J+83	651
AMERICAN DRIVE	8J+83	-	22AD+80	740
<b>TOTAL</b>				<b>1,391</b>

**REMOVING CONCRETE BARRIER**

204.0157  
REMOVING CONCRETE BARRIER

LOCATION	STATION	STATION	OFFSET	LF
STAGE 2A	1270NB+77	-	1270NB+97	20
S-70-246	1275NB+90	-	1277NB+10	120
S-70-244	1304NB+65	-	1304NB+85	20
S-70-247	1265SB+89	-	1267SB+10	240
S-70-245	1283SB+90	-	1287SB+20	660
S-70-243	1293SB+65	-	1294SB+85	240
STAGE 2A	108FWS+75	-	108FWS+50	80
STAGE 2A	1305SB+10	-	1305SB+75	70
<b>TOTAL</b>				<b>1,430</b>

**REMOVING FENCE**

204.0170  
REMOVING FENCE

STATION	STATION	STATION	STATION	OFFSET	LOCATION	LF
1260NB+00	-	1270NB+00	RT	WNE RAMP	460	
1270NB+48	-	1280NB+00	RT	IH 41 NB	955	
1280NB+00	-	1290NB+00	RT	IH 41 NB	1,005	
1290NB+00	-	1300NB+00	RT	IH 41 NB	1,020	
1300NB+00	-	1301NB+54	RT	IH 41 NB	165	
1258WNW+33	-	1260WNW+09	LT	WNW RAMP	186	
1267SB+87	-	1268SB+55	LT	IH 41 SB	106	
1270SB+66	-	1303SB+87	LT	IH 41 SB	3,422	
<b>TOTAL</b>						<b>7,319</b>

**REMOVING SIGN STRUCTURE BASE**

204.9105S  
REMOVING SIGN STRUCTURE BASE

LOCATION	LS	
STA 1304NB+90.00	1	
<b>TOTAL</b>		<b>1</b>

**REMOVING RUMBLE STRIPS**

SPV.0180.001  
REMOVING RUMBLE STRIPS

LOCATION	STATION	STATION	STATION	OFFSET	SY
IH 41 SB	1233SB+60	-	1307SB+10	MED	2,450
IH 41 NB	1262NB+80	-	1311NB+50	MED	1,625
<b>TOTAL</b>					<b>4,075</b>

ALL ITEMS ARE CATEGORY 1000 UNLESS OTHERWISE SPECIFIED.

Addendum No. 04  
ID 1517-07-74  
Revised Sheet 268  
May 3, 2016

REMOVING PAVEMENT

204.0100 204.0155

REMOVING REMOVING

ASPHALTIC CONCRETE

SURFACE SIDEWALK

SY SY

REMOVING PAVEMENT

SY

STATION - STATION

LOCATION

NORTHBOUND	1250NB+00 - 1260NB+00	1,820	-	90
	1260NB+40 - 1270NB+00	1,910	-	-
	1270NB+00 - 1280NB+00	870	-	-
	1280NB+00 - 1290NB+00	940	-	-
	1290NB+00 - 1300NB+00	930	-	-
	1300NB+00 - 1310NB+85	1,686	-	-
SOUTHBOUND	1233SB+00 - 1240SB+00	554	-	-
	1240SB+00 - 1250SB+00	2,770	-	-
	1250SB+00 - 1260SB+00	5,035	-	-
	1260SB+00 - 1270SB+00	3,010	-	-
	1270SB+00 - 1280SB+00	910	-	-
	1280SB+00 - 1290SB+00	950	-	-
	1290SB+00 - 1300SB+00	1,420	-	-
	1300SB+00 - 1310SB+00	5,230	20	-
	1310SB+00 - 1320SB+00	0	1,120	-
WINCHESTER ROAD	LOOP 21	32	-	-
	LOOP 61	32	-	-
AMERICAN DRIVE	9AD+90 - 22AD+96.98	0	7,122	-
BARRIER WORK AT	S-70-247	55	-	-
SIGN STRUCTURES	S-70-246	30	-	-
	S-70-245	147	-	-
	S-70-244	5	-	-
	S-70-243	55	-	-
MEDIAN PIER WORK	B-70-129	-	-	42
TOTAL		28,391	8,262	132

Addendum No. 04  
ID 1517-07-74  
Revised Sheet 269  
May 3, 2016

ALL ITEMS ARE CATEGORY 1000 UNLESS OTHERWISE SPECIFIED.

MISCELLANEOUS QUANTITIES SHEET NO: 269

COUNTY: WINNEBAGO

HWY: IH 41

PROJECT NUMBER: 1517-07-74

ORIGINATOR: JESSICA MEDAUGH ORIG. DATE: JANUARY 31, 2014

PLOTTED DATE: 4/29/2016 11:44 AM

**REMOVING STORM SEWER**

204.0220 204.0245.001 204.0245.002 204.9060.S.002

LOCATION	STATION	OFFSET	STATION	OFFSET	REMOVING STORM SEWER INLETS EACH	12-INCH - 18-INCH LF	21-INCH - 30-INCH LF	REMOVING STORM SEWER ENDWALLS EACH
WNE RAMP	126WNE+10	81' RT	126WNE+14	30' RT	-	52	-	1
	1288NB+92				-	-	-	1
	1292NB+90				-	-	-	1
	1298NB+95				-	-	-	1
	1303NB+85	72' RT	1303NB+95	56' RT	-	14	-	1
SOUTHBOUND	124FVS+40	RT			1	-	-	-
AMERICAN DRIVE	15AD+30	LT			1	-	-	-
	18AD+00	LT			1	-	-	-
	22AD+00	LT			1	-	-	-
UNDISTRIBUTED					-	150	-	-
TOTAL					4	202	14	5

**ADJUSTING STORM SEWER**

611.8115 611.0410 611.0420 611.0530

LOCATION	STATION	OFFSET	ADJUSTING INLET COVERS EACH	RECONSTRUCTING CATH BASINS EACH	RECONSTRUCTING MANHOLES EACH	RECONSTRUCTING MANHOLES COVER TYPE J EACH
WNW RAMP	1255WNW+31	15' LT	-	1	-	1
	1255WNW+51	5' RT	1	-	-	-
	1255WNW+57	15' RT	1	-	-	-
	1257WNW+53	5' RT	1	-	-	-
	1257WNW+52	18' RT	-	1	-	-
	1557WNW+52	40' RT	-	-	1	-
WSW RAMP	1254WSW+09	20' LT	1	-	-	-
	1254WSW+08	5' RT	1	-	-	-
	1254WSW+08	10' RT	1	-	-	-
TOTAL			6	2	1	1

Addendum No. 04  
ID 1517-07-74  
Revised Sheet 270  
May 3, 2016

ALL ITEMS ARE CATEGORY 1000 UNLESS OTHERWISE SPECIFIED.

MISCELLANEOUS QUANTITIES SHEET NO: 270 E

COUNTY: WINNEBAGO

HWY: IH 41

PROJECT NUMBER: 1517-07-74

ORIGINATOR: JESSICA MEDDAUGH

PLOTTED DATE: 5/3/2016 3:03 PM

FILE NAME: P:\TRANSPORTATION\10 WS 441\CADD\SHEETS\15170776\030201\_0.mxd PPT

EARTHWORK

Category	Stage	From/To Station	Location	Excavation Common (CY)		Excavation Rock (CY)	Fill (CY)	Roadway Embankment (CY)	Mass Ordinate +/- (5)
				Cut (CY) (2)	EBS (CY) (3)				
1000	1	9A+90 to 22A+97	American Drive (AD)	3,723	0	100	267	267	3,456
		8J+83 to 9J+73	Jameson (J)	306	0	100	1	1	305
			Pond 6	12,152	0	15,000	105	105	12,047
1000	1	N/A	Pond 7	1,865	0	0	2,620	2,620	-755
<b>Stage 1 Subtotal</b>				18,046	0	15,200	2,993	2,993	15,053
<b>Stage 1 Subtotal</b>				18,046		15,200		2,993	
1000	2	1264NB+00 to 1307NB+89	IH 41 NB	12,985	0	0	18,719	18,719	-5,734
		1255WNE+96 to 1264WNE+53	WNE	6,502	0	0	1,261	1,261	5,241
		1233SB+88 to 1321SB+00	IH 41 SB	21,731	0	0	19,937	19,937	1,793
	2B	1244WSW+51 to 1254WSW+33	WSW	4,332	0	0	571	571	3,760
	2B	1255WNW+57 to 1265WNW+67	WNW	3,120	0	0	3,433	3,433	-313
	2	105FWS+00 to 112FWS+00	FWS	6,996	0	0	155	155	6,841
		CV-22 to CV-23, CV-26 to CV-33	ITS VAULTS, CONDUIT	0	0	200	0	0	0
		1286SB to 1310SB (SB, AD, FWS)	LIGHTING BASES AND CONDUIT	0	0	200	0	0	0
		UNDISTRIBUTED	UNDISTRIBUTED	0	0	2,000	0	0	0
<b>Stage 2 Subtotal</b>				55,665	0	2,400	44,077	44,077	11,569
<b>Stage 2 Subtotal</b>				55,665		2,400	44,077	44,077	
<b>Project 1517-07-74 Total</b>				73,711		17,600		47,070	

- 1) Excavation Common = Cut + EBS Excavation.
- 2) Cut volume includes concrete and asphaltic surface material.
- 3) EBS Excavation to be backfilled with roadway embankment unless otherwise noted in plans.
- 4) Roadway Embankment = Fill
- 5) The Mass Ordinate: A positive quantity indicates an excess of material and a negative quantity indicates a shortage of material. Mass Ordinate = Cut - Fill. The Mass Ordinate is for information purposes only as Common Excavation and Roadway Embankment are not balanced for quantity purposes and does not guarantee the quality of Common Excavation, and if it can be reused onsite. All EBS material is assumed to be wasted offsite.

Addendum No. 04  
 ID 1517-07-74  
 Revised Sheet 273  
 May 3, 2016

PAVEMENT

LOCATION	STA	STA	3/4-INCH AGGREGATE DENSE	305-.0110 BASE AGGREGATE DENSE	305-.0120 BASE AGGREGATE DENSE	311-.0110 BREAKER RUN	320.0155 CONCRETE BASE	415.0070		416.0610 DRILLED TIE BARS	460.6224 HMA PAVEMENT 4 MT 58-28 S	455.0605 TACK COAT	465-.0120 ASPHALTIC SURFACE		416.0160 CONCRETE DRIVEWAY	SPV-.0180-.003 MODIFIED HIGH PERFORMANCE CONCRETE (HPC) PAVEMENT		
								7-INCH PAVEMENT	9-INCH PAVEMENT				CONCRETE DRIVEWAYS & FIELD ENTRANCES	6-INCH		10-INCH	11-INCH	
	TON	TON	TON	TON	TON	TON	SY	SY	SY	EACH	TON	GAL	TON	TON	SY	SY	SY	
NORTHBOUND	1250NB+00	1260NB+00	40	1013	2193	0	0	0	20	0	0	0	0	0	0	2576	0	
	1260NB+00	1270NB+00	0	1200	3011	0	0	0	145	0	0	0	0	0	0	2648	145	
	1270NB+00	1280NB+00	0	1073	2760	0	0	0	445	0	0	0	0	0	0	0	2406	
	1280NB+00	1290NB+00	0	1101	2785	0	0	0	445	0	0	0	0	0	0	0	2445	
	1290NB+00	1300NB+00	0	928	2415	0	0	0	445	0	0	0	0	0	0	0	2465	
	1300NB+00	1310NB+85	36	851	2838	0	0	0	516	17	10	10	0	0	0	0	2470	
SOUTHBOUND	1233SB+00	1240SB+00	0	557	1167	0	0	0	285	0	0	0	0	0	0	0	963	
	1240SB+00	1250SB+00	0	1874	4221	316	0	0	450	37	10	10	0	0	0	1712	1873	
	1250SB+00	1260SB+00	0	2945	6505	0	0	0	460	43	10	10	0	0	0	3670	1964	
	1260SB+00	1270SB+00	0	1632	4087	217	0	0	350	26	10	10	0	0	0	2730	1377	
	1270SB+00	1280SB+00	0	1242	3059	0	0	0	440	0	0	0	0	0	0	0	2411	
	1280SB+00	1290SB+00	0	1346	3334	0	0	0	445	0	0	0	0	0	0	0	2704	
	1290SB+00	1300SB+00	29	1702	4286	0	0	0	445	0	0	0	0	0	0	0	3741	
	1300SB+00	1310SB+00	473	3187	6568	292	0	0	480	308	50	50	0	0	0	0	3960	
	1310SB+00	1320SB+00	282	969	2069	0	0	0	0	226	30	30	0	0	0	0	0	
	1320SB+00	1330SB+00	29	89	207	0	0	0	0	24	10	10	0	0	0	0	0	
AMERICAN DRIVE	9AD+90	22AD+96.98	0	2185	5851	0	0	577	0	1508	130	130	31	146	0	0	0	
BARRIER WORK AT	S-70-244		0	6	16	0	0	0	5	0	0	0	0	0	0	0	0	
SIGN STRUCTURES	S-70-246		0	17	45	0	0	0	27	0	0	0	0	0	0	0	0	
TOTAL			889	23,917	57,417	825	577	32	5,371	2,189	260	260	31	146	13,336	28,924		

ALL ITEMS ARE CATEGORY 1000 UNLESS OTHERWISE SPECIFIED.



Addendum No. 04  
ID 1517-07-74  
Revised Sheet 277  
May 3, 2016

STORM SEWER PIPES

ROADWAY	PRED	FROM STR	TO STR	INLET ELEV	DISCH ELEV	SLOPE %	PIPE LENGTH LF	608.0312 STORM SEWER PRE-REINFORCED CONCRETE CLASS III	608.0315 STORM SEWER PRE-REINFORCED CONCRETE CLASS III	608.0318 STORM SEWER PRE-REINFORCED CONCRETE CLASS III	608.0324 STORM SEWER PRE-REINFORCED CONCRETE CLASS III	608.0330 STORM SEWER PRE-REINFORCED CONCRETE CLASS III	608.0336 STORM SEWER PRE-REINFORCED CONCRETE CLASS III	608.0342 STORM SEWER PRE-REINFORCED CONCRETE CLASS III	608.0354 STORM SEWER PRE-REINFORCED CONCRETE CLASS II	608.0430 STORM SEWER PRE-REINFORCED CONCRETE CLASS IV	608.0454 STORM SEWER PRE-REINFORCED CONCRETE CLASS IV
AMERICAN DR.	P218	218	219	771.75	770.56	0.51	234	---	---	---	240	---	---	---	---	---	---
AMERICAN DR.	P219	219	223	770.56	769.35	0.51	239	---	---	---	244	---	---	---	---	---	---
AMERICAN DR.	P223	223	226	769.35	768.89	0.32	89	---	---	---	95	---	---	---	---	---	---
AMERICAN DR.	P226	226	229	768.4	767.28	0.50	224	---	230	---	---	---	---	---	---	---	---
AMERICAN DR.	P229	229	232	767.27	766.56	0.51	140	---	146	---	---	---	---	---	---	---	---
AMERICAN DR.	P232	232	234	766.56	765.60	0.51	180	---	186	---	---	---	---	---	---	---	---
AMERICAN DR.	P234	234	234A	765.6	764.97	0.61	103	---	---	---	---	---	---	---	---	106	---
AMERICAN DR.	P215	215	216	771.53	771.26	2.08	13	---	---	---	---	---	---	---	---	---	---
AMERICAN DR.	P216	216	218	771.53	771.26	2.08	13	---	---	---	---	---	---	---	---	---	---
AMERICAN DR.	P201	201	203	771.42	770.60	0.83	99	---	---	---	---	---	---	---	---	---	---
AMERICAN DR.	P203	203	222	770.6	770.53	2.70	3	---	---	6	---	---	---	---	---	---	---
AMERICAN DR.	P221	221	219	770.43	770.06	2.74	14	---	---	---	---	---	---	---	---	---	---
AMERICAN DR.	P222	222	219	770.53	770.06	3.48	14	---	---	17	---	---	---	---	---	---	---
AMERICAN DR.	P217	223	223	769.14	768.85	1.11	26	---	---	---	---	---	---	---	---	---	---
AMERICAN DR.	P224	224	226	768.97	768.40	1.81	32	---	---	---	---	---	---	---	---	---	---
AMERICAN DR.	P225	225	226	768.63	768.40	1.77	13	---	---	---	---	---	---	---	---	---	---
AMERICAN DR.	P205	205	225	766.69	766.63	2.25	3	---	---	---	---	---	---	---	---	---	---
AMERICAN DR.	P201	231	229	767.9	767.27	3.13	20	---	---	---	---	---	---	---	---	---	---
AMERICAN DR.	P227	227	232	766.75	766.56	1.46	13	---	---	---	---	---	---	---	---	---	---
AMERICAN DR.	P228	228	232	766.92	766.56	2.77	13	---	---	---	---	---	---	---	---	---	---
AMERICAN DR.	P230	230	234	765.83	765.60	1.77	13	---	---	---	---	---	---	---	---	---	---
STAGE 1 SUBTOTAL								0	320	23	580	572	0	0	0	106	0

ROADWAY	PRED	FROM STR	TO STR	INLET ELEV	DISCH ELEV	SLOPE %	PIPE LENGTH LF	608.0312 STORM SEWER PRE-REINFORCED CONCRETE CLASS III	608.0315 STORM SEWER PRE-REINFORCED CONCRETE CLASS III	608.0318 STORM SEWER PRE-REINFORCED CONCRETE CLASS III	608.0324 STORM SEWER PRE-REINFORCED CONCRETE CLASS III	608.0330 STORM SEWER PRE-REINFORCED CONCRETE CLASS III	608.0336 STORM SEWER PRE-REINFORCED CONCRETE CLASS III	608.0342 STORM SEWER PRE-REINFORCED CONCRETE CLASS III	608.0354 STORM SEWER PRE-REINFORCED CONCRETE CLASS II	608.0430 STORM SEWER PRE-REINFORCED CONCRETE CLASS IV	608.0454 STORM SEWER PRE-REINFORCED CONCRETE CLASS IV	
USH 41 NB	P113	113	114	796.92	796.36	0.50	111	---	---	---	115	---	---	---	---	---	---	---
USH 41 NB	P114	114	115	796.36	795.73	0.32	123	---	---	---	127	---	---	---	---	---	---	---
USH 41 NB	P115	115	116	795.73	795.31	1.16	295	---	---	---	299	---	---	---	---	---	---	---
USH 41 NB	P116	116	118	792.31	784.34	2.69	296	---	---	---	300	---	---	---	---	---	---	---
USH 41 NB	P118	118	119	784.34	778.13	2.52	246	---	---	---	250	---	---	---	---	---	---	---
USH 41 NB	P119	119	121	778.13	773.85	1.74	246	---	---	---	250	---	---	---	---	---	---	---
USH 41 NB	P121	121	122	773.85	772.77	0.93	116	---	---	---	120	---	---	---	---	---	---	---
USH 41 NB	P122	122	123	772.77	771.64	0.96	117	---	---	---	122	---	---	---	---	---	---	---
USH 41 NB	P143	123	123A	771.13	771.01	0.73	18	---	---	---	25	---	---	---	---	---	---	---
USH 41 NB	P123	123A	124A	770.99	770.06	0.56	166	---	---	---	173	---	---	---	---	---	---	---
USH 41 NB	P124	124A	125	770.06	768.95	0.56	199	---	---	---	205	---	---	---	---	---	---	---
USH 41 NB	P125	125A	126	768.95	768.23	0.50	143	---	---	---	149	---	---	---	---	---	---	---
USH 41 NB	P126	126A	128	768.23	767.48	0.52	144	---	---	---	151	---	---	---	---	---	---	---
USH 41 NB	P127	128	130	767.48	765.97	0.50	302	---	---	---	309	---	---	---	---	---	---	---
USH 41 NB	P130	130A	130A	764.57	764.00	0.69	83	---	---	---	86	---	---	---	---	---	---	---
USH 41 NB	P128	129	130	767.59	765.07	0.98	257	---	---	---	262	---	---	---	---	---	---	---
USH 41 NB	P132	135A	135	764	763.92	1.00	8	---	---	---	10	---	---	---	---	---	---	---
USH 41 NB	P135	135	265A	763.92	763.70	1.00	24	---	---	---	22	---	---	---	---	---	---	---
USH 41 NB	P115A	115A	115B	781	773.00	38.00	21	---	---	---	---	---	---	---	---	---	---	---
USH 41 NB	P116A	116A	116B	778	772.00	43.00	14	---	---	---	---	---	---	---	---	---	---	---
USH 41 NB	P132	132	132A	763.51	763.23	0.30	94	---	---	---	96	---	---	---	---	---	---	---
USH 41 NB	P133	133	133A	762.3	761.97	0.94	35	---	---	---	37	---	---	---	---	---	---	---
USH 41 NB	P140	124	124A	775.03	772.90	1.43	9	---	---	---	---	---	---	---	---	---	---	---
USH 41 NB	P141	126	125	772.03	771.90	1.43	9	---	---	---	---	---	---	---	---	---	---	---
USH 41 NB	P141A	126A	126A	766.45	766.23	2.47	9	---	---	---	---	---	---	---	---	---	---	---
USH 41 NB	P142	127	128	773.03	772.90	1.54	9	---	---	---	---	---	---	---	---	---	---	---
WNE RAMP	P261	261	261A	760.67	790.00	3.00	23	---	---	---	25	---	---	---	---	---	---	---
WNE RAMP	P263	263	265	784.97	771.97	4.84	269	---	---	---	273	---	---	---	---	---	---	---
WNE RAMP	P264	264	265	772.59	771.97	2.29	27	---	---	---	---	---	---	---	---	---	---	---
WNE RAMP	P265	265	265A	769.85	768.31	3.00	51	---	---	---	54	---	---	---	---	---	---	---
WNE RAMP	P264	264	265	772.59	771.97	2.29	27	---	---	---	---	---	---	---	---	---	---	---
STAGE 2 SUBTOTAL								35	119	0	2329	1128	0	0	0	0	0	0

ALL ITEMS ARE CATEGORY 1000 UNLESS OTHERWISE SPECIFIED.

MISCELLANEOUS QUANTITIES SHEET NO: 277 E

COUNTY: WINNEBAGO

HWY: IH 41

PROJECT NUMBER: 1517-07-74

Addendum No. 04  
ID 1517-07-74  
Added Sheet 277A  
May 3, 2016

STORM SEWER PIPES (CONT.)

ROADWAY	REF ID	FROM STR	TO STR	INLET ELEV	DISCH ELEV	SLOPE %	PIPE LENGTH LF	608.0312 STORM SEWER PIPE REINFORCED CONCRETE CLASS II 12-INCH	608.0315 STORM SEWER PIPE REINFORCED CONCRETE CLASS II 15-INCH	608.0318 STORM SEWER PIPE REINFORCED CONCRETE CLASS II 18-INCH	608.0324 STORM SEWER PIPE REINFORCED CONCRETE CLASS II 24-INCH	608.0330 STORM SEWER PIPE REINFORCED CONCRETE CLASS II 30-INCH	608.0336 STORM SEWER PIPE REINFORCED CONCRETE CLASS III 36-INCH	608.0342 STORM SEWER PIPE REINFORCED CONCRETE CLASS III 42-INCH	608.0354 STORM SEWER PIPE REINFORCED CONCRETE CLASS III 54-INCH	608.0430 STORM SEWER PIPE REINFORCED CONCRETE CLASS IV 30-INCH	608.0454 STORM SEWER PIPE REINFORCED CONCRETE CLASS IV 54-INCH	
STAGE2A																		
IH 41 SB	P101	101	102	769.2	765.68	1.43	246	---	---	---	250	---	---	---	---	---	---	---
IH 41 SB	P102	102	105	765.68	764.37	0.51	265	---	---	---	260	---	---	---	---	---	---	---
IH 41 SB	P104	104	105	765.71	764.37	0.57	235	---	---	---	240	---	---	---	---	---	---	---
IH 41 SB	P103	103	104	768.64	765.71	1.19	246	---	---	---	250	---	---	---	---	---	---	---
IH 41 SB	P105	105	COLLAR	764.37	764.30	0.50	13	---	---	---	16	---	---	---	---	---	---	---
IH 41 SB	P142	142	144	792.34	785.61	2.76	244	---	---	---	250	---	---	---	---	---	---	---
IH 41 SB	P144	144	146	785.61	779.15	2.65	244	---	---	---	250	---	---	---	---	---	---	---
IH 41 SB	P146	146	148	779.15	774.18	1.86	267	---	---	---	273	---	---	---	---	---	---	---
IH 41 SB	P148	148	148A	774.18	772.44	0.89	175	---	---	---	181	---	---	---	---	---	---	---
IH 41 SB	P148A	148A	149	772.44	770.62	1.03	177	---	---	---	183	---	---	---	---	---	---	---
IH 41 SB	P149	149	149A	770.62	769.59	0.72	142	---	---	---	148	---	---	---	---	---	---	---
IH 41 SB	P149A	149A	152	769.59	768.40	0.75	159	---	---	---	165	---	---	---	---	---	---	---
IH 41 SB	P152	152	154	767.9	764.78	1.07	292	---	---	---	298	---	---	---	---	---	---	---
IH 41 SB	P154	154	156	764.78	762.59	0.92	238	---	---	---	244	---	---	---	---	---	---	---
IH 41 SB	P156	156	157	762.09	761.14	0.50	190	---	---	---	---	196	---	---	---	---	---	---
IH 41 SB	P157	157	158	761.14	760.13	0.50	202	---	---	---	---	209	---	---	---	---	---	---
IH 41 SB	P151	151	152	768.5	768.40	3.33	3	---	8	---	---	---	---	---	---	---	---	---
IH 41 SB	P153	153	154	764.35	764.23	4.03	3	---	---	8	---	---	---	---	---	---	---	---
IH 41 SB	P155	155	156	762.6	762.59	0.50	3	---	---	8	---	---	---	---	---	---	---	---
IH 41 SB	P164	164	165	752.6	752.48	0.50	24	---	---	---	---	22	---	---	---	---	---	---
IH 41 SB	P165	165	COLLAR	752.48	751.76	0.56	127	---	---	---	---	130	---	---	---	---	---	---
IH 41 SB	P165	165	COLLAR	752.48	751.76	0.56	127	---	---	---	---	130	---	---	---	---	---	---
STAGE2A SUBTOTAL								0	8	16	2466	694	405	0	0	0	0	0
STAGE2B																		
FWS RAMP	P158	158	159	758.63	757.69	0.40	234	---	---	---	---	---	---	---	---	---	---	---
FWS RAMP	P159	159	160	757.69	756.75	0.40	234	---	---	---	---	---	---	---	---	---	---	---
FWS RAMP	P160	160	161	756.75	756.48	0.40	67	---	---	---	---	---	---	---	---	---	---	---
FWS RAMP	P161	161	161A	756.48	754.00	0.42	595	---	---	---	---	---	---	---	---	---	---	---
FWS RAMP	P158A	158A	158	760.96	760.59	1.29	21	---	---	---	---	---	---	25	---	---	---	---
STAGE2B SUBTOTAL								0	0	0	0	0	0	25	590	0	0	559
PROJECT 1517-07-74 TOTAL								36	447	39	5375	2336	405	25	530	106	559	0

ALL ITEMS ARE CATEGORY 1000 UNLESS OTHERWISE SPECIFIED.

PROJECT NUMBER: 1517-07-74 COUNTY: WINNEBAGO HWY: IH 41 MISCELLANEOUS QUANTITIES SHEET NO: 277A E

ORIGINATOR: JESSICA MEDDAUGH ORIG. DATE: JANUARY 31, 2014 PLOTTED DATE: 4/27/2016 2:46 PM

**CONCRETE SIDEWALK**

LOCATION	STA	STA	SF
WNE	1250SB+00	1260NB+00	840
WSW	1254WSH+00	1254WSH+45	890
<b>WINCHESTER</b>	<b>MEDIAN</b>		<b>445</b>
MEDIAN	B-70-129		220
TOTAL			<b>2395</b>

602.0410

CONCRETE  
SIDEWALK  
5-INCH

**GUARDRAIL ITEMS**

LOCATION	STATION	STATION	OFFSET	LF	DESCRIPTION	LF	DESCRIPTION	LF	DESCRIPTION	LF	DESCRIPTION
RAMP WNE	1257WNE+32	1258WNE+25	LT	-	-	-	-	-	-	-	-
RAMP WNE	1257WNE+32	1258WNE+25	RT	-	-	40	1	-	-	-	-
RAMP FWS	105FWS+24	106FWS+24	LT	-	-	40	1	-	-	-	54
RAMP FWS	109FWS+53	110FWS+50	RT	-	-	40	1	-	-	-	49
IH 41 SB	1305SB+86	1307SB+68	LT	-	-	-	1	-	-	-	65
IH 41 SB	1312SB+20	1322SB+78	LT	927	1	113	-	1	-	-	74
TOTAL	927	1	113	160	5	1	-	-	-	-	242

**TRAFFIC CONTROL CLOSE-OPEN FREEWAY ENTRANCE RAMP**

STAGE	LOCATION	REMARKS	NO. OF CLOSURES
1	FWS RAMP	PIPE INSTALLATION	1
2	MAINLINE - WIDENING	WNE, WSW, WNW, FWS, FNE RAMPS	6
TOTALS			7

**TRAFFIC CONTROL LEFT IN PLACE**

STAGE	LOCATION	REMARKS	NO. OF CLOSURES
1A	MAINLINE - MEDIAN RUMBLE STRIPS		7
1B	MAINLINE - MEDIAN SIGN STRUCTURES		21
2	MAINLINE - WIDENING		10
2	MAINLINE - B-70-130 EPOXY OVERLAY		5
2B	MAINLINE - WIDENING		10
2C	MAINLINE - NB PAVEMENT		1
3A	MAINLINE - GREEN BAY ROAD STRUCTURES		10
3	MAINLINE - B-70-131 EPOXY OVERLAY		5
3B	MAINLINE - GREEN BAY ROAD STRUCTURES		10
TOTALS			78

Addendum No. 04  
ID 1517-07-74  
Revised Sheet 281  
May 3, 2016

**FENCE SAFETY**

616.0700.S  
FENCE SAFETY

LOCATION	LF
UNDISTRIBUTED	10000
PROJECT 1517-07-74 TOTAL	10000

PROJECT NUMBER: 1517-07-74 HWY: IH 41 COUNTY: WINNEBAGO ORIGINATOR: JESSICA MEDDAUGH PLOTTED DATE: 4/28/2016 11:00 AM SHEET NO: 281

ALL ITEMS ARE CATEGORY 1000 UNLESS OTHERWISE SPECIFIED.

MISCELLANEOUS QUANTITIES

LANDSCAPING

STATION	TO	STATION	MGAL	SEEDING MIXTURE	625.0100	625.0500	627.0200	629.0210	630.0120	630.0130	630.0200
			SEEDING MIXTURE	FERTILIZER	SEEDING MIXTURE	SEEDING MIXTURE	SEEDING MIXTURE	SEEDING MIXTURE	SEEDING MIXTURE	SEEDING MIXTURE	SEEDING MIXTURE
			SEEDING MIXTURE	TYPE B	NO. 20	NO. 30	NO. 30	NO. 30	NO. 30	NO. 30	NO. 30
STATION	TO	STATION	SY	SY	SY	SY	CWT	LB	LB	LB	LB
NORTHBOUND											
1250NB+00		1260NB+00	48	1,620	540	2,150	2	59	-	-	59
1260NB+00		1270NB+00	109	3,630	1,210	4,840	4	131	-	-	131
1270NB+00		1280NB+00	189	6,320	2,110	8,420	6	228	-	-	228
1280NB+00		1290NB+00	93	3,120	1,040	4,150	3	113	-	-	113
1290NB+00		1300NB+00	81	2,710	910	3,610	3	98	-	-	98
1300NB+00		1310NB+00	110	3,680	1,230	4,900	4	133	-	-	133
SOUTHBOUND											
1233SB+00		1240SB+00	36	1,210	410	1,610	2	44	-	-	44
1240SB+00		1250SB+00	53	1,770	590	2,350	2	64	-	-	64
1250SB+00		1260SB+00	209	7,010	2,340	9,340	6	253	-	-	253
1260SB+00		1270SB+00	31	1,030	350	1,370	1	37	-	-	37
1270SB+00		1280SB+00	232	7,770	2,590	10,350	7	280	-	-	280
1280SB+00		1290SB+00	37	1,260	420	1,670	2	46	-	-	46
1290SB+00		1300SB+00	42	1,410	470	1,880	2	51	-	-	51
1300SB+00		1310SB+00	121	4,060	1,360	5,410	4	147	-	-	147
<b>POND 6</b>		<b>1313SB+50</b>	<b>274</b>	<b>9,180</b>	<b>3,060</b>	<b>12,230</b>	<b>8</b>	<b>331</b>	-	-	<b>331</b>
AMERICAN											
9AD+90		22AD+96.98	37	1,230	410	1,640	2	-	-	30	31
UNDISTRIBUTED (25%)			426	14253	4760	18980	15	504	8		512
1517-07-74 TOTAL			<b>2,128</b>	<b>71,263</b>	<b>23,800</b>	<b>94,900</b>	<b>73</b>	<b>2,519</b>	<b>38</b>		<b>2,558</b>

MOBILIZATIONS EROSION CONTROL

STAGE	MOBILIZATIONS EROSION CONTROL EACH	628.1910	628.1905
1A	2	1	
1B	3	2	
2A	9	6	
2B	6	3	
TOTAL	20	12	

TRACKING PADS

LOCATION	628.7560
UNDISTRIBUTED	8
PROJECT 1517-07-74 TOTAL	8

Addendum No. 04  
ID 1517-07-74  
Revised Sheet 283  
May 3, 2016

Addendum No. 04  
 ID 1517-07-74  
 Revised Sheet 285  
 May 3, 2016

3

TRAFFIC CONTROL

STAGE	LOCATION	643.0300		643.0420		643.0715		643.0800		643.0900		643.0920		643.1050		643.8000		643.8125		NO. OF CLOSURES	REMARKS		
		TRAFFIC CONTROL DRUMS	TRAFFIC CONTROL BARRICADES	TRAFFIC CONTROL WARNING LIGHTS	TRAFFIC CONTROL TYPE III	TRAFFIC CONTROL EACH	TRAFFIC CONTROL DAYS	TRAFFIC CONTROL EACH	TRAFFIC CONTROL DAYS	TRAFFIC CONTROL EACH	TRAFFIC CONTROL DAYS	TRAFFIC CONTROL EACH	TRAFFIC CONTROL DAYS	TRAFFIC CONTROL EACH	TRAFFIC CONTROL DAYS	TRAFFIC CONTROL EACH	TRAFFIC CONTROL DAYS	CONCRETE BARRIER	CONCRETE BARRIER			TEMPORARY PRECAST	TEMPORARY PRECAST
1A	MAINLINE - MEDIAN SB	120	840	9	63	15	105	2	14	25	175	0	0	1	7	0	0	0	0	1	7	DAYS	
	MAINLINE - MEDIAN NB	125	875	8	56	15	105	2	14	26	182	0	0	1	7	0	0	0	0	1	7	DAYS	
	AMERICAN	0	0	6	42	12	84	0	0	6	42	0	0	0	0	0	0	0	0	0	0	7	DAYS
	WINCHESTER RD - B-70-129	12	84	2	14	0	0	0	0	6	42	0	0	0	0	0	0	0	0	0	0	7	DAYS
1B	MAINLINE - S-70-247	100	3,000	6	180	30	900	4	120	42	1,260	0	0	2	60	1,000	1,000	1,000	1,000	1	30	DAYS	
	MAINLINE - S-70-245	100	3,000	6	180	30	900	4	120	42	1,260	0	0	2	60	1,400	1,400	1,400	1,400	1	30	DAYS	
	MAINLINE - S-70-243	100	3,000	6	180	30	900	4	120	42	1,260	0	0	2	60	1,000	1,000	1,000	1,000	1	30	DAYS	
	WINCHESTER RD - B-70-129	12	360	2	60	0	0	0	0	6	180	0	0	0	0	0	0	0	0	0	0	30	DAYS
1	MAINLINE NB S-40-246	50	1,500	3	90	15	450	2	60	21	630	0	0	1	30	1,000	1,000	1,000	1,000	1	30	DAYS	
	AMERICAN	0	0	6	180	12	360	0	0	6	180	0	0	0	0	0	0	0	0	0	0	30	DAYS
2	MAINLINE NB	0	0	0	0	0	0	0	0	15	900	0	0	2	120	4,030	4,030	4,030	4,030	1	60	DAYS	
2	MAINLINE SB - WIDENING & PMS OUTSIDE	10	600	1	60	0	0	0	0	11	660	0	0	2	120	8,400	8,400	8,400	8,400	1	60	DAYS	
2B	NB WINCHESTER RAMP	28	1,260	4	180	8	360	0	0	22	990	3	1	2	90	775	1,175	1,175	1,175	1	45	DAYS	
2B	SB WINCHESTER RAMPS	20	600	13	390	18	540	0	0	8	240	5	1	0	0	450	850	850	850	1	30	DAYS	
2B	WINCHESTER RD - LOOP PAVEMENT REPAIR	12	84	2	14	0	0	0	0	6	42	0	0	0	0	0	0	0	0	0	7	DAYS	
2	PMS INSIDE	30	900	0	0	0	0	0	0	3	90	0	0	0	0	1,150	1,150	1,150	1,150	1	30	DAYS	
2	B-70-130 EPOXY OVERLAY 1 LANE CLOSURES	45	135	2	6	13	39	2	6	13	39	0	0	0	0	0	0	0	0	0	3	1	DAYS
2	B-70-130 EPOXY OVERLAY 2 LANE CLOSURES	83	166	4	8	26	52	3	6	18	36	0	0	0	0	0	0	0	0	0	2	1	DAYS
2C	MAINLINE NB @ FWN RAMP	0	0	0	0	0	0	0	0	0	0	0	0	0	0	1,405	1,405	1,405	1,405	1	9	DAYS	
3	MAINLINE NB	17	3,978	0	0	0	0	0	0	17	3,978	0	0	2	468	1,000	1,000	1,000	1,000	1	234	DAYS	
3A	MAINLINE SB - 4 LANES	100	17,900	0	0	0	0	0	0	5	895	0	0	0	0	1,000	1,000	1,000	1,000	1	179	DAYS	
3B	MAINLINE SB - 3 LANES	100	5,500	0	0	0	0	0	0	5	275	0	0	0	0	0	0	0	0	0	55	DAYS	
3	B-70-131 EPOXY OVERLAY 1 LANE CLOSURES	45	135	2	6	13	39	2	6	13	39	0	0	0	0	0	0	0	0	0	3	1	DAYS
3	B-70-131 EPOXY OVERLAY 2 LANE CLOSURES	83	166	4	8	26	52	3	6	18	36	0	0	0	0	0	0	0	0	0	2	1	DAYS
	SIDE ROAD CLOSURE B-70-129	0	0	8	56	10	70	0	0	8	56	0	0	2	14	0	0	0	0	0	1	7	DAYS
	SIDE ROAD CLOSURE B-70-131	4	28	6	42	8	56	0	0	6	42	0	0	0	0	0	0	0	0	0	1	7	DAYS
	SIDE ROAD CLOSURE B-70-132	4	28	6	42	8	56	0	0	6	42	0	0	0	0	0	0	0	0	0	1	7	DAYS
	SUBTOTAL	44,139	1,857	1,857	5,068	472	13,571	8	1,036	22,610	24,410	104	1,357	1,140	22,610	24,410	24,410	24,410	24,410	1	7	DAYS	
	UNDISTRIBUTED (10%)	4,414	186	186	507	47	1,357	8	104	14,928	14,928	8	1,357	1,140	22,610	24,410	24,410	24,410	24,410	1	7	DAYS	
	TOTALS	48,553	2,043	2,043	5,575	519	14,928	8	1,140	22,610	24,410	8	1,357	1,140	22,610	24,410	24,410	24,410	24,410	1	7	DAYS	

ALL ITEMS ARE CATEGORY 1000 UNLESS OTHERWISE SPECIFIED.

PROJECT NUMBER: 1517-07-74      HWY: IH 41      COUNTY: WINNEBAGO      MISCELLANEOUS QUANTITIES      SHEET NO: 285      E

ORIGINATOR: JESSICA MEDDAUGH      ORIG. DATE: JANUARY 31, 2014      PLOTTED DATE: 4/29/2016 11:28 AM

3

SAWING

690.0150      690.0250  
 SAWING      SAWING  
 ASPHALT      CONCRETE

LOCATION	STATION	STATION	LF	LF
IH 41 NB				
	1250NB+00	- 1260NB+00	-	155
	1260NB+00	- 1270NB+00	-	490
	1270NB+00	- 1280NB+00	-	1,015
	1280NB+00	- 1290NB+00	-	1,000
	1290NB+00	- 1300NB+00	-	1,010
	1300NB+00	- 1307NB+89	-	830
	1307NB+89	- 1310NB+84.86	-	295
IH 41 SB				
	1233SB+65	- 1240SB+00	-	635
	1240SB+00	- 1250SB+00	-	1,015
	1250SB+00	- 1260SB+00	-	800
	1260SB+00	- 1267SB+80	-	782
	1270SB+49	- 1280SB+00	-	990
	1280SB+00	- 1290SB+00	-	1,000
	1290SB+00	- 1300SB+00	-	994
	1300SB+00	- 1310SB+00	-	980
WINCHESTER ROAD      LOOP 21      -      72				
WINCHESTER ROAD      LOOP 61      -      72				
NSW      1253WSW+70      -      1254WSW+33      -      150				
WNW      1255WNW+58      -      1255WNW+75      -      125				
FWS      112FWS+00      -      112FWS+00      -      50				
AMERICAN DRIVE				
	9AD+90	- 10AD+00	29	-
	12AD+78	- 13AD+20	42	-
	13AD+75	- 15AD+08	135	-
	16AD+58	- 21AD+89	525	-
	22AD+25	- 22AD+55	28	-
	22AD+96	- 22AD+96	30	-
JAMESON STREET				
	8J+83	- 8J+84	44	-
	8J+84	- 9J+86	102	-
BARRIER WORK AT				
	S-70-247	-	-	260
SIGN STRUCTURES				
	S-70-246	-	-	125
	S-70-245	-	-	661
	S-70-244	-	-	30
	S-70-243	-	-	260
MEDIAN PIER WORK				
	B-70-129	-	-	33
TOTAL				
			935	13,829

CONCRETE PAVEMENT REPAIR

LOCATION	416.0610	416.0620	416.1710	
DRILLED	8	40	32	CONCRETE
TIE	8	40	32	PAVEMENT
BARS	16	80	64	REPAIR
EACH				SY
WINCHESTER RD WESTBOUND LOOP 21				
WINCHESTER RD EASTBOUND LOOP 61				
TOTAL				

Addendum No. 04  
 ID 1517-07-74  
 Revised Sheet 290  
 May 3, 2016

ALL ITEMS ARE CATEGORY 1000 UNLESS OTHERWISE SPECIFIED.

Conduit Rigid Nonmetallic Schedule 40

Location	141 SB & CTH II (S70-0295)	652.0225 2-Inch	652.0235 3-Inch
FROM	TO	LF	LF
PB1	SB2		20
PB2	SB6		30
PB2	SB7	40	
PB3	SB8	10	
TOTALS		50	50

Conduit Rigid Nonmetallic Schedule 40

Location	141 NB & CTH II (S70-2015)	652.0210 1-Inch	652.0225 2-Inch	652.0235 3-Inch	652.0615 3-Inch Special
FROM	TO	LF	LF	LF	LF
CB1	PB1		40		
CB1	PB2		40		
PB1	PB3	200			
PB1	PB4			50	
PB2	SB1	10			
PB5	SB2		10		
PB6	SB6		10		
TOTALS		200	100	50	50

Pull Boxes, Non-Conductive or Steel

LOCATION	SPV.0060.350 Non-Conductive 24x42-Inch EACH	653.0105 Steel 12x24-Inch EACH
141 SB & CTH II (S70-0295)	10	2
TOTALS	10	2

Removing Concrete Bases

LOCATION	204.0195 EACH
141 SB & CTH II (S70-0295)	2
TOTAL	2

Addendum No. 04  
ID 1517-07-74  
Revised Sheet 301A  
May 3, 2016

Pull Boxes, Non-Conductive

LOCATION	SPV.0060.350 24x42-Inch EACH
141 NB & CTH II (S70-2015)	11
TOTALS	11

Removing Concrete Bases

LOCATION	204.0195 EACH
141 NB & CTH II (S70-2015)	3
TOTAL	3

ALL ITEMS ARE CATEGORY 1300 UNLESS OTHERWISE SPECIFIED.

PROJECT NUMBER: 1517-07-74      HWY: IH 41      COUNTY: WINNEBAGO      MISCELLANEOUS QUANTITIES      SHEET NO: 301A      E

ORIGINATOR: JESSICA MEDAUGH      ORIG. DATE: JANUARY 31, 2014      PLOTTED DATE: 4/29/2016 9:03 AM

FILE NAME: P:\TRANSPORTATION\10 WS 441\CADD\SHEETS\15170776\030201\_0.mxd

**Loop Detectors**

LOCATION	LOOP NO.	# OF TURNS	652.0800 Conduit LF	655.0700 Lead In Cable LF	655.0800 Wire LF
I 41 SB & CTH II (S70-0295)	21	3	70	220	230
I 41 SB & CTH II (S70-0295)	41	2	90	40	220
I 41 SB & CTH II (S70-0295)	42	3	80	40	290
<b>TOTALS</b>			<b>240</b>	<b>300</b>	<b>740</b>

**Concrete Bases**

LOCATION	EACH	EACH	EACH
654.0101 Type 1	1	1	2
654.0102 Type 2	1	1	2
654.0110 Type 10	1	1	2
<b>TOTALS</b>	<b>1</b>	<b>1</b>	<b>2</b>

**Electrical Wire Traffic Signals 10 AWG**

LOCATION	FROM	TO	655.0515 (Equipment Grounding Conductor) (Green) LF
I 41 SB & CTH II (S70-0295)	CB1	SB1	60
	SB1	SB2	210
	SB2	SB3	110
	SB3	SB4	110
	SB4	SB5	120
	SB5	SB6	140
	SB6	SB7	100
	SB7	SB8	190
	CB1	CB1	90
<b>TOTAL</b>			<b>1,130</b>

**Loop Detectors**

LOCATION	LOOP NO.	# OF TURNS	652.0800 Conduit LF	655.0700 Lead In Cable LF	655.0800 Wire LF
I 41 NB & CTH II (S70-2015)	61	3	70	230	230
<b>TOTALS</b>			<b>70</b>	<b>230</b>	<b>230</b>

**Concrete Bases**

LOCATION	EACH	EACH	EACH
654.0217 Control Cabinet Special	1	2	1
654.0102 Type 2	1	2	1
654.0110 Type 9	1	2	1
654.0110 Type 10	1	2	1
<b>TOTALS</b>	<b>1</b>	<b>2</b>	<b>1</b>

**Electrical Wire Traffic Signals 10 AWG**

LOCATION	FROM	TO	655.0515 (Equipment Grounding Conductor) (Green) LF
I 41 NB & CTH II (S70-2015)	CB1	SB2	180
	SB2	SB3	120
	SB3	SB4	120
	SB4	SB5	110
	SB5	SB6	190
	SB6	SB7	120
	SB7	SB1	120
	SB1	CB1	60
<b>TOTAL</b>			<b>960</b>

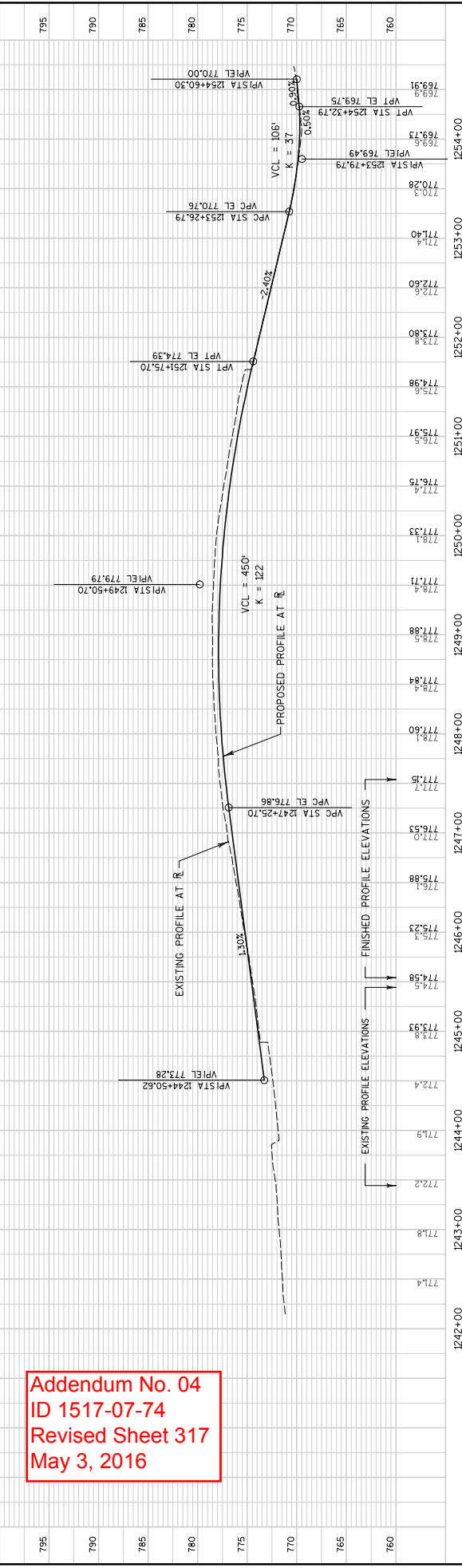
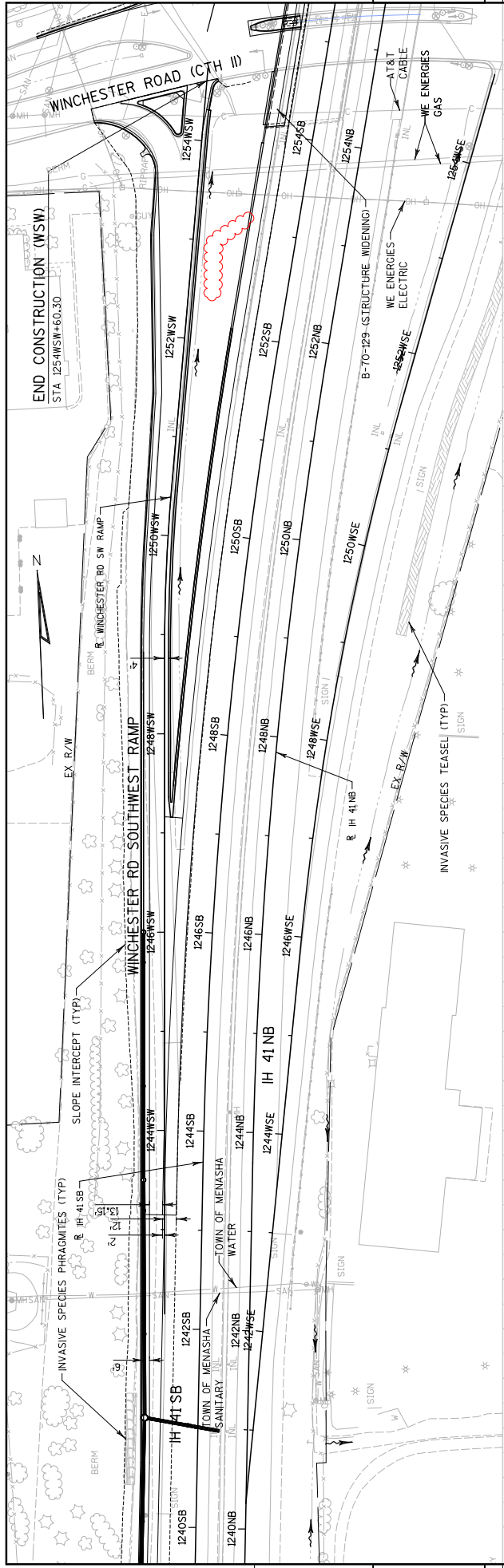
Addendum No. 04  
ID 1517-07-74  
Revised Sheet 301B  
May 3, 2016

ALL ITEMS ARE CATEGORY 1300 UNLESS OTHERWISE SPECIFIED.

PROJECT NUMBER: 1517-07-74      HWY: IH 41      COUNTY: WINNEBAGO      SHEET NO: 301B      E

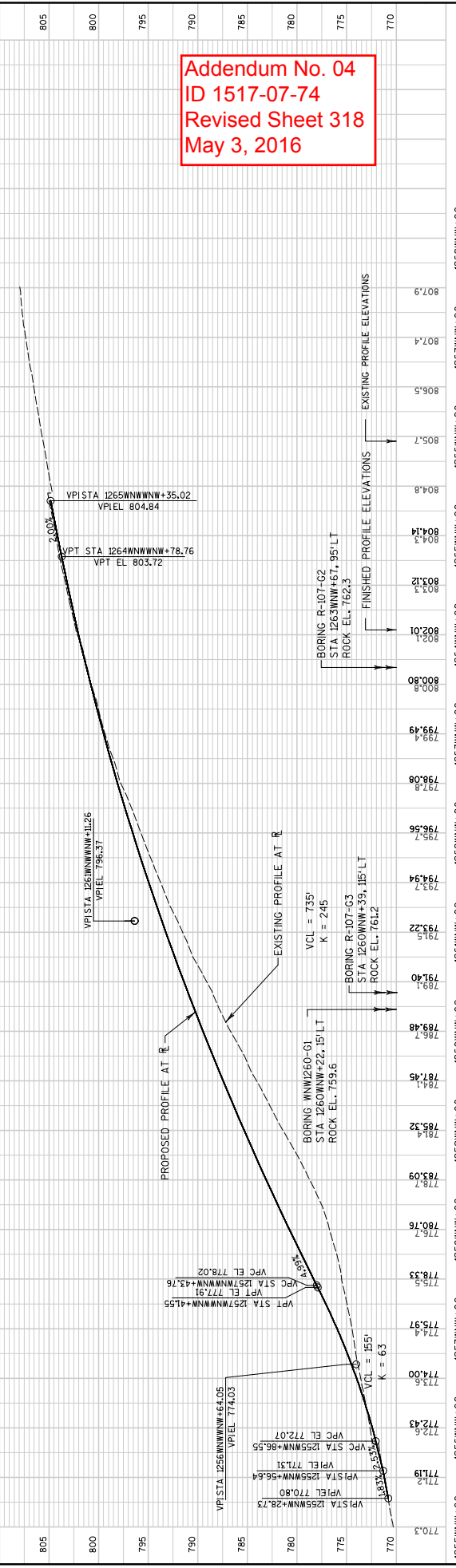
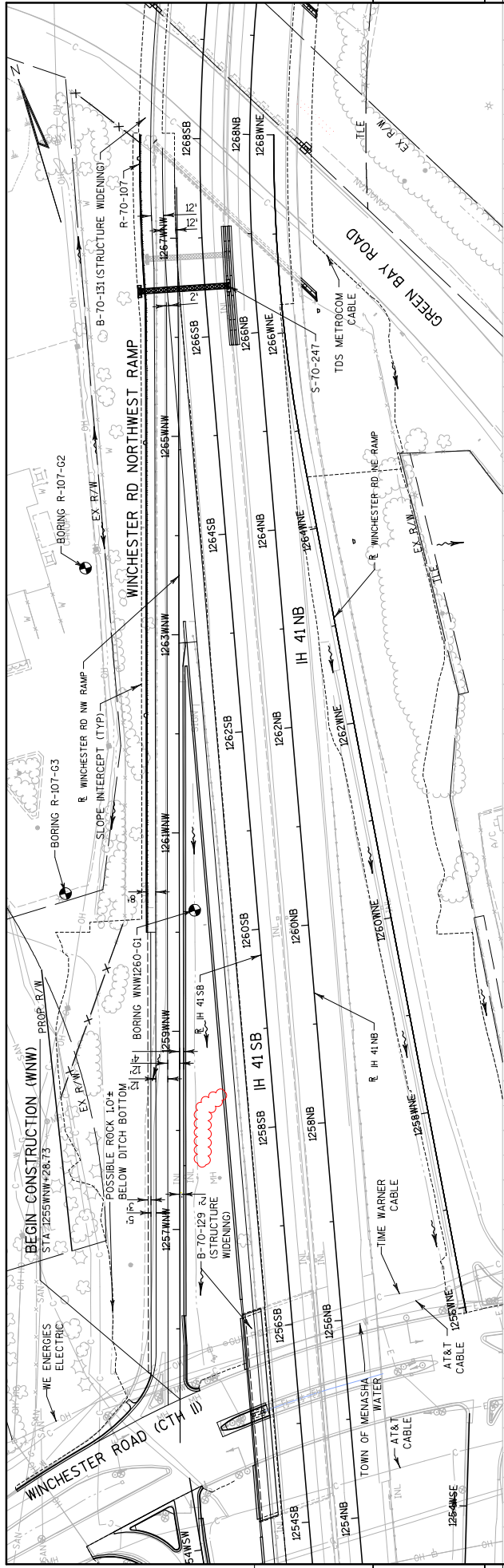
FILE NAME: P:\TRANSPORTATION\10 WS 441\CADD\SHEETS\15170776\030201\_0.mxd      ORIGINATOR: JESSICA MEDDAUGH      PLOTTED DATE: 4/29/2016 9:03 AM





Addendum No. 04  
 ID 1517-07-74  
 Revised Sheet 317  
 May 3, 2016

795	790	785	780	775	770	765	760					
1242+00	1243+00	1244+00	1245+00	1246+00	1247+00	1248+00	1249+00	1250+00	1251+00	1252+00	1253+00	1254+00
PROJECT NO: 1517-07-74      COUNTY: WINNEBAGO      PLAN & PROFILE: WINCHESTER RD SW RAMP      SHEET 317      E												
FILE NAME : F:\Transportation\US 10 WIS 441\CADD\sheet\15170774\050113.dwg      PLOT DATE : 4/28/2016      PLOT BY : Jess.Loc.meddaugh      PLOT NAME :      PLOT SCALE : 100.0000 ft / in.      WISDOT/CADD SHEET 40												



Addendum No. 04  
ID 1517-07-74  
Revised Sheet 318  
May 3, 2016

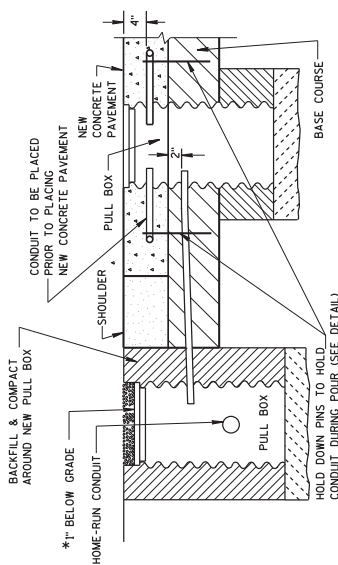
PROJECT NO: 1517-07-74 COUNTY: WINNEBAGO PLAN & PROFILE: WINCHESTER RD NW RAMP SHEET 318

HWY: IH 41 PLOT DATE: 4/28/2016 PLOT NAME: J:\1517\15170774\050114.dgn FILE NAME: P:\Transportation\US 10 WIS 441\CADD\sheet\15170774\050114.dgn

PLOT SCALE: 1:100,000 6" / 1" WISDOT/CADD SHEET 40

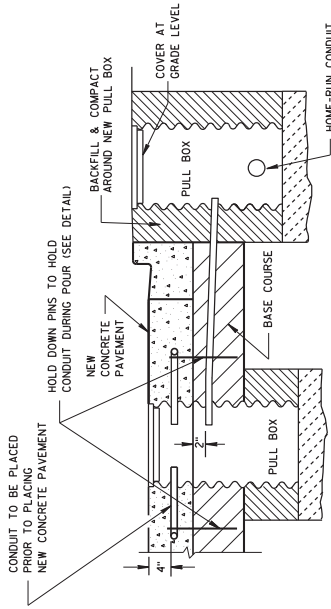
**GENERAL NOTES**

- DETAILS OF CONSTRUCTION, MATERIALS AND WORKMANSHIP NOT SHOWN ON THIS DRAWING SHALL CONFORM TO THE PERTINENT REQUIREMENTS OF THE CONTRACT.
- LOOP SIZE, LOCATION, NUMBER OF TURNS OF WIRE AND ASSOCIATED SIGNAL PHASE SHALL BE AS SHOWN ON THE PLANS.
- PITCH LEAD OUT CONDUIT TO DRAIN TO ROADSIDE PULL BOX.
- SPLICES SHALL BE INSTALLED BY USING CAST IN PLACE SPLICE KITS LISTED ON THE DEPARTMENTS APPROVED PRODUCTS LIST OR AN ENGINEER APPROVED EQUAL, NON-INSULATED BUTT SPLICES TO FIT #12 AWG STRANDED WIRE SHALL BE USED. SPLICES SHALL BE SOLDERED AND INSULATED FROM EACH OTHER AS PER INSTRUCTIONS INCLUDED IN THE SPLICE KIT.
- MEASURE GROUND RESISTANCE USING A MEGGER. REPLACE LOOP WIRE NOT ATTAINING A READING OF INFINITY TO GROUND.
- AFTER SPLICING THE LOOP WIRE TO THE LOOP LEAD-IN CABLE, THE CONTRACTOR SHALL MEASURE INDUCTANCE, GROUND RESISTANCE AND WIRE RESISTANCE AT THE CABINET END OF THE LEAD-IN CABLE AND FURNISH A COPY OF THE READINGS TO THE PROJECT ENGINEER FOR EVALUATION.
- LOOP DETECTOR LEADS SHALL BE IDENTIFIED WITH THEIR ASSOCIATED LOOP BY USE OF WATERPROOF TAGS AND BY THE LISTING OF THE CABLE IDENTIFICATION PER INDIVIDUAL LOOP LEAD-IN SHALL BE PLACED IN THE CABINET.
- ANY PVC LEADOUT CONDUIT CONTAINING MORE THAN ONE TWISTED PAIR OF LOOP LEAD WIRE SHALL BE 2" 3 TWISTS PER FOOT BEFORE INSTALLATION.
- THE #12 AWG LOOP WIRE FROM THE LOOP TO THE ROADSIDE PULL BOX, SHALL BE HAND TWISTED AT LEAST 3 TWISTS PER FOOT BEFORE INSTALLATION.
- THE #12 AWG LOOP WIRE TO LEAD-IN CABLE SHALL BE MADE ONLY IN PULL BOXES AT THE SIDE OF THE ROAD.
- SPLICES OF LOOP WIRE SHALL BE INSTALLED FROM THE ROADSIDE PULL BOX INTO THE PULL BOX IN THE PAVEMENT THROUGH THE LOOP CONDUIT, BACK TO THE ROADSIDE PULL BOX, AND BE INSTALLED IN ONE, NON-SPLICED CONTINUOUS LENGTH.
- PROTECTION OF THE PULL BOX IN THE BASE COURSE, AND THE RELATED CONDUITS SHALL BE REQUIRED AFTER INSTALLATION AND BEFORE NEW CONCRETE PAVEMENT IS POURED.
- 12" PULL BOXES IN PAVEMENT SHALL BE CORRUGATED STEEL ONLY.

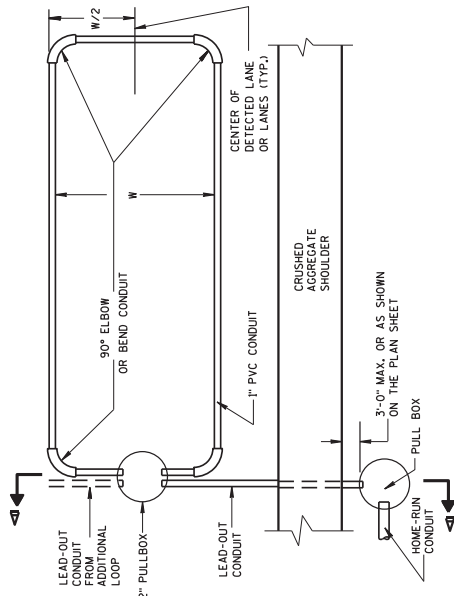


**SECTION A-A  
NO CURB & GUTTER  
LOOP DETECTOR INSTALLATION DETAIL**

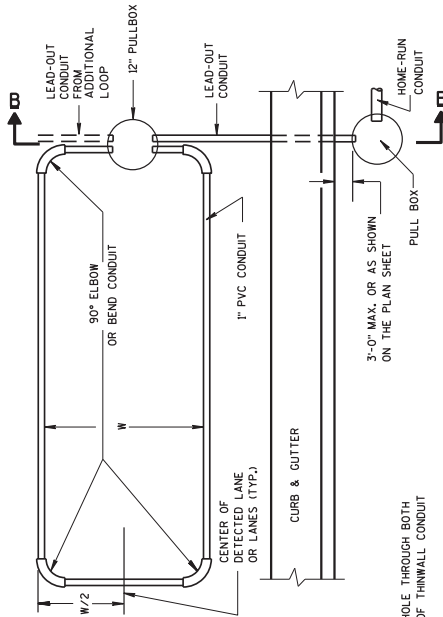
\*RECESS PULL BOX SO THAT THE COVER IS 3" BELOW GRADE IN SHOULDER AREAS OF CRUSHED AGGREGATE. BACKFILL OVER COVER WITH THE CRUSHED AGGREGATE TO BRING THE AREA TO GRADE LEVEL.



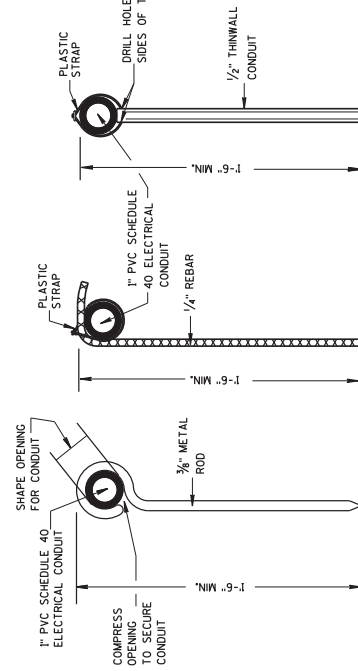
**SECTION B-B  
CURB & GUTTER  
LOOP DETECTOR INSTALLATION DETAIL**



**TYPICAL PLAN OF LOOP DETECTOR WITH 12" PULLBOX**



**TYPICAL PLAN OF LOOP DETECTOR WITH 12" PULLBOX**



**TYPICAL DETAILS FOR HOLD DOWN PINS**

Addendum No. 04  
ID 1517-07-74  
Added Sheet 345E  
May 3, 2016

LOOP DETECTOR INSTALLED IN NEW CONCRETE PAVEMENT IN ROUND CSCP PULLBOX	
APPROVED	STATE OF WISCONSIN
DATE	DEPARTMENT OF TRANSPORTATION
SEPT. 2014	/S/ Ahmet Demir-Dilek
	STATE ELECTRICAL ENGINEER
	P.E.

**GENERAL NOTES**

DETAILS OF CONSTRUCTION, MATERIALS AND WORKMANSHIP NOT SHOWN ON THIS DRAWING SHALL CONFORM TO THE PERTINENT REQUIREMENTS OF THE CONTRACT.  
 LOOP SIZE, CONFIGURATION LOCATION, NUMBER OF TURNS OF WIRE AND ASSOCIATED SIGNAL PHASE SHALL BE AS SHOWN ON THE PLANS.

PITCH LEAD OUT CONDUIT TO DRAIN TO ROADSIDE PULL (SPLICE) BOX.

SPLICES SHALL BE INSTALLED BY USING CAST IN PLACE SPLICE WITS LISTED ON THE DEPARTMENTS APPROVED PRODUCTS LIST OR AN ENGINEER APPROVED EQUAL, NON-INSULATED BUTT SPLICES TO FIT #12 AWG STRANDED WIRE SHALL BE USED. SPLICES SHALL BE SOLDERED AND INSULATED FROM EACH OTHER AS PER INSTRUCTIONS INCLUDED IN THE SPLICE KIT.

MEASURE GROUND RESISTANCE USING A MEGGER. REPLACE LOOP WIRE NOT ATTAINING A READING OF INFINITY TO GROUND.

AFTER SPLICING THE LOOP WIRE TO THE LOOP LEAD-IN CABLE, THE CONTRACTOR SHALL MEASURE INDUCTANCE, GROUND RESISTANCE AND WIRE RESISTANCE AT THE CABINET END OF THE LEAD-IN CABLE AND FURNISH A COPY OF THE READINGS TO THE PROJECT ENGINEER FOR EVALUATION.

LOOP DETECTOR LEADS SHALL BE IDENTIFIED WITH THEIR ASSOCIATED LOOP BY USE OF WATERPROOF TAGS AT BOTH ENDS OF THE CABLE. A LISTING OF THE CABLE IDENTIFICATION PER INDIVIDUAL LOOP LEAD-IN SHALL BE PLACED IN THE CABINET.

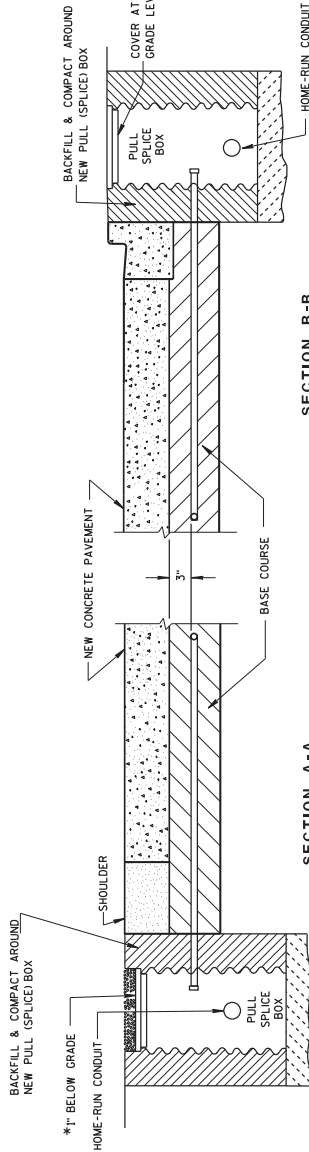
THE #12 AWG LOOP WIRE IN THE PULL (SPLICE) BOX SHALL BE HAND TWISTED AT LEAST 3 TWISTS PER FOOT BEFORE BEING SPLICED TO THE LOOP LEAD-IN CABLE.

SPLICES OF LOOP WIRE TO LEAD-IN CABLE SHALL BE MADE ONLY IN PULL (SPLICE) BOXES AT THE SIDE OF THE ROAD.

THE #12 AWG LOOP WIRE SHALL BE INSTALLED FROM THE ROADSIDE PULL (SPLICE) BOX THROUGH THE LOOP CONDUIT, BACK TO THE ROADSIDE PULL (SPLICE) BOX, AND BE INSTALLED IN ONE, NON-SPLICE CONTINUOUS LENGTH.

PROTECTION OF THE CONDUIT IN THE BASE COURSE SHALL BE REQUIRED AFTER INSTALLATION AND BEFORE NEW PAVEMENT IS INSTALLED.

SHOULD INSTALLATION REPAIR BE REQUIRED, IT SHALL BE DONE UNDER THE DIRECTION OF THE PROJECT ENGINEER.



**SECTION A-A**

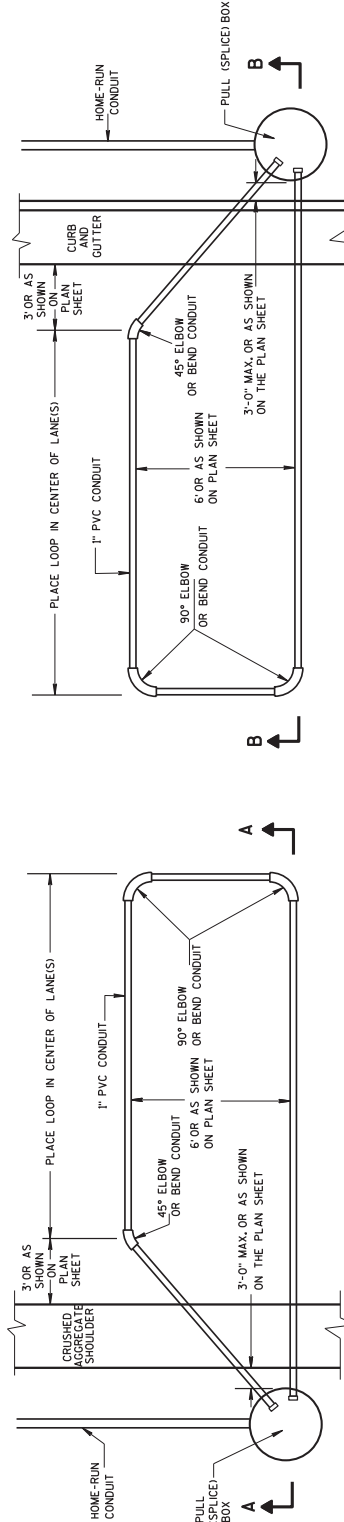
**NO CURB & GUTTER**

\*RECESS PULL (SPLICE) BOX SO THAT THE COVER IS 3" BELOW GRADE IN SHOULDER AREAS OF CRUSHED AGGREGATE. BACKFILL OVER COVER WITH THE CRUSHED AGGREGATE TO BRING THE AREA TO GRADE LEVEL.

**SECTION B-B**

**CURB & GUTTER**

**LOOP DETECTOR INSTALLATION DETAIL**



**TYPICAL PLAN OF LOOP DETECTOR WITH 18" OR 24" PULL (SPLICE) BOX**

Addendum No. 04  
 ID 1517-07-74  
 Added Sheet 345F  
 May 3, 2016

LOOP DETECTOR INSTALLED IN BASE COURSE WITH PULL (SPLICE) BOX OFF ROADWAY (OPTION 1)
STATE OF WISCONSIN DEPARTMENT OF TRANSPORTATION
APPROVED DATE: Sept., 2014 /S/ Ahmed Demirdasik STATE ELECTRICAL ENGINEER P.E.

SCHEDULE OF ITEMS

REVISED:

CONTRACT:  
20160510058

PROJECT(S):  
1517-07-74

FEDERAL ID(S):  
N/A

CONTRACTOR : \_\_\_\_\_

LINE NO	ITEM DESCRIPTION	APPROX. QUANTITY AND UNITS	UNIT PRICE		BID AMOUNT	
			DOLLARS	CTS	DOLLARS	CTS

SECTION 0001 ROADWAY

0010	201.0110 Clearing	16,790.000 SY	.	.	.	.
0020	201.0120 Clearing	225.000 ID	.	.	.	.
0030	201.0210 Grubbing	16,790.000 SY	.	.	.	.
0040	201.0220 Grubbing	225.000 ID	.	.	.	.
0050	203.0200 Removing Old Structure (station) 001. STA 1255+25	LUMP	LUMP	.	.	.
0060	203.0200 Removing Old Structure (station) 002. STA 1267SB+50	LUMP	LUMP	.	.	.
0070	203.0200 Removing Old Structure (station) 003. STA 1267NB+00	LUMP	LUMP	.	.	.
0080	203.0225.S Debris Containment (structure) 001. B-70-131	LUMP	LUMP	.	.	.
0090	203.0225.S Debris Containment (structure) 002. B-70-132	LUMP	LUMP	.	.	.
0100	204.0100 Removing Pavement	28,391.000 SY	.	.	.	.

## SCHEDULE OF ITEMS

REVISED:

CONTRACT:  
20160510058PROJECT(S):  
1517-07-74FEDERAL ID(S):  
N/A

CONTRACTOR : \_\_\_\_\_

LINE NO	ITEM DESCRIPTION	APPROX. QUANTITY AND UNITS	UNIT PRICE		BID AMOUNT	
			DOLLARS	CTS	DOLLARS	CTS
0110	204.0110 Removing Asphaltic Surface	8,262.000 SY	.	.	.	.
0120	204.0150 Removing Curb & Gutter	1,391.000 LF	.	.	.	.
0130	204.0155 Removing Concrete Sidewalk	132.000 SY	.	.	.	.
0140	204.0157 Removing Concrete Barrier	1,430.000 LF	.	.	.	.
0150	204.0165 Removing Guardrail	7,040.000 LF	.	.	.	.
0160	204.0170 Removing Fence	7,319.000 LF	.	.	.	.
0170	204.0180 Removing Delineators and Markers	8.000 EACH	.	.	.	.
0180	204.0220 Removing Inlets	4.000 EACH	.	.	.	.
0190	204.0245 Removing Storm Sewer (size) 001. 12-Inch- 18-Inch	202.000 LF	.	.	.	.
0200	204.0245 Removing Storm Sewer (size) 002. 21-Inch- 30 Inch	14.000 LF	.	.	.	.

SCHEDULE OF ITEMS

REVISED:

CONTRACT:  
20160510058

PROJECT(S):  
1517-07-74

FEDERAL ID(S):  
N/A

CONTRACTOR : \_\_\_\_\_

LINE NO	ITEM DESCRIPTION	APPROX. QUANTITY AND UNITS	UNIT PRICE		BID AMOUNT	
			DOLLARS	CTS	DOLLARS	CTS
0210	204.9060.S Removing (item description) 001. Removing Concrete Apron Endwall For Pipe Underdrain	2.000 EACH	.		.	
0220	204.9060.S Removing (item description) 002. Removing Endwalls	5.000 EACH	.		.	
0230	204.9105.S Removing (item description) 003. Removing Sign Structure Base	LUMP		LUMP	.	
0240	205.0100 Excavation Common	73,711.000 CY	.		.	
0250	205.0200 Excavation Rock	17,600.000 CY	.		.	
0260	206.1000 Excavation for Structures Bridges (structure) 001. B-70-129	LUMP		LUMP	.	
0270	206.1000 Excavation for Structures Bridges (structure) 002. B-70-131	LUMP		LUMP	.	
0280	206.1000 Excavation for Structures Bridges (structure) 003. B-70-132	LUMP		LUMP	.	
0290	210.0100 Backfill Structure	910.000 CY	.		.	

## SCHEDULE OF ITEMS

REVISED:

CONTRACT:  
20160510058PROJECT(S):  
1517-07-74FEDERAL ID(S):  
N/A

CONTRACTOR : \_\_\_\_\_

LINE NO	ITEM DESCRIPTION	APPROX. QUANTITY AND UNITS	UNIT PRICE		BID AMOUNT	
			DOLLARS	CTS	DOLLARS	CTS
0300	213.0100 Finishing Roadway (project) 001. 1517-07-74	1.000 EACH	.		.	
0310	305.0110 Base Aggregate Dense 3/4-Inch	889.000 TON	.		.	
0320	305.0120 Base Aggregate Dense 1 1/4-Inch	23,917.000 TON	.		.	
0330	311.0110 Breaker Run	57,417.000 TON	.		.	
0340	320.0155 Concrete Base 9-Inch	825.000 SY	.		.	
0350	415.0070 Concrete Pavement 7-Inch	577.000 SY	.		.	
0360	415.0090 Concrete Pavement 9-Inch	32.000 SY	.		.	
0390	416.0160 Concrete Driveway 6-Inch	146.000 SY	.		.	
0400	416.0610 Drilled Tie Bars	5,387.000 EACH	.		.	
0410	416.0620 Drilled Dowel Bars	367.000 EACH	.		.	
0420	416.1010 Concrete Surface Drains	2.000 CY	.		.	



## SCHEDULE OF ITEMS

REVISED:

CONTRACT:  
20160510058PROJECT(S):  
1517-07-74FEDERAL ID(S):  
N/A

CONTRACTOR : \_\_\_\_\_

LINE NO	ITEM DESCRIPTION	APPROX. QUANTITY AND UNITS	UNIT PRICE		BID AMOUNT	
			DOLLARS	CTS	DOLLARS	CTS
0430	440.4410 Incentive IRI Ride	6,432.000 DOL	1.00000		6432.00	
0440	455.0605 Tack Coat	260.000 GAL	.		.	
0450	460.2000 Incentive Density HMA Pavement	1,150.000 DOL	1.00000		1150.00	
0460	460.6224 HMA Pavement 4 MT 58-28 S	2,189.000 TON	.		.	
0470	465.0120 Asphaltic Surface Driveways and Field Entrances	31.000 TON	.		.	
0480	465.0315 Asphaltic Flumes	18.000 SY	.		.	
0490	501.1000.S Ice Hot Weather Concreting	8,053.000 LB	.		.	
0500	502.3100 Expansion Device (structure) 001. B-70-131	LUMP	LUMP		.	
0510	502.3100 Expansion Device (structure) 002. B-70-132	LUMP	LUMP		.	
0520	502.3200 Protective Surface Treatment	522.000 SY	.		.	
0530	502.3210 Pigmented Surface Sealer	1,973.000 SY	.		.	

## SCHEDULE OF ITEMS

REVISED:

CONTRACT:  
20160510058PROJECT(S):  
1517-07-74FEDERAL ID(S):  
N/A

CONTRACTOR : \_\_\_\_\_

LINE NO	ITEM DESCRIPTION	APPROX. QUANTITY AND UNITS	UNIT PRICE		BID AMOUNT	
			DOLLARS	CTS	DOLLARS	CTS
0540	502.5002 Masonry Anchors Type L No. 4 Bars	30.000 EACH	.		.	
0550	502.5010 Masonry Anchors Type L No. 6 Bars	118.000 EACH	.		.	
0560	502.5025 Masonry Anchors Type L No. 9 Bars	27.000 EACH	.		.	
0570	503.0155 Prestressed Girder Type I 54W-Inch	412.000 LF	.		.	
0580	504.0500 Concrete Masonry Retaining Walls	1,121.000 CY	.		.	
0590	505.0400 Bar Steel Reinforcement HS Structures	6,380.000 LB	.		.	
0600	505.0600 Bar Steel Reinforcement HS Coated Structures	326,650.000 LB	.		.	
0610	506.0605 Structural Steel HS	365,400.000 LB	.		.	
0620	506.2605 Bearing Pads Elastomeric Non-Laminated	8.000 EACH	.		.	
0630	506.3015 Welded Stud Shear Connectors 7/8x6-Inch	2,424.000 EACH	.		.	
0640	506.4000 Steel Diaphragms (structure) 001. B-70-129	8.000 EACH	.		.	

## SCHEDULE OF ITEMS

REVISED:

CONTRACT:  
20160510058PROJECT(S):  
1517-07-74FEDERAL ID(S):  
N/A

CONTRACTOR : \_\_\_\_\_

LINE NO	ITEM DESCRIPTION	APPROX. QUANTITY AND UNITS	UNIT PRICE		BID AMOUNT	
			DOLLARS	CTS	DOLLARS	CTS
0650	506.5000 Bearing Assemblies Fixed (structure) 001. B-70-131	EACH 2.000	.		.	
0660	506.5000 Bearing Assemblies Fixed (structure) 002. B-70-132	EACH 2.000	.		.	
0670	506.6000 Bearing Assemblies Expansion (structure) 001. B-70-131	EACH 4.000	.		.	
0680	506.6000 Bearing Assemblies Expansion (structure) 002. B-70-132	EACH 4.000	.		.	
0690	509.5100.S Polymer Overlay	SY 1,874.000	.		.	
0700	511.1100 Temporary Shoring	SF 7,600.000	.		.	
0710	511.1200 Temporary Shoring (structure) 001. B-70-129	SF 912.000	.		.	
0720	511.1200 Temporary Shoring (structure) 002. B-70-131	SF 905.000	.		.	
0730	511.1200 Temporary Shoring (structure) 003. S-70-202	SF 360.000	.		.	
0740	511.1200 Temporary Shoring (structure) 004. B-70-132	SF 700.000	.		.	

## SCHEDULE OF ITEMS

REVISED:

CONTRACT:  
20160510058PROJECT(S):  
1517-07-74FEDERAL ID(S):  
N/A

CONTRACTOR : \_\_\_\_\_

LINE NO	ITEM DESCRIPTION	APPROX. QUANTITY AND UNITS	UNIT PRICE		BID AMOUNT	
			DOLLARS	CTS	DOLLARS	CTS
0750	516.0500 Rubberized Membrane Waterproofing	129.000 SY	.	.	.	.
0760	517.0600 Painting Epoxy System (structure) 001. B-70-131	LUMP	LUMP	.	.	.
0770	517.0600 Painting Epoxy System (structure) 002. B-70-132	LUMP	LUMP	.	.	.
0780	517.3000.S Structure Overcoating Cleaning and Priming (structure) 001. B-70-131	LUMP	LUMP	.	.	.
0790	517.3000.S Structure Overcoating Cleaning and Priming (structure) 002. B-70-132	LUMP	LUMP	.	.	.
0800	517.4000.S Containment and Collection of Waste Materials (structure) 001. B-70-131	LUMP	LUMP	.	.	.
0810	517.4000.S Containment and Collection of Waste Materials (structure) 002. B-70-132	LUMP	LUMP	.	.	.
0820	520.8000 Concrete Collars for Pipe	4.000 EACH	.	.	.	.
0830	522.1012 Apron Endwalls for Culvert Pipe Reinforced Concrete 12-Inch	2.000 EACH	.	.	.	.

## SCHEDULE OF ITEMS

REVISED:

CONTRACT:  
20160510058PROJECT(S):  
1517-07-74FEDERAL ID(S):  
N/A

CONTRACTOR : \_\_\_\_\_

LINE NO	ITEM DESCRIPTION	APPROX. QUANTITY AND UNITS	UNIT PRICE		BID AMOUNT	
			DOLLARS	CTS	DOLLARS	CTS
0840	522.1024 Apron Endwalls for Culvert Pipe Reinforced Concrete 24-Inch	EACH 4.000	.		.	
0850	522.1030 Apron Endwalls for Culvert Pipe Reinforced Concrete 30-Inch	EACH 5.000	.		.	
0860	522.1042 Apron Endwalls for Culvert Pipe Reinforced Concrete 42-Inch	EACH 1.000	.		.	
0870	522.1054 Apron Endwalls for Culvert Pipe Reinforced Concrete 54-Inch	EACH 1.000	.		.	
0880	550.0020 Pre-Boring Rock or Consolidated Materials	LF 211.000	.		.	
0890	550.0500 Pile Points	EACH 26.000	.		.	
0900	550.1100 Piling Steel HP 10-Inch X 42 Lb	LF 1,926.000	.		.	
0910	601.0409 Concrete Curb & Gutter 30-Inch Type A	LF 920.000	.		.	
0920	601.0411 Concrete Curb & Gutter 30-Inch Type D	LF 1,350.000	.		.	
0930	601.0555 Concrete Curb & Gutter 6-Inch Sloped 36-Inch Type A	LF 2,234.000	.		.	

## SCHEDULE OF ITEMS

REVISED:

CONTRACT:  
20160510058PROJECT(S):  
1517-07-74FEDERAL ID(S):  
N/A

CONTRACTOR : \_\_\_\_\_

LINE NO	ITEM DESCRIPTION	APPROX. QUANTITY AND UNITS	UNIT PRICE		BID AMOUNT	
			DOLLARS	CTS	DOLLARS	CTS
0940	601.0557 Concrete Curb & Gutter 6-Inch Sloped 36-Inch Type D	295.000 LF	.	.	.	.
0950	602.0410 Concrete Sidewalk 5-Inch	2,395.000 SF	.	.	.	.
0960	603.0105 Concrete Barrier Single-Faced 32-Inch	40.000 LF	.	.	.	.
0970	603.1132 Concrete Barrier Type S32	1,343.000 LF	.	.	.	.
0980	603.1142 Concrete Barrier Type S42	8,285.000 LF	.	.	.	.
0990	603.1442 Concrete Barrier Type S42C	1,507.000 LF	.	.	.	.
1000	603.2156 Concrete Barrier Fixed Object Protection Type S56	16.000 LF	.	.	.	.
1010	603.3113 Concrete Barrier Transition Type NJ32SF to S36	14.000 EACH	.	.	.	.
1020	603.3513 Concrete Barrier Transition Type S32 to S36	2.000 EACH	.	.	.	.
1030	603.3535 Concrete Barrier Transition Type S36 to S42	16.000 EACH	.	.	.	.
1040	603.3559 Concrete Barrier Transition Type S42 to S56	3.000 EACH	.	.	.	.

## SCHEDULE OF ITEMS

REVISED:

CONTRACT:  
20160510058PROJECT(S):  
1517-07-74FEDERAL ID(S):  
N/A

CONTRACTOR : \_\_\_\_\_

LINE NO	ITEM DESCRIPTION	APPROX. QUANTITY AND UNITS	UNIT PRICE		BID AMOUNT	
			DOLLARS	CTS	DOLLARS	CTS
1050	603.8000 Concrete Barrier Temporary Precast Delivered	22,610.000 LF	.		.	
1060	603.8125 Concrete Barrier Temporary Precast Installed	24,410.000 LF	.		.	
1070	604.0400 Slope Paving Concrete	386.000 SY	.		.	
1080	604.0600 Slope Paving Select Crushed Material	317.000 SY	.		.	
1090	606.0200 Riprap Medium	994.000 CY	.		.	
1100	606.0300 Riprap Heavy	500.000 CY	.		.	
1110	608.0005 Storm Sewer Rock Excavation	2,726.000 CY	.		.	
1120	608.0315 Storm Sewer Pipe Reinforced Concrete Class III 15-Inch	447.000 LF	.		.	
1130	608.0318 Storm Sewer Pipe Reinforced Concrete Class III 18-Inch	39.000 LF	.		.	
1140	608.0324 Storm Sewer Pipe Reinforced Concrete Class III 24-Inch	5,375.000 LF	.		.	
1150	608.0330 Storm Sewer Pipe Reinforced Concrete Class III 30-Inch	2,396.000 LF	.		.	

## SCHEDULE OF ITEMS

REVISED:

CONTRACT:  
20160510058PROJECT(S):  
1517-07-74FEDERAL ID(S):  
N/A

CONTRACTOR : \_\_\_\_\_

LINE NO	ITEM DESCRIPTION	APPROX. QUANTITY AND UNITS	UNIT PRICE		BID AMOUNT	
			DOLLARS	CTS	DOLLARS	CTS
1160	608.0336 Storm Sewer Pipe Reinforced Concrete Class III 36-Inch	405.000 LF	.		.	
1170	608.0342 Storm Sewer Pipe Reinforced Concrete Class III 42-Inch	25.000 LF	.		.	
1180	608.0354 Storm Sewer Pipe Reinforced Concrete Class III 54-Inch	590.000 LF	.		.	
1190	608.0430 Storm Sewer Pipe Reinforced Concrete Class IV 30-Inch	106.000 LF	.		.	
1200	608.0454 Storm Sewer Pipe Reinforced Concrete Class IV 54-Inch	559.000 LF	.		.	
1210	611.0430 Reconstructing Inlets	3.000 EACH	.		.	
1220	611.0530 Manhole Covers Type J	17.000 EACH	.		.	
1230	611.0535 Manhole Covers Type J-Special	4.000 EACH	.		.	
1240	611.0624 Inlet Covers Type H	10.000 EACH	.		.	
1250	611.0627 Inlet Covers Type HM	3.000 EACH	.		.	
1260	611.0654 Inlet Covers Type V	39.000 EACH	.		.	



## SCHEDULE OF ITEMS

REVISED:

CONTRACT:  
20160510058PROJECT(S):  
1517-07-74FEDERAL ID(S):  
N/A

CONTRACTOR : \_\_\_\_\_

LINE NO	ITEM DESCRIPTION	APPROX. QUANTITY AND UNITS	UNIT PRICE		BID AMOUNT	
			DOLLARS	CTS	DOLLARS	CTS
1270	611.2005 Manholes 5-FT Diameter	4.000 EACH	.	.	.	.
1280	611.2006 Manholes 6-FT Diameter	22.000 EACH	.	.	.	.
1290	611.2007 Manholes 7-FT Diameter	3.000 EACH	.	.	.	.
1300	611.2008 Manholes 8-FT Diameter	5.000 EACH	.	.	.	.
1310	611.3004 Inlets 4-FT Diameter	29.000 EACH	.	.	.	.
1320	611.3230 Inlets 2x3-FT	10.000 EACH	.	.	.	.
1330	612.0106 Pipe Underdrain 6-Inch	20.000 LF	.	.	.	.
1340	612.0406 Pipe Underdrain Wrapped 6-Inch	3,429.000 LF	.	.	.	.
1350	612.0806 Apron Endwalls for Underdrain Reinforced Concrete 6-Inch	1.000 EACH	.	.	.	.
1360	614.0397 Guardrail Mow Strip Emulsified Asphalt	242.000 SY	.	.	.	.

## SCHEDULE OF ITEMS

REVISED:

CONTRACT:  
20160510058PROJECT(S):  
1517-07-74FEDERAL ID(S):  
N/A

CONTRACTOR : \_\_\_\_\_

LINE NO	ITEM DESCRIPTION	APPROX. QUANTITY AND UNITS	UNIT PRICE		BID AMOUNT	
			DOLLARS	CTS	DOLLARS	CTS
1370	614.0805 Crash Cushions Permanent Low Maintenance	1.000 EACH	.		.	
1380	614.0905 Crash Cushions Temporary	20.000 EACH	.		.	
1390	614.1000 MGS Guardrail Temporary	927.000 LF	.		.	
1400	614.1200 MGS Guardrail Temporary Terminal EAT	1.000 EACH	.		.	
1410	614.2300 MGS Guardrail 3	113.000 LF	.		.	
1420	614.2500 MGS Thrie Beam Transition	160.000 LF	.		.	
1430	614.2610 MGS Guardrail Terminal EAT	5.000 EACH	.		.	
1440	614.2620 MGS Guardrail Terminal Type 2	1.000 EACH	.		.	
1450	616.0206 Fence Chain Link 6-FT	5,755.000 LF	.		.	
1460	616.0700.S Fence Safety	10,000.000 LF	.		.	
1470	619.1000 Mobilization	1.000 EACH	.		.	

## SCHEDULE OF ITEMS

REVISED:

CONTRACT:  
20160510058PROJECT(S):  
1517-07-74FEDERAL ID(S):  
N/A

CONTRACTOR : \_\_\_\_\_

LINE NO	ITEM DESCRIPTION	APPROX. QUANTITY AND UNITS	UNIT PRICE		BID AMOUNT	
			DOLLARS	CTS	DOLLARS	CTS
1480	620.0300 Concrete Median Sloped Nose	114.000 SF	.	.	.	.
1490	624.0100 Water	778.000 MGAL	.	.	.	.
1500	625.0100 Topsoil	71,263.000 SY	.	.	.	.
1510	625.0500 Salvaged Topsoil	23,800.000 SY	.	.	.	.
1520	627.0200 Mulching	94,900.000 SY	.	.	.	.
1530	628.1504 Silt Fence	1,995.000 LF	.	.	.	.
1540	628.1520 Silt Fence Maintenance	1,995.000 LF	.	.	.	.
1550	628.1905 Mobilizations Erosion Control	20.000 EACH	.	.	.	.
1560	628.1910 Mobilizations Emergency Erosion Control	12.000 EACH	.	.	.	.
1570	628.2002 Erosion Mat Class I Type A	77,630.000 SY	.	.	.	.
1580	628.2006 Erosion Mat Urban Class I Type A	2,070.000 SY	.	.	.	.

## SCHEDULE OF ITEMS

REVISED:

CONTRACT:  
20160510058PROJECT(S):  
1517-07-74FEDERAL ID(S):  
N/A

CONTRACTOR : \_\_\_\_\_

LINE NO	ITEM DESCRIPTION	APPROX. QUANTITY AND UNITS	UNIT PRICE		BID AMOUNT	
			DOLLARS	CTS	DOLLARS	CTS
1590	628.7005 Inlet Protection Type A	8.000 EACH	.		.	
1600	628.7010 Inlet Protection Type B	54.000 EACH	.		.	
1610	628.7015 Inlet Protection Type C	19.000 EACH	.		.	
1620	628.7020 Inlet Protection Type D	13.000 EACH	.		.	
1630	628.7504 Temporary Ditch Checks	520.000 LF	.		.	
1640	628.7555 Culvert Pipe Checks	30.000 EACH	.		.	
1650	628.7560 Tracking Pads	8.000 EACH	.		.	
1660	629.0210 Fertilizer Type B	73.000 CWT	.		.	
1670	630.0120 Seeding Mixture No. 20	2,519.000 LB	.		.	
1680	630.0130 Seeding Mixture No. 30	38.000 LB	.		.	
1690	630.0200 Seeding Temporary	2,558.000 LB	.		.	

## SCHEDULE OF ITEMS

REVISED:

CONTRACT:  
20160510058PROJECT(S):  
1517-07-74FEDERAL ID(S):  
N/A

CONTRACTOR : \_\_\_\_\_

LINE NO	ITEM DESCRIPTION	APPROX. QUANTITY AND UNITS	UNIT PRICE		BID AMOUNT	
			DOLLARS	CTS	DOLLARS	CTS
1700	633.5200 Markers Culvert End	1.000 EACH	.		.	
1710	634.0614 Posts Wood 4x6-Inch X 14-FT	13.000 EACH	.		.	
1720	634.0616 Posts Wood 4x6-Inch X 16-FT	32.000 EACH	.		.	
1730	634.0618 Posts Wood 4x6-Inch X 18-FT	15.000 EACH	.		.	
1740	636.0100 Sign Supports Concrete Masonry	166.000 CY	.		.	
1750	636.1000 Sign Supports Steel Reinforcement HS	1,180.000 LB	.		.	
1760	636.1500 Sign Supports Steel Coated Reinforcement HS	11,800.000 LB	.		.	
1770	637.1220 Signs Type I Reflective SH	3,796.000 SF	.		.	
1780	637.2210 Signs Type II Reflective H	555.060 SF	.		.	
1790	637.2215 Signs Type II Reflective H Folding	25.900 SF	.		.	
1800	637.2230 Signs Type II Reflective F	66.000 SF	.		.	

SCHEDULE OF ITEMS

REVISED:

CONTRACT:  
20160510058

PROJECT(S):  
1517-07-74

FEDERAL ID(S):  
N/A

CONTRACTOR : \_\_\_\_\_

LINE NO	ITEM DESCRIPTION	APPROX. QUANTITY AND UNITS	UNIT PRICE		BID AMOUNT	
			DOLLARS	CTS	DOLLARS	CTS
1810	638.2101 Moving Signs Type I	9.000 EACH	.		.	
1820	638.2601 Removing Signs Type I	12.000 EACH	.		.	
1830	638.2602 Removing Signs Type II	40.000 EACH	.		.	
1840	638.3000 Removing Small Sign Supports	56.000 EACH	.		.	
1850	638.3100 Removing Structural Steel Sign Supports	4.000 EACH	.		.	
1860	641.0600 Sign Bridge Single Pole Sign Support Two Signs (structure) 001. S-70-245	LUMP	LUMP		.	
1870	641.1200 Sign Bridge Cantilevered (structure) 001. S-70-202	LUMP	LUMP		.	
1880	641.6600 Sign Bridge (structure) 001. S-70-243	LUMP	LUMP		.	
1890	641.6600 Sign Bridge (structure) 002. S-70-247	LUMP	LUMP		.	
1900	641.6600 Sign Bridge (structure) 003. S-70-244	LUMP	LUMP		.	
1910	641.6600 Sign Bridge (structure) 004. S-70-246	LUMP	LUMP		.	

## SCHEDULE OF ITEMS

REVISED:

CONTRACT:  
20160510058PROJECT(S):  
1517-07-74FEDERAL ID(S):  
N/A

CONTRACTOR : \_\_\_\_\_

LINE NO	ITEM DESCRIPTION	APPROX. QUANTITY AND UNITS	UNIT PRICE		BID AMOUNT	
			DOLLARS	CTS	DOLLARS	CTS
1920	642.5401 Field Office Type D	1.000 EACH	.		.	
1930	643.0200 Traffic Control Surveillance and Maintenance (project) 001. 1517-07-74	411.000 DAY	.		.	
1940	643.0300 Traffic Control Drums	48,553.000 DAY	.		.	
1950	643.0420 Traffic Control Barricades Type III	2,043.000 DAY	.		.	
1960	643.0715 Traffic Control Warning Lights Type C	5,575.000 DAY	.		.	
1970	643.0800 Traffic Control Arrow Boards	519.000 DAY	.		.	
1980	643.0900 Traffic Control Signs	14,928.000 DAY	.		.	
1990	643.0910 Traffic Control Covering Signs Type I	8.000 EACH	.		.	
2000	643.0920 Traffic Control Covering Signs Type II	10.000 EACH	.		.	
2010	643.1000 Traffic Control Signs Fixed Message	422.000 SF	.		.	
2020	643.1050 Traffic Control Signs PCMS	1,056.000 DAY	.		.	

## SCHEDULE OF ITEMS

REVISED:

CONTRACT:  
20160510058PROJECT(S):  
1517-07-74FEDERAL ID(S):  
N/A

CONTRACTOR : \_\_\_\_\_

LINE NO	ITEM DESCRIPTION	APPROX. QUANTITY AND UNITS	UNIT PRICE		BID AMOUNT	
			DOLLARS	CTS	DOLLARS	CTS
2030	643.3000 Traffic Control Detour Signs	264.000 DAY	.	.	.	.
2040	645.0120 Geotextile Type HR	1,480.000 SY	.	.	.	.
2050	646.0103 Pavement Marking Paint 4-Inch	66,595.000 LF	.	.	.	.
2060	646.0106 Pavement Marking Epoxy 4-Inch	37,588.000 LF	.	.	.	.
2070	646.0123 Pavement Marking Paint 8-Inch	5,793.000 LF	.	.	.	.
2080	646.0126 Pavement Marking Epoxy 8-Inch	1,010.000 LF	.	.	.	.
2090	646.0600 Removing Pavement Markings	114,548.000 LF	.	.	.	.
2100	646.0841.S Pavement Marking Grooved Wet Reflective Contrast Tape 4-Inch	8,066.000 LF	.	.	.	.
2110	646.0843.S Pavement Marking Grooved Wet Reflective Contrast Tape 8-Inch	6,364.000 LF	.	.	.	.
2120	647.0566 Pavement Marking Stop Line Epoxy 18-Inch	122.000 LF	.	.	.	.



## SCHEDULE OF ITEMS

REVISED:

CONTRACT:  
20160510058PROJECT(S):  
1517-07-74FEDERAL ID(S):  
N/A

CONTRACTOR : \_\_\_\_\_

LINE NO	ITEM DESCRIPTION	APPROX. QUANTITY AND UNITS	UNIT PRICE		BID AMOUNT	
			DOLLARS	CTS	DOLLARS	CTS
2250	652.0125 Conduit Rigid Metallic 2-Inch	4,640.000 LF	.	.	.	.
2260	652.0225 Conduit Rigid Nonmetallic Schedule 40 2-Inch	10,051.000 LF	.	.	.	.
2270	653.0180 Pull Boxes Steel Communications (inch) 001. 24x36-Inch	16.000 EACH	.	.	.	.
2280	653.0220 Junction Boxes 18x6x6-Inch	8.000 EACH	.	.	.	.
2290	653.0222 Junction Boxes 18x12x6-Inch	9.000 EACH	.	.	.	.
2300	654.0105 Concrete Bases Type 5	5.000 EACH	.	.	.	.
2310	654.0107 Concrete Bases Type 7	4.000 EACH	.	.	.	.
2320	655.0620 Electrical Wire Lighting 8 AWG	331.000 LF	.	.	.	.
2330	655.0625 Electrical Wire Lighting 6 AWG	662.000 LF	.	.	.	.
2340	656.0200 Electrical Service Meter Breaker Pedestal (location) 001. 131FES+50	LUMP	LUMP	.	.	.

## SCHEDULE OF ITEMS

REVISED:

CONTRACT:  
20160510058PROJECT(S):  
1517-07-74FEDERAL ID(S):  
N/A

CONTRACTOR : \_\_\_\_\_

LINE NO	ITEM DESCRIPTION	APPROX. QUANTITY AND UNITS	UNIT PRICE		BID AMOUNT	
			DOLLARS	CTS	DOLLARS	CTS
2350	657.0255 Transformer Bases Breakaway 11 1/2-Inch Bolt Circle	9.000 EACH	.		.	
2360	657.0322 Poles Type 5-Aluminum	5.000 EACH	.		.	
2370	657.6005.S Anchor Assemblies Light Poles on Structures	8.000 EACH	.		.	
2380	670.0100 Field System Integrator	LUMP	LUMP		.	
2390	670.0200 ITS Documentation	LUMP	LUMP		.	
2400	671.0112 Conduit HDPE 1-Duct 2-Inch	224.000 LF	.		.	
2410	671.0122 Conduit HDPE 2-Duct 2-Inch	1,171.000 LF	.		.	
2420	671.0132 Conduit HDPE 3-Duct 2-Inch	2,290.000 LF	.		.	
2430	671.0142 Conduit HDPE 4-Duct 2-Inch	452.000 LF	.		.	
2440	671.0222 Conduit HDPE Directional Bore 2-Duct 2-Inch	205.000 LF	.		.	
2450	671.0232 Conduit HDPE Directional Bore 3-Duct 2-Inch	1,430.000 LF	.		.	

## SCHEDULE OF ITEMS

REVISED:

CONTRACT:  
20160510058PROJECT(S):  
1517-07-74FEDERAL ID(S):  
N/A

CONTRACTOR : \_\_\_\_\_

LINE NO	ITEM DESCRIPTION	APPROX. QUANTITY AND UNITS	UNIT PRICE		BID AMOUNT	
			DOLLARS	CTS	DOLLARS	CTS
2460	671.0300 Fiber Optic Cable Marker	24.000 EACH	.		.	
2470	673.0105 Communication Vault Type 1	6.000 EACH	.		.	
2480	673.0225.S Install Pole Mounted Cabinet	1.000 EACH	.		.	
2490	674.0200 Cable Microwave Detector	6,458.000 LF	.		.	
2500	674.0300 Remove Cable	6,662.000 LF	.		.	
2510	674.0400 Reinstall Cable	6,662.000 LF	.		.	
2520	675.0300 Install Mounted Controller Microwave Detector Assembly	5.000 EACH	.		.	
2530	675.0400.S Install Ethernet Switch	1.000 EACH	.		.	
2540	678.0300 Fiber Optic Splice	15.000 EACH	.		.	
2550	678.0500 Communication System Testing	LUMP	LUMP		.	
2560	690.0150 Sawing Asphalt	935.000 LF	.		.	

## SCHEDULE OF ITEMS

REVISED:

CONTRACT:  
20160510058PROJECT(S):  
1517-07-74FEDERAL ID(S):  
N/A

CONTRACTOR : \_\_\_\_\_

LINE NO	ITEM DESCRIPTION	APPROX. QUANTITY AND UNITS	UNIT PRICE		BID AMOUNT	
			DOLLARS	CTS	DOLLARS	CTS
2570	690.0250 Sawing Concrete	13,829.000 LF	.	.	.	.
2580	715.0415 Incentive Strength Concrete Pavement	4,284.000 DOL	1.00000	.	4284.00	.
2590	715.0502 Incentive Strength Concrete Structures	3,132.000 DOL	1.00000	.	3132.00	.
2600	SPV.0035 Special 001. Roadway Embankment	47,070.000 CY	.	.	.	.
2610	SPV.0035 Special 002. Pond Liner Clay	5,370.000 CY	.	.	.	.
2620	SPV.0035 Special 700. Modified High Performance Concrete (HCP) Masonry Bridges	1,074.000 CY	.	.	.	.
2630	SPV.0060 Special 001. Concrete Barrier Transition Type 1 V33.5 To S42 Block	2.000 EACH	.	.	.	.
2640	SPV.0060 Special 002. Pond Outlet Control Manhole	2.000 EACH	.	.	.	.
2650	SPV.0060 Special 003. Detention Pond Corrugated Metal Anti-Seep Collar	2.000 EACH	.	.	.	.
2660	SPV.0060 Special 004. Flared End Section With Trash Rack	2.000 EACH	.	.	.	.

## SCHEDULE OF ITEMS

REVISED:

CONTRACT:  
20160510058PROJECT(S):  
1517-07-74FEDERAL ID(S):  
N/A

CONTRACTOR : \_\_\_\_\_

LINE NO	ITEM DESCRIPTION	APPROX. QUANTITY AND UNITS	UNIT PRICE		BID AMOUNT	
			DOLLARS	CTS	DOLLARS	CTS
2670	SPV.0060 Special 005. Concrete Barrier Transition Type S42 To S56 Special	14.000 EACH	.		.	
2680	SPV.0060 Special 006. Linear Delineation System	30.000 EACH	.		.	
2690	SPV.0060 Special 200. Traffic Control Close-Open Freeway Entrance Ramp	7.000 EACH	.		.	
2700	SPV.0060 Special 201. Repositioning Traffic Control Devices For Mainline Closures	78.000 EACH	.		.	
2710	SPV.0060 Special 202. Maintain Crash Cushion Temporary Left In Place	1.000 EACH	.		.	
2720	SPV.0060 Special 203. Move and Install Overhead Sign On Temporary Supports	1.000 EACH	.		.	
2730	SPV.0060 Special 350. Concrete Bases Type 7 On Steep Slopes	22.000 EACH	.		.	
2740	SPV.0060 Special 351. Anchor Bolt Cover Shroud	34.000 EACH	.		.	
2750	SPV.0060 Special 352. Pull Box Non-Conductive 24X42-Inch	28.000 EACH	.		.	
2760	SPV.0060 Special 400. Install Termination Panel	1.000 EACH	.		.	

## SCHEDULE OF ITEMS

REVISED:

CONTRACT:  
20160510058PROJECT(S):  
1517-07-74FEDERAL ID(S):  
N/A

CONTRACTOR : \_\_\_\_\_

LINE NO	ITEM DESCRIPTION	APPROX. QUANTITY AND UNITS	UNIT PRICE		BID AMOUNT	
			DOLLARS	CTS	DOLLARS	CTS
2770	SPV.0060 Special 401. Tracer Test Station	1.000 EACH	.		.	
2780	SPV.0060 Special 700. Junction Boxes Stainless Steel 24X18X6-Inch	3.000 EACH	.		.	
2790	SPV.0060 Special 701. Cleaning And Painting Bearings	54.000 EACH	.		.	
2800	SPV.0075 Special 001. Street Sweeping	600.000 HRS	.		.	
2810	SPV.0085 Special 001. Pond Edge Seed	710.000 LB	.		.	
2820	SPV.0090 Special 001. Concrete Barrier Type S56 Special	492.000 LF	.		.	
2830	SPV.0090 Special 200. Maintain Temporary Concrete Barrier Precast Left In Place	1,405.000 LF	.		.	
2840	SPV.0105 Special 002. Removing Cantilever Sign Support S-70-142	LUMP		LUMP	.	
2850	SPV.0105 Special 003. Removing Cantilever Sign Support S-70-143	LUMP		LUMP	.	
2860	SPV.0105 Special 004. Concrete Pavement Joint Layout	LUMP		LUMP	.	

## SCHEDULE OF ITEMS

REVISED:

CONTRACT:  
20160510058PROJECT(S):  
1517-07-74FEDERAL ID(S):  
N/A

CONTRACTOR : \_\_\_\_\_

LINE NO	ITEM DESCRIPTION	APPROX. QUANTITY AND UNITS	UNIT PRICE		BID AMOUNT	
			DOLLARS	CTS	DOLLARS	CTS
2870	SPV.0105 Special 005. Removing Cantilever Sign Support S-70-37	LUMP	LUMP			.
2880	SPV.0105 Special 006. Removing Sign Bridge S-70-32	LUMP	LUMP			.
2890	SPV.0105 Special 007. Removing Sign Structure Single Pole S-70-33	LUMP	LUMP			.
2900	SPV.0105 Special 950. Salvage Existing Sign Structure S-70-143, Truss	LUMP	LUMP			.
2910	SPV.0120 Special 001. Water For Seeded Areas	2,128.000 MGAL	.			.
2920	SPV.0165 Special 850. Wall Concrete Panel Mechanically Stabilized Earth LRFD/QMP **p**	20,025.000 SF	.			.
2930	SPV.0165 Special 950. Sign Blanks Left In Place	90.000 SF	.			.
2940	SPV.0180 Special 001. Removing Rumble Strips	4,075.000 SY	.			.
2950	SPV.0180 Special 002. Resin Binder High Friction Surface Treatment	3,690.000 SY	.			.
2960	204.0195 Removing Concrete Bases	5.000 EACH	.			.

## SCHEDULE OF ITEMS

REVISED:

CONTRACT:  
20160510058PROJECT(S):  
1517-07-74FEDERAL ID(S):  
N/A

CONTRACTOR : \_\_\_\_\_

LINE NO	ITEM DESCRIPTION	APPROX. QUANTITY AND UNITS	UNIT PRICE		BID AMOUNT	
			DOLLARS	CTS	DOLLARS	CTS
2970	509.0301 Preparation Decks Type 1	15.000 SY	.		.	
2980	611.0410 Reconstructing Catch Basins	2.000 EACH	.		.	
2990	611.8115 Adjusting Inlet Covers	6.000 EACH	.		.	
3000	652.0210 Conduit Rigid Nonmetallic Schedule 40 1-Inch	200.000 LF	.		.	
3010	652.0235 Conduit Rigid Nonmetallic Schedule 40 3-Inch	150.000 LF	.		.	
3020	652.0615 Conduit Special 3-Inch	50.000 LF	.		.	
3030	652.0800 Conduit Loop Detector	310.000 LF	.		.	
3040	654.0101 Concrete Bases Type 1	1.000 EACH	.		.	
3050	654.0102 Concrete Bases Type 2	2.000 EACH	.		.	
3060	654.0110 Concrete Bases Type 10	4.000 EACH	.		.	
3070	654.0217 Concrete Control Cabinet Bases Type 9 Special	1.000 EACH	.		.	



## SCHEDULE OF ITEMS

REVISED:

CONTRACT:  
20160510058PROJECT(S):  
1517-07-74FEDERAL ID(S):  
N/A

CONTRACTOR : \_\_\_\_\_

LINE NO	ITEM DESCRIPTION	APPROX. QUANTITY AND UNITS	UNIT PRICE		BID AMOUNT	
			DOLLARS	CTS	DOLLARS	CTS
3080	655.0230 Cable Traffic Signal 5-14 AWG	3,085.000 LF	.	.	.	.
3090	655.0240 Cable Traffic Signal 7-14 AWG	510.000 LF	.	.	.	.
3100	655.0260 Cable Traffic Signal 12-14 AWG	570.000 LF	.	.	.	.
3110	655.0305 Cable Type UF 2-12 AWG Grounded	1,530.000 LF	.	.	.	.
3120	655.0515 Electrical Wire Traffic Signals 10 AWG	2,090.000 LF	.	.	.	.
3130	655.0610 Electrical Wire Lighting 12 AWG	1,200.000 LF	.	.	.	.
3140	655.0700 Loop Detector Lead In Cable	530.000 LF	.	.	.	.
3150	655.0800 Loop Detector Wire	970.000 LF	.	.	.	.
3160	656.0200 Electrical Service Meter Breaker Pedestal (location) 450. I 41 NB & CTH II	LUMP	LUMP	.	.	.
3170	657.0100 Pedestal Bases	1.000 EACH	.	.	.	.
3180	657.0310 Poles Type 3	2.000 EACH	.	.	.	.

## SCHEDULE OF ITEMS

REVISED:

CONTRACT:  
20160510058PROJECT(S):  
1517-07-74FEDERAL ID(S):  
N/A

CONTRACTOR : \_\_\_\_\_

LINE NO	ITEM DESCRIPTION	APPROX. QUANTITY AND UNITS	UNIT PRICE		BID AMOUNT	
			DOLLARS	CTS	DOLLARS	CTS
3190	657.0315 Poles Type 4	2.000 EACH	.		.	
3200	657.0420 Traffic Signal Standards Aluminum 13-FT	1.000 EACH	.		.	
3210	657.0585 Trombone Arms 15-FT	2.000 EACH	.		.	
3220	657.0709 Luminaire Arms Truss Type 4-Inch Clamp 12-FT	4.000 EACH	.		.	
3230	657.1350 Install Poles Type 10	4.000 EACH	.		.	
3240	657.1530 Install Monotube Arms 30-FT	4.000 EACH	.		.	
3250	657.1812 Install Luminaire Arms Steel 12-FT	4.000 EACH	.		.	
3260	658.0110 Traffic Signal Face 3-12 Inch Vertical	13.000 EACH	.		.	
3270	658.0115 Traffic Signal Face 4-12 Inch Vertical	2.000 EACH	.		.	
3280	658.0155 Traffic Signal Face 3-12 Inch Horizontal	2.000 EACH	.		.	
3290	658.0215 Backplates Signal Face 3 Section 12-Inch	15.000 EACH	.		.	

## SCHEDULE OF ITEMS

REVISED:

CONTRACT:  
20160510058PROJECT(S):  
1517-07-74FEDERAL ID(S):  
N/A

CONTRACTOR : \_\_\_\_\_

LINE NO	ITEM DESCRIPTION	APPROX. QUANTITY AND UNITS	UNIT PRICE		BID AMOUNT	
			DOLLARS	CTS	DOLLARS	CTS
3300	658.0220 Backplates Signal Face 4 Section 12-Inch	2.000 EACH	.		.	
3310	658.0600 Led Modules 12-Inch Red Ball	15.000 EACH	.		.	
3320	658.0605 Led Modules 12-Inch Yellow Ball	15.000 EACH	.		.	
3330	658.0610 Led Modules 12-Inch Green Ball	15.000 EACH	.		.	
3340	658.0615 Led Modules 12-Inch Red Arrow	2.000 EACH	.		.	
3350	658.0620 Led Modules 12-Inch Yellow Arrow	4.000 EACH	.		.	
3360	658.0625 Led Modules 12-Inch Green Arrow	2.000 EACH	.		.	
3370	658.5069 Signal Mounting Hardware (location) 450. I 41 SB & CTH II	LUMP	LUMP		.	
3380	658.5069 Signal Mounting Hardware (location) 451. I 41 NB & CTH II	LUMP	LUMP		.	
3390	659.1120 Luminaires Utility LED B	8.000 EACH	.		.	
3400	SPV.0025 Special 700. Polyester Polymer Concrete Masonry	20.000 CF	.		.	

## SCHEDULE OF ITEMS

REVISED:

CONTRACT:  
20160510058PROJECT(S):  
1517-07-74FEDERAL ID(S):  
N/A

CONTRACTOR : \_\_\_\_\_

LINE NO	ITEM DESCRIPTION	APPROX. QUANTITY AND UNITS	UNIT PRICE		BID AMOUNT	
			DOLLARS	CTS	DOLLARS	CTS
3410	SPV.0060 Special 007. Pavement Marking Grooved Arrows Preformed Thermoplastic Type 2	3.000 EACH	.	.	.	.
3420	SPV.0060 Special 008. Pavement Marking Grooved Words Preformed Thermoplastic	2.000 EACH	.	.	.	.
3430	SPV.0090 Special 700. Sawing Pavement Deck Preparation Areas	272.000 LF	.	.	.	.
3440	SPV.0105 Special 001. Survey Project	LUMP	LUMP	.	.	.
3450	SPV.0105 Special 450. Remove Traffic Signal (I41 NB & CTH II)	LUMP	LUMP	.	.	.
3460	SPV.0105 Special 451. Remove Traffic Signal (I41 SB & CTH II)	LUMP	LUMP	.	.	.
3470	SPV.0180 Special 700. Rapid Cure Polymer Overlay	1,300.000 SY	.	.	.	.
3480	SPV.0180 Special 003. Modified High Performance Concrete (HPC) Pavement 10-Inch	13,336.000 SY	.	.	.	.
3490	SPV.0180 Special 004. Modified High Performance Concrete (HPC) Pavement 11-Inch	28,924.000 SY	.	.	.	.
3500	416.1710 Concrete Pavement Repair	64.000 SY	.	.	.	.

SCHEDULE OF ITEMS

REVISED:

CONTRACT:  
20160510058

PROJECT(S):  
1517-07-74

FEDERAL ID(S):  
N/A

CONTRACTOR : \_\_\_\_\_

LINE NO	ITEM DESCRIPTION	APPROX. QUANTITY AND UNITS	UNIT PRICE		BID AMOUNT	
			DOLLARS	CTS	DOLLARS	CTS
3510	608.0312 Storm Sewer Pipe Reinforced Concrete Class III 12-Inch	35.000 LF	.		.	
3520	611.0420 Reconstructing Manholes	1.000 EACH	.		.	
3530	653.0105 Pull Boxes Steel 12x24-Inch	2.000 EACH	.		.	
	SECTION 0001 TOTAL				.	
	TOTAL BID				.	