



# Wisconsin Department of Transportation

May 31, 2016

**Division of Transportation Systems  
Development**

Bureau of Project Development  
4802 Sheboygan Avenue, Rm 601  
P O Box 7916  
Madison, WI 53707-7916

Telephone: (608) 266-1631  
Facsimile (FAX): (608) 266-8459

**NOTICE TO ALL CONTRACTORS:**

**Proposal #07: 1060-43-82  
East-West Freeway  
Elm Grove Rd Bridge over IH 94  
IH 94  
Waukesha County**

**Letting of June 14, 2016**

This is Addendum No. 02, which provides for the following:

**Special Provisions**

Added Special Provisions	
Article No.	Description
89	Removing Lighting Control Cabinets for Stockpile, Item SPV.0060.1003
90	Twin Arm Temporary Wood Pole Lighting Units 60-FT, Item SPV.0060.1004
91	Poles Wood 60-FT, Item SPV.0060.1005
92	Removing Arm and Luminaire, Item SPV.0060.1006
93	Cable Aerial Aluminum 4 AWG Quadruplex, Item SPV.0090.1002
94	Cable In Duct 3-4 AWG, 1-8 AWG, Item SPV.0090.1003

**Schedule of Items**

Revised Bid Item Quantities					
Bid Item	Item Description	Unit	Old Quantity	Revised Quantity	Proposal Total
611.3004	Inlets 4-FT Diameter	Each	11	-1	10
652.0135	Conduit Rigid Metallic 3-Inch	LF	220	320	540
655.0610	Electrical Wire Lighting 12 AWG	LF	492	-246	246
SPV.0060	Special 1002. Lighting Units Salvaged	Each	2	-1	1
SPV.0090	Special 1001. Conduit Flexible Metallic 3-Inch	LF	20	20	40

Added Bid Item Quantities					
Bid Item	Item Description	Unit	Old Quantity	Revised Quantity	Proposal Total
204.0195	Removing Concrete Bases	Each	0	1	1
654.0230	Concrete Control Cabinet Bases Type L30	Each	0	1	1
655.0620	Electrical Wire Lighting 8 AWG	LF	0	380	380
655.0630	Electrical Wire Lighting 4 AWG	LF	0	1,140	1,140

655.0640	Electrical Wire Lighting 1 AWG	LF	0	18	18
656.0400	Electrical Service Main Lugs Only Meter Pedestal (location) 654+23.04	LS	0	1	1
659.2230	Lighting Control Cabinets 240/480 30-Inch	Each	0	1	1
SPV.0060	Special 1003. Removing Lighting Control Cabinets for Stockpile	Each	0	1	1
SPV.0060	Special 1004. Twin Arm Temporary Wood Pole Lighting Units 60-FT	Each	0	1	1
SPV.0060	Special 1005. Poles Wood 60-FT	Each	0	1	1
SPV.0060	Special 1006. Removing Arm and Luminaire	Each	0	2	2
SPV.0090	Special 1002. Cable Aerial Aluminum 4 AWG Quadruplex	LF	0	500	500
SPV.0090	Special 1003. Cable In Duct 3-4 AWG, 1-8 AWG	LF	0	380	380

Deleted Bid Item Quantities					
Bid Item	Item Description	Unit	Old Quantity	Revised Quantity	Proposal Total
655.0124	Cable In Duct 3-4 AWG	LF	240	-240	0

**Plan Sheets**

Revised Plan Sheets	
Plan Sheet	Plan Sheet Title (brief description of changes to sheet)
57	Project Overview – Lighting Plan (revised the note to reflect that the distribution center will be relocated)
59	Temporary Lighting Plan (revised to include the additional temporary lighting work required)
60	Lighting Plan (revised to include the additional lighting work required)
109	Miscellaneous Quantities (revised to include corrected quantity for Item 611.3004)
123	Miscellaneous Quantities (revised to include the additional lighting items and quantities)

Added Plan Sheets	
Plan Sheet	Plan Sheet Title (brief description of why sheet was added)
58A	Lighting Removal Plan (added to reflect the existing lighting that has to be relocated due to project conflicts)
123A	Miscellaneous Quantities (added to include the additional lighting items and quantities)

The responsibility for notifying potential subcontractors and suppliers of these changes remains with the prime contractor.

Sincerely,

*Mike Coleman*

Proposal Development Specialist  
Proposal Management Section

**ADDENDUM NO. 02**

**1060-43-82**

**May 31, 2016**

**Special Provisions**

**89. Removing Lighting Control Cabinets for Stockpile, Item SPV.0060.1003.**

**A Description**

The work under this item shall consist of removing for salvage or stockpile an existing highway lighting distribution center and electrical service pedestal. The department will issue the demolition request to WE-Energies. Remove the meter pedestals and dispose of off the site. Removal of the concrete bases will be measured and paid separately.

**B (Vacant)**

**C Construction**

Coordinate with the utility for disconnection of services. The department will pay any fees charged by the utility. Deliver stockpiled cabinets to the department at the West Allis shop as noted elsewhere in these special provisions. Salvaged cabinets will be re-installed on the site as shown on the plan.

**D Measurement**

The department will measure Removing Distribution Centers for Stockpile by the unit removed and delivered; a unit include the service pedestal.

**E Payment**

The department will pay for the measured quantities at the contract unit price under the following bid item:

ITEM NUMBER	DESCRIPTION	UNIT
SPV.0060.1003	Removing Lighting Control Cabinets for Stockpile	Each

Payment is full compensation for removal of the cabinet and services; for delivering the cabinet to the department at West Allis (where required); and for utility coordination.

**90. Twin Arm Temporary Wood Pole Lighting Units 60-FT, Item SPV.0060.1004.**

**A Description**

The work under these items include furnishing and installing 60-foot wood pole, arm(s) and luminaire(s), junction box, grounding system, and lightning protection system, as shown on the plans, in accordance to standard specs 651 and 659, and as hereinafter provided.

**B Materials**

Furnish wood poles, Class 4 or larger with a 60-foot minimum overall length. The poles shall be western red cedar in accordance to ANSI standards 05.1. Pressure treatment shall be 5% pentachlorophenol with a minimum of 8 pounds per cubic foot net retention of the oil-borne preservative. All poles shall be shaved the entire length.

Luminaire arm and luminaire for wood pole lighting units and temporary wood pole lighting units shall be per standard specs 657.2.3 and 659.2, respectively.

**C Construction**

This work shall be done in accordance to the pertinent provisions of standard spec 611.3.1.1 and as shown on the plans. Install #4 AWG equipment grounding wire exothermically bonded to a 5/8 inch by 8 foot copper clad grounding electrode. Install cable guard, NEMA 3R junction box near mounting arm, and NEMA 4X junction box at 3 feet above grade for fuses and splice on wood pole units. Install air terminal with #2 AWG grounding wire exothermically bonded to a 5/8-inch by 8-foot copper clad grounding electrode for lightning protection. Install #2 AWG bare copper exothermically bonding between grounding electrodes. Install conduit and wiring between junction boxes, wire racks, and required hardware as necessary and as shown on lighting plans and detail drawings.

Install luminaire arm and luminaire for wood pole lighting units and temporary lighting units as shown on the plans and details and as per applicable portion of standard specs 657.3 and 659.3.

**D Measurement**

The department will measure Twin Arm Temporary Wood Pole Lighting Units 60-FT as a unit for each individual item, acceptably completed.

**E Payment**

The department will pay for measured quantities at the contract unit price under the following bid items:

ITEM NUMBER	DESCRIPTION	UNIT
SPV.0060.1004	Twin Arm Temporary Wood Pole Lighting Units 60-FT	Each

Payment is full compensation for furnishing and installing items as mentioned above; and for furnishing all excavation and backfill.

**91. Poles Wood 60-FT, Item SPV.0060.1005.**

**A Description**

Furnish and install wood poles and other incidental items as required and as shown on the plans, in accordance to standard spec 651, and as hereinafter provided.

**B Materials**

Furnish wood poles that are Class 4 or larger with a 60-foot minimum overall length. The poles shall be western red cedar in accordance to ANSI standards 05.1. All poles shall be shaved the entire length.

Wood poles used for freeway lighting shall be pressure treated with a 5 percent pentachlorophenol mixture with a minimum of 8 pounds per cubic foot net retention of the oil-borne preservative.

**C Construction**

Install the pole in accordance to the pertinent provisions of standard spec 611.3.1.1, and as shown on the plans. As necessary, install #4 AWG grounding wire exothermically bonded to a 5/8-inch by 8-foot copper clad grounding electrode, cable guard, NEMA 3R junction box 3ft above grade level for splice, and incidentals as necessary.

**D Measurement**

The department will measure Poles Wood 60-Foot as a unit for each individual pole, acceptably completed.

**E Payment**

The department will pay for measured quantities at the contract unit price under the following bid item:

ITEM NUMBER	DESCRIPTION	UNIT
SPV.0060.1005	Poles Wood 60-FT	Each

Payment is full compensation for furnishing and installing a wood pole; and for all excavation and backfill.

**92. Removing Arm and Luminaire, Item SPV.0060.1006.**

**A Description**

The work under this item shall consist of removing arm and luminaires from temporary wood poles intended to remain in service as shown on the plans. Removed arms and luminaires shall become the property of the Contractor and shall be disposed of off the project site. Lamp disposal will be measured and paid separately.

**B (Vacant)**

**C Construction**

No removal work will be permitted without approval from the Engineer. Removal shall start as soon as the temporary lighting or permanent lighting, as applicable, is placed in approved operation. An inspection and approval by the Engineer will take place before any associated proposed permanent or temporary lighting is approved for operation.

All materials shall be removed as described on the plans and as directed by the Engineer. Dispose of all materials off the site, except sodium vapor lamps. Lamps shall be disposed of under the requirement of a separate pay item.

**D Measurement**

The department will measure Removing Arm and Luminaire by each unit removed and disposed of, as directed by the Engineer.

**E Payment**

The department will pay for the measured quantities at the contract unit prices under the following bid items:

ITEM NUMBER	DESCRIPTION	UNIT
SPV.0060.1006	Removing Arm and Luminaire	Each

Payment will be full compensation for removing luminaires; and for disposal of all removed materials.

**93. Cable Aerial Aluminum 4 AWG Quadruplex, Item SPV.0090.1002.**

**A Description**

Furnish, install, and connect temporary overhead cable complete with all splicing, identifications, terminations and guy wires at wood poles. The removal of the overhead cable after the temporary lighting is approved for removal.

**B Materials**

Overhead cable shall be aluminum conductors according to ASTM B 230 and shall be Class B stranded according to ASTM B 231, and shall conform to the values listed in the table below:

Phase Conductor			Messenger Wire		
Size AWG	Stranding	Avg. Insulation Thickness		Min. Size AWG	Stranding
		mm	mils		
6	7	1.1	45	6	6/1
4	7	1.1	45	4	6/1
2	7	1.1	45	2	6/1

The aerial cable shall be an assembly of insulated aluminum conductors and a steel messenger wire according to ANSI/ICEA S-76-474. The cable assembly may have the messenger wire intertwined with

the insulated cables or lashed to the insulated cables by a factory wrap. The cable shall be assembled according to ANSI/ICEA S-76-474.

All cable shall be rated 600-V. The cable shall be rated 105° C dry and 90° C wet and shall be suitable for installation in wet and dry locations, and shall be resistant to oils and chemicals, and UV rated. The UL listing mark, cable voltage, insulation type and ratings, as well as the cable size, shall all be clearly printed on the cable in a color contrasting with the insulation color. When specified, each cable installed shall be identified with its complete circuit number at each termination, splice, junction box or other location where the wire is accessible.

All electric cables installed shall be color coded. Neutral wires shall be color-coded white. Single phase three wire runs of cable shall be color-coded one black, one red, and one white. Insulated ground wires, where applicable, shall be green. Color striping of cables will not be acceptable in lieu of the specified color coding means.

Make the luminaire connections to the aerial cable with listed parallel tap insulation piercing connectors. The connector shall be rated for 600-V, and be listed under UL Standard 486B.

### **C Construction**

Overhead cable as shown on temporary lighting plans will not be needed for final lighting. Remove temporary overhead cable. Removal of temporary overhead cable will be incidental to this pay item and it will become property of the contractor. The bid price shall reflect the salvage value of the temporary overhead cable.

Upon written request by the contractor, the engineer may permit to reuse removed temporary overhead cable of ampacity equivalent to the specified cable and of a type and condition approved by the engineer, if possible.

Install guy wires as necessary per WisDOT standard details for Spanwire Temporary Traffic Signal.

Conform to standard spec 655.3.5(9) for ground resistance testing.

### **D Measurement**

The department will measure Cable Aerial Aluminum 4 AWG Quadruplex; in length by the linear foot in place, acceptably completed, and will be taken as the length of the messenger wire. Measurement will be made in a straight line between changes in direction and to the centers of light standards and control cabinets. Sag of the aerial cable or vertical cable will not be measured for payment. The rewiring to facilitate relocation of the cable due to staging or other construction requirements will not be measured for payment.

### **E Payment**

The department will pay for measured quantities at the contract unit price under the following bid items:

ITEM NUMBER	DESCRIPTION	UNIT
SPV.0090.1002	Cable Aerial Aluminum 4 AWG Quadruplex	LF

Payment is full compensation for providing electrical wire; for making all connections; for providing all connectors, including wire nuts, fuses, fuse holders, splices, tape, and insulators; for providing messenger wire, and guy wires; and for removing temporary overhead cable.

## **94. Cable In Duct 3-4 AWG, 1-8 AWG, Item SPV.0090.1003.**

### **A Description**

The work consists of furnishing and installing Cable In Duct as shown on the plans, and as hereinafter provided to match the cable characteristics and properties of the cable as specified in standard spec 655.3.2.

**B Materials**

Conform to applicable portion of subsections 655.2.1 and 655.2.6 of the standard specifications.

**C Construction**

Conform to applicable portions of subsections 655.3.1, 655.3.2 and 655.3.7 of the standard specifications.

Conform to subsection 655.3.5 (9) of the standard specifications for ground resistance testing.

**D Measurement**

The department will measure Cable In Duct by the linear foot acceptably completed. This measurement includes conductors that had the duct cut away.

**E Payment**

The department will pay for measured quantities at the contract unit price under the following bid item:

ITEM	DESCRIPTION	UNIT
NUMBER		
SPV.0090.1003	Cable In Duct 3-4 AWG, 1-8 AWG	LF

Payment is full compensation for providing all materials, including cables and duct; for excavating trenches; for placing cable in duct; for providing rigid steel conduit as needed; for backfilling; for restoring disturbed or damaged areas, including seeding and sodding; for making connections and testing installed cable system; and for disposing of surplus material.

**Schedule of Items**

Attached, dated May 31, 2016, are the revised Schedule of Items Pages 1 – 19.

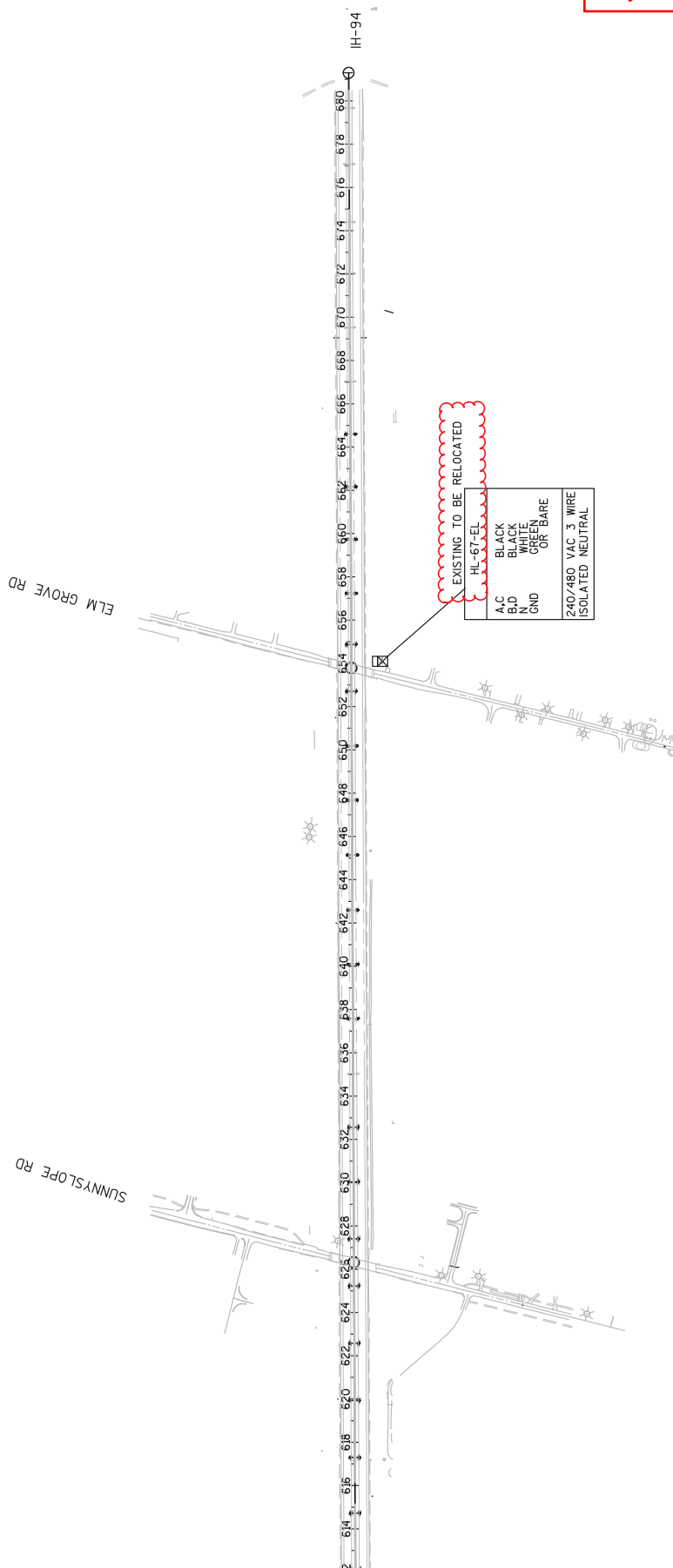
**Plan Sheets**

The following 8½ x 11-inch sheets are attached and made part of the plans for this proposal:

Revised: 57, 59, 60, 109, and 123.

Added: 58A and 123A

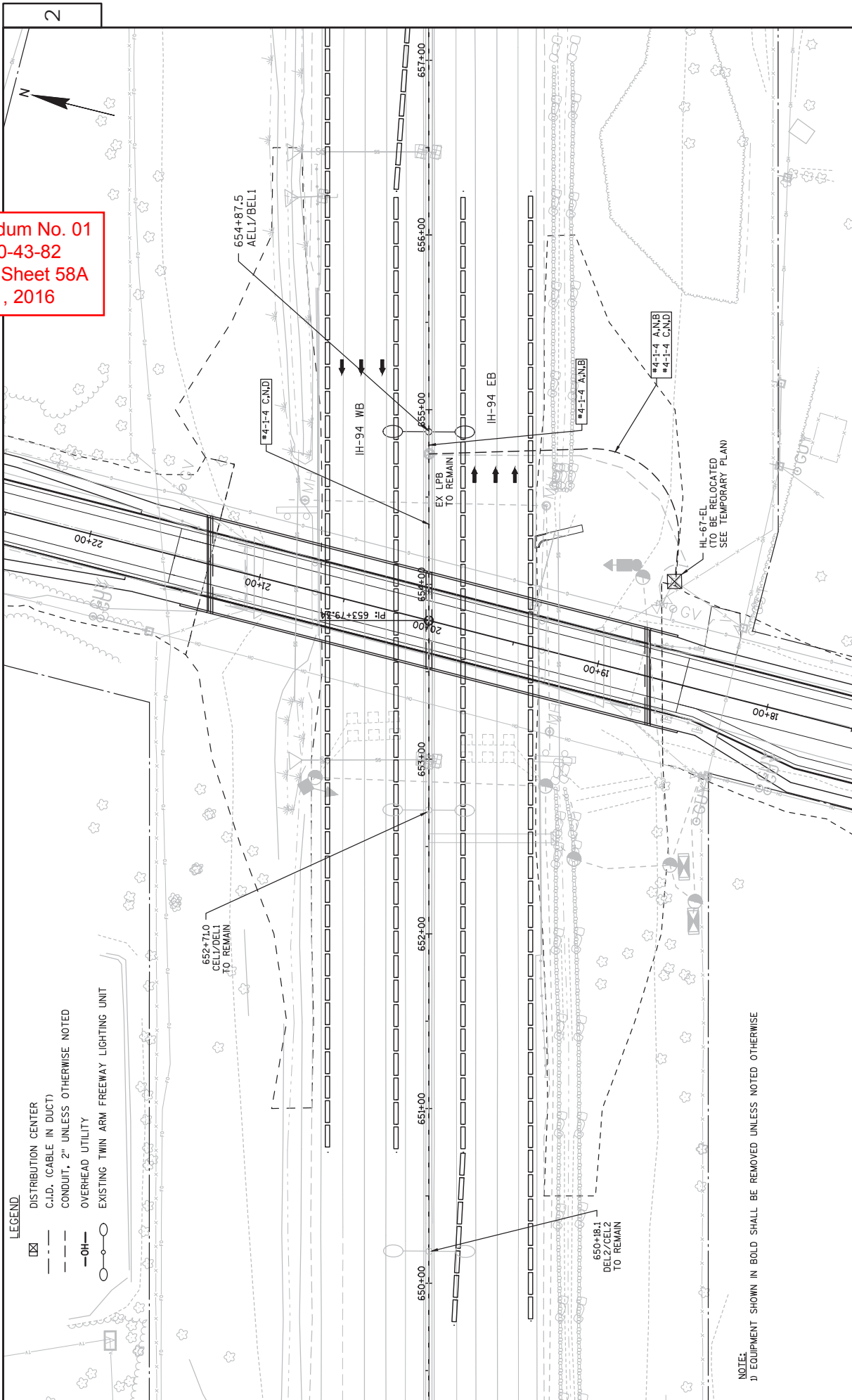
END OF ADDENDUM



Addendum No. 01  
 ID 1060-43-82  
 Revised Sheet 57  
 May 31, 2016



Addendum No. 01  
 ID 1060-43-82  
 Added Sheet 58A  
 May 31, 2016

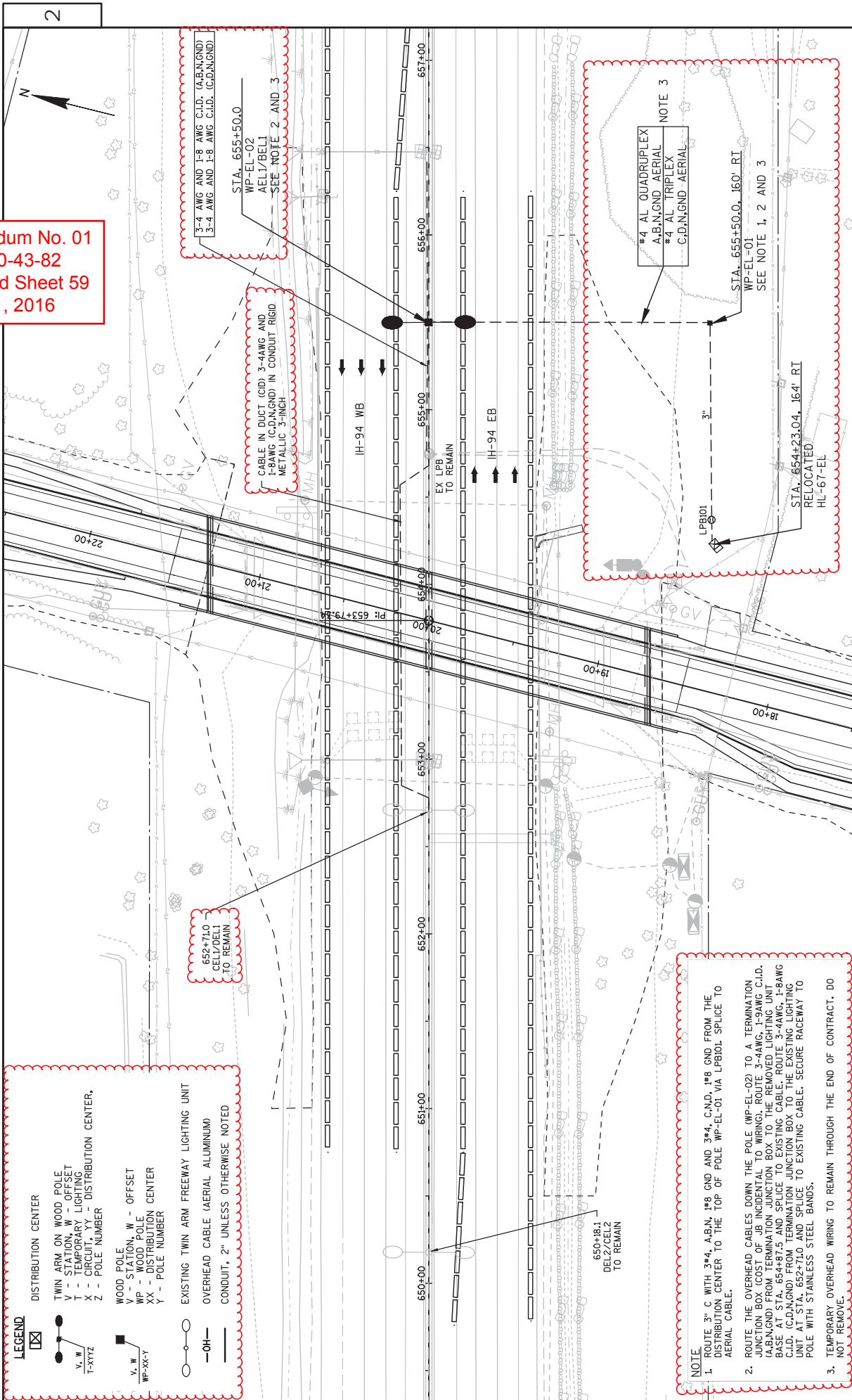


LEGEND

- DISTRIBUTION CENTER
- C.I.D. (CABLE IN DUCT)
- CONDUIT, 2" UNLESS OTHERWISE NOTED
- OVERHEAD UTILITY
- EXISTING TWIN ARM FREEWAY LIGHTING UNIT

NOTE:  
 1) EQUIPMENT SHOWN IN BOLD SHALL BE REMOVED UNLESS NOTED OTHERWISE

Addendum No. 01  
 ID 1060-43-82  
 Revised Sheet 59  
 May 31, 2016



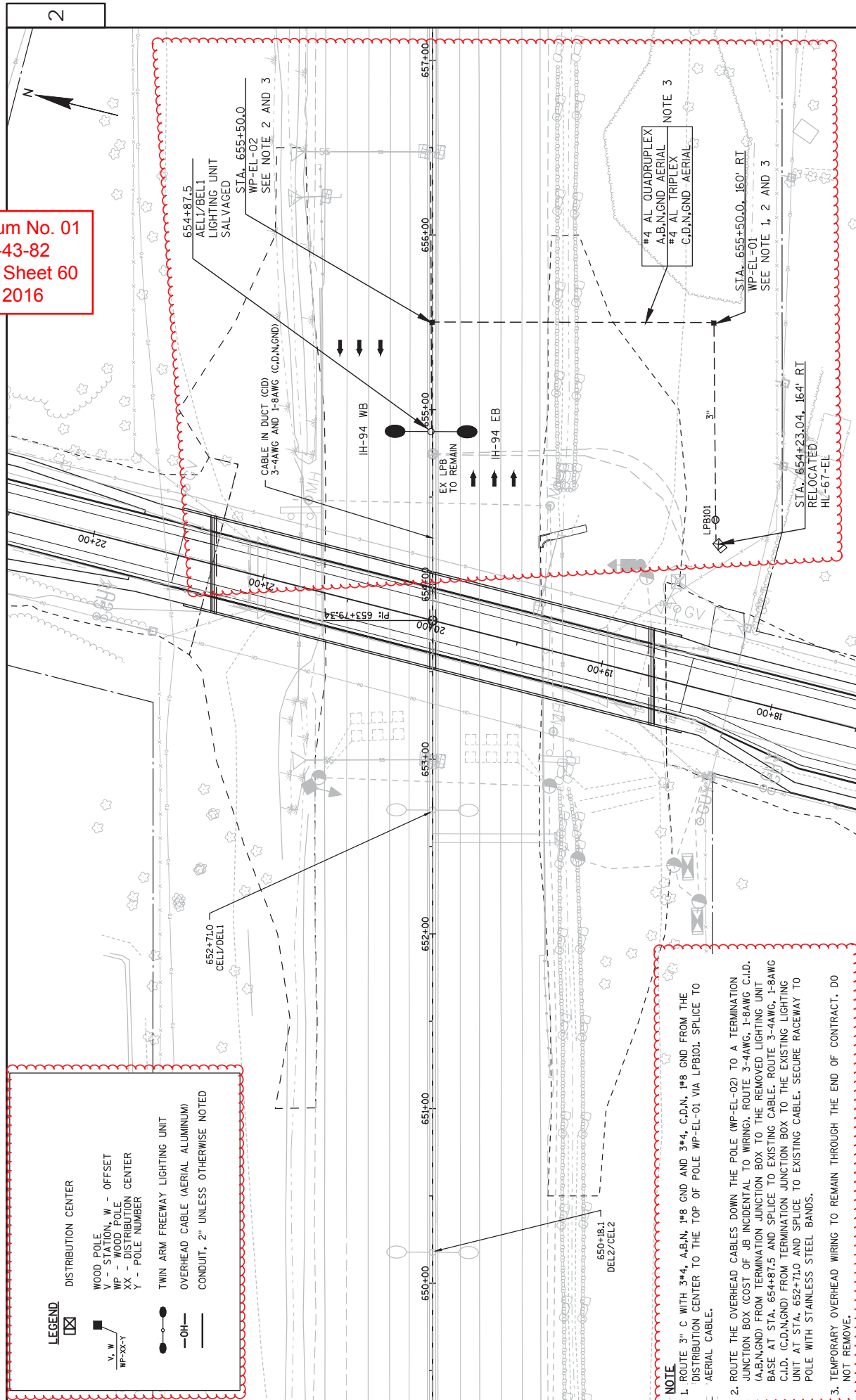
**LEGEND**

- DISTRIBUTION CENTER
- TWIN ARM ON WOOD POLE
- STATION W OFFSET
- TEMPORARY LIGHTING
- CIRCUIT YY - DISTRIBUTION CENTER
- POLE NUMBER
- WOOD POLE
- STATION W - OFFSET
- WOOD POLE
- DISTRIBUTION CENTER
- POLE NUMBER
- EXISTING TWIN ARM FREEWAY LIGHTING UNIT
- 

**NOTE**

1. ROUTE 3\*4 WITH 3\*4, A.B.N, 1\*8 GND AND 3\*4, C.N.D, 1\*8 GND FROM THE DISTRIBUTION CENTER TO THE TOP OF POLE WP-EL-01 VIA LFB01. SPLICE TO AERIAL CABLE.
2. ROUTE THE OVERHEAD CABLES DOWN THE POLE (WP-EL-02) TO A TERMINATION JUNCTION BOX (COST OF JOB INCIDENTAL TO WIRING), ROUTE 3-4AWG, 1-9AWG C.I.D. (A.B,N,GND) FROM TERMINATION JUNCTION BOX TO THE REMOVED LIGHTING UNIT BASE AT STA. 654+87.5 AND SPLICE TO EXISTING CABLE, ROUTE 3-4AWG, 1-8AWG C.I.D. (C/D,N,GND) FROM TERMINATION JUNCTION BOX TO THE EXISTING LIGHTING UNIT. STAINLESS STEEL BANDS TO EXISTING CABLE, SECURE RACEWAY TO POLE WITH STAINLESS STEEL BANDS.
3. TEMPORARY OVERHEAD WIRING TO REMAIN THROUGH THE END OF CONTRACT. DO NOT REMOVE.

Addendum No. 01  
 ID 1060-43-82  
 Revised Sheet 60  
 May 31, 2016



**LEGEND**

- DISTRIBUTION CENTER
- WOOD POLE
- STATION, POLE OFFSET
- WP - POLE
- XX - DISTRIBUTION CENTER
- Y - POLE NUMBER
- TWIN ARM FREEWAY LIGHTING UNIT
- OVERHEAD CABLE (AERIAL ALUMINUM)
- 

**NOTE**

- ROUTE 3" C WITH 3\*4, A,B,N, #8 GND AND 3\*4, C,D,N, #8 GND FROM THE DISTRIBUTION CENTER TO THE TOP OF POLE WP-EL-01 VIA LPB01, SPLICE TO AERIAL CABLE.
- ROUTE THE OVERHEAD CABLES DOWN THE POLE (WP-EL-02) TO A TERMINATION JUNCTION BOX (COST OF JB INCIDENTAL TO WIRING). ROUTE 3-4AWG, 1-8AWG C.I.D. (A,B,N,GND) FROM TERMINATION JUNCTION BOX TO THE REMOVED LIGHTING UNIT BASE AT STA. 654+81.5 AND SPLICE TO EXISTING CABLE. ROUTE 3-4AWG, 1-8AWG C.I.D. (C,D,N,GND) FROM TERMINATION JUNCTION BOX TO THE EXISTING LIGHTING UNIT AT STA. 652+71.0 AND SPLICE TO EXISTING CABLE. SECURE RACEWAY TO POLE WITH STAINLESS STEEL BANDS.
- TEMPORARY OVERHEAD WIRING TO REMAIN THROUGH THE END OF CONTRACT. DO NOT REMOVE.

STORM SEWER (CONT.)

ROADWAY	STRUCTURE NUMBER	STATION	OFFSET FT	RIM OR STR FLANGE DEPTH ELEV FT	FROM STR	TO STR	INLET ELEV	DISCH ELEV	SLOPE %	MANHOLES 4-FT DIAMETER EACH	MANHOLES 6-FT DIAMETER EACH	INLETS 4-FT DIAMETER EACH	INLETS 2x3-FT EACH	INLETS MEDIAN 1 GRATE EACH	INLET COVERS TYPE 27-IN BOLTED EACH	SPV.0060.0009	
	C01	11+95	18.4	LT	--	--	797.60	797.30	1.0	--	--	--	--	--	--		
	CB01	12+38	24.0	RT	CB01_OUT	CB01	798.50	798.09	1.0	--	--	--	--	--	--		
ELM GROVE	I01	12+99	17.0	RT	I01	MH01	798.98	799.92	1.0	--	--	1	--	--	--		
	MH01	12+99	23.0	RT	MH01	MH01	798.22	798.50	1.0	1	--	--	--	--	--		
	A01	13+49	59.0	LT	A01	MH02	801.40	801.00	2.8	--	--	--	--	--	--		
	MH02	13+52	41.7	LT	MH02	MH02_OUT	800.46	798.60	2.4	1	--	--	--	--	--		
	A02	13+60	45.8	LT	A02	MH02	801.40	801.00	3.3	--	--	--	--	--	--		
ELM GROVE	I02	13+71	18.0	LT	I02	MH02	802.33	802.00	0.9	--	1	--	--	--	--		
	I03	13+91	17.0	RT	I03	MH03	802.87	802.80	1.2	--	--	1	--	--	--		
	MH03	13+91	24.0	RT	MH03	MH01	800.48	799.22	1.5	1	--	--	--	--	--		
	I04	13+91	42.0	RT	I04	MH03	800.89	800.73	1.0	--	--	--	--	1	--		
	I05	15+83	30.0	LT	I05	D5_OUT	808.10	807.60	0.5	--	1	--	--	--	--		
ELM GROVE	I06	16+47	43.0	RT	I06	EXISTING SS	809.65	807.96	2.2	--	--	--	--	1	--		
	I07	16+76	17.0	RT	I07	I06	810.54	809.65	2.5	1	--	--	--	--	--		
	Q02	16+21	56.5	LT	--	--	811.35	809.45	4.3	--	--	--	--	--	--		
	I08	18+38	19.0	LT	I08	I09	819.10	818.00	3.0	--	1	--	--	--	--		
	I09	18+38	17.0	RT	I09	I09_OUT	818.00	811.80	13.2	--	1	--	--	--	--		
ELM GROVE	I10	21+46	17.0	LT	I10	I11	815.58	813.96	4.5	--	--	1	--	--	--		
	I11	21+88	17.0	RT	I11	MH06	813.96	812.50	4.5	--	--	--	1	--	--		
	MH06	21+69	48.5	RT	MH06	8	812.50	810.64	13.9	1	--	--	--	--	--		
	I12	23+22	17.0	LT	I12	I12_OUT	808.87	808.55	1.0	--	--	1	--	--	--		
	I13	23+45	17.0	RT	I13	MH04	806.50	806.31	2.0	--	1	--	--	--	--		
ELM GROVE	I14	23+51	43.0	RT	I14	MH04	806.50	806.31	1.0	--	--	--	1	--	--		
	MH04	23+58	22.0	RT	MH04	MH05	806.06	804.10	1.5	1	--	--	--	--	--		
	I15	24+92	17.0	RT	I15	MH05	804.38	804.35	0.5	--	--	--	1	--	--		
	MH05	24+92	22.0	RT	MH05	MH05_OUT	804.10	804.00	0.5	1	--	--	--	--	--		
ELM GROVE	I16	24+96	17.0	LT	I16	I16_OUT	803.63	803.32	1.0	--	--	1	--	--	--		
	C03	25+72	32.4	RT	--	--	803.33	803.19	0.5	--	--	--	--	--	--		
IH-94 DRAINAGE STRUCTURES																	
	PE390	652+99	61.0	LT	--	EXISTING	PE390_OUT	798.26	799.12	0.5	--	--	--	--	--		
	BULKHEAD	653+01	71.0	LT	--	BULKHEAD	AU393	796.51	790.20	3.6	--	--	--	--	--		
IH-94	AU393	654+74	71.0	LT	796.61	6.4	--	790.20	--	--	--	1	--	--	1		
	P450	654+09	91.0	LT	--	--	AU450A	797.13	793.86	3.0	--	--	--	--	--		
	AU170	650+45	73.5	RT	812.90	5.9	AU170	806.98	799.53	3.8	--	--	--	--	--		
	AU172	652+44	73.3	RT	803.23	3.7	AU172	798.53	792.08	3.8	--	--	--	--	--		
IH-94	AU174	654+45	73.0	RT	797.75	5.7	--	792.08	--	--	--	1	--	--	1		
	P200	653+63	92.2	RT	--	--	AU200A	798.39	795.85	3.7	--	--	--	--	--		
<div style="display: flex; justify-content: space-between; border: 1px solid black; padding: 5px;"> <span>5</span> <span>1</span> <span>10</span> <span>7</span> <span>3</span> <span>4</span> </div>																	

Addendum No. 01  
 ID 1060-43-82  
 Revised Sheet 109  
 May 31, 2016

CATEGORY 1100  
LIGHTING REMOVAL ITEMS

204.0195 REMOVING CONCRETE BASES  
SPV.0060.1001 LAMP DISPOSAL HIGH INTENSITY DISCHARGE  
SPV.0060.1002 LIGHTING UNITS SALVAGED  
SPV.0060.1003 REMOVING LIGHTING CONTROL CABINETS FOR STOCKPILE

SYSTEM	LOCATION	OFFSET	ITEM	204.0195 REMOVING CONCRETE BASES	SPV.0060.1001 LAMP DISPOSAL HIGH INTENSITY DISCHARGE	SPV.0060.1002 LIGHTING UNITS SALVAGED	SPV.0060.1003 REMOVING LIGHTING CONTROL CABINETS FOR STOCKPILE	COMMENTS
HL-67-EL	654+10.00	135' RT	LIGHTING CABINET	1	--	--	1	EACH
HL-67-EL	654+87.50	C/L	LIGHTING UNIT	--	2	1	--	EACH
HL-67-EL	655+50.00	C/L	LIGHTING UNIT	--	2	--	--	TEMPORARY LIGHT
<b>TOTAL (1100)</b>				<b>1</b>	<b>4</b>	<b>1</b>	<b>1</b>	

CATEGORY 1100  
DISTRIBUTION CENTERS AND SERVICE

240/480 VAC 3-WIRE  
654.0230 CONCRETE CONTROL CABINET BASES TYPE L30  
655.0640 ELECTRICAL WIRE LIGHTING 1 AWG  
656.0400 ELECTRICAL SERVICE MAIN LUGS ONLY METER PEDESTAL (HL-67-EL)  
659.2230 LIGHTING CONTROL CABINETS 240/480 30-INCH  
SPV.0105.1001 MAINTENANCE OF LIGHTING SYSTEMS

SYSTEM	LOCATION	654.0230 CONCRETE CONTROL CABINET BASES TYPE L30	655.0640 ELECTRICAL WIRE LIGHTING 1 AWG	656.0400 ELECTRICAL SERVICE MAIN LUGS ONLY METER PEDESTAL	659.2230 LIGHTING CONTROL CABINETS 240/480 30-INCH	SPV.0105.1001 MAINTENANCE OF LIGHTING SYSTEMS
HL-67-EL	654+23.04 (ELM GROVE ROAD)	1	18	1	1	1
<b>TOTAL (1100)</b>		<b>1</b>	<b>18</b>	<b>1</b>	<b>1</b>	<b>1</b>

PLAQUE TEXT  
HL-67-EL  
ELM GROVE ROAD  
2 - 480 VAC WARNING (2 REQUIRED PER LOCATION; METER PEDESTAL AND CABINET DOOR)

Addendum No. 01  
ID 1060-43-82  
Revised Sheet 123  
May 31, 2016

CATEGORY 1100  
TEMPORARY LIGHTING ITEMS

- 652.0135 CONDUIT RIGID METALLIC 3-INCH
- 655.0620 ELECTRICAL WIRE LIGHTING 8 AWG
- 655.0630 ELECTRICAL WIRE LIGHTING 4 AWG
- SPV.0060.1004 TWIN ARM TEMPORARY WOOD POLE LIGHTING UNITS 60-FT
- SPV.0060.1005 POLES WOOD 60-FT
- SPV.0060.1006 REMOVING ARM AND LUMINAIRE
- SPV.0090.1001 CONDUIT FLEXIBLE METALLIC 3-INCH
- SPV.0090.1002 CABLE AERIAL ALUMINUM 4 AWG QUADRUPLEX
- SPV.0090.1003 CABLE IN DUCT 3-4 AWG, 1-8 AWG

SYSTEM	NETWORK	LOCATION	OFFSET	652.0135 CONDUIT RIGID METALLIC 3-INCH	655.0620 ELECTRICAL WIRE LIGHTING 8 AWG	655.0630 ELECTRICAL WIRE LIGHTING 4 AWG	SPV.0060.1004 TWIN ARM TEMPORARY WOOD POLE LIGHTING UNITS 60-FT	SPV.0060.1005 WOOD 60-FT	SPV.0060.1006 ARM AND LUMINAIRE	SPV.0090.1001 CONDUIT FLEXIBLE METALLIC 3-INCH	SPV.0090.1002 CABLE AERIAL ALUMINUM 4 AWG	SPV.0090.1003 CABLE IN DUCT 3-4 AWG, 1-8 AWG
				LF	LF	LF	EACH	EACH	EACH	LF	LF	LF
HL-67-EL	AB/N/G	HL-67-EL - LPB101	164' RT	25	--	--	--	--	--	--	--	--
HL-67-EL	C/D/N/G	HL-67-EL - LPB101	164' RT	25	--	--	--	--	--	--	--	--
HL-67-EL	AB/N/G	HL-67-EL - WP-EL-01	164' RT	120	190	570	--	--	--	--	--	--
HL-67-EL	C/D/N/G	HL-67-EL - WP-EL-01	164' RT	120	190	570	--	--	--	--	--	--
HL-67-EL	AB/N/G	WP-EL-01 - WP-EL-02	--	--	--	--	--	--	--	--	230	--
HL-67-EL	C/D/N/G	WP-EL-01 - WP-EL-02	--	--	--	--	--	--	--	--	230	--
HL-67-EL	WP-EL-01	655+50.00	C/L	--	--	--	1	--	2	--	--	--
HL-67-EL	WP-EL-02	655+50.00	160' RT	--	--	--	--	1	--	--	--	--
HL-67-EL	C/D/N/G	655+50 - 652+71	C/L	250	--	--	--	--	--	--	--	300
HL-67-EL	C/D/N/G	652+71	C/L	--	--	--	--	--	--	20	20	--
HL-67-EL	C/D/N/G	654+88	C/L	--	--	--	--	--	--	20	20	--
HL-67-EL	AB/N/G	655+50 - 654+87.5	C/L	--	--	--	--	--	--	--	--	80
<b>TOTAL (1100)</b>				<b>540</b>	<b>380</b>	<b>1,140</b>	<b>1</b>	<b>1</b>	<b>2</b>	<b>40</b>	<b>500</b>	<b>380</b>

CATEGORY 1100  
LIGHTING UNIT QUANTITIES

655.0610 ELECTRICAL WIRE LIGHTING 12 AWG

SYSTEM	STATION	OFFSET	655.0610 ELECTRICAL WIRE LIGHTING 12 AWG L.F.	COMMENTS
HL-67-EL	654+87.50	C/L	246	SALVAGED LIGHTING UNIT
<b>TOTAL (1100)</b>				<b>246</b>

Addendum No. 01  
ID 1060-43-82  
Added Sheet 123A  
May 31, 2016

SCHEDULE OF ITEMS

REVISED:

CONTRACT:  
20160614007

PROJECT(S):  
1060-43-82

FEDERAL ID(S):  
N/A

CONTRACTOR : \_\_\_\_\_

LINE NO	ITEM DESCRIPTION	APPROX. QUANTITY AND UNITS	UNIT PRICE		BID AMOUNT	
			DOLLARS	CTS	DOLLARS	CTS

SECTION 0001 Roadway Items

0010	108.4400 CPM Progress Schedule	EACH 1.000	.		.	
0020	201.0105 Clearing	STA 4.000	.		.	
0030	201.0120 Clearing	ID 288.000	.		.	
0040	201.0205 Grubbing	STA 4.000	.		.	
0050	201.0220 Grubbing	ID 288.000	.		.	
0060	203.0100 Removing Small Pipe Culverts	EACH 6.000	.		.	
0070	203.0200 Removing Old Structure (station) 0001. Sta. 20+00	LUMP		LUMP	.	
0080	203.0210.S Abatement of Asbestos Containing Material (structure) 0001. B-67-55	LUMP		LUMP	.	
0090	204.0120 Removing Asphaltic Surface Milling	SY 2,000.000	.		.	
0100	204.0157 Removing Concrete Barrier	LF 918.000	.		.	

## SCHEDULE OF ITEMS

REVISED:

CONTRACT:  
20160614007PROJECT(S):  
1060-43-82FEDERAL ID(S):  
N/A

CONTRACTOR : \_\_\_\_\_

LINE NO	ITEM DESCRIPTION	APPROX. QUANTITY AND UNITS	UNIT PRICE		BID AMOUNT	
			DOLLARS	CTS	DOLLARS	CTS
0110	204.0165 Removing Guardrail	301.000 LF	.	.	.	.
0120	204.0170 Removing Fence	195.000 LF	.	.	.	.
0130	204.0220 Removing Inlets	2.000 EACH	.	.	.	.
0140	204.0280 Sealing Pipes	1.000 EACH	.	.	.	.
0150	205.0100 Excavation Common	5,274.540 CY	.	.	.	.
0160	206.1000 Excavation for Structures Bridges (structure) 0001. B-67-345	LUMP	LUMP	.	.	.
0170	208.0100 Borrow	854.990 CY	.	.	.	.
0180	210.0100 Backfill Structure	500.000 CY	.	.	.	.
0190	213.0100 Finishing Roadway (project) 0001. 1060-43-82	1.000 EACH	.	.	.	.
0200	305.0120 Base Aggregate Dense 1 1/4-Inch	4,500.000 TON	.	.	.	.
0210	415.0410 Concrete Pavement Approach Slab	136.000 SY	.	.	.	.



## SCHEDULE OF ITEMS

REVISED:

CONTRACT:  
20160614007PROJECT(S):  
1060-43-82FEDERAL ID(S):  
N/A

CONTRACTOR : \_\_\_\_\_

LINE NO	ITEM DESCRIPTION	APPROX. QUANTITY AND UNITS	UNIT PRICE		BID AMOUNT	
			DOLLARS	CTS	DOLLARS	CTS
0220	416.0160 Concrete Driveway 6-Inch	90.000 SY	.	.	.	.
0230	455.0605 Tack Coat	330.000 GAL	.	.	.	.
0240	460.2000 Incentive Density HMA Pavement	1,380.000 DOL	1.00000	.	1380.00	.
0260	460.5223 HMA Pavement 3 LT 58-28 S	857.000 TON	.	.	.	.
0270	460.5224 HMA Pavement 4 LT 58-28 S	612.000 TON	.	.	.	.
0280	460.6223 HMA Pavement 3 MT 58-28 S	788.000 TON	.	.	.	.
0290	465.0120 Asphaltic Surface Driveways and Field Entrances	32.000 TON	.	.	.	.
0300	465.0315 Asphaltic Flumes	28.000 SY	.	.	.	.
0310	502.0100 Concrete Masonry Bridges	983.000 CY	.	.	.	.
0320	502.3200 Protective Surface Treatment	1,560.000 SY	.	.	.	.
0330	502.3210 Pigmented Surface Sealer	63.000 SY	.	.	.	.

## SCHEDULE OF ITEMS

REVISED:

CONTRACT:  
20160614007PROJECT(S):  
1060-43-82FEDERAL ID(S):  
N/A

CONTRACTOR : \_\_\_\_\_

LINE NO	ITEM DESCRIPTION	APPROX. QUANTITY AND UNITS	UNIT PRICE		BID AMOUNT	
			DOLLARS	CTS	DOLLARS	CTS
0340	503.0155 Prestressed Girder Type I 54W-Inch	2,329.000 LF	.	.	.	.
0350	505.0400 Bar Steel Reinforcement HS Structures	10,890.000 LB	.	.	.	.
0360	505.0600 Bar Steel Reinforcement HS Coated Structures	159,880.000 LB	.	.	.	.
0370	506.2605 Bearing Pads Elastomeric Non-Laminated	36.000 EACH	.	.	.	.
0380	506.4000 Steel Diaphragms (structure) 0001. B-67-345	32.000 EACH	.	.	.	.
0390	511.1200 Temporary Shoring (structure) 0001. B-67-345	960.000 SF	.	.	.	.
0400	516.0500 Rubberized Membrane Waterproofing	42.000 SY	.	.	.	.
0410	517.1010.S Concrete Staining (structure) 0001. B-67-345	13,000.000 SF	.	.	.	.
0420	520.8000 Concrete Collars for Pipe	1.000 EACH	.	.	.	.
0430	521.1012 Apron Endwalls for Culvert Pipe Steel 12-Inch	1.000 EACH	.	.	.	.
0440	522.1012 Apron Endwalls for Culvert Pipe Reinforced Concrete 12-Inch	7.000 EACH	.	.	.	.

## SCHEDULE OF ITEMS

REVISED:

CONTRACT:  
20160614007PROJECT(S):  
1060-43-82FEDERAL ID(S):  
N/A

CONTRACTOR : \_\_\_\_\_

LINE NO	ITEM DESCRIPTION	APPROX. QUANTITY AND UNITS	UNIT PRICE		BID AMOUNT	
			DOLLARS	CTS	DOLLARS	CTS
0450	522.1015 Apron Endwalls for Culvert Pipe Reinforced Concrete 15-Inch	EACH 6.000	.		.	
0460	522.1024 Apron Endwalls for Culvert Pipe Reinforced Concrete 24-Inch	EACH 4.000	.		.	
0470	522.1030 Apron Endwalls for Culvert Pipe Reinforced Concrete 30-Inch	EACH 2.000	.		.	
0480	523.0524 Apron Endwalls for Culvert Pipe Reinforced Concrete Horizontal Elliptical 24x38-Inch	EACH 1.000	.		.	
0490	550.1100 Piling Steel HP 10-Inch X 42 Lb	LF 2,080.000	.		.	
0500	550.1120 Piling Steel HP 12-Inch X 53 Lb	LF 2,145.000	.		.	
0510	601.0409 Concrete Curb & Gutter 30-Inch Type A	LF 76.000	.		.	
0520	601.0411 Concrete Curb & Gutter 30-Inch Type D	LF 1,881.000	.		.	
0530	601.0413 Concrete Curb & Gutter 6-Inch Sloped 30-Inch Type G	LF 20.000	.		.	
0540	601.0600 Concrete Curb Pedestrian	LF 94.000	.		.	

## SCHEDULE OF ITEMS

REVISED:

CONTRACT:  
20160614007PROJECT(S):  
1060-43-82FEDERAL ID(S):  
N/A

CONTRACTOR : \_\_\_\_\_

LINE NO	ITEM DESCRIPTION	APPROX. QUANTITY AND UNITS	UNIT PRICE		BID AMOUNT	
			DOLLARS	CTS	DOLLARS	CTS
0550	602.0410 Concrete Sidewalk 5-Inch	10,899.000 SF	.	.	.	.
0560	602.0505 Curb Ramp Detectable Warning Field Yellow	80.000 SF	.	.	.	.
0570	603.1142 Concrete Barrier Type S42	130.000 LF	.	.	.	.
0580	603.1156 Concrete Barrier Type S56	120.000 LF	.	.	.	.
0590	603.1342 Concrete Barrier Type S42B	51.000 LF	.	.	.	.
0600	603.3535 Concrete Barrier Transition Type S36 to S42	2.000 EACH	.	.	.	.
0610	603.3559 Concrete Barrier Transition Type S42 to S56	4.000 EACH	.	.	.	.
0620	603.8000 Concrete Barrier Temporary Precast Delivered	7,895.000 LF	.	.	.	.
0630	603.8125 Concrete Barrier Temporary Precast Installed	10,370.000 LF	.	.	.	.
0640	604.0400 Slope Paving Concrete	500.000 SY	.	.	.	.
0650	606.0100 Riprap Light	86.000 CY	.	.	.	.

## SCHEDULE OF ITEMS

REVISED:

CONTRACT:  
20160614007PROJECT(S):  
1060-43-82FEDERAL ID(S):  
N/A

CONTRACTOR : \_\_\_\_\_

LINE NO	ITEM DESCRIPTION	APPROX. QUANTITY AND UNITS	UNIT PRICE		BID AMOUNT	
			DOLLARS	CTS	DOLLARS	CTS
0660	608.0312 Storm Sewer Pipe Reinforced Concrete Class III 12-Inch	481.000 LF	.	.	.	.
0670	608.0315 Storm Sewer Pipe Reinforced Concrete Class III 15-Inch	462.000 LF	.	.	.	.
0680	608.0324 Storm Sewer Pipe Reinforced Concrete Class III 24-Inch	862.000 LF	.	.	.	.
0690	608.0330 Storm Sewer Pipe Reinforced Concrete Class III 30-Inch	96.000 LF	.	.	.	.
0700	608.0412 Storm Sewer Pipe Reinforced Concrete Class IV 12-Inch	51.000 LF	.	.	.	.
0710	608.0415 Storm Sewer Pipe Reinforced Concrete Class IV 15-Inch	29.000 LF	.	.	.	.
0720	608.0424 Storm Sewer Pipe Reinforced Concrete Class IV 24-Inch	46.000 LF	.	.	.	.
0730	608.6012 Storm Sewer Pipe Composite 12-Inch	24.000 LF	.	.	.	.
0740	610.0424 Storm Sewer Pipe Reinforced Concrete Horizontal Elliptical Class HE-IV 24x38-Inch	77.000 LF	.	.	.	.
0750	611.0530 Manhole Covers Type J	6.000 EACH	.	.	.	.
0760	611.0612 Inlet Covers Type C	2.000 EACH	.	.	.	.

## SCHEDULE OF ITEMS

REVISED:

CONTRACT:  
20160614007PROJECT(S):  
1060-43-82FEDERAL ID(S):  
N/A

CONTRACTOR : \_\_\_\_\_

LINE NO	ITEM DESCRIPTION	APPROX. QUANTITY AND UNITS	UNIT PRICE		BID AMOUNT	
			DOLLARS	CTS	DOLLARS	CTS
0770	611.0624 Inlet Covers Type H	13.000 EACH	.		.	
0780	611.0642 Inlet Covers Type MS	2.000 EACH	.		.	
0790	611.1004 Catch Basins 4-FT Diameter	1.000 EACH	.		.	
0800	611.2004 Manholes 4-FT Diameter	5.000 EACH	.		.	
0810	611.2006 Manholes 6-FT Diameter	1.000 EACH	.		.	
0820	611.3004 Inlets 4-FT Diameter	10.000 EACH	.		.	
0830	611.3230 Inlets 2x3-FT	7.000 EACH	.		.	
0840	611.3901 Inlets Median 1 Grate	3.000 EACH	.		.	
0850	612.0406 Pipe Underdrain Wrapped 6-Inch	620.000 LF	.		.	
0860	614.0150 Anchor Assemblies for Steel Plate Beam Guard	4.000 EACH	.		.	
0870	614.0905 Crash Cushions Temporary	10.000 EACH	.		.	

## SCHEDULE OF ITEMS

REVISED:

CONTRACT:  
20160614007PROJECT(S):  
1060-43-82FEDERAL ID(S):  
N/A

CONTRACTOR : \_\_\_\_\_

LINE NO	ITEM DESCRIPTION	APPROX. QUANTITY AND UNITS	UNIT PRICE		BID AMOUNT	
			DOLLARS	CTS	DOLLARS	CTS
0880	616.0100 Fence Woven Wire (height) 0001. 4 Ft	111.000 LF	.	.	.	.
0890	616.0206 Fence Chain Link 6-FT	75.000 LF	.	.	.	.
0900	616.0329 Gates Chain Link (width) 0001. 5 Ft	2.000 EACH	.	.	.	.
0910	616.0700.S Fence Safety	215.000 LF	.	.	.	.
0920	618.0100 Maintenance And Repair of Haul Roads (project) 0001. 1060-43-82	1.000 EACH	.	.	.	.
0930	619.1000 Mobilization	1.000 EACH	.	.	.	.
0940	624.0100 Water	585.000 MGAL	.	.	.	.
0950	627.0200 Mulching	2,500.000 SY	.	.	.	.
0960	628.1504 Silt Fence	2,883.000 LF	.	.	.	.
0970	628.1520 Silt Fence Maintenance	3,044.000 LF	.	.	.	.
0980	628.1905 Mobilizations Erosion Control	3.000 EACH	.	.	.	.

## SCHEDULE OF ITEMS

REVISED:

CONTRACT:  
20160614007PROJECT(S):  
1060-43-82FEDERAL ID(S):  
N/A

CONTRACTOR : \_\_\_\_\_

LINE NO	ITEM DESCRIPTION	APPROX. QUANTITY AND UNITS	UNIT PRICE		BID AMOUNT	
			DOLLARS	CTS	DOLLARS	CTS
0990	628.1910 Mobilizations Emergency Erosion Control	4.000 EACH	.	.	.	.
1000	628.2006 Erosion Mat Urban Class I Type A	2,414.000 SY	.	.	.	.
1010	628.2008 Erosion Mat Urban Class I Type B	341.000 SY	.	.	.	.
1020	628.2023 Erosion Mat Class II Type B	6,683.000 SY	.	.	.	.
1030	628.6505 Soil Stabilizer Type A	1.500 ACRE	.	.	.	.
1040	628.6510 Soil Stabilizer Type B	2.000 ACRE	.	.	.	.
1050	628.7005 Inlet Protection Type A	20.000 EACH	.	.	.	.
1060	628.7010 Inlet Protection Type B	6.000 EACH	.	.	.	.
1070	628.7015 Inlet Protection Type C	14.000 EACH	.	.	.	.
1080	628.7504 Temporary Ditch Checks	224.000 LF	.	.	.	.
1090	628.7555 Culvert Pipe Checks	7.000 EACH	.	.	.	.



## SCHEDULE OF ITEMS

REVISED:

CONTRACT:  
20160614007PROJECT(S):  
1060-43-82FEDERAL ID(S):  
N/A

CONTRACTOR : \_\_\_\_\_

LINE NO	ITEM DESCRIPTION	APPROX. QUANTITY AND UNITS	UNIT PRICE		BID AMOUNT	
			DOLLARS	CTS	DOLLARS	CTS
1100	628.7560 Tracking Pads	3.000 EACH	.		.	
1110	628.7570 Rock Bags	5.000 EACH	.		.	
1120	629.0210 Fertilizer Type B	10.300 CWT	.		.	
1130	630.0120 Seeding Mixture No. 20	304.000 LB	.		.	
1140	630.0200 Seeding Temporary	96.000 LB	.		.	
1150	631.0300 Sod Water	119.000 MGAL	.		.	
1160	631.1000 Sod Lawn	4,265.000 SY	.		.	
1170	631.1100 Sod Erosion Control	105.000 SY	.		.	
1180	634.0622 Posts Wood 4x6-Inch X 22-FT	7.000 EACH	.		.	
1190	634.0816 Posts Tubular Steel 2x2-Inch X 16-FT	9.000 EACH	.		.	
1200	637.2210 Signs Type II Reflective H	15.000 SF	.		.	

## SCHEDULE OF ITEMS

REVISED:

CONTRACT:  
20160614007PROJECT(S):  
1060-43-82FEDERAL ID(S):  
N/A

CONTRACTOR : \_\_\_\_\_

LINE NO	ITEM DESCRIPTION	APPROX. QUANTITY AND UNITS	UNIT PRICE		BID AMOUNT	
			DOLLARS	CTS	DOLLARS	CTS
1210	637.2230 Signs Type II Reflective F	24.000 SF	.		.	
1220	638.2102 Moving Signs Type II	2.000 EACH	.		.	
1230	638.2602 Removing Signs Type II	9.000 EACH	.		.	
1240	638.3000 Removing Small Sign Supports	13.000 EACH	.		.	
1250	643.0100 Traffic Control (project) 0001. 1060-43-82	1.000 EACH	.		.	
1260	643.0300 Traffic Control Drums	6,374.000 DAY	.		.	
1270	643.0420 Traffic Control Barricades Type III	7,747.000 DAY	.		.	
1280	643.0500 Traffic Control Flexible Tubular Marker Posts	92.000 EACH	.		.	
1290	643.0600 Traffic Control Flexible Tubular Marker Bases	92.000 EACH	.		.	
1300	643.0705 Traffic Control Warning Lights Type A	7,085.000 DAY	.		.	
1310	643.0715 Traffic Control Warning Lights Type C	3,457.000 DAY	.		.	

## SCHEDULE OF ITEMS

REVISED:

CONTRACT:  
20160614007PROJECT(S):  
1060-43-82FEDERAL ID(S):  
N/A

CONTRACTOR : \_\_\_\_\_

LINE NO	ITEM DESCRIPTION	APPROX. QUANTITY AND UNITS	UNIT PRICE		BID AMOUNT	
			DOLLARS	CTS	DOLLARS	CTS
1320	643.0800 Traffic Control Arrow Boards	76.000 DAY	.	.	.	.
1330	643.0900 Traffic Control Signs	9,034.000 DAY	.	.	.	.
1340	643.0910 Traffic Control Covering Signs Type I	17.000 EACH	.	.	.	.
1350	643.0920 Traffic Control Covering Signs Type II	89.000 EACH	.	.	.	.
1360	643.1000 Traffic Control Signs Fixed Message	952.000 SF	.	.	.	.
1370	643.1050 Traffic Control Signs PCMS	615.000 DAY	.	.	.	.
1380	643.1055.S Truck or Trailer Mounted Attenuator	50.000 DAY	.	.	.	.
1390	643.2000 Traffic Control Detour (project) 0001. 1060-43-82	1.000 EACH	.	.	.	.
1400	643.3000 Traffic Control Detour Signs	61,783.000 DAY	.	.	.	.
1410	645.0130 Geotextile Type R	342.000 SY	.	.	.	.
1420	646.0106 Pavement Marking Epoxy 4-Inch	10,082.000 LF	.	.	.	.

## SCHEDULE OF ITEMS

REVISED:

CONTRACT:  
20160614007PROJECT(S):  
1060-43-82FEDERAL ID(S):  
N/A

CONTRACTOR : \_\_\_\_\_

LINE NO	ITEM DESCRIPTION	APPROX. QUANTITY AND UNITS	UNIT PRICE		BID AMOUNT	
			DOLLARS	CTS	DOLLARS	CTS
1430	646.0600 Removing Pavement Markings	6,500.000 LF	.	.	.	.
1440	647.0566 Pavement Marking Stop Line Epoxy 18-Inch	33.000 LF	.	.	.	.
1450	649.0400 Temporary Pavement Marking Removable Tape 4-Inch	9,200.000 LF	.	.	.	.
1460	649.2100 Temporary Raised Pavement Markers Type I	392.000 EACH	.	.	.	.
1470	652.0135 Conduit Rigid Metallic 3-Inch	540.000 LF	.	.	.	.
1490	655.0610 Electrical Wire Lighting 12 AWG	246.000 LF	.	.	.	.
1500	690.0150 Sawing Asphalt	799.000 LF	.	.	.	.
1510	690.0250 Sawing Concrete	415.000 LF	.	.	.	.
1520	715.0502 Incentive Strength Concrete Structures	5,898.000 DOL	1.00000	.	5898.00	.
1530	SPV.0045 Special 0001. Portable Speed Trailer	400.000 DAY	.	.	.	.
1540	SPV.0060 Special 0001. Mobilizations Emergency Pavement Repair	4.000 EACH	.	.	.	.

## SCHEDULE OF ITEMS

REVISED:

CONTRACT:  
20160614007PROJECT(S):  
1060-43-82FEDERAL ID(S):  
N/A

CONTRACTOR : \_\_\_\_\_

LINE NO	ITEM DESCRIPTION	APPROX. QUANTITY AND UNITS	UNIT PRICE		BID AMOUNT	
			DOLLARS	CTS	DOLLARS	CTS
1550	SPV.0060 Special 0002. Welding Sewer Access Covers	9.000 EACH	.		.	
1560	SPV.0060 Special 0003. Removing Welds From Sewer Access Covers	1.000 EACH	.		.	
1570	SPV.0060 Special 0004. Traffic Control Close Open Freeway Entrance Ramp	12.000 EACH	.		.	
1580	SPV.0060 Special 0005. Traffic Control Close Open Freeway System Ramp	10.000 EACH	.		.	
1590	SPV.0060 Special 0006. Traffic Control Freeway Closure	12.000 EACH	.		.	
1600	SPV.0060 Special 0007. Crash Cushions Temporary Special	2.000 EACH	.		.	
1610	SPV.0060 Special 0008. Reconnect Existing Storm Sewer Laterals	2.000 EACH	.		.	
1620	SPV.0060 Special 0009. Inlet Covers Type 27-M Bolted	4.000 EACH	.		.	
1630	SPV.0060 Special 0010. Concrete Barrier Transition Type GM to Type S36	2.000 EACH	.		.	
1640	SPV.0060 Special 0011. Concrete Barrier Type S42 End Anchor	4.000 EACH	.		.	

## SCHEDULE OF ITEMS

REVISED:

CONTRACT:  
20160614007PROJECT(S):  
1060-43-82FEDERAL ID(S):  
N/A

CONTRACTOR : \_\_\_\_\_

LINE NO	ITEM DESCRIPTION	APPROX. QUANTITY AND UNITS	UNIT PRICE		BID AMOUNT	
			DOLLARS	CTS	DOLLARS	CTS
1650	SPV.0060 Special 0012. Reinforced Concrete Support Beam	1.000 EACH	.		.	
1660	SPV.0060 Special 0013. Adjusting Sanitary Manhole Covers	1.000 EACH	.		.	
1670	SPV.0060 Special 0014. Adjusting Water Valve Boxes	4.000 EACH	.		.	
1680	SPV.0060 Special 0015. Remove & Relocate Hydrant Assembly	1.000 EACH	.		.	
1690	SPV.0060 Special 0016. Water Service Lateral Offset	1.000 EACH	.		.	
1700	SPV.0060 Special 1001. Lamp Disposal High Intensity Discharge	4.000 EACH	.		.	
1710	SPV.0060 Special 1002. Lighting Units Salvaged	1.000 EACH	.		.	
1720	SPV.0075 Special 0001. Pavement Cleanup Project 1060-43-82	100.000 HRS	.		.	
1730	SPV.0090 Special 0001. Concrete Barrier Temporary Precast Delivered Special	613.000 LF	.		.	
1740	SPV.0090 Special 0002. Wet Reflective Removeable Temporary Pavement Marking Tape 4-Inch	12,025.000 LF	.		.	

## SCHEDULE OF ITEMS

REVISED:

CONTRACT:  
20160614007PROJECT(S):  
1060-43-82FEDERAL ID(S):  
N/A

CONTRACTOR : \_\_\_\_\_

LINE NO	ITEM DESCRIPTION	APPROX. QUANTITY AND UNITS	UNIT PRICE		BID AMOUNT	
			DOLLARS	CTS	DOLLARS	CTS
1750	SPV.0090 Special 0003. Pavement Marking Contrast Epoxy 7-Inch	1,450.000 LF	.	.	.	.
1760	SPV.0090 Special 0004. Heavy Duty Silt Fence	161.000 LF	.	.	.	.
1770	SPV.0090 Special 1001. Conduit Flexible Metallic 3-Inch	40.000 LF	.	.	.	.
1780	SPV.0090 Special 2001. Fence Decorative Bridge	588.000 LF	.	.	.	.
1790	SPV.0090 Special 2002. Removing Existing Timber Piling	460.000 LF	.	.	.	.
1800	SPV.0105 Special 0001. Survey Project 1060-43-82	LUMP	LUMP	.	.	.
1810	SPV.0105 Special 1001. Maintenance of Lighting System	LUMP	LUMP	.	.	.
1820	SPV.0135 Special 0001. Vibration Monitoring	2.000 MON	.	.	.	.
1830	SPV.0180 Special 6001. Topsoil Special	10,640.000 SY	.	.	.	.
1840	SPV.0195 Special 0001. Asphaltic Pavement Repair Special	40.000 TON	.	.	.	.
1850	SPV.0195 Special 0002. Cold Patch	7.000 TON	.	.	.	.

## SCHEDULE OF ITEMS

REVISED:

CONTRACT:  
20160614007PROJECT(S):  
1060-43-82FEDERAL ID(S):  
N/A

CONTRACTOR : \_\_\_\_\_

LINE NO	ITEM DESCRIPTION	APPROX. QUANTITY AND UNITS	UNIT PRICE		BID AMOUNT	
			DOLLARS	CTS	DOLLARS	CTS
1860	450.4000 HMA Cold Weather Paving	607.000 TON	.	.	.	.
1870	204.0195 Removing Concrete Bases	1.000 EACH	.	.	.	.
1880	654.0230 Concrete Control Cabinet Bases Type L30	1.000 EACH	.	.	.	.
1890	655.0620 Electrical Wire Lighting 8 AWG	380.000 LF	.	.	.	.
1900	655.0630 Electrical Wire Lighting 4 AWG	1,140.000 LF	.	.	.	.
1910	655.0640 Electrical Wire Lighting 1 AWG	18.000 LF	.	.	.	.
1920	656.0400 Electrical Service Main Lugs Only Meter Pedestal (location) 0001. 654+23. 04	LUMP	LUMP	.	.	.
1930	659.2230 Lighting Control Cabinets 240/480 30-Inch	1.000 EACH	.	.	.	.
1940	SPV.0060 Special 1003. Removing Lighting Control Cabinets For Stockpile	1.000 EACH	.	.	.	.
1950	SPV.0060 Special 1004. Twin Arm Temporary Wood Pole Lighting Units 60-FT	1.000 EACH	.	.	.	.



SCHEDULE OF ITEMS

REVISED:

CONTRACT:  
20160614007

PROJECT(S):  
1060-43-82

FEDERAL ID(S):  
N/A

CONTRACTOR : \_\_\_\_\_

LINE NO	ITEM DESCRIPTION	APPROX. QUANTITY AND UNITS	UNIT PRICE		BID AMOUNT	
			DOLLARS	CTS	DOLLARS	CTS
1960	SPV.0060 Special 1005. Poles Wood 60-FT	1.000 EACH	.		.	
1970	SPV.0060 Special 1006. Removing Arm and Luminaire	2.000 EACH	.		.	
1980	SPV.0090 Special 1002. Cable Aerial Aluminum 4 AWG Quadruplex	500.000 LF	.		.	
1990	SPV.0090 Special 1003. Cable In Duct 3-4 AWG, 1-8 AWG	380.000 LF	.		.	
	SECTION 0001 TOTAL				.	
	TOTAL BID				.	