



# Wisconsin Department of Transportation

---

June 13, 2016

**Division of Transportation Systems Development**

Bureau of Project Development  
 4802 Sheboygan Avenue, Rm 601  
 P O Box 7916  
 Madison, WI 53707-7916

Telephone: (608) 266-1631  
 Facsimile (FAX): (608) 266-8459

**NOTICE TO ALL CONTRACTORS:**

**Proposal #07: 1060-43-82  
 East-West Freeway  
 Elm Grove Rd Bridge over IH 94  
 IH 94  
 Waukesha County**

**Letting of June 14, 2016**

This is Addendum No. 03, which provides for the following:

**Schedule of Items**

Revised Bid Item Quantities					
Bid Item	Item Description	Unit	Old Quantity	Revised Quantity	Proposal Total
203.0100	Removing Small Pipe Culverts	Each	6	3	9

Added Bid Item Quantities					
Bid Item	Item Description	Unit	Old Quantity	Revised Quantity	Proposal Total
204.0190	Removing Surface Drains	Each	0	3	3
204.0245	Removing Storm Sewer (Size) 0001. 6-Inch	LF	0	54	54
204.0245	Removing Storm Sewer (Size) 0002. 12-Inch	LF	0	168	168

**Plan Sheets**

Revised Plan Sheets	
Plan Sheet	Plan Sheet Title (brief description of changes to sheet)
30	Removal Plan (corrected to include additional drainage removal label)
31	Removal Plan (revised to include additional drainage removals)
99	Miscellaneous Quantities (revised to include additional drainage removal items)

**Schedule of Items**

Attached, dated June 13, 2016, are the revised Schedule of Items Pages 1 and 19.

**Plan Sheets**

The following 8½ x 11-inch sheets are attached and made part of the plans for this proposal:

Revised: 30, 31, and 99.

The responsibility for notifying potential subcontractors and suppliers of these changes remains with the prime contractor.

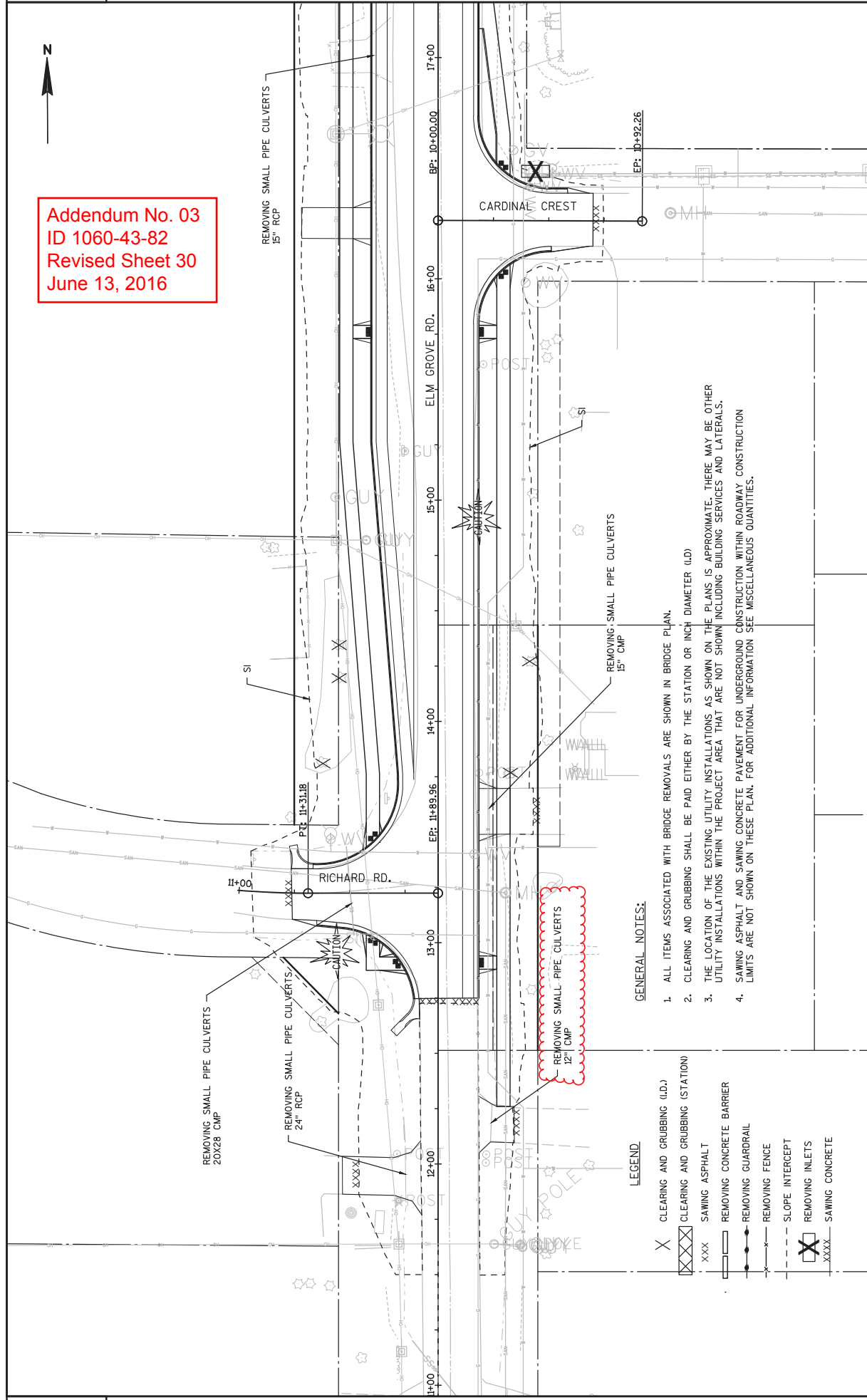
Sincerely,

*Mike Coleman*

Proposal Development Specialist  
Proposal Management Section

END OF ADDENDUM

Addendum No. 03  
 ID 1060-43-82  
 Revised Sheet 30  
 June 13, 2016



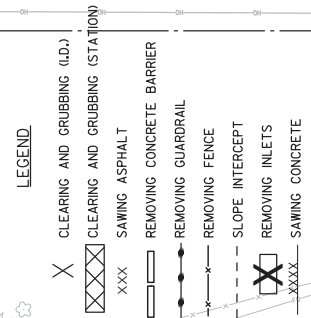
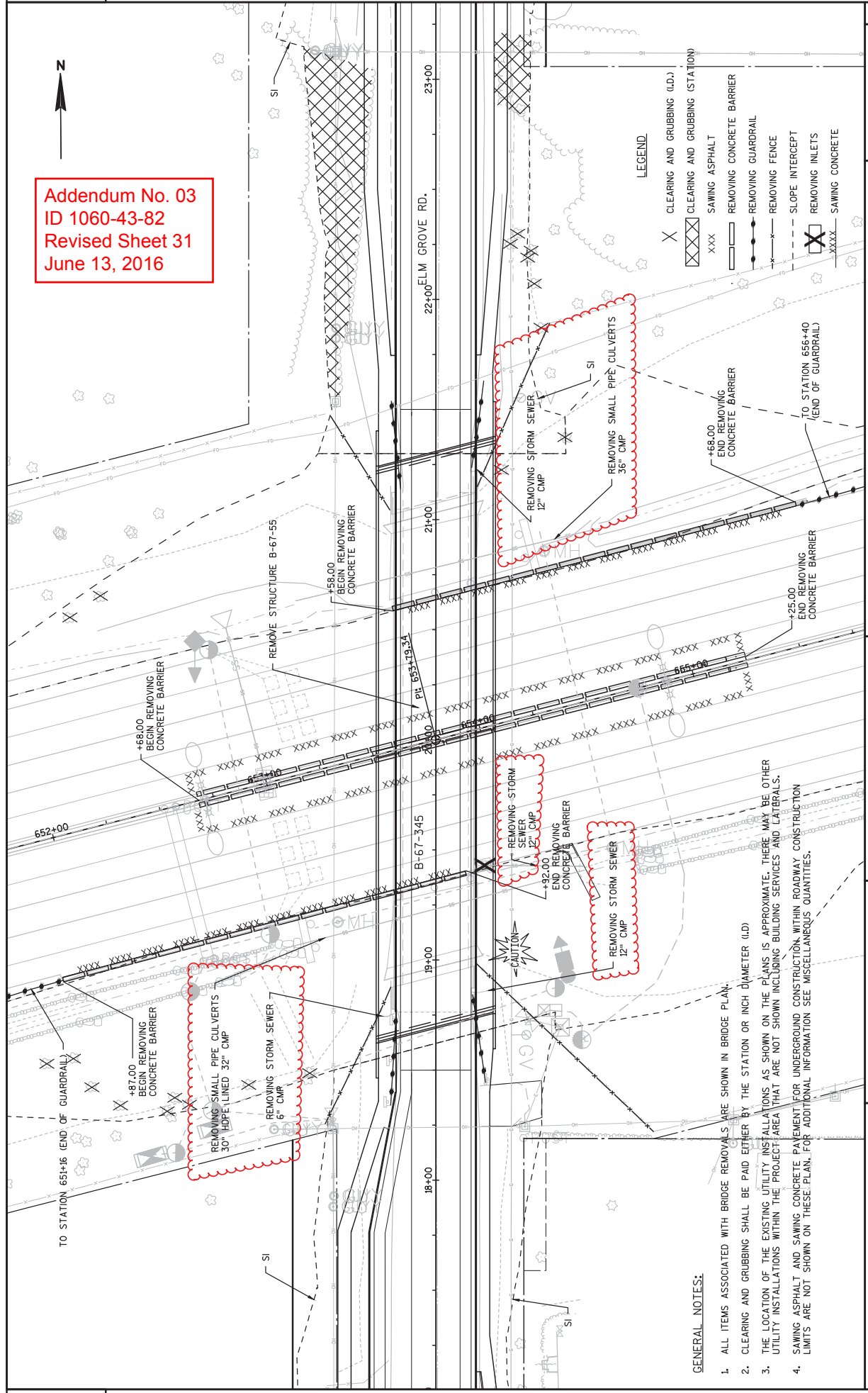
**GENERAL NOTES:**

1. ALL ITEMS ASSOCIATED WITH BRIDGE REMOVALS ARE SHOWN IN BRIDGE PLAN.
2. CLEARING AND GRUBBING SHALL BE PAID EITHER BY THE STATION OR INCH DIAMETER (I.D.)
3. THE LOCATION OF THE EXISTING UTILITY INSTALLATIONS AS SHOWN ON THE PLANS IS APPROXIMATE. THERE MAY BE OTHER UTILITY INSTALLATIONS WITHIN THE PROJECT AREA THAT ARE NOT SHOWN INCLUDING BUILDING SERVICES AND LATERALS.
4. SAWING ASPHALT AND SAWING CONCRETE PAVEMENT FOR UNDERGROUND CONSTRUCTION WITHIN ROADWAY CONSTRUCTION LIMITS ARE NOT SHOWN ON THESE PLANS. FOR ADDITIONAL INFORMATION SEE MISCELLANEOUS QUANTITIES.

**LEGEND:**

- X CLEARING AND GRUBBING (I.D.)
- XXX SAWING ASPHALT
- XXXX REMOVING CONCRETE BARRIER
- XXXX REMOVING GUARDRAIL
- XXXX REMOVING FENCE
- XXXX SLOPE INTERCEPT
- XXXX REMOVING INLETS
- XXXX SAWING CONCRETE

Addendum No. 03  
 ID 1060-43-82  
 Revised Sheet 31  
 June 13, 2016



**GENERAL NOTES:**

1. ALL ITEMS ASSOCIATED WITH BRIDGE REMOVALS ARE SHOWN IN BRIDGE PLAN.
2. CLEARING AND GRUBBING SHALL BE PAID EITHER BY THE STATION OR INCH DIAMETER (I.D.)
3. THE LOCATION OF THE EXISTING UTILITY INSTALLATIONS AS SHOWN ON THE PLANS IS APPROXIMATE. THERE MAY BE OTHER UTILITY INSTALLATIONS WITHIN THE PROJECT AREA THAT ARE NOT SHOWN INCLUDING BUILDING SERVICES AND LATERALS.
4. SAWING ASPHALT AND SAWING CONCRETE PAVEMENT FOR UNDERGROUND CONSTRUCTION WITHIN ROADWAY CONSTRUCTION LIMITS ARE NOT SHOWN ON THESE PLANS. FOR ADDITIONAL INFORMATION SEE MISCELLANEOUS QUANTITIES.

Addendum No. 03  
 ID 1060-43-82  
 Revised Sheet 99  
 June 13, 2016

CPM PROGRESS SCHEDULE

108.4400

CFM

PROGRESS SCHEDULE

EACH

PROJECT

1000 1060-43-82 1

TOTAL: 1

REMOVING DRAINAGE ITEMS

CA CATEGORY	ROADWAY	STATION	OFFSET FT	PIPE SIZE	*PIPE MATERIAL	*PIPE LENGTH FT	203.0100 REMOVING SMALL PIPE CULVERTS	204.0190 REMOVING SURFACE DRAINS	204.0220 REMOVING INLETS	204.0245.0001 REMOVING STORM SEWER 6-INCH LF	204.0245.0002 REMOVING STORM SEWER 12-INCH LF	SPV_0060.0008 RECONNECT EXISTING STORM SEWER LATERALS	NOTES
1000	ELM GROVE	11+94	17.3	24"	RCP	25	1						
	ELM GROVE	12+19	30.5	12"	CMP	22	1						
	RICHARD ROAD	11+50	40.0	20" X 28"	CMP	40	1						
	ELM GROVE	13+63	22.0	12"	CMP	29	1						
	ELM GROVE	14+05	EXIST DITCH										
	CARDINAL CREST DR.	16+46	43.4	LT					1				SHORTEN PVC PIPE TO MATCH INTO PROPOSED DITCH
	ELM GROVE	17+00	28.0	15"	RCP	26	1						RECONNECT 12-INCH RCP TO STRUCTURE 106
	ELM GROVE	18+76	18.5	6"	CMP	54		1		54			CONCRETE FLUME ATTACHED TO CMP PIPE
	ELM GROVE	18+85	16.8	12"	CMP	68		1			68		CONCRETE FLUME ATTACHED TO CMP PIPE
	ELM GROVE	21+13	18.0	12"	CMP	54		1			54		CONCRETE FLUME ATTACHED TO CMP PIPE
	ELM GROVE	23+74	32.0	18"	RCP	27	1						
	ELM GROVE	25+70	30.0	15"	RCP	26	1						
	IH 94	653+63	74.4	32"	HDPE LINED CMP	143	1						
	IH 94	653+87	60.6	12"	RCP	46			1		46		
	IH 94	653+99	75.8	36"	CMP	144	1						
							9	3	2	54	168	2	

\* PIPE LENGTHS AND MATERIAL ARE APPROXIMATIONS FOR BIDDING PURPOSES ONLY

PROJECT NO.: 1060-43-82

HWY: IH 94

COUNTY: WAUKESHA

MISCELLANEOUS QUANTITIES

SHEET: 99

E

FILE NAME:

PLOT DATE:

PLOT BY:

PLOT NAME:

PLOT SCALE: 1:1

SCHEDULE OF ITEMS

REVISED:

CONTRACT:  
20160614007

PROJECT(S):  
1060-43-82

FEDERAL ID(S):  
N/A

CONTRACTOR : \_\_\_\_\_

LINE NO	ITEM DESCRIPTION	APPROX. QUANTITY AND UNITS	UNIT PRICE		BID AMOUNT	
			DOLLARS	CTS	DOLLARS	CTS

SECTION 0001 Roadway Items

0010	108.4400 CPM Progress Schedule	EACH	1.000	.	.	.
0020	201.0105 Clearing	STA	4.000	.	.	.
0030	201.0120 Clearing	ID	288.000	.	.	.
0040	201.0205 Grubbing	STA	4.000	.	.	.
0050	201.0220 Grubbing	ID	288.000	.	.	.
0060	203.0100 Removing Small Pipe Culverts	EACH	9.000	.	.	.
0070	203.0200 Removing Old Structure (station) 0001. Sta. 20+00	LUMP		LUMP		.
0080	203.0210.S Abatement of Asbestos Containing Material (structure) 0001. B-67-55	LUMP		LUMP		.
0090	204.0120 Removing Asphaltic Surface Milling	SY	2,000.000	.	.	.
0100	204.0157 Removing Concrete Barrier	LF	918.000	.	.	.

SCHEDULE OF ITEMS

REVISED:

CONTRACT:  
20160614007

PROJECT(S):  
1060-43-82

FEDERAL ID(S):  
N/A

CONTRACTOR : \_\_\_\_\_

LINE NO	ITEM DESCRIPTION	APPROX. QUANTITY AND UNITS	UNIT PRICE		BID AMOUNT	
			DOLLARS	CTS	DOLLARS	CTS
1960	SPV.0060 Special 1005. Poles Wood 60-FT	1.000 EACH	.		.	
1970	SPV.0060 Special 1006. Removing Arm and Luminaire	2.000 EACH	.		.	
1980	SPV.0090 Special 1002. Cable Aerial Aluminum 4 AWG Quadruplex	500.000 LF	.		.	
1990	SPV.0090 Special 1003. Cable In Duct 3-4 AWG, 1-8 AWG	380.000 LF	.		.	
2000	204.0190 Removing Surface Drains	3.000 EACH	.		.	
2010	204.0245 Removing Storm Sewer (size) 0001. 6-Inch	54.000 LF	.		.	
2020	204.0245 Removing Storm Sewer (size) 0002. 12-Inch	168.000 LF	.		.	
	SECTION 0001 TOTAL				.	
	TOTAL BID				.	