



Wisconsin Department of Transportation

June 08, 2016

Division of Transportation Systems Development

Bureau of Project Development
 4802 Sheboygan Avenue, Rm 601
 P O Box 7916
 Madison, WI 53707-7916

Telephone: (608) 266-1631
 Facsimile (FAX): (608) 266-8459

NOTICE TO ALL CONTRACTORS:

Proposal #10: 1310-16-70 STH 50 B-30-54 EB Over Des Plaines River STH 50 Kenosha County

3738-02-73, WISC 2016 223 104th Street Village of Pleasant Prairie Corporate Dr to E. of Terwall Terrace STH 165 Kenosha County

3738-06-60, WISC 2016 224 104th Street Village of Pleasant Prairie IH 94 to STH 31 STH 165 Kenosha County

Letting of June 14, 2016

This is Addendum No. 02, which provides for the following:

Schedule of Items

Revised Bid Item Quantities					
Bid Item	Item Description	Unit	Old Quantity	Revised Quantity	Proposal Total
205.0100	Excavation Common	CY	23,917	-5,806	18,111
208.0100	Borrow	CY	24,997	2,775	27,772
611.1004	Catch Basins 4-FT Diameter	Each	3	3	6
611.2004	Manholes 4-FT Diameter	Each	5	-3	2

Plan Sheets

Revised Plan Sheets – 3738-02-73	
Plan Sheet	Plan Sheet Title (brief description of changes to sheet)
78	Storm Sewer Plan – Catch basin type revised
183	Miscellaneous Quantities – Earthwork Summary table updated
188	Miscellaneous Quantities – Storm Sewer Summary table updated
387	Earthwork Data Sheet – Cut areas updated
388	Earthwork Data Sheet – Cut areas updated

Schedule of Items

Attached, dated June 08, 2016, are the revised Schedule of Items Pages 3 and 13.

Plan Sheets

The following 8½ x 11-inch sheets are attached and made part of the plans for this proposal:

ID 3738-02-73

Revised: 78, 183, 188, 387 and 388.

The responsibility for notifying potential subcontractors and suppliers of these changes remains with the prime contractor.

Sincerely,

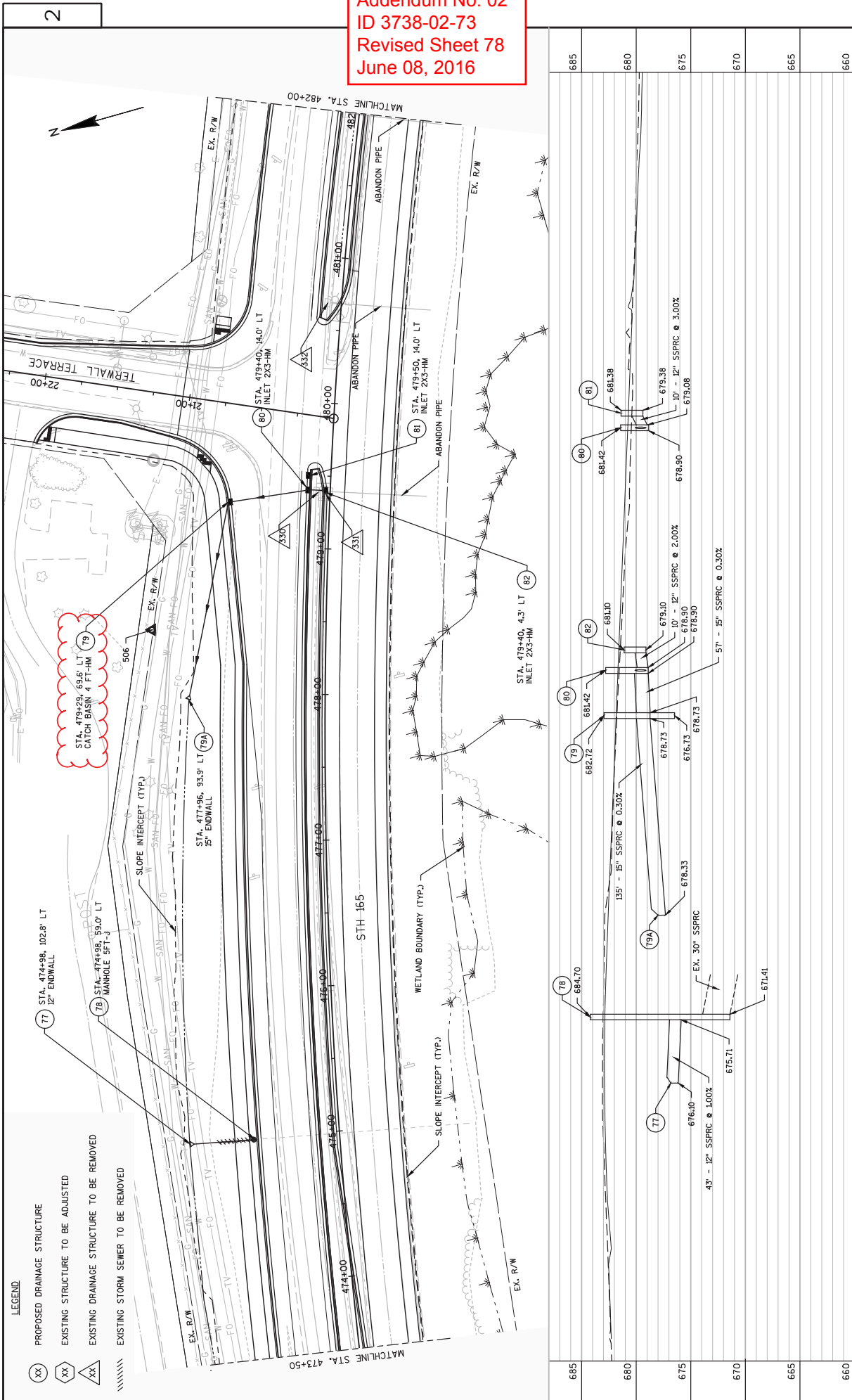
Mike Coleman

Proposal Development Specialist

Proposal Management Section

END OF ADDENDUM

Addendum No. 02
 ID 3738-02-73
 Revised Sheet 78
 June 08, 2016



PROJECT NO. 3738-02-73	COUNTY: KENOSHA	STORM SEWER PLAN	SHEET 78	E
HWY: STH 165	PLOT DATE: 6/6/2016 2:07 PM		PLOT SCALE: 1" = 60' .XREF	
FILE NAME: L:\JOBS\2013\20130212\CAD\ASITE\DWG\SHEETS\PLAN\02501_SS.DWG		PLOT BY: SCHWALTER, STEVEN		WISDOT/CADD'S SHEET 41
LAYOUT NAME: 02501_SS - 02508_SS				

ALL QUANTITIES ARE CATEGORY 0010 UNLESS OTHERWISE NOTED

REMOVING STORM SEWER

CATEGORY	STREET	STATION	STATION	LOCATION	204.0245.01 12-INCH LF	204.0245.04 24-INCH LF	204.0245.05 30-INCH LF
0010	STH 165	417+41	417+42	LT	30	-	-
	STH 165	420+24	420+25	LT	61	-	-
	STH 165	422+49	422+49	LT	-	69	-
	STH 165	437+58	438+01	LT	43	-	-
	STH 165	440+99	440+99	LT	14	-	-
	STH 165	444+69	444+69	LT	19	-	-
	STH 165	456+99	456+99	LT	18	-	-
	STH 165	465+80	465+50	LT	62	-	-
	STH 165	469+99	469+99	LT	29	-	-
	STH 165	471+38	471+38	LT	16	-	-
	STH 165	471+39	471+39	LT	15	-	-
	STH 165	474+98	474+98	LT	-	27	-
PROJECT TOTAL					276	31	96

ABANDONING SEWER

CATEGORY	STREET	STATION	STATION	LOCATION	204.0291.1 CY
0010	STH 165	438+99	438+99	RT	2.27
	STH 165	442+80	442+80	RT	2.50
	STH 165	458+29	458+29	RT	2.44
	STH 165	460+99	460+99	RT	2.41
	STH 165	464+79	464+79	RT	2.24
	STH 165	467+49	467+49	RT	2.04
	STH 166	469+99	469+99	RT	1.89
	STH 167	479+39	479+39	RT	2.01
	STH 168	480+69	480+69	RT	2.04
	STH 169	481+99	481+99	RT	1.89
PROJECT TOTAL					21.73

REMOVING ASPHALT CURB AND ISLAND

STATION	TO	STATION	LOCATION	204.9180.S SY
423+25	-	429+17	RT	323
PROJECT TOTAL				323

3

3

EARTHWORK SUMMARY

Division	From/To Station	Location	Common Excavation (Item # 205.0100)		Salvaged/Unusable Pavement Material (4)	Available Material (5)	Reduced EBS in Fill (6)	Unexpanded Fill	Expanded Fill (7)	Mass Ordinate +/- (8)	Waste	Borrow (9)	Comment:
			Cut (2)	Excavation (3)									
PRESTAGE/STAGE 1													
CROSSOVERS	225+78	Crossovers	1195	0	0	1195	0	0	0	1195	0	0	Install 5" of asphaltic surface temporary over -10" of crushed aggregate base course. The waste in Prestage/Stage 1 shall be used as borrow.
STH 165 - WESTBOUND	413-00 to 487-23	Mainline	7184	914	2045	5139	823	29450	32600	-28637	0	27772	
TERMINAL TERRACE	21+00 to 22-00	Sidewalk	447	0	0	447	0	2	2	445	0	0	
REMOVAL OF EXCESS TOPSOIL/ORGANICS		Project	0	2500	0	0	2250	2500	2775	-2775	0	0	
STAGE 1 SUBTOTAL			8826	3414	2045	6781	3073	31952	35407	-2772	0	27772	(Item #208.0100)
STAGE 2													
STH 165 - EASTBOUND	413-00 to 487-23	Mainline	3311	0	0	3311	0	127	141	3170	3170	0	
STAGE 2 SUBTOTAL			3311	0	0	3311	0	127	141	3170	3170	0	
STAGE 3													
REMOVAL OF CROSSOVERS		Crossovers	351	0	0	351	0	0	0	351	351	0	- Remove 5" of asphaltic concrete pavement.
STAGE 3 SUBTOTAL			351	0	0	351	0	0	0	351	351	0	
CATEGORY 0010 SUBTOTAL			12488	3414	2045	10443	3073	32079	35608	-24252	3521	27772	

Addendum No. 02
ID 3738-02-73
Revised Sheet 183
June 08, 2016

- Common Excavation is the sum of the Cut and EBS Excavation columns. Item number 205.0100
- Salvaged/Unusable Pavement Material is included in Cut.
- EBS Excavation to be backfilled with Breaker Run. See quantities elsewhere for item number 311.0110
- Salvaged/Unusable Pavement Material
- Available Material = (Cut + EBS Excavation) - Salvaged/Unusable Pavement Material
- EBS in Fill Reduction factor = 0.9.
- Expanded Fill Factor = 1.11
Depending on selections.
- Expanded Fill = (Unexpanded Fill - Rock) * Rock Factor - Reduced Marsh - Reduced EBS * Fill Factor
Expanded Fill = (Unexpanded Fill - Rock) * Rock Factor - Reduced EBS * Fill Factor
Expanded Fill = (Unexpanded Fill - Rock) * Rock Factor - Reduced Marsh * Fill Factor
Expanded Fill = (Unexpanded Fill - Rock) * Rock Factor - Reduced Marsh * Fill Factor
- The Mass Ordinate + or - Qty calculated for the Division. Plus quantity indicates an excess of material within the Division. Minus quantity indicates a shortage of material within the Division.
- Borrow Subtotal = Sum (Borrow) - Sum (Waste)

ALL QUANTITIES ARE CATEGORY 0010
 UNLESS OTHERWISE NOTED

STORM SEWER SUMMARY

ITEM NUMBER	ITEM	TOTAL
520.8000	Concrete Collars for Pipe	17
522.1012	Apron Endwalls for Culvert Pipe Reinforced Concrete 12-Inch	4
522.1015	Apron Endwalls for Culvert Pipe Reinforced Concrete 15-Inch	1
522.1018	Apron Endwalls for Culvert Pipe Reinforced Concrete 18-Inch	1
522.1021	Apron Endwalls for Culvert Pipe Reinforced Concrete 21-Inch	1
524.0612	Apron Endwalls for Culvert Pipe Salvaged 12-Inch	3
524.0624	Apron Endwalls for Culvert Pipe Salvaged 24-Inch	3
524.0630	Apron Endwalls for Culvert Pipe Salvaged 30-Inch	3
608.0312	Storm Sewer Pipe Reinforced Concrete Class III 12-Inch	979
608.0315	Storm Sewer Pipe Reinforced Concrete Class III 15-Inch	184
608.0318	Storm Sewer Pipe Reinforced Concrete Class III 18-Inch	71
608.0321	Storm Sewer Pipe Reinforced Concrete Class III 21-Inch	186
608.0324	Storm Sewer Pipe Reinforced Concrete Class III 24-Inch	112
608.0330	Storm Sewer Pipe Reinforced Concrete Class III 30-Inch	106
608.0421	Storm Sewer Pipe Reinforced Concrete Class IV 21-Inch	279
611.0530	Manhole Covers Type J	4
611.0627	Inlet Covers Type HM	35
611.0636	Inlet Covers Type HM-S	9
611.0642	Inlet Covers Type MS	15
611.0654	Inlet Covers Type V	1
611.1003	Catch Basins 2-FT Diameter	6
611.1004	Catch Basins 4-FT Diameter	6
611.1005	Catch Basins 5-FT Diameter	6
611.1230	Catch Basins 2x3-FT	13
611.2004	Manholes 4-FT Diameter	2
611.2005	Manholes 5-FT Diameter	5
611.3004	Inlets 4-FT Diameter	3
611.3230	Inlets 2x3-FT	18
611.3901	Inlets Median 1 Grate	4
611.3902	Inlets Median 2 Grate	4
611.3903	Inlets Median 3 Grate	1

ADJUSTING INLET COVERS

STREET	STRUCTURE NO.	STREET	STATION	LOCATION	611.8115
STH 165	206	STH 165	488+90	6' RT	EACH
	207	STH 165	489+23	44' RT	1
	211	STH 165	497+09	6' LT	1
	212	STH 165	497+09	6' RT	1
PROJECT TOTAL					4

CONCRETE CURB & GUTTER

STAGE	STREET	STATION TO	STATION	LF	LF	LF	TYPE A	TYPE D	TYPE B	TYPE TBT
STAGE 1	STH 165	411+34	420+00	76	--	--	4-INCH SLOPED 36-INCH	4-INCH SLOPED 36-INCH	4-INCH SLOPED 36-INCH	601.0590
	STH 165	420+00	433+50	60	--	--	4-INCH SLOPED 36-INCH	4-INCH SLOPED 36-INCH	4-INCH SLOPED 36-INCH	601.0553
	STH 165	433+50	447+50	60	--	--	4-INCH SLOPED 36-INCH	4-INCH SLOPED 36-INCH	4-INCH SLOPED 36-INCH	601.0551
	STH 165	447+50	461+50	60	--	--	4-INCH SLOPED 36-INCH	4-INCH SLOPED 36-INCH	4-INCH SLOPED 36-INCH	601.0551
	STH 165	461+50	475+50	60	--	--	4-INCH SLOPED 36-INCH	4-INCH SLOPED 36-INCH	4-INCH SLOPED 36-INCH	601.0551
	STH 165	475+50	487+24	305	--	--	4-INCH SLOPED 36-INCH	4-INCH SLOPED 36-INCH	4-INCH SLOPED 36-INCH	601.0551
		STAGE SUBTOTAL	136	305	6,932	58				88
STAGE 2	STH 165	411+34	420+00	13	--	--	4-INCH SLOPED 36-INCH	4-INCH SLOPED 36-INCH	4-INCH SLOPED 36-INCH	601.0551
	STH 165	420+00	433+50	64	--	--	4-INCH SLOPED 36-INCH	4-INCH SLOPED 36-INCH	4-INCH SLOPED 36-INCH	601.0551
	STH 165	433+50	447+50	64	--	--	4-INCH SLOPED 36-INCH	4-INCH SLOPED 36-INCH	4-INCH SLOPED 36-INCH	601.0551
	STH 165	447+50	461+50	64	--	--	4-INCH SLOPED 36-INCH	4-INCH SLOPED 36-INCH	4-INCH SLOPED 36-INCH	601.0551
	STH 165	461+50	475+50	64	--	--	4-INCH SLOPED 36-INCH	4-INCH SLOPED 36-INCH	4-INCH SLOPED 36-INCH	601.0551
	STH 165	475+50	487+24	77	0	6,048	4-INCH SLOPED 36-INCH	4-INCH SLOPED 36-INCH	4-INCH SLOPED 36-INCH	601.0551
		STAGE SUBTOTAL	77	0	6,048	55				106
STAGE 3	STH 165	411+34	420+00	524	--	--	4-INCH SLOPED 36-INCH	4-INCH SLOPED 36-INCH	4-INCH SLOPED 36-INCH	601.0551
	STH 165	420+00	433+50	62	--	--	4-INCH SLOPED 36-INCH	4-INCH SLOPED 36-INCH	4-INCH SLOPED 36-INCH	601.0551
	STH 165	433+50	447+50	62	--	--	4-INCH SLOPED 36-INCH	4-INCH SLOPED 36-INCH	4-INCH SLOPED 36-INCH	601.0551
	STH 165	447+50	461+50	62	--	--	4-INCH SLOPED 36-INCH	4-INCH SLOPED 36-INCH	4-INCH SLOPED 36-INCH	601.0551
	STH 165	461+50	475+50	62	--	--	4-INCH SLOPED 36-INCH	4-INCH SLOPED 36-INCH	4-INCH SLOPED 36-INCH	601.0551
	STH 165	475+50	487+24	586	0	733	4-INCH SLOPED 36-INCH	4-INCH SLOPED 36-INCH	4-INCH SLOPED 36-INCH	601.0551
		STAGE SUBTOTAL	586	0	733	0				0
		PROJECT TOTAL	799	305	15,733	113				194

CONCRETE SIDEWALK 5-INCH

STREET	STATION TO	STATION	SF
STH 165	411+34	420+00	2,029
	420+00	433+50	527
	433+50	447+50	--
	447+50	461+50	--
	461+50	475+50	--
	475+50	487+24	438
		PROJECT TOTAL	2,984

CURB RAMP DETECTABLE WARNING FIELD NATURAL PATINA

CATEGORY	STREET	SF
0010	120TH AVENUE	152
	TERWALL TERRACE	104
	PROJECT TOTAL	256

STH 165 - EASTBOUND

STATION	Distance	AREA (SF)			Incremental Vol (CY) (Unadjusted)			Cumulative Vol (CY)				
		Cut	Salvaged/Unusable Pavement Material	Fill	EBS	Cut	Salvaged/Unusable Pavement Material	Fill	EBS	Cut 1.00 Note 1	Expanded Fill 1.11	Mass Ordinate Note 8
412+59.00		0	0	0	0	0	0	0	0	0	0	0
413+00.00	41	0	0	0	0	0	0	0	0	0	0	0
413+20.00	20	0	0	0	0	0	0	0	0	0	0	0
414+00.00	80	0	0	0	0	0	0	0	0	0	0	0
414+50.00	50	0	0	0	0	0	0	0	0	0	0	0
415+00.00	50	0	0	0	0	0	0	0	0	0	0	0
416+00.00	100	0	0	0	0	0	0	0	0	0	0	0
417+00.00	100	0	0	0	0	0	0	0	0	0	0	0
417+42.00	42	6	0	0	0	5	0	0	0	5	0	5
418+00.00	58	8	0	0	0	15	0	0	0	20	0	20
419+00.00	100	10	0	0	0	33	0	0	0	53	0	53
419+16.00	16	10	0	0	0	6	0	0	0	59	0	59
420+00.00	84	9	0	0	0	29	0	0	0	88	0	88
420+21.00	21	10	0	0	0	7	0	0	0	95	0	95
420+24.00	3	10	0	0	0	1	0	0	0	96	0	96
421+00.00	76	11	0	0	0	29	0	0	0	125	0	125
421+55.00	55	12	0	0	0	23	0	0	0	148	0	148
422+65.00	10	12	0	0	0	4	0	0	0	153	0	153
422+00.00	35	13	0	0	0	16	0	0	0	169	0	169
422+49.00	49	13	0	0	0	24	0	0	0	192	0	192
423+00.00	51	13	0	0	0	25	0	0	0	217	0	217
424+00.00	100	14	0	0	0	50	0	0	0	267	0	267
425+00.00	100	17	0	0	0	57	0	0	0	324	1	324
426+00.00	100	19	0	0	0	67	0	0	0	391	1	390
427+00.00	100	13	0	0	0	58	0	0	0	448	1	448
428+00.00	100	13	0	0	0	46	0	1	0	494	2	494
429+00.00	100	13	0	0	0	46	0	1	0	542	3	539
430+00.00	100	13	0	0	0	46	0	1	0	588	4	584
431+00.00	100	13	0	0	0	46	0	1	0	635	5	630
432+00.00	100	13	0	0	0	46	0	1	0	681	6	675
432+49.00	49	13	0	0	0	23	0	0	0	703	6	697
433+00.00	51	13	0	0	0	24	0	0	0	727	6	721
434+00.00	100	13	0	0	0	46	0	1	0	773	7	766
434+39.00	39	13	0	0	0	18	0	0	0	791	8	784
435+00.00	61	13	0	0	0	28	0	0	0	820	8	812
436+00.00	100	13	0	0	0	46	0	1	0	866	9	857
436+29.00	29	13	0	0	0	13	0	0	0	879	9	870
437+00.00	71	13	0	0	0	33	0	0	0	912	10	902
437+99.00	99	13	0	0	0	46	0	1	0	958	12	946
438+00.00	1	13	0	0	0	0	0	0	0	959	12	947
439+00.00	100	13	0	0	0	46	0	2	0	1005	14	991
440+00.00	100	13	0	0	0	46	0	2	0	1051	15	1036
441+00.00	100	13	0	0	0	46	0	2	0	1097	17	1080
442+00.00	100	13	0	0	0	46	0	2	0	1144	19	1124
442+79.00	79	13	0	0	0	37	0	1	0	1180	21	1159
443+00.00	21	13	0	0	0	10	0	0	0	1190	21	1169
443+50.00	50	13	0	0	0	23	0	0	0	1213	23	1191
444+00.00	50	13	0	0	0	32	0	0	0	1236	24	1213
444+69.00	69	13	0	0	0	14	0	0	0	1268	25	1243
445+00.00	31	13	0	0	0	14	0	0	0	1283	26	1257
445+94.00	94	13	0	0	0	44	0	2	0	1326	28	1298
446+00.00	6	13	0	0	0	3	0	0	0	1329	28	1301
446+59.00	59	13	0	0	0	27	0	1	0	1356	30	1327
447+00.00	41	13	0	0	0	19	0	0	0	1375	31	1345
447+44.00	44	13	0	0	0	20	0	0	0	1396	33	1363
448+00.00	56	10	0	0	0	23	0	0	0	1419	37	1382
448+07.00	7	10	0	0	0	3	0	0	0	1422	37	1384
448+20.00	13	10	0	0	0	5	0	1	0	1426	38	1388
448+35.00	15	10	0	0	0	6	0	1	0	1432	39	1393
448+39.00	4	10	0	0	0	1	0	0	0	1433	39	1394
448+47.00	8	10	0	0	0	3	0	0	0	1436	40	1396
448+70.00	23	10	0	0	0	9	0	2	0	1445	42	1403
448+72.00	2	10	0	0	0	1	0	0	0	1446	42	1403
448+95.00	23	10	0	0	0	9	0	6	0	1454	49	1405

Addendum No. 02
ID 3738-02-73
Revised Sheet 387
June 08, 2016

STATION	Distance	AREA (SF)			Incremental Vol. (CY) (Unadjusted)			Cumulative Vol. (CY)			Mass Ordinate	
		Cut	Salvaged/Unusable Pavement Material	Fill	EBS	Cut	Salvaged/Unusable Pavement Material	Fill	EBS	Cut		Expanded Fill
449+00.00	5	10	0	0	0	2	0	1	0	1456	50	1406
450+00.00	100	10	0	0	0	37	0	0	0	1493	50	1443
451+00.00	700	10	0	0	0	37	0	0	0	1530	50	1480
451+73.00	10	10	0	15	0	27	0	20	0	1557	73	1484
451+82.00	9	10	0	15	0	7	0	5	0	1560	78	1482
452+00.00	18	10	0	8	0	3	0	8	0	1567	87	1480
452+24.00	24	10	0	3	0	1	0	5	0	1576	92	1484
452+27.00	3	10	0	2	0	1	0	1	0	1577	92	1485
452+37.00	10	10	0	2	0	4	0	1	0	1581	93	1487
452+48.00	11	10	0	2	0	4	0	2	0	1585	94	1491
452+73.00	25	10	0	2	0	9	0	2	0	1594	97	1498
453+00.00	27	10	0	2	0	10	0	2	0	1604	99	1505
454+00.00	100	10	0	1	0	37	0	5	0	1641	105	1537
454+50.00	50	13	0	1	0	19	0	2	0	1660	106	1553
455+00.00	50	13	0	0	0	21	0	1	0	1681	107	1573
456+00.00	100	13	0	0	0	46	0	1	0	1727	108	1619
457+00.00	100	13	0	0	0	46	0	1	0	1773	109	1664
458+00.00	100	13	0	0	0	46	0	1	0	1819	110	1710
458+29.00	29	13	0	0	0	13	0	0	0	1833	110	1723
459+00.00	71	13	0	0	0	33	0	0	0	1866	110	1755
459+59.00	59	13	0	0	0	27	0	0	0	1893	110	1783
460+00.00	41	13	0	0	0	19	0	0	0	1912	110	1802
461+00.00	100	13	0	0	0	46	0	0	0	1958	111	1846
462+00.00	100	13	0	0	0	46	0	1	0	2005	111	1893
462+19.00	19	13	0	0	0	38	0	0	0	2013	112	1902
463+00.00	81	13	0	0	0	23	0	0	0	2051	112	1939
463+49.00	49	13	0	0	0	24	0	0	0	2074	112	1962
464+00.00	51	13	0	0	0	24	0	0	0	2097	112	1985
464+79.00	79	13	0	0	0	37	0	0	0	2134	112	2022
465+00.00	21	13	0	0	0	10	0	0	0	2143	112	2032
466+00.00	100	13	0	0	0	46	0	0	0	2190	112	2078
466+48.00	48	13	0	0	0	22	0	0	0	2212	112	2100
467+00.00	52	13	0	0	0	24	0	0	0	2236	112	2124
467+49.00	49	13	0	0	0	23	0	0	0	2259	112	2147
468+00.00	51	13	0	0	0	24	0	0	0	2282	113	2170
468+79.00	79	13	0	0	0	37	0	0	0	2319	113	2206
469+00.00	21	13	0	0	0	10	0	0	0	2329	113	2216
470+00.00	100	13	0	0	0	46	0	0	0	2375	113	2262
471+00.00	100	13	0	1	0	46	0	2	0	2421	113	2306
471+39.00	39	13	0	1	0	18	0	2	0	2439	117	2322
472+00.00	61	13	0	1	0	28	0	3	0	2468	121	2347
473+00.00	100	13	0	1	0	46	0	4	0	2514	126	2388
474+00.00	100	15	0	0	0	51	0	2	0	2565	128	2437
475+00.00	100	20	0	0	0	65	0	0	0	2630	129	2501
476+00.00	100	19	0	0	0	72	0	0	0	2702	129	2573
477+00.00	100	19	0	0	0	70	0	0	0	2772	129	2643
478+00.00	100	19	0	0	0	70	0	1	0	2843	130	2713
479+00.00	100	19	0	1	0	70	0	2	0	2913	132	2781
479+39.00	39	19	0	1	0	27	0	2	0	2940	134	2806
480+00.00	61	19	0	0	0	43	0	2	0	2983	136	2848
480+69.00	69	15	0	1	0	43	0	0	0	3027	137	2890
481+00.00	31	12	0	1	0	16	0	1	0	3042	138	2904
481+99.00	99	12	0	0	0	44	0	1	0	3086	140	2947
482+00.00	1	12	0	0	0	0	0	0	0	3087	140	2947
482+61.00	61	12	0	0	0	27	0	0	0	3114	140	2974
483+00.00	39	12	0	0	0	17	0	0	0	3131	140	2991
484+00.00	100	12	0	0	0	44	0	0	0	3176	141	3035
485+00.00	100	12	0	0	0	44	0	0	0	3220	141	3079
485+19.00	19	12	0	0	0	8	0	0	0	3228	141	3088
486+00.00	81	12	0	0	0	36	0	0	0	3264	141	3124
487+00.00	100	8	0	0	0	39	0	0	0	3303	141	3162
487+23.00	23	8	0	0	0	7	0	0	0	3311	141	3170

Column totals

3311 0 127 0

PROJECT NO: 3738-02-73 HWY: STH 165 COUNTY: KENOSHA

EARTHWORK DATA

SHEET 388

WSDOT/CADD SHEET 49

Addendum No. 02
ID 3738-02-73
Revised Sheet 388
June 08, 2016

SCHEDULE OF ITEMS

REVISED:

CONTRACT:
20160614010

PROJECT(S):
1310-16-70
3738-02-73
3738-06-60

FEDERAL ID(S):
N/A
WISC 2016223
WISC 2016224

CONTRACTOR : _____

LINE NO	ITEM DESCRIPTION	APPROX. QUANTITY AND UNITS	UNIT PRICE		BID AMOUNT	
			DOLLARS	CTS	DOLLARS	CTS
0200	204.0245 Removing Storm Sewer (size) 04. 24-Inch	39.000 LF	.		.	
0210	204.0245 Removing Storm Sewer (size) 05. 30-Inch	96.000 LF	.		.	
0220	204.0291.S Abandoning Sewer	21.730 CY	.		.	
0230	204.9060.S Removing (item description) 01. Ramp Gate	1.000 EACH	.		.	
0240	204.9180.S Removing (item description) 01. Asphalt Curb and Island	323.000 SY	.		.	
0250	205.0100 Excavation Common	18,111.000 CY	.		.	
0260	206.1000 Excavation for Structures Bridges (structure) 01. B-30-133	LUMP	LUMP		.	
0270	206.1000 Excavation for Structures Bridges (structure) 02. B-30-54	LUMP	LUMP		.	
0280	206.5000 Cofferdams (structure) 01. B-30-133	LUMP	LUMP		.	
0290	208.0100 Borrow	27,772.000 CY	.		.	

SCHEDULE OF ITEMS

REVISED:

CONTRACT:
20160614010

PROJECT(S):
1310-16-70
3738-02-73
3738-06-60

FEDERAL ID(S):
N/A
WISC 2016223
WISC 2016224

CONTRACTOR : _____

LINE NO	ITEM DESCRIPTION	APPROX. QUANTITY AND UNITS	UNIT PRICE		BID AMOUNT	
			DOLLARS	CTS	DOLLARS	CTS
1210	611.0636 Inlet Covers Type HM-S	9.000 EACH	.		.	
1220	611.0642 Inlet Covers Type MS	15.000 EACH	.		.	
1230	611.0651 Inlet Covers Type S	4.000 EACH	.		.	
1240	611.0654 Inlet Covers Type V	1.000 EACH	.		.	
1250	611.0660 Inlet Covers Type WM	2.000 EACH	.		.	
1260	611.1003 Catch Basins 3-FT Diameter	1.000 EACH	.		.	
1270	611.1004 Catch Basins 4-FT Diameter	6.000 EACH	.		.	
1280	611.1005 Catch Basins 5-FT Diameter	1.000 EACH	.		.	
1290	611.1230 Catch Basins 2x3-FT	13.000 EACH	.		.	
1300	611.2004 Manholes 4-FT Diameter	2.000 EACH	.		.	