



Wisconsin Department of Transportation

July 7, 2016

Division of Transportation Systems Development

Bureau of Project Development
 4802 Sheboygan Avenue, Rm 601
 P O Box 7916
 Madison, WI 53707-7916

Telephone: (608) 266-1631
 Facsimile (FAX): (608) 266-8459

NOTICE TO ALL CONTRACTORS:

**Proposal #02: 1010-02-78, WISC 2016 248
 Madison - Portage
 STH 19 & CPR Overpass
 Structures
 IH 39
 Dane County**

Letting of July 12, 2016

This is Addendum No. 01, which provides for the following:

Special Provisions

Revised Special Provisions	
Article No.	Description
4	Traffic

Added Special Provisions	
Article No.	Description
70	Concrete Barrier Temporary Precast Left In Place

Schedule of Items

Revised Bid Item Quantities					
Bid Item	Item Description	Unit	Old Quantity	Revised Quantity	Proposal Total
502.0100	Concrete Masonry Bridges	CY	1,708	268	1,976

Added Bid Item Quantities					
Bid Item	Item Description	Unit	Old Quantity	Revised Quantity	Proposal Total
SPV.0090.07	Concrete Barrier Temporary Precast Left In Place	LF	0	1,793	1,793

Plan Sheets

Revised Plan Sheets	
Plan Sheet	Plan Sheet Title (brief description of changes to sheet)
23, 24	Plan Detail: Bridge Approach Details (modified expansion joint locations)
106	Miscellaneous Quantities (added SPV.0090.07 Concrete Barrier Precast Left in Place)
352	Structure B-13-93 Quantities Sheet
373	Structure B-13-94 Quantities Sheet

Added Plan Sheets	
Plan Sheet	Plan Sheet Title (brief description of why sheet was added)
412 A, B, C, D, E	Earthwork data sheets (to provide clarification of earthwork quantities)

The responsibility for notifying potential subcontractors and suppliers of these changes remains with the prime contractor.

Sincerely,

Mike Coleman

Proposal Development Specialist
Proposal Management Section

ADDENDUM NO. 01

1010-02-78

July 7, 2016

Special Provisions

4. Traffic.

*Replace entire section titled **B Definitions** with the following:*

B Definitions

The following definitions apply to this contract:

IH 39:

Spring/Fall Work Hours:

September 6, 2016 through May 25, 2017 and September 5, 2017 through May 24, 2018
Single lane closure: 10:00 PM Sunday to 11:00 AM Friday

Summer Work Hours:

May 29, 2018 through June 15, 2018, for crossover removal and final barrier installation.
Single closure: 10:00 PM Sunday to 5:00 AM Friday

70. Concrete Barrier Temporary Precast Left In Place, Item SPV.0090.07.

A Description

This special provision describes leaving in place temporary precast reinforced concrete barrier conforming to the shape, dimensions, and details the plans show and according to the pertinent provisions of standard spec 603, these special provisions, and as hereinafter provided.

Concrete Barrier Temporary Precast Contractor Left In Place becomes property of the department after final acceptance by the engineer.

Concrete barrier shall be new at initial delivery. Ownership identification shall include the department (DOT).

B (Vacant)

C (Vacant)

D Measurement

The department will measure Concrete Barrier Temporary Precast Left In Place by the linear foot, acceptably completed, measured along the base of the barrier after final installation in its left-in-place location.

E Payment

The department will pay for measured quantities at the contract unit price under the following bid item:

ITEM NUMBER	DESCRIPTION	UNIT
SPV.0090.07	Concrete Barrier Temporary Precast Left In Place	LF

Payment is full compensation for leaving Concrete Barrier Temporary Precast on the project site.

Furnishing concrete barrier temporary, initial delivery, installation, reinstallation, trucking between worksites, transitions between temporary and permanent barriers, and anchoring will be paid for separately under the bid items provided for in the contract.

Schedule of Items

Attached, dated July 7, 2016, are the revised Schedule of Items Pages 6, 29 and 30.

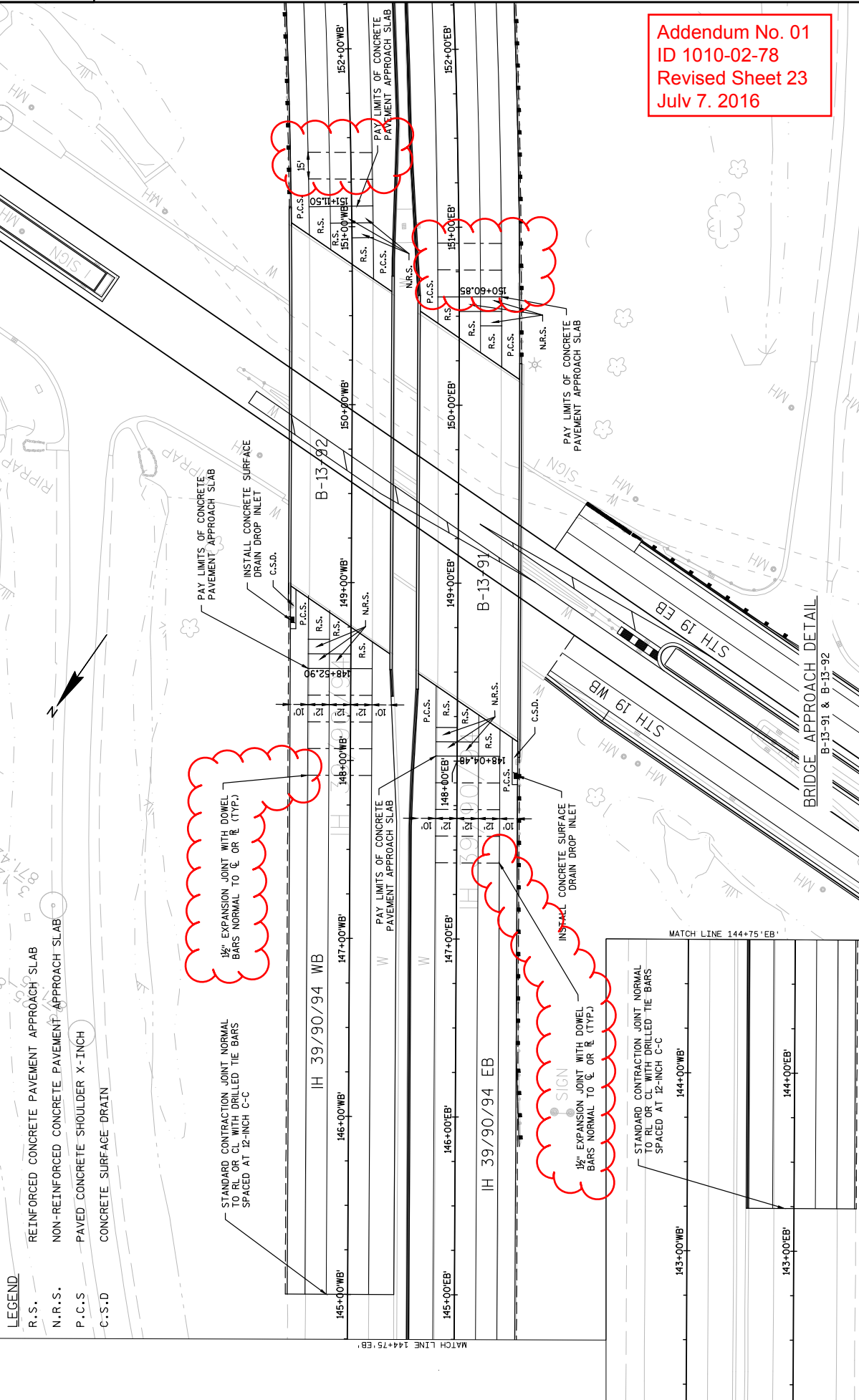
Plan Sheets

The following 8½ x 11-inch sheets are attached and made part of the plans for this proposal:

Revised: 23, 24, 106, 352, and 373.

Added: 412A, 412B, 412C, 412D and 412E.

END OF ADDENDUM



Addendum No. 01
 ID 1010-02-78
 Revised Sheet 23
 July 7, 2016

- LEGEND**
- R.S. REINFORCED CONCRETE PAVEMENT APPROACH SLAB
 - N.R.S. NON-REINFORCED CONCRETE PAVEMENT APPROACH SLAB
 - P.C.S. PAVED CONCRETE SHOULDER X-INCH
 - C.S.D. CONCRETE SURFACE DRAIN

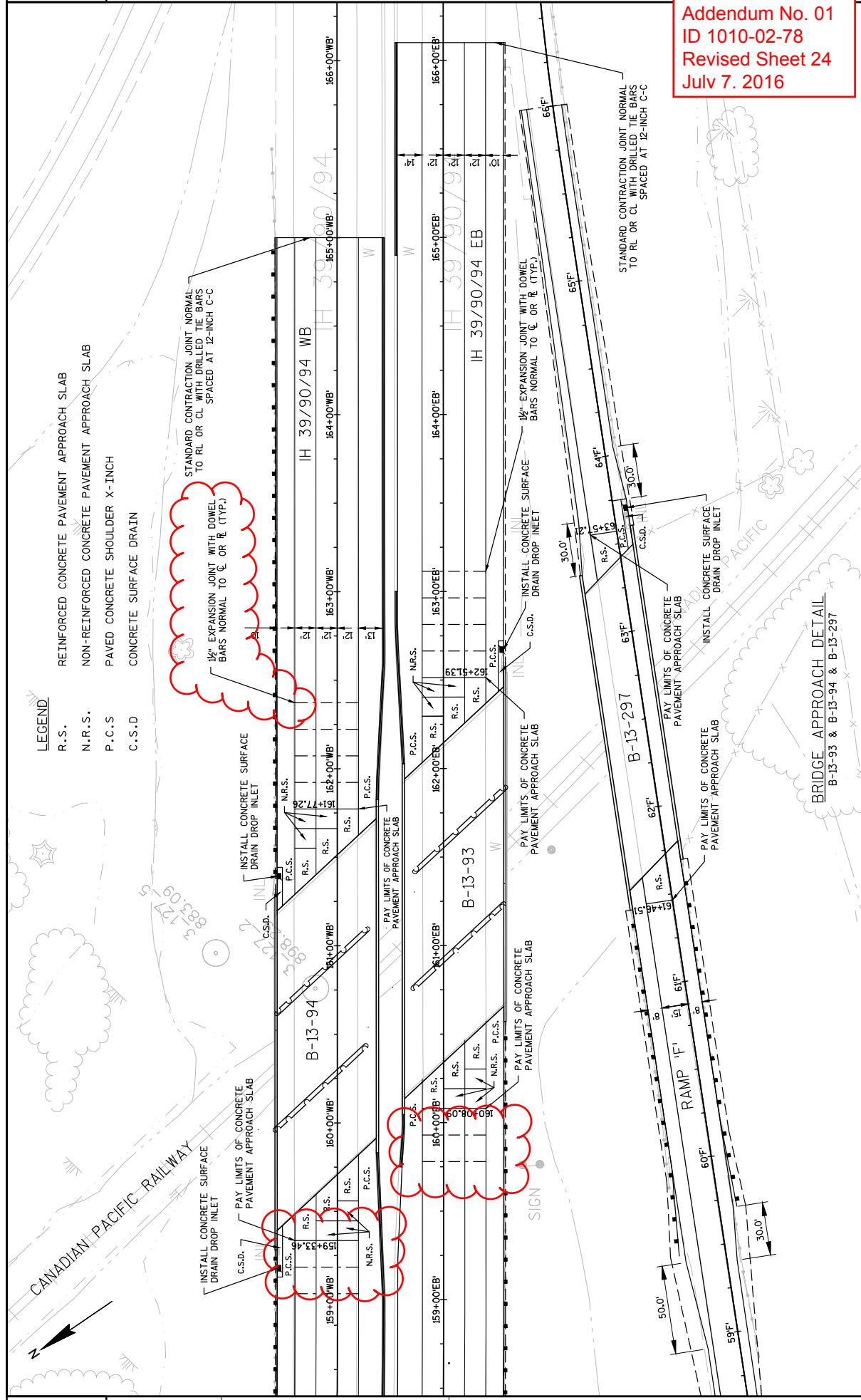
1/2" EXPANSION JOINT WITH DOWEL BARS NORMAL TO CL OR CL (TYP.)

STANDARD CONTRACTION JOINT NORMAL TO RL OR CL WITH DRILLED TIE BARS SPACED AT 12-INCH C-C

1/2" EXPANSION JOINT WITH DOWEL BARS NORMAL TO CL OR CL (TYP.)

STANDARD CONTRACTION JOINT NORMAL TO RL OR CL WITH DRILLED TIE BARS SPACED AT 12-INCH C-C

- LEGEND**
- R.S. REINFORCED CONCRETE PAVEMENT APPROACH SLAB
 - N.R.S. NON-REINFORCED CONCRETE PAVEMENT APPROACH SLAB
 - P.C.S. PAVED CONCRETE SHOULDER X-INCH
 - C.S.D. CONCRETE SURFACE DRAIN



Addendum No. 01
ID 1010-02-78
Revised Sheet 24
July 7, 2016

CATEGORY	STAGE	STATION	TO	STATION	CONCRETE BARRIER DELIVERED	CONCRETE BARRIER INSTALLED	SPV.0060.13 RECONSTRUCTING SANITARY MANHOLES EACH
0010	STAGE 1	131+16 'WB'	-	139+81 'WB'	865	865	SPV.0060.04
		169+52 'WB'	-	178+80 'WB'	928	928	611.8115
	STAGE 1 Total				1,793	1,793	611.8110
0010	STAGE 2	131+16 'WB'	-	139+81 'WB'	865	865	ADJUSTING MANHOLE COVERS EACH
		140+48 'WB'	-	140+48 'WB'	933	933	ADJUSTING INLET COVERS FLAT TEMPORARY EACH
	STAGE 2 Total				1,799	1,799	611.8115
0010	STAGE 3	131+16 'WB'	-	139+81 'WB'	865	865	ADJUSTING MANHOLE COVERS EACH
		148+14 'WB'	-	148+14 'WB'	767	767	ADJUSTING INLET COVERS FLAT TEMPORARY EACH
	STAGE 3 Total				1,632	1,632	611.8110
0010	STAGE 4	131+16 'WB'	-	139+81 'WB'	865	865	ADJUSTING MANHOLE COVERS EACH
		148+15 'WB'	-	148+15 'WB'	3,057	3,057	ADJUSTING INLET COVERS FLAT TEMPORARY EACH
	STAGE 4 Total				3,922	3,922	611.8115
PROJECT TOTAL					6,549	6,549	
PROJECT TOTAL					16,698	16,698	

CATEGORY	STAGE 1	STAGE 2	STAGE 3	STAGE 4	PROJECT TOTAL
0010	1	15	37	186	243
	22	186	102	102	512
	2	2	2	2	8
	2	3	5	2	12
	2	3	5	5	15
	802	743	1,545		3,090
	1	1	1	1	4
	1	1	1	1	4
	4	3	7	2	16
	3	2	5		10
PROJECT TOTAL					8

CATEGORY	STAGE 1	STAGE 2	STAGE 3	STAGE 4	PROJECT TOTAL
0010	1	15	37	186	243
	22	186	102	102	512
	2	2	2	2	8
	2	3	5	2	12
	2	3	5	5	15
	802	743	1,545		3,090
	1	1	1	1	4
	1	1	1	1	4
	4	3	7	2	16
	3	2	5		10
PROJECT TOTAL					8

CATEGORY	ITEM	DESCRIPTION	UNIT	STAGE 1	STAGE 2	STAGE 3	STAGE 4	PROJECT TOTAL
0010	522.1024	APRON ENDWALLS FOR CULVERT PIPE REINFORCED CONCRETE 24-INCH	EACH	1				1
	608.0315	STORM SEWER PIPE REINFORCED CONCRETE CLASS III 15-INCH	LF	22	15	37	186	300
	608.0318	STORM SEWER PIPE REINFORCED CONCRETE CLASS III 18-INCH	LF	186				186
	608.0324	STORM SEWER PIPE REINFORCED CONCRETE CLASS III 24-INCH	LF	102				102
	611.0530	MANHOLE COVERS TYPE J	EACH	2	2	2	2	8
	611.0627	INLET COVERS TYPE HM	EACH	2	2	2	2	8
	611.2044	MANHOLES 4X4-FT	EACH	2	2	2	2	8
	611.3230	INLETS 2X3-FT	EACH	2	2	2	2	8
	612.0106	PIPE UNDERDRAIN 6-INCH	LF	802	743	1,545		3,090
	612.0806	APRON ENDWALLS FOR UNDERDRAIN REINFORCED CONCRETE 6-INCH	EACH	1				1
	633.5200	MARKERS CULVERT END	EACH	1				1
	650.4000	CONSTRUCTION STAKING STORM SEWER	EACH	4	3	7	2	16
	SPV.0060.03	DRAINAGE STRUCTURE MAINTENANCE	EACH	3	2	5		10

LOCATION	STAGE	STATION	TO	STATION	LF
IH 39	STAGE 4	131+16	-	139+81	865
IH 39	STAGE 4	169+52	-	178+80	928
PROJECT TOTAL					1,793

CATEGORY	STAGE 1	STAGE 2	STAGE 3	STAGE 4	PROJECT TOTAL
0010	1	15	37	186	243
	22	186	102	102	512
	2	2	2	2	8
	2	3	5	2	12
	2	3	5	5	15
	802	743	1,545		3,090
	1	1	1	1	4
	1	1	1	1	4
	4	3	7	2	16
	3	2	5		10
PROJECT TOTAL					8

SPV.0090.07 CONCRETE BARRIER TEMPORARY PRECAST LEFT IN PLACE

CONCRETE BARRIER

STAGE 1: 2
STAGE 2: 8
STAGE 3: 8
STAGE 4: 1

Addendum No. 01
ID 1010-02-78
Revised Sheet 106
July 7, 2016

TOTAL ESTIMATED QUANTITIES

ITEM NUMBER	ITEM DESCRIPTION	UNIT	W. ABUT.	PIER 1	PIER 2	E. ABUT.	SUPER.	TOTAL
203.0200.03	REMOVING OLD STRUCTURE STA 80+90.80 EB	LS	---	---	---	---	---	1
203.0225.03	DEBRIS CONTAINMENT B-13-93	LS	---	---	---	---	---	1
206.0000.03	EXCAVATION FOR STRUCTURES BRIDGES B-13-93	LS	---	---	---	---	---	1
210.0100	BACKFILL STRUCTURE	CY	10	67	67	10	325	479
502.0200	CONCRETE MASONRY BRIDGES	CY	10	67	67	10	325	479
502.0300.03	EXPANSION DEVICE B-13-93	LS	---	---	---	---	---	---
502.3200	PROTECTIVE SURFACE TREATMENT	SF	10	---	---	10	1,100	1,130
502.3220	PIMENTED SURFACE SEALER	SF	---	---	---	---	170	170
502.5005	MASONRY ANCHORS TYPE L NO. 5 BARS	EACH	133	---	---	---	---	266
502.4100	MASONRY ANCHORS TYPE S 3/4-INCH	EACH	9	130	130	---	---	269
505.0400	BAR STEEL REINFORCEMENT HS STRUCTURES	LB	---	4,490	4,490	---	---	8,980
505.0600	BAR STEEL REINFORCEMENT HS COATED STRUCTURES	LB	2,100	---	---	2,120	83,770	88,000
509.1500	CONCRETE SURFACE REPAIR	SF	10	10	10	46	---	76
509.9020.5	EPOXY CRACK SEALING	LF	20	---	20	---	---	40
516.0500	RUBBERIZED MEMBRANE WATERPROOFING	SF	5	---	5	---	---	10
517.0900.5.03	PREPARATION AND COATING OF TOP FLANGES B-13-93	LS	---	---	---	---	---	1
517.1800.5.03	STRUCTURE REPAINTING RECYCLED ABRASIVE B-13-93	LS	---	---	---	---	---	1
517.4500.5.03	NEGATIVE PRESSURE CONTAINMENT AND COLLECTION OF WASTE MATERIALS B-13-93	LS	---	---	---	---	---	1
517.6001.5	PORTABLE DECONTAMINATION FACILITY	EACH	---	---	---	---	---	1
604.0500	SLOPE PAVING CRUSHED AGGREGATE	SF	512	---	---	512	---	1,024
614.0150	ANCHOR ASSEMBLIES FOR STEEL PLATE BEAM GUARD	EACH	1	---	---	1	---	2
SPV.0165.01	TEMPORARY SHORING RAILROAD	SF	---	440	420	---	---	860
	BRIDGE SEAT PROTECTION							
	NON-BID ITEMS							

GENERAL NOTES

- DRAWINGS SHALL NOT BE SCALED.
- DIMENSIONS SHOWN ARE BASED ON THE ORIGINAL STRUCTURE PLANS.
- THE EXISTING STRUCTURE, B-13-93, IS A 3-SPAN STEEL DECK GIRDER STRUCTURE WITH A WIDTH OF 59'-0" AND AN END-OF-DECK TO END-OF-DECK LENGTH OF 180'-5 7/8". THE DECK AND PARAPETS ARE 59'-0" WIDE. THE PARAPETS ARE 10'-0" HIGH. THE DECK AND PARAPETS ARE TO BE REPAIRED AND REINFORCED. THE REPAIRS ARE TO BE CLEANED, REPAIRED, AND REFINISHED TO MATCH THE EXISTING SURFACE. THE REPAIRS ARE TO BE CLEANED, REPAIRED, AND REFINISHED TO MATCH THE EXISTING SURFACE. THE REPAIRS ARE TO BE CLEANED, REPAIRED, AND REFINISHED TO MATCH THE EXISTING SURFACE.
- CONCRETE SURFACE REPAIRS TO BE MADE TO THE EAST ABUTMENT BACK WALL, CRASH WALLS ARE TO BE ADDED TO THE EXISTING PIERS.
- THE FIRST OR FIRST TWO DIGITS OF A BAR MARK SIGNIFIES THE BAR SIZE.
- BAR STEEL REINFORCEMENT SHALL BE EMBEDDED 2" CLEAR UNLESS OTHERWISE SHOWN OR NOTED.
- UTILIZE EXISTING BAR STEEL REINFORCEMENT WHERE SHOWN AND EXTEND 24 BAR DIAMETERS INTO NEW WORK, UNLESS SPECIFIED OTHERWISE.
- THE TOP LAYER OF BAR STEEL REINFORCEMENT IN THE DECK SHALL BE PLACED WITH 2 1/2" OF CLEAR COVER.
- ALL CONCRETE REMOVAL SHALL BE DEFINED WITH A 1" DEEP SAW CUT.
- BEVEL EXPOSED EDGES 3/4" UNLESS OTHERWISE NOTED.
- PROTECTIVE SURFACE TREATMENT TO BE APPLIED TO THE ENTIRE TOP OF DECK AND PAVING SURFACE. THE TREATMENT SHALL BE APPLIED TO THE ENTIRE TOP OF DECK AND PAVING SURFACE. THE TREATMENT SHALL BE APPLIED TO THE ENTIRE TOP OF DECK AND PAVING SURFACE.
- VARIOUS TO THE NEW GRADE LINE OVER 1/4" MUST BE SUBMITTED BY THE FIELD ENGINEER TO THE STRUCTURES DESIGN SECTION FOR REVIEW.
- THE SUPERSTRUCTURE CONCRETE QUANTITY INCLUDES VOLUME FOR THE AVERAGE ESTIMATED HAUNCH HEIGHT AND OVERHANG TRIANGULAR AREA.
- THE COLOR OF THE FINISH TOP COAT ON THE STEEL GIRDERS AND BEARINGS SHALL BE MEDIUM SKY BLUE TONE, (FEDERAL STANDARD COLOR NO. 255240).
- AT THE BACKFACE OF ABUTMENT ALL VOLUME NOT OCCUPIED BY THE NEW STRUCTURE SHALL BE BACKFILLED WITH STRUCTURE BACKFILL.
- THE CONTRACTOR SHALL SUPPLY A NEW NAME PLATE IN ACCORDANCE WITH SECTION 502.3.11 OF THE STANDARD SPECIFICATIONS AND THE STANDARD DETAIL DRAWINGS. NAME PLATE TO SHOW ORIGINAL CONSTRUCTION YEAR OF 1959.
- PERFORM "CONCRETE SURFACE REPAIR" AND "EPOXY CRACK SEALING" AS DIRECTED BY THE FIELD ENGINEER. QUANTITIES SHOWN ON THE PLANS ARE APPROXIMATE.
- EXPANSION JOINT ASSEMBLY, INCLUDING ANCHOR STUDS AND HARDWARE SHALL BE PAID FOR IN THE LUMP SUM PRICE BID AS "EXPANSION DEVICE B-13-93".
- PAYMENT FOR CLEANING AND PAINTING ALL STEEL ELEMENTS INCLUDING GIRDERS, BRACING ELEMENTS, AND EXISTING BEARINGS SHALL BE INCLUDED IN THE BID ITEM "STRUCTURE REPAINTING RECYCLED ABRASIVE B-13-93".



Addendum No. 01
ID 1010-02-78
Revised Sheet 352
July 7, 2016

William C. Decker
SDR

06/30/16

1	10/16/16	UPDATE CONCRETE QUANTITY	LMK
NO.	DATE	REVISION	BY
STATE OF WISCONSIN DEPARTMENT OF TRANSPORTATION			
STRUCTURE B-13-93			
GENERAL NOTES & QUANTITIES			
SHEET 3 OF 21			352

TOTAL ESTIMATED QUANTITIES

ITEM NUMBER	ITEM DESCRIPTION	UNIT	W. ABUT.	PIER 1	PIER 2	E. ABUT.	SUPER.	TOTAL
203.0200.04	REMOVING OLD STRUCTURE STA. 160+27.57 WB	LS	---	---	---	---	---	1
203.0225.S.04	DEBRIS CONTAINMENT B-13-94	LS	---	---	---	---	---	1
206.1000.04	EXCAVATION FOR STRUCTURES BRIDGES B-13-94	LS	---	---	---	---	---	1
210.0100	BACKFILL STRUCTURE	CY	10	67	67	10	334	488
502.0100	CONCRETE MASONRY BRIDGES	CY	10	67	67	10	334	488
502.3000.04	EXPANSION DEVICE B-13-94	LS	---	---	---	---	---	1
502.3200	PROTECTIVE SURFACE TREATMENT	SF	10	---	---	10	1,110	1,130
502.3210	PIGMENTED SURFACE SEALER	SY	---	---	---	---	170	170
502.5005	MASONRY ANCHORS TYPE L NO. 5 BARS	EACH	133	---	---	133	---	266
502.6110	MASONRY ANCHORS TYPE S 3/4-INCH	EACH	9	130	130	---	---	269
505.0400	BAR STEEL REINFORCEMENT HS STRUCTURES	LB	---	4,490	4,490	---	---	8,980
505.0600	BAR STEEL REINFORCEMENT HS COATED STRUCTURES	LB	2,100	---	---	2,090	85,930	90,120
505.1500	CONCRETE SURFACE REPAIR	SF	10	10	10	10	---	40
509.9020.S	EPOXY CRACK SEALING	LF	20	---	---	20	---	40
516.0500	RUBBERIZED MEMBRANE WATERPROOFING	SY	5	---	---	5	---	10
517.0900.S.04	PREPARATION AND COATING OF TOP FLANGES B-13-94	LS	---	---	---	---	---	1
517.1800.S.04	STRUCTURE REPAINTING RECYCLED ABRASIVE B-13-94	LS	---	---	---	---	---	1
517.4500.S.04	NEGATIVE PRESSURE CONTAINMENT AND COLLECTION OF WASTE MATERIALS B-13-94	LS	---	---	---	---	---	1
604.0500	SLOPE PAVING CRUSHED AGGREGATE	LS	512	---	---	512	---	1,024
614.0150	ANCHOR ASSEMBLIES FOR STEEL PLATE BEAM GUARD	EACH	1	---	---	1	---	2
SPV.0165.01	TEMPORARY SHORING RAILROAD	SF	---	425	461	---	---	886
	NON-BID ITEMS							
	BRIDGE SEAT PROTECTION							

NOTE: PORTABLE DECONTAMINATION FACILITY IS PAID FOR AS PART OF B-13-93

GENERAL NOTES

DRAWINGS SHALL NOT BE SCALED.
 DIMENSIONS SHOWN ARE BASED ON THE ORIGINAL STRUCTURE PLANS.
 THE EXISTING STRUCTURE B-13-94 IS A 3-SPAN STEEL DECK GIRDER STRUCTURE WITH A WIDTH OF 59'-0" AND AN END-OF-DECK TO END-OF-DECK LENGTH OF 180'-5/2". THE DECK AND PARAPETS ARE TO BE REMOVED. ALL BEARINGS ARE TO BE CLEANED AND PAINTED. GIRDERS (AS SHOWN ON PLANS), CRASH WALLS ARE TO BE ADDED TO THE EXISTING PIERS.
 THE FIRST OR FIRST TWO DIGITS OF A BAR MARK SIGNIFIES THE BAR SIZE.
 BAR STEEL REINFORCEMENT SHALL BE EMBEDDED 2" CLEAR UNLESS OTHERWISE SHOWN OR NOTED.
 UTILIZE EXISTING BAR STEEL REINFORCEMENT WHERE SHOWN AND EXTEND 24 BAR DIAMETERS INTO NEW WORK, UNLESS SPECIFIED OTHERWISE.
 THE TOP LAYER OF BAR STEEL REINFORCEMENT IN THE DECK SHALL BE PLACED WITH 2 1/2" OF CLEAR COVER.
 ALL CONCRETE REMOVAL SHALL BE DEFINED WITH A 1" DEEP SAW CUT.
 BEVEL EXPOSED EDGES 1/4" UNLESS OTHERWISE NOTED.
 PROTECTIVE SURFACE TREATMENT TO BE APPLIED TO THE ENTIRE TOP OF DECK AND PAVING SURFACES TO BE EXPOSED TO WEATHER. ALL PARTS TO BE REPAINTED TO MATCH THE TOP AND ROADWAY FACE OF THE PARAPET INCLUDING PARAPETS ON ABUTMENT WINGS.
 VARIATIONS TO THE NEW GRADE LINE OVER 1/4" MUST BE SUBMITTED BY THE FIELD ENGINEER TO THE STRUCTURES DESIGN SECTION FOR REVIEW.
 THE SUPERSTRUCTURE CONCRETE QUANTITY INCLUDES VOLUME FOR THE AVERAGE ESTIMATED HAUNCH HEIGHT AND OVERHANG TRIANGULAR AREA.
 THE COLOR OF THE FINISH TOP COAT ON THE STEEL GIRDERS AND BEARINGS SHALL BE MEDIUM SKY BLUE (FONC, FEDERAL STANDARD COLOR NO. 252-60).
 AT THE BACKFACE OF ABUTMENT ALL VOLUME NOT OCCUPIED BY THE NEW STRUCTURE SHALL BE BACKFILLED WITH STRUCTURE BACKFILL.
 THE CONTRACTOR SHALL SUPPLY A NEW NAME PLATE IN ACCORDANCE WITH SECTION 502.3.11 OF THE STANDARD SPECIFICATIONS AND THE STANDARD DETAIL DRAWINGS. NAME PLATE TO SHOW ORIGINAL CONSTRUCTION YEAR OF 1989.
 PERFORM "CONCRETE SURFACE REPAIR" AND "EPOXY CRACK SEALING" AS DIRECTED BY THE FIELD ENGINEER. QUANTITIES SHOWN ON THE PLANS ARE APPROXIMATE.
 EXPANSION JOINT ASSEMBLY, INCLUDING ANCHOR STUDS AND HARDWARE, SHALL BE PAID FOR IN THE LUMP SUM PRICE BID AS "EXPANSION DEVICE B-13-94".
 PAYMENT FOR CLEANING AND PAINTING ALL STEEL ELEMENTS INCLUDING GIRDERS, BRACING ELEMENTS, AND EXISTING BEARINGS SHALL BE INCLUDED IN THE BID ITEM "STRUCTURE REPAINTING RECYCLED ABRASIVE B-13-94".



William C. Decker SDR
 06/30/16

Addendum No. 01
 ID 1010-02-78
 Revised Sheet 373
 July 7, 2016

1	8/28/16	UPDATE CONCRETE QUANTITY	LWK
NO.	DATE	REVISION	BY
STATE OF WISCONSIN DEPARTMENT OF TRANSPORTATION			
STRUCTURE B-13-94			
DRAWN BY		DRH/ECO. LWK	
GENERAL NOTES & QUANTITIES			373
SHEET 3 OF 21			

Addendum No. 01
 ID 1010-02-78
 Added Sheet 412C
 July 7, 2016

EXPANDED MARSH BACKFILL QUANTIFICATION

STATION	Real Station	Distance	AREA (SF)			Incremental Vol (CY) (Unadjusted)			Cumulative Vol (CY)					Mass Ordinate			
			Cut	Salvaged/Unusable Pavement Material	Fill	Marsh Exc	Rock Exc	EBS	Cut 1.00	Expanded Fill 1.11	Expanded Backfill 1.50	Expanded Marsh Backfill 1.10	Expanded EBS Backfill 1.30		Reduced Marsh In Fill 0.60	Reduced EBS In Fill 0.80	
49+00	4900	50	34.3	15.9	1.3	0.0	0.0	0.0	0	0	0	0	0	0	0	0	0
49+50	4950	50	24.2	15.9	0.2	0.0	0.0	0.0	56	29	1	0	0	0	0	0	25
50+00	5000	50	111.6	15.9	0.0	0.0	0.0	0.0	126	29	0	0	0	0	0	0	121
50+50	5050	50	128.9	15.9	0.0	0.0	0.0	0.0	223	29	0	0	0	0	0	0	214
51+00	5100	50	169.8	15.9	0.0	0.0	0.0	0.0	277	29	0	0	0	0	0	0	262
51+50	5150	50	236.6	15.9	0.0	0.0	0.0	0.0	377	29	0	0	0	0	0	0	358
52+00	5200	50	280.1	15.9	0.0	0.0	0.0	0.0	479	29	0	0	0	0	0	0	457
52+50	5250	50	339.3	15.9	0.0	0.0	0.0	0.0	574	29	0	0	0	0	0	0	552
53+00	5300	50	278.8	15.9	0.0	0.0	0.0	0.0	647	29	0	0	0	0	0	0	621
53+50	5350	50	204.0	15.9	0.0	0.0	0.0	0.0	729	29	0	0	0	0	0	0	700
54+00	5400	50	129.8	15.9	0.0	0.0	0.0	0.0	809	29	0	0	0	0	0	0	779
54+50	5450	50	88.5	15.9	0.0	0.0	0.0	0.0	897	29	0	0	0	0	0	0	868
55+00	5500	50	38.3	15.9	0.0	0.0	0.0	0.0	935	29	0	0	0	0	0	0	904
55+50	5550	50	3.5	15.9	0.0	0.0	0.0	0.0	938	29	0	0	0	0	0	0	907
Column totals									3796	383	2	0	0	0	0	0	0

SCHEDULE OF ITEMS

REVISED:

CONTRACT:
20160712002PROJECT(S):
1010-02-78FEDERAL ID(S):
WISC 2016248

CONTRACTOR : _____

LINE NO	ITEM DESCRIPTION	APPROX. QUANTITY AND UNITS	UNIT PRICE		BID AMOUNT	
			DOLLARS	CTS	DOLLARS	CTS
0530	460.6224 HMA Pavement 4 MT 58-28 S	318.000 TON	.		.	
0540	465.0105 Asphaltic Surface	415.000 TON	.		.	
0550	465.0110 Asphaltic Surface Patching	40.000 TON	.		.	
0560	465.0125 Asphaltic Surface Temporary	40.000 TON	.		.	
0570	465.0315 Asphaltic Flumes	80.000 SY	.		.	
0580	502.0100 Concrete Masonry Bridges	1,976.000 CY	.		.	
0590	502.3100 Expansion Device (structure) 01. B-13-91	LUMP	LUMP		.	
0600	502.3100 Expansion Device (structure) 02. B-13-92	LUMP	LUMP		.	
0610	502.3100 Expansion Device (structure) 03. B-13-93	LUMP	LUMP		.	
0620	502.3100 Expansion Device (structure) 04. B-13-94	LUMP	LUMP		.	
0630	502.3100 Expansion Device (structure) 05. B-13-297	LUMP	LUMP		.	

SCHEDULE OF ITEMS

REVISED:

CONTRACT:
20160712002PROJECT(S):
1010-02-78FEDERAL ID(S):
WISC 2016248

CONTRACTOR : _____

LINE NO	ITEM DESCRIPTION	APPROX. QUANTITY AND UNITS	UNIT PRICE		BID AMOUNT	
			DOLLARS	CTS	DOLLARS	CTS
2950	SPV.0060 Special 13. Reconstructing Sanitary Manholes	1.000 EACH
2960	SPV.0090 Special 01. Traffic Channelizing Curb System	974.000 LF
2970	SPV.0090 Special 02. Fill Existing Rumble Strips	7,664.000 LF
2980	SPV.0090 Special 03. Restore Existing Rumble Strips	5,564.000 LF
2990	SPV.0090 Special 05. Temporary Pavement Marking Non Reflective Black Tape 6-inch	14,636.000 LF
3000	SPV.0090 Special 06. Heavy Duty Silt Fence	480.000 LF
3010	SPV.0105 Special 01. Concrete Pavement Joint Layout	LUMP	LUMP	.	.	.
3020	SPV.0165 Special 01. Temporary Shoring Railroad	1,746.000 SF
3030	SPV.0165 Special 02. Fiber Wrap Girder Reinforcing	244.000 SF
3040	SPV.0180 Special 01. Geogrid Reinforcement	13,389.000 SY

SCHEDULE OF ITEMS

REVISED:

CONTRACT:
20160712002

PROJECT(S):
1010-02-78

FEDERAL ID(S):
WISC 2016248

CONTRACTOR : _____

LINE NO	ITEM DESCRIPTION	APPROX. QUANTITY AND UNITS	UNIT PRICE		BID AMOUNT	
			DOLLARS	CTS	DOLLARS	CTS
3050	SPV.0090 Special 07. Concrete Barrier Temporary Precast Left In Place	1,793.000 LF	.		.	
	SECTION 0001 TOTAL				.	
	TOTAL BID				.	