



Wisconsin Department of Transportation

June 29, 2016

Division of Transportation Systems Development

Bureau of Project Development
 4802 Sheboygan Avenue, Rm 601
 P O Box 7916
 Madison, WI 53707-7916

Telephone: (608) 266-1631
 Facsimile (FAX): (608) 266-8459

NOTICE TO ALL CONTRACTORS:

Proposal #06: 1674-00-81, WISC 2016 250
Lake Delton – Sauk City
Terrytown Rd To Ski Hi Rd, Phase 3
USH 12
Sauk County

1674-00-84
Lake Delton – Sauk City
IH 90/94 – Ski Hi Road
Salt Storage Facility
Sauk County

Letting of July 12, 2016

This is Addendum No. 03, which provides for the following:

Special Provisions

Added Special Provisions	
Article No.	Description
50	Backfill Controlled Low Strength, Item 209.0200.S
51	High Performance Dowel Bars Special

Deleted Special Provisions	
Article No.	Description
19	Abatement of Asbestos Containing Material Parcel 50, Item 203.0210.S.001

Schedule of Items

Revised Bid Item Quantities					
Bid Item	Item Description	Unit	Old Quantity	Revised Quantity	Proposal Total
204.0270	Abandoning Culvert Pipes	Each	3	1	4
312.0110	Select Crushed Material	Ton	88,000	-10,000	78,000
521.0118	Culvert Pipe Corrugated Steel 18-Inch	LF	167	-66	101
521.1018	Apron Endwalls for Culvert Pipe Steel 18-Inch	Each	12	-4	8
522.1024	Apron Endwalls for Culvert Pipe Reinforced Concrete 24-Inch	Each	19	-8	11
522.1042	Apron Endwalls for Culvert Pipe Reinforced Concrete 42-Inch	Each	4	-2	2
523.0419	Culvert Pipe Reinforced Concrete Horizontal Elliptical Class HE-IV 19x30-Inch	LF	131	492	623
523.0424	Culvert Pipe Reinforced Concrete Horizontal Elliptical Class HE-IV 24x38-Inch	LF	175	562	737

523.0519	Apron Endwalls for Culvert Pipe Reinforced Concrete Horizontal Elliptical 19x30-Inch	Each	4	12	16
523.0548	Apron Endwalls for Culvert Pipe Reinforced Concrete Horizontal Elliptical 48x76-Inch	Each	2	2	4
633.5200	Markers Culvert End	Each	46	8	54
650.6000	Construction Staking Pipe Culverts	Each	34	4	38
SPV.0090	Special 003. Culvert Pipe Horizontal Elliptical Class HE IV 48x76-Inch	LF	145	198	343

Added Bid Item Quantities					
Bid Item	Item Description	Unit	Old Quantity	Revised Quantity	Proposal Total
209.0200.S	Backfill Controlled Low Strength	CY	0	150	150
504.0900	Concrete Masonry Endwalls	CY	0	32	32
523.0429	Culvert Pipe Reinforced Concrete Horizontal Elliptical Class HE-IV 29x45-Inch	LF	0	353	353

Deleted Bid Item Quantities					
Bid Item	Item Description	Unit	Old Quantity	Revised Quantity	Proposal Total
204.0280	Sealing Pipes	Each	3	-3	0
415.0410	Concrete Pavement Approach Slab	SY	1,700	-1,700	0
416.1010	Concrete Surface Drains	CY	90	-90	0
521.1012	Apron Endwalls for Culvert Pipe Steel 12-Inch	Each	2	-2	0
522.0324	Culvert Pipe Reinforced Concrete Class IV 24-Inch	LF	582	-582	0
523.0434	Culvert Pipe Reinforced Concrete Horizontal Elliptical Class HE-IV 34x53-Inch	LF	177	-177	0
523.0524	Apron Endwalls for Culvert Pipe Reinforced Concrete Horizontal Elliptical 24x38-Inch	Each	2	-2	0
523.0534	Apron Endwalls for Culvert Pipe Reinforced Concrete Horizontal Elliptical 34x53-Inch	Each	2	-2	0

Plan Sheets

Revised Plan Sheets	
Plan Sheet	Plan Sheet Title (brief description of changes to sheet)
34	Plan Details (Revised sheet details)
40-41	Plan Details (Revised sheet details)
43-44	Plan Details (Revised sheet details)
49-50	Plan Details (Revised sheet details)
56-57	Plan Details (Revised sheet details)
66-67	Plan Details (Revised sheet details)
179	Storm Sewer (Removed structure)
399	Miscellaneous Quantities (Revised Abandoning Culvert Pipes, added Backfill Controlled Low Strength, and removed Sealing Pipes quantity)
401	Miscellaneous Quantities (Removed Concrete Approach Slab and Concrete Surface Drains quantity)
404	Miscellaneous Quantities (Revised Base Aggregate Dense 1 ¼-Inch and Select Crush Material quantity)
407	Miscellaneous Quantities (Revised culvert pipes quantity)
408	Miscellaneous Quantities (Revised apron endwalls quantity)
409	Miscellaneous Quantities (Revised apron endwalls quantity)
410	Miscellaneous Quantities (Revised SSPRC quantity)
411	Miscellaneous Quantities (Revised structures quantity)
464	Plan and Profile (Changed pipe sizes)
465	Plan and Profile (Changed pipe sizes)
466	Plan and Profile (Changed pipe sizes)
467	Plan and Profile (Changed pipe sizes)
476	Plan and Profile (Changed SSPRC sizes)
478	Plan and Profile (Changed pipe sizes)

The responsibility for notifying potential subcontractors and suppliers of these changes remains with the prime contractor.

Sincerely,

Mike Coleman

Proposal Development Specialist
Proposal Management Section

ADDENDUM NO. 03
1674-00-81 and 1674-00-84
June 29, 2016

Special Provisions

19. **DELETED**

50. **Backfill Controlled Low Strength, Item 209.0200.S.**

A Description

This special provision describes furnishing and placing a controlled low strength material designed for use as backfill in trenches for culverts, sewers, utilities, or similar structures, as backfill behind bridges abutments, or as fill for the abandonment of culverts, pipes, or tanks.

B Materials

Provide controlled low strength backfill that consists of a designed cementitious mixture of natural or processed materials. Allowable materials include natural sand, natural gravel, produced sand, foundry sand, produced gravel, fly ash, Portland cement, and other broken or fragmented mineral materials. The designed mixture shall be self-leveling and shall be free of shrinkage after hardening. Design the mixture to reach a state of hardening such that it can support foot traffic in no more than 24 hours. Provide a mixture that also meets the following requirements.

Test	Method	Value
Flow (inch)	ASTM D-6103	9 min
Compressive Strength (psi)	ASTM D-6024	20-40 @ 14 days 40-80 @ 28 days 80-120 @ 90 days

Chemical admixtures to control air content and setting time are allowable. Ten days prior to placement, furnish the engineer with a design mix detailing all components and their proportions in the mix. Also, provide documentation from the supplier of the industrial byproducts that the foundry sand and fly ash used in the mixture meet the requirements for Industrial Byproducts Categories 1, 2, 3, or 4 in NR 538 of the Wisconsin Administrative Code for use as a confined geotechnical fill.

C Construction

Place controlled low strength backfill at the locations and to the lines and grades as shown on the plan. Proportion and mix materials to produce a product of consistent texture and flow characteristics. The engineer may reject any materials exhibiting a substantial change in properties, appearance, or composition.

If the official Weather Bureau forecast for the construction site predicts temperatures at or below freezing within the next 24 hours after placement of controlled low strength backfill, protect the placed materials from freezing during that time period. If the temperature is not forecast to rise above 40° F for 72 hours after placement, the engineer may require protection from freezing for up to 72 hours.

No controlled low strength backfill shall be allowed to enter any stream, lake, or sewer system. The contractor shall be responsible for any clean up or remediation costs resulting from such occurrences.

D Measurement

The department will measure Backfill Controlled Low Strength in volume by the cubic yard of material placed and accepted. Such volume shall be computed from actual measurements of the dimensions of the area to be backfilled. In irregular or inaccessible areas, the engineer may allow volume to be determined by other appropriate methods.

E Payment

The department will pay for measured quantities at the contract unit price under the following bid item:

ITEM NUMBER	DESCRIPTION	UNIT
209.0200.S	Backfill Controlled Low Strength	CY

Payment is full compensation for designing the mix; supplying all materials; preparing the proportioned mix; hauling it to the construction site; placing the material; and protecting it from freezing.

209-010 (20090901)

50. High Performance Dowel Bars Special

A Description

This special provision describes the optional use of high performance dowel bars for use in mainline pavement.

B Materials

Replace standard spec 505.2.6.2(1) with the following when using high performance dowel bars:

- Bars with a fully bonded longitudinal glass fiber reinforced polymer (GFRP) corrosion shield conforming to the GFRP materials requirements of AASHTO LRFD Bridge Design Guide Specifications for GFRP Reinforced Concrete Bridge Decks and Traffic Railings.
- Ensure that the bars have a smooth finished GFRP surface coating 0.125 inches thick or thicker over ASTM A615 grade 60 or higher carbon steel.
- Ensure that the bars are straight, round, smooth, and free from burrs or other deformations detrimental to the free movement of the bar in the concrete.

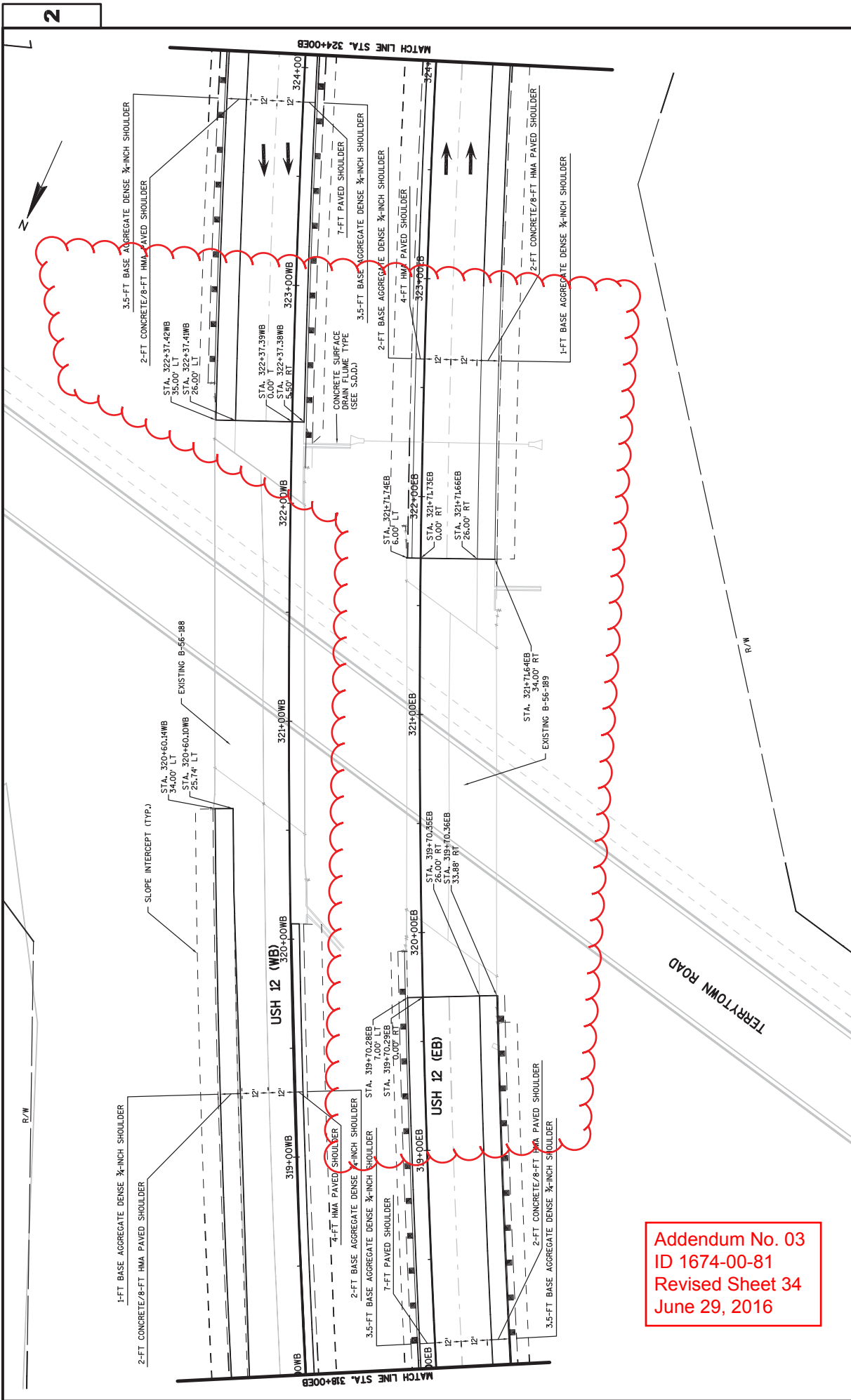
Schedule of Items

Attached, dated June 29, 2016 are the revised Schedule of Items Pages 1 – 26.

Plan Sheets

The following 8½ x 11-inch sheets are attached and made part of the plans for this proposal:
Revised: 34, 40-41, 43-44, 49-50, 56-57, 66-67, 179, 399, 401, 404, 407-411, 464-467, 476, and 478.

END OF ADDENDUM



Addendum No. 03
 ID 1674-00-81
 Revised Sheet 34
 June 29, 2016

2

2

PROJECT NO: 1674-00-81

HWY: USH 12

COUNTY: SAUK

PLAN DETAILS: USH 12

SHEET 34

FILE NAME : G:\WISDOT\SW\12023\CVL3D\SHEET\PLAN\PLAN DETAILS\81_PROJECT\021201.PD (USH 12).DWG

PLOT DATE : 6/28/2016

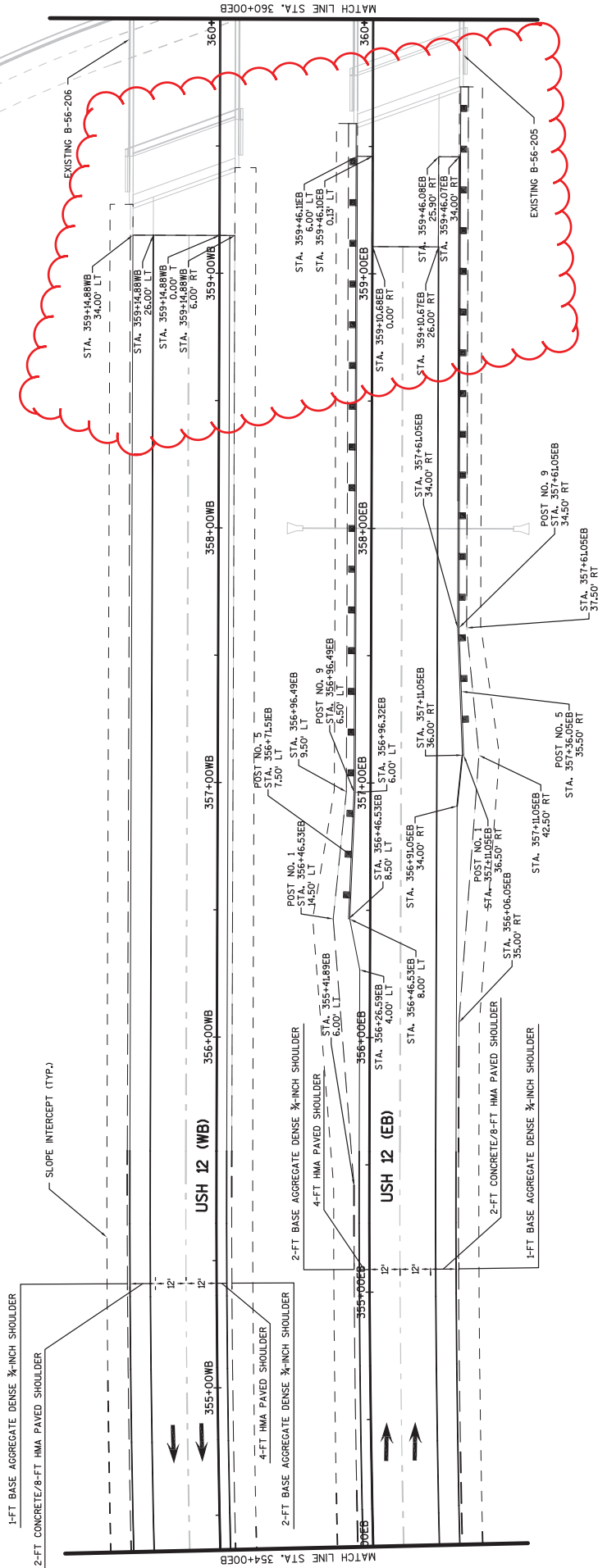
PLOT BY : KL ENGINEERING

PLOT NAME :

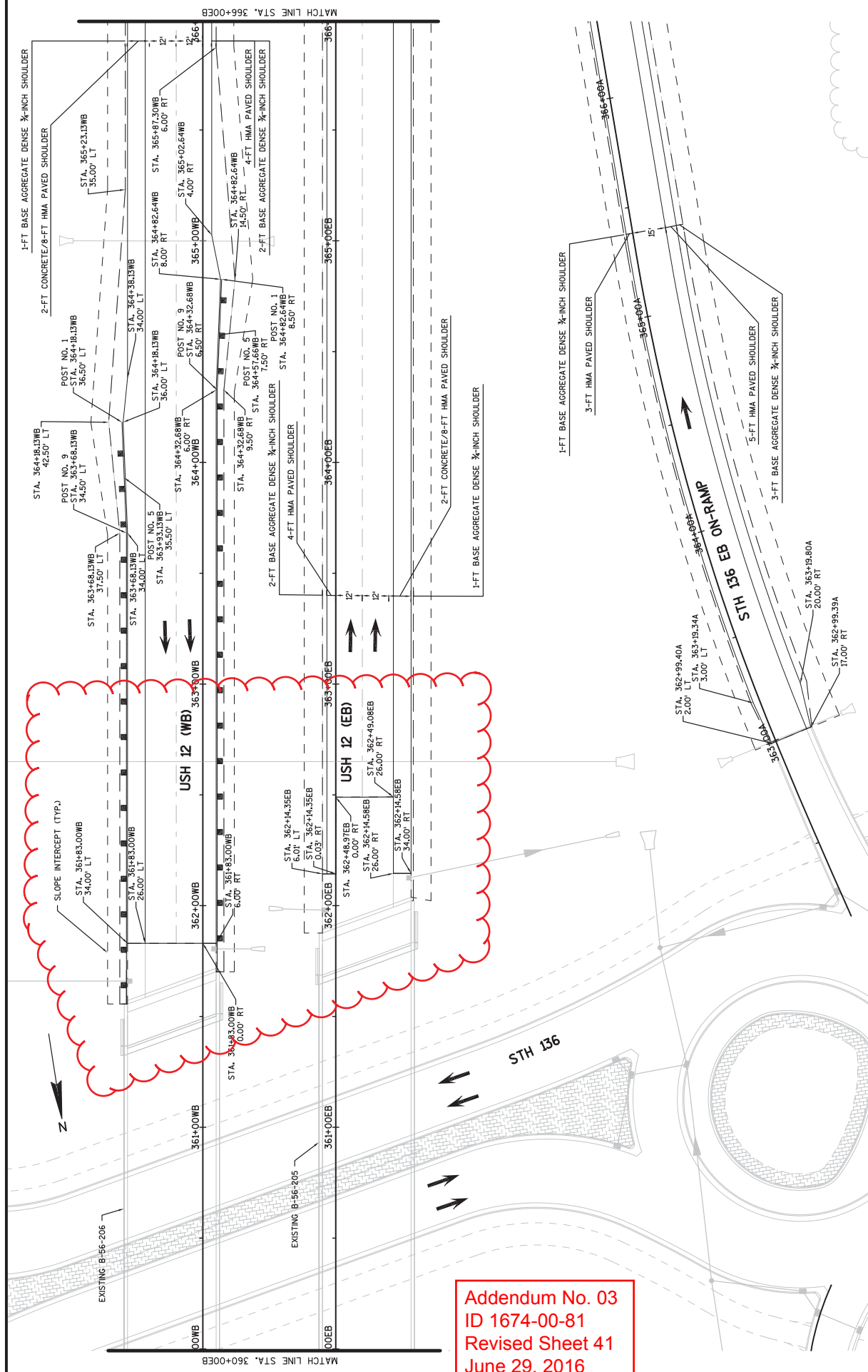
PLOT SCALE : 1 IN:40 FT

WISDOT/CADD SHEET 42

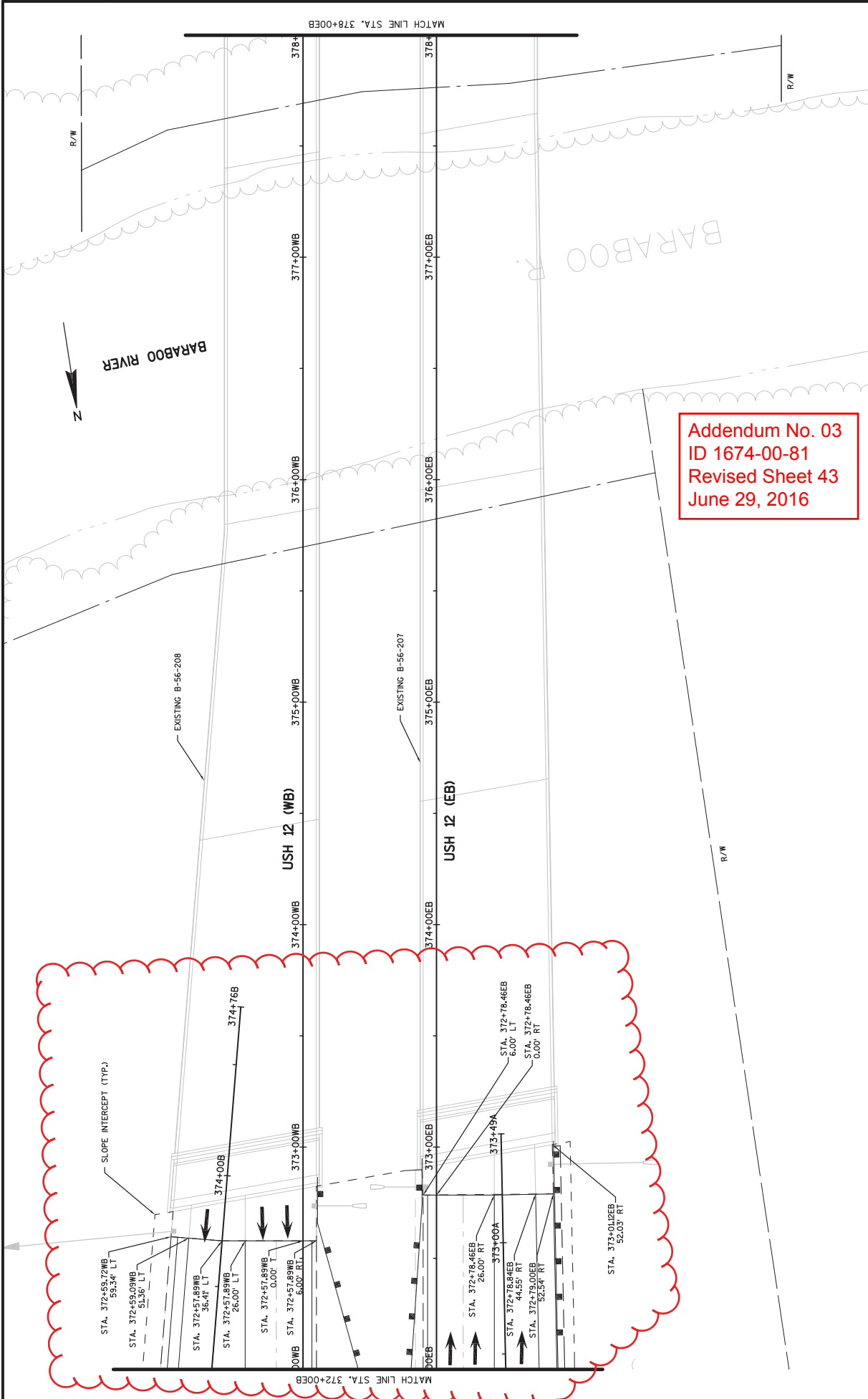
STH 136



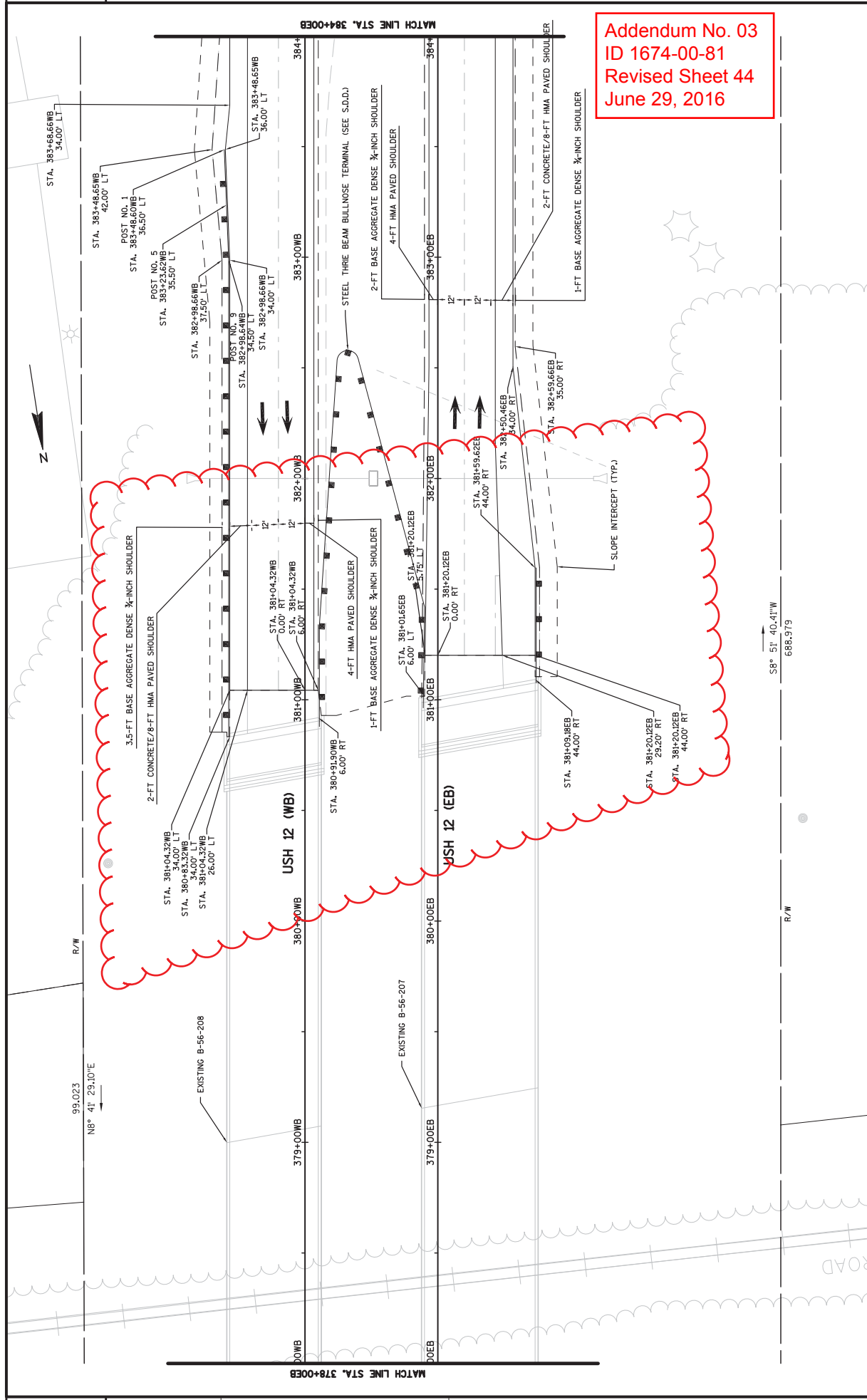
Addendum No. 03
 ID 1674-00-81
 Revised Sheet 40
 June 29, 2016



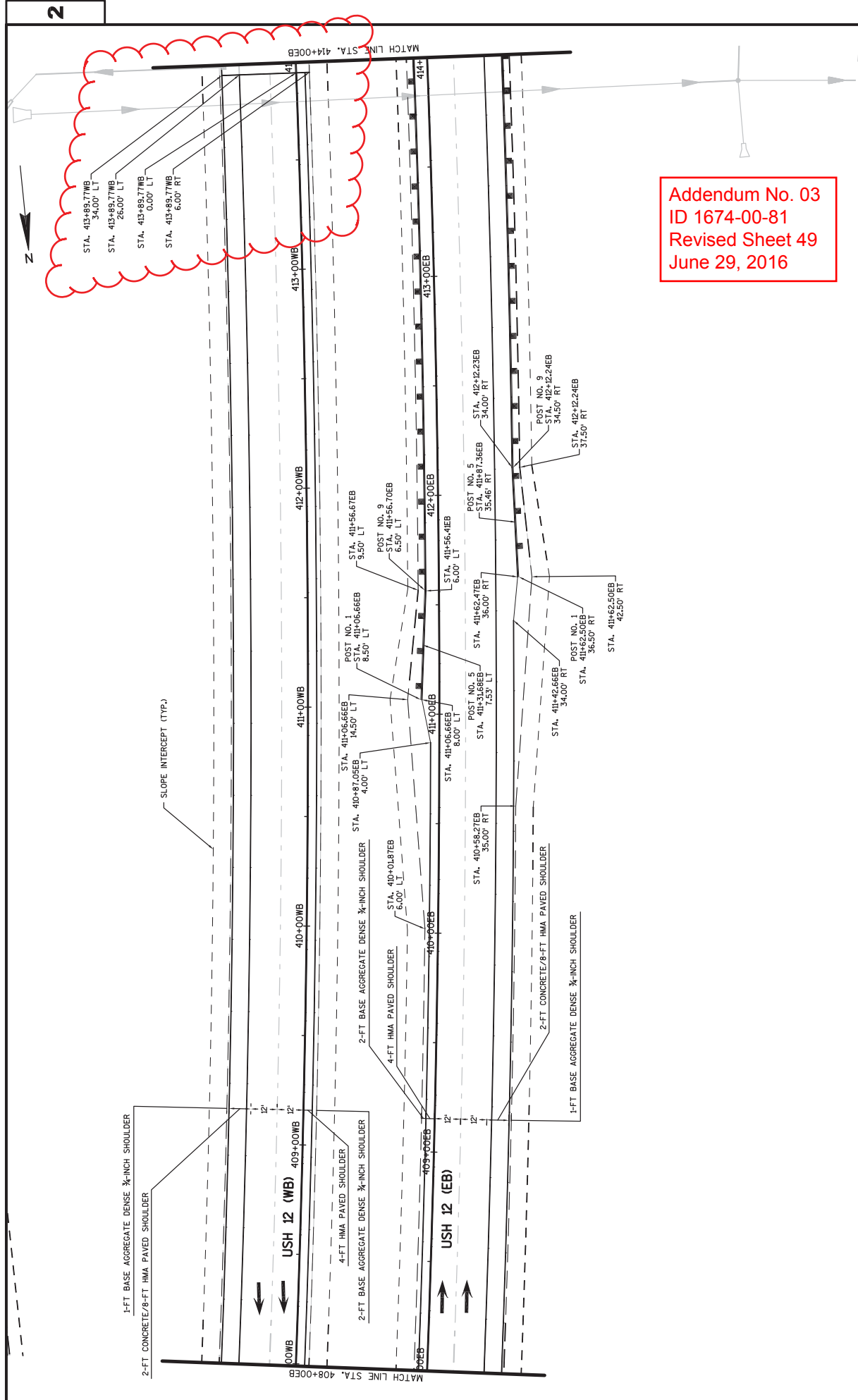
Addendum No. 03
 ID 1674-00-81
 Revised Sheet 41
 June 29, 2016



Addendum No. 03
 ID 1674-00-81
 Revised Sheet 43
 June 29, 2016

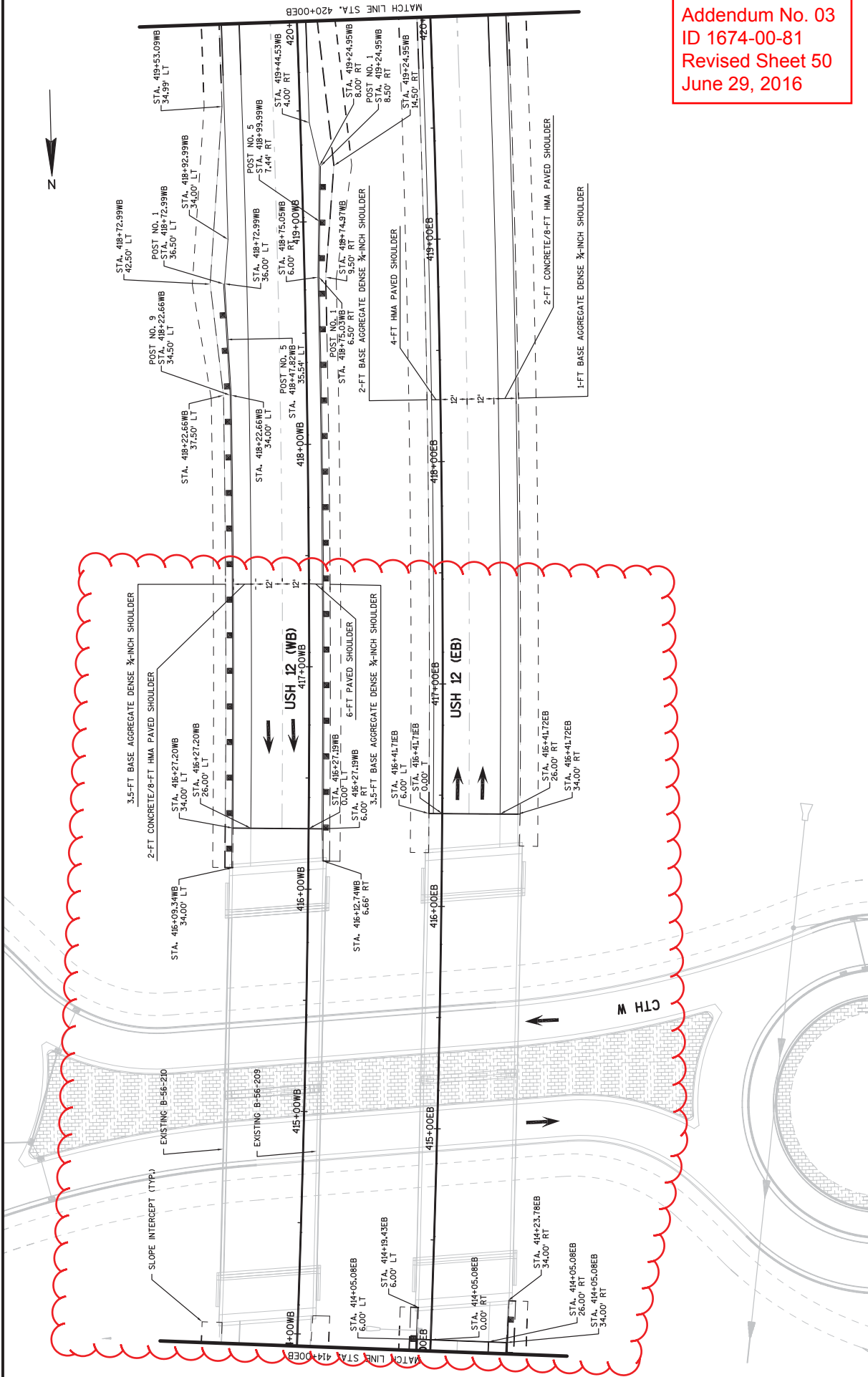


Addendum No. 03
 ID 1674-00-81
 Revised Sheet 44
 June 29, 2016

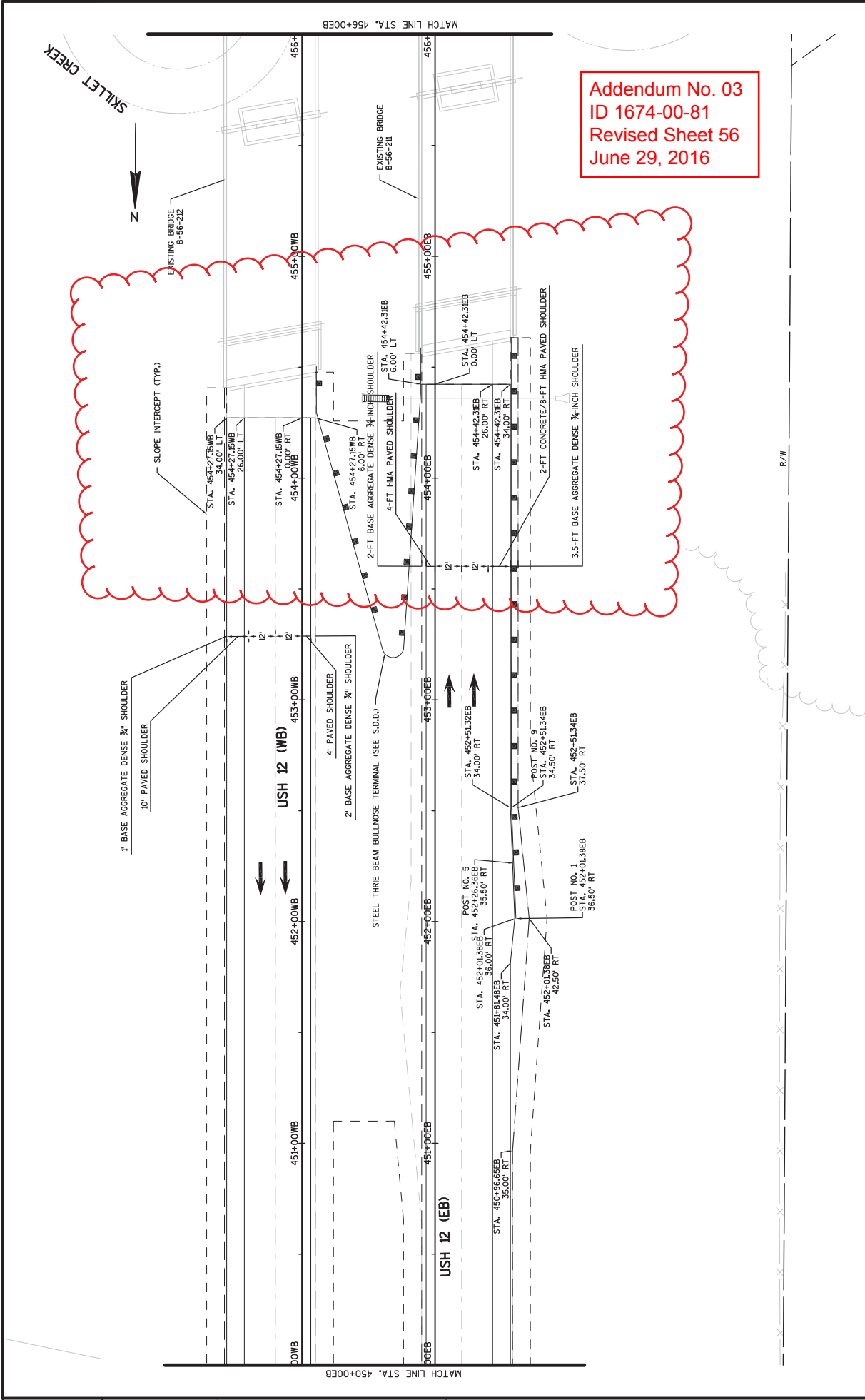


Addendum No. 03
 ID 1674-00-81
 Revised Sheet 49
 June 29, 2016

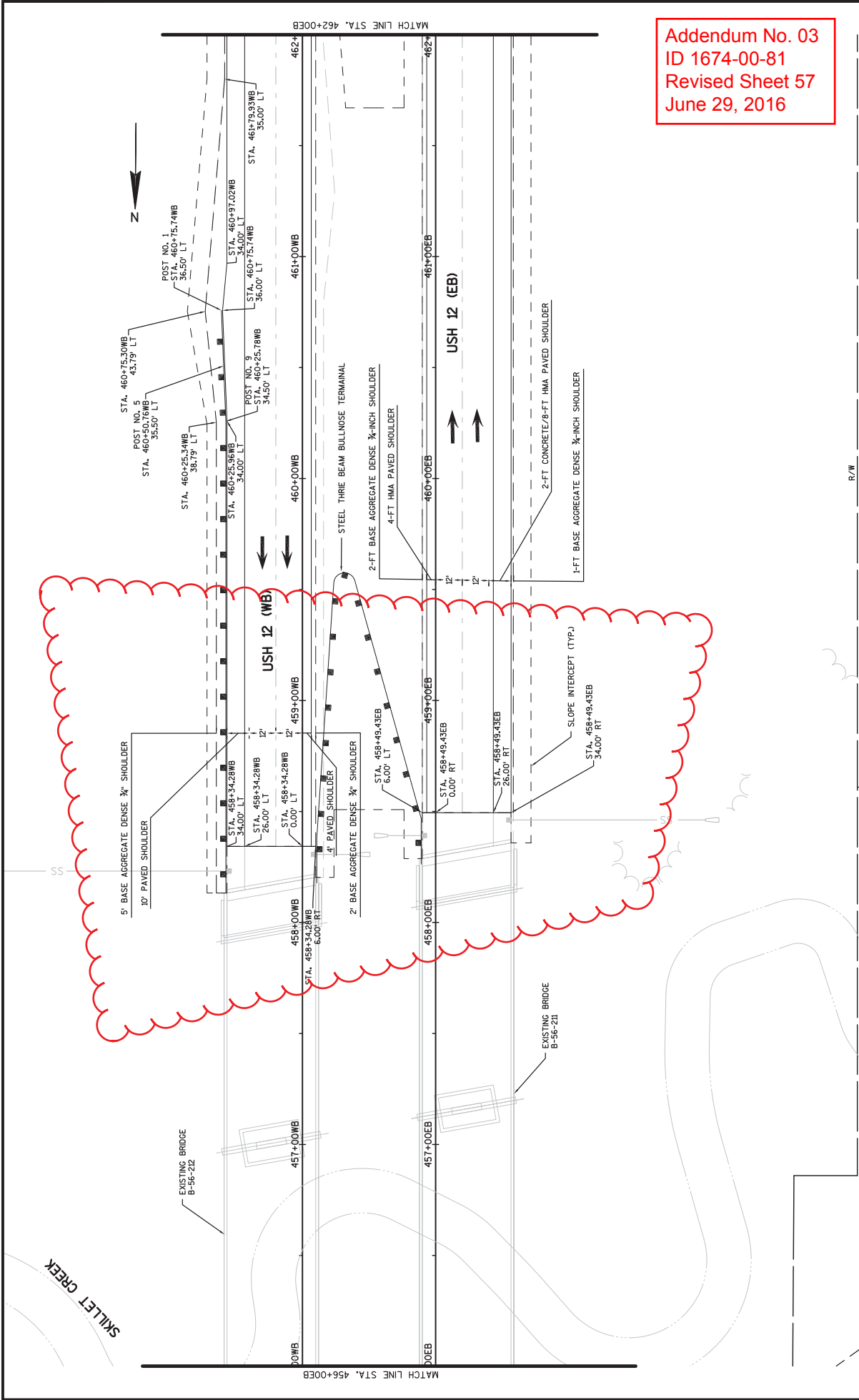
STA. 413+89.77WB
 34.00' LT
 STA. 413+89.77WB
 26.00' LT
 STA. 413+89.77WB
 0.00' LT
 STA. 413+89.77WB
 6.00' RT



Addendum No. 03
 ID 1674-00-81
 Revised Sheet 50
 June 29, 2016

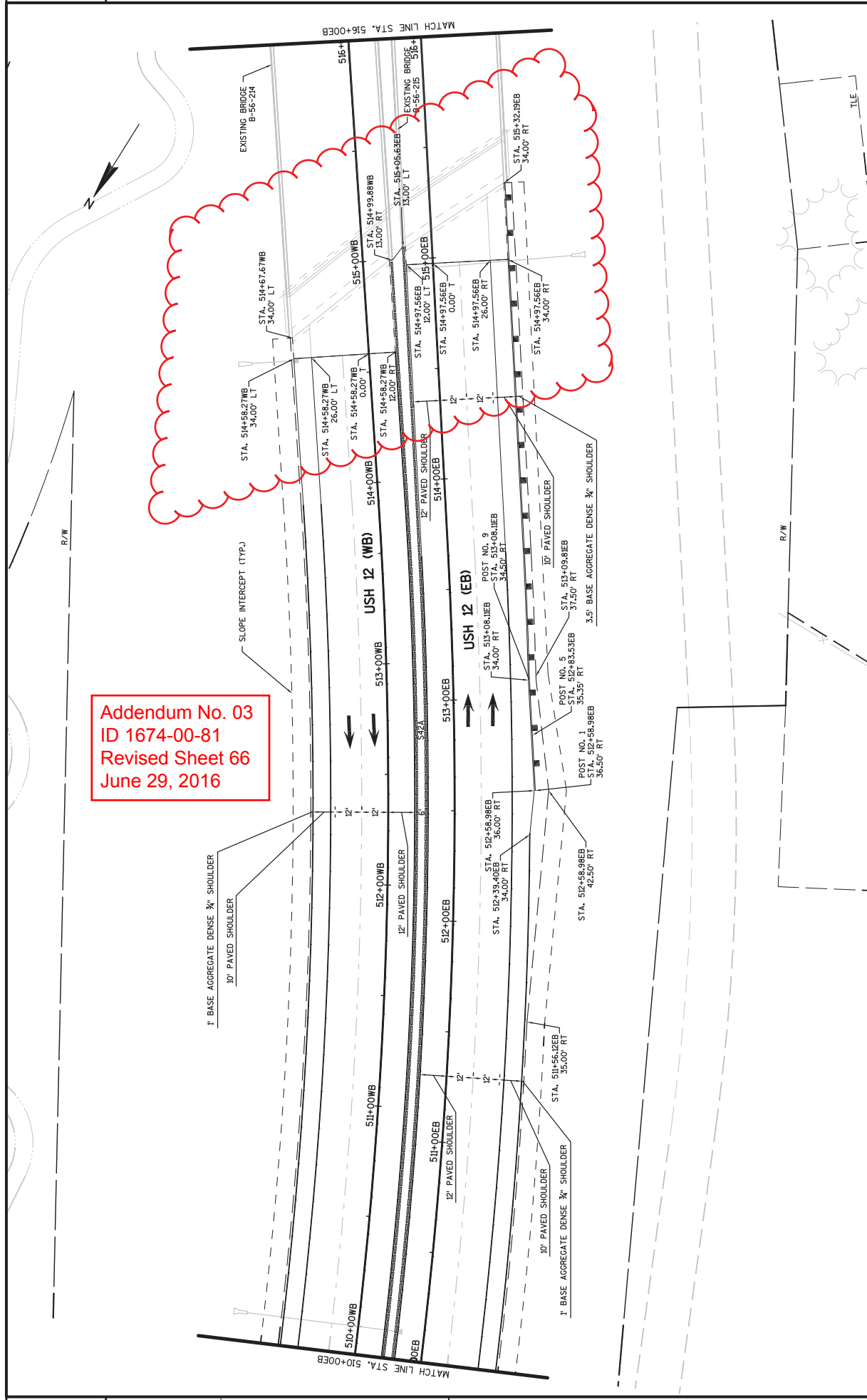


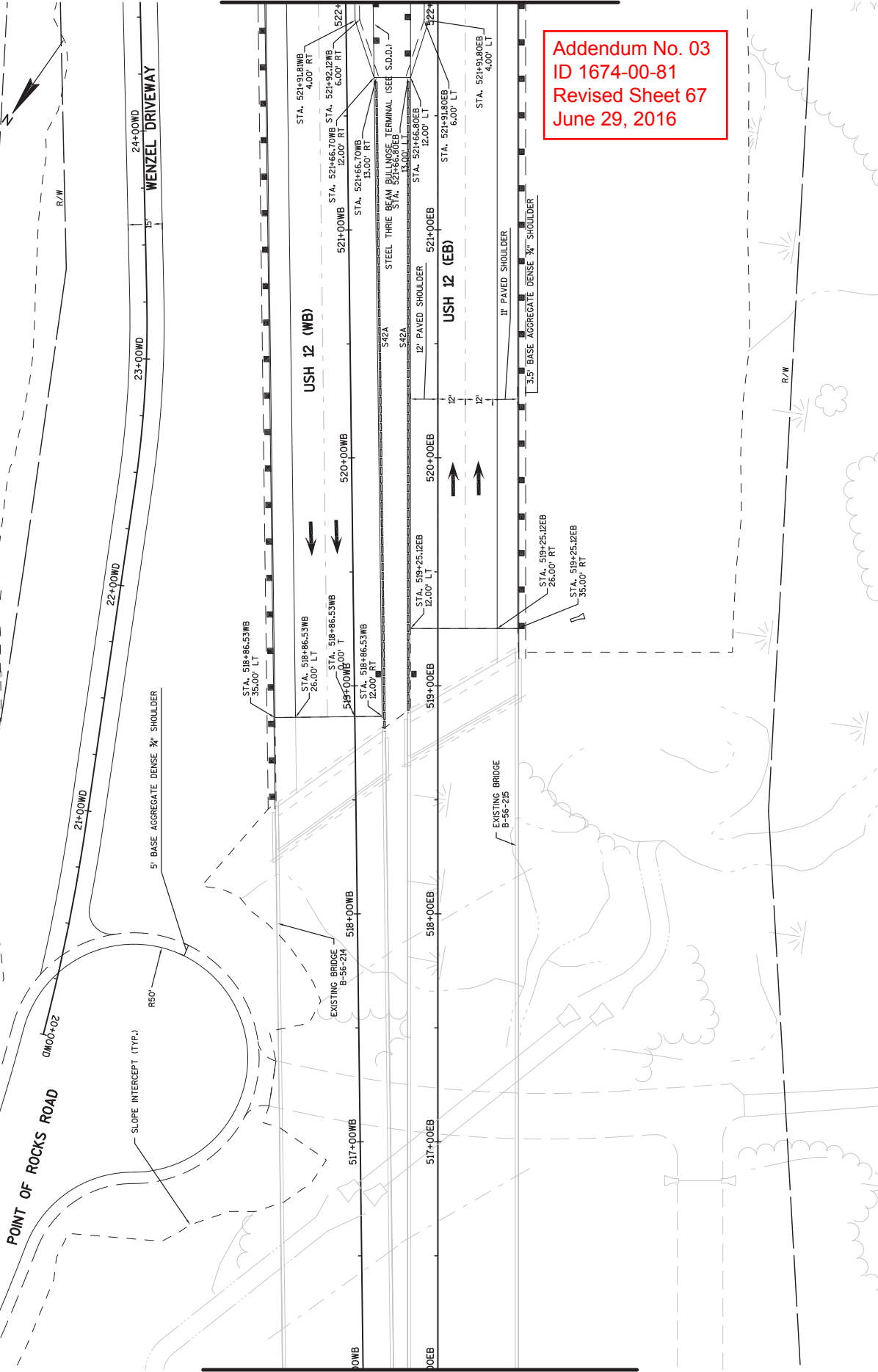
Addendum No. 03
 ID 1674-00-81
 Revised Sheet 56
 June 29, 2016



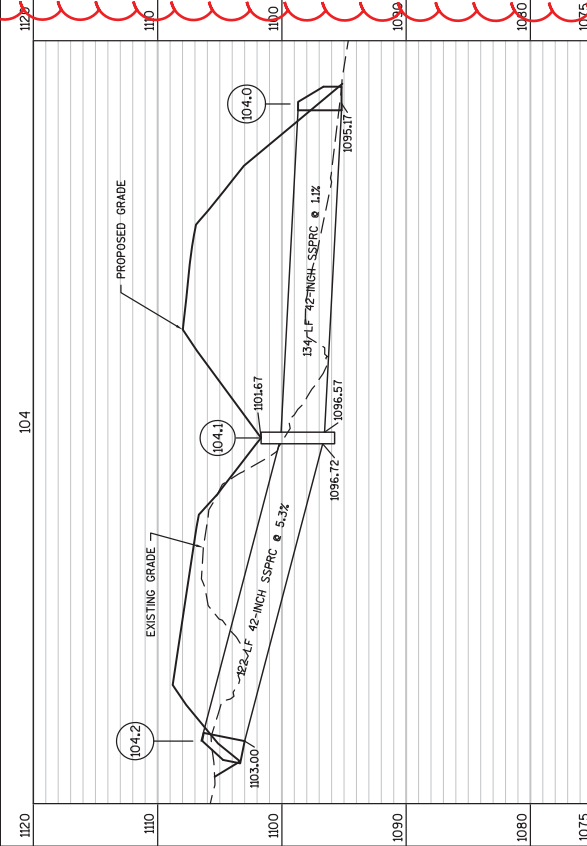
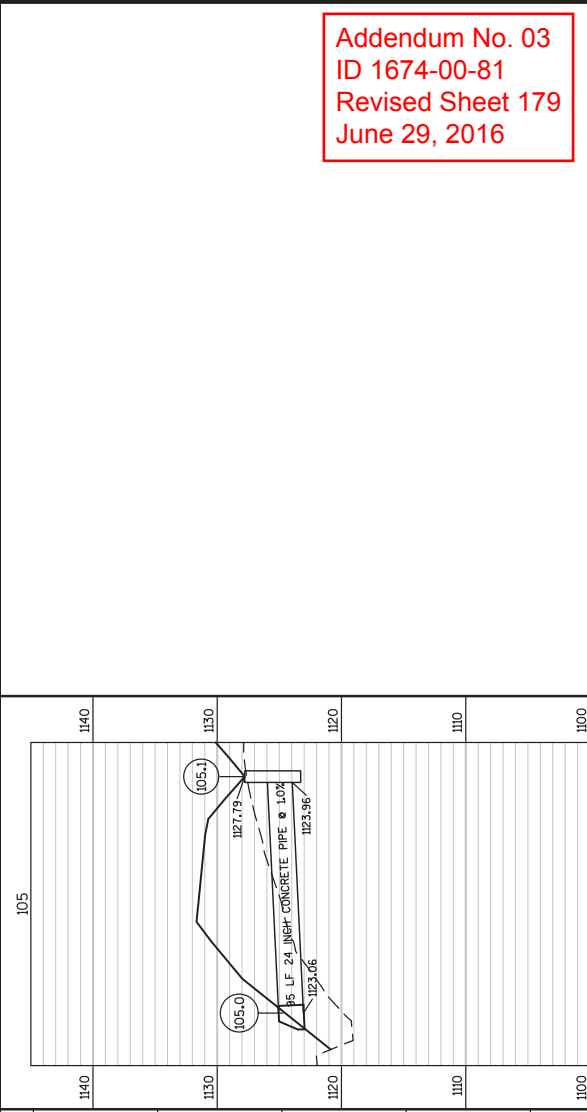
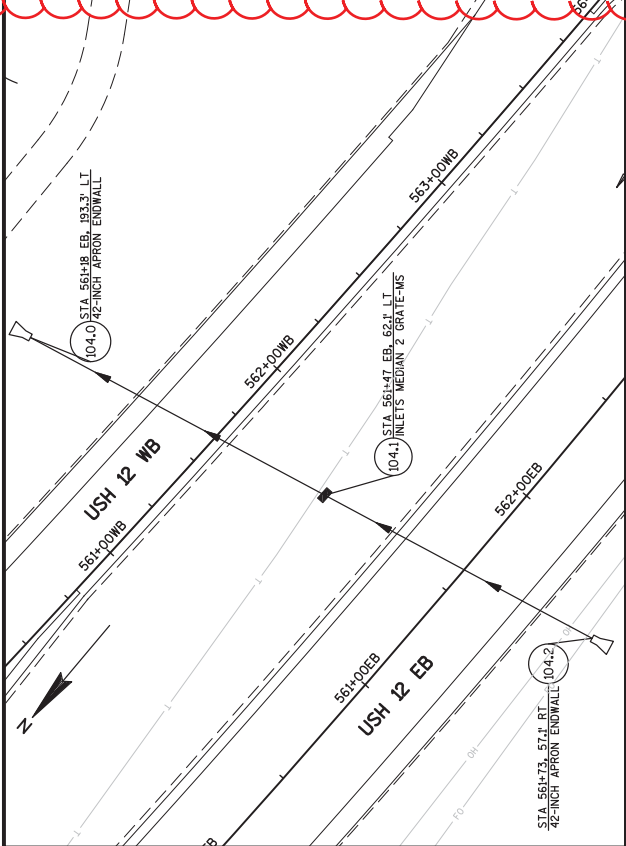
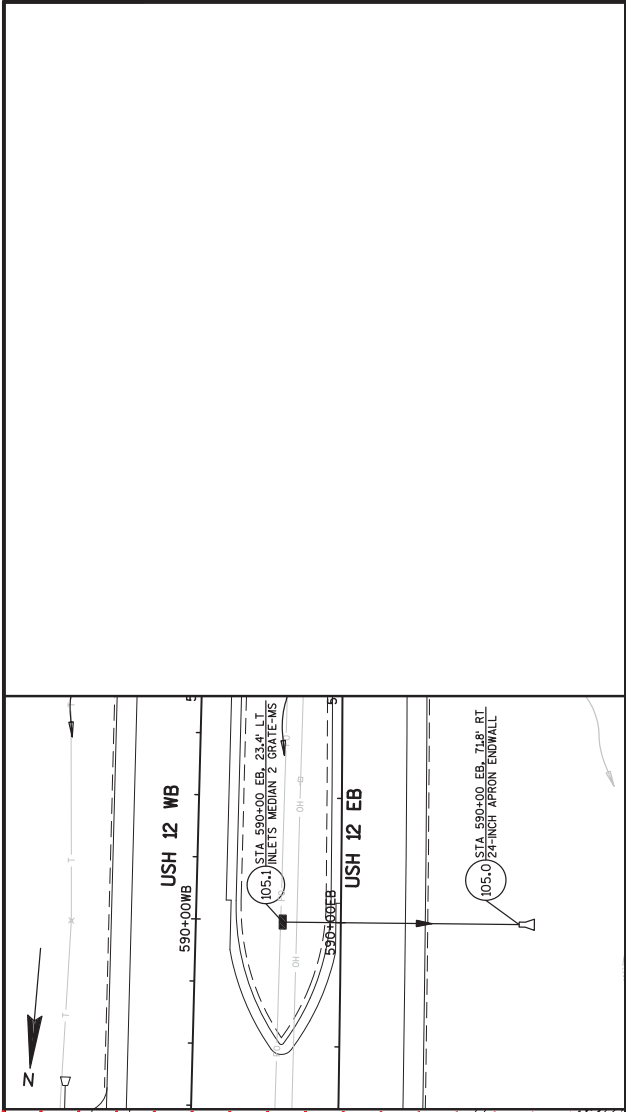
Addendum No. 03
 ID 1674-00-81
 Revised Sheet 57
 June 29, 2016

Addendum No. 03
 ID 1674-00-81
 Revised Sheet 66
 June 29, 2016





Addendum No. 03
 ID 1674-00-81
 Revised Sheet 67
 June 29, 2016



Addendum No. 03
ID 1674-00-81
Revised Sheet 179
June 29, 2016

Addendum No. 03
 ID 1674-00-81
 Revised Sheet 399
 June 29, 2016

CLEARING AND GRUBBING		REMOVING CULVERTS										
CATEGORY	LOCATION	STATION - STATION	CLEARING (STA)	GRUBBING (STA)	SMALL PIPE CULVERTS (EACH)	203.0200.001 REMOVING OLD STRUCTURE (LS)	203.0200.002 REMOVING OLD STRUCTURE (LS)	203.0200.003 REMOVING OLD STRUCTURE (LS)	203.0200.004 REMOVING OLD STRUCTURE (LS)	203.0200.005 REMOVING OLD STRUCTURE (LS)	203.0200.006 REMOVING OLD STRUCTURE (LS)	NOTE
0010	USH 12 EB	518+72 EB - 522+99 EB	4	4	1							64-FEET LONG
		523+02 EB - 527+53 EB	5	5								64-FEET LONG
		538+47 EB - 539+27 EB	1	1								31-FEET LONG
		530+71 EB - 537+00 EB	6	6								57-FEET LONG
		546+95 EB - 547+61 EB	1	1								34-FEET LONG
		548+76 EB - 550+38 EB	2	2								25-FEET LONG
		551+26 EB - 559+19 EB	8	8								81-FEET LONG
		554+03 EB - 554+92 EB	1	1								30-FEET LONG
		572+98 EB - 581+49 EB	9	9								17-FEET LONG
		584+62 EB - 588+14 EB	2	2								62-FEET LONG
		587+30 EB - 601+11 EB	14	14								45-FEET LONG
		518+00 WB - 521+78 WB	3	3								20-FEET LONG
		522+01 WB - 522+99 WB	1	1								20-FEET LONG
		528+28 WB - 527+83 WB	2	2								54-FEET LONG
		528+61 WB - 529+25 WB	1	1								51-FEET LONG
		529+81 WB - 536+71 WB	7	7								56-FEET LONG
		537+73 WB - 538+49 WB	1	1								57-FEET LONG
		546+86 WB - 550+55 WB	2	2								24-FEET LONG
		550+89 WB - 560+92 WB	10	10								59-FEET LONG
		562+37 WB - 563+12 WB	1	1								30-FEET LONG
		568+34 WB - 567+49 WB	1	1								88-FEET LONG
		568+14 WB - 571+56 WB	3	3								112-FEET LONG
		572+43 WB - 574+85 WB	2	2								78-FEET LONG
		577+09 WB - 577+66 WB	1	1								40-FEET LONG
		581+28 WB - 583+00 WB	2	2								31-FEET LONG
		582+36 WB - 584+22 WB	1	1								23-FEET LONG
		584+38 WB - 588+42 WB	3	3								27-FEET LONG
		589+27 WB - 590+32 WB	1	1								33-FEET LONG
		590+81 WB - 591+89 WB	1	1								
		592+14 WB - 605+71 WB	14	14								
	WENZEL DRIVEWAY	21+89 WD - 27+22 WD	5	5								
		29+10 WD - 30+03 WD	1	1								
	GREEN VALLEY DRIVEWAY	30+00 GD - 35+91 GD	6	6								
		38+64 GD - 37+32 GD	1	1								
	OAK COURT	10+28 LF - 11+48 LF	1	1								
		11+97 LF - 12+67 LF	1	1								
		15+10 LF - 17+28 LF	2	2								
		20+53 LF - 21+13 LF	1	1								
		24+61 LF - 25+84 LF	1	1								
	LEHMAN ROAD	491+00 LR - 491+57 LR	1	1								
		496+58 LR - 498+07 LR	1	1								
	SKI HI ROAD	600+82 SH - 605+74 SH	5	5								
		606+71 SH - 609+19 SH	2	2								
	PROJECT 1674-06-81 TOTAL		138	138								

CATEGORY	LOCATION	STATION	OFFSET	SMALL PIPE CULVERTS (EACH)	203.0200.001 REMOVING OLD STRUCTURE (LS)	203.0200.002 REMOVING OLD STRUCTURE (LS)	203.0200.003 REMOVING OLD STRUCTURE (LS)	203.0200.004 REMOVING OLD STRUCTURE (LS)	203.0200.005 REMOVING OLD STRUCTURE (LS)	203.0200.006 REMOVING OLD STRUCTURE (LS)	NOTE
0010	USH 12 EB/WB	289+00 EB	180' RT	1							64-FEET LONG
		526+60 EB	30' LT								64-FEET LONG
		527+67 EB	17' RT	1							31-FEET LONG
		528+39 EB	54' LT	1							57-FEET LONG
		538+65 EB	37' RT								34-FEET LONG
		545+85 EB	59' RT	1							25-FEET LONG
		549+22 EB	100' RT	1							81-FEET LONG
		551+32 EB	90' RT	1							30-FEET LONG
		555+56 EB	2' RT	1							17-FEET LONG
		561+40 EB	108' LT	1							62-FEET LONG
		561+61 EB	17' LT								45-FEET LONG
		562+12 EB	126' LT	1							20-FEET LONG
		563+72 EB	4' LT	1							20-FEET LONG
		569+01 EB	49' RT	1							54-FEET LONG
		573+93 EB	74' LT	1							51-FEET LONG
		574+08 EB	11' LT	1							25-FEET LONG
		574+55 EB	18' RT	1							56-FEET LONG
		583+27 EB	72' LT	1							57-FEET LONG
		587+48 EB	74' LT	1							24-FEET LONG
		592+00 EB	101' LT	1							59-FEET LONG
		593+55 EB	61' LT	1							30-FEET LONG
		596+99 EB	81' RT	1							39-FEET LONG
		601+33 EB	3' RT	1							88-FEET LONG
		603+65 EB	4' LT	1							112-FEET LONG
	CTH BD	32+34 BD	104' RT	1							78-FEET LONG
	WENZEL DRIVEWAY	20+89 WD	14' RT	1							40-FEET LONG
	OAK COURT	18+95 LF	10' LT	1							31-FEET LONG
		21+16 LF	10' LT	1							31-FEET LONG
		24+75 LF	38' RT	1							23-FEET LONG
	LEHMAN ROAD	483+37 LR	16' LT	1							27-FEET LONG
	SKI HI ROAD	601+59 SH	13' LT	1							33-FEET LONG
		603+75 SH	1' RT	1							
	PROJECT 1674-06-81 TOTAL			4							

PROJECT NO: 1674-00-81
 COUNTY: SAUK
 HWY: USH 12
 PROJECT: 1674-06-81 TABLES.B1
 PROJECT: 1674-06-81 TABLE 1.DWG
 FILE NAME : G:\NDOT\S\MS12023\CIVIL\3D\SHEETS\PLANNING TABLES.B1
 PLOT DATE : 6/27/2016
 PLOT BY : KL ENGINEERING
 PLOT NAME : MISCELLANEOUS UTILITIES
 PLOT SCALE : 1:1.188
 SHEET 399
 WISDOT/CADD SHEET 42

BASE AGGREGATE DENSE AND SELECT CRUSHED MATERIAL

CATEGORY	STAGE 1	STATION - STATION	305.0110		312.0110	
			3/4-INCH (TON)	1 1/4-INCH (TON)	3/4-INCH (TON)	SELECT CRUSHED MATERIAL (TON)
0010	USH 12 EB/WB	282+40 EB - 319+92 EB	678	14,250	242	4,493
		321+57 EB - 359+94 EB	1,029	13,979	--	--
		361+67 EB - 373+17 EB	321	4,260	--	--
		380+77 EB - 414+43 EB	862	11,980	--	--
		416+02 EB - 454+80 EB	974	13,768	--	--
		458+07 EB - 515+35 EB	1,070	20,012	--	--
		518+95 EB - 537+04 EB	36	937	--	--
		537+04 EB - 551+34 EB	433	4,057	892	--
		551+34 EB - 564+45 EB	84	3,545	978	--
		564+45 EB - 589+12 EB	380	4,896	930	--
589+12 EB - 597+27 EB	32	1,405	--	--		
STH 136 EB RAMP						
		345+38 A - 360+47 A	179	1,610	--	--
		362+14 A - 373+49 A	144	1,333	--	--
STH 136 WB RAMP						
		340+60 B - 360+15 B	227	2,563	--	--
		361+82 B - 374+13 B	119	1,052	--	--
CTH W EB RAMP						
		399+91 C - 414+89 C	203	1,796	--	--
		419+46 C - 433+55 C	212	2,286	--	--
CTH W WB RAMP						
		398+13 D - 414+53 D	207	2,182	--	--
		419+09 D - 431+04 D	203	1,797	--	--
STAGE 2 EB						
		518+00 L - 621+00 L	--	7,394	--	--
EXCAVATION BELOW SUBGRADE (EBS)						
		FRENCH DRAINS	--	--	851	78
TEMPORARY SEDIMENT TRAPS						
STAGE 1 TOTAL			7,395	114,800	--	135
STAGE 2			--	--	500	--
		282+40 EB - 319+92 EB	--	--	370	--
		458+07 EB - 515+35 EB	273	5,582	7,698	--
		518+95 EB - 537+04 EB	182	4,706	7,503	--
		551+34 EB - 551+34 EB	86	3,454	4,679	--
		564+45 EB - 564+45 EB	332	7,864	11,087	--
		589+12 EB - 597+27 EB	96	2,856	3,982	--
		597+27 EB - 605+73 EB	79	3,413	5,128	--
CTH BD						
		30+04 BD - 48+20 BD	18	690	--	--
GREEN VALLEY DRIVEWAY						
		30+49 GD - 38+25 GD	91	1,438	--	--
OAK COURT						
		10+70 LF - 24+81 LF	421	4,988	--	--
LEHMAN ROAD						
		491+00 LR - 498+33 LR	192	2,407	--	--
SKI HI ROAD						
		60+16 SH - 610+00 SH	453	2,713	--	--
EXCAVATION BELOW SUBGRADE (EBS)						
		FRENCH DRAINS	--	--	1,678	114
TEMPORARY ACCESS						
		TEMPORARY SEDIMENT TRAPS	400	--	--	--
STAGE 2 TOTAL			2,622	40,961	--	135
STAGE 3 TOTAL			--	--	254	7,234
STAGE 4 TOTAL			330	6,444	--	18
PROJECT 1674-00-81 TOTAL			10,600	168,500	--	78,000

Addendum No. 03
ID 1674-00-81
Revised Sheet 404
June 29, 2016

CATEGORY	STAGE 1	STATION - STATION	305.0110		312.0110	
			3/4-INCH (TON)	1 1/4-INCH (TON)	3/4-INCH (TON)	SELECT CRUSHED MATERIAL (TON)
0010	USH 12 EB/WB	282+40 EB - 319+92 EB	678	14,250	242	4,493
		321+57 EB - 359+94 EB	1,029	13,979	--	--
		361+67 EB - 373+17 EB	321	4,260	--	--
		380+77 EB - 414+43 EB	862	11,980	--	--
		416+02 EB - 454+80 EB	974	13,768	--	--
		458+07 EB - 515+35 EB	1,070	20,012	--	--
		518+95 EB - 537+04 EB	36	937	--	--
		537+04 EB - 551+34 EB	433	4,057	892	--
		551+34 EB - 564+45 EB	84	3,545	978	--
		564+45 EB - 589+12 EB	380	4,896	930	--
589+12 EB - 597+27 EB	32	1,405	--	--		
STH 136 EB RAMP						
		345+38 A - 360+47 A	179	1,610	--	--
		362+14 A - 373+49 A	144	1,333	--	--
STH 136 WB RAMP						
		340+60 B - 360+15 B	227	2,563	--	--
		361+82 B - 374+13 B	119	1,052	--	--
CTH W EB RAMP						
		399+91 C - 414+89 C	203	1,796	--	--
		419+46 C - 433+55 C	212	2,286	--	--
CTH W WB RAMP						
		398+13 D - 414+53 D	207	2,182	--	--
		419+09 D - 431+04 D	203	1,797	--	--
STAGE 2 EB						
		518+00 L - 621+00 L	--	7,394	--	--
EXCAVATION BELOW SUBGRADE (EBS)						
		FRENCH DRAINS	--	--	851	78
TEMPORARY SEDIMENT TRAPS						
STAGE 1 TOTAL			7,395	114,800	--	135
STAGE 2			--	--	500	--
		282+40 EB - 319+92 EB	--	--	370	--
		458+07 EB - 515+35 EB	273	5,582	7,698	--
		518+95 EB - 537+04 EB	182	4,706	7,503	--
		551+34 EB - 551+34 EB	86	3,454	4,679	--
		564+45 EB - 564+45 EB	332	7,864	11,087	--
		589+12 EB - 597+27 EB	96	2,856	3,982	--
		597+27 EB - 605+73 EB	79	3,413	5,128	--
CTH BD						
		30+04 BD - 48+20 BD	18	690	--	--
GREEN VALLEY DRIVEWAY						
		30+49 GD - 38+25 GD	91	1,438	--	--
OAK COURT						
		10+70 LF - 24+81 LF	421	4,988	--	--
LEHMAN ROAD						
		491+00 LR - 498+33 LR	192	2,407	--	--
SKI HI ROAD						
		60+16 SH - 610+00 SH	453	2,713	--	--
EXCAVATION BELOW SUBGRADE (EBS)						
		FRENCH DRAINS	--	--	1,678	114
TEMPORARY ACCESS						
		TEMPORARY SEDIMENT TRAPS	400	--	--	--
STAGE 2 TOTAL			2,622	40,961	--	135
STAGE 3 TOTAL			--	--	254	7,234
STAGE 4 TOTAL			330	6,444	--	18
PROJECT 1674-00-81 TOTAL			10,600	168,500	--	78,000

CONCRETE DRIVEWAY 7-INCH

CATEGORY	STAGE 2	STATION	OFFSET	SY
0010	OAK COURT	21+18 LF	LT	15
STAGE 2 TOTAL				
15				
STAGE 3				
	CTH BD	37+40 BD	RT	35
STAGE 3 TOTAL				
35				
PROJECT 1674-00-81 TOTAL				
50				

MISCELLANEOUS QUANTITIES

COUNTY: SAUK

HWY: USH 12

PROJECT: NO. 1674-00-81

SHEET 404

E
WISDOT/CADD SHEET 42

FILE NAME : G:\WISDOT\SM12023\CIVIL\3D\SHEET\PLANNING TABLES\81 PROJECT\MO TABLE 1.DWG

PLOT DATE : 6/24/2016

PLOT BY : KL ENGINEERING

PLOT NAME :

PLOT SCALE : 1:1.185

PROJECT: NO. 1674-00-81

PROJECT: MO TABLE 1.DWG

Addendum No. 03
ID 1674-00-81
Revised Sheet 407
June 29, 2016

CATEGORY	STAGE	LOCATION	INLET STATION	INLET OFFSET	INLET ELEV.	OUTLET STATION	OUTLET OFFSET	OUTLET ELEV.	NOTES	SLOPE (%)	CULVERT PIPE TEMPORARY				CONCRETE COLLARS FOR PIPE (EACH)	CONSTRUCTION STAKING PIPE CULVERTS (EACH)	
											18 INCH (LF)	24 INCH (LF)	36 INCH (LF)	48 INCH (LF)			
0010	1	USH 12 EBWB	524+50.00 L	34.95 RT	1029.93	524+50.00 L	30.94 LT	1028.19	CROSS DRAIN	2.85	66	---	---	---	---	650,600(A)	
0010	1	USH 12 EBWB	526+13.43 L	23.49 RT	1033.47	526+15.06 L	24.88 RT	1033.10	CROSS DRAIN	0.76	---	48	---	---	---	650,600(A)	
0010	1	USH 12 EBWB	527+53.38 L	23.09 LT	1054.37	527+48.48 L	24.00 LT	1052.22	DRIVEWAY LT	6.08	---	35	---	---	---	650,600(A)	
0010	1	USH 12 EBWB	527+84.45 L	43.97 RT	1050.24	528+20.48 L	42.53 RT	1048.21	DRIVEWAY RT	5.81	---	35	---	---	---	650,600(A)	
0010	1	USH 12 EBWB	570+14.90 L	46.42 RT	1097.10	570+09.19 L	33.64 LT	1093.83	CROSS DRAIN	4.08	---	---	80	---	---	650,600(A)	
0010	1	USH 12 EBWB	572+18.31 L	46.47 LT	1099.45	572+44.24 L	45.06 LT	1099.45	DRIVEWAY RT	3.41	---	---	---	---	---	650,600(A)	
0010	1	USH 12 EBWB	583+00.71 L	42.20 LT	1115.04	583+38.40 L	41.86 LT	1114.05	DRIVEWAY RT	3.80	---	28	---	---	---	650,600(A)	
0010	1	USH 12 EBWB	591+65.93 L	35.39 LT	1126.14	592+11.95 L	35.89 LT	1126.14	DRIVEWAY RT	0.54	---	---	---	---	---	650,600(A)	
0010	1	USH 12 EBWB	603+53.11 L	25.16 RT	N/A	603+45.25 L	45.57 RT	1148.57	EXTENSION	1.06	---	22	---	---	---	650,600(A)	
0010	1	USH 12 EBWB	603+86.64 L	63.72 LT	1149.60	603+84.25 L	57.32 LT	N/A	EXTENSION	1.06	---	7	---	---	---	650,600(A)	
0010	1	USH 12 EBWB	604+00.00 SH	42.00 RT	1087.85	604+00.00 SH	48.00 LT	1086.15	CROSS DRAIN	1.06	---	---	91	---	---	650,600(A)	
PROJECT 1674-00-81 TOTAL											52	182	77	171	2	11	

CATEGORY	STAGE	LOCATION	INLET STATION	INLET OFFSET	INLET ELEV.	OUTLET STATION	OUTLET OFFSET	OUTLET ELEV.	NOTES	SLOPE (%)	CULVERT PIPE CORROGATED STEEL				MARKERS CULVERT (EACH)	CONSTRUCTION STAKING PIPE CULVERTS (EACH)	
											18 INCH (LF)	24 INCH (LF)	36 INCH (LF)	48 INCH (LF)			
0010	1	USH 12 EBWB	537+49.21 WB	56.09 LT	1084.65	537+03.21 WB	57.84 LT	1083.06	DRIVEWAY LT	3.2	47	---	---	---	---	633,520	
0010	1	USH 12 EBWB	537+22.54 EB	29.50 LT	1091.23	538+46.89 EB	35.87 LT	1091.05	CROSS DRAIN	0.3	---	55	---	---	---	633,520	
0010	1	USH 12 EBWB	543+00.00 EB	30.30 LT	1104.12	543+00.00 EB	45.74 RT	1101.44	CROSS DRAIN	3.4	---	---	76	---	---	633,520	
0010	1	USH 12 EBWB	568+46.29 EB	61.03 RT	1088.33	568+45.11 EB	61.99 RT	1087.97	DRIVEWAY RT	0.9	39	---	---	---	---	633,520	
0010	1	USH 12 EBWB	568+75.00 WB	51.60 RT	1088.18	568+75.00 WB	55.86 LT	1086.53	CROSS DRAIN	1.5	---	107	---	---	---	633,520	
0010	1	USH 12 EBWB	571+50.00 WB	41.20 RT	1088.68	571+50.00 WB	39.16 LT	1085.90	CROSS DRAIN	3.0	---	100	---	---	---	633,520	
0010	1	USH 12 EBWB	571+20.81 EB	25.13 RT	1100.30	571+30.68 EB	22.19 RT	1099.18	DRIVEWAY RT	3.3	30	---	---	---	---	633,520	
0010	1	USH 12 EBWB	573+44.54 EB	114.81 LT	1088.75	573+26.28 EB	60.62 RT	1087.75	CROSS DRAIN (SKEW 10° LHF)	0.6	---	---	176	---	---	633,520	
0010	1	USH 12 EBWB	573+40.00 EB	114.35 LT	1088.75	573+30.68 EB	61.08 RT	1087.75	CROSS DRAIN (SKEW 10° LHF)	0.6	---	---	176	---	---	633,520	
0010	1	USH 12 EBWB	577+00.00 EB	23.89 LT	1105.33	577+00.00 EB	57.57 RT	1104.49	CROSS DRAIN	1.0	---	---	---	---	---	633,520	
0010	1	USH 12 EBWB	583+31.58 EB	121.79 LT	1115.28	583+31.58 EB	92.89 RT	1114.43	CROSS DRAIN	0.5	---	175	---	---	---	633,520	
0010	1	USH 12 EBWB	583+35.19 EB	121.79 LT	1115.28	583+35.19 EB	92.89 RT	1114.43	CROSS DRAIN	0.5	---	175	---	---	---	633,520	
0010	1	USH 12 EBWB	587+48.00 EB	120.29 LT	1121.30	587+48.00 EB	73.73 RT	1119.83	CROSS DRAIN	0.7	---	---	194	---	---	633,520	
0010	1	USH 12 EBWB	587+52.00 EB	120.29 LT	1121.30	587+52.00 EB	73.73 RT	1119.83	CROSS DRAIN	0.7	---	---	194	---	---	633,520	
0010	1	USH 12 EBWB	588+31.61 WB	50.00 LT	1126.90	588+46.89 WB	50.86 LT	1126.27	DRIVEWAY LT	1.7	35	---	---	---	---	633,520	
0010	1	USH 12 EBWB	588+55.01 EB	116.84 LT	1127.38	588+47.02 EB	78.30 RT	1126.61	CROSS DRAIN (SKEW 2° LHF)	0.4	---	197	---	---	---	633,520	
0010	1	USH 12 EBWB	588+18.21 EB	83.70 LT	1138.82	588+09.84 EB	70.50 RT	1135.55	CROSS DRAIN (SKEW 3° LHF)	0.8	---	---	---	---	---	633,520	
0010	1	USH 12 EBWB	604+06.80 EB	53.00 RT	1151.99	603+70.78 EB	64.70 RT	1151.01	DRIVEWAY RT	2.4	37	---	---	---	---	633,520	
0010	1	USH 12 EBWB	604+45.59 WB	61.70 LT	1150.96	603+65.38 EB	50.70 RT	1150.12	CROSS DRAIN (SKEW 34° LHF)	0.6	---	---	---	---	---	633,520	
0010	1	WENZEL DRIVEWAY	20+61.37 WD	27.65 LT	995.39	20+72.65 WD	45.60 RT	994.19	CROSS DRAIN (SKEW 9° RHF)	1.5	---	74	---	---	---	633,520	
0010	1	GREEN VALLEY PARK ACCESS	8+55.88 GP	16.40 RT	1042.33	9+19.71 GP	27.30 LT	1041.53	CROSS DRAIN	0.7	---	52	---	---	---	633,520	
0010	1	GREEN VALLEY TURN-AROUND	10+48.21 GT	26.60 RT	1098.76	10+17.75 GT	26.20 LT	1095.03	CROSS DRAIN	2.8	64	---	---	---	---	633,520	
0010	1	GREEN VALLEY DRIVEWAY	37+55.29 GD	18.30 LT	1032.99	37+55.28 GD	33.57 RT	1031.51	CROSS DRAIN	2.7	---	52	---	---	---	633,520	
0010	1	OAK COURT	18+82.81 LF	27.65 LT	1106.67	19+07.65 LF	27.65 LT	1106.29	DRIVEWAY LT	1.3	25	---	---	---	---	633,520	
0010	1	LEHMAN ROAD	492+19.42 LR	30.55 LT	1116.77	491+80.60 LR	30.55 LT	1116.02	DRIVEWAY LT	1.8	39	---	---	---	---	633,520	
0010	1	LEHMAN ROAD	498+53.97 LR	40.86 RT	1110.50	498+76.25 LR	54.94 LT	1110.02	CROSS DRAIN (SKEW 13° LHF)	0.5	---	98	---	---	---	633,520	
0010	1	SKI HI ORCHARD FIELD ENTRANCE	11+74.74 SE	14.09 LT	1088.26	11+74.74 SE	17.39 RT	1087.89	CROSS DRAIN	1.1	---	31	---	---	---	633,520	
PROJECT 1674-00-81 TOTAL											101	216	31	229	343	54	27

NOTE: FOR CULVERT PIPE CORROGATED STEEL THE MINIMUM STEEL WALL THICKNESS IS 0.064-INCH.
 (A) DENOTES ADDITIONAL QUANTITIES SHOWN ELSEWHERE IN PLANS

Addendum No. 03
ID 1674-00-81
Revised Sheet 410
June 29, 2016

ADJUSTING INLET COVERS AND INLET COVERS TEMPORARY

CATEGORY	STAGE 1	STATION-STATION	ADJUSTING INLET COVERS (EACH)	INLET COVERS TEMPORARY (EACH)
0010	USH 12 EB	361+00 EB - 362+18 EB	2	---
		372+76 EB - 373+01 EB	2	---
		414+03 EB - 414+22 EB	1	---
		458+30 EB - 458+51 EB	2	---
		514+50 EB - 515+32 EB	1	---
	USH 12 WB	361+57 WB - 361+87 WB	2	---
		372+57 WB - 372+82 WB	2	---
		413+87 WB - 414+07 WB	1	---
		458+13 WB - 458+35 WB	2	---
		514+52 WB - 515+00 WB	1	---
	STAGE 1 TOTAL		16	---
	STAGE 3	30+00 BD - 49+00 BD	3	---
	CTH BD			
	STAGE 3 TOTAL		3	---
	STAGE 4	30+00 BD - 49+00 BD	3	---
	CTH BD			
	USH 12 EBWB	597+27 EB - 604+61 EB	---	4
	STAGE 4 TOTAL		3	4
	PROJECT 1674-00-81 TOTAL		22	4

611,8115 SPY/0960,001

CURB AND GUTTER

CATEGORY	LOCATION	OFFSET (LF)	601.0555 6-INCH SLOPED 36-INCH TYPE A	601.0557 6-INCH SLOPED 36-INCH TYPE D	650.5500 CONSTRUCTION STAKING
0010	USH 12 EB	560+73 EB - 551+13 EB	RT 57	---	57
		551+56 EB - 552+06 EB	RT 86	---	86
		597+21 EB - 603+62 EB	RT 651	---	651
		604+18 EB - 605+73 EB	RT 155	---	155
	USH 12 WB	563+90 WB - 564+50 WB	RT 79	---	79
		564+62 WB - 566+33 WB	RT 63	---	63
		597+19 WB - 603+62 WB	RT 651	---	651
		604+18 WB - 605+73 WB	RT 155	---	155
	LEHMAN ROAD	495+36 LR - 495+68 LR	RT 68	---	68
		496+17 LR - 496+72 LR	RT 91	---	91
	CTH BD	30+04 BD - 47+59 BD	RT 1548	---	1548
		30+04 BD - 46+20 BD	RT 665	---	946
	PROJECT 1674-00-81 TOTAL		4,100	450	4,550

PIPE SCHEDULE

CATEGORY	FROM STRUCTURE	TO STRUCTURE	INLET ELEVATION	DISCHARGE ELEVATION	SLOPE (%)	15-INCH SSFRC	24-INCH SSFRC	30-INCH SSFRC	36-INCH SSFRC	42-INCH SSFRC
0010	100.1	100.0	1018.73	1017.13	2.2%	73	---	---	---	---
	100.2	100.1	1016.62	1016.73	5.7%	16	---	---	---	---
	101.1	101.0	1033.03	1028.88	5.0%	81	---	---	---	---
	102.1	102.0	1045.43	1044.16	1.4%	---	---	---	90	---
	102.2	102.1	1047.09	1045.43	1.4%	---	---	---	119	---
	103.1	103.0	1075.54	1075.07	0.5%	92	---	---	---	---
	104.1	104.0	1096.59	1095.17	1.1%	---	---	---	---	132
	104.2	104.1	1103.00	1096.59	5.3%	---	---	---	---	122
	105.1	105.0	1123.86	1123.06	1.0%	95	---	---	---	---
	107.1	107.0	1136.61	1137.42	2.5%	56	---	---	---	---
	107.2	107.1	1139.47	1138.81	2.5%	27	---	---	---	---
	108.1	108.0	1142.20	1142.00	1.8%	51	---	---	---	---
	108.2	108.1	1143.17	1142.81	1.8%	15	---	---	---	---
	109.1	109.0	1153.76	1153.52	0.5%	47	---	---	---	---
	109.2	109.1	1153.80	1153.76	0.6%	6	---	---	---	---
	110.1	110.0	1106.87	1106.53	0.5%	68	---	---	---	---
	111.1	111.0	1098.33	1098.88	0.5%	90	---	---	---	---
	T190.1	T190.0	1098.09	1098.09	1.3%	142	---	---	---	---
	T200.1	T200.0	1100.00	1098.88	0.9%	---	---	---	---	---
	T201.1	T201.0	1120.96	1120.54	2.3%	18	---	---	---	---
	T201.2	T201.1	1121.15	1120.86	2.4%	8	---	---	---	---
	T201.3	T201.1	1123.00	1120.86	12.8%	16	---	---	---	---
	PROJECT 1674-00-81 TOTAL		339	508	142	209	264			

CONCRETE BARRIER

CATEGORY	LOCATION	STATION-STATION	CONCRETE BARRIER TYPE S&A	CONSTRUCTION STAKING CONCRETE BARRIER
0010	USH 12 EB	483+47 EB - 515+06 EB	2,167	2,167
		518+88 EB - 521+67 EB	281	281
	USH 12 WB	483+47 WB - 515+00 WB	2,163	2,163
			289	289
	PROJECT 1674-00-81		4,900	4,900

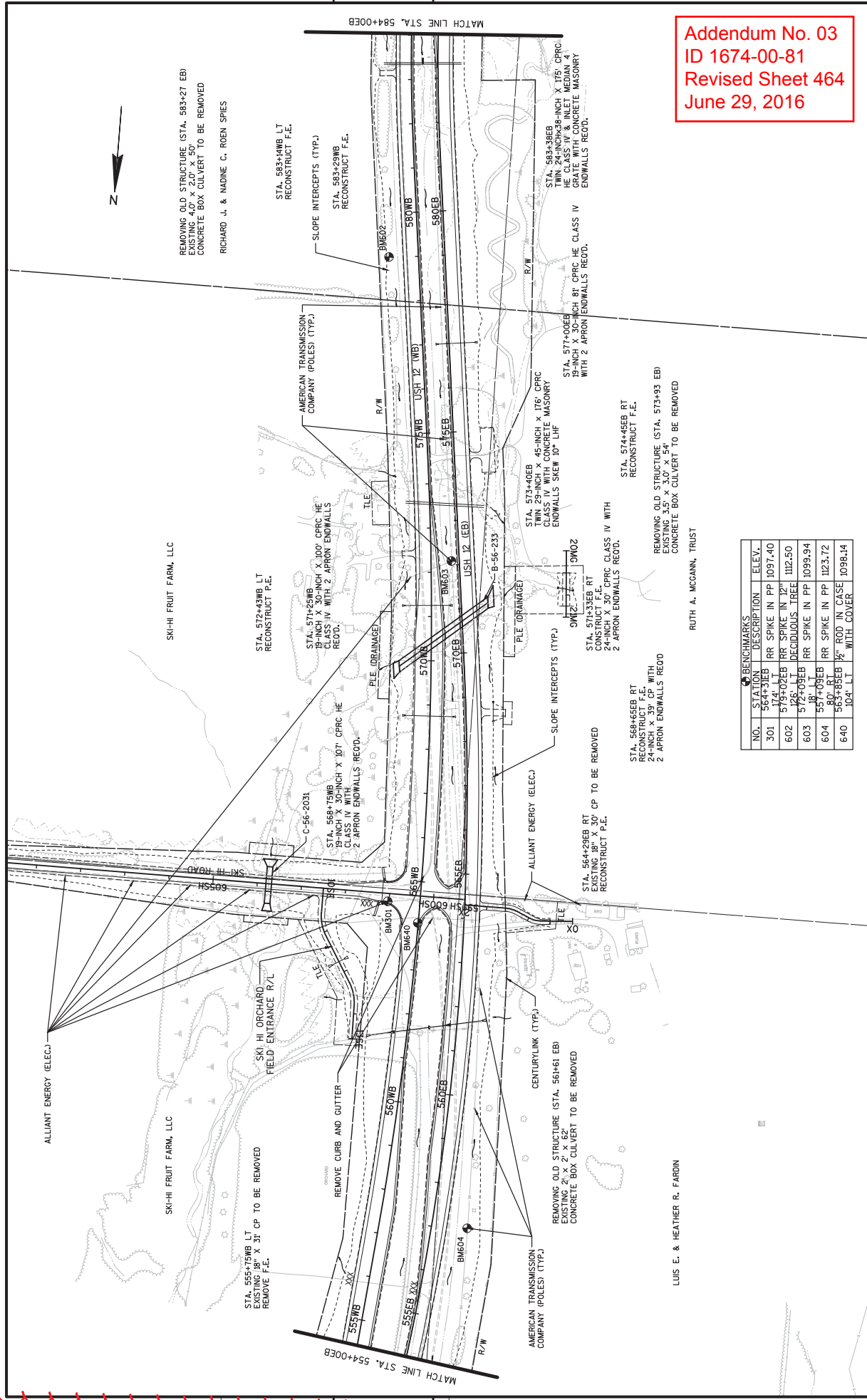
STRUCTURE SCHEDULE

STRUCT. CATEGORY	NO.	STATION	OFFSET TO STRUCTURE	CASTING ELEV.	TOP OF STR. ELEV.	BOTTOM OF STR. ELEV.	DEPTH	CONCRETE COLLARS		MANHOLES		2X3.5 FT		2X3.5 FT		INLETS		MANHOLE COVERS		INLET COVERS		CONSTRUCTION STAKING													
								PIPE (EACH)	FOR (EACH)	5-FT DIAMETER (EACH)	2X3.5 FT (EACH)	2X3.5 FT (EACH)	MEDIAN 1 GRATE (EACH)	MEDIAN 2 GRATE (EACH)	MEDIAN 4 GRATE MODIFIED (EACH)	RECONSTRUCTING (EACH)	TYPE J (EACH)	TYPE BM (EACH)	TYPE HM (EACH)	TYPE MS (EACH)	STAKING SYSTEM (EACH)	STORM (EACH)													
0010	97.0	382+00.00 EB	29' LT	983.98	---	---	---	---	---	---	---	---	---	---	---	---	---	---	---	---	---	---	---	---											
	98.0	454+36.00 EB	27' LT	985.50	---	---	---	---	---	---	---	---	---	---	---	---	---	---	---	---	---	---	---	---											
	99.0	489+00.00 EB	25' LT	987.60	---	---	---	---	---	---	---	---	---	---	---	---	---	---	---	---	---	---	---	---											
	100.0	519+27.98 EB	58.6' RT	ENDWALL	---	---	---	---	---	---	---	---	---	---	---	---	---	---	---	---	---	---	---	---											
	100.1	519+27.98 EB	58.6' RT	ENDWALL	1017.00	---	---	---	---	---	---	---	---	---	---	---	---	---	---	---	---	---	---	---											
	100.2	518+95.16 EB	10.5' LT	1023.33	---	---	3.50	---	---	---	---	---	---	---	---	---	---	---	---	---	---	---	---	---											
	100.3	518+95.16 EB	25.1' LT	1024.54	1023.25	1018.54	3.42	---	---	---	---	---	---	---	---	---	---	---	---	---	---	---	---	---											
	101.0	529+00.00 EB	66.0' RT	ENDWALL	---	---	---	---	---	---	---	---	---	---	---	---	---	---	---	---	---	---	---	---											
	101.1	529+00.00 EB	14.8' LT	1037.16	1037.16	1032.84	4.32	---	---	---	---	---	---	---	---	---	---	---	---	---	---	---	---	---											
	102.0	527+50.00 EB	65.3' RT	ENDWALL	---	---	---	---	---	---	---	---	---	---	---	---	---	---	---	---	---	---	---	---											
	102.1	527+50.00 EB	25.1' LT	1056.84	1056.84	1045.10	11.74	---	---	---	---	---	---	---	---	---	---	---	---	---	---	---	---	---											
	102.2	527+50.00 EB	143.7' LT	ENDWALL	---	---	---	---	---	---	---	---	---	---	---	---	---	---	---	---	---	---	---	---											
	103.0	539+00.00 EB	56.9' RT	ENDWALL	---	---	---	---	---	---	---	---	---	---	---	---	---	---	---	---	---	---	---	---											
	103.1	539+00.00 EB	35.0' LT	1080.12	1080.12	1075.04	4.83	---	---	---	---	---	---	---	---	---	---	---	---	---	---	---	---	---											
	104.0	561+17.87 EB	193.3' LT	ENDWALL	---	---	---	---	---	---	---	---	---	---	---	---	---	---	---	---	---	---	---	---											
	104.1	561+17.87 EB	62.1' LT	1102.12	1101.67	1098.17	5.50	---	---	---	---	---	---	---	---	---	---	---	---	---	---	---	---	---											
	104.2	561+73.31 EB	57.1' RT	ENDWALL	---	---	---	---	---	---	---	---	---	---	---	---	---	---	---	---	---	---	---	---											
	105.0	590+00.00 EB	71.8' RT	ENDWALL	---	---	---	---	---	---	---	---	---	---	---	---	---	---	---	---	---	---	---	---											
	105.1	590+00.00 EB	23.4' LT	1127.79	1127.79	1123.00	4.00	---	---	---	---	---	---	---	---	---	---	---	---	---	---	---	---	---											
	107.0	597+36.29 EB	83.2' LT	ENDWALL	---	---	---	---	---	---	---	---	---	---	---	---	---	---	---	---	---	---	---	---											
	107.1	597+36.29 EB	28.3' LT	1142.82	1141.19	1138.62	3.28	---	---	---	---	---	---	---	---	---	---	---	---	---	---	---	---	---											
	107.2	597+25.00 EB	1.5' LT	1142.78	---	---	2.58	---	---	---	---	---	---	---	---	---	---	---	---	---	---	---	---	---											
	108.0	599+50.01 EB	67.7' LT	ENDWALL	---	---	---	---	---	---	---	---	---	---	---	---	---	---	---	---	---	---	---	---											
	108.1	599+50.00 EB	16.3' LT	1146.51	1145.6	1142.72	2.88	---	---	---	---	---	---	---	---	---	---	---	---	---	---	---	---	---											
	108.2	599+50.00 EB	1.5' LT	1146.46	1145.56	1142.86	2.58	---	---	---	---	---	---	---	---	---	---	---	---	---	---	---	---	---											
	109.0	604+21.43 EB	45.8' RT	ENDWALL	---	---	---	---	---	---	---	---	---	---	---	---	---	---	---	---	---	---	---	---											
	109.1	604+21.35 EB	1.5' LT	1157.55	1156.63	1153.57	3.06	---	---	---	---	---	---	---	---	---	---	---	---	---	---	---	---	---											
	109.2	604+21.35 EB	7.2' LT	1157.37	1156.45	1153.61	2.85	---	---	---	---	---	---	---	---	---	---	---	---	---	---	---	---	---											
	110.0	12+20.00 LF	36.9' RT	ENDWALL	---	---	---	---	---	---	---	---	---	---	---	---	---	---	---	---	---	---	---	---											
	110.1	12+20.00 LF	31.2' RT	ENDWALL	---	---	---	---	---	---	---	---	---	---	---	---	---	---	---	---	---	---	---	---											
	111.0	20+59.70 LF	62.0' RT	ENDWALL	---	---	---	---	---	---	---	---	---	---	---	---	---	---	---	---	---	---	---	---											
	111.1	20+59.70 LF	27.6' LT	1103.16	1103.16	1098.14	4.02	---	---	---	---	---	---	---	---	---	---	---	---	---	---	---	---	---											
	1190.0	569+89.03 L	137.2' LT	ENDWALL	---	---	---	---	---	---	---	---	---	---	---	---	---	---	---	---	---	---	---	---											
	1190.1	561+43.88 L	5.9' LT	1105.84	1104.94	1099.71	5.23	---	---	---	---	---	---	---	---	---	---	---	---	---	---	---	---	---											
	1200.0	520+75.51 L	21.2' LT	ENDWALL	---	---	---	---	---	---	---	---	---	---	---	---	---	---	---	---	---	---	---	---											
	1200.1	521+75.00 L	23.1' RT	ENDWALL	---	---	---	---	---	---	---	---	---	---	---	---	---	---	---	---	---	---	---	---											
	1201.0	597+51.70 L	32.1' LT	CONCRETE COLLAR	1014.27	1009.75	4.52	---	---	---	---	---	---	---	---	---	---	---	---	---	---	---	---	---											
	1201.1	597+50.75 L	50.3' LT	CONCRETE COLLAR	1124.50	1120.71	2.79	---	---	---	---	---	---	---	---	---	---	---	---	---	---	---	---	---											
	1201.2	597+50.02 L	56.3' LT	CONCRETE COLLAR	1124.50	1121.15	---	---	---	---	---	---	---	---	---	---	---	---	---	---	---	---	---	---											
	1201.3	597+46.27 L	48.2' LT	ENDWALL	---	---	---	---	---	---	---	---	---	---	---	---	---	---	---	---	---	---	---	---											
PROJECT 1674-00-81 TOTAL																							2	2	2	6	3	5	2	1	2	2	6	21	39

(A) DENOTES ADDITIONAL QUANTITIES SHOWN ELSEWHERE IN PLANS

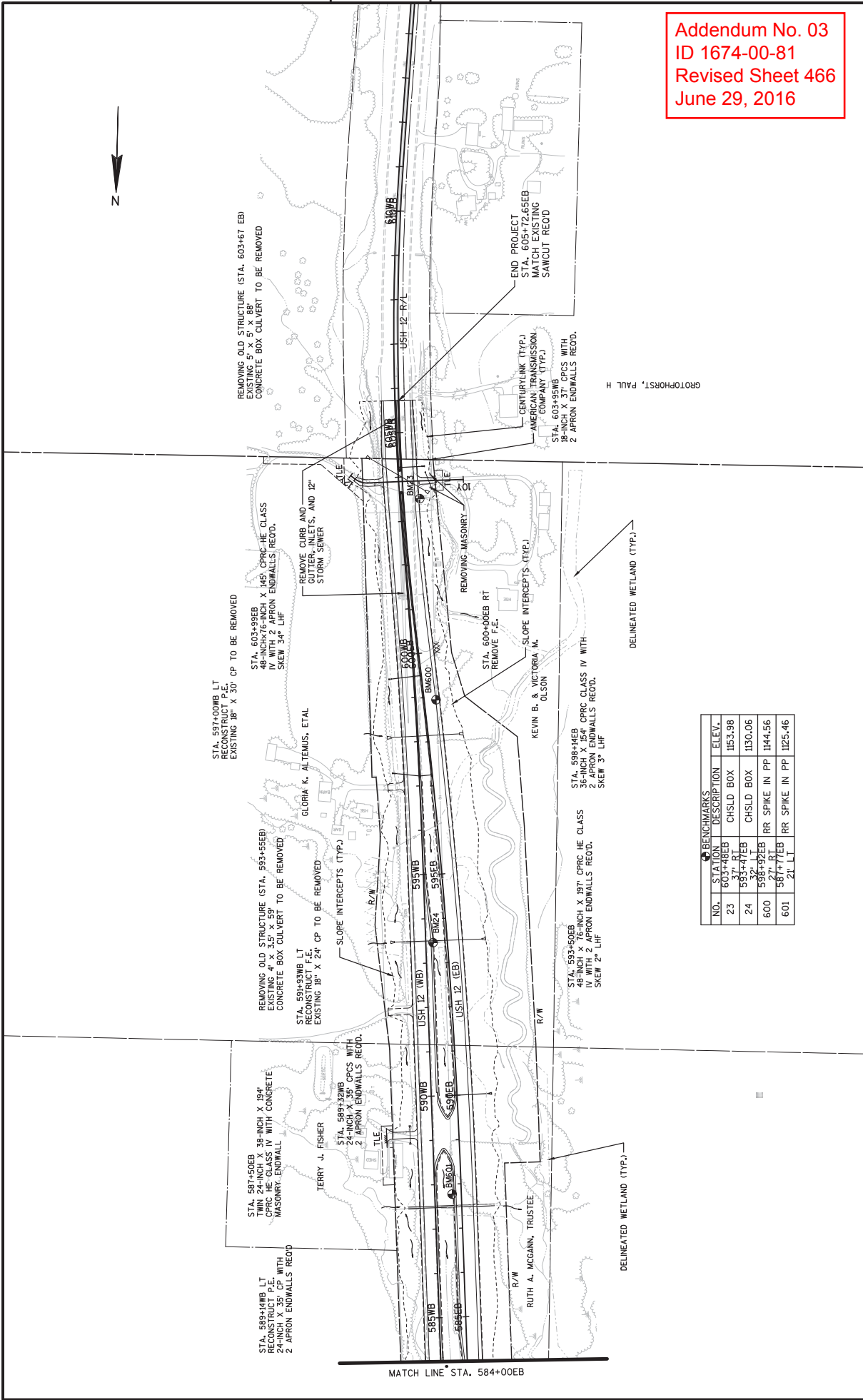
Addendum No. 03
ID 1674-00-81
Revised Sheet 411
June 29, 2016

Addendum No. 03
 ID 1674-00-81
 Revised Sheet 464
 June 29, 2016

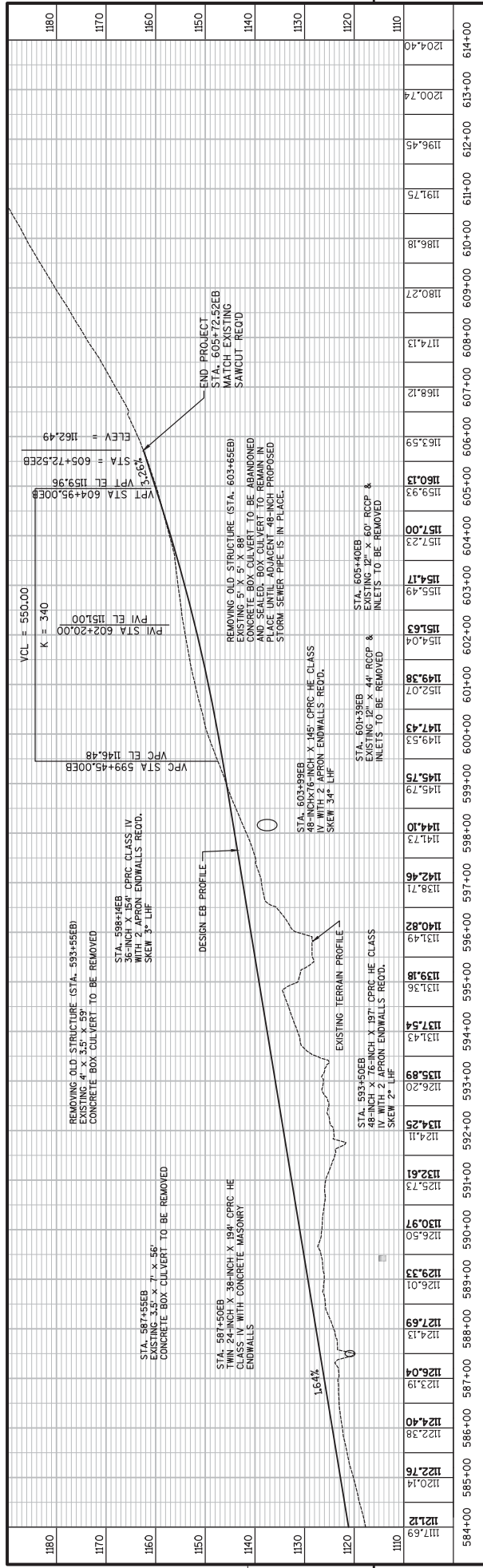


NO.	STATION	BENCHMARK DESCRIPTION	ELEV.
301	564+31EB	RR SPIKE IN PP	1097.40
602	579+02EB	RR SPIKE IN 12"	1112.50
603	572+09EB	DECIDUOUS TREE	1099.94
604	557+09EB	RR SPIKE IN PP	1123.72
640	563+85EB	80" RT ROD IN CASE WITH COVER	1098.14

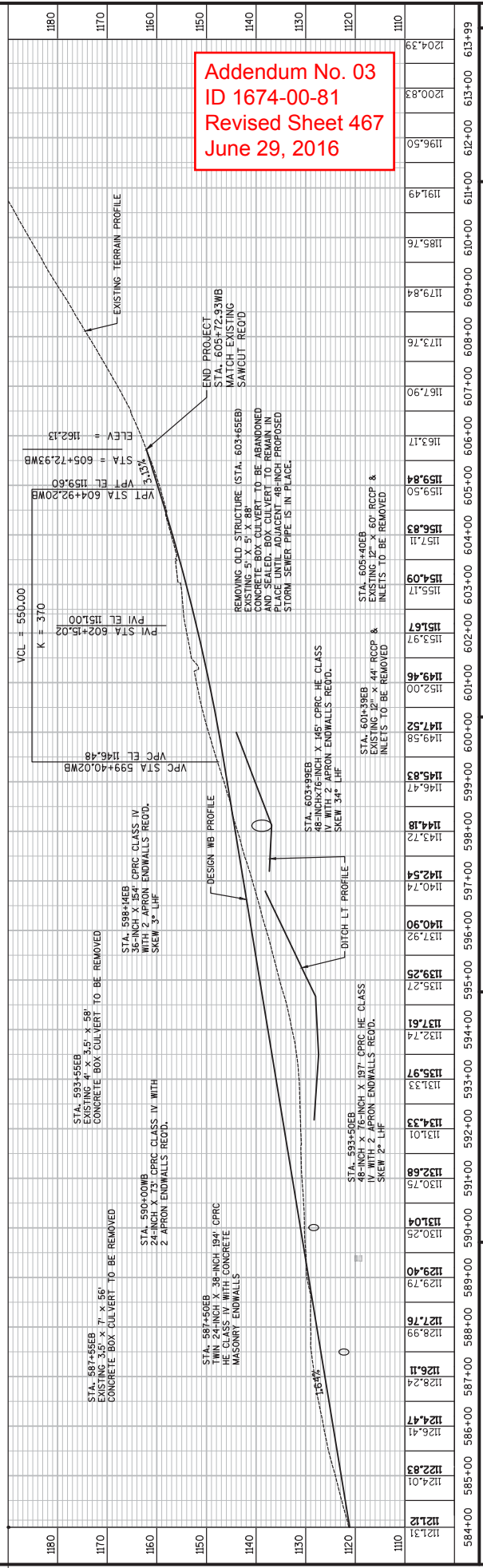
Addendum No. 03
 ID 1674-00-81
 Revised Sheet 466
 June 29, 2016



NO.	STATION	DESCRIPTION	ELEV.
23	603+48EB	CHSLD BOX	1153.98
24	597+71EB	CHSLD BOX	1130.06
600	596+92EB	RR SPIKE IN PP	1144.56
601	587+77EB	RR SPIKE IN PP	1125.46



Addendum No. 03
ID 1674-00-81
Revised Sheet 467
June 29, 2016



SCHEDULE OF ITEMS

REVISED:

CONTRACT:
20160712006

PROJECT(S):
1674-00-81
1674-00-84

FEDERAL ID(S):
WISC 2016250
N/A

CONTRACTOR : _____

LINE NO	ITEM DESCRIPTION	APPROX. QUANTITY AND UNITS	UNIT PRICE		BID AMOUNT	
			DOLLARS	CTS	DOLLARS	CTS

SECTION 0001 ROADWAY ITEMS

0010	201.0105 Clearing	138.000 STA
0020	201.0205 Grubbing	138.000 STA
0030	203.0100 Removing Small Pipe Culverts	26.000 EACH
0040	203.0200 Removing Old Structure (station) 001. 526+60 EB	LUMP	LUMP	.	.	.
0050	203.0200 Removing Old Structure (station) 002. 561+61 EB	LUMP	LUMP	.	.	.
0060	203.0200 Removing Old Structure (station) 003. 573+93 EB	LUMP	LUMP	.	.	.
0070	203.0200 Removing Old Structure (station) 004. 583+27 EB	LUMP	LUMP	.	.	.
0080	203.0200 Removing Old Structure (station) 005. 593+55 EB	LUMP	LUMP	.	.	.
0090	203.0200 Removing Old Structure (station) 006. 603+67 EB	LUMP	LUMP	.	.	.

SCHEDULE OF ITEMS

REVISED:

CONTRACT:
20160712006PROJECT(S):
1674-00-81
1674-00-84FEDERAL ID(S):
WISC 2016250
N/A

CONTRACTOR : _____

LINE NO	ITEM DESCRIPTION	APPROX. QUANTITY AND UNITS	UNIT PRICE		BID AMOUNT	
			DOLLARS	CTS	DOLLARS	CTS
0100	203.0200 Removing Old Structure (station) 007. 570+30.00	LUMP	LUMP			.
0110	203.0200 Removing Old Structure (station) 008. 603+74.00	LUMP	LUMP			.
0120	203.0210.S Abatement of Asbestos Containing Material (structure) 001. PARCEL 50	LUMP	LUMP			.
0130	204.0100 Removing Pavement	28,000.000 SY		.		.
0140	204.0110 Removing Asphaltic Surface	100.000 SY		.		.
0150	204.0150 Removing Curb & Gutter	8,650.000 LF		.		.
0160	204.0170 Removing Fence	5,320.000 LF		.		.
0170	204.0185 Removing Masonry	5.000 CY		.		.
0180	204.0195 Removing Concrete Bases	17.000 EACH		.		.
0190	204.0220 Removing Inlets	22.000 EACH		.		.

SCHEDULE OF ITEMS

REVISED:

CONTRACT:
20160712006PROJECT(S):
1674-00-81
1674-00-84FEDERAL ID(S):
WISC 2016250
N/A

CONTRACTOR : _____

LINE NO	ITEM DESCRIPTION	APPROX. QUANTITY AND UNITS	UNIT PRICE		BID AMOUNT	
			DOLLARS	CTS	DOLLARS	CTS
0200	204.0235 Removing Buildings (parcel) 001. PARCEL 50	LUMP	LUMP			.
0210	204.0240 Site Clearance (parcel) 001. PARCEL 50	LUMP	LUMP			.
0220	204.0245 Removing Storm Sewer (size) 001. 12-INCH	LF	400.000	.		.
0230	204.0245 Removing Storm Sewer (size) 002. 15-INCH	LF	50.000	.		.
0240	204.0265 Abandoning Wells	EACH	1.000	.		.
0250	204.0270 Abandoning Culvert Pipes	EACH	4.000	.		.
0270	204.9060.S Removing (item description) 001. SIGNING COVER PLAQUE	EACH	25.000	.		.
0280	204.9060.S Removing (item description) 002. OVERHEAD SIGN SUPPORT	EACH	2.000	.		.
0290	204.9060.S Removing (item description) 003. PERMANENT TYPE III BARRICADES	EACH	8.000	.		.
0300	204.9060.S Removing (item description) 004. PERMANENT CRASH CUSHIONS	EACH	5.000	.		.

SCHEDULE OF ITEMS

REVISED:

CONTRACT:
20160712006PROJECT(S):
1674-00-81
1674-00-84FEDERAL ID(S):
WISC 2016250
N/A

CONTRACTOR : _____

LINE NO	ITEM DESCRIPTION	APPROX. QUANTITY AND UNITS	UNIT PRICE		BID AMOUNT	
			DOLLARS	CTS	DOLLARS	CTS
0310	204.9060.S Removing (item description) 005. REMOVING SEPTIC MOUND	1.000 EACH	.		.	
0320	204.9060.S Removing (item description) 006. Street Lights	15.000 EACH	.		.	
0330	204.9060.S Removing (item description) 007. Street Lighting Cabinet	1.000 EACH	.		.	
0340	204.9090.S Removing (item description) 001. TEMPORARY CONCRETE BARRIER	5,950.000 LF	.		.	
0350	205.0100 Excavation Common	219,663.000 CY	.		.	
0360	205.0200 Excavation Rock	35,924.000 CY	.		.	
0370	206.2000 Excavation for Structures Culverts (structure) 001. B-56-223	LUMP	LUMP		.	
0380	206.2000 Excavation for Structures Culverts (structure) 002. C-56-2031	LUMP	LUMP		.	
0390	208.0100 Borrow	72,899.000 CY	.		.	
0400	210.0100 Backfill Structure	2,739.000 CY	.		.	

SCHEDULE OF ITEMS

REVISED:

CONTRACT:
20160712006PROJECT(S):
1674-00-81
1674-00-84FEDERAL ID(S):
WISC 2016250
N/A

CONTRACTOR : _____

LINE NO	ITEM DESCRIPTION	APPROX. QUANTITY AND UNITS	UNIT PRICE		BID AMOUNT	
			DOLLARS	CTS	DOLLARS	CTS
0410	211.0100 Prepare Foundation for Asphaltic Paving (project) 001. 1674-00-81	LUMP	LUMP			.
0420	213.0100 Finishing Roadway (project) 001. 1674-00-81	1.000 EACH		.		.
0430	214.0100 Obliterating Old Road	20.000 STA		.		.
0440	305.0110 Base Aggregate Dense 3/4-Inch	10,600.000 TON		.		.
0450	305.0120 Base Aggregate Dense 1 1/4-Inch	169,500.000 TON		.		.
0460	311.0115 Breaker Run	96.000 CY		.		.
0470	312.0110 Select Crushed Material	78,000.000 TON		.		.
0480	415.0090 Concrete Pavement 9-Inch	20,500.000 SY		.		.
0490	415.0100 Concrete Pavement 10-Inch	180,000.000 SY		.		.
0500	415.0210 Concrete Pavement Gaps	13.000 EACH		.		.

SCHEDULE OF ITEMS

REVISED:

CONTRACT:
20160712006PROJECT(S):
1674-00-81
1674-00-84FEDERAL ID(S):
WISC 2016250
N/A

CONTRACTOR : _____

LINE NO	ITEM DESCRIPTION	APPROX. QUANTITY AND UNITS	UNIT PRICE		BID AMOUNT	
			DOLLARS	CTS	DOLLARS	CTS
0520	416.0170 Concrete Driveway 7-Inch	50.000 SY	.		.	
0530	416.0610 Drilled Tie Bars	825.000 EACH	.		.	
0540	416.0620 Drilled Dowel Bars	224.000 EACH	.		.	
0560	416.1110 Concrete Shoulder Rumble Strips	53,100.000 LF	.		.	
0570	440.4410 Incentive IRI Ride	54,000.000 DOL	1.00000		54000.00	
0580	450.4000 HMA Cold Weather Paving	1,438.000 TON	.		.	
0590	455.0605 Tack Coat	600.000 GAL	.		.	
0600	460.2000 Incentive Density HMA Pavement	13,100.000 DOL	1.00000		13100.00	
0610	460.5224 HMA Pavement 4 LT 58-28 S	21,000.000 TON	.		.	
0620	465.0120 Asphaltic Surface Driveways and Field Entrances	470.000 TON	.		.	
0630	465.0125 Asphaltic Surface Temporary	3,550.000 TON	.		.	

SCHEDULE OF ITEMS

REVISED:

CONTRACT:
20160712006PROJECT(S):
1674-00-81
1674-00-84FEDERAL ID(S):
WISC 2016250
N/A

CONTRACTOR : _____

LINE NO	ITEM DESCRIPTION	APPROX. QUANTITY AND UNITS	UNIT PRICE		BID AMOUNT	
			DOLLARS	CTS	DOLLARS	CTS
0640	465.0315 Asphaltic Flumes	120.000 SY	.		.	
0650	465.0400 Asphaltic Shoulder Rumble Strips	55,700.000 LF	.		.	
0660	504.0100 Concrete Masonry Culverts	794.000 CY	.		.	
0670	505.0400 Bar Steel Reinforcement HS Structures	86,040.000 LB	.		.	
0680	505.0600 Bar Steel Reinforcement HS Coated Structures	3,810.000 LB	.		.	
0690	511.1100 Temporary Shoring	280.000 SF	.		.	
0700	511.1200 Temporary Shoring (structure) 001. B-56-223	560.000 SF	.		.	
0710	516.0500 Rubberized Membrane Waterproofing	73.000 SY	.		.	
0720	520.4018 Culvert Pipe Temporary 18-Inch	52.000 LF	.		.	
0730	520.4024 Culvert Pipe Temporary 24-Inch	162.000 LF	.		.	
0740	520.4036 Culvert Pipe Temporary 36-Inch	77.000 LF	.		.	

SCHEDULE OF ITEMS

REVISED:

CONTRACT:
20160712006PROJECT(S):
1674-00-81
1674-00-84FEDERAL ID(S):
WISC 2016250
N/A

CONTRACTOR : _____

LINE NO	ITEM DESCRIPTION	APPROX. QUANTITY AND UNITS	UNIT PRICE		BID AMOUNT	
			DOLLARS	CTS	DOLLARS	CTS
0750	520.4048 Culvert Pipe Temporary 48-Inch	171.000 LF	.		.	
0760	520.8000 Concrete Collars for Pipe	4.000 EACH	.		.	
0770	521.0112 Culvert Pipe Corrugated Steel 12-Inch	37.000 LF	.		.	
0780	521.0118 Culvert Pipe Corrugated Steel 18-Inch	101.000 LF	.		.	
0790	521.0124 Culvert Pipe Corrugated Steel 24-Inch	216.000 LF	.		.	
0800	521.0130 Culvert Pipe Corrugated Steel 30-Inch	31.000 LF	.		.	
0820	521.1018 Apron Endwalls for Culvert Pipe Steel 18-Inch	8.000 EACH	.		.	
0830	521.1024 Apron Endwalls for Culvert Pipe Steel 24-Inch	11.000 EACH	.		.	
0840	521.1036 Apron Endwalls for Culvert Pipe Steel 36-Inch	2.000 EACH	.		.	
0860	522.0336 Culvert Pipe Reinforced Concrete Class IV 36-Inch	229.000 LF	.		.	

SCHEDULE OF ITEMS

REVISED:

CONTRACT:
20160712006PROJECT(S):
1674-00-81
1674-00-84FEDERAL ID(S):
WISC 2016250
N/A

CONTRACTOR : _____

LINE NO	ITEM DESCRIPTION	APPROX. QUANTITY AND UNITS	UNIT PRICE		BID AMOUNT	
			DOLLARS	CTS	DOLLARS	CTS
0870	522.1015 Apron Endwalls for Culvert Pipe Reinforced Concrete 15-Inch	EACH 7.000	.		.	
0880	522.1024 Apron Endwalls for Culvert Pipe Reinforced Concrete 24-Inch	EACH 19.000	.		.	
0890	522.1030 Apron Endwalls for Culvert Pipe Reinforced Concrete 30-Inch	EACH 1.000	.		.	
0900	522.1036 Apron Endwalls for Culvert Pipe Reinforced Concrete 36-Inch	EACH 8.000	.		.	
0910	522.1042 Apron Endwalls for Culvert Pipe Reinforced Concrete 42-Inch	EACH 2.000	.		.	
0920	523.0419 Culvert Pipe Reinforced Concrete Horizontal Elliptical Class HE-IV 19x30-Inch	LF 623.000	.		.	
0930	523.0424 Culvert Pipe Reinforced Concrete Horizontal Elliptical Class HE-IV 24x38-Inch	LF 737.000	.		.	
0950	523.0519 Apron Endwalls for Culvert Pipe Reinforced Concrete Horizontal Elliptical 19x30-Inch	EACH 16.000	.		.	

SCHEDULE OF ITEMS

REVISED:

CONTRACT:
20160712006PROJECT(S):
1674-00-81
1674-00-84FEDERAL ID(S):
WISC 2016250
N/A

CONTRACTOR : _____

LINE NO	ITEM DESCRIPTION	APPROX. QUANTITY AND UNITS	UNIT PRICE		BID AMOUNT	
			DOLLARS	CTS	DOLLARS	CTS
0980	523.0548 Apron Endwalls for Culvert Pipe Reinforced Concrete Horizontal Elliptical 48x76-Inch	4.000 EACH	.		.	
0990	601.0555 Concrete Curb & Gutter 6-Inch Sloped 36-Inch Type A	4,100.000 LF	.		.	
1000	601.0557 Concrete Curb & Gutter 6-Inch Sloped 36-Inch Type D	450.000 LF	.		.	
1010	603.1242 Concrete Barrier Type S42A	4,900.000 LF	.		.	
1020	603.8000 Concrete Barrier Temporary Precast Delivered	5,355.000 LF	.		.	
1030	603.8125 Concrete Barrier Temporary Precast Installed	5,355.000 LF	.		.	
1040	604.0500 Slope Paving Crushed Aggregate	3,300.000 SY	.		.	
1050	606.0200 Riprap Medium	2,900.000 CY	.		.	
1060	606.0300 Riprap Heavy	169.000 CY	.		.	
1070	608.0415 Storm Sewer Pipe Reinforced Concrete Class IV 15-Inch	359.000 LF	.		.	

SCHEDULE OF ITEMS

REVISED:

CONTRACT:
20160712006PROJECT(S):
1674-00-81
1674-00-84FEDERAL ID(S):
WISC 2016250
N/A

CONTRACTOR : _____

LINE NO	ITEM DESCRIPTION	APPROX. QUANTITY AND UNITS	UNIT PRICE		BID AMOUNT	
			DOLLARS	CTS	DOLLARS	CTS
1080	608.0424 Storm Sewer Pipe Reinforced Concrete Class IV 24-Inch	508.000 LF	.		.	
1090	608.0430 Storm Sewer Pipe Reinforced Concrete Class IV 30-Inch	142.000 LF	.		.	
1100	608.0436 Storm Sewer Pipe Reinforced Concrete Class IV 36-Inch	209.000 LF	.		.	
1110	608.0442 Storm Sewer Pipe Reinforced Concrete Class IV 42-Inch	451.000 LF	.		.	
1120	611.0430 Reconstructing Inlets	1.000 EACH	.		.	
1130	611.0530 Manhole Covers Type J	2.000 EACH	.		.	
1140	611.0610 Inlet Covers Type BW	2.000 EACH	.		.	
1150	611.0627 Inlet Covers Type HM	6.000 EACH	.		.	
1160	611.0642 Inlet Covers Type MS	23.000 EACH	.		.	
1170	611.2005 Manholes 5-FT Diameter	2.000 EACH	.		.	
1180	611.3225 Inlets 2x2.5-FT	2.000 EACH	.		.	

SCHEDULE OF ITEMS

REVISED:

CONTRACT:
20160712006PROJECT(S):
1674-00-81
1674-00-84FEDERAL ID(S):
WISC 2016250
N/A

CONTRACTOR : _____

LINE NO	ITEM DESCRIPTION	APPROX. QUANTITY AND UNITS	UNIT PRICE		BID AMOUNT	
			DOLLARS	CTS	DOLLARS	CTS
1190	611.3230 Inlets 2x3-FT	6.000 EACH	.		.	
1200	611.3901 Inlets Median 1 Grate	3.000 EACH	.		.	
1210	611.3902 Inlets Median 2 Grate	6.000 EACH	.		.	
1220	611.8115 Adjusting Inlet Covers	22.000 EACH	.		.	
1230	612.0406 Pipe Underdrain Wrapped 6-Inch	355.000 LF	.		.	
1240	614.0200 Steel Thrie Beam Structure Approach	248.000 LF	.		.	
1250	614.0220 Steel Thrie Beam Bullnose Terminal	8.000 EACH	.		.	
1260	614.0230 Steel Thrie Beam	813.000 LF	.		.	
1270	614.0396 Guardrail Mow Strip Asphalt	2,800.000 SY	.		.	
1280	614.0905 Crash Cushions Temporary	8.000 EACH	.		.	
1290	614.2300 MGS Guardrail 3	5,500.000 LF	.		.	

SCHEDULE OF ITEMS

REVISED:

CONTRACT:
20160712006PROJECT(S):
1674-00-81
1674-00-84FEDERAL ID(S):
WISC 2016250
N/A

CONTRACTOR : _____

LINE NO	ITEM DESCRIPTION	APPROX. QUANTITY AND UNITS	UNIT PRICE		BID AMOUNT	
			DOLLARS	CTS	DOLLARS	CTS
1300	614.2500 MGS Thrie Beam Transition	788.000 LF	.		.	
1310	614.2610 MGS Guardrail Terminal EAT	18.000 EACH	.		.	
1320	614.2620 MGS Guardrail Terminal Type 2	1.000 EACH	.		.	
1330	616.0204 Fence Chain Link 4-FT	410.000 LF	.		.	
1340	616.0206 Fence Chain Link 6-FT	300.000 LF	.		.	
1350	616.0208 Fence Chain Link 8-FT	1,710.000 LF	.		.	
1360	616.0700.S Fence Safety	500.000 LF	.		.	
1370	618.0100 Maintenance And Repair of Haul Roads (project) 001. 1674-00-81	1.000 EACH	.		.	
1380	619.1000 Mobilization	1.000 EACH	.		.	
1390	620.0300 Concrete Median Sloped Nose	70.000 SF	.		.	
1400	624.0100 Water	9,000.000 MGAL	.		.	

SCHEDULE OF ITEMS

REVISED:

CONTRACT:
20160712006PROJECT(S):
1674-00-81
1674-00-84FEDERAL ID(S):
WISC 2016250
N/A

CONTRACTOR : _____

LINE NO	ITEM DESCRIPTION	APPROX. QUANTITY AND UNITS	UNIT PRICE		BID AMOUNT	
			DOLLARS	CTS	DOLLARS	CTS
1410	625.0500 Salvaged Topsoil	337,900.000 SY	.		.	
1420	627.0200 Mulching	300,300.000 SY	.		.	
1430	628.1104 Erosion Bales	520.000 EACH	.		.	
1440	628.1504 Silt Fence	25,300.000 LF	.		.	
1450	628.1520 Silt Fence Maintenance	45,200.000 LF	.		.	
1460	628.1905 Mobilizations Erosion Control	30.000 EACH	.		.	
1470	628.1910 Mobilizations Emergency Erosion Control	15.000 EACH	.		.	
1480	628.1920 Cleaning Sediment Basins	300.000 CY	.		.	
1490	628.2004 Erosion Mat Class I Type B	211,200.000 SY	.		.	
1500	628.2027 Erosion Mat Class II Type C	3,800.000 SY	.		.	
1510	628.6510 Soil Stabilizer Type B	30.000 ACRE	.		.	

SCHEDULE OF ITEMS

REVISED:

CONTRACT:
20160712006PROJECT(S):
1674-00-81
1674-00-84FEDERAL ID(S):
WISC 2016250
N/A

CONTRACTOR : _____

LINE NO	ITEM DESCRIPTION	APPROX. QUANTITY AND UNITS	UNIT PRICE		BID AMOUNT	
			DOLLARS	CTS	DOLLARS	CTS
1520	628.7005 Inlet Protection Type A	16.000 EACH	.		.	
1530	628.7010 Inlet Protection Type B	10.000 EACH	.		.	
1540	628.7015 Inlet Protection Type C	6.000 EACH	.		.	
1550	628.7020 Inlet Protection Type D	4.000 EACH	.		.	
1560	628.7504 Temporary Ditch Checks	3,490.000 LF	.		.	
1570	628.7515.S Stone or Rock Ditch Checks	810.000 CY	.		.	
1580	628.7555 Culvert Pipe Checks	153.000 EACH	.		.	
1590	628.7560 Tracking Pads	13.000 EACH	.		.	
1600	628.7570 Rock Bags	100.000 EACH	.		.	
1610	629.0210 Fertilizer Type B	221.000 CWT	.		.	
1620	630.0130 Seeding Mixture No. 30	3,400.000 LB	.		.	

SCHEDULE OF ITEMS

REVISED:

CONTRACT:
20160712006PROJECT(S):
1674-00-81
1674-00-84FEDERAL ID(S):
WISC 2016250
N/A

CONTRACTOR : _____

LINE NO	ITEM DESCRIPTION	APPROX. QUANTITY AND UNITS	UNIT PRICE		BID AMOUNT	
			DOLLARS	CTS	DOLLARS	CTS
1630	630.0200 Seeding Temporary	3,075.000 LB	.		.	
1640	630.0300 Seeding Borrow Pit	5,500.000 LB	.		.	
1650	630.0400 Seeding Nurse Crop	1,100.000 LB	.		.	
1660	632.0101 Trees (species) (size) (root) 001. HACKBERRY, "PRAIRIE PRIDE", B&B, 2.5-INCH CAL.	1.000 EACH	.		.	
1670	632.0101 Trees (species) (size) (root) 002. HONEYLOCUST, THORNLESS 'IMPERIAL', B&B, 2.5-INCH CAL.	2.000 EACH	.		.	
1680	632.0101 Trees (species) (size) (root) 003. MAPLE, FREEMAN 'SIENNA GLEN', B&B, 2.5-INCH CAL.	11.000 EACH	.		.	
1690	632.0101 Trees (species) (size) (root) 004. MAPLE, STATE STREET, B&B, 2.5-INCH CAL.	2.000 EACH	.		.	
1700	632.0101 Trees (species) (size) (root) 005. HAWTHORN, COCKSPUR THORNLESS (SHRUB FROM TREE), B&B, 6-FOOT HT.	9.000 EACH	.		.	

SCHEDULE OF ITEMS

REVISED:

CONTRACT:
20160712006PROJECT(S):
1674-00-81
1674-00-84FEDERAL ID(S):
WISC 2016250
N/A

CONTRACTOR : _____

LINE NO	ITEM DESCRIPTION	APPROX. QUANTITY AND UNITS	UNIT PRICE		BID AMOUNT	
			DOLLARS	CTS	DOLLARS	CTS
1710	632.0101 Trees (species) (size) (root) 006. HAWTHORN, 'WINTER KING' (SHRUB FORM TREE), B&B, 6-FOOT HT.	11.000 EACH	.		.	
1720	632.0101 Trees (species) (size) (root) 007. MUSCLEWOOD, J.N. STRAIN, B&B, 5-FOOT HT.	5.000 EACH	.		.	
1730	632.0101 Trees (species) (size) (root) 008. SERVICEBERRY, SMOOTH (SHRUB FORM TREE), B&B, 5-FOOT HT.	12.000 EACH	.		.	
1740	632.0101 Trees (species) (size) (root) 009. VIBURNUM, BLACKHAW 'FOREST ROUGE' (SHRUB FORM TREE), B&B, 6-FOOT HT.	15.000 EACH	.		.	
1750	632.0101 Trees (species) (size) (root) 010. FIR, BALSAM, B&B, 7-FOOT HT.	15.000 EACH	.		.	
1760	632.0101 Trees (species) (size) (root) 011. JUNIPER, HILL DUNDEE, B&B, 5-FOOT HT.	22.000 EACH	.		.	
1770	632.0101 Trees (species) (size) (root) 012. JUNIPER, 'MOUNTBATTEN', B&B, 5-FOOT HT.	19.000 EACH	.		.	
1780	632.0101 Trees (species) (size) (root) 013. PINE, WHITE, B&B, 7-FOOT HT.	6.000 EACH	.		.	

SCHEDULE OF ITEMS

REVISED:

CONTRACT:
20160712006PROJECT(S):
1674-00-81
1674-00-84FEDERAL ID(S):
WISC 2016250
N/A

CONTRACTOR : _____

LINE NO	ITEM DESCRIPTION	APPROX. QUANTITY AND UNITS	UNIT PRICE		BID AMOUNT	
			DOLLARS	CTS	DOLLARS	CTS
1790	632.0101 Trees (species) (size) (root) 014. SPRUCE, BLACK HILLS, B&B, 7-FOOT HT	40.000 EACH	.		.	
1800	632.0201 Shrubs (species) (size) (root) 001. VIBURNUM, ARROWWOOD, CONT., 3-FOOT HT./#5	54.000 EACH	.		.	
1810	632.9101 Landscape Planting Surveillance and Care Cycles	20.000 EACH	.		.	
1820	633.0200 Delineators Flexible	300.000 EACH	.		.	
1830	633.0500 Delineator Reflectors	22.000 EACH	.		.	
1840	633.1000 Delineator Brackets	22.000 EACH	.		.	
1850	633.5200 Markers Culvert End	54.000 EACH	.		.	
1860	634.0612 Posts Wood 4x6-Inch X 12-FT	16.000 EACH	.		.	
1870	634.0614 Posts Wood 4x6-Inch X 14-FT	32.000 EACH	.		.	
1880	634.0616 Posts Wood 4x6-Inch X 16-FT	96.000 EACH	.		.	

SCHEDULE OF ITEMS

REVISED:

CONTRACT:
20160712006PROJECT(S):
1674-00-81
1674-00-84FEDERAL ID(S):
WISC 2016250
N/A

CONTRACTOR : _____

LINE NO	ITEM DESCRIPTION	APPROX. QUANTITY AND UNITS	UNIT PRICE		BID AMOUNT	
			DOLLARS	CTS	DOLLARS	CTS
1890	634.0618 Posts Wood 4x6-Inch X 18-FT	55.000 EACH	.		.	
1900	634.0620 Posts Wood 4x6-Inch X 20-FT	31.000 EACH	.		.	
1910	634.0622 Posts Wood 4x6-Inch X 22-FT	11.000 EACH	.		.	
1920	634.0814 Posts Tubular Steel 2x2-Inch X 14-FT	6.000 EACH	.		.	
1930	635.0200 Sign Supports Structural Steel HS	19,062.000 LB	.		.	
1940	636.0100 Sign Supports Concrete Masonry	30.000 CY	.		.	
1950	636.0500 Sign Supports Steel Reinforcement	1,806.000 LB	.		.	
1960	637.1220 Signs Type I Reflective SH	3,523.000 SF	.		.	
1970	637.2210 Signs Type II Reflective H	2,918.000 SF	.		.	
1980	637.2220 Signs Type II Reflective SH	13.500 SF	.		.	
1990	637.2230 Signs Type II Reflective F	325.000 SF	.		.	

SCHEDULE OF ITEMS

REVISED:

CONTRACT:
20160712006PROJECT(S):
1674-00-81
1674-00-84FEDERAL ID(S):
WISC 2016250
N/A

CONTRACTOR : _____

LINE NO	ITEM DESCRIPTION	APPROX. QUANTITY AND UNITS	UNIT PRICE		BID AMOUNT	
			DOLLARS	CTS	DOLLARS	CTS
2000	638.2101 Moving Signs Type I	1.000 EACH	.		.	
2010	638.2102 Moving Signs Type II	1.000 EACH	.		.	
2020	638.2601 Removing Signs Type I	5.000 EACH	.		.	
2030	638.2602 Removing Signs Type II	169.000 EACH	.		.	
2040	638.3000 Removing Small Sign Supports	172.000 EACH	.		.	
2050	638.3100 Removing Structural Steel Sign Supports	4.000 EACH	.		.	
2060	642.5401 Field Office Type D	1.000 EACH	.		.	
2070	642.6001 Field Laboratory	1.000 EACH	.		.	
2080	643.0200 Traffic Control Surveillance and Maintenance (project) 001. 1674-00-81	361.000 DAY	.		.	
2090	643.0300 Traffic Control Drums	143,000.000 DAY	.		.	

SCHEDULE OF ITEMS

REVISED:

CONTRACT:
20160712006PROJECT(S):
1674-00-81
1674-00-84FEDERAL ID(S):
WISC 2016250
N/A

CONTRACTOR : _____

LINE NO	ITEM DESCRIPTION	APPROX. QUANTITY AND UNITS	UNIT PRICE		BID AMOUNT	
			DOLLARS	CTS	DOLLARS	CTS
2100	643.0420 Traffic Control Barricades Type III	8,200.000 DAY	.		.	
2110	643.0500 Traffic Control Flexible Tubular Marker Posts	1,000.000 EACH	.		.	
2120	643.0600 Traffic Control Flexible Tubular Marker Bases	1,000.000 EACH	.		.	
2130	643.0705 Traffic Control Warning Lights Type A	6,450.000 DAY	.		.	
2140	643.0715 Traffic Control Warning Lights Type C	23,100.000 DAY	.		.	
2150	643.0800 Traffic Control Arrow Boards	950.000 DAY	.		.	
2160	643.0900 Traffic Control Signs	5,200.000 DAY	.		.	
2170	643.0920 Traffic Control Covering Signs Type II	10.000 EACH	.		.	
2180	643.1050 Traffic Control Signs PCMS	300.000 DAY	.		.	
2190	645.0105 Geotextile Type C	286.000 SY	.		.	
2200	645.0111 Geotextile Type DF Schedule A	90.000 SY	.		.	

SCHEDULE OF ITEMS

REVISED:

CONTRACT:
20160712006PROJECT(S):
1674-00-81
1674-00-84FEDERAL ID(S):
WISC 2016250
N/A

CONTRACTOR : _____

LINE NO	ITEM DESCRIPTION	APPROX. QUANTITY AND UNITS	UNIT PRICE		BID AMOUNT	
			DOLLARS	CTS	DOLLARS	CTS
2210	645.0120 Geotextile Type HR	7,994.000 SY	.		.	
2220	645.0140 Geotextile Type SAS	2,800.000 SY	.		.	
2230	646.0106 Pavement Marking Epoxy 4-Inch	154,000.000 LF	.		.	
2240	646.0600 Removing Pavement Markings	10,000.000 LF	.		.	
2250	646.0841.S Pavement Marking Grooved Wet Reflective Contrast Tape 4-Inch	16,500.000 LF	.		.	
2260	646.0843.S Pavement Marking Grooved Wet Reflective Contrast Tape 8-Inch	15,100.000 LF	.		.	
2270	647.0456 Pavement Marking Curb Epoxy	20.000 LF	.		.	
2280	647.0566 Pavement Marking Stop Line Epoxy 18-Inch	80.000 LF	.		.	
2290	647.0606 Pavement Marking Island Nose Epoxy	2.000 EACH	.		.	
2300	647.0726 Pavement Marking Diagonal Epoxy 12-Inch	1,900.000 LF	.		.	

SCHEDULE OF ITEMS

REVISED:

CONTRACT:
20160712006PROJECT(S):
1674-00-81
1674-00-84FEDERAL ID(S):
WISC 2016250
N/A

CONTRACTOR : _____

LINE NO	ITEM DESCRIPTION	APPROX. QUANTITY AND UNITS	UNIT PRICE		BID AMOUNT	
			DOLLARS	CTS	DOLLARS	CTS
2310	649.0400 Temporary Pavement Marking Removable Tape 4-Inch	184,000.000 LF	.		.	
2320	649.0402 Temporary Pavement Marking Paint 4-Inch	6,000.000 LF	.		.	
2330	649.0801 Temporary Pavement Marking Removable Tape 8-Inch	500.000 LF	.		.	
2340	649.1200 Temporary Pavement Marking Stop Line Removable Tape 18-Inch	150.000 LF	.		.	
2350	650.4000 Construction Staking Storm Sewer	42.000 EACH	.		.	
2360	650.4500 Construction Staking Subgrade	22,330.000 LF	.		.	
2370	650.5000 Construction Staking Base	5,105.000 LF	.		.	
2380	650.5500 Construction Staking Curb Gutter and Curb & Gutter	4,550.000 LF	.		.	
2390	650.6000 Construction Staking Pipe Culverts	38.000 EACH	.		.	
2400	650.6500 Construction Staking Structure Layout (structure) 001. R-56-34	LUMP	LUMP		.	

SCHEDULE OF ITEMS

REVISED:

CONTRACT:
20160712006PROJECT(S):
1674-00-81
1674-00-84FEDERAL ID(S):
WISC 2016250
N/A

CONTRACTOR : _____

LINE NO	ITEM DESCRIPTION	APPROX. QUANTITY AND UNITS	UNIT PRICE		BID AMOUNT	
			DOLLARS	CTS	DOLLARS	CTS
2410	650.6500 Construction Staking Structure Layout (structure) 002. B-56-223	LUMP	LUMP			.
2420	650.6500 Construction Staking Structure Layout (structure) 003. C-56-2031	LUMP	LUMP			.
2430	650.7000 Construction Staking Concrete Pavement	64,100.000 LF	.			.
2440	650.7500 Construction Staking Concrete Barrier	4,900.000 LF	.			.
2450	650.9910 Construction Staking Supplemental Control (project) 001. 1674-00-81	LUMP	LUMP			.
2460	650.9920 Construction Staking Slope Stakes	22,330.000 LF	.			.
2470	690.0150 Sawing Asphalt	4,600.000 LF	.			.
2480	690.0250 Sawing Concrete	2,350.000 LF	.			.
2490	715.0415 Incentive Strength Concrete Pavement	60,150.000 DOL	1.00000		60150.00	
2500	715.0502 Incentive Strength Concrete Structures	4,764.000 DOL	1.00000		4764.00	

SCHEDULE OF ITEMS

REVISED:

CONTRACT:
20160712006PROJECT(S):
1674-00-81
1674-00-84FEDERAL ID(S):
WISC 2016250
N/A

CONTRACTOR : _____

LINE NO	ITEM DESCRIPTION	APPROX. QUANTITY AND UNITS	UNIT PRICE		BID AMOUNT	
			DOLLARS	CTS	DOLLARS	CTS
2510	ASP.1T0A On-the-Job Training Apprentice at \$5.00/HR	2,100.000 HRS	5.00000		10500.00	
2520	ASP.1T0G On-the-Job Training Graduate at \$5. 00/HR	6,480.000 HRS	5.00000		32400.00	
2530	SPV.0035 Special 001. TOPSOIL SPECIAL	203.000 CY	.		.	
2540	SPV.0060 Special 001. INLET COVERS TEMPORARY	4.000 EACH	.		.	
2550	SPV.0060 Special 002. INLET MEDIAN 4 GRATE MODIFIED	2.000 EACH	.		.	
2560	SPV.0085 Special 001. SEEDING MIXTURE NO. 75 MODIFIED	1,100.000 LB	.		.	
2570	SPV.0090 Special 001. FENCE CHAIN LINK POLYMER-COATED 4-FT	335.000 LF	.		.	
2580	SPV.0090 Special 002. LANDSCAPE EDGING	340.000 LF	.		.	
2590	SPV.0090 Special 003. CULVERT PIPE HORIZONTAL ELLIPTICAL CLASS HE IV 48X76-INCH	343.000 LF	.		.	
2600	SPV.0105 Special 001. CONCRETE PAVEMENT JOINT LAYOUT	LUMP	LUMP		.	

SCHEDULE OF ITEMS

REVISED:

CONTRACT:
20160712006

PROJECT(S):
1674-00-81
1674-00-84

FEDERAL ID(S):
WISC 2016250
N/A

CONTRACTOR : _____

LINE NO	ITEM DESCRIPTION	APPROX. QUANTITY AND UNITS	UNIT PRICE		BID AMOUNT	
			DOLLARS	CTS	DOLLARS	CTS
2610	SPV.0105 Special 002. SAUK COUNTY SALT STORAGE FACILITY	LUMP	LUMP			.
2620	SPV.0165 Special 001. WALL MODULAR BLOCK MECHANICALLY STABILIZED EARTH LRFD/QMP	SF	2,440.000			.
2630	SPV.0195 Special 001. COARSE AGGREGATE SPECIAL	TON	17.000			.
2640	209.0200.S Backfill Controlled Low Strength	CY	150.000			.
2650	504.0900 Concrete Masonry Endwalls	CY	32.000			.
2660	523.0429 Culvert Pipe Reinforced Concrete Horizontal Elliptical Class HE-IV 29x45-Inch	LF	353.000			.
	SECTION 0001 TOTAL					.
	TOTAL BID					.