

Wisconsin Department of Transportation

September 1, 2016

Division of Transportation Systems Development

Bureau of Project Development
 4802 Sheboygan Avenue, Rm 601
 P O Box 7916
 Madison, WI 53707-7916

Telephone: (608) 266-1631
 Facsimile (FAX): (608) 266-8459

NOTICE TO ALL CONTRACTORS:

Proposal #03: 1060-31-71
East – West Freeway
CTH P Park & Ride
IH 94
Waukesha County

Letting of September 13, 2016

This is Addendum No. 01, which provides for the following:

Schedule of Items

Revised Bid Item Quantities					
Bid Item	Item Description	Unit	Old Quantity	Revised Quantity	Proposal Total
SPV.0090.01	Chain Link Fence 6 Feet Vinyl Coated	LF	100	595	695

Added Bid Item Quantities					
Bid Item	Item Description	Unit	Old Quantity	Revised Quantity	Proposal Total
608.3012	Storm Sewer Pipe Class III-A 12-Inch	LF	0	714	714
608.3018	Storm Sewer Pipe Class III-A 18-Inch	LF	0	97	97

Deleted Bid Item Quantities					
Bid Item	Item Description	Unit	Old Quantity	Revised Quantity	Proposal Total
608.0312	Storm Sewer Pipe Reinforced Concrete Class III 12-Inch	LF	714	-714	0
608.0318	Storm Sewer Pipe Reinforced Concrete Class III 18-Inch	LF	97	-97	0
616.0406	Fence Chain Link Salvaged 6-Ft	LF	600	-600	0

Plan Sheets

Revised Plan Sheets	
Plan Sheet	Plan Sheet Title (brief description of changes to sheet)
11,12	Plan Detail – revised call outs for chain link fence and revised existing chain link fence mapping.
20,21	Pavement Marking & Fencing Detail – revised call outs for chain link fence and revised existing chain link fence mapping.
46	Miscellaneous Quantities – Revised storm sewer pipe item, deleted salvaged chain link fence item and revised new chain link fence quantity.

Schedule of Items

Attached, dated September 1, 2016, are the revised Schedule of Items Pages 1 – 10.

Plan Sheets

The following 8½ x 11-inch sheets are attached and made part of the plans for this proposal:
Revised: 11, 12, 20, 21, and 46

The responsibility for notifying potential subcontractors and suppliers of these changes remains with the prime contractor.

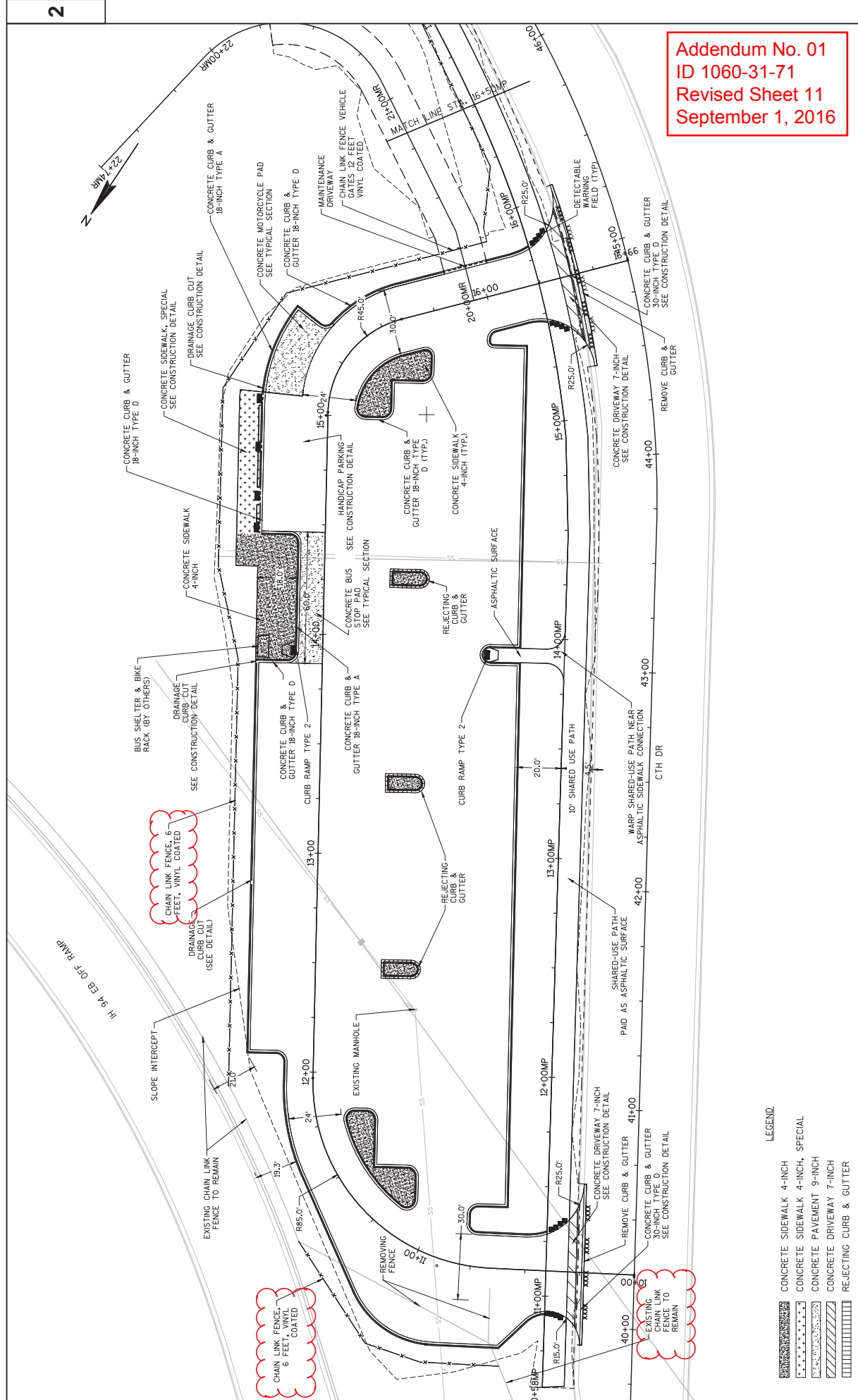
Sincerely,

Mike Coleman

Proposal Development Specialist
Proposal Management Section

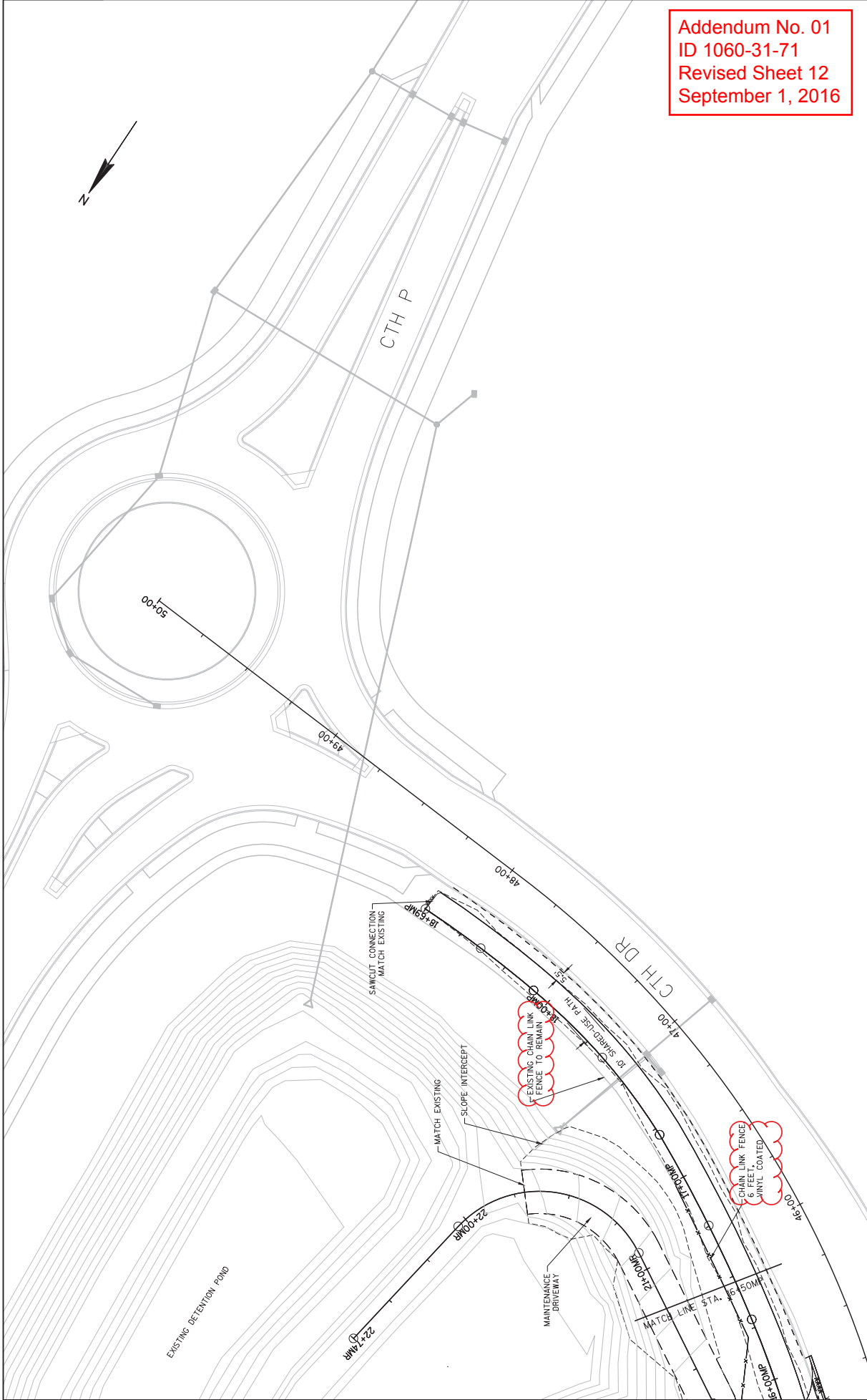
END OF ADDENDUM

Addendum No. 01
ID 1060-31-71
Revised Sheet 11
September 1, 2016



- LEGEND**
- CONCRETE SIDEWALK 4-INCH
 - CONCRETE SIDEWALK 4-INCH, SPECIAL
 - CONCRETE PAVEMENT 9-INCH
 - CONCRETE DRIVEWAY 7-INCH
 - REJECTING CURB & GUTTER

2

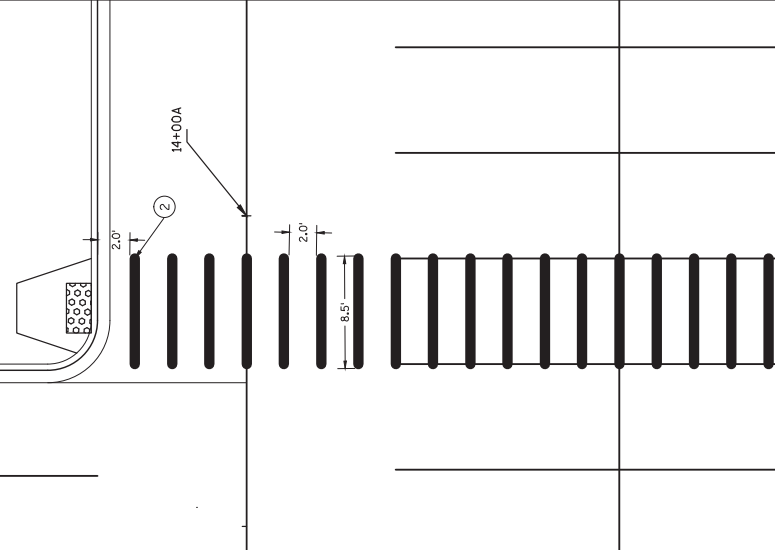


Addendum No. 01
 ID 1060-31-71
 Revised Sheet 12
 September 1, 2016

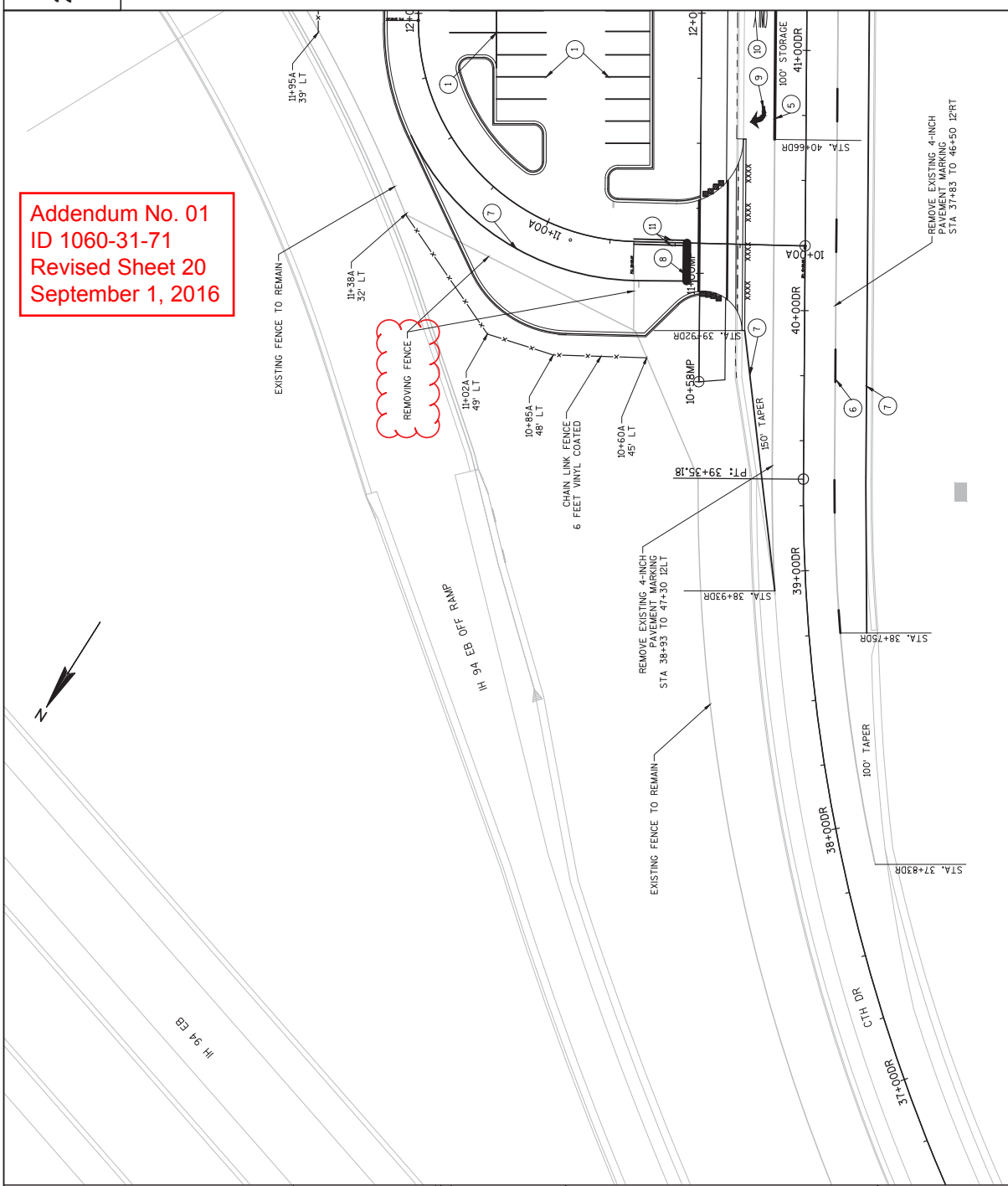
2

- PAVEMENT MARKING LEGEND**
- ① PAVEMENT MARKING, PARKING STALL, EPOXY, WHITE
 - ② PAVEMENT MARKING, CROSSWALK, EPOXY, 24-INCH, WHITE
 - ③ PAVEMENT MARKING, DIAGONAL, EPOXY, 6-INCH, WHITE
 - ④ PAVEMENT MARKING, EPOXY, SYMBOLS, WHITE
 - ⑤ PAVEMENT MARKING, EPOXY, 8-INCH, WHITE
 - ⑥ PAVEMENT MARKING, EPOXY, 4-INCH, DASHED WHITE (2.5"LINE,37.5"GAP)
 - ⑦ PAVEMENT MARKING, EPOXY, 4-INCH, WHITE
 - ⑧ PAVEMENT MARKING, EPOXY, STOP LINE, 18-INCH, WHITE
 - ⑨ PAVEMENT MARKING, ARROWS EPOXY, TYPE 2, WHITE
 - ⑩ PAVEMENT MARKING, WORDS EPOXY, WHITE
 - ⑪ PAVEMENT MARKING, EPOXY, 4-INCH, DOUBLE YELLOW
- REMOVE PAVEMENT MARKING

CROSSWALK DETAIL



Addendum No. 01
ID 1060-31-71
Revised Sheet 20
September 1, 2016



PROJECT NO: 1060-31-71

HWY: IH 94

COUNTY: WAUKESHA

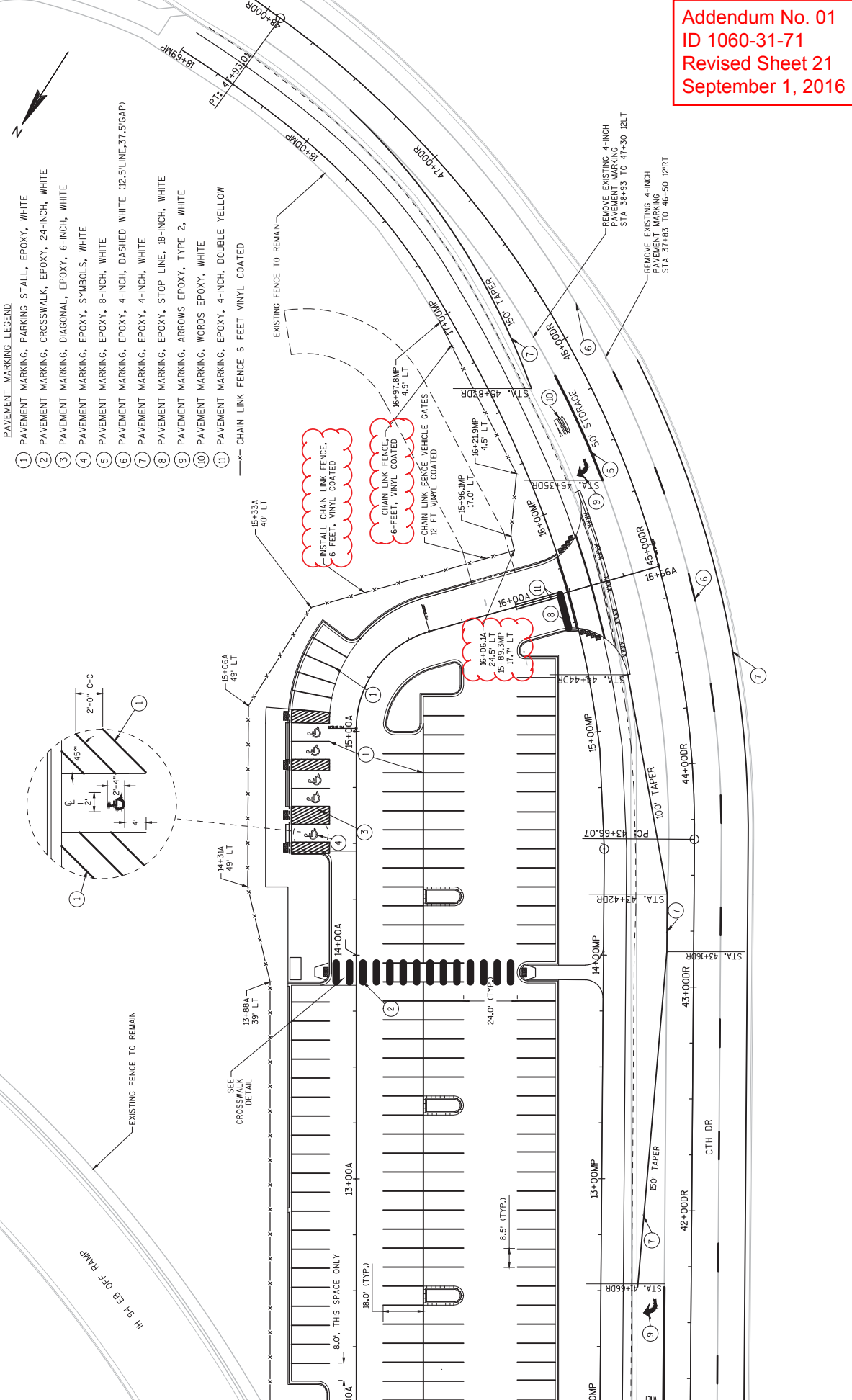
PLOT DATE : 8/31/2016

PLAN: PAVEMENT MARKING & FENCING

SHEET 20

E

- PAVEMENT MARKING LEGEND**
- ① PAVEMENT MARKING, PARKING STALL, EPOXY, WHITE
 - ② PAVEMENT MARKING, CROSSWALK, EPOXY, 24-INCH, WHITE
 - ③ PAVEMENT MARKING, DIAGONAL, EPOXY, 6-INCH, WHITE
 - ④ PAVEMENT MARKING, EPOXY, SYMBOLS, WHITE
 - ⑤ PAVEMENT MARKING, EPOXY, 8-INCH, WHITE
 - ⑥ PAVEMENT MARKING, EPOXY, 4-INCH, DASHED WHITE (2.5"LINE:37.5"CAP)
 - ⑦ PAVEMENT MARKING, EPOXY, 4-INCH, WHITE
 - ⑧ PAVEMENT MARKING, EPOXY, STOP LINE, 18-INCH, WHITE
 - ⑨ PAVEMENT MARKING, ARROWS EPOXY, TYPE 2, WHITE
 - ⑩ PAVEMENT MARKING, WORDS EPOXY, WHITE
 - ⑪ PAVEMENT MARKING, EPOXY, 4-INCH, DOUBLE YELLOW
- CHAIN LINK FENCE 6 FEET VINYL COATED



Addendum No. 01
 ID 1060-31-71
 Revised Sheet 21
 September 1, 2016

STORM SEWER PIPE CLASS III-A

FROM	TO	INLET ELEVATION	DISCHARGE ELEVATION	SLOPE	CONCRETE COLLAR	12-INCH	18-INCH	
				FT/FT	EACH	(LF)	(LF)	
1.1	1.0	885.00	884.50	0.012	-	-	40	
1.2	1.1	885.34	885.00	0.007	-	-	47	
1.3	1.2	885.51	885.34	0.017	-	-	10	
1.4	1.3	887.93	885.76	0.019	-	116	-	
1.5	1.4	890.57	887.93	0.028	-	94	-	
1.6	1.5	891.97	890.57	0.013	-	109	-	
1.7	2.2	894.09	894.04	0.005	-	9	-	
1.8	2.6	892.98	892.52	0.012	-	40	-	
1.9	1.2	885.92	885.59	0.005	-	60	-	
2.0	1.4	888.57	887.93	0.011	-	59	-	
2.1	1.5	890.92	890.57	0.006	-	60	-	
2.2	1.6	892.17	891.97	0.005	-	38	-	
2.3	2.2	892.42	892.17	0.007	-	36	-	
2.6	2.3	892.52	892.42	0.005	-	19	-	
2.9	2.8	887.00	886.90	0.005	-	21	-	
2.8	2.7	886.65	886.50	0.005	-	29	-	
EXISTING	2.5	881.94	880.75	0.046	1	26	-	
TOTAL						1	714	97

LENGTH MEASURED FROM CENTER OF STRUCTURE OR APRON ENDWALL TO CENTER OF STRUCTURE

DELINEATORS FLEXIBLE

STATION TO STATION	LOCATION	DELINEATORS FLEXIBLE
		(EACH)
10+24A - 16+28A	PARK AND RIDE	14
TOTAL		14

CHAIN LINK FENCE, VINYL COATED

STATION TO STATION	O/S	LOCATION	CHAIN LINK FENCE VEHICLE COATED	SPV 0060.01
			GATES 12 FEET VINYL COATED	CHAIN LINK FENCE 6 FEET, VINYL COATED
			(EACH)	(LF)
10+60A - 11+38A	LT	PARK AND RIDE	--	120
11+85A - 16+06A	LT	PARK AND RIDE	1	465
15+89MP - 16+98MP	RT	SHARED USE PATH	--	110
TOTAL			1	695

Addendum No. 01
ID 1060-31-71
Revised Sheet 46
September 1, 2016

SCHEDULE OF ITEMS

REVISED:

CONTRACT:
20160913003PROJECT(S):
1060-31-71FEDERAL ID(S):
N/A

CONTRACTOR : _____

LINE NO	ITEM DESCRIPTION	APPROX. QUANTITY AND UNITS	UNIT PRICE		BID AMOUNT	
			DOLLARS	CTS	DOLLARS	CTS

SECTION 0001 Contract Items

0010	204.0150 Removing Curb & Gutter	160.000 LF
0020	204.0170 Removing Fence	150.000 LF
0030	205.0100 Excavation Common	969.000 CY
0040	213.0100 Finishing Roadway (project) 01. 1060-31-71	1.000 EACH
0050	305.0120 Base Aggregate Dense 1 1/4-Inch	2,700.000 TON
0060	415.0090 Concrete Pavement 9-Inch	156.000 SY
0070	416.0170 Concrete Driveway 7-Inch	55.000 SY
0080	455.0605 Tack Coat	350.000 GAL
0090	460.2000 Incentive Density HMA Pavement	770.000 DOL	1.00000	.	770.00	.
0100	460.5224 HMA Pavement 4 LT 58-28 S	1,200.000 TON

SCHEDULE OF ITEMS

REVISED:

CONTRACT:
20160913003PROJECT(S):
1060-31-71FEDERAL ID(S):
N/A

CONTRACTOR : _____

LINE NO	ITEM DESCRIPTION	APPROX. QUANTITY AND UNITS	UNIT PRICE		BID AMOUNT	
			DOLLARS	CTS	DOLLARS	CTS
0110	465.0105 Asphaltic Surface	150.000 TON	.		.	
0120	520.8000 Concrete Collars for Pipe	1.000 EACH	.		.	
0130	522.1012 Apron Endwalls for Culvert Pipe Reinforced Concrete 12-Inch	1.000 EACH	.		.	
0140	522.1018 Apron Endwalls for Culvert Pipe Reinforced Concrete 18-Inch	1.000 EACH	.		.	
0150	524.0612 Apron Endwalls for Culvert Pipe Salvaged 12-Inch	1.000 EACH	.		.	
0160	601.0405 Concrete Curb & Gutter 18-Inch Type A	125.000 LF	.		.	
0170	601.0407 Concrete Curb & Gutter 18-Inch Type D	1,630.000 LF	.		.	
0180	601.0411 Concrete Curb & Gutter 30-Inch Type D	170.000 LF	.		.	
0190	602.0405 Concrete Sidewalk 4-Inch	2,360.000 SF	.		.	
0200	602.0505 Curb Ramp Detectable Warning Field Yellow	112.000 SF	.		.	

SCHEDULE OF ITEMS

REVISED:

CONTRACT:
20160913003PROJECT(S):
1060-31-71FEDERAL ID(S):
N/A

CONTRACTOR : _____

LINE NO	ITEM DESCRIPTION	APPROX. QUANTITY AND UNITS	UNIT PRICE		BID AMOUNT	
			DOLLARS	CTS	DOLLARS	CTS
0210	606.0200 Riprap Medium	32.000 CY	.		.	
0240	611.0420 Reconstructing Manholes	1.000 EACH	.		.	
0250	611.0612 Inlet Covers Type C	3.000 EACH	.		.	
0260	611.0624 Inlet Covers Type H	13.000 EACH	.		.	
0270	611.3220 Inlets 2x2-FT	3.000 EACH	.		.	
0280	611.3230 Inlets 2x3-FT	13.000 EACH	.		.	
0290	612.0206 Pipe Underdrain Unperforated 6-Inch	25.000 LF	.		.	
0310	618.0100 Maintenance And Repair of Haul Roads (project) 01. 1060-31-71	1.000 EACH	.		.	
0320	619.1000 Mobilization	1.000 EACH	.		.	
0330	624.0100 Water	60.000 MGAL	.		.	
0340	625.0500 Salvaged Topsoil	2,100.000 SY	.		.	

SCHEDULE OF ITEMS

REVISED:

CONTRACT:
20160913003

PROJECT(S):
1060-31-71

FEDERAL ID(S):
N/A

CONTRACTOR : _____

LINE NO	ITEM DESCRIPTION	APPROX. QUANTITY AND UNITS	UNIT PRICE		BID AMOUNT	
			DOLLARS	CTS	DOLLARS	CTS
0350	627.0200 Mulching	900.000 SY	.		.	
0360	628.1104 Erosion Bales	160.000 EACH	.		.	
0370	628.1504 Silt Fence	1,000.000 LF	.		.	
0380	628.1520 Silt Fence Maintenance	500.000 LF	.		.	
0390	628.1905 Mobilizations Erosion Control	3.000 EACH	.		.	
0400	628.1910 Mobilizations Emergency Erosion Control	3.000 EACH	.		.	
0410	628.2004 Erosion Mat Class I Type B	1,250.000 SY	.		.	
0420	628.7005 Inlet Protection Type A	2.000 EACH	.		.	
0430	628.7010 Inlet Protection Type B	3.000 EACH	.		.	
0440	628.7015 Inlet Protection Type C	16.000 EACH	.		.	
0450	628.7560 Tracking Pads	2.000 EACH	.		.	

SCHEDULE OF ITEMS

REVISED:

CONTRACT:
20160913003PROJECT(S):
1060-31-71FEDERAL ID(S):
N/A

CONTRACTOR : _____

LINE NO	ITEM DESCRIPTION	APPROX. QUANTITY AND UNITS	UNIT PRICE		BID AMOUNT	
			DOLLARS	CTS	DOLLARS	CTS
0460	628.7570 Rock Bags	140.000 EACH	.		.	
0470	629.0210 Fertilizer Type B	1.300 CWT	.		.	
0480	630.0120 Seeding Mixture No. 20	57.000 LB	.		.	
0490	633.0200 Delineators Flexible	14.000 EACH	.		.	
0500	634.0618 Posts Wood 4x6-Inch X 18-FT	11.000 EACH	.		.	
0510	634.0816 Posts Tubular Steel 2x2-Inch X 16-FT	22.000 EACH	.		.	
0520	635.0200 Sign Supports Structural Steel HS	1,800.000 LB	.		.	
0530	636.0100 Sign Supports Concrete Masonry	3.600 CY	.		.	
0540	636.0500 Sign Supports Steel Reinforcement	204.000 LB	.		.	
0550	637.1220 Signs Type I Reflective SH	408.000 SF	.		.	
0560	637.2210 Signs Type II Reflective H	177.110 SF	.		.	

SCHEDULE OF ITEMS

REVISED:

CONTRACT:
20160913003PROJECT(S):
1060-31-71FEDERAL ID(S):
N/A

CONTRACTOR : _____

LINE NO	ITEM DESCRIPTION	APPROX. QUANTITY AND UNITS	UNIT PRICE		BID AMOUNT	
			DOLLARS	CTS	DOLLARS	CTS
0570	637.2230 Signs Type II Reflective F	33.000 SF
0580	642.5001 Field Office Type B	1.000 EACH
0590	643.0100 Traffic Control (project) 01. 1060-31-71	1.000 EACH
0600	643.0300 Traffic Control Drums	1,700.000 DAY
0610	643.0420 Traffic Control Barricades Type III	430.000 DAY
0620	643.0705 Traffic Control Warning Lights Type A	860.000 DAY
0630	643.0715 Traffic Control Warning Lights Type C	260.000 DAY
0640	643.0900 Traffic Control Signs	440.000 DAY
0650	645.0120 Geotextile Type HR	58.000 SY
0660	646.0106 Pavement Marking Epoxy 4-Inch	1,709.000 LF
0670	646.0126 Pavement Marking Epoxy 8-Inch	150.000 LF

SCHEDULE OF ITEMS

REVISED:

CONTRACT:
20160913003PROJECT(S):
1060-31-71FEDERAL ID(S):
N/A

CONTRACTOR : _____

LINE NO	ITEM DESCRIPTION	APPROX. QUANTITY AND UNITS	UNIT PRICE		BID AMOUNT	
			DOLLARS	CTS	DOLLARS	CTS
0680	646.0600 Removing Pavement Markings	1,650.000 LF	.		.	
0690	647.0166 Pavement Marking Arrows Epoxy Type 2	3.000 EACH	.		.	
0700	647.0256 Pavement Marking Symbols Epoxy	5.000 EACH	.		.	
0710	647.0356 Pavement Marking Words Epoxy	2.000 EACH	.		.	
0720	647.0566 Pavement Marking Stop Line Epoxy 18-Inch	30.000 LF	.		.	
0730	647.0656 Pavement Marking Parking Stall Epoxy	2,984.000 LF	.		.	
0740	647.0706 Pavement Marking Diagonal Epoxy 6-Inch	942.000 LF	.		.	
0750	647.0796 Pavement Marking Crosswalk Epoxy 24-Inch	202.000 LF	.		.	
0760	650.4000 Construction Staking Storm Sewer	14.000 EACH	.		.	
0770	650.4500 Construction Staking Subgrade	1,415.000 LF	.		.	
0780	650.5000 Construction Staking Base	1,415.000 LF	.		.	

SCHEDULE OF ITEMS

REVISED:

CONTRACT:
20160913003PROJECT(S):
1060-31-71FEDERAL ID(S):
N/A

CONTRACTOR : _____

LINE NO	ITEM DESCRIPTION	APPROX. QUANTITY AND UNITS	UNIT PRICE		BID AMOUNT	
			DOLLARS	CTS	DOLLARS	CTS
0790	650.5500 Construction Staking Curb Gutter and Curb & Gutter	1,925.000 LF	.		.	
0800	650.7000 Construction Staking Concrete Pavement	100.000 LF	.		.	
0810	650.8500 Construction Staking Electrical Installations (project) 01. 1060-31-71	LUMP	LUMP		.	
0820	650.9910 Construction Staking Supplemental Control (project) 01. 1060-31-71	LUMP	LUMP		.	
0830	650.9920 Construction Staking Slope Stakes	1,415.000 LF	.		.	
0840	652.0225 Conduit Rigid Nonmetallic Schedule 40 2-Inch	1,140.000 LF	.		.	
0850	653.0140 Pull Boxes Steel 24x42-Inch	2.000 EACH	.		.	
0860	654.0105 Concrete Bases Type 5	3.000 EACH	.		.	
0870	654.0224 Concrete Control Cabinet Bases Type L24	1.000 EACH	.		.	
0880	655.0610 Electrical Wire Lighting 12 AWG	2,229.000 LF	.		.	

SCHEDULE OF ITEMS

REVISED:

CONTRACT:
20160913003PROJECT(S):
1060-31-71FEDERAL ID(S):
N/A

CONTRACTOR : _____

LINE NO	ITEM DESCRIPTION	APPROX. QUANTITY AND UNITS	UNIT PRICE		BID AMOUNT	
			DOLLARS	CTS	DOLLARS	CTS
0890	655.0615 Electrical Wire Lighting 10 AWG	5,144.000 LF
0900	655.0640 Electrical Wire Lighting 1 AWG	18.000 LF
0910	656.0200 Electrical Service Meter Breaker Pedestal (location) 01. Sta. 10+47.9a	LUMP	LUMP	.	.	.
0920	657.0255 Transformer Bases Breakaway 11 1/2-Inch Bolt Circle	12.000 EACH
0930	657.0322 Poles Type 5-Aluminum	12.000 EACH
0940	657.0610 Luminaire Arms Single Member 4 1/2-Inch Clamp 6-FT	10.000 EACH
0950	657.0715 Luminaire Arms Truss Type 4 1/2-Inch Clamp 15-FT	7.000 EACH
0960	659.0115 Luminaires Utility HPS 150 Watts	1.000 EACH
0970	659.1125 Luminaires Utility LED C	16.000 EACH
0980	659.2124 Lighting Control Cabinets 120/240 24-Inch	1.000 EACH
0990	690.0150 Sawing Asphalt	150.000 LF

SCHEDULE OF ITEMS

REVISED:

CONTRACT:
20160913003

PROJECT(S):
1060-31-71

FEDERAL ID(S):
N/A

CONTRACTOR : _____

LINE NO	ITEM DESCRIPTION	APPROX. QUANTITY AND UNITS	UNIT PRICE		BID AMOUNT	
			DOLLARS	CTS	DOLLARS	CTS
1000	690.0250 Sawing Concrete	10.000 LF	.		.	
1010	715.0415 Incentive Strength Concrete Pavement	500.000 DOL	1.00000		500.00	
1020	SPV.0060 Special 01. Chain Link Fence Vehicle Gates 12 Feet Vinyl Coated	1.000 EACH	.		.	
1030	SPV.0060 Special 02. Concrete Bases Type 5, Special	9.000 EACH	.		.	
1040	SPV.0090 Special 01. Chain Link Fence 6 Feet Vinyl Coated	695.000 LF	.		.	
1050	SPV.0105 Special 01. Lighting System Survey	LUMP	LUMP		.	
1060	SPV.0105 Special 02. Lighting System Integrator	LUMP	LUMP		.	
1070	SPV.0165 Special 01. Concrete Sidewalk 4-Inch, Special	685.000 SF	.		.	
1080	608.3012 Storm Sewer Pipe Class III-A 12-Inch	714.000 LF	.		.	
1090	608.3018 Storm Sewer Pipe Class III-A 18-Inch	97.000 LF	.		.	
	SECTION 0001 TOTAL				.	
	TOTAL BID				.	