



Wisconsin Department of Transportation

September 1, 2016

Division of Transportation Systems Development

Bureau of Project Development
 4802 Sheboygan Avenue, Rm 601
 P O Box 7916
 Madison, WI 53707-7916

Telephone: (608) 266-1631
 Facsimile (FAX): (608) 266-8459

NOTICE TO ALL CONTRACTORS:

**Proposal #08: 3360-09-72, WISC 2016 309
 Menomonee Falls to Slinger
 Maple Road to STH 60
 STH 175
 Washington County**

Letting of September 13, 2016

This is Addendum No. 01, which provides for the following:

Special Provisions

| Revised Special Provisions | |
|----------------------------|--------------------------|
| Article No. | Description |
| 4 | Prosecution and Progress |
| 5 | Traffic |

| Added Special Provisions | |
|--------------------------|---|
| Article No. | Description |
| 51 | Concrete Curb and Gutter 30-Inch Type D HES |
| 52 | Concrete Curb and Gutter 4-Inch Sloped 36-Inch Type T HES |

Schedule of Items

| Revised Bid Item Quantities | | | | | |
|-----------------------------|---|------|--------------|------------------|----------------|
| Bid Item | Item Description | Unit | Old Quantity | Revised Quantity | Proposal Total |
| 205.0200 | Excavation Rock | CY | 820 | 46 | 866 |
| 601.0411 | Concrete Curb and Gutter 30-Inch Type D | LF | 5775 | -600 | 5175 |
| 601.0582 | Concrete Curb and Gutter 4-Inch Sloped 36-Inch Type T | LF | 285 | -95 | 190 |

| Added Bid Item Quantities | | | | | |
|----------------------------------|---|------|--------------|------------------|----------------|
| Bid Item | Item Description | Unit | Old Quantity | Revised Quantity | Proposal Total |
| 647.0606 | Pavement Marking Island Nose Epoxy | EA | 0 | 10 | 10 |
| SPV.0090.09 | Concrete Curb and Gutter 30-Inch Type D HES | LF | 0 | 600 | 600 |
| SPV.0090.10 | Concrete Curb and Gutter 4-Inch Sloped 36-Inch Type T HES | LF | 0 | 95 | 95 |

| Deleted Bid Item Quantities | | | | | |
|------------------------------------|-----------------------------|------|--------------|------------------|----------------|
| Bid Item | Item Description | Unit | Old Quantity | Revised Quantity | Proposal Total |
| 647.0456 | Pavement Marking Curb Epoxy | LF | 136 | -136 | 0 |

Plan Sheets

| Revised Plan Sheets | |
|----------------------------|--|
| Plan Sheet | Plan Sheet Title (brief description of changes to sheet) |
| 101-102 | Revised the anticipated storm sewer rock excavation limits and revised notes |
| 191-194 | Changed Pavement Marking Curb to Pavement Marking Island Nose and updated legend |
| 291 | Added Rock Excavation to Category 0010 |
| 294 | Revised concrete curb and gutter quantities and added concrete curb and gutter HES items |
| 310 | Deleted Pavement Marking Curb Epoxy item and added Island Nose item |

The responsibility for notifying potential subcontractors and suppliers of these changes remains with the prime contractor.

Sincerely,

Mike Coleman

Proposal Development Specialist
Proposal Management Section

ADDENDUM NO. 01

3360-09-72

September 1, 2016

Special Provisions

4. Prosecution and Progress

Replace paragraph 6 with the following:

No work shall be performed between June 10, 2017 and June 19, 2017 (dates inclusive) due to the U.S. Open golf tournament at the Erin Hills Golf Course. All roadways within the project limits shall be open with two lanes of travel and at least a binder course layer of asphalt. Pavement marking, signs, and guardrail/end terminals shall be complete and maintained with existing or new installations during this period.

Replace paragraph 11 with the following:

Stage 2C: Complete construction of Lannon Road roundabout. During this stage Lannon Road may be closed one time for a maximum 15 calendar days. Do not open Lannon Road to through traffic until completing all concrete curb and gutter, HMA pavement, shouldering, permanent pavement markings, signing and lighting.

5. Traffic

*Replace entire subsection titled **Stage 2C** under section titled **A General** with the following:*

Stage 2C

Place portable changeable message signs (PCMS) 14 days prior to beginning construction on Stage 2C as shown on the plans. Close Lannon Road.

- Stage 2C Lannon Road Detour – will be CTH Q to USH 41.
- Complete construction of the Lannon Road roundabout to include all concrete curb and gutter, HMA pavement, shouldering, permanent pavement markings, signing and lighting prior to opening to traffic

51. Concrete Curb and Gutter 30-Inch Type D HES, Item SPV.0090.09

Construct the concrete curb and gutter in accordance with Section 601 of the Standard Specifications, in accordance with the plan details and as hereinafter provided.

Provide high early strength concrete for Concrete Curb and Gutter 30-Inch Type D in accordance with Section 501 of the Standard Specifications.

52. Concrete Curb and Gutter 4-Inch Sloped 36-Inch Type T HES, Item SPV.0090.10

Construct the concrete curb and gutter in accordance with Section 601 of the Standard Specifications, in accordance with the plan details and as hereinafter provided.

Provide high early strength concrete for Concrete Curb and Gutter 4-Inch Sloped 36-Inch Type T in accordance with Section 501 of the Standard Specifications.

Schedule of Items

Attached, dated September 1, 2016, are the revised Schedule of Items Pages 3, 10, 21, 22, and 30.

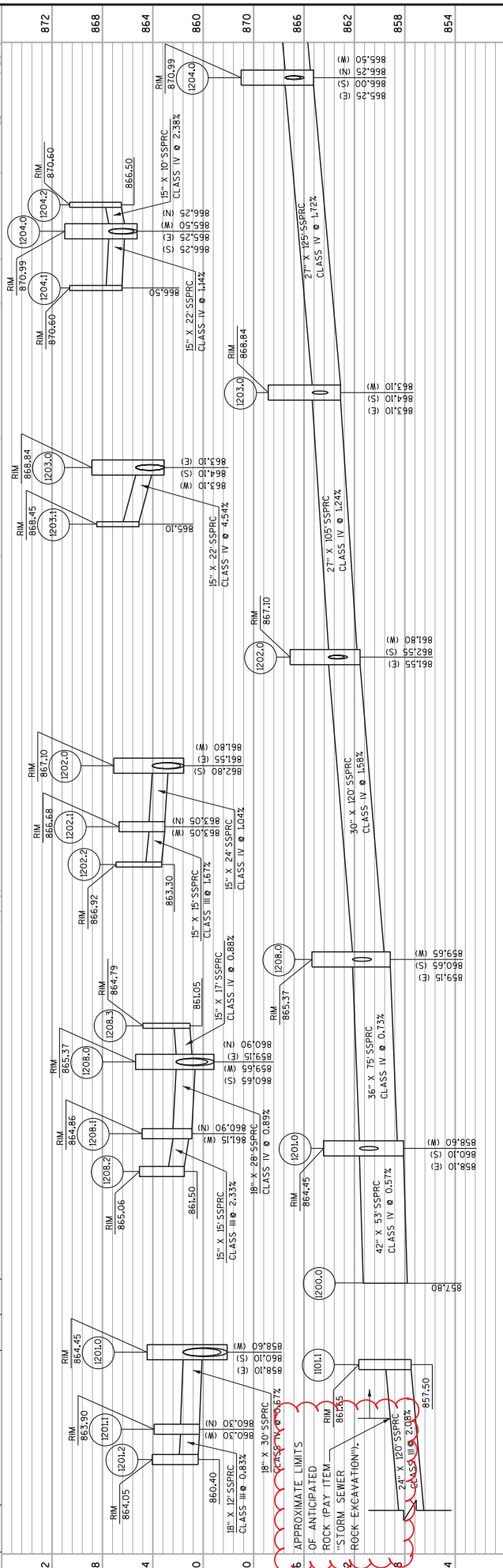
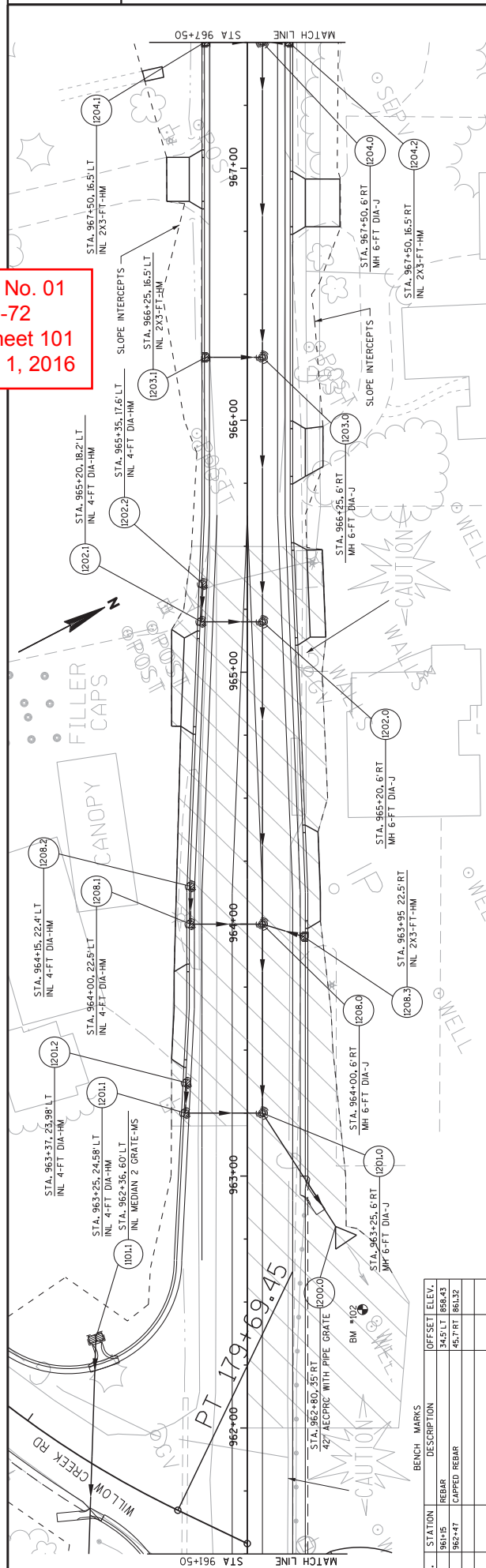
Plan Sheets

The following 8½ x 11-inch sheets are attached and made part of the plans for this proposal:

Revised: 101, 102, 191 - 194, 291, 294, and 310.

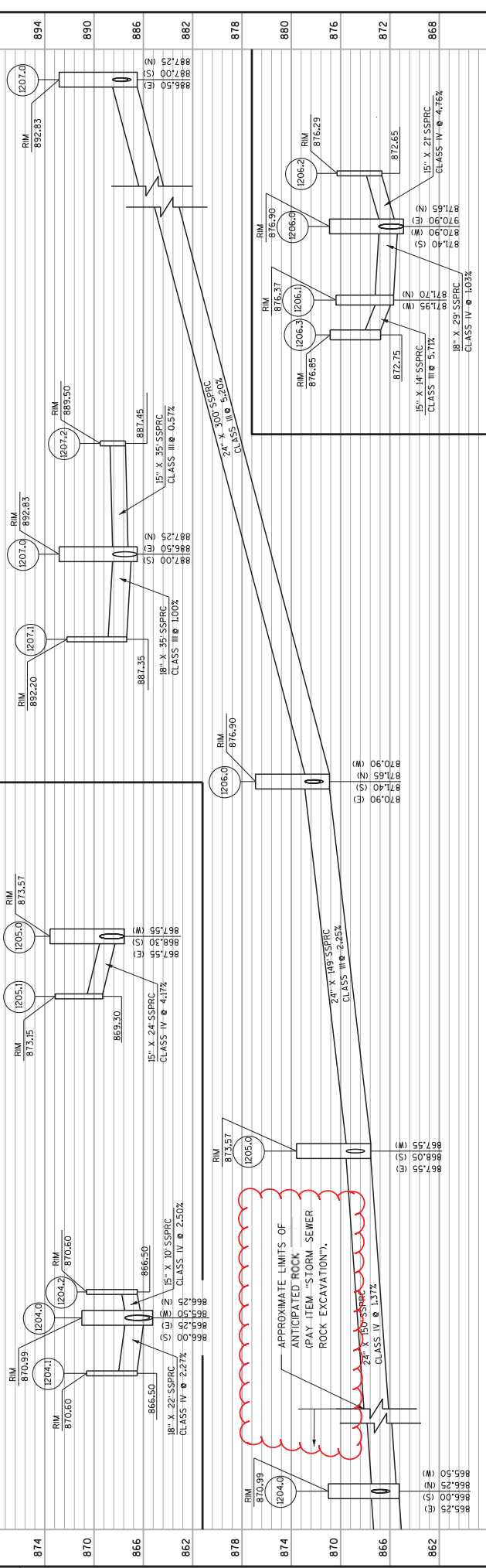
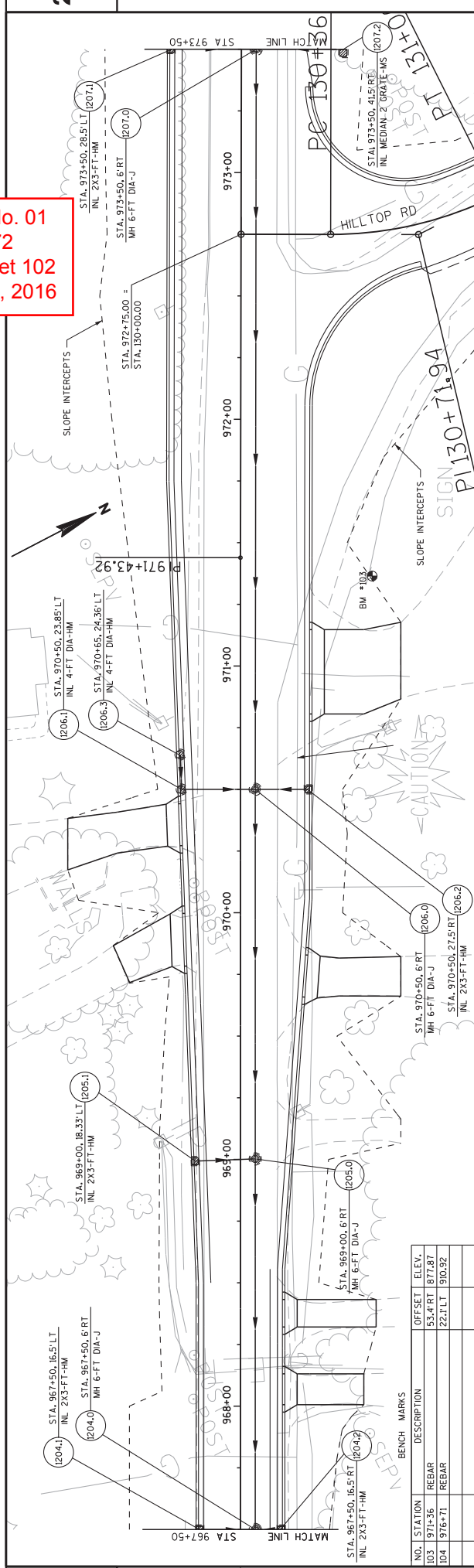
END OF ADDENDUM

Addendum No. 01
 ID 3360-09-72
 Revised Sheet 101
 September 1, 2016



| NO. | STATION | DESCRIPTION | OFFSET/ELEV. |
|-----|---------|--------------|-----------------|
| 01 | 961+15 | REBAR | 34.5' LT 858.43 |
| 02 | 962+47 | CAPPED REBAR | 45.7' RT 861.32 |

Addendum No. 01
 ID 3360-09-72
 Revised Sheet 102
 September 1, 2016



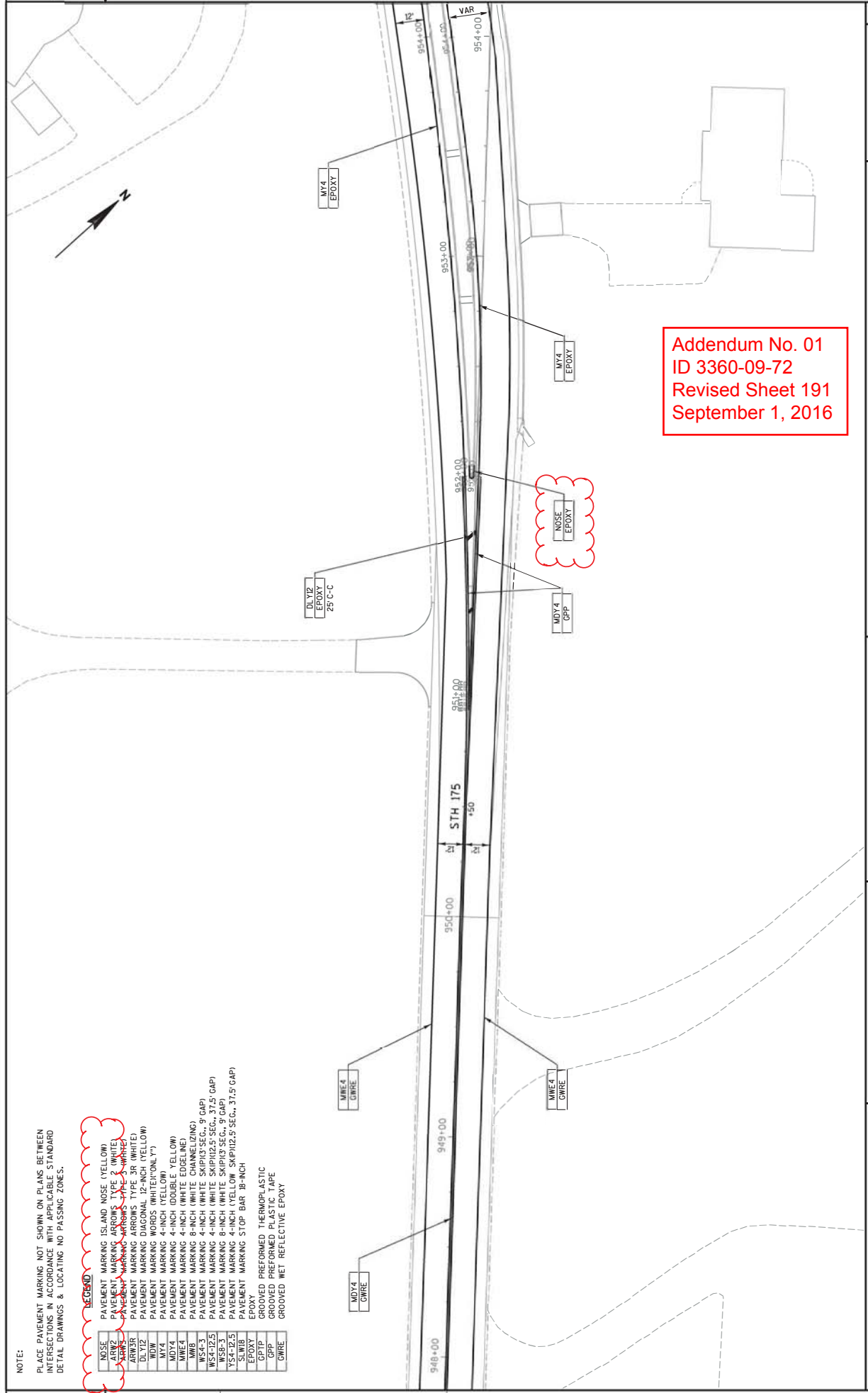
| NO. | STATION | DESCRIPTION | OFFSET | ELEV. |
|-----|---------|-------------|---------|--------|
| 103 | 971+36 | REBAR | 53.4 RT | 877.87 |
| 104 | 976+71 | REBAR | 22.1 LT | 910.92 |

PROJECT NO: 3360-09-72
 COUNTY: WASHINGTON
 HWY: STH 175
 STORM SEWER - MAINLINE
 SHEET 102

FILE NAME : N:\PDS\33600902\3360-09-72\cshp1.cpl Data\Plan Sheets\022503_ss_96750_97350_new.dgn
 PLOT DATE : 31-AUG-2016 14:38
 PLOT BY : cshp1
 PLOT SCALE : 40:1
 WISDOT/CADDIS SHEET 41

NOTE:
 PLACE PAVEMENT MARKING NOT SHOWN ON PLANS BETWEEN
 INTERSECTIONS ACCORDING TO THE CENTERLINE STANDARD
 DETAIL DRAWINGS & LOCATING NO PASSING ZONES.

| LEGEND | |
|----------|---|
| NOSE | PAVEMENT MARKING ISLAND NOSE (YELLOW) |
| ARW2 | PAVEMENT MARKING ARROWS TYPE 2 (WHITE) |
| ARW3 | PAVEMENT MARKING ARROWS TYPE 3 (WHITE) |
| ARW3R | PAVEMENT MARKING ARROWS TYPE 3R (WHITE) |
| DLTY2 | PAVEMENT MARKING DIAGONAL 12-INCH (YELLOW) |
| DLTY2 | PAVEMENT MARKING WORDS (WHITE/ONML Y) |
| MDY4 | PAVEMENT MARKING 4-INCH (DOUBLE YELLOW) |
| MWE4 | PAVEMENT MARKING 4-INCH (WHITE EDGELINE) |
| MW4 | PAVEMENT MARKING 8-INCH (WHITE CHANNELIZING) |
| WS4-12.5 | PAVEMENT MARKING 4-INCH (WHITE SKIP/12.5" SEC., 9" GAP) |
| WS4-37.5 | PAVEMENT MARKING 8-INCH (WHITE SKIP/37.5" SEC., 9" GAP) |
| WS4-37.5 | PAVEMENT MARKING 4-INCH (YELLOW SKIP/37.5" SEC., 9" GAP) |
| WS4-37.5 | PAVEMENT MARKING STOP BAR 18-INCH (YELLOW SKIP/37.5" SEC., 31.5" GAP) |
| EPXY | PREFORMED THERMOPLASTIC EPOXY |
| GPTP | GROOVED PREFORMED THERMOPLASTIC |
| GPP | GROOVED PREFORMED PLASTIC TAPE |
| GWRE | GROOVED MET REFLECTIVE EPOXY |

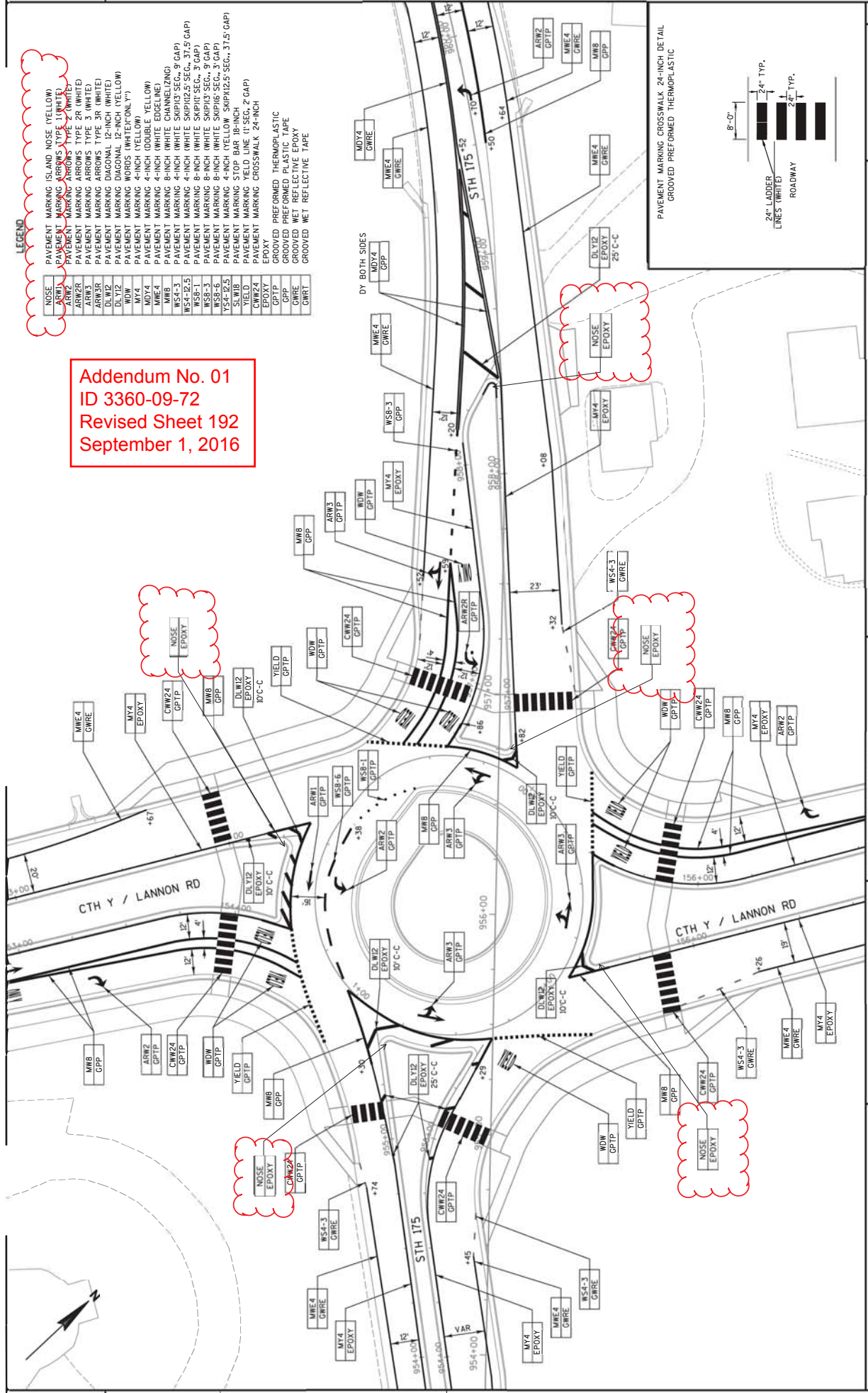


Addendum No. 01
 ID 3360-09-72
 Revised Sheet 191
 September 1, 2016

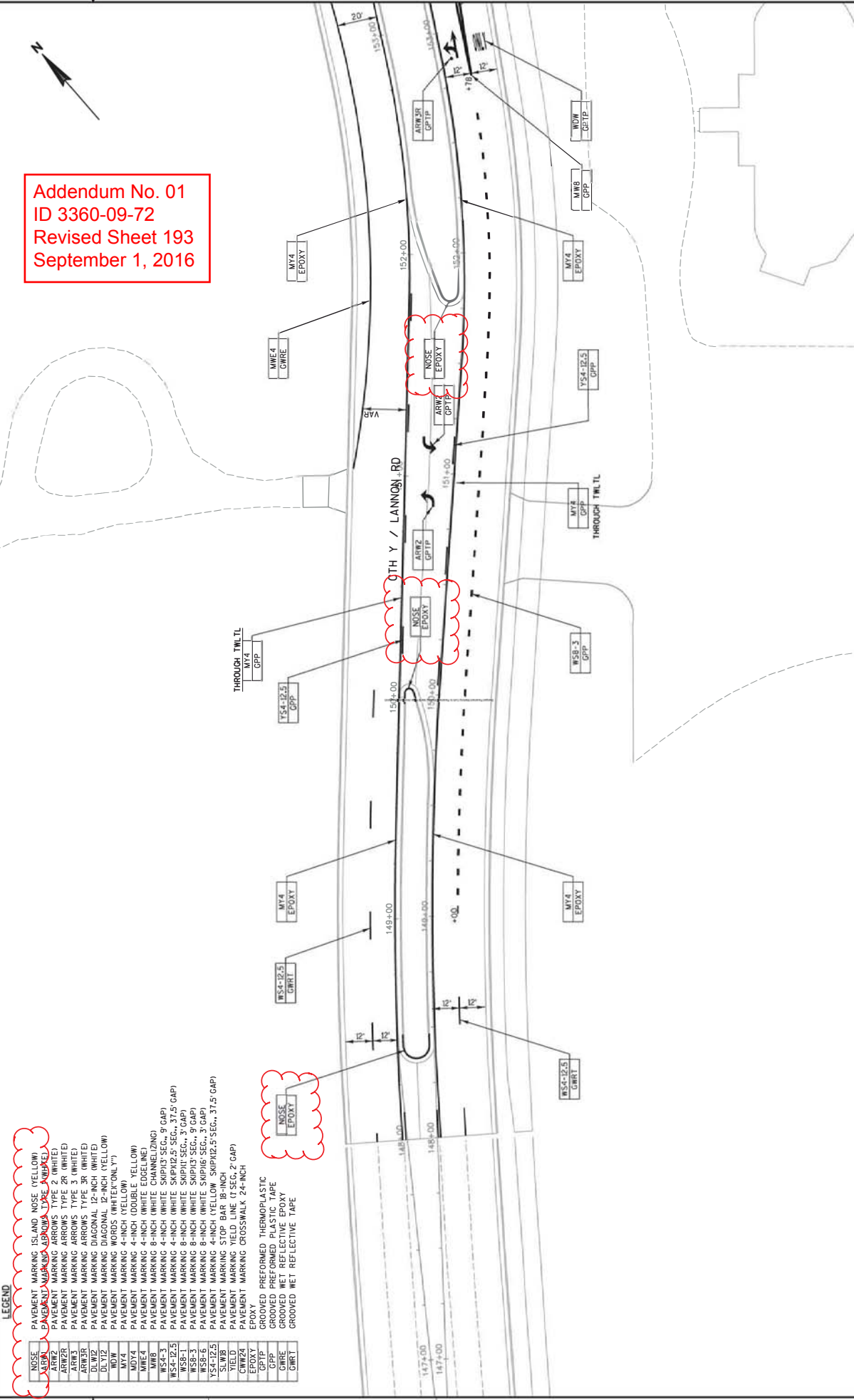
LEGEND

| | |
|-------|--|
| NOSE | PAVEMENT MARKING ISLAND NOSE (YELLOW) |
| ARW1 | PAVEMENT MARKING ARROWS TYPE 1 (WHITE) |
| ARW2 | PAVEMENT MARKING ARROWS TYPE 2 (WHITE) |
| ARW3 | PAVEMENT MARKING ARROWS TYPE 3 (WHITE) |
| ARW4 | PAVEMENT MARKING ARROWS TYPE 4 (WHITE) |
| DLW1 | PAVEMENT MARKING DIAGONAL 12-INCH (WHITE) |
| DLW2 | PAVEMENT MARKING DIAGONAL 12-INCH (WHITE) |
| DLW3 | PAVEMENT MARKING DIAGONAL 12-INCH (WHITE) |
| DLW4 | PAVEMENT MARKING DIAGONAL 12-INCH (WHITE) |
| MY1 | PAVEMENT MARKING WORDS (WHITE/ONLY Y) |
| MY2 | PAVEMENT MARKING 4-INCH (YELLOW) |
| MY3 | PAVEMENT MARKING 4-INCH (YELLOW) |
| MY4 | PAVEMENT MARKING 4-INCH (DOUBLE YELLOW) |
| MY5 | PAVEMENT MARKING 4-INCH (WHITE EDGE LINE) |
| MY6 | PAVEMENT MARKING 4-INCH (WHITE CHANNELIZING) |
| MY7 | PAVEMENT MARKING 4-INCH (WHITE CHANNELIZING) |
| MY8 | PAVEMENT MARKING 4-INCH (WHITE CHANNELIZING) |
| WS1-1 | PAVEMENT MARKING 8-INCH (WHITE SKIP/13" SEC., 9" GAP) |
| WS1-2 | PAVEMENT MARKING 8-INCH (WHITE SKIP/13" SEC., 9" GAP) |
| WS1-3 | PAVEMENT MARKING 8-INCH (WHITE SKIP/13" SEC., 9" GAP) |
| WS1-4 | PAVEMENT MARKING 8-INCH (WHITE SKIP/13" SEC., 9" GAP) |
| WS2-1 | PAVEMENT MARKING 8-INCH (YELLOW SKIP/12.5" SEC., 3" GAP) |
| WS2-2 | PAVEMENT MARKING 8-INCH (YELLOW SKIP/12.5" SEC., 3" GAP) |
| WS2-3 | PAVEMENT MARKING 8-INCH (YELLOW SKIP/12.5" SEC., 3" GAP) |
| WS2-4 | PAVEMENT MARKING 8-INCH (YELLOW SKIP/12.5" SEC., 3" GAP) |
| Y1 | PAVEMENT MARKING STOP BAR 18-INCH |
| Y2 | PAVEMENT MARKING STOP BAR 18-INCH |
| Y3 | PAVEMENT MARKING STOP BAR 18-INCH |
| Y4 | PAVEMENT MARKING STOP BAR 18-INCH |
| Y5 | PAVEMENT MARKING STOP BAR 18-INCH |
| Y6 | PAVEMENT MARKING STOP BAR 18-INCH |
| Y7 | PAVEMENT MARKING STOP BAR 18-INCH |
| Y8 | PAVEMENT MARKING STOP BAR 18-INCH |
| Y9 | PAVEMENT MARKING STOP BAR 18-INCH |
| Y10 | PAVEMENT MARKING STOP BAR 18-INCH |
| Y11 | PAVEMENT MARKING STOP BAR 18-INCH |
| Y12 | PAVEMENT MARKING STOP BAR 18-INCH |
| Y13 | PAVEMENT MARKING STOP BAR 18-INCH |
| Y14 | PAVEMENT MARKING STOP BAR 18-INCH |
| Y15 | PAVEMENT MARKING STOP BAR 18-INCH |
| Y16 | PAVEMENT MARKING STOP BAR 18-INCH |
| Y17 | PAVEMENT MARKING STOP BAR 18-INCH |
| Y18 | PAVEMENT MARKING STOP BAR 18-INCH |
| Y19 | PAVEMENT MARKING STOP BAR 18-INCH |
| Y20 | PAVEMENT MARKING STOP BAR 18-INCH |
| Y21 | PAVEMENT MARKING STOP BAR 18-INCH |
| Y22 | PAVEMENT MARKING STOP BAR 18-INCH |
| Y23 | PAVEMENT MARKING STOP BAR 18-INCH |
| Y24 | PAVEMENT MARKING STOP BAR 18-INCH |
| Y25 | PAVEMENT MARKING STOP BAR 18-INCH |
| Y26 | PAVEMENT MARKING STOP BAR 18-INCH |
| Y27 | PAVEMENT MARKING STOP BAR 18-INCH |
| Y28 | PAVEMENT MARKING STOP BAR 18-INCH |
| Y29 | PAVEMENT MARKING STOP BAR 18-INCH |
| Y30 | PAVEMENT MARKING STOP BAR 18-INCH |
| Y31 | PAVEMENT MARKING STOP BAR 18-INCH |
| Y32 | PAVEMENT MARKING STOP BAR 18-INCH |
| Y33 | PAVEMENT MARKING STOP BAR 18-INCH |
| Y34 | PAVEMENT MARKING STOP BAR 18-INCH |
| Y35 | PAVEMENT MARKING STOP BAR 18-INCH |
| Y36 | PAVEMENT MARKING STOP BAR 18-INCH |
| Y37 | PAVEMENT MARKING STOP BAR 18-INCH |
| Y38 | PAVEMENT MARKING STOP BAR 18-INCH |
| Y39 | PAVEMENT MARKING STOP BAR 18-INCH |
| Y40 | PAVEMENT MARKING STOP BAR 18-INCH |
| Y41 | PAVEMENT MARKING STOP BAR 18-INCH |
| Y42 | PAVEMENT MARKING STOP BAR 18-INCH |
| Y43 | PAVEMENT MARKING STOP BAR 18-INCH |
| Y44 | PAVEMENT MARKING STOP BAR 18-INCH |
| Y45 | PAVEMENT MARKING STOP BAR 18-INCH |
| Y46 | PAVEMENT MARKING STOP BAR 18-INCH |
| Y47 | PAVEMENT MARKING STOP BAR 18-INCH |
| Y48 | PAVEMENT MARKING STOP BAR 18-INCH |
| Y49 | PAVEMENT MARKING STOP BAR 18-INCH |
| Y50 | PAVEMENT MARKING STOP BAR 18-INCH |
| Y51 | PAVEMENT MARKING STOP BAR 18-INCH |
| Y52 | PAVEMENT MARKING STOP BAR 18-INCH |
| Y53 | PAVEMENT MARKING STOP BAR 18-INCH |
| Y54 | PAVEMENT MARKING STOP BAR 18-INCH |
| Y55 | PAVEMENT MARKING STOP BAR 18-INCH |
| Y56 | PAVEMENT MARKING STOP BAR 18-INCH |
| Y57 | PAVEMENT MARKING STOP BAR 18-INCH |
| Y58 | PAVEMENT MARKING STOP BAR 18-INCH |
| Y59 | PAVEMENT MARKING STOP BAR 18-INCH |
| Y60 | PAVEMENT MARKING STOP BAR 18-INCH |
| Y61 | PAVEMENT MARKING STOP BAR 18-INCH |
| Y62 | PAVEMENT MARKING STOP BAR 18-INCH |
| Y63 | PAVEMENT MARKING STOP BAR 18-INCH |
| Y64 | PAVEMENT MARKING STOP BAR 18-INCH |
| Y65 | PAVEMENT MARKING STOP BAR 18-INCH |
| Y66 | PAVEMENT MARKING STOP BAR 18-INCH |
| Y67 | PAVEMENT MARKING STOP BAR 18-INCH |
| Y68 | PAVEMENT MARKING STOP BAR 18-INCH |
| Y69 | PAVEMENT MARKING STOP BAR 18-INCH |
| Y70 | PAVEMENT MARKING STOP BAR 18-INCH |
| Y71 | PAVEMENT MARKING STOP BAR 18-INCH |
| Y72 | PAVEMENT MARKING STOP BAR 18-INCH |
| Y73 | PAVEMENT MARKING STOP BAR 18-INCH |
| Y74 | PAVEMENT MARKING STOP BAR 18-INCH |
| Y75 | PAVEMENT MARKING STOP BAR 18-INCH |
| Y76 | PAVEMENT MARKING STOP BAR 18-INCH |
| Y77 | PAVEMENT MARKING STOP BAR 18-INCH |
| Y78 | PAVEMENT MARKING STOP BAR 18-INCH |
| Y79 | PAVEMENT MARKING STOP BAR 18-INCH |
| Y80 | PAVEMENT MARKING STOP BAR 18-INCH |
| Y81 | PAVEMENT MARKING STOP BAR 18-INCH |
| Y82 | PAVEMENT MARKING STOP BAR 18-INCH |
| Y83 | PAVEMENT MARKING STOP BAR 18-INCH |
| Y84 | PAVEMENT MARKING STOP BAR 18-INCH |
| Y85 | PAVEMENT MARKING STOP BAR 18-INCH |
| Y86 | PAVEMENT MARKING STOP BAR 18-INCH |
| Y87 | PAVEMENT MARKING STOP BAR 18-INCH |
| Y88 | PAVEMENT MARKING STOP BAR 18-INCH |
| Y89 | PAVEMENT MARKING STOP BAR 18-INCH |
| Y90 | PAVEMENT MARKING STOP BAR 18-INCH |
| Y91 | PAVEMENT MARKING STOP BAR 18-INCH |
| Y92 | PAVEMENT MARKING STOP BAR 18-INCH |
| Y93 | PAVEMENT MARKING STOP BAR 18-INCH |
| Y94 | PAVEMENT MARKING STOP BAR 18-INCH |
| Y95 | PAVEMENT MARKING STOP BAR 18-INCH |
| Y96 | PAVEMENT MARKING STOP BAR 18-INCH |
| Y97 | PAVEMENT MARKING STOP BAR 18-INCH |
| Y98 | PAVEMENT MARKING STOP BAR 18-INCH |
| Y99 | PAVEMENT MARKING STOP BAR 18-INCH |
| Y100 | PAVEMENT MARKING STOP BAR 18-INCH |

Addendum No. 01
ID 3360-09-72
Revised Sheet 192
September 1, 2016



Addendum No. 01
ID 3360-09-72
Revised Sheet 193
September 1, 2016

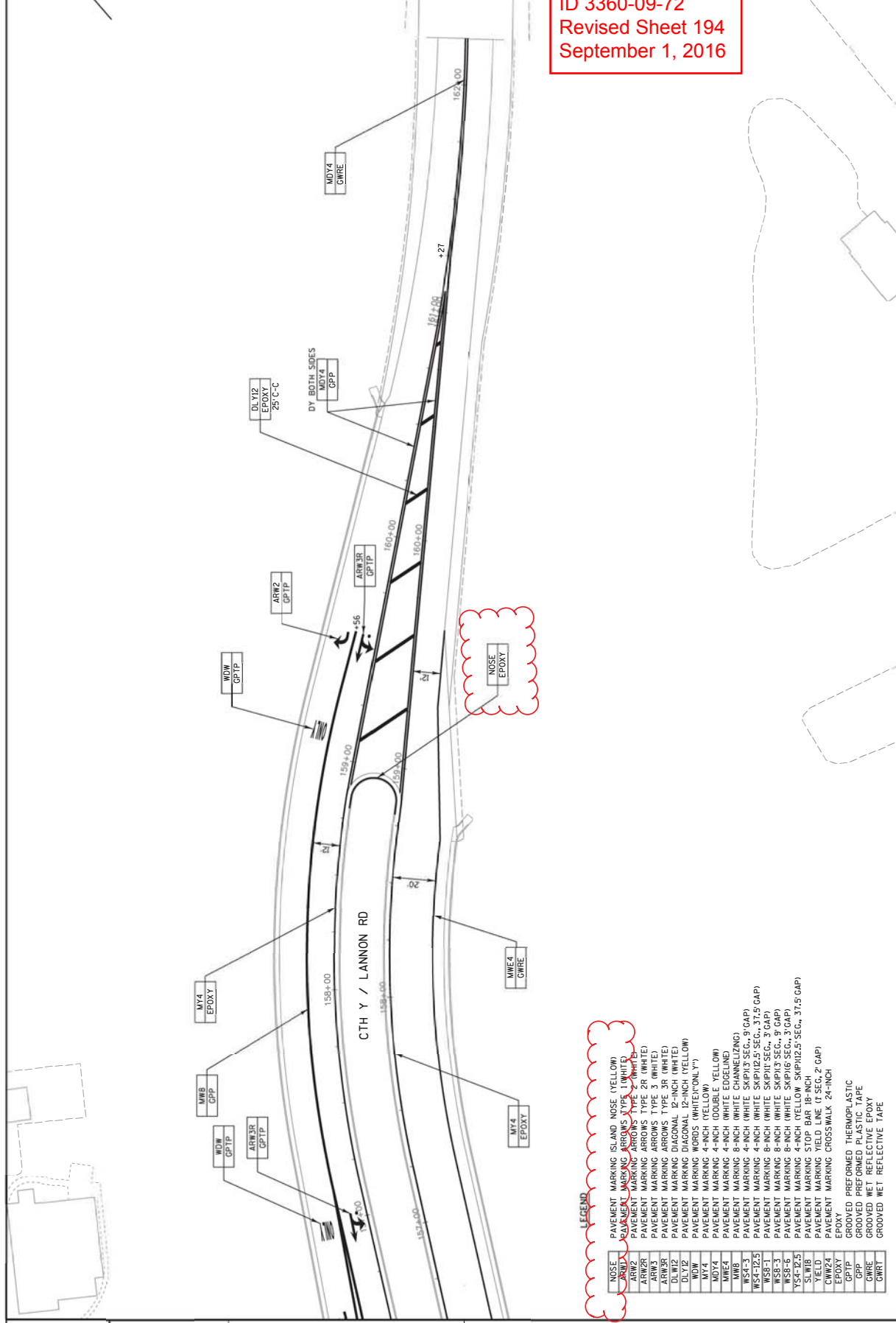


LEGEND

| | |
|----------|---|
| NOSE | PAVEMENT MARKING ISLAND NOSE (YELLOW) |
| ARWZ | PAVEMENT MARKING ARROWS TYPE 2 (WHITE) |
| ARW2R | PAVEMENT MARKING ARROWS TYPE 2R (WHITE) |
| ARW3R | PAVEMENT MARKING ARROWS TYPE 3 (WHITE) |
| ARW3R | PAVEMENT MARKING ARROWS TYPE 3R (WHITE) |
| DLV12 | PAVEMENT MARKING DIAGONAL 12-INCH (YELLOW) |
| WOW | PAVEMENT MARKING WORDS (WHITE)(ONLY) |
| MY4 | PAVEMENT MARKING 4-INCH (YELLOW) |
| MDY4 | PAVEMENT MARKING 4-INCH (DOUBLE YELLOW) |
| MWE4 | PAVEMENT MARKING 8-INCH (WHITE EDGELINE) |
| MWB | PAVEMENT MARKING 8-INCH (WHITE CHANNELIZING) |
| WS4-12.5 | PAVEMENT MARKING 4-INCH (WHITE SKIP/12.5 SEC., 9' GAP) |
| WSB-3 | PAVEMENT MARKING 8-INCH (WHITE SKIP/12.5 SEC., 3' GAP) |
| WSB-6 | PAVEMENT MARKING 8-INCH (WHITE SKIP/13' SEC., 9' GAP) |
| YS4-12.5 | PAVEMENT MARKING 4-INCH (YELLOW SKIP/12.5 SEC., 3' GAP) |
| SLWB | PAVEMENT MARKING STOP BAR 18-INCH |
| YIELD | PAVEMENT MARKING YIELD LINE (1' SEC., 2' GAP) |
| GFTF | PAVEMENT MARKING GFTF |
| EPOXY | PAVEMENT MARKING GFTF |
| GPP | GROOVED PREFORMED THERMOPLASTIC |
| GWR | GROOVED PREFORMED PLASTIC TAPE |
| GWR | GROOVED WET REFLECTIVE EPOXY |
| GWR | GROOVED WET REFLECTIVE TAPE |
| GWR1 | GROOVED WET REFLECTIVE TAPE |



Addendum No. 01
 ID 3360-09-72
 Revised Sheet 194
 September 1, 2016



LEGEND

| | |
|----------|--|
| NOSE | PAVEMENT MARKING ISLAND NOSE (YELLOW) |
| ARW1 | PAVEMENT MARKING ARROWS TYPE 1 (WHITE) |
| ARW2 | PAVEMENT MARKING ARROWS TYPE 2 (WHITE) |
| ARW3 | PAVEMENT MARKING ARROWS TYPE 3 (WHITE) |
| ARW3R | PAVEMENT MARKING ARROWS TYPE 3 (WHITE) REVERSE |
| DL12 | PAVEMENT MARKING DIAGONAL 12-INCH (WHITE) |
| DL12 | PAVEMENT MARKING DIAGONAL 12-INCH (YELLOW) |
| WDW | PAVEMENT MARKING WORDS (WHITE)(ONLY) |
| MY4 | PAVEMENT MARKING 4-INCH (YELLOW) |
| MY4 | PAVEMENT MARKING 4-INCH (DOUBLE YELLOW) |
| MWB | PAVEMENT MARKING 8-INCH (WHITE CHANNELZING) |
| WS4-12.5 | PAVEMENT MARKING 4-INCH (WHITE SKIP)12.5 SEC., 37.5 (CAP) |
| WSB-3 | PAVEMENT MARKING 8-INCH (WHITE SKIP)13 SEC., 9 (CAP) |
| WSB-6 | PAVEMENT MARKING 8-INCH (WHITE SKIP)16 SEC., 3 (CAP) |
| YS4-12.5 | PAVEMENT MARKING STOP BAR 18-INCH (YELLOW)12.5 SEC., 2 (CAP) |
| SLWB | PAVEMENT MARKING STOP BAR 18-INCH (YELLOW)12.5 SEC., 2 (CAP) |
| CW24 | PAVEMENT MARKING CROSSWALK 24-INCH (EPOXY) |
| GPTP | GROOVED PREFORMED THERMOPLASTIC |
| GPP | GROOVED PREFORMED PLASTIC TAPE |
| CWRE | GROOVED WET REFLECTIVE EPOXY |
| CWRT | GROOVED WET REFLECTIVE TAPE |

| LOCATION | 646-0106* | | 646-2304.S* | | 646-0881.S | | 647-0726 | | 647-0806 | | SPV-0090.08 | | SPV-0090.05 | |
|------------------------------|---|---|---|---|---|---|---|---|---|---|---|---|---|---|
| | SPV-0090.08 | SPV-0090.05 | SPV-0090.08 | SPV-0090.05 | SPV-0090.08 | SPV-0090.05 | SPV-0090.08 | SPV-0090.05 | SPV-0090.08 | SPV-0090.05 | SPV-0090.08 | SPV-0090.05 | SPV-0090.08 | SPV-0090.05 |
| | (WHITE) (EDGE LINE) (EDGE LINE 3' SKIPS) (CL SOLID) | (WHITE) (EDGE LINE) (EDGE LINE 3' SKIPS) (CL SOLID) | (WHITE) (EDGE LINE) (EDGE LINE 3' SKIPS) (CL SOLID) | (WHITE) (EDGE LINE) (EDGE LINE 3' SKIPS) (CL SOLID) | (WHITE) (EDGE LINE) (EDGE LINE 3' SKIPS) (CL SOLID) | (WHITE) (EDGE LINE) (EDGE LINE 3' SKIPS) (CL SOLID) | (WHITE) (EDGE LINE) (EDGE LINE 3' SKIPS) (CL SOLID) | (WHITE) (EDGE LINE) (EDGE LINE 3' SKIPS) (CL SOLID) | (WHITE) (EDGE LINE) (EDGE LINE 3' SKIPS) (CL SOLID) | (WHITE) (EDGE LINE) (EDGE LINE 3' SKIPS) (CL SOLID) | (WHITE) (EDGE LINE) (EDGE LINE 3' SKIPS) (CL SOLID) | (WHITE) (EDGE LINE) (EDGE LINE 3' SKIPS) (CL SOLID) | (WHITE) (EDGE LINE) (EDGE LINE 3' SKIPS) (CL SOLID) | (WHITE) (EDGE LINE) (EDGE LINE 3' SKIPS) (CL SOLID) |
| STH 175 RAB SOUTH LEG | 8 | 15 | 170 | 186 | 124 | 540 | 236 | 242 | 136 | 35 | 21 | 513 | 123 | 159 |
| STH 175 RAB NORTH LEG | 15 | 170 | 186 | 124 | 540 | 236 | 242 | 136 | 35 | 21 | 513 | 123 | 159 | 15 |
| LANNON RD RAB WEST LEG | 261 | 331 | 10 | 186 | 124 | 540 | 236 | 242 | 136 | 35 | 21 | 513 | 123 | 159 |
| LANNON RD RAB EAST LEG | 331 | 10 | 186 | 124 | 540 | 236 | 242 | 136 | 35 | 21 | 513 | 123 | 159 | 15 |
| STH 175/LANNON RD RAB CIRCLE | 650 | 331 | 10 | 186 | 124 | 540 | 236 | 242 | 136 | 35 | 21 | 513 | 123 | 159 |
| VALLEY CREEK RD | | | | | | | | | | | | | | |
| HILLTOP DR | | | | | | | | | | | | | | |
| MEEKER LN (S) | | | | | | | | | | | | | | |
| MEEKER LN (N) | | | | | | | | | | | | | | |
| BARK LAKE RD | | | | | | | | | | | | | | |
| AMY BELLE RD | | | | | | | | | | | | | | |
| PLEASANT HILL RD (E) | | | | | | | | | | | | | | |
| PLEASANT HILL RD (W) | | | | | | | | | | | | | | |
| MAYFIELD RD (W) | | | | | | | | | | | | | | |
| MAYFIELD RD (E) | | | | | | | | | | | | | | |
| PIONEER RD (S) | | | | | | | | | | | | | | |
| PIONEER RD (N) | | | | | | | | | | | | | | |
| PIONEER RD (E) | | | | | | | | | | | | | | |
| SCENIC RD (S) | | | | | | | | | | | | | | |
| FOREMAN DR | | | | | | | | | | | | | | |
| SCENIC RD (N) | | | | | | | | | | | | | | |
| FARLANE DR | | | | | | | | | | | | | | |
| HILLSIDE RD (W) | | | | | | | | | | | | | | |
| HILLSIDE RD (E) | | | | | | | | | | | | | | |
| SHERMAN RD | | | | | | | | | | | | | | |
| FOXBORO LN | | | | | | | | | | | | | | |
| CORPORATE DR | | | | | | | | | | | | | | |
| TOTALS | 2,856 | 592 | 33 | 4,248 | 170 | 317 | 60 | 485 | 6,222 | 257 | 8,668 | 358 | 999 | 4,262 |
| | | | 4,873 | | | | | | | | | | | 6,342 |

* ADDITIONAL QUANTITIES SHOWN ELSEWHERE
 NOTE: QUANTITIES DO NOT INCLUDE STH-175 MAINLINE OUTSIDE EDGLINES AND STH-175 STANDARD CENTERLINE THROUGH INTERSECTIONS. SEE MAINLINE MISC QTY TABLE FOR STH-175 MAINLINE QUANTITIES

PROJECT NO: 3360-09-72 HWY: STH 175 COUNTY: WASHINGTON MISCELLANEOUS QUANTITIES SHEET 310 E

FILE NAME : N:\PDS\3360\3360-09-72\GRAPHICAL DATA\PLAN SHEETS\3360221-MO-NEW.DWG LAYOUT NAME : ***** PLOT DATE : 8/31/2016 3:04 PM PLOT BY : FINITER, ANDREW D PLOT NAME : PLOT SCALE : 1"=40' WSDOT/CADD SHEET 42

NOTE: ALL ITEMS ARE CATEGORY 0010, UNLESS OTHERWISE NOTED.

Addendum No. 01
 ID 3360-09-72
 Revised Sheet 310
 September 1, 2016

SCHEDULE OF ITEMS

REVISED:

CONTRACT:
20160913008PROJECT(S):
3360-09-72FEDERAL ID(S):
WISC 2016309

CONTRACTOR : _____

| LINE NO | ITEM DESCRIPTION | APPROX. QUANTITY AND UNITS | UNIT PRICE | | BID AMOUNT | |
|------------|--|----------------------------------|------------|-----|------------|-----|
| | | | DOLLARS | CTS | DOLLARS | CTS |
| 0220 | 204.0245 Removing Storm Sewer (size) 02. 15-inch | 104.000 LF | . | | . | |
| 0230 | 204.0245 Removing Storm Sewer (size) 03. 18-inch | 73.000 LF | . | | . | |
| 0240 | 204.0280 Sealing Pipes | 2.000 EACH | . | | . | |
| 0250 | 205.0100 Excavation Common | 63,937.000 CY | . | | . | |
| 0260 | 205.0200 Excavation Rock | 866.000 CY | . | | . | |
| 0270 | 205.0501.S Excavation, Hauling, and Disposal of Petroleum Contaminated Soil | 1,470.000 TON | . | | . | |
| 0280 | 206.2000 Excavation for Structures Culverts (structure) 01.C-66-106 | LUMP | LUMP | | . | |
| 0290 | 206.3000 Excavation for Structures Retaining Walls (structure) 01. R-66-37 | LUMP | LUMP | | . | |
| 0300 | 206.3000 Excavation for Structures Retaining Walls (structure) 02. R-66-38 | LUMP | LUMP | | . | |
| 0310 | 210.0100 Backfill Structure | 1,225.000 CY | . | | . | |

SCHEDULE OF ITEMS

REVISED:

CONTRACT:
20160913008PROJECT(S):
3360-09-72FEDERAL ID(S):
WISC 2016309

CONTRACTOR : _____

| LINE NO | ITEM DESCRIPTION | APPROX. QUANTITY AND UNITS | UNIT PRICE | | BID AMOUNT | |
|------------|--|----------------------------------|------------|-----|------------|-----|
| | | | DOLLARS | CTS | DOLLARS | CTS |
| 0910 | 601.0411 Concrete Curb & Gutter 30-Inch Type D | 5,175.000 LF | . | . | . | . |
| 0920 | 601.0557 Concrete Curb & Gutter 6-Inch Sloped 36-Inch Type D | 15,925.000 LF | . | . | . | . |
| 0930 | 601.0582 Concrete Curb & Gutter 4-Inch Sloped 36-Inch Type T | 190.000 LF | . | . | . | . |
| 0940 | 602.0410 Concrete Sidewalk 5-Inch | 22,825.000 SF | . | . | . | . |
| 0950 | 602.0420 Concrete Sidewalk 7-Inch | 530.000 SF | . | . | . | . |
| 0960 | 602.0505 Curb Ramp Detectable Warning Field Yellow | 224.000 SF | . | . | . | . |
| 0970 | 602.1500 Concrete Steps | 24.000 SF | . | . | . | . |
| 0980 | 606.0100 Riprap Light | 80.000 CY | . | . | . | . |
| 0990 | 606.0200 Riprap Medium | 335.000 CY | . | . | . | . |
| 1000 | 606.0300 Riprap Heavy | 45.000 CY | . | . | . | . |
| 1010 | 606.0600 Grouted Riprap Medium | 12.000 CY | . | . | . | . |

SCHEDULE OF ITEMS

REVISED:

CONTRACT:
20160913008PROJECT(S):
3360-09-72FEDERAL ID(S):
WISC 2016309

CONTRACTOR : _____

| LINE NO | ITEM DESCRIPTION | APPROX. QUANTITY AND UNITS | UNIT PRICE | | BID AMOUNT | |
|------------|---|----------------------------------|------------|-----|------------|-----|
| | | | DOLLARS | CTS | DOLLARS | CTS |
| 2120 | 646.0881.S Pavement Marking Grooved Wet Reflective Tape 4-Inch | 170.000 LF | . | . | . | . |
| 2130 | 646.2304.S Pavement Marking Grooved Wet Reflective Epoxy 4-Inch | 138,708.000 LF | . | . | . | . |
| 2150 | 647.0726 Pavement Marking Diagonal Epoxy 12-Inch | 377.000 LF | . | . | . | . |
| 2160 | 647.0955 Removing Pavement Markings Arrows | 5.000 EACH | . | . | . | . |
| 2170 | 647.0965 Removing Pavement Markings Words | 3.000 EACH | . | . | . | . |
| 2180 | 648.0100 Locating No-Passing Zones | 9.000 MI | . | . | . | . |
| 2190 | 649.0400 Temporary Pavement Marking Removable Tape 4-Inch | 4,802.000 LF | . | . | . | . |
| 2200 | 649.0402 Temporary Pavement Marking Paint 4-Inch | 47,140.000 LF | . | . | . | . |
| 2210 | 649.0900 Temporary Pavement Marking Stop Line 12-Inch | 96.000 LF | . | . | . | . |
| 2220 | 650.4000 Construction Staking Storm Sewer | 81.000 EACH | . | . | . | . |

SCHEDULE OF ITEMS

REVISED:

CONTRACT:
20160913008PROJECT(S):
3360-09-72FEDERAL ID(S):
WISC 2016309

CONTRACTOR : _____

| LINE NO | ITEM DESCRIPTION | APPROX. QUANTITY AND UNITS | UNIT PRICE | | BID AMOUNT | |
|------------|--|----------------------------------|------------|-----|------------|-----|
| | | | DOLLARS | CTS | DOLLARS | CTS |
| 2230 | 650.4500 Construction Staking Subgrade | 23,200.000 LF | . | | . | |
| 2240 | 650.5000 Construction Staking Base | 23,200.000 LF | . | | . | |
| 2250 | 650.5500 Construction Staking Curb Gutter and Curb & Gutter | 22,748.000 LF | . | | . | |
| 2260 | 650.6000 Construction Staking Pipe Culverts | 24.000 EACH | . | | . | |
| 2270 | 650.6500 Construction Staking Structure Layout (structure) 01. C-66-106 | LUMP | LUMP | | . | |
| 2280 | 650.6500 Construction Staking Structure Layout (structure) 02. R-66-36 | LUMP | LUMP | | . | |
| 2290 | 650.6500 Construction Staking Structure Layout (structure) 03. R-66-37 | LUMP | LUMP | | . | |
| 2300 | 650.6500 Construction Staking Structure Layout (structure) 04. R-66-38 | LUMP | LUMP | | . | |
| 2310 | 650.6500 Construction Staking Structure Layout (structure) 05. S-66-609 | LUMP | LUMP | | . | |

SCHEDULE OF ITEMS

REVISED:

CONTRACT:
20160913008

PROJECT(S):
3360-09-72

FEDERAL ID(S):
WISC 2016309

CONTRACTOR : _____

| LINE NO | ITEM DESCRIPTION | APPROX. QUANTITY AND UNITS | UNIT PRICE | | BID AMOUNT | |
|---------|---|----------------------------|------------|-----|------------|-----|
| | | | DOLLARS | CTS | DOLLARS | CTS |
| 3010 | SPV.0195 Special 03. HMA Pavement 3 MT 58-28 S 3.0% VA Regression Special | 1,882.000 TON | . | . | . | . |
| 3020 | SPV.0195 Special 04. HMA Pavement 4 MT 58-28 S 3.0% VA Regression Special | 878.000 TON | . | . | . | . |
| 3030 | 647.0606 Pavement Marking Island Nose Epoxy | 10.000 EACH | . | . | . | . |
| 3040 | SPV.0090 Special 09. Concrete Curb and Gutter 30-Inch Type D HES | 600.000 LF | . | . | . | . |
| 3050 | SPV.0090 Special 10. Concrete Curb and Gutter 4-Inch Sloped 36-Inch Type T HES | 95.000 LF | . | . | . | . |
| | SECTION 0001 TOTAL | | | | . | . |
| | TOTAL BID | | | | . | . |