



Wisconsin Department of Transportation

October 31, 2016

Division of Transportation Systems Development

Bureau of Project Development
4802 Sheboygan Avenue, Rm 601
P O Box 7916
Madison, WI 53707-7916

Telephone: (608) 266-1631
Facsimile (FAX): (608) 266-8459

NOTICE TO ALL CONTRACTORS:

**Proposal #07: 5300-02-73, WISC 2016 343
West Madison Beltline
High Point Structure & Apprs
USH 12
Dane County**

Letting of November 8, 2016

This is Addendum No. 01, which provides for the following:

Special Provisions

Added Special Provisions	
Article No.	Description
46	Fence Chain Link 6-Ft. R-13-225, Item SPV.0090.06

Schedule of Items

Revised Bid Item Quantities					
Bid Item	Item Description	Unit	Old Quantity	Revised Quantity	Proposal Total
616.0206	Fence Chain Link 6-Ft	LF	627	-182	445

Added Bid Item Quantities					
Bid Item	Item Description	Unit	Old Quantity	Revised Quantity	Proposal Total
204.0165	Removing Guardrail	LF	0	820	820
204.0170	Removing Fence	LF	0	625	625
SPV.0090.06	Fence Chain Link 6-Ft. R-13-225	LF	0	182	182

Plan Sheets

Revised Plan Sheets	
Plan Sheet	Plan Sheet Title (brief description of changes to sheet)
66	Miscellaneous Quantities (Added tables for Removing Guardrail and Removing Fence).
71	Miscellaneous Quantities (Revised table to remove the note indicating "Additional Quantity Found in Structures Plans" for item 616.0206 Fence Chain Link 6-Ft.).
264	Structure R-13-255 General Plan (Changed bid item in Total Estimated Quantities table from "616.0206 Fence Chain Link 6-Ft" to "SPV.0090.06 Fence Chain Link 6-FT. R-13-255").
265	Structure R-13-255 Fencing Details (Changed Note 4 under General Notes to read "The Bid Item Shall Be 'Fence Chain Link 6-FT. R-13-255', LF.").

The responsibility for notifying potential subcontractors and suppliers of these changes remains with the prime contractor.

Sincerely,

Mike Coleman

Proposal Development Specialist
Proposal Management Section

ADDENDUM NO. 01

5300-02-73

October 31, 2016

Special Provisions

46. Fence Chain Link 6-Ft. R-13-255, Item SPV.0090.06.

A Description

This special provision describes furnishing and installing a new fence system on structures in accordance with the pertinent plan details, as directed by the Engineer and as hereinafter provided.

B Materials

All materials for this fence system shall be new stock, free from defects impairing strength, durability, and appearance. Fabric shall be produced by methods recognized as good commercial practice. Pipes used in framework shall be straight, true to section and free of defects. All burrs at the ends of pipes shall be removed before galvanizing.

B1 Fabric

Provide steel chain link fence fabric that conforms to the requirements of ASTM A491 or A392-Class 2, which is aluminum-coated or zinc-coated. Provide fabric woven from 9-gage wire using plan specified mesh size, diamond pattern, with both the top and bottom selvages knuckled. The minimum breaking strength of the wire shall be 1290 lbs.

B2 Framework

Provide steel rails, posts and post sleeves conforming to the requirements of ASTM F1083, Standard Weight Pipe (Schedule 40) of the size (O.D.) and weight as shown on the plans. The minimum yield strength shall be 30,000 psi and the minimum tensile strength shall be 48,000 psi. These components shall be zinc-coated inside and outside by the hot-dip process as stated in ASTM F1083. Weld base plate to posts or post sleeves and complete any additional welding of components before galvanizing.

B3 Fittings

Provide end post caps, line post caps, top rail sleeves, rail ends, line rail clamps, brace bands, tension bands, tension bars, and tie wires that are steel and conform to the requirements of ASTM F626. Tie wires shall be round, 9-gage steel wire or 0.179-inch diameter aluminum wire. These components (excluding tie wires) shall be zinc-coated by the hot-dip process as stated in ASTM F626. For steel tie wires, provide a zinc-coating using the same procedure as required for zinc-coated fence fabric. End post caps and line post caps shall fit tightly over posts to prevent moisture intrusion. Supply dome style caps for end posts and loop type caps for line posts.

B4 Bolts

All bolts are to be supplied with lock washers and nuts. Use galvanized steel bolts, nuts and washers per plan details.

B5 Tests

B5.1 Fabric and Tie Wire

Breaking Strength: ASTM A370

Zinc-Coating Requirements

Weight of Zinc-Coating: ASTM A90

B5.2 Framework

Tensile and Yield Strength: ASTM E8

Zinc-Coating Requirements

Weight of Zinc-Coating: ASTM A90

B5.3 Fittings

Zinc-Coating Requirements

Weight of Zinc-Coating: ASTM A90

B6 Submittals

In addition to the Project Engineer, send submittals listed in this section to the name below for informational purposes:

David Nelson
WisDOT (Bureau of Structures)
4802 Sheboygan Ave. (Room 601)
PO Box 7916
Madison, WI 53707

B6.1 Shop Drawings

Submit shop drawings showing the details of fence construction. Show the fence height, post spacing, rail location, and all dimensions necessary for the construction of the chain link fence. Label the end posts, line posts, rails, post sleeves, top rail sleeves, bolts and fittings. For the fabric, state the wire gage, mesh size, and type of selvages used. For the framework, state the size (O.D.) and unit weight for the posts and rails. For the fittings, state the size for top rail sleeves, brace bands, tension bands, tension bars, line rail clamps, size and type of bolts, and the tie wire gage. State the material type used for fabric, framework, and fittings. Also give the breaking strength for the fabric wire and the tensile and yield strength properties for the framework.

B6.2 Specification Compliance

Submit certification of compliance with material specifications. Provide material certification and test documentation for fabric, framework, fittings and hardware that shows that all materials meet or exceed the specifications of this contract and the tests in **B5**. This document shall provide the name, address and phone number of the manufacturer, and the name of a contact person.

C Construction

C1 Delivery, Storage and Handling

Deliver material to the site in an undamaged condition. Upon receipt at the job site, all materials shall be thoroughly inspected to ensure that no damage occurred during shipping or handling and condition of materials is in conformance with these specifications. If damaged, Contractor shall repair or replace components as necessary to the approval of the Engineer at no additional cost to the Owner. Carefully store material off the ground to ensure proper ventilation and drainage and to provide protection against damage caused by ground moisture.

C2 Touch-up and Repair

For minor damage caused by shipping, handling or installation to coated surfaces, touch-up the finish in conformance with the manufacturer's recommendations. Provide touch-up coating such that repairs are not visible from a distance of 6-feet. If damage is beyond repair, the fencing component shall be replaced at no additional cost to the Owner. The Contractor shall provide the Engineer with a copy of the manufacturer's recommended repair procedure and materials before repairing damaged coatings.

C3 General

Install the chain link fence in accordance with ASTM F567 and the manufacturer's instructions. The Contractor shall provide staff that is thoroughly familiar with the type of construction involved and materials and techniques specified. Chain link fabric shall be installed on the side of the posts indicated on the plans. Fabric shall be attached to the end posts with tension bars and tension

bands. It shall be attached to rails, and posts without tension bands, with tie wires. The fabric shall be installed and pulled taut to provide a smooth and uniform appearance free from sag, without permanently distorting the fabric diamond or reducing the fabric height. Install top rail to pass through line post caps and form a continuous brace between end posts. Minimum length of top rail between splices shall be 20-feet. Splice top rail at joints with sleeves for a rigid connection. Locate splices near ¼ point of post spacing. Heads of bolts shall be on the side of the fence adjacent to pedestrian traffic.

D Measurement

The department will measure Fence Chain Link 6-Ft. R-13-255 by the linear foot satisfactorily furnished and installed.

E Payment

The department will pay for the measured quantity at the contract unit price under the following bid item:

ITEM NUMBER	DESCRIPTION	UNIT
SPV.0090.06	Fence Chain Link 6-Ft. R-13-255	LF

Payment is full compensation for fabricating and coating all fence components, and transporting to jobsite; and for erecting components to create a fence system, including any touch-up and repairs.

Schedule of Items

Attached, dated October 31, 2016, are the revised Schedule of Items. All pages of the Schedule of Items are being replaced.

Plan Sheets

The following 8½ x 11-inch sheets are attached and made part of the plans for this proposal:
Revised: 66, 71, 264 and 265.

END OF ADDENDUM

REMOVING BASES AND PULL BOXES

		204.0195		653.0905	
CATEGORY	STATION	LOCATION	REMOVING CONCRETE BASES EACH	REMOVING PULL BOXES EACH	REMARKS
0010	243+61	30.5' LT	1	-	-
	245+28	22.0' LT	1	-	-
	246+93	14.5 LT	1	-	-
	251+69	26.2' RT	1	-	-
	251+55	24.0' RT	-	1	HH3-EX
	252+85	26.0' RT	-	1	HH4-EX
	254+07	28.5' RT	-	1	HH5-EX
	254+08	31.0' LT	-	1	HH6-EX
	254+14	32.8' RT	1	-	-
TOTAL 0010			5	4	

Addendum No. 01
ID 5300-02-73
Revised Sheet 66
October 31, 2016

REMOVING STORM SEWER (01.15-INCH TO 24-INCH)

CATEGORY	STATION TO	STATION	LOCATION	204.0245.01 LF
0010	242+90		LT & RT	110
TOTAL 0010				110
0040	450+93 BL - 451+11 BL		RT	21
	451+19 BL - 451+50 BL		RT	34
	451+49 BL - 451+50 BL		RT	14
TOTAL 0040				69
PROJECT TOTAL				179

REMOVING GUARDRAIL

		204.0165		
CATEGORY	STATION TO	STATION	LOCATION	REMARKS
0010	196+81 WB - 198+70 WB		RT	EB MEDIUM SHOULDER
	198+84 WB - 200+82 WB		RT	WB MEDIUM SHOULDER
	246+36 - 247+53		RT	SE OF BRIDGE
	250+13 - 251+18		RT	NE OF BRIDGE
	250+41 - 251+90		LT	NW OF BRIDGE
TOTAL 0010			820	

REMOVING FENCE

		204.0170		
CATEGORY	STATION TO	STATION	LOCATION	REMARKS
0010	195+45 WB - 197+78 WB		LT	NW OF BRIDGE
	198+24 WB - 199+25 WB		RT	SW OF BRIDGE
	198+26 WB - 199+86 WB		LT	NE OF BRIDGE
	199+73 WB - 200+70 WB		RT	SE OF BRIDGE
TOTAL 0010			625	

REMOVING CATCH BASINS AND INLETS

204.0215 204.0220 SPV.0060.12

REMOVING SALVAGED CATCH REMOVING INLET FILTER BASINS INLETS INSERT EACH

CATEGORY	STATION	LOCATION	EACH	REMARKS
0010	242+90	LT	2	-
	242+91	RT	1	-
TOTAL 0010			3	0
0040	451+03 BL	RT	1	-
	451+50 BL	RT	1	INSTALL AT STRUCTURE 102-A
TOTAL 0040			1	1
PROJECT TOTAL			4	1

PROJECT NO: 5300-02-73

HWY: USH 12

COUNTY: DANE

PLOT DATE: 10/26/2016 10:42 AM

MISCELLANEOUS QUANTITIES

PLOT NAME: C.A.B.

PLOT SCALE: 1:1

SHEET: 66

E

Addendum No. 01
ID 5300-02-73
Revised Sheet 71
October 31, 2016

STORM SEWER

STORM SEWER PIPE REINFORCED CONCRETE											
		530.0115		608.0312		608.0315		608.0318		608.0424	
		CULVERT PIPE		CORRUGATED		POLYETHYLENE		CLASS III		CLASS IV	
FROM	TO	12-INCH	15-INCH	18-INCH	24-INCH	12-INCH	12-INCH	24-INCH	12-INCH	12-INCH	24-INCH
STRUCTURE	STRUCTURE	LF	LF	LF	LF	LF	LF	LF	LF	LF	LF
0010	101-D	-	30	-	-	-	-	-	-	-	-
	101-C	-	-	57	-	-	-	-	-	-	-
	101-A	-	-	-	117	-	-	-	-	-	-
	101-B	-	45	-	-	-	-	-	-	-	-
	100-A	-	-	-	-	-	-	-	-	-	26
	100-B	-	-	-	-	60	-	-	-	-	-
	100-C	-	53	-	-	-	-	-	-	-	-
	TOTAL 0010	0	128	57	117	60	0	0	0	0	26
0040	101-F	-	-	-	22	-	-	-	-	-	-
	101-E	-	-	-	-	-	-	-	-	105	-
	102-A	52	-	-	-	-	-	-	-	-	-
	103-A	-	-	-	-	-	-	-	-	84	-
	TOTAL 0040	52	0	0	22	0	0	22	0	189	0
	PROJECT TOTAL	52	128	57	139	60	0	189	0	189	26

GUARDRAIL AND FENCE

CATEGORY	STATION	TO	STATION	LOCATION	EACH	614.0230		614.2300		614.2500		616.0206		REMARKS
						STEEL THRIE BEAM	STEEL THRIE BEAM	MGS GUARDRAIL 3	MGS THRIE BEAM	INGS FENCE	CHAIN LINK			
						LF	LF	LF	LF	LF	LF	LF	LF	
0010	195+45	WB	197+05	WB	LT	-	-	-	-	-	172	-	-	NW SIDE OF BRIDGE
	197+49	WB	198+02	WB	RT	1	-	-	-	-	-	-	-	WEST END OF PIER
	198+02	WB	199+29	WB	RT	-	128	-	-	-	-	-	-	NORTH SIDE OF PIER
	198+02	WB	199+29	WB	RT	-	128	-	-	-	-	-	-	SOUTH SIDE OF PIER
	198+23	WB	199+06	WB	RT	-	-	-	-	86	-	-	-	SW SIDE OF BRIDGE
	198+90	WB	199+86	WB	LT	-	-	-	-	121	-	-	-	NE SIDE OF BRIDGE
	199+29	WB	199+82	WB	RT	1	-	-	-	-	-	-	-	EAST END OF PIER
	200+08	WB	200+70	WB	RT	-	-	-	-	66	-	-	-	SE SIDE OF BRIDGE
	TOTAL 0010				2	256	0	0	40	445	0	0	0	
0040	199+30	WB	199+70	WB	LT	-	-	-	40	-	-	-	-	CONNECT TO CONCRETE BARRIER TYPE S56
	199+70	WB	201+81	WB	LT	-	-	209	-	-	-	-	-	CONNECT TO EXISTING GUARDRAIL
	TOTAL 0040				0	0	209	40	40	0	0	0	0	
	PROJECT TOTAL				2	256	209	40	445*	0	0	0	0	

PROJECT TOTAL

*ADDITIONAL QUANTITY FOUND IN STRUCTURES PLANS

PROJECT NO: 5300-02-73

HWY: USH17Z

COUNTY: DANE

MISCELLANEOUS QUANTITIES

PLOT NAME:

PLOT SCALE: 1:1

SHEET: 71

E

FOUNDATION DATA

FOOTING AT THE RETAINING WALL IS DESIGNED TO PLACE A MAXIMUM LOAD OF 10,000 LBS PER LINEAL FOOT. RETAINING WALL FOOTING ELEVATIONS ARE ESTIMATED TO HAVE A FACTORED BEARING RESISTANCE OF 2.5 TONS PER SQUARE FOOT.

DESIGN DATA

MATERIAL PROPERTIES
CONCRETE MASONRY RETAINING WALL $f'_c = 3,500$ P.S.I.
BAR STEEL REINFORCEMENT, GRADE 60 $f_y = 60,000$ P.S.I.

GENERAL NOTES

- DRAWINGS SHALL NOT BE SCALED.
- BAR STEEL REINFORCEMENT SHALL BE EMBEDDED 2' CLEAR UNLESS OTHERWISE SHOWN OR NOTED.
- THE FIRST OR FIRST TWO DIGITS OF THE BAR MARK SIGNIFIES THE BAR SIZE.
- AT THE BACKFACE OF THE WALL, ALL VOLUME NOT OCCUPIED BY THE NEW STRUCTURE SHALL BE BACKFILLED WITH STRUCTURE BACKFILL TO THE EXTENTS SHOWN IN THE TYPICAL WALL SECTION.
- THE GRADATION OF THE STRUCTURE BACKFILL SHALL MEET THE REQUIREMENTS OF SECTION 209.2.2 OF THE STANDARD SPECIFICATIONS FOR GRADE 1 MATERIAL.
- THE EXISTING GROUND LINE SHALL BE USED AS THE UPPER LIMITS OF EXCAVATION FOR THE RETAINING WALL.
- PIGMENTED SURFACE SEALER SHALL BE APPLIED TO THE FRONT FACE, BACK FACE, & TOP OF THE WALL ABOVE THE FOOTING.
- BEVEL ALL EXPOSED EDGES OF CONCRETE $\frac{3}{4}$ " UNLESS NOTED OTHERWISE.
- BACKFILL THE FRONT FACE OF WALL BEFORE THE BACK FACE.

TOTAL ESTIMATED QUANTITIES

BID ITEM NUMBER	BID ITEMS	UNIT	TOTALS
206.3000	EXCAVATION FOR STRUCTURES RETAINING WALLS R-13-255	LS	1
210.0100	BACKFILL STRUCTURE	CY	390
502.3200	PIGMENTED SURFACE SEALER	SY	539
504.0500	CONCRETE MASONRY RETAINING WALLS	CY	240
505.0400	BAR STEEL REINFORCEMENT HS STRUCTURES	LB	4,030
612.0406	PIPE UNDERDRAIN WRAPPED 6-INCH FENCE CHAIN LINK 6-F.T. R-13-255	LF	330
		LF	182

NOTE: ALL BID ITEMS FOR R-13-255 ARE CAT. 0040

William C. Schuch 10/26/16

STRUCTURE DESIGN CONTACTS:
CHRIS DOLL (608) 266-3229
LAURA SHADEWALD (608) 267-9592

CURVE DATA

WB U.S.H. 12 R
P.L. = 207+96.89
 Δ = 54° 25' 37"
D = 1° 30' 51"
T = 1945.69
L = 3594.26'
R = 3783.72'
S.E. = 42
P.C. = 88+51.20
P.T. = 224+45.46

WISDOT
Prepared by
BUREAU OF STRUCTURES

ACCEPTED
STRUCTURE R-13-255

CHIEF STRUCTURES DESIGN ENGINEER _____ DATE _____

ROADWAY BARRIER WALL ALONG WB U.S.H. 12

COUNTY _____ DATE _____

DESIGN SPEC. _____

DESIGNED BY: _____

BY: _____

REVISION _____

NO. DATE

8

LIST OF DRAWINGS

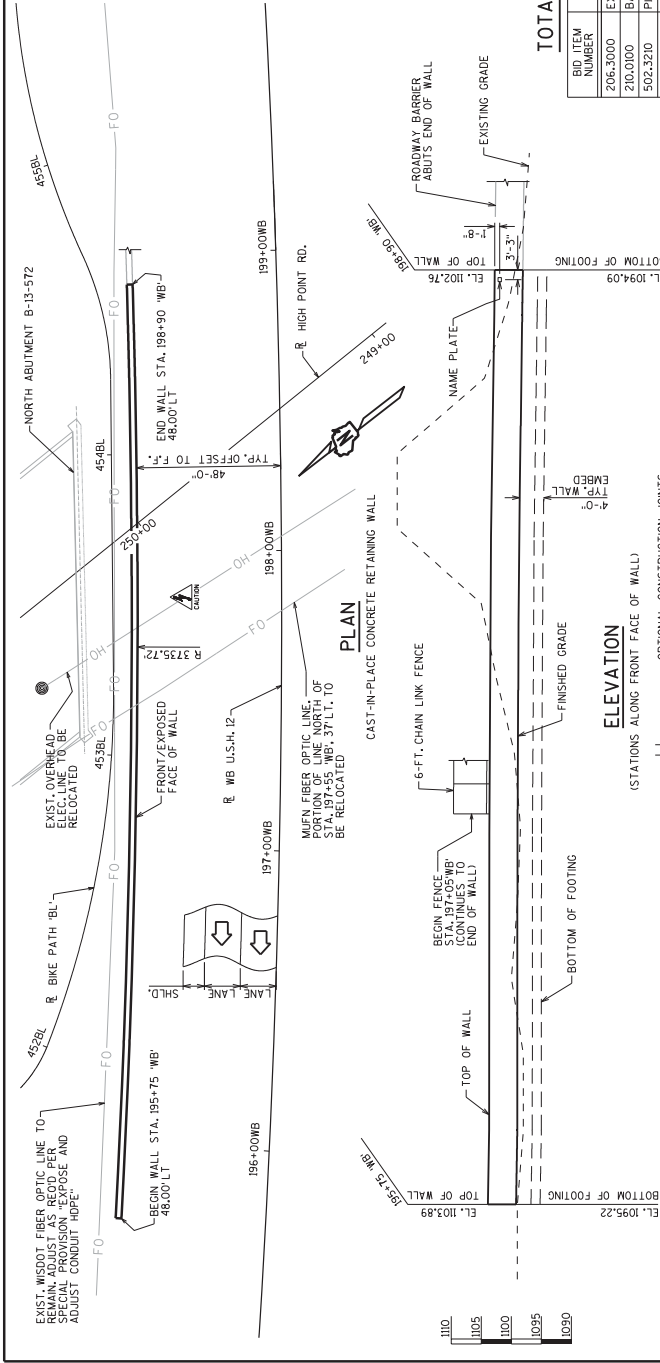
- 1. GENERAL PLAN
- 2. FENCING DETAILS
- 3. SUBSURFACE EXPLORATION

GENERAL PLAN

264

SHEET 1 OF 3

DATE: APRIL 2016

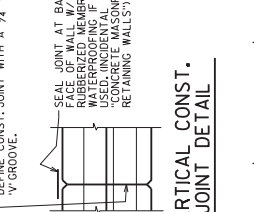


ELEVATION TABLE

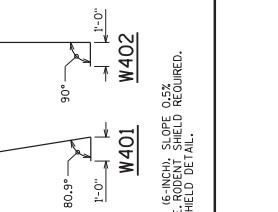
BAR MARK	NO.	LENGTH	BAR SERIES	LOCATION
W401	X	312	9'-1"	X
W402	X	312	9'-1"	X
W503	X	84	15'-3"	X
W404	X	546	5'-2"	STEM - HORIZ.
W405	X	80	14'-2"	STEM - HORIZ.

NOTE: THE FIRST OR FIRST TWO DIGITS OF THE BAR MARK SIGNIFIES THE BAR SIZE.

VERTICAL CONST. JOINT DETAIL



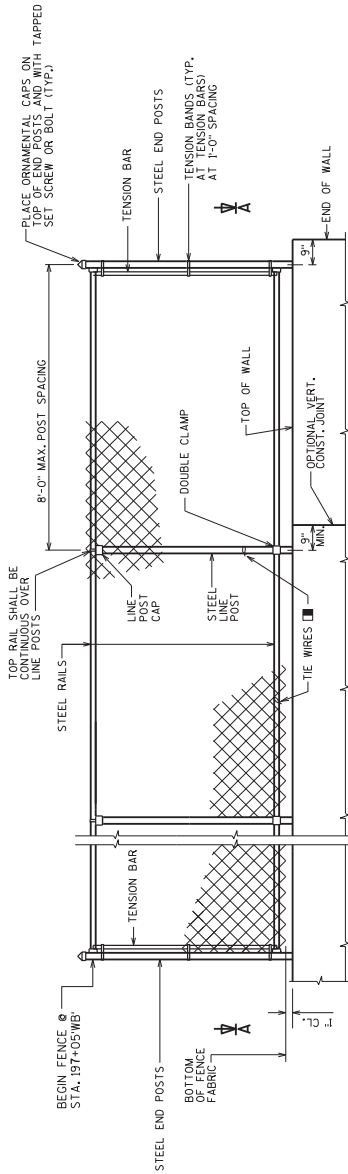
TYPICAL SECTION THRU WALL



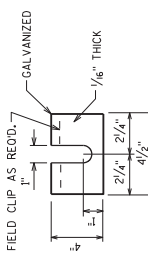
Addendum No. 01
ID 5300-02-73
Revised Sheet 264
October 31, 2016

FENCE MEMBER SIZE & WEIGHT

STEEL MEMBER NUMBER	OUTSIDE DIMENSION (INCHES)	WEIGHT (LB/FT)
RAILS	1.660	2.27
END POST	2.875	5.80
OVERHANG POST	2.875	5.80
LINE POST	2.375	3.65
POST SLEEVE	4.000	9.12

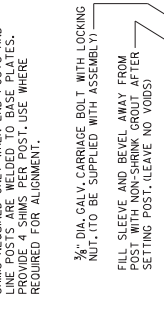


FENCE PART ELEVATION
VIEWING FABRIC SIDE



POST SHIM DETAILS

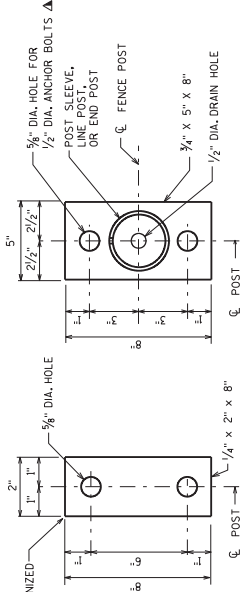
SHIMS REQUIRED ONLY WHEN END POSTS AND LINE POSTS ARE USED. PROVIDE 4 SHIMS PER POST. USE WHERE REQUIRED FOR ALIGNMENT.



3/8" DIA. GALV. CARRIAGE BOLT WITH LOCKING NUT. (TO BE SUPPLIED WITH ASSEMBLY) FILL SLEEVE AND BEVEL AWAY FROM POST WITH NON-SHRINK GROUT AFTER SETTING POST. LEAVE NO VOIDS)

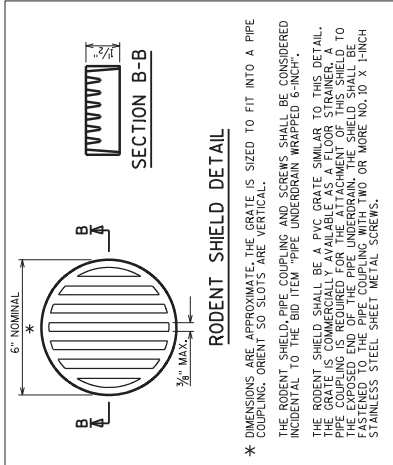
SECTION A-A

NOTE: PLACE ALL BOLT HEADS ON SIDE OF FENCE ADJACENT TO PEDESTRIANS



BASE PLATE

ANCHOR PLATE



RODENT SHIELD DETAIL

* DIMENSIONS ARE APPROXIMATE. THE GRATE IS SIZED TO FIT INTO A PIPE COUPLING. ORIENT SO SLOTS ARE VERTICAL. THE RODENT SHIELD, PIPE COUPLING AND SCREWS SHALL BE CONSIDERED INCIDENTAL TO THE BID ITEM "PIPE UNDERDRAIN WRAPPED 6-INCH". THE RODENT SHIELD SHALL BE A PVC GRATE SIMILAR TO THIS DETAIL. THE GRATE IS COMMERCIALY AVAILABLE AS A FLOOR STRAINER. A 1/2" DIA. DRILL BIT SHOULD BE USED TO DRILL THE HOLES IN THE EXPOSED END OF THE PIPE UNDERDRAIN. THE SHIELD SHALL BE FASTENED TO THE PIPE COUPLING WITH TWO OR MORE NO. 10 X 1-INCH STAINLESS STEEL SHEET METAL SCREWS.

GENERAL NOTES

POSTS ARE TO BE SET VERTICAL.
ALL FENCE COMPONENTS SHALL BE GALVANIZED STEEL, EXCEPT THE FENCE FABRIC WHICH MAY BE ALUMINUM-COATED STEEL OR GALVANIZED STEEL.
FABRIC SHALL CONFORM TO ASTM A491 OR A492, CLASS 2. STEEL RAILS, POSTS, AND POST SLEEVES SHALL CONFORM TO ASTM F1083, STANDARD WEIGHT PIPE (SCHEDULE 40). FITTINGS SHALL CONFORM TO ASTM F626.
R-13-255, LF. THE BID ITEM SHALL BE FENCE CHAIN LINK 6-FT. ALTERNATE TO DOUBLE CLAMP-USE LINE RAIL CLAMP (BOULEVARD) OR 180° BRACE BAND, WHICH MAY BE USED WHEN THE POSTS ARE EITHER BOLTED TO THE POST SLEEVES OR DIRECTLY WELDED TO THE BASE PLATE.
1/2" DIA. X 6 1/2" LONG GALVANIZED HEX BOLT WITH NUT & WASHER, TYPE "S", 1/2" DIA. CONCRETE MASONRY ANCHORS MAY BE SUBSTITUTED FOR 1/2" DIA. BOLTS, ANCHOR PLATE* NOT REQUIRED WHEN TYPE "S" ANCHORS ARE USED. SEE MASONRY ANCHOR TYPE S 1/2-INCH, EMBED 6" IN CONCRETE. ANCHOR, WASHER, AND NUT SHALL BE GALVANIZED.
ATTACH FABRIC TO RAILS, AND TO POSTS WITHOUT TENSION BANDS, WITH THE WIRES (ROUND, 9-GAGE) SPACED AT 1'-0".
MINIMUM LENGTH OF TOP RAIL BETWEEN SPICES SHALL BE 20'-0". LOCATE SPICES NEAR 1/4 POINT OF POST SPACING.

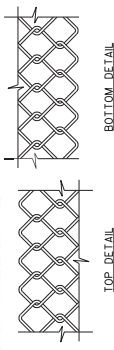
BASE PLATES, ANCHOR PLATES AND SHIMS SHALL BE ASTM A709, GRADE 36.
ALL POST SPACINGS ARE MEASURED HORIZONTALLY ALONG THE C/L OF THE POST.
CAULK AROUND PERIMETER OF BASE PLATE AND FILL PORTION OF SLOTTED HOLE AROUND ANCHOR BOLT IN SHIM WITH NON-STAINING GRAY NON-BITUMINOUS JOINT SEALER.
ALTERNATE TO DOUBLE CLAMP-USE LINE RAIL CLAMP (BOULEVARD) OR 180° BRACE BAND, WHICH MAY BE USED WHEN THE POSTS ARE EITHER BOLTED TO THE POST SLEEVES OR DIRECTLY WELDED TO THE BASE PLATE.

1/2" DIA. X 6 1/2" LONG GALVANIZED HEX BOLT WITH NUT & WASHER, TYPE "S", 1/2" DIA. CONCRETE MASONRY ANCHORS MAY BE SUBSTITUTED FOR 1/2" DIA. BOLTS, ANCHOR PLATE* NOT REQUIRED WHEN TYPE "S" ANCHORS ARE USED. SEE MASONRY ANCHOR TYPE S 1/2-INCH, EMBED 6" IN CONCRETE. ANCHOR, WASHER, AND NUT SHALL BE GALVANIZED.

ATTACH FABRIC TO RAILS, AND TO POSTS WITHOUT TENSION BANDS, WITH THE WIRES (ROUND, 9-GAGE) SPACED AT 1'-0".

MINIMUM LENGTH OF TOP RAIL BETWEEN SPICES SHALL BE 20'-0". LOCATE SPICES NEAR 1/4 POINT OF POST SPACING.

William C. Decker, LLC 10/25/16



FENCE FABRIC

FENCE FABRIC WHEN OF 9 GAGE WIRE IN 2" DIAMOND PATTERN MESH WITH BOTH THE TOP AND BOTTOM SELVAGES UNKICKLED.

NO.	DATE	REVISION	CAD
STATE OF WISCONSIN DEPARTMENT OF TRANSPORTATION STRUCTURES DESIGN SECTION			
STRUCTURE R-13-255			
BY	DATE	BY	DATE
PRN	BY	PRN	BY
COO	COO	ARC	ARC
FENCING DETAILS			265



Proposal Schedule of Items

Proposal ID: 20161108007

Project(s): 5300-02-73

SECTION: 0001

Contract Items

Alt Set ID:

Alt Mbr ID:

Proposal Line Number	Item ID Description	Approximate Quantity and Units	Unit Price	Bid Amount
0010	201.0120 Clearing	486.000 ID	_____.	_____.
0020	201.0220 Grubbing	486.000 ID	_____.	_____.
0030	203.0200 Removing Old Structure (station) 01. STA. 248+00 HP	LS	LUMP SUM	_____.
0040	204.0100 Removing Pavement	227.000 SY	_____.	_____.
0050	204.0110 Removing Asphaltic Surface	3,771.000 SY	_____.	_____.
0060	204.0150 Removing Curb & Gutter	2,698.000 LF	_____.	_____.
0070	204.0155 Removing Concrete Sidewalk	1,233.000 SY	_____.	_____.
0080	204.0195 Removing Concrete Bases	5.000 EACH	_____.	_____.
0090	204.0215 Removing Catch Basins	1.000 EACH	_____.	_____.
0100	204.0220 Removing Inlets	4.000 EACH	_____.	_____.
0110	204.0245 Removing Storm Sewer (size) 01. 15- INCH TO 24-INCH	179.000 LF	_____.	_____.
0120	204.9060.S Removing (item description) 01. PRECAST SIGN POST BASES	7.000 EACH	_____.	_____.
0130	205.0100 Excavation Common	5,311.000 CY	_____.	_____.
0140	206.1000 Excavation for Structures Bridges (structure) 01. B-13-572	LS	LUMP SUM	_____.
0150	206.3000 Excavation for Structures Retaining Walls (structure) 01. R-13-255	LS	LUMP SUM	_____.
0160	208.1100 Select Borrow	11,956.000 CY	_____.	_____.



Proposal Schedule of Items

Page 2 of 15

Proposal ID: 20161108007

Project(s): 5300-02-73

SECTION: 0001

Contract Items

Alt Set ID:

Alt Mbr ID:

Proposal Line Number	Item ID Description	Approximate Quantity and Units	Unit Price	Bid Amount
0170	209.0100 Backfill Granular	758.000 CY	_____.	_____.
0180	210.0100 Backfill Structure	7,140.000 CY	_____.	_____.
0190	213.0100 Finishing Roadway (project) 01. 5300-02-73	1.000 EACH	_____.	_____.
0200	305.0110 Base Aggregate Dense 3/4-Inch	326.000 TON	_____.	_____.
0210	305.0120 Base Aggregate Dense 1 1/4-Inch	3,590.000 TON	_____.	_____.
0220	305.0130 Base Aggregate Dense 3-Inch	2,712.000 TON	_____.	_____.
0230	415.0410 Concrete Pavement Approach Slab	404.000 SY	_____.	_____.
0240	416.0170 Concrete Driveway 7-Inch	53.000 SY	_____.	_____.
0250	416.0270 Concrete Driveway HES 7-Inch	45.000 SY	_____.	_____.
0260	416.1010 Concrete Surface Drains	1.000 CY	_____.	_____.
0270	455.0605 Tack Coat	333.000 GAL	_____.	_____.
0280	460.2000 Incentive Density HMA Pavement	1,250.000 DOL	1.00000	1,250.00
0290	460.6223 HMA Pavement 3 MT 58-28 S	1,209.000 TON	_____.	_____.
0300	460.6424 HMA Pavement 4 MT 58-28 H	744.000 TON	_____.	_____.
0310	465.0105 Asphaltic Surface	94.000 TON	_____.	_____.
0320	501.1000.S Ice Hot Weather Concreting	21,490.000 LB	_____.	_____.
0330	502.0100 Concrete Masonry Bridges	2,870.000 CY	_____.	_____.



Proposal Schedule of Items

Proposal ID: 20161108007

Project(s): 5300-02-73

SECTION: 0001 Contract Items

Alt Set ID: Alt Mbr ID:

Proposal Line Number	Item ID Description	Approximate Quantity and Units	Unit Price	Bid Amount
0340	502.3100 Expansion Device (structure) 01. B-13-572	LS	LUMP SUM	_____.
0350	502.3200 Protective Surface Treatment	2,160.000 SY	_____.	_____.
0360	502.3210 Pigmented Surface Sealer	1,198.000 SY	_____.	_____.
0370	503.0146 Prestressed Girder Type I 45W-Inch	3,460.000 LF	_____.	_____.
0380	504.0500 Concrete Masonry Retaining Walls	240.000 CY	_____.	_____.
0390	505.0400 Bar Steel Reinforcement HS Structures	71,480.000 LB	_____.	_____.
0400	505.0600 Bar Steel Reinforcement HS Coated Structures	330,905.000 LB	_____.	_____.
0410	506.2605 Bearing Pads Elastomeric Non-Laminated	28.000 EACH	_____.	_____.
0420	506.2610 Bearing Pads Elastomeric Laminated	28.000 EACH	_____.	_____.
0430	506.4000 Steel Diaphragms (structure) 01. B-13-572	52.000 EACH	_____.	_____.
0440	513.4091 Railing Tubular Screening (structure) 01. B-13-572	624.000 LF	_____.	_____.
0450	513.8006 Railing Steel Pedestrian Type C1 (structure) 01. R-13-251	65.000 LF	_____.	_____.
0460	513.8006 Railing Steel Pedestrian Type C1 (structure) 02. R-13-252	200.000 LF	_____.	_____.
0470	513.8006 Railing Steel Pedestrian Type C1 (structure) 03. R-13-253	146.000 LF	_____.	_____.
0480	513.8006 Railing Steel Pedestrian Type C1 (structure) 04. R-13-254	493.000 LF	_____.	_____.



Proposal Schedule of Items

Proposal ID: 20161108007

Project(s): 5300-02-73

SECTION: 0001

Contract Items

Alt Set ID:

Alt Mbr ID:

Proposal Line Number	Item ID Description	Approximate Quantity and Units	Unit Price	Bid Amount
0490	516.0500 Rubberized Membrane Waterproofing	61.000 SY	_____.	_____.
0500	517.1010.S Concrete Staining (structure) 01. B-13-572	19,965.000 SF	_____.	_____.
0510	517.1010.S Concrete Staining (structure) 02. R-13-251	120.000 SF	_____.	_____.
0520	517.1010.S Concrete Staining (structure) 03. R-13-253	220.000 SF	_____.	_____.
0530	517.1010.S Concrete Staining (structure) 04. R-13-254	740.000 SF	_____.	_____.
0540	517.1050.S Architectural Surface Treatment (structure) 01. B-13-572	4,370.000 SF	_____.	_____.
0550	522.1012 Apron Endwalls for Culvert Pipe Reinforced Concrete 12-Inch	1.000 EACH	_____.	_____.
0560	522.1018 Apron Endwalls for Culvert Pipe Reinforced Concrete 18-Inch	1.000 EACH	_____.	_____.
0570	530.0115 Culvert Pipe Corrugated Polyethylene 15-In	52.000 LF	_____.	_____.
0580	550.1100 Piling Steel HP 10-Inch X 42 Lb	2,950.000 LF	_____.	_____.
0590	601.0407 Concrete Curb & Gutter 18-Inch Type D	176.000 LF	_____.	_____.
0600	601.0411 Concrete Curb & Gutter 30-Inch Type D	2,097.000 LF	_____.	_____.
0610	602.0410 Concrete Sidewalk 5-Inch	8,711.000 SF	_____.	_____.
0620	602.0420 Concrete Sidewalk 7-Inch	13,430.000 SF	_____.	_____.
0630	602.0505 Curb Ramp Detectable Warning Field Yellow	106.000 SF	_____.	_____.



Proposal Schedule of Items

Proposal ID: 20161108007

Project(s): 5300-02-73

SECTION: 0001

Contract Items

Alt Set ID:

Alt Mbr ID:

Proposal Line Number	Item ID Description	Approximate Quantity and Units	Unit Price	Bid Amount
0640	603.1132 Concrete Barrier Type S32	217.000 LF	_____	_____
0650	603.1156 Concrete Barrier Type S56	40.000 LF	_____	_____
0660	603.8000 Concrete Barrier Temporary Precast Delivered	3,500.000 LF	_____	_____
0670	603.8125 Concrete Barrier Temporary Precast Installed	3,500.000 LF	_____	_____
0680	604.0500 Slope Paving Crushed Aggregate	300.000 SY	_____	_____
0690	606.0100 Riprap Light	3.000 CY	_____	_____
0700	608.0312 Storm Sewer Pipe Reinforced Concrete Class III 12-Inch	128.000 LF	_____	_____
0710	608.0315 Storm Sewer Pipe Reinforced Concrete Class III 15-Inch	57.000 LF	_____	_____
0720	608.0318 Storm Sewer Pipe Reinforced Concrete Class III 18-Inch	139.000 LF	_____	_____
0730	608.0324 Storm Sewer Pipe Reinforced Concrete Class III 24-Inch	60.000 LF	_____	_____
0740	608.0412 Storm Sewer Pipe Reinforced Concrete Class IV 12-Inch	189.000 LF	_____	_____
0750	608.0424 Storm Sewer Pipe Reinforced Concrete Class IV 24-Inch	26.000 LF	_____	_____
0760	611.0530 Manhole Covers Type J	1.000 EACH	_____	_____
0770	611.0610 Inlet Covers Type BW	2.000 EACH	_____	_____
0780	611.0624 Inlet Covers Type H	5.000 EACH	_____	_____



Proposal Schedule of Items

Proposal ID: 20161108007

Project(s): 5300-02-73

SECTION: 0001

Contract Items

Alt Set ID:

Alt Mbr ID:

Proposal Line Number	Item ID Description	Approximate Quantity and Units	Unit Price	Bid Amount
0790	611.0639 Inlet Covers Type H-S	1.000 EACH	_____	_____
0800	611.0645 Inlet Covers Type MS-A	2.000 EACH	_____	_____
0810	611.2005 Manholes 5-FT Diameter	1.000 EACH	_____	_____
0820	611.2006 Manholes 6-FT Diameter	1.000 EACH	_____	_____
0830	611.3004 Inlets 4-FT Diameter	2.000 EACH	_____	_____
0840	611.3225 Inlets 2x2.5-FT	1.000 EACH	_____	_____
0850	611.3230 Inlets 2x3-FT	5.000 EACH	_____	_____
0860	611.3901 Inlets Median 1 Grate	2.000 EACH	_____	_____
0870	612.0406 Pipe Underdrain Wrapped 6-Inch	1,710.000 LF	_____	_____
0880	614.0220 Steel Thrie Beam Bullnose Terminal	2.000 EACH	_____	_____
0890	614.0230 Steel Thrie Beam	256.000 LF	_____	_____
0900	614.0905 Crash Cushions Temporary	4.000 EACH	_____	_____
0910	614.2300 MGS Guardrail 3	209.000 LF	_____	_____
0920	614.2500 MGS Thrie Beam Transition	40.000 LF	_____	_____
0930	616.0206 Fence Chain Link 6-FT	445.000 LF	_____	_____
0940	616.0700.S Fence Safety	90.000 LF	_____	_____
0950	618.0100 Maintenance And Repair of Haul Roads (project) 01. 5300-02-73	1.000 EACH	_____	_____



Proposal Schedule of Items

Proposal ID: 20161108007

Project(s): 5300-02-73

SECTION: 0001

Contract Items

Alt Set ID:

Alt Mbr ID:

Proposal Line Number	Item ID Description	Approximate Quantity and Units	Unit Price	Bid Amount
0960	619.1000 Mobilization	1.000 EACH	_____	_____
0970	620.0300 Concrete Median Sloped Nose	64.000 SF	_____	_____
0980	624.0100 Water	987.000 MGAL	_____	_____
0990	625.0100 Topsoil	12,350.000 SY	_____	_____
1000	628.1104 Erosion Bales	40.000 EACH	_____	_____
1010	628.1504 Silt Fence	1,983.000 LF	_____	_____
1020	628.1520 Silt Fence Maintenance	1,983.000 LF	_____	_____
1030	628.1905 Mobilizations Erosion Control	9.000 EACH	_____	_____
1040	628.1910 Mobilizations Emergency Erosion Control	7.000 EACH	_____	_____
1050	628.2006 Erosion Mat Urban Class I Type A	7,953.000 SY	_____	_____
1060	628.2008 Erosion Mat Urban Class I Type B	1,438.000 SY	_____	_____
1070	628.2023 Erosion Mat Class II Type B	196.000 SY	_____	_____
1080	628.7005 Inlet Protection Type A	10.000 EACH	_____	_____
1090	628.7020 Inlet Protection Type D	10.000 EACH	_____	_____
1100	628.7504 Temporary Ditch Checks	180.000 LF	_____	_____
1110	628.7560 Tracking Pads	2.000 EACH	_____	_____
1120	628.7570 Rock Bags	15.000 EACH	_____	_____



Proposal Schedule of Items

Proposal ID: 20161108007

Project(s): 5300-02-73

SECTION: 0001

Contract Items

Alt Set ID:

Alt Mbr ID:

Proposal Line Number	Item ID Description	Approximate Quantity and Units	Unit Price	Bid Amount
1130	629.0210 Fertilizer Type B	8.500 CWT	_____.	_____.
1140	630.0130 Seeding Mixture No. 30	398.000 LB	_____.	_____.
1150	630.0140 Seeding Mixture No. 40	35.000 LB	_____.	_____.
1160	630.0200 Seeding Temporary	324.000 LB	_____.	_____.
1170	630.0300 Seeding Borrow Pit	7.000 LB	_____.	_____.
1180	631.0300 Sod Water	285.000 MGAL	_____.	_____.
1190	631.1000 Sod Lawn	329.000 SY	_____.	_____.
1200	633.1000 Delineator Brackets	3.000 EACH	_____.	_____.
1210	633.5200 Markers Culvert End	2.000 EACH	_____.	_____.
1220	637.2210 Signs Type II Reflective H	82.000 SF	_____.	_____.
1230	638.2102 Moving Signs Type II	1.000 EACH	_____.	_____.
1240	638.2602 Removing Signs Type II	2.000 EACH	_____.	_____.
1250	638.3000 Removing Small Sign Supports	4.000 EACH	_____.	_____.
1260	638.4000 Moving Small Sign Supports	1.000 EACH	_____.	_____.
1270	641.8100 Overhead Sign Support (structure) 01. S-13-472	LS	LUMP SUM	_____.
1280	641.8100 Overhead Sign Support (structure) 02. S-13-473	LS	LUMP SUM	_____.
1290	642.5201 Field Office Type C	1.000 EACH	_____.	_____.



Proposal Schedule of Items

Proposal ID: 20161108007

Project(s): 5300-02-73

SECTION: 0001

Contract Items

Alt Set ID:

Alt Mbr ID:

Proposal Line Number	Item ID Description	Approximate Quantity and Units	Unit Price	Bid Amount
1300	643.0100 Traffic Control (project) 01. 5300-02-73	1.000 EACH	_____.	_____.
1310	643.0300 Traffic Control Drums	15,818.000 DAY	_____.	_____.
1320	643.0410 Traffic Control Barricades Type II	1,665.000 DAY	_____.	_____.
1330	643.0420 Traffic Control Barricades Type III	3,152.000 DAY	_____.	_____.
1340	643.0453 Traffic Control Barricades Permanent Type III	1.000 EACH	_____.	_____.
1350	643.0705 Traffic Control Warning Lights Type A	5,874.000 DAY	_____.	_____.
1360	643.0715 Traffic Control Warning Lights Type C	1,800.000 DAY	_____.	_____.
1370	643.0800 Traffic Control Arrow Boards	192.000 DAY	_____.	_____.
1380	643.0900 Traffic Control Signs	10,396.000 DAY	_____.	_____.
1390	643.0920 Traffic Control Covering Signs Type II	72.000 EACH	_____.	_____.
1400	643.1000 Traffic Control Signs Fixed Message	32.000 SF	_____.	_____.
1410	643.1050 Traffic Control Signs PCMS	66.000 DAY	_____.	_____.
1420	643.2000 Traffic Control Detour (project) 01. 5300-02-73	1.000 EACH	_____.	_____.
1430	643.3000 Traffic Control Detour Signs	13,292.000 DAY	_____.	_____.
1440	644.1410.S Temporary Pedestrian Surface Asphalt	95.000 SF	_____.	_____.
1450	644.1601.S Temporary Curb Ramp	2.000 EACH	_____.	_____.
1460	645.0112 Geotextile Type DF Schedule B	10.000 SY	_____.	_____.



Proposal Schedule of Items

Proposal ID: 20161108007

Project(s): 5300-02-73

SECTION: 0001

Contract Items

Alt Set ID:

Alt Mbr ID:

Proposal Line Number	Item ID Description	Approximate Quantity and Units	Unit Price	Bid Amount
1470	645.0130 Geotextile Type R	4.000 SY	_____.	_____.
1480	646.0106 Pavement Marking Epoxy 4-Inch	5,417.000 LF	_____.	_____.
1490	646.0116 Pavement Marking Epoxy 6-Inch	466.000 LF	_____.	_____.
1500	646.0126 Pavement Marking Epoxy 8-Inch	598.000 LF	_____.	_____.
1510	647.0576 Pavement Marking Stop Line Epoxy 24-Inch	22.000 LF	_____.	_____.
1520	647.0606 Pavement Marking Island Nose Epoxy	1.000 EACH	_____.	_____.
1530	647.0706 Pavement Marking Diagonal Epoxy 6-Inch	41.000 LF	_____.	_____.
1540	647.0786 Pavement Marking Crosswalk Epoxy 18-Inch	348.000 LF	_____.	_____.
1550	649.0600 Temporary Pavement Marking Removable Tape 6-Inch	70.000 LF	_____.	_____.
1560	649.0801 Temporary Pavement Marking Removable Tape 8-Inch	350.000 LF	_____.	_____.
1570	650.4000 Construction Staking Storm Sewer	14.000 EACH	_____.	_____.
1580	650.4500 Construction Staking Subgrade	2,244.000 LF	_____.	_____.
1590	650.5000 Construction Staking Base	2,509.000 LF	_____.	_____.
1600	650.5500 Construction Staking Curb Gutter and Curb & Gutter	2,503.000 LF	_____.	_____.
1610	650.6500 Construction Staking Structure Layout (structure) 01. B-13-572	LS	LUMP SUM	_____.



Proposal Schedule of Items

Proposal ID: 20161108007

Project(s): 5300-02-73

SECTION: 0001 Contract Items

Alt Set ID: Alt Mbr ID:

Proposal Line Number	Item ID Description	Approximate Quantity and Units	Unit Price	Bid Amount
1620	650.6500 Construction Staking Structure Layout (structure) 02. R-13-151	LS	LUMP SUM	_____.
1630	650.6500 Construction Staking Structure Layout (structure) 03. R-13-252	LS	LUMP SUM	_____.
1640	650.6500 Construction Staking Structure Layout (structure) 04. R-13-153	LS	LUMP SUM	_____.
1650	650.6500 Construction Staking Structure Layout (structure) 05. R-13-154	LS	LUMP SUM	_____.
1660	650.6500 Construction Staking Structure Layout (structure) 06. R-13-255	LS	LUMP SUM	_____.
1670	650.6500 Construction Staking Structure Layout (structure) 07. WALL MODULAR BLOCK GRAVITY LANDSCAPE LRFD	LS	LUMP SUM	_____.
1680	650.7000 Construction Staking Concrete Pavement	70.000 LF	_____.	_____.
1690	650.7500 Construction Staking Concrete Barrier	243.000 LF	_____.	_____.
1700	650.8500 Construction Staking Electrical Installations (project) 01. 5300-02-73	LS	LUMP SUM	_____.
1710	650.9910 Construction Staking Supplemental Control (project) 01. 5300-02-73	LS	LUMP SUM	_____.
1720	650.9920 Construction Staking Slope Stakes	5,255.000 LF	_____.	_____.
1730	652.0125 Conduit Rigid Metallic 2-Inch	12.000 LF	_____.	_____.
1740	652.0135 Conduit Rigid Metallic 3-Inch	24.000 LF	_____.	_____.
1750	652.0205 Conduit Rigid Nonmetallic Schedule 40 3/4-Inch	26.000 LF	_____.	_____.



Proposal Schedule of Items

Proposal ID: 20161108007

Project(s): 5300-02-73

SECTION: 0001

Contract Items

Alt Set ID:

Alt Mbr ID:

Proposal Line Number	Item ID Description	Approximate Quantity and Units	Unit Price	Bid Amount
1760	652.0215 Conduit Rigid Nonmetallic Schedule 40 1 1/4-Inch	265.000 LF	_____	_____
1770	652.0225 Conduit Rigid Nonmetallic Schedule 40 2-Inch	2,062.000 LF	_____	_____
1780	652.0235 Conduit Rigid Nonmetallic Schedule 40 3-Inch	2,209.000 LF	_____	_____
1790	652.0325 Conduit Rigid Nonmetallic Schedule 80 2-Inch	135.000 LF	_____	_____
1800	652.0335 Conduit Rigid Nonmetallic Schedule 80 3-Inch	140.000 LF	_____	_____
1810	652.0800 Conduit Loop Detector	205.000 LF	_____	_____
1820	653.0900 Adjusting Pull Boxes	2.000 EACH	_____	_____
1830	653.0905 Removing Pull Boxes	4.000 EACH	_____	_____
1840	655.0610 Electrical Wire Lighting 12 AWG	2,534.000 LF	_____	_____
1850	655.0620 Electrical Wire Lighting 8 AWG	1,485.000 LF	_____	_____
1860	655.0625 Electrical Wire Lighting 6 AWG	2,287.000 LF	_____	_____
1870	655.0630 Electrical Wire Lighting 4 AWG	1,710.000 LF	_____	_____
1880	655.0700 Loop Detector Lead In Cable	1,897.000 LF	_____	_____
1890	655.0800 Loop Detector Wire	890.000 LF	_____	_____
1900	690.0150 Sawing Asphalt	322.000 LF	_____	_____
1910	690.0250 Sawing Concrete	41.000 LF	_____	_____



Proposal Schedule of Items

Proposal ID: 20161108007

Project(s): 5300-02-73

SECTION: 0001 Contract Items

Alt Set ID:

Alt Mbr ID:

Proposal Line Number	Item ID Description	Approximate Quantity and Units	Unit Price	Bid Amount
1920	ASP.1T0A On-the-Job Training Apprentice at \$5.00/HR	900.000 HRS	5.00000	4,500.00
1930	ASP.1T0G On-the-Job Training Graduate at \$5.00/HR	700.000 HRS	5.00000	3,500.00
1940	SPV.0060 Special 01. DECORATIVE MEDALLION	4.000 EACH	_____.	_____.
1950	SPV.0060 Special 02. MEDALLION CONCRETE STAINING MULTI-COLOR	4.000 EACH	_____.	_____.
1960	SPV.0060 Special 03. PAVEMENT MARKING ARROWS TYPE 2 MAD EPOXY	3.000 EACH	_____.	_____.
1970	SPV.0060 Special 04. PAVEMENT MARKING ARROWS BIKE LANE MAD EPOXY	2.000 EACH	_____.	_____.
1980	SPV.0060 Special 05. PAVEMENT MARKING SYMBOLS BIKE LANE MAD EPOXY	3.000 EACH	_____.	_____.
1990	SPV.0060 Special 06. PAVEMENT MARKING WORDS MAD EPOXY	3.000 EACH	_____.	_____.
2000	SPV.0060 Special 10. UTILITY LINE OPENING (ULO ULO	5.000 EACH	_____.	_____.
2010	SPV.0060 Special 11. MANHOLE COVERS TYPE MAD	1.000 EACH	_____.	_____.
2020	SPV.0060 Special 12. SALVAGED INLET FILTER INSERT	1.000 EACH	_____.	_____.
2030	SPV.0060 Special 15. ELECTRICAL PULL BOX TYPE I	7.000 EACH	_____.	_____.
2040	SPV.0060 Special 16. ELECTRICAL PULL BOX TYPE III	4.000 EACH	_____.	_____.
2050	SPV.0060 Special 17. ELECTRICAL PULL BOX TYPE V	1.000 EACH	_____.	_____.



Proposal Schedule of Items

Proposal ID: 20161108007

Project(s): 5300-02-73

SECTION: 0001 Contract Items

Alt Set ID:

Alt Mbr ID:

Proposal Line Number	Item ID Description	Approximate Quantity and Units	Unit Price	Bid Amount
2060	SPV.0060 Special 18. ELECTRICAL PULL BOX TYPE VII	1.000 EACH	_____.	_____.
2070	SPV.0060 Special 19. CONCRETE BASE TYPE G	1.000 EACH	_____.	_____.
2080	SPV.0060 Special 20. CONCRETE BASE TYPE LB-3	5.000 EACH	_____.	_____.
2090	SPV.0060 Special 21. MOVING LIGHTING ASSEMBLY	4.000 EACH	_____.	_____.
2100	SPV.0060 Special 22. WALL PACK OUTLET BOXES	2.000 EACH	_____.	_____.
2110	SPV.0060 Special 25. EMERGENCY SWEEPING MOBILIZATION	4.000 EACH	_____.	_____.
2120	SPV.0075 Special 01. STREET SWEEPING	106.000 HRS	_____.	_____.
2130	SPV.0090 Special 01. CONCRETE GUTTER 48-INCH	217.000 LF	_____.	_____.
2140	SPV.0090 Special 02. CONCRETE CURB & GUTTER 24-INCH TYPE D	294.000 LF	_____.	_____.
2150	SPV.0090 Special 05. EXPOSE AND ADJUST CONDUIT HDPE	425.000 LF	_____.	_____.
2160	SPV.0165 Special 01. WALL MODULAR BLOCK MECHANICALLY STABILIZED EARTH LRFD/QMP	5,744.000 SF	_____.	_____.
2170	SPV.0165 Special 02. WALL MODULAR BLOCK GRAVITY LANDSCAPE LRFD	65.000 SF	_____.	_____.
2180	204.0165 Removing Guardrail	820.000 LF	_____.	_____.
2190	204.0170 Removing Fence	665.000 LF	_____.	_____.



Proposal Schedule of Items

Proposal ID: 20161108007

Project(s): 5300-02-73

SECTION: 0001

Contract Items

Alt Set ID:

Alt Mbr ID:

Proposal Line Number	Item ID Description	Approximate Quantity and Units	Unit Price	Bid Amount
2200	SPV.0090 Special 06. Fence Chain Line 6-FT. R-13-255	182.000 LF	_____.	_____.
Section: 0001			Total:	_____.
			Total Bid:	_____.