



Wisconsin Department of Transportation

November 3, 2016

Division of Transportation Systems Development

Bureau of Project Development
 4802 Sheboygan Avenue, Rm 601
 P O Box 7916
 Madison, WI 53707-7916

Telephone: (608) 266-1631
 Facsimile (FAX): (608) 266-8459

NOTICE TO ALL CONTRACTORS:

Proposal #11: 1175-19-60, WISC 2016 346
Manitowish - Hurley
Weber Road to CTH C
USH 51
Iron County

Letting of November 8, 2016

This is Addendum No. 01, which provides for the following:

Schedule of Items

Revised Bid Item Quantities					
Bid Item	Item Description	Unit	Old Quantity	Revised Quantity	Proposal Total
649.0402	Temporary Pavement Marking 4-Inch	LF	147,560	-73,100	74,460

Added Bid Item Quantities					
Bid Item	Item Description	Unit	Old Quantity	Revised Quantity	Proposal Total
520.1024	Apron Endwalls for Culvert Pipe 24-Inch	EACH	0	8	8
520.1030	Apron Endwalls for Culvert Pipe 30-Inch	EACH	0	3	3
520.1036	Apron Endwalls for Culvert Pipe 36-Inch	EACH	0	2	2
520.3424	Culvert Pipe Class III-A Non-Metal 24-Inch	LF	0	320	320
520.3430	Culvert Pipe Class III-A Non-Metal 30-Inch	LF	0	74	74
520.3436	Culvert Pipe Class III-A Non-Metal 36-Inch	LF	0	70	70

Deleted Bid Item Quantities					
Bid Item	Item Description	Unit	Old Quantity	Revised Quantity	Proposal Total
522.0124	Culvert Pipe Reinforced Concrete Class III 24-Inch	LF	320	-320	0
522.0130	Culvert Pipe Reinforced Concrete Class III 30-Inch	LF	74	-74	0
522.0136	Culvert Pipe Reinforced Concrete Class III 36-Inch	LF	70	-70	0
522.1024	Apron Endwalls for Culvert Pipe Reinforced Concrete 24-Inch	EACH	8	-8	0

522.1030	Apron Endwalls for Culvert Pipe Reinforced Concrete 30-Inch	EACH	3	-3	0
522.1036	Apron Endwalls for Culvert Pipe Reinforced Concrete 36-Inch	EACH	2	-2	0

Plan Sheets

Revised Plan Sheets	
Plan Sheet	Plan Sheet Title (brief description of changes to sheet)
49	Miscellaneous Quantities (changed culvert pipe and apron endwall bid items)
54	Miscellaneous Quantities (revised temporary pavement marking total quantity)
55	Miscellaneous Quantities (removed temporary pavement marking from Stage 2B, new total shown on Sheet 54)
56	Plan Sheet (updated culvert pipe label to change pipe bid item)
58	Plan Sheet (updated culvert pipe label to change pipe bid item)
59	Plan Sheet (updated culvert pipe label to change pipe bid item)
61	Plan Sheet (updated culvert pipe label to change pipe bid item)
63	Plan Sheet (updated culvert pipe label to change pipe bid item)
65	Plan Sheet (updated culvert pipe label to change pipe bid item)
66	Plan Sheet (updated culvert pipe label to change pipe bid item)

Schedule of Items

Attached, dated November 3, 2016, are the revised Schedule of Items. All pages of the Schedule of Items are being replaced.

Plan Sheets

The following 8½ x 11-inch sheets are attached and made part of the plans for this proposal:
Revised: 49, 54 – 56, 58, 59, 61, 63, 65, and 66.

The responsibility for notifying potential subcontractors and suppliers of these changes remains with the prime contractor.

Sincerely,

Mike Coleman

Proposal Development Specialist
Proposal Management Section

END OF ADDENDUM

ASPHALTIC CENTERLINE RUMBLE STRIP 2-LANE RURAL

STATION	LF	465.0475
19+65 - 29+32	965	
34+09 - 39+53	545	
43+53 - 45+39	185	
45+64 - 79+38	3,380	
83+38 - 126+56	4,320	
126+81 - 139+50	1,270	
274+25 - 277+61	335	
281+84 - 290+27	840	
294+27 - 305+93	1,170	
309+79 - 314+51	470	
316+51 - 321+00	450	
325+00 - 326+00	100	
330+00 - 379+64	4,960	
382+64 - 482+67	9,900	
486+67 - 509+94	2,330	
513+94 - 515+52	160	
519+52 - 532+21	1,370	
537+26 - 588+44	5,120	
592+58 - 613+11	2,060	
617+11 - 623+69	660	
627+49 - 632+55	505	
636+55 - 639+05	250	
643+05 - 665+53	2,250	
669+59 - 691+89	2,230	
695+93 - 722+89	2,700	
727+34 - 728+19	85	
730+19 - 751+29	2,500	
759+29 - 759+66	40	
763+66 - 790+65	2,700	
TOTAL	53,850	

**Addendum No. 01
ID 1175-19-60
Revised Sheet 49
November 3, 2016**

CULVERT PIPE ITEMS

STATION	CULVERT NUMBER	INLET ELEVATION	DISCHARGE ELEVATION	PIPE SLOPE	APRON ENDWALLS FOR CULVERT PIPE	APRON ENDWALLS FOR CULVERT PIPE	APRON ENDWALLS FOR CULVERT PIPE	CONCRETE COLLARS FOR CULVERT PIPE	SPRINKLER MARKERS FOR CULVERT PIPE	TRANSITIONS
38+81	36	1639.05	1632.79	6.14%	-	-	-	-	-	-
302+21	58	1646.39	1644.73	1.93%	86	-	-	-	-	-
319+81	60	1629.12	1629.07	0.62%	-	-	-	-	-	-
464+93	71	1603.99	1603.54	0.70%	8	-	-	-	-	-
562+02	75R	1586.01	1584.93	1.08%	64	-	-	-	-	-
710+83	87R	1554.99	1553.93	1.89%	64	-	-	-	-	-
767+36	89	1555.71	1555.28	0.72%	66	-	-	-	-	-
TOTAL					74	320	8	2	1	13

CONCRETE CURB & GUTTER

STATION	LOCATION	LF	601.0557
324+23 - 324+78	RT	89	
325+09 - 325+59	RT	76	
TOTAL		165	

MOBILIZATION

PROJECT	EACH	619.1000
PROJECT 1175-19-60	1	
TOTAL	1	

WATER

STATION	LOCATION	MGAL	REMARKS
38+81 - 767+36	USH51	34	BASE AGG. COMPACTION
TOTAL		34	

MOBILIZATIONS EROSION CONTROL

PROJECT	EACH	628.1910
PROJECT 1175-19-60	8	
TOTAL	8	

SILT FENCE

STATION	LOCATION	LF	628.1520
38+26 - 39+34	LT	108	
38+25 - 39+33	RT	108	
277+19 - 280+17	LT	330	
301+67 - 302+75	LT	108	
301+65 - 302+74	RT	110	
318+65 - 326+63	LT	800	
318+68 - 322+69	RT	490	
323+09 - 324+47	RT	240	
464+39 - 465+49	LT	110	
464+37 - 465+47	RT	110	
531+50 - 532+46	LT	105	
532+00 - 532+47	RT	55	
534+03 - 534+64	LT	70	
534+04 - 535+04	RT	100	
562+28 - 562+57	LT	30	
561+47 - 562+55	RT	110	
710+46 - 711+37	LT	90	
710+29 - 711+37	RT	108	
766+82 - 767+90	LT	108	
766+81 - 767+90	RT	110	
UNDISTRIBUTED		540	
TOTAL		3,940	

PROJECT NUMBER: 1175-19-60

HWY: USH 51

COUNTY: IRON

MISCELLANEOUS QUANTITIES

SHEET 49

E
UNLESS OTHERWISE NOTED
ALL ITEMS IN CATEGORY 0010

PAVEMENT MARKING EPOXY (CONTINUED)

646.0106 4-INCH		646.0406 SAME DAY 4-INCH		646.0126 8-INCH STOP LINE		647.0566 18-INCH ENFORCEMENT BARS EPOXY		647.0803 AERIAL	
STATION	LOCATION	WHITE 3-FOOT LINE	DASHED WHITE 9-FOOT SKIP	YELLOW 12.5-FOOT LINE	DASHED YELLOW 37.5-FOOT SKIP	WHITE 12.5-FOOT LINE	DASHED YELLOW 37.5-FOOT SKIP	WHITE 12.5-FOOT LINE	DASHED YELLOW 37.5-FOOT SKIP
LF	RT	LF	LF	LF	LF	LF	LF	LF	LF
725+41 - 756+37	RT	3,100	-	-	-	-	-	-	-
725+95 - 726+80	LT	-	20	-	-	-	-	-	-
726+80 - 761+11	LT	3,430	-	-	-	-	-	-	-
727+89 - 735+29	CENTER LINE	-	-	185	-	-	185	-	-
735+29 - 772+97	CENTER LINE	-	-	3,770	-	-	3,770	-	-
740+85 - 748+81	CENTER LINE	-	-	200	-	-	200	-	-
748+81 - 786+86	CENTER LINE	-	-	3,800	-	-	3,800	-	-
757+29	RT	-	-	100	-	-	-	35	-
757+86 - 762+01	RT	-	-	100	-	-	-	-	-
757+89 - 790+65	RT	3,280	-	-	-	-	-	-	-
761+66	LT	-	-	-	-	-	-	25	-
762+12 - 790+65	LT	2,850	-	-	-	-	-	-	-
772+97 - 786+89	CENTER LINE	-	-	340	-	-	340	-	-
786+89 - 790+65	CENTER LINE	-	-	420	-	-	420	-	-
786+88 - 790+65	CENTER LINE	-	-	95	-	-	95	-	-
SUBTOTAL		12,660	20	7,990	820	200	7,990	820	0
TOTAL				198,150			74,030	610	95

Addendum No. 01
ID 1175-19-60
Revised Sheet 54
November 3, 2016

TEMPORARY PAVEMENT MARKING 4-INCH

646.0402		646.0402		
STAGE 1F	STATION	LOCATION	YELLOW 12.5-FOOT LINE	DASHED YELLOW 37.5-FOOT SKIP
LF	LF	LF	LF	LF
38+27 - 39+35	CENTER LINE	-	110	-
301+66 - 302+74	CENTER LINE	-	-	27
464+38 - 465+48	CENTER LINE	-	-	28
561+48 - 562+56	CENTER LINE	-	-	27
710+29 - 711+37	CENTER LINE	-	110	-
766+82 - 767+90	CENTER LINE	-	110	-
SUBTOTAL			330	80

TEMPORARY PAVEMENT MARKING 4-INCH (CONTINUED)

646.0402		646.0402		
STAGE 1B	STATION	LOCATION	YELLOW 12.5-FOOT LINE	DASHED YELLOW 37.5-FOOT SKIP
LF	LF	LF	LF	LF
19+65 - 45+44	CENTER LINE	-	2,580	-
19+65 - 24+09	CENTER LINE	-	-	110
24+09 - 45+44	CENTER LINE	-	2,140	-
45+59 - 61+12	CENTER LINE	-	1,550	-
45+59 - 74+38	CENTER LINE	-	2,880	-
61+12 - 74+38	CENTER LINE	-	-	330
74+38 - 106+80	CENTER LINE	-	3,250	-
74+38 - 88+59	CENTER LINE	-	-	1,420
88+59 - 123+13	CENTER LINE	-	3,450	-
106+80 - 119+54	CENTER LINE	-	-	320
119+54 - 126+61	CENTER LINE	-	-	-
126+76 - 134+14	CENTER LINE	-	740	-
126+76 - 133+42	CENTER LINE	-	-	170
133+42 - 139+50	CENTER LINE	-	610	-
134+14 - 139+50	CENTER LINE	-	-	145
274+25 - 285+75	CENTER LINE	-	1,150	-
274+25 - 280+95	CENTER LINE	-	-	170
280+94 - 299+00	CENTER LINE	-	1,760	-
285+75 - 323+60	CENTER LINE	-	-	950
319+27 - 350+25	CENTER LINE	-	3,100	-
323+60 - 336+55	CENTER LINE	-	1,290	-
336+55 - 372+27	CENTER LINE	-	3,510	-
358+10 - 393+22	CENTER LINE	-	3,340	-
372+27 - 405+69	CENTER LINE	-	-	930
393+22 - 430+18	CENTER LINE	-	-	-
417+12 - 432+56	CENTER LINE	-	1,550	-
430+18 - 446+22	CENTER LINE	-	1,600	-
432+56 - 503+99	CENTER LINE	-	-	1,790
490+67 - 507+81	CENTER LINE	-	1,710	-
503+99 - 521+03	CENTER LINE	-	1,710	-
507+81 - 532+46	CENTER LINE	-	-	625
534+04 - 577+23	CENTER LINE	-	-	1,080
563+47 - 590+41	CENTER LINE	-	2,700	-
577+23 - 590+41	CENTER LINE	-	1,320	-
590+56 - 595+44	CENTER LINE	-	500	-
590+56 - 609+47	CENTER LINE	-	1,900	-
595+44 - 671+38	CENTER LINE	-	-	1,900
636+19 - 643+12	CENTER LINE	-	700	-
650+37 - 655+95	CENTER LINE	-	560	-
658+49 - 678+24	CENTER LINE	-	1,980	-
671+38 - 691+67	CENTER LINE	-	2,040	-
678+24 - 722+58	CENTER LINE	-	-	1,110
709+38 - 721+89	CENTER LINE	-	1,850	-
722+58 - 740+85	CENTER LINE	-	1,830	-
721+89 - 735+29	CENTER LINE	-	-	185
735+29 - 772+97	CENTER LINE	-	3,770	-
740+85 - 748+81	CENTER LINE	-	-	200
748+81 - 786+86	CENTER LINE	-	3,800	-
772+97 - 786+89	CENTER LINE	-	-	340
786+89 - 790+65	CENTER LINE	-	420	-
786+86 - 790+65	CENTER LINE	-	-	95
SUBTOTAL			61,290	12,760
TOTAL			74,460	

UNLESS OTHERWISE NOTED
ALL ITEMS IN CATEGORY 0010

SAWING CONCRETE

STATION	LOCATION	LF	REMARKS
19+65	-	20	-
38+27	-	20	CULVERT 36
39+35	-	20	CULVERT 36
301+66	-	20	CULVERT 58
302+24	-	20	CULVERT 58
464+38	-	20	CULVERT 71
465+48	-	20	CULVERT 71
561+46	-	20	CULVERT 75R
562+56	-	20	CULVERT 75R
710+29	-	20	CULVERT 87R
711+37	-	20	CULVERT 87R
766+82	-	20	CULVERT 89
767+90	-	20	CULVERT 89
790+65	-	20	-
TOTAL		320	

REESTABLISHING SECTION CORNER MONUMENTS

STATION	LOCATION	SPV.0060.03 EACH
589+12.17	88.18' LT	1
615+13.51	47.37' LT	1
693+90.09	2.23' LT	1
720+36.31	2.37' RT	1
TOTAL		4

PROTECTIVE THERMOPLASTIC COATINGS AT SNOWMOBILE TRAIL CROSSINGS

STATION	SPV.0180.01 SY
45+51	50
126+68	50
309+66	50
484+64	50
590+49	50
TOTAL	250

CONSTRUCTION STAKING

STATION	LOCATION	LF	REMARKS
PROJECT 1175-19-60			
19+65 - 139+50	-	-	-
274+25 - 790+65	-	-	-
38+81	-	-	-
302+20	-	-	-
464+93	-	-	-
562+02	-	-	-
710+83	-	-	-
767+36	-	-	-
318+67 - 324+47	RT	580	580
318+65 - 326+63	LT	800	800
322+23 - 322+78	RT	90	90
323+08 - 323+59	RT	80	80
TOTAL		1,380	1,380

LOCATING NO-PASSING ZONES

STATION	LOCATION	648.0100 MI
19+65 - 139+50	-	2.27
274+25 - 790+65	-	9.78
TOTAL		12.05

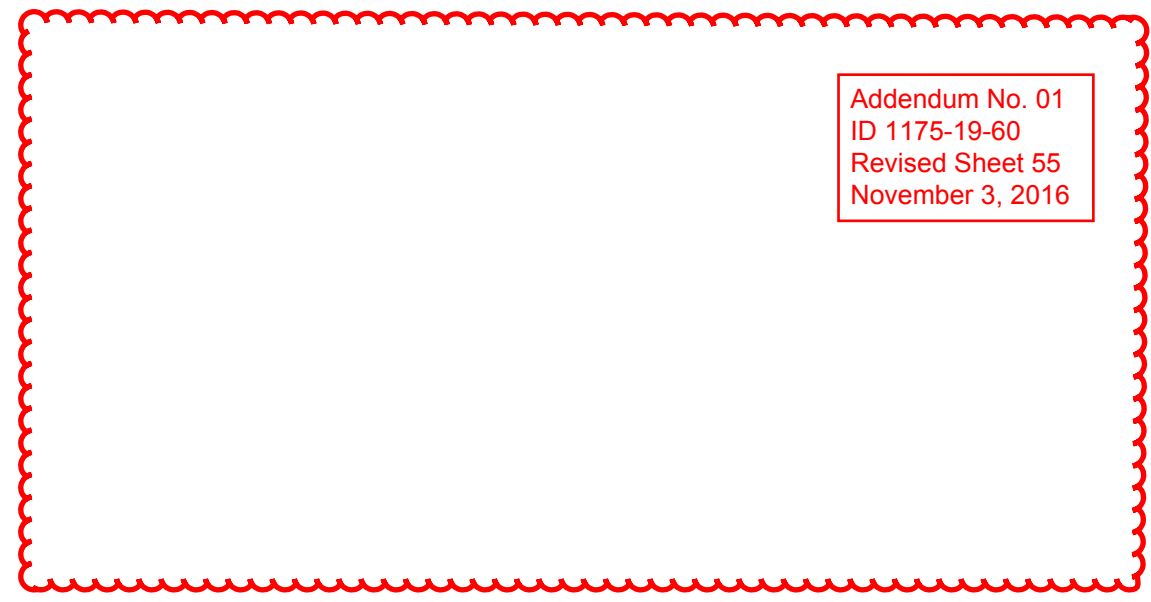
ABANDONING CATTLE PASSES

LOCATION	SPV.0060.01 EACH
11725S NUS HWY 51	1
TOTAL	1

SAWING ASPHALT

STATION	LOCATION	LF	REMARKS
19+65	-	30	-
31+32	LT	15	WEBER RD
32+09	RT	21	OLD 51 RD
38+27	-	30	CULVERT 36
39+35	-	30	CULVERT 36
139+50	-	30	-
274+25	-	30	SOUTH END RD
279+61	RT	25	CULVERT 58
301+66	-	30	CULVERT 58
302+24	-	30	CULVERT 58
306+83	RT	26	-
308+73	RT	33	-
315+51	LT	32	-
316+98	RT	28	-
318+64 - 320+63	LT	800	-
318+67 - 324+46	RT	580	-
323+00	RT	22	CHIC
328+00	LT	18	BARTH RD
464+38	-	30	CULVERT 71
465+48	-	30	CULVERT 71
535+26	LT	21	SHOWBERG PARK RD
561+48	-	30	CULVERT 75R
562+56	-	30	CULVERT 75R
667+53	RT	23	LYON RD
670+46	LT	12	-
693+93	LT	18	TOWN HALL RD
696+42	LT	24	-
710+29	-	30	CULVERT 87R
711+37	-	30	CULVERT 87R
724+89	RT	32	CENTER DR (CHLCC)
725+34	LT	25	KOEHMSTEDT RD
743+94	RT	25	-
747+44	LT	18	-
757+29	RT	30	CHIC
761+66	LT	30	CHIC
766+82	-	30	CULVERT 89
767+90	-	30	CULVERT 89
777+15	RT	22	-
782+89	RT	20	-
790+65	-	30	-
TOTAL		2,380	

**Addendum No. 01
ID 1175-19-60
Revised Sheet 55
November 3, 2016**



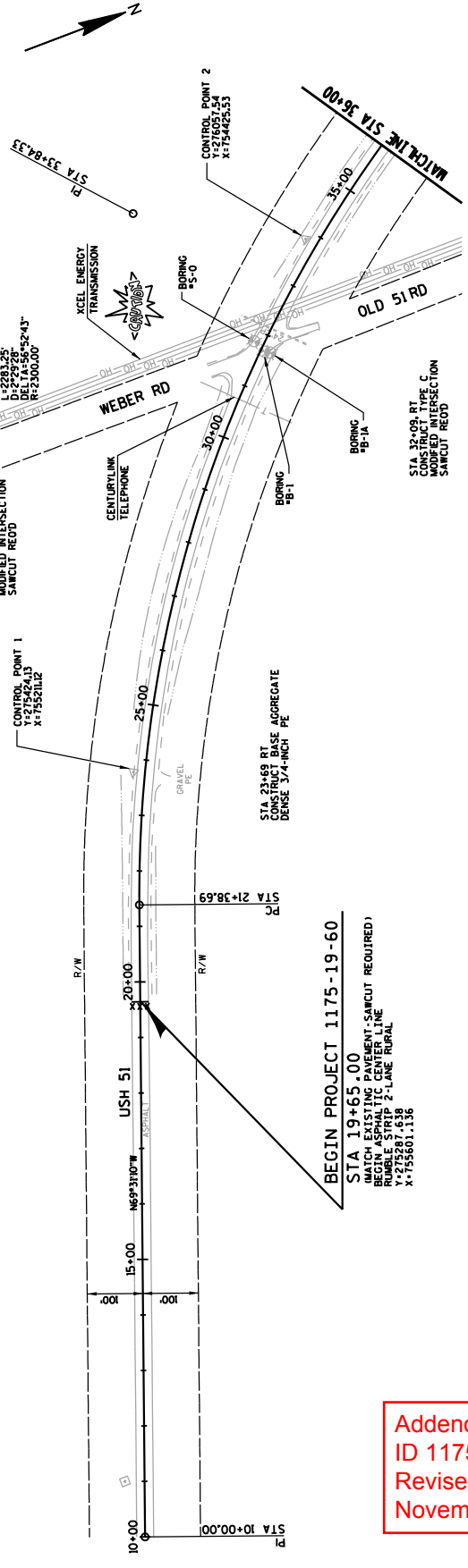
P/STA 10+00.00
X=755605.14

PC STA 2+38.69
X=755438.43

STA 31+32 LT
CONSTRUCT TYPE C
MODIFIED INTERSECTION
SAWCUT REED

P/STA 33+84.33
X=754271.52
T=1245.64
D=2293.28
DELTA=56°52'43"
R=2300.00

NOTE: REFER ELEVATION CORRECTION
REQUIRED. SEE FINISHED TYPICAL SECTIONS.



BEGIN PROJECT 1175-19-60
STA 19+65.00
 (MATCH EXISTING PAVEMENT-SAWCUT REQUIRED)
 REMOVE STRIP 2-LANE RURAL
 Y=275287.638
 X=755601.136

Addendum No. 01
 ID 1175-19-60
 Revised Sheet 56
 November 3, 2016

PT STA 44+21.94
Y=276998.70
X=753996.52

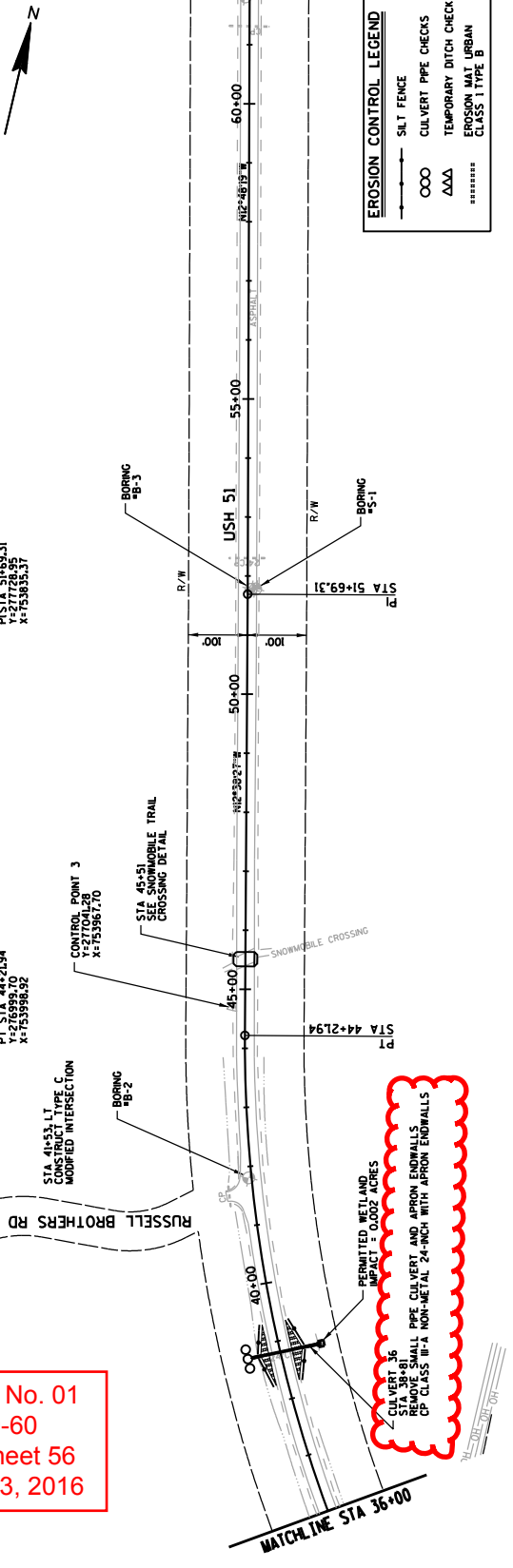
STA 41+53 LT
CONSTRUCT TYPE C
MODIFIED INTERSECTION

STA 45+51
SEE SNOWMOBILE TRAIL
SEE CROSSING DETAIL

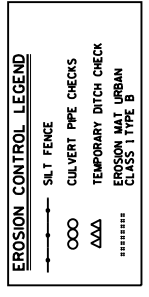
P/STA 51+69.31
X=753855.37

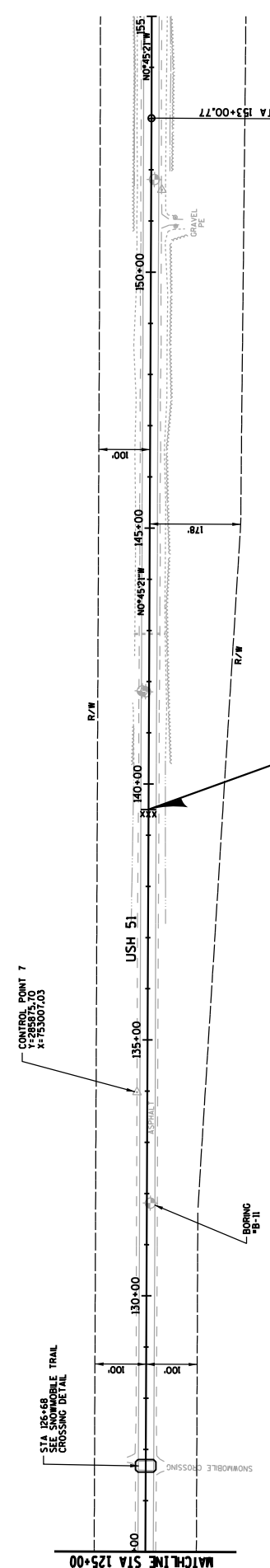
STA 32+09 RT
CONSTRUCT TYPE C
SAWCUT REED

STA 63+79 LT
CONSTRUCT BASE AGGREGATE
DENSE 3/4-INCH PE



PERMITTED WETLAND
 IMPACT - 0.002 ACRES
 CULVERT #36
 REMOVE SMALL PIPE CULVERT AND APRON ENDWALLS
 REMOVE SMALL PIPE CULVERT AND APRON ENDWALLS
 CP CLASS III-A NON-METAL 24-INCH WITH APRON ENDWALLS

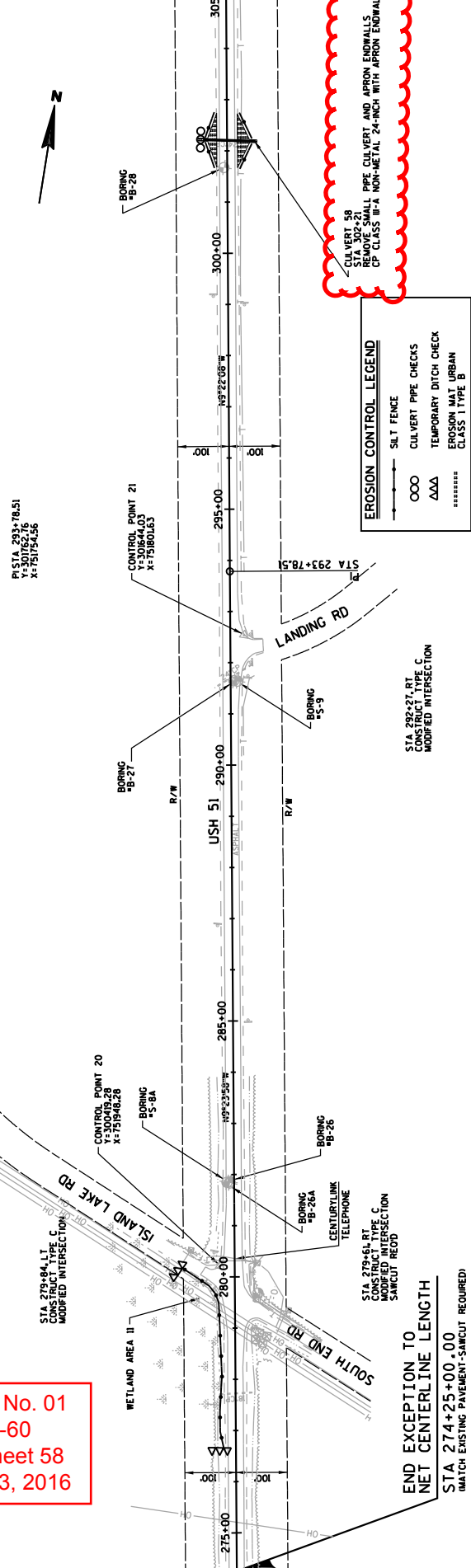




Addendum No. 01
 ID 1175-19-60
 Revised Sheet 58
 November 3, 2016

BEGIN EXCEPTION TO
 NET CENTERLINE LENGTH
 STA 139+50+00.00
 (MATCH EXISTING PAVEMENT-SARICUT REQUIRED)

STA 150+98 RT
 CONSTRUCT BASE AGGREGATE
 DENSE 3/4-INCH PE
 P1 STA 153+00.77
 Y=287778.74
 X=753002.01

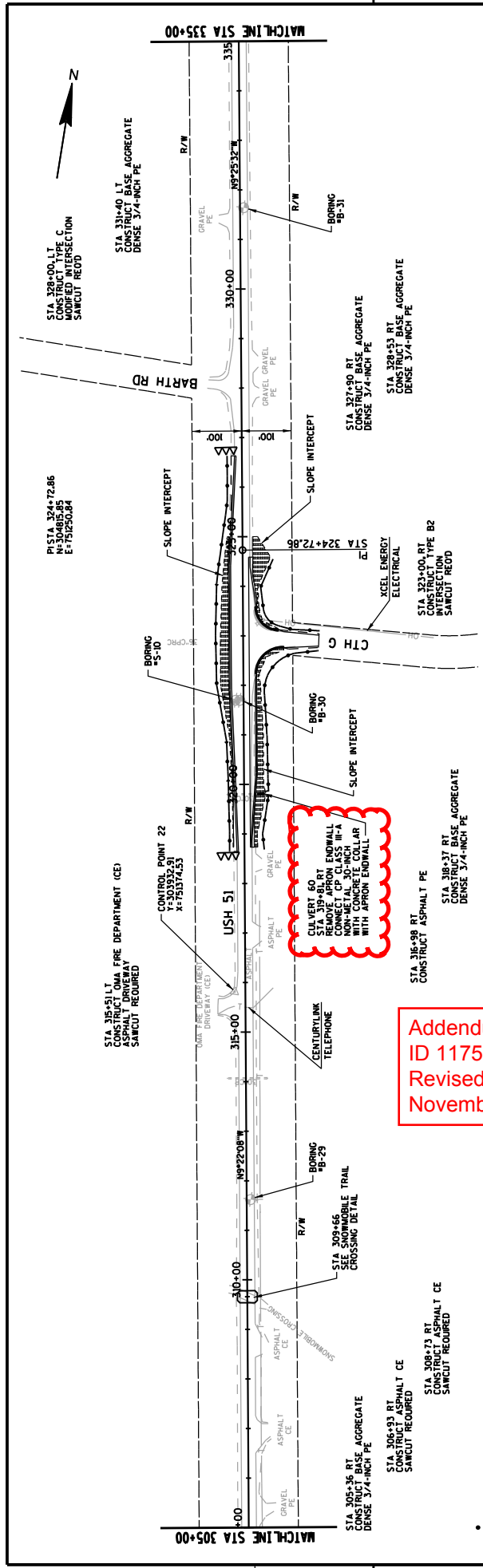


CULVERT 58
 REMOVE SMALL PIPE CULVERT AND APRON ENDWALLS
 CP CLASS III-A NON-METAL 24-INCH WITH APRON ENDWALLS

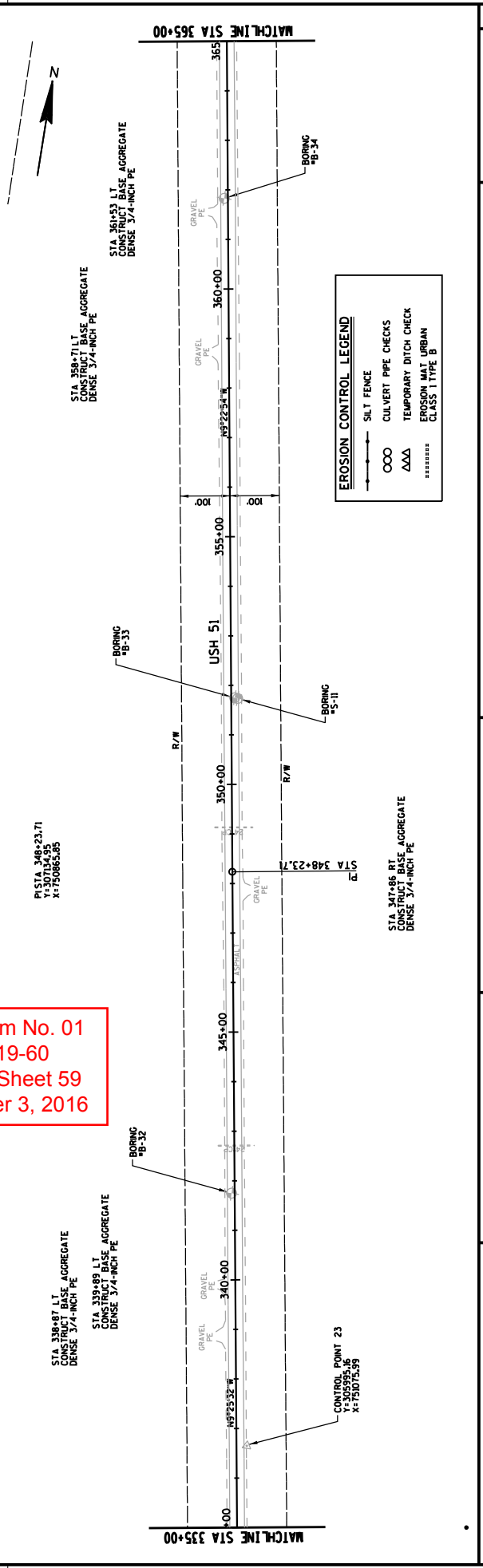
EROSION CONTROL LEGEND	
	SALT FENCE
	CULVERT PIPE CHECKS
	TEMPORARY DITCH CHECK
	EROSION MAT URBAN CLASS I TYPE B

STA 292+37 RT
 CONSTRUCT TYPE C
 MODIFIED INTERSECTION

END EXCEPTION TO
 NET CENTERLINE LENGTH
 STA 274+25+00.00
 (MATCH EXISTING PAVEMENT-SARICUT REQUIRED)



Addendum No. 01
 ID 1175-19-60
 Revised Sheet 59
 November 3, 2016



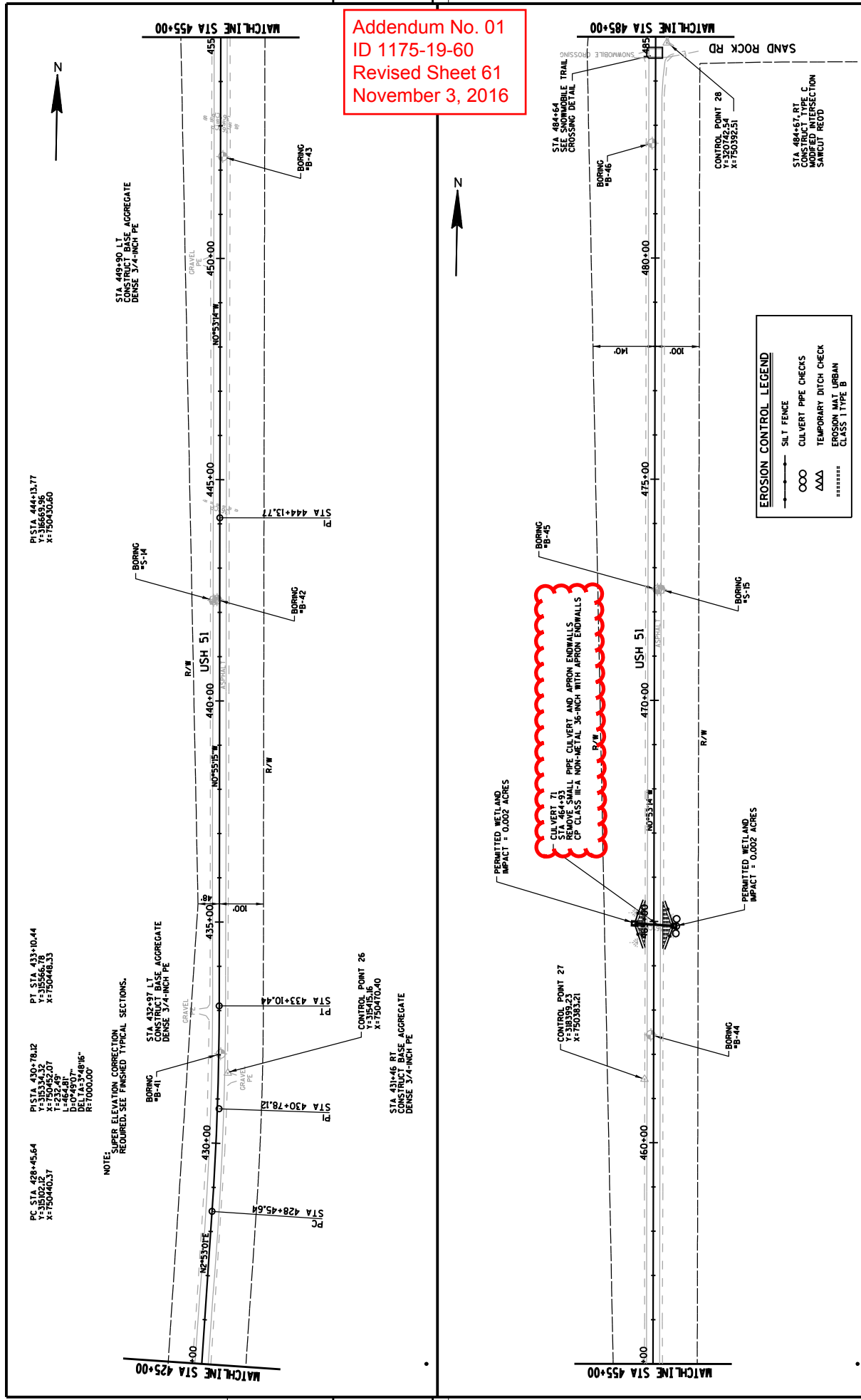
EROSION CONTROL LEGEND

—	SILT FENCE
○	CULVERT PIPE CHECKS
△	TEMPORARY DITCH CHECK
*****	EROSION MAT URBAN CLASS 1 TYPE B

5

5

Addendum No. 01
 ID 1175-19-60
 Revised Sheet 61
 November 3, 2016



EROSION CONTROL LEGEND

- SILT FENCE
- CULVERT PIPE CHECKS
- △△△ TEMPORARY DITCH CHECK
- ***** EROSION MAT URBAN CLASS 1 TYPE B

PC STA 428+45.64
 Y=315002.02
 X=150460.51

PT STA 433+04.44
 Y=315566.78
 X=150460.51

PI STA 430+78.12
 Y=315343.27
 X=150460.51

PI STA 444+13.77
 Y=316693.96
 X=150460.51

PI STA 484+64
 Y=320424.54
 X=150392.51

NOTE: SUPER ELEVATION CORRECTION REQUIRED. SEE FINISHED TYPICAL SECTIONS.

STA 432+97 LT
 CONSTRUCT BASE AGGREGATE
 DENSE 3/4-INCH PE

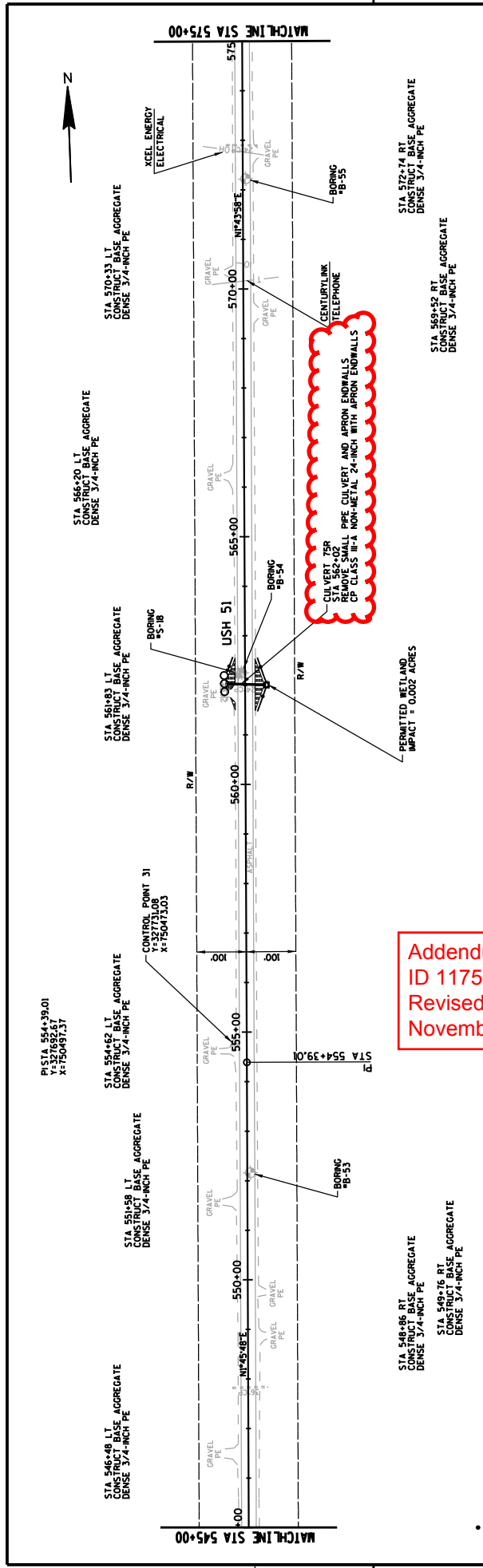
STA 431+46 RT
 CONSTRUCT BASE AGGREGATE
 DENSE 3/4-INCH PE

CULVERT 11
 REMOVE SMALL PIPE CULVERT AND APRON ENDWALLS
 CP CLASS III-A NON-METAL 36-INCH WITH APRON ENDWALLS

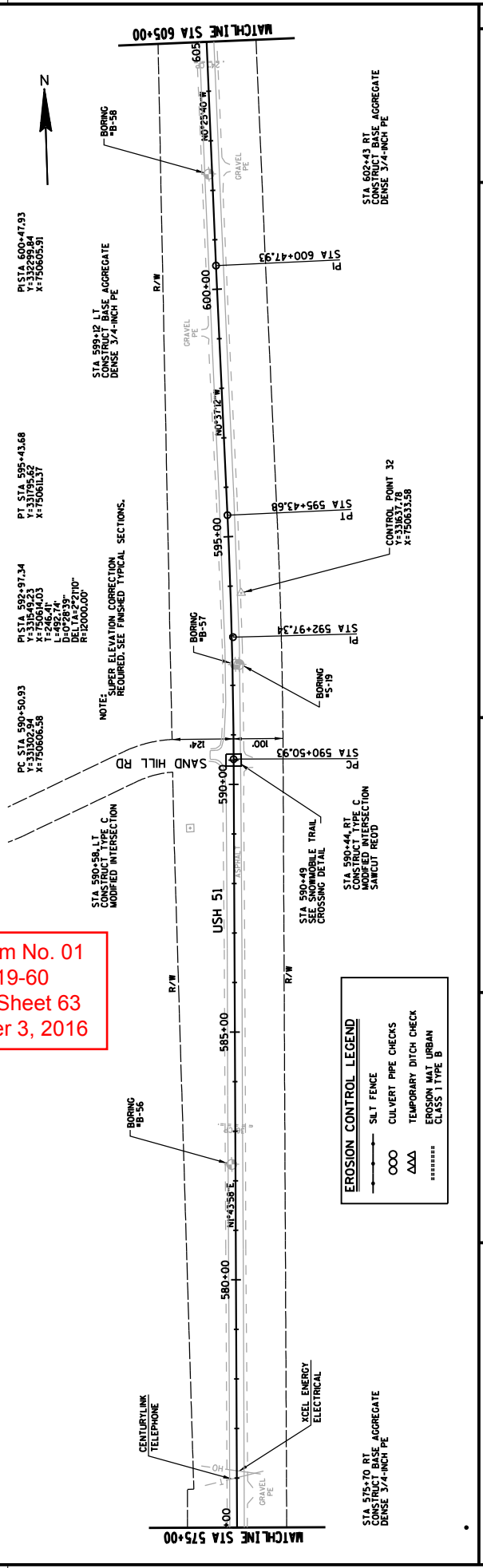
PERMITTED WETLAND
 IMPACT = 0.0002 ACRES

PERMITTED WETLAND
 IMPACT = 0.0002 ACRES

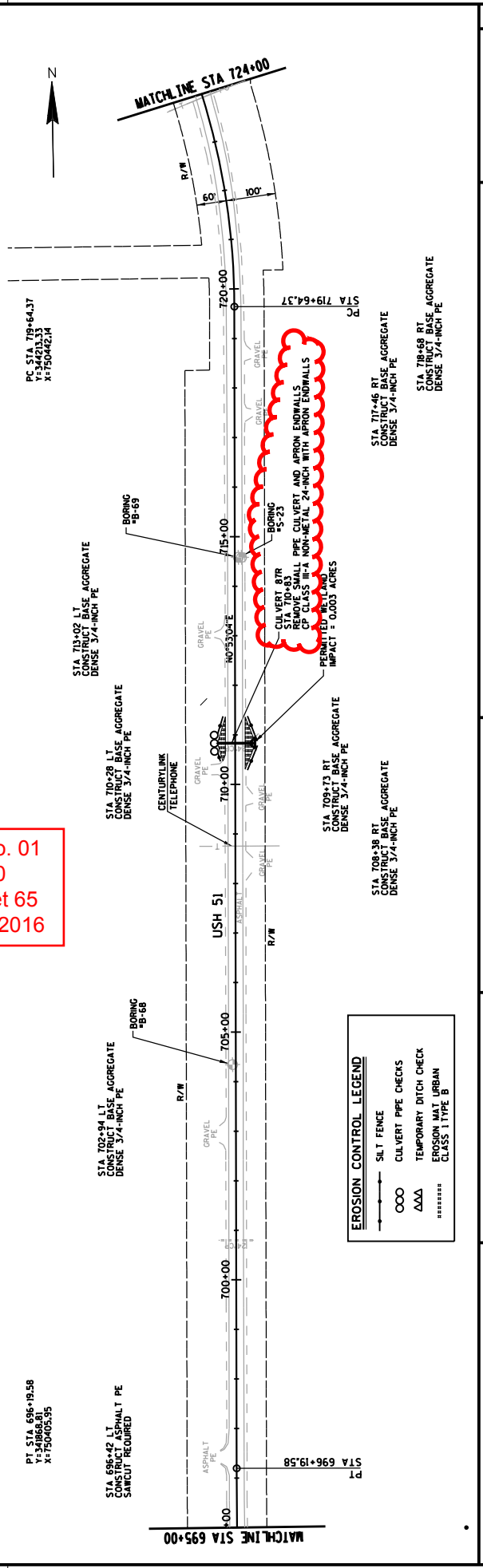
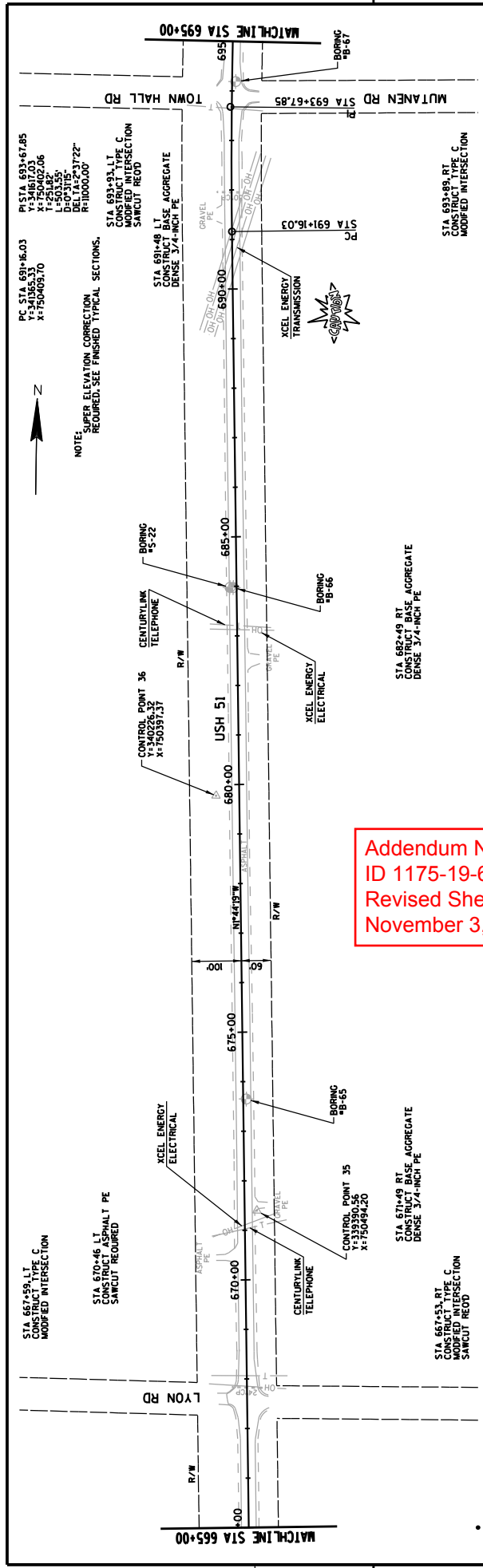




Addendum No. 01
 ID 1175-19-60
 Revised Sheet 63
 November 3, 2016

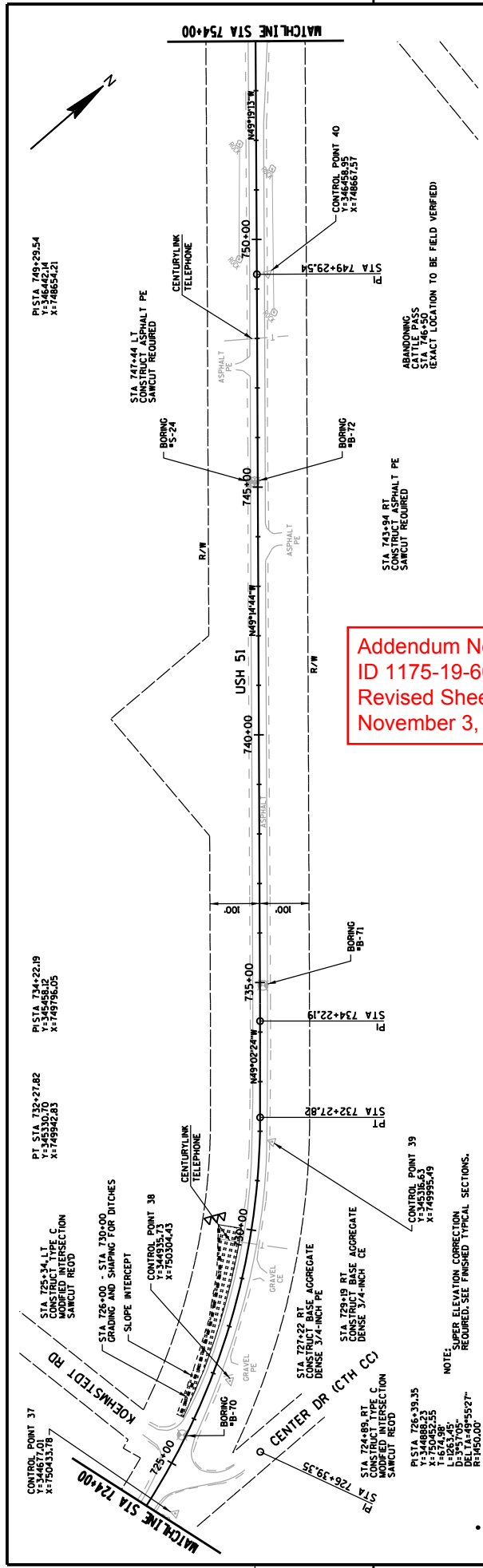


EROSION CONTROL LEGEND	
	SALT FENCE
	CULVERT PIPE CHECKS
	TEMPORARY DITCH CHECK
	EROSION MAT URBAN CLASS 1 TYPE B

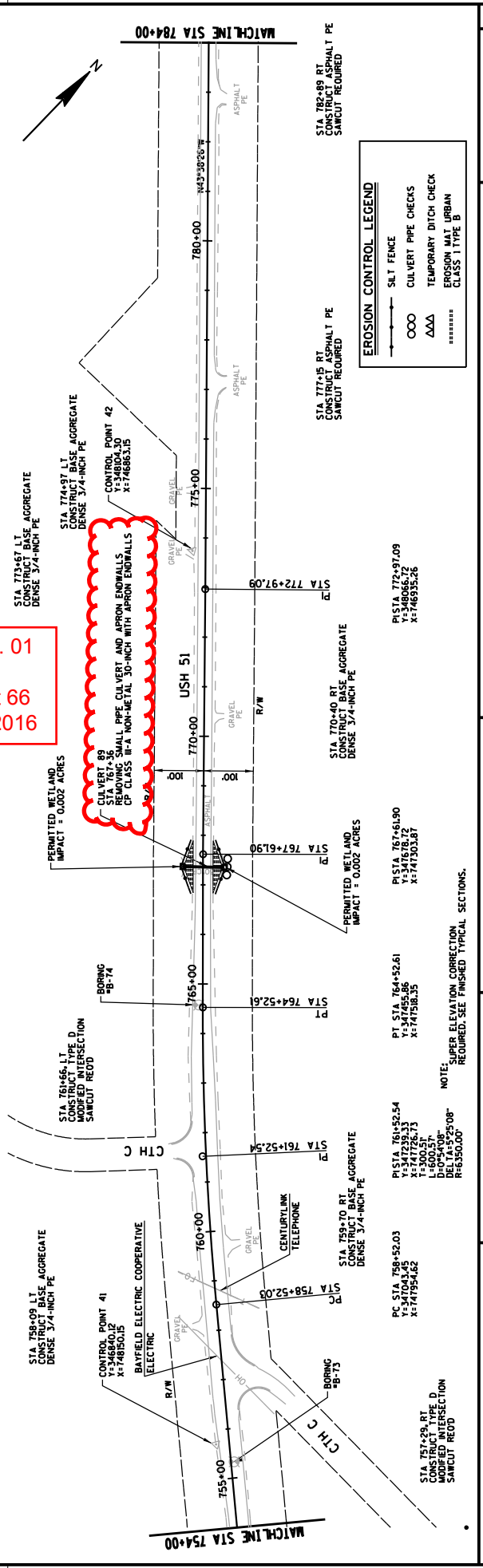


Addendum No. 01
 ID 1175-19-60
 Revised Sheet 65
 November 3, 2016

EROSION CONTROL LEGEND	
	SILT FENCE
	CULVERT PIPE CHECKS
	TEMPORARY DITCH CHECK
	EROSION MAT URBAN CLASS 1 TYPE B



Addendum No. 01
 ID 1175-19-60
 Revised Sheet 66
 November 3, 2016



EROSION CONTROL LEGEND

—	SILT FENCE
○	CULVERT PIPE CHECKS
△	TEMPORARY DITCH CHECK
■	EROSION MAT URBAN
■	CLASS I TYPE B



Proposal Schedule of Items

Proposal ID: 20161108011

Project(s): 1175-19-60

SECTION: 0001 Contract Items

Alt Set ID:

Alt Mbr ID:

Proposal Line Number	Item ID Description	Approximate Quantity and Units	Unit Price	Bid Amount
0010	203.0100 Removing Small Pipe Culverts	6.000 EACH	_____.	_____.
0020	204.0110 Removing Asphaltic Surface	3,350.000 SY	_____.	_____.
0030	204.0115 Removing Asphaltic Surface Butt Joints	155.000 SY	_____.	_____.
0040	204.0120 Removing Asphaltic Surface Milling	218,800.000 SY	_____.	_____.
0050	204.0150 Removing Curb & Gutter	155.000 LF	_____.	_____.
0060	204.9060.S Removing (item description) 01. Apron Endwalls	1.000 EACH	_____.	_____.
0070	205.0100 Excavation Common	760.000 CY	_____.	_____.
0080	209.0100 Backfill Granular	2,050.000 CY	_____.	_____.
0090	211.0400 Prepare Foundation for Asphaltic Shoulders	8.000 STA	_____.	_____.
0100	213.0100 Finishing Roadway (project) 01. 1175-19-60	1.000 EACH	_____.	_____.
0110	305.0110 Base Aggregate Dense 3/4-Inch	1,400.000 TON	_____.	_____.
0120	305.0120 Base Aggregate Dense 1 1/4-Inch	2,000.000 TON	_____.	_____.
0130	305.0500 Shaping Shoulders	1,270.000 STA	_____.	_____.
0140	440.4410 Incentive IRI Ride	24,590.000 DOL	1.00000	24,590.00
0150	455.0605 Tack Coat	5,500.000 GAL	_____.	_____.
0160	460.2000 Incentive Density HMA Pavement	15,960.000 DOL	1.00000	15,960.00



Proposal Schedule of Items

Proposal ID: 20161108011

Project(s): 1175-19-60

SECTION: 0001

Contract Items

Alt Set ID:

Alt Mbr ID:

Proposal Line Number	Item ID Description	Approximate Quantity and Units	Unit Price	Bid Amount
0170	460.4110.S Reheating HMA Pavement Longitudinal Joints	63,450.000 LF	_____.	_____.
0180	460.6223 HMA Pavement 3 MT 58-28 S	150.000 TON	_____.	_____.
0190	460.6224 HMA Pavement 4 MT 58-28 S	170.000 TON	_____.	_____.
0200	460.6244 HMA Pavement 4 MT 58-34 S	24,680.000 TON	_____.	_____.
0210	465.0120 Asphaltic Surface Driveways and Field Entrances	300.000 TON	_____.	_____.
0220	465.0475 Asphalt Center Line Rumble Strips 2-Lane Rural	53,850.000 LF	_____.	_____.
0230	520.8000 Concrete Collars for Pipe	1.000 EACH	_____.	_____.
0300	601.0557 Concrete Curb & Gutter 6-Inch Sloped 36-Inch Type D	165.000 LF	_____.	_____.
0310	618.0100 Maintenance And Repair of Haul Roads (project) 01. 1175-19-60	1.000 EACH	_____.	_____.
0320	619.1000 Mobilization	1.000 EACH	_____.	_____.
0330	624.0100 Water	34.000 MGAL	_____.	_____.
0340	625.0100 Topsoil	9,238.000 SY	_____.	_____.
0350	628.1504 Silt Fence	3,940.000 LF	_____.	_____.
0360	628.1520 Silt Fence Maintenance	3,940.000 LF	_____.	_____.
0370	628.1905 Mobilizations Erosion Control	8.000 EACH	_____.	_____.
0380	628.1910 Mobilizations Emergency Erosion Control	2.000 EACH	_____.	_____.



Proposal Schedule of Items

Proposal ID: 20161108011

Project(s): 1175-19-60

SECTION: 0001

Contract Items

Alt Set ID:

Alt Mbr ID:

Proposal Line Number	Item ID Description	Approximate Quantity and Units	Unit Price	Bid Amount
0390	628.2008 Erosion Mat Urban Class I Type B	9,250.000 SY	_____	_____
0400	628.2027 Erosion Mat Class II Type C	90.000 SY	_____	_____
0410	628.7504 Temporary Ditch Checks	45.000 LF	_____	_____
0420	628.7555 Culvert Pipe Checks	29.000 EACH	_____	_____
0430	629.0210 Fertilizer Type B	5.000 CWT	_____	_____
0440	630.0130 Seeding Mixture No. 30	165.000 LB	_____	_____
0450	630.0160 Seeding Mixture No. 60	2.000 LB	_____	_____
0460	633.5200 Markers Culvert End	13.000 EACH	_____	_____
0470	634.0616 Posts Wood 4x6-Inch X 16-FT	126.000 EACH	_____	_____
0480	634.0618 Posts Wood 4x6-Inch X 18-FT	33.000 EACH	_____	_____
0490	637.2210 Signs Type II Reflective H	602.790 SF	_____	_____
0500	637.2230 Signs Type II Reflective F	347.500 SF	_____	_____
0510	638.2602 Removing Signs Type II	158.000 EACH	_____	_____
0520	638.3000 Removing Small Sign Supports	137.000 EACH	_____	_____
0530	642.5001 Field Office Type B	1.000 EACH	_____	_____
0540	643.0100 Traffic Control (project) 01. 1175-19-60	1.000 EACH	_____	_____
0550	643.0300 Traffic Control Drums	34,344.000 DAY	_____	_____



Proposal Schedule of Items

Proposal ID: 20161108011

Project(s): 1175-19-60

SECTION: 0001 Contract Items

Alt Set ID:

Alt Mbr ID:

Proposal Line Number	Item ID Description	Approximate Quantity and Units	Unit Price	Bid Amount
0560	643.0900 Traffic Control Signs	5,360.000 DAY	_____.	_____.
0570	643.1050 Traffic Control Signs PCMS	28.000 DAY	_____.	_____.
0580	646.0106 Pavement Marking Epoxy 4-Inch	198,150.000 LF	_____.	_____.
0590	646.0126 Pavement Marking Epoxy 8-Inch	610.000 LF	_____.	_____.
0600	646.0406 Pavement Marking Same Day Epoxy 4-Inch	74,030.000 LF	_____.	_____.
0610	647.0566 Pavement Marking Stop Line Epoxy 18-Inch	95.000 LF	_____.	_____.
0620	647.0803 Pavement Marking Aerial Enforcement Bars Epoxy 24-Inch	24.000 LF	_____.	_____.
0630	648.0100 Locating No-Passing Zones	12.050 MI	_____.	_____.
0640	649.0402 Temporary Pavement Marking Paint 4-Inch	74,460.000 LF	_____.	_____.
0650	650.4500 Construction Staking Subgrade	1,380.000 LF	_____.	_____.
0660	650.5000 Construction Staking Base	1,380.000 LF	_____.	_____.
0670	650.5500 Construction Staking Curb Gutter and Curb & Gutter	170.000 LF	_____.	_____.
0680	650.6000 Construction Staking Pipe Culverts	6.000 EACH	_____.	_____.
0690	650.8000 Construction Staking Resurfacing Reference	63,640.000 LF	_____.	_____.
0700	650.9910 Construction Staking Supplemental Control (project) 01. 1175-19-60	LS	LUMP SUM	_____.



Proposal Schedule of Items

Proposal ID: 20161108011

Project(s): 1175-19-60

SECTION: 0001 Contract Items

Alt Set ID: Alt Mbr ID:

Proposal Line Number	Item ID Description	Approximate Quantity and Units	Unit Price	Bid Amount
0710	650.9920 Construction Staking Slope Stakes	1,380.000 LF	_____.	_____.
0720	690.0150 Sawing Asphalt	2,380.000 LF	_____.	_____.
0730	690.0250 Sawing Concrete	320.000 LF	_____.	_____.
0740	ASP.1T0A On-the-Job Training Apprentice at \$5.00/HR	2,000.000 HRS	5.00000	10,000.00
0750	ASP.1T0G On-the-Job Training Graduate at \$5.00/HR	1,260.000 HRS	5.00000	6,300.00
0760	SPV.0060 Special 01. Abandoning Cattle Pass	1.000 EACH	_____.	_____.
0770	SPV.0060 Special 02. Culvert Pipe Transitions	7.000 EACH	_____.	_____.
0780	SPV.0060 Special 03. Reestablishing Section Corner Monuments	4.000 EACH	_____.	_____.
0790	SPV.0060 Special 04. Lane Shift	14.000 EACH	_____.	_____.
0800	SPV.0180 Special 01. Protective Thermoplastic Coating At Snowmobile Trail Crossings	250.000 SY	_____.	_____.
0810	520.1024 Apron Endwalls for Culvert Pipe 24-Inch	8.000 EACH	_____.	_____.
0820	520.1030 Apron Endwalls for Culvert Pipe 30-Inch	3.000 EACH	_____.	_____.
0830	520.1036 Apron Endwalls for Culvert Pipe 36-Inch	2.000 EACH	_____.	_____.
0840	520.3424 Culvert Pipe Class III-A Non-metal 24-Inch	320.000 LF	_____.	_____.
0850	520.3430 Culvert Pipe Class III-A Non-metal 30-Inch	74.000 LF	_____.	_____.



Proposal Schedule of Items

Proposal ID: 20161108011

Project(s): 1175-19-60

SECTION: 0001

Contract Items

Alt Set ID:

Alt Mbr ID:

Proposal Line Number	Item ID Description	Approximate Quantity and Units	Unit Price	Bid Amount
0860	520.3436 Culvert Pipe Class III-A Non-metal 36-Inch	70.000 LF	_____.	_____.
Section: 0001			Total:	_____.
			Total Bid:	_____.