



Wisconsin Department of Transportation

November 2, 2016

Division of Transportation Systems Development

Bureau of Project Development
 4802 Sheboygan Avenue, Rm 601
 P O Box 7916
 Madison, WI 53707-7916

Telephone: (608) 266-1631
 Facsimile (FAX): (608) 266-8459

NOTICE TO ALL CONTRACTORS:

**Proposal #26: 1517-75-87, WISC 2016 415
 USH 10/STH 441
 County CB – Oneida Street
 USH 10
 Winnebago County**

Letting of November 8, 2016

This is Addendum No. 01, which provides for the following:

Special Provisions

Added Special Provisions	
Article No.	Description
19.12	Flagpole 40' HT, Item SPV.0060.016; Flagpole 50' HT, Item SPV.0060.017.

Deleted Special Provisions	
Article No.	Description
19.5	Flagpole 25' HT, Item SPV.0060.012; Flagpole 30' HT, Item SPV.0060.013

Schedule of Items

Revised Bid Item Quantities					
Bid Item	Item Description	Unit	Old Quantity	Revised Quantity	Proposal Total
632.0101.013	Crabapple – 'Spring Snow', B&B, 2-Inch CAL	Each	6	-2	4
632.0101.015	Hawthorne – Thomless Cockspur, B&B, 2 – Inch CAL	Each	18	-3	15
SPV.0060.014	Watering Bag	Each	66	-8	58
632.0101.013	Crabapple – 'Spring Snow', B&B, 2 – Inch CAL	Each	6	-2	4

Added Bid Item Quantities					
Bid Item	Item Description	Unit	Old Quantity	Revised Quantity	Proposal Total
632.0201.031	Dogwood – Gray, Cont., 24 Inch Ht	Each	0	12	12
SPV.0060.016	Flagpole 40' HT	Each	0	2	2
SPV.0060.017	Flagpole 50' HT	Each	0	1	1

Deleted Bid Item Quantities					
Bid Item	Item Description	Unit	Old Quantity	Revised Quantity	Proposal Total
632.0201.017	Hophornbeam, B&B, 2 – Inch CAL	Each	3	-3	0
SPV.0060.012	Flagpole 25' HT	Each	2	-2	0
SPV.0060.013	Flagpole 30' HT	Each	1	-1	0

Plan Sheets

Revised Plan Sheets	
Plan Sheet	Plan Sheet Title (brief description of changes to sheet)
5	Construction Details – update flag pole details
6	Construction Details – update wall details
7	Construction Details – update aluminum edging details
15	Planting Plans – updated planting legend
16	Planting Plans – updated planting legend and planting arrangements and wall layout
17	Planting Plans – updated planting legend and planting arrangements and wall layout
18	Planting Plans – updated planting legend
19	Planting Plans – updated planting legend
20	Planting Plans – updated planting legend
21	Planting Plans – updated planting legend
22	Planting Plans – updated planting legend
23	Planting Plans – updated planting legend
24	Planting Plans – updated planting legend and planting arrangements
25	Planting Plans – Updated planting legend
26	Planting Plans – Updated Plant Date Chart
35	Miscellaneous Quantities – Update quantities based on changes
36	Miscellaneous Quantities – Update quantities based on changes

The responsibility for notifying potential subcontractors and suppliers of these changes remains with the prime contractor.

Sincerely,

Mike Coleman

Proposal Development Specialist
Proposal Management Section

ADDENDUM NO. 01

1517-75-87

November 2, 2016

Special Provisions

19.12 Flagpole 40' HT, Item SPV 0060.016; Flagpole 50' HT, Item SPV 0060.017.

A Description

This work consists of constructing and installing one (1) 50' flagpole and two (2)- 40' flagpoles in concrete footings as shown in the plans.

B Materials

Material shall meet the following manufacturer's standards:

3000 PSI Concrete Footings installed per cross-sections.

Finish: Natural aluminum

Flagpoles shall be Architectural / Commercial grade aluminum. Top of pole shall have round gold anodized finish.

Internal halyard system.

Pole shall have grounding rod welded to 1/4" steel plate at base of foundation.

Concrete shall conform to Sections 501 and 716 (Class III), of the Standard Specifications.

Flagpole suppliers:

Eder Manufacturing
1000 W. Rawson Avenue
Oak Creek, WI 53154
414-344-7002

New Flag LLC
3708 Hampton Ct.
Appleton, WI 54915
920-851-7805

Flag Center
2954 W. North Avenue
Wauwatosa, WI 53222
414-778-1776

Sommerville Flags
2204 Memorial Drive
Appleton, WI 54915
920-733-2203

Manufacturer's pole specifications shall be submitted to the Engineer for approval. Do not start installation until approval from Engineer is received.

C Construction

Flagpole installation shall follow manufacture's specifications and procedures. The following items are incidental to Flagpole:

- Flagpole foundation, excavation, concrete, constructed to the manufacturer's specifications.
- Miscellaneous hardware necessary for completion of fully operational flag pole.

- Repair of damaged turf
- Removing excess excavation from the site

D Measurement

The department will measure Flagpole as each unit, acceptably completed.

E Payment

The department will pay for measured quantities at the contract unit price under the following bid item:

ITEM NUMBER	DESCRIPTION	UNIT
SPV.0060.016	Flagpole 40' HT	Each
SPV.0060.017	Flagpole 50' HT	Each

19.5 DELETED.

Schedule of Items

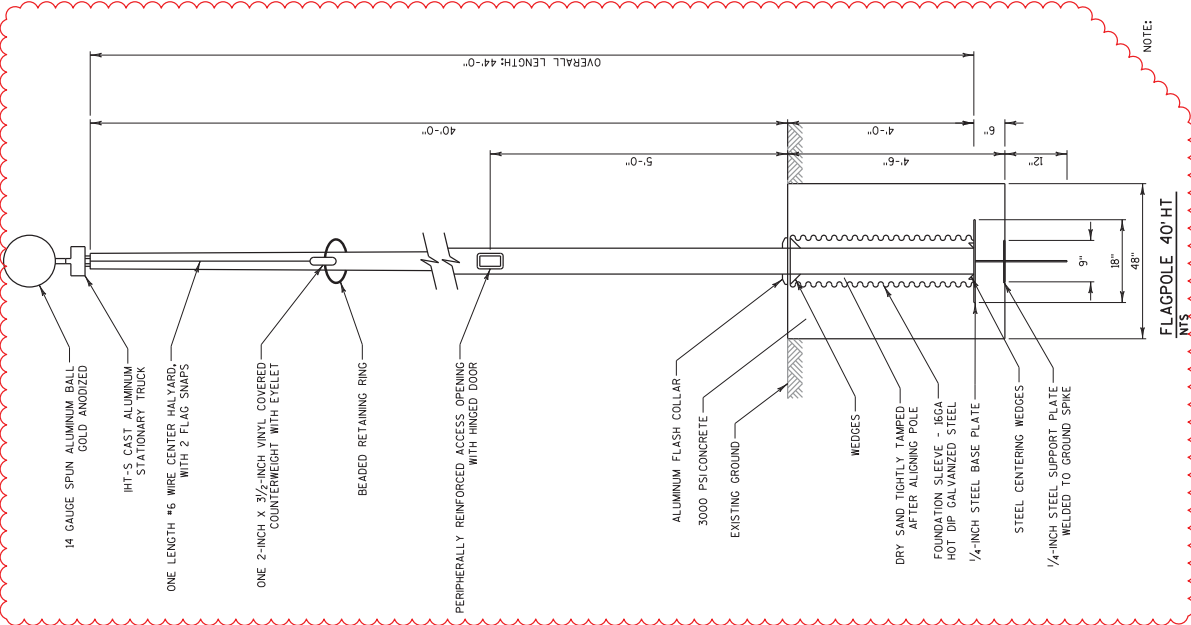
Attached, dated November 2, 2016, are the revised Schedule of Items. All pages of the Schedule of Items are being replaced.

Plan Sheets

The following 8½ x 11-inch sheets are attached and made part of the plans for this proposal:

Revised: 5, 6, 7, 15, 16, 17, 18, 19, 20, 21, 22, 23, 24, 25 and 26.

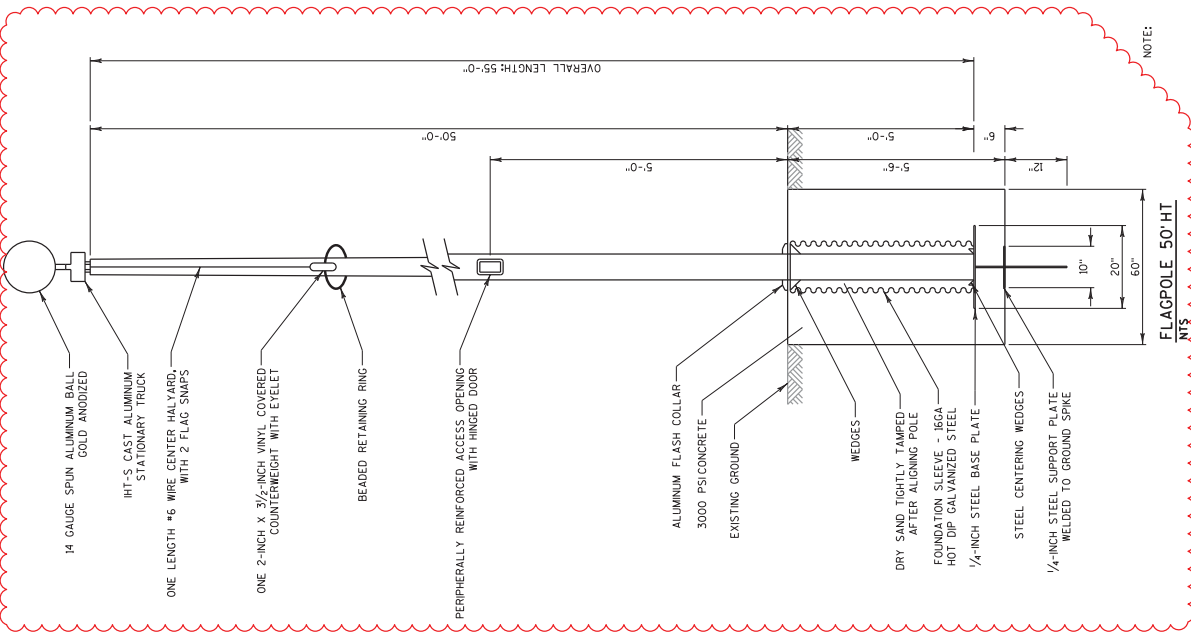
END OF ADDENDUM



Addendum No. 01
 ID 1517-75-87
 Revised Sheet 5
 November 2, 2016

NOTE: ANY DISCREPANCY BETWEEN
 DETAIL SHOWN AND MANUFACTURERS
 RECOMMENDATIONS

SHEET 5 E



NOTE: ANY DISCREPANCY BETWEEN
 DETAIL SHOWN AND MANUFACTURERS
 RECOMMENDATIONS

COUNTY: WINNEBAGO

HWY: USH 10

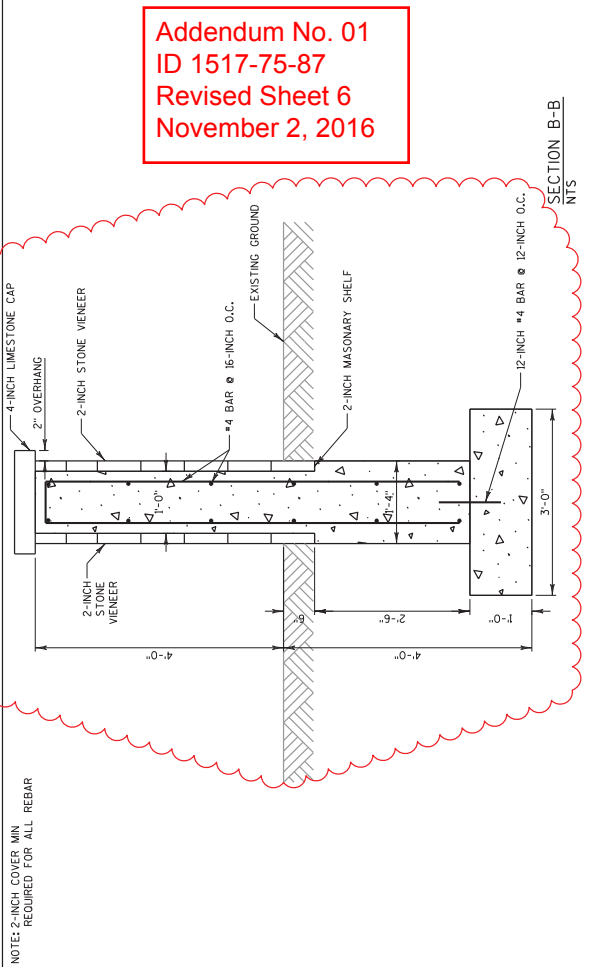
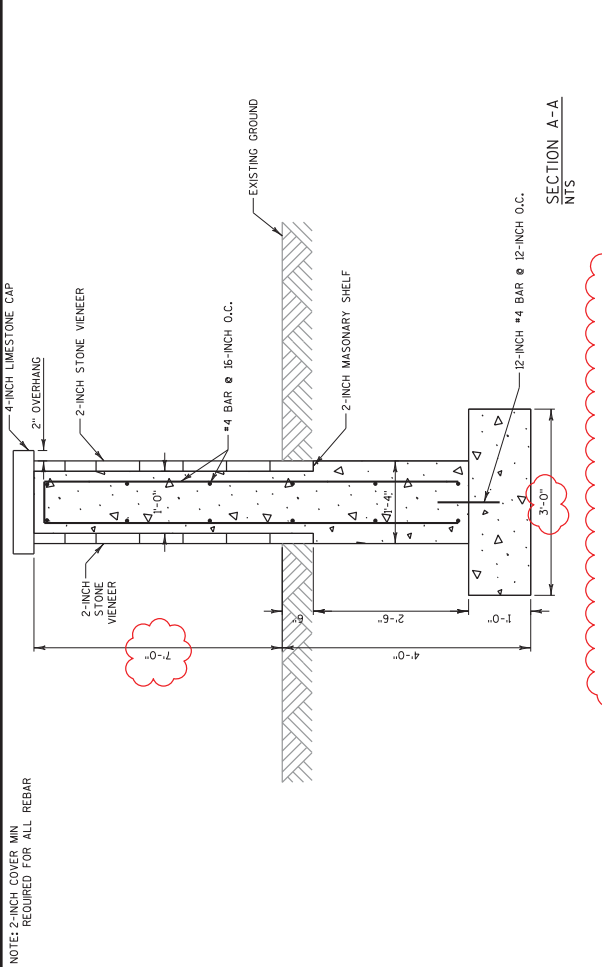
PROJECT NO: 1517-75-87

FILE NAME : I:\56537\1517-75-87\1\56538\021001.Lcd.dgn

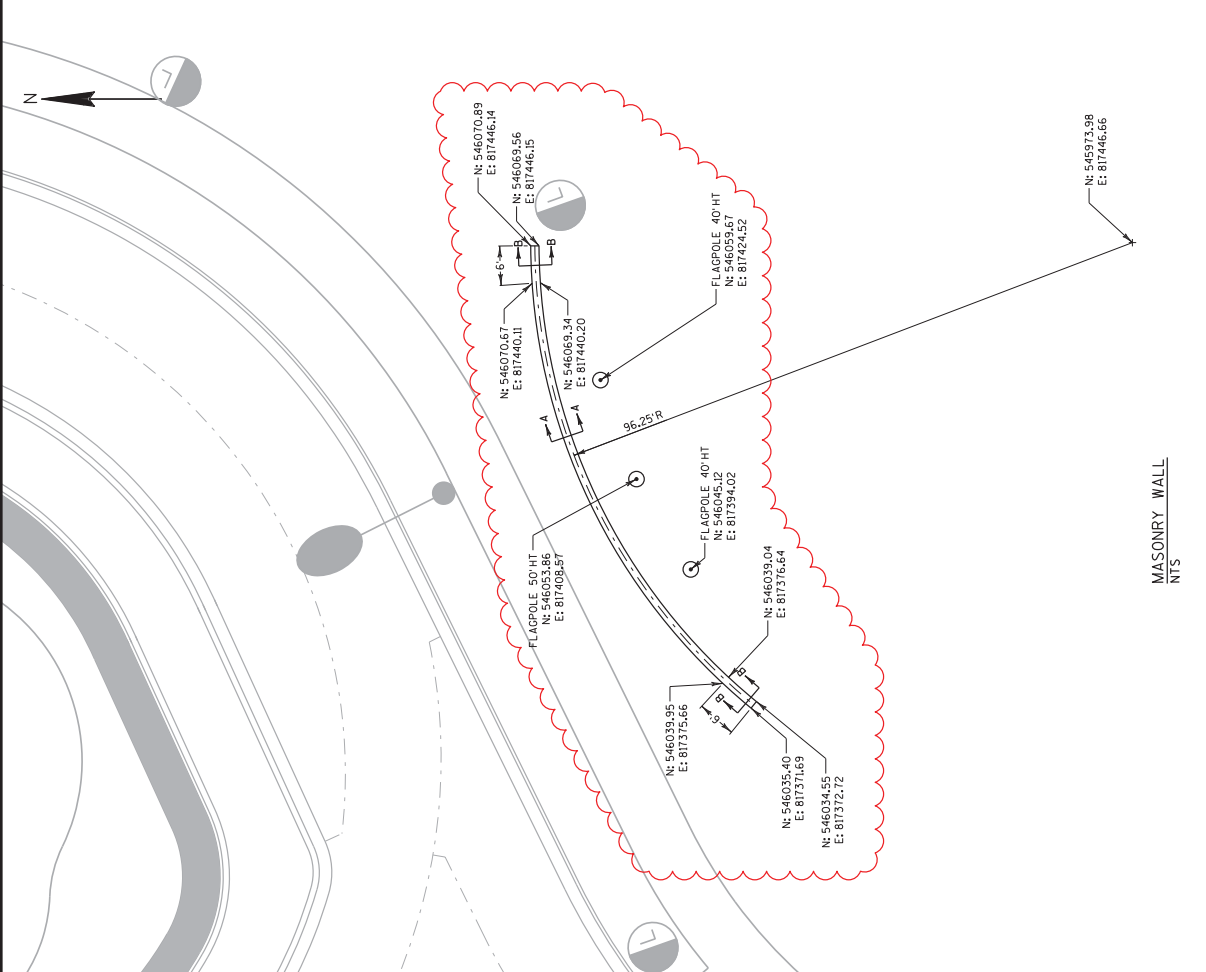
PLOT DATE : 10/31/2016 4:30:43 PM

PLOT NAME : CONSTRUCTION DETAILS

PLOT SCALE : 40:1



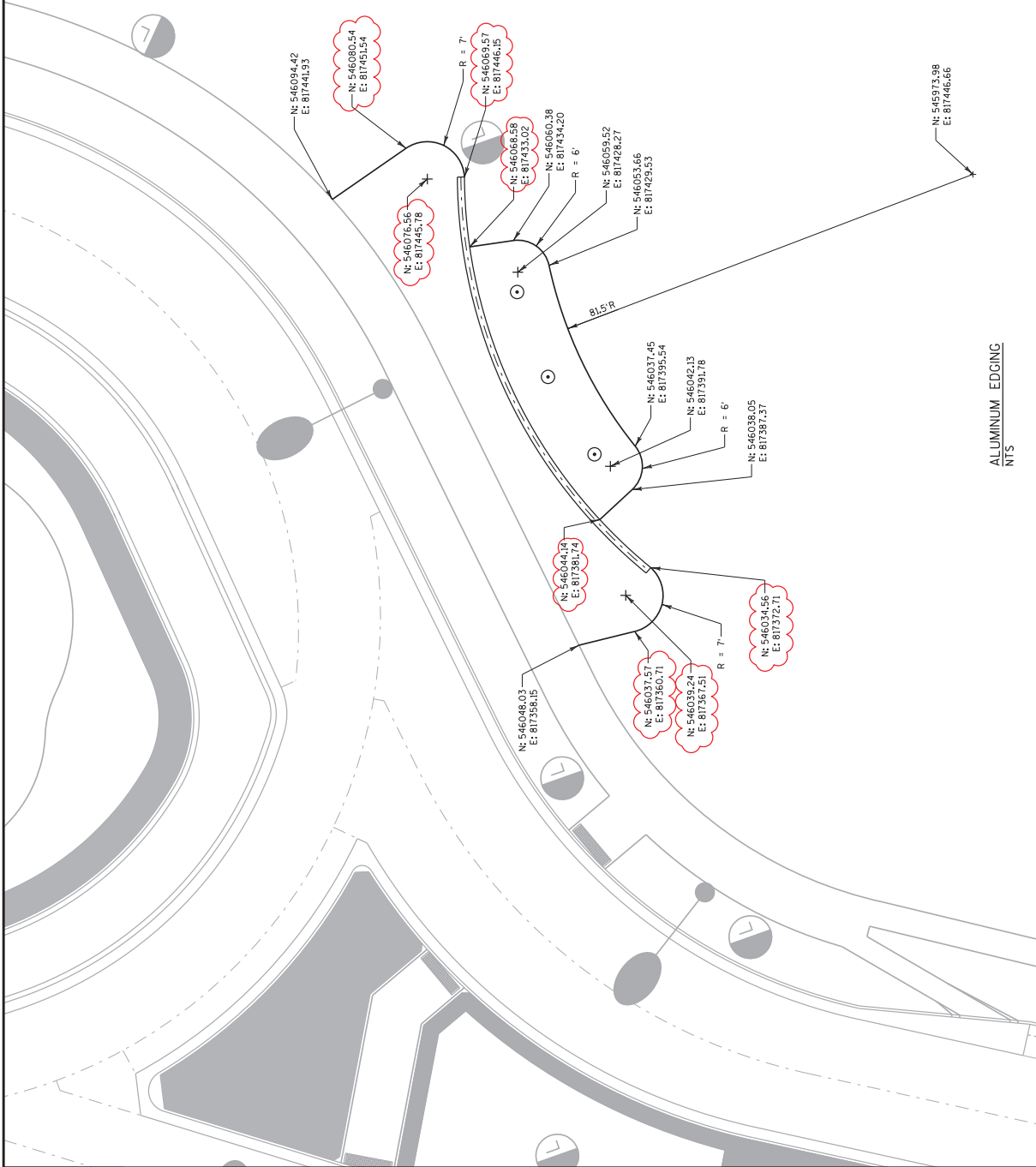
Addendum No. 01
 ID 1517-75-87
 Revised Sheet 6
 November 2, 2016



PROJECT NO: 1517-75-87	COUNTY: WINNEBAGO	CONSTRUCTION DETAILS	SHEET 6
FILE NAME : I:\56537\1517-75-87\1\1\56537\021002_c4.dgn	HWY: USH 10	PLOT NAME : dfe1b8r	WISDOT/CADD SHEET 42
		PLOT DATE : 10/31/2016 4:30:45 PM	PLOT SCALE : 20:1



Addendum No. 01
 ID 1517-75-87
 Revised Sheet 7
 November 2, 2016



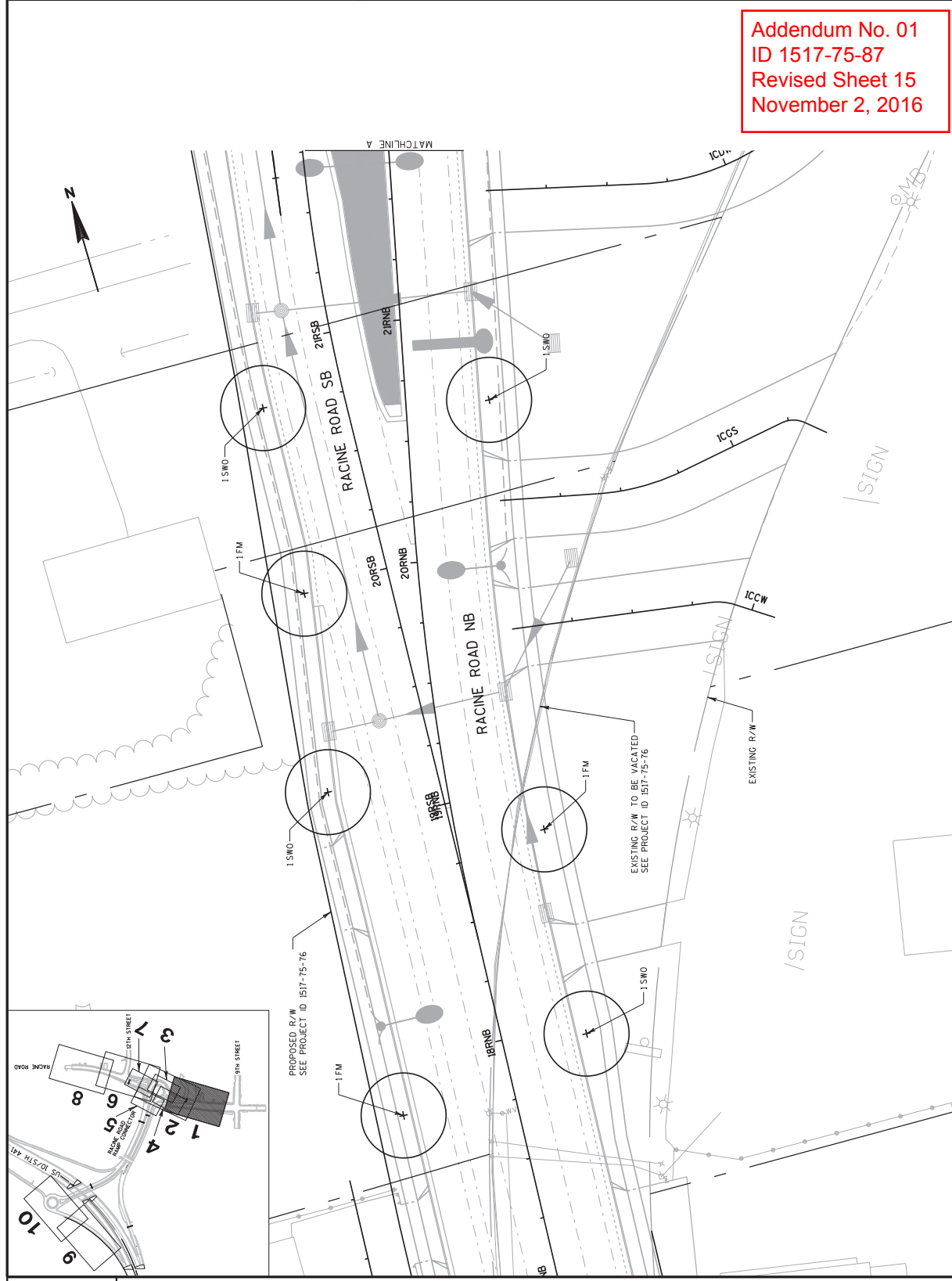
PROJECT NO: 1517-75-87	HWY: USH 10	COUNTY: WINNEBAGO	CONSTRUCTION DETAILS	SHEET 7	E
FILE NAME : I:\56537\1517-75-87\1517-75-87\021003_cad.dgn			PLOT NAME : WISDOT/CADD SHEET 42		
PLOT DATE : 10/31/2016 4:30:47 PM			PLOT SCALE : 20:1		

PLANT KEY	
SYMB.	ABBR. COMMON NAME
DECIDUOUS TREES (SHADE)	
CH	HACKBERRY - COMMON
KC	COFFEE TREE - KENTUCKY ESPRESSO
FM	MAPLE - FREEMAN AUTUMN BLAZE
SM	MAPLE - SUGAR
RO	OAK - BUR
SWO	OAK - SHAMP WHITE
DECIDUOUS TREES (ORNAMENTAL)	
SS	GRABAPPLE - SPRING SNOW
TCH	HAMTHORN - THORNLESS COCKSPUR
EVERGREEN	
T	TARCH. AMERICAN (TAMARACK)
ERIC	RED CEDAR EASTERN
WS	SPRUCE WHITE
SHRUBS	
DBH	HONEY SUCKLE - DWARF BUSH
GLS	SUMAC - GRD. LOW
GD	DOGWOOD GRAY
PERENNIALS, GRASSES & GROUNDCOVERS	
ATC	ACHILLEA - TERRA COTTA
AP	ASTER - PROFESSOR KIPPENBURG
PC	CONEFLOWER - PURPLE
GS	GOLDENROD - STIFF
BMG	GRASS - BLUE MOORE
KFC	GRASS - KARL FORESTER REED
PDG	GRASS - PRAIRIE DROPSIDE
LBG	GRASS - LITTLE BLUESTEM
SP	SALVIA - PERENNIAL
AS	SEDUM - AUTUMN JOY
BES	SUSAN - BLACK EYED
LEGEND	
	EXISTING TREE
	EXISTING CONCRETE SIDEWALK SPECIAL 5 - INCH
	EXISTING LIGHT POLE, ARM MOUNT LUMINAIRE

NOTE:
 1. ADJUST PLANTING LOCATION MIN. 2'-0" LATERAL CLEARANCE FROM ALL MARKED UTILITY LINES AND FACE OF CURB
 2. MULCH IS INCIDENTAL TO TREE PLANTING, SEE PLANT DATA CHART
 3. CONTRACTOR SHALL MARK PLANT LOCATIONS. PLANTINGS SHALL NOT PROCEED WITHOUT APPROVAL OF THE ENGINEER.

SHEET 1 OF 10

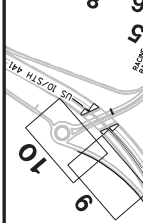
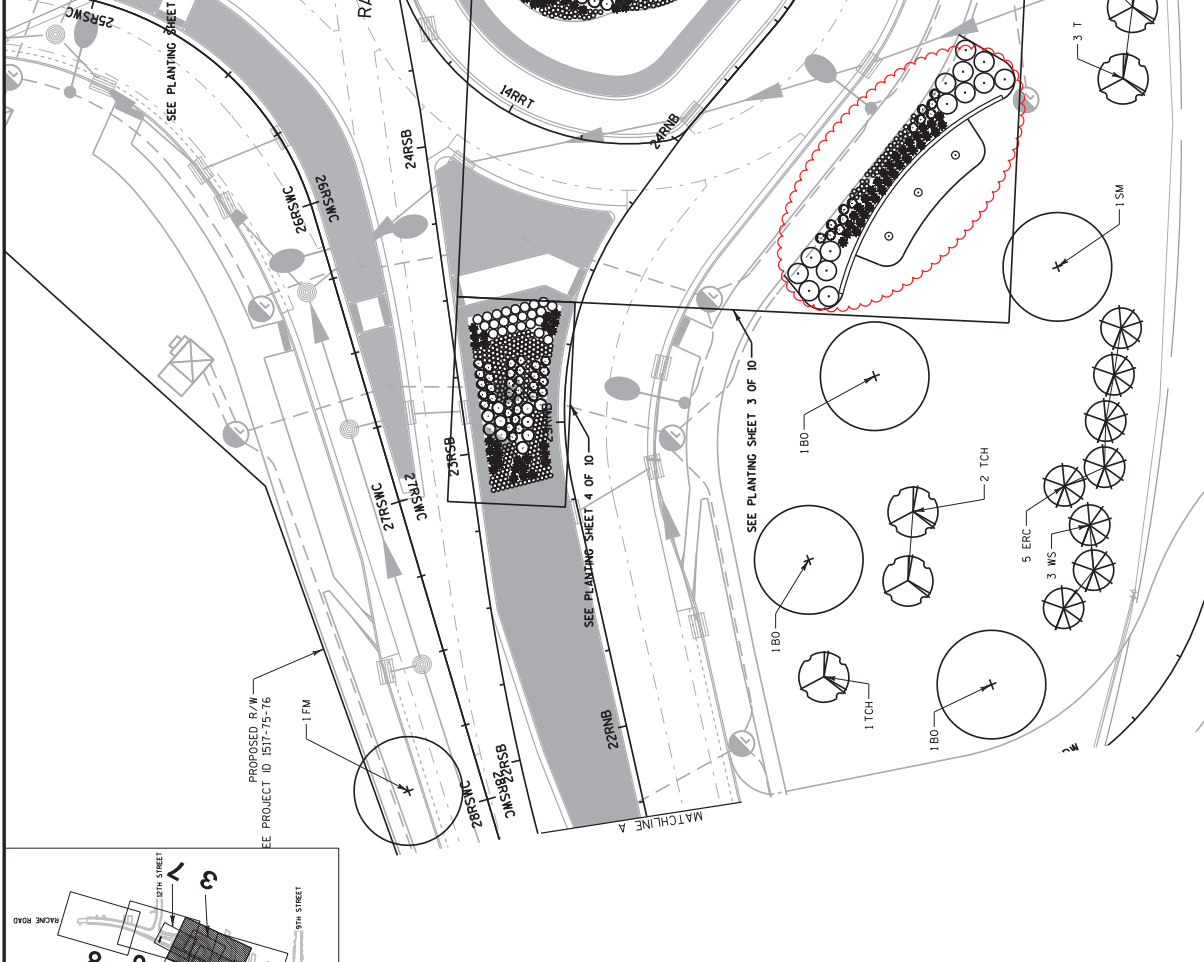
Addendum No. 01
 ID 1517-75-87
 Revised Sheet 15
 November 2, 2016



PLANT KEY	
SYMB.	ABBR. COMMON NAME
DECIDUOUS TREES (SHADE)	
CH	HICKBERRY - COMMON
KC	COFFEE TREE - KENTUCKY ESPRESSO
FK	MAPLE - FREEMAN AUTUMN BLAZE
SM	MAPLE - SUGAR
RO	OAK - BUR
SW	OAK - SHAMP WHITE
DECIDUOUS TREES (ORNAMENTAL)	
SS	GRABAPPLE - SPRING SNOW
TCH	HAMTHORN - THORNLESS COCKSPUR
EVERGREEN	
T	LARCH, AMERICAN (TAMARACK)
ERC	RED CEDAR, EASTERN
WS	SPRUCE, WHITE
SHRUBS	
DBH	HONEY SUCKLE - DWARF BUSH
GLS	SUMAC - GROUND LOW
GD	DOGWOOD, GRAY
PERENNIALS, GRASSES & GROUNDCOVERS	
ATC	ACHILLEA - TERRA COTTA
AP	ASTER - PROFESSOR KIPPENBURG
PC	CONEFLOWER - PURPLE
GS	GOLDENROD - STIFF
BMG	GRASS - BLUE MOORE
KFG	GRASS - KARL FORESTER REED
PDG	GRASS - PRAIRIE DROPSIDE
LBG	GRASS - LITTLE BLUESTEM
SP	SALVIA - PERENNIAL
AS	SEDUM - AUTUMN JOY
BES	SUSAN - BLACK EYED

LEGEND	
	EXISTING TREE
	EXISTING CONCRETE SIDEWALK SPECIAL 5 - INCH
	EXISTING LIGHT POLE, ARM MOUNT LUMINAIRE

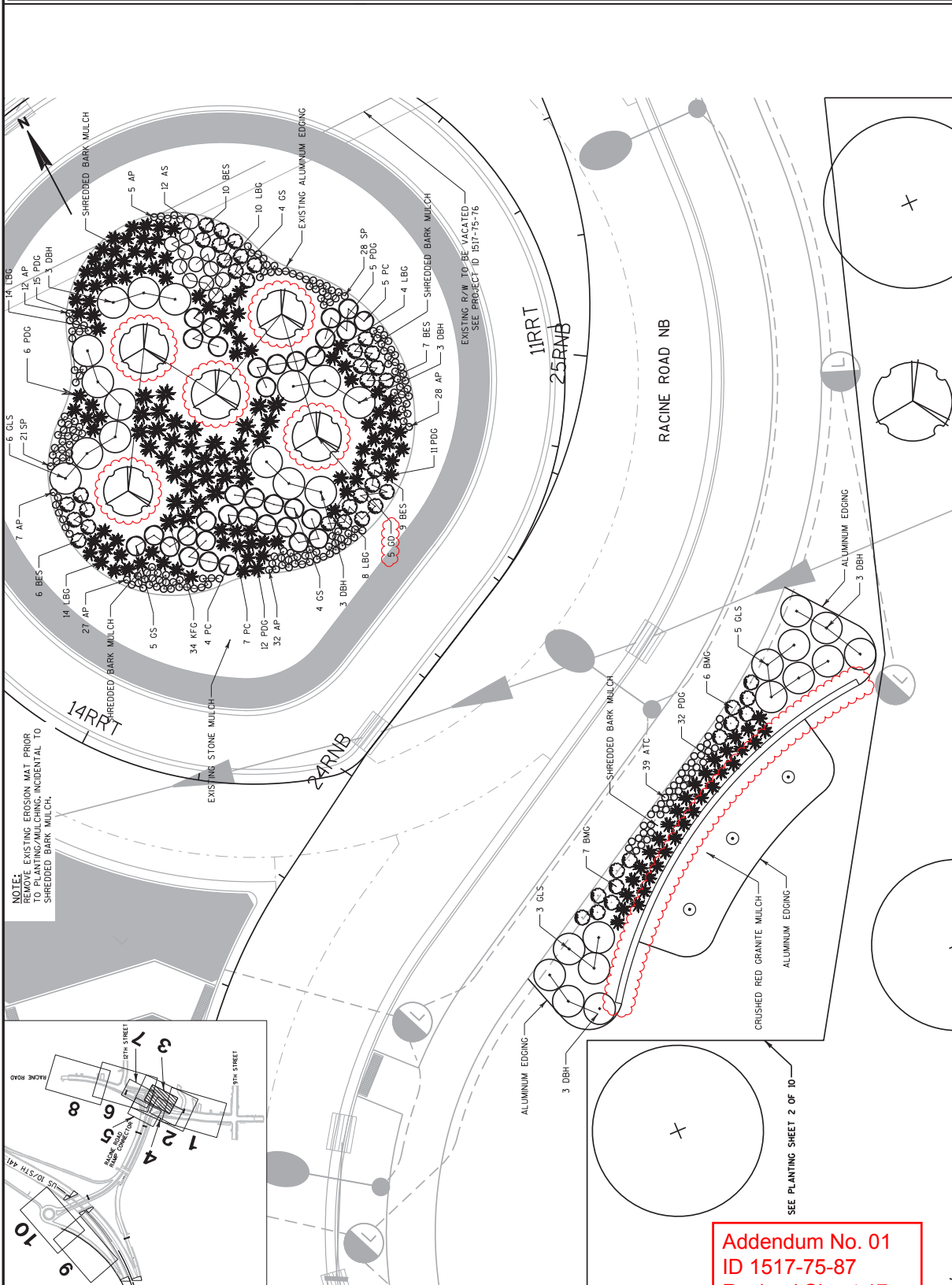
NOTE:
 1. ADJUST PLANTING LOCATION MIN. 2'-0" LATERAL CLEARANCE FROM ALL MARKED UTILITY LINES AND FACE OF CURB
 2. MULCH IS INCIDENTAL TO TREE PLANTING, SEE PLANT DATA CHART
 3. CONTRACTOR SHALL MARK PLANT LOCATIONS. PLANTINGS SHALL NOT PROCEED WITHOUT APPROVAL OF THE ENGINEER.



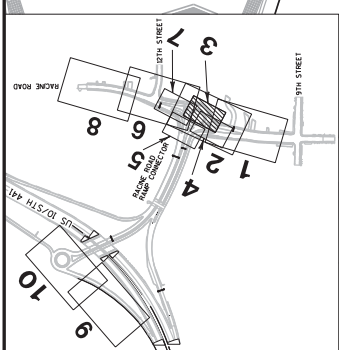
Addendum No. 01
 ID 1517-75-87
 Revised Sheet 16
 November 2, 2016

PLANT KEY	
SYMB.	ABBR. COMMON NAME
DECIDUOUS TREES (SHADE)	
CH	HICKBERRY - COMMON
KC	COFFEETREE - KENTUCKY ESPRESSO
FC	MAPLE - FREEMAN AUTUMN BLAZE
SM	MAPLE - SUGAR
RO	OAK - BUR
SW	OAK - SWAMP WHITE
DECIDUOUS TREES (ORNAMENTAL)	
SS	GRABAPPLE - SPRING SNOW
TCH	HAMTHORN - THORNLESS COCKSPUR
EVERGREEN	
T	LARCH, AMERICAN (TAMARACK)
ERC	RED CEDAR, EASTERN
WS	SPRUCE, WHITE
SHRUBS	
DBH	HONEYBUCKLE - DWARF BUSH
GLS	SUNAIL - GRD. LOW
GD	DOGWOOD, GRAY
PERENNIALS, GRASSES & GROUNDCOVERS	
ATC	ACHILLEA - TERRA COTTA
AP	ASTER - PROFESSOR KIPPENBURG
PC	CONEFLOWER - PURPLE
GS	GOLDENROD - STIFF
BNG	GRASS - BLUE MOORE
KFG	GRASS - KARL FORESTER REED
PDG	GRASS - PRAIRIE DROPSIDE
LBG	GRASS - LITTLE BLUESTEM
SP	SALVIA - PERENNIAL
AS	SEDUM - AUTUMN JOY
BES	SUSAN - BLACK EYED
LEGEND	
	EXISTING TREE
	EXISTING CONCRETE SIDEWALK SPECIAL 5 - INCH
	EXISTING LIGHT POLE, ARM MOUNT LUMINAIRE

NOTE:
 1. ADJUST PLANTING LOCATION MIN. 2'-0" LATERAL CLEARANCE FROM ALL MARKED UTILITY LINES AND FACE OF CURB
 2. MULCH IS INCIDENTAL TO TREE PLANTING, SEE PLANT DATA CHART
 3. CONTRACTOR SHALL MARK PLANT LOCATIONS. PLANTINGS SHALL NOT PROCEED WITHOUT APPROVAL OF THE ENGINEER.



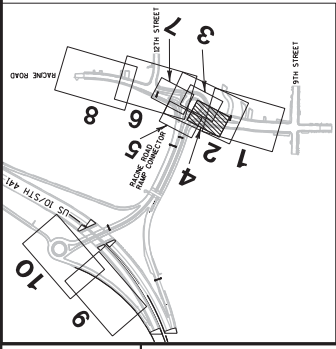
NOTE: EXISTING ERSON MAT PRIOR TO PLANTING/MULCHING INCIDENTAL TO SHREDDERED BARK MULCH.



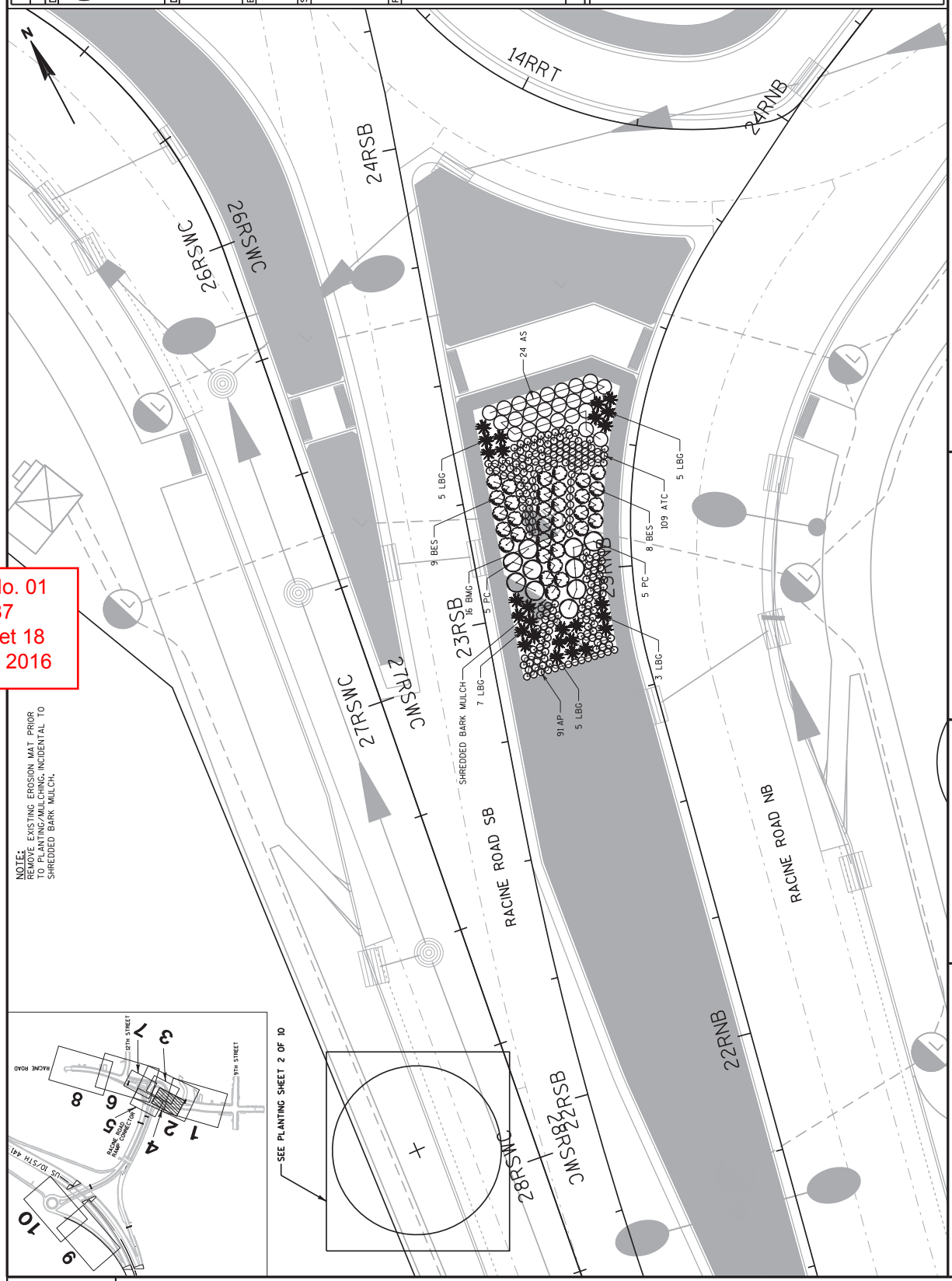
Addendum No. 01
 ID 1517-75-87
 Revised Sheet 17
 November 2, 2016

Addendum No. 01
 ID 1517-75-87
 Revised Sheet 18
 November 2, 2016

NOTE: EXISTING EROSION MAT PRIOR TO PLANTING/MULCHING INCIDENTAL TO SHREDDED BARK MULCH.



SEE PLANTING SHEET 2 OF 10



PLANT KEY	
SYMB.	ABBR. COMMON NAME
DECIDUOUS TREES (SHADE)	
CH	HACKBERRY - COMMON
KC	COFFEETREE - KENTUCKY ESPRESSO
FG	MAPLE - FREEMAN AUTUMN BLAZE
SM	MAPLE - SUGAR
RO	OAK - BUR
SW	OAK - SWAMP WHITE
DECIDUOUS TREES (ORNAMENTAL)	
SS	GRABAPPLE - SPRING SNOW
TCH	HAMTHORN - THORNLESS COCKSPUR
EVERGREEN	
T	LARCH, AMERICAN (TAMARACK)
ERC	RED CEDAR, EASTERN
WS	SPRUCE, WHITE
SHRUBS	
DBH	HONEYBUCKLE - DWARF BUSH
GLS	SUMAC - GROUND LOW
GD	DOGWOOD, GRAY
PERENNIALS, GRASSES & GROUNDCOVERS	
ATC	ACHILLEA - TERRA COTTA
AP	ASTER - PROFESSOR KIPPENBURG
PC	CONEFLOWER - PURPLE
GS	GOLDENROD - STIFF
BMG	GRASS - BLUE MOORE
KFG	GRASS - KARL FORESTER REED
PDC	GRASS - PRAIRIE DROPSIDE
LBG	GRASS - LITTLE BLUESTEM
SP	SALVIA - PERENNIAL
AS	SEDUM - AUTUMN JOY
BES	SUSAN - BLACK EYED
LEGEND	
	EXISTING TREE
	EXISTING CONCRETE SIDEWALK
	SPECIAL 5 - INCH
	EXISTING LIGHT POLE, ARM MOUNT LUMINAIRE

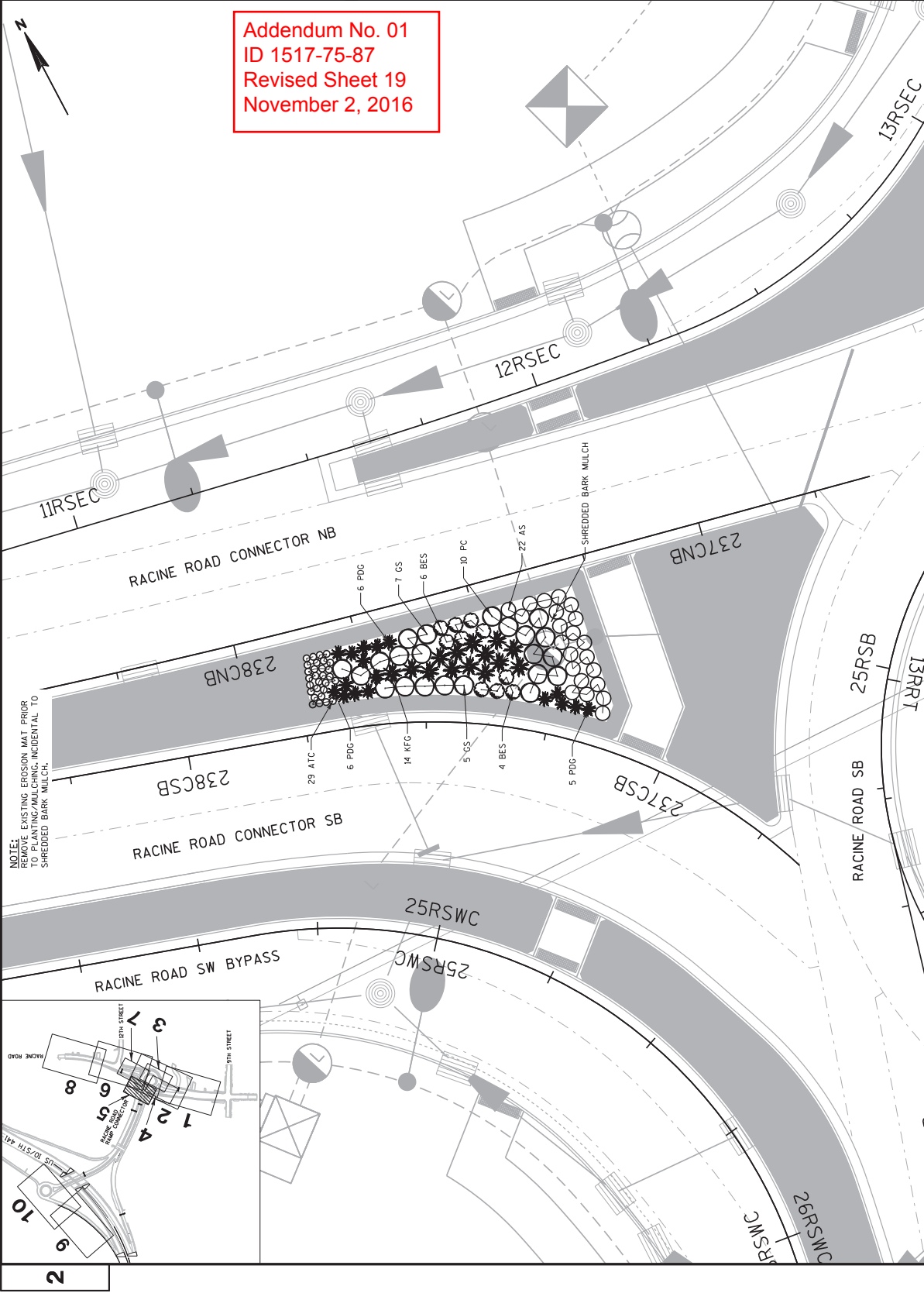
NOTE:
 1. ADJUST PLANTING LOCATION MIN. 2'-0" LATERAL CLEARANCE FROM ALL MARKED UTILITY LINES AND FACE OF CURB
 2. MULCH IS INCIDENTAL TO TREE PLANTING, SEE PLANT DATA CHART
 3. CONTRACTOR SHALL MARK PLANT LOCATIONS. PLANTINGS SHALL NOT PROCEED WITHOUT APPROVAL OF THE ENGINEER.

SHEET 4 OF 10

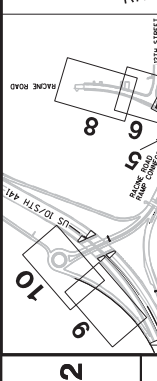
SYMBOL	ABBR.	COMMON NAME
DECIDUOUS TREES (SHADE)		
	CK	MACYBERRY - COMMON
	KC	COFFEETREE - KENTUCKY ESPRESSO
	FM	MARLE - FREEMAN AUTUMN BLAZE
	SM	MARLE - SUGAR
	RO	OAK - BUR
	SNO	OAK - SHAMP WHITE
DECIDUOUS TREES (ORNAMENTAL)		
	SS	GRABAPPLE - SPRING SNOW
	TCH	HAMTHORN - THORNLESS COCKSPUR
EVERGREEN		
	T	LARCH AMERICAN (TAMARACK)
	ERC	RED CEDAR EASTERN
	WS	SPRUCE WHITE
SHRUBS		
	DBH	HONEYBUCKLE - DWARF BUSH
	GLS	SUMAC - GROUND LOW
	GD	DODGEWOOD GRAY
PERENNIALS, GRASSES & GROUNDCOVERS		
	ATC	ACHILLEA - TERRA COTTA
	AP	ASTER - PROFESSOR KIPPENBURG
	PC	CONEFLOWER - PURPLE
	GS	GOLDENROD - STEFF
	BMG	GRASS - BLUE MOORE
	KFC	GRASS - KARL FORESTER REED
	PDG	GRASS - PRAIRIE DROPSSEED
	LBG	GRASS - LITTLE BLUESTEM
	SP	SALVIA - PERENNIAL
	AS	SEDUM - AUTUMN JOY
	BES	SUSAN - BLACK EYED

LEGEND	
	EXISTING TREE
	EXISTING CONCRETE SIDEWALK SPECIAL 5 - INCH
	EXISTING LIGHT POLE, ARM MOUNT LUMINAIRE

NOTE:
 1. ADJUST PLANTING LOCATION MIN. 2'-0" LATERAL CLEARANCE FROM ALL MARKED UTILITY LINES AND FACE OF CURB
 2. MULCH IS INCIDENTAL TO TREE PLANTING. SEE PLANT DATA CHART
 3. CONTRACTOR SHALL MARK PLANT LOCATIONS. PLANTINGS SHALL NOT PROCEED WITHOUT APPROVAL OF THE ENGINEER.



Addendum No. 01
 ID 1517-75-87
 Revised Sheet 19
 November 2, 2016



INDICATE EXISTING EROSION MAT PRIOR TO PLANTING/MULCHING INCIDENTAL TO SHREDDED BARK MULCH.

PLOT DATE : 10/31/2016 4:33:05 PM PLOT BY : cfrabdr

PLOT NAME : #FILE# PLOT SCALE : 20:1

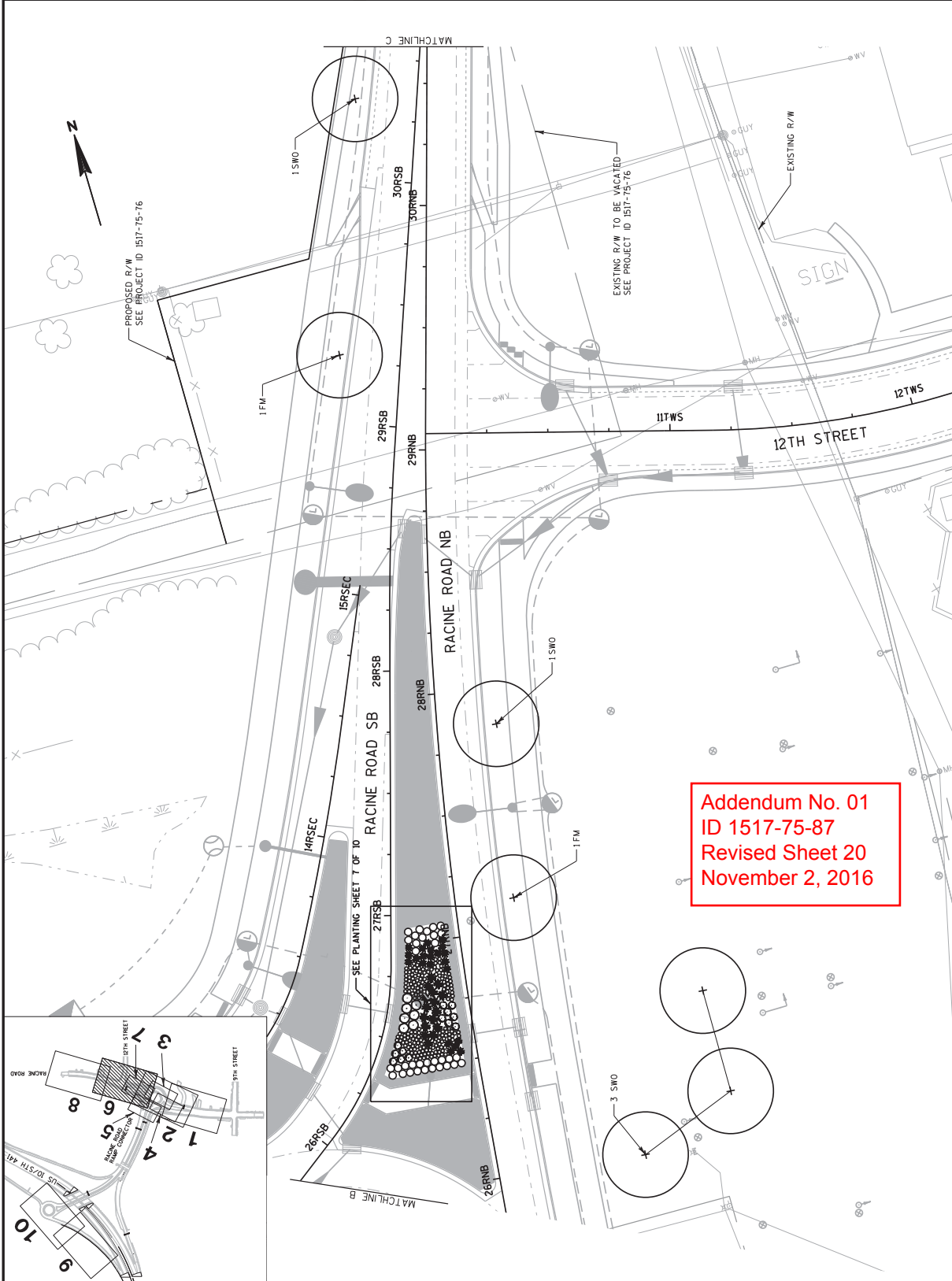
SHEET 5 OF 10

WISDOT/CADD SHEET 42

PLANT KEY	
SYMB.	ABBR. COMMON NAME
DECIDUOUS TREES (SHADE)	
CH	HAWKBIT - COMMON
KC	COFFEETREE - KENTUCKY ESPRESSO
FC	MAPLE - FREEMAN AUTUMN BLAZE
SM	MAPLE - SUGAR
RO	OAK - BUR
SWO	OAK - SHAMP WHITE
DECIDUOUS TREES (ORNAMENTAL)	
SS	GRABAPPLE - SPRING SNOW
TCH	HAMTHORN - THORNLESS COCKSPUR
EVERGREEN	
T	LARCH AMERICAN (TAMARACK)
ERIC	RED CEDAR EASTERN
WS	SPRUCE WHITE
SHRUBS	
DBH	HONEYBUCKLE - DWARF BUSH
GLS	SUMAC - GRD LOW
GD	DOGWOOD GRAY
PERENNIALS, GRASSES & GROUNDCOVERS	
ATC	ACHILLEA - TERRA COTTA
AP	ASTER - PROFESSOR KIPPENBURG
PC	CONEFLOWER - PURPLE
GS	GOLDENROD - STIFF
BMG	GRASS - BLUE MOORE
KFG	GRASS - KARL FORESTER REED
PDC	GRASS - PRAIRIE DROPSIDE
LBG	GRASS - LITTLE BLUESTEM
SP	SALVIA - PERENNIAL
AS	SEDUM - AUTUMN JOY
BES	SUSAN - BLACK EYED
LEGEND	
	EXISTING TREE
	EXISTING CONCRETE SIDEWALK SPECIAL 5 - INCH
	EXISTING LIGHT POLE, ARM MOUNT LUMINAIRE

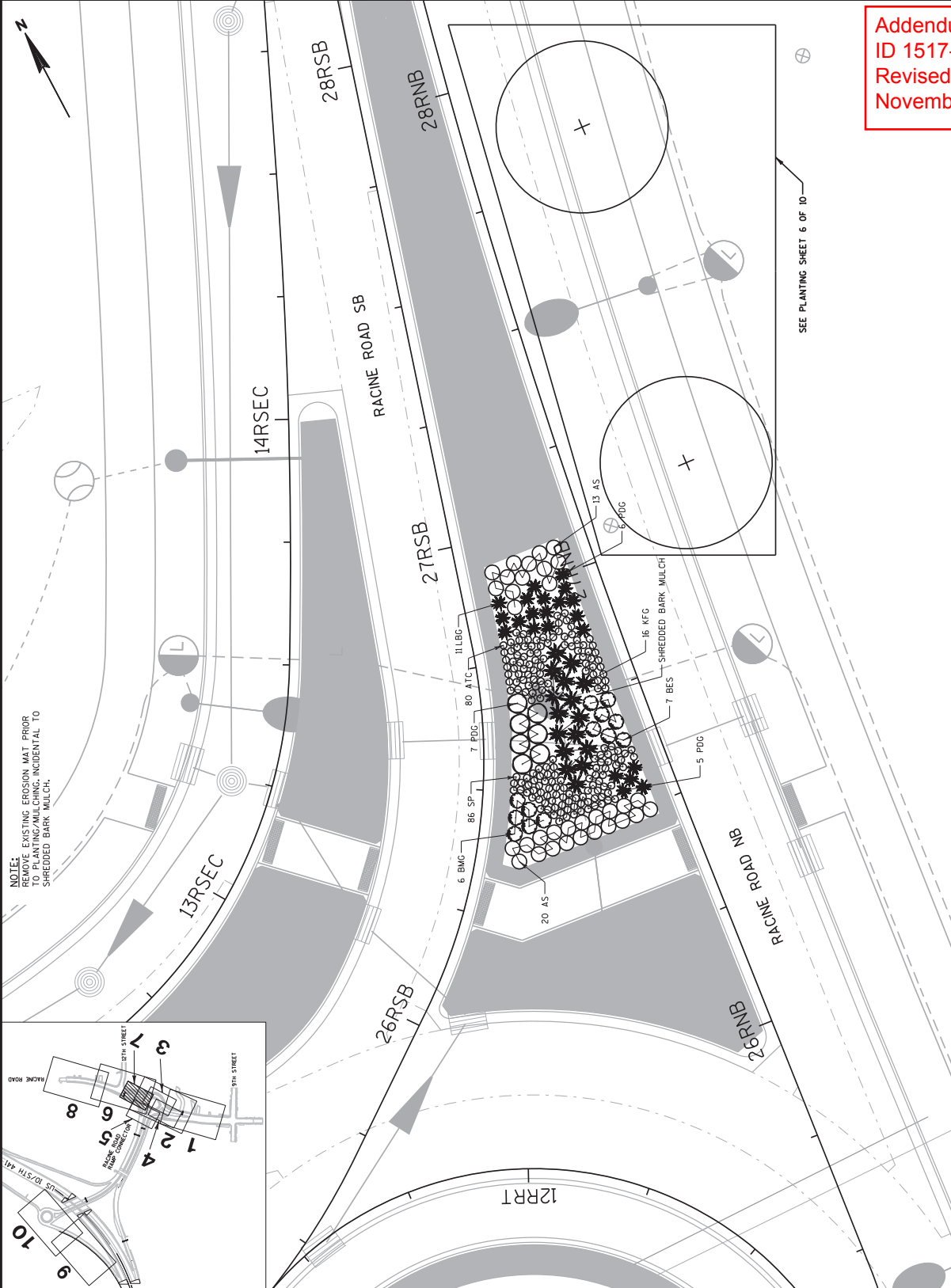
NOTE:
 1. ADJUST PLANTING LOCATION MIN. 2'-0" LATERAL CLEARANCE FROM ALL MARKED UTILITY LINES AND FACE OF CURB
 2. MULCH IS INCIDENTAL TO TREE PLANTING, SEE PLANT DATA CHART
 3. CONTRACTOR SHALL MARK PLANT LOCATIONS. PLANTINGS SHALL NOT PROCEED WITHOUT APPROVAL OF THE ENGINEER.

SHEET 6 OF 10



PLANT KEY	
SYMB.	ABBR. COMMON NAME
DECIDUOUS TREES (SHADE)	
CH	HONEYLOC - COMMON
KC	COFFEETREE - KENTUCKY ESPRESSO
FK	MARLE - FREEMAN AUTUMN BLAZE
SM	MARLE - SUGAR
RO	OAK - BUR
SW	OAK - SWAMP WHITE
DECIDUOUS TREES (ORNAMENTAL)	
SS	GRABAPPLE - SPRING SNOW
TCH	HAMTHORN - THORNLESS COCKSPUR
EVERGREEN	
T	LARCH, AMERICAN (TAMARACK)
ERIC	RED CEDAR, EASTERN
WS	SPRUCE, WHITE
SHRUBS	
DBH	HONEYLOC - DWARF BUSH
GLS	SUMAC - GRD. LOW
GD	DOGWOOD, GRAY
PERENNIALS, GRASSES & GROUNDCOVERS	
ATC	ACHILLEA - TERRA COTTA
AP	ASTER - PROFESSOR KIPPENBURG
PC	CONEFLOWER - PURPLE
GS	GOLDENROD - STEFF
BMG	GRASS - BLUE MOORE
KFG	GRASS - KARL FORESTER REED
PDC	GRASS - PRAIRIE DROPSSEED
LBG	GRASS - LITTLE BLUESTEM
SP	SALVIA - PERENNIAL
AS	SEDUM - AUTUMN JOY
BES	SUSAN - BLACK EYED
LEGEND	
	EXISTING TREE
	EXISTING CONCRETE SIDEWALK SPECIAL 5 - INCH
	EXISTING LIGHT POLE, ARM MOUNT LUMINAIRE

NOTE:
 1. ADJUST PLANTING LOCATION MIN. 2'-0" LATERAL CLEARANCE FROM ALL MARKED UTILITY LINES AND FACE OF CURB
 2. MULCH IS INCIDENTAL TO TREE PLANTING, SEE PLANT DATA CHART
 3. CONTRACTOR SHALL MARK PLANT LOCATIONS. PLANTINGS SHALL NOT PROCEED WITHOUT APPROVAL OF THE ENGINEER.

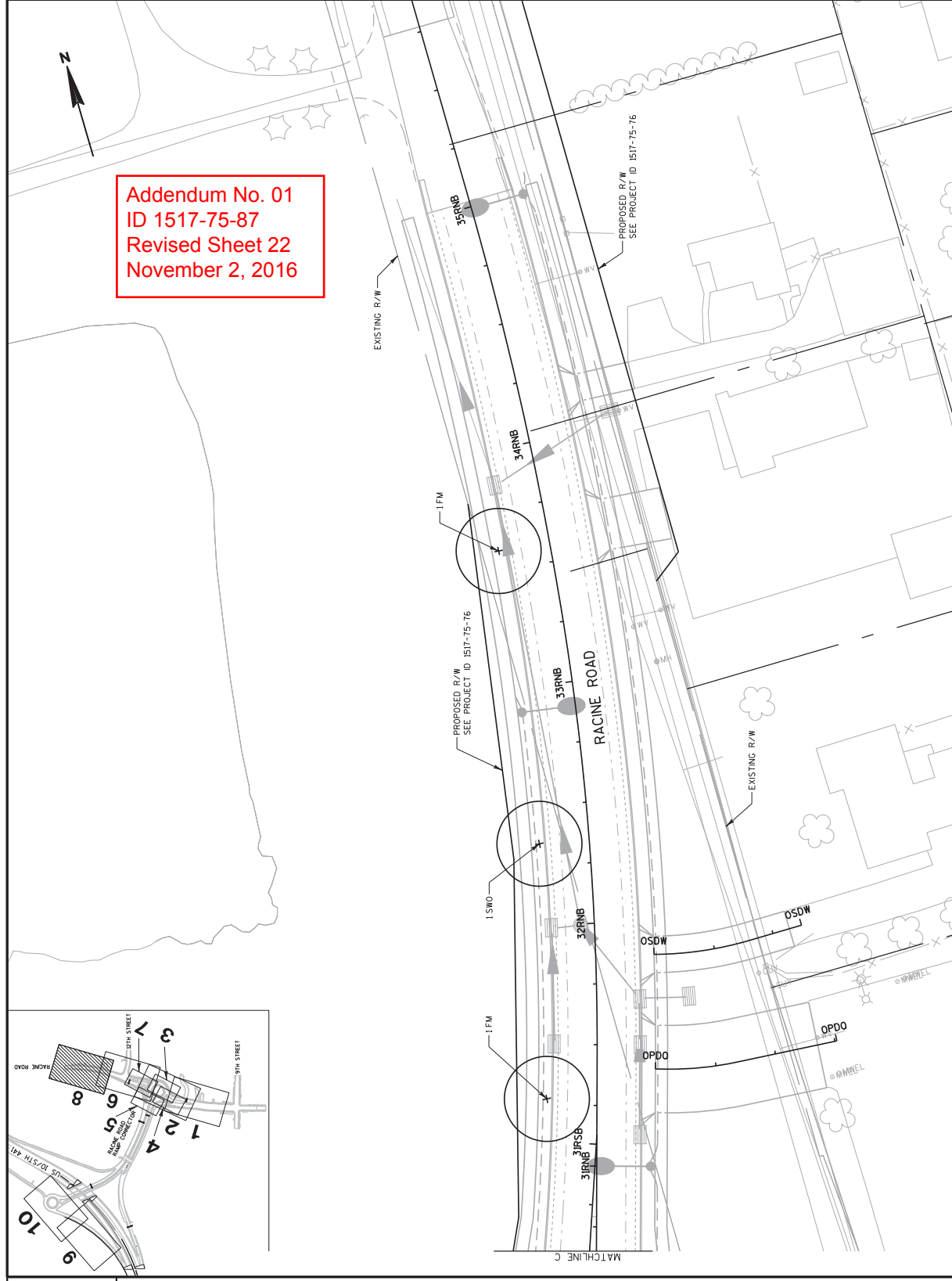


Addendum No. 01
ID 1517-75-87
Revised Sheet 21
November 2, 2016

PLANT KEY	
SYMB.	ABBR. COMMON NAME
DECIDUOUS TREES (SHADE)	
CH	HONEYBERRY - COMMON
KC	COFFEETREE - KENTUCKY ESPRESSO
FG	MAPLE - FREEMAN AUTUMN BLAZE
SM	MAPLE - SUGAR
RO	OAK - BUR
SW	OAK - SWAMP WHITE
DECIDUOUS TREES (ORNAMENTAL)	
SS	GRABAPPLE - SPRING SNOW
TCH	HAMTHORN - THORNLESS COCKSPUR
EVERGREEN	
T	LARCH, AMERICAN (TAMARACK)
ERIC	RED CEDAR, EASTERN
WS	SPRUCE, WHITE
SHRUBS	
DBH	HONEYBUCKLE - DWARF BUSH
GLS	SUMAC - GRD. LOW
GD	DOGWOOD, GRAY
PERENNIALS, GRASSES & GROUNDCOVERS	
ATC	ACHILLEA - TERRA COTTA
AP	ASTER - PROFESSOR KIPPENBURG
PC	CONEFLOWER - PURPLE
GS	GOLDENROD - STIFF
BMG	GRASS - BLUE MOORE
KFG	GRASS - KARL FORESTER REED
PDG	GRASS - PRAIRIE DROPSIDE
LBG	GRASS - LITTLE BLUESTEM
SP	SALVIA - PERENNIAL
AS	SEDUM - AUTUMN JOY
BES	SUSAN - BLACK EYED
LEGEND	
	EXISTING TREE
	EXISTING CONCRETE SIDEWALK SPECIAL 5 - INCH
	EXISTING LIGHT POLE, ARM MOUNT LUMINAIRE

NOTE:
 1. ADJUST PLANTING LOCATION MIN. 2'-0" LATERAL CLEARANCE FROM ALL MARKED UTILITY LINES AND FACE OF CURB
 2. MULCH IS INCIDENTAL TO TREE PLANTING, SEE PLANT DATA CHART
 3. CONTRACTOR SHALL MARK PLANT LOCATIONS. PLANTINGS SHALL NOT PROCEED WITHOUT APPROVAL OF THE ENGINEER.

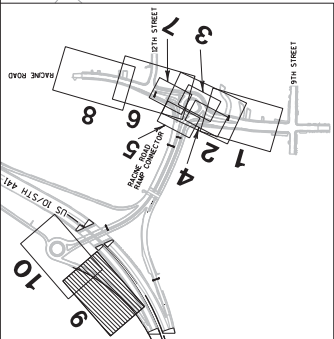
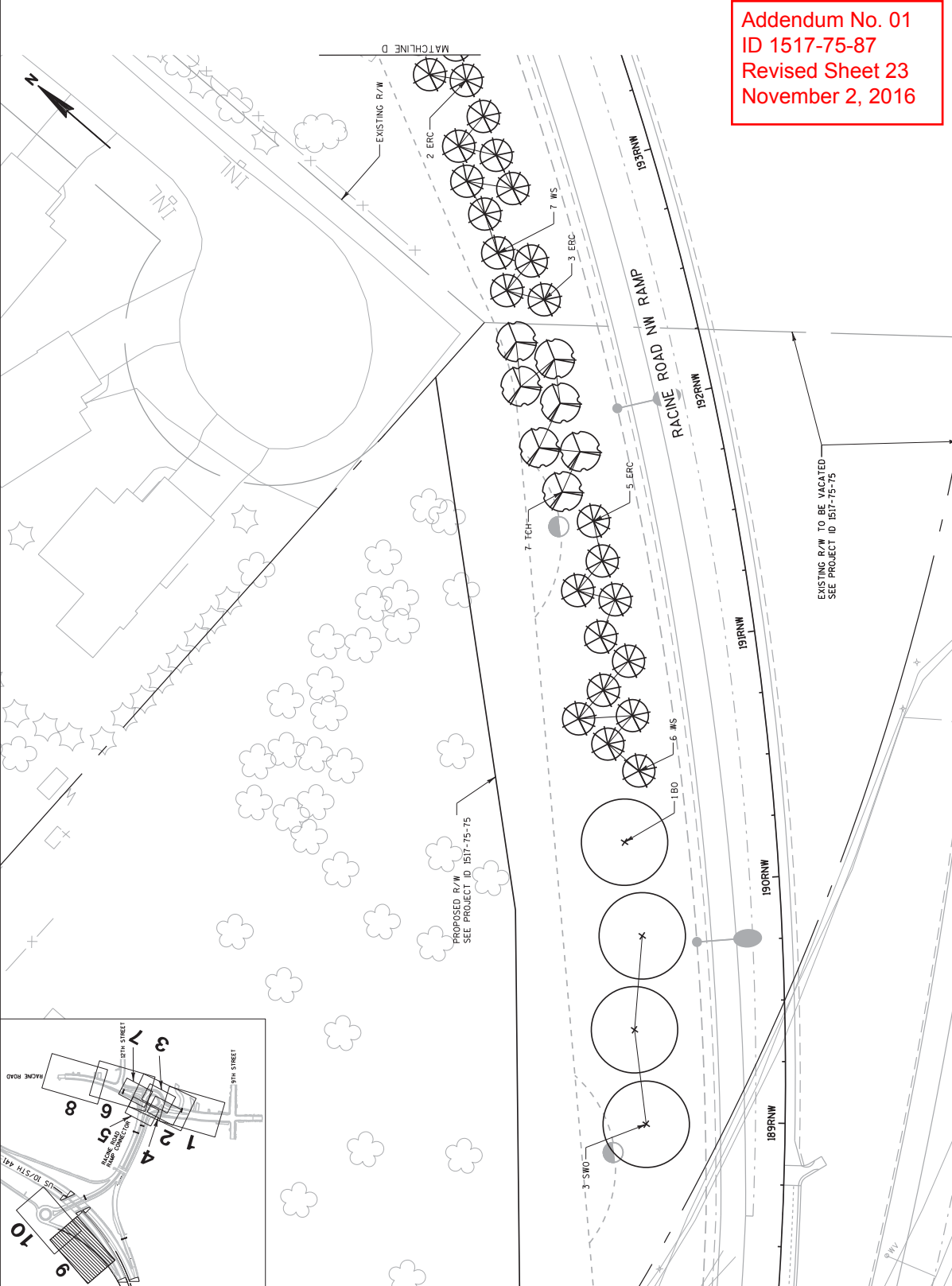
SHEET 8 OF 10

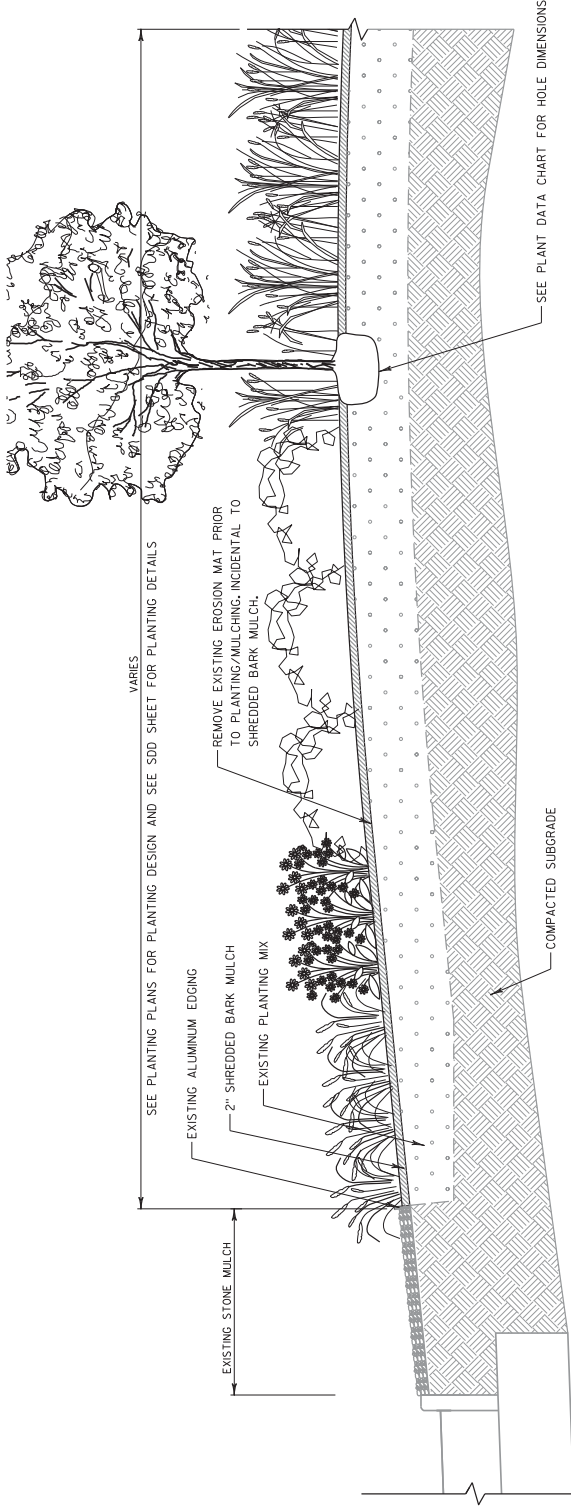


PLANT KEY	
SYMB.	ABBR. COMMON NAME
DECIDUOUS TREES (SHADE)	
CH	HACKBERRY - COMMON
CF	COFFEETREE - KENTUCKY ESPRESSO
FK	MAPLE - FREEMAN AUTUMN BLAZE
SM	MAPLE - SUGAR
RO	OAK - BUR
SW	OAK - SWAMP WHITE
DECIDUOUS TREES (ORNAMENTAL)	
SS	GRABAPPLE - SPRING SNOW
TCH	HAMTHORN - THORNLESS COCKSPUR
EVERGREEN	
T	LARCH, AMERICAN (TAMARACK)
ERC	RED CEDAR, EASTERN
WS	SPRUCE, WHITE
SHRUBS	
DBH	HONEYBUCKLE - DWARF BUSH
GLS	SUMAC - GROUND LOW
GD	DOGWOOD, GRAY
PERENNIALS, GRASSES & GROUNDCOVERS	
ATC	ACHILLEA - TERRA COTTA
AP	ASTER - PROFESSOR KIPPENBURG
PC	CONEFLOWER - PURPLE
GS	GOLDENROD - STIFF
BMG	GRASS - BLUE MOORE
KFG	GRASS - KARL FORESTER REED
PDG	GRASS - PRAIRIE DROPSIDE
LBG	GRASS - LITTLE BLUESTEM
SP	SALVIA - PERENNIAL
AS	SEDUM - AUTUMN JOY
BES	SUSAN - BLACK EYED
LEGEND	
	EXISTING TREE
	EXISTING CONCRETE SIDEWALK SPECIAL 5 - INCH
	EXISTING LIGHT POLE, ARM MOUNT LUMINAIRE

NOTE:
 1. ADJUST PLANTING LOCATION MIN. 2'-0" LATERAL CLEARANCE FROM ALL MARKED UTILITY LINES AND FACE OF CURB
 2. MULCH IS INCIDENTAL TO TREE PLANTING, SEE PLANT DATA CHART
 3. CONTRACTOR SHALL MARK PLANT LOCATIONS. PLANTINGS SHALL NOT PROCEED WITHOUT APPROVAL OF THE ENGINEER.

SHEET 9 OF 10





Addendum No. 01
 ID 1517-75-87
 Revised Sheet 25
 November 2, 2016

PLANT KEY	
SYMB.	ABBR. COMMON NAME
DECIDUOUS TREES (SHADE)	
CH	HICKBERRY - COMMON
KC	COFFEETREE - KENTUCKY ESPRESSO
FL	MAPLE - FREEMAN AUTUMN BLAZE
SM	MAPLE - SUGAR
RO	OAK - BUR
SNO	OAK - SHAMP WHITE
DECIDUOUS TREES (ORNAMENTAL)	
SS	GRABAPPLE - SPRING SNOW
TCH	HAMTHORN - THORNLESS COCKSPUR
EVERGREEN	
T	LARCH AMERICAN (TAMARACK)
ERC	RED CEDAR EASTERN
WS	SPRUCE WHITE
SHRUBS	
DBH	HONEYBUCKLE - DWARF BUSH
GLS	SUMAC - GROUND LOW
DC	DOORWOOD, GRAY
PERENNIALS, GRASSES & GROUNDCOVERS	
TCA	ACHILLEA - TERRA COTTA
AP	ASTER - PROFESSOR KIPPENBURG
PC	CONEFLOWER - PURPLE
GS	GOLDENROD - STIFF
BMG	GRASS - BLUE MOORE
KFC	GRASS - KARL FORESTER REED
PDC	GRASS - PRAIRIE DROPSIDE
LBG	GRASS - LITTLE BLUESTEM
SP	SALVIA - PERENNIAL
AS	SEDUM - AUTUMN JOY
BES	SUSAN - BLACK EYED
LEGEND	
	EXISTING TREE
	EXISTING CONCRETE SIDEWALK SPECIAL 5 - INCH
	EXISTING LIGHT POLE, ARM MOUNT LUMINAIRE

NOTE:
 1. ADJUST PLANTING LOCATION MIN. 2'-0" LATERAL CLEARANCE FROM ALL MARKED UTILITY LINES AND FACE OF CURB
 2. MULCH IS INCIDENTAL TO TREE PLANTING, SEE PLANT DATA CHART
 3. CONTRACTOR SHALL MARK PLANT LOCATIONS. PLANTINGS SHALL NOT PROCEED WITHOUT APPROVAL OF THE ENGINEER.

SYM.	COMMON NAME	SCIENTIFIC NAME	AVE. MATURE HEIGHT	SIZE WHEN PLANTED	ROOT ZONE MODE	MINIMUM BALL OR POT		MINIMUM M HOLE		BRACE OR GUY	FERT. UNITS REQ'D	RODENT PROTECT REQ'D	MULCH RING DIAM.
						DIAM.	DEPTH	DIAM.	DEPTH				
DECIDUOUS TREES (SHADE)													
CH*	Hackberry - Common	Celtis occidentalis	50'	2 1/2" CAL	B&B	28"	17"	52"	17"	GUY	4	NO	64"
KC*	Coffeetree - Kentucky 'Espresso'	Gymnocladus dioica	50'	2 1/2" CAL	B&B	28"	17"	52"	17"	GUY	4	NO	64"
FM*	Maple - Freeman 'Autumn Blaze'	Acer x freemanii 'Autumn Blaze'	50'	2 1/2" CAL	B&B	28"	17"	52"	17"	GUY	4	NO	64"
SM*	Maple - Sugar	Acer saccharum	50'	2 1/2" CAL	B&B	28"	17"	52"	17"	GUY	4	NO	64"
BO*	Oak - Burr	Quercus macrocarpa	40'	2 1/2" CAL	B&B	28"	17"	52"	17"	GUY	4	NO	64"
SWO*	Oak - Swamp White	Quercus bicolor	40'	2 1/2" CAL	B&B	28"	17"	52"	17"	GUY	4	NO	64"

DECIDUOUS TREES (ORNAMENTAL)

SS*	Crabapple - 'Spring Snow'	Malus 'Spring Snow'	15'	2" CAL	B&B	24"	14"	48"	14"	BRACE	3	YES	BEDLIMITS
TCH*	Hawthorn - Thornless Cockspur	Crataegus crus-galli Inermis	15'	2" CAL	B&B	24"	14"	48"	14"	BRACE	3	YES	BEDLIMITS

EVERGREENS

T	Tamarack	Larix laricina	30'	7' HT	B&B	24"	14"	48"	14"	BRACE	3	NO	60"
ERC	Redcedar - Eastern	Juniperus virginiana	30'	6' HT	B&B	22"	13"	46"	13"		3	NO	60"
WS	Spruce - White	Picea glauca	40'	6' HT	B&B	22"	13"	46"	13"		3	NO	60"

SHRUBS

DBH	Honeysuckle - Dwarf Bush	Derrilla lonicera	4'	18" HT	Cont.	10"	6.5"	34"	6.5"	n/a	n/a	NO	BEDLIMITS
GLS	Sumac - Gro Low	Rhus aromatic 'Gro Low'	4'	18" HT	Cont.	10"	6.5"	34"	6.5"	n/a	n/a	NO	BEDLIMITS
GD	Dogwood, Gray	Cornus racemosa	7'	24" HT	Cont.	10"	6.5"	34"	6.5"	n/a	n/a	NO	BEDLIMITS

PERENNIALS, GRASSES & GROUNDCOVERS

AP	Aster - Professor Kippenburg	Aster nov-belgijii 'Professor Kippenburg'	1'-5"	#1	Cont.	9"	6"	18"	6"	n/a	n/a	NO	BEDLIMITS
PC	Coneflower - Purple	Echinacea purpurea	4'	#1	Cont.	9"	6"	18"	6"	n/a	n/a	NO	BEDLIMITS
ATC	Achillea Terra Cotta	Achillea Terra Cotta	16"	#1	Cont.	9"	6"	18"	6"	n/a	n/a	NO	BEDLIMITS
GS	Goldenrod - Stiff	Solidago rigida	3'	#1	Cont.	9"	6"	18"	6"	n/a	n/a	NO	BEDLIMITS
BMG	Grass - Blue Moore	Blue Moore Grass	3'	#1	Cont.	9"	6"	18"	6"	n/a	n/a	NO	BEDLIMITS
KFG	Grass - Karl Forster Reed	Calamagrostis x acutiflora 'Karl Forster'	4'	#1	Cont.	9"	6"	18"	6"	n/a	n/a	NO	BEDLIMITS
PDG	Grass - Prairie Dropseed	Sporobolus heterolepis	2'	#1	Cont.	9"	6"	18"	6"	n/a	n/a	NO	BEDLIMITS
LBG	Grass - Little bluestem	Schizachyllum scoparium 'Carousel'	1'-5"	#1	Cont.	9"	6"	18"	6"	n/a	n/a	NO	BEDLIMITS
SP	Salvia - Perennial	Salvia 'Victoria'	1'-5"	#1	Cont.	9"	6"	18"	6"	n/a	n/a	NO	BEDLIMITS
AS	Sedum - Autumn n Joy	Sedum x 'Autumn Joy'	2'	#1	Cont.	9"	6"	18"	6"	n/a	n/a	NO	BEDLIMITS
BES	Susan - Black Eyed	Rudbeckia hirta	3'	#1	Cont.	9"	6"	18"	6"	n/a	n/a	NO	BEDLIMITS

*Require Watering Bag

Addendum No. 01
ID 1517-75-87
Revised Sheet 26
November 2, 2016

Addendum No. 01
ID 1517-75-87
Revised Sheet 35
November 2, 2016

CATEGORY 1400 BID ITEMS	SYM.	COMMON NAME	PLANTING SHEET NUMBERS										TOTALS		
			1	2	3	4	5	6	7	8	9	10	EACH	EACH	
DECIDUOUS TREES (SHADE)															
632.0101.001	QH*	Hackberry - Common		1										3	4
632.0101.003	KC*	Coffeetree - Kentucky 'Espresso'												3	3
632.0101.005	FM*	Maple - Freeman 'Autumn Blaze'	3	1					2					4	12
632.0101.007	SM*	Maple - Sugar		1										2	3
632.0101.009	BO*	Oak - Burr		3								1		4	4
632.0101.011	SWO*	Oak - Swamp White	4						5			1	3		13

DECIDUOUS TREES (ORNAMENTAL)															
632.0101.013	SS*	Crabapple - 'Spring Snow'												4	4
632.0101.015	TCH*	Hawthorn - Thornless Cockspar	3									7	5	15	15
632.0101.017	HT*	Hopbloom												0	0

EVERGREENS															
632.0101.021	T	Tamarack	3											5	8
632.0101.023	ERC	Redcedar - Eastern	5									10	3	18	18
632.0101.025	WS	Spruce - White	3									13		16	16

SHRUBS															
632.0201.027	DBH	Honeysuckle - Dwarf Bush												15	15
632.0201.029	GLS	Sumac - Grop Low												14	14
632.0201.031	GD	Doonwood, Gray												7	12

* Use Water Bag

CATEGORY 1400 BID ITEMS	SYM.	COMMON NAME	PLANTING SHEET NUMBERS										TOTALS			
			1	2	3	4	5	6	7	8	9	10	EACH	EACH		
PERENNIALS, GRASSES & GROUNDCOVERS																
SPV.0060.001	AP	Aster - Professor Kippenburg													111	111
SPV.0060.002	PC	Coneflower - Purple													36	36
SPV.0060.003	ATC	Achillea - Terra Cotta													257	257
SPV.0060.004	GS	Goldenrod - Stiff													25	25
SPV.0060.005	BMG	Grass - Blue Moore													35	35
SPV.0060.006	KFG	Grass - Karl Forester Reed													64	64
SPV.0060.007	PDG	Grass - Prairie Dropseed													116	116
SPV.0060.008	LBG	Grass - Little bluestem													81	81
SPV.0060.009	SP	Salma - Perennial													135	135
SPV.0060.010	AS	Sedum - Autumn Joy													91	91
SPV.0060.011	BES	Susan - Black Eyed													66	66



Proposal Schedule of Items

Proposal ID: 20161108026

Project(s): 1517-75-87

SECTION: 0001 Contract Items

Alt Set ID:

Alt Mbr ID:

Proposal Line Number	Item ID Description	Approximate Quantity and Units	Unit Price	Bid Amount
0010	619.1000 Mobilization	1.000 EACH	_____.	_____.
0020	625.0100 Topsoil	1,200.000 SY	_____.	_____.
0030	627.0200 Mulching	1,200.000 SY	_____.	_____.
0040	628.1104 Erosion Bales	10.000 EACH	_____.	_____.
0050	628.1504 Silt Fence	500.000 LF	_____.	_____.
0060	628.1520 Silt Fence Maintenance	500.000 LF	_____.	_____.
0070	628.1905 Mobilizations Erosion Control	2.000 EACH	_____.	_____.
0080	628.1910 Mobilizations Emergency Erosion Control	2.000 EACH	_____.	_____.
0090	628.2004 Erosion Mat Class I Type B	100.000 SY	_____.	_____.
0100	628.7010 Inlet Protection Type B	10.000 EACH	_____.	_____.
0110	628.7015 Inlet Protection Type C	10.000 EACH	_____.	_____.
0120	629.0210 Fertilizer Type B	1.000 CWT	_____.	_____.
0130	630.0120 Seeding Mixture No. 20	32.000 LB	_____.	_____.
0140	632.0101 Trees (species) (size) (root) 001. Hackberry - Common, B&B, 2 1/2-Inch CAL	4.000 EACH	_____.	_____.
0150	632.0101 Trees (species) (size) (root) 003. Coffeetree - Kentucky 'Espresso', B&B, 2 1/2 - Inch CAL	3.000 EACH	_____.	_____.



Proposal Schedule of Items

Proposal ID: 20161108026

Project(s): 1517-75-87

SECTION: 0001 Contract Items

Alt Set ID:

Alt Mbr ID:

Proposal Line Number	Item ID Description	Approximate Quantity and Units	Unit Price	Bid Amount
0160	632.0101 Trees (species) (size) (root) 005. Maple - Freeman 'Autumn Blaze', B&B, 2 1/2 - Inch CAL	12.000 EACH	_____.	_____.
0170	632.0101 Trees (species) (size) (root) 007. Maple - Sugar, B&B, 2 1/2 - Inch CAL	3.000 EACH	_____.	_____.
0180	632.0101 Trees (species) (size) (root) 009. Oak - Burr, B&B, 2 1/2 - Inch CAL	4.000 EACH	_____.	_____.
0190	632.0101 Trees (species) (size) (root) 011. Oak - Swamp White, B&B, 2 1/2-Inch CAL	13.000 EACH	_____.	_____.
0200	632.0101 Trees (species) (size) (root) 013. Crabapple - 'Spring Snow', B&B, 2 - Inch CAL	4.000 EACH	_____.	_____.
0210	632.0101 Trees (species) (size) (root) 015. Hawthorn - Thornless Cockspur, B&B, 2 - Inch CAL	15.000 EACH	_____.	_____.
0230	632.0101 Trees (species) (size) (root) 021. Tamarack, B&B, 7 Foot Ht	8.000 EACH	_____.	_____.
0240	632.0101 Trees (species) (size) (root) 023. Redcedar - Eastern, B&B, 6 Foot Ht	18.000 EACH	_____.	_____.
0250	632.0101 Trees (species) (size) (root) 025. Spruce - White, B&B, 6 Foot Ht	16.000 EACH	_____.	_____.
0260	632.0201 Shrubs (species) (size) (root) 027. Honeysuckle - Dwarf Bush, Cont., 18 Inch Ht	15.000 EACH	_____.	_____.
0270	632.0201 Shrubs (species) (size) (root) 029. Sumac - Gro Low, Cont 18 Inch Ht	14.000 EACH	_____.	_____.
0280	632.9101 Landscape Planting Surveillance and Care Cycles	24.000 EACH	_____.	_____.
0290	643.0100 Traffic Control (project) (1517-75-87)	1.000 EACH	_____.	_____.



Proposal Schedule of Items

Proposal ID: 20161108026

Project(s): 1517-75-87

SECTION: 0001 Contract Items

Alt Set ID:

Alt Mbr ID:

Proposal Line Number	Item ID Description	Approximate Quantity and Units	Unit Price	Bid Amount
0300	652.0210 Conduit Rigid Nonmetallic Schedule 40 1-Inch	145.000 LF	_____.	_____.
0310	655.0615 Electrical Wire Lighting 10 AWG	786.000 LF	_____.	_____.
0320	655.0620 Electrical Wire Lighting 8 AWG	2,338.000 LF	_____.	_____.
0330	SPV.0060 Special 001. Perennial (Aster - Professor Kippenburg, Cont. #1)	111.000 EACH	_____.	_____.
0340	SPV.0060 Special 002. Perennial (Coneflower - Purple, Cont. #1)	36.000 EACH	_____.	_____.
0350	SPV.0060 Special 003. Perennial (Achillea - Terra Cotta, Cont. #1)	257.000 EACH	_____.	_____.
0360	SPV.0060 Special 004. Perennial (Goldenrod - Stiff, Cont. #1)	25.000 EACH	_____.	_____.
0370	SPV.0060 Special 005. Perennial (Grass - Blue Moore, Cont. #1)	35.000 EACH	_____.	_____.
0380	SPV.0060 Special 006. Perennial (Grass - Karl Forester Reed, Cont. #1)	64.000 EACH	_____.	_____.
0390	SPV.0060 Special 007. Perennial (Grass - Prairie Dropseed , Cont. #1)	116.000 EACH	_____.	_____.
0400	SPV.0060 Special 008. Perennial (Grass - Little Bluestem, Cont. #1)	81.000 EACH	_____.	_____.
0410	SPV.0060 Special 009. Perennial (Salvia - Perennial, Cont. #1)	135.000 EACH	_____.	_____.
0420	SPV.0060 Special 010. Perennial (Sedum - Autumn Joy, Cont. #1)	91.000 EACH	_____.	_____.
0430	SPV.0060 Special 011. Perennial (Susan - Black Eyed, Cont. #1)	66.000 EACH	_____.	_____.



Proposal Schedule of Items

Proposal ID: 20161108026

Project(s): 1517-75-87

SECTION: 0001 Contract Items

Alt Set ID:

Alt Mbr ID:

Proposal Line Number	Item ID Description	Approximate Quantity and Units	Unit Price	Bid Amount
0460	SPV.0060 Special 014. Watering Bag	58.000 EACH	_____.	_____.
0470	SPV.0060 Special 015. Masonry Wall	1.000 EACH	_____.	_____.
0480	SPV.0060 Special 350. Flag Pole Light Fixture Special	9.000 EACH	_____.	_____.
0490	SPV.0090 Special 001. Aluminum Edging	135.000 LF	_____.	_____.
0500	SPV.0105 Special 001. Survey Project (1517-75-87)	LS	LUMP SUM	_____.
0510	SPV.0180 Special 002. Shredded Bark Mulch	1,293.000 SY	_____.	_____.
0520	SPV.0180 Special 003. Crushed Red Granite Mulch	85.000 SY	_____.	_____.
0530	632.0201 Shrubs (species) (size) (root) 031. Dogwood - Gray, Cont,, 24 Inch Ht	12.000 EACH	_____.	_____.
0540	SPV.0060 Special 016. Flagpole 40' HT	2.000 EACH	_____.	_____.
0550	SPV.0060 Special 017. Flagpole 50' HT	1.000 EACH	_____.	_____.
Section: 0001			Total:	_____.
			Total Bid:	_____.