



Wisconsin Department of Transportation

December 1, 2016

Division of Transportation Systems Development

Bureau of Project Development
4802 Sheboygan Avenue, Rm 601
P O Box 7916
Madison, WI 53707-7916
Telephone: (608) 266-1631
Facsimile (FAX): (608) 266-8459

NOTICE TO ALL CONTRACTORS:

- Proposal #02: 1071-06-82, WISC 2016 463**
La Crosse - Galesville
Livingston ST to West George St
USH 53
La Crosse County
- 1071-06-83, WISC 2016 464**
USH 53/35 – Theater RD
West George ST to BN RR Bridge
USH 53
La Crosse County
- 1071-06-89**
USH 53/35 – Theater RD
West George ST to BN RR Bridge
USH 53
La Crosse County
- 7190-03-72, WISC 2016 471**
La Crosse - Trempealeau
BN RR Bridge to 2nd Ave SW
STH 35
La Crosse County

Letting of December 13, 2016

This is Addendum No. 01, which provides for the following:

Special Provisions

Revised Special Provisions	
Article No.	Description
59	Moonshine Yarrow, Item SPV.0060.01; Nodding Wild Onion, Item SPV.0060.02; Summer Beauty Globe Lily, Item SPV.0060.03; Sky-Blue Aster, Item SPV.0060.04; Blue Wild Indigo, Item SPV.0060.05; Blue Wild Indigo 'Purple Smoke', Item SPV.0060.07; Brown Fox Sedge, Item SPV.0060.08; Lanceleaf Tickseed, Item SPV.0060.09; Prairie Splendor Coneflower, Item SPV.0060.11; Rocket City Daylily, Item SPV.0060.12;

	German Iris, Item SPV.0060.13; Blue Flag Iris, Item SPV.0060.33; Prairie June Grass, Item SPV.0060.34; Cylindrical Blazing Star, Item SPV.0060.35; Spike Gayfeather, Item SPV.0060.36; Yellow Coneflower, Item SPV.0060.37; Prairie Dropseed, Item SPV.0060.38; Blue Vervain, Item SPV.0060.39.
61	Plaza Seat Stone Type A, SPV.0060.14; Type B, SPV.0060.15; Type C, Item SPV.0060.16.
62	Lawn Seat Stone Type A, SPV.0060.17; Type B, SPV.0060.18; Type C, Item SPV.0060.19.
77	Manholes 6-FT DIA With Gate, Item SPV.0060.51; 8-FT DIA With Gate, Item SPV.0060.42
78	Automatic Drainage Gates 24-Inch, Item SPV.0060.52; 36-Inch, Item SPV.0060.53
126	Entry Sign, Item SPV.0105.40.
131	Modular Block Retaining Wall, Item SPV.0165.11

Added Special Provisions	
Article No.	Description
139	Sluice Gates 24-Inch, Item SPV.0060.43; 36-Inch, Item SPV.0060.44

Deleted Special Provisions	
Article No.	Description
76	Manholes 5-FT DIA With Gate, Item SPV.0060.50

Schedule of Items

Revised Bid Item Quantities					
Bid Item	Item Description	Unit	Old Quantity	Revised Quantity	Proposal Total
204.0100	Removing Pavement	SY	86,338	-865	85,473
204.0110	Removing Asphaltic Surface	SY	7,892	-6,644	1,248
204.0115	Removing Asphaltic Surface Butt Joints	SY	350	125	475
204.9060.S	Removing (item description) 01. Business Sign	EA	2	1	3
205.0100	Common Excavation	CY	234,964	818	235,782
208.1100	Select Borrow	CY	11,022	-1,022	10,000
460.5224	HMA Pavement 4 LT 58-28 S	TON	2,102	86	2,188
SPV.0060.51	Manholes 6-FT DIA With Gate	EA	2	2	4
SPV.0060.53	Automatic Drainage Gates 36-Inch	EA	3	-2	1

Added Bid Item Quantities					
Bid Item	Item Description	Unit	Old Quantity	Revised Quantity	Proposal Total
SPV.0060.42	Manholes 8-FT DIA With Gate	EA	0	1	1
SPV.0060.43	Sluice Gates 24-Inch	EA	0	4	4
SPV.0060.44	Sluice Gates 36-Inch	EA	0	1	1

Deleted Bid Item Quantities					
Bid Item	Item Description	Unit	Old Quantity	Revised Quantity	Proposal Total
SPV.0060.50	Manholes 5-FT DIA With Gate	EA	2	-2	0
SPV.0060.52	Automatic Drainage Gates 24-Inch	EA	3	-3	0

Plan Sheets

Revised Plan Sheets	
Plan Sheet	Plan Sheet Title (brief description of changes to sheet)
2	General Notes – Removed HMA Pavement Thickness Table
9	Typical Sections – Changed callout from Decorative Rail to Steel Railing
26	Construction Details – Replaced Butt Joint Detail
73	Construction Details – Removed Manhole W/ Gate Detail
449	Miscellaneous Quantities – Revised Removing Pavement quantities
456	Miscellaneous Quantities – Revised earthwork quantities
454	Miscellaneous Quantities – Revised Removing Business Signs
459	Miscellaneous Quantities – Revised Asphalt Items quantities and added Removing Asphaltic Surface Butt Joint table
460	Miscellaneous Quantities – Revised Asphaltic Items quantities
566	Plan & Profile – Added note removing business sign

Added Plan Sheets	
Plan Sheet	Plan Sheet Title (brief description of why sheet was added)
73A	Construction Details – Added Manhole W/ Gate Details
694A	SDD – Concrete Barrier Single Slope (CBSS)
916A – 916-D	Earthwork Data – Added data for 1071-06-82 project

The responsibility for notifying potential subcontractors and suppliers of these changes remains with the prime contractor.

Sincerely,

Mike Coleman

Proposal Development Specialist
Proposal Management Section

ADDENDUM NO. 01

1071-06-82

December 1, 2016

Special Provisions

- 59. Moonshine Yarrow, Item SPV.0060.01; Nodding Wild Onion, Item SPV.0060.02; Summer Beauty Globe Lily, Item SPV.0060.03; Sky-Blue Aster, Item SPV.0060.04; Blue Wild Indigo, Item SPV.0060.05; Blue Wild Indigo 'Purple Smoke', Item SPV.0060.07; Brown Fox Sedge, Item SPV.0060.08; Lanceleaf Tickseed, Item SPV.0060.09; Prairie Splendor Coneflower, Item SPV.0060.11; Rocket City Daylily, Item SPV.0060.12; German Iris, Item SPV.0060.13; Blue Flag Iris, Item SPV.0060.33; Prairie June Grass, Item SPV.0060.34; Cylindrical Blazing Star, Item SPV.0060.35; Spike Gayfeather, Item SPV.0060.36; Yellow Coneflower, Item SPV.0060.37; Prairie Dropseed, Item SPV.0060.38; Blue Vervain, Item SPV.0060.39.**

*Add the following to the end of section titled **B Materials**:*

Plants: All the perennials (forbs and grasses) are to be #1 size (1 gal).

- 61. Plaza Seat Stone Type A, SPV.0060.14; Type B, SPV.0060.15; Type C, Item SPV.0060.16.**

*Add the following to the end of section titled **B1. Plaza Seat Stone Comparable Sources**:*

Rivard Stone
318 HWY 35/64
Houlton, WI 54082
(888)-620-3268
(715)-247-3856
Fax (715)-247-4798

- 62. Lawn Seat Stone Type A, SPV.0060.17; Type B, SPV.0060.18; Type C, Item SPV.0060.19.**

*Add the following to the end of section titled **B1. Lawn Seat Stone Comparable Sources**:*

Rivard Stone
318 HWY 35/64
Houlton, WI 54082
(888)-620-3268
(715)-247-3856
Fax (715)-247-4798

- 76. DELETED.**

- 77. Manholes 6-FT with Gate, Item SPV.0060.51.**

Revise the title of the article to:

Manholes 6-FT DIA with Gate, Item SPV.0060.51; 8-FT DIA With Gate, Item SPV.0060.42.

Replace entire section titled **C Construction** with the following:

Construction of manhole under this item will conform to standard specification 611.3. Include reinforced concrete fillet formed to meet sluice gate manufacturer specifications to provide surface for mounting of gate at pipe opening.

Include manhole cover opening and operator access opening with cover, located as shown in the plans.

Add the following under section titled **D Construction**:

The department will measure Manholes 8-FT DIA With Gate by each acceptably installed.

Replace entire section titled **E Payment** with the following:

E Payment

The department will pay for measured quantities at the contract unit price under the following bid items:

ITEM NUMBER	DESCRIPTION	UNIT
SPV. 0060.51	Manholes 6-FT DIA With Gate	Each
SPV.0060.42	Manholes 8-FT DIA With Gate	Each

Payment for Manholes 6-FT DIA With Gate and 8-FT DIA With Gate is full compensation for providing all materials, including all masonry, conduit and sewer connections, steps, concrete masonry and steel reinforcement for sluice gate mounting, operator access cover and all other fittings; for all excavating, backfilling, disposing of surplus material, and for cleaning out and restoring the work site; except that the department will pay for manhole covers, including frames, grates and lids separately.

78. Automatic Drainage Gates 24-Inch, Item SPV.0060.52; 36-Inch, Item SPV.0060.53.

Revise the title of the article to:

Automatic Drainage Gates 36-Inch, Item SPV.0060.53.

Replace the last paragraph under section titled **B Materials** with the following:

Automatic drainage gates mounted on concrete masonry surface are Neenah Foundry R-5050-SF, or equal.

Replace entire section titled **C Construction** with the following:

C Construction

Automatic drainage gates are to be securely mounted at locations shown in the plans. Gates must be mounted at a proper angle to ensure proper self-closing operation. For concrete masonry endwall installation, securely mount the gate to the endwall ensuring complete closure to seal pipe end.

Replace entire section titled **D Measurement** with the following:

The department will measure Automatic Drainage Gates 36-Inch by each acceptably installed.

Replace entire section titled **E Payment** with the following:

E Payment

The department will pay for measured quantities at the contract unit price under the following bid items:

ITEM NUMBER	DESCRIPTION	UNIT
SPV.0060.53	Automatic Drainage Gates 36-Inch	Each

Payment for Automatic Drainage Gates 36-Inch is full compensation for furnishing the gate; furnishing and installing all mounting hardware; preparing mounting surface and mounting the gate; for furnishing all labor and equipment for mounting the gate; and for furnishing all labor, tools, equipment, materials, and incidentals necessary to complete the work.

126. Entry Sign, Item SPV.0105.40.

Add the following to the end of section titled **B Materials**:

A copy of the design file image is available from Shop Floors by contacting Trygve Wastvedt at (844) 258-5710:

- ImageWal-2-1-2
- SN: IW-024595-278603
- www.shopfloorapp.com/

Replace the 1st Dash (2nd Line) under section titled **B.1 Steel** with the following:

- Perforated Corten Steel Sign: Con-Ten A, A242, ¼" thick.

131. Modular Block Retaining Wall, Item SPV.0165.11.

Replace the first sentence of the first paragraph in in section titled **B.1 Proprietary Wall Systems** with the following:

The supplied wall system must be from the department's approved list of Modular Block Retaining Wall systems (Modular Block Gravity Landscape Walls).

Add the following at the end of section titled **B.2 Design Requirements**:

The finished grade at the bottom of the wall is 638.10 at the end points and 638.3 at the center of the wall.

139. Sluice Gates 24-Inch, Item SPV.0060.43; 36-Inch, Item SPV.0060.44.

A Description

Work under this item consists of furnishing and installing a stainless steel gate at the location shown on the plans. Perform the work in accordance to pertinent parts of the standard specifications, the plans, and these special provisions.

B Materials

Gates shall be as specified herein and have the characteristics and dimensions shown on the Contract Drawings.

Leakage shall not exceed 0.05 gpm/ft of wetted seal perimeter in seating head and unseating head conditions. The gate shall utilize self-adjusting seals. Due to the difficulty of accessing gates when

they are in service, gates that utilize adjustable wedges, wedging devices or pressure pads are not acceptable.

All structural components of the frame and slide shall be fabricated of stainless steel having a minimum thickness of 1/4-inch and shall have adequate strength to prevent distortion during normal handling, during installation and while in service.

The frame assembly, including the guide members and invert member shall be constructed of formed stainless steel plate with a minimum thickness of 1/4-inch. Frame design shall allow for embedded mounting, or mounting directly to a wall with stainless steel anchor bolts. The structural portion of the frame that incorporates the seat/seals shall be formed into a one-piece shape for rigidity.

Gussets shall be provided as necessary to support the guide members in an unseating head condition. The gussets shall extend to support the outer portion of the guide assembly and shall be positioned to ensure that the load is transferred to the anchor bolts or the wall thimble studs.

The frame shall extend to accommodate the entire height of the slide when the slide is in the fully opened position on upward opening gates or downward opening weir gates.

All gates shall be equipped with UHMW polyethylene seat/seals to restrict leakage and to prevent metal to metal contact between the frame and slide. The seat/seals shall extend to accommodate the 1-1/2 x the height of the slide when the slide is in the fully closed or fully opened position.

All upward opening gates shall be provided with a resilient seal to seal the bottom portion of the gate. The seal shall be attached to the invert member or the bottom of the slide and it shall be held in place with stainless steel attachment hardware. All downward opening weir gates shall be provided with UHMW polyethylene seat/seals across the invert member.

A threaded operating stem shall be utilized to connect the operating mechanism to the slide. The threaded portion of the stem shall have a minimum outside diameter of 1-1/2 inches. The stem shall be constructed of solid stainless steel bar for the entire length, the metal having a tensile strength of not less than 75,000 psi. The stem shall be threaded to allow full travel of the slide. Stems of more than one section shall be joined by stainless steel or bronze couplings. The coupling shall be bolted to the stems.

Gates shall be operated by a manual handwheel or a manual crank-operated gearbox. The gate manufacturer shall select the proper gear ratio to ensure that the gate can be operated with no more than a 40 lb effort when the gate is in the closed position and experiencing the maximum operating head.

An arrow with the word "OPEN" shall be permanently attached or cast onto the operator to indicate the direction or rotation to open the gate.

Handwheel operators shall be provided with a threaded cast bronze lift nut to engage the operating stem. The handwheel shall be removable and shall have a minimum diameter of 15 inches.

Anchor bolts shall be provided by the gate manufacturer for mounting the gates and appurtenances. Quantity and location shall be determined by the gate manufacturer. If epoxy type anchor bolts are provided, the gate manufacturer shall provide the studs and nuts. Anchor bolts shall have a minimum diameter of 1/2-inch.

Components

Frame Assembly and Retainers
Slide and Stiffeners
Stem

Materials

Stainless Steel, Type 304L, ASTM A240
Stainless Steel, Type 304L, ASTM A240
Stainless Steel, Type 304, ASTM A276

Anchor Studs, Fasteners and Nuts
Invert Seal
Seat/Seals and Facing

Stainless Steel, Type 316, ASTM A276
Neoprene ASTM D-2000 or EPDM
Ultra-High Molecular Weight Polyethylene ASTM D4020
Bronze ASTM B584
Stainless Steel, Type 304L, ASTM A240
Cast aluminum or ductile iron

Lift Nuts
Pedestals and Wall Brackets
Operator Housing

C Construction

Sluice gates are to be securely mounted at locations shown in the plans. The gate assemblies shall be installed in a true vertical plane, square and plumb. Fill the void between the gate frame and the wall with non-shrink grout as shown on the installation drawing and in accordance with the manufacturer's recommendations.

D Measurement

The department will measure Sluice Gates 24-Inch by each acceptably installed. The department will measure Sluice Gates 36-Inch by each acceptably installed.

E Payment

The department will pay for measured quantities at the contract unit price under the following bid items:

ITEM NUMBER	DESCRIPTION	UNIT
SPV.0060.43	Sluice Gates 24-Inch	Each
SPV.0060.44	Sluice Gates 36-Inch	Each

Payment for Sluice Gates 24-Inch and Sluice Gates 36-Inch is full compensation for furnishing the gate; furnishing and installing all mounting hardware; preparing mounting surface and mounting the gate; and for furnishing all labor and equipment for mounting the gate.

Schedule of Items

Attached, dated December 1, 2016, are the revised Schedule of Items Pages. All pages of the Schedule of Items are being replaced.

Plan Sheets

The following 8½ x 11-inch sheets are attached and made part of the plans for this proposal:
Revised: 2, 9, 26, 73, 449, 454, 456, 459, 460, and 566
Added: 73A, 694A, 916A, 916B, 916C, and 916D

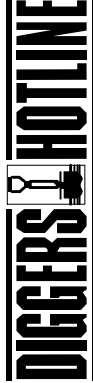
END OF ADDENDUM

GENERAL NOTES

DETAILS OF CONSTRUCTION NOT SHOWN SHALL BE IN ACCORDANCE WITH THE PERTINENT REQUIREMENTS OF THE STANDARD SPECIFICATIONS.
STATIONING DISTANCES, AND OFFSETS FOR SIGNS SHOWN IN PLANS ARE APPROXIMATE AND THE FINAL LOCATION OF SIGNS ARE TO BE DETERMINED BY THE ENGINEER.
NO TREES OR SHRUBS SHALL BE REMOVED WITHOUT APPROVAL OF THE ENGINEER.
THE LOCATIONS OF EXISTING AND PROPOSED UTILITY INSTALLATIONS AS SHOWN ON THE PLANS ARE APPROXIMATE. THERE MAY BE OTHER UTILITY INSTALLATIONS WITHIN THE PROJECT AREA THAT ARE NOT SHOWN.
THE CONTRACTOR SHALL NOTIFY DIGGERS HOTLINE AND AFFECTED UTILITIES PRIOR TO THE START OF WORK. ANY UTILITY WHICH IS NOT A MEMBER OF THE DIGGERS HOTLINE MUST BE CONTACTED SEPARATELY.
PRIOR TO ORDERING DRAINAGE PIPES AND STRUCTURES, THE CONTRACTOR SHALL FIELD VERIFY RELATED DRAINAGE INFORMATION IN THE PLAN WITH THE ENGINEER.
INLET AND DISCHARGE ELEVATIONS FOR DRAINAGE STRUCTURES SHOWN ON THE PLAN MAY BE ADJUSTED BY THE ENGINEER TO FIT FIELD CONDITIONS.
TEMPORARY STORAGE OF ANY EXCAVATED MATERIAL WILL NOT BE PERMITTED IN WETLANDS.
BROKEN CONCRETE CONTAINING RE-BAR SHALL NOT BE USED AS RIPRAP OR RIPRAP HEAVY.
CROSS SECTIONS SHOWN INCLUDE THE THICKNESS OF TOPSOIL AND SALVAGED TOPSOIL WHERE REQUIRED.
EXISTING PIPE CULVERT SIZES SHOWN ARE APPROXIMATE AND CONTRACTOR WILL BASE BID ON THE ACTUAL FIELD CONDITIONS.
THE EROSION CONTROL ITEMS SHOWN ON THE PLANS ARE AT SUGGESTED LOCATIONS. THE ENGINEER MAY MODIFY LOCATIONS AS NEEDED. ALL EROSION CONTROL MEASURES SHALL BE MAINTAINED UNTIL SUCH TIME AS THE ENGINEER DETERMINES THE MEASURE IS NO LONGER NECESSARY.
EXCAVATION BELOW SUBGRADE (EBS) IS NOT USED TO BALANCE YARDAGE AND IS NOT SHOWN ON THE CROSS SECTIONS BUT IS DETERMINED BY THE ENGINEER.
SEED, INSTALL EROSION MAT, AND FERTILIZE ALL SALVAGED TOPSOIL AREAS WITHIN 7 WORKING DAYS AFTER GRADING WORK IS COMPLETED.
DO NOT APPLY FERTILIZER WITHIN 20 FEET OF A WATER OR WETLAND.
TRAFFIC CONTROL DEVICES SHALL BE ADJUSTED TO FIT FIELD CONDITIONS AS DIRECTED BY THE ENGINEER.
CURB HEIGHT AT THE END OF CURB AND GUTTER SHALL TAPER FROM 0 TO 6-INCHES IN 6 FEET.
EXISTING ELEVATIONS SHALL BE VERIFIED IN THE FIELD.
ASPHALTIC SURFACE TEMPORARY SHALL BE CONSTRUCTED IN A SINGLE LAYER.
3.5" HMA PAVEMENT FOR SHOULDERS TO BE PLACED IN A SINGLE LAYER. 5" HMA PAVEMENT TO BE PLACED IN TWO LAYERS.
HMA PAVEMENT WEIGHT CALCULATIONS ARE BASED ON 102 LB/FT³/IN.
EXISTING DRIVEWAYS AND FIELD ENTRANCES SHALL BE RESTORED IN KIND AS DIRECTED BY THE ENGINEER IN THE FIELD AND AT THE LOCATION DETERMINED BY THE ENGINEER.
A SAWED JOINT IS REQUIRED WHERE NEW HMA OR CONCRETE PAVEMENT SURFACE MEETS EXISTING HMA OR CONCRETE PAVEMENT SURFACE.
CONCRETE MEDIAN SLOPED NOSE SHALL BE CONSTRUCTED FOR ALL MEDIAN OPENINGS AT INTERSECTIONS WITH CURB & GUTTER.
DEWATERING STORMWATER PONDS IS CONSIDERED INCIDENTAL TO OTHER CONSTRUCTION ITEMS.
EXISTING SIGNS THAT REQUIRE COVERING ALONG THE DETOUR ROUTES WILL BE PAID UNDER THE GENERAL TRAFFIC CONTROL OF THE PROJECT ARE INCIDENTAL TO THE WORK.

ORDER OF SECTION 2 SHEETS

- PROJECT OVERVIEW
- TYPICAL SECTIONS
- CONSTRUCTION DETAILS
- INTERSECTION DETAILS
- PAVING DETAILS
- EROSION CONTROL
- STORM SEWER
- PERMANENT SIGNING
- PERMANENT SIGNING
- LIGHTING PLAN
- TRAFFIC SIGNAL/PHASING
- PAVEMENT MARKING
- TRAFFIC CONTROL AND CONSTRUCTION STAGING ALIGNMENT



Dial **811** or (800) 242-8511
www.DiggersHotline.com

AGENCY CONTACTS

ENVIRONMENTAL COORDINATOR

WISCONSIN DEPARTMENT OF NATURAL RESOURCES
3550 MURKIN COULLEE ROAD
LA CROSSE, WI 54601
ATTN: KAREN KALVELAGE
(608) 785-9315

RAILROAD COORDINATOR

BNSF RAILWAY COMPANY
MINNEAPOLIS, MN 55421
ATTN: DAVID A JOHNSON, MANAGER OF PUBLIC PROJECTS
david.johnson@bnsf.com
(651) 782-3495

AIRPORT COORDINATOR

WISCONSIN DEPT. OF TRANSPORTATION - CENTRAL OFFICE
4802 SHEBOYGAN AVENUE 701
MADISON, WI 53705
ATTN: WENDY HOTTENSTEIN
(608) 261-0278
wendy.hottenstein@dot.wis.gov

WISCONSIN DEPT. OF TRANSPORTATION SIGNAL COORDINATOR

SOUTHWEST REGION - LA CROSSE OFFICE
3550 MURKIN COULLEE ROAD
LA CROSSE, WI 54601
ATTN: Andrew Wingo
(608) 785-9061
andrew.wingo@dot.wis.gov

WISCONSIN DEPT. OF TRANSPORTATION CONTACT

SOUTHWEST REGION - LA CROSSE OFFICE
3550 MURKIN COULLEE ROAD
LA CROSSE, WI 54601
ATTN: ANTHONY VANDER WIELEN, PE - PROJECT MANAGER
anthony.vanderwiel@dot.wis.gov

CITY OF LA CROSSE

400 LA CROSSE STREET
LA CROSSE, WI 54601
ATTN: MATTHEW GALLAGER
(608) 785-1905

DESIGN CONTACT

LD 1071-06-82
JOEL JURJES
CH2M HILL
136 SOUTH BATH STREET
LA CROSSE, WI 54601
(414) 272-2426
jjur@ch2m.com
LD 1071-06-83, LD 1071-06-89, LD 7190-03-72
MARK PETERSEN
ATYRES ASSOCIATES
4433 OAKWOOD HILLS PARKWAY
EAGLE ROCK, WI 53410
(715) 833-3361
peter.sen@atyresassociates.com

UTILITIES

CENTURYLINK - COMMUNICATION LINE

BRIAN STEPLUGH
133 N. WISCONSIN STREET
LA CROSSE, WI 54601
PHONE: (608) 796-5142
CELL: (608) 780-2328
brian.steplugh@centurylink.com

CHARTER COMMUNICATION - COMMUNICATION

CHRIS WISSELE, SA
1228 12TH AVE SOUTH
ONALASKA, WI 54650
PHONE: (608) 317-6213
perry.mcclellan@charter.com

CITY OF LA CROSSE - WATER

MARK JOHNSON
400 LA CROSSE STREET
LA CROSSE, WI 54601
PHONE: (608) 789-7588
johnsonm@cityoflacrosse.org

CITY OF LA CROSSE - SANITARY & STORM SEWER

STEVE ASP
400 LA CROSSE STREET
LA CROSSE, WI 54601
PHONE: (608) 789-7588
aspascityoflacrosse.org

CITY OF ONALASKA - WATER, SANITARY & STORM SEWER

KEVIN SCHUBERT
405 MAIN STREET
ONALASKA, WI 54650
PHONE: (608) 789-6061
kschuber@cityofonalaska.com

WISCONSIN INDEPENDENT NETWORK (WIN), LLC, COMMUNICATION

JOHN LOUIS
405 MAIN STREET STE 219
EAD CLARE, WI 54703
PHONE: (715) 838-4032
CELL: (715) 864-2938
jlo@winllc.net

WISCONSIN STOC - ITS ITEMS

DEAN BEEKMAN
433 WEST ST. PAUL AVE, STE 300
MILWAUKEE, WI 53203
PHONE: (414) 227-2264
deanbeekman@dot.wis.gov

XCEL ENERGY - ELECTRIC DISTRIBUTION

SCOTT ROBERTS
3215 COMMERCE STREET
LA CROSSE, WI 54603
PHONE: (608) 518-0825
CELL: (608) 518-0818
scott.w.robert@xcelenergy.com

XCEL ENERGY - NATURAL GAS

ED PRZYTARSKI
3215 COMMERCE STREET
LA CROSSE, WI 54603
PHONE: (608) 789-3231
CELL: (608) 780-0351
edward.przytarSKI@xcelenergy.com

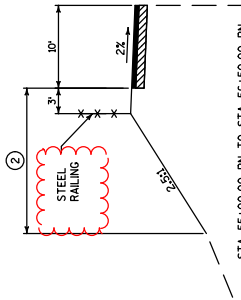
XCEL ENERGY - ELECTRIC TRANSMISSION

BRUCE ZEMKE
1000 WISCONSIN MALL
WISCONSIN, WI 55401
PHONE: (612) 330-7815
CELL: (651) 214-2620
bruce.m.zemke@xcelenergy.com

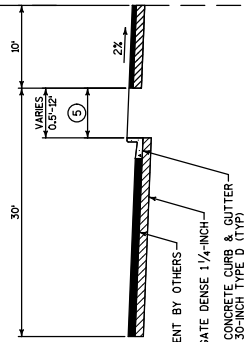
Addendum No. 01
IDs 1071-06-82/83/89 &
ID 7190-03-72
Revised Sheet 2
December 1, 2016

Addendum No. 01
 IDs 1071-06-82/83/89 &
 ID 7190-03-72
 Revised Sheet 9
 December 1, 2016

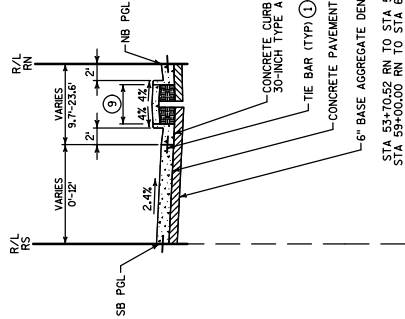
- ① TIE BARS ARE INCIDENTAL TO CONCRETE PAVEMENT (UNLESS DRILLED INTO EXISTING PAVEMENT)
- ② SALVAGED TOPSOIL, SEEDING MIXTURE NO. 20, SEEDING TEMPORARY & MULCHING
- ③ SALVAGED TOPSOIL, SEEDING MIXTURE NO. 40, SEEDING TEMPORARY & MULCHING
- ④ SALVAGED TOPSOIL, SEEDING TEMPORARY, MULCHING, PLANTINGS AND NO-NOW FESCUE SEED MIX (SEE LANDSCAPING PLANS FOR CONDITIONS DETAIL) IN AREAS WHERE MEDIAN WIDTH IS GREATER THAN 15 FEET. IN AREAS WHERE MEDIAN WIDTH IS LESS THAN 15 FEET, CONCRETE SIDEWALK IN AREAS



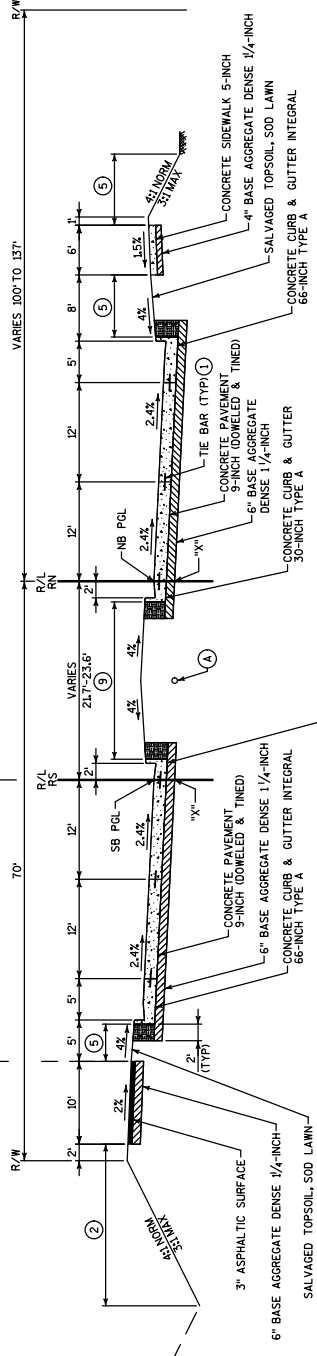
STA 55+00.00 RN TO STA 56+50.00 RN



ASPHALT PAVEMENT BY OTHERS
 6" BASE AGGREGATE DENSE 1 1/4-INCH-
 CONCRETE CURB & GUTTER
 30-INCH TYPE D (TYP)
 STA 53+32.00 RN TO STA 54+64.00 RN

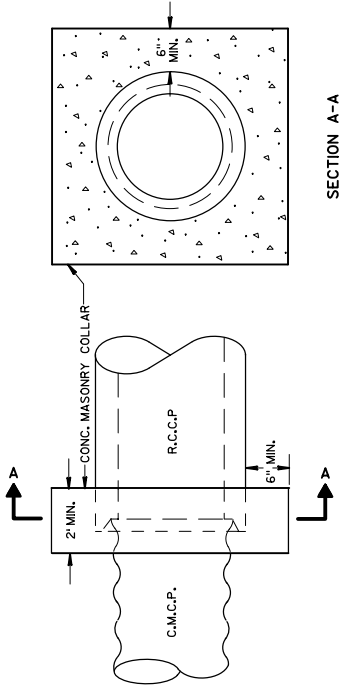


CONCRETE PAVEMENT 9-INCH (DOWELED & TINED)
 6" BASE AGGREGATE DENSE 1 1/4-INCH
 STA 53+70.52 RN TO STA 57+19.08 RN
 STA 59+00.00 RN TO STA 62+78.09 RN



TYPICAL FINISHED SECTION
 ROSE STREET
 STA 53+32.00 RN STA 69+60.62 RN

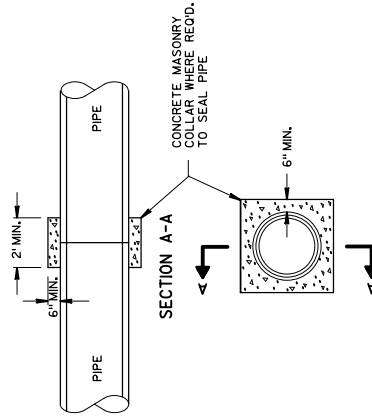
④ CONDUIT RIGID NONMETALLIC SCHEDULE 40
 2-INCH IN MEDIAN FOR FUTURE USE BY CITY
 PLACED 30" BELOW FINISHED SURFACE.
 SEE PLAN FOR PERFORATE CONNECT FOR
 ADDITIONAL INFORMATION
 *X" = POINT REFERRED TO ON CROSS SECTIONS



SECTION A-A

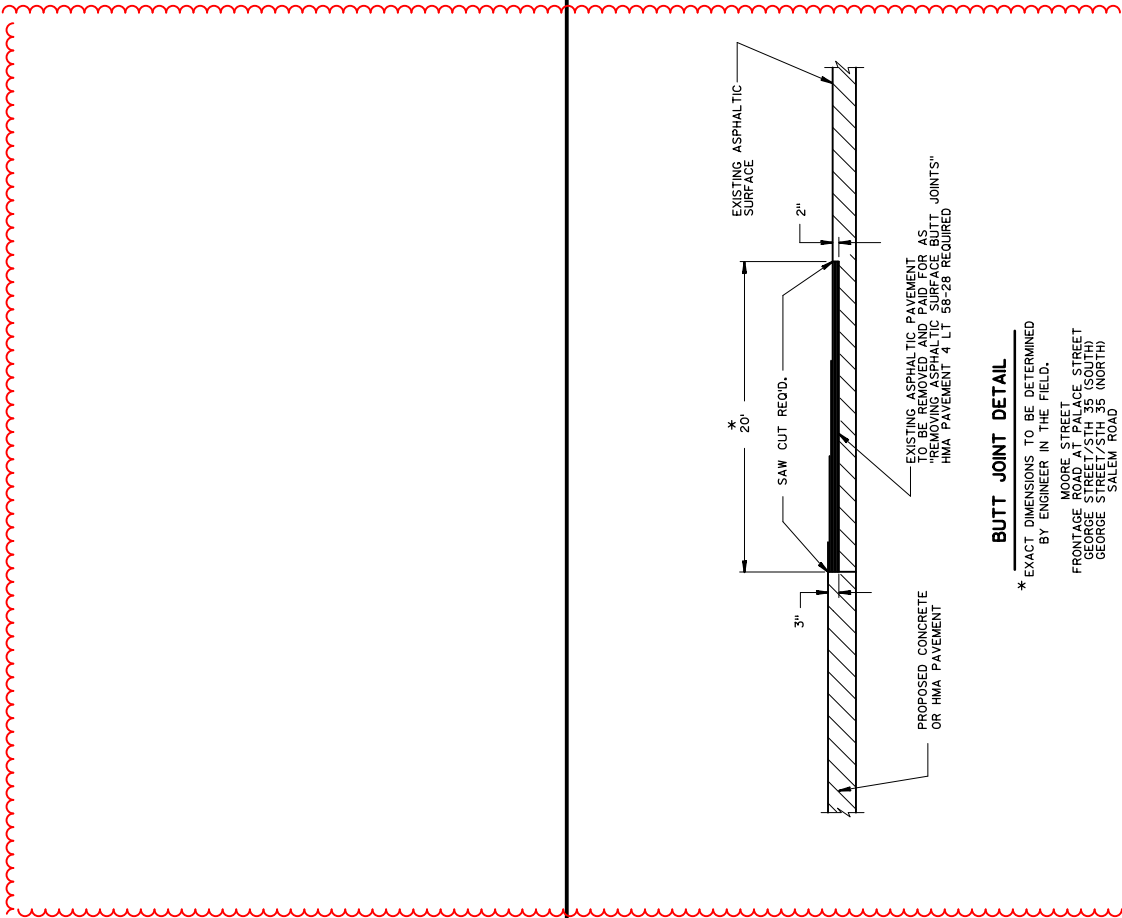
CONNECTION DETAIL R.C.C.P. TO C.M.C.P.

Addendum No. 01
 IDs 1071-06-82/83/89 &
 ID 7190-03-72
 Revised Sheet 26
 December 1, 2016



SECTION A-A

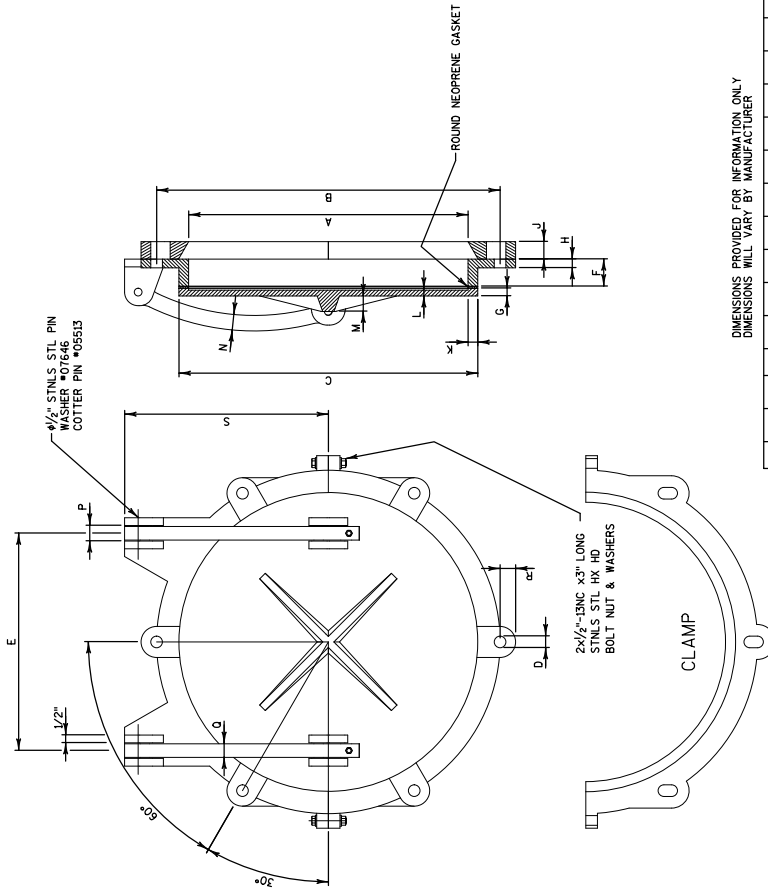
CONCRETE COLLAR DETAIL



BUTT JOINT DETAIL

* EXACT DIMENSIONS TO BE DETERMINED BY ENGINEER IN THE FIELD.
 USORSE STREET
 FRONTAGE ROAD AT PLACE STREET
 GEORGE STREET/STH 35 (SOUTH)
 GEORGE STREET/STH 35 (NORTH)
 SALEM ROAD

Addendum No. 01
 IDs 1071-06-82/83/89 &
 ID 7190-03-72
 Revised Sheet 73
 December 1, 2016



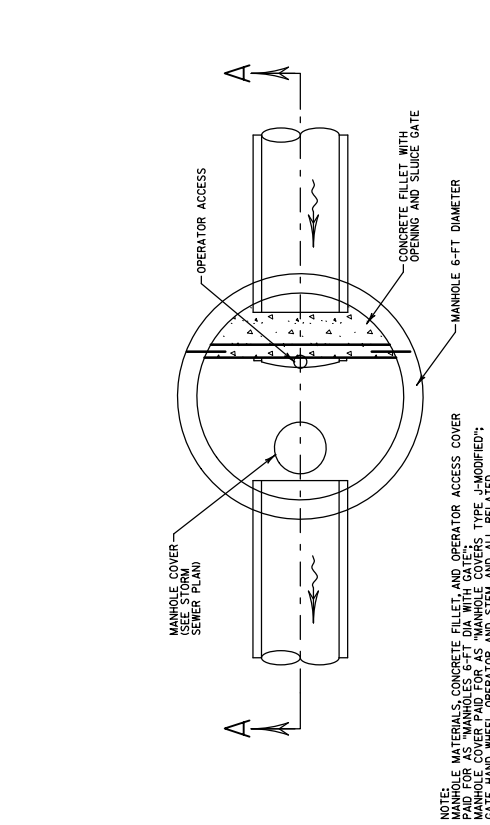
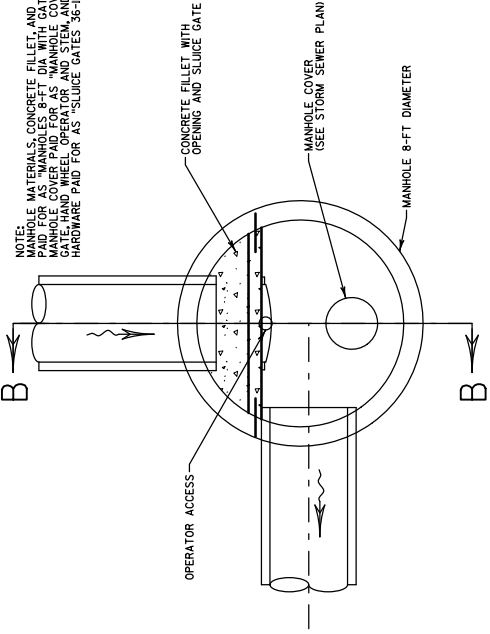
DIMENSIONS PROVIDED FOR INFORMATION ONLY
 DIMENSIONS WILL VARY BY MANUFACTURER

A	B	C	D	E	F	G	H	J	K	L	M	N	P	O	R	S
36"	4 1/2"	37 1/2"	1"	3 5/8"	1 3/4"	3/4"	3/4"	1/4"	3/4"	5/8"	2 1/4"	1 1/2"	1 3/8"	1 1/8"	1"	22 7/8"

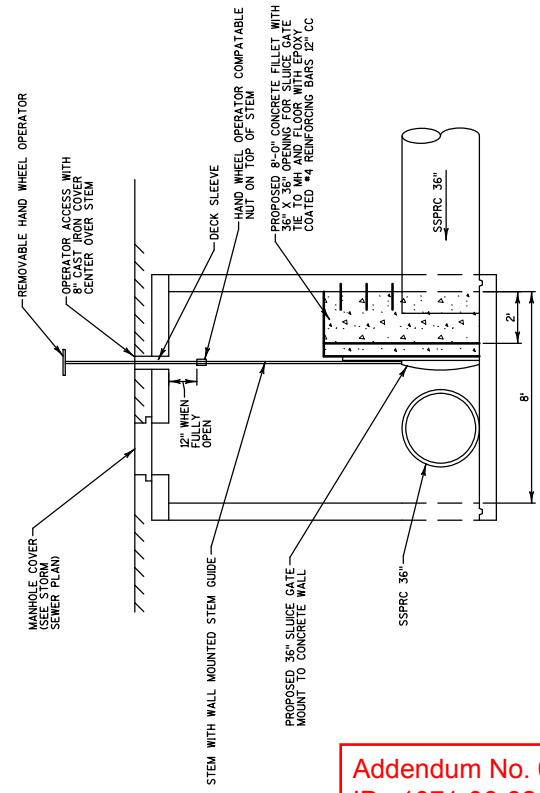
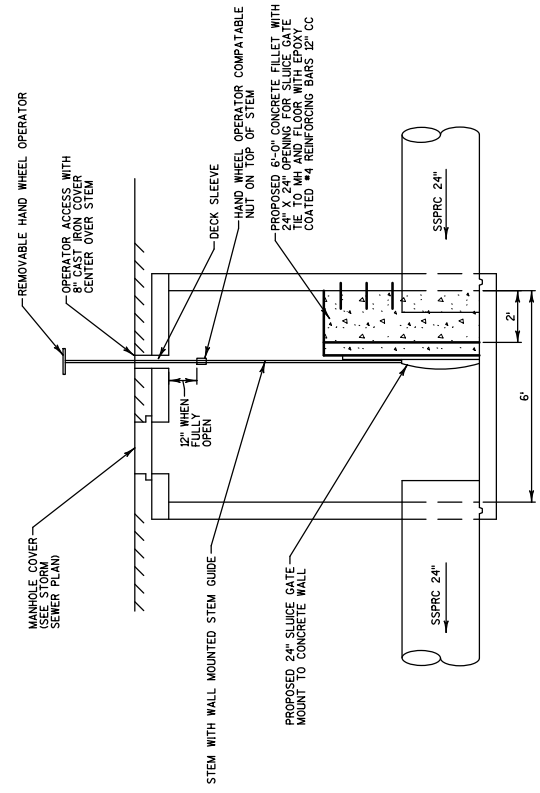
NOTE: ALL DIMENSIONS SHOWN ARE IN ENGLISH.
 MATERIAL: FRAME, LID, CLAMPS, ARMS - CAST GRAY IRON ASTM A-48, CLASS 35B.
 27" ARM - CAST DUCTILE IRON, ASTM A-536, 55+KSI YIELD.
 FINISH: BLACK EPOXY PAINT.

AUTOMATIC DRAINAGE GATE
36-INCH

NOTE: MANHOLE MATERIALS, CONCRETE FILLET, AND OPERATOR ACCESS COVER PAID FOR AS "MANHOLES 8-FT DIA WITH GATE". MANHOLE COVER, GATE, GATE HAND WHEEL OPERATOR, AND STEM, AND ALL RELATED HARDWARE PAID FOR AS "SLUDGE GATES 36-INCH".



NOTE: MANHOLE MATERIALS, CONCRETE FILLET, AND OPERATOR ACCESS COVER PAID FOR AS "MANHOLES 6-FT DIA WITH GATE". MANHOLE COVER, GATE, GATE HAND WHEEL OPERATOR, AND STEM, AND ALL RELATED HARDWARE PAID FOR AS "SLUDGE GATES 24-INCH".



Addendum No. 01
IDs 1071-06-82/83/89 &
ID 7190-03-72
Added Sheet 73A
December 1, 2016

MANHOLE 6-FT DIA WITH GATE
STRUCTURES 1-6, 1-30, 2-8A, AND 3-22

MANHOLE 8-FT DIA WITH GATE
STRUCTURE 7-20

REMOVING PAVEMENT

REMOVING PAVEMENT

STATION	LOCATION	SY	REMOVING PAVEMENT	204.0110	REMOVING ASPHALTIC SURFACE	SY
53+34 - 62+00 RN	RT	2,722		204.0100	REMOVING PAVEMENT	SY
62+00 - 76+00 RN	R/TILT	4,539		204.0110	REMOVING ASPHALTIC SURFACE	SY
72+55 - 72+90 RN	RT	--	190			
76+00 - 91+00 RN	RT	5,184				
84+30 - 86+75 RN	RT	--	675			
89+35 - 89+80 RN	RT	80				
91+00 - 98+00 RN	RT	2,188				
91+62 - 92+12 RN	RT	124				
ROSE STREET SB						
53+10 - 54+85 RS	LT	545				
53+18 - 62+00 RS	R/TILT	3,509				
62+00 - 76+00 RS	LT	5,085	103			
76+00 - 91+00 RS	LT	7,941	86			
91+00 - 98+00 RS	LT	3,623	--			
W. GEORGE STREET						
145+42 - 157+53 WG	R/TILT	7,540	64			
152+00 - 153+50 WG	RT	--	85			
153+80 - 154+61 WG	RT	--	45			
150+58 - 150+01 WG	RT	41	--			
151+64 - 152+24 WG	RT	52	--			
MOORE STREET						
10+40 - 11+00 MS	R/TILT	316	--			
PALACE STREET						
10+46 - 12+50 PS	R/TILT	1,352	--			
GEORGE STREET						
10+46 - 15+33 GS	R/TILT	2,382	--			
1071-06-82 TOTAL		47,203	1,248			

STATION	LOCATION	SY	REMOVING PAVEMENT	204.0100	REMOVING ASPHALTIC SURFACE	SY
98+00 RN - 133+21.32 RN	NB LANES	11,675		204.0100	REMOVING PAVEMENT	SY
98+14.27 RS - 133+35.72 RS	SB LANES	10,610		204.0110	REMOVING ASPHALTIC SURFACE	SY
EV RAMP	IH 90 EB EXIT TO ROSE STREET SB	935				
EX RAMP	IH 90 EB EXIT TO ROSE STREET NB	2,130				
FO RAMP	ROSE STREET NB TO EB IH 90	3,165				
FO RAMP	ROSE STREET SB TO EB IH 90	435				
GV RAMP	IH 90 WB EXIT TO ROSE STREET SB	2,840				
GV RAMP	IH 90 WB EXIT TO ROSE STREET NB	1,550				
HW RAMP	ROSE STREET NB TO WB IH 90	950				
HW RAMP	ROSE STREET SB TO WB IH 90	1,850				
1071-06-83 TOTAL		36,550				
PROJECT NO: 7190-03-72						
133+21.32 RN - 135+73 RN	NB LANES	690				
139+26 RN - 144+75 RN	NB LANES	1,230				
7190-03-72 TOTAL		1,920				
CONSTRUCTION TOTAL						
		85,473				1,248

REMOVING OLD STRUCTURES

STATION	LOCATION	LS
01 122+00 RN	WB IH 90 TO SB ROSE STREET	1
PROJECT ID: 7190-03-72		
02 237+66.50 NB		1
PROJECT ID: 1071-06-83		
203.0200		
REMOVING OLD STRUCTURES		

Addendum No. 01
IDs 1071-06-82/83/89 &
ID 7190-03-72
Revised Sheet 449
December 1, 2016

CATEGORY 0010
UNLESS OTHERWISE
NOTED

REMOVING STORM SEWER

STATION TO STATION	LOCATION	DESCRIPTION	12-INCH LF	18-INCH LF	24-INCH LF	30-INCH LF	36-INCH LF
CAT 0010							
PROJECT ID : 1071-06-82							
55+08 - 56+17 FN	NB RT	18" SS	--	113	--	--	--
56+11 - 56+22 FN	UNDER NB AND SB LANES	24" SS	--	--	149	--	--
56+38 - 56+55 FN	UNDER NB AND SB LANES	30" SS	--	--	--	120	--
56+48 - 57+05 FN	UNDER MEDIAN	12" SS	148	--	--	--	--
61+51 - 61+54 FN	UNDER NB AND SB LANES	36" SS	--	--	--	--	180
67+14 - 67+18 FN	UNDER NB AND SB LANES	36" SS	--	--	--	--	196
69+21 - 71+71 FN	SB MEDIAN	12" SS	271	--	--	--	--
69+62 FN	UNDER NB LANES	12"24" SS	20	--	79	--	--
69+62 - 70+52 FN	PALACE INTERSECTION	12" SS	105	--	--	--	--
75+00 FN	UNDER NB AND SB LANES	36" SS	--	--	--	--	185
81+87 - 81+89 FS	MEDIAN AND SBLT	18" SS	--	77	--	--	--
85+57 - 87+04 FN	NB RT TO MEDIAN	24" SS	--	203	--	--	--
85+66 - 85+68 FS	SB LT	18" SS	--	45	--	--	--
87+01 - 87+03 FN	MANHOLE TO OUTFALL	24" SS	--	176	--	--	--
87+03 - 88+33 FN	NB RT TO MEDIAN	18" SS	--	145	--	--	--
88+35 - 88+38 FS	SB LT	24" SS	--	--	183	--	--
145+48 - 145+59 WG	ACROSS ENTIRE ROAD	18" SS	57	--	--	--	--
149+67 - 150+16 WG	CAMPBELL INTERSECTION	12" SS	117	--	--	--	--
155+48 - 157+81 WG	MEDIAN AND RT TO MANHOLE	18" SS	--	279	--	--	--
9+75 - 10+76 GS	GEORGE INTERSECTION	24" SS	--	102	--	--	--
10+40 - 10+75 GS	GEORGE INTERSECTION	12" SS	41	--	--	--	--
10+67 - 13+53 GS	ALONG LT SIDE OF ROAD	24" SS	--	--	235	--	--
13+34 - 13+86 GS	SALEM INTERSECTION	12" SS	80	--	--	--	--
13+83 GS	MANHOLE TO MANHOLE	24" SS	--	36	--	--	--
13+53 - 15+33 GS	MANHOLE TO PROJECT LIMITS	24" SS	--	216	--	--	--
1071-06-82 TOTAL			839	659	1,379	120	651

REMOVING MANHOLES

STATION	LOCATION	STAGE	204-0210 EACH
CAT 0010			
PROJECT ID : 1071-06-82			
56+17 FN	RT	2	1
56+22 FN	RT	2	1
69+62 FS	RT	3	1
87+04 FN	RT	2	1
155+48 WG	LT	2	1
10+66 GS	LT	2	1
13+15 GS	LT	2	1
13+53 GS	LT	1	1
13+53 GS	RT	1	1
15+16 GS	RT	1	1
1071-06-82 TOTAL			10

PROJECT ID : 1071-06-83

99+27 FN	RT	1	1
101+14 RS	RT	1	1
118+16 RS	RT	1	1
123+20 RS	RT	1	1
1071-06-83 TOTAL			4

PROJECT ID : 1071-06-89

202+55.7 G	41.19 FT	1	1
1071-06-89 TOTAL			1

CONSTRUCTION TOTAL

CONSTRUCTION TOTAL			15
--------------------	--	--	----

Addendum No. 01
IDs 1071-06-82/83/89 &
ID 7190-03-72
Revised Sheet 454
December 1, 2016

REMOVING BUSINESS SIGN

STATION	LOCATION	MESSAGE	204-9060.S REMOVING BUSINESS SIGN EACH
CAT 0010			
PROJECT ID : 1071-06-82			
93+07 FN	75 FT	AMERICA'S BEST VALUE INN	1
154+83 WG	32 LT	BUJER KING	1
144+80 AR	48 LT	SSEMUSIC	1
1071-06-82 TOTAL			3
CONSTRUCTION TOTAL			3

CATEGORY 0010
UNLESS OTHERWISE
NOTED

SHEET 454

MISCELLANEOUS QUANTITIES

COUNTY: LA CROSSE

HWY: USH 53

PROJECT NO: 1071-06-82

FILE NAME : ch_0682_030201_mq.pptx

PLOT DATE : _____

PLOT BY : jpierni

ORG DATE : Aug 1, 2016

PLOT SCALE : 1:1

Addendum No. 01
IDs 1071-06-82/83/89 &
ID 7190-03-72
Revised Sheet 456
December 1, 2016

EARTHWORK SUMMARY

Table with columns: DIVISION, PROJECT, STATION TO STATION, LOCATION, EXCAVATION COMMON CUT CY, SALVAGED/UNUSABLE PAVEMENT MATERIAL CY, AVAILABLE MATERIAL CY, EXPANDED EBS BACKFILL CY, REDUCED EBS INFILL CY, UNEXPANDED FILL CY, EXPANDED FILL CY, MASS ORDINATE +/- CY, 208.1100 BORROW CY, 208.0100 BORROW CY.

(1) REDUCED EBS IN FILL IS EXCAVATED EBS MATERIAL THAT IS USABLE OUTSIDE THE 1:1 SLOPES. REDUCED EBS INFILL REDUCTION FACTOR = 0.8
(2) EXPANSION FACTOR = 1.15
(3) SELECT BORROW = EXPANDED FILL - EXCAVATION COMMON
(4) EXPANDED FILL = (UNEXPANDED FILL - REDUCED EBS) * EXPANSION FACTOR + EXPANDED EBS BACKFILL
(5) THE MASS ORDINATE + OR - QTY CALCULATED FOR THE DIVISION. PLUS QUANTITY INDICATES AN EXCESS OF MATERIAL WITHIN THE DIVISION. MINUS QUANTITY INDICATES A SHORTAGE OF MATERIAL WITHIN THE DIVISION.
(6) AVAILABLE MATERIAL = COMMON EXCAVATION - SALVAGED/UNUSABLE MATERIAL
(7) UNDISTRIBUTED SELECT BORROW IS INCLUDED TO ACCOUNT FOR LACK OF AVAILABILITY OF EXCAVATED MATERIAL DURING STAGING AND POTENTIAL UNUSABLE MATERIALS WITHIN THE PROJECT DURING THE EARLY STAGES OF CONSTRUCTION.
(8) EBS QUANTITY IS BASED ON OBSERVED TOPSOIL IN EXCESS OF 1" IN SOME AREAS AND OBSERVED POOR SOILS IN THE EXISTING SE QUADRANT OF THE INTERCHANGE. QUANTITIES SHOWN ARE UNDISTRIBUTED.
(9) EBS IS NOT INCLUDED IN THE EARTHWORK DATA TABLE FOR THE F RAMP.
(10) BORROW ITEM FOR USE IN EAGLE VIEWING LANDSCAPING AREA AND NOT IN EAGLE VIEWING PARKING LOT AREA WHERE SELECT BORROW IS REQUIRED.

CATEGORY 0010
UNLESS OTHERWISE
NOTED

SHEET 456

E

MISCELLANEOUS QUANTITIES

COUNTY: LA CROSSE

HWY: USH 53

PROJECT NO: 1071-06-82

UNDISTRIBUTED (7) (11)

PROJECT ID 1071-06-82 SUMMARY CATEGORY 0010

PROJECT ID 1071-06-83 SUMMARY CATEGORY 0010

PROJECT ID 7190-03-72 SUMMARY CATEGORY 0010

PROJECT TOTALS

PROJECT TOTALS

PROJECT TOTALS

Summary table with columns: DIVISION 1 SUBTOTAL, PROJECT ID 1071-06-82 SUMMARY CATEGORY 0010, PROJECT ID 1071-06-83 SUMMARY CATEGORY 0010, PROJECT ID 7190-03-72 SUMMARY CATEGORY 0010, PROJECT TOTALS. Values include CUT CY, SALVAGED/UNUSABLE PAVEMENT MATERIAL CY, AVAILABLE MATERIAL CY, EXPANDED EBS BACKFILL CY, REDUCED EBS INFILL CY, UNEXPANDED FILL CY, EXPANDED FILL CY, MASS ORDINATE +/- CY, 208.1100 BORROW CY, 208.0100 BORROW CY.

FILE NAME: ch_0682_030201_mq.pptx PLOT DATE: _____ PLOT BY: j_literoni PLOT NAME: _____ ORG DATE: Aug 1, 2016 PLOT SCALE: 1:1

CONCRETE PAVING GAIRS

STATION	LOCATION	EACH	415.0210
PROJECT NO: 1071-06-82			
146+25 WG	STH 35 - STAGE 1B	1	
155+15 WG	STH 35 - STAGE 1B	1	
55+00 RN	STAGE 1C/2A	1	
70+00 RN	STAGE 1C/2A	1	
87+00 RN	STAGE 1C/2A	1	
149+00 WG	STH 35 - STAGE 1C	1	
153+75 WG	STH 35 - STAGE 1D	1	
10+25 GS	STH 35 - STAGE 2A	1	
1071-06-82 TOTAL			8
PROJECT NO: 1071-06-83			
101+08 RN	RN LINE STAGE 2A	1	
121+56 RN	RN LINE STAGE 2A	1	
199+25 H	H RAMP STAGE 2A	1	
187+50 F	F RAMP STAGE 2A	1	
128+64 RS	RS LINE STAGE 3A	1	
1071-06-83 TOTAL			5
CONSTRUCTION TOTAL			13

REMOVING ASPHALTIC SURFACE BUTT JOINTS

LOCATION	204.0115 REMOVING ASPHALTIC SURFACE BUTT JOINTS SY	
CAT 0010		
PROJECT NO: 1071-06-82		
MOORE STREET	65	
FROM W. GEORGE ST. AT PALACE STREET	165	
W. GEORGE STREET (STH 35)	135	
GEORGE STREET	70	
SALEBURN ROAD	80	
1071-06-82 TOTAL		475
CONSTRUCTION TOTAL		475

Addendum No. 01
IDs 1071-06-82/83/89 &
ID 7190-03-72
Revised Sheet 459
December 1, 2016

ASPHALTIC ITEMS

STATION	LOCATION	TON	TON	TON	TON	LF	SY
		ASPHALTIC SURFACE	ASPHALTIC SURFACE TEMPORARY	HMA PAVEMENT	HMA PAVEMENT	ASPHALTIC CURB	ASPHALTIC FLUMES
CAT 0010							
PROJECT ID: 1071-06-82							
ROSE STREET SB							
53+17 - 62+00 RS	PATH/LT	178	--	--	--	--	--
62+00 - 76+00 RS	PATH/LT	270	--	--	--	--	--
76+00 - 86+63 RS	PATH/LT	281	--	--	--	--	--
87+03 - 98+00 RS	PATH/LT	134	--	--	--	--	--
W. GEORGE STREET							
145+22 - 145+72 WG	R/T/LT	--	--	24	--	--	--
152+00 - 154+60 WG	RT	25	--	--	--	--	--
154+61 - 154+91 WG	RT	5	--	--	--	--	--
MOORE STREET							
11+00 - 12+00 MS	R/T/LT	--	--	95	--	--	--
PALACE STREET							
11+75 - 12+25 FS	RT	--	--	20	--	--	--
GEORGE STREET							
5+60 - 8+16 GS	R/T/LT	--	--	256	--	--	--
13+17 - 15+33 GS	R/T/LT	--	--	330	--	--	--
ACCESS ROAD							
13+63 - 19+65 AR	R/T/LT	--	--	768	--	--	--
14+35 AR	RT	--	--	41	--	--	--
15+10 AR	RT	--	--	105	--	--	--
16+77 AR	RT	--	--	29	--	--	--
18+52 AR	LT	6	--	--	--	--	--
TEMPORARY PAVEMENT							
53+60 - 57+89 RN	R/T/LT	--	129	--	--	--	--
55+00 - 56+50 RN	MEDIAN	--	57	--	--	--	--
67+00 - 75+50 RS	LT	--	233	--	--	--	--
69+87 - 71+35 RS	R/T/LT	--	44	--	--	--	--
70+00 - 70+40 RN	RT	--	39	--	--	--	--
83+25 - 90+64 RS	R/T/LT	--	162	--	--	--	--
85+63 - 98+00 RS	LT	--	420	--	--	--	--
86+70 - 87+56 RN	R/T/LT	--	27	--	--	--	--
86+00 - 87+20 RN	MEDIAN	--	100	--	--	--	--
87+80 - 98+00 RN	RT	--	301	--	--	--	--
92+00 - 96+00 RN	MEDIAN	--	123	--	--	--	--
94+75 - 98+00 RS	R/T/LT	--	60	--	--	--	--
145+49 - 146+25 WG	LT	--	14	--	--	75	--
149+00 - 151+20 WG	MEDIAN	--	98	--	--	--	--
PIPE TRENCH PAVEMENT PATCH	STAGING	--	150	--	--	--	--
1071-06-82 TOTAL		899	1,977	1,688	--	75	--

CATEGORY 0010
UNLESS OTHERWISE
NOTED

COUNTY: LA CROSSE

HWY: USH 53

PROJECT NO: 1071-06-82

MISCELLANEOUS QUANTITIES

SHEET

459

E

FILE NAME : ch_0682_030202_mq.pptx

PLOT DATE :

PLOT BY :

ORG DATE : Aug 1, 2016

PLOT SCALE : 1:1

Addendum No. 01
IDs 1071-06-82/83/89 &
ID 7190-03-72
Revised Sheet 460
December 1, 2016

CATEGORY 0010
UNLESS OTHERWISE
NOTED

SHEET 460 E

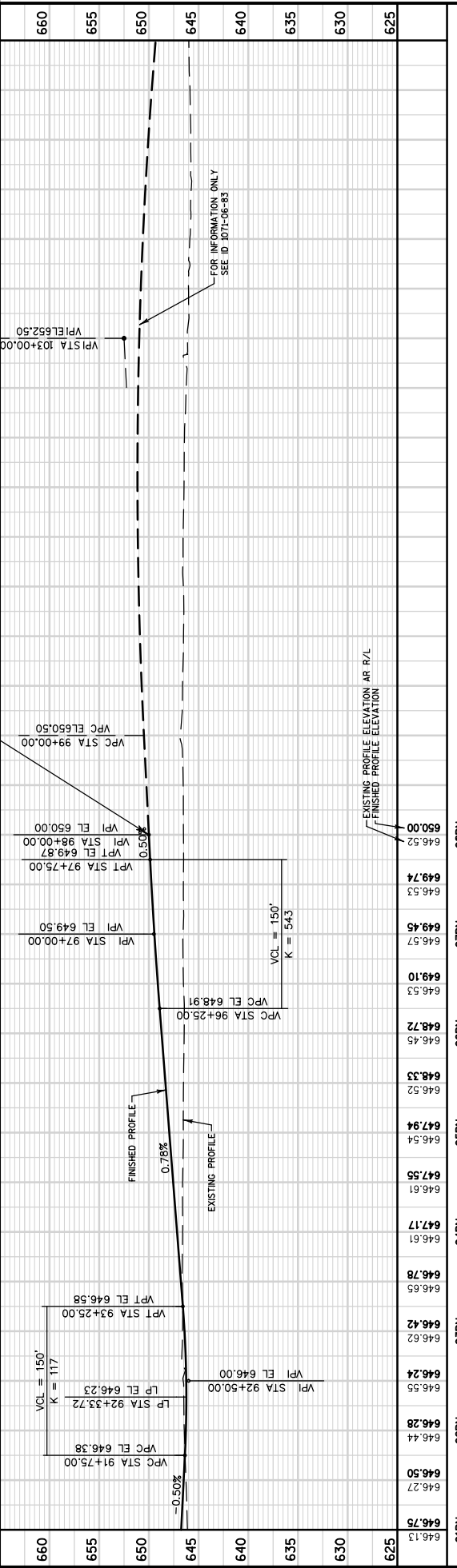
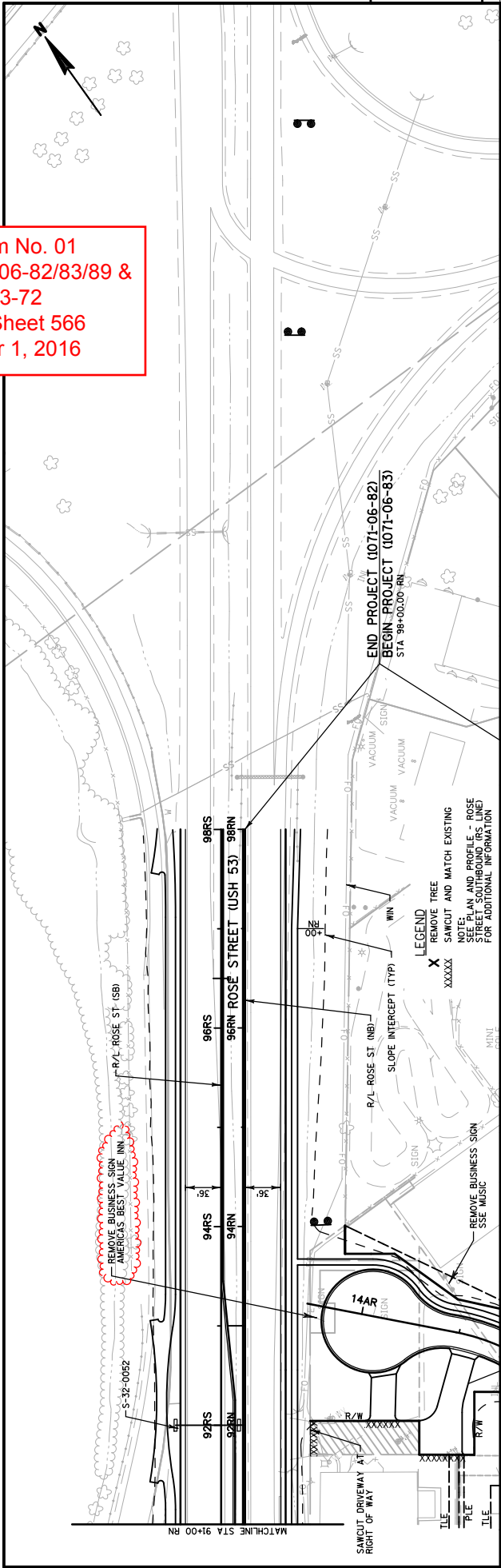
PLOT SCALE: 1:1

ASPHALTIC ITEMS

STATION	LOCATION	TON	TON	TON	TON	LF	SY
		465.0105	465.0125	460.6224	460.6224	465.0310	465.0315
		ASPHALTIC SURFACE	ASPHALTIC SURFACE TEMPORARY	HMA PAVEMENT 4 LT 58-28 S	HMA PAVEMENT 4 MT 58-28 S	ASPHALTIC CURB	ASPHALTIC FLUMES
CAT 0010							
PROJECT NO: 1071-06-83							
CAT 0010							
	ERAMP			100			
	189+03 E						20
	F RAMP			200			
	190+51 F						16
	G RAMP			190			
	200+19 G						23
	200+48 G						20
	H RAMP			30	35		
	200+66 H						18
	GRLINE				10		
	99+14 RS - 133+35 RS	615					
	183+86 F - 189+90 F	110					
	189+90 F	15					
	207+73 WB						7
	RS WIDENING		1,360				
	EW TEMP RAMP		160				
	GY TEMP RAMP		520				
	TG TEMP WIDENING		110				
	FY TEMP RAMP		135				
	HX TEMP RAMP		200				
	RN WIDENING		1,580				
	HK TEMP RAMP		80				
	FX TEMP RAMP		160				
	CZ TEMP RAMP		355				
	UG TEMP WIDENING		20				
	UG TEMP WIDENING		40				
	1071-06-83 CATEGORY 0010 TOTAL	740	4,720	520	45	75	104
CAT 0040							
	EAGLE VIEWING AREA	410					
	1071-06-83 CATEGORY 0040 TOTAL	410					
	1071-06-83 TOTAL	1,150	4,720	520	45	75	104
PROJECT NO: 7190-03-72							
CAT 0010							
	133+35 RS - 135+75 RS	45					
	RW CROSSOVER		90				
	RY TEMP RAMP		70				
	7190-03-72 TOTAL	45	160				
CONSTRUCTION TOTAL							
		2,094	6,857	2,188	45	75	104

PROJECT NO: 1071-06-82 HWY: USH 53 COUNTY: LA CROSSE MISCELLANEOUS QUANTITIES SHEET 460 E
PLOT DATE: _____ PLOT BY: _____ PLOT NAME: _____ ORG DATE: Aug 1, 2016
FILE NAME: ch_0682_030202_mq.pptx

Addendum No. 01
 IDs 1071-06-82/83/89 &
 ID 7190-03-72
 Revised Sheet 566
 December 1, 2016



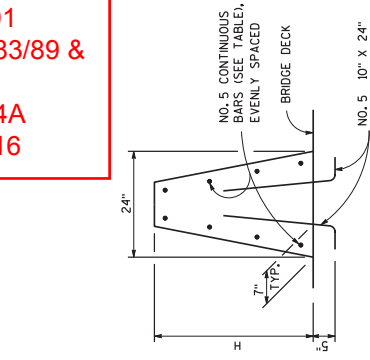
STATION	ELEVATION	STATION	ELEVATION
91RN	646.75	96RN	646.53
91RN	646.27	96RN	646.45
92RN	646.50	96RN	648.72
92RN	646.44	96RN	646.72
92RN	646.28	96RN	646.53
92RN	646.55	97RN	649.10
93RN	646.24	97RN	649.45
93RN	646.52	97RN	649.57
93RN	646.42	98RN	649.74
94RN	646.61	98RN	646.53
94RN	646.78	98RN	650.00
94RN	647.17		
95RN	647.55		
95RN	647.94		
95RN	646.54		
95RN	647.94		
95RN	646.52		
95RN	647.53		
95RN	646.45		
95RN	648.72		
95RN	648.33		
95RN	648.72		
95RN	646.45		
95RN	648.72		
95RN	646.53		
95RN	649.10		
95RN	649.45		
95RN	649.57		
95RN	649.74		
95RN	646.53		
95RN	650.00		
95RN	646.53		
95RN	649.74		
95RN	646.53		
95RN	649.74		
95RN	646.53		
95RN	650.00		
95RN	646.53		
95RN	649.74		
95RN	646.53		
95RN	649.74		
95RN	646.53		
95RN	650.00		

PROJECT NO: 1071-06-82
 COUNTY: LA CROSS
 HWY: USH 53
 PLAN AND PROFILE - ROSE STREET NORTHBOUND (RN LINE)
 SHEET 566
 WISDOT/CADD SHEET 40

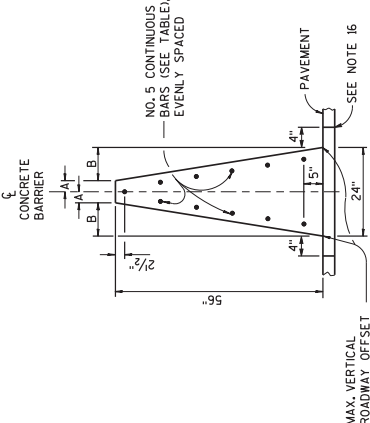
Addendum No. 01
IDs 1071-06-82/83/89 &
ID 7190-03-72
Added Sheet 694A
December 1, 2016

GENERAL NOTES

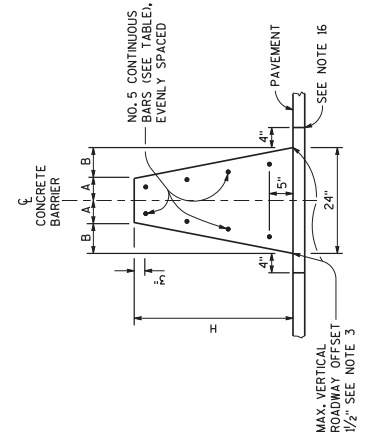
- WHERE THE CONCRETE BARRIER IS ADDED TO THE FACE OF EXISTING CONCRETE STRUCTURE, MATCH EXISTING WEEP HOLES.
- EXPANSION JOINTS IN CONCRETE BARRIER SHALL BE LOCATED AT ALL DECK, AND PRINCIPAL WALL JOINTS; EXPANSION JOINT FILLER MATERIAL SHALL BE THE SAME SIZE AS JOINT OR 1/2" MINIMUM.
- WHERE VERTICAL ROADWAY OFFSET IS GREATER THAN 1/2", USE TYPE A.
- PLACE BARRIER PERPENDICULAR TO SHOULDER GRADE, UNLESS INDICATED IN PLAN.
- EXCEPT IN ANCHORS, VERTICAL REINFORCING STIRRUP NOT REQUIRED FOR ROADWAY OFFSETS LESS THAN 1'-0".
- FOR TYPE S32, TYPE S36, TYPE S42, AND S56 MONOLITHIC FOOTING OR DOWELED FOOTING WITH 2-#8 x 8' @ 2'-0".
- STAGGER LAPPING OF LONGITUDINAL STEEL, MINIMUM OVERLAP OF STEEL 2 FEET. BARS AT LAPS TO BE FIRMLY TIED OR CONNECTED.
- 4000 PSI CONCRETE AIR ENTRAINMENT PER STANDARD SPECIFICATION 501.
- WHEN SWITCHING BETWEEN SLIP FORM AND CAST-IN-PLACE OPERATIONS, EXTEND LONGITUDINAL STEEL 3 FEET BEYOND SLIP-FORMING CUT OFF POINT. EXPOSED STEEL INTO NEXT POURS REINFORCEMENT LAPS TO BE FIRMLY TIED.
- USE 3/4" BEVEL OR 1" RADIUS ON ALL EXPOSED SHARP EDGES UNLESS OTHERWISE NOTED.
- 2" CLEAR COVER TYPICAL.
- COLD-JOINTS MAY BE USED BETWEEN ANCHOR INSTALLATIONS. WHEN A COLD JOINT IS NEEDED, 3 FEET OF LAP OF LONGITUDINAL STEEL IS REQUIRED. LAPS TO BE FIRMLY TIED.
- IN TYPE S32, TYPE S36, TYPE S42 AND TYPE S56 NO ADDITIONAL VERTICAL STEEL NEEDED. IN TYPE S32A, TYPE S36A, TYPE S42A AND TYPE S56A REQUIRES VERTICAL STEEL, SEE OTHER DETAIL.



SINGLE SLOPE CONCRETE BARRIER ON BRIDGE
NON OUTER PARAPET APPLICATION

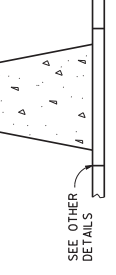


56-INCH SINGLE SLOPE CONCRETE BARRIER (TYPE S56)

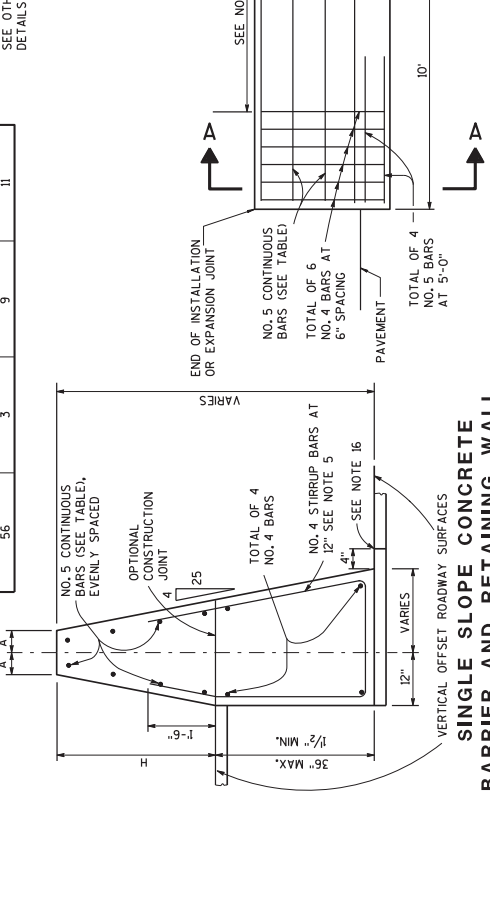


32-INCH, 36-INCH OR 42-INCH SINGLE SLOPE CONCRETE BARRIER (TYPE S32, TYPE S36, AND TYPE S42)

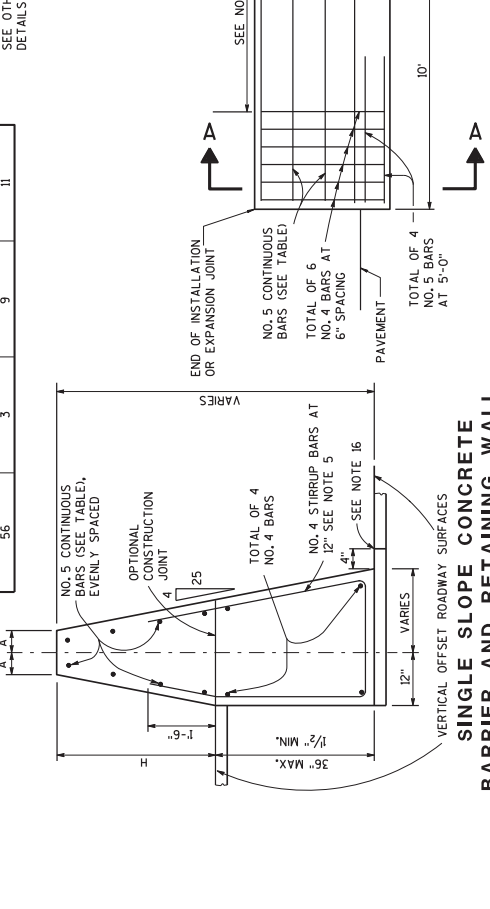
BARRIER HEIGHT H, INCHES	A INCHES	B INCHES	NUMBER OF NO. 5 BARS EACH
32	7	5	8
36	6 1/4	5 1/4	8
42	5 1/4	6 3/4	10
56	3	9	11



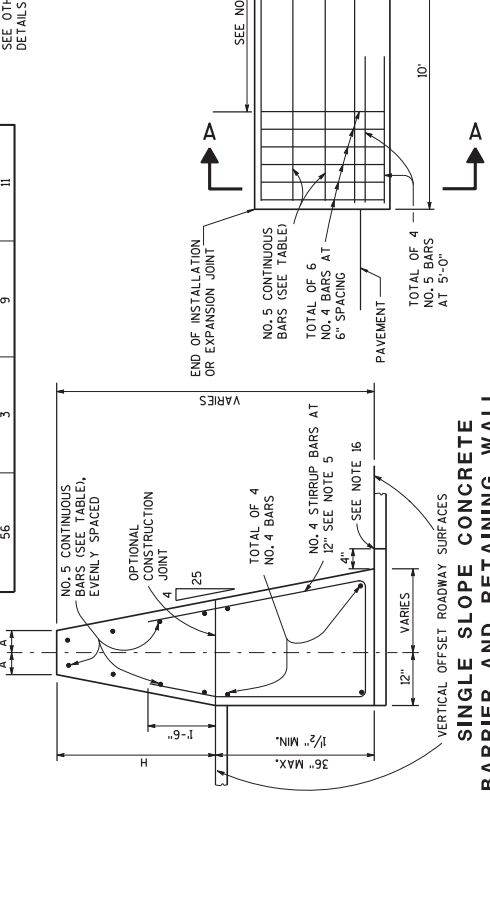
DELINEATION



END ANCHOR SINGLE SLOPE CONCRETE BARRIER AT CONSTRUCTION JOINT



SINGLE SLOPE CONCRETE BARRIER AND RETAINING WALL (TYPE S32A, TYPE S36A, TYPE S42A, TYPE S56A) (BETWEEN ADJACENT ROADWAYS)



DELINEATOR SPACING ON HORIZONTAL CURVES

RADIUS OF CURVE	APPROXIMATE SPACING ON CURVE
50 FEET	20 FEET
100 FEET	25 FEET
150 FEET	30 FEET
200 FEET	35 FEET
250 FEET	40 FEET
300 FEET	45 FEET
400 FEET	50 FEET
500 FEET	55 FEET
600 FEET	60 FEET
700 FEET	65 FEET
800 FEET	70 FEET
900 FEET	75 FEET
1000 FEET	80 FEET
1000 FEET	85 FEET
1000 FEET	90 FEET

DELINEATOR SPACING ON RADIUS GREATER THAN 1000 FEET OR TANGENT SECTIONS

LENGTH OF BARRIER	REFLECTOR NO. SPACING	REFLECTOR NO. SURFACES	MIN. NO. REFLECTORIZED
< 200'	50' C-C	100' C-C	1
> 200'	50' C-C	100' C-C	3
< 200'	25' C-C	50' C-C	1
> 200'	25' C-C	50' C-C	6
< 200'	10' C-C	100' C-C	2
> 200'	10' C-C	100' C-C	3

CONCRETE BARRIER SINGLE SLOPE (CBSS)

STATE OF WISCONSIN
DEPARTMENT OF TRANSPORTATION

Addendum No. 01
IDs 1071-06-82/83/89 &
ID 7190-03-72
Added Sheet 916A
December 1, 2016

NB ROSE STREET										NB ROSE STREET									
Station	Factor	Area	Volume	Adjusted	Factor	Area	Volume	Adjusted	Ordnate	Station	Factor	Area	Volume	Adjusted	Factor	Area	Volume	Adjusted	Ordnate
53+50.00	1	59.77	0	0	1.15	0	0	0	0	78+50.00	1	0.08	0.07	0.07	1.15	85.83	174.9	201.14	-5116.91
54+00.00	1	47.88	99.67	99.67	1.15	11.12	10.3	11.84	87.83	79+00.00	1	10.88	10.14	10.14	1.15	68.15	142.57	163.95	-5270.72
54+50.00	1	37.33	78.89	78.89	1.15	16.59	25.66	29.51	137.21	80+00.00	1	25.6	33.77	33.77	1.15	60.39	119.01	136.87	-5373.81
54+75.00	1	32.17	32.18	32.18	1.15	16.85	15.48	17.8	151.59	80+50.00	1	37.37	58.3	58.3	1.15	53.23	105.2	120.88	-5436.5
55+00.00	1	26.86	27.33	27.33	1.15	20.51	17.3	19.89	159.03	81+00.00	1	38.66	70.4	70.4	1.15	50.12	95.7	110.05	-5476.15
55+50.00	1	16.59	40.24	40.24	1.15	32.49	49.07	56.44	142.83	81+50.00	1	35.21	68.4	68.4	1.15	52.28	94.82	109.04	-5516.79
56+00.00	1	6.24	21.14	21.14	1.15	44.33	71.13	81.8	82.17	82+00.00	1	22.53	53.46	53.46	1.15	65.26	108.84	125.16	-5588.49
56+50.00	1	4.24	9.7	9.7	1.15	69.25	120.94	-29.06	-29.06	82+50.00	1	7.02	27.37	27.37	1.15	78.42	133.04	153	-5714.12
57+00.00	1	8.88	12.15	12.15	1.15	48.11	108.67	124.97	-141.88	83+00.00	1	0.56	7.02	7.02	1.15	90.76	156.65	180.15	-5887.24
57+50.00	1	24.37	30.79	30.79	1.15	32.11	74.28	85.42	-196.51	83+50.00	1	1.31	1.74	1.74	1.15	94.9	171.91	197.69	-6083.2
57+75.00	1	32.56	26.35	26.35	1.15	23.52	25.75	29.61	-199.77	84+00.00	1	0.47	1.65	1.65	1.15	99.87	180.35	207.4	-6288.95
58+00.00	1	36.81	33.04	33.04	1.15	0	10.89	12.52	-179.25	84+50.00	1	1.68	1.99	1.99	1.15	77.48	164.22	188.85	-6475.81
58+50.00	1	54.27	86.18	86.18	1.15	0	0	0	-93.07	85+00.00	1	0.89	2.39	2.39	1.15	62.88	129.96	149.46	-6622.88
59+00.00	1	45.31	92.21	92.21	1.15	1.88	1.74	2	-2.86	85+50.00	1	8.07	8.3	8.3	1.15	39.46	94.76	108.97	-6723.56
59+50.00	1	44.65	83.31	83.31	1.15	29.06	28.64	32.94	47.51	86+00.00	1	9.99	16.73	16.73	1.15	40.44	73.99	85.08	-6791.92
60+00.00	1	36.01	74.69	74.69	1.15	47.77	71.13	81.8	40.39	86+50.00	1	8.78	17.39	17.39	1.15	38.29	72.9	83.84	-6888.37
60+50.00	1	24.25	55.8	55.8	1.15	71.32	110.26	126.8	-36.62	87+00.00	1	0.04	0.04	0.04	1.15	68.65	98.02	113.87	-6984.07
61+00.00	1	16.81	38.02	38.02	1.15	85.98	145.65	167.49	-160.09	87+50.00	1	0	0	0	1.15	59.26	118.44	136.2	-7100.23
61+50.00	1	15.41	29.84	29.84	1.15	104.9	176.74	203.25	-333.5	88+00.00	1	0	0	0	1.15	68.46	118.25	135.99	-7236.23
62+00.00	1	21.68	34.34	34.34	1.15	97.14	187.07	215.13	-514.29	88+50.00	1	0	0	0	1.15	71.36	129.46	148.88	-7385.11
62+50.00	1	33.12	50.74	50.74	1.15	85.13	168.76	194.08	-687.63	89+00.00	1	0	0	0	1.15	105.35	163.62	188.16	-7573.27
63+00.00	1	42.46	69.88	69.88	1.15	72.33	145.79	167.66	-755.3	89+50.00	1	0	0	0	1.15	96.83	187.2	215.28	-7788.56
63+50.00	1	44.63	80.65	80.65	1.15	62.04	124.41	143.07	-817.73	90+00.00	1	2.7	2.5	2.5	1.15	34.91	98.32	113.06	-8076.11
64+00.00	1	42.99	81.13	81.13	1.15	60.42	113.39	130.39	-887	90+50.00	1	10.15	11.9	11.9	1.15	18.29	49.26	56.65	-8122.86
64+50.00	1	31.82	69.26	69.26	1.15	73.36	123.87	142.45	-940.18	91+00.00	1	29.05	36.3	36.3	1.15	17.54	33.17	38.15	-8124.71
65+00.00	1	25.14	52.74	52.74	1.15	73.45	135.93	156.32	-1043.76	91+50.00	1	46.89	70.13	70.13	1.15	18.1	33	37.95	-8092.53
65+50.00	1	10.54	33.04	33.04	1.15	83.46	145.28	167.07	-1177.79	92+00.00	1	69.92	107.87	107.87	1.15	5.87	22.2	25.53	-8010.08
66+00.00	1	2.8	12.35	12.35	1.15	103.88	173.46	199.48	-1364.92	92+50.00	1	72.25	131.63	131.63	1.15	25.24	28.81	33.13	-7911.58
66+50.00	1	0.02	2.61	2.61	1.15	141.28	227	261.05	-1623.36	93+00.00	1	88.02	129.87	129.87	1.15	35.98	56.69	65.19	-7946.9
67+00.00	1	0	0.02	0.02	1.15	162.76	281.51	323.74	-1947.08	93+50.00	1	49.44	108.76	108.76	1.15	62.04	90.76	104.38	-7842.52
67+50.00	1	0.3	0.28	0.28	1.15	149.6	285.22	332.61	-2279.4	94+00.00	1	32.98	76.31	76.31	1.15	74.82	126.73	145.74	-7911.95
68+00.00	1	0.6	0.84	0.84	1.15	126.14	228.1	296.81	-2575.37	94+50.00	1	14.35	43.82	43.82	1.15	96.68	158	182.62	-8050.74
68+50.00	1	0.26	0.79	0.79	1.15	104.6	216.43	248.89	-2823.47	95+00.00	1	0	0	0	1.15	118.07	198.84	228.67	-8286.12
69+00.00	1	2.47	2.52	2.52	1.15	87.82	175.17	204.9	-3025.85	95+50.00	1	0	0	0	1.15	160.72	258.14	296.86	-8562.98
69+50.00	1	15.56	16.69	16.69	1.15	6.74	87.56	100.69	-3108.85	96+00.00	1	0	0	0	1.15	204.75	338.4	389.16	-8852.14
70+00.00	1	44.04	86.19	86.19	1.15	0.41	0.38	0.43	-2971.45	96+50.00	1	0	0	0	1.15	239.4	411.25	472.94	-9425.07
71+00.00	1	68.33	104.98	104.98	1.15	0.72	1.04	1.2	-2887.68	97+00.00	1	0	0	0	1.15	270.87	472.48	543.35	-9988.42
71+50.00	1	64.5	123.92	123.92	1.15	17.25	16.64	19.14	-2762.9	97+50.00	1	0	0	0	1.15	313.62	541.2	622.38	-10590.8
72+00.00	1	60.91	116.12	116.12	1.15	31.8	45.42	52.23	-2699	98+00.00	1	0	0	0	1.15	355.52	619.58	712.52	-11303.32
72+50.00	1	55.46	107.76	107.76	1.15	21.85	49.68	57.13	-2648.37	Grand Total:		3410.36	3410.36			12794.5	14713.67		
73+00.00	1	49.02	96.74	96.74	1.15	39.69	56.99	65.53	-2617.17										
73+50.00	1	43.53	85.69	85.69	1.15	58.74	91.14	104.81	-2636.28										
74+00.00	1	24.39	62.89	62.89	1.15	100.32	147.28	169.37	-2742.76										
74+50.00	1	16.71	38.05	38.05	1.15	117.93	202.08	232.4	-3198.95										
75+00.00	1	7.24	22.17	22.17	1.15	148.8	246.97	284.02	-3198.95										
75+50.00	1	0	6.7	6.7	1.15	144.79	271.85	312.63	-3504.87										
76+00.00	1	0	0	0	1.15	142.36	265.88	305.76	-3810.63										
76+50.00	1	0	0	0	1.15	145.74	266.76	306.77	-4117.41										
77+00.00	1	0	0	0	1.15	136.59	261.42	300.63	-4418.04										
77+50.00	1	0	0	0	1.15	113.93	231.96	266.75	-4684.79										
78+00.00	1	0	0	0	1.15	103.07	200.92	231.06	-4915.85										

PROJECT NO: 1071-06-82
HWY: USH 53
COUNTY: LA CROSSE
EARTHWORK
SHEET 916A

PLOT DATE: Aug 1, 2016
ORG DATE: Aug 1, 2016
PLOT SCALE: 1:1

Addendum No. 01
IDs 1071-06-82/83/89 &
ID 7190-03-72
Added Sheet 916B
December 1, 2016

SB ROSE STREET

Station	Cut				Fill				Mass				
	Factor	Area	Volume	Adjusted	Factor	Area	Volume	Adjusted	Factor	Area	Volume	Adjusted	Ordnate
53+50.00	1	42.53	0	0	1.15	6.23	0	0	0	0	0	0	0
54+00.00	1	70.09	104.28	104.28	1.15	14.93	19.59	22.53	81.75	79+00.00	1	263.33	302.82
54+50.00	1	51.7	112.76	112.76	1.15	31.62	43.1	49.57	144.95	79+00.00	1	105.49	217.41
54+75.00	1	45.75	45.12	45.12	1.15	44.61	35.29	40.59	149.48	79+50.00	1	82.25	173.82
55+00.00	1	37.91	38.73	38.73	1.15	52.63	41.02	51.77	136.44	80+00.00	1	62.08	133.64
55+50.00	1	22.59	56.02	56.02	1.15	46.38	91.68	105.43	87.04	80+50.00	1	55.25	108.64
56+00.00	1	11.13	31.22	31.22	1.15	44.71	84.34	96.99	21.26	81+00.00	1	60.42	107.09
56+50.00	1	5.27	15.19	15.19	1.15	82.02	117.34	134.95	-98.5	81+50.00	1	75.65	125.98
57+00.00	1	10.11	14.25	14.25	1.15	52.42	124.48	143.16	-227.41	82+00.00	1	99.57	162.24
57+50.00	1	21.73	29.49	29.49	1.15	30.82	77.07	88.64	-286.56	82+50.00	1	114.78	198.47
58+00.00	1	32.46	25.09	25.09	1.15	23.21	25.01	28.77	-290.23	83+00.00	1	131.59	228.12
58+50.00	1	35.36	58.87	58.87	1.15	6.71	17.53	20.16	-242.3	83+50.00	1	120.83	233.73
59+00.00	1	48.32	77.48	77.48	1.15	4.19	10.1	11.61	-178.43	84+00.00	1	102.69	206.97
59+50.00	1	65.68	105.55	105.55	1.15	2.29	6.01	6.91	-77.78	84+50.00	1	97.3	185.18
60+00.00	1	55.83	112.51	112.51	1.15	2.46	4.39	5.05	29.67	85+00.00	1	1.03	1.27
60+50.00	1	36.57	85.56	85.56	1.15	5.8	7.64	8.79	106.45	85+50.00	1	62.3	128.82
61+00.00	1	23.56	55.67	55.67	1.15	17.83	21.88	25.16	136.96	86+00.00	1	51.77	113.9
61+50.00	1	16.07	36.69	36.69	1.15	34.5	48.46	55.73	117.92	86+50.00	1	113.9	130.99
62+00.00	1	23.58	36.71	36.71	1.15	16.58	47.3	54.39	100.24	87+00.00	1	176.47	202.94
62+50.00	1	28.51	48.23	48.23	1.15	13.04	27.42	31.54	118.94	87+50.00	1	153.36	263.52
63+00.00	1	28.81	51.22	51.22	1.15	15.02	25.98	29.88	138.28	88+00.00	1	182.52	311
63+50.00	1	12.75	36.63	36.63	1.15	26.12	38.09	43.8	131.1	88+50.00	1	187.07	342.21
64+00.00	1	0.29	12.07	12.07	1.15	52.81	73.08	84.04	59.14	89+00.00	1	172.15	332.61
64+50.00	1	0	0	0	1.15	110.77	151.46	174.16	-114.77	89+50.00	1	164.48	291.32
65+00.00	1	0.05	0.05	0.05	1.15	185.29	255.61	293.95	-408.68	90+00.00	1	114.5	237.94
65+50.00	1	0.05	0.05	0.05	1.15	187.79	326.92	375.96	-784.58	90+50.00	1	78.91	179.08
66+00.00	1	0	0	0	1.15	220.4	377.95	434.64	-1219.22	91+00.00	1	67.57	135.64
66+50.00	1	0	0	0	1.15	259.2	444.07	510.68	-1729.9	91+50.00	1	114.5	237.94
67+00.00	1	0	0	0	1.15	276.36	495.89	570.27	-2300.18	92+00.00	1	7.82	7.24
67+50.00	1	0	0	0	1.15	254.99	491.99	565.79	-2865.97	92+50.00	1	7.24	7.24
68+00.00	1	0	0	0	1.15	197.74	419.2	482.08	-3346.05	93+00.00	1	19.39	19.39
68+50.00	1	0	0	0	1.15	141.29	313.92	361.01	-3709.06	93+50.00	1	32.53	32.53
69+00.00	1	0	0	0	1.15	94.26	218.1	250.82	-3959.88	94+00.00	1	32.53	32.53
69+50.00	1	2.09	1.93	1.93	1.15	58.27	141.22	162.41	-4120.35	94+50.00	1	29.17	29.17
70+00.00	1	15.95	16.7	16.7	1.15	38.21	89.33	102.72	-4206.38	95+00.00	1	2.44	2.44
70+50.00	1	21.73	34.89	34.89	1.15	39.43	71.88	82.67	-4254.16	95+50.00	1	2.44	2.44
71+00.00	1	45.12	61.9	61.9	1.15	23.53	58.3	67.04	-4259.3	96+00.00	1	0.26	0.26
71+50.00	1	49.81	87.9	87.9	1.15	17.49	37.99	43.68	-4215.08	96+50.00	1	0.26	0.26
72+00.00	1	47.16	89.79	89.79	1.15	18.62	33.44	38.46	-4163.75	97+00.00	1	0.03	0.03
72+50.00	1	37.46	78.34	78.34	1.15	19.04	34.87	40.1	-4125.51	97+50.00	1	0.03	0.03
73+00.00	1	25.39	58.19	58.19	1.15	26.59	42.25	45.58	-4115.9	98+00.00	1	0.03	0.03
73+50.00	1	5.91	28.89	28.89	1.15	43.11	64.53	74.21	-4161.13	Grand Total:		1850.78	1850.78
74+00.00	1	0.16	5.62	5.62	1.15	70.29	105	120.75	-4276.25			15163.84	17438.42
74+50.00	1	0	0.15	0.15	1.15	100.14	157.8	181.47	-4457.58				
75+00.00	1	0	0	0	1.15	122.11	205.78	236.65	-4694.23				
75+50.00	1	0	0	0	1.15	137.82	240.67	276.77	-4971				
76+00.00	1	0	0	0	1.15	163.61	269.85	310.32	-5281.32				
76+50.00	1	0	0	0	1.15	179.66	305.98	354.87	-5636.19				
77+00.00	1	0	0	0	1.15	186.04	338.61	389.4	-6025.59				
77+50.00	1	0	0	0	1.15	170.75	330.36	379.91	-6405.5				
78+00.00	1	0	0	0	1.15	155.07	301.68	346.93	-6752.43				

Addendum No. 01
IDs 1071-06-82/83/89 &
ID 7190-03-72
Added Sheet 916C
December 1, 2016

WEST GEORGE STREET
Station

Table with columns: Factor, Area, Volume, Adjusted, Factor, Area, Volume, Adjusted, Mass, Ordinate. Includes data for stations 145+50.00 to 157+00.00 and a Grand Total.

PALACE STREET
Station

Table with columns: Factor, Area, Volume, Adjusted, Factor, Area, Volume, Adjusted, Mass, Ordinate. Includes data for stations 10+50.00 to 12+50.00 and a Grand Total.

GEORGE STREET
Station

Table with columns: Factor, Area, Volume, Adjusted, Factor, Area, Volume, Adjusted, Mass, Ordinate. Includes data for stations 5+62.00 to 9+47.00 and a Grand Total.

MOORE STREET
Station

Table with columns: Factor, Area, Volume, Adjusted, Factor, Area, Volume, Adjusted, Mass, Ordinate. Includes data for stations 10+50.00 to 15+32.00 and a Grand Total.

GEORGE STREET
Station

Table with columns: Factor, Area, Volume, Adjusted, Factor, Area, Volume, Adjusted, Mass, Ordinate. Includes data for stations 10+36.00 to 15+32.00 and a Grand Total.

GEORGE STREET
Station

Table with columns: Factor, Area, Volume, Adjusted, Factor, Area, Volume, Adjusted, Mass, Ordinate. Includes data for stations 10+50.00 to 15+32.00 and a Grand Total.

Addendum No. 01
IDs 1071-06-82/83/89 &
ID 7190-03-72
Added Sheet 916D
December 1, 2016

ACCESS ROAD Station	-----Cut-----			-----Fill-----			Mass		
	Factor	Area	Volume	Adjusted	Factor	Area	Volume	Adjusted	Ordinate
14+00.00	1	0	0	0	1.15	0	0	0	0
14+50.00	1	119.78	110.91	110.91	1.15	1.33	1.23	1.41	108.5
15+00.00	1	11.37	121.44	121.44	1.15	38.37	36.75	42.27	188.67
15+50.00	1	93.21	96.84	96.84	1.15	49.87	61.7	93.96	191.55
16+00.00	1	117.41	195.01	195.01	1.15	18.86	63.64	73.18	313.38
16+50.00	1	48.69	153.79	153.79	1.15	22.22	38.03	43.74	423.43
17+00.00	1	66.33	106.5	106.5	1.15	12.28	31.94	36.73	493.2
17+50.00	1	59.31	116.33	116.33	1.15	1.74	12.88	14.92	594.6
18+00.00	1	89.04	137.36	137.36	1.15	0	1.61	1.85	730.1
18+50.00	1	88.35	164.25	164.25	1.15	0.43	0.4	0.46	863.89
19+00.00	1	80.43	156.27	156.27	1.15	0.56	0.92	1.05	1048.11
19+50.00	1	74.26	143.23	143.23	1.15	0.25	0.75	0.86	1191.48
20+00.00	1	58.49	122.91	122.91	1.15	2.86	2.89	3.32	1311.07
Grand Total:			1624.83	1624.83			272.83	313.76	

CAMPBELL STREET Station	-----Cut-----			-----Fill-----			Mass		
	Factor	Area	Volume	Adjusted	Factor	Area	Volume	Adjusted	Ordinate
10+30.00	1	149.81	0	0	1.15	0	0	0	0
10+50.00	1	90.42	88.97	88.97	1.15	0	0	0	88.87
10+64.50	1	81.38	46.13	46.13	1.15	0	0	0	135.11
Grand Total:			135.11	135.11			0	0	0



Proposal Schedule of Items

Proposal ID: 20161213002

Project(s): 1071-06-82, 1071-06-83, 1071-06-89, 7190-03-72

SECTION: 0001

Contract Items

Alt Set ID:

Alt Mbr ID:

Proposal Line Number	Item ID Description	Approximate Quantity and Units	Unit Price	Bid Amount
0010	201.0105 Clearing	84.000 STA	_____.	_____.
0020	201.0120 Clearing	8.000 ID	_____.	_____.
0030	201.0205 Grubbing	84.000 STA	_____.	_____.
0040	201.0220 Grubbing	8.000 ID	_____.	_____.
0050	203.0100 Removing Small Pipe Culverts	26.000 EACH	_____.	_____.
0060	203.0200 Removing Old Structure (station) 01. 122+00 RN	LS	LUMP SUM	_____.
0070	203.0200 Removing Old Structure (station) 02. 237+66.50 NB	LS	LUMP SUM	_____.
0080	203.0210.S Abatement of Asbestos Containing Material (structure) 01. B-32-67	LS	LUMP SUM	_____.
0090	204.0100 Removing Pavement	85,473.000 SY	_____.	_____.
0100	204.0110 Removing Asphaltic Surface	1,248.000 SY	_____.	_____.
0110	204.0115 Removing Asphaltic Surface Butt Joints	475.000 SY	_____.	_____.
0120	204.0150 Removing Curb & Gutter	13,261.000 LF	_____.	_____.
0130	204.0155 Removing Concrete Sidewalk	1,252.000 SY	_____.	_____.
0140	204.0165 Removing Guardrail	6,464.000 LF	_____.	_____.
0150	204.0170 Removing Fence	3,822.000 LF	_____.	_____.
0160	204.0175 Removing Concrete Slope Paving	285.000 SY	_____.	_____.



Proposal Schedule of Items

Proposal ID: 20161213002

Project(s): 1071-06-82, 1071-06-83, 1071-06-89, 7190-03-72

SECTION: 0001 Contract Items

Alt Set ID: Alt Mbr ID:

Proposal Line Number	Item ID Description	Approximate Quantity and Units	Unit Price	Bid Amount
0170	204.0180 Removing Delineators and Markers	181.000 EACH	_____.	_____.
0180	204.0190 Removing Surface Drains	8.000 EACH	_____.	_____.
0190	204.0195 Removing Concrete Bases	31.000 EACH	_____.	_____.
0200	204.0210 Removing Manholes	15.000 EACH	_____.	_____.
0210	204.0220 Removing Inlets	56.000 EACH	_____.	_____.
0220	204.0235 Removing Buildings (parcel) 01. Parcel 29	LS	LUMP SUM	_____.
0230	204.0235 Removing Buildings (parcel) 02. Parcel 33	LS	LUMP SUM	_____.
0240	204.0235 Removing Buildings (parcel) 03. Parcel 34	LS	LUMP SUM	_____.
0250	204.0245 Removing Storm Sewer (size) 01. 12-Inch	839.000 LF	_____.	_____.
0260	204.0245 Removing Storm Sewer (size) 02. 18-Inch	659.000 LF	_____.	_____.
0270	204.0245 Removing Storm Sewer (size) 03. 24-Inch	1,379.000 LF	_____.	_____.
0280	204.0245 Removing Storm Sewer (size) 04. 30-Inch	120.000 LF	_____.	_____.
0290	204.0245 Removing Storm Sewer (size) 05. 36-Inch	561.000 LF	_____.	_____.
0300	204.0270 Abandoning Culvert Pipes	7.000 EACH	_____.	_____.



Proposal Schedule of Items

Proposal ID: 20161213002

Project(s): 1071-06-82, 1071-06-83, 1071-06-89, 7190-03-72

SECTION: 0001 Contract Items

Alt Set ID: Alt Mbr ID:

Proposal Line Number	Item ID Description	Approximate Quantity and Units	Unit Price	Bid Amount
0310	204.9060.S Removing (item description) 01. Business Sign	3.000 EACH	_____.	_____.
0320	204.9060.S Removing (item description) 01. Flexible Tubular Marker Post and Bases	61.000 EACH	_____.	_____.
0330	205.0100 Excavation Common	235,782.000 CY	_____.	_____.
0340	206.1000 Excavation for Structures Bridges (structure) 01. B-32-67	LS	LUMP SUM	_____.
0350	208.0100 Borrow	10,926.000 CY	_____.	_____.
0360	208.1100 Select Borrow	10,000.000 CY	_____.	_____.
0370	209.0200.S Backfill Controlled Low Strength	365.000 CY	_____.	_____.
0380	210.1500 Backfill Structure Type A	190.000 TON	_____.	_____.
0390	213.0100 Finishing Roadway (project) 01. 1071-06-83	1.000 EACH	_____.	_____.
0400	213.0100 Finishing Roadway (project) 02. 7190-03-72	1.000 EACH	_____.	_____.
0410	213.0100 Finishing Roadway (project) 03. 1071-06-82	1.000 EACH	_____.	_____.
0420	305.0110 Base Aggregate Dense 3/4-Inch	2,880.000 TON	_____.	_____.
0430	305.0120 Base Aggregate Dense 1 1/4-Inch	81,027.000 TON	_____.	_____.
0440	312.0110 Select Crushed Material	300.000 TON	_____.	_____.
0450	405.0100 Coloring Concrete WisDOT Red	264.600 CY	_____.	_____.



Proposal Schedule of Items

Proposal ID: 20161213002

Project(s): 1071-06-82, 1071-06-83, 1071-06-89, 7190-03-72

SECTION: 0001 Contract Items

Alt Set ID: Alt Mbr ID:

Proposal Line Number	Item ID Description	Approximate Quantity and Units	Unit Price	Bid Amount
0460	415.0090 Concrete Pavement 9-Inch	84,236.000 SY	_____	_____
0470	415.0210 Concrete Pavement Gaps	13.000 EACH	_____	_____
0480	415.0410 Concrete Pavement Approach Slab	155.000 SY	_____	_____
0490	415.1090 Concrete Pavement HES 9-Inch	1,385.000 SY	_____	_____
0500	415.6000.S Rout and Seal	6,352.000 LF	_____	_____
0510	416.0160 Concrete Driveway 6-Inch	800.000 SY	_____	_____
0520	416.0610 Drilled Tie Bars	678.000 EACH	_____	_____
0530	416.0620 Drilled Dowel Bars	310.000 EACH	_____	_____
0540	440.4410 Incentive IRI Ride	15,200.000 DOL	1.00000	15,200.00
0550	460.2000 Incentive Density HMA Pavement	1,370.000 DOL	1.00000	1,370.00
0560	460.5224 HMA Pavement 4 LT 58-28 S	2,188.000 TON	_____	_____
0570	460.6224 HMA Pavement 4 MT 58-28 S	45.000 TON	_____	_____
0580	465.0105 Asphaltic Surface	2,094.000 TON	_____	_____
0590	465.0125 Asphaltic Surface Temporary	6,857.000 TON	_____	_____
0600	465.0310 Asphaltic Curb	75.000 LF	_____	_____
0610	465.0315 Asphaltic Flumes	104.000 SY	_____	_____
0620	502.0100 Concrete Masonry Bridges	620.000 CY	_____	_____



Proposal Schedule of Items

Page 5 of 38

Proposal ID: 20161213002

Project(s): 1071-06-82, 1071-06-83, 1071-06-89, 7190-03-72

SECTION: 0001 Contract Items

Alt Set ID:

Alt Mbr ID:

Proposal Line Number	Item ID Description	Approximate Quantity and Units	Unit Price	Bid Amount
0630	502.3100 Expansion Device (structure) 01. B-32-67	LS	LUMP SUM	_____
0640	502.3210 Pigmented Surface Sealer	415.000 SY	_____	_____
0650	502.4205 Adhesive Anchors No. 5 Bar	378.000 EACH	_____	_____
0660	504.0900 Concrete Masonry Endwalls	3.000 CY	_____	_____
0670	505.0600 Bar Steel Reinforcement HS Coated Structures	103,620.000 LB	_____	_____
0680	509.1500 Concrete Surface Repair	20.000 SF	_____	_____
0690	509.5100.S Polymer Overlay	3,760.000 SY	_____	_____
0700	509.9020.S Epoxy Crack Sealing	100.000 LF	_____	_____
0710	511.1100 Temporary Shoring	12,485.000 SF	_____	_____
0720	511.1200 Temporary Shoring (structure) 01. 7190-03.72	200.000 SF	_____	_____
0730	513.4091 Railing Tubular Screening (structure) 01. B-32-67	425.000 LF	_____	_____
0740	516.0500 Rubberized Membrane Waterproofing	26.000 SY	_____	_____
0750	517.0900.S Preparation and Coating of Top Flanges (structure) 01. B-32-67	LS	LUMP SUM	_____
0760	517.1010.S Concrete Staining (structure) 01. B-32-67	2,680.000 SF	_____	_____
0770	517.1015.S Concrete Staining Multi-Color (structure) 01. B-32-67	2,515.000 SF	_____	_____



Proposal Schedule of Items

Page 6 of 38

Proposal ID: 20161213002

Project(s): 1071-06-82, 1071-06-83, 1071-06-89, 7190-03-72

SECTION: 0001 Contract Items

Alt Set ID: Alt Mbr ID:

Proposal Line Number	Item ID Description	Approximate Quantity and Units	Unit Price	Bid Amount
0780	517.1050.S Architectural Surface Treatment (structure) 01. B-32-67	2,515.000 SF	_____.	_____.
0790	517.3000.S Structure Overcoating Cleaning and Priming (structure) 01. B-32-67	LS	LUMP SUM	_____.
0800	517.4000.S Containment and Collection of Waste Materials (structure) 01. B-32-67	LS	LUMP SUM	_____.
0810	520.2012 Culvert Pipe Temporary 12-Inch	515.000 LF	_____.	_____.
0820	520.2015 Culvert Pipe Temporary 15-Inch	474.000 LF	_____.	_____.
0830	520.2018 Culvert Pipe Temporary 18-Inch	624.000 LF	_____.	_____.
0840	520.2024 Culvert Pipe Temporary 24-Inch	100.000 LF	_____.	_____.
0850	520.2036 Culvert Pipe Temporary 36-Inch	22.000 LF	_____.	_____.
0860	520.8000 Concrete Collars for Pipe	10.000 EACH	_____.	_____.
0870	522.1012 Apron Endwalls for Culvert Pipe Reinforced Concrete 12-Inch	1.000 EACH	_____.	_____.
0880	522.1015 Apron Endwalls for Culvert Pipe Reinforced Concrete 15-Inch	7.000 EACH	_____.	_____.
0890	522.1018 Apron Endwalls for Culvert Pipe Reinforced Concrete 18-Inch	15.000 EACH	_____.	_____.
0900	522.1024 Apron Endwalls for Culvert Pipe Reinforced Concrete 24-Inch	11.000 EACH	_____.	_____.
0910	522.1036 Apron Endwalls for Culvert Pipe Reinforced Concrete 36-Inch	3.000 EACH	_____.	_____.



Proposal Schedule of Items

Proposal ID: 20161213002

Project(s): 1071-06-82, 1071-06-83, 1071-06-89, 7190-03-72

SECTION: 0001 Contract Items

Alt Set ID: Alt Mbr ID:

Proposal Line Number	Item ID Description	Approximate Quantity and Units	Unit Price	Bid Amount
0920	522.1054 Apron Endwalls for Culvert Pipe Reinforced Concrete 54-Inch	2.000 EACH	_____	_____
0930	601.0105 Concrete Curb Type A	77.000 LF	_____	_____
0940	601.0342 Concrete Curb & Gutter Integral 18-Inch	202.000 LF	_____	_____
0950	601.0409 Concrete Curb & Gutter 30-Inch Type A	22,929.000 LF	_____	_____
0960	601.0411 Concrete Curb & Gutter 30-Inch Type D	3,229.000 LF	_____	_____
0970	601.0555 Concrete Curb & Gutter 6-Inch Sloped 36-Inch Type A	503.000 LF	_____	_____
0980	601.0590 Concrete Curb & Gutter 4-Inch Sloped 36-Inch Type TBTT	41.000 LF	_____	_____
0990	602.0405 Concrete Sidewalk 4-Inch	47,350.000 SF	_____	_____
1000	602.0410 Concrete Sidewalk 5-Inch	52,470.000 SF	_____	_____
1010	602.0505 Curb Ramp Detectable Warning Field Yellow	1,102.000 SF	_____	_____
1020	602.1500 Concrete Steps	235.000 SF	_____	_____
1030	603.1142 Concrete Barrier Type S42	141.000 LF	_____	_____
1040	603.8000 Concrete Barrier Temporary Precast Delivered	721.000 LF	_____	_____
1050	603.8125 Concrete Barrier Temporary Precast Installed	721.000 LF	_____	_____
1060	604.0400 Slope Paving Concrete	1,440.000 SY	_____	_____



Proposal Schedule of Items

Proposal ID: 20161213002

Project(s): 1071-06-82, 1071-06-83, 1071-06-89, 7190-03-72

SECTION: 0001 Contract Items

Alt Set ID: Alt Mbr ID:

Proposal Line Number	Item ID Description	Approximate Quantity and Units	Unit Price	Bid Amount
1070	606.0100 Riprap Light	27.000 CY	_____.	_____.
1080	606.0200 Riprap Medium	490.000 CY	_____.	_____.
1090	608.0312 Storm Sewer Pipe Reinforced Concrete Class III 12-Inch	1,338.000 LF	_____.	_____.
1100	608.0315 Storm Sewer Pipe Reinforced Concrete Class III 15-Inch	633.000 LF	_____.	_____.
1110	608.0318 Storm Sewer Pipe Reinforced Concrete Class III 18-Inch	4,333.000 LF	_____.	_____.
1120	608.0324 Storm Sewer Pipe Reinforced Concrete Class III 24-Inch	2,453.000 LF	_____.	_____.
1130	608.0330 Storm Sewer Pipe Reinforced Concrete Class III 30-Inch	486.000 LF	_____.	_____.
1140	608.0336 Storm Sewer Pipe Reinforced Concrete Class III 36-Inch	977.000 LF	_____.	_____.
1150	608.0354 Storm Sewer Pipe Reinforced Concrete Class III 54-Inch	523.000 LF	_____.	_____.
1160	608.0412 Storm Sewer Pipe Reinforced Concrete Class IV 12-Inch	36.000 LF	_____.	_____.
1170	608.0418 Storm Sewer Pipe Reinforced Concrete Class IV 18-Inch	115.000 LF	_____.	_____.
1180	611.0420 Reconstructing Manholes	3.000 EACH	_____.	_____.
1190	611.0430 Reconstructing Inlets	1.000 EACH	_____.	_____.
1200	611.0606 Inlet Covers Type B	1.000 EACH	_____.	_____.



Proposal Schedule of Items

Proposal ID: 20161213002

Project(s): 1071-06-82, 1071-06-83, 1071-06-89, 7190-03-72

SECTION: 0001 Contract Items

Alt Set ID: Alt Mbr ID:

Proposal Line Number	Item ID Description	Approximate Quantity and Units	Unit Price	Bid Amount
1210	611.0624 Inlet Covers Type H	179.000 EACH	_____.	_____.
1220	611.0642 Inlet Covers Type MS	17.000 EACH	_____.	_____.
1230	611.1004 Catch Basins 4-FT Diameter	27.000 EACH	_____.	_____.
1240	611.1005 Catch Basins 5-FT Diameter	10.000 EACH	_____.	_____.
1250	611.1006 Catch Basins 6-FT Diameter	3.000 EACH	_____.	_____.
1260	611.1230 Catch Basins 2x3-FT	78.000 EACH	_____.	_____.
1270	611.2004 Manholes 4-FT Diameter	4.000 EACH	_____.	_____.
1280	611.2005 Manholes 5-FT Diameter	3.000 EACH	_____.	_____.
1290	611.2006 Manholes 6-FT Diameter	6.000 EACH	_____.	_____.
1300	611.2008 Manholes 8-FT Diameter	1.000 EACH	_____.	_____.
1310	611.3004 Inlets 4-FT Diameter	17.000 EACH	_____.	_____.
1320	611.3230 Inlets 2x3-FT	43.000 EACH	_____.	_____.
1330	611.3901 Inlets Median 1 Grate	3.000 EACH	_____.	_____.
1340	611.3902 Inlets Median 2 Grate	8.000 EACH	_____.	_____.
1350	611.8110 Adjusting Manhole Covers	8.000 EACH	_____.	_____.
1360	611.8115 Adjusting Inlet Covers	2.000 EACH	_____.	_____.
1370	611.8120.S Cover Plates Temporary	31.000 EACH	_____.	_____.



Proposal Schedule of Items

Proposal ID: 20161213002

Project(s): 1071-06-82, 1071-06-83, 1071-06-89, 7190-03-72

SECTION: 0001 Contract Items

Alt Set ID: Alt Mbr ID:

Proposal Line Number	Item ID Description	Approximate Quantity and Units	Unit Price	Bid Amount
1380	612.0406 Pipe Underdrain Wrapped 6-Inch	200.000 LF	_____	_____
1390	612.0902.S Insulation Board Polystyrene (inch) 01. 2-Inch	392.000 SY	_____	_____
1400	614.0150 Anchor Assemblies for Steel Plate Beam Guard	4.000 EACH	_____	_____
1410	614.0805 Crash Cushions Permanent Low Maintenance	1.000 EACH	_____	_____
1420	614.0905 Crash Cushions Temporary	1.000 EACH	_____	_____
1430	614.1000 MGS Guardrail Temporary	12.000 LF	_____	_____
1440	614.1100 MGS Guardrail Temporary Thrie Beam Transition	38.000 LF	_____	_____
1450	614.1200 MGS Guardrail Temporary Terminal EAT	2.000 EACH	_____	_____
1460	614.2300 MGS Guardrail 3	1,225.000 LF	_____	_____
1470	614.2500 MGS Thrie Beam Transition	92.000 LF	_____	_____
1480	614.2610 MGS Guardrail Terminal EAT	4.000 EACH	_____	_____
1490	614.2620 MGS Guardrail Terminal Type 2	4.000 EACH	_____	_____
1500	616.0206 Fence Chain Link 6-FT	3,733.000 LF	_____	_____
1510	616.0329 Gates Chain Link (width) 01. 12-FT	1.000 EACH	_____	_____
1520	618.0100 Maintenance And Repair of Haul Roads (project) 01. 1071-06-83	1.000 EACH	_____	_____



Proposal Schedule of Items

Proposal ID: 20161213002

Project(s): 1071-06-82, 1071-06-83, 1071-06-89, 7190-03-72

SECTION: 0001 Contract Items

Alt Set ID: Alt Mbr ID:

Proposal Line Number	Item ID Description	Approximate Quantity and Units	Unit Price	Bid Amount
1530	618.0100 Maintenance And Repair of Haul Roads (project) 02. 7190-03-72	1.000 EACH	_____.	_____.
1540	619.1000 Mobilization	1.000 EACH	_____.	_____.
1550	620.0300 Concrete Median Sloped Nose	1,988.000 SF	_____.	_____.
1560	624.0100 Water	2,335.000 MGAL	_____.	_____.
1570	625.0500 Salvaged Topsoil	203,410.000 SY	_____.	_____.
1580	627.0200 Mulching	255,786.000 SY	_____.	_____.
1590	628.1104 Erosion Bales	50.000 EACH	_____.	_____.
1600	628.1504 Silt Fence	18,605.000 LF	_____.	_____.
1610	628.1520 Silt Fence Maintenance	18,605.000 LF	_____.	_____.
1620	628.1905 Mobilizations Erosion Control	45.000 EACH	_____.	_____.
1630	628.1910 Mobilizations Emergency Erosion Control	24.000 EACH	_____.	_____.
1640	628.2004 Erosion Mat Class I Type B	29,870.000 SY	_____.	_____.
1650	628.6510 Soil Stabilizer Type B	10.000 ACRE	_____.	_____.
1660	628.7005 Inlet Protection Type A	237.000 EACH	_____.	_____.
1670	628.7015 Inlet Protection Type C	208.000 EACH	_____.	_____.
1680	628.7504 Temporary Ditch Checks	585.000 LF	_____.	_____.



Proposal Schedule of Items

Proposal ID: 20161213002

Project(s): 1071-06-82, 1071-06-83, 1071-06-89, 7190-03-72

SECTION: 0001 Contract Items

Alt Set ID: Alt Mbr ID:

Proposal Line Number	Item ID Description	Approximate Quantity and Units	Unit Price	Bid Amount
1690	628.7555 Culvert Pipe Checks	90.000 EACH	_____	_____
1700	628.7560 Tracking Pads	12.000 EACH	_____	_____
1710	629.0210 Fertilizer Type B	139.100 CWT	_____	_____
1720	630.0120 Seeding Mixture No. 20	4,778.000 LB	_____	_____
1730	630.0140 Seeding Mixture No. 40	347.000 LB	_____	_____
1740	630.0160 Seeding Mixture No. 60	28.000 LB	_____	_____
1750	630.0200 Seeding Temporary	4,446.000 LB	_____	_____
1760	630.0300 Seeding Borrow Pit	187.000 LB	_____	_____
1770	631.1000 Sod Lawn	1,426.000 SY	_____	_____
1780	632.0101 Trees (species) (size) (root) 01. River Birch, B&B, 2.5" CAL	12.000 EACH	_____	_____
1790	632.0101 Trees (species) (size) (root) 02. Common Hackberry B&B, 2" CAL	3.000 EACH	_____	_____
1800	632.0101 Trees (species) (size) (root) 03. Thornless Hawthorn, B&B, 1.5" CAL	27.000 EACH	_____	_____
1810	632.0101 Trees (species) (size) (root) 04. Skyline Honeylocust, B&B, 2.5" CAL	11.000 EACH	_____	_____
1820	632.0101 Trees (species) (size) (root) 05. Spring Snow Crabapple, B&B, 1.5" CAL	13.000 EACH	_____	_____
1830	632.0101 Trees (species) (size) (root) 06. White Oak, B&B, 2.5" CAL	22.000 EACH	_____	_____



Proposal Schedule of Items

Proposal ID: 20161213002

Project(s): 1071-06-82, 1071-06-83, 1071-06-89, 7190-03-72

SECTION: 0001 Contract Items

Alt Set ID: Alt Mbr ID:

Proposal Line Number	Item ID Description	Approximate Quantity and Units	Unit Price	Bid Amount
1840	632.0101 Trees (species) (size) (root) 07. Burr Oak, B&B, 2.5" CAL	11.000 EACH	_____.	_____.
1850	632.0101 Trees (species) (size) (root) 08. Red Oak, B&B, 2.5" CAL	17.000 EACH	_____.	_____.
1860	632.0101 Trees (species) (size) (root) 09. Princeton American Elm, B&B, 2.5" CAL	18.000 EACH	_____.	_____.
1870	632.0101 Trees (species) (size) (root) 10. Valley Forge Elm, B&B, 2.5" CAL	5.000 EACH	_____.	_____.
1880	632.0201 Shrubs (species) (size) (root) 01. Isanti Dogwood, CG, #5 Cont.	24.000 EACH	_____.	_____.
1890	632.9101 Landscape Planting Surveillance and Care Cycles	40.000 EACH	_____.	_____.
1900	633.0100 Delineator Posts Steel	37.000 EACH	_____.	_____.
1910	633.0500 Delineator Reflectors	40.000 EACH	_____.	_____.
1920	633.1100 Delineators Temporary	17.000 EACH	_____.	_____.
1930	633.5200 Markers Culvert End	31.000 EACH	_____.	_____.
1940	634.0612 Posts Wood 4x6-Inch X 12-FT	6.000 EACH	_____.	_____.
1950	634.0614 Posts Wood 4x6-Inch X 14-FT	100.000 EACH	_____.	_____.
1960	634.0616 Posts Wood 4x6-Inch X 16-FT	61.000 EACH	_____.	_____.
1970	634.0618 Posts Wood 4x6-Inch X 18-FT	17.000 EACH	_____.	_____.
1980	634.0620 Posts Wood 4x6-Inch X 20-FT	11.000 EACH	_____.	_____.



Proposal Schedule of Items

Proposal ID: 20161213002

Project(s): 1071-06-82, 1071-06-83, 1071-06-89, 7190-03-72

SECTION: 0001 Contract Items

Alt Set ID: Alt Mbr ID:

Proposal Line Number	Item ID Description	Approximate Quantity and Units	Unit Price	Bid Amount
1990	634.0622 Posts Wood 4x6-Inch X 22-FT	1.000 EACH	_____.	_____.
2000	635.0200 Sign Supports Structural Steel HS	1,500.000 LB	_____.	_____.
2010	636.0100 Sign Supports Concrete Masonry	42.800 CY	_____.	_____.
2020	636.1000 Sign Supports Steel Reinforcement HS	166.000 LB	_____.	_____.
2030	636.1500 Sign Supports Steel Coated Reinforcement HS	5,500.000 LB	_____.	_____.
2040	637.1220 Signs Type I Reflective SH	2,128.000 SF	_____.	_____.
2050	637.2210 Signs Type II Reflective H	1,292.060 SF	_____.	_____.
2060	637.2215 Signs Type II Reflective H Folding	234.140 SF	_____.	_____.
2070	637.2220 Signs Type II Reflective SH	4.500 SF	_____.	_____.
2080	637.2230 Signs Type II Reflective F	234.250 SF	_____.	_____.
2090	638.2102 Moving Signs Type II	48.000 EACH	_____.	_____.
2100	638.2601 Removing Signs Type I	26.000 EACH	_____.	_____.
2110	638.2602 Removing Signs Type II	144.000 EACH	_____.	_____.
2120	638.3000 Removing Small Sign Supports	158.000 EACH	_____.	_____.
2130	638.3100 Removing Structural Steel Sign Supports	2.000 EACH	_____.	_____.
2140	638.3620 Erecting State Owned Signs Type II	3.000 EACH	_____.	_____.



Proposal Schedule of Items

Proposal ID: 20161213002

Project(s): 1071-06-82, 1071-06-83, 1071-06-89, 7190-03-72

SECTION: 0001 Contract Items

Alt Set ID: Alt Mbr ID:

Proposal Line Number	Item ID Description	Approximate Quantity and Units	Unit Price	Bid Amount
2150	638.4000 Moving Small Sign Supports	52.000 EACH	_____.	_____.
2160	641.1200 Sign Bridge Cantilevered (structure) 02. S-32-54	LS	LUMP SUM	_____.
2170	641.6600 Sign Bridge (structure) 01. S-32-51	LS	LUMP SUM	_____.
2180	641.6600 Sign Bridge (structure) 05. S-32-65	LS	LUMP SUM	_____.
2190	641.8100 Overhead Sign Support (structure) 01. S-32-55	LS	LUMP SUM	_____.
2200	641.8100 Overhead Sign Support (structure) 02. S-32-56	LS	LUMP SUM	_____.
2210	641.8100 Overhead Sign Support (structure) 03. S-32-50	LS	LUMP SUM	_____.
2220	641.8100 Overhead Sign Support (structure) 04. S-32-52	LS	LUMP SUM	_____.
2230	641.8100 Overhead Sign Support (structure) 05. S-32-66	LS	LUMP SUM	_____.
2240	641.8100 Overhead Sign Support (structure) 06. S-32-68	LS	LUMP SUM	_____.
2250	641.8100 Overhead Sign Support (structure) 40. S-32-53	LS	LUMP SUM	_____.
2260	642.5201 Field Office Type C	1.000 EACH	_____.	_____.
2270	643.0200.S Traffic Control Surveillance and Maintenance (project) 01. 1071-06-83	222.000 DAY	_____.	_____.
2280	643.0200.S Traffic Control Surveillance and Maintenance (project) 02. 7190-03-72	222.000 DAY	_____.	_____.



Proposal Schedule of Items

Proposal ID: 20161213002

Project(s): 1071-06-82, 1071-06-83, 1071-06-89, 7190-03-72

SECTION: 0001 Contract Items

Alt Set ID: Alt Mbr ID:

Proposal Line Number	Item ID Description	Approximate Quantity and Units	Unit Price	Bid Amount
2290	643.0200.S Traffic Control Surveillance and Maintenance (project) 03. 1071-06-82	222.000 DAY	_____.	_____.
2300	643.0300 Traffic Control Drums	70,391.000 DAY	_____.	_____.
2310	643.0410 Traffic Control Barricades Type II	625.000 DAY	_____.	_____.
2320	643.0420 Traffic Control Barricades Type III	14,921.000 DAY	_____.	_____.
2330	643.0500 Traffic Control Flexible Tubular Marker Posts	496.000 EACH	_____.	_____.
2340	643.0600 Traffic Control Flexible Tubular Marker Bases	496.000 EACH	_____.	_____.
2350	643.0705 Traffic Control Warning Lights Type A	20,708.000 DAY	_____.	_____.
2360	643.0715 Traffic Control Warning Lights Type C	4,694.000 DAY	_____.	_____.
2370	643.0800 Traffic Control Arrow Boards	816.000 DAY	_____.	_____.
2380	643.0900 Traffic Control Signs	33,628.000 DAY	_____.	_____.
2390	643.0910 Traffic Control Covering Signs Type I	10.000 EACH	_____.	_____.
2400	643.0920 Traffic Control Covering Signs Type II	6.000 EACH	_____.	_____.
2410	643.1000 Traffic Control Signs Fixed Message	416.250 SF	_____.	_____.
2420	643.1050 Traffic Control Signs PCMS	1,587.000 DAY	_____.	_____.
2430	643.2000 Traffic Control Detour (project) 01. 1071-06-83	1.000 EACH	_____.	_____.
2440	643.3000 Traffic Control Detour Signs	35,000.000 DAY	_____.	_____.



Proposal Schedule of Items

Proposal ID: 20161213002

Project(s): 1071-06-82, 1071-06-83, 1071-06-89, 7190-03-72

SECTION: 0001 Contract Items

Alt Set ID: Alt Mbr ID:

Proposal Line Number	Item ID Description	Approximate Quantity and Units	Unit Price	Bid Amount
2450	645.0120 Geotextile Type HR	837.000 SY	_____	_____
2460	645.0130 Geotextile Type R	89.000 SY	_____	_____
2470	646.0103 Pavement Marking Paint 4-Inch	240.000 LF	_____	_____
2480	646.0600 Removing Pavement Markings	39,919.000 LF	_____	_____
2490	646.0842.S Pavement Marking Grooved Contrast Wet Reflective Epoxy 4-Inch	47,819.000 LF	_____	_____
2500	646.0843.S Pavement Marking Grooved Wet Reflective Contrast Tape 8-Inch	1,024.000 LF	_____	_____
2510	646.0844.S Pavement Marking Grooved Contrast Wet Reflective Epoxy 8-Inch	6,012.000 LF	_____	_____
2520	647.0153 Pavement Marking Arrows Paint Type 1	2.000 EACH	_____	_____
2530	647.0166 Pavement Marking Arrows Epoxy Type 2	44.000 EACH	_____	_____
2540	647.0176 Pavement Marking Arrows Epoxy Type 3	3.000 EACH	_____	_____
2550	647.0253 Pavement Marking Symbols Paint	1.000 EACH	_____	_____
2560	647.0356 Pavement Marking Words Epoxy	45.000 EACH	_____	_____
2570	647.0456 Pavement Marking Curb Epoxy	632.000 LF	_____	_____
2580	647.0566 Pavement Marking Stop Line Epoxy 18-Inch	711.000 LF	_____	_____
2590	647.0606 Pavement Marking Island Nose Epoxy	24.000 EACH	_____	_____
2600	647.0653 Pavement Marking Parking Stall Paint	504.000 LF	_____	_____



Proposal Schedule of Items

Page 18 of 38

Proposal ID: 20161213002

Project(s): 1071-06-82, 1071-06-83, 1071-06-89, 7190-03-72

SECTION: 0001

Contract Items

Alt Set ID:

Alt Mbr ID:

Proposal Line Number	Item ID Description	Approximate Quantity and Units	Unit Price	Bid Amount
2610	647.0726 Pavement Marking Diagonal Epoxy 12-Inch	215.000 LF	_____.	_____.
2620	647.0766 Pavement Marking Crosswalk Epoxy 6-Inch	2,233.000 LF	_____.	_____.
2630	647.0955 Removing Pavement Markings Arrows	5.000 EACH	_____.	_____.
2640	649.0400 Temporary Pavement Marking Removable Tape 4-Inch	5,977.000 LF	_____.	_____.
2650	649.0402 Temporary Pavement Marking Paint 4-Inch	87,529.000 LF	_____.	_____.
2660	649.0801 Temporary Pavement Marking Removable Tape 8-Inch	1,290.000 LF	_____.	_____.
2670	649.0802 Temporary Pavement Marking Paint 8-Inch	6,390.000 LF	_____.	_____.
2680	649.1100 Temporary Pavement Marking Stop Line 18-Inch	591.000 LF	_____.	_____.
2690	649.1200 Temporary Pavement Marking Stop Line Removable Tape 18-Inch	181.000 LF	_____.	_____.
2700	649.1800 Temporary Pavement Marking Arrows Removable Tape	11.000 EACH	_____.	_____.
2710	649.1802 Temporary Pavement Marking Arrows Paint	31.000 EACH	_____.	_____.
2720	649.2000 Temporary Pavement Marking Words Removable Tape	6.000 EACH	_____.	_____.
2730	649.2002 Temporary Pavement Marking Words Paint	12.000 EACH	_____.	_____.
2740	650.4000 Construction Staking Storm Sewer	249.000 EACH	_____.	_____.



Proposal Schedule of Items

Proposal ID: 20161213002

Project(s): 1071-06-82, 1071-06-83, 1071-06-89, 7190-03-72

SECTION: 0001 Contract Items

Alt Set ID:

Alt Mbr ID:

Proposal Line Number	Item ID Description	Approximate Quantity and Units	Unit Price	Bid Amount
2750	650.4500 Construction Staking Subgrade	35,737.000 LF	_____.	_____.
2760	650.5000 Construction Staking Base	13,820.000 LF	_____.	_____.
2770	650.5500 Construction Staking Curb Gutter and Curb & Gutter	3,278.000 LF	_____.	_____.
2780	650.6500 Construction Staking Structure Layout (structure) 01. B-32-67	LS	LUMP SUM	_____.
2790	650.6500 Construction Staking Structure Layout (structure) 02. S-32-54	LS	LUMP SUM	_____.
2800	650.6500 Construction Staking Structure Layout (structure) 03. S-32-55	LS	LUMP SUM	_____.
2810	650.6500 Construction Staking Structure Layout (structure) 04. S-32-56	LS	LUMP SUM	_____.
2820	650.6500 Construction Staking Structure Layout (structure) 05. S-32-65	LS	LUMP SUM	_____.
2830	650.6500 Construction Staking Structure Layout (structure) 06. S-32-51	LS	LUMP SUM	_____.
2840	650.6500 Construction Staking Structure Layout (structure) 40. S-32-53	LS	LUMP SUM	_____.
2850	650.6500 Construction Staking Structure Layout (structure) 50. S-32-50	LS	LUMP SUM	_____.
2860	650.6500 Construction Staking Structure Layout (structure) 51. S-32-52	LS	LUMP SUM	_____.
2870	650.6500 Construction Staking Structure Layout (structure) 52. S-32-66	LS	LUMP SUM	_____.
2880	650.6500 Construction Staking Structure Layout (structure) 53. S-32-68	LS	LUMP SUM	_____.



Proposal Schedule of Items

Proposal ID: 20161213002

Project(s): 1071-06-82, 1071-06-83, 1071-06-89, 7190-03-72

SECTION: 0001 Contract Items

Alt Set ID:

Alt Mbr ID:

Proposal Line Number	Item ID Description	Approximate Quantity and Units	Unit Price	Bid Amount
2890	650.7000 Construction Staking Concrete Pavement	21,946.000 LF	_____.	_____.
2900	650.8500 Construction Staking Electrical Installations (project) 01. 1071-06-82	LS	LUMP SUM	_____.
2910	650.8500 Construction Staking Electrical Installations (project) 02. 1071-06-83	LS	LUMP SUM	_____.
2920	650.8500 Construction Staking Electrical Installations (project) 03. 7190-03-72	LS	LUMP SUM	_____.
2930	650.9910 Construction Staking Supplemental Control (project) 01. 1071-06-83	LS	LUMP SUM	_____.
2940	650.9910 Construction Staking Supplemental Control (project) 02. 7190-03-72	LS	LUMP SUM	_____.
2950	650.9910 Construction Staking Supplemental Control (project) 03. 1071-06-82	LS	LUMP SUM	_____.
2960	650.9920 Construction Staking Slope Stakes	36,287.000 LF	_____.	_____.
2970	652.0125 Conduit Rigid Metallic 2-Inch	24.000 LF	_____.	_____.
2980	652.0205 Conduit Rigid Nonmetallic Schedule 40 3/4-Inch	318.000 LF	_____.	_____.
2990	652.0225 Conduit Rigid Nonmetallic Schedule 40 2-Inch	30,913.000 LF	_____.	_____.
3000	652.0235 Conduit Rigid Nonmetallic Schedule 40 3-Inch	5,645.000 LF	_____.	_____.
3010	652.0800 Conduit Loop Detector	1,605.000 LF	_____.	_____.
3020	653.0135 Pull Boxes Steel 24x36-Inch	2.000 EACH	_____.	_____.



Proposal Schedule of Items

Proposal ID: 20161213002

Project(s): 1071-06-82, 1071-06-83, 1071-06-89, 7190-03-72

SECTION: 0001 Contract Items

Alt Set ID: Alt Mbr ID:

Proposal Line Number	Item ID Description	Approximate Quantity and Units	Unit Price	Bid Amount
3030	653.0140 Pull Boxes Steel 24x42-Inch	2.000 EACH	_____.	_____.
3040	653.0220 Junction Boxes 18x6x6-Inch	4.000 EACH	_____.	_____.
3050	653.0905 Removing Pull Boxes	24.000 EACH	_____.	_____.
3060	654.0101 Concrete Bases Type 1	21.000 EACH	_____.	_____.
3070	654.0102 Concrete Bases Type 2	14.000 EACH	_____.	_____.
3080	654.0105 Concrete Bases Type 5	5.000 EACH	_____.	_____.
3090	654.0106 Concrete Bases Type 6	29.000 EACH	_____.	_____.
3100	654.0110 Concrete Bases Type 10	4.000 EACH	_____.	_____.
3110	654.0113 Concrete Bases Type 13	11.000 EACH	_____.	_____.
3120	654.0217 Concrete Control Cabinet Bases Type 9 Special	5.000 EACH	_____.	_____.
3130	654.0230 Concrete Control Cabinet Bases Type L30	3.000 EACH	_____.	_____.
3140	655.0210 Cable Traffic Signal 3-14 AWG	435.000 LF	_____.	_____.
3150	655.0230 Cable Traffic Signal 5-14 AWG	3,778.000 LF	_____.	_____.
3160	655.0240 Cable Traffic Signal 7-14 AWG	4,897.000 LF	_____.	_____.
3170	655.0250 Cable Traffic Signal 9-14 AWG	3,385.000 LF	_____.	_____.
3180	655.0260 Cable Traffic Signal 12-14 AWG	3,145.000 LF	_____.	_____.



Proposal Schedule of Items

Proposal ID: 20161213002

Project(s): 1071-06-82, 1071-06-83, 1071-06-89, 7190-03-72

SECTION: 0001 Contract Items

Alt Set ID: Alt Mbr ID:

Proposal Line Number	Item ID Description	Approximate Quantity and Units	Unit Price	Bid Amount
3190	655.0305 Cable Type UF 2-12 AWG Grounded	5,000.000 LF	_____.	_____.
3200	655.0510 Electrical Wire Traffic Signals 12 AWG	1,650.000 LF	_____.	_____.
3210	655.0515 Electrical Wire Traffic Signals 10 AWG	6,412.000 LF	_____.	_____.
3220	655.0610 Electrical Wire Lighting 12 AWG	20,790.000 LF	_____.	_____.
3230	655.0615 Electrical Wire Lighting 10 AWG	5,592.000 LF	_____.	_____.
3240	655.0620 Electrical Wire Lighting 8 AWG	2,510.000 LF	_____.	_____.
3250	655.0630 Electrical Wire Lighting 4 AWG	54,750.000 LF	_____.	_____.
3260	655.0635 Electrical Wire Lighting 2 AWG	6,759.000 LF	_____.	_____.
3270	655.0700 Loop Detector Lead In Cable	13,646.000 LF	_____.	_____.
3280	655.0800 Loop Detector Wire	5,265.000 LF	_____.	_____.
3290	656.0200 Electrical Service Meter Breaker Pedestal (location) 01. USH 53 & Palace	LS	LUMP SUM	_____.
3300	656.0200 Electrical Service Meter Breaker Pedestal (location) 02. USH 53 & STH 35	LS	LUMP SUM	_____.
3310	656.0200 Electrical Service Meter Breaker Pedestal (location) 03. STH 35 & W George	LS	LUMP SUM	_____.
3320	656.0200 Electrical Service Meter Breaker Pedestal (location) 04. City of LaCrosse LC1	LS	LUMP SUM	_____.



Proposal Schedule of Items

Proposal ID: 20161213002

Project(s): 1071-06-82, 1071-06-83, 1071-06-89, 7190-03-72

SECTION: 0001 Contract Items

Alt Set ID: Alt Mbr ID:

Proposal Line Number	Item ID Description	Approximate Quantity and Units	Unit Price	Bid Amount
3330	656.0200 Electrical Service Meter Breaker Pedestal (location) 05. City of LaCrosse LC2	LS	LUMP SUM	_____.
3340	656.0200 Electrical Service Meter Breaker Pedestal (location) 06. City of LaCrosse LC3	LS	LUMP SUM	_____.
3350	656.0200 Electrical Service Meter Breaker Pedestal (location) 07. USH 53 & IH 90 EB	LS	LUMP SUM	_____.
3360	656.0200 Electrical Service Meter Breaker Pedestal (location) 08. USH 53 & IH 90 WB	LS	LUMP SUM	_____.
3370	657.0100 Pedestal Bases	22.000 EACH	_____.	_____.
3380	657.0255 Transformer Bases Breakaway 11 1/2-Inch Bolt Circle	42.000 EACH	_____.	_____.
3390	657.0315 Poles Type 4	14.000 EACH	_____.	_____.
3400	657.0327 Poles Type 6-Aluminum	25.000 EACH	_____.	_____.
3410	657.0420 Traffic Signal Standards Aluminum 13-FT	15.000 EACH	_____.	_____.
3420	657.0425 Traffic Signal Standards Aluminum 15-FT	6.000 EACH	_____.	_____.
3430	657.0430 Traffic Signal Standards Aluminum 10-FT	1.000 EACH	_____.	_____.
3440	657.0709 Luminaire Arms Truss Type 4-Inch Clamp 12-FT	22.000 EACH	_____.	_____.
3450	657.0710 Luminaire Arms Truss Type 4 1/2-Inch Clamp 12-FT	49.000 EACH	_____.	_____.



Proposal Schedule of Items

Proposal ID: 20161213002

Project(s): 1071-06-82, 1071-06-83, 1071-06-89, 7190-03-72

SECTION: 0001 Contract Items

Alt Set ID: Alt Mbr ID:

Proposal Line Number	Item ID Description	Approximate Quantity and Units	Unit Price	Bid Amount
3460	657.1350 Install Poles Type 10	4.000 EACH	_____.	_____.
3470	657.1360 Install Poles Type 13	11.000 EACH	_____.	_____.
3480	657.1520 Install Monotube Arms 20-FT	2.000 EACH	_____.	_____.
3490	657.1530 Install Monotube Arms 30-FT	2.000 EACH	_____.	_____.
3500	657.1535 Install Monotube Arms 35-FT	1.000 EACH	_____.	_____.
3510	657.1545 Install Monotube Arms 45-FT	3.000 EACH	_____.	_____.
3520	657.1550 Install Monotube Arms 50-FT	2.000 EACH	_____.	_____.
3530	657.1555 Install Monotube Arms 55-FT	5.000 EACH	_____.	_____.
3540	657.1815 Install Luminaire Arms Steel 15-FT	7.000 EACH	_____.	_____.
3550	658.0110 Traffic Signal Face 3-12 Inch Vertical	67.000 EACH	_____.	_____.
3560	658.0115 Traffic Signal Face 4-12 Inch Vertical	17.000 EACH	_____.	_____.
3570	658.0215 Backplates Signal Face 3 Section 12-Inch	67.000 EACH	_____.	_____.
3580	658.0220 Backplates Signal Face 4 Section 12-Inch	17.000 EACH	_____.	_____.
3590	658.0416 Pedestrian Signal Face 16-Inch	29.000 EACH	_____.	_____.
3600	658.0500 Pedestrian Push Buttons	30.000 EACH	_____.	_____.
3610	658.0600 Led Modules 12-Inch Red Ball	64.000 EACH	_____.	_____.



Proposal Schedule of Items

Page 25 of 38

Proposal ID: 20161213002

Project(s): 1071-06-82, 1071-06-83, 1071-06-89, 7190-03-72

SECTION: 0001 Contract Items

Alt Set ID: Alt Mbr ID:

Proposal Line Number	Item ID Description	Approximate Quantity and Units	Unit Price	Bid Amount
3620	658.0605 Led Modules 12-Inch Yellow Ball	55.000 EACH	_____.	_____.
3630	658.0610 Led Modules 12-Inch Green Ball	55.000 EACH	_____.	_____.
3640	658.0615 Led Modules 12-Inch Red Arrow	20.000 EACH	_____.	_____.
3650	658.0620 Led Modules 12-Inch Yellow Arrow	41.000 EACH	_____.	_____.
3660	658.0625 Led Modules 12-Inch Green Arrow	34.000 EACH	_____.	_____.
3670	658.0635 Led Modules Pedestrian Countdown Timer 16-Inch	29.000 EACH	_____.	_____.
3680	658.5069 Signal Mounting Hardware (location) 01. USH 53 & Palace	LS	LUMP SUM	_____.
3690	658.5069 Signal Mounting Hardware (location) 02. USH 53 & STH 35	LS	LUMP SUM	_____.
3700	658.5069 Signal Mounting Hardware (location) 03. STH 35 & W George	LS	LUMP SUM	_____.
3710	658.5069 Signal Mounting Hardware (location) 04. 103 RN+69	LS	LUMP SUM	_____.
3720	658.5069 Signal Mounting Hardware (location) 05. 117 RN+35	LS	LUMP SUM	_____.
3730	659.1125 Luminaires Utility LED C	78.000 EACH	_____.	_____.
3740	659.2130 Lighting Control Cabinets 120/240 30- Inch	3.000 EACH	_____.	_____.
3750	661.0200 Temporary Traffic Signals for Intersections (location) 01. STH 35 and George Street	LS	LUMP SUM	_____.



Proposal Schedule of Items

Proposal ID: 20161213002

Project(s): 1071-06-82, 1071-06-83, 1071-06-89, 7190-03-72

SECTION: 0001 Contract Items

Alt Set ID: Alt Mbr ID:

Proposal Line Number	Item ID Description	Approximate Quantity and Units	Unit Price	Bid Amount
3760	661.0200 Temporary Traffic Signals for Intersections (location) 02. STH 35 and USH 53	LS	LUMP SUM	_____.
3770	661.0200 Temporary Traffic Signals for Intersections (location) 03. Palace Street and USH 53	LS	LUMP SUM	_____.
3780	661.0200 Temporary Traffic Signals for Intersections (location) 04. Eastbound Ramp Terminal	LS	LUMP SUM	_____.
3790	661.0200 Temporary Traffic Signals for Intersections (location) 05. Westbound Ramp Terminal	LS	LUMP SUM	_____.
3800	662.1037.S Ramp Closure Gates Hardwired 37-FT	2.000 EACH	_____.	_____.
3810	662.1040.S Ramp Closure Gates Hardwired 40-FT	1.000 EACH	_____.	_____.
3820	676.0300 Signal Assembly Advance Flasher Type 1	1.000 EACH	_____.	_____.
3830	678.0036 Install Fiber Optic Cable Outdoor Plant 36-CT	12,545.000 LF	_____.	_____.
3840	678.0200 Fiber Optic Splice Enclosure	8.000 EACH	_____.	_____.
3850	678.0300 Fiber Optic Splice	64.000 EACH	_____.	_____.
3860	690.0150 Sawing Asphalt	6,936.000 LF	_____.	_____.
3870	690.0250 Sawing Concrete	3,597.000 LF	_____.	_____.
3880	715.0415 Incentive Strength Concrete Pavement	25,615.000 DOL	1.00000	25,615.00
3890	715.0502 Incentive Strength Concrete Structures	3,720.000 DOL	1.00000	3,720.00



Proposal Schedule of Items

Proposal ID: 20161213002

Project(s): 1071-06-82, 1071-06-83, 1071-06-89, 7190-03-72

SECTION: 0001 Contract Items

Alt Set ID: Alt Mbr ID:

Proposal Line Number	Item ID Description	Approximate Quantity and Units	Unit Price	Bid Amount
3900	999.1500.S Crack and Damage Survey	LS	LUMP SUM	_____.
3910	ASP.1T0A On-the-Job Training Apprentice at \$5.00/HR	2,100.000 HRS	5.00000	10,500.00
3920	ASP.1T0G On-the-Job Training Graduate at \$5.00/HR	6,480.000 HRS	5.00000	32,400.00
3930	SPV.0035 Special 02. Planting Soil Mix	1,896.000 CY	_____.	_____.
3940	SPV.0035 Special 03. Colored Concrete Bands	15.000 CY	_____.	_____.
3950	SPV.0060 Special 01. Moonshine Yarrow	582.000 EACH	_____.	_____.
3960	SPV.0060 Special 02. Nodding Wild Onion	1,037.000 EACH	_____.	_____.
3970	SPV.0060 Special 03. Summer Beauty Globe Lily	1,111.000 EACH	_____.	_____.
3980	SPV.0060 Special 04. Sky-Blue Aster	149.000 EACH	_____.	_____.
3990	SPV.0060 Special 05. Blue Wild Indigo	47.000 EACH	_____.	_____.
4000	SPV.0060 Special 06. Connecting To Existing Inlets	7.000 EACH	_____.	_____.
4010	SPV.0060 Special 07. Blue Wild Indigo 'Purple Smoke'	55.000 EACH	_____.	_____.
4020	SPV.0060 Special 08. Brown Fox Sedge	247.000 EACH	_____.	_____.
4030	SPV.0060 Special 09. Lanceleaf Tickseed	855.000 EACH	_____.	_____.
4040	SPV.0060 Special 11. Prairie Splendor Coneflower	548.000 EACH	_____.	_____.
4050	SPV.0060 Special 12. Rocket City Daylily	184.000 EACH	_____.	_____.



Proposal Schedule of Items

Proposal ID: 20161213002

Project(s): 1071-06-82, 1071-06-83, 1071-06-89, 7190-03-72

SECTION: 0001 Contract Items

Alt Set ID: Alt Mbr ID:

Proposal Line Number	Item ID Description	Approximate Quantity and Units	Unit Price	Bid Amount
4060	SPV.0060 Special 13. German Iris	305.000 EACH	_____.	_____.
4070	SPV.0060 Special 14. Plaza Seat Stone Type A	4.000 EACH	_____.	_____.
4080	SPV.0060 Special 15. Plaza Seat Stone Type B	6.000 EACH	_____.	_____.
4090	SPV.0060 Special 16. Plaza Seat Stone Type C	3.000 EACH	_____.	_____.
4100	SPV.0060 Special 17. Lawn Seat Stone Type A	3.000 EACH	_____.	_____.
4110	SPV.0060 Special 18. Lawn Seat Stone Type B	5.000 EACH	_____.	_____.
4120	SPV.0060 Special 19. Lawn Seat Stone Type C	4.000 EACH	_____.	_____.
4130	SPV.0060 Special 20. Bench Type A	7.000 EACH	_____.	_____.
4140	SPV.0060 Special 21. Bike Rack	3.000 EACH	_____.	_____.
4150	SPV.0060 Special 22. Surface Mounted Trash Receptacle	2.000 EACH	_____.	_____.
4160	SPV.0060 Special 23. Bearing Repair	8.000 EACH	_____.	_____.
4170	SPV.0060 Special 25. Spotting Scope Type B	1.000 EACH	_____.	_____.
4180	SPV.0060 Special 26. Decorative Lighting Unit 20-Foot	2.000 EACH	_____.	_____.
4190	SPV.0060 Special 27. Decorative Bollard	6.000 EACH	_____.	_____.
4200	SPV.0060 Special 28. Concrete Bollard Base	6.000 EACH	_____.	_____.
4210	SPV.0060 Special 29. Spotting Scope Type A	2.000 EACH	_____.	_____.



Proposal Schedule of Items

Proposal ID: 20161213002

Project(s): 1071-06-82, 1071-06-83, 1071-06-89, 7190-03-72

SECTION: 0001 Contract Items

Alt Set ID: Alt Mbr ID:

Proposal Line Number	Item ID Description	Approximate Quantity and Units	Unit Price	Bid Amount
4220	SPV.0060 Special 30. Inlets 5-FT Diameter	1.000 EACH	_____.	_____.
4230	SPV.0060 Special 31. Inlets 6-FT Diameter	1.000 EACH	_____.	_____.
4240	SPV.0060 Special 32. Sanitary Manhole Covers	4.000 EACH	_____.	_____.
4250	SPV.0060 Special 33. Blue Flag Iris	248.000 EACH	_____.	_____.
4260	SPV.0060 Special 34. Prairie June Grass	618.000 EACH	_____.	_____.
4270	SPV.0060 Special 35. Cylindrical Blazing Star	166.000 EACH	_____.	_____.
4280	SPV.0060 Special 36. Spike Gayfeather	57.000 EACH	_____.	_____.
4290	SPV.0060 Special 37. Yellow Coneflower	866.000 EACH	_____.	_____.
4300	SPV.0060 Special 38. Prairie Dropseed	902.000 EACH	_____.	_____.
4310	SPV.0060 Special 39. Blue Vervain	237.000 EACH	_____.	_____.
4320	SPV.0060 Special 45. Corporation Stop 2-Inch	1.000 EACH	_____.	_____.
4330	SPV.0060 Special 46. Service Stop 2-Inch	1.000 EACH	_____.	_____.
4340	SPV.0060 Special 47. D.I. Fitting Plug 8-Inch	1.000 EACH	_____.	_____.
4350	SPV.0060 Special 48. R.S. Gate Valve With Road Box 8-Inch	1.000 EACH	_____.	_____.
4370	SPV.0060 Special 51. Manholes 6-FT DIA With Gate	4.000 EACH	_____.	_____.
4390	SPV.0060 Special 53. Automatic Drainage Gates 36-Inch	2.000 EACH	_____.	_____.



Proposal Schedule of Items

Proposal ID: 20161213002

Project(s): 1071-06-82, 1071-06-83, 1071-06-89, 7190-03-72

SECTION: 0001 Contract Items

Alt Set ID: Alt Mbr ID:

Proposal Line Number	Item ID Description	Approximate Quantity and Units	Unit Price	Bid Amount
4400	SPV.0060 Special 54. Remove And Salvage Storm Water Gate	8.000 EACH	_____.	_____.
4410	SPV.0060 Special 55. Manhole Covers Type J-Modified	15.000 EACH	_____.	_____.
4420	SPV.0060 Special 60. Corporation Stop 1-Inch	1.000 EACH	_____.	_____.
4430	SPV.0060 Special 61. Service Stop 1-Inch	1.000 EACH	_____.	_____.
4440	SPV.0060 Special 62. Adjust Service Stop Elevation	11.000 EACH	_____.	_____.
4450	SPV.0060 Special 63. Relocate Fire Hydrant	5.000 EACH	_____.	_____.
4460	SPV.0060 Special 64. Fire Hydrant - New	4.000 EACH	_____.	_____.
4470	SPV.0060 Special 65. Adjust Fire Hydrant Elevation	2.000 EACH	_____.	_____.
4480	SPV.0060 Special 66. R.S. Hydrant Control Valve With Road Box 6-Inch	4.000 EACH	_____.	_____.
4490	SPV.0060 Special 67. Adjust Water Main Valve Elevation	16.000 EACH	_____.	_____.
4500	SPV.0060 Special 68. Nitrile Gaskets 8-Inch	5.000 EACH	_____.	_____.
4510	SPV.0060 Special 69. Nitrile Gaskets 6-Inch	2.000 EACH	_____.	_____.
4520	SPV.0060 Special 70. Tapping Valve and Sleeve 6-Inch	2.000 EACH	_____.	_____.
4530	SPV.0060 Special 71. D.I. Fitting - 45 Degree Bend 8-Inch	4.000 EACH	_____.	_____.
4540	SPV.0060 Special 72. D.I. Fitting - 45 Degree Bend 6-Inch	4.000 EACH	_____.	_____.



Proposal Schedule of Items

Proposal ID: 20161213002

Project(s): 1071-06-82, 1071-06-83, 1071-06-89, 7190-03-72

SECTION: 0001

Contract Items

Alt Set ID:

Alt Mbr ID:

Proposal Line Number	Item ID Description	Approximate Quantity and Units	Unit Price	Bid Amount
4550	SPV.0060 Special 73. D.I. Fitting - Reducer 8 to 6-Inch	1.000 EACH	_____.	_____.
4560	SPV.0060 Special 74. D.I. Fitting, 8x6 Inch Tee For Fire Hydrant	2.000 EACH	_____.	_____.
4570	SPV.0060 Special 75. Connect Existing Water Service To New Water Main	1.000 EACH	_____.	_____.
4580	SPV.0060 Special 76. Sanitary Sewer Manhole New, 48-Inch ID	7.000 EACH	_____.	_____.
4590	SPV.0060 Special 77. Sanitary Sewer Manhole Remove 48-Inch ID	2.000 EACH	_____.	_____.
4600	SPV.0060 Special 78. Adjust Sanitary Sewer Manhole Elevation, 48-Inch ID	11.000 EACH	_____.	_____.
4610	SPV.0060 Special 79. Sanitary Sewer Wye PVC - 8x6-Inch	1.000 EACH	_____.	_____.
4620	SPV.0060 Special 80. Black Paint Pedestal Bases	21.000 EACH	_____.	_____.
4630	SPV.0060 Special 81. Black Paint Transformer Bases Breakaway 11 1/2-Inch Bolt Circle	39.000 EACH	_____.	_____.
4640	SPV.0060 Special 82. Black Paint Traffic Signal Standard Aluminum 13-FT	15.000 EACH	_____.	_____.
4650	SPV.0060 Special 83. Black Paint Traffic Signal Standard Aluminum 15-FT	5.000 EACH	_____.	_____.
4660	SPV.0060 Special 84. Black Paint Traffic Signal Standard Aluminum 10-FT	1.000 EACH	_____.	_____.
4670	SPV.0060 Special 85. Black Paint Poles Type 4	14.000 EACH	_____.	_____.
4680	SPV.0060 Special 86. Black Paint Poles Type 6, Modified Aluminum	25.000 EACH	_____.	_____.



Proposal Schedule of Items

Proposal ID: 20161213002

Project(s): 1071-06-82, 1071-06-83, 1071-06-89, 7190-03-72

SECTION: 0001 Contract Items

Alt Set ID: Alt Mbr ID:

Proposal Line Number	Item ID Description	Approximate Quantity and Units	Unit Price	Bid Amount
4690	SPV.0060 Special 87. Black Paint Luminaire Arms Truss Type 4.5-Inch Clamp 12-FT	49.000 EACH	_____.	_____.
4700	SPV.0060 Special 88. Black Paint Luminaire Arms Truss Type 4-Inch Clamp 12-FT	22.000 EACH	_____.	_____.
4710	SPV.0060 Special 89. Black Paint Luminaires Utility LED C	78.000 EACH	_____.	_____.
4720	SPV.0060 Special 90. Black Paint Lighting Control Cabinet	3.000 EACH	_____.	_____.
4730	SPV.0060 Special 91. Removing Traffic Signal Units	31.000 EACH	_____.	_____.
4740	SPV.0060 Special 92. Pull Box Non-Conductive 24x42-Inch	125.000 EACH	_____.	_____.
4750	SPV.0060 Special 93. 8-Count Fiber Optic Connector 250-FT	7.000 EACH	_____.	_____.
4760	SPV.0060 Special 94. 8-Count Fiber Optic Connector 1000-FT	1.000 EACH	_____.	_____.
4770	SPV.0060 Special 95. Remove Existing Lighting Control	1.000 EACH	_____.	_____.
4780	SPV.0060 Special 96. Decorative Street Light Base	45.000 EACH	_____.	_____.
4790	SPV.0060 Special 97. Decorative Street Light Assembly	45.000 EACH	_____.	_____.
4800	SPV.0060 Special 98. Round Communications Vault 36x42-Inch	5.000 EACH	_____.	_____.
4810	SPV.0060 Special 99. Remove Existing Lighting Pole	1.000 EACH	_____.	_____.
4820	SPV.0085 Special 01. Native Prairie	46.000 LB	_____.	_____.



Proposal Schedule of Items

Proposal ID: 20161213002

Project(s): 1071-06-82, 1071-06-83, 1071-06-89, 7190-03-72

SECTION: 0001 Contract Items

Alt Set ID:

Alt Mbr ID:

Proposal Line Number	Item ID Description	Approximate Quantity and Units	Unit Price	Bid Amount
4830	SPV.0085 Special 02. Pollinator Mix	10.000 LB	_____.	_____.
4840	SPV.0085 Special 03. No-Mow Fescue	224.000 LB	_____.	_____.
4850	SPV.0090 Special 02. Concrete Curb And Gutter Integral 54-Inch Type A	358.000 LF	_____.	_____.
4860	SPV.0090 Special 03. Concrete Curb And Gutter Integral 66-Inch Type A	16,163.000 LF	_____.	_____.
4870	SPV.0090 Special 10. Aluminum Edging	7,597.000 LF	_____.	_____.
4880	SPV.0090 Special 11. Steel Railing	205.000 LF	_____.	_____.
4890	SPV.0090 Special 50. Level Spreader Wall	24.000 LF	_____.	_____.
4900	SPV.0090 Special 66. Copper Water Service 1-Inch	20.000 LF	_____.	_____.
4910	SPV.0090 Special 67. Extend Water Service	68.000 LF	_____.	_____.
4920	SPV.0090 Special 68. D.I. Water Main With Poly Wrap 6-Inch	15.000 LF	_____.	_____.
4930	SPV.0090 Special 69. D.I. Water Main With Poly Wrap 8-Inch	816.000 LF	_____.	_____.
4940	SPV.0090 Special 70. D.I. Hydrant Lead With Poly Wrap 6-Inch	59.000 LF	_____.	_____.
4950	SPV.0090 Special 71. SDR 35 PVC Sanitary Sewer Main 8-Inch	590.000 LF	_____.	_____.
4960	SPV.0090 Special 72. SDR 35 PVC Sanitary Sewer Lateral 6-Inch	20.000 LF	_____.	_____.
4970	SPV.0090 Special 73. Removing Sanitary Sewer	218.000 LF	_____.	_____.



Proposal Schedule of Items

Proposal ID: 20161213002

Project(s): 1071-06-82, 1071-06-83, 1071-06-89, 7190-03-72

SECTION: 0001 Contract Items

Alt Set ID: Alt Mbr ID:

Proposal Line Number	Item ID Description	Approximate Quantity and Units	Unit Price	Bid Amount
4980	SPV.0090 Special 74. Copper Water Service 2-Inch	50.000 LF	_____.	_____.
4990	SPV.0090 Special 75. SDR 35 PVC Sanitary Sewer Main 18-Inch	79.000 LF	_____.	_____.
5000	SPV.0090 Special 76. Water Main Casing Pipe 0.25" Wall With End Seals, 18-Inch	140.000 LF	_____.	_____.
5010	SPV.0090 Special 77. Support System For Water Main Inside Casing Pipe, 8 - 18-Inch	140.000 LF	_____.	_____.
5020	SPV.0090 Special 78. Sanitary Sewer Pipe RCP 36-Inch	231.000 LF	_____.	_____.
5030	SPV.0105 Special 01. Removing Sign Bridge S-32-18	LS	LUMP SUM	_____.
5040	SPV.0105 Special 02. Removing Sign Bridge S-32-21	LS	LUMP SUM	_____.
5050	SPV.0105 Special 03. Removing Sign Bridge S-32-19	LS	LUMP SUM	_____.
5060	SPV.0105 Special 04. Removing Sign Bridge S-32-20	LS	LUMP SUM	_____.
5070	SPV.0105 Special 05. Adjusting Construction Staking 1071-06-83	LS	LUMP SUM	_____.
5080	SPV.0105 Special 06. Adjusting Construction Staking Project 7190-03-72	LS	LUMP SUM	_____.
5090	SPV.0105 Special 07. Concrete Pavement Joint Layout 1071-06-83	LS	LUMP SUM	_____.
5100	SPV.0105 Special 08. Concrete Pavement Joint Layout Project 7190-03-72	LS	LUMP SUM	_____.



Proposal Schedule of Items

Proposal ID: 20161213002

Project(s): 1071-06-82, 1071-06-83, 1071-06-89, 7190-03-72

SECTION: 0001 Contract Items

Alt Set ID: Alt Mbr ID:

Proposal Line Number	Item ID Description	Approximate Quantity and Units	Unit Price	Bid Amount
5110	SPV.0105 Special 09. Construction Staking Eagle Viewing Area	LS	LUMP SUM	_____.
5120	SPV.0105 Special 10. Construction Staking Ramp Removal Southeast Quad	LS	LUMP SUM	_____.
5130	SPV.0105 Special 11. Construction Staking Ramp Removal Northeast Quad	LS	LUMP SUM	_____.
5140	SPV.0105 Special 12. Construction Staking Ramp Removal Northwest Quad	LS	LUMP SUM	_____.
5150	SPV.0105 Special 20. Shade Structure	LS	LUMP SUM	_____.
5160	SPV.0105 Special 21. Construction Staking Landscaping Items	LS	LUMP SUM	_____.
5170	SPV.0105 Special 22. Debris Containment Special Structure B-32-67	LS	LUMP SUM	_____.
5180	SPV.0105 Special 23. Landscape Irrigation System	LS	LUMP SUM	_____.
5190	SPV.0105 Special 30. Paint Structure S-32-50	LS	LUMP SUM	_____.
5200	SPV.0105 Special 31. Paint Structure S-32-51	LS	LUMP SUM	_____.
5210	SPV.0105 Special 32. Paint Structure S-32-52	LS	LUMP SUM	_____.
5220	SPV.0105 Special 33. Paint Structure S-32-53	LS	LUMP SUM	_____.
5230	SPV.0105 Special 34. Paint Structure S-32-54	LS	LUMP SUM	_____.
5240	SPV.0105 Special 35. Paint Structure S-32-55	LS	LUMP SUM	_____.
5250	SPV.0105 Special 36. Paint Structure S-32-56	LS	LUMP SUM	_____.



Proposal Schedule of Items

Proposal ID: 20161213002

Project(s): 1071-06-82, 1071-06-83, 1071-06-89, 7190-03-72

SECTION: 0001 Contract Items

Alt Set ID: Alt Mbr ID:

Proposal Line Number	Item ID Description	Approximate Quantity and Units	Unit Price	Bid Amount
5260	SPV.0105 Special 37. Paint Structure S-32-65	LS	LUMP SUM	_____.
5270	SPV.0105 Special 38. Paint Structure S-32-66	LS	LUMP SUM	_____.
5280	SPV.0105 Special 39. Paint Structure S-32-68	LS	LUMP SUM	_____.
5290	SPV.0105 Special 40. Entry Sign	LS	LUMP SUM	_____.
5300	SPV.0105 Special 41. Temp. Non-Intrusive Vehicle Detect. System For Intersections, Rose/Palace	LS	LUMP SUM	_____.
5310	SPV.0105 Special 42. Temp. Non-Intrusive Vehicle Detect. System For Intersections, Rose/George	LS	LUMP SUM	_____.
5320	SPV.0105 Special 43. Temp. Non-Intrusive Vehicle Detect. System For Intersections, STH 35/George	LS	LUMP SUM	_____.
5330	SPV.0105 Special 44. Temp. Non-Intrusive Vehicle Detect. System For Intersections, RS&EBR1	LS	LUMP SUM	_____.
5340	SPV.0105 Special 45. Temp. Non-Intrusive Vehicle Detect. System For Intersections, RS&EBR2	LS	LUMP SUM	_____.
5350	SPV.0105 Special 46. Temp. Non-Intrusive Vehicle Detect. System For Intersections, RS&WBR1	LS	LUMP SUM	_____.
5360	SPV.0105 Special 47. Temp. Non-Intrusive Vehicle Detect. System For Intersections, RS&WBR2	LS	LUMP SUM	_____.
5370	SPV.0105 Special 48. Temp. Non-Intrusive Vehicle Detect. System For Intersections, RS&WBR3	LS	LUMP SUM	_____.



Proposal Schedule of Items

Proposal ID: 20161213002

Project(s): 1071-06-82, 1071-06-83, 1071-06-89, 7190-03-72

SECTION: 0001 Contract Items

Alt Set ID: Alt Mbr ID:

Proposal Line Number	Item ID Description	Approximate Quantity and Units	Unit Price	Bid Amount
5380	SPV.0105 Special 50. Adjusting Construction Staking 1071-06-82	LS	LUMP SUM	_____.
5390	SPV.0105 Special 51. Concrete Pavement Joint Layout 1071-06-82	LS	LUMP SUM	_____.
5400	SPV.0105 Special 52. Removing Sign Bridge S-32-03	LS	LUMP SUM	_____.
5410	SPV.0105 Special 53. Sanitary Sewer Bypass Pumping	LS	LUMP SUM	_____.
5420	SPV.0105 Special 54. Sanitary Manhole Modifications	LS	LUMP SUM	_____.
5430	SPV.0105 Special 55. Lift Station Wall Modification	LS	LUMP SUM	_____.
5440	SPV.0165 Special 11. Modular Block Retaining Wall	160.000 SF		_____.
5450	SPV.0165 Special 12. Trench Insulation 4-Inch	80.000 SF		_____.
5460	SPV.0165 Special 13. Permeable Pavers	1,758.000 SF		_____.
5470	SPV.0180 Special 01. Special Mulching	16,371.000 SY		_____.
5480	SPV.0195 Special 01. Limestone Screenings Path	2,249.000 TON		_____.
5490	SPV.0195 Special 02. Stone Screenings With Binder	518.000 TON		_____.
5500	SPV.0195 Special 03. Permeable Base Aggregate ASTM-57	190.000 TON		_____.
5510	SPV.0195 Special 04. Permeable Base Aggregate ASTM-2	253.000 TON		_____.



Proposal Schedule of Items

Proposal ID: 20161213002

Project(s): 1071-06-82, 1071-06-83, 1071-06-89, 7190-03-72

SECTION: 0001 Contract Items

Alt Set ID: Alt Mbr ID:

Proposal Line Number	Item ID Description	Approximate Quantity and Units	Unit Price	Bid Amount
5520	SPV.0200 Special 01. Sanitary Manholes 5-FT Diameter	43.000 VF	_____.	_____.
5530	SPV.0060 Special 42. Manholes 8-FT DIA With Gate	1.000 EACH	_____.	_____.
5540	SPV.0060 Special 43. Sluice Gates 24-Inch	4.000 EACH	_____.	_____.
5550	SPV.0060 Special 44. Sluice Gates 36-Inch	1.000 EACH	_____.	_____.
Section: 0001			Total:	_____.
			Total Bid:	_____.