



Wisconsin Department of Transportation

December 11, 2016

Division of Transportation Systems Development

Bureau of Project Development
 4802 Sheboygan Avenue, Rm 601
 P O Box 7916
 Madison, WI 53707-7916

Telephone: (608) 266-1631
 Facsimile (FAX): (608) 266-8459

NOTICE TO ALL CONTRACTORS:

Proposal #11: 2160-01-72, WISC 2016 472
CTH U
Intersection of CTH U and CTH BB
CTH U
Milwaukee County

Letting of December 13, 2016

This is Addendum No. 01, which provides for the following:

Plan Sheets

Revised Plan Sheets	
Plan Sheet	Plan Sheet Title (brief description of changes to sheet)
40	Miscellaneous Quantities (defines Item 612.0406 to have connections costs incidental to unit cost)

Added Plan Sheets	
Plan Sheet	Plan Sheet Title (brief description of why sheet was added)
34A	Traffic Control Legend (Sheet missing from plan)
34B	Traffic Control Legend (Sheet missing from plan)
34C	Traffic Control Overview (Sheet missing from plan)
34D	Traffic Control Stage 1 Typical Sections (Sheet missing from plan)
34E	Traffic Control Stage 1 Typical Sections (Sheet missing from plan)
34F - 34R	Traffic Control Stage 1 (Sheets missing from plan)
34S	Traffic Control Stage 2 Typical Sections (Sheet missing from plan)
34T	Traffic Control Stage 2 Typical Sections (Sheet missing from plan)
34U – 34AE	Traffic Control Stage 2 (Sheets missing from plan)

Plan Sheets

The following 8½ x 11-inch sheets are attached and made part of the plans for this proposal:

Revised: 40

Added: 34A – 34AE.

The responsibility for notifying potential subcontractors and suppliers of these changes remains with the prime contractor.

Sincerely,

Mike Coleman

Proposal Development Specialist

Proposal Management Section

ADDENDUM NO. 1

2160-01-72

December 7, 2016

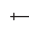
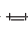




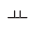










Special Provisions

Schedule of Items

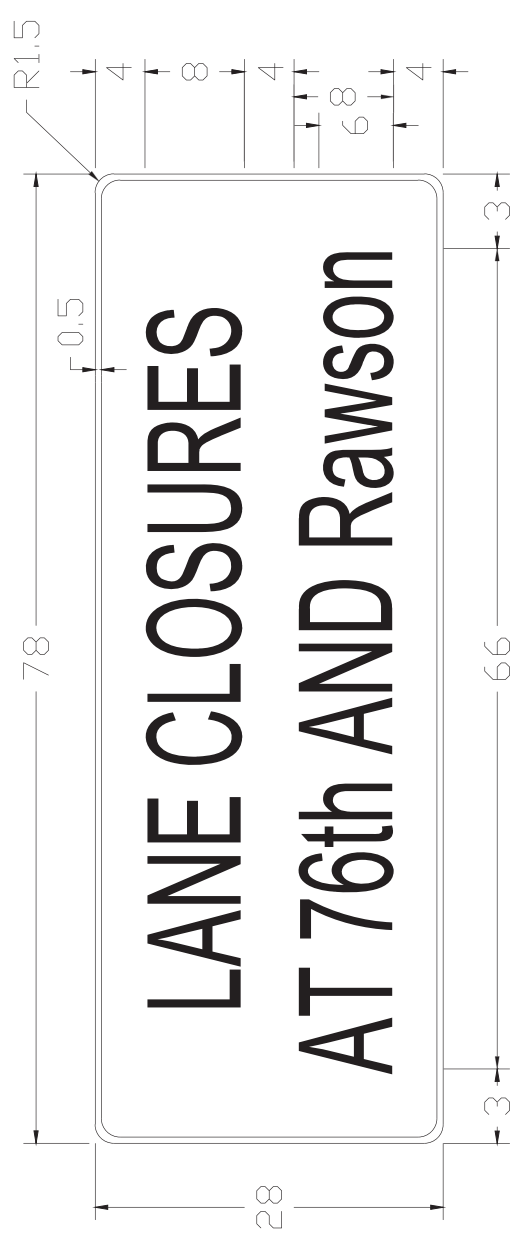
Attached, dated Month DD, YYYY, are the revised Schedule of Items Pages x, x, x, xx – xx, xx and xx.

END OF ADDENDUM

LEGEND

-  TYPE III BARRICADE
-  TYPE III BARRICADE WITH ATTACHED SIGN AND TYPE A WARNING LIGHT (FLASHING)
-  TRAFFIC CONTROL DRUM
-  TRAFFIC CONTROL DRUM WITH TYPE C STEADY BURN LIGHT
-  FLASHING ARROW BOARD
-  SIGN ON PERMANENT SUPPORT
-  SIGN ON TEMPORARY SUPPORT
-  DELINEATOR FLEXIBLE/TUBULAR MARKER
-  WORK ZONE
-  DIRECTION OF TRAFFIC
-  FIXED MESSAGE SIGN
-  TEMPORARY PEDESTRIAN FENCE
-  TEMPORARY CURB RAMP
-  TEMPORARY PEDESTRIAN SURFACE
-  TEMPORARY PAVEMENT MARKING REMOVABLE 4-INCH TAPE (YELLOW)
-  TEMPORARY PAVEMENT MARKING REMOVABLE 4-INCH TAPE (WHITE)
-  TEMPORARY PAVEMENT MARKING REMOVABLE 4-INCH TAPE (WHITE), 12.5' DASH, 37.5' SKIP

Addendum No. 01
 ID 2160-01-72
 Added Sheet 34A
 December 11, 2016

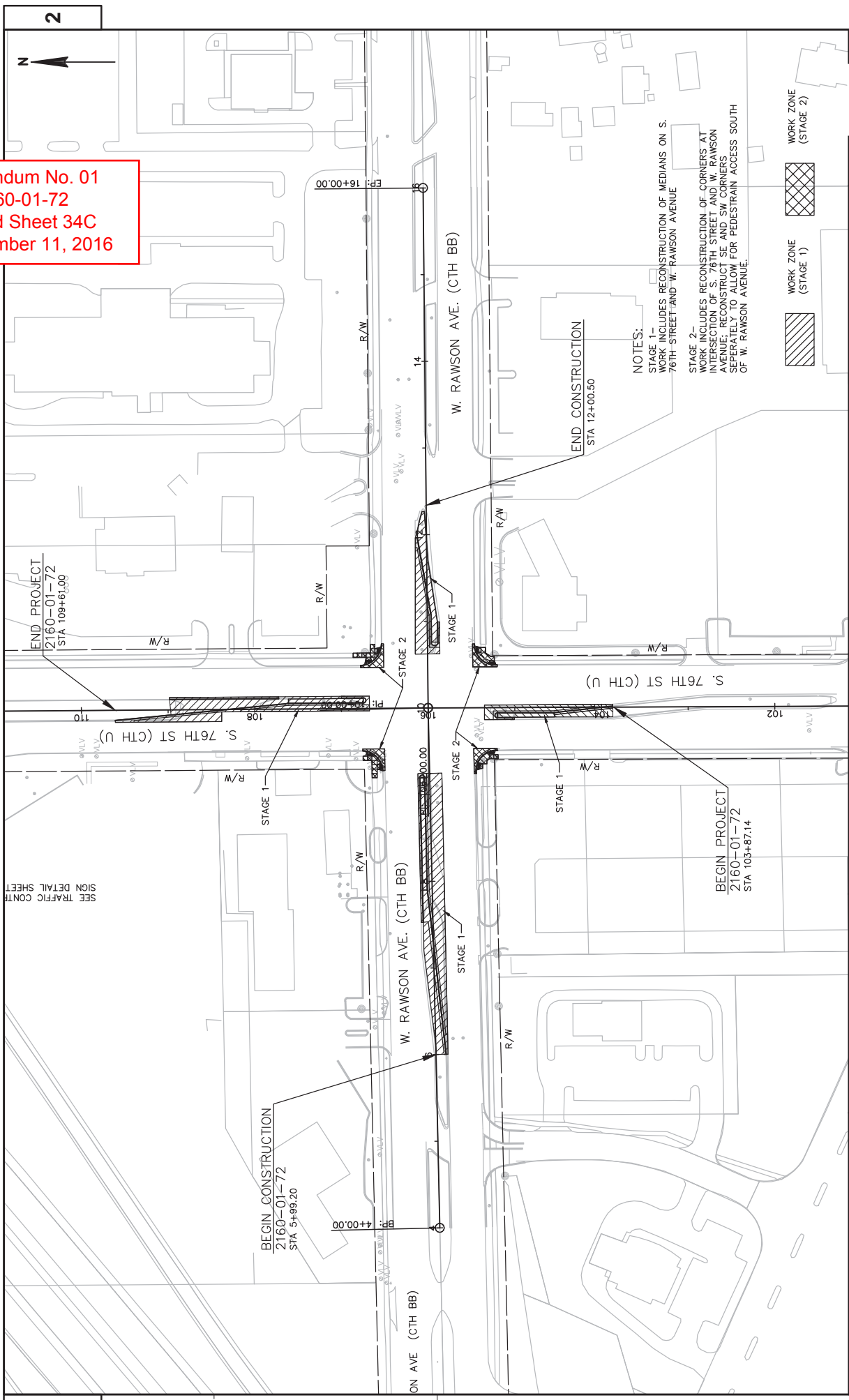


Addendum No. 01
 ID 2160-01-72
 Added Sheet 34B
 December 11, 2016

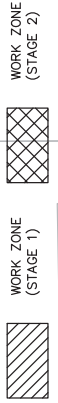
CONSTRUCTION NOTES:

1. Sign is per requirements of section 643 of WisDOT Standard Specifications for Highway and Structure Construction, latest edition.
2. Color: Background - Orange; Message and Border - Black
3. Letters are Series C (spaced to fit); 8" Upper Case; 6" Lower Case
4. All dimensions are in inches.

Addendum No. 01
 ID 2160-01-72
 Added Sheet 34C
 December 11, 2016



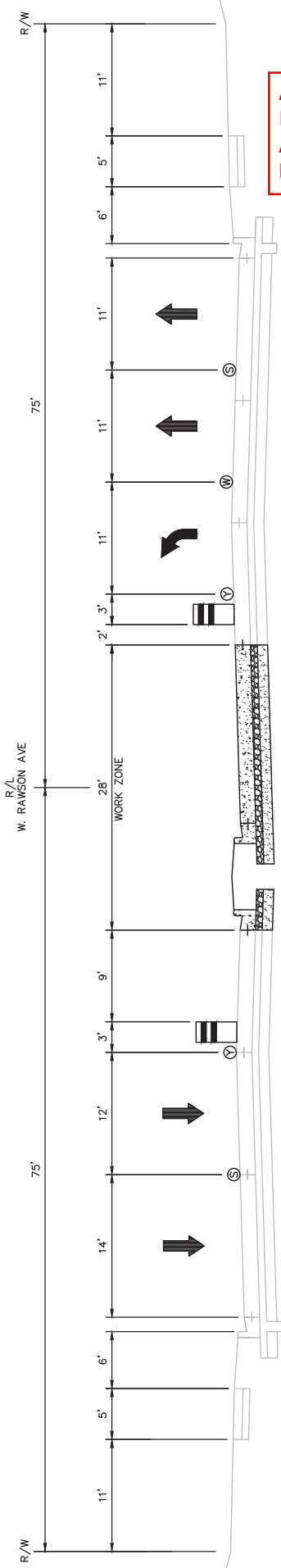
NOTES:
 STAGE 1 - WORK INCLUDES RECONSTRUCTION OF MEDIANS ON S. 76TH STREET AND W. RAWSON AVENUE.
 STAGE 2 - WORK INCLUDES RECONSTRUCTION OF CORNERS AT INTERSECTION OF S. 76TH STREET AND W. RAWSON AVENUE; RECONSTRUCT SE AND SW CORNERS SEPARATELY TO ALLOW FOR PEDESTRIAN ACCESS SOUTH OF W. RAWSON AVENUE.



2

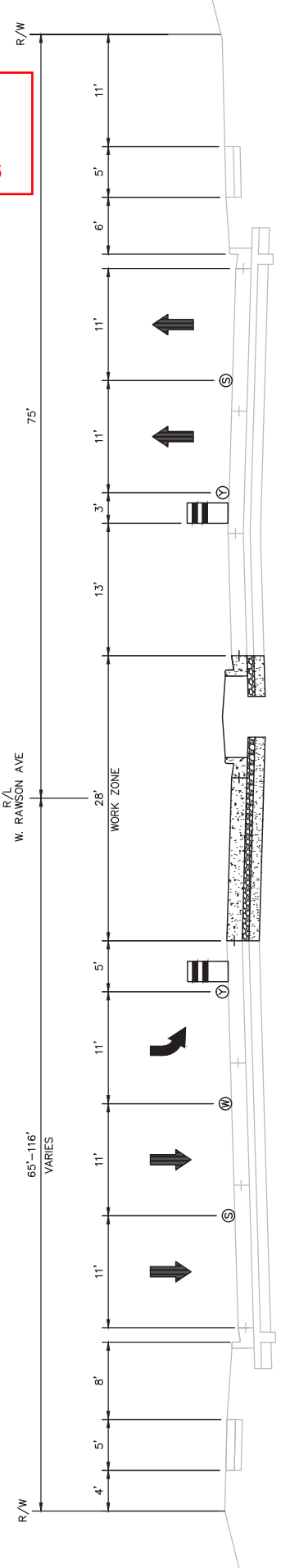
2

PROJECT NO: 2160-01-72	HWY: CTH U	COUNTY: MILWAUKEE	TRAFFIC CONTROL - OVERVIEW (S. 76TH ST / W. RAWSON AVE.)	SHEET 34C
FILE NAME : C:\HIGHWAY OPERATIONS CONTROL FILES\CENTRAL FILES\2010-2014\CTH U - S. 76TH ST\INTERSECTION WITH RAWSON - 2160-01-02\DESIGN\PLANS\FINAL PLANS\17_TRAFFIC CONTROL\21600172_LC-OVERVIEW.DWG				
PLOT DATE : 6/27/2016 11:34 AM				
PLOT BY : HILLARD, MARC				
PLOT NAME : 1:100_XREF				
WSD				
EET 42				



Addendum No. 01
 ID 2160-01-72
 Added Sheet 34D
 December 11, 2016

TYPICAL SECTION - STAGE 1
 W. RAWSON AVE. (WEST OF S. 76TH)
 STA. 6+00.00 TO STA. 9+24.60

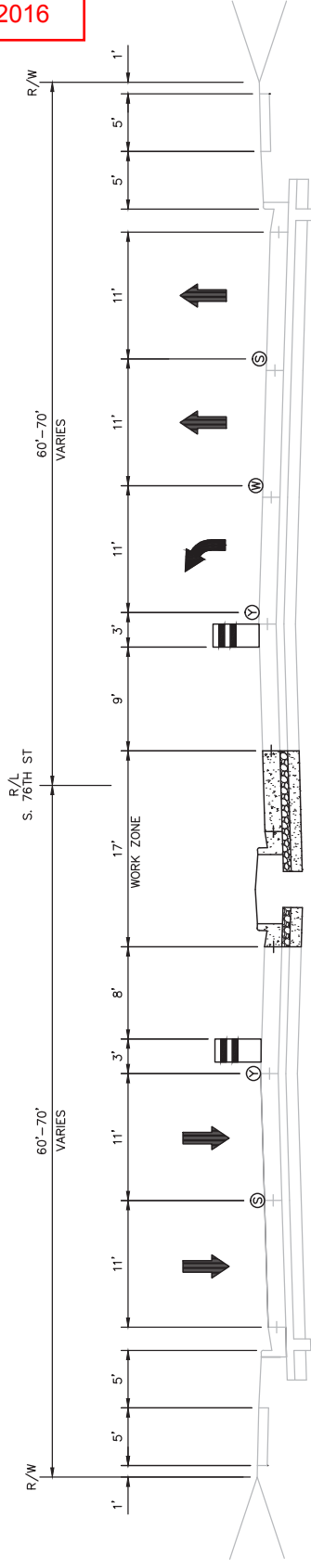


TYPICAL SECTION - STAGE 1
 W. RAWSON AVE. (EAST OF S. 76TH)
 STA. 10+62.40 TO STA. 12+27.00

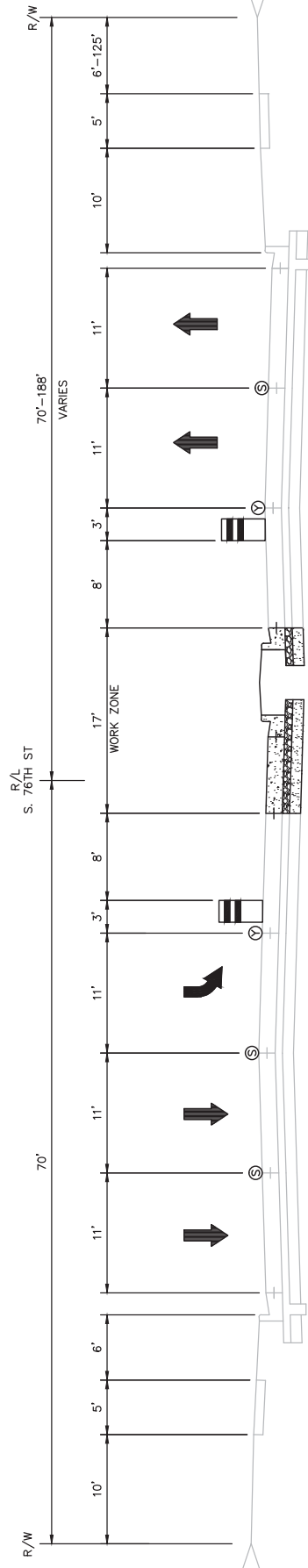
- LEGEND
- Ⓚ TEMPORARY PAVEMENT MARKING, REMOVABLE TAPE 4-INCH (YELLOW)
 - Ⓜ TEMPORARY PAVEMENT MARKING, REMOVABLE TAPE 4-INCH, (WHITE)
 - Ⓢ TEMPORARY PAVEMENT MARKING, REMOVABLE TAPE 4-INCH, (WHITE) 12.5' DASH, 37.5' SKIP

Addendum No. 01
 ID 2160-01-72
 Added Sheet 34E
 December 11, 2016

2



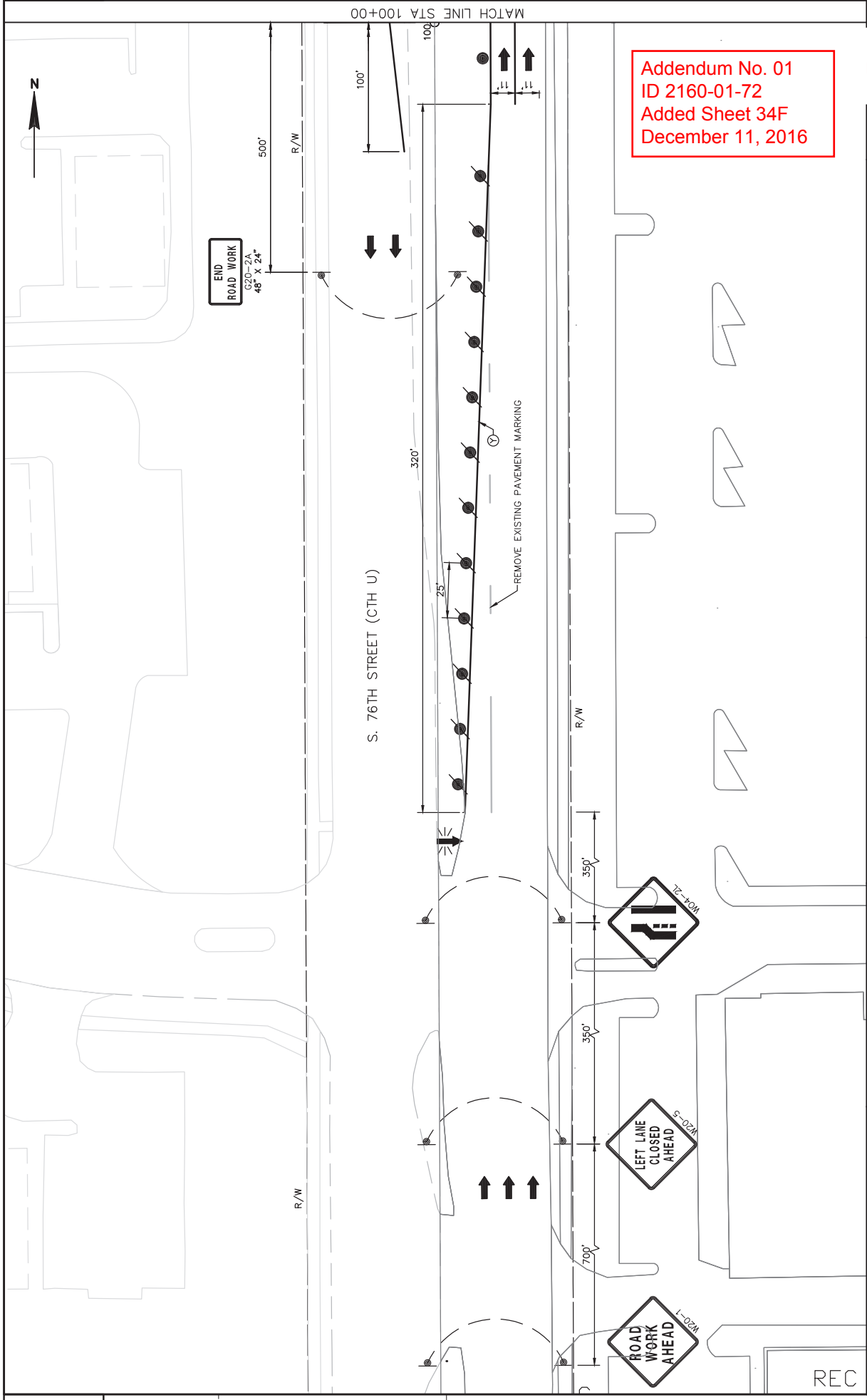
TYPICAL SECTION-STAGE 1
 S. 76TH ST. (SOUTH OF W. RAWSON)
 STA. 103+87.50 TO STA. 105+35.00



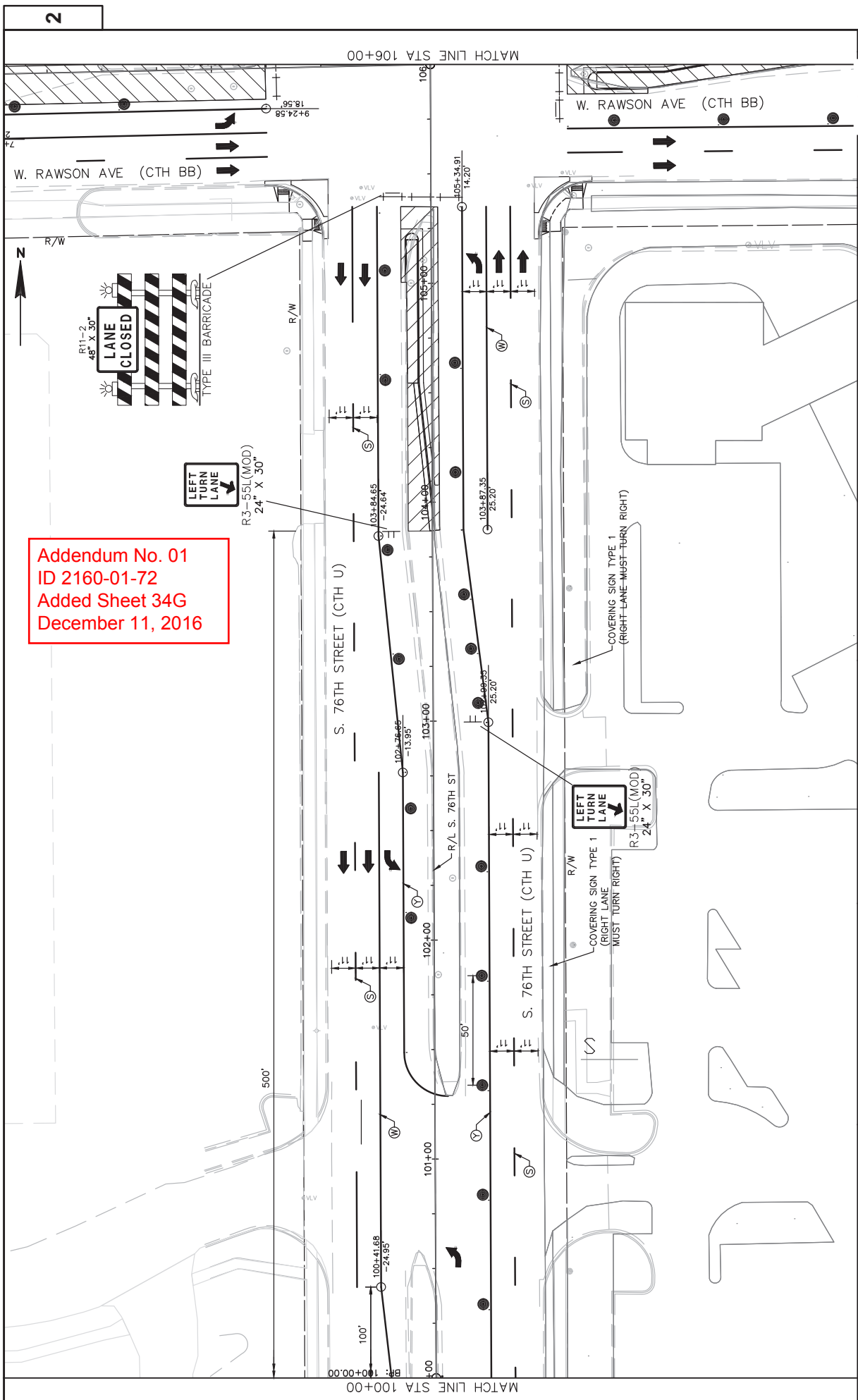
TYPICAL SECTION-STAGE 1
 S. 76TH ST. (NORTH OF W. RAWSON)
 STA. 106+67.70 TO STA. 109+60.80

- LEGEND**
- Ⓚ TEMPORARY PAVEMENT MARKING, REMOVABLE TAPE 4-INCH (YELLOW)
 - Ⓜ TEMPORARY PAVEMENT MARKING, REMOVABLE TAPE 4-INCH, (WHITE)
 - Ⓢ TEMPORARY PAVEMENT MARKING, REMOVABLE TAPE 4-INCH, (WHITE) 12.5' DASH, 37.5' SKIP

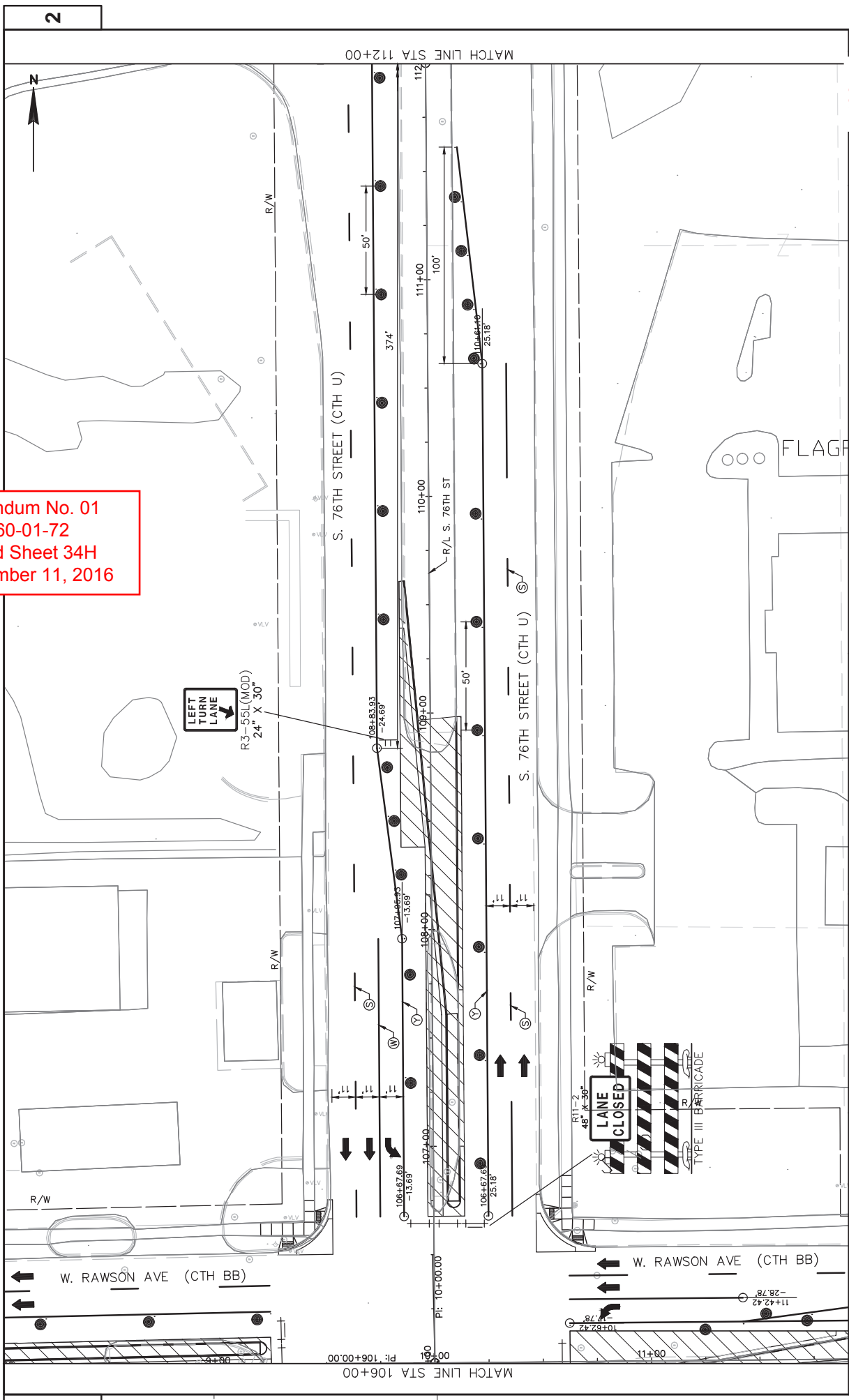
2



REC



Addendum No. 01
 ID 2160-01-72
 Added Sheet 34G
 December 11, 2016

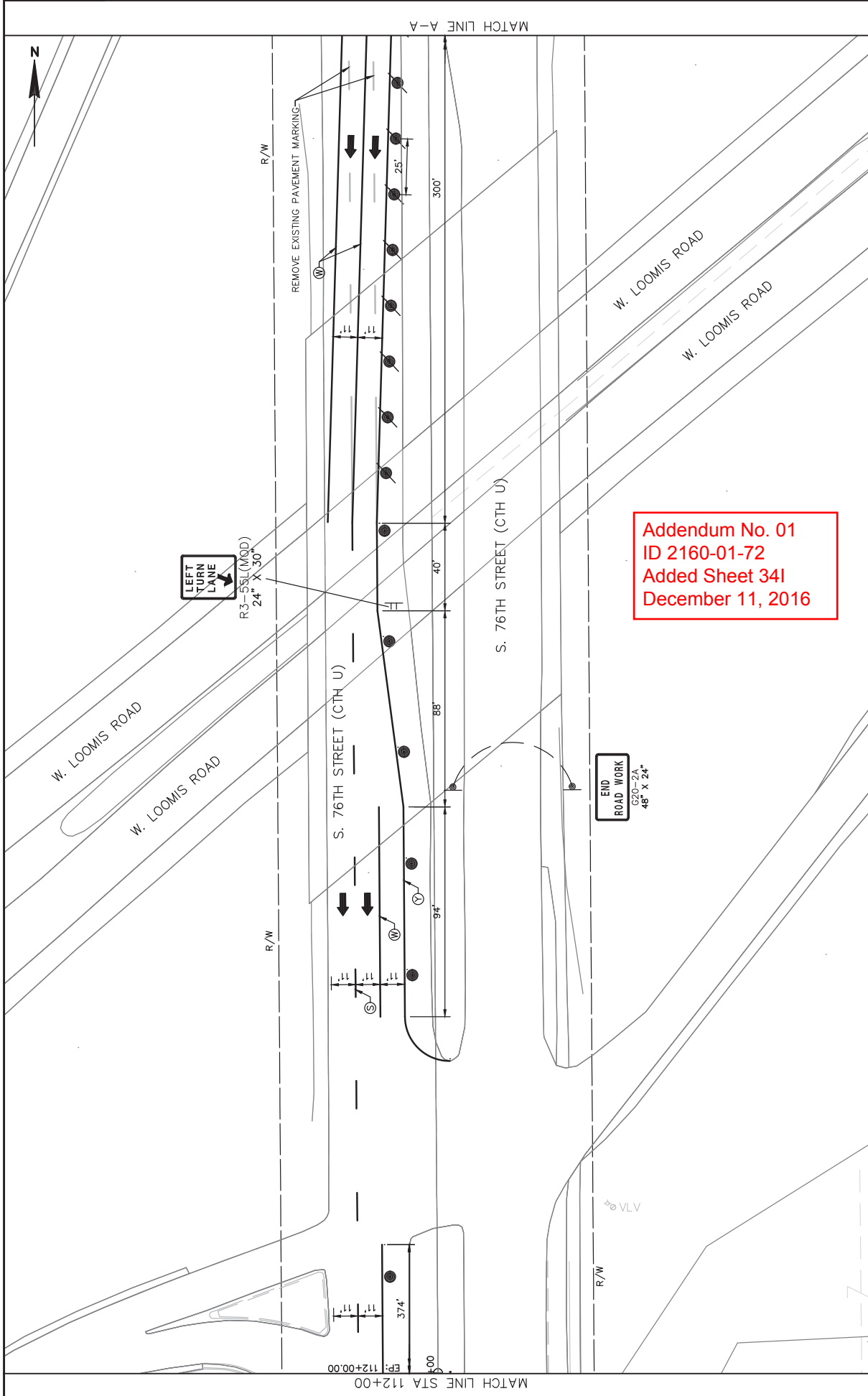


Addendum No. 01
 ID 2160-01-72
 Added Sheet 34H
 December 11, 2016

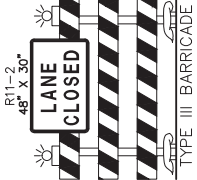
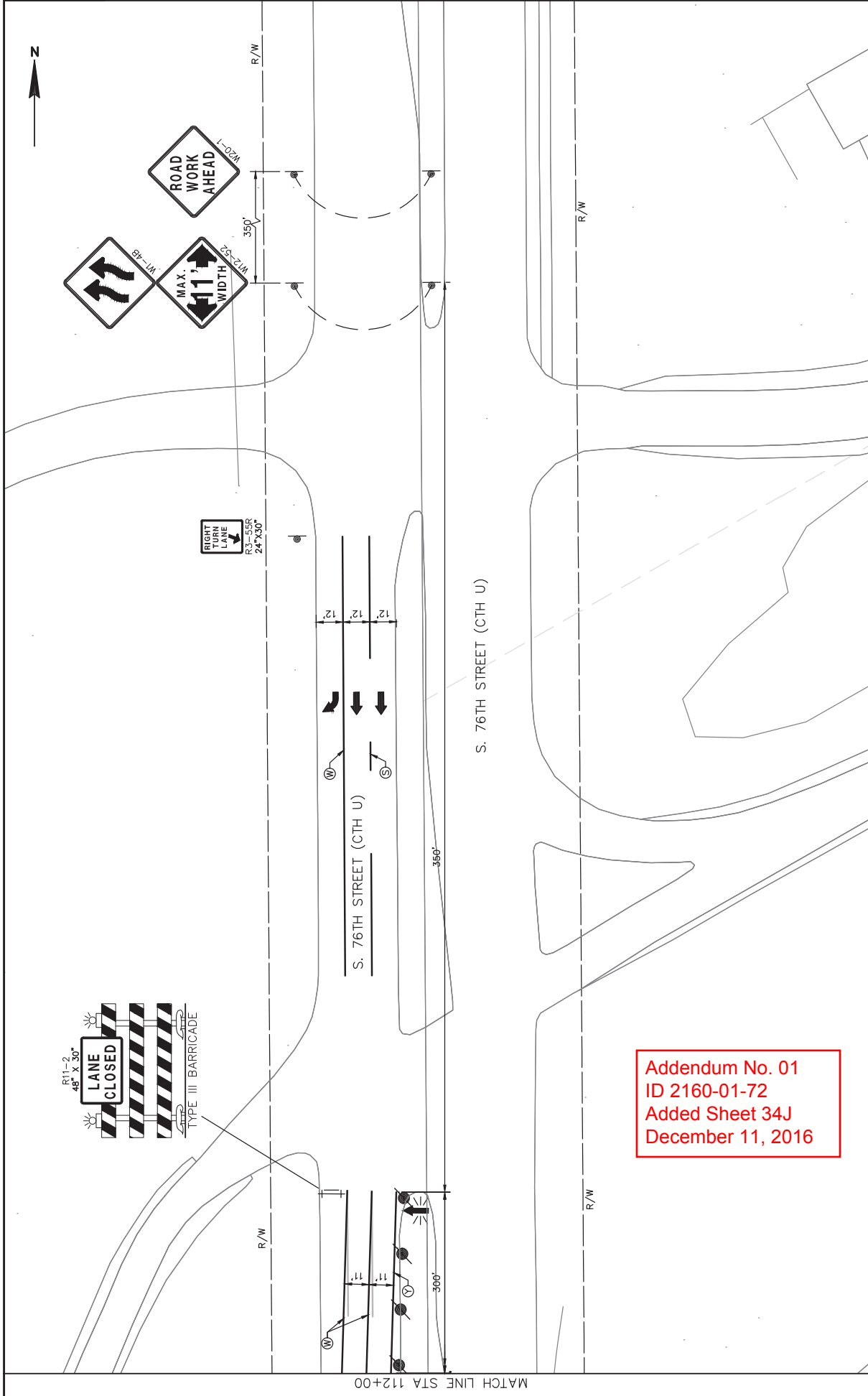
2

2

PROJECT NO: 2160-01-72 COUNTY: MILWAUKEE TRAFFIC CONTROL - STAGE 1 SHEET 34H E
 HWY: CTH U
 FILE NAME: C:\HIGHWAY OPERATIONS CONTROL FILES\CENTRAL FILES\2010-2014\CTH U - S. 76TH ST\INTERSECTION WITH RAWSON - 2160-01-02\DESIGN\PLANS\FINAL PLANS\17_TRAFFIC CONTROL\21600172_LC-31.DWG PLOT BY: HILLIARD, MARC PLOT NAME: PLOT SCALE: 1" = 40' XREF
 WISDOT/CADD SHEET 42
 MATCH LINE STA 106+00 MATCH LINE STA 112+00

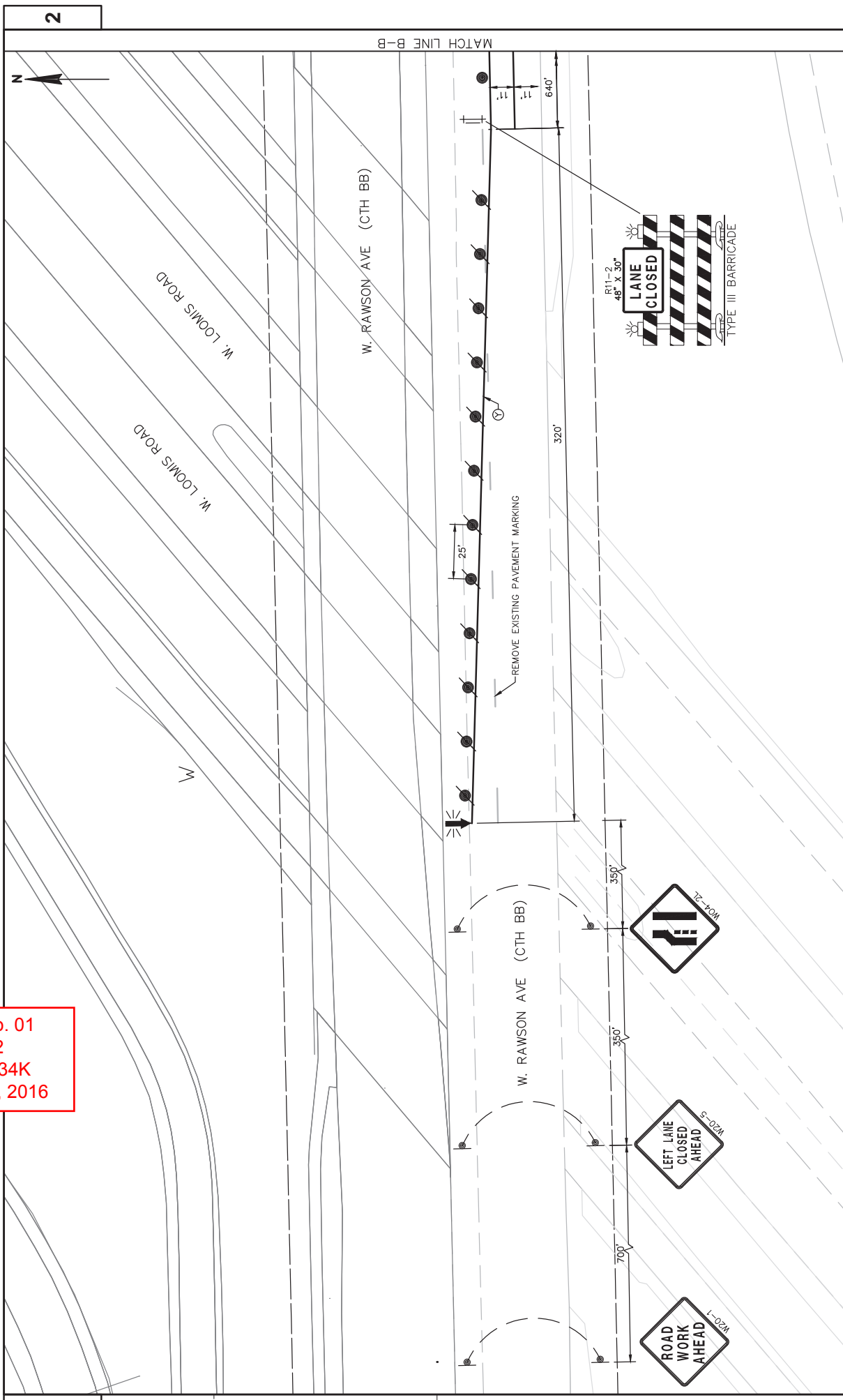


Addendum No. 01
 ID 2160-01-72
 Added Sheet 341
 December 11, 2016

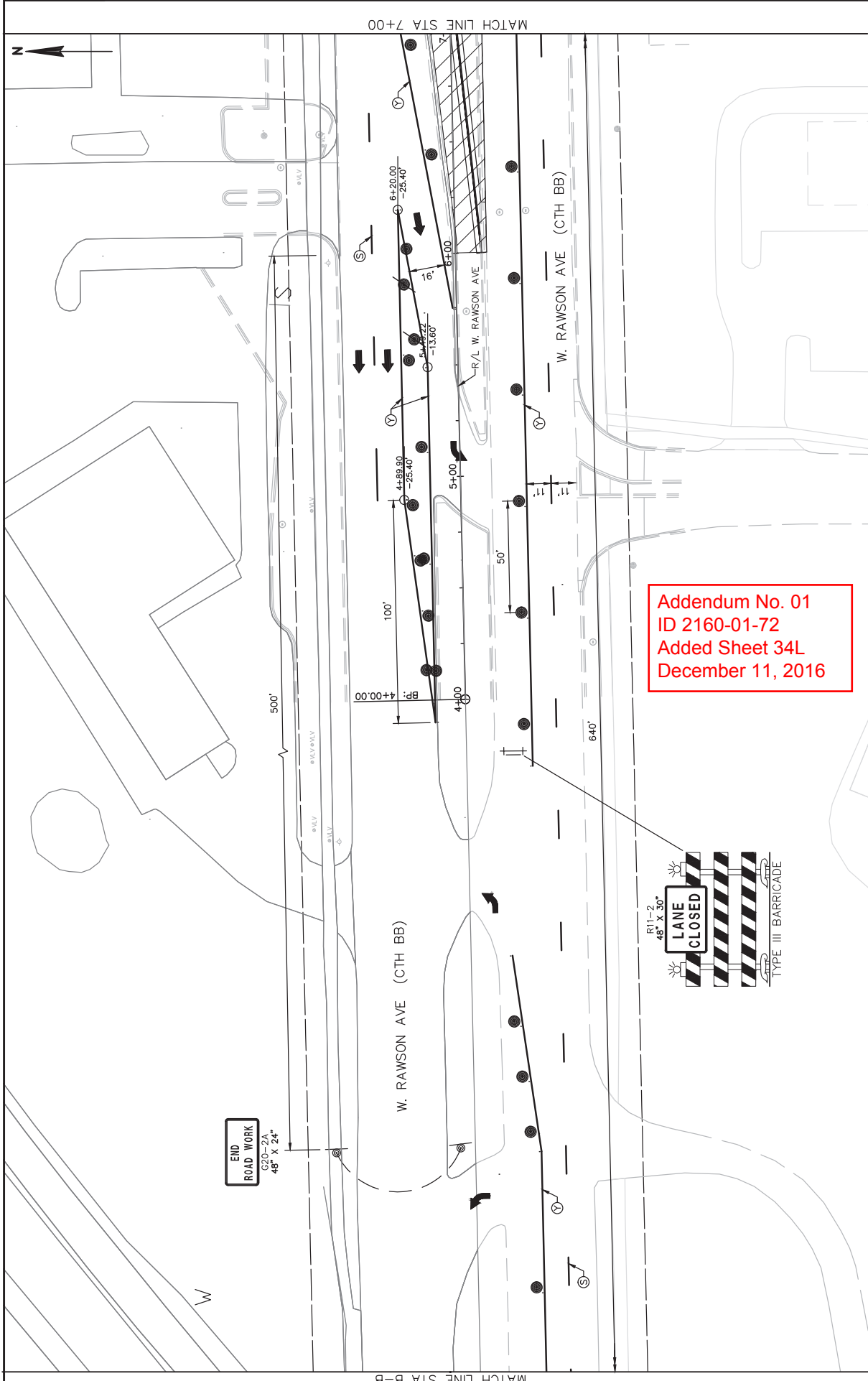


Addendum No. 01
 ID 2160-01-72
 Added Sheet 34J
 December 11, 2016

MATCH LINE STA 112+00



Addendum No. 01
 ID 2160-01-72
 Added Sheet 34K
 December 11, 2016



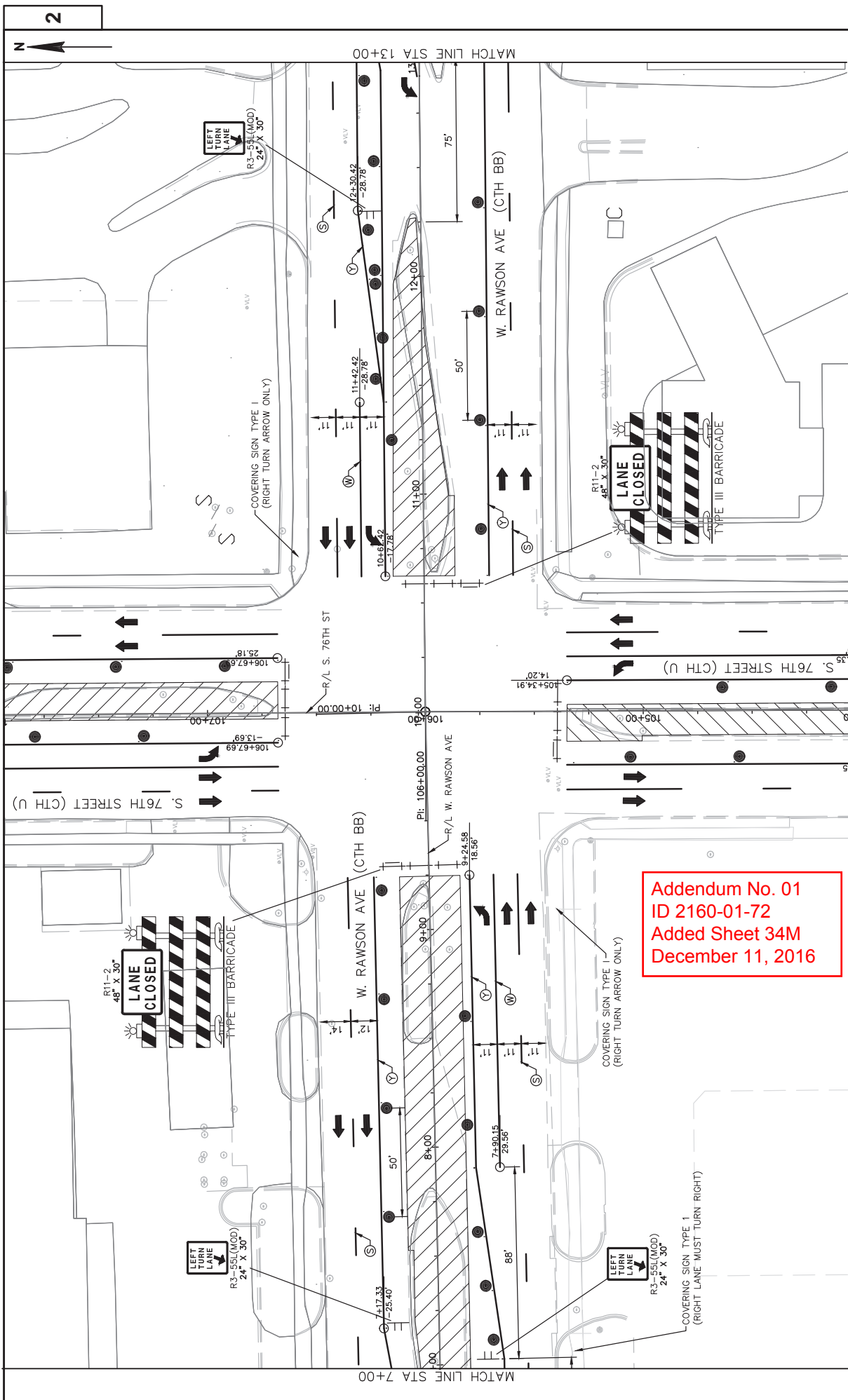
Addendum No. 01
 ID 2160-01-72
 Added Sheet 34L
 December 11, 2016



END ROAD WORK
 G20-2A
 48" X 24"

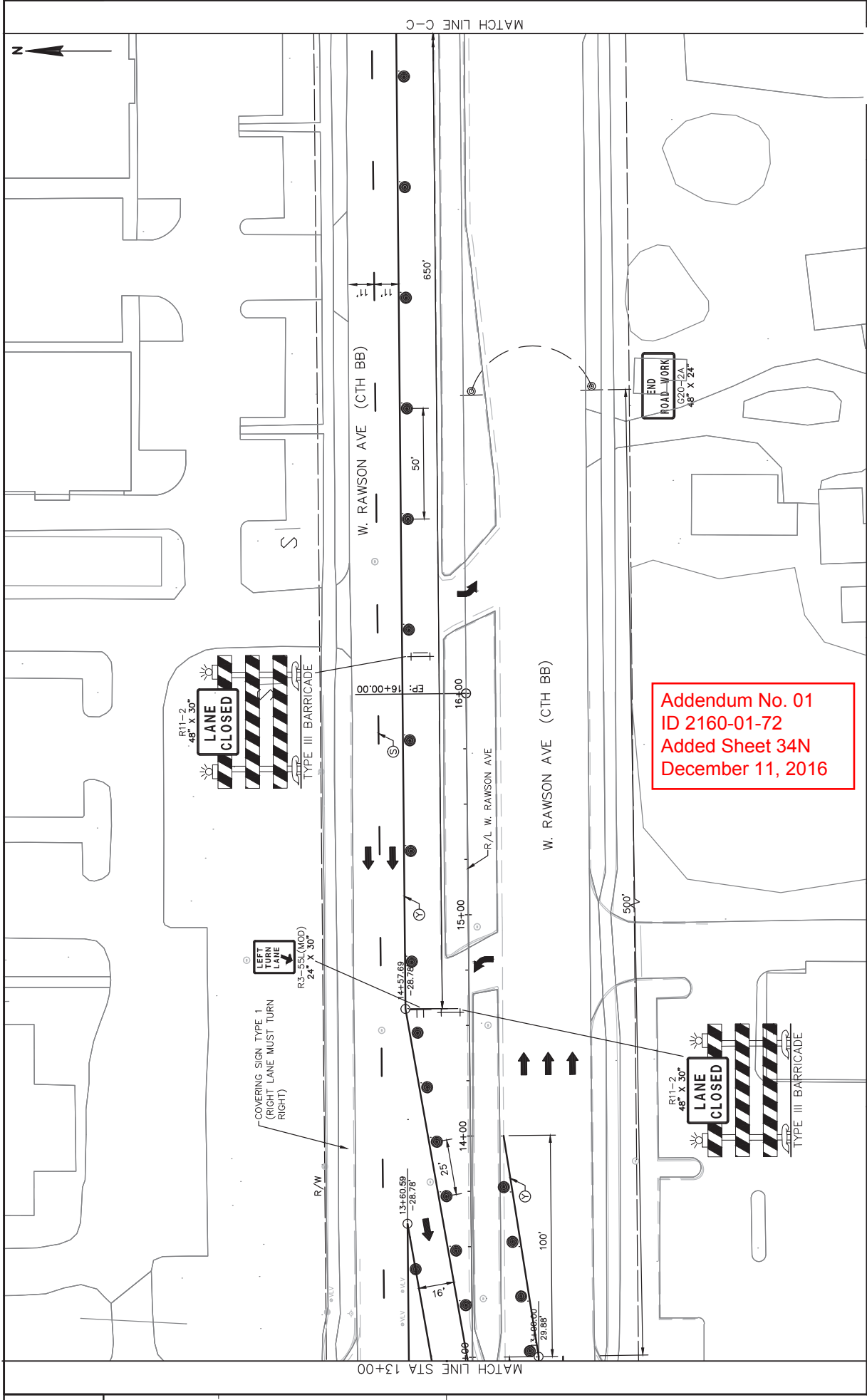
MATCH LINE STA B-B

MATCH LINE STA 7+00

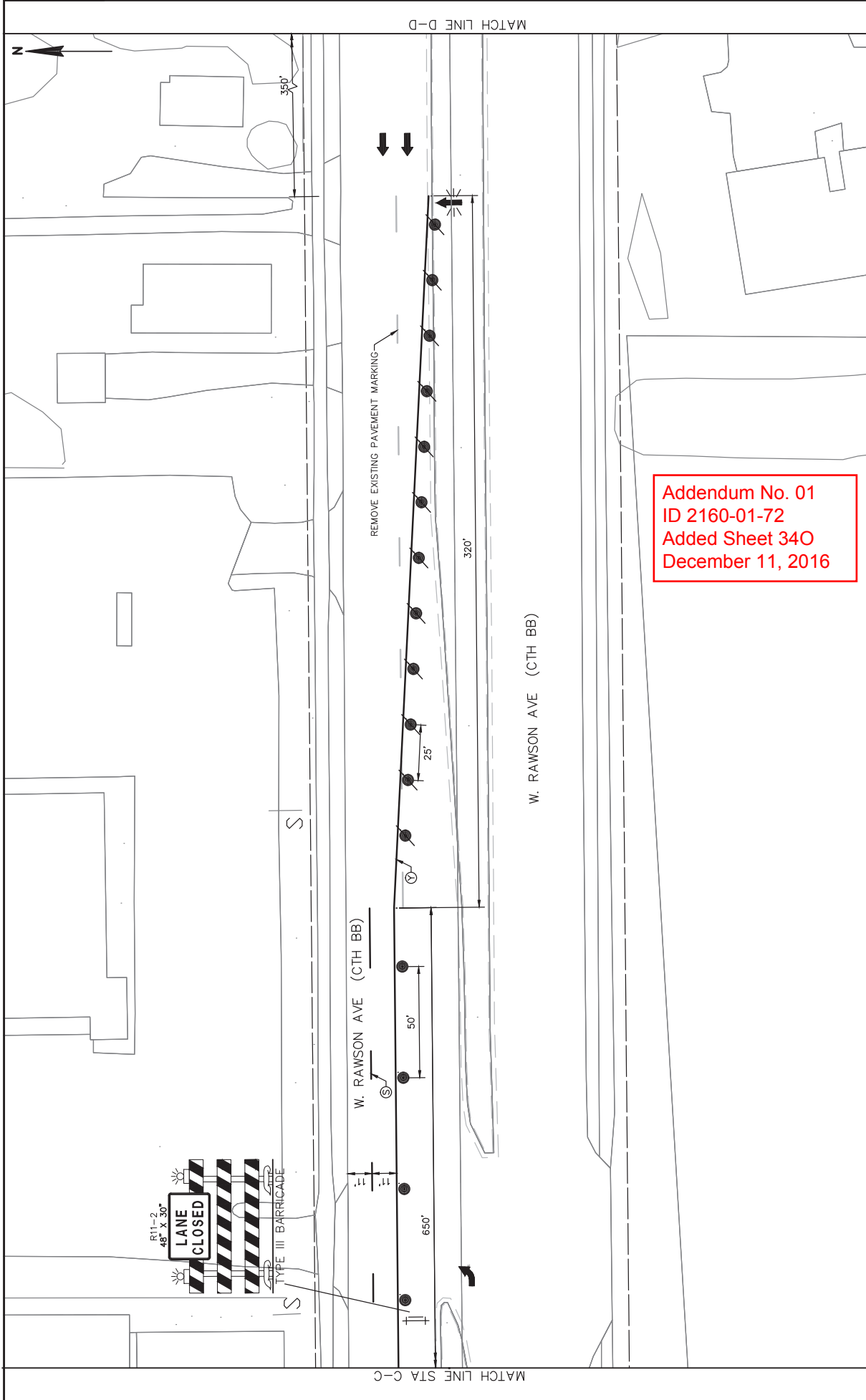


PROJECT NO: 2160-01-72 HWY: CTH U COUNTY: MILWAUKEE TRAFFIC CONTROL - STAGE 1 SHEET 34M

FILE NAME: C:\HIGHWAY OPERATIONS CONTROL FILES\CENTRAL FILES\2010-2014\CTH U - S. 76TH ST\INTERSECTION WITH RAWSON - 2160-01-02\DESIGN\PLANS\PLAN_V17_BK_CTRL_V1600172_LC_S1.DWG PLOT DATE: 6/27/2016 11:21 AM PLOT BY: HILLIARD, MARC PLOT NAME: PLOT SCALE: 1" = 40' _XREF WSDOT/CADD SHEET 42



Addendum No. 01
 ID 2160-01-72
 Added Sheet 34N
 December 11, 2016



Addendum No. 01
 ID 2160-01-72
 Added Sheet 340
 December 11, 2016



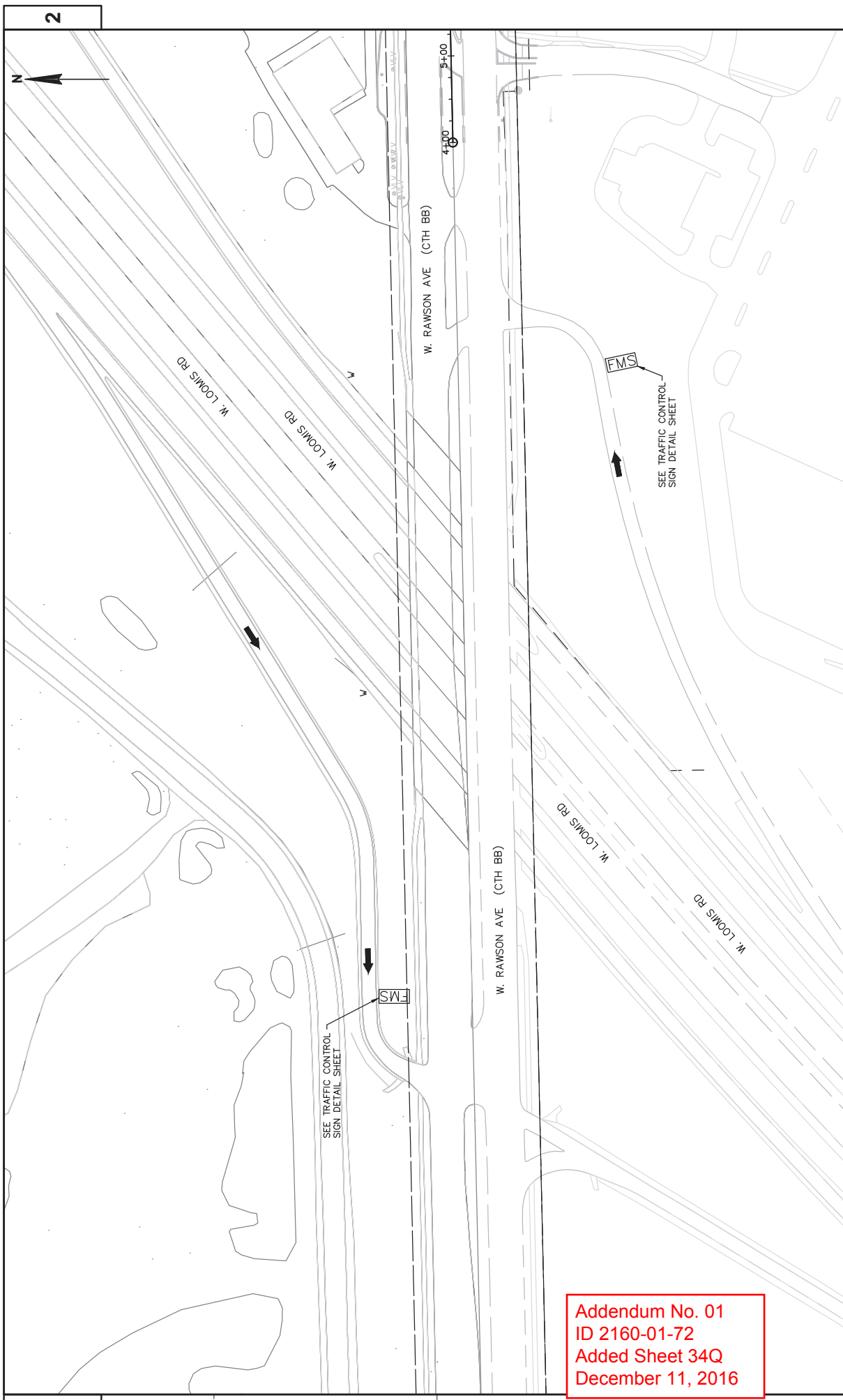
Addendum No. 01
ID 2160-01-72
Added Sheet 34P
December 11, 2016



W. RAWSON AVE (CTH BB)

W. RAWSON AVE (CTH BB)

MATCH LINE STA D-D



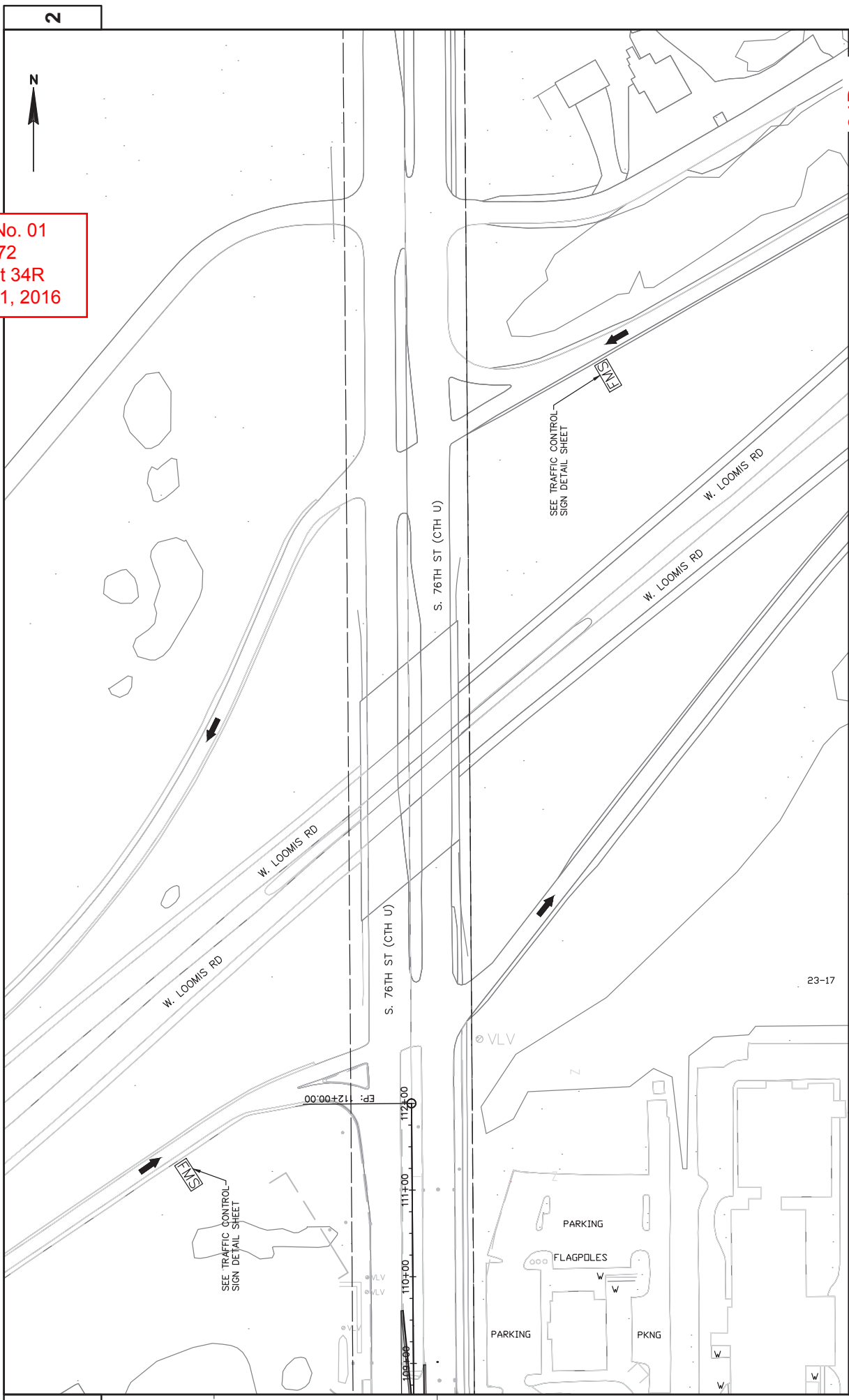
2

2

PROJECT NO: 2160-01-72	HWY: CTH U	COUNTY: MILWAUKEE	TRAFFIC CONTROL - STAGE 1 (LOOMIS RD RAMP)	SHEET 34Q	E
FILE NAME : C:\HIGHWAY OPERATIONS CONTROL FILE\CENTRAL FILES\2010-2014\CTH U - S - 76TH ST\INTERSECTION WITH RAWSON - 2160-01-02\DESIGN\PLANS\904 PLANS\17_1\RAW_CTRL\21600172_1_C_LOOMIS.DWG					
PLOT DATE : 5/5/2016 12:12 PM					
PLOT BY : HILLIARD, MARC					
PLOT NAME : WISDOT/CADD5 SHEET 42					
PLOT SCALE : 1:100_XREF					

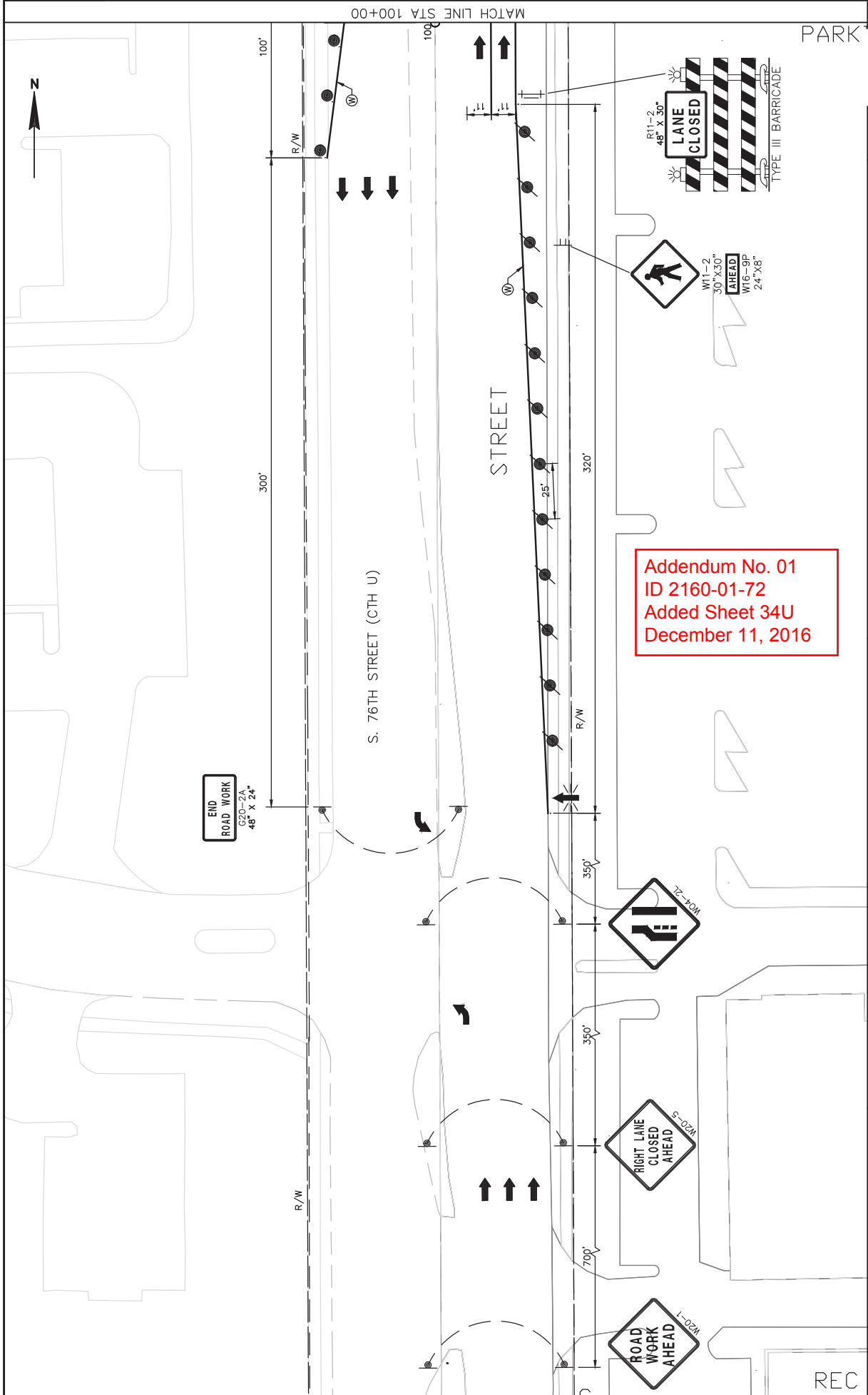
Addendum No. 01
 ID 2160-01-72
 Added Sheet 34Q
 December 11, 2016

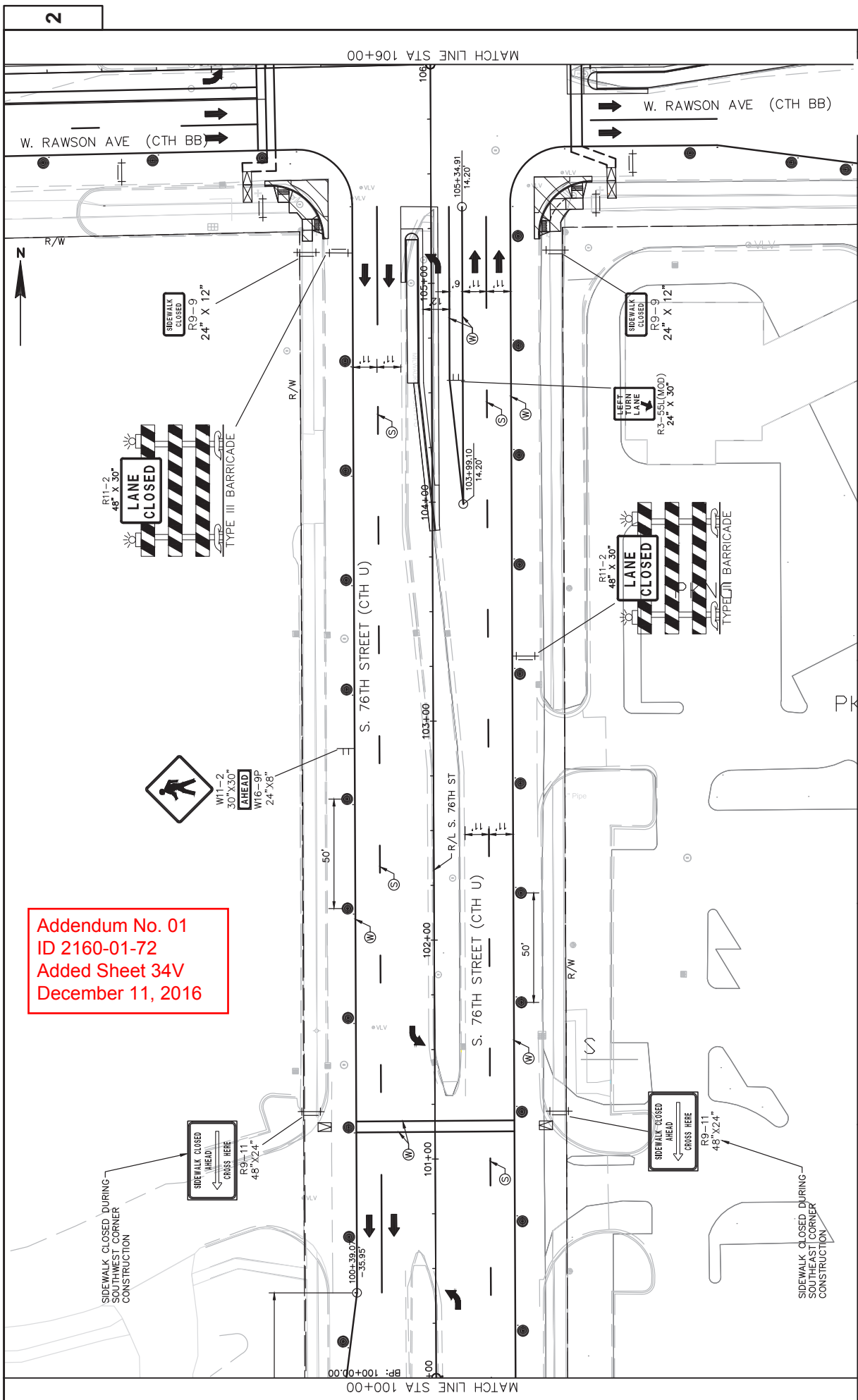
Addendum No. 01
ID 2160-01-72
Added Sheet 34R
December 11, 2016



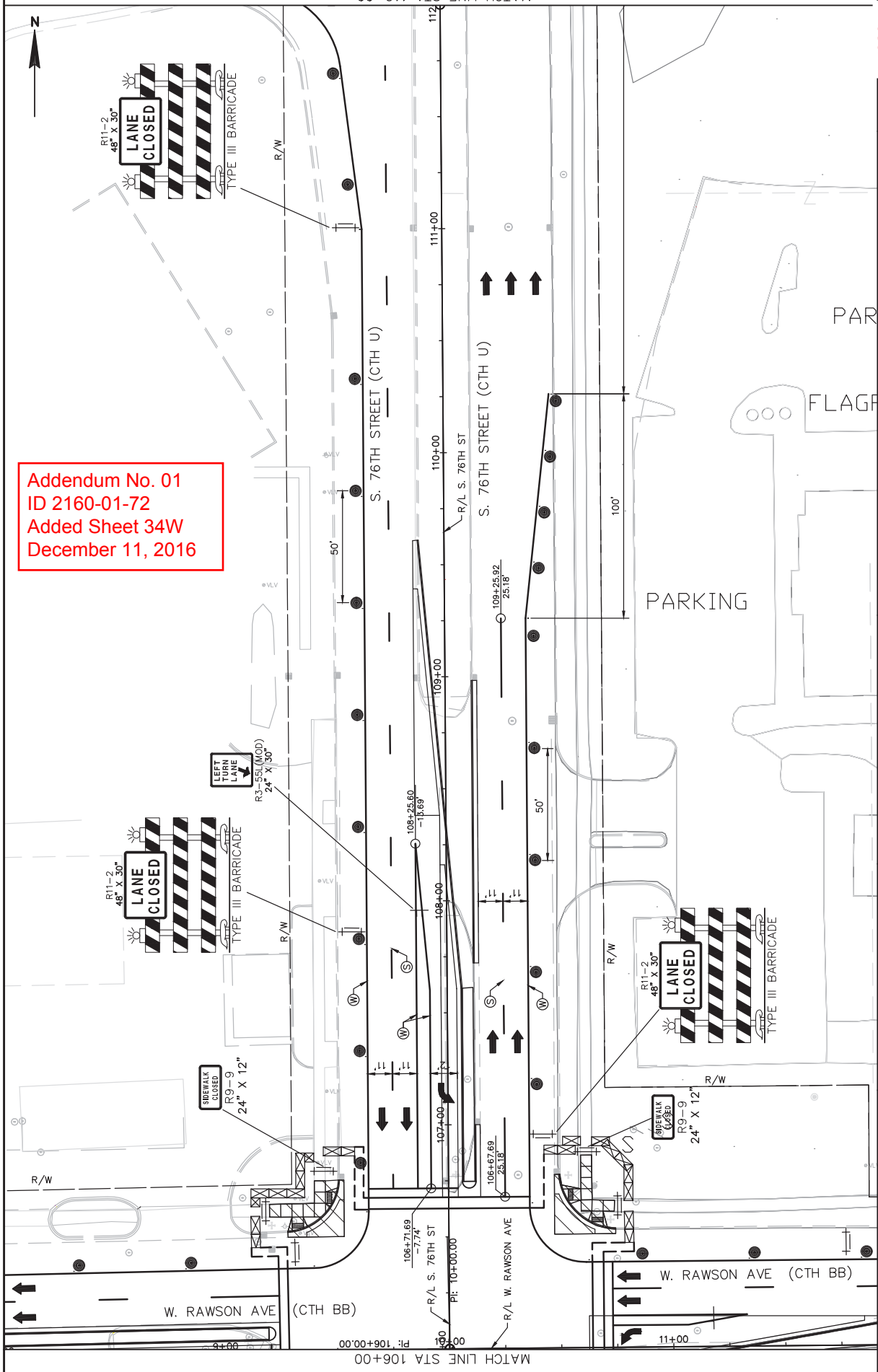
PROJECT NO: 2160-01-72 COUNTY: MILWAUKEE TRAFFIC CONTROL - STAGE 1 (LOOMIS RD RAMP) SHEET 34R E

FILE NAME : C:\HIGHWAY OPERATIONS CONTROL FILE\CENTRAL FILES\2010-2014\CTH U - S. 76TH ST\INTERSECTION WITH RAMSON - 2160-01-02\DESIGN\PLANS\904 PLANS\17_1\TRAF_CNTRL\21600172_C.LOOMIS.DWG HWY: CTH U PLOT DATE : 5/5/2016 12:13 PM PLOT BY : HILLIARD, MARC PLOT NAME : PLOT SCALE : 1:100_XREF WSDOT/CADD SHEET 42





Addendum No. 01
 ID 2160-01-72
 Added Sheet 34V
 December 11, 2016

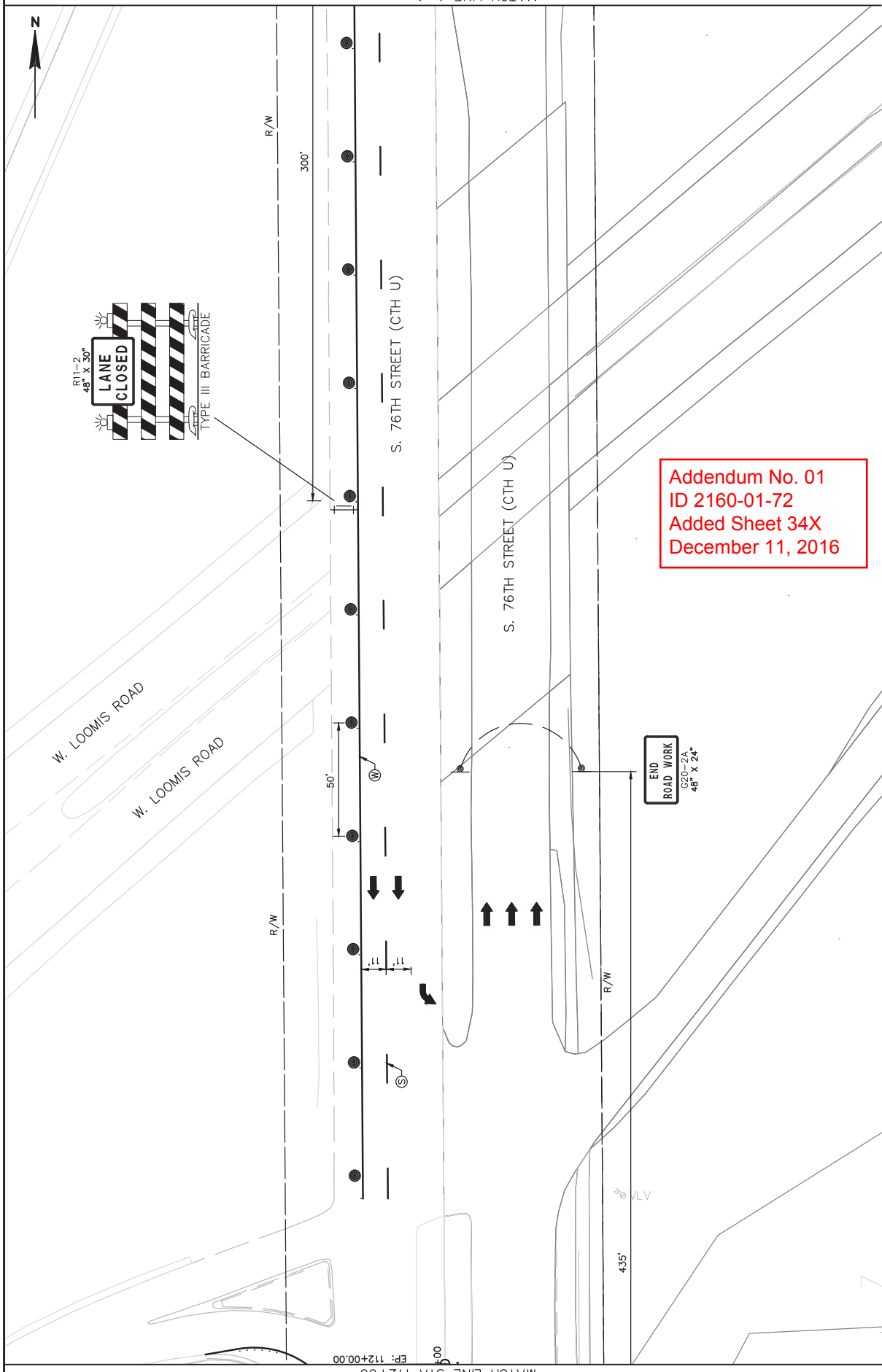


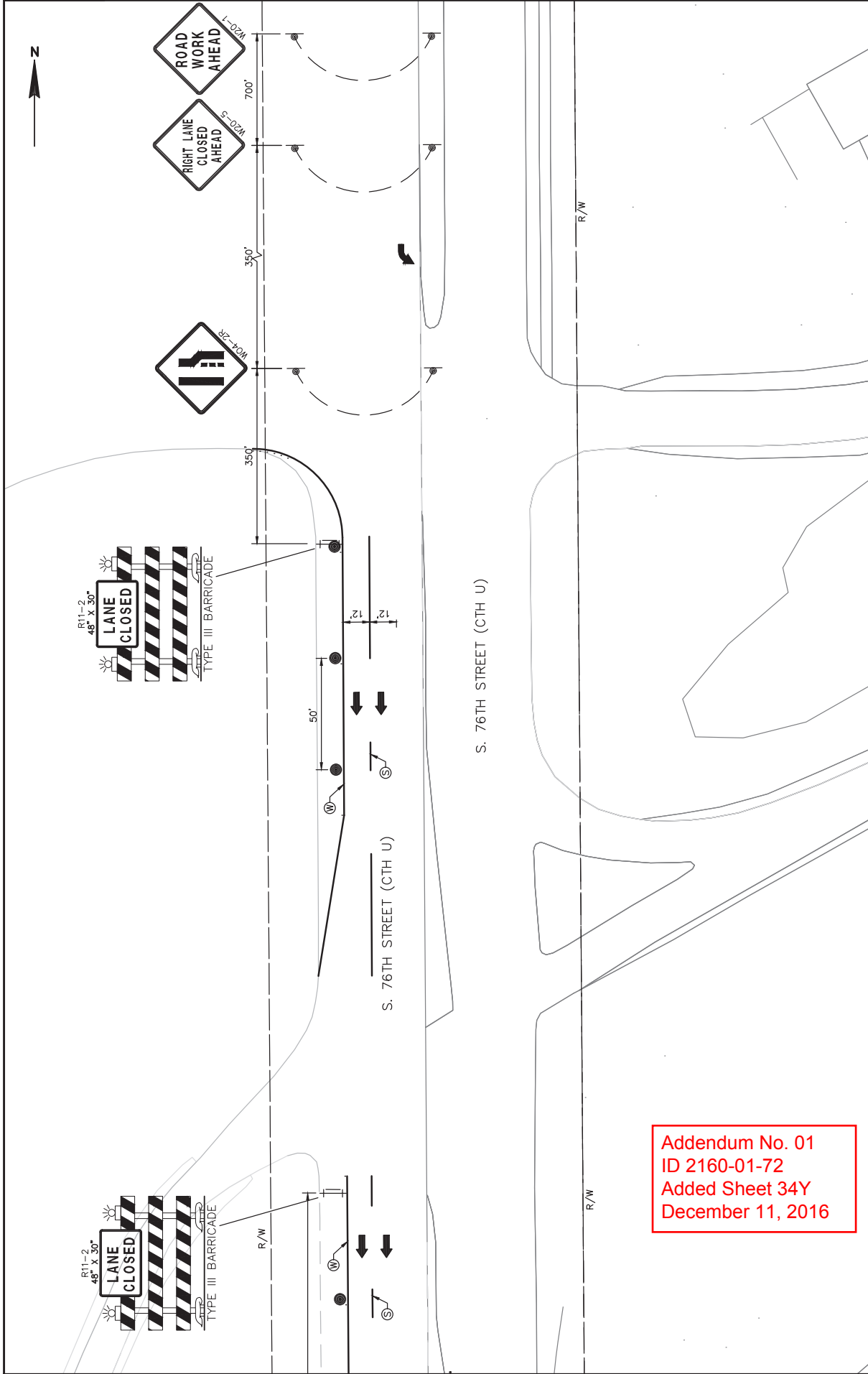
Addendum No. 01
 ID 2160-01-72
 Added Sheet 34W
 December 11, 2016

MATCH LINE STA 112+00

MATCH LINE STA 106+00

PROJECT NO: 2160-01-72
 COUNTY: MILWAUKEE
 HWY: CTH U
 TRAFFIC CONTROL - STAGE 2
 FILE NAME: C:\HIGHWAY OPERATIONS CONTROL FILES\2010-2014\CTH U - S. 76TH ST\INTERSECTION WITH RAWSON - 2160-01-02\DESIGN\PLANS\TRAF CONTROL\21600172_LC_S2.DWG
 PLOT BY: HILLIARD, MARC
 PLOT DATE: 6/27/2016 12:21 PM
 PLOT NAME: 1:40_XREF
 PLOT SCALE: 1:40_XREF
 WSDOT/CADD SHEET 42



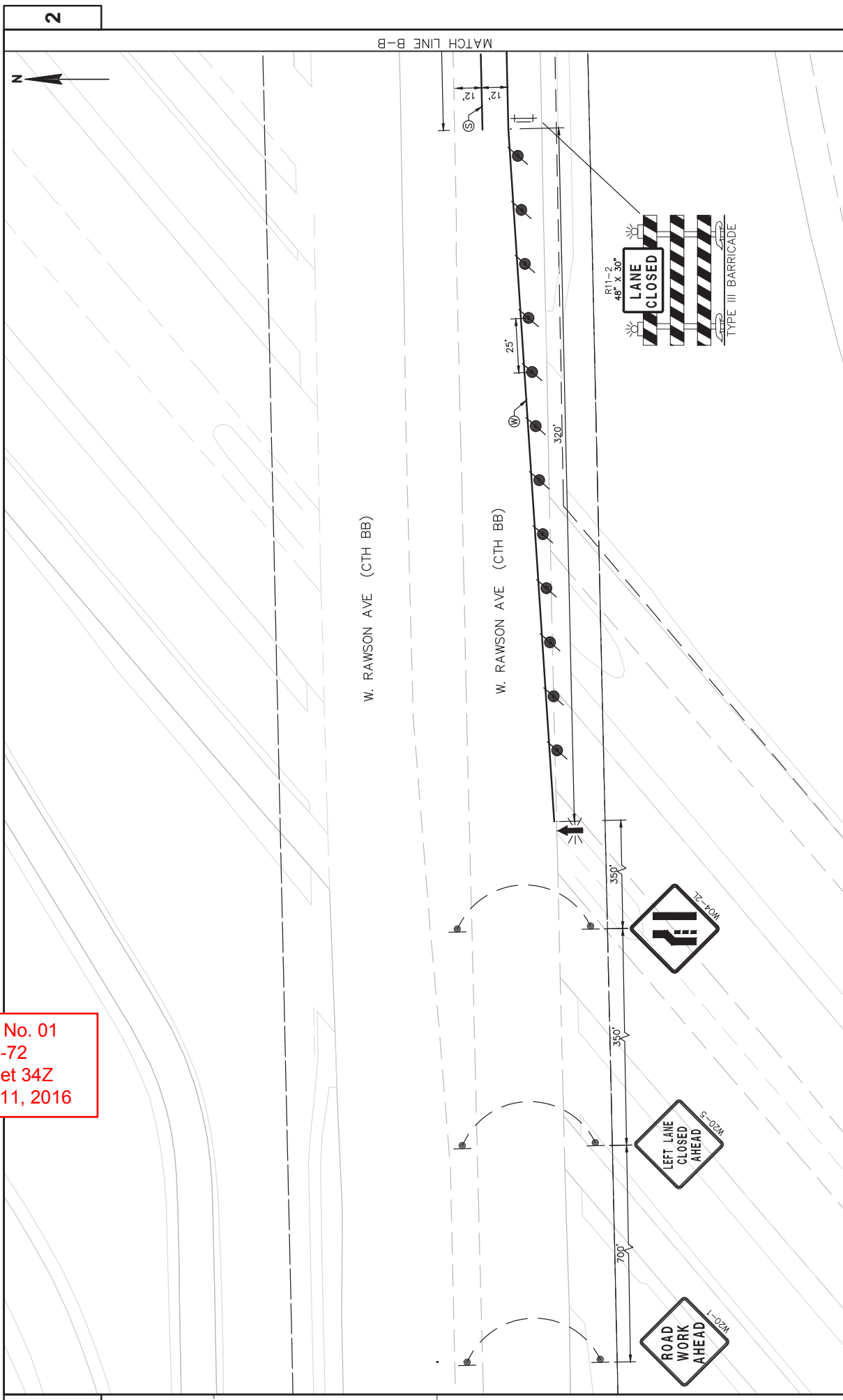


Addendum No. 01
 ID 2160-01-72
 Added Sheet 34Y
 December 11, 2016

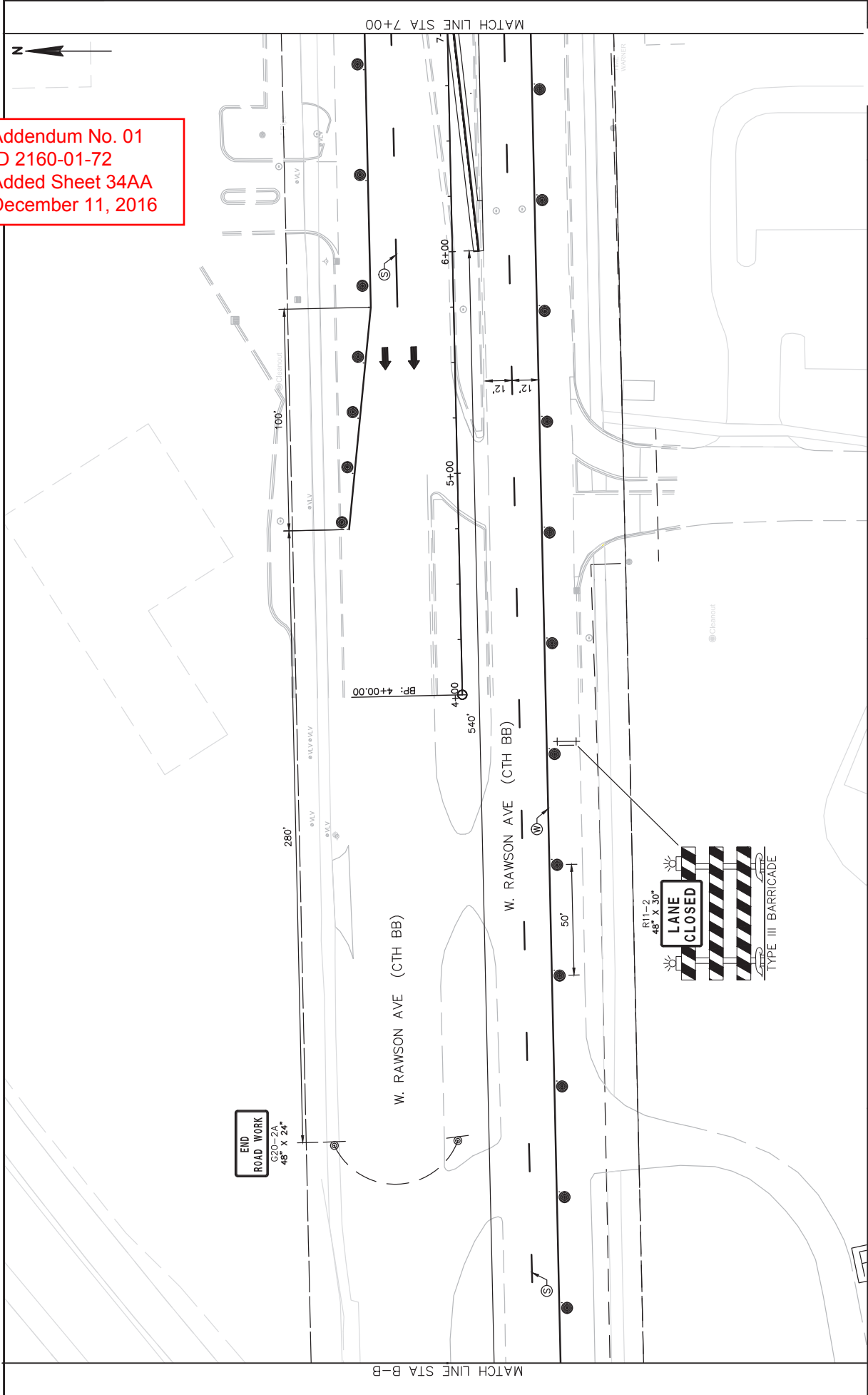


MATCH LINE B-B

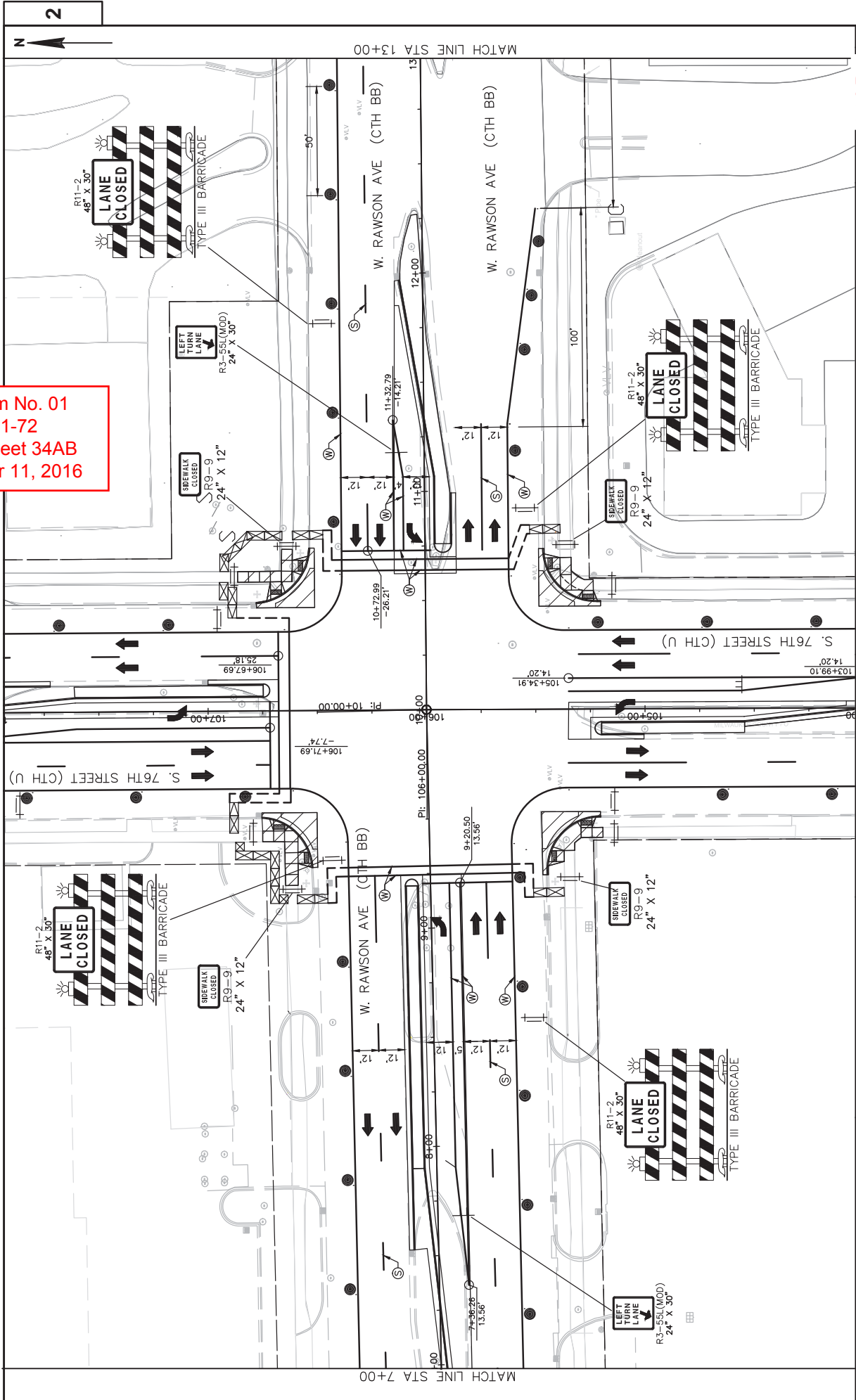
Addendum No. 01
ID 2160-01-72
Added Sheet 34Z
December 11, 2016



Addendum No. 01
ID 2160-01-72
Added Sheet 34AA
December 11, 2016



Addendum No. 01
 ID 2160-01-72
 Added Sheet 34AB
 December 11, 2016



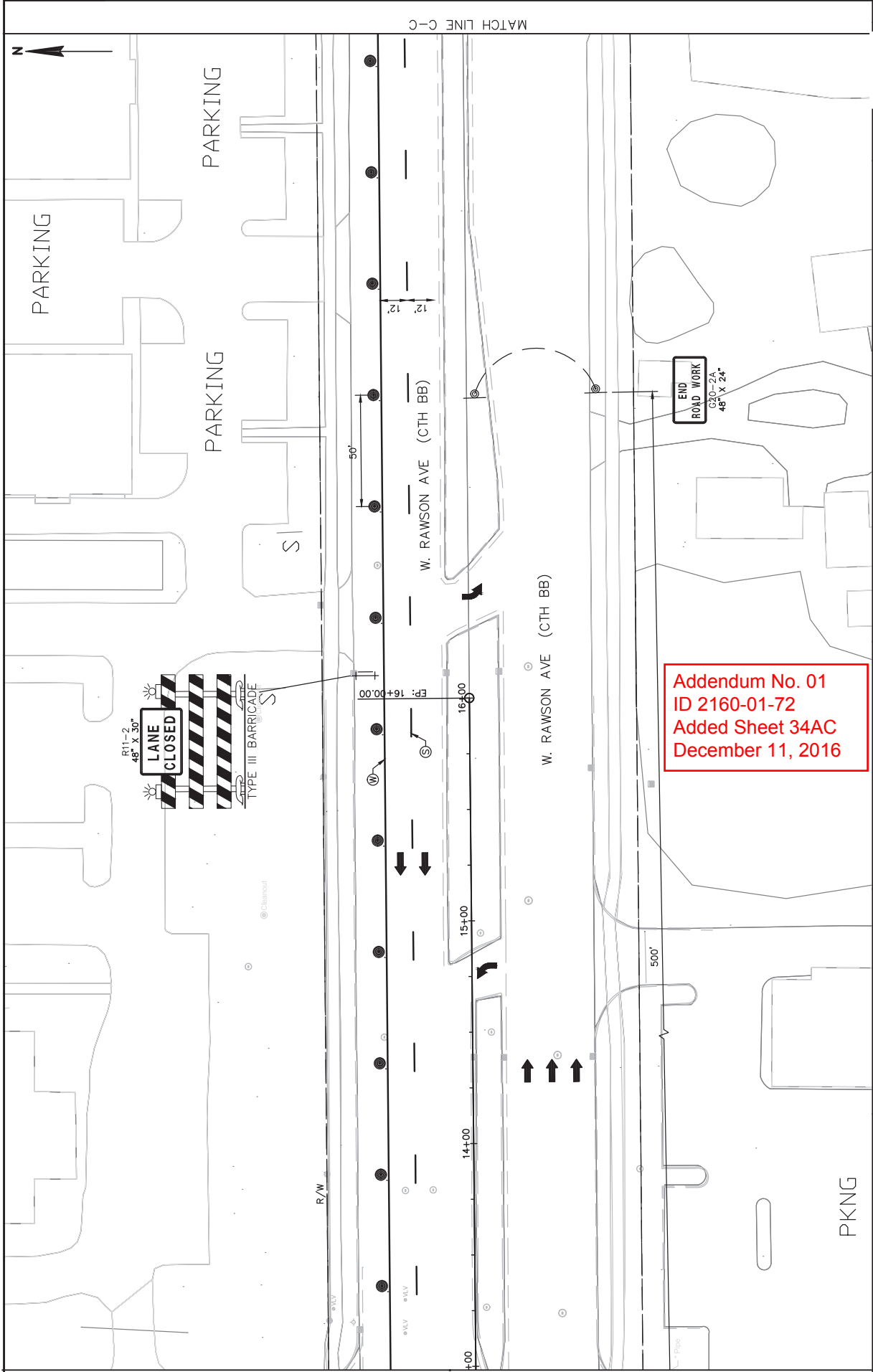
MATCH LINE STA 7+00

MATCH LINE STA 13+00

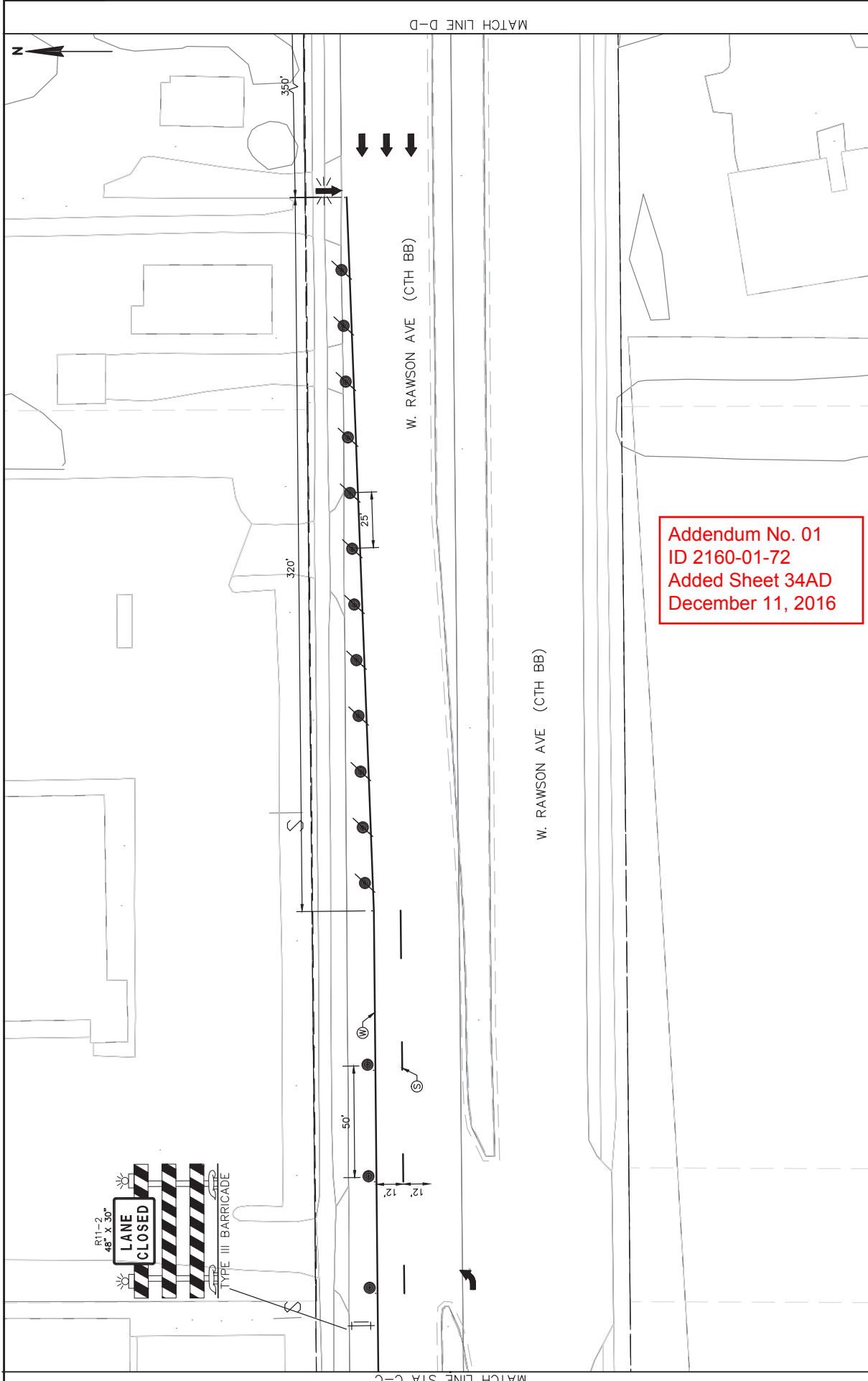
2

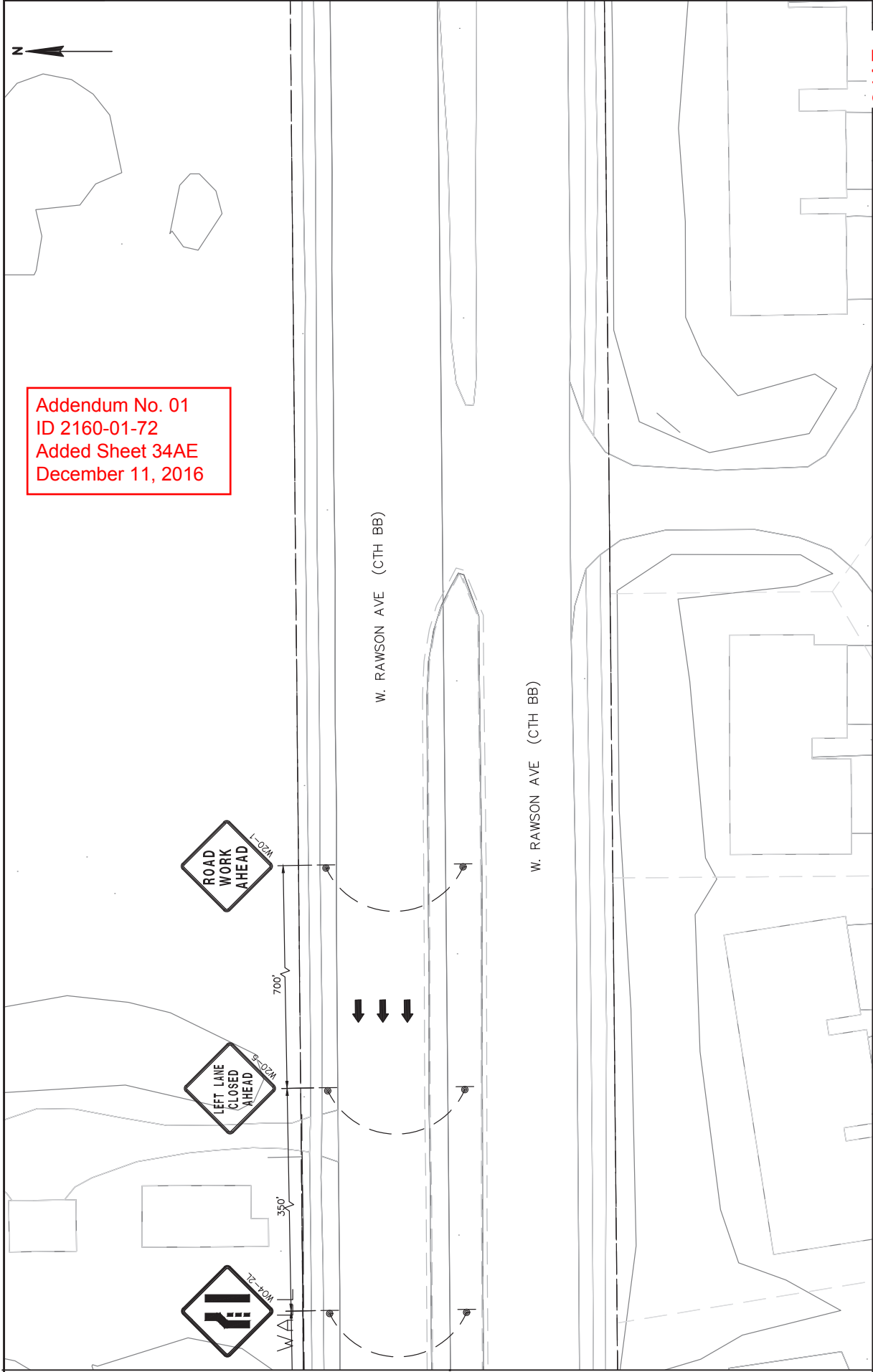
2

PROJECT NO: 2160-01-72
 COUNTY: MILWAUKEE
 HWY: CTH U
 TRAFFIC CONTROL - STAGE 2
 SHEET 34AB
 FILE NAME: C:\HIGHWAY OPERATIONS CONTROL FILES\2010-2014\CTH U - S. 76TH ST\INTERSECTION WITH RAWSON - 2160-01-02\DESIGN\PLANS\FINAL PLANS\17_TRAFFIC CONTROL\21600172_1C_52.DWG
 PLOT BY: HILLIARD, MARC
 PLOT DATE: 6/27/2016 12:24 PM
 PLOT NAME: 17_TRAFFIC CONTROL
 PLOT SCALE: 1:40_XREF
 WSDOT/CADD SHEET 42



Addendum No. 01
 ID 2160-01-72
 Added Sheet 34AC
 December 11, 2016





Addendum No. 01
 ID 2160-01-72
 Added Sheet 34AE
 December 11, 2016

FINISHING ROADWAY (I.D. 2160-01-72)

PROJECT I.D.	2160-01-72
FINISHING ROADWAY	1
TOTAL	1

Addendum No. 01
ID 2160-01-72
Revised Sheet 40
December 11, 2016

AGGREGATE ITEMS

LOCATION	STATION	OFFSET	TON	TON	TON	TON	SY
STAGE 1							
RAWSON (WEST MEDIATEAN)	5+99	- 9+25	-	169	216	-	497
RAWSON (EAST MEDIATEAN)	10+62	- 12+00	-	54	73	-	170
76TH (SOUTH MEDIATEAN)	103+87	- 105+35	-	46	53	-	118
76TH (NORTH MEDIATEAN)	106+67	- 109+61	-	99	113	-	206
UNDISTRIBUTED			33	-	-	50	56
SUBTOTAL			400	455	455	50	1151
STAGE 2							
NE CORNER	106+50	- 106+78	RT	16	12	-	22
NW CORNER	106+46	- 106+50	LF	14	10	-	18
SE CORNER	105+20	- 105+49	RT	14	11	-	19
SW CORNER	10520	- 10548	LF	13	11	-	20
UNDISTRIBUTED			13	-	-	33	4
SUBTOTAL			70	45	45	199	83
TOTAL			470	500	500	50	1130

612.0406*
Pipe Underdrain
6-inch Schedule A

645.0111
Geotextile Fabric
Type DF

* CONNECTION TO INLETS AND EXISTING UNDERDRAIN IS INCIDENTAL TO PIPE UNDERDRAIN

CATEGORY 0010

CONCRETE PAVEMENT ITEMS

LOCATION	STATION	STATION	OFFSET	SY	EACH	EACH
STAGE 1						
RAWSON (WEST MEDIATEAN)	5+99	- 9+25	-	497	201	12
RAWSON (EAST MEDIATEAN)	10+62	- 12+00	-	170	71	12
76TH (SOUTH MEDIATEAN)	103+87	- 105+35	-	118	68	7
76TH (NORTH MEDIATEAN)	106+67	- 109+61	-	206	133	7
UNDISTRIBUTED				56	25	2
SUBTOTAL				1047	497	40
STAGE 2						
NE CORNER	106+50	- 106+78	RT	22	24	--
NW CORNER	106+46	- 106+50	LT	18	22	--
SE CORNER	105+20	- 105+49	RT	19	24	--
SW CORNER	10520	- 10548	LT	20	24	--
UNDISTRIBUTED				4	5	--
SUBTOTAL				83	98	0
TOTAL				1130	595	40

CONCRETE CURB & GUTTER

LOCATION	STATION	STATION	OFFSET	LF	SF
STAGE 1					
RAWSON (WEST MEDIATEAN)	5+99	- 9+25	-	488	50
RAWSON (EAST MEDIATEAN)	10+62	- 12+00	-	147	72
76TH (SOUTH MEDIATEAN)	103+87	- 105+35	-	154	50
76TH (NORTH MEDIATEAN)	106+67	- 109+61	-	441	70
SUBTOTAL				1,230	242
STAGE 2					
NE CORNER	106+50	- 106+78	RT	40	--
NW CORNER	106+46	- 106+50	LT	36	--
SE CORNER	105+20	- 105+49	RT	40	--
SW CORNER	10520	- 10548	LT	40	--
UNDISTRIBUTED				156	--
TOTAL				1,400	8

PROJECT NO: 2160-01-72

HWY: CTH U

COUNTY: MILWAUKEE

MISCELLANEOUS QUANTITIES

SHEET 40

E

FILE NAME :

PLOT DATE : 12/7/2016

PLOT BY : DMW

PLOT SCALE : 1:1

