



# Wisconsin Department of Transportation

December 2, 2016

## Division of Transportation Systems Development

Bureau of Project Development  
 4802 Sheboygan Avenue, Rm 601  
 P O Box 7916  
 Madison, WI 53707-7916

Telephone: (608) 266-1631  
 Facsimile (FAX): (608) 266-8459

### NOTICE TO ALL CONTRACTORS:

**Proposal #14: 3170-08-70, WISC 2016 474**  
**7th St & Geneva St,**  
**City of Delavan**  
**Wisconsin St to Wright St**  
**STH 50**  
**Walworth County**

**3170-08-71**  
**7th St & Geneva St,**  
**City of Delavan**  
**Wisconsin St to Wright St**  
**STH 50**  
**Walworth County**

### Letting of December 13, 2016

This is Addendum No. 01, which provides for the following:

#### Schedule of Items

Revised Bid Item Quantities – 3170-08-70					
Bid Item	Item Description	Unit	Old Quantity	Revised Quantity	Proposal Total
204.0110	Removing Asphaltic Surface	SY	240	36	276
204.0150	Removing Curb & Gutter	LF	8,079	162	8,241
305.0120	Base Aggregate Dense 1 1/4-Inch	TON	22,960	7	22,967
455.0605	Tack Coat	GAL	3,034	4	3,038
460.6223	HMA Pavement 3 MT 58-28 S	TON	8,649	17	8,666
601.0411	Concrete Curb & Gutter 30-Inch Type D	LF	4,263	162	4,425
611.0624	Inlet Covers Type H	EACH	27	1	28
611.8115	Adjusting Inlet Covers	EACH	7	19	26
625.0100	Topsoil	SY	17,830	54	17,884
628.2006	Erosion Mat Urban Class I Type A	SY	17,600	54	17,654
629.0210	Fertilizer Type B	CWT	11.1	0.1	11.2
630.0130	Seeding Mixture No. 30	LB	311	1	312
650.5500	Construction Staking Curb Gutter and Curb & Gutter	LF	9,267	162	9,429
690.0150	Sawing Asphalt	LF	15,670	234	15,904
690.0250	Sawing Concrete	LF	3,237	90	3,327
SPV.0120.001	Water For Seeded Areas	MGAL	621	1	622

## Plan Sheets

Revised Plan Sheets – 3170-08-70	
Plan Sheet	Plan Sheet Title (brief description of changes to sheet)
22	Plan Details - STH 50 (Added 'Adjusting Inlet Covers Req'd' call-outs)
25	Plan Details - STH 50 (Added 'Adjusting Inlet Covers Req'd' call-outs)
28	Plan Details - STH 50 (Added 'Adjusting Inlet Covers Req'd' call-outs)
30	Plan Details - STH 50 (Added 'Adjusting Inlet Covers Req'd' call-outs)
32	Plan Details - STH 50 (Added 'Adjusting Inlet Covers Req'd' call-outs)
185	Miscellaneous Quantities (Added call-out for 'Additional Quantities Listed Elsewhere')
187	Miscellaneous Quantities (Added call-out for 'Additional Quantities Listed Elsewhere')
188	Miscellaneous Quantities (Added call-out for 'Additional Quantities Listed Elsewhere')
190	Miscellaneous Quantities (Added call-out for 'Additional Quantities Listed Elsewhere')
191	Miscellaneous Quantities (Added call-out for 'Additional Quantities Listed Elsewhere' and updated quantity for added Adjusting Inlet Covers)
192	Miscellaneous Quantities (Added table of quantities for added Adjusting Inlet Covers)
204	Miscellaneous Quantities (Added call-out for 'Additional Quantities Listed Elsewhere')

Added Plan Sheets	
Plan Sheet	Plan Sheet Title (brief description of why sheet was added)
21A	Construction Details (Added detail for Adjusting Inlet Covers)

### Schedule of Items

Attached, dated December 2, 2016, are the revised Schedule of Items Pages. All pages of the Schedule of Items are being replaced.

### Plan Sheets

The following 8½ x 11-inch sheets are attached and made part of the plans for this proposal:

Revised: 22, 25, 28, 30, 32, 185, 187, 188, 190, 191, 192 and 204.

Added: 21A.

The responsibility for notifying potential subcontractors and suppliers of these changes remains with the prime contractor.

Sincerely,

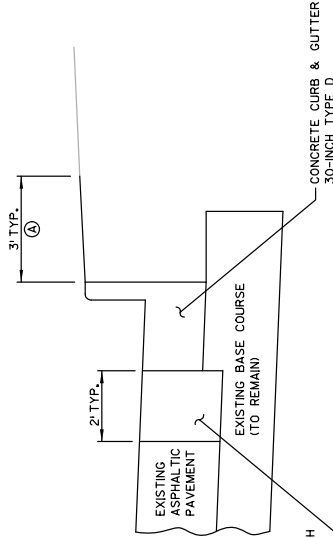
*Mike Coleman*

Proposal Development Specialist  
Proposal Management Section

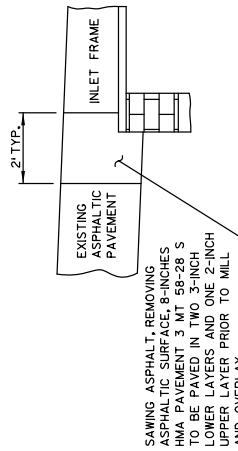
END OF ADDENDUM

Addendum No. 01  
 ID 3170-08-70  
 Added Sheet 21A  
 December 2, 2016

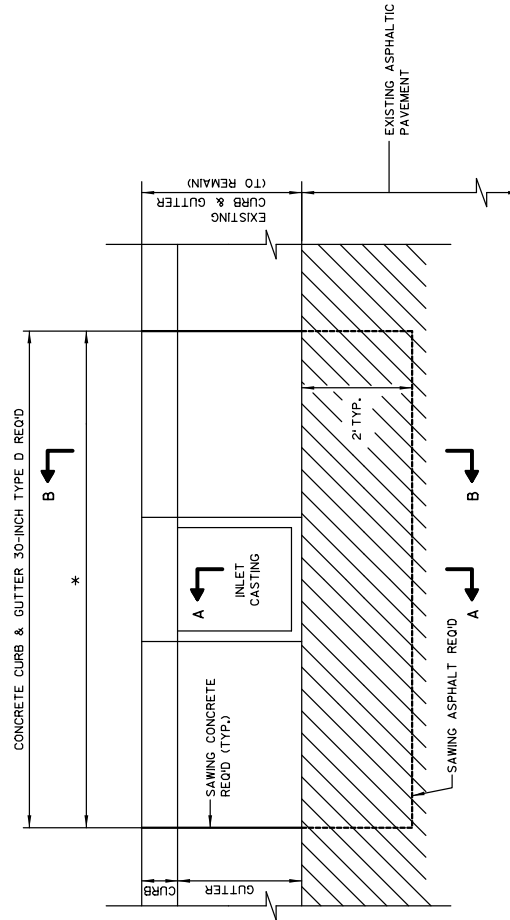
Ⓐ TOPSOIL: FERTILIZER TYPE B;  
 SEEDING MIXTURE NO. 30;  
 EROSION MAT URBAN  
 CLASS 1 TYPE A



SAWING ASPHALT, REMOVING ASPHALTIC SURFACE, 8-INCHES HMA PAVEMENT 3 MT 58-28 S TO BE PAVED IN TWO 3-INCH LOWER LAYERS AND ONE 2-INCH UPPER LAYER PRIOR TO MILL AND OVERLAY

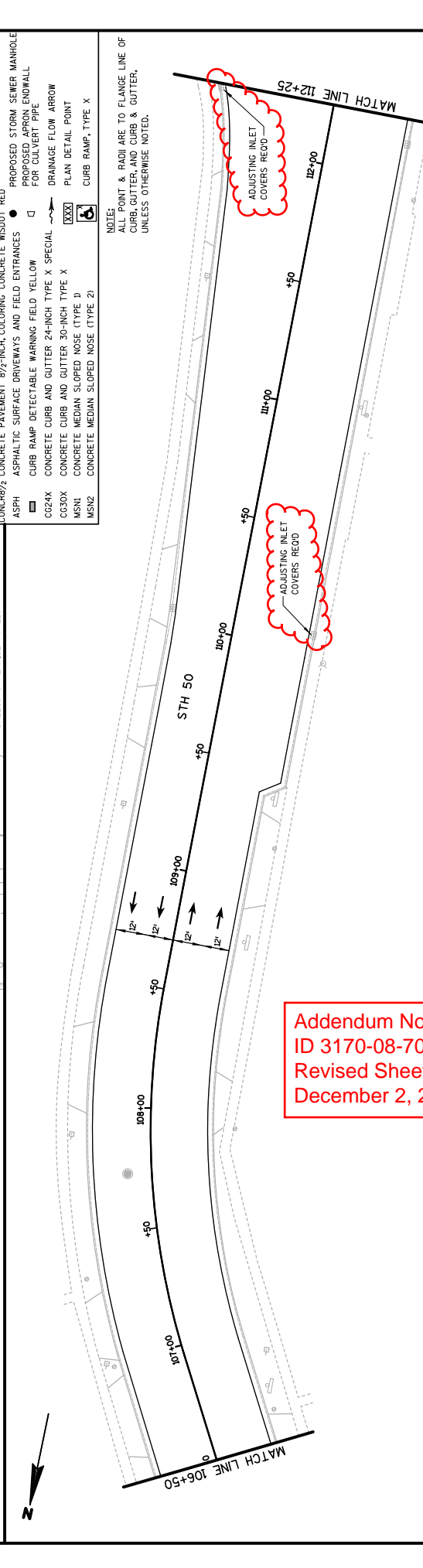
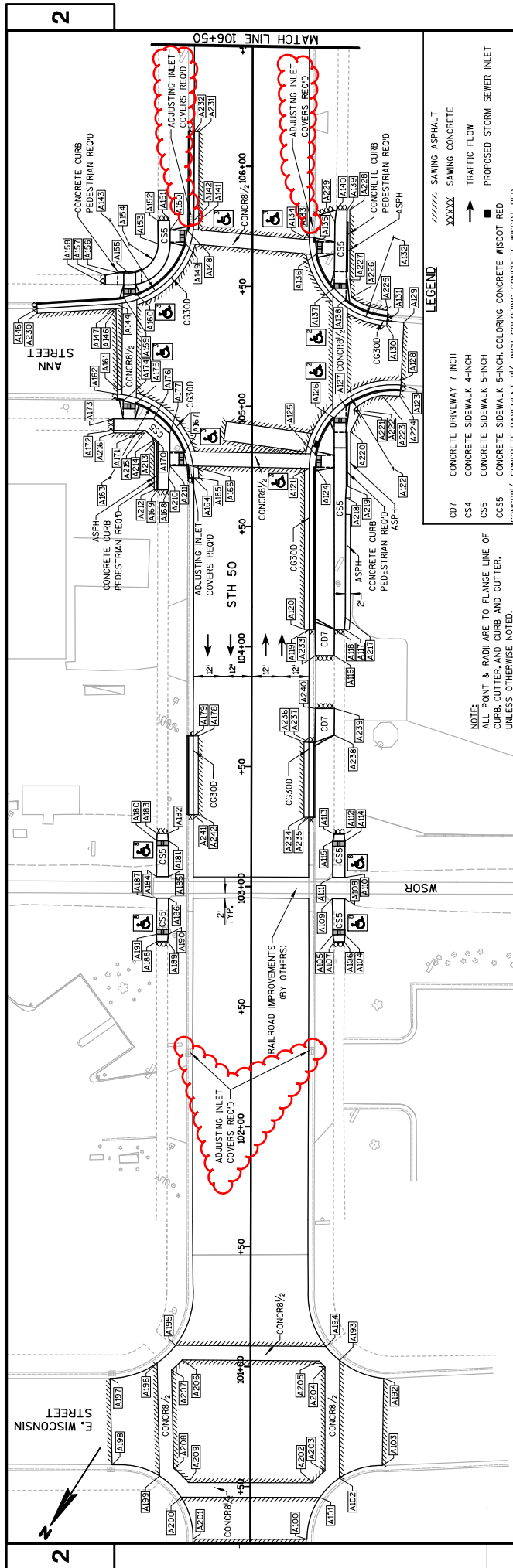


SAWING ASPHALT, REMOVING ASPHALTIC SURFACE, 8-INCHES HMA PAVEMENT, 3 MT 58-28 S TO BE PAVED IN TWO 3-INCH LOWER LAYERS AND ONE 2-INCH UPPER LAYER PRIOR TO MILL AND OVERLAY



\* REMOVING CURB & GUTTER (REMOVE 3-FOOT CURB & GUTTER MIN. EACH SIDE OF INLET OR TO THE NEAREST JOINT, 6-FOOT MAX. OR AS SHOWN IN THE PLAN OR AS DIRECTED BY THE ENGINEER)

ADJUSTING INLET COVERS



**LEGEND**

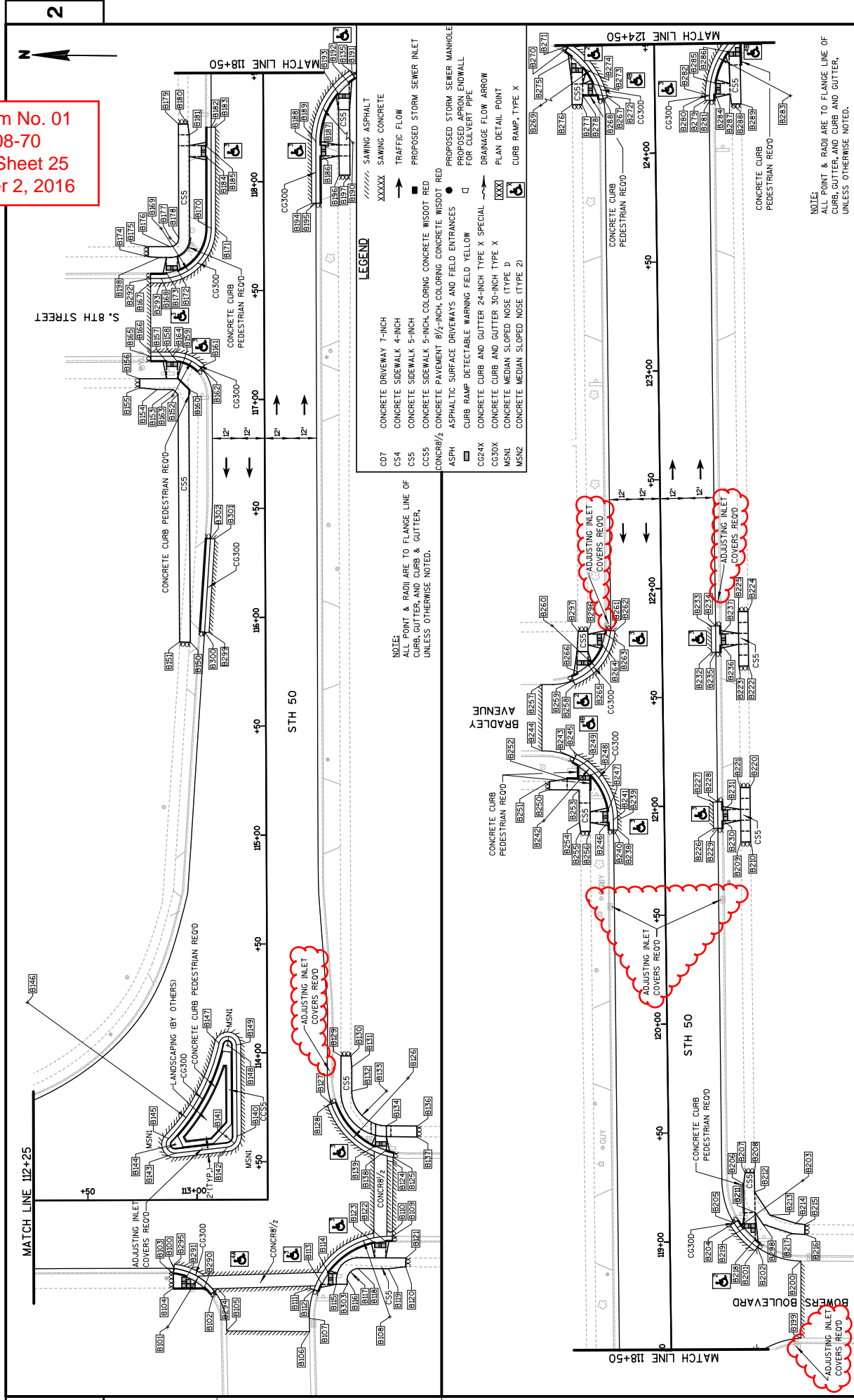
CD7	CONCRETE DRIVEWAY 7-INCH	XXXXX	SAWMING ASPHALT
CS4	CONCRETE SIDEWALK 4-INCH	→	TRAFFIC FLOW
CS5	CONCRETE SIDEWALK 5-INCH	■	PROPOSED STORM SEWER INLET
CCS5	CONCRETE SIDEWALK 5-INCH COLORING CONCRETE WISDOT RED	○	PROPOSED STORM SEWER MANHOLE
CONCR8/2	CONCRETE PAVEMENT 8/2-INCH COLORING CONCRETE WISDOT RED	○	PROPOSED STORM SEWER ENDWALL FOR CULVERT PIPE
ASPH	ASPHALTIC SURFACE DRIVEWAYS AND FIELD ENTRANCES	○	DRAINAGE FLOW ARROW
CC24X	CURB RAMP DETECTABLE WARNING FIELD YELLOW	○	PLAN DETAIL POINT
CC30X	CONCRETE CURB AND GUTTER 24-INCH TYPE X SPECIAL	○	CURB RAMP, TYPE X
MSN1	CONCRETE CURB AND GUTTER 30-INCH TYPE X	○	
MSN2	CONCRETE MEDIAN SLOPED NOSE (TYPE D)	○	
	CONCRETE MEDIAN SLOPED NOSE (TYPE 2)	○	

NOTE:  
ALL POINT & RADII ARE TO FLANGE LINE OF CURB, GUTTER, AND CURB AND GUTTER, UNLESS OTHERWISE NOTED.

NOTE:  
ALL POINT & RADII ARE TO FLANGE LINE OF CURB, GUTTER, AND CURB & GUTTER, UNLESS OTHERWISE NOTED.

Addendum No. 01  
ID 3170-08-70  
Revised Sheet 22  
December 2, 2016

Addendum No. 01  
 ID 3170-08-70  
 Revised Sheet 25  
 December 2, 2016





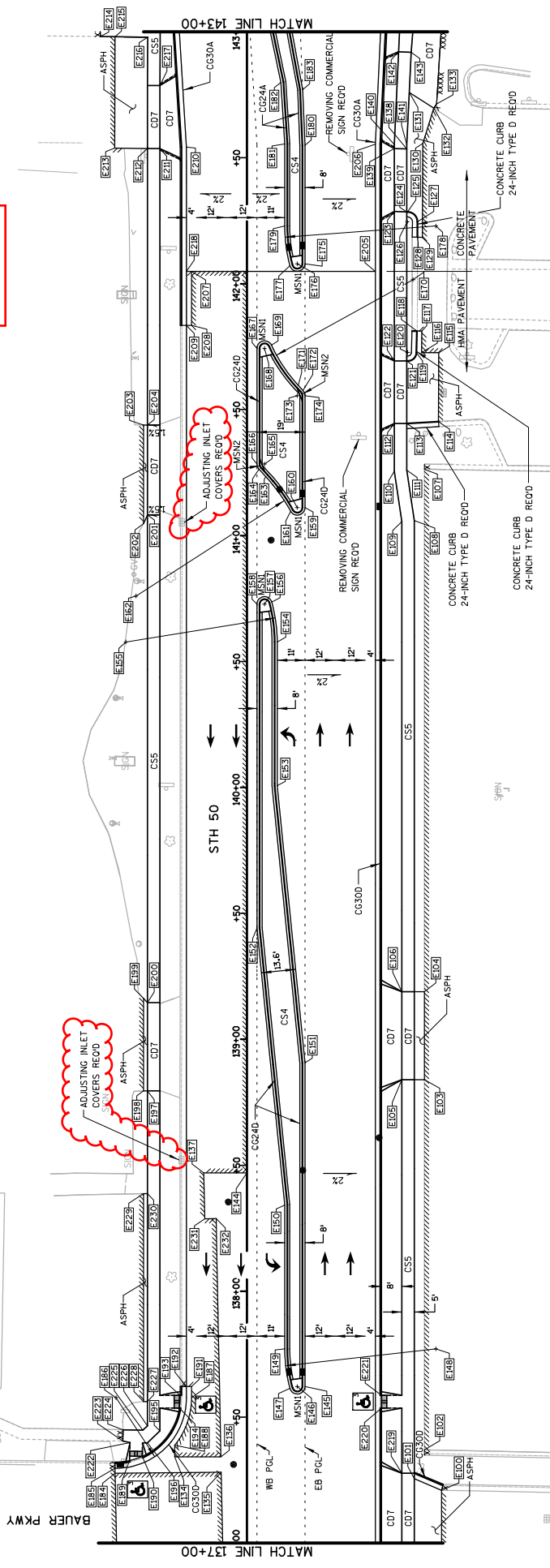


Addendum No. 01  
 ID 3170-08-70  
 Revised Sheet 32  
 December 2, 2016



2

2



**LEGEND**

//////	SAWING ASPHALT
XXXXXX	SAWING CONCRETE
→	TRAFFIC FLOW
■	PROPOSED STORM SEWER INLET
●	PROPOSED STORM SEWER MANHOLE
○	PROPOSED APRON ENDWALL FOR CULVERT PIPE
—○—	DRAINAGE FLOW ARROW
□	PLAN DETAIL POINT
XXX	CURB RAMP, TYPE X
—○—	CURB RAMP, TYPE 2
—○—	CURB RAMP, TYPE 1
—○—	CURB RAMP, TYPE 0
—○—	CURB RAMP, TYPE 3
—○—	CURB RAMP, TYPE 4
—○—	CURB RAMP, TYPE 5
—○—	CURB RAMP, TYPE 6
—○—	CURB RAMP, TYPE 7
—○—	CURB RAMP, TYPE 8
—○—	CURB RAMP, TYPE 9
—○—	CURB RAMP, TYPE 10
—○—	CURB RAMP, TYPE 11
—○—	CURB RAMP, TYPE 12
—○—	CURB RAMP, TYPE 13
—○—	CURB RAMP, TYPE 14
—○—	CURB RAMP, TYPE 15
—○—	CURB RAMP, TYPE 16
—○—	CURB RAMP, TYPE 17
—○—	CURB RAMP, TYPE 18
—○—	CURB RAMP, TYPE 19
—○—	CURB RAMP, TYPE 20
—○—	CURB RAMP, TYPE 21
—○—	CURB RAMP, TYPE 22
—○—	CURB RAMP, TYPE 23
—○—	CURB RAMP, TYPE 24
—○—	CURB RAMP, TYPE 25
—○—	CURB RAMP, TYPE 26
—○—	CURB RAMP, TYPE 27
—○—	CURB RAMP, TYPE 28
—○—	CURB RAMP, TYPE 29
—○—	CURB RAMP, TYPE 30
—○—	CURB RAMP, TYPE 31
—○—	CURB RAMP, TYPE 32
—○—	CURB RAMP, TYPE 33
—○—	CURB RAMP, TYPE 34
—○—	CURB RAMP, TYPE 35
—○—	CURB RAMP, TYPE 36
—○—	CURB RAMP, TYPE 37
—○—	CURB RAMP, TYPE 38
—○—	CURB RAMP, TYPE 39
—○—	CURB RAMP, TYPE 40
—○—	CURB RAMP, TYPE 41
—○—	CURB RAMP, TYPE 42
—○—	CURB RAMP, TYPE 43
—○—	CURB RAMP, TYPE 44
—○—	CURB RAMP, TYPE 45
—○—	CURB RAMP, TYPE 46
—○—	CURB RAMP, TYPE 47
—○—	CURB RAMP, TYPE 48
—○—	CURB RAMP, TYPE 49
—○—	CURB RAMP, TYPE 50
—○—	CURB RAMP, TYPE 51
—○—	CURB RAMP, TYPE 52
—○—	CURB RAMP, TYPE 53
—○—	CURB RAMP, TYPE 54
—○—	CURB RAMP, TYPE 55
—○—	CURB RAMP, TYPE 56
—○—	CURB RAMP, TYPE 57
—○—	CURB RAMP, TYPE 58
—○—	CURB RAMP, TYPE 59
—○—	CURB RAMP, TYPE 60
—○—	CURB RAMP, TYPE 61
—○—	CURB RAMP, TYPE 62
—○—	CURB RAMP, TYPE 63
—○—	CURB RAMP, TYPE 64
—○—	CURB RAMP, TYPE 65
—○—	CURB RAMP, TYPE 66
—○—	CURB RAMP, TYPE 67
—○—	CURB RAMP, TYPE 68
—○—	CURB RAMP, TYPE 69
—○—	CURB RAMP, TYPE 70
—○—	CURB RAMP, TYPE 71
—○—	CURB RAMP, TYPE 72
—○—	CURB RAMP, TYPE 73
—○—	CURB RAMP, TYPE 74
—○—	CURB RAMP, TYPE 75
—○—	CURB RAMP, TYPE 76
—○—	CURB RAMP, TYPE 77
—○—	CURB RAMP, TYPE 78
—○—	CURB RAMP, TYPE 79
—○—	CURB RAMP, TYPE 80
—○—	CURB RAMP, TYPE 81
—○—	CURB RAMP, TYPE 82
—○—	CURB RAMP, TYPE 83
—○—	CURB RAMP, TYPE 84
—○—	CURB RAMP, TYPE 85
—○—	CURB RAMP, TYPE 86
—○—	CURB RAMP, TYPE 87
—○—	CURB RAMP, TYPE 88
—○—	CURB RAMP, TYPE 89
—○—	CURB RAMP, TYPE 90
—○—	CURB RAMP, TYPE 91
—○—	CURB RAMP, TYPE 92
—○—	CURB RAMP, TYPE 93
—○—	CURB RAMP, TYPE 94
—○—	CURB RAMP, TYPE 95
—○—	CURB RAMP, TYPE 96
—○—	CURB RAMP, TYPE 97
—○—	CURB RAMP, TYPE 98
—○—	CURB RAMP, TYPE 99
—○—	CURB RAMP, TYPE 100

**NOTE:**  
 ALL POINT & RADI ARE TO FLANGE LINE OF CURB, GUTTER, AND CURB & GUTTER, UNLESS OTHERWISE NOTED.



Addendum No. 01  
ID 3170-08-70  
Revised Sheet 185  
December 2, 2016

CLEARING AND GRUBBING SUMMARY

Table with columns: CATEGORY, STATION, LOCATION, 2010220 ID, 2010220 CLEARING GRUBBING LF, 204.0100 SY. Includes items like 132+19, 132+87, 135+04, etc.

REMOVING PAVEMENT

Table with columns: CATEGORY, STATION-STATION, LOCATION, 204.0100 SY. Includes items like 103+31-103+62, 103+30-104+11, etc.

REMOVING ASPHALTIC SURFACE

Table with columns: CATEGORY, STATION-STATION, LOCATION, 204.0105 BUTT JOINTS SY, 204.0120 MILLING SY. Includes items like 100+25-104+75, 104+75-105+00, etc.

REMOVING CURB

Table with columns: CATEGORY, STATION-STATION, LOCATION, 204.0130 LF. Includes items like 141+27-142+54, 142+22-144+77, etc.

REMOVING CURB & GUTTER

Table with columns: CATEGORY, STATION-STATION, LOCATION, 204.0150 LF. Includes items like 102+00-106+50, 102+00-106+50, etc.

REMOVING DELINEATORS AND MARKERS

Table with columns: CATEGORY, STATION-STATION, LOCATION, 204.0180 EACH. Includes item 442+21-144+18.

REMOVING CONCRETE BASES

Table with columns: CATEGORY, LOCATION, EQUIP., LOCATION, STATION, LOCATION, 204.0195 EACH. Includes items like 146+04, 146+88, 146+29, etc.

REMOVING CONCRETE SIDEWALK

Table with columns: CATEGORY, STATION-STATION, LOCATION, 204.0195 SY. Includes items like 102+50-106+00, 102+50-106+00, etc.

REMOVING STORM SEWER

Table with columns: CATEGORY, STATION-STATION, LOCATION, 204.0245 EACH. Includes items like 104+82-104+89, 136+47-136+68, etc.

\*ADDITIONAL QUANTITIES LISTED ELSEWHERE

\*ADDITIONAL QUANTITIES LISTED ELSEWHERE



Addendum No. 01  
ID 3170-08-70  
Revised Sheet 188  
December 2, 2016

CONCRETE CURB AND GUTTER ITEMS

601.005	601.010	SPV.0090.001	*601.041	601.049	601.047	601.060	SPV.0090.003	SPV.0090.004	SPV.0090.005	*601.050
CONCRETE CURB	CONCRETE CURB	CONCRETE CURB	CONCRETE CURB	CONCRETE CURB	CONCRETE CURB	CONCRETE CURB	CONCRETE CURB	CONCRETE CURB	CONCRETE CURB	CONCRETE CURB
TYPE A	TYPE D	TYPE D SPECIAL	TYPE D	TYPE A	TYPE D	TYPE D	TYPE D	TYPE D	TYPE A	CONCRETE CURB & GUTTER
LF	LF	LF	LF	LF	LF	LF	LF	LF	LF	LF
000										
102+00 - 106+50	LT		80			32				24
102+00 - 106+50	RT		180			43				228
112+50 - 119+50	LT		220			15				335
112+50 - 119+50	RT		160			13				173
120+50 - 125+50	LT		105			28				153
120+50 - 125+50	RT		44							4
127+50 - 131+75	LT		44							4
127+50 - 131+75	RT		98							98
131+75 - 142+05	LT		97							97
131+75 - 142+05	RT		950			27				2,308
142+05 - 146+00	LT		24			15				203
142+05 - 146+00	RT		180			190				305
146+00 - 151+18	LT									0
146+00 - 151+18	RT									0
151+18 - 157+50	LT									305
151+18 - 157+50	RT									543
9+75 BG - 13+83 BG	LT	120	355			58				540
9+75 BG - 13+83 BG	RT	120	420			86				86
13+83 BG - 14+75 BG	LT		99							86
13+83 BG - 14+75 BG	RT		175							150
14+75 BG - 17+33 BG	LT		81							81
14+75 BG - 17+33 BG	RT		240							240
17+33 BG - 24+00 BG	LT	54	545							678
17+33 BG - 24+00 BG	RT	560	600			24				1,579
24+00 PH - 23+20 PH	LT/RT		67							67
24+00 PH - 23+20 PH	LT/RT									67
UNDISTRIBUTED										447
TOTALS		335	122	2,144	1,084	3,597	40	345	400	447
*ADDITIONAL QUANTITIES LISTED ELSEWHERE										

602.040	602.040	*416.010	*416.020	*405.010
CONCRETE SIDEWALK	CONCRETE SIDEWALK	CONCRETE DRIVEWAY	CONCRETE DRIVEWAY	COLORING
5-INCH	7-INCH	7-INCH	HES 7-INCH	WISDOT RED
SF	SF	ST	ST	CY
000				
102+50 - 106+00	LT			
102+50 - 106+00	RT			
112+50 - 119+50	LT			
112+50 - 119+50	RT			
120+50 - 125+50	LT			
120+50 - 125+50	RT			
127+50 - 131+50	LT			
127+50 - 131+50	RT			
131+50 - 137+00	LT			
131+50 - 137+00	RT			
137+00 - 145+00	LT			
137+00 - 145+00	RT			
145+00 - 152+50	LT			
145+00 - 152+50	RT			
146+30 - 147+54	MEDIAN			
152+50 - 157+50	LT			
152+50 - 157+50	RT			
9+00 BG - 14+50 BG	LT			
9+00 BG - 14+50 BG	RT			
14+50 BG - 21+32 BG	LT			
14+50 BG - 21+32 BG	RT			
16+50 BG - 23+00 BG	LT			
16+50 BG - 23+00 BG	RT			
21+03 PH - 33+49 PH	LT/RT			
21+03 PH - 33+49 PH	LT/RT			
UNDISTRIBUTED				
SUBTOTALS (000)		15	28	0
112+50 - 114+02	LT			
112+50 - 114+02	RT			
SUBTOTALS (0060)		0	0	3
TOTALS		15	28	3
*ADDITIONAL QUANTITIES LISTED ELSEWHERE				

CURB RAMP DETECTABLE WARNING FIELD YELLOW	602.0505
CATEGORY	STATION - LOCATION
000	
102+00 - 106+00	LT 60
102+00 - 106+00	RT 60
112+50 - 119+50	LT 30
112+50 - 119+50	RT 86
120+50 - 125+50	LT 88
120+50 - 125+50	RT 54
127+50 - 131+00	LT 10
127+50 - 131+00	RT 48
131+00 - 137+00	LT 30
131+00 - 137+00	RT 30
137+00 - 145+00	LT 30
137+00 - 145+00	RT 40
145+00 - 153+50	LT 72
145+00 - 153+50	RT 10
9+00 BG - 15+00 BG	LT 48
9+00 BG - 15+00 BG	RT 90
15+00 BG - 16+50 BG	LT 10
15+00 BG - 16+50 BG	RT 60
23+00 PH - 24+00 PH	LT/RT 76
23+00 PH - 24+00 PH	LT/RT 88
31+75 PH - 32+75 PH	LT/RT 88
TOTAL	1,020







Addendum No. 01  
ID 3170-08-70  
Revised Sheet 204  
December 2, 2016

SAWING ASPHALT

CATEGORY	STATION - STATION	LOCATION	LF
0000	100+28 - 106+50	LT/RT	1640
	122+50 - 119+50	LT/RT	815
	120+50 - 126+50	LT/RT	345
	127+50 - 131+75	LT/RT	255
	131+75 - 142+05	LT/RT	1,940
	142+05 - 145+50	LT/RT	550
	145+50 - 150+00	LT	18
	33+49 PH	LT	12
	9+70 BG - 14+18 BG	LT/RT	575
	16+20 BG - 23+98 BG	LT/RT	1,720
	<b>TOTAL</b>		<b>7,770</b>

\*ADDITIONAL QUANTITIES LISTED ELSEWHERE

SAWING CONCRETE

CATEGORY	STATION - STATION	LOCATION	LF
0000	100+28 - 106+50	LT/RT	97
	112+50 - 119+50	LT/RT	88
	127+50 - 131+75	LT/RT	86
	131+75 - 142+05	LT/RT	65
	142+05 - 145+50	LT/RT	265
	145+50 - 150+00	LT/RT	565
	150+00 - 157+50	LT/RT	1,120
	23+00 PH - 32+61 PH	LT/RT	260
	9+70 BG - 14+80 BG	LT/RT	275
	16+23 BG - 23+98 BG	LT/RT	35
	<b>TOTAL</b>		<b>2,947</b>

\*ADDITIONAL QUANTITIES LISTED ELSEWHERE

CONSTRUCTION STAKING CURB RAMP LAYOUT

CATEGORY	LOCATION	SPV.0060.015 EACH
0000	ANN STREET	8
	E. GENEVA STREET / S. SEVENTH STREET	4
	S. 8TH STREET	2
	BOWERS BOULEVARD	4
	BRADLEY AVENUE	6
	TYRELL AVENUE/COURT	6
	MARK AVENUE	4
	PARK AVENUE	4
	BALIER PARKWAY	6
	BORG ROAD / WRIGHT STREET	13
	ENTRANCE (152+50)	5
	SB OFF-RAMP	3
	NB ON-RAMP	3
	PHOENIX STREET	6
	PRIVATE DRIVEWAY (12+25 BG)	2
	WALGREENS LOT (18+00 BG)	1
	PRIVATE DRIVEWAY (20+00 BG)	2
	<b>TOTAL</b>	<b>79</b>

CONCRETE PAVEMENT JOINT LAYOUT

CATEGORY	PROJECT	SPV.0005.004 L/S
0000	ID 3170-08-70	1

PAVEMENT CLEANUP

CATEGORY	PROJECT	SPV.0075.001 HRS
0000	ID 3170-08-70	165

SAWING CURB HEAD

CATEGORY	STATION	LOCATION	SPV.0090.007 LF
0000	9+26 BG	LT	9



Proposal Schedule of Items

Proposal ID: 20161213014

Project(s): 3170-08-70, 3170-08-71

SECTION: 0001 Roadway Items

Alt Set ID: Alt Mbr ID:

Proposal Line Number	Item ID Description	Approximate Quantity and Units	Unit Price	Bid Amount
0010	201.0120 Clearing	270.000 ID	_____.	_____.
0020	201.0220 Grubbing	270.000 ID	_____.	_____.
0030	204.0100 Removing Pavement	5,681.000 SY	_____.	_____.
0040	204.0110 Removing Asphaltic Surface	276.000 SY	_____.	_____.
0050	204.0115 Removing Asphaltic Surface Butt Joints	221.000 SY	_____.	_____.
0060	204.0120 Removing Asphaltic Surface Milling	22,095.000 SY	_____.	_____.
0070	204.0130 Removing Curb	563.000 LF	_____.	_____.
0080	204.0150 Removing Curb & Gutter	8,241.000 LF	_____.	_____.
0090	204.0155 Removing Concrete Sidewalk	3,231.000 SY	_____.	_____.
0100	204.0175 Removing Concrete Slope Paving	517.000 SY	_____.	_____.
0110	204.0180 Removing Delineators and Markers	24.000 EACH	_____.	_____.
0120	204.0195 Removing Concrete Bases	15.000 EACH	_____.	_____.
0130	204.0210 Removing Manholes	2.000 EACH	_____.	_____.
0140	204.0220 Removing Inlets	13.000 EACH	_____.	_____.
0150	204.0245 Removing Storm Sewer (size) 001. 12-Inch	352.000 LF	_____.	_____.
0160	204.0245 Removing Storm Sewer (size) 002. 21-Inch	190.000 LF	_____.	_____.
0170	204.0291.S Abandoning Sewer	13.000 CY	_____.	_____.





Proposal Schedule of Items

Proposal ID: 20161213014

Project(s): 3170-08-70, 3170-08-71

SECTION: 0001 Roadway Items

Alt Set ID:

Alt Mbr ID:

Proposal Line Number	Item ID Description	Approximate Quantity and Units	Unit Price	Bid Amount
0180	204.9060.S Removing (item description) 001. Inlet Covers	7.000 EACH	_____.	_____.
0190	204.9060.S Removing (item description) 002. Commercial Sign	3.000 EACH	_____.	_____.
0200	204.9060.S Removing (item description) 003. Light Pole	4.000 EACH	_____.	_____.
0210	204.9090.S Removing (item description) 001. Block Retaining Wall	262.000 LF	_____.	_____.
0220	205.0100 Excavation Common	26,533.000 CY	_____.	_____.
0230	209.2100 Backfill Granular Grade 2	6,700.000 CY	_____.	_____.
0240	211.0100 Prepare Foundation for Asphaltic Paving (project) 001. 3170-08-70	LS	LUMP SUM	_____.
0250	213.0100 Finishing Roadway (project) 001. 3170-08-70	1.000 EACH	_____.	_____.
0260	305.0120 Base Aggregate Dense 1 1/4-Inch	22,967.000 TON	_____.	_____.
0270	310.0115 Base Aggregate Open-Graded	5.000 CY	_____.	_____.
0280	311.0110 Breaker Run	16,725.000 TON	_____.	_____.
0290	405.0100 Coloring Concrete WisDOT Red	83.000 CY	_____.	_____.
0300	415.0085 Concrete Pavement 8 1/2-Inch	7,923.000 SY	_____.	_____.
0310	415.1085 Concrete Pavement HES 8 1/2-Inch	1,881.000 SY	_____.	_____.
0320	416.0170 Concrete Driveway 7-Inch	1,045.000 SY	_____.	_____.



Proposal Schedule of Items

Proposal ID: 20161213014

Project(s): 3170-08-70, 3170-08-71

SECTION: 0001 Roadway Items

Alt Set ID:

Alt Mbr ID:

Proposal Line Number	Item ID Description	Approximate Quantity and Units	Unit Price	Bid Amount
0330	416.0270 Concrete Driveway HES 7-Inch	116.000 SY	_____.	_____.
0340	416.0610 Drilled Tie Bars	589.000 EACH	_____.	_____.
0350	416.0620 Drilled Dowel Bars	43.000 EACH	_____.	_____.
0360	440.4410 Incentive IRI Ride	6,329.000 DOL	1.00000	6,329.00
0370	450.4000 HMA Cold Weather Paving	1,285.000 TON	_____.	_____.
0380	455.0605 Tack Coat	3,038.000 GAL	_____.	_____.
0390	460.2000 Incentive Density HMA Pavement	6,480.000 DOL	1.00000	6,480.00
0400	460.4110.S Reheating HMA Pavement Longitudinal Joints	31,755.000 LF	_____.	_____.
0410	460.6223 HMA Pavement 3 MT 58-28 S	8,666.000 TON	_____.	_____.
0420	460.6224 HMA Pavement 4 MT 58-28 S	3,390.000 TON	_____.	_____.
0430	465.0120 Asphaltic Surface Driveways and Field Entrances	254.000 TON	_____.	_____.
0440	465.0125 Asphaltic Surface Temporary	1,698.000 TON	_____.	_____.
0450	465.0310 Asphaltic Curb	18.000 LF	_____.	_____.
0460	511.1200 Temporary Shoring (structure) 001. R-64-20	480.000 SF	_____.	_____.
0470	513.2001 Railing Pipe (structure) 001. R-64-20	333.000 LF	_____.	_____.
0480	520.8000 Concrete Collars for Pipe	15.000 EACH	_____.	_____.



Proposal Schedule of Items

Proposal ID: 20161213014

Project(s): 3170-08-70, 3170-08-71

SECTION: 0001 Roadway Items

Alt Set ID:

Alt Mbr ID:

Proposal Line Number	Item ID Description	Approximate Quantity and Units	Unit Price	Bid Amount
0490	522.1024 Apron Endwalls for Culvert Pipe Reinforced Concrete 24-Inch	1.000 EACH	_____.	_____.
0500	524.0624 Apron Endwalls for Culvert Pipe Salvaged 24-Inch	2.000 EACH	_____.	_____.
0510	601.0105 Concrete Curb Type A	335.000 LF	_____.	_____.
0520	601.0110 Concrete Curb Type D	122.000 LF	_____.	_____.
0530	601.0407 Concrete Curb & Gutter 18-Inch Type D	256.000 LF	_____.	_____.
0540	601.0409 Concrete Curb & Gutter 30-Inch Type A	3,597.000 LF	_____.	_____.
0550	601.0411 Concrete Curb & Gutter 30-Inch Type D	4,425.000 LF	_____.	_____.
0560	601.0600 Concrete Curb Pedestrian	875.000 LF	_____.	_____.
0570	602.0405 Concrete Sidewalk 4-Inch	13,290.000 SF	_____.	_____.
0580	602.0410 Concrete Sidewalk 5-Inch	54,110.000 SF	_____.	_____.
0590	602.0420 Concrete Sidewalk 7-Inch	115.000 SF	_____.	_____.
0600	602.0505 Curb Ramp Detectable Warning Field Yellow	1,020.000 SF	_____.	_____.
0610	604.0400 Slope Paving Concrete	360.000 SY	_____.	_____.
0620	606.0200 Riprap Medium	4.000 CY	_____.	_____.
0630	608.0312 Storm Sewer Pipe Reinforced Concrete Class III 12-Inch	1,111.000 LF	_____.	_____.
0640	608.0318 Storm Sewer Pipe Reinforced Concrete Class III 18-Inch	16.000 LF	_____.	_____.



Proposal Schedule of Items

Proposal ID: 20161213014

Project(s): 3170-08-70, 3170-08-71

SECTION: 0001 Roadway Items

Alt Set ID: Alt Mbr ID:

Proposal Line Number	Item ID Description	Approximate Quantity and Units	Unit Price	Bid Amount
0650	608.0324 Storm Sewer Pipe Reinforced Concrete Class III 24-Inch	806.000 LF	_____.	_____.
0660	608.0336 Storm Sewer Pipe Reinforced Concrete Class III 36-Inch	192.000 LF	_____.	_____.
0670	608.0412 Storm Sewer Pipe Reinforced Concrete Class IV 12-Inch	135.000 LF	_____.	_____.
0680	611.0530 Manhole Covers Type J	3.000 EACH	_____.	_____.
0690	611.0535 Manhole Covers Type J-Special	5.000 EACH	_____.	_____.
0700	611.0624 Inlet Covers Type H	28.000 EACH	_____.	_____.
0710	611.0639 Inlet Covers Type H-S	4.000 EACH	_____.	_____.
0720	611.0666 Inlet Covers Type Z	2.000 EACH	_____.	_____.
0730	611.1003 Catch Basins 3-FT Diameter	2.000 EACH	_____.	_____.
0740	611.1230 Catch Basins 2x3-FT	25.000 EACH	_____.	_____.
0750	611.2004 Manholes 4-FT Diameter	11.000 EACH	_____.	_____.
0760	611.2005 Manholes 5-FT Diameter	2.000 EACH	_____.	_____.
0770	611.2008 Manholes 8-FT Diameter	2.000 EACH	_____.	_____.
0780	611.8110 Adjusting Manhole Covers	3.000 EACH	_____.	_____.
0790	611.8115 Adjusting Inlet Covers	26.000 EACH	_____.	_____.
0800	611.9710 Salvaged Inlet Covers	5.000 EACH	_____.	_____.



Proposal Schedule of Items

Proposal ID: 20161213014

Project(s): 3170-08-70, 3170-08-71

SECTION: 0001 Roadway Items

Alt Set ID:

Alt Mbr ID:

Proposal Line Number	Item ID Description	Approximate Quantity and Units	Unit Price	Bid Amount
0810	612.0406 Pipe Underdrain Wrapped 6-Inch	1,075.000 LF	_____.	_____.
0820	612.0902.S Insulation Board Polystyrene (inch) 001. 2-Inch	60.000 SY	_____.	_____.
0830	619.1000 Mobilization	1.000 EACH	_____.	_____.
0840	620.0300 Concrete Median Sloped Nose	849.000 SF	_____.	_____.
0850	624.0100 Water	304.000 MGAL	_____.	_____.
0860	625.0100 Topsoil	17,884.000 SY	_____.	_____.
0870	627.0200 Mulching	10,180.000 SY	_____.	_____.
0880	628.1504 Silt Fence	3,025.000 LF	_____.	_____.
0890	628.1520 Silt Fence Maintenance	6,650.000 LF	_____.	_____.
0900	628.1905 Mobilizations Erosion Control	16.000 EACH	_____.	_____.
0910	628.1910 Mobilizations Emergency Erosion Control	8.000 EACH	_____.	_____.
0920	628.2006 Erosion Mat Urban Class I Type A	17,654.000 SY	_____.	_____.
0930	628.7005 Inlet Protection Type A	44.000 EACH	_____.	_____.
0940	628.7010 Inlet Protection Type B	2.000 EACH	_____.	_____.
0950	628.7015 Inlet Protection Type C	69.000 EACH	_____.	_____.
0960	628.7020 Inlet Protection Type D	14.000 EACH	_____.	_____.
0970	629.0210 Fertilizer Type B	11.200 CWT	_____.	_____.



Proposal Schedule of Items

Proposal ID: 20161213014

Project(s): 3170-08-70, 3170-08-71

SECTION: 0001 Roadway Items

Alt Set ID:

Alt Mbr ID:

Proposal Line Number	Item ID Description	Approximate Quantity and Units	Unit Price	Bid Amount
0980	630.0120 Seeding Mixture No. 20	6.000 LB	_____.	_____.
0990	630.0130 Seeding Mixture No. 30	312.000 LB	_____.	_____.
1000	630.0200 Seeding Temporary	265.000 LB	_____.	_____.
1010	634.0618 Posts Wood 4x6-Inch X 18-FT	31.000 EACH	_____.	_____.
1020	634.0816 Posts Tubular Steel 2x2-Inch X 16-FT	87.000 EACH	_____.	_____.
1030	637.2210 Signs Type II Reflective H	918.970 SF	_____.	_____.
1040	637.2215 Signs Type II Reflective H Folding	119.360 SF	_____.	_____.
1050	637.2230 Signs Type II Reflective F	207.640 SF	_____.	_____.
1060	638.2602 Removing Signs Type II	119.000 EACH	_____.	_____.
1070	638.3000 Removing Small Sign Supports	71.000 EACH	_____.	_____.
1080	641.8100 Overhead Sign Support (structure) 001. S-64-604	LS	LUMP SUM	_____.
1090	641.8100 Overhead Sign Support (structure) 002. S-64-603	LS	LUMP SUM	_____.
1100	642.5401 Field Office Type D	1.000 EACH	_____.	_____.
1110	643.0100 Traffic Control (project) 001. 3170-08-70	1.000 EACH	_____.	_____.
1120	643.0300 Traffic Control Drums	85,552.000 DAY	_____.	_____.
1130	643.0410 Traffic Control Barricades Type II	2,166.000 DAY	_____.	_____.
1140	643.0420 Traffic Control Barricades Type III	10,256.000 DAY	_____.	_____.



Proposal Schedule of Items

Proposal ID: 20161213014

Project(s): 3170-08-70, 3170-08-71

SECTION: 0001 Roadway Items

Alt Set ID:

Alt Mbr ID:

Proposal Line Number	Item ID Description	Approximate Quantity and Units	Unit Price	Bid Amount
1150	643.0500 Traffic Control Flexible Tubular Marker Posts	729.000 EACH	_____.	_____.
1160	643.0600 Traffic Control Flexible Tubular Marker Bases	729.000 EACH	_____.	_____.
1170	643.0705 Traffic Control Warning Lights Type A	7,794.000 DAY	_____.	_____.
1180	643.0715 Traffic Control Warning Lights Type C	9,970.000 DAY	_____.	_____.
1190	643.0800 Traffic Control Arrow Boards	294.000 DAY	_____.	_____.
1200	643.0900 Traffic Control Signs	16,387.000 DAY	_____.	_____.
1210	643.0920 Traffic Control Covering Signs Type II	10.000 EACH	_____.	_____.
1220	643.1000 Traffic Control Signs Fixed Message	1.000 SF	_____.	_____.
1230	643.1050 Traffic Control Signs PCMS	111.000 DAY	_____.	_____.
1240	643.2000 Traffic Control Detour (project) 001. 3170-08-70	1.000 EACH	_____.	_____.
1250	643.3000 Traffic Control Detour Signs	13,770.000 DAY	_____.	_____.
1260	644.1410.S Temporary Pedestrian Surface Asphalt	5,600.000 SF	_____.	_____.
1270	644.1420.S Temporary Pedestrian Surface Plywood	525.000 SF	_____.	_____.
1280	644.1430.S Temporary Pedestrian Surface Plate	525.000 SF	_____.	_____.
1290	644.1601.S Temporary Curb Ramp	10.000 EACH	_____.	_____.
1300	644.1616.S Temporary Pedestrian Safety Fence	1,900.000 LF	_____.	_____.



Proposal Schedule of Items

Proposal ID: 20161213014

Project(s): 3170-08-70, 3170-08-71

SECTION: 0001 Roadway Items

Alt Set ID: Alt Mbr ID:

Proposal Line Number	Item ID Description	Approximate Quantity and Units	Unit Price	Bid Amount
1310	645.0120 Geotextile Type HR	72.000 SY	_____.	_____.
1320	645.0220 Geogrid Type SR	24,000.000 SY	_____.	_____.
1330	646.0106 Pavement Marking Epoxy 4-Inch	15,268.000 LF	_____.	_____.
1340	646.0126 Pavement Marking Epoxy 8-Inch	2,971.000 LF	_____.	_____.
1350	646.0600 Removing Pavement Markings	11,366.000 LF	_____.	_____.
1360	647.0110 Pavement Marking Railroad Crossings Epoxy	4.000 EACH	_____.	_____.
1370	647.0156 Pavement Marking Arrows Epoxy Type 1	4.000 EACH	_____.	_____.
1380	647.0166 Pavement Marking Arrows Epoxy Type 2	34.000 EACH	_____.	_____.
1390	647.0176 Pavement Marking Arrows Epoxy Type 3	6.000 EACH	_____.	_____.
1400	647.0186 Pavement Marking Arrows Epoxy Type 4	2.000 EACH	_____.	_____.
1410	647.0356 Pavement Marking Words Epoxy	12.000 EACH	_____.	_____.
1420	647.0456 Pavement Marking Curb Epoxy	140.000 LF	_____.	_____.
1430	647.0526 Pavement Marking Yield Line Symbols Epoxy 18-Inch	9.000 EACH	_____.	_____.
1440	647.0566 Pavement Marking Stop Line Epoxy 18-Inch	521.000 LF	_____.	_____.
1450	647.0606 Pavement Marking Island Nose Epoxy	14.000 EACH	_____.	_____.
1460	647.0656 Pavement Marking Parking Stall Epoxy	235.000 LF	_____.	_____.





Proposal Schedule of Items

Proposal ID: 20161213014

Project(s): 3170-08-70, 3170-08-71

SECTION: 0001 Roadway Items

Alt Set ID:

Alt Mbr ID:

Proposal Line Number	Item ID Description	Approximate Quantity and Units	Unit Price	Bid Amount
1470	647.0726 Pavement Marking Diagonal Epoxy 12-Inch	211.000 LF	_____.	_____.
1480	647.0766 Pavement Marking Crosswalk Epoxy 6-Inch	3,785.000 LF	_____.	_____.
1490	647.0955 Removing Pavement Markings Arrows	11.000 EACH	_____.	_____.
1500	647.0965 Removing Pavement Markings Words	6.000 EACH	_____.	_____.
1510	649.0400 Temporary Pavement Marking Removable Tape 4-Inch	22,703.000 LF	_____.	_____.
1520	649.0402 Temporary Pavement Marking Paint 4-Inch	24,837.000 LF	_____.	_____.
1530	649.0801 Temporary Pavement Marking Removable Tape 8-Inch	731.000 LF	_____.	_____.
1540	649.0802 Temporary Pavement Marking Paint 8-Inch	601.000 LF	_____.	_____.
1550	649.1100 Temporary Pavement Marking Stop Line 18-Inch	102.000 LF	_____.	_____.
1560	649.1200 Temporary Pavement Marking Stop Line Removable Tape 18-Inch	242.000 LF	_____.	_____.
1570	649.1800 Temporary Pavement Marking Arrows Removable Tape	15.000 EACH	_____.	_____.
1580	649.1802 Temporary Pavement Marking Arrows Paint	12.000 EACH	_____.	_____.
1590	650.4000 Construction Staking Storm Sewer	42.000 EACH	_____.	_____.
1600	650.4500 Construction Staking Subgrade	5,030.000 LF	_____.	_____.



Proposal Schedule of Items

Proposal ID: 20161213014

Project(s): 3170-08-70, 3170-08-71

SECTION: 0001 Roadway Items

Alt Set ID: Alt Mbr ID:

Proposal Line Number	Item ID Description	Approximate Quantity and Units	Unit Price	Bid Amount
1610	650.5000 Construction Staking Base	3,810.000 LF	_____.	_____.
1620	650.5500 Construction Staking Curb Gutter and Curb & Gutter	9,429.000 LF	_____.	_____.
1630	650.6500 Construction Staking Structure Layout (structure) 001. R-64-20	LS	LUMP SUM	_____.
1640	650.7000 Construction Staking Concrete Pavement	1,220.000 LF	_____.	_____.
1650	650.8500 Construction Staking Electrical Installations (project) 001. 3170-08-70	LS	LUMP SUM	_____.
1660	650.9910 Construction Staking Supplemental Control (project) 001. 3170-08-70	LS	LUMP SUM	_____.
1670	650.9920 Construction Staking Slope Stakes	5,030.000 LF	_____.	_____.
1680	652.0225 Conduit Rigid Nonmetallic Schedule 40 2-Inch	2,661.000 LF	_____.	_____.
1690	652.0235 Conduit Rigid Nonmetallic Schedule 40 3-Inch	3,922.000 LF	_____.	_____.
1700	652.0700.S Install Conduit into Existing Item	10.000 EACH	_____.	_____.
1710	652.0800 Conduit Loop Detector	1,571.000 LF	_____.	_____.
1720	653.0135 Pull Boxes Steel 24x36-Inch	11.000 EACH	_____.	_____.
1730	653.0140 Pull Boxes Steel 24x42-Inch	38.000 EACH	_____.	_____.
1740	653.0900 Adjusting Pull Boxes	2.000 EACH	_____.	_____.
1750	653.0905 Removing Pull Boxes	21.000 EACH	_____.	_____.



Proposal Schedule of Items

Proposal ID: 20161213014

Project(s): 3170-08-70, 3170-08-71

SECTION: 0001 Roadway Items

Alt Set ID:

Alt Mbr ID:

Proposal Line Number	Item ID Description	Approximate Quantity and Units	Unit Price	Bid Amount
1760	654.0101 Concrete Bases Type 1	12.000 EACH	_____.	_____.
1770	654.0102 Concrete Bases Type 2	4.000 EACH	_____.	_____.
1780	654.0105 Concrete Bases Type 5	16.000 EACH	_____.	_____.
1790	654.0110 Concrete Bases Type 10	1.000 EACH	_____.	_____.
1800	654.0113 Concrete Bases Type 13	3.000 EACH	_____.	_____.
1810	654.0217 Concrete Control Cabinet Bases Type 9 Special	1.000 EACH	_____.	_____.
1820	654.0230 Concrete Control Cabinet Bases Type L30	1.000 EACH	_____.	_____.
1830	655.0230 Cable Traffic Signal 5-14 AWG	1,792.000 LF	_____.	_____.
1840	655.0240 Cable Traffic Signal 7-14 AWG	1,946.000 LF	_____.	_____.
1850	655.0250 Cable Traffic Signal 9-14 AWG	126.000 LF	_____.	_____.
1860	655.0260 Cable Traffic Signal 12-14 AWG	1,000.000 LF	_____.	_____.
1870	655.0280 Cable Traffic Signal 19-14 AWG	175.000 LF	_____.	_____.
1880	655.0320 Cable Type UF 2-10 AWG Grounded	705.000 LF	_____.	_____.
1890	655.0515 Electrical Wire Traffic Signals 10 AWG	3,643.000 LF	_____.	_____.
1900	655.0610 Electrical Wire Lighting 12 AWG	4,788.000 LF	_____.	_____.
1910	655.0615 Electrical Wire Lighting 10 AWG	303.000 LF	_____.	_____.
1920	655.0620 Electrical Wire Lighting 8 AWG	9,728.000 LF	_____.	_____.



Proposal Schedule of Items

Proposal ID: 20161213014

Project(s): 3170-08-70, 3170-08-71

SECTION: 0001 Roadway Items

Alt Set ID:

Alt Mbr ID:

Proposal Line Number	Item ID Description	Approximate Quantity and Units	Unit Price	Bid Amount
1930	655.0625 Electrical Wire Lighting 6 AWG	10,716.000 LF	_____.	_____.
1940	655.0630 Electrical Wire Lighting 4 AWG	13,022.000 LF	_____.	_____.
1950	655.0635 Electrical Wire Lighting 2 AWG	10,270.000 LF	_____.	_____.
1960	655.0700 Loop Detector Lead In Cable	5,564.000 LF	_____.	_____.
1970	655.0800 Loop Detector Wire	4,945.000 LF	_____.	_____.
1980	656.0200 Electrical Service Meter Breaker Pedestal (location) 001. STH 50 (E. Geneva Street) & Borg Road/Wright Street	LS	LUMP SUM	_____.
1990	656.0200 Electrical Service Meter Breaker Pedestal (location) 002. STH 50 (E. Geneva Street) & Borg Road/Wright Street	LS	LUMP SUM	_____.
2000	657.0100 Pedestal Bases	11.000 EACH	_____.	_____.
2010	657.0255 Transformer Bases Breakaway 11 1/2-Inch Bolt Circle	4.000 EACH	_____.	_____.
2020	657.0315 Poles Type 4	4.000 EACH	_____.	_____.
2030	657.0405 Traffic Signal Standards Aluminum 3.5-FT	4.000 EACH	_____.	_____.
2040	657.0410 Traffic Signal Standards Aluminum 9-FT	1.000 EACH	_____.	_____.
2050	657.0420 Traffic Signal Standards Aluminum 13-FT	5.000 EACH	_____.	_____.
2060	657.0425 Traffic Signal Standards Aluminum 15-FT	1.000 EACH	_____.	_____.



Proposal Schedule of Items

Proposal ID: 20161213014

Project(s): 3170-08-70, 3170-08-71

SECTION: 0001 Roadway Items

Alt Set ID: Alt Mbr ID:

Proposal Line Number	Item ID Description	Approximate Quantity and Units	Unit Price	Bid Amount
2070	657.0709 Luminaire Arms Truss Type 4-Inch Clamp 12-FT	8.000 EACH	_____.	_____.
2080	657.1345 Install Poles Type 9	1.000 EACH	_____.	_____.
2090	657.1355 Install Poles Type 12	3.000 EACH	_____.	_____.
2100	657.1530 Install Monotube Arms 30-FT	1.000 EACH	_____.	_____.
2110	657.1535 Install Monotube Arms 35-FT	1.000 EACH	_____.	_____.
2120	657.1540 Install Monotube Arms 40-FT	1.000 EACH	_____.	_____.
2130	657.1555 Install Monotube Arms 55-FT	1.000 EACH	_____.	_____.
2140	658.0110 Traffic Signal Face 3-12 Inch Vertical	20.000 EACH	_____.	_____.
2150	658.0115 Traffic Signal Face 4-12 Inch Vertical	6.000 EACH	_____.	_____.
2160	658.0120 Traffic Signal Face 5-12 Inch Vertical	2.000 EACH	_____.	_____.
2170	658.0215 Backplates Signal Face 3 Section 12- Inch	20.000 EACH	_____.	_____.
2180	658.0220 Backplates Signal Face 4 Section 12- Inch	6.000 EACH	_____.	_____.
2190	658.0225 Backplates Signal Face 5 Section 12- Inch	2.000 EACH	_____.	_____.
2200	658.0416 Pedestrian Signal Face 16-Inch	30.000 EACH	_____.	_____.
2210	658.0500 Pedestrian Push Buttons	13.000 EACH	_____.	_____.
2220	658.0600 Led Modules 12-Inch Red Ball	15.000 EACH	_____.	_____.



Proposal Schedule of Items

Proposal ID: 20161213014

Project(s): 3170-08-70, 3170-08-71

SECTION: 0001 Roadway Items

Alt Set ID: Alt Mbr ID:

Proposal Line Number	Item ID Description	Approximate Quantity and Units	Unit Price	Bid Amount
2230	658.0605 Led Modules 12-Inch Yellow Ball	15.000 EACH	_____.	_____.
2240	658.0610 Led Modules 12-Inch Green Ball	15.000 EACH	_____.	_____.
2250	658.0615 Led Modules 12-Inch Red Arrow	14.000 EACH	_____.	_____.
2260	658.0620 Led Modules 12-Inch Yellow Arrow	20.000 EACH	_____.	_____.
2270	658.0625 Led Modules 12-Inch Green Arrow	12.000 EACH	_____.	_____.
2280	658.0635 Led Modules Pedestrian Countdown Timer 16-Inch	30.000 EACH	_____.	_____.
2290	658.5069 Signal Mounting Hardware (location) 001. STH 50 (E. Geneva Street) & Borg Road/Wright Street	LS	LUMP SUM	_____.
2300	659.1125 Luminaires Utility LED C	8.000 EACH	_____.	_____.
2310	659.2130 Lighting Control Cabinets 120/240 30-Inch	1.000 EACH	_____.	_____.
2320	661.0200 Temporary Traffic Signals for Intersections (location) 001. STH 50 (E. Geneva Street) & Borg Road/Wright Street	LS	LUMP SUM	_____.
2330	690.0150 Sawing Asphalt	15,904.000 LF	_____.	_____.
2340	690.0250 Sawing Concrete	3,327.000 LF	_____.	_____.
2350	715.0415 Incentive Strength Concrete Pavement	3,042.000 DOL	1.00000	3,042.00
2360	ASP.1T0A On-the-Job Training Apprentice at \$5.00/HR	1,800.000 HRS	5.00000	9,000.00
2370	ASP.1T0G On-the-Job Training Graduate at \$5.00/HR	3,000.000 HRS	5.00000	15,000.00



Proposal Schedule of Items

Proposal ID: 20161213014

Project(s): 3170-08-70, 3170-08-71

SECTION: 0001 Roadway Items

Alt Set ID:

Alt Mbr ID:

Proposal Line Number	Item ID Description	Approximate Quantity and Units	Unit Price	Bid Amount
2380	SPV.0035 Special 200. Removal and Replacement of Unsuitable Material	100.000 CY	_____.	_____.
2390	SPV.0060 Special 001. Remove Existing Signal Faces	14.000 EACH	_____.	_____.
2400	SPV.0060 Special 002. Relocate Existing Traffic Signal Pole	1.000 EACH	_____.	_____.
2410	SPV.0060 Special 003. Relocate Existing Pedestrian Push Button	5.000 EACH	_____.	_____.
2420	SPV.0060 Special 004. Inlet Covers Type DW	8.000 EACH	_____.	_____.
2430	SPV.0060 Special 005. Traffic Signal Controller, Fully Actuated, 8 Phase	1.000 EACH	_____.	_____.
2440	SPV.0060 Special 006. Steel Light Pole Assembly-Single Arm	4.000 EACH	_____.	_____.
2450	SPV.0060 Special 007. Steel Light Pole Assembly-Twin Arm	10.000 EACH	_____.	_____.
2460	SPV.0060 Special 008. Luminaires Utility LED- City of Delavan	24.000 EACH	_____.	_____.
2470	SPV.0060 Special 009. Repower Flashing Beacon	1.000 EACH	_____.	_____.
2480	SPV.0060 Special 010. Remove and Salvage Existing Light Pole	9.000 EACH	_____.	_____.
2490	SPV.0060 Special 015. Construction Staking Curb Ramp Layout	79.000 EACH	_____.	_____.
2500	SPV.0060 Special 016. Salvage and Reinstall Existing Light Pole	2.000 EACH	_____.	_____.
2510	SPV.0060 Special 017. Storm Sewer Tap	2.000 EACH	_____.	_____.



Proposal Schedule of Items

Proposal ID: 20161213014

Project(s): 3170-08-70, 3170-08-71

SECTION: 0001 Roadway Items

Alt Set ID:

Alt Mbr ID:

Proposal Line Number	Item ID Description	Approximate Quantity and Units	Unit Price	Bid Amount
2520	SPV.0060 Special 200. Remove Existing Valve Box	21.000 EACH	_____.	_____.
2530	SPV.0060 Special 201. Abandon Existing Hydrant	7.000 EACH	_____.	_____.
2540	SPV.0060 Special 202. Water Main Fitting 12-Inch Cap	1.000 EACH	_____.	_____.
2550	SPV.0060 Special 203. Water Main Fitting 12-Inch Sleeve	6.000 EACH	_____.	_____.
2560	SPV.0060 Special 204. Water Main Fitting 12-Inch X 45 Degree Bend	2.000 EACH	_____.	_____.
2570	SPV.0060 Special 205. Water Main Fitting 12-Inch X 22.5 Degree Bend	1.000 EACH	_____.	_____.
2580	SPV.0060 Special 206. Water Main Fitting 12-Inch Tee	1.000 EACH	_____.	_____.
2590	SPV.0060 Special 207. Water Main Fitting 12-Inch X 8-Inch Tee	5.000 EACH	_____.	_____.
2600	SPV.0060 Special 208. Water Main Fitting 12-Inch X 6-Inch Tee	4.000 EACH	_____.	_____.
2610	SPV.0060 Special 209. Water Main Fitting 12-Inch X 8-Inch Cross	1.000 EACH	_____.	_____.
2620	SPV.0060 Special 210. Water Main Fitting 12-Inch X 8-Inch Reducer	1.000 EACH	_____.	_____.
2630	SPV.0060 Special 211. Water Main Fitting 8-Inch Sleeve	6.000 EACH	_____.	_____.
2640	SPV.0060 Special 212. Water Main Fitting 8-Inch X 45 Degree Bend	7.000 EACH	_____.	_____.
2650	SPV.0060 Special 213. Water Main Fitting 8-Inch Tee	2.000 EACH	_____.	_____.





Proposal Schedule of Items

Proposal ID: 20161213014

Project(s): 3170-08-70, 3170-08-71

SECTION: 0001 Roadway Items

Alt Set ID: Alt Mbr ID:

Proposal Line Number	Item ID Description	Approximate Quantity and Units	Unit Price	Bid Amount
2660	SPV.0060 Special 214. Water Main Fitting 8-Inch X 6-Inch Tee	5.000 EACH	_____.	_____.
2670	SPV.0060 Special 215. Water Main Fitting 8-Inch X 6-Inch Reducer	4.000 EACH	_____.	_____.
2680	SPV.0060 Special 216. Water Main Fitting 6-Inch Sleeve	6.000 EACH	_____.	_____.
2690	SPV.0060 Special 217. Water Main Fitting 6-Inch X 90 Degree Bend	1.000 EACH	_____.	_____.
2700	SPV.0060 Special 218. Water Main Fitting 6-Inch X 45 Degree Bend	6.000 EACH	_____.	_____.
2710	SPV.0060 Special 219. Water Valves, 12-Inch	10.000 EACH	_____.	_____.
2720	SPV.0060 Special 220. Water Valves, 8-Inch	7.000 EACH	_____.	_____.
2730	SPV.0060 Special 221. Water Valves, 6-Inch	1.000 EACH	_____.	_____.
2740	SPV.0060 Special 222. Water Main Connection 12-Inch Non-Pressure	7.000 EACH	_____.	_____.
2750	SPV.0060 Special 223. Water Main Connection 8-Inch Non-Pressure	6.000 EACH	_____.	_____.
2760	SPV.0060 Special 224. Water Main Connection 6-Inch Non-Pressure	7.000 EACH	_____.	_____.
2770	SPV.0060 Special 225. Fire Hydrants	6.000 EACH	_____.	_____.
2780	SPV.0060 Special 226. Water Service Pipe Connections, 1-Inch	17.000 EACH	_____.	_____.
2790	SPV.0060 Special 227. Adjust Water Valve Box	11.000 EACH	_____.	_____.
2800	SPV.0060 Special 228. Replace Water Valve Box	6.000 EACH	_____.	_____.



Proposal Schedule of Items

Proposal ID: 20161213014

Project(s): 3170-08-70, 3170-08-71

SECTION: 0001 Roadway Items

Alt Set ID: Alt Mbr ID:

Proposal Line Number	Item ID Description	Approximate Quantity and Units	Unit Price	Bid Amount
2810	SPV.0060 Special 229. Adjust Curb Box	3.000 EACH	_____.	_____.
2820	SPV.0060 Special 230. Sanitary Manhole Installation	1.000 EACH	_____.	_____.
2830	SPV.0060 Special 231. Sanitary Manhole Exterior Joint Protection	1.000 EACH	_____.	_____.
2840	SPV.0060 Special 232. Sanitary Manhole Cone Replacement	3.000 EACH	_____.	_____.
2850	SPV.0060 Special 233. Sanitary Manhole Frame and Grate, Special	7.000 EACH	_____.	_____.
2860	SPV.0060 Special 234. Sanitary Manhole Chimney Seals	10.000 EACH	_____.	_____.
2870	SPV.0060 Special 235. Sanitary Manhole Frame Adjustment	18.000 EACH	_____.	_____.
2880	SPV.0075 Special 001. Pavement Cleanup Project ID 3170-08-70	165.000 HRS	_____.	_____.
2890	SPV.0075 Special 200. Water Main Exploratory Excavation	12.000 HRS	_____.	_____.
2900	SPV.0090 Special 001. Concrete Curb & Gutter 24-Inch Type D Special	2,144.000 LF	_____.	_____.
2910	SPV.0090 Special 002. Concrete Curb & Gutter 24-Inch Type A Special	1,084.000 LF	_____.	_____.
2920	SPV.0090 Special 003. Concrete Curb 24-Inch Type D	40.000 LF	_____.	_____.
2930	SPV.0090 Special 004. Concrete Curb & Gutter 24-Inch Type D	345.000 LF	_____.	_____.
2940	SPV.0090 Special 005. Concrete Curb & Gutter HES 30-Inch Type A	400.000 LF	_____.	_____.



Proposal Schedule of Items

Proposal ID: 20161213014

Project(s): 3170-08-70, 3170-08-71

SECTION: 0001 Roadway Items

Alt Set ID: Alt Mbr ID:

Proposal Line Number	Item ID Description	Approximate Quantity and Units	Unit Price	Bid Amount
2950	SPV.0090 Special 006. Concrete Curb & Gutter HES 30-Inch Type D	447.000 LF	_____.	_____.
2960	SPV.0090 Special 007. Sawing Curb Head	9.000 LF	_____.	_____.
2970	SPV.0090 Special 200. Water Main (Open Cut), 12- Inch RJT	225.000 LF	_____.	_____.
2980	SPV.0090 Special 201. Water Main (Open Cut), 12- Inch	2,460.000 LF	_____.	_____.
2990	SPV.0090 Special 202. Water Main (Open Cut), 8- Inch RJT	200.000 LF	_____.	_____.
3000	SPV.0090 Special 203. Water Main (Open Cut), 8- Inch	620.000 LF	_____.	_____.
3010	SPV.0090 Special 204. Water Main (Open Cut), 6- Inch RJT	170.000 LF	_____.	_____.
3020	SPV.0090 Special 205. Water Service Pipe, 1-Inch C.T.S. HDPE	605.000 LF	_____.	_____.
3030	SPV.0090 Special 206. Steel Casing Pipe, 36-Inch	66.000 LF	_____.	_____.
3040	SPV.0105 Special 001. Removing Overhead Sign Support Station 141+75	LS	LUMP SUM	_____.
3050	SPV.0105 Special 002. Removing Overhead Sign Support Station 102+40	LS	LUMP SUM	_____.
3060	SPV.0105 Special 003. Rmv and Trnsprt Traffic Signals, STH50 (E. Geneva St) & Borg Rd/Wright St	LS	LUMP SUM	_____.
3070	SPV.0105 Special 004. Concrete Pavement Joint Layout	LS	LUMP SUM	_____.
3080	SPV.0105 Special 005. EVP Detector STH50 (E. Geneva St) & Borg Road / Wright Street	LS	LUMP SUM	_____.



Proposal Schedule of Items

Proposal ID: 20161213014

Project(s): 3170-08-70, 3170-08-71

SECTION: 0001 Roadway Items

Alt Set ID: Alt Mbr ID:

Proposal Line Number	Item ID Description	Approximate Quantity and Units	Unit Price	Bid Amount
3090	SPV.0105 Special 200. Water Main Spot Relocation 12-Inch RJT	LS	LUMP SUM	_____.
3100	SPV.0105 Special 201. Water Main Spot Relocation 8-Inch RJT	LS	LUMP SUM	_____.
3110	SPV.0105 Special 202. Water Main Spot Relocation 6-Inch RJT	LS	LUMP SUM	_____.
3120	SPV.0120 Special 001. Water for Seeded Areas	622.000 MGAL	_____.	_____.
3130	SPV.0165 Special 001. Wall Modular Block Gravity LRFD, R-64-20 **P**	1,940.000 SF	_____.	_____.
3140	SPV.0165 Special 002. Anti-Graffiti Coating	1,770.000 SF	_____.	_____.

Section: 0001 Total: \_\_\_\_\_.

Total Bid: \_\_\_\_\_.