



Wisconsin Department of Transportation

December 11, 2016

Division of Transportation Systems Development

Bureau of Project Development
 4802 Sheboygan Avenue, Rm 601
 P O Box 7916
 Madison, WI 53707-7916

Telephone: (608) 266-1631
 Facsimile (FAX): (608) 266-8459

NOTICE TO ALL CONTRACTORS:

**Proposal #24: 4085-42-71, WISC 2016 484
 8th Street, City of De Pere
 Main Avenue – Ashland Avenue
 STH 32
 Brown County**

Letting of December 13, 2016

This is Addendum No. 01, which provides for the following:

Special Provisions

Revised Special Provisions	
Article No.	Description
4	Traffic

Schedule of Items

Revised Bid Item Quantities					
Bid Item	Item Description	Unit	Old Quantity	Revised Quantity	Proposal Total
415.0210	Concrete Pavement Gaps	EACH	6	2	8
643.0410	Traffic Control Barricades Type II	DAY	3,473	-453	3,020
643.0705	Traffic Control Warning Lights Type A	DAY	11,627	-453	11,174
643.0900	Traffic Control Signs	DAY	10,872	-453	10,419
644.1410.S	Temporary Pedestrian Surface Asphalt	SF	2,000	-400	1,600
644.1601.S	Temporary Curb Ramp	EACH	40	-6	34
644.1616.S	Temporary Pedestrian Safety Fence	LF	1,200	-140	1,060

Plan Sheets

Revised Plan Sheets	
Plan Sheet	Plan Sheet Title (brief description of changes to sheet)
26	Paving Details (Added Concrete Paving Gap at Cedar Street)
56	Pedestrian Detour Signing (Removed Pedestrian Crossing at Spruce Street)
65	Estimate of Quantities (Quantity Updates)
66	Estimate of Quantities (Quantity Updates)
67	Estimate of Quantities (Quantity Updates)
71	Miscellaneous Quantities (Quantity Updates)
81	Miscellaneous Quantities (Quantity Updates)

The responsibility for notifying potential subcontractors and suppliers of these changes remains with the prime contractor.

Sincerely,

Mike Coleman

Proposal Development Specialist
Proposal Management Section

ADDENDUM NO. 01

4085-42-71

December 11, 2016

Special Provisions

4. Traffic

*Replace paragraph six under section titled **Pedestrian Access** with the following:*

Provide a minimum of one crosswalk access across WIS 32 (8th Street) at the intersections of Oak Street, Pine Street, Cedar Street, and Elm Street or as directed by the engineer. Crosswalk access shall be maintained at all times.

Schedule of Items

Attached, dated December 11, 2016, are the revised Schedule of Items Pages 1 and 5.

Plan Sheets

The following 8½ x 11-inch sheets are attached and made part of the plans for this proposal:

Revised: 26, 56, 65, 66, 67, 71, and 81.

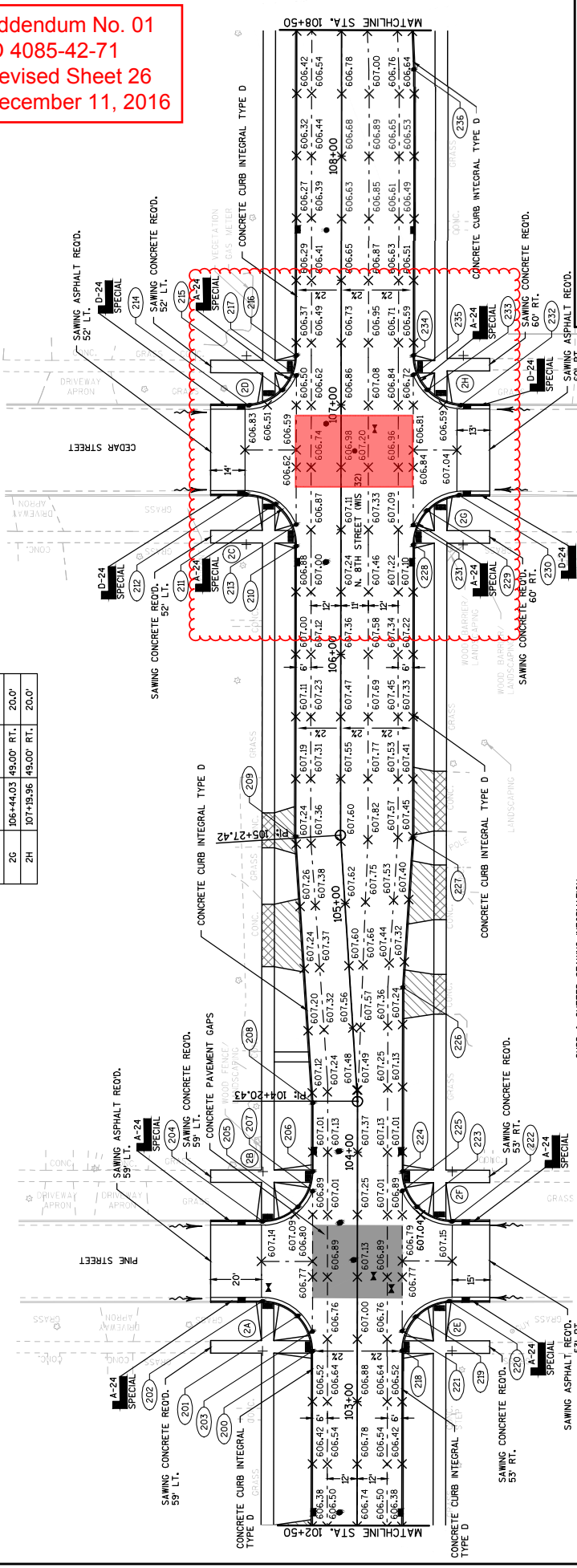
Added: None

END OF ADDENDUM

Addendum No. 01
 ID 4085-42-71
 Revised Sheet 26
 December 11, 2016

CURB & GUTTER RADIUS STAKING INFORMATION

POINT NO.	STATION	OFFSET	RADIUS
2A	103+20.21	38.00' LT.	20.0'
2B	103+92.21	38.00' LT.	20.0'
2C	106+44.09	38.00' LT.	20.0'
2D	107+19.80	38.00' LT.	20.0'
2E	103+20.36	38.00' RT.	20.0'
2F	103+92.36	38.00' RT.	20.0'
2G	106+44.03	48.00' RT.	20.0'
2H	107+19.96	48.00' RT.	20.0'



NOTES

- ELEVATIONS ARE AT 25-FOOT INTERVALS.
- RADIUS DIMENSIONS ARE TO THE FACE OF CURB.
- ELEVATIONS ARE AT THE FLOW LINE ALONG THE FACE OF CURB FOR CONCRETE CURB INTEGRAL TYPE D.

LEGEND

- LONGITUDINAL JOINT
- CONCRETE DRIVEWAY 6-INCH
- CONCRETE SIDEWALK 6-INCH
- CONCRETE CURB & GUTTER XX-INCH TYPE X
- MANHOLE COVER
- INLET COVER
- WATER VALVE
- DRAINAGE DIRECTION

CURB & GUTTER STAKING INFORMATION

POINT NO.	DESCRIPTION	STATION	OFFSET	RADIUS	ELEVATION
225	END GUTTER	103+84.52	18.00' RT.	21.5'	606.94
226	BEND PT.	104+64.85	20.95' RT.	-	607.29
227	BEND PT.	105+24.53	26.87' RT.	-	607.45
228	PC	106+43.97	29.00' RT.	20.0'	607.00
229	MID PT.	106+57.78	34.48' RT.	20.0'	606.95
230	PT	106+64.04	47.04' RT.	20.0'	607.01
231	BEGIN GUTTER	106+51.90	29.00' RT.	21.5'	606.96
232	PC	106+99.98	48.03' RT.	20.0'	606.49
233	MID PT.	107+06.16	34.52' RT.	20.0'	606.59
234	PT	107+19.36	29.00' RT.	20.0'	606.62
235	END GUTTER	107+12.18	29.00' RT.	21.5'	606.66
236	BEND PT.	108+34.78	23.00' RT.	-	606.69

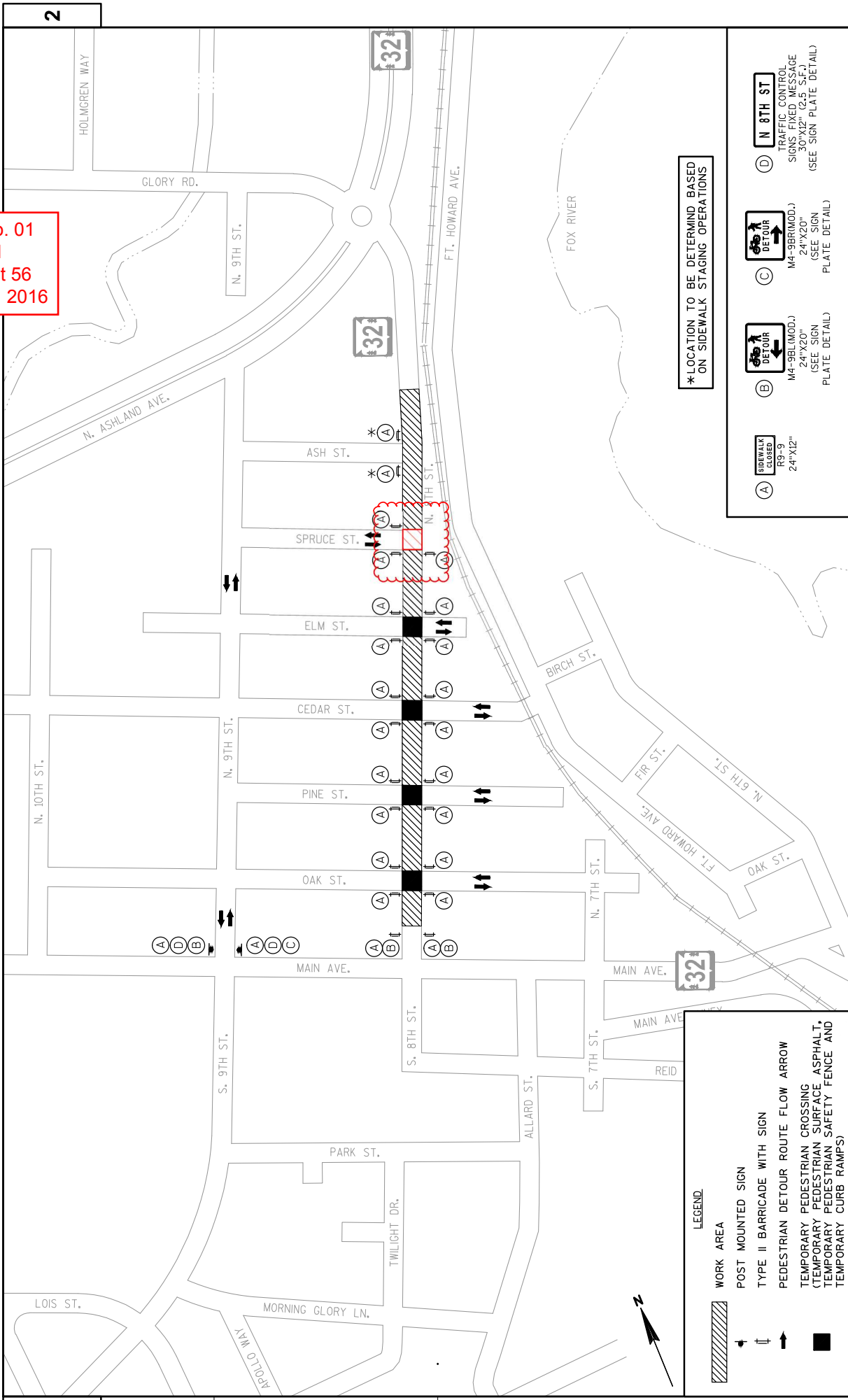
CURB & GUTTER STAKING INFORMATION

POINT NO.	DESCRIPTION	STATION	OFFSET	RADIUS	ELEVATION
212	PT	106+64.06	38.03' LT.	20.0'	606.52
213	BEGIN GUTTER	106+52.02	18.00' LT.	21.5'	606.74
214	PC	106+99.82	36.97' LT.	20.0'	606.46
215	MID PT.	107+06.04	23.48' LT.	20.0'	606.41
216	PT	107+19.85	18.00' LT.	20.0'	606.40
217	END GUTTER	107+18.83	18.00' LT.	21.5'	606.44
218	PC	103+20.45	18.00' RT.	20.0'	606.61
219	MID PT.	103+34.12	23.49' RT.	20.0'	606.69
220	PT	103+40.33	36.85' RT.	20.0'	606.90
221	BEGIN GUTTER	103+28.33	18.00' RT.	21.5'	607.66
222	PC	103+72.36	38.04' RT.	20.0'	607.06
223	MID PT.	103+78.20	23.88' RT.	20.0'	606.93
224	PT	103+92.36	18.00' RT.	20.0'	606.98

CURB & GUTTER STAKING INFORMATION

POINT NO.	DESCRIPTION	STATION	OFFSET	RADIUS	ELEVATION
200	PC	103+20.21	18.00' LT.	20.0'	606.62
201	MID PT.	103+34.35	23.87' LT.	20.0'	606.78
202	PT	103+40.21	38.04' LT.	20.0'	606.83
203	BEGIN GUTTER	103+28.10	18.00' LT.	21.5'	606.66
204	PC	103+72.21	37.96' LT.	20.0'	607.22
205	MID PT.	103+78.08	23.84' LT.	20.0'	606.96
206	PT	103+92.21	18.00' LT.	20.0'	606.98
207	END GUTTER	103+84.33	18.00' LT.	21.5'	606.94
208	BEND PT.	104+19.84	18.00' LT.	-	607.11
209	BEND PT.	105+21.42	18.00' LT.	-	607.24
210	PC	106+43.34	18.00' LT.	20.0'	606.78
211	MID PT.	106+60.28	26.24' LT.	20.0'	606.68

Addendum No. 01
 ID 4085-42-71
 Revised Sheet 56
 December 11, 2016



*LOCATION TO BE DETERMIND BASED ON SIDEWALK STAGING OPERATIONS

- (A) SIDEWALK CLOSED R9-9 24"X12"
- (B) M4-98L(MOD.) 24"X20" (SEE SIGN PLATE DETAIL)
- (C) M4-98R(MOD.) 24"X20" (SEE SIGN PLATE DETAIL)
- (D) N 8TH ST TRAFFIC CONTROL SIGNS FIXED MESSAGE 30"X12" (2.5 S.F.) (SEE SIGN PLATE DETAIL)

- LEGEND
- WORK AREA
 - POST MOUNTED SIGN
 - TYPE II BARRICADE WITH SIGN
 - PEDESTRIAN DETOUR ROUTE FLOW ARROW
 - TEMPORARY PEDESTRIAN CROSSING (TEMPORARY PEDESTRIAN SURFACE, ASPHALT, TEMPORARY PEDESTRIAN SAFETY FENCE AND TEMPORARY CURB RAMP)

Addendum No. 01
 ID 4085-42-71
 Revised Sheet 81
 December 11, 2016

TRAFFIC CONTROL									
CATEGORY	(643.0420)		(643.0705)		(643.0900)		(643.1000)		DURATION
	BARRICADES TYPE III DAY	WARNING LIGHTS TYPE A NO. DEVICES	TRAFFIC CONTROL TYPE A DAY	TRAFFIC CONTROL TYPE A NO. DEVICES	TRAFFIC CONTROL SIGNS DAY	TRAFFIC CONTROL SIGNS NO. DEVICES	TRAFFIC CONTROL SIGNS FIXED MESSAGE SF	TRAFFIC CONTROL SIGNS FIXED MESSAGE SF	
0010	MAIN AVE.	-	-	-	1,208	2	5	151	DAYS
	OAK ST.	4	8	1,208	4	-	-	151	DAYS
	PINE ST.	4	8	1,208	3	453	-	151	DAYS
	CEDAR ST.	4	8	1,208	4	-	-	151	DAYS
	ELM ST.	4	8	1,208	3	453	-	151	DAYS
	SPRUCE ST.	2	4	604	2	302	-	151	DAYS
	ASH ST.	2	4	604	2	302	-	151	DAYS
	S. 8TH ST.	5	7	1,057	1	151	-	151	DAYS
	GLORY RD.	-	-	-	3	453	1	2.5	DAYS
	8TH ST. & STH-32 ROUNDABOUT	5	7	1,057	13	1,963	2	5	DAYS
PROJECT TOTALS									12.5
*ADDITIONAL QUANTITIES FOUND ELSEWHERE									6,493
8,154									

PEDESTRIAN DETOUR									
CATEGORY	(643.0410)		(643.0705)		(643.0900)		(643.1000)		DURATION
	BARRICADES TYPE II DAY	WARNING LIGHTS TYPE A NO. DEVICES	TRAFFIC CONTROL TYPE A DAY	TRAFFIC CONTROL TYPE A NO. DEVICES	TRAFFIC CONTROL SIGNS DAY	TRAFFIC CONTROL SIGNS NO. DEVICES	TRAFFIC CONTROL SIGNS FIXED MESSAGE SF	TRAFFIC CONTROL SIGNS FIXED MESSAGE SF	
0010	MAIN AVENUE	-	-	-	4	604	2	5	151
	OAK STREET	4	4	604	4	604	-	400	240
	PINE STREET	4	4	604	4	604	-	400	240
	CEDAR STREET	4	4	604	4	604	-	400	240
	ELM STREET	4	4	604	4	604	-	400	240
	SPRUCE STREET	3	3	453	3	453	-	400	240
	ASH STREET	2	2	302	2	302	-	400	240
	N. 8TH STREET	2	2	302	4	604	-	400	240
PROJECT TOTALS									34
*ADDITIONAL QUANTITIES FOUND ELSEWHERE									1,060
3,020									

TEMPORARY PAVEMENT MARKING REMOVABLE MASK-OUT TAPE 6-INCH	
CATEGORY	DESCRIPTION
0010	STH 32 SOUTHBOUND ROUNDABOUT APPROACH
	GLORY ROAD EASTBOUND ROUNDABOUT APPROACH
	N. ASHLAND AVENUE NORTHBOUND ROUNDABOUT APPROACH
PROJECT TOTAL	

FENCE SAFETY	
CATEGORY	DESCRIPTION
0010	UNDISTRIBUTED
PROJECT TOTAL	

PROJECT NO: 4085-42-71

HWY: WIS 32 (8TH STREET)

COUNTY: BROWN

MISCELLANEOUS QUANTITIES

SHEET

E



Proposal Schedule of Items

Proposal ID: 20161213024

Project(s): 4085-42-71

SECTION: 0001 Contract Items

Alt Set ID:

Alt Mbr ID:

Proposal Line Number	Item ID Description	Approximate Quantity and Units	Unit Price	Bid Amount
0010	201.0120 Clearing	116.000 ID	_____.	_____.
0020	201.0220 Grubbing	128.000 ID	_____.	_____.
0030	204.0100 Removing Pavement	8,617.000 SY	_____.	_____.
0040	204.0110 Removing Asphaltic Surface	542.000 SY	_____.	_____.
0050	204.0150 Removing Curb & Gutter	828.000 LF	_____.	_____.
0060	204.0155 Removing Concrete Sidewalk	1,616.000 SY	_____.	_____.
0070	204.0210 Removing Manholes	12.000 EACH	_____.	_____.
0080	204.0220 Removing Inlets	31.000 EACH	_____.	_____.
0090	204.0245 Removing Storm Sewer (size) 01. 12-Inch or Less	3,024.000 LF	_____.	_____.
0100	205.0100 Excavation Common	13,399.000 CY	_____.	_____.
0110	213.0100 Finishing Roadway (project) 01. 4085-42-71	1.000 EACH	_____.	_____.
0120	305.0110 Base Aggregate Dense 3/4-Inch	495.000 TON	_____.	_____.
0130	305.0120 Base Aggregate Dense 1 1/4-Inch	4,735.000 TON	_____.	_____.
0140	310.0110 Base Aggregate Open-Graded	3,027.000 TON	_____.	_____.
0150	311.0110 Breaker Run	8,320.000 TON	_____.	_____.
0160	415.0090 Concrete Pavement 9-Inch	10,331.000 SY	_____.	_____.
0170	415.0210 Concrete Pavement Gaps	8.000 EACH	_____.	_____.



Proposal Schedule of Items

Proposal ID: 20161213024

Project(s): 4085-42-71

SECTION: 0001 Contract Items

Alt Set ID:

Alt Mbr ID:

Proposal Line Number	Item ID Description	Approximate Quantity and Units	Unit Price	Bid Amount
0650	632.9101 Landscape Planting Surveillance and Care Cycles	10.000 EACH	_____.	_____.
0660	634.0614 Posts Wood 4x6-Inch X 14-FT	30.000 EACH	_____.	_____.
0670	634.0616 Posts Wood 4x6-Inch X 16-FT	18.000 EACH	_____.	_____.
0680	637.2210 Signs Type II Reflective H	309.300 SF	_____.	_____.
0690	637.2230 Signs Type II Reflective F	14.750 SF	_____.	_____.
0700	638.2602 Removing Signs Type II	25.000 EACH	_____.	_____.
0710	638.3000 Removing Small Sign Supports	21.000 EACH	_____.	_____.
0720	642.5401 Field Office Type D	1.000 EACH	_____.	_____.
0730	643.0100 Traffic Control (project) 01. 4085-42-71	1.000 EACH	_____.	_____.
0740	643.0410 Traffic Control Barricades Type II	3,020.000 DAY	_____.	_____.
0750	643.0420 Traffic Control Barricades Type III	4,530.000 DAY	_____.	_____.
0760	643.0705 Traffic Control Warning Lights Type A	11,174.000 DAY	_____.	_____.
0770	643.0900 Traffic Control Signs	10,419.000 DAY	_____.	_____.
0780	643.1000 Traffic Control Signs Fixed Message	17.500 SF	_____.	_____.
0790	644.1410.S Temporary Pedestrian Surface Asphalt	1,600.000 SF	_____.	_____.
0800	644.1601.S Temporary Curb Ramp	34.000 EACH	_____.	_____.
0810	644.1616.S Temporary Pedestrian Safety Fence	1,060.000 LF	_____.	_____.

