



Wisconsin Department of Transportation

December 5, 2016

Division of Transportation Systems Development

Bureau of Project Development
4802 Sheboygan Avenue, Rm 601
P O Box 7916
Madison, WI 53707-7916

Telephone: (608) 266-1631
Facsimile (FAX): (608) 266-8459

NOTICE TO ALL CONTRACTORS:

Proposal #44: 8680-00-71, WISC 2016 503
City of Superior, Belknap Street
Banks Avenue – Hill Avenue
USH 2
Douglas County

8680-00-72
City of Superior, Belknap Street
Banks Avenue – Hill Avenue
USH 2
Douglas County

8998-00-24, WISC 2016 506
City of Superior, Belknap Street
Side Streets
Banks Avenue – Hill Avenue
USH 2
Douglas County

Letting of December 13, 2016

This is Addendum No. 01, which provides for the following:

Special Provisions

Revised Special Provisions	
Article No.	Description
22	Notice to Contractor – Coordination with Ground Vibration Isolation/Attenuation Research
70	Seismograph/Vibration Monitoring, Item SPV.0045.002
94	Connect to Existing Sanitary Sewer Service, Item SPV.0060.042; Connect to Existing Sanitary Main, 18-inch, Item SPV.0060.043; 20x30-inch, Item SPV.0060.044; 72-inch, Item SPV.0060.045.

Added Special Provisions	
Article No.	Description
178	Lighting Unit Type Special 4, Item SPV.0060.087
179	Lighting Unit Type Special 5, Item SPV.0060.088
180	Concrete Knee Wall, Item SPV.0090.070

Schedule of Items

Revised Bid Item Quantities					
Bid Item	Item Description	Unit	Old Quantity	Revised Quantity	Proposal Total
205.0100	Excavation Common	CY	77,902	2,686	80,588
208.1100	Select Borrow	CY	28,254	761	29,015
305.0120	Base Aggregate 1 ¼-Inch	TON	49,718	346	50,064
455.0605	Tack Coat	GAL	12,709	43	12,752
465.0105	Asphaltic Surface	TON	1855	192	2047
637.2210	Signs Type II Reflective H	SF	1276.72	2.50	1279.22
638.2602	Removing Signs Type II	EACH	218	1	219
638.3000	Removing Small Sign Supports	EACH	111	1	112
643.0410	Traffic Control Barricades Type II	DAY	4,880	762	5,642
643.0900	Traffic Control Signs	DAY	41,134	762	41,896
643.0920	Traffic Control Covering Signs Type II	EACH	44	2	46
647.0156	Pavement Marking Arrows Epoxy Type 1	EACH	9	1	10
647.0166	Pavement Marking Arrows Epoxy Type 2	EACH	69	1	70
647.0356	Pavement Marking Words Epoxy	EACH	16	-1	15
647.0706	Pavement Marking Diagonal Epoxy 6-Inch	LF	1,417	-74	1,343
652.0205	Conduit Rigid Nonmetallic Schedule 40 ¾-Inch	LF	29	131	160
652.0225	Conduit Rigid Nonmetallic Schedule 40 2-Inch	LF	26,919	51	26,970
653.0145	Pull Boxes Steel 24"x48"	EACH	31	2	33
655.0615	Electrical Wire Lighting 10 AWG	LF	3,786	726	4,512
SPV.0060.040	Removing Sanitary Manholes	EACH	1	1	2
SPV.0060.043	Connect to Existing Sanitary Main 6-Inch to 18-Inch	EACH	1	2	3
SPV.0060.065	Gate Valve and Box, 6-Inch	EACH	6	1	7
SPV.0090.005	Removing Sanitary Sewer Pipe 4-Inch to 30 Inch	LF	304	8	312
SPV.0090.010	Sanitary Sewer Main 18-Inch	LF	8	8	16

Added Bid Item Quantities					
Bid Item	Item Description	Unit	Old Quantity	Revised Quantity	Proposal Total
204.0170	Removing Fence	LF	0	65	65
645.0140	Geotextile Type SAS	SY	0	3,970	3,970
SPV.0060.087	Lighting Unit Type Special 4	EACH	0	2	2
SPV.0060.088	Lighting Unit Type Special 5	EACH	0	1	1
SPV.0090.070	Concrete Knee Wall	LF	0	34	34

Plan Sheets

Revised Plan Sheets	
Plan Sheet	Plan Sheet Title (brief description of changes to sheet)
19	Revised Typical Section: Revised and combined with Typical from Sheet 20
30	Revised Typical Section for Cathedral Parking Lot West side of Baxter Avenue
34	Revised Construction Detail, missing data placed
63	Intersection Detail: Added Removing Fence, removed elevation label

153	Water main Plan and Profile: revisions made to one line
250	Permanent Signing Sheet: Parking Signs removed, added in new location
265	Lighting Plan Sheet: Added Note for Lighting Sign
270	Lighting Plan Sheet: Added Note for Lighting Sign
276	Lighting Detail Sheet: Added Detail for Lighting Unit Type Special 4
279	Lighting Detail Sheet: Added Detail for Lighting Unit Type Special 5
411	Pavement Marking Sheet: Bus Turnout Removed, and Bus Turnout Shifted
507	MQ Sheet: Revised to add Unusable Cut volumes, added additional excavation for parking lots and driveways
508	MQ Sheet: Revised to add Unusable Cut volumes, added additional excavation for parking lots and driveways
518	MQ Sheet: Revised – Rearranged Asphaltic Surface Temporary Quantity tables
519	MQ Sheet: Revised Asphaltic Surface, Select Borrow and Base Aggregate Quantities
537	MQ Sheet: Revisions made to add parking signs and revised bus turnouts
542	MQ Sheet: Revisions made to add parking signs and revised bus turnouts - totals
551	MQ Sheet: Revisions made to bus turn out & parking, revised arrows in parking lot
560	MQ Sheet: Revisions made to Sanitary main and Manhole
615	MQ Sheet: Revisions made to Water main, revised gate valve & box quantity
620	MQ Sheet: Revisions made to Water main, revised gate valve & box quantity
631	MQ Sheet: Categories revised, Item Number for entry column corrected.

Added Plan Sheets	
Plan Sheet	Plan Sheet Title (brief description of why sheet was deleted)
41A	Construction Detail Added to show Knee Wall Detail
41B	Construction Detail Added to show Landscape edging details
168A	Sanitary Sewer Detail Added
427A	Temporary Signing Sheet – No parking on Tower Avenue Added
519A	MQ Sheet: Revised Asphaltic Surface, Select Borrow and Base Aggregate Quantities
558A	MQ Sheet: Added New MQ Sheet for New Item Concrete Knee Wall, Removing Fence, Additional Traffic Control Items on Tower Avenue, Lighting Item revisions
709A	SDD 9C12 Sheet a: Added detail needed for traffic signal plans
709B	SDD 9C12 Sheet b: Added detail needed for traffic signal plans

Deleted Plan Sheets	
Plan Sheet	Plan Sheet Title (brief description of why sheet was deleted)
20	Typical Section: Combined onto Typical Section Sheet 19

The responsibility for notifying potential subcontractors and suppliers of these changes remains with the prime contractor.

Sincerely,

Mike Coleman

Proposal Development Specialist
Proposal Management Section

ADDENDUM NO. 01

8680-00-71, 8680-00-72, 8998-00-24

December 5, 2016

Special Provisions

22. Notice to Contractor – Coordination with Ground Vibration Isolation/Attenuation Research

The Wisconsin Department of Transportation (WisDOT) and the Construction & Materials Support Center University of Wisconsin Madison will perform Ground Vibration Isolation/Attenuation Research for the USH 2 Belknap Street project.

During construction, a series of test procedures will be conducted. Due to the urban setting of this project, there are several historical, and many non-historical structures that are located in close proximity (15 feet or less) to the proposed construction activities along the corridor. Specific construction activities have the potential to produce vibration levels that could cause damage to existing structures if appropriate precautions are not taken. One of the primary environmental commitments of the Belknap Street construction project will be to maximize protection of historic structures (and all properties) along the limits of construction.

The contractor shall be responsible for the construction of test ground vibration isolation systems utilizing open or filled trenches as a barrier to surface (Rayleigh) waves. Construct Ground Vibration Isolation Trenches at the 7 locations along the project alignment during year 1 of construction (2017) per plan details. The sites are from Station 205+75 to 210+03 LT and RT.

During and after ground vibration isolation trench construction, the contractor shall run a set of construction equipment along a construction equipment test zone, see special provision SPV.0075.00 Construction Equipment Test Zone. Ground Vibration Isolation/Attenuation Researchers will need to be on site to document construction-induced vibration levels of the following activities and equipment:

- Pavement removal
- Compaction activities
- Jackhammers
- Hydraulic breakers
- Hoe rams
- Vibratory rollers
- Large truck
- Dozer
- Excavator operations
- Paving

Layout of the proposed ground vibration isolation trenches and the construction equipment test zones will be done by others. Collection of seismograph data will be done by others.

Contact WisDOT Soils at least two weeks in advance of starting concrete removal operations work on US 2/Belknap Street, to arrange for layout of trenches and test zones.

Ground Vibration Isolation/Attenuation Research Offers Test Opportunities

The ground vibration testing would be an ideal opportunity for the Contractor to assess and plan equipment/operations for work near historic buildings and properties. The test ground vibration research data would provide information to the Contractor for the Vibration-Inducing Work Activity Plan required in SPV.0045.002.

The Contractor shall be advised it may take extraordinary measures when construction is within vicinity of buildings/structures, listed in Table SPV.0045.002-C4.2 Historic Properties, especially near the Harrington Arts Center building located at 1401 Belknap Street.

The "Harrington Arts Center Art Glass Survey Report" is available upon request. Contact WisDOT Project Manager Brendan Dirkes at (715) 225-9314.

70. Seismograph/Vibration Monitoring, Item SPV.0045.002.

A Description

This special provision describes furnishing a seismograph(s) and employing trained operators to monitor construction-induced vibrations on buildings/structures, and submittal of all required documentation.

Whenever there is a potential for vibration damage to adjacent buildings, structures, or utilities, monitor the vibration source with an approved seismograph, located, in a direct line between the vibration source and the point or area of the closest buildings/structures subject to vibration damage, and as close as practical to the subject structure.

Peak particle velocity shall not be allowed to exceed the maximum limits, seen in tables SPV.0045.002-C4.1 Maximum Peak Particle Velocities and SPV.0045.002-C4.2 Historic Properties, of the nearest buildings/structures subject to vibration damage.

B Materials

Use digital seismographs that are in accordance to Wisconsin Department of Safety and Professional Services (SPS) 307.43, Wisconsin Administrative Code, and are continuous data loggers supplied with all the accessories necessary for making vibration and noise monitoring observations.

C Construction

All vibration-inducing work performed shall be done in compliance with Wisconsin Department of Safety and Professional Services SPS 307.44, unless otherwise noted in the plan documents.

Place the seismograph to continuously monitor all construction activities or as directed by the engineer. Seismograph for continuous project monitoring shall be placed 5' behind proposed sidewalk at begin of construction operations. Monitor all forms of construction operations to determine that peak particle velocity shall not exceed the maximum limits listed in Table SPV.0045.002-C4.1 Maximum Peak Particle Velocities and Figure SPV.0045.002-C4.3. The qualified vibration specialist shall review and report data daily. Review and report exceedances immediately to Engineer in the field. If monitoring shows construction operation staying at or below peak particle velocity then monitoring can cease until different construction operation begins or as directed by the Department or Engineer in the field.

When use of construction equipment approaches buildings/structures, listed in Table SPV.0045.002-C4.2 Historic Properties, within 350 feet of the operations monitoring shall resume. For buildings/structures, listed in Table SPV.0045.002-C4.2 Historic Properties, place the seismograph on a stable surface within 3 feet of the building/structure nearest to the construction operation. The qualified vibration specialist shall review and report data hourly. Review and report exceedances immediately to Engineer in the field.

C.1. Vibration-Inducing Work Activity Plan Submittal

When construction is within vicinity of buildings/structures, listed in Table SPV.0045.002-C4.2 Historic Properties, especially near the Harrington Arts Center building located at 1401 Belknap Street, the Contractor shall be advised it may take extraordinary measures to work in these areas due to worksite conditions.

The "Harrington Arts Center Art Glass Survey Report" is available upon request. Contact WisDOT Project Manager Brendan Dirkes at (715) 225-9314.

Not less than two weeks prior to commencing vibration-inducing work operations, during each year of construction, submit a Vibration-Inducing Work Activity Plan to the engineer for review, for properties listed in Table SPV.0045.002-C4.2 – Historic Properties. The plan shall contain full details vibration-inducing work operations and the methods employed to control and monitor vibration levels. The vibration-inducing work activity plan shall contain the following minimum information:

1. Listing and description of equipment and tools used.
2. Description of proposed vibration-inducing work activity methods and operations.
3. Discussion of methods employed to control and monitor vibration levels.

The plan submittal is for quality control and record keeping purposes. Review of this plan by the engineer shall not relieve the contractor of his responsibility for the accuracy and adequacy of the plan when implemented in the field.

C.2. Condition Surveys

For construction vibration-inducing work, conduct and document pre-construction and post-construction surveys of nearby structures or buildings that have a potential for vibration damage. The Engineer may require condition surveys of facilities not deemed to have damage potential by the contractor. Make right of entry arrangements with the property owners for these condition surveys. Prior to any removal\construction work, the pre-construction survey records shall be made available to the Engineer for review. After completion of the removal\construction operations, perform a post-construction survey and make these records available to the engineer for review. Be responsible for any damage resulting from excessive vibration-causing operations.

These condition surveys shall consist of visually inspecting and recording all existing defects in the structures before and after removal, construction, and/or vibration causing operations. Photographs and/or videotape may be used to assist in documentation. Submit a written report to the department detailing the visual and photographic investigation of potentially affected structures. This report shall include copies of the pre-construction and post-construction surveys and discuss any discrepancies and findings of these surveys.

C.3. Safety

The engineer will, at all times, have the authority to prohibit or halt the contractor's operations or other vibration-inducing construction activities; if it is apparent that through the methods being employed, the safety and convenience of the traveling public is being jeopardized or that vibration levels are excessive or above allowable levels.

C.4. Vibration Monitoring

Vibration monitoring shall be performed by a qualified vibration specialist, subject to the Engineer's approval. The vibration specialist shall monitor vibration levels in accordance with SPS 307.44 of the Wisconsin Administrative Code and interpret the seismograph records to insure that the seismograph data shall be effectively utilized in the control of construction operations with respect to the existing buildings/structures and utilities.

Wisconsin Department of Safety and Professional Services SPS 307.44 states that the maximum allowable limit on ground vibration for buildings/structures not listed in SPS 307.44 shall be established using Table SPV.0045.002-C4.1 Maximum Peak Particle Velocities below and after consulting with the engineer in the field or utility. In no case shall these vibration limits exceed the following criteria:

Table SPV.0045.002-C4.1 Maximum Peak Particle Velocities

Building/Structure Type	Maximum Peak Particle Velocity (Inches per second)
Reinforced Concrete Structures, Unoccupied	4.0
Steel Structures, Unoccupied	4.0
Buried Utilities	2.0
Wells and Aquifers	2.0
Green Concrete (less than 7 days)	1.0
Non-historic buildings	2.0
Historic buildings that have standard vibration sensitivity (<i>in good state of maintenance</i>)	0.5
Historic buildings with greater potential for damage/sensitivity (<i>deteriorated state of maintenance</i>)	0.20

Table SPV.0045.002-C4.2 Historic Properties

Address	Historic Property	Recommended Levels PPV
1424-1430 Tower Ave	New Jersey Block	Below 0.5
1501-1511 Tower Ave	Minnesota Block	Below 0.5
1517-1523 Tower Ave.	Washington Block	2.0
1313 Belknap St.	Douglas County Courthouse	2.0
1503 Belknap St.	Masonic Temple (Elks Lodge)	Below 0.5
1513-1515 John Ave.	Watkins Duplex	2.0
1517 John Ave.	Brown Bros.	2.0
1401 Belknap St.	Hammond Avenue Presbyterian Church (Harrington Arts Center)	Below 0.3
1115 Belknap St.	Cathedral of Christ the King	2.0
1419 Baxter Ave.	Cathedral School	2.0
1416 Cumming Ave	Catholic Charities Bureau	2.0

Monitoring procedures shall be in accordance with SPS 307.44 and conducted as follows: Take seismograph readings prior to construction activities to establish an ambient or background index.

During construction, place the seismograph to monitor all vibration-inducing construction activities or as directed by the engineer. At a minimum utilize one seismograph per location of construction operation. Additional seismographs may be requested by the engineer. If more than one major construction activity per day is taking place, multiple seismographs may be required.

Data recorded for each vibration occurrence shall be furnished to the Engineer, within 24 hours of data collection, and shall include the following:

1. Identification of vibration monitoring instrument used.
2. Description of equipment used by the contractor.
3. Name of qualified observer and interpreter.

4. Distance and direction of recording station from the vibration area.
5. Type of ground at recording station and material on which the instrument is sitting.
6. Peak particle velocity and principal frequency in each component.
7. A dated and signed copy of records of seismograph readings,
8. A comparison (plot) of measured seismograph readings to maximum allowable readings identified on Figure SPV.0045.002-C4.3.
9. If the maximum allowable vibration levels are exceeded, halt further vibration-causing work and document the operational changes to reduce the next vibration levels measured to below or not to exceed acceptable levels.
10. Copy of Vibration-Inducing Work Activity Plan, noting corrections made in the field to equipment, tools, work activity methods and operations
11. A digital copy is required of all information submitted. All data types required shall be on a single portable electronic media device compatible with Microsoft Windows. Media with a USB connector or read on CD or DVD optical drive are acceptable. Media on blu-ray discs is not acceptable.

If construction activities generate ground vibration in excess of the Peak Particle Velocity Limits as shown in Figure SPV.0045.002-C4.3 or as specified in table SPV.0045.002-C4.1 Maximum Peak Particle Velocities and SPV.0045.002-C4.2 Historic Properties in this special provision, stop the construction operation in progress and implement alternate construction methods to produce results within the allowable Peak Particle Velocity Limits.

Figure SPV.0045.002-C4.3

(Source FIGURE 7.44 – Blasting Level Chart, contained in Wisconsin Administrative Code, Chapter SPS 307)

D Measurement

The department will measure Seismograph/Vibration Monitoring bid item by the day of work acceptably completed. The measured quantity will equal the number of calendar days, for each device, from the date the device is placed into operation through the date the device is removed from operation at each location.

E Payment

The department will pay for measured quantities at the contract unit price under the following bid item:

ITEM NUMBER	DESCRIPTION	UNIT
SPV.0045.002	Seismograph/Vibrating Monitoring	DAYS

Payment is full compensation for developing and furnishing the work plans; conducting and providing the pre/post construction surveys; furnishing and operating a seismograph(s), any operator(s), and producing documentation reports.

94. Connect to Existing Sanitary Sewer Service, Item SPV.0060.042; Connect to Existing Sanitary Main, 18-inch, Item SPV.0060.043; 20x30-inch, Item SPV.0060.044; 72-inch, Item SPV.0060.045.

Revise Title of the article to the following:

Connect to Existing Sanitary Sewer Service, Item SPV.0060.042; Connect to Existing Sanitary Main 6-Inch to 18-Inch, Item SPV.0060.043; 20x30-inch, Item SPV.0060.044; 72-inch, Item SPV.0060.045.

Replace entire section titled E Payment with the following:

E Payment

The department will pay for measured quantities at the contract unit price under the following bid item:

ITEM NUMBER	DESCRIPTION	UNIT
SPV.0060.042	Connect to Existing Sanitary Service	EACH
SPV.0060.043	Connect to Existing Sanitary Main 6-Inch to 18-Inch	EACH
SPV.0060.044	Connect to Existing Sanitary Main 20x30-Inch	EACH
SPV.0060.045	Connect to Existing Sanitary Main 72-Inch	EACH

Payment is full compensation for connecting to existing sanitary pipe, furnishing, hauling and placing all materials, for furnishing all excavation, backfilling and disposing of excess material; and for furnishing all labor, tools, equipment and incidentals necessary to complete the work.

178. Lighting Unit Type Special 4, Item SPV.0060.087.

A Description

This special provision describes furnishing and installing lighting units complete with 38-watt LED flood luminaires, stanchion mounts, and concrete foundations.

B Materials

Lighting Units to withstand the maximum loading applied as the standard detail drawings included in the plans show. Apply design factors to this structure conforming to the latest AASHTO Standard Specifications for Structural Supports for Highway Signs, Luminaires and Traffic Signals, together with a wind pressure based on a wind velocity of 90 mph plus gust factor. Luminaires shall be as shown in the Plan details and Lighting Unit Schedule.

The luminaires shall be a type DFL7. The luminaires shall be "UL" listed and equipped with an internal universal voltage (120-277V) LED driver, surge protection, and 4000 Kelvin LED lamps. Flood luminaire shall have no less than 16 LEDs with a metal core printed circuit board. LEDs shall be driven at no more than 700mA.

The optical system shall have a rectangular medium flood distribution. Optics shall be composed of high performance UV stabilized optical grade polymer refractor lenses to achieve desired distribution.

The housing shall be constructed of a single piece low copper die cast aluminum allow for a high resistance to corrosion. The housing shall also act as a heat sink. The lens assembly shall be a heat and impact resistant 1/8" thick tempered glass lens with a one-piece silicon gasket that is mechanically secured to the door frame providing an IP66 seal.

The knuckle shall feature an integral cULus recognized splicing compartment. A single captive 3/16" stainless steel allen-head bolt and stainless steel nut shall securely lock the knuckle aiming teeth in 5° increments. The knuckle assembly shall be fully gasketed to provide a wet location seal.

Luminaires and accessories shall have a textured black finish. The stanchion mount shall be no more than 18" and be rated for in-ground concrete burial mounting.

Furnish shop drawings as specified in 506.3.2, except submit 5 copies with the materials list. Ensure the drawings contain sufficient detail to allow satisfactory review and show the dimensions of all equipment shown in the plans.

All threaded equipment mounting hardware shall be stainless steel.

Ensure that all castings are clean and smooth, and that all details are well-defined and true to pattern.

C Construction

Under the bid items Lighting Unit Type Special 4 furnish and install luminaires, concrete foundations, and all necessary miscellaneous accessories and hardware to complete the installation of the poles as shown in the plan details.

Three 1/c No. 10 stranded wires shall be used to connect the luminaires to their respective branch conductors.

Contractor is responsible for establishing set-back, installation location, and aiming of lighting units. See Landscape Plans for additional information.

All threaded stainless steel hardware and dissimilar metal, threaded hardware shall be coated with an approved zinc-based anti-seize compound (Loctite or Jet-Lube) by the Contractor.

The Contractor shall provide a concrete foundation for the flood light and stanchion as detailed in the Plans.

After completing installation, ensure the centerline of the stanchion is vertical.

The Contractor shall follow manufacturer's instructions regarding luminaire installation.

D Measurement

The department will measure Lighting Unit Type Special 4 as each individual lighting unit acceptably completed.

E Payment

The department will pay for measured quantities at the contract unit price under the following bid item:

ITEM NUMBER	DESCRIPTION	UNIT
SPV.0060.087	Lighting Unit Type Special 4	Each

Payment is full compensation for furnishing and installing all materials, including luminaires, stanchion, concrete foundation, and all accessories, hardware and fittings necessary to install the lighting unit in a workable first class condition, and for furnishing all labor, tools, equipment and incidentals necessary to complete the contract work.

179. Lighting Unit Type Special 5, Item SPV.0060.088.

A Description

This special provision describes furnishing and installing lighting units complete with LED tape lights, power supplies, and vaults.

B Materials

Lighting Units shall be as shown in the Plan details and Lighting Unit Schedule.

The Led tape light shall be a type iQ68. The tape light shall be "UL" listed and equipped with 3500 Kelvin LED lamps. Tape light shall be IP68 rated and operate at 24VDC. LED life span shall be no less than 40,000 hours and have an operating temperature range of -4°F to 113°F. Tape light shall be flexible and have cut points every 3.94". Luminaire shall have a manufacturer's warranty of no less than 3 years.

The max run of the tape lights shall be no less than 21 feet. CRI shall be no less than 90. The tape light shall be rated at 4.4W/ft and 219 lumens/ft.

The tape light shall have an external power supply that is rated for direct burial and outdoor use when installed in the accompanying vault. The power supply shall have an input voltage of 120-277VAC and an output voltage of 24VDC. Power supply shall be fully potted and have an operating temperature range of -4°F to 104°F.

The vault shall be an IP68 wet-listed direct burial transformer/power supply center and shall house the electronic power supply previously mentioned. The vault shall house up to (2)24VDC electronic power supplies. The vault shall be completely watertight. The vault shall have (2) ½" NPT knockouts and (4) ¾" NPT knockouts for conduit entries. Vault shall have a one-piece gasket sealing the cover to the enclosure.

Furnish shop drawings as specified in 506.3.2, except submit 5 copies with the materials list. Ensure the drawings contain sufficient detail to allow satisfactory review and show the dimensions of all equipment shown in the plans.

All threaded equipment mounting hardware shall be stainless steel.

C Construction

Under the bid items Lighting Unit Type Special 5 furnish and install tape light, power supplies, vaults, and all necessary miscellaneous accessories and hardware to complete the installation of the lighting units as shown in the plan details.

Contractor is responsible for establishing set-back, installation location, and aiming of lighting units. See Landscape Plans for additional information.

All threaded stainless steel hardware and dissimilar metal, threaded hardware shall be coated with an approved zinc-based anti-seize compound (Loctite or Jet-Lube) by the Contractor.

The Contractor shall follow manufacturer's instructions regarding tape light, power supply, and vault installation.

D Measurement

The department will measure Lighting Unit Type Special 5 as each individual lighting unit acceptably completed.

E Payment

The department will pay for measured quantities at the contract unit price under the following bid item:

ITEM NUMBER	DESCRIPTION	UNIT
-------------	-------------	------

SPV.0060.088

Lighting Unit Type Special 5

Each

Payment is full compensation for furnishing and installing all materials, including tape light, power supplies, vault, and all accessories, hardware and fittings necessary to install the lighting unit in a workable first class condition, and for furnishing all labor, tools, equipment and incidentals necessary to complete the contract work.

180. Concrete Knee Wall, Item SPV.0090.070.

A Description

This special provision describes furnishing and installing a concrete knee wall as shown on the plans and as hereinafter provided.

B Materials

The formwork materials, reinforcing materials, concrete and accessories necessary for knee wall is to be constructed per the plan details. Contractor to provide list of materials, shop drawings if necessary and material samples to Landscape Architect or Engineer in the field for review and approval prior to the ordering of materials and/or commencing of fabrication.

Concrete – Shall conform to section 501 of the standard specifications and be hand finished, demonstrate form layout and installation method to Landscape Architect or Engineer in the field for review and approval prior to fabrication.

Reinforcing steel – Shall conform to section 505 of the standard specifications.

B.1 Concrete

Materials shall conform to section 501 of the standard specifications.

C Construction

C.1 Concrete Knee Wall

Construct Concrete knee wall as shown in the plan details and in accordance to section 504 of the standard specifications

C.2 Finish

Hand rub all visible above grade finished concrete, construct smooth finished concrete foundation conforming to the requirements in section 502.3.7.3 of the standard specifications.

D Measurement

The department will measure concrete knee wall by the linear foot measured along center of the wall acceptably completed.

E Payment

The department will pay for measured quantities at the contract unit price under the following bid item:

ITEM NUMBER	DESCRIPTION	UNIT
SPV.0090.070	Concrete Knee Wall	LF

Payment is full compensation for providing all materials, including formwork materials, reinforcing materials, concrete and accessories, for the wall, for sawing, excavating and preparing the site work; backfilling and disposing of surplus material; for placing, finishing, protecting, and restoring the site, and for furnishing all labor, tools, equipment, and incidentals necessary to complete the contract work.

Schedule of Items

Attached, dated December 5, 2016, are the revised Schedule of Items Pages 3, 4, 10 – 15, 22, 23, 26, 35, and 36.

Plan Sheets

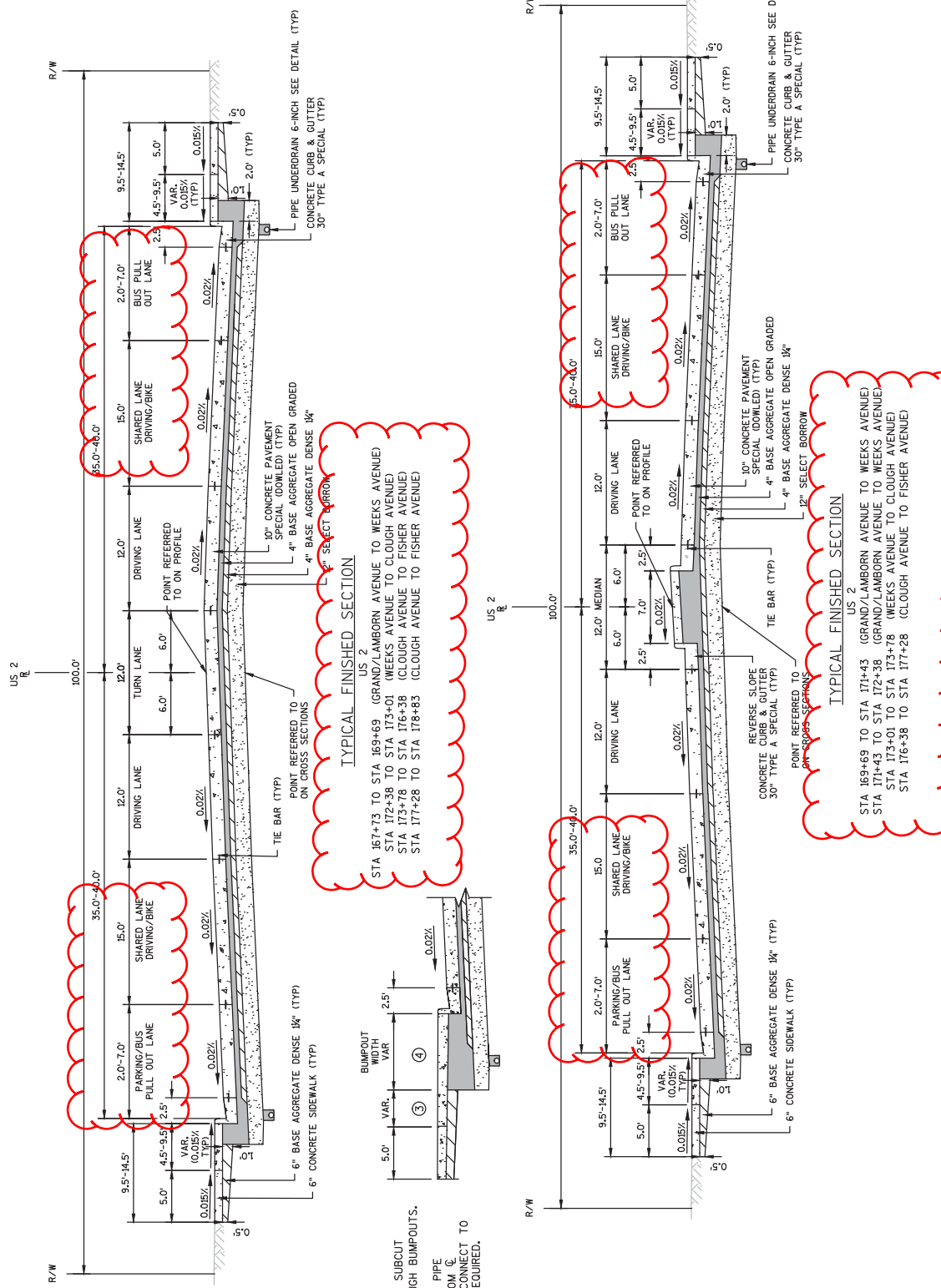
The following 8½ x 11-inch sheets are attached and made part of the plans for this proposal:

Revised: 19, 30, 34, 63, 153, 250, 265, 270, 276, 279, 411,507, 508, 518, 519, 537, 542, 551, 560, 615, 620, and 631.

Added: 41A, 41B, 168A, 427A, 519A, 558A, 709A and 709B.

END OF ADDENDUM

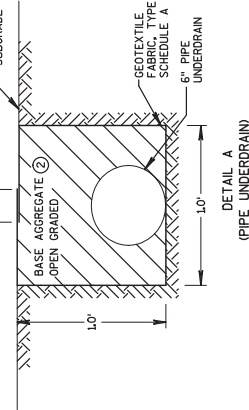
Addendum No. 01
ID 8680-00-71
Revised Sheet 19
December 5, 2016



TYPICAL FINISHED SECTION
 US 2
 STA 167+73 TO STA 169+69 (GRAND/LAMBORN AVENUE TO WEEKS AVENUE)
 STA 172+38 TO STA 173+01 (WEEKS AVENUE TO CLOUGH AVENUE)
 STA 173+78 TO STA 176+38 (CLOUGH AVENUE TO FISHER AVENUE)
 STA 177+28 TO STA 178+83 (CLOUGH AVENUE TO FISHER AVENUE)

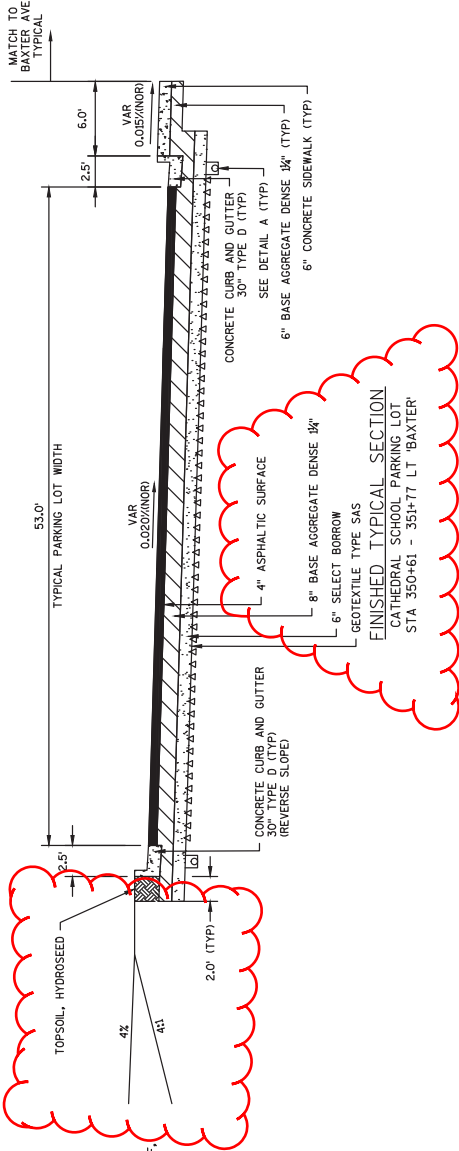
TYPICAL FINISHED SECTION
 US 2
 STA 169+69 TO STA 171+43 (GRAND/LAMBORN AVENUE TO WEEKS AVENUE)
 STA 171+43 TO STA 172+38 (GRAND/LAMBORN AVENUE TO WEEKS AVENUE)
 STA 173+01 TO STA 173+78 (WEEKS AVENUE TO CLOUGH AVENUE)
 STA 176+38 TO STA 177+28 (CLOUGH AVENUE TO FISHER AVENUE)

- ③ MAINTAIN ALIGNMENT OF SUBCUT OFFSET FROM $\frac{1}{2}$ THROUGH BUMPOUTS.
- ④ MAINTAIN ALIGNMENT OF PIPE UNDERDRAIN OFFSET FROM $\frac{1}{2}$ THROUGH BUMPOUTS - CONNECT TO INLET STRUCTURE AS REQUIRED.

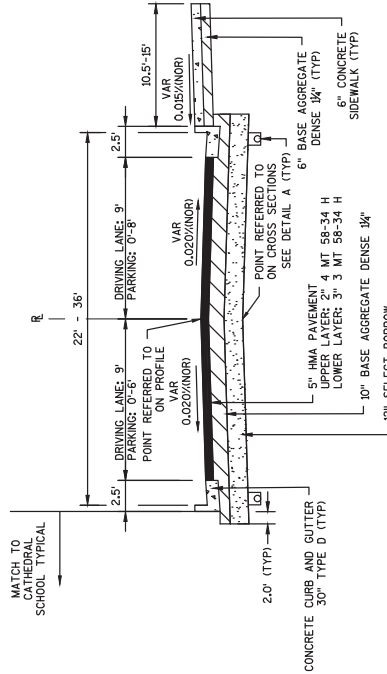


NOTES:

- ① FABRIC SHALL OVERLAP AT THE TOP OF SUBGRADE, 6-INCH MINIMUM OVERLAP. PIPE UNDERDRAIN SHALL BE LAID PARALLEL TO THE GRADE OF THE ROADWAY.
- IF THERE IS A CONE LOT WITH THE STORM SEWER, THE PIPE UNDERDRAIN SHALL BE LAID PARALLEL TO THE STORM SEWER TOWARDS THE CENTER OF THE ROAD. PLACE UNDERDRAIN AFTER EXCAVATION OF SUBGRADE AND PRIOR TO THE PLACEMENT OF SELECT BORROW.
- ② TRENCH BACKFILL WILL BE PAID FOR AS BASE COURSE. THE UNDERDRAIN SHALL BE PAID FOR AS WELL GRADED COURSE AGGREGATE SIZE NO. 1 OR 2 AS PER SUBSECTION 501.2.5.4.4 OF THE STANDARD SPECIFICATIONS.



FINISHED TYPICAL SECTION
CATHEDRAL SCHOOL PARKING LOT
STA 350+61 - 351+77 LT 'BAXTER'



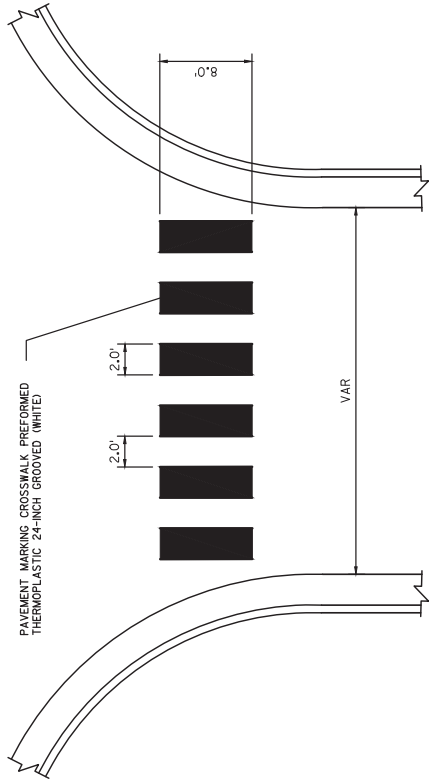
FINISHED TYPICAL SECTION
BAXTER AVE
350+69 - 351+86

Addendum No. 01
ID 8680-00-71
Revised Sheet 30
December 5, 2016

RUNOFF COEFFICIENT TABLE

LAND USE:	HYDROLOGIC SOIL GROUP																	
	A				B				C				D					
	SLOPE RANGE (PERCENT)			SLOPE RANGE (PERCENT)			SLOPE RANGE (PERCENT)			SLOPE RANGE (PERCENT)			SLOPE RANGE (PERCENT)			SLOPE RANGE (PERCENT)		
	0-2	2-6	6 & OVER	0-2	2-6	6 & OVER	0-2	2-6	6 & OVER	0-2	2-6	6 & OVER	0-2	2-6	6 & OVER	0-2	2-6	6 & OVER
ROW CROPS	.08	.16	.22	.12	.20	.27	.15	.24	.33	.19	.28	.38	.19	.28	.38	.19	.28	.38
MEDIAN STRIP-TURF	.19	.20	.24	.19	.22	.26	.20	.23	.30	.20	.23	.30	.20	.23	.30	.20	.23	.30
SIDE SLOPE-TURF	.24	.26	.30	.25	.28	.33	.26	.30	.37	.26	.30	.37	.26	.30	.37	.26	.30	.37
PAVEMENT:	.25	.32		.27	.34		.27	.34		.28	.36		.28	.36		.28	.36	
ASPHALT	.70 - .95																	
CONCRETE	.80 - .95																	
BRICK	.70 - .80																	
DRIVES, WALKS	.75 - .85																	
ROOFS	.75 - .95																	
GRAVEL ROADS, SHOULDERS	.40 - .60																	

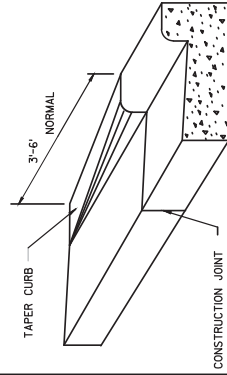
TOTAL PROJECT AREA = 20.96 ACRES
 TOTAL AREA EXPECTED TO BE DISTURBED BY CONSTRUCTION ACTIVITIES = 18.17 ACRES



PAVEMENT MARKING CROSSWALK DETAIL

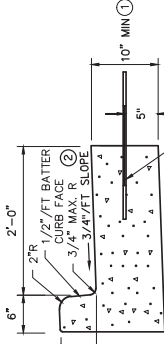
- 1 PAINTED AREAS TO BE CENTERED ON CENTERLINE AND LANE LINES.
- 2 A MINIMUM OF 15 FEET CLEAR DISTANCE SHALL BE LEFT ADJACENT TO THE CURB. IF THE LAST PAINTED AREA FALLS INTO THIS DISTANCE, IT MUST BE OMITTED.
- 3 THE BLOCKS SHALL BE PLACED SO THAT THEY ARE NOT LOCATED IN THE WHEEL PATH OF THE VEHICLES.

Addendum No. 01
 ID 8680-00-71
 Revised Sheet 34
 December 5, 2016



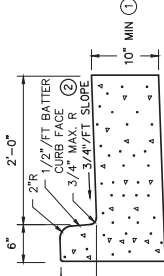
CURB & GUTTER TIERMIN

- NOTES:
- 1 THE BOTTOM OF CURB AND GUTTER MAY BE CONSTRUCTED EITHER LEVEL OR PARALLEL TO THE SLOPE OF THE SUBGRADE OR BASE AGGREGATE PROVIDED A 10" MINIMUM GUTTER THICKNESS IS MAINTAINED.
 - 2 REVERSE SLOPE IN MEDIAN LOCATIONS.



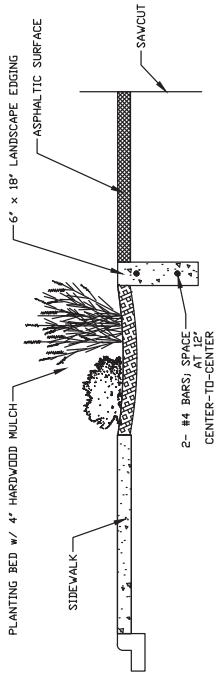
CONCRETE CURB & GUTTER
 30" TYPE A SPECIAL

- NOTES:
- 1 THE BOTTOM OF CURB AND GUTTER MAY BE CONSTRUCTED EITHER LEVEL OR PARALLEL TO THE SLOPE OF THE SUBGRADE OR BASE AGGREGATE PROVIDED A 10" MINIMUM GUTTER THICKNESS IS MAINTAINED.
 - 2 REVERSE SLOPE IN MEDIAN LOCATIONS.



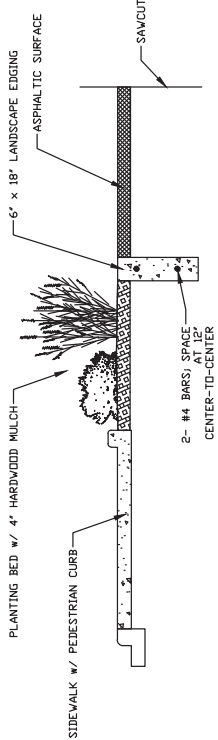
CONCRETE CURB & GUTTER
 30" TYPE D SPECIAL

- NOTES:
- 1 THE BOTTOM OF CURB AND GUTTER MAY BE CONSTRUCTED EITHER LEVEL OR PARALLEL TO THE SLOPE OF THE SUBGRADE OR BASE AGGREGATE PROVIDED A 10" MINIMUM GUTTER THICKNESS IS MAINTAINED.
 - 2 REVERSE SLOPE IN MEDIAN LOCATIONS.



LANDSCAPE EDGING FLUSH

SCALE: NOT TO SCALE

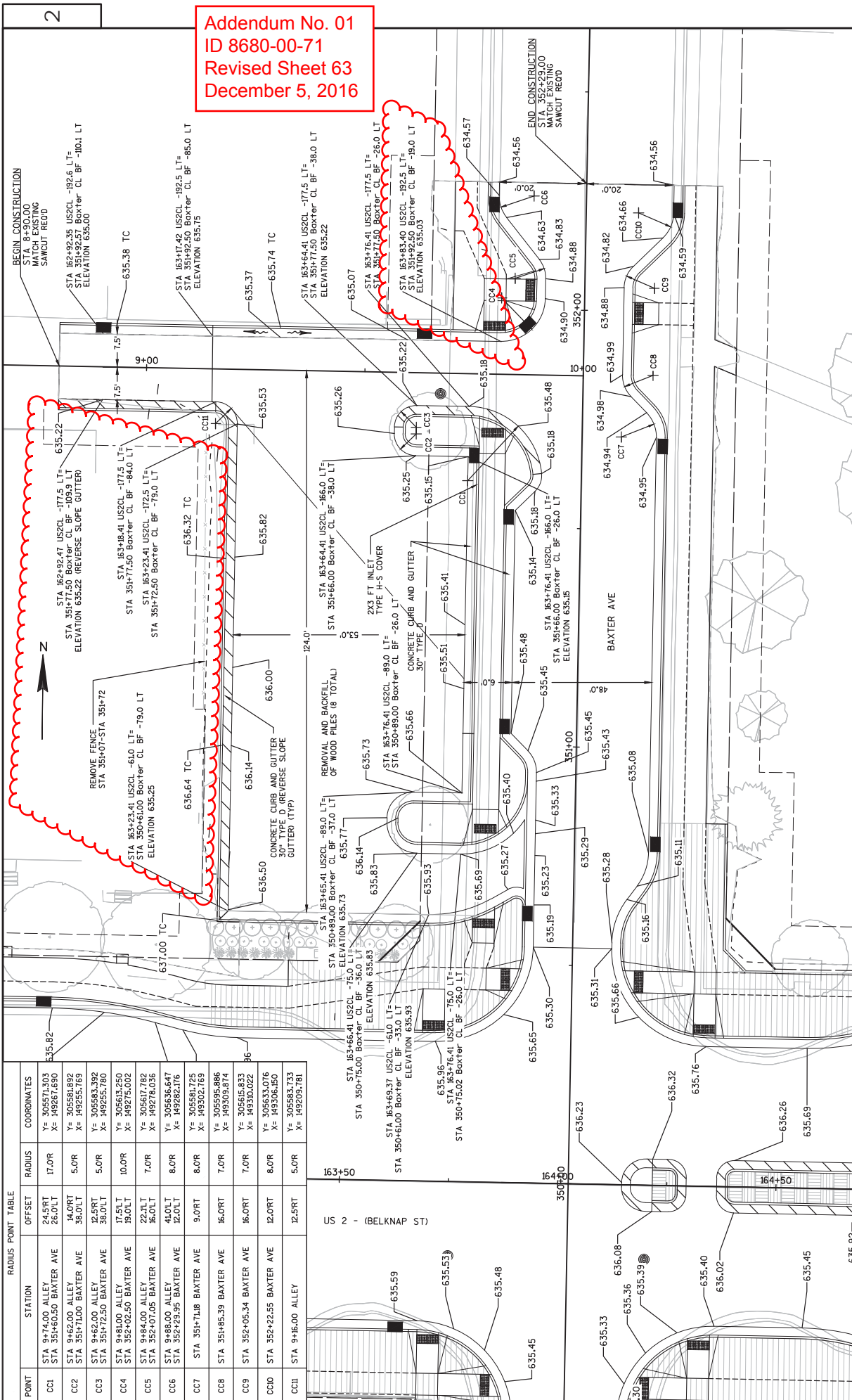


LANDSCAPE EDGING RAISED

SCALE: NOT TO SCALE

Addendum No. 01
 ID 8680-00-71
 Added Sheet 41B
 December 5, 2016

Addendum No. 01
 ID 8680-00-71
 Revised Sheet 63
 December 5, 2016



RADIUS POINT TABLE

POINT	STATION	OFFSET	RADIUS	COORDINATES
CC1	STA 9+74.00 ALLEY STA 35+160.50 BAXTER AVE	24.5RT 26.0LT	17.0R	Y= 305671.303 X= 149257.690
CC2	STA 9+462.00 ALLEY STA 35+171.00 BAXTER AVE	14.0RT 38.0LT	5.0R	Y= 305581.692 X= 149255.169
CC3	STA 9+462.00 ALLEY STA 35+172.50 BAXTER AVE	12.5RT 38.0LT	5.0R	Y= 305583.392 X= 149255.780
CC4	STA 9+480.00 ALLEY STA 35+202.50 BAXTER AVE	17.5LT 19.0LT	10.0R	Y= 305613.250 X= 149275.002
CC5	STA 9+484.00 ALLEY STA 35+207.05 BAXTER AVE	22.0LT 16.0LT	7.0R	Y= 305617.782 X= 149278.036
CC6	STA 9+488.00 ALLEY STA 35+229.95 BAXTER AVE	41.0LT 12.0LT	8.0R	Y= 305636.647 X= 149282.176
CC7	STA 35+171.18 BAXTER AVE	9.0PT	8.0R	Y= 305581.725 X= 149302.769
CC8	STA 35+185.39 BAXTER AVE	16.0PT	7.0R	Y= 305595.886 X= 149303.874
CC9	STA 35+205.34 BAXTER AVE	16.0PT	7.0R	Y= 305615.833 X= 149300.022
CC10	STA 35+222.55 BAXTER AVE	12.0PT	8.0R	Y= 305633.076 X= 149306.150
CC11	STA 9+416.00 ALLEY	12.5RT	5.0R	Y= 305583.733 X= 149203.781

PROJECT NO: 8680-00-71

COUNTY: DOUGLAS

INTERSECTION DETAIL - BAXTER AVE - NW PARKING LOT

SHEET 63

FILE NAME: P:\A\W\I\T\W\122503\CD\86800071\SHEETS\PLAN\01101.DWG

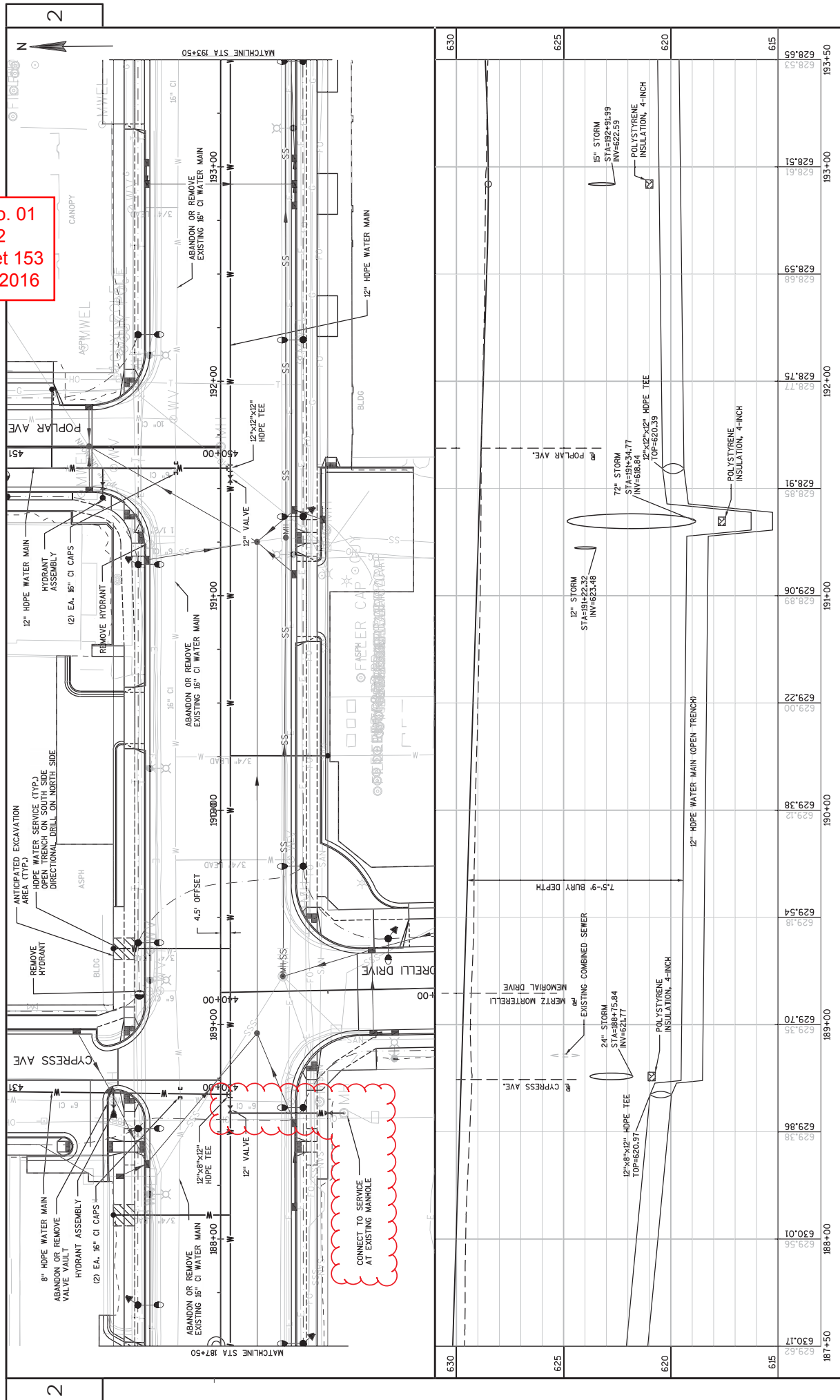
PLOT DATE: 11/30/2016 11:09 AM

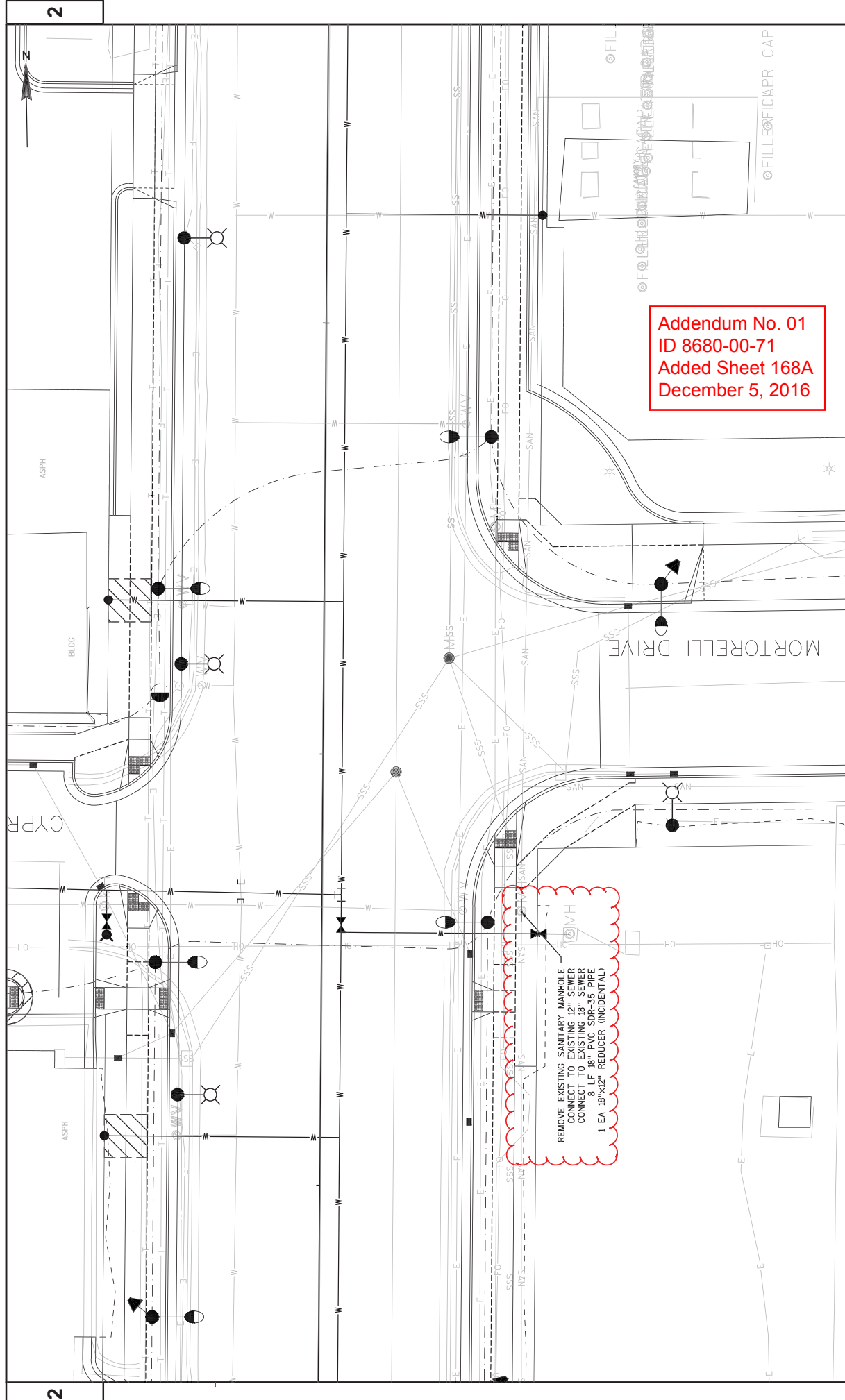
PLOT BY: NICK ENGH

PLOT SCALE: 1:120.XREF

WSDOT/CADD SHEET 42

Addendum No. 01
 ID 8680-00-72
 Revised Sheet 153
 December 5, 2016





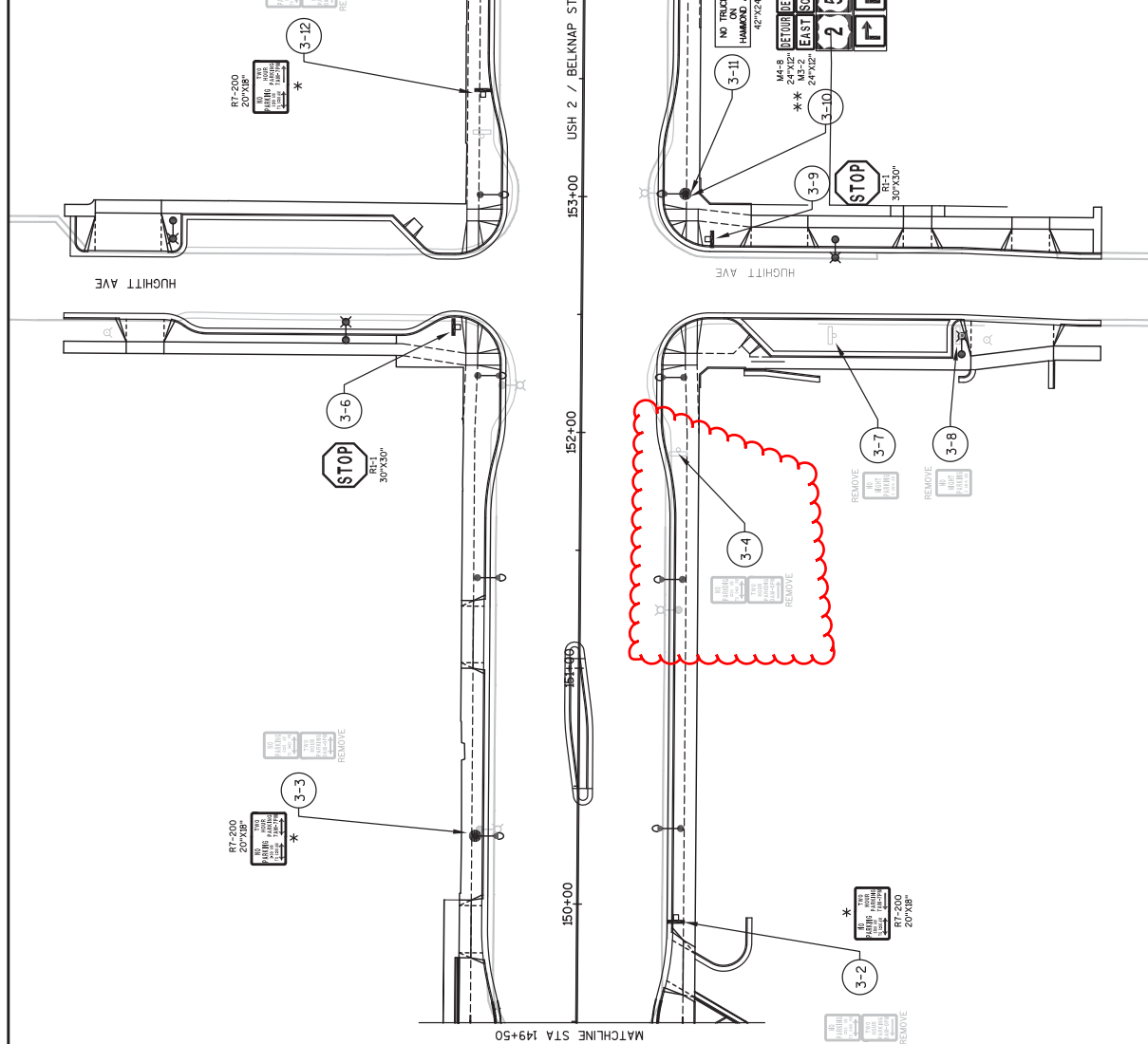
Addendum No. 01
ID 8680-00-71
Added Sheet 168A
December 5, 2016

REMOVE EXISTING SANITARY MANHOLE
CONNECT TO EXISTING 18" SEWER
8 LF 18" PVC SDR-35 PIPE
1 EA 18"x12" REDUCER (INCIDENTAL)



SIGN LEGEND

- EXISTING SIGN MOUNTED ON POST(S)
- EXISTING SIGN MOUNTED TO LIGHT OR SIGNAL POLE
- PROPOSED SIGN MOUNTED ON 2X2-INCH TUBULAR POST(S)
- PROPOSED SIGN MOUNTED ON SIGNAL POLE MONOTUBE ARM
- PROPOSED SIGN BANDED TO LIGHT OR SIGNAL POLE
- 'X' DENOTES SIGN SHEET NO.; 'Y' DENOTES SIGN NO.

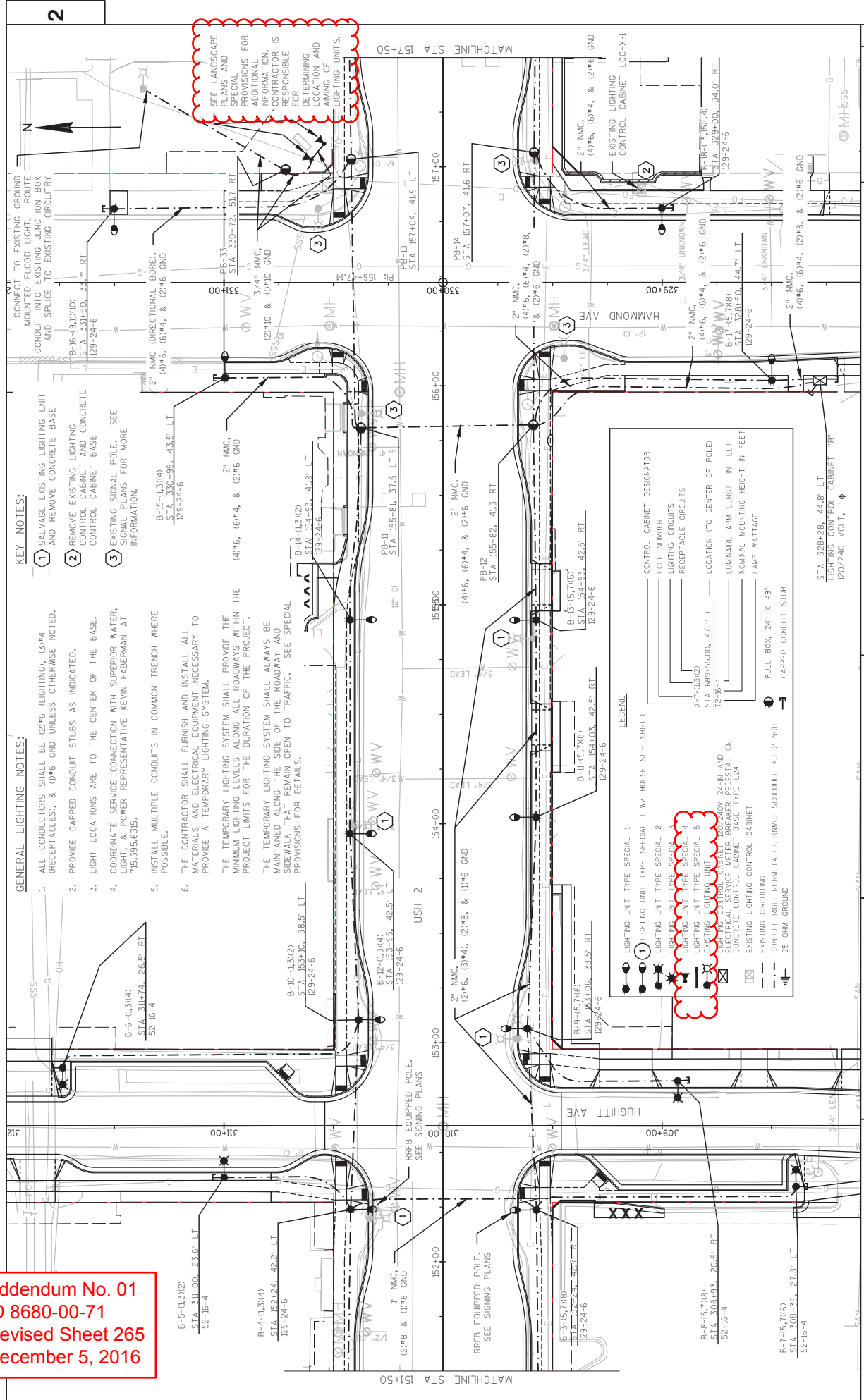


Addendum No. 01
 ID 8680-00-71
 Revised Sheet 250
 December 5, 2016

* RT-200 SIGNS SHALL HAVE NO PARKING 3:00 AM TO 6:00 AM, AND TWO HOUR PARKING FROM 7:00 AM TO 7:00 PM (ARROWS VARY)

** SNOW EMERGENCY SIGNS ARE HINGED FOR FOLDING ABOVE AND BELOW THE ROUTE MARKER M50-2 SIGN.

**Addendum No. 01
ID 8680-00-71
Revised Sheet 265
December 5, 2016**



KEY NOTES:

- 1 SALVAGE EXISTING LIGHTING UNIT AND REMOVE CONCRETE BASE
- 2 REMOVE EXISTING LIGHTING CONTROL CABINET AND CONCRETE CONTROL CABINET BASE
- 3 EXISTING SIGNAL POLE. SEE SIGNAL PLANS FOR MORE INFORMATION.

GENERAL LIGHTING NOTES:

1. ALL CONDUCTORS SHALL BE (2)*6 LIGHTING, (3)*4 RECEPTABLES, & (0)*6 GND UNLESS OTHERWISE NOTED.
 2. PROVIDE CAPPED CONDUIT STUBS AS INDICATED.
 3. LIGHT LOCATIONS ARE TO THE CENTER OF THE BASE.
 4. COORDINATE SERVICE CONNECTION WITH SUPERIOR WATER, LIGHT, & POWER REPRESENTATIVE KEVIN HABERMAN AT 715-395-6335.
 5. INSTALL MULTIPLE CONDUITS IN COMMON TRENCH WHERE POSSIBLE.
 6. THE CONTRACTOR SHALL FURNISH AND INSTALL ALL MATERIALS AND ELECTRICAL EQUIPMENT NECESSARY TO PROVIDE A TEMPORARY LIGHTING SYSTEM.
- THE TEMPORARY LIGHTING SYSTEM SHALL PROVIDE THE MINIMUM LIGHTING LEVELS ALONG ALL ROADWAYS WITHIN THE PROJECT LIMITS FOR THE DURATION OF THE PROJECT.
- THE TEMPORARY LIGHTING SYSTEM SHALL ALWAYS BE MAINTAINED ALONG THE SIDE OF THE ROADWAY AND SIDEWALK THAT REMAIN OPEN TO TRAFFIC. SEE SPECIAL PROVISIONS FOR DETAILS.

SEE LANDSCAPE PLANS AND SPECIAL PROVISIONS FOR ADDITIONAL INFORMATION. CONTRACTOR IS RESPONSIBLE FOR DETERMINING LOCATION AND AMOUNT OF LIGHTING UNITS.

LEGEND

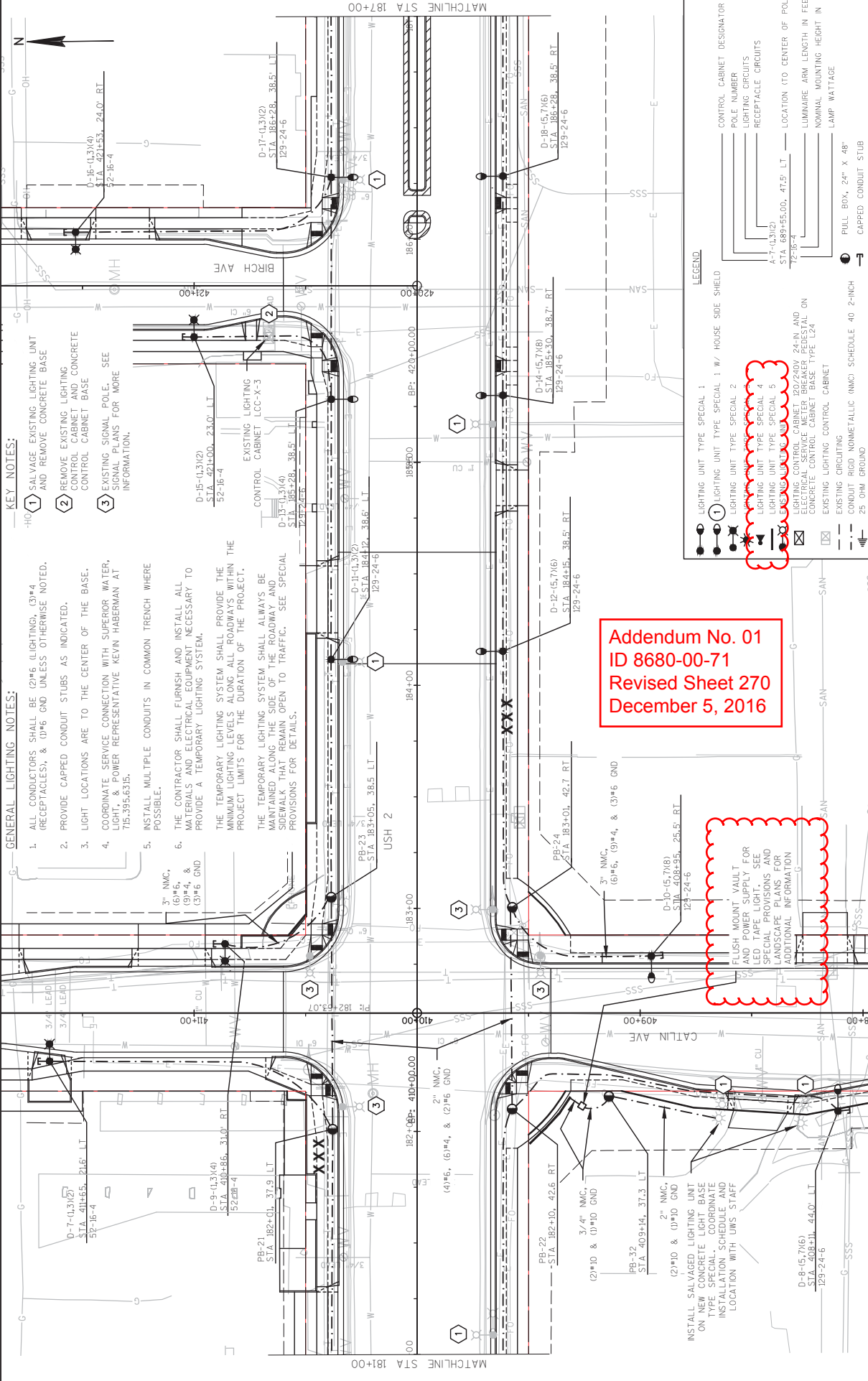
- LIGHTING UNIT TYPE SPECIAL 1
- LIGHTING UNIT TYPE SPECIAL 2
- LIGHTING UNIT TYPE SPECIAL 3
- LIGHTING UNIT TYPE SPECIAL 4
- LIGHTING UNIT TYPE SPECIAL 5
- EXISTING LIGHTING UNIT
- EXISTING CONCRETE CONTROL CABINET BASE
- EXISTING LIGHTING CONTROL CABINET
- EXISTING CIRCUITING
- CONDUIT RIGID NONMETALLIC (NMC) SCHEDULE 40 2-INCH
- 25 OHM GROUND

CONTROL CABINET DESIGNATOR

POLE NUMBER
LIGHTING CIRCUITS
RECEPTABLE CIRCUITS

LOCATION (TO CENTER OF POLE)
LUMINAIRE ARM LENGTH IN FEET
NOMINAL MOUNTING HEIGHT IN FEET
LAMP WATTAGE

PULL BOX, 24" X 48"
CAPPED CONDUIT STUB



KEY NOTES:

- 1 SALVAGE EXISTING LIGHTING UNIT AND REMOVE CONCRETE BASE
- 2 REMOVE EXISTING LIGHTING CONTROL CABINET AND CONCRETE CONTROL CABINET BASE
- 3 EXISTING SIGNAL POLE. SEE SIGNAL PLANS FOR MORE INFORMATION.

GENERAL LIGHTING NOTES:

1. ALL CONDUCTORS SHALL BE (2)*6 LIGHTING, (3)*4 (RECEPTACLE), & (1)*6 GND UNLESS OTHERWISE NOTED.
2. PROVIDE CAPPED CONDUIT STUBS AS INDICATED.
3. LIGHT LOCATIONS ARE TO THE CENTER OF THE BASE.
4. COORDINATE SERVICE CONNECTION WITH SUPERIOR WATER, LIGHT, & POWER REPRESENTATIVE KEVIN HABERMAN AT 75.395.6335.
5. INSTALL MULTIPLE CONDUITS IN COMMON TRENCH WHERE POSSIBLE.
6. THE CONTRACTOR SHALL FURNISH AND INSTALL ALL MATERIALS AND ELECTRICAL EQUIPMENT NECESSARY TO PROVIDE A TEMPORARY LIGHTING SYSTEM.

THE TEMPORARY LIGHTING SYSTEM SHALL PROVIDE THE MINIMUM LIGHTING LEVELS ALONG ALL ROADWAYS WITHIN THE PROJECT LIMITS FOR THE DURATION OF THE PROJECT. THE TEMPORARY LIGHTING SYSTEM SHALL ALWAYS BE MAINTAINED ALONG THE SIDE OF THE ROADWAY AND SIDEWALK THAT REMAIN OPEN TO TRAFFIC. SEE SPECIAL PROVISIONS FOR DETAILS.

Addendum No. 01
ID 8680-00-71
Revised Sheet 270
December 5, 2016

FLUSH MOUNT WALL
AND TYPE SUPPLY FOR
SPECIAL PROVISIONS AND
LANDSCAPE PLANS FOR
ADDITIONAL INFORMATION

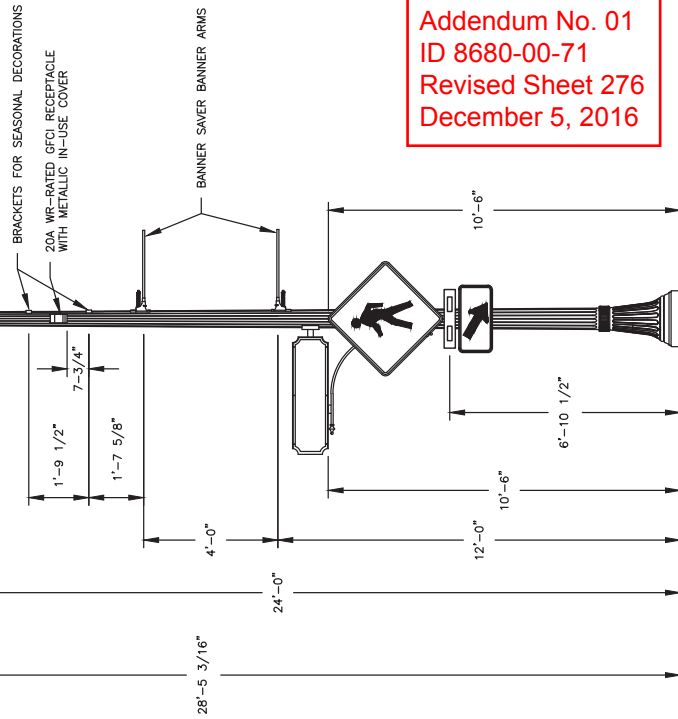
LEGEND

- (Symbol) LIGHTING UNIT TYPE SPECIAL 1
 - (Symbol) LIGHTING UNIT TYPE SPECIAL 1 W/ HOUSE SIDE SHIELD
 - (Symbol) LIGHTING UNIT TYPE SPECIAL 2
 - (Symbol) LIGHTING UNIT TYPE SPECIAL 4
 - (Symbol) LIGHTING UNIT TYPE SPECIAL 5
 - (Symbol) LIGHTING CONTROL CABINET 20/240V 24-IN AND 24-IN CONCRETE CONTROL CABINET BASE TYPE L24
 - (Symbol) EXISTING LIGHTING CONTROL CABINET
 - (Symbol) EXISTING CIRCUITING
 - (Symbol) CONDUIT RIGID NONMETALLIC (NMC) SCHEDULE 40 2-INCH
 - (Symbol) 25 OHM GROUND
 - (Symbol) FULL BOX, 24" X 48"
 - (Symbol) CAPPED CONDUIT STUB
- CONTROL CABINET DESIGNATOR**
- (Symbol) POLE NUMBER
 - (Symbol) LIGHTING CIRCUITS
 - (Symbol) RECEPTACLE CIRCUITS
 - (Symbol) LOCATION (TO CENTER OF POLE)
 - (Symbol) LUMINAIRE ARM LENGTH IN FEET
 - (Symbol) NOMINAL MOUNTING HEIGHT IN FEET
 - (Symbol) LAMP WATTAGE

EQUIPMENT SCHEDULE

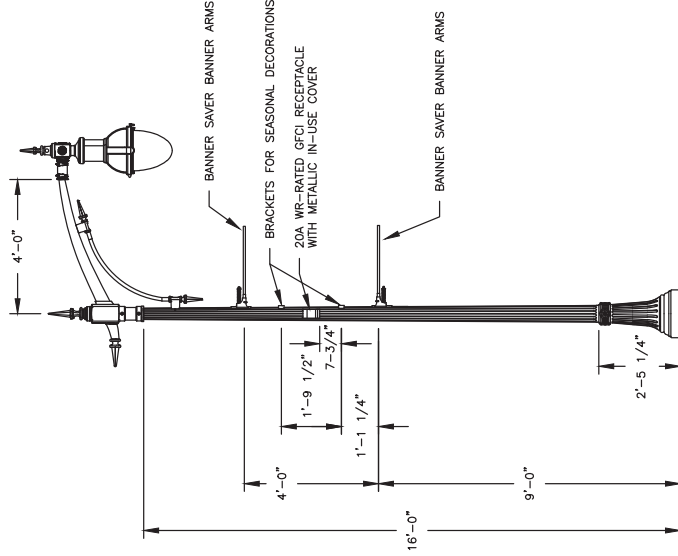
SYMBOL	DESCRIPTION	LAMP SOURCE	MOUNTING	OPTICS	MANUFACTURER & SERIES #
	LIGHTING UNIT TYPE SPECIAL 1 TEARDROP STYLE LED LUMINAIRE ON TAPERED FLUTED ALUMINUM POLE W/ BANNER ARMS AND 20A WR-RATED GFCl RECEPTACLE W/ METALLIC IN-USE COVER	129 WATT 80 LED 4000K	24' POLE ON LIGHT FOUNDATION TYPE SPECIAL	TYPE III	LUMEC - LUMINAIRE: RN20-135W60LED4K-R-GL-LE3R-240-SMA-BKTX LUMINAIRE: RN20-135W60LED4K-R-GL-LE3R-240-SMA-HS-BKTX* ARM: AR3-1-BKTX HAPOO - POLE: B27023-BA
	LIGHTING UNIT TYPE SPECIAL 2 TEARDROP STYLE LED LUMINAIRE ON TAPERED FLUTED ALUMINUM POLE W/ BANNER ARMS AND 20A WR-RATED GFCl RECEPTACLE W/ METALLIC IN-USE COVER	52 WATT 32 LED 4000K	16' POLE ON LIGHT FOUNDATION TYPE SPECIAL	TYPE III	LUMEC - LUMINAIRE: RN20-55W32LED4K-R-GL-LE3R-240-SMA-BKTX ARM: AR4-1-BKTX HAPOO - POLE: B27024-BA
	LIGHTING UNIT TYPE SPECIAL 3 ACORN STYLE LED LUMINAIRE MOUNTED ON EXISTING MONUMENT	36 WATT 32 LED 4000K	ON EXISTING MONUMENT	TYPE V	LUMEC - LUMINAIRE: 555-35W32LED4K-R-GL-LE5-240-SFX-EN10-BKTX
	LIGHTING UNIT TYPE SPECIAL 4 ACORN STYLE LED LUMINAIRE MOUNTED ON EXISTING MONUMENT COMPLETE WITH CONCRETE FOUNDATION	38 WATT 32 LED 4000K	STANCHION MOUNTED ON CONCRETE FOUNDATION	RECTANGULAR MONUMENT FLOOD	*SEE SPECIAL PROVISIONS FOR PERFORMANCE CHARACTERISTICS
	LIGHTING UNIT TYPE SPECIAL 5 21'-FT LINEAR LED TAPE LIGHT W/ ELECTRONIC POWER SUPPLY AND IP68 RATED DIRECT BURIAL VAULT	4.4 WATT/FT LED 3500K	SURFACE MOUNT FLOOD ON U-CHANNEL	FLOOD	*SEE SPECIAL PROVISIONS FOR PERFORMANCE CHARACTERISTICS

*NOTE: LUMINAIRE IS EQUIPPED WITH HOUSE-SIDE SHIELD. INSTALL AT LOCATIONS AS DESIGNATED IN THE PLANS WITH A (1)

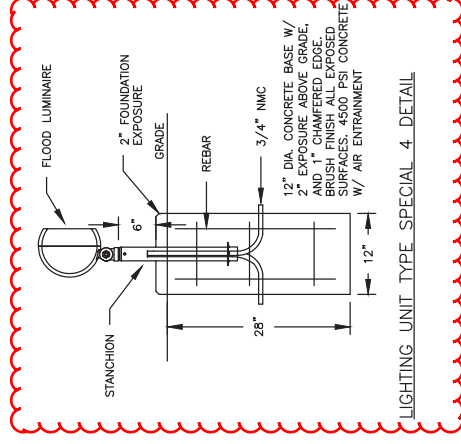


Addendum No. 01
ID 8680-00-71
Revised Sheet 276
December 5, 2016

LIGHTING UNIT TYPE SPECIAL 1 DETAIL

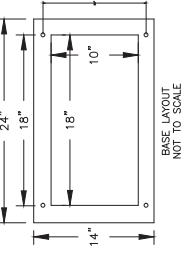
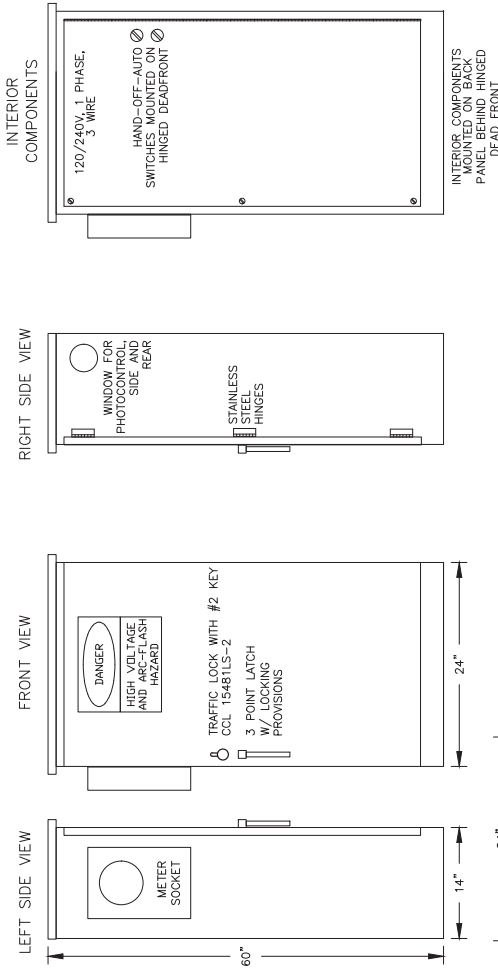


LIGHTING UNIT TYPE SPECIAL 2 DETAIL



LIGHTING UNIT TYPE SPECIAL 4 DETAIL

LIGHTING UNIT TYPE SPECIAL 3 DETAIL



SERVICE CABINET NOTES:

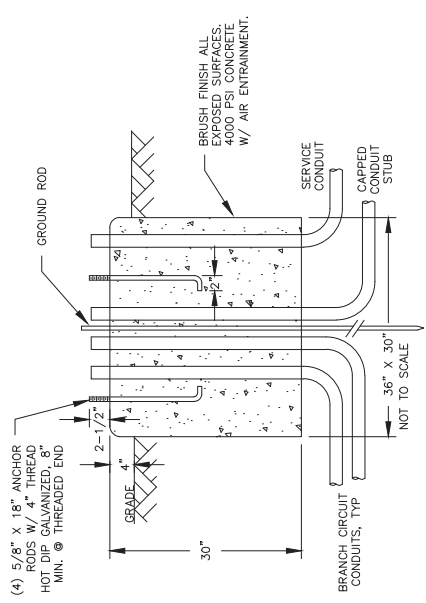
- A. PROVIDE METER SOCKET PER UTILITY COMPANY REQUIREMENTS.
- B. CIRCUIT BREAKERS SHALL BE 120/240 VOLT AC, 60Hz AND SHALL BE CLEARLY MARKED WITH THE "ON" AND "OFF" POSITIONS AND IDENTIFIED WITH THE LOAD WHICH IT IS CARRYING.
- C. SHORT CIRCUIT RATING - 22,000 AC SYMMETRICAL.
- D. 3-POSITION SELECTOR SWITCH ALLEN BRADLEY #800T-J2A.
- E. CIRCUIT CONTACTORS SHALL HAVE A 240 VOLT RATING, WITH 120 VOLT COIL.
- F. PROVIDE PANEL WITH DIMENSIONS AS REQUIRED TO FIT EQUIPMENT PROPOSED.
- G. PROVIDE A 25-OHM GROUND AT CABINET AS PER NEC.
- H. TIME CLOCK SHALL BE NEMA 3B WITH A CAPACITOR BACK-UP, AUTOMATIC DAYLIGHT SAVINGS TIME, AND LEAP-YEAR ADJUSTMENTS. TORQ, MODEL E101B.
- I. PROVIDE 20A WR-RATED GFCI RECEPTACLE MOUNTED TO CABINET DEAD-FRONT.
- J. BOTH PHOTOCONTROL AND ITS SOCKET SHALL BE 3 TERMINAL, POLARIZED, TWIST-LOCK TYPE. IT SHALL BE EQUIPPED WITH A MOVRO TYPE LIGHTNING ARRESTER.
- K. CABINET SHALL BE MANUFACTURED BY POVOLNY SPECIALTIES INC. 651.452.7335.
- L. COORDINATE SUPERIOR WATER LIGHT AND POWER SERVICE CONNECTIONS WITH KEVIN HABERMAN AT 715.395.6315.

CABINET CONSTRUCTION

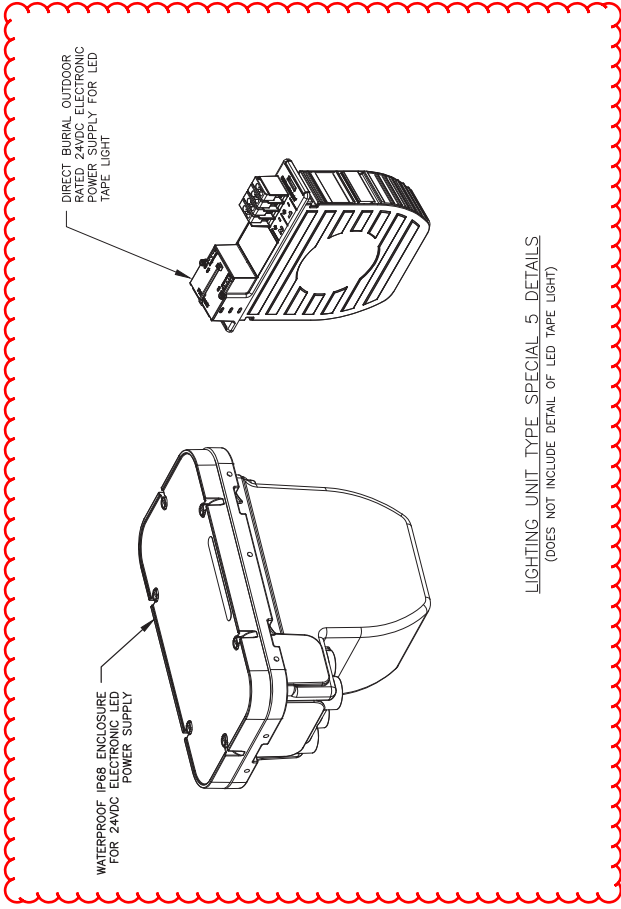
- NEMA 3R
- INTERIOR COMPONENTS MOUNTED ON BACK PANEL BEHIND DEAD FRONT
- 1/8" ANODIZED ALUMINUM (DURANODIC BLACK)
- NEOPRENE GASKET EDGEMORE
- SILICONE GASKET EDGEMORE
- ETL LISTED IN ACCORDANCE WITH UL508A

Addendum No. 01
ID 8680-00-71
Revised Sheet 279
December 5, 2016

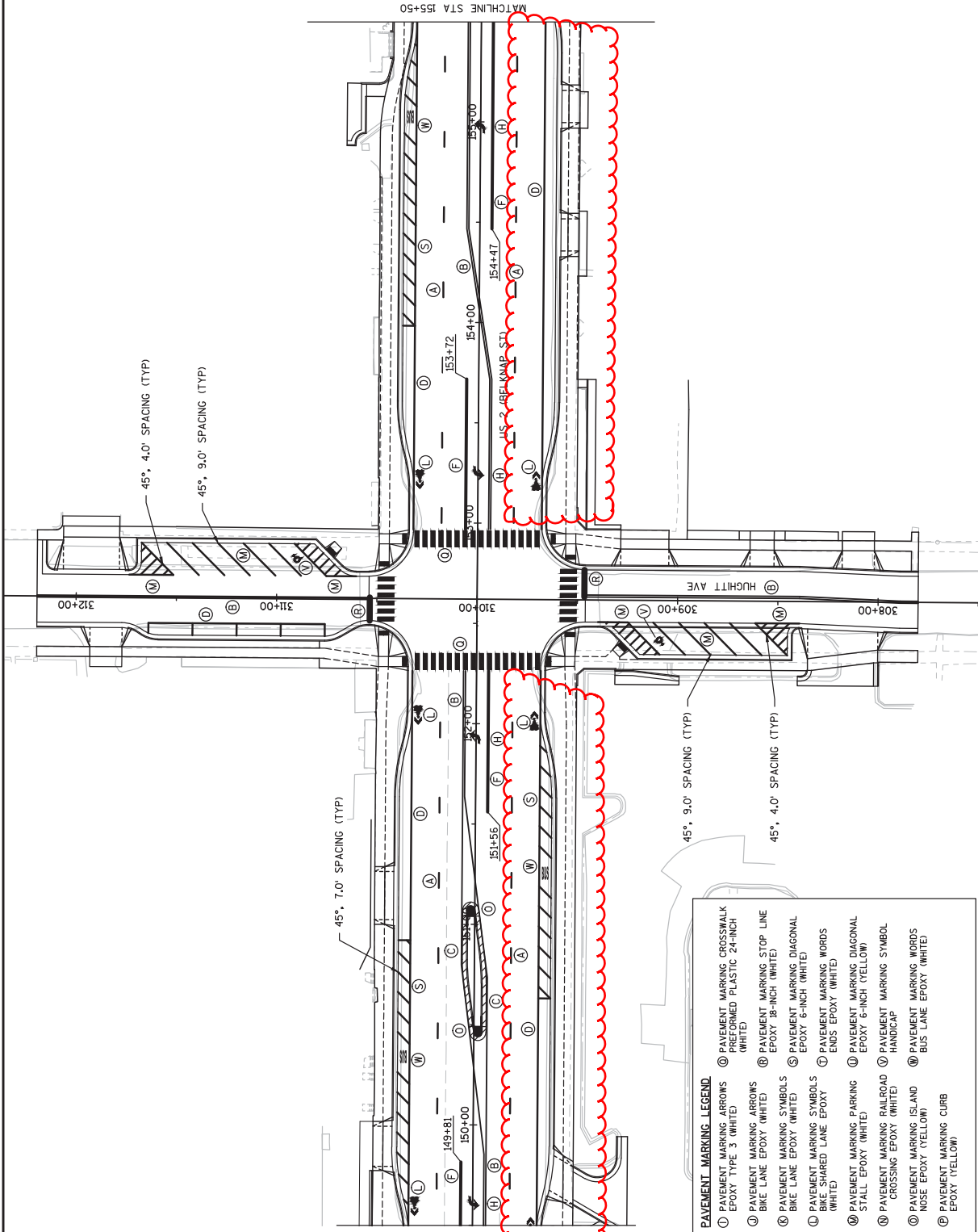
LIGHTING CONTROL CABINET TYPE SPECIAL DETAILS



CONCRETE CONTROL CABINET BASE TYPE SPECIAL

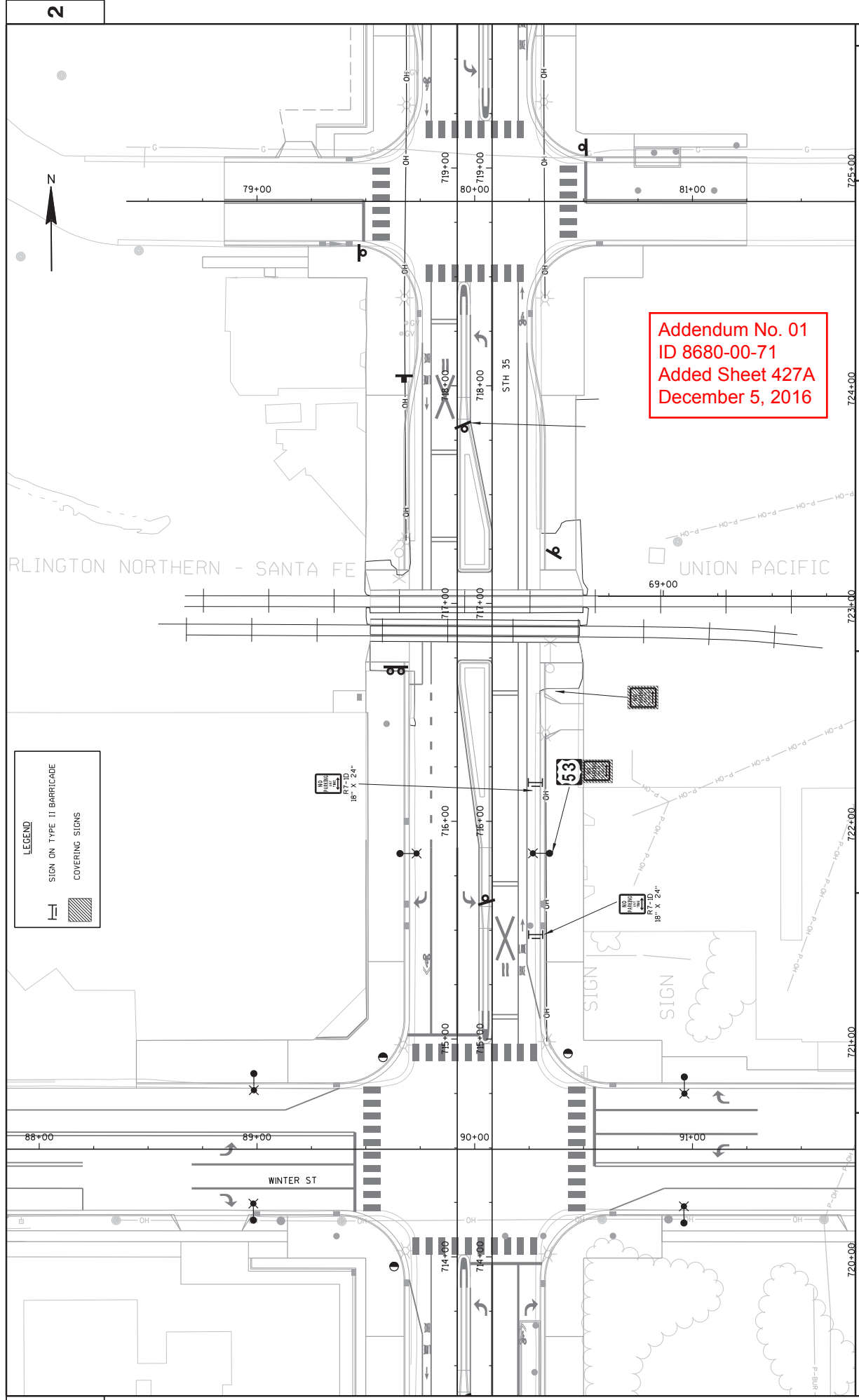


Addendum No. 01
 ID 8680-00-71
 Revised Sheet 411
 December 5, 2016



PAVEMENT MARKING LEGEND

Ⓐ PAVEMENT MARKING EPOXY 4-INCH (SKIP WHITE)	Ⓜ PAVEMENT MARKING CROSSWALK PREFORMED PLASTIC 24-INCH (WHITE)
Ⓑ PAVEMENT MARKING EPOXY 4-INCH (DOUBLE, YELLOW)	Ⓨ PAVEMENT MARKING STOP LINE EPOXY 18-INCH (WHITE)
Ⓒ PAVEMENT MARKING EPOXY 4-INCH (YELLOW)	Ⓩ PAVEMENT MARKING DIAGONAL EPOXY 6-INCH (WHITE)
Ⓓ PAVEMENT MARKING EPOXY 4-INCH (WHITE)	ⓓ PAVEMENT MARKING WORDS ENDS EPOXY (WHITE)
Ⓔ PAVEMENT MARKING EPOXY (DOTTED) EDGE EXTENSION, (WHITE)	ⓔ PAVEMENT MARKING DIAGONAL EPOXY 6-INCH (YELLOW)
Ⓚ PAVEMENT MARKING EPOXY 6-INCH (WHITE)	ⓕ PAVEMENT MARKING SYMBOL HANDICAP
Ⓛ PAVEMENT MARKING EPOXY 4-INCH (WHITE)	ⓖ PAVEMENT MARKING ISLAND NOSE EPOXY (YELLOW)
Ⓜ PAVEMENT MARKING EPOXY 4-INCH (WHITE)	ⓗ PAVEMENT MARKING CURB EPOXY (YELLOW)
Ⓨ PAVEMENT MARKING EPOXY 4-INCH (WHITE)	



Addendum No. 01
 ID 8680-00-71
 Added Sheet 427A
 December 5, 2016

LEGEND

SIGN ON TYPE II BARRICADE
 COVERING SIGNS

2

2

PROJECT NO: 8680-00-71
 COUNTY: DOUGLAS
 HWY: US 2 - BELKNAP STREET
 SHEET 427A
 WISDOT/CADDIS SHEET 42

PLOT NAME :
 PLOT SCALE : N/A

TEMPORARY SIGNING
 PLOT BY : SEH

PLOT DATE : 12/4/2016
 PLOT TIME : 2:20:53 AM

Addendum No. 01
ID 8680-00-71
Revised Sheet 507
December 5, 2016

8680-00-71 EARTHWORK DATA SUMMARY TABLE

DIVISION	STAGE	CATEGORY CODE	FROM/TO STATION	LOCATION	205.0100 COMMON EXCAVATION CUT	PULVERIZED MATERIAL	EBS EXCAVATION (C)	SALVAGED/ UNUSABLE MATERIAL (C)	AVAILABLE MATERIAL (C)	REDUCED EBS IN FILL FACTOR 0.80	EXPANDED BACKFILL FACTOR 1.30	UNEPAVED FILL	EXPANDED FILL FACTOR 1.30	MASS ORDNATE FILL (A)	DIVISION WASTE	208.0100 BORROW
1	1	0010	138+07 - 210+18	USH 2 Mainline	53337			40072		0	0	181	235	38937		
			286+00 - 289+46	John (South)	535			332		0	0	2	3	332		
			309+00 - 309+46	Haight (South)	226			226		0	0	2	1	225		
			310+54 - 311+00	Haight (North)	232			232		0	0	0	0	232		
			328+15 - 329+46	Hammond (South)	234			42		0	0	1	1	192		
			330+54 - 331+00	Hammond (North)	333			68		0	0	1	1	284		
			339+00 - 339+46	Cumming (South)	252					0	0	1	1	232		
			348+95 - 349+46	Cumming (North)	262					0	0	1	1	277		
			350+54 - 351+00	Baker (South)	466					0	0	0	0	466		
			370+59 - 371+10	Grand (North)	438					0	0	0	0	438		
			389+85 - 389+35	Lamborn (South)	337			61		0	0	0	0	276		
			380+60 - 380+85	Weste (North)	136					0	0	0	0	136		
			389+00 - 389+40	Clough (South)	166					0	0	0	0	166		
			390+00 - 390+40	Clough (North)	166					0	0	0	0	166		
			400+60 - 401+00	Flaxen (North)	290					0	0	0	0	290		
			408+00 - 409+40	Callin (South)	775					0	0	0	0	775		
			410+60 - 411+75	Callin (North)	481					0	0	0	0	481		
			420+60 - 420+75	Birch (North)	75					0	0	0	0	75		
			430+50 - 430+61	Cypress (North)	69					0	0	1	1	69		
			438+50 - 439+34	Metz (South)	346					0	0	32	42	374		
			440+60 - 441+00	Metz (North)	192					0	0	0	0	192		
			460+60 - 461+00	Pine (North)	380					0	0	0	0	380		
			469+00 - 469+41	Elm (South)	350					0	0	1	1	379		
			470+58 - 471+00	Elm (North)	173					0	0	9	12	161		
			480+60 - 481+00	Cedar (North)	219					0	0	1	1	218		
			489+00 - 489+40	W. Hill (North)	167					0	0	0	0	167		
			490+00 - 490+40	Hill (North)	204					0	0	0	0	152		
			138+07 - 210+18	All Backfills	2604			2604		0	0	0	0	0		
				8680-00-71 CAT 010 TOTAL	64509			13265		0	0	378	462	58968	0	0
			297+72 - 298+00	John (South)	93			93		0	0	3	4	89		
			307+80 - 308+00	Haight (North)	471			371		0	0	2	3	369		
			311+00 - 312+20	Haight (North)	489			489		0	0	12	15	483		
			320+00 - 320+40	Cumming (South)	588			588		0	0	7	7	592		
			340+85 - 342+57	Cumming (North)	755			755		0	0	6	6	752		
			347+79 - 348+57	Baker (South)	471			471		0	0	2	3	469		
			351+00 - 352+28	Baker (North)	1114			1114		0	0	0	0	1114		
			380+85 - 382+50	Weste (North)	844			844		0	0	0	0	844		
			387+25 - 389+00	Clough (South)	699			699		0	0	13	17	692		
			401+00 - 402+15	Fisher (North)	699			699		0	0	2	2	699		
			430+61 - 432+60	Cypress (North)	1110			1110		0	0	14	18	1092		
			437+75 - 438+50	Metz (South)	335			335		0	0	32	42	293		
			451+25 - 452+30	Poplar (North)	515			515		0	0	7	9	506		
			461+00 - 461+75	Pine (North)	370			370		0	0	1	1	369		
			467+20 - 469+00	Elm (South)	860			860		0	0	1	1	859		
			481+00 - 482+15	Elm (North)	496			496		0	0	13	10	485		
			501+00 - 501+84	Hill (North)	342			342		0	0	2	2	340		
				8680-00-71 CAT 020 TOTAL	76700			63264		0	0	378	462	58968	0	0
				STAGE 1 SUBTOTAL	76700			13436		0	0	378	462	58968	0	0
				DIVISION SUBTOTAL	76700			13436		0	0	378	462	58968	0	0
				ITEM TOTALS	76700			63264		0	0	378	462	58968	0	0

1) EBS EXCAVATION TO BE BACKFILLED WITH BORROW OR CUT MATERIAL
 2) EBS EXCAVATION TO BE BACKFILLED WITH BORROW OR CUT MATERIAL
 3) EBS EXCAVATION TO BE BACKFILLED WITH BORROW OR CUT MATERIAL
 4) EXPANDED FILL FACTOR = 1 - SALVAGED UNUSABLE PAVEMENT MATERIAL
 5) THE MASS ORDNATE + OR - CITY CALCULATED FOR THE STAGE PLUS QUANTITY INDICATES EXCESS OF MATERIAL WITHIN THE STAGE AND IS CATEGORIZED AS DIVISION WASTE. MINUS QUANTITY INDICATES A SHORTAGE OF MATERIAL WITHIN THE STAGE AND IS CATEGORIZED AS DIVISION BORROW. MASS ORDNATE IS AVAILABLE MATERIAL PLUS REDUCED EBS IN FILL, LESS ROCK EXCAVATION AND LESS EXPANDED FILL. ITEM NUMBER 208.0100.

Addendum No. 01
ID 8680-00-71
Revised Sheet 508
December 5, 2016

8998-00-24 EARTHWORK DATA SUMMARY TABLE

DIVISION	STAGE	CATEGORY CODE	FROM / TO STATION	LOCATION	208.0100 COMMON EXCAVATION (1)	PULVERIZED MATERIAL	EBS EXCAVATION (2)	UNUSABLE PAVEMENT MATERIAL	AVAILABLE MATERIAL (3)	REDUCED EBS IN FILL FACTOR (4)	EXPANDED EBS BACKFILL FACTOR (5)	UNEXPANDED FILL	EXPANDED FILL (4)	MASS ORDNATE +/- (5)	DIVISION WASTE	208.0100 DIVISION BORROW	
1	1	0010	327+75 - 329+15 100+51 - 101+67 371+10 - 372+07 357+79 - 358+85 407+83 - 408+00 411+75 - 412+00 467+75 - 468+00	Hammond (South) Grand (South) Grand (North) Lamborn (South) Caitlin (South) Caitlin (North) Fair (South)	928 522 617 844 95 224 658		230 103 140	668 419 617 704 95 224 658	0 0 0 0 0 0 0	0 0 0 0 0 0 0	0 5 1 3 0 4 5 17	0 7 1 4 0 6 6 23	688 413 616 700 95 224 652				
STAGE 1 SUBTOTAL					3888		0	473	3415	0	0	17	23	3392	0	3392	
DIVISION 1 SUBTOTAL					3888		0	473	3415	0	0	17	23	3392	0	3392	
ITEM TOTALS					3888		0	473	3415	0	0	17	23	3392	0	3392	
TOTAL COMMON EXC					3888				3888								

1) COMMON EXCAVATION IS THE SUM OF THE CUT LESS PULVERIZED MATERIAL VOLUME. ITEM NUMBER 208.0100.
 2) EBS EXCAVATION TO BE BACKFILLED WITH BORROW OR CUT MATERIAL.
 3) CUT MATERIAL TO BE REUSED AS UNUSABLE PAVEMENT MATERIAL.
 4) EXPANDED FILL FACTOR = 1.25
 5) THE MASS ORDNATE + OR - QTY CALCULATED FOR THE STAGE. PLUS QUANTITY INDICATES EXCESS OF MATERIAL WITHIN THE STAGE AND IS CATEGORIZED AS DIVISION WASTE. MINUS QUANTITY INDICATES A SHORTAGE OF MATERIAL WITHIN THE STAGE AND IS CATEGORIZED AS DIVISION BORROW. MASS ORDNATE IS AVAILABLE MATERIAL PLUS REDUCED EBS IN FILL, LESS ROCK EXCAVATION AND LESS EXPANDED FILL. ITEM NUMBER 208.0100.

Addendum No. 01
ID 8680-00-71
Revised Sheet 518
December 5, 2016

CONT. ASPHALTIC PAVEMENT ITEMS

STATION - STATION	LOCATION	455.0805 TACK COAT GAL	460.6443 HMA 3 MT 58-34 H TON	460.6444 HMA 4 MT 58-34 H TON	SPV.0195.004 HMA 3 MT 58-34 H TON	460.7844 HMA 4 FT 58-34 V TON	REMARKS
STA 301+25 - STA 302+17	L/RT	142	44	30	0	0	JOHN AVE N - LOWER LAYER
STA 301+25 - STA 302+17	L/RT	264	82	55	0	0	JOHN AVE N - UPPER LAYER
STA 311+00 - STA 312+20	L/RT	402	125	83	0	0	HUGHITT AVE N - LOWER LAYER
STA 311+00 - STA 312+20	L/RT	228	71	47	0	0	HUGHITT AVE N - UPPER LAYER
STA 340+95 - STA 342+56	L/RT	317	98	66	0	0	CUMMING AVE N - LOWER LAYER
STA 340+95 - STA 342+56	L/RT	551	143	57	0	0	CUMMING AVE N - UPPER LAYER
STA 351+00 - STA 352+29	L/RT	1904	563	338	0	0	BAKTER AVE N - LOWER LAYER
STA 351+00 - STA 352+29	L/RT	5619	1392	1266	0	0	BAKTER AVE N - UPPER LAYER
STA 380+68 - STA 382+50	L/RT	10217	2424	1913	108	72	WEEKS AVE - LOWER LAYER
STA 380+68 - STA 382+50	L/RT	10217	2424	1913	108	72	WEEKS AVE - UPPER LAYER
STA 380+68 - STA 382+50	L/RT	10217	2424	1913	108	72	FISHER AVE N - LOWER LAYERS
STA 380+68 - STA 382+50	L/RT	10217	2424	1913	108	72	FISHER AVE N - UPPER LAYER
CAT 0000 STAGE 5 TOTAL							
		1904	563	338	0	0	
PROJECT 8680-00-71 CAT 0000 TOTAL		5619	1392	1266	0	0	
PROJECT 8680-00-71 TOTAL							
		10217	2424	1913	108	72	
PROJECT 8998-00-24							
CAT 0010							
STAGE 1							
STA 497+75 - STA 498+60	L/RT	492	128	51	0	0	HILL AVE S - LOWER LAYERS
STA 497+75 - STA 498+60	L/RT	492	128	51	0	0	HILL AVE S - UPPER LAYER
PROJECT 8998-00-24 STAGE 1 TOTAL							
		492	128	51	0	0	
STAGE 4							
STA 407+83 - STA 408+00	L/RT	99	26	10	0	0	CATLINA VES - LOWER LAYERS
STA 407+83 - STA 408+00	L/RT	99	26	10	0	0	CATLINA VES - UPPER LAYER
PROJECT 8998-00-24 STAGE 4 TOTAL							
		99	26	10	0	0	
STAGE 5							
STA 371+10 - STA 372+07	L/RT	639	166	66	0	0	GRAND AVE N - LOWER LAYERS
STA 371+10 - STA 372+07	L/RT	247	64	26	0	0	GRAND AVE N - UPPER LAYER
STA 411+75 - STA 412+50	L/RT	866	230	92	0	0	CATLINA AVE N - LOWER LAYER
STA 411+75 - STA 412+50	L/RT	1477	384	153	0	0	CATLINA AVE N - UPPER LAYER
PROJECT 8998-00-24 STAGE 5 TOTAL							
		1477	384	153	0	0	
PROJECT 8998-00-24 TOTAL							
		11684	2808	2066	108	72	
COMBINED TOTAL (BOTH PROJECTS)							

*QUANTITIES SHOWN ELSEWHERE (ASPHALTIC SURFACE, ASPHALTIC SURFACE TEMPORARY)

STATION - STATION	LOCATION	DEPTH (IN)	455.0805 TACK COAT GAL	465.0125 ASPHALTIC SURFACE TEMPORARY TON	REMARKS
PROJECT 8680-00-71					
CAT 0000					
STAGE 1					
STA 147+60 - STA 147+60	RT	6	103	32	EB MAINLINE TEMP TIE IN TO EXISTING
STA 184+10 - STA 184+60	RT	6	177	55	EB MAINLINE TEMP TIE IN TO EXISTING
CAT 0010 STAGE 1 TOTAL					
			280	87	
STAGE 2					
STA 147+60 - STA 147+60	LT	6	103	32	WB MAINLINE TEMP TIE IN TO EXISTING
STA 184+10 - STA 184+60	LT	6	177	55	WB MAINLINE TEMP TIE IN TO EXISTING
CAT 0010 STAGE 2 TOTAL					
			280	87	
STAGE 3					
STA 147+60 - STA 147+60	L/RT	6	43	13	MEDIAN TEMP TIE IN TO EXISTING
STA 184+10 - STA 184+60	L/RT	6	72	22	MEDIAN TEMP TIE IN TO EXISTING
CAT 0010 STAGE 3 TOTAL					
			115	35	
PROJECT 8680-00-71 CAT 0010 TOTAL					
			675	500	
UNDISTRIBUTED					
			291		
PROJECT 8680-00-71 CAT 0010 TOTAL					
			675	500	
*QUANTITY SHOWN ELSEWHERE					

Addendum No. 01
ID 8680-00-71
Revised Sheet 519
December 5, 2016

ASPHALTIC SURFACE & BASE AGGREGATE DENSE
FOR DRIVEWAYS AND PARKING LOTS

STATION - STATION LOCATION	SELECT BORROW DEPTH (IN)	BASE AGGREGATE DEPTH (IN)	ASPHALTIC SURFACE DEPTH (IN)	208.1100 SELECT BORROW CY	305.0120 BASE AGG 1 1/4-INCH SURFACE TON	485.0105 ASPHALTIC SURFACE TON	455.0605 TACK COAT GAL	645.0140 GEOTEXTILE TYPE SAS SY	REMARKS
PROJECT 8680-00-71									
CAT 0010									
STAGE 1									
STA 145+62 - STA 147+18	RT	0	4	0	52	26	6	0	PARKING ENTRANCE
STA 184+80 - STA 184+96	RT	0	3	0	4	1	0	0	HOLIDAY STATION
STA 189+55 - STA 190+76	RT	0	4	0	86	33	7	0	HOLIDAY STATION (SHARED)
STA 190+76 - STA 191+47	RT	6	4	51	135	61	14	0	ERLANSO STRIP MALL
STA 193+65 - STA 194+63	RT	0	4	0	143	67	15	323	BELKNAP PLAZA
STA 197+85 - STA 201+15	RT	6	4	186	443	174	39	0	
STA 208+95 - STA 209+36	RT	0	4	0	116	46	10	0	
CAT 0010 STAGE 1 TOTAL									
		0	4	217	979	408	91	323	
STAGE 2									
STA 139+57 - STA 139+81	LT	0	3	0	7	2	0	0	PARKING ENTRANCE
STA 144+37 - STA 144+81	LT	0	4	0	18	9	2	0	
STA 145+66 - STA 147+60	LT	0	4	0	09	35	8	0	
STA 187+31 - STA 187+64	LT	0	3	0	24	5	0	0	BMO PARKING
STA 189+54 - STA 190+72	LT	0	4	0	156	72	16	352	JULIES RESTAURANT
STA 193+20 - STA 193+55	LT	0	4	0	17	9	2	0	FREEDOM JGS
STA 193+55 - STA 193+65	LT	0	4	0	1	4	0	0	WELLS FARGO ELECTRIC
STA 193+65 - STA 200+45	LT	0	3	0	1	4	0	0	WELLS FARGO CREDIT
STA 205+04 - STA 207+66	LT	6	4	96	256	87	19	0	CHINA INN
CAT 0010 STAGE 2 TOTAL									
		6	4	96	563	225	47	352	
STAGE 4									
STA 147+88 - STA 148+59	RT	0	3	0	75	14	0	0	FIRST MERIT
STA 149+32 - STA 149+95	RT	0	4	0	49	15	3	1111	HARDEES
STA 308+99 - STA 309+31	LT	0	4	0	12	3	1	0	HUGHITT AVE S
STA 309+05 - STA 309+29	RT	0	4	0	5	2	0	0	HUGHITT AVE S
STA 153+00 - STA 153+72	RT	0	4	0	16	8	2	0	CHINESE RESTAURANT
STA 156+93 - STA 157+51	RT	6	3	37	99	29	0	0	
STA 159+58 - STA 159+91	RT	0	4	0	25	12	0	0	BIG APPLE BAGELS
STA 181+24 - STA 181+63	RT	0	3	0	0	0	0	0	DOMINOS
STA 182+46 - STA 183+14	RT	0	4	0	26	13	3	0	PEOPLES DRUG STORE
STA 185+12 - STA 185+59	RT	0	3	0	0	0	0	0	USA CASH SERVICES
STA 185+84 - STA 187+38	RT	0	4	0	96	48	11	0	
STA 188+14 - STA 189+46	RT	0	3	0	77	26	0	0	
STA 189+79 - STA 170+24	RT	0	4	0	11	6	1	0	
STA 176+81 - STA 178+44	RT	0	3	0	388	98	0	796	
STA 178+95 - STA 180+17	RT	0	4	0	278	110	25	625	
STA 180+75 - STA 180+96	RT	0	4	0	4	2	0	0	CATLIN AVE S
STA 408+39 - STA 408+60	LT	0	3	0	10	3	0	0	
CAT 0010 STAGE 4 TOTAL									
		0	37	1206	399	50	1532		
STAGE 5									
STA 147+60 - STA 148+51	LT	0	4	0	47	24	5	0	BLAINE BUSINESS CENTER
STA 154+44 - STA 154+60	RT	0	4	0	3	2	0	0	WEEKS AVE
STA 154+79 - STA 155+19	LT	0	3	0	25	4	0	0	FISHER AVE N
STA 159+34 - STA 159+50	RT	0	4	0	5	2	1	0	CATLIN AVE N
STA 160+60 - STA 161+67	LT	0	4	0	38	18	4	0	
STA 163+21 - STA 163+85	LT	6	4	27	73	29	7	165	
STA 172+64 - STA 176+62	LT	6	4	212	564	222	49	0	
STA 380+67 - STA 380+97	RT	0	3	0	1	0	0	0	
STA 382+07 - STA 382+51	RT	0	4	0	6	3	0	0	
STA 400+90 - STA 401+04	LT	0	4	0	113	57	13	253	
STA 410+60 - STA 411+26	LT	0	4	0	40	23	5	0	
STA 182+82 - STA 184+54	LT	0	4	0	100	51	14	0	
CAT 0010 STAGE 5 TOTAL									
		0	4	239	1140	497	110	418	
PROJECT 8680-00-71 CAT 0010 TOTAL									
		589	3888	1529	298	2625			
*QUANTITY SHOWN ELSEWHERE									

Addendum No. 01
ID 8680-00-71
Added Sheet 519A
December 5, 2016

ASPHALTIC SURFACE & BASE AGGREGATE DENSE FOR DRIVEWAYS AND PARKING LOTS

STATION - STATION	LOCATION	SELECT BORROW DEPTH (IN)	BASE AGGREGATE DEPTH (IN)	ASPHALTIC SURFACE DEPTH (IN)	SELECT BORROW CY	BASE AGG 1 1/4-INCH SURFACE TON	ASPHALTIC SURFACE TON	ASPHALTIC TACK COAT GAL	455 0605	645.0140	REMARKS
PROJECT 8680-00-71									GEOTEXTILE	TYPE SAS	
CAT 0080											
STAGE 1											
STA 3+99 - 4+23	LT	0	9	3	0	23	2	0	0	0	BANKS AVE
STA 143+43 - STA 144+93	RT	0	9	3	0	147	26	0	0	0	ELM AVE S
STA 466+92 - STA 467+27	LT	0	8	4	0	8	4	1	0	0	ELM AVE S
STA 467+22 - STA 467+44	RT	0	8	3	0	9	3	0	0	0	ELM AVE S
STA 467+51 - STA 467+67	RT	0	8	4	0	191	37	1	0	0	ELM AVE S
CAT 0080 STAGE 1 TOTAL											
STA 421+67 - STA 421+69	LT	0	9	3	0	4	1	0	0	0	BIRCH AVE N
STA 421+77 - STA 421+80	LT	0	9	3	0	6	2	0	0	0	BIRCH AVE N
STA 421+82 - STA 421+86	RT	0	9	3	0	6	2	0	0	0	BIRCH AVE N
STA 421+92 - STA 421+92	RT	0	9	3	0	6	2	0	0	0	BIRCH AVE N
STA 421+78 - STA 421+82	RT	0	8	4	0	12	8	1	0	0	CYPRESS AVE N
STA 431+78 - STA 431+84	RT	0	8	4	0	10	5	1	0	0	POPLAR AVE N
STA 431+78 - STA 431+84	LT	0	8	4	0	10	5	1	0	0	POPLAR AVE N
STA 451+75 - STA 451+82	RT	0	6	3	0	6	3	0	0	0	POPLAR AVE N
STA 450+83 - STA 451+23	RT	0	6	3	0	2	1	0	0	0	POPLAR AVE N
STA 451+60 - STA 451+75	RT	0	9	3	0	4	1	0	0	0	ELM AVE N
STA 471+52 - STA 471+72	LT	0	9	3	0	3	2	0	0	0	ELM AVE N
STA 471+78 - STA 471+84	LT	0	9	3	0	6	2	0	0	0	ELM AVE N
STA 471+28 - STA 471+50	RT	0	8	4	0	4	2	0	0	0	ELM AVE N
STA 471+79 - STA 471+95	RT	6	8	4	7	19	10	2	0	0	CEDAR AVE N
STA 481+00 - STA 481+67	RT	0	8	4	0	4	2	0	0	0	CEDAR AVE N
STA 481+78 - STA 481+96	RT	0	8	4	0	4	2	0	0	0	CEDAR AVE N
CAT 0080 STAGE 2 TOTAL											
STA 298+06 - STA 298+80	LT	0	9	3	0	64	14	0	0	0	JOHN AVE S
STA 298+07 - STA 298+46	RT	0	8	4	0	58	28	0	131	0	HUGHITT AVE S
STA 308+00 - STA 308+40	LT	0	8	4	0	16	6	2	0	0	HUGHITT AVE S
STA 308+02 - STA 308+16	RT	0	8	4	0	4	2	0	0	0	HUGHITT AVE S
STA 308+52 - STA 308+64	LT	0	8	4	0	11	6	1	0	0	CUMMING AVE S
STA 308+64 - STA 308+69	LT	0	8	4	0	3	2	0	0	0	CUMMING AVE S
STA 338+10 - STA 338+26	RT	0	8	4	0	3	2	0	0	0	BAXTER AVE S
STA 348+10 - STA 348+26	LT	0	8	4	0	3	2	0	0	0	BAXTER AVE S
STA 348+09 - STA 348+25	RT	0	8	4	0	3	2	0	0	0	BAXTER AVE S
STA 387+67 - STA 388+15	RT	0	9	3	0	60	20	0	0	0	CLOUGH AVE
CAT 0080 STAGE 4 TOTAL											
STA 301+25 - STA 301+95	LT	0	8	4	0	27	13	3	0	0	JOHN AVE N
STA 301+77 - STA 301+93	RT	0	8	4	0	3	2	0	0	0	JOHN AVE N
STA 311+73 - STA 311+93	LT	0	8	4	0	4	2	0	0	0	HUGHITT AVE N
STA 340+95 - STA 341+93	RT	0	8	4	0	37	19	4	0	0	CUMMING AVE N
STA 350+69 - STA 351+75	LT	6	8	4	83	167	78	17	375	0	CATHEDRAL SCHOOL
STA 351+00 - STA 351+95	LT	6	8	4	89	183	78	17	412	0	CATHEDRAL SCHOOL ALLEY & LOT
STA 401+75 - STA 401+94	RT	0	8	4	132	611	288	62	1214	0	FISHER AVE N
CAT 0080 STAGE 5 TOTAL											
PROJECT 8680-00-71 CAT 0080 TOTAL											
					139	1118	453	77	1345		
PROJECT 8998-00-71 TOTAL					728	5005	1982	375	3970		
PROJECT 8998-00-24											
CAT 0010											
STAGE 4											
STA 358+01 - STA 358+17	LT	0	8	4	0	6	3	1	0	0	HAMMOND AVE S
STA 358+01 - STA 358+23	RT	0	8	4	0	6	3	1	0	0	HAMMOND AVE S
STA 358+91 - STA 357+45	RT	0	8	3	33	98	31	0	0	0	CHINESE RESTAURANT
STA 358+11 - STA 358+85	LT	0	8	4	0	37	19	4	0	0	LANBORN AVE
8998-00-24 STAGE 4 TOTAL											
					33	137	56	6	0		
STAGE 5											
STA 411+75 - STA 411+80	LT	0	8	4	0	8	4	1	0	0	CATLIN AVE N
STA 411+75 - STA 411+80	RT	0	8	4	0	11	5	1	0	0	CATLIN AVE N
8998-00-24 STAGE 5 TOTAL											
					0	19	9	2	0		
PROJECT 8998-00-24 TOTAL											
					33	156	65	8	0		
COMBINED TOTAL (BOTH PROJECTS)											
					761	5162	2047	383	3970		

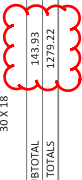
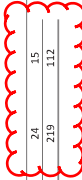
*QUANTITY SHOWN ELSEWHERE

USH 2 APPROX. STATION	LOCATION	SIGN NO.	SIGN CODE	SIGN MESSAGE	SIGN SIZE (INCHES)	SIGN TYPE II REFLECTIVE W/F	SIGN TYPE II FOLDING SF	SIGN TYPE II REFLECTIVE W/F SF	PERMANENT SIGNING ITEMS				REMOVING SIGNS TYPE II	REMOVING SIGNS TYPE II	REMOVING SMALL SIGN SUPPORTS		
									637.22210	637.22210	637.22210	637.22210				638.2602	638.2602
									8-FOOT EACH	9.5-FOOT EACH	11-FOOT EACH	BLACK SIGN	12-FOOT EACH	BLACK SIGN	REMOVING SIGNS	REMOVING SMALL SIGN SUPPORTS	
144-92	RT	3-6	R1-1F	STOP (Folding)	30 X 30	---	5.18	---	---	---	---	---	---	---	---	---	ATTACH TO TRAFFIC SIGNAL POLE
144-92	RT	3-6	R1-1F	STOP (Folding)	30 X 30	---	7.46	---	---	---	---	---	---	---	---	---	ATTACH TO TRAFFIC SIGNAL POLE
145-08	RT	2-9	M1-94H	Belknap St	90 X 18	11.25	---	---	---	---	---	---	---	---	---	---	OVERHEAD SIGN MOUNTED TO MONOTUBE ARM
145-08	LT	2-11	M1-94H	Belknap St	90 X 18	11.25	---	---	---	---	---	---	---	---	---	---	OVERHEAD SIGN MOUNTED TO MONOTUBE ARM
145-67	RT	2-12	R1-1F	STOP (Folding)	36 X 36	---	7.46	---	---	---	---	---	---	---	---	---	ATTACH TO TRAFFIC SIGNAL POLE
145-67	RT	2-13	M1-94H	Ogden Ave	78 X 18	9.75	---	---	---	---	---	---	---	---	---	---	OVERHEAD SIGN MOUNTED TO MONOTUBE ARM
145-51	RT	2-14	R1-1F	STOP (Folding)	30 X 30	---	5.18	---	---	---	---	---	---	---	---	---	ATTACH TO TRAFFIC SIGNAL POLE
146-54	LT	2-16	---	NO PARKING ANY TIME	---	---	---	---	---	---	---	---	---	---	---	---	ATTACH TO LIGHT POLE
147-64	RT	2-17	R7-1D	NO PARKING ANY TIME (Double arrow)	18 X 24	3.00	---	---	---	---	---	---	---	---	---	---	ATTACH TO LIGHT POLE
148-57	RT	2-19	R6-2L	DO NOT ENTER	30 X 30	6.25	---	---	---	---	---	---	---	---	---	---	LOCATED AT ENTRANCE FACING EAST
148-57	RT	2-19	R6-2R	ONE WAY (LEFT Arrow)	24 X 30	5.00	---	---	---	---	---	---	---	---	---	---	ATTACH TO TRAFFIC SIGNAL POLE
148-50	RT	2-21	R6-2R	ONE WAY (RIGHT Arrow)	24 X 30	5.00	---	---	---	---	---	---	---	---	---	---	ATTACH TO TRAFFIC SIGNAL POLE
148-50	RT	2-22	R6-2L	ONE WAY (LEFT Arrow)	24 X 30	5.00	---	---	---	---	---	---	---	---	---	---	ATTACH TO TRAFFIC SIGNAL POLE FACING EAST
148-79	MEDIAN	2-23	R4-7	Keep Right Symbol	30 X 30	5.00	---	---	---	---	---	---	---	---	---	---	FACING NORTH JOHN AVE
148-80	LT	2-24	R1-1	STOP	30 X 30	5.18	---	---	---	---	---	---	---	---	---	---	LOCATED AT ENTRANCE FACING WEST
148-80	LT	2-25	R6-2R	ONE WAY (RIGHT Arrow)	24 X 30	5.00	---	---	---	---	---	---	---	---	---	---	LOCATED AT ENTRANCE FACING EAST
149-42	LT	2-26	R6-2L	ONE WAY (LEFT Arrow)	24 X 30	5.00	---	---	---	---	---	---	---	---	---	---	ATTACH TO TRAFFIC SIGNAL POLE
149-43	LT	2-27	R5-1	DO NOT ENTER	30 X 30	6.25	---	---	---	---	---	---	---	---	---	---	ATTACH TO TRAFFIC SIGNAL POLE
148-50	RT	2-28	R6-2R	ONE WAY (RIGHT Arrow)	24 X 30	5.00	---	---	---	---	---	---	---	---	---	---	ATTACH TO TRAFFIC SIGNAL POLE FACING EAST
148-50	RT	2-29	R6-2L	ONE WAY (LEFT Arrow)	24 X 30	5.00	---	---	---	---	---	---	---	---	---	---	ATTACH TO TRAFFIC SIGNAL POLE FACING EAST
149-44	RT	2-30	J4-1	2 (USH Route Marker)	24 X 36	6.00	---	---	---	---	---	---	---	---	---	---	ATTACH TO LIGHT POLE
149-94	RT	3-2	M1-91	LAKE SUPERIOR CIRCLE TOUR	24 X 24	4.00	---	---	---	---	---	---	---	---	---	---	ATTACH TO LIGHT POLE
149-94	RT	3-2	R7-200	NO PARKING 3:00 AM TO 6:00 AM (Double arrow)	20 X 18	2.50	---	---	---	---	---	---	---	---	---	---	ATTACH TO LIGHT POLE
150-29	LT	3-3	R7-200	TWO HOUR PARKING 7 AM - 7 PM (Left arrow)	20 X 18	2.50	---	---	---	---	---	---	---	---	---	---	ATTACH TO LIGHT POLE
152-45	LT	3-6	R1-1	STOP	30 X 30	5.18	---	---	---	---	---	---	---	---	---	---	FACING NORTH-HUGHITT AVE
152-41	RT	3-7	---	NO NIGHT PARKING 3 AM - 6 AM	---	---	---	---	---	---	---	---	---	---	---	---	FACING SOUTH-HUGHITT AVE
152-42	RT	3-8	---	NO NIGHT PARKING 3 AM - 6 AM	---	---	---	---	---	---	---	---	---	---	---	---	FACING SOUTH-HUGHITT AVE
152-82	RT	3-9	R1-1	STOP	30 X 30	5.18	---	---	---	---	---	---	---	---	---	---	FACING SOUTH-HUGHITT AVE
153-02	RT	M3-8	DEF TOUR	24 X 12	2.00	---	---	---	---	---	---	---	---	---	---	---	ATTACH TO LIGHT POLE
153-02	RT	M3-9	DEF TOUR	24 X 12	2.00	---	---	---	---	---	---	---	---	---	---	---	ATTACH TO LIGHT POLE
153-02	RT	M3-3	SOUTH	24 X 12	2.00	---	---	---	---	---	---	---	---	---	---	---	ROUTE MARKERS ON ONE BOARD
153-02	RT	M50-2	Z1USH Route Marker	48 X 24	8.00	---	---	---	---	---	---	---	---	---	---	---	ARROWS ON ONE BOARD (ORANGE)
153-02	RT	M50-2A	Advance Right Arrows	48 X 24	7.00	---	---	---	---	---	---	---	---	---	---	---	ATTACH TO LIGHT POLE ABOVE SIGN NO. 3-10
153-02	RT	3-11	---	NO TRUCKS ON HAMMOND AVE	42 X 24	7.00	---	---	---	---	---	---	---	---	---	---	ATTACH TO LIGHT POLE
153-44	LT	3-12	R7-200	NO PARKING 3:00 AM TO 6:00 AM (Double arrow)	20 X 18	2.50	---	---	---	---	---	---	---	---	---	---	ATTACH TO LIGHT POLE
153-495	LT	3-13	J4-1	2 (USH Route Marker)	24 X 36	6.00	---	---	---	---	---	---	---	---	---	---	ATTACH TO LIGHT POLE
154-94	LT	3-14	M1-91	LAKE SUPERIOR CIRCLE TOUR	24 X 24	4.00	---	---	---	---	---	---	---	---	---	---	ATTACH TO LIGHT POLE
154-94	LT	3-14	R7-200	NO PARKING 3:00 AM TO 6:00 AM (Double arrow)	20 X 18	2.50	---	---	---	---	---	---	---	---	---	---	ATTACH TO LIGHT POLE
154-94	LT	3-14	R7-51R	NO PARKING HERE TO CORNER (Right arrow)	18 X 24	3.00	---	---	---	---	---	---	---	---	---	---	ATTACH TO LIGHT POLE
155-70	RT	M4-8	DEF TOUR	24 X 12	2.00	---	---	---	---	---	---	---	---	---	---	---	ROUTE MARKERS ON ONE BOARD
155-70	RT	M3-2	EAST	24 X 12	2.00	---	---	---	---	---	---	---	---	---	---	---	ARROWS ON ONE BOARD (ORANGE)
155-70	RT	M4-8	DEF TOUR	24 X 12	2.00	---	---	---	---	---	---	---	---	---	---	---	ATTACH TO TRAFFIC SIGNAL POLE
155-70	RT	M3-3	SOUTH	24 X 12	2.00	---	---	---	---	---	---	---	---	---	---	---	ATTACH TO LIGHT POLE
155-70	RT	M50-2	Z1USH Route Marker	48 X 24	8.00	---	---	---	---	---	---	---	---	---	---	---	ATTACH TO LIGHT POLE
155-70	RT	M50-2A	Right Arrows	48 X 24	7.00	---	---	---	---	---	---	---	---	---	---	---	ATTACH TO LIGHT POLE
155-96	RT	3-16	R1-1F	STOP (Folding)	36 X 36	---	7.46	---	---	---	---	---	---	---	---	---	OVERHEAD SIGN MOUNTED TO MONOTUBE ARM
155-96	LT	3-17	M1-94H	Hammond Ave	108 X 18	13.50	---	---	---	---	---	---	---	---	---	---	ATTACH TO TRAFFIC SIGNAL POLE
155-96	LT	3-18	R4-5L	TRUCKS USE LEFT LANE	24 X 30	5	---	---	---	---	---	---	---	---	---	---	OVERHEAD SIGN MOUNTED TO MONOTUBE ARM
154-00	RT	3-19	R7-200	NO PARKING 3:00 AM TO 6:00 AM (Double arrow)	20 X 18	2.50	---	---	---	---	---	---	---	---	---	---	ATTACH TO LIGHT POLE
154-93	RT	3-20	R7-200	TWO HOUR PARKING 7 AM - 7 PM (Right arrow)	20 X 18	2.50	---	---	---	---	---	---	---	---	---	---	ATTACH TO LIGHT POLE
156-02	RT	4-1	R7-200	NO PARKING 3:00 AM TO 6:00 AM (Double arrow)	20 X 18	2.50	---	---	---	---	---	---	---	---	---	---	ATTACH TO LIGHT POLE
156-05	RT	4-2	---	NO PARKING 3:00 AM TO 6:00 AM (Double arrow)	20 X 18	2.50	---	---	---	---	---	---	---	---	---	---	ATTACH TO LIGHT POLE
156-05	RT	4-2	M1-94H	Belknap St	90 X 18	11.25	---	---	---	---	---	---	---	---	---	---	OVERHEAD SIGN MOUNTED TO MONOTUBE ARM
156-05	RT	4-5	R1-1F	STOP (Folding)	36 X 36	---	7.46	---	---	---	---	---	---	---	---	---	ATTACH TO TRAFFIC SIGNAL POLE
156-04	LT	4-7	R7-200	NO PARKING 3:00 AM TO 6:00 AM (Double arrow)	18 X 24	3.00	---	---	---	---	---	---	---	---	---	---	ATTACH TO LIGHT POLE
156-60	LT	4-7	M1-94H	Belknap St	90 X 18	11.25	---	---	---	---	---	---	---	---	---	---	OVERHEAD SIGN MOUNTED TO MONOTUBE ARM
156-78	LT	4-8	RS-2	No Trucks symbol	24 X 24	4.00	---	---	---	---	---	---	---	---	---	---	ATTACH TO TRAFFIC SIGNAL POLE FACING SOUTH
156-80	LT	4-9	R7-200	NO PARKING 3:00 AM TO 6:00 AM (Double arrow)	18 X 24	3.00	---	---	---	---	---	---	---	---	---	---	ATTACH TO TRAFFIC SIGNAL POLE FACING SOUTH
156-79	RT	4-11	R8-8W	Left ONLY Ahead ONLY Right ONLY	54 X 30	11.25	---	---	---	---	---	---	---	---	---	---	ATTACH TO LIGHT POLE
SUBTOTAL					213.04	83.92	0.00	0.00	0	5	6	3	41	24			

Addendum No. 01
ID 8680-00-71
Revised Sheet 542
December 5, 2016

PERMANENT SIGNING ITEMS

USH 2 APPROX. STATION	LOCATION	NO.	SIGN CODE	SIGN MESSAGE	SIGN TYPE	REFLECTIVE H SF	FOLDING SF	REFLECTIVE H SF	TYPE II BLAC 8-FOOT EACH	TYPE III BLAC 8-FOOT EACH	TYPE IV BLAC 11-FOOT EACH	TYPE V BLAC 13-FOOT EACH	REMOVING SIGNS TYPE II EACH	REMOVING SIGNS TYPE III EACH	REMOVING SMALL SIGN SUPPORTS EACH	638.2000		
207+90	RT	11-13	RS-1	Pekestran Crossing symbol	30 X 30	6.25	1	...	1	...	LOCATED ON HAYES CT FACING EAST	
207+77	RT	11-14	RS-1	DO NOT ENTER	30 X 30	5.18	1	...	1	...	LOCATED ON HAYES CT	
208+30	RT	11-15	RS-1	STOP	30 X 30	5.18	1	...	1	...	OVERHEAD SIGN MOUNTED TO MONOTUBE ARM	
208+12	RT	11-16	M1-94H	Belknap St	90 X 18	11.25	1	ATTACH TO TRAFFIC SIGNAL POLE	
207+95	RT	11-17	RS-2	No Trucks symbol	24 X 24	4.00	1	OVERHEAD SIGN MOUNTED TO MONOTUBE ARM	
207+82	LT	11-18	M1-94H	Hill Ave	60 X 18	7.50	1	ATTACH TO SIGNAL POLE	
207+78	LT	11-19	M1-94H	TRUCKS USE LEFT LANE	24 X 30	5	1	ATTACH TO TRAFFIC SIGNAL POLE	
208+25	LT	11-20	RL-1F	STOP (Folding)	30 X 30	...	5.18	1	OVERHEAD SIGN MOUNTED TO MONOTUBE ARM	
208+48	LT	11-21	M1-94H	Belknap St	90 X 18	11.25	1	REMOVE UPPER SIGN FROM LIGHT POLE	
208+65	LT	11-22	...	DEAD END	1	ATTACH TO TRAFFIC SIGNAL POLE	
208+72	LT	11-23	W14-1	DEAD END	30 X 30	...	6.25	1	ATTACH TO TRAFFIC SIGNAL POLE	
208+20	RT	11-24	J3-2	WEST 2 (USH Route Marker)	48 X 57	19.00	1	
208+30	RT	11-25	...	Left Arrow Right Arrow	1	
208+30	RT	11-26	...	EAST 2 Right Arrow	1	
208+55	RT	11-28	RL-1F	STOP (Folding)	30 X 30	...	5.18	1	ATTACH TO TRAFFIC SIGNAL POLE	
208+74	RT	11-30	M1-94H	Hill Ave	60 X 18	7.50	1	OVERHEAD SIGN MOUNTED TO MONOTUBE ARM	
208+84	LT	11-31	RL-1F	STOP (Folding)	36 X 36	...	7.46	1	ATTACH TO TRAFFIC SIGNAL POLE	
209+47	LT	11-32	D1-55L	NO PARKING ANY TIME (Right arrow)	18 X 24	3.00	1	ATTACH TO TRAFFIC SIGNAL POLE	
209+47	LT	11-32	D1-55L	National Guard Armory (Left arrow)	60 X 21	8.75	2	
CUMULATIVE																		
340+90	LT	R7-8R	R7-8R	RESERVED PARKING (Right Arrow)	12 X 18	1.50	1	LOCATED ON ALLEY FACING WEST
340+90	LT	R7-8V	R7-8V	VAN ACCESSIBLE	12 X 6	0.50	1	LOCATED ON ALLEY FACING WEST
341+15	LT	R7-8R	R7-8R	RESERVED PARKING ... THIS SPACE	12 X 6	0.50	1	LOCATED ON ALLEY FACING WEST
341+45	LT	R7-8A	R7-8A	RESERVED PARKING ... THIS SPACE	12 X 6	0.50	1	LOCATED ON ALLEY FACING WEST
341+72	LT	R7-8L	R7-8L	RESERVED PARKING (Left Arrow)	12 X 6	0.50	1	LOCATED ON ALLEY FACING WEST
342+00	RT	R5-1	R5-1	DO NOT ENTER	30 X 30	6.25	1	LOCATED ON ALLEY FACING WEST
342+11	RT	R2-8A	R2-8A	RESERVED PARKING ... THIS SPACE	12 X 18	1.50	1	LOCATED ON ALLEY FACING WEST
342+55	RT	R2-10	R2-10	NO PARKING ANY TIME (Left arrow)	18 X 24	3.00	1	LOCATED ON ALLEY FACING WEST
341+10	LT	R7-8V	R7-8V	RESERVED PARKING ... THIS SPACE	12 X 18	1.50	1	LOCATED ON ALLEY FACING WEST
341+40	LT	R7-8A	R7-8A	VAN ACCESSIBLE	12 X 6	0.50	1	LOCATED ON ALLEY FACING WEST
341+50	LT	R7-8V	R7-8V	RESERVED PARKING ... THIS SPACE	12 X 6	0.50	1	LOCATED ON ALLEY FACING WEST
341+50	LT	R7-8A	R7-8A	RESERVED PARKING ... THIS SPACE	12 X 18	1.50	1	LOCATED ON ALLEY FACING WEST
BAXTER AVE																		
350+59	RT	S1-1	S1-1	School Zone symbol	36 X 36	...	6.75	1	ATTACH TO SAME POST OPPOSITE S1-1 SIGN
350+59	RT	S16-9P	S16-9P	AHEAD	30 X 18	...	3.75	1	ATTACH TO SAME POST OPPOSITE S1-1 SIGN
350+60	LT	R5-1	R5-1	DO NOT ENTER	30 X 30	6.25	1	ATTACH TO SAME POST OPPOSITE S1-1 SIGN
350+76	RT	R3-5	R6-2L	ONE WAY (LEFT Arrow)	24 X 30	5.00	1	SIGN FACING WEST ACROSS FROM SCHOOL LOT
351+65	LT	R6-2R	R6-2R	ONE WAY (RIGHT Arrow)	24 X 30	5.00	1	LOCATED ON ALLEY/ENTRANCE FACING SOUTH
351+82	RT	R6-2L	R6-2L	ONE WAY (LEFT Arrow)	24 X 30	5.00	1	ATTACH TO SAME POST OPPOSITE R6-2L SIGN
351+92	RT	S1-1	S1-1	School Zone symbol	36 X 36	...	6.75	1	SIGN FACING WEST ACROSS FROM SCHOOL LOT
351+99	LT	S1-1	S1-1	Left Down Arrow	30 X 18	...	3.75	1	SIGN FACING WEST ACROSS FROM SCHOOL LOT
351+99	LT	S16-7R	S16-7R	Right Down Arrow	30 X 18	...	3.75	1	SIGN FACING WEST ACROSS FROM SCHOOL LOT
SUBTOTAL																		
PROJECT TOTALS																		
143.93 17.82 37.75 7 1 1 7 6 24 15																		
1279.22 227.52 192.89 7 23 60 25 219 112																		



Addendum No. 01
 ID 8680-00-71
 Added Sheet 558A
 December 5, 2016

* LIGHTING WIRE AND CONDUIT ITEMS			
FROM	TO	LF	COMMENT
PROJECT 8680-00-71			
CAT 0090			
LUTS5 VAULT	652.0205		655.0615
PB-32 VAULT	CONDUIT RIGID	10	UW-S
	NONMETALLIC	18	UW-S
	SCHEDULE 40 3/4-INCH	51	UW-S
	SCHEDULE 40 2-INCH	51	
	ELECTRICAL WIRE	183	
	LIGHTING 10 AWG	327	
CAT 0090 TOTAL			
PROJECT 8680-00-71			
CAT 0100			
X-DCC FLOOD	652.0205		DOUGLAS CTY
PB-33	CONDUIT RIGID	75	DOUGLAS CTY
LUTS4-1	NONMETALLIC	18	DOUGLAS CTY
LUTS4-2	SCHEDULE 40 2-INCH	10	DOUGLAS CTY
LUTS4-1	SCHEDULE 40 3/4-INCH	103	DOUGLAS CTY
	LIGHTING 10 AWG	0	
CAT 0100 TOTAL			
PROJECT 8680-00-71 TOTAL			
131			
*QUANTITY SHOWN ELSEWHERE			

* CONCRETE KNEE WALL			
STATION - STATION	LOCATION	LF	COMMENT
PROJECT 8680-00-71			
CAT 0080			
388+55 - 388+89	28' LT	34	CLOUGH AVE
CAT 0080 TOTAL			
PROJECT 8680-00-71 CAT 0080 TOTAL			
34			

* REMOVING FENCE			
STATION - STATION	LOCATION	LF	COMMENT
PROJECT 8680-00-71			
CAT 0080			
351+07 - 351+72	86' LT	86	BAKTER AVE
CAT 0080 TOTAL			
PROJECT 8680-00-71 CAT 0080 TOTAL			
86			

* TRAFFIC CONTROL (TOWER AVENUE)			
STATION - STATION	DEVICES REQD	DAYS IN SERVICE	COMMENT
PROJECT 8680-00-71			
CAT 0010			
TOWER AVE	2	381	762
			2
CAT 0010 TOTAL			
PROJECT 8680-00-71 CAT 0010 TOTAL			
762			
*QUANTITY SHOWN ELSEWHERE (TRAFFIC CONTROL SHEETS)			

* PULL BOX ITEMS			
NO.	LOCATION	EACH	COMMENT
PROJECT 8680-00-71			
CAT 0090			
PB-32	409+14.373 LT	1	UW-S
CAT 0090 TOTAL			
PROJECT 8680-00-71			
CAT 0100			
PB-33	330+72.517 RT	1	DOUGLAS CTY
CAT 0100 TOTAL			
PROJECT 8680-00-71 TOTAL			
2			
*QUANTITY SHOWN ELSEWHERE			

* LIGHTING UNIT ITEMS			
LIGHTING UNIT NO.	SPV/0080.087 LIGHTING UNIT TYPE SPECIAL 4	EACH	COMMENT
PROJECT 8680-00-71			
CAT 0090			
LUTS5		1	UW-S
CAT 0090 TOTAL			
PROJECT 8680-00-71			
CAT 0100			
LUTS4-1		1	DOUGLAS CTY
LUTS4-2		2	DOUGLAS CTY
CAT 0100 TOTAL			
PROJECT 8680-00-71 TOTAL			
3			

SANITARY SEWER ITEMS		SANITARY SERVICES			
STATION	LOCATION	SPV.0090.005 REMOVING SANITARY SEWER PIPE 4-INCH TO 30-INCH LIN FT	SPV.0090.009 SANITARY SEWER SERVICE 6-INCH LIN FT	(INCH)	SPV.0060.042 CONNECT TO EXISTING SANITARY SERVICE
	PINE AVE			EACH	EACH
	460+53	34	34	1	1
	460+56	34	34	1	1
	460+97	34	34	1	1
PROJECT ITEM TOTALS		102	102	3	3

Addendum No. 01
ID 8680-00-71
Revised Sheet 560
December 5, 2016

STR. NO.	TYPE	LOCATION	TOP OF CASTING	OUTLET	SPV.0060.041 SANITARY SEWER CASTING	SPV.0060.040 REMOVING SANITARY MANHOLES	SPV.0090.007 SANITARY MANHOLE, 48-INCH	SPV.0090.008 SANITARY MANHOLE, 120-INCH	SPV.0090.005 REMOVING SANITARY SEWER PIPE 4-INCH TO 30-INCH LIN FT	SPV.0090.009 SANITARY SEWER SERVICE 6-INCH LIN FT	(INCH)	SPV.0060.042 CONNECT TO EXISTING SANITARY SERVICE
					EACH	EACH	LIN FT	LIN FT			EACH	EACH
SA10	SAN	BIRCH AVE	ELEV	ELEV	1	1	6.33	10.25	8	8	1	1
SA11	SAN	419+52	629.48	613.90	1	1	6.47	10.25			1	1
		420+69	629.34	613.62	1	1						
		PINE AVE										
620	EX SAN	459+56	628.73	615.61	1	1			194	194	1	1
SA20	SAN	461+50	626.28	614.92	1	1			8	8	1	1
		188+64			3	2	12.8	20.5	210	210	3	3
PROJECT ITEM TOTALS												

SANITARY SEWER MAIN

STR. NO.	TYPE	LOCATION	TOP OF CASTING	OUTLET	SPV.0060.041 SANITARY SEWER CASTING	SPV.0060.040 REMOVING SANITARY MANHOLES	SPV.0090.007 SANITARY MANHOLE, 48-INCH	SPV.0090.008 SANITARY MANHOLE, 120-INCH	SPV.0090.005 REMOVING SANITARY SEWER PIPE 4-INCH TO 30-INCH LIN FT	SPV.0090.009 SANITARY SEWER SERVICE 6-INCH LIN FT	(INCH)	SPV.0060.042 CONNECT TO EXISTING SANITARY SERVICE
					EACH	EACH	LIN FT	LIN FT			EACH	EACH
SA10	SAN	BIRCH AVE	ELEV	ELEV	1	1	6.33	10.25	8	8	1	1
SA11	SAN	419+52	629.48	613.90	1	1	6.47	10.25			1	1
		420+69	629.34	613.62	1	1						
		PINE AVE										
620	EX SAN	459+56	628.73	615.61	1	1			194	194	1	1
SA20	SAN	461+50	626.28	614.92	1	1			8	8	1	1
		188+64			3	2	12.8	20.5	210	210	3	3
PROJECT ITEM TOTALS												

SANITARY SEWER MAIN (Continued)

STR. NO.	TYPE	LOCATION	TOP OF CASTING	OUTLET	SPV.0060.041 SANITARY SEWER CASTING	SPV.0060.040 REMOVING SANITARY MANHOLES	SPV.0090.007 SANITARY MANHOLE, 48-INCH	SPV.0090.008 SANITARY MANHOLE, 120-INCH	SPV.0090.005 REMOVING SANITARY SEWER PIPE 4-INCH TO 30-INCH LIN FT	SPV.0090.009 SANITARY SEWER SERVICE 6-INCH LIN FT	(INCH)	SPV.0060.042 CONNECT TO EXISTING SANITARY SERVICE
					EACH	EACH	LIN FT	LIN FT			EACH	EACH
SA10	SAN	BIRCH AVE	ELEV	ELEV	1	1	6.33	10.25	8	8	1	1
SA11	SAN	419+52	629.48	613.90	1	1	6.47	10.25			1	1
		420+69	629.34	613.62	1	1						
		PINE AVE										
620	EX SAN	459+56	628.73	615.61	1	1			194	194	1	1
SA20	SAN	461+50	626.28	614.92	1	1			8	8	1	1
		188+64			3	2	12.8	20.5	210	210	3	3
PROJECT ITEM TOTALS												

SEH PROJECT NO: 8680-00-71

US 2-BELKNAP STREET

COUNTY: DOUGLAS

TABULATIONS - SANITARY

SHEET 560

E

SUMMARY OF SWLP ITEMS

NOTE	ITEM NO.	ITEM DESCRIPTION	ESTIMATED QUANTITY	UNIT
1,2	305.0120	BASE AGGREGATE DENSE 1-1/4"	3502	TON
1,3	465.0125	ASPHALTIC SURFACE TEMPORARY	274	TON
	612.0902.S	4-INCH POLYSTYRENE INSULATION	238	SY
	SPV.0060.050	REMOVE WATER VALVE	16	EACH
	SPV.0060.051	REMOVE WATER VALVE BOX	9	EACH
	SPV.0060.052	REMOVE CURB STOP	52	EACH
	SPV.0060.053	REMOVE CURB STOP BOX	37	EACH
	SPV.0060.054	REMOVE HYDRANT	28	EACH
	SPV.0060.055	REMOVE OR ABANDON VALVE VAULT	14	EACH
4	SPV.0060.056	HYDRANT ASSEMBLY	24	EACH
5	SPV.0060.057	TAPPING TEE WITH ELECTROFUSION SADDLE, 1-1/2-INCH	59	EACH
5	SPV.0060.058	TAPPING TEE WITH ELECTROFUSION SADDLE, 1.25-INCH	5	EACH
5	SPV.0060.059	TAPPING TEE WITH ELECTROFUSION SADDLE, 1.5-INCH	3	EACH
5	SPV.0060.060	TAPPING TEE WITH ELECTROFUSION SADDLE, 2-INCH	1	EACH
	SPV.0060.061	CURB STOP AND BOX, 1-INCH	75	EACH
	SPV.0060.062	CURB STOP AND BOX, 1.25-INCH	6	EACH
	SPV.0060.063	CURB STOP AND BOX, 1.5-INCH	4	EACH
	SPV.0060.064	CURB STOP AND BOX, 2-INCH	4	EACH
	SPV.0060.065	GATE VALVE AND BOX, 6-INCH	7	EACH
	SPV.0060.066	GATE VALVE AND BOX, 8-INCH	1	EACH
	SPV.0060.067	GATE VALVE AND BOX, 12-INCH	19	EACH
6	SPV.0060.096	CORPORATION STOP 1-INCH	16	EACH
6	SPV.0060.097	CORPORATION STOP 1.25-INCH	1	EACH
6	SPV.0060.098	CORPORATION STOP 1.5-INCH	1	EACH
6	SPV.0060.099	CORPORATION STOP 2-INCH	3	EACH
	SPV.0060.068	CONNECT TO EXISTING WATER MAIN	32	EACH
	SPV.0060.069	CONNECT TO EXISTING WATER SERVICE	97	EACH
	SPV.0060.070	EXCAVATION AREA - WATER MAIN	18	EACH
	SPV.0060.071	EXCAVATION AREA - SERVICE SMALLER THAN 2-INCHES	41	EACH
	SPV.0060.072	EXCAVATION AREA - SERVICE LARGER THAN 2-INCHES	1	EACH
5	SPV.0090.050	REMOVE OR ABANDON WATER MAIN	13012	LF
5	SPV.0090.051	WATER MAIN AND FITTINGS, 8-INCH HDPE DR-11	3348	LF
5	SPV.0090.052	WATER MAIN AND FITTINGS, 12-INCH HDPE DR-11	7045	LF
5	SPV.0090.065	WATER MAIN AND FITTINGS, 8-INCH DI CL 52	1244	LF
5	SPV.0090.066	WATER MAIN AND FITTINGS, 12-INCH DI CL 52	1059	LF
5	SPV.0090.053	WATER SERVICE, 1-INCH HDPE	2800	LF
5	SPV.0090.054	WATER SERVICE, 1.25-INCH HDPE	237	LF
5	SPV.0090.055	WATER SERVICE, 1.5-INCH HDPE	132	LF
5	SPV.0090.056	WATER SERVICE, 2-INCH HDPE	27	LF
5	SPV.0090.057	WATER SERVICE, 6-INCH HDPE	265	LF
5	SPV.0090.058	WATER SERVICE, 12-INCH HDPE	41	LF
6	SPV.0090.060	WATER SERVICE, 1-INCH COPPER	725	LF
6	SPV.0090.061	WATER SERVICE, 1.25-INCH COPPER	46	LF
6	SPV.0090.062	WATER SERVICE, 1.5-INCH COPPER	38	LF
6	SPV.0090.063	WATER SERVICE, 2-INCH COPPER	126	LF
6	SPV.0090.064	WATER SERVICE, 6-INCH DI CL 52	29	LF
	SPV.0090.059	STEEL CASING PIPE, 24-INCH JACKED	50	LF
	SPV.0105.050	TEMPORARY WATER SERVICE	1	LS
	SPV.0105.051	CONSTRUCTION STAKING WATER MAIN	1	LS

NOTES

1	TO BE USED FOR TEMPORARY ROADWAY AREAS AS SHOWN IN THE PLAN FOR SIDE STREET CONNECTIONS. RESTORATION AREAS FOR SERVICE CONNECTIONS, ETC. ARE INCLUDED IN EXCAVATION AREA BID ITEMS.
2	ASSUMES 16' UNIFORM WIDTH TRENCH FOR 14 SIDE STREETS.
3	ASSUMES 16' WIDTH x 33' LENGTH AREA FOR 14 SIDE STREETS AND LENGTH OF ROADWAY ON CATLIN AVENUE AND GRAND AVENUE. INCLUDES BOTH DI AND HDPE PIPE LEADS. USE DI LEADS IN CONTAMINATED AREAS.
4	TO BE USED IN NON-CONTAMINATED AREAS.
5	TO BE USED IN CONTAMINATED AREAS.
6	TO BE USED IN CONTAMINATED AREAS.

NOTES:

EXACT ALIGNMENT OF ALL WATER SERVICES TO BE COORDINATED BY CONTRACTOR WITH EXISTING AND PROPOSED UTILITIES AS WELL AS PROPOSED LANDSCAPING FEATURES.

MINIMUM 18" CLEAR REQUIRED AT ALL STORM AND SANITARY CROSSINGS. PIPE INVERTS SHOWN ARE AT REFERENCE LINE OF ROADWAY AND DO NOT ACCOUNT FOR PIPE THICKNESS.

CONTRACTOR TO VERIFY ALL ANTICIPATED SERVICES CONNECTIONS SHOWN IN PLAN.

REMOVAL OR ABANDONMENT OF ALL PIPES 2-INCH AND SMALLER IS INCIDENTAL.

BENDS SHOWN, PREFERABLE TO DEFLECT HDPE PIPE AT BEND LOCATIONS IF FEASIBLE. NO PAYMENT SHALL BE MADE FOR METHOD SELECTED.

Addendum No. 01
 ID 8680-00-72
 Revised Sheet 615
 December 5, 2016

Addendum No. 01
 ID 8680-00-72
 Revised Sheet 620
 December 5, 2016

TEES AND CROSSES			
STATION	LOCATION	HDPE CROSS OR TEE EACH	DI CROSS OR TEE EACH
		TYPE	TYPE
US 2			
137+42.45	12.0' RT.	12"x12"x12"	
141+24.00	12.0' RT.	12"x12"	TEE
145+11.60	12.0' RT.		CROSS
148+82.82	12.0' RT.		12"x8"
148+90.73	12.0' RT.		6"x12"x6"
148+90.73	4.5' RT.		8"x12"x8"
148+90.73	4.5' RT.		8"x12"x8"
152+58.49	4.5' RT.	12"x8"	TEE
156+26.74	4.5' RT.		CROSS
160+28.73	4.5' RT.	12"x8"	TEE
163+98.77	4.5' RT.	12"x8"	CROSS
167+62.07	4.5' RT.		12"x8"
171+31.62	4.5' RT.	12"x8"x12"	TEE
174+09.82	4.5' RT.	12"x8"x12"	TEE
178+71.81	4.5' RT.	12"x8"	CROSS
182+40.81	4.5' RT.		12"x8"
185+69.65	4.5' RT.	12"x8"x12"	TEE
188+67.45	4.5' RT.	12"x8"x12"	TEE
191+59.47	4.5' RT.	12"x12"x12"	TEE
198+30.46	4.5' RT.	12"x8"x12"	TEE
201+48.47	4.5' RT.	12"x8"	CROSS
204+49.20	4.5' RT.	12"x8"x12"	TEE
208+27.89	4.5' RT.	12"x12"	CROSS

WATER SERVICES - VALVES										
STATION	LOCATION	WATER SERVICE, 6-INCH HDPE LIN FT	WATER SERVICE, 12-INCH HDPE LIN FT	WATER SERVICE, 6-INCH DI CL 52 LIN FT	REMOVE WATER VALVE EACH	REMOVE WATER VALVE EACH	REMOVE WATER VALVE BOX EACH	GATE VALVE & BOX, 6-INCH EACH	GATE VALVE & BOX, 12-INCH EACH	CONNECT TO EXISTING WATER SERVICE EACH
US 2										
176+39.67	50.0' LT.	55				1		1		1
188+58.71	50.0' RT.	42					1	1		1
193+56.13	50.0' RT.	46			1		1	1		1
194+86.68	50.0' RT.	46			1		1	1		1
195+41.86	50.0' RT.	46			1		1	1		1
196+89.49	41.0' RT.		41		1			1		1
HAMMOND AVE										
328+73.51	50.0' LT.	30			1			1		1
CUMMING AVE										
342+15.79	30.7' LT.			29				1		1
PROJECT ITEM TOTALS		265	41	29	6	1	7	1		8

LANDSCAPE - SITE AMENITY ITEMS

SITE AMENITIES		CATEGORY 0650		CATEGORY 0680		CATEGORY 0690		CATEGORY 0690		CATEGORY 0190	
SPV.0060.075	SPV.0060.076	SPV.0060.077	SPV.0060.079	SPV.0060.083	SPV.0060.047	SPV.0060.040	SPV.0060.042	SPV.0060.043	SPV.0105.072	SPV.0105.073	
BENCH EACH	TRASH RECEPTACLE** EACH	BIKE RACK** EACH	BOLLARD EACH	FENCE COLUMN EACH	ORNAMENTAL METAL FENCE LF	STEEL LANDSCAPE EDGING LF	CONCRETE WALL FOUNDATION LF	HILL AVENUE ENTRY SIGN LF	UWS ENTRY SIGN LS	DOUGLAS COUNTY COURTHOUSE SIGN LS	
35	30	25	41	84	1513	3891.5	261	136.02	1	1	

**FIELD LOCATE TRASH RECEPTABLES AND BIKE RACKS FOR APPROVAL

ENTRY COLUMN	LOCATION	COLUMNS
135*-30.00	55.05 LT	1
135*-38.35	51.50 RT	1
135*-73.51	55.05 LT	1
135*-91.80	53.00 RT	1
135*-94.80	53.00 RT	1
135*-94.81	55.05 LT	1
135*-63.22	55.05 LT	1
135*-69.30	55.00 RT	1
200*-62.20	48.83 LT	1
200*-70.00	50.95 RT	1
207*-12.20	48.83 LT	1
207*-15.00	50.95 RT	1
207*-42.20	48.83 LT	1
207*-42.20	48.83 LT	1
Project Item Totals		14

DOUGLAS COUNTY COURTHOUSE SIGN

DESCRIPTION	QUANTITY	UNIT
EXCAVATION COMMON	160	CY
Concrete Sign Wall, Douglas County, (above ground)	1	LS
Concrete Wall Foundation	32	LF
TEXTURED CONCRETE CAP	40	LF
SIGN LIGHTING, Douglas County (INCLUDES WIRING)	1	LS

*QUANTITIES PROVIDED ARE FOR INFORMATION ONLY; ITEM TO BE BID LUMP SUM

LWS CAMPUS ENTRY SIGN

DESCRIPTION	QUANTITY	UNIT
EXCAVATION COMMON	320	CY
EXCAVATION, HAULING, AND DISPOSAL OF PETROLEUM CONTAMINATED SOIL**	191	TON
SIGN FOOTINGS	2	EA
BRICK/ MASONRY FOR SIGN & PILLARS	2	LS
SIGN LETTERS, UWS	2	LS
BUZZ EMBLEM (1 PER COLUMN)	4	EA
Concrete Sign Wall, UWS (Includes items above in Sign Package)	2	EA

*QUANTITIES PROVIDED ARE FOR INFORMATION ONLY; ITEM TO BE BID LUMP SUM

STEEL LANDSCAPE EDGING

STARTING STATION POINT	ENDING STATION POINT	LF	OFFSET START	OFFSET END
135+27.86	135+86.95	74.35	60.64 LT	82.17 LT
135+12.78	139+12.78	86.82	55.94 LT	59.23 LT
135+12.72	04+30.86	82.11 LT	50.71 LT	50.71 LT
135+56.36	136+65.92	31.81	66.33 RT	65.27 RT
02+33.89	02+62.53	27.10	45.40 LT	57.87 LT
09+16.39	145+70.08	43.17	35.01 RT	53.62 RT
145+00.16	147+00.18	99.57	50.00 RT	54.85 RT
147+00.18	148+00.18	39.82	39.82 RT	54.85 RT
148+00.18	149+00.18	31.34	52.94 RT	50.00 LT
149+00.18	150+20.82	248.89	49.91 RT	50.00 LT
150+20.82	151+25.01	34.26	50.05 RT	52.53 RT
151+25.01	159+70.84	88.22	44.18 RT	72.49 RT
159+70.84	169+47.38	152.20	50.00 LT	54.22 LT
169+47.38	174+63.66	55.96	72.66 LT	58.73 RT
174+63.66	175+62.74	218.16	49.00 RT	24.00 RT
175+62.74	177+31.93	72.02	50.00 RT	50.00 RT
177+31.93	177+31.93	68.71	50.00 RT	50.00 RT
177+31.93	399+39.84	60.17	73.66 LT	39.87 LT
178+21.69	400+74.36	32.40	19.45 RT	50.44 RT
399+39.84	179+16.72	139.21	48.72 RT	36.21 LT
399+39.84	409+17.03	206.89	36.54 RT	49.00 RT
409+17.03	184+80.13	206.89	45.00 RT	45.00 RT
409+17.03	187+10.30	25.29	50.00 RT	37.52 LT
187+10.30	439+27.57	70.75	64.50 RT	45.80 LT
439+27.57	196+72.55	192.37	50.00 RT	54.88 LT
196+72.55	197+48.02	42.64	50.00 RT	50.00 RT
197+48.02	197+48.02	19.00	50.00 LT	50.00 LT
198+91.49	200+27.41	45.58	45.00 RT	45.00 RT
200+27.41	200+27.41	45.58	45.00 RT	45.00 RT
200+27.41	200+40.89	204+07.29	45.00 RT	45.00 RT
200+40.89	204+07.29	29.24	45.00 RT	45.00 RT
204+07.29	204+55.26	29.24	45.00 RT	45.00 RT
204+55.26	205+01.62	33.32	45.00 RT	45.00 RT
205+01.62	205+01.62	6.35	52.50 LT	52.50 LT
205+01.62	205+60.71	21.08	50.00 LT	50.00 LT
205+60.71	206+30.79	21.08	52.50 LT	52.50 LT
206+30.79	206+30.79	21.08	52.50 LT	52.50 LT
206+30.79	206+60.71	6.35	45.00 RT	45.00 RT
206+60.71	499+17.88	138.99	38.85 RT	38.85 RT
499+17.88	500+00.00	56.56	37.24 LT	37.24 LT
500+00.00	500+00.00	24.95	64.09 LT	64.09 LT
500+00.00	500+78.83	26.02	58.42 LT	58.42 LT
500+78.83	209+19.48	3891.50		
Project Item TOTAL				

Addendum No. 01
ID 8680-00-71
Revised Sheet 631
December 5, 2016

GENERAL NOTES

DETAILS OF CONSTRUCTION MATERIALS AND WORKMANSHIP NOT SHOWN ON THIS DRAWING SHALL CONFORM TO THE PERTINENT REQUIREMENTS OF THE CONTRACT.

ORIENT ANCHOR RODS IN FOOTING AND PROVIDE ANCHOR ROD PROJECTION ABOVE TOP OF CONCRETE FOOTING BASE PER THIS SHEET.

BENDING DIMENSIONS FOR REINFORCING BARS ARE OUT TO OUT.

USE 3" CLEAR FOR ALL REINFORCEMENT UNLESS NOTED OTHERWISE.

THE CONTRACTOR IS RESPONSIBLE FOR MAKING HIS OWN DETERMINATION AS TO THE TYPE AND LOCATION OF THE UNDERGROUND UTILITIES AS MAY BE NECESSARY TO AVOID DAMAGE THERETO.

WELDING OF ANCHOR RODS TO THE CAGE IS UNACCEPTABLE. TEMPLATES SHALL BE USED.

BASSES (SHAFTS) BELOW THE WING SHALL BE EXCAVATED BY THE USE OF A CIRCULAR AUGER. IF A BASE REQUIRES A DEEP FORM BECAUSE OF LOOSE SOIL, THE FORM SHALL BE REMOVED BEFORE BACKFILLING AROUND THE BASE. BACKFILL SHALL BE TAMPED TIGHT AGAINST THE BASE. CONCRETE BASE IN LAYERS OF 1 FOOT OR LESS.

TOP SURFACE OF THE CONCRETE BASE SHALL BE TROWEL FINISHED AND LEVEL.

CONDUIT SIZE AND LOCATIONS SHALL BE AS SHOWN ON THE PLANS.

MINIMUM BENDING RADIUS OF CONDUIT IS EQUAL TO 6 X THE DIAMETER.

CONDUIT HEIGHT ABOVE CONCRETE BASE SHALL BE 4 1/2" INCHES. ALL METALLIC CONDUIT ENDS SHALL BE REAMED AND THREADED. NONMETALLIC CONDUIT SHALL HAVE BELL ENDS INSTALLED. ALL CONDUIT SHALL SLOPE TO PULL BOX.

ALL CONDUIT ENDS AT THE TOP OF THE BASES SHALL BE CAPPED IF METALLIC OR PLUGGED IF NONMETALLIC IMMEDIATELY AFTER PLACEMENT AND BEFORE CONCRETE IS POURED. CONDUITS IN WHICH WIRE OR CABLE IS NOT INSTALLED SHALL REMAIN CAPPED OR PLUGGED.

BELL ENDS SHALL BE INSTALLED ON ALL PVC CONDUIT EXPOSED AT THE TOP OF CONCRETE BASES BEFORE INSTALLATION OF CABLE OR WIRE. WHEN REQUIRED TO CONNECT NONMETALLIC CONDUIT TO METALLIC CONDUIT, ONLY ADAPTOR FITTINGS, UL LISTED FOR ELECTRICAL USE, SHALL BE USED.

A NO. 4 AWG, STRANDED COPPER EQUIPMENT GROUNDING CONDUCTOR SHALL BE EXOTHERMICALLY WELDED TO THE EQUIPMENT GROUNDING ELECTRODE (GROUND ROD).

THE EQUIPMENT GROUNDING CONDUCTOR SHALL BE FURNISHED AND INSTALLED TO ENTER THE BASE THROUGH A 1-INCH CONDUIT INSTALLED THROUGH THE HOOPS, LEAVING A 6-INCH COIL OF WIRE ABOVE THE CONCRETE BASE. THE EQUIPMENT GROUNDING CONDUCTOR SHALL BE NEATLY COILED AND THE COILS TIED TOGETHER.

BAR STEEL REINFORCEMENT SHALL BE COATED WITH POWDERED EPOXY RESIN IN ACCORDANCE WITH SECTION 505 OF THE STANDARD SPECIFICATIONS.

THE MINIMUM DEPTH OF CONDUIT EXITING THE CONCRETE BASE AND INSTALLED BELOW THE TRAVEL WAY SHALL BE 24-INCHES. THE MINIMUM DEPTH OF CONDUIT EXITING THE CONCRETE BASE THAT IS NOT INSTALLED BELOW THE TRAVELED WAY SHALL BE 18-INCHES. THE MAXIMUM DEPTH OF ALL CONDUIT SHALL BE 36-INCHES, GREATER THAN 36-INCHES IF INSTALLED IN BREAKER-RUN, EXCEPT WITH THE WRITTEN APPROVAL OF THE ENGINEER.

ANCHOR RODS SHALL BE INSTALLED WITH MISALIGNMENTS OF LESS THAN 1/40 FROM VERTICAL.

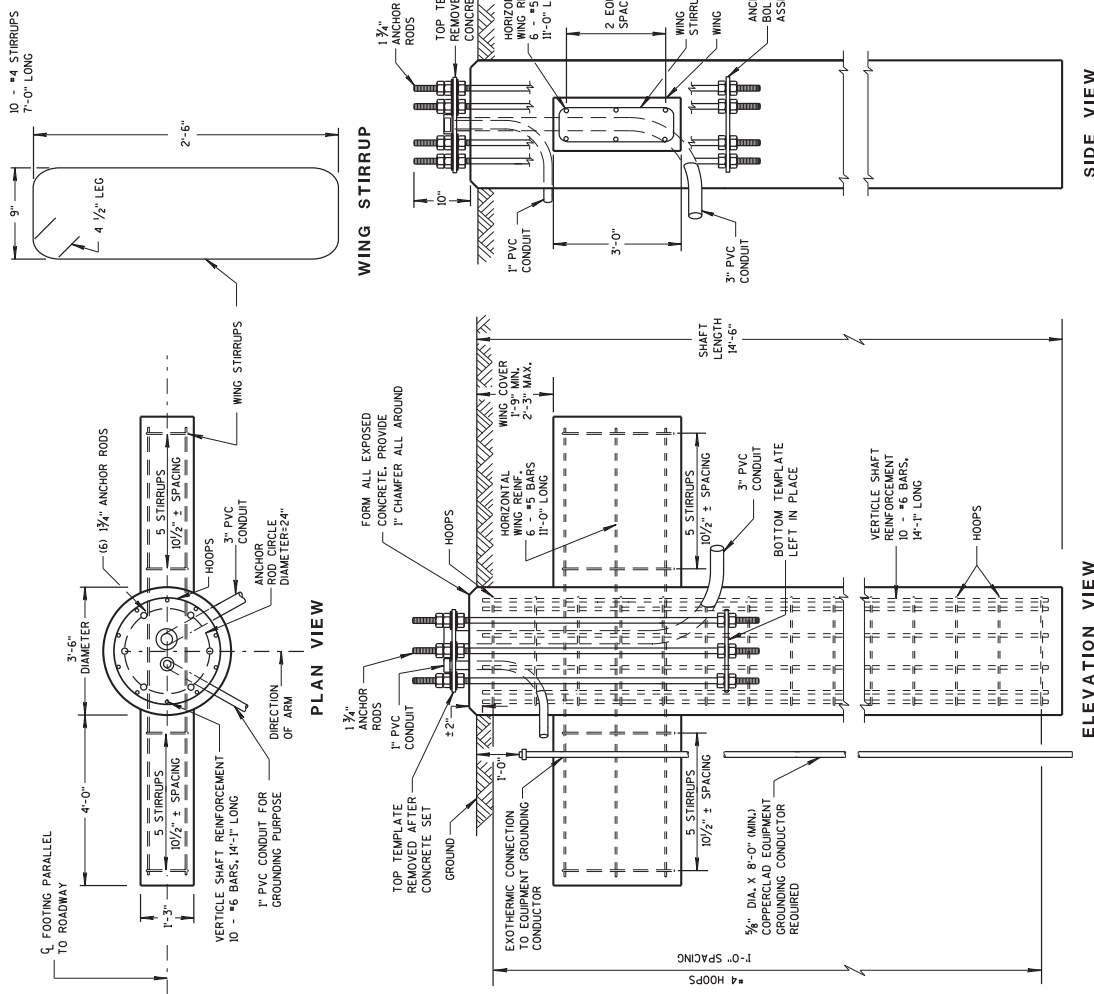
CONCRETE MASONRY fc=3,500 p.s.i.

HIGH STRENGTH BAR STEEL REINFORCEMENT, GRADE 60 fy=60,000 p.s.i.

ANCHOR RODS, ASTM F1554 GRADE 55 IN ACCORDANCE WITH SECTION 641.2.3 OF THE STANDARD SPECIFICATIONS fy=55,000 p.s.i.

TEMPLATES, ASTM A109 GRADE 36 fy=36,000 p.s.i.

Addendum No. 01
ID 8680-00-71
Added Sheet 709A
December 5, 2016



HOOP DETAIL

SIDE VIEW

ELEVATION VIEW

DOES NOT SHOW HOOPS OR VERTICAL SHAFT REINFORCEMENT

(FOR TYPE 12 & 13 POLES)

CONCRETE = 6.3 C.Y.
H.S. REINFORCEMENT = 433 LBS.

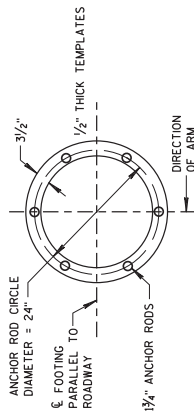
TO BE USED WHEN GROUND ELEVATION AT BASE EQUALS OR IS GREATER THAN HIGH POINT OF ROADWAY ELEVATION.
SEE S.D.D. 9C13-2 WHEN GROUND ELEVATION AT BASE IS LOWER THAN HIGH POINT OF ROADWAY ELEVATION.

CONCRETE BASE TYPE 13
STATE OF WISCONSIN
DEPARTMENT OF TRANSPORTATION

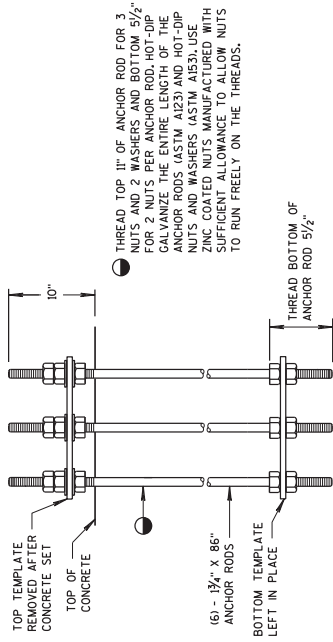
709A

S.D.D. 9 C 12-8a

S.D.D. 9 C 12-8a



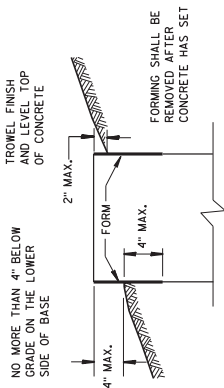
TOP AND BOTTOM TEMPLATES



● THREAD TOP 11" OF ANCHOR ROD FOR 3 NUTS AND 2 WASHERS AND BOTTOM 5/2" FOR 2 NUTS PER ANCHOR ROD. HOT-DIP GALVANIZE THE ENTIRE LENGTH OF THE ANCHOR RODS (ASTM A153) AND HOT-DIP NUTS AND WASHERS (ASTM A153). USE ANCHOR RODS AND NUTS WITH SUFFICIENT ALLOWANCE TO ALLOW NUTS TO RUN FREELY ON THE THREADS.

ANCHOR BOLT ASSEMBLY DETAIL

CONCRETE BASE TYPE 13 ANCHOR ASSEMBLY



FORMING DETAIL

Addendum No. 01
 ID 8680-00-71
 Added Sheet 709B
 December 5, 2016

CONCRETE BASE TYPE 13
STATE OF WISCONSIN DEPARTMENT OF TRANSPORTATION
APPROVED Mcy 2016 /S/ Ahmet Demirdilek DATE STATE ELECTRICAL ENGINEER P.W.A.



Proposal Schedule of Items

Proposal ID: 20161213044

Project(s): 8680-00-71, 8680-00-72, 8998-00-24

SECTION: 0001 Contract Items

Alt Set ID:

Alt Mbr ID:

Proposal Line Number	Item ID Description	Approximate Quantity and Units	Unit Price	Bid Amount
0290	204.9090.S Removing (item description) 001. Retaining Wall	88.000 LF	_____.	_____.
0300	205.0100 Excavation Common	80,588.000 CY	_____.	_____.
0310	208.1100 Select Borrow	29,015.000 CY	_____.	_____.
0320	211.0100 Prepare Foundation for Asphaltic Paving (project) 001. 8680-00-71	LS	LUMP SUM	_____.
0330	211.0200 Prepare Foundation for Concrete Pavement (project) 001. 8680-00-71	LS	LUMP SUM	_____.
0340	213.0100 Finishing Roadway (project) 001. 8680- 00-71	1.000 EACH	_____.	_____.
0350	305.0115 Base Aggregate Dense 3/4-Inch	21.000 CY	_____.	_____.
0360	305.0120 Base Aggregate Dense 1 1/4-Inch	50,064.000 TON	_____.	_____.
0370	310.0110 Base Aggregate Open-Graded	18,049.000 TON	_____.	_____.
0380	310.0115 Base Aggregate Open-Graded	74.000 CY	_____.	_____.
0390	312.0115 Select Crushed Material	56.000 CY	_____.	_____.
0400	415.0210 Concrete Pavement Gaps	20.000 EACH	_____.	_____.
0410	416.0260 Concrete Driveway HES 6-Inch	3,212.000 SY	_____.	_____.
0420	416.0610 Drilled Tie Bars	502.000 EACH	_____.	_____.
0430	416.0620 Drilled Dowel Bars	518.000 EACH	_____.	_____.
0440	416.1710 Concrete Pavement Repair	50.000 SY	_____.	_____.



Proposal Schedule of Items

Proposal ID: 20161213044

Project(s): 8680-00-71, 8680-00-72, 8998-00-24

SECTION: 0001 Contract Items

Alt Set ID: Alt Mbr ID:

Proposal Line Number	Item ID Description	Approximate Quantity and Units	Unit Price	Bid Amount
0450	416.1720 Concrete Pavement Replacement	714.000 SY	_____	_____
0460	455.0605 Tack Coat	12,752.000 GAL	_____	_____
0470	460.6443 HMA Pavement 3 MT 58-34 H	2,808.000 TON	_____	_____
0480	460.6444 HMA Pavement 4 MT 58-34 H	2,066.000 TON	_____	_____
0490	460.7644 HMA Pavement 4 HT 58-34 V	72.000 TON	_____	_____
0500	465.0105 Asphaltic Surface	2,047.000 TON	_____	_____
0510	465.0125 Asphaltic Surface Temporary	774.000 TON	_____	_____
0520	520.8000 Concrete Collars for Pipe	14.000 EACH	_____	_____
0530	522.1012 Apron Endwalls for Culvert Pipe Reinforced Concrete 12-Inch	4.000 EACH	_____	_____
0540	522.1015 Apron Endwalls for Culvert Pipe Reinforced Concrete 15-Inch	1.000 EACH	_____	_____
0550	601.0407 Concrete Curb & Gutter 18-Inch Type D	120.000 LF	_____	_____
0560	601.0409 Concrete Curb & Gutter 30-Inch Type A	810.000 LF	_____	_____
0570	601.0411 Concrete Curb & Gutter 30-Inch Type D	11,366.000 LF	_____	_____
0580	601.0600 Concrete Curb Pedestrian	1,224.000 LF	_____	_____
0590	602.0415 Concrete Sidewalk 6-Inch	210,689.000 SF	_____	_____
0600	602.0515 Curb Ramp Detectable Warning Field Natural Patina	2,415.000 SF	_____	_____



Proposal Schedule of Items

Proposal ID: 20161213044

Project(s): 8680-00-71, 8680-00-72, 8998-00-24

SECTION: 0001 Contract Items

Alt Set ID: Alt Mbr ID:

Proposal Line Number	Item ID Description	Approximate Quantity and Units	Unit Price	Bid Amount
1350	632.0201 Shrubs (species) (size) (root) 009. Sherwood Compact Spruce #15 CG	3.000 EACH	_____.	_____.
1360	632.0201 Shrubs (species) (size) (root) 010.Abbotswood Potentilla	43.000 EACH	_____.	_____.
1370	632.0201 Shrubs (species) (size) (root) 011. Goldfinger Potentilla	42.000 EACH	_____.	_____.
1380	632.9101 Landscape Planting Surveillance and Care Cycles	20.000 EACH	_____.	_____.
1390	633.5200 Markers Culvert End	5.000 EACH	_____.	_____.
1400	637.2210 Signs Type II Reflective H	1,279.220 SF	_____.	_____.
1410	637.2215 Signs Type II Reflective H Folding	227.520 SF	_____.	_____.
1420	637.2230 Signs Type II Reflective F	192.390 SF	_____.	_____.
1430	638.2102 Moving Signs Type II	9.000 EACH	_____.	_____.
1440	638.2602 Removing Signs Type II	219.000 EACH	_____.	_____.
1450	638.3000 Removing Small Sign Supports	112.000 EACH	_____.	_____.
1460	642.5401 Field Office Type D	1.000 EACH	_____.	_____.
1470	643.0200.S Traffic Control Surveillance and Maintenance (project) 001. 8680-00-71	367.000 DAY	_____.	_____.
1480	643.0300 Traffic Control Drums	57,311.000 DAY	_____.	_____.
1490	643.0410 Traffic Control Barricades Type II	5,642.000 DAY	_____.	_____.



Proposal Schedule of Items

Proposal ID: 20161213044

Project(s): 8680-00-71, 8680-00-72, 8998-00-24

SECTION: 0001 Contract Items

Alt Set ID: Alt Mbr ID:

Proposal Line Number	Item ID Description	Approximate Quantity and Units	Unit Price	Bid Amount
1500	643.0420 Traffic Control Barricades Type III	34,337.000 DAY	_____.	_____.
1510	643.0500 Traffic Control Flexible Tubular Marker Posts	706.000 EACH	_____.	_____.
1520	643.0600 Traffic Control Flexible Tubular Marker Bases	706.000 EACH	_____.	_____.
1530	643.0705 Traffic Control Warning Lights Type A	68,674.000 DAY	_____.	_____.
1540	643.0715 Traffic Control Warning Lights Type C	10,364.000 DAY	_____.	_____.
1550	643.0900 Traffic Control Signs	41,896.000 DAY	_____.	_____.
1560	643.0920 Traffic Control Covering Signs Type II	46.000 EACH	_____.	_____.
1570	643.1000 Traffic Control Signs Fixed Message	472.000 SF	_____.	_____.
1580	643.1051 Traffic Control Signs PCMS with Cellular Communications	762.000 DAY	_____.	_____.
1590	643.2000 Traffic Control Detour (project) 001. 8680-00-71	1.000 EACH	_____.	_____.
1600	643.3000 Traffic Control Detour Signs	102,760.000 DAY	_____.	_____.
1610	645.0111 Geotextile Type DF Schedule A	11,486.000 SY	_____.	_____.
1620	645.0120 Geotextile Type HR	10.000 SY	_____.	_____.
1630	646.0106 Pavement Marking Epoxy 4-Inch	100,986.000 LF	_____.	_____.
1640	646.0126 Pavement Marking Epoxy 8-Inch	4,879.000 LF	_____.	_____.
1650	646.0600 Removing Pavement Markings	4,837.000 LF	_____.	_____.



Proposal Schedule of Items

Proposal ID: 20161213044

Project(s): 8680-00-71, 8680-00-72, 8998-00-24

SECTION: 0001 Contract Items

Alt Set ID: Alt Mbr ID:

Proposal Line Number	Item ID Description	Approximate Quantity and Units	Unit Price	Bid Amount
1660	647.0110 Pavement Marking Railroad Crossings Epoxy	4.000 EACH	_____.	_____.
1670	647.0156 Pavement Marking Arrows Epoxy Type 1	10.000 EACH	_____.	_____.
1680	647.0166 Pavement Marking Arrows Epoxy Type 2	70.000 EACH	_____.	_____.
1690	647.0176 Pavement Marking Arrows Epoxy Type 3	9.000 EACH	_____.	_____.
1700	647.0206 Pavement Marking Arrows Bike Lane Epoxy	28.000 EACH	_____.	_____.
1710	647.0256 Pavement Marking Symbols Epoxy	11.000 EACH	_____.	_____.
1720	647.0306 Pavement Marking Symbols Bike Lane Epoxy	28.000 EACH	_____.	_____.
1730	647.0336 Pavement Marking Symbols Bike Shared Lane Epoxy	42.000 EACH	_____.	_____.
1740	647.0356 Pavement Marking Words Epoxy	15.000 EACH	_____.	_____.
1750	647.0456 Pavement Marking Curb Epoxy	198.000 LF	_____.	_____.
1760	647.0566 Pavement Marking Stop Line Epoxy 18-Inch	1,175.000 LF	_____.	_____.
1770	647.0606 Pavement Marking Island Nose Epoxy	22.000 EACH	_____.	_____.
1780	647.0656 Pavement Marking Parking Stall Epoxy	3,195.000 LF	_____.	_____.
1790	647.0706 Pavement Marking Diagonal Epoxy 6-Inch	1,343.000 LF	_____.	_____.
1800	647.0773 Pavement Marking Crosswalk Paint 12-Inch	40.000 LF	_____.	_____.



Proposal Schedule of Items

Proposal ID: 20161213044

Project(s): 8680-00-71, 8680-00-72, 8998-00-24

SECTION: 0001 Contract Items

Alt Set ID: Alt Mbr ID:

Proposal Line Number	Item ID Description	Approximate Quantity and Units	Unit Price	Bid Amount
1810	647.0799 Pavement Marking Crosswalk Preformed Plastic 24-Inch	6,080.000 LF	_____.	_____.
1820	647.0955 Removing Pavement Markings Arrows	7.000 EACH	_____.	_____.
1830	647.0965 Removing Pavement Markings Words	7.000 EACH	_____.	_____.
1840	649.0400 Temporary Pavement Marking Removable Tape 4-Inch	58,670.000 LF	_____.	_____.
1850	649.0402 Temporary Pavement Marking Paint 4-Inch	19,159.000 LF	_____.	_____.
1860	649.0600 Temporary Pavement Marking Removable Tape 6-Inch	752.000 LF	_____.	_____.
1870	650.4000 Construction Staking Storm Sewer	298.000 EACH	_____.	_____.
1880	650.4500 Construction Staking Subgrade	24,538.000 LF	_____.	_____.
1890	650.5000 Construction Staking Base	4,145.000 LF	_____.	_____.
1900	650.5500 Construction Staking Curb Gutter and Curb & Gutter	31,028.000 LF	_____.	_____.
1910	650.7000 Construction Staking Concrete Pavement	8,124.000 LF	_____.	_____.
1920	650.8500 Construction Staking Electrical Installations (project) 001. 8680-00-71	LS	LUMP SUM	_____.
1930	650.9910 Construction Staking Supplemental Control (project) 001. 8680-00-71	LS	LUMP SUM	_____.
1940	652.0205 Conduit Rigid Nonmetallic Schedule 40 3/4-Inch	160.000 LF	_____.	_____.



Proposal Schedule of Items

Proposal ID: 20161213044

Project(s): 8680-00-71, 8680-00-72, 8998-00-24

SECTION: 0001 Contract Items

Alt Set ID: Alt Mbr ID:

Proposal Line Number	Item ID Description	Approximate Quantity and Units	Unit Price	Bid Amount
1950	652.0210 Conduit Rigid Nonmetallic Schedule 40 1-Inch	258.000 LF	_____	_____
1960	652.0225 Conduit Rigid Nonmetallic Schedule 40 2-Inch	26,970.000 LF	_____	_____
1970	652.0235 Conduit Rigid Nonmetallic Schedule 40 3-Inch	5,546.000 LF	_____	_____
1980	652.0605 Conduit Special 2-Inch	2,341.000 LF	_____	_____
1990	652.0615 Conduit Special 3-Inch	1,928.000 LF	_____	_____
2000	653.0140 Pull Boxes Steel 24x42-Inch	71.000 EACH	_____	_____
2010	653.0145 Pull Boxes Steel 24x48-Inch	33.000 EACH	_____	_____
2020	653.0905 Removing Pull Boxes	65.000 EACH	_____	_____
2030	654.0101 Concrete Bases Type 1	40.000 EACH	_____	_____
2040	654.0217 Concrete Control Cabinet Bases Type 9 Special	7.000 EACH	_____	_____
2050	655.0230 Cable Traffic Signal 5-14 AWG	3,730.000 LF	_____	_____
2060	655.0240 Cable Traffic Signal 7-14 AWG	2,965.000 LF	_____	_____
2070	655.0260 Cable Traffic Signal 12-14 AWG	1,754.000 LF	_____	_____
2080	655.0270 Cable Traffic Signal 15-14 AWG	9,614.000 LF	_____	_____
2090	655.0320 Cable Type UF 2-10 AWG Grounded	4,468.000 LF	_____	_____
2100	655.0515 Electrical Wire Traffic Signals 10 AWG	9,057.000 LF	_____	_____



Proposal Schedule of Items

Proposal ID: 20161213044

Project(s): 8680-00-71, 8680-00-72, 8998-00-24

SECTION: 0001 Contract Items

Alt Set ID: Alt Mbr ID:

Proposal Line Number	Item ID Description	Approximate Quantity and Units	Unit Price	Bid Amount
2110	655.0610 Electrical Wire Lighting 12 AWG	30,930.000 LF	_____.	_____.
2120	655.0615 Electrical Wire Lighting 10 AWG	4,512.000 LF	_____.	_____.
2130	655.0620 Electrical Wire Lighting 8 AWG	6,994.000 LF	_____.	_____.
2140	655.0625 Electrical Wire Lighting 6 AWG	78,195.000 LF	_____.	_____.
2150	655.0630 Electrical Wire Lighting 4 AWG	78,195.000 LF	_____.	_____.
2160	655.0900 Traffic Signal EVP Detector Cable	7,541.000 LF	_____.	_____.
2170	656.0200 Electrical Service Meter Breaker Pedestal (location) 001. Signals US 2 Belknap St & Banks Ave	LS	LUMP SUM	_____.
2180	656.0200 Electrical Service Meter Breaker Pedestal (location) 002. Signals US 2 Belknap St & STH 35 Tower Ave	LS	LUMP SUM	_____.
2190	656.0200 Electrical Service Meter Breaker Pedestal (location) 003. Signals US 2 Belknap St & Ogden Ave	LS	LUMP SUM	_____.
2200	656.0200 Electrical Service Meter Breaker Pedestal (location) 004. Signals US 2 Belknap St & Hammond Ave	LS	LUMP SUM	_____.
2210	656.0200 Electrical Service Meter Breaker Pedestal (location) 005. Signals US 2 Belknap St & Grand Ave	LS	LUMP SUM	_____.
2220	656.0200 Electrical Service Meter Breaker Pedestal (location) 006. Signals US 2 Belknap St & Catlin Ave	LS	LUMP SUM	_____.
2230	656.0200 Electrical Service Meter Breaker Pedestal (location) 007. Signals US 2 & Hill Ave	LS	LUMP SUM	_____.



Proposal Schedule of Items

Proposal ID: 20161213044

Project(s): 8680-00-71, 8680-00-72, 8998-00-24

SECTION: 0001 Contract Items

Alt Set ID:

Alt Mbr ID:

Proposal Line Number	Item ID Description	Approximate Quantity and Units	Unit Price	Bid Amount
3080	SPV.0060 Special 037. Temporary Connection To Existing Storm Sewer Pipe	10.000 EACH	_____.	_____.
3090	SPV.0060 Special 039. Low Permeable Plug	2.000 EACH	_____.	_____.
3100	SPV.0060 Special 040. Removing Sanitary Manholes	2.000 EACH	_____.	_____.
3110	SPV.0060 Special 041. Sanitary Sewer Casting	3.000 EACH	_____.	_____.
3120	SPV.0060 Special 042. Connect to Existing Sanitary Service	3.000 EACH	_____.	_____.
3130	SPV.0060 Special 043. Connect to Existing Sanitary Main 6-Inch to 18-Inch	3.000 EACH	_____.	_____.
3140	SPV.0060 Special 044. Connect to Existing Sanitary Main, 20x30-Inch	1.000 EACH	_____.	_____.
3150	SPV.0060 Special 045. Connect to Existing Sanitary Main, 72-Inch	2.000 EACH	_____.	_____.
3160	SPV.0060 Special 046. Connect to Existing Sanitary Manhole	1.000 EACH	_____.	_____.
3170	SPV.0060 Special 047. Construction Staking Sanitary Sewer	3.000 EACH	_____.	_____.
3180	SPV.0060 Special 048. Adjust Sanitary Manhole Covers	11.000 EACH	_____.	_____.
3190	SPV.0060 Special 050. Remove Water Valve	16.000 EACH	_____.	_____.
3200	SPV.0060 Special 051. Remove Water Valve Box	9.000 EACH	_____.	_____.
3210	SPV.0060 Special 052. Remove Curb Stop	52.000 EACH	_____.	_____.



Proposal Schedule of Items

Proposal ID: 20161213044

Project(s): 8680-00-71, 8680-00-72, 8998-00-24

SECTION: 0001 Contract Items

Alt Set ID: Alt Mbr ID:

Proposal Line Number	Item ID Description	Approximate Quantity and Units	Unit Price	Bid Amount
3220	SPV.0060 Special 053. Remove Curb Stop Box	37.000 EACH	_____.	_____.
3230	SPV.0060 Special 054. Remove Hydrant	28.000 EACH	_____.	_____.
3240	SPV.0060 Special 055. Remove or Abandon Valve Vault	14.000 EACH	_____.	_____.
3250	SPV.0060 Special 056. Hydrant Assembly	24.000 EACH	_____.	_____.
3260	SPV.0060 Special 057. Tapping Tee with Electrofusion Saddle, 1-Inch	59.000 EACH	_____.	_____.
3270	SPV.0060 Special 058. Tapping Tee with Electrofusion Saddle, 1.25-Inch	5.000 EACH	_____.	_____.
3280	SPV.0060 Special 059. Tapping Tee with Electrofusion Saddle, 1.5-Inch	3.000 EACH	_____.	_____.
3290	SPV.0060 Special 060. Tapping Tee with Electrofusion Saddle, 2-Inch	1.000 EACH	_____.	_____.
3300	SPV.0060 Special 061. Curb Stop and Box, 1-inch	75.000 EACH	_____.	_____.
3310	SPV.0060 Special 062. Curb Stop and Box, 1.25-inch	6.000 EACH	_____.	_____.
3320	SPV.0060 Special 063. Curb Stop and Box, 1.5-inch	4.000 EACH	_____.	_____.
3330	SPV.0060 Special 064. Curb Stop and Box, 2-inch	4.000 EACH	_____.	_____.
3340	SPV.0060 Special 065. Gate Valve & Box 6-inch	7.000 EACH	_____.	_____.
3350	SPV.0060 Special 066. Gate Valve & Box 8-inch	1.000 EACH	_____.	_____.
3360	SPV.0060 Special 067. Gate Valve & Box 12-inch	19.000 EACH	_____.	_____.



Proposal Schedule of Items

Proposal ID: 20161213044

Project(s): 8680-00-71, 8680-00-72, 8998-00-24

SECTION: 0001 Contract Items

Alt Set ID: Alt Mbr ID:

Proposal Line Number	Item ID Description	Approximate Quantity and Units	Unit Price	Bid Amount
3680	SPV.0090 Special 001. Dielectric 12-Count Fiber Optic Cable	9,565.000 LF	_____.	_____.
3690	SPV.0090 Special 002. Schedule 40 PVC Pipe Perforated 6-Inch	4,913.000 LF	_____.	_____.
3700	SPV.0090 Special 003. Schedule 80 PVC Peforated 8-inch	10.000 LF	_____.	_____.
3710	SPV.0090 Special 005. Removing Sanitary Sewer Pipe 4-Inch to 30-Inch	312.000 LF	_____.	_____.
3720	SPV.0090 Special 006. Removing Sanitary Sewer Pipe, 72-Inch	118.000 LF	_____.	_____.
3730	SPV.0090 Special 007. Sanitary Manhole, 48-Inch	12.800 LF	_____.	_____.
3740	SPV.0090 Special 008. Sanitary Manhole, 120-Inch	20.500 LF	_____.	_____.
3750	SPV.0090 Special 009. Sanitary Sewer Service 6-Inch	102.000 LF	_____.	_____.
3760	SPV.0090 Special 010. Sanitary Sewer Main 18-Inch	16.000 LF	_____.	_____.
3770	SPV.0090 Special 011. Sanitary Sewer Main 24-Inch	194.000 LF	_____.	_____.
3780	SPV.0090 Special 012. Sanitary Sewer Main RCHorizontal Elliptical Class HE-III 58x91-Inch	118.000 LF	_____.	_____.
3790	SPV.0090 Special 013. Sewer Field Quality Control - Deflection Test	202.000 LF	_____.	_____.
3800	SPV.0090 Special 014. Sewer Field Quality Control - Televising	320.000 LF	_____.	_____.
3810	SPV.0090 Special 015. PVC Pipe 4-Inch	10.000 LF	_____.	_____.



Proposal Schedule of Items

Proposal ID: 20161213044

Project(s): 8680-00-71, 8680-00-72, 8998-00-24

SECTION: 0001 Contract Items

Alt Set ID: Alt Mbr ID:

Proposal Line Number	Item ID Description	Approximate Quantity and Units	Unit Price	Bid Amount
4820	SPV.0165 Special 007. Temporary Pedestrian Access - Intersection	17,815.000 SF	_____	_____
4830	SPV.0165 Special 008. Concrete Sidewalk HES 6-Inch	2,500.000 SF	_____	_____
4840	SPV.0165 Special 009. Concrete Curb Median 3-Inch Sloped	1,146.000 SF	_____	_____
4850	SPV.0180 Special 001. Concrete Pavement 10-Inch Special	53,060.000 SY	_____	_____
4860	SPV.0180 Special 002. Concrete Pavement 9-Inch Special	2,577.000 SY	_____	_____
4870	SPV.0180 Special 003. Hydroseeding	2,568.000 SY	_____	_____
4880	SPV.0195 Special 002. Over Excavation Hauling And Disposal Of Contaminated Soil	773.000 TON	_____	_____
4890	SPV.0195 Special 003. Excavation, Hauling, and Disposal of Contaminated Soil	24,405.000 TON	_____	_____
4900	SPV.0195 Special 004. HMA Pavement 3 MT 58-28 H	108.000 TON	_____	_____
4910	204.0170 Removing Fence	65.000 LF	_____	_____
4920	645.0140 Geotextile Type SAS	3,970.000 SY	_____	_____
4930	SPV.0060 Special 087. Lighting Unit Type Special 4	2.000 EACH	_____	_____
4940	SPV.0060 Special 088. Lighting Unit Type Special 5	1.000 EACH	_____	_____
4950	SPV.0090 Special 070. Concrete Knee Wall	34.000 LF	_____	_____
Section: 0001			Total:	_____

Total Bid: _____.