



Wisconsin Department of Transportation

January 4, 2017

Division of Transportation Systems Development

Bureau of Project Development
 4802 Sheboygan Avenue, Rm 601
 P O Box 7916
 Madison, WI 53707-7916

Telephone: (608) 266-1631
 Facsimile (FAX): (608) 266-8459

NOTICE TO ALL CONTRACTORS:

**Proposal #12: 6950-03-73, WISC 2017 010
 Dexterville – Port Edwards
 Lonesome Road – Smith Lane
 STH 54
 Wood County**

**6950-03-75, WISC 2017 011
 Dexterville – Port Edwards
 STH 54 Relocations at CTH D
 STH 54
 Wood County**

Letting of January 10, 2017

This is Addendum No. 01, which provides for the following:

Special Provisions

Added Special Provisions	
Article No.	Description
31	Pipe Culverts

Schedule of Items

Revised Bid Item Quantities					
Bid Item	Item Description	Unit	Old Quantity	Revised Quantity	Proposal Total
205.0100	Excavation Common	CY	25898	62	25960
205.0400	Excavation Marsh	CY	9,202	2,290	11,492
208.1100	Select Borrow	CY	78,193	-11,885	66,308
522.1018	Apron Endwall for Culvert Pipe Reinforced Concrete 18-Inch	EA	4	-2	2
522.1024	Apron Endwall for Culvert Pipe Reinforced Concrete 24-Inch	EA	34	-29	5
523.0519	Apron Endwalls for Culvert Pipe Reinforced Concrete Horizontal Elliptical 19x30-Inch	EA	2	2	4
633.5200	Markers Culvert End	EA	41	-2	39

Added Bid Item Quantities					
Bid Item	Item Description	Unit	Old Quantity	Revised Quantity	Proposal Total
460.5424	HMA Pavement 4 LT 58-28 H	TON	0	5175	5175
520.1012	Apron Endwalls for Culvert Pipe 12-Inch	EA	0	4	4
520.1018	Apron Endwalls for Culvert Pipe 18-Inch	EA	0	26	26
520.1024	Apron Endwalls for Culvert Pipe 24-Inch	EA	0	37	37
520.3412	Culvert Pipe Class III-A Non-Metal 12-Inch	LF	0	69	69
520.3418	Culvert Pipe Class III-A Non-Metal 18-Inch	LF	0	508	508
520.3424	Culvert Pipe Class III-A Non-Metal 24-Inch	LF	0	139	139
520.3524	Culvert Pipe Class III-B Non-Metal 24-Inch	LF	0	895	895
520.8000	Concrete Collar for Pipe	EA	0	1	1
522.0318	Culvert Pipe Reinforced Concrete Class IV 18-Inch	LF	0	56	56
522.0324	Culvert Pipe Reinforced Concrete Class IV 24-Inch	LF	0	123	123
523.0419	Culvert Pipe Reinforced Concrete Horizontal Elliptical Class HE-IV 19x30-Inch	LF	0	152	152
608.3024	Storm Sewer Pipe Class III-A 24-Inch	LF	0	256	256

Deleted Bid Item Quantities					
Bid Item	Item Description	Unit	Old Quantity	Revised Quantity	Proposal Total
460.6424	HMA Pavement 4 MT 58-28 H	TON	5175	-5175	0
522.0118	Culvert Pipe Reinforced Concrete Class III 18-Inch	LF	156	-156	0
522.0124	Culvert Pipe Reinforced Concrete Class III 24-Inch	LF	1109	-1109	0
523.0119	Culvert Pipe Reinforced Concrete Horizontal Elliptical Class HE-III 19x30-Inch	LF	72	-72	0
525.0112	Culvert Pipe Corrugated Aluminum 12-Inch	LF	69	-69	0
525.0118	Culvert Pipe Corrugated Aluminum 18-Inch	LF	473	-473	0
525.0124	Culvert Pipe Corrugated Aluminum 24-Inch	LF	170	-170	0
525.0312	Aluminum Apron Endwalls for Culvert Pipe 12-Inch	LF	4	-4	0
525.0318	Aluminum Apron Endwalls for Culvert Pipe 18-Inch	LF	29	-29	0
525.0324	Aluminum Apron Endwalls for Culvert Pipe 24-Inch	LF	10	-10	0
608.0324	Storm Sewer Pipe Reinforced Concrete Class III 24-Inch	LF	250	-250	0

Plan Sheets

Revised Plan Sheets – 6950-03-73	
Plan Sheet	Plan Sheet Title (brief description of changes to sheet)
5	Typical Section – Changed callout of proposed HMA Pavement Upper Layer.
6	Typical Section – Changed callout of proposed HMA Pavement Upper Layer.
7	Typical Section – Changed callout of proposed HMA Pavement Upper Layer.
37	Miscellaneous Quantities – Revised Earthwork Summary Quantity Table
38	Miscellaneous Quantities – Revised Asphaltic Items Quantity Table
39	Miscellaneous Quantities – Revised Culvert Pipe Items Quantity Table
49	Plan and Profile – Revised pipe notes for culverts
50	Plan and Profile – Revised pipe notes for culverts
51	Plan and Profile – Revised pipe notes for culverts
52	Plan and Profile – Revised pipe notes for culverts
53	Plan and Profile – Revised pipe notes for culverts
105	Cross Sections – Revised pipe notes for culverts
109	Cross Sections – Revised pipe notes for culverts
111	Cross Sections – Revised pipe notes for culverts
114	Cross Sections – Revised pipe notes for culverts
116	Cross Sections – Revised pipe notes for culverts
121	Cross Sections – Revised pipe notes for culverts
125	Cross Sections – Revised pipe notes for culverts

Revised Plan Sheets – 6950-03-75	
Plan Sheet	Plan Sheet Title (brief description of changes to sheet)
5	Typical Section – Changed callout of proposed HMA Pavement Upper Layer.
6	Typical Section – Changed callout of proposed HMA Pavement Upper Layer.
7	Typical Section – Changed callout of proposed HMA Pavement Upper Layer.
60	Miscellaneous Quantities – Revised Earthwork Summary Quantity Table
62	Miscellaneous Quantities – Revised Asphaltic Items Quantity Table
63	Miscellaneous Quantities – Revised Culvert Pipe Items Quantity Table
76	Plan and Profile – Revised pipe notes for culverts
77	Plan and Profile – Revised pipe notes for culverts
78	Plan and Profile – Revised pipe notes for culverts
79	Plan and Profile – Revised pipe notes for culverts
80	Plan and Profile – Revised pipe notes for culverts
81	Plan and Profile – Revised pipe notes for culverts
84	Plan and Profile – Revised pipe notes for culverts
85	Plan and Profile – Revised pipe notes for culverts
156	Earthwork Data Sheet – Updated STH 54 earthwork.
162	Cross Sections – Revised pipe notes for culverts
164	Cross Sections – Revised pipe notes for culverts
169	Cross Sections – Revised pipe notes for culverts
174	Cross Sections – Revised pipe notes for culverts
176	Cross Sections – Revised pipe notes for culverts
180	Cross Sections – Revised pipe notes for culverts
184	Cross Sections – Revised pipe notes for culverts
193	Cross Sections – Revised pipe notes for culverts and left ditch grade
194	Cross Sections – Revised pipe notes for culverts and left ditch grade
196	Cross Sections – Revised pipe notes for culverts
204	Cross Sections – Revised pipe notes for culverts

Added Plan Sheets – 6950-03-75	
Plan Sheet	Plan Sheet Title (brief description of why sheet was added)
157A	Earthwork Data Sheet – provides data table for STH 54 (STA 1238+00 to STA 1252+00) and School Lane

The responsibility for notifying potential subcontractors and suppliers of these changes remains with the prime contractor.

Sincerely,

Mike Coleman

Proposal Development Specialist
Proposal Management Section

ADDENDUM NO. 01
6950-03-73 & 6950-03-75
January 4, 2017

Special Provisions

31. Pipe Culverts

Replace standard spec 520.2.1 with the following:

- (1) Furnish culvert pipe consistent with the diameter the bid item indicates. Furnish materials for the various classes of pipe as follows:

TABLE 520-1 ALLOWABLE MATERIALS FOR CULVERT PIPE

CLASS	ALLOWABLE MATERIALS
III	Class III reinforced concrete, corrugated steel pipe of the thickness contract designates
III-A	Class II and Class III reinforced concrete, corrugated steel of the thickness the contract designates, corrugated polyethylene, corrugated polypropylene
III-A Non-metal	Class II and Class III reinforced concrete, corrugated aluminum, corrugated polyethylene, corrugated polypropylene
III-B	Class III reinforced concrete, corrugated steel of the thickness the contract designates, corrugated polypropylene
III-B Non-metal	Class III reinforced concrete, corrugated polypropylene
IV	Class IV reinforced concrete, corrugated steel pipe of the thickness contract designates
V	Class V reinforced concrete, corrugated steel pipe of the thickness contract designates

- (2) For the given materials, conform to the following:

Corrugated steel pipe.....	521.2
Reinforced concrete pipe.....	522.2.2
Corrugated aluminum pipe.....	525.2.1
Corrugated polyethylene pipe.....	530.2
Corrugated polypropylene pipe.....	530.2.2

- (3) Under the Culvert Pipe Temporary bid items, use either new or used culvert pipe in a condition suitable for the purpose intended.

Replace standard spec 520.2.3(1) with the following:

Under the Apron Endwalls for Culvert Pipe bid items, use aluminum apron endwall for corrugated polyethylene, and corrugated polypropylene pipe culvert installations, and use concrete apron endwalls with concrete pipe culvert installations. For the given materials, conform to the following:

Aluminum apron endwalls.....	525.2.1
Concrete apron endwalls.....	522.2.4

Schedule of Items

Attached, dated January 4, 2017, are the revised Schedule of Items Pages 1 – 8.

Plan Sheets

The following 8½ x 11-inch sheets are attached and made part of the plans for this proposal:

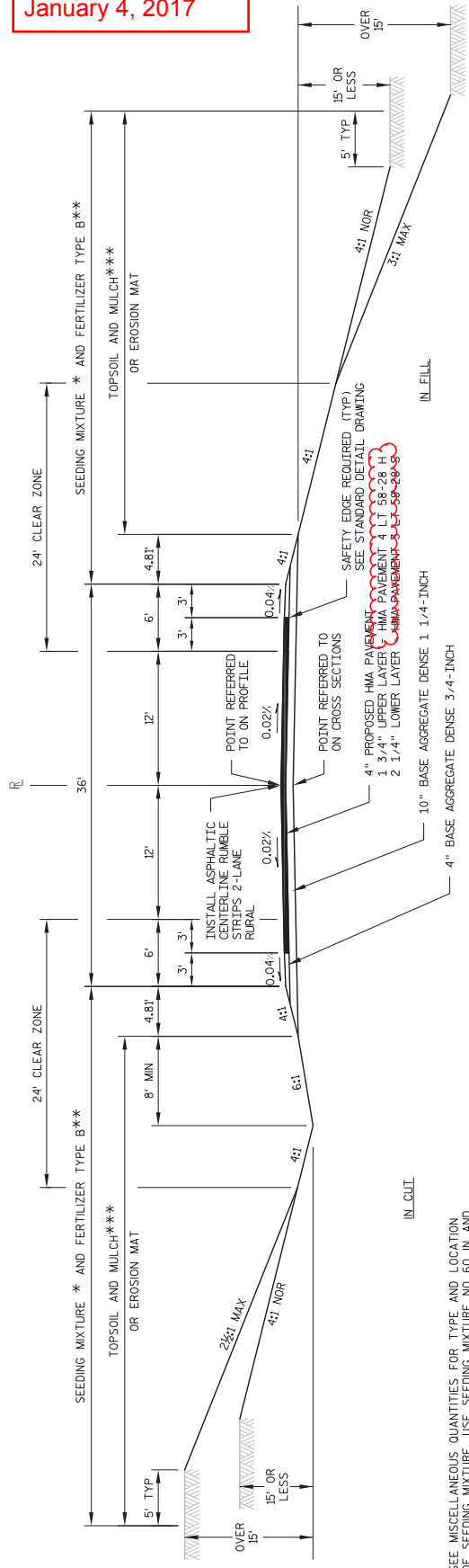
Revised: 6950-03-73 – 5, 6, 7, 37, 38, 39, 49, 50, 51, 52, and 53.

6950-03-75 – 5, 6, 7, 60, 62, 63, 77, 78, 79, 80, 81, 84, and 85.

Added: 6950-03-75 – 157A.

END OF ADDENDUM

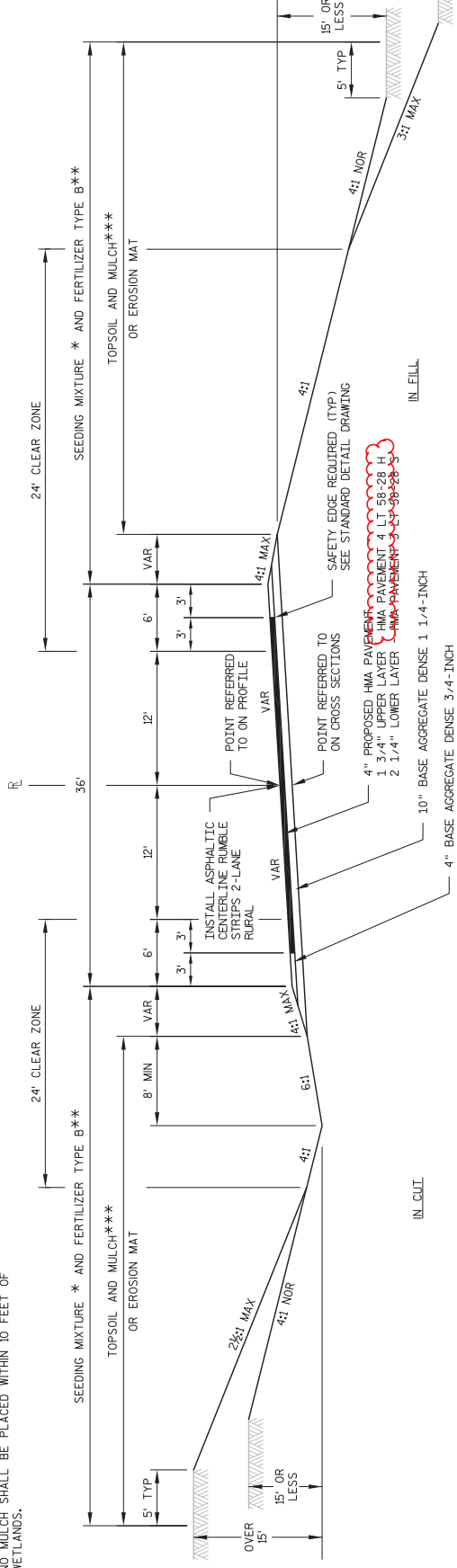
Addendum No. 01
 ID 6950-03-73
 Revised Sheet 5
 January 4, 2017



PROPOSED STH 54 REALIGNMENT TYPICAL SECTION

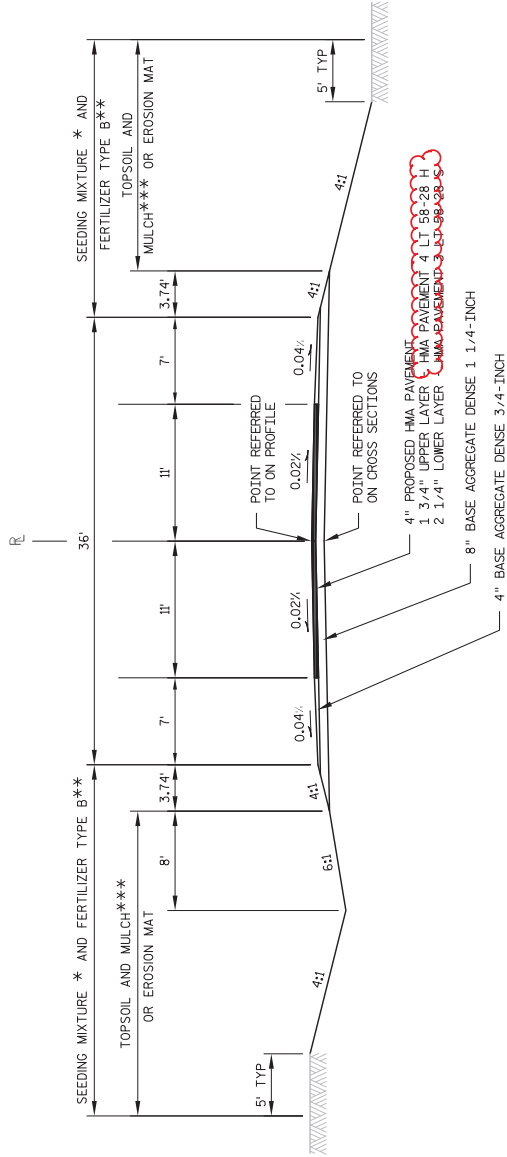
STA 1053+00.00 TO STA 1053+61.26
 STA 1083+8.79 TO STA 1095+50.00

* SEE MISCELLANEOUS QUANTITIES FOR TYPE AND LOCATION OF SEEDING MIXTURE. USE SEEDING MIXTURE NO 60 IN AND ADJACENT TO GRADED WET AREAS.
 ** NO FERTILIZER SHALL BE PLACED WITHIN 25 FEET OF WETLANDS.
 *** NO MULCH SHALL BE PLACED WITHIN 10 FEET OF WETLANDS.



PROPOSED STH 54 REALIGNMENT TYPICAL SECTION

STA 1053+51.26 TO STA 1083+8.79



PROPOSED TYPICAL SECTION SIDE ROADS
 OLD STH 54
 STA 10+12.00' TO STA 13+50.00'

* SEE MISCELLANEOUS QUANTITIES FOR TYPE AND LOCATION OF SEEDING MIXTURE. USE SEEDING MIXTURE NO 60 IN AND ADJACENT TO GRADED WET AREAS.

** NO FERTILIZER SHALL BE PLACED WITHIN 25 FEET OF WETLANDS.

*** NO MULCH SHALL BE PLACED WITHIN 10 FEET OF WETLANDS.

Addendum No. 01
 ID 6950-03-73
 Revised Sheet 7
 January 4, 2017

EARTHWORK SUMMARY

Division	From/To Station	205.0100 Common Excavation (1)		Available Material (2)	205.0400 Excavation Marsh (3) <small>(Item #205.0400)</small>	Reduced Marsh in Fill (4)	208.1100 Expanded Marsh Backfill (5)	Unexpanded Fill	Expanded Fill (6)	Mass Ordinate +/- (7)	Waste	208.1100 Select Borrow (8)	Comment:
		Cut	EBS Excavation										
STAGE 1	STH54 (0539+00 - 1093+00)	2434	0	2,434	5,184	3,888	6,479	26951	28829	-26394	--	--	
	LONESOME ROAD (5+50 - 9+00)	502	0	502	0	0	0	318	397	104	--	--	
DIVISION 1 SUBTOTAL		2936	0	2936	5184	3888	6479	27269	29226	-26290	0	26,290	
STAGE 4	STH54 (0539+00 - 1059+00)	1041	0	1041	771	578	964	763	231	810	--	--	
	STH54 (0939+00 - 1095+50)	1026	0	1,026	0	0	0	19	24	1003	--	--	
	LONESOME ROAD (11+00 - 17+00)	315	0	315	0	0	0	2756	3445	-3131	--	--	
DIVISION 2 SUBTOTAL		1443	0	1,443	0	0	0	67	84	1359	--	--	
DIVISION 2 SUBTOTAL		3825	0	3825	771	578	964	3605	3784	41	117	0	
UNDISTRIBUTED (9)		--	--	--	1490	--	1865	--	--	--	--	--	
GRAND TOTAL		6,761	0	6,761	7,445	4,466	9,308	30,874	33,010	-26,249	117	26,290	
Total Common Exc											6,761	Total Select Borrow	35,598

Addendum No. 01
ID 6950-03-73
Revised Sheet 37
January 4, 2017

- 1) Common Excavation is the sum of the Cut and EBS Excavation columns. Item number 205.0100
- 2) Available Material = Cut materials not conforming to Select Borrow Material Specifications usable in Fills outside the 1:1 slope.
- 3) Marsh Excavation - to be backfilled with Select Borrow Material.
- 4) Reduced Marsh in Fill - Excavated Marsh material is usable in Fills outside the 1:1 slope. Marsh in Fill Reduction factor = 0.75
- 5) Expanded Marsh Backfill - This is to be filled with Select Borrow material. Marsh Backfill Factor = 1.25. Item number 208.1100
- 6) Expanded Fill = (Unexpanded Fill - Reduced Marsh) * Fill Factor. Factor = 1.25
- 7) The Mass Ordinate +/- Qty calculated for the Division. Plus quantity indicates an excess of material within the Division. Minus indicates a shortage of material within the Division.
- 8) Select Borrow to be obtained from location of contractors choice
- 9) Undistributed Select Borrow is included to account for potential additional marsh excavation and unusable materials within the project area

BASE AGGREGATE ITEMS

LOCATION	STATION - STATION	OFFSET	3/4 - INCH	1 1/4 - INCH	AGGREGATE DENSE	BASE DENSE	ASPHALTIC SURFACE DRIVEWAYS AND FIELD ENTRANCES	WATER (MGAL)	REMARKS
STH 54	1053+00 - 1059+50	CL	140	1,985	--	--	32	INTERSECTION	
	1059+50 - 1062+25	CL	45	1,510	--	--	24		
	1062+25 - 1091+00	CL	615	8,785	--	--	141		
	1071+00	RT	110	--	6	6	2	DRIVEWAY	
	1080+00	LT	18	--	6	6	1	DRIVEWAY	
	1079+75	RT	42	--	5	5	1	DRIVEWAY	
	1089+03	LT	30	--	6	6	1	DRIVEWAY	
	1091+00 - 1093+50	CL	39	1,075	--	--	17	INTERSECTION	
	1091+98	LT	23	--	5	5	1	DRIVEWAY	
	1093+50 - 1095+50	CL	36	595	--	--	10		
TOTAL									

BASE AGGREGATE ITEMS (Continued)

LOCATION	STATION - STATION	OFFSET	3/4 - INCH	1 1/4 - INCH	AGGREGATE DENSE	BASE DENSE	ASPHALTIC SURFACE DRIVEWAYS AND FIELD ENTRANCES	WATER (MGAL)	REMARKS
	LONESOME	5B'+50 - 9B'+00	CL	67	640	--	--	11	
		6B'+70	RT	23	--	10	1	DRIVEWAY	
		11'B'+00 - 16'B'+75	CL	135	1,160	--	--	20	
		15'B'+80	LT	28	--	5	1	DRIVEWAY	
	OLD STH 54	11'C'+00 - 13'C'+50	CL	120	580	--	--	11	
		12'C'+30	LT	33	--	5	1	DRIVEWAY	
		21'C'+10	LT	85	--	16	2	DRIVEWAY	
TOTAL									

ASPHALTIC ITEMS

LOCATION	STATION - STATION	OFFSET	TACK COAT	HMA PAVEMENT	HMA PAVEMENT	REHEATING HMA PAVEMENT	LONGITUDINAL JOINTS (LF)
STH 54	1053+00 - 1059+50	CL	150	295	230	1,950	
	1059+50 - 1062+25	CL	130	250	195	825	
	1062+25 - 1091+00	CL	670	1,300	1,015	8,625	
	1091+00 - 1093+50	CL	90	180	140	750	
	1093+50 - 1095+50	CL	50	90	70	600	
LONESOME	5B'+50 - 9B'+00	CL	60	120	95	1,050	
	11'B'+00 - 16'B'+75	CL	85	195	155	1,725	
OLD STH 54	11'C'+00 - 13'C'+50	CL	45	85	65	750	
TOTAL:			1,280	2,515	1,965	16,275	

Addendum No. 01
ID 6950-03-73
Revised Sheet 38
January 4, 2017

Addendum No. 01
 ID 6950-03-73
 Revised Sheet 39
 January 4, 2017

3

3

CULVERT PIPE ITEMS

LOCATION	STATION	OFFSET	STATION	OFFSET	520.3412	520.1012	520.1018	520.1024	522.0318	522.0324	522.0148	608.3024	611.0530	611.2004	633.5200	REMARKS	
STH 54	1061+35	47.0' LT	1061+35	35.0' RT	520.3412	520.1012	520.1018	520.1024	522.0318	522.0324	522.0148	608.3024	611.0530	611.2004	633.5200		
					CULVERT PIPE CLASS III-B NON-METAL	APRON ENDWALLS FOR CULVERT PIPE	APRON ENDWALLS FOR CULVERT PIPE	APRON ENDWALLS FOR CULVERT PIPE	CULVERT PIPE REINFORCED CONCRETE CLASS IV	CULVERT PIPE REINFORCED CONCRETE CLASS III	APRON ENDWALL FOR CULVERT PIPE REINFORCED CONCRETE	STORM SEWER PIPE CLASS III-A 24-INCH (LF)	MANHOLE COVERS TYPE J (EACH)	MANHOLE S 4-FT DIAMETER (EACH)	MARKERS FOR CULVERT PIPE (EACH)	JOINT TIES FOR CULVERT PIPE (EACH)	
	1069+75	33.0' LT	1069+75	45.0' RT	82	12-INCH (EACH)	18-INCH (EACH)	24-INCH (EACH)	18-INCH (EACH)	48-INCH (EACH)	18-INCH (EACH)	24-INCH (EACH)	2	2	2	2	
	1073+24	31.0' LT	1073+50	42.5' RT	78	--	--	2	--	--	--	--	--	--	2	--	994.14
	1079+79	36.4' LT	1080+20	37.8' LT	80	--	2	--	--	--	--	--	--	--	2	--	993.80
	1080+18	85.8' LT	1080+65	38.0' RT	--	--	--	--	--	132	--	--	--	--	2	--	993.50
	1081+10	33.0' LT	1081+10	46.0' RT	79	--	--	2	--	--	2	--	--	--	2	--	990.79
	1082+00	34.3' LT	1086+04	39.2' LT	--	--	--	--	--	--	--	96	--	--	2	--	991.04
	1087+00	30.0' RT	1087+00	34.3' LT	--	--	--	1	--	--	--	64	1	1	1	--	991.50
	1087+97	29.9' LT	1087+00	34.3' LT	--	--	--	1	--	--	--	96	1	1	1	--	991.80
1091+86	30.3' RT	1092+10	30.3' RT	24	--	2	--	--	--	--	--	--	--	1	--	992.07	
LONESOME	65+54	19.9' RT	65+86	19.9' RT	--	2	--	--	--	--	--	--	--	--	2	--	993.83
	95+50	30.5' RT	95+50	34.5' LT	--	--	--	--	65	--	2	--	--	--	2	12	993.77
	10C-50	24.5' LT	10C-50	31.3' RT	--	--	--	--	56	--	--	--	--	--	2	--	993.57
OLD STH 54	12C-50	28.4' LT	12C-13	28.4' LT	37	2	--	--	--	--	2	--	--	2	12	--	991.64
	TOTAL				69	4	4	11	56	65	132	256	1	1	17	36	992.28

*ADDITIONAL QUANTITIES LOCATED ELSEWHERE

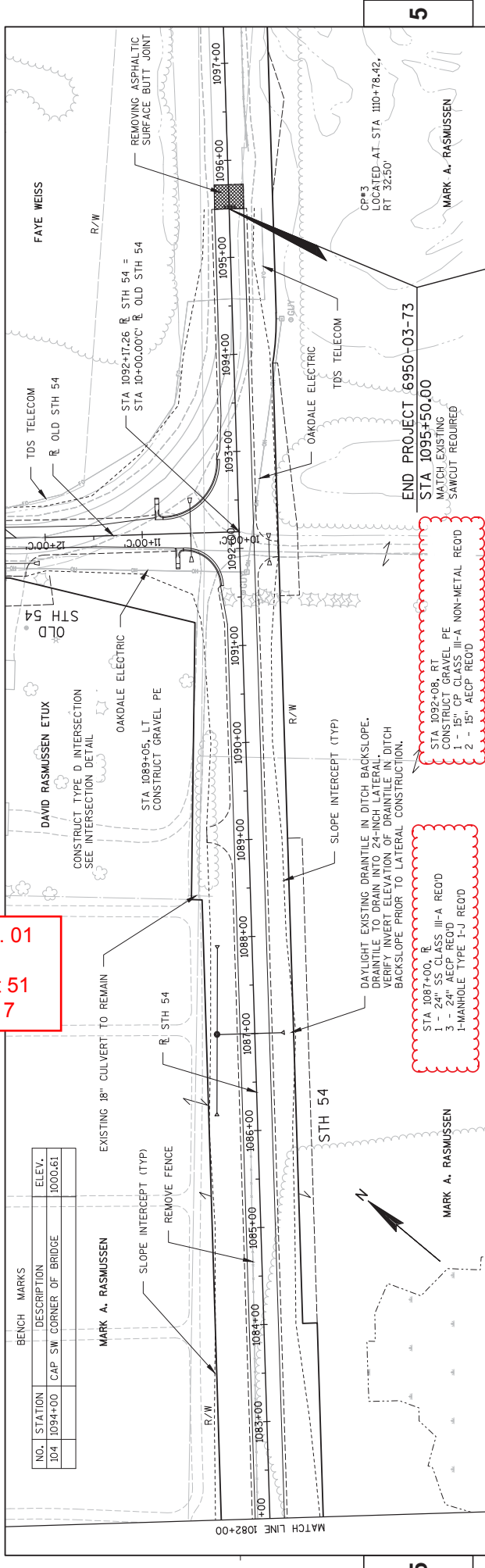
- NOTES:
- 1.) MINIMUM THICKNESS FOR 12-INCH CULVERT PIPE CORRUGATED ALUMINIUM = 0.060 INCHES
 - 2.) MINIMUM THICKNESS FOR 18-INCH CULVERT PIPE CORRUGATED ALUMINIUM = 0.060 INCHES
 - 3.) MINIMUM THICKNESS FOR 24-INCH CULVERT PIPE CORRUGATED ALUMINIUM = 0.075 INCHES
 - 4.) THE LENGTH FOR CULVERT PIPE CLASS III-A AND CLASS III-B NON-METAL (SIZE) IS BASED ON THERMOPLASTIC PIPE MATERIAL.
 - 5.) JOINT TIES ARE NOT INCLUDED FOR PIPE ITEMS WHERE CONTRACTOR HAS THE OPTION TO SELECT THE PIPE MATERIAL.

ALL ITEMS ARE CATEGORY 0010 UNLESS OTHERWISE SPECIFIED.

PROJECT NO: 6950-03-73 HWY: STH 54 COUNTY: WOOD MISCELLANEOUS QUANTITIES SHEET 39

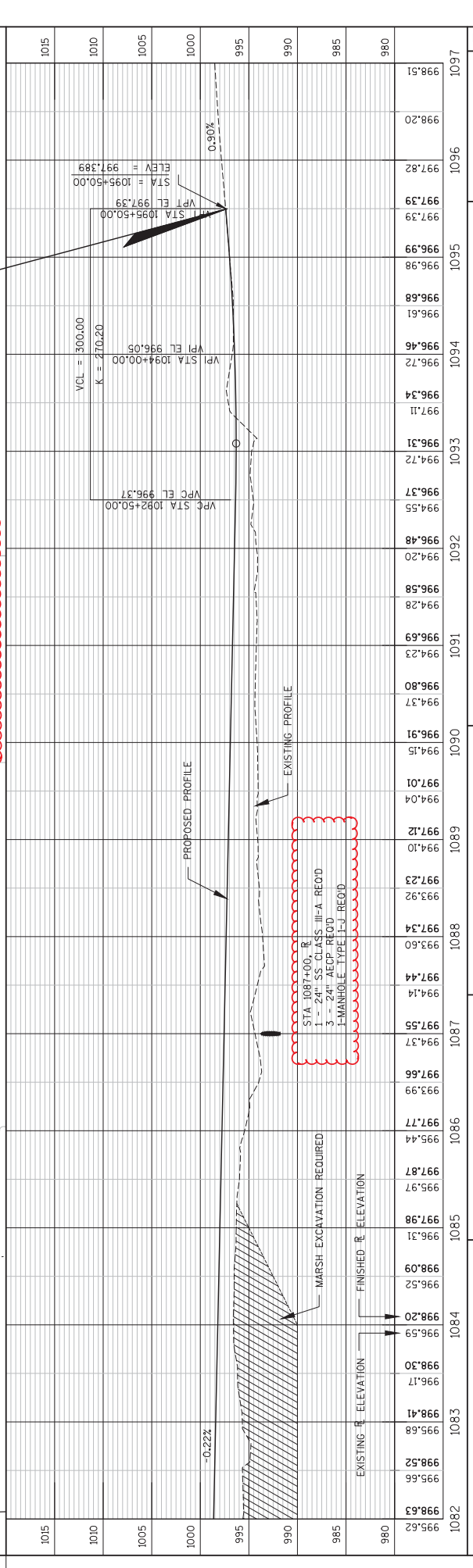
FILE NAME : ...0392001_inq.ppt PLOT DATE : 12/29/2016 1:40 PM PLOT NAME : 0392001_inq4 PLOT SCALE : 1.000000:1.000000 WISDOT / CADDS SHEET 42

Addendum No. 01
 ID 6950-03-73
 Revised Sheet 51
 January 4, 2017



5

5



END PROJECT 6950-03-73
 STA 1095+50.00
 MATCH EXISTING
 SAWCUT REQUIRED

STA 1092+08, RT
 CONSTRUCT GRAVEL PE
 1 - 15" CP CLASS III-A NON-METAL REOD
 2 - 15" AACP REOD

STA 1087+00, R
 1 - 24" SS CLASS III-A REOD
 3 - 24" AACP REOD
 1-MANHOLE TYPE I-J REOD

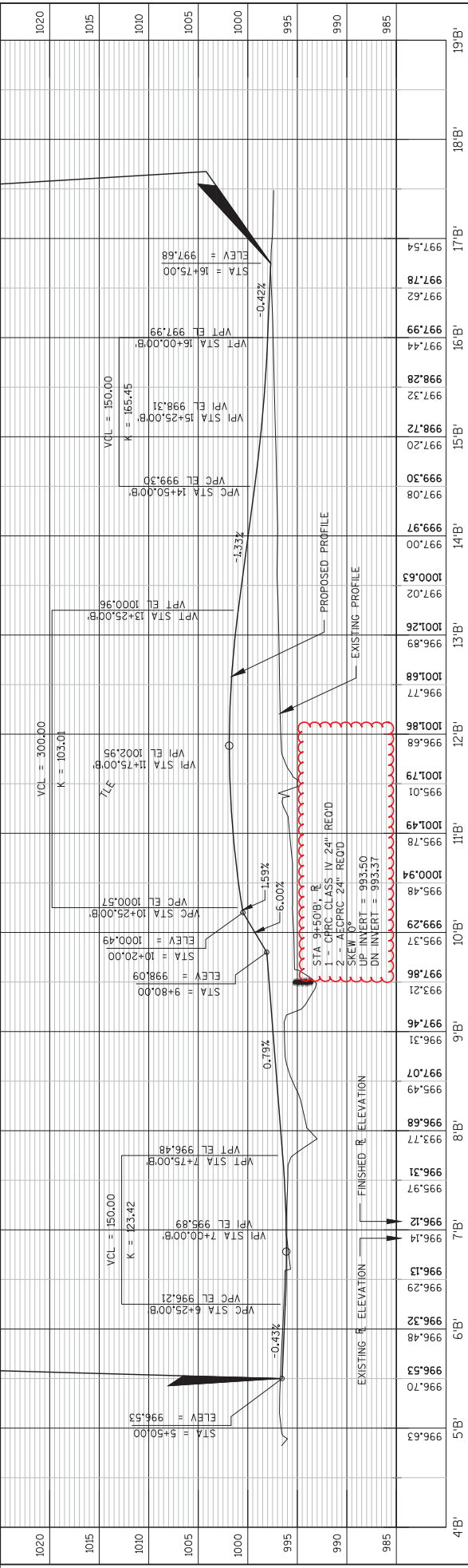
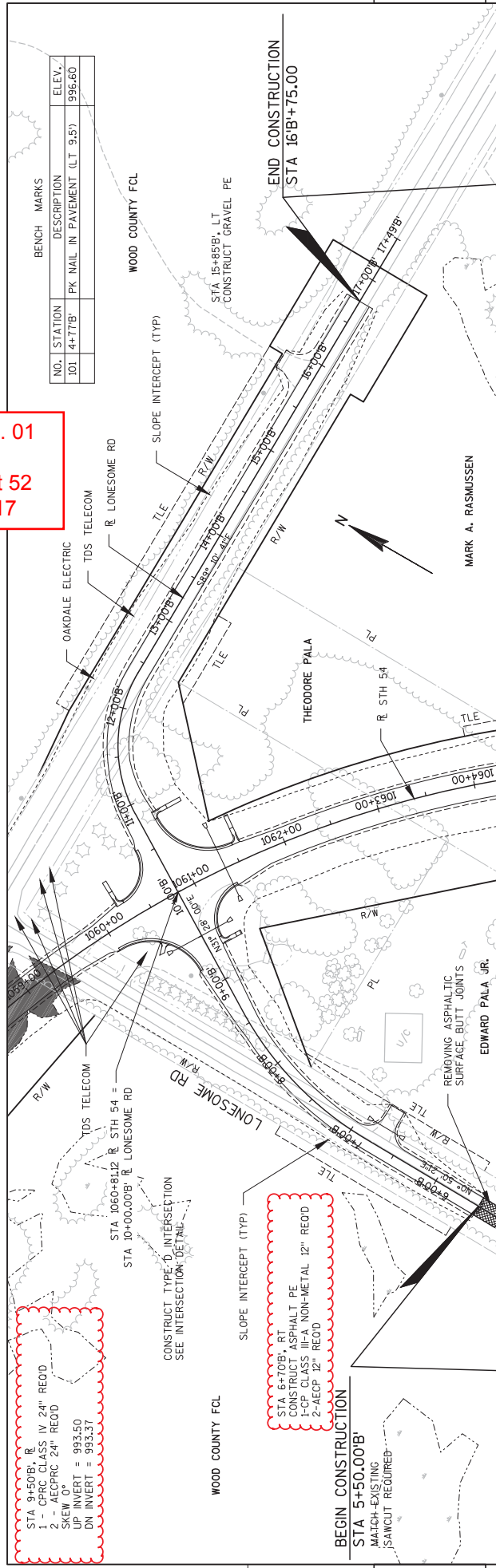
STA 1087+00, R
 1 - 24" SS CLASS III-A REOD
 3 - 24" AACP REOD
 1-MANHOLE TYPE I-J REOD

STATION	ELEVATION	STATION	ELEVATION
1082	995.63	1092	996.48
1083	995.66	1093	996.31
1084	996.17	1094	996.72
1085	996.52	1095	996.98
1086	997.77	1096	997.82
1087	997.55	1097	998.20
1088	997.34		
1089	997.12		
1090	997.01		
1091	996.80		
1092	996.58		
1093	996.31		
1094	996.34		
1095	996.61		
1096	997.39		
1097	998.51		

PROJECT NO: 6950-03-73
 HWY: STH 54
 COUNTY: WOOD
 PLAN AND PROFILE: STH 54
 SHEET 51

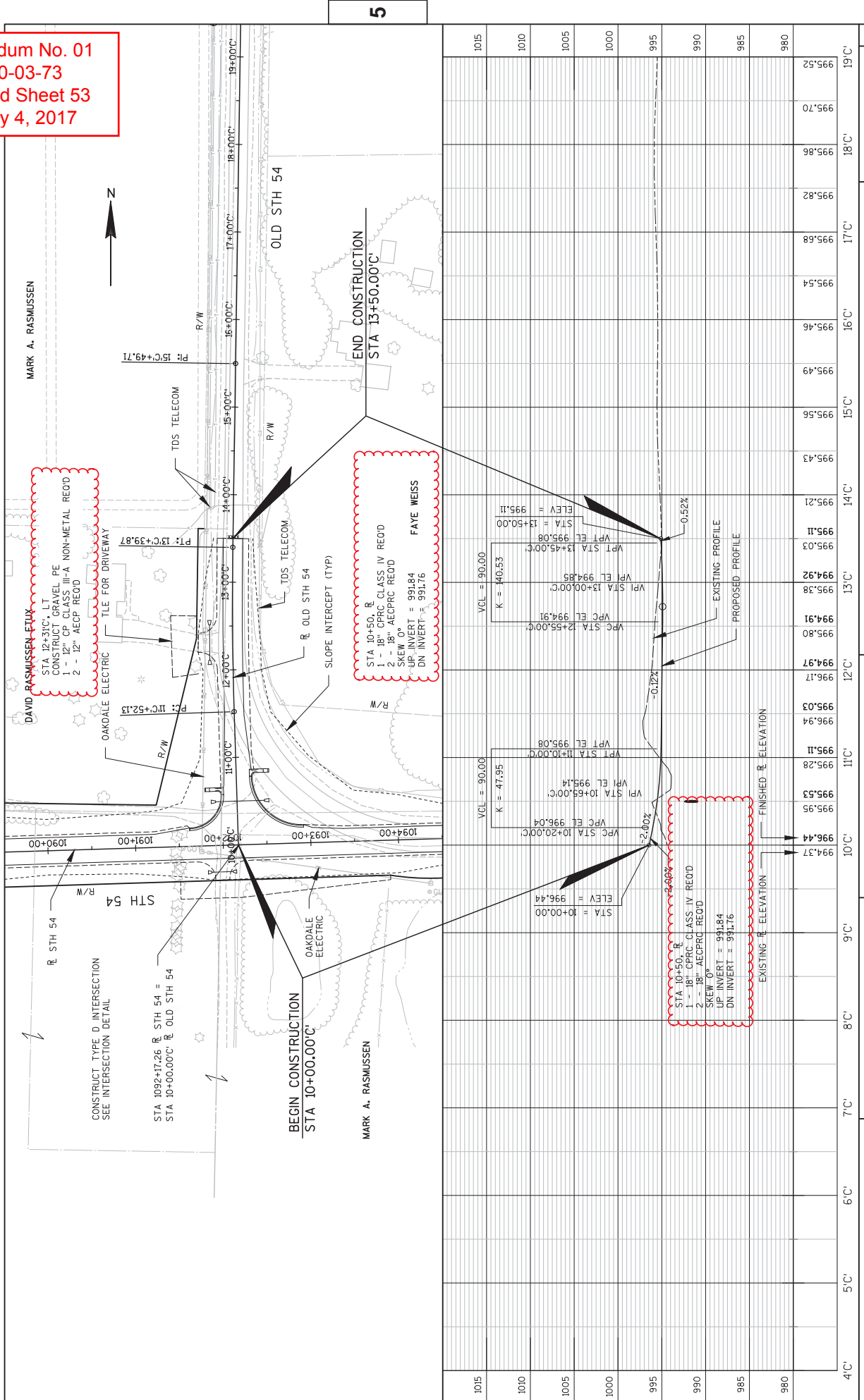
FILE NAME : X:\23046-20\10016\TECH\CADD\DRAWINGS\5HEETS\PLAN\6950-03-73\050101.PP AREA1.DWG
 PLOT DATE : 12/27/2016 3:02 PM
 PLOT BY : DOUGLAS HIBYAN
 PLOT NAME :
 PLOT SCALE : 1" = 100'.XREF
 WISDOT/CADD SHEET 44

Addendum No. 01
ID 6950-03-73
Revised Sheet 52
January 4, 2017



STATION	ELEVATION	STATION	ELEVATION
1020		17'	997.54
1015		16'	997.78
1010		15'	997.99
1005		14'	998.28
1000		13'	998.72
995		12'	999.20
990		11'	999.30
985		10'	999.97
		9'	1000.63
		8'	1001.26
		7'	1001.68
		6'	1001.86
		5'	1001.79
		4'	1001.49
		3'	1000.94
		2'	999.48
		1'	999.29
		0'	999.37
			997.86
			997.46
			997.07
			996.68
			996.31
			996.12
			996.13
			996.32
			996.48
			996.53
			996.70
			996.86
			997.07
			997.46
			997.86
			998.09
			998.21
			998.31
			998.48
			998.63
			998.70
			998.86
			999.09
			999.29
			999.48
			999.78
			1000.49
			1001.79
			1001.86
			1001.68
			1001.26
			1000.63
			999.78
			999.20
			998.72
			998.28
			997.99
			997.78
			997.54

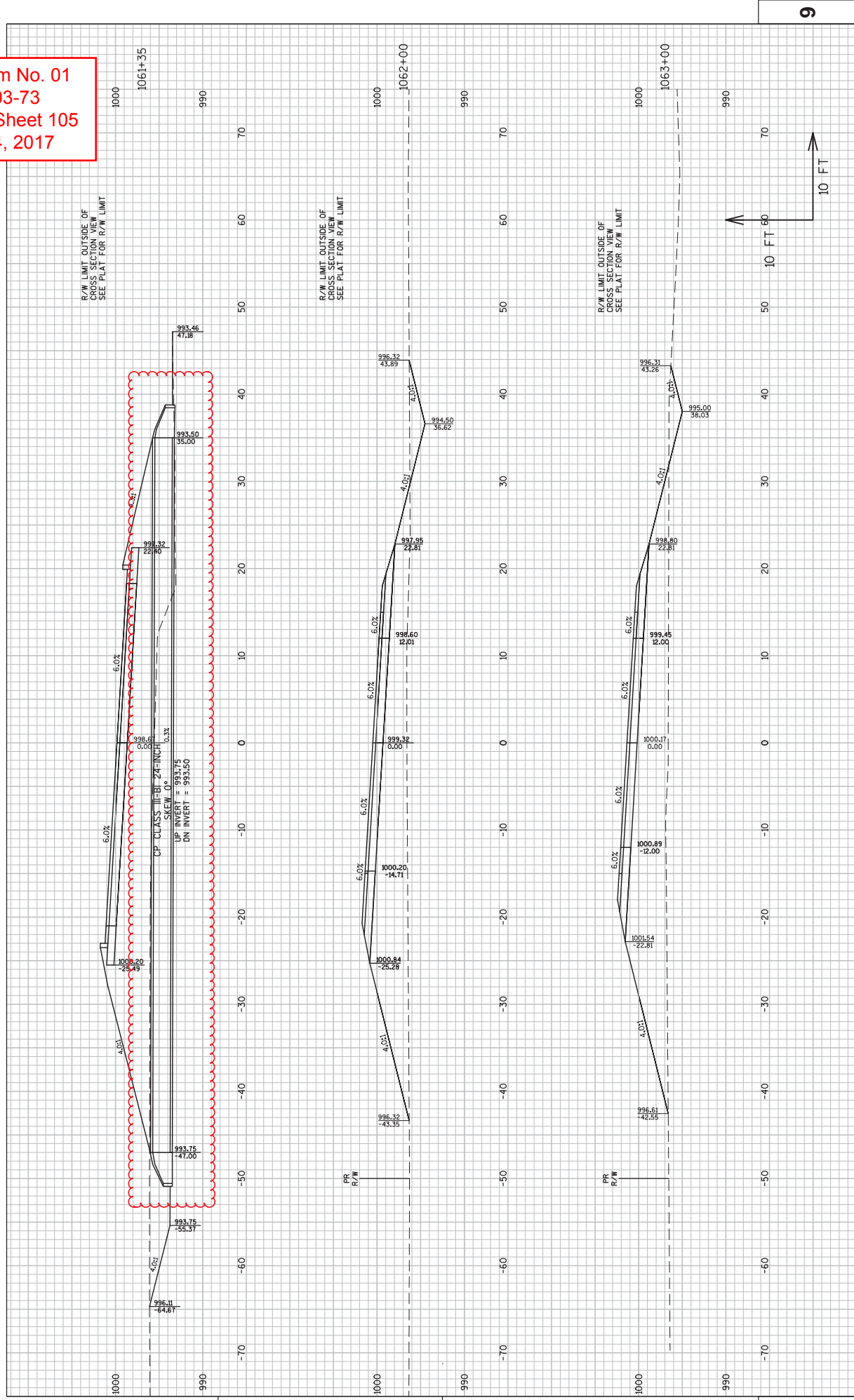
Addendum No. 01
 ID 6950-03-73
 Revised Sheet 53
 January 4, 2017



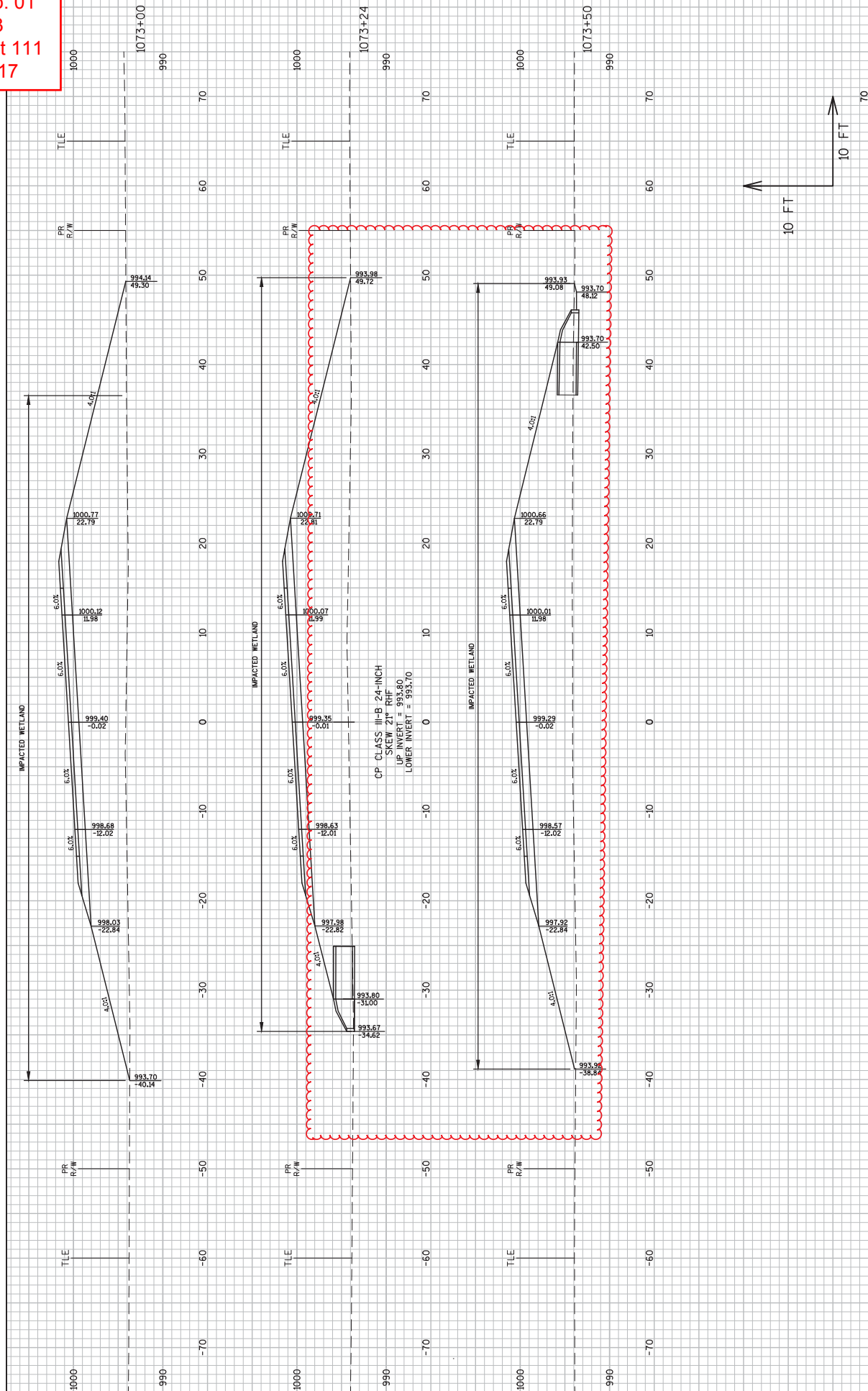
5

5

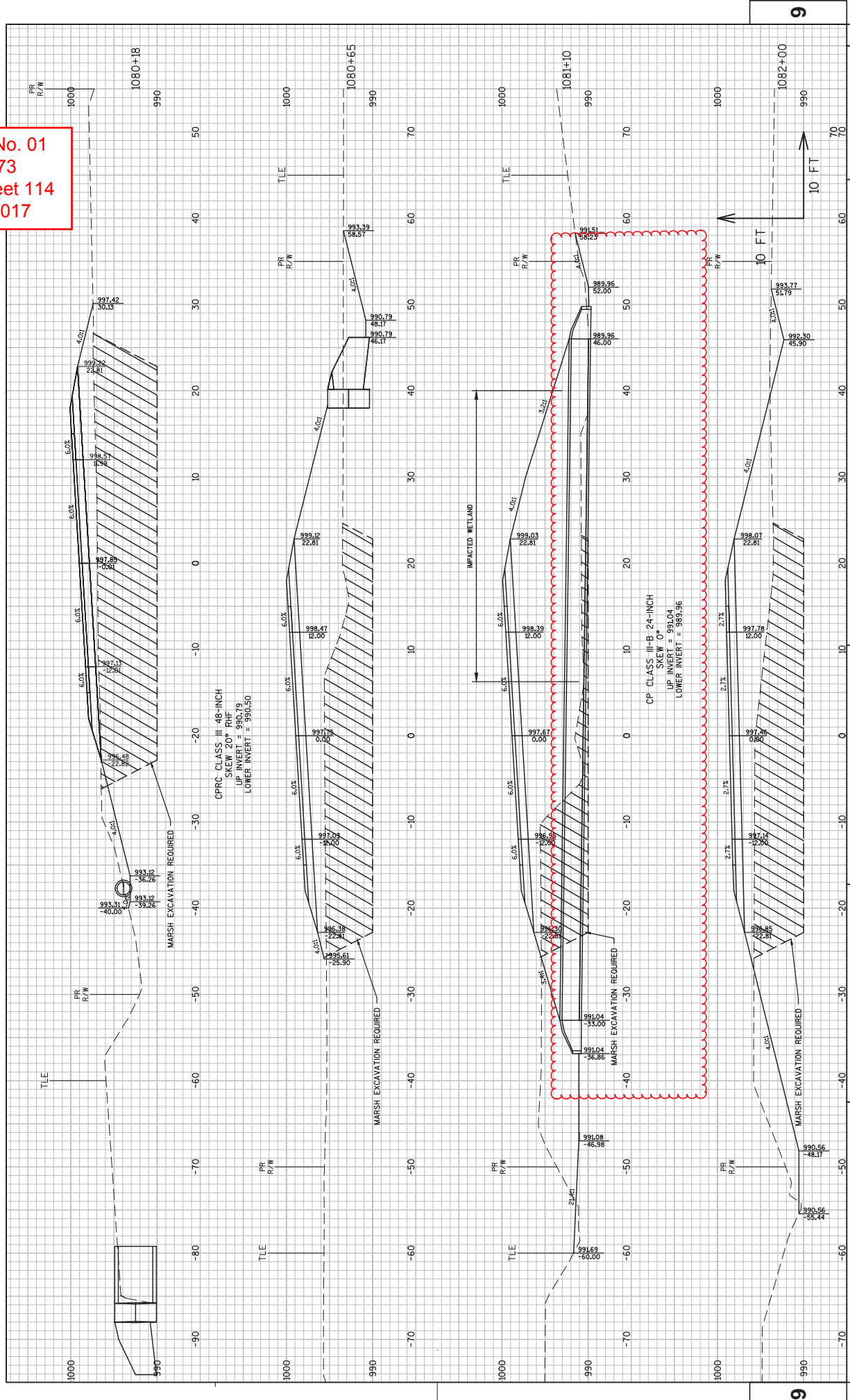
Addendum No. 01
 ID 6950-03-73
 Revised Sheet 105
 January 4, 2017



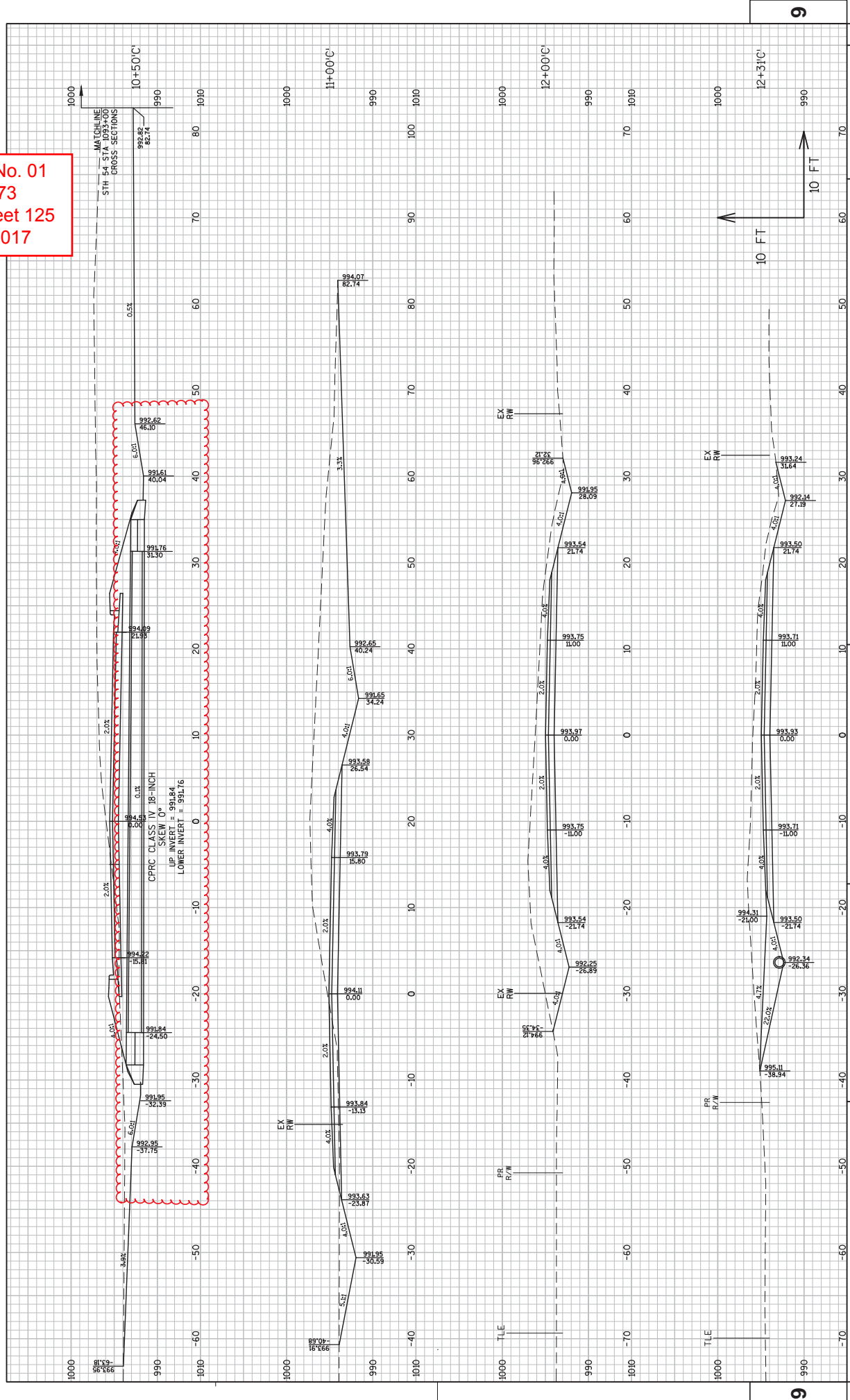
Addendum No. 01
 ID 6950-03-73
 Revised Sheet 111
 January 4, 2017

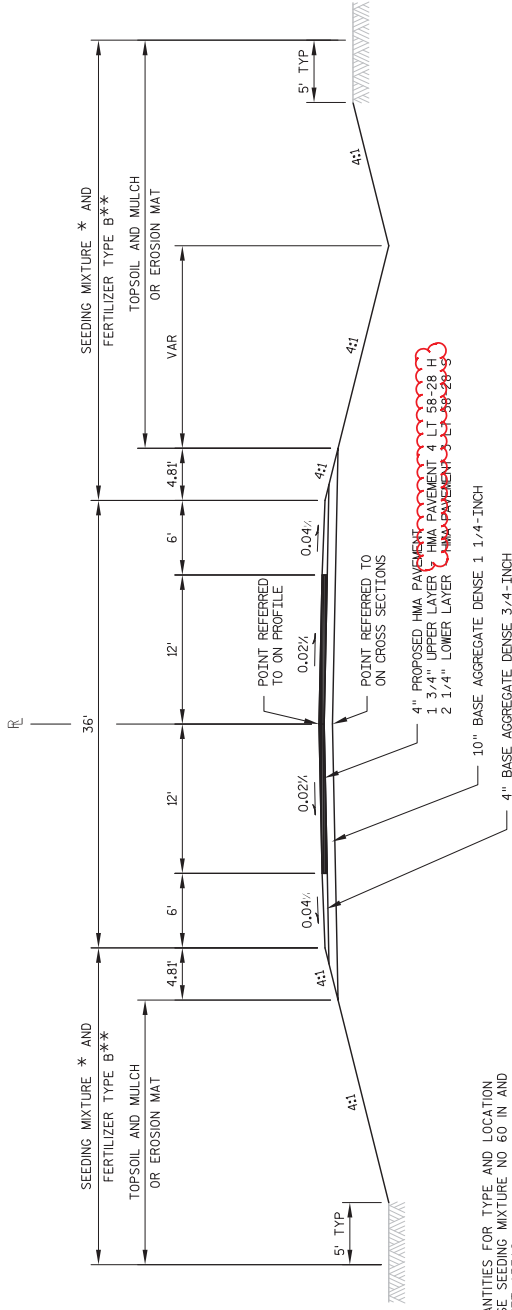


Addendum No. 01
 ID 6950-03-73
 Revised Sheet 114
 January 4, 2017



Addendum No. 01
 ID 6950-03-73
 Revised Sheet 125
 January 4, 2017

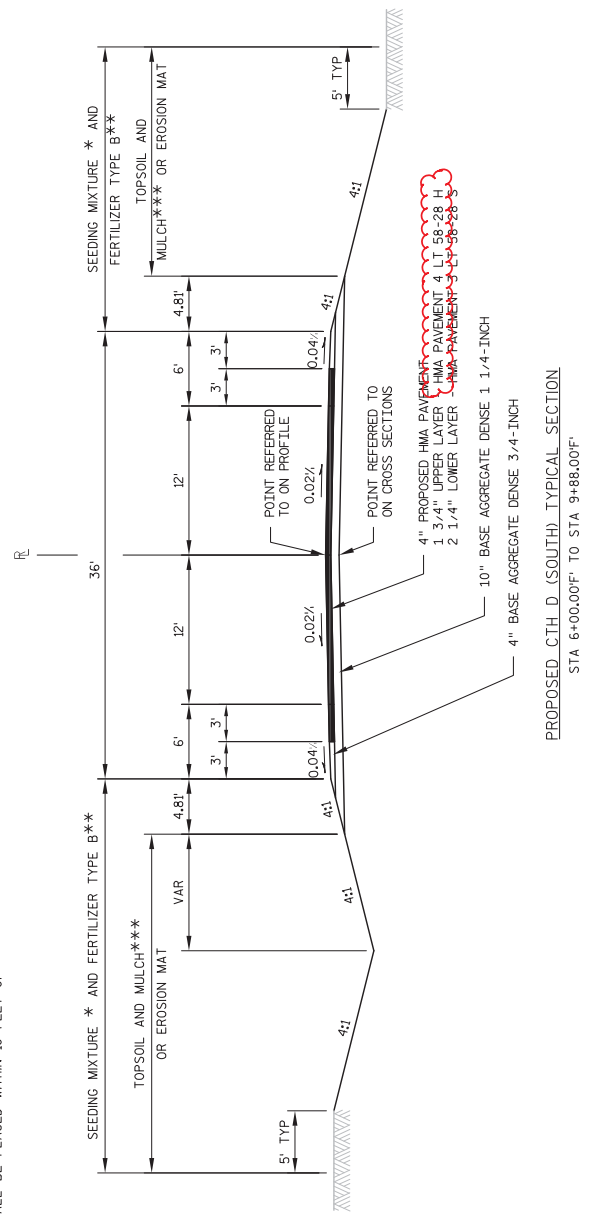




PROPOSED CTH D (NORTH) TYPICAL SECTION
STA 10+12.00'E TO STA 14+50.00'E

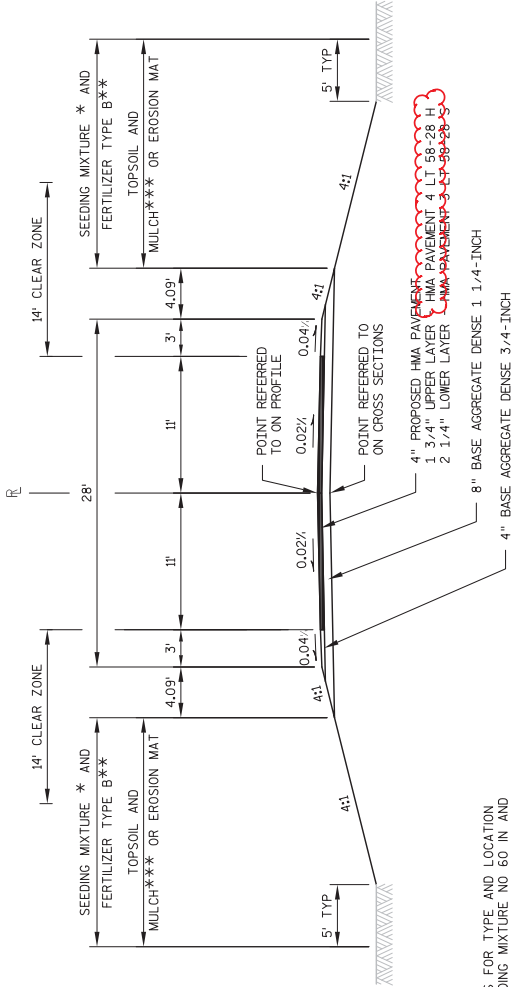
* SEE MISCELLANEOUS QUANTITIES FOR TYPE AND LOCATION OF SEEDING MIXTURE. USE SEEDING MIXTURE NO 60 IN AND ADJACENT TO GRADED WET AREAS.
** NO FERTILIZER SHALL BE PLACED WITHIN 25 FEET OF WETLANDS.
*** NO MULCH SHALL BE PLACED WITHIN 10 FEET OF WETLANDS.

Addendum No. 01
ID 6950-03-75
Revised Sheet 6
January 4, 2017



PROPOSED CTH D (SOUTH) TYPICAL SECTION
STA 6+00.00'E TO STA 9+88.00'E

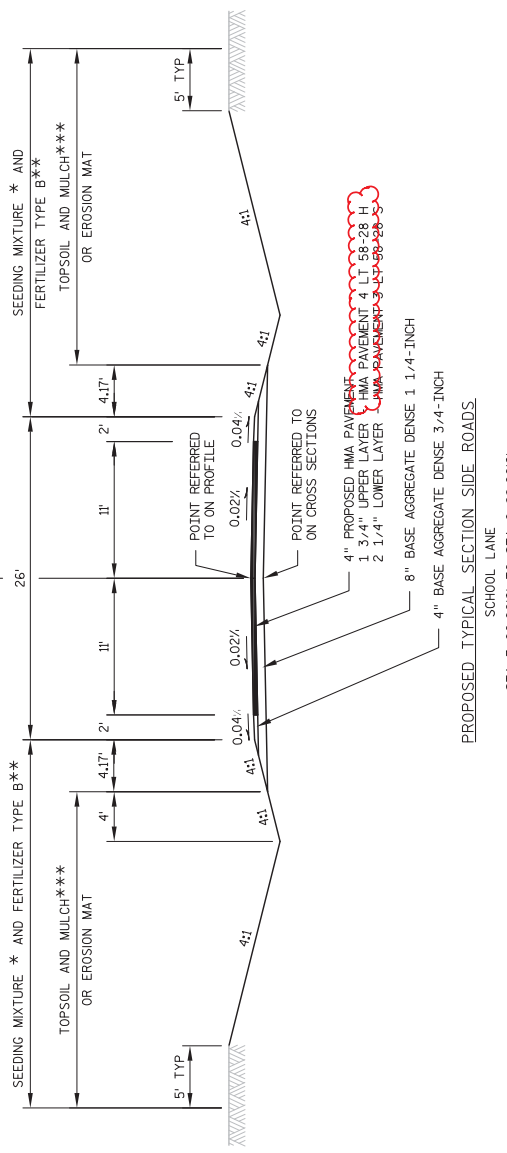
PROJECT NO: 6950-03-75	HWY: STH 54	COUNTY: WOOD	TYPICAL SECTIONS	SHEET 6	E
FILE NAME : X:\23046-20\10016\TECH\CADD\DRAWINGS\SHEETPLAN\6950-03-75\T5_020301_TS.DWG			PLOT DATE : 12/21/2016 2:30 PM		
			PLOT NAME : PLOT SCALE : 1 IN:10 FT		
			PLOT BY : JEFF BREU		



PROPOSED TYPICAL SECTION SIDE ROADS
HEMLOCK TRAIL
STA 10+12.000' TO STA 13+00.000'

* SEE MISCELLANEOUS QUANTITIES FOR TYPE AND LOCATION OF SEEDING MIXTURE. USE SEEDING MIXTURE NO 60 IN AND ADJACENT TO GRADED WET AREAS.
** NO FERTILIZER SHALL BE PLACED WITHIN 25 FEET OF WETLANDS.
*** NO MULCH SHALL BE PLACED WITHIN 10 FEET OF WETLANDS.

Addendum No. 01
ID 6950-03-75
Revised Sheet 7
January 4, 2017



PROPOSED TYPICAL SECTION SIDE ROADS
SCHOOL LANE
STA 7+00.000' TO STA 9+88.000'

PROJECT NO: 6950-03-75	HWY: STH 54	COUNTY: WOOD	TYPICAL SECTIONS	SHEET 7	E
FILE NAME : X:\23046-20\10016\TECH\CADD\DRAWINGS\SHEETS\PLAN\6950-03-75\75_020301_TS.DWG			PLOT NAME : PLOT SCALE : 1 IN:10 FT		
PLOT DATE : 12/21/2016 2:30 PM			PLOT BY : JEFF BREU		

EARTHWORK SUMMARY

Division	From/To Station	205.0100 Common Excavation (1)		Available Material (2)	205.0400 Excavation Marsh (3)	Reduced Marsh in Fill (4)	208.1100 Expanded Marsh Backfill (5)	Unexpanded Fill	Expanded Fill (6)	Mass Ordinate +/- (7)	Waste	208.1100 Select Borrow (8)	Comment:
		Cut	EBS Excavation										
STAGE 1	STH 54 (198+00 - 225+00)	6083	0	6,083	(Item #205.0500) 1923	1,443	2,404	17,196	1,25 16932	-13,609	--	--	
	STH 54 (252+00 - 327+00)	4771	0	4,771	874	655	1,092	4,200	4431	341	--	--	
	HEMLOCK TRAIL	228	0	228	0	0	0	160	187	40	--	--	
STAGE 2/4	SCHOOL LANE	677	0	677	450	338	563	243	-119	796	--	--	
	TEMPORARY BYPASS (INSTALLATION)	170	0	170	0	0	0	90	113	58	--	--	
	DIVISION 1 SUBTOTAL	11929	0	11929	3247	2435	4059	21878	24303	-12375	0	12375	
STAGE 3	STH 54 (225+00 - 238+00)	4186	0	4,186	0	0	0	6466	8083	-3897	--	--	
	STH 54 (243+00 - 252+00)	1022	0	1,022	0	0	0	7496	9370	-6348	--	--	
	CTHDNORTH	369	0	369	0	0	0	191	1488	-119	--	--	
DIVISION 2 SUBTOTAL	5578	0	5578	0	0	0	15153	18941	-13364	0	13364		
STAGE 3	STH 54 (198+00 - 143+00)	1005	0	1,005	0	0	0	1092	1365	-360	--	--	
	CTHDSOUTH	588	0	588	0	0	0	438	548	50	--	--	
	TEMPORARY BYPASS (REMOVAL)	90	0	90	0	0	0	0	0	90	--	--	
DIVISION 3 SUBTOTAL	1693	0	1693	0	0	0	1630	1913	-220	0	220		
UNDISTRIBUTED (9)	--	--	--	800	--	--	1000	--	--	--	--	--	
GRAND TOTAL	19,199	0	19,199	4,047	2,435	5,059	38,561	45,157	-25,958	0	25,959		
Total Common Exc												31,018	

Addendum No. 01
ID 6950-03-75
Revised Sheet 60
January 4, 2017

1) Common Excavation is the sum of the Cut and EBS Excavation columns. Item number 205.0100
 2) Available Material = Cut materials not conforming to Select Borrow Material Specifications usable in Fills outside the 1:1 slope.
 3) Marsh Excavation - to be backfilled with Select Borrow Material.
 4) Reduced Marsh in Fill - Excavated Marsh material is usable in Fills outside the 1:1 slope. Marsh in Fill Reduction factor = 0.75
 5) Expanded Marsh Backfill - This is to be filled with Select Borrow material. Marsh Backfill Factor = 1.25. Item number 208.1100
 6) Expanded Fill = (Unexpanded Fill - Reduced Marsh) * Fill Factor. Factor = 1.25
 7) The Mass Ordinate +/- or - Qty calculated for the Division. Plus quantity indicates an excess of material within the Division. Minus indicates a shortage of material within the Division.
 8) Select Borrow = (Expanded Marsh Backfill + Expanded Fill) - Available Material, unless noted otherwise. Item number 208.1100
 9) Undistributed Select Borrow is included to account for potential additional marsh excavation and unusable materials within the project area

Addendum No. 01
 ID 6950-03-75
 Revised Sheet 63
 January 4, 2017

CULVERT PIPE ITEMS

LOCATION	STATION	OFFSET	STATION	OFFSET	520.8000 CONCRETE COLLARS FOR PIPE (EACH)	520.3418	520.3424	520.3624	522.0324	523.0419	520.1018	520.1024	522.1024	523.0519	633.5200	REMARKS		
STH 54	1206+50	35.0' LT	1206+50	35.0' RT	--	--	--	70	--	523.0419 CULVERT PIPE REINFORCED CONCRETE HORIZONTAL ELLIPTICAL CLASS HE- 19x30-INCH (LF)	18-INCH 24-INCH (EACH)	520.1024 APRON ENDWALLS FOR CULVERT PIPE (EACH)	522.1024 APRON ENDWALLS FOR CULVERT PIPE REINFORCED CONCRETE 24-INCH (EACH)	523.0519 APRON ENDWALLS FOR CULVERT PIPE REINFORCED HORIZONTAL ELLIPTICAL 19x30-INCH (EACH)	633.5200 MARKERS CULVERT END PIPE (EACH)	JOINT TIES FOR CULVERT PIPE (EACH)	ELEVATION	DISCHARGE
	1209+00	32.0' LT	1209+00	35.0' RT	--	--	67	--	--	--	--	2	--	--	2	--	995.22	995.01
	1210+30	49.0' LT	1209+96	47.0' LT	--	38	--	67	--	--	2	2	--	--	2	--	987.85	987.29
	1215+00	29.5' RT	1215+00	42.4' LT	--	72	--	72	--	--	2	2	--	--	2	--	998.00	987.50
	1217+57	40.0' LT	1217+17	40.0' LT	--	44	--	44	--	--	2	2	--	--	2	--	1003.05	1001.90
	1219+13	35.0' RT	1218+69	35.0' RT	--	46	--	46	--	--	2	2	--	--	2	--	1005.60	1005.10
	1220+02	30.0' LT	1219+60	30.0' LT	--	31	--	31	--	--	2	2	--	--	2	--	1007.20	1006.80
	1226+00	36.1' LT	1226+00	38.5' RT	--	75	--	75	--	--	2	2	--	--	2	--	1007.42	1006.45
	1226+92	41.0' LT	1226+48	41.0' LT	--	42	--	42	--	--	2	2	--	--	2	--	1009.47	1009.45
	1227+40	35.0' RT	1227+05	35.0' RT	--	34	--	34	--	--	2	2	--	--	2	--	1009.93	1009.82
	1229+16	35.0' RT	1228+78	35.0' RT	--	36	--	36	--	--	2	2	--	--	2	--	1010.46	1010.35
	1231+00	32.5' LT	1231+00	24.7' RT	--	33	58	58	--	--	2	2	--	--	2	12	1012.06	1011.19
	1231+70	33.0' LT	1231+36	33.0' LT	--	33	--	33	--	73	2	2	--	2	2	12	1014.60	1013.53
	1237+00	31.0' RT	1237+00	41.5' LT	--	39	--	39	--	--	2	2	--	2	2	12	1010.00	1009.76
	1242+15	31.0' RT	1242+54	31.0' RT	--	39	--	39	--	--	2	2	--	2	2	12	1008.86	1008.57
	1245+00	38.0' RT	1245+00	39.0' LT	1	77	--	77	--	--	2	2	--	--	2	12	1004.00	1003.75
	1252+22	36.0' LT	1252+60	36.0' LT	--	36	--	36	--	--	2	2	--	--	2	12	1001.25	1001.23
	1252+51	43.0' RT	1252+87	43.0' RT	--	36	36	36	--	--	2	2	--	--	2	12	1002.01	1001.82
	1265+50	33.0' RT	1266+00	23.0' LT	--	35	--	35	--	79	2	2	--	2	2	12	994.93	994.53
	1267+61	30.0' RT	1267+92	30.0' RT	--	35	--	35	--	--	2	2	--	--	2	12	993.83	993.55
	1268+25	31.0' LT	1268+61	31.0' LT	--	35	--	35	--	--	2	2	--	--	2	12	993.34	993.05
	1269+73	31.0' LT	1270+03	31.0' LT	--	30	--	30	--	--	2	2	--	--	2	12	992.32	992.08
	1270+34	32.1' LT	1270+43	35.2' RT	--	68	68	68	--	--	2	2	--	--	2	12	988.88	988.12
	1270+39	32.1' LT	1270+48	35.2' RT	--	68	68	68	--	--	2	2	--	--	2	12	988.88	988.12
	7F+40	27.0' LT	7F+74	27.0' LT	--	34	--	34	--	--	2	2	--	--	2	12	1002.51	1002.31
	9F+50	42.0' LT	9F+50	37.0' RT	--	34	--	34	--	--	2	2	--	--	2	12	1000.70	1000.39
SCHOOL LN	8G+80	27.0' RT	9G+14	27.0' RT	1	444	139	576	58	152	22	26	2	4	22	36	995.30	995.13
TOTAL					1	444	139	576	58	152	22	26	2	4	22	36	995.30	995.13

- NOTES:
 1.) MINIMUM THICKNESS FOR 18-INCH CULVERT PIPE CORRUGATED ALUMINUM = 0.060 INCHES
 2.) MINIMUM THICKNESS FOR 24-INCH CULVERT PIPE CORRUGATED ALUMINUM = 0.075 INCHES
 3.) STATION, OFFSET AND INVERT AND DISCHARGE ELEVATIONS AT END OF ENDWALL
 4.) TEMPORARY EXTENSION REQUIRED TO MAINTAIN CTD TRAFFIC.
 5.) THE LENGTH FOR CULVERT PIPE CLASS III-A AND CLASS III-B
 NON-METAL (SIZE) IS BASED ON THERMOPLASTIC PIPE
 6.) JOINT TIES ARE NOT INCLUDED FOR PIPE ITEMS
 WHERE CONTRACTOR HAS THE OPTION TO SELECT
 THE PIPE MATERIAL
 * ADDITIONAL QUANTITIES LISTED ELSEWHERE

TEMPORARY PRECAST BARRIER

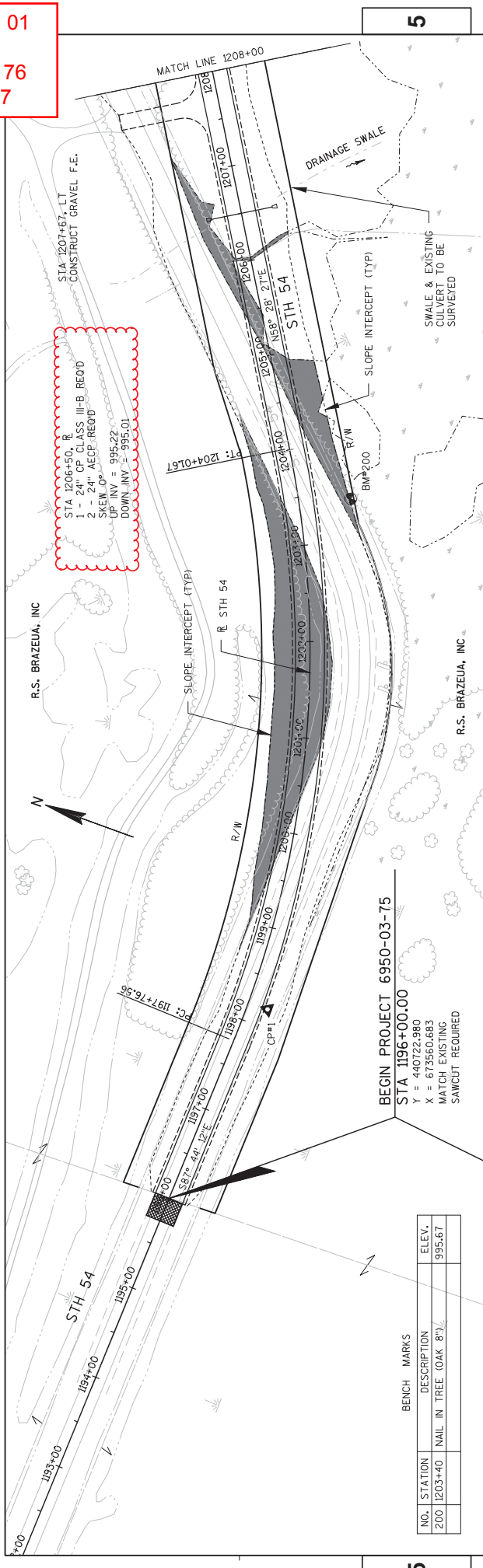
603.8000 603.8125 614.0905
 CONCRETE BARRIER CRASH
 TEMPORARY PRECAST CUSHIONS

STATION	STATION	STAGE	DELIVERED (LF)	INSTALLED (LF)	TEMPORARY PRECAST CUSHIONS (EACH)	BACK WIDTH (LF)	OBJECT MARKING PATTERN	CRASH TEST LEVEL	TRAFFIC DIRECTION	TRAFFIC LOCATION	CRASH CUSHION SHIELDS
309+80	-	320+68	2	1087.5	1	4	OM-3L (W05-58L)	TL-3	UNIDIRECTIONAL	L	TEMPORARY CONCRETE BARRIER ON SHOULDER
1242+88	-	1252+13	3	925	1	4	OM-3R (W05-58R)	TL-3	UNIDIRECTIONAL	R	TEMPORARY CONCRETE BARRIER ON SHOULDER
TOTAL			1087.5	2012.5	4						

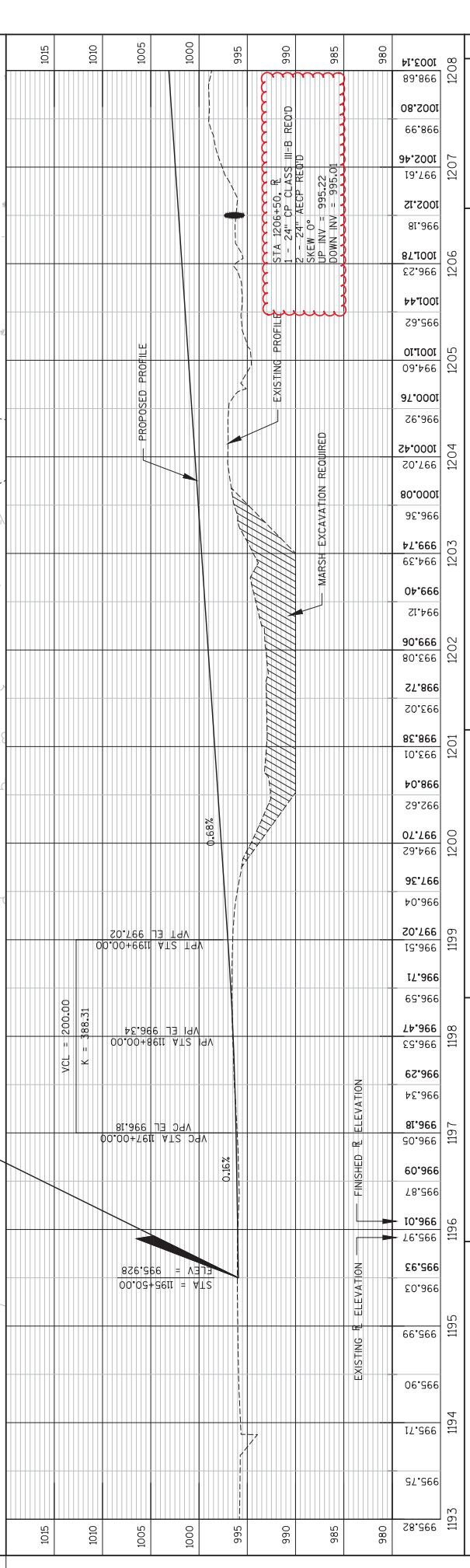
STATION	STATION	STAGE	DELIVERED (LF)	INSTALLED (LF)	TEMPORARY PRECAST CUSHIONS (EACH)	BACK WIDTH (LF)	OBJECT MARKING PATTERN	CRASH TEST LEVEL	TRAFFIC DIRECTION	TRAFFIC LOCATION	CRASH CUSHION SHIELDS
309+80	-	320+68	2	1087.5	1	4	OM-3L (W05-58L)	TL-3	UNIDIRECTIONAL	L	TEMPORARY CONCRETE BARRIER ON SHOULDER
1242+88	-	1252+13	3	925	1	4	OM-3R (W05-58R)	TL-3	UNIDIRECTIONAL	R	TEMPORARY CONCRETE BARRIER ON SHOULDER
TOTAL			1087.5	2012.5	4						

ALL ITEMS ARE CATEGORY 0010 UNLESS OTHERWISE SPECIFIED.

Addendum No. 01
 ID 6950-03-75
 Revised Sheet 76
 January 4, 2017



NO.	STATION	DESCRIPTION	ELEV.
200	1203+40	NAIL IN TREE (OAK 8")	995.67

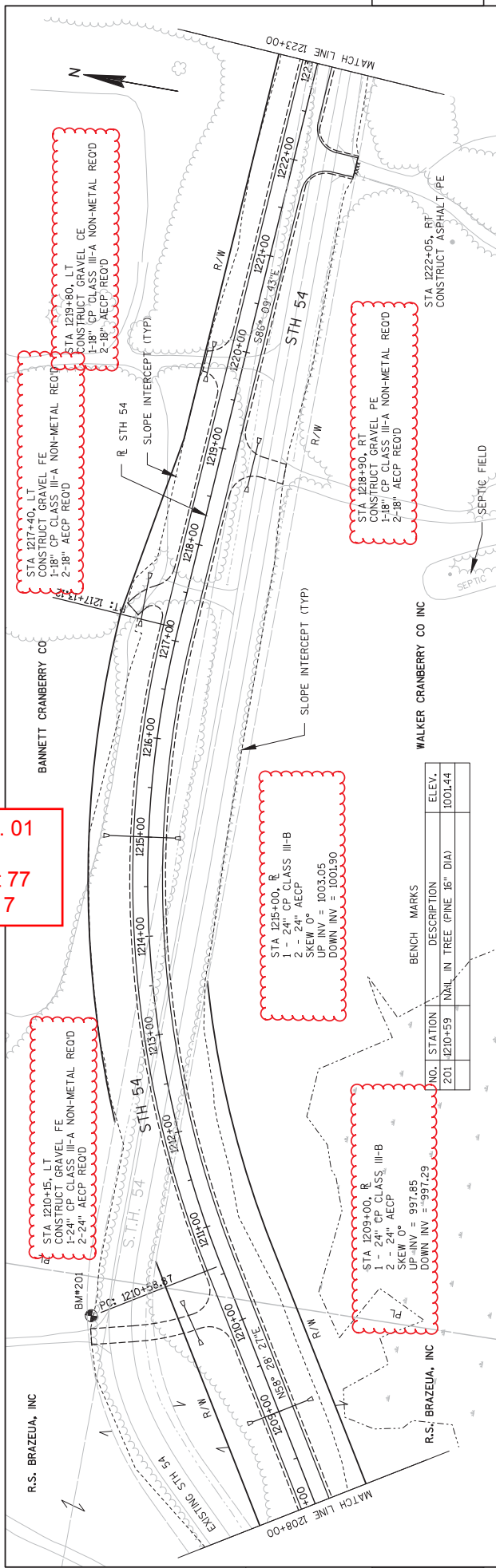


STATION	ELEVATION	PROFILE
1193	995.82	EXISTING ELEVATION
1194	995.75	EXISTING ELEVATION
1195	995.99	EXISTING ELEVATION
1196	996.03	EXISTING ELEVATION
1196	995.97	EXISTING ELEVATION
1196	996.01	FINISHED ELEVATION
1196	996.09	EXISTING ELEVATION
1197	996.05	EXISTING ELEVATION
1197	996.18	EXISTING ELEVATION
1197	996.34	EXISTING ELEVATION
1198	996.29	EXISTING ELEVATION
1198	996.53	EXISTING ELEVATION
1198	996.47	EXISTING ELEVATION
1198	996.59	EXISTING ELEVATION
1198	996.71	EXISTING ELEVATION
1199	997.02	EXISTING ELEVATION
1199	996.04	EXISTING ELEVATION
1200	997.36	EXISTING ELEVATION
1200	994.62	EXISTING ELEVATION
1200	997.70	EXISTING ELEVATION
1202	998.72	EXISTING ELEVATION
1202	993.08	EXISTING ELEVATION
1202	999.06	EXISTING ELEVATION
1202	994.12	EXISTING ELEVATION
1203	999.74	EXISTING ELEVATION
1203	994.39	EXISTING ELEVATION
1204	997.02	EXISTING ELEVATION
1204	996.36	EXISTING ELEVATION
1204	1000.08	EXISTING ELEVATION
1204	997.02	EXISTING ELEVATION
1204	1000.42	EXISTING ELEVATION
1204	996.92	EXISTING ELEVATION
1205	994.60	EXISTING ELEVATION
1205	1001.10	EXISTING ELEVATION
1205	995.62	EXISTING ELEVATION
1206	1001.44	EXISTING ELEVATION
1206	996.23	EXISTING ELEVATION
1206	1001.78	EXISTING ELEVATION
1206	996.18	EXISTING ELEVATION
1206	1002.12	EXISTING ELEVATION
1206	997.61	EXISTING ELEVATION
1207	1002.46	EXISTING ELEVATION
1207	998.99	EXISTING ELEVATION
1207	1002.80	EXISTING ELEVATION
1207	998.68	EXISTING ELEVATION
1208	1003.14	EXISTING ELEVATION

PROJECT NO: 6950-03-75
 HWY: STH 54
 COUNTY: WOOD
 PLAN AND PROFILE: STH 54
 SHEET 76

FILE NAME : X:\23046-20\10016\TECH\CADD\DRAWINGS\6950-03-75\5-050101.PP AREA2.DWG
 PLOT DATE : 12/28/2016 3:50 PM
 PLOT BY : DOUGLAS HIBYAN
 PLOT NAME :
 PLOT SCALE : 1" = 100'.XREF
 WISDOT/CADD/ SHEET 44

Addendum No. 01
 ID 6950-03-75
 Revised Sheet 77
 January 4, 2017



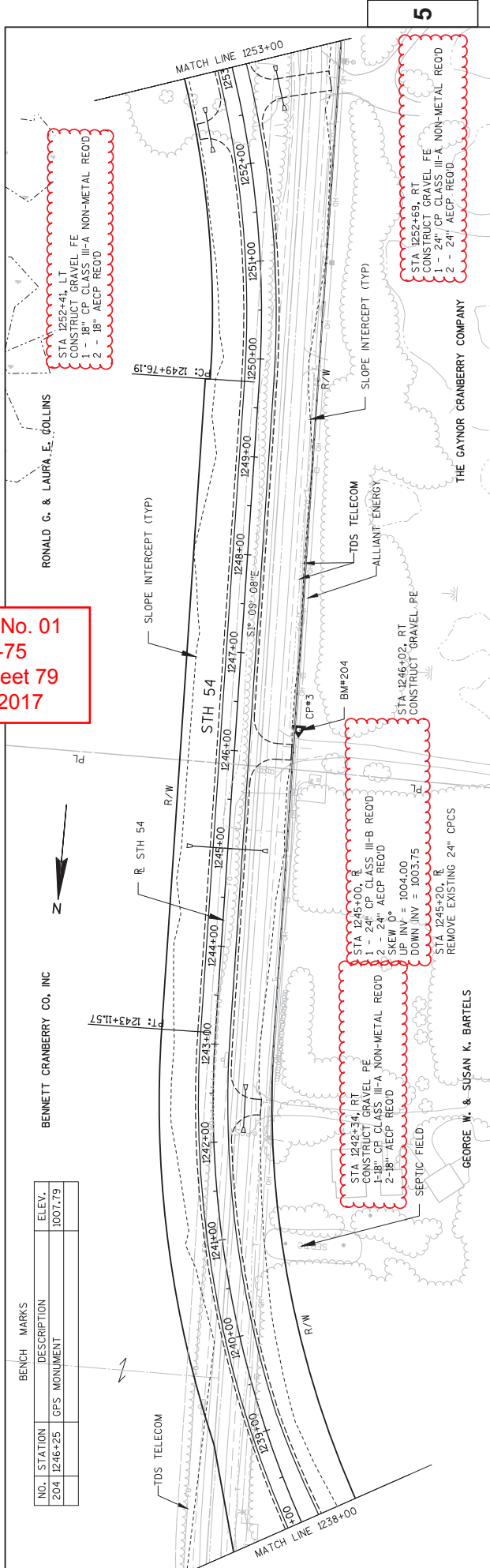
5

5

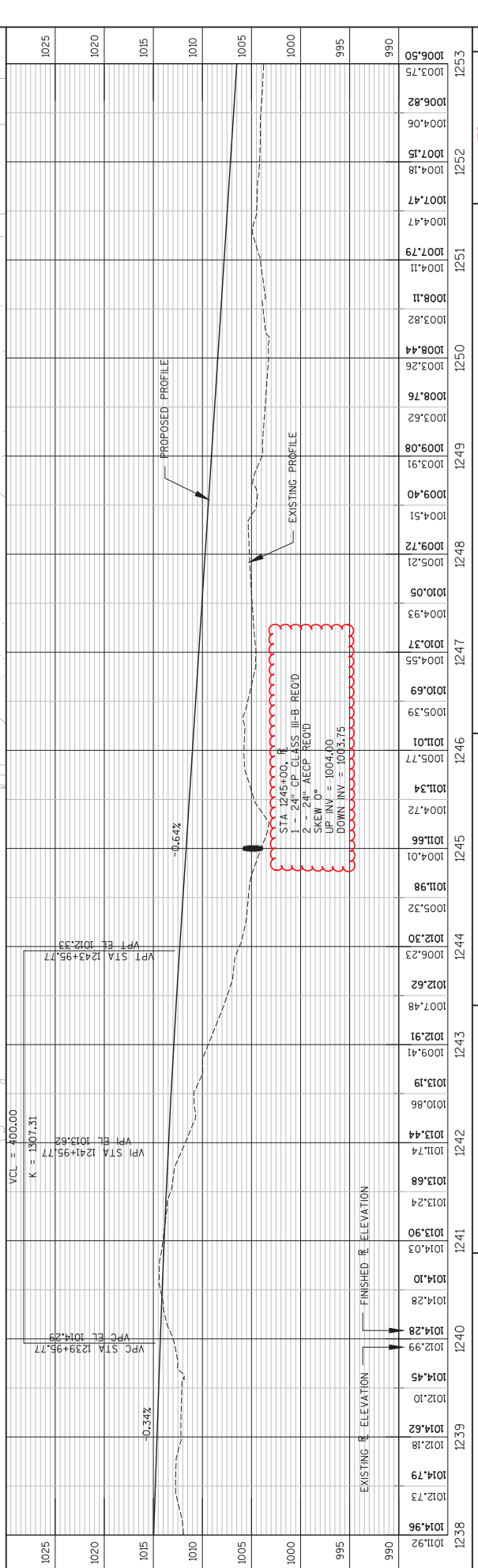
STATION	ELEV.	DESCRIPTION
1208+00	1003.14	VCPI STA 1208+00.00 VPI EL 1003.14
1208+50	1004.59	VCPI STA 1208+50.00 VPI EL 1004.50
1209+00	1005.38	VCPI STA 1209+00.00 VPI EL 1005.38
1209+50	1006.64	VCPI STA 1209+50.00 VPI EL 1006.64
1210+00	1007.07	VCPI STA 1210+00.00 VPI EL 1007.07
1210+59	1007.93	VCPI STA 1210+59.00 VPI EL 1007.93
1211+00	1008.21	VCPI STA 1211+00.00 VPI EL 1008.21
1211+50	1008.89	VCPI STA 1211+50.00 VPI EL 1008.89
1212+00	1009.79	VCPI STA 1212+00.00 VPI EL 1009.79
1212+50	1010.82	VCPI STA 1212+50.00 VPI EL 1010.82
1213+00	1011.96	VCPI STA 1213+00.00 VPI EL 1011.96
1213+50	1012.82	VCPI STA 1213+50.00 VPI EL 1012.82
1214+00	1013.36	VCPI STA 1214+00.00 VPI EL 1013.36
1214+53	1014.53	VCPI STA 1214+53.00 VPI EL 1014.53
1215+00	1015.79	VCPI STA 1215+00.00 VPI EL 1015.79
1215+50	1016.48	VCPI STA 1215+50.00 VPI EL 1016.48
1216+00	1017.42	VCPI STA 1216+00.00 VPI EL 1017.42
1216+59	1018.43	VCPI STA 1216+59.00 VPI EL 1018.43
1217+00	1019.61	VCPI STA 1217+00.00 VPI EL 1019.61
1217+50	1020.28	VCPI STA 1217+50.00 VPI EL 1020.28
1218+00	1021.50	VCPI STA 1218+00.00 VPI EL 1021.50
1218+50	1022.84	VCPI STA 1218+50.00 VPI EL 1022.84
1219+00	1024.11	VCPI STA 1219+00.00 VPI EL 1024.11
1219+50	1025.01	VCPI STA 1219+50.00 VPI EL 1025.01
1220+00	1025.99	VCPI STA 1220+00.00 VPI EL 1025.99
1220+50	1026.84	VCPI STA 1220+50.00 VPI EL 1026.84
1221+00	1027.73	VCPI STA 1221+00.00 VPI EL 1027.73
1221+50	1028.62	VCPI STA 1221+50.00 VPI EL 1028.62
1222+00	1029.51	VCPI STA 1222+00.00 VPI EL 1029.51
1222+50	1030.40	VCPI STA 1222+50.00 VPI EL 1030.40
1223+00	1031.29	VCPI STA 1223+00.00 VPI EL 1031.29

PROJECT NO: 6950-03-75
 COUNTY: WOOD
 HWY: STH 54
 PLAN AND PROFILE: STH 54
 SHEET 77
 WISDOT/CADD SHEET 44

Addendum No. 01
 ID 6950-03-75
 Revised Sheet 79
 January 4, 2017



BENCH MARKS	
NO. STATION	DESCRIPTION
204 1246+25	GPS MONUMENT
	ELEV. 1007.79



STATION	ELEVATION	STATION	ELEVATION
1025		1005	
1020		1000	
1015		995	
1010		990	
1005			
1000			
995			
990			
1006.50		1253	
1003.75		1252	
1006.82		1004.06	
1004.18		1007.47	
1007.47		1004.11	
1004.47		1008.11	
1007.79		1003.82	
1004.11		1008.44	
1008.11		1003.26	
1003.82		1008.76	
1008.44		1003.62	
1003.26		1009.08	
1008.76		1003.91	
1003.62		1009.40	
1009.08		1005.21	
1003.91		1009.72	
1009.40		1004.93	
1005.21		1010.37	
1009.72		1004.56	
1004.93		1010.69	
1010.37		1005.39	
1004.56		1011.01	
1010.69		1005.77	
1005.39		1011.34	
1011.01		1004.72	
1011.34		1011.66	
1004.72		1004.01	
1011.66		1011.98	
1004.01		1005.32	
1011.98		1012.30	
1005.32		1006.23	
1012.30		1007.48	
1006.23		1012.91	
1007.48		1009.41	
1012.91		1010.86	
1009.41		1013.44	
1010.86		1013.68	
1013.44		1013.24	
1013.68		1013.90	
1013.24		1014.03	
1013.90		1014.10	
1014.03		1014.28	
1014.10		1014.28	
1014.28		1012.99	
1014.28		1014.45	
1012.99		1012.10	
1014.45		1014.62	
1012.10		1014.79	
1014.62		1012.73	
1014.79		1014.96	
1012.73			
1014.96			
1011.92			

PLAN AND PROFILE: STH 54
 COUNTY: WOOD

PROJECT NO: 6950-03-75
 HWY: STH 54

SHEET 79

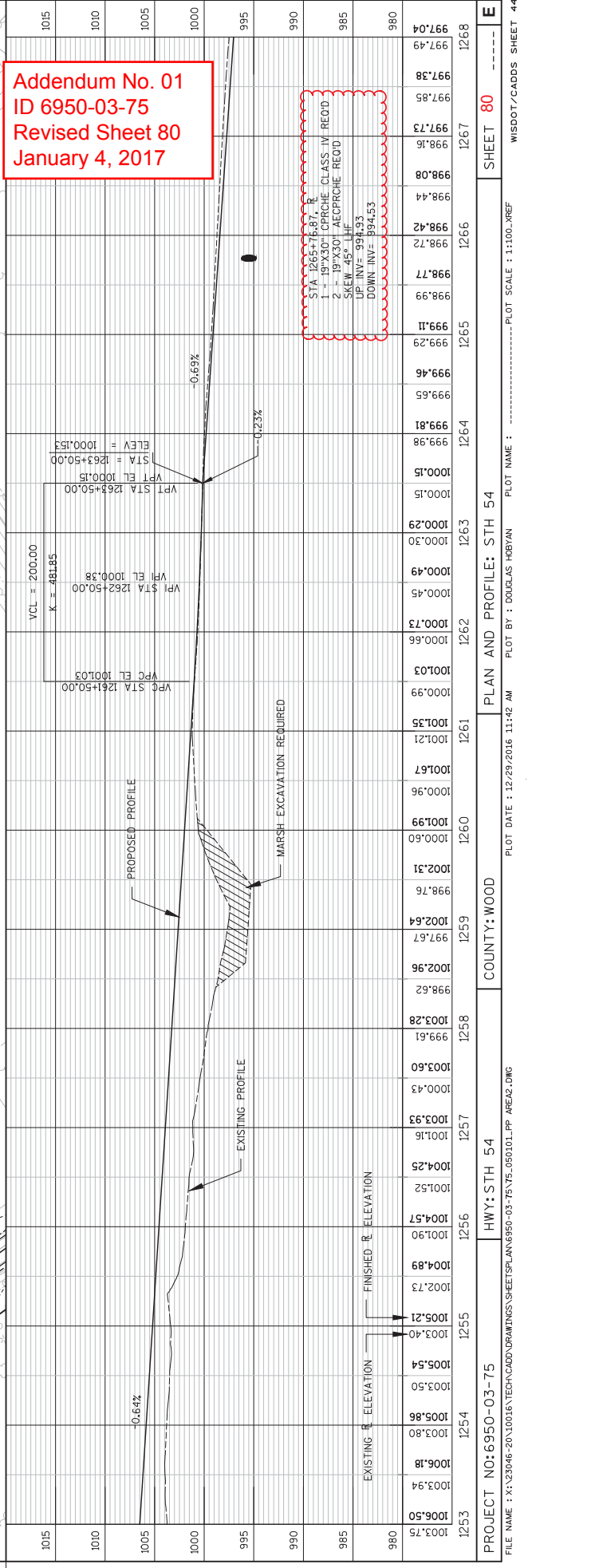
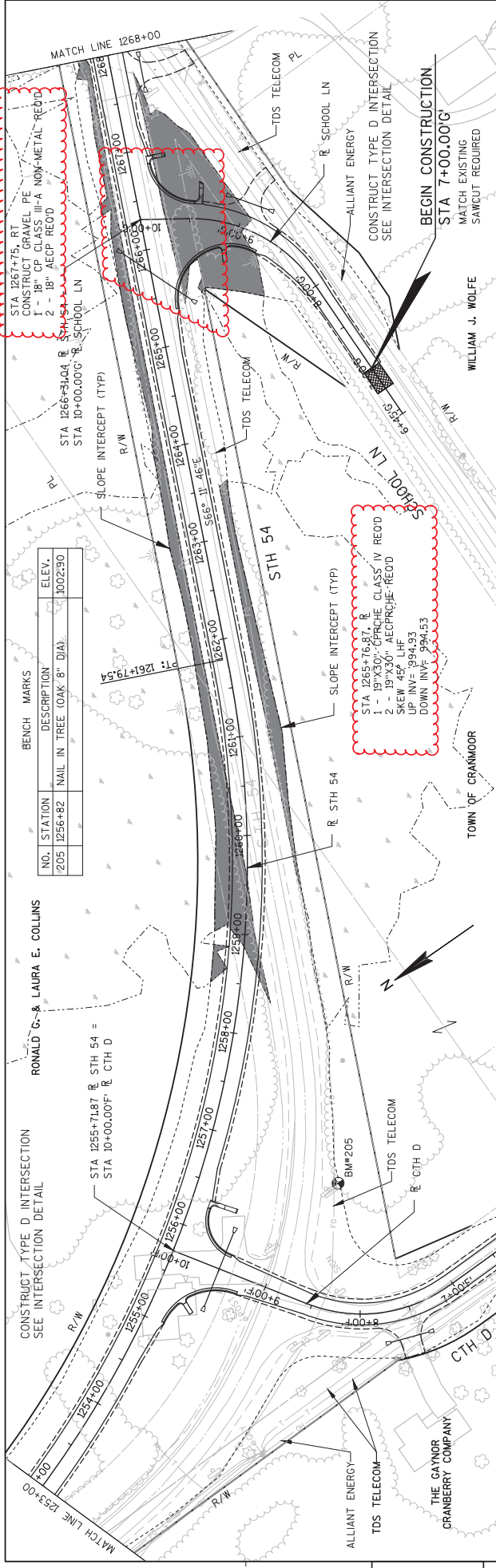
WISDOT/CADD SHEET 44

PLOT NAME :PLOT SCALE : 1" = 100'.XREF

PLOT BY : DOUGLAS HEBBYAN

PLOT DATE : 12/28/2016 4:00 PM

FILE NAME : X:\23046-20\10016\TECH\CADD\DRAWINGS\SHEET\PLAN\6950-03-75-050101.PP AREA2.DWG



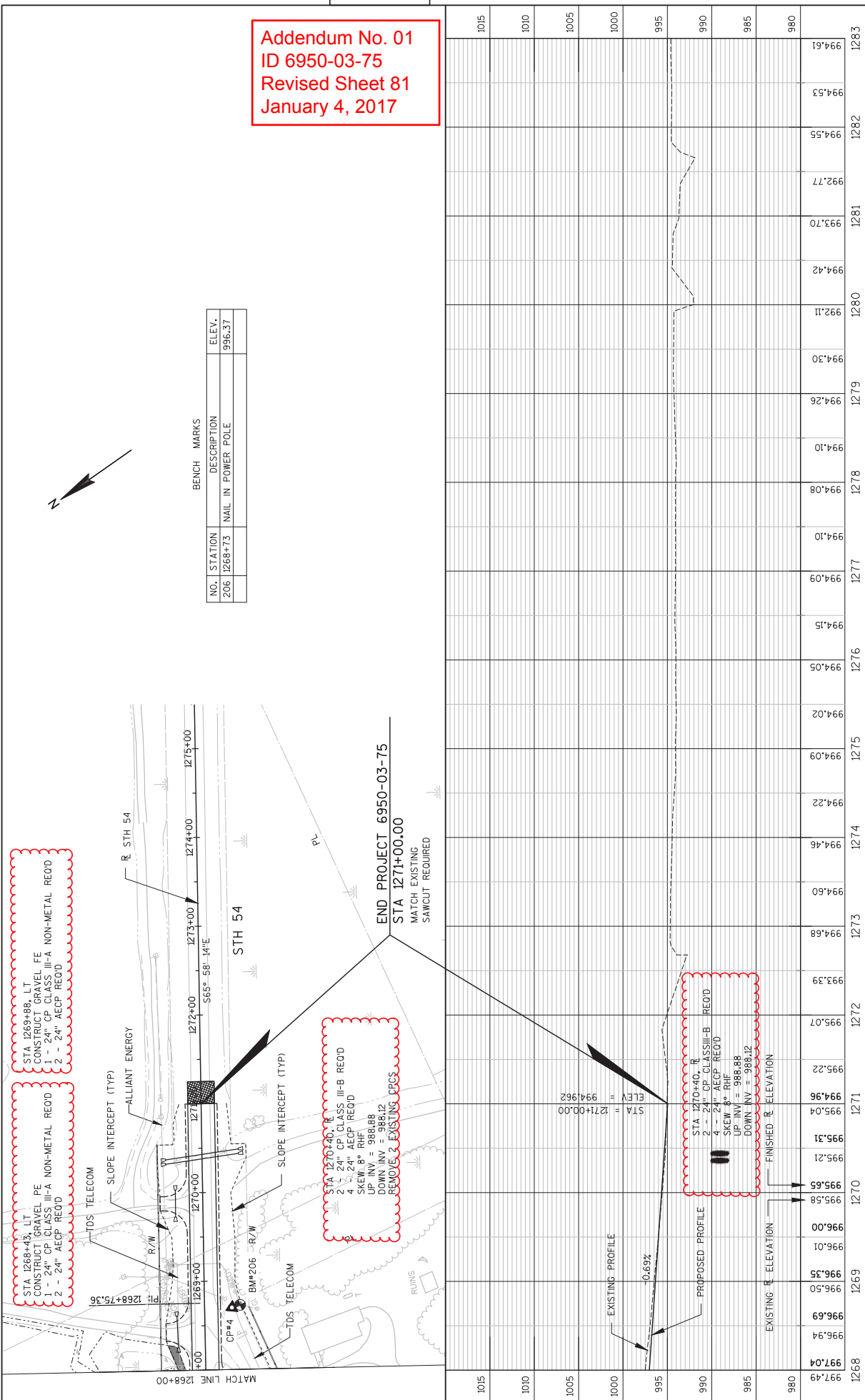
Addendum No. 01
 ID 6950-03-75
 Revised Sheet 80
 January 4, 2017

STA 1265+76.87 R
 1 - 19"x30" CIRCULAR CLASS IV REOD
 2 - 19"x30" A/CPC/RCHE REOD
 SKEW = 45° L/R
 DOWN INV = 994.53

STA 1265+76.87 R
 1 - 19"x30" CIRCULAR CLASS IV REOD
 2 - 19"x30" A/CPC/RCHE REOD
 SKEW = 45° L/R
 DOWN INV = 994.53

NO. STATION	DESCRIPTION	ELEV.
205 1256+82	NAIL IN TREE (OAK 8" DIA)	1002.30

Addendum No. 01
 ID 6950-03-75
 Revised Sheet 81
 January 4, 2017



STA 1268+43, LT
 CONSTRUCT GRAVEL PE
 1 - 24" CP CLASS III-A NON-METAL REOD
 2 - 24" AACP REOD

STA 1269+88, LT
 CONSTRUCT GRAVEL FE
 1 - 24" CP CLASS III-A NON-METAL REOD
 2 - 24" AACP REOD

STA 1270+40, R
 2 - 24" CP CLASS III-B REOD
 4 - 24" AACP REOD
 SKEW: 8° RHF
 UP INV = 988.88
 DOWN INV = 988.12
 REMOVE EXISTING CPCS

STA 1271+00.00, R
 2 - 24" CP CLASS III-B REOD
 4 - 24" AACP REOD
 SKEW: 8° RHF
 UP INV = 988.88
 DOWN INV = 988.12

NO. STATION	DESCRIPTION	ELEV.
206	NAIL IN POWER POLE	996.37

STATION	ELEVATION	STATION	ELEVATION	STATION	ELEVATION	STATION	ELEVATION	STATION	ELEVATION	STATION	ELEVATION	STATION	ELEVATION
1015		1275	994.22	1280	992.11	1285	994.55	1290	994.61	1295	994.53	1300	994.55
1010		1276	994.05	1281	993.70	1286	994.26	1291	994.30	1296	994.26	1301	994.26
1005		1277	994.09	1282	994.08	1287	994.10	1292	994.10	1297	994.10	1302	994.10
1000		1278	994.15	1283	994.15	1288	994.15	1293	994.15	1298	994.15	1303	994.15
995		1279	994.22	1284	994.22	1289	994.22	1294	994.22	1299	994.22	1304	994.22
990		1280	995.04	1285	995.04	1290	995.04	1295	995.04	1300	995.04	1305	995.04
985		1281	995.31	1286	995.31	1291	995.31	1296	995.31	1301	995.31	1306	995.31
980		1282	995.58	1287	995.58	1292	995.58	1297	995.58	1302	995.58	1307	995.58
		1283	996.00	1288	996.00	1293	996.00	1298	996.00	1303	996.00	1308	996.00
		1284	996.35	1289	996.35	1294	996.35	1299	996.35	1304	996.35	1309	996.35
		1285	996.66	1290	996.66	1295	996.66	1300	996.66	1305	996.66	1310	996.66
		1286	996.94	1291	996.94	1296	996.94	1301	996.94	1306	996.94	1311	996.94
		1287	997.04	1292	997.04	1297	997.04	1302	997.04	1307	997.04	1312	997.04
		1288	997.49	1293	997.49	1298	997.49	1303	997.49	1308	997.49	1313	997.49

Addendum No. 01
 ID 6950-03-75
 Revised Sheet 156
 January 4, 2017

STH 54 PROPOSED - STAGE 1														
Station	Real Station	Distance	AREA (SF)			Incremental Vol (CY) (Unadjusted)			Cumulative Vol (CY)					
			Cut	Fill	Marsh	Cut	Fill	Marsh Exc	Expanded Fill 1.25	Reduced Marsh in Fill 0.75	Expanded Marsh Backfill 1.25	Mass Ordinate		
125200.00	125200.00	0.00	84.80	104.20	0.00	0.00	0.00	0.00	0.00	0.00	0.00	0.00	0.00	0.00
125300.00	125300.00	100.00	67.80	77.00	0.00	282.59	335.56	0.00	282.59	419.44	0.00	0.00	0.00	-136.85
125400.00	125400.00	100.00	127.00	60.30	0.00	360.74	254.26	0.00	643.33	737.27	0.00	0.00	0.00	-93.94
125500.00	125500.00	100.00	132.10	46.90	0.00	479.81	168.52	0.00	123.15	985.42	0.00	0.00	0.00	137.73
125600.00	125600.00	100.00	11.10	322.98	0.00	265.19	684.96	0.00	1388.33	1841.62	0.00	0.00	0.00	-453.29
125700.00	125700.00	100.00	97.20	97.50	0.00	200.58	778.67	0.00	1588.89	2814.95	0.00	0.00	0.00	-1226.06
125800.00	125800.00	100.00	89.40	60.00	0.00	345.56	476.85	0.00	1934.44	3411.02	0.00	0.00	0.00	-1476.57
125900.00	125900.00	100.00	83.00	150.00	0.00	144.28	574.07	267.19	2253.70	4128.61	200.39	333.98	0.00	-1624.42
126000.00	126000.00	100.00	11.10	61.60	58.40	174.26	391.85	375.33	2427.96	4618.43	481.89	803.15	0.00	-1588.10
126100.00	126100.00	100.00	26.50	46.70	33.24	69.63	200.56	169.70	2497.59	4869.12	609.17	1015.28	0.00	-1610.07
126200.00	126200.00	100.00	26.80	27.30	0.00	98.70	137.04	61.56	2596.30	5040.42	655.33	1092.22	0.00	-1624.95
126300.00	126300.00	100.00	44.40	12.20	0.00	131.85	73.15	0.00	2728.15	5131.85	655.33	1092.22	0.00	-1584.54
126400.00	126400.00	100.00	69.60	0.00	0.00	211.11	22.59	0.00	2939.26	5600.89	655.33	1092.22	0.00	-1401.67
126500.00	126500.00	100.00	75.00	0.00	0.00	267.78	0.00	0.00	3207.04	5600.89	655.33	1092.22	0.00	-1133.89
126600.00	126600.00	100.00	77.60	3.00	0.00	282.59	5.56	0.00	3489.63	5677.04	655.33	1092.22	0.00	-658.24
126700.00	126700.00	100.00	94.30	0.00	0.00	318.33	5.56	0.00	3807.96	5733.98	655.33	1092.22	0.00	-546.85
126800.00	126800.00	100.00	100.10	7.30	0.00	360.00	13.52	0.00	4167.96	5900.88	655.33	1092.22	0.00	-203.75
126900.00	126900.00	100.00	57.10	0.00	0.00	291.11	13.52	0.00	4459.07	5207.78	655.33	1092.22	0.00	70.46
127000.00	127000.00	100.00	47.30	3.10	0.00	193.33	5.74	0.00	4652.41	5214.95	655.33	1092.22	0.00	256.62
127100.00	127100.00	100.00	16.82	11.94	0.00	18.74	27.85	0.00	4771.15	5249.77	655.33	1092.22	0.00	340.55
			4,771	4,200	874									

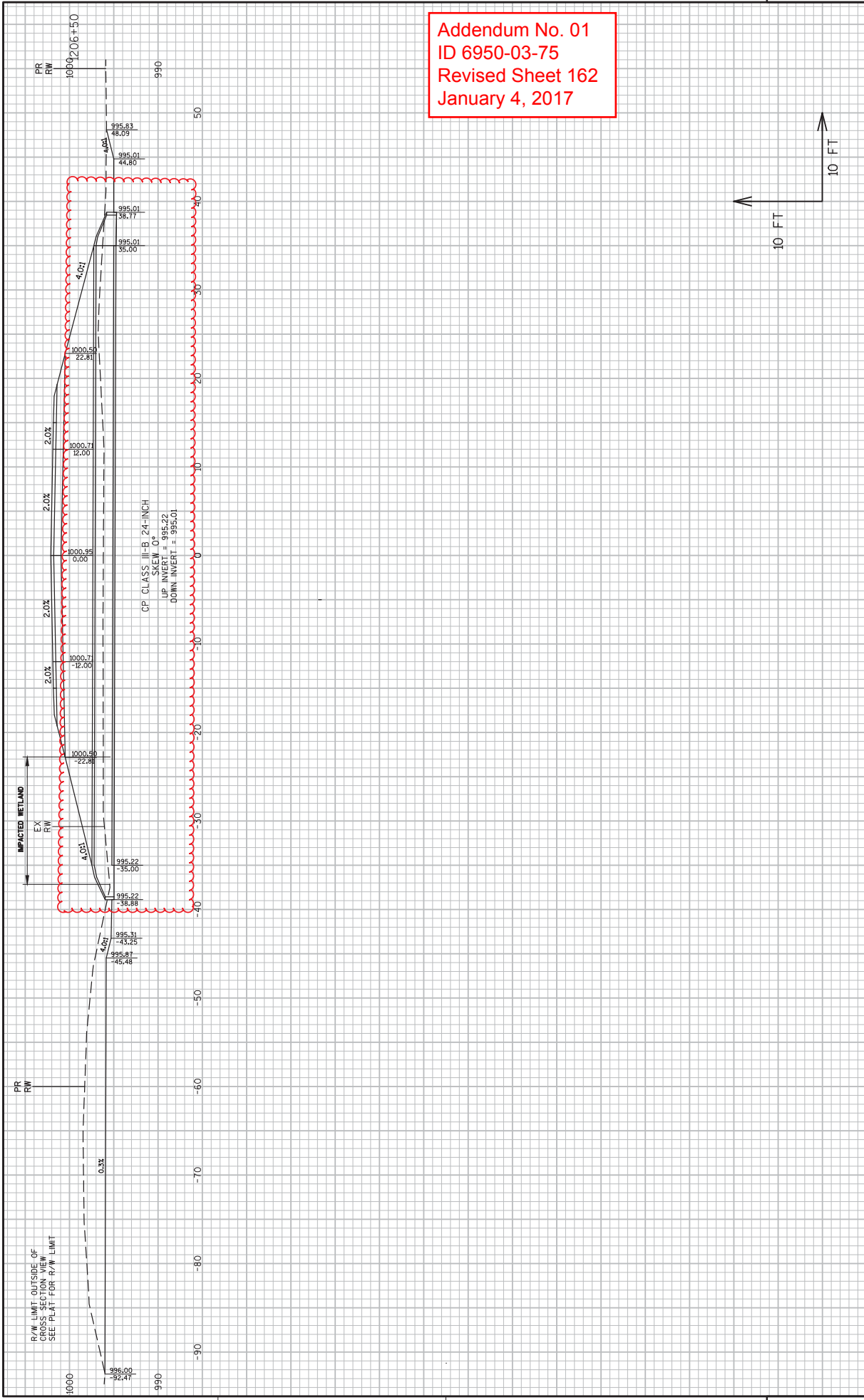
STH 54 PROPOSED - STAGE 2											
Station	Real Station	Distance	AREA (SF)		Incremental Vol (CY) (Unadjusted)		Cumulative Vol (CY)		Expanded Fill 1.25	Mass Ordinate	
			Cut	Fill	Cut	Fill	Cut	Expanded Fill 1.25			
122500.00	122500.00	0.00	45.90	0.00	67.40	0.00	0.00	0.00	0.00	0.00	
122600.00	122600.00	100.00	338.50	18.00	117.20	711.85	343.33	711.85	429.17	282.69	
122700.00	122700.00	100.00	30.40	117.20	117.20	683.15	435.56	1395.00	973.61	421.39	
122800.00	122800.00	100.00	7.20	155.90	155.90	26.67	505.74	26.67	632.18	-141.16	
122900.00	122900.00	100.00	2.79	165.40	165.40	26.67	595.00	53.33	1375.93	-866.41	
123000.00	123000.00	100.00	29.70	159.20	159.20	10.00	601.11	10.00	751.39	-1557.63	
123100.00	123100.00	100.00	318.80	50.00	50.00	387.41	387.41	220.00	1235.65	-1396.52	
123200.00	123200.00	100.00	171.00	0.00	0.00	633.33	92.59	633.33	115.74	-605.22	
123300.00	123300.00	100.00	130.00	15.20	15.20	633.33	28.15	1266.67	150.93	-63.00	
123400.00	123400.00	100.00	75.90	137.30	137.30	282.41	281.11	1811.11	353.01	-541.71	
123500.00	123500.00	100.00	5.30	498.20	498.20	281.11	1176.85	562.22	1824.07	-1375.41	
123600.00	123600.00	100.00	79.30	139.10	139.10	293.70	180.19	293.70	1475.23	-2693.97	
123700.00	123700.00	100.00	286.80	92.70	92.70	293.70	429.26	587.41	2011.81	-2552.58	
123800.00	123800.00	100.00	27.40	128.10	128.10	1014.8	408.89	1014.8	511.11	-2481.84	
						4,186	6,466				

Addendum No. 01
 ID 6950-03-75
 Added Sheet 157A
 January 4, 2017

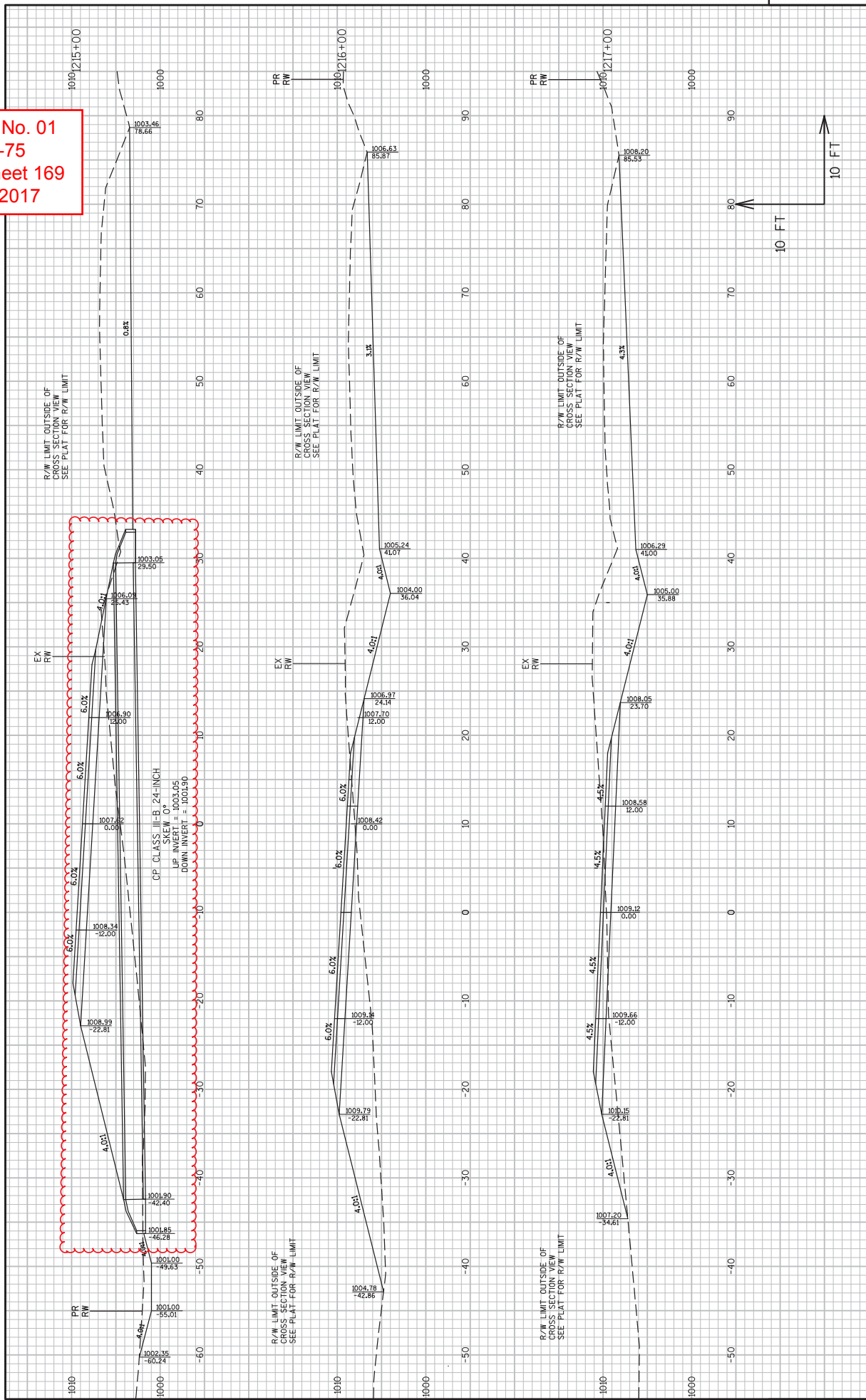
SCHOOL LANE - STAGE 1												
Station	AREA (SF)			Incremental Vol (CY) (Unadjusted)			Cumulative Vol (CY)			Expanded Marsh Backfill 1.25	Mass Ordinate	
	Real Station	Distance	Cut	Fill	Marsh	Cut	Fill	Marsh Exc	Cut			Expanded Fill 1.25
07+00.00	700.00	0.00	83.04	0.00	0.00	0.00	0.00	0.00	0.00	0.00	0.00	0.00
08+00.00	800.00	100.00	130.00	0.00	0.00	394.52	0.00	0.00	395.52	0.00	0.00	394.52
09+00.00	900.00	100.00	15.00	50.00	82.66	268.52	92.59	153.07	664.04	15.74	114.81	690.80
09+50.00	950.00	50.00	0.00	112.00	238.16	13.89	150.00	297.06	677.93	303.24	337.60	795.68
						677	243	450				

STH 54 PROPOSED - STAGE 2/4											
Station	Real Station	Distance	AREA (SF)		Incremental Vol (CY) (Unadjusted)		Cumulative Vol (CY)		Cut 1.00	Expanded Fill 1.25	Mass Ordinate
			Cut	Fill	Cut	Fill	Cut	Expanded Fill 1.25			
124300.00	124300.00	0.00	42.00	135.60	0.00	0.00	0.00	0.00	0.00	0.00	0.00
124400.00	124400.00	100.00	30.70	277.60	134.63	765.19	134.63	956.48	134.63	956.48	-821.85
124500.00	124500.00	100.00	141.20	346.60	319.33	165.93	452.96	2401.39	452.96	2401.39	-1948.43
124600.00	124600.00	100.00	0.00	261.50	0.00	1126.11	0.00	1407.64	0.00	1407.64	-3094.58
124700.00	124700.00	100.00	11.70	258.80	0.00	963.52	0.00	2612.04	0.00	2612.04	-4277.31
124800.00	124800.00	100.00	25.00	170.70	67.96	795.37	67.96	3606.25	67.96	3606.25	-5203.56
124900.00	124900.00	100.00	19.60	222.90	82.59	728.89	150.56	4517.36	150.56	4517.36	-6032.08
125000.00	125000.00	100.00	12.20	222.70	58.89	825.19	209.44	5548.84	209.44	5548.84	-7004.68
125100.00	125100.00	100.00	48.70	143.22	112.78	677.63	322.22	6395.88	322.22	6395.88	-7738.94
125200.00	125200.00	100.00	84.80	104.20	247.22	458.19	569.44	6968.61	569.44	6968.61	-8064.44
					1,022	7,496					

Addendum No. 01
 ID 6950-03-75
 Revised Sheet 162
 January 4, 2017



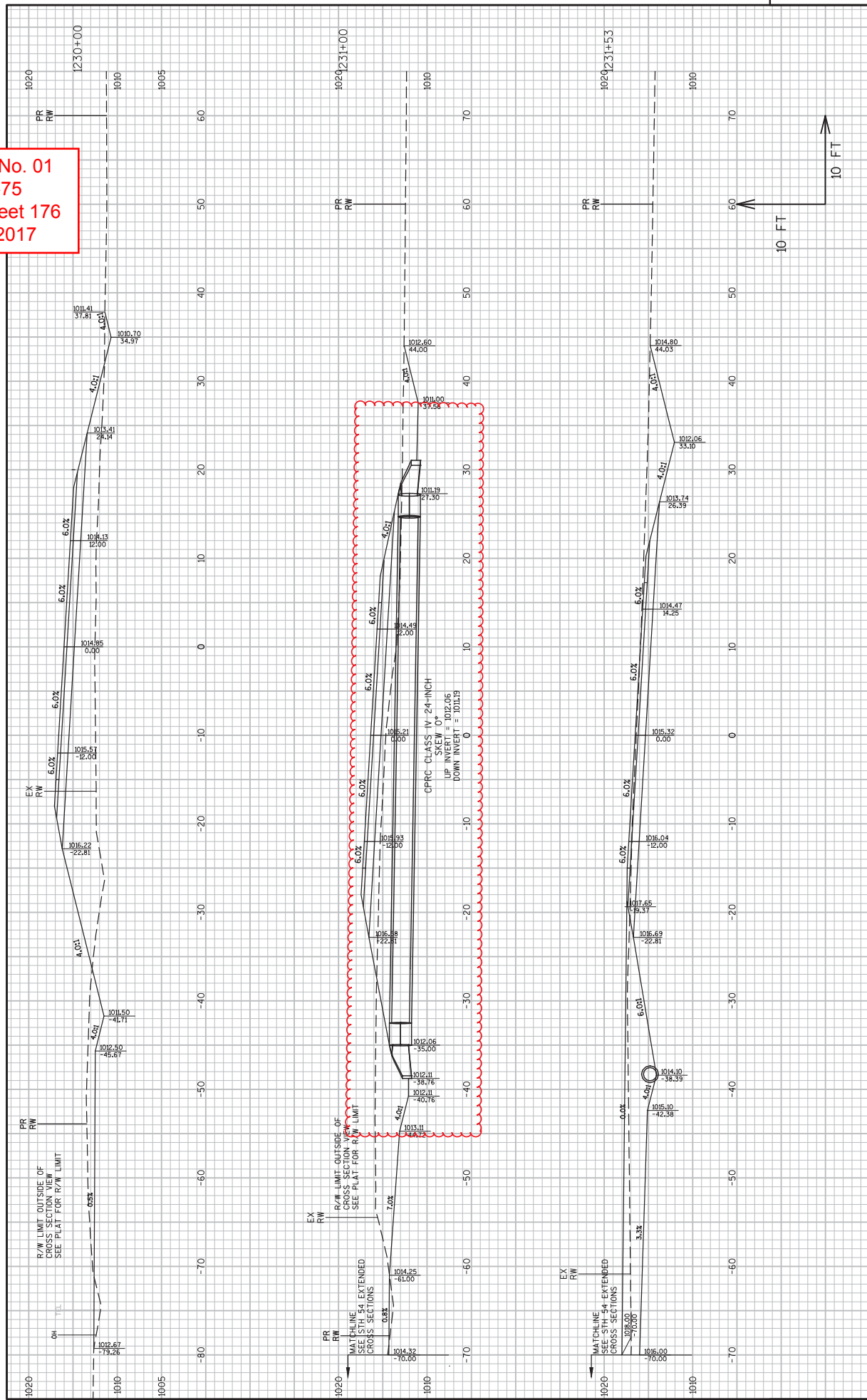
Addendum No. 01
 ID 6950-03-75
 Revised Sheet 169
 January 4, 2017



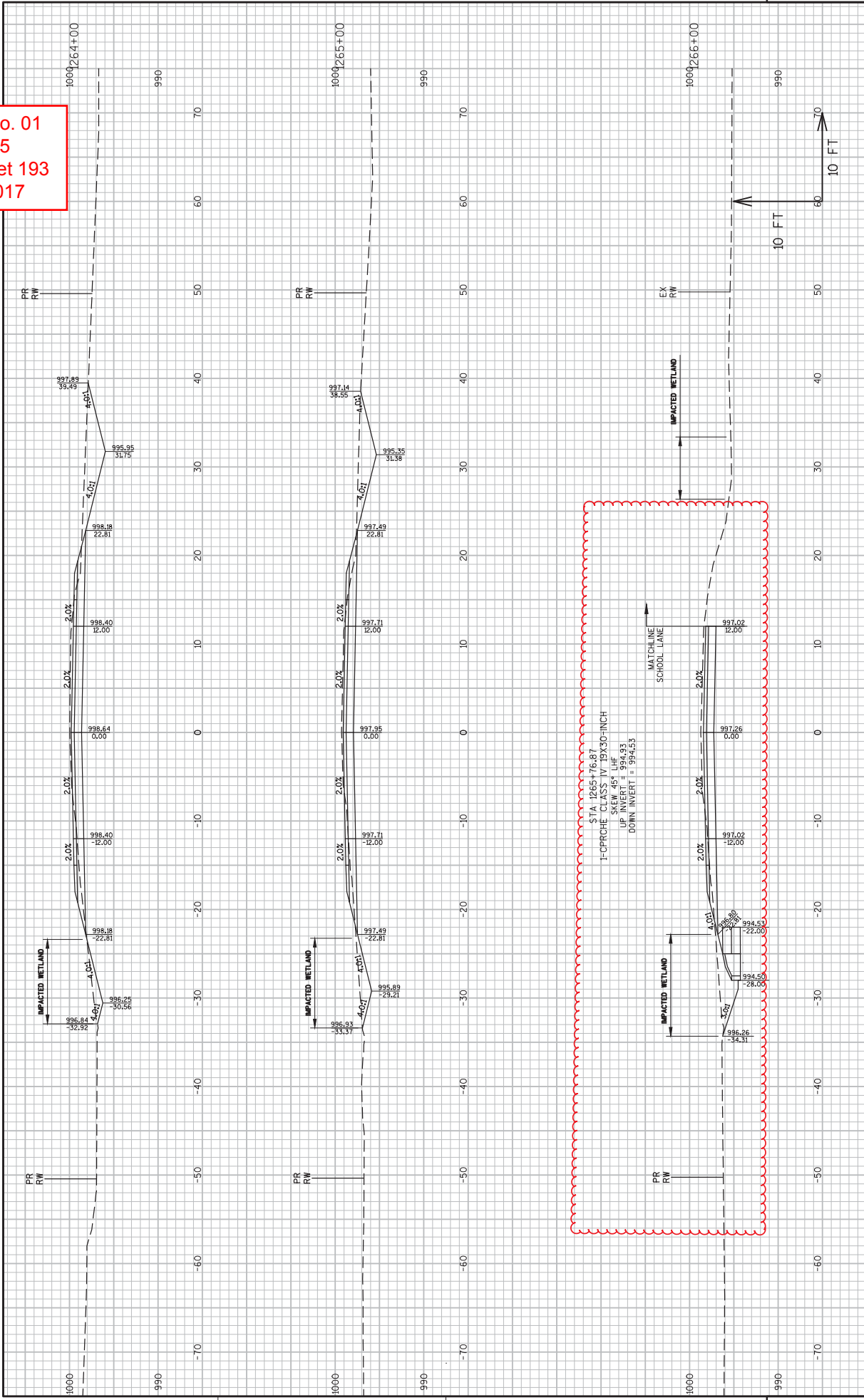
9

9

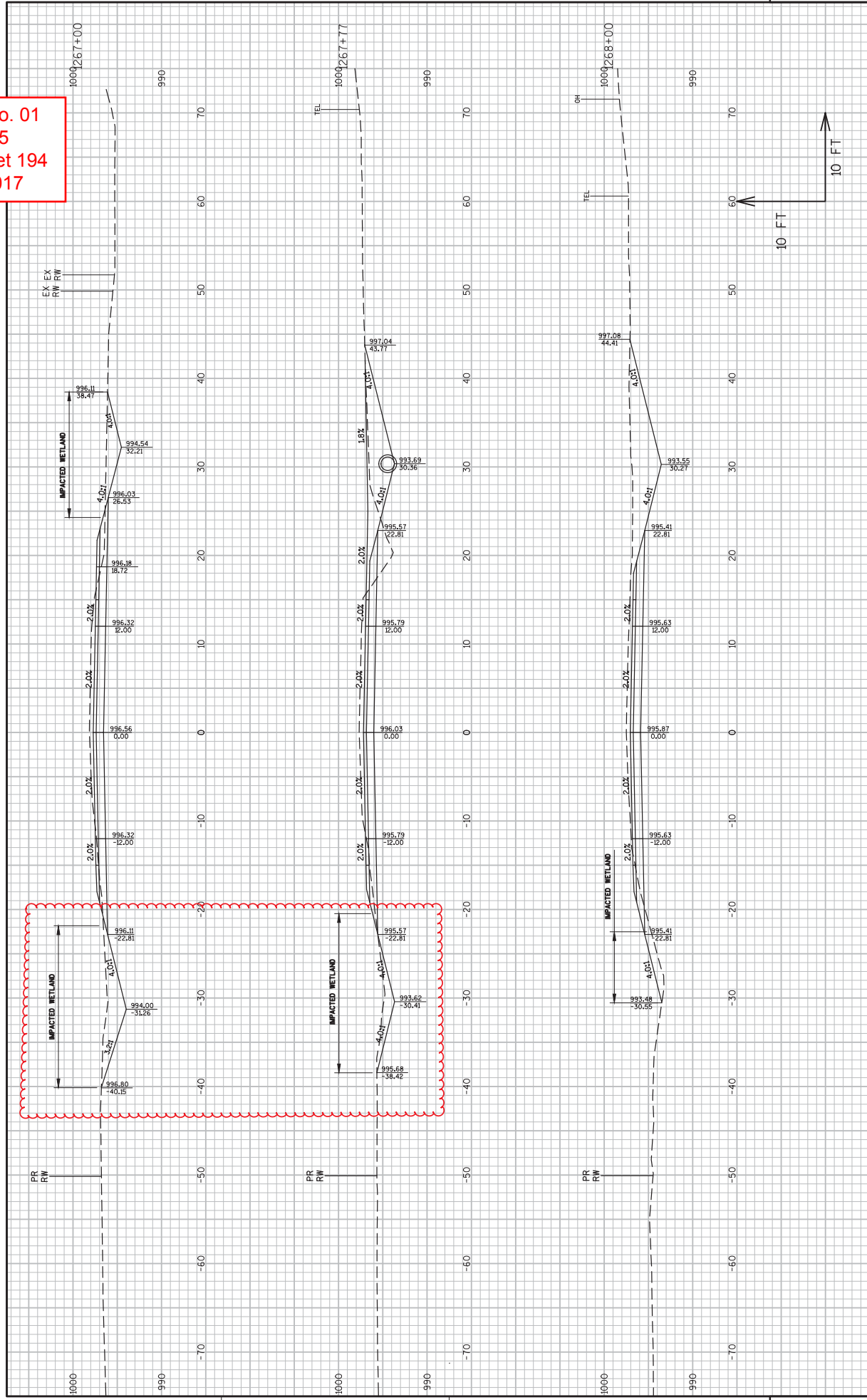
Addendum No. 01
 ID 6950-03-75
 Revised Sheet 176
 January 4, 2017



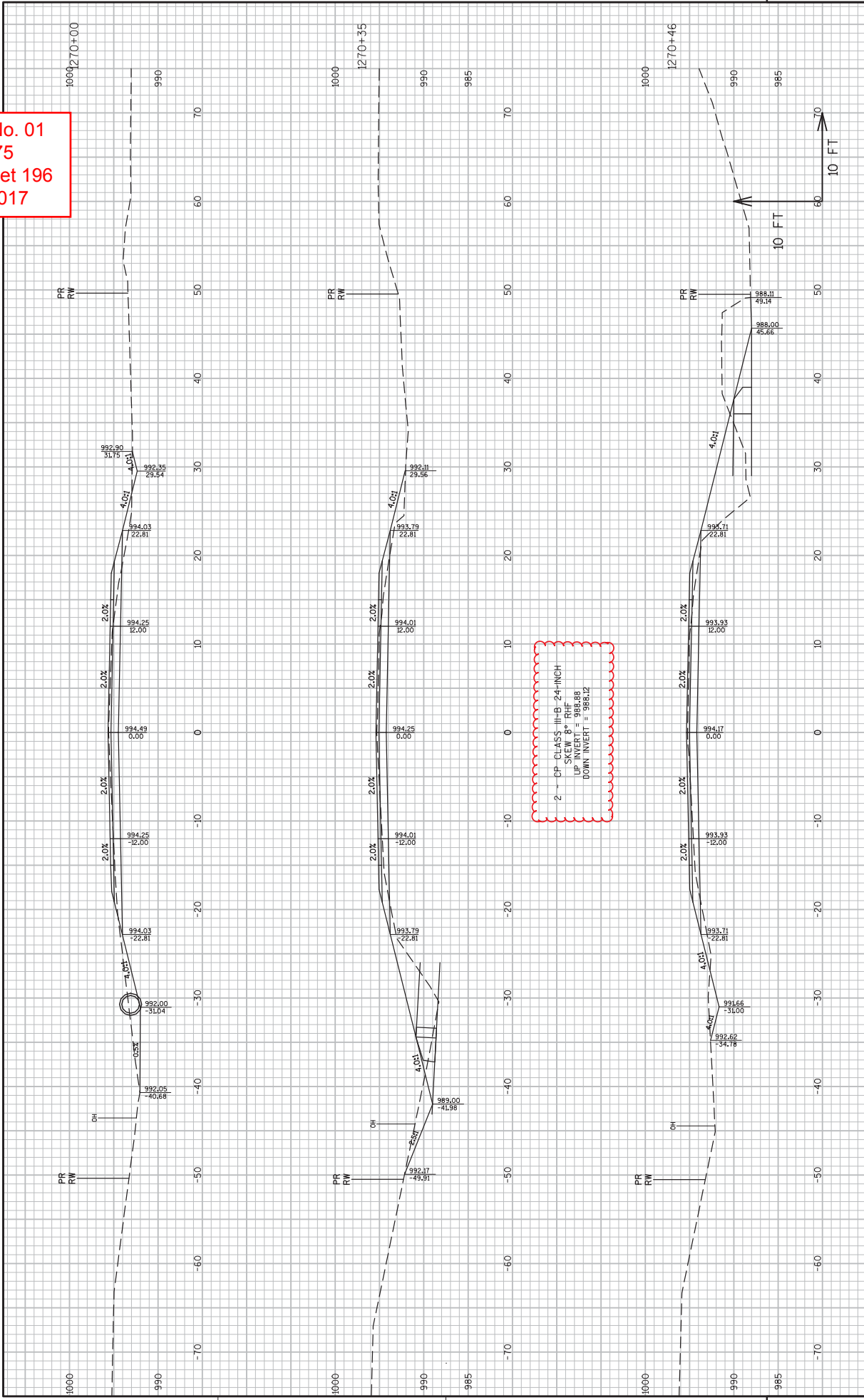
Addendum No. 01
 ID 6950-03-75
 Revised Sheet 193
 January 4, 2017



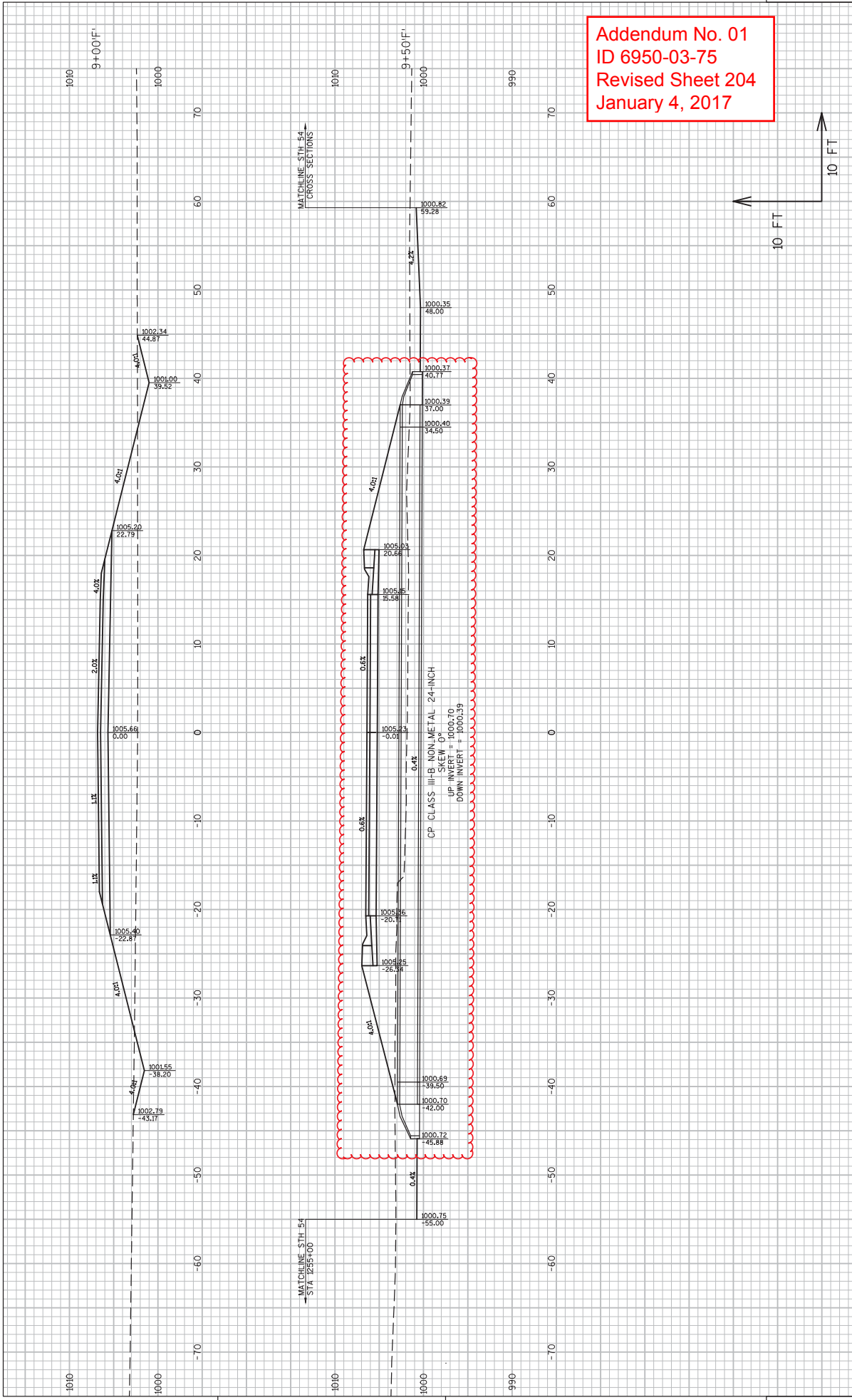
Addendum No. 01
 ID 6950-03-75
 Revised Sheet 194
 January 4, 2017



Addendum No. 01
 ID 6950-03-75
 Revised Sheet 196
 January 4, 2017



2 - CP CLASS III-B 24-INCH
 SKEW 8° RTF
 UP INVERT = 988.88
 DOWN INVERT = 986.12



Addendum No. 01
ID 6950-03-75
Revised Sheet 204
January 4, 2017



Proposal Schedule of Items

Proposal ID: 20170110012

Project(s): 6950-03-73, 6950-03-75

SECTION: 0001 Contract Items

Alt Set ID:

Alt Mbr ID:

Proposal Line Number	Item ID Description	Approximate Quantity and Units	Unit Price	Bid Amount
0010	201.0105 Clearing	109.000 STA	_____.	_____.
0020	201.0205 Grubbing	109.000 STA	_____.	_____.
0030	203.0100 Removing Small Pipe Culverts	21.000 EACH	_____.	_____.
0040	204.0110 Removing Asphaltic Surface	425.000 SY	_____.	_____.
0050	204.0115 Removing Asphaltic Surface Butt Joints	711.000 SY	_____.	_____.
0060	204.0170 Removing Fence	500.000 LF	_____.	_____.
0070	204.0180 Removing Delineators and Markers	7.000 EACH	_____.	_____.
0080	205.0100 Excavation Common	25,960.000 CY	_____.	_____.
0090	205.0400 Excavation Marsh	11,492.000 CY	_____.	_____.
0100	208.1100 Select Borrow	66,308.000 CY	_____.	_____.
0110	213.0100 Finishing Roadway (project) 01. 6950-03-73	1.000 EACH	_____.	_____.
0120	213.0100 Finishing Roadway (project) 02. 6950-03-75	1.000 EACH	_____.	_____.
0130	214.0100 Obliterating Old Road	2.000 STA	_____.	_____.
0140	305.0110 Base Aggregate Dense 3/4-Inch	4,513.000 TON	_____.	_____.
0150	305.0120 Base Aggregate Dense 1 1/4-Inch	43,715.000 TON	_____.	_____.
0160	305.0500 Shaping Shoulders	20.000 STA	_____.	_____.
0170	440.4410 Incentive IRI Ride	11,120.000 DOL	1.00000	11,120.00



Proposal Schedule of Items

Proposal ID: 20170110012

Project(s): 6950-03-73, 6950-03-75

SECTION: 0001 Contract Items

Alt Set ID:

Alt Mbr ID:

Proposal Line Number	Item ID Description	Approximate Quantity and Units	Unit Price	Bid Amount
0180	455.0605 Tack Coat	3,405.000 GAL	_____.	_____.
0190	460.2000 Incentive Density HMA Pavement	7,570.000 DOL	1.00000	7,570.00
0200	460.4110.S Reheating HMA Pavement Longitudinal Joints	42,225.000 LF	_____.	_____.
0210	460.5223 HMA Pavement 3 LT 58-28 S	6,650.000 TON	_____.	_____.
0230	465.0110 Asphaltic Surface Patching	50.000 TON	_____.	_____.
0240	465.0120 Asphaltic Surface Driveways and Field Entrances	172.000 TON	_____.	_____.
0250	465.0125 Asphaltic Surface Temporary	500.000 TON	_____.	_____.
0260	465.0315 Asphaltic Flumes	226.000 SY	_____.	_____.
0270	465.0475 Asphalt Center Line Rumble Strips 2-Lane Rural	9,280.000 LF	_____.	_____.
0300	522.0148 Culvert Pipe Reinforced Concrete Class III 48-Inch	132.000 LF	_____.	_____.
0310	522.0524 Culvert Pipe Reinforced Concrete Class V 24-Inch	13.000 LF	_____.	_____.
0320	522.1018 Apron Endwalls for Culvert Pipe Reinforced Concrete 18-Inch	2.000 EACH	_____.	_____.
0330	522.1024 Apron Endwalls for Culvert Pipe Reinforced Concrete 24-Inch	5.000 EACH	_____.	_____.
0340	522.1048 Apron Endwalls for Culvert Pipe Reinforced Concrete 48-Inch	2.000 EACH	_____.	_____.



Proposal Schedule of Items

Proposal ID: 20170110012

Project(s): 6950-03-73, 6950-03-75

SECTION: 0001 Contract Items

Alt Set ID:

Alt Mbr ID:

Proposal Line Number	Item ID Description	Approximate Quantity and Units	Unit Price	Bid Amount
0360	523.0519 Apron Endwalls for Culvert Pipe Reinforced Concrete Horizontal Elliptical 19x30-Inch	4.000 EACH	_____.	_____.
0430	601.0557 Concrete Curb & Gutter 6-Inch Sloped 36-Inch Type D	1,157.000 LF	_____.	_____.
0440	603.8000 Concrete Barrier Temporary Precast Delivered	1,087.500 LF	_____.	_____.
0450	603.8125 Concrete Barrier Temporary Precast Installed	2,012.500 LF	_____.	_____.
0460	606.0100 Riprap Light	48.000 CY	_____.	_____.
0480	611.0530 Manhole Covers Type J	1.000 EACH	_____.	_____.
0490	611.2004 Manholes 4-FT Diameter	1.000 EACH	_____.	_____.
0500	614.0905 Crash Cushions Temporary	4.000 EACH	_____.	_____.
0510	618.0100 Maintenance And Repair of Haul Roads (project) 01. 6950-03-73	1.000 EACH	_____.	_____.
0520	618.0100 Maintenance And Repair of Haul Roads (project) 02. 6950-03-75	1.000 EACH	_____.	_____.
0530	619.1000 Mobilization	1.000 EACH	_____.	_____.
0540	621.0100 Landmark Reference Monuments	4.000 EACH	_____.	_____.
0550	624.0100 Water	748.000 MGAL	_____.	_____.
0560	625.0100 Topsoil	110,595.000 SY	_____.	_____.
0570	627.0200 Mulching	97,066.000 SY	_____.	_____.



Proposal Schedule of Items

Proposal ID: 20170110012

Project(s): 6950-03-73, 6950-03-75

SECTION: 0001 Contract Items

Alt Set ID:

Alt Mbr ID:

Proposal Line Number	Item ID Description	Approximate Quantity and Units	Unit Price	Bid Amount
0580	628.1504 Silt Fence	35,590.000 LF	_____.	_____.
0590	628.1520 Silt Fence Maintenance	106,770.000 LF	_____.	_____.
0600	628.1905 Mobilizations Erosion Control	21.000 EACH	_____.	_____.
0610	628.1910 Mobilizations Emergency Erosion Control	8.000 EACH	_____.	_____.
0620	628.2004 Erosion Mat Class I Type B	9,265.000 SY	_____.	_____.
0630	628.2006 Erosion Mat Urban Class I Type A	15,480.000 SY	_____.	_____.
0640	628.2008 Erosion Mat Urban Class I Type B	13,530.000 SY	_____.	_____.
0650	628.7555 Culvert Pipe Checks	172.000 EACH	_____.	_____.
0660	628.7560 Tracking Pads	13.000 EACH	_____.	_____.
0670	628.7570 Rock Bags	2,135.000 EACH	_____.	_____.
0680	629.0210 Fertilizer Type B	60.300 CWT	_____.	_____.
0690	630.0120 Seeding Mixture No. 20	593.000 LB	_____.	_____.
0700	630.0130 Seeding Mixture No. 30	1,498.000 LB	_____.	_____.
0710	630.0140 Seeding Mixture No. 40	210.000 LB	_____.	_____.
0720	630.0160 Seeding Mixture No. 60	204.000 LB	_____.	_____.
0730	631.0300 Sod Water	2,489.700 MGAL	_____.	_____.
0740	631.1200 Sod Erosion Control Sandy Soil	102.000 SY	_____.	_____.



Proposal Schedule of Items

Proposal ID: 20170110012

Project(s): 6950-03-73, 6950-03-75

SECTION: 0001 Contract Items

Alt Set ID:

Alt Mbr ID:

Proposal Line Number	Item ID Description	Approximate Quantity and Units	Unit Price	Bid Amount
0750	633.1100 Delineators Temporary	18.000 EACH	_____.	_____.
0760	633.5200 Markers Culvert End	39.000 EACH	_____.	_____.
0770	634.0614 Posts Wood 4x6-Inch X 14-FT	8.000 EACH	_____.	_____.
0780	634.0616 Posts Wood 4x6-Inch X 16-FT	17.000 EACH	_____.	_____.
0790	634.0618 Posts Wood 4x6-Inch X 18-FT	9.000 EACH	_____.	_____.
0800	634.0620 Posts Wood 4x6-Inch X 20-FT	1.000 EACH	_____.	_____.
0810	634.0622 Posts Wood 4x6-Inch X 22-FT	3.000 EACH	_____.	_____.
0820	637.2210 Signs Type II Reflective H	205.000 SF	_____.	_____.
0830	637.2230 Signs Type II Reflective F	88.500 SF	_____.	_____.
0840	638.2602 Removing Signs Type II	53.000 EACH	_____.	_____.
0850	638.3000 Removing Small Sign Supports	53.000 EACH	_____.	_____.
0860	642.5001 Field Office Type B	1.000 EACH	_____.	_____.
0870	643.0100 Traffic Control (project) 01. 6950-03-73	1.000 EACH	_____.	_____.
0880	643.0100 Traffic Control (project) 02. 6950-03-75	1.000 EACH	_____.	_____.
0890	643.0300 Traffic Control Drums	10,215.000 DAY	_____.	_____.
0900	643.0420 Traffic Control Barricades Type III	5,845.000 DAY	_____.	_____.
0910	643.0705 Traffic Control Warning Lights Type A	11,085.000 DAY	_____.	_____.



Proposal Schedule of Items

Proposal ID: 20170110012

Project(s): 6950-03-73, 6950-03-75

SECTION: 0001 Contract Items

Alt Set ID:

Alt Mbr ID:

Proposal Line Number	Item ID Description	Approximate Quantity and Units	Unit Price	Bid Amount
0920	643.0715 Traffic Control Warning Lights Type C	2,630.000 DAY	_____.	_____.
0930	643.0900 Traffic Control Signs	7,375.000 DAY	_____.	_____.
0940	643.0920 Traffic Control Covering Signs Type II	10.000 EACH	_____.	_____.
0950	643.1000 Traffic Control Signs Fixed Message	64.000 SF	_____.	_____.
0960	643.2000 Traffic Control Detour (project) 01. 6950-03-75	1.000 EACH	_____.	_____.
0970	643.3000 Traffic Control Detour Signs	24,219.000 DAY	_____.	_____.
0980	645.0130 Geotextile Type R	384.000 SY	_____.	_____.
0990	646.0106 Pavement Marking Epoxy 4-Inch	53,024.000 LF	_____.	_____.
1000	646.0406 Pavement Marking Same Day Epoxy 4-Inch	23,500.000 LF	_____.	_____.
1010	646.0600 Removing Pavement Markings	8,420.000 LF	_____.	_____.
1020	648.0100 Locating No-Passing Zones	2.200 MI	_____.	_____.
1030	649.0402 Temporary Pavement Marking Paint 4-Inch	8,965.000 LF	_____.	_____.
1040	650.4000 Construction Staking Storm Sewer	4.000 EACH	_____.	_____.
1050	650.4500 Construction Staking Subgrade	14,675.000 LF	_____.	_____.
1060	650.5000 Construction Staking Base	14,675.000 LF	_____.	_____.
1070	650.5500 Construction Staking Curb Gutter and Curb & Gutter	1,157.000 LF	_____.	_____.



Proposal Schedule of Items

Proposal ID: 20170110012

Project(s): 6950-03-73, 6950-03-75

SECTION: 0001 Contract Items

Alt Set ID: Alt Mbr ID:

Proposal Line Number	Item ID Description	Approximate Quantity and Units	Unit Price	Bid Amount
1080	650.6000 Construction Staking Pipe Culverts	18.000 EACH	_____.	_____.
1090	650.9910 Construction Staking Supplemental Control (project) 01. 6950-03-73	LS	LUMP SUM	_____.
1100	650.9910 Construction Staking Supplemental Control (project) 01. 6950-03-75	LS	LUMP SUM	_____.
1110	650.9920 Construction Staking Slope Stakes	14,675.000 LF	_____.	_____.
1120	690.0150 Sawing Asphalt	1,566.000 LF	_____.	_____.
1130	ASP.1T0A On-the-Job Training Apprentice at \$5.00/HR	2,000.000 HRS	5.00000	10,000.00
1140	ASP.1T0G On-the-Job Training Graduate at \$5.00/HR	1,260.000 HRS	5.00000	6,300.00
1150	SPV.0030 Special 01. Fertilizer for Lawn Turf	7.300 CWT	_____.	_____.
1160	SPV.0060 Special 01. Reestablish Section Corner Monuments	1.000 EACH	_____.	_____.
1170	SPV.0105 Special 01. Research and Locate Existing Property Monuments	LS	LUMP SUM	_____.
1180	SPV.0105 Special 02. Verify and Replace Existing Property Monuments	LS	LUMP SUM	_____.
1190	SPV.0180 Special 01. Preparing Topsoil for Lawn Turf	10,039.000 SY	_____.	_____.
1200	460.5424 HMA Pavement 4 LT 58-28 H	5,175.000 TON	_____.	_____.
1210	520.1012 Apron Endwalls for Culvert Pipe 12-Inch	4.000 EACH	_____.	_____.
1220	520.1018 Apron Endwalls for Culvert Pipe 18-Inch	26.000 EACH	_____.	_____.



Proposal Schedule of Items

Proposal ID: 20170110012

Project(s): 6950-03-73, 6950-03-75

SECTION: 0001 Contract Items

Alt Set ID:

Alt Mbr ID:

Proposal Line Number	Item ID Description	Approximate Quantity and Units	Unit Price	Bid Amount
1230	520.1024 Apron Endwalls for Culvert Pipe 24-Inch	37.000 EACH	_____.	_____.
1240	520.3412 Culvert Pipe Class III-A Non-metal 12-Inch	69.000 LF	_____.	_____.
1250	520.3418 Culvert Pipe Class III-A Non-metal 18-Inch	508.000 LF	_____.	_____.
1260	520.3424 Culvert Pipe Class III-A Non-metal 24-Inch	139.000 LF	_____.	_____.
1270	520.3524 Culvert Pipe Class III-B 24-Inch	895.000 LF	_____.	_____.
1280	520.8000 Concrete Collars for Pipe	1.000 EACH	_____.	_____.
1290	522.0318 Culvert Pipe Reinforced Concrete Class IV 18-Inch	56.000 LF	_____.	_____.
1300	522.0324 Culvert Pipe Reinforced Concrete Class IV 24-Inch	123.000 LF	_____.	_____.
1310	523.0419 Culvert Pipe Reinforced Concrete Horizontal Elliptical Class HE-IV 19x30-Inch	152.000 LF	_____.	_____.
1320	608.3024 Storm Sewer Pipe Class III-A 24-Inch	256.000 LF	_____.	_____.
Section: 0001			Total:	_____.
			Total Bid:	_____.

