



Wisconsin Department of Transportation

January 24, 2017

Division of Transportation Systems Development

Bureau of Project Development
4802 Sheboygan Avenue, Rm 601
P O Box 7916
Madison, WI 53707-7916

Telephone: (608) 266-1631
Facsimile (FAX): (608) 266-8459

NOTICE TO ALL CONTRACTORS:

Proposal #16: 1020-02-90, WISC 2017 028
Hudson – Black River Falls
Cross Median Cable Guard
IH 94
Eau Claire County

1050-00-92, WISC 2017 029
Chippewa Falls - Abbotsbord
Cross Median Cable Guard
STH 29
Clark County

7200-00-90, WISC 2017 031
River Falls - Hudson
STH 65 to Coulee Road/CTH FF
STH 35
St. Croix County

Letting of February 14, 2017

This is Addendum No. 01, which provides for the following:

Special Provisions

Revised Special Provisions	
Article No.	Description
4.	Traffic.

Added Special Provisions	
Article No.	Description
15.	Temporary Portable Rumble Strips Lane Closure, SPV.0105.01

Schedule of Items

Revised Bid Item Quantities					
Bid Item	Item Description	Unit	Old Quantity	Revised Quantity	Proposal Total
611.0430	Reconstructing Inlets	Each	4	18	22
628.7005	Inlet Protection Type A	Each	48	1	49
628.7010	Inlet Protection Type B	Each	48	1	49

Added Bid Item Quantities					
Bid Item	Item Description	Unit	Old Quantity	Revised Quantity	Proposal Total
SPV.0105.01	Temporary Portable Rumble Strips Lane Closure	LS	0	1	1

Deleted Bid Item Quantities					
Bid Item	Item Description	Unit	Old Quantity	Revised Quantity	Proposal Total
611.8115	Adjusting Inlet Covers	Each	20	-20	0

Plan Sheets

Revised Plan Sheets	
Plan Sheet	Plan Sheet Title (brief description of changes to sheet)
63	Miscellaneous Quantities
64	Miscellaneous Quantities
68	Miscellaneous Quantities
143	Cross Sections
147	Cross Sections
149	Cross Sections
150	Cross Sections
154	Cross Sections
158	Cross Sections
161	Cross Sections
163	Cross Sections
164	Cross Sections
167	Cross Sections
181	Cross Sections
187	Cross Sections
194	Cross Sections
196	Cross Sections
197	Cross Sections
199	Cross Sections
231	Cross Sections
238	Cross Sections
243	Cross Sections
265	Cross Sections
316	Cross Sections

Added Plan Sheets	
Plan Sheet	Plan Sheet Title (brief description of why sheet was added)
17A	Temporary Portable Rumble Strips Lane Closure Construction Detail 15D12-6A
17B	Temporary Portable Rumble Strips Lane Closure Construction Detail 15D12-6B

The responsibility for notifying potential subcontractors and suppliers of these changes remains with the prime contractor.

Sincerely,

Mike Coleman

Proposal Development Specialist
Proposal Management Section

ADDENDUM NO. 01
1020-02-90/1050-00-92/7200-00-90
January 24, 2017

Special Provisions

4. Traffic.

Replace paragraph two and the corresponding tables with the following:

The following tables represent peak hours. Lane closures are **not** allowed at the following locations/times:

STH 35 Peak Hours		
STA 1009+90 NB - STA 1274+01 NB		
	Southbound	Northbound
Sunday	---	---
Monday	3PM - 6PM	6AM - 8AM
Tuesday	3PM - 6PM	6AM - 8AM
Wednesday	3PM - 6PM	6AM - 8AM
Thursday	3PM - 6PM	6AM - 8AM
Friday	3PM - 6PM	6AM - 8AM
Saturday	---	---

IH 94 Freeway Peak Hours

Pre Memorial Day and Post Labor Day

STH 65 (Exit 10) to STH 128 (Exit 28)			CTH Q (Exit 31) to STH 37 (Exit 65)		
STA 2003+00 EB - STA 2084+34 EB STA 3001+85 EB - STA 3065+68 EB			STA 4000+07 EB - STA 4275+69 EB STA 5000+48 EB - STA 5098+00 EB		
	Eastbound	Westbound		Eastbound	Westbound
Sunday	9AM - 7PM	10AM - 9PM	Sunday	10AM - 7PM	10AM - 9PM
Monday	9AM - 6PM	11AM - 6PM	Monday	9AM - 5PM	1PM - 7PM
Tuesday	9AM - 6PM	1PM - 6PM	Tuesday	10AM - 5PM	1PM - 6PM
Wednesday	9AM - 6PM	1PM - 6PM	Wednesday	10AM - 5PM	1PM - 6PM
Thursday	9AM - 7PM	1PM - 6PM	Thursday	10AM - 6PM	12PM - 6PM
Friday	8AM - 8PM	10AM - 8PM	Friday	9AM - 8PM	11AM - 8PM
Saturday	8AM - 4PM	9AM - 6PM	Saturday	9AM - 3PM	9AM - 5PM

Memorial Day through Labor Day

STH 65 (Exit 10) to STH 128 (Exit 28)			CTH Q (Exit 31) to STH 37 (Exit 65)		
STA 2003+00 EB - STA 2084+34 EB STA 3001+85 EB - STA 3065+68 EB			STA 4000+07 EB - STA 4275+69 EB STA 5000+48 EB - STA 5098+00 EB		
	Eastbound	Westbound		Eastbound	Westbound
Sunday	9AM - 7PM	10AM - 10PM	Sunday	9AM - 7PM	10AM - 9PM
Monday	9AM - 7PM	10AM - 7PM	Monday	9AM - 6PM	11AM - 7PM
Tuesday	9AM - 7PM	11AM - 6PM	Tuesday	9AM - 6PM	11AM - 6PM
Wednesday	9AM - 7PM	11AM - 6PM	Wednesday	9AM - 6PM	11AM - 6PM
Thursday	9AM - 8PM	9AM - 7PM	Thursday	7AM - 8PM	10AM - 7PM
Friday	8AM - 8PM	9AM - 8PM	Friday	7AM - 8PM	10AM - 8PM
Saturday	8AM - 6PM	9AM - 6PM	Saturday	8AM - 5PM	9AM - 6PM

IH 94 Freeway Peak Hours

Pre Memorial Day and Post Labor Day

STH 37 (Exit 65) to CTH HH (Exit 81)			STH 95 (Exit 105) to STH 54 (Exit 116)		
STA 6000+75 EB - STA 6165+21 EB			STA 7001+27 EB - STA 7046+75 EB		
	Eastbound	Westbound		Eastbound	Westbound
Sunday	10AM - 6PM	11AM - 8PM	Sunday	11AM - 5PM	11AM - 8PM
Monday	2PM - 5PM	2PM - 6PM	Monday	---	---
Tuesday	---	---	Tuesday	---	---
Wednesday	---	---	Wednesday	---	---
Thursday	2PM - 6PM	2PM - 6PM	Thursday	---	---
Friday	9AM - 8PM	12PM - 7PM	Friday	11AM - 7PM	1PM - 6PM
Saturday	9AM - 1PM	10AM - 3PM	Saturday	---	---

Memorial Day through Labor Day

STH 37 (Exit 65) to CTH HH (Exit 81)			STH 95 (Exit 105) to STH 54 (Exit 116)		
STA 6000+75 EB - STA 6165+21 EB			STA 7001+27 EB - STA 7046+75 EB		
	Eastbound	Westbound		Eastbound	Westbound
Sunday	10AM - 7PM	10AM - 9PM	Sunday	9AM - 7PM	11AM - 8PM
Monday	9AM - 5PM	1PM - 6PM	Monday	11AM - 4PM	2PM - 6PM
Tuesday	2PM - 5PM	2PM - 6PM	Tuesday	---	---
Wednesday	10AM - 5PM	2PM - 6PM	Wednesday	---	---
Thursday	10AM - 7PM	1PM - 7PM	Thursday	11AM - 4PM	12PM - 6PM
Friday	8AM - 8PM	10AM - 7PM	Friday	9AM - 7PM	10AM - 7PM
Saturday	8AM - 3PM	10AM - 5PM	Saturday	9AM - 2PM	10AM - 3PM

STH 29 Peak Hours					
Pre Memorial Day and Post Labor Day					
USH 53 to CTH X			Hiline Ave to Bus 29		
STA 8000+83 EB - STA 8067+09 EB			STA 9000+69 EB - STA 9222+73 EB		
	Eastbound	Westbound		Eastbound	Westbound
Sunday	---	12PM - 7PM	Sunday	---	---
Monday	---	---	Monday	---	---
Tuesday	---	---	Tuesday	---	---
Wednesday	---	---	Wednesday	---	---
Thursday	---	---	Thursday	---	---
Friday	1PM - 7PM	2PM - 6PM	Friday	---	---
Saturday	---	---	Saturday	---	---
Memorial Day through Labor Day					
USH 53 to CTH X			Hiline Ave to Bus 29		
STA 8000+83 EB - STA 8067+09 EB			STA 9000+69 EB - STA 9222+73 EB		
	Eastbound	Westbound		Eastbound	Westbound
Sunday	---	11AM - 7PM	Sunday	---	12PM - 5PM
Monday	---	---	Monday	---	---
Tuesday	---	---	Tuesday	---	---
Wednesday	---	---	Wednesday	---	---
Thursday	3PM - 6PM	---	Thursday	---	---
Friday	11AM - 7PM	12PM - 6PM	Friday	---	---
Saturday	---	---	Saturday	---	---

15. Temporary Portable Rumble Strips Lane Closure, SPV.0105.01.

A Description

This special provision describes providing, relocating, maintaining, and removing temporary portable rumble strips.

B Materials

Furnish RoadQuake2 or Roadquake2F temporary portable rumble strips, by Plastic Safety Systems. Do not use alternate products or methods without preapproval by the Bureau of Traffic Operations.

C Construction

C.1 Placement

Provide rumble strips where the plans show or the engineer directs as follows:

1. Before placing rumble strips, clean the roadway of sand and other materials that may cause slippage.
2. Place one end of the rumble strips 6 inches from the roadway edge line. Extend the strips perpendicular to the direction of travel. Ensure strips lay flat on the roadway surface.
3. Only one series of rumble strips, placed before the first work zone, is required per direction of travel for multiple work zones spaced 3 mile or less apart. Work zones spaced greater than 3 miles apart require a separate series of rumble strips.

C.2 Maintenance

Maintain rumble strips as follows:

1. If rumble strips slide, become out of alignment, or are no longer in the wheel path of approaching vehicles during the work period, thoroughly clean both sides of the rumble strips and reset on a clean roadway.
2. Repair or replace damaged rumble strips immediately.

D Measurement

The department will measure temporary portable rumble strips lane closure as a single lump sum unit of work acceptably completed.

E Payment

The department will pay for measured quantities at the contract unit price under the following bid item:

ITEM NUMBER	DESCRIPTION	UNIT
SPV.0105.01	Temporary Portable Rumble Strips Lane Closure	LS

Payment is full compensation for providing, relocating, maintaining or replacing, and removing temporary portable rumble strips.

Schedule of Items

Attached, dated January 24, 2017, are the revised Schedule of Items Pages 1 – 3.

Plan Sheets

The following 8½ x 11-inch sheets are attached and made part of the plans for this proposal:

Revised: 63, 64, 68, 143, 147, 149, 150, 154, 158, 161, 163, 164, 167, 181, 187, 194, 196, 197, 199, 231, 238, 243, 265, and 316.

Added: 17A and 17B.

END OF ADDENDUM

GENERAL NOTES

THE EXACT NUMBER, LOCATION, AND SPACING OF ALL SIGNS AND DEVICES SHALL BE ADJUSTED TO FIT FIELD CONDITIONS AS APPROVED BY THE ENGINEER.

THE SPACING BETWEEN SIGNS SHOULD BE ADJUSTED TO NOT CONFLICT WITH AND TO PROVIDE A MINIMUM OF 200 FEET, (500 FEET DESIRABLE) DISTANCE TO EXISTING SIGNS.

THIS LANE CLOSURE IS TYPICAL FOR CLOSING RIGHT LANE - REVERSE FOR CLOSING LEFT LANE.

ALL SIGNS ARE 48"x48" UNLESS OTHERWISE NOTED.

"W" IS THE SAME AS "W" EXCEPT THE BACKGROUND IS ORANGE.

ANY SIGNS TEMPORARY OR EXISTING, WHICH CONFLICT WITH TRAFFIC CONTROL "IN USE" SHALL BE REMOVED OR COVERED AS NEEDED, AND AS APPROVED BY THE ENGINEER. NO WARNING LIGHTS SHALL BE WORKING ON "COVERED" OR "DOWNED" SIGNS.

CONSIDER GEOMETRICS WHEN LOCATING SIGNS AND ARROW BOARD SO THE DRIVER HAS A CLEAR VIEW OF THE ARROW BOARD AND LANE CLOSURE DRUMS FOR A MINIMUM 1500 FEET IN FRONT OF DRUMS.

FOR A LANE CLOSURE THAT IS IN PLACE LESS THAN 7 CONTINUOUS DAYS AND NIGHTS, THE ADVANCED WARNING SIGNS MAY BE MOUNTED ON PORTABLE SUPPORTS.

REMOVE PAVEMENT MARKINGS IF LANE CLOSURE IS TO BE IN PLACE FOR LONGER THAN 4 OR MORE DAYS AND NIGHTS.

WARNING LIGHTS ARE NOT REQUIRED IF THE LANE CLOSURE IS A DAYTIME ONLY OPERATION.

IF THE HORIZONTAL ALIGNMENT IS SUCH THAT A CURVE MAY REQUIRE ADDITIONAL DELINEATION, THE DEVICE SPACING MAY BE DECREASED TO 50 FEET.

ADJUSTMENTS IN BUFFER SPACE NEED TO BE INCORPORATED WHEN THE LANE CLOSURE OCCURS NEAR AN INTERCHANGE EXIT OR ENTRANCE RAMP. THE LANE CLOSURE MUST STILL ALLOW FOR ADEQUATE BUFFER SPACE. THE MINIMUM LENGTH OF THE BUFFER SPACE BEFORE AN ENTRANCE RAMP SHOULD BE 72 FEET. THE LENGTH OF THE TRANSITION AREA AFTER THE ENTRANCE RAMP SHOULD BE 72 FEET. THE LENGTH OF THE BUFFER SPACE OF 800 FEET DESIRABLE PRIOR TO ANOTHER TRAFFIC CONTROL CHANGE SUCH AS A CROSSOVER MANEUVER.

1 EACH RUMBLE STRIP ARRAY CONSISTS OF THREE RUMBLE STRIPS SPACED 10 FEET APART. THE RUMBLE STRIPS ARE 1/2" HIGH, 1/4" WIDE, AND PLACED TRANSVERSE ACROSS THE LANE AT LOCATIONS SHOWN.

INSTALL TEMPORARY RUMBLE STRIPS PER MANUFACTURER'S RECOMMENDATIONS.

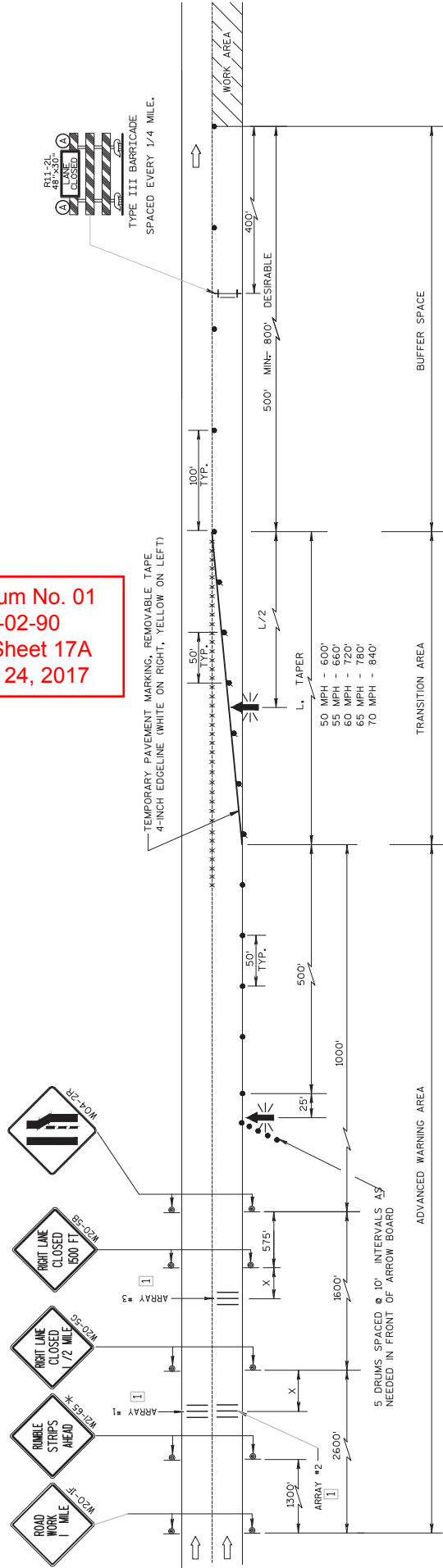
* IF TRAFFIC IS OBSERVED TO BE QUEUING OR IS EXPECTED TO QUEUE BEYOND RUMBLE ARRAY "1" AND "2" THE W21-65 SIGN AND RUMBLE STRIP ARRAY "1" AND "2" MAY BE RELOCATED UPSTREAM OF THE W20-F SIGN AS NECESSARY TO PROVIDE NEEDED WARNING.

Addendum No. 01
ID 1020-02-90
Added Sheet 17A
January 24, 2017

LEGEND

- TYPE III BARRICADE WITH ATTACHED SIGN
- SIGN ON PERMANENT SUPPORT
- TRAFFIC CONTROL DRUM WITH TYPE "C" STEADY BURN LIGHT
- TRAFFIC CONTROL DRUM
- FLASHING ARROW BOARD
- TYPE "A" WARNING LIGHT (FLASHING)
- REMOVING PAVEMENT MARKING
- DIRECTION OF TRAFFIC
- WORK AREA

POSTED SPEED	X
50 MPH	200'
55 MPH	250'
60 MPH	300'
65 MPH	350'
70 MPH	400'



GENERAL NOTES

THE EXACT NUMBER, LOCATION, AND SPACING OF ALL SIGNS AND DEVICES SHALL BE ADJUSTED TO FIT FIELD CONDITIONS AS APPROVED BY THE ENGINEER.

THE SPACING BETWEEN SIGNS SHOULD BE ADJUSTED TO NOT CONFLICT WITH AND TO PROVIDE A MINIMUM OF 200 FEET (500 FEET DESIRABLE) DISTANCE TO EXISTING SIGNS.

THIS LANE CLOSURE IS TYPICAL FOR CLOSING RIGHT LANE - REVERSE FOR CLOSING LEFT LANE.

ALL SIGNS ARE 48"x48" UNLESS OTHERWISE NOTED.

"W" IS THE SAME AS "W" EXCEPT THE BACKGROUND IS ORANGE.

ANY SIGNS TEMPORARY OR EXISTING, WHICH CONFLICT WITH TRAFFIC CONTROL "IN USE" SHALL BE REMOVED OR COVERED AS NEEDED, AND AS APPROVED BY THE ENGINEER. NO WARNING LIGHTS SHALL BE WORKING ON "COVERED" OR "DOWNED" SIGNS.

CONSIDER GEOMETRICS WHEN LOCATING SIGNS AND ARROW BOARD SO THE DRIVER HAS A CLEAR VIEW OF THE ARROW BOARD AND LANE CLOSURE DRUMS FOR A MINIMUM 1500 FEET IN FRONT OF DRUMS.

FOR A LANE CLOSURE THAT IS IN PLACE LESS THAN 7 CONTINUOUS DAYS AND NIGHTS, THE ADVANCED WARNING SIGNS MAY BE MOUNTED ON PORTABLE SUPPORTS.

LEGEND

TYPE III BARRICADE WITH ATTACHED SIGN

SIGN ON PERMANENT SUPPORT

TRAFFIC CONTROL DRUM WITH TYPE "C" - STEADY BURN LIGHT

TRAFFIC CONTROL DRUM

FLASHING ARROW BOARD

TYPE "A" - WARNING LIGHT (FLASHING)

REMOVING PAVEMENT MARKING

DIRECTION OF TRAFFIC

WORK AREA



** SPEED LIMIT 60 OR SPEED LIMIT 55

Table with 2 columns: POSTED SPEED, X. Rows: 55 MPH, 250'; 60 MPH, 300'.

Addendum No. 01 ID 1020-02-90 Added Sheet 17B January 24, 2017

REMOVE PAVEMENT MARKINGS IF LANE CLOSURE IS TO BE IN PLACE FOR LONGER THAN 4 OR MORE DAYS AND NIGHTS.

WARNING LIGHTS ARE NOT REQUIRED IF THE LANE CLOSURE IS A DAYTIME ONLY OPERATION.

IF THE HORIZONTAL ALIGNMENT IS SUCH THAT A CURVE MAY REQUIRE ADDITIONAL DELINEATION, THE DEVICE SPACING MAY BE DECREASED TO 50 FEET.

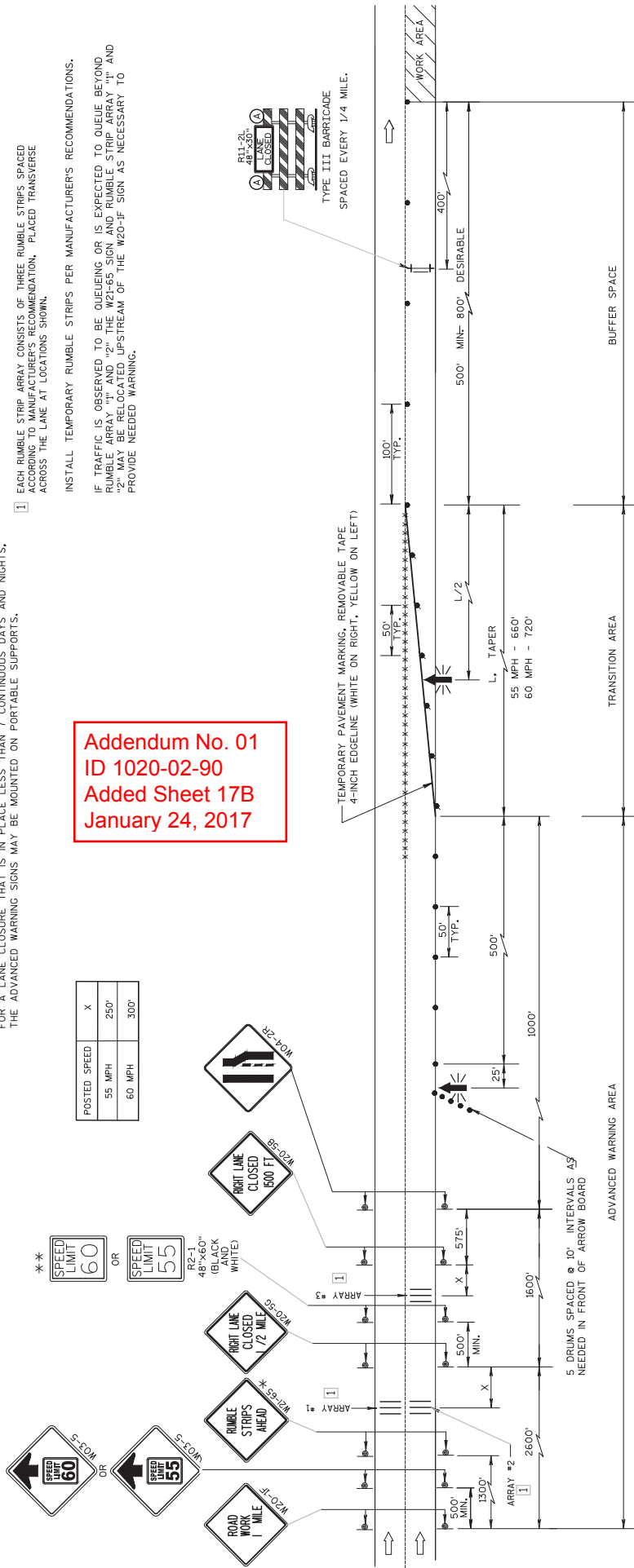
ADJUSTMENTS IN BUFFER SPACE NEED TO BE INCORPORATED WHEN THE LANE CLOSURE MUST BE MADE THROUGH AN ADVANCE EXIT OR ENTRANCE RAMP. THE BUFFER SPACE BEFORE AN EXIT RAMP SHOULD BE 1/2 THE LENGTH OF THE TRANSITION AREA. THE ENTRANCE RAMP SHOULD BE FOLLOWED BY THE ORIGINAL BUFFER SPACE LENGTH OF 800 FEET DESIRABLE PRIOR TO ANOTHER TRAFFIC CONTROL CHANGE SUCH AS A CROSSOVER MANUEVER.

** A SPEED LIMIT SIGN SHALL BE LOCATED 1500 FEET BEYOND THE END OF THE ACCELERATION LANE OF EACH ENTRANCE RAMP. THERE SHOULD BE A SPEED LIMIT SIGN INCORPORATED A MINIMUM OF EVERY 2 OR 3 MILES. INCLUDE A RESUME SPEED LIMIT SIGN 200 FEET MINIMUM (500 FEET DESIRABLE) BEYOND THE "END OF ROADWORK" SIGN.

1 EACH RUMBLE STRIP ARRAY CONSISTS OF THREE RUMBLE STRIPS SPACED ACCORDING TO MANUFACTURER'S RECOMMENDATION, PLACED TRANSVERSE ACROSS THE LANE AT LOCATIONS SHOWN.

INSTALL TEMPORARY RUMBLE STRIPS PER MANUFACTURER'S RECOMMENDATIONS.

IF TRAFFIC IS OBSERVED TO BE QUEUING OR IS EXPECTED TO QUEUE BEYOND RUMBLE ARRAY "1" AND "2" THE W2-65 SIGN AND RUMBLE STRIP ARRAY "1" AND "2" MAY BE RELOCATED UPSTREAM OF THE W20-F SIGN AS NECESSARY TO PROVIDE NEEDED WARNING.



Addendum No. 01
ID 1020-02-90,
ID 1050-00-92, &
ID 7200-00-90
Revise Sheet 63
January 24, 2017

STORM SEWER

STATION	LOCATION	RECONSTRUCTING INLETS		INLET PROTECTION		REMARKS
		TYPE A EACH	TYPE B EACH	TYPE A EACH	TYPE B EACH	
1020-02-90						
IH 94						
2009+32 EB	21' LT	1	1			NO WORK REQD TO INLET
2013+48 EB	21' LT	1	1			NO WORK REQD TO INLET
2031+49 EB	21.5' LT	1	1			
2039+51 EB	22' LT	1	1			
2047+51 EB	24' LT	1	1			
2055+51 EB	24' LT	1	1			
2062+53 EB	21' LT	1	1			
2067+44 EB	25.5' LT	1	1			
2074+53 EB	26.5' LT	1	1			
3006+81 EB	22' LT	1	1			
3016+10 EB	19' LT	1	1			
3024+09 EB	22' LT	1	1			
3030+10 EB	22' LT	1	1			
3039+10 EB	25.5' LT	1	1			
3055+05 EB	44.5' LT	1	1			
3061+98 EB	48' LT	1	1			
4013+13 EB	25.5' LT	1	1			
4013+27 EB	26' LT	1	1			
4020+76 EB	20.5' LT	1	1			NO WORK TO PIPE EXISTING DITCH TO REMAIN
4020+76 EB	20.5' LT	1	1			NO WORK TO PIPE EXISTING DITCH TO REMAIN
4036+94 EB	25' LT	1	1			NO WORK REQD TO INLET
4042+82 EB	35' LT	1	1			NO WORK REQD TO INLET
4045+66 EB	35' LT	1	1			NO WORK REQD TO INLET
4053+75 EB	28.2' LT	1	1			NO WORK TO PIPE EXISTING DITCH TO REMAIN
4062+86 EB	29' LT	1	1			NO WORK REQD TO INLET
4063+80 EB	22.1' LT	1	1			NO WORK REQD TO INLET
4073+34 EB	25' LT	1	1			NO WORK REQD TO INLET
4073+34 EB	25' LT	1	1			NO WORK REQD TO INLET
4090+31 EB	25.5' LT	1	1			
4101+32 EB	25' LT	1	1			
4115+80 EB	25' LT	1	1			NO WORK REQD TO INLET
4125+28 EB	35.8' LT	1	1			NO WORK TO PIPE/AEW, EXISTING DITCH TO REMAIN
4125+57 EB	49.4' LT	1	1			NO WORK TO CROSS OVER PIPE & AEW'S
4148+27 EB	42.0' LT	1	1			NO WORK TO PIPE EXISTING DITCH TO REMAIN
4150+75 EB	29.3' LT	1	1			NO WORK REQD TO COVERED AREA DRAIN
4150+75 EB	29.3' LT	1	1			NO WORK REQD TO COVERED AREA DRAIN
4186+20 EB	24' LT	1	1			NO WORK REQD TO INLET
4173+13 EB	18.7' LT	1	1			NO WORK TO PIPE EXISTING DITCH TO REMAIN
4182+59 EB	34' LT	1	1			NO WORK REQD TO INLET
4184+86 EB	36' LT	1	1			NO WORK REQD TO INLET
4209+19 EB	25' LT	1	1			
4228+51 EB	25' LT	1	1			
4230+73 EB	21' LT	1	1			
4230+73 EB	21' LT	1	1			
4257+56 EB	25.5' LT	1	1			
4265+55 EB	20.4' LT	1	1			
4273+31 EB	24.5' LT	1	1			
5007+76 EB	26.8' LT	1	1			
5013+77 EB	23.7' LT	1	1			NO WORK TO PIPE EXISTING DITCH TO REMAIN
5016+76 EB	19.5' LT	1	1			NO WORK TO PIPE EXISTING DITCH TO REMAIN
5026+77 EB	19.5' LT	1	1			NO WORK TO PIPE EXISTING DITCH TO REMAIN
5040+77 EB	21.3' LT	1	1			NO WORK TO PIPE EXISTING DITCH TO REMAIN
5050+76 EB	21.5' LT	1	1			NO WORK TO PIPE EXISTING DITCH TO REMAIN
5059+79 EB	22.2' LT	1	1			NO WORK TO PIPE EXISTING DITCH TO REMAIN
5077+82 EB	29' LT	1	1			NO WORK TO PIPE EXISTING DITCH TO REMAIN
5084+77 EB	44.8' LT	1	1			NO WORK TO PIPE EXISTING DITCH TO REMAIN
5091+76 EB	41.7' LT	1	1			NO WORK TO PIPE EXISTING DITCH TO REMAIN
SUB TOTAL		22	37		37	

STATION	LOCATION	TON	REMARKS
1020-02-90			
IH 94			
2003+00 EB - 2025+78 EB	12 LT	105	ST. CROCK COUNTY
2003+00 WB - 2084+46 WB	12-15 RT	377	ST. CROCK COUNTY
3000+85 EB - 3009+57 EB	15 LT	40	ST. CROCK COUNTY
3010+72 WB - 3065+79 WB	15 RT	255	ST. CROCK COUNTY
3040+00 EB - 3065+68 EB	15 LT	119	ST. CROCK COUNTY
4000+17 WB - 4012+65 WB	15 RT	58	DUNN COUNTY
4013+13 EB - 4027+70 EB	15 LT	67	DUNN COUNTY
4029+44 WB - 4073+66 WB	15 RT	206	DUNN COUNTY
4074+47 EB - 4125+99 EB	15 LT	239	DUNN COUNTY
4126+65 WB - 4133+52 WB	15 RT	31	DUNN COUNTY
4138+88 WB - 4166+84 WB	15 RT	125	DUNN COUNTY
4166+19 EB - 4223+07 EB	15 LT	263	DUNN COUNTY
4224+22 WB - 4279+92 WB	15 RT	239	DUNN COUNTY
5000+48 EB - 5048+38 EB	15 LT	222	EAU CLAIRE COUNTY
5048+23 WB - 5086+17 WB	15 RT	226	EAU CLAIRE COUNTY
6000+76 EB - 6097+18 EB	15 LT	446	EAU CLAIRE COUNTY
6097+71 WB - 6123+29 WB	10 RT	118	EAU CLAIRE COUNTY
6097+86 EB - 6123+45 WB	10 LT	118	EAU CLAIRE COUNTY
6144+89 WB - 6166+26 WB	10 RT	94	EAU CLAIRE COUNTY
6145+07 EB - 6166+21 EB	10 LT	93	EAU CLAIRE COUNTY
7001+31 WB - 7047+08 WB	15 RT	212	JACKSON COUNTY
1020-02-90 TOTAL		3653	
1050-00-92			
STH 29			
8000+84 WB - 8067+64 WB	10 RT	309	CHIPPewa COUNTY
9004+95 WB - 9139+58 WB	15 RT	310	MARATHON COUNTY
9140+46 EB - 9188+83 EB	15 LT	188	MARATHON COUNTY
9182+22 WB - 9179+87 WB	15 RT	114	MARATHON COUNTY
9179+13 WB - 9202+89 WB	15 RT	165	MARATHON COUNTY
9201+17 EB - 9222+73 EB	15 LT	150	MARATHON COUNTY
UNDISTRIBUTED	LT & RT	150	CLARK COUNTY
1050-00-92 TOTAL		1386	
7200-00-90			
STH 35			
UNDISTRIBUTED	LT & RT	500	ST. CROCK COUNTY
7200-00-90 TOTAL		500	
ITEM TOTALS (ALL PROJECTS)		5549	

STORM SEWER CONTINUED

STATION	LOCATION	RECONSTRUCTING INLETS EACH	611-043 INLET PIPE A EACH	628-7005 INLET PIPE B EACH	628-7010 INLET PROTECTION EACH	REMARKS
6002+27 EB	38.5 FT	-	-	-	-	NO WORK TO PIPE - EXISTING DITCH TO REMAIN
6022+10 EB	35.2 FT	-	-	-	-	NO WORK TO PIPE - EXISTING DITCH TO REMAIN
6037+37 EB	31.1 FT	-	-	-	-	NO WORK REQD TO INLET
6066+26 EB	34 FT	-	-	-	-	NO WORK REQD TO INLET
6095+28 EB	30 LT	-	-	-	-	NO WORK REQD TO INLET
6107+04 EB	37 LT	-	-	-	-	NO WORK REQD TO INLET
6114+04 EB	37 LT	-	-	-	-	NO WORK TO PIPE - EXISTING DITCH TO REMAIN
6123+56 EB	13.4 LT	-	-	-	-	NO WORK TO PIPE - EXISTING DITCH TO REMAIN
6158+12 EB	18 LT	-	-	-	-	NO WORK REQD TO INLET
6164+61 EB	27.1 LT	-	-	-	-	NO WORK TO PIPE - EXISTING DITCH TO REMAIN
6164+61 EB	23 LT	-	-	-	-	NO WORK TO PIPE - EXISTING DITCH TO REMAIN
7008+80 EB	18 LT	-	-	-	-	NO WORK TO PIPE - EXISTING DITCH TO REMAIN
7019+72 EB	30 LT	-	-	-	-	NO WORK REQD TO INLETS
7024+74 EB	31 LT	-	-	-	-	NO WORK REQD TO INLET
7028+70 EB	24 LT	-	-	-	-	NO WORK REQD TO INLET
7037+81 EB	28 LT	-	-	-	-	NO WORK TO PIPE - EXISTING DITCH TO REMAIN
7046+79 EB	28.5 LT	-	-	-	-	NO WORK TO PIPE - EXISTING DITCH TO REMAIN
SUB TOTAL		0	8	8	8	
1020-02-90 TOTAL		22	45	45	45	
1050-00-92						
STH 29						
8006+21 EB	29 LT	-	-	-	-	NO WORK REQD TO INLET
8020+02 EB	16.4 LT	-	-	-	-	NO WORK TO PIPE OR FLUME - EXISTING DITCH TO REMAIN
8024+79 EB	24.5 LT	-	-	-	-	NO WORK REQD TO INLET
8030+02 EB	24.5 LT	-	-	-	-	NO WORK TO PIPE OR FLUME - EXISTING DITCH TO REMAIN
8037+08 EB	16 LT	-	-	-	-	NO WORK TO PIPE OR FLUME - EXISTING DITCH TO REMAIN
8048+16 EB	18 LT	-	-	-	-	NO WORK REQD TO INLET
8052+12 EB	13.8 LT	-	-	-	-	NO WORK TO PIPE OR FLUME - EXISTING DITCH TO REMAIN
8058+02 EB	14.2 LT	-	-	-	-	NO WORK TO PIPE OR FLUME - EXISTING DITCH TO REMAIN
9000+89 EB - 9092+50 EB	LT & RT	0	0	0	0	CLARK COUNTY - NO GRADING REQD
9095+00 EB - 9222+73 EB	LT & RT	0	0	0	0	MARATHON COUNTY - NO GRADING REQD
1050-00-92 TOTAL		0	4	4	4	
7200-00-90						
STH 35						
1009+90 NB - 1274+01 NB	LT & RT	0	0	0	0	ST. CROIX COUNTY - NO GRADING REQD
7200-00-90 TOTAL		0	0	0	0	
ITEM TOTALS (ALL PROJECTS)		22	49	49	49	

Addendum No. 01
 ID 1020-02-90,
 ID 1050-00-92, &
 ID 7200-00-90
 Revise Sheet 64
 January 24, 2017

Addendum No. 01
ID 1020-02-90,
ID 1050-00-92, &
ID 7200-00-90
Revise Sheet 68
January 24, 2017

CONSTRUCTION STAKING CABLE BARRIER			
STATION	LOCATION	SPV/0090.01 LF	REMARKS
1020-02-90 IH 94			
2003-00 EB - 2025-78 EB	12 LT	2278	ST. CROIX COUNTY
2003-00 WB - 2064-48 WB	12-15 RT	8148	ST. CROIX COUNTY
3000-66 EB - 3009-67 EB	15 LT	872	ST. CROIX COUNTY
3010-72 WB - 3065-79 WB	15 RT	5507	ST. CROIX COUNTY
3040-00 EB - 3065-68 EB	15 LT	2568	ST. CROIX COUNTY
4000-17 WB - 4012-65 WB	15 RT	1248	DUNN COUNTY
4013-13 EB - 4027-70 EB	15 LT	1457	DUNN COUNTY
4029-44 WB - 4073-66 WB	15 RT	4442	DUNN COUNTY
4074-47 EB - 4125-69 EB	15 LT	5152	DUNN COUNTY
4126-56 WB - 4135-65 WB	15 RT	2698	DUNN COUNTY
4139-68 WB - 4165-64 WB	15 LT	2698	DUNN COUNTY
4186-19 EB - 4223-07 EB	15 RT	5688	DUNN COUNTY
4224-22 WB - 4275-92 WB	15 LT	5170	DUNN COUNTY
5000-48 EB - 5048-38 EB	15 LT	4790	EAU CLAIRE COUNTY
5049-25 WB - 5098-17 WB	15 RT	4892	EAU CLAIRE COUNTY
6000-75 EB - 6097-18 EB	15 LT	9843	EAU CLAIRE COUNTY
6098-25 WB - 6123-45 WB	15 RT	2569	EAU CLAIRE COUNTY
6097-66 EB - 6123-45 WB	10 LT	2569	EAU CLAIRE COUNTY
6144-68 WB - 6165-26 WB	10 RT	2030	EAU CLAIRE COUNTY
6145-07 EB - 6165-21 EB	10 LT	2014	EAU CLAIRE COUNTY
7001-31 WB - 7047-08 WB	15 RT	4577	JACKSON COUNTY
1020-02-90 TOTAL		78954	
1050-00-92 STH 20			
8000-64 WB - 8067-64 WB	10 RT	6680	CHIPPewa COUNTY
9000-69 WB - 9053-68 WB	15 RT	5289	CLARK COUNTY
9053-63 EB - 9073-58 EB	15 LT	1995	CLARK COUNTY
9074-02 EB - 9092-50 EB	15 LT	1848	CLARK COUNTY
9094-98 WB - 9139-68 WB	15 RT	4682	MARATHON COUNTY
9140-46 EB - 9168-83 EB	15 LT	2847	MARATHON COUNTY
9169-93 WB - 9202-69 WB	15 RT	3486	MARATHON COUNTY
9170-13 WB - 9202-69 WB	15 RT	2078	MARATHON COUNTY
9201-17 EB - 9222-73 EB	15 LT	2169	MARATHON COUNTY
1050-00-92 TOTAL		29298	
7200-00-90 STH 35			
1009-90 SB - 1053-64 SB	15 RT	4584	ST. CROIX COUNTY
1054-64 WB - 1054-75 SB	15 RT	6524	ST. CROIX COUNTY
1089-49 SB - 1154-75 SB	15 RT	6524	ST. CROIX COUNTY
1155-95 NB - 1171-64 NB	15 LT	1559	ST. CROIX COUNTY
1170-02 SB - 1174-90 SB	15 RT	488	ST. CROIX COUNTY
1175-68 SB - 1192-26 SB	15 RT	1658	ST. CROIX COUNTY
1189-83 NB - 1224-12 NB	15 LT	3019	ST. CROIX COUNTY
1224-78 SB - 1236-32 SB	15 LT	1164	ST. CROIX COUNTY
1237-06 SB - 1258-13 SB	15 RT	2107	ST. CROIX COUNTY
1259-71 NB - 1274-01 NB	15 LT	1430	ST. CROIX COUNTY
7200-00-90 TOTAL		28005	
ITEM TOTALS (ALL PROJECTS)		134257	

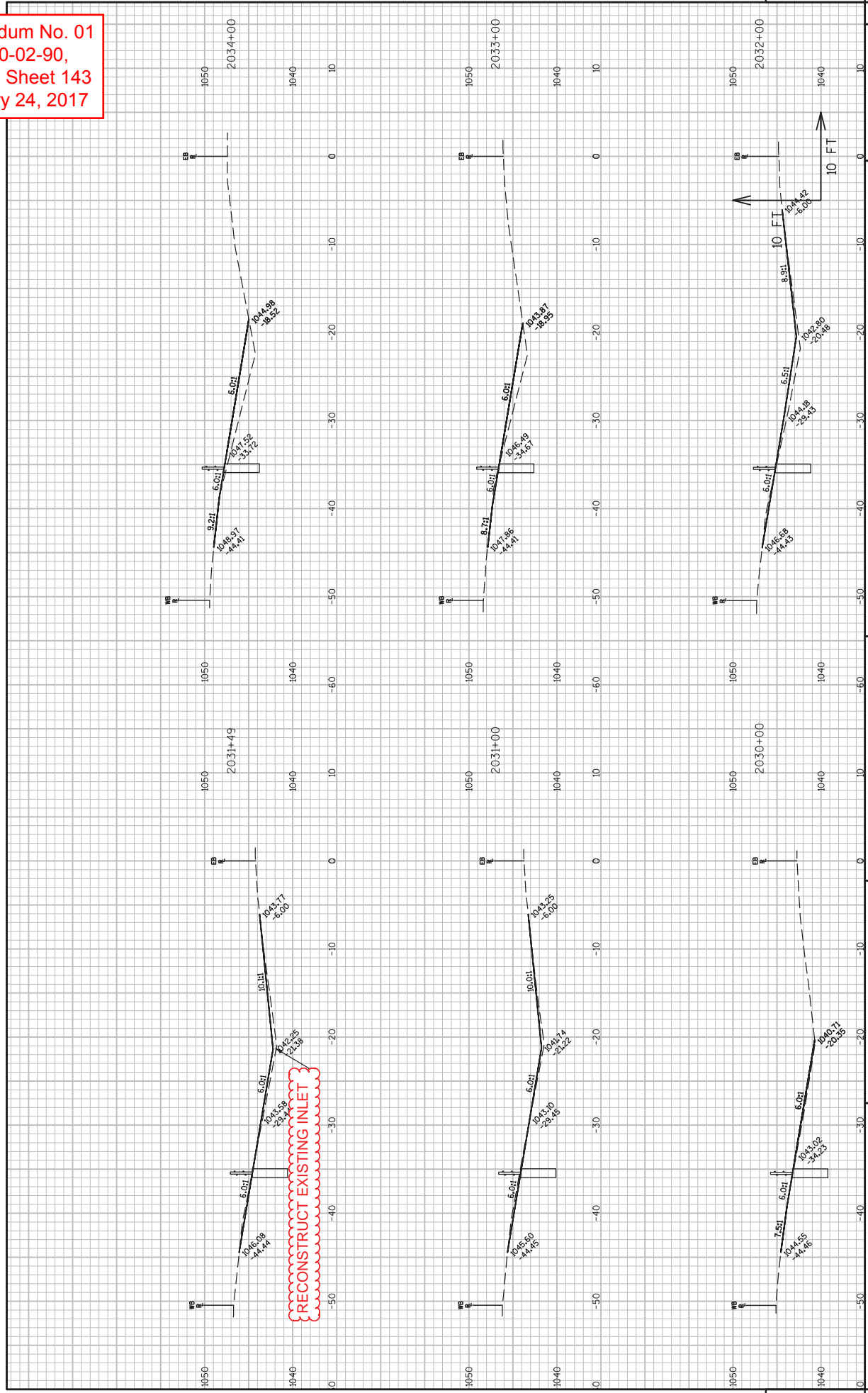
CONSTRUCTION STAKING SLOPE STAKES			
STATION	LOCATION	660.9920 LF	REMARKS
1020-02-90 IH 94			
2003-00 EB - 2084-34 EB	10424		ST. CROIX COUNTY
3001-68 EB - 3085-68 EB	8947		ST. CROIX COUNTY
4000-07 EB - 4275-69 EB	28520		DUNN COUNTY
5000-48 EB - 5098-00 EB	9882		EAU CLAIRE COUNTY
6000-75 EB - 6165-21 EB	18834		EAU CLAIRE COUNTY
7001-27 EB - 7046-75 EB	4577		JACKSON COUNTY
1020-02-90 TOTAL		78984	
1050-00-92 STH 29			
8000-63 EB - 8067-09 EB	6619		CHIPPewa COUNTY
9000-69 EB - 9092-50 EB	0		CLARK COUNTY
9095-00 EB - 9222-73 EB	13181		MARATHON COUNTY
1050-00-92 TOTAL		19800	
7200-00-90 STH 35			
1009-90 NB - 1274-01 NB	0		ST. CROIX COUNTY
7200-00-90 TOTAL		0	
ITEM TOTALS (ALL PROJECTS)		98784	

UTILITY LINE OPENING			
STATION	LOCATION	SPV/0060.01 EACH	REMARKS
1020-02-90 IH 94			
UNDISTRIBUTED		20	
1020-02-90 TOTAL		21	
1050-00-92 STH 29			
UNDISTRIBUTED		6	
1050-00-92 TOTAL		7	
7200-00-90 STH 35			
UNDISTRIBUTED		19	
1050-00-92 TOTAL		20	
ITEM TOTAL (ALL PROJECTS)		48	

CONSTRUCTION STAKING SUPPLEMENTAL CONTROL (PROJECT)			
STATION	LOCATION	650.9910 LS	REMARKS
1020-02-90 IH 94			
ITEM TOTAL		1	
1050-00-92 STH 29			
ITEM TOTAL		1	
7200-00-90 STH 35			
ITEM TOTAL		1	

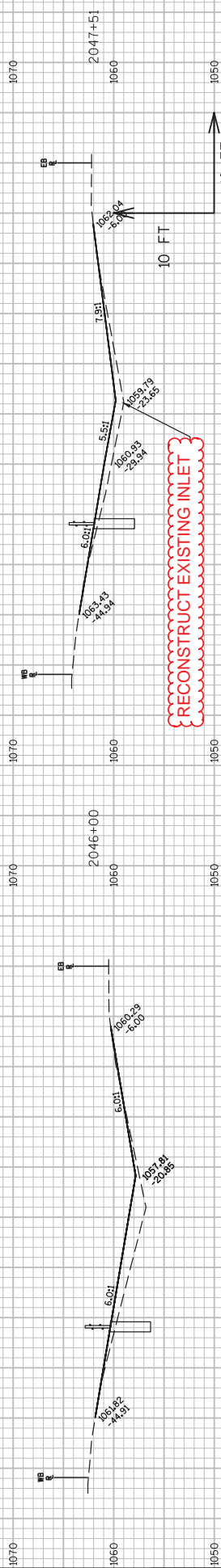
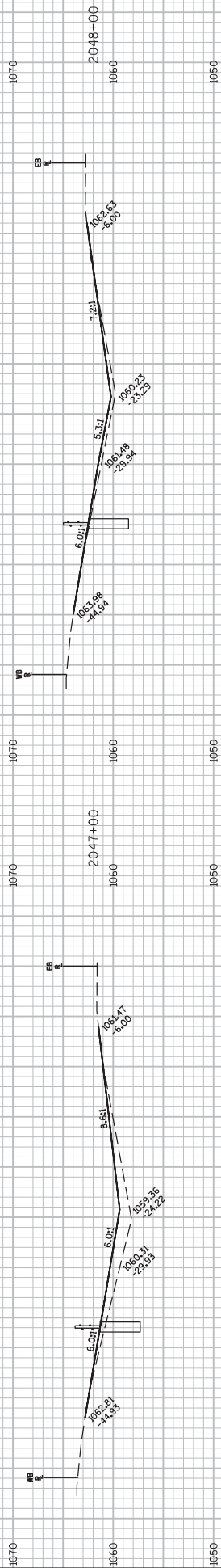
CONSTRUCTION STAKING SUPPLEMENTAL CONTROL (PROJECT)			
STATION	LOCATION	650.9910 LS	REMARKS
1020-02-90 IH 94			
ITEM TOTAL		1	
1050-00-92 STH 29			
ITEM TOTAL		1	
7200-00-90 STH 35			
ITEM TOTAL		1	

Addendum No. 01
 ID 1020-02-90,
 Revise Sheet 143
 January 24, 2017



RECONSTRUCT EXISTING INLET

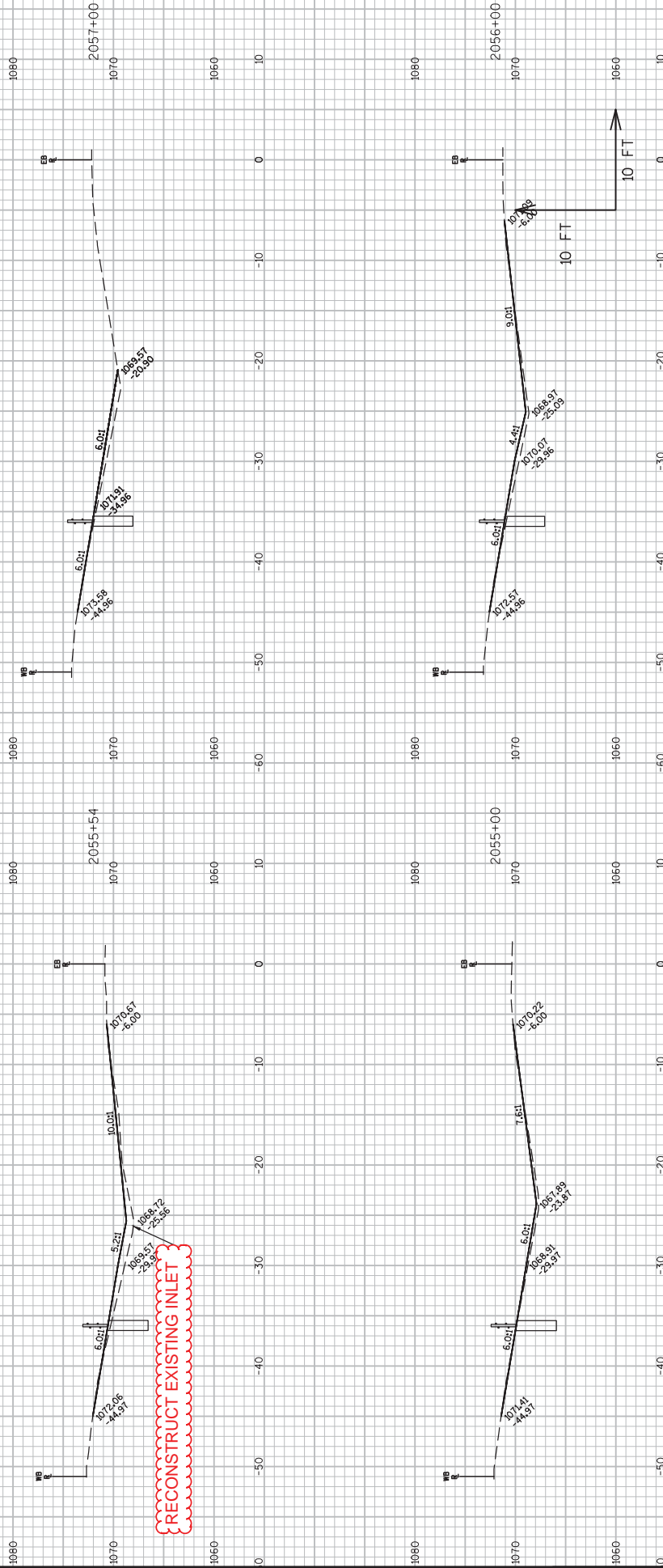
Addendum No. 01
ID 1020-02-90,
Revise Sheet 147
January 24, 2017



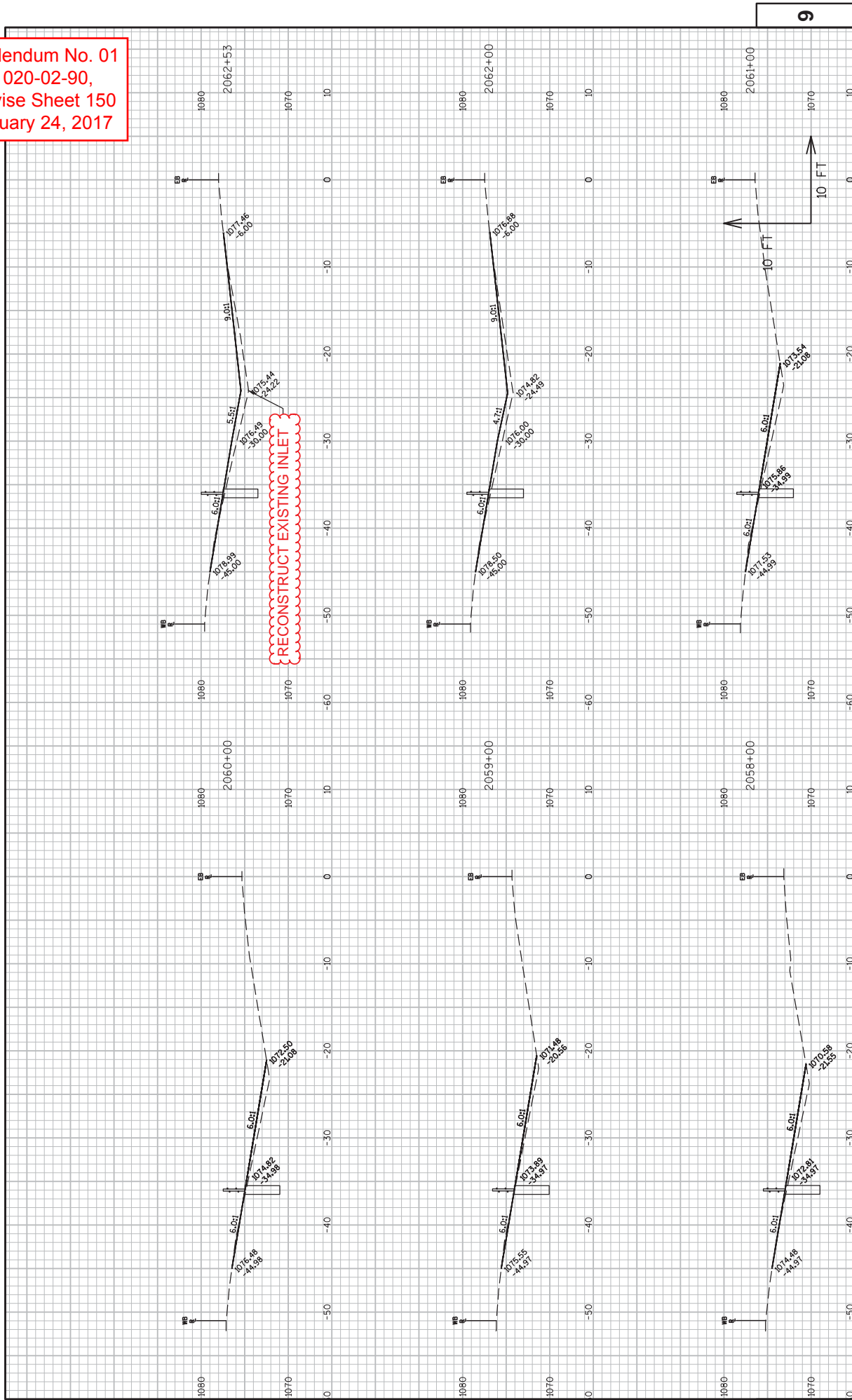
RECONSTRUCT EXISTING INLET

9

Addendum No. 01
 ID 1020-02-90,
 Revise Sheet 149
 January 24, 2017

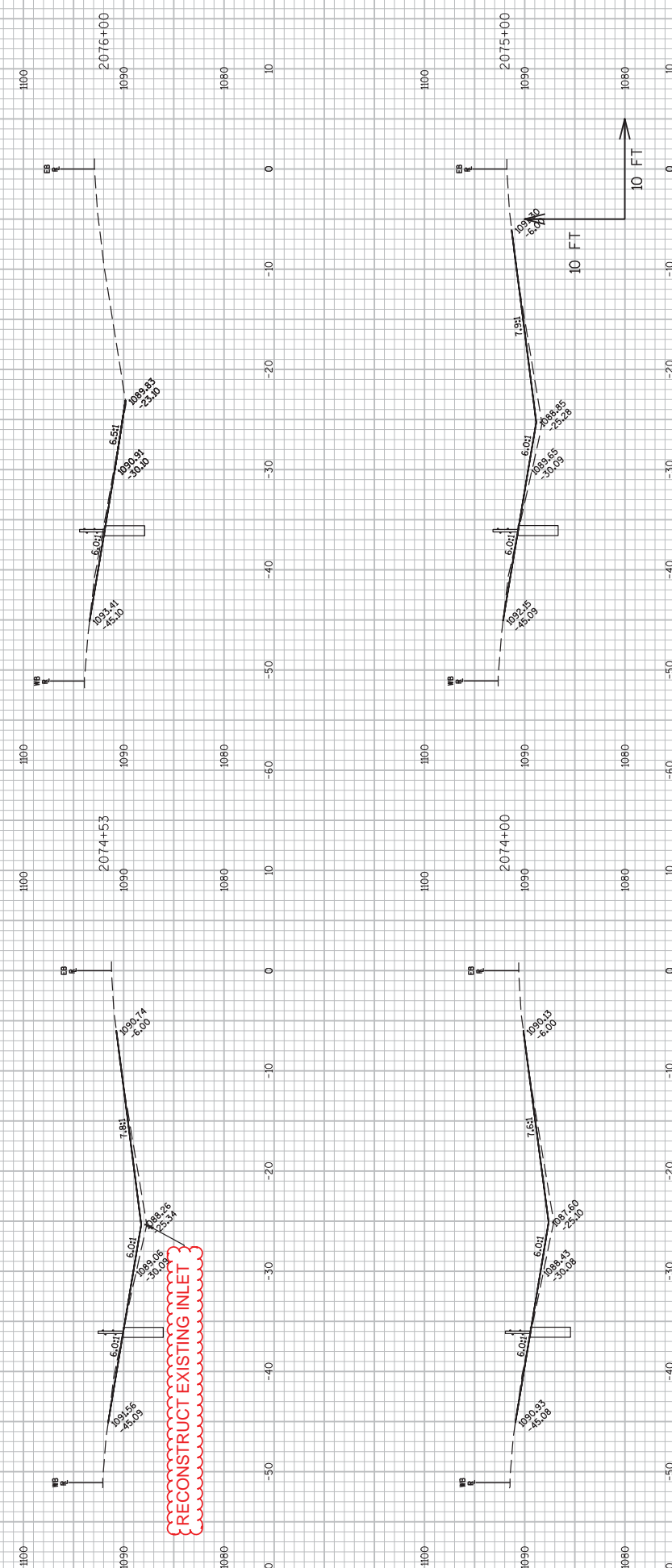


Addendum No. 01
 ID 1020-02-90,
 Revise Sheet 150
 January 24, 2017



RECONSTRUCT EXISTING INLET

Addendum No. 01
 ID 1020-02-90,
 Revise Sheet 154
 January 24, 2017

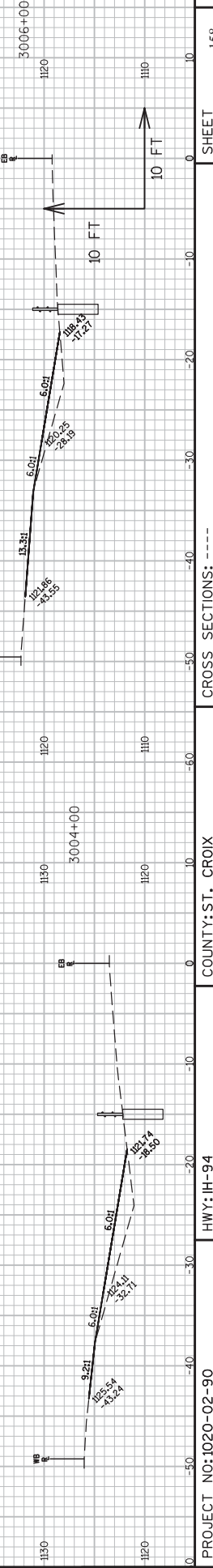
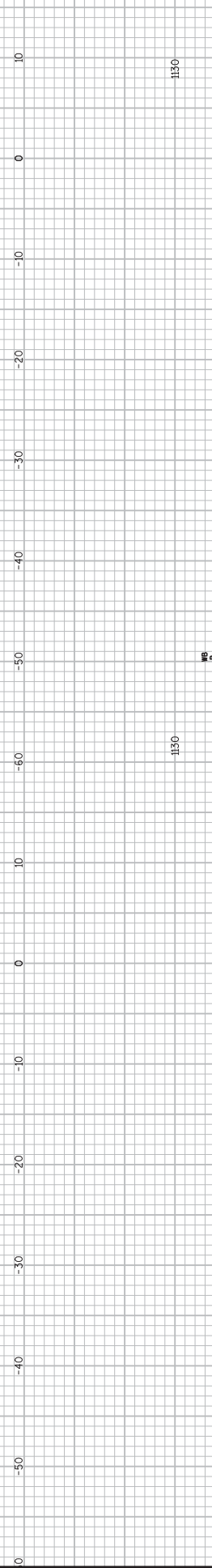
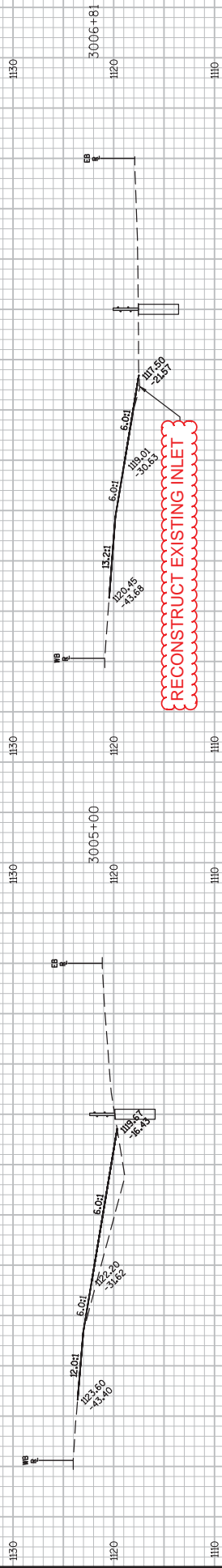


RECONSTRUCT EXISTING INLET

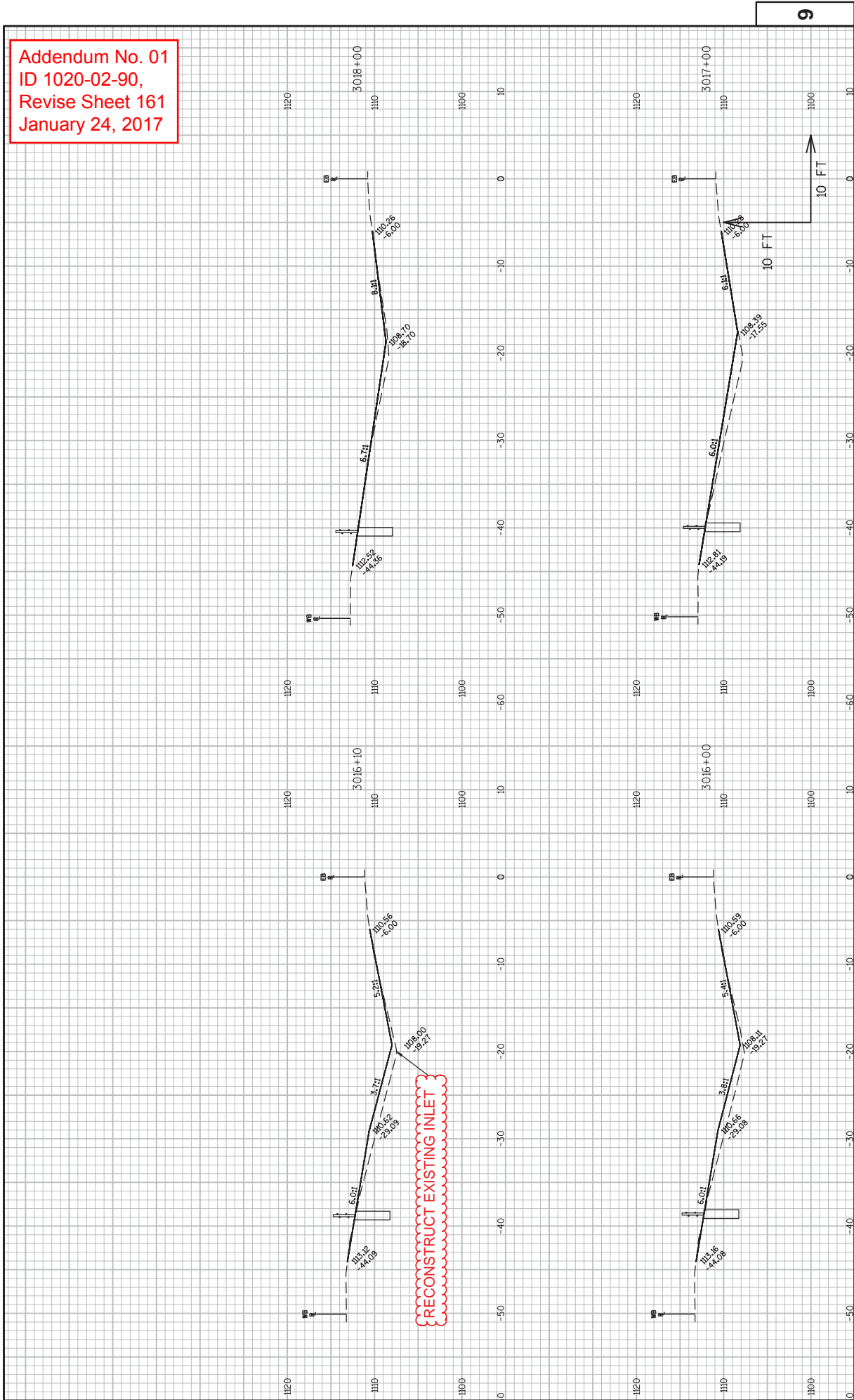
9

9

Addendum No. 01
 ID 1020-02-90,
 Revise Sheet 158
 January 24, 2017



Addendum No. 01
ID 1020-02-90,
Revise Sheet 161
January 24, 2017



9

SHEET 161

PROJECT NO: 1020-02-90

CROSS SECTIONS: - - - -

COUNTY: ST. CROIX

HWY: IH-94

PLLOT NAME : NICK ENGH

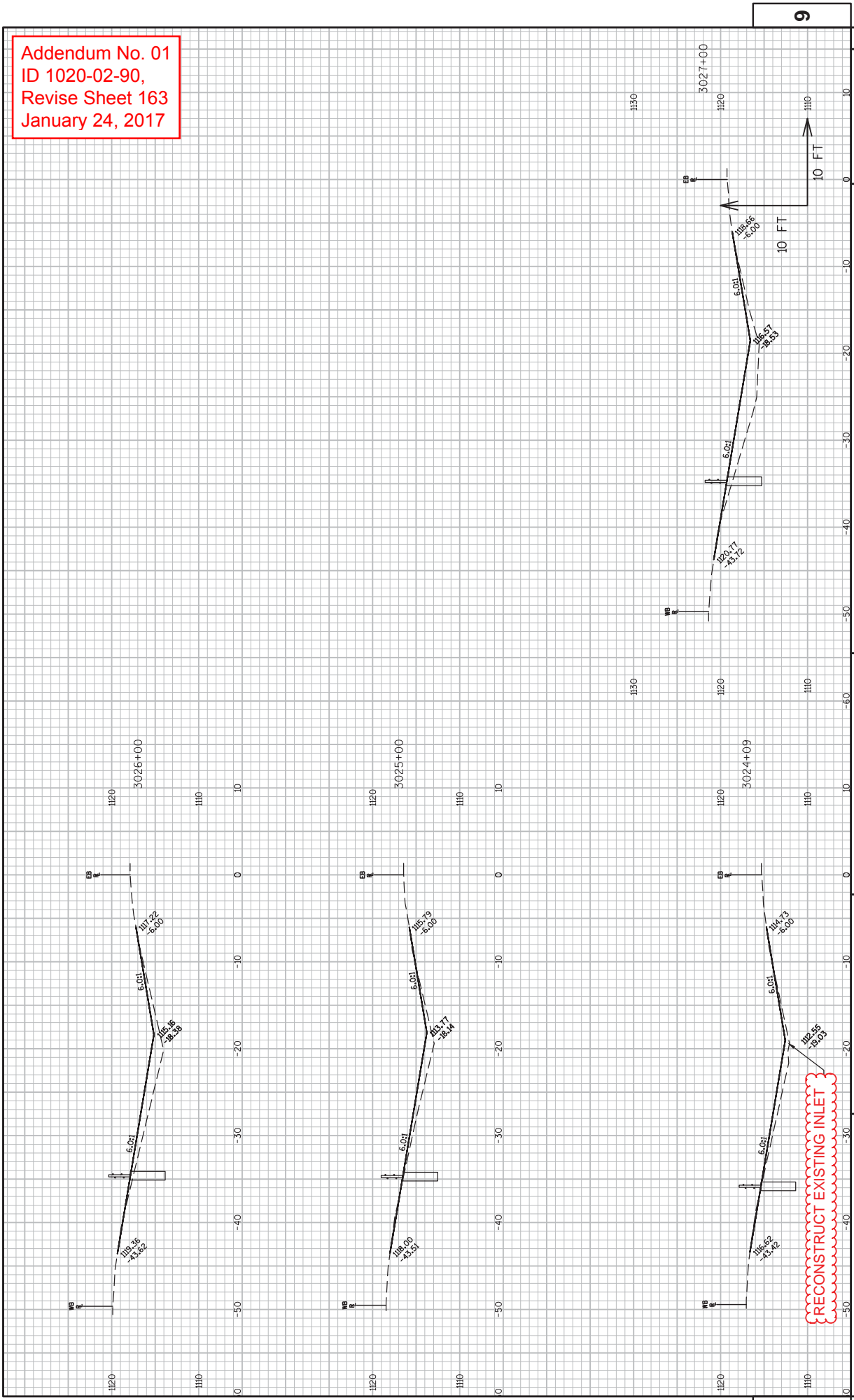
PLLOT DATE : 11/19/2016 12:49 PM

PLLOT SCALE : 1 IN:10 FT

WISDOT/CADD SHEET 49

FILE NAME : F:\JLZ\WJIT\W136893\CIVIL_3D\SHEET\SP\AN_090202.XS-STCROIXCOUNTY.DWG
LAYOUT NAME - 090202.XS-STCROIXCOUNTY - 090205

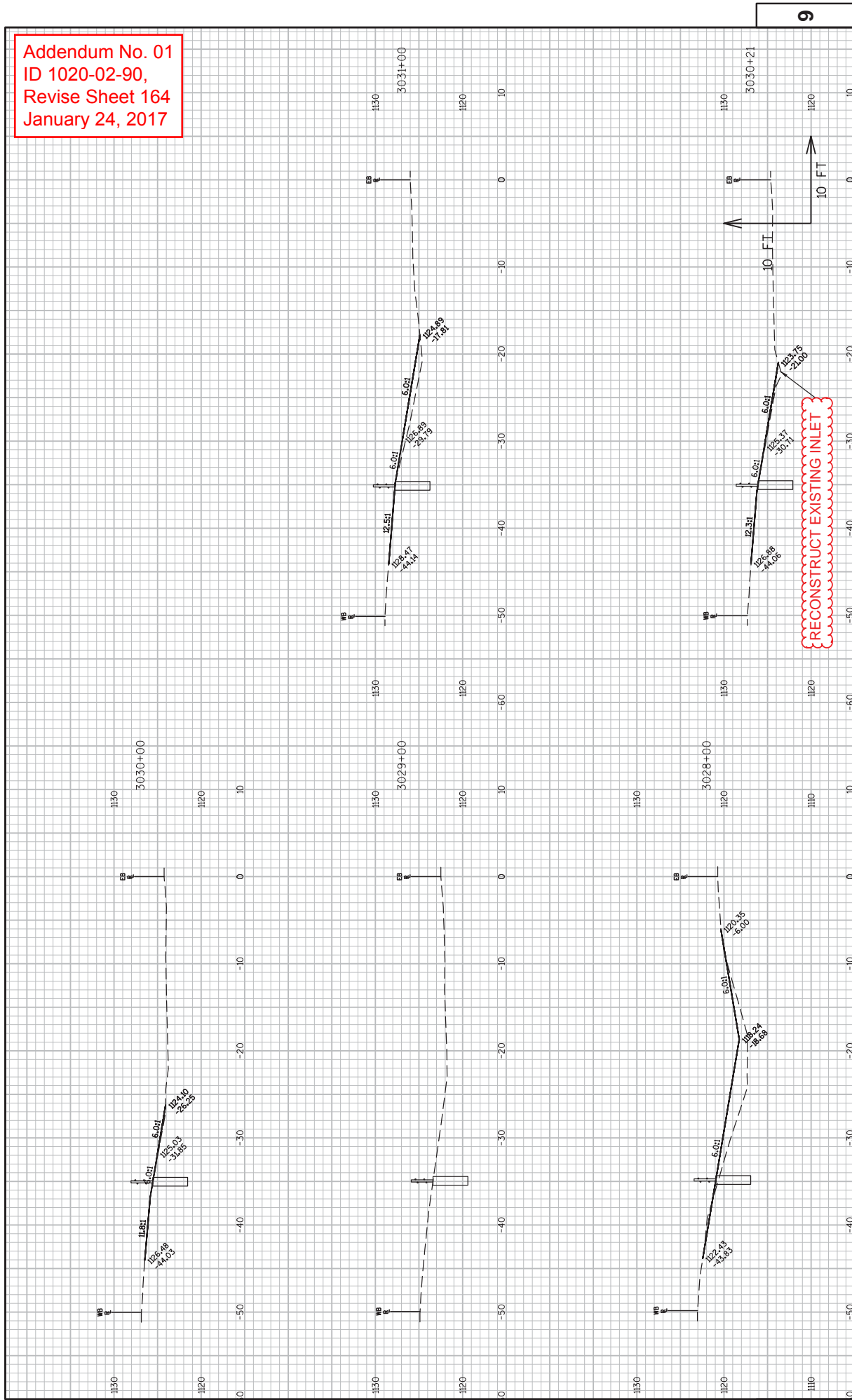
Addendum No. 01
 ID 1020-02-90,
 Revise Sheet 163
 January 24, 2017



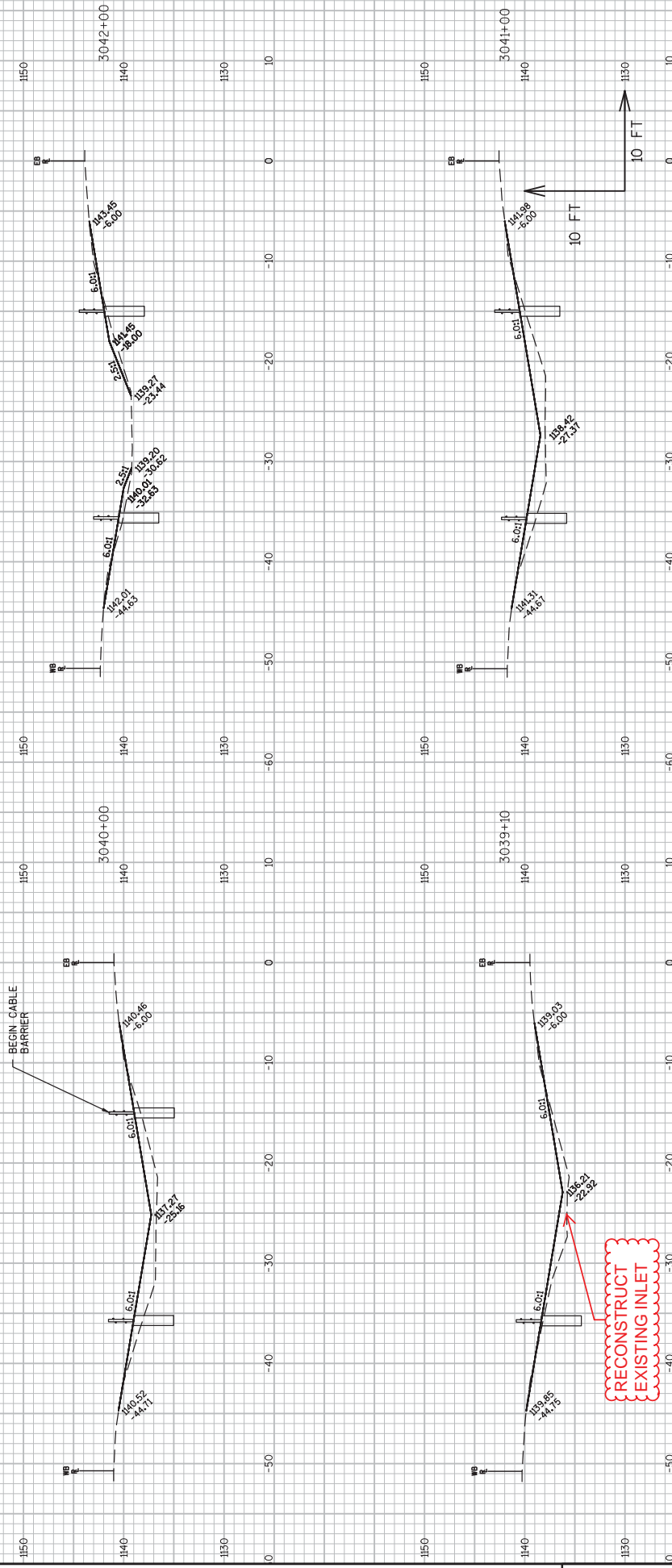
PROJECT NO: 1020-02-90
 COUNTY: ST. CROIX
 HWY: IH-94
 CROSS SECTIONS: -----
 PLOT BY: NICK ENGH
 PLOT DATE: 11/19/2016 12:50 PM
 PLOT NAME:
 PLOT SCALE: 1 IN=10 FT
 SHEET 163
 WSDOT/CADD SHEET 49

RECONSTRUCT EXISTING INLET

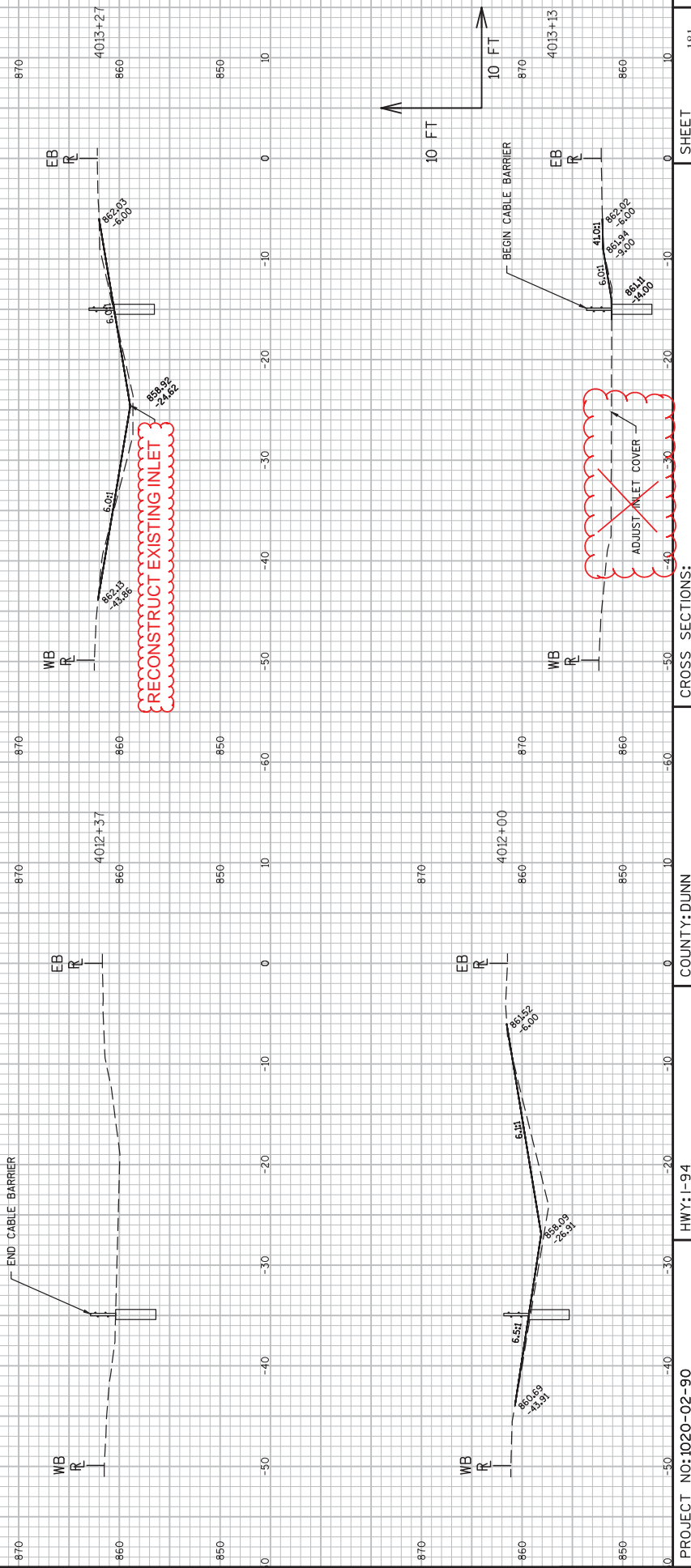
Addendum No. 01
 ID 1020-02-90,
 Revise Sheet 164
 January 24, 2017



Addendum No. 01
 ID 1020-02-90,
 Revise Sheet 167
 January 24, 2017



Addendum No. 01
 ID 1020-02-90,
 Revise Sheet 181
 January 24, 2017



9

PROJECT NO: 1020-02-90

HWY: 1-94

COUNTY: DUNN

CROSS SECTIONS:

PLOT NAME :

181

SHEET

E

FILE NAME : F:\1020\1020-02-90\CIVIL_3D\SHEET\SP_4N\090204_XS_DUNNCOUNTY.DWG

LAYOUT NAME - 090204-XSEB DUNN COUNTY

PLOT DATE : 11/19/2016 12:17 PM

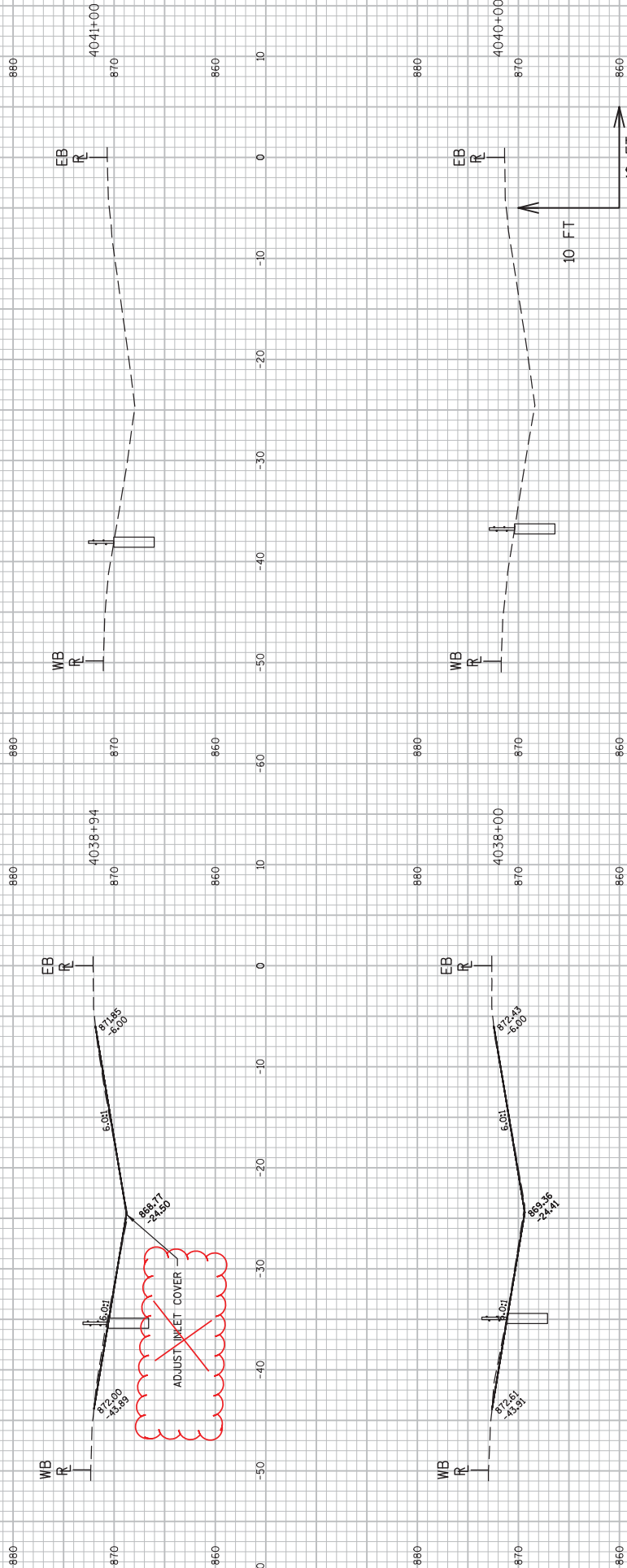
PLOT BY : NICK ENGH

PLOT NAME :

PLOT SCALE : 1 IN=10 FT

WSDOT/CADD SHEET 49

Addendum No. 01
 ID 1020-02-90,
 Revise Sheet 187
 January 24, 2017



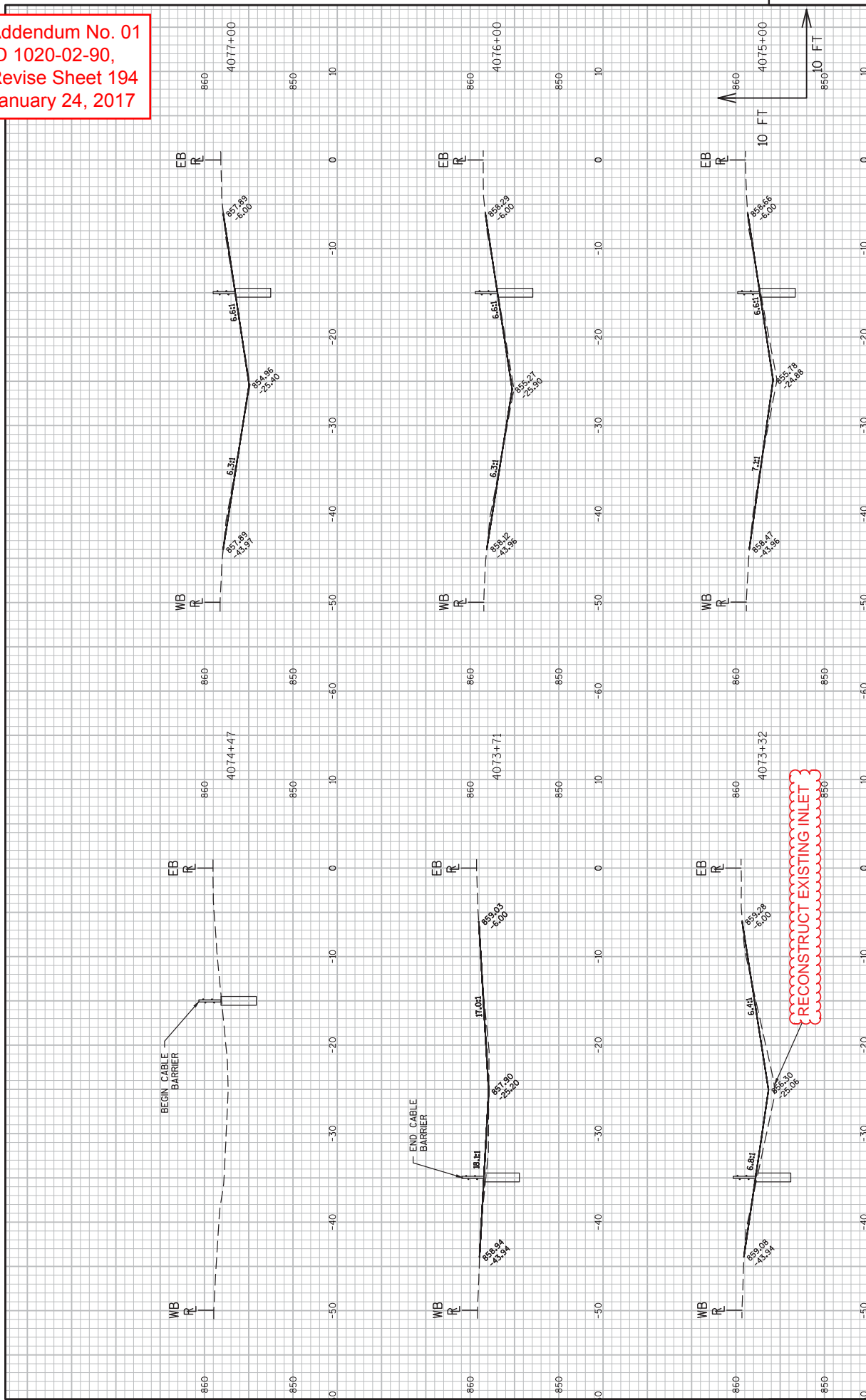
9

9

PROJECT NO: 1020-02-90
 COUNTY: DUNN
 HWY: IH-94
 CROSS SECTIONS:
 PLOT BY: NICK ENGH
 PLOT DATE: 11/19/2016 12:18 PM
 PLOT SCALE: 1 IN=10 FT
 SHEET 187
 WSDOT/CADD SHEET 49

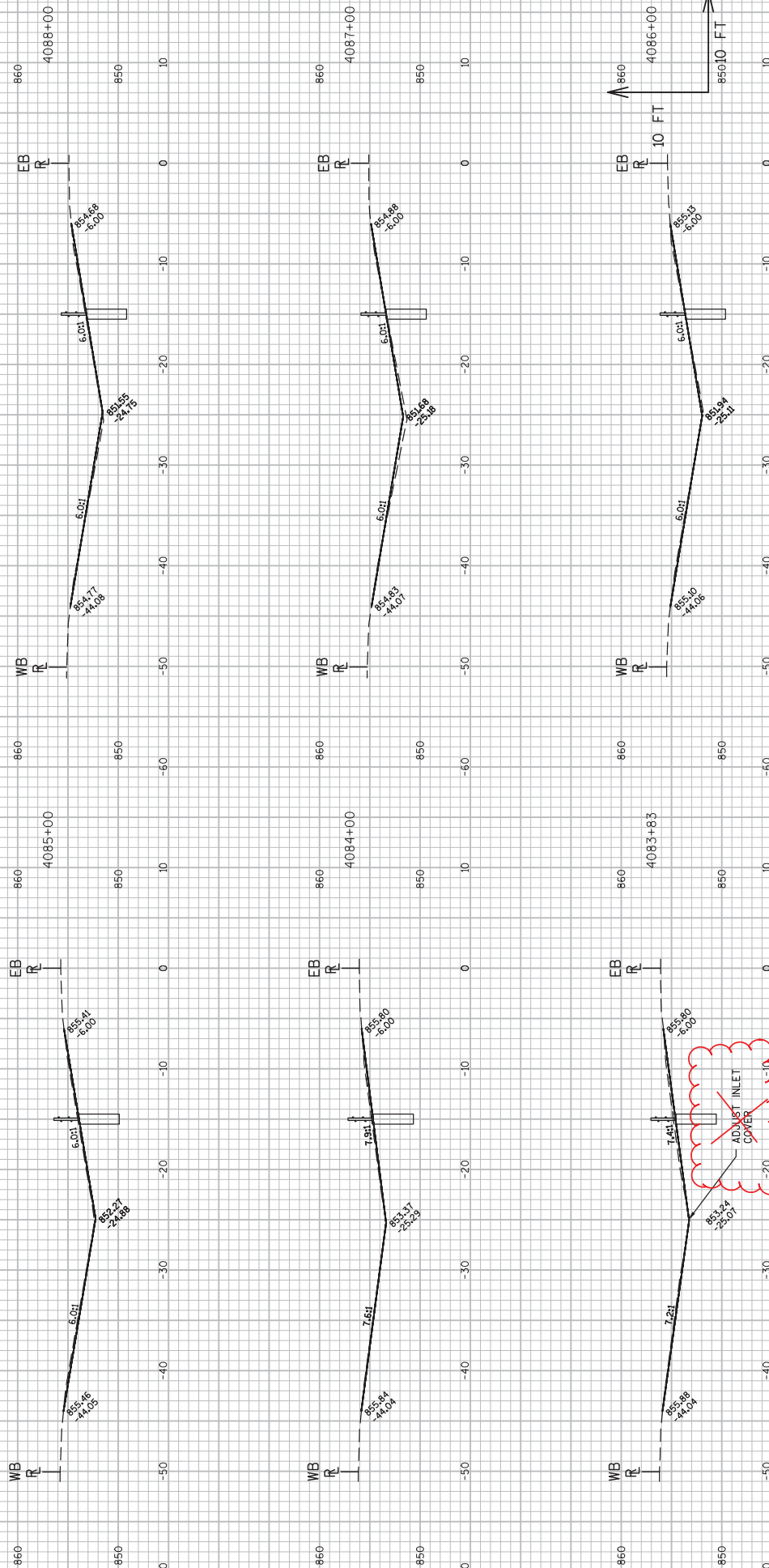
FILE NAME : F:\JAZ\W\IT\W\136893\CIVIL_3D\SHEET\SP\LAN\090204_XS_DUNNCOUNTY.DWG
 LAYOUT NAME - 090210-XS DUNN COUNTY

Addendum No. 01
 ID 1020-02-90,
 Revise Sheet 194
 January 24, 2017



RECONSTRUCT EXISTING INLET

Addendum No. 01
 ID 1020-02-90,
 Revise Sheet 196
 January 24, 2017

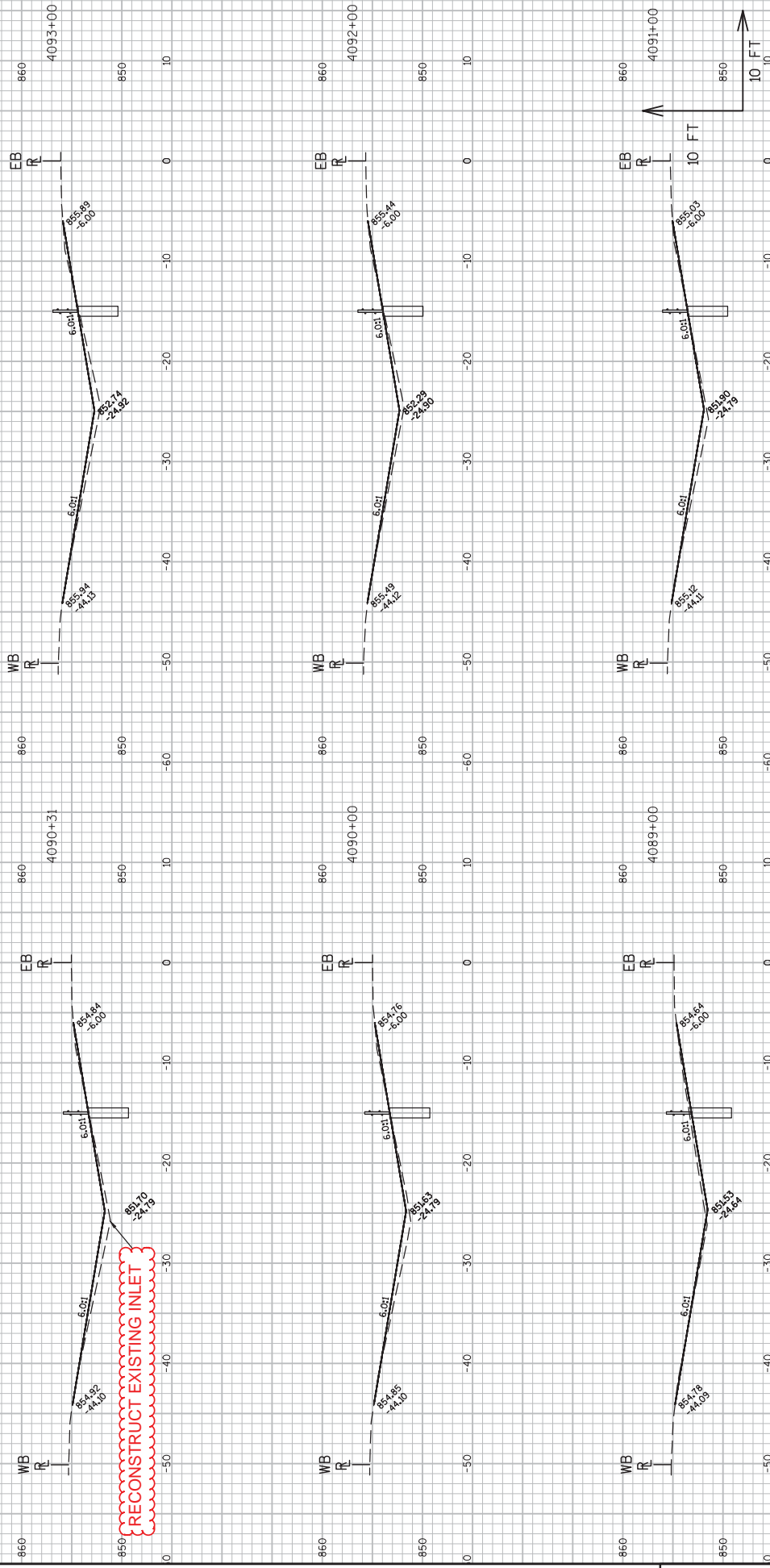


FILE NAME : F:\A2\W\IT\136893\CIVIL_3D\SHEET\SP\AN090204_XS_DUNNCOUNTY.DWG
 LAYOUT NAME - 090219 - XS DUNN COUNTY

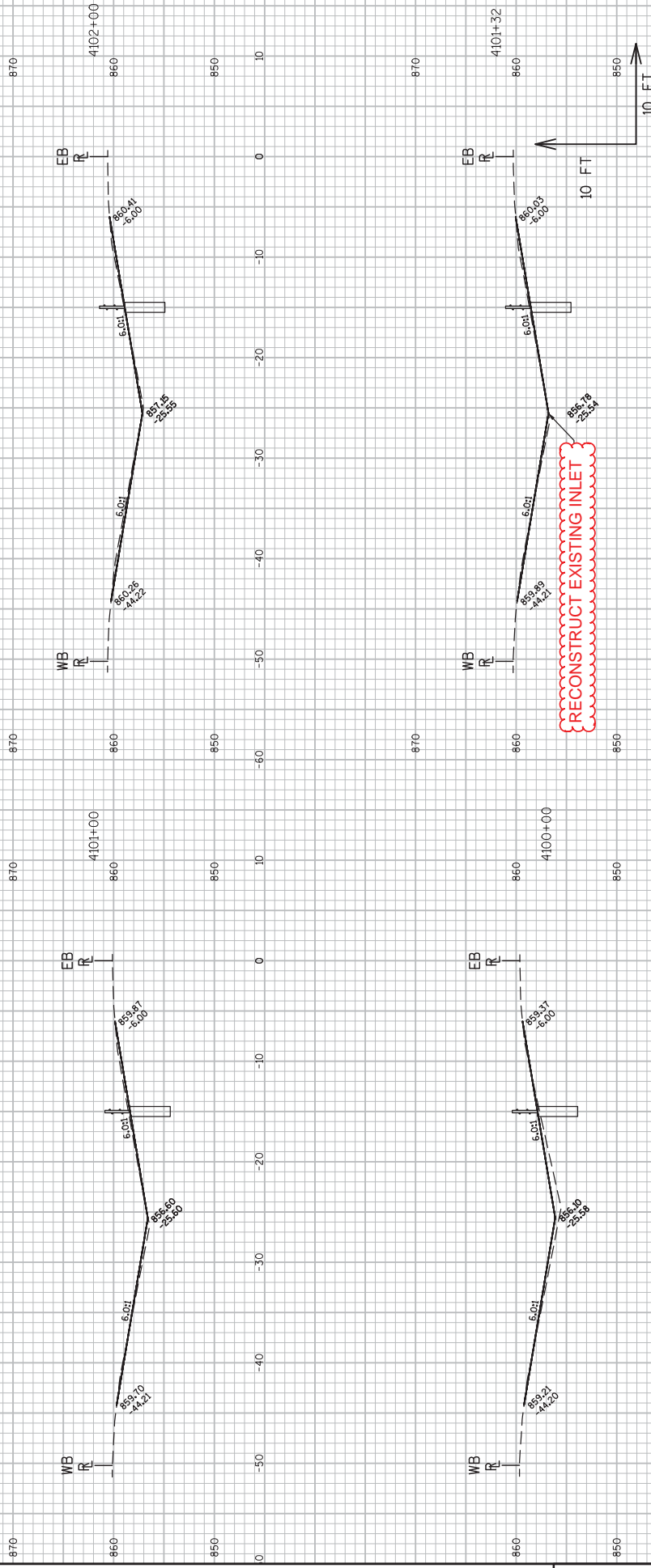
9

9

Addendum No. 01
 ID 1020-02-90,
 Revise Sheet 197
 January 24, 2017



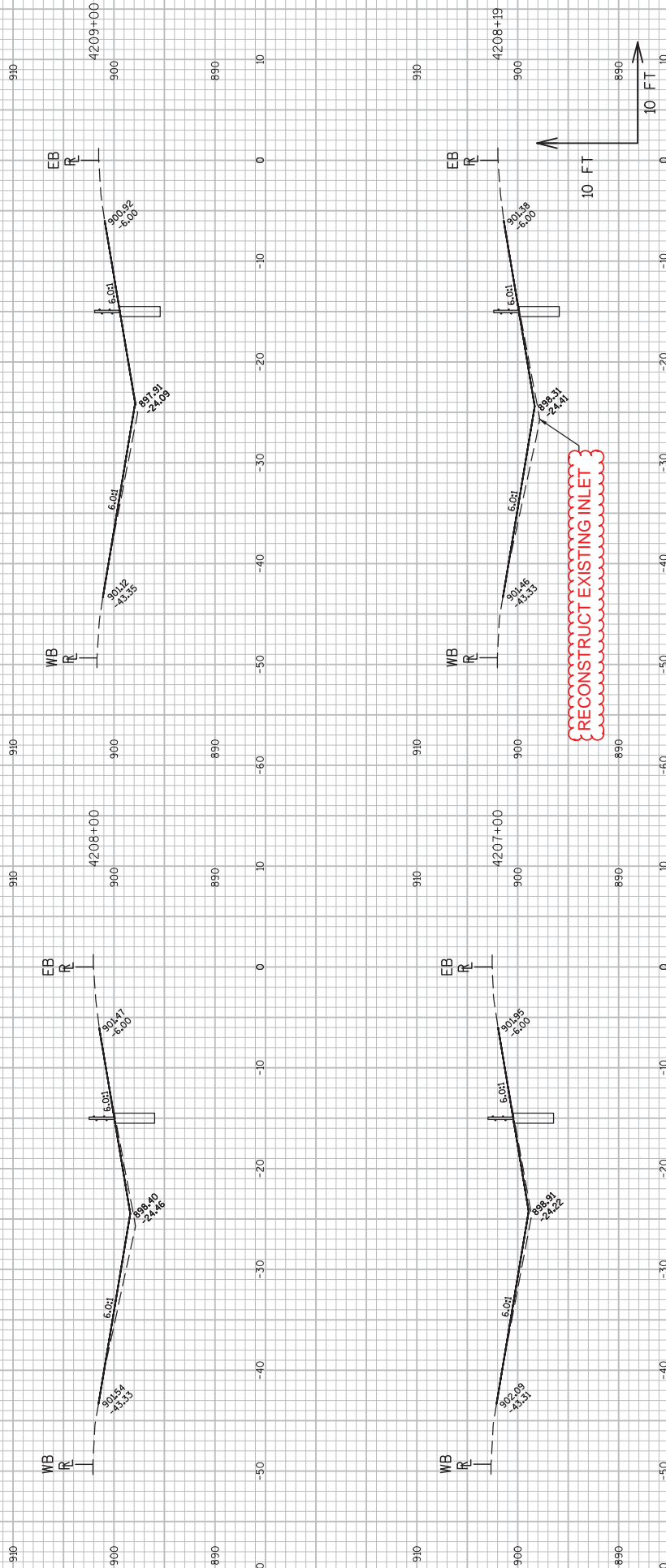
Addendum No. 01
 ID 1020-02-90,
 Revise Sheet 199
 January 24, 2017



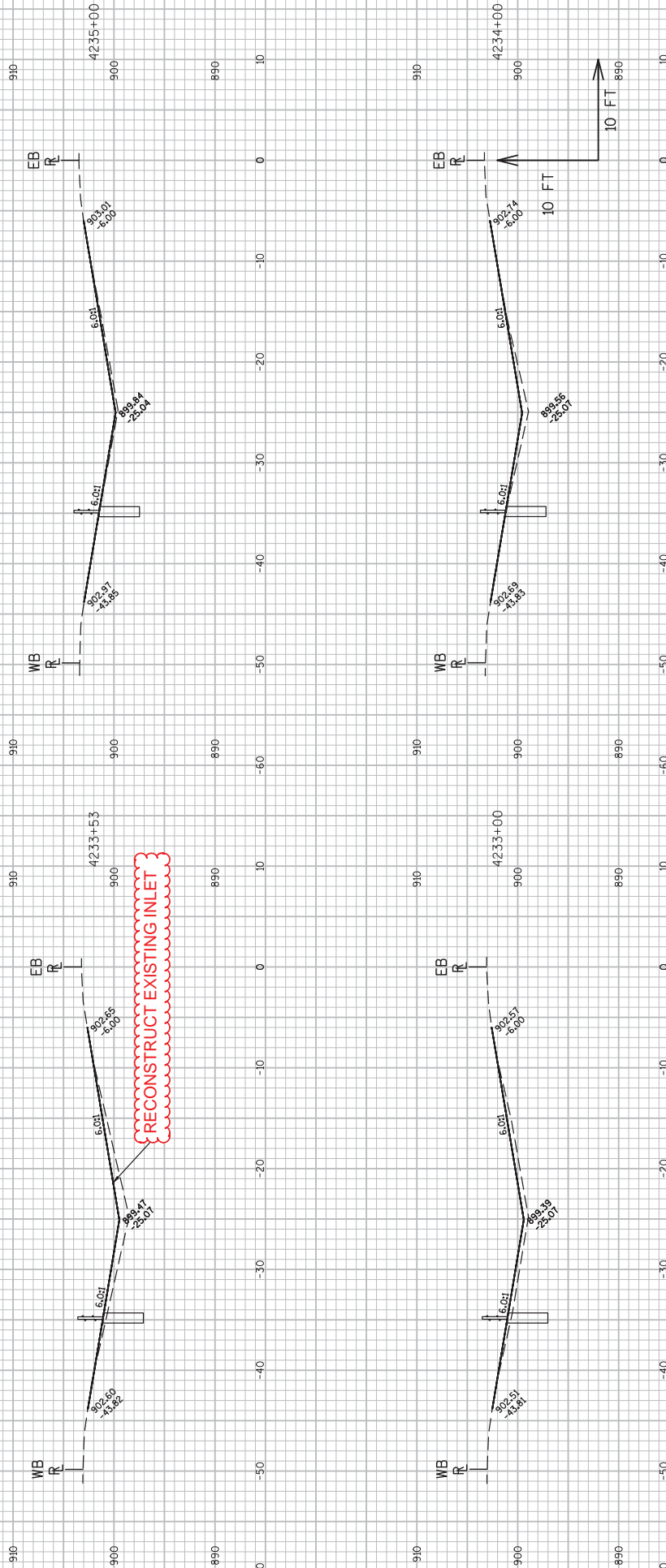
9

9

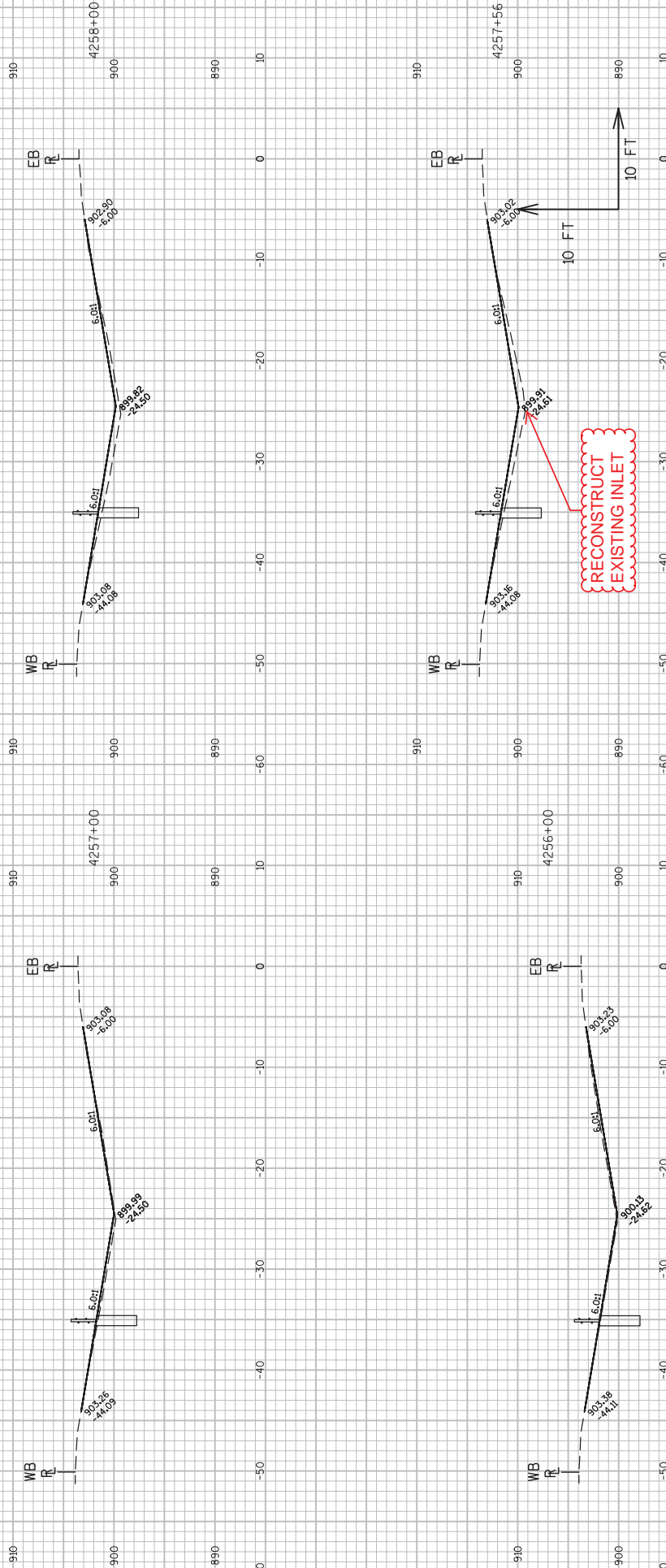
Addendum No. 01
 ID 1020-02-90,
 Revise Sheet 231
 January 24, 2017



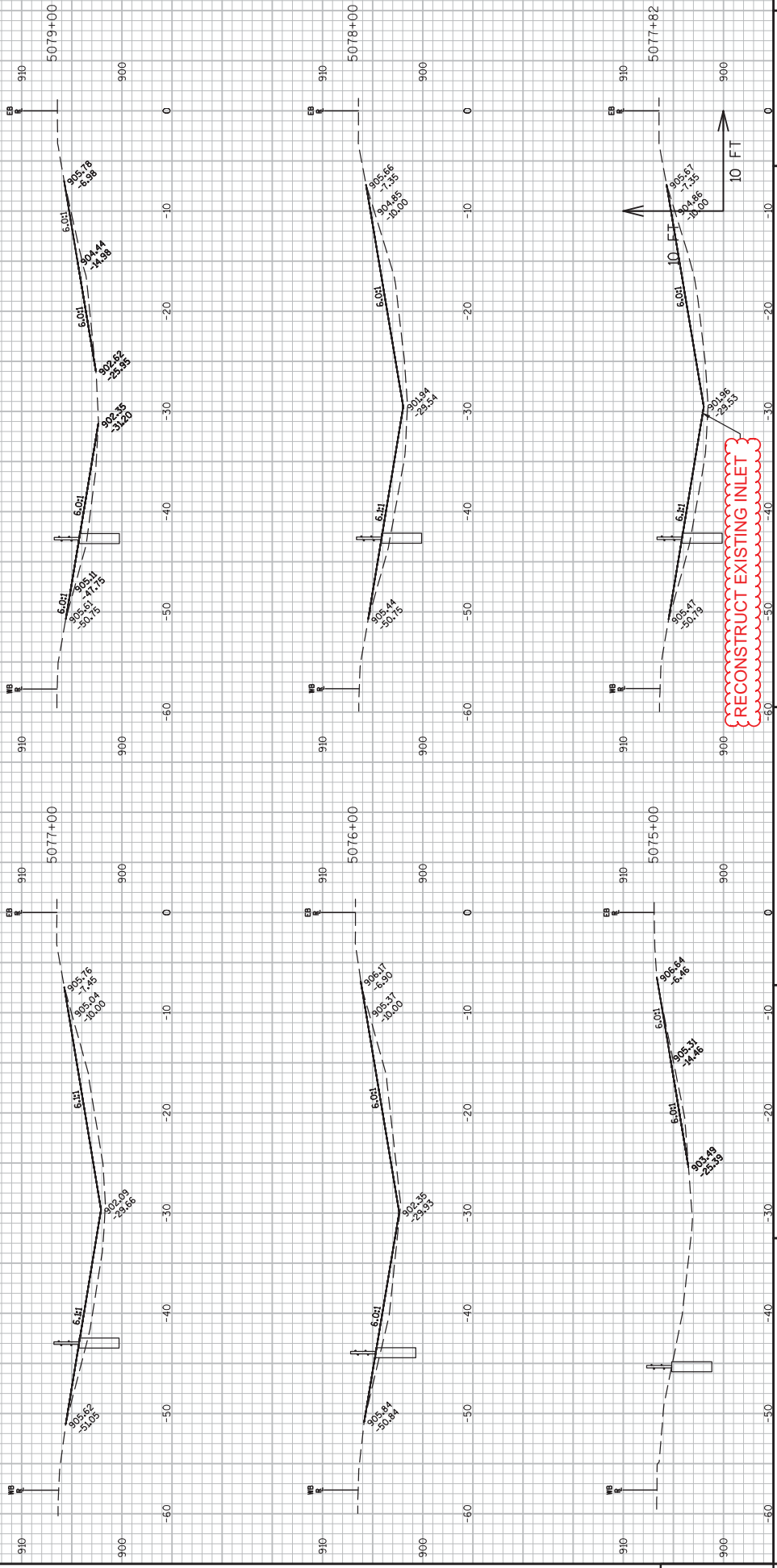
Addendum No. 01
ID 1020-02-90,
Revise Sheet 238
January 24, 2017



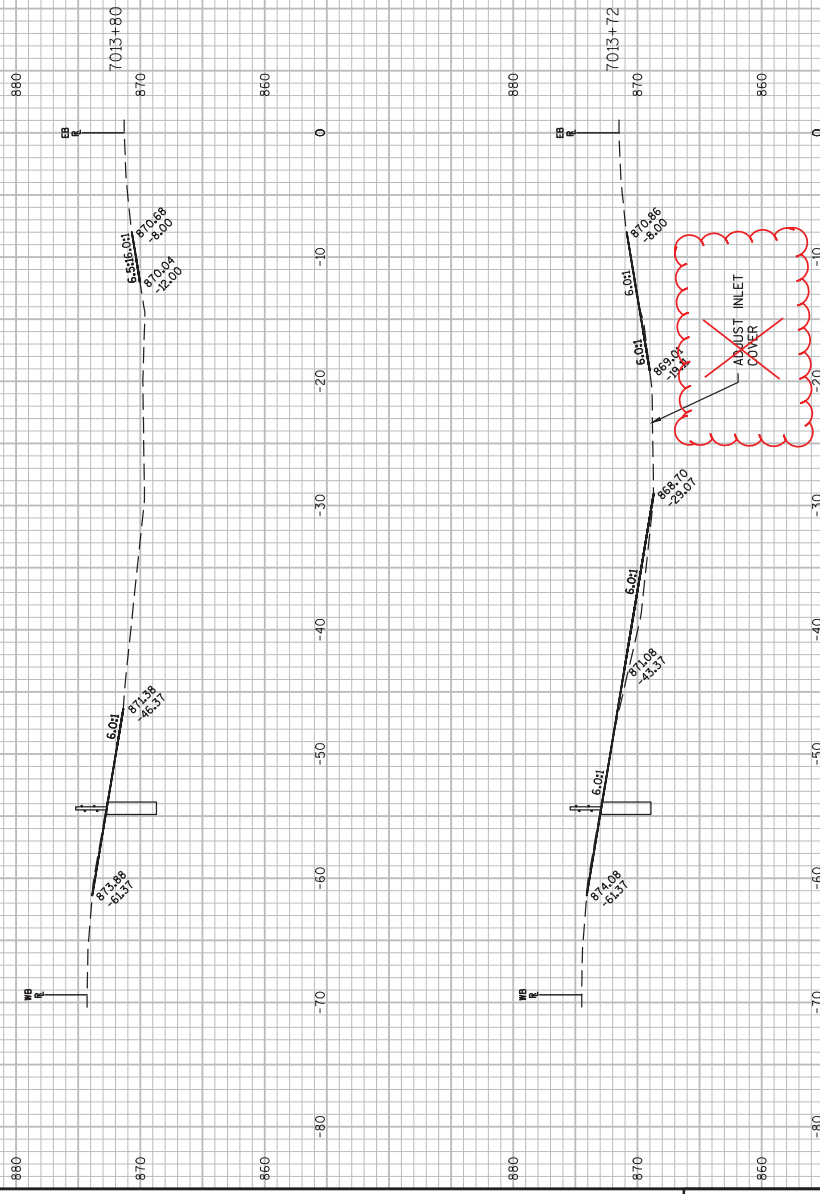
Addendum No. 01
 ID 1020-02-90,
 Revise Sheet 243
 January 24, 2017



Addendum No. 01
 ID 1020-02-90,
 Revise Sheet 265
 January 24, 2017



Addendum No. 01
 ID 1020-02-90,
 Revise Sheet 316
 January 24, 2017





Proposal Schedule of Items

Proposal ID: 20170214016 Project(s): 1020-02-90, 1050-00-92, 7200-00-90

Federal ID(s): WISC 2017028, WISC 2017029, WISC 2017031

SECTION: 0001 Roadway Items

Alt Set ID: Alt Mbr ID:

Proposal Line Number	Item ID Description	Approximate Quantity and Units	Unit Price	Bid Amount
0010	205.0100 Excavation Common	1,695.000 CY	_____.	_____.
0020	208.0100 Borrow	17,739.000 CY	_____.	_____.
0030	213.0100 Finishing Roadway (project) 01. 1020-02-90	1.000 EACH	_____.	_____.
0040	213.0100 Finishing Roadway (project) 02. 1050-00-92	1.000 EACH	_____.	_____.
0050	213.0100 Finishing Roadway (project) 03. 7200-00-90	1.000 EACH	_____.	_____.
0060	305.0110 Base Aggregate Dense 3/4-Inch	5,549.000 TON	_____.	_____.
0070	611.0430 Reconstructing Inlets	22.000 EACH	_____.	_____.
0090	613.1100.S Cable Barrier Type 1	131,941.000 LF	_____.	_____.
0100	613.1200.S Cable Barrier End Terminal Type 1	80.000 EACH	_____.	_____.
0110	618.0100 Maintenance And Repair of Haul Roads (project) 01. 1020-02-90	1.000 EACH	_____.	_____.
0120	618.0100 Maintenance And Repair of Haul Roads (project) 02. 1050-00-92	1.000 EACH	_____.	_____.
0130	618.0100 Maintenance And Repair of Haul Roads (project) 03. 7200-00-90	1.000 EACH	_____.	_____.
0140	619.1000 Mobilization	1.000 EACH	_____.	_____.
0150	625.0500 Salvaged Topsoil	207,494.000 SY	_____.	_____.
0160	627.0200 Mulching	231,337.000 SY	_____.	_____.



Proposal Schedule of Items

Proposal ID: 20170214016 Project(s): 1020-02-90, 1050-00-92, 7200-00-90

Federal ID(s): WISC 2017028, WISC 2017029, WISC 2017031

SECTION: 0001 Roadway Items

Alt Set ID: Alt Mbr ID:

Proposal Line Number	Item ID Description	Approximate Quantity and Units	Unit Price	Bid Amount
0170	628.1905 Mobilizations Erosion Control	2.000 EACH	_____.	_____.
0180	628.1910 Mobilizations Emergency Erosion Control	2.000 EACH	_____.	_____.
0190	628.2008 Erosion Mat Urban Class I Type B	4,000.000 SY	_____.	_____.
0200	628.7005 Inlet Protection Type A	49.000 EACH	_____.	_____.
0210	628.7010 Inlet Protection Type B	49.000 EACH	_____.	_____.
0220	629.0210 Fertilizer Type B	146.000 CWT	_____.	_____.
0230	630.0120 Seeding Mixture No. 20	6,265.000 LB	_____.	_____.
0240	638.2102 Moving Signs Type II	1.000 EACH	_____.	_____.
0250	638.4000 Moving Small Sign Supports	1.000 EACH	_____.	_____.
0260	642.5001 Field Office Type B	1.000 EACH	_____.	_____.
0270	643.0100 Traffic Control (project) 01. 1020-02-90	1.000 EACH	_____.	_____.
0280	643.0100 Traffic Control (project) 02. 1050-00-92	1.000 EACH	_____.	_____.
0290	643.0100 Traffic Control (project) 03. 7200-00-90	1.000 EACH	_____.	_____.
0300	643.0300 Traffic Control Drums	15,429.000 DAY	_____.	_____.
0310	643.0420 Traffic Control Barricades Type III	808.000 DAY	_____.	_____.
0320	643.0705 Traffic Control Warning Lights Type A	1,615.000 DAY	_____.	_____.
0330	643.0715 Traffic Control Warning Lights Type C	2,670.000 DAY	_____.	_____.



Proposal Schedule of Items

Proposal ID: 20170214016 Project(s): 1020-02-90, 1050-00-92, 7200-00-90

Federal ID(s): WISC 2017028, WISC 2017029, WISC 2017031

SECTION: 0001 Roadway Items

Alt Set ID: Alt Mbr ID:

Proposal Line Number	Item ID Description	Approximate Quantity and Units	Unit Price	Bid Amount
0340	643.0800 Traffic Control Arrow Boards	360.000 DAY	_____.	_____.
0350	643.0900 Traffic Control Signs	2,477.000 DAY	_____.	_____.
0360	643.1051 Traffic Control Signs PCMS with Cellular Communications	458.000 DAY	_____.	_____.
0370	650.9910 Construction Staking Supplemental Control (project) 01. 1020-02-90	LS	LUMP SUM	_____.
0380	650.9910 Construction Staking Supplemental Control (project) 02. 1050-00-92	LS	LUMP SUM	_____.
0390	650.9910 Construction Staking Supplemental Control (project) 03. 7200-00-90	LS	LUMP SUM	_____.
0400	650.9920 Construction Staking Slope Stakes	98,784.000 LF	_____.	_____.
0410	ASP.1T0A On-the-Job Training Apprentice at \$5.00/HR	2,400.000 HRS	5.00000	12,000.00
0420	ASP.1T0G On-the-Job Training Graduate at \$5.00/HR	1,380.000 HRS	5.00000	6,900.00
0430	SPV.0060 Special 01. Utility Line Opening	48.000 EACH	_____.	_____.
0440	SPV.0090 Special 01. Construction Staking Cable Barrier	134,257.000 LF	_____.	_____.
0450	SPV.0105 Special 01. Temporary Portable Rumble Strips Lane Closure	LS	LUMP SUM	_____.
Section: 0001			Total:	_____.
			Total Bid:	_____.

