



Wisconsin Department of Transportation

Division of Transportation Systems Development

Bureau of Project Development
4802 Sheboygan Avenue, Rm 601
P O Box 7916
Madison, WI 53707-7916

March 9, 2017

Telephone: (608) 266-1631
Facsimile (FAX): (608) 266-8459

NOTICE TO ALL CONTRACTORS:

Proposal #06: 3897-00-69
Iron Ridge – East County Line
STH 67 – Meadowbrook Park
Drive
CTH S
Dodge County

3897-00-70, WISC 2017 096
Iron Ridge – East County Line
STH 67 – Meadowbrook Park
Drive
CTH S
Dodge County

Letting of March 14, 2017

This is Addendum No. 03, which provides for the following:

Special Provisions:

Added Special Provisions	
Article No.	Description
55	Fence Chain Link Polyvinyl Chloride 4-Ft., Item SPV.0090.15

Deleted Special Provisions	
Article No.	Description
44	Fence Chain Link Polymer-Coated 4-Ft., Item SPV.0090.02

Schedule of Items:

Added Bid Item Quantities					
Bid Item	Item Description	Unit	Old Quantity	Revised Quantity	Proposal Total
455.0605	Tack Coat	Gal	0	44	44
SPV.0090.15	Fence Chain Link Polyvinyl Chloride 4-Ft	LF	0	282	282

Deleted Bid Item Quantities					
Bid Item	Item Description	Unit	Old Quantity	Revised Quantity	Proposal Total
SPV.0090.02	Fence Chain Link Polymer-Coated 4-Ft.	LF	282	-282	0

Plan Sheets:

Revised Plan Sheets	
Plan Sheet	Plan Sheet Title (brief description of changes to sheet)
19	Construction Details (Renamed polymer-coated fence to polyvinyl chloride)
24	Construction Details (Renamed polymer-coated fence to polyvinyl chloride and moved fence further away from retaining wall)
26	Construction Details (Added fence to wall M detail with new name of polyvinyl chloride and moved fence to 1' behind wall)
32	Construction Details (Renamed polymer-coated fence to polyvinyl chloride)
52	Erosion Control (Renamed polymer-coated fence to polyvinyl chloride)
115	Miscellaneous Quantities (Added tack coat to mq chart)
126	Miscellaneous Quantities (Renamed polymer-coated fence to polyvinyl chloride)
149	Plan and profiles (Renamed polymer-coated fence to polyvinyl chloride)
153	Plan and profiles (Renamed polymer-coated fence to polyvinyl chloride)
159	Plan and profiles (Renamed polymer-coated fence to polyvinyl chloride)
161	Plan and profiles (Renamed polymer-coated fence to polyvinyl chloride)

The responsibility for notifying potential subcontractors and suppliers of these changes remains with the prime contractor.

Sincerely,

Mike Coleman

Proposal Development Specialist
Proposal Management Section

ADDENDUM NO. 03
3897-00-69 & 3897-00-70
March 9, 2017

Special Provisions

44. **DELETED.**

55. **Fence Chain Link Polyvinyl Chloride 4-Ft., Item SPV.0090.15.**

A Description

This special provision describes furnishing and installing new black vinyl clad chain link fencing in accordance to standard spec 616, as directed by the engineer and as hereinafter provided.

B Materials

Conform to standard spec 616.2.3 and as herein after provided.

Provide chain link fence with a bonded polyvinyl chloride (PVC) coating and conforming to AASHTO M181 type IV, class B. Provide fabric woven of 9-gage wire in 2-inch diamond pattern mesh with both the top and bottom selvages knuckled. Also provide PVC-coated ties and tension bars conforming to AASHTO M181. Ensure that the color of all fencing components is black.

C Construction

Install chain link fence fabric conforming to standard spec 616.3.3 and the plan details. Touch up painted framework surfaces marred by fencing installation.

Install all line posts in concrete as shown on the standard detail drawing.

D Measurement

The department will measure Fence Chain Link Polyvinyl Chloride 4-Ft. by the linear foot, acceptably completed.

E Payment

The department will pay for the measured quantity at the contract unit price under the following bid item:

ITEM NUMBER	DESCRIPTION	UNIT
SPV.0090.15	Fence Chain Link Polyvinyl Chloride 4-Ft.	LF

Payment is full compensation for excavating; transporting, setting posts including placing concrete, erecting and tensioning all fencing components; installing grounds; painting the framework, including touch up; removing and disposing all debris, and for excess excavation and surplus materials.

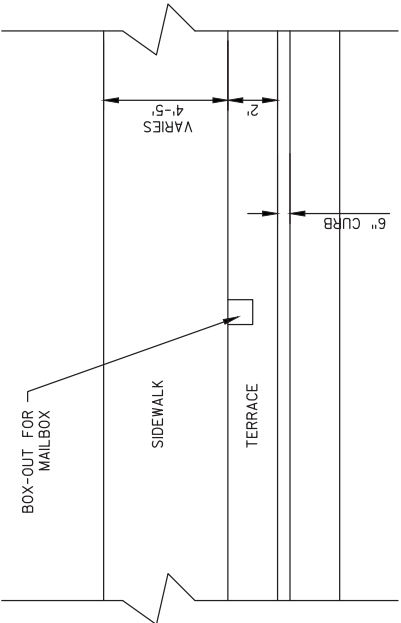
Schedule of Items

Attached, dated March 9, 2017, are the revised Schedule of Items Pages 13 and 14.

Plan Sheets

The following 8½ x 11-inch sheets are attached and made part of the plans for this proposal:
Revised: 19, 24, 26, 32, 52, 115, 126, 149, 153, 159, and 161.

END OF ADDENDUM



NOTES:

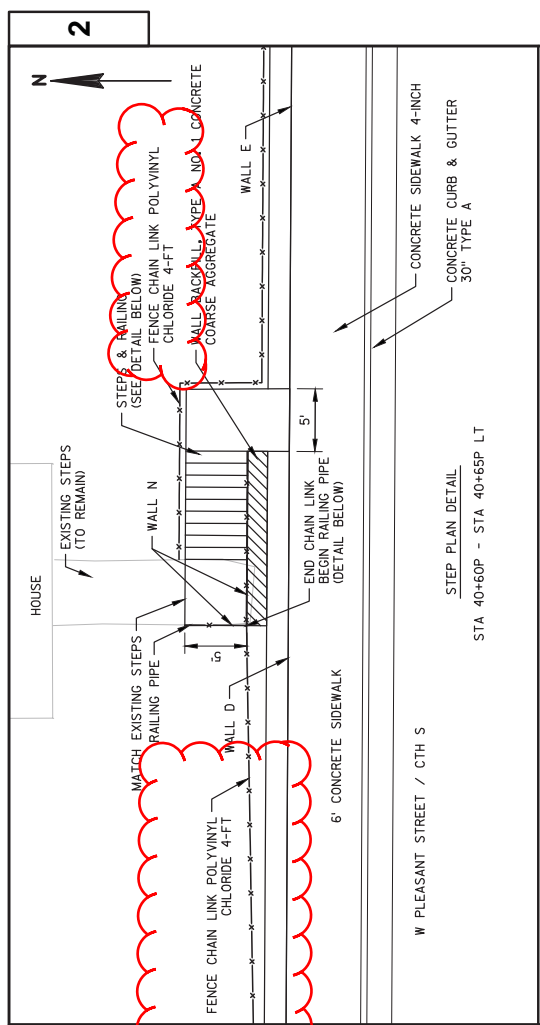
12" X 12" BOX-OUT FOR THE PLACEMENT OF MAIL BOXES IN CONCRETE TERRACE TO BE PLACED AT THE SAWCUT BETWEEN THE TERRACE AND SIDEWALK. POSITION THE BOX-OUT SO THE TOP OF THE BOX-OUT IS FLUSH WITH THE CONCRETE SURFACE.

MAILBOX BOX-OUT DETAIL

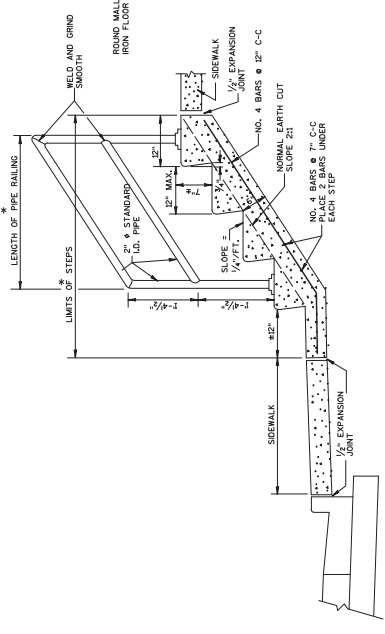
PAYMENT FOR BOX-OUT IS INCLUDED IN CONCRETE SIDEWALK 4-INCH

* STATION	OFFSET	NOTES
28+50P	LT	233 W PLEASANT
	LT	235 W PLEASANT
	LT	237 W PLEASANT
	LT	239 W PLEASANT
	LT	225 W PLEASANT
	LT	227 W PLEASANT
	LT	229 W PLEASANT
	LT	231 W PLEASANT (ALL BOXES ON 2 POSTS)
	LT	221 W PLEASANT
	LT	217 W PLEASANT
	LT	107 W PLEASANT (BOTH 107 & 109 ON 1 POST)
	LT	200 S MAIN ST
	LT	204 S MAIN ST
	LT	208 S MAIN ST
	LT	212 S MAIN ST
	LT	216 S MAIN ST
31+90P	LT	
33+75P	LT	
43+87P	LT	
58+15	LT	
59+50	LT	
60+35	LT	
60+95	LT	
63+75	LT	

*EXACT LOCATION TO BE DETERMINED IN FIELD BY THE ENGINEER. THERE MAY BE OTHERS NOT LISTED.



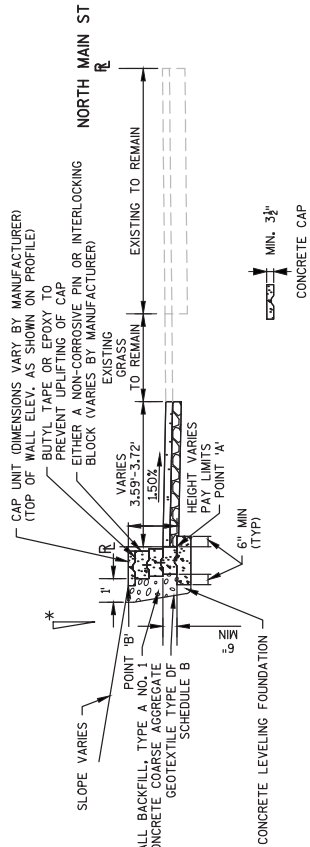
STEP PLAN DETAIL
STA 40+60P - STA 40+65P LT



CONCRETE STEPS DETAIL
STA 21+26.53H LT
STA 60+81.23 LT
STA 40+51.2P - 40+59.93P LT

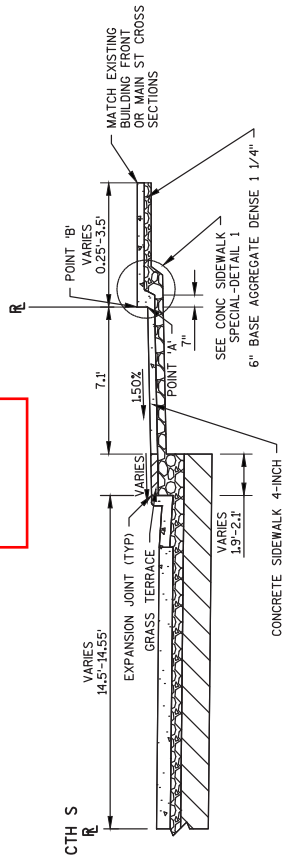
NOTE:
THE EXACT LOCATION, WIDTHS, & NUMBER OF STEPS TO BE DETERMINED BY THE ENGINEER IN THE FIELD.
CONCRETE CURB AND PIPE RAILING NOT REQUIRED ON STEPS WITH 2 RISERS OR LESS.
MINIMUM WIDTH OF STEP EQUALS 4 FEET.
RISERS MUST BE PLACED ON LEFT ACCORDING SIDE OF STEPS ONLY.
* = AS LISTED ON NO SHEET.

Addendum No. 03
ID 3897-00-70
Revised Sheet 19
March 9, 2017



TYPICAL SECTION WALL MODULAR BLOCK GRAVITY LRFD

STA 45+02 - STA 45+38 LT (WALL D)



TYPICAL SECTION FOR CONCRETE SIDEWALK SPECIAL

STA 46+00P - STA 46+40P RT (REVERSED) (WALL J)

NOTES:
ELEVATIONS AND LENGTHS ARE APPROXIMATE.
CONSTRUCT TO FIT TERRAIN.
DRAWING NOT TO SCALE.

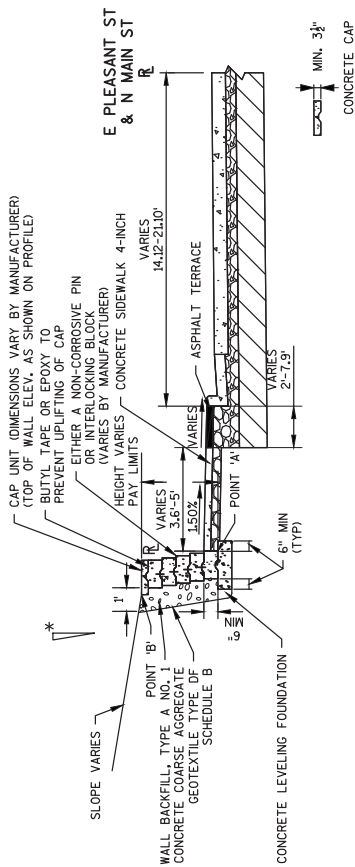
RETAINING WALL BLOCK DEPTH MIN. 8" - MAX. 12".

DEPTH VARIES BY HEIGHT OF STRUCTURE AND MANUFACTURER

POINT A AND B REFER TO THE PLAN AND PROFILE TOPS AND BOTTOMS OF WALLS. SEE THE PLAN AND PROFILES FOR MORE DETAILS.

*SETBACK VARIES BY MANUFACTURER.
MAXIMUM FRONT FACE SLOPE VERTICAL IS 1 HORIZONTAL TO 8 VERTICAL.
ALLOWABLE SOIL BEARING CAPACITY = 3,000 PSF.

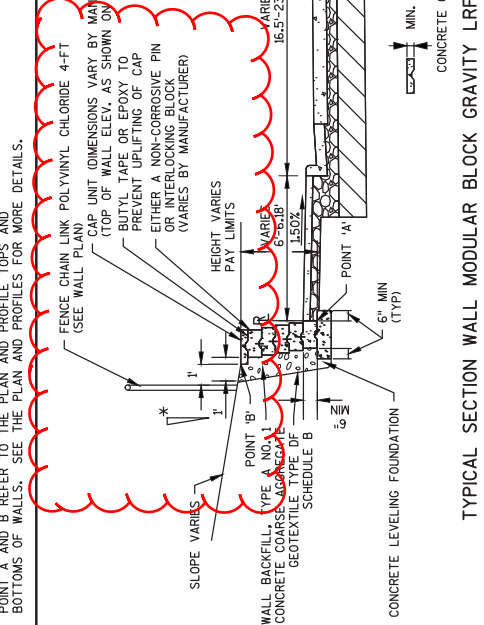
Addendum No. 03
ID 3897-00-70
Revised Sheet 26
March 9, 2017



TYPICAL SECTION WALL MODULAR BLOCK GRAVITY LRFD

STA 45+95P - STA 46+10P LT (WALL D)

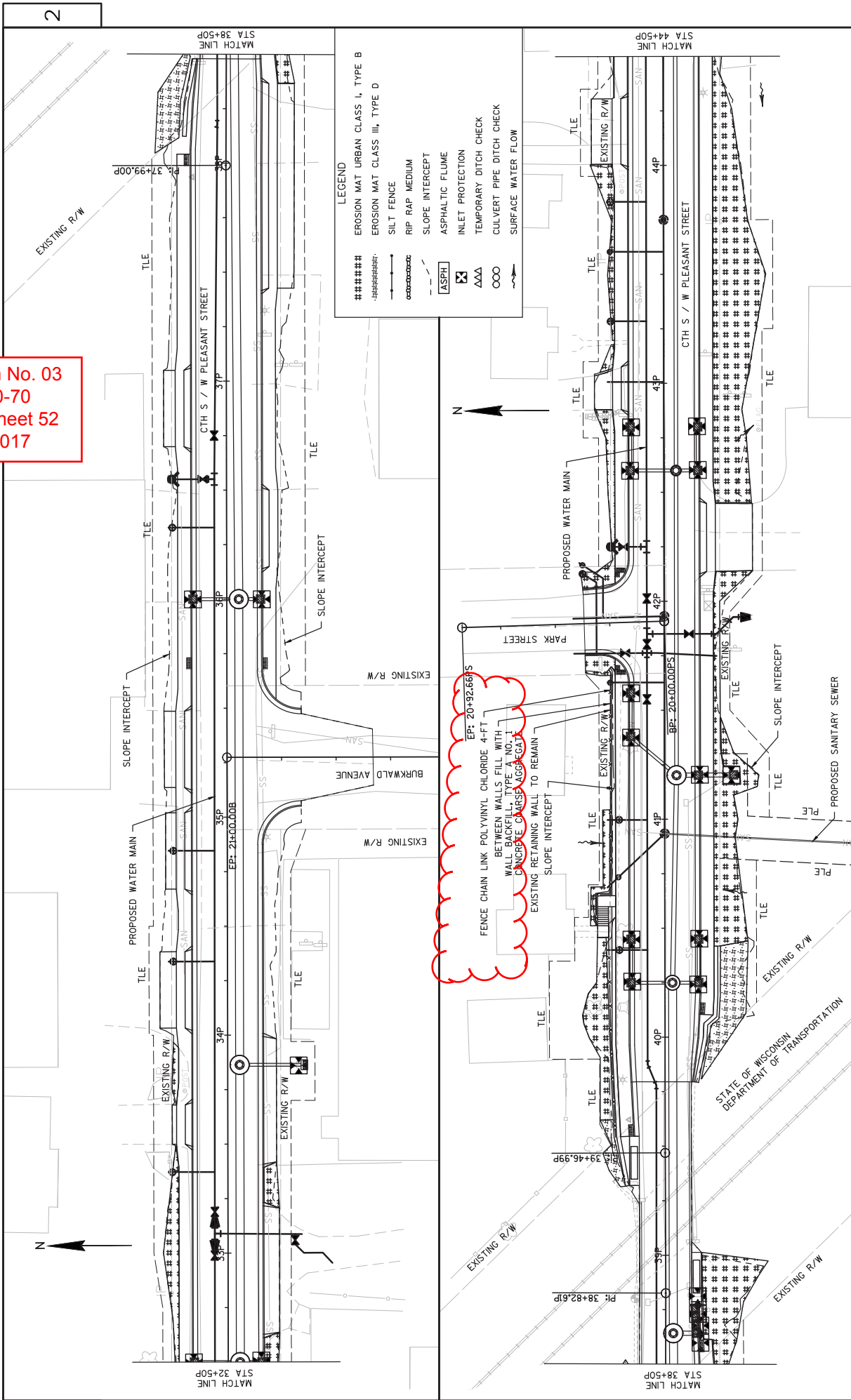
*SETBACK VARIES BY MANUFACTURER.
MAXIMUM FRONT FACE SLOPE VERTICAL IS 1 HORIZONTAL TO 8 VERTICAL.



TYPICAL SECTION WALL MODULAR BLOCK GRAVITY LRFD

STA 58+57 - STA 59+19 LT (WALL M)

Addendum No. 03
 ID 3897-00-70
 Revised Sheet 52
 March 9, 2017



PROJECT NO: 3897-00-70	HWY: CTH S	COUNTY: DODGE	EROSION CONTROL	SHEET 52
FILE NAME : F:\2205\226\00226003\CADD\SHEETPLAN\EROSION CONTROL_022001-EC.DWG	LAYOUT NAME - 022001-EC - 02	PLOT DATE : 3/8/2017 4:03 PM	PLOT BY : BOBBY MAXWELL	PLOT SCALE : 1" IN=40 FT
STATE OF WISCONSIN DEPARTMENT OF TRANSPORTATION			WISDOT/CADD SHEET 44	

ASPHALT PAVEMENT ITEMS

STATION - STATION	LOCATION	THICKNESS INCHES	455.0605 TACK COAT GAL	465.0105 ASPHALTIC SURFACE TON	415.6000 S ROUT AND SEAL LF
21+25.00P - 25+46.00P	LT	4	9.4	42	421
21+25.00P - 25+46.00P	RT	4	9.4	42	421
21+25P - 21+28P	MAINLINE	4.5	0.5	3	---
30+50.89W - 30+53.89W	MAINLINE	4.5	0.6	3	---
20+41.08I - 20+44.08I	MAINLINE	4.5	0.6	3	---
20+34.55I - 20+41.08I	RT	4.5	0.1	0.4	---
20+25.00I - 20+41.08I	LT	4.5	0.2	1	---
38+47.88P - 39+79.56P	MAINLINE	4.5	17.6	89	---
20+36.77PS - 20+39.77PS	MAINLINE	4.5	0.5	2	---
44+53P - 45+40P	LT	2	1.3	3	---
45+95P - 46+43P	LT	4	0.6	2	---
46+43P - 46+46P	MAINLINE	4.5	0.4	2	---
45+34.56 - 45+37.56	MAINLINE	4.5	0.4	2	---
20+88H - 21+11H	LT	4	0.4	1	---
20+46.38HS - 20+49.38HS	MAINLINE	4.5	0.5	2	---
21+03.74H - 21+06.74H	MAINLINE	4.5	0.4	2	---
20+40.59A - 20+43.56A	MAINLINE	4.5	0.3	2	---
70+50	LT	4	0.5	2	---
70+52 - 70+55	MAINLINE	4.5	0.5	2	---
TOTAL PROJECT 3897-00-70			44	206	842

ASPHALTIC DRIVEWAYS

STATION	LOCATION	BASE THICKNESS INCHES	DENSE 1 1/4 INCH TON	ASPHALT THICKNESS INCHES	ASPHALTIC SURFACE DRIVEWAYS AND FIELD ENTRANCES TON	624.0100 WATER MGAL
21+50P	LT	4	3	2	1.4	0.05
23+13P	LT	4	8	2	4.0	0.12
28+75P	LT	4	6	2	2.8	0.09
30+75P	RT	4	9	2	4.3	0.14
30+75P	RT	6	31	2	4.3	0.47
31+50P	RT	4	3	2	1.4	0.05
32+00P	LT	4	4	2	1.7	0.06
33+00P	RT	4	10	2	5.1	0.15
33+40P - 35+05P	RT	4	35	2	17.4	0.53
33+68P	LT	4	1	2	0.4	0.02
33+75P	RT	4	8	2	4.2	0.12
34+25P	LT	4	6	2	3.2	0.09
34+38P - 34+67P	LT	4	5	2	2.4	0.08
34+75P	LT	4	4	2	2.0	0.06
35+02P - 35+14P	LT	4	1	2	0.7	0.02
35+25P	LT	4	5	2	2.3	0.08
35+48P - 36+70P	LT	4	19	2	9.3	0.29
35+50P - 37+43P	RT	4	39	2	19.3	0.59
36+85P	LT	4	5	2	2.3	0.08
37+05P - 38+12P	LT	4	17	2	8.2	0.26
37+75P	RT	4	18	2	8.9	0.27
42+25P	RT	4	13	2	6.4	0.20
44+25P	LT	4	7	2	3.5	0.11
44+37P	LT	2	2	6	2.0	---
44+80P	RT	4	10	2	4.8	0.15
47+88 - 49+92	RT	4	32	2	15.9	0.48
48+20	RT	4	8	2	4.1	0.12
49+40	RT	4	15	2	7.5	0.23
49+80	RT	4	8	2	4.2	0.12
49+90	RT	4	0.0	2	0.1	0.00
51+65 - 52+13	SS RT	4	187	2	92.5	2.81
52+20	RT	4	7	2	3.5	0.11
52+41 - 54+16	RT	4	27	2	13.3	0.41
52+60	RT	4	2	2	1.1	0.03
54+00	RT	4	8	2	3.9	0.12
56+25	LT	4	5	2	2.8	0.08
21+50H	LT	4	1	2	0.7	0.02
21+50H	LT	6	5	2	1.0	0.08
56+25	LT	4	2	2	1.0	0.03
56+65	LT	4	2	2	1.0	0.03
58+65	LT	6	1	2	---	0.02
60+50	LT	4	5	2	2.5	0.06
69+00	RT	4	14	2	7.1	0.21
TOTAL PROJECT 3897-00-70			596		280	8.9

**ADDITIONAL QUANTITIES LISTED ELSEWHERE

ASPHALTIC FLUMES

STATION	LOCATION	SI
29+40P	RT	16
TOTAL PROJECT 3897-00-70		16

TEMPORARY SHORING

STATION	LOCATION	SHORING SF
38+75P - 39+50P	RT	750
41+04P - 41+66P	LT	186
TOTAL PROJECT 3897-00-70		936

Addendum No. 03
 ID 3897-00-70
 Revised Sheet 115
 March 9, 2017

ALL ITEMS ARE CATEGORY 0010 ON THIS SHEET.

Addendum No. 03
ID 3897-00-70
Revised Sheet 126
March 9, 2017

3

SAVING PAVEMENT ITEMS

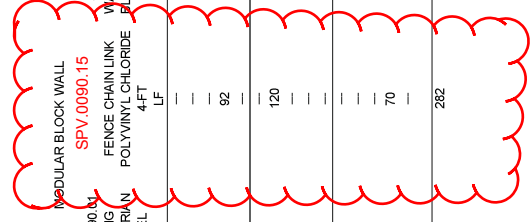
STATION	LOCATION	680.0150 SAWING ASPHALT LF	680.0250 SAWING CONCRETE LF	NOTES
21+25P	CROSSING	12	30	
21+50P	LT	10	—	
23+15P	LT	10	—	
30+51W	CROSSING	32	5	
20+44I	CROSSING	34	—	
20+25I-20+44I	RT	21	—	
20+35I-20+44I	LT	12	—	
33+48P	LT	25	—	
33+68P	LT	18	—	
33+48P-34+90P	RT	155	—	
35+05P-37+65P	LT	200	—	
35+68P-38+25P	RT	230	—	
20+37PS	CROSSING	25	—	
42+25P	RT	31	—	
43+00P	LT	—	16	
44+16P	LT	30	—	
44+30P-44+53P	LT	23	—	
44+80P	RT	51	—	
46+23P	RT	—	4	
46+43P	CROSSING	26	9	
44+85	LT	—	4	
45+38	CROSSING	52	8	
46+00-46+28	LT	—	30	
45+80-47+97	RT	—	217	
47+27-47+73	LT	—	60	
47+80	LT	24	—	
47+97-49+92	RT	291	—	
47+97-49+36	LT	—	139	
49+52-49+84	LT	—	32	
49+90	LT	12	—	
49+95	RT	—	4	
50+02-50+52	LT	—	50	
50+45	RT	—	10	
50+63	LT	—	4	
50+77-51+08	RT	—	31	
51+60	LT	—	25	
51+85	LT	—	4	
52+07	LT	—	4	
52+60	LT	—	50	
51+43-52+85	RT	170	—	
52+77-53+70	LT	—	95	
53+80	LT	17	—	
54+00	RT	60	—	
54+20	LT	—	5	
55+74	LT	—	5	
56+25	LT	17	3	
20+17HS	LT	—	5	
20+46HS	CROSSING	25	—	
21+07H	CROSSING	22	—	
21+27H	LT	—	3	
59+25	LT	20	—	
59+50	RT	—	10	
60+10	RT	—	26	
60+50	LT	34	—	
20+41A	CROSSING	18	—	
63+65	LT	—	15	
70+55	CROSSING	16	20	
511-96	STORM SEWER	450	—	
UNDISTRIBUTED		100	150	
TOTAL PROJECT 3897-00-70		2,263	1,073	

CRACK AND DAMAGE SURVEY

LOCATION	LS	NOTES
W PLEASANT ST & S MAIN ST	1	APPROX 17 PARCELS
TOTAL PROJECT 3897-00-70	1	

CONNECTION TO SUMP

STATION - STATION	LOCATION	CONNECTION TO RESIDENTIAL SUMP EACH	CONNECTION TO DRAIN TILE EACH
44+50P - 45+50P	LT	1	—
63+00 - 64+00	LT	—	1
TOTAL PROJECT 3897-00-70		1	1



STATION - STATION	WALL	LOCATION	CONNECTION TO RESIDENTIAL SUMP EACH	CONNECTION TO DRAIN TILE EACH	SPV.0165.01 WALL MODULAR BLOCK GRAVITY LRFDF	SPV.0165.03 COARSE AGGREGATE STONE MULCH SF	645.0111 GEOTEXTILE TYPE DF SCHEDULE A SF
26+20P - 28+54P	A	LT	236	—	865	—	—
28+88P - 29+73P	B	LT	86	—	247	—	—
38+12P - 38+48P	C	LT	—	—	127	—	—
39+32P - 40+60P	D	LT	—	—	547	—	—
40+46P - 40+60P	N	LT	92	—	37	—	—
39+80P - 40+43P	F	RT	—	—	282	—	—
40+51P - 41+70P	E	LT	120	—	462	—	—
44+31P - 44+53P	G	LT	22	—	—	—	—
44+80P - 45+38P	H	LT	59	—	—	—	—
45+02 - 46+11P	I	LT	—	—	57	—	—
46+14P - 46+33	J	RT & LT	60	—	—	—	—
45+98 - 47+51	K	LT	157	—	—	—	—
47+16 - 47+60	L	LT	54	—	—	—	—
58+57 - 59+19	MI	LT	—	—	129	—	—
59+79 - 60+30	—	LT	—	—	—	291	36
TOTAL PROJECT 3897-00-70			664	282	2,753	281	36

SALVAGE AND RESET LANDSCAPING

STATION - STATION	LOCATION	SPV.0165.04 SALVAGE AND RESET LANDSCAPING SF
46+41 - 47+25	LT	73
51+01 - 51+41	LT	30
51+65 - 51+80	LT	15
TOTAL PROJECT 3897-00-70		118

U/L0'S

STATION - STATION	LOCATION	SPV.0060.03 UTILITY LINE OPENING (U/L0) EACH	STATION - STATION	LOCATION	SPV.0195.01 EXCAVATION, HAULING AND DISPOSAL OF CONTAMINATED SEDIMENT AND DEWATERING OF CONTAMINATED SEDIMENT TON
50+79.54	189 RT	1	—	—	—
51+86.81	5.5 RT	1	—	—	—
UNDISTRIBUTED		3	—	—	—
TOTAL PROJECT 3897-00-70		5	—	—	—

ALL ITEMS ARE CATEGORY 0010 ON THIS SHEET.

PROJECT NO: 3897-00-70

HWY: CTH S

COUNTY: DODGE

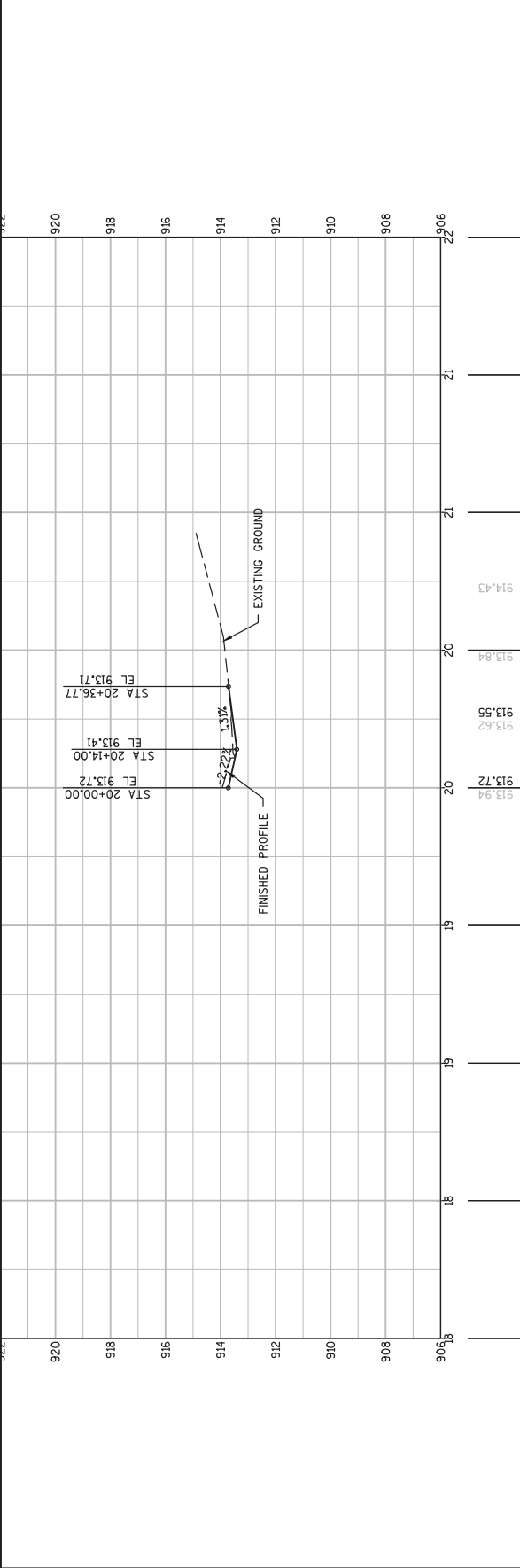
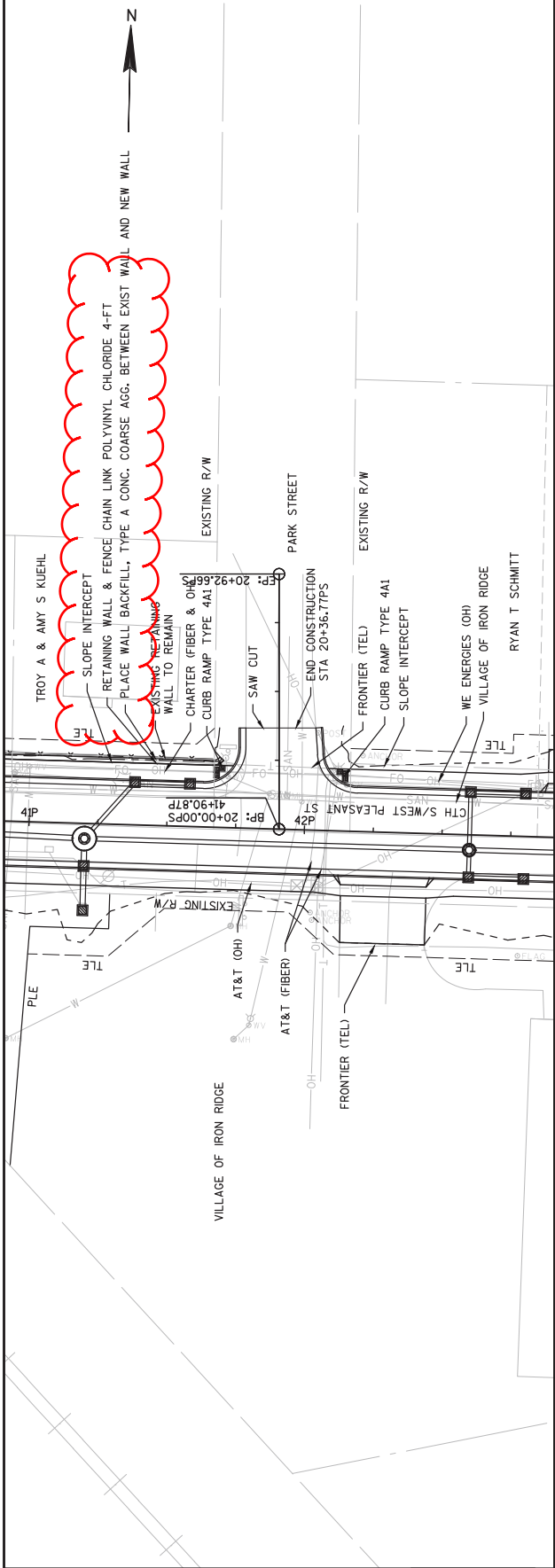
MISCELLANEOUS QUANTITIES

SHEET

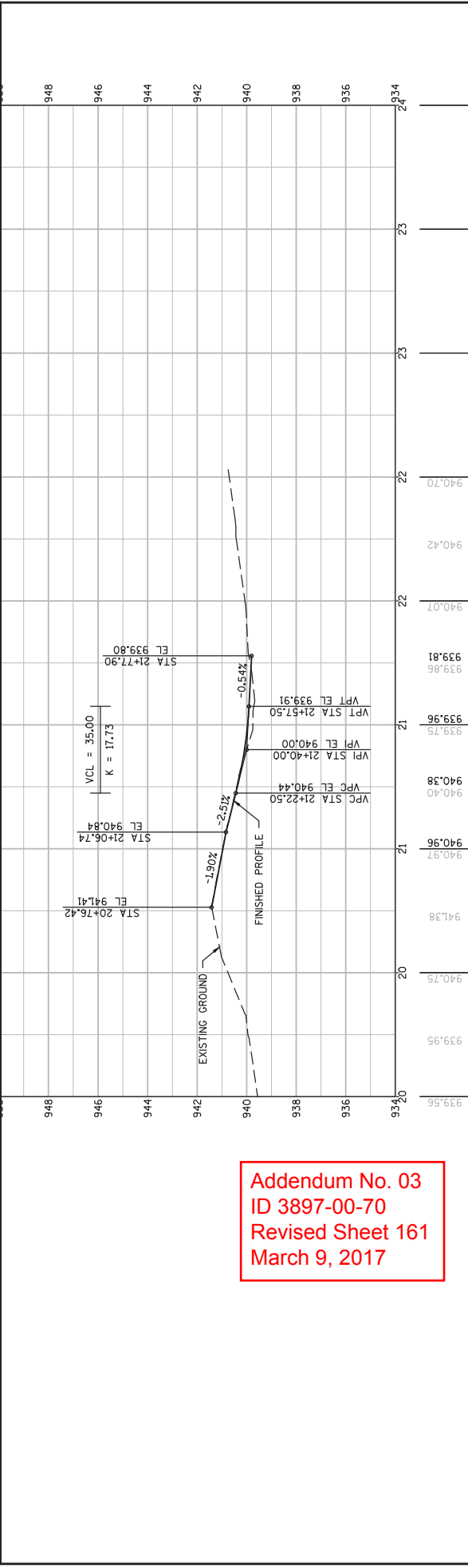
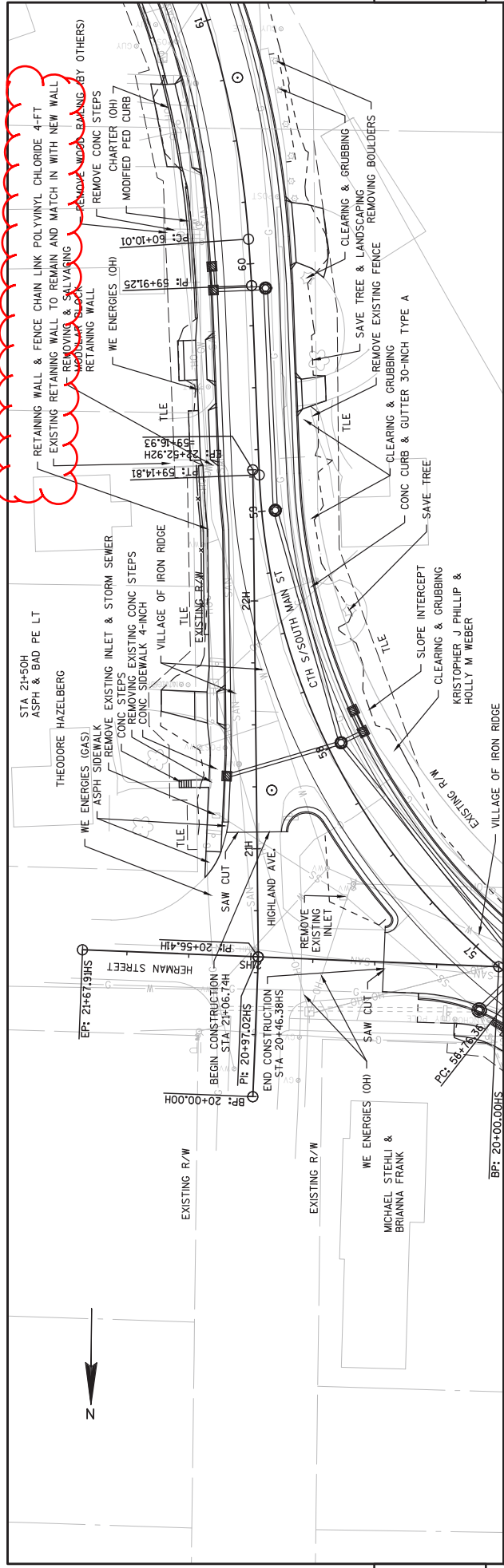
126

E

Addendum No. 03
 ID 3897-00-70
 Revised Sheet 159
 March 9, 2017



PROJECT NO: 3897-00-70	HWY: CTH S	COUNTY: DODGE	PLAN AND PROFILE: PARK STREET	SHEET 159	E
FILE NAME : F:\2205\226\00226003\CADD\SHETS\PLAN\PLAN & PROFILES\CTH S SIDEROADS RRP.DWG			PLOT NAME :		
LAYOUT NAME - 04			PLOT BY : BOBBI MAXWELL		
PLOT DATE : 3/8/2017 4:25 PM			PLOT SCALE : 1 IN:40 FT		



Addendum No. 03
 ID 3897-00-70
 Revised Sheet 161
 March 9, 2017

PROJECT NO: 3897-00-70	HWY: CTH S	COUNTY: DODGE	PLAN AND PROFILE: HIGHLAND AVE.
FILE NAME : F:\2205\226\00226003\CADD\SHEETS\PLAN & PROFILES\CTH S SIDEROADS FRP.DWG		PLOT DATE : 3/8/2017 4:25 PM	
LAYOUT NAME - 06		PLOT BY : BOBBY MAXWELL	
		PLOT NAME : HIGHLAND AVE	
		PLOT SCALE : 1 IN=40 FT	
SHEET	161	E	



Proposal Schedule of Items

Proposal ID: 20170314006 Project(s): 3897-00-69, 3897-00-70

Federal ID(s): N/A, WISC 2017096

SECTION: 0001 Contract Items

Alt Set ID: Alt Mbr ID:

Proposal Line Number	Item ID Description	Approximate Quantity and Units	Unit Price	Bid Amount
1910	SPV.0090 Special 03. Modified Pedestrian Curb, 12-Inch	153.000 LF	_____.	_____.
1920	SPV.0090 Special 05. Forcemain Sewer Pipe 4-Inch	500.000 LF	_____.	_____.
1930	SPV.0090 Special 06. Forcemain Sewer Pipe 6-Inch	500.000 LF	_____.	_____.
1940	SPV.0090 Special 07. Sanitary Sewer Pipe 8-Inch	873.000 LF	_____.	_____.
1950	SPV.0090 Special 08. Sanitary Lateral 4-Inch or 6-Inch	425.000 LF	_____.	_____.
1960	SPV.0090 Special 09. Water Main 4-Inch PVC	25.000 LF	_____.	_____.
1970	SPV.0090 Special 10. Water Main 6-Inch PVC	172.000 LF	_____.	_____.
1980	SPV.0090 Special 11. Water Main 8-Inch PVC	3,403.000 LF	_____.	_____.
1990	SPV.0090 Special 12. Water Main 8-Inch DI	132.000 LF	_____.	_____.
2000	SPV.0090 Special 13. Water Main 12-Inch PVC	136.000 LF	_____.	_____.
2010	SPV.0090 Special 14. Water Service 1-Inch To 2-Inch	1,208.000 LF	_____.	_____.
2020	SPV.0105 Special 02. Concrete Pavement Joint Layout	LS	LUMP SUM	_____.
2030	SPV.0120 Special 01. Water for Seeded Areas	170.000 MGAL	_____.	_____.
2040	SPV.0165 Special 01. Wall Modular Block Gravity LRFD	2,753.000 SF	_____.	_____.
2050	SPV.0165 Special 02. Concrete Sidewalk Special	2,756.000 SF	_____.	_____.



Proposal Schedule of Items

Proposal ID: 20170314006 Project(s): 3897-00-69, 3897-00-70

Federal ID(s): N/A, WISC 2017096

SECTION: 0001 Contract Items

Alt Set ID: Alt Mbr ID:

Proposal Line Number	Item ID Description	Approximate Quantity and Units	Unit Price	Bid Amount
2060	SPV.0165 Special 03. Coarse Aggregate Stone Mulch	291.000 SF	_____.	_____.
2070	SPV.0165 Special 04. Salvage and Reset Landscaping	118.000 SF	_____.	_____.
2080	SPV.0165 Special 05. Removing & Salvaging Modular Block Retaining Wall	24.000 SF	_____.	_____.
2090	SPV.0195 Special 01. Excavation, Hauling, Disposal and Dewatering of Contaminated Sediment	1,255.000 TON	_____.	_____.
2100	608.0412 Storm Sewer Pipe Reinforced Concrete Class IV 12-Inch	514.000 LF	_____.	_____.
2110	608.0415 Storm Sewer Pipe Reinforced Concrete Class IV 15-Inch	388.000 LF	_____.	_____.
2120	608.0418 Storm Sewer Pipe Reinforced Concrete Class IV 18-Inch	101.000 LF	_____.	_____.
2130	608.0421 Storm Sewer Pipe Reinforced Concrete Class IV 21-Inch	412.000 LF	_____.	_____.
2140	608.0424 Storm Sewer Pipe Reinforced Concrete Class IV 24-Inch	235.000 LF	_____.	_____.
2150	608.0436 Storm Sewer Pipe Reinforced Concrete Class IV 36-Inch	161.000 LF	_____.	_____.
2160	455.0605 Tack Coat	44.000 GAL	_____.	_____.
2170	SPV.0090 Special 15. Fence Chain Link Polyvinyl Chloride 4-Ft	282.000 LF	_____.	_____.

Section: 0001 Total: _____.

Total Bid: _____.