



Wisconsin Department of Transportation

Division of Transportation Systems Development

Bureau of Project Development
 4802 Sheboygan Avenue, Rm 601
 P O Box 7916
 Madison, WI 53707-7916

Telephone: (608) 266-1631
 Facsimile (FAX): (608) 266-8459

March 3, 2017

NOTICE TO ALL CONTRACTORS:

Proposal 17: 3370-05-70, WISC 2017106
Bushnell Road
Burlington City Limit to Kenosha County Line
STH 142
Racine County

Letting of March 14, 2017

This is Addendum No. 01, which provides for the following:

Schedule of Items:

Revised Bid Item Quantities					
Bid Item	Item Description	Unit	Old Quantity	Revised Quantity	Proposal Total
204.0110	Removing Asphaltic Surface	SY	1,812	-109	1,703
204.0150	Removing Curb & Gutter	LF	2,546	-35	2,511
521.0118	Culvert Pipe Corrugate Steel 18-Inch	LF	344	-30	314
521.1018	Apron Endwalls for Culvert Pipe Steel 18-Inch	EAC H	18	-2	16
601.0553	Concrete Curb & Gutter 4-Inch Sloped 36-Inch Type D	LF	1,744	-35	1,709
650.6000	Construction Staking Pipe Culverts	EAC H	17	-1	16
690.0150	Sawing Asphalt	LF	11,010	-70	10,940
SPV.0090.03	Ditching and Shaping	LF	1,270	-139	1,131

Plan Sheets:

Revised Plan Sheets	
Plan Sheet	Plan Sheet Title (brief description of changes to sheet)
3	Updated City of Burlington Street Department contact.
52	Removed Curb & Gutter Lines at Station 182+25 LT.
199	Updated items 204.0110 and 204.0150 on Misc. Qty tables.
203	Removed a duplicate quantity from bottom Misc. Qty table.
207	Updated item 601.0553 on Misc. Qty table.
209	Updated item SPV.0090.03 on Misc. Qty table.
211	Updated item 690.0150 on Misc. Qty table.

248	Eliminated driveway removal at Station 150+35 RT.
250	Eliminated driveway removal at Station 182+25 LT.
252	Eliminated driveway removal at Station 204+95 RT.
254	Eliminated driveway removal at Station 236+40 RT.

Schedule of Items

Attached, dated March 3, 2017, are the revised Schedule of Items Pages 1, 3, 5, and 11 – 13.

Plan Sheets

The following 8½ x 11-inch sheets are attached and made part of the plans for this proposal:
Revised: 3, 52, 199, 203, 207, 209, 211, 248, 250, 252, and 254.

The responsibility for notifying potential subcontractors and suppliers of these changes remains with the prime contractor.

Sincerely,

Mike Coleman

Proposal Development Specialist
Proposal Management Section

END OF ADDENDUM

UTILITY CONTACTS

AT&T WISCONSIN
CHRIS DUNCAN
2005 PEWAUKEE ROAD
WAUKESHA, WI 53188
(262) 896-7678
CD8946@ATT.COM

AMR PIPELINE CO.
LARRY HUBER
W9325 PIPELINE LANE
EDEN, WI 53019
(920) 477-2235 EXT. 13
LAWRENCE_HUBER@TRANSCANADA.COM

ATC MANAGEMENT, INC.
MIKE OLSEN
801 O'KEEFE ROAD
PO BOX 6113
DEPERE, WI 54115 6113
(920) 338-6582
MOLSEN@ATCLLC.COM

BURLINGTON DPW, CITY OF
JUDY GERULAT
2200 S PINE STREET
BURLINGTON, WI 53105
(262) 539-3770
JUDYG@BURLINGTON-WI.GOV

BROWNS LAKE SANITARY DISTRICT
TIM LYNCH, P.E.
5482 S. WESTRIDGE DRIVE
NEW BERLIN, WI 53151
(262) 206-5168
TL.LYNCH@LYNCH-ENGINEERING.COM

MIDWEST FIBER NETWORKS
RICHARD TRGOVEC
6070 NORTH FLINT ROAD
GLENDALE, WI 53209
(414) 672-5612
RTRGOVEC@MIDWESTFIBERNETWORKS.COM

TDS METROCOM
MATT SCHULTE
16924 WEST VICTOR ROAD
NEW BERLIN, WI 53151
(262) 754-3063
MATT.SCHULTE@TDSTELECOM.COM

TIME WARNER CABLE
TW CABLE ENGINEERING
1320 N. MARTIN LUTHER KING JR. DR.
MILWAUKEE, WI 53212
(414) 277-4045
WIS.ENGINEERING@TWCABLE.COM

WE ENERGIES (ELECTRIC & GAS)
LATROY BRUMFIELD
333 W. EVERETT ST - A279
MILWAUKEE, WI 53203
(414) 221-5617
LATROY.BRUMFIELD@WE-ENERGIES.COM

WE ENERGIES GAS FIELD CONTACT
SCOTT BOHN
500 SOUTH 116ST
WEST ALLIS, WI 53214
(414) 587-3983
SCOTT.BOHN@WE-ENERGIES.COM

WE ENERGIES ELECTRIC FIELD CONTACT
ED HERDA
500 SOUTH 116ST
WEST ALLIS, WI 53214
(262) 763-1013
ED.HERDA@WE-ENERGIES.COM

CITY OF BURLINGTON FIRE CHIEF
PERRY HOWARD
165 W. WASHINGTON ST.
BURLINGTON, WI 53105
(262) 763-7842
PHOWARD@BURLINGTON.WI.GOV

CITY OF BURLINGTON POLICE CHIEF
PETER NIMMER
224 E. JEFFERSON ST.
BURLINGTON, WI 53105
(262) 342-1100

CITY OF BURLINGTON STREET DEPARTMENT
JIM BERGLES
2200 S. PINE ST.
BURLINGTON, WI 53105
(262) 539-3770
JBERGLES@BURLINGTON-WI.GOV

TOWN OF BURLINGTON FIRE DEPARTMENT
ED UMNUIS
32288 BUSHNELL RD.
BURLINGTON, WI 53105
(2623) 763-3070 EXT 4

TOWN OF BURLINGTON POLICE DEPARTMENT
MICHAEL SEVICK
32288 BUSHNELL RD.
BURLINGTON, WI 53105
(262) 763-9558
CHIEFSEVICK@TOWNOFBURLINGTON.COM

TOWN OF BURLINGTON HIGHWAY DEPARTMENT
SCOTT GOLDSCHMIDT
32288 BUSHNELL RD.
BURLINGTON, WI 53105
(2623) 763-3070 EXT 3

RACINE COUNTY SURVEYOR
MARK R. MADSEN P.E., R.L.S.
1458 HORIZON BLVD, SUITE 200
RACINE, WI 53406
(262) 634-5588
MMADSEN@NMBSC.NET

AGENCY CONTACTS

RACINE COUNTY SHERIFF
CHRISTOPHER SCHWALING
717 WISCONSIN AVENUE
RACINE, WI 53403
(262) 636-3822
RCSHERIFF@GORACINE.ORG

RACINE COUNTY DIRECTOR OF PUBLIC WORKS
JULIE ANDERSON
14200 WASHINGTON AVE
STURTEVANT, WI 53177
(262) 886-8470
JULIE.ANDERSON@GORACINE.ORG

KENOSHA COUNTY SHERIFF
DAVID BETH
1000-55TH ST.
KENOSHA, WI 53140
(262) 605-5101

KENOSHA COUNTY DIRECTOR OF PUBLIC WORKS
RAY ARBET
19600 75TH ST.
BRISTOL, WI 53104-9772
(262) 857-1870

HIGHWAY MAINTENANCE
GAIL LANTZ
141 NW BARSTOW STREET
PO BOX 798
WAUKESHA, WI 53187-0798
(262) 548-6737
GAIL.LANTZ@DOT.WI.GOV

Call 811 or Toll Free (800) 242-8511
www.DiggersHotline.com



Addendum No. 01
ID 3370-05-70
Revised Sheet 3
March 3, 2017

PROJECT NO: 3370-05-70

HWY: STH 142

COUNTY: RACINE

GENERAL NOTES AND UTILITY CONTACTS

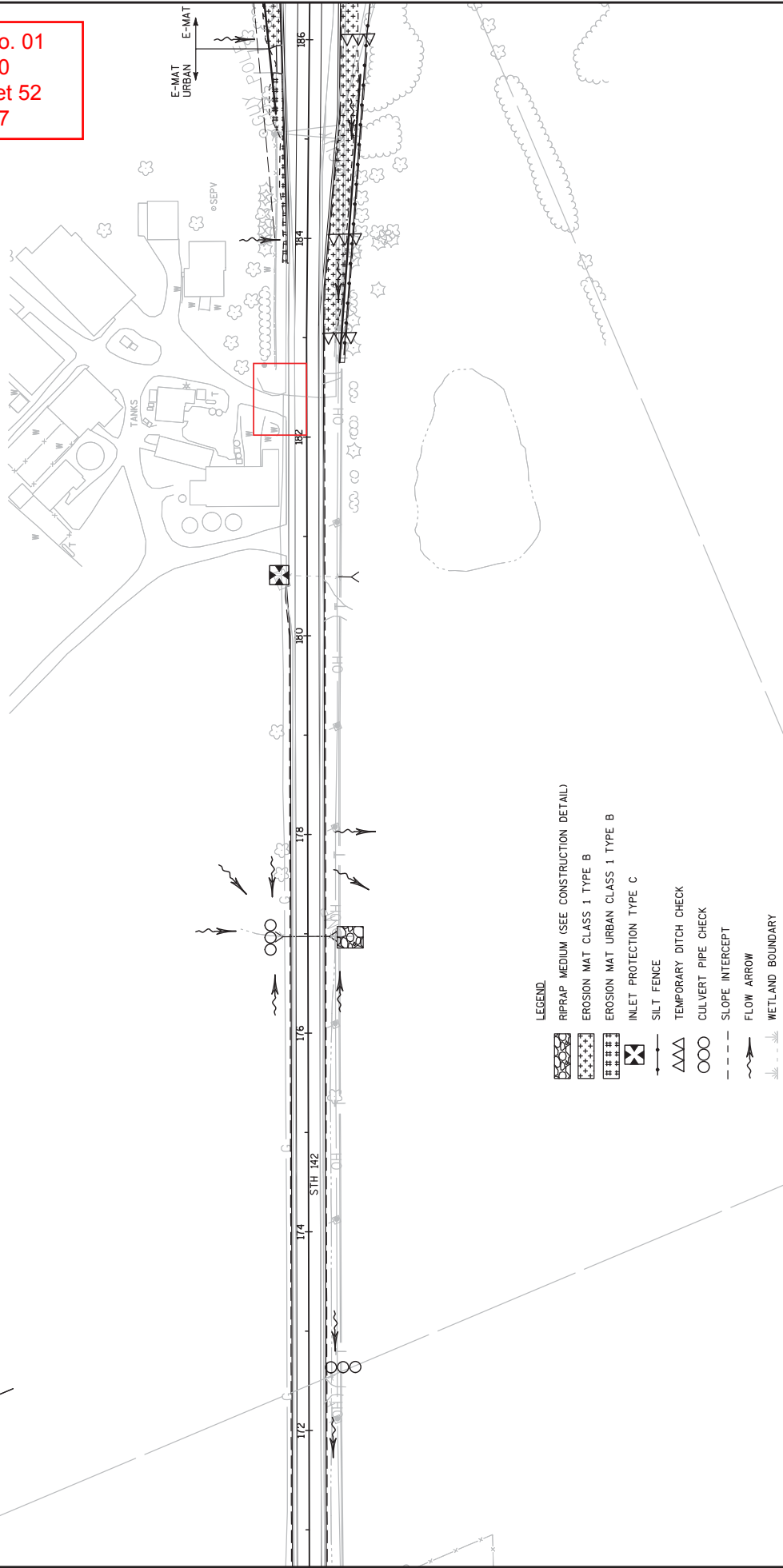
SHEET: 3 E

PLOT SCALE: 1:1

PLOT BY: _____ PLOT NAME: _____

PLOT DATE: _____

Addendum No. 01
 ID 3370-05-70
 Revised Sheet 52
 March 3, 2017



- LEGEND**
- RIPRAP MEDIUM (SEE CONSTRUCTION DETAIL)
 - EROSION MAT CLASS 1 TYPE B
 - EROSION MAT URBAN CLASS 1 TYPE B
 - INLET PROTECTION TYPE C
 - SILT FENCE
 - TEMPORARY DITCH CHECK
 - CULVERT PIPE CHECK
 - SLOPE INTERCEPT
 - FLOW ARROW
 - WETLAND BOUNDARY

Addendum No. 01
ID 3370-05-70
Revised Sheet 199
March 3, 2017

LOCATION	REMOVING ASPHALTIC SURFACE		MILLING 204.0125 TON
	204.0110 SY	BUTT JOINTS 204.0115 SY	
STH 142			
STA 39+00 - 62+91	--	188	1,445
STA 87+00 - 101+50	--	167	797
STA 143+50 - 291+50	--	300	8,580
SIDE ROADS			
BREVER ROAD	--	122	--
WHEATLAND ROAD	--	166	--
WOMACK LANE	--	112	--
SHAGBARK LANE	--	122	--
HORSESHOE TRAIL	--	124	--
CTH J	--	238	--
DWY			
STA 41+00 RT	27	--	--
STA 41+92 LT	39	--	--
STA 44+25 - 45+50 LT	440	--	--
STA 61+69 LT	128	--	--
STA 61+69 RT	100	--	--
STA 93+05 LT	217	--	--
STA 95+61 RT	44	--	--
STA 156+88 RT	27	--	--
STA 157+58 RT	58	--	--
STA 169+43 RT	53	--	--
STA 194+24 LT	31	--	--
STA 207+50 RT	25	--	--
STA 209+45 LT	28	--	--
STA 226+08 LT	62	--	--
STA 226+75 RT	28	--	--
STA 228+16 RT	27	--	--
STA 230+39 RT	50	--	--
STA 236+37 RT	50	--	--
STA 238+70 RT	67	--	--
STA 251+02 RT	27	--	--
STA 266+31 RT	38	--	--
STA 18+55 LT, WOMACK LANE	51	--	--
UNDISTRIBUTED	86	77	540
TOTAL	1,703	1,616	11,342

LOCATION	REMOVING CURB & GUTTER		REMOVING SURFACE DRAINS		REMOVING CONCRETE SIDEWALK	
	204.0150 LF	204.0150 EACH	204.0190 EACH	204.0190 EACH	204.0155 SY	204.0155 SY
STH 142						
STA 38+89 - 39+04 LT	15	--	--	--	--	--
STA 183+75 - 189+42, LT	567	--	--	--	--	--
STA 263+23 - 269+67, RT	622	--	--	--	--	--
WHEATLAND RD						
SW QUADRANT	94	--	--	--	--	--
SE QUADRANT	61	--	--	--	--	--
WOMACK LN						
SW QUADRANT	63	--	--	--	--	--
SE QUADRANT	59	--	--	--	--	--
HORSESHOE TR						
NW QUADRANT	54.5	1	--	--	--	--
NE QUADRANT	95	1	--	--	--	--
CTH J						
NW QUADRANT	120	--	--	--	--	--
NE QUADRANT	104	1	--	--	--	--
SW QUADRANT	126	--	--	--	--	--
SE QUADRANT	158	--	--	--	--	--
MCCANNA PARKWAY						
STA 11+00 - 12+00 LT	80	--	--	--	--	--
STA 12+80 - 13+30 LT	50	--	--	--	--	--
STA 12+80 - 13+30 RT	49	--	--	--	--	--
STA 15+35 - 15+65 RT	37	--	--	--	--	--
STA 18+69 - 18+87 RT	35	--	--	--	--	37
STA 18+80	--	--	--	--	--	2
UNDISTRIBUTED	121	--	--	--	--	39
TOTAL	2,511	3	3	3	39	39

Addendum No. 01
 ID 3370-05-70
 Revised Sheet 203
 March 3, 2017

LOCATION	REMOVING SMALL CULVERT PIPES 203.0100**		CULVERT PIPE CORRUGATED STEEL		APRON ENDWALLS FOR CULVERT PIPE STEEL		APRON END WALL FOR CULVERT PIPE SLOPED SIDE		GRADING SLOPED ENDWALL AREA SPV.0060 01** EACH
	EACH	LF	12-INCH 521.0112** LF	15-INCH 521.0115 LF	18-INCH 521.0118** LF	12-INCH 521.1012** LF	15-INCH 521.1015 LF	18-INCH 521.1018** LF	
STA 61+69 LT	1	--	--	45	--	2	--	--	1
STA 63+86, 44.6' LT	1	--	--	--	--	--	--	--	--
STA 64+28	1	--	--	--	--	--	--	--	--
STA 85+05 RT	--	--	--	--	70	--	--	2	--
STA 86+17 RT	--	--	--	--	20	--	--	2	--
STA 92+25 RT	1	--	--	--	--	--	--	--	--
STA 95+61 RT	--	--	--	--	30	--	--	--	--
STA 190+29 LT	1	--	--	--	30	--	--	--	--
STA 191+71 LT	1	--	--	--	21	--	--	--	--
STA 230+39 RT	1	--	--	--	24	--	--	--	--
STA 282+26 LT	1	--	--	--	31	--	--	--	--
STA 284+00 LT	1	--	--	--	24	--	--	--	--
STA 289+29 LT	1	--	--	--	20	--	--	--	--
STA 18+55 LT, WOMACK LANE	1	25	--	--	--	2	--	--	--
UNDISTRIBUTED	--	1	2	2	14	--	--	--	--
TOTAL	11	26	47	284	2	2	14	4	1

**ADDITIONAL QUANTITY SHOWN ELSEWHERE

64+27	INLET OFFSET	INLET ELEV	DISCH STATION	DISCH OFFSET	DISCH ELEV	SLOPE %	CULVERT PIPE REINFORCED CONCRETE CLASS III 24-INCH 522.0124 LF	APRON ENDWALL FOR CULVERT PIPE REINFORCED CONCRETE 24-INCH 522.1024** EACH	CONSTRUCTION STAKING PIPE CULVERTS 650.6000** EACH
STH 142	38.2' RT	761.36	64+28	36.9' LT	761.03	0.46%	71	2	1
TOTALS							71	2	1

**ADDITIONAL QUANTITY SHOWN ELSEWHERE

LOCATION	CONCRETE CURB PEDESTRIAN 601.0600		18-INCH TYPE A 601.0405		30-INCH TYPE D 601.0411		30-INCH TYPE J 601.0415		36-INCH SLOPED 601.0553		36-INCH TYPE T 601.0582		4-INCH SLOPED 601.0553		CONCRETE SIDEWALK 602.0410		CURB RAMP DETECTABLE WARNING FIELD YELLOW 602.0505		CONCRETE MEDIAN SLOPED NOSE TYPE 1 620.0300		CONCRETE MEDIAN SLOPED NOSE TYPE 2 620.0300	
	LF	SF	LF	SF	LF	SF	LF	SF	LF	SF	LF	SF	LF	SF	LF	SF	LF	SF	LF	SF	LF	SF
STA 9+80 - 10+06	--	--	--	--	--	--	--	--	--	--	--	--	--	--	--	--	--	--	--	--	--	--
STA 15+29	--	--	--	--	--	--	--	--	--	--	--	--	--	--	--	--	--	--	--	--	--	--
STA 16+56	--	--	--	--	--	--	--	--	--	--	--	--	--	--	--	--	--	--	--	--	--	--
STA 38+89 - 39+04 LT	--	--	--	--	--	--	--	--	--	--	--	--	--	--	--	--	--	--	--	--	--	--
STA 38+91 - 38+96 LT	--	--	--	--	--	--	--	--	--	--	--	--	--	--	--	--	--	--	--	--	--	--
STA 62+91 - 87+00	83	--	15	--	1,880	--	--	--	--	--	--	--	--	--	--	--	--	--	--	--	--	--
STA 73+83	--	--	--	--	--	--	--	--	--	--	--	--	--	--	--	--	--	--	--	--	--	--
STA 81+85	--	--	--	--	--	--	--	--	--	--	--	--	--	--	--	--	--	--	--	--	--	--
STA 90+32 - 92+29 RT	--	--	--	--	--	--	--	--	--	--	--	--	--	--	--	--	--	--	--	--	--	--
STA 183+75 - 191+13 LT	--	--	--	--	--	--	--	--	--	--	--	--	--	--	--	--	--	--	--	--	--	--
STA 263+50 - 289+75 RT	--	--	--	--	--	--	--	--	--	--	--	--	--	--	--	--	--	--	--	--	--	--
QUARRY DRY	--	--	--	--	--	--	--	--	--	--	--	--	--	--	--	--	--	--	--	--	--	--
SW QUAD	--	--	--	--	--	--	--	--	--	--	--	--	--	--	--	--	--	--	--	--	--	--
MCCANNA PARKWAY	--	--	--	--	--	--	--	--	--	--	--	--	--	--	--	--	--	--	--	--	--	--
STA 9+79 - 13+30	33	--	700	--	--	--	--	--	--	--	--	--	--	--	--	--	--	--	--	--	--	--
STA 10+44	--	--	--	--	--	--	--	--	--	--	--	--	--	--	--	--	--	--	--	--	--	--
BREWER ROAD	--	--	--	--	--	--	--	--	--	--	--	--	--	--	--	--	--	--	--	--	--	--
SW QUAD	--	--	--	--	--	--	--	--	--	--	--	--	--	--	--	--	--	--	--	--	--	--
SE QUAD	--	--	--	--	--	--	--	--	--	--	--	--	--	--	--	--	--	--	--	--	--	--
WHEATLAND ROAD	--	--	--	--	--	--	--	--	--	--	--	--	--	--	--	--	--	--	--	--	--	--
SW QUAD	--	--	--	--	--	--	--	--	--	--	--	--	--	--	--	--	--	--	--	--	--	--
SE QUAD	--	--	--	--	--	--	--	--	--	--	--	--	--	--	--	--	--	--	--	--	--	--
WOMACK LANE	--	--	--	--	--	--	--	--	--	--	--	--	--	--	--	--	--	--	--	--	--	--
SW QUAD	--	--	--	--	--	--	--	--	--	--	--	--	--	--	--	--	--	--	--	--	--	--
SE QUAD	--	--	--	--	--	--	--	--	--	--	--	--	--	--	--	--	--	--	--	--	--	--
SHAGBARK LANE	--	--	--	--	--	--	--	--	--	--	--	--	--	--	--	--	--	--	--	--	--	--
SW QUAD	--	--	--	--	--	--	--	--	--	--	--	--	--	--	--	--	--	--	--	--	--	--
SE QUAD	--	--	--	--	--	--	--	--	--	--	--	--	--	--	--	--	--	--	--	--	--	--
HORSESHOE TRAIL	--	--	--	--	--	--	--	--	--	--	--	--	--	--	--	--	--	--	--	--	--	--
SW QUAD	--	--	--	--	--	--	--	--	--	--	--	--	--	--	--	--	--	--	--	--	--	--
NE QUAD	--	--	--	--	--	--	--	--	--	--	--	--	--	--	--	--	--	--	--	--	--	--
CTH J	--	--	--	--	--	--	--	--	--	--	--	--	--	--	--	--	--	--	--	--	--	--
NW QUAD	--	--	--	--	--	--	--	--	--	--	--	--	--	--	--	--	--	--	--	--	--	--
NE QUAD	--	--	--	--	--	--	--	--	--	--	--	--	--	--	--	--	--	--	--	--	--	--
SW QUAD	--	--	--	--	--	--	--	--	--	--	--	--	--	--	--	--	--	--	--	--	--	--
SE QUAD	--	--	--	--	--	--	--	--	--	--	--	--	--	--	--	--	--	--	--	--	--	--
UNDISTRIBUTED	6	--	12	--	130	--	10	--	113	--	15	--	47	--	247	--	16	--	4.5	--	72	--
TOTALS	122	--	242	--	2,725	--	217	--	2,369	--	320	--	968	--	5,195	--	340	--	94.5	--	214.2	--
																						308.7

LOCATION	COLORING	CONCRETE
STH 142	CONCRETE	TRUCK APRON
STA 77+41 - 78+37	WISDOT RED	12-INCH
UNDISTRIBUTED	405,0100	416,0512
	CY	SY
TOTAL	116	344

LOCATION	DRILLED TIE BARS
MCCANNA PARKWAY	416.0610*
STA 9+79 - 13+30	EACH
TOTALS	16

*USE 2 EACH FOR CONCRETE CURB & GUTTER CONNECTIONS

Addendum No. 01
ID 3370-05-70
Revised Sheet 207
March 3, 2017

Addendum No. 01
ID 3370-05-70
Revised Sheet 209
March 3, 2017

LOCATION	REMOVING FENCE		FENCE CHAIN LINK SALVAGED 6-FT		TOPSOIL		MULCHING		EROSION MAT		FERTILIZER		SEEDING MIXTURE NO. 30		WATER		SOD		SEEDING NO MOW FESCUE		DITCHING AND SHAPING		
	LF	LF	LF	LF	SY	SY	SY	SY	CLASS I TYPE B	CLASS II TYPE B	URBAN CLASS I TYPE B	TYPE B	CWT	LB	MGAL	MGAL	SY	SY	LB	LB	LF	LF	
STH 142																							
STA45+55 - 60+00 LT	--	1,445	--	17,400	--	25,200	--	17,400	--	--	5,790	--	16.0	420	16.00	--	700	--	--	73	--	--	--
STA62+91 - 87+00	--	--	--	--	--	--	--	--	--	--	7,460	--	95.9	201	--	--	--	--	--	73	--	60	--
STA238+70 RT (DWY REMOVAL)	--	--	--	--	--	--	--	--	--	2,218	673	--	37.2	78	--	--	--	--	--	--	--	--	--
BREVER RD	--	--	--	--	--	7,460	--	--	728	2,943	99	--	47.2	99	--	--	--	--	--	--	--	--	--
WHEATLAND RD	--	--	--	--	--	3,905	--	--	3,905	--	1,163	--	50.2	105	--	--	--	--	--	--	--	--	--
WOMACK LN	--	--	--	--	--	2,375	--	--	2,375	1,921	95	--	45.5	95	--	--	--	--	--	--	--	--	--
SHAGBARK LN	--	--	--	--	--	7,039	--	7,039	5,119	--	1.0	--	6.00	20	6.00	--	--	--	--	--	--	--	--
HORSESHOE TR	--	--	--	--	--	33	--	--	33	--	--	--	--	--	--	--	--	--	--	--	--	--	--
CTH J	--	--	--	--	--	8,563	--	--	8,563	110.1	231	--	110.1	231	--	--	--	--	--	--	--	--	--
MCCANNA PARKWAY	--	--	--	--	--	6,100	--	4,600	5	6.0	150	--	6.0	150	--	--	--	--	--	--	--	--	--
SHARED-USE PATHS	--	--	--	--	--	1,560	--	--	1,560	20.1	42	--	20.1	42	--	--	--	--	--	--	--	--	--
STA9+80 - 10+06	--	--	--	--	--	2,300	--	2,300	285	2.0	50	--	2.0	50	--	--	--	--	--	--	--	--	--
STA10+06 - 17+10	--	--	--	--	--	1,607	--	1,607	1,520	26.1	84	--	26.1	84	1.10	--	48	--	--	4	--	--	--
STA17+10P - 32+73P	35	--	--	--	--	76,710	--	33,746	15,062	31,916	1,767	--	547.7	1,767	23.10	--	998	--	--	77	--	--	--
STA0+00 - 5+10	--	--	--	--	--	37	--	1,517	15,062	31,916	1,767	--	547.7	1,767	23.10	--	998	--	--	77	--	--	--
WHITE RIVER STATE TRAIL	--	--	--	--	--	2	--	72	717	285	50	--	2.0	50	--	--	--	--	--	4	--	--	--
STA202+10 - 209+76	2	--	--	--	--	3,653	--	1,607	1,520	26.1	84	--	26.1	84	1.10	--	48	--	--	4	--	--	--
UNDISTRIBUTED	2	--	--	--	--	37	--	1,517	15,062	31,916	1,767	--	547.7	1,767	23.10	--	998	--	--	77	--	--	--
TOTALS	37	1,517	76,710	33,746	15,062	31,916	1,767	547.7	1,767	23.10	998	77	5,000	630.0200	631.0300	631.0300	631.1000	631.1000	606.0100	606.0100	645.0130	645.0130	8

**ADDITIONAL QUANTITIES SHOWN ELSEWHERE IN PLAN

LOCATION	SILT FENCE		MAINTENANCE		HEAVY DUTY SILT FENCE		MAINTENANCE		EROSION CONTROL		EROSION CONTROL		EROSION CONTROL		EMERGENCY		MOBILIZATION		INLET PROTECTION		TEMPORARY		CULVERT		EROSION		ROCK		RIPRAP		SEEDING		GEOTEXTILE												
	LF	LF	LF	LF	LF	LF	LF	LF	LF	LF	LF	LF	LF	LF	LF	LF	LF	LF	LF	LF	LF	LF	LF	LF	LF	LF	LF	LF	LF	LF	LF	LF	LF	LF											
STH 142																																													
STA39+00 - 62+91	2,862	1,431	--	--	--	--	--	--	--	--	--	--	--	--	--	--	--	--	--	--	--	40	3	9	36	3	36	--	--	--	--	--	--	--	--	--									
STA62+91 - 87+00	1,830	915	--	--	--	--	--	--	--	--	--	--	--	--	--	--	--	--	--	--	--	390	16	30	30	3	36	--	--	--	--	--	--	--	--	--									
STA87+00 - 101+50	1,750	875	--	--	--	--	--	--	--	--	--	--	--	--	--	--	--	--	--	--	--	505	45	21	84	21	84	--	--	--	--	--	--	--	--	--									
STA143+50 - 291+50	7,500	3,000	1,525	--	--	--	--	--	--	--	--	--	--	--	--	--	--	--	--	--	--	628,7504	628,7555	628,1104	628,7570	628,1104	628,7570	606,0100	630,0200	630,0200	645,0130	645,0130	645,0130	645,0130	645,0130										
PROJECT LIMITS	--	--	--	--	--	--	--	--	--	--	--	--	--	--	--	--	--	--	--	--	--	--	--	--	--	--	--	--	--	--	--	--	--	--	--	--	--	--							
MCCANNA PARKWAY																																													
STA9+79 - 13+30	250	125	--	--	--	--	--	--	--	--	--	--	--	--	--	--	--	--	--	--	--	--	--	--	--	--	--	--	--	--	--	--	--	--	--	--	--	--	--						
SHARED-USE PATH																																													
STA17+10P - 32+73P	1,280	640	--	--	--	--	--	--	--	--	--	--	--	--	--	--	--	--	--	--	--	--	--	--	--	--	--	--	--	--	--	--	--	--	--	--	--	--	--	--					
WHITE RIVER STATE TRAIL	330	165	--	--	--	--	--	--	--	--	--	--	--	--	--	--	--	--	--	--	--	90	3	3	3	3	3	3	3	3	3	3	3	3	3	3	3	3	3	3					
STA202+10 - 209+76	930	465	76	--	--	--	--	--	--	--	--	--	--	--	--	--	--	--	--	--	--	120	5	100	10	100	10	100	5,000	5,000	5,000	5,000	5,000	5,000	5,000	5,000	5,000	5,000	5,000	5,000					
UNDISTRIBUTED	930	465	76	--	--	--	--	--	--	--	--	--	--	--	--	--	--	--	--	--	--	120	5	100	10	100	10	100	5,000	5,000	5,000	5,000	5,000	5,000	5,000	5,000	5,000	5,000	5,000	5,000	5,000				
TOTALS	16,732	7,616	1,601	2	2	1,601	1,601	1,601	8	8	25	32	1,145	78	139	196	3	3	3	3	1,145	78	139	196	3	3	3	3	3	3	3	3	3	3	3	3	3	3	3	3	3	3	3	3	3

Addendum No. 01
ID 3370-05-70
Revised Sheet 211
March 3, 2017

LOCATION	SAWING ASPHALT 690.0150 LF
STH 142	
STA 38+89 - 39+04 LT	15
STA 38+91 - 38+96 LT	5
STA 39+00	31
STA 62+91 - 87+00	46
STA 88+19 - 94+66 RT	647
STA 88+92 - 96+65 LT	773
STA 101+50	30
STA 143+50	30
STA 183+12 - 189+40 RT	627
STA 183+75 - 191+67 LT	793
STA 228+87 - 235+55 RT	668
STA 229+19 - 237+88 LT	870
STA 252+99 - 259+50 RT	789
STA 253+50 - 261+48 LT	798
STA 262+65 - 270+50 RT	784
STA 264+81 - 271+16 LT	635
STA 281+44 288+47 RT	696
STA 283+95 - 290+76 LT	683
STA 291+50	30
DWY	
STA 38+78 LT	5
STA 41+99 LT	9
STA 44+25 - 45+50 LT	129
STA 61+69 LT	21
STA 61+69 RT	27
STA 93+00 LT	84
STA 95+62 RT	19
STA 230+39 RT	14
STA 236+37 RT	12
STA 238+70 RT	150
STA 266+31 RT	13
QUARRY DWY	58
SIDE ROADS	
BREVER ROAD	22
WHEATLAND ROAD	30
WOMACK LANE	
STA 18+25	20
STA 18+55 LT	21
SHAGBARK LANE	22
HORSESHOE TRAIL	22
CTH J	
STA 7+86	22
STA 11+93	20
MCCANNA PARKWAY	
STA 9+79 -13+30	221
CULVERT	
STA 53+74	61
STA 168+08	61
STA 176+97	61
STA 191+06	61
STA 211+54	61
STA 242+75	61
STA 250+19	61
STA 258+07	49
STA 287+81	49
UNDISTRIBUTED	524
TOTALS	10,940

LOCATION	SAWING CONCRETE 690.0250 LF
MCCANNA PARKWAY	
STA 9+79 - 13+30	36
STH 142	
STA 181+00 LT	6
STA 38+89 LT	3
UNDISTRIBUTED	2
TOTALS	47

LOCATION	STH 142	DRAIN TILE EXPLORATION 612.0700 LF
STA 233+87 - 257+75		2,400
UNDISTRIBUTED		120
TOTALS		2,520

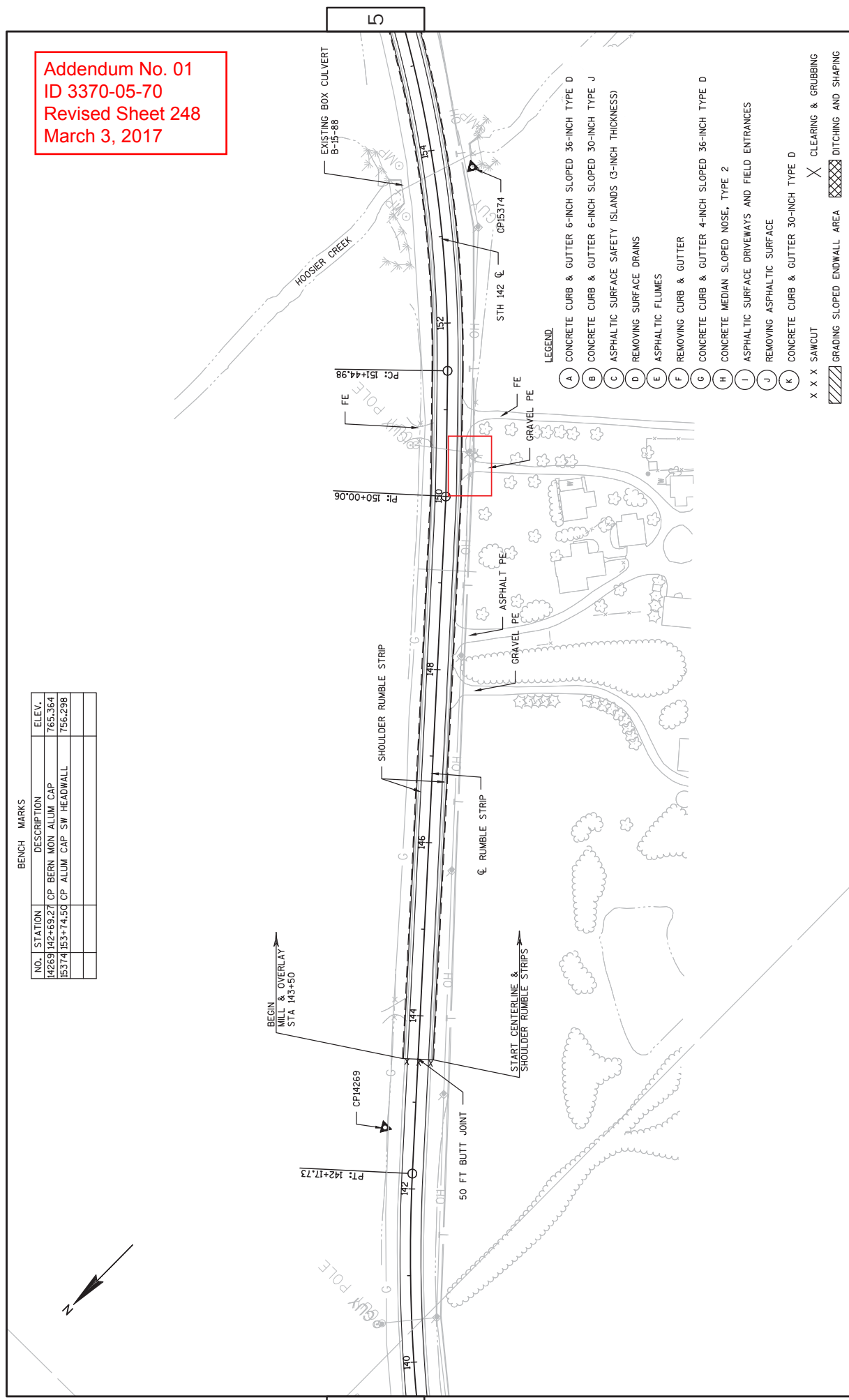
LOCATION	PIPE UNDERDRAIN 6-INCH 612.0106 LF	APRON ENDWALLS FOR UNDERDRAIN REINFORCED CONCRETE 6-INCH EACH
STH 142		
UNDISTRIBUTED	2,700	8
TOTALS	2,700	8

LOCATION	SUBGRADE		CURB & GUTTER		RESURFACING REFERENCE		CONSTRUCTION STAKING		SLOPE STAKES		STORM SEWER		ELECTRICAL INSTALLATIONS	
	LF	LS	LF	LS	LF	LS	LF	LS	LF	LS	LF	LS	LF	LS
STH 142														
STA 39+00 - 63+00	--	--	15	--	2,400	--	--	--	--	--	--	--	--	--
STA 62+91 - 87+00	3,064	--	3,500	--	--	--	--	--	3,064	--	37	--	1	--
STA 87+00 - 101+50	1,450	--	200	--	--	--	--	--	1,450	--	--	--	--	--
STA 143+50 - 291+50	5,650	--	1,400	--	9,150	--	--	--	5,650	--	--	--	--	--
SIDE ROADS														
BREVER RD	380	--	280	--	--	--	--	--	380	--	--	--	--	--
WHEATLAND RD	110	--	160	--	--	--	--	--	110	--	--	--	--	--
WOMACK LN	175	--	170	--	--	--	--	--	175	--	--	--	--	--
SHAGBARK LN	165	--	160	--	--	--	--	--	165	--	--	--	--	--
HORSESHOE	160	--	160	--	--	--	--	--	160	--	--	--	--	--
CTH J	425	--	450	--	--	--	--	--	425	--	5	--	--	--
MCCANNA PARKWAY	432	--	730	--	--	--	--	--	432	--	--	--	--	--
SHARED-USE PATHS														
STA 0+00 - 5+10	510	--	--	--	--	--	--	--	510	--	--	--	--	--
STA 10+06 - 33+74	2,400	--	--	--	--	--	--	--	2,400	--	--	--	--	--
STA 10+06P - 17+10P	704	--	--	--	--	--	--	--	704	--	--	--	--	--
UNDISTRIBUTED	781	--	361	--	578	--	1	--	781	--	2	--	--	--
TOTAL	16,406	16,406	7,586	16,406	12,128	16,406	1	1	16,406	16,406	44	650,8500	1	1

Addendum No. 01
 ID 3370-05-70
 Revised Sheet 248
 March 3, 2017

BENCH MARKS

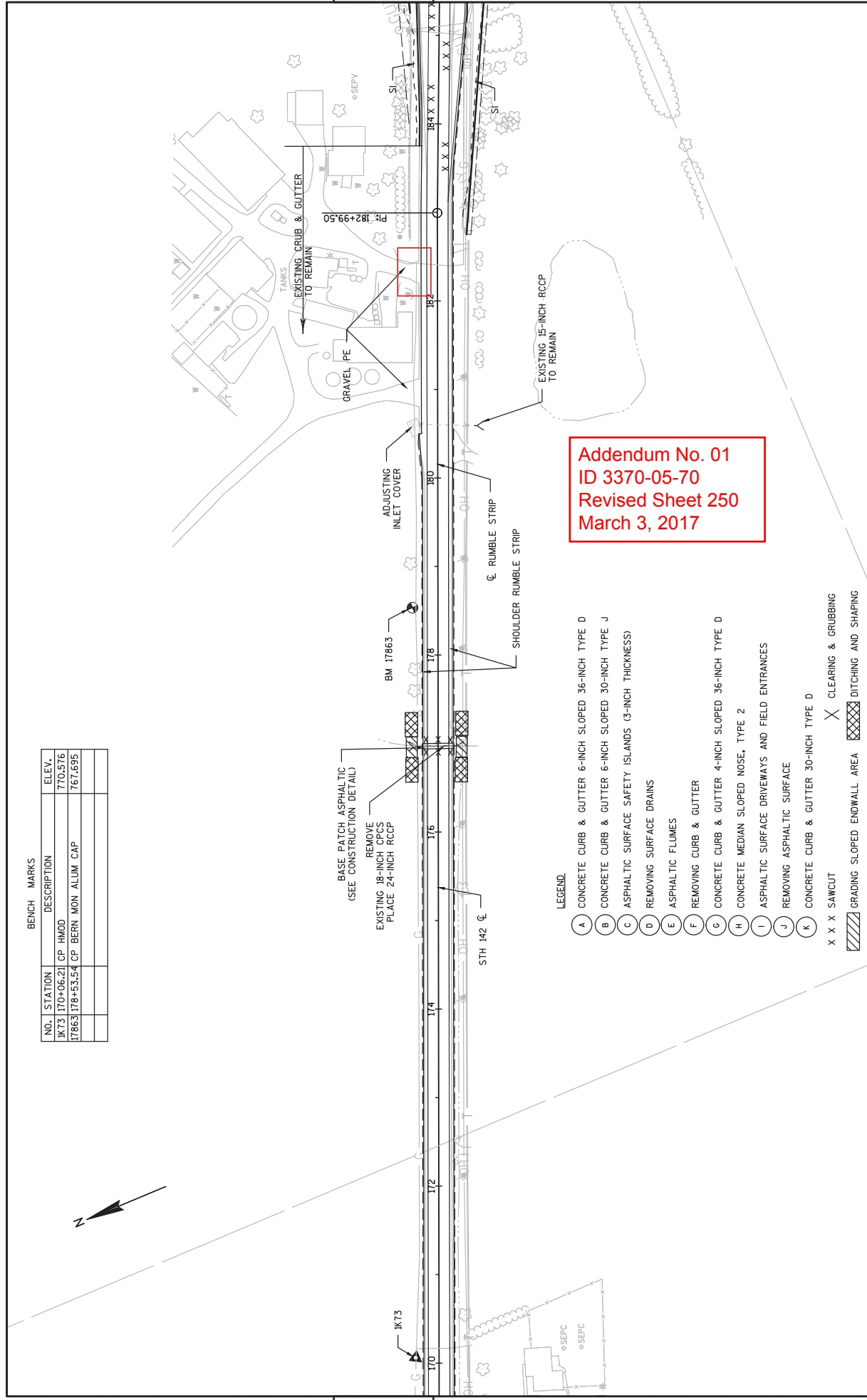
NO.	STATION	DESCRIPTION	ELEV.
14269	142+69.21	CP BERN MON ALUM CAP	765.364
15374	153+74.50	CP ALLUM CAP SW HEADWALL	756.298



LEGEND

- (A) CONCRETE CURB & GUTTER 6-INCH SLOPED 36-INCH TYPE D
 - (B) CONCRETE CURB & GUTTER 6-INCH SLOPED 30-INCH TYPE J
 - (C) ASPHALTIC SURFACE SAFETY ISLANDS (3-INCH THICKNESS)
 - (D) REMOVING SURFACE DRAINS
 - (E) ASPHALTIC FLUMES
 - (F) REMOVING CURB & GUTTER
 - (G) CONCRETE CURB & GUTTER 4-INCH SLOPED 36-INCH TYPE D
 - (H) CONCRETE MEDIAN SLOPED NOSE, TYPE 2
 - (I) ASPHALTIC SURFACE DRIVEWAYS AND FIELD ENTRANCES
 - (J) REMOVING ASPHALTIC SURFACE
 - (K) CONCRETE CURB & GUTTER 30-INCH TYPE D
- X X X SAWCUT
- ▨ GRADING SLOPED ENDWALL AREA
- ▨ DITCHING AND SHAPING

BENCH MARKS		
NO.	STATION	ELEV.
IK73	170+06.21 CP HMOD	770.576
17863	178+53.54 CP BERN MON ALUM CAP	767.695

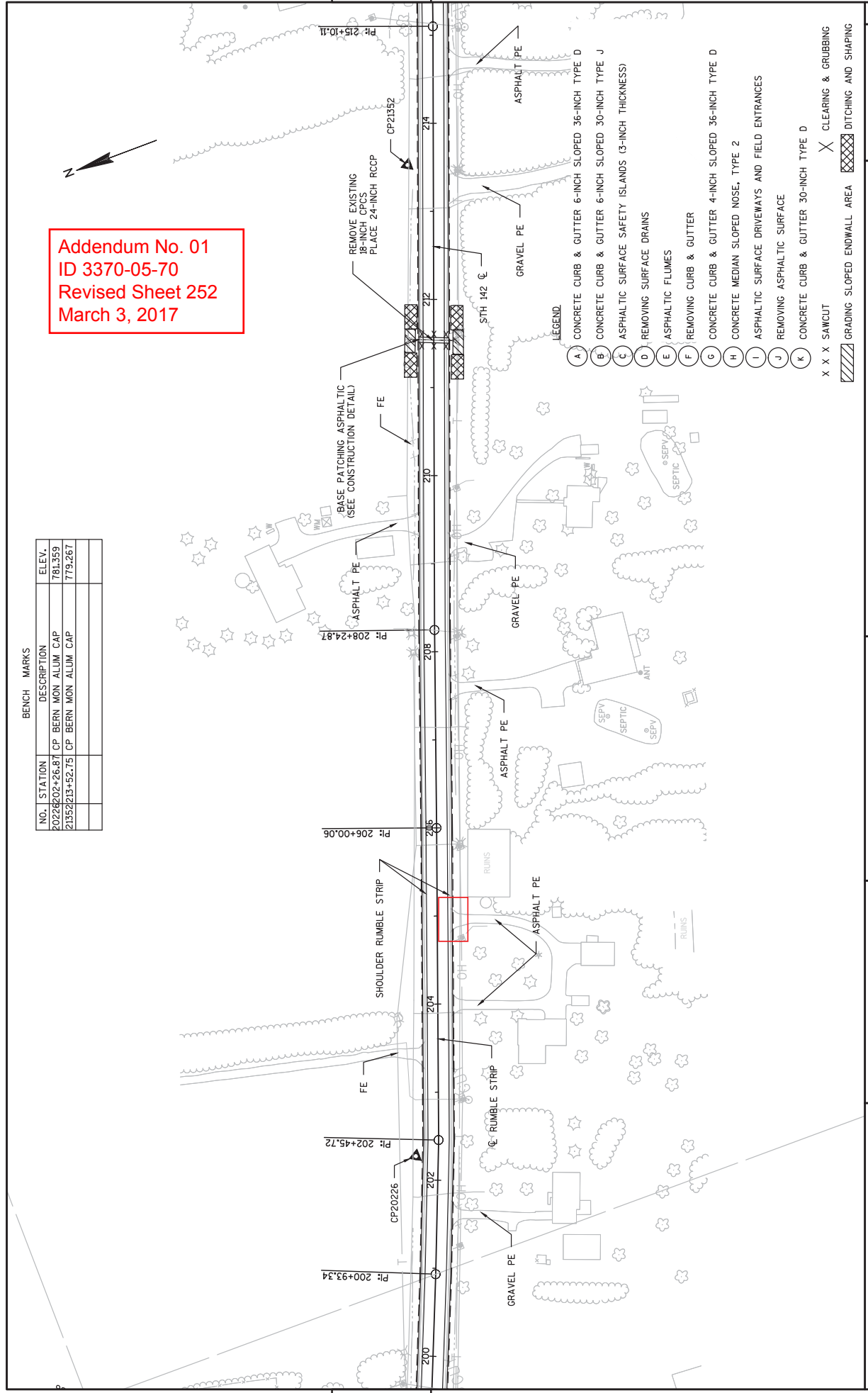


- LEGEND**
- A CONCRETE CURB & GUTTER 6-INCH SLOPED 36-INCH TYPE D
 - B CONCRETE CURB & GUTTER 6-INCH SLOPED 30-INCH TYPE J
 - C ASPHALTIC SURFACE SAFETY ISLANDS (3-INCH THICKNESS)
 - D REMOVING SURFACE DRAINS
 - E ASPHALTIC FLUMES
 - F REMOVING CURB & GUTTER
 - G CONCRETE CURB & GUTTER 4-INCH SLOPED 36-INCH TYPE D
 - H CONCRETE MEDIAN SLOPED NOSE, TYPE 2
 - I ASPHALTIC SURFACE DRIVEWAYS AND FIELD ENTRANCES
 - J REMOVING ASPHALTIC SURFACE
 - K CONCRETE CURB & GUTTER 30-INCH TYPE D
 - X X X SAWCUT
 - Grading sloped Endwall Area
 - CLEARING & GRUBBING
 - DITCHING AND SHAPING

Addendum No. 01
ID 3370-05-70
Revised Sheet 250
March 3, 2017

Addendum No. 01
 ID 3370-05-70
 Revised Sheet 252
 March 3, 2017

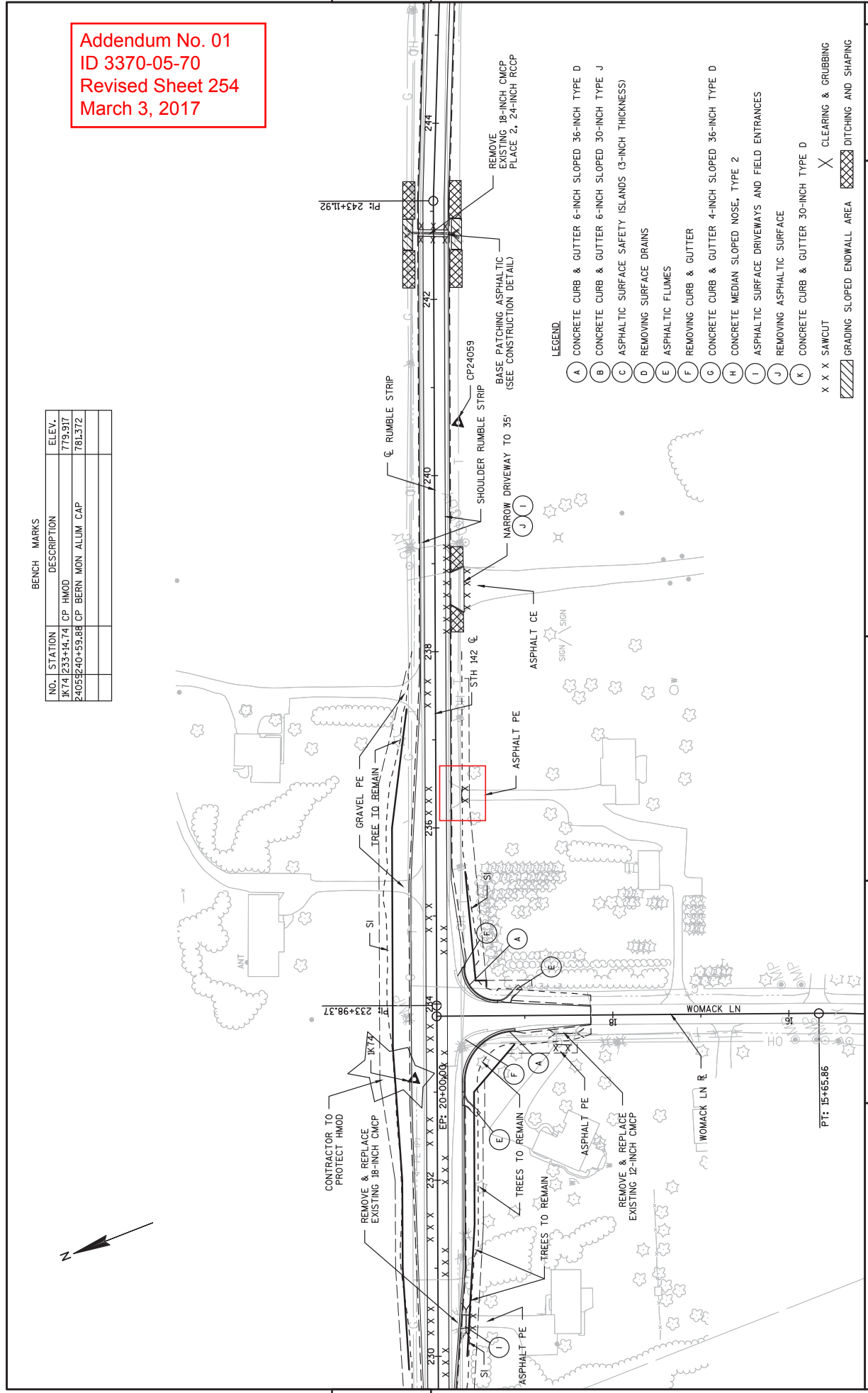
NO.	STATION	DESCRIPTION	ELEV.
	2022+62.26	CP BERN MON ALUM CAP	781.359
	2135+22.13	CP BERN MON ALUM CAP	779.267



- LEGEND
- A CONCRETE CURB & GUTTER 6-INCH SLOPED 36-INCH TYPE D
 - B CONCRETE CURB & GUTTER 6-INCH SLOPED 30-INCH TYPE J
 - C ASPHALTIC SURFACE SAFETY ISLANDS (3-INCH THICKNESS)
 - D REMOVING SURFACE DRAINS
 - E ASPHALTIC FLUMES
 - F REMOVING CURB & GUTTER
 - G CONCRETE CURB & GUTTER 4-INCH SLOPED 36-INCH TYPE D
 - H CONCRETE MEDIAN SLOPED NOSE, TYPE 2
 - I ASPHALTIC SURFACE DRIVEWAYS AND FIELD ENTRANCES
 - J REMOVING ASPHALTIC SURFACE
 - K CONCRETE CURB & GUTTER 30-INCH TYPE D
- X X X SAWCUT
 X X X GRADING SLOPED ENDWALL AREA
 X X X CLEARING & GRUBBING
 X X X DITCHING AND SHAPING

Addendum No. 01
 ID 3370-05-70
 Revised Sheet 254
 March 3, 2017

BENCH MARKS		
NO.	STATION	ELEV.
JK74	233+14.74	779.917
24058240+59.88	CP BERN MON ALLUM CAP	781.372





Proposal Schedule of Items

Proposal ID: 20170314017 Project(s): 3370-05-70

Federal ID(s): WISC 2017106

SECTION: 0001 Contract Items

Alt Set ID: Alt Mbr ID:

Proposal Line Number	Item ID Description	Approximate Quantity and Units	Unit Price	Bid Amount
0010	201.0105 Clearing	59.000 STA	_____.	_____.
0020	201.0205 Grubbing	59.000 STA	_____.	_____.
0030	203.0100 Removing Small Pipe Culverts	23.000 EACH	_____.	_____.
0040	203.0200 Removing Old Structure (station) 01. 77+80	LS	LUMP SUM	_____.
0050	203.0200 Removing Old Structure (station) 02. 83+10	LS	LUMP SUM	_____.
0060	204.0110 Removing Asphaltic Surface	1,703.000 SY	_____.	_____.
0070	204.0115 Removing Asphaltic Surface Butt Joints	1,616.000 SY	_____.	_____.
0080	204.0125 Removing Asphaltic Surface Milling	11,342.000 TON	_____.	_____.
0090	204.0150 Removing Curb & Gutter	2,511.000 LF	_____.	_____.
0100	204.0155 Removing Concrete Sidewalk	39.000 SY	_____.	_____.
0110	204.0165 Removing Guardrail	3,250.000 LF	_____.	_____.
0120	204.0170 Removing Fence	37.000 LF	_____.	_____.
0130	204.0180 Removing Delineators and Markers	2.000 EACH	_____.	_____.
0140	204.0190 Removing Surface Drains	3.000 EACH	_____.	_____.
0150	204.0220 Removing Inlets	1.000 EACH	_____.	_____.
0160	204.0245 Removing Storm Sewer (size) 01. 12- Inch	67.000 LF	_____.	_____.



Proposal Schedule of Items

Proposal ID: 20170314017 Project(s): 3370-05-70

Federal ID(s): WISC 2017106

SECTION: 0001 Contract Items

Alt Set ID: Alt Mbr ID:

Proposal Line Number	Item ID Description	Approximate Quantity and Units	Unit Price	Bid Amount
0330	465.0105 Asphaltic Surface	1,182.000 TON	_____.	_____.
0340	465.0120 Asphaltic Surface Driveways and Field Entrances	242.000 TON	_____.	_____.
0350	465.0305 Asphaltic Surface Safety Islands	49.000 TON	_____.	_____.
0360	465.0310 Asphaltic Curb	281.000 LF	_____.	_____.
0370	465.0315 Asphaltic Flumes	195.180 SY	_____.	_____.
0380	465.0425 Asphaltic Shoulder Rumble Strips 2-Lane Rural	4,284.000 LF	_____.	_____.
0390	465.0475 Asphalt Center Line Rumble Strips 2-Lane Rural	2,468.000 LF	_____.	_____.
0400	520.8000 Concrete Collars for Pipe	1.000 EACH	_____.	_____.
0410	521.0112 Culvert Pipe Corrugated Steel 12-Inch	70.000 LF	_____.	_____.
0420	521.0115 Culvert Pipe Corrugated Steel 15-Inch	47.000 LF	_____.	_____.
0430	521.0118 Culvert Pipe Corrugated Steel 18-Inch	314.000 LF	_____.	_____.
0440	521.1012 Apron Endwalls for Culvert Pipe Steel 12-Inch	4.000 EACH	_____.	_____.
0450	521.1015 Apron Endwalls for Culvert Pipe Steel 15-Inch	2.000 EACH	_____.	_____.
0460	521.1018 Apron Endwalls for Culvert Pipe Steel 18-Inch	16.000 EACH	_____.	_____.
0470	521.1518 Apron Endwalls for Culvert Pipe Sloped Side Drains Steel 18-Inch 6 to 1	4.000 EACH	_____.	_____.



Proposal Schedule of Items

Proposal ID: 20170314017 Project(s): 3370-05-70

Federal ID(s): WISC 2017106

SECTION: 0001 Contract Items

Alt Set ID: Alt Mbr ID:

Proposal Line Number	Item ID Description	Approximate Quantity and Units	Unit Price	Bid Amount
0610	601.0415 Concrete Curb & Gutter 6-Inch Sloped 30-Inch Type J	217.000 LF	_____.	_____.
0620	601.0553 Concrete Curb & Gutter 4-Inch Sloped 36-Inch Type D	1,709.000 LF	_____.	_____.
0630	601.0557 Concrete Curb & Gutter 6-Inch Sloped 36-Inch Type D	2,369.000 LF	_____.	_____.
0640	601.0582 Concrete Curb & Gutter 4-Inch Sloped 36-Inch Type T	320.000 LF	_____.	_____.
0650	601.0600 Concrete Curb Pedestrian	122.000 LF	_____.	_____.
0660	602.0405 Concrete Sidewalk 4-Inch	988.000 SF	_____.	_____.
0670	602.0410 Concrete Sidewalk 5-Inch	5,195.000 SF	_____.	_____.
0680	602.0505 Curb Ramp Detectable Warning Field Yellow	340.000 SF	_____.	_____.
0690	606.0100 Riprap Light	3.000 CY	_____.	_____.
0700	606.0200 Riprap Medium	53.030 CY	_____.	_____.
0710	608.0312 Storm Sewer Pipe Reinforced Concrete Class III 12-Inch	110.900 LF	_____.	_____.
0720	608.0324 Storm Sewer Pipe Reinforced Concrete Class III 24-Inch	341.100 LF	_____.	_____.
0730	608.0412 Storm Sewer Pipe Reinforced Concrete Class IV 12-Inch	711.600 LF	_____.	_____.
0740	608.0415 Storm Sewer Pipe Reinforced Concrete Class IV 15-Inch	135.400 LF	_____.	_____.



Proposal Schedule of Items

Proposal ID: 20170314017 Project(s): 3370-05-70

Federal ID(s): WISC 2017106

SECTION: 0001 Contract Items

Alt Set ID: Alt Mbr ID:

Proposal Line Number	Item ID Description	Approximate Quantity and Units	Unit Price	Bid Amount
1550	650.5000 Construction Staking Base	16,406.000 LF	_____.	_____.
1560	650.5500 Construction Staking Curb Gutter and Curb & Gutter	7,586.000 LF	_____.	_____.
1570	650.6000 Construction Staking Pipe Culverts	16.000 EACH	_____.	_____.
1580	650.8000 Construction Staking Resurfacing Reference	12,128.000 LF	_____.	_____.
1590	650.8500 Construction Staking Electrical Installations (project) 01. 3370-05-70	LS	LUMP SUM	_____.
1600	650.9910 Construction Staking Supplemental Control (project) 01. 3370-05-70	LS	LUMP SUM	_____.
1610	650.9920 Construction Staking Slope Stakes	16,406.000 LF	_____.	_____.
1620	652.0225 Conduit Rigid Nonmetallic Schedule 40 2-Inch	1,348.000 LF	_____.	_____.
1630	653.0140 Pull Boxes Steel 24x42-Inch	4.000 EACH	_____.	_____.
1640	654.0105 Concrete Bases Type 5	12.000 EACH	_____.	_____.
1650	655.0610 Electrical Wire Lighting 12 AWG	1,638.000 LF	_____.	_____.
1660	655.0620 Electrical Wire Lighting 8 AWG	4,398.000 LF	_____.	_____.
1670	656.0400 Electrical Service Main Lugs Only Meter Pedestal (location) 01. Cabinet CB	LS	LUMP SUM	_____.
1680	657.0255 Transformer Bases Breakaway 11 1/2-Inch Bolt Circle	12.000 EACH	_____.	_____.
1690	657.0322 Poles Type 5-Aluminum	12.000 EACH	_____.	_____.



Proposal Schedule of Items

Proposal ID: 20170314017 Project(s): 3370-05-70

Federal ID(s): WISC 2017106

SECTION: 0001 Contract Items

Alt Set ID: Alt Mbr ID:

Proposal Line Number	Item ID Description	Approximate Quantity and Units	Unit Price	Bid Amount
1700	657.0715 Luminaire Arms Truss Type 4 1/2-Inch Clamp 15-FT	12.000 EACH	_____.	_____.
1710	659.1120 Luminaires Utility LED B	5.000 EACH	_____.	_____.
1720	659.1125 Luminaires Utility LED C	7.000 EACH	_____.	_____.
1730	690.0150 Sawing Asphalt	10,940.000 LF	_____.	_____.
1740	690.0250 Sawing Concrete	47.000 LF	_____.	_____.
1750	ASP.1T0A On-the-Job Training Apprentice at \$5.00/HR	1,200.000 HRS	5.00000	6,000.00
1760	ASP.1T0G On-the-Job Training Graduate at \$5.00/HR	1,500.000 HRS	5.00000	7,500.00
1770	SPV.0060 Special 01. Grading Sloped Endwall Areas	13.000 EACH	_____.	_____.
1780	SPV.0060 Special 02. Inlet 4-ft Diameter Special	4.000 EACH	_____.	_____.
1790	SPV.0060 Special 03. Lighting Control Cabinet	1.000 EACH	_____.	_____.
1800	SPV.0060 Special 04. Section Corner Monuments	9.000 EACH	_____.	_____.
1810	SPV.0060 Special 05. Removing Solar Flashing Beacon and Pole, Eastbound STH 142 at CTH J	1.000 EACH	_____.	_____.
1820	SPV.0060 Special 06. Removing Solar Flashing Beacon and Pole, Westbound STH 142 at CTH J	1.000 EACH	_____.	_____.
1830	SPV.0060 Special 07. Traffic Flashing Beacon System, Solar, Eastbound STH 142 at CTH J	1.000 EACH	_____.	_____.



Proposal Schedule of Items

Proposal ID: 20170314017 Project(s): 3370-05-70

Federal ID(s): WISC 2017106

SECTION: 0001 Contract Items

Alt Set ID: Alt Mbr ID:

Proposal Line Number	Item ID Description	Approximate Quantity and Units	Unit Price	Bid Amount
1840	SPV.0060 Special 08. Traffic Flashing Beacon System, Solar, Westbound STH 142 at CTH J	1.000 EACH	_____.	_____.
1850	SPV.0085 Special 01. Seeding No Mow Fescue	77.000 LB	_____.	_____.
1860	SPV.0090 Special 01. Heavy Duty Silt Fence	1,601.000 LF	_____.	_____.
1870	SPV.0090 Special 02. Heavy Duty Silt Fence Maintenance	1,601.000 LF	_____.	_____.
1880	SPV.0090 Special 03. Ditching and Shaping	1,131.000 LF	_____.	_____.
1890	SPV.0105 Special 01. Removing Overhead Sign Support 285+50	LS	LUMP SUM	_____.
1900	SPV.0105 Special 02. Removing Traffic Signals STH 142 & CTH J	LS	LUMP SUM	_____.
1910	SPV.0105 Special 03. Rectangular Rapid Flashing Beacon (RRFB) System Station 79+00, Westbound Right	LS	LUMP SUM	_____.
1920	SPV.0105 Special 04. Rectangular Rapid Flashing Beacon (RRFB) System Station 78+78, Eastbound Right	LS	LUMP SUM	_____.

Section: 0001 Total: _____.

Total Bid: _____.

