



# Wisconsin Department of Transportation

## Division of Transportation Systems Development

Bureau of Project Development  
 4802 Sheboygan Avenue, Rm 601  
 P O Box 7916  
 Madison, WI 53707-7916

Telephone: (608) 266-1631  
 Facsimile (FAX): (608) 266-8459

March 9, 2017

### NOTICE TO ALL CONTRACTORS:

**Proposal #18: 6525-06-71, WISC 2017 107**  
**STH 28 – Random Lake**  
**STH 28 – STH 57**  
**STH 144**  
**Sheboygan County**

### Letting of March 14, 2017

This is Addendum No. 02, which provides for the following:

#### Special Provisions:

Revised Special Provisions	
Article No.	Description
22	Asphaltic Base Excavation

#### Schedule of Items:

Revised Bid Item Quantities					
Bid Item	Item Description	Unit	Old Quantity	Revised Quantity	Proposal Total
305.0120	Base Aggregate Dense 1 1/4 -Inch	Ton	13,514	7,681	21,195
460.2005	Incentive Density PWL HMA Pavement	DOL	17,440	25,170	42,610
460.5223	HMA Pavement 3 LT 58-28 S	Ton	29,590	25	29,615
SPV.0060	Special 05. HMA Percent Within Limits (PWL) Test Strip	EA	1	1	2

Added Bid Item Quantities					
Bid Item	Item Description	Unit	Old Quantity	Revised Quantity	Proposal Total
315.0200	Asphaltic Base Widening	Ton	0	3,934	3,934
465.0110	Asphaltic Surface Patching	Ton	0	1,000	1,000

Deleted Bid Item Quantities					
Bid Item	Item Description	Unit	Old Quantity	Revised Quantity	Proposal Total
315.0100	Asphaltic Base	Ton	3,934	-3,934	0
390.0201	Base Patching Asphaltic	Ton	2,000	-2,000	0

**Plan Sheets:**

Revised Plan Sheets	
Plan Sheet	Plan Sheet Title (brief description of changes to sheet)
5	Changes the note on typical sections to Asphaltic Base Widening
6	Changes the note on typical sections to Asphaltic Base Widening
20	Changes the Concrete Steps Detail and add note
74	Adds an undistributed quantity and updates the total quantity
75	Adds quantity of Base Aggregate Dense 1 ¼-Inch were omitted; under shoulders, and in storm sewer trench. Changed the bid item to Asphaltic Base Widening and removes quantity of common excavation
76	Changes bid time to Asphaltic Surface Patching
77	Adds quantity of HMA Pavement 3 LT 58-28 S for storm sewer laterals and updates total quantity listed on this table. Changes to the note to clarify incentive bid items. Updates the quantity for HMA Percent Within Limits (PWL) Test Strip

The responsibility for notifying potential subcontractors and suppliers of these changes remains with the prime contractor.

Sincerely,

*Mike Coleman*

Proposal Development Specialist  
Proposal Management Section

**ADDENDUM NO. 02**

**6525-06-71**

**March 9, 2017**

**Special Provisions**

**22. Asphaltic Base Excavation**

*Replace the entire article language with the following:*

**Description**

Excavation for Asphaltic Base Widening, as shown in the Proposed Typical Cross Sections shall not be temporarily or permanently placed in existing ditch, nor shall the existing shoulder outside of the 16 foot paved shoulder be excavated unless approved by the engineer.

**Materials**

*Revise 315.2 Materials*

Furnish 19mm nominal size aggregate graded as specified in 460.2.2.3 and conform to the other materials and mixture requirements specified for asphaltic surface in 465.

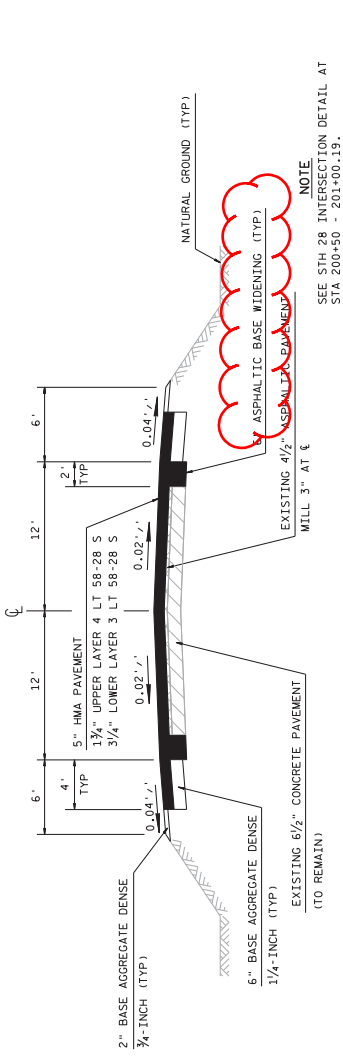
**Schedule of Items**

Attached, dated March 9, 2017, are the revised Schedule of Items Pages 1 – 14.

**Plan Sheets**

The following 8½ x 11-inch sheets are attached and made part of the plans for this proposal:  
Revised: 5, 6, 20, 74, 75, 76 and 77.

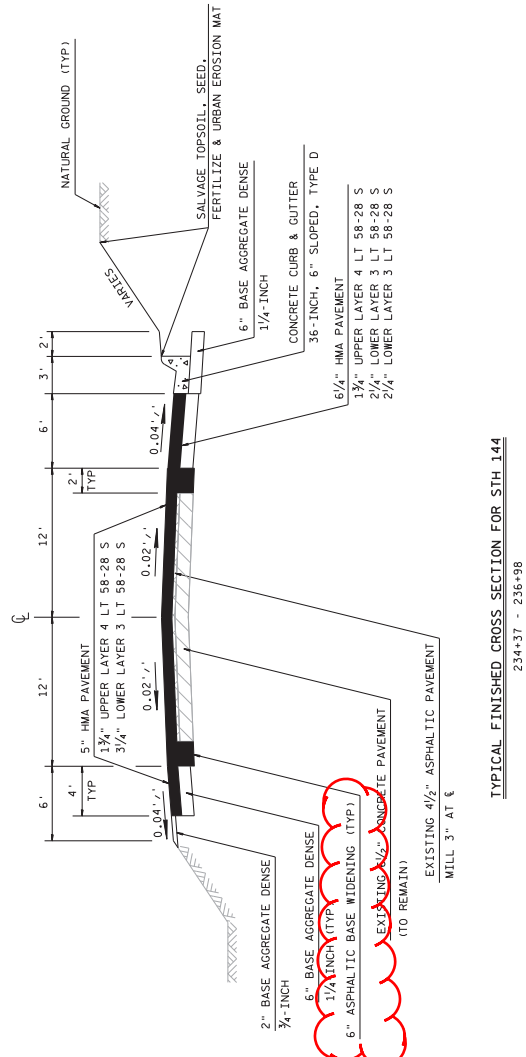
END OF ADDENDUM



TYPICAL FINISHED CROSS SECTION FOR STH 144

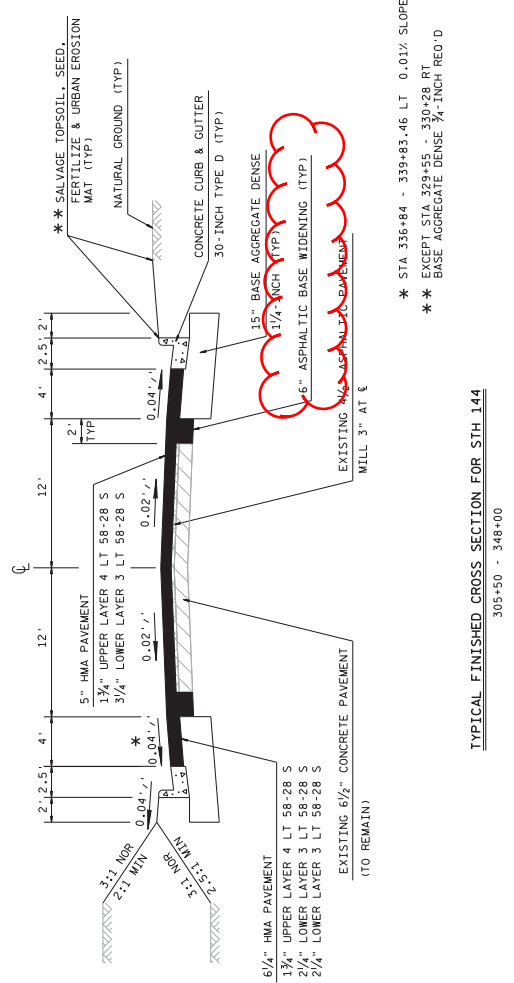
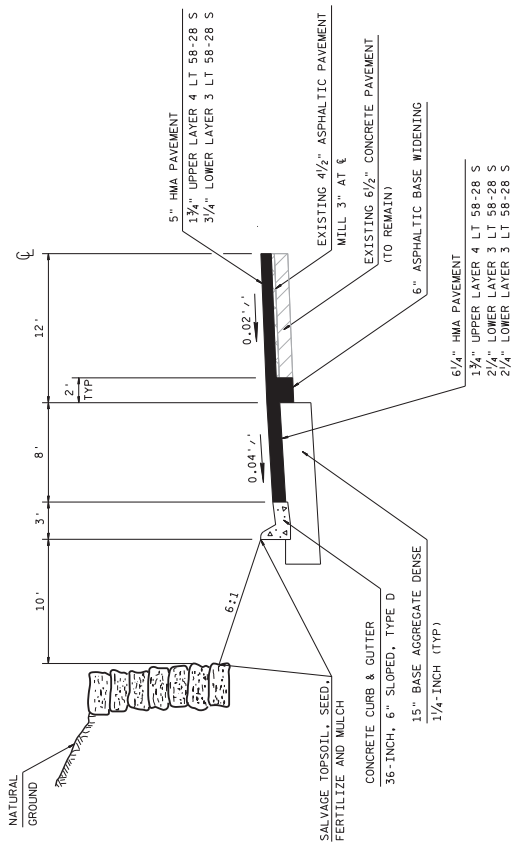
200+00 - 374+37  
 236+98 - 304+50  
 348+00 - 465+62

Addendum No. 02  
 ID 6525-06-71  
 Revised Sheet 5  
 March 9, 2017



TYPICAL FINISHED CROSS SECTION FOR STH 144

234+37 - 236+98

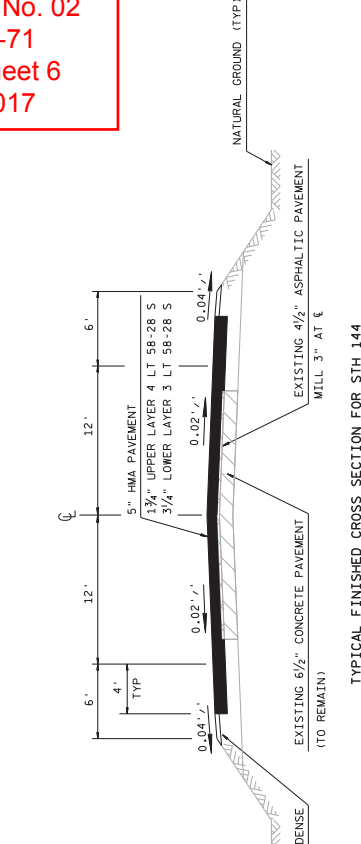


TYPICAL FINISHED CROSS SECTION FOR STH 144

1/2 TYPICAL FINISHED CROSS SECTION FOR STH 144

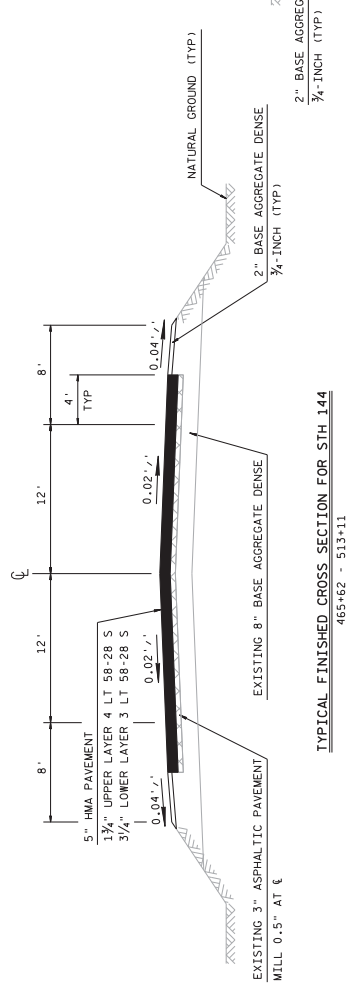
435+65 - 439+00 LT

Addendum No. 02  
ID 6525-06-71  
Revised Sheet 6  
March 9, 2017



TYPICAL FINISHED CROSS SECTION FOR STH 144

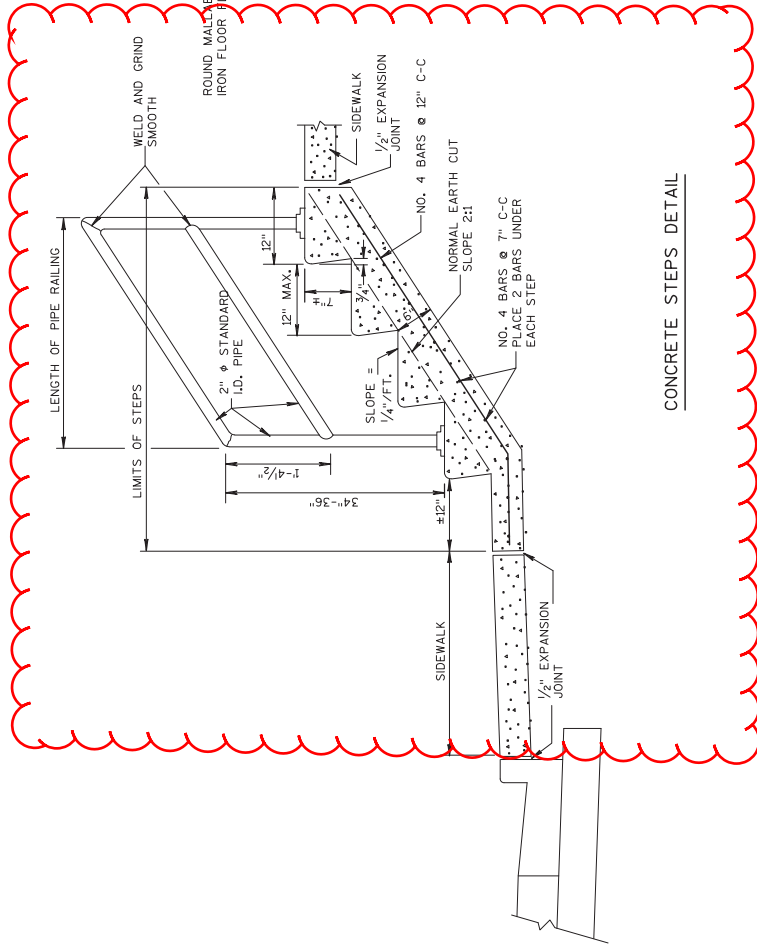
513+11 - 560+23



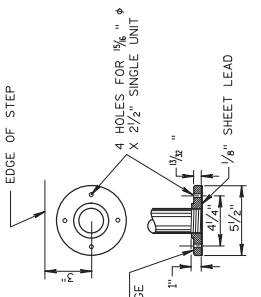
TYPICAL FINISHED CROSS SECTION FOR STH 144

465+62 - 513+11

Addendum No. 02  
 ID 6525-06-71  
 Revised Sheet 20  
 March 9, 2017



CONCRETE STEPS DETAIL



FLANGE DETAIL

NOTE:  
 THE EXACT LOCATION, WIDTHS, & NUMBER OF STEPS TO BE DETERMINED BY THE ENGINEER IN THE FIELD.  
 STEEL REINFORCEMENT AND PIPE RAILING NOT REQUIRED ON STEPS WITH 2 RISERS OR LESS.  
 MINIMUM WIDTH OF STEP EQUALS 4 FEET.  
 RAILING TO BE PLACED ON LEFT ASCENDING SIDE OF STEPS ONLY.  
 STEPS AND RAILING CONSTRUCTION TO FOLLOW APPLICABLE BUILDING CODES.

PROJECT NO: 6525-06-71	COUNTY: SHEBOYGAN	CONSTRUCTION DETAIL	SHEET 20	E
FILE NAME: F:\03_65250602\001_CADD\RD02.DWG	LAYOUT NAME: RAILING	FLYBY: CAMPBURE, MICHAEL	PLOT SCALE: #####	WISDOT/CADD/SHEET 42
HWY: STH 144	FLY DATE: 3/9/2017 10:39 AM			

Addendum No. 02  
ID 6525-06-71  
Revised Sheet 74  
March 9, 2017

Division	From/To Station	Location	205.0100** Common Excavation (1)		Salvaged/ Unusable Pavement Material (3)	Available Material (4)	Unexpanded Fill (5)	Expanded Fill (5) Factor 1.33	Mass Ordinate +/- (6)	HAUL OUT	HAUL IN
			Cut (2)	Fill (2)							
Division 1	209+67-212+50	STH 144	12	0	0	12	53	70	-58	0	58
	231+10-239+05	STH 144	561	0	0	561	237	315	246	0	0
	248+32-260+75	STH 144	113	0	0	113	902	1,200	-1,087	0	1,087
	279+75-282+50	STH 144	159	0	0	159	105	140	19	19	0
	298+70-308+14	STH 144	415	44	44	371	227	302	69	69	0
	308+14-324+00	STH 144	2,245	243	243	2,002	223	296	1,705	1,705	0
	324+00-348+50	STH 144	3,201	353	353	2,848	157	209	2,639	2,639	0
	357+25-359+70	STH 144	57	0	0	57	159	212	-155	0	155
	381+50-383+50	STH 144	41	0	0	41	206	274	-233	0	233
	394+35-397+75	STH 144	384	0	0	384	5	7	376	0	0
	402+50-403+50	STH 144	0	0	0	0	26	34	-34	0	34
	423+25-424+75	STH 144	19	0	0	19	347	462	-442	0	442
	434+50-439+70	STH 144	755	42	42	713	1	1	712	0	0
	443+90-453+72	STH 144	597	2	2	595	396	526	69	69	0
	462+76-469+00	STH 144	351	0	0	351	116	155	196	0	0
	489+00-509+50	STH 144	65	0	0	65	462	614	-549	0	549
	510+75-514+71	STH 144	128	0	0	128	33	44	83	83	0
	515+35-517+25	STH 144	0	0	0	0	67	89	-89	0	89
	531+09-536+30	STH 144	9	0	0	9	205	272	-263	0	263
	20+12-20+95	LOWE PINE	2	0	0	2	47	63	-61	0	61
	20+80-29+60	RIVERVIEW	4	0	0	4	73	97	-93	0	93
	70+56-71+36.14	SCHROETER	4	0	0	4	7	10	-5	0	5
	88+30-89+48	CTH DE	93	0	0	93	2	2	90	90	0
80+58-81+28	SILVER CREEK RD	20	0	0	20	5	6	14	14	0	
98+25-99+84	LYNN (S)	386	0	0	386	17	22	363	363	0	
100+58-101+50	LYNN (N)	209	0	0	209	3	4	205	205	0	
108+50-109+89	CTH I (S)	115	0	0	115	148	197	-83	0	83	
110+16-111+40	CTH I (N)	123	0	0	123	99	132	-9	0	9	
0+50-2+05	DE	516	0	0	516	0	0	516	516	0	
UNDISTRIBUTED			1,950	0	0	0	0	0	0	0	0
Subtotal			12,534	684	684	9,899	4,328	5,757	4,142	7,304	3,161
Grand Total		Total Common Exc	12,534	684	684	9,899	4,328	5,757	4,142	7,304	3,161

\*\* Additional quantity elsewhere

- 1) Common Excavation is Cut. Item number 205.0100
- 2) Salvaged/Unusable Pavement Material is included in Cut.
- 3) Salvaged/Unusable Pavement Material
- 4) Available Material = Cut - Salvaged/Unusable Pavement Material
- 5) Expanded Fill. Factor = 1.25
- 6) The Mass Ordinate + or - Qty calculated for the Division. Plus quantity indicates an excess of material within the Division. Minus indicates a short

**BASE AGGREGATE DENSE SUMMARY**

CATEGORY	STATION TO	STATION	LOCATION	305.0110		WATER
				BASE AGGREGATE DENSE	305.120**	
				3/4-INCH	1 1/4-INCH	MGAL
0010	201+01	- 234+07	STH 144 LT	97	189	1
	201+01	- 233+96	STH 144 RT	101	488	1
	234+49	- 250+53	STH 144 LT	49	238	0
	238+04	- 250+67	STH 144 RT	39	187	0
	250+81	- 257+31	STH 144 LT	20	96	0
	250+96	- 257+26	STH 144 RT	19	93	0
	257+88	- 304+00	STH 144 LT	141	379	1
	257+89	- 306+80	STH 144 RT	148	717	1
	304+00	- 316+19	STH 144 LT	-	960	10
	306+80	- 316+00	STH 144 RT	-	1232	12
	306+81	-	STH 144	-	19	0
	309+53	-	STH 144	-	9	0
	311+70	-	STH 144	-	9	0
	313+88	-	STH 144	-	9	0
	316+32	- 317+46	STH 144 LT	-	53	1
	316+32	-	STH 144	-	9	0
	317+43	- 342+29	STH 144 LT	-	1959	20
	316+00	- 342+32	STH 144 RT	-	2844	28
	317+46	-	STH 144	-	9	0
	318+85	-	STH 144	-	9	0
	321+81	-	STH 144	-	9	0
	325+84	-	STH 144	-	9	0
	332+74	-	STH 144	-	9	0
	342+28	- 342+69	STH 144 RT	-	19	0
	342+28	- 342+69	STH 144 LT	-	19	0
	342+69	-	STH 144	-	9	0
	342+69	- 343+27	STH 144 LT	-	27	0
	343+38	- 348+45	STH 144 RT	-	416	4
	343+57	- 345+42	STH 144 LT	-	180	2
	349+00	- 395+43	STH 144 LT	142	688	1
	348+34	- 395+23	STH 144 RT	143	695	1
	382+87	-	STH 144	-	43	0
	396+74	- 448+40	STH 144 LT	142	686	1
	396+53	- 447+69	STH 144 RT	157	761	2
	396+04	- 396+70	STH 144 RT	-	140	1
	403+27	-	STH 144	-	43	0
	424+01	-	STH 144	-	38	0
	435+65	- 439+00	STH 144 LT	-	264	3
	443+89	- 447+89	STH 144 RT	-	607	6
	447+23	-	STH 144	-	43	0
	447+10	- 448+10	STH 144 RT	-	121	1
			SUBTOTAL	1198	14334	97

\*\*Additional quantities listed elsewhere in plan

**BASE AGGREGATE DENSE SUMMARY (CONTINUED)**

CATEGORY	STATION TO	STATION	LOCATION	305.0110		WATER
				BASE AGGREGATE DENSE	305.120**	
				3/4-INCH	1 1/4-INCH	MGAL
0010	449+19	- 500+41	STH 144 RT	157	759	2
		- 448+89	STH 144	-	43	0
		- 449+42	STH 144	-	21	0
	449+18	- 450+19	STH 144 RT	-	121	1
	449+40	- 453+90	STH 144 LT	-	647	7
	502+81	- 560+23	STH 144 LT	176	851	2
	503+63	- 560+23	STH 144 RT	166	804	2
		-	LONE PINE LT & RT	1	75	1
		-	RIVERVIEW LT & RT	3	301	3
		-	CAMP ANAWA (N) LT & RT	1	-	0
		-	CAMP ANAWA (S) LT & RT	1	-	0
		-	SCHROETER	6	19	0
		-	CTH DE LT & RT	9	290	3
		-	SILVER CREEK	2	80	1
		-	LYNN LT & RT	11	226	2
		-	CTH I LT & RT	14	352	4
		-	PL	5	208	2
		-	STORM SEWER TRENCHES	552	4867	30
		-	SUBTOTAL	1750	19201	127

**ASPHALTIC BASE WIDENING SUMMARY**

CATEGORY	STATION TO	STATION	LOCATION	TON
0010	201+00	- 234+02	STH 144 LT & RT	499
	234+41	- 250+60	STH 144 LT & RT	245
	250+90	- 257+26	STH 144 LT & RT	96
	257+88	- 304+00	STH 144 LT & RT	696
	304+00	- 342+35	STH 144 LT & RT	580
	342+35	- 396+53	STH 144 LT & RT	774
	396+53	- 449+19	STH 144 LT & RT	796
	449+19	- 465+62	STH 144 LT & RT	248
			TOTAL 0010	3934

Addendum No. 02  
ID 6525-06-71  
Revised Sheet 75  
March 9, 2017



ASPHALTIC SURFACE DRIVEWAYS AND FIELD ENTRANCES

CATEGORY	STATION	LOCATION	TON
0010	210+20	STH 144 RT	2
	212+11	STH 144 RT	2
	262+67	STH 144 RT	5
	292+58	STH 144 RT	1
	293+00	STH 144 RT	1
	293+85	STH 144 RT	2
	295+86	STH 144 LT	2
	298+13	STH 144 LT	2
	319+65	STH 144 RT	2
	323+63	STH 144 LT	2
	324+64	STH 144 RT	2
	326+70	STH 144 LT	2
	332+55	STH 144 LT	2
	333+20	STH 144 LT	4
	335+18	STH 144 LT	4
	338+64	STH 144 RT	2
	345+10	STH 144 LT	4
	423+03	STH 144 LT	2
	426+89	STH 144 LT	2
	435+00	STH 144 LT	2
	468+46	STH 144 RT	3
	511+55	STH 144 RT	2
	512+15	STH 144 LT	2
	513+50	STH 144 LT	2
	517+38	STH 144 RT	2
	517+89	STH 144 RT	2
	518+36	STH 144 LT	2
	518+57	STH 144 RT	2
	518+96	STH 144 RT	2
	519+72	STH 144 RT	2
	520+39	STH 144 RT	2
	520+39	STH 144 LT	2
	522+65	STH 144 LT	2
	524+77	STH 144 LT	2
	528+96	STH 144 LT	2
	29+45	RIVERVIEW LT	1

TOTAL 0010 79

ASPHALTIC SURFACE PATCHING

CATEGORY	STATION	TO STATION	LOCATION	TON
0010	200+44	560+23	UNDI STRIBUTED	1000
				1000

465.0110

CONCRETE DRIVEWAY SUMMARY

CATEGORY	STATION	LOCATION	416.0160 SY	416.0180 SY	REMARKS
0010	304+80	STH 144 LT	10		
	307+64	STH 144 LT	10		
	307+90	STH 144 RT	10		
	308+80	STH 144 LT	10		
	310+85	STH 144 LT	10		
	311+90	STH 144 RT	10		
	313+52	STH 144 LT	5		
	313+56	STH 144 RT	8		
	314+37	STH 144 RT	40		
	314+72	STH 144 LT	56		
	316+05	STH 144 RT	75		
	316+68	STH 144 RT	55		
	319+65	STH 144 RT	9		
	319+70	STH 144 LT	18		
	320+60	STH 144 LT	42		
	321+12	STH 144 LT	42		
	321+43	STH 144 RT	12		
	322+32	STH 144 LT	7		
	323+00	STH 144 RT	10		
	323+35	STH 144 LT	9		
	323+63	STH 144 LT	9		
	324+64	STH 144 RT	9		
	325+81	STH 144 LT	17		
	326+70	STH 144 LT	7		
	327+39	STH 144 RT	6		
	328+06	STH 144 RT	10		
	328+63	STH 144 LT	9		
	328+68	STH 144 RT	30		
	329+46	STH 144 RT	49		
	329+48	STH 144 LT	12		
	330+13	STH 144 RT	12		
	331+01	STH 144 RT	8		
	331+28	STH 144 LT	5		
	332+28	STH 144 RT	8		
	332+55	STH 144 LT	7		
	332+90	STH 144 RT	7		
	333+20	STH 144 LT	16		
	334+05	STH 144 LT		93	
	334+22	STH 144 RT	7		
	335+57	STH 144 RT	6		
	335+18	STH 144 LT	16		
	335+64	STH 144 LT	6		
	335+91	STH 144 LT	14		
	337+96	STH 144 RT	5		
	338+64	STH 144 RT	9		
	339+80	STH 144 LT	12		
	340+50	STH 144 RT	10		
	341+30	STH 144 RT	14		
	345+10	STH 144 LT	14		
	345+54	STH 144 RT	10		
	TOTAL 0010		792	93	

Addendum No. 02  
ID 6525-06-71  
Revised Sheet 76  
March 9, 2017

PROJECT NO: 6525-06-71

HWY: STH 144

COUNTY: SHEBOYGAN

MISCELLANEOUS QUANTITIES

SHEET: 76

E

FILE NAME: N:\PDS\...030200.mxd

PLOT DATE: June 14, 1911

PLOT NAME:

PLOT SCALE: 1:1

**ASPHALTIC FLUMES**

CATEGORY	STATION	LOCATION	SY
0010	210+63	STH 144 LT	5
	211+74	STH 144 LT	5
	238+04	STH 144 RT	5
	304+00	STH 144 LT	11
	306+80	STH 144 RT	11
	345+43	STH 144 LT	11
	348+05	STH 144 RT	11
	395+64	STH 144 RT	5
	396+56	STH 144 RT	5
	396+73	STH 144 LT	5
	434+80	STH 144 LT	7
439+65	STH 144 LT	11	
447+89	STH 144 RT	5	
448+12	STH 144 LT	7	
513+11	STH 144 LT	8	
70+54	SCHROETER LT	6	
50+74	SCHROETER RT	6	
88+80	CTH DE LT	6	
100+34	LYNN LT	6	
109+35	CTH I LT	6	
110+83	CTH I RT	6	
TOTAL 0010			148

**ASPHALTIC SUMMARY**

CATEGORY	STATION TO	STATION	LOCATION	GAL	TON	TON	TON	LF
0010	201+00	-	234+02	STH 144 LT & RT	1552	2504	1147	6604
	234+41	-	250+60	STH 144 LT & RT	751	1107	564	3238
	250+90	-	257+26	STH 144 LT & RT	317	452	231	1272
	257+88	-	304+00	STH 144 LT & RT	2130	3120	1594	9224
	304+00	-	342+35	STH 144 LT & RT	1984	1307	1822	8810
	342+35	-	396+53	STH 144 LT & RT	2435	3626	1822	9696
	396+53	-	449+19	STH 144 LT & RT	2532	3705	1835	10532
	449+19	-	465+62	STH 144 LT & RT	764	1192	567	3286
	465+62	-	500+49	STH 144 LT & RT	1771	2505	1278	6974
	502+71	-	513+11	STH 144 LT & RT	613	766	391	2080
	513+11	-	561+23	STH 144 LT & RT	2178	3153	1642	9424
				LOVE PINE	67	97	49	
				RIVERVIEW	57	77	39	
				CAMP AWANA N	17	24	12	
				CAMP AWANA S	33	45	23	
				SCHROETER	69	103	53	
				SILVERCREEK	69	113	58	
			CTH DE	43	153	60		
			LYNN ROAD N	76	120	61		
			LYNN ROAD S	74	119	61		
			CTH I (N)	80	1214	65		
			CTH I (S)	67	1241	67		
			CTH K	122	1857	100		
			CARROLL	68	97	50		
			STARK	77	106	54		
			CULVERT STORM SEWER LATERALS	25	25			
			TOTAL 0010	17524	29505	13130	71140	

\*\*Additional quantity listed elsewhere in plan  
 NOTE: Item 460.2000 includes upper and lower layer side roads.  
 Item 460.2005 does not include the lowest layer on the mainline 6 1/4" sections. It only includes the upper and lower layer on the mainline 5" sections.

**HMA PERCENT WITHIN LIMITS (PWL) TEST STRIP**

CATEGORY	STATION	LOCATION	EA	REMARKS
0010	201+00 - 561+23	STH 144	2	
	TOTAL 0010		2	

Addendum No. 02  
 ID 6525-06-71  
 Revised Sheet 77  
 March 9, 2017



Proposal Schedule of Items

Proposal ID: 20170314018 Project(s): 6525-06-71

Federal ID(s): WISC 2017107

SECTION: 0001

Contract Items

Alt Set ID:

Alt Mbr ID:

Proposal Line Number	Item ID Description	Approximate Quantity and Units	Unit Price	Bid Amount
0010	201.0105 Clearing	6.000 STA	_____.	_____.
0020	201.0120 Clearing	518.000 ID	_____.	_____.
0030	201.0205 Grubbing	6.000 STA	_____.	_____.
0040	201.0220 Grubbing	590.000 ID	_____.	_____.
0050	203.0100 Removing Small Pipe Culverts	7.000 EACH	_____.	_____.
0060	203.0200 Removing Old Structure (station) 01. STA 281+50	LS	LUMP SUM	_____.
0070	203.0200 Removing Old Structure (station) 02. STA 299+99	LS	LUMP SUM	_____.
0080	203.0200 Removing Old Structure (station) 03. STA 301+16	LS	LUMP SUM	_____.
0090	203.0200 Removing Old Structure (station) 04. STA 316+04	LS	LUMP SUM	_____.
0100	203.0200 Removing Old Structure (station) 05. STA 358+30	LS	LUMP SUM	_____.
0110	203.0200 Removing Old Structure (station) 06. STA 382+57	LS	LUMP SUM	_____.
0120	203.0200 Removing Old Structure (station) 07. STA 403+27	LS	LUMP SUM	_____.
0130	203.0200 Removing Old Structure (station) 08. STA 424+01	LS	LUMP SUM	_____.
0140	203.0200 Removing Old Structure (station) 09. STA 447+24	LS	LUMP SUM	_____.



Proposal Schedule of Items

Proposal ID: 20170314018 Project(s): 6525-06-71

Federal ID(s): WISC 2017107

SECTION: 0001

Contract Items

Alt Set ID:

Alt Mbr ID:

Proposal Line Number	Item ID Description	Approximate Quantity and Units	Unit Price	Bid Amount
0150	203.0200 Removing Old Structure (station) 10. STA 448+89	LS	LUMP SUM	_____.
0160	203.0200 Removing Old Structure (station) 11. STA 535+65	LS	LUMP SUM	_____.
0170	204.0100 Removing Pavement	1,917.000 SY	_____.	_____.
0180	204.0110 Removing Asphaltic Surface	39.000 SY	_____.	_____.
0190	204.0115 Removing Asphaltic Surface Butt Joints	248.000 SY	_____.	_____.
0200	204.0125 Removing Asphaltic Surface Milling	16,024.000 TON	_____.	_____.
0210	204.0150 Removing Curb & Gutter	8,364.000 LF	_____.	_____.
0220	204.0155 Removing Concrete Sidewalk	24.000 SY	_____.	_____.
0230	204.0165 Removing Guardrail	3,720.000 LF	_____.	_____.
0240	204.0170 Removing Fence	74.000 LF	_____.	_____.
0250	204.0185 Removing Masonry	2.000 CY	_____.	_____.
0260	204.0190 Removing Surface Drains	4.000 EACH	_____.	_____.
0270	204.0210 Removing Manholes	1.000 EACH	_____.	_____.
0280	204.0220 Removing Inlets	11.000 EACH	_____.	_____.
0290	204.0245 Removing Storm Sewer (size) 01. 12 INCH	906.000 LF	_____.	_____.
0300	204.0245 Removing Storm Sewer (size) 02. 15 INCH	320.000 LF	_____.	_____.



Proposal Schedule of Items

Proposal ID: 20170314018 Project(s): 6525-06-71

Federal ID(s): WISC 2017107

SECTION: 0001

Contract Items

Alt Set ID:

Alt Mbr ID:

Proposal Line Number	Item ID Description	Approximate Quantity and Units	Unit Price	Bid Amount
0310	204.0245 Removing Storm Sewer (size) 03. 24 INCH	298.000 LF	_____.	_____.
0320	204.0245 Removing Storm Sewer (size) 04. 30 INCH	308.000 LF	_____.	_____.
0330	204.9165.S Removing (item description) 01. Concrete Steps	44.000 SF	_____.	_____.
0340	205.0100 Excavation Common	14,717.000 CY	_____.	_____.
0350	205.0501.S Excavation, Hauling, and Disposal of Petroleum Contaminated Soil	130.000 TON	_____.	_____.
0360	208.1100 Select Borrow	1,457.000 CY	_____.	_____.
0370	211.0100 Prepare Foundation for Asphaltic Paving (project) 01. 6525-06-71	LS	LUMP SUM	_____.
0380	211.0400 Prepare Foundation for Asphaltic Shoulders	633.000 STA	_____.	_____.
0390	213.0100 Finishing Roadway (project) 01. 6525-06-71	1.000 EACH	_____.	_____.
0400	305.0110 Base Aggregate Dense 3/4-Inch	1,750.000 TON	_____.	_____.
0410	305.0120 Base Aggregate Dense 1 1/4-Inch	21,195.000 TON	_____.	_____.
0420	305.0500 Shaping Shoulders	187.000 STA	_____.	_____.
0450	416.0160 Concrete Driveway 6-Inch	792.000 SY	_____.	_____.
0460	416.0180 Concrete Driveway 8-Inch	93.000 SY	_____.	_____.
0470	440.4410 Incentive IRI Ride	27,220.000 DOL	1.00000	27,220.00



## Proposal Schedule of Items

Proposal ID: 20170314018 Project(s): 6525-06-71

Federal ID(s): WISC 2017107

SECTION: 0001

Contract Items

Alt Set ID:

Alt Mbr ID:

Proposal Line Number	Item ID Description	Approximate Quantity and Units	Unit Price	Bid Amount
0480	455.0605 Tack Coat	17,524.000 GAL	_____.	_____.
0490	460.2000 Incentive Density HMA Pavement	25,170.000 DOL	1.00000	25,170.00
0500	460.2005 Incentive Density PWL HMA Pavement	42,610.000 DOL	1.00000	42,610.00
0510	460.2010 Incentive Air Voids HMA Pavement	42,610.000 DOL	1.00000	42,610.00
0520	460.4110.S Reheating HMA Pavement Longitudinal Joints	71,140.000 LF	_____.	_____.
0530	460.5223 HMA Pavement 3 LT 58-28 S	29,615.000 TON	_____.	_____.
0540	460.5224 HMA Pavement 4 LT 58-28 S	13,130.000 TON	_____.	_____.
0550	465.0105 Asphaltic Surface	114.000 TON	_____.	_____.
0560	465.0120 Asphaltic Surface Driveways and Field Entrances	79.000 TON	_____.	_____.
0570	465.0315 Asphaltic Flumes	148.000 SY	_____.	_____.
0580	465.0475 Asphalt Center Line Rumble Strips 2-Lane Rural	31,248.000 LF	_____.	_____.
0590	502.3200 Protective Surface Treatment	1,849.000 SY	_____.	_____.
0600	504.0900 Concrete Masonry Endwalls	4.000 CY	_____.	_____.
0610	509.0301 Preparation Decks Type 1	148.000 SY	_____.	_____.
0620	509.0302 Preparation Decks Type 2	106.000 SY	_____.	_____.
0630	509.0500 Cleaning Decks	872.000 SY	_____.	_____.



Proposal Schedule of Items

Proposal ID: 20170314018 Project(s): 6525-06-71

Federal ID(s): WISC 2017107

SECTION: 0001

Contract Items

Alt Set ID:

Alt Mbr ID:

Proposal Line Number	Item ID Description	Approximate Quantity and Units	Unit Price	Bid Amount
0640	509.1500 Concrete Surface Repair	1,000.000 SF	_____.	_____.
0650	509.2000 Full-Depth Deck Repair	8.000 SY	_____.	_____.
0660	509.2500 Concrete Masonry Overlay Decks	98.000 CY	_____.	_____.
0670	509.9005.S Removing Concrete Masonry Deck Overlay (structure) 01. B-59-104	672.000 SY	_____.	_____.
0680	509.9050.S Cleaning Parapets	489.000 LF	_____.	_____.
0690	520.1018 Apron Endwalls for Culvert Pipe 18-Inch	4.000 EACH	_____.	_____.
0700	520.1030 Apron Endwalls for Culvert Pipe 30-Inch	4.000 EACH	_____.	_____.
0710	520.8000 Concrete Collars for Pipe	3.000 EACH	_____.	_____.
0720	521.0118 Culvert Pipe Corrugated Steel 18-Inch	32.000 LF	_____.	_____.
0730	521.0130 Culvert Pipe Corrugated Steel 30-Inch	57.000 LF	_____.	_____.
0740	522.0124 Culvert Pipe Reinforced Concrete Class III 24-Inch	58.000 LF	_____.	_____.
0750	522.0130 Culvert Pipe Reinforced Concrete Class III 30-Inch	200.000 LF	_____.	_____.
0760	522.0148 Culvert Pipe Reinforced Concrete Class III 48-Inch	111.000 LF	_____.	_____.
0770	522.1024 Apron Endwalls for Culvert Pipe Reinforced Concrete 24-Inch	4.000 EACH	_____.	_____.
0780	522.1030 Apron Endwalls for Culvert Pipe Reinforced Concrete 30-Inch	7.000 EACH	_____.	_____.



## Proposal Schedule of Items

Proposal ID: 20170314018 Project(s): 6525-06-71

Federal ID(s): WISC 2017107

SECTION: 0001

Contract Items

Alt Set ID:

Alt Mbr ID:

Proposal Line Number	Item ID Description	Approximate Quantity and Units	Unit Price	Bid Amount
0790	523.0129 Culvert Pipe Reinforced Concrete Horizontal Elliptical Class HE-III 29x45- Inch	64.000 LF	_____.	_____.
0800	523.0143 Culvert Pipe Reinforced Concrete Horizontal Elliptical Class HE-III 43x68- Inch	130.000 LF	_____.	_____.
0810	523.0148 Culvert Pipe Reinforced Concrete Horizontal Elliptical Class HE-III 48x76- Inch	55.000 LF	_____.	_____.
0820	523.0419 Culvert Pipe Reinforced Concrete Horizontal Elliptical Class HE-IV 19x30- Inch	216.000 LF	_____.	_____.
0830	523.0424 Culvert Pipe Reinforced Concrete Horizontal Elliptical Class HE-IV 24x38- Inch	42.000 LF	_____.	_____.
0840	523.0519 Apron Endwalls for Culvert Pipe Reinforced Concrete Horizontal Elliptical 19x30-Inch	4.000 EACH	_____.	_____.
0850	523.0524 Apron Endwalls for Culvert Pipe Reinforced Concrete Horizontal Elliptical 24x38-Inch	2.000 EACH	_____.	_____.
0860	523.0529 Apron Endwalls for Culvert Pipe Reinforced Concrete Horizontal Elliptical 29x45-Inch	2.000 EACH	_____.	_____.
0870	523.0543 Apron Endwalls for Culvert Pipe Reinforced Concrete Horizontal Elliptical 43x68-Inch	4.000 EACH	_____.	_____.
0880	523.0548 Apron Endwalls for Culvert Pipe Reinforced Concrete Horizontal Elliptical 48x76-Inch	2.000 EACH	_____.	_____.
0890	601.0110 Concrete Curb Type D	84.000 LF	_____.	_____.





Proposal Schedule of Items

Proposal ID: 20170314018 Project(s): 6525-06-71

Federal ID(s): WISC 2017107

SECTION: 0001

Contract Items

Alt Set ID:

Alt Mbr ID:

Proposal Line Number	Item ID Description	Approximate Quantity and Units	Unit Price	Bid Amount
0900	601.0411 Concrete Curb & Gutter 30-Inch Type D	8,485.000 LF	_____.	_____.
0910	601.0557 Concrete Curb & Gutter 6-Inch Sloped 36-Inch Type D	1,204.000 LF	_____.	_____.
0920	602.0405 Concrete Sidewalk 4-Inch	165.000 SF	_____.	_____.
0930	602.1500 Concrete Steps	54.000 SF	_____.	_____.
0940	606.0200 Riprap Medium	73.000 CY	_____.	_____.
0950	608.0312 Storm Sewer Pipe Reinforced Concrete Class III 12-Inch	341.000 LF	_____.	_____.
0960	608.0324 Storm Sewer Pipe Reinforced Concrete Class III 24-Inch	1,142.000 LF	_____.	_____.
0970	608.0330 Storm Sewer Pipe Reinforced Concrete Class III 30-Inch	40.000 LF	_____.	_____.
0980	608.0412 Storm Sewer Pipe Reinforced Concrete Class IV 12-Inch	254.000 LF	_____.	_____.
0990	608.0424 Storm Sewer Pipe Reinforced Concrete Class IV 24-Inch	165.000 LF	_____.	_____.
1000	608.0430 Storm Sewer Pipe Reinforced Concrete Class IV 30-Inch	253.000 LF	_____.	_____.
1010	611.0530 Manhole Covers Type J	3.000 EACH	_____.	_____.
1020	611.0624 Inlet Covers Type H	33.000 EACH	_____.	_____.
1030	611.0642 Inlet Covers Type MS	4.000 EACH	_____.	_____.
1040	611.0654 Inlet Covers Type V	1.000 EACH	_____.	_____.



Proposal Schedule of Items

Proposal ID: 20170314018 Project(s): 6525-06-71

Federal ID(s): WISC 2017107

SECTION: 0001

Contract Items

Alt Set ID:

Alt Mbr ID:

Proposal Line Number	Item ID Description	Approximate Quantity and Units	Unit Price	Bid Amount
1050	611.2004 Manholes 4-FT Diameter	15.000 EACH	_____.	_____.
1060	611.2005 Manholes 5-FT Diameter	8.000 EACH	_____.	_____.
1070	611.3230 Inlets 2x3-FT	13.000 EACH	_____.	_____.
1080	611.3901 Inlets Median 1 Grate	4.000 EACH	_____.	_____.
1090	611.9800.S Pipe Grates	3.000 EACH	_____.	_____.
1100	612.0106 Pipe Underdrain 6-Inch	135.000 LF	_____.	_____.
1110	612.0406 Pipe Underdrain Wrapped 6-Inch	310.000 LF	_____.	_____.
1120	612.0700 Drain Tile Exploration	210.000 LF	_____.	_____.
1130	612.0806 Apron Endwalls for Underdrain Reinforced Concrete 6-Inch	1.000 EACH	_____.	_____.
1140	614.0200 Steel Thrie Beam Structure Approach	126.000 LF	_____.	_____.
1150	614.0305 Steel Plate Beam Guard Class A	2,878.000 LF	_____.	_____.
1160	614.0345 Steel Plate Beam Guard Short Radius	74.000 LF	_____.	_____.
1170	614.0370 Steel Plate Beam Guard Energy Absorbing Terminal	4.000 EACH	_____.	_____.
1180	614.0390 Steel Plate Beam Guard Short Radius Terminal	2.000 EACH	_____.	_____.
1190	614.2300 MGS Guardrail 3	453.000 LF	_____.	_____.
1200	614.2310 MGS Guardrail 3 HS	150.000 LF	_____.	_____.



Proposal Schedule of Items

Proposal ID: 20170314018 Project(s): 6525-06-71

Federal ID(s): WISC 2017107

SECTION: 0001

Contract Items

Alt Set ID:

Alt Mbr ID:

Proposal Line Number	Item ID Description	Approximate Quantity and Units	Unit Price	Bid Amount
1210	614.2500 MGS Thrie Beam Transition	390.000 LF	_____	_____
1220	614.2610 MGS Guardrail Terminal EAT	16.000 EACH	_____	_____
1230	614.8010 Anchor Post Assembly Top Mount	16.000 EACH	_____	_____
1240	618.0100 Maintenance And Repair of Haul Roads (project) 01. 6525-06-71	1.000 EACH	_____	_____
1250	619.1000 Mobilization	1.000 EACH	_____	_____
1260	620.0200 Concrete Median Blunt Nose	30.000 SF	_____	_____
1270	620.0300 Concrete Median Sloped Nose	85.000 SF	_____	_____
1280	624.0100 Water	127.000 MGAL	_____	_____
1290	625.0100 Topsoil	1,090.000 SY	_____	_____
1300	625.0500 Salvaged Topsoil	27,812.000 SY	_____	_____
1310	627.0200 Mulching	23,611.000 SY	_____	_____
1320	628.1504 Silt Fence	39,010.000 LF	_____	_____
1330	628.1520 Silt Fence Maintenance	14,820.000 LF	_____	_____
1340	628.1905 Mobilizations Erosion Control	8.000 EACH	_____	_____
1350	628.1910 Mobilizations Emergency Erosion Control	5.000 EACH	_____	_____
1360	628.2008 Erosion Mat Urban Class I Type B	12,118.000 SY	_____	_____



Proposal Schedule of Items

Proposal ID: 20170314018 Project(s): 6525-06-71

Federal ID(s): WISC 2017107

SECTION: 0001

Contract Items

Alt Set ID:

Alt Mbr ID:

Proposal Line Number	Item ID Description	Approximate Quantity and Units	Unit Price	Bid Amount
1370	628.2023 Erosion Mat Class II Type B	3,110.000 SY	_____.	_____.
1380	628.7005 Inlet Protection Type A	4.000 EACH	_____.	_____.
1390	628.7015 Inlet Protection Type C	34.000 EACH	_____.	_____.
1400	628.7504 Temporary Ditch Checks	25.000 LF	_____.	_____.
1410	628.7555 Culvert Pipe Checks	124.000 EACH	_____.	_____.
1420	628.7570 Rock Bags	200.000 EACH	_____.	_____.
1430	629.0210 Fertilizer Type B	23.000 CWT	_____.	_____.
1440	630.0130 Seeding Mixture No. 30	319.000 LB	_____.	_____.
1450	630.0140 Seeding Mixture No. 40	219.000 LB	_____.	_____.
1460	633.5200 Markers Culvert End	20.000 EACH	_____.	_____.
1470	634.0614 Posts Wood 4x6-Inch X 14-FT	83.000 EACH	_____.	_____.
1480	634.0616 Posts Wood 4x6-Inch X 16-FT	75.000 EACH	_____.	_____.
1490	634.0618 Posts Wood 4x6-Inch X 18-FT	5.000 EACH	_____.	_____.
1500	637.2210 Signs Type II Reflective H	872.380 SF	_____.	_____.
1510	637.2230 Signs Type II Reflective F	316.250 SF	_____.	_____.
1520	637.2235 Signs Type II Reflective F Folding	36.000 SF	_____.	_____.
1530	638.2602 Removing Signs Type II	143.000 EACH	_____.	_____.



Proposal Schedule of Items

Proposal ID: 20170314018 Project(s): 6525-06-71

Federal ID(s): WISC 2017107

SECTION: 0001

Contract Items

Alt Set ID:

Alt Mbr ID:

Proposal Line Number	Item ID Description	Approximate Quantity and Units	Unit Price	Bid Amount
1540	638.3000 Removing Small Sign Supports	159.000 EACH	_____.	_____.
1550	642.5401 Field Office Type D	1.000 EACH	_____.	_____.
1560	643.0100 Traffic Control (project) 01. 6525-06-71	1.000 EACH	_____.	_____.
1570	643.0300 Traffic Control Drums	1,300.000 DAY	_____.	_____.
1580	643.0420 Traffic Control Barricades Type III	6,678.000 DAY	_____.	_____.
1590	643.0705 Traffic Control Warning Lights Type A	11,932.000 DAY	_____.	_____.
1600	643.0900 Traffic Control Signs	7,266.000 DAY	_____.	_____.
1610	643.0920 Traffic Control Covering Signs Type II	11.000 EACH	_____.	_____.
1620	643.1050 Traffic Control Signs PCMS	28.000 DAY	_____.	_____.
1630	643.2000 Traffic Control Detour (project) 01. 6525-06-71	1.000 EACH	_____.	_____.
1640	643.3000 Traffic Control Detour Signs	20,128.000 DAY	_____.	_____.
1650	645.0120 Geotextile Type HR	230.000 SY	_____.	_____.
1660	646.0106 Pavement Marking Epoxy 4-Inch	91,726.000 LF	_____.	_____.
1670	646.0126 Pavement Marking Epoxy 8-Inch	1,088.000 LF	_____.	_____.
1680	646.0406 Pavement Marking Same Day Epoxy 4-Inch	16,832.000 LF	_____.	_____.
1690	646.0600 Removing Pavement Markings	299.000 LF	_____.	_____.



Proposal Schedule of Items

Proposal ID: 20170314018 Project(s): 6525-06-71

Federal ID(s): WISC 2017107

SECTION: 0001

Contract Items

Alt Set ID:

Alt Mbr ID:

Proposal Line Number	Item ID Description	Approximate Quantity and Units	Unit Price	Bid Amount
1700	646.2304.S Pavement Marking Grooved Wet Reflective Epoxy 4-Inch	70,146.000 LF	_____.	_____.
1710	647.0110 Pavement Marking Railroad Crossings Epoxy	2.000 EACH	_____.	_____.
1720	647.0566 Pavement Marking Stop Line Epoxy 18-Inch	20.000 LF	_____.	_____.
1730	647.0606 Pavement Marking Island Nose Epoxy	2.000 EACH	_____.	_____.
1740	647.0726 Pavement Marking Diagonal Epoxy 12-Inch	50.000 LF	_____.	_____.
1750	648.0100 Locating No-Passing Zones	7.000 MI	_____.	_____.
1760	649.0402 Temporary Pavement Marking Paint 4-Inch	32,146.000 LF	_____.	_____.
1770	650.4000 Construction Staking Storm Sewer	44.000 EACH	_____.	_____.
1780	650.4500 Construction Staking Subgrade	12,913.000 LF	_____.	_____.
1790	650.5000 Construction Staking Base	7,393.000 LF	_____.	_____.
1800	650.5500 Construction Staking Curb Gutter and Curb & Gutter	10,095.000 LF	_____.	_____.
1810	650.6000 Construction Staking Pipe Culverts	11.000 EACH	_____.	_____.
1820	650.6500 Construction Staking Structure Layout (structure) 01. Wall Modular Block Gravity	LS	LUMP SUM	_____.
1830	650.8000 Construction Staking Resurfacing Reference	35,973.000 LF	_____.	_____.



Proposal Schedule of Items

Proposal ID: 20170314018 Project(s): 6525-06-71

Federal ID(s): WISC 2017107

SECTION: 0001

Contract Items

Alt Set ID:

Alt Mbr ID:

Proposal Line Number	Item ID Description	Approximate Quantity and Units	Unit Price	Bid Amount
1840	650.9910 Construction Staking Supplemental Control (project) 01. 6525-06-71	LS	LUMP SUM	_____.
1850	650.9920 Construction Staking Slope Stakes	12,913.000 LF	_____.	_____.
1860	690.0150 Sawing Asphalt	1,741.000 LF	_____.	_____.
1870	690.0250 Sawing Concrete	9,429.000 LF	_____.	_____.
1880	ASP.1T0A On-the-Job Training Apprentice at \$5.00/HR	2,100.000 HRS	5.00000	10,500.00
1890	ASP.1T0G On-the-Job Training Graduate at \$5.00/HR	2,400.000 HRS	5.00000	12,000.00
1900	SPV.0060 Special 01. Precast Concrete Box Culvert Extension 4 FT x 3 FT	1.000 EACH	_____.	_____.
1910	SPV.0060 Special 02. Precast Concrete Box Culvert End Section 4 FT x 3 FT	1.000 EACH	_____.	_____.
1920	SPV.0060 Special 03. Salvage Box Culvert Grate	1.000 EACH	_____.	_____.
1930	SPV.0060 Special 04. Removing Carbide Pit Generator	1.000 EACH	_____.	_____.
1940	SPV.0060 Special 05. HMA Percent Within Limits (PWL) Test Strip	2.000 EACH	_____.	_____.
1950	SPV.0090 Special 01. 16 Gauge Galvanized Metal Flashing	252.000 LF	_____.	_____.
1960	SPV.0090 Special 02. Handrail Special	12.000 LF	_____.	_____.
1970	SPV.0120 Special 01. Water For Seeded Areas	340.000 MGAL	_____.	_____.



Proposal Schedule of Items

Proposal ID: 20170314018 Project(s): 6525-06-71

Federal ID(s): WISC 2017107

SECTION: 0001

Contract Items

Alt Set ID:

Alt Mbr ID:

Proposal Line Number	Item ID Description	Approximate Quantity and Units	Unit Price	Bid Amount
1980	SPV.0165 Special 01. Wall Modular Block Gravity LRFD	1,576.000 SF	_____.	_____.
1990	520.3318 Culvert Pipe Class III-A 18-Inch	90.000 LF	_____.	_____.
2000	520.3330 Culvert Pipe Class III-A 30-Inch	36.000 LF	_____.	_____.
2010	608.3024 Storm Sewer Pipe Class III-A 24-Inch	1,359.000 LF	_____.	_____.
2020	315.0200 Asphaltic Base Widening	3,934.000 TON	_____.	_____.
2030	465.0110 Asphaltic Surface Patching	1,000.000 TON	_____.	_____.
Section: 0001			Total:	_____.
			Total Bid:	_____.