



# Wisconsin Department of Transportation

## Division of Transportation Systems Development

Bureau of Project Development  
 4802 Sheboygan Avenue, Rm 601  
 P O Box 7916  
 Madison, WI 53707-7916

March 9, 2017

Telephone: (608) 266-1631  
 Facsimile (FAX): (608) 266-8459

### NOTICE TO ALL CONTRACTORS:

**Proposal #34: 8590-23-72**  
**Bloomer - Bruce**  
**South County Line to USH 8**  
**STH 40**  
**Rusk County**

### Letting of March 14, 2017

This is Addendum No. 01, which provides for the following:

#### Schedule of Items:

Revised Bid Item Quantities					
Bid Item	Item Description	Unit	Old Quantity	Revised Quantity	Proposal Total
204.0110	Removing Asphaltic Surface	SY	459	222	681
211.0400	Prepare Foundation for Asphaltic Shoulders	STA	2	38	40
305.0120	Base Aggregate Dense 1 ¼-Inch	Ton	151	7,646	7,797
455.0605	Tack Coat	Gal	110	5	115
465.0105	Asphaltic Surface	Ton	446	-211	235
625.0500	Salvaged Topsoil	SY	3777	-3,203	574
629.0210	Fertilizer Type B	Cwt	3	-2	1
630.0120	Seeding Mixture No. 20	LB	123	-82	41

#### Plan Sheets:

Revised Plan Sheets	
Plan Sheet	Plan Sheet Title (brief description of changes to sheet)
7	Finished Typical Section (Added Prepare Foundation for Asphaltic Shoulders)
8	Finished Typical Section (Added Prepare Foundation for Asphaltic Shoulders)
9	Finished Typical Section (Added Prepare Foundation for Asphaltic Shoulders) & Proposed Typical Section (Added Typical Section for Culvert Replacement)
13	Construction Details (Updated pipe depth at STA. 523+79 and Culvert Pipe Replacement Detail)
135	Miscellaneous Quantities (Revised Removing Asphaltic Surface Quantity)
137	Miscellaneous Quantities (Revised Prepare Foundation For Asphaltic Shoulders).
138	Miscellaneous Quantities (Revised Base Aggregate Dense 1 ¼-Inch Quantity)
139	Miscellaneous Quantities (Revised Tack Coat Quantity)

140	Miscellaneous Quantities (Revised Asphaltic Surface Quantity)
147	Miscellaneous Quantities (Revised Barrier System Grading Shaping Finishing Table)
151	Miscellaneous Quantities (Revised Salvaged Topsoil Quantity)
158	Miscellaneous Quantities (Revised Fertilizer Type B Quantity)
159	Miscellaneous Quantities (Revised Seeding Mixture No. 20)

**Schedule of Items**

Attached, dated March 9, 2017, are the revised Schedule of Items Pages 1 – 8.

**Plan Sheets**

The following 8½ x 11-inch sheets are attached and made part of the plans for this proposal:

Revised: 7 – 9, 13, 135, 137 – 140, 147, 151, 158, and 159

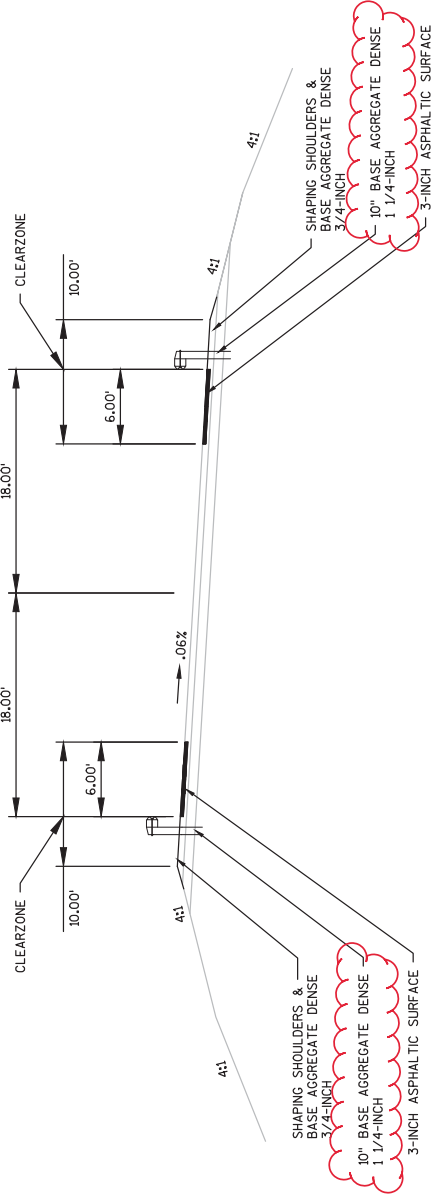
The responsibility for notifying potential subcontractors and suppliers of these changes remains with the prime contractor.

Sincerely,

*Mike Coleman*

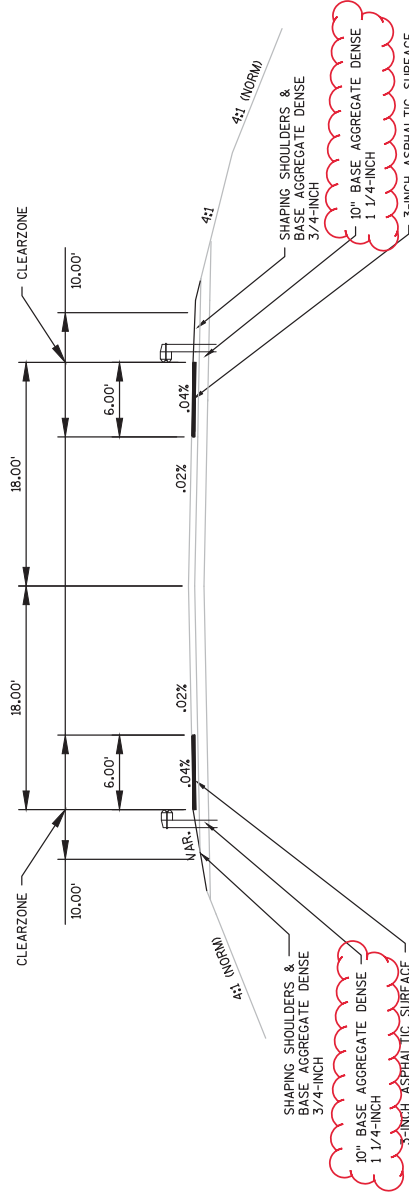
Proposal Development Specialist  
Proposal Management Section

END OF ADDENDUM



TYPICAL SUPERELEVATED FINISHED SECTION

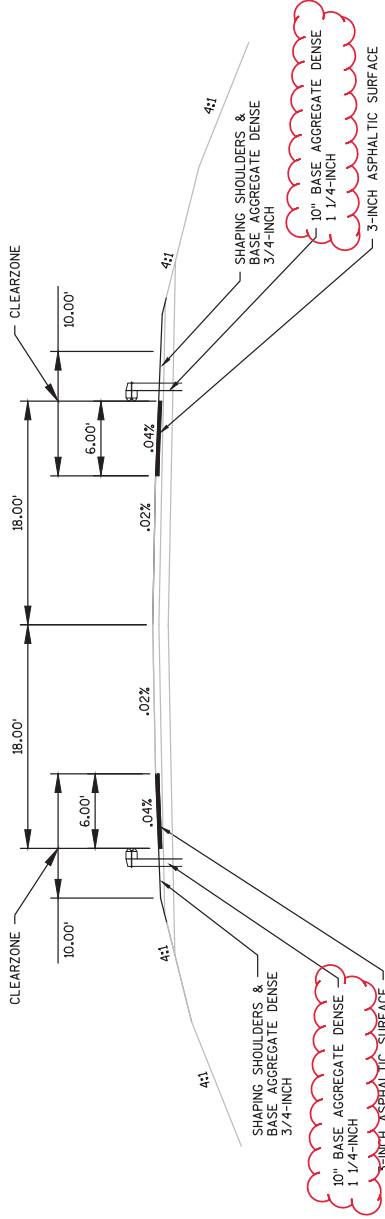
STA. 103+52 - STA. 114+87  
STA. 616+33 - STA. 622+18



TYPICAL FINISHED SECTION

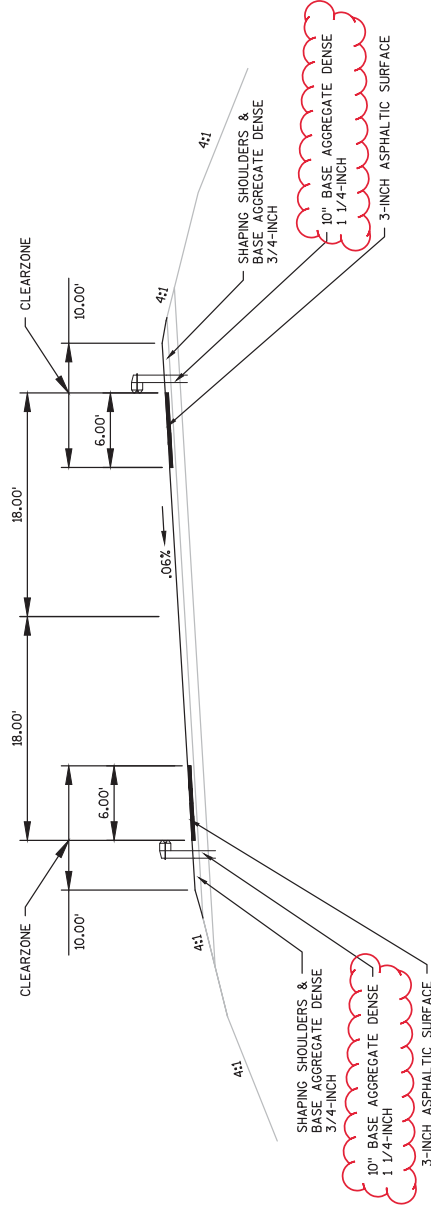
STA. 114+87 - STA. 117+21

Addendum No. 01  
ID 8590-23-72  
Revised Sheet 7  
March 9, 2017



TYPICAL FINISHED SECTION

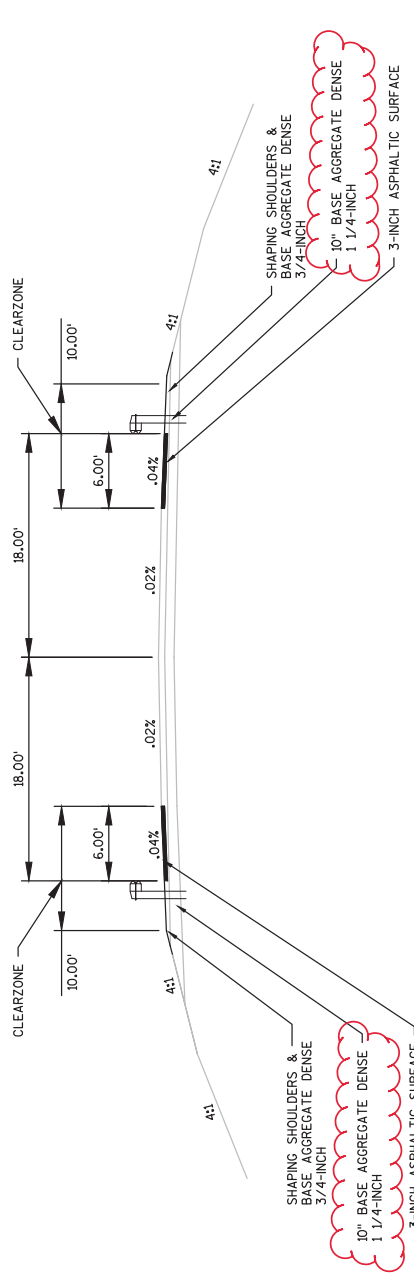
STA. 117+59 - STA. 132+50



TYPICAL SUPERELEVATED FINISHED SECTION

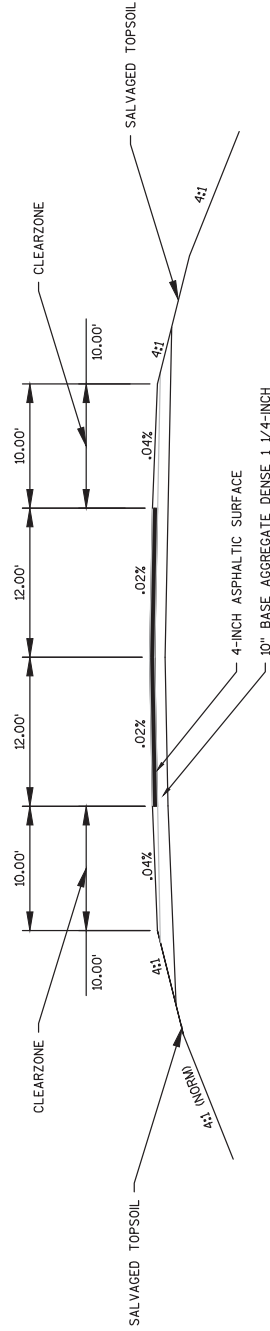
STA. 235+36 - STA. 242+76  
STA. 322+46 - STA. 329+86  
STA. 513+53 - STA. 522+65  
STA. 609+21 - STA. 612+92

Addendum No. 01  
ID 8590-23-72  
Revised Sheet 8  
March 9, 2017



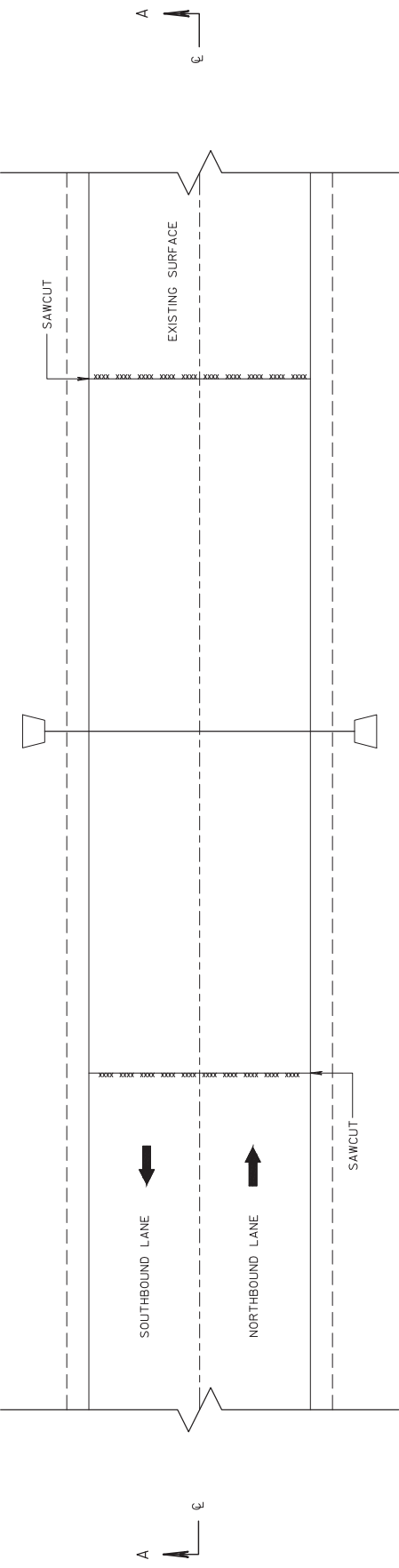
TYPICAL FINISHED SECTION

- STA. 242+76 - STA. 250+39
- STA. 320+80 - STA. 339+40
- STA. 340+30 - STA. 342+51
- STA. 512+96 - STA. 609+31
- STA. 612+92 - STA. 609+33
- STA. 622+18 - STA. 641+24



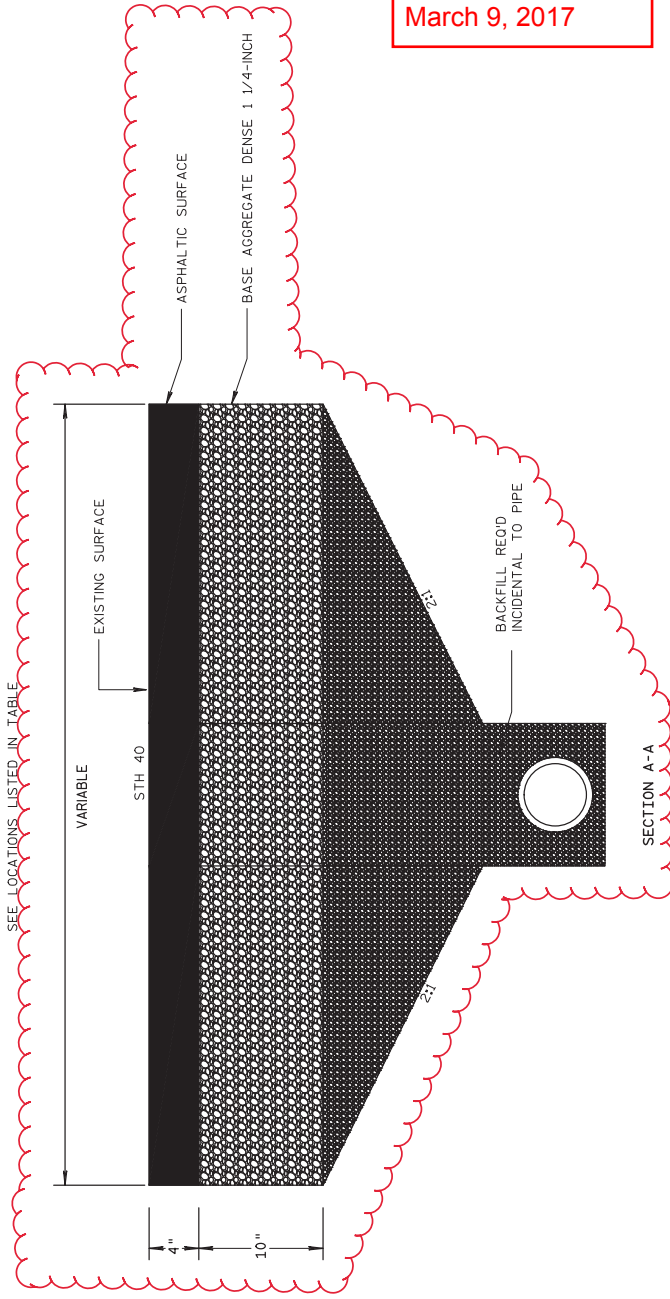
TYPICAL FINISHED SECTION FOR CULVERT REPLACEMENT

Addendum No. 01  
 ID 8590-23-72  
 Revised Sheet 9  
 March 9, 2017



**CULVERT PIPE REPLACEMENT DETAIL**

SEE LOCATIONS LISTED IN TABLE



CULVERT PIPE LOCATIONS	STATION	DEPTH
	7+44	13'
	29+31	5'
	59+15	8'
	67+24	9'
	75+26	10'
	85+14	12'
	95+01	5'
	120+53	4'
	129+42	5'
	167+90	5'
	178+64	4'
	295+78	3'
	384+58	2'
	411+48	14'
	448+80	4'
	500+53	4'
	500+64	4'
	523+79	18'

Addendum No. 01  
 ID 8590-23-72  
 Revised Sheet 13  
 March 9, 2017

REMOVING SMALL PIPE CULVERTS

CATEGORY	STATION	LOCATION	203.0100 EACH
0010	7+44		1
0010	29+31		1
0010	59+15		1
0010	67+24		1
0010	75+26		1
0010	85+14		1
0010	95+01		1
0010	120+53		1
0010	129+42		1
0010	167+90		1
0010	178+64		1
0010	295+78		1
0010	384+58		1
0010	411+48		1
0010	448+80		1
0010	500+53		1
0010	523+79		1
0010	433+40		1
TOTAL 0010			18

RT (SIDEROAD)

Addendum No. 01  
ID 8590-23-72  
Revised Sheet 135  
March 9, 2017

REMOVING ASPHALTIC SURFACE

CATEGORY	STATION	LOCATION	204.0110 SY	REMARKS
0010	7+44		56	
0010	29+31		31	
0010	59+15		40	
0010	67+24		40	
0010	75+26		43	
0010	85+14		48	
0010	95+01		29	
0010	120+53		30	
0010	129+42		29	
0010	167+90		29	
0010	178+64		27	
0010	295+78		24	
0010	384+58		21	
0010	411+48		53	
0010	448+80		31	
0010	500+53		35	
0010	500+64		35	
0010	523+79		64	
0010	433+40		9	
0010	696+20		3	C & G
0010	696+20		4	C & G
TOTAL 0010			681	

RT, SIDEROAD  
STH 40/USH 8, LT  
STH 40/USH 8, RT

PROJECT: 8590-23-72      HWY: STH 40      COUNTY: RUSK      MISCELLANEOUS QUANTITIES

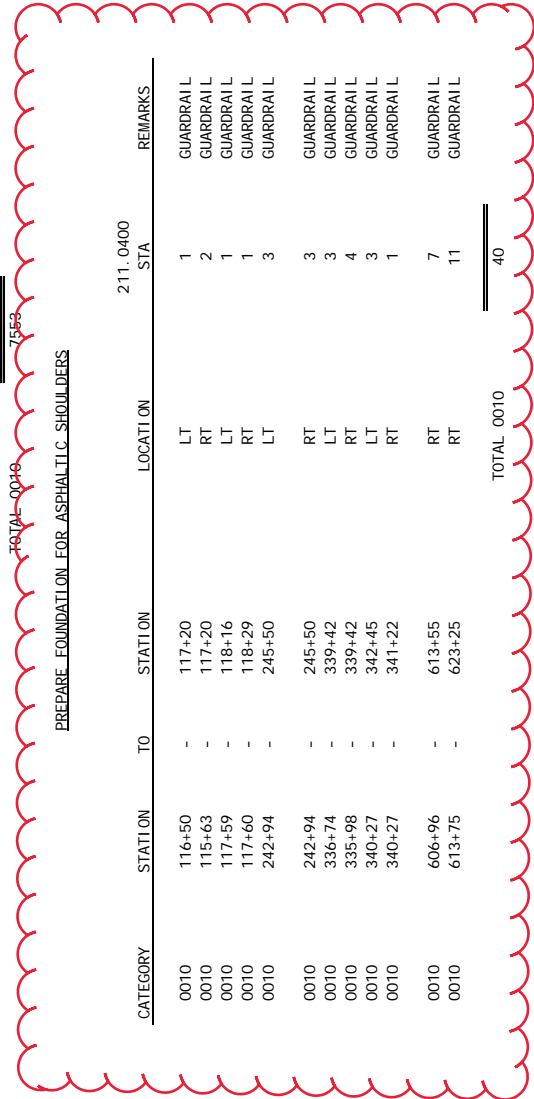
SHEET: 135

E

EXCEL FILE NAME: N:\PDS\PROJECTS\LET\8590-23-00\ESTIMATE & QUANTITIES\85902372\_01\_PLOT1.XLSX      PLOT DATE: 3/9/2017 10:47:21 AM      PLOT BY: AARON CHRIST      PLOT SCALE: NONE  
POWERPOINT FILE NAME: N:\PDS\PROJECTS\LET\8590-23-00\ESTIMATE & QUANTITIES\MISCELLANEOUS QUANTITIES\85902372\_MQ.PPTX

EXCAVATION COMMON

CATEGORY	STATION	TO	STATION	LOCATION	205.0100 CY	REMARKS
0010	116+50	-	117+20	LT	156	GUARDRAIL
0010	115+63	-	117+20	RT	349	GUARDRAIL
0010	117+59	-	118+16	LT	127	GUARDRAIL
0010	117+60	-	118+29	RT	153	GUARDRAIL
0010	242+94	-	245+50	LT	569	GUARDRAIL
0010	242+94	-	245+50	RT	569	GUARDRAIL
0010	336+74	-	339+42	LT	596	GUARDRAIL
0010	335+98	-	339+42	RT	764	GUARDRAIL
0010	340+27	-	342+45	LT	484	GUARDRAIL
0010	340+27	-	341+22	RT	211	GUARDRAIL
0010	606+96	-	613+55	RT	1464	GUARDRAIL
0010	613+75	-	623+25	RT	2111	GUARDRAIL



CATEGORY	STATION	TO	STATION	LOCATION	211.0400 STA	REMARKS
0010	116+50	-	117+20	LT	1	GUARDRAIL
0010	115+63	-	117+20	RT	2	GUARDRAIL
0010	117+59	-	118+16	LT	1	GUARDRAIL
0010	117+60	-	118+29	RT	1	GUARDRAIL
0010	242+94	-	245+50	LT	3	GUARDRAIL
0010	242+94	-	245+50	RT	3	GUARDRAIL
0010	336+74	-	339+42	LT	3	GUARDRAIL
0010	335+98	-	339+42	RT	4	GUARDRAIL
0010	340+27	-	342+45	LT	3	GUARDRAIL
0010	340+27	-	341+22	RT	1	GUARDRAIL
0010	606+96	-	613+55	RT	7	GUARDRAIL
0010	613+75	-	623+25	RT	11	GUARDRAIL
TOTAL 0010					40	

CATEGORY	STATION	TO	STATION	LOCATION	213.0100 EACH
0010	2+00	-	696+57	PROJECT	1
TOTAL 0010					1

Addendum No. 01  
 ID 8590-23-72  
 Revised Sheet 137  
 March 9, 2017



BASE\_AGGREGATE\_DENSE\_3/4-INCH

CATEGORY	STATION	TO	STATION	LOCATION	REMARKS	TON
0010	116+50		117+20	LT	GUARDRAIL	4
0010	115+63		117+20	RT	GUARDRAIL	9
0010	117+59		118+16	LT	GUARDRAIL	3
0010	117+60		118+29	RT	GUARDRAIL	4
0010	242+94		245+50	LT	GUARDRAIL	14
0010	242+94		245+50	RT	GUARDRAIL	14
0010	336+74		339+42	LT	GUARDRAIL	15
0010	335+98		339+42	RT	GUARDRAIL	19
0010	340+27		342+45	LT	GUARDRAIL	12
0010	340+27		341+22	RT	GUARDRAIL	5
0010	606+96		613+55	RT	GUARDRAIL	37
0010	613+75		623+25	RT	GUARDRAIL	53
TOTAL 0010						189

305.0110

BASE\_AGGREGATE\_DENSE\_1 1/4-INCH

CATEGORY	STATION	TO	STATION	LOCATION	REMARKS	TON
0010	7+44				PIPE	32
0010	29+31				PIPE	17
0010	59+15				PIPE	22
0010	67+24				PIPE	22
0010	75+26				PIPE	24
0010	85+14				PIPE	27
0010	95+01				PIPE	16
0010	120+53				PIPE	17
0010	129+42				PIPE	16
0010	167+90				PIPE	16
0010	178+64				PIPE	15
0010	295+78				PIPE	13
0010	384+58				PIPE	12
0010	411+48				PIPE	29
0010	448+80				PIPE	17
0010	500+53				PIPE	19
0010	500+64				PIPE	19
0010	523+79				PIPE	36
0010	433+40				PIPE	5
0010	116+50		117+20	LT	GUARDRAIL	130
0010	115+63		117+20	RT	GUARDRAIL	291
0010	117+59		118+16	LT	GUARDRAIL	106
0010	117+60		118+29	RT	GUARDRAIL	128
0010	242+94		245+50	LT	GUARDRAIL	569
0010	242+94		245+50	RT	GUARDRAIL	569
0010	336+74		339+42	LT	GUARDRAIL	596
0010	335+98		339+42	RT	GUARDRAIL	764
0010	340+27		342+45	LT	GUARDRAIL	484
0010	340+27		341+22	RT	GUARDRAIL	211
0010	606+96		613+55	RT	GUARDRAIL	1464
0010	613+75		623+25	RT	GUARDRAIL	2111
TOTAL 0010						7797

RT (SIDEWALK)

\* BASE AGGREGATE DENSE 1 1/4-INCH, MATERIAL TO BE USED IN AREAS OF CULVERT REPLACEMENTS.  
 \*\* TRENCH WIDTH DETERMINED BY THE ENGINEER.

Addendum No. 01  
 ID 8590-23-72  
 Revised Sheet 138  
 March 9, 2017

SHAPING SHOULDERS

CATEGORY	STATION	TO	STATION	LOCATION	305.0500 STA
0010	2+00	-	590+00		2
TOTAL 0010					2

TOTAL 0010

TACK COAT

CATEGORY	STATION	TO	STATION	LOCATION	455.0605 GAL	REMARKS
0010	7+40	-	7+61		2	7+50
0010	29+25	-	29+37		1.0	29+31
0010	59+08	-	59+23		1.0	59+15
0010	67+17	-	67+32		1.0	67+24
0010	75+18	-	75+34		1.0	75+26
0010	85+05	-	85+23		1	85+14
0010	94+96	-	95+07		0.7	95+01
0010	120+48	-	120+58		0.8	120+53
0010	129+37	-	129+48		0.7	129+42
0010	167+85	-	167+96		0.7	167+90
0010	178+59	-	178+69		0.7	178+64
0010	295+74	-	295+83		0.6	295+78
0010	384+54	-	384+62		0.5	384+58
0010	411+38	-	411+58		1	411+48
0010	448+74	-	448+86		0.8	448+80
0010	500+47	-	500+60		0.9	500+53
0010	500+58	-	500+71		0.9	500+64
0010	523+67	-	523+91		1	523+79
0010	116+50	-	117+20	LT	4	B-54-0031 GUARDRAIL
0010	115+63	-	117+20	RT	4	B-54-0031 GUARDRAIL
0010	117+60	-	118+34	LT	4	B-54-0031 GUARDRAIL
0010	117+60	-	118+29	RT	4	B-54-0031 GUARDRAIL
0010	242+94	-	245+50	LT	6	B-54-0029 GUARDRAIL
0010	242+94	-	245+50	RT	6	B-54-0029 GUARDRAIL
0010	336+74	-	339+42	LT	10.5	B-54-0030 GUARDRAIL
0010	335+98	-	339+42	RT	10.5	B-54-0030 GUARDRAIL
0010	340+27	-	342+45	LT	10.5	B-54-0030 GUARDRAIL
0010	340+27	-	341+22	RT	10.5	B-54-0030 GUARDRAIL
0010	606+96	-	623+09	RT	28	STA. 606 NEW GUARDRAIL LOCATION
0010	696+10	-		LT	0.1	C & G
0010	696+14	-		RT	0.1	C & G
TOTAL 0010					115	

Addendum No. 01  
ID 8590-23-72  
Revised Sheet 139  
March 9, 2017

Addendum No. 01  
 ID 8590-23-72  
 Revised Sheet 140  
 March 9, 2017

ASPHALTIC SURFACE

CATEGORY	STATION	TO	STATION	LOCATI ON	465.0105 TON	REMARKS
0010	7+40	-	7+61		13	PIPE
0010	29+25	-	29+37		7	PIPE
0010	59+08	-	59+23		9	PIPE
0010	67+17	-	67+32		9	PIPE
0010	75+18	-	75+34		10	PIPE
0010	85+05	-	85+23		11	PIPE
0010	94+92	-	95+10		7	PIPE
0010	120+51	-	120+55		7	PIPE
0010	129+37	-	129+48		7	PIPE
0010	167+85	-	167+96		7	PIPE
0010	178+59	-	178+69		6	PIPE
0010	295+74	-	295+83		6	PIPE
0010	384+53	-	384+63		6	PIPE
0010	411+38	-	411+58		12	PIPE
0010	448+74	-	448+86		7	PIPE
0010	500+46	-	500+60		9	PIPE
0010	500+57	-	500+71		21	PIPE
0010	523+62	-	523+97		21	PIPE
0010	433+40	-		RT, SIDEROAD	2	PIPE
0010	116+50	-	117+20	LT	9	B-54-0031 GUARDRAIL
0010	115+63	-	117+20	RT		B-54-0031 GUARDRAIL
0010	117+60	-	118+34	LT		B-54-0031 GUARDRAIL
0010	117+60	-	118+29	RT		B-54-0031 GUARDRAIL
0010	242+94	-	245+50	LT	7	B-54-0029 GUARDRAIL
0010	242+94	-	245+50	RT		B-54-0029 GUARDRAIL
0010	336+74	-	339+42	LT	24	B-54-0030 GUARDRAIL
0010	335+98	-	339+42	RT		B-54-0030 GUARDRAIL
0010	340+27	-	342+45	LT		B-54-0030 GUARDRAIL
0010	340+27	-	341+22	RT		B-54-0030 GUARDRAIL
0010	606+96	-	623+09	RT	16	STA. 606 NEW GUARDRAIL LOCATI ON
0010	696+10			LT	1	C & G
0010	696+14			RT	1	C & G
				TOTAL 0010	235	

PROJECT: 8590-23-72

HWY: STH 40

COUNTY: RUSK

MISCELLANEOUS QUANTITIES

SHEET: 140

E

EXCEL FILE NAME: N:\PDS\PROJECTS\LET\8590-23-00\ESTIMATE & QUANTITIES\85902372\_001\XLSX  
 POWERPOINT FILE NAME: N:\PDS\PROJECTS\LET\8590-23-00\ESTIMATE & QUANTITIES\MISCELLANEOUS QUANTITIES\85902372\_MQ.PPTX  
 PLOT DATE: 3/9/2017 10:47:21 AM  
 PLOT BY: AARON CHRIST  
 PLOT NAME:  
 PLOT SCALE: NONE

BARRIER SYSTEM GRADING SHAPING FINISHING

CATEGORY	STATION	LOCATION	614.0010 EACH	* SALVAGED TOPSOIL SY	* FERTILIZER TYPE B CWT	* SEEDING MIX NO. 20 LB
0010	116+50	LT	1	78	0.04	2
0010	115+63	RT	1	174	0.09	4
0010	118+34	LT	1	63	0.04	2
0010	118+29	RT	1	77	0.04	2
0010	242+94	LT	1	142	0.07	3
0010	242+94	RT	1	142	0.07	3
0010	245+07	LT	1	142	0.07	3
0010	245+07	RT	1	142	0.07	3
0010	336+74	LT	1	298	0.15	6
0010	335+98	RT	1	382	0.19	8
0010	342+45	LT	1	242	0.12	5
0010	341+22	RT	1	106	0.05	2
0010	606+96	RT	1	366	0.17	8
0010	613+55	RT	1	366	0.18	8
0010	613+75	RT	1	528	0.26	11
0010	623+25	RT	1	528	0.26	11
TOTAL 0010			16	3776	2	81

\* ITEMS AND QUANTITIES FOR INFORMATION ONLY.

ANCHOR ASSEMBLIES FOR STEEL PLATE BEAM GUARD

CATEGORY	STATION	LOCATION	614.0150 EACH	REMARKS
0010	339+42	LT	1	B-54-0030
0010	339+42	RT	1	B-54-0030
0010	340+27	LT	1	B-54-0030
0010	340+27	RT	1	B-54-0030
TOTAL 0010			4	

STEEL THRIE BEAM STRUCTURE APPROACH

CATEGORY	STATION	TO	STATION	LOCATION	614.0200 LF	REMARKS
0010	117+60	-	117+81	LT	21	B-54-31
TOTAL 0010					21	

Addendum No. 01  
 ID 8590-23-72  
 Revised Sheet 147  
 March 9, 2017

PROJECT: 8590-23-72 HWY: STH 40 COUNTY: RUSK

SHEET: 147

E

EXCEL FILE NAME: N:\PDS\PROJECTS\LE116890-23\01ESTIMATE & QUANTITIES\85902372\_MQ.PPTX

POWERPOINT FILE NAME: N:\PDS\PROJECTS\LE116890-23\01ESTIMATE & QUANTITIES\MISCELLANEOUS QUANTITIES\85902372\_MQ.PPTX

PROJECT: 8590-23-72 HWY: STH 40 COUNTY: RUSK

PLANT NAME: NONE

PLANT NAME: AARON CHRIST

PLANT NAME: AARON CHRIST

PLANT NAME: NONE

SALVAGED TOPSOIL

CATEGORY	STATION	TO	STATION	LOCATION	625.0500 SY	REMARKS
0010	7+40	-	7+61		61	PIPE
0010	29+25	-	29+37		13	PIPE
0010	59+08	-	59+23		27	PIPE
0010	67+17	-	67+32		30	PIPE
0010	75+18	-	75+34		37	PIPE
0010	85+05	-	85+23		48	PIPE
0010	94+92	-	95+10		20	PIPE
0010	120+51	-	120+55		4	PIPE
0010	129+37	-	129+48		12	PIPE
0010	167+85	-	167+96		12	PIPE
0010	178+59	-	178+69		9	PIPE
0010	295+74	-	295+83		6	PIPE
0010	384+53	-	384+63		9	PIPE
0010	411+38	-	411+58		62	PIPE
0010	448+74	-	448+86		10	PIPE
0010	500+46	-	500+60		16	PIPE
0010	500+57	-	500+71		16	PIPE
0010	523+56	-	524+02		184	PIPE
TOTAL 0010					574	

MULCHING

CATEGORY	STATION	TO	STATION	LOCATION	627.0200 SY
0010	UNDISTRIBUTED				17600
TOTAL 0010					17600

Addendum No. 01  
 ID 8590-23-72  
 Revised Sheet 151  
 March 9, 2017

Addendum No. 01  
ID 8590-23-72  
Revised Sheet 158  
March 9, 2017

FERTILIZER TYPE B

CATEGORY	STATION	TO	STATION	LOCATION	629.0210 CWT	REMARKS
0010	7+36	-	7+53	LT	0.03	7+21
0010	7+36	-	7+53	RT	0.03	7+21
0010	29+27	-	29+35	LT	0.01	29+00
0010	29+27	-	29+35	RT	0.01	29+00
0010	59+10	-	59+21	LT	0.01	59+00
0010	59+10	-	59+21	RT	0.01	59+00
0010	67+20	-	67+31	LT	0.01	67+00
0010	67+20	-	67+31	RT	0.01	67+00
0010	75+20	-	75+32	LT	0.02	75+00
0010	85+07	-	85+21	LT	0.01	84+89
0010	85+07	-	85+21	RT	0.01	84+89
0010	94+98	-	95+03	LT	0.01	94+62
0010	94+98	-	95+03	RT	0.01	94+62
0010	120+50	-	120+56	LT	0.01	125+20
0010	120+50	-	120+56	RT	0.01	125+20
0010	129+39	-	129+46	LT	0.01	134+00
0010	129+39	-	129+46	RT	0.01	134+00
0010	167+87	-	167+94	LT	0.01	181+00
0010	178+61	-	178+67	LT	0.01	181+00
0010	178+61	-	178+67	RT	0.01	181+00
0010	295+76	-	295+81	LT	0.01	297+96
0010	295+76	-	295+81	RT	0.01	297+96
0010	384+56	-	384+60	LT	0.01	387+00
0010	384+56	-	384+60	RT	0.01	387+00
0010	411+40	-	411+56	LT	0.01	414+00
0010	411+40	-	411+56	RT	0.01	414+00
0010	448+76	-	448+84	LT	0.01	448+80
0010	448+76	-	448+84	RT	0.01	448+80
0010	500+48	-	500+58	LT	0.02	500+53
0010	500+48	-	500+58	RT	0.02	500+53
0010	500+59	-	500+69	LT	0.02	500+64
0010	500+59	-	500+69	RT	0.02	500+64
0010	523+75	-	523+84	LT	0.02	523+79
0010	523+75	-	523+84	RT	0.02	523+79
0010	433+39	-	433+41	LT	0.01	RT, SIDEROAD
0010	433+39	-	433+41	RT	0.01	RT, SIDEROAD
0010	UNDISTRIBUTED				1.00	
TOTAL 0010					1	

PROJECT: 8590-23-72 HWY: STH 40 COUNTY: RUSK MISCELLANEOUS QUANTITIES

SHEET: 158

E

PLOT NAME:

PLOT SCALE: NONE

PLOT BY: AARON CHRIST

PLOT DATE: 3/9/2017 10:47:21 AM

EXCEL FILE NAME: N:\PDS\PROJECTS\LET\8590-23-00\ESTIMATE & QUANTITIES\85902372\_01.XLSX  
POWERPOINT FILE NAME: N:\PDS\PROJECTS\LET\8590-23-00\ESTIMATE & QUANTITIES\MISCELLANEOUS QUANTITIES\85902372\_MQ.PPTX

Addendum No. 01  
ID 8590-23-72  
Revised Sheet 159  
March 9, 2017

SEEDING MIXTURE NO. 20

CATEGORY	STATION	TO	STATION	LOCATION	630.0120 LB	REMARKS
0010	7+37	-	7+54	LT	1.37	7+21
0010	7+37	-	7+54	RT	1.37	7+21
0010	29+28	-	29+35	LT	0.22	29+00
0010	29+28	-	29+35	RT	0.22	29+00
0010	59+10	-	59+21	LT	0.54	59+00
0010	59+10	-	59+21	RT	0.54	59+00
0010	67+20	-	67+31	LT	0.61	67+00
0010	67+20	-	67+31	RT	0.61	67+00
0010	75+20	-	75+32	LT	0.77	75+00
0010	75+20	-	75+32	RT	0.77	75+00
0010	85+07	-	85+21	LT	1.04	84+89
0010	85+07	-	85+21	RT	1.04	84+89
0010	94+98	-	95+05	LT	0.22	94+62
0010	94+98	-	95+05	RT	0.22	94+62
0010	120+50	-	120+56	LT	0.15	125+20
0010	120+50	-	120+56	RT	0.15	125+20
0010	129+39	-	129+46	LT	0.22	134+00
0010	129+39	-	129+46	RT	0.22	134+00
0010	178+61	-	178+67	LT	0.15	181+00
0010	178+61	-	178+67	RT	0.15	181+00
0010	295+76	-	295+81	LT	0.09	297+96
0010	295+76	-	295+81	RT	0.09	297+96
0010	384+56	-	384+60	LT	0.05	387+00
0010	384+56	-	384+60	RT	0.05	387+00
0010	411+40	-	411+56	LT	1.39	414+00
0010	411+40	-	411+56	RT	1.39	414+00
0010	448+76	-	448+84	LT	0.19	448+80
0010	448+76	-	448+84	RT	0.19	448+80
0010	500+48	-	500+58	LT	0.31	500+53
0010	500+48	-	500+58	RT	0.31	500+53
0010	500+59	-	500+69	LT	0.31	500+64
0010	500+59	-	500+69	RT	0.31	500+64
0010	523+75	-	523+84	LT	0.39	523+79
0010	523+75	-	523+84	RT	0.39	523+79
0010	433+39	-	433+41	LT	0.02	RT, SIDEROAD
0010	433+39	-	433+41	RT	0.02	RT, SIDEROAD
0010	UNDISTRIBUTED	-	433+41	RT	0.02	RT, SIDEROAD
TOTAL					0010	41

PROJECT: 8590-23-72 HWY: STH 40 COUNTY: RUSK MISCELLANEOUS QUANTITIES SHEET: 159 E

EXCEL FILE NAME: N:\PDS\PROJECTS\LE16890-23\01ESTIMATE & QUANTITIES\85902372\_MQ.PPTX PLOT DATE: 3/9/2017 10:47:21 AM PLOT BY: AARON CHRIST PLOT SCALE: NONE



## Proposal Schedule of Items

Proposal ID: 20170314034 Project(s): 8590-23-72

Federal ID(s): N/A

SECTION: 0001

Contract Items

Alt Set ID:

Alt Mbr ID:

Proposal Line Number	Item ID Description	Approximate Quantity and Units	Unit Price	Bid Amount
0010	203.0100 Removing Small Pipe Culverts	18.000 EACH	_____.	_____.
0020	203.0600.S Removing Old Structure Over Waterway With Minimal Debris (station) 01. Sta. 121+80	LS	LUMP SUM	_____.
0030	204.0110 Removing Asphaltic Surface	681.000 SY	_____.	_____.
0040	204.0150 Removing Curb & Gutter	71.000 LF	_____.	_____.
0050	204.0165 Removing Guardrail	1,348.000 LF	_____.	_____.
0060	204.0180 Removing Delineators and Markers	10.000 EACH	_____.	_____.
0070	205.0100 Excavation Common	7,553.000 CY	_____.	_____.
0080	211.0400 Prepare Foundation for Asphaltic Shoulders	40.000 STA	_____.	_____.
0090	213.0100 Finishing Roadway (project) 01. 8590-23-72	1.000 EACH	_____.	_____.
0100	305.0110 Base Aggregate Dense 3/4-Inch	189.000 TON	_____.	_____.
0110	305.0120 Base Aggregate Dense 1 1/4-Inch	7,797.000 TON	_____.	_____.
0120	305.0500 Shaping Shoulders	2.000 STA	_____.	_____.
0130	455.0605 Tack Coat	115.000 GAL	_____.	_____.
0140	465.0105 Asphaltic Surface	235.000 TON	_____.	_____.
0150	502.0100 Concrete Masonry Bridges	32.000 CY	_____.	_____.





## Proposal Schedule of Items

Proposal ID: 20170314034 Project(s): 8590-23-72

Federal ID(s): N/A

SECTION: 0001

Contract Items

Alt Set ID:

Alt Mbr ID:

Proposal Line Number	Item ID Description	Approximate Quantity and Units	Unit Price	Bid Amount
0160	502.3200 Protective Surface Treatment	185.000 SY	_____.	_____.
0170	502.4205 Adhesive Anchors No. 5 Bar	4.000 EACH	_____.	_____.
0180	505.0600 Bar Steel Reinforcement HS Coated Structures	5,680.000 LB	_____.	_____.
0190	509.0301 Preparation Decks Type 1	2.000 SY	_____.	_____.
0200	509.0302 Preparation Decks Type 2	2.000 SY	_____.	_____.
0210	509.0500 Cleaning Decks	103.000 SY	_____.	_____.
0220	509.1500 Concrete Surface Repair	6.000 SF	_____.	_____.
0230	509.2000 Full-Depth Deck Repair	1.000 SY	_____.	_____.
0240	509.2500 Concrete Masonry Overlay Decks	8.000 CY	_____.	_____.
0250	509.5100.S Polymer Overlay	324.000 SY	_____.	_____.
0260	513.4061 Railing Tubular Type M (structure) 01. B-54-0031	85.000 LF	_____.	_____.
0270	520.8700 Cleaning Culvert Pipes	4.000 EACH	_____.	_____.
0280	522.0124 Culvert Pipe Reinforced Concrete Class III 24-Inch	771.000 LF	_____.	_____.
0290	522.0130 Culvert Pipe Reinforced Concrete Class III 30-Inch	151.000 LF	_____.	_____.
0300	522.0136 Culvert Pipe Reinforced Concrete Class III 36-Inch	88.000 LF	_____.	_____.



## Proposal Schedule of Items

Proposal ID: 20170314034 Project(s): 8590-23-72

Federal ID(s): N/A

SECTION: 0001

Contract Items

Alt Set ID:

Alt Mbr ID:

Proposal Line Number	Item ID Description	Approximate Quantity and Units	Unit Price	Bid Amount
0310	522.0142 Culvert Pipe Reinforced Concrete Class III 42-Inch	48.000 LF	_____.	_____.
0320	522.0148 Culvert Pipe Reinforced Concrete Class III 48-Inch	81.000 LF	_____.	_____.
0330	522.0160 Culvert Pipe Reinforced Concrete Class III 60-Inch	120.000 LF	_____.	_____.
0340	522.1024 Apron Endwalls for Culvert Pipe Reinforced Concrete 24-Inch	22.000 EACH	_____.	_____.
0350	522.1030 Apron Endwalls for Culvert Pipe Reinforced Concrete 30-Inch	4.000 EACH	_____.	_____.
0360	522.1036 Apron Endwalls for Culvert Pipe Reinforced Concrete 36-Inch	2.000 EACH	_____.	_____.
0370	522.1042 Apron Endwalls for Culvert Pipe Reinforced Concrete 42-Inch	2.000 EACH	_____.	_____.
0380	522.1048 Apron Endwalls for Culvert Pipe Reinforced Concrete 48-Inch	2.000 EACH	_____.	_____.
0390	522.1060 Apron Endwalls for Culvert Pipe Reinforced Concrete 60-Inch	4.000 EACH	_____.	_____.
0400	523.0119 Culvert Pipe Reinforced Concrete Horizontal Elliptical Class HE-III 19x30-Inch	54.000 LF	_____.	_____.
0410	523.0519 Apron Endwalls for Culvert Pipe Reinforced Concrete Horizontal Elliptical 19x30-Inch	1.000 EACH	_____.	_____.
0420	525.0118 Culvert Pipe Corrugated Aluminum 18-Inch	29.000 LF	_____.	_____.
0430	525.0318 Aluminum Apron Endwalls for Aluminum Culvert Pipe 18-Inch	2.000 EACH	_____.	_____.



Proposal Schedule of Items

Proposal ID: 20170314034 Project(s): 8590-23-72

Federal ID(s): N/A

SECTION: 0001

Contract Items

Alt Set ID:

Alt Mbr ID:

Proposal Line Number	Item ID Description	Approximate Quantity and Units	Unit Price	Bid Amount
0440	601.0411 Concrete Curb & Gutter 30-Inch Type D	71.000 LF	_____.	_____.
0450	602.0405 Concrete Sidewalk 4-Inch	56.000 SF	_____.	_____.
0460	602.0505 Curb Ramp Detectable Warning Field Yellow	20.000 SF	_____.	_____.
0470	603.8000 Concrete Barrier Temporary Precast Delivered	350.000 LF	_____.	_____.
0480	603.8125 Concrete Barrier Temporary Precast Installed	350.000 LF	_____.	_____.
0490	606.0200 Riprap Medium	200.000 CY	_____.	_____.
0500	606.0300 Riprap Heavy	10.000 CY	_____.	_____.
0510	611.0430 Reconstructing Inlets	2.000 EACH	_____.	_____.
0520	611.0660 Inlet Covers Type WM	2.000 EACH	_____.	_____.
0530	611.8110 Adjusting Manhole Covers	1.000 EACH	_____.	_____.
0540	614.0010 Barrier System Grading Shaping Finishing	16.000 EACH	_____.	_____.
0550	614.0150 Anchor Assemblies for Steel Plate Beam Guard	4.000 EACH	_____.	_____.
0560	614.0200 Steel Thrie Beam Structure Approach	21.000 LF	_____.	_____.
0570	614.0305 Steel Plate Beam Guard Class A	1,506.000 LF	_____.	_____.
0580	614.0345 Steel Plate Beam Guard Short Radius	32.000 LF	_____.	_____.



Proposal Schedule of Items

Proposal ID: 20170314034 Project(s): 8590-23-72

Federal ID(s): N/A

SECTION: 0001

Contract Items

Alt Set ID:

Alt Mbr ID:

Proposal Line Number	Item ID Description	Approximate Quantity and Units	Unit Price	Bid Amount
0590	614.0370 Steel Plate Beam Guard Energy Absorbing Terminal	2.000 EACH	_____.	_____.
0600	614.0390 Steel Plate Beam Guard Short Radius Terminal	3.000 EACH	_____.	_____.
0610	614.0920 Salvaged Rail	1,348.000 LF	_____.	_____.
0620	614.2330 MGS Guardrail 3 K	1,733.000 LF	_____.	_____.
0630	614.2500 MGS Thrie Beam Transition	276.000 LF	_____.	_____.
0640	614.2610 MGS Guardrail Terminal EAT	11.000 EACH	_____.	_____.
0650	618.0100 Maintenance And Repair of Haul Roads (project) 01. 8590-23-72	1.000 EACH	_____.	_____.
0660	619.1000 Mobilization	1.000 EACH	_____.	_____.
0670	625.0500 Salvaged Topsoil	574.000 SY	_____.	_____.
0680	627.0200 Mulching	17,600.000 SY	_____.	_____.
0690	628.1504 Silt Fence	7,005.000 LF	_____.	_____.
0700	628.1520 Silt Fence Maintenance	7,005.000 LF	_____.	_____.
0710	628.1905 Mobilizations Erosion Control	3.000 EACH	_____.	_____.
0720	628.1910 Mobilizations Emergency Erosion Control	3.000 EACH	_____.	_____.
0730	628.2004 Erosion Mat Class I Type B	4,380.000 SY	_____.	_____.
0740	628.2008 Erosion Mat Urban Class I Type B	198.000 SY	_____.	_____.



## Proposal Schedule of Items

Proposal ID: 20170314034 Project(s): 8590-23-72

Federal ID(s): N/A

SECTION: 0001

Contract Items

Alt Set ID:

Alt Mbr ID:

Proposal Line Number	Item ID Description	Approximate Quantity and Units	Unit Price	Bid Amount
0750	628.6005 Turbidity Barriers	100.000 SY	_____.	_____.
0760	628.7015 Inlet Protection Type C	2.000 EACH	_____.	_____.
0770	628.7504 Temporary Ditch Checks	100.000 LF	_____.	_____.
0780	628.7555 Culvert Pipe Checks	19.000 EACH	_____.	_____.
0790	629.0210 Fertilizer Type B	1.000 CWT	_____.	_____.
0800	630.0120 Seeding Mixture No. 20	41.000 LB	_____.	_____.
0810	630.0200 Seeding Temporary	117.000 LB	_____.	_____.
0820	633.5200 Markers Culvert End	42.000 EACH	_____.	_____.
0830	634.0614 Posts Wood 4x6-Inch X 14-FT	3.000 EACH	_____.	_____.
0840	638.2102 Moving Signs Type II	14.000 EACH	_____.	_____.
0850	638.4000 Moving Small Sign Supports	14.000 EACH	_____.	_____.
0860	642.5001 Field Office Type B	1.000 EACH	_____.	_____.
0870	643.0200.S Traffic Control Surveillance and Maintenance (project) 01. 8590-23-72	6.000 DAY	_____.	_____.
0880	643.0300 Traffic Control Drums	126.000 DAY	_____.	_____.
0890	643.0310.S Temporary Portable Rumble Strips	1.000 LS	_____.	_____.
0900	643.0420 Traffic Control Barricades Type III	39.000 DAY	_____.	_____.



## Proposal Schedule of Items

Proposal ID: 20170314034 Project(s): 8590-23-72

Federal ID(s): N/A

SECTION: 0001

Contract Items

Alt Set ID:

Alt Mbr ID:

Proposal Line Number	Item ID Description	Approximate Quantity and Units	Unit Price	Bid Amount
0910	643.0715 Traffic Control Warning Lights Type C	126.000 DAY	_____.	_____.
0920	643.0900 Traffic Control Signs	741.000 DAY	_____.	_____.
0930	643.0920 Traffic Control Covering Signs Type II	3.000 EACH	_____.	_____.
0940	643.1000 Traffic Control Signs Fixed Message	91.000 SF	_____.	_____.
0950	643.1050 Traffic Control Signs PCMS	140.000 DAY	_____.	_____.
0960	643.2000 Traffic Control Detour (project) 01. 8590-23-72	1.000 EACH	_____.	_____.
0970	643.3000 Traffic Control Detour Signs	1,572.000 DAY	_____.	_____.
0980	645.0120 Geotextile Type HR	290.000 SY	_____.	_____.
0990	646.0103 Pavement Marking Paint 4-Inch	814.000 LF	_____.	_____.
1000	646.0600 Removing Pavement Markings	415.000 LF	_____.	_____.
1010	647.0563 Pavement Marking Stop Line Paint 18-Inch	20.000 LF	_____.	_____.
1020	648.0100 Locating No-Passing Zones	13.000 MI	_____.	_____.
1030	649.0400 Temporary Pavement Marking Removable Tape 4-Inch	3,900.000 LF	_____.	_____.
1040	649.1400 Temporary Pavement Marking Stop Line Removable Tape 24-Inch	96.000 LF	_____.	_____.
1050	650.5500 Construction Staking Curb Gutter and Curb & Gutter	70.000 LF	_____.	_____.



Proposal Schedule of Items

Proposal ID: 20170314034 Project(s): 8590-23-72

Federal ID(s): N/A

SECTION: 0001

Contract Items

Alt Set ID:

Alt Mbr ID:

Proposal Line Number	Item ID Description	Approximate Quantity and Units	Unit Price	Bid Amount
1060	650.6000 Construction Staking Pipe Culverts	19.000 EACH	_____.	_____.
1070	650.8000 Construction Staking Resurfacing Reference	69,168.000 LF	_____.	_____.
1080	650.9910 Construction Staking Supplemental Control (project) 01. 8590-23-72	LS	LUMP SUM	_____.
1090	650.9920 Construction Staking Slope Stakes	3,399.000 LF	_____.	_____.
1100	661.0100 Temporary Traffic Signals for Bridges (structure) 01. B-54-0030	LS	LUMP SUM	_____.
1110	661.0300 Generators	6.000 DAY	_____.	_____.
1120	690.0150 Sawing Asphalt	1,032.000 LF	_____.	_____.
1130	SPV.0035 Special 01. Concrete Masonry Deck Patching	1.000 CY	_____.	_____.
1140	SPV.0090 Special 01. Sawing Pavement Deck Preparation Areas	30.000 LF	_____.	_____.
Section: 0001			Total:	_____.
			Total Bid:	_____.

