



Wisconsin Department of Transportation

Division of Transportation Systems Development

Bureau of Project Development
4802 Sheboygan Avenue, Rm 601
P O Box 7916
Madison, WI 53707-7916

March 31, 2017

Telephone: (608) 266-1631
Facsimile (FAX): (608) 266-8459

NOTICE TO ALL CONTRACTORS:

Proposal #18: 2430-06-70, WISC 2017 164
Colony Avenue
7th Avenue to STH 20
USH 45
Racine County

Letting of April 11, 2017

This is Addendum No. 01, which provides for the following:

Special Provisions:

| Revised Special Provisions | |
|----------------------------|--------------------------|
| Article No. | Description |
| 3 | Prosecution and Progress |
| 6 | Utilities |

| Added Special Provisions | |
|--------------------------|--|
| Article No. | Description |
| 44 | Exposing Existing Water Main, Item SPV.0060.09 |

Schedule of Items:

| Revised Bid Item Quantities | | | | | |
|-----------------------------|--|------|--------------|------------------|----------------|
| Bid Item | Item Description | Unit | Old Quantity | Revised Quantity | Proposal Total |
| 205.0100 | Excavation Common | CY | 171,702 | 1,198 | 172,900 |
| 305.0110 | Base Aggregate Dense ¾-Inch | Ton | 8,503 | 126 | 8,629 |
| 305.0120 | Base Aggregate Dense 1 ¼-Inch | Ton | 74,725 | 1,395 | 76,120 |
| 465.0120 | Asphaltic Surface Driveways and Field Entrances | Ton | 545 | -16 | 529 |
| 521.0124 | Culvert Pipe Corrugated Steel 24-Inch | LF | 195 | 20 | 215 |
| 608.0324 | Storm Sewer Pipe Reinforced Concrete Class III 24-Inch | LF | 1,774 | -7 | 1,767 |
| 608.0418 | Storm Sewer Pipe Reinforced Concrete Class IV 18-Inch | LF | 1,201 | -1 | 1,200 |
| 625.0500 | Salvaged Topsoil | SY | 141,526 | 378 | 141,904 |

| | | | | | |
|----------|--|-----|---------|-----|---------|
| 627.0200 | Mulching | SY | 104,459 | 445 | 104,904 |
| 628.1504 | Silt Fence | LF | 6,038 | 820 | 6,858 |
| 628.1520 | Silt Fence Maintenance | LF | 6,038 | 820 | 6,858 |
| 628.2006 | Erosion Mat Urban Class I Type A | SY | 23,364 | 378 | 23,742 |
| 630.0140 | Seeding Mixture No. 40 | LB | 421 | 6 | 427 |
| 650.4500 | Construction Staking Subgrade | LF | 20,711 | 500 | 21,211 |
| 650.7000 | Construction Staking Concrete Pavement | LF | 654 | 500 | 1,154 |
| 650.9920 | Construction Staking Slope Stakes | LF | 20,711 | 500 | 21,211 |
| 690.0150 | Sawing Asphalt | LF | 1,056 | 144 | 1,200 |
| 715.0415 | Incentive Strength Concrete Pavement | DOL | 361 | 514 | 875 |

| Added Bid Item Quantities | | | | | |
|---------------------------|------------------------------|------|--------------|------------------|----------------|
| Bid Item | Item Description | Unit | Old Quantity | Revised Quantity | Proposal Total |
| 415.0070 | Concrete Pavement 7-Inch | SY | 0 | 1,713 | 1,713 |
| SPV.0060.09 | Exposing Existing Water Main | Each | 0 | 1 | 1 |

Plan Sheets:

| Revised Plan Sheets | |
|---------------------|--|
| Plan Sheet | Plan Sheet Title (brief description of changes to sheet) |
| 54 | Plan Detail (removed proposed driveway) |
| 81 | Plan Detail (revised proposed driveway) |
| 92 | Pavement Grades (removed proposed driveway) |
| 119 | Pavement Grades (revised proposed driveway) |
| 127 | Erosion Control (removed proposed driveway) |
| 138 | Storm Sewer (revised storm sewer profiles for pipe run 3.01 to 3.04 and 3.03 to 3.05) |
| 139 | Storm Sewer (revised storm sewer profile and plan for pipe run 6.03 to 6.07) |
| 141 | Storm Sewer (removed proposed driveway) |
| 154 | Storm Sewer (revised storm sewer profile and plan for pipe run 6.04 to 6.05) |
| 157 | Storm Sewer (revised proposed driveway) |
| 240 | Miscellaneous Quantities (revised common excavation for proposed driveway on CTH C) |
| 244 | Miscellaneous Quantities (revised Driveways and Field Entrances table and Sidewalk, Truck Apron, & Concrete Pavement table) |
| 245 | Miscellaneous Quantities (revised Temporary Stream Diversion table) |
| 246 | Miscellaneous Quantities (revised Culvert Pipe Summary table) |
| 247 | Miscellaneous Quantities (revised Culvert Pipe Summary table) |
| 248 | Miscellaneous Quantities (revised sump/invert elevation and depth for structures 3.01, 3.02, 3.03, and 3.04) |
| 256 | Miscellaneous Quantities (revised inlet & discharge elevation and slope for pipes 3.02 – 3.01, 3.03 – 3.02, 3.04 – 3.03, 3.05 – 3.03, 6.04 – 6.03, 6.05 – 6.04, 6.07 – 6.04. Revised pipe lengths for 6.04 – 6.03, 6.05 – 6.04, and 6.07 – 6.04) |
| 258 | Miscellaneous Quantities (revised total for Class III 24-Inch and Class IV 18-Inch) |
| 260 | Miscellaneous Quantities (revised Erosion Control table for CTH C East) |
| 262 | Miscellaneous Quantities (revised Construction Staking table for CTH C) |
| 264 | Miscellaneous Quantities (revised Saw Cuts table for CTH C) |
| 289 | Plan and Profile: USH 45 (removed proposed driveway) |
| 301 | Plan and Profile: CTH C (revised proposed driveway) |
| 497 | Cross Sections: USH 45 (revised storm sewer STA 106+50) |
| 498 | Cross Sections: USH 45 (revised storm sewer) |
| 499 | Cross Sections: USH 45 (revised storm sewer) |

| | |
|-----|---|
| 505 | Cross Sections: USH 45 (revised storm sewer STA 116+00) |
| 506 | Cross Sections: USH 45 (revised storm sewer STA 116+50) |
| 600 | Cross Sections: 58 th RD (revised storm sewer STA 51+00) |

| Added Plan Sheets | |
|--------------------------|--|
| Plan Sheet | Plan Sheet Title (brief description of why sheet was added) |
| 35A | Construction Detail – Driveway From CTH C (additional driveway reconstruction) |

The responsibility for notifying potential subcontractors and suppliers of these changes remains with the prime contractor.

Sincerely,

Mike Coleman

Proposal Development Specialist
Proposal Management Section

ADDENDUM NO. 01

2430-06-70

March 31, 2017

Special Provisions

3. Prosecution and Progress.

Add the following after paragraph six:

Construction on the commercial driveway along CTH C at STA 57+15, RT will need to be completed, including associated restoration, within 30 calendar days of the commencement of the roadway project.

6. Utilities.

Replace entire section titled AT&T Wisconsin with the following:

AT&T Wisconsin has existing underground facilities located throughout the construction project. Relocations and splicing for Phase 1 (7th Av to Church St) will begin prior to construction, and will continue through the start of construction. Subsequent relocations and splicing for Phase 2 (Church St to Plank Rd) will begin during construction, but will be completed prior to construction work on Phase 2.

Field contact: Jay Bulanek, 2005 Pewaukee Rd, Waukesha, WI 53188; Work: (262) 896-7669, Mobile: (262) 491-2855; jb5175@att.com.

Replace entire section titled Village of Union Grove (Water) with the following:

Village of Union Grove (Water) has existing facilities along USH 45 located between the south end of the project and 100ft north of 58th Road that are in conflict with the proposed roadway construction. There is a 12" water main that runs along the West side of USH 45 with service lines extending to both sides of USH 45. The main then runs along the south side of 58th Road. Some of the conflicts will be resolved prior to construction, but others will need to be completed during construction. The following table lists the work that will need to be done in coordination with the construction project. The contractor shall contact Mark Osmundsen 24 hours in advance of work involving coordination with the water utility.

| Location | Work Required to Take Place During Construction |
|-----------------|--|
| USH 45 | |
| STA 100+00 | Village staff will insulate the water main in conjunction with the contractor's installation of the storm sewer. |
| STA 102+00 | Village staff will insulate the water main in conjunction with the contractor's installation of the storm sewer. |
| STA 104+00 | The contractor shall expose and locate the water main at this location according to the item SPV.0060.09. Due to the location of the existing facilities and soil conditions, the Village was unable to verify the exact depth/location of this portion of the water main. |

| | |
|----------------------|--|
| STA 104+00 | If, after locating the water main, the water main is deemed to be in conflict with box culvert C-51-64, the Village will have their contractor offset the water main. If the water main needs to be offset, the Village will require 3 working days to complete this work. |
| STA 106+50 | Village staff will insulate the water main in conjunction with the contractor's installation of the storm sewer. |
| STA 107+25 to 109+25 | Village staff will insulate the water main in conjunction with the contractor's grading work. |
| STA 109+00 | Village contractor will need to replace a water service in conjunction of the contractor's grading work. |
| STA 114+00 | Village staff will insulate the water main in conjunction with the contractor's installation of the storm sewer. |
| STA 115+00 to 117+50 | Village staff will insulate the water main in conjunction with the contractor's grading work. |
| 58th Road | |
| 49+70 to 51+00 | Village staff will insulate the water main in conjunction with the contractor's grading work. |

Field contact: Mark D. Osmundsen, 925 15th Ave, Union Grove, WI 53182; Work: (262) 878-1511, Mobile: (262) 770-1587; mosmundsen@uniongrove.net.

*Replace entire section titled **We Energies (Electricity)** with the following:*

We Energies (Electricity) has an existing aerial facility located on poles throughout the construction project. Relocations will be completed before the construction project. Any facilities not relocated have been deemed to be not in conflict and will remain in place as is.

It is imperative that the highway contractor contact We Energies before removing any gas facilities or electrical underground cables, to verify that they have been discontinued and carry no natural gas or electrical current. The contractor must not assume that unmarked facilities have been discontinued. At no time is it acceptable to push, pull, cut or drill an unmarked facility without explicit consent from We Energies.

Contractor must call the We Energies 24 hour Dispatch lines to arrange for this verification.

Field contact: Eugene McNew, 7815 Northwestern Ave, Racine, WI 53406; Work: (262) 886-7033, Mobile: (414) 531-5286; eugene.mcnew@we-energies.com.
We Energies Electric Dispatch #1-800-662-4797

*Replace entire section titled **We Energies (Gas/Petroleum)** with the following:*

We Energies (Gas/Petroleum) has existing underground facilities within the construction project. Relocations will be completed before the construction project. Any facilities not relocated have been deemed to be not in conflict and will remain in place as is.

Discontinued facilities include: 4" steel main approximately 50'RT the length of the job, 2" steel main 21'RT on 58th Road, and Valve pit and 4" steel main on the south side of CTH C.

It is imperative that the highway contractor contact We Energies before removing any gas facilities or electrical underground cables, to verify that they have been discontinued and carry no natural gas or electrical current. The contractor must not assume that unmarked facilities have been discontinued. At no time is it acceptable to push, pull, cut or drill an unmarked facility without explicit consent from We Energies.

Contractor must call the We Energies 24 hour Dispatch lines to arrange for this verification.

Field contact: Chris DeGrave, 7815 Northwestern Ave, Racine, WI 53406; Work: (262) 886-7018, Mobile: (262) 939-9814; chris.degrave@we-energies.com.
We Energies Gas Dispatch #1-800-261-5325

44. Exposing Existing Water Main, Item SPV.0060.09.

A Description

This work includes exposing existing water main which is potentially in direct conflict with proposed facilities. The work includes exposing existing water main at the west end of the proposed box culvert C-51-64 prior to placing sheeting, and providing both lateral and depth measurements to determine the impact of the new box culvert on the water main. Large boulders are known to exist in this area and standard hydro excavation may not be possible.

B Materials

B.1 Granular Backfill

Furnish granular backfill that conforms to standard spec 209.

C Construction

C.1 General

Coordinate utility exposures with the engineer and notify Mark Osmundsen from the Village of Union Grove Water Department two working days in advance so that they may be present when the work commences.

C.2 Excavation

Maintain drainage at all times in accordance to standard spec 205.3.3. Take precautions, including temporary shoring, in order to prevent any undermining of the existing roadway. Perform work in accordance to all applicable laws, ordinances, rules, regulations, and OSHA standards.

Expose the water main. Excavate in a manner that protects the integrity of the water main and prevents any damage to wrappings or protective coatings such as by any mechanical method or hand digging. Notify the utility owner promptly if damage or interruption of service occurs. All damage caused to such utilities resulting from negligence or carelessness on the part of the contractor's operation will be repaired at the contractor's expense.

Take all lateral and depth measurements in US feet and tenths thereof. Identify horizontal locations of each exposed utility with a coordinate northing and easting referenced to the Wisconsin County Coordinate System (WCCS), Racine County, NAD 83 (97). Provide vertical elevations for each exposed utility and reference to NAVD 88 (91).

The utility location shall remain exposed and available for visual inspection until the completion of all work in a given location. If the utility shall remain exposed overnight or for prolonged periods of time, protect the location with traffic-rated steel plating, safety barriers, and all necessary traffic control devices that may be required under applicable standards or as directed by the engineer.

If ground water is present at the location and dewatering is necessary, provide a dewatering system as described in the erosion control special provision article.

C.3 Backfilling

Upon completion of the utility exposure, restore the location in kind to its original condition. Use granular backfill, conforming to standard spec 209, to backfill the exposed water main to the subgrade elevation.

C.4 Documentation

Provide documentation to the engineer and include the coordinates and elevations of the water main location. Supply digital photographs of the uncovered water main to the engineer in .jpeg format for future reference.

D Measurement

The department will measure Exposing Existing Utility as an each item acceptably completed.

E Payment

The department will pay for measured quantities at the contract unit price under the following bid item:

| ITEM NUMBER | DESCRIPTION | UNIT |
|-------------|------------------------------|------|
| SPV.0060.09 | Exposing Existing Water Main | Each |

Payment is full compensation for furnishing all excavation; for disposing of all materials; for providing documentation and photographs of the water main location to the engineer; for furnishing all surveying associated with exposing the existing water main; for furnishing all maintenance of the location during construction; safety barriers, and steel plating required; for furnishing and placing granular backfill; and for temporary shoring. Granular backfill required for this work will be incidental to this item and not paid separately under the contract price.

Schedule of Items

Attached, dated March 31, 2017, are the revised Schedule of Items Pages 1 – 17.

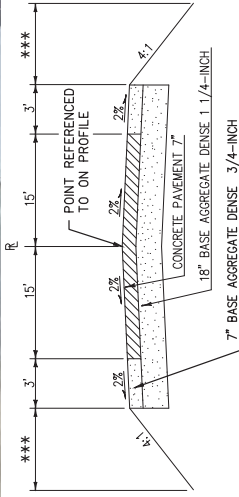
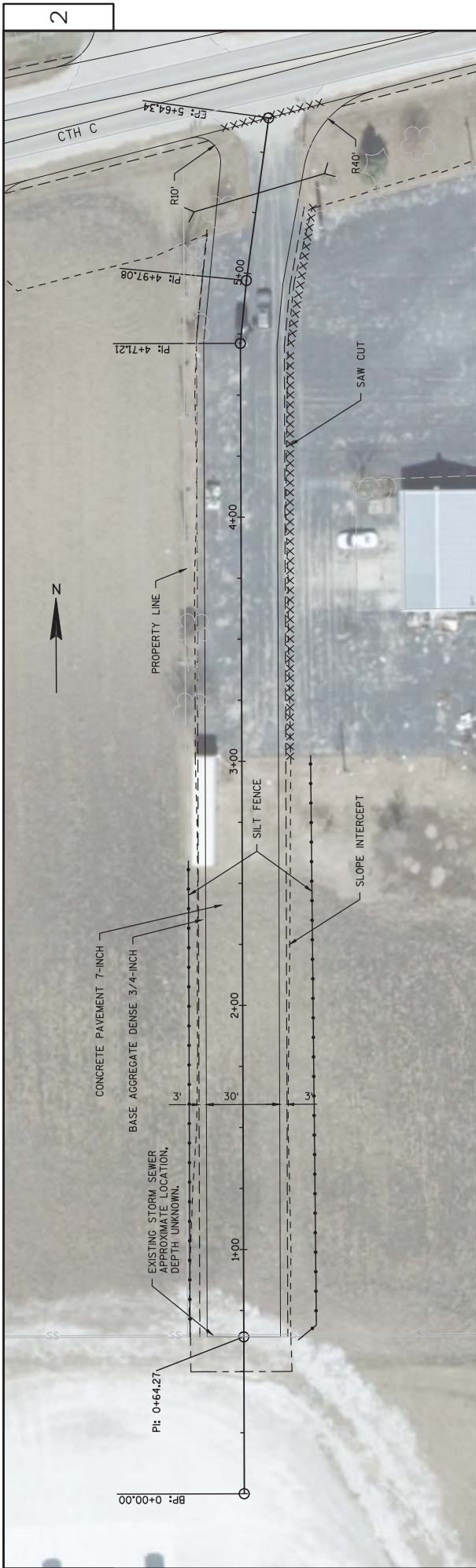
Plan Sheets

The following 8½ x 11-inch sheets are attached and made part of the plans for this proposal:

Revised: 54, 81, 92, 119, 127, 138, 139, 141, 154, 157, 240, 244, 245, 246, 247, 248, 256, 258, 260, 262, 264, 289, 301, 497, 498, 499, 505, 506, 600.

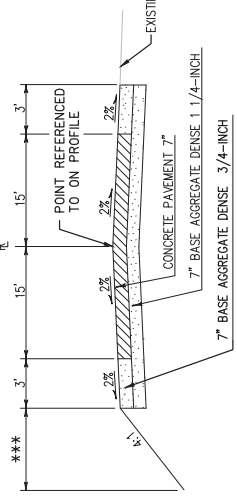
Added: 35A.

END OF ADDENDUM

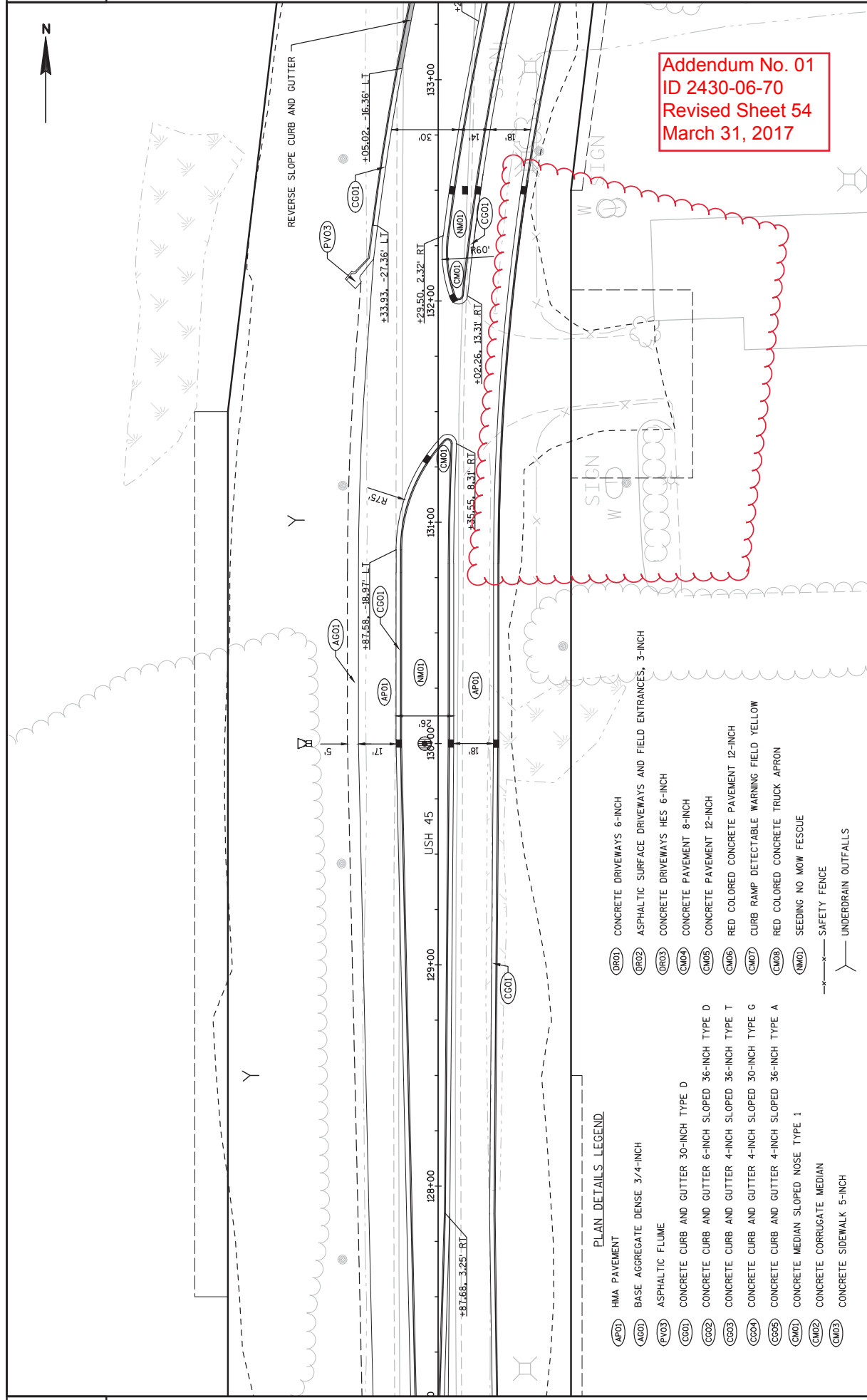


NOTES:
 -EGGS MAY BE REQUIRED AND WILL BE BACKFILLED WITH BASE
 -EGGS SHALL BE 18 INCH
 -ANY DRAIN TILE DISTURBED BY CONSTRUCTION OPERATIONS WILL
 NEED TO BE REPAIRED.

*** RESTORE WITH SALVAGED TOPSOIL, FERTILIZER
 TYPE B, SEEDING MIXTURE NO. 40, AND MULCH
 OR EROSION MAT URBAN CLASS 1 TYPE A



Addendum No. 01
 ID 2430-06-70
 Added Sheet 35A
 March 31, 2017



Addendum No. 01
 ID 2430-06-70
 Revised Sheet 54
 March 31, 2017

PLAN DETAILS LEGEND

- (4P01) HMA PAVEMENT
- (4B01) BASE AGGREGATE DENSE 3/4-INCH
- (4A01) ASPHALTIC FLUME
- (FV03) CONCRETE CURB AND GUTTER 30-INCH TYPE D
- (CG01) CONCRETE CURB AND GUTTER 6-INCH SLOPED 36-INCH TYPE D
- (CG02) CONCRETE CURB AND GUTTER 4-INCH SLOPED 36-INCH TYPE T
- (CG03) CONCRETE CURB AND GUTTER 4-INCH SLOPED 30-INCH TYPE G
- (CG04) CONCRETE CURB AND GUTTER 4-INCH SLOPED 36-INCH TYPE A
- (CG05) CONCRETE MEDIAN SLOPED NOSE TYPE 1
- (CM01) CONCRETE CORRUGATE MEDIAN
- (CM02) CONCRETE SIDEWALK 5-INCH
- (OR01) CONCRETE DRIVEWAYS 6-INCH
- (OR02) ASPHALTIC SURFACE DRIVEWAYS AND FIELD ENTRANCES, 3-INCH
- (OR03) CONCRETE DRIVEWAYS HES 6-INCH
- (CM04) CONCRETE PAVEMENT 8-INCH
- (CM05) CONCRETE PAVEMENT 12-INCH
- (CM06) RED COLORED CONCRETE PAVEMENT 12-INCH
- (CM07) CURB RAMP DETECTABLE WARNING FIELD YELLOW
- (CM08) RED COLORED CONCRETE TRUCK APRON
- (NM01) SEEDING NO MOW FESCUE
- (X) SAFETY FENCE
- (Y) UNDERDRAIN OUTFALLS

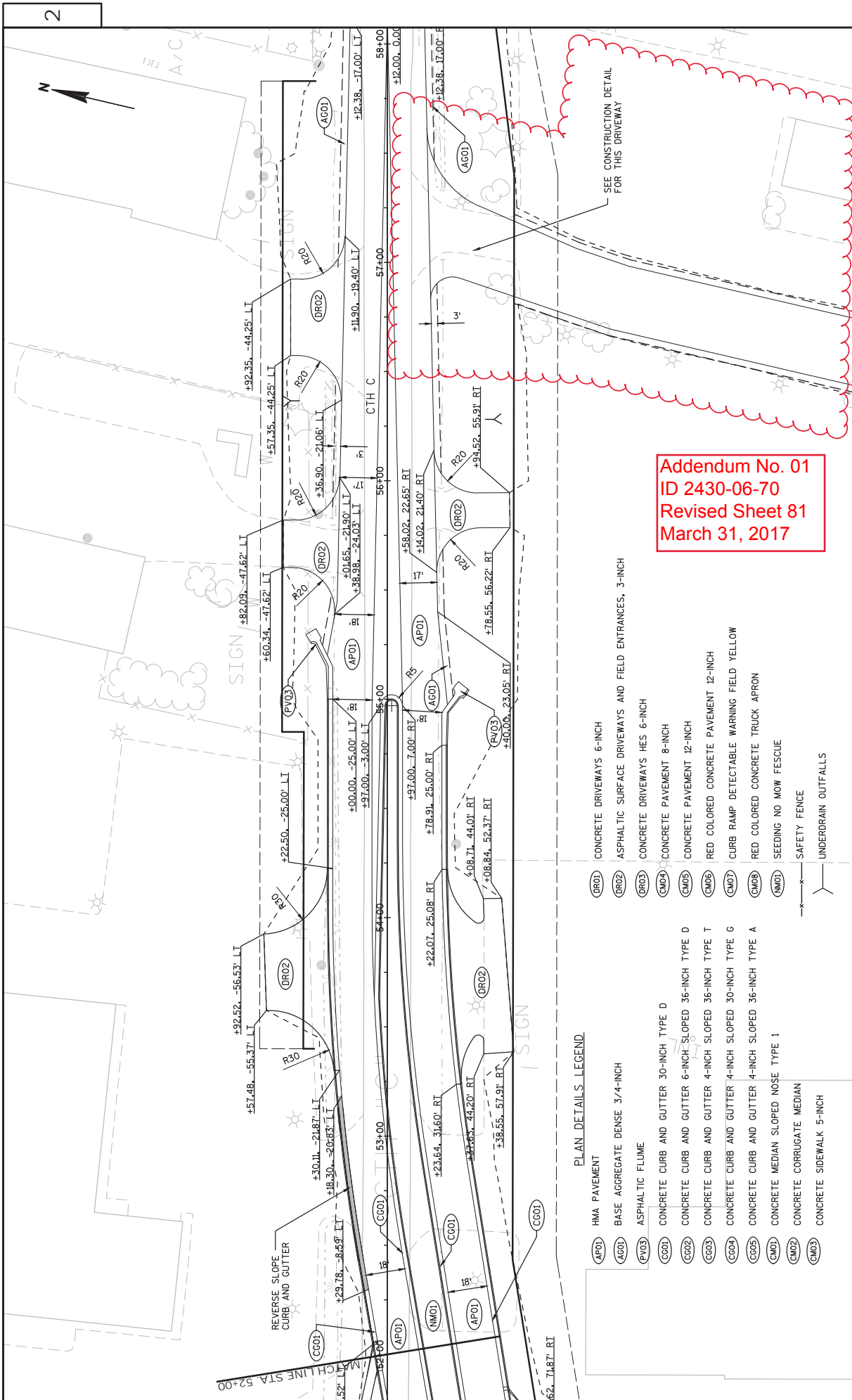
PROJECT NO: 2430-06-70

HWY: USH 45

COUNTY: RACINE

PLAN DETAIL

SHEET 54



Addendum No. 01
 ID 2430-06-70
 Revised Sheet 81
 March 31, 2017

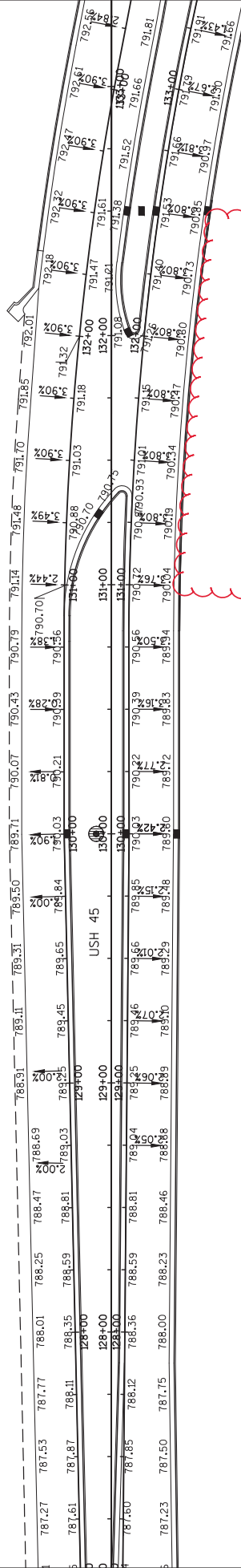
PLAN DETAILS LEGEND

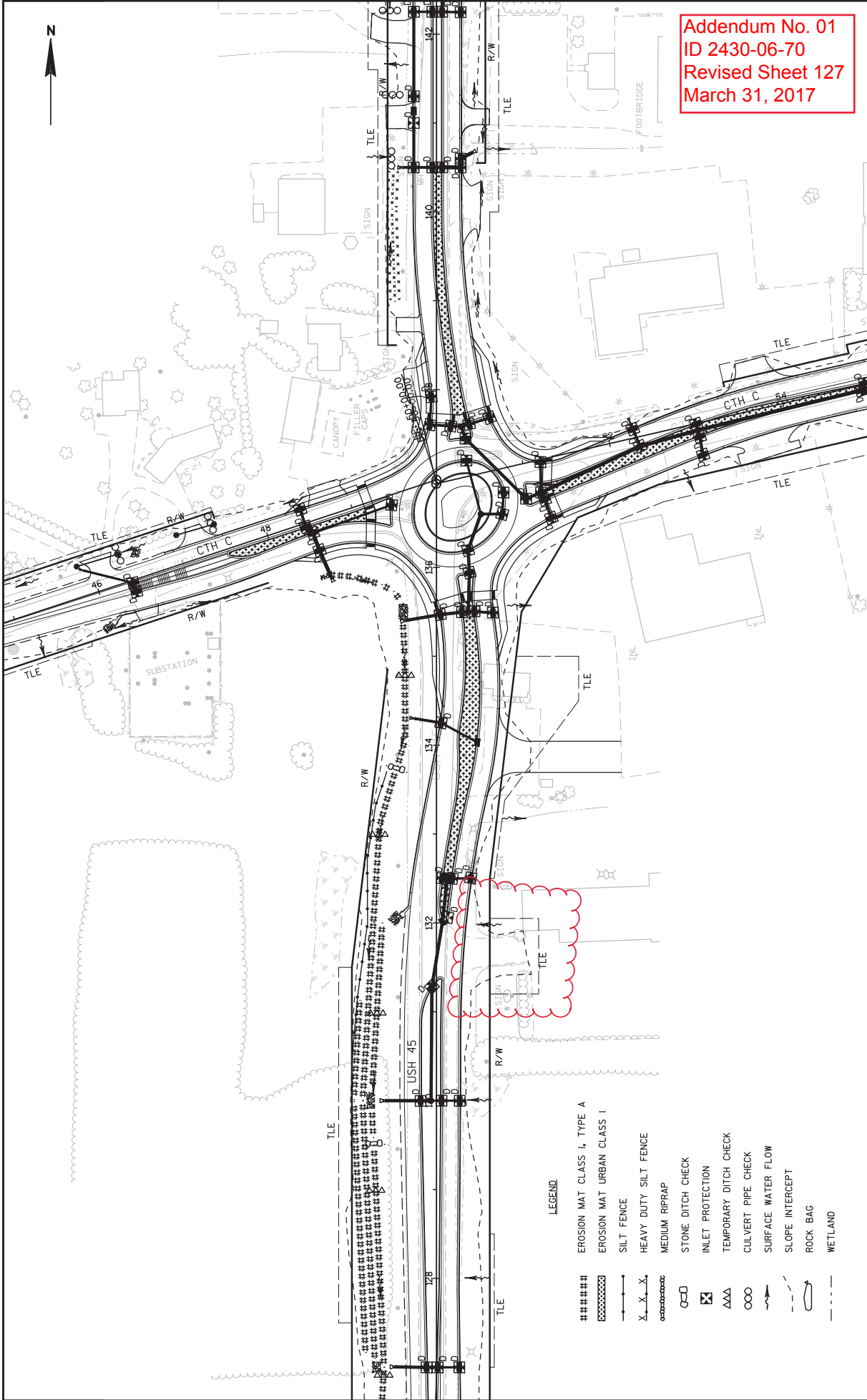
- | | |
|--|--|
| (AP01) HMA PAVEMENT | (DR01) CONCRETE DRIVEWAYS 6-INCH |
| (AG01) BASE AGGREGATE DENSE 3/4-INCH | (DR02) ASPHALTIC SURFACE DRIVEWAYS AND FIELD ENTRANCES, 3-INCH |
| (FV03) ASPHALTIC FLUME | (DR03) CONCRETE DRIVEWAYS HES 6-INCH |
| (CG01) CONCRETE CURB AND GUTTER 30-INCH TYPE D | (CM04) CONCRETE PAVEMENT 8-INCH |
| (CG02) CONCRETE CURB AND GUTTER 6-INCH SLOPED 36-INCH TYPE D | (CM05) CONCRETE PAVEMENT 12-INCH |
| (CG03) CONCRETE CURB AND GUTTER 4-INCH SLOPED 36-INCH TYPE T | (CM06) RED COLORED CONCRETE PAVEMENT 12-INCH |
| (CG04) CONCRETE CURB AND GUTTER 4-INCH SLOPED 30-INCH TYPE G | (CM07) CURB RAMP DETECTABLE WARNING FIELD YELLOW |
| (CG05) CONCRETE CURB AND GUTTER 4-INCH SLOPED 36-INCH TYPE A | (CM08) RED COLORED CONCRETE TRUCK APRON |
| (CM01) CONCRETE MEDIAN SLOPED NOSE TYPE 1 | (NM01) SEEDING NO MOW FESCUE |
| (CM02) CONCRETE CORRUGATE MEDIAN | — X — SAFETY FENCE |
| (CM03) CONCRETE SIDEWALK 5-INCH | — Y — UNDERDRAIN OUTFALLS |



Addendum No. 01
ID 2430-06-70
Revised Sheet 92
March 31, 2017

▽





Addendum No. 01
 ID 2430-06-70
 Revised Sheet 127
 March 31, 2017

LEGEND

- ##### EROSION MAT CLASS I, TYPE A
- ##### EROSION MAT URBAN CLASS I
- SILT FENCE
- X-X-X HEAVY DUTY SILT FENCE
- o-o-o MEDIUM RIPRAP
- o-o-o STONE DITCH CHECK
- ☒ INLET PROTECTION
- AAA TEMPORARY DITCH CHECK
- ooo CULVERT PIPE CHECK
- ~ SURFACE WATER FLOW
- - - SLOPE INTERCEPT
- o ROCK BAG
- - - WETLAND

PROJECT NO: 2430-06-70

HWY: USH 45

COUNTY: RACINE

EROSION CONTROL

SHEET 127

E

FILE NAME : N:\PDS\G3D\CAD\24300600\022001_EC.DWG
 LAYOUT NAME : 022003_EC

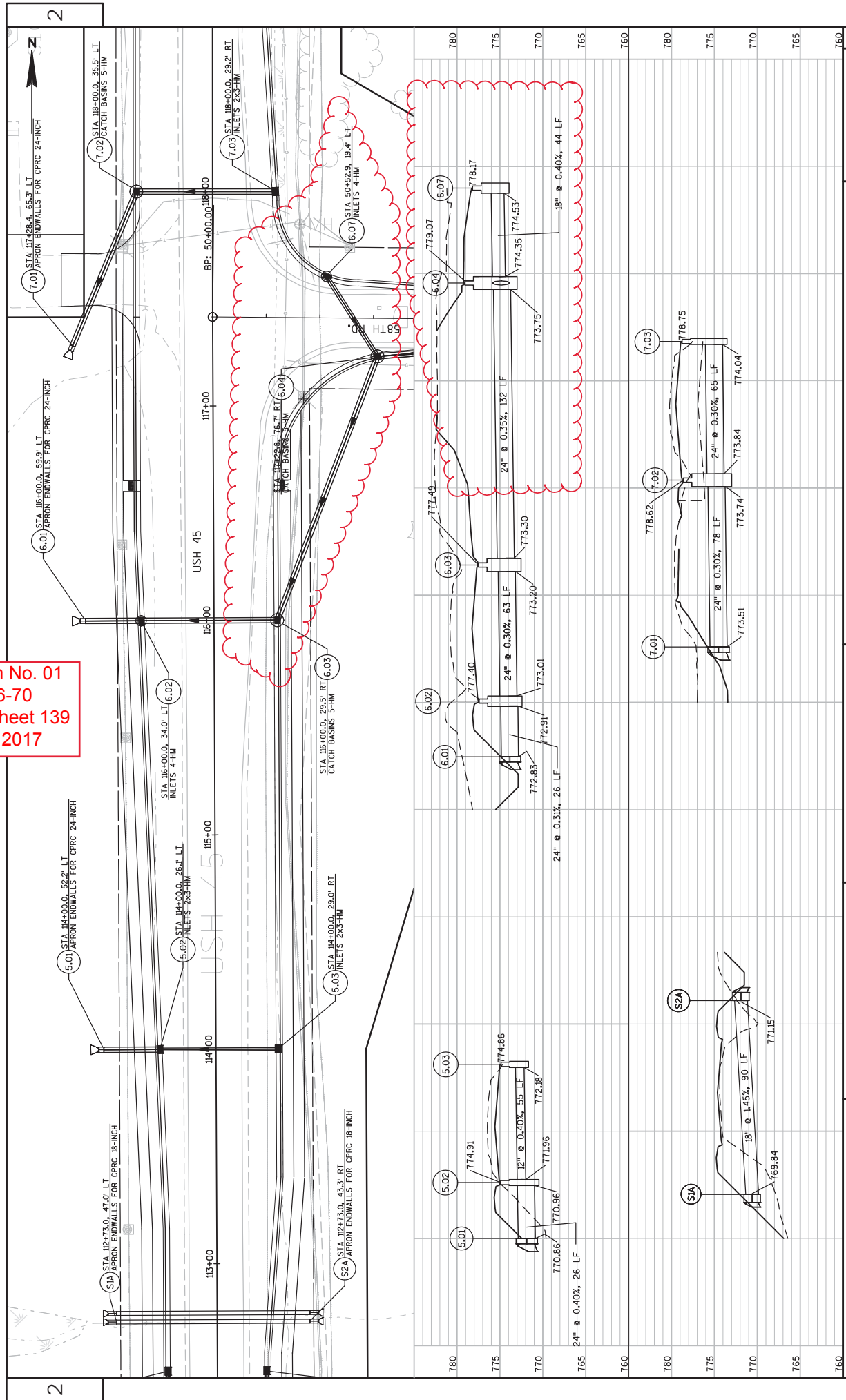
PLOT DATE : 3/29/2017 1:05 PM

PLOT BY : GUENETTE, JEFFREY J

PLOT SCALE : 1 IN=100 FT

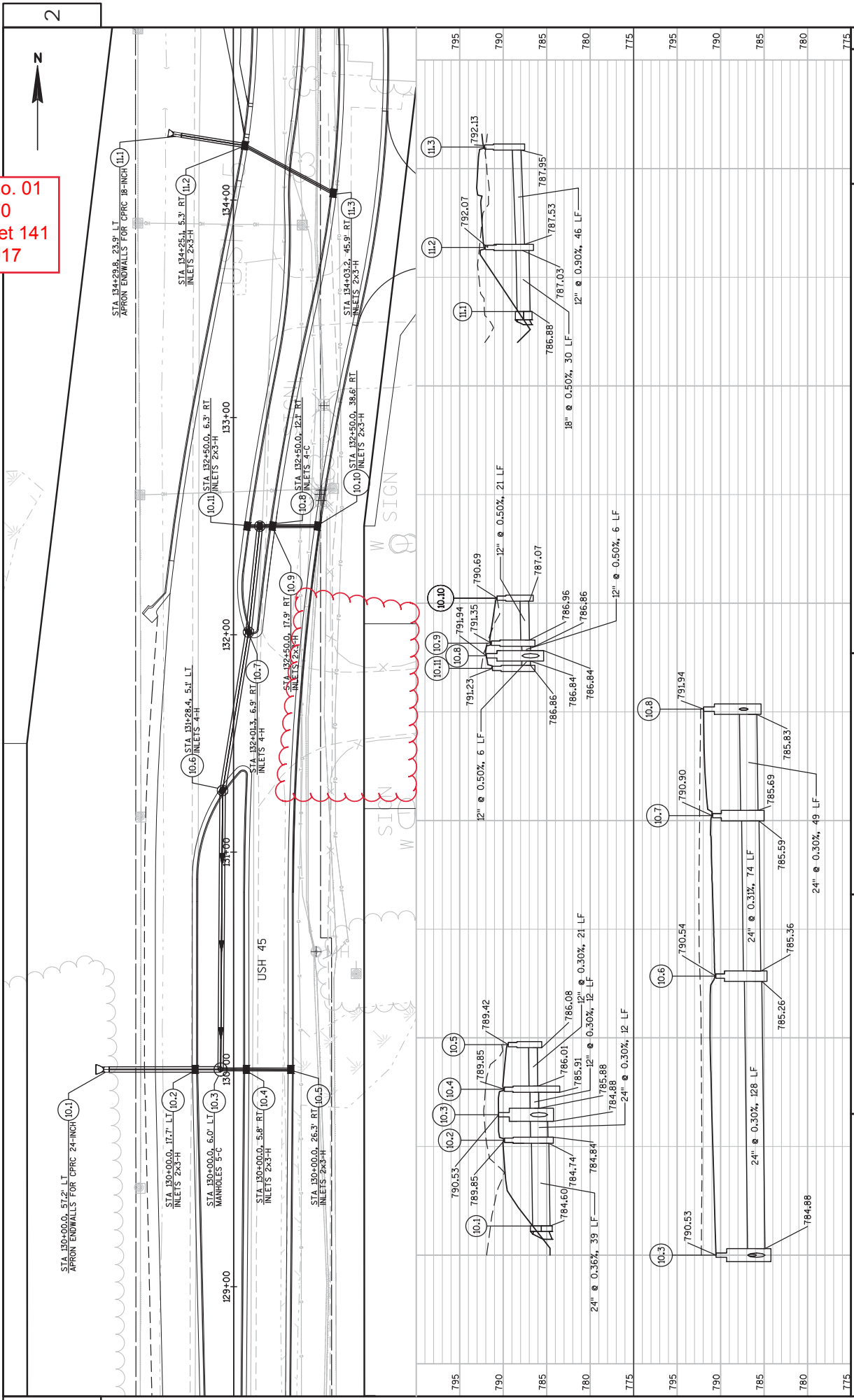
WISDOT/CADD SHEET 42

Addendum No. 01
 ID 2430-06-70
 Revised Sheet 139
 March 31, 2017



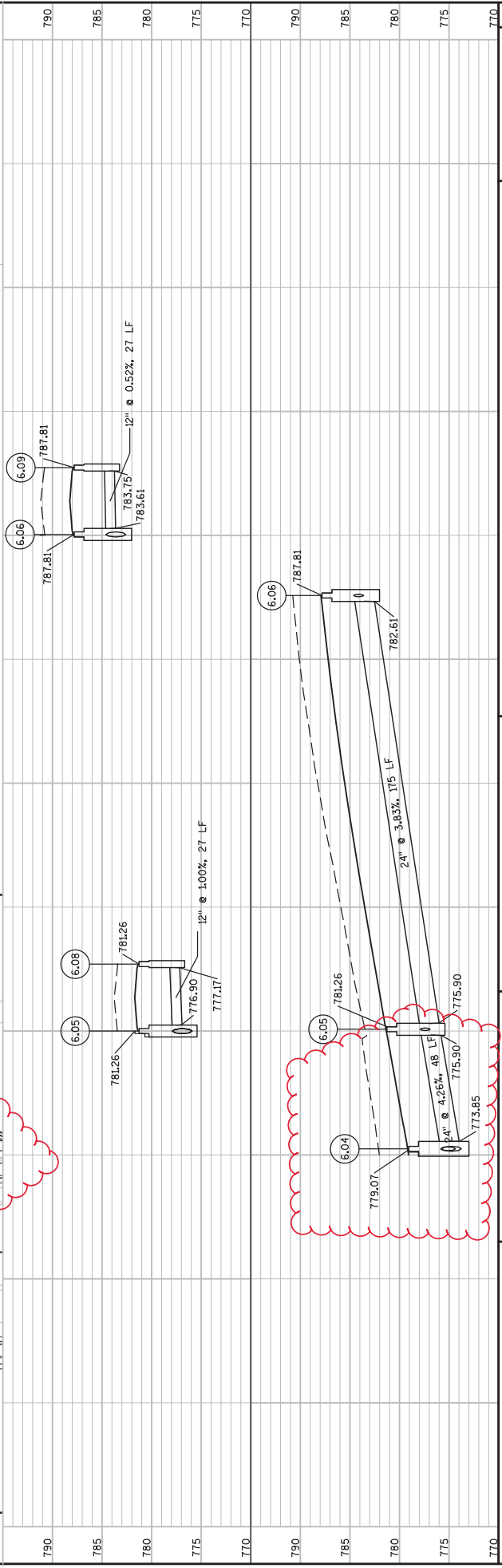
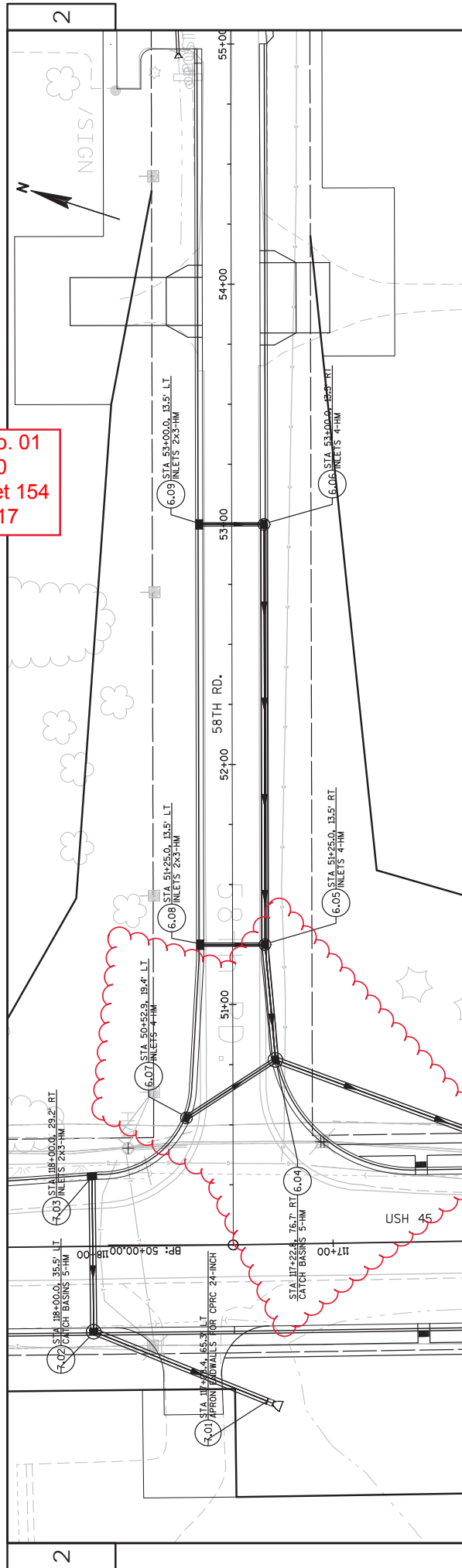
| | | | |
|--|----------------|-------------|-----------|
| PROJECT NO: 2430-06-70 | COUNTY: RACINE | STORM SEWER | SHEET 139 |
| HWY: USH 45 | | | |
| FILE NAME : N:\PDS\303430600\00\SHEETS\PLAN\DWG\02 - TYPICAL SECTIONS AND DETAILS\02501-SS.DWG LAYOUT NAME - 02501-SS - 02503 PLOT DATE : 3/28/2017 6:43 PM PLOT SCALE : 1 IN=40 FT WISDOT/CADD SHEET 41 | | | |

Addendum No. 01
 ID 2430-06-70
 Revised Sheet 141
 March 31, 2017



| | | | | |
|---|-------------|----------------|-------------|-----------|
| PROJECT NO: 2430-06-70 | HWY: USH 45 | COUNTY: RACINE | STORM SEWER | SHEET 141 |
| FILE NAME : N:\VPOS\C3D\24300600\SSHEETS\PLAN\DWG\02 - TYPICAL SECTIONS AND DETAILS\022501-SS.DWG | | | | |
| LAYOUT NAME - 022501-SS - 022505 | | | | |
| PLOT DATE : 3/29/2017 1:17 PM | | | | |
| PLOT BY : GIBNETTE, JEFFREY J PLOT NAME : | | | | |
| PLOT SCALE : 1 IN=40 FT | | | | |
| WISDOT/CADD SHEET 41 | | | | |

Addendum No. 01
 ID 2430-06-70
 Revised Sheet 154
 March 31, 2017



EARTHWORK SUMMARY

| Division | From/To Station | Location | 205.0100 Common Excavation | | Salvaged/Unusable Pavement Material (4) | 205.0400 Marsh Excavation (6) | Expanded Marsh Backfill (7) | EBS Backfill (8) | Unexpanded Fill (9) | Expanded Fill (9) | Waste (10) | Unsuitable Waste (11) | Total Waste (12) | 209.2500 ** Backfill Granular Grade 2 (13) | 311.0110 ** Breaker Run (14) |
|---------------------|---|---|---|--|--|-------------------------------|--------------------------------------|---|---------------------------------------|---------------------------------------|---|--|---|--|---|
| | | | Cut (2) | EBS Excavation (3) | | | | | | | | | | | |
| Division 1 | 0+64/5+64 97+75/175+00 49+47.86/54+97.86 43+75/47+99 50+00/59+25 46+50/50+00 | Dwy Parcel 14 USH 45 Stage 1 58th Rd CTH C West CTH C East Church Rd | 1,141 64,038 3,980 2,655 5,102 1,719 | 57 3,202 199 133 255 86 | 109 8,445 288 250 372 146 | 0 0 0 0 0 0 | Factor 1.50 0 0 0 0 0 | Factor 1.00 57 3,202 199 133 255 86 | 0 11,910 10 351 525 31 | 0 14,292 12 421 630 37 | 1,032 41,301 3,680 1,984 4,100 1,537 | 57 3,202 199 133 255 86 | 1,089 44,503 3,879 2,117 4,355 1,623 | 0 0 0 0 0 0 | 0 5,763 358 239 459 155 6,974 |
| Division 1 Subtotal | | | 78,635 | 3,932 | 9,609 | 0 | 0 | 3,932 | 12,827 | 15,392 | 53,634 | 3,932 | 57,565 | 0 | 6,974 |
| Division 2 | 175+00/268+40 50+00/51+60 50+00/53+35 47+00/54+00 | USH 45 Stage 2 52nd Rd Savage Rd CTH A | 82,226 696 1,438 1,672 | 4,111 35 72 84 | 8,005 112 255 359 | 4,038.89 0 0 0 | 6,058 0 0 0 | 4,111 35 72 84 | 26,235 10 12 1,044 | 31,482 12 14 1,252 | 42,739 572 1,169 61 | 8,150 35 72 84 | 50,889 606 1,241 145 | 10,299 0 0 0 | 7,400 63 129 150 7,743 |
| Division 2 Subtotal | | | 86,032 | 4,302 | 8,730 | 4,039 | 6,058 | 4,302 | 27,300 | 32,760 | 44,541 | 8,340 | 52,882 | 10,299 | 7,743 |
| Grand Total | | | 164,666 | 8,233 | 18,339 | 4,039 | 6,058 | 8,233 | 40,127 | 48,153 | 98,175 | 12,272 | 110,447 | 10,299 | 14,717 |
| Total Common Exc | | | 172,900 | | | | | | | | | | | | |

** ADDITIONAL QUANTITIES LISTED ELSEWHERE

Notes:

- (1) Common Excavation is the sum of the Cut and EBS Excavation columns. Item number 205.0100
- (2) Salvaged/Unusable Pavement Material is included in Cut.
- (3) EBS Excavation to be backfilled with Breaker Run
- (4) Salvaged/Unusable Pavement Material
- (5) Available Material = Cut - Salvaged/Unusable Pavement Material
- (6) Marsh Excavation - To be backfilled with Backfill Granular Grade 2
- (7) Expanded Marsh Backfill - This is to be filled with Backfill Granular Grade 2
- (8) EBS Backfill - This is to be filled with Breaker Run
- (9) Expanded Fill Factor = 1.2
- (10) Waste = Available Material - Expanded Fill ("0" means borrow area)
- (11) Unsuitable Waste = EBS Excavation + Marsh Excavation
- (12) Total Waste = Waste + Unsuitable Waste
- (13) Backfill Granular Grade 2 = Expanded Marsh Backfill (CY) * 1.7 (TON/CY)
- (14) Breaker Run = EBS Backfill (CY) * 1.8 (TON/CY)

Addendum No. 01
ID 2430-06-70
Revised Sheet 240
March 31, 2017

NOTE: ALL ITEMS ON THIS SHEET ARE PAID UNDER CATEGORY 0010

CONCRETE CURB AND GUTTER

| STATION | STATION | LOCATION | 601.0411 | 601.0551 | 601.0557 | 601.0574 | 601.0582 | 601.0600 | 465.0315 |
|---------|-------------------------|----------|----------------|------------------------------|------------------------------|------------------------------|------------------------------|-----------------------------|---------------------|
| LF | LF | TYPE D | 30-INCH TYPE A | 4-INCH SLOPED 36-INCH TYPE A | 6-INCH SLOPED 36-INCH TYPE D | 4-INCH SLOPED 30-INCH TYPE G | 4-INCH SLOPED 36-INCH TYPE T | CONCRETE CURB PEDESTRIAN LF | ASPHALTIC FLUMES SY |
| 97+75 | 126+00 | USH 45 | 305 | 4,693 | | | | | |
| 126+00 | 136+00 | USH 45 | 3,184 | | | | | | |
| 137+50 | 147+00 | USH 45 | 2,329 | | | | | | |
| 147+00 | 162+00 | USH 45 | | 1,880 | | | | | |
| 177+50 | 188+00 | USH 45 | | 1,201 | | | | | |
| 193+75 | 197+00 | USH 45 | | 332 | | | | | |
| 223+75 | 230+50 | USH 45 | | 695 | | | | | |
| 246+00 | 257+00 | USH 45 | | 547 | | | | | |
| | 58TH ROAD | | | 999 | | | | | |
| | CTH C ROUNDABOUT CIRCLE | | | | 415 | | 575 | | |
| | CTH C WEST LEG | | 1,219 | | | | | 15 | 13 |
| | CTH C EAST LEG | | 1,591 | | | | | 18 | 27 |
| | CHURCH ROAD | | | 156 | | | | | 27 |
| | 52ND ROAD | | | 157 | | | | | 27 |
| | SAVAGE ROAD | | | 271 | | | | | |
| | CTH A | | | 388 | | | | | 53 |
| | TOTAL | | 8,323 | 11,319 | 415 | 575 | 61 | | 267 |

| STATION | LOCATION | CONCRETE CORRUGATED MEDIAN SF | CONCRETE MEDIATEAN SF | CONCRETE MEDIAN SLOPED NOSE SF |
|--------------|----------|-------------------------------|-----------------------|--------------------------------|
| 126+00 | USH 45 | -- | -- | 70 |
| 131+40 | USH 45 | -- | -- | 60 |
| 132+00 | USH 45 | -- | -- | 52 |
| 140+50 | USH 45 | -- | -- | 40 |
| 146+50 | USH 45 | 515 | 515 | 55 |
| 46+40 | CTH C | 515 | 515 | 70 |
| 55+00 | CTH C | -- | -- | 60 |
| TOTAL | | 1,030 | 1,030 | 407 |

Addendum No. 01
ID 2430-06-70
Revised Sheet 245
March 31, 2017

TEMPORARY STREAM DIVERSION

| 209.2500** | 310.0110** | 603.8000 | 603.8125 | 606.0100 | 628.1104 | 645.0130** | SPV.0105.01 |
|---------------------------|----------------------------|--|--|---------------|---------------|-------------------|---------------------------------------|
| BACKFILL GRANULAR GRADE 2 | BASE AGGREGATE OPEN-GRADED | CONCRETE BARRIER TEMPORARY PRECAST DELIVERED | CONCRETE BARRIER TEMPORARY PRECAST INSTALLED | RIP RAP LIGHT | EROSION BALES | GEOTEXTILE TYPE R | EXPOSING EXISTING WATER MAIN CHANNELS |
| TON | TON | LF | LF | TON | EA | SY | EACH |
| C-51-64 | 84 | 50 | 50 | 425 | -- | 1480.0 | 1 |
| C-51-65 | 72 | 34 | 37.5 | 107 | 92 | 392.0 | -- |
| C-51-67 | 72 | 45 | 50 | 155 | -- | 551.1 | -- |
| C-51-23 | 359 | 64 | 62.5 | 296 | -- | 1018.3 | -- |
| UNDISTRIBUTED | -- | -- | -- | -- | -- | -- | -- |
| TOTAL | 862 | 227 | 200 | 983 | 92 | 3,441.4 | 1 |

** QUANTITIES LISTED ELSEWHERE

NOTE: ALL ITEMS ON THIS SHEET ARE PAID UNDER CATEGORY 0010 UNLESS OTHERWISE NOTED.

CULVERT PIPE SUMMARY

521.0112 521.0115 521.0118 521.0124 522.0124 522.0130 522.0318 522.0330
 CULVERT PIPE REINFORCED CONCRETE

| LOCATION | INLET | | OUTLET | | ELEVATIONS | | CULVERT PIPE CORRUGATED STEEL | | STEEL THICKNESS (INCHES) | CLASS III | | CLASS IV | | |
|---------------|-----------|----------|-----------|-----------|------------|--------|-------------------------------|---------|--------------------------|-----------|---------|----------|---------|---------|
| | STATION | OFFSET | STATION | OFFSET | INLET | OUTLET | 12-INCH | 15-INCH | | 18-INCH | 24-INCH | 30-INCH | 18-INCH | 30-INCH |
| USH 45 | 112+73 | 43.26 RT | 112+73 | 47 LT | 771.15 | 769.84 | -- | -- | -- | -- | -- | 90 | -- | |
| USH 45 | 112+77 | 43.26 RT | 112+77 | 47 LT | 771.15 | 769.84 | -- | -- | -- | -- | -- | 90 | -- | |
| USH 45 | 166+53 | 42.03 LT | 166+53 | 42.87 RT | 773.45 | 772.59 | -- | -- | -- | -- | 85 | -- | -- | |
| USH 45 | 166+47 | 42.05 LT | 166+47 | 42.93 RT | 773.45 | 772.59 | -- | -- | -- | -- | 85 | -- | -- | |
| USH 45 | 174+50 | 42.46 LT | 174+50 | 42.03 RT | 773.91 | 773.39 | -- | -- | -- | -- | -- | 84 | -- | |
| USH 45 | 216+50 | 40.52 LT | 216+50 | 40.61 RT | 778.82 | 778.67 | -- | -- | -- | -- | 81 | -- | -- | |
| USH 45 | 216+56.6 | 40.53 LT | 216+56.6 | 40.6 RT | 778.82 | 778.67 | -- | -- | -- | -- | 81 | -- | -- | |
| USH 45 | 216+43.4 | 40.5 LT | 216+43.4 | 40.62 RT | 778.82 | 778.67 | -- | -- | -- | -- | 81 | -- | -- | |
| USH 45 | 253+00 | 48.81 LT | 253+00 | 52.18 RT | 767.12 | 766.28 | -- | -- | -- | -- | 101 | -- | -- | |
| USH 45 | 262+85 | 42.86 LT | 262+85 | 50.68 RT | 754.37 | 753.16 | -- | -- | -- | -- | 94 | -- | -- | |
| USH 45 | 104+22.48 | 63.37 RT | 103+78.49 | 64.39 RT | 759.93 | 759.25 | -- | 44 | -- | -- | -- | -- | -- | |
| USH 45 | 110+57 | 55.11 LT | 110+95 | 56.38 LT | 770.53 | 770.08 | 38 | -- | -- | -- | -- | -- | -- | |
| USH 45 | 117+59 | 496.2 RT | 117+59.73 | 520.09 RT | 789.34 | 788.84 | 24 | -- | -- | -- | -- | -- | -- | |
| USH 45 | 120+67 | 44.33 LT | 121+13 | 48.29 LT | 777.25 | 776.86 | 46 | -- | -- | -- | -- | -- | -- | |
| USH 45 | 46+33.39 | 33.18 LT | 45+85.27 | 34.44 LT | 790.80 | 790.62 | 48 | -- | -- | -- | -- | -- | -- | |
| CTH C | 47+46.73 | 31.32 LT | 47+02.75 | 32.84 LT | 791.32 | 791.14 | 44 | -- | -- | -- | -- | -- | -- | |
| CTH C | 55+52.5 | 36.84 LT | 55+86.5 | 37.31 LT | 786.58 | 786.20 | -- | 34 | -- | -- | -- | -- | -- | |
| CTH C | 55+72 | 50.69 RT | 56+04.92 | 52.12 RT | 784.59 | 784.09 | -- | 33 | -- | -- | -- | -- | -- | |
| CTH C | 56+48 | 87.16 LT | 56+98 | 37.22 LT | 785.55 | 785.00 | -- | 50 | -- | -- | -- | -- | -- | |
| CTH C | 56+78 | 49.92 RT | 57+33 | 46.44 RT | 783.71 | 783.43 | -- | 56 | -- | -- | -- | -- | -- | |
| CTH C | 58+59.5 | 38.62 RT | 58+95.21 | 34.05 RT | 782.36 | 782.18 | -- | 36 | -- | -- | -- | -- | -- | |
| USH 45 | 143+20.12 | 52.43 RT | 143+64.1 | 53.77 RT | 787.93 | 787.71 | 44 | -- | -- | -- | -- | -- | -- | |
| USH 45 | 143+81.07 | 54.13 RT | 144+17.07 | 54.62 RT | 787.63 | 787.45 | 36 | -- | -- | -- | -- | -- | -- | |
| USH 45 | 148+23.29 | 43.61 LT | 147+97.45 | 46.49 LT | 789.65 | 789.30 | 26 | -- | -- | -- | -- | -- | -- | |
| USH 45 | 152+18.18 | 46.11 RT | 151+56.37 | 52 RT | 790.51 | 789.85 | 60 | -- | -- | -- | -- | -- | -- | |
| USH 45 | 157+10 | 50.18 RT | 157+72 | 51.4 RT | 788.78 | 788.00 | 62 | -- | -- | -- | -- | -- | -- | |
| USH 45 | 161+14.5 | 45.72 RT | 161+80.5 | 46.43 RT | 783.60 | 782.00 | -- | 66 | -- | -- | -- | -- | -- | |
| USH 45 | 164+02.49 | 48.8 RT | 164+62.46 | 50.68 RT | 777.35 | 776.10 | -- | 60 | -- | -- | -- | -- | -- | |
| CHURCH RD | 46+89.5 | 32.84 LT | 47+21.5 | 32.84 LT | 781.70 | 781.30 | 32 | -- | -- | -- | -- | -- | -- | |
| SAVAGE RD | 52+03 | 27.13 RT | 51+73 | 27.93 RT | 770.50 | 769.76 | 30 | -- | -- | -- | -- | -- | -- | |
| SAVAGE RD | 52+31.06 | 21.36 LT | 51+91.58 | 27.63 LT | 772.10 | 771.29 | 40 | -- | -- | -- | -- | -- | -- | |
| SAVAGE RD | 53+02.48 | 26.23 RT | 52+64.5 | 25.25 RT | 772.65 | 772.05 | 38 | -- | -- | -- | -- | -- | -- | |
| USH 45 | 198+81.44 | 42.25 LT | 198+41.47 | 40.72 LT | 772.65 | 772.43 | -- | 40 | -- | -- | -- | -- | -- | |
| USH 45 | 199+77.87 | 45.92 LT | 199+27.91 | 44.01 LT | 773.10 | 772.87 | -- | 50 | -- | -- | -- | -- | -- | |
| USH 45 | 211+81.5 | 48.07 RT | 212+25.5 | 47.97 RT | 780.95 | 780.76 | 44 | -- | -- | -- | -- | -- | -- | |
| CTH A | 49+22 | 25.9 LT | 49+22 | 40.26 RT | 782.06 | 781.84 | -- | 66 | -- | -- | -- | -- | -- | |
| USH 45 | 227+66 | 51.64 RT | 228+58 | 54.36 RT | 781.20 | 780.73 | -- | 92 | -- | -- | -- | -- | -- | |
| USH 45 | 235+63 | 55.41 RT | 236+13 | 54.31 RT | 771.21 | 770.20 | -- | 50 | -- | -- | -- | -- | -- | |
| USH 45 | 247+81.47 | 46.26 LT | 247+07.5 | 48.24 LT | 772.52 | 772.04 | 74 | -- | -- | -- | -- | -- | -- | |
| USH 45 | 251+06.84 | 52.83 RT | 251+66.86 | 53.89 RT | 770.93 | 769.51 | 60 | -- | -- | -- | -- | -- | -- | |
| USH 45 | 255+06.84 | 57.36 RT | 255+70.75 | 60.51 RT | 765.05 | 764.71 | 64 | -- | -- | -- | -- | -- | -- | |
| USH 45 | 262+19 | 59.26 RT | 262+40.91 | 60.52 RT | 754.80 | 754.25 | -- | 22 | -- | -- | -- | -- | -- | |
| USH 45 | 265+14 | 45.81 LT | 265+81.45 | 53.31 LT | 755.43 | 755.13 | 68 | -- | -- | -- | -- | -- | -- | |
| TOTALS | | | | | | | 684 | 224 | 388 | 215 | 160 | 514 | 180 | 84 |

1. STATION AND ELEVATIONS ARE TO THE END OF PIPE SECTION, NOT END OF APRON ENDWALL.

NOTE: ALL ITEMS ON THIS SHEET ARE PAID UNDER CATEGORY 0010

PROJECT NO: 2430-06-70

HWY: USH 45

COUNTY: RACINE

MISCELLANEOUS QUANTITIES

PLOT NAME:

PLOT SCALE: 1:1

SHEET: 246

E

Addendum No. 01
 ID 2430-06-70
 Revised Sheet 246
 March 31, 2017

STORM SEWER STRUCTURES

522.1012 522.1015 522.1018 522.1024 522.1030 523.0519 611.0530 611.0612 * 611.0624 611.0627 611.0630 611.0642 611.0645 611.0652 SPV.0060.08
 APRON ENDWALLS FOR CULVERT PIPE REINFORCED CONCRETE INLET COVERS

| STRUCTURE | LOCATION | STATION | OFFSET | RIM ELEVATION | SUMP / INVERT ELEVATION | DEPTH FT | HORIZONTAL | | | ELLIPTICAL | | | Manhole Covers | | | TYPE H | | | TYPE H WITH CURB PLATE EACH | | | |
|-----------|----------|-----------|----------|---------------|-------------------------|----------|------------|---------|---------|------------|---------|------------|----------------|--------|--------|---------|------------|---------|-----------------------------|-----------|--------|----|
| | | | | | | | 12-INCH | 15-INCH | 18-INCH | 24-INCH | 30-INCH | 19X30-INCH | Type J | TYPE C | TYPE H | TYPE HM | TYPE HM-GJ | TYPE MS | | TYPE MS-A | TYPE T | |
| 1.01 | USH45 | 100+00 | 44.8' LT | -- | 767.74 | -- | -- | -- | 1 | -- | -- | -- | -- | -- | -- | -- | -- | -- | -- | -- | -- | |
| 1.03 | USH45 | 100+00 | 23.5' LT | 771.11 | 767.71 | 2.40 | -- | -- | -- | -- | -- | -- | -- | 1 | -- | -- | -- | -- | -- | -- | -- | -- |
| 1.04 | USH45 | 100+00 | 23.5' RT | 771.11 | 768.48 | 1.63 | -- | -- | -- | -- | -- | -- | -- | -- | -- | -- | -- | -- | -- | -- | -- | -- |
| 2.01 | USH45 | 102+00 | 54.2' LT | -- | 761.66 | -- | -- | -- | -- | 1 | -- | -- | -- | -- | -- | -- | -- | -- | -- | -- | -- | -- |
| 2.02 | USH45 | 102+00 | 37.7' LT | 767.47 | 761.64 | 4.59 | -- | -- | -- | -- | -- | 1 | -- | -- | -- | -- | -- | -- | -- | -- | -- | -- |
| 2.03 | USH45 | 102+00 | 23.5' LT | 766.67 | 761.81 | 3.86 | -- | -- | -- | -- | -- | -- | -- | -- | -- | -- | -- | -- | -- | -- | -- | -- |
| 2.04 | USH45 | 102+00 | 23.5' RT | 766.67 | 763.04 | 2.63 | -- | -- | -- | -- | -- | -- | -- | 1 | -- | -- | -- | -- | -- | -- | -- | -- |
| 2.05 | USH45 | 103+35 | 37.7' LT | 766.02 | 762.15 | 2.63 | -- | -- | -- | -- | -- | 1 | -- | -- | -- | -- | -- | -- | -- | -- | -- | -- |
| 2.06 | USH45 | 103+35 | 23.5' LT | 765.59 | 762.39 | 2.20 | -- | -- | -- | -- | -- | -- | -- | -- | -- | -- | -- | -- | -- | -- | -- | -- |
| 2.07 | USH45 | 103+45 | 23.5' LT | 765.59 | 762.90 | 1.69 | -- | -- | -- | -- | -- | -- | -- | -- | -- | -- | -- | -- | -- | -- | -- | -- |
| 2.08 | USH45 | 103+35 | 23.5' RT | 765.59 | 762.53 | 2.06 | -- | -- | -- | -- | -- | -- | -- | -- | -- | -- | -- | -- | -- | -- | -- | -- |
| 2.09 | USH45 | 103+45 | 23.5' RT | 765.59 | 766.74 | 1.45 | -- | -- | -- | -- | -- | -- | -- | -- | -- | -- | -- | -- | -- | -- | -- | -- |
| 3.01 | USH45 | 106+50 | 58.7' LT | -- | 764.78 | -- | -- | -- | 1 | -- | -- | -- | -- | -- | -- | -- | -- | -- | -- | -- | -- | -- |
| 3.02 | USH45 | 106+50 | 23.5' LT | 770.17 | 764.89 | 4.28 | -- | -- | -- | -- | -- | -- | -- | -- | -- | -- | -- | -- | -- | -- | -- | -- |
| 3.03 | USH45 | 106+50 | 14' LT | 770.53 | 765.27 | 4.02 | -- | -- | -- | -- | -- | -- | -- | 1 | -- | -- | -- | -- | -- | -- | -- | -- |
| 3.04 | USH45 | 106+50 | 23.5' RT | 770.17 | 766.63 | 2.54 | -- | -- | -- | -- | -- | -- | -- | -- | -- | -- | -- | -- | -- | -- | -- | -- |
| 3.05 | USH45 | 108+75 | 14' LT | 774.18 | 767.88 | 5.06 | -- | -- | -- | -- | -- | -- | -- | 1 | -- | -- | -- | -- | -- | -- | -- | -- |
| 3.06 | USH45 | 108+75 | 23.5' LT | 773.82 | 768.92 | 3.90 | -- | -- | -- | -- | -- | -- | -- | -- | -- | -- | -- | -- | -- | -- | -- | -- |
| 3.07 | USH45 | 108+75 | 23.5' RT | 773.82 | 769.15 | 3.67 | -- | -- | -- | -- | -- | -- | -- | -- | -- | -- | -- | -- | -- | -- | -- | -- |
| 4.01 | USH45 | 112+22.50 | 55.6' LT | -- | 768.50 | -- | -- | -- | 1 | -- | -- | -- | -- | -- | -- | -- | -- | -- | -- | -- | -- | -- |
| 4.02 | USH45 | 112+22.50 | 23' LT | 773.94 | 768.56 | 4.38 | -- | -- | -- | -- | -- | -- | -- | 1 | -- | -- | -- | -- | -- | -- | -- | -- |
| 4.03 | USH45 | 112+50 | 23' LT | 773.96 | 769.70 | 3.26 | -- | -- | -- | -- | -- | -- | -- | 1 | -- | -- | -- | -- | -- | -- | -- | -- |
| 4.04 | USH45 | 112+22.50 | 23' RT | 773.94 | 768.89 | 4.05 | -- | -- | -- | -- | -- | -- | -- | 1 | -- | -- | -- | -- | -- | -- | -- | -- |
| 4.05 | USH45 | 112+50 | 23' RT | 773.96 | 770.03 | 2.93 | -- | -- | -- | -- | -- | -- | -- | 1 | -- | -- | -- | -- | -- | -- | -- | -- |
| 5.01 | USH45 | 114+00 | 52.2' LT | -- | 770.86 | -- | -- | -- | 1 | -- | -- | -- | -- | -- | -- | -- | -- | -- | -- | -- | -- | -- |
| 5.02 | USH45 | 114+00 | 26.1' LT | 774.91 | 770.86 | 3.05 | -- | -- | -- | -- | -- | -- | -- | 1 | -- | -- | -- | -- | -- | -- | -- | -- |
| 5.03 | USH45 | 114+00 | 29' RT | 774.86 | 772.08 | 1.78 | -- | -- | -- | -- | -- | -- | -- | 1 | -- | -- | -- | -- | -- | -- | -- | -- |
| 6.01 | USH45 | 116+00 | 59.9' LT | -- | 772.83 | -- | -- | -- | 1 | -- | -- | -- | -- | -- | -- | -- | -- | -- | -- | -- | -- | -- |
| 6.02 | USH45 | 116+00 | 34' LT | 777.40 | 772.91 | 3.49 | -- | -- | -- | -- | -- | -- | -- | 1 | -- | -- | -- | -- | -- | -- | -- | -- |
| 6.03 | USH45 | 116+00 | 29.5' RT | 777.49 | 773.20 | 3.29 | -- | -- | -- | -- | -- | -- | -- | 1 | -- | -- | -- | -- | -- | -- | -- | -- |
| 6.04 | USH45 | 117+22.8 | 76.7' RT | 779.07 | 773.75 | 4.32 | -- | -- | -- | -- | -- | -- | -- | 1 | -- | -- | -- | -- | -- | -- | -- | -- |
| 6.05 | 58THRD | 51+25 | 13.5' RT | 781.26 | 775.90 | 4.36 | -- | -- | -- | -- | -- | -- | -- | 1 | -- | -- | -- | -- | -- | -- | -- | -- |
| 6.06 | 58THRD | 53+00 | 13.5' RT | 787.81 | 782.51 | 4.30 | -- | -- | -- | -- | -- | -- | -- | 1 | -- | -- | -- | -- | -- | -- | -- | -- |
| 6.07 | 58THRD | 50+52.9 | 19.4' LT | 778.17 | 774.33 | 2.84 | -- | -- | -- | -- | -- | -- | -- | 1 | -- | -- | -- | -- | -- | -- | -- | -- |
| 6.08 | 58THRD | 51+25 | 13.5' LT | 781.26 | 777.07 | 3.19 | -- | -- | -- | -- | -- | -- | -- | 1 | -- | -- | -- | -- | -- | -- | -- | -- |
| 6.09 | 58THRD | 53+00 | 13.5' LT | 787.81 | 783.65 | 3.16 | -- | -- | -- | -- | -- | -- | -- | 1 | -- | -- | -- | -- | -- | -- | -- | -- |
| 7.01 | USH45 | 117+28.40 | 65.3' LT | -- | 773.51 | -- | -- | -- | 1 | -- | -- | -- | -- | -- | -- | -- | -- | -- | -- | -- | -- | -- |
| 7.02 | USH45 | 118+00 | 35.5' LT | 778.62 | 773.64 | 3.98 | -- | -- | -- | -- | -- | -- | -- | 1 | -- | -- | -- | -- | -- | -- | -- | -- |
| 7.03 | USH45 | 118+00 | 29.2' RT | 778.75 | 773.94 | 3.81 | -- | -- | -- | -- | -- | -- | -- | 1 | -- | -- | -- | -- | -- | -- | -- | -- |
| 8.1 | USH45 | 121+25 | 29.3' LT | -- | 776.73 | -- | -- | -- | 1 | -- | -- | -- | -- | -- | -- | -- | -- | -- | -- | -- | -- | -- |

Addendum No. 01
 ID 2430-06-70
 Revised Sheet 248
 March 31, 2017

- REMARKS
1. STATIONS AND OFFSETS ARE TO CENTER OF STRUCTURES
 2. RIM ELEVATIONS ARE GIVEN AT THE CENTER OF STRUCTURE FOR MANHOLES AND MEDIAN INLETS
 3. RIMELEVATIONS ARE GIVEN AT THE FACE OF CURB FOR STRUCTURES IN CURB AND GUTTER
 4. DEPTH = RIMELEVATION - SUMP ELEVATION - CASTING HEIGHT - ADJUSTMENT
 5. CASTING HEIGHT = 8.78" FOR TYPE C; 6" FOR TYPE H AND HM; 2" FOR TYPE MS; 8.78" FOR TYPE J; 7" FOR TYPE T
 6. ADJUSTMENT = 6" TYPICAL (NO ADJUSTMENT FOR INLETS COVERS TYPE MS)

NOTE: ALL ITEMS ON THIS SHEET ARE PAID UNDER CATEGORY 0010

CONTINUED ON NEXT PAGE
 * ADDITIONAL QUANTITY ELSEWHERE

Addendum No. 01
ID 2430-06-70
Revised Sheet 256
March 31, 2017

STORM SEWER PIPE REINFORCED CONCRETE

| FROM STR | TO STR | 608.0312 | | 608.0315 | | 608.0318 | | 608.0324 | | 608.0330 | | 608.0412 | | 608.0415 | | 608.0418 | | 608.0424 | | 608.0430 | | 608.0518 | | 610.0119 | |
|----------|--------|----------|----|----------|----|----------|----|----------|----|----------|----|----------|----|----------|----|----------|----|----------|----|----------|----|----------|----|----------|----|
| | | LF | LF | LF | LF | LF | LF | LF | LF | LF | LF | LF | LF | LF | LF | LF | LF | LF | LF | LF | LF | LF | LF | LF | LF |
| 1.03 | 1.01 | | | | | | | | | | | | | | | | | | | | | | | | |
| 1.04 | 1.03 | | | | | | | | | | | | | | | | | | | | | | | | |
| 2.02 | 2.01 | | | | | | | | | | | | | | | | | | | | | | | | |
| 2.03 | 2.02 | | | | | | | | | | | | | | | | | | | | | | | | |
| 2.04 | 2.03 | | | | | | | | | | | | | | | | | | | | | | | | |
| 2.05 | 2.02 | | | | | | | | | | | | | | | | | | | | | | | | |
| 2.06 | 2.05 | | | | | | | | | | | | | | | | | | | | | | | | |
| 2.07 | 2.06 | | | | | | | | | | | | | | | | | | | | | | | | |
| 2.08 | 2.06 | | | | | | | | | | | | | | | | | | | | | | | | |
| 2.09 | 2.08 | | | | | | | | | | | | | | | | | | | | | | | | |
| 3.02 | 3.01 | | | | | | | | | | | | | | | | | | | | | | | | |
| 3.03 | 3.02 | | | | | | | | | | | | | | | | | | | | | | | | |
| 3.04 | 3.03 | | | | | | | | | | | | | | | | | | | | | | | | |
| 3.05 | 3.03 | | | | | | | | | | | | | | | | | | | | | | | | |
| 3.06 | 3.05 | | | | | | | | | | | | | | | | | | | | | | | | |
| 3.07 | 3.05 | | | | | | | | | | | | | | | | | | | | | | | | |
| 4.02 | 4.01 | | | | | | | | | | | | | | | | | | | | | | | | |
| 4.03 | 4.02 | | | | | | | | | | | | | | | | | | | | | | | | |
| 4.04 | 4.02 | | | | | | | | | | | | | | | | | | | | | | | | |
| 4.05 | 4.04 | | | | | | | | | | | | | | | | | | | | | | | | |
| 5.02 | 5.01 | | | | | | | | | | | | | | | | | | | | | | | | |
| 5.03 | 5.02 | | | | | | | | | | | | | | | | | | | | | | | | |
| 6.02 | 6.01 | | | | | | | | | | | | | | | | | | | | | | | | |
| 6.03 | 6.02 | | | | | | | | | | | | | | | | | | | | | | | | |
| 6.04 | 6.03 | | | | | | | | | | | | | | | | | | | | | | | | |
| 6.05 | 6.04 | | | | | | | | | | | | | | | | | | | | | | | | |
| 6.06 | 6.05 | | | | | | | | | | | | | | | | | | | | | | | | |
| 6.07 | 6.04 | | | | | | | | | | | | | | | | | | | | | | | | |
| 6.08 | 6.05 | | | | | | | | | | | | | | | | | | | | | | | | |
| 6.09 | 6.06 | | | | | | | | | | | | | | | | | | | | | | | | |
| 7.02 | 7.01 | | | | | | | | | | | | | | | | | | | | | | | | |
| 7.03 | 7.02 | | | | | | | | | | | | | | | | | | | | | | | | |
| 8.2 | 8.1 | | | | | | | | | | | | | | | | | | | | | | | | |
| 8.2A | 8.2 | | | | | | | | | | | | | | | | | | | | | | | | |
| 8.4 | 8.3 | | | | | | | | | | | | | | | | | | | | | | | | |
| 9.2 | 9.1 | | | | | | | | | | | | | | | | | | | | | | | | |
| 9.3 | 9.2 | | | | | | | | | | | | | | | | | | | | | | | | |
| 9.4 | 9.3 | | | | | | | | | | | | | | | | | | | | | | | | |
| 10.2 | 10.1 | | | | | | | | | | | | | | | | | | | | | | | | |
| 10.3 | 10.2 | | | | | | | | | | | | | | | | | | | | | | | | |

- 1. PIPE LENGTHS ARE MEASURED TO THE CENTER OF STRUCTURES
- 2. PIPE LENGTH FOR AEW IS MEASURED FROM CENTER OF STRUCTURE TO END OF PIPE SECTIONS, NOT END OF APRON ENDWALL.

NOTE: ALL ITEMS ON THIS SHEET ARE PAID UNDER CATEGORY 0010

CONTINUED ON NEXT PAGE
* ADDITIONAL QUANTITY ELSEWHERE

Addendum No. 01
ID 2430-06-70
Revised Sheet 258
March 31, 2017

STORM SEWER PIPE REINFORCED CONCRETE

| FROM STR | TO STR | 12-INCH | | 18-INCH | | 24-INCH | | 30-INCH | | 18-INCH | | 24-INCH | | 30-INCH | | 18-INCH | | 24-INCH | | 30-INCH | | 18-INCH | | 24-INCH | | 30-INCH | | |
|----------|--------|---------|--------|---------|----|---------|----|---------|-----|---------|-----|---------|----|---------|-----|---------|----|---------|----|---------|----|---------|----|---------|----|---------|----|----|
| | | LF | LF | LF | LF | LF | LF | LF | LF | LF | LF | LF | LF | LF | LF | LF | LF | LF | LF | LF | LF | LF | LF | LF | LF | LF | LF | LF |
| 14.15 | 14.16 | 789.98 | 789.78 | 0.63% | | | | | | | | | | | | | | | | | | | | | | | | |
| 14.16 | 14.17 | 789.29 | 789.17 | 0.52% | | | | | | | | | | | | | | | | | | | | | | | | |
| 14.17 | 14.18 | 789.18 | 789.12 | 0.50% | | | | | | | | | | | | | | | | | | | | | | | | |
| 14.18 | 14.19 | 789.17 | 789.12 | 0.50% | | | | | | | | | | | | | | | | | | | | | | | | |
| 14.19 | 14.20 | 789.39 | 789.27 | 0.50% | | | | | | | | | | | | | | | | | | | | | | | | |
| 14.20 | 14.3 | 786.15 | 785.95 | 0.30% | | | | | | | | | | | | | | | | | | | | | | | | |
| 14.21 | 14.2 | 785.81 | 785.76 | 0.50% | | | | | | | | | | | | | | | | | | | | | | | | |
| 14.22 | 14.12 | 788.90 | 788.42 | 6.86% | 7 | | | | | | | | | | | | | | | | | | | | | | | |
| 15.2 | 15.1 | 788.29 | 788.25 | 0.27% | | | | | | | | | | | | | | | | | | | | | | | | |
| 15.3 | 15.2 | 788.44 | 788.39 | 0.49% | | | | | | | | | | | | | | | | | | | | | | | | |
| 15.4 | 15.3 | 788.60 | 788.54 | 0.30% | | | | | | | | | | | | | | | | | | | | | | | | |
| 15.5 | 15.4 | 788.72 | 788.69 | 0.30% | | | | | | | | | | | | | | | | | | | | | | | | |
| 15.6 | 15.5 | 788.89 | 788.82 | 0.30% | | | | | | | | | | | | | | | | | | | | | | | | |
| 15.7 | 15.6 | 789.02 | 788.99 | 0.31% | | | | | | | | | | | | | | | | | | | | | | | | |
| 15.8 | 15.6 | 789.18 | 788.99 | 0.30% | | | | | | | | | | | | | | | | | | | | | | | | |
| 16.2 | 16.1 | 786.93 | 786.79 | 0.34% | | | | | | | | | | | | | | | | | | | | | | | | |
| 16.3 | 16.2 | 788.01 | 787.03 | 0.30% | | | | | | | | | | | | | | | | | | | | | | | | |
| 16.4 | 16.3 | 788.13 | 788.11 | 0.15% | | | | | | | | | | | | | | | | | | | | | | | | |
| 16.5 | 16.4 | 788.29 | 788.23 | 0.30% | | | | | | | | | | | | | | | | | | | | | | | | |
| 16.6 | 16.5 | 788.67 | 788.39 | 0.30% | | | | | | | | | | | | | | | | | | | | | | | | |
| 16.7 | 16.3 | 789.19 | 789.13 | 0.30% | | | | | | | | | | | | | | | | | | | | | | | | |
| 16.8 | 16.2 | 788.09 | 788.03 | 0.55% | 11 | | | | | | | | | | | | | | | | | | | | | | | |
| 16.9 | 16.8 | 788.29 | 788.19 | 0.50% | | | | | | | | | | | | | | | | | | | | | | | | |
| 17.2 | 17.1 | 786.21 | 786.02 | 0.30% | | | | | | | | | | | | | | | | | | | | | | | | |
| 17.3 | 17.2 | 786.91 | 786.71 | 0.30% | | | | | | | | | | | | | | | | | | | | | | | | |
| 17.4 | 17.3 | 787.48 | 787.41 | 0.30% | | | | | | | | | | | | | | | | | | | | | | | | |
| 17.5 | 17.3 | 787.48 | 787.41 | 0.30% | | | | | | | | | | | | | | | | | | | | | | | | |
| 17.6 | 17.2 | 786.48 | 786.31 | 0.76% | | | | | | | | | | | | | | | | | | | | | | | | |
| 17.7 | 17.5 | 788.82 | 788.79 | 0.30% | | | | | | | | | | | | | | | | | | | | | | | | |
| 18.2 | 18.1 | 788.81 | 788.61 | 0.30% | | | | | | | | | | | | | | | | | | | | | | | | |
| 19.2 | 19.1 | 789.84 | 789.66 | 0.30% | | | | | | | | | | | | | | | | | | | | | | | | |
| 19.3 | 19.2 | 789.99 | 789.94 | 0.50% | | | | | | | | | | | | | | | | | | | | | | | | |
| 20.2 | 20.1 | 787.20 | 787.01 | 0.30% | | | | | | | | | | | | | | | | | | | | | | | | |
| 21.2 | 21.1 | 774.87 | 774.65 | 0.30% | | | | | | | | | | | | | | | | | | | | | | | | |
| 21.4 | 21.3 | 771.98 | 771.54 | 0.50% | | | | | | | | | | | | | | | | | | | | | | | | |
| 22.2 | 22.1 | 768.28 | 768.04 | 0.30% | | | | | | | | | | | | | | | | | | | | | | | | |
| 23.2 | 23.1 | 763.13 | 762.96 | 0.50% | | | | | | | | | | | | | | | | | | | | | | | | |
| 23.3 | 23.2 | 763.41 | 763.22 | 0.29% | | | | | | | | | | | | | | | | | | | | | | | | |
| 23.3A | 23.3 | 764.30 | 763.91 | 2.16% | | | | | | | | | | | | | | | | | | | | | | | | |
| 23.4 | 23.3A | 766.79 | 764.40 | 1.65% | | | | | | | | | | | | | | | | | | | | | | | | |
| 23.5 | 23.4 | 769.97 | 766.88 | 1.58% | | | | | | | | | | | | | | | | | | | | | | | | |
| 23.6 | 23.4 | 767.83 | 767.78 | 0.50% | | | | | | | | | | | | | | | | | | | | | | | | |
| 24.2 | 24.1 | 781.67 | 781.29 | 0.50% | | | | | | | | | | | | | | | | | | | | | | | | |
| 25.1 | 25.2 | 784.49 | 784.30 | 0.96% | | | | | | | | | | | | | | | | | | | | | | | | |
| | | TOTAL | 272 | 31 | 91 | 1,767 | 34 | 657 | 116 | 940 | 695 | 127 | 21 | 211 | 534 | | | | | | | | | | | | | |

1. PIPE LENGTHS ARE MEASURED TO THE CENTER OF STRUCTURES
2. PIPE LENGTH FOR AEW IS MEASURED FROM CENTER OF STRUCTURE TO END OF APRON ENDWALL.

NOTE: ALL ITEMS ON THIS SHEET ARE PAID UNDER CATEGORY 0010

* ADDITIONAL QUANTITY ELSEWHERE

Addendum No. 01
ID 2430-06-70
Revised Sheet 260
March 31, 2017

| EROSION CONTROL | | | | | | | | | | | | | | | | |
|-----------------|----|------------|------------|------------------------|-----------------------------------|----------|----------------|----------------|--------------|--------------|-----------------|---------------|-------------------|-------------------------|------------------------------------|-----------------------|
| STATION | TO | STATION | LOCATION | RIPRAP MEDIUM CY | GROUTED RIPRAP MEDIUM CY | 606.0200 | 625.0500 | 627.0200 | 628.1504 | 628.1520 | MOBILIZATIONS | | EROSION CONTROL | | TEMPORARY DITCH CHECKS LF | |
| | | | | | | | | | | | EROSION CONTROL | EMERGENCY | CLASS I TYPE A | URBAN CLASS I TYPE A | | EROSION MAT TYPE A |
| | | | | | | | SY | SY | LF | LF | EA | EA | SY | SY | EA | EA |
| 97+50. | | 117+40. | USH 45 | 101 | | | 8,721 | 5,172 | 816 | 816 | 4 | 667 | 2,882 | | 22 | 105 |
| 117+40. | | 137+00. | USH 45 | 23 | | | 10,581 | 7,244 | 488 | 488 | | 3,004 | 333 | 2 | 23 | 105 |
| 137+00. | | 175+00. | USH 45 | 46 | | | 26,686 | 21,949 | 464 | 464 | | 3,846 | 889 | 2 | 27 | 315 |
| 175+00. | | 193+00. | USH 45 | 30 | | | 12,103 | 7,370 | | | 4 | 1,222 | 3,511 | | 4 | 150 |
| 193+00. | | 223+00. | USH 45 | 21 | | | 25,501 | 19,357 | 1,425 | 1,425 | | 5,478 | 667 | 1 | 2 | 345 |
| 223+00. | | 268+00. | USH 45 | 29 | | | 45,187 | 33,920 | 1,675 | 1,675 | | 7,867 | 3,400 | | 1 | 570 |
| 50+00. | | 55+50. | 58TH RD | | | | 2,406 | 1,653 | | | | | | | 6 | |
| 43+75. | | 49+00. | CTH C WEST | 10 | | | 2,253 | | | | | 146 | | | 7 | |
| 51+00. | | 59+50. | CTH C EAST | 8 | | | 3,720 | 3,100 | 680 | 680 | | 431 | 189 | 1 | 11 | |
| 46+50. | | 50+00. | CHURCH RD | 4 | | | 4,439 | 942 | | | | | | | | |
| 50+00. | | 53+35. | SAVAGE RD | | | | 942 | | | | | | | | | |
| 47+00. | | 54+00. | CTH A | 8 | | | 2,985 | 263 | 160 | 160 | | 2,722 | | | | 15 |
| UNDISTRIBUTED | | | | | | | | | 1,150 | 1,150 | | 25,385 | 11,871 | | | |
| TOTAL | | 281 | | 10 | | | 141,904 | 104,648 | 6,858 | 6,858 | 8 | 50,770 | 23,742 | 6 | 103 | 1,605 |

| EROSION CONTROL CONT. | | | | | | | | | | | | | | | | | | |
|-----------------------|----|------------|------------|-------------------------------------|--|----------|-----------|-----------|------------|--------------|------------|--------------|------------|--------------|-----------|--------------|------------|-------------|
| STATION | TO | STATION | LOCATION | STONE OR ROCK DITCH CHECKS CY | ROCK CULVERT PIPE CHECKS EACH | 628.7570 | 628.7555 | 629.0210 | 630.0110 | 630.0130 | 630.0140 | 630.0200 | 645.0120 | 645.0130 | 645.0130 | 645.0130 | 645.0130 | SPV.0090.03 |
| | | | | | | | | | | | | | | | | | | |
| 97+50. | | 117+40. | USH 45 | 75 | | | 3 | 12 | 6 | 53 | 104 | 118 | 304 | | | | | |
| 117+40. | | 137+00. | USH 45 | 30 | | | | | 7 | 178 | 12 | 143 | 75 | | | 23 | | |
| 137+00. | | 175+00. | USH 45 | 158 | | | 2 | 19 | 19 | 448 | 32 | 360 | 152 | | | 13 | | |
| 175+00. | | 193+00. | USH 45 | 42 | | | | 6 | 8 | 217 | 126 | 163 | 81 | | | 533 | | |
| 193+00. | | 223+00. | USH 45 | 105 | | | 7 | 12 | 18 | 435 | 24 | 344 | 62 | | | | | |
| 223+00. | | 268+00. | USH 45 | 63 | | | 12 | 42 | 32 | 691 | 122 | 610 | 78 | | | | | |
| 50+00. | | 55+50. | 58TH RD | | | | | | 1 | 30 | | 22 | | | | | | |
| 43+75. | | 49+00. | CTH C WEST | 11 | | | 2 | | 2 | 43 | | 32 | | | | 7 | | |
| 51+00. | | 59+50. | CTH C EAST | 11 | | | | | 3 | 60 | | 45 | | | | 19 | | |
| 46+50. | | 50+00. | CHURCH RD | | | | | | 1 | 26 | | 19 | | | | | | |
| 50+00. | | 53+35. | SAVAGE RD | | | | 3 | | 1 | 17 | | 13 | | | | | | |
| 47+00. | | 54+00. | CTH A | | | | | | 2 | 54 | | 40 | | | | 300 | | |
| UNDISTRIBUTED | | | | | | | | | | | | | | | | | | |
| TOTAL | | 494 | | 41 | | | 72 | 99 | 518 | 2,127 | 427 | 1,911 | 805 | 1,067 | 62 | 2,591 | 260 | |

NOTE: ALL ITEMS ON THIS SHEET ARE PAID UNDER CATEGORY 0010

PROJECT NO: 2430-06-70

HWY: USH 45

COUNTY: RACINE

MISCELLANEOUS QUANTITIES

SHEET: 260

FILE NAME: _____ PLOT DATE: _____ PLOT BY: _____ PLOT NAME: _____ PLOT SCALE: 1:1

** QUANTITIES LISTED ELSEWHERE

CONSTRUCTION STAKING

| LOCATION | SUBGRADE LF | 650.4500 | 650.5000 | 650.5500 | 650.6500 | 650.7000 | 650.9910 | 650.9920 | 650.9920 | SPV.0075.01 |
|---------------|----------------|---------------|---------------|----------|----------|--------------|----------|---------------|----------|-------------|
| USH 45 | 17,065 | 17,065 | 16,547 | | | 600 | | 17,065 | | |
| 58TH ROAD | 550 | 550 | 999 | | | | | 550 | | |
| CTHC | 2,051 | 1,551 | 4,117 | | | 554 | | 2,051 | | |
| CHURCH RD | 350 | 350 | 156 | | | | | 350 | | |
| 52ND ROAD | 160 | 160 | 157 | | | | | 160 | | |
| SAVAGE ROAD | 335 | 335 | 271 | | | | | 335 | | |
| CTH A | 700 | 700 | 388 | | | | | 700 | | |
| C-51-23 | | | | 1 | | | | | | |
| C-51-64 | | | | 1 | | | | | | |
| C-51-65 | | | | 1 | | | | | | |
| C-51-67 | | | | 1 | | | | | | |
| R-51-78 | | | | 1 | | | | | | |
| UNDISTRIBUTED | | | | | 1 | | | | | 30 |
| TOTAL | 21,211 | 20,711 | 22,635 | 5 | 1 | 1,154 | 1 | 21,211 | | 30 |

Addendum No. 01
ID 2430-06-70
Revised Sheet 262
March 31, 2017

| STATION | STATION | LOCATION | OFFSET | LF |
|--------------|---------|-------------|--------|------------|
| 186+17. - | 188+00. | USH 45 | LT | 183 |
| 47+00. - | 225+00. | CTH A/USH45 | LT | 379 |
| TOTAL | | | | 562 |

| LOCATION | LF |
|-------------------------|------------|
| RETAINING WALL R-51-78 | 176 |
| TOTAL 2430-06-00 | 176 |

NOTE: ALL ITEMS ON THIS SHEET ARE
PAID UNDER CATEGORY 0010

Addendum No. 01
ID 2430-06-70
Revised Sheet 264
March 31, 2017

| SAWCUTS | | 690.0150 | 690.0250 |
|------------------------------|-------------------|--------------------|----------|
| DESCRIPTION | SAWING ASPHALT LF | SAWING CONCRETE LF | |
| BEGINNING OF PROJECT TO 58TH | 140 | 17 | |
| 58TH TO CTH C | 30 | 32 | |
| CTH C | 23 | --- | |
| CTH C TO CHURCH RD | 441 | 39 | |
| CHURCH RD | 184 | 102 | |
| 52ND | 30 | --- | |
| SAVAGE RD | 28 | --- | |
| SAVAGE RD TO CTH A | 88 | --- | |
| CTH A | 25 | --- | |
| CTH A TO END OF PROJECT | 60 | --- | |
| TOTAL | 1,200 | 190 | |

| SECTION CORNER MONUMENTS | | SPV.0060.07 |
|--------------------------|----------|-------------|
| LOCATION | EACH | |
| STATION 117+41.54 | 1 | |
| STATION 143+80.17 | 1 | |
| STATION 170+24.22 | 1 | |
| STATION 196+66.90 | 1 | |
| STATION 223+00.09 | 1 | |
| STATION 249+36.92 | 1 | |
| TOTALS | 6 | |

NOTE: ALL ITEMS ON THIS SHEET ARE PAID UNDER CATEGORY 0010

PROJECT NO: 2430-06-70

HWY: USH 45

COUNTY: RACINE

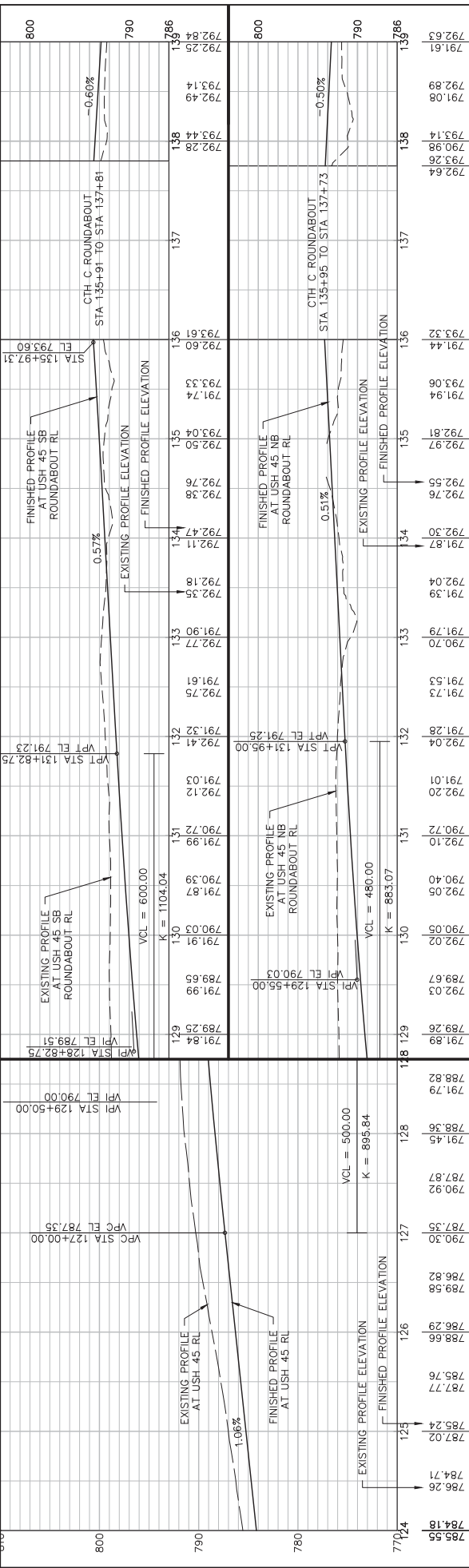
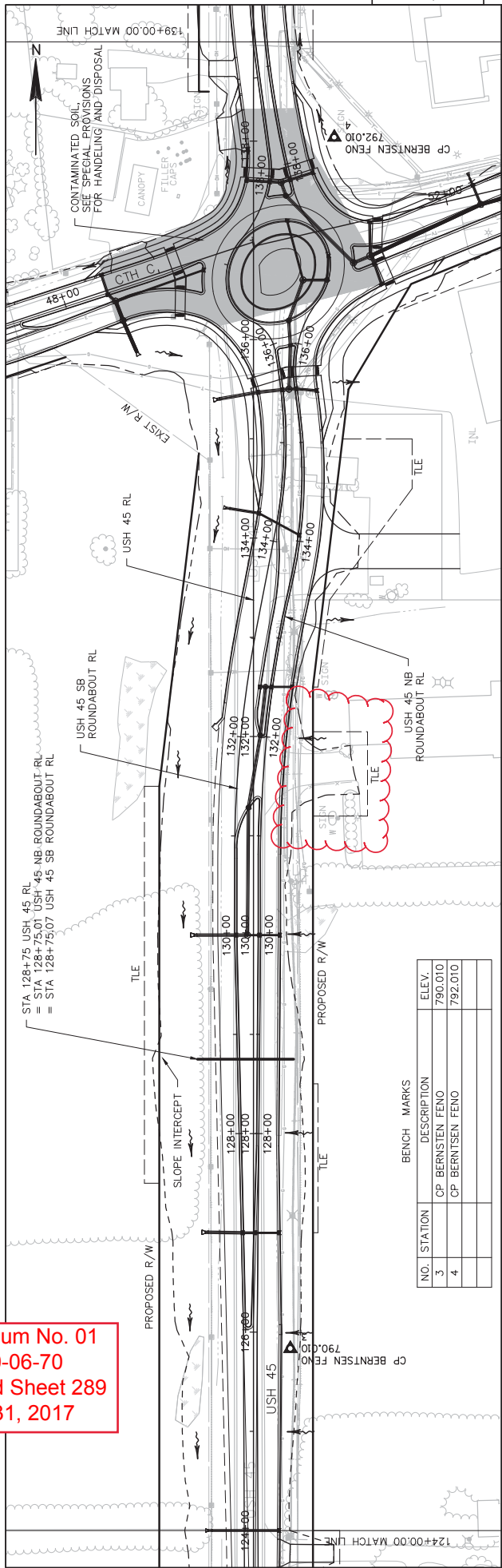
MISCELLANEOUS QUANTITIES

SHEET: 264

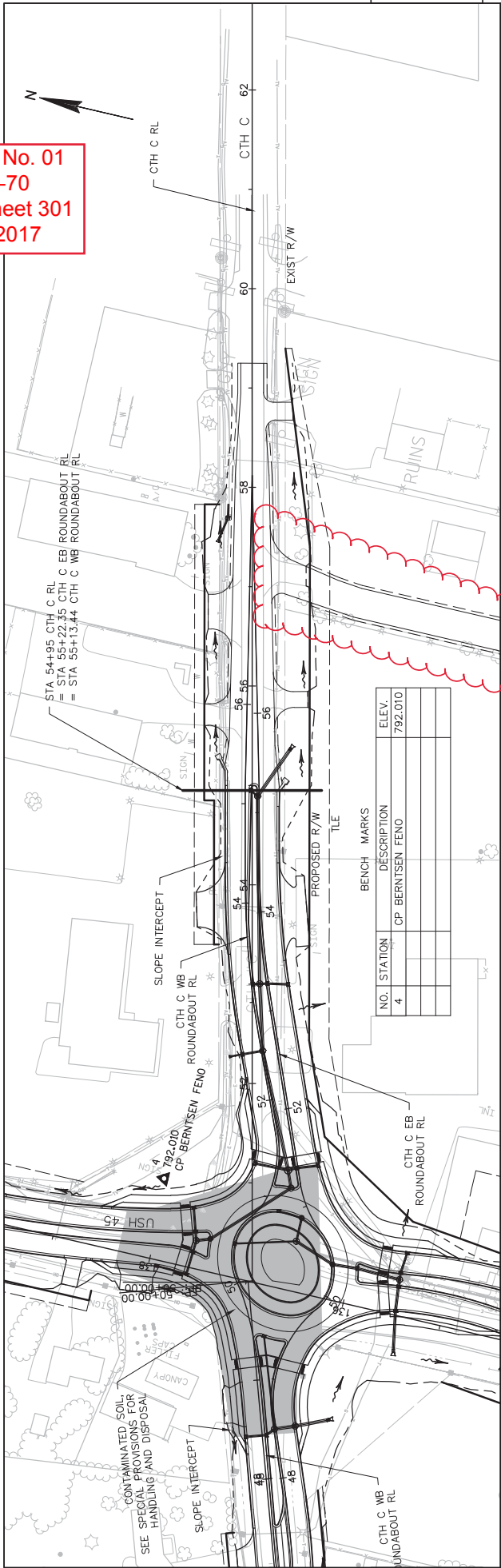
E

FILE NAME: _____ PLOT DATE: _____ PLOT BY: _____ PLOT NAME: _____ PLOT SCALE: 1:1

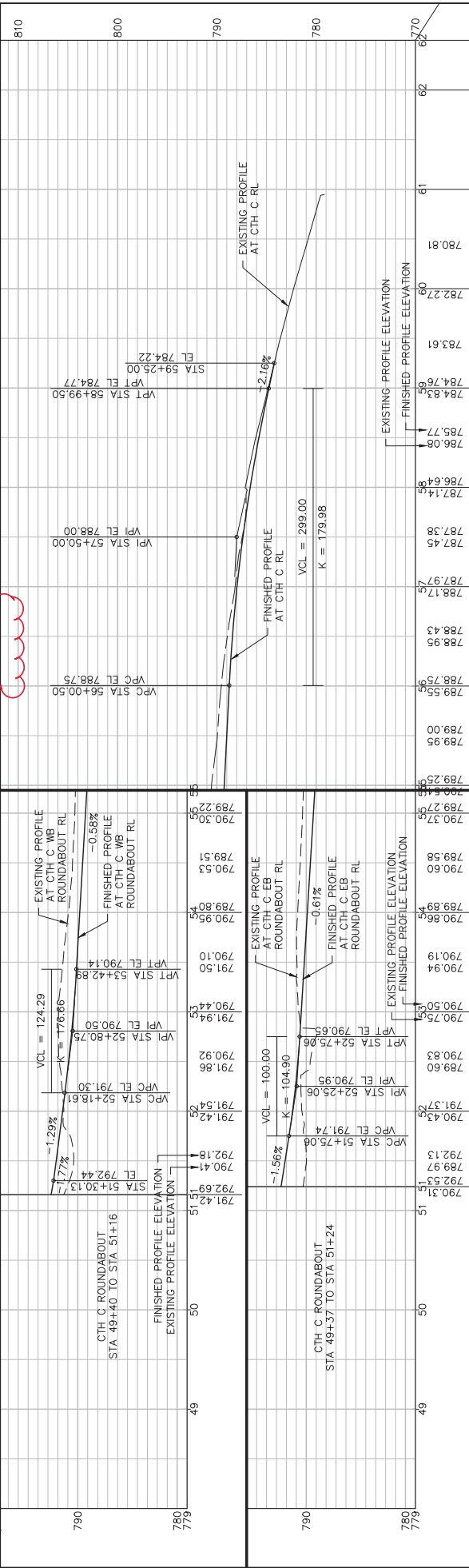
Addendum No. 01
ID 2430-06-70
Revised Sheet 289
March 31, 2017



Addendum No. 01
 ID 2430-06-70
 Revised Sheet 301
 March 31, 2017



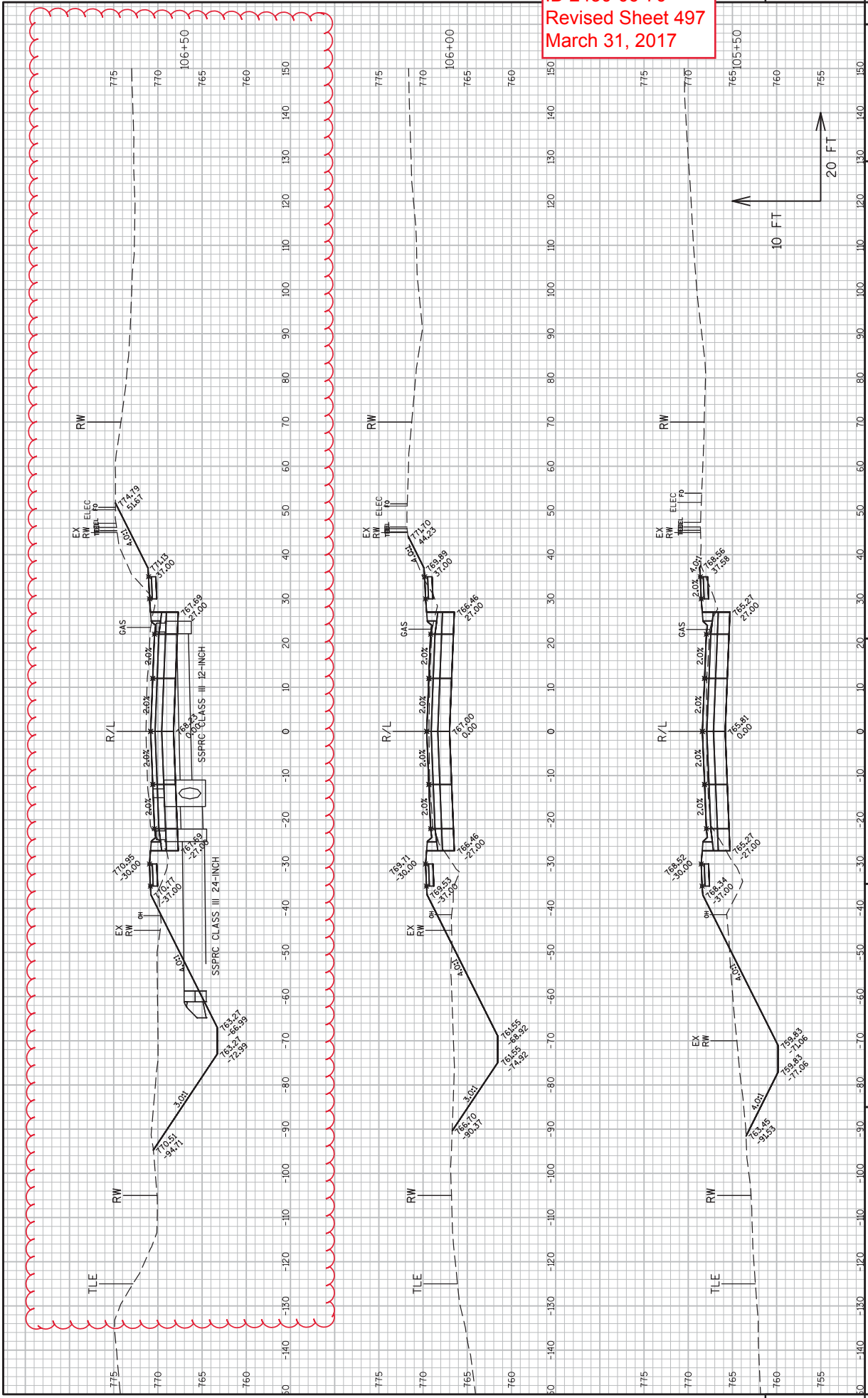
| NO. | STATION | DESCRIPTION | ELEV. |
|-----|---------|-------------------|---------|
| 4 | | CP BERTENSEN FENO | 792.010 |



PROJECT NO: 2430-06-00 HWY: USH 45 COUNTY: RACINE PLAN AND PROFILE: CTH C SHEET 301

FILE NAME: N:\POS\CAD\24300600\05\PLANS\PLAN DWG 05 - PLAN AND PROFILE\05102_PP_CTH C RD 100 SCALED.WG PLOT DATE: 3/29/2017 1:57 PM PLOT BY: GUENETTE, JEFFREY J PLOT NAME: PLOT SCALE: 1:100_MRF WSDOT/CADD SHEET 44

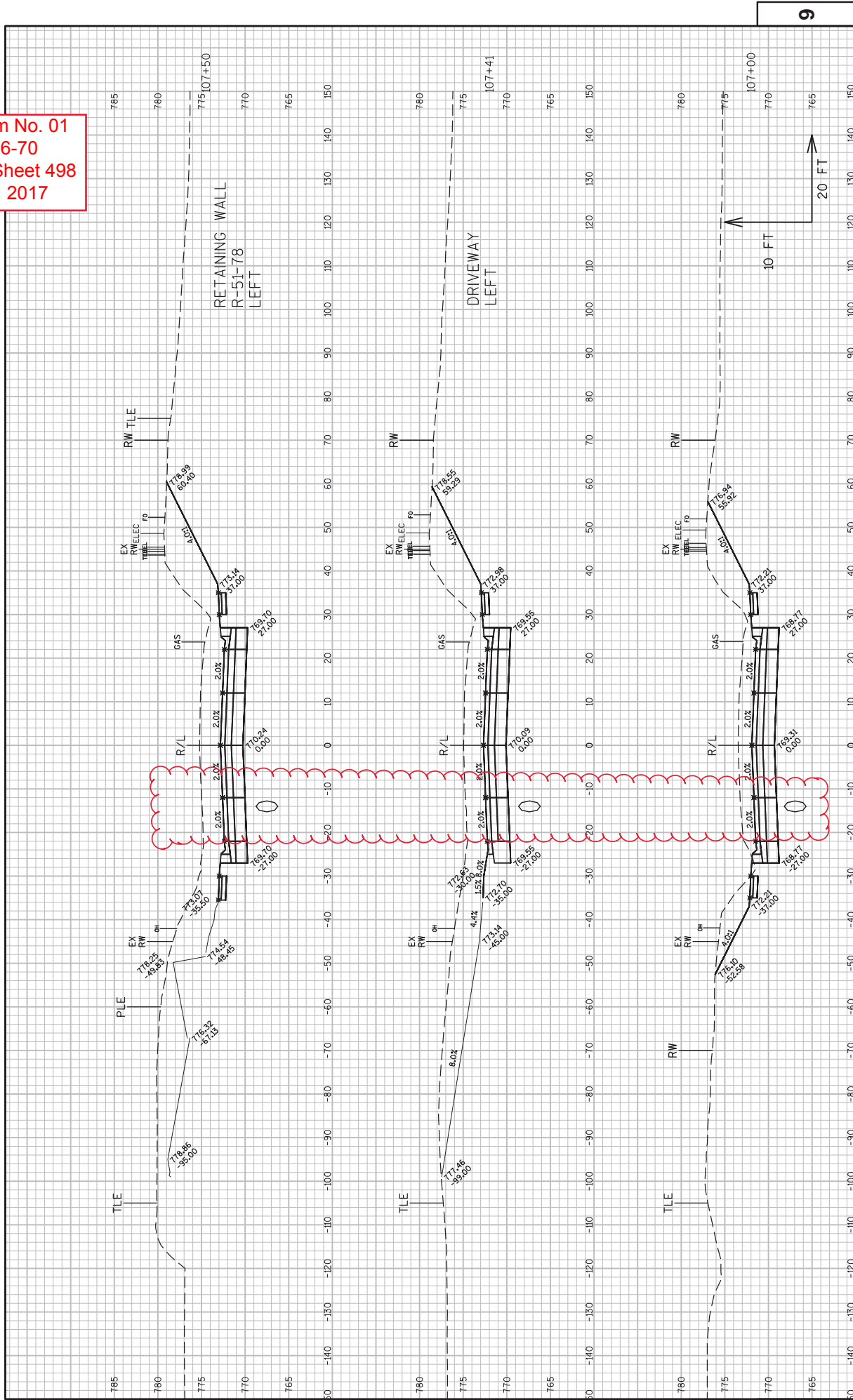
Addendum No. 01
 ID 2430-06-70
 Revised Sheet 497
 March 31, 2017



PROJECT NO: 2430-06-70
 COUNTY: RACINE
 HWY: USH 45
 CROSS SECTIONS: USH 45
 SHEET 497
 E

FILE NAME : N:\VPOS\C3D\430600\0\SHEETS\PLAN\DWG\099 - CROSS SECTIONS\09201.XS USH45-1.DWG
 LAYOUT NAME - 09201.XS USH45-1 - SECTION SHEET - (6)
 PLOT DATE : 3/29/2017 9:24 AM
 PLOT BY : GIBNETTE, JEFFREY J PLOT NAME :
 PLOT SCALE : 1 IN:20 FT
 WSDOT/CADD SHEET 49

Addendum No. 01
 ID 2430-06-70
 Revised Sheet 498
 March 31, 2017



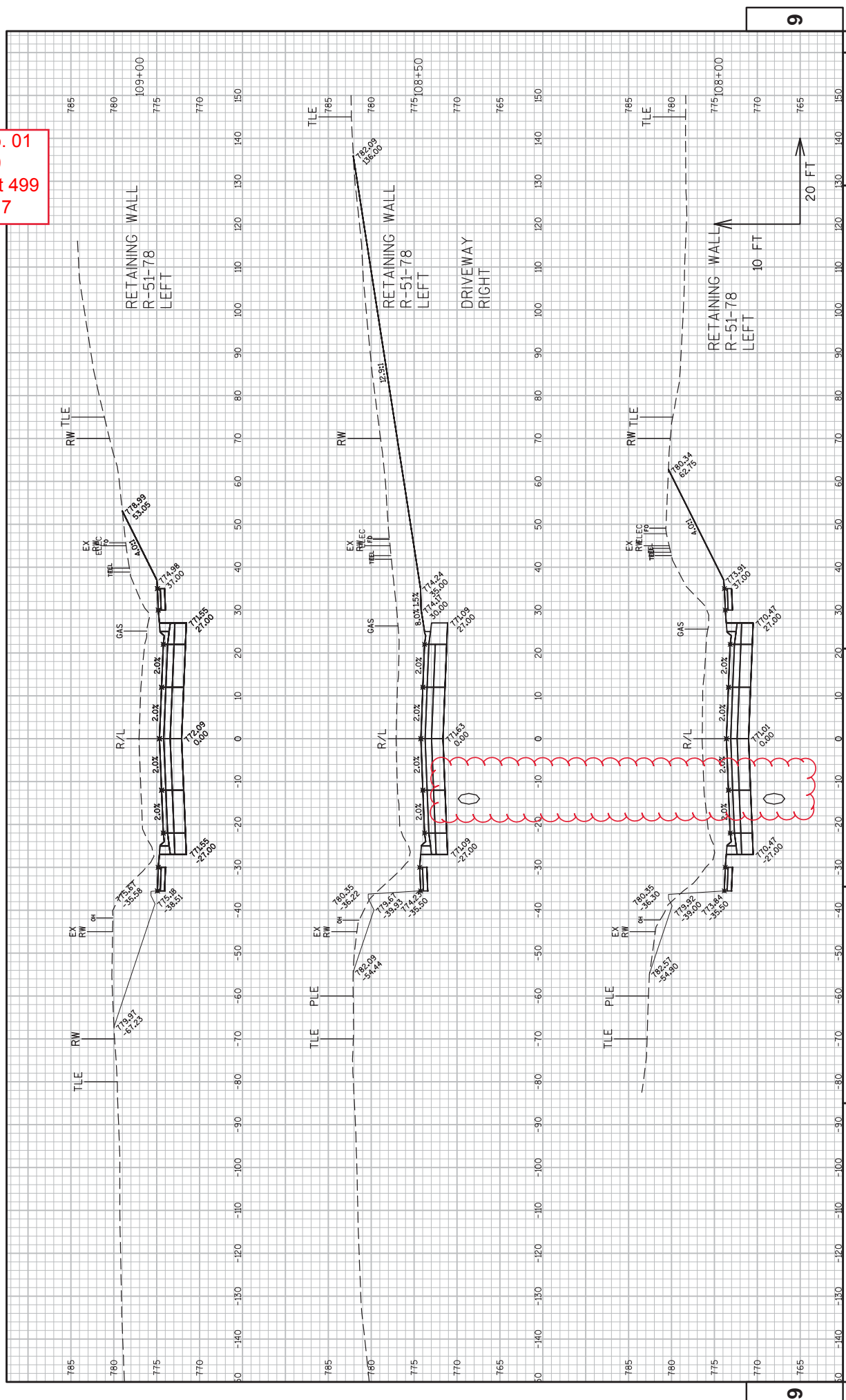
9

9

PROJECT NO: 2430-06-70
 COUNTY: RACINE
 HWY: USH 45
 CROSS SECTIONS: USH 45
 SHEET 498
 E

FILE NAME : N:\VPOS\C3D\4306000\SHEETS\PLAN\DWG\099 - CROSS SECTIONS\090201.XS USH45-1.DWG
 LAYOUT NAME - 090201.XS USH45-1 - SECTION SHEET
 PLOT DATE : 3/29/2017 9:24 AM
 PLOT BY : GUENETTE, JEFFREY J PLOT NAME :
 PLOT SCALE : 1 IN:20 FT
 WSDOT/CADD SHEET 49

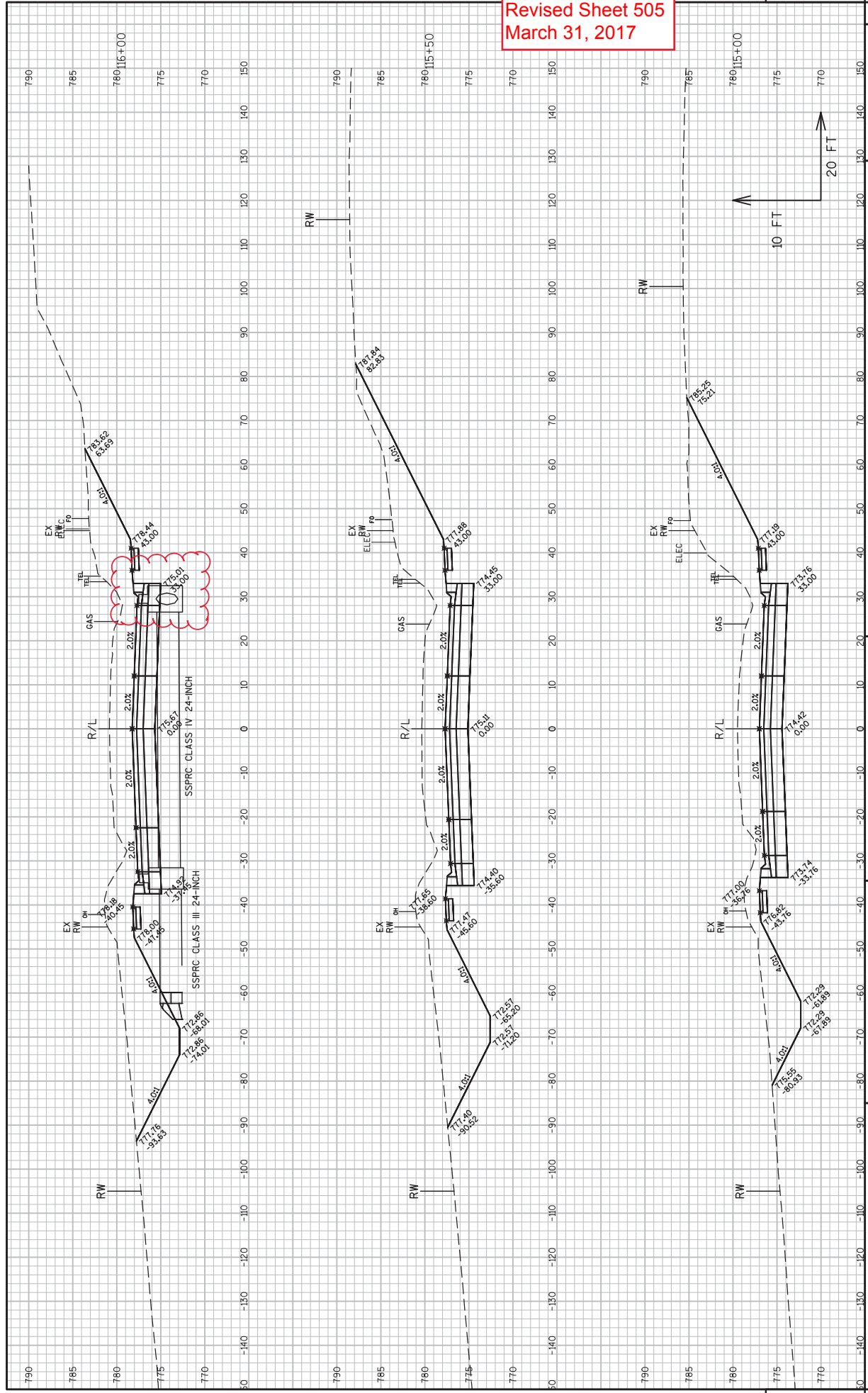
Addendum No. 01
 ID 2430-06-70
 Revised Sheet 499
 March 31, 2017



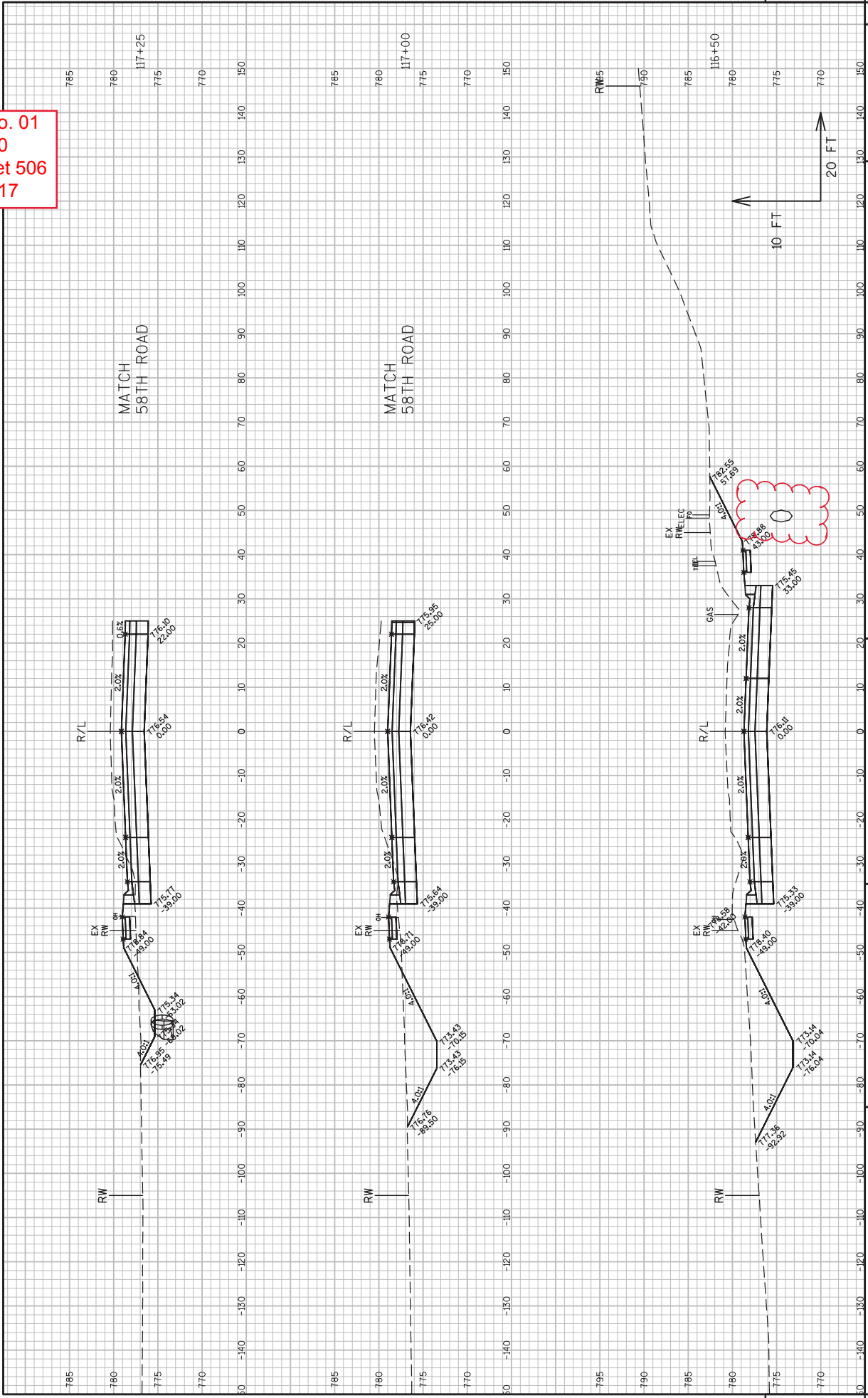
PROJECT NO: 2430-06-70
 COUNTY: RACINE
 CROSS SECTIONS: USH 45
 SHEET 499
 HWY: USH 45
 PLOT DATE : 3/29/2017 9:25 AM
 PLOT BY : GIBNETTE, JEFFREY J PLOT NAME :
 PLOT SCALE : 1 IN:20 FT
 WSDOT/CADD SHEET 49

FILE NAME : N:\VPOS\C3D\430600\0\0\SHEETS\PLAN\DWG\099 - CROSS SECTIONS\09201.XS USH45-1.DWG
 LAYOUT NAME : 09201.XS USH45-1 - SECTION SHEET - (8)

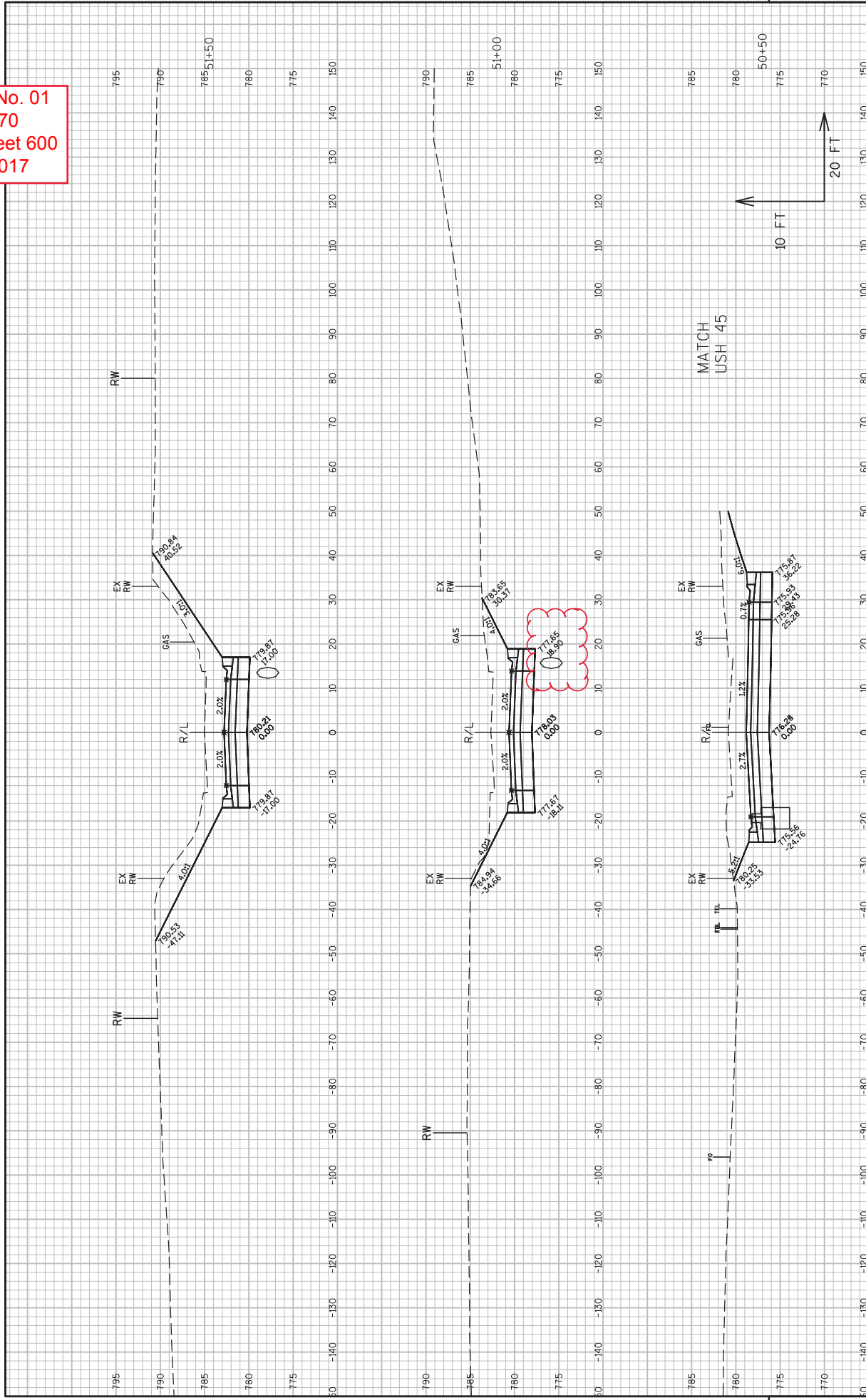
Addendum No. 01
ID 2430-06-70
Revised Sheet 505
March 31, 2017



Addendum No. 01
 ID 2430-06-70
 Revised Sheet 506
 March 31, 2017



Addendum No. 01
 ID 2430-06-70
 Revised Sheet 600
 March 31, 2017





Proposal Schedule of Items

Proposal ID: 20170411018 Project(s): 2430-06-70

Federal ID(s): WISC 2017164

SECTION: 0001

Contract Items

Alt Set ID:

Alt Mbr ID:

| Proposal Line Number | Item ID Description | Approximate Quantity and Units | Unit Price | Bid Amount |
|----------------------|---|--------------------------------|------------|------------|
| 0010 | 201.0105 Clearing | 82.000 STA | _____. | _____. |
| 0020 | 201.0205 Grubbing | 82.000 STA | _____. | _____. |
| 0030 | 203.0100 Removing Small Pipe Culverts | 56.000 EACH | _____. | _____. |
| 0040 | 203.0200 Removing Old Structure (station) 01. 103+50 | LS | LUMP SUM | _____. |
| 0050 | 203.0200 Removing Old Structure (station) 02. 191+37 | LS | LUMP SUM | _____. |
| 0060 | 203.0200 Removing Old Structure (station) 03. 242+04 | LS | LUMP SUM | _____. |
| 0070 | 203.0200 Removing Old Structure (station) 04. 266+53 | LS | LUMP SUM | _____. |
| 0080 | 204.0100 Removing Pavement | 32,988.000 SY | _____. | _____. |
| 0090 | 204.0150 Removing Curb & Gutter | 1,956.000 LF | _____. | _____. |
| 0100 | 204.0165 Removing Guardrail | 1,682.000 LF | _____. | _____. |
| 0110 | 204.0195 Removing Concrete Bases | 11.000 EACH | _____. | _____. |
| 0120 | 205.0100 Excavation Common | 172,900.000 CY | _____. | _____. |
| 0130 | 205.0400 Excavation Marsh | 4,039.000 CY | _____. | _____. |
| 0140 | 205.0501.S Excavation, Hauling, and Disposal of Petroleum Contaminated Soil | 4,293.000 TON | _____. | _____. |
| 0150 | 206.2000 Excavation for Structures Culverts (structure) 01. C-51-23 | LS | LUMP SUM | _____. |



Proposal Schedule of Items

Proposal ID: 20170411018 Project(s): 2430-06-70

Federal ID(s): WISC 2017164

SECTION: 0001

Contract Items

Alt Set ID:

Alt Mbr ID:

| Proposal Line Number | Item ID Description | Approximate Quantity and Units | Unit Price | Bid Amount |
|----------------------|--|--------------------------------|------------|------------|
| 0160 | 206.2000 Excavation for Structures Culverts (structure) 02. C-51-64 | LS | LUMP SUM | _____. |
| 0170 | 206.2000 Excavation for Structures Culverts (structure) 03. C-51-65 | LS | LUMP SUM | _____. |
| 0180 | 206.2000 Excavation for Structures Culverts (structure) 04. C-51-67 | LS | LUMP SUM | _____. |
| 0190 | 206.5000 Cofferdams (structure) 02. C-51-64 | LS | LUMP SUM | _____. |
| 0200 | 206.5000 Cofferdams (structure) 03. C-51-65 | LS | LUMP SUM | _____. |
| 0210 | 209.0300.S Backfill Coarse Aggregate (size) 01. No. 2 | 2.000 CY | _____. | _____. |
| 0220 | 209.2500 Backfill Granular Grade 2 | 13,662.000 TON | _____. | _____. |
| 0230 | 210.2500 Backfill Structure Type B | 3,130.000 TON | _____. | _____. |
| 0240 | 213.0100 Finishing Roadway (project) 01. 2430-06-70 | 1.000 EACH | _____. | _____. |
| 0250 | 305.0110 Base Aggregate Dense 3/4-Inch | 8,629.000 TON | _____. | _____. |
| 0260 | 305.0120 Base Aggregate Dense 1 1/4-Inch | 76,120.000 TON | _____. | _____. |
| 0270 | 310.0110 Base Aggregate Open-Graded | 703.000 TON | _____. | _____. |
| 0280 | 311.0110 Breaker Run | 118,971.000 TON | _____. | _____. |
| 0290 | 311.0115 Breaker Run | 435.000 CY | _____. | _____. |
| 0300 | 371.1000.S QMP Base Aggregate Dense 1 1/4-Inch Compaction | 73,113.000 TON | _____. | _____. |



Proposal Schedule of Items

Proposal ID: 20170411018 Project(s): 2430-06-70

Federal ID(s): WISC 2017164

SECTION: 0001

Contract Items

Alt Set ID:

Alt Mbr ID:

| Proposal Line Number | Item ID Description | Approximate Quantity and Units | Unit Price | Bid Amount |
|----------------------|---|--------------------------------|------------|------------|
| 0310 | 405.0100 Coloring Concrete WisDOT Red | 204.000 CY | _____. | _____. |
| 0320 | 415.0080 Concrete Pavement 8-Inch | 960.000 SY | _____. | _____. |
| 0330 | 415.0120 Concrete Pavement 12-Inch | 242.000 SY | _____. | _____. |
| 0340 | 416.0160 Concrete Driveway 6-Inch | 447.000 SY | _____. | _____. |
| 0350 | 416.0260 Concrete Driveway HES 6-Inch | 359.000 SY | _____. | _____. |
| 0360 | 416.0512 Concrete Truck Apron 12-Inch | 371.000 SY | _____. | _____. |
| 0370 | 416.0610 Drilled Tie Bars | 105.000 EACH | _____. | _____. |
| 0380 | 440.4410 Incentive IRI Ride | 13,049.000 DOL | 1.00000 | 13,049.00 |
| 0390 | 455.0605 Tack Coat | 4,767.000 GAL | _____. | _____. |
| 0400 | 460.2000 Incentive Density HMA Pavement | 21,930.000 DOL | 1.00000 | 21,930.00 |
| 0410 | 460.6223 HMA Pavement 3 MT 58-28 S | 19,856.000 TON | _____. | _____. |
| 0420 | 460.6224 HMA Pavement 4 MT 58-28 S | 14,183.000 TON | _____. | _____. |
| 0430 | 465.0120 Asphaltic Surface Driveways and Field Entrances | 529.000 TON | _____. | _____. |
| 0440 | 465.0315 Asphaltic Flumes | 267.000 SY | _____. | _____. |
| 0450 | 465.0425 Asphaltic Shoulder Rumble Strips 2-Lane Rural | 14,327.000 LF | _____. | _____. |
| 0460 | 465.0475 Asphalt Center Line Rumble Strips 2-Lane Rural | 8,140.000 LF | _____. | _____. |



Proposal Schedule of Items

Proposal ID: 20170411018 Project(s): 2430-06-70

Federal ID(s): WISC 2017164

SECTION: 0001

Contract Items

Alt Set ID:

Alt Mbr ID:

| Proposal Line Number | Item ID Description | Approximate Quantity and Units | Unit Price | Bid Amount |
|----------------------|---|--------------------------------|------------|------------|
| 0470 | 502.4205 Adhesive Anchors No. 5 Bar | 42.000 EACH | _____. | _____. |
| 0480 | 504.0100 Concrete Masonry Culverts | 654.000 CY | _____. | _____. |
| 0490 | 505.0400 Bar Steel Reinforcement HS Structures | 90,070.000 LB | _____. | _____. |
| 0500 | 505.0600 Bar Steel Reinforcement HS Coated Structures | 10,870.000 LB | _____. | _____. |
| 0510 | 511.1200 Temporary Shoring (structure) 01. C-51-23 | 420.000 SF | _____. | _____. |
| 0520 | 516.0500 Rubberized Membrane Waterproofing | 112.000 SY | _____. | _____. |
| 0530 | 516.0600.S Sheet Membrane Waterproofing | 56.000 SY | _____. | _____. |
| 0540 | 521.0112 Culvert Pipe Corrugated Steel 12-Inch | 684.000 LF | _____. | _____. |
| 0550 | 521.0115 Culvert Pipe Corrugated Steel 15-Inch | 224.000 LF | _____. | _____. |
| 0560 | 521.0118 Culvert Pipe Corrugated Steel 18-Inch | 388.000 LF | _____. | _____. |
| 0570 | 521.0124 Culvert Pipe Corrugated Steel 24-Inch | 215.000 LF | _____. | _____. |
| 0580 | 521.1012 Apron Endwalls for Culvert Pipe Steel 12-Inch | 32.000 EACH | _____. | _____. |
| 0590 | 521.1015 Apron Endwalls for Culvert Pipe Steel 15-Inch | 6.000 EACH | _____. | _____. |
| 0600 | 521.1018 Apron Endwalls for Culvert Pipe Steel 18-Inch | 8.000 EACH | _____. | _____. |
| 0610 | 521.1024 Apron Endwalls for Culvert Pipe Steel 24-Inch | 4.000 EACH | _____. | _____. |



Proposal Schedule of Items

Proposal ID: 20170411018 Project(s): 2430-06-70

Federal ID(s): WISC 2017164

SECTION: 0001

Contract Items

Alt Set ID:

Alt Mbr ID:

| Proposal Line Number | Item ID Description | Approximate Quantity and Units | Unit Price | Bid Amount |
|----------------------|--|--------------------------------|------------|------------|
| 0620 | 521.1518 Apron Endwalls for Culvert Pipe Sloped Side Drains Steel 18-Inch 6 to 1 | 8.000 EACH | _____. | _____. |
| 0630 | 521.1524 Apron Endwalls for Culvert Pipe Sloped Side Drains Steel 24-Inch 6 to 1 | 6.000 EACH | _____. | _____. |
| 0640 | 522.0124 Culvert Pipe Reinforced Concrete Class III 24-Inch | 160.000 LF | _____. | _____. |
| 0650 | 522.0130 Culvert Pipe Reinforced Concrete Class III 30-Inch | 514.000 LF | _____. | _____. |
| 0660 | 522.0318 Culvert Pipe Reinforced Concrete Class IV 18-Inch | 180.000 LF | _____. | _____. |
| 0670 | 522.0330 Culvert Pipe Reinforced Concrete Class IV 30-Inch | 84.000 LF | _____. | _____. |
| 0680 | 522.1012 Apron Endwalls for Culvert Pipe Reinforced Concrete 12-Inch | 2.000 EACH | _____. | _____. |
| 0690 | 522.1015 Apron Endwalls for Culvert Pipe Reinforced Concrete 15-Inch | 1.000 EACH | _____. | _____. |
| 0700 | 522.1018 Apron Endwalls for Culvert Pipe Reinforced Concrete 18-Inch | 14.000 EACH | _____. | _____. |
| 0710 | 522.1024 Apron Endwalls for Culvert Pipe Reinforced Concrete 24-Inch | 16.000 EACH | _____. | _____. |
| 0720 | 522.1030 Apron Endwalls for Culvert Pipe Reinforced Concrete 30-Inch | 16.000 EACH | _____. | _____. |
| 0730 | 523.0519 Apron Endwalls for Culvert Pipe Reinforced Concrete Horizontal Elliptical 19x30-Inch | 4.000 EACH | _____. | _____. |
| 0740 | 601.0411 Concrete Curb & Gutter 30-Inch Type D | 8,323.000 LF | _____. | _____. |



Proposal Schedule of Items

Proposal ID: 20170411018 Project(s): 2430-06-70

Federal ID(s): WISC 2017164

SECTION: 0001

Contract Items

Alt Set ID:

Alt Mbr ID:

| Proposal Line Number | Item ID Description | Approximate Quantity and Units | Unit Price | Bid Amount |
|----------------------|---|--------------------------------|------------|------------|
| 0750 | 601.0551 Concrete Curb & Gutter 4-Inch Sloped 36-Inch Type A | 1,942.000 LF | _____. | _____. |
| 0760 | 601.0557 Concrete Curb & Gutter 6-Inch Sloped 36-Inch Type D | 11,319.000 LF | _____. | _____. |
| 0770 | 601.0574 Concrete Curb & Gutter 4-Inch Sloped 30-Inch Type G | 415.000 LF | _____. | _____. |
| 0780 | 601.0582 Concrete Curb & Gutter 4-Inch Sloped 36-Inch Type T | 575.000 LF | _____. | _____. |
| 0790 | 601.0600 Concrete Curb Pedestrian | 61.000 LF | _____. | _____. |
| 0800 | 602.0410 Concrete Sidewalk 5-Inch | 27,955.000 SF | _____. | _____. |
| 0810 | 602.0505 Curb Ramp Detectable Warning Field Yellow | 276.000 SF | _____. | _____. |
| 0820 | 603.8000 Concrete Barrier Temporary Precast Delivered | 200.000 LF | _____. | _____. |
| 0830 | 603.8125 Concrete Barrier Temporary Precast Installed | 200.000 LF | _____. | _____. |
| 0840 | 606.0100 Riprap Light | 983.000 CY | _____. | _____. |
| 0850 | 606.0200 Riprap Medium | 281.000 CY | _____. | _____. |
| 0860 | 606.0300 Riprap Heavy | 240.000 CY | _____. | _____. |
| 0870 | 606.0500 Grouted Riprap Light | 10.000 CY | _____. | _____. |
| 0880 | 608.0312 Storm Sewer Pipe Reinforced Concrete Class III 12-Inch | 272.000 LF | _____. | _____. |



Proposal Schedule of Items

Proposal ID: 20170411018 Project(s): 2430-06-70

Federal ID(s): WISC 2017164

SECTION: 0001

Contract Items

Alt Set ID:

Alt Mbr ID:

| Proposal Line Number | Item ID Description | Approximate Quantity and Units | Unit Price | Bid Amount |
|----------------------|--|--------------------------------|------------|------------|
| 0890 | 608.0315 Storm Sewer Pipe Reinforced Concrete Class III 15-Inch | 31.000 LF | _____. | _____. |
| 0900 | 608.0318 Storm Sewer Pipe Reinforced Concrete Class III 18-Inch | 91.000 LF | _____. | _____. |
| 0910 | 608.0324 Storm Sewer Pipe Reinforced Concrete Class III 24-Inch | 1,767.000 LF | _____. | _____. |
| 0920 | 608.0330 Storm Sewer Pipe Reinforced Concrete Class III 30-Inch | 34.000 LF | _____. | _____. |
| 0930 | 608.0412 Storm Sewer Pipe Reinforced Concrete Class IV 12-Inch | 657.000 LF | _____. | _____. |
| 0940 | 608.0415 Storm Sewer Pipe Reinforced Concrete Class IV 15-Inch | 116.000 LF | _____. | _____. |
| 0950 | 608.0418 Storm Sewer Pipe Reinforced Concrete Class IV 18-Inch | 1,200.000 LF | _____. | _____. |
| 0960 | 608.0424 Storm Sewer Pipe Reinforced Concrete Class IV 24-Inch | 695.000 LF | _____. | _____. |
| 0970 | 608.0430 Storm Sewer Pipe Reinforced Concrete Class IV 30-Inch | 127.000 LF | _____. | _____. |
| 0980 | 608.0518 Storm Sewer Pipe Reinforced Concrete Class V 18-Inch | 21.000 LF | _____. | _____. |
| 0990 | 610.0119 Storm Sewer Pipe Reinforced Concrete Horizontal Elliptical Class HE-III 19x30-Inch | 211.000 LF | _____. | _____. |
| 1000 | 610.0419 Storm Sewer Pipe Reinforced Concrete Horizontal Elliptical Class HE-IV 19x30-Inch | 534.000 LF | _____. | _____. |
| 1010 | 611.0530 Manhole Covers Type J | 6.000 EACH | _____. | _____. |



Proposal Schedule of Items

Proposal ID: 20170411018 Project(s): 2430-06-70

Federal ID(s): WISC 2017164

SECTION: 0001

Contract Items

Alt Set ID:

Alt Mbr ID:

| Proposal Line Number | Item ID Description | Approximate Quantity and Units | Unit Price | Bid Amount |
|----------------------|---|--------------------------------|------------|------------|
| 1020 | 611.0612 Inlet Covers Type C | 10.000 EACH | _____. | _____. |
| 1030 | 611.0624 Inlet Covers Type H | 44.000 EACH | _____. | _____. |
| 1040 | 611.0627 Inlet Covers Type HM | 40.000 EACH | _____. | _____. |
| 1050 | 611.0630 Inlet Covers Type HM-GJ | 4.000 EACH | _____. | _____. |
| 1060 | 611.0642 Inlet Covers Type MS | 3.000 EACH | _____. | _____. |
| 1070 | 611.0645 Inlet Covers Type MS-A | 2.000 EACH | _____. | _____. |
| 1080 | 611.0652 Inlet Covers Type T | 4.000 EACH | _____. | _____. |
| 1090 | 611.1005 Catch Basins 5-FT Diameter | 17.000 EACH | _____. | _____. |
| 1100 | 611.1006 Catch Basins 6-FT Diameter | 1.000 EACH | _____. | _____. |
| 1110 | 611.1230 Catch Basins 2x3-FT | 2.000 EACH | _____. | _____. |
| 1120 | 611.2005 Manholes 5-FT Diameter | 9.000 EACH | _____. | _____. |
| 1130 | 611.2006 Manholes 6-FT Diameter | 1.000 EACH | _____. | _____. |
| 1140 | 611.3004 Inlets 4-FT Diameter | 16.000 EACH | _____. | _____. |
| 1150 | 611.3225 Inlets 2x2.5-FT | 2.000 EACH | _____. | _____. |
| 1160 | 611.3230 Inlets 2x3-FT | 72.000 EACH | _____. | _____. |
| 1170 | 611.3901 Inlets Median 1 Grate | 5.000 EACH | _____. | _____. |
| 1180 | 612.0206 Pipe Underdrain Unperforated 6-Inch | 965.000 LF | _____. | _____. |



Proposal Schedule of Items

Proposal ID: 20170411018 Project(s): 2430-06-70

Federal ID(s): WISC 2017164

SECTION: 0001

Contract Items

Alt Set ID:

Alt Mbr ID:

| Proposal Line Number | Item ID Description | Approximate Quantity and Units | Unit Price | Bid Amount |
|----------------------|--|--------------------------------|------------|------------|
| 1190 | 612.0208 Pipe Underdrain Unperforated 8-Inch | 200.000 LF | _____. | _____. |
| 1200 | 612.0210 Pipe Underdrain Unperforated 10-Inch | 200.000 LF | _____. | _____. |
| 1210 | 612.0406 Pipe Underdrain Wrapped 6-Inch | 4,720.000 LF | _____. | _____. |
| 1220 | 612.0700 Drain Tile Exploration | 1,000.000 LF | _____. | _____. |
| 1230 | 612.0806 Apron Endwalls for Underdrain Reinforced Concrete 6-Inch | 96.000 EACH | _____. | _____. |
| 1240 | 616.0700.S Fence Safety | 562.000 LF | _____. | _____. |
| 1250 | 619.1000 Mobilization | 1.000 EACH | _____. | _____. |
| 1260 | 620.0100 Concrete Corrugated Median | 1,030.000 SF | _____. | _____. |
| 1270 | 620.0300 Concrete Median Sloped Nose | 407.000 SF | _____. | _____. |
| 1280 | 624.0100 Water | 1,457.000 MGAL | _____. | _____. |
| 1290 | 625.0500 Salvaged Topsoil | 141,904.000 SY | _____. | _____. |
| 1300 | 627.0200 Mulching | 104,904.000 SY | _____. | _____. |
| 1310 | 628.1104 Erosion Bales | 92.000 EACH | _____. | _____. |
| 1320 | 628.1504 Silt Fence | 6,858.000 LF | _____. | _____. |
| 1330 | 628.1520 Silt Fence Maintenance | 6,858.000 LF | _____. | _____. |
| 1340 | 628.1905 Mobilizations Erosion Control | 14.000 EACH | _____. | _____. |



Proposal Schedule of Items

Proposal ID: 20170411018 Project(s): 2430-06-70

Federal ID(s): WISC 2017164

SECTION: 0001

Contract Items

Alt Set ID:

Alt Mbr ID:

| Proposal Line Number | Item ID Description | Approximate Quantity and Units | Unit Price | Bid Amount |
|----------------------|---|--------------------------------|------------|------------|
| 1350 | 628.1910 Mobilizations Emergency Erosion Control | 8.000 EACH | _____. | _____. |
| 1360 | 628.2002 Erosion Mat Class I Type A | 50,770.000 SY | _____. | _____. |
| 1370 | 628.2006 Erosion Mat Urban Class I Type A | 23,742.000 SY | _____. | _____. |
| 1380 | 628.7005 Inlet Protection Type A | 6.000 EACH | _____. | _____. |
| 1390 | 628.7020 Inlet Protection Type D | 103.000 EACH | _____. | _____. |
| 1400 | 628.7504 Temporary Ditch Checks | 1,605.000 LF | _____. | _____. |
| 1410 | 628.7515.S Stone or Rock Ditch Checks | 494.000 CY | _____. | _____. |
| 1420 | 628.7555 Culvert Pipe Checks | 41.000 EACH | _____. | _____. |
| 1430 | 628.7570 Rock Bags | 72.000 EACH | _____. | _____. |
| 1440 | 629.0210 Fertilizer Type B | 99.000 CWT | _____. | _____. |
| 1450 | 630.0110 Seeding Mixture No. 10 | 518.000 LB | _____. | _____. |
| 1460 | 630.0130 Seeding Mixture No. 30 | 2,127.000 LB | _____. | _____. |
| 1470 | 630.0140 Seeding Mixture No. 40 | 427.000 LB | _____. | _____. |
| 1480 | 630.0200 Seeding Temporary | 1,911.000 LB | _____. | _____. |
| 1490 | 633.5200 Markers Culvert End | 44.000 EACH | _____. | _____. |
| 1500 | 634.0618 Posts Wood 4x6-Inch X 18-FT | 85.000 EACH | _____. | _____. |
| 1510 | 634.0622 Posts Wood 4x6-Inch X 22-FT | 10.000 EACH | _____. | _____. |



Proposal Schedule of Items

Proposal ID: 20170411018 Project(s): 2430-06-70

Federal ID(s): WISC 2017164

SECTION: 0001

Contract Items

Alt Set ID:

Alt Mbr ID:

| Proposal Line Number | Item ID Description | Approximate Quantity and Units | Unit Price | Bid Amount |
|----------------------|--|--------------------------------|------------|------------|
| 1520 | 634.0814 Posts Tubular Steel 2x2-Inch X 14-FT | 78.000 EACH | _____. | _____. |
| 1530 | 634.0816 Posts Tubular Steel 2x2-Inch X 16-FT | 6.000 EACH | _____. | _____. |
| 1540 | 635.0200 Sign Supports Structural Steel HS | 600.000 LB | _____. | _____. |
| 1550 | 636.0100 Sign Supports Concrete Masonry | 1.200 CY | _____. | _____. |
| 1560 | 636.0500 Sign Supports Steel Reinforcement | 68.000 LB | _____. | _____. |
| 1570 | 637.2210 Signs Type II Reflective H | 1,093.850 SF | _____. | _____. |
| 1580 | 637.2230 Signs Type II Reflective F | 404.500 SF | _____. | _____. |
| 1590 | 638.2101 Moving Signs Type I | 1.000 EACH | _____. | _____. |
| 1600 | 638.2102 Moving Signs Type II | 10.000 EACH | _____. | _____. |
| 1610 | 638.2602 Removing Signs Type II | 92.000 EACH | _____. | _____. |
| 1620 | 638.3000 Removing Small Sign Supports | 100.000 EACH | _____. | _____. |
| 1630 | 642.5401 Field Office Type D | 1.000 EACH | _____. | _____. |
| 1640 | 643.0100 Traffic Control (project) 01. 2430-06-70 | 1.000 EACH | _____. | _____. |
| 1650 | 643.0420 Traffic Control Barricades Type III | 4,884.000 DAY | _____. | _____. |
| 1660 | 643.0705 Traffic Control Warning Lights Type A | 7,516.000 DAY | _____. | _____. |
| 1670 | 643.0900 Traffic Control Signs | 6,669.000 DAY | _____. | _____. |
| 1680 | 643.0910 Traffic Control Covering Signs Type I | 8.000 EACH | _____. | _____. |



Proposal Schedule of Items

Proposal ID: 20170411018 Project(s): 2430-06-70

Federal ID(s): WISC 2017164

SECTION: 0001

Contract Items

Alt Set ID:

Alt Mbr ID:

| Proposal Line Number | Item ID Description | Approximate Quantity and Units | Unit Price | Bid Amount |
|----------------------|---|--------------------------------|------------|------------|
| 1690 | 643.0920 Traffic Control Covering Signs Type II | 10.000 EACH | _____. | _____. |
| 1700 | 643.1000 Traffic Control Signs Fixed Message | 323.500 SF | _____. | _____. |
| 1710 | 643.1050 Traffic Control Signs PCMS | 31.000 DAY | _____. | _____. |
| 1720 | 643.2000 Traffic Control Detour (project) 01. 2430-06-70 | 1.000 EACH | _____. | _____. |
| 1730 | 643.3000 Traffic Control Detour Signs | 82,316.000 DAY | _____. | _____. |
| 1740 | 645.0105 Geotextile Type C | 1,349.000 SY | _____. | _____. |
| 1750 | 645.0111 Geotextile Type DF Schedule A | 497.000 SY | _____. | _____. |
| 1760 | 645.0120 Geotextile Type HR | 1,228.000 SY | _____. | _____. |
| 1770 | 645.0130 Geotextile Type R | 4,508.000 SY | _____. | _____. |
| 1780 | 646.0106 Pavement Marking Epoxy 4-Inch | 31,628.000 LF | _____. | _____. |
| 1790 | 646.0156 Pavement Marking Epoxy 18-Inch | 84.000 LF | _____. | _____. |
| 1800 | 646.0805.S Pavement Marking Outfall | 96.000 EACH | _____. | _____. |
| 1810 | 646.0842.S Pavement Marking Grooved Contrast Wet Reflective Epoxy 4-Inch | 37,641.000 LF | _____. | _____. |
| 1820 | 646.0844.S Pavement Marking Grooved Contrast Wet Reflective Epoxy 8-Inch | 3,043.000 LF | _____. | _____. |
| 1830 | 647.0166 Pavement Marking Arrows Epoxy Type 2 | 9.000 EACH | _____. | _____. |
| 1840 | 647.0356 Pavement Marking Words Epoxy | 13.000 EACH | _____. | _____. |



Proposal Schedule of Items

Proposal ID: 20170411018 Project(s): 2430-06-70

Federal ID(s): WISC 2017164

SECTION: 0001

Contract Items

Alt Set ID:

Alt Mbr ID:

| Proposal Line Number | Item ID Description | Approximate Quantity and Units | Unit Price | Bid Amount |
|----------------------|---|--------------------------------|------------|------------|
| 1850 | 647.0456 Pavement Marking Curb Epoxy | 825.000 LF | _____. | _____. |
| 1860 | 647.0566 Pavement Marking Stop Line Epoxy 18-Inch | 187.000 LF | _____. | _____. |
| 1870 | 647.0606 Pavement Marking Island Nose Epoxy | 4.000 EACH | _____. | _____. |
| 1880 | 647.0726 Pavement Marking Diagonal Epoxy 12-Inch | 400.000 LF | _____. | _____. |
| 1890 | 647.0766 Pavement Marking Crosswalk Epoxy 6-Inch | 352.000 LF | _____. | _____. |
| 1900 | 647.0856 Pavement Marking Concrete Corrugated Median Epoxy | 960.000 SF | _____. | _____. |
| 1910 | 648.0100 Locating No-Passing Zones | 3.230 MI | _____. | _____. |
| 1920 | 650.4000 Construction Staking Storm Sewer | 152.000 EACH | _____. | _____. |
| 1930 | 650.4500 Construction Staking Subgrade | 21,211.000 LF | _____. | _____. |
| 1940 | 650.5000 Construction Staking Base | 20,711.000 LF | _____. | _____. |
| 1950 | 650.5500 Construction Staking Curb Gutter and Curb & Gutter | 22,635.000 LF | _____. | _____. |
| 1960 | 650.6500 Construction Staking Structure Layout (structure) 01. C-51-23 | LS | LUMP SUM | _____. |
| 1970 | 650.6500 Construction Staking Structure Layout (structure) 02. C-51-64 | LS | LUMP SUM | _____. |
| 1980 | 650.6500 Construction Staking Structure Layout (structure) 03. C-51-65 | LS | LUMP SUM | _____. |



Proposal Schedule of Items

Proposal ID: 20170411018 Project(s): 2430-06-70

Federal ID(s): WISC 2017164

SECTION: 0001

Contract Items

Alt Set ID:

Alt Mbr ID:

| Proposal Line Number | Item ID Description | Approximate Quantity and Units | Unit Price | Bid Amount |
|----------------------|--|--------------------------------|------------|------------|
| 1990 | 650.6500 Construction Staking Structure Layout (structure) 04. C-51-67 | LS | LUMP SUM | _____. |
| 2000 | 650.6500 Construction Staking Structure Layout (structure) 05. R-51-78 | LS | LUMP SUM | _____. |
| 2010 | 650.7000 Construction Staking Concrete Pavement | 1,154.000 LF | _____. | _____. |
| 2020 | 650.8500 Construction Staking Electrical Installations (project) 01. 2430-06-70 | LS | LUMP SUM | _____. |
| 2030 | 650.9910 Construction Staking Supplemental Control (project) 01. 2430-06-70 | LS | LUMP SUM | _____. |
| 2040 | 650.9920 Construction Staking Slope Stakes | 21,211.000 LF | _____. | _____. |
| 2050 | 652.0225 Conduit Rigid Nonmetallic Schedule 40 2-Inch | 2,265.000 LF | _____. | _____. |
| 2060 | 652.0235 Conduit Rigid Nonmetallic Schedule 40 3-Inch | 295.000 LF | _____. | _____. |
| 2070 | 653.0140 Pull Boxes Steel 24x42-Inch | 6.000 EACH | _____. | _____. |
| 2080 | 653.0905 Removing Pull Boxes | 10.000 EACH | _____. | _____. |
| 2090 | 654.0105 Concrete Bases Type 5 | 16.000 EACH | _____. | _____. |
| 2100 | 654.0230 Concrete Control Cabinet Bases Type L30 | 1.000 EACH | _____. | _____. |
| 2110 | 655.0610 Electrical Wire Lighting 12 AWG | 2,088.000 LF | _____. | _____. |
| 2120 | 655.0615 Electrical Wire Lighting 10 AWG | 300.000 LF | _____. | _____. |
| 2130 | 655.0620 Electrical Wire Lighting 8 AWG | 10,600.000 LF | _____. | _____. |



Proposal Schedule of Items

Proposal ID: 20170411018 Project(s): 2430-06-70

Federal ID(s): WISC 2017164

SECTION: 0001

Contract Items

Alt Set ID:

Alt Mbr ID:

| Proposal Line Number | Item ID Description | Approximate Quantity and Units | Unit Price | Bid Amount |
|----------------------|---|--------------------------------|------------|------------|
| 2140 | 655.0640 Electrical Wire Lighting 1 AWG | 18.000 LF | _____. | _____. |
| 2150 | 656.0400 Electrical Service Main Lugs Only Meter Pedestal (location) 01. 134+50 11' LT | LS | LUMP SUM | _____. |
| 2160 | 657.0255 Transformer Bases Breakaway 11 1/2-Inch Bolt Circle | 16.000 EACH | _____. | _____. |
| 2170 | 657.0322 Poles Type 5-Aluminum | 16.000 EACH | _____. | _____. |
| 2180 | 657.0610 Luminaire Arms Single Member 4 1/2-Inch Clamp 6-FT | 8.000 EACH | _____. | _____. |
| 2190 | 657.0715 Luminaire Arms Truss Type 4 1/2-Inch Clamp 15-FT | 8.000 EACH | _____. | _____. |
| 2200 | 659.1125 Luminaires Utility LED C | 16.000 EACH | _____. | _____. |
| 2210 | 659.2230 Lighting Control Cabinets 240/480 30-Inch | 1.000 EACH | _____. | _____. |
| 2220 | 690.0150 Sawing Asphalt | 1,200.000 LF | _____. | _____. |
| 2230 | 690.0250 Sawing Concrete | 190.000 LF | _____. | _____. |
| 2240 | 715.0415 Incentive Strength Concrete Pavement | 875.000 DOL | 1.00000 | 875.00 |
| 2250 | ASP.1T0A On-the-Job Training Apprentice at \$5.00/HR | 1,800.000 HRS | 5.00000 | 9,000.00 |
| 2260 | ASP.1T0G On-the-Job Training Graduate at \$5.00/HR | 1,800.000 HRS | 5.00000 | 9,000.00 |
| 2270 | SPV.0060 Special 03. REMOVING FLASHING BEACON AND POLE EASTBOUND CTH A AT USH 45 | 1.000 EACH | _____. | _____. |



Proposal Schedule of Items

Proposal ID: 20170411018 Project(s): 2430-06-70

Federal ID(s): WISC 2017164

SECTION: 0001

Contract Items

Alt Set ID:

Alt Mbr ID:

| Proposal Line Number | Item ID Description | Approximate Quantity and Units | Unit Price | Bid Amount |
|----------------------|---|--------------------------------|------------|------------|
| 2280 | SPV.0060 Special 04. REMOVING FLASHING BEACON AND POLE WESTBOUND CTH A AT USH 45 | 1.000 EACH | _____. | _____. |
| 2290 | SPV.0060 Special 05. TRAFFIC FLASHING BEACON SYSTEM, SOLAR EASTBOUND CTH A AT USH 45 | 1.000 EACH | _____. | _____. |
| 2300 | SPV.0060 Special 06. TRAFFIC FLASHING BEACON SYSTEM, SOLAR WESTBOUND CTH A AT USH 45 | 1.000 EACH | _____. | _____. |
| 2310 | SPV.0060 Special 07. SECTION CORNER MONUMENTS | 6.000 EACH | _____. | _____. |
| 2320 | SPV.0060 Special 08. INLET COVER TYPE H WITH CURB PLATE | 12.000 EACH | _____. | _____. |
| 2330 | SPV.0075 Special 01. CONTRACTOR STAKING MISCELLANEOUS | 30.000 HRS | _____. | _____. |
| 2340 | SPV.0085 Special 01. NO MOW FESCUE | 62.000 LB | _____. | _____. |
| 2350 | SPV.0090 Special 01. TIMBER FENCE FOR MSE WALL | 176.000 LF | _____. | _____. |
| 2360 | SPV.0090 Special 02. HEAVY DUTY SILT FENCE | 2,591.000 LF | _____. | _____. |
| 2370 | SPV.0090 Special 03. Silt Fence 4 Ft Post Spacing | 260.000 LF | _____. | _____. |
| 2380 | SPV.0105 Special 01. TEMPORARY DIVERSION CHANNELS | LS | LUMP SUM | _____. |
| 2390 | SPV.0105 Special 02. REMOVE TRAFFIC SIGNALS USH 45 & CTH C | LS | LUMP SUM | _____. |
| 2400 | SPV.0105 Special 03. REMOVE LOOP DETECTOR WIRE & LEAD-IN CABLE USH 45 & CTH C | LS | LUMP SUM | _____. |



Proposal Schedule of Items

Proposal ID: 20170411018 Project(s): 2430-06-70

Federal ID(s): WISC 2017164

SECTION: 0001

Contract Items

Alt Set ID:

Alt Mbr ID:

| Proposal Line Number | Item ID Description | Approximate Quantity and Units | Unit Price | Bid Amount |
|----------------------|---|--------------------------------|------------|------------|
| 2410 | SPV.0105 Special 11. LIGHTING SYSTEM INTEGRATOR | LS | LUMP SUM | _____. |
| 2420 | SPV.0105 Special 12. LIGHTING SYSTEM SURVEY | LS | LUMP SUM | _____. |
| 2430 | SPV.0165 Special 01. Wall Modular Block Mechanically Stabilized Earth LRFD/QMP | 1,155.000 SF | _____. | _____. |
| 2440 | 415.0070 Concrete Pavement 7-Inch | 1,713.000 SY | _____. | _____. |
| 2450 | SPV.0060 Special 09. Exposing Existing Water Main | 1.000 EACH | _____. | _____. |
| Section: 0001 | | | Total: | _____. |
| | | | Total Bid: | _____. |