

Wisconsin Department of Transportation

May 4, 2017

Division of Transportation Systems Development

Bureau of Project Development
 4802 Sheboygan Avenue, Rm 601
 P O Box 7916
 Madison, WI 53707-7916

Telephone: (608) 266-1631
 Facsimile (FAX): (608) 266-8459

NOTICE TO ALL CONTRACTORS:

**Proposal #08: 1370-15-71, WISC 2017 266
 Oconomowoc-Waukesha
 CTH P (Brown Street) to IH-94
 STH 16
 Waukesha County**

Letting of May 9, 2017

This is Addendum No. 02, which provides for the following:

Special Provisions:

Revised Special Provisions	
Article No.	Description
46	Joint and Crack Repair, Item SPV.0195.01

Deleted Special Provisions	
Article No.	Description
25	Concrete Pavement Partial Depth Repair Joint Repair, Item 416.0750.S

Schedule of Items:

Revised Bid Item Quantities					
Bid Item	Item Description	Unit	Old Quantity	Revised Quantity	Proposal Total
205.0100	Common Excavation	CY	49,289	2210	51,499
445.0605	Tack Coat	GAL	24,663	-56	24,607
460.6223	HMA Pavement 3 MT 58-28 S	TON	32,910	10,910	43,820
460.6224	HMA Pavement 4 MT 58-28 S	TON	34,880	-10,270	24,610
649.0400	Temporary Pavement Marking Removable Tape 4-inch	LF	72,060	-5,400	66,660
649.0402	Temporary Pavement Marking Paint 4-inch	LF	223,760	5400	229,160
SPV.0195.01	Joint and Crack Repair	TON	550	520	1070

Deleted Bid Item Quantities					
Bid Item	Item Description	Unit	Old Quantity	Revised Quantity	Proposal Total
416.0750.S	Concrete Pavement Partial Depth Repair Joint Repair	LF	10,000	-10,000	0

Plan Sheets:

Revised Plan Sheets	
Plan Sheet	Plan Sheet Title (brief description of changes to sheet)
2	HMA table updated for outside shoulder layers.
227	Change lane skips from Temporary Removable Tape to Temporary Paint item in stage 3B.
279	Updated earthwork summary.
281	Deleted Concrete Pavement Partial Depth item updated quantity into joint repair item.
283	Updated HMA table to account for 2 different HMA mixes on outside shoulder.
288	Moved Temporary Removable tape quantity for lane skips to Temporary Paint item.
555, 558-559, 560-561	Updated earthwork tables.
584-586	Updated cross sections to show EBS.
612	Added cross section at station 424+56.
631	Updated cross sections.

Added Plan Sheets	
Plan Sheet	Plan Sheet Title (brief description of why sheet was added)
591A	Added cross section at station 233+20
631A	Added cross sections.

Deleted Plan Sheets	
Plan Sheet	Plan Sheet Title (brief description of why sheet was deleted)
358	Delete Standard Detail Drawing for Concrete Pavement Partial Depth Repair. Item removed from plans.

The responsibility for notifying potential subcontractors and suppliers of these changes remains with the prime contractor.

Sincerely,

Mike Coleman

Proposal Development Specialist
Proposal Management Section

ADDENDUM NO. 02

1370-15-72

May 4, 2017

Special Provisions

25. **DELETED**

46. **Joint And Crack Repair, Item SPV.0195.01.**

A Description

This special provision describes Joint and Crack Repair by removing all loose and spalled concrete and HMA patches in joints and cracks in existing pavement and filling with HMA pavement as shown on the plans and hereinafter provided.

B Materials

Furnish HMA pavement meeting the requirements for mixture LT or MT as specified under section 465.2 of the standard specs; except the engineer will not require the contractor to conform to the quality management program in section 460.2.8. Furnish tack coat meeting the requirements specified under 455.2.5.

C Construction

Clean out all joints and cracks removing loose concrete and all HMA patches. Place asphaltic tack coat. Fill voids with HMA pavement and machine compact.

D Measurement

The department will measure Joint and Crack Repair by the ton acceptably completed.

E Payment

The department will pay for measured quantities at the contract unit price under the following bid item:

ITEM NUMBER	DESCRIPTION	UNIT
SPV.0195.01	Joint and Crack Repair	TON

Payment is full compensation for removing, cleaning, and properly disposing of all loose and spalled concrete and HMA patches; for providing and applying tack coat, and for providing, placing and compacting HMA pavement.

SER-460.1 (20170502)

Schedule of Items

Attached, dated May 4, 2017, are the revised Schedule of Items Pages 1 – 13.

Plan Sheets

The following 8½ x 11-inch sheets are attached and made part of the plans for this proposal:

Revised: 2, 227, 279, 281, 283, 288, 555, 558-559, 560-561, 584-586, 612 and 631.

Added: 591A and 631A.

END OF ADDENDUM

GENERAL NOTES

- NO TREES OR SHRUBS ARE TO BE REMOVED WITHOUT THE APPROVAL OF THE ENGINEER.
- THE CONTRACTOR SHALL NOTIFY DIGGER'S HOTLINE AND AFFECTED UTILITIES PRIOR TO THE START OF WORK.
- THE LOCATION OF EXISTING OR PROPOSED UTILITIES AS NOTED ON THE PLANS ARE APPROXIMATE. THERE MAY BE OTHER UTILITY INSTALLATIONS WITHIN THE PROJECT AREA THAT ARE NOT SHOWN.
- RE-TOPSOIL OF GRADED AREAS, AS DESIGNATED BY THE ENGINEER, IMMEDIATELY AFTER GRADING IS COMPLETED WITHIN THOSE AREAS. SEED, FERTILIZE AND MULCH/EROSION MAT TOP-SOILED AREAS, AS DESIGNATED BY THE ENGINEER, WITHIN FIVE (5) CALENDAR DAYS AFTER PLACEMENT OF TOPSOIL. IF GRADED AREAS ARE LEFT EXPOSED FOR MORE THAN (14) CALENDAR DAYS, SEED THOSE AREAS WITH TEMPORARY SEED AND MULCH.
- STOCKPILE EXCESS MATERIAL OR SPOILS ON UPLAND AREAS AWAY FROM WETLANDS, FLOODPLAINS AND WATERWAYS. STOCKPILED SOIL SHALL BE PROTECTED AGAINST EROSION. IF STOCKPILED MATERIAL IS LEFT FOR MORE THAN FOURTEEN (14) CALENDAR DAYS, SEED THE STOCKPILE WITH TEMPORARY SEED AND MULCH.
- THE CONTRACTOR IS RESPONSIBLE FOR RESHAPING AND FINISHING ANY PREVIOUSLY GRASSED AREAS WHICH ARE DISTURBED BY THEIR OPERATION OUTSIDE THE NORMAL CONSTRUCTION LIMITS.
- EROSION CONTROL BMP'S ARE AT SUGGESTED LOCATIONS. THE ACTUAL LOCATIONS WILL BE DETERMINED BY THE CONTRACTORS ECP AND BY THE ENGINEER. EROSION CONTROL BMP'S SHALL BE MAINTAINED UNTIL PERMANENT VEGETATION IS ESTABLISHED OR UNTIL THE ENGINEER DETERMINES THAT THE BMP IS NO LONGER REQUIRED.
- THE MILLING OPERATIONS WILL INCLUDE MILLING ASPHALT PAVEMENT AND EXISTING AND NEW CONCRETE BASE PATCHING. MILLING CONCRETE BASE PATCHING WILL BE PAID FOR AS "REMOVING ASPHALTIC SURFACE MILLING."
- THE CONTRACTORS HMA PAVING OPERATION SHALL BE CONSISTANT WITH THE TYPICAL SECTIONS AND CONSTRUCTED TO PREVENT LONGITUDINAL JOINTS FROM BEING LOCATED WITHIN A DRIVING, TURNING, OR PARKING LANE.
- A SAWED JOINT IS REQUIRED WHERE NEW HMA PAVEMENT MEETS EXISTING ASPHALTIC CONCRETE PAVEMENT.
- REMOVAL ITEMS REQUIRING RESTORATION OF CONCRETE OR ASPHALT SHALL BE REMOVED TO AN EXISTING JOINT OR SAWED AS DETERMINED BY THE ENGINEER.
- TRAFFIC CONTROL DEVICES SHALL BE ADJUSTED TO FIT FIELD CONDITIONS AS DIRECTED BY THE ENGINEER.
- SEE STANDARD DETAIL DRAWING "DELINEATOR LAYOUT" FOR LOCATION OF DELINEATORS.
- CONTRACTOR MUST CONTACT THE PROJECT ENGINEER AND SEWRPC, JOHN WASHBURN, AT LEAST TWO WEEKS PRIOR TO WORK NEAR ANY PUBLIC SURVEY MONUMENT.
- ALL CURB AND GUTTER RADII ARE MEASURE TO THE FACE OF CURB.
- CURB AND GUTTER PLAN GRADES ARE AT THE FLANGE LINE UNLESS OTHERWISE NOTED.

HMA PAVEMENT, WHEN INDICATED ON THE PLANS, SHALL CONSIST OF COURSES AS FOLLOWS UNLESS OTHERWISE NOTED ON THE PLANS.

LOCATION	LAYERS	PAVEMENT TYPE
STH 16 MAINLINE DRIVING LANES	1 3/4" UPPER 2 1/4" - 3 3/4" LOWER	4 HT58-28 H 3 MT58-28 S
STH 16 MAINLINE INSIDE SHOULDER (STA 187+00 TO STA 447+00)	1 3/4" UPPER UPPER 2 1/4" LOWER UPPER 4" LOWER	4 MT58-28 S 3 MT58-28 S 3 MT58-28 S
STH 16 MAINLINE INSIDE SHOULDER (STA 637+34 TO STA 744+00)	4" UPPER	4 MT58-28 S
STH 16 MAINLINE INSIDE SHOULDER (STA 744+00 TO STA 816+50)	1 3/4" UPPER 4" LOWER	4 MT58-28 S 6 MT38-28 S
STH 16 MAINLINE OUTSIDE SHOULDER (STA 637+34 TO STA 744+00)	4" UPPER	4 MT58-28 S
STH 16 MAINLINE OUTSIDE SHOULDER (STA 187+00 TO STA 447+00)	1 3/4" UPPER 2 3/4" LOWER	4 MT58-28 S 3 MT58-28 S
STH 16 MAINLINE OUTSIDE SHOULDER (STA 744+00 TO STA 816+50)	4" UPPER	4 MT58-28 S
CTH E WB ON-RAMP DRIVING LANE	2" - 2 3/4" UPPER	4 HT58-28 H

Addendum No. 02
 ID 1370-15-71
 Revised Sheet 2
 May 4, 2017

SECTION 2 SHEET ORDER

- GENERAL NOTES
- PROJECT OVERVIEW
- TYPICAL SECTIONS
- CONSTRUCTION DETAILS
- PAVING DETAILS
- PLAN DETAILS
- FTMS
- EROSION CONTROL
- PERMANENT SIGNING
- PAVEMENT MARKING
- TRAFFIC CONTROL AND CONSTRUCTION STAGING
- DETOURS
- ALIGNMENTS

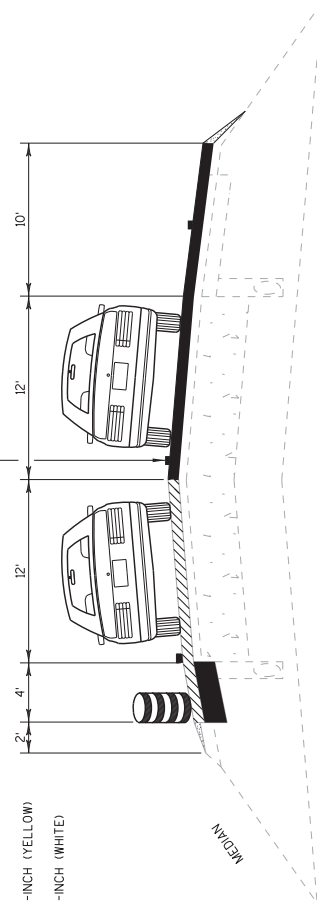
LEGEND

- 1W TEMPORARY PAVEMENT MARKING REMOVABLE TAPE 4-INCH 4' SKIPS (WHITE)
- 2W TEMPORARY PAVEMENT MARKING REFLECTIVE PAINT 4-INCH (WHITE)
- 2Y TEMPORARY PAVEMENT MARKING REFLECTIVE PAINT 4-INCH (YELLOW)
- 3W TEMPORARY PAVEMENT MARKING REFLECTIVE 4-INCH (WHITE) 4' SKIPS
- 4W PERMANENT PAVEMENT MARKING 4-INCH GROOVED WET REFLECTIVE EPOXY (WHITE)
- 4Y PERMANENT PAVEMENT MARKING 4-INCH GROOVED WET REFLECTIVE EPOXY (YELLOW)
- 5W PERMANENT PAVEMENT MARKING REFLECTIVE CONTRAST TAPE 4-INCH (WHITE) 12.5 SKIPS 37.5 GAP
- 6Y TEMPORARY PAVEMENT MARKING REMOVABLE TAPE 4-INCH (YELLOW)
- 6W TEMPORARY PAVEMENT MARKING REMOVABLE TAPE 4-INCH (WHITE)

STAGE 3A

- CONTINUOUSLY REINFORCED CONCRETE BASE PATCHING
- MILL HMA PAVEMENT OF LANE 1 & SHOULDER
- MILL TEMPORARY ASPHALT JOINT (INCIDENTAL TO REMOVING ASPHALTIC SURFACE MILLING ITEM)
- PLACE LOWER LAYER HMA
- RESHAPE AGGREGATE SHOULDER

TEMPORARY PAVEMENT MARKING PLACED IN PREVIOUS STAGE



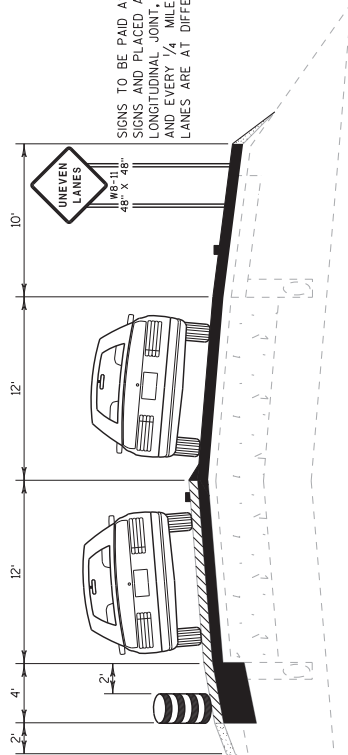
STAGE 3A PEAK

- STAGE 3B
- PLACE UPPER LAYER HMA LANE 1 & INSIDE SHOULDER
- PLACE TEMPORARY ASPHALT JOINT
- FINAL SHAPING AGGREGATE SHOULDER

TEMPORARY ASPHALT JOINT



TEMPORARY PAVEMENT MARKING PLACED IN PREVIOUS STAGE



STAGE 3B PEAK

PLACE IN SAME LOCATION AS PERMANENT PAVEMENT MARKING

STAGE 3B OFF PEAK

Addendum No. 02
 ID 1370-15-71
 Revised Sheet 227
 May 4, 2017

Division	From/To Station	Location	Common Excavation (1) (ITEM # 205.0100)		Salvaged/Unusable Pavement Material (4)	Available Material (5)	Reduced EBS in Fill (9)		Expanded EBS Backfill (11)		Unexpanded Fill	Expanded Fill (13)		Mass Ordinate +/- (14)	Waste	Comment:		
			Cut (2)	EBS Excavation (3)			Factor	0.80	Factor	1.30		Factor	1.25					
CTH C	234+22"C TO 246+75"C 221+51"D TO 233+20"D	WB OFF WB ON CTH C SUBTOTAL	2,126	1,590	1,401	725	1,272	2,067	69	87	638							
			1,892	1,562	1,306	684	1,250	2,031	68	85	599							
			4,117	3,152	2,708	1,409	2,522	4,098	137	172	1,237							
STH 83	WB ON EB OFF EB ON STH 83 SUBTOTAL	WB ON EB OFF EB ON STH 83 SUBTOTAL	2,454	2,292	2,454	0	1,834	2,990	15	19	-19							
			427	0	427	0	0	0	0	0	0	0						
			179	0	179	0	0	0	2	3	-3							
CTH KC	424+50"G TO 436+50"G	EB ON CTH KC SUBTOTAL	1,528	0	1,403	125	0	0	0	0	124							
			1,528	0	1,403	125	0	0	0	0	0	124						
			3,393	3,417	1,547	1,847	2,758	4,432	234	292	1,554							
STH 190	688+00" TO 684+60" I 685+33" TO 689+90" J 671+00" M TO 685+00" M 686+05" L TO 692+00" L	EB ON WB ON WB OFF STH 190 SUBTOTAL	1,189	1,369	492	697	1,095	1,790	7	9	688							
			3,436	4,044	1,461	1,975	3,236	5,258	158	198	1,777							
			610	0	610	0	0	0	3	4	-3							
CTH JJ	710+00" N TO 724+45" N 734+50" N TO 746+31" N 730+40" O TO 740+00" O 713+40" P TO 726+60" P	EB OFF EB ON WB OFF WB ON CTH JJ SUBTOTAL	8,628	8,861	4,109	4,518	7,089	11,519	402	503	4,015							
			2,282	2,097	1,384	898	1,677	2,726	3	3	895							
			2,759	2,471	1,566	1,193	1,977	3,212	40	50	1,143							
GRAND TOTAL	TOTAL COMMON EXCAVATION:	TOTAL COMMON EXCAVATION:	27,258	24,241	16,686	10,572	19,392	31,513	882	1,116	9,456							
			27,258	24,241	16,686	10,572	19,392	31,513	882	1,116	9,456							
			57,499															

- 1) Common Excavation is the sum of the Cut and EBS Excavation columns. Item number 205.0100
- 2) Salvaged/Unusable Pavement Material is included in Cut.
- 3) EBS Excavation to be backfilled with Breaker Run.
- 4) Salvaged/Unusable Pavement Material
- 5) Available Material = Cut - Salvaged/Unusable Pavement Material
- 9) Reduced EBS in Fill - Excavated EBS material is usable in Fills outside the 1:1 slope. EBS in Fill Reduction factor = 0.8
- 11) Expanded EBS Backfill - This is to be filled with Select Borrow material. EBS Backfill Factor = 1.3. Item number 208.1100
- 13) Expanded Fill Factor = 1.25
- 14) The Mass Ordinate + or - Qty calculated for the Division. Plus quantity indicates an excess of material within the Division. Minus indicates a shortage of material within the Division.

Addendum No. 02
ID 1370-15-71
Revised Sheet 279
May 4, 2017

BASE AGGREGATE DENSE

STATION	TO	STATION	LOCATION	34-INCH TON	1 1/4-INCH TON	SHARPING SHOULDERS STA	BREAKER RUN TON
191+00	TO	233+50	EB	790	--	--	--
CTH C EB RAMPS			EB	550	180	42	--
233+50	TO	342+50	EB	2,020	--	--	--
342+50	TO	391+00	EB	900	--	--	--
CTH E EB RAMP			EB	280	--	23	--
392+20	TO	424+50	EB	600	--	--	--
424+50	TO	447+00	EB	420	--	--	--
CTH KC EB RAMP			EB	340	--	23	--
STH 190 EB RAMPS			EB	180	3,930	5	4,620
CTH J J EB RAMPS			EB	570	3,280	6	4,020
649+47	TO	744+00	EB	--	--	--	--
744+00	TO	802+10	EB	360	--	--	--
187+00	TO	233+00	WB	860	--	--	--
CTH C WB RAMPS			WB	190	2,630	24	3,170
233+00	TO	342+00	WB	2,020	--	--	--
STH 83 RAMPS			WB	210	1,400	34	1,750
342+00	TO	391+10	WB	910	--	--	--
CTH E WB RAMP			WB	100	40	20	--
392+25	TO	425+20	WB	620	--	--	--
425+20	TO	447+00	WB	410	--	--	--
CTH KC WB RAMP			WB	250	--	8	--
STH 190 WB RAMPS			WB	570	4,190	--	5,240
CTH J J WB RAMPS			WB	440	4,380	9	5,420
637+34	TO	744+30	WB	--	--	--	--
744+30	TO	816+50	WB	450	--	--	--
UNDISTRIBUTED				680	1,010	--	1,220
TOTAL				14,720	21,040	194	25,440

CONCRETE PAVEMENT

CONCRETE PAVEMENT 8-INCH	CONCRETE PAVEMENT 8-INCH HES	INCIDENTAL STRENGTH CONCRETE PAVEMENT	415.0080	415.1080	715.0415
SY	SY	SY	SY	SY	DOL
CTHC	WB ON	1,920	--	--	128
CTHC	WB OFF	2,100	--	--	140
CTHC	EB OFF	--	225	--	15
CTHC	EB ON	--	250	--	17
STH 83	WB ON	1,850	--	--	123
STH 83	EB OFF	1,350	--	--	90
STH 83	EB ON	570	--	--	38
CTH E	WB OFF	--	495	--	33
CTH E	WB ON	--	295	--	20
CTH KC	WB OFF	--	85	--	6
CTH KC	EB ON	2,000	--	--	133
STH 190	EB OFF	3,030	--	--	202
STH 190	WB ON	3,130	--	--	209
STH 190	EB ON	1,540	--	--	103
STH 190	WB OFF	1,620	--	--	108
CTH J J	EB OFF	2,420	--	--	161
CTH J J	WB ON	2,200	--	--	147
CTH J J	EB ON	1,990	--	--	133
CTH J J	WB OFF	1,770	--	--	118
TOTAL		27,490	1,350	--	1,923

Addendum No. 02
ID 1370-15-71
Revised Sheet 281
May 4, 2017

CONCRETE PAVEMENT CONTINUOUS DIAMOND GRINDING

STA	TO	STA	LOCATION	420.1000 SY
220+94	TO	233+00	CTH C EB OFF RAMP	2,010
233+70	TO	242+19	CTH C WB ON RAMP	1,420
379+13	TO	390+75	CTH E EB OFF RAMP	1,940
424+55	TO	432+59	CTH KC WB OFF RAMP	1,340
649+47	TO	686+00	EB	8,950
686+00	TO	744+32	EB	15,420
694+50	TO	709+00	EB AUXILIARY LANE	1,540
637+34	TO	686+00	WB	12,180
686+00	TO	744+00	WB	13,740
698+90	TO	713+40	WB AUXILIARY LANE	1,540
TOTAL				60,080

JOINT AND CRACK REPAIR

STATION	TO	STATION	LOCATION	TON	REPAIR	LF	#
626+63	TO	733+95	WB	260		5,000	
638+82	TO	733+06	EB	235		4,500	
TOTAL			UNDISTRIBUTED	575		11,000	
				1,070			

NOTE:
FOR INFORMATION ONLY

HMA PAVEMENT ITEMS

STA	TO	STA	LOCATION	211.0400 PREPARE FOUNDATION FOR ASPHALTIC SHOULDERS	440.4410 INCENTIVE IRI RIDE	455.0605 TACK COAT GAL	460.6223 HMA PAVEMENT 3 MT 58-28 S 4 HT 58-28 H	460.6224 HMA PAVEMENT TON	460.7424 HMA PAVEMENT TON	460.2005 INCENTIVE DENSITY PVL HMA	460.2010 INCENTIVE AIR VOIDS HMA	460.4110.S REHEATING HMA PAVEMENT LONGITUDINAL JOINTS
191+00	233+00	84	EB	84	2,272	1,570	2,800	680	1,160	2,643	4,640	4,200
			CTHC EB RAMPS					860			860	
233+00	341+50	217	EB	217	5,864	4,040	7,220	1,750	2,990	6,828	11,960	10,850
			STH 83 EB RAMPS					600			600	
341+50	391+50	100	EB	100	2,704	1,870	3,330	810	1,380	3,147	5,520	5,000
			CTH E EB RAMPS					420			420	
391+50	424+50	66	EB	66	1,784	1,230	2,200	540	910	2,077	3,650	3,300
			CTH KC EB RAMPS					270			270	
424+50	447+00	45	EB	45	1,216	840	1,500	370	620	1,416	2,490	2,250
			649+47					1,350		2,299	1,350	
686+00	744+32	117	EB	117				850		3,670	2,150	
			CTH J J EB RAMPS					690			690	
744+32	802+10	116	EB	116	3,672	2,190	4,190	930	1,600	3,636	6,720	5,778
			187+00					740		2,895	5,080	4,600
187+00	233+00	92	WB	92	2,488	1,720	3,070	740			930	
			CTH C WB RAMPS					930			930	
233+00	341+50	217	WB	217	5,864	4,040	7,220	1,750	2,990	6,828	11,960	10,850
			STH 83 WB RAMPS					330			330	
341+50	391+50	100	WB	100	2,704	1,870	3,330	810	1,380	3,147	5,520	5,000
			CTH E WB RAMPS					280			280	
391+50	424+50	66	WB	66	1,784	1,230	2,200	540	910	2,077	3,650	3,300
			CTH KC WB RAMPS					310			310	
424+50	447+00	45	WB	45	1,216	840	1,500	370	620	1,416	2,490	2,250
			637+34					1,790		3,062	1,790	
686+00	744+00	116	WB	116				910			910	
			CTH J J WB RAMPS					2,130		3,650	2,130	
744+00	816+50	145	WB	145	4,608	2,740	5,260	1,170	2,000	4,563	8,430	7,250
			TOTAL	1,696	36,424	24,430	43,820	24,610	18,140	53,354	86,570	64,628

NOTE: * ADDITIONAL QUANTITIES SHOWN ELSEWHERE

PREPARE FOUNDATION FOR ASPHALTIC PAVING

211.0100	PREPARE	FOUNDATION FOR	ASPHALTIC	PAVING 1370-15-71
70+00	816+50	1		
	TOTAL	1		

HMA PAVEMENT AT BRIDGE APPROACHES

204.0120	440.4410	455.0605	460.6224	460.7424	460.2010
REMOVING	INCENTIVE	TACK	HMA	INCENTIVE	INCENTIVE
ASPHALTIC	IRI RIDE	COAT	PAVEMENT	DENSITY	AIR VOIDS
SURFACE	DOL	GAL	4 MT 58-28 S	PVL HMA	HMA
MILLING	DOL	GAL	4 HT 58-28 H	PAVEMENT	PAVEMENT
SY	DOL	GAL	TON	DOL	DOL
CTHP (SAWYER RD) UNDER STH 16	455	384	480	107	480
B-67-178	625	59	16	74	74
B-67-179	610	58	15	72	72
B-67-180	740	70	18	88	88
B-67-181	655	62	16	78	78
B-67-182	490	47	12	59	59
B-67-183	515	50	13	62	62
B-67-184	870	83	22	104	104
B-67-185	885	83	22	104	104
STA 694+81 - 699+66 LT	1270	120	32	150	150
TOTAL	7115	1,017	177	1,675	1,271

NOTE: * ADDITIONAL QUANTITIES SHOWN ELSEWHERE

Addendum No. 02
ID 1370-15-71
Revised Sheet 283
May 4, 2017

TRAFFIC CONTROL ITEMS

Table with columns: STAGE, LOCATION, # OF DAYS, BARICADES, WARNING LIGHTS, ARROW, SIGNS, COVERING, DETOUR, SURFACE, CURB, RAMP, EACH. Includes items like STH 16 (CTH P16 STH 190) INSIDE LANE CLOSURE, CTHC EASTBOUND DETOURS, and PEDESTRIAN ACCOMMODATION.

TEMPORARY PAVEMENT MARKING

Table with columns: LOCATION, L F, WHITE (4' SKIPS), YELLOW, WHITE (4' SKIPS), YELLOW, WHITE. Includes items like STA 191+00 TO STA 447+00, STAGE 1, STAGE 2, STAGE 3A/B, STAGE 4, STAGE 1, STAGE 2A/B, STAGE 3A/B.

DETOURS

Table with columns: DETOUR ROUTE, DETOUR ROUTE EACH, TRAFFIC CONTROL, DETOUR 1370-15-71. Includes items like CTHC WB RAMPS, CTHC EB RAMPS, STH 83 WB DETOURS, CTHC & KC EB RAMPS, CTHC & KC WB RAMPS, STH 190 WB RAMPS, STH 190 EB RAMPS, CTH JJ WB RAMPS, CTH JJ EB RAMPS.

Addendum No. 02 ID 1370-15-71 Revised Sheet 288 May 4, 2017

TRAFFIC CONTROL

Table with columns: PROJECT, D:1370-15-71, TOTAL. Values: 643,0100, 1, 1.

PROJECT NO. 1370-15-71

MISCELLANEOUS QUANTITIES

SHEET: 288

FILE NAME: PROJECT NAME: PLOT SCALE: 1:1 PLOT DATE: COUNTY: WAUKESHA

Station	Distance	AREA (SF)		Incremental Vol (CY) (Unadjusted)			Cumulative Vol (CY)			Mass Ordinate
		Cut	Salvaged/Unusable Pavement Material	Fill	EBS	Cut	Expanded Fill	Expanded Backfill	Reduced EBS In Fill	
		Note 1	Note 2	Note 3	Note 1	Note 1	Note 1	Note 5	Note 7	Note 8
234+22		103.6	45.1	1.0	115.5	0	0	0	0	0
235+00	78	68.7	29.7	3.2	82.5	249	108	6	286	419
236+00	100	63.3	29.7	6.2	82.5	244	110	17	306	837
237+00	100	65.2	29.7	2.4	82.5	238	110	16	306	1251
238+00	100	67.8	29.7	4.2	82.5	246	110	12	306	1678
239+00	100	64.0	29.7	2.7	84.5	244	110	13	309	2105
239+50	50	29.7	29.7	0.2	0.0	87	55	3	78	2212
240+00	50	31.0	29.7	0.0	0.0	56	55	0	0	2213
241+00	100	30.8	29.7	0.0	0.0	114	110	0	0	2217
242+00	100	29.7	29.7	0.3	0.0	112	110	1	0	2218
243+00	100	29.7	29.7	0.3	0.0	110	110	1	0	2217
244+00	100	29.7	29.7	0.0	0.0	110	110	1	0	2216
245+00	100	29.7	29.7	0.0	0.0	110	110	0	0	2216
246+00	100	33.4	29.7	0.0	0.0	117	110	0	0	2223
246+75	75	29.7	29.7	0.0	0.0	88	83	0	0	2228
		Column totals			2126	1401	69	1590		

Station	Distance	AREA (SF)		Incremental Vol (CY) (Unadjusted)			Cumulative Vol (CY)			Mass Ordinate
		Cut	Salvaged/Unusable Pavement Material	Fill	EBS	Cut	Expanded Fill	Expanded Rock	Reduced EBS In Fill	
		Note 1	Note 2	Note 3	Note 1	Note 1	Note 1	Note 5	Note 7	Note 8
221+51		65.0	45.1	1.0	115.5	0	0	0	0	0
222+00	49	68.7	29.7	3.2	82.5	121	68	4	180	228
223+00	100	63.3	29.7	6.2	82.5	244	110	17	306	647
224+00	100	65.2	29.7	2.4	82.5	238	110	16	306	1060
225+00	100	67.8	29.7	4.2	82.5	246	110	12	306	1487
226+00	100	64.0	29.7	2.7	84.5	244	110	13	309	1914
227+00	100	32.2	29.7	0.2	0.0	178	110	5	156	2132
228+00	100	29.7	29.7	0.0	0.0	114	110	0	0	2136
229+00	100	31.8	29.7	0.0	0.0	114	110	0	0	2140
230+00	100	31.9	29.7	0.0	0.0	118	110	0	0	2148
231+00	100	30.7	29.7	0.0	0.0	116	110	0	0	2154
232+00	100	29.7	29.7	0.0	0.0	112	110	0	0	2156
233+00	100	32.0	29.7	0.0	0.0	114	110	0	0	2160
233+20	20	51.1	51.1	0.0	0.0	31	30	0	0	2161
		Column totals			1992	1308	68	1562		

STATION	STH 190 EB OFF		AREA (SF)				Incremental Vol (CY) (Unadjusted)				Cumulative Vol (CY)				Mass Ordinate		
	Real Station	Distance	Cut	Salvaged/Unusable Pavement Material	Fill	EBS	Cut	Salvaged/Unusable Pavement Material	Fill	EBS	Cut	Expanded Fill	Expanded Backfill	Reduced EBS In Fill		Note 7	Note 8
668+00	66800		19.9	24.7	14.1	0.0	0	0	0	0	0	0	0	0	0	0	
669+00	66900	100	24.7	24.7	5.0	0.0	83	91	35	0	44	0	0	0	0	-53	
670+00	67000	100	24.7	24.7	6.2	0.0	91	91	21	0	70	0	0	0	0	-79	
671+00	67100	100	17.9	24.7	14.2	0.0	79	91	38	0	117	0	0	0	0	-139	
672+00	67200	100	16.8	24.7	18.5	0.0	64	91	61	0	193	0	0	0	0	-242	
673+00	67300	100	63.3	25.1	4.2	73.9	148	92	42	137	109	178	109	109	109	-101	
674+00	67400	100	63.3	25.1	0.9	73.9	234	93	9	274	153	534	328	328	328	302	
675+00	67500	100	68.2	25.1	1.8	74.4	244	93	5	275	422	891	548	548	721	721	
676+00	67600	100	60.1	25.1	1.7	74.4	238	93	6	276	689	1249	769	769	1133	1133	
677+00	67700	100	63.5	25.1	1.0	78.2	229	93	5	283	965	1616	995	995	1545	1545	
678+00	67800	100	72.4	30.2	0.7	85.7	252	102	3	304	1265	2011	1237	1237	1994	1994	
679+00	67900	100	85.4	35.5	0.8	94.1	292	122	3	333	1594	2444	1504	1504	2494	2494	
680+00	68000	100	86.6	24.7	0.5	91.8	319	111	2	344	1936	2891	1779	1779	3043	3043	
681+00	68100	100	86.6	24.7	0.3	91.8	321	91	1	340	2593	2886	1776	1776	3610	3610	
682+00	68200	100	86.6	24.7	0.3	91.8	321	91	1	340	2612	2886	1776	1776	4178	4178	
683+00	68300	100	40.8	19.6	0.0	48.0	236	82	1	259	2871	2780	1711	1711	4590	4590	
684+00	68400	100	40.8	19.6	0.0	48.0	151	73	0	178	3048	2675	1646	1646	4846	4846	
684+60	68460	60	42.4	19.6	0.0	48.0	92	44	0	107	3155	2582	1589	1589	5002	5002	
			Column totals				3393	1547	234	3447							

STATION	STH 190 EB ON		AREA (SF)				Incremental Vol (CY) (Unadjusted)				Cumulative Vol (CY)				Mass Ordinate		
	Real Station	Distance	Cut	Salvaged/Unusable Pavement Material	Fill	EBS	Cut	Salvaged/Unusable Pavement Material	Fill	EBS	Cut	Expanded Fill	Expanded Backfill	Reduced EBS In Fill		Note 7	Note 8
685+33	68533		72.9	29.7	0.0	82.7	0	0	0	0	0	0	0	0	0	0	
686+00	68600	67	71.1	29.7	0.0	82.7	179	74	0	205	-205	267	164	164	310	310	
687+00	68700	100	72.9	29.7	1.7	82.7	267	110	3	306	-508	665	409	409	769	769	
688+00	68800	100	72.9	29.7	0.3	82.7	270	110	4	306	-809	1063	654	654	1231	1231	
689+00	68900	100	72.9	29.7	0.0	82.7	270	110	1	306	-1115	1461	899	899	1696	1696	
689+80	68980	80	64.5	29.7	0.0	82.7	204	88	0	245	-1360	1780	1095	1095	2057	2057	
			Column totals				1189	492	7	1369							

Addendum No. 02
ID 1370-15-71
Revised Sheet 558
May 4, 2017

STH 190 WB On		AREA (SF)				Incremental Vol (CY) (Unadjusted)				Cumulative Vol (CY)						
STATION	Real Station	Distance	Cut	Salvaged/Unusable Pavement Material	Fill	EBS	Cut	Salvaged/Unusable Pavement Material	Fill	EBS	Cut	Expanded Fill	Expanded EBS reduced Backfill	Mass Ordinate		
			Note 1	Note 2	Note 3	Note 3	Note 1	Note 2	Note 3	Note 3	Note 1	1.25	1.30	Note 7	Note 8	
671+00	67100	100	70.9	29.3	0.2	82.9	0	0	0	0	0	0	0	0	0	
672+00	67200	100	62.4	29.3	3.9	82.9	247	109	8	307	247	-298	399	246	436	
673+00	67300	100	62.3	29.3	6.7	82.9	231	109	20	307	478	-580	798	491	841	
674+00	67400	100	69.6	29.3	5.3	82.9	244	109	22	307	722	-859	1197	737	1256	
675+00	67500	100	69.6	29.3	6.2	82.9	258	109	21	307	980	-1140	1597	983	1685	
676+00	67600	100	69.6	29.3	4.1	82.9	258	109	19	307	1238	-1423	1996	1228	2118	
677+00	67700	100	69.6	29.3	2.1	82.9	258	109	11	307	1495	-1716	2395	1474	2560	
678+00	67800	100	69.6	29.3	0.5	82.9	258	109	5	307	1753	-2017	2794	1719	3010	
679+00	67900	100	77.0	29.3	0.6	82.9	271	109	2	307	2025	-2321	3193	1965	3478	
680+00	68000	100	78.1	29.3	10.2	82.9	287	109	20	307	2312	-2603	3592	2211	3938	
681+00	68100	100	82.3	36.2	1.7	95.7	297	121	22	331	2609	-2906	4022	2475	4417	
682+00	68200	100	87.1	36.2	0.7	95.7	314	134	4	354	2923	-3255	4483	2759	4946	
683+00	68300	100	53.2	23.7	0.4	61.1	260	111	2	290	3182	-3543	4861	2991	5383	
684+00	68400	100	49.7	23.7	0.3	61.1	191	88	1	226	3373	-3768	5155	3172	5710	
684+35	68435	35	47.5	23.7	0.1	61.1	63	31	0	79	3436	-3847	5258	3236	5821	
Column totals											3436	1461	158	4044		

STH 190 WB Off		AREA (SF)				Incremental Vol (CY) (Unadjusted)				Cumulative Vol (CY)						
STATION	Real Station	Distance	Cut	Salvaged/Unusable Pavement Material	Fill	Rock Exc	EBS	Cut	Salvaged/Unusable Pavement Material	Fill	EBS	Cut	Expanded Fill	Expanded EBS reduced Backfill	Mass Ordinate	
			Note 1	Note 2	Note 3	Note 3	Note 3	Note 1	Note 2	Note 3	Note 3	Note 1	1.25	1.30	Note 7	Note 8
686+05	68605	95	20.1	20.1	0.0	0.0	0.0	0	0	0	0	0	0	0	0	0
687+00	68700	100	20.1	20.1	0.0	0.0	0.0	71	71	0	0	71	0	0	0	0
688+00	68800	100	29.7	29.7	0.2	0.0	0.0	92	92	0	0	163	0	0	0	0
689+00	68900	100	29.7	29.7	0.2	0.0	0.0	110	110	1	0	273	1	0	0	-1
690+00	69000	100	29.7	29.7	0.2	0.0	0.0	110	110	1	0	383	2	0	0	-2
691+00	69100	100	29.7	29.7	0.1	0.0	0.0	110	110	1	0	493	3	0	0	-3
692+00	69200	100	29.7	29.7	0.1	0.0	0.0	110	110	0	0	603	3	0	0	-3
692+06	69206	6	30.0	29.7	0.1	0.0	0.0	7	7	0	0	610	4	0	0	-3
Column totals											610	610	3	0		

Addendum No. 02
ID 1370-15-71
Revised Sheet 559
May 4, 2017

CTH JJ EB Off		AREA (SF)				Incremental Vol (CY) (Unadjusted)				Cumulative Vol (CY)						
STATION	Real Station	Distance	Cut	Salvaged/Unusable Pavement Material	Fill	EBS	Cut	Salvaged/Unusable Pavement Material	Fill	EBS	Cut	Expanded Fill	Expanded EBS Backfill	Reduced EBS In Fill	Mass Ordinate	
			Note 1	Note 2	Note 3	Note 3	Note 1	Note 2	Note 3	Note 3	Note 1	Note 5	Note 7	Note 8	Note 8	
710+00	71000	100	55.1	24.2	0.0	61.3	0	0	0	0	0	0	0	0	0	
711+00	71100	100	54.1	24.2	0.0	61.3	202	90	0	227	202	295	182	340	340	
712+00	71200	100	50.6	24.2	0.0	61.3	194	90	0	227	396	590	363	671	671	
713+00	71300	100	49.3	24.2	0.1	61.3	185	90	0	227	581	885	545	993	993	
714+00	71400	100	48.5	24.2	0.2	61.3	181	90	1	227	762	1181	727	1311	1311	
715+00	71500	100	49.0	24.2	0.1	61.3	181	90	1	227	943	1476	908	1628	1628	
716+00	71600	100	65.2	29.5	0.1	78.4	211	99	0	259	1154	1812	1115	1998	1998	
717+00	71700	100	62.3	28.5	0.1	75.2	236	107	0	284	1390	2182	1343	2411	2411	
718+00	71800	100	63.3	28.6	0.1	75.4	233	106	0	279	1623	2544	1566	2816	2816	
719+00	71900	100	25.3	26.0	0.0	0.0	164	101	0	140	1787	2726	1677	3019	3019	
720+00	72000	100	26.3	27.6	0.0	0.0	96	99	0	1883	2726	2726	1677	3019	3019	
721+00	72100	100	28.5	29.8	0.0	0.0	101	106	0	1984	2726	2726	1677	3010	3010	
722+00	72200	100	28.3	32.5	0.0	0.0	105	115	0	2089	2726	2726	1677	3000	3000	
723+00	72300	100	18.0	18.0	0.0	0.0	86	94	0	2175	2726	2726	1677	2992	2992	
724+00	72400	100	21.0	21.0	0.0	0.0	72	72	0	2247	2726	2726	1677	2992	2992	
724+45	72445	45	21.0	21.0	0.0	0.0	35	35	0	2282	2726	2726	1677	2992	2992	
			Column totals				2282	1384	3	2097						

CTH JJ EB On		AREA (SF)				Incremental Vol (CY) (Unadjusted)				Cumulative Vol (CY)						
STATION	Real Station	Distance	Cut	Salvaged/Unusable Pavement Material	Fill	EBS	Cut	Salvaged/Unusable Pavement Material	Fill	EBS	Cut	Expanded Fill	Expanded EBS Backfill	Reduced EBS In Fill	Mass Ordinate	
			Note 1	Note 2	Note 3	Note 3	Note 1	Note 2	Note 3	Note 3	Note 1	Note 5	Note 7	Note 8	Note 8	
734+50	73450	50	111.0	111.0	0.0	0.0	0	0	0	0	0	0	0	0	0	
735+00	73500	100	72.7	72.7	0.0	0.0	170	170	0	0	170	0	0	0	0	
736+00	73600	100	74.5	74.5	0.0	0.0	273	273	0	0	443	0	0	0	0	
737+00	73700	100	26.1	29.2	0.2	0.0	186	192	0	0	629	0	0	0	0	
737+50	73750	50	65.3	29.2	1.4	82.6	85	54	1	76	714	99	61	99	99	
738+00	73800	50	67.2	29.2	1.0	82.6	123	54	2	153	836	298	184	318	318	
739+00	73900	100	72.7	29.2	0.6	82.6	259	108	3	306	1095	696	428	771	771	
740+00	74000	100	71.9	29.2	0.8	82.6	268	108	3	306	1363	1094	673	1233	1233	
741+00	74100	100	69.4	29.2	0.6	82.6	262	108	3	306	1625	1491	918	1689	1689	
742+00	74200	100	68.3	29.2	0.3	82.6	255	108	2	306	1880	1889	1163	2140	2140	
743+00	74300	100	52.9	23.1	0.4	61.3	224	97	1	266	2104	2236	1376	2533	2533	
744+00	74400	100	53.2	23.1	1.4	61.3	196	86	3	227	2301	2531	1557	2866	2866	
745+00	74500	100	53.5	24.6	3.4	61.3	198	88	9	227	2498	2826	1739	3192	3192	
746+00	74600	100	53.5	24.6	2.1	61.3	198	91	10	227	2696	3121	1921	3513	3513	
746+31	74631	31	54.6	24.6	1.8	61.3	62	28	2	70	2759	3212	1977	3614	3614	
			Column totals				2759	1566	40	2471						

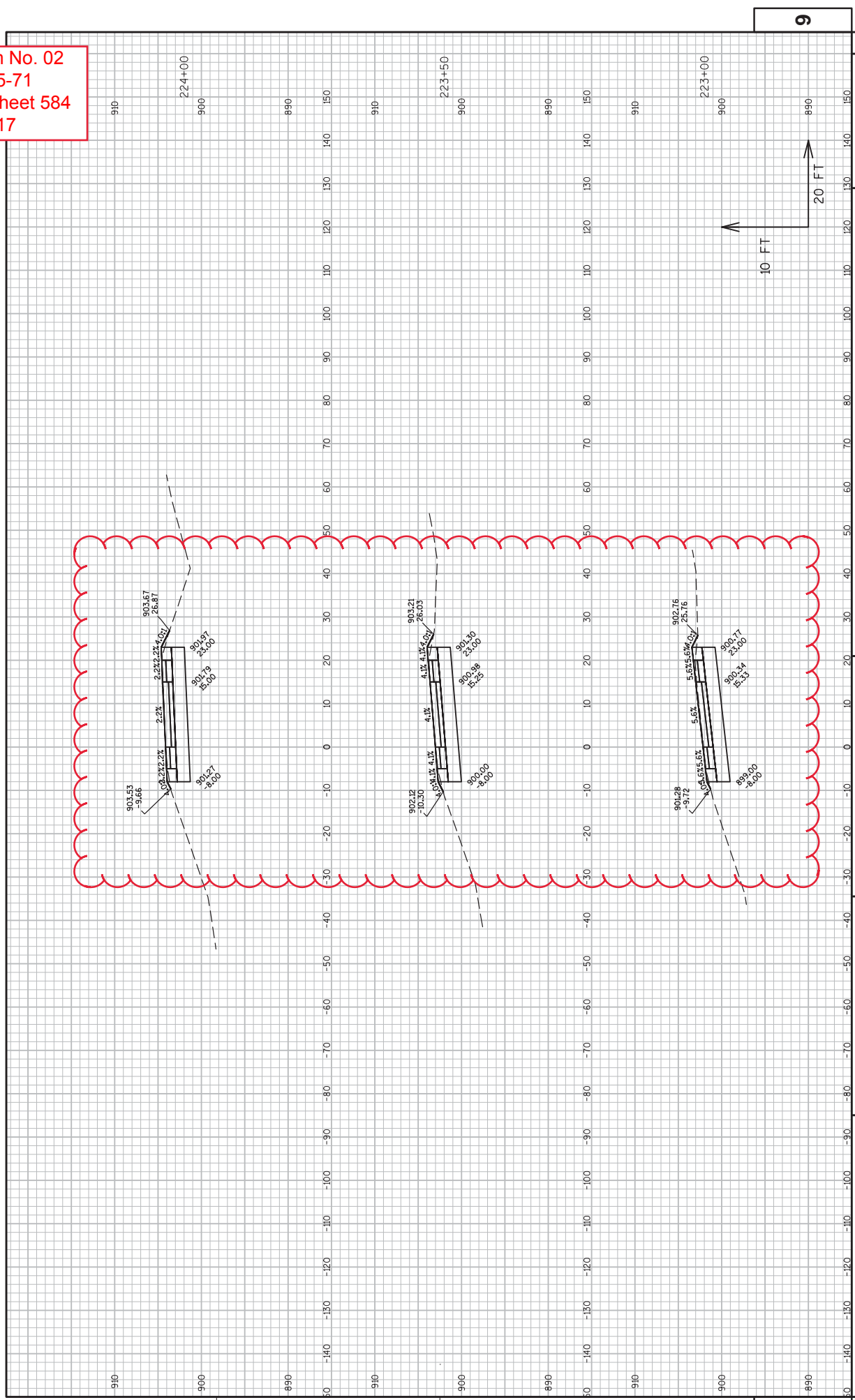
Addendum No. 02
 ID 1370-15-71
 Revised Sheet 560
 May 4, 2017

CTH JJ WB Off		AREA (SF)				Incremental Vol (CY) (Unadjusted)				Cumulative Vol (CY)				Mass Ordinate		
STATION	Real Station	Distance	Cut	Salvaged/Unusable Pavement Material	Fill	EBS	Cut	Salvaged/Unusable Pavement Material	Fill	EBS	Cut	Expanded Fill	Expanded EBS Backfill	Reduced EBS In Fill	Note 8	
			Note 1	Note 2	Note 3		Note 1	Note 2	Note 3		Note 1	1.25	1.30	0.80	Note 7	
730+40	73040		45.0	35.6	0.0	0.0	0	0	0	0	0	0	0	0	0	
731+00	73100	60	27.8	30.2	0.0	0.0	81	73	0	0	81	0	0	0	8	
732+00	73200	100	24.9	29.2	1.1	0.0	98	110	2	0	178	3	0	0	-7	
733+00	73300	100	25.1	29.2	0.9	0.0	93	108	4	0	271	0	0	0	-27	
734+00	73400	100	24.9	29.2	2.8	0.0	93	108	7	0	364	16	0	0	-51	
734+50	73450	50	63.7	29.2	4.3	82.6	82	54	7	76	446	-53	99	61	45	
735+00	73500	50	64.7	29.2	2.8	82.6	119	54	7	153	565	-197	298	184	254	
736+00	73600	100	64.0	29.2	1.7	82.6	238	108	8	306	696	-493	803	428	680	
737+00	73700	100	67.8	29.2	1.3	82.3	243	108	5	306	1046	-793	1094	673	1115	
738+00	73800	100	66.8	29.2	1.3	82.3	248	108	4	305	1293	-1093	1491	917	1555	
739+00	73900	100	51.3	24.2	1.2	61.4	219	99	5	266	1512	-1354	1837	1130	1935	
740+00	74000	100	53.4	24.2	61.3	61.4	194	90	116	227	1706	-1436	2132	1312	2122	
Column totals			1706	1021	163	1640										

CTH JJ WB On		AREA (SF)				Incremental Vol (CY) (Unadjusted)				Cumulative Vol (CY)				Mass Ordinate		
STATION	Real Station	Distance	Cut	Salvaged/Unusable Pavement Material	Fill	EBS	Cut	Salvaged/Unusable Pavement Material	Fill	EBS	Cut	Expanded Fill	Expanded EBS Backfill	Reduced EBS In Fill	Note 8	
			Note 1	Note 2	Note 3		Note 1	Note 2	Note 3		Note 1	1.25	1.30	0.80	Note 7	
713+40	71340		65.4	28.2	0.0	74.7	0	0	0	0	0	0	0	0	0	
714+00	71400	60	65.4	28.2	0.0	74.7	145	63	0	166	145	-166	216	133	249	
715+00	71500	100	65.4	28.2	0.0	74.7	242	104	0	277	388	-443	575	354	663	
716+00	71600	100	63.4	28.3	0.1	74.7	239	105	0	277	426	-719	935	575	1073	
717+00	71700	100	65.8	28.3	4.9	74.7	239	105	9	277	865	-984	1295	797	1473	
718+00	71800	100	65.4	28.2	7.1	74.7	243	105	22	277	1108	-1233	1654	1018	1860	
719+00	71900	100	64.4	34.7	7.0	98.2	240	116	26	320	1349	-1521	2071	2272	2752	
720+00	72000	100	86.6	34.7	8.0	98.2	321	131	28	364	1628	-1850	2544	1565	2752	
721+00	72100	100	86.6	36.3	1.7	74.7	321	140	18	320	1949	-2147	2960	1821	3239	
722+00	72200	100	88.7	39.1	0.2	103.7	325	140	4	330	2174	-2473	3389	2086	3750	
723+00	72300	100	52.2	24.1	0.1	61.1	261	117	1	305	2535	-2778	3786	2330	4198	
724+00	72400	100	51.9	24.1	1.6	61.1	193	89	3	226	2727	-3000	4080	2511	4524	
725+00	72500	100	44.2	24.1	1.8	61.1	178	89	6	226	2905	-3219	4374	2692	4831	
726+00	72600	100	46.3	24.1	2.5	61.1	168	89	8	226	3073	-3435	4669	2873	5126	
726+60	72660	60	48.9	24.1	2.1	61.3	106	54	5	136	3179	-3565	4845	2982	5308	
Column totals			3179	1436	130	3727										

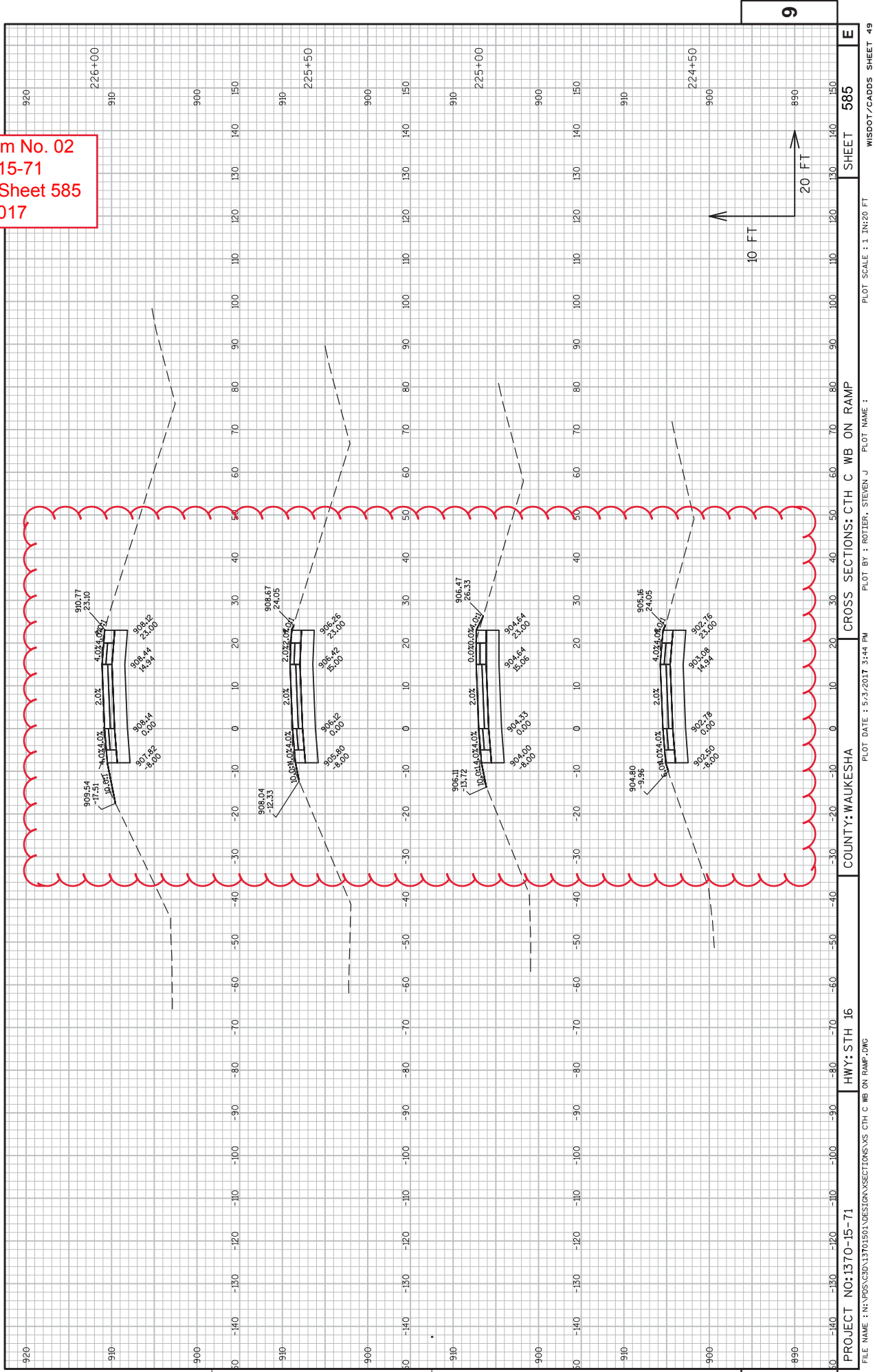
Addendum No. 02
 ID 1370-15-71
 Revised Sheet 561
 May 4, 2017

Addendum No. 02
ID 1370-15-71
Revised Sheet 584
May 4, 2017

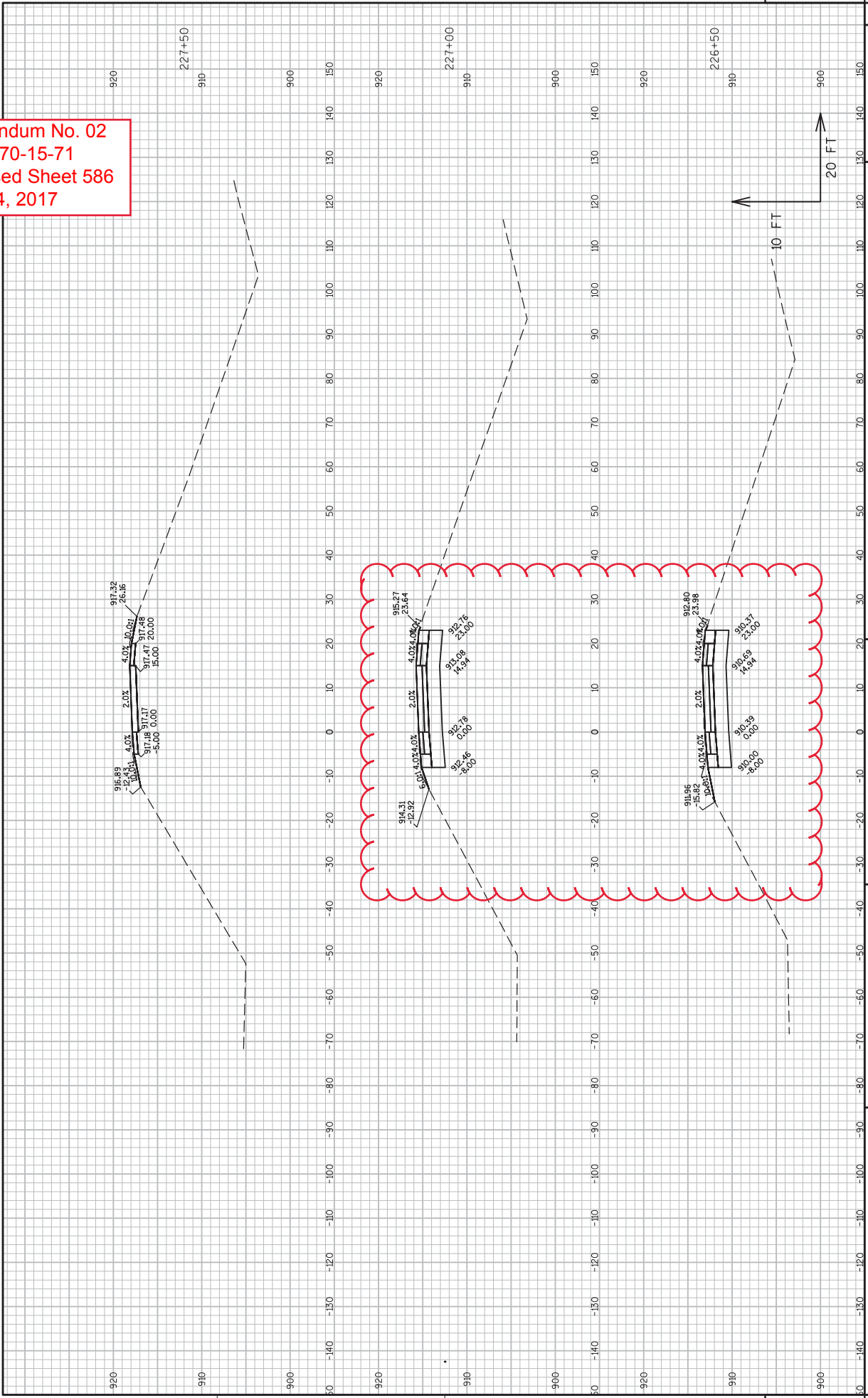


9
E
SHEET 584
WSDOT/CADD SHEET 49
PLOT SCALE : 1 IN:20 FT
PLOT NAME :
CROSS SECTIONS: CTH C WB ON RAMP
PLOT BY : ROTIER, STEVEN J
PLOT DATE : 5/3/2017 3:44 PM
COUNTY: WAUKESHA
HWY: STH 16
PROJECT NO: 1370-15-71
FILE NAME : N:\POS\C3D\13701501\DESIGN\XSECTIONS\AS CTH C WB ON RAMP.DWG

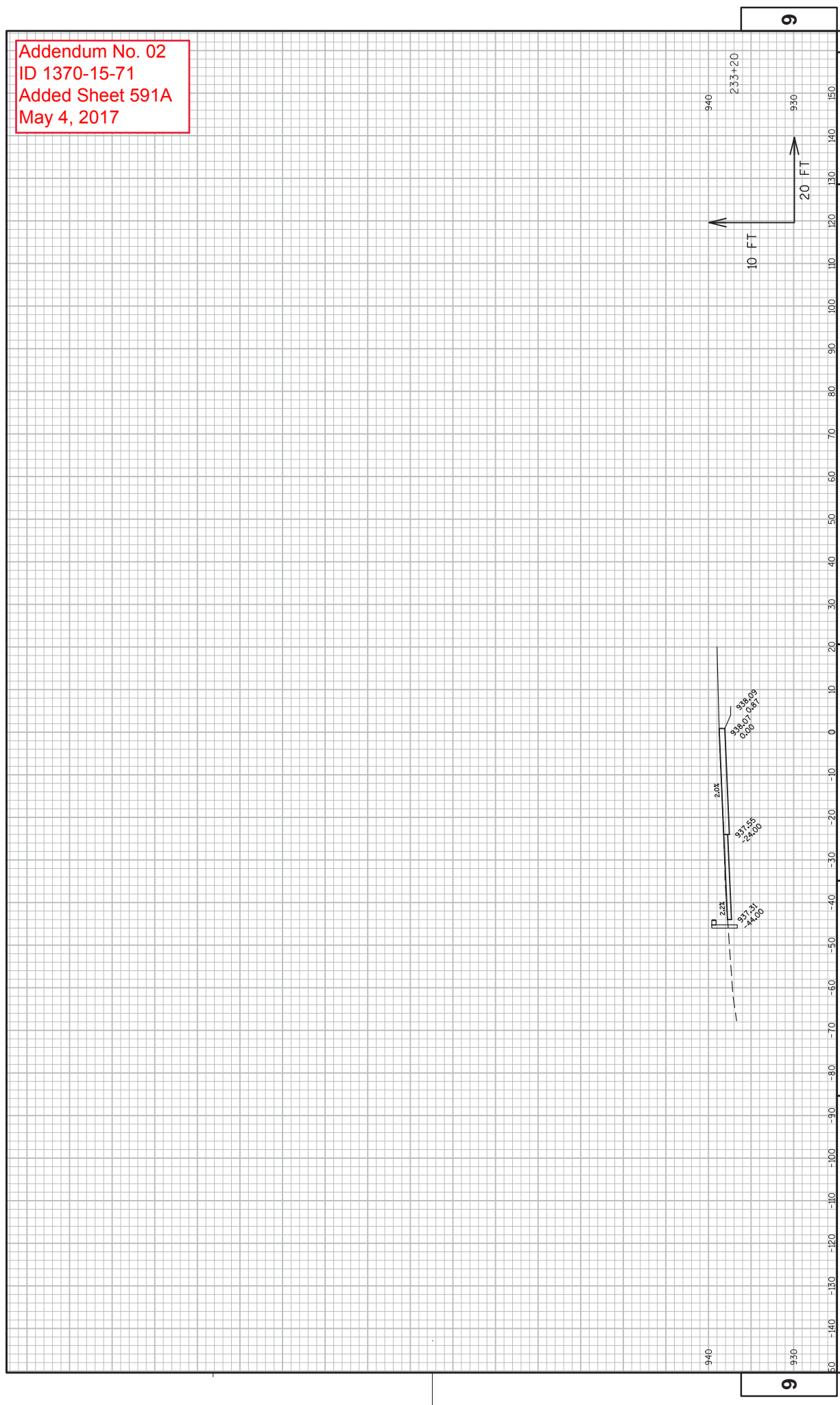
Addendum No. 02
ID 1370-15-71
Revised Sheet 585
May 4, 2017



Addendum No. 02
 ID 1370-15-71
 Revised Sheet 586
 May 4, 2017

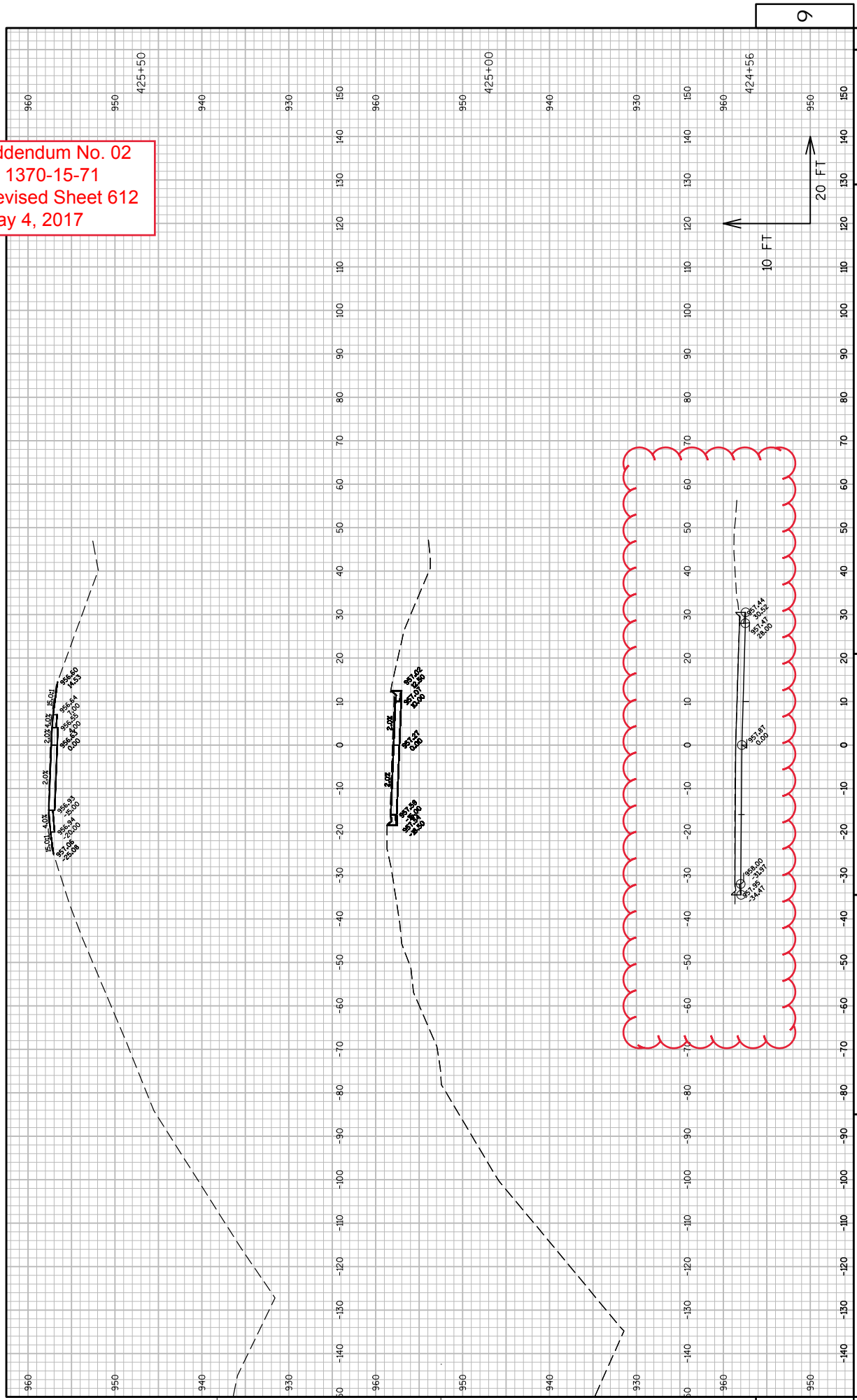


Addendum No. 02
ID 1370-15-71
Added Sheet 591A
May 4, 2017



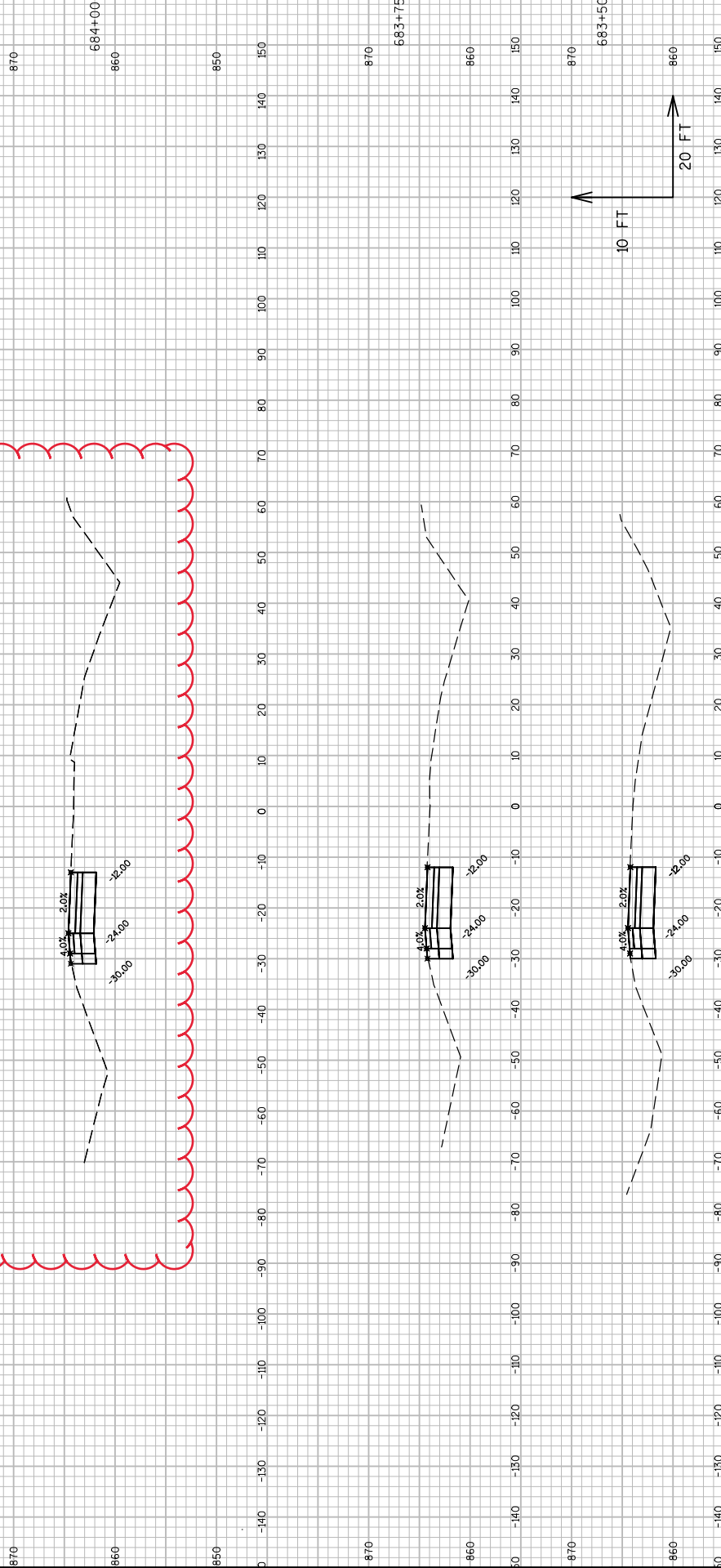
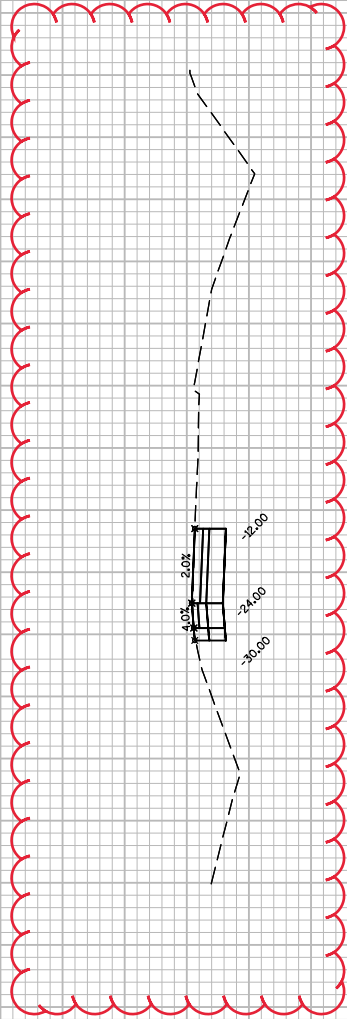
940
233+20
930
10 FT
20 FT
9
E
SHEET 591A
CROSS SECTIONS: CTH C WB ON RAMP
COUNTY: WAUKESHA
HWY: STH 16
PROJECT NO: 1370-15-71
FILE NAME : N:\VPOS\C3D\13701501\DESIGN\SECTIONS\XVS CTH C WB ON RAMP.DWG
LAYOUT NAME - SECTION SHEET - (11)
PLOT BY : ROTIER, STEVEN J
PLOT NAME :
PLOT SCALE : 1 IN:20 FT
PLOT DATE : 5/3/2017 5:03 PM

Addendum No. 02
ID 1370-15-71
Revised Sheet 612
May 4, 2017



PROJECT NO: 1370-15-71
COUNTY: WAUKESHA
HWY: STH 16
CROSS SECTIONS: CTH KC EB ON-RAMP
SHEET 612
E
PLOT DATE: 5/3/2017 5:32 PM
PLOT BY: ROTIER, STEVEN J
PLOT NAME:
PLOT SCALE: 1 IN:20 FT
WISDOT/CADD SHEET 49

Addendum No. 02
ID 1370-15-71
Revised Sheet 631
May 4, 2017



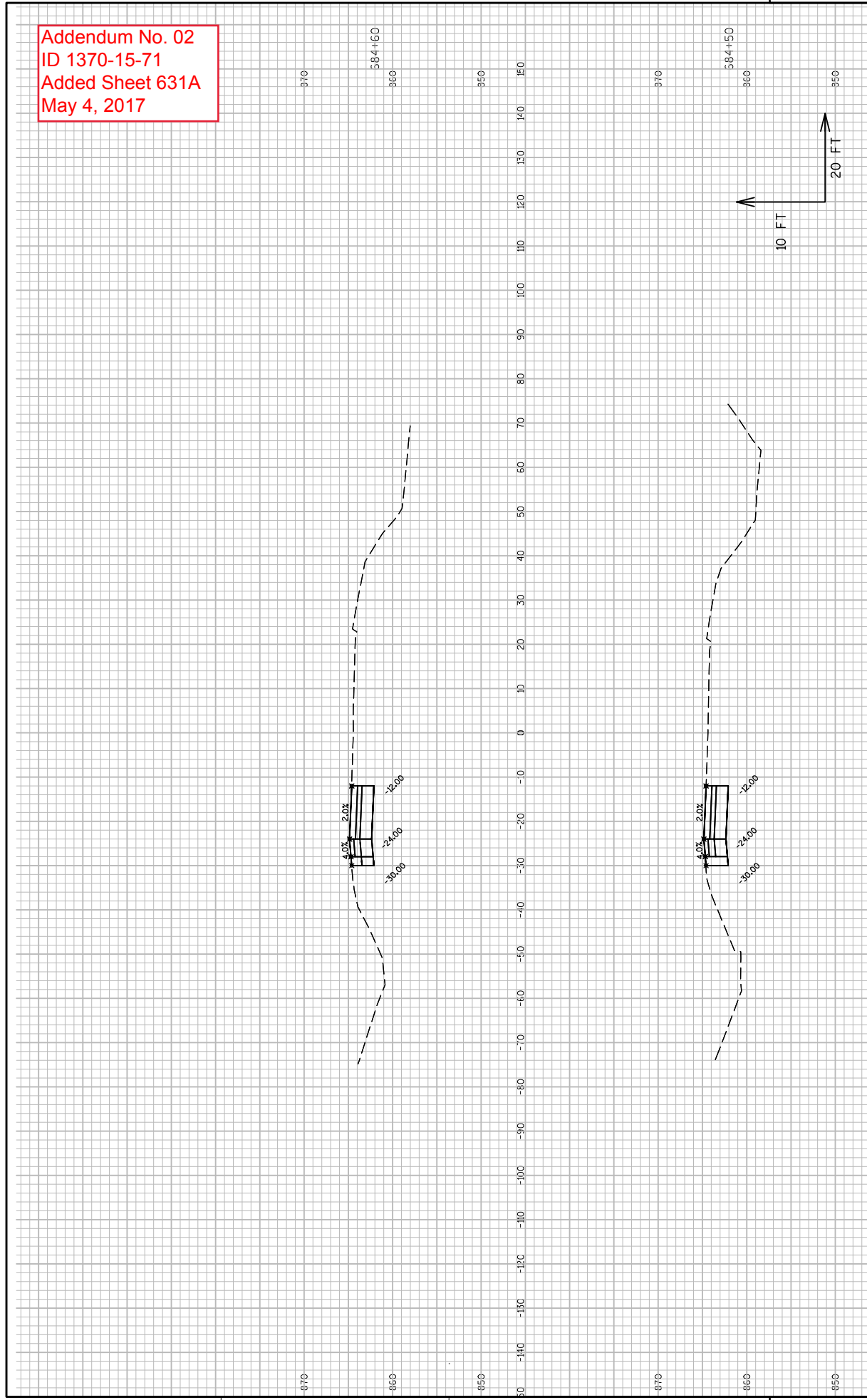
9

9

PROJECT NO: 1370-15-71
HWY: STH 16
COUNTY: WAUKESHA
CROSS SECTIONS: STH 190 EB OFF RAMP
SHEET 631
E

FILE NAME : N:\POS\C30\13701501\DESIGN\XSECTIONS\STS STH 190 NW OFF RAMP.DWG
PLOT DATE : 5/3/2017 7:15 PM
PLOT BY : SOOMAN, MOHAMMAD HASPLOT NAME :
PLOT SCALE : 1 IN:20 FT
WISDOT/CADD SHEET 49

Addendum No. 02
ID 1370-15-71
Added Sheet 631A
May 4, 2017



9

9

PROJECT NO: 1370-15-71
HWY: STH 16
COUNTY: WAUKESHA
CROSS SECTIONS: STH 190 EB OFF RAMP
SHEET 631A
E

FILE NAME : N:\POS\C3D\13701501\DESIGN\XSECTIONS\STH 190 NB OFF RAMP.DWG
PLOT DATE : 5/3/2017 7:19 PM
PLOT BY : SOOMAN, MOHAMMAD HASPLOT NAME :
PLOT SCALE : 1 IN:20 FT
WISDOT/CADD SHEET 49



Proposal Schedule of Items

Proposal ID: 20170509008 Project(s): 1370-15-71

Federal ID(s): WISC 2017266

SECTION: 0001

Contract Items

Alt Set ID:

Alt Mbr ID:

Proposal Line Number	Item ID Description	Approximate Quantity and Units	Unit Price	Bid Amount
0010	108.4400 CPM Progress Schedule	1.000 EACH	_____.	_____.
0020	204.0100 Removing Pavement	26,630.000 SY	_____.	_____.
0030	204.0110 Removing Asphaltic Surface	37,150.000 SY	_____.	_____.
0040	204.0115 Removing Asphaltic Surface Butt Joints	2,930.000 SY	_____.	_____.
0050	204.0120 Removing Asphaltic Surface Milling	261,265.000 SY	_____.	_____.
0060	204.0150 Removing Curb & Gutter	1,818.000 LF	_____.	_____.
0070	204.0155 Removing Concrete Sidewalk	443.000 SY	_____.	_____.
0080	204.0157 Removing Concrete Barrier	84.000 LF	_____.	_____.
0090	204.0165 Removing Guardrail	11,087.000 LF	_____.	_____.
0100	204.0180 Removing Delineators and Markers	500.000 EACH	_____.	_____.
0110	205.0100 Excavation Common	51,499.000 CY	_____.	_____.
0120	211.0100 Prepare Foundation for Asphaltic Paving (project) 01. 1370-15-71	LS	LUMP SUM	_____.
0130	211.0400 Prepare Foundation for Asphaltic Shoulders	1,696.000 STA	_____.	_____.
0140	213.0100 Finishing Roadway (project) 01. 1370-15-71	1.000 EACH	_____.	_____.
0150	305.0110 Base Aggregate Dense 3/4-Inch	14,720.000 TON	_____.	_____.
0160	305.0120 Base Aggregate Dense 1 1/4-Inch	21,040.000 TON	_____.	_____.



Proposal Schedule of Items

Proposal ID: 20170509008 Project(s): 1370-15-71

Federal ID(s): WISC 2017266

SECTION: 0001

Contract Items

Alt Set ID:

Alt Mbr ID:

Proposal Line Number	Item ID Description	Approximate Quantity and Units	Unit Price	Bid Amount
0170	305.0500 Shaping Shoulders	194.000 STA	_____.	_____.
0180	311.0110 Breaker Run	25,440.000 TON	_____.	_____.
0190	390.0403 Base Patching Concrete Shes	2,867.000 SY	_____.	_____.
0200	415.0080 Concrete Pavement 8-Inch	27,490.000 SY	_____.	_____.
0210	415.1080 Concrete Pavement HES 8-Inch	1,350.000 SY	_____.	_____.
0220	416.0610 Drilled Tie Bars	365.000 EACH	_____.	_____.
0230	416.0620 Drilled Dowel Bars	14,338.000 EACH	_____.	_____.
0250	416.1715 Concrete Pavement Repair SHES	3,911.000 SY	_____.	_____.
0260	416.1725 Concrete Pavement Replacement SHES	2,655.000 SY	_____.	_____.
0270	420.1000 Continuous Diamond Grinding Concrete Pavement	60,080.000 SY	_____.	_____.
0280	440.4410 Incentive IRI Ride	37,441.000 DOL	1.00000	37,441.00
0290	455.0605 Tack Coat	24,607.000 GAL	_____.	_____.
0300	460.2005 Incentive Density PWL HMA Pavement	55,029.000 DOL	1.00000	55,029.00
0310	460.2010 Incentive Air Voids HMA Pavement	86,721.000 DOL	1.00000	86,721.00
0320	460.4110.S Reheating HMA Pavement Longitudinal Joints	64,628.000 LF	_____.	_____.
0330	460.6223 HMA Pavement 3 MT 58-28 S	43,820.000 TON	_____.	_____.



Proposal Schedule of Items

Proposal ID: 20170509008 Project(s): 1370-15-71
Federal ID(s): WISC 2017266

SECTION: 0001 Contract Items

Alt Set ID: Alt Mbr ID:

Proposal Line Number	Item ID Description	Approximate Quantity and Units	Unit Price	Bid Amount
0340	460.6224 HMA Pavement 4 MT 58-28 S	24,610.000 TON	_____.	_____.
0350	460.7424 HMA Pavement 4 HT 58-28 H	18,931.000 TON	_____.	_____.
0360	465.0315 Asphaltic Flumes	113.000 SY	_____.	_____.
0370	465.0400 Asphaltic Shoulder Rumble Strips	142,508.000 LF	_____.	_____.
0380	520.8700 Cleaning Culvert Pipes	8.000 EACH	_____.	_____.
0390	520.9700.S Culvert Pipe Liners (size) 01. 15-Inch	480.000 LF	_____.	_____.
0400	520.9750.S Cleaning Culvert Pipes for Liner Verification	6.000 EACH	_____.	_____.
0410	524.0118 Culvert Pipe Salvaged 18-Inch	56.000 LF	_____.	_____.
0420	524.0124 Culvert Pipe Salvaged 24-Inch	24.000 LF	_____.	_____.
0430	524.0130 Culvert Pipe Salvaged 30-Inch	8.000 LF	_____.	_____.
0440	524.0618 Apron Endwalls for Culvert Pipe Salvaged 18-Inch	20.000 EACH	_____.	_____.
0450	524.0624 Apron Endwalls for Culvert Pipe Salvaged 24-Inch	7.000 EACH	_____.	_____.
0460	524.0630 Apron Endwalls for Culvert Pipe Salvaged 30-Inch	1.000 EACH	_____.	_____.
0470	524.0636 Apron Endwalls for Culvert Pipe Salvaged 36-Inch	1.000 EACH	_____.	_____.
0480	601.0409 Concrete Curb & Gutter 30-Inch Type A	1,315.000 LF	_____.	_____.



Proposal Schedule of Items

Proposal ID: 20170509008 Project(s): 1370-15-71
Federal ID(s): WISC 2017266

SECTION: 0001 Contract Items

Alt Set ID: Alt Mbr ID:

Proposal Line Number	Item ID Description	Approximate Quantity and Units	Unit Price	Bid Amount
0490	601.0411 Concrete Curb & Gutter 30-Inch Type D	309.000 LF	_____.	_____.
0500	601.0555 Concrete Curb & Gutter 6-Inch Sloped 36-Inch Type A	143.000 LF	_____.	_____.
0510	601.0600 Concrete Curb Pedestrian	25.000 LF	_____.	_____.
0520	602.0410 Concrete Sidewalk 5-Inch	3,980.000 SF	_____.	_____.
0530	602.0505 Curb Ramp Detectable Warning Field Yellow	264.000 SF	_____.	_____.
0550	606.0200 Riprap Medium	23.000 CY	_____.	_____.
0560	611.8115 Adjusting Inlet Covers	3.000 EACH	_____.	_____.
0570	611.9710 Salvaged Inlet Covers	3.000 EACH	_____.	_____.
0580	614.0010 Barrier System Grading Shaping Finishing	20.000 EACH	_____.	_____.
0590	614.0115 Anchorage for Steel Plate Beam Guard Type 2	2.000 EACH	_____.	_____.
0600	614.0150 Anchor Assemblies for Steel Plate Beam Guard	4.000 EACH	_____.	_____.
0610	614.0200 Steel Thrie Beam Structure Approach	42.000 LF	_____.	_____.
0620	614.0220 Steel Thrie Beam Bullnose Terminal	6.000 EACH	_____.	_____.
0630	614.0230 Steel Thrie Beam	729.000 LF	_____.	_____.
0640	614.0305 Steel Plate Beam Guard Class A	575.000 LF	_____.	_____.



Proposal Schedule of Items

Proposal ID: 20170509008 Project(s): 1370-15-71

Federal ID(s): WISC 2017266

SECTION: 0001

Contract Items

Alt Set ID:

Alt Mbr ID:

Proposal Line Number	Item ID Description	Approximate Quantity and Units	Unit Price	Bid Amount
0650	614.0345 Steel Plate Beam Guard Short Radius	38.000 LF	_____.	_____.
0660	614.0396 Guardrail Mow Strip Asphalt	1,785.500 SY	_____.	_____.
0670	614.0805 Crash Cushions Permanent Low Maintenance	1.000 EACH	_____.	_____.
0680	614.0920 Salvaged Rail	509.000 LF	_____.	_____.
0690	614.0925 Salvaged Guardrail End Treatments	11.000 EACH	_____.	_____.
0700	614.2300 MGS Guardrail 3	10,083.000 LF	_____.	_____.
0710	614.2500 MGS Thrie Beam Transition	480.000 LF	_____.	_____.
0720	614.2610 MGS Guardrail Terminal EAT	17.000 EACH	_____.	_____.
0730	614.2620 MGS Guardrail Terminal Type 2	16.000 EACH	_____.	_____.
0740	619.1000 Mobilization	1.000 EACH	_____.	_____.
0750	620.0300 Concrete Median Sloped Nose	300.000 SF	_____.	_____.
0760	625.0500 Salvaged Topsoil	16,312.000 SY	_____.	_____.
0770	627.0200 Mulching	1,660.000 SY	_____.	_____.
0780	628.1504 Silt Fence	30,680.000 LF	_____.	_____.
0790	628.1520 Silt Fence Maintenance	3,071.000 LF	_____.	_____.
0800	628.1905 Mobilizations Erosion Control	5.000 EACH	_____.	_____.



Proposal Schedule of Items

Proposal ID: 20170509008 Project(s): 1370-15-71

Federal ID(s): WISC 2017266

SECTION: 0001

Contract Items

Alt Set ID:

Alt Mbr ID:

Proposal Line Number	Item ID Description	Approximate Quantity and Units	Unit Price	Bid Amount
0810	628.1910 Mobilizations Emergency Erosion Control	5.000 EACH	_____.	_____.
0820	628.2004 Erosion Mat Class I Type B	14,211.000 SY	_____.	_____.
0830	628.2008 Erosion Mat Urban Class I Type B	490.000 SY	_____.	_____.
0840	628.7010 Inlet Protection Type B	24.000 EACH	_____.	_____.
0850	628.7015 Inlet Protection Type C	10.000 EACH	_____.	_____.
0860	628.7504 Temporary Ditch Checks	680.000 LF	_____.	_____.
0870	628.7555 Culvert Pipe Checks	51.000 EACH	_____.	_____.
0880	628.7570 Rock Bags	200.000 EACH	_____.	_____.
0890	629.0210 Fertilizer Type B	142.800 CWT	_____.	_____.
0900	630.0130 Seeding Mixture No. 30	299.000 LB	_____.	_____.
0910	630.0160 Seeding Mixture No. 60	9.500 LB	_____.	_____.
0920	630.0200 Seeding Temporary	25.000 LB	_____.	_____.
0930	633.0100 Delineator Posts Steel	534.000 EACH	_____.	_____.
0940	633.0500 Delineator Reflectors	714.000 EACH	_____.	_____.
0950	634.0618 Posts Wood 4x6-Inch X 18-FT	611.000 EACH	_____.	_____.
0960	634.0622 Posts Wood 4x6-Inch X 22-FT	62.000 EACH	_____.	_____.
0970	634.0816 Posts Tubular Steel 2x2-Inch X 16-FT	18.000 EACH	_____.	_____.



Proposal Schedule of Items

Proposal ID: 20170509008 Project(s): 1370-15-71

Federal ID(s): WISC 2017266

SECTION: 0001

Contract Items

Alt Set ID:

Alt Mbr ID:

Proposal Line Number	Item ID Description	Approximate Quantity and Units	Unit Price	Bid Amount
0980	635.0200 Sign Supports Structural Steel HS	11,600.000 LB	_____.	_____.
0990	635.0300 Sign Supports Replacing Base Connection Bolts	76.000 EACH	_____.	_____.
1000	636.0100 Sign Supports Concrete Masonry	19.000 CY	_____.	_____.
1010	636.0500 Sign Supports Steel Reinforcement	1,156.000 LB	_____.	_____.
1020	637.1220 Signs Type I Reflective SH	9,653.500 SF	_____.	_____.
1030	637.1230 Signs Type I Reflective F	127.500 SF	_____.	_____.
1040	637.2210 Signs Type II Reflective H	6,352.120 SF	_____.	_____.
1050	637.2215 Signs Type II Reflective H Folding	366.820 SF	_____.	_____.
1060	637.2230 Signs Type II Reflective F	1,113.250 SF	_____.	_____.
1070	638.2102 Moving Signs Type II	3.000 EACH	_____.	_____.
1080	638.2601 Removing Signs Type I	50.000 EACH	_____.	_____.
1090	638.2602 Removing Signs Type II	500.000 EACH	_____.	_____.
1100	638.3000 Removing Small Sign Supports	527.000 EACH	_____.	_____.
1110	638.3100 Removing Structural Steel Sign Supports	16.000 EACH	_____.	_____.
1130	643.0100 Traffic Control (project) 01. 1370-15-71	1.000 EACH	_____.	_____.
1140	643.0300 Traffic Control Drums	233,250.000 DAY	_____.	_____.



Proposal Schedule of Items

Proposal ID: 20170509008 Project(s): 1370-15-71
Federal ID(s): WISC 2017266

SECTION: 0001 Contract Items

Alt Set ID: Alt Mbr ID:

Proposal Line Number	Item ID Description	Approximate Quantity and Units	Unit Price	Bid Amount
1150	643.0410 Traffic Control Barricades Type II	448.000 DAY	_____.	_____.
1160	643.0420 Traffic Control Barricades Type III	13,105.000 DAY	_____.	_____.
1170	643.0453 Traffic Control Barricades Permanent Type III	12.000 EACH	_____.	_____.
1180	643.0705 Traffic Control Warning Lights Type A	26,210.000 DAY	_____.	_____.
1190	643.0715 Traffic Control Warning Lights Type C	20,294.000 DAY	_____.	_____.
1200	643.0800 Traffic Control Arrow Boards	696.000 DAY	_____.	_____.
1210	643.0900 Traffic Control Signs	31,672.000 DAY	_____.	_____.
1220	643.0910 Traffic Control Covering Signs Type I	32.000 EACH	_____.	_____.
1230	643.0920 Traffic Control Covering Signs Type II	1,280.000 EACH	_____.	_____.
1240	643.1000 Traffic Control Signs Fixed Message	590.000 SF	_____.	_____.
1250	643.1050 Traffic Control Signs PCMS	14.000 DAY	_____.	_____.
1260	643.2000 Traffic Control Detour (project) 01. 1370-15-71	1.000 EACH	_____.	_____.
1270	643.3000 Traffic Control Detour Signs	8,043.000 DAY	_____.	_____.
1280	644.1410.S Temporary Pedestrian Surface Asphalt	120.000 SF	_____.	_____.
1290	644.1601.S Temporary Curb Ramp	3.000 EACH	_____.	_____.
1300	645.0120 Geotextile Type HR	47.000 SY	_____.	_____.



Proposal Schedule of Items

Proposal ID: 20170509008 Project(s): 1370-15-71
Federal ID(s): WISC 2017266

SECTION: 0001 Contract Items

Alt Set ID: Alt Mbr ID:

Proposal Line Number	Item ID Description	Approximate Quantity and Units	Unit Price	Bid Amount
1310	646.0600 Removing Pavement Markings	51,000.000 LF	_____.	_____.
1320	646.0790.S Removing Raised Pavement Markers	850.000 EACH	_____.	_____.
1330	646.0841.S Pavement Marking Grooved Wet Reflective Contrast Tape 4-Inch	33,105.000 LF	_____.	_____.
1340	646.0843.S Pavement Marking Grooved Wet Reflective Contrast Tape 8-Inch	28,568.000 LF	_____.	_____.
1350	646.0883.S Pavement Marking Grooved Wet Reflective Tape 8-Inch	2,973.000 LF	_____.	_____.
1360	646.2304.S Pavement Marking Grooved Wet Reflective Epoxy 4-Inch	325,484.000 LF	_____.	_____.
1370	647.0136 Pavement Marking Arrows Epoxy Type 7	1.000 EACH	_____.	_____.
1380	647.0166 Pavement Marking Arrows Epoxy Type 2	13.000 EACH	_____.	_____.
1390	647.0176 Pavement Marking Arrows Epoxy Type 3	7.000 EACH	_____.	_____.
1400	647.0186 Pavement Marking Arrows Epoxy Type 4	32.000 EACH	_____.	_____.
1410	647.0356 Pavement Marking Words Epoxy	15.000 EACH	_____.	_____.
1420	647.0566 Pavement Marking Stop Line Epoxy 18-Inch	431.000 LF	_____.	_____.
1430	647.0606 Pavement Marking Island Nose Epoxy	1.000 EACH	_____.	_____.
1440	647.0726 Pavement Marking Diagonal Epoxy 12-Inch	40.000 LF	_____.	_____.
1450	647.0746 Pavement Marking Diagonal Epoxy 24-Inch	3,260.000 LF	_____.	_____.



Proposal Schedule of Items

Proposal ID: 20170509008 Project(s): 1370-15-71

Federal ID(s): WISC 2017266

SECTION: 0001

Contract Items

Alt Set ID:

Alt Mbr ID:

Proposal Line Number	Item ID Description	Approximate Quantity and Units	Unit Price	Bid Amount
1460	647.0766 Pavement Marking Crosswalk Epoxy 6-Inch	1,499.000 LF	_____.	_____.
1470	649.0400 Temporary Pavement Marking Removable Tape 4-Inch	66,660.000 LF	_____.	_____.
1480	649.0402 Temporary Pavement Marking Paint 4-Inch	229,160.000 LF	_____.	_____.
1490	650.4500 Construction Staking Subgrade	8,850.000 LF	_____.	_____.
1500	650.7000 Construction Staking Concrete Pavement	16,454.000 LF	_____.	_____.
1510	650.8000 Construction Staking Resurfacing Reference	86,779.000 LF	_____.	_____.
1520	650.8500 Construction Staking Electrical Installations (project) 01. 1370-15-71	LS	LUMP SUM	_____.
1530	650.9910 Construction Staking Supplemental Control (project) 01. 1370-15-71	LS	LUMP SUM	_____.
1540	650.9920 Construction Staking Slope Stakes	18,150.000 LF	_____.	_____.
1550	652.0225 Conduit Rigid Nonmetallic Schedule 40 2-Inch	540.000 LF	_____.	_____.
1560	652.0800 Conduit Loop Detector	98.000 LF	_____.	_____.
1570	653.0135 Pull Boxes Steel 24x36-Inch	16.000 EACH	_____.	_____.
1580	653.0900 Adjusting Pull Boxes	2.000 EACH	_____.	_____.
1590	653.0905 Removing Pull Boxes	2.000 EACH	_____.	_____.
1600	654.0105 Concrete Bases Type 5	19.000 EACH	_____.	_____.



Proposal Schedule of Items

Proposal ID: 20170509008 Project(s): 1370-15-71
Federal ID(s): WISC 2017266

SECTION: 0001 Contract Items

Alt Set ID: Alt Mbr ID:

Proposal Line Number	Item ID Description	Approximate Quantity and Units	Unit Price	Bid Amount
1610	654.0220 Concrete Control Cabinet Bases Type 10	16.000 EACH	_____.	_____.
1620	655.0615 Electrical Wire Lighting 10 AWG	2,880.000 LF	_____.	_____.
1630	655.0700 Loop Detector Lead In Cable	884.000 LF	_____.	_____.
1640	655.0800 Loop Detector Wire	392.000 LF	_____.	_____.
1650	657.0100 Pedestal Bases	16.000 EACH	_____.	_____.
1660	657.0255 Transformer Bases Breakaway 11 1/2-Inch Bolt Circle	19.000 EACH	_____.	_____.
1670	657.0321 Poles Type 5-Steel	16.000 EACH	_____.	_____.
1680	657.0322 Poles Type 5-Aluminum	3.000 EACH	_____.	_____.
1690	657.0425 Traffic Signal Standards Aluminum 15-FT	16.000 EACH	_____.	_____.
1700	662.2026.S Ramp Closure Gates Solar 26-FT	2.000 EACH	_____.	_____.
1710	662.2030.S Ramp Closure Gates Solar 30-FT	2.000 EACH	_____.	_____.
1720	662.2037.S Ramp Closure Gates Solar 37-FT	2.000 EACH	_____.	_____.
1730	662.2040.S Ramp Closure Gates Solar 40-FT	10.000 EACH	_____.	_____.
1740	662.3026.S Ramp Closure Gate Arms Stockpile 26-FT	2.000 EACH	_____.	_____.
1750	662.3030.S Ramp Closure Gate Arms Stockpile 30-FT	2.000 EACH	_____.	_____.
1760	662.3037.S Ramp Closure Gate Arms Stockpile 37-FT	2.000 EACH	_____.	_____.



Proposal Schedule of Items

Proposal ID: 20170509008 Project(s): 1370-15-71
 Federal ID(s): WISC 2017266

SECTION: 0001 Contract Items

Alt Set ID: Alt Mbr ID:

Proposal Line Number	Item ID Description	Approximate Quantity and Units	Unit Price	Bid Amount
1770	662.3040.S Ramp Closure Gate Arms Stockpile 40-FT	4.000 EACH	_____.	_____.
1780	662.4000.S Ramp Closure Gate Flashers Stockpile	30.000 EACH	_____.	_____.
1790	662.6030.S Ramp Closure Barricade Rack 3-Unit	4.000 EACH	_____.	_____.
1800	674.0200 Cable Microwave Detector	275.000 LF	_____.	_____.
1810	674.0300 Remove Cable	435.000 LF	_____.	_____.
1820	675.0300 Install Mounted Controller Microwave Detector Assembly	3.000 EACH	_____.	_____.
1830	690.0150 Sawing Asphalt	3,138.000 LF	_____.	_____.
1840	690.0250 Sawing Concrete	41,700.000 LF	_____.	_____.
1850	715.0415 Incentive Strength Concrete Pavement	1,923.000 DOL	1.00000	1,923.00
1860	ASP.1T0A On-the-Job Training Apprentice at \$5.00/HR	4,000.000 HRS	5.00000	20,000.00
1870	ASP.1T0G On-the-Job Training Graduate at \$5.00/HR	6,000.000 HRS	5.00000	30,000.00
1880	SPV.0060 Special 01. Install Conduit Into Existing Item	3.000 EACH	_____.	_____.
1890	SPV.0060 Special 02. Install Microwave Detector Module, 2 Port	9.000 EACH	_____.	_____.
1900	SPV.0060 Special 03. HMA Percent Within Limits (PLW) Test Strip	3.000 EACH	_____.	_____.
1910	SPV.0060 Special 04. Section Corner Monuments Special	1.000 EACH	_____.	_____.



Proposal Schedule of Items

Proposal ID: 20170509008 Project(s): 1370-15-71
 Federal ID(s): WISC 2017266

SECTION: 0001 Contract Items

Alt Set ID: Alt Mbr ID:

Proposal Line Number	Item ID Description	Approximate Quantity and Units	Unit Price	Bid Amount
1920	SPV.0090 Special 01. Remove Pavement Marking Grooved Tape	15,780.000 LF	_____.	_____.
1930	SPV.0105 Special 01. Remove Loop Detector Wire and Lead-in Cable STH 16 WB Ramps & CTH JJ	LS	LUMP SUM	_____.
1940	SPV.0105 Special 02. Remove Loop Detector Wire and Lead-In Cable STH 16 EB Ramps & STH 83	LS	LUMP SUM	_____.
1950	SPV.0105 Special 03. Milling And Removing Temporary Joint	LS	LUMP SUM	_____.
1960	SPV.0180 Special 02. Resin Binder High Friction Surface Treatment	25,620.000 SY	_____.	_____.
1970	SPV.0195 Special 01. Joint And Crack Repair	1,070.000 TON	_____.	_____.
1980	624.0100 Water	357.600 MGAL	_____.	_____.
1990	SPV.0060 Special 05. Field Facilities Office Space	1.000 EACH	_____.	_____.
2000	SPV.0090 Special 02. Concrete Barrier Single-Faced With Anchorage	6.500 LF	_____.	_____.
Section: 0001			Total:	_____.
			Total Bid:	_____.