



Wisconsin Department of Transportation

Division of Transportation Systems Development

Bureau of Project Development
 4802 Sheboygan Avenue, Rm 601
 P O Box 7916
 Madison, WI 53707-7916

Telephone: (608) 266-1631
 Facsimile (FAX): (608) 266-8459

April 20, 2017

NOTICE TO ALL CONTRACTORS:

Proposal #09: 2035-06-70, WISC 2017 267
Watertown Plank Rd, City of Wauwatosa
Underwood Creek Strs B-40-0470/0471
Local Street
Milwaukee County

Letting of May 9, 2017

This is Addendum No. 01, which provides for the following:

Special Provisions:

Revised Special Provisions	
Article No.	Description
8	Utilities – Subsection AT&T Wisconsin

Schedule of Items:

Revised Bid Item Quantities					
Bid Item	Item Description	Unit	Old Quantity	Revised Quantity	Proposal Total
646.0106	Pavement Marking Epoxy 4-Inch	LF	11,630	360	11,990
646.0600	Removing Pavement Markings	LF	12,885	1,320	14,205
646.0841.S	Pavement Marking Grooved Wet Reflective Contrast Tape 4-Inch	LF	610	290	900
646.0843.S	Pavement Marking Grooved Wet Reflective Contrast Tape 8-Inch	LF	765	670	1,435
647.0356	Pavement Marking Words Epoxy	EA	2	4	6
647.0965	Removing Pavement Markings Words	EA	2	4	6

Added Bid Item Quantities					
Bid Item	Item Description	Unit	Old Quantity	Revised Quantity	Proposal Total
647.0166	Pavement Marking Arrows Epoxy Type 2	EA	0	6	6
647.0955	Removing Pavement Markings Arrows	EA	0	6	6

Plan Sheets:

Revised Plan Sheets	
Plan Sheet	Plan Sheet Title (brief description of changes to sheet)
25	Construction Detail AT&T B-40-0470 Attachment - Revised to show decreased eyelet (insert) spacing for AT&T facility.
26	Construction Detail AT&T B-40-0470 Attachment – Revised to show decreased eyelet (insert) spacing for AT&T facility.
27	Construction Detail AT&T B-40-0470 Attachment – Revised to show decreased eyelet (insert) spacing for AT&T facility.
49	Permanent Signing and Marking – Revised to show pavement marking replacement extension limits on eastbound lanes.
131	Miscellaneous Quantities – Revised to show added bid item 647.0166 Pavement Marking Arrows Epoxy Type 2 and additional pavement marking quantities related to the pavement marking replacement extension limits on eastbound lanes
134	Miscellaneous Quantities – Revised to show added bid item 647.0955 Removing Pavement Markings Arrows and additional pavement marking removal quantities related to the pavement marking replacement extension limits on eastbound lanes.

The responsibility for notifying potential subcontractors and suppliers of these changes remains with the prime contractor.

Sincerely,

Mike Coleman

Proposal Development Specialist
Proposal Management Section

ADDENDUM NO. 01

2035-06-70

April 20, 2017

Special Provisions

8. Utilities.

Replace entire section titled AT&T Wisconsin with the following:

AT&T Wisconsin

AT&T Wisconsin maintains facilities within the project limits as follows:

- Eight 4-inch conduits attached to the underdeck of Structure B-40-0470.
- Underground facilities at various locations.
- Manhole at approximately STA 87+94 EB, LT.
- Manhole at approximately STA 96+24 EB, LT.

Conflicts are anticipated with the 8 4-inch conduits attached to the underdeck of Structure B-40-0470 and the manhole at STA 96+24EB, LT.

8 duct conduit package attached to Structure B-40-0470

This conduit package on record is (8) 4" ABS conduits (6) occupied and (2) vacant attached under EB bridge Structure B-40-0470. The cables will remain operational during construction operations. Within this package is (1) working TDS Metrocom fiber optic cable, (2) working AT&T copper cables and (4) working AT&T fiber-optic cables. The approximate combined weight of these cables, innerduct, and conduits is 108 lbs./ft. There will be no relocation of these lines, only adjustments.

Removal, Temporary Support, and Protection of Suspended Assembly:

Prior to project construction beginning, the AT&T contractor will erect a temporary support system between girders 1 & 2 to support the cables; remove ABS duct material; cut support rods and remove hardware; splay out cables; and construct temporary plywood protection system over the cables & innerduct.

The AT&T contractor will remove the 2' x 2' sheet metal box covering conduit system +/- 12 ft from each abutment wall from the existing box out at abutments. The AT&T contractor will remove (8) ABS ducts, then temporarily support and protect cables contained in package located on Structure B-40-0470. Temporary support system consists of 4"x 4" timbers inserted between girders 1 & 2 at 4 to 4.5 ft intervals and 2" x 4" stringers screwed to the timbers to maintain horizontal intervals and cables contained within 24 in wide protection box. Refer to Construction Details "AT&T B-40-0470 Attachment" for drawing of temporary support system.

The WisDOT contractor shall not damage the cables during construction operations. If the WisDOT contractor decides additional protection is required beyond that installed by AT&T, the WisDOT contractor shall submit the information and details to the AT&T Engineer for review 3 working days prior to making adjustments in line with protecting the cables.

Installation of Eyelets (Inserts):

During re-decking, the WisDOT contractor shall install the eyelets (inserts) for the proposed hanger assemblies, as shown in the construction details. The eyelets (inserts) shall be installed from mid-deck out at intervals of 7'-7" spacing (typical) throughout the length of the bridge (Note: 3 locations require additional inserts for brace struts as shown in Construction Details "AT&T B-40-0470 Attachment").

The AT&T contractor will supply and deliver eyelets (inserts) to the WisDOT contractor upon receiving 10 working days notification. AT&T requests that the WisDOT contractor install the eyelets (inserts) for the proposed hanger assembly, using spacing and quantities as shown in the construction details.

There are (47) intermediate hanger assemblies to be installed (inserts at 7'-7" intervals); and (3) brace strut(s) inserts to be installed for (1) back to back expansion joint assembly at mid-point of deck 181'-9" from front face of back-wall and at the (2) Stop Split Ring Assemblies at 90'-11" from mid-point east and west (see Construction Details "AT&T B-40-0470 Attachment").

The installation of the eyelets (inserts) shall be incidental to the bid item Concrete Masonry Bridges.

AT&T requests 3 working day notice to provide an AT&T inspector on site for the eyelet (insert) installation.

Abutment Backwall Reconstruction:

When excavation takes place behind the backwall, the WisDOT contractor shall work around the active AT&T package at the back of the abutment walls when doing all work. The existing cables shall be maintained and supported behind the abutment and as they pass through the box-outs.

The WisDOT contractor shall notify AT&T at least 5 working days prior to excavation of abutment backwall so AT&T can schedule a crew to remove, support, and protect cables. Provide a schedule allowance of 8 working days per abutment for the AT&T contractor to complete their work.

The WisDOT contractor shall supply a box out at existing locations of both abutment backwalls to accommodate (8) - 4" Fiberglass conduits as shown on drawings (Refer to Construction Details "AT&T B-40-0470 Attachment"). Construction of the box outs shall be incidental to the bid item Concrete Masonry Bridges.

The WisDOT contractor shall provide AT&T a 5 working day notice so AT&T can schedule a crew. After the backwall is poured, forms are stripped, and before backfilling both abutment backwalls, the AT&T contractor will do any additional excavation to expose existing 8-duct conduit package to transition and match elevation and offset of conduit sleeves placed thru each backwall. The AT&T contractor will provide and place (6) - 4" Fiberglass split duct over existing cables and (2) - 4" Fiberglass conduits through the abutment backwall box outs. Provide a schedule allowance of 8 working days per abutment for the AT&T contractor to complete their work.

The AT&T contractor will install the sleeves in the abutment backwalls. The WisDOT contractor shall grout the box outs and plug the ducts to prevent debris from passing through the sleeves. All grouting work around the box outs and plugging of ducts to be completed by the WisDOT contractor shall be incidental to the bid item Concrete Masonry Bridges.

Reinstallation of Suspended Assembly:

The WisDOT contractor shall give AT&T a 10 working day notice to schedule this work. Upon bridge deck completion, stripping of forms, but before bridge painting, AT&T to install (2) complete fiberglass ducts and (6) fiberglass split ducts over cables to complete the conduit system; and removing and hauling temporary protection construction materials as necessary. Refer to Construction Details "AT&T B-40-0470 Attachment". Provide a schedule allowance of 8 working days for the AT&T contractor to replace and finalize the conduit in hangers and affix to bridge using access from above.

The reinstallation of the suspended assembly on Structure B-40-0470 must be completed before Stage 1B is complete and before cleaning and painting of girders for Structure B-40-0470 begins.

AT&T will utilize the WisDOT contractor traffic control to perform their work and will be responsible for any additional traffic control requirements that would not be provided by the WisDOT contractor. AT&T will coordinate for railroad flaggers over the Canadian Pacific Railroad.

Manhole at STA 96+24EB, LT

AT&T has a manhole structure located at STA 96 + 24EB, LT within the proposed crossover limits. During crossover pavement construction in Stage 1A, the WisDOT contractor shall provide grade and AT&T will adjust the frame and cover. The WisDOT contractor shall provide AT&T with a 5 working day notice to schedule a crew. Provide a schedule allowance of 1 working day for AT&T to complete the manhole adjustment.

During final restoration of crossover median in Stage 2B, AT&T will need to return to adjust frame and cover to final grade at the time of median crossover removal and restoration. The WisDOT contractor shall provide AT&T with a 5 working day notice to schedule a crew. Provide a schedule allowance of 1 working day for AT&T to complete the manhole adjustment.

The field contact for AT&T Wisconsin is Deanna Barbian; Phone 414-476-6188; Mobile 414-469-1335; Email: dj5352@att.com.

Schedule of Items

Attached, dated April 20, are the revised Schedule of Items Pages 10 and 15.

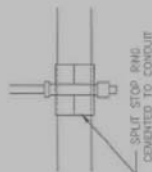
Plan Sheets

The following 8½ x 11-inch sheets are attached and made part of the plans for this proposal:
Revised: 25, 26, 27, 49, 131, and 134.

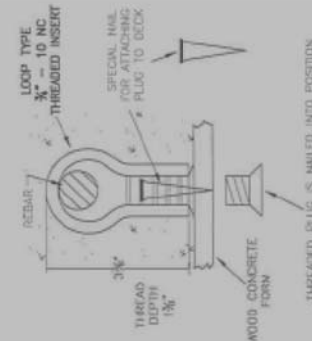
END OF ADDENDUM

ALL PARTS REFERENCED ON THIS DRAWING FROM
 OSSURN ASSOCIATES, INC.
 P.O. BOX 912 LOGA, OHIO 43138
 TOLL FREE 1-800-523-8917

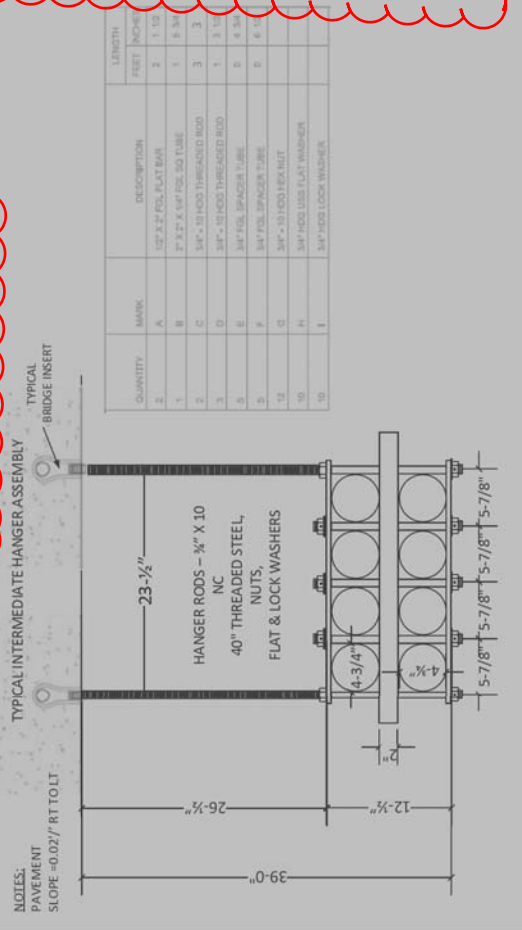
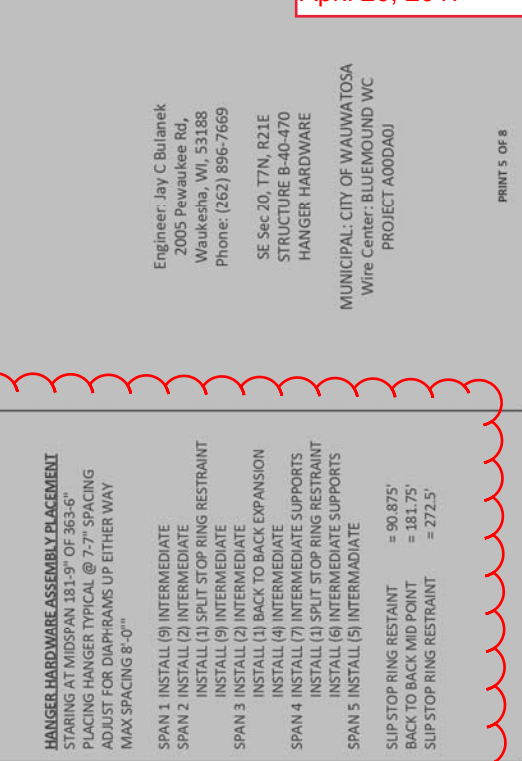
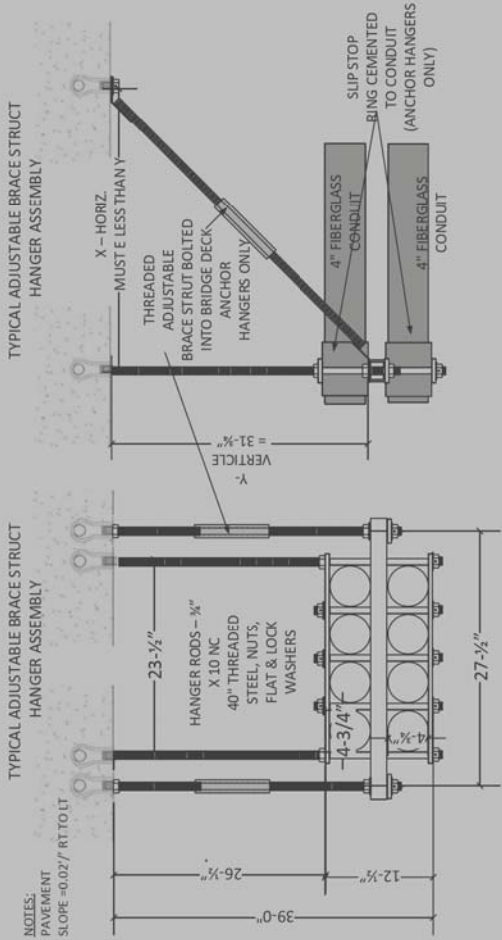
SPLIT STOP RING DETAIL



INSERTS FOR ALL HANGERS AND ANGLE BRACE STRUTS



AT&T CONTRACTOR TO SUPPLY
 MIN. 100 EA DECK INSERTS
 94 EA FOR INTERMEDIATE HANGERS
 6 EA FOR (3) BRACE STRUT LOCATIONS



QUANTITY	MARK	DESCRIPTION	LENGTH FEET	INCHES
2	A	1/2" X 2' FIBR. FLAT BAR	2	1' 10"
1	B	2" X 2" X 1/4" FIBR. 90 TURN	1	8' 3/4"
3	C	1/2" X 10 FIBR. THREADED ROD	3	3'
3	D	1/2" X 10 FIBR. THREADED ROD	3	3'
8	E	1/4" FIBR. SPACER TUBE	8	4' 3/4"
8	F	1/4" FIBR. SPACER TUBE	8	4' 3/4"
12	G	1/4" X 10 FIBR. NUT	12	6'
10	H	1/4" FIBR. USE FLAT WASHER	10	5'
10	I	1/4" FIBR. LOCK WASHER	10	5'

HANGER HARDWARE ASSEMBLY PLACEMENT
 STARTING AT MIDSPAN 181'-9" OF 363'-6"
 PLACING HANGER TYPICAL @ 7'-0" SPACING
 ADJUST FOR DIAPHRAGMS UP EITHER WAY
 MAX SPACING 8'-0"

SPAN 1 INSTALL (9) INTERMEDIATE
 SPAN 2 INSTALL (2) INTERMEDIATE
 INSTALL (1) SPLIT STOP RING RESTRAINT
 INSTALL (9) INTERMEDIATE
 SPAN 3 INSTALL (2) INTERMEDIATE
 INSTALL (1) BACK TO BACK EXPANSION
 INSTALL (4) INTERMEDIATE
 SPAN 4 INSTALL (7) INTERMEDIATE SUPPORTS
 INSTALL (1) SPLIT STOP RING RESTRAINT
 INSTALL (6) INTERMEDIATE SUPPORTS
 SPAN 5 INSTALL (5) INTERMEDIATE

SLIP STOP RING RESTRAINT = 90.875'
 BACK TO BACK MID POINT = 181.75'
 SLIP STOP RING RESTRAINT = 272.5'

Addendum No. 01
 ID 2035-06-70
 Revised Sheet 25
 April 20, 2017

Engineer: Jay C Bulanek
 2005 Pewaukee Rd,
 Waukesha, WI, 53188
 Phone: (262) 896-7669

SE Sec 20, T7N, R21E
 STRUCTURE B-40-470
 HANGER HARDWARE

MUNICIPALITY OF WAUWATOSA
 Wire Center: BLUEMOUND WC
 PROJECT A000DA01

PRINT 5 OF 8

PLAN SHEET PREPARED BY AT&T WISCONSIN.

CONSTRUCTION DETAIL AT&T B-40-0470 ATTACHMENT

COUNTY: MILWAUKEE

HWY: WATERTOWN PLANK ROAD

PROJECT NO: 2035-06-70

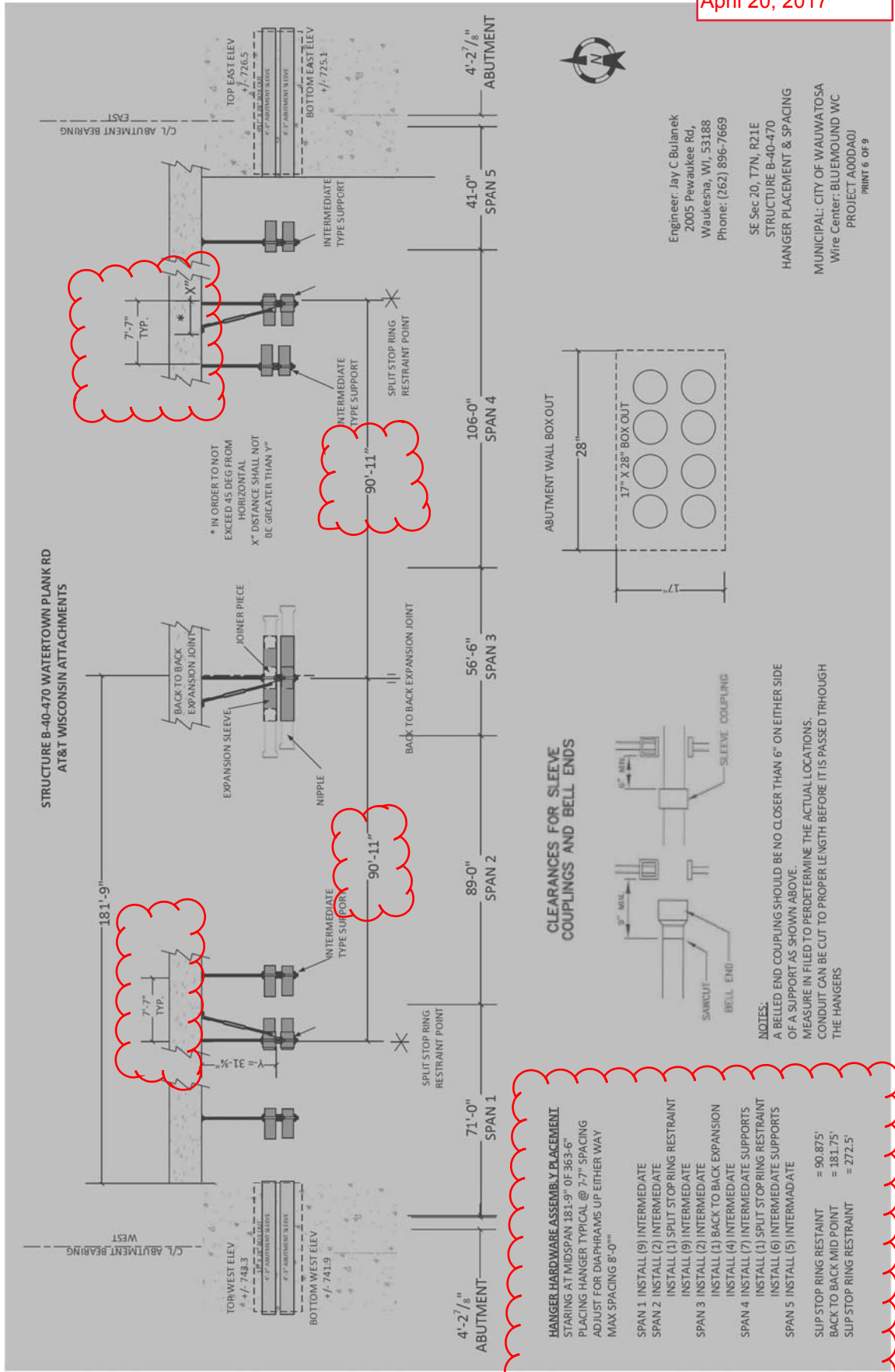
SHEET 25

WISDOT/CADD SHEET 42

DATE: 4-7-2017

FILE NAME: R:\426808\2035-06-70_021001.cdw\1117.dgn

Addendum No. 01
 ID 2035-06-70
 Revised Sheet 26
 April 20, 2017



- HANGER HARDWARE ASSEMBLY PLACEMENT**
 STARING AT MIDSPAN 181'-9" OF 363'-6"
 PLACING HANGER TYPICAL @ 7'-7" SPACING
 ADJUST FOR DIAPHRAGMS UP EITHER WAY
 MAX SPACING 8'-0"
- SPAN 1 INSTALL (9) INTERMEDIATE
 - SPAN 2 INSTALL (2) INTERMEDIATE
 - INSTALL (1) SPLIT STOP RING RESTRAINT
 - INSTALL (9) INTERMEDIATE
 - SPAN 3 INSTALL (2) INTERMEDIATE
 - INSTALL (1) BACK TO BACK EXPANSION
 - INSTALL (4) INTERMEDIATE
 - SPAN 4 INSTALL (7) INTERMEDIATE SUPPORTS
 - INSTALL (1) SPLIT STOP RING RESTRAINT
 - INSTALL (6) INTERMEDIATE SUPPORTS
 - SPAN 5 INSTALL (5) INTERMEDIATE
- SUP STOP RING RESTRAINT = 90.875'
 - BACK TO BACK MID POINT = 181.75'
 - SUP STOP RING RESTRAINT = 272.5'

STRUCTURE B-40-470 WATERTOWN PLANK RD
 AT&T WISCONSIN ATTACHMENTS

Engineer: Jay C Bulanek
 2005 Pawaukee Rd,
 Waukesha, WI, 53188
 Phone: (262) 896-7669

SE Sec 20, T7N, R21E
 STRUCTURE B-40-470
 HANGER PLACEMENT & SPACING

MUNICIPAL: CITY OF WAUWATOSA
 Wire Center: BLUEMOUND WC
 PROJECT A000A01
 PRINT 6 OF 9

PLAN SHEET PREPARED BY AT&T WISCONSIN.

CONSTRUCTION DETAIL AT&T B-40-0470 ATTACHMENT

COUNTY: MILWAUKEE

PROJECT NO: 2035-06-70

SHEET 26

E

PLOT SCALE : 1:100

PLOT NAME :

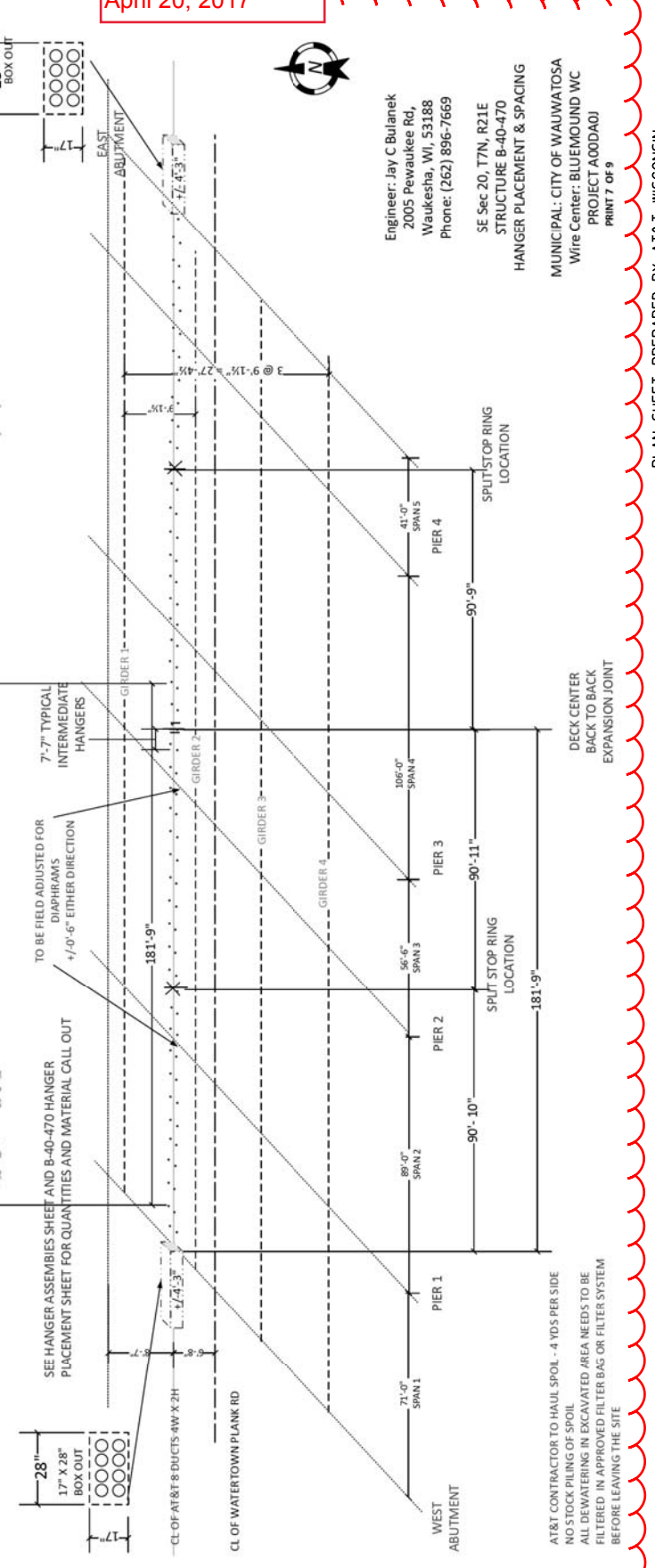
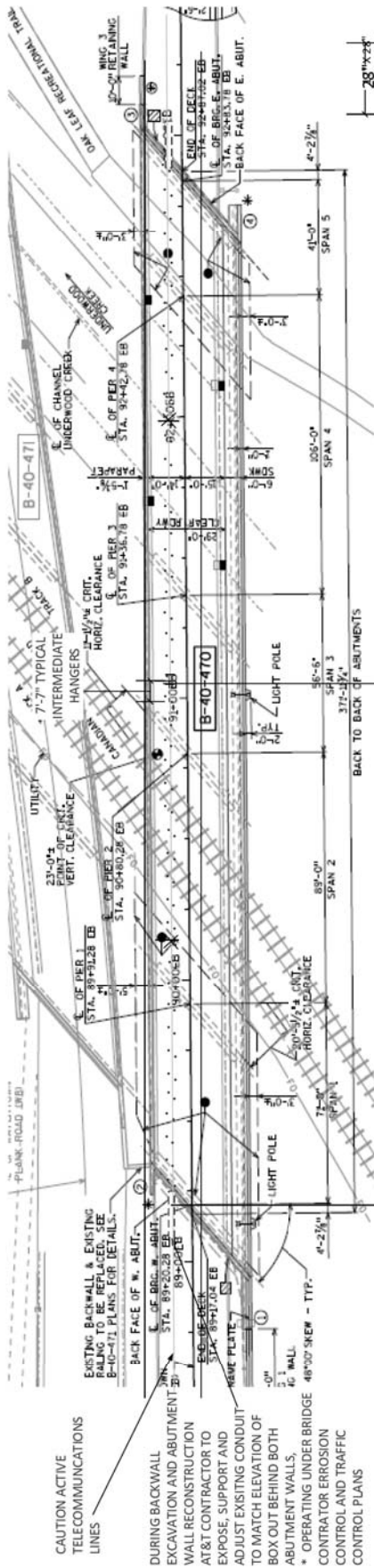
FLOT BY : srbuckr

PLOT DATE : 4/7/2017

FILE NAME : R:\420808\09\2035-06-70_021001.cdw\1117.dgn

WISDOT/CADD SHEET 42

Addendum No. 01
ID 2035-06-70
Revised Sheet 27
April 20, 2017



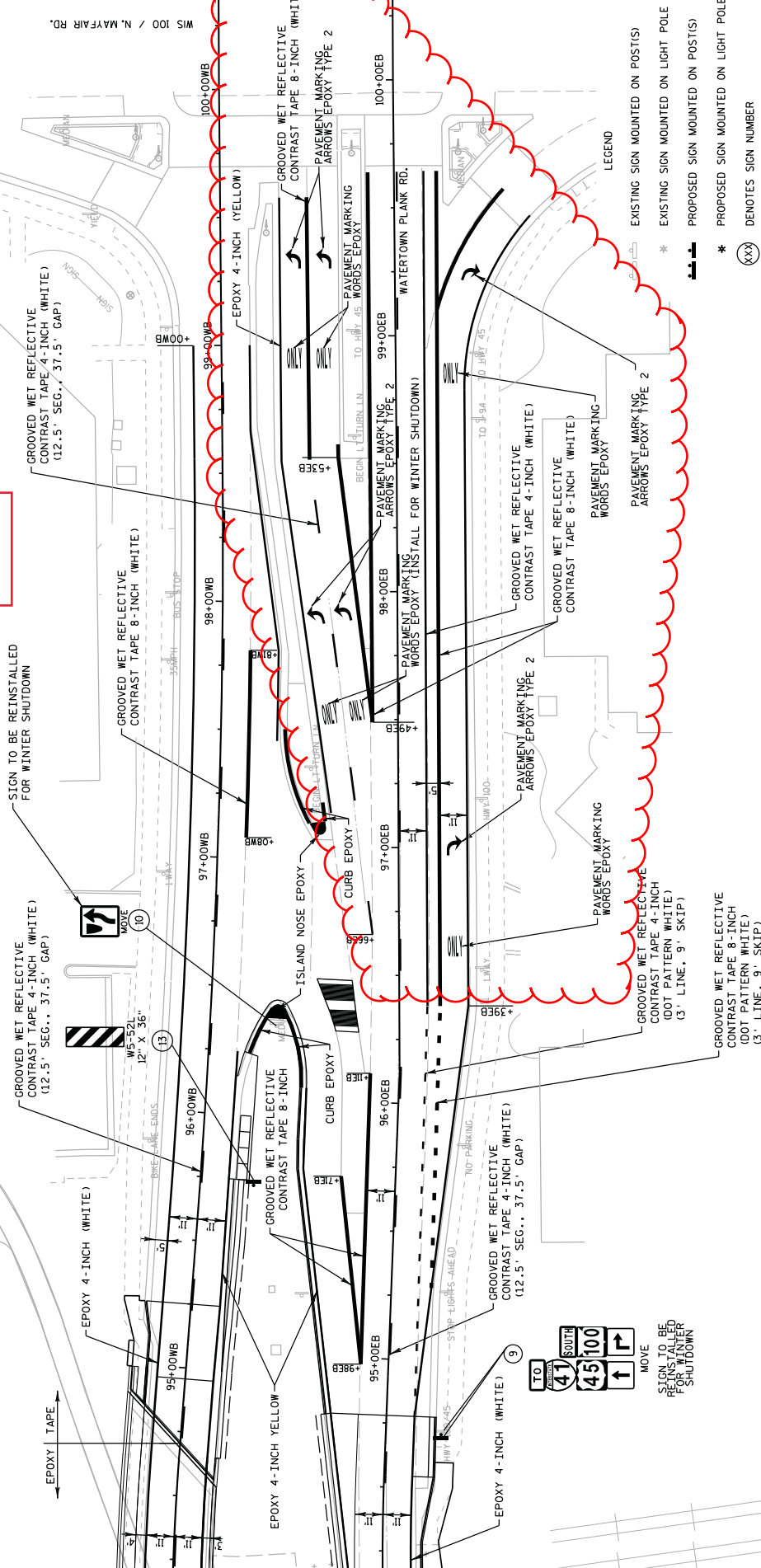
Engineer: Jay C Bulanek
2005 Pewaukee Rd,
Waukesha, WI, 53188
Phone: (262) 896-7669

SE Sec 20, T7N, R21E
STRUCTURE B-40-470
HANGER PLACEMENT & SPACING

MUNICIPAL: CITY OF WAUWATOSA
Wire Center: BLUEMOUND WC
PROJECT A00DA0J
PRINT 7 OF 9

PLAN SHEET PREPARED BY AT&T WISCONSIN.

Addendum No. 01
 ID 2035-06-70
 Revised Sheet 49
 April 20, 2017



- LEGEND
- EXISTING SIGN MOUNTED ON POST(S)
 - EXISTING SIGN MOUNTED ON LIGHT POLE
 - PROPOSED SIGN MOUNTED ON POST(S)
 - PROPOSED SIGN MOUNTED ON LIGHT POLE
 - XXX DENOTES SIGN NUMBER

PROJECT NO: 2035-06-70	HWY: WATERTOWN PLANK ROAD	COUNTY: MILWAUKEE	PERMANENT SIGNING AND MARKING	SHEET 49	E
FILE NAME : R:\420808\09\2035-06-70_023205.ps.dgn			PLOT DATE : 4/10/2017		
PLOT BY : dbck@rtd			PLOT NAME :		
PLOT SCALE : 1:40			WISDOT/CADD SHEET 42		

Addendum No. 01
 ID 2035-06-70
 Revised Sheet 131
 April 20, 2017

RESTORATION									
STATION	STATION	OFFSET	(*)	(*)	(*)	(*)	(*)	(*)	(*)
625.0100	627.0200		628.2027	629.0210	630.0130	630.0200	630.0130	630.0200	630.0200
SY	SY	SY	SY	CWT	LB	LB	LB	LB	LB
TOPSOIL MULCHING	FERTILIZER TYPE B	SEEDING MIXTURE NO. 30	SEEDING TEMPORARY						
CLASS II TYPE C									
86+25EB	96+30EB	L/RT	2020	1.3	37	-	-	-	-
86+25WB	95+10WB	L/RT	740	0.5	13	-	-	-	-
UNDISTRIBUTED									
			690	1000	690	0.4	13	50	50
TOTAL 2035-06-70			3450	1000	3450	2.2	63	50	50

(*) QUANTITIES LISTED ELSEWHERE

PAVEMENT MARKING									
STATION	TO	STATION	OFFSET	(*)	(*)	(*)	(*)	(*)	(*)
646.0106	646.0126	646.0841.S	646.0843.S	647.0166	647.0356	647.0456	647.0566	647.0606	647.0766
LF	LF	LF	LF	EA	EA	LF	LF	EA	LF
PAVEMENT MARKING	PAVEMENT MARKING	PAVEMENT MARKING	PAVEMENT MARKING	PAVEMENT MARKING	PAVEMENT MARKING	PAVEMENT MARKING	PAVEMENT MARKING	PAVEMENT MARKING	PAVEMENT MARKING
EPOXY 4-INCH	GROOVED WET REFLECTIVE CONTRAST TAPE 4-INCH (WHITE)	GROOVED WET REFLECTIVE CONTRAST TAPE 8-INCH (WHITE)	GROOVED WET REFLECTIVE CONTRAST TAPE 8-INCH (WHITE)	ARROWS EPOXY TYPE 2	WORDS EPOXY	CURB EPOXY (YELLOW)	STOP LINE EPOXY 18-INCH	ISLAND NOSE EPOXY (YELLOW)	PAVEMENT MARKING CROSSWALK EPOXY 6-INCH
(WHITE)	(WHITE)	(WHITE)	(WHITE)	TYPE 2	EPOXY	(YELLOW)	LF	EACH	LF
74+00EB	-	96+50EB	L/RT	2570	1880	100	30	1	100
76+50WB	-	105+00WB	L/RT	2090	1830	-	15	-	100
NB HWY 100 LEFT TURN LANE TO WB WATERTOWN PLANK RC									
				4660	3710	100	45	1	200
TOTALS 2035-06-70				8370	3710	100	45	1	200

(*) QUANTITIES LISTED ELSEWHERE

ALL QUANTITIES ARE CATEGORY 0010 UNLESS NOTED

TEMPORARY PAVEMENT MARKING

STAGE	STATION	TO	STATION	LOCATION	646.0106 (*) PAVEMENT MARKING EPOXY 4-INCH YELLOW		646.0126 (*) PAVEMENT MARKING EPOXY 8-INCH WHITE		647.0566 (*) PAVEMENT MARKING STOP LINE EPOXY 18-INCH		646.0600 REMOVING PAVEMENT MARKINGS		647.0955 REMOVING PAVEMENT MARKING ARROWS		647.0965 REMOVING PAVEMENT MARKING WORDS		649.0400 TEMPORARY PAVEMENT MARKING REMOVABLE TAPE 4-INCH		
					LF	LF	LF	LF	LF	LF	LF	LF	LF	LF	LF	LF	LF	LF	LF
1A	74+38EB	-	75+88EB	WEST OF N.115TH STREET	-	-	-	-	-	-	-	-	-	-	-	-	-	-	-
1A	102+40WB	-	104+65WB	EAST OF WIS 100 LEFT TURN LANE	-	-	-	-	-	-	-	-	-	-	-	-	-	-	-
1A	WIS 100 / MAYFAIR ROAD	-			-	-	-	-	-	-	-	-	-	-	-	-	-	-	-
1A	76+60EB	-	99+40EB	WATERTOWN PLANK ROAD	-	-	-	-	-	-	440	-	-	-	-	-	-	-	1730
1A	76+60WB	-	99+40WB	WATERTOWN PLANK ROAD	-	-	-	-	-	-	630	-	-	-	-	-	-	-	2110
1B	76+60EB	-	99+40EB	WATERTOWN PLANK ROAD	-	-	-	-	-	-	440	-	-	-	-	-	-	-	320
1B	76+60WB	-	99+40WB	WATERTOWN PLANK ROAD	-	-	-	-	-	-	220	-	-	-	-	-	-	-	440
W	76+60EB	-	99+40EB	WINTER SHUTDOWN	480	570	190	-	-	-	3350	-	-	-	-	-	-	-	-
W	76+60WB	-	105+00WB	WINTER SHUTDOWN	640	1890	-	-	12	-	3050	-	-	-	-	-	-	-	-
W	HWY 100 / MAYFAIR ROAD	-			40	-	325	-	-	-	-	-	-	-	-	-	-	-	-
2A	74+38EB	-	75+88EB	WEST OF N.115TH STREET	-	-	-	-	-	-	-	-	-	-	-	-	-	-	-
2A	102+40WB	-	104+65WB	EAST OF WIS 100 LEFT TURN LANE	-	-	-	-	-	-	-	-	-	-	-	-	-	-	-
2A	WIS 100 / MAYFAIR ROAD	-			-	-	-	-	-	-	-	-	-	-	-	-	-	-	-
2A	76+60EB	-	99+40EB	WATERTOWN PLANK ROAD	-	-	-	-	-	-	-	-	-	-	-	-	-	-	-
2A	76+60WB	-	99+40WB	WATERTOWN PLANK ROAD	-	-	-	-	-	-	1105	-	-	-	-	-	-	-	1170
2B	76+60EB	-	99+65EB	WATERTOWN PLANK ROAD	-	-	-	-	-	-	720	-	-	-	-	-	-	-	1430
2B	76+60WB	-	99+40WB	WATERTOWN PLANK ROAD	-	-	-	-	-	-	2800	-	-	-	-	-	-	-	1730
TOTALS 2035-06-70					3620		515		12		14205		6		6		235		16258

(*) QUANTITIES LISTED ELSEWHERE

TEMPORARY PAVEMENT MARKING (CONT.)

STAGE	STATION	TO	STATION	LOCATION	649.0402 TEMPORARY PAVEMENT MARKING PAINT 4-INCH YELLOW		649.0801 TEMPORARY PAVEMENT MARKING REMOVABLE TAPE 8-INCH WHITE		649.0802 TEMPORARY PAVEMENT MARKING PAINT 8-INCH WHITE		649.1200 TEMPORARY PAVEMENT MARKING STOP LINE REMOVABLE TAPE 18-INCH	
					LF	LF	LF	LF	LF	LF	LF	LF
1A	74+38EB	-	75+88EB	WEST OF N.115TH STREET	-	-	-	-	150	-	-	-
1A	102+40WB	-	104+65WB	EAST OF WIS 100 LEFT TURN LANE	-	-	-	-	125	-	-	-
1A	WIS 100 / MAYFAIR ROAD	-			-	-	-	-	-	-	-	-
1A	76+60EB	-	99+40EB	WATERTOWN PLANK ROAD	-	-	-	-	295	-	-	-
1A	76+60WB	-	99+40WB	WATERTOWN PLANK ROAD	-	-	-	-	295	-	-	-
1B	76+60EB	-	99+40EB	WATERTOWN PLANK ROAD	1560	1550	-	-	-	-	11	-
1B	76+60WB	-	99+40WB	WATERTOWN PLANK ROAD	1710	1550	-	-	-	-	-	-
W	76+60EB	-	99+40EB	WINTER SHUTDOWN	-	-	-	-	-	-	-	-
W	76+60WB	-	105+00WB	WINTER SHUTDOWN	-	-	-	-	-	-	-	-
W	HWY 100 / MAYFAIR ROAD	-			-	-	-	-	-	-	-	-
2A	74+38EB	-	75+88EB	WEST OF N.115TH STREET	-	-	-	-	150	-	-	-
2A	102+40WB	-	104+65WB	EAST OF WIS 100 LEFT TURN LANE	-	-	-	-	125	-	-	-
2A	WIS 100 / MAYFAIR ROAD	-			-	-	-	-	-	-	-	-
2A	76+60EB	-	99+40EB	WATERTOWN PLANK ROAD	765	735	-	-	-	-	11	-
2A	76+60WB	-	99+40WB	WATERTOWN PLANK ROAD	735	735	-	-	-	-	-	-
2B	76+60EB	-	99+40EB	WATERTOWN PLANK ROAD	-	-	290	-	-	-	-	-
2B	76+60WB	-	99+40WB	WATERTOWN PLANK ROAD	-	-	170	-	-	-	-	-
TOTALS 2035-06-70					9340		1300		300		22	

(*) QUANTITIES LISTED ELSEWHERE

Addendum No. 01
ID 2035-06-70
Revised Sheet 134
April 20, 2017

ALL QUANTITIES ARE CATEGORY 0010 UNLESS NOTED



Proposal Schedule of Items

Proposal ID: 20170509009 Project(s): 2035-06-70

Federal ID(s): WISC 2017267

SECTION: 0001 Contract Items

Alt Set ID: Alt Mbr ID:

Proposal Line Number	Item ID Description	Approximate Quantity and Units	Unit Price	Bid Amount
1370	645.0120 Geotextile Type HR	1,550.000 SY	_____.	_____.
1380	646.0106 Pavement Marking Epoxy 4-Inch	11,990.000 LF	_____.	_____.
1390	646.0126 Pavement Marking Epoxy 8-Inch	615.000 LF	_____.	_____.
1400	646.0600 Removing Pavement Markings	14,205.000 LF	_____.	_____.
1410	646.0841.S Pavement Marking Grooved Wet Reflective Contrast Tape 4-Inch	900.000 LF	_____.	_____.
1420	646.0843.S Pavement Marking Grooved Wet Reflective Contrast Tape 8-Inch	1,435.000 LF	_____.	_____.
1430	647.0356 Pavement Marking Words Epoxy	6.000 EACH	_____.	_____.
1440	647.0456 Pavement Marking Curb Epoxy	45.000 LF	_____.	_____.
1450	647.0566 Pavement Marking Stop Line Epoxy 18-Inch	56.000 LF	_____.	_____.
1460	647.0606 Pavement Marking Island Nose Epoxy	1.000 EACH	_____.	_____.
1470	647.0766 Pavement Marking Crosswalk Epoxy 6-Inch	200.000 LF	_____.	_____.
1480	647.0965 Removing Pavement Markings Words	6.000 EACH	_____.	_____.
1490	649.0400 Temporary Pavement Marking Removable Tape 4-Inch	16,258.000 LF	_____.	_____.
1500	649.0402 Temporary Pavement Marking Paint 4-Inch	9,340.000 LF	_____.	_____.
1510	649.0801 Temporary Pavement Marking Removable Tape 8-Inch 01. 2035-06-70	1,300.000 LF	_____.	_____.



Proposal Schedule of Items

Proposal ID: 20170509009 Project(s): 2035-06-70

Federal ID(s): WISC 2017267

SECTION: 0001 Contract Items

Alt Set ID: Alt Mbr ID:

Proposal Line Number	Item ID Description	Approximate Quantity and Units	Unit Price	Bid Amount
2090	SPV.0105 Special 02. TEMPORARY INFRARED EVP SYSTEM W WATERTOWN PLANK RD & N 113TH ST	LS	LUMP SUM	_____.
2100	SPV.0105 Special 03. TRANSPORT AND INSTALL CITY OF WAUWATOSA FURNISHED ITERIS VIDEO DETECTION SYS	LS	LUMP SUM	_____.
2110	SPV.0105 Special 04. TRANSPORT TRAFFIC SIGNAL AND INTERSECTION LIGHTING MATERIALS	LS	LUMP SUM	_____.
2120	SPV.0105 Special 05. EVP DETECTOR HEAD INSTALLATION W WATERTOWN PLANK RD & N 113TH ST	LS	LUMP SUM	_____.
2130	SPV.0105 Special 06. TEMPORARY GRADE CROSSING CANADIAN PACIFIC RAILROAD	LS	LUMP SUM	_____.
2140	SPV.0105 Special 07. CONSTRUCTION STAKING RIGHT-OF-WAY	LS	LUMP SUM	_____.
2150	SPV.0180 Special 01. CLEARING (OUTSIDE RIGHT-OF-WAY)	1,160.000 SY	_____.	_____.
2160	647.0166 Pavement Marking Arrows Epoxy Type 2	6.000 EACH	_____.	_____.
2170	647.0955 Removing Pavement Markings Arrows	6.000 EACH	_____.	_____.
Section: 0001			Total:	_____.
				Total Bid: _____.

