

Wisconsin Department of Transportation

April 28, 2017

Division of Transportation Systems Development

Bureau of Project Development
4802 Sheboygan Avenue, Rm 601
P O Box 7916
Madison, WI 53707-7916

Telephone: (608) 266-1631
Facsimile (FAX): (608) 266-8459

NOTICE TO ALL CONTRACTORS:

Proposal #10: 2415-00-70, WISC 2017 268
South 60th Street
W Cold Spring Rd to W Morgan Ave
Local Street
Milwaukee County

Letting of May 9, 2017

This is Addendum No. 01, which provides for the following:

Special Provisions:

Revised Special Provisions	
Article No.	Description
3	Prosecution and Progress
23	Landscape Planting Surveillance and Care Cycles

Schedule of Items:

Revised Bid Item Quantities					
Bid Item	Item Description	Unit	Old Quantity	Revised Quantity	Proposal Total
416.0170	Concrete Driveway 7-Inch	SY	1434	-99	1335
416.0180	Concrete Driveway 8-Inch	SY	50	99	149

Plan Sheets:

Revised Plan Sheets	
Plan Sheet	Plan Sheet Title (brief description of changes to sheet)
49 - 50	Plan Detail Sheets (Modify three driveways from 7-Inch Concrete to 8-Inch Concrete)
170	Miscellaneous Quantity (Modify Concrete Driveway Quantities)

Other

Revise the contract time for completion from a completion date of August 3, 2018 to a completion date of October 16, 2019.

The responsibility for notifying potential subcontractors and suppliers of these changes remains with the prime contractor.

Sincerely,

Mike Coleman

Proposal Development Specialist
Proposal Management Section

ADDENDUM NO. 01

2415-00-70

April 28, 2017

Special Provisions

3. Prosecution and Progress

Replace paragraphs 8 and 9 with the following:

Complete all contract work including restoration and pavement markings within the limits of South 60th Street construction limits between Forest Home (WIS 24) and Morgan, and open the roadway to through traffic prior to 12:01 AM November 16, 2017.

If the contractor fails to complete all contract work excluding all trees, shrubs, plants, and other landscaping items within the construction limits of South 60th Street between Forest Home (WIS 24) and Morgan Ave and open the roadway to through traffic prior to 12:01 AM September 30, 2017, the department will assess the contractor \$2,065 in interim liquidated damages for each calendar day that the roadway remains closed after 12:01 AM, September 30, 2017. An entire calendar day will be charged for any period of time within a calendar day that the road remains closed beyond 12:01 AM.

Furnishing and planting all trees, shrubs, and plants for the roadway segment between Forest Home (WIS 24) and Morgan shall not commence until May 1, 2018, and all plantings shall be completed prior to 12:01 AM May 15, 2018. Complete all landscape surveillance and care cycles prior to 12:01 AM October 1, 2018.

Complete all contract work including restoration and pavement markings within the limits of South 60th Street construction limits between Cold Spring Road and Forest Home (WIS 24) and open the roadway to through traffic prior to 12:01 AM August 3, 2018.

If the contractor fails to complete all contract work excluding all trees, shrubs, plants, and other landscaping items within the limits of South 60th Street construction limits between Cold Spring Road and Forest Home (WIS 24) and open the roadway to through traffic prior to 12:01 AM August 3, 2018, the department will assess the contractor \$2,065 in interim liquidated damages for each calendar day that the roadway remains closed after 12:01 AM, August 3, 2018. An entire calendar day will be charged for any period of time within a calendar day that the road remains closed beyond 12:01 AM.

Furnishing and planting all trees, shrubs, and plants for the roadway segment between Cold Spring Road and Forest Home (WIS 24) shall not commence until May 1, 2019, and all plantings shall be completed prior to 12:01 AM May 15, 2019. Complete all landscape surveillance and care cycles prior to 12:01 AM October 17, 2019.

23. Landscape Planting Surveillance and Care Cycles

Replace entire article language with the following:

The work under this item shall be in accordance to the plans, section 632 of the standard specifications, and as herein after provided.

A plant establishment period of 1 year shall follow the completion of planting.

If the care specialist fails to perform any of the required care cycles as specified in standard spec 632.3.19.1, the department will assess daily damages in the amount of \$200 to cover the cost of performing the work with other forces. The department will assess these damages for each day the

requirements of the care cycle remain incomplete, except when the engineer extends the required time period.

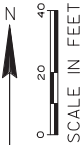
Schedule of Items

Attached, dated April 28, 2017, are the revised Schedule of Items Page 2.

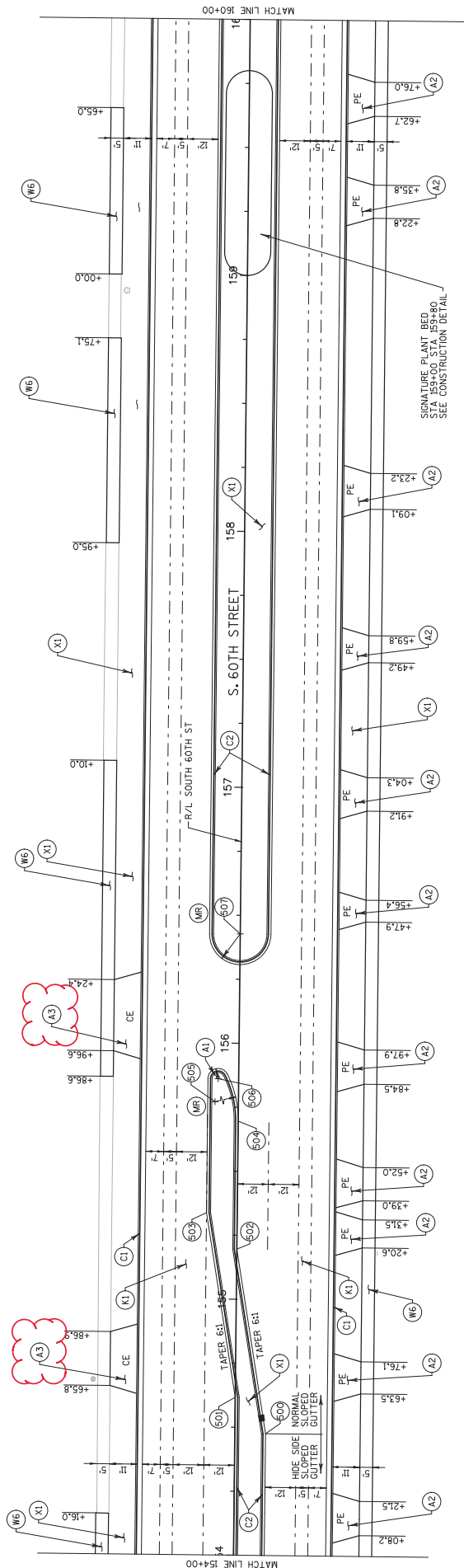
Plan Sheets

The following 8¹/₂ x 11-inch sheets are attached and made part of the plans for this proposal:
Revised: 49, 50, and 170.

END OF ADDENDUM



Addendum No. 01
ID 2415-00-70
Revised Sheet 49
April 28, 2017

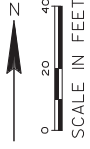


LEGEND

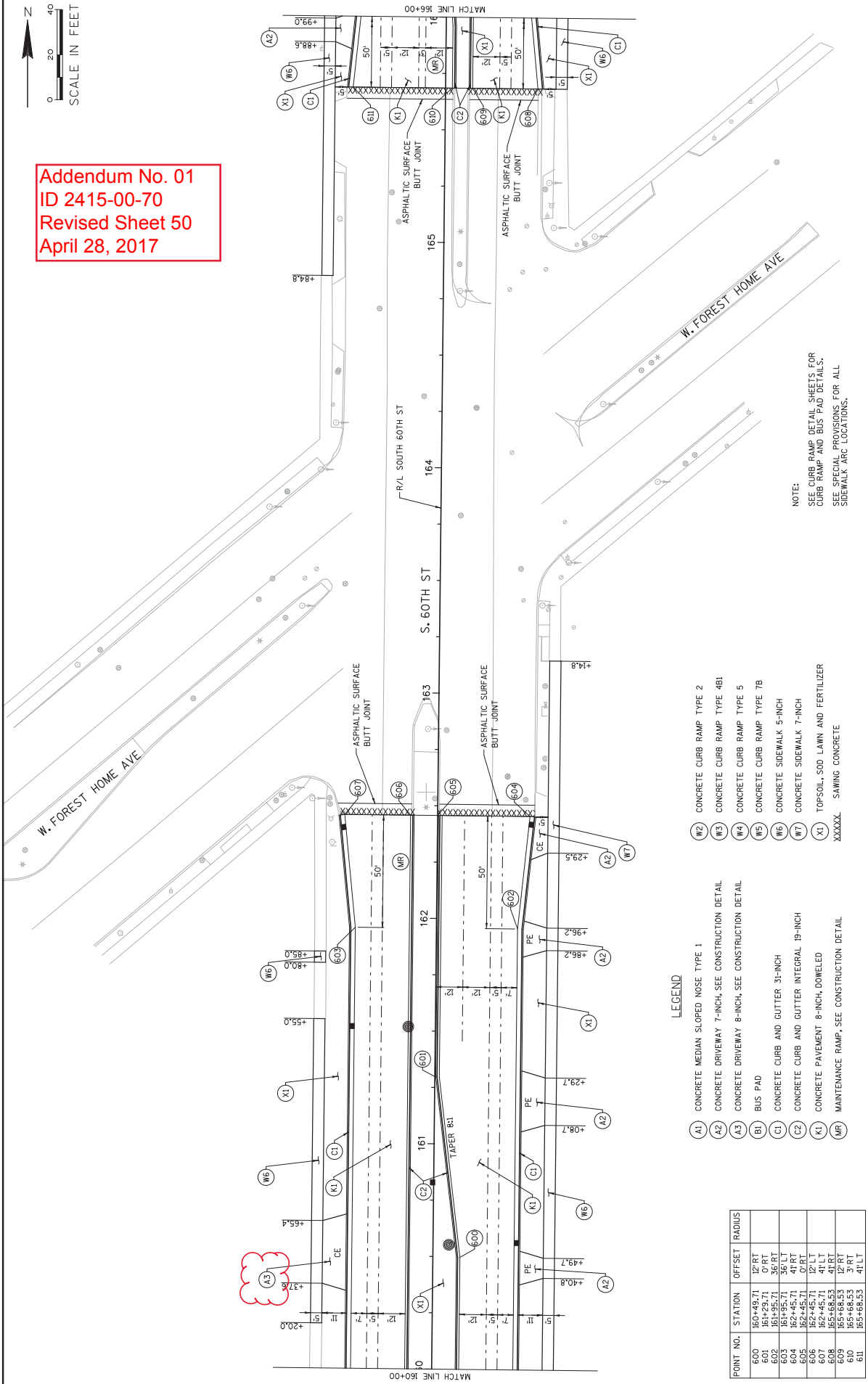
- (A1) CONCRETE MEDIUM SLOPED NOSE TYPE 1
- (A2) CONCRETE DRIVEWAY 7-INCH, SEE CONSTRUCTION DETAIL
- (A3) CONCRETE DRIVEWAY 8-INCH, SEE CONSTRUCTION DETAIL
- (B1) BUS PAD
- (C1) CONCRETE CURB AND GUTTER 3-INCH
- (C2) CONCRETE CURB AND GUTTER INTEGRAL 19-INCH
- (K1) CONCRETE PAVEMENT 8-INCH, DOWELED
- (MR) MAINTENANCE RAMP, SEE CONSTRUCTION DETAIL
- (W2) CONCRETE CURB RAMP TYPE 2
- (W3) CONCRETE CURB RAMP TYPE 4B1
- (W4) CONCRETE CURB RAMP TYPE 5
- (W5) CONCRETE CURB RAMP TYPE 7B
- (W6) CONCRETE SIDEWALK 5-INCH
- (W7) CONCRETE SIDEWALK 7-INCH
- (X1) TOPSOIL, SOO LAWN AND FERTILIZER
XXXXXX SAMING CONCRETE

NOTE:
SEE CURB RAMP DETAILS FOR CURB RAMP AND BUS PAD DETAILS.
SEE SPECIAL PROVISIONS FOR ALL SIDEWALK ARC LOCATIONS.

POINT NO.	STATION	OFFSET	RADIUS
500	154+71.58	12' RT	
500	154+41.58	0' RT	
502	155+19.58	0' RT	
503	155+33.69	12' LT	
504	155+69.58	0' RT	40'
505	155+69.58	40' LT	
506	156+07.74	0' RT	12'
507	156+42.74	0' RT	12'



Addendum No. 01
ID 2415-00-70
Revised Sheet 50
April 28, 2017



NOTE:
SEE CURB RAMP DETAIL SHEETS FOR CURB RAMP AND BUS PAD DETAILS.
SEE SPECIAL PROVISIONS FOR ALL SIDEWALK ARC LOCATIONS.

LEGEND

- (A1) CONCRETE MEDIAN SLOPED NOSE TYPE 1
- (A2) CONCRETE DRIVEWAY 7-INCH, SEE CONSTRUCTION DETAIL
- (A3) CONCRETE DRIVEWAY 8-INCH, SEE CONSTRUCTION DETAIL
- (B1) BUS PAD
- (C1) CONCRETE CURB AND GUTTER 31-INCH
- (C2) CONCRETE CURB AND GUTTER INTEGRAL 19-INCH
- (K1) CONCRETE PAVEMENT 8-INCH, DOWELED
- (MR) MAINTENANCE RAMP, SEE CONSTRUCTION DETAIL
- (W2) CONCRETE CURB RAMP TYPE 2
- (W3) CONCRETE CURB RAMP TYPE 4B1
- (W4) CONCRETE CURB RAMP TYPE 5
- (W5) CONCRETE CURB RAMP TYPE 7B
- (W6) CONCRETE SIDEWALK 5-INCH
- (W7) CONCRETE SIDEWALK 7-INCH
- (X1) TOPSOIL, SOO LAWN AND FERTILIZER
- XXXXX SAWING CONCRETE

POINT NO.	STATION	OFFSET	RADIUS
600	160+49.71	12' RT	0' RT
601	161+29.71	36' RT	36' RT
602	161+95.71	36' LT	36' LT
603	161+95.71	36' RT	36' RT
604	162+45.71	41' RT	41' RT
605	162+45.71	12' LT	12' LT
606	162+45.71	12' LT	12' LT
607	162+45.71	41' LT	41' LT
608	165+68.53	41' RT	41' RT
609	165+68.53	12' RT	12' RT
610	165+68.53	3' RT	3' RT
611	165+68.53	41' LT	41' LT

CONCRETE PAVEMENT AND DRIVEWAYS

Table with columns: 415.0080, 415.0210, 416.0170, 715.0415, CONCRETE, CONCRETE INCENTIVE, STRENGTH, PAVEMENT, 8-INCH, 7-INCH, 8-INCH, SY, SY, SY, DOL

3

CONCRETE PAVEMENT AND DRIVEWAYS

Table with columns: 415.0080, 415.0210, 416.0170, 715.0415, CONCRETE, CONCRETE INCENTIVE, STRENGTH, PAVEMENT, 8-INCH, 7-INCH, 8-INCH, SY, SY, SY, DOL

3

CONCRETE PAVEMENT AND DRIVEWAYS

Table with columns: 415.0080, 415.0210, 416.0170, 715.0415, CONCRETE, CONCRETE INCENTIVE, STRENGTH, PAVEMENT, 8-INCH, 7-INCH, 8-INCH, SY, SY, SY, DOL

3

STAGE 1 S. 60TH STREET 165+09 - 172+12 1,918 LT 575

STAGE 2 S. 60TH STREET 165+09 - 172+12 1,918 LT 575

STAGE 2 SUBTOTAL 4985 0 181 0 1498

STAGE 2 S. 60TH STREET 165+69 - 172+12 1,971 RT 591

STAGE 2 SUBTOTAL 4844 1 256 0 1453

STAGE 3 S. 100TH STREET 129+88 - 129+81 581 LT 174

STAGE 3 S. 100TH STREET 129+81 - 132+37 1,745 LT 523

STAGE 3 SUBTOTAL 12471 6 357 149 3741

STAGE 4 S. 100TH STREET 125+88 - 126+81 RT 607

STAGE 4 S. 100TH STREET 126+81 - 132+37 1,573 RT 472

STAGE 4 SUBTOTAL 12733 0 341 0 3820

Addendum No. 01 ID 2415-00-70 Revised Sheet 170 April 28, 2017



Proposal Schedule of Items

Proposal ID: 20170509010 Project(s): 2415-00-70

Federal ID(s): WISC 2017268

SECTION: 0001 Contract Items

Alt Set ID: Alt Mbr ID:

Proposal Line Number	Item ID Description	Approximate Quantity and Units	Unit Price	Bid Amount
0170	415.0080 Concrete Pavement 8-Inch	35,042.000 SY	_____.	_____.
0180	415.0210 Concrete Pavement Gaps	7.000 EACH	_____.	_____.
0190	416.0170 Concrete Driveway 7-Inch	1,335.000 SY	_____.	_____.
0200	416.0180 Concrete Driveway 8-Inch	149.000 SY	_____.	_____.
0210	416.0610 Drilled Tie Bars	406.000 EACH	_____.	_____.
0220	455.0605 Tack Coat	40.000 GAL	_____.	_____.
0230	460.5223 HMA Pavement 3 LT 58-28 S	108.000 TON	_____.	_____.
0240	460.5224 HMA Pavement 4 LT 58-28 S	143.000 TON	_____.	_____.
0250	465.0125 Asphaltic Surface Temporary	259.000 TON	_____.	_____.
0260	465.0310 Asphaltic Curb	240.000 LF	_____.	_____.
0270	601.0331 Concrete Curb & Gutter 31-Inch	11,147.000 LF	_____.	_____.
0280	601.0600 Concrete Curb Pedestrian	382.000 LF	_____.	_____.
0290	602.0410 Concrete Sidewalk 5-Inch	44,876.000 SF	_____.	_____.
0300	602.0420 Concrete Sidewalk 7-Inch	2,043.000 SF	_____.	_____.
0310	602.0505 Curb Ramp Detectable Warning Field Yellow	644.000 SF	_____.	_____.
0320	608.0412 Storm Sewer Pipe Reinforced Concrete Class IV 12-Inch	998.000 LF	_____.	_____.