

Wisconsin Department of Transportation

June 29, 2017

Division of Transportation Systems Development

Bureau of Project Development
4802 Sheboygan Avenue, Rm 601
P O Box 7916
Madison, WI 53707-7916

Telephone: (608) 266-1631
Facsimile (FAX): (608) 266-8459

NOTICE TO ALL CONTRACTORS:

Proposal #10: 2240-18-70, WISC 2017 343
STH 36
Intersect with CTH Y
STH 36
Racine County

Letting of July 11, 2017

This is Addendum No. 02, which provides for the following:

Schedule of Items:

Revised Bid Item Quantities					
Bid Item	Item Description	Unit	Old Quantity	Revised Quantity	Proposal Total
204.0100	Removing Pavement	SY	635	93	728
205.0100	Excavation Common	CY	3,342	33	3,375
305.0120	Base Aggregate Dense 1-1/4-Inch	TON	2,972	60	3,032
602.0410	Concrete Sidewalk 5-Inch	SF	5,312	537	5,849
602.0505	Curb Ramp Detectable Warning Field Yellow	SF	16	112	128
643.0300	Traffic Control Drums	DAY	9,360	720	10,080
690.0150	Sawing Asphalt	LF	790	230	1,020
690.0250	Sawing Concrete	LF	845	50	895

Added Bid Item Quantities					
Bid Item	Item Description	Unit	Old Quantity	Revised Quantity	Proposal Total
465.0305	Asphaltic Surface Safety Islands	TON	0	20	20
601.0411	Concrete Curb & Gutter 30-Inch Type D	LF	0	84	84
601.0600	Concrete Curb Pedestrian	LF	0	115	115

Plan Sheets:

Revised Plan Sheets	
Plan Sheet	Plan Sheet Title (brief description of changes to sheet)
4	Project Overview: (Revised existing safety islands on CTH Y to include bike/ped accommodation and updated the pedestrian refuge on STH 36 to be 8-ft wide)
17	Pavement Removal: CTH Y (Added Removing Pavement and Common Excavation in the existing safety islands)
20	Plan Details: (Revised existing safety islands on CTH Y to include bike/ped accommodation and updated the pedestrian refuge on STH 36 to be 8-ft wide)
23	Pavement Grades: STH 36 (Updated the pedestrian refuge to be 8-ft wide)
26	Erosion Control Plan: (Revised existing safety islands on CTH Y to include bike/ped accommodation and updated the pedestrian refuge on STH 36 to be 8-ft wide)
36	Permanent Signing: CTH Y (Updated the signing in the safety islands to coincide with the new monotube locations)
48	Traffic Control Plan – Stage 2: CTH Y (Added drums around the existing safety islands)
55	Traffic Signal Plan: CTH Y (Revised monotube, pull box and push button placement in regards to the new bike/ped accommodation)
62	Pavement Markings: CTH Y (Revised crosswalk and yield markings)
70	Miscellaneous Quantities: (Revised Removals, Base Aggregate Items and Sawing Pavement tables)
71	Miscellaneous Quantities: (Revised Pavement Items, Concrete Sidewalk and Curb and Gutter tables)
74	Miscellaneous Quantities: (Revised Traffic Control table)
77	Miscellaneous Quantities: (Revised Common Excavation table)

Added Plan Sheets	
Plan Sheet	Plan Sheet Title (brief description of why sheet was added)
7A	Construction Detail: CTH Y (Added safety island details and sidewalk grades)

Schedule of Items

Attached, dated June 29, 2017, are the revised Schedule of Items Pages 1 – 10.

Plan Sheets

The following 8½ x 11-inch sheets are attached and made part of the plans for this proposal:

Revised: 4, 17, 20, 23, 26, 36, 48, 55, 62, 70, 71, 74, and 77.

Added: 7A

The responsibility for notifying potential subcontractors and suppliers of these changes remains with the prime contractor.

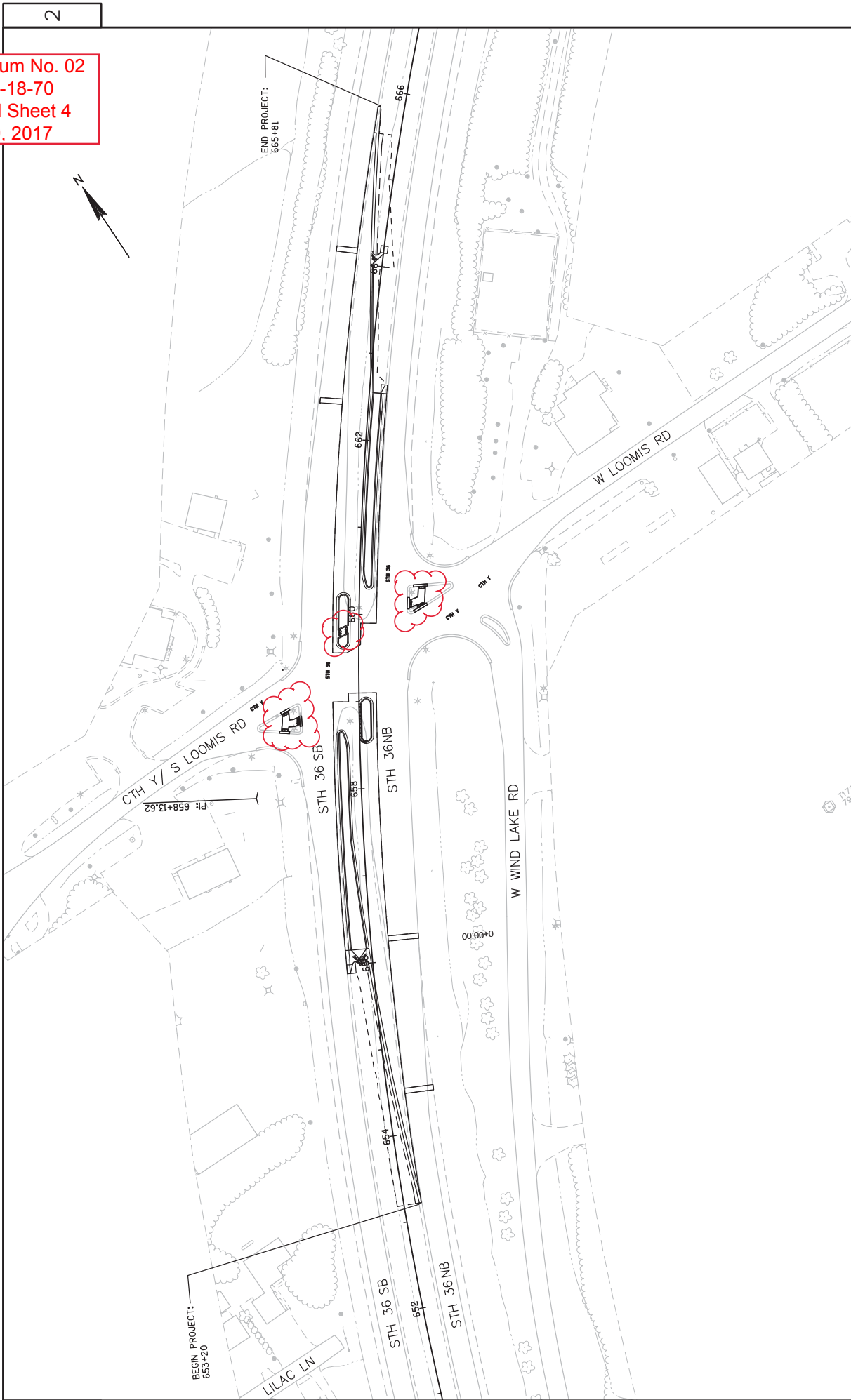
Sincerely,

Mike Coleman

Proposal Development Specialist
Proposal Management Section

END OF ADDENDUM

Addendum No. 02
ID 2240-18-70
Revised Sheet 4
June 29, 2017



2

2

PROJECT NO: 2240-18-70

HWY: STH 36

COUNTY: RACINE

PROJECT OVERVIEW

SHEET 4

E

FILE NAME : N:\NPS\CAD\CAD22401800\0220201_LAYOUT.PLOT

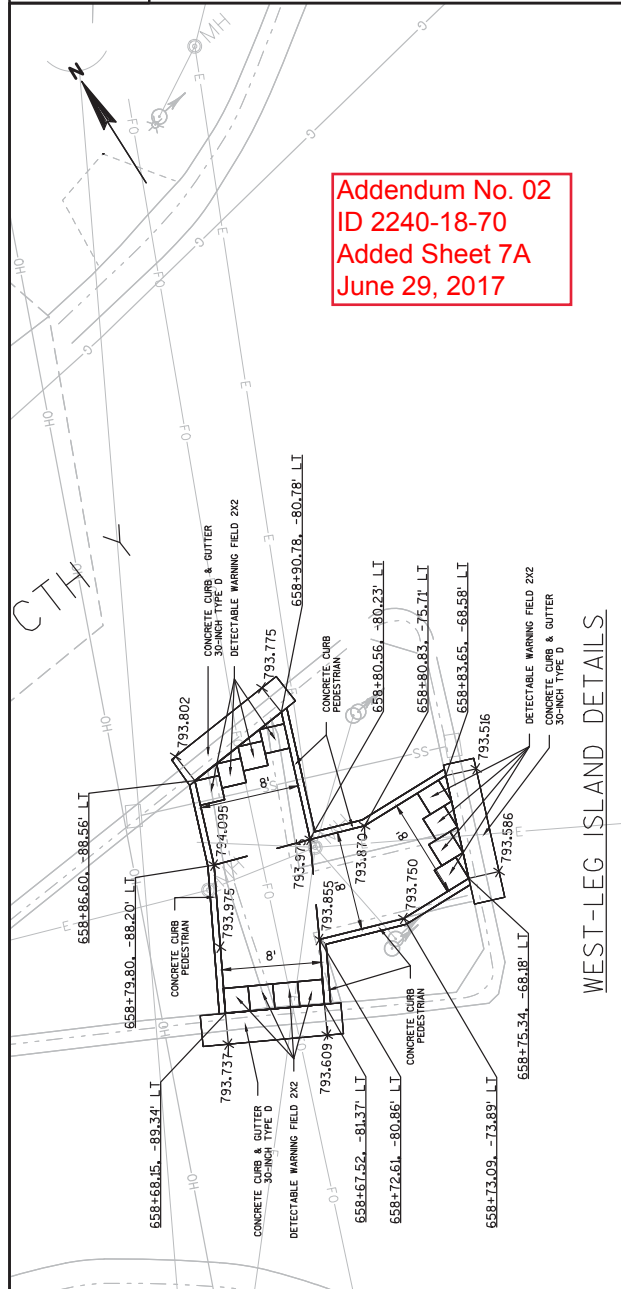
PLOT BY : SCHROEDER, JENNIFER

PLOT SCALE : 1 IN=100 FT

WISDOT/CADD SHEET 42

NOTES:

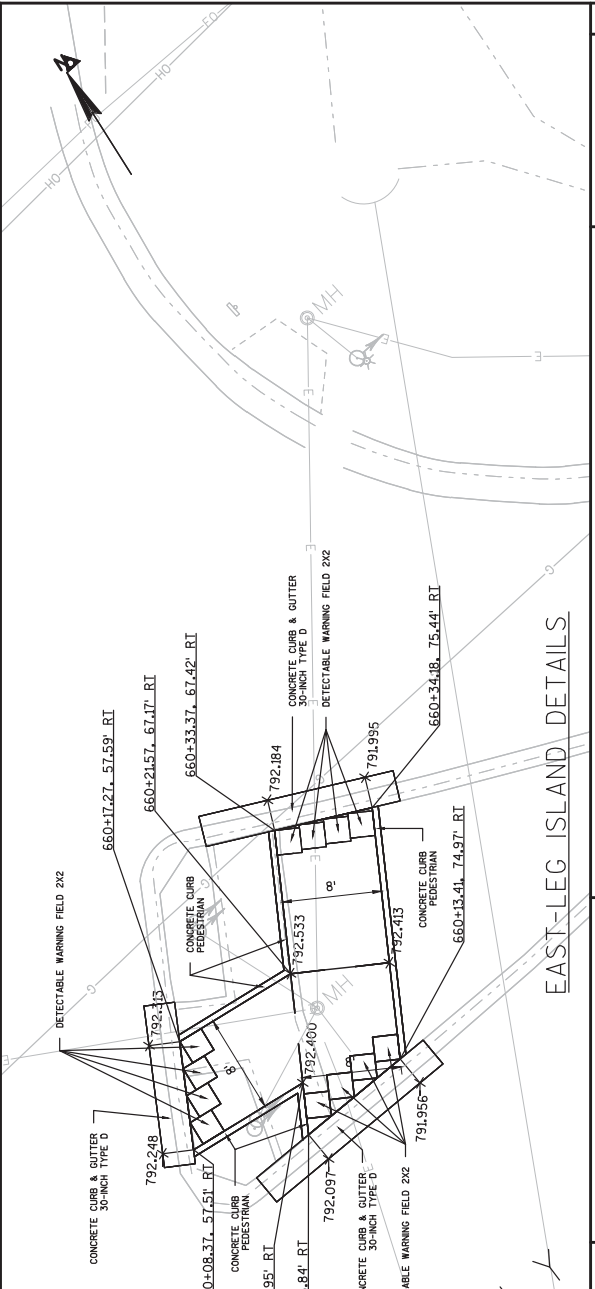
- ALL SIDEWALKS ARE 8-FT WIDE
- SIDEWALK ELEVATIONS ARE SHOWN
- PAY AS CONCRETE SIDEWALK 5-INCH, OVER 6" OF BASE AGGREGATE DENSE 1-1/4-INCH
- FOR ELEVATION OF TOP OF PEDESTRIAN CURB, ADD 6-IN TO ELEV SHOWN
- PAY AS CONCRETE CURB PEDESTRIAN
- CURB & GUTTER AT ROADWAY TO MATCH EXISTING
- PAY AS CONCRETE CURB & GUTTER 30-INCH TYPE D
- AFTER MONOTUBES, PULL BOXES, LIGHTING, SIGNING AND SIDEWALK ARE INSTALLED, RESTORE ISLAND WITH 3" ASPHALTIC SURFACE SAFETY ISLANDS TO MATCH EXISTING



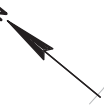
Addendum No. 02
ID 2240-18-70
Added Sheet 7A
June 29, 2017

NOTES:

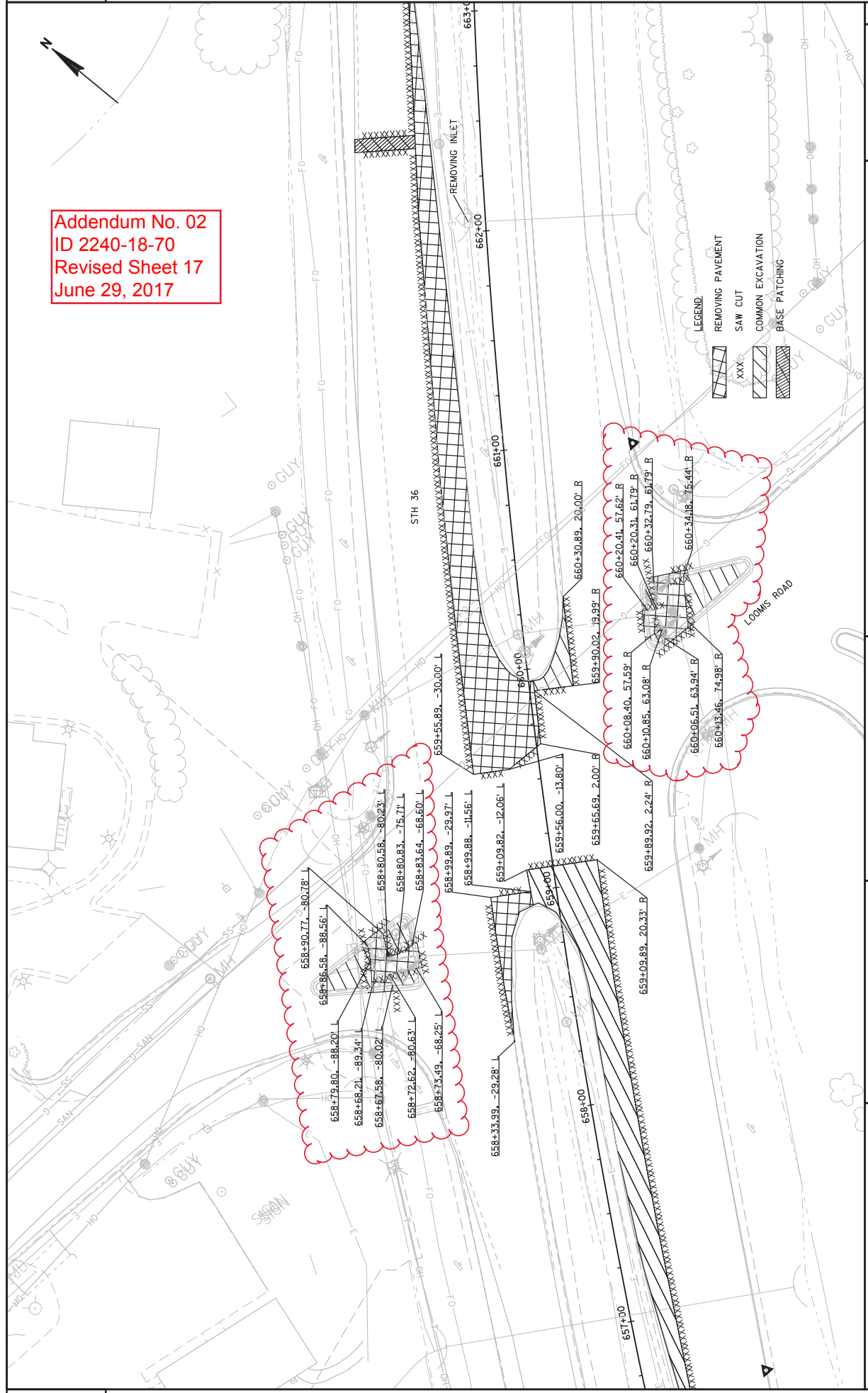
- ALL SIDEWALKS ARE 8-FT WIDE
- SIDEWALK ELEVATIONS ARE SHOWN
- PAY AS CONCRETE SIDEWALK 5-INCH, OVER 6" OF BASE AGGREGATE DENSE 1-1/4-INCH
- FOR ELEVATION OF TOP OF PEDESTRIAN CURB, ADD 6-IN TO ELEV SHOWN
- PAY AS CONCRETE CURB PEDESTRIAN
- CURB & GUTTER AT ROADWAY TO MATCH EXISTING
- PAY AS CONCRETE CURB & GUTTER 30-INCH TYPE D
- AFTER MONOTUBES, PULL BOXES, LIGHTING, SIGNING AND SIDEWALK ARE INSTALLED, RESTORE ISLAND WITH 3" ASPHALTIC SURFACE SAFETY ISLANDS TO MATCH EXISTING



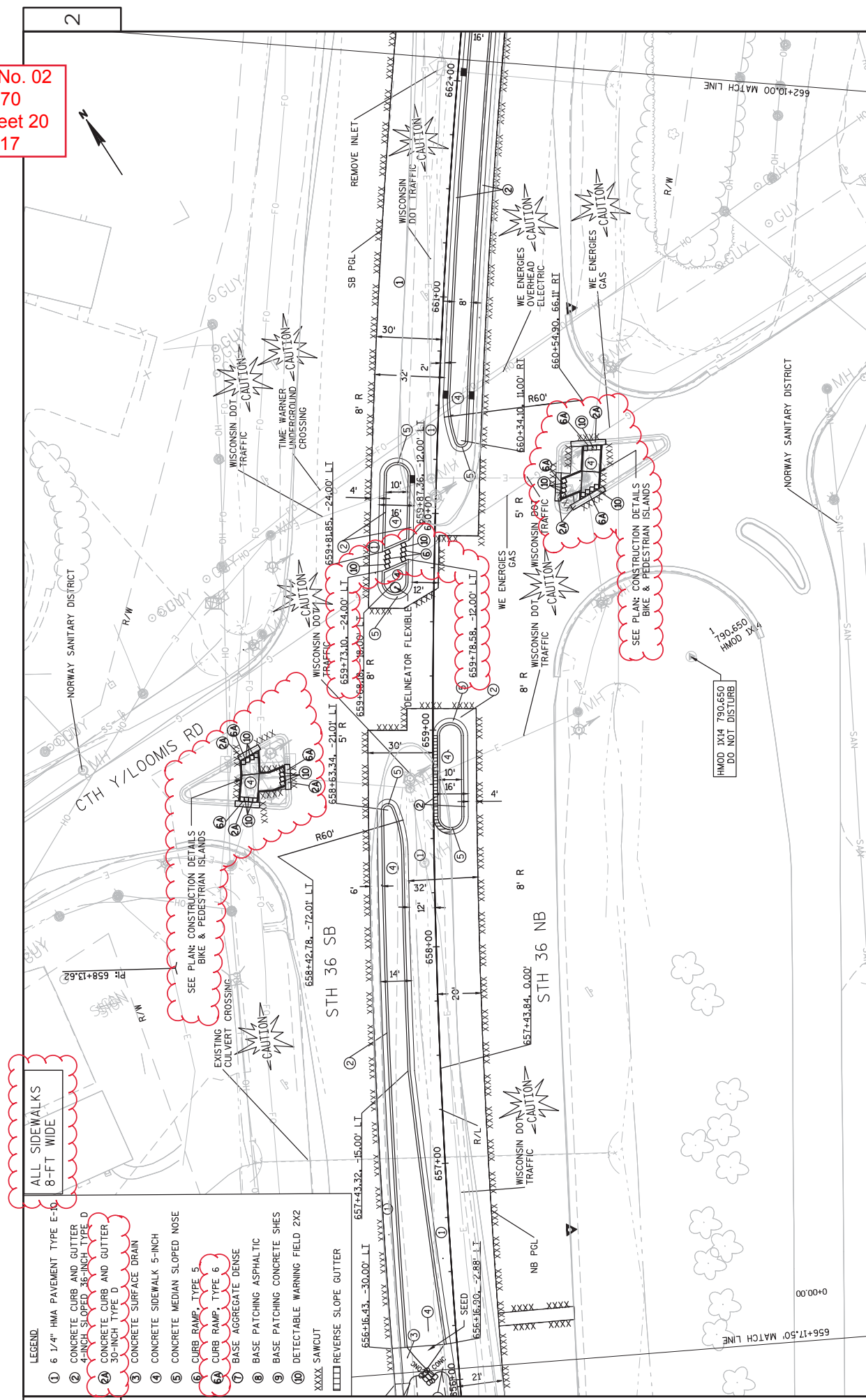
PROJECT NO: 2240-18-70	HWY: STH 36	COUNTY: RACINE	PLAN: CONSTRUCTION DETAILS - BIKE & PEDESTRIAN ISLAND
FILE NAME : N:\NPOS\CSD\2401800\DESIGN\KDELLINES\ADDEND02\22401800_021202-PWMT_GRADES_REVISED.DWG		PLOT BY : SCHROEDER, JENNIFER PLOT NAME :	
LAYOUT NAME : - SHEET - (1)		PLOT SCALE : 1:10	
PROJECT NO: 2240-18-70		SHEET : 7A	
HWY: STH 36		E :	



Addendum No. 02
 ID 2240-18-70
 Revised Sheet 17
 June 29, 2017

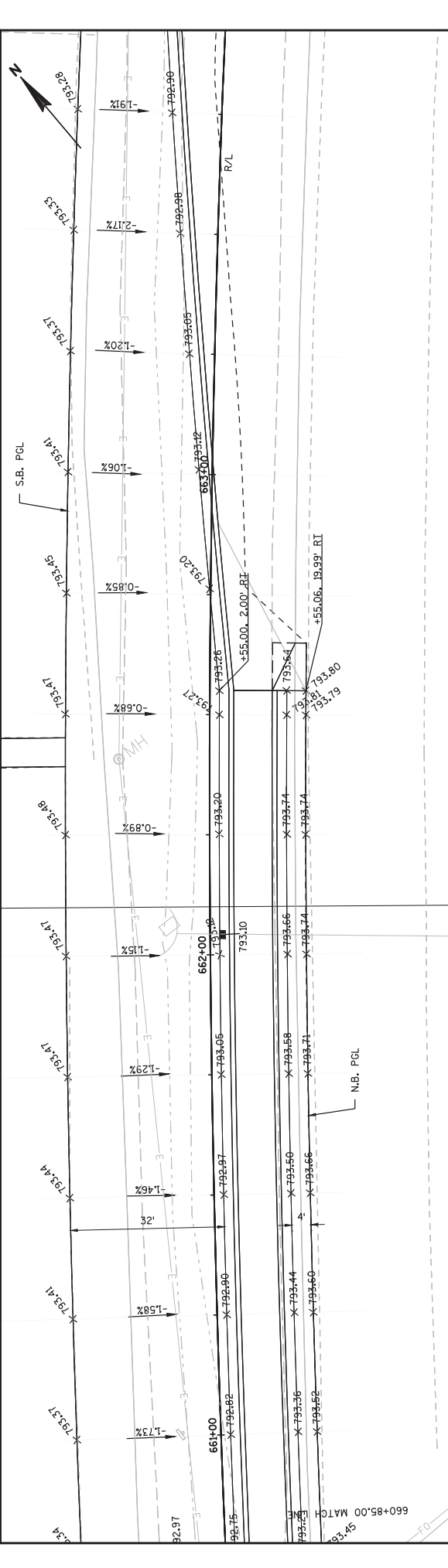
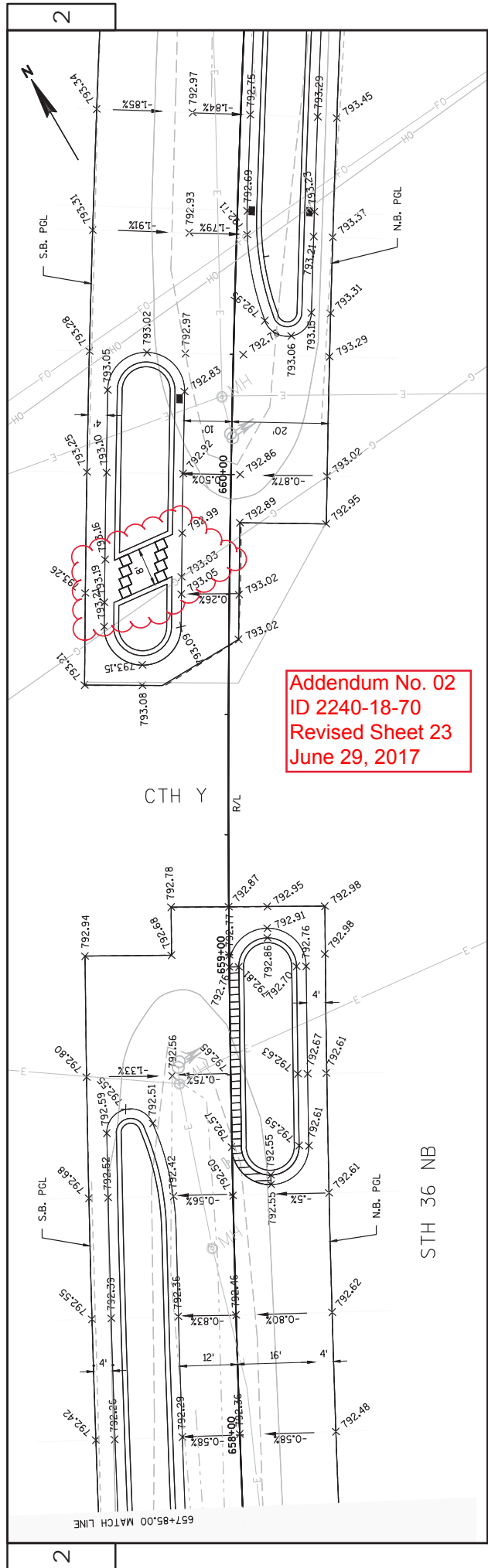


Addendum No. 02
 ID 2240-18-70
 Revised Sheet 20
 June 29, 2017



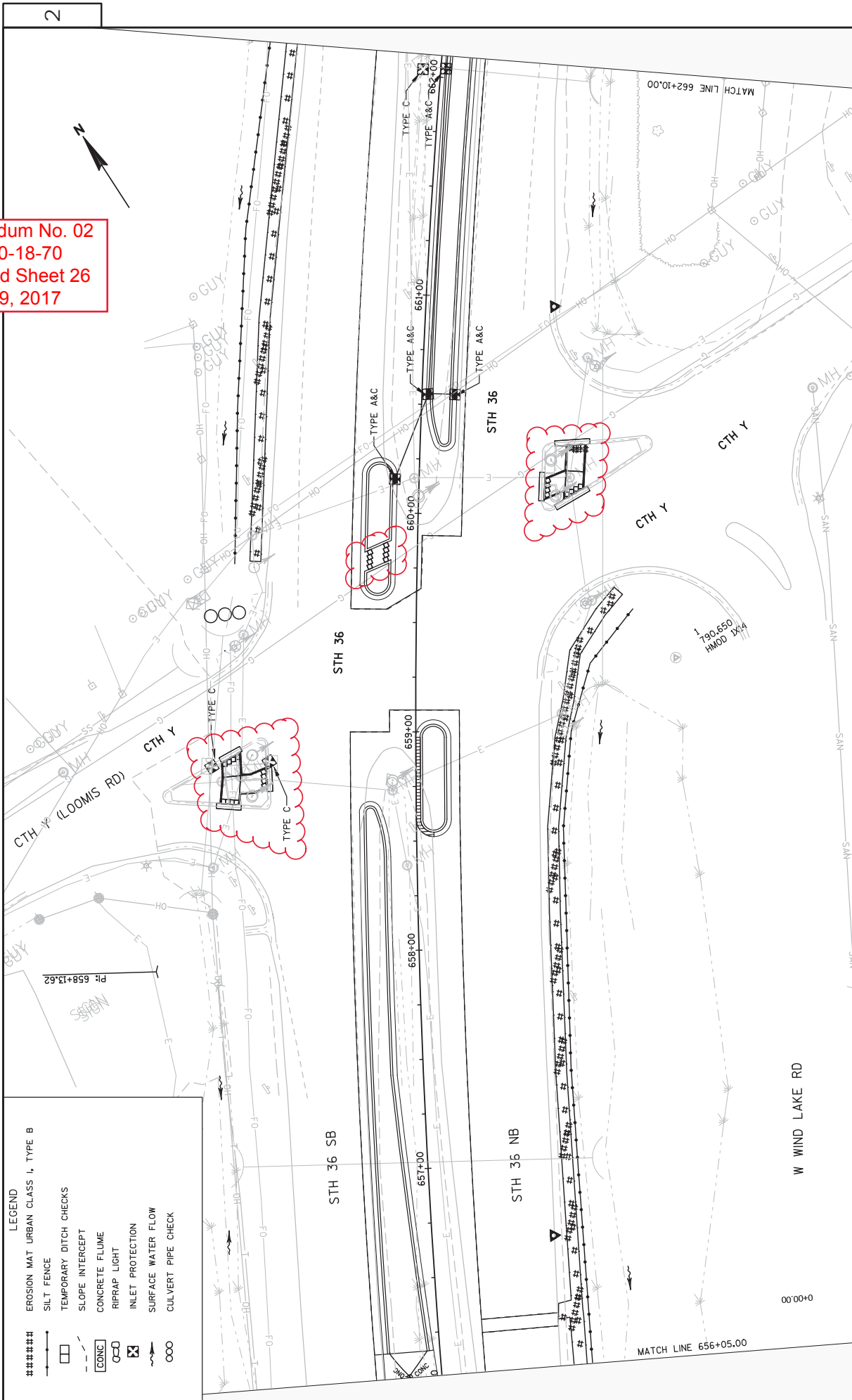
ALL SIDEWALKS
 8-FT WIDE

- LEGEND**
- ① 6 1/4" HMA PAVEMENT TYPE E-10
 - ② CONCRETE CURB AND GUTTER
 - ③ 4-INCH SLOPED 36-INCH TYPE D
 - ④ CONCRETE CURB AND GUTTER 30-INCH TYPE D
 - ⑤ CONCRETE SURFACE DRAIN
 - ⑥ CONCRETE SIDEWALK 5-INCH
 - ⑦ CONCRETE MEDIAN SLOPED NOSE
 - ⑧ CURB RAMP, TYPE 5
 - ⑨ CURB RAMP, TYPE 6
 - ⑩ BASE AGGREGATE DENSE
 - ⑪ BASE PATCHING ASPHALTIC
 - ⑫ BASE PATCHING CONCRETE SHES
 - ⑬ DETECTABLE WARNING FIELD 2X2
 - XXXX SAMCUT
 - REVERSE SLOPE GUTTER



PROJECT NO: 2240-18-70	HWY: STH 36	COUNTY: RACINE	PAVEMENT GRADES	SHEET 23	E
FILE NAME : N:\VPOS\330\22401800\DESIGN\RELINES\ADDEND02\22401800_021202-PWMT_GRADES.REVISED.DWG					
PLOT DATE : 6/28/2017 4:32 PM					
PLOT BY : SCHROEDER, JENNIFER PLOT NAME :					
LAYOUT NAME - SHEET - (10)					
PLOT SCALE : *****					

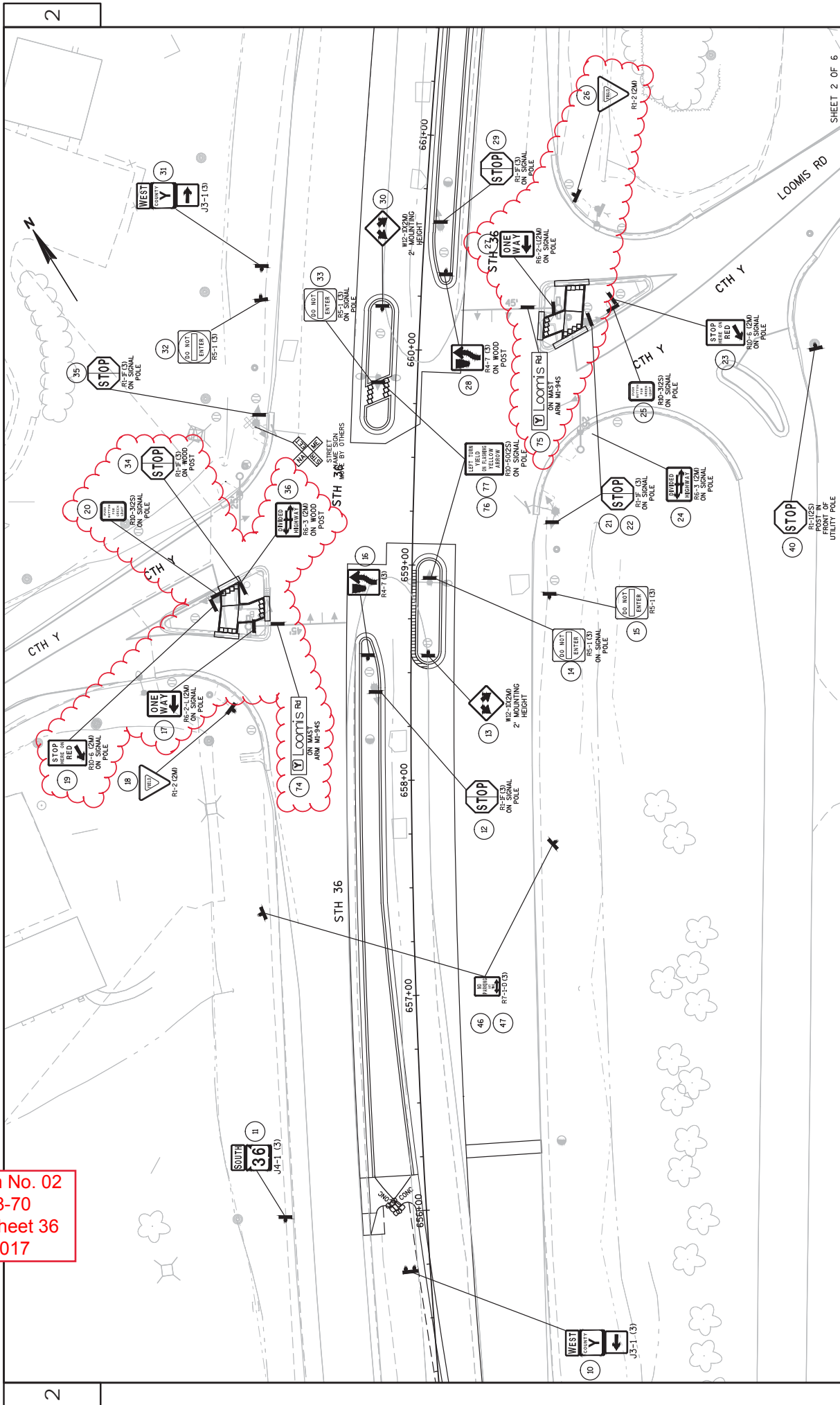
Addendum No. 02
 ID 2240-18-70
 Revised Sheet 26
 June 29, 2017



LEGEND

#####	EROSION MAT URBAN CLASS I, TYPE B
—	SILT FENCE
—	TEMPORARY DITCH CHECKS
—	SLOPE INTERCEPT
CONC	CONCRETE FLUME
○	RIPRAP LIGHT
⊠	INLET PROTECTION
→	SURFACE WATER FLOW
○	CULVERT PIPE CHECK

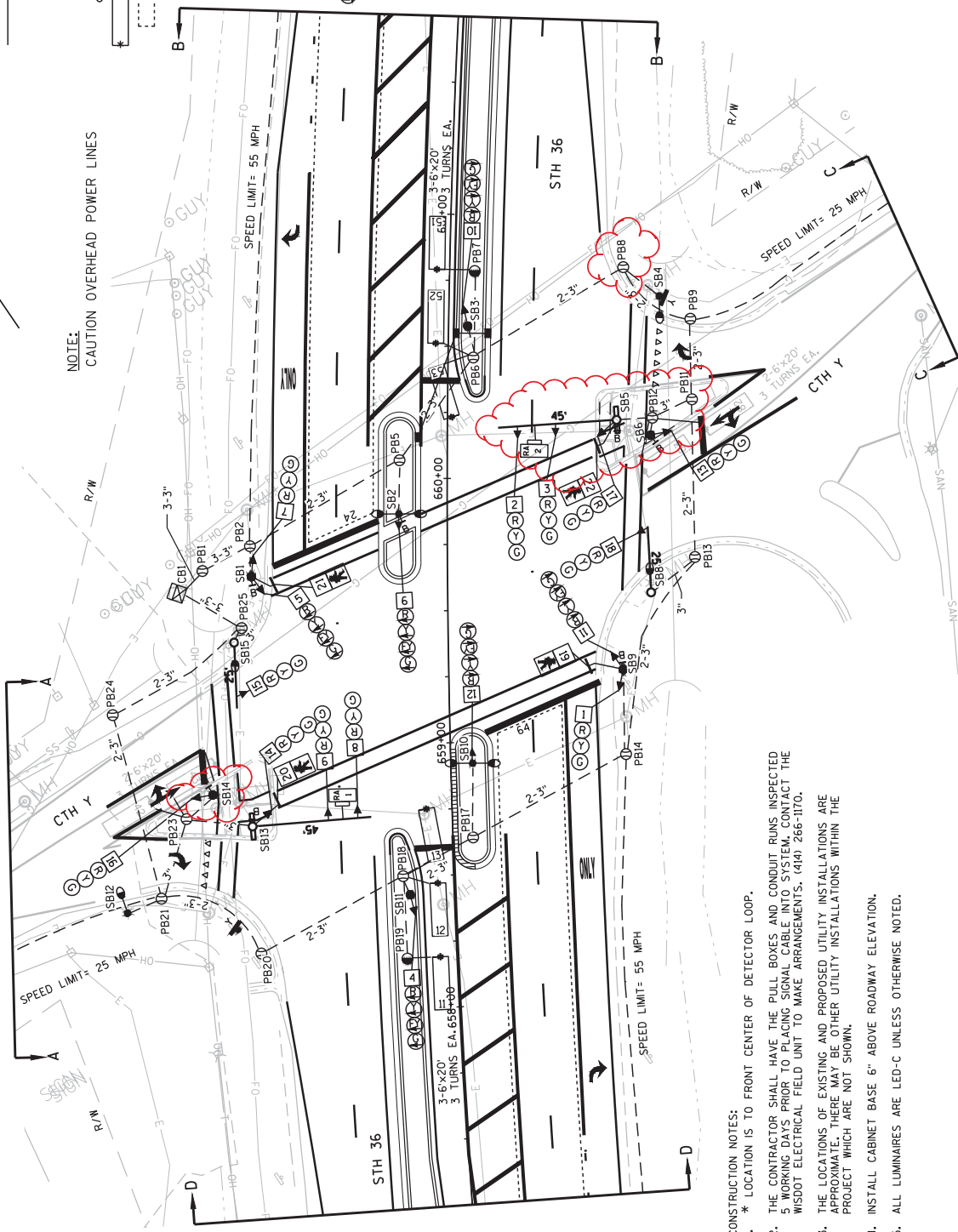
Addendum No. 02
ID 2240-18-70
Revised Sheet 36
June 29, 2017



LEGEND

- CONTROL CABINET
- NONMETALLIC CONDUIT 2", UNLESS OTHERWISE NOTED
- LOOP DETECTOR CONDUIT 1" NONMETALLIC
- SIGNAL HEAD, TRAFFIC SIGNAL STANDARD, PEDESTAL BASE
- MONOTUBE BASE, POLE, 15'-30" ARM
- MONOTUBE BASE, POLE, 35'-55" ARM
- LUMINAIRE, TRAFFIC POLE, TRANSFORMER BASE
- LOOP DETECTOR IN 1" NONMETALLIC CONDUIT
- RADAR DETECTION AREA
- RADAR DETECTOR
- PULL BOX, 24" X 36"
- PULL BOX, 24" X 42"
- SIGNAL HEAD NUMBER
- RED CIRCULAR INDICATOR
- YELLOW CIRCULAR INDICATOR
- GREEN CIRCULAR INDICATOR
- RED ARROW
- YELLOW ARROW
- GREEN ARROW
- YIELD SIGN
- PUSH BUTTON

NOTE: CAUTION OVERHEAD POWER LINES



NOTE: ALL LENSES ARE 12-INCH GRAYSHADE REPRESENTS EXISTING

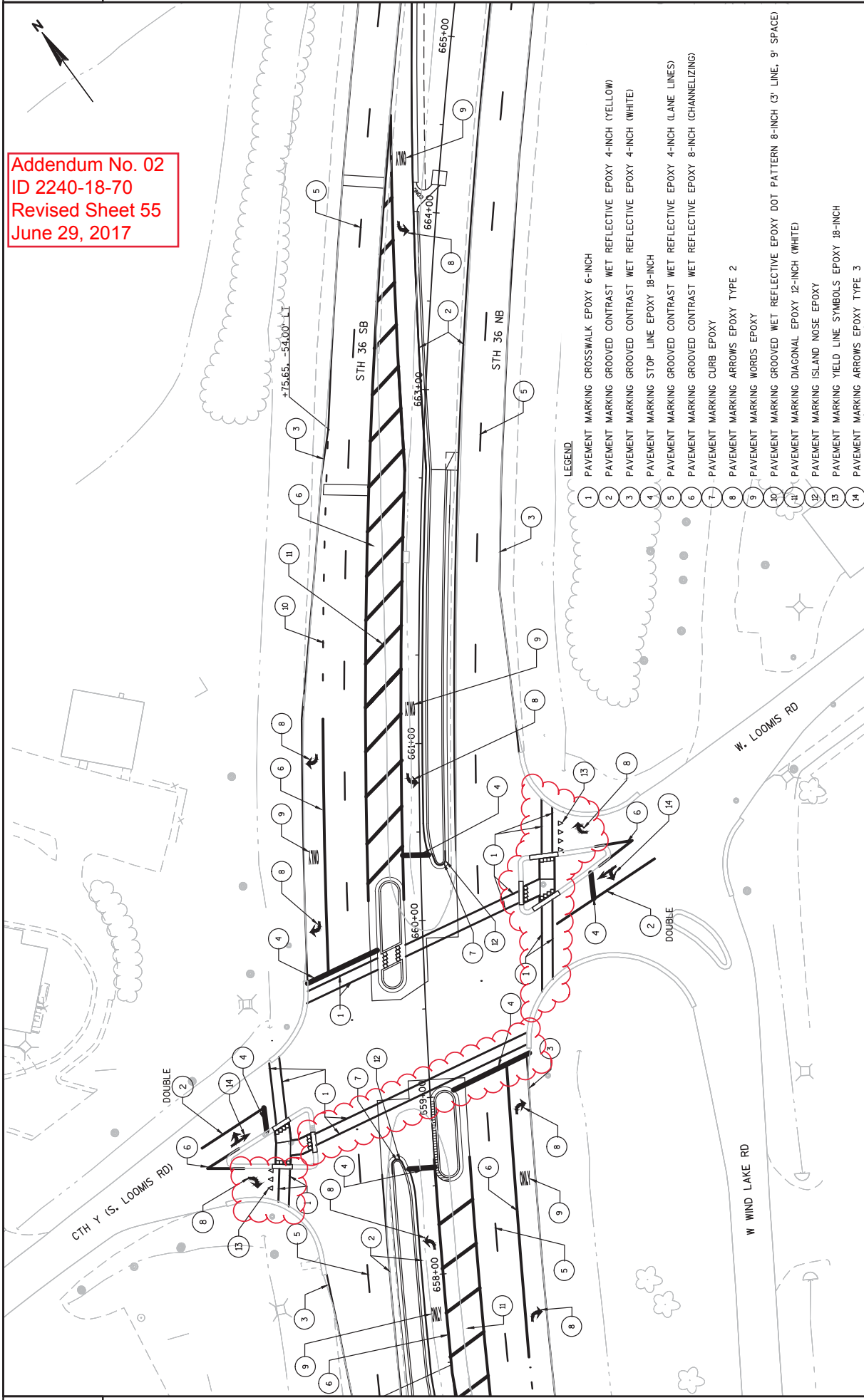
Addendum No. 02
ID 2240-18-70
Revised Sheet 48
June 29, 2017

MONOTUBE STRUCTURE NUMBERS
SB5 = S-51-1196
SB8 = S-51-1197
SB13 = S-51-1198
SB15 = S-51-1199

- CONSTRUCTION NOTES:
1. * LOCATION IS TO FRONT CENTER OF DETECTOR LOOP.
 2. THE CONTRACTOR SHALL HAVE THE PULL BOXES AND CONDUIT RUNS INSPECTED 5 WORKING DAYS PRIOR TO BEING SUBMITTED TO THE FIELD UNIT. CONTACT THE WISDOT ELECTRICAL FIELD UNIT TO MAKE ARRANGEMENTS. (414) 266-3176.
 3. THE LOCATIONS OF EXISTING AND PROPOSED UTILITY INSTALLATIONS ARE APPROXIMATE. THERE MAY BE OTHER UTILITY INSTALLATIONS WITHIN THE PROJECT WHICH ARE NOT SHOWN.
 4. INSTALL CABINET BASE 6" ABOVE ROADWAY ELEVATION.
 5. ALL LUMINAIRES ARE LED-C UNLESS OTHERWISE NOTED.

TRAFFIC CONTROL SIGNAL	STH 36 & CTH Y (LOOMIS RD)
TOWN OF NORWAY	RACINE COUNTY
SIGNAL NO. S51-0582	CABINET TYPE: TS2
WISCONSIN DEPARTMENT OF TRANSPORTATION	
APPROVAL RECOMMENDED	DATE: 6/22/17
APPROVED	DATE: 6/26/17
REGION CONTACT: D. WALFORD	DESIGNED BY: S. WAGNER
STATE TRAFFIC ENGINEER	PAGE 1 OF 4

Addendum No. 02
 ID 2240-18-70
 Revised Sheet 55
 June 29, 2017



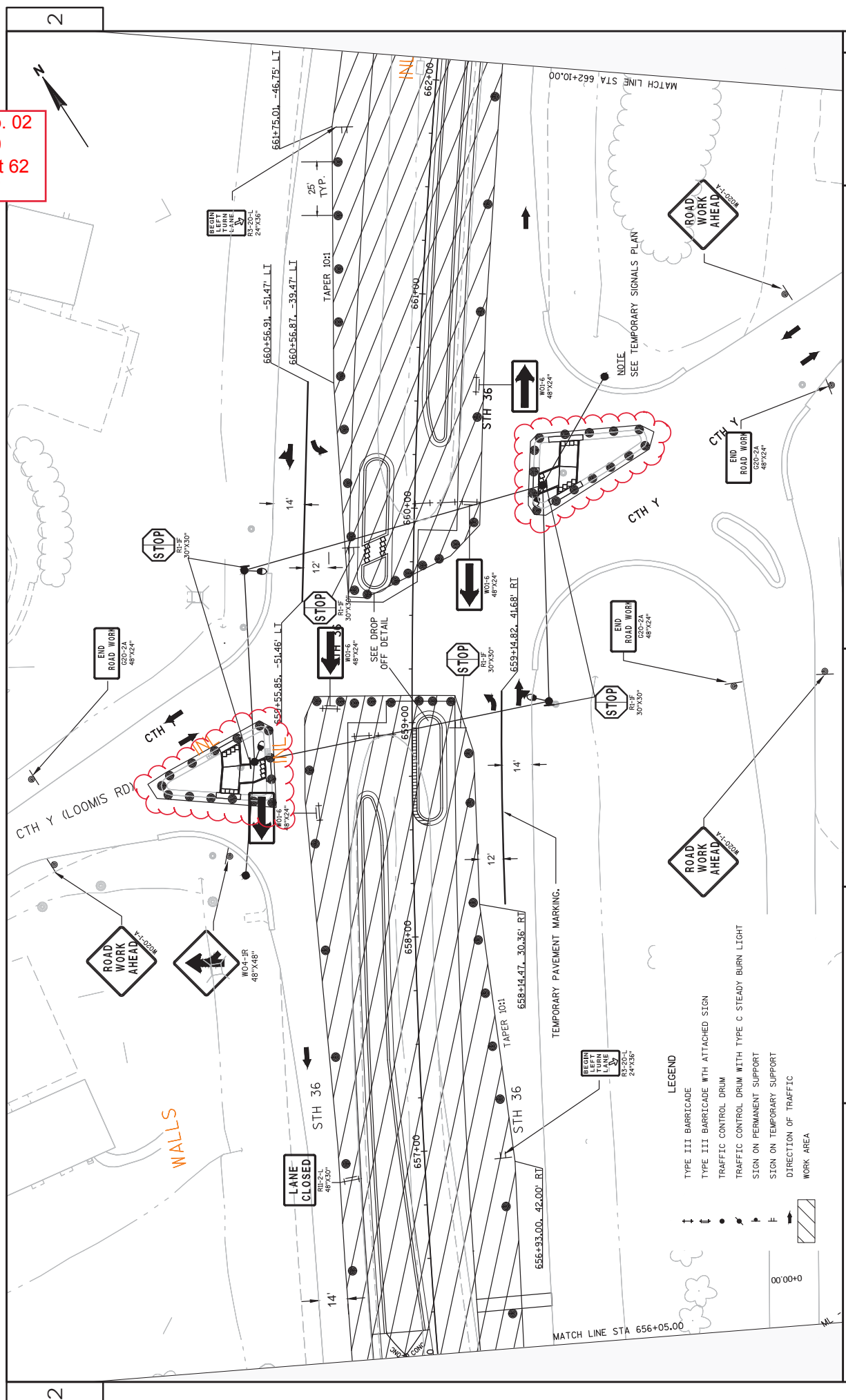
- LEGEND
- 1 PAVEMENT MARKING CROSSWALK EPOXY 6-INCH
 - 2 PAVEMENT MARKING GROOVED CONTRAST WET REFLECTIVE EPOXY 4-INCH (YELLOW)
 - 3 PAVEMENT MARKING GROOVED CONTRAST WET REFLECTIVE EPOXY 4-INCH (WHITE)
 - 4 PAVEMENT MARKING STOP LINE EPOXY 18-INCH
 - 5 PAVEMENT MARKING GROOVED CONTRAST WET REFLECTIVE EPOXY 4-INCH (LANE LINES)
 - 6 PAVEMENT MARKING GROOVED CONTRAST WET REFLECTIVE EPOXY 8-INCH (CHANNELIZING)
 - 7 PAVEMENT MARKING CURB EPOXY
 - 8 PAVEMENT MARKING ARROWS EPOXY TYPE 2
 - 9 PAVEMENT MARKING WORDS EPOXY
 - 10 PAVEMENT MARKING GROOVED WET REFLECTIVE EPOXY DOT PATTERN 8-INCH (3' LINE, 9' SPACE)
 - 11 PAVEMENT MARKING DIAGONAL EPOXY 12-INCH (WHITE)
 - 12 PAVEMENT MARKING ISLAND NOSE EPOXY
 - 13 PAVEMENT MARKING YIELD LINE SYMBOLS EPOXY 18-INCH
 - 14 PAVEMENT MARKING ARROWS EPOXY TYPE 3

2

2

PROJECT NO: 2240-18-70	HWY: STH 36	COUNTY: RACINE	PAVEMENT MARKINGS	SHEET 55	E
<small>FILE NAME : N:\VPOS\330\22401800\DESIGN\DELINES\ADDENDUM\224018-70-REVISED.DWG LAYOUT NAME - 024501.PW - 024502.PW PLOT DATE : 6/28/2017 4:39 PM PLOT BY : SCHROEDER, JENNIFER PLOT NAME : PLOT SCALE : 1:1 IN=50 FT</small>					

Addendum No. 02
 ID 2240-18-70
 Revised Sheet 62
 June 29, 2017



- LEGEND**
- ↑ TYPE III BARRICADE
 - ↓ TYPE III BARRICADE WITH ATTACHED SIGN
 - TRAFFIC CONTROL DRUM
 - ▬ TRAFFIC CONTROL DRUM WITH TYPE C STEADY BURN LIGHT
 - ⊥ SIGN ON PERMANENT SUPPORT
 - ⊥ SIGN ON TEMPORARY SUPPORT
 - DIRECTION OF TRAFFIC
 - ▨ WORK AREA

Addendum No. 02
ID 2240-18-70
Revised Sheet 70
June 29, 2017

REMOVALS

204.0100 REMOVING PAVEMENT (SY)	
ROADWAY	STATION
STH 36 (NB)	653+20 659+10 45
STH 36 (SB)	659+10 665+81 590
CTH Y (WEST LEG)	SAFETY ISLAND 41
CTH Y (EAST LEG)	SAFETY ISLAND 52
TOTAL	728

204.0220 REMOVING INLETS (EACH)

ROADWAY	STATION	OFFSET
STH 36 (SB)	662+05	7.5' LT 1
TOTAL		1

SAWING PAVEMENT

690.0150 SAWING ASPHALT (LF)		690.0250 SAWING CONCRETE (LF)	
ROADWAY	STATION	STATION	STATION
STH 36 (NB)	653+20 659+10 730	659+60 665+81 60	659+10 665+81 95
STH 36 (SB)	659+60 665+81 60	SAFETY ISLAND 120	750
CTH Y (WEST LEG)	SAFETY ISLAND 120	SAFETY ISLAND 110	25
CTH Y (EAST LEG)	SAFETY ISLAND 110	SAFETY ISLAND 25	25
TOTAL	1,020	895	

BASE AGGREGATE ITEMS

ROADWAY	STATION	305.0110 BASE AGGREGATE DENSE 3/4-INCH (TON)	305.0120 BASE AGGREGATE DENSE 1 1/4-INCH (TON)	311.0110 BREAKER RUN (TON)
STH 36	653+20 659+10 39	1,518	1,510	
STH 36	659+10 665+81 22	1,454	1,730	
CTH Y (WEST LEG)	SAFETY ISLAND 30			
CTH Y (EAST LEG)	SAFETY ISLAND 30			
TOTAL	61	3,032	3,240	

PAVEMENT ITEMS

ROADWAY	STATION	390.0203 BASE PATCHING ASPHALTIC (SY)	390.0403 BASE PATCHING CONCRETE SHES (SY)	416.0620 DRILLED DOWEL BARS (EACH)
STH 36	654+47 654+53 17.5	--	--	--
STH 36	656+23 656+29 23.5	--	--	--
STH 36	662+40 662+46 --	15.7	44	
STH 36	664+12 664+18 --	18.3	38	
TOTAL	41	34	82	

ALL QUANTITIES ARE CATEGORY 0010 UNLESS NOTED

Addendum No. 02
ID 2240-18-70
Revised Sheet 71
June 29, 2017

PAVEMENT ITEMS

ROADWAY	STATION	455.0605 TACK COAT (GAL)	460.8223 HMA PAVEMENT 3 MT 58-28 S (TON)	460.6424 HMA PAVEMENT 4 MT 58-58-28 H (TON)	465.0305 ASPHALTIC SURFACE ISLANDS (TON)
STH 36	653+20	157	423	165	--
STH 36	659+10	174	470	183	--
CTH Y (WEST LEG)	SAFETY ISLAND	--	--	--	10
CTH Y (EAST LEG)	SAFETY ISLAND	--	--	--	10
TOTAL		331	893	348	20

MISC CONCRETE ITEMS

ROADWAY	STATION	STATION	OFFSET	416.1010 CONCRETE SURFACE DRAINS (CY)
STH 36	656+00	656+16.4	30' LT	3.0
	656+00	656+16.9	2.88' LT	3.0
	664+00	664+16.3	12.79' LT	2.6
TOTAL				8.6

CONCRETE SIDEWALK

ROADWAY	STATION	STATION	602.0505 CURB RAMP CONCRETE DETECTABLE SIDEWALK 5-INCH (SF)	602.0410 CONCRETE DETECTABLE SIDEWALK WARNING FIELD YELLOW (SF)
STH 36 (NB)	653+20	659+10	2,998	--
STH 36 (SB)	659+10	665+81	2,314	32
CTH Y (WEST LEG)	SAFETY ISLAND		272	48
CTH Y (EAST LEG)	SAFETY ISLAND		265	48
TOTAL			5,849	128

CURB AND GUTTER

ROADWAY	STATION	STATION	601.0411 CONCRETE CURB & GUTTER 30-INCH TYPE D (LF)	601.0600 CONCRETE CURB PEDESTRIAN (LF)	601.0553 CONCRETE CURB & GUTTER 4-INCH SLOPED 36-INCH TYPE D (LF)	633.0200 DELINEATORS FLEXIBLE (EACH)
STH 36	658+51.9	659+05.3	--	--	125	--
	660+30	664+00	--	--	603	--
STH 36	656+16.43	658+68.3	--	--	546	--
	659+60.2	660+25	--	--	149	1
CTH Y (WEST LEG)	SAFETY ISLAND		36	59	--	--
CTH Y (EAST LEG)	SAFETY ISLAND		48	56	--	--
TOTAL			84	115	1,423	1

ALL QUANTITIES ARE CATEGORY 0010 UNLESS NOTED

Addendum No. 02
ID 2240-18-70
Revised Sheet 74
June 29, 2017

TRAFFIC CONTROL

ROADWAY	643.1050 TRAFFIC CONTROL SIGNS PCMS (DAYS)	643.0800 TRAFFIC CONTROL ARROW BOARDS (DAY)	643.0900 TRAFFIC CONTROL SIGNS (DAY)	643.0300 TRAFFIC CONTROL DRUMS (DAY)	643.0420 TRAFFIC CONTROL BARRICADES TYPE III (DAY)	643.0715 TRAFFIC CONTROL WARNING LIGHTS TYPE C (DAY)	643.0100 TRAFFIC CONTROL PROJECT (2240-18-70) (EACH)
STAGE 1 - STH 36 (NB)	10	7	140	455	35	140	1
STAGE 1 - STH 36 (SB)	10	7	133	455	35	140	--
STAGE 2 - STH 36 (NB)	--	65	1,560	4,225	390	1,300	--
STAGE 2 - STH 36 (SB)	--	65	1,625	4,225	390	1,300	--
STAGE 2 - CTH Y	--	--	--	720	--	--	--
TOTAL	20	144	3,458	10,080	850	2,880	1

MOBILIZATIONS

619.1000 MOBILIZATION (EACH)	1
TOTAL	1

TEMPORARY PAVEMENT MARKING

ROADWAY	STATION	STATION	646.0600 REMOVING PAVEMENT MARKING (LF)	649.0400 TEMPORARY PAVEMENT MARKING INCH (WHITE) (LF)	649.0400 TEMPORARY PAVEMENT MARKING INCH (YELLOW) (LF)
STH 36 (NB)	648+47	659+15	1,070	100	1,070
	661+00	666+35	535	--	535
STH 36 (SB)	668+67	659+56	910	110	920
	658+00	651+67	635	--	635
TOTAL			3,150	210	3,370

ALL QUANTITIES ARE CATEGORY 0010 UNLESS NOTED

Addendum No. 02
ID 2240-18-70
Revised Sheet 77
June 29, 2017

Division	From/To Station	Location	205.0100 Common Excavation (1)		Salvaged/Unusable Pavement Material (4)	Available Material (5)	Unexpanded Fill	Expanded Fill (13)		Mass Ordinate +/- (14)	Waste	205.0100 Borrow	Comment:
			Cut (2)	EBS Excavation (3)				Factor 1.25					
Division 1	653+70.005-681		3.942	0	309	3.033	40	50	2.983	2.983	0		
CITY (WEST LEG)	SAFETY ISLAND		20	0					20	20	0		
CITY (EAST LEG)	SAFETY ISLAND		15	0					15	15	0		
Division 1 Subtotal			3.975	0	309	3.033	40	50	3.018	3.018	0		
Grand Total		Total Common Exc	3.975	0	309	3.033	40	50	3.018	3.018	0		

- Miscellaneous Quantities
- (1) Common Excavation is the sum of the Cut and EBS Excavation columns. Item number 205.0100
 - (2) Salvaged/Unusable Pavement Material is included in Cut
 - (3) EBS Excavation to be backfilled with Select Borrow material.
 - (4) Salvaged/Unusable Pavement Material
 - (5) Available Material = Cut - Salvaged/Unusable Pavement Material
 - (13) Expanded Fill Factor = 1.25
 - (14) The Mass Ordinate + or - Qty calculated for the Division. Minus quantity indicates a shortage of material within the Division.

ALL QUANTITIES ARE CATEGORY 0010 UNLESS NOTED

MISCELLANEOUS QUANTITIES

COUNTY: RACINE

HWY: STH 36

PROJECT NO: 2240-18-70

FILE NAME: _____

PLOT BY: _____

PLOT DATE: _____

PLOT NAME: _____

PLOT SCALE: 1:1

SHEET: 77

E



Proposal Schedule of Items

Proposal ID: 20170711010 Project(s): 2240-18-70

Federal ID(s): WISC 2017343

SECTION: 0001

Contract Items

Alt Set ID:

Alt Mbr ID:

Proposal Line Number	Item ID Description	Approximate Quantity and Units	Unit Price	Bid Amount
0010	204.0100 Removing Pavement	728.000 SY	_____.	_____.
0020	204.0195 Removing Concrete Bases	15.000 EACH	_____.	_____.
0030	204.0220 Removing Inlets	1.000 EACH	_____.	_____.
0040	205.0100 Excavation Common	3,375.000 CY	_____.	_____.
0050	213.0100 Finishing Roadway (project) 01. 2240-18-70	1.000 EACH	_____.	_____.
0060	305.0110 Base Aggregate Dense 3/4-Inch	61.000 TON	_____.	_____.
0070	305.0120 Base Aggregate Dense 1 1/4-Inch	3,032.000 TON	_____.	_____.
0080	311.0110 Breaker Run	3,240.000 TON	_____.	_____.
0090	390.0203 Base Patching Asphaltic	41.000 SY	_____.	_____.
0100	390.0403 Base Patching Concrete Shes	34.000 SY	_____.	_____.
0110	416.0620 Drilled Dowel Bars	82.000 EACH	_____.	_____.
0120	416.1010 Concrete Surface Drains	8.600 CY	_____.	_____.
0130	455.0605 Tack Coat	331.000 GAL	_____.	_____.
0140	460.6223 HMA Pavement 3 MT 58-28 S	893.000 TON	_____.	_____.
0150	460.6424 HMA Pavement 4 MT 58-28 H	348.000 TON	_____.	_____.
0160	601.0553 Concrete Curb & Gutter 4-Inch Sloped 36-Inch Type D	1,423.000 LF	_____.	_____.



Proposal Schedule of Items

Proposal ID: 20170711010 Project(s): 2240-18-70

Federal ID(s): WISC 2017343

SECTION: 0001

Contract Items

Alt Set ID:

Alt Mbr ID:

Proposal Line Number	Item ID Description	Approximate Quantity and Units	Unit Price	Bid Amount
0170	602.0410 Concrete Sidewalk 5-Inch	5,849.000 SF	_____.	_____.
0180	602.0505 Curb Ramp Detectable Warning Field Yellow	128.000 SF	_____.	_____.
0190	606.0100 Riprap Light	2.600 CY	_____.	_____.
0200	608.0412 Storm Sewer Pipe Reinforced Concrete Class IV 12-Inch	419.000 LF	_____.	_____.
0210	611.0627 Inlet Covers Type HM	4.000 EACH	_____.	_____.
0220	611.0642 Inlet Covers Type MS	1.000 EACH	_____.	_____.
0230	611.3004 Inlets 4-FT Diameter 01. 2240-18-70	3.000 EACH	_____.	_____.
0240	611.3230 Inlets 2x3-FT	1.000 EACH	_____.	_____.
0250	611.3901 Inlets Median 1 Grate	1.000 EACH	_____.	_____.
0260	619.1000 Mobilization	1.000 EACH	_____.	_____.
0270	625.0500 Salvaged Topsoil	775.000 SY	_____.	_____.
0280	627.0200 Mulching	600.000 SY	_____.	_____.
0290	628.1504 Silt Fence	1,042.000 LF	_____.	_____.
0300	628.1520 Silt Fence Maintenance	1,042.000 LF	_____.	_____.
0310	628.1905 Mobilizations Erosion Control	3.000 EACH	_____.	_____.
0320	628.1910 Mobilizations Emergency Erosion Control	1.000 EACH	_____.	_____.



Proposal Schedule of Items

Proposal ID: 20170711010 Project(s): 2240-18-70

Federal ID(s): WISC 2017343

SECTION: 0001

Contract Items

Alt Set ID:

Alt Mbr ID:

Proposal Line Number	Item ID Description	Approximate Quantity and Units	Unit Price	Bid Amount
0330	628.2008 Erosion Mat Urban Class I Type B	1,320.000 SY	_____.	_____.
0340	628.7005 Inlet Protection Type A	5.000 EACH	_____.	_____.
0350	628.7015 Inlet Protection Type C	7.000 EACH	_____.	_____.
0360	628.7504 Temporary Ditch Checks	115.000 LF	_____.	_____.
0370	628.7555 Culvert Pipe Checks	1.000 EACH	_____.	_____.
0380	628.7570 Rock Bags	10.000 EACH	_____.	_____.
0390	629.0210 Fertilizer Type B	0.840 CWT	_____.	_____.
0400	630.0130 Seeding Mixture No. 30	9.840 LB	_____.	_____.
0410	630.0160 Seeding Mixture No. 60	10.430 LB	_____.	_____.
0420	630.0200 Seeding Temporary	16.000 LB	_____.	_____.
0430	631.1100 Sod Erosion Control	9.000 SY	_____.	_____.
0440	633.0200 Delineators Flexible	1.000 EACH	_____.	_____.
0450	633.5200 Markers Culvert End	1.000 EACH	_____.	_____.
0460	634.0618 Posts Wood 4x6-Inch X 18-FT	63.000 EACH	_____.	_____.
0470	637.2210 Signs Type II Reflective H	587.680 SF	_____.	_____.
0480	637.2215 Signs Type II Reflective H Folding	44.760 SF	_____.	_____.
0490	637.2230 Signs Type II Reflective F	50.250 SF	_____.	_____.



Proposal Schedule of Items

Proposal ID: 20170711010 Project(s): 2240-18-70

Federal ID(s): WISC 2017343

SECTION: 0001

Contract Items

Alt Set ID:

Alt Mbr ID:

Proposal Line Number	Item ID Description	Approximate Quantity and Units	Unit Price	Bid Amount
0500	638.2102 Moving Signs Type II	1.000 EACH	_____.	_____.
0510	638.2602 Removing Signs Type II	54.000 EACH	_____.	_____.
0520	638.3000 Removing Small Sign Supports	46.000 EACH	_____.	_____.
0530	642.5401 Field Office Type D	1.000 EACH	_____.	_____.
0540	643.0100 Traffic Control (project) 01. 2240-18-70	1.000 EACH	_____.	_____.
0550	643.0300 Traffic Control Drums	10,080.000 DAY	_____.	_____.
0560	643.0420 Traffic Control Barricades Type III	850.000 DAY	_____.	_____.
0570	643.0715 Traffic Control Warning Lights Type C	2,880.000 DAY	_____.	_____.
0580	643.0800 Traffic Control Arrow Boards	144.000 DAY	_____.	_____.
0590	643.0900 Traffic Control Signs	3,458.000 DAY	_____.	_____.
0600	643.1050 Traffic Control Signs PCMS	20.000 DAY	_____.	_____.
0610	645.0130 Geotextile Type R	8.000 SY	_____.	_____.
0620	646.0600 Removing Pavement Markings	2,245.000 LF	_____.	_____.
0630	646.0842.S Pavement Marking Grooved Contrast Wet Reflective Epoxy 4-Inch	5,301.000 LF	_____.	_____.
0640	646.0844.S Pavement Marking Grooved Contrast Wet Reflective Epoxy 8-Inch	1,942.000 LF	_____.	_____.
0650	646.2308.S Pavement Marking Grooved Wet Reflective Epoxy 8-Inch	126.000 LF	_____.	_____.



Proposal Schedule of Items

Proposal ID: 20170711010 Project(s): 2240-18-70

Federal ID(s): WISC 2017343

SECTION: 0001

Contract Items

Alt Set ID:

Alt Mbr ID:

Proposal Line Number	Item ID Description	Approximate Quantity and Units	Unit Price	Bid Amount
0660	647.0166 Pavement Marking Arrows Epoxy Type 2	10.000 EACH	_____.	_____.
0670	647.0176 Pavement Marking Arrows Epoxy Type 3	2.000 EACH	_____.	_____.
0680	647.0356 Pavement Marking Words Epoxy	6.000 EACH	_____.	_____.
0690	647.0456 Pavement Marking Curb Epoxy	47.000 LF	_____.	_____.
0700	647.0526 Pavement Marking Yield Line Symbols Epoxy 18-Inch	22.000 EACH	_____.	_____.
0710	647.0566 Pavement Marking Stop Line Epoxy 18-Inch	151.000 LF	_____.	_____.
0720	647.0606 Pavement Marking Island Nose Epoxy	2.000 EACH	_____.	_____.
0730	647.0726 Pavement Marking Diagonal Epoxy 12-Inch	609.000 LF	_____.	_____.
0740	647.0766 Pavement Marking Crosswalk Epoxy 6-Inch	763.000 LF	_____.	_____.
0750	649.0400 Temporary Pavement Marking Removable Tape 4-Inch	3,370.000 LF	_____.	_____.
0760	650.4000 Construction Staking Storm Sewer	7.000 EACH	_____.	_____.
0770	650.4500 Construction Staking Subgrade	1,265.000 LF	_____.	_____.
0780	650.5000 Construction Staking Base	1,265.000 LF	_____.	_____.
0790	650.5500 Construction Staking Curb Gutter and Curb & Gutter	1,423.000 LF	_____.	_____.
0800	650.8500 Construction Staking Electrical Installations (project) 01. 2240-18-70	LS	LUMP SUM	_____.



Proposal Schedule of Items

Proposal ID: 20170711010 Project(s): 2240-18-70

Federal ID(s): WISC 2017343

SECTION: 0001

Contract Items

Alt Set ID:

Alt Mbr ID:

Proposal Line Number	Item ID Description	Approximate Quantity and Units	Unit Price	Bid Amount
0810	650.9910 Construction Staking Supplemental Control (project) 01. 2240-18-70	LS	LUMP SUM	_____.
0820	650.9920 Construction Staking Slope Stakes	1,265.000 LF	_____.	_____.
0830	652.0225 Conduit Rigid Nonmetallic Schedule 40 2-Inch	1,434.000 LF	_____.	_____.
0840	652.0235 Conduit Rigid Nonmetallic Schedule 40 3-Inch	844.000 LF	_____.	_____.
0850	652.0615 Conduit Special 3-Inch	880.000 LF	_____.	_____.
0860	652.0700.S Install Conduit into Existing Item	2.000 EACH	_____.	_____.
0870	652.0800 Conduit Loop Detector	798.000 LF	_____.	_____.
0880	653.0135 Pull Boxes Steel 24x36-Inch	6.000 EACH	_____.	_____.
0890	653.0140 Pull Boxes Steel 24x42-Inch	17.000 EACH	_____.	_____.
0900	653.0905 Removing Pull Boxes	17.000 EACH	_____.	_____.
0910	654.0101 Concrete Bases Type 1	7.000 EACH	_____.	_____.
0920	654.0102 Concrete Bases Type 2	2.000 EACH	_____.	_____.
0930	654.0105 Concrete Bases Type 5	2.000 EACH	_____.	_____.
0940	654.0110 Concrete Bases Type 10	2.000 EACH	_____.	_____.
0950	654.0113 Concrete Bases Type 13	2.000 EACH	_____.	_____.
0960	654.0217 Concrete Control Cabinet Bases Type 9 Special	1.000 EACH	_____.	_____.



Proposal Schedule of Items

Proposal ID: 20170711010 Project(s): 2240-18-70

Federal ID(s): WISC 2017343

SECTION: 0001

Contract Items

Alt Set ID:

Alt Mbr ID:

Proposal Line Number	Item ID Description	Approximate Quantity and Units	Unit Price	Bid Amount
0970	655.0230 Cable Traffic Signal 5-14 AWG	508.000 LF	_____.	_____.
0980	655.0240 Cable Traffic Signal 7-14 AWG	1,605.000 LF	_____.	_____.
0990	655.0260 Cable Traffic Signal 12-14 AWG	2,785.000 LF	_____.	_____.
1000	655.0305 Cable Type UF 2-12 AWG Grounded	1,129.000 LF	_____.	_____.
1010	655.0515 Electrical Wire Traffic Signals 10 AWG	2,823.000 LF	_____.	_____.
1020	655.0610 Electrical Wire Lighting 12 AWG	990.000 LF	_____.	_____.
1030	655.0700 Loop Detector Lead In Cable	5,392.000 LF	_____.	_____.
1040	655.0800 Loop Detector Wire	4,778.000 LF	_____.	_____.
1050	656.0200 Electrical Service Meter Breaker Pedestal (location) 01. 2240-18-70	LS	LUMP SUM	_____.
1060	657.0100 Pedestal Bases	7.000 EACH	_____.	_____.
1070	657.0255 Transformer Bases Breakaway 11 1/2-Inch Bolt Circle	4.000 EACH	_____.	_____.
1080	657.0310 Poles Type 3	2.000 EACH	_____.	_____.
1090	657.0322 Poles Type 5-Aluminum	2.000 EACH	_____.	_____.
1100	657.0405 Traffic Signal Standards Aluminum 3.5-FT	1.000 EACH	_____.	_____.
1110	657.0420 Traffic Signal Standards Aluminum 13-FT	2.000 EACH	_____.	_____.
1120	657.0425 Traffic Signal Standards Aluminum 15-FT	4.000 EACH	_____.	_____.



Proposal Schedule of Items

Proposal ID: 20170711010 Project(s): 2240-18-70

Federal ID(s): WISC 2017343

SECTION: 0001

Contract Items

Alt Set ID:

Alt Mbr ID:

Proposal Line Number	Item ID Description	Approximate Quantity and Units	Unit Price	Bid Amount
1130	657.0609 Luminaire Arms Single Member 4-Inch Clamp 6-FT	4.000 EACH	_____.	_____.
1140	657.0610 Luminaire Arms Single Member 4 1/2-Inch Clamp 6-FT	2.000 EACH	_____.	_____.
1150	657.1350 Install Poles Type 10	2.000 EACH	_____.	_____.
1160	657.1525 Install Monotube Arms 25-FT	2.000 EACH	_____.	_____.
1170	657.1545 Install Monotube Arms 45-FT	2.000 EACH	_____.	_____.
1180	657.1815 Install Luminaire Arms Steel 15-FT	2.000 EACH	_____.	_____.
1190	658.0110 Traffic Signal Face 3-12 Inch Vertical	12.000 EACH	_____.	_____.
1200	658.0115 Traffic Signal Face 4-12 Inch Vertical	6.000 EACH	_____.	_____.
1210	658.0215 Backplates Signal Face 3 Section 12-Inch	12.000 EACH	_____.	_____.
1220	658.0220 Backplates Signal Face 4 Section 12-Inch	6.000 EACH	_____.	_____.
1230	658.0416 Pedestrian Signal Face 16-Inch	4.000 EACH	_____.	_____.
1240	658.0500 Pedestrian Push Buttons	7.000 EACH	_____.	_____.
1250	658.0600 Led Modules 12-Inch Red Ball	12.000 EACH	_____.	_____.
1260	658.0605 Led Modules 12-Inch Yellow Ball	12.000 EACH	_____.	_____.
1270	658.0610 Led Modules 12-Inch Green Ball	12.000 EACH	_____.	_____.
1280	658.0615 Led Modules 12-Inch Red Arrow	6.000 EACH	_____.	_____.



Proposal Schedule of Items

Proposal ID: 20170711010 Project(s): 2240-18-70

Federal ID(s): WISC 2017343

SECTION: 0001

Contract Items

Alt Set ID:

Alt Mbr ID:

Proposal Line Number	Item ID Description	Approximate Quantity and Units	Unit Price	Bid Amount
1290	658.0620 Led Modules 12-Inch Yellow Arrow	12.000 EACH	_____.	_____.
1300	658.0625 Led Modules 12-Inch Green Arrow	6.000 EACH	_____.	_____.
1310	658.0635 Led Modules Pedestrian Countdown Timer 16-Inch	4.000 EACH	_____.	_____.
1320	658.5069 Signal Mounting Hardware (location) 01. 2240-18-70	LS	LUMP SUM	_____.
1330	659.1125 Luminaires Utility LED C	8.000 EACH	_____.	_____.
1340	661.0200 Temporary Traffic Signals for Intersections (location) 01. 2240-18-70	LS	LUMP SUM	_____.
1350	690.0150 Sawing Asphalt	1,020.000 LF	_____.	_____.
1360	690.0250 Sawing Concrete	895.000 LF	_____.	_____.
1370	ASP.1T0A On-the-Job Training Apprentice at \$5.00/HR	400.000 HRS	5.00000	2,000.00
1380	ASP.1T0G On-the-Job Training Graduate at \$5.00/HR	800.000 HRS	5.00000	4,000.00
1390	SPV.0060 Special 07. Install Poles Over Height Type 12	2.000 EACH	_____.	_____.
1400	SPV.0090 Special 01. Remove Pavement Marking Grooved Tape 4-Inch	600.000 LF	_____.	_____.
1410	SPV.0090 Special 02. Remove Pavement Marking Grooved Tape 8-Inch	313.000 LF	_____.	_____.
1420	SPV.0105 Special 01. Install State Furnished Traffic Signal Cabinet STH 36 & CTH Y (Loomis Rd)	LS	LUMP SUM	_____.



Proposal Schedule of Items

Proposal ID: 20170711010 Project(s): 2240-18-70

Federal ID(s): WISC 2017343

SECTION: 0001

Contract Items

Alt Set ID:

Alt Mbr ID:

Proposal Line Number	Item ID Description	Approximate Quantity and Units	Unit Price	Bid Amount
1430	SPV.0105 Special 02. Transport Traffic Signal & Intersection Lighting Materials	LS	LUMP SUM	_____.
1440	SPV.0105 Special 03. Remove Traffic Signal STH 36 & CTH Y (Loomis Rd)	LS	LUMP SUM	_____.
1450	SPV.0105 Special 04. Remove Loop Detector Wire & Lead-In-Cable STH 36 & CTH Y (Loomis Rd)	LS	LUMP SUM	_____.
1460	SPV.0105 Special 05. Tnsport & Install St Furn Radar Detection System STH 36 & CTH Y (Loomis Rd)	LS	LUMP SUM	_____.
1470	SPV.0105 Special 06. Temporary Non-Intrusive Vehicle Detection System STH 36 & CTH Y (Loomis Rd)	LS	LUMP SUM	_____.
1480	465.0305 Asphaltic Surface Safety Islands	20.000 TON	_____.	_____.
1490	601.0411 Concrete Curb & Gutter 30-Inch Type D	84.000 LF	_____.	_____.
1500	601.0600 Concrete Curb Pedestrian	115.000 LF	_____.	_____.
Section: 0001			Total:	_____.
			Total Bid:	_____.