



Wisconsin Department of Transportation

August 7, 2017

Division of Transportation Systems Development

Bureau of Project Development
4802 Sheboygan Avenue, Rm 601
P O Box 7916
Madison, WI 53707-7916

Telephone: (608) 266-1631
Facsimile (FAX): (608) 266-8459

NOTICE TO ALL CONTRACTORS:

Proposal #04: 5992-09-82, WISC 2017 401 (5992-09-87 sanitary/water)
City of Verona, North Main Street
Cross Country Road to CTH PD
CTH M
Dane County

5992-09-83, WISC 2017 402 (5992-09-88 sanitary)
City of Madison, CTH M
CTH PD Intersection
CTH M
Dane County

5992-09-85, WISC 2017 403 (5992-09-86 sanitary/water)
City of Madison, South Pleasant View Road
CTH PD to Prairie Hill Road
CTH M
Dane County

Letting of August 8, 2017

This is Addendum No. 02, which provides for the following:

Special Provisions:

Revised Special Provisions	
Article No.	Description
4	Prosecution and Progress
19	General Provisions For Storm Sewer

Added Special Provisions	
Article No.	Description
177	Storm Sewer Pipe Reinforced Concrete Horizontal Elliptical Class Special 68x106-Inch, Item SPV.0090.13

Schedule of Items:

Revised Bid Item Quantities - 5992-09-83 (CAT 0070)					
Bid Item	Item Description	Unit	Old Quantity	Revised Quantity	Proposal Total
SPV.0090.12	Storm Sewer Pipe Reinforced Concrete Horizontal Elliptical Class HE-IV 68x106-Inch	LF	1,859	-500	1,359

Added Bid Item Quantities - 5992-09-83 (CAT 0070)					
Bid Item	Item Description	Unit	Old Quantity	Revised Quantity	Proposal Total
SPV.0090.13	Storm Sewer Pipe Reinforced Concrete Horizontal Elliptical Class Special 68x106-Inch	LF	0	500	500

Plan Sheets:

Revised Plan Sheets	
Plan Sheet	Plan Sheet Title (brief description of changes to sheet)
302	STORM SEWER - (storm sewer pipe type revised)
303	STORM SEWER - (storm sewer pipe type revised)
316	STORM SEWER PIPE AND STRUCTURE DETAILS - (storm sewer pipe type revised)
836	MISCELLANEOUS QUANTITIES – (Quantity tables updated per revisions to pipe materials listed above)

The responsibility for notifying potential subcontractors and suppliers of these changes remains with the prime contractor.

Sincerely,

Mike Coleman

Proposal Development Specialist
Proposal Management Section

ADDENDUM NO. 02
5992-09-82/83/85/86/87/88
August 7, 2017

Special Provisions

4. Prosecution and Progress

*Replace the second bullet under section titled **D Roadway Embankment Surcharging** with the following:*

- Station 142 'SB'+50 to Station 148 'SB'+50 Left (Stage 1 or Stage 2). Construct the roadway embankment to a minimum elevation of 1020.00. The surcharge load duration shall be 2 months. Do not begin excavation for construction of the substructure units of R-13-292, R-13-293, C-13-2080, or C-13-2081, or complete final subgrade grading before the 2-month time has elapsed unless approved by the engineer. Prior to placing the fill, install a temporary culvert extension for the existing cross culvert.

*Replace the fourth bullet under section titled **D Roadway Embankment Surcharging** with the following:*

- Station 303 'WB'+00 to Station 316 'WB'+00 Left (including the 'WB UP' alignment) (Stage Stage 2). Construct the roadway embankment to within 6-inches of final subgrade elevation. The surcharge loading duration shall be 1 month. Do not begin excavation for the construction of structures C-13-2086, R-13-300, or R-13-301 before the 1-month time has elapsed unless approved by the engineer.

19. General Provisions For Storm Sewer

Replace paragraph seven with the following

No approval shall be authorized for any precast structure until such time as all ULO's that could affect the structure/structures in question have been completed and the project leader has had a minimum of three working days to review all the relevant information.

177. Storm Sewer Pipe Reinforced Concrete Horizontal Elliptical Class Special, 68x106-Inch, Item SPV.0090.13.

A Description

This work shall be in accordance to the requirements of standard spec 608, the plans, standard detail drawings, and as hereinafter provided.

B Materials

Furnish storm sewer pipe conforming to the plans and standard spec 608.2.1. The pipe design shall be designed for the site soil conditions in accordance to ASTM C 507 Special Design (>2000 lbs/ft/ft).

C Construction

In accordance to the plans and standard spec 608.3.

D Measurement

The department will measure Storm Sewer Pipe Reinforced Concrete Horizontal Elliptical Class HE-Special 68x106 in length by the linear foot, acceptably completed.

E Payment

The department will pay for measured quantities at the contract unit price under the following bid item:

ITEM NUMBER	DESCRIPTION	UNIT
SPV.0090.13	Storm Sewer Pipe Reinforced Concrete Horizontal Elliptical Class Special 68x106-Inch	LF

Payment is full compensation in accordance to standard spec 608.5, including site specific pipe design and design documentation.

Schedule of Items

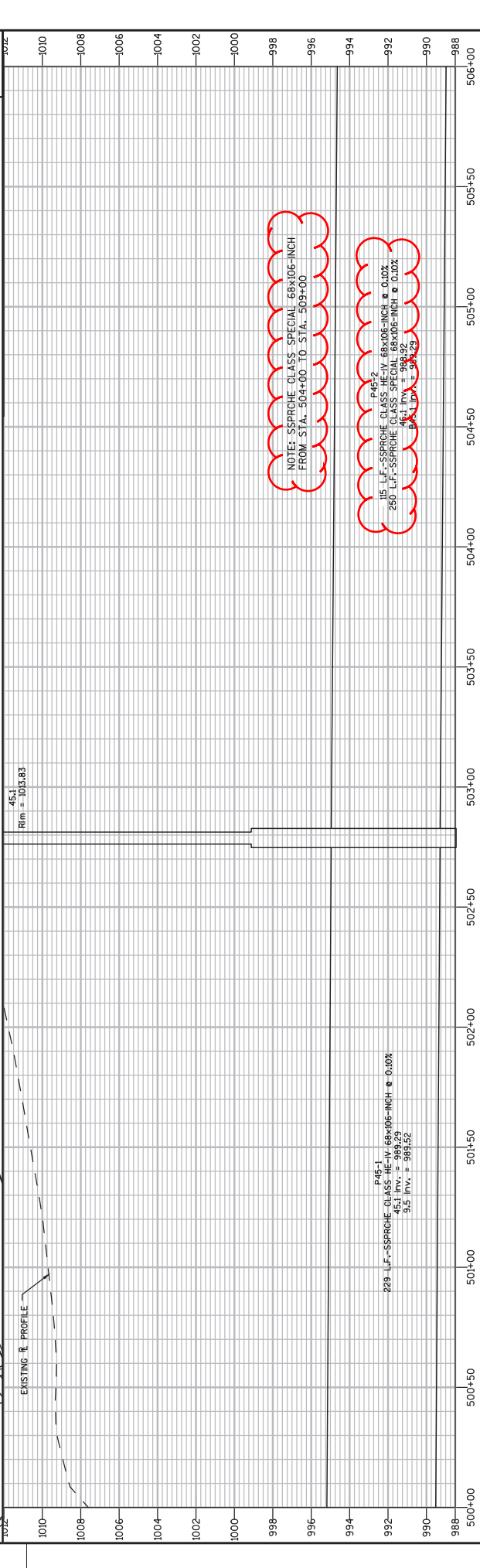
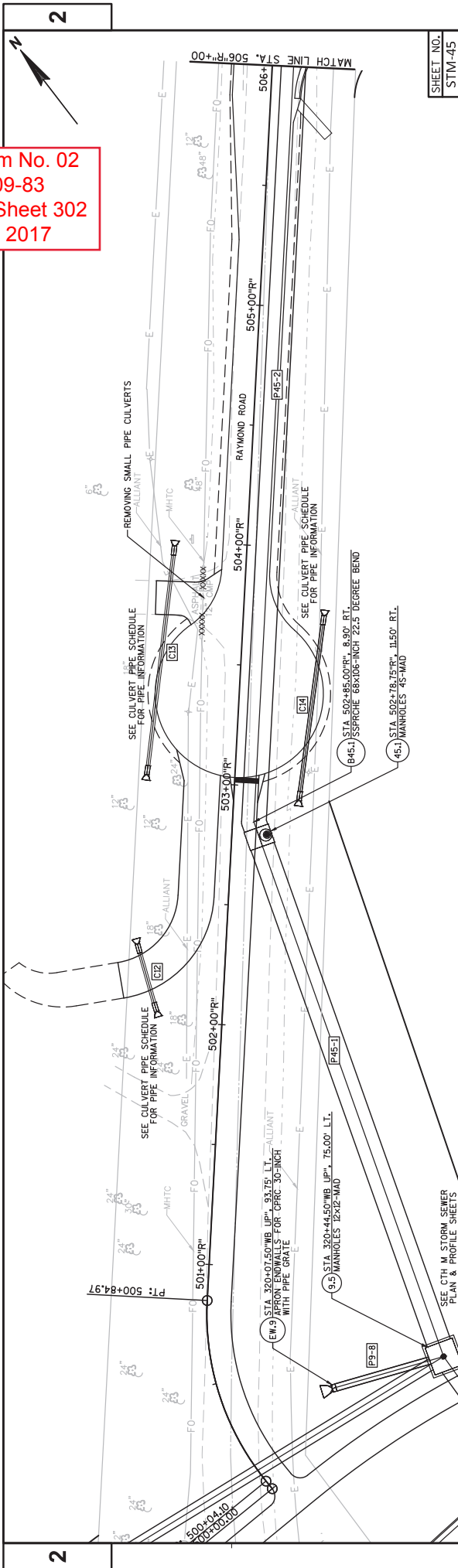
Attached, dated August 7, 2017, are the revised Schedule of Items Page 47.

Plan Sheets

The following 8½ x 11-inch sheets are attached and made part of the plans for this proposal:
Revised: 302-303, 316, 836

END OF ADDENDUM

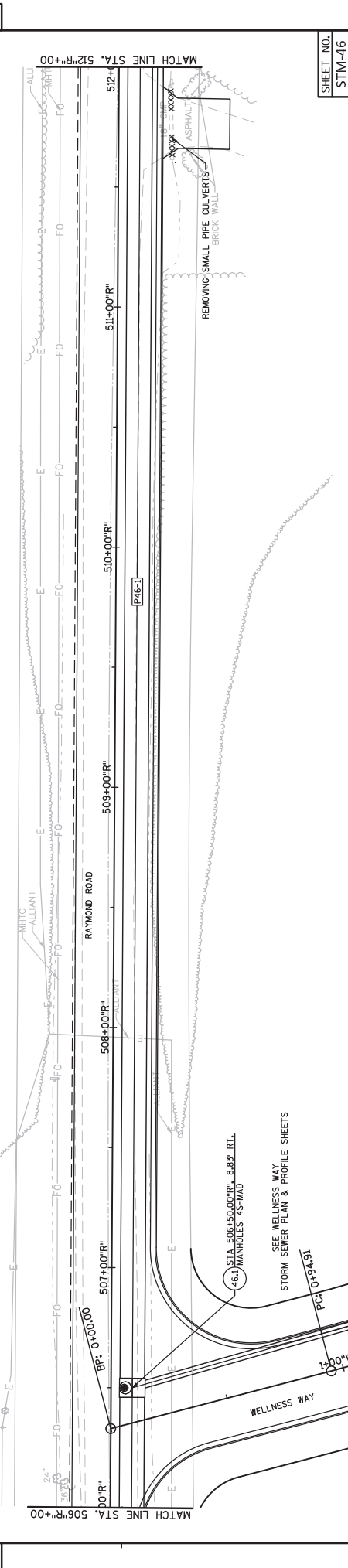
Addendum No. 02
 ID 5992-09-83
 Revised Sheet 302
 August 7, 2017



NOTE: SSPRCHG CLASS SPECIAL 68X106-INCH FROM STA. 504+00 TO STA. 509+00

18" LF - SSPRCHG CLASS IV 68X106-INCH @ 0.10%
 250 LF - SSPRCHG CLASS SPECIAL 68X106-INCH @ 0.10%
 46.1 INV. = 988.92
 46.1 INV. = 988.23

Addendum No. 02
 ID 5992-09-83
 Revised Sheet 303
 August 7, 2017



STATION	ELEVATION
506+00	988
506+50	990
507+00	992
507+50	994
508+00	996
508+50	998
509+00	1000
509+50	1002
510+00	1004
510+50	1006
511+00	1008
511+50	1010
512+00	1010

PROJECT NO: 5992-09-83
 COUNTY: DANE
 HWY: CTH M
 STORM SEWER: RAYMOND ROAD
 SHEET 303

FILE NAME : F:\3705\373\00373030\CADD\CD\DESIGN\PIPE\NETWORKS\STORMSEWER.DWG
 CTH M - SHEET SET MANAGER - STORMSEWER - RAYMOND_02
 PLOT DATE : 8/4/2017 1:03 PM
 PLOT BY : JASON DALENS
 PLOT NAME :
 PLOT SCALE : 0.30000000 * 1'-0" -> XREF: WSDOT/CADD/SHEET 41

STORM SEWER PIPE SCHEDULE

PIPE NO.	DOWNSTREAM STRUCTURE	UPSTREAM STRUCTURE	PIPE LENGTH (FT)	DOWNSTREAM INVERT	UPSTREAM INVERT	PIPE SLOPE	PIPE SIZE	PIPE TYPE
P44-5	44.1A	44.1A	39	1063.54	1063.74	0.50%	12"	SSPRC Class IV
P44-6	44.1A	44.3A	8	1063.41	1063.45	0.50%	15"	SSPRC Class IV
P44-7	44.1A	44.3B	8	1063.45	1063.49	0.50%	15"	SSPRC Class IV
P45-1	45.1	9.5	22.9	989.29	989.52	0.10%	66"X16"	SSPRC Class IV & SPECIAL
P45-2	46.1	45.1	36.5	989.29	989.29	0.10%	66"X16"	SSPRC Class IV & SPECIAL
P46-1	47.1	46.1	66.3	988.26	988.92	0.10%	66"X16"	SSPRC Class IV & SPECIAL
P46-7	48.1	47.1	60.2	987.66	988.26	0.10%	66"X16"	SSPRC Class IV & SPECIAL
P47-2	47.2	47.2	9	1001.39	1001.43	0.50%	18"	SSPRC Class III
P47-3	47.2	47.3	10	1001.68	1001.73	0.50%	15"	SSPRC Class III
P48-1	EW 47	48.1	65	1001.38	1002.07	1.07%	18"	SSPRC Class III
P48-2	48.2	48.1	23.5	987.42	987.66	0.10%	66"X16"	SSPRC Class III
P48-2	48.3	48.2	17.9	987.24	987.42	0.10%	66"X16"	SSPRC Class III
P48-3	48.1	48.4	9	1001.45	1001.49	0.50%	12"	SSPRC Class III
P48-4	48.4	48.5	10	1001.49	1001.54	0.50%	12"	SSPRC Class III
P48-5	EW 48	48.6	53	1002.78	1003.35	1.08%	18"	SSPRC Class IV
P49-1	49.1	48.3	13.9	987.10	987.24	0.10%	66"X16"	SSPRC Class III
P49-2	49.2	49.1	50.7	986.60	987.10	0.10%	66"X16"	SSPRC Class III
P49-3	49.1	49.1A	9	986.71	986.75	0.50%	15"	SSPRC Class III
P49-4	49.1A	49.1B	10	987.00	987.05	0.50%	12"	SSPRC Class III
P49-5	49.2	49.2A	17	989.02	989.11	0.50%	12"	SSPRC Class III
P49-6	49.2A	49.2B	12	989.11	989.17	0.50%	12"	SSPRC Class III
P50-1	50.1	49.2	90	986.51	986.60	0.10%	66"X16"	SSPRC Class III
P50-2	EW 50A	50.1	25.6	986.51	986.51	0.10%	66"X16"	SSPRC Class III
P50-3	EW 50B	50.2A	96	987.99	987.99	0.50%	18"	SSPRC Class III
P50-4	50.2A	50.2B	21	987.99	988.09	0.50%	18"	SSPRC Class III
P50-5	50.2B	50.2C	45	988.59	988.81	0.50%	12"	SSPRC Class III
P50-6	50.2C	50.2D	27	988.81	988.95	0.50%	12"	SSPRC Class III
P50-7	50.2E	50.2E	27	988.59	988.72	0.50%	12"	SSPRC Class III
P51-1	46.1	51.1	168	1014.92	1015.76	0.50%	30"	SSPRC Class III
P51-2	51.1	51.2	161	1016.26	1016.79	1.57%	24"	SSPRC Class III
P51-3	51.2	51.3	144	1018.79	1023.86	3.51%	24"	SSPRC Class III
P51-4	51.3	51.4	15.2	1023.86	1031.92	5.32%	24"	SSPRC Class III
P51-5	51.1	51.1A	6	1017.01	1017.04	0.50%	15"	SSPRC Class III
P51-6	51.1	51.1B	29	1017.26	1017.4	0.50%	12"	SSPRC Class III
P51-7	51.1A	51.1C	10	1017.29	1017.34	0.50%	12"	SSPRC Class III
P51-8	51.1B	51.1D	10	1017.40	1017.46	0.50%	12"	SSPRC Class III
P51-9	51.3	51.3A	35	1024.86	1025.03	0.50%	12"	SSPRC Class III
P52-1	52.1	52.2	13.3	1031.92	1037.80	4.42%	24"	SSPRC Class III
P52-2	52.3	52.3	26.9	1037.80	1050.17	4.60%	24"	SSPRC Class III
P52-3	52.4	52.4	87	1050.17	1052.74	2.95%	24"	SSPRC Class III
P52-4	52.4	52.5	82	1052.74	1054.45	2.08%	24"	SSPRC Class III
P52-5	52.2	52.2A	35	1038.80	1038.98	0.50%	12"	SSPRC Class III
P52-6	52.3	52.3A	35	1051.17	1051.35	0.50%	12"	SSPRC Class III
P53-1	53.1	53.3	166	996.38	996.71	0.20%	28"X45"	SSPRC Class III
P53-2	53.2	53.1	188	994.26	995.79	0.81%	36"	SSPRC Class III
P53-3	EW 53B	53.2	28	994.05	994.26	0.75%	36"	SSPRC Class III
P53-4	53.3	EW 53A	25	996.71	996.76	0.20%	28"X45"	SSPRC Class III
P53-5	53.3	53.3	46	996.04	996.13	0.20%	36"	SSPRC Class III
P53-6	33.1	53.1	27	995.98	996.04	0.20%	36"	SSPRC Class III
P54-1	54.1	EW 54A	15	995.24	995.24	0.30%	45"X68"	SSPRC Class III
P54-2	54.2	54.1	34.9	994.20	995.24	0.30%	45"X68"	SSPRC Class III
P54-3	EW 54B	54.2	16	994.15	994.20	0.30%	45"X68"	SSPRC Class III

Addendum No. 02
 ID 5992-09-82/83/85
 Revised Sheet 316
 August 7, 2017

STORM SEWER PIPE SCHEDULE

PIPE NO.	DOWNSTREAM STRUCTURE	UPSTREAM STRUCTURE	PIPE LENGTH (FT)	DOWNSTREAM INVERT	UPSTREAM INVERT	PIPE SLOPE	PIPE SIZE	PIPE TYPE
P40-2	40.1	1020.92	1021.31	3.85%	15"	SSPRC Class III		
P40-3	40.1A	1021.31	1021.54	0.50%	15"	SSPRC Class III		
P40-4	40.1B	1021.54	1021.66	0.50%	15"	SSPRC Class III		
P40-5	40.1C	1021.66	1021.95	0.50%	12"	SSPRC Class III		
P40-6	40.1D	1021.95	1022.10	0.50%	12"	SSPRC Class III		
P40-7	40.1E	1022.10	1022.70	3.73%	12"	SSPRC Class III		
P40-8	40.1F	1022.70	1023.36	1.00%	18"	SSPRC Class III		
P41-1	EW 41	1023.36	1023.93	0.50%	18"	SSPRC Class III		
P41-2	41.1	1023.93	1024.11	0.50%	18"	SSPRC Class III		
P41-3	41.2	1024.11	1024.68	0.50%	12"	SSPRC Class III		
P41-4	41.3	1024.68	1025.03	0.50%	18"	SSPRC Class III		
P41-5	41.4	1025.03	1024.61	1.00%	12"	SSPRC Class III		
P41-6	41.3A	1025.19	1025.59	0.70%	6"	Composite		
P41-7	41.3B	1025.59	1025.88	0.70%	6"	Composite		
P41-8	41.4	1025.88	1026.51	0.50%	15"	SSPRC Class III		
P41-9	41.4A	1026.51	1029.56	0.50%	15"	SSPRC Class III		
P41-10	41.4B	1029.56	1029.93	0.50%	15"	SSPRC Class III		
P41-11	41.4C	1029.93	1029.97	0.50%	12"	SSPRC Class III		
P41-12	41.4D	1029.97	1040.12	0.50%	12"	SSPRC Class III		
P41-13	41.4	1042.56	1042.56	0.50%	12"	SSPRC Class III		
P41-14	41.4A	1042.56	1040.03	0.50%	12"	SSPRC Class III		
P41-15	41.4G	1040.03	1040.07	0.50%	12"	SSPRC Class III		
P41-16	41.4E	1040.12	1040.17	0.50%	12"	SSPRC Class III		
P42-1	41.4	1048.91	1048.91	4.42%	24"	SSPRC Class III		
P42-2	42.1	1048.91	1052.76	2.36%	24"	SSPRC Class III		
P42-3	42.2	1052.76	1052.92	0.42%	24"	SSPRC Class III		
P42-4	42.1	1050.19	1050.19	0.50%	12"	SSPRC Class III		
P42-5	42.1	1051.77	1051.97	3.49%	12"	SSPRC Class III		
P42-6	42.1B	1051.97	1052.80	3.46%	12"	SSPRC Class III		
P42-7	42.1C	1052.80	1053.08	3.46%	12"	SSPRC Class III		
P42-8	42.1D	1053.08	1055.84	3.42%	12"	SSPRC Class III		
P42-9	42.2	1055.84	1054.45	1.90%	12"	SSPRC Class III		
P42-10	42.3	1054.45	1054.92	0.43%	24"	SSPRC Class III		
P43-1	43.1	1054.92	1054.92	0.73%	18"	SSPRC Class III		
P43-2	43.1C	1054.92	1054.97	0.50%	18"	SSPRC Class III		
P43-3	43.1G	1054.97	1056.38	1.84%	12"	SSPRC Class III		
P43-4	43.1H	1056.38	1056.47	0.50%	12"	SSPRC Class III		
P43-5	43.1	1054.32	1054.45	0.50%	21"	SSPRC Class III		
P43-6	43.1B	1054.45	1054.60	0.50%	21"	SSPRC Class III		
P43-7	43.1E	1054.60	1055.40	0.50%	12"	SSPRC Class III		
P43-8	43.1B	1055.35	1055.40	0.50%	12"	SSPRC Class III		
P43-9	43.1D	1055.40	1055.22	0.50%	18"	SSPRC Class III		
P43-10	43.1D	1055.22	1055.52	0.50%	15"	SSPRC Class III		
P43-11	43.1	1055.77	1055.82	0.50%	12"	SSPRC Class III		
P43-12	43.2	1059.24	1059.50	0.38%	42"	SSPRC Class IV		
P43-13	43.3	1060.00	1060.20	0.50%	36"	SSPRC Class IV		
P43-14	43.4	1060.20	1060.85	0.50%	36"	SSPRC Class IV		
P43-15	43.4A	1060.85	1062.29	0.50%	12"	SSPRC Class IV		
P43-16	43.4A	1062.29	1062.33	0.50%	12"	SSPRC Class IV		
P43-17	43.4	1062.33	1062.26	0.50%	12"	SSPRC Class IV		
P43-18	43.4C	1062.26	1062.31	0.50%	12"	SSPRC Class IV		
P43-19	43.3	1060.00	1060.36	0.61%	36"	SSPRC Class IV		
P43-20	43.6	1062.15	1062.15	0.50%	15"	SSPRC Class IV		
P43-21	43.6B	1062.15	1062.30	0.50%	15"	SSPRC Class IV		
P43-22	43.7	1062.55	1062.67	0.50%	12"	SSPRC Class IV		
P43-23	43.7A	1062.67	1062.72	0.50%	15"	SSPRC Class IV		
P43-24	43.7A	1062.72	1063.03	0.50%	15"	SSPRC Class IV		
P44-1	43.5	1061.95	1061.88	0.50%	30"	SSPRC Class IV		
P44-2	44.1	1062.38	1067.20	1.41%	24"	SSPRC Class IV		
P44-3	44.2	EW 44	57	1067.20	1070.00	4.90%	24"	SSPRC Class IV
P44-4	44.1	1063.54	1063.54	0.50%	12"	SSPRC Class IV		

Addendum No. 02
ID 5992-09-82/83/85
Revised Sheet 836
August 7, 2017

STORM SEWER PIPE REINFORCED CONCRETE HORIZONTAL ELLIPTICAL

CATEGORY	PIPE I.D.	STRUCTURE I.D.	STRUCTURE I.D.	TO		FROM		LF	CLASS HE-III	CLASS HE-III	CLASS HE-IV	CLASS HE-IV	CLASS SPECIAL	LF	LF
				5.2	5.2	5.2	5.2								
PROJECT 5992-09-82															
0010	P5-3	EW.5A	5.2	5.2	0	0	0	52	0	0	0	0	0	0	0
PROJECT 5992-09-83															
0070	P9-1	9.1	9.1	9.1	9.1	9.1	9.1	85	85	173	124	95	229	115	250
	P9-2	9.2	9.2	9.2	9.2	9.2	9.2	173	173	413	602	235	179	139	507
	P9-3	9.3	9.3	9.3	9.3	9.3	9.3	124	124	90	256	166	25	15	349
	P9-4	9.4	9.4	9.4	9.4	9.4	9.4	95	95	16	380	191	86	66	145
	P37-1	EW.37A	37.1	37.1	49	49	49	52	52	0	0	0	0	0	0
	P45-1	45.1	45.1	45.1	45.1	45.1	45.1	49	49	191	380	1406	382	95	1359
	P46-1	46.1	46.1	46.1	46.1	46.1	46.1	49	49	191	380	1406	382	95	1359
	P47-1	47.1	47.1	47.1	47.1	47.1	47.1	49	49	191	380	1406	382	95	1359
	P48-1	48.1	48.1	48.1	48.1	48.1	48.1	49	49	191	380	1406	382	95	1359
	P48-2	48.2	48.2	48.2	48.2	48.2	48.2	49	49	191	380	1406	382	95	1359
	P49-1	49.1	49.1	49.1	49.1	49.1	49.1	49	49	191	380	1406	382	95	1359
	P49-2	49.2	49.2	49.2	49.2	49.2	49.2	49	49	191	380	1406	382	95	1359
	P50-1	50.1	50.1	50.1	50.1	50.1	50.1	49	49	191	380	1406	382	95	1359
	P50-2	EW.50A	50.1	50.1	50.1	50.1	50.1	49	49	191	380	1406	382	95	1359
	P53-1	53.1	53.1	53.1	53.1	53.1	53.1	49	49	191	380	1406	382	95	1359
	P53-4	EW.53A	53.3	53.3	53.3	53.3	53.3	49	49	191	380	1406	382	95	1359
	P54-1	EW.54A	54.1	54.1	54.1	54.1	54.1	49	49	191	380	1406	382	95	1359
	P54-2	54.1	54.2	54.2	54.2	54.2	54.2	49	49	191	380	1406	382	95	1359
	P54-3	54.2	54.2	54.2	54.2	54.2	54.2	49	49	191	380	1406	382	95	1359
PROJECT 5992-09-85															
0040	P16-2	16.1	16.2	16.2	16.2	16.2	16.2	86	86	145	59	145	59	145	59
	P16-3	EW.16A	16.2	16.2	16.2	16.2	16.2	86	86	145	59	145	59	145	59
PROJECT 5992-09-85 TOTALS															
					0	0	0	145	145	191	380	1406	382	95	1359
OVERALL PROJECT TOTALS															
					49	49	49	145	145	191	380	1406	382	95	1359

STORM SEWER PIPE REINFORCED CONCRETE BENDS

CATEGORY	STRUCTURE I.D.	STATION	LOCATION	BEND		ELECTRONIC MARKERS	SEWER CONSTRUCTION	
				88-INCH	96-INCH		SEWER	STAKING
PROJECT 5992-09-83								
0070	B45.1	502+85.00 "R"	8.90 RT	1	-	-	1	1
	B48.1	521+57.02 "R"	8.83 RT	1	-	-	1	1
	B48.2	523+44.66 "R"	8.19 RT	1	-	-	1	1
	B49.1	524+62.52 "R"	8.35 RT	1	-	-	1	1
	B49.2	530+07.00 "R"	6.31 RT	1	-	-	1	1
	B50.1	530+96.94 "R"	42.69 RT	1	-	-	1	1
	B53.1	312+50.42 "EB"	70.25 RT	1	-	-	1	1
PROJECT 5992-09-83 TOTALS								
				6	1	1	7	7
OVERALL PROJECT TOTALS								
				6	1	1	7	7

*ADDITIONAL QUANTITIES FOUND ELSEWHERE

SIDEWALK TRENCH DRAIN

CATEGORY	STRUCTURE I.D.	STATION	LOCATION	CONSTRUCTION	
				SEWER	STAKING
PROJECT 5992-09-85					
0040	41.3B	170+73.25 "P"	11.00 LT	1	1
	41.3C	170+73.23 "P"	1.00 RT	1	1
PROJECT 5992-09-85 TOTALS					
				2	2
OVERALL PROJECT TOTALS					
				2	2

*ADDITIONAL QUANTITIES FOUND ELSEWHERE



Proposal Schedule of Items

Proposal ID: 20170808004 Project(s): 5992-09-82, 5992-09-83, 5992-09-85, 5992-09-86, 5992-09-87, 5992-09-88

Federal ID(s): WISC 2017401, WISC 2017403, WISC 2017402, N/A, N/A, N/A

SECTION: 0001 Contract Items

Alt Set ID: Alt Mbr ID:

Proposal Line Number	Item ID Description	Approximate Quantity and Units	Unit Price	Bid Amount
6330	SPV.0200 Special 20. Sanitary Manhole 4-Foot Diameter W/ Outside Drop (MMSD)	38.800 VF	_____.	_____.
6340	SPV.0200 Special 21. Sanitary Manhole 4-Foot Diameter (MMSD)	180.300 VF	_____.	_____.
6350	SPV.0200 Special 22. Sanitary Manhole 6-Foot Diameter (MMSD)	13.800 VF	_____.	_____.
6360	SPV.0200 Special 23. Sanitary Monitoring Manhole 6-Foot Diameter	15.300 VF	_____.	_____.
6370	608.0448 Storm Sewer Pipe Reinforced Concrete Class IV 48-Inch	427.000 LF	_____.	_____.
6380	SPV.0090 Special 10. Storm Sewer Pipe Reinforced Concrete Class IV, 43x68-Inch	382.000 LF	_____.	_____.
6390	SPV.0090 Special 11. Storm Sewer Pipe Reinforced Concrete Class IV, 58x91-Inch	95.000 LF	_____.	_____.
6400	SPV.0090 Special 12. Storm Sewer Pipe Reinforced Concrete Class IV, 68x106-Inch	1,359.000 LF	_____.	_____.
6410	SPV.0090 Special 73. Sanitary Sewer Force Main 1 1/4-Inch	250.000 LF	_____.	_____.
6420	SPV.0090 Special 13. Storm Sewer Pipe Reinforced Concrete Horizontal Elliptical Special 68x106-In	500.000 LF	_____.	_____.
Section: 0001			Total:	_____.
			Total Bid:	_____.

