



# Wisconsin Department of Transportation

July 24, 2017

**Division of Transportation Systems Development**

Bureau of Project Development  
 4802 Sheboygan Avenue, Rm 601  
 P O Box 7916  
 Madison, WI 53707-7916

Telephone: (608) 266-1631  
 Facsimile (FAX): (608) 266-8459

**NOTICE TO ALL CONTRACTORS:**

**Proposal #10: 6190-15-72, WIS 2017 281**  
**Main St, Village of Winneconne**  
**Wolf River Bridge & Approaches**  
**STH 116**  
**Winnebago County**

**6190-15-74**  
**Main St, Village of Winneconne**  
**Wolf River Bridge & Approaches**  
**STH 116**  
**Winnebago County**

**Letting of August 8, 2017**

This is Addendum No. 01, which provides for the following:

**Special Provisions:**

Revised Special Provisions	
Article No.	Description
3	Prosecution and Progress

**Schedule of Items:**

Revised Bid Item Quantities					
Bid Item	Item Description	Unit	Old Quantity	Revised Quantity	Proposal Total
460.4110.S	Reheating HMA Pavement Longitudinal Joints	LF	885	6,795	7,680
655.0615	Electrical Wire Lighting 10 AWG	LF	15,316	1,228	16,544

**Plan Sheets:**

Revised Plan Sheets	
Plan Sheet	Plan Sheet Title (brief description of changes to sheet)
20	Lighting receptacle conductors placed on shared trip breakers
21	Lighting receptacle conductors placed on shared trip breakers; added radar board circuit
66	Lighting receptacle conductors placed on shared trip breakers; added radar board circuit
72	Revised for shared trip breakers and radar board conductors
116	Changed quantity of bid item 460.4110.S
125	Changed quantity of bid item 655.0615
126	Changed quantity of bid item 655.0615

326	Added haunch dimension for B-70-321
345	Added haunch dimension for B-70-322

<b>Added Plan Sheets</b>	
Plan Sheet	Plan Sheet Title (brief description of why sheet was added)
15A	Added driveway detail

The responsibility for notifying potential subcontractors and suppliers of these changes remains with the prime contractor.

Sincerely,

*Mike Coleman*

Proposal Development Specialist  
Proposal Management Section

**ADDENDUM NO. 01**  
**6190-15-72 & 6190-15-74**  
**July 25, 2017**

**Special Provisions**

**3. Prosecution and Progress**

*Add the following paragraph:*

Buildings on parcels 6, 9, 12, 17, and 18 of transportation project plat 6190-15-23 may not be completely razed and removed until September 15, 2017.

*Replace entire section titled **Fish Spawning and Migration** with the following:*

There shall be no instream disturbance of the Wolf River as a result of construction activity under or for this contract, from March 15 to June 1 both dates inclusive, in order to avoid adverse impacts upon the spawning of fish such as northern pike and walleye.

In order to minimize adverse impacts upon fish migration, any instream disturbance from October 15 to November 30 both dates inclusive, must comply with the following requirements:

- Complete any placement of sheeting for coffer dams using a vibratory hammer
- Complete any placement of sheeting for coffer dams and any pile driving operations during daylight hours (from 30 minutes after sunrise to 30 minutes prior to sunset)
- Placement of sheeting for coffer dams and all pile driving operations at piers 3 and 4 of structure B-70-316 are not allowed from October 15 to November 30 both dates inclusive.
- Placement of sheeting for coffer dams and all pile driving operations at piers 1 and 2 of structure B-70-321 are not allowed from October 15 to November 30 both dates inclusive.
- Placement of sheeting for coffer dams and all pile driving operations at piers 4 and 5 of structure B-70-322 are not allowed from October 15 to November 30 both dates inclusive.
- Removal of any piers or substructure components on existing structure B-70-913 under item SPV.0105.450 is not allowed from October 15 to November 30 both dates inclusive.

Any change to these limitations will require submitting a written request by the contractor to the engineer, subsequent review and concurrence by the Department of Natural Resources (DNR) in the request, and final approval by the engineer. The approval will include all conditions to the request as mutually agreed upon by WisDOT and DNR.

**Schedule of Items**

Attached, dated July 25, 2017, are the revised Schedule of Items Pages 4 and 14.

**Plan Sheets**

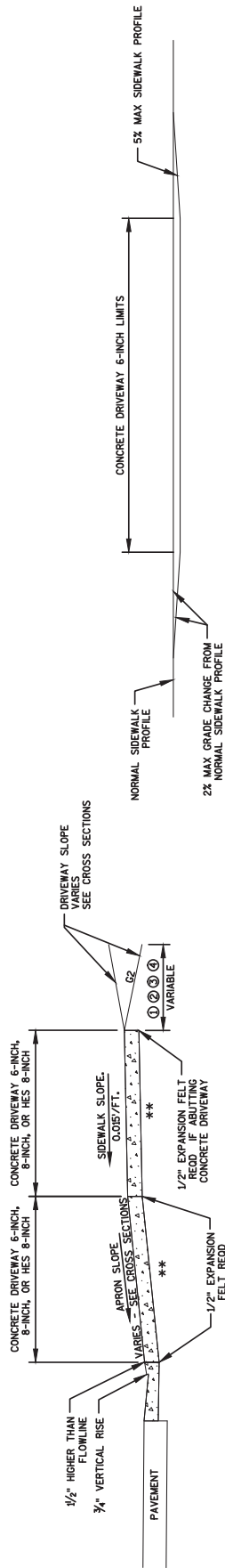
The following 8½ x 11-inch sheets are attached and made part of the plans for this proposal:

Revised: 20, 21, 66, 72, 116, 125, 126, 326, and 345.

Added: 15A

END OF ADDENDUM

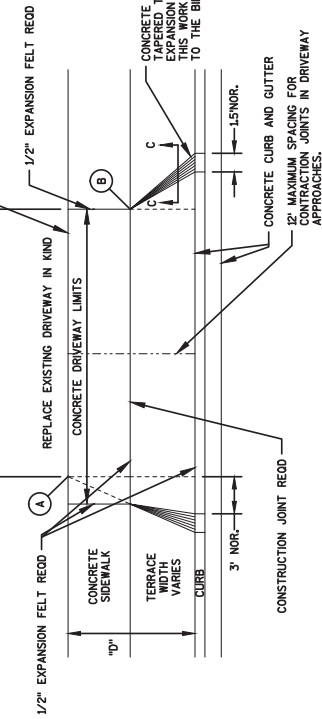
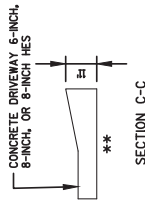
Addendum No. 01  
ID 6190-15-72  
Added Sheet 15A  
July 25, 2017



TYPICAL SIDEWALK SECTION

- (A) WHEN "D" IS 13" OR LESS, ALIGN TAPER WITH BACK OF SIDEWALK
- (B) WHEN "D" IS GREATER THAN 13", ALIGN TAPER WITH FRONT OF SIDEWALK

C.E. 30' NOR. 35' MAX.  
P.E. 36' NOR. 24' MAX.  
TO FIT EXISTING DRIVEWAY AT BACK OF SIDEWALK, AS SHOWN ON PLANS, OR AS DIRECTED BY ENGINEER



PLAN VIEW

DEPRESSED SIDEWALK PROFILE DETAIL

- ① 6-INCH OR 8-INCH CONCRETE DRIVEWAY OR HES 8-INCH CONCRETE DRIVEWAY
- ② 6" BASE AGG. DENSE 1 1/4-INCH
- ③ RESIDENTIAL - 4" BASE AGG. DENSE 1 1/4-INCH BASE WITH MINIMUM 2" ASPHALTIC SURFACE (OR MATCH EXISTING)
- ④ COMMERCIAL - MINIMUM 9" BASE AGG. DENSE 1 1/4-INCH BASE WITH MINIMUM 3" ASPHALTIC SURFACE (OR MATCH EXISTING)
- \*\* 6" BASE AGG. DENSE 1 1/4-INCH REED UNDER CONCRETE DRIVEWAY

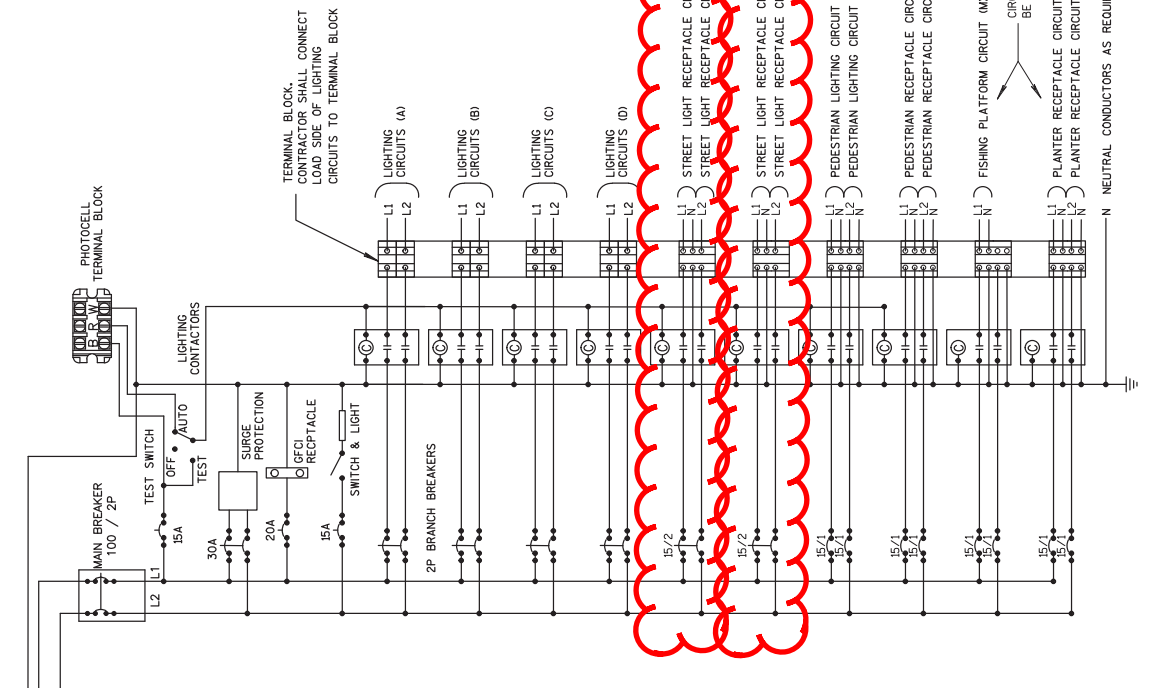
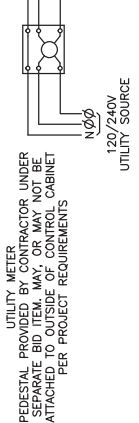
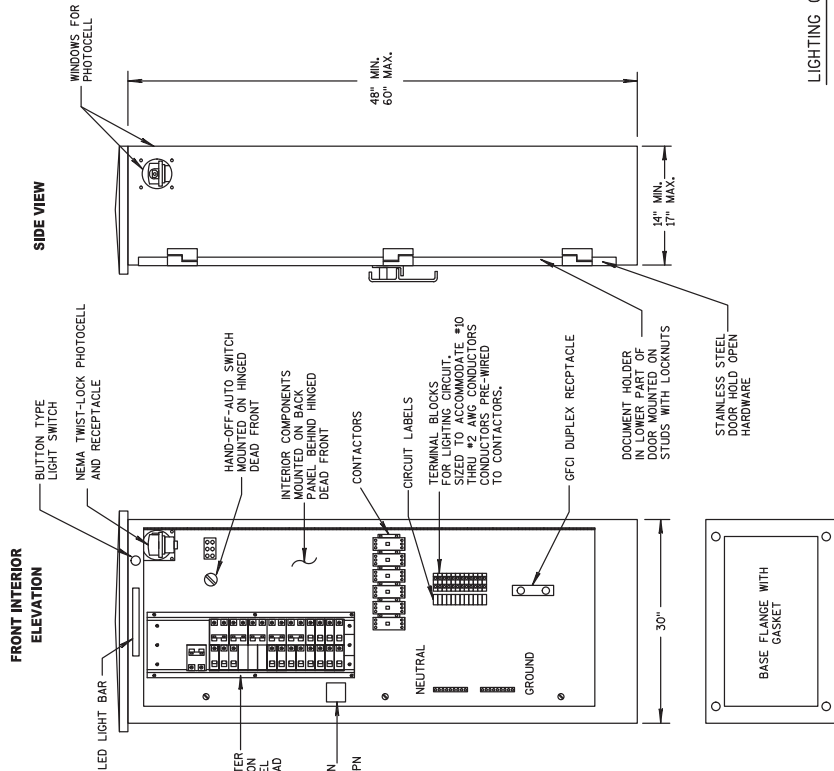
NOTES:

- 1. ALGEBRAIC DIFFERENCE BETWEEN TANGENT GRADES G1 & G2 TO NOT EXCEED 15%

URBAN DRIVEWAY WITH SIDEWALK DETAIL  
STANDARD

**GENERAL NOTES**

- DETAILS OF CONSTRUCTION, MATERIALS AND WORKMANSHIP NOT SHOWN ON THIS DRAWING SHALL CONFORM TO THE PERTINENT REQUIREMENTS OF THE STANDARD SPECIFICATIONS AND APPLICABLE SPECIAL PROVISIONS.
- ALL INTERNAL ELECTRICAL COMPONENTS WILL BE PRE-WIRED BY THE CABINET FABRICATOR.
- ALL CONDUIT ENTRIES SHALL BE SEALED WITH AN APPROPRIATE DUCT SEALING COMPOUND.
- ORIENT PHOTOCELL AWAY FROM AMBIENT LIGHT SOURCES AND ONCOMING TRAFFIC HEADLIGHTS.
- A COMPLETE LIGHTING OR ELECTRICAL PLAN SHALL BE SECURELY PLACED IN THE DOCUMENT HOLDER ATTACHED TO THE DOOR.



Addendum No. 01  
ID 6190-15-72  
Revised Sheet 20  
July 25, 2017

LIGHTING CONTROL CABINET - CB100  
NO SCALE

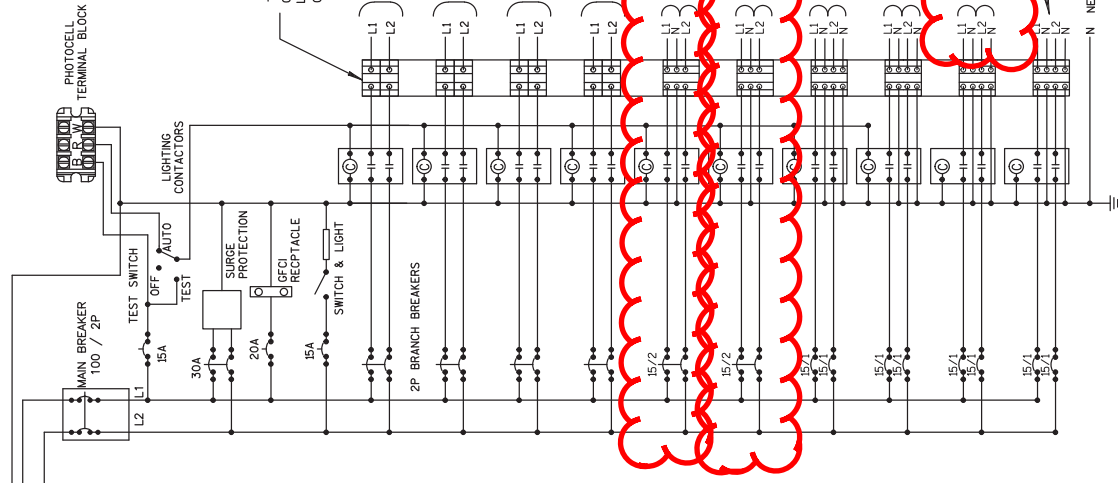
CONTROL CABINET SCHEMATIC

**GENERAL NOTES**

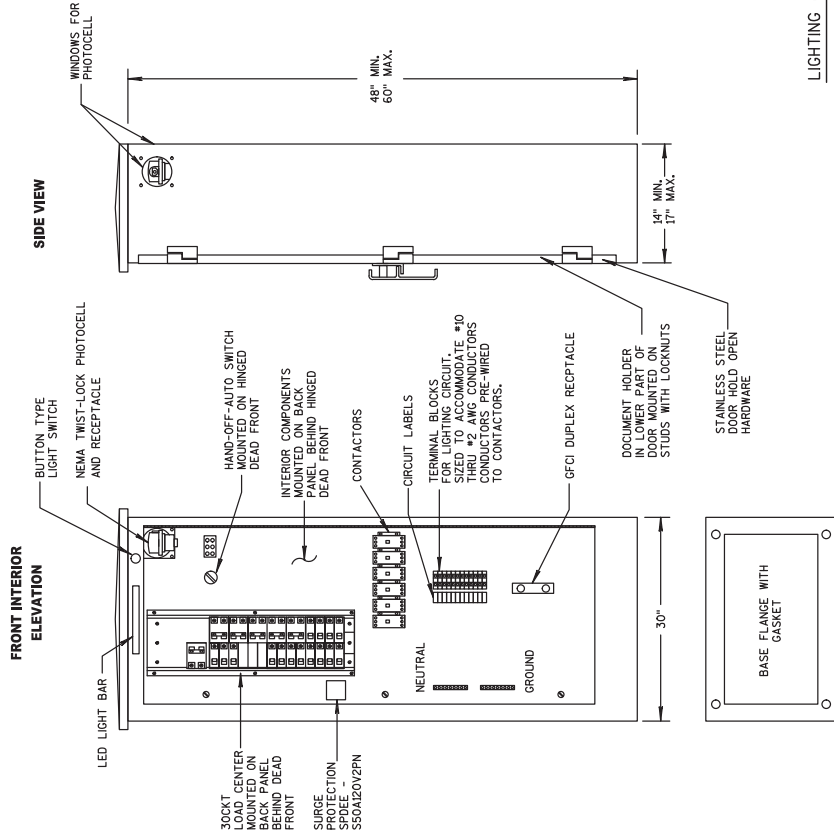
- DETAILS OF CONSTRUCTION, MATERIALS, AND WORKMANSHIP NOT SHOWN ON THIS DRAWING SHALL CONFORM TO THE PERTINENT REQUIREMENTS OF THE STANDARD SPECIFICATIONS AND APPLICABLE SPECIAL PROVISIONS.
- ALL INTERNAL ELECTRICAL COMPONENTS WILL BE PRE-WIRED BY THE CABINET FABRICATOR.
- ALL CONDUIT ENTRIES SHALL BE SEALED WITH AN APPROPRIATE DUCT SEALING COMPOUND.
- ORIENT PHOTOCELL AWAY FROM AMBIENT LIGHT SOURCES AND ONCOMING TRAFFIC HEADLIGHTS.
- A COMPLETE LIGHTING OR ELECTRICAL PLAN SHALL BE SECURELY PLACED IN THE DOCUMENT HOLDER ATTACHED TO THE DOOR.

UTILITY METER  
 PEDESTAL PROVIDED BY CONTRACTOR UNDER  
 BID SHALL BE ATTACHED TO OUTSIDE OF CONTROL CABINET  
 PER PROJECT REQUIREMENTS

120/240V  
 UTILITY SOURCE

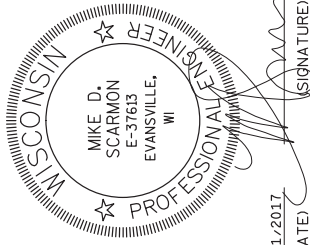


Addendum No. 01  
 ID 6190-15-72  
 Revised Sheet 21  
 July 25, 2017



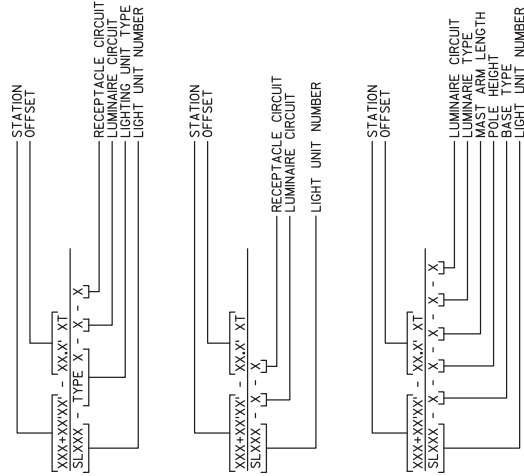
**CONTROL CABINET SCHEMATIC**

LIGHTING CONTROL CABINET - CB200  
 NO SCALE

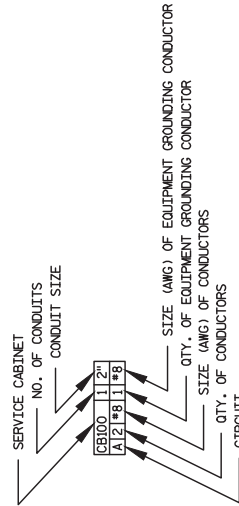


**LIGHTING PLAN LEGEND:**

- EXISTING DECORATIVE STREET LIGHT
- EXISTING DECORATIVE PEDESTRIAN STREET LIGHT
- DECORATIVE STREET LIGHT (TYPE A)
- DECORATIVE PEDESTRIAN STREET LIGHT (TYPE B)
- WISDOT UTILITY WALKWAY LED LIGHTING UNIT
- BOLLARD WALKWAY LED LIGHTING UNIT
- NAVIGATION LIGHT - CENTER OF CHANNEL (GREEN)
- NAVIGATION LIGHT - EDGE OF CHANNEL (RED)
- SINGLE ARM LIGHTING UNIT
- CONCRETE CONTROL CABINET BASE/LIGHTING CONTROL CABINET
- ELECTRICAL SERVICE METER BREAKER PEDESTAL
- PULL BOX NON-CONDUCTIVE (24"x42")
- LIGHTING CONDUIT (2" SCHEDULE 40 PVC UNLESS NOTED)
- REMOVE AND SALVAGE EXISTING STREET LIGHTING UNIT



**CONDUIT/CONDUCTOR LEGEND**



PWO = PULL WIRE ONLY

**GENERAL STREET LIGHTING NOTES:**

- 1) THE ENGINEER SHALL APPROVE THE FINAL LOCATION FOR ALL CONCRETE BASES IN THE FIELD PRIOR TO CONSTRUCTION.
- 2) PITCH ALL CONDUITS TOWARD PULLBOXES. INSTALL A 2" DRAIN DUCT TO DITCH OR STORM SEWER AS REQUIRED FOR DRAINAGE. THIS 2" DRAIN DUCT IS INCIDENTAL TO THE PULL BOX BID ITEM. DRAIN DUCT IS NOT SHOWN, DO NOT SPLICE IN PULLBOXES.
- 3) THE LOCATION OF EXISTING AND PROPOSED UTILITIES AS SHOWN ON THE PLANS ARE APPROXIMATE. IN ADDITION, THERE MAY BE OTHER UTILITIES WITHIN THE PROJECT AREA WHICH ARE NOT SHOWN. THE CONTRACTOR SHALL VERIFY THE LOCATIONS OF ALL UTILITIES PRIOR TO CONSTRUCTION.
- 4) TEMPORARY LIGHTING IS NOT SHOWN IN THE LIGHTING PLANS. ALL TEMPORARY LIGHTING FOR THIS PROJECT IS DEFINED AND PAID FOR UNDER THE TEMPORARY LIGHTING SPECIAL PROVISION.

SHEET 1 OF 11

**CONDUCTOR COLOR LEGEND**

CB100	CB200	CB300
STREET LIGHTING CONDUCTORS A - BLACK B - RED C - BLACK D - RED	STREET LIGHTING CONDUCTORS A - BLACK B - RED C - BLACK D - RED	NAVIGATION LIGHTING CONDUCTORS A - BLACK & NEUTRAL B - RED & NEUTRAL I20V PHASE TO GROUND
STREET LIGHTING RECEPTACLE CONDUCTORS E - BLUE & NEUTRAL F - BROWN G - BLUE & NEUTRAL H - BROWN I20V PHASE TO GROUND	STREET LIGHTING RECEPTACLE CONDUCTORS E - BLUE & NEUTRAL F - BROWN G - BLUE & NEUTRAL H - BROWN I20V PHASE TO GROUND	STREET LIGHTING RECEPTACLE CONDUCTORS E - BLUE & NEUTRAL F - BROWN G - BLUE & NEUTRAL H - BROWN I20V PHASE TO GROUND
PEDESTRIAN LIGHTING CONDUCTORS I - BLACK & NEUTRAL J - RED & NEUTRAL I20V PHASE TO GROUND	PEDESTRIAN LIGHTING CONDUCTORS I - BLACK & NEUTRAL J - RED & NEUTRAL I20V PHASE TO GROUND	PARK AND RIDE LIGHTING CONDUCTORS I - BLACK & NEUTRAL J - RED & NEUTRAL I20V PHASE TO GROUND
PEDESTRIAN LIGHTING RECEPTACLE CONDUCTORS K - BLUE & NEUTRAL L - BROWN & NEUTRAL I20V PHASE TO GROUND	PEDESTRIAN LIGHTING RECEPTACLE CONDUCTORS K - BLACK & NEUTRAL I20V PHASE TO GROUND	PEDESTRIAN LIGHTING RECEPTACLE CONDUCTORS K - BLACK & NEUTRAL I20V PHASE TO GROUND
FISHING PLATFORM M - ORANGE & NEUTRAL I20V PHASE TO GROUND	FISHING PLATFORM L - BLUE & NEUTRAL I20V PHASE TO GROUND	FISHING PLATFORM L - BLUE & NEUTRAL I20V PHASE TO GROUND
PLANTER RECEPTACLE CONDUCTORS N - ORANGE & NEUTRAL O - ORANGE & NEUTRAL I20V PHASE TO GROUND	PLANTER RECEPTACLE CONDUCTORS M - ORANGE & NEUTRAL I20V PHASE TO GROUND	PLANTER RECEPTACLE CONDUCTORS M - ORANGE & NEUTRAL I20V PHASE TO GROUND
PLANTER RECEPTACLE CONDUCTORS N - ORANGE & NEUTRAL O - ORANGE & NEUTRAL I20V PHASE TO GROUND	PLANTER RECEPTACLE CONDUCTORS N - ORANGE & NEUTRAL O - ORANGE & NEUTRAL I20V PHASE TO GROUND	PLANTER RECEPTACLE CONDUCTORS N - ORANGE & NEUTRAL O - ORANGE & NEUTRAL I20V PHASE TO GROUND

Addendum No. 01  
ID 6190-15-72  
Revised Sheet 66  
July 25, 2017



N 2ND AVE

N 1ST AVE

SEE SHEET 11 OF 11 FOR PEDESTRIAN PATHWAY AND FISHING PIER LIGHTING  
SEE SHEET 11 OF 11 FOR PARKING LOT LIGHTING

CB200	1	2"
D	2	#8 1 #8
H	1	#10
NEU	1	#10

CB200	1	2"
C	2	#8 1 #8
G	1	#10
N	1	#10

CB200	1	2"
C	4	#8 2 #8
D	4	#8 2 #8
G	2	#10
H	2	#10
NEU	2	#10
N	1	#10

CB100	1	2"
D	2	#8 1 #8
H	1	#10
NEU	1	#10

CB100	1	2"
C	2	#8 1 #8
D	2	#8 1 #8
G	1	#10
H	1	#10
NEU	1	#10

CB200	1	2"
A	2	#8 1 #8
B	2	#8 1 #8
E	1	#10
F	1	#10
NEU	1	#10

CB200	1	2"
C	2	#8 1 #8
D	2	#8 1 #8
G	1	#10
H	1	#10
NEU	1	#10

CB200	1	2"
C	2	#8 1 #8
D	2	#8 1 #8
G	1	#10
H	1	#10
NEU	1	#10

MATCH LINE STA. 143+50

Addendum No. 01  
ID 6190-15-72  
Revised Sheet 72  
July 25, 2017



ASPHALTIC ITEMS

STATION TO STATION	ROADWAY	455.0605 TACK COAT GAL	450.4000 HMA COLD WEATHER PAVING TON	460.2000 INCENTIVE DENSITY HMA PAVEMENT DOL	460.4110.S REHEATING HMA PAVEMENT LONGITUDINAL JOINTS LF	460.5223 HMA PAVEMENT 3 LT 58-28 S	460.5224 HMA PAVEMENT 4 LT 58-28 S	460.6223 HMA PAVEMENT 3 MT 58-28 S	460.6224 HMA PAVEMENT 4 MT 58-28 S	465.0120 ASPHALTIC SURFACE DRIVEWAYS AND FIELD ENTRANCES TON	COMMENTS
PROJECT 6190-15-72											
CATEGORY 0010											
132+60 -	137+75	213	50	408	2,540	0	0	459	178	0	
143+75 -	149+60	292	50	560	3,560	0	0	630	245	0	
14+50 -	12+00	16	---	40	80	35	28	0	0	0	INCL BUMPOUT AT ADAMS
13+00 -	14+91	42	---	103	160	90	70	0	0	3	
12+94 -	14+81	83	---	203	740	178	139	0	0	0	INCL MEADOW LN CURB RAMPS
16+50 -	17+50	17	---	43	130	37	29	0	0	0	
25+60 -	26+03	10	---	25	70	22	17	0	0	0	
26+91 -	27+15	5	---	13	50	11	9	0	0	0	
FIN PARKING LOT											
CATEGORY 0010 SUBTOTALS 679* 100 1,395 7,330 375 292 1,089 424 157											
CATEGORY 0110											
EAST PLATFORM PARKING --- 44 --- 109 --- 350 --- 95 74 0 0 0											
CATEGORY 0110 SUBTOTALS 44 --- 109 --- 350 --- 95 74 0 0 0											
PROJECT TOTALS 723 100 1,503 7,680 470 366 1,089 424 157											

\*ADDITIONAL QTY IN TEMPORARY SURFACE TABLE

TEMPORARY SHORING

STRUCTURE	511.1100 SF
PROJECT 6190-15-72	
CATEGORY 0010	
R-70-122	2,710
R-70-123	2,560
PROJECT TOTAL	5,270

WALL MODULAR BLOCK GRAVITY

LOCATION	532.0201.S WALL MODULAR BLOCK GRAVITY LRFD
PROJECT 6190-15-72	
CATEGORY 0010	
S 1ST AV	235
PROJECT TOTAL	235

Addendum No. 01  
 ID 6190-15-72  
 Revised Sheet 116  
 July 25, 2017

CONCRETE CURB AND GUTTER

STATION TO STATION	ROADWAY	601.0411 30-INCH TYPE D LF	601.0600 CONCRETE CURB PEDESTRIAN LF	SPV.0090.035 HES 30-INCH TYPE D LF	COMMENTS
PROJECT 6190-15-72					
CATEGORY 0010					
132+60 -	136+68	830	---	---	
144+16 -	149+60	1,047	---	---	
11+50 -	12+00	104	---	---	
8+95 -	9+54	70	---	---	
13+00 -	14+91	327	---	---	
12+94 -	14+80	425	---	---	40 INCL MEADOW LN CURB RAMPS
16+42 -	17+50	173	---	---	
25+60 -	26+05	88	---	---	
26+91 -	27+15	48	---	---	
FIN PARKING LOT					
CATEGORY 0010 SUBTOTALS 3,262 160 40					
CATEGORY 0110					
EAST PLATFORM PARKING 385 --- --- ---					
CATEGORY 0110 SUBTOTALS 385 --- ---					
PROJECT TOTALS 3,647 160 40					

Addendum No. 01  
ID 6190-15-72  
Revised Sheet 125  
July 25, 2017

FROM		TO		REMARKS	
ALL ITEMS ARE CATEGORY 0010	LF	LF	LF	LF	LF
EX PLANTER - PB 100	100	--	--	FUTURE CIRCUITING FOR PLANTER RECEPTACLE	
PB 100 - PB 101	70	--	--	FUTURE CIRCUITING FOR PLANTER RECEPTACLE	
PB 101 - CB 100	10	--	--	FUTURE CIRCUITING FOR PLANTER RECEPTACLE	
CB 100 - PB 101	10	78	130		
PB 101 - PB 100	70	246	410		
PB 100 - SL 118	10	126	210		
PB 100 - SL 116	80	273	455		
CB 100 - PB 102	10	78	130		
PB 102 - SL 120	15	156	260		
SL 120 - PB 103	30	123	205		
PB 103 - SL 122	5	138	230	CONDUIT IN R-70-122	
SL 122 - SL 124	--	285	475	CONDUIT IN R-70-122	
SL 124 - SL 126	--	285	475	CONDUIT IN R-70-122	
PB 102 - PB 105	70	246	410		
PB 105 - SL 123	50	183	305		
SL 123 - SL 125	65	225	375		
SL 125 - SL 127	70	160	240		
PB 105 - SL 121	15	156	260	PULL WIRE ONLY	
PB 105 - PB 106	90	--	--		
PB 106 - SL 119	10	126	210		
PB 106 - PB 100	55	201	335		
PB 106 - SL 117	70	243	405		
CB 100 - PB 102	10	--	--	FUTURE CIRCUITING FOR PLANTER RECEPTACLE	
PB 102 - PB 105	65	--	--	FUTURE CIRCUITING FOR PLANTER RECEPTACLE	
PB 105 - PB 106	90	--	--	FUTURE CIRCUITING FOR PLANTER RECEPTACLE	
PB 106 - EX PLANTER	55	--	--		
CB 200 - PB 200	10	78	130		
PB 200 - SL 205	15	168	280	CONDUIT IN R-70-123	
SL 205 - SL 204	--	345	575	CONDUIT IN R-70-123	
CB 200 - PB 201	20	216	180		
PB 201 - SL 206	90	606	505		
PB 206 - PB 104	10	--	--	PULL WIRE ONLY	
PB 104 - SL 133	10	--	--	PULL WIRE ONLY / CONDUIT IN R-70-123	
SL 133 - SL 132	--	240	360	CONDUIT IN R-70-123	
SL 206 - PB 202	15	260	260		
PB 202 - SL 208	80	546	455		
SL 208 - SL 210	70	480	400		
SL 210 - SL 211	55	--	--	PULL WIRE ONLY	
SL 210 - SL 212	90	400	300		
SL 212 - SL 213	55	--	--	PULL WIRE ONLY	
SL 213 - SL 211	75	170	255		
SL 211 - SL 209	100	330	550		
SL 209 - SL 207	80	270	450		
SL 207 - PB 202	50	183	305		
CB 100 - PB 110	10	52	78		
PB 110 - PB 111	100	224	336		
PB 111 - SL 141	70	162	243		
SL 141 - PB 112	70	324	486		
PB 112 - SL 142	20	62	93		
SL 142 - PB 113	60	--	--	PULL WIRE ONLY	
PB 113 - SL 143	20	--	93		
SL 143 - PB 112	60	142	213	FISHING SHELTER RECEPTACLE CONDUCTORS	
CB 200 - PB 203	10	52	78		
PB 203 - SL 214	100	222	333		
SL 214 - PB 204	55	--	386		
PB 204 - PB 205	35	--	141		
UNDISTRIBUTED - TEMP LIGHTING	100	--	500		
CATEGORY 0010 TOTALS	2660	8860	13015		

STREET LIGHTING REMOVALS		204-0195		REMOVING CONCRETE BASES	
LIGHT NUMBER	STATION	R/L	EACH	PROJECT TOTALS	22
EXSL1	132+93	RT	--		
EXSL2	133+02	LT	--		
EXSL3	133+65	RT	1		
EXSL4	133+60	LT	1		
EXSL5	134+40	RT	1		
EXSL6	134+25	LT	1		
EXSL7	134+60	LT	1		
EXSL8	134+95	LT	1		
EXSL9	135+20	LT	1		
EXSL10	135+60	LT	1		
EXSL11	136+15	LT	1		
EXSL12	136+20	LT	1		
EXSL13	145+65	LT	1		
EXSL14	145+75	LT	1		
EXSL15	146+40	LT	1		
EXSL16	146+65	LT	1		
EXSL17	147+25	RT	1		
EXSL18	147+35	LT	1		
EXSL19	147+90	RT	1		
EXSL20	148+00	LT	1		
EXSL21	148+50	RT	1		
EXSL22	148+60	LT	1		
EXSL23	149+20	RT	1		
EXSL24	149+20	LT	1		

LIGHTING CONDUIT AND WIRE (CONTINUED)

652.0225 655.0615 655.0620  
CONDUIT RIGD NONMETALLIC  
ELECTRICAL WIRE  
SCHEDULE 40 LIGHTING

FROM	- TO	2-INCH LF	10 AWG LF	8 AWG LF	REMARKS
ALL ITEMS ARE CATEGORY 0020					
CB 300	- PB 300	25	--	246	--
PB 300	- NAV NORTH	20	--	1503	CONDUIT IN R-70-123 & B-70-321
PB 300	- PB 301	90	--	306	--
PB 301	- NAV SOUTH	10	--	1,788	CONDUIT IN R-70-123 & B-70-321
CATEGORY 0020 TOTALS					
		145	0	3843	

FROM	- TO	2-INCH LF	10 AWG LF	8 AWG LF	REMARKS
ALL ITEMS ARE CATEGORY 0030					
CB 200	- PB 203	--	52	26	FISHING PER RECEPTACLE CIRCUIT
PB 203	- SL 214	--	222	111	FISHING PER RECEPTACLE CIRCUIT
SL 214	- PB 204	--	132	66	FISHING PER RECEPTACLE CIRCUIT
PB 204	- SL 215	10	--	228	CONDUIT IN B-70-321
SL 215	- SL 217	--	--	285	CONDUIT IN B-70-321
SL 217	- SL 219	--	--	285	CONDUIT IN B-70-321
SL 219	- SL 220	--	--	135	PULL WIRE ONLY / CONDUIT IN B-70-321
SL 220	- SL 218	--	--	135	CONDUIT IN B-70-321
SL 218	- SL 218	--	220	440	CONDUIT IN B-70-321
SL 218	- SL 216	10	--	47	CONDUIT IN B-70-321
PB 205	- PB 204	--	94	47	FISHING PER RECEPTACLE CIRCUIT
CATEGORY 0030 TOTALS					
		20	868	2106	

FROM	- TO	2-INCH LF	10 AWG LF	8 AWG LF	REMARKS
ALL ITEMS ARE CATEGORY 0040					
CB 100	- PB 110	--	52	26	FISHING PER RECEPTACLE CIRCUIT
PB 110	- PB 111	--	224	112	FISHING PER RECEPTACLE CIRCUIT
PB 111	- SL 141	--	162	81	FISHING PER RECEPTACLE CIRCUIT
SL 141	- SL 142	--	142	71	FISHING PER RECEPTACLE CIRCUIT
PB 112	- SL 143	--	142	71	FISHING PER RECEPTACLE CIRCUIT
SL 143	- SL 145	10	--	540	CONDUIT IN B-70-322
SL 145	- SL 147	--	220	440	CONDUIT IN B-70-322
SL 147	- SL 149	--	135	135	CONDUIT IN B-70-322
SL 149	- SL 148	--	--	285	PULL WIRE ONLY / CONDUIT IN B-70-322
SL 148	- SL 146	--	330	165	CONDUIT IN B-70-322
SL 146	- SL 144	--	330	165	CONDUIT IN B-70-322
SL 144	- PB 113	10	--	258	CONDUIT IN B-70-322
CATEGORY 0040 TOTALS					
		20	1232	2359	

FROM	- TO	2-INCH LF	10 AWG LF	8 AWG LF	REMARKS
ALL ITEMS ARE CATEGORY 0090					
SL 126	- SL 128	--	510	850	CONDUIT IN R-70-122 & B-70-316
SL 128	- SL 129	--	570	950	CONDUIT IN B-70-316
SL 129	- SL 130	--	570	950	CONDUIT IN B-70-316
SL 130	- SL 131	--	570	950	CONDUIT IN B-70-316
SL 131	- SL 132	--	450	750	CONDUIT IN B-70-316 & R-70-123
SL 132	- SL 200	10	--	--	PULL WIRE ONLY / CONDUIT IN R-70-122 & B-70-316
SL 200	- SL 201	--	360	540	CONDUIT IN B-70-316
SL 201	- SL 202	--	570	950	CONDUIT IN B-70-316
SL 202	- SL 203	--	570	950	CONDUIT IN B-70-316
SL 203	- SL 204	--	570	950	CONDUIT IN B-70-316 & R-70-123
CATEGORY 0090 TOTALS					
		10	4740	7840	

LIGHTING CONDUIT AND WIRE (CONTINUED)

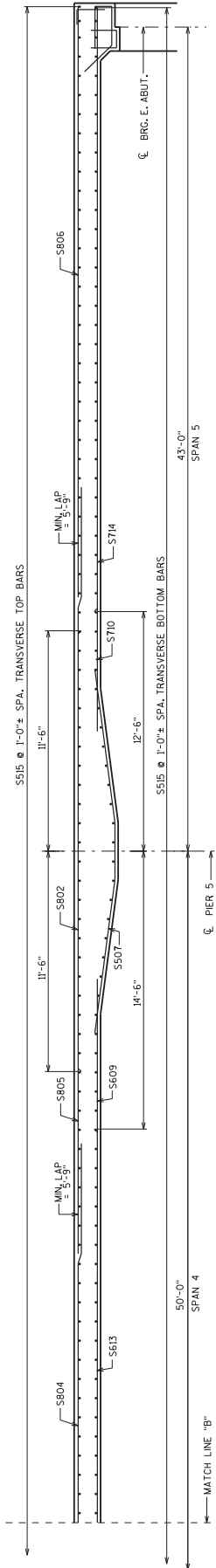
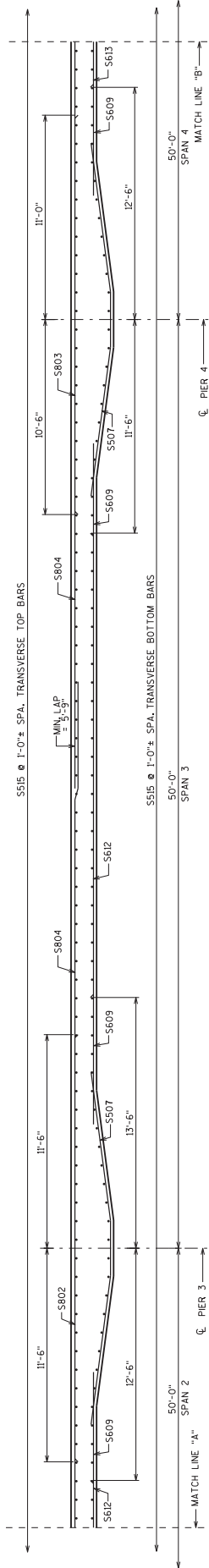
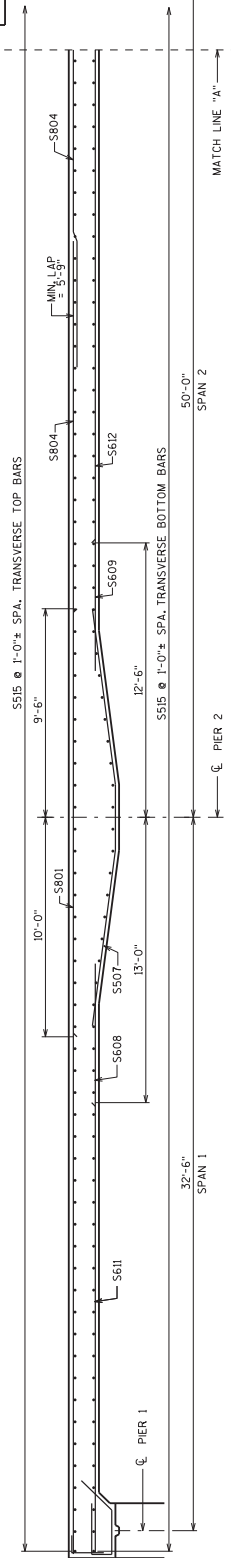
652.0225 655.0615 655.0620  
CONDUIT RIGD NONMETALLIC  
ELECTRICAL WIRE  
SCHEDULE 40 LIGHTING

FROM	- TO	2-INCH LF	10 AWG LF	8 AWG LF	REMARKS
ALL ITEMS ARE CATEGORY 0110					
CB 100	- PB 107	10	52	78	
PB 107	- SL 134	35	92	138	
SL 134	- SL 135	75	170	255	
SL 135	- SL 136	70	160	240	
SL 136	- PB 108	25	170	240	
PB 108	- PB 138	15	--	78	
SL 138	- SL 138	30	--	120	
SL 139	- PB 109	10	--	--	PULL WIRE ONLY
SL 140	- SL 140	60	200	300	
SL 140	- PB 206	10	--	156	
CB 200	- SL 221	60	--	213	
PB 206	- SL 221	60	--	183	
SL 221	- SL 222	130	--	420	
SL 222	- SL 223	700	844	2529	
CATEGORY 0110 TOTALS					
		700	844	2529	

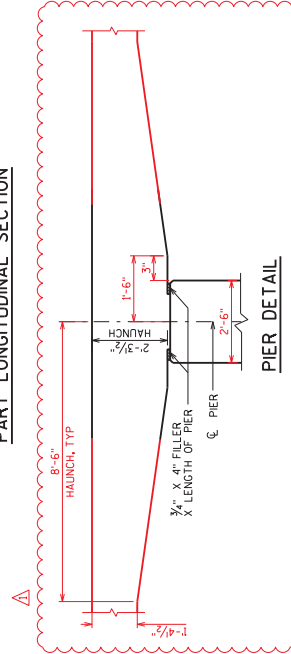
FROM	- TO	2-INCH LF	10 AWG LF	8 AWG LF	REMARKS
PROJECT TOTALS					
		3555	16544	41681	

Addendum No. 01  
ID 6190-15-72  
Revised Sheet 126  
July 25, 2017

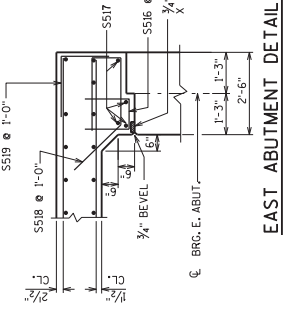
Addendum No. 01  
ID 6190-15-72  
Revised Sheet 326  
July 25, 2017



**PART LONGITUDINAL SECTION**



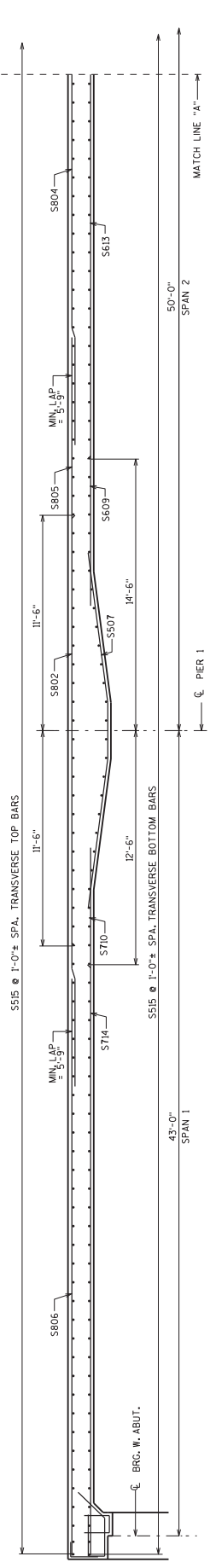
**PIER 1 DETAIL**



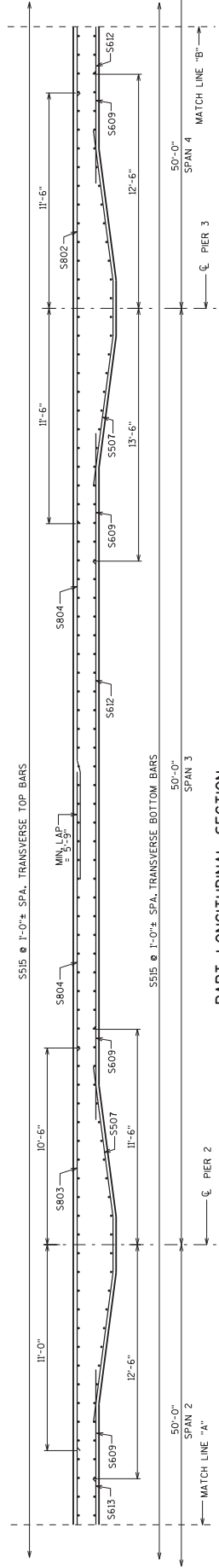
**EAST ABUTMENT DETAIL**

7/8" x 4" FILLER X LENGTH OF PIER	HAUNCH DIMENSION	DETAILS	TAB	BY
DATE	REVISION			
STATE OF WISCONSIN DEPARTMENT OF TRANSPORTATION STRUCTURES DESIGN SECTION				
STRUCTURE B-70-321				
DESIGN BY	DRAWN BY	CHKD.	TAB	BY
SUPERSTRUCTURE SHEET 12				
DETAILS 1 326				

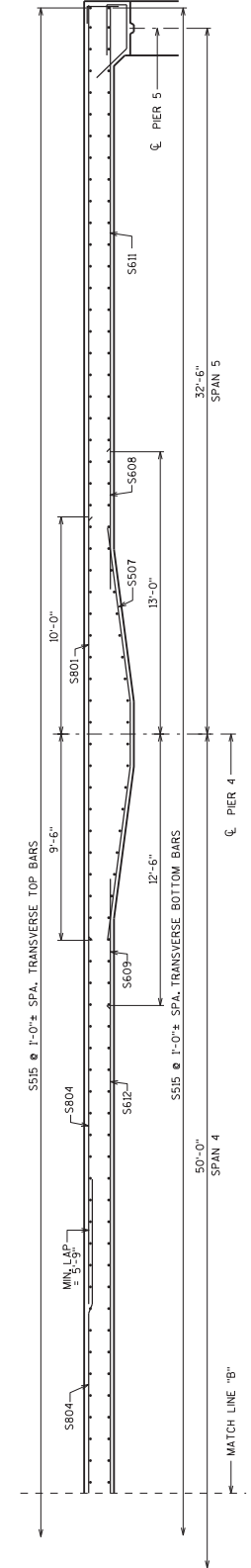
William C. Decker 7/19/17



PART LONGITUDINAL SECTION

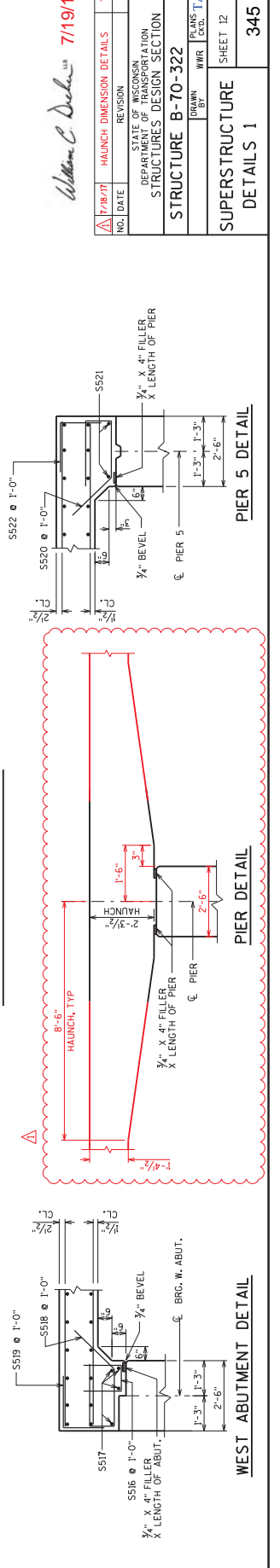


PART LONGITUDINAL SECTION



PART LONGITUDINAL SECTION

Addendum No. 01  
ID 6190-15-72  
Revised Sheet 345  
July 25, 2017



WEST ABUTMENT DETAIL

PIER DETAIL

PIER 5 DETAIL

7/18/17 HAUNCH DIMENSION DETAILS TAB  
NO. DATE REVISION BY

STATE OF WISCONSIN  
DEPARTMENT OF TRANSPORTATION  
STRUCTURES DESIGN SECTION  
STRUCTURE B-70-322

DESIGN BY: WWR  
CHECKED BY: WWR  
DATE: 7/19/17

WILLIAM C. DELANEY 7/19/17

SUPERSTRUCTURE SHEET 12  
DETAILS 1 345



## Proposal Schedule of Items

Proposal ID: 20170808010 Project(s): 6190-15-72, 6190-15-74

Federal ID(s): WISC 2017281, N/A

SECTION: 0001

Contract Items

Alt Set ID:

Alt Mbr ID:

Proposal Line Number	Item ID Description	Approximate Quantity and Units	Unit Price	Bid Amount
0460	310.0110 Base Aggregate Open-Graded	7.000 TON	_____	_____
0470	311.0110 Breaker Run	4,777.000 TON	_____	_____
0480	415.0410 Concrete Pavement Approach Slab	106.660 SY	_____	_____
0490	416.0160 Concrete Driveway 6-Inch	124.000 SY	_____	_____
0500	416.0180 Concrete Driveway 8-Inch	46.000 SY	_____	_____
0510	416.0280 Concrete Driveway HES 8-Inch	38.000 SY	_____	_____
0520	450.4000 HMA Cold Weather Paving	110.000 TON	_____	_____
0530	455.0605 Tack Coat	724.000 GAL	_____	_____
0540	460.2000 Incentive Density HMA Pavement	1,504.000 DOL	1.00000	1,504.00
0550	460.4110.S Reheating HMA Pavement Longitudinal Joints	7,680.000 LF	_____	_____
0560	460.5223 HMA Pavement 3 LT 58-28 S	475.000 TON	_____	_____
0570	460.5224 HMA Pavement 4 LT 58-28 S	372.000 TON	_____	_____
0580	460.6223 HMA Pavement 3 MT 58-28 S	1,089.000 TON	_____	_____
0590	460.6224 HMA Pavement 4 MT 58-28 S	424.000 TON	_____	_____
0600	465.0120 Asphaltic Surface Driveways and Field Entrances	160.000 TON	_____	_____
0610	465.0125 Asphaltic Surface Temporary	247.000 TON	_____	_____



## Proposal Schedule of Items

Proposal ID: 20170808010 Project(s): 6190-15-72, 6190-15-74

Federal ID(s): WISC 2017281, N/A

SECTION: 0001

Contract Items

Alt Set ID:

Alt Mbr ID:

Proposal Line Number	Item ID Description	Approximate Quantity and Units	Unit Price	Bid Amount
2000	652.0225 Conduit Rigid Nonmetallic Schedule 40 2-Inch	7,618.000 LF	_____.	_____.
2010	653.0220 Junction Boxes 18x6x6-Inch	8.000 EACH	_____.	_____.
2020	653.0222 Junction Boxes 18x12x6-Inch	25.000 EACH	_____.	_____.
2030	654.0105 Concrete Bases Type 5	18.000 EACH	_____.	_____.
2040	654.0111 Concrete Bases Type 11	9.000 EACH	_____.	_____.
2050	654.0230 Concrete Control Cabinet Bases Type L30	2.000 EACH	_____.	_____.
2060	655.0610 Electrical Wire Lighting 12 AWG	8,616.000 LF	_____.	_____.
2070	655.0615 Electrical Wire Lighting 10 AWG	16,544.000 LF	_____.	_____.
2080	655.0620 Electrical Wire Lighting 8 AWG	31,691.000 LF	_____.	_____.
2090	656.0200 Electrical Service Meter Breaker Pedestal (location) 001. CB100	LS	LUMP SUM	_____.
2100	656.0200 Electrical Service Meter Breaker Pedestal (location) 002. CB200	LS	LUMP SUM	_____.
2110	657.6005.S Anchor Assemblies Light Poles on Structures	27.000 EACH	_____.	_____.
2120	659.2130 Lighting Control Cabinets 120/240 30- Inch	2.000 EACH	_____.	_____.
2130	690.0150 Sawing Asphalt	3,350.000 LF	_____.	_____.
2140	690.0250 Sawing Concrete	1,595.000 LF	_____.	_____.

