



Wisconsin Department of Transportation

Division of Transportation Systems Development

Bureau of Project Development
4802 Sheboygan Avenue, Rm 601
P O Box 7916
Madison, WI 53707-7916

November 8, 2017

Telephone: (608) 266-1631
Facsimile (FAX): (608) 266-8459

NOTICE TO ALL CONTRACTORS:

**Proposal #2: 1002-01-71, WISC 2017 500
C of Madison
Milwaukee Street Bridge B-13-0131
IH 39
Dane County**

Letting of November 14, 2017

This is Addendum No. 01, which provides for the following:

Schedule of Items:

Revised Bid Item Quantities					
Bid Item	Item Description	Unit	Old Quantity	Revised Quantity	Proposal Total
502.0100	Concrete Masonry Bridges	CY	311	2	313
502.4205	Adhesive Anchor No. 5 Bar	EACH	186	54	240
505.0600	Bar Steel Reinforcement HS Coated Structures	LB	61,890	4,360	66,250

Plan Sheets:

Revised Plan Sheets	
Plan Sheet	Plan Sheet Title (brief description of changes to sheet)
94	Structure 3 of 14 - General Notes & Quantities (updated quantities for three items)
95	Structure 4 of 14 – Wingwall Replacement Details (1 of 2) (updated Outside Elevation View of New Wingwall for Paving Block)
96	Structure 5 of 14 - Wingwall Replacement Details (2 of 2) (updated details and Bill of Bars for Paving Block)
98	Structure 7 of 14 – Superstructure Plan (additional haunch reinforcement added to details)
99	Structure 8 of 14 – Superstructure Details (Hat Bar Layout detail added and Bill of Bars updated)
101	Structure 10 of 14 – Compression Seal Details (updated Proposed Section at Abutment for Paving Notch)

Schedule of Items

Attached, dated November 9, 2017, are the revised Schedule of Items Page 2.

Plan Sheets

The following 8½ x 11-inch sheets are attached and made part of the plans for this proposal:

Revised: 94, 95, 96, 98, 99 and 101.

The responsibility for notifying potential subcontractors and suppliers of these changes remains with the prime contractor.

Sincerely,

Mike Coleman

Proposal Development Specialist
Proposal Management Section

END OF ADDENDUM

TOTAL ESTIMATED QUANTITIES

ITEM NO.	BID ITEM	UNIT	W. ABUT.	PIER 1	PIER 2	PIER 3	E. ABUT.	SUPER	TOTAL
203.0200	REMOVING OLD STRUCTURE STA. 25+12.62	LS	-	-	-	-	-	-	-
203.0225.5	DEBRIS CONTAINMENT B-13-131	LS	-	-	-	-	-	-	-
206.3000	EXCAVATION FOR STRUCTURES BRIDGES B-13-131	LS	-	-	-	-	-	-	-
200.9500	BACKFILL STRUCTURE TYPE A	TON	38	-	-	-	-	-	38
502.3000	SOFTENING SURFACE SEALER	LF	151	-	-	-	-	-	151
502.3000	COMPRESSION SEALER	LF	151	-	-	-	-	-	151
502.3000	EXPANSION DEVICE B-13-131	LF	151	-	-	-	-	-	151
502.3200	PROTECTIVE SURFACE TREATMENT	SY	-	-	-	-	-	-	-
502.3200	PIGMENTED SURFACE SEALER	SY	12	-	-	-	-	-	12
502.4204	ADHESIVE ANCHORS NO. 4 BAR	EACH	16	-	-	-	-	-	16
502.4205	ADHESIVE ANCHORS NO. 5 BAR	EACH	120	-	-	-	-	-	120
505.0600	BAR STEEL REINFORCEMENT HS COATED STRUCTURES	LB	1,720	-	-	-	-	-	1,720
506.2610	BEARING PADS ELASTOMERIC LAMINATED	EACH	4	-	-	-	-	-	4
506.4000	STEEL DIAPHRAGMS B-13-131	EACH	-	-	-	-	-	-	-
506.7050.5	REMOVING BEARINGS B-13-131	EACH	4	-	-	-	-	-	4
509.8500	CONCRETE SURFACE REPAIR	SF	10	25	10	25	35	125	230
516.0500	RUBBERIZED MEMBRANE WATERPROOFING	SF	10	25	10	25	35	125	230
604.005.5	RESEAL CRUSHED AGGREGATE SLOPE PAVING	SF	170	-	-	-	-	-	170
612.0506	PIPE UNDERDRAIN WRAPPED 6-INCH	LF	50	-	-	-	-	-	50
612.0506	PIPE UNDERDRAIN WRAPPED 8-INCH	LF	50	-	-	-	-	-	50
612.0506	FORCE CHAIN LINK 1/2"	EA	2	-	-	-	-	-	2
645.0010	GEOTEXTILE TYPE OF SCHEDULE A	SF	22	-	-	-	-	-	22
SPV.005.001	CLEANING AND PAINTING BEARINGS	EACH	-	9	10	9	-	-	28
SPV.005.001	VEGETATION REMOVAL B-13-131	LS	-	-	-	-	-	-	-
SPV.0165.001	FIBER WRAP GIRDER REINFORCING NON-BID ITEMS	SF	-	-	-	-	-	-	480
	NAME PLATE	EACH	-	-	-	-	-	-	1
	RODENT SHIELD	EACH	-	-	-	-	-	-	4

ALL ITEMS ARE CATEGORY 20
 ① EPOXY USED FOR ANCHORING BARS TO HAVE A MINIMUM CHARACTERISTIC BOND STRESS IN CRACKED CONCRETE OF 563 PSI.

GENERAL NOTES

THE EXISTING STRUCTURE IS A FOUR-SPAN, PRESTRESSED CONCRETE 45" I-GIRDER BRIDGE WITH AN OVERALL LENGTH OF 400 FEET. THE BRIDGE IS TO BE DEMOLISHED AND THE REMAINING DECK, RAILING, AND FLOOR SLABS ARE TO BE CLEANED AND REPAIRED. THE REMAINING DECK, RAILING, AND FLOOR SLABS ARE TO BE REPAIRED AND THE REMAINING EXISTING SUPERSTRUCTURE AND SUBSTRUCTURE WILL UNDERGO CONCRETE SURFACE REPAIR. DRAWINGS SHALL NOT BE SCALED.

DIMENSIONS SHOWN ARE BASED ON THE ORIGINAL STRUCTURE PLANS. ALL DIMENSIONS ARE IN FEET AND INCHES UNLESS OTHERWISE NOTED.

BAR STEEL REINFORCEMENT SHALL BE EMBEDDED 2" CLEAR UNLESS OTHERWISE SHOWN OR NOTED.

THE FIRST OR FIRST TWO DIGITS OF THE BAR MARK SIGNIFIES THE BAR SIZE.

UTILIZE EXISTING BAR STEEL REINFORCEMENT WHERE SHOWN AND EXTEND 24 BAR DIAMETERS INTO NEW WORK, UNLESS SPECIFIED OTHERWISE.

BEVEL ALL EXPOSED EDGES OF CONCRETE 3/4" UNLESS OTHERWISE NOTED.

AT ABUTMENTS, ALL EXCAVATED VOLUME NOT OCCUPIED BY THE NEW STRUCTURE SHALL BE BACKFILLED WITH STRUCTURE BACKFILL TYPE A.

THE EXISTING GROUNDLINE SHALL BE THE UPPER LIMITS OF EXCAVATION FOR STRUCTURES.

EXPANSION JOINT ASSEMBLY INCLUDING ANCHOR STUDS AND HARDWARE, SHALL BE PAID FOR IN THE LUMP SUM PRICE BID AS "EXPANSION DEVICE B-13-131".

VARIATIONS TO THE NEW GRADE LINE OVER 1/4" MUST BE SUBMITTED BY THE FIELD ENGINEER TO THE STRUCTURES DESIGN SECTION FOR REVIEW.

THE CONTRACTOR SHALL SUPPLY A NEW NAME PLATE IN ACCORDANCE WITH SECTION 602.3 (4) OF THE STANDARD SPECIFICATIONS AND THE STANDARD DETAIL DRAWINGS. NAME PLATE TO SHOW ORIGINAL CONSTRUCTION YEAR 1981. NAME PLATE SHALL BE CONSIDERED INCIDENTAL TO "CONCRETE MASONRY BRIDGES".

THE HAUNCH CONCRETE QUANTITY IS BASED ON THE AVERAGE HAUNCH HEIGHT SHOWN ON THE "SUPERSTRUCTURE DETAILS" SHEET.

ALL CONCRETE REMOVAL SHALL BE DEFINED BY A 1/4" DEEP SAW CUT. THE CONTRACTOR SHALL EXERCISE CAUTION WHEN REMOVING OLD DECK AS TO NOT DAMAGE THE EXISTING ORDERS.

BOTTOM OF ORDER ELEVATIONS AT ABUTMENTS AND PIERS ARE BASED ON FIELD SURVEY.

PERFORM CONCRETE SURFACE REPAIR AS DIRECTED BY THE FIELD ENGINEER. QUANTITY SHOWN IS APPROXIMATE.

CLEAN AND PAINT EXISTING PIER BEARINGS. COLOR TO BE LIGHT GRAY, FEDERAL COLOR NUMBER 28293.

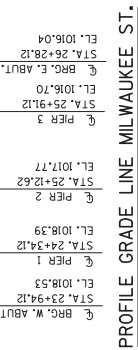
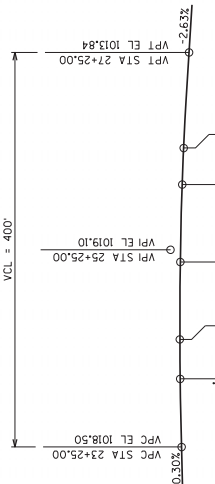
REMOVE ALL VEGETATION FROM EXISTING CRUSHED AGGREGATE SLOPE PAVING PRIOR TO RESEALING THE SLOPE PAVING. THIS WORK INCLUDED IN BID ITEM "VEGETATION REMOVAL B-13-131".

CONTRACTOR IS RESPONSIBLE FOR GIRDER STABILITY DURING REMOVAL AND REPLACEMENT OF THE GIRDER DIAPHRAGMS.

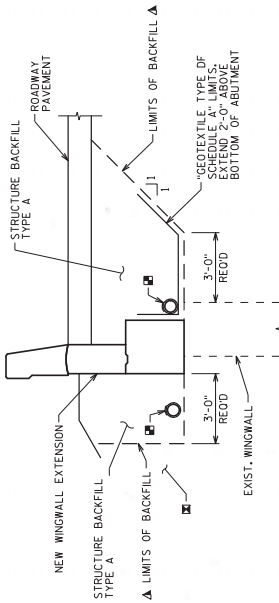
Addendum No. 01
 ID 1002-01-71
 Revised Sheet 94
 November 9, 2017

HORIZONTAL CURVE DATA

R. R. EXIT RAMP
 P.L. = 28+95.09R
 X: 847956.63
 Y: 491767.01
 D = 65+46.84"
 T = 90.36'
 R = 845.30'
 P.C. = 28+04.72R
 X: 841674.72
 Y: 491674.72
 P.T. = 29+84.79R
 X: 847899.26
 Y: 491695.16



William C. Decker
 11/08/17



EXCAVATION/BACKFILL LIMITS

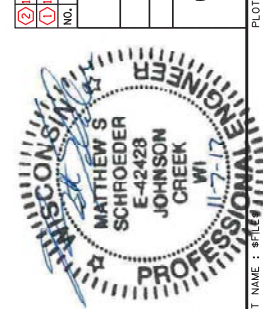
- BACKFILL LIMITS: BACKFILL BEYOND BACKFILL PAV LIMITS SHALL BE CONSIDERED INCIDENTAL TO THE CONTRACTOR'S OBLIGATIONS OF EXCAVATION SHALL BE DETERMINED BY THE CONTRACTOR.
- EXCAVATION AND RESHAPING OF SLOPE IN FRONT OF WINGWALL TO BE INCIDENTAL TO EXCAVATION FOR STRUCTURES BRIDGES B-13-131.
- PIPE UNDERDRAIN WRAPPED 6-INCH, SLOPE 0.5% MIN TO SUITABLE DRAINAGE. ATTACH RODENT SHIELD AT ENDS OF PIPE UNDERDRAIN.

RODENT SHIELD DETAIL



SECTION B-B

* DIMENSIONS ARE APPROXIMATE. THE GRATE IS SIZED TO FIT INTO A PIPE COUPLING. ORIENT SHIELD SO SLOTS ARE VERTICAL. THE RODENT SHIELD-PIPE COUPLING AND SCREWS SHALL BE CONSIDERED INCIDENTAL TO THE BID ITEM "PIPE UNDERDRAIN WRAPPED 6-INCH". THE RODENT SHIELD SHALL BE A PVC GRATE SIMILAR TO THIS DETAIL. THE GRATE IS COMMERCIALY AVAILABLE AS A FLOOR STRAINER. A MINIMUM OF TWO SCREWS SHALL BE USED TO FASTEN THE SHIELD TO THE EXPOSED END OF THE PIPE UNDERDRAIN. THE SHIELD SHALL BE FASTENED TO THE PIPE COUPLING WITH TWO OR MORE NO. 10 X 1-INCH STAINLESS STEEL SHEET METAL SCREWS.



NO.	DATE	REVISION	BY
②	11/7/17	PAVING BLOCK	MSS
①	11/3/17	ADDED HAUNCH HAT BARS	MSS

STATE OF WISCONSIN
 DEPARTMENT OF TRANSPORTATION

STRUCTURE B-13-131

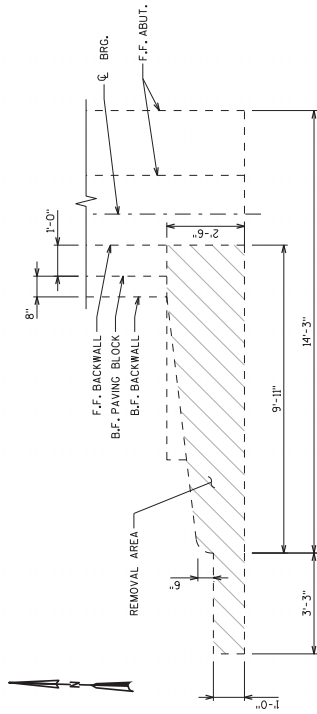
PIERS
 PKGS
 HDA

GENERAL NOTES & QUANTITIES

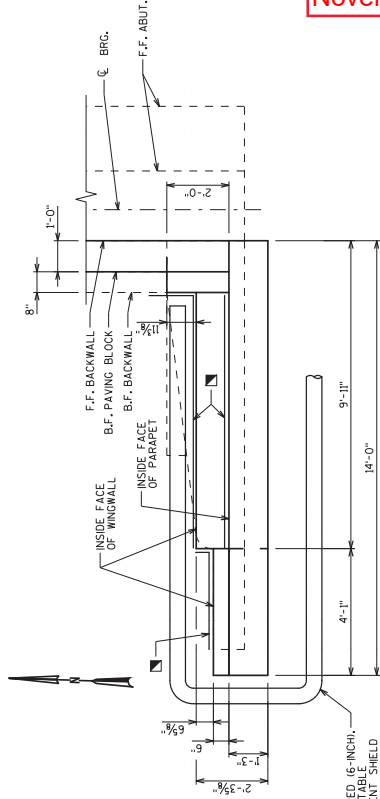
SHEET 3 OF 14

94

Addendum No. 01
ID 1002-01-71
Revised Sheet 95
November 9, 2017

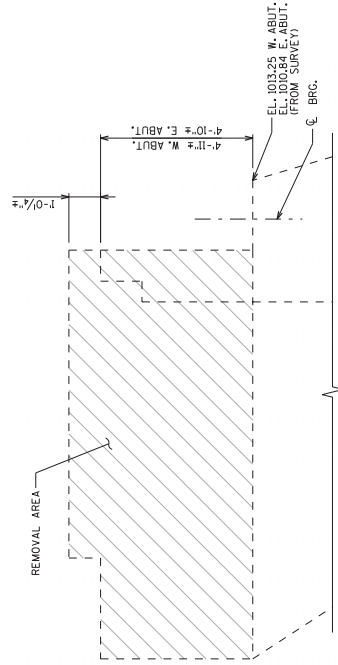


PLAN VIEW EXISTING WINGWALL
WINGWALL 1 SHOWN, OTHERS SIMILAR

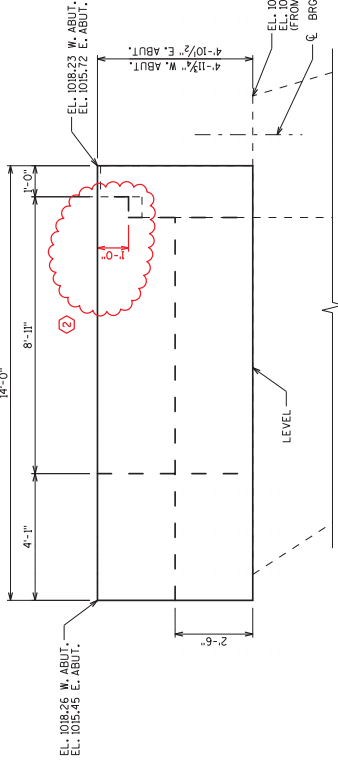


PLAN VIEW NEW WINGWALL
WINGWALL 1 SHOWN, OTHERS SIMILAR

PIPE UNDERDRAIN WRAPPED 16-INCH, SLOPE 0.5%, MIN. TO SUITABLE DRAINAGE. SEE GENERAL NOTES FOR DETAILS AND QUANTITIES. CAP END BEHIND ABUTMENT BACKWALL.



OUTSIDE ELEVATION VIEW EXISTING WINGWALL
WINGWALL 1 SHOWN, LOOKING NORTH, OTHERS SIMILAR



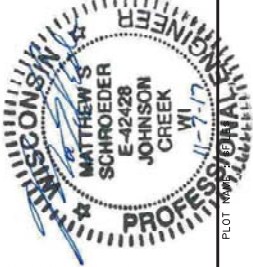
OUTSIDE ELEVATION VIEW NEW WINGWALL
WINGWALL 1 SHOWN, LOOKING NORTH, OTHERS SIMILAR

LEGEND

- 1" RUBBERIZED MEMBRANE WATERPROOFING. SEAL ALL HORIZONTAL AND VERTICAL JOINTS ALONG BACKFACE.
- REMOVAL AREA

NOTES

FOR REINFORCEMENT AND SECTIONS, SEE SHEET "WINGWALL REPLACEMENT DETAILS (2 OF 2)".
SEE "EXCAVATION/BACKFILL LIMITS" DETAIL ON "GENERAL NOTES & QUANTITIES" SHEET FOR STRUCTURE BACKFILL, GEOTEXTILE, AND ADDITIONAL PIPE UNDERDRAIN INFORMATION.



William C. Decker
11/08/17

NO.	DATE	REVISION	BY
2	11/7/17	PAVING BLOCK	MSS

STATE OF WISCONSIN
DEPARTMENT OF TRANSPORTATION

STRUCTURE B-13-131
MSS
SHEET 4 OF 14

WINGWALL REPLACEMENT
DETAILS (1 OF 2)
95

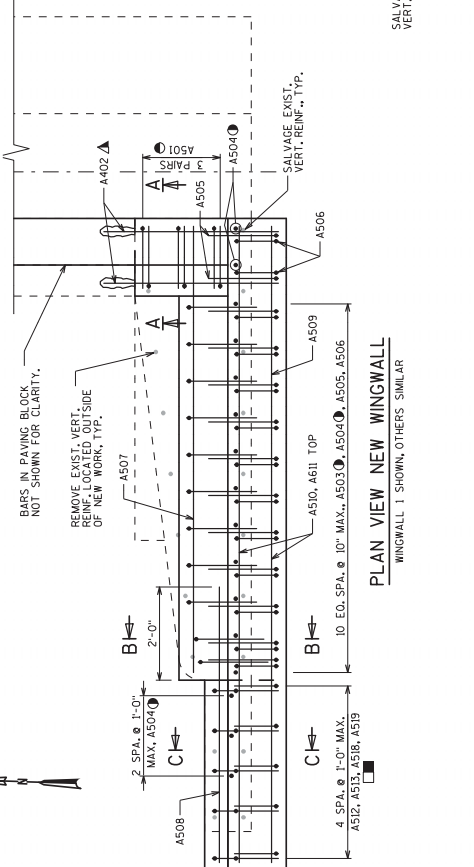
PLOT SCALE: 1/4" = 1'

PLOT BY: mssgpc@cedr

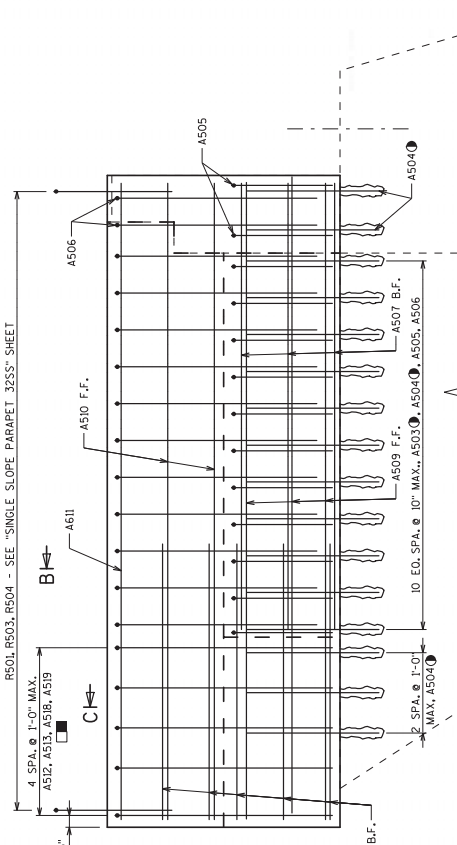
PLOT DATE: 11/7/2017

FILE NAME: I:\S9870 M06\c06\080301_wg_ADD2.dwg

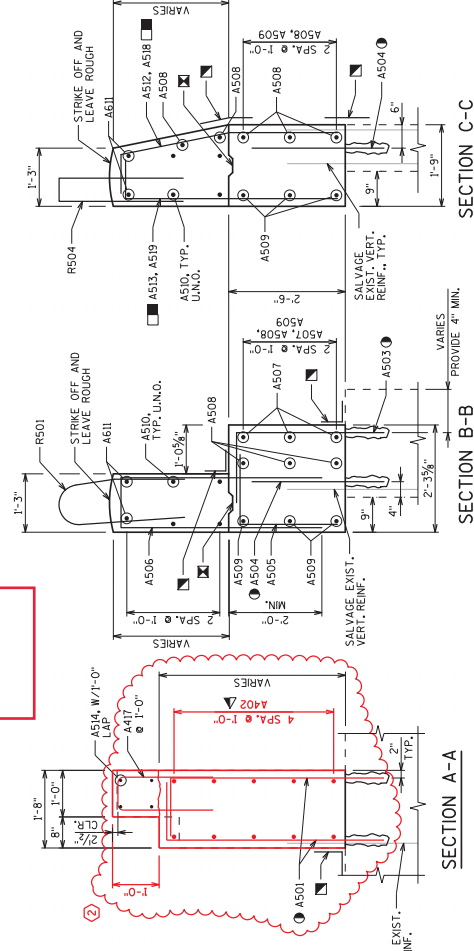
Addendum No. 01
ID 1002-01-71
Revised Sheet 96
November 9, 2017



PLAN VIEW NEW WINGWALL
WINDOW 1 SHOWN, OTHERS SIMILAR



OUTSIDE ELEVATION VIEW NEW WINGWALL
WINDOW 1 SHOWN LOOKING NORTH, OTHERS SIMILAR



SECTION A-A
SECTION B-B
SECTION C-C

BILL OF BARS

BAR MARK	NO.	REDD.	LENGTH	SERIES	LOCATION
A501	24	(5-8)	X		BACKWALL - VERT.
A502	40	(3-9)	X		BACKWALL - HORIZ. DOWEL
A503	44	4-7	X		WINGWALL LOWER BODY - VERT. DOWEL
A504	64	2-10	X		WINGWALL LOWER BODY - VERT. DOWEL
A505	52	3-7	X		WINGWALL LOWER BODY - VERT.
A506	52	9-4	X		WINGWALL UPPER BODY - VERT.
A507	12	9-7	X		WINGWALL LOWER BODY - HORIZ.
A508	20	5-11	X		WINGWALL LOWER BODY - HORIZ.
A509	12	13-8	X		WINGWALL UPPER BODY - HORIZ.
A510	8	13-8	X		WINGWALL UPPER BODY - HORIZ. TOP
A511	10	5-4	X		WINGWALLS 1 & 2 LOWER BODY - VERT.
A512	10	5-4	X		WINGWALLS 1 & 2 LOWER BODY - VERT.
A513	50	7-0	X		PAVING BLOCK - HORIZ.
A514	54	3-7	X		PAVING BLOCK - STIRRUP
A515	54	3-2	X		PAVING BLOCK - VERT. DOWEL
A516	12	(4-8)	X		WINGWALL BACKWALL - VERT. AT PAVING BLOCK
A517	10	4-11	X		WINGWALLS 3 & 4 LOWER BODY - VERT.
A518	10	4-11	X		WINGWALLS 3 & 4 LOWER BODY - VERT.
A519	10	5-0	X		WINGWALLS 3 & 4 LOWER BODY - VERT.
A520	54	1-9	X		BACKWALL - VERT. DOWEL
A521	54	1-10	X		BACKWALL - HORIZONTAL TIE BAR
A522	6	25-8	X		BACKWALL - LONG.

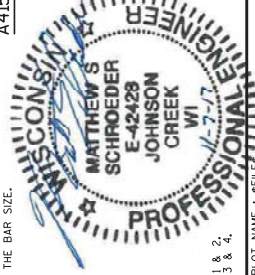
NOTE: DIMENSIONS ARE OUT TO CUT OF BAR. THE FIRST OR FIRST TWO DIGITS OF A BAR MARK SIGNIFIES THE BAR SIZE.

LEGEND

- ▣ 18" RUBBERIZED MEMBRANE WATERPROOFING. SEAL ALL HORIZONTAL AND VERTICAL JOINTS ALONG BACKFACE.
- ADHESIVE ANCHOR NO. 5 BAR. EMBED 10" INTO EXISTING CONCRETE.
- △ ADHESIVE ANCHOR NO. 4 BAR. EMBED 8" INTO EXISTING CONCRETE.
- ▣ OPTIONAL CONSTRUCTION JOINT FORMED BY BEVELED 2" X 6" KEYS.
- ▣ A512 AND A513 TO BE USED AT WINGWALLS 1 & 2. A518 AND A519 TO BE USED AT WINGWALLS 3 & 4.

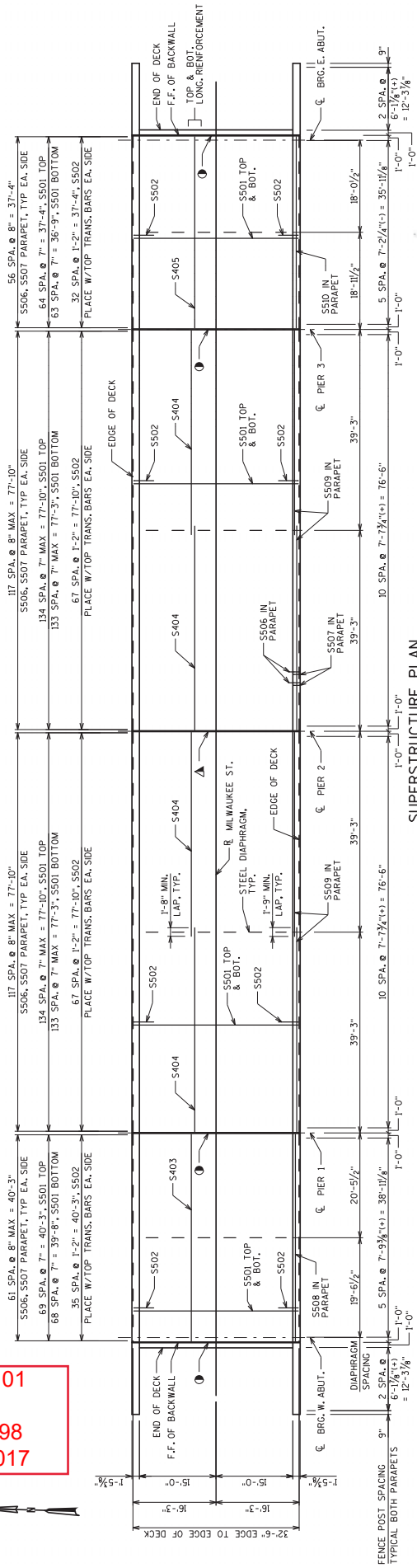
NOTES

- UTILIZE EXISTING REINFORCEMENT WHERE APPLICABLE AND ADD NEW BARS TO MEET DESIGN REQUIREMENTS UNLESS NOTED OTHERWISE.
- F.F. = FRONT FACE
- B.F. = BACK FACE

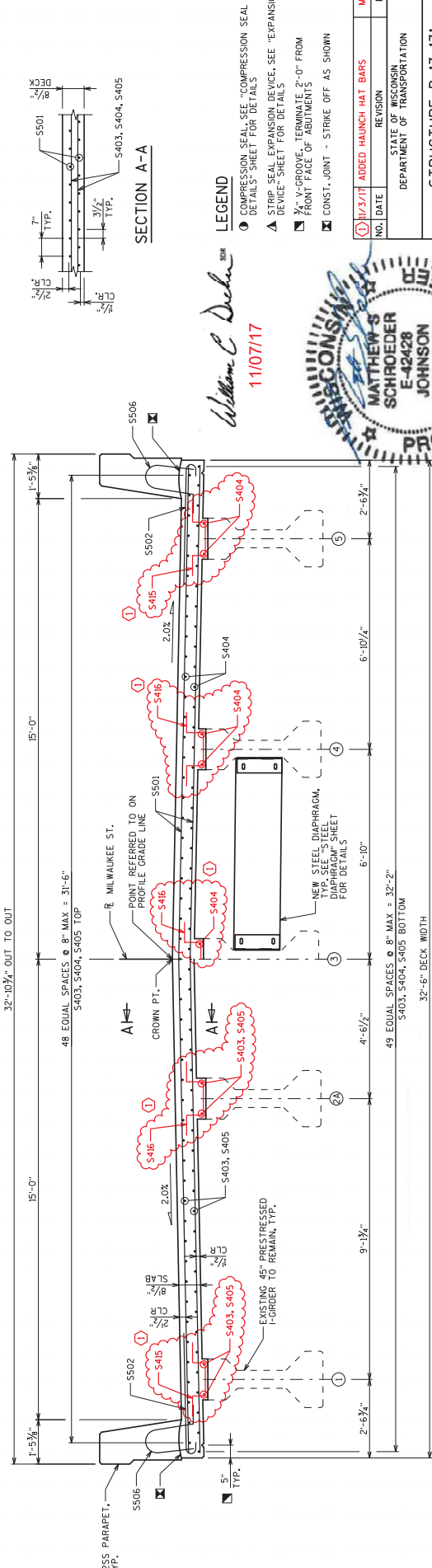


William C. Decker
11/08/17

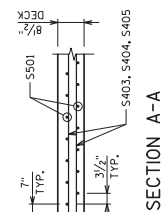
Addendum No. 01
ID 1002-01-71
Revised Sheet 98
November 9, 2017



SUPERSTRUCTURE PLAN



SUPERSTRUCTURE SECTION
LOOKING EAST



LEGEND
 ○ COMPRESSION SEAL, SEE "COMPRESSION SEAL DETAILS" SHEET FOR DETAILS
 ▲ STRIP SEAL EXPANSION DEVICE, SEE "EXPANSION DEVICE" SHEET FOR DETAILS
 ▣ 1/2" V-GROOVE, TERMINATE 2'-0" FROM FRONT FACE OF ABUTMENTS
 ⊠ CONST. JOINT - STRIKE OFF AS SHOWN

William C. Decker
11/07/17



NO.	DATE	REVISION	BY
1	11/27/17	ADDED HAUNCH HAT BARS	MSS

STATE OF WISCONSIN
DEPARTMENT OF TRANSPORTATION

STRUCTURE B-13-131
DRAWN BY: MSS
CHECKED BY: HD

SUPERSTRUCTURE PLAN
SHEET 7 OF 14
98



TOP OF DECK ELEVATIONS, SPANS 1 & 4

LOCATION	SPAN 1										SPAN 4									
	0.1	0.2	0.3	0.4	0.5	0.6	0.7	0.8	0.9	PIER 1	0.1	0.2	0.3	0.4	0.5	0.6	0.7	0.8	0.9	PIER 3
NORTH EDGE OF DECK	1018.22	1018.21	1018.20	1018.19	1018.18	1018.16	1018.15	1018.13	1018.11	1018.09	1016.40	1016.34	1016.28	1016.22	1016.15	1016.09	1016.02	1015.95	1015.88	1015.81
NORTH FLOWLINE	1018.23	1018.22	1018.20	1018.19	1018.18	1018.16	1018.15	1018.13	1018.11	1018.09	1016.40	1016.34	1016.28	1016.22	1016.15	1016.09	1016.02	1015.95	1015.88	1015.81
GRIDER 1	1018.25	1018.24	1018.23	1018.22	1018.20	1018.19	1018.17	1018.16	1018.14	1018.12	1016.43	1016.37	1016.31	1016.24	1016.18	1016.11	1016.04	1015.98	1015.91	1015.84
GRIDER 2A	1018.44	1018.43	1018.42	1018.41	1018.40	1018.39	1018.37	1018.36	1018.34	1018.32	1016.70	1016.64	1016.58	1016.52	1016.45	1016.39	1016.32	1016.25	1016.18	1016.12
PGL	1018.53	1018.52	1018.51	1018.50	1018.49	1018.48	1018.46	1018.45	1018.43	1018.41	1016.70	1016.64	1016.58	1016.52	1016.45	1016.39	1016.32	1016.25	1016.18	1016.12
GRIDER 4A	1018.44	1018.43	1018.42	1018.41	1018.40	1018.39	1018.37	1018.36	1018.34	1018.32	1016.43	1016.37	1016.31	1016.24	1016.18	1016.11	1016.04	1015.98	1015.91	1015.84
GRIDER 5	1018.26	1018.25	1018.24	1018.23	1018.22	1018.20	1018.19	1018.17	1018.16	1018.14	1016.40	1016.34	1016.28	1016.22	1016.15	1016.09	1016.02	1015.95	1015.88	1015.81
SOUTH FLOWLINE	1018.23	1018.22	1018.20	1018.19	1018.18	1018.16	1018.15	1018.13	1018.11	1018.09	1016.40	1016.34	1016.28	1016.22	1016.15	1016.09	1016.02	1015.95	1015.88	1015.81

TOP OF DECK ELEVATIONS, SPANS 2 & 3

LOCATION	SPAN 2										SPAN 3										
	0.1	0.2	0.3	0.4	0.5	0.6	0.7	0.8	0.9	PIER 2	0.1	0.2	0.3	0.4	0.5	0.6	0.7	0.8	0.9	PIER 3	
NORTH EDGE OF DECK	1018.09	1018.05	1018.00	1017.95	1017.90	1017.84	1017.77	1017.71	1017.63	1017.56	1017.47	1017.47	1017.39	1017.30	1017.20	1017.10	1017.00	1016.89	1016.77	1016.65	1016.53
NORTH FLOWLINE	1018.09	1018.05	1018.00	1017.95	1017.90	1017.84	1017.77	1017.71	1017.63	1017.56	1017.47	1017.47	1017.39	1017.30	1017.20	1017.10	1017.00	1016.89	1016.77	1016.65	1016.53
GRIDER 1	1018.12	1018.08	1018.03	1017.98	1017.92	1017.87	1017.80	1017.73	1017.66	1017.58	1017.50	1017.50	1017.41	1017.32	1017.23	1017.13	1017.02	1016.91	1016.80	1016.68	1016.56
GRIDER 2	1018.25	1018.21	1018.17	1018.12	1018.06	1018.00	1017.94	1017.87	1017.80	1017.72	1017.64	1017.64	1017.55	1017.46	1017.36	1017.26	1017.15	1017.05	1016.94	1016.82	1016.70
PGL/GRIDER 3	1018.39	1018.35	1018.30	1018.25	1018.20	1018.14	1018.07	1018.01	1017.93	1017.86	1017.77	1017.77	1017.69	1017.60	1017.50	1017.40	1017.30	1017.19	1017.07	1016.95	1016.83
GRIDER 4	1018.25	1018.21	1018.17	1018.12	1018.06	1018.00	1017.94	1017.87	1017.80	1017.72	1017.64	1017.64	1017.55	1017.46	1017.36	1017.26	1017.16	1017.05	1016.94	1016.82	1016.70
GRIDER 5	1018.12	1018.08	1018.03	1017.98	1017.92	1017.87	1017.80	1017.73	1017.66	1017.58	1017.50	1017.50	1017.41	1017.32	1017.23	1017.13	1017.02	1016.91	1016.80	1016.68	1016.56
SOUTH FLOWLINE	1018.09	1018.05	1018.00	1017.95	1017.90	1017.84	1017.77	1017.71	1017.63	1017.56	1017.47	1017.47	1017.39	1017.30	1017.20	1017.10	1017.00	1016.89	1016.77	1016.65	1016.53
SOUTH EDGE OF DECK	1018.09	1018.05	1018.00	1017.95	1017.90	1017.84	1017.77	1017.71	1017.63	1017.56	1017.47	1017.47	1017.39	1017.30	1017.20	1017.10	1017.00	1016.89	1016.77	1016.65	1016.53

BILL OF BARS

BAR MARK	NO. RECD.	LENGTH	SERIES	LOCATION
S500	X	806	32'-3"	DECK - TRANSVERSE
S502	X	400	4'-5"	DECK - OVERLAP TOP
S503	X	107	40'-5"	DECK - LONG SPAN 1
S504	X	436	39'-11"	DECK - LONG SPANS 2 & 3
S505	X	107	37'-5"	DECK - LONG SPAN 4
S506	X	710	4'-5"	PARAPET - TRANSVERSE
S507	X	710	5'-0"	PARAPET - TRANSVERSE
S508	X	12	40'-5"	PARAPET - LONG SPAN 1
S509	X	48	39'-11"	PARAPET - LONG SPANS 2 & 3
S510	X	12	37'-5"	PARAPET - LONG SPAN 4
S511	X	96	5'-2"	DIAPHRAGM - LONG SPANS 2 & 3
S512	X	248	4'-3"	DIAPHRAGM - TRANS.
S513	X	16	5'-2"	DIAPHRAGM - LONG AT EXPANSION JOINT
S514	X	52	2'-5"	DIAPHRAGM - LONG SPANS 1 & 4
S515	X	52	2'-5"	DIAPHRAGM - LONG SPANS 1 & 4
S516	X	88	6'-3"	HAUNCH HAT BARS - EXTERIOR GIRDERS
S517	X	88	6'-3"	HAUNCH HAT BARS - INTERIOR GIRDERS

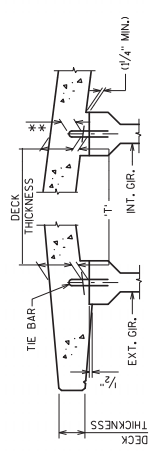
NOTE: DIMENSIONS ARE OUT TO OUT OF BAR. THE FIRST OR FIRST TWO DIGITS OF A BAR MARK SIGNIFIES THE BAR SIZE.



DEAD LOAD DEFLECTION DIAGRAM

SPAN	1/10	2/10	3/10	4/10	5/10
SPAN 1	0	7/8	7/8	7/8	7/8
SPAN 2	3/8	3/4	1/2	1/4	1/8
SPAN 3	3/8	3/4	1/2	1/4	1/8
SPAN 4	0	0	7/8	7/8	7/8

Addendum No. 01
ID 1002-01-71
Revised Sheet 99
November 9, 2017

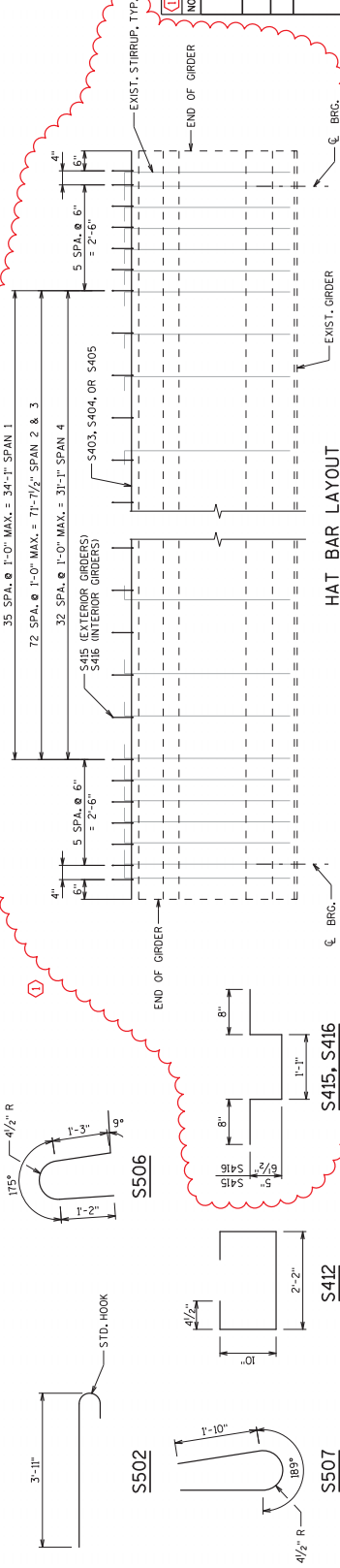


DECK HAUNCH DETAIL

IF 1/4" MINIMUM HAUNCH HEIGHT AT EDGE OF GIRDER CANNOT BE MAINTAINED, THE GRADE LINE MAY BE REVISED BY THE ENGINEER AT THE OPTION OF THE CONTRACTOR. THE PLAN DECK THICKNESS SHALL BE HELD. NOTIFY THE STRUCTURES SECTION OF THE GRAND DECK EMBEDMENT OF THE BAR IS TO BE MORE THAN 1/2" OR. ** IF 3" MINIMUM DECK EMBEDMENT OF THE BAR CANNOT BE OBTAINED.

TO DETERMINE 'T', ELEV. OF TOP OF GRS. AT Q. OF SUBSTRUCTURE UNITS IS AT 1/20 POINTS OF EACH SPAN SHALL BE TAKEN. THEN FOLLOW THIS PROCESS:
- TOP OF GIRDER ELEVATION
- DECK THICKNESS
- HAUNCH HEIGHT 'T'
= HAUNCH HEIGHT 'T'

NOTE: AN AVERAGE HAUNCH ('T') OF 3 3/8" WAS USED IN THE QUANTITY "CONCRETE MASONRY BRIDGES".



HAT BAR LAYOUT

William C. Decker
11/07/17

NO.	DATE	REVISION	BY
1	11/27/17	ADDED HAUNCH HAT BARS	MSS

STATE OF WISCONSIN
DEPARTMENT OF TRANSPORTATION

STRUCTURE B-13-131

SUPERSTRUCTURE
DETAILS

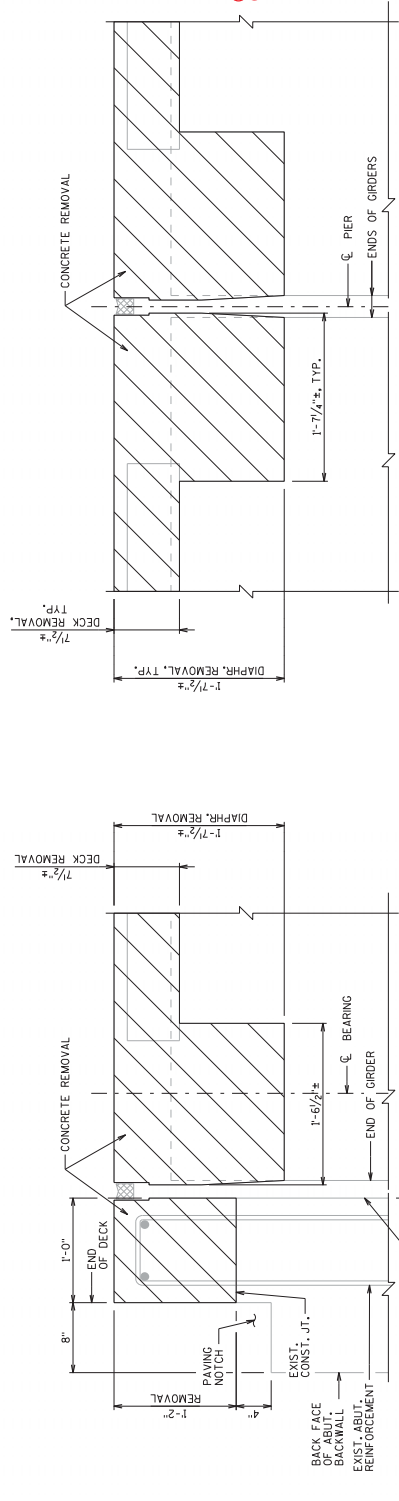
99

STATE PROJECT NUMBER
1002-01-71

NOTES

ADHESIVE ANCHORS NO. 5 BAR, EMBED A MINIMUM OF 1'-6" INTO CONCRETE. SPACE AT 1'-0" MAX. TURN 90° LEC. AS NECESSARY TO FIT. ANCHORS SHALL BE APPROVED FOR USE IN CRACKED CONCRETE.
EXISTING BARS ARE LIKELY TO BE CORRODED AND/OR DAMAGED DURING REMOVAL OF CONCRETE. REPAIRS TO EXISTING BARS MUST BE MADE AS NECESSARY. SUPPLEMENT WITH THE BARS INDICATED BY ①.

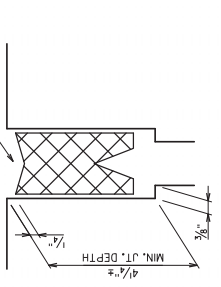
ADHESIVE ANCHORS NO. 5 BAR, EMBED A MINIMUM OF 1'-0" INTO CONCRETE. SPACE AT 1'-0" MAX. ANCHORS SHALL BE APPROVED FOR USE IN CRACKED CONCRETE. ②



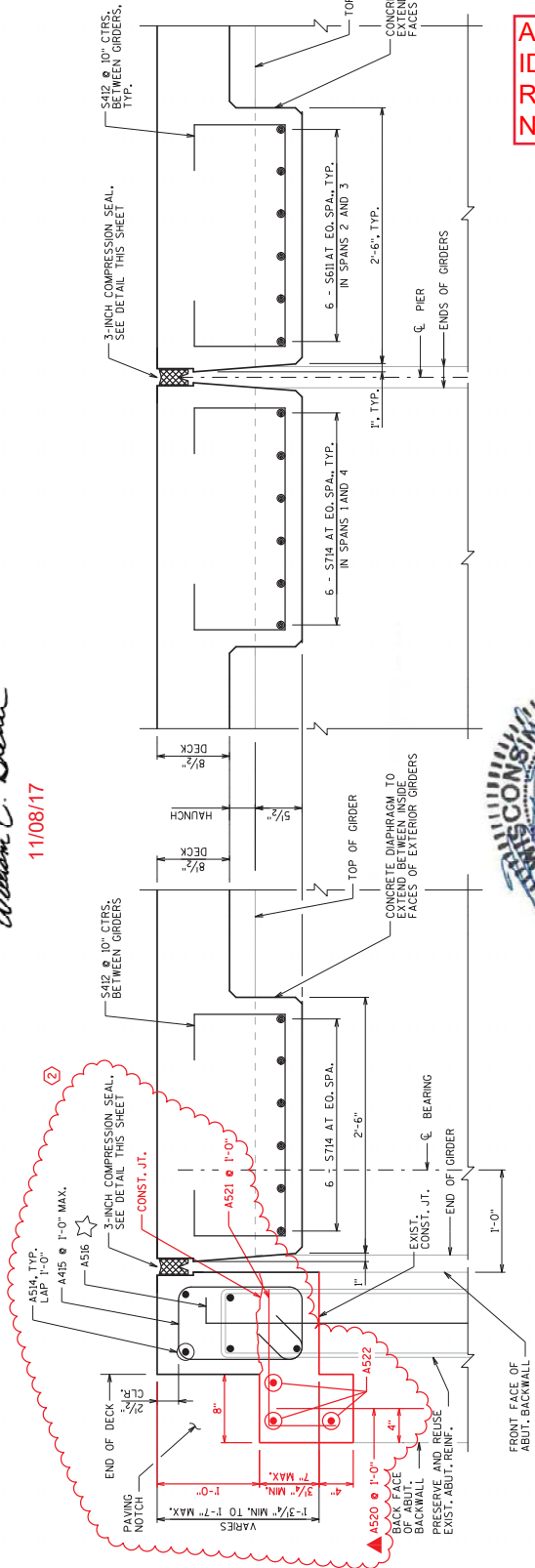
EXISTING SECTION AT ABUTMENT
AT ROADWAY

EXISTING SECTION AT PIERS 1 AND 3
AT ROADWAY

William C. Schroeder
11/08/17



MANUFACTURER MUST LABEL TOP OF SEAL
3-INCH COMPRESSION SEAL DETAIL



PROPOSED SECTION AT ABUTMENT
AT ROADWAY

PROPOSED SECTION AT PIERS 1 AND 3
AT ROADWAY



Addendum No. 01
ID 1002-01-71
Revised Sheet 101
November 9, 2017

NO.	DATE	REVISION	BY
②	11/7/17	PAVING NOTCH	MSS

STATE OF WISCONSIN DEPARTMENT OF TRANSPORTATION	
STRUCTURE B-13-131	DESIGNER MSS
COMPRESSION SEAL DETAILS	SHEET 10 OF 14
101	



Proposal Schedule of Items

Proposal ID: 20171114002 Project(s): 1002-01-71

Federal ID(s): WISC 2017500

SECTION: 0001

Contract Items

Alt Set ID:

Alt Mbr ID:

Proposal Line Number	Item ID Description	Approximate Quantity and Units	Unit Price	Bid Amount
0034	460.6224 HMA Pavement 4 MT 58-28 S	282.000 TON	_____.	_____.
0036	465.0310 Asphaltic Curb	30.000 LF	_____.	_____.
0038	465.0315 Asphaltic Flumes	14.000 SY	_____.	_____.
0040	502.0100 Concrete Masonry Bridges	313.000 CY	_____.	_____.
0042	502.2000 Compression Joint Sealer Preformed Elastomeric (width) 01. 3 Inch	130.000 LF	_____.	_____.
0044	502.3100 Expansion Device (structure) 01. B-13-0131	LS	LUMP SUM	_____.
0046	502.3200 Protective Surface Treatment	793.000 SY	_____.	_____.
0048	502.3210 Pigmented Surface Sealer	221.000 SY	_____.	_____.
0050	502.4204 Adhesive Anchors No. 4 Bar	32.000 EACH	_____.	_____.
0052	502.4205 Adhesive Anchors No. 5 Bar	240.000 EACH	_____.	_____.
0054	505.0600 Bar Steel Reinforcement HS Coated Structures	66,250.000 LB	_____.	_____.
0056	506.2610 Bearing Pads Elastomeric Laminated	8.000 EACH	_____.	_____.
0058	506.4000 Steel Diaphragms (structure) 01. B-13-0131	14.000 EACH	_____.	_____.
0060	506.7050.S Removing Bearings (structure) 01. B-13-0131	8.000 EACH	_____.	_____.
0062	509.1500 Concrete Surface Repair	230.000 SF	_____.	_____.

