



Wisconsin Department of Transportation

November 28, 2017

Division of Transportation Systems Development

Bureau of Project Development
4802 Sheboygan Avenue, Rm 601
P O Box 7916
Madison, WI 53707-7916

Telephone: (608) 266-1631
Facsimile (FAX): (608) 266-8459

NOTICE TO ALL CONTRACTORS:

Proposal #02: 1007-11-74, WISC 2018 001
Illinois State Line – Madison
S. Dane Cty Line to E. Church Rd, SB
IH 39
Dane County

Letting of December 12, 2017

This is Addendum No. 01, which provides for the following:

Special Provisions

Revised Special Provisions	
Article No.	Description
72.	Survey Project 1007-11-74 with Optional AMG for Concrete Pavement and Base Course, Item SPV.0105.002

Added Special Provisions	
Article No.	Description
76.	Contractor Data Packet

Deleted Special Provisions	
Article No.	Description
20.	Design Model Data

Schedule of Items

Revised Bid Item Quantities					
Bid Item	Item Description	Unit	Old Quantity	Revised Quantity	Proposal Total
204.0165	Removing Guardrail	LF	2,054	215	2,269
204.9060.S	Removing Crash Cushions	EA	15	1	16
455.0605	Tack Coat	GAL	9	184	193
460.5224	HMA Pavement 4 LT 58-28 S	TON	379	508	887

614.2300	MGS Guardrail 3		1,167.5	287.5	1,455.0
614.2500	MGS Thrie Beam Transition		354.6	78.8	433.4
614.2610	MGS Guardrail Terminal EAT		7	2	9
715.0415	Incentive Strength Concrete Pavement	DOL	24,250	121,410	145,660
SPV.0090.200	Maintenance and Removal of Concrete Barrier Temporary Precast Left In Place By Others	LF	9,149	254	9,403

Added Bid Item Quantities					
Bid Item	Item Description	Unit	Old Quantity	Revised Quantity	Proposal Total
204.0120	Removing Asphaltic Surface Milling	SY	0	300	300
204.0185	Removing Masonry	CY	0	26.1	26.1
205.0200	Rock Excavation	CY	0	2,000	2,000

Plan Sheets

Revised Plan Sheets	
Plan Sheet	Plan Sheet Title (brief description of changes to sheet)
41, 56, 57, 66	Removals (Added Removing Masonry, Guardrail, CBTP, and Crash Cushion)
144, 145, 169	Plan Details (Added new guardrail, thrie beam transition, and EAT)
400-402, 405, 411, 413	Miscellaneous Quantities (Added/Revised items)

The responsibility for notifying potential subcontractors and suppliers of these changes remains with the prime contractor.

Sincerely,

Mike Coleman

Proposal Development Specialist
Proposal Management Section

**ADDENDUM NO. 01
1007-11-74
November 28, 2017**

Special Provisions

20. DELETED

72. Survey Project 1007-11-74 with Optional AMG for Concrete Pavement and Base Course, Item SPV.0105.002.

Replace entire article language with the following:

A Description

Standard specs 105.6 and 650 are modified to define the requirements for construction staking for this contract.

Add the following to standard spec 105.6.1:

Horizontal and vertical control points, provided by the department, are generally at 1-mile intervals for horizontal control and at ½-mile intervals for vertical control. Control points will be provided in a hard copy and ASCII electronic format.

Replace standard spec 105.6.2 with the following:

The department will not perform any construction staking for this contract. The contractor shall perform all survey required to layout and construct the work under this contract, subject to engineer's approval.

The survey includes establishing horizontal and vertical position for all aspects of construction including but not limited to storm sewer, subgrade, base, curb, gutter, curb and gutter, pipe culverts, structure layout, pavement, barriers (temporary and permanent), electrical installations, supplemental control, slope stakes, ponds, ITS, FTMS, ramp gates, parking lots, utilities, landscaping elements, irrigation system layout, installation of community sensitive design elements, traffic control items, fencing, etc.

The department may choose to perform quality assurance survey during construction. This quality assurance survey does not relieve the contractor of the responsibility for furnishing all survey work required under this contract.

Delete standard spec 650.1.

B (Vacant)

C Construction

Survey required under this item shall be in accordance to all pertinent requirements of standard spec 650 and shall include all other miscellaneous survey required to layout and construct all work under this contract.

Replace standard spec 650.3.8 with the following:

**650.3.8 Concrete Pavement
650.3.8.1 General**

- (1) Under the Construction Staking Concrete Pavement bid item the contractor may substitute automated machine guidance (AMG) for conventional staking on all or part of the concrete pavement and underlying base. The engineer may require the contractor to revert to conventional staking methods for all or part of the work at any point during construction if, in the engineer's opinion, AMG is producing unacceptable results.

650.3.8.2 Conventional Concrete Pavement Staking

- (1) Set construction stakes or marks at 25-foot intervals. Set and maintain additional stakes as necessary to establish location and grade along intersecting road radii; and for auxiliary lanes, vertical curves, horizontal curves, and curve transitions according to the plans. Locate stakes to within 0.02 feet horizontally and establish elevations to within 0.01 feet vertically. Set and maintain sufficient additional stakes at each cross-section to achieve the required accuracy and to support the method of operations.

650.3.8.3 Automated Machine Guidance for Concrete Pavement

650.3.8.3.1 General

- (1) No base or paving stakes or stringlines are required for AMG work.
- (2) Coordinate with the engineer throughout the course of construction to ensure that work performed using AMG conforms to the contract tolerances and that the methods employed conform to the contractor's AMG work plan and accepted industry standards. Address AMG issues at weekly progress meetings.
- (3) Provide the department field staff up to 8 hours of formal training on contractor's AMG systems.

650.3.8.3.2 AMG Work Plan

- (1) Submit a comprehensive written AMG work plan for department review at least 5 business days before beginning AMG work. The engineer will review the plan to determine if it conforms to the requirements of this special provision.
- (2) Construct the base and concrete pavement as the contractor's AMG work plan provides. Update the plan as necessary during construction.
- (3) The AMG work plan should discuss how AMG technology will be integrated into other technologies employed on the project. Include, but do not limit the contents to, the following:
 1. Designate which portions of the contract will be done using AMG and which portions will be done using conventional staking.
 2. Describe the manufacturer, model, and software version of the AMG equipment including the angular accuracy and the measurement frequency of the guidance system.
 3. Provide information on the qualifications of contractor staff. Include formal training and field experience. Designate a single staff person as the primary contact for AMG technology issues. This person shall be on site during all AMG concrete placement.
 4. Describe how project control is to be established. Include a list and map or kml file showing 3D control points enveloping the site. Incorporate department-provided primary control and contractor-provided secondary control into a single site control network. At a minimum provide sufficient 3D control to utilize not less than three control points in each total station setup, be it within a resection or as a setup point, backsight, and third point for an independent check. Use engineer-approved survey markers and/or targets. Ensure that secondary control points are accurate to within 0.02 feet horizontally and to within 0.01 feet vertically.
 5. Describe total station setup procedures including methods used to set and relocate total stations for each day's paving. Record or note the residual error in any resection

calculation. Take and record check shots on 3D control points at varying distances from the instrument that represent the varying distances used in guiding the paving machine. Submit notes or digital reports of setup data and control-point checks daily.

6. Describe the contractor's quality control procedures. Describe procedures for checking, mechanical calibration, and maintenance of equipment. Include the frequency and type of checks performed to ensure that the trimmed base and concrete pavement conform to the contract plans.

650.3.8.3.3 Equipment

- (1) Use robotic total stations machine guidance or other engineer approved combination of methodologies to meet the contract requirements.
- (2) Perform periodic sensor and/or pan calibrations and other routine adjustments as required to ensure that the trimmed base and concrete pavement conform to the contract plans.

650.3.8.3.4 Geometric and Surface Information

650.3.8.3.4.1 Department Responsibilities

- (1) The department will provide electronic design data in the contractor data packet. See the Contractor Data Packet contract special provision for a list of design data content.

650.3.8.3.4.2 Contractor Responsibilities

- (1) Obtain elevations of adjacent pavement and bridges at centerline, edge of pavement, and other locations necessary to characterize existing profile and cross slope. Adjust design profile grade and cross slope to provide a smooth transition from the new pavement to the existing pavement or bridge. Notify the engineer when a smooth profile cannot be provided. Submit final adjusted plan elevations to the engineer.
- (2) Review department-provided design model data for areas of the project employing AMG. Report inconsistencies between that data and the contract plans to the engineer and work with the engineer to resolve those inconsistencies. Use the resulting revised design model data and matching as-built surface data from above item (1) to develop a contractor construction model.
- (3) Provide the resulting construction model data proposed for the paving operation to the department in LandXML v1.2 or AutoCAD DWG.

650.3.8.3.4.3 Managing and Updating Information

- (1) Notify the department of any errors or discrepancies in department-provided information. The department will determine what revisions may be required. The department will revise the contract plans, if necessary, to address errors or discrepancies that the contractor identifies. The department will provide the best available information related to those contract plan revisions.
- (2) Revise the construction model as required to support construction operations and to reflect any contract plan revisions the department makes. Perform checks to confirm that the revised construction model agrees with the contract plan revisions. Provide a copy of the resulting adjusted construction model data to the engineer in LandXML v1.2 or AutoCAD DWG. The department will pay for costs incurred to incorporate contract plan revisions as extra work.

650.3.8.3.5 Construction Checks

650.3.8.3.5.1 Final Base Checks

- (1) Check the trimmed base against the final adjusted plan elevation at randomly selected points on cross sections located at stations evenly divisible by 100. Conduct at least one random check per 250 lane-feet corresponding to the basic units used to assess pavement thickness under standard spec 415.3.16. Also, check the trimmed base at additional points as the engineer directs. Notify the engineer at least 2 business days before making final checks so the engineer can observe the process.

- (2) Ensure that no individual check is off by more than 0.02 foot vertically of the final adjusted plan elevation. Notify the engineer if this criterion is exceeded.
- (3) The department may conduct periodic independent base checks. The department will notify the contractor if any individual check differs by more than 0.02 foot vertically from the final adjusted plan elevation.

650.3.8.3.5.2 Final Pavement Checks

- (1) Check the finished concrete immediately after placement against the accepted plan elevation at randomly selected points on cross sections. Conduct at least one random check per 250 lane-feet corresponding to the basic units used to assess pavement thickness under standard spec 415.3.16. Also, check the pavement at drainage structures, bridges, driveways, intersections, ramp termini, and additional points as the engineer directs. Notify the engineer before making final checks so the engineer can observe the process.
- (2) Notify the engineer and suspend paving operations immediately if the final pavement surface does not match the final adjusted plan elevation within 0.02 foot vertically.
- (3) The department may conduct periodic independent pavement elevation checks. The department will notify the contractor if any individual check differs by more than 0.05 foot horizontally or 0.02 foot vertically from the final adjusted plan elevation.

D Measurement

The department will measure Survey Project 1007-11-74 with Optional AMG for Concrete Pavement and Base Course as a single lump sum unit acceptably completed.

E Payment

The department will pay for measured quantities at the contract unit price under the following bid item:

ITEM NUMBER	DESCRIPTION	UNIT
SPV.0105.002	Survey Project 1007-11-74 with Optional AMG for Concrete Pavement and Base Course	LS

Payment is full compensation for performing all survey work required to layout and construct all work under this contract.

76. Contractor Data Packet.

The department will provide electronic design data for project 1007-11-74. The data provided is for the bidder's general knowledge only and is not a part of the contract. The department assumes no responsibility for discrepancies between the data provided and the contract documents.

The department will provide the project contractor data packet before the project let date within 5 business days of a contractor request submitted by email to Craig Pringle at craig.pringle@dot.wi.gov.

The contractor data packet contains the following:

- 1. Field control data, LandXML v1.2 file
- 2. Existing topographic data, 2D AutoCAD DWG files
 - a. Mapping
 - b. Utilities
- 3. Reference line alignments and proposed profiles, LandXML v1.2 file(s)
- 4. Superelevation transition information, comma separated value (csv) text file(s)

5. Proposed roadway features, 2D AutoCAD DWG file
6. Proposed structure horizontal features, 2D in AutoCAD DWG file
7. Surface models, LandXML v1.2 files and AutoCAD DWG files containing 3D face objects representing surface TIN triangles of surface models as follows:
 - a. Existing ground surface
 - b. Proposed top surface
 - i. Top of topsoil outside the roadway subgrade shoulder points extended to the slope intercepts
 - ii. Top of shoulder and top of pavement within the roadway subgrade
 - c. Proposed datum surface
 - i. Top of topsoil outside the roadway subgrade shoulder points extended to the slope intercepts
 - ii. Subgrade surface within the roadway subgrade shoulder points
8. Proposed surface model longitudinal breaklines, 3D AutoCAD DWG files
9. Surface model outer boundaries, 3D AutoCAD DWG file
10. Slope stake report, comma separated value (csv) text file
11. Earthwork data, Excel spreadsheet xlsx file(s)
12. Right of Way and easement data, LandXML v1.2 file and 2D AutoCAD DWG file
13. Metadata information

Schedule of Items

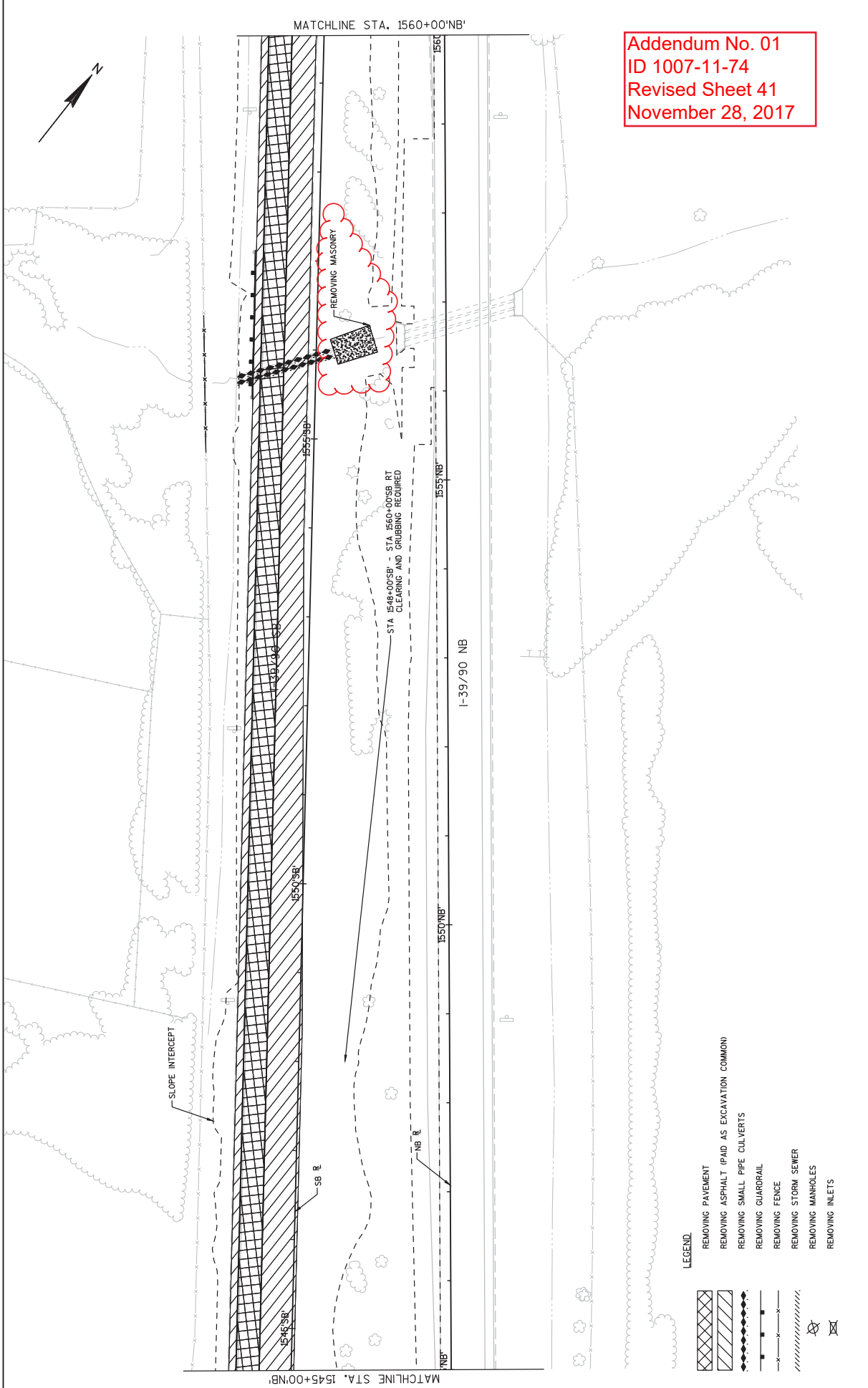
Attached, dated November 28, 2017, are the revised Schedule of Items. Pages 1 – 18.

Plan Sheets

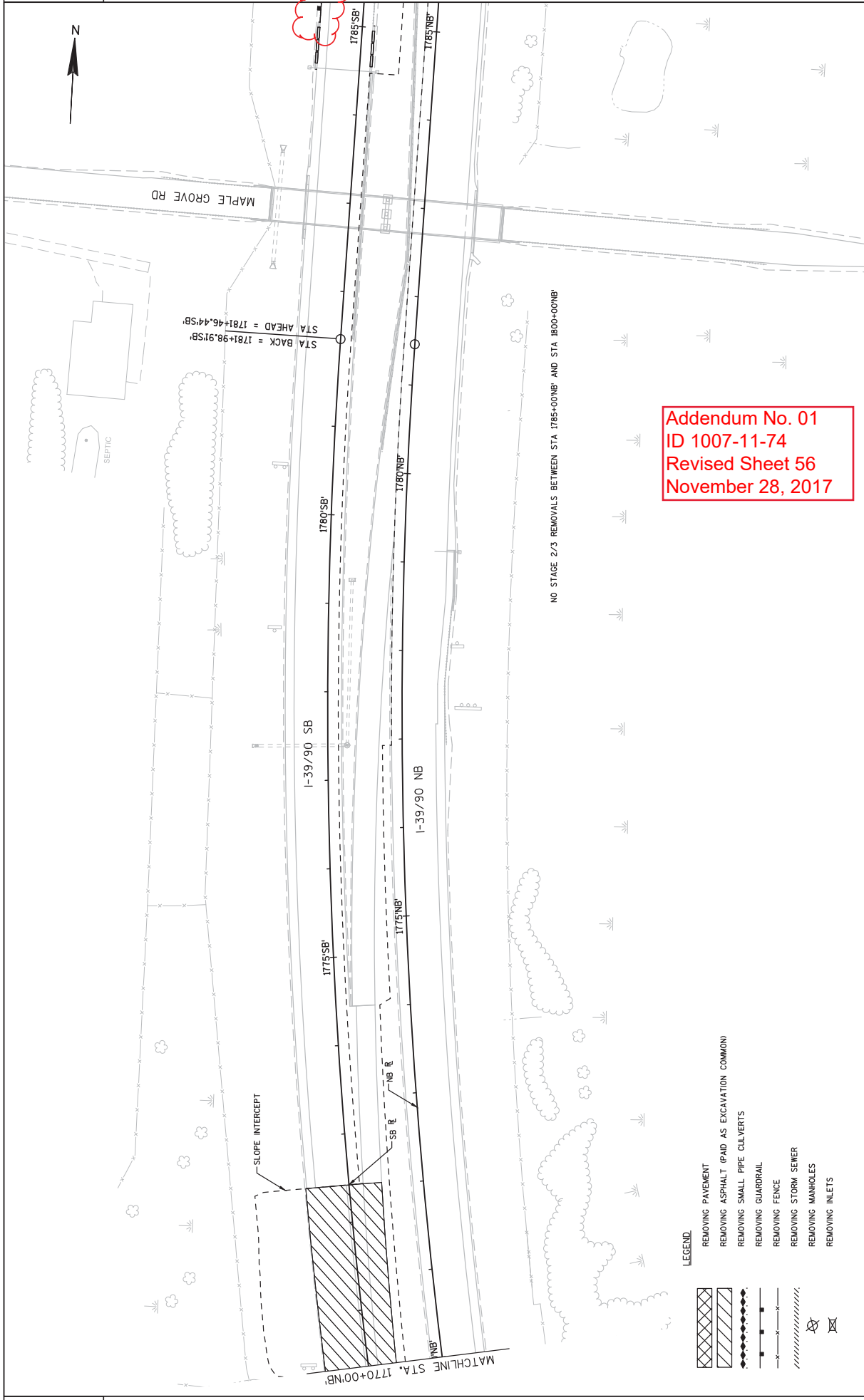
The following 8½ x 11-inch sheets are attached and made part of the plans for this proposal:

Revised: 41, 56, 57, 66, 144, 145, 169, 400, 401, 402, 405, 411, 413

END OF ADDENDUM



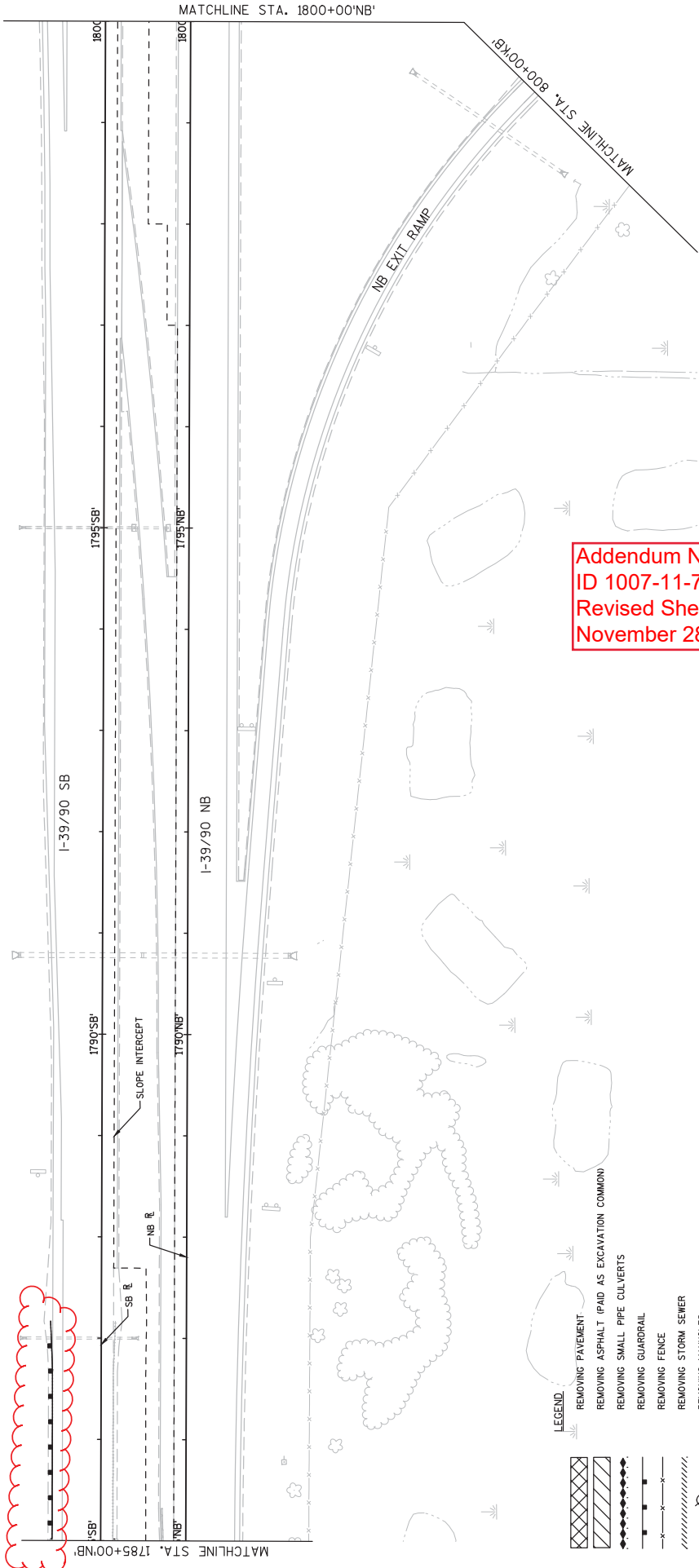
PROJECT NO: 1007-11-74	COUNTY: DANE	REMOVAL PLAN - STAGE 2/3	SHEET 41	E
FILE NAME : F:\17XX\1739_DP_139_DANENG\3D\10071001\10071174\SHEET\PLAN\021102-RM2-3.DWG HWY: IH 39 PLOT DATE : 11/22/2017 8:25 AM PLOT BY : KEVIN DRUMSKY PLOT NAME : PLOT SCALE : 1 IN:100 FT WSDOT/CADD SHEET 42				



Addendum No. 01
 ID 1007-11-74
 Revised Sheet 56
 November 28, 2017

- LEGEND**
- REMOVING PAVEMENT
 - REMOVING ASPHALT (PAID AS EXCAVATION COMMON)
 - REMOVING SMALL PIPE CULVERTS
 - REMOVING GUARDRAIL
 - REMOVING FENCE
 - REMOVING STORM SEWER
 - REMOVING MANHOLES
 - REMOVING INLETS

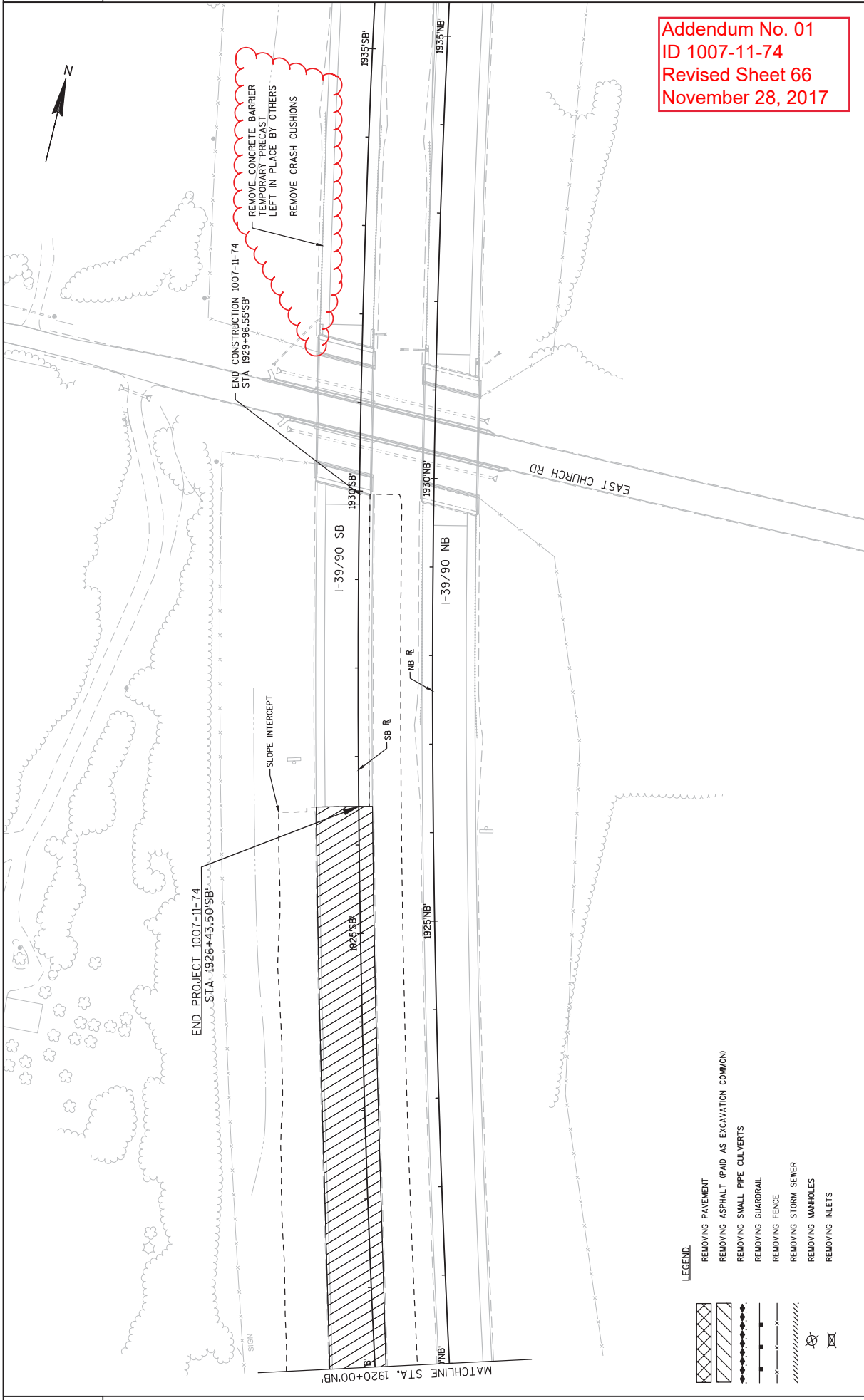
PROJECT NO: 1007-11-74	COUNTY: DANE	REMOVAL PLAN - STAGE 2/3	SHEET 56	E
HWY: IH 39	PLOT DATE : 11/22/2017 8:47 AM			
PLOT NAME : PLOT SCALE : 1 IN:100 FT				
FILE NAME : F:\17XXX\1739_DP_139_DANE\ENG\C3D\10071001\100711174\SHEETSPLAN\021102-RM2-3.DWG				
WSDOT/CADD SHEET 42				



Addendum No. 01
ID 1007-11-74
Revised Sheet 57
November 28, 2017

- LEGEND**
- REMOVING PAVEMENT
 - REMOVING ASPHALT (PAID AS EXCAVATION COMMON)
 - REMOVING SMALL PIPE CULVERTS
 - REMOVING GUARDRAIL
 - REMOVING FENCE
 - REMOVING STORM SEWER
 - REMOVING MANHOLES
 - REMOVING INLETS

PROJECT NO: 1007-11-74	COUNTY: DANE	REMOVAL PLAN - STAGE 2/3	SHEET 57	E
FILE NAME : F:\17XXX\1739_39_DP_139_DANE\ENG\3D\10071001\100711174\SHEET\PLAN\021102-RM2-3.DWG	HWY: IH 39	PLOT DATE : 11/22/2017 8:48 AM	PLOT NAME :	WSDOT/CADD SHEET 42
		PLOT BY : KEVIN DRUMSKY	PLOT SCALE : 1 IN=100 FT	

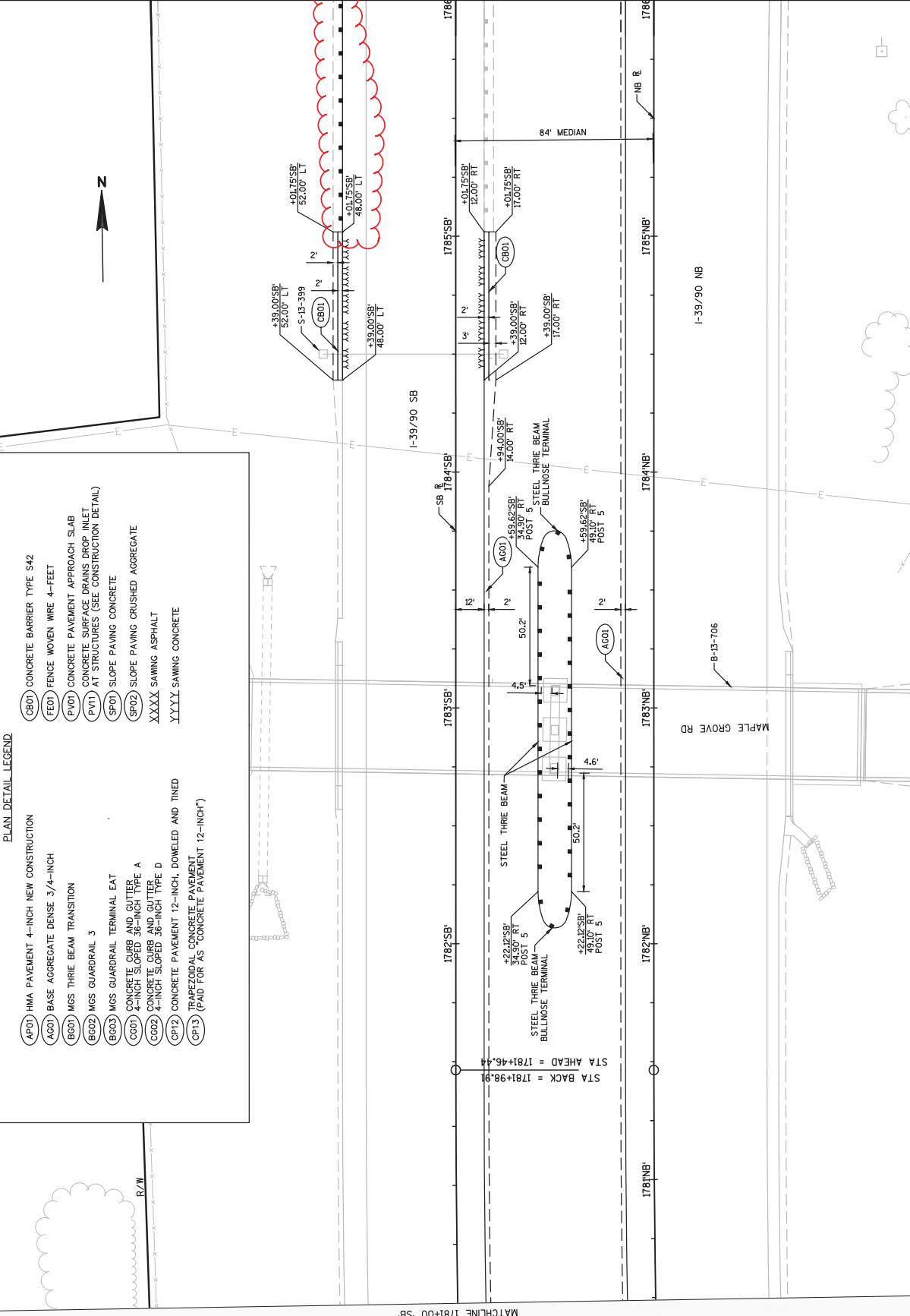


Addendum No. 01
 ID 1007-11-74
 Revised Sheet 66
 November 28, 2017

- LEGEND.**
- REMOVING PAVEMENT
 - REMOVING ASPHALT (PAID AS EXCAVATION COMMON)
 - REMOVING SMALL PIPE CULVERTS
 - REMOVING GUARDRAIL
 - REMOVING FENCE
 - REMOVING STORM SEWER
 - REMOVING MANHOLES
 - REMOVING INLETS

PROJECT NO: 1007-11-74	HWY: IH 39	COUNTY: DANE	REMOVAL PLAN - STAGE 2/3	SHEET 66	E
FILE NAME : F:\17XX\1739_39_DP_139_DANENG\CS0\10071001\10071174\SHEET\PLAN\021102-RM2-3.DWG					
PLOT DATE : 11/22/2017 8:24 AM					
PLOT BY : KEVIN DRUMSKY					
PLOT NAME : PLOT SCALE : 1 IN:100 FT					
WISDOT/CADD'S SHEET 42					

Addendum No. 01
 ID 1007-11-74
 Revised Sheet 144
 November 28, 2017

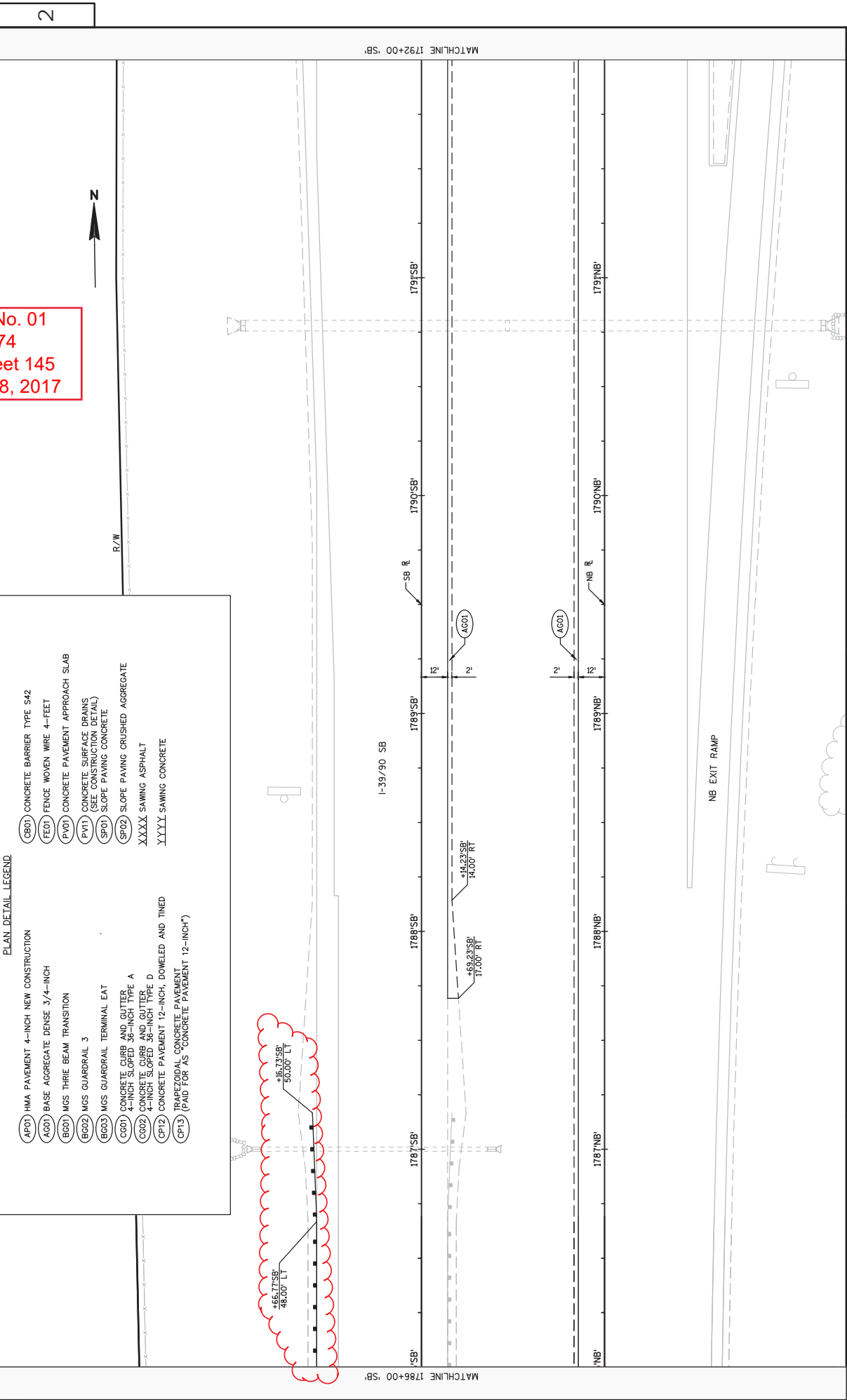


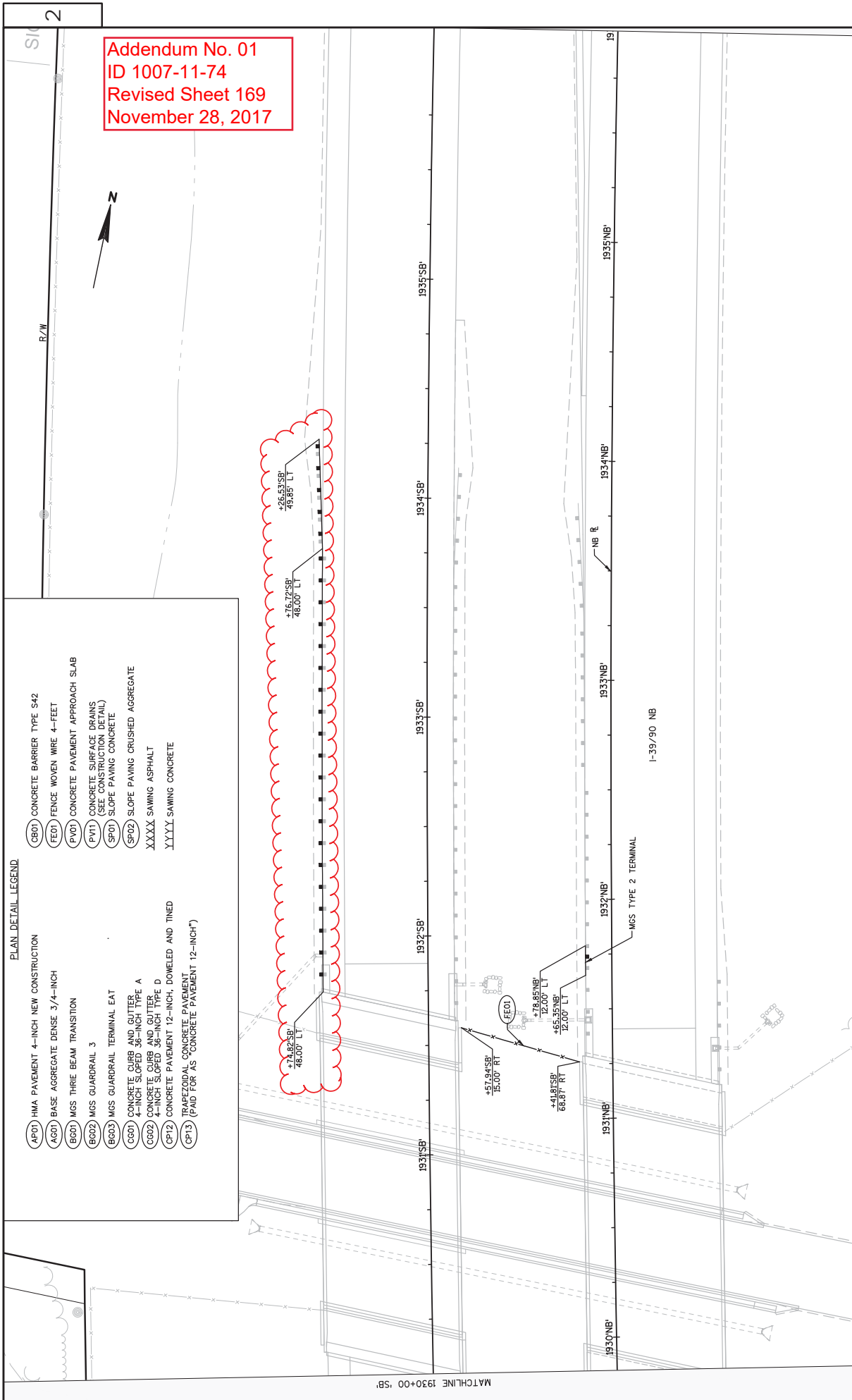
- PLAN DETAIL LEGEND**
- (AFD) HMA PAVEMENT 4-INCH NEW CONSTRUCTION
 - (AC01) BASE AGGREGATE DENSE 3/4-INCH
 - (BC01) MGS THRE BEAM TRANSITION
 - (BC02) MGS GUARDRAIL 3
 - (BC03) MGS GUARDRAIL TERMINAL EAT
 - (CC01) CONCRETE CURB AND GUTTER 4-INCH SLOPED 36-INCH TYPE A
 - (CC02) 4-INCH SLOPED 36-INCH TYPE D
 - (CP12) CONCRETE PAVEMENT 12-INCH, DOMELED AND TINED
 - (CP13) TRAPEZOIDAL CONCRETE PAVEMENT (PAID FOR AS "CONCRETE PAVEMENT 12-INCH")
 - (CB01) CONCRETE BARRIER TYPE S42
 - (FE01) FENCE WOVEN WIRE 4- FEET
 - (FV01) CONCRETE PAVEMENT APPROACH SLAB
 - (FV1) CONCRETE SURFACE DRAINS DROP INLET AT STRUCTURES (SEE CONSTRUCTION DETAIL)
 - (SP01) SLOPE PAVING CONCRETE
 - (SP02) SLOPE PAVING CRUSHED AGGREGATE
 - XXXX SAWING ASPHALT
 - YYYY SAWING CONCRETE

Addendum No. 01
 ID 1007-11-74
 Revised Sheet 145
 November 28, 2017

PLAN DETAIL LEGEND

(AFD) HMA PAVEMENT 4-INCH NEW CONSTRUCTION	(CB0) CONCRETE BARRIER TYPE S42
(AC0) BASE AGGREGATE DENSE 3/4-INCH	(FE0) FENCE WOVEN WIRE 4- FEET
(BC0) MGS THRE BEAM TRANSITION	(FV0) CONCRETE PAVEMENT APPROACH SLAB
(BG0) MGS GUARDRAIL 3	(FV1) CONCRETE SURFACE DRAINS (SEE CONSTRUCTION DETAIL)
(BG2) MGS GUARDRAIL TERMINAL EAT	(SP0) SLOPE PAVING CRUSHED AGGREGATE
(CG0) CONCRETE CURB AND GUTTER 4-INCH SLOPED 36-INCH TYPE A	XXXX SAWING ASPHALT
(CG2) CONCRETE CURB AND GUTTER 4-INCH SLOPED 36-INCH TYPE D	YYYY SAWING CONCRETE
(CF2) CONCRETE PAVEMENT 12-INCH, DOMELED AND TINED	
(CP13) TRAPEZOIDAL CONCRETE PAVEMENT (PAID FOR AS "CONCRETE PAVEMENT 12-INCH")	





Addendum No. 01
 ID 1007-11-74
 Revised Sheet 169
 November 28, 2017

PLAN DETAIL LEGEND

- (AFD) HMA PAVEMENT 4-INCH NEW CONSTRUCTION
- (AC0) BASE AGGREGATE DENSE 3/4-INCH
- (BC0) MGS THRE BEAM TRANSITION
- (BG0) MGS GUARDRAIL 3
- (BG3) MGS GUARDRAIL TERMINAL EAT
- (CG0) CONCRETE CURB AND GUTTER 4-INCH SLOPED 36-INCH TYPE A
- (CG2) CONCRETE CURB AND GUTTER 4-INCH SLOPED 36-INCH TYPE D
- (CF2) CONCRETE PAVEMENT 12-INCH, DOMELED AND TINED
- (CP13) TRAPEZOIDAL CONCRETE PAVEMENT (PAID FOR AS "CONCRETE PAVEMENT 12-INCH")

- (CB0) CONCRETE BARRIER TYPE S42
- (FE0) FENCE WOVEN WIRE 4- FEET
- (FV0) CONCRETE PAVEMENT APPROACH SLAB
- (FV1) CONCRETE SURFACE DRAINS (SEE CONSTRUCTION DETAIL)
- (SP0) SLOPE PAVING CONCRETE
- (SP2) SLOPE PAVING CRUSHED AGGREGATE
- XXXX SAWING ASPHALT
- YYYY SAWING CONCRETE

CLEARING AND GRUBBING

CATEGORY STAGE	LOCATION	STATION	STA	STA
1000	2/3 IH 39 SB	1532+00 - 1543+00 'SB'	11	11
		1548+00 - 1560+00 'SB'	12	12
		1564+00 - 1565+00 'SB'	1	1
		1566+00 - 1568+00 'SB'	2	2
		1637+00 - 1639+00 'SB'	2	2
		1730+00 - 1738+00 'SB'	8	8
		1830+00 - 1845+00 'SB'	15	15
		1856+00 - 1858+00 'SB'	2	2
		1883+00 - 1885+00 'SB'	2	2
STAGE 2/3 SUBTOTALS			55	55
CATEGORY TOTALS			55	55
PROJECT TOTALS			55	55

201.0105 201.0205
CLEARING GRUBBING

REMOVING PAVEMENT

CATEGORY STAGE	LOCATION	STATION	SY
1000	2-3 IH 39 SB	1498+00 - 1528+72 'SB'	9,526
		1529+88 - 1679+84 'SB'	43,175
		1680+42 - 1769+93 'SB'	25,871
		1836+90 - 1915+25 'SB'	22,485
CATEGORY 1000 TOTAL			101,057
PROJECT TOTAL			101,057

204.0100

REMOVING ASPHALTIC SURFACE

CATEGORY STAGE	LOCATION	STATION	SY	REMARKS
1000	2/3 LAKE DRIVERD	41+22 - 57+00 'L'	--	
4	IH 39 SB	1811+80 - 1823+27 'SB'	446	
CATEGORY 1000 TOTAL			446	
PROJECT TOTAL			446	

204.0120
REMOVING ASPHALTIC SURFACE MILLING

REMOVING CONCRETE BARRIER

CATEGORY STAGE	LOCATION	STATION	LF
1000	2-3 IH 39 SB	1784+39 - 1785+02 'LT'	63
		1784+39 - 1785+02 'RT'	63
		1828+28 - 1828+85 'LT'	57
CATEGORY 1000 TOTAL			183
PROJECT TOTAL			183

204.0157

REMOVING SMALL PIPE CULVERTS

CATEGORY STAGE	LOCATION	STATION	OFFSET	EACH	DESCRIPTION
1000	2/3 IH 39 SB	1502+93	'SB' LT & RT	1	94' x 42" CPRC
		1503+74	'SB' LT & RT	1	93' x 18" CPRC
		1508+75	'SB' LT & RT	1	83' x 18" CPRC
		1518+44	'SB' LT & RT	1	AEW & 108' x 36" CPFC
		1527+13	'SB' LT	1	35' x 18" CPFC
		1555+87	'SB' LT & RT	1	110' x 54" CPFC
		1555+95	'SB' LT & RT	1	110' x 54" CPFC
		1566+66	'SB' LT & RT	1	137' x 48" CPFC
		1578+79	'SB' LT & RT	1	93' x 36" CPFC
		1578+85	'SB' LT & RT	1	93' x 36" CPFC
		1609+83	'SB' LT & RT	1	93' x 18" CPRC
		1621+32	'SB' LT & RT	1	79' x 18" CPRC
		1632+30	'SB' LT & RT	1	123' x 36" CPFC
		1632+34	'SB' LT & RT	1	105' x 36" CPFC
		1634+32	'SB' LT & RT	1	132' x 18" CPRC
		1642+22	'SB' LT & RT	1	68' x 18" CPRC
		1661+23	'SB' LT & RT	1	74' x 18" CPRC
		1662+23	'SB' LT & RT	1	96' x 36" CPFC
		1662+30	'SB' LT & RT	1	96' x 36" CPFC
		1689+23	'SB' LT & RT	1	86' x 24" CPRC
		1704+22	'SB' LT & RT	1	79' x 18" CPRC
		1722+24	'SB' LT & RT	1	70' x 18" CPRC
		1754+20	'SB' LT & RT	1	117' x 42" CPRC
		1770+24	'SB' LT & RT	1	80' x 36" CPFC
		1849+40	'SB' LT & RT	1	191' x 36" CPRC
		1860+73	'SB' LT & RT	1	228' x 36" CPRC
	IH 39 NB	1518+00	'NB' LT	1	AEW
		1566+23	'NB' LT	1	AEW
		1905+50	'NB' LT	1	AEW & 6' x 24" CPRC
	LAKE DRIVERD	46+61 - 48+48	'L' LT	1	186' x 30" CPFC
		48+95	'L' LT	1	AEW
CATEGORY 1000 TOTAL				31	
PROJECT TOTAL				31	

Addendum No. 01
ID 1007-11-74
Revised Sheet 400
November 28, 2017

REMOVING GUARDRAIL

CATEGORY STAGE	LOCATION	STATION	OFFSET	LF
1000	2/3 IH 39 SB	1529+84 - 1530+88 'SB'	RT	104
		1530+17 - 1534+14 'SB'	LT	394
		1559+44 - 1557+10 'SB'	LT	167
		1680+37 - 1683+09 'SB'	LT	272
		1714+44 - 1716+95 'SB'	LT	254
		1785+02 - 1787+17 'SB'	LT	215
		1530+51 - 1531+92 'NB'	LT	216
		1680+52 - 1683+04 'NB'	LT	253
		1811+78 - 1814+30 'NB'	LT	253
		1931+65 - 1933+81 'NB'	LT	144
CATEGORY 1000 TOTAL				2,269
PROJECT TOTAL				2,269

204.0165

PROJECT NO: 1007-11-74

HWY: IH 39

COUNTY: DANE

MISCELLANEOUS QUANTITIES

SHEET 400

Addendum No. 01
ID 1007-11-74
Revised Sheet 401
November 28, 2017

REMOVING STORM SEWER STRUCTURES

CATEGORY	STAGE	LOCATION	STATION	OFFSET	OFFSET	MANHOLES	REMOVING
1000	2/3	IH 39 SB				EACH	INLETS
			1540+37	'SB	33.1' RT	--	1
			1569+94	'SB	4.2' RT	--	1
			1570+62	'SB	7.3' RT	--	1
			1605+32	'SB	51.4' RT	1	--
			1610+00	'SB	48.1' RT	1	--
			1620+00	'SB	7.3' RT	--	1
			1832+76	'SB	55.9' RT	1	--
			1889+26	'SB	24.5' RT	1	--
		STAGE 2/3 SUBTOTALS				4	4
4		IH 39 SB	1645+90	'SB	60.5' RT	--	1
			1777+40	'SB	22.2' RT	1	--
			1779+27	'SB	26.0' RT	--	1
			1795+00	'SB	29.8' RT	--	1
			1795+00	'SB	63.4' RT	--	1
		IH 39 NB	1829+03	'NB	19.9' LT	--	1
		STAGE 4 SUBTOTALS				1	5
		CATEGORY 1000 TOTALS				5	9
		PROJECT TOTALS				5	9

CATEGORY	STAGE	LOCATION	STATION	OFFSET	LF
1000	2/3	IH 39 SB	1528+79 - 1529+05	'SB' LT	82
			1530+17 - 1531+12	'SB' LT	95
			1554+82 - 1556+36	'SB' LT	154
			1679+38 - 1679+84	'SB' LT	105
			1680+41 - 1680+87	'SB' LT	101
			1714+17 - 1714+41	'SB' LT	34
			1714+51 - 1714+85	'SB' LT	42
		CATEGORY 1000 TOTAL			613
		PROJECT TOTAL			613

REMOVING DELINEATORS AND MARKERS

CATEGORY	STAGE	LOCATION	STATION	EACH
1000	2/3	IH 39 SB	1498+00-1528+00	'SB' 16
			1528+00-1690+00	'SB' 86
			1660+00-1772+42	'SB' 29
			1830+00-1926+44	'SB' 31
		STAGE 2/3 SUBTOTAL		142
4		IH 39 SB	1647+87	'SB' 1
			1829+06	'SB' 1
		STAGE 4 SUBTOTAL		2
		CATEGORY 1000 TOTAL		144
		PROJECT TOTAL		144

REMOVING MASONRY

CATEGORY	STAGE	LOCATION	STATION	OFFSET	CY	REMARKS
1000	2/3	IH 39	1556+00	RT	26.1	MEDIAN FLUME
		CATEGORY TOTAL			26.1	
		PROJECT TOTAL			26.1	

REMOVING STORM SEWER

CATEGORY	STAGE	LOCATION	STATION	OFFSET	LF	LF	LF	REMARKS
1000	2/3	IH 39 SB	1540+37 - 1540+83	'SB' LT & RT	--	147	--	CORRUGATED STEEL
			1569+74 - 1569+94	'SB' RT	44	--	--	REINFORCED CONCRETE
			1569+94 - 1570+62	'SB' RT	67	--	--	REINFORCED CONCRETE
			1570+62 - 1572+15	'SB' RT	154	--	--	REINFORCED CONCRETE
			1605+32 - 1610+00	'SB' LT & RT	--	118	--	CORRUGATED STEEL
			1605+32 - 1610+00	'SB' RT	--	468	--	REINFORCED CONCRETE
			1832+76 - 1832+76	'SB' LT & RT	--	--	90	CORRUGATED STEEL
			1889+26 - 1889+26	'SB' LT & RT	--	116	--	CORRUGATED STEEL
			1889+26 - 1891+29	'SB' RT	203	--	--	REINFORCED CONCRETE
		STAGE 2/3 SUBTOTALS			468	147	702	
4		IH 39 SB	1645+90 - 1647+86	'SB' RT	200	--	--	REINFORCED CONCRETE
			1777+40 - 1779+27	'SB' RT	187	--	--	REINFORCED CONCRETE
			1795+00	'SB' RT	34	--	--	REINFORCED CONCRETE
		IH 39 NB	1829+03	'NB' RT	40	--	--	REINFORCED CONCRETE
		STAGE 4 SUBTOTALS			461	--	--	
		CATEGORY 1000 TOTALS			929	147	702	90
		PROJECT TOTALS			929	147	702	90

PROJECT NO: 1007-II-74

HWY: IH 39

COUNTY: DANE

MISCELLANEOUS QUANTITIES

SHEET 401

E

Addendum No. 01
 ID 1007-11-74
 Revised Sheet 402
 November 28, 2017

EARTHWORK SUMMARY

STAGE	LOCATION	STATION	205 0100 EXCAVATION OUT (2) EBS (3)	205 0400 MARSH EXCAVATION (4)	205 0200 ROCK EXCAVATION	FILL CY	SPV 0035.001 ROADWAY EMBANKMENT (5)	MASS ORDINATE (6)	208.1100 SELECT BORROW MATERIAL (7)	SPV 0060.010 TEST PITS EACH	645.0220 GEOGRID TYPE SR	
2-3	IH 39 SB BEGIN TO LAKE DRIVE IH 39 SB LAKE DRIVE TO SAUNDERS CREEK IH 39 SB SAUNDERS CREEK TO USH 51 IH 39 SB USH 51 TO EAST CHURCH RAMP TC RAMP TCT RAMP TDT LAKE DRIVE RD	1498+00 - 1528+62 'SB'	13,092	0	0	19,631	19,631	-6,539	0	0	0	
		1529+62 - 1679+39 'SB'	191,569	12,161	0	35,412	35,412	168,318	12,161	0	0	
		1680+02 - 1809+49 'SB'	33,145	12,296	0	51,681	51,681	-6,240	12,296	0	0	
		1813+96 - 1929+58 'SB'	131,770	0	3,414	80,630	82,337	52,847	1,707	0	0	
		595+42 - 599+00 'TC'	1,881	0	0	0	0	1,881	0	0	0	
		628+00 - 631+65 'TD'	1,840	0	0	0	0	1,840	0	0	0	
		41+37 - 57+00 'TCT'	1,202	0	0	677	677	525	0	0	0	
		10+50 - 16+63 'TDT'	1,403	0	0	522	522	881	0	0	0	
		46+69 - 49+36 'L'	1,150	0	0	526	526	624	0	0	0	
		STAGE 2-3 SUBTOTALS			377,052	24,457	3,414	189,079	190,796	214,137	28,164	0
4	IH 39 SB BEGIN TO LAKE DRIVE IH 39 SB LAKE DRIVE TO SAUNDERS CREEK IH 39 SB SAUNDERS CREEK TO USH 51 IH 39 SB USH 51 TO EAST CHURCH STAGE 4 SUBTOTALS	1498+00 - 1508+00 'SB'	113	0	0	9	9	104	0	0	0	
		1542+00 - 1660+61 'SB'	9,405	0	0	73	73	9,332	0	0	0	
		1699+61 - 1809+49 'SB'	4,284	0	0	110	110	4,174	0	0	0	
		1823+38 - 1897+55 'SB'	6,003	0	0	253	253	5,750	0	0	0	
		STAGE 4 SUBTOTALS			19,805	0	0	445	445	19,360	0	0
5	IH 39 SB SAUNDERS CREEK TO USH 51 IH 39 SB USH 51 TO EAST CHURCH STAGE 5 SUBTOTALS UNDISTRIBUTED CATEGORY 1000 SUBTOTALS PROJECT TOTALS	1700+00 - 1714+10 'SB'	391	0	0	0	0	391	0	0	0	
		1870+50 - 1884+60 'SB'	1,073	0	0	0	0	1,073	0	0	0	
		STAGE 5 SUBTOTALS			1,464	0	0	0	1,464	0	0	0
		UNDISTRIBUTED			0	4,591	500	0	6,831	0	45	10,000
		CATEGORY 1000 SUBTOTALS			398,321	29,038	3,914	189,524	191,481	241,792	28,164	45
PROJECT TOTALS			398,321	29,038	3,914	189,524	191,481	241,792	28,164	45	10,000	

1) COMMON EXCAVATION IS THE SUM OF THE CUT AND EBS EXCAVATION COLUMNS. ITEM NUMBER 205.0100

2) SALVAGED/UNUSABLE PAVEMENT MATERIAL IS INCLUDED IN CUT.

3) EBS EXCAVATION TO BE BACKFILLED WITH SELECT BORROW.

4) MARSH EXCAVATION TO BE BACKFILLED WITH SELECT BORROW IN AREAS OF WATER AS STATED IN NOTE 7. AREAS OF MARSH EXCAVATION NOT FILLED WITH SELECT BORROW TO BE BACKFILLED WITH EMBANKMENT.

SEE CONSTRUCTION DETAILS FOR LIMITS OF EBS EXCAVATION AND PLACEMENT.

SEE CONSTRUCTION DETAILS FOR LIMITS OF MARSH EXCAVATION AND PLACEMENT.

5) ROADWAY EMBANKMENT = FILL - MARSH EXCAVATION - (SELECT BORROW - EBS)

6) THE MASS ORDINATE + OR - QTY CALCULATED FOR THE DIVISION, PLUS QUANTITY INDICATES AN EXCESS OF MATERIAL WITHIN THE DIVISION, MINUS INDICATES A SHORTAGE OF MATERIAL WITHIN THE DIVISION

MASS ORDINATE = CUT + EBS EXC + MARSH EXC + ROCK EXC - EMBANKMENT. THE MASS ORDINATE IS FOR INFORMATION PURPOSES ONLY AS COMMON EXCAVATION AND ROADWAY EMBANKMENT ARE NOT BALANCED FOR QUANTITY PURPOSES

GUARANTEE THE QUALITY OF COMMON EXCAVATION, AND IF IT CAN BE REUSED ON SITE.

7) WHERE WATER IS ENCOUNTERED, PLACE SELECT BORROW TO AND ELEVATION 2 FEET ABOVE THE WATER LINE

ASPHALTIC ITEMS

CATEGORY	STAGE	LOCATION	STATION	OFFSET ALIGNMENT		TACK COAT	TON	HMA COLD WEATHER PAVING	TON	HMA PAVEMENT	TON	ROUT AND SEAL	TON	415 6000.S	REMARKS
				LT	RT										
1000	1	RAMP TC	599+00	604+10	TC						64	510	64		OUTSIDE SHOULDER
		RAMP TD	621+70	628+00	TD						77	630	77		OUTSIDE SHOULDER
		STAGE 1 SUBTOTALS									141	1,140	141		
2/3		IH 39 SB	1589+00	1598+99	'SB'						125	999	125		OUTSIDE SHOULDER
			1628+02	1629+03	'SB'						8	101	8		INSIDE SHOULDER SB EXIT RAMP
			1628+04	1640+40	'SB'						160	1,236	160		OUTSIDE SHOULDER
		RAMP TCT2	580+75	596+66	LT & RT						528		528		TEMPORARY UH5/STH73 ENTRANCE RAMP CROSSOVER
			598+93	603+50	TD						134		134		TEMPORARY UH5/STH73 ENTRANCE RAMP
		RAMP TDT2	624+34	628+35	LT & RT						121		121		TEMPORARY UH5/STH73 EXIT RAMP
			629+95	643+89	LT & RT						440		440		TEMPORARY UH5/STH73 EXIT RAMP CROSSOVER
		LAKE DRIVE ROAD	46+69	49+00	LT						15		15		
			47+49	49+00	RT						10		10		
			41+22	57+00	LT&RT						308		308		
		STAGE 2/3 SUBTOTALS									826		826		2,336
4		IH 39	1570+45	1571+85	RT						111	280	111		MAINTENANCE CROSSOVER
			1668+58	1669+88	RT						84	260	84		MAINTENANCE CROSSOVER
			1701+20	1702+61	RT						138	282	138		MAINTENANCE CROSSOVER
			1753+66	1754+97	RT						83	262	83		MAINTENANCE CROSSOVER
			1842+75	1844+24	RT						161	298	161		MAINTENANCE CROSSOVER
			1899+35	1900+60	RT						83	250	83		MAINTENANCE CROSSOVER
		RAMP TC	598+77	603+40	TC						35	463	35		INSIDE SHOULDER
		RAMP TD	624+53	628+00	TD						26	347	26		INSIDE SHOULDER
		STAGE 4 SUBTOTALS									61	660	61		
		CATEGORY 1000 TOTALS									193	2,024	193		5,918
		PROJECT TOTALS									193	2,024	193		5,918

Addendum No. 01
ID 1007-11-74
Revised Sheet 405
November 28, 2017

Addendum No. 01
 ID 1007-11-74
 Revised Sheet 413
 November 28, 2017

CONCRETE BARRIER ITEMS

603.1142
 CONCRETE BARRIER
 TYPE S42

CATEGORY	STAGE	LOCATION	STATION	OFFSET ALIGNMENT	LF	REMARKS
1000	2/3	IH 39 SB	1640+00 - 1640+91	LT 'SB'	52	--
			1784+39 - 1785+02	LT 'SB'	63	CONNECTION TO EXISTING GUARDRAIL IS PAID UNDER 603.1142
			1784+39 - 1785+02	RT 'SB'	63	CONNECTION TO EXISTING GUARDRAIL IS PAID UNDER 603.1142
			1828+28 - 1828+85	LT 'SB'	57	--
CATEGORY 1000 TOTAL						235
PROJECT TOTAL						235

CONCRETE BARRIER ITEMS

604.0400
 SLOPE PAVING
 CONCRETE

CATEGORY	STAGE	LOCATION	STATION	OFFSET ALIGNMENT	LF	REMARKS
1000	2/3	IH 39 SB	1612+68 - 1612+70	LT 'SB'	125	--
			1655+52 - 1655+95	LT 'SB'	24	B-13-703 WEST ABUTMENT
			1859+79 - 1860+27	LT 'SB'	25	B-13-703 WEST ABUTMENT
CATEGORY 1000 TOTALS						49
PROJECT TOTALS						49

GUARDRAIL ITEMS

614.0220
 STEEL THRIE BULLNOSE TERMINAL

CATEGORY	STAGE	LOCATION	STATION	OFFSET ALIGNMENT	LF	REMARKS
1000	2/3	IH 39 SB	1529+83 - 1532+35	RT 'SB'	162.5	39.4
			1530+23 - 1532+77	LT 'SB'	162.5	39.4
			1640+91 - 1643+31	LT 'SB'	150.0	39.4
			1679+18 - 1679+69	RT 'SB'	13.5	39.4
			1679+18 - 1679+69	LT 'SB'	13.5	39.4
			1680+61 - 1683+14	RT 'SB'	162.5	39.4
			1680+61 - 1683+14	LT 'SB'	162.5	39.4
			1783+02 - 1787+17	LT 'SB'	123.0	39.4
			1806+35 - 1806+39	RT 'SB'	13.5	39.4
			1811+80 - 1814+32	RT 'SB'	162.5	39.4
			1828+85 - 1831+14	LT 'SB'	137.5	39.4
			1831+73 - 1834+27	LT 'SB'	162.5	39.4
CATEGORY 1000 TOTALS						433.4
PROJECT TOTALS						433.4

CONCRETE BARRIER ITEMS

604.0500
 SLOPE PAVING
 CRUSHED CONCRETE

CATEGORY	STAGE	LOCATION	STATION	OFFSET ALIGNMENT	LF	REMARKS
1000	4	IH 39	1496+59 - 1496+59	20' RT 'SB'	--	B-13-703 WEST ABUTMENT
			1496+59 - 1515+93	20' RT 'SB'	1,937	B-13-703 WEST ABUTMENT
CATEGORY 1000 TOTALS						1,937
PROJECT TOTALS						1,937

RE-LAP GUARD RAIL

SPV.0090.003

CATEGORY	STAGE	LOCATION	STATION	OFFSET ALIGNMENT	LF	
1000	2/3	IH 39 NB	1525+10 - 1527+62	LT 'NB'	252	
			1529+40 - 1531+92	LT 'NB'	252	
			1677+16 - 1679+68	LT 'NB'	252	
			1680+52 - 1683+04	LT 'NB'	252	
			1807+33 - 1809+85	LT 'NB'	252	
			1811+78 - 1814+30	LT 'NB'	252	
			1927+22 - 1929+74	LT 'NB'	252	
			1931+29 - 1933+81	LT 'NB'	252	
CATEGORY 1000 TOTALS						2,016
PROJECT TOTALS						2,016

GUARDRAIL ITEMS

614.2300
 STEEL THRIE BULLNOSE TERMINAL

CATEGORY	STAGE	LOCATION	STATION	OFFSET ALIGNMENT	LF	REMARKS
1000	2/3	IH 39 SB	1612+11 - 1614+41	RT 'SB'	250	39.4
			1654+93 - 1656+61	RT 'SB'	2	39.4
			1782+07 - 1783+75	RT 'SB'	2	39.4
			1858+76 - 1860+56	RT 'SB'	2	39.4
			1530+52 - 1530+65	LT 'NB'	13.5	39.4
			1931+65 - 1931+79	LT 'NB'	13.5	39.4
CATEGORY 1000 TOTALS						433.4
PROJECT TOTALS						433.4

CONCRETE BARRIER ITEMS

603.1142
 CONCRETE BARRIER
 TYPE S42

CATEGORY	STAGE	LOCATION	STATION	OFFSET ALIGNMENT	LF	REMARKS
1000	2/3	IH 39 SB	1640+00 - 1640+91	LT 'SB'	52	--
			1784+39 - 1785+02	LT 'SB'	63	CONNECTION TO EXISTING GUARDRAIL IS PAID UNDER 603.1142
			1784+39 - 1785+02	RT 'SB'	63	CONNECTION TO EXISTING GUARDRAIL IS PAID UNDER 603.1142
			1828+28 - 1828+85	LT 'SB'	57	--
CATEGORY 1000 TOTAL						235
PROJECT TOTAL						235

CONCRETE BARRIER ITEMS

604.0500
 SLOPE PAVING
 CRUSHED CONCRETE

CATEGORY	STAGE	LOCATION	STATION	OFFSET ALIGNMENT	LF	REMARKS
1000	4	IH 39	1496+59 - 1496+59	20' RT 'SB'	--	B-13-703 WEST ABUTMENT
			1496+59 - 1515+93	20' RT 'SB'	1,937	B-13-703 WEST ABUTMENT
CATEGORY 1000 TOTALS						1,937
PROJECT TOTALS						1,937

RE-LAP GUARD RAIL

SPV.0090.003

CATEGORY	STAGE	LOCATION	STATION	OFFSET ALIGNMENT	LF	
1000	2/3	IH 39 NB	1525+10 - 1527+62	LT 'NB'	252	
			1529+40 - 1531+92	LT 'NB'	252	
			1677+16 - 1679+68	LT 'NB'	252	
			1680+52 - 1683+04	LT 'NB'	252	
			1807+33 - 1809+85	LT 'NB'	252	
			1811+78 - 1814+30	LT 'NB'	252	
			1927+22 - 1929+74	LT 'NB'	252	
			1931+29 - 1933+81	LT 'NB'	252	
CATEGORY 1000 TOTALS						2,016
PROJECT TOTALS						2,016

CONCRETE BARRIER ITEMS

603.1142
 CONCRETE BARRIER
 TYPE S42

CATEGORY	STAGE	LOCATION	STATION	OFFSET ALIGNMENT	LF	REMARKS
1000	2/3	IH 39 SB	1640+00 - 1640+91	LT 'SB'	52	--
			1784+39 - 1785+02	LT 'SB'	63	CONNECTION TO EXISTING GUARDRAIL IS PAID UNDER 603.1142
			1784+39 - 1785+02	RT 'SB'	63	CONNECTION TO EXISTING GUARDRAIL IS PAID UNDER 603.1142
			1828+28 - 1828+85	LT 'SB'	57	--
CATEGORY 1000 TOTAL						235
PROJECT TOTAL						235

CONCRETE BARRIER ITEMS

604.0500
 SLOPE PAVING
 CRUSHED CONCRETE

CATEGORY	STAGE	LOCATION	STATION	OFFSET ALIGNMENT	LF	REMARKS
1000	4	IH 39	1496+59 - 1496+59	20' RT 'SB'	--	B-13-703 WEST ABUTMENT
			1496+59 - 1515+93	20' RT 'SB'	1,937	B-13-703 WEST ABUTMENT
CATEGORY 1000 TOTALS						1,937
PROJECT TOTALS						1,937

RE-LAP GUARD RAIL

SPV.0090.003

CATEGORY	STAGE	LOCATION	STATION	OFFSET ALIGNMENT	LF	
1000	2/3	IH 39 NB	1525+10 - 1527+62	LT 'NB'	252	
			1529+40 - 1531+92	LT 'NB'	252	
			1677+16 - 1679+68	LT 'NB'	252	
			1680+52 - 1683+04	LT 'NB'	252	
			1807+33 - 1809+85	LT 'NB'	252	
			1811+78 - 1814+30	LT 'NB'	252	
			1927+22 - 1929+74	LT 'NB'	252	
			1931+29 - 1933+81	LT 'NB'	252	
CATEGORY 1000 TOTALS						2,016
PROJECT TOTALS						2,016



Proposal Schedule of Items

Proposal ID: 20171212002 Project(s): 1007-11-74

Federal ID(s): WISC 2018001

SECTION: 0001 Contract Items

Alt Set ID: Alt Mbr ID:

Proposal Line Number	Item ID Description	Approximate Quantity and Units	Unit Price	Bid Amount
0002	201.0105 Clearing	55.000 STA	_____.	_____.
0004	201.0205 Grubbing	55.000 STA	_____.	_____.
0006	203.0100 Removing Small Pipe Culverts	31.000 EACH	_____.	_____.
0008	203.0200 Removing Old Structure (station) 001. 1529+00'SB'	LS	LUMP SUM	_____.
0010	203.0200 Removing Old Structure (station) 002. Sta 1714+45.85'SB'	LS	LUMP SUM	_____.
0012	203.0200 Removing Old Structure (station) 003. Sta 1904+79'SB'	LS	LUMP SUM	_____.
0014	203.0600.S Removing Old Structure Over Waterway With Minimal Debris (station) 001. Sta 1680+00'SB'	LS	LUMP SUM	_____.
0016	204.0100 Removing Pavement	101,057.000 SY	_____.	_____.
0018	204.0110 Removing Asphaltic Surface	446.000 SY	_____.	_____.
0020	204.0157 Removing Concrete Barrier	183.000 LF	_____.	_____.
0022	204.0165 Removing Guardrail	2,269.000 LF	_____.	_____.
0024	204.0170 Removing Fence	613.000 LF	_____.	_____.
0026	204.0180 Removing Delineators and Markers	144.000 EACH	_____.	_____.
0028	204.0210 Removing Manholes	5.000 EACH	_____.	_____.
0030	204.0220 Removing Inlets	9.000 EACH	_____.	_____.



Proposal Schedule of Items

Proposal ID: 20171212002 Project(s): 1007-11-74

Federal ID(s): WISC 2018001

SECTION: 0001 Contract Items

Alt Set ID: Alt Mbr ID:

Proposal Line Number	Item ID Description	Approximate Quantity and Units	Unit Price	Bid Amount
0032	204.0245 Removing Storm Sewer (size) 001. 18-Inch	929.000 LF	_____.	_____.
0034	204.0245 Removing Storm Sewer (size) 002. 30-Inch	147.000 LF	_____.	_____.
0036	204.0245 Removing Storm Sewer (size) 003. 36-Inch	702.000 LF	_____.	_____.
0038	204.0245 Removing Storm Sewer (size) 004. 42-Inch	90.000 LF	_____.	_____.
0040	204.9060.S Removing (item description) 001. Crash Cushions	16.000 EACH	_____.	_____.
0042	205.0100 Excavation Common	427,359.000 CY	_____.	_____.
0044	205.0400 Excavation Marsh	3,914.000 CY	_____.	_____.
0046	206.1000 Excavation for Structures Bridges (structure) 001. B-13-0700	LS	LUMP SUM	_____.
0048	206.1000 Excavation for Structures Bridges (structure) 002. B-13-0704	LS	LUMP SUM	_____.
0050	206.2000 Excavation for Structures Culverts (structure) 001. C-13-3076	LS	LUMP SUM	_____.
0052	206.2000 Excavation for Structures Culverts (structure) 002. C-13-3078	LS	LUMP SUM	_____.
0054	206.5000 Cofferdams (structure) 001. C-13-3076	LS	LUMP SUM	_____.
0056	206.5000 Cofferdams (structure) 002. C-13-3078	LS	LUMP SUM	_____.
0058	208.1100 Select Borrow	26,164.000 CY	_____.	_____.



Proposal Schedule of Items

Proposal ID: 20171212002 Project(s): 1007-11-74

Federal ID(s): WISC 2018001

SECTION: 0001 Contract Items

Alt Set ID: Alt Mbr ID:

Proposal Line Number	Item ID Description	Approximate Quantity and Units	Unit Price	Bid Amount
0060	210.1500 Backfill Structure Type A	1,840.000 TON	_____.	_____.
0062	210.2500 Backfill Structure Type B	4,028.000 TON	_____.	_____.
0064	213.0100 Finishing Roadway (project) 001. 1007-11-74	1.000 EACH	_____.	_____.
0066	305.0110 Base Aggregate Dense 3/4-Inch	26,533.000 TON	_____.	_____.
0068	305.0120 Base Aggregate Dense 1 1/4-Inch	123,038.000 TON	_____.	_____.
0070	305.0130 Base Aggregate Dense 3-Inch	2,163.000 TON	_____.	_____.
0072	311.0115 Breaker Run	175.000 CY	_____.	_____.
0074	312.0110 Select Crushed Material	223,966.000 TON	_____.	_____.
0076	415.0120 Concrete Pavement 12-Inch **P**	242,762.000 SY	_____.	_____.
0078	415.0210 Concrete Pavement Gaps	2.000 EACH	_____.	_____.
0080	415.0410 Concrete Pavement Approach Slab **P**	358.000 SY	_____.	_____.
0082	415.5110.S Concrete Pavement Joint Layout	1.000 LS	_____.	_____.
0084	415.6000.S Rout and Seal	5,918.000 LF	_____.	_____.
0086	416.0620 Drilled Dowel Bars	186.000 EACH	_____.	_____.
0088	416.1010 Concrete Surface Drains **P**	13.900 CY	_____.	_____.
0090	416.1110 Concrete Shoulder Rumble Strips **P**	160,407.000 LF	_____.	_____.



Proposal Schedule of Items

Proposal ID: 20171212002 Project(s): 1007-11-74

Federal ID(s): WISC 2018001

SECTION: 0001 Contract Items

Alt Set ID: Alt Mbr ID:

Proposal Line Number	Item ID Description	Approximate Quantity and Units	Unit Price	Bid Amount
0092	440.4410 Incentive IRI Ride	43,000.000 DOL	1.00000	43,000.00
0094	450.4000 HMA Cold Weather Paving	182.000 TON	_____	_____
0096	455.0605 Tack Coat	193.000 GAL	_____	_____
0098	460.2000 Incentive Density HMA Pavement	1,537.000 DOL	1.00000	1,537.00
0100	460.5224 HMA Pavement 4 LT 58-28 S	887.000 TON	_____	_____
0102	460.6424 HMA Pavement 4 MT 58-28 H	2,024.000 TON	_____	_____
0104	465.0400 Asphaltic Shoulder Rumble Strips	1,906.000 LF	_____	_____
0106	501.1000.S Ice Hot Weather Concreting	6,560.000 LB	_____	_____
0108	502.0100 Concrete Masonry Bridges **P**	379.000 CY	_____	_____
0110	502.3200 Protective Surface Treatment **P**	1,889.000 SY	_____	_____
0112	502.3210 Pigmented Surface Sealer	275.000 SY	_____	_____
0114	502.4205 Adhesive Anchors No. 5 Bar	112.000 EACH	_____	_____
0116	503.0136 Prestressed Girder Type I 36-Inch **P**	357.000 LF	_____	_____
0118	503.0172 Prestressed Girder Type I 72W-Inch **P**	1,122.000 LF	_____	_____
0120	504.0100 Concrete Masonry Culverts **P**	233.000 CY	_____	_____
0122	504.0900 Concrete Masonry Endwalls **P**	45.000 CY	_____	_____



Proposal Schedule of Items

Proposal ID: 20171212002 Project(s): 1007-11-74

Federal ID(s): WISC 2018001

SECTION: 0001 Contract Items

Alt Set ID: Alt Mbr ID:

Proposal Line Number	Item ID Description	Approximate Quantity and Units	Unit Price	Bid Amount
0124	505.0400 Bar Steel Reinforcement HS Structures **P**	53,040.000 LB	_____.	_____.
0126	505.0600 Bar Steel Reinforcement HS Coated Structures **P**	156,600.000 LB	_____.	_____.
0128	505.0800.S Bar Steel Reinforcement HS Stainless Structures **P**	4,380.000 LB	_____.	_____.
0130	506.2605 Bearing Pads Elastomeric Non- Laminated	30.000 EACH	_____.	_____.
0132	506.4000 Steel Diaphragms (structure) 001. B-13- 700 **P**	14.000 EACH	_____.	_____.
0134	506.4000 Steel Diaphragms (structure) 002. B-13- 0704 **P**	6.000 EACH	_____.	_____.
0136	516.0500 Rubberized Membrane Waterproofing	122.000 SY	_____.	_____.
0138	520.8000 Concrete Collars for Pipe	19.000 EACH	_____.	_____.
0140	521.1012 Apron Endwalls for Culvert Pipe Steel 12-Inch	3.000 EACH	_____.	_____.
0142	521.1618 Apron Endwalls for Culvert Pipe Sloped Side Drains Steel 18-Inch 10 to 1	6.000 EACH	_____.	_____.
0144	521.1630 Apron Endwalls for Culvert Pipe Sloped Side Drains Steel 30-Inch 10 to 1	1.000 EACH	_____.	_____.
0146	522.0118 Culvert Pipe Reinforced Concrete Class III 18-Inch	860.000 LF	_____.	_____.
0148	522.0124 Culvert Pipe Reinforced Concrete Class III 24-Inch	239.000 LF	_____.	_____.



Proposal Schedule of Items

Proposal ID: 20171212002 Project(s): 1007-11-74

Federal ID(s): WISC 2018001

SECTION: 0001 Contract Items

Alt Set ID: Alt Mbr ID:

Proposal Line Number	Item ID Description	Approximate Quantity and Units	Unit Price	Bid Amount
0150	522.0130 Culvert Pipe Reinforced Concrete Class III 30-Inch	120.000 LF	_____.	_____.
0152	522.0136 Culvert Pipe Reinforced Concrete Class III 36-Inch	1,293.000 LF	_____.	_____.
0154	522.0142 Culvert Pipe Reinforced Concrete Class III 42-Inch	261.000 LF	_____.	_____.
0156	522.0148 Culvert Pipe Reinforced Concrete Class III 48-Inch	181.000 LF	_____.	_____.
0158	522.0160 Culvert Pipe Reinforced Concrete Class III 60-Inch	381.000 LF	_____.	_____.
0160	522.0418 Culvert Pipe Reinforced Concrete Class IV 18-Inch	1,012.000 LF	_____.	_____.
0162	522.0436 Culvert Pipe Reinforced Concrete Class IV 36-Inch	104.000 LF	_____.	_____.
0164	522.1018 Apron Endwalls for Culvert Pipe Reinforced Concrete 18-Inch	31.000 EACH	_____.	_____.
0166	522.1024 Apron Endwalls for Culvert Pipe Reinforced Concrete 24-Inch	8.000 EACH	_____.	_____.
0168	522.1030 Apron Endwalls for Culvert Pipe Reinforced Concrete 30-Inch	2.000 EACH	_____.	_____.
0170	522.1036 Apron Endwalls for Culvert Pipe Reinforced Concrete 36-Inch	8.000 EACH	_____.	_____.
0172	522.1048 Apron Endwalls for Culvert Pipe Reinforced Concrete 48-Inch	1.000 EACH	_____.	_____.
0174	522.2319 Culvert Pipe Reinforced Concrete Horizontal Elliptical Class HE-III 19x30-Inch	7.000 LF	_____.	_____.



Proposal Schedule of Items

Proposal ID: 20171212002 Project(s): 1007-11-74

Federal ID(s): WISC 2018001

SECTION: 0001 Contract Items

Alt Set ID: Alt Mbr ID:

Proposal Line Number	Item ID Description	Approximate Quantity and Units	Unit Price	Bid Amount
0176	522.2619 Apron Endwalls for Culvert Pipe Reinforced Concrete Horizontal Elliptical 19x30-Inch	1.000 EACH	_____.	_____.
0178	550.2126 Piling CIP Concrete 12 3/4 X 0.375-Inch	2,630.000 LF	_____.	_____.
0180	601.0551 Concrete Curb & Gutter 4-Inch Sloped 36-Inch Type A **P**	556.000 LF	_____.	_____.
0182	601.0553 Concrete Curb & Gutter 4-Inch Sloped 36-Inch Type D **P**	344.000 LF	_____.	_____.
0184	603.1142 Concrete Barrier Type S42 **P**	235.000 LF	_____.	_____.
0186	603.8000 Concrete Barrier Temporary Precast Delivered	58,135.000 LF	_____.	_____.
0188	603.8125 Concrete Barrier Temporary Precast Installed	61,212.000 LF	_____.	_____.
0190	604.0400 Slope Paving Concrete	125.000 SY	_____.	_____.
0192	604.0500 Slope Paving Crushed Aggregate	499.000 SY	_____.	_____.
0194	606.0200 Riprap Medium	977.000 CY	_____.	_____.
0196	606.0300 Riprap Heavy	482.000 CY	_____.	_____.
0198	608.0324 Storm Sewer Pipe Reinforced Concrete Class III 24-Inch	444.000 LF	_____.	_____.
0200	608.0330 Storm Sewer Pipe Reinforced Concrete Class III 30-Inch	361.000 LF	_____.	_____.
0202	608.0336 Storm Sewer Pipe Reinforced Concrete Class III 36-Inch	127.000 LF	_____.	_____.



Proposal Schedule of Items

Proposal ID: 20171212002 Project(s): 1007-11-74

Federal ID(s): WISC 2018001

SECTION: 0001 Contract Items

Alt Set ID: Alt Mbr ID:

Proposal Line Number	Item ID Description	Approximate Quantity and Units	Unit Price	Bid Amount
0204	608.0424 Storm Sewer Pipe Reinforced Concrete Class IV 24-Inch	189.000 LF	_____.	_____.
0206	611.0430 Reconstructing Inlets	1.000 EACH	_____.	_____.
0208	611.0550 Manhole Covers Type M	1.000 EACH	_____.	_____.
0210	611.0642 Inlet Covers Type MS	16.000 EACH	_____.	_____.
0212	611.0654 Inlet Covers Type V	3.000 EACH	_____.	_____.
0214	611.2005 Manholes 5-FT Diameter	1.000 EACH	_____.	_____.
0216	611.3220 Inlets 2x2-FT	3.000 EACH	_____.	_____.
0218	611.3902 Inlets Median 2 Grate	8.000 EACH	_____.	_____.
0220	612.0212 Pipe Underdrain Unperforated 12-Inch	120.000 LF	_____.	_____.
0222	612.0406 Pipe Underdrain Wrapped 6-Inch	435.000 LF	_____.	_____.
0224	613.1100.S Cable Barrier Type 1	1,937.000 LF	_____.	_____.
0226	613.1200.S Cable Barrier End Terminal Type 1	2.000 EACH	_____.	_____.
0228	614.0150 Anchor Assemblies for Steel Plate Beam Guard	8.000 EACH	_____.	_____.
0230	614.0220 Steel Thrie Beam Bullnose Terminal	8.000 EACH	_____.	_____.
0232	614.0230 Steel Thrie Beam	650.000 LF	_____.	_____.
0234	614.0905 Crash Cushions Temporary	13.000 EACH	_____.	_____.



Proposal Schedule of Items

Proposal ID: 20171212002 Project(s): 1007-11-74

Federal ID(s): WISC 2018001

SECTION: 0001 Contract Items

Alt Set ID: Alt Mbr ID:

Proposal Line Number	Item ID Description	Approximate Quantity and Units	Unit Price	Bid Amount
0236	614.2300 MGS Guardrail 3	1,455.000 LF	_____.	_____.
0238	614.2500 MGS Thrie Beam Transition	433.400 LF	_____.	_____.
0240	614.2610 MGS Guardrail Terminal EAT	9.000 EACH	_____.	_____.
0242	614.2620 MGS Guardrail Terminal Type 2	5.000 EACH	_____.	_____.
0244	616.0100 Fence Woven Wire (height) 001. 4-FT **P**	1,042.000 LF	_____.	_____.
0246	616.0700.S Fence Safety	3,500.000 LF	_____.	_____.
0248	618.0100 Maintenance And Repair of Haul Roads (project) 001. 1007-11-74	1.000 EACH	_____.	_____.
0250	619.1000 Mobilization	1.000 EACH	_____.	_____.
0252	624.0100 Water	4,780.000 MGAL	_____.	_____.
0254	625.0500 Salvaged Topsoil **P**	470,950.000 SY	_____.	_____.
0256	627.0200 Mulching	337,493.000 SY	_____.	_____.
0258	628.1104 Erosion Bales	2,600.000 EACH	_____.	_____.
0260	628.1504 Silt Fence	21,160.000 LF	_____.	_____.
0262	628.1520 Silt Fence Maintenance	84,650.000 LF	_____.	_____.
0264	628.1905 Mobilizations Erosion Control	22.000 EACH	_____.	_____.
0266	628.1910 Mobilizations Emergency Erosion Control	7.000 EACH	_____.	_____.



Proposal Schedule of Items

Proposal ID: 20171212002 Project(s): 1007-11-74

Federal ID(s): WISC 2018001

SECTION: 0001 Contract Items

Alt Set ID: Alt Mbr ID:

Proposal Line Number	Item ID Description	Approximate Quantity and Units	Unit Price	Bid Amount
0268	628.2004 Erosion Mat Class I Type B	105,530.000 SY	_____.	_____.
0270	628.2008 Erosion Mat Urban Class I Type B	15,780.000 SY	_____.	_____.
0272	628.6005 Turbidity Barriers	239.000 SY	_____.	_____.
0274	628.6505 Soil Stabilizer Type A	6.700 ACRE	_____.	_____.
0276	628.6510 Soil Stabilizer Type B	22.000 ACRE	_____.	_____.
0278	628.7005 Inlet Protection Type A	15.000 EACH	_____.	_____.
0280	628.7010 Inlet Protection Type B	15.000 EACH	_____.	_____.
0282	628.7504 Temporary Ditch Checks	2,005.000 LF	_____.	_____.
0284	628.7555 Culvert Pipe Checks	406.000 EACH	_____.	_____.
0286	628.7560 Tracking Pads	18.000 EACH	_____.	_____.
0288	628.7570 Rock Bags	150.000 EACH	_____.	_____.
0290	629.0205 Fertilizer Type A	379.000 CWT	_____.	_____.
0292	630.0110 Seeding Mixture No. 10	1,720.000 LB	_____.	_____.
0294	630.0120 Seeding Mixture No. 20	5,490.000 LB	_____.	_____.
0296	630.0130 Seeding Mixture No. 30	4,810.000 LB	_____.	_____.
0298	630.0200 Seeding Temporary	10,820.000 LB	_____.	_____.
0300	633.0100 Delineator Posts Steel	211.000 EACH	_____.	_____.



Proposal Schedule of Items

Proposal ID: 20171212002 Project(s): 1007-11-74

Federal ID(s): WISC 2018001

SECTION: 0001 Contract Items

Alt Set ID: Alt Mbr ID:

Proposal Line Number	Item ID Description	Approximate Quantity and Units	Unit Price	Bid Amount
0302	633.0500 Delineator Reflectors	315.000 EACH	_____.	_____.
0304	633.1000 Delineator Brackets	12.000 EACH	_____.	_____.
0306	633.5200 Markers Culvert End	66.000 EACH	_____.	_____.
0308	634.0614 Posts Wood 4x6-Inch X 14-FT	5.000 EACH	_____.	_____.
0310	634.0616 Posts Wood 4x6-Inch X 16-FT	9.000 EACH	_____.	_____.
0312	634.0618 Posts Wood 4x6-Inch X 18-FT	100.000 EACH	_____.	_____.
0314	634.0620 Posts Wood 4x6-Inch X 20-FT	6.000 EACH	_____.	_____.
0316	635.0200 Sign Supports Structural Steel HS	6,411.000 LB	_____.	_____.
0318	636.0100 Sign Supports Concrete Masonry **P**	20.600 CY	_____.	_____.
0320	636.0500 Sign Supports Steel Reinforcement	752.000 LB	_____.	_____.
0322	636.1500 Sign Supports Steel Coated Reinforcement HS	990.000 LB	_____.	_____.
0324	637.1220 Signs Type I Reflective SH	1,712.500 SF	_____.	_____.
0326	637.2210 Signs Type II Reflective H	1,110.880 SF	_____.	_____.
0328	637.2215 Signs Type II Reflective H Folding	27.000 SF	_____.	_____.
0330	637.2230 Signs Type II Reflective F	16.000 SF	_____.	_____.
0332	638.2102 Moving Signs Type II	78.000 EACH	_____.	_____.



Proposal Schedule of Items

Proposal ID: 20171212002 Project(s): 1007-11-74

Federal ID(s): WISC 2018001

SECTION: 0001 Contract Items

Alt Set ID: Alt Mbr ID:

Proposal Line Number	Item ID Description	Approximate Quantity and Units	Unit Price	Bid Amount
0334	638.2601 Removing Signs Type I	13.000 EACH	_____.	_____.
0336	638.2602 Removing Signs Type II	108.000 EACH	_____.	_____.
0338	638.3000 Removing Small Sign Supports	129.000 EACH	_____.	_____.
0340	638.3100 Removing Structural Steel Sign Supports	17.000 EACH	_____.	_____.
0342	641.1200 Sign Bridge Cantilevered (structure) 001. S-13-397	LS	LUMP SUM	_____.
0344	642.5401 Field Office Type D	1.000 EACH	_____.	_____.
0346	643.0300 Traffic Control Drums	136,507.000 DAY	_____.	_____.
0348	643.0420 Traffic Control Barricades Type III	6,907.000 DAY	_____.	_____.
0350	643.0500 Traffic Control Flexible Tubular Marker Posts	145.000 EACH	_____.	_____.
0352	643.0600 Traffic Control Flexible Tubular Marker Bases	145.000 EACH	_____.	_____.
0354	643.0705 Traffic Control Warning Lights Type A	4,396.000 DAY	_____.	_____.
0356	643.0715 Traffic Control Warning Lights Type C	13,199.000 DAY	_____.	_____.
0358	643.0800 Traffic Control Arrow Boards	52.000 DAY	_____.	_____.
0360	643.0900 Traffic Control Signs	13,476.000 DAY	_____.	_____.
0362	643.0920 Traffic Control Covering Signs Type II	3.000 EACH	_____.	_____.
0364	643.1000 Traffic Control Signs Fixed Message	295.750 SF	_____.	_____.



Proposal Schedule of Items

Proposal ID: 20171212002 Project(s): 1007-11-74

Federal ID(s): WISC 2018001

SECTION: 0001 Contract Items

Alt Set ID: Alt Mbr ID:

Proposal Line Number	Item ID Description	Approximate Quantity and Units	Unit Price	Bid Amount
0366	643.1050 Traffic Control Signs PCMS	63.000 DAY	_____.	_____.
0368	643.5000 Traffic Control	1.000 EACH	_____.	_____.
0370	645.0105 Geotextile Type C	421.000 SY	_____.	_____.
0372	645.0120 Geotextile Type HR	3,090.000 SY	_____.	_____.
0374	645.0220 Geogrid Type SR	10,000.000 SY	_____.	_____.
0376	646.1020 Marking Line Epoxy 4-Inch	95,351.000 LF	_____.	_____.
0378	646.1040 Marking Line Grooved Wet Ref Epoxy 4-Inch	91,447.000 LF	_____.	_____.
0380	646.1555 Marking Line Grooved Contrast Permanent Tape 4-Inch	22,985.000 LF	_____.	_____.
0382	646.3555 Marking Line Grooved Contrast Permanent Tape 8-Inch	10,117.000 LF	_____.	_____.
0384	646.9010 Marking Removal Line Water Blasting 4-Inch	127,757.000 LF	_____.	_____.
0386	646.9110 Marking Removal Line Water Blasting 8-Inch	7,505.000 LF	_____.	_____.
0388	649.0105 Temporary Marking Line Paint 4-Inch	14,527.000 LF	_____.	_____.
0390	649.0150 Temporary Marking Line Removable Tape 4-Inch	220,451.000 LF	_____.	_____.
0392	649.0250 Temporary Marking Line Removable Tape 8-Inch	6,903.000 LF	_____.	_____.
0394	649.0760 Temporary Marking Raised Pavement Marker Type I	204.000 EACH	_____.	_____.



Proposal Schedule of Items

Proposal ID: 20171212002 Project(s): 1007-11-74

Federal ID(s): WISC 2018001

SECTION: 0001 Contract Items

Alt Set ID: Alt Mbr ID:

Proposal Line Number	Item ID Description	Approximate Quantity and Units	Unit Price	Bid Amount
0396	652.0125 Conduit Rigid Metallic 2-Inch **P**	72.000 LF	_____.	_____.
0398	652.0225 Conduit Rigid Nonmetallic Schedule 40 2-Inch **P**	604.000 LF	_____.	_____.
0400	652.0235 Conduit Rigid Nonmetallic Schedule 40 3-Inch **P**	50.000 LF	_____.	_____.
0402	652.0605 Conduit Special 2-Inch **P**	135.000 LF	_____.	_____.
0404	653.0164 Pull Boxes Non-Conductive 24x42-Inch	5.000 EACH	_____.	_____.
0406	653.0222 Junction Boxes 18x12x6-Inch	3.000 EACH	_____.	_____.
0408	654.0105 Concrete Bases Type 5	2.000 EACH	_____.	_____.
0410	655.0610 Electrical Wire Lighting 12 AWG	34,515.000 LF	_____.	_____.
0412	655.0630 Electrical Wire Lighting 4 AWG	108.000 LF	_____.	_____.
0414	657.0255 Transformer Bases Breakaway 11 1/2-Inch Bolt Circle	2.000 EACH	_____.	_____.
0416	657.0322 Poles Type 5-Aluminum	2.000 EACH	_____.	_____.
0418	670.0100 Field System Integrator	LS	LUMP SUM	_____.
0420	670.0200 ITS Documentation	LS	LUMP SUM	_____.
0422	671.0132 Conduit HDPE 3-Duct 2-Inch **P**	27,825.000 LF	_____.	_____.
0424	671.0232 Conduit HDPE Directional Bore 3-Duct 2-Inch **P**	1,080.000 LF	_____.	_____.
0426	673.0110 Communication Vault Type Round	15.000 EACH	_____.	_____.



Proposal Schedule of Items

Proposal ID: 20171212002 Project(s): 1007-11-74

Federal ID(s): WISC 2018001

SECTION: 0001 Contract Items

Alt Set ID: Alt Mbr ID:

Proposal Line Number	Item ID Description	Approximate Quantity and Units	Unit Price	Bid Amount
0428	673.0200 Tracer Wire Marker Posts	15.000 EACH	_____.	_____.
0430	674.0200 Cable Microwave Detector	3,418.000 LF	_____.	_____.
0432	674.0300 Remove Cable	20.000 LF	_____.	_____.
0434	674.0400 Reinstall Cable	20.000 LF	_____.	_____.
0436	675.0300 Install Mounted Controller Microwave Detector Assembly	4.000 EACH	_____.	_____.
0438	678.0600 Install Ethernet Switches	1.000 EACH	_____.	_____.
0440	690.0150 Sawing Asphalt	492.000 LF	_____.	_____.
0442	690.0250 Sawing Concrete	295.000 LF	_____.	_____.
0444	715.0415 Incentive Strength Concrete Pavement	145,660.000 DOL	1.00000	145,660.00
0446	715.0502 Incentive Strength Concrete Structures	7,512.000 DOL	1.00000	7,512.00
0448	ASP.1T0A On-the-Job Training Apprentice at \$5.00/HR	1,350.000 HRS	5.00000	6,750.00
0450	ASP.1T0G On-the-Job Training Graduate at \$5.00/HR	2,400.000 HRS	5.00000	12,000.00
0452	SPV.0035 Special 001. Roadway Embankment	191,481.000 CY	_____.	_____.
0454	SPV.0035 Special 701. High Performance Concrete (HPC) Masonry Structures **P**	873.000 CY	_____.	_____.
0456	SPV.0060 Special 001. Baseline CPM Progress Schedule	1.000 EACH	_____.	_____.



Proposal Schedule of Items

Proposal ID: 20171212002 Project(s): 1007-11-74

Federal ID(s): WISC 2018001

SECTION: 0001 Contract Items

Alt Set ID: Alt Mbr ID:

Proposal Line Number	Item ID Description	Approximate Quantity and Units	Unit Price	Bid Amount
0458	SPV.0060 Special 002. CPM Progress Schedule Updates and Accepted Revisions	7.000 EACH	_____.	_____.
0460	SPV.0060 Special 010. Test Pits	45.000 EACH	_____.	_____.
0462	SPV.0060 Special 200. Concrete Barrier Temporary Precast Delineation	485.000 EACH	_____.	_____.
0464	SPV.0060 Special 201. Temporary Concrete Barrier Gate	3.000 EACH	_____.	_____.
0466	SPV.0060 Special 202. Install Department Furnished Crash Cushion Low Maintenance	1.000 EACH	_____.	_____.
0468	SPV.0060 Special 203. Repair State Owned Crash Cushion Low Maintenance	1.000 EACH	_____.	_____.
0470	SPV.0060 Special 204. Repair State Owned Energy Absorbing Terminal (EAT)	6.000 EACH	_____.	_____.
0472	SPV.0060 Special 205. Repair State Owned Crash Cushion	6.000 EACH	_____.	_____.
0474	SPV.0060 Special 206. Roadway Cleanup	8.000 EACH	_____.	_____.
0476	SPV.0090 Special 001. Furnishing Temporary Snow Fence	5,156.000 LF	_____.	_____.
0478	SPV.0090 Special 002. Installing Temporary Snow Fence	5,156.000 LF	_____.	_____.
0480	SPV.0090 Special 003. Re-Lap Guard Rail	3,172.000 LF	_____.	_____.
0482	SPV.0090 Special 150. Compost Tube	3,606.000 LF	_____.	_____.



Proposal Schedule of Items

Proposal ID: 20171212002 Project(s): 1007-11-74

Federal ID(s): WISC 2018001

SECTION: 0001 Contract Items

Alt Set ID: Alt Mbr ID:

Proposal Line Number	Item ID Description	Approximate Quantity and Units	Unit Price	Bid Amount
0484	SPV.0090 Special 200. Maintenance and Removal of Conc Barrier Temporary Precast L.I.P. by Others	9,403.000 LF	_____.	_____.
0486	SPV.0090 Special 201. Traffic Channelizing Curb System Furnished	150.000 LF	_____.	_____.
0488	SPV.0090 Special 202. Traffic Channelizing Curb System Installed	150.000 LF	_____.	_____.
0490	SPV.0090 Special 203. Glare Screen Furnished	429.000 LF	_____.	_____.
0492	SPV.0090 Special 204. Glare Screen Installed	429.000 LF	_____.	_____.
0494	SPV.0090 Special 205. Repair State Owned Concrete Barrier Temporary Precast	700.000 LF	_____.	_____.
0496	SPV.0090 Special 206. Repair State Owned Guardrail	1,800.000 LF	_____.	_____.
0498	SPV.0090 Special 207. Emergency Response to Traffic Incident Involving Roadside Safety Devices	7.000 LF	_____.	_____.
0500	SPV.0105 Special 002. Survey Project 1007-11-74 with Optional AMG for Conc. Pave. and Base Course	LS	LUMP SUM	_____.
0502	SPV.0105 Special 401. Relocate Roadside DMS	LS	LUMP SUM	_____.
0504	SPV.0165 Special 701. Longitudinal Grooving Bridge Deck **P**	16,607.000 SF	_____.	_____.
0506	SPV.0195 Special 700. Excavation, Hauling, and Disposal of Contaminated Soil	110.000 TON	_____.	_____.
0508	204.0120 Removing Asphaltic Surface Milling	300.000 SY	_____.	_____.



Proposal Schedule of Items

Proposal ID: 20171212002 Project(s): 1007-11-74

Federal ID(s): WISC 2018001

SECTION: 0001 Contract Items

Alt Set ID: Alt Mbr ID:

Proposal Line Number	Item ID Description	Approximate Quantity and Units	Unit Price	Bid Amount
0510	204.0185 Removing Masonry	26.100 CY	_____.	_____.
0512	205.0200 Excavation Rock	2,000.000 CY	_____.	_____.
Section: 0001			Total:	_____.
			Total Bid:	_____.