



Wisconsin Department of Transportation

Division of Transportation Systems Development

Bureau of Project Development
 4802 Sheboygan Avenue, Rm 601
 P O Box 7916
 Madison, WI 53707-7916

Telephone: (608) 266-1631
 Facsimile (FAX): (608) 266-8459

December 5, 2017

NOTICE TO ALL CONTRACTORS:

Proposal #05: 5042-05-81, WISC 2018 004
Richland Center - Hillsboro
Pine Rvr & Fancy Crk Strucs
STH 80
Richland County

Letting of December 12, 2017

This is Addendum No. 1, which provides for the following:

Schedule of Items:

Revised Bid Item Quantities					
Bid Item	Item Description	Unit	Old Quantity	Revised Quantity	Proposal Total
521.1018	Apron Endwalls for Culvert Pipe Steel 18-Inch	EA	6	-4	2
521.1024	Apron Endwalls for Culvert Pipe Steel 24-Inch	EA	6	-2	4
521.3118	Culvert Pipe Corrugated Steel 18-Inch	LF	164	-104	60
521.3124	Culvert Pipe Corrugated Steel 24-Inch	LF	140	-48	92

Added Bid Item Quantities					
Bid Item	Item Description	Unit	Old Quantity	Revised Quantity	Proposal Total
520.1018	Apron Endwalls for Culvert Pipe 18-Inch	EA	0	4	4
520.1024	Apron Endwalls for Culvert Pipe 24-Inch	EA	0	2	2
520.1030	Apron Endwalls for Culvert Pipe 30-Inch	EA	0	6	6
520.1036	Apron Endwalls for Culvert Pipe 36-Inch	EA	0	2	2
520.3318	Culvert Pipe Class III-A 18-Inch	LF	0	104	104
520.3324	Culvert Pipe Class III-A 24-Inch	LF	0	48	48
520.3330	Culvert Pipe Class III-A 30-Inch	LF	0	218	218
520.3336	Culvert Pipe Class III-A 36-Inch	LF	0	100	100

Deleted Bid Item Quantities					
Bid Item	Item Description	Unit	Old Quantity	Revised Quantity	Proposal Total
521.1030	Apron Endwalls for Culvert Pipe Steel 30-Inch	EA	6	-6	0
521.1036	Apron Endwalls for Culvert Pipe Steel 36-Inch	EA	2	-2	0
521.3130	Culvert Pipe Corrugated Steel 30-Inch	LF	218	-218	0
521.3136	Culvert Pipe Corrugated Steel 36-Inch	LF	100	-100	0

Plan Sheets:

Revised Plan Sheets	
Plan Sheet	Plan Sheet Title (brief description of changes to sheet)
18	Construction Details for B-52-0269. Revised Culvert-2 and Culvert-3 information to reflect the bid item changes to Culvert Pipe Class III-A.
19	Construction Details for B-52-0269. Revised Culvert-4 and Culvert-6 information to reflect the bid item changes to Culvert Pipe Class III-A.
21	Construction Details for B-52-0269. Revised Culvert-8 information to reflect the bid item changes to Culvert Pipe Class III-A.
24	Construction Details for B-52-0270. Revised Culvert-9 information to reflect the bid item changes to Culvert Pipe Class III-A.
26	Construction Details for B-52-0268. Revised Culvert-11 information to reflect the bid item changes to Culvert Pipe Class III-A.
94	Miscellaneous Quantities. Revised sheet shows new culvert pipe summary bid items. Added Culvert Pipe Class III-A Summary and revised Culvert Pipe Steel Summary tables. Added required thickness for culvert pipe corrugated steel pipe.

Schedule of Items

Attached, dated December 5, 2017, are the revised Schedule of Items Pages 1 – 11.

Plan Sheets

The following 8½ x 11-inch sheets are attached and made part of the plans for this proposal:

Revised: 18, 19, 21, 24, 26, 94

The responsibility for notifying potential subcontractors and suppliers of these changes remains with the prime contractor.

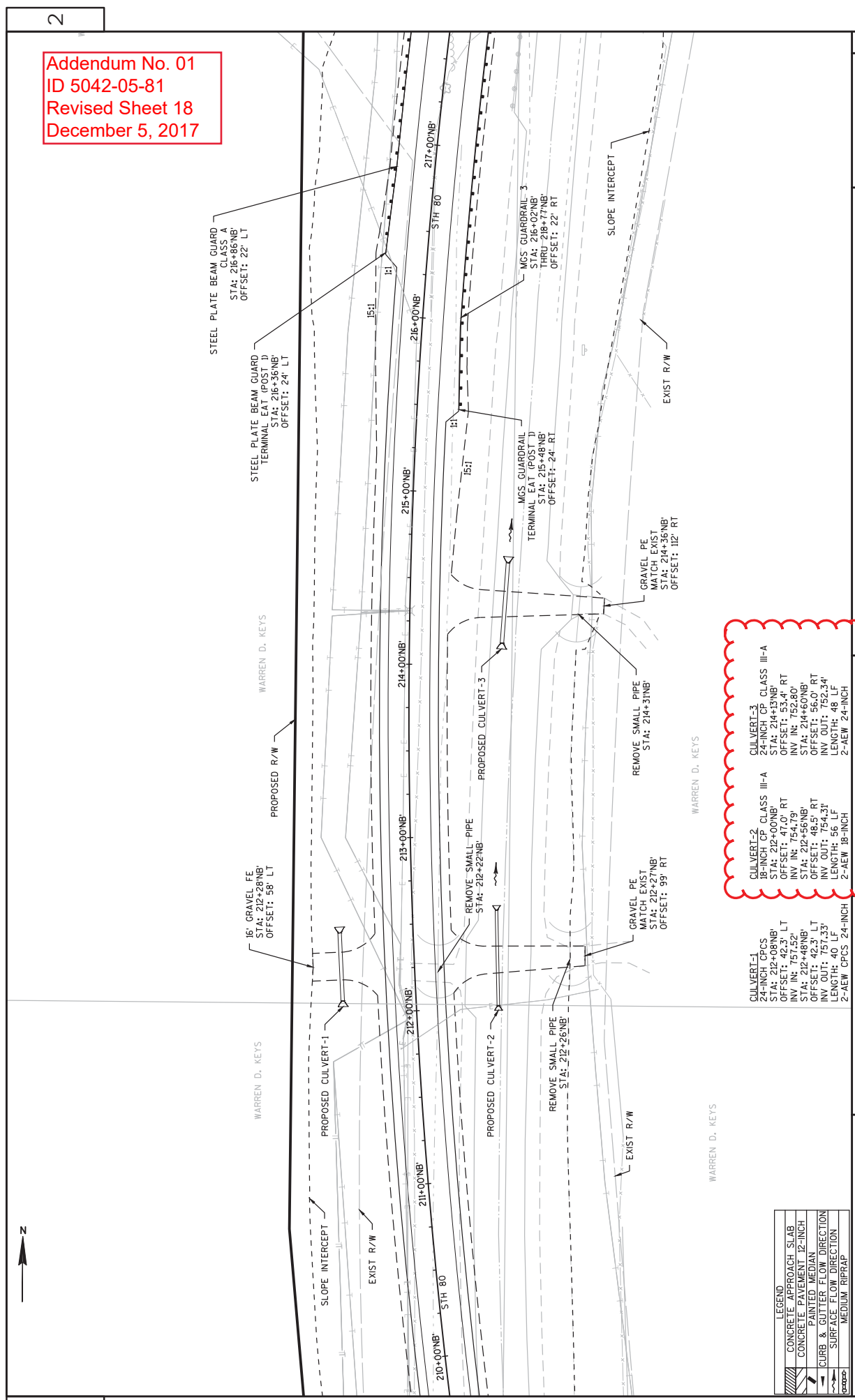
Sincerely,

Mike Coleman

Proposal Development Specialist
Proposal Management Section

END OF ADDENDUM

Addendum No. 01
ID 5042-05-81
Revised Sheet 18
December 5, 2017



COUNTY: RICHLAND

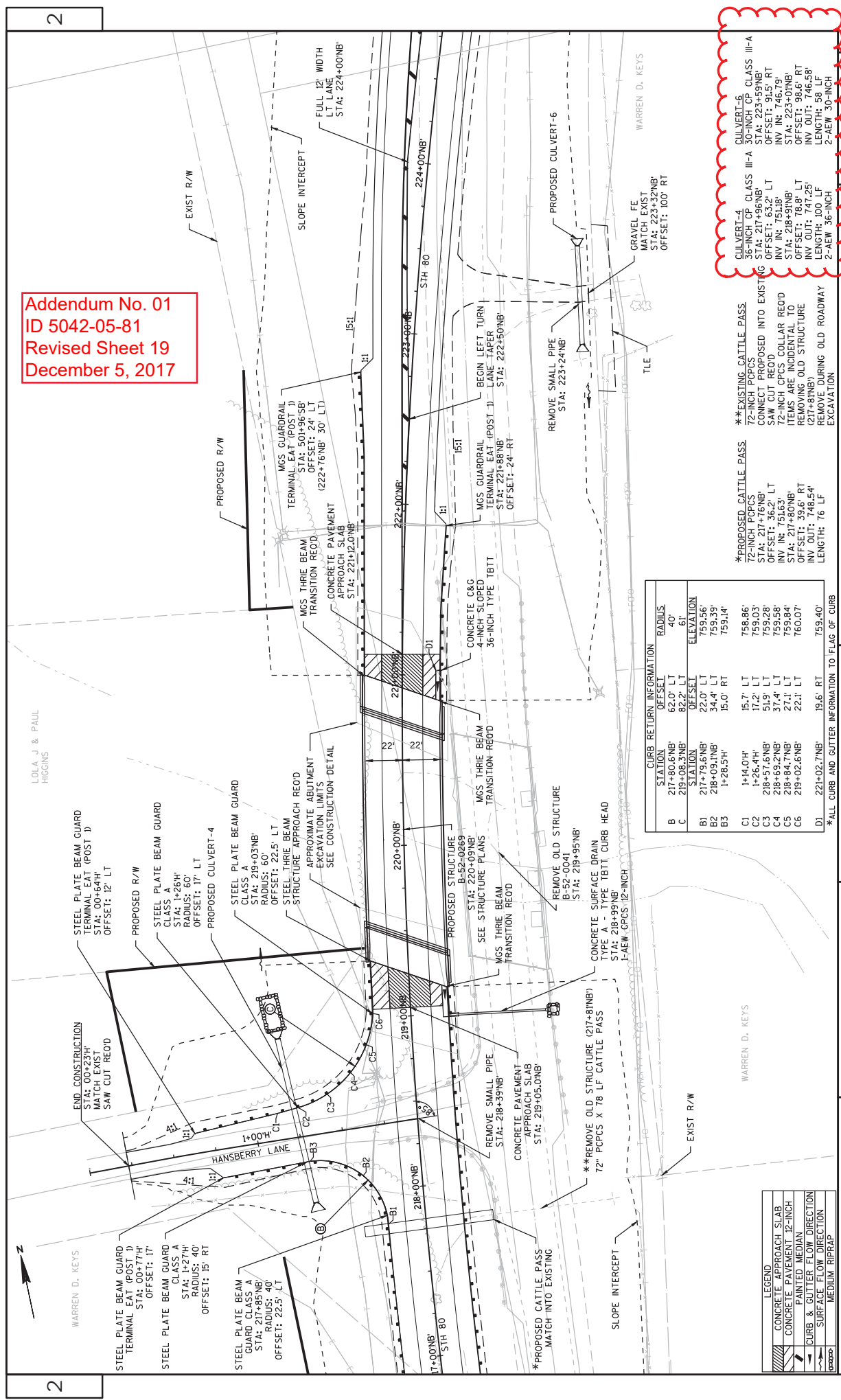
CULVERT-1
24-INCH CPCS
STA: 212+08NB
OFFSET: 42.3' LT
INV IN: 757.52'
STA: 212+48NB
OFFSET: 42.3' LT
INV OUT: 757.33'
LENGTH: 40 LF
2-AEW CPCS 24-INCH

CULVERT-2
24-INCH CP CLASS III-A
STA: 212+00NB
OFFSET: 47.0' RT
INV IN: 754.79'
STA: 212+56NB
OFFSET: 48.5' RT
INV OUT: 754.31'
LENGTH: 56 LF
2-AEW CPCS 24-INCH

CULVERT-3
24-INCH CP CLASS III-A
STA: 214+19NB
OFFSET: 53.4' RT
INV IN: 752.80'
STA: 214+60NB
OFFSET: 56.0' RT
INV OUT: 752.34'
LENGTH: 48 LF
2-AEW 24-INCH

LEGEND	
	CONCRETE APPROACH SLAB
	CONCRETE PAVEMENT 12-INCH
	PAINTED MEDIAN
	CURB & GUTTER FLOW DIRECTION
	SURFACE FLOW DIRECTION
	MEDIUM RIPRAP

Addendum No. 01
 ID 5042-05-81
 Revised Sheet 19
 December 5, 2017



STATION	OFFSET	RADIUS
B	217+80.6'NB	40'
C	219+08.3'NB	61'
B1	217+79.6'NB	22.0' LT
B2	218+09.1'NB	34.4' LT
B3	1+28.5'H	759.39'
C1	1+14.0'H	759.56'
C2	1+26.4'H	759.14'
C3	218+57.6'NB	758.86'
C4	218+69.2'NB	759.03'
C5	218+84.7'NB	759.28'
C6	219+02.6'NB	759.58'
D1	221+02.7'NB	760.07'
D2	221+02.7'NB	759.40'

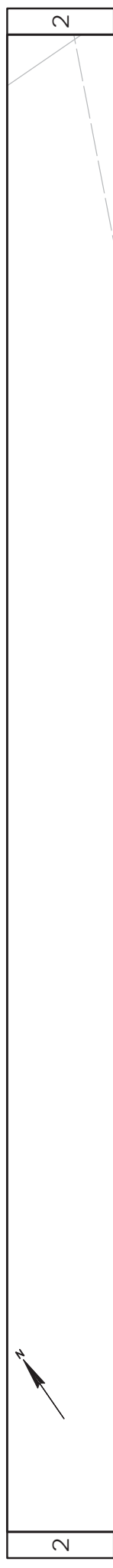
LEGEND
[Symbol] CONCRETE APPROACH SLAB
[Symbol] CONCRETE PAVEMENT 12-INCH
[Symbol] PAINTED MEDIAN
[Symbol] CURB & GUTTER FLOW DIRECTION
[Symbol] SURFACE FLOW DIRECTION
[Symbol] MEDIUM RIPRAP

***PROPOSED CATTLE PASS
 72" CP CS
 STA: 217+76'NB
 OFFSET: 36.2' LT
 INV IN: 751.63'
 STA: 217+80'NB
 OFFSET: 39.6' RT
 INV OUT: 748.54'
 LENGTH: 76 LF

***EXISTING CATTLE PASS
 72" CP CS
 STA: 217+76'NB
 OFFSET: 36.2' LT
 INV IN: 751.63'
 STA: 218+91'NB
 OFFSET: 78.8' LT
 INV OUT: 747.25'
 LENGTH: 100 LF
 2-AEW 36-INCH EXCAVATION

CULVERT-4
 36-INCH CP CLASS III-A
 STA: 217+96'NB
 OFFSET: 63.2' LT
 INV IN: 746.79'
 STA: 223+59'NB
 OFFSET: 91.5' RT
 INV OUT: 746.58'
 LENGTH: 58 LF
 2-AEW 30-INCH EXCAVATION

CULVERT-6
 30-INCH CP CLASS III-A
 STA: 223+59'NB
 OFFSET: 63.2' LT
 INV IN: 746.79'
 STA: 223+59'NB
 OFFSET: 91.5' RT
 INV OUT: 746.58'
 LENGTH: 58 LF
 2-AEW 30-INCH EXCAVATION



JIMMEY R & LOLA
B SCHWEITZER

END CONSTRUCTION
STA: 235+45NB
MATCH EXIST
STA: 235+45NB
X: 464909.9816
Y: 464909.9816

END FULL ROADWAY RECONSTRUCT
STA: 233+15NB
STA: 233+00SB

END FULL ROADWAY SHOULDER REPLACEMENT
STA: 233+00NB
STA: 233+41NB

REMOVE SMALL PIPE
STA: 232+35NB

REMOVE SMALL PIPE
STA: 233+41NB

GRAVEL FE
MATCH EXIST
STA: 232+36NB
OFFSET: 65' RT

ASPHALT PE
MATCH EXIST
STA: 233+48NB
OFFSET: 68' RT

CULVERT-7
24-INCH CP CLASS III-A
STA: 232+56NB
OFFSET: 46.2' RT
INV IN: 770.32
STA: 232+04NB
OFFSET: 48.0' RT
INV OUT: 767.93
LENGTH: 52 LF
2-AEW CP CS 24-INCH

CULVERT-8
18-INCH CP CLASS III-A
STA: 233+63NB
OFFSET: 38.0' RT
INV IN: 773.87
STA: 233+15NB
OFFSET: 39.7' RT
INV OUT: 772.70
LENGTH: 48 LF
2-AEW 18-INCH

BEGIN RIGHT TURN RAMP TAPER
STA: 513+00SR
OFFSET: 17' LT
(233+75NB, 17' LT)

RT LANE FULL WIDTH
STA: 511+88SB
OFFSET: 26' LT
(232+64NB, 29' LT)

EXIST R/W

EXIST R/W

EXIST R/W

EXIST R/W

EXIST R/W

EXIST R/W

EXIST R/W

EXIST R/W

EXIST R/W

EXIST R/W

EXIST R/W

EXIST R/W

EXIST R/W

EXIST R/W

Addendum No. 01
ID 5042-05-81
Revised Sheet 21
December 5, 2017

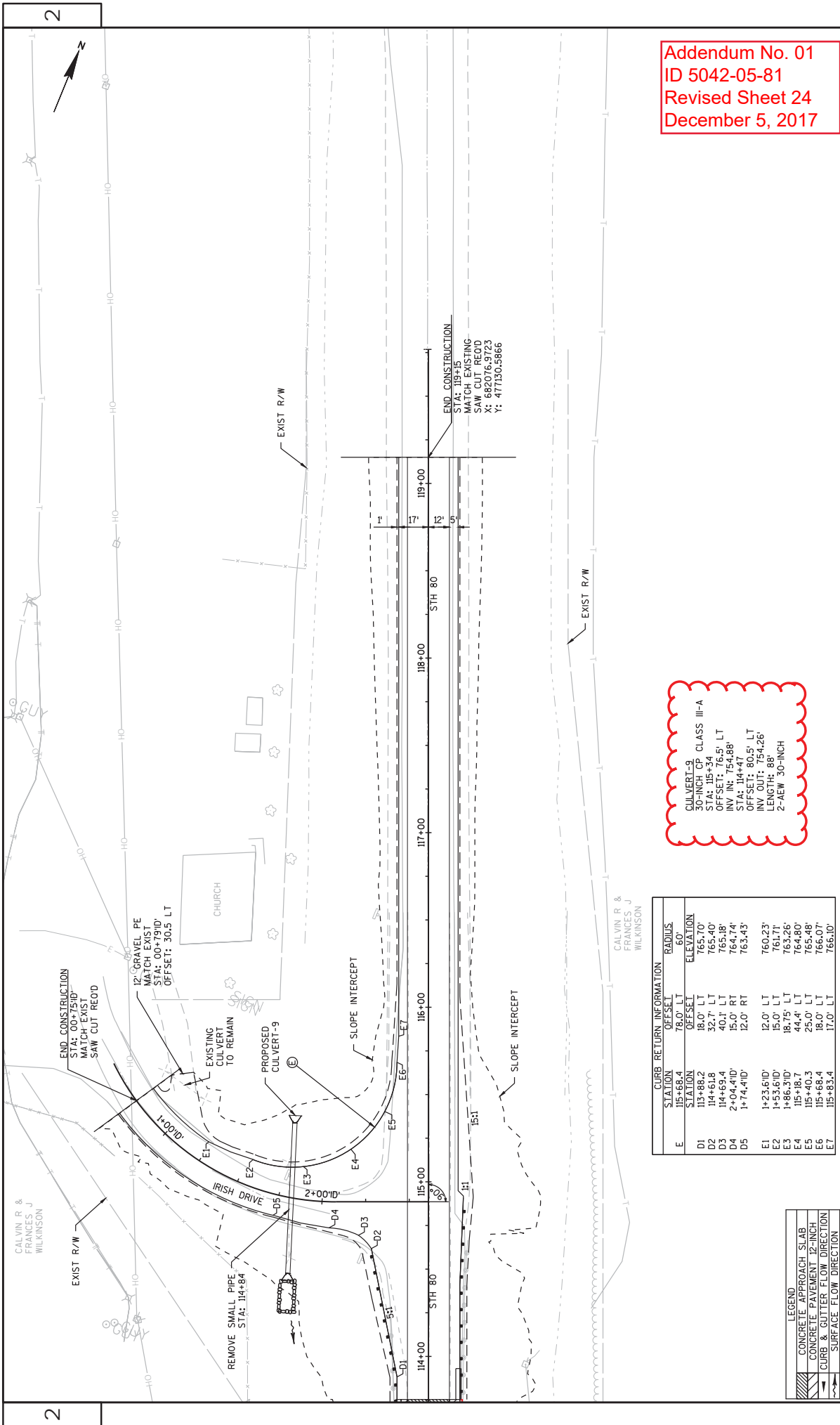
CULVERT-7
24-INCH CP CLASS III-A
STA: 232+56NB
OFFSET: 46.2' RT
INV IN: 770.32
STA: 232+04NB
OFFSET: 48.0' RT
INV OUT: 767.93
LENGTH: 52 LF
2-AEW CP CS 24-INCH

CULVERT-8
18-INCH CP CLASS III-A
STA: 233+63NB
OFFSET: 38.0' RT
INV IN: 773.87
STA: 233+15NB
OFFSET: 39.7' RT
INV OUT: 772.70
LENGTH: 48 LF
2-AEW 18-INCH

DAVID L & KAREN
K FRY

DAVID L & KAREN
K FRY

LEGEND	
[Symbol]	CONCRETE APPROACH SLAB
[Symbol]	CONCRETE PAVEMENT 12-INCH
[Symbol]	PAINTED MEDIAN
[Symbol]	CURB & GUTTER FLOW DIRECTION
[Symbol]	SURFACE FLOW DIRECTION
[Symbol]	MEDIUM RIPRAP



Addendum No. 01
 ID 5042-05-81
 Revised Sheet 24
 December 5, 2017

CULVERT-9
 30-INCH CP CLASS III-A
 STA: 114+47
 OFFSET: 75.5' LT
 INV IN: 754.88'
 STA: 114+47
 OFFSET: 80.5' LT
 INV OUT: 754.26'
 LENGTH: 88'
 2-AEW 30-INCH

CURB RETURN INFORMATION		
STATION	OFFSET	RADIUS
E 115+68.4	78.0' LT	60'
D1 113+88.2	18.0' LT	765.70'
D2 114+61.8	32.7' LT	765.40'
D3 114+63.4	40.1' LT	765.18'
D4 2+04.41D	15.0' RT	764.74'
D5 1+74.41D	12.0' RT	763.43'
E1 1+23.61D	12.0' LT	760.23'
E2 1+51.61D	15.0' LT	761.77'
E3 1+86.31D	18.75' LT	763.26'
E4 115+18.7	44.4' LT	764.80'
E5 115+40.3	25.0' LT	765.48'
E6 115+68.4	18.0' LT	766.07'
E7 115+83.4	17.0' LT	766.10'

LEGEND	
	CONCRETE APPROACH SLAB
	CONCRETE PAVEMENT 12-INCH
	CURB & GUTTER FLOW DIRECTION
	SURFACE FLOW DIRECTION
	MEDIUM RIPRAP

*ALL CURB AND GUTTER INFORMATION TO FLAG OF CURB

PROJECT NO: 5042-05-81

HWY: STH 80

COUNTY: RICHLAND

CONSTRUCTION DETAILS: STH 80 (B-52-0270)

SHEET 24

E
 WISDOT/CADD SHEET 44

FILE NAME : N:\POS\C30\50420501\SHEET\PLAN\021001_CD_B520270.DWG
 LAYOUT NAME - 021001_CD_B520270 (1)

PLOT DATE : 12/4/2017 8:28 PM

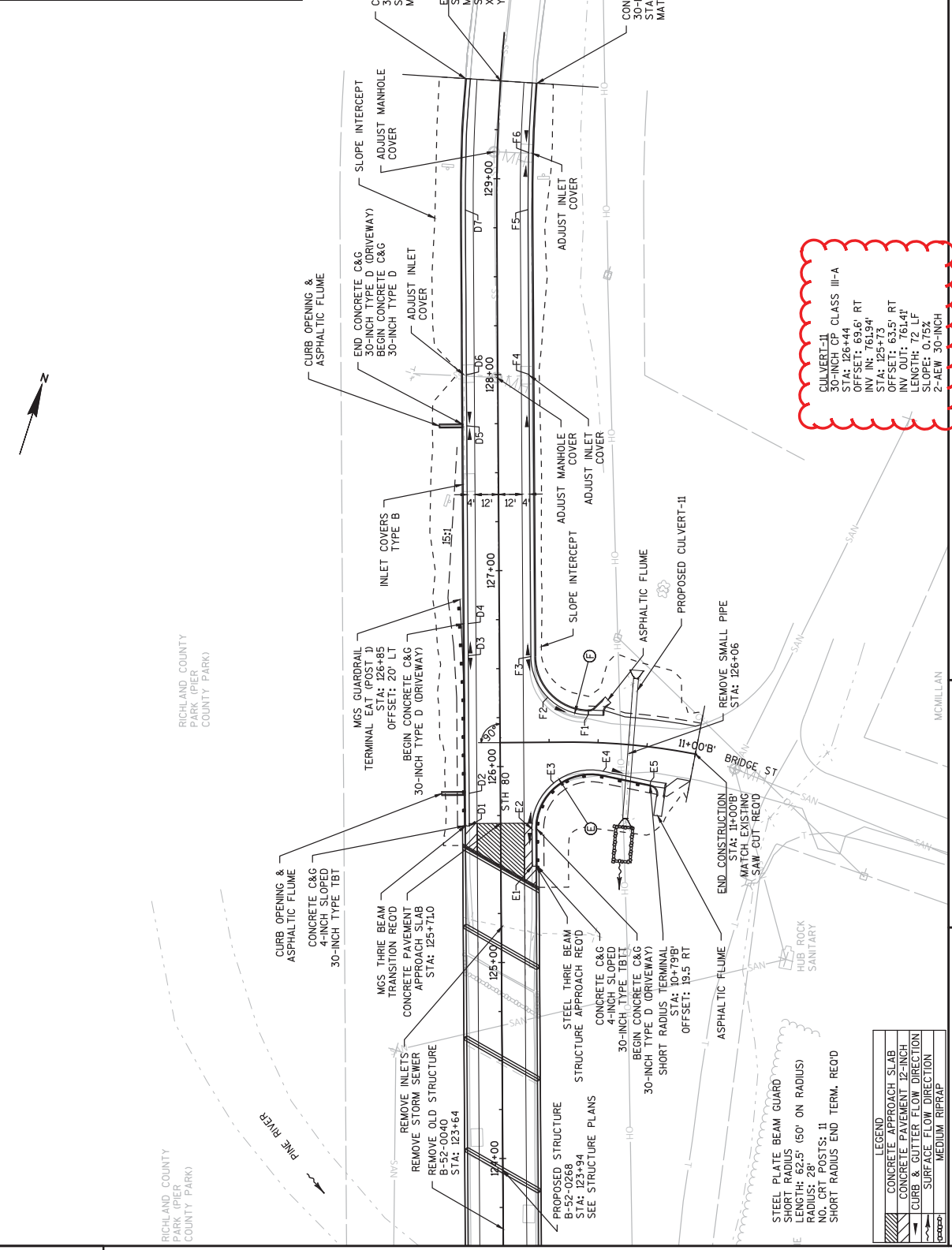
PLOT BY : SHIFFER, CAMERON J

PLOT SCALE : 1 IN=50 FT

CURB AND GUTTER INFORMATION		
STATION	OFFSET	RADIUS
E	46.0' RT	30'
	46.0' RT	30'
	46.0' RT	30'
	46.0' RT	30'
D1	16.0' LT	771.97'
D2	16.0' LT	771.04'
D3	16.0' LT	771.18' (HP)
D4	16.0' LT	771.17'
D5	16.0' LT	770.88' (LP)
D6	16.0' LT	770.99'
D7	16.0' LT	771.56'
E1	16.0' RT	770.87'
E2	16.0' RT	770.96' (HP)
E3	27.2' RT	770.03'
E4	10+53.38'	769.10'
E5	10+79.28'	768.24'
F1	14.0' LT	769.96'
F2	24.5' RT	770.57'
F3	16.0' RT	771.18' (HP)
F4	16.0' RT	770.79'
F5	16.0' RT	770.48'
F6	16.0' RT	770.32'

*ALL CURB AND GUTTER INFORMATION TO FLAG OF CURB

Addendum No. 01
 ID 5042-05-81
 Revised Sheet 26
 December 5, 2017



CULVERT-11
 30-INCH CP CLASS III-A
 STA: 126+44
 OFFSET: 69.6' RT
 INV IN: 761.94'
 STA: 125+73
 OFFSET: 63.5' RT
 INV OUT: 761.41'
 LENGTH: 72 LF
 SLOPE: 0.75%
 2-NEW 30-INCH

LEGEND

[Symbol]	CONCRETE APPROACH SLAB
[Symbol]	CONCRETE PAVEMENT 12-INCH
[Symbol]	CURB & GUTTER FLOW DIRECTION
[Symbol]	SURFACE FLOW DIRECTION
[Symbol]	MEDIUM RIPRAP

Addendum No. 01
ID 5042-05-81
Revised Sheet 94
December 5, 2017

CULVERT PIPE CLASS III-A SUMMARY

CATEGORY	STATION	LOCATION	APRON ENDWALLS FOR		APRON ENDWALLS FOR		CULVERT PIPE CLASS III -A		CULVERT PIPE CLASS III -A		CULVERT PIPE CLASS III -A		REMARKS
			EACH	EACH	EACH	EACH	18-INCH	24-INCH	30-INCH	36-INCH	LF	LF	
0010	126+06	RT - BRIDGE ST	-	-	2	-	-	-	-	72	-	-	B-52-0268
0010	212+28' NB'	RT - PE	2	-	-	-	56	-	-	-	-	-	B-52-0269
0010	214+37' NB'	RT - PE	-	2	-	-	-	48	-	-	-	-	B-52-0269
0010	218+44' NB'	LT - HANSBERRY LN	-	-	-	2	-	-	-	-	100	-	B-52-0269
0010	223+30' NB'	RT - FE	-	-	2	-	-	-	-	58	-	-	B-52-0269
0010	233+39' NB'	RT - PE	2	-	-	-	48	-	-	-	-	-	B-52-0269
0010	114+91	LT - IRI SH DR	-	-	2	-	-	-	-	88	-	-	B-52-0270
TOTAL 0010			4	2	6	2	104	48	218	100			

CULVERT PIPE STEEL SUMMARY

CATEGORY	STATION	LOCATION	APRON ENDWALLS FOR		CULVERT PIPE CLASS III -A		CULVERT PIPE CLASS III -A		CULVERT PIPE CLASS III -A		REMARKS
			EACH	EACH	18-INCH	24-INCH	30-INCH	36-INCH	LF	LF	
0010	121+83	LT - PARK ENIT	-	2	-	-	60	-	-	-	B-52-0268
0010	212+27' NB'	LT - FE	-	-	2	-	-	40	-	-	B-52-0269
0010	219+14' NB'	RT - SURFACE DRAIN	1	-	-	-	-	-	-	-	B-52-0269
0010	232+30' NB'	RT - FE	-	-	2	-	-	52	-	-	B-52-0269
TOTAL 0010			1	2	4	60	92				

**CULVERT PIPE CORRUGATED
STEEL THICKNESS
12" TO 24" DIA = 0.064"
30" TO 36" DIA = 0.079"

PIPE CATTLE PASS CORRUGATED STEEL

CATEGORY	STATION	LOCATION	LF	REMARKS
0010	217+78' NB'	MIL	76	B-52-0269 - 72-1 INCH
TOTAL 0010			76	

PROJECT NO: 5042-05-81

HWY: STH 80

COUNTY: RICHLAND

MISCELLANEOUS QUANTITIES

SHEET NO: 94

E

FILE NAME: _____ PLOT BY: _____ PLOT NAME: _____ ORG DATE: _____ ORIGINATOR: DIST: _____ PLOT SCALE: 1:1



Proposal Schedule of Items

Proposal ID: 20171212005 Project(s): 5042-05-81

Federal ID(s): WISC 2018004

SECTION: 0001 Contract Items

Alt Set ID: Alt Mbr ID:

Proposal Line Number	Item ID Description	Approximate Quantity and Units	Unit Price	Bid Amount
0002	201.0105 Clearing	6.000 STA	_____.	_____.
0004	201.0205 Grubbing	6.000 STA	_____.	_____.
0006	203.0100 Removing Small Pipe Culverts	10.000 EACH	_____.	_____.
0008	203.0200 Removing Old Structure (station) 01. 217+81'NB'	LS	LUMP SUM	_____.
0010	203.0200 Removing Old Structure (station) 01. 225+52'NB'	LS	LUMP SUM	_____.
0012	203.0210.S Abatement of Asbestos Containing Material (structure) 01. B-52-0041	LS	LUMP SUM	_____.
0014	203.0210.S Abatement of Asbestos Containing Material (structure) 02. B-52-0044	LS	LUMP SUM	_____.
0016	203.0600.S Removing Old Structure Over Waterway With Minimal Debris (station) 01. 123+60	LS	LUMP SUM	_____.
0018	203.0600.S Removing Old Structure Over Waterway With Minimal Debris (station) 02. 220+00'NB'	LS	LUMP SUM	_____.
0020	203.0600.S Removing Old Structure Over Waterway With Minimal Debris (station) 03. 112+00	LS	LUMP SUM	_____.
0022	204.0150 Removing Curb & Gutter	1,086.000 LF	_____.	_____.
0024	204.0165 Removing Guardrail	1,323.000 LF	_____.	_____.
0026	204.0180 Removing Delineators and Markers	27.000 EACH	_____.	_____.
0028	204.0220 Removing Inlets	2.000 EACH	_____.	_____.



Proposal Schedule of Items

Proposal ID: 20171212005 Project(s): 5042-05-81

Federal ID(s): WISC 2018004

SECTION: 0001 Contract Items

Alt Set ID: Alt Mbr ID:

Proposal Line Number	Item ID Description	Approximate Quantity and Units	Unit Price	Bid Amount
0030	204.0245 Removing Storm Sewer (size) 24-Inch	64.000 LF	_____.	_____.
0032	205.0100 Excavation Common	36,938.000 CY	_____.	_____.
0034	206.1000 Excavation for Structures Bridges (structure) 01. B-52-0268	LS	LUMP SUM	_____.
0036	206.1000 Excavation for Structures Bridges (structure) 02.B-52-0269	LS	LUMP SUM	_____.
0038	206.1000 Excavation for Structures Bridges (structure) 03. B-52-0270	LS	LUMP SUM	_____.
0040	206.5000 Cofferdams (structure) 01. B-52-0268	LS	LUMP SUM	_____.
0042	206.5000 Cofferdams (structure) 03. B-52-0270	LS	LUMP SUM	_____.
0044	208.0100 Borrow	27,692.000 CY	_____.	_____.
0046	209.1500 Backfill Granular Grade 1	1,110.000 TON	_____.	_____.
0048	210.1500 Backfill Structure Type A	1,246.000 TON	_____.	_____.
0050	213.0100 Finishing Roadway (project) 01. 5042-05-81	1.000 EACH	_____.	_____.
0052	305.0110 Base Aggregate Dense 3/4-Inch	1,990.000 TON	_____.	_____.
0054	305.0120 Base Aggregate Dense 1 1/4-Inch	21,155.000 TON	_____.	_____.
0056	305.0130 Base Aggregate Dense 3-Inch	2,070.000 TON	_____.	_____.
0058	312.0110 Select Crushed Material	17,695.000 TON	_____.	_____.
0060	415.0120 Concrete Pavement 12-Inch	168.000 SY	_____.	_____.



Proposal Schedule of Items

Proposal ID: 20171212005 Project(s): 5042-05-81

Federal ID(s): WISC 2018004

SECTION: 0001 Contract Items

Alt Set ID: Alt Mbr ID:

Proposal Line Number	Item ID Description	Approximate Quantity and Units	Unit Price	Bid Amount
0062	415.0410 Concrete Pavement Approach Slab	341.000 SY	_____.	_____.
0064	416.1010 Concrete Surface Drains	15.000 CY	_____.	_____.
0066	440.4410 Incentive IRI Ride	2,408.000 DOL	1.00000	2,408.00
0068	450.4000 HMA Cold Weather Paving	1,625.000 TON	_____.	_____.
0070	455.0605 Tack Coat	1,106.000 GAL	_____.	_____.
0072	460.2000 Incentive Density HMA Pavement	4,140.000 DOL	1.00000	4,140.00
0074	460.5223 HMA Pavement 3 LT 58-28 S	4,001.000 TON	_____.	_____.
0076	460.5224 HMA Pavement 4 LT 58-28 S	2,483.000 TON	_____.	_____.
0078	465.0120 Asphaltic Surface Driveways and Field Entrances	17.000 TON	_____.	_____.
0080	465.0315 Asphaltic Flumes	102.000 SY	_____.	_____.
0082	465.0425 Asphaltic Shoulder Rumble Strips 2-Lane Rural	4,582.000 LF	_____.	_____.
0084	465.0475 Asphalt Centerline Rumble Strips 2-Lane Rural	1,396.000 LF	_____.	_____.
0086	502.0100 Concrete Masonry Bridges	2,451.000 CY	_____.	_____.
0088	502.3200 Protective Surface Treatment	3,194.000 SY	_____.	_____.
0090	502.3210 Pigmented Surface Sealer	663.000 SY	_____.	_____.
0092	503.0137 Prestressed Girder Type I 36W-Inch	1,629.000 LF	_____.	_____.



Proposal Schedule of Items

Proposal ID: 20171212005 Project(s): 5042-05-81

Federal ID(s): WISC 2018004

SECTION: 0001 Contract Items

Alt Set ID: Alt Mbr ID:

Proposal Line Number	Item ID Description	Approximate Quantity and Units	Unit Price	Bid Amount
0094	503.0155 Prestressed Girder Type I 54W-Inch	1,008.000 LF	_____.	_____.
0096	505.0400 Bar Steel Reinforcement HS Structures	38,300.000 LB	_____.	_____.
0098	505.0600 Bar Steel Reinforcement HS Coated Structures	362,890.000 LB	_____.	_____.
0100	505.0800.S Bar Steel Reinforcement HS Stainless Structures	1,600.000 LB	_____.	_____.
0102	506.2605 Bearing Pads Elastomeric Non-Laminated	52.000 EACH	_____.	_____.
0104	506.4000 Steel Diaphragms (structure) 01. B-52-0269	14.000 EACH	_____.	_____.
0106	506.4000 Steel Diaphragms (structure) 03. B-52-0270	30.000 EACH	_____.	_____.
0108	511.1200 Temporary Shoring (structure) 01. B-52-0269	1,950.000 SF	_____.	_____.
0110	516.0500 Rubberized Membrane Waterproofing	79.000 SY	_____.	_____.
0112	521.1012 Apron Endwalls for Culvert Pipe Steel 12-Inch	1.000 EACH	_____.	_____.
0114	521.1018 Apron Endwalls for Culvert Pipe Steel 18-Inch	2.000 EACH	_____.	_____.
0116	521.1024 Apron Endwalls for Culvert Pipe Steel 24-Inch	4.000 EACH	_____.	_____.
0122	521.1900 Pipe Cattle Pass Corrugated Steel	76.000 LF	_____.	_____.
0124	521.3118 Culvert Pipe Corrugated Steel 18-Inch	60.000 LF	_____.	_____.



Proposal Schedule of Items

Proposal ID: 20171212005 Project(s): 5042-05-81

Federal ID(s): WISC 2018004

SECTION: 0001 Contract Items

Alt Set ID: Alt Mbr ID:

Proposal Line Number	Item ID Description	Approximate Quantity and Units	Unit Price	Bid Amount
0126	521.3124 Culvert Pipe Corrugated Steel 24-Inch	92.000 LF	_____.	_____.
0132	550.0500 Pile Points	40.000 EACH	_____.	_____.
0134	550.1100 Piling Steel HP 10-Inch X 42 Lb	3,950.000 LF	_____.	_____.
0136	550.1120 Piling Steel HP 12-Inch X 53 Lb	4,330.000 LF	_____.	_____.
0138	601.0409 Concrete Curb & Gutter 30-Inch Type A	11.000 LF	_____.	_____.
0140	601.0411 Concrete Curb & Gutter 30-Inch Type D	1,049.000 LF	_____.	_____.
0142	601.0557 Concrete Curb & Gutter 6-Inch Sloped 36-Inch Type D	557.000 LF	_____.	_____.
0144	601.0584 Concrete Curb & Gutter 4-Inch Sloped 30-Inch Type TBT	189.000 LF	_____.	_____.
0146	601.0586 Concrete Curb & Gutter 4-Inch Sloped 30-Inch Type TBTT	19.000 LF	_____.	_____.
0148	601.0588 Concrete Curb & Gutter 4-Inch Sloped 36-Inch Type TBT	18.000 LF	_____.	_____.
0150	601.0590 Concrete Curb & Gutter 4-Inch Sloped 36-Inch Type TBTT	36.000 LF	_____.	_____.
0152	606.0200 Riprap Medium	50.000 CY	_____.	_____.
0154	606.0300 Riprap Heavy	1,221.000 CY	_____.	_____.
0156	611.0606 Inlet Covers Type B	1.000 EACH	_____.	_____.
0158	611.8110 Adjusting Manhole Covers	2.000 EACH	_____.	_____.



Proposal Schedule of Items

Proposal ID: 20171212005 Project(s): 5042-05-81

Federal ID(s): WISC 2018004

SECTION: 0001 Contract Items

Alt Set ID: Alt Mbr ID:

Proposal Line Number	Item ID Description	Approximate Quantity and Units	Unit Price	Bid Amount
0160	611.8115 Adjusting Inlet Covers	3.000 EACH	_____.	_____.
0162	612.0212 Pipe Underdrain Unperforated 12-Inch	52.000 LF	_____.	_____.
0164	612.0406 Pipe Underdrain Wrapped 6-Inch	530.000 LF	_____.	_____.
0166	614.0150 Anchor Assemblies for Steel Plate Beam Guard	12.000 EACH	_____.	_____.
0168	614.0200 Steel Thrie Beam Structure Approach	84.000 LF	_____.	_____.
0170	614.0305 Steel Plate Beam Guard Class A	300.000 LF	_____.	_____.
0172	614.0345 Steel Plate Beam Guard Short Radius	112.500 LF	_____.	_____.
0174	614.0370 Steel Plate Beam Guard Energy Absorbing Terminal	4.000 EACH	_____.	_____.
0176	614.0390 Steel Plate Beam Guard Short Radius Terminal	2.000 EACH	_____.	_____.
0178	614.2300 MGS Guardrail 3	525.000 LF	_____.	_____.
0180	614.2500 MGS Thrie Beam Transition	320.000 LF	_____.	_____.
0182	614.2610 MGS Guardrail Terminal EAT	8.000 EACH	_____.	_____.
0184	618.0100 Maintenance And Repair of Haul Roads (project) 01. 5042-05-81	1.000 EACH	_____.	_____.
0186	619.1000 Mobilization	1.000 EACH	_____.	_____.
0188	624.0100 Water	420.000 MGAL	_____.	_____.
0190	625.0100 Topsoil	4,070.000 SY	_____.	_____.



Proposal Schedule of Items

Proposal ID: 20171212005 Project(s): 5042-05-81

Federal ID(s): WISC 2018004

SECTION: 0001 Contract Items

Alt Set ID: Alt Mbr ID:

Proposal Line Number	Item ID Description	Approximate Quantity and Units	Unit Price	Bid Amount
0192	625.0500 Salvaged Topsoil	50,885.000 SY	_____.	_____.
0194	628.1104 Erosion Bales	68.000 EACH	_____.	_____.
0196	628.1504 Silt Fence	9,370.000 LF	_____.	_____.
0198	628.1520 Silt Fence Maintenance	9,370.000 LF	_____.	_____.
0200	628.1905 Mobilizations Erosion Control	8.000 EACH	_____.	_____.
0202	628.1910 Mobilizations Emergency Erosion Control	4.000 EACH	_____.	_____.
0204	628.2008 Erosion Mat Urban Class I Type B	9,010.000 SY	_____.	_____.
0206	628.2027 Erosion Mat Class II Type C	2,355.000 SY	_____.	_____.
0208	628.6505 Soil Stabilizer Type A	8.000 ACRE	_____.	_____.
0210	628.7015 Inlet Protection Type C	4.000 EACH	_____.	_____.
0212	628.7504 Temporary Ditch Checks	170.000 LF	_____.	_____.
0214	628.7555 Culvert Pipe Checks	37.000 EACH	_____.	_____.
0216	628.7560 Tracking Pads	3.000 EACH	_____.	_____.
0218	629.0210 Fertilizer Type B	33.000 CWT	_____.	_____.
0220	630.0110 Seeding Mixture No. 10	607.000 LB	_____.	_____.
0222	630.0140 Seeding Mixture No. 40	57.000 LB	_____.	_____.
0224	630.0160 Seeding Mixture No. 60	38.000 LB	_____.	_____.



Proposal Schedule of Items

Proposal ID: 20171212005 Project(s): 5042-05-81

Federal ID(s): WISC 2018004

SECTION: 0001 Contract Items

Alt Set ID: Alt Mbr ID:

Proposal Line Number	Item ID Description	Approximate Quantity and Units	Unit Price	Bid Amount
0226	630.0200 Seeding Temporary	140.000 LB	_____.	_____.
0228	633.5200 Markers Culvert End	23.000 EACH	_____.	_____.
0230	634.0614 Posts Wood 4x6-Inch X 14-FT	19.000 EACH	_____.	_____.
0232	634.0616 Posts Wood 4x6-Inch X 16-FT	21.000 EACH	_____.	_____.
0234	634.0618 Posts Wood 4x6-Inch X 18-FT	3.000 EACH	_____.	_____.
0236	637.2210 Signs Type II Reflective H	307.240 SF	_____.	_____.
0238	637.2230 Signs Type II Reflective F	20.000 SF	_____.	_____.
0240	638.2602 Removing Signs Type II	37.000 EACH	_____.	_____.
0242	638.3000 Removing Small Sign Supports	37.000 EACH	_____.	_____.
0244	642.5201 Field Office Type C	1.000 EACH	_____.	_____.
0246	643.0300 Traffic Control Drums	14,904.000 DAY	_____.	_____.
0248	643.0420 Traffic Control Barricades Type III	7,784.000 DAY	_____.	_____.
0250	643.0705 Traffic Control Warning Lights Type A	15,568.000 DAY	_____.	_____.
0252	643.0715 Traffic Control Warning Lights Type C	1,491.000 DAY	_____.	_____.
0254	643.0900 Traffic Control Signs	53,675.000 DAY	_____.	_____.
0256	643.0920 Traffic Control Covering Signs Type II	20.000 EACH	_____.	_____.
0258	643.1050 Traffic Control Signs PCMS	42.000 DAY	_____.	_____.



Proposal Schedule of Items

Proposal ID: 20171212005 Project(s): 5042-05-81

Federal ID(s): WISC 2018004

SECTION: 0001 Contract Items

Alt Set ID: Alt Mbr ID:

Proposal Line Number	Item ID Description	Approximate Quantity and Units	Unit Price	Bid Amount
0260	643.5000 Traffic Control	1.000 EACH	_____.	_____.
0262	645.0111 Geotextile Type DF Schedule A	320.000 SY	_____.	_____.
0264	645.0120 Geotextile Type HR	2,183.000 SY	_____.	_____.
0266	645.0220 Geogrid Type SR	2,960.000 SY	_____.	_____.
0268	646.1020 Marking Line Epoxy 4-Inch	18,982.000 LF	_____.	_____.
0270	646.3020 Marking Line Epoxy 8-Inch	712.000 LF	_____.	_____.
0272	646.5020 Marking Arrow Epoxy	3.000 EACH	_____.	_____.
0274	646.5120 Marking Word Epoxy	2.000 EACH	_____.	_____.
0276	646.6120 Marking Stop Line Epoxy 18-Inch	30.000 LF	_____.	_____.
0278	646.7120 Marking Diagonal Epoxy 12-Inch	467.000 LF	_____.	_____.
0280	646.9000 Marking Removal Line 4-Inch	1,369.000 LF	_____.	_____.
0282	648.0100 Locating No-Passing Zones	1.000 MI	_____.	_____.
0284	649.0105 Temporary Marking Line Paint 4-Inch	6,310.000 LF	_____.	_____.
0286	650.4500 Construction Staking Subgrade	4,868.000 LF	_____.	_____.
0288	650.5000 Construction Staking Base	5,038.000 LF	_____.	_____.
0290	650.5500 Construction Staking Curb Gutter and Curb & Gutter	1,879.000 LF	_____.	_____.



Proposal Schedule of Items

Proposal ID: 20171212005 Project(s): 5042-05-81

Federal ID(s): WISC 2018004

SECTION: 0001 Contract Items

Alt Set ID: Alt Mbr ID:

Proposal Line Number	Item ID Description	Approximate Quantity and Units	Unit Price	Bid Amount
0292	650.6000 Construction Staking Pipe Culverts	12.000 EACH	_____.	_____.
0294	650.6500 Construction Staking Structure Layout (structure) 01. B-52-0268	LS	LUMP SUM	_____.
0296	650.6500 Construction Staking Structure Layout (structure) 02. B-52-0269	LS	LUMP SUM	_____.
0298	650.6500 Construction Staking Structure Layout (structure) 03. B-52-0270	LS	LUMP SUM	_____.
0300	650.9910 Construction Staking Supplemental Control (project) 01. 5042-05-81	LS	LUMP SUM	_____.
0302	650.9920 Construction Staking Slope Stakes	5,038.000 LF	_____.	_____.
0304	690.0150 Sawing Asphalt	534.000 LF	_____.	_____.
0306	690.0250 Sawing Concrete	10.500 LF	_____.	_____.
0308	715.0415 Incentive Strength Concrete Pavement	500.000 DOL	1.00000	500.00
0310	715.0502 Incentive Strength Concrete Structures	14,706.000 DOL	1.00000	14,706.00
0312	ASP.1T0A On-the-Job Training Apprentice at \$5.00/HR	2,400.000 HRS	5.00000	12,000.00
0314	ASP.1T0G On-the-Job Training Graduate at \$5.00/HR	3,200.000 HRS	5.00000	16,000.00
0316	SPV.0180 Special 01. Topsoil Special	2,400.000 SY	_____.	_____.
0318	520.1018 Apron Endwalls for Culvert Pipe 18-Inch	4.000 EACH	_____.	_____.
0320	520.1024 Apron Endwalls for Culvert Pipe 24-Inch	2.000 EACH	_____.	_____.



Proposal Schedule of Items

Proposal ID: 20171212005 Project(s): 5042-05-81

Federal ID(s): WISC 2018004

SECTION: 0001 Contract Items

Alt Set ID: Alt Mbr ID:

Proposal Line Number	Item ID Description	Approximate Quantity and Units	Unit Price	Bid Amount
0322	520.1030 Apron Endwalls for Culvert Pipe 30-Inch	6.000 EACH	_____.	_____.
0324	520.1036 Apron Endwalls for Culvert Pipe 36-Inch	2.000 EACH	_____.	_____.
0326	520.3318 Culvert Pipe Class III-A 18-Inch	104.000 LF	_____.	_____.
0328	520.3324 Culvert Pipe Class III-A 24-Inch	48.000 LF	_____.	_____.
0330	520.3330 Culvert Pipe Class III-A 30-Inch	218.000 LF	_____.	_____.
0332	520.3336 Culvert Pipe Class III-A 36-Inch	100.000 LF	_____.	_____.
Section: 0001			Total:	_____.
			Total Bid:	_____.

