



Wisconsin Department of Transportation

Division of Transportation Systems Development

Bureau of Project Development
4802 Sheboygan Avenue, Rm 601
P O Box 7916
Madison, WI 53707-7916

November 27, 2017

Telephone: (608) 266-1631
Facsimile (FAX): (608) 266-8459

NOTICE TO ALL CONTRACTORS:

Proposal #08: 5541-06-71, WISC 2018006
Prairie du Chien - Eastman
0.09M N of Cipra to Meadow
Lane St
STH 27
Crawford County

5541-06-72, WISC 2018007
Prairie du Chien - Eastman
Meadow Ln St to 0.05MI N of
Water St
STH 27
Crawford County

5541-06-73
Prairie du Chien - Eastman
Meadow Ln St to 0.05MI N of
Water St
STH 27
Crawford County

Letting of December 12, 2017

This is Addendum No. 01, which provides for the following:

Schedule of Items:

Revised Bid Item Quantities					
Bid Item	Item Description	Unit	Old Quantity	Revised Quantity	Proposal Total
520.3324	Culvert Pipe Class III-A 24-Inch	LF	276	688	964
522.1024	Apron Endwalls For Culvert Pipe Reinforced Concrete 24-Inch	Each	20	-18	2
630.0120	Seeding Mixture #20	LB	10,634	-181	10,453

Added Bid Item Quantities					
Bid Item	Item Description	Unit	Old Quantity	Revised Quantity	Proposal Total
520.1024	Apron Endwalls For Culvert Pipe 24-Inch	Each	0	18	18
520.3524	Culvert Pipe Class III-B 24-Inch	LF	0	144	144
630.0140	Seeding Mixture #40	LB	0	1,134	1,134

Deleted Bid Item Quantities					
Bid Item	Item Description	Unit	Old Quantity	Revised Quantity	Proposal Total
522.0124	Culvert Pipe Reinforced Concrete Class III 24-Inch	LF	832	-832	0

Plan Sheets:

Revised Plan Sheets	
Plan Sheet	Plan Sheet Title (brief description of changes to sheet)
6	Typical Section (Added depth of salvaged topsoil for #40 seed)
54-58 & 61	Erosion Control (Revised notes for CPRC to Class III-A and Class III-B)
158-160	Miscellaneous Quantities (Changed CPRC to Class III-A and Class III-B pipes)
164	Miscellaneous Quantities (Added #40 seed and updated #20 seed)
245-249 & 251, 252, 260	Plan & Profiles (Revised notes for CPRC to Class III-A and Class III-B)
475, 497, 530, 539, 560, 611, 633, 649, 824	Cross Sections (Revised CPRC notes to Class III-A and Class III-B)

Schedule of Items

Attached, dated November 27, 2017, are the revised Schedule of Items Pages 1 – 13.

Plan Sheets

The following 8½ x 11-inch sheets are attached and made part of the plans for this proposal:
Revised: 6, 54-58, 61, 158-160, 164, 245-249, 251, 252, 260, 475, 497, 530, 539, 560, 611, 633, 649, and 824.

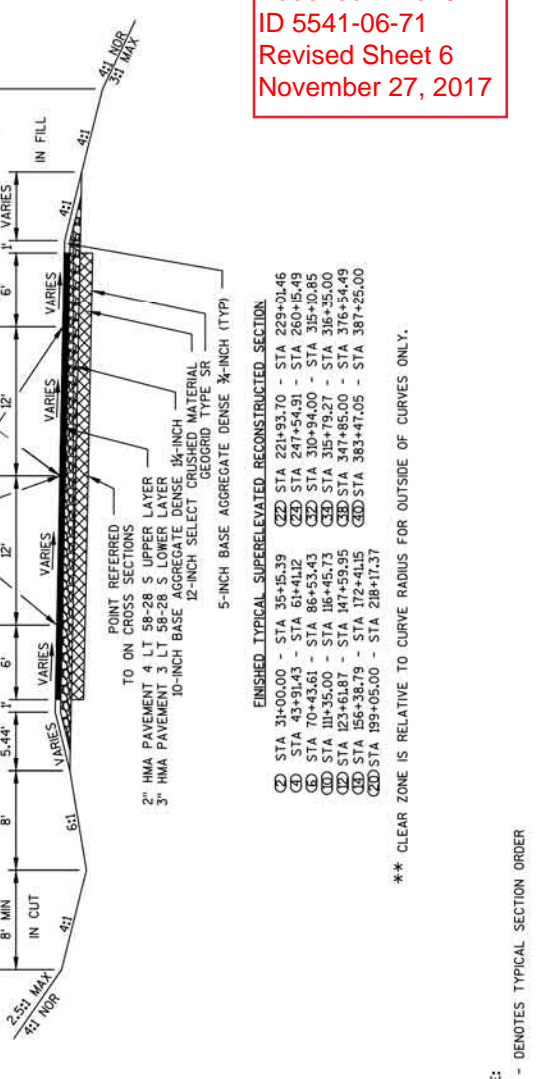
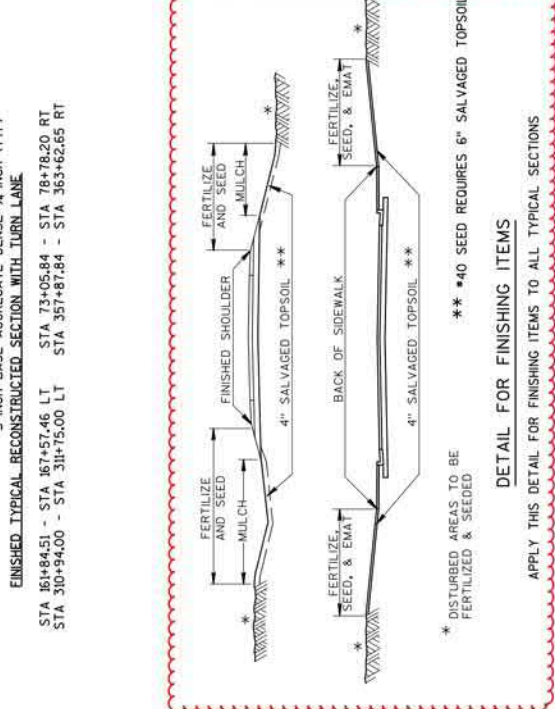
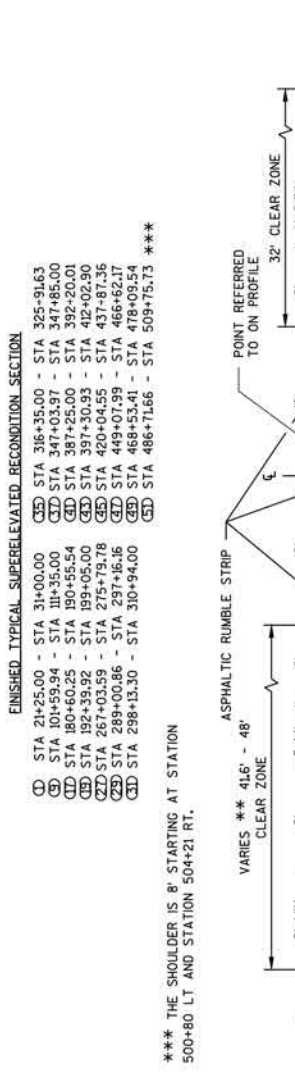
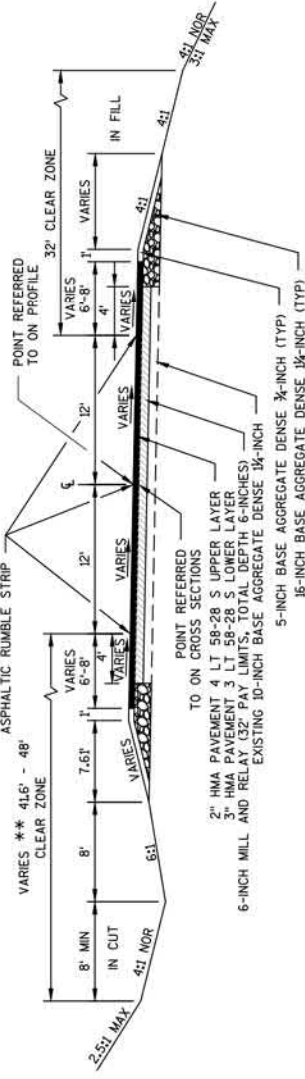
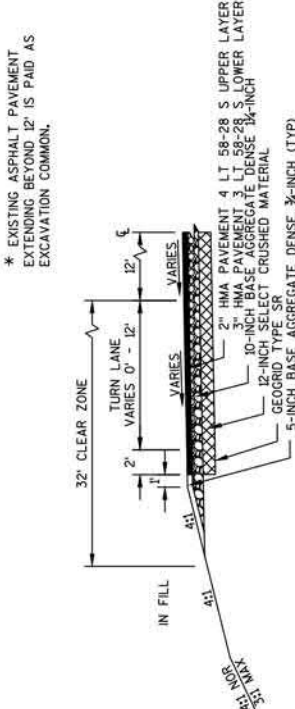
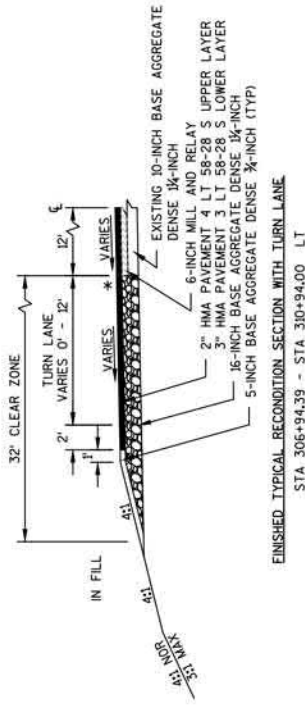
The responsibility for notifying potential subcontractors and suppliers of these changes remains with the prime contractor.

Sincerely,

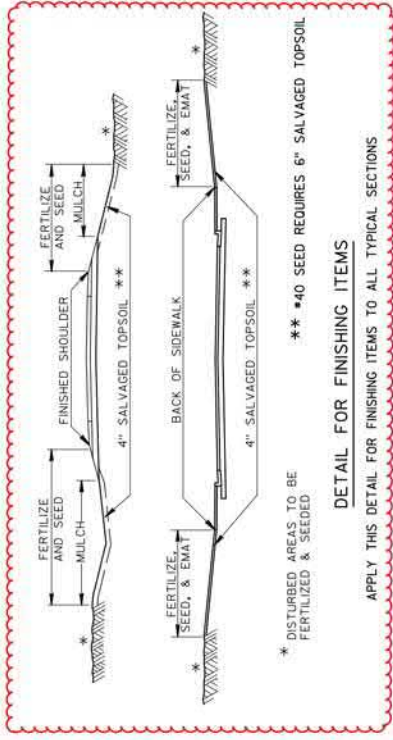
Mike Coleman

Proposal Development Specialist
Proposal Management Section

END OF ADDENDUM



Addendum No. 01
ID 5541-06-71
Revised Sheet 6
November 27, 2017



NOTE:
(()) - DENOTES TYPICAL SECTION ORDER

** CLEAR ZONE IS RELATIVE TO CURVE RADIUS FOR OUTSIDE OF CURVES ONLY.

- END OF SUPER-ELEVATED RECONSTRUCTION SECTION
- (()) STA 21+25.00 - STA 31+00.00
- (()) STA 101+59.94 - STA 111+35.00
- (()) STA 180+60.25 - STA 190+55.54
- (()) STA 192+35.92 - STA 199+05.00
- (()) STA 267+03.59 - STA 275+79.78
- (()) STA 289+00.86 - STA 297+16.16
- (()) STA 298+13.30 - STA 310+94.00
- (()) STA 316+35.00 - STA 325+91.63
- (()) STA 347+03.97 - STA 347+85.00
- (()) STA 387+25.00 - STA 392+20.01
- (()) STA 397+30.93 - STA 412+02.90
- (()) STA 420+04.55 - STA 437+87.36
- (()) STA 449+07.99 - STA 466+62.17
- (()) STA 468+53.41 - STA 478+09.54
- (()) STA 486+71.66 - STA 509+75.73

*** THE SHOULDER IS 8' STARTING AT STATION 500+80 LT AND STATION 504+21 RT.

Addendum No. 01
ID 5541-06-71
Revised Sheet 54
November 27, 2017



STA 26+66.6, LT
1-24" CP CLASS III-A
1-AEW REOD

STA 31+50.0, LT
1-18" CP CLASS III-A
2-AEW'S REOD

STA 39+50.0, LT
1-18" CP CLASS III-A
2-AEW'S REOD

STA 40+75.8, LT
1-24" CP CLASS III-A
1-AEW REOD

STA 40+76.4, RT
1-24" CP CLASS III-A
1-AEW REOD

STA 48+50.0, LT
1-18" CP CLASS III-A
2-AEW'S REOD

STA 26+62.4, RT
1-24" CP CLASS III-A
1-AEW REOD

STA 31+50.0, RT
1-18" CP CLASS III-A
2-AEW'S REOD

STA 40+00.0, LT
1-18" CP CLASS III-A
2-AEW'S REOD

STA 57+40.9, LT
1-24" CP CLASS III-A
1-AEW REOD

STA 55+63.0, RT
1-18" CP CLASS III-A
2-AEW'S REOD

STA 57+46.2, RT
1-24" CP CLASS III-A
1-AEW REOD

STA 60+00.0, LT
1-18" CP CLASS III-A
2-AEW'S REOD

STA 66+61.6
1-24" CP CLASS III-B
2-AEW'S REOD

STA 55+63.0, RT
REMOVE EXISTING 15' CMP

STA 57+46.2, RT
REMOVE EXISTING 15' CMP

STA 66+61.6
REMOVE EXISTING 24" CMP

STA 78+69.0, RT
REMOVE EXISTING 18" CMP

STA 78+69.0, RT
1-18" CP CLASS III-A
2-AEW'S REOD

LEGEND

#####	EROSION MAT CLASS I, TYPE B
---	SILT FENCE
- - -	SLOPE INTERCEPT
[ASPH]	ASPHALTIC FLUME
⊗	INLET PROTECTION A & C
ΔΔΔ	TEMPORARY DITCH CHECK
OOO	CULVERT PIPE CHECK
~	SURFACE WATER FLOW
SR	SILT FENCE RELIEF

STA 21+95
BEGIN PROJECT 5541-06-71

STA 20+29F
REMOVE EXISTING 18" CMP

STA 22+30.62F
REMOVE EXISTING 24" CMP

STA 55+63.0, RT
REMOVE EXISTING 15' CMP

STA 57+46.2, RT
REMOVE EXISTING 15' CMP

STA 66+61.6
REMOVE EXISTING 24" CMP

STA 78+69.0, RT
REMOVE EXISTING 18" CMP

STA 78+69.0, RT
1-18" CP CLASS III-A
2-AEW'S REOD

STA 86+61.6
REMOVE EXISTING 24" CMP

STA 86+61.6
REMOVE EXISTING 24" CMP

STA 86+61.6
REMOVE EXISTING 24" CMP

STA 86+61.6
REMOVE EXISTING 24" CMP

STA 86+61.6
REMOVE EXISTING 24" CMP

STA 86+61.6
REMOVE EXISTING 24" CMP

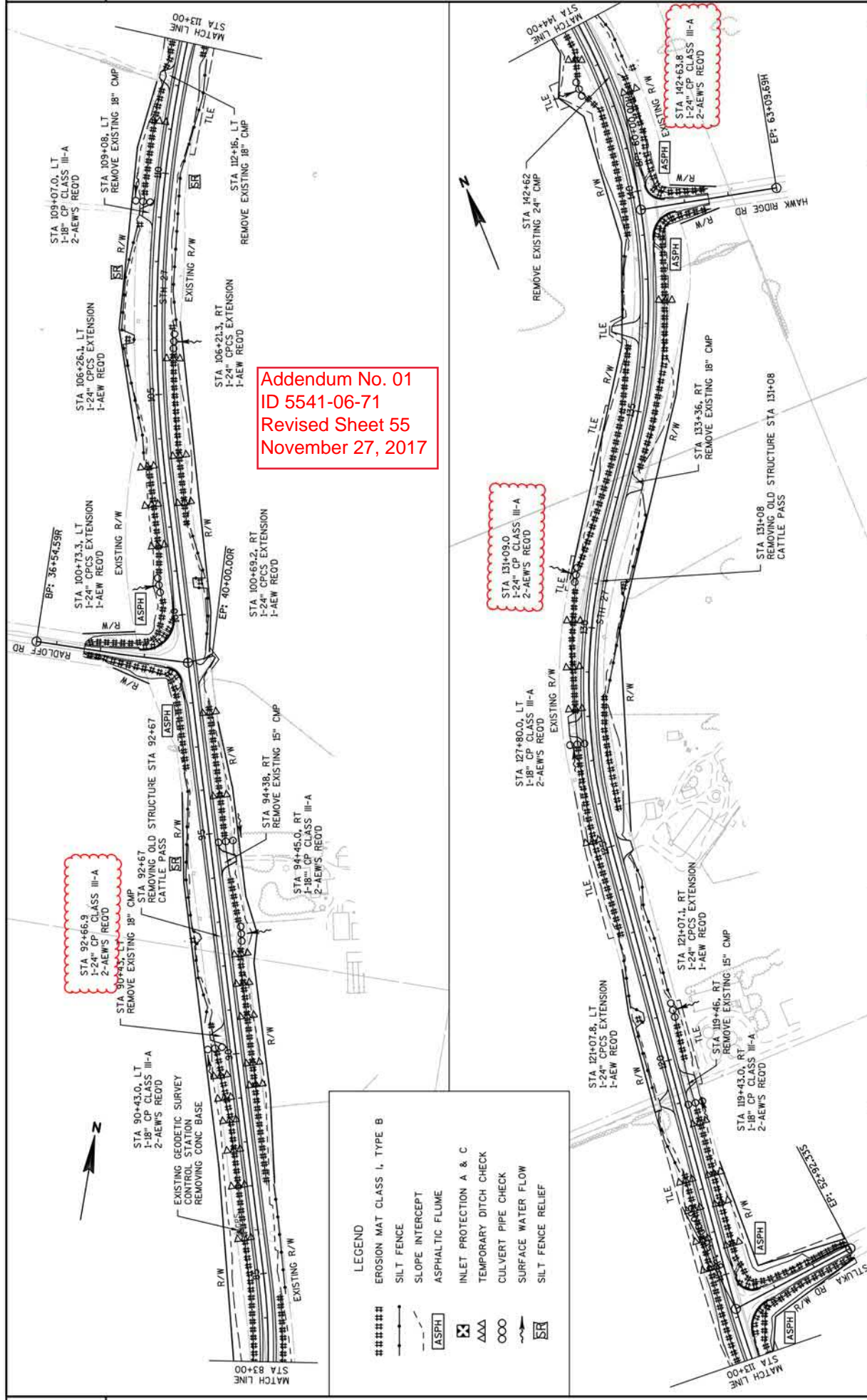
STA 86+61.6
REMOVE EXISTING 24" CMP

STA 86+61.6
REMOVE EXISTING 24" CMP

STA 86+61.6
REMOVE EXISTING 24" CMP

STA 86+61.6
REMOVE EXISTING 24" CMP

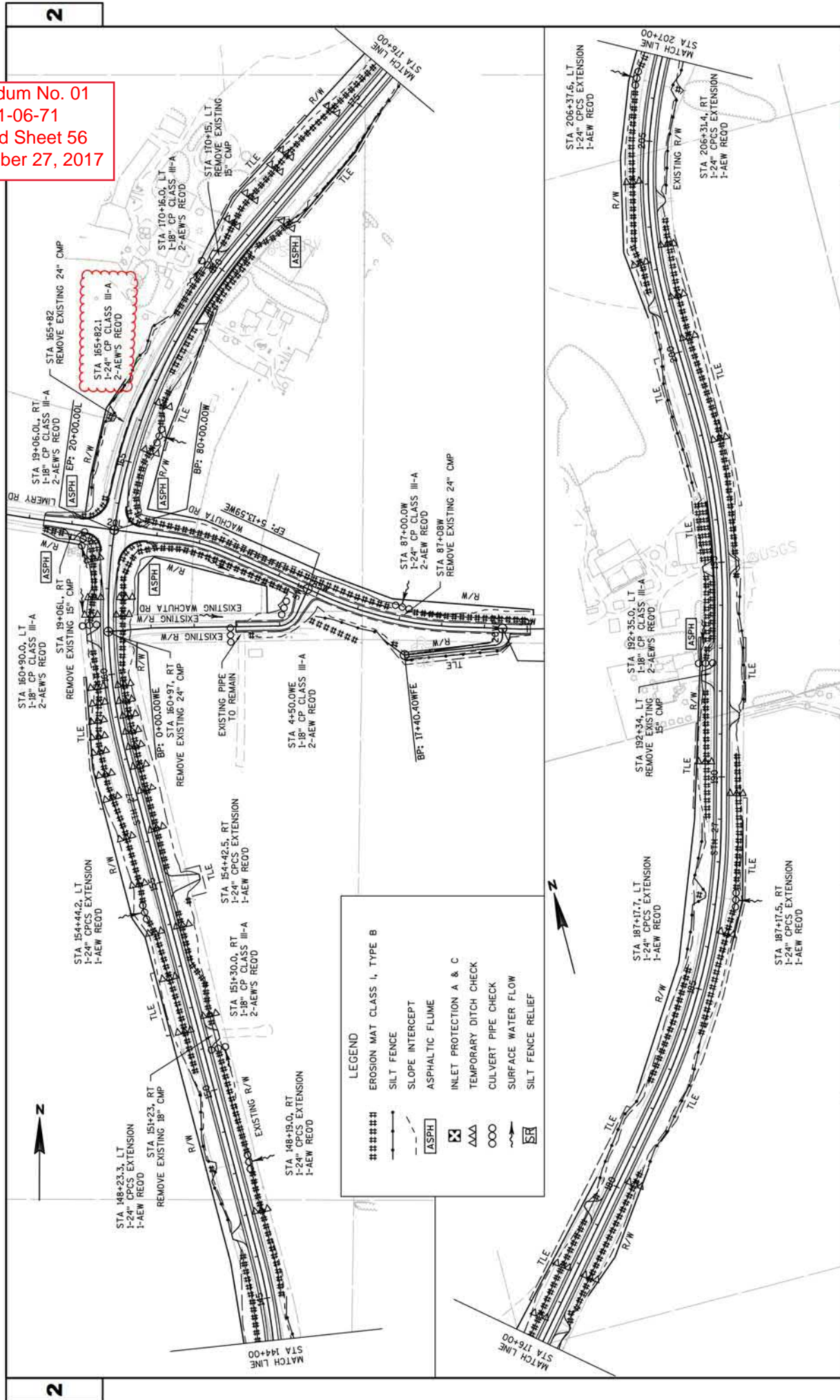
STA 86+61.6
REMOVE EXISTING 24" CMP



Addendum No. 01
 ID 5541-06-71
 Revised Sheet 55
 November 27, 2017

LEGEND	
#####	EROSION MAT CLASS I, TYPE B
---	SILT FENCE
---	SLOPE INTERCEPT
[ASPH]	ASPHALTIC FLUME
XXX	INLET PROTECTION A & C
AAA	TEMPORARY DITCH CHECK
OOO	CULVERT PIPE CHECK
~	SURFACE WATER FLOW
SR	SILT FENCE RELIEF

Addendum No. 01
 ID 5541-06-71
 Revised Sheet 56
 November 27, 2017

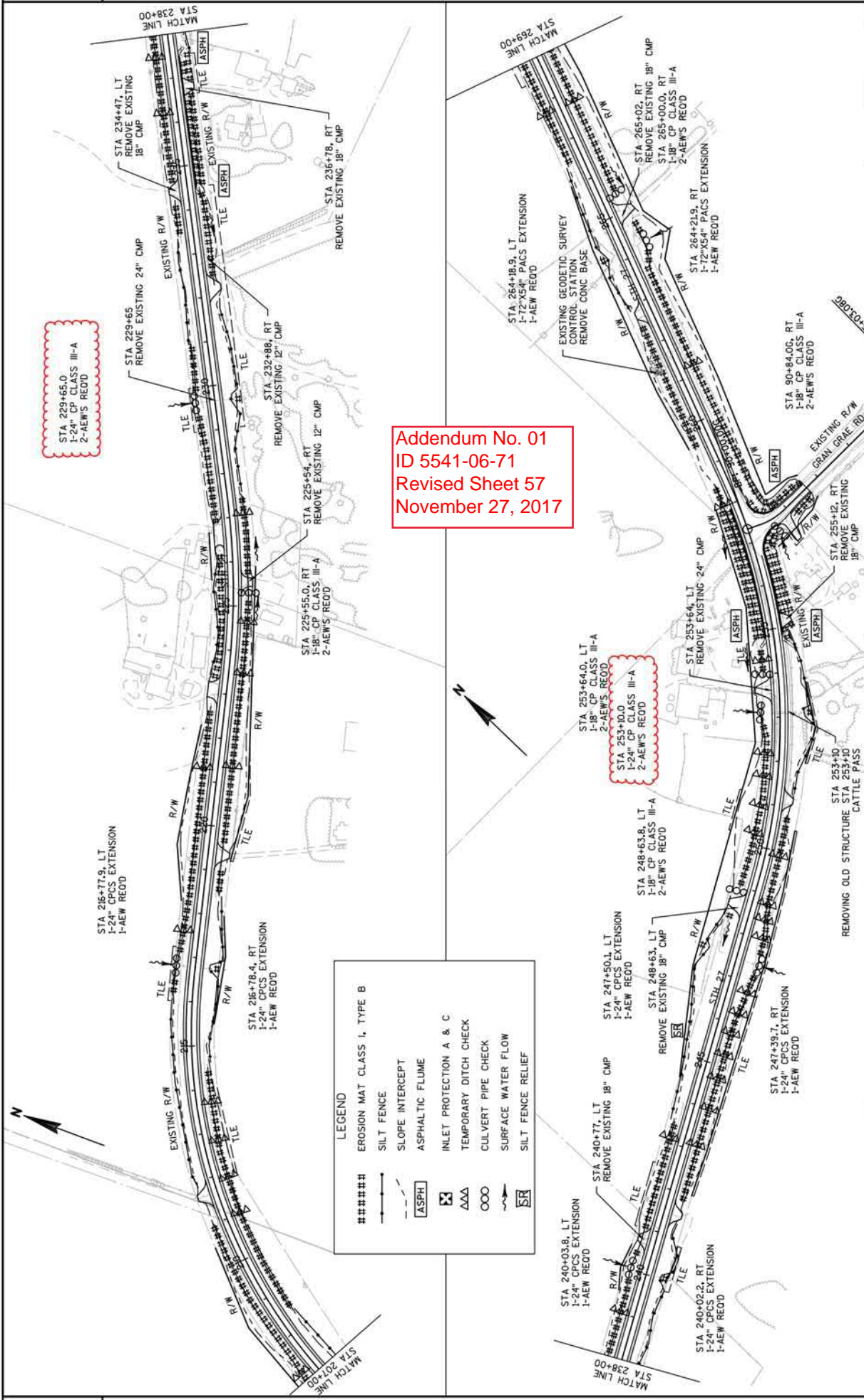


2

2

PROJECT NO: 5541-06-71
 COUNTY: CRAWFORD
 HWY: STH 27
 EROSION CONTROL
 SHEET 56
 E

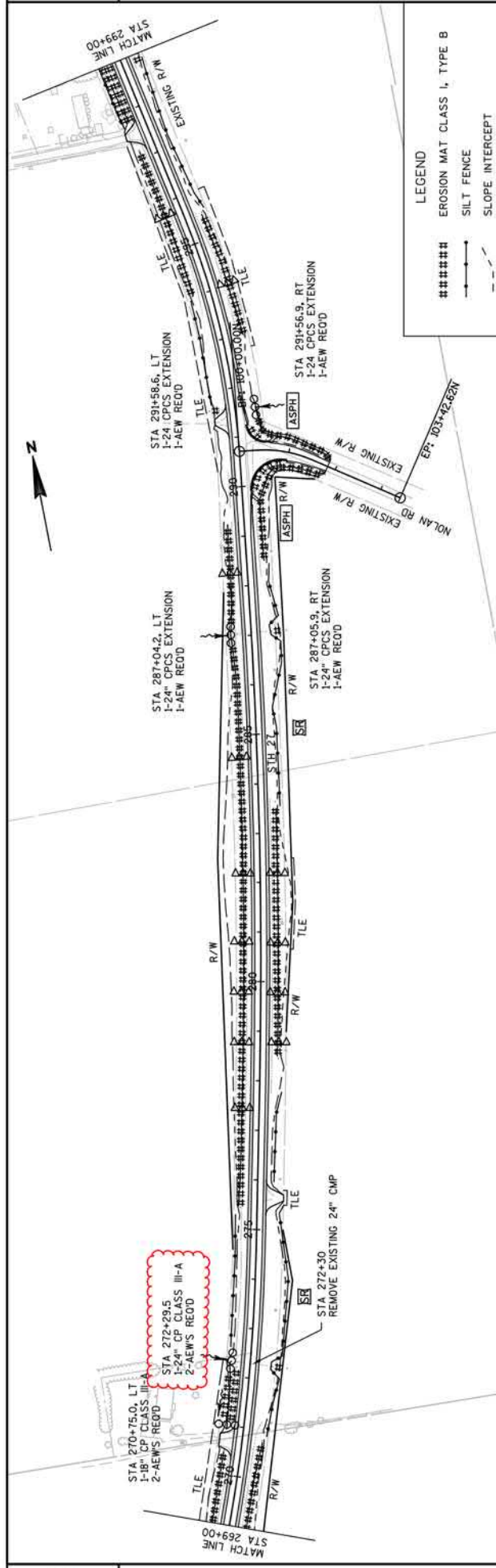
FILE NAME : P:\905\93\0093155\CA00\SHEETPLAN\EROSION CONTROL\022001_EC.DWG
 LAYOUT NAME - 022001
 PLOT DATE : 11/20/2017 8:50 AM
 PLOT BY : BOBBY MAXWELL
 PLOT NAME :
 PLOT SCALE : 1:1 IN/200 FT
 WSDOT/CADD SHEET 44



Addendum No. 01
 ID 5541-06-71
 Revised Sheet 57
 November 27, 2017

STA 253+10.0
 1-24" CP CLASS III-A
 2-AEW'S REOD

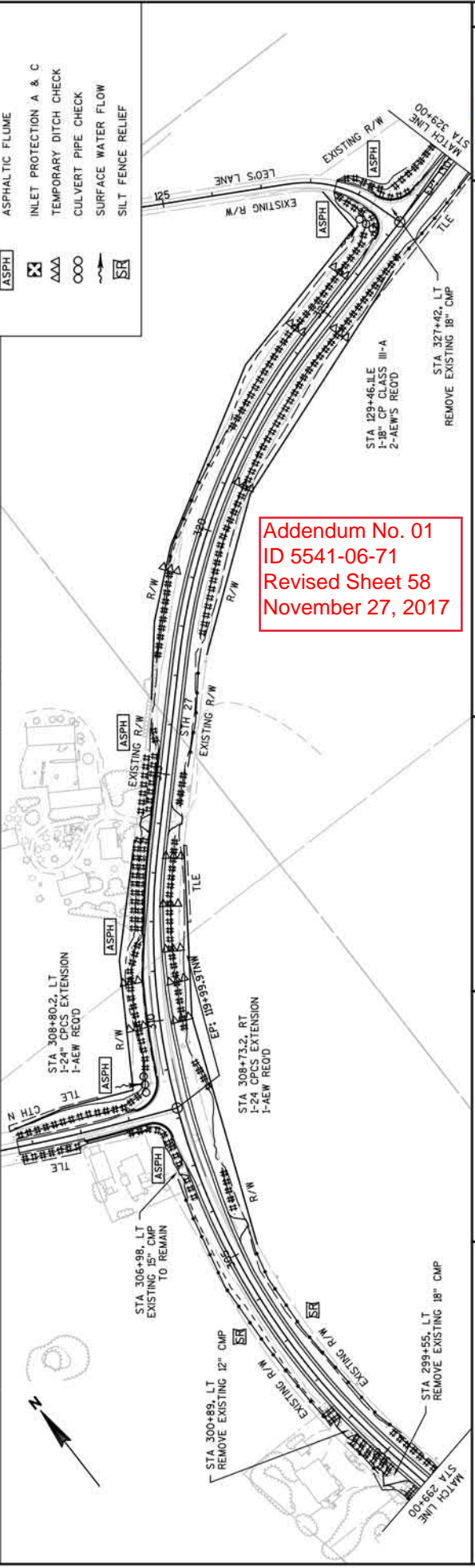
LEGEND	
#####	EROSION MAT CLASS I, TYPE B
—	SILT FENCE
- - -	SLOPE INTERCEPT
ASPH	ASPHALTIC FLUME
⊠	INLET PROTECTION A & C
Δ	TEMPORARY DITCH CHECK
○	CULVERT PIPE CHECK
~	SURFACE WATER FLOW
SR	SILT FENCE RELIEF



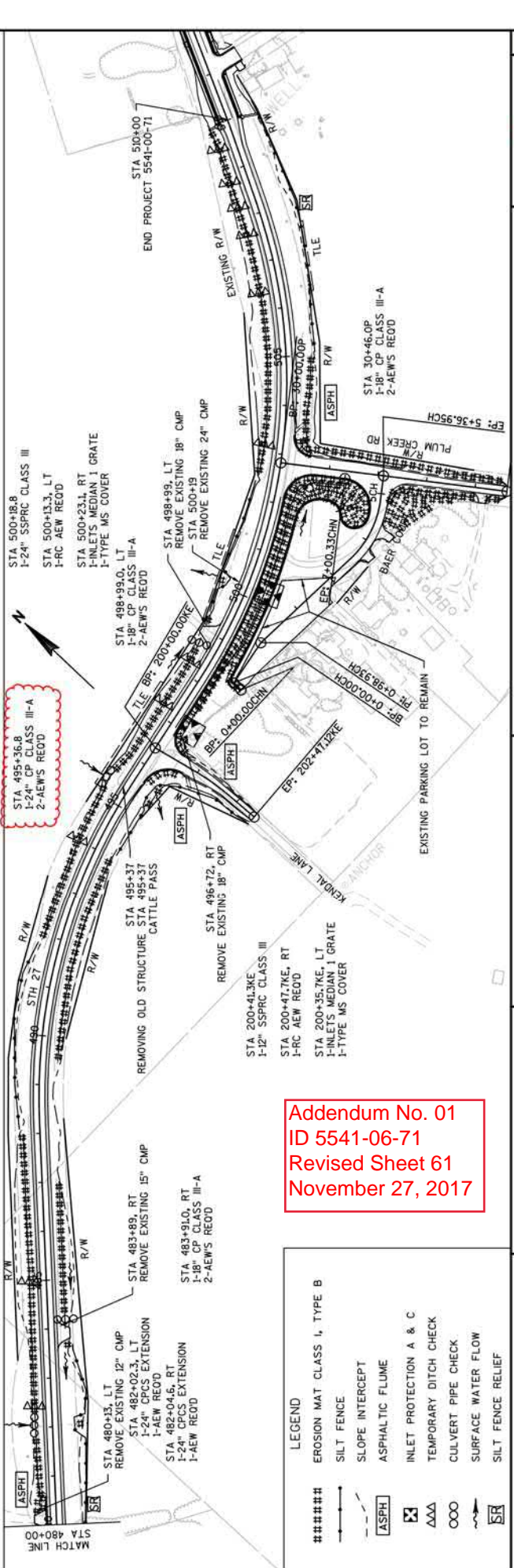
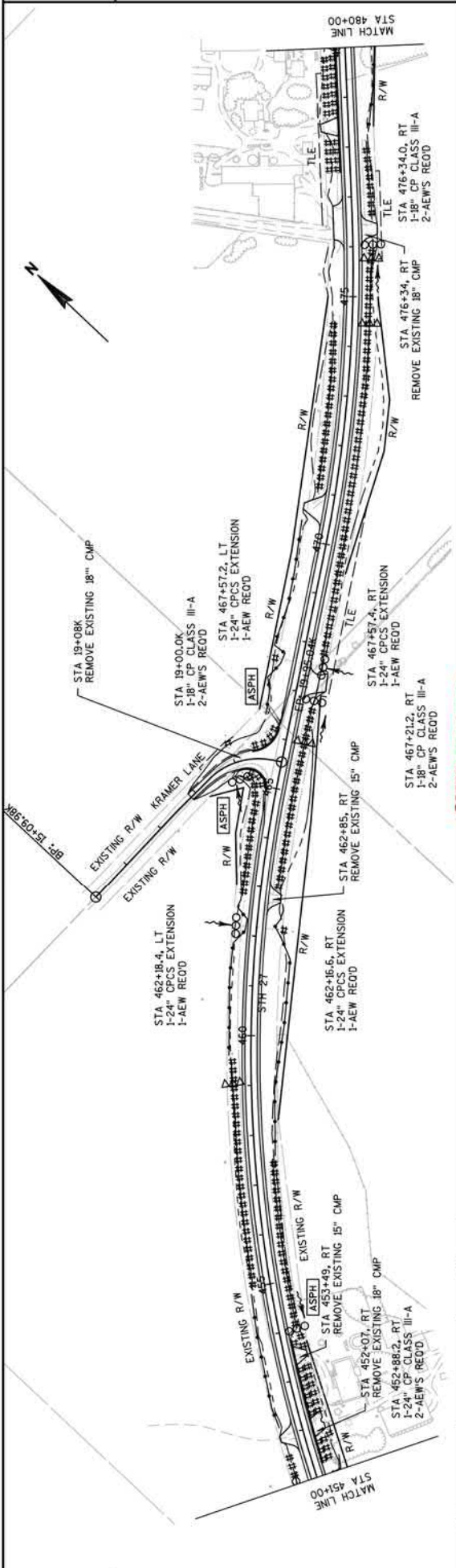
LEGEND

#####	EROSION MAT CLASS I, TYPE B
- - - - -	SILT FENCE
-----	SLOPE INTERCEPT
[ASPH]	ASPHALTIC FLUME
[X]	INLET PROTECTION A & C
AAA	TEMPORARY DITCH CHECK
OOO	CULVERT PIPE CHECK
~ ~ ~ ~ ~	SURFACE WATER FLOW
[SR]	SILT FENCE RELIEF

Addendum No. 01
 ID 5541-06-71
 Revised Sheet 58
 November 27, 2017



PROJECT NO: 5541-06-71 <small>FILE NAME : P:\905\93\00093155\CADD\SHEETPLAN\EROSION CONTROL\022001_EC.DWG LAYOUT NAME - 022005</small>	COUNTY: CRAWFORD <small>PLOT DATE : 11/20/2017 8:50 AM</small>	EROSION CONTROL <small>PLOT BY : BOBBY MAXWELL</small>	SHEET 58 <small>PLOT SCALE : 1:1 IN:200 FT</small>
---	---	---	---



Addendum No. 01
 ID 5541-06-71
 Revised Sheet 61
 November 27, 2017

LEGEND	
#####	EROSION MAT CLASS I, TYPE B
---	SILT FENCE
- - -	SLOPE INTERCEPT
[ASPH]	ASPHALTIC FLUME
⊗	INLET PROTECTION A & C
△△△	TEMPORARY DITCH CHECK
○○○	CULVERT PIPE CHECK
~	SURFACE WATER FLOW
SR	SILT FENCE RELIEF

Addendum No. 01
ID 5541-06-71/72
Revised Sheet 158
November 27, 2017

CULVERT SUMMARY

CATEGORY	STATION	LOCATION	INVERT ELEV.	THICKNESS		520.3318 CULVERT PIPE CLASS III-A 18-INCH	521.3124 CULVERT PIPE CORRUGATED STEEL 24-INCH	520.3324 CULVERT PIPE CLASS III-B 24-INCH	520.090.04 PIPE ARCH CORRUGATED STEEL 72x54-INCH	520.1018 APRON ENDWALLS FOR CULVERT PIPE 18-INCH	520.1024 APRON ENDWALLS FOR CULVERT PIPE 24-INCH	521.1024 APRON ENDWALLS FOR CULVERT PIPE 24-INCH	SPV.0060.13 APRON ENDWALLS FOR PIPE STEEL 72x54-INCH	633.5200 MARKERS FOR CULVERT END	650.6000 CONSTRUCTION STAKING CULVERTS
				STEEL INCHES	ALUMINUM INCHES										
0010	26+62.4	39.3 RT	1160.24	0.064			14								
	26+66.6	39.9 LT	1164.11	0.064			14								
	31+30.4	45.2 RT	1169.37	0.064			38								
	31+67.8	39.9 RT	1171.17	0.064											
	31+27.0	32.9 LT	1173.98	0.064			44								
	31+70.3	32.0 LT	1175.20	0.064											
	39+26.5	32.8 LT	1176.59	0.064			34								
	39+59.8	32.1 LT	1176.41	0.064											
	40+70.4	49.8 RT	1188.90	0.064			14								
	40+75.8	28.3 LT	1175.09	0.064			4								
	48+26.9	38.0 LT	1182.44	0.064			44								
	48+72.4	37.9 LT	1182.95	0.064											
	58+43.8	32.8 RT	1186.51	0.064			40								
	59+52.2	53.7 RT	1186.00	0.064											
	59+74.9	52.7 RT	1187.74	0.064			36								
	59+46.3	52.7 RT	1179.04	0.064			12								
	59+74.3	32.2 LT	1179.87	0.064			54								
	60+27.1	32.8 LT	1179.58	0.064											
	69+50.8	74.5 RT	1183.21	0.064											
	66+71.4	66.8 LT	1171.64	0.064											
	78+08.5	70.2 LT	1185.55	0.064											
	78+35.8	51.0 RT	1188.31	0.064			58								
	78+90.7	38.3 RT	1201.92	0.064											
	90+27.4	44.6 LT	1187.01	0.064			34								
	90+59.8	47.2 LT	1185.79	0.064											
	92+66.8	32.7 RT	1182.14	0.064											
	92+67.0	50.7 LT	1176.48	0.064			84								
	94+07.6	35.3 RT	1183.61	0.064			62								
	94+68.7	34.8 RT	1183.51	0.064			8								
	100+73.3	33.4 LT	1188.69	0.064											
	100+69.2	41.2 RT	1185.12	0.064											
	105+21.3	28.0 RT	1183.94	0.064											
	105+26.1	57.6 LT	1187.39	0.064			4								
	108+87.3	45.6 LT	1195.30	0.064			38								
	109+24.4	43.7 LT	1196.42	0.064											
	119+20.0	32.7 RT	1189.98	0.064			54								
	119+22.8	33.4 RT	1189.68	0.064											
	121+07.1	29.5 RT	1188.66	0.064											
	121+07.6	36.1 LT	1186.59	0.064			12								
	127+47.9	31.4 LT	1194.38	0.064			54								
	131+11.0	36.6 LT	1187.66	0.064											
	131+04.4	50.8 RT	1180.26	0.064			82								
	142+83.8	49.8 LT	1187.00	0.064											
	142+83.8	59.1 RT	1184.25	0.064			110								
	148+19.0	29.9 RT	1193.58	0.064											
	148+23.3	44.4 LT	1189.47	0.064			6								
	151+00.7	33.4 RT	1193.88	0.064			12								
	151+45.8	33.6 RT	1193.03	0.064			46								
	154+44.2	42.4 LT	1187.39	0.064			22								
	154+42.5	44.2 RT	1185.42	0.064											
	160+68.3	38.7 LT	1206.46	0.064			16								
	161+06.9	41.9 LT	1206.69	0.064			40								
	19+22.1L	27.6 RT	1210.03	0.064			36								
	18+87.1L	24.1 RT	1209.12	0.064											
	4+50.0ME	20.1 LT	1189.07	0.064			44								
	4+50.0ME	23.1 RT	1188.32	0.064											
	87+00.0W	50.3 RT	1172.88	0.064	0.075										
	87+00.0W	22.8 LT	1180.43	0.064			74								
	165+60.6	38.3 RT	1206.83	0.064			100								
	165+84.3	61.6 LT	1204.21	0.064											
	169+96.3	33.0 LT	1211.21	0.064			44								
	170+38.3	34.7 LT	1210.25	0.064											
	187+17.5	35.6 RT	1187.40	0.064			6								
	187+17.7	29.5 LT	1185.37	0.064			8								

CONTINUED ON NEXT PAGE

CONTINUED FROM PREVIOUS PAGE

CULVERT SUMMARY

CATEGORY	STATION	LOCATION	INVERT ELEV.	THICKNESS STEEL ALUMINUM INCHES	521.3124 CULVERT PIPE CLASS III-A 18-INCH	521.3124 CULVERT PIPE CLASS III-A 24-INCH	520.3524 CULVERT PIPE CLASS III-B 24-INCH	SPV 0090 04 PIPE ARCH CORRUGATED STEEL 72X54-INCH	520.1018 APRON ENDWALLS FOR CULVERT PIPE 18-INCH	520.1024 APRON ENDWALLS FOR CULVERT PIPE 24-INCH	521.1024 APRON ENDWALLS FOR CULVERT PIPE 24-INCH	SPV 0090 13 APRON ENDWALLS FOR PIPE ARCH 72X54-INCH	633.5200 MARKERS END CULVERT PIPE	650.0000 CONSTRUCTION STAKING CULVERTS EACH
					LF	LF	LF	LF	EACH	EACH	EACH	EACH	EACH	EACH
	192+13.8	38.7 LT	1189.51	0.064	44									
	192+56.3	38.6 LT	1189.75											
	206+37.6	38.0 LT	1185.89	0.064										
	206+31.4	41.2 RT	1181.20	0.064										
	216+77.9	33.1 LT	1178.51	0.064										
	216+78.4	33.2 RT	1173.66	0.064										
	225+69.0	32.3 RT	1170.90	0.064	32									
	225+69.0	30.5 LT	1166.17			70								
	229+44.3	38.9 RT	1163.50											
	240+03.8	28.7 LT	1168.10	0.064										
	240+02.2	35.6 RT	1165.91	0.064										
	247+39.7	45.6 RT	1150.50	0.064										
	247+50.1	71.8 LT	1141.53	0.064										
	248+47.6	47.9 LT	1152.31	0.064	34									
	248+80.3	40.2 LT	1154.04											
	253+10.4	31.2 LT	1163.12			84								
	253+09.8	51.9 RT	1159.31											
	253+34.1	41.0 LT	1165.10	0.064	56									
	253+91.0	34.2 LT	1167.73											
	300+67.1G	30.7 RT	1178.25	0.064	42									
	81+02.2G	25.0 RT	1177.74											
	264+21.9	44.0 RT	1177.13	0.064										
	264+18.9	44.0 LT	1175.21	0.064										
	264+05.2	45.8 RT	1179.50	0.064	70									
	265+34.0	35.7 RT	1181.48											
	270+46.2	34.2 LT	1184.46	0.064	46									
	270+02.4	34.3 LT	1184.09											
	272+30.8	29.2 LT	1183.45											
	272+27.7	42.2 RT	1181.76			72								
	281+04.2	31.9 LT	1189.25	0.064										
	281+05.9	39.9 RT	1206.74	0.064										
	291+69.8	33.1 LT	1201.62	0.064										
	308+90.2	43.9 LT	1221.06	0.064										
	308+73.2	53.9 RT	1213.87	0.064										
	120+46.2LE	32.4 RT	1221.45	0.064										
	120+46.0LE	36.6 LT	1220.94											
	329+37.0	31.6 LT	1219.48	0.064										
	329+37.0	38.9 RT	1217.25	0.064										
	333+75.0	33.6 RT	1220.52	0.064	56									
	334+29.6	33.6 RT	1220.80											
	339+07.7	29.8 RT	1228.12	0.064										
	339+06.1	53.5 LT	1221.90	0.064										
	340+76.3	33.9 LT	1232.62	0.064	42									
	341+17.6	34.6 LT	1233.31											
	349+69.8	34.4 LT	1239.44	0.064										
	350+25.4	34.2 LT	1239.21											
	370+88.6	36.4 RT	1233.49	0.064	178									
	372+41.7	32.5 RT	1232.70											
	371+22.9	32.7 LT	1230.57	0.064	52									
	371+75.9	32.6 LT	1230.02											
	380+64.7	27.5 RT	1223.86	0.064										
	380+66.7	40.2 LT	1220.15	0.064										
	179+54.9E	38.1 RT	1219.09	0.064	84									
	179+48.6E	45.3 LT	1219.50											
	406+38.3	33.7 LT	1220.30	0.064										
	406+36.5	47.6 RT	1217.15	0.064										
	410+87.9	29.9 RT	1219.30	0.064										
	415+87.9	34.5 LT	1219.03	0.064										
	415+86.9	34.5 LT	1219.03	0.064	46									
	415+85.2	35.9 LT	1219.71											
	417+85.0	42.8 LT	1215.99	0.064										
	428+38.1	44.0 LT	1209.51	0.064										
	428+38.4	44.0 RT	1205.46	0.064										

CONTINUED ON NEXT PAGE

Addendum No. 01
ID 5541-06-71/72
Revised Sheet 159
November 27, 2017

CONTINUED FROM PREVIOUS PAGE

CULVERT SUMMARY

CATEGORY	STATION	LOCATION	INVERT ELEV.	THICKNESS STEEL INCHES	THICKNESS ALUMINUM INCHES	520 3318 CULVERT PIPE CLASS III-A 18-INCH	521 3124 CULVERT PIPE CORRUGATED STEEL 24-INCH	520 3324 CULVERT PIPE CLASS III-A 24-INCH	520 3524 CULVERT PIPE CLASS III-B 24-INCH	SPV 0900 04 PIPE ARCH CORRUGATED STEEL 72X84-INCH	520 1018 APRON ENDWALLS FOR CULVERT PIPE 18-INCH	520 1024 APRON ENDWALLS FOR CULVERT PIPE 24-INCH	521 1024 APRON ENDWALLS FOR CULVERT PIPE 24-INCH	SPV 0060 13 APRON ENDWALLS FOR PIPE ARCH STEEL 72X84-INCH	633 5200 MARKERS FOR CULVERT END	650 6000 CONSTRUCTION STAKING CULVERTS
						LF	LF	LF	LF	LF	EACH	EACH	EACH	EACH	EACH	EACH
	429+04.4	133.6 RT	1189.76	0.064		28										
	440+30.4	28.5 RT	1206.07	0.064		4										
	440+32.7	48.9 LT	1200.42	0.064		14										
	442+92.5	33.6 LT	1209.39	0.064	0.060	44										
	443+35.6	34.3 LT	1209.72													
	202+60.8C	44.7 RT	1208.41	0.064	0.060	100										
	202+53.9C	55.2 LT	1207.91													
	450+88.2	32.4 LT	1206.43	0.064	0.075	6										
	451+85.8	47.2 RT	1203.68	0.064			232									
	453+90.4	36.7 RT	1206.89													
	462+18.4	31.6 LT	1206.92	0.064		8										
	462+16.6	44.3 RT	1201.11	0.064		14										
	19+00.0K	23.1 RT	1205.14	0.064	0.060	56										
	19+00.0K	32.4 LT	1222.92													
	466+97.9	39.6 RT	1203.30	0.064	0.060	48										
	467+44.4	40.2 RT	1203.60													
	467+57.4	41.8 LT	1206.32	0.064		6										
	469+51.7	41.8 LT	1206.32	0.064		18										
	476+14.7	39.6 RT	1200.48	0.064	0.060	42										
	476+54.6	39.1 RT	1200.17													
	482+02.3	27.0 LT	1197.17	0.064		12										
	482+04.6	50.5 RT	1190.70	0.064		4										
	483+75.0	37.1 RT	1197.84	0.064	0.060	34										
	484+07.8	38.0 RT	1198.87													
	485+37.6	35.3 LT	1198.07				76									
	486+35.9	40.5 RT	1193.79													
	488+82.6	40.8 LT	1195.19	0.064	0.060	32										
	489+15.4	43.6 LT	1194.46													
	30+47.8P	38.5 RT	1196.52	0.064	0.060	84										
	30+46.7P	44.1 LT	1196.29													
						2112	660	144	62	80	18	58	4	160	74	
TOTAL PROJECT 5541-06-71																

*** ORIGINAL QUANTITIES LISTED ELSEWHERE - LENGTHS AND INVERTS ARE BASED OFF THE ASSUMPTION THE 24-INCH CROSS DRAINS CLASS III-A & CLASS III-B WILL BE CONCRETE AND MAY HAVE TO BE ADJUSTED IF ANOTHER MATERIAL IS USED

STORM SEWER ENDWALLS

CATEGORY	STRUCTURE NO.	STATION	LOCATION	INVERT ELEV.	522 1072 APRON ENDWALLS FOR CULVERT PIPE REINFORCED CONCRETE 12-INCH	322 1024 APRON ENDWALLS FOR CULVERT PIPE REINFORCED CONCRETE 24-INCH	633 5200 MARKERS FOR CULVERT END	665 4000 CONSTRUCTION STAKING SEWER	JOINT TIES
					EACH	EACH	EACH	EACH	EACH
0010		200+47.7K	64.6 RT	1194.75	1	1	1	0	6
0010		500+13.3	44.8 LT	1190.40	1	1	1	0	6
					1	1	2	0	12
TOTAL PROJECT 5541-06-71									
0010		508+96.57	55.31 RT	1188.11	1	1	1	1	6
0010		278+32.66WA	12.13 LT	1201.62	1	1	1	1	6
					1	1	2	2	12
TOTAL PROJECT 5541-06-72									

NOTE: THE LAST THREE SECTIONS OF PIPE AND APRON ENDWALL ADDITIONAL QUANTITIES LISTED ELSEWHERE *** NON-BID ITEM, FOR INFORMATION ONLY

Addendum No. 01
ID 5541-06-71/72
Revised Sheet 160
November 27, 2017

Addendum No. 01
 ID 5541-06-71/72
 Revised Sheet 164
 November 27, 2017

PIPE UNDERDRAIN SUMMARY

612.0100 PIPE UNDERDRAIN 9-INCH	612.0206 UNDERDRAIN UNPERFORATED 6-INCH	612.0606 APRON ENDWALLS FOR UNDERDRAIN REINFORCED CONCRETE 6-INCH	633.5200 MARKERS CULVERT END
LF	LF	EACH	EACH
200	8	1	1
98	8	1	1
36	—	—	—
26	—	—	—
130	—	—	—
284	—	—	—
240	—	—	—
328	—	—	—
234	—	—	—
598	—	—	—
321	—	—	—
322	—	—	—
390	—	—	—
100	—	—	—
24	—	—	—
236	—	—	—
193	—	—	—
314	—	—	—
282	—	—	—
198	—	—	—
198	—	—	—
207	—	—	—
266	—	—	—
65	—	—	—
29	—	—	—
115	—	—	—
193	—	—	—
192	—	—	—
172	—	—	—
142	—	—	—
190	—	—	—
130	—	—	—
6,986	32	4	4

** ADDITIONAL QUANTITIES LISTED ELSEWHERE

FENCE

616.0700 \$	616.0700 \$
SAFETY	FENCE
LF	LF
560	560
560	560
160	160
180	180

LANDMARK REFERENCE MONUMENTS

621.0100 LANDMARK REFERENCE MONUMENTS	621.0100 LANDMARK REFERENCE MONUMENTS
EACH	EACH
1	1
1	1

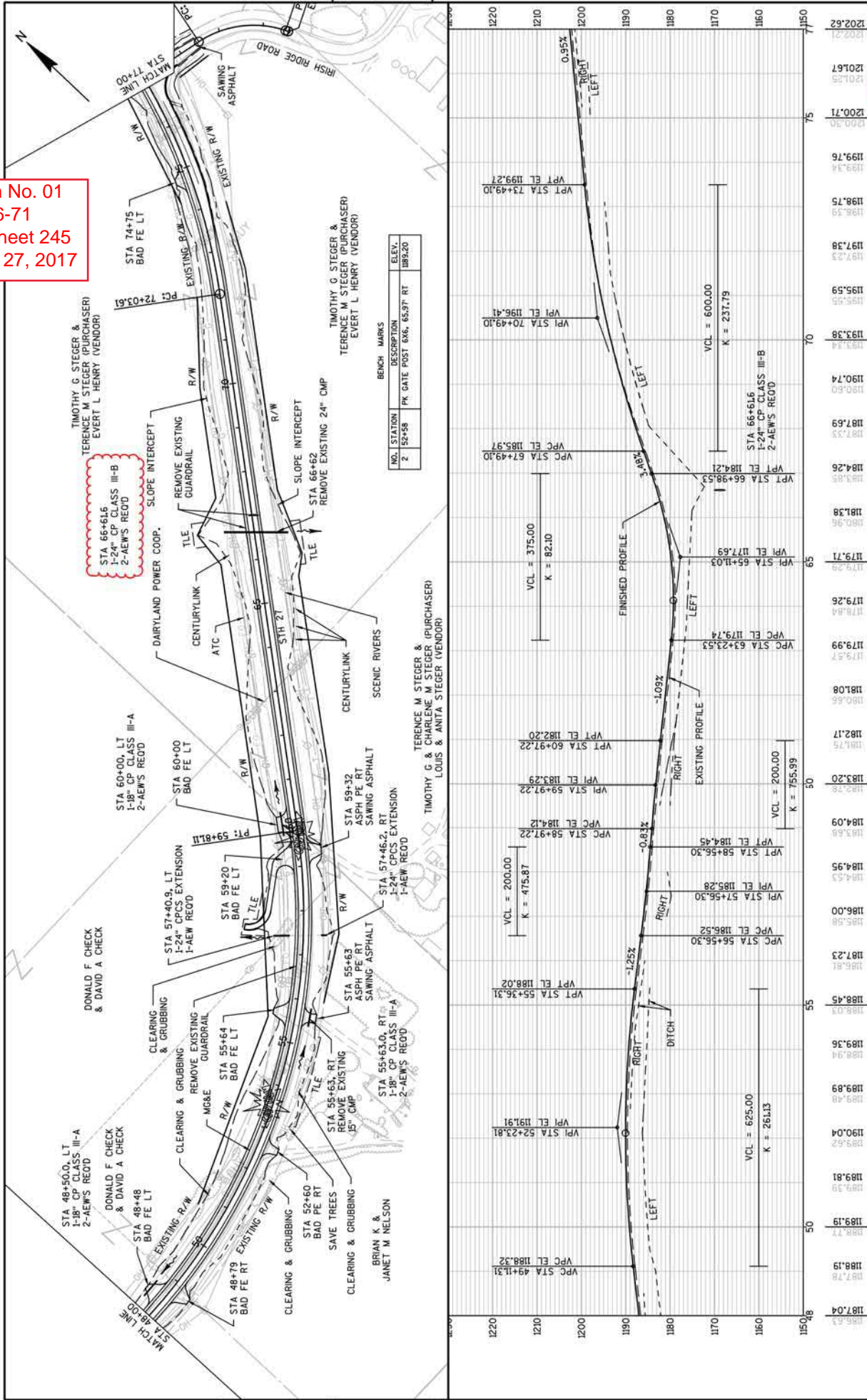
LANDMARK REFERENCE MONUMENTS

621.0100 LANDMARK REFERENCE MONUMENTS	621.0100 LANDMARK REFERENCE MONUMENTS
EACH	EACH
1	1

CATEGORY	STATION - STATION	LOCATION	625.0500 SALVAGED TOPSOIL		627.0200 MULCHING SY	629.0210 FERTILIZER TYPE B CWT	630.0120 SEEDING MIXTURE #20		630.0140 SEEDING MIXTURE #40		630.0200 SEEDING TEMPORARY		630.0300 SEEDING BORROW PIT	
			SY	LOCATION			LB	LB	LB	LB	LB	LB		
0010	21+25 - 98+80	LT	24.344	18.9	18.9	4.1	791	—	—	—	791	—	—	1,623
	41+25 - 42+80	RT	5.063	4.174	4.1	717	—	—	—	—	717	—	—	—
	49+10 - 77+15	RT	9.968	8.220	7.5	322	—	—	—	—	322	—	—	—
	7+35 - 16+30	RT	6.963	5.665	7.3	313	—	—	—	—	313	—	—	—
	50+15 - 62+20	RT	16.874	14.0	14.0	619	—	—	—	—	619	—	—	—
	11+40 - 139+25	RT	7.158	7.158	5.4	232	—	—	—	—	232	—	—	—
	139+70 - 163+25	RT	6.238	4.526	4.8	204	—	—	—	—	204	—	—	—
	0+50RVE - 3+00RVE	LT & RT	1.802	1.802	1.1	49	—	—	—	—	49	—	—	—
	80+90W - 90+10W	RT	2.745	2.432	2.1	89	—	—	—	—	89	—	—	—
	80+75W - 90+10W	LT	1.981	1.207	1.5	65	—	—	—	—	65	—	—	—
	163+50 - 257+15	RT	21.180	16.175	16.8	718	—	—	—	—	718	—	—	—
	163+50 - 308+05	LT	33.655	26.340	27.1	1,161	—	—	—	—	1,161	—	—	—
	257+50 - 290+50	RT	9.651	7.589	7.7	332	—	—	—	—	332	—	—	—
	290+80 - 352+65	RT	13.381	10.468	11.5	491	—	—	—	—	491	—	—	—
	352+90 - 360+85	RT	5.369	4.529	3.9	168	—	—	—	—	168	—	—	—
	308+35 - 327+20	LT	5.487	3.868	4.3	183	—	—	—	—	183	—	—	—
	327+50 - 399+20	LT	17.054	12.871	13.6	584	—	—	—	—	584	—	—	—
	362+25 - 379+55	RT	5.672	4.781	4.2	179	—	—	—	—	179	—	—	—
	151+60RVE - 156+75RVE	LT	1.572	1.476	1.4	59	—	—	—	—	59	—	—	—
	376+85 - 393+55	RT	3.450	2.576	2.7	117	—	—	—	—	117	—	—	—
	392+85 - 486+30	RT	25.625	21.048	21.3	914	—	—	—	—	914	—	—	—
	396+50 - 433+20	LT	9.184	7.431	7.4	318	—	—	—	—	318	—	—	—
	433+50 - 447+65	LT	4.781	3.747	3.8	164	—	—	—	—	164	—	—	—
	448+20 - 465+30	LT	3.393	2.185	3.1	131	—	—	—	—	131	—	—	—
	465+65 - 510+00	LT	10.991	8.489	9.0	395	—	—	—	—	395	—	—	—
	486+55 - 502+70	RT	2.543	820	1.6	70	—	—	—	—	70	—	—	—
	52+30P - 34+66P	RT	329	137	0.3	88	—	—	—	—	88	—	—	—
	50+06 - 510+00	RT	285	2,204	2.0	88	—	—	—	—	88	—	—	—
	UNDISTRIBUTED		46,058	36,669	36.3	1,568	—	—	—	—	1,568	—	—	—
	TOTAL PROJECT 5541-06-71		307,626	245,028	245.3	10,433	10,433	1,064	1,064	10,514	10,514	1,623	1,623	1,623

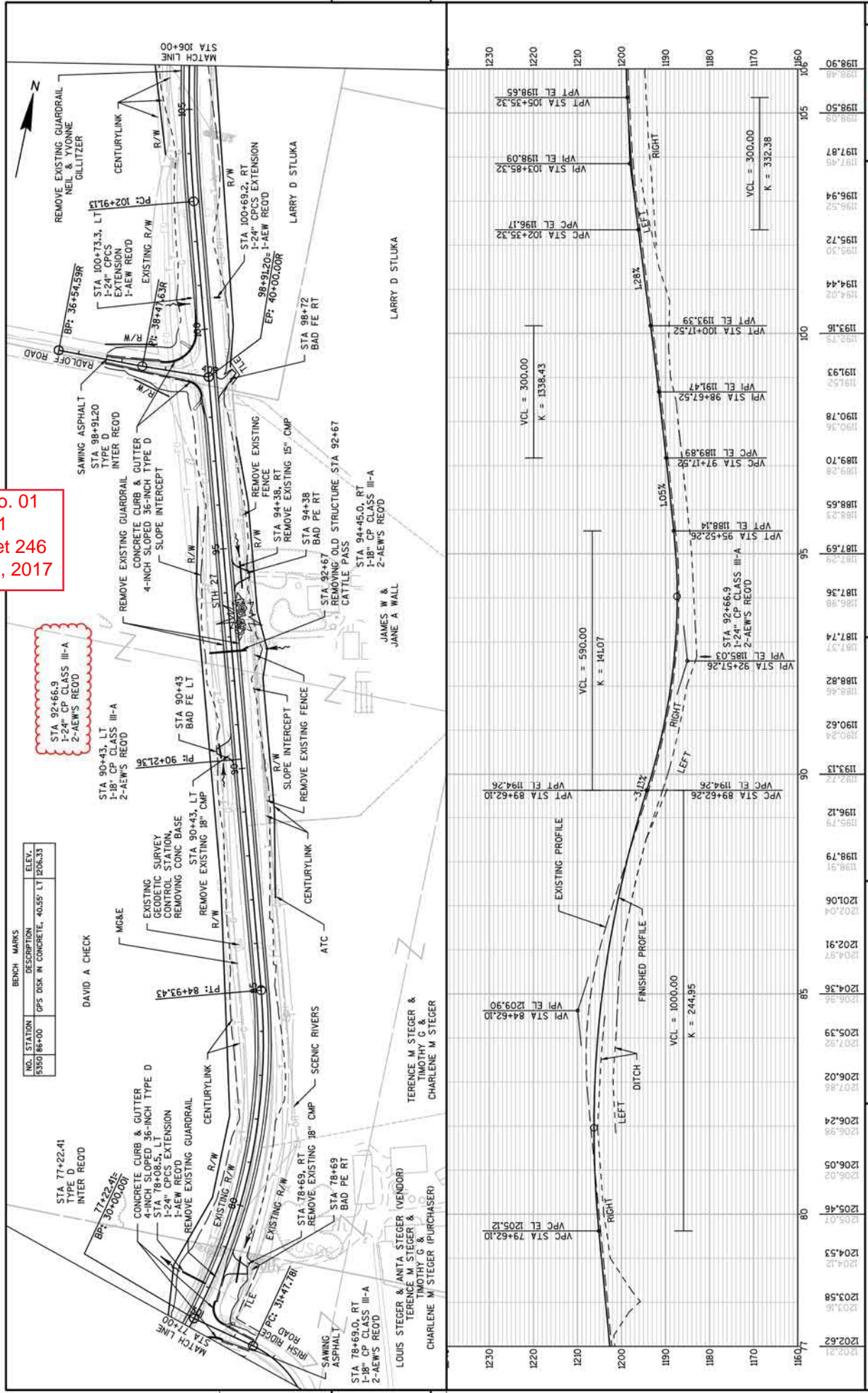
CATEGORY	STATION - STATION	LOCATION	625.0500 SALVAGED TOPSOIL		627.0200 MULCHING SY	629.0210 FERTILIZER TYPE B CWT	630.0120 SEEDING MIXTURE #20		630.0140 SEEDING MIXTURE #40		630.0200 SEEDING TEMPORARY		630.0300 SEEDING BORROW PIT	
			SY	LOCATION			LB	LB	LB	LB	LB	LB		
0010	509+00 - 511+00	RT	490	947	—	0.3	—	—	—	—	7	—	—	—
	510+00 - 520+00	LT	947	—	—	0.6	—	—	—	—	17	—	—	—
	511+25 - 520+10	RT	323	—	—	0.2	—	—	—	—	6	—	—	—
	520+40 - 530+25	RT	343	—	—	0.2	—	—	—	—	9	—	—	—
	530+25 - 540+25	LT	627	—	—	0.4	—	—	—	—	17	—	—	—
	530+50 - 540+20	RT	270	—	—	0.2	—	—	—	—	5	—	—	—
	278+25RVA - 278+45RVA	LT	8	—	—	0.0	—	—	—	—	0	—	—	—
	540+60 - 545+71	LT	420	—	—	0.3	—	—	—	—	8	—	—	—
	540+35 - 545+71	RT	355	—	—	0.2	—	—	—	—	6	—	—	—
	UNDISTRIBUTED		739	—	—	0.5	—	—	—	—	20	—	—	—
	TOTAL PROJECT 5541-06-72		4,433	0	0	2.8	20	80	80	120	120	0	0	0

Addendum No. 01
 ID 5541-06-71
 Revised Sheet 245
 November 27, 2017



FILE NAME : F:\905\93\00093156\CADD\SHEET\PLAN & PROFILE\050101_PP.DWG
 PLANS - 050102 (2)
 PLOT DATE : 11/20/2017 9:13 AM
 PLOT BY : BOBBY MAXWELL
 PLOT NAME :
 PLOT SCALE : 1" = 200'-XREF

Addendum No. 01
 ID 5541-06-71
 Revised Sheet 246
 November 27, 2017



NO. STATION	DESCRIPTION	ELEV.
9350 86+00	GPS 05K IN CONCRETE, 40.55' LT	1206.33

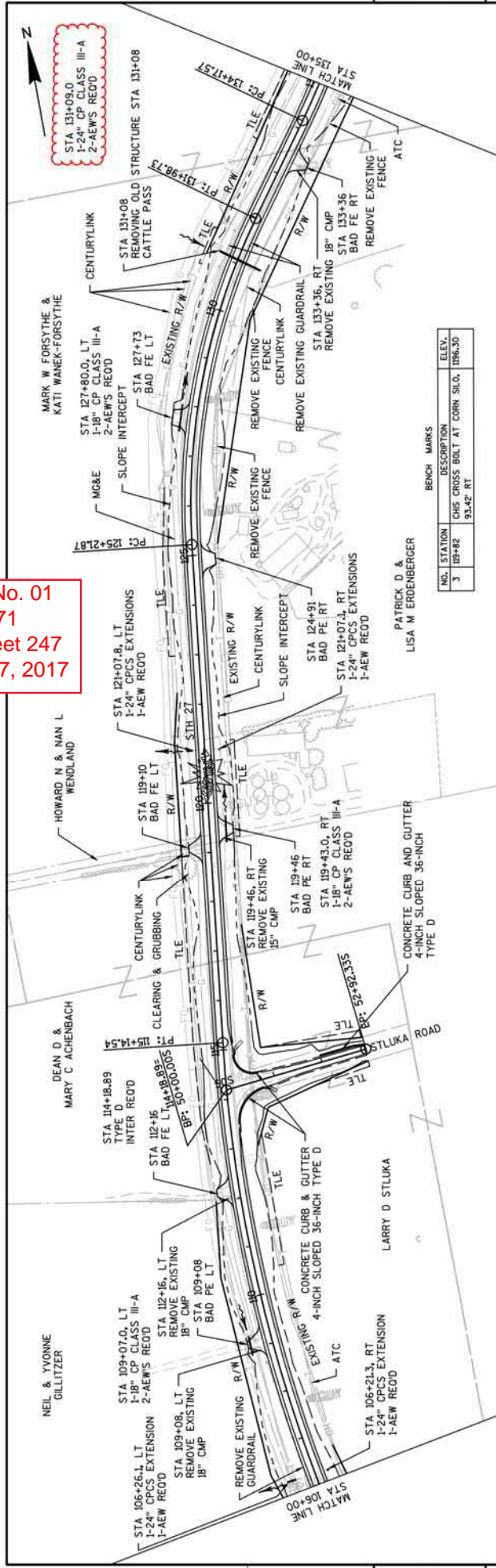
NO. STATION	DESCRIPTION	ELEV.
77+22.41	TYPE D INTER REOD	
77+22.41	TYPE D INTER REOD	
77+22.41	TYPE D INTER REOD	

NO. STATION	DESCRIPTION	ELEV.
92+43	1-24" CP CLASS III-A 2-AEW'S REOD	
90+43	1-24" CP CLASS III-A 2-AEW'S REOD	
90+43	1-24" CP CLASS III-A 2-AEW'S REOD	

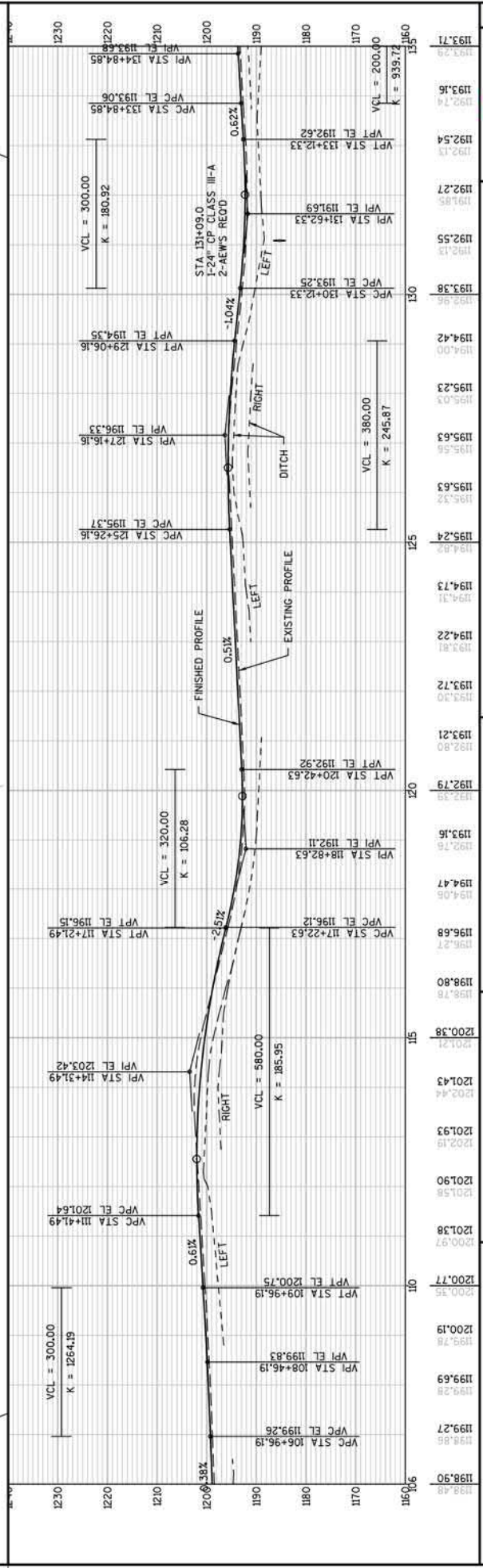
PROJECT NO: 5541-06-71
 COUNTY: CRAWFORD
 HWY: STH 27
 PLAN AND PROFILE: STH 27
 SHEET 246
 E

FILE NAME: F:\9305\93\00993156\ROAD\SHETS\PLAN\AM & PROFILES\050101_PP.DWG
 PLANS - 050103 (3)
 PLOT DATE: 11/20/2017 4:13 AM
 PLOT BY: BOBBY MAXWELL
 PLOT NAME: 1" = 200'-XREF
 WSDOT/CADD SHEET 44

Addendum No. 01
 ID 5541-06-71
 Revised Sheet 247
 November 27, 2017



NO.	STATION	DESCRIPTION	ELEV.
3	119+82	CHIS CROSS BOLT AT CORN. SLO.	1196.30
		93.42' RT	

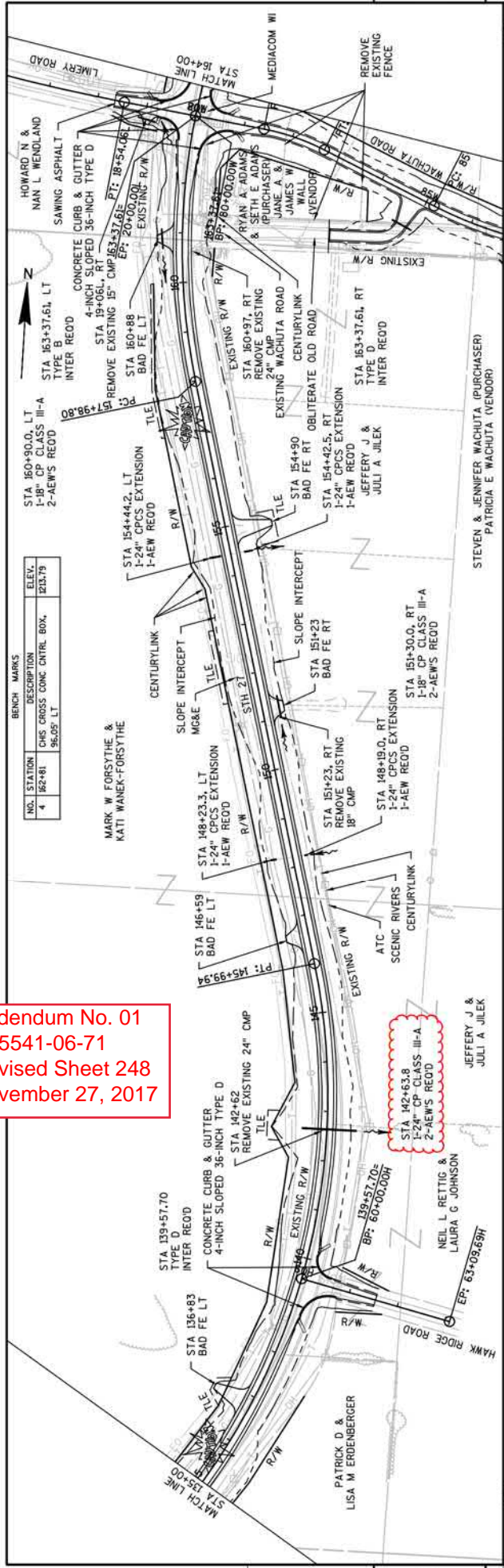


PROJECT NO: 5541-06-71
 COUNTY: CRAWFORD
 PLAN AND PROFILE: STH 27
 SHEET 247
 E

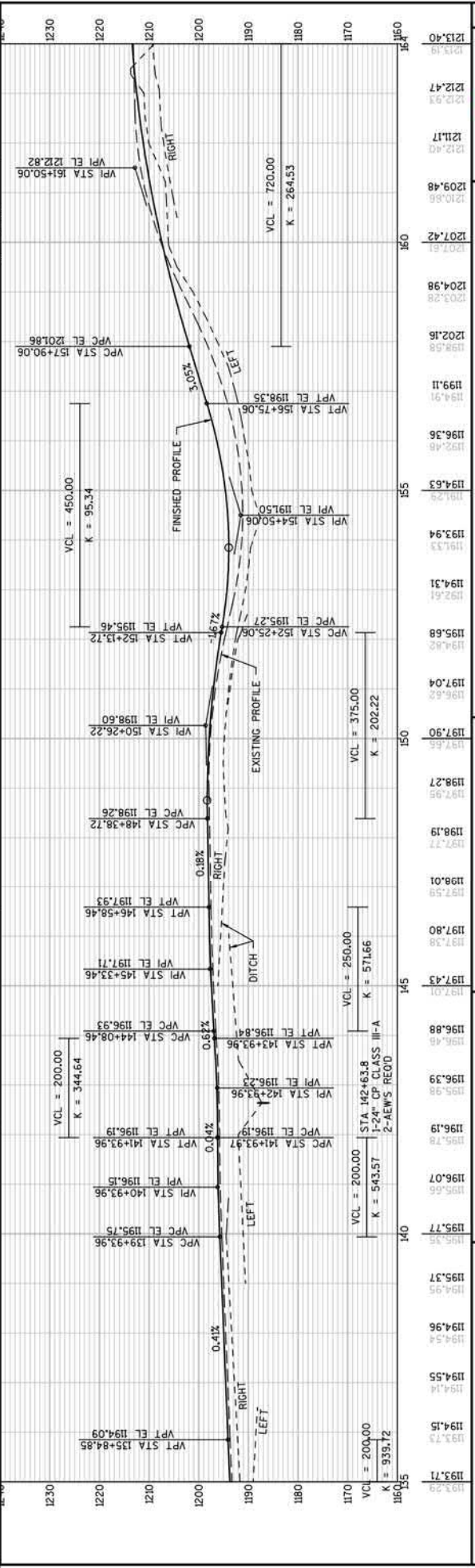
FILE NAME: F:\9305\93\00093156\ROAD\SHETS\PLAN\PLAN & PROFILES\050101_PP.DWG
 PLANS - 050104 (4)

PLOT DATE: 11/20/2017 9:13 AM
 PLOT BY: BOBBY MAXWELL
 PLOT NAME: 1" = 200'-REF
 WSDOT/CADD SHEET 44

Addendum No. 01
 ID 5541-06-71
 Revised Sheet 248
 November 27, 2017



NO.	STATION	DESCRIPTION	ELEV.
4	162+41	CHS CROSS CONC CNTRL BOX, 96.05' LT	121.79



STATION	ELEVATION
136+00	1173.29
137+00	1173.73
138+00	1174.15
139+00	1174.55
140+00	1174.96
141+00	1175.37
142+00	1175.78
143+00	1176.19
144+00	1176.59
145+00	1177.01
146+00	1177.43
147+00	1177.80
148+00	1178.19
149+00	1178.58
150+00	1178.90
151+00	1179.27
152+00	1179.62
153+00	1180.00
154+00	1180.31
155+00	1180.63
156+00	1180.94
157+00	1181.28
158+00	1181.59
159+00	1181.86
160+00	1182.17
161+00	1182.47
162+00	1182.73
163+00	1183.00

SHEET 248

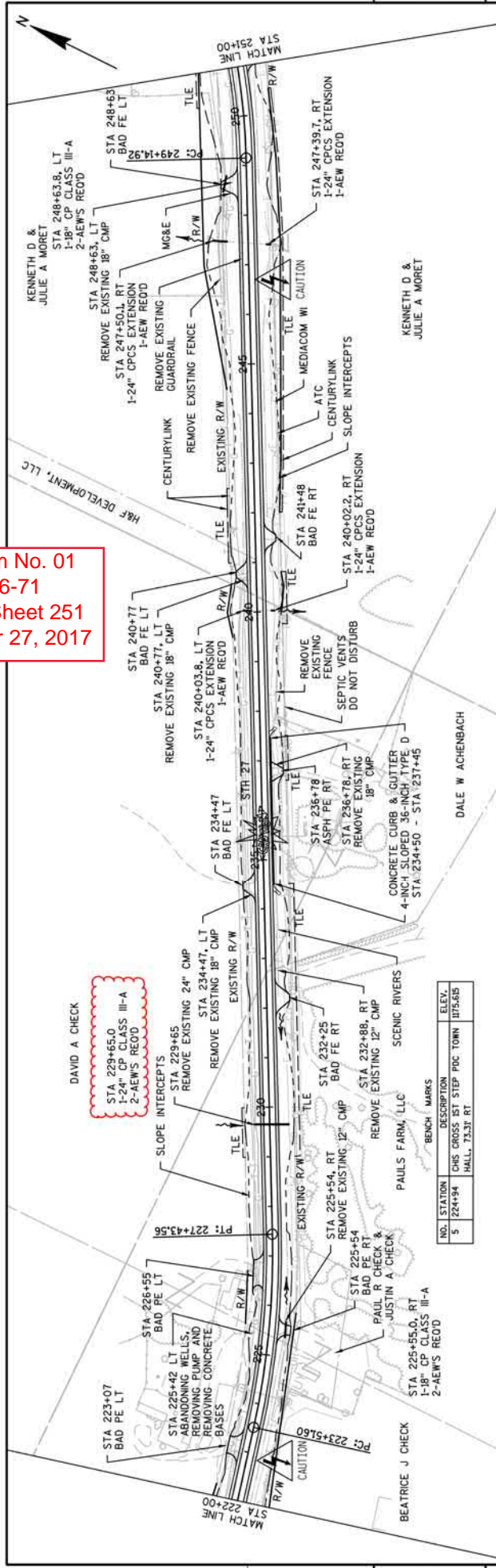
PLAN AND PROFILE: STH 27

COUNTY: CRAWFORD

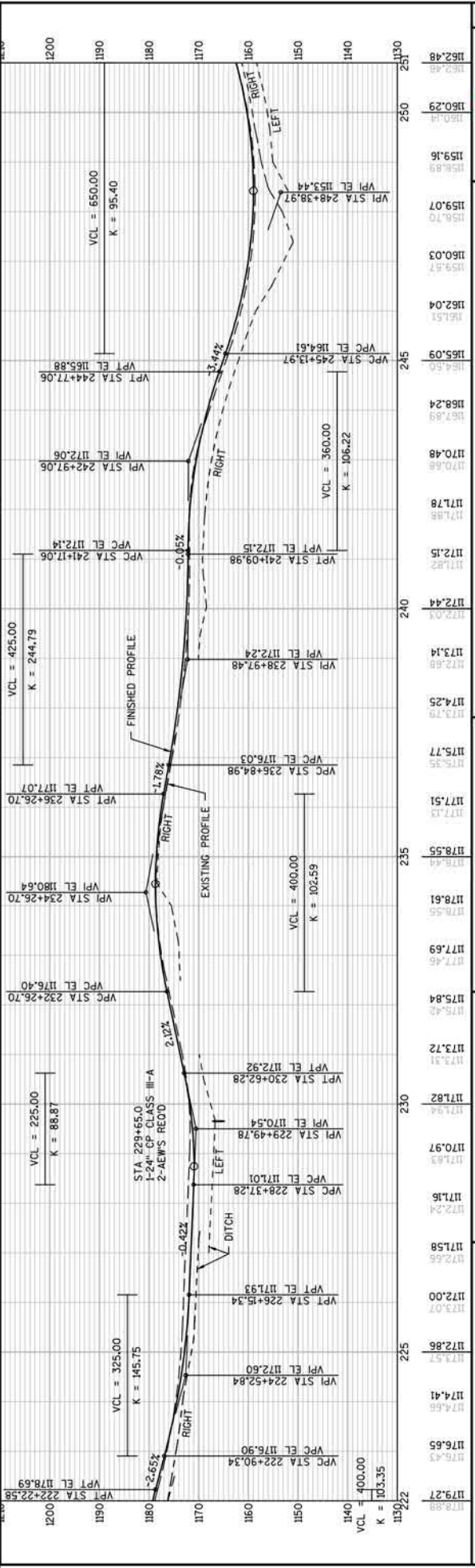
HWY: STH 27

PROJECT NO: 5541-06-71

Addendum No. 01
 ID 5541-06-71
 Revised Sheet 251
 November 27, 2017



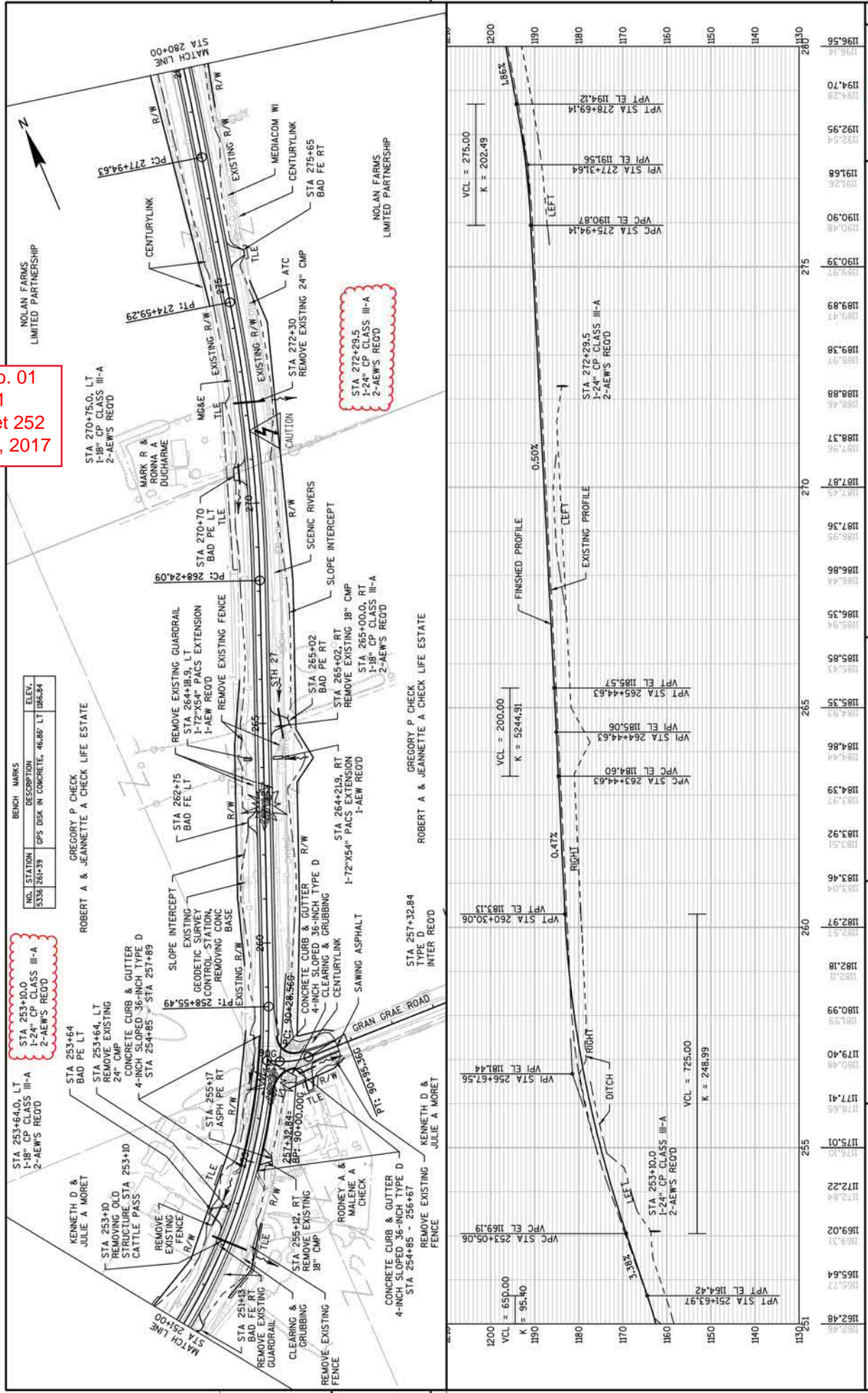
NO.	STATION	DESCRIPTION	ELEV.
5	224+34	CHS CROSS 1ST STEP PDC TOWN HALL, 75.31 RT	1175.65



PROJECT NO: 5541-06-71
 COUNTY: CRAWFORD
 HWY: STH 27
 PLAN AND PROFILE: STH 27
 SHEET 251
 E

FILE NAME : F:\9305\9300093156\CADD\SHEET\PLAN & PROFILE\050101.PP.DWG
 PLOT DATE : 11/20/2017 9:14 AM
 PLOT BY : BOBBY MAXWELL
 PLOT SCALE : 1" = 200'-REF
 WSDOT/CADD SHEET 44
 PLANS - 050108 (8)

Addendum No. 01
 ID 5541-06-71
 Revised Sheet 252
 November 27, 2017



NO. STATION	DESCRIPTION	ELEV.
5338.281+39	GPS DISK IN CONCRETE, 46.86' LT	1066.34

STATION	DESCRIPTION	ELEV.
1132.51	VPT STA 251+63.97	1162.48
1135.00	VPC STA 253+05.06	1165.64
1137.50	VPI STA 253+05.06	1169.02
1140.00	VPI STA 253+05.06	1172.22
1142.50	VPI STA 253+05.06	1175.01
1145.00	VPI STA 253+05.06	1177.41
1147.50	VPI STA 253+05.06	1179.40
1150.00	VPI STA 253+05.06	1180.99
1152.50	VPI STA 253+05.06	1182.18
1155.00	VPI STA 253+05.06	1182.97
1157.50	VPI STA 253+05.06	1183.46
1160.00	VPI STA 253+05.06	1183.92
1162.50	VPI STA 253+05.06	1184.39
1165.00	VPI STA 253+05.06	1184.86
1167.50	VPI STA 253+05.06	1185.35
1170.00	VPI STA 253+05.06	1185.85
1172.50	VPI STA 253+05.06	1186.35
1175.00	VPI STA 253+05.06	1186.86
1177.50	VPI STA 253+05.06	1187.36
1180.00	VPI STA 253+05.06	1187.87
1182.50	VPI STA 253+05.06	1188.37
1185.00	VPI STA 253+05.06	1188.88
1187.50	VPI STA 253+05.06	1189.38
1190.00	VPI STA 253+05.06	1189.89
1192.50	VPI STA 253+05.06	1190.39
1195.00	VPI STA 253+05.06	1190.90
1197.50	VPI STA 253+05.06	1191.68
1200.00	VPI STA 253+05.06	1192.95
1202.50	VPI STA 253+05.06	1194.70
1205.00	VPI STA 253+05.06	1196.56

PROJECT NO: 5541-06-71

HWY: STH 27

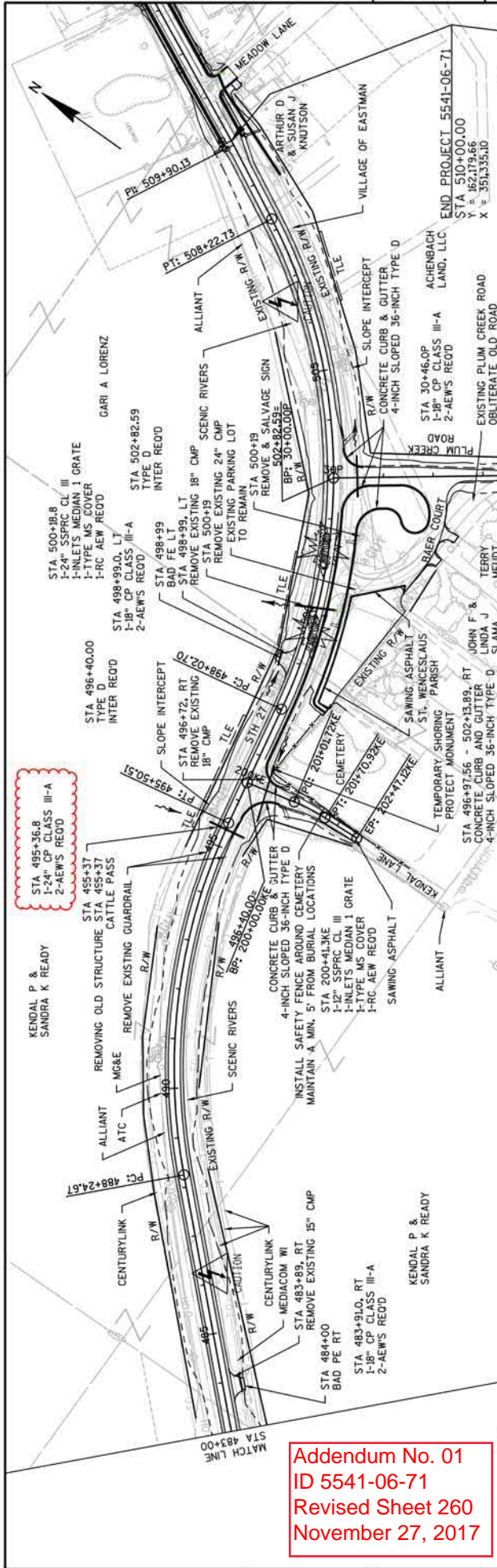
COUNTY: CRAWFORD

PLAN AND PROFILE: STH 27

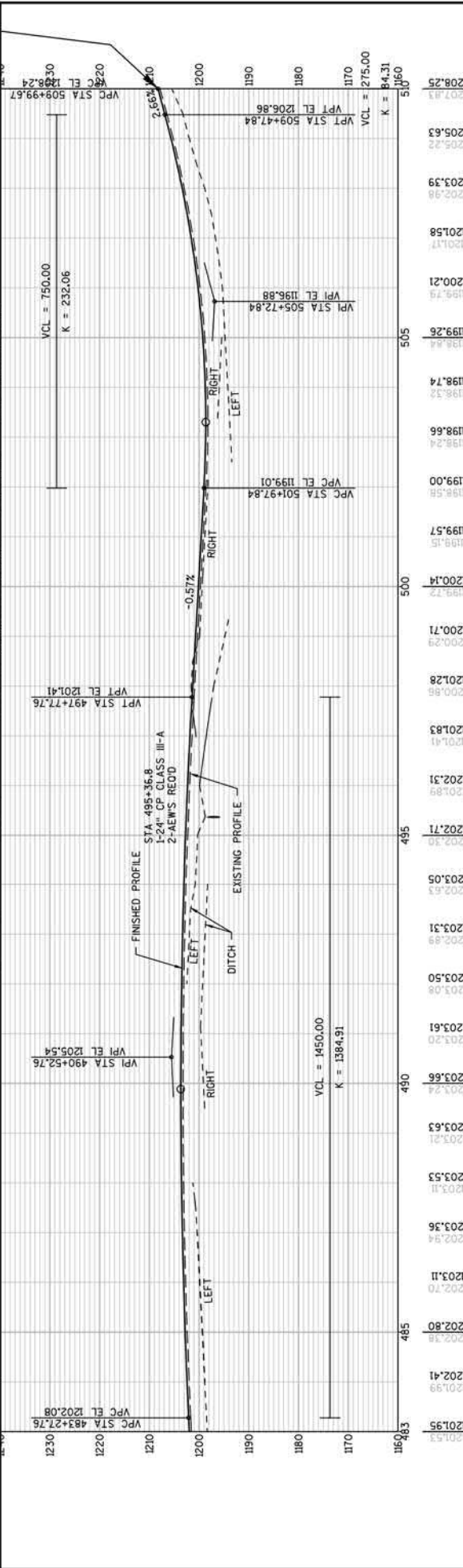
SHEET 252

WISDOT/CADD SHEET 44

FILE NAME: F:\9305\93\00093156\CADD\SHEETS\PLAN & PROFILES\050101.PP.DWG
 PLANS - 050109 69
 PLOT DATE: 11/20/2017 9:14 AM
 PLOT BY: BOBBI MAXWELL
 PLOT NAME: PLAN AND PROFILE: STH 27
 PLOT SCALE: 1" = 200'-XREF

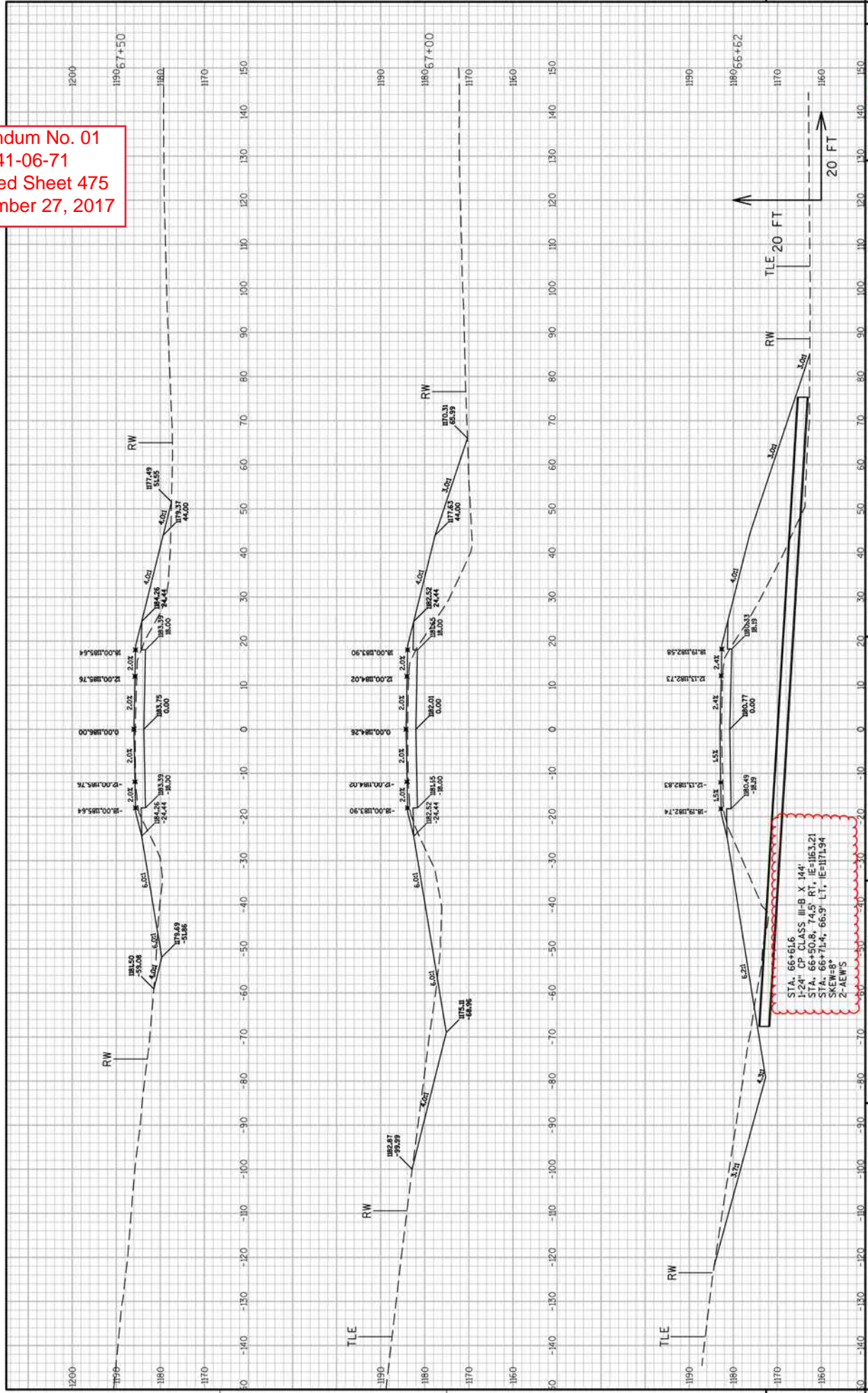


Addendum No. 01
 ID 5541-06-71
 Revised Sheet 260
 November 27, 2017

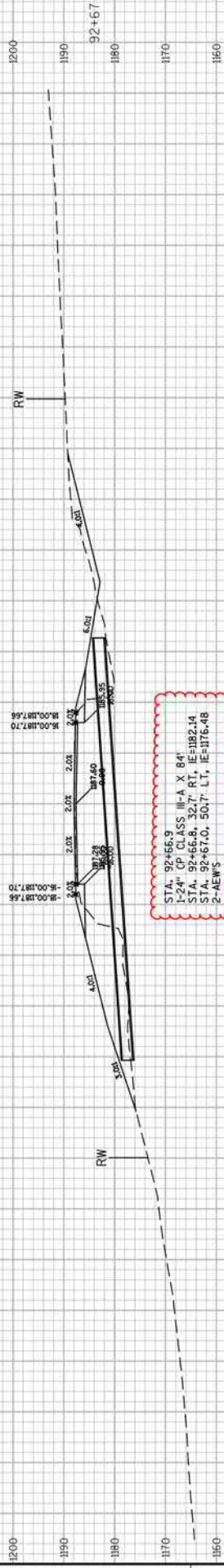


PROJECT NO: 5541-06-71	Hwy: STH 27	COUNTY: CRAWFORD	PLAN AND PROFILE: STH 27	SHEET 260
FILE NAME : F:\995\93\00993156\CADD\SHEET\PLAN & PROFILE\050101.PP.DWG		PLOT DATE : 11/20/2017 9:16 AM		PLOT NAME :
PLANS - 050117 (17)		PLOT BY : BOBBY MAXWELL		PLOT SCALE : 1" = 200'-XREF
				WSDOT/CADD SHEET 44

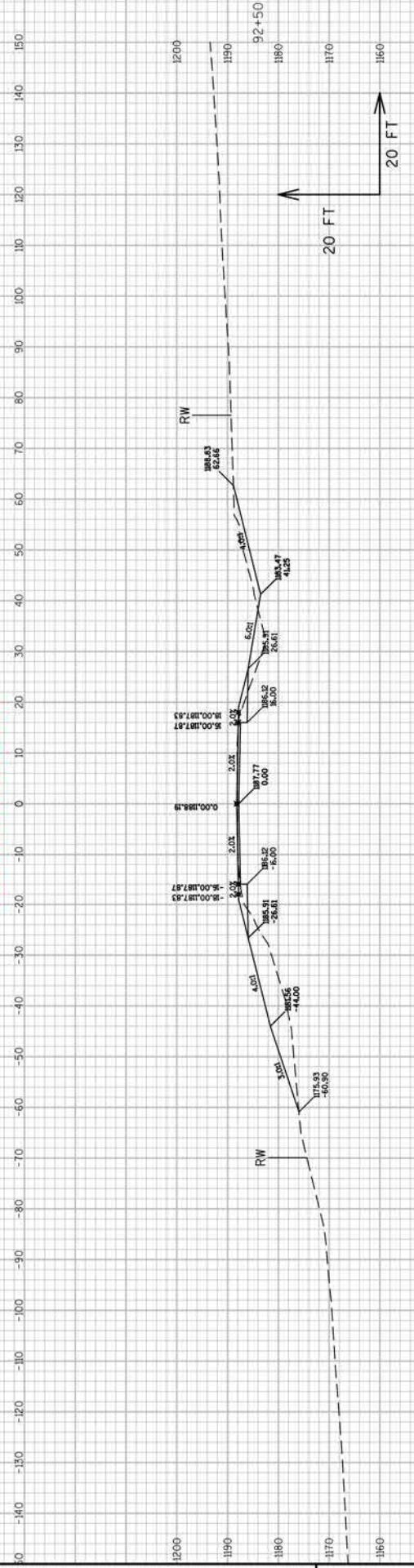
Addendum No. 01
 ID 5541-06-71
 Revised Sheet 475
 November 27, 2017



Addendum No. 01
 ID 5541-06-71
 Revised Sheet 497
 November 27, 2017



STA. 92+66.9
 1-24' CP CLASS III-A X B4
 STA. 92+66.9, 32.7' RT, IE=102.14
 STA. 92+67.0, 50.7' LT, IE=116.46
 2-AEWS

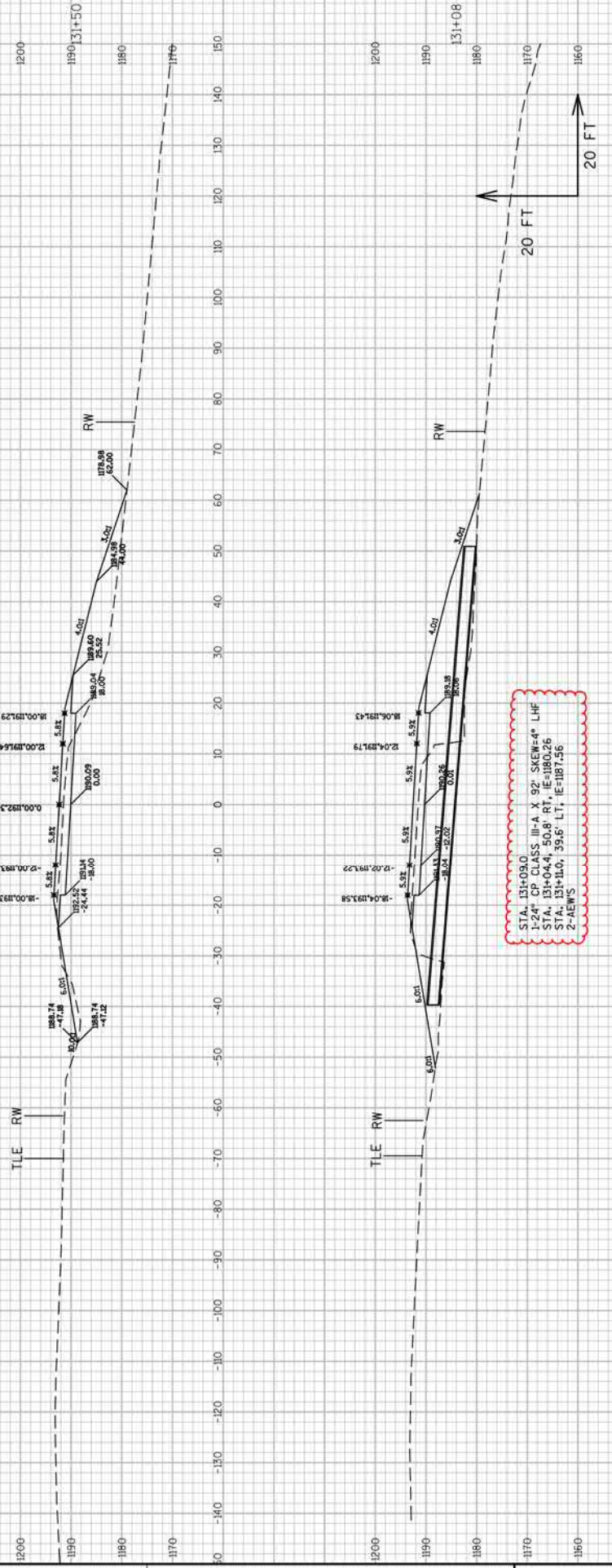


20 FT
 20 FT

9

9

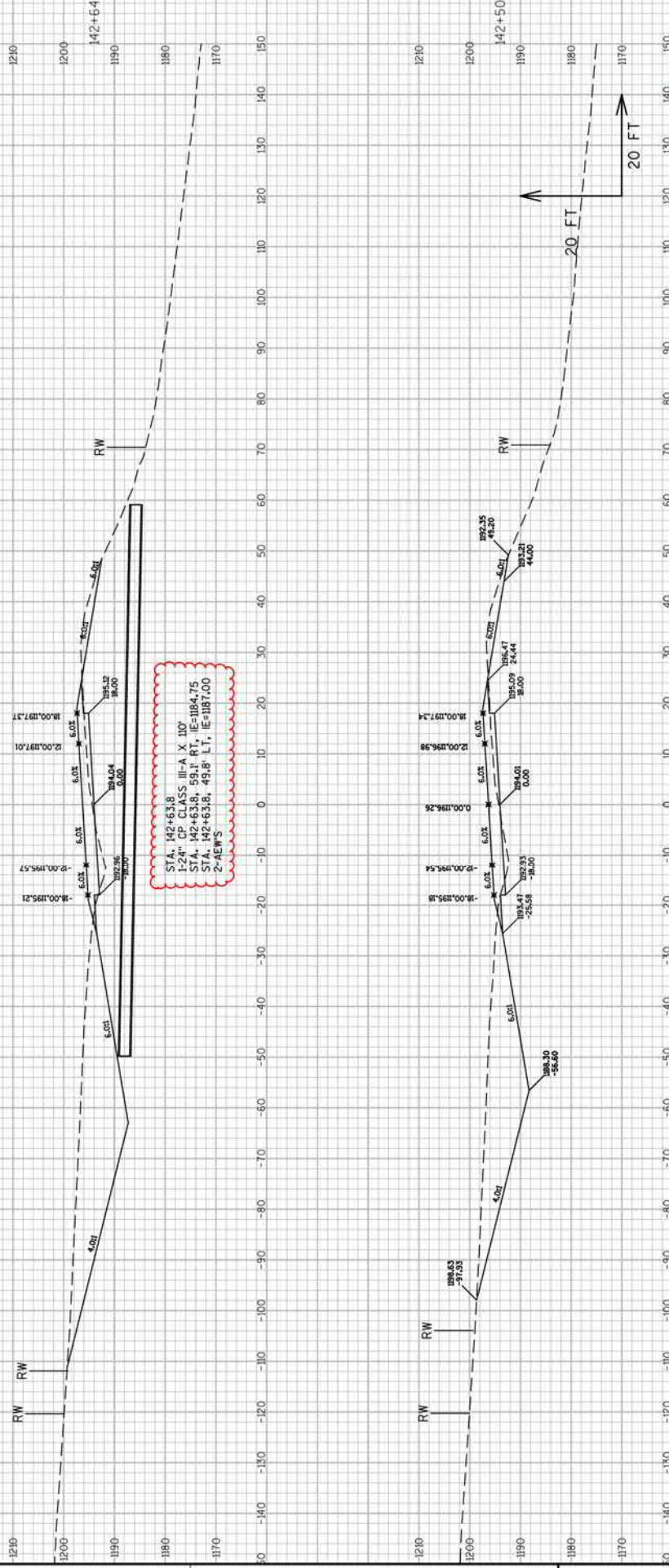
Addendum No. 01
 ID 5541-06-71
 Revised Sheet 530
 November 27, 2017



9

9

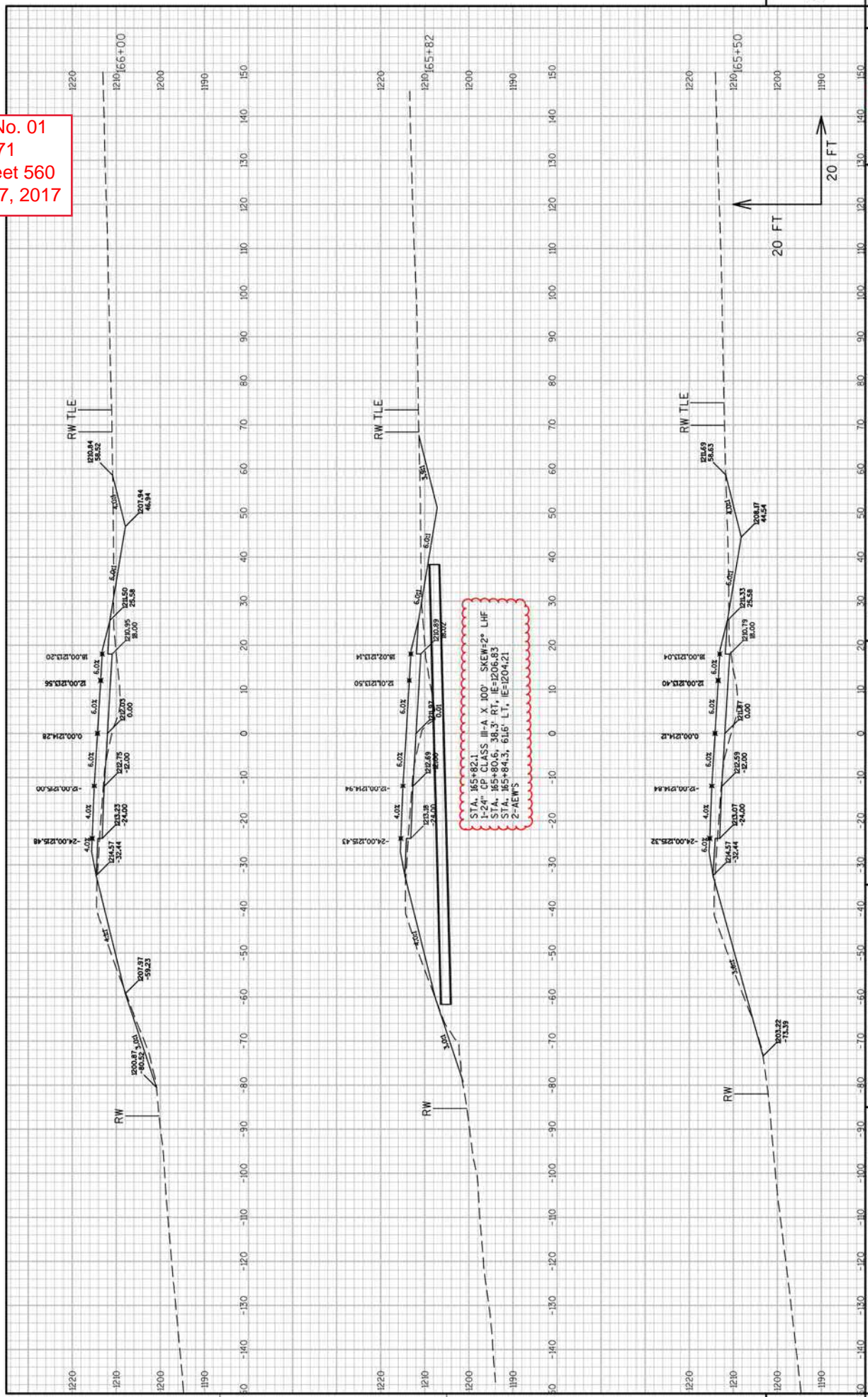
Addendum No. 01
 ID 5541-06-71
 Revised Sheet 539
 November 27, 2017



9

9

Addendum No. 01
 ID 5541-06-71
 Revised Sheet 560
 November 27, 2017

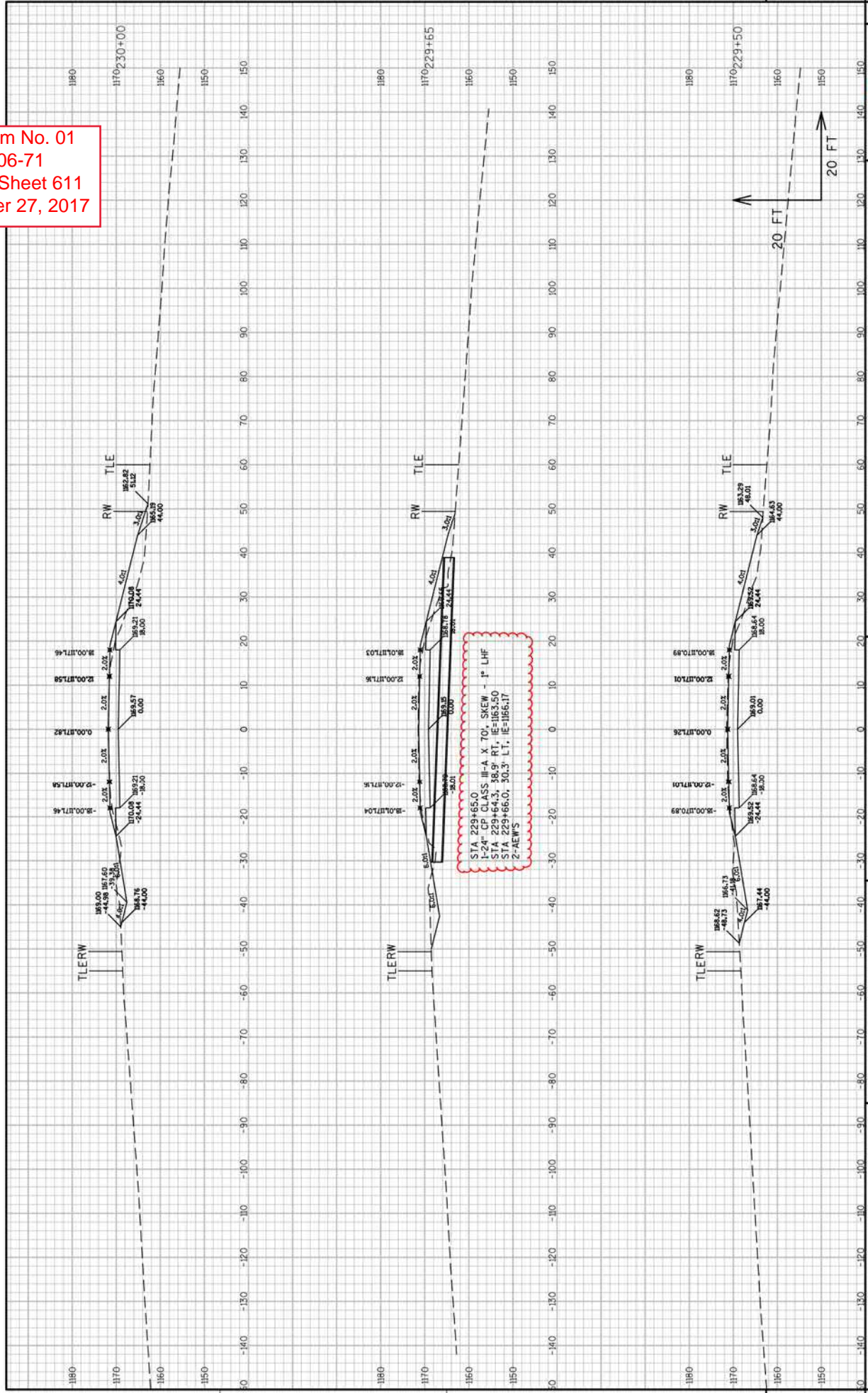


STA. 165+82.1
 1-24" CP CLASS III-A X 100' SKEW=2° LHF
 STA. 165+80.6, 38.3° RT, IE=1206.83
 STA. 165+84.3, 61.6° LT, IE=1204.21
 2-AEW'S

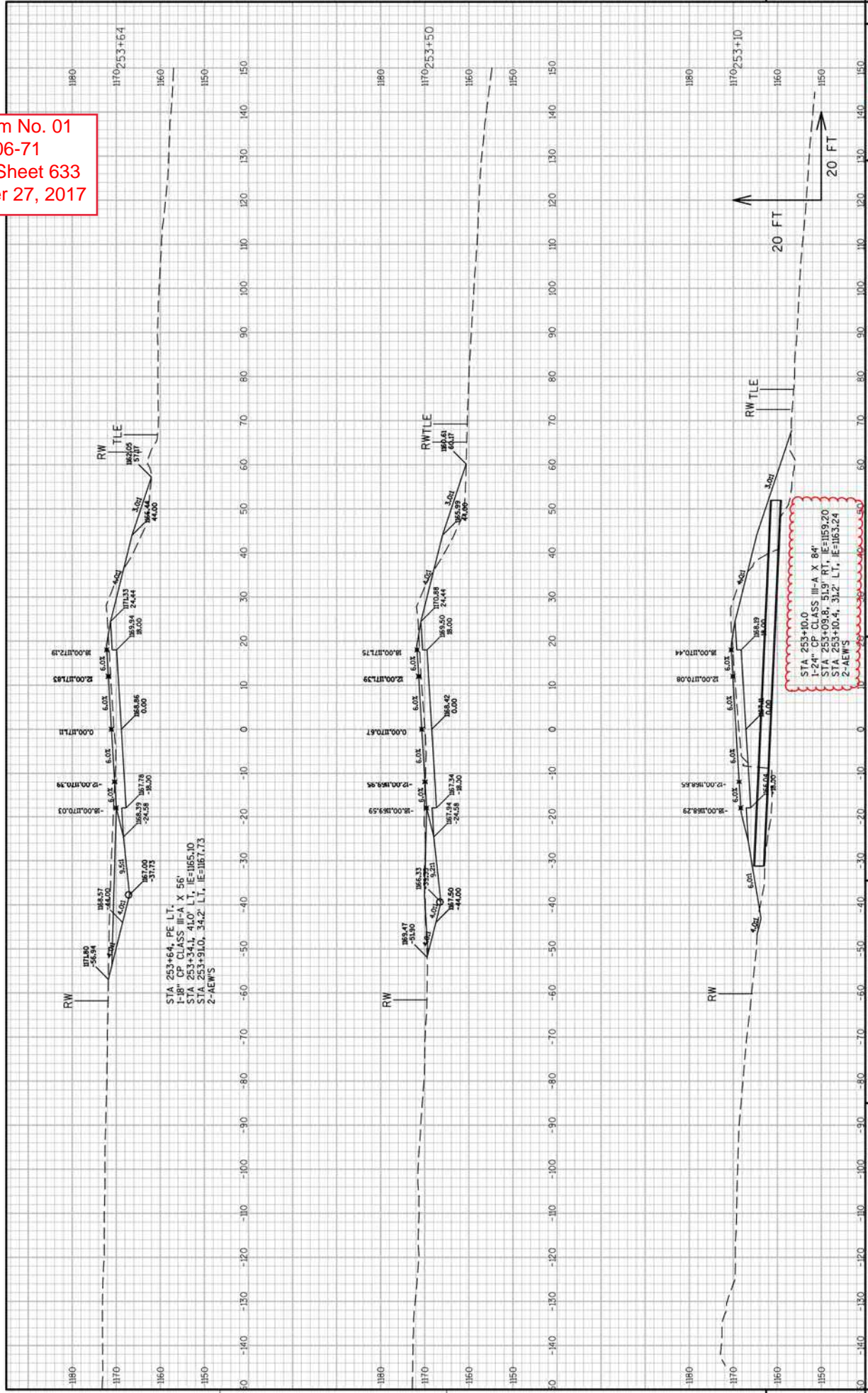
9

9

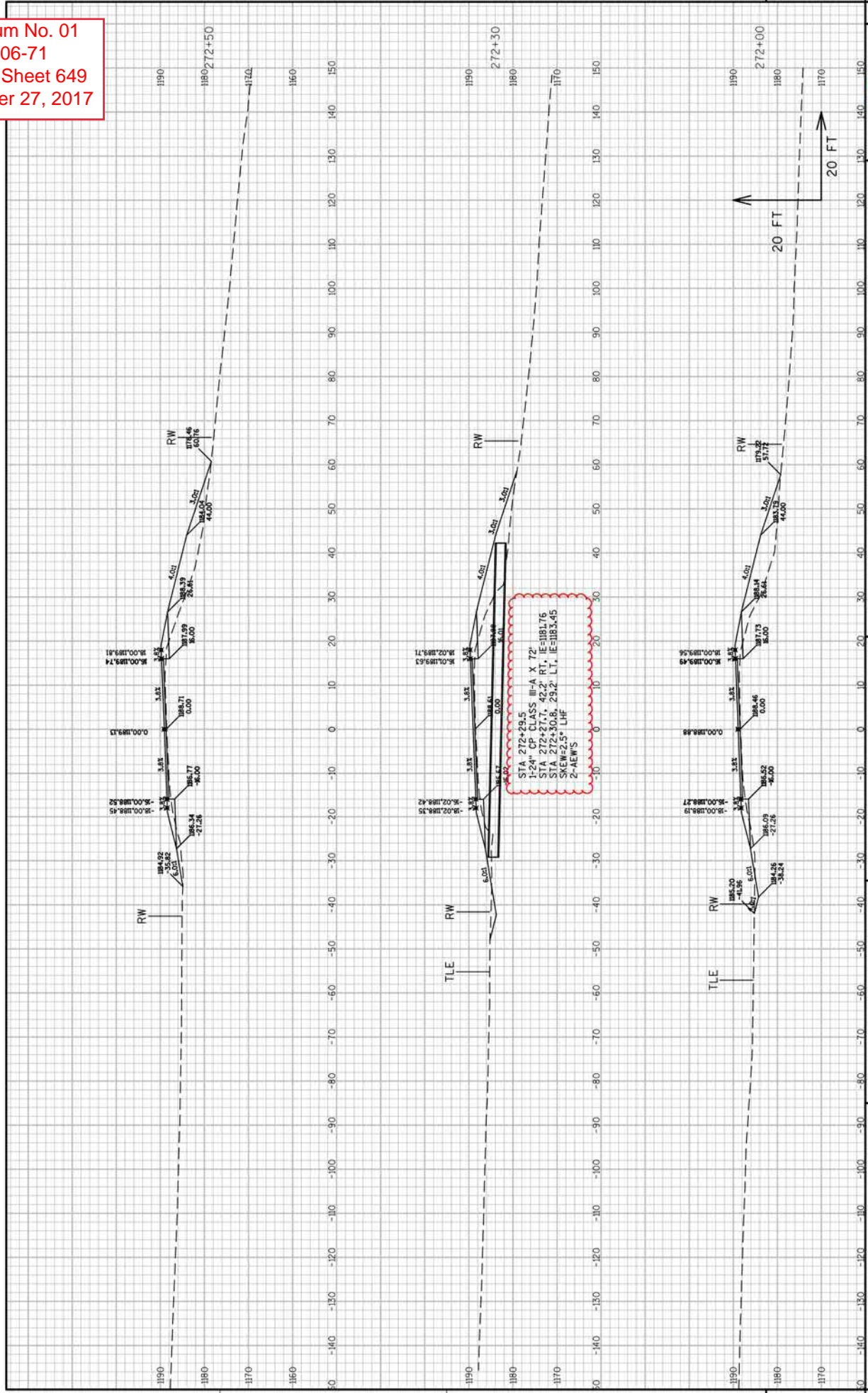
Addendum No. 01
 ID 5541-06-71
 Revised Sheet 611
 November 27, 2017



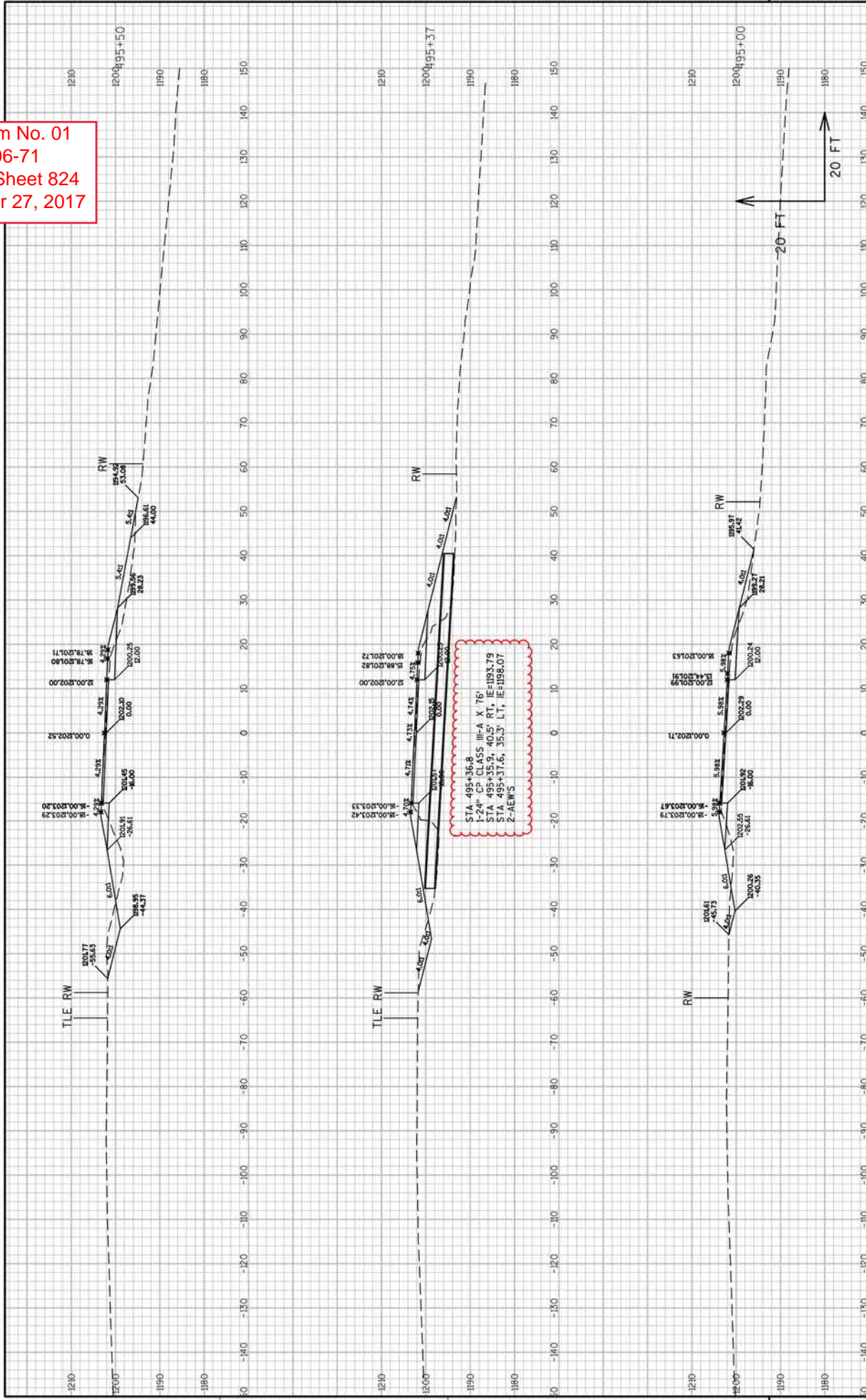
Addendum No. 01
 ID 5541-06-71
 Revised Sheet 633
 November 27, 2017



Addendum No. 01
 ID 5541-06-71
 Revised Sheet 649
 November 27, 2017



Addendum No. 01
 ID 5541-06-71
 Revised Sheet 824
 November 27, 2017



STA 495+36.8
 1-24" CP CLASS III-A, X, 76'
 STA 495+35.9, 40.5' RT, IE=1193.79
 STA 495+37.6, 35.3' LT, IE=1198.07
 2-AEW'S



Proposal Schedule of Items

Proposal ID: 20171212008 Project(s): 5541-06-71, 5541-06-72, 5541-06-73

Federal ID(s): WISC 2018006, WISC 2018007, N/A

SECTION: 0001 Contract Items

Alt Set ID: Alt Mbr ID:

Proposal Line Number	Item ID Description	Approximate Quantity and Units	Unit Price	Bid Amount
0002	201.0105 Clearing	46.000 STA	_____.	_____.
0004	201.0205 Grubbing	47.000 STA	_____.	_____.
0006	203.0100 Removing Small Pipe Culverts	56.000 EACH	_____.	_____.
0008	203.0200 Removing Old Structure (station) 01. 92+67	LS	LUMP SUM	_____.
0010	203.0200 Removing Old Structure (station) 02. 131+08	LS	LUMP SUM	_____.
0012	203.0200 Removing Old Structure (station) 03. 253+10	LS	LUMP SUM	_____.
0014	203.0200 Removing Old Structure (station) 04. 379+14	LS	LUMP SUM	_____.
0016	203.0200 Removing Old Structure (station) 05. 406+83	LS	LUMP SUM	_____.
0018	203.0200 Removing Old Structure (station) 06. 495+37	LS	LUMP SUM	_____.
0020	204.0100 Removing Pavement	3,671.000 SY	_____.	_____.
0022	204.0115 Removing Asphaltic Surface Butt Joints	706.000 SY	_____.	_____.
0024	204.0150 Removing Curb & Gutter	7,127.000 LF	_____.	_____.
0026	204.0155 Removing Concrete Sidewalk	3,365.000 SY	_____.	_____.
0028	204.0165 Removing Guardrail	4,425.000 LF	_____.	_____.
0030	204.0170 Removing Fence	8,629.000 LF	_____.	_____.



Proposal Schedule of Items

Proposal ID: 20171212008 Project(s): 5541-06-71, 5541-06-72, 5541-06-73

Federal ID(s): WISC 2018006, WISC 2018007, N/A

SECTION: 0001 Contract Items

Alt Set ID: Alt Mbr ID:

Proposal Line Number	Item ID Description	Approximate Quantity and Units	Unit Price	Bid Amount
0032	204.0195 Removing Concrete Bases	4.000 EACH	_____.	_____.
0034	204.0210 Removing Manholes	2.000 EACH	_____.	_____.
0036	204.0220 Removing Inlets	14.000 EACH	_____.	_____.
0038	204.0245 Removing Storm Sewer (size) 01. 12-Inch	380.000 LF	_____.	_____.
0040	204.0245 Removing Storm Sewer (size) 02. 15-Inch	69.000 LF	_____.	_____.
0042	204.0245 Removing Storm Sewer (size) 03. 18-Inch	115.000 LF	_____.	_____.
0044	204.0245 Removing Storm Sewer (size) 04. 24-Inch	158.000 LF	_____.	_____.
0046	204.0265 Abandoning Wells	1.000 EACH	_____.	_____.
0048	204.0280 Sealing Pipes	1.000 EACH	_____.	_____.
0050	204.9060.S Removing (item description) 01. Post	1.000 EACH	_____.	_____.
0052	204.9060.S Removing (item description) 02. Pump	1.000 EACH	_____.	_____.
0054	204.9060.S Removing (item description) 03. Retaining Wall	1.000 EACH	_____.	_____.
0056	204.9060.S Removing (item description) 04. Signs & Salvaging	1.000 EACH	_____.	_____.
0058	205.0100 Excavation Common	219,594.000 CY	_____.	_____.
0060	205.0200 Excavation Rock	353.000 CY	_____.	_____.



Proposal Schedule of Items

Proposal ID: 20171212008 Project(s): 5541-06-71, 5541-06-72, 5541-06-73
Federal ID(s): WISC 2018006, WISC 2018007, N/A

SECTION: 0001 Contract Items

Alt Set ID: Alt Mbr ID:

Table with 5 columns: Proposal Line Number, Item ID Description, Approximate Quantity and Units, Unit Price, Bid Amount. Rows include items like Backfill Granular Grade 2, Finishing Roadway, Obliterating Old Road, Base Aggregate Dense, Select Crushed Material, Mill and Relay, QMP Base Aggregate, QMP Mill and Relay, Concrete Driveway, Incentive IRI Ride, HMA Cold Weather Paving, Tack Coat, and Incentive Density HMA Pavement.



Proposal Schedule of Items

Proposal ID: 20171212008 Project(s): 5541-06-71, 5541-06-72, 5541-06-73

Federal ID(s): WISC 2018006, WISC 2018007, N/A

SECTION: 0001 Contract Items

Alt Set ID: Alt Mbr ID:

Proposal Line Number	Item ID Description	Approximate Quantity and Units	Unit Price	Bid Amount
0094	460.2005 Incentive Density PWL HMA Pavement	15,576.000 DOL	1.00000	15,576.00
0096	460.2010 Incentive Air Voids HMA Pavement	24,016.000 DOL	1.00000	24,016.00
0098	460.4110.S Reheating HMA Pavement Longitudinal Joints	52,446.000 LF	_____.	_____.
0100	460.5223 HMA Pavement 3 LT 58-28 S	37,391.000 TON	_____.	_____.
0102	460.5224 HMA Pavement 4 LT 58-28 S	27,812.000 TON	_____.	_____.
0104	465.0120 Asphaltic Surface Driveways and Field Entrances	160.000 TON	_____.	_____.
0106	465.0125 Asphaltic Surface Temporary	200.000 TON	_____.	_____.
0108	465.0315 Asphaltic Flumes	1,174.000 SY	_____.	_____.
0110	465.0425 Asphaltic Shoulder Rumble Strips 2-Lane Rural	86,728.000 LF	_____.	_____.
0112	465.0450 Asphaltic Intersection Rumble Strips	60.000 SY	_____.	_____.
0114	465.0475 Asphalt Centerline Rumble Strips 2-Lane Rural	40,917.000 LF	_____.	_____.
0116	504.0900 Concrete Masonry Endwalls	12.000 CY	_____.	_____.
0118	511.1100 Temporary Shoring	50.000 SF	_____.	_____.
0120	520.1018 Apron Endwalls for Culvert Pipe 18-Inch	80.000 EACH	_____.	_____.
0122	520.3318 Culvert Pipe Class III-A 18-Inch	2,112.000 LF	_____.	_____.
0124	520.3324 Culvert Pipe Class III-A 24-Inch	964.000 LF	_____.	_____.



Proposal Schedule of Items

Proposal ID: 20171212008 Project(s): 5541-06-71, 5541-06-72, 5541-06-73

Federal ID(s): WISC 2018006, WISC 2018007, N/A

SECTION: 0001 Contract Items

Alt Set ID: Alt Mbr ID:

Proposal Line Number	Item ID Description	Approximate Quantity and Units	Unit Price	Bid Amount
0126	521.1024 Apron Endwalls for Culvert Pipe Steel 24-Inch	58.000 EACH	_____.	_____.
0128	521.3124 Culvert Pipe Corrugated Steel 24-Inch	660.000 LF	_____.	_____.
0132	522.1012 Apron Endwalls for Culvert Pipe Reinforced Concrete 12-Inch	2.000 EACH	_____.	_____.
0134	522.1024 Apron Endwalls for Culvert Pipe Reinforced Concrete 24-Inch	2.000 EACH	_____.	_____.
0136	522.2000 Pipe Cattle Pass Reinforced Concrete	88.000 LF	_____.	_____.
0138	601.0411 Concrete Curb & Gutter 30-Inch Type D	7,429.000 LF	_____.	_____.
0140	601.0553 Concrete Curb & Gutter 4-Inch Sloped 36-Inch Type D	8,101.000 LF	_____.	_____.
0142	602.0405 Concrete Sidewalk 4-Inch	41,008.000 SF	_____.	_____.
0144	602.0505 Curb Ramp Detectable Warning Field Yellow	245.000 SF	_____.	_____.
0146	602.1500 Concrete Steps	154.000 SF	_____.	_____.
0148	606.0200 Riprap Medium	2.000 CY	_____.	_____.
0150	606.0300 Riprap Heavy	6.000 CY	_____.	_____.
0152	608.0312 Storm Sewer Pipe Reinforced Concrete Class III 12-Inch	351.000 LF	_____.	_____.
0154	608.0315 Storm Sewer Pipe Reinforced Concrete Class III 15-Inch	322.000 LF	_____.	_____.
0156	608.0324 Storm Sewer Pipe Reinforced Concrete Class III 24-Inch	275.000 LF	_____.	_____.



Proposal Schedule of Items

Proposal ID: 20171212008 Project(s): 5541-06-71, 5541-06-72, 5541-06-73

Federal ID(s): WISC 2018006, WISC 2018007, N/A

SECTION: 0001 Contract Items

Alt Set ID: Alt Mbr ID:

Proposal Line Number	Item ID Description	Approximate Quantity and Units	Unit Price	Bid Amount
0158	608.0412 Storm Sewer Pipe Reinforced Concrete Class IV 12-Inch	1,053.000 LF	_____.	_____.
0160	608.0415 Storm Sewer Pipe Reinforced Concrete Class IV 15-Inch	814.000 LF	_____.	_____.
0162	611.0530 Manhole Covers Type J	12.000 EACH	_____.	_____.
0164	611.0624 Inlet Covers Type H	36.000 EACH	_____.	_____.
0166	611.0642 Inlet Covers Type MS	2.000 EACH	_____.	_____.
0168	611.2004 Manholes 4-FT Diameter	12.000 EACH	_____.	_____.
0170	611.2005 Manholes 5-FT Diameter	1.000 EACH	_____.	_____.
0172	611.3230 Inlets 2x3-FT	35.000 EACH	_____.	_____.
0174	611.3901 Inlets Median 1 Grate	2.000 EACH	_____.	_____.
0176	612.0106 Pipe Underdrain 6-Inch	6,986.000 LF	_____.	_____.
0178	612.0206 Pipe Underdrain Unperforated 6-Inch	32.000 LF	_____.	_____.
0180	612.0806 Apron Endwalls for Underdrain Reinforced Concrete 6-Inch	4.000 EACH	_____.	_____.
0182	616.0700.S Fence Safety	740.000 LF	_____.	_____.
0184	619.1000 Mobilization	1.000 EACH	_____.	_____.
0186	621.0100 Landmark Reference Monuments	1.000 EACH	_____.	_____.
0188	623.0200 Dust Control Surface Treatment	237,730.000 SY	_____.	_____.



Proposal Schedule of Items

Proposal ID: 20171212008 Project(s): 5541-06-71, 5541-06-72, 5541-06-73

Federal ID(s): WISC 2018006, WISC 2018007, N/A

SECTION: 0001 Contract Items

Alt Set ID: Alt Mbr ID:

Proposal Line Number	Item ID Description	Approximate Quantity and Units	Unit Price	Bid Amount
0190	624.0100 Water	4,976.000 MGAL	_____.	_____.
0192	625.0500 Salvaged Topsoil	312,259.000 SY	_____.	_____.
0194	627.0200 Mulching	245,028.000 SY	_____.	_____.
0196	628.1504 Silt Fence	38,172.000 LF	_____.	_____.
0198	628.1520 Silt Fence Maintenance	38,172.000 LF	_____.	_____.
0200	628.1905 Mobilizations Erosion Control	17.000 EACH	_____.	_____.
0202	628.1910 Mobilizations Emergency Erosion Control	11.000 EACH	_____.	_____.
0204	628.2004 Erosion Mat Class I Type B	84,654.000 SY	_____.	_____.
0206	628.2008 Erosion Mat Urban Class I Type B	4,577.000 SY	_____.	_____.
0208	628.7005 Inlet Protection Type A	38.000 EACH	_____.	_____.
0210	628.7015 Inlet Protection Type C	38.000 EACH	_____.	_____.
0212	628.7504 Temporary Ditch Checks	3,604.000 LF	_____.	_____.
0214	628.7555 Culvert Pipe Checks	321.000 EACH	_____.	_____.
0216	628.7570 Rock Bags	676.000 EACH	_____.	_____.
0218	629.0210 Fertilizer Type B	248.100 CWT	_____.	_____.
0220	630.0120 Seeding Mixture No. 20	10,453.000 LB	_____.	_____.
0222	630.0200 Seeding Temporary	10,634.000 LB	_____.	_____.



Proposal Schedule of Items

Proposal ID: 20171212008 Project(s): 5541-06-71, 5541-06-72, 5541-06-73

Federal ID(s): WISC 2018006, WISC 2018007, N/A

SECTION: 0001 Contract Items

Alt Set ID: Alt Mbr ID:

Proposal Line Number	Item ID Description	Approximate Quantity and Units	Unit Price	Bid Amount
0224	630.0300 Seeding Borrow Pit	1,623.000 LB	_____.	_____.
0226	633.5100 Markers Row	469.000 EACH	_____.	_____.
0228	633.5200 Markers Culvert End	170.000 EACH	_____.	_____.
0230	634.0614 Posts Wood 4x6-Inch X 14-FT	54.000 EACH	_____.	_____.
0232	634.0616 Posts Wood 4x6-Inch X 16-FT	72.000 EACH	_____.	_____.
0234	637.2210 Signs Type II Reflective H	483.150 SF	_____.	_____.
0236	637.2230 Signs Type II Reflective F	277.900 SF	_____.	_____.
0238	638.2102 Moving Signs Type II	2.000 EACH	_____.	_____.
0240	638.2602 Removing Signs Type II	116.000 EACH	_____.	_____.
0242	638.3000 Removing Small Sign Supports	122.000 EACH	_____.	_____.
0244	642.5201 Field Office Type C	1.000 EACH	_____.	_____.
0246	643.0300 Traffic Control Drums	34,580.000 DAY	_____.	_____.
0248	643.0410 Traffic Control Barricades Type II	11,115.000 DAY	_____.	_____.
0250	643.0420 Traffic Control Barricades Type III	22,230.000 DAY	_____.	_____.
0252	643.0705 Traffic Control Warning Lights Type A	35,815.000 DAY	_____.	_____.
0254	643.0900 Traffic Control Signs	79,287.000 DAY	_____.	_____.
0256	643.0920 Traffic Control Covering Signs Type II	17.000 EACH	_____.	_____.



Proposal Schedule of Items

Proposal ID: 20171212008 Project(s): 5541-06-71, 5541-06-72, 5541-06-73

Federal ID(s): WISC 2018006, WISC 2018007, N/A

SECTION: 0001 Contract Items

Alt Set ID: Alt Mbr ID:

Proposal Line Number	Item ID Description	Approximate Quantity and Units	Unit Price	Bid Amount
0258	643.1050 Traffic Control Signs PCMS	28.000 DAY	_____.	_____.
0260	643.5000 Traffic Control	1.000 EACH	_____.	_____.
0262	644.1410.S Temporary Pedestrian Surface Asphalt	2,964.000 SF	_____.	_____.
0264	644.1420.S Temporary Pedestrian Surface Plywood	2,964.000 SF	_____.	_____.
0266	644.1430.S Temporary Pedestrian Surface Plate	2,964.000 SF	_____.	_____.
0268	644.1601.S Temporary Curb Ramp	20.000 EACH	_____.	_____.
0270	644.1616.S Temporary Pedestrian Safety Fence	5,000.000 LF	_____.	_____.
0272	645.0120 Geotextile Type HR	24.000 SY	_____.	_____.
0274	645.0220 Geogrid Type SR	119,596.000 SY	_____.	_____.
0276	646.1020 Marking Line Epoxy 4-Inch	95,644.000 LF	_____.	_____.
0278	646.1040 Marking Line Grooved Wet Ref Epoxy 4-Inch	95,040.000 LF	_____.	_____.
0280	646.3020 Marking Line Epoxy 8-Inch	930.000 LF	_____.	_____.
0282	646.5020 Marking Arrow Epoxy	4.000 EACH	_____.	_____.
0284	646.6120 Marking Stop Line Epoxy 18-Inch	86.000 LF	_____.	_____.
0286	646.6464.S Cold Weather Marking Epoxy 4-Inch	57,093.000 LF	_____.	_____.
0288	646.7420 Marking Crosswalk Epoxy Transverse Line 6-Inch	770.000 LF	_____.	_____.



Proposal Schedule of Items

Proposal ID: 20171212008 Project(s): 5541-06-71, 5541-06-72, 5541-06-73
 Federal ID(s): WISC 2018006, WISC 2018007, N/A

SECTION: 0001 Contract Items

Alt Set ID: Alt Mbr ID:

Proposal Line Number	Item ID Description	Approximate Quantity and Units	Unit Price	Bid Amount
0290	648.0100 Locating No-Passing Zones	9.260 MI	_____.	_____.
0292	649.0105 Temporary Marking Line Paint 4-Inch	95,018.000 LF	_____.	_____.
0294	650.4000 Construction Staking Storm Sewer	52.000 EACH	_____.	_____.
0296	650.4500 Construction Staking Subgrade	32,246.000 LF	_____.	_____.
0298	650.5000 Construction Staking Base	58,217.000 LF	_____.	_____.
0300	650.5500 Construction Staking Curb Gutter and Curb & Gutter	15,530.000 LF	_____.	_____.
0302	650.6000 Construction Staking Pipe Culverts	75.000 EACH	_____.	_____.
0304	650.8000 Construction Staking Resurfacing Reference	25,834.000 LF	_____.	_____.
0306	650.9000 Construction Staking Curb Ramps	24.000 EACH	_____.	_____.
0308	650.9910 Construction Staking Supplemental Control (project) 01. 5541-06-71	LS	LUMP SUM	_____.
0310	650.9910 Construction Staking Supplemental Control (project) 01. 5541-06-72	LS	LUMP SUM	_____.
0312	650.9920 Construction Staking Slope Stakes	58,080.000 LF	_____.	_____.
0314	690.0150 Sawing Asphalt	1,092.000 LF	_____.	_____.
0316	690.0250 Sawing Concrete	567.000 LF	_____.	_____.
0318	999.1000.S Seismograph	LS	LUMP SUM	_____.
0320	999.1500.S Crack and Damage Survey	LS	LUMP SUM	_____.



Proposal Schedule of Items

Proposal ID: 20171212008 Project(s): 5541-06-71, 5541-06-72, 5541-06-73
Federal ID(s): WISC 2018006, WISC 2018007, N/A

SECTION: 0001 Contract Items

Alt Set ID: Alt Mbr ID:

Table with 5 columns: Proposal Line Number, Item ID Description, Approximate Quantity and Units, Unit Price, Bid Amount. Rows include items like ASP.1T0A, ASP.1T0G, SPV.0060 (Special 01-12).



Proposal Schedule of Items

Proposal ID: 20171212008 Project(s): 5541-06-71, 5541-06-72, 5541-06-73
 Federal ID(s): WISC 2018006, WISC 2018007, N/A

SECTION: 0001 Contract Items

Alt Set ID: Alt Mbr ID:

Proposal Line Number	Item ID Description	Approximate Quantity and Units	Unit Price	Bid Amount
0350	SPV.0060 Special 13. Apron Endwalls For Pipe Arch Steel 72x54-Inch	4.000 EACH	_____.	_____.
0352	SPV.0060 Special 14. Plugging Old Water Main	10.000 EACH	_____.	_____.
0354	SPV.0060 Special 15. HMA Percent Within Limits (PWL) Test Strip Volumetrics	1.000 EACH	_____.	_____.
0356	SPV.0060 Special 16. Utility Line Opening (ULO)	82.000 EACH	_____.	_____.
0358	SPV.0060 Special 17. Research and Locate Existing Land Parcel Monuments	153.000 EACH	_____.	_____.
0360	SPV.0060 Special 18. Verify and Replace Existing Land Parcel Monuments	153.000 EACH	_____.	_____.
0362	SPV.0060 Special 19. HMA Percent Within Limits (PWL) Test Strip Density	1.000 EACH	_____.	_____.
0364	SPV.0090 Special 01. Water Service, Copper, 1-Inch	47.000 LF	_____.	_____.
0366	SPV.0090 Special 02. Water Service, Copper, 3/4-Inch	28.000 LF	_____.	_____.
0368	SPV.0090 Special 03. Ductile Iron Water Main, 6-Inch	43.000 LF	_____.	_____.
0370	SPV.0090 Special 04. Pipe Arch Corrugated Steel 72x54-Inch	62.000 LF	_____.	_____.
0372	SPV.0090 Special 05. Removing HMA Pavement Notched Wedge Longitudinal Joint Milling	52,446.000 LF	_____.	_____.
0374	SPV.0105 Special 01. Construction Staking, Water	LS	LUMP SUM	_____.
0376	SPV.0165 Special 01. Utility Insulation	544.000 SF	_____.	_____.



Proposal Schedule of Items

Proposal ID: 20171212008 Project(s): 5541-06-71, 5541-06-72, 5541-06-73

Federal ID(s): WISC 2018006, WISC 2018007, N/A

SECTION: 0001 Contract Items

Alt Set ID: Alt Mbr ID:

Proposal Line Number	Item ID Description	Approximate Quantity and Units	Unit Price	Bid Amount
0378	SPV.0165 Special 02. Concrete Sidewalk Reinforced	726.000 SF	_____.	_____.
0380	SPV.0195 Special 01. Excavation, Hauling, and Disposal of Contaminated Soil	1,435.000 TON	_____.	_____.
0382	520.1024 Apron Endwalls for Culvert Pipe 24-Inch	18.000 EACH	_____.	_____.
0384	520.3524 Culvert Pipe Class III-B 24-Inch	144.000 LF	_____.	_____.
0386	630.0140 Seeding Mixture No. 40	1,134.000 LB	_____.	_____.
Section: 0001			Total:	_____.
			Total Bid:	_____.

