



Wisconsin Department of Transportation

December 6, 2017

Division of Transportation Systems Development

Bureau of Project Development
4802 Sheboygan Avenue, Rm 601
P O Box 7916
Madison, WI 53707-7916

Telephone: (608) 266-1631
Facsimile (FAX): (608) 266-8459

NOTICE TO ALL CONTRACTORS:

Proposal #09: 5770-01-60
STH 23- Lone Rock
WI River Structure B-52-856
STH 130
Richland County

Letting of December 12, 2017

This is Addendum No. 02, which provides for the following:

Schedule of Items:

Revised Bid Item Quantities					
Bid Item	Item Description	Unit	Old Quantity	Revised Quantity	Proposal Total
506.0105	Structural Steel Carbon	LB	1,855	1,125	2,980

Plan Sheets:

Revised Plan Sheets	
Plan Sheet	Plan Sheet Title (brief description of changes to sheet)
36	Changed Structural steel Carbon quantity
39	Added note requiring tapping of the top flange of the floorbeam for interior floorbeam repair
41-43	Modified dimensions

Schedule of Items

Attached, dated December 6, 2017, are the revised Schedule of Items Page 1.

Plan Sheets

The following 8½ x 11-inch sheets are attached and made part of the plans for this proposal:

Revised: 36, 39, and 41 – 43.

The responsibility for notifying potential subcontractors and suppliers of these changes remains with the prime contractor.

Sincerely,

Mike Coleman

Proposal Development Specialist
Proposal Management Section

END OF ADDENDUM

NOTES

DRAWING NOT TO SCALE.

RIVET HOLES AND GENERAL DIMENSIONS SHOULD BE VERIFIED PRIOR TO PLATE AND ANGLE FABRICATION.

EXISTING RIVET SHALL BE REMOVED AND REPLACED WITH $\frac{3}{4}$ " DIAMETER A325 HIGH STRENGTH BOLTS.

A STOP HOLE SHALL BE DRILLED AT THE END OF ANY CRACK FOUND. GRIND DEFECTS SMOOTH, ENSURING THERE ARE NO NOTCHES.

ALL NEW PLATES TO BE SHOP PAINTED WITH A THREE COAT PAINT SYSTEM FROM THE DEPARTMENT'S APPROVED PRODUCTS LIST FOR STRUCTURE OVERCOATING. CLEANING AND PREPARATION OF THE SURFACE SHALL BE DONE IN ACCORDANCE WITH THE STANDARD COLOR AND FINISH SPECIFICATIONS. AFTER INSTALLATION, COATING TOUCH UPS SHALL BE COMPLETED AT NO COST AS DIRECTED BY THE ENGINEER.

BOLT SPACING SHALL ADHERE TO THE FOLLOWING DIMENSIONAL REQUIREMENTS:

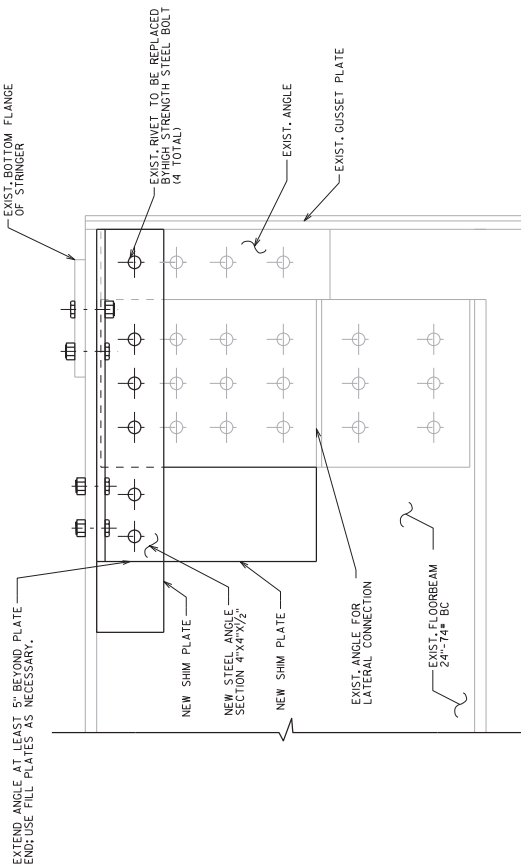
MINIMUM EDGE DISTANCE = $\frac{1}{4}$ "

MINIMUM BOLT (CENTER) TO CENTER SPACING = $\frac{2}{4}$ "

MAXIMUM BOLT (CENTER) TO CENTER SPACING = 6"

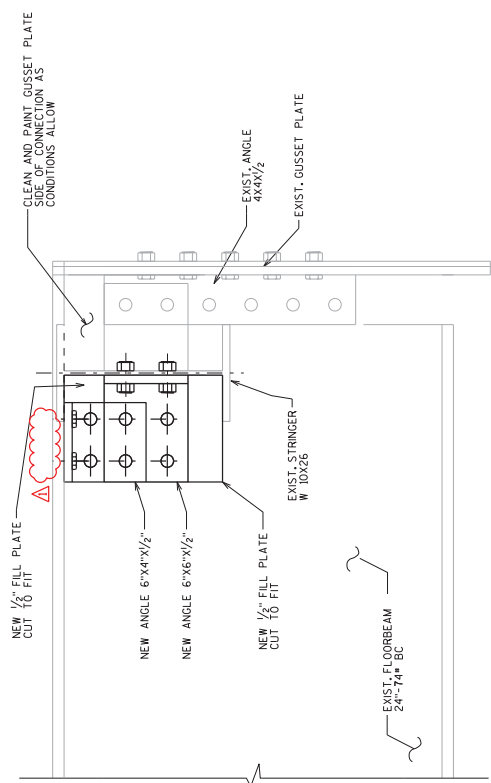
INTERIOR FLOORBEAM REPAIR REQUIRES TAPPING OF THE TOP FLANGE OF THE FLOORBEAM AND IS INCIDENTAL TO STRUCTURAL STEEL REPAIR B-52-0856.

William C. Dukes
12/6/17



EXTERIOR FLOORBEAM REPAIR DETAIL

CONNECTION DETAIL BASED ON PHOTOS FROM THE FIELD



INTERIOR FLOORBEAM REPAIR DETAIL

CONNECTION DETAIL BASED ON PHOTOS FROM THE FIELD

Addendum No. 02
ID 5770-01-60
Revised Sheet 39
December 6, 2017

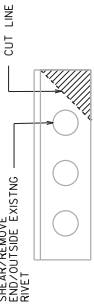
NO.	DATE	REVISION	BY
12/6/17		WASHERS REMOVED	KCY
12/6/17			KCY

STATE OF WISCONSIN
DEPARTMENT OF TRANSPORTATION
STRUCTURES DESIGN SECTION
STRUCTURE B-52-856

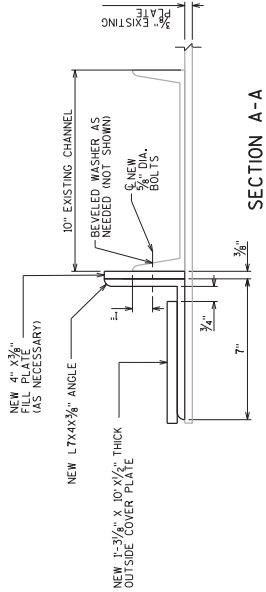
DESIGNED BY	KCY	PLANS	SAD
CHECKED BY			

CONNECTION REPAIR DETAILS
SHEET 4
39

STATE PROJECT NUMBER
5770-01-60



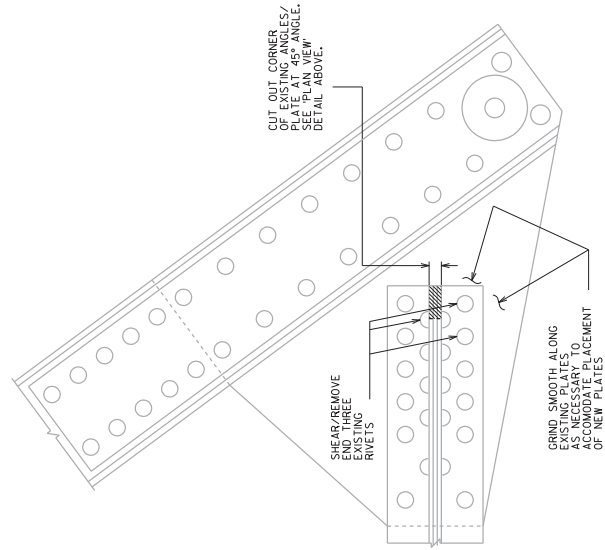
PLAN VIEW OF EXISTING ANGLE



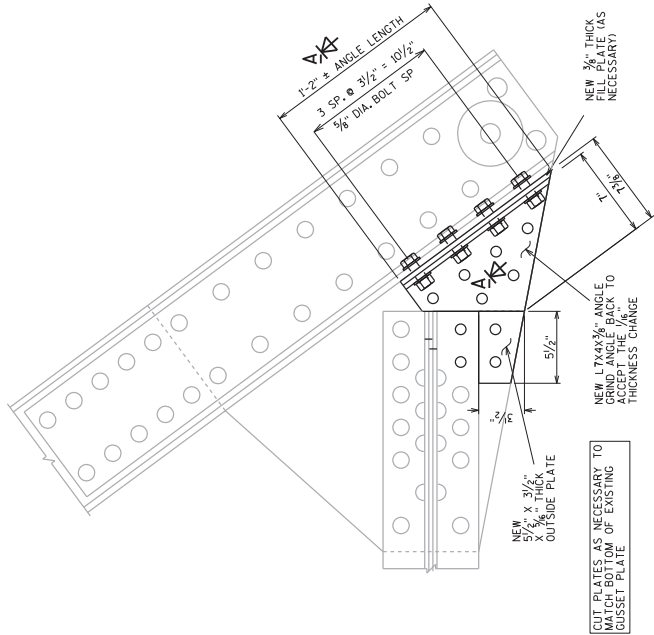
SECTION A-A

NOTES

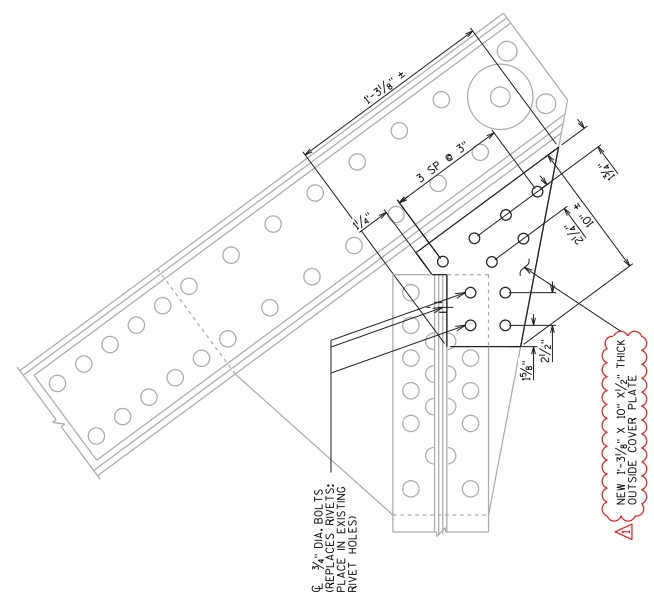
DIMENSIONS SHOWN ARE BASED ON EXISTING PLANS AND FIELD MEASUREMENTS. ALL DIMENSIONS MUST BE VERIFIED PRIOR TO PLATE AND ANGLE FABRICATION. ALL FIELD CONNECTIONS SHALL BE MADE WITH FRICTION TYPE HIGH-TENSILE STRENGTH BOLTS UNLESS SHOWN OR OTHERWISE NOTED. ALL NEW PLATES TO BE SHOP PAINTED WITH A THREE COAT PAINT SYSTEM FROM THE DEPARTMENT'S APPROVED PRODUCTS LIST FOR "STRUCTURE OVERCOATING CLEANING AND PRIMING". THE COLOR OF THE FINAL COAT SHALL BE LIGHT GREY FEDERAL STANDARD #595. ALL NEW PLATES AND ANGLES TO BE FABRICATED AS REQUIRED, THEY SHALL BE COMPLETED AT NO COST AS DIRECTED BY THE ENGINEER.



EXISTING GUSSET PLATE DETAIL AT TRUSS ENDS
OUTSIDE VIEW - SHOWING REMOVAL AREAS!



NEW 3/8" THICK PLATE DETAIL
SEE DETAIL AT RIGHT FOR BOLT HOLE DIMENSIONS



NEW 1/2" THICK PLATE DETAIL
ALL NEW BOLTS NOT LABELED ARE 3/8" DIA. BOLTS

William C. Decker
12/6/17

Addendum No. 02
ID 5770-01-60
Revised Sheet 41
December 6, 2017

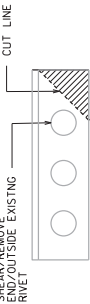
FIXED BEARING REPAIR

SPAN 1: EAST TRUSS, LO (INSIDE & OUTSIDE GUSSET PLATE)

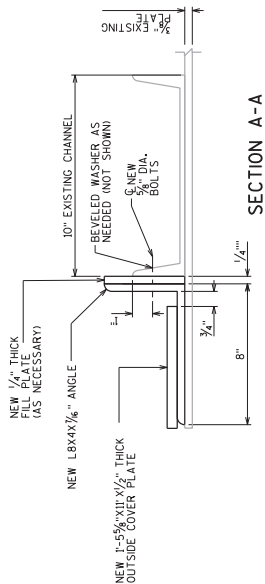
NO.	DATE	MODIFIED DIMENSION	KCY	REVISION	BY
12/6/17					
STATE OF WISCONSIN DEPARTMENT OF TRANSPORTATION STRUCTURES DESIGN SECTION					
STRUCTURE B-52-856					
BY	DATE	BY	DATE	BY	DATE
W.C.D.		K.C.Y.		W.C.D.	
GUSSET REPAIRS 1					
SHEET 6					
41					

STATE PROJECT NUMBER

5770-01-60

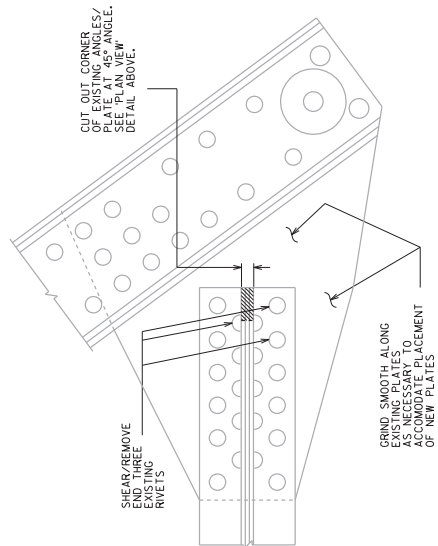


PLAN VIEW OF EXISTING ANGLE



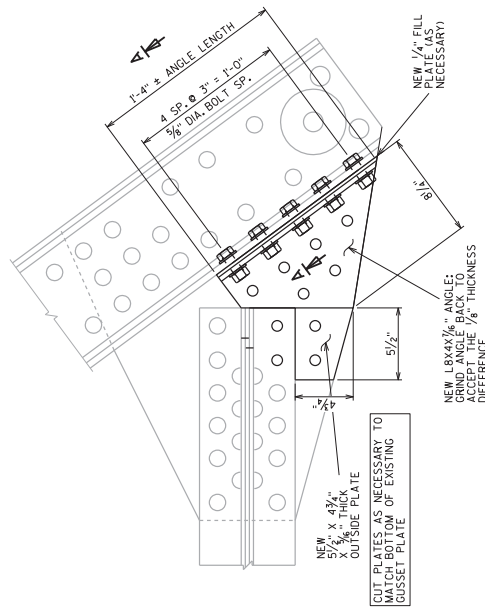
NOTES

DIMENSIONS SHOWN ARE BASED ON EXISTING PLANS AND FIELD MEASUREMENTS. ALL DIMENSIONS MUST BE VERIFIED PRIOR TO PLATE AND ANGLE FABRICATION. ALL FIELD CONNECTIONS SHALL BE MADE WITH FRICTION TYPE HIGH-TENSILE STRENGTH BOLTS UNLESS SHOWN OR OTHERWISE NOTED. ALL NEW PLATES TO BE SHOP PAINTED WITH A THREE COAT PAINT SYSTEM FROM THE DEPARTMENT'S APPROVED PRODUCTS LIST FOR "STRUCTURE OVERCOATING CLEANING AND PRIMING". THE COLOR OF THE FINAL COAT SHALL BE GREY FEDERAL STANDARD #5952. ALL WORK SHALL BE COMPLETED AS DIRECTED BY THE ENGINEER. BE COMPLETED AT NO COST AS DIRECTED BY THE ENGINEER.



EXISTING GUSSET PLATE DETAIL AT TRUSS ENDS

(OUTSIDE VIEW - SHOWING REMOVAL AREAS)

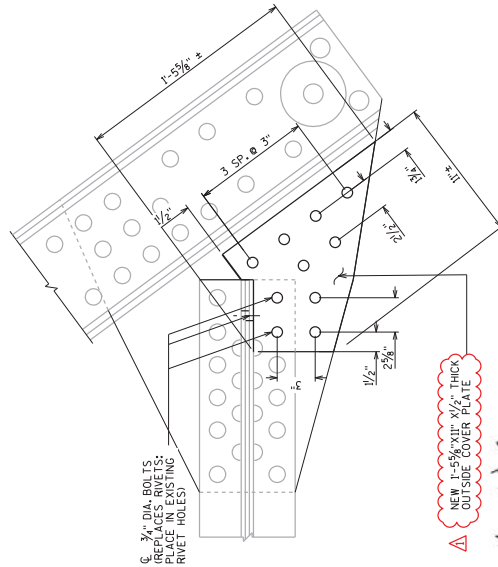


NEW 5/8" PLATE & 7/16" THICK ANGLE DETAIL

SEE DETAIL AT RIGHT FOR BOLT HOLE DIMENSIONS

EXPANSION BEARING REPAIR

- SPAN 1: EAST TRUSS, LB (OUTSIDE GUSSET PLATE ONLY)
- SPAN 2: EAST TRUSS, LO (INSIDE & OUTSIDE GUSSET PLATE)
- SPAN 2: EAST TRUSS, LB (INSIDE & OUTSIDE GUSSET PLATE)
- SPAN 3: WEST TRUSS, LO (INSIDE & OUTSIDE GUSSET PLATE)
- SPAN 3: EAST TRUSS, LB (INSIDE & OUTSIDE GUSSET PLATE)
- SPAN 4: EAST TRUSS, LO (INSIDE & OUTSIDE GUSSET PLATE)



NEW 1/2" THICK PLATE DETAIL

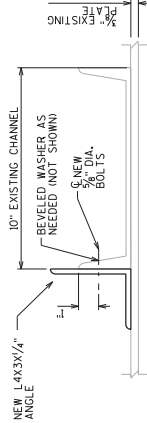
ALL NEW BOLTS NOT LABELED ARE 3/8" DIA. BOLTS

Addendum No. 02
ID 5770-01-60
Revised Sheet 42
December 6, 2017

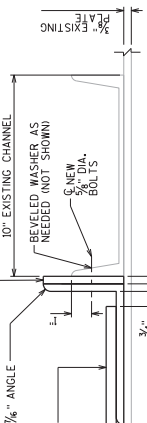
NO.	DATE	MODIFIED DIMENSION	KCY	BY
12/6/17				
STATE OF WISCONSIN DEPARTMENT OF TRANSPORTATION STRUCTURES DESIGN SECTION				
STRUCTURE B-52-856				
BY	BRN	KCY	CLD	SAD
GUSSET REPAIRS 2				
SHEET 7				
42				

NOTES

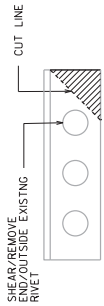
DIMENSIONS SHOWN ARE BASED ON EXISTING PLANS AND FIELD MEASUREMENTS. ALL DIMENSIONS MUST BE VERIFIED PRIOR TO PLATE AND ANGLE FABRICATION. ALL FIELD CONNECTIONS SHALL BE MADE WITH FRICTION TYPE HIGH-TENSILE STRENGTH BOLTS UNLESS SHOWN OR OTHERWISE NOTED. ALL NEW PLATES TO BE SHOP PAINTED WITH A THREE COAT PAINT SYSTEM FROM THE MANUFACTURER'S RECOMMENDATIONS. THE COLOR OF THE FINAL COAT SHALL BE LIGHT GREY (FEDERAL STANDARD COLOR NO. 26293). AFTER INSTALLATION, IF ANY TOUCH UPS ARE REQUIRED, THEY SHALL BE COMPLETED AT NO COST AS DIRECTED BY THE ENGINEER.



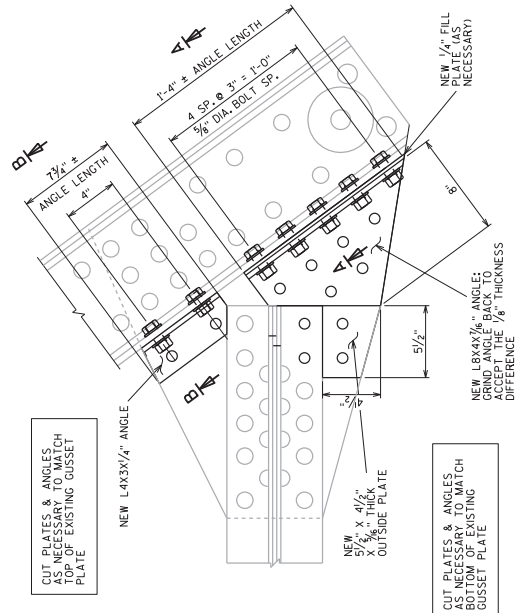
SECTION B-B



SECTION A-A



PLAN VIEW OF EXISTING ANGLE



CUT PLATES & ANGLES TO MATCH TOP OF EXISTING GUSSET PLATE

CUT PLATES & ANGLES TO MATCH BOTTOM OF EXISTING GUSSET PLATE

CUT OUT CORNER PLATE AT 45° ANGLE. SEE PLAN VIEW DETAIL ABOVE.

SHEAR/RMOVE EXISTING RIVETS

GRIND SMOOTH ALONG EXISTING PLATES AS NECESSARY TO PREPARE SURFACES OF NEW PLATES

EXISTING GUSSET PLATE DETAIL AT TRUSS ENDS

SHOWING REMOVAL AREAS

NEW 5/16" PLATE & 7/16" THICK ANGLE DETAIL

SEE DETAIL AT RIGHT FOR BOLT HOLE DIMENSIONS

NEW 1/2" THICK PLATE DETAIL

ALL NEW BOLTS NOT LABELED ARE 3/8" DIA. BOLTS

NEW 1-5/8" x 1/2" THICK OUTSIDE COVER PLATE

William C. Decker
12/16/17

NO.	DATE	MODIFIED DIMENSION	KCY	BY
12/6/17				
STATE OF WISCONSIN DEPARTMENT OF TRANSPORTATION STRUCTURES DESIGN SECTION				
STRUCTURE B-52-856				
DESIGNED BY	BRN	PLANS BY	SAD	
GUSSET REPAIRS 3				SHEET 8
				43

Addendum No. 02
ID 5770-01-60
Revised Sheet 43
December 6, 2017

GUSSET REPAIR - BOTTOM CHORD TO ENDPPOST & BEARING

SPAN 1: EAST TRUSS, LB (INSIDE GUSSET PLATE ONLY)



Proposal Schedule of Items

Proposal ID: 20171212009 Project(s): 5770-01-60

Federal ID(s): N/A

SECTION: 0001

Contract Items

Alt Set ID:

Alt Mbr ID:

Proposal Line Number	Item ID Description	Approximate Quantity and Units	Unit Price	Bid Amount
0002	204.0165 Removing Guardrail	84.000 LF	_____.	_____.
0004	506.0105 Structural Steel Carbon	2,980.000 LB	_____.	_____.
0006	614.0200 Steel Thrie Beam Structure Approach	84.000 LF	_____.	_____.
0008	619.1000 Mobilization	1.000 EACH	_____.	_____.
0010	634.0612 Posts Wood 4x6-Inch X 12-FT	4.000 EACH	_____.	_____.
0012	634.0618 Posts Wood 4x6-Inch X 18-FT	2.000 EACH	_____.	_____.
0014	637.2210 Signs Type II Reflective H	16.000 SF	_____.	_____.
0016	637.2230 Signs Type II Reflective F	12.000 SF	_____.	_____.
0018	638.2602 Removing Signs Type II	6.000 EACH	_____.	_____.
0020	638.3000 Removing Small Sign Supports	6.000 EACH	_____.	_____.
0022	642.5001 Field Office Type B	1.000 EACH	_____.	_____.
0024	643.0420 Traffic Control Barricades Type III	1,430.000 DAY	_____.	_____.
0026	643.0705 Traffic Control Warning Lights Type A	2,080.000 DAY	_____.	_____.
0028	643.0900 Traffic Control Signs	14,300.000 DAY	_____.	_____.
0030	643.0920 Traffic Control Covering Signs Type II	13.000 EACH	_____.	_____.
0032	643.1050 Traffic Control Signs PCMS	14.000 DAY	_____.	_____.
0034	643.5000 Traffic Control	1.000 EACH	_____.	_____.

