



Wisconsin Department of Transportation

December 5, 2017

Division of Transportation Systems Development

Bureau of Project Development
 4802 Sheboygan Avenue, Rm 601
 P O Box 7916
 Madison, WI 53707-7916

Telephone: (608) 266-1631
 Facsimile (FAX): (608) 266-8459

NOTICE TO ALL CONTRACTORS:

Proposal #21: 1166-12-80, WISC 2018 020
Plainfield – Stevens Point
STH 54 to North 2nd Street
IH 39
Portage County

6414-00-73
Plover - Waupaca
Hoover Avenue to Harding Avenue
STH 54
Portage County

Letting of December 12, 2017

This is Addendum No. 02, which provides for the following:

Special Provisions:

Revised Special Provisions	
Article No.	Description
3	Prosecution and Progress.

Schedule of Items:

Revised Bid Item Quantities					
Bid Item	Item Description	Unit	Old Quantity	Revised Quantity	Proposal Total
460.6424	HMA Pavement 4 MT 58-28 H	Ton	2,248	49,449	51,697

Deleted Bid Item Quantities					
Bid Item	Item Description	Unit	Old Quantity	Revised Quantity	Proposal Total
460.6224	HMA Pavement 4 MT 58-28 S	Ton	49,449	-49,449	0

Plan Sheets:

Revised Plan Sheets	
Plan Sheet	Plan Sheet Title (brief description of changes to sheet)
6	Typical Section (Changed legend for HMA pavement)
7	Typical Section (Changed legend for HMA pavement)
8	Typical Section (Changed legend for HMA pavement)
10	Typical Section (Changed legend for HMA pavement)
11	Typical Section (Changed legend for HMA pavement)

25	Construction Detail (Changed note about HMA Pavement type)
90	Traffic Control Typical Section (Revised stage 1 construction operations note 3)
91	Traffic Control Typical Section (Revised stage 2 construction operations note 3)
111	Traffic Control - Typical Section Stage 1 (Revised stage 1 construction operations note 2)
130	Miscellaneous Quantities (Deleted HMA Pavement 4 MT 58-28 S and revised subtotal quantity 4 MT 58-28 H from 0 to 43,491)
131	Miscellaneous Quantities (Deleted HMA Pavement 4 MT 58-28 S and revised subtotal quantity 4 MT 58-28 H from 1,492 to 7,450 for a total of 50,941)
132	Miscellaneous Quantities (Revise PWL Mixture Table to change 4 MT 58-28 S to 4 MT 58-28 H)

The responsibility for notifying potential subcontractors and suppliers of these changes remains with the prime contractor.

Sincerely,

Mike Coleman

Proposal Development Specialist
Proposal Management Section

ADDENDUM NO. 02
1166-12-80 & 6414-00-73
December 5, 2017

Special Provisions

3. Prosecution and Progress

*Replace paragraph directly above section titled **Project 1166-12-80** with the following:*

No work or lane closures are permitted on STH 54 or STH 54 ramps before June 4, 2018.

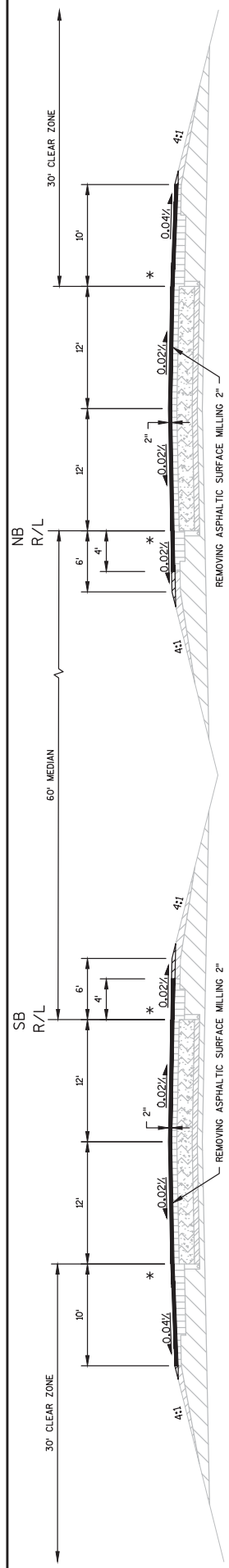
Schedule of Items

Attached, dated December 5, 2017, are the revised Schedule of Items Page 2 - 5.

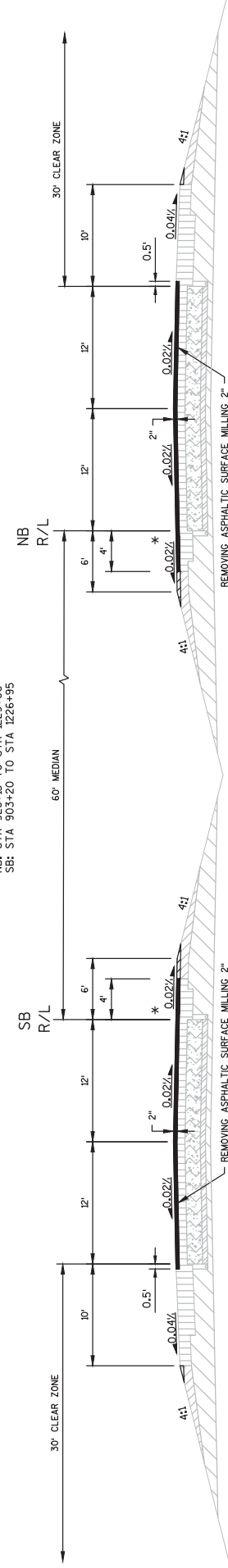
Plan Sheets

The following 8½ x 11-inch sheets are attached and made part of the plans for this proposal:
Revised: 6, 7, 8, 10, 11, 25, 90, 91, 111, 130, 131 and 132.

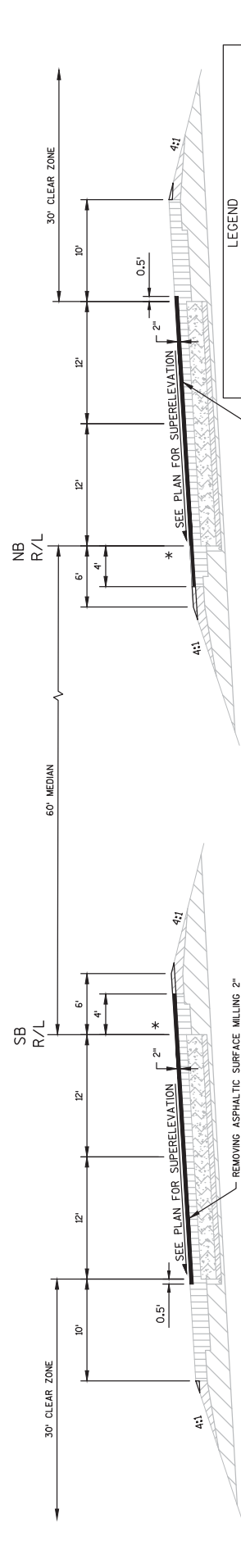
END OF ADDENDUM



PROPOSED TYPICAL SECTION IH 39
 NB: STA 926+15 TO STA 1229+00
 SB: STA 903+20 TO STA 1226+95



PROPOSED TYPICAL SECTION IH 39
 NB: STA 1229+00 TO STA 1530+09
 SB: STA 1226+95 TO STA 1464+58



PROPOSED SUPERELEVATED TYPICAL SECTION IH 39
 STA 1230+84 TO STA 1265+80
 STA 1530+80 TO STA 1464+58
 STA 1458+01 TO STA 1483+83

LEGEND

EXISTING

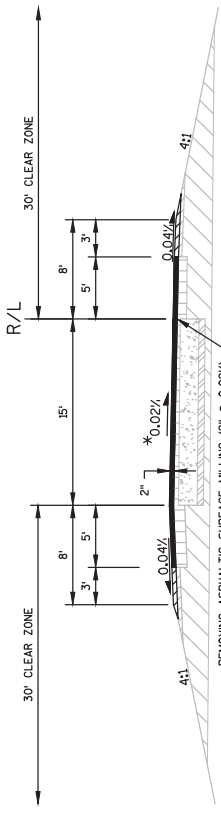
- CRUSHED AGGREGATE BASE COURSE
- 3" ASPHALTIC STABILIZED BASE COURSE
- 9" RUBBLIZED CONCRETE PAVEMENT
- ASPHALTIC CONCRETE PAVEMENT
- CRUSHED AGGREGATE BASE COURSE (SHOULDERS)

PROPOSED

- HMA PAVEMENT TYPE 4, MT 58-28 H (OUTSIDE SHOULDER 4, LT 58-28 S)
- BASE AGGREGATE DENSE 3/4-INCH
- INSTALL RUMBLE STRIP ACCORDING TO SDD

*

Addendum No. 02
ID 1166-12-80
Revised Sheet 6
December 5, 2017

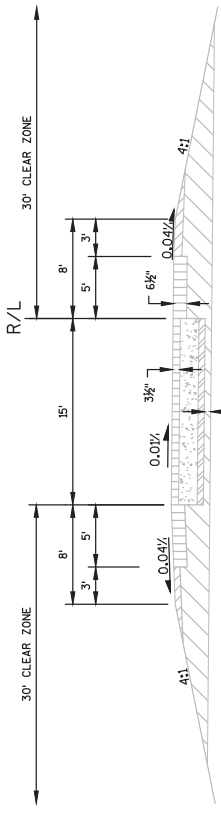


EXISTING TYPICAL RAMP SECTION

STH 54 INTERCHANGE
 "SA" RAMP: STA 43+19"SA" - STA 52+62"SA"
 "SB" RAMP: STA 34+99"SB" - STA 40+49"SB"
 "SC" RAMP: STA 35+85"SC" - STA 45+80"SC"
 "SD" RAMP: STA 48+24"SD" - STA 54+32"SD"

CTH B INTERCHANGE
 "MA" RAMP: STA 30+11"MA" - STA 33+66"MA"
 "MD" RAMP: STA 30+35"MD" - STA 33+75"MD"

NOTE: FOR "SC", "SD" & "MD" RAMPS, ROTATE SECTION 180° AROUND R/L



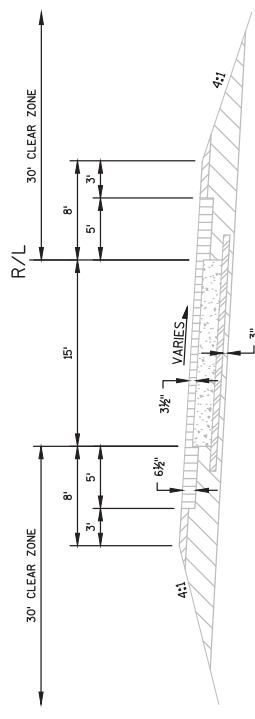
PROPOSED TYPICAL RAMP SECTION

STH 54 INTERCHANGE
 "SA" RAMP: STA 43+19"SA" - STA 55+06"SA"
 "SB" RAMP: STA 32+40"SB" - STA 40+49"SB"
 "SC" RAMP: STA 33+44"SC" - STA 45+80"SC"
 "SD" RAMP: STA 48+24"SD" - STA 56+92"SD"

CTH B INTERCHANGE
 "MA" RAMP: STA 30+11"MA" - STA 33+66"MA"
 "MD" RAMP: STA 30+35"MD" - STA 33+75"MD"

NOTE: FOR "SC", "SD" & "MD" RAMPS, ROTATE SECTION 180° AROUND R/L

* MATCH EXISTING SLOPE ON "MA" & "MD" RAMPS



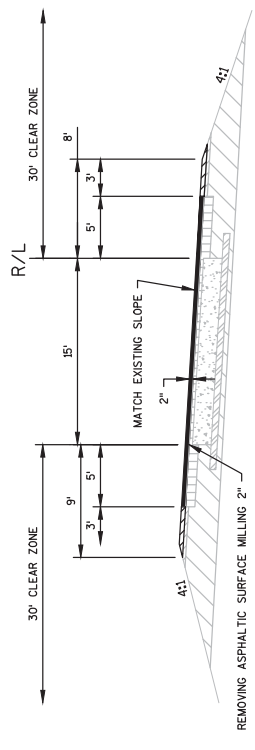
EXISTING TYPICAL SUPERELEVATED RAMP SECTION

STH 54 INTERCHANGE
 "SA" RAMP: STA 52+62"SA" - STA 55+03"SA"
 "SB" RAMP: STA 32+40"SB" - STA 34+99"SB"
 "SC" RAMP: STA 33+44"SC" - STA 35+85"SC"
 "SD" RAMP: STA 54+32"SD" - STA 56+92"SD"

CTH B INTERCHANGE
 "MA" RAMP: STA 33+66"MA" - STA 37+66"MA"
 "MD" RAMP: STA 33+75"MD" - STA 38+27"MD"

USH 10/STH 66 INTERCHANGE
 "ZC" RAMP: STA 277+03"ZC" - STA 284+91"ZC"

NOTE: FOR "SC", "SD", "MD" & "ZC" RAMPS, ROTATE SECTION 180° AROUND R/L



PROPOSED TYPICAL SUPERELEVATED RAMP SECTION

STH 54 INTERCHANGE
 "SA" RAMP: STA 52+62"SA" - STA 55+03"SA"
 "SB" RAMP: STA 32+40"SB" - STA 34+99"SB"
 "SC" RAMP: STA 33+44"SC" - STA 35+85"SC"
 "SD" RAMP: STA 54+32"SD" - STA 56+92"SD"

CTH B INTERCHANGE
 "MA" RAMP: STA 33+66"MA" - STA 37+66"MA"
 "MD" RAMP: STA 33+75"MD" - STA 38+27"MD"

USH 10/STH 66 INTERCHANGE
 "ZC" RAMP: STA 277+03"ZC" - STA 284+91"ZC"

NOTE: FOR "SC", "SD", "MD" & "ZC" RAMPS, ROTATE SECTION 180° AROUND R/L

LEGEND

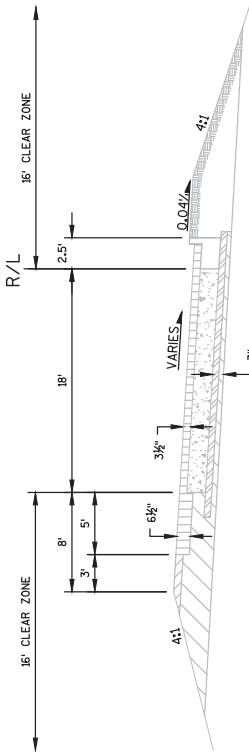
EXISTING

- CRUSHED AGGREGATE BASE COURSE
- 3" ASPHALTIC STABILIZED BASE COURSE
- 9" CONCRETE PAVEMENT
- ASPHALTIC CONCRETE PAVEMENT
- CRUSHED AGGREGATE BASE COURSE (SHOULDERS)

PROPOSED

- HMA PAVEMENT TYPE 4 MT 58-28 H
- BASE AGGREGATE DENSE 3/4-INCH

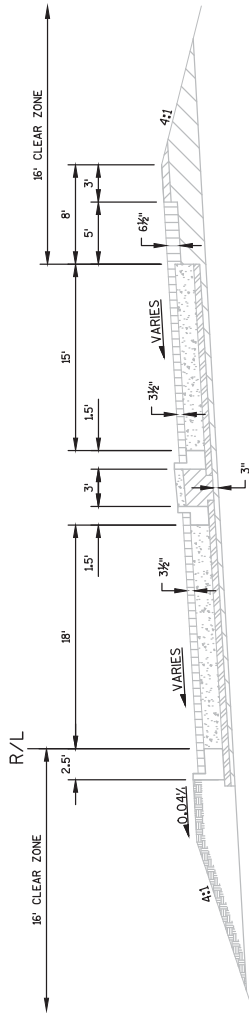
Addendum No. 02
 ID 1166-12-80
 Revised Sheet 7
 December 5, 2017



EXISTING TYPICAL SUPERELEVATED RAMP SECTION

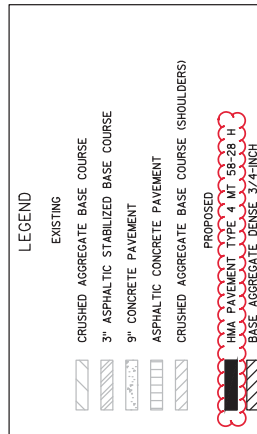
USH 10/STH 66 INTERCHANGE
 "ZB" RAMP: STA 280+72"ZD" - STA 284+72"ZD"
 "ZD" RAMP: STA 280+74"ZD" - STA 284+72"ZD"

NOTE: FOR "ZD" RAMPS, ROTATE SECTION 180° AROUND R/L

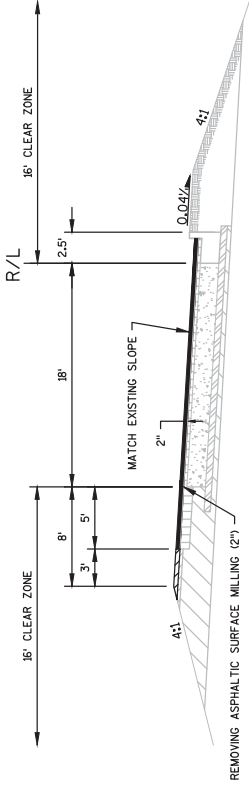


EXISTING TYPICAL DUAL RAMP SECTION

USH 10/STH 66 INTERCHANGE
 "ZD" RAMP: STA 272+31"ZD" - 279+77"ZD"



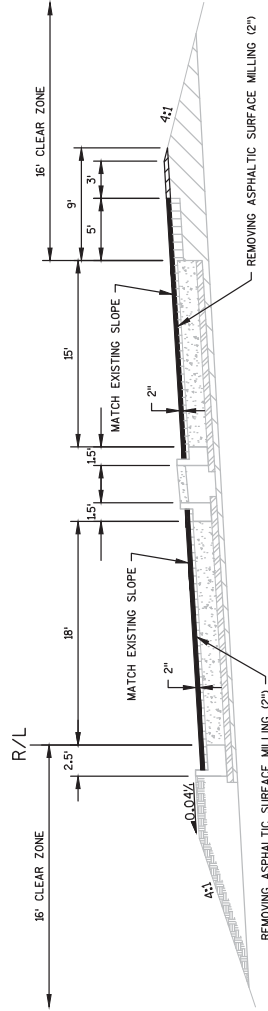
Addendum No. 02
 ID 1166-12-80
 Revised Sheet 8
 December 5, 2017



PROPOSED TYPICAL SUPERELEVATED RAMP SECTION

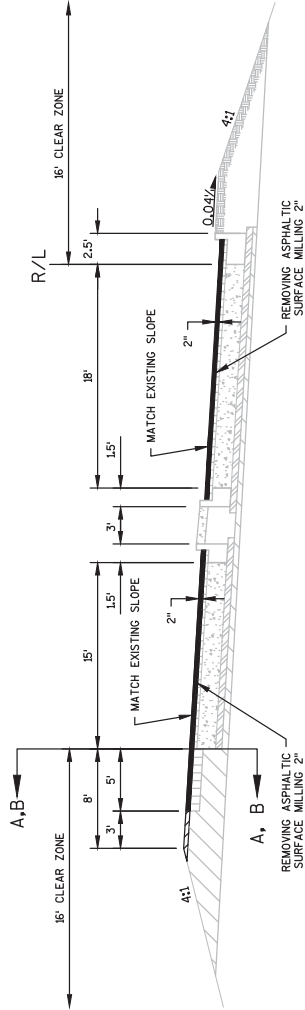
USH 10/STH 66 INTERCHANGE
 "ZB" RAMP: STA 280+72"ZD" - STA 284+72"ZD"
 "ZD" RAMP: STA 280+74"ZD" - STA 284+72"ZD"

NOTE: FOR "ZD" RAMPS, ROTATE SECTION 180° AROUND R/L



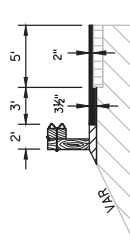
PROPOSED TYPICAL DUAL RAMP SECTION

USH 10/STH 66 INTERCHANGE
 "ZD" RAMP: STA 272+31"ZD" - 279+77"ZD"

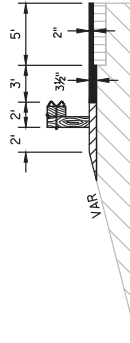


PROPOSED TYPICAL DUAL RAMP SECTION

USH 10/STH 66 INTERCHANGE
 "ZB" RAMP: STA 299+39"ZB" - 307+84"ZB"



SECTION B-B
 USH 10/STH 66 INTERCHANGE
 STA 300+20"ZB" - STA 299+37"ZB"

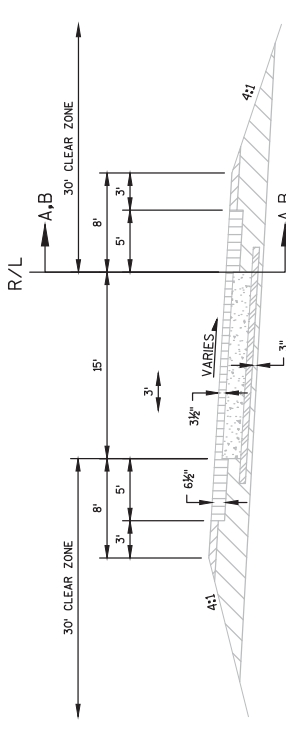


SECTION A-A
 USH 10/STH 66 INTERCHANGE
 STA 307+51"ZB" - STA 300+20"ZB"

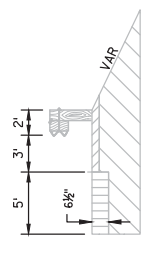
LEGEND	
EXISTING	
	CRUSHED AGGREGATE BASE COURSE
	3" ASPHALTIC STABILIZED BASE COURSE
	9" CONCRETE PAVEMENT
	ASPHALTIC CONCRETE PAVEMENT
	CRUSHED AGGREGATE BASE COURSE (SHOULDERS)
PROPOSED	
	1 1/2" AGGREGATE BASE COURSE
	3/4" AGGREGATE BASE COURSE

Addendum No. 02
 ID 1166-12-80
 Revised Sheet 10
 December 5, 2017

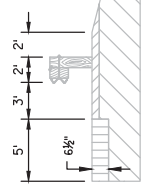
Addendum No. 02
 ID 1166-12-80
 Revised Sheet 11
 December 5, 2017



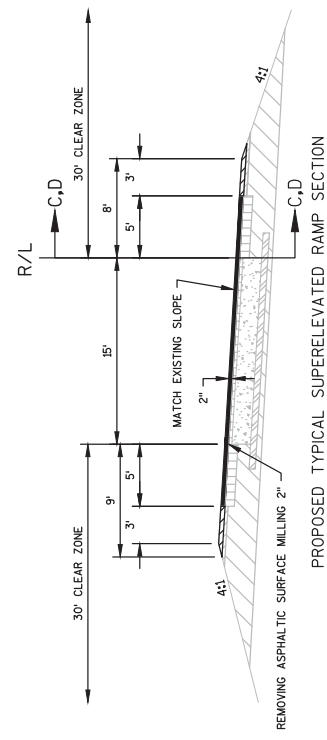
EXISTING TYPICAL SUPERELEVATED RAMP SECTION
 U.S. 10/STH 66 INTERCHANGE
 "ZA" RAMP: STA 293+65"ZA" - STA 302+00"ZA"



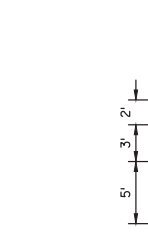
SECTION A-A
 U.S. 10/STH 66 INTERCHANGE
 STA 293+65"ZA" - STA 294+00"ZA"



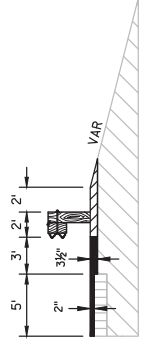
SECTION B-B
 U.S. 10/STH 66 INTERCHANGE
 STA 294+00"ZA" - STA 296+85"ZA"



PROPOSED TYPICAL SUPERELEVATED RAMP SECTION
 U.S. 10/STH 66 INTERCHANGE
 "ZA" RAMP: STA 293+65"ZA" - STA 302+00"ZA"



SECTION C-C
 U.S. 10/STH 66 INTERCHANGE
 STA 293+65"ZA" - STA 294+00"ZA"



SECTION D-D
 U.S. 10/STH 66 INTERCHANGE
 STA 294+00"ZA" - STA 296+85"ZA"

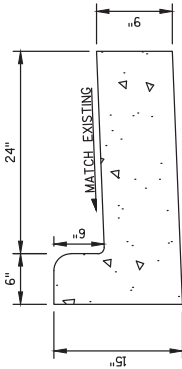
LEGEND

EXISTING

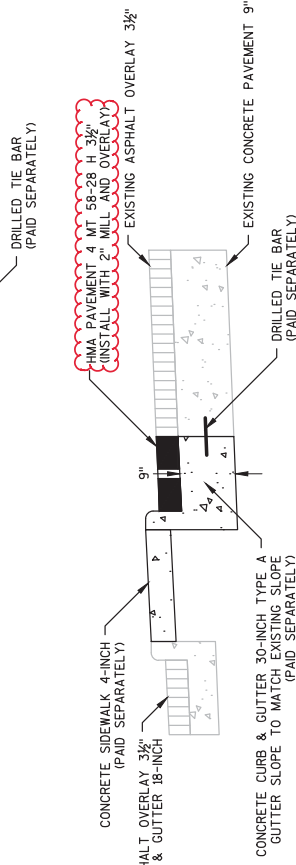
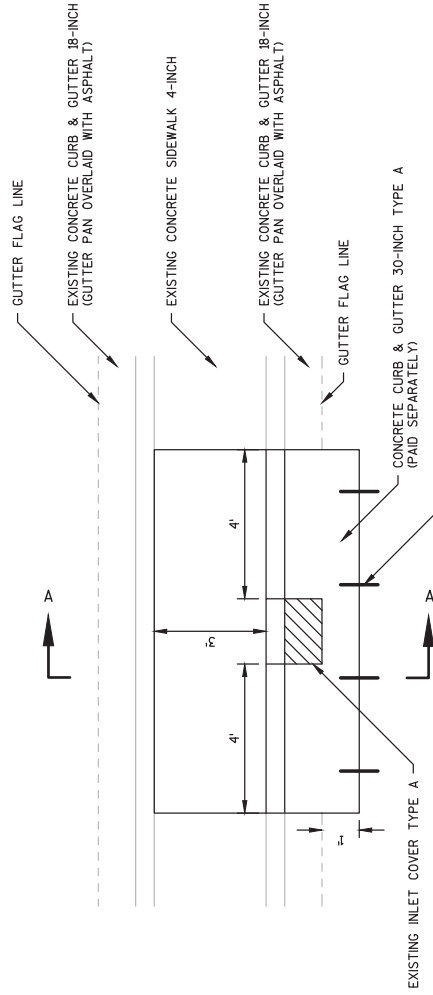
- CRUSHED AGGREGATE BASE COURSE
- 3" ASPHALTIC STABILIZED BASE COURSE
- 9" CONCRETE PAVEMENT
- ASPHALTIC CONCRETE PAVEMENT
- CRUSHED AGGREGATE BASE COURSE (SHOULDERS)

PROPOSED

- HMA PAVEMENT TYPE 4, MT 58-28, H
- AGGREGATE BASE DENSE 3/4-INCH



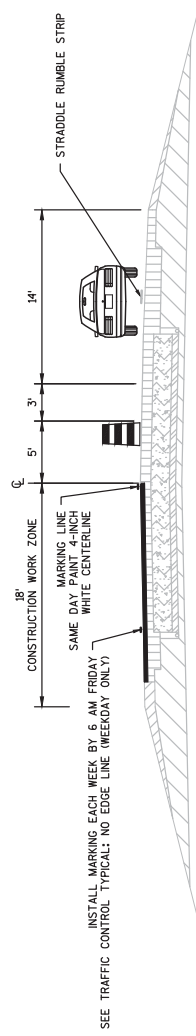
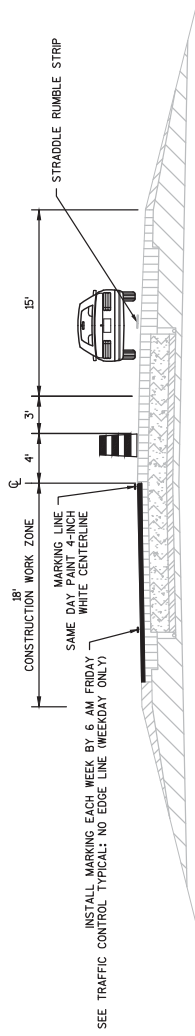
CONCRETE CURB & GUTTER 30-INCH TYPE A MODIFIED
STATION 303+95'ZB" - 304+05'ZB"



NOTE: VERTICAL SCALE EXAGGERATED BY FACTOR OF 2

RECONSTRUCTING INLET
STATION 304+00'ZB"

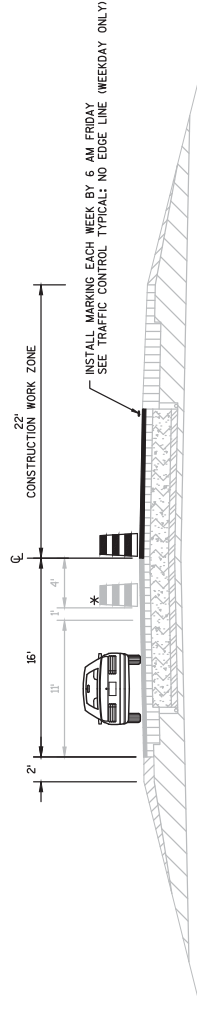
Addendum No. 02
ID 1166-12-80
Revised Sheet 25
December 5, 2017



Addendum No. 02
 ID 1166-12-80
 Revised Sheet 90
 December 5, 2017

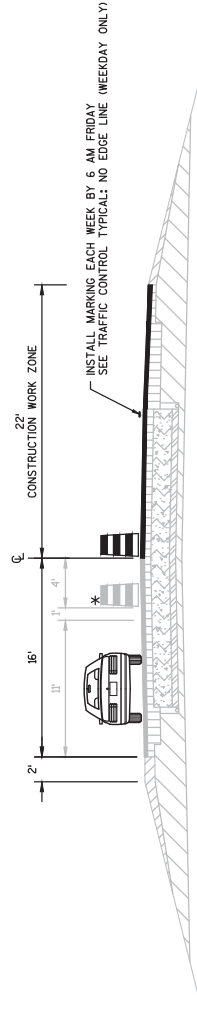
- STAGE 1 CONSTRUCTION OPERATIONS
1. CLOSE THE INSIDE PASSING LANE FOR THE CONSTRUCTION WORK.
 2. MILL UP THE EXISTING PAVEMENT.
 3. MILL 2" OF THE EXISTING PAVEMENT, MT 58-28 H.
 4. SHAPE SHOULDERS AND INSTALL BASE AGGREGATE (SHOULDERS).
 5. APPLY MARKING LINE SAME DAY PAINT, 4-INCH WHITE C/L.
 6. APPLY MARKING LINE EPOXY, 4-INCH YELLOW EDGE LINE.

NOTE: WIDTH RESTRICTION SIGNS SHALL BE INSTALLED DURING STAGE 2 OPERATIONS. SEE TRAFFIC CONTROL - WIDTH SIGNING.



STAGE 2 - NORTHERN LIMITS

NB: STA 1229+00 TO STA 1510+09
SB: STA 1227+00 TO STA 1483+83



STAGE 2 - SOUTHERN LIMITS

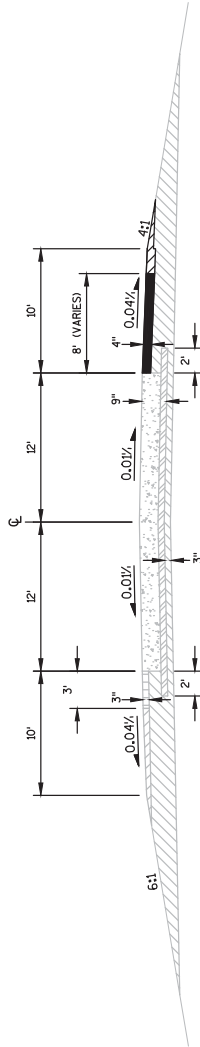
NB: STA 926+15 TO STA 1229+00
SB: STA 903+20 TO STA 1227+00

Addendum No. 02
ID 1166-12-80
Revised Sheet 91
December 5, 2017

- STAGE 2 CONSTRUCTION OPERATIONS
1. CLOSE THE OUTSIDE DRIVING LANE FOR THE CONSTRUCTION WORK.
 2. MILL UP THE EXISTING PAVEMENT.
 3. PLACE 2" OF FINE GRADATION OVER THE MILLING.
 4. SHAPE SHOULDERS, REINSTALL BASE AGGREGATE (SHOULDERS).
 5. APPLY MARKING LINE EPOXY, 4-INCH WHITE EDGE LINE.

*TEMPORARILY MOVE DRUM DURING PAVING OPERATION. REINSTALL TO ORIGINAL POSITION IMMEDIATELY UPON COMPLETION OF PAVING OPERATION.

Addendum No. 02
 ID 1166-12-80
 Revised Sheet 111
 December 5, 2017



ASPHALT WIDENING TYPICAL SECTION STH 54

STA 15+00'S+ TO 15+89'S+

- STAGE 1 CONSTRUCTION OPERATIONS**
1. REMOVE ASPHALTIC SURFACE ON EXISTING SHOULDERS AND INSTALL BASE AGGREGATE DENSE 3/4-INCH AS REQUIRED FOR THE WIDENING. THERE SHALL BE A MINIMUM OF 6 INCHES OF BASE AGGREGATE DENSE 3/4-INCH UNDER THE ASPHALTIC WIDENING.
 2. INSTALL HMA PAVEMENT 4 MT 58-28 H AT THE IH 319 SB ON RAMP INTERSECTION
 3. INSTALL BASE AGGREGATE DENSE 3/4-INCH SHOULDERS.

LEGEND	
EXISTING	
	CONCRETE PAVEMENT
	3" ASPHALTIC STABILIZED BASE COURSE
	ASPHALTIC CONCRETE PAVEMENT (SUPERPAVE)
	CRUSHED AGGREGATE BASE COURSE
	CRUSHED AGGREGATE BASE COURSE (SHOULDER)
PROPOSED	
	HMA PAVEMENT 4 MT 58-28 H
	BASE AGGREGATE DENSE 3/4-INCH

ALL ITEMS ARE CATEGORY 0010
UNLESS NOTED OTHERWISE

HMAPAVEMENT

STATION	STATION	LOCATION	460.5224		460.6424		455.0605		460.4110.S		REMARKS
			TON	58-28 S	TON	58-28 H	TACK COAT GAL	PAVEMENT LONGITUDINAL JOINTS LF	REHEATING HMA		
926+15	-	1028+22	NB	1304	3652	3017	10207				
1030+27	-	1039+82	NB	122	342	282	955				
1041+81	-	1094+91	NB	679	1900	1569	5310				
1095+52	-	1229+00	NB	1706	4776	3945	13348				
1229+00	-	1241+29	NB	---	448	363	1229				
1243+85	-	1303+92	NB	---	2188	1775	6007				
1306+21	-	1365+00	NB	---	2141	1738	5879				
1367+82	-	1443+50	NB	---	2756	2237	7568				
1446+05	-	1510+09	NB	---	2332	1893	6404				
903+20	-	1028+22	SB	1597	4473	3695	12502				
1030+27	-	1039+82	SB	122	342	282	955				
1041+81	-	1095+24	SB	863	1912	1579	5343				
1095+89	-	1227+00	SB	1675	4691	3875	13111				
1227+00	-	1241+29	SB	---	520	422	1429				
1243+85	-	1303+92	SB	---	2188	1775	6007				
1306+21	-	1365+00	SB	---	2141	1738	5879				
1367+82	-	1443+50	SB	---	2756	2237	7568				
1446+05	-	1483+83	SB	---	1376	1117	3778				
928+31	-	934+49	NB RT	---	65	40	---				STH 54 NB OFF RAMP TAPER
34+47"SB"	-	40+50"SB"	SB RAMP	---	193	117	---				STH 54 NB OFF RAMP
953+56	-	962+37	NB RT	---	124	75	---				STH 54 NB ON RAMP TAPER
43+18"SA"	-	53+53"SA"	SA RAMP	---	331	201	---				STH 54 NB ON RAMP
927+05	-	934+68	SB LT	---	105	64	---				STH 54 SB ON RAMP TAPER
34+65"SC"	-	45+80"SC"	SC RAMP	---	356	217	---				STH 54 SB ON RAMP
954+85	-	960+23	SB LT	---	57	35	---				STH 54 SB OFF RAMP TAPER
48+26"SD"	-	54+91"SD"	SD RAMP	---	212	129	---				STH 54 SB OFF RAMP
1016+50	-	1022+30	NB RT	---	74	45	---				CTH B NB OFF RAMP TAPER
1035+66	-	1039+82	NB RT	---	94	57	---				CTH B NB ON RAMP TAPER
1041+81	-	1052+06	NB RT	---	56	34	---				CTH B NB ON RAMP TAPER
30+11"MA"	-	35+36"MA"	MA RAMP	---	168	102	---				CTH B NB ON RAMP
1035+49	-	1039+82	SB LT	---	87	53	---				CTH B SB OFF RAMP TAPER
1012+49	-	1021+59	SB LT	---	137	84	---				CTH B SB ON RAMP TAPER
30+35"MD"	-	35+53"MD"	MD RAMP	---	194	118	---				CTH B SB OFF RAMP
1172+78	-	1178+42	NB RT	---	116	71	---				CTH HH NB OFF RAMP TAPER
1195+65	-	1207+54	NB RT	---	191	116	---				CTH HH NB ON RAMP TAPER
SUBTOTALS				7888	43491	35098	113479				

Addendum No. 02
ID 1166-12-80
Revised Sheet 130
December 5, 2017

ALL ITEMS ARE CATEGORY 0010 UNLESS NOTED OTHERWISE

HMA PAVEMENT

460.4110.S
REHEATING
HMA

460.5224
4 LT
58-28 S
TON

460.6424
4 MT
58-28 H
TON

455.0605
TACK
COAT
GAL

460.6424
PAVEMENT
LONGITUDINAL
JOINTS
LF

STATION	STATION	LOCATION	460.5224 4 LT 58-28 S TON	460.6424 4 MT 58-28 H TON	455.0605 TACK COAT GAL	460.6424 PAVEMENT LONGITUDINAL JOINTS LF	REMARKS
1181+37	- 1188+55	SB LT	---	112	68	---	CTH HH SB OFF RAMP TAPER
1163+26	- 1174+27	SB LT	---	1989	1211	---	CTH HH SB ON RAMP TAPER
1273+00	- 1281+24	NB RT	---	254	155	---	USH 10 NB PARALLEL OFF RAMP
1285+01	- 1297+24	SB LT	---	228	139	---	USH 10 SB PARALLEL OFF RAMP
274+87"ZD"	- 285+06"ZD"	ZD RAMP	---	286	174	---	USH 10 SB OFF RAMP
272+31"ZD"	- 279+77"ZD"	ZC RAMP	---	238	145	---	USH 10 SB ON RAMP
284+91"ZC"	- 278+18"ZC"	ZC RAMP	---	215	131	---	USH 10 SB ON RAMP
1269+47	- 1278+20	SB LT	---	246	150	---	USH 10 SB ON RAMP TAPER
1287+72	- 1293+32	NB RT	---	130	79	---	USH 10 NB OFF RAMP TAPER
293+27"ZB"	- 307+40"ZB"	ZB RAMP	---	397	242	---	USH 10 NB OFF RAMP
293+65"ZA"	- 300+84"ZA"	ZA RAMP	---	230	123	---	USH 10 NB ON RAMP
299+37"ZB"	- 307+84"ZB"	ZA RAMP	---	271	145	---	USH 10 NB ON RAMP
1300+82	- 1303+92	NB RT	---	123	75	---	USH 10 NB ON RAMP TAPER
1305+64	- 1311+61	NB RT	---	100	61	---	USH 10 NB ON RAMP TAPER
1346+60	- 1357+70	SB LT	---	283	172	---	STH 66 SB ON RAMP TAPER
1375+85	- 1387+12	NB RT	---	264	160	---	STH 66 NB ON RAMP TAPER
1483+72	- 1494+18	NB RT	---	252	153	---	BUS 51 NB ON RAMP TAPER
1463+40	- 1471+93	NB RT	---	193	117	---	BUS 51 NB OFF RAMP TAPER
912+34		MEDIAN	20	---	16	---	MEDIAN CROSSOVER
978+92		MEDIAN	20	---	16	---	MEDIAN CROSSOVER
1072+95		MEDIAN	20	---	16	---	MEDIAN CROSSOVER
1147+80		MEDIAN	20	---	16	---	MEDIAN CROSSOVER
10+00"S"	- 14+00"S"	RT & LT	---	161	75	400	STH 54
10+00"S"	- 14+00"S"	RT	---	229	49	---	STH 54 RAMP LANE
14+00"S"	- 17+60"S"	INTERSECTION	---	242	112	360	STH 54
15+00"S"	- 15+89"S"	RT	---	36	11	---	STH 54 ASPHALT WIDENING 4 INCH THICKNESS
46+89"SD"	- 48+26"SD"	SD RAMP	---	87	40	---	STH 54 SB RAMP TERMINAL
45+79"SC"	- 48+36"SC"	SC RAMP	---	182	85	---	STH 54 SB RAMP ENTRANCE
21+22"S"	- 25+20"S"	INTERSECTION	---	327	152	398	STH 54
40+49"SB"	- 42+01"SB"	SB RAMP	---	111	51	---	STH 54 NB RAMP TERMINAL
39+99"SA"	- 43+18"SA"	SA RAMP	---	117	54	---	STH 54 NB RAMP ENTRANCE
29+34"MA"	- 30+11"MA"	MA RAMP	---	36	22	---	CTH B SB RAMP TERMINAL
28+04"MB"	- 29+00"MB"	MB RAMP	---	37	23	---	CTH B SB RAMP TERMINAL
28+47"MC"	- 29+15"MC"	MC RAMP	---	37	22	---	CTH B NB RAMP TERMINAL
29+32"MD"	- 30+35"MD"	MD RAMP	---	37	23	---	CTH B NB RAMP TERMINAL
SUBTOTALS			80	7450	4283	1158	
TOTALS			7968	50941	39381	114637	

Addendum No. 02
ID 1166-12-80
Revised Sheet 131
December 5, 2017

Addendum No. 02
 ID 1166-12-80
 Revised Sheet 132
 December 5, 2017

3

ALL ITEMS ARE CATEGORY 0010
 UNLESS NOTED OTHERWISE

PWL MIXTURE USE TABLE

STATION	LOCATION	UNDERLYING SURFACE	BID ITEM	TONS	THICKNESS (IN)	QUALITY MANAGEMENT PROGRAM TO BE USED:	DENSITY ACCEPTANCE
926+15 - 1510+09	IH 39 NB 12 FOOT DRIVING LANE	MILLED EXISTING HMA SURFACE	4 MT 58-28 H	8829	2	MIXTURE ACCEPTANCE INCENTIVE AIR VOIDS HMA PAVEMENT	INCENTIVE DENSITY PWL HMA PAVEMENT 460.2005
926+15 - 1510+09	IH 39 NB 12 FOOT PASSING LANE & 4 FOOT SHOULDER	MILLED EXISTING HMA SURFACE	4 MT 58-28 H	11704	2	INCENTIVE AIR VOIDS HMA PAVEMENT	INCENTIVE DENSITY PWL HMA PAVEMENT 460.2005
926+15 - 1229+00	IH 39 NB 10 FOOT SHOULDER	MILLED EXISTING HMA SURFACE	4 LT 58-28 S	3810	2	GMP AS PER SS 460	INCENTIVE DENSITY HMA PAVEMENT 460.2000
903+20 - 1483+83	IH 39 SB 12 FOOT DRIVING LANE	MILLED EXISTING HMA SURFACE	4 MT 58-28 H	8771	2	INCENTIVE AIR VOIDS HMA PAVEMENT	INCENTIVE DENSITY PWL HMA PAVEMENT 460.2005
903+20 - 1483+83	IH 39 SB 12 FOOT PASSING LANE & 4 FOOT SHOULDER	MILLED EXISTING HMA SURFACE	4 MT 58-28 H	11627	2	INCENTIVE AIR VOIDS HMA PAVEMENT	INCENTIVE DENSITY PWL HMA PAVEMENT 460.2005
903+20 - 1227+00	IH 39 SB 10 FOOT SHOULDER	MILLED EXISTING HMA SURFACE	4 LT 58-28 S	4078	2	GMP AS PER SS 460	INCENTIVE DENSITY HMA PAVEMENT 460.2000
34+47"SB - 40+50"SB"	STH 54 NB OFF RAMP	MILLED EXISTING HMA SURFACE	4 MT 58-28 H	193	2	GMP AS PER SS 460	INCENTIVE DENSITY HMA PAVEMENT 460.2000
43+18"SA" - 53+53"SA"	STH 54 NB ON RAMP	MILLED EXISTING HMA SURFACE	4 MT 58-28 H	331	2	GMP AS PER SS 460	INCENTIVE DENSITY HMA PAVEMENT 460.2000
34+65"SC" - 45+80"SC"	STH 54 SB OFF RAMP	MILLED EXISTING HMA SURFACE	4 MT 58-28 H	356	2	GMP AS PER SS 460	INCENTIVE DENSITY HMA PAVEMENT 460.2000
48+26"SD" - 54+91"SD"	STH 54 SB ON RAMP	MILLED EXISTING HMA SURFACE	4 MT 58-28 H	212	2	GMP AS PER SS 460	INCENTIVE DENSITY HMA PAVEMENT 460.2000
29+34"MA" - 35+36"MA"	CTH B NB ON RAMP	MILLED EXISTING HMA SURFACE	4 MT 58-28 H	168	2	GMP AS PER SS 460	INCENTIVE DENSITY HMA PAVEMENT 460.2000
28+04"MB" - 29+00"MB"	CTH B NB OFF RAMP TERMINAL	MILLED EXISTING CONCRETE PAVEMENT	4 MT 58-28 H	194	2	GMP AS PER SS 460	INCENTIVE DENSITY HMA PAVEMENT 460.2000
28+47"MC" - 29+15"MC"	CTH B SB ON RAMP TERMINAL	MILLED EXISTING CONCRETE PAVEMENT	4 MT 58-28 H	194	2	GMP AS PER SS 460	INCENTIVE DENSITY HMA PAVEMENT 460.2000
29+32"MD" - 35+53"MD"	CTH B SB OFF RAMP	MILLED EXISTING HMA SURFACE	4 MT 58-28 H	194	2	GMP AS PER SS 460	INCENTIVE DENSITY HMA PAVEMENT 460.2000
274+67"ZD" - 285+06"ZD"	USH 10 SB OFF RAMP (ZD RAMP)	MILLED EXISTING HMA SURFACE	4 MT 58-28 H	286	2	GMP AS PER SS 460	INCENTIVE DENSITY HMA PAVEMENT 460.2000
272+31"ZD" - 279+77"ZD"	USH 10 SB ON RAMP (ZC RAMP)	MILLED EXISTING HMA SURFACE	4 MT 58-28 H	453	2	GMP AS PER SS 460	INCENTIVE DENSITY HMA PAVEMENT 460.2000
284+91"ZC" - 278+18"ZC"	USH 10 NB OFF RAMP (ZB RAMP)	MILLED EXISTING HMA SURFACE	4 MT 58-28 H	397	2	GMP AS PER SS 460	INCENTIVE DENSITY HMA PAVEMENT 460.2000
293+27"ZB" - 307+40"ZB"	USH 10 SB ON RAMP (ZA RAMP)	MILLED EXISTING HMA SURFACE	4 MT 58-28 H	501	2	GMP AS PER SS 460	INCENTIVE DENSITY HMA PAVEMENT 460.2000
293+65"ZA" - 300+84"ZA"	USH 10 SB ON RAMP (ZB RAMP)	MILLED EXISTING HMA SURFACE	4 MT 58-28 H	1492	1.75	GMP AS PER SS 460	INCENTIVE DENSITY HMA PAVEMENT 460.2000
289+37"ZB" - 307+84"ZB"	USH 10 NB OFF RAMP (ZC RAMP)	MILLED EXISTING HMA SURFACE	4 MT 58-28 H	1492	1.75	GMP AS PER SS 460	INCENTIVE DENSITY HMA PAVEMENT 460.2000
10+00"S" - 25+20"S"	STH 54 LANES & SHOULDERS	MILLED EXISTING CONCRETE PAVEMENT	4 MT 58-28 H	1492	1.75	GMP AS PER SS 460	INCENTIVE DENSITY HMA PAVEMENT 460.2000

3

PROJECT NO: 1166-12-80

HWY: IH 39

COUNTY: PORTAGE

PLOT DATE: December 5, 2017

PLOT BY: Zach Gungor

MISCELLANEOUS QUANTITIES

PLOT NAME: Miscellaneous Quantities

SHEET: 132

E



Proposal Schedule of Items

Proposal ID: 20171212021 Project(s): 1166-12-80, 6414-00-73

Federal ID(s): WISC 2018020, N/A

SECTION: 0001

Contract Items

Alt Set ID:

Alt Mbr ID:

Proposal Line Number	Item ID Description	Approximate Quantity and Units	Unit Price	Bid Amount
0032	211.0500 Prepare Foundation for Base Aggregate	6.000 STA	_____.	_____.
0034	213.0100 Finishing Roadway (project) 01. 1166-12-80	1.000 EACH	_____.	_____.
0036	213.0100 Finishing Roadway (project) 02. 6414-00-73	1.000 EACH	_____.	_____.
0038	305.0110 Base Aggregate Dense 3/4-Inch	12,037.000 TON	_____.	_____.
0040	305.0120 Base Aggregate Dense 1 1/4-Inch	131.000 TON	_____.	_____.
0042	305.0500 Shaping Shoulders	2,459.000 STA	_____.	_____.
0044	390.0203 Base Patching Asphaltic	281.000 SY	_____.	_____.
0046	416.0610 Drilled Tie Bars	4.000 EACH	_____.	_____.
0048	440.4410 Incentive IRI Ride	92,160.000 DOL	1.00000	92,160.00
0050	455.0605 Tack Coat	39,705.000 GAL	_____.	_____.
0052	460.2000 Incentive Density HMA Pavement	12,000.000 DOL	1.00000	12,000.00
0054	460.2005 Incentive Density PWL HMA Pavement	26,200.000 DOL	_____.	_____.
0056	460.2010 Incentive Air Voids HMA Pavement	26,200.000 DOL	_____.	_____.
0058	460.4110.S Reheating HMA Pavement Longitudinal Joints	115,635.000 LF	_____.	_____.
0060	460.5224 HMA Pavement 4 LT 58-28 S	7,968.000 TON	_____.	_____.
0064	460.6424 HMA Pavement 4 MT 58-28 H	51,697.000 TON	_____.	_____.



Proposal Schedule of Items

Proposal ID: 20171212021 Project(s): 1166-12-80, 6414-00-73

Federal ID(s): WISC 2018020, N/A

SECTION: 0001

Contract Items

Alt Set ID:

Alt Mbr ID:

Proposal Line Number	Item ID Description	Approximate Quantity and Units	Unit Price	Bid Amount
0066	465.0110 Asphaltic Surface Patching	2,060.000 TON	_____.	_____.
0068	465.0310 Asphaltic Curb	53.000 LF	_____.	_____.
0070	465.0315 Asphaltic Flumes	8.000 SY	_____.	_____.
0072	465.0400 Asphaltic Shoulder Rumble Strips	168,974.000 LF	_____.	_____.
0074	509.0301 Preparation Decks Type 1	4.000 SY	_____.	_____.
0076	509.0302 Preparation Decks Type 2	2.000 SY	_____.	_____.
0078	509.5100.S Polymer Overlay	1,104.000 SY	_____.	_____.
0080	520.8700 Cleaning Culvert Pipes	16.000 EACH	_____.	_____.
0082	521.0348 Apron Endwalls for Culvert Pipe Sloped Cross Drains Steel 48-Inch 4 to 1	1.000 EACH	_____.	_____.
0084	521.0657 Apron Endwalls for Pipe Arch Sloped Cross Drains Steel 57x38-Inch 6 to 1	1.000 EACH	_____.	_____.
0086	522.0112 Culvert Pipe Reinforced Concrete Class III 12-Inch	4.000 LF	_____.	_____.
0088	522.1012 Apron Endwalls for Culvert Pipe Reinforced Concrete 12-Inch	17.000 EACH	_____.	_____.
0090	522.1018 Apron Endwalls for Culvert Pipe Reinforced Concrete 18-Inch	1.000 EACH	_____.	_____.
0092	524.0130 Culvert Pipe Salvaged 30-Inch	8.000 LF	_____.	_____.
0094	524.0136 Culvert Pipe Salvaged 36-Inch	64.000 LF	_____.	_____.



Proposal Schedule of Items

Proposal ID: 20171212021 Project(s): 1166-12-80, 6414-00-73

Federal ID(s): WISC 2018020, N/A

SECTION: 0001

Contract Items

Alt Set ID:

Alt Mbr ID:

Proposal Line Number	Item ID Description	Approximate Quantity and Units	Unit Price	Bid Amount
0096	524.0618 Apron Endwalls for Culvert Pipe Salvaged 18-Inch	1.000 EACH	_____.	_____.
0098	524.0630 Apron Endwalls for Culvert Pipe Salvaged 30-Inch	3.000 EACH	_____.	_____.
0100	524.0636 Apron Endwalls for Culvert Pipe Salvaged 36-Inch	4.000 EACH	_____.	_____.
0102	602.0405 Concrete Sidewalk 4-Inch	30.000 SF	_____.	_____.
0104	606.0200 Riprap Medium	8.000 CY	_____.	_____.
0106	611.0430 Reconstructing Inlets	1.000 EACH	_____.	_____.
0108	614.0010 Barrier System Grading Shaping Finishing	1.000 EACH	_____.	_____.
0110	614.2300 MGS Guardrail 3	963.000 LF	_____.	_____.
0112	614.2330 MGS Guardrail 3 K	130.000 LF	_____.	_____.
0114	614.2610 MGS Guardrail Terminal EAT	1.000 EACH	_____.	_____.
0116	614.2620 MGS Guardrail Terminal Type 2	1.000 EACH	_____.	_____.
0118	618.0100 Maintenance And Repair of Haul Roads (project) 01. 1166-12-80	1.000 EACH	_____.	_____.
0120	619.1000 Mobilization	1.000 EACH	_____.	_____.
0122	624.0100 Water	120.000 MGAL	_____.	_____.
0124	628.1504 Silt Fence	556.000 LF	_____.	_____.



Proposal Schedule of Items

Proposal ID: 20171212021 Project(s): 1166-12-80, 6414-00-73

Federal ID(s): WISC 2018020, N/A

SECTION: 0001

Contract Items

Alt Set ID:

Alt Mbr ID:

Proposal Line Number	Item ID Description	Approximate Quantity and Units	Unit Price	Bid Amount
0126	628.1520 Silt Fence Maintenance	556.000 LF	_____.	_____.
0128	628.1905 Mobilizations Erosion Control	2.000 EACH	_____.	_____.
0130	628.1910 Mobilizations Emergency Erosion Control	2.000 EACH	_____.	_____.
0132	628.2004 Erosion Mat Class I Type B	682.000 SY	_____.	_____.
0134	628.2008 Erosion Mat Urban Class I Type B	182.000 SY	_____.	_____.
0136	628.7010 Inlet Protection Type B	1.000 EACH	_____.	_____.
0138	628.7555 Culvert Pipe Checks	5.000 EACH	_____.	_____.
0140	628.7570 Rock Bags	25.000 EACH	_____.	_____.
0142	633.0100 Delineator Posts Steel	698.000 EACH	_____.	_____.
0144	633.0500 Delineator Reflectors	934.000 EACH	_____.	_____.
0146	633.5200 Markers Culvert End	24.000 EACH	_____.	_____.
0148	634.0612 Posts Wood 4x6-Inch X 12-FT	10.000 EACH	_____.	_____.
0150	634.0614 Posts Wood 4x6-Inch X 14-FT	137.000 EACH	_____.	_____.
0152	634.0616 Posts Wood 4x6-Inch X 16-FT	39.000 EACH	_____.	_____.
0154	634.0618 Posts Wood 4x6-Inch X 18-FT	71.000 EACH	_____.	_____.
0156	634.0620 Posts Wood 4x6-Inch X 20-FT	63.000 EACH	_____.	_____.

