



Wisconsin Department of Transportation

Division of Transportation Systems Development

Bureau of Project Development
4802 Sheboygan Avenue, Rm 601
P O Box 7916
Madison, WI 53707-7916

December 14, 2017

Telephone: (608) 266-1631
Facsimile (FAX): (608) 266-8459

NOTICE TO ALL CONTRACTORS:

**Proposal #12: 1060-34-88, WISC 2018 077
Zoo IC, IH 894 SB Noise Wall
UPRR Bridge to Lincoln Avenue
IH 894
Milwaukee County**

Letting of January 9, 2018

This is Addendum No. 01, which provides for the following:

Special Provisions:

Revised Special Provisions	
Article No.	Description
23	Noise Barriers Double-Sided Sound Absorptive N-40-65, Item 531.0300.S.0001

Plan Sheets:

Revised Plan Sheets	
Plan Sheet	Plan Sheet Title (brief description of changes to sheet)
49 – 61	Structure N-40-65 (Old outdated plan set inadvertently inserted in plans)

The responsibility for notifying potential subcontractors and suppliers of these changes remains with the prime contractor.

Sincerely,

Mike Coleman

Proposal Development Specialist
Proposal Management Section

ADDENDUM NO. 01

1060-34-88

December 14, 2017

Special Provisions

23. Noise Barriers Double-Sided Sound Absorptive N-40-65, Item 531.0300.S.0001.

*Replace paragraph three under section titled **B.2.1 Structural and Foundation Design** with the following:*

Design drilled shaft foundations using the Broms Method or the P-y Method of analysis. Ignore the top 1-foot of supporting soil in the design of ground-mounted barrier foundations.

Plan Sheets

The following 8½ x 11-inch sheets are attached and made part of the plans for this proposal:

Revised: 49 – 61.

END OF ADDENDUM

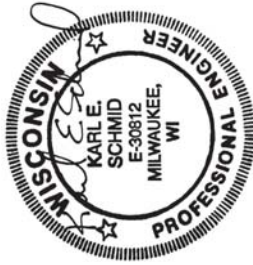
STATE PROJECT NUMBER
1060-34-88

NOTES

FOR UTILITY INFORMATION, SEE SHEETS 2 - 6.
LOCATE THE BOTTOM OF THE HYDRANT ACCESS HOLES 4.0' ABOVE THE BOTTOM OF NOISE BARRIER.

LIST OF DRAWINGS

1. GENERAL PLAN & ELEVATION
2. UTILITY PLAN (1 OF 5)
3. UTILITY PLAN (2 OF 5)
4. UTILITY PLAN (3 OF 5)
5. UTILITY PLAN (4 OF 5)
6. UTILITY PLAN (5 OF 5)
7. ALIGNMENT PLAN
8. QUANTITIES & CONSTRUCTION DETAILS
9. RESIDENTIAL SIDE TREATMENT DETAILS
10. AESTHETIC WALL TREATMENT DETAILS
11. FREEMWAY SIDE
12. SUBSURFACE EXPLORATION (1 OF 3)
13. SUBSURFACE EXPLORATION (2 OF 3)
14. SUBSURFACE EXPLORATION (3 OF 3)



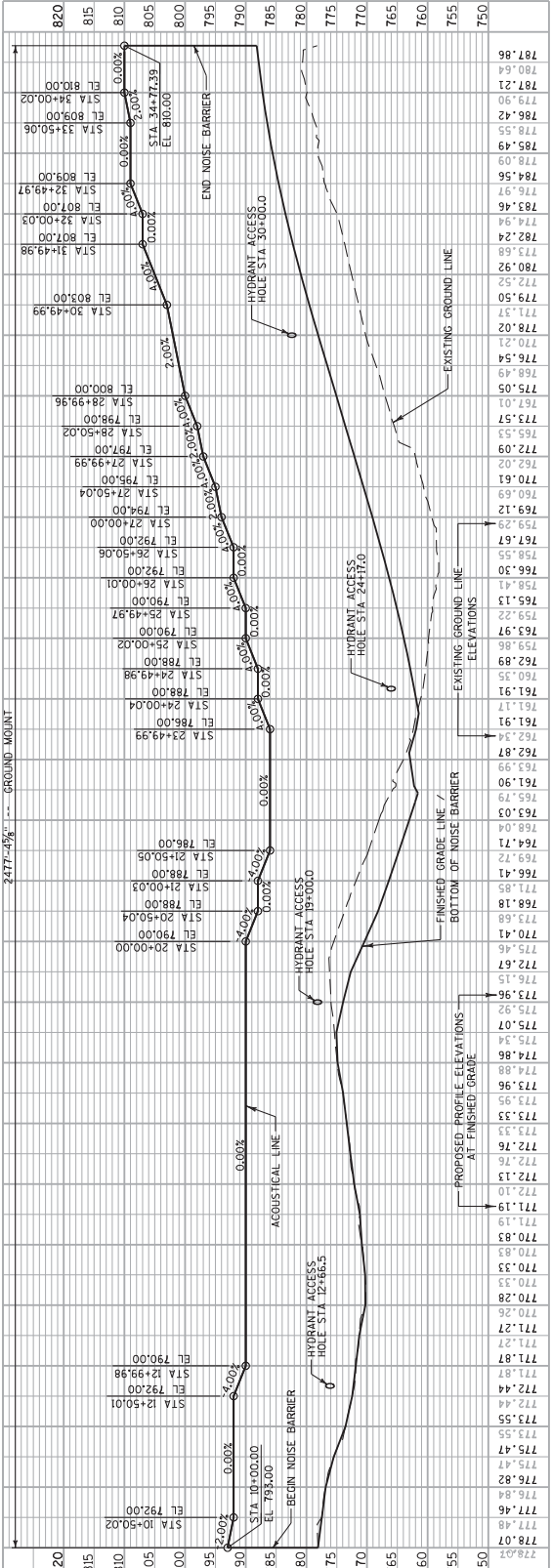
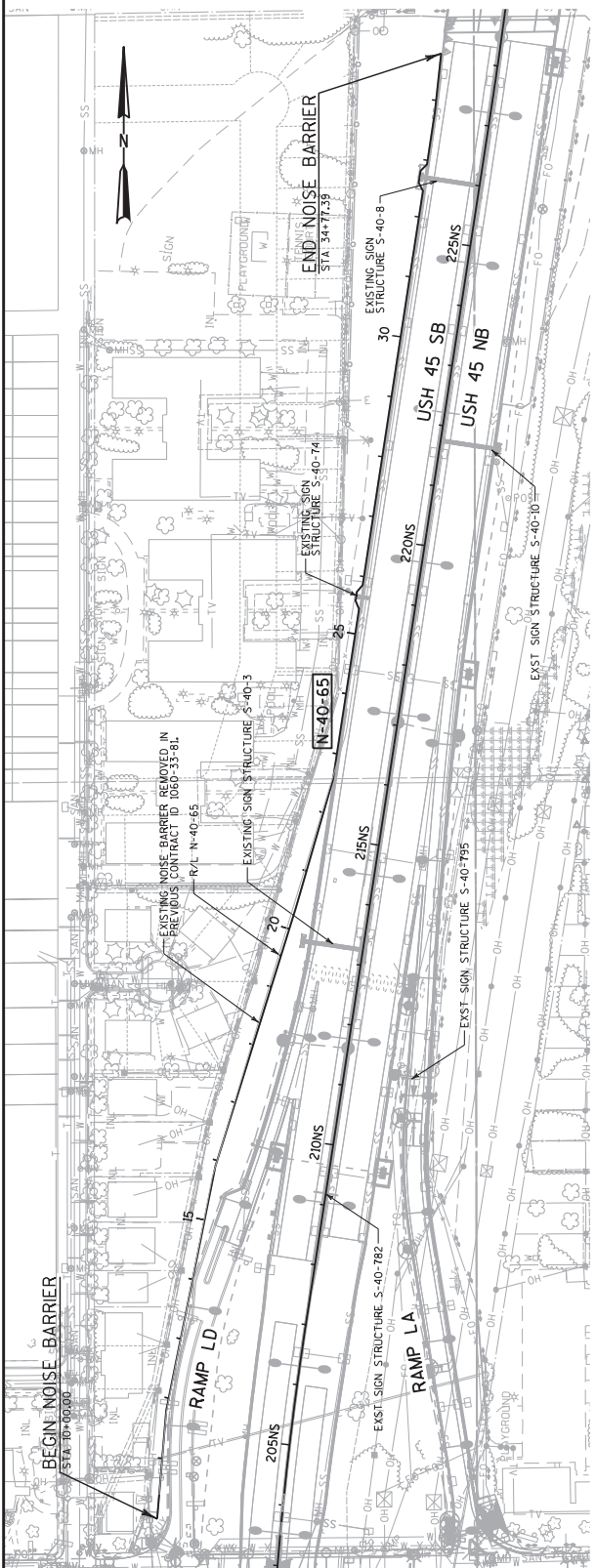
STRUCTURES DESIGN CONTACTS
BRIDGE OFFICES:
WILLIAM DREIER (608) 266-8489
CONSULTANT:
ED MCCORRIST (414) 272-2426

NO.	DATE	REVISION	BY

STATE OF WISCONSIN
DEPARTMENT OF TRANSPORTATION
ACCEPTED *William C. DeLeon* 05/11/17
DATE
CHIEF STRUCTURES DESIGN ENGINEER

STRUCTURE N-40-65
NOISE BARRIER N OF LINCOLN/WEST OF USH 45 SB
COUNTY MILWAUKEE TOWN/CITY/VILLAGE WEST ALLIS
DESIGN SPEC. 600
DESIGNED BY CES (KCD) EXAM BY CES (KCD)
DESIGN DRAWING PLAN
CLM (KCD) KEJ

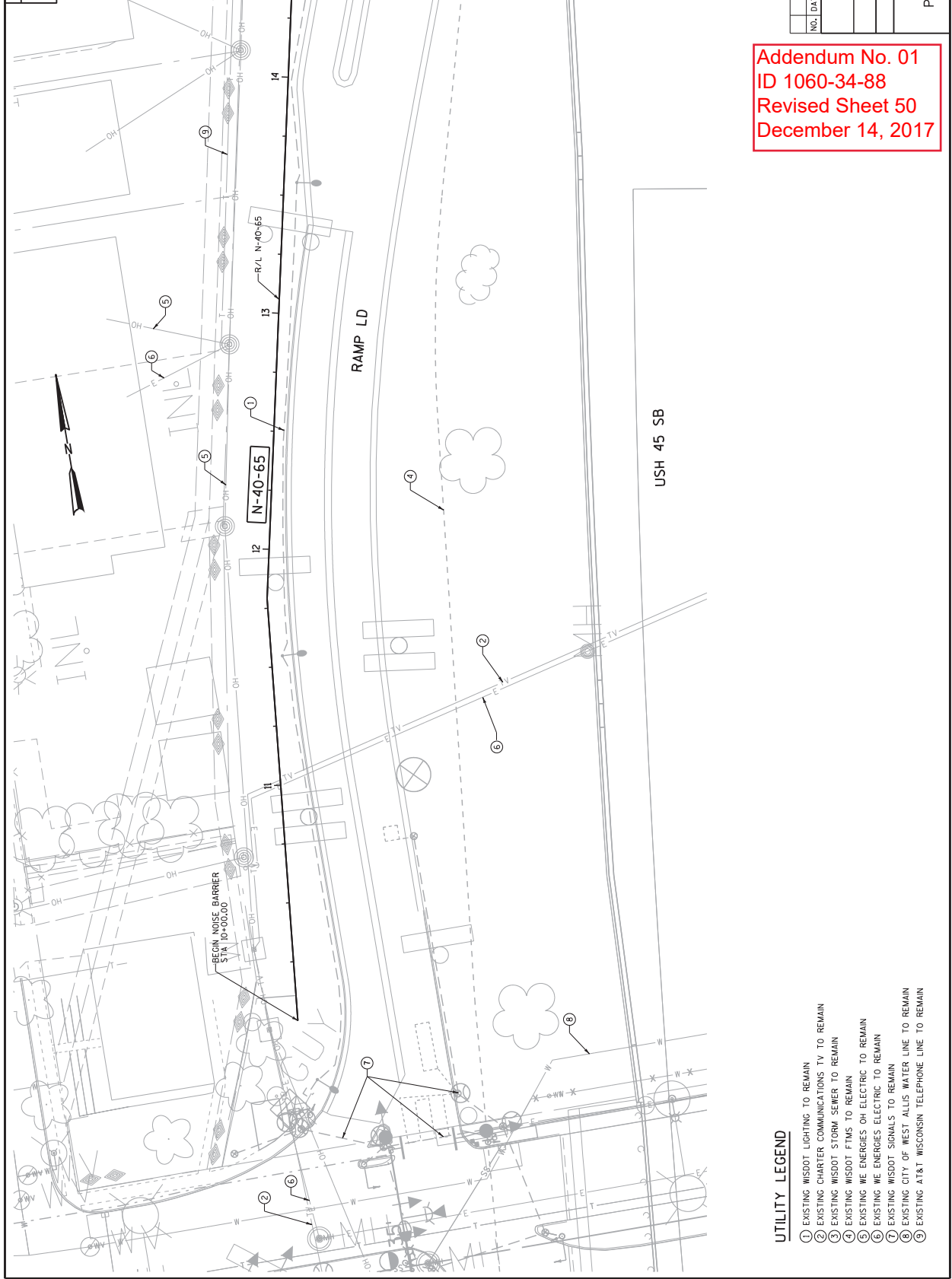
GENERAL PLAN
& ELEVATION
SHEET 1 OF 13
49



Addendum No. 01
ID 1060-34-88
Revised Sheet 49
December 14, 2017

PLAN & PROFILE: NOISE BARRIER N-40-65
PLOT NAME : N65.0800101
PLOT BY : mesecem
PLOT DATE : 18-APR-2017 11:44
FILE NAME : W:\Cadd\VF\real\10603488_NMS\Structures\N-40-65\cadd\N65_080101.dwg

STATE PROJECT NUMBER
1060-34-88



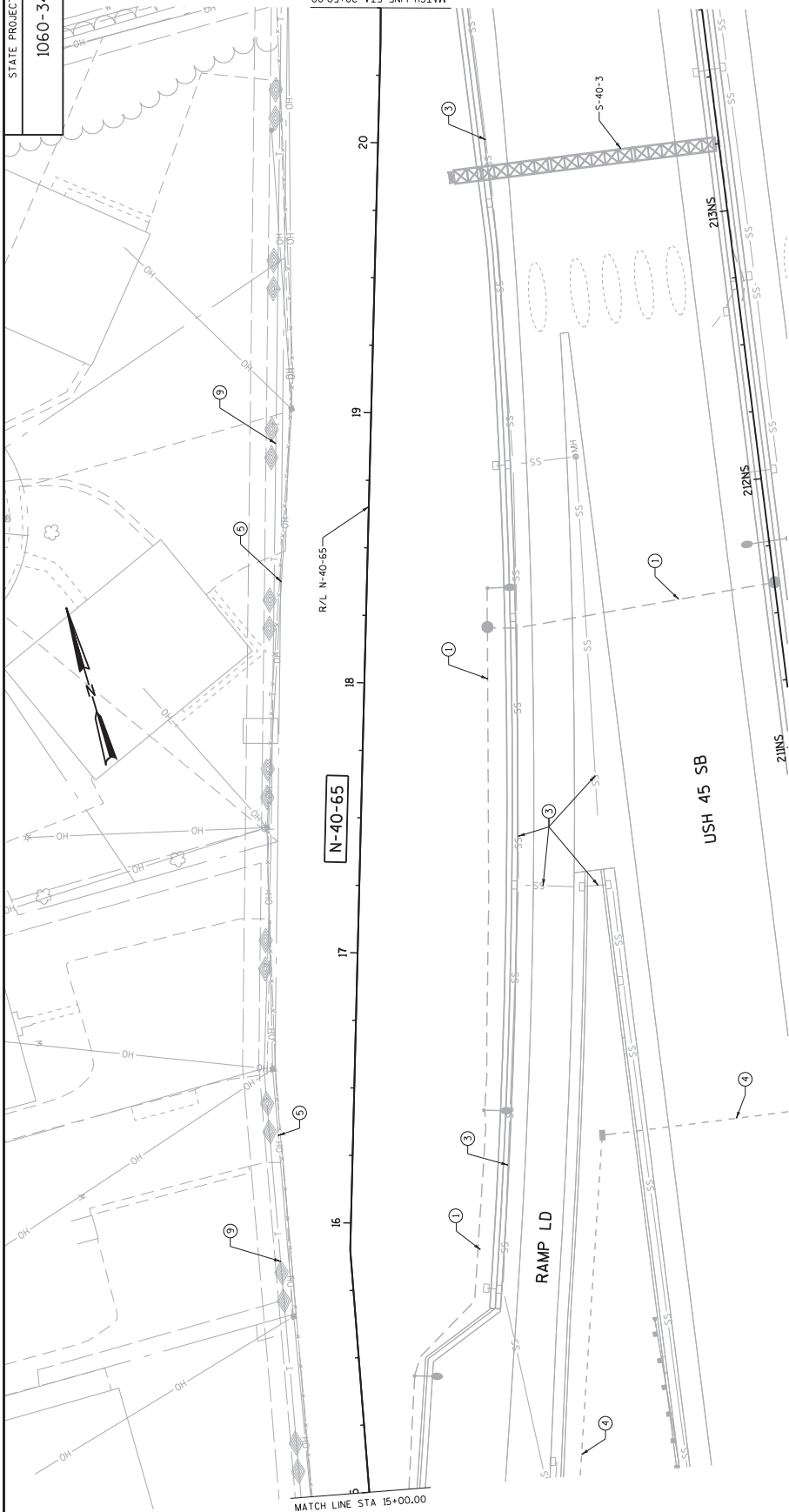
Addendum No. 01
ID 1060-34-88
Revised Sheet 50
December 14, 2017

UTILITY LEGEND

- ① EXISTING WISDOT LIGHTING TO REMAIN
- ② EXISTING CHARTER COMMUNICATIONS TV TO REMAIN
- ③ EXISTING WISDOT STORM SEWER TO REMAIN
- ④ EXISTING WISDOT FMS TO REMAIN
- ⑤ EXISTING WE ENERGIES OH ELECTRIC TO REMAIN
- ⑥ EXISTING WE ENERGIES ELECTRIC TO REMAIN
- ⑦ EXISTING WISDOT SIGNALS TO REMAIN
- ⑧ EXISTING CITY OF WEST ALLIS WATER LINE TO REMAIN
- ⑨ EXISTING AT&T WISCONSIN TELEPHONE LINE TO REMAIN

NO.	DATE	REVISION	BY
STATE OF WISCONSIN DEPARTMENT OF TRANSPORTATION			
STRUCTURE N-40-65			
DRAWN BY	GLM	PLANS	RES
CHECKED BY	CRS	DES	
UTILITY PLAN (1 OF 5)			50

STATE PROJECT NUMBER
1060-34-88



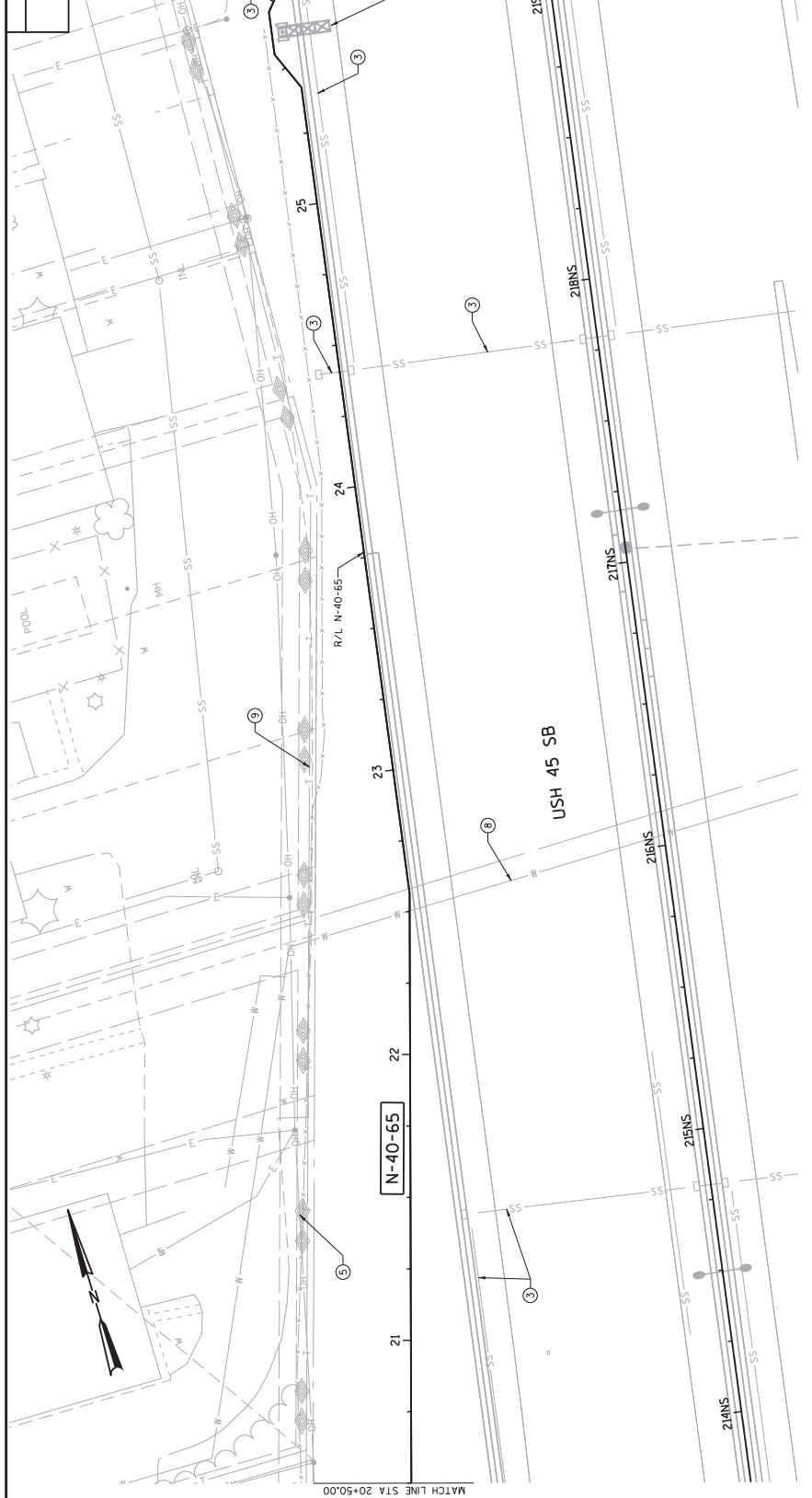
Addendum No. 01
ID 1060-34-88
Revised Sheet 51
December 14, 2017

UTILITY LEGEND

- ① EXISTING WISDOT LIGHTING TO REMAIN
- ② EXISTING CHARTER COMMUNICATIONS TV TO REMAIN
- ③ EXISTING WISDOT STORM SENSER TO REMAIN
- ④ EXISTING WISDOT FTMS TO REMAIN
- ⑤ EXISTING WE ENERGIES OH ELECTRIC TO REMAIN
- ⑥ EXISTING WE ENERGIES ELECTRIC TO REMAIN
- ⑦ EXISTING WISDOT SIGNALS TO REMAIN
- ⑧ EXISTING CITY OF WEST ALLIS WATER LINE TO REMAIN
- ⑨ EXISTING AT&T WISCONSIN TELEPHONE LINE TO REMAIN

NO.	DATE	REVISION	BY
STATE OF WISCONSIN DEPARTMENT OF TRANSPORTATION			
STRUCTURE N-40-65			
DRWN	CLM	PLNS	AKS
CHKD	AKS	CHKD	AKS
UTILITY PLAN (2 OF 5)			SHEET 3 OF 13
			51

STATE PROJECT NUMBER
1060-34-88



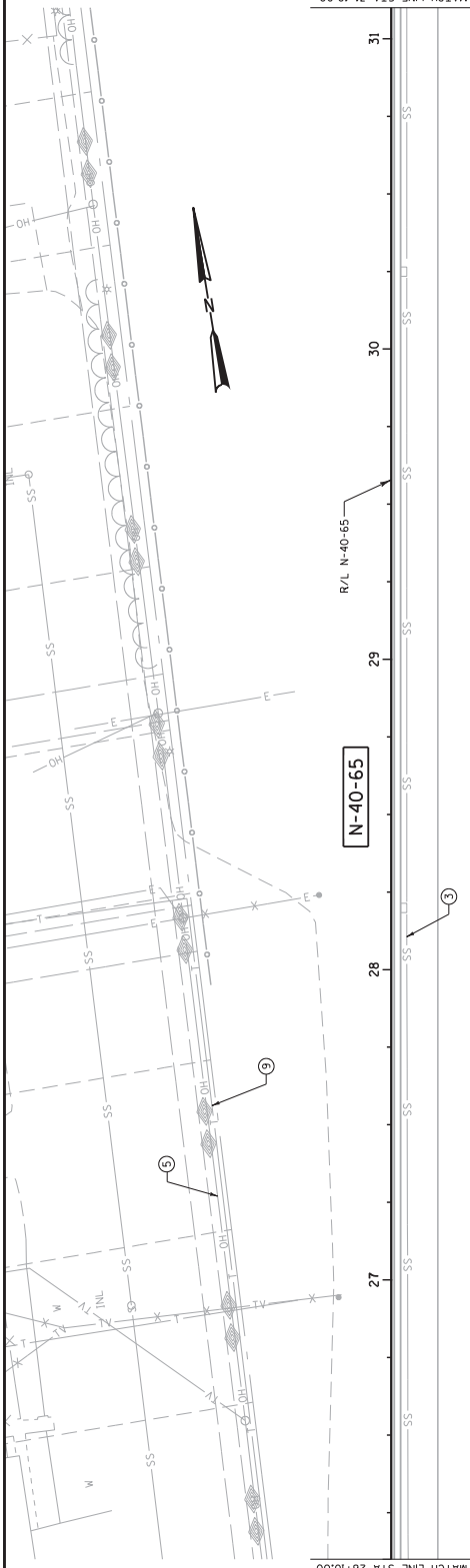
UTILITY LEGEND

- ① EXISTING WISDOT LIGHTING TO REMAIN
- ② EXISTING CHARTER COMMUNICATIONS TV TO REMAIN
- ③ EXISTING WISDOT STORM SEWER TO REMAIN
- ④ EXISTING WISDOT FTMS TO REMAIN
- ⑤ EXISTING WE ENERGIES OH ELECTRIC TO REMAIN
- ⑥ EXISTING WE ENERGIES ELECTRIC TO REMAIN
- ⑦ EXISTING WISDOT SIGNALS TO REMAIN
- ⑧ EXISTING CITY OF WEST ALLIS WATER LINE TO REMAIN
- ⑨ EXISTING AT&T WISCONSIN TELEPHONE LINE TO REMAIN

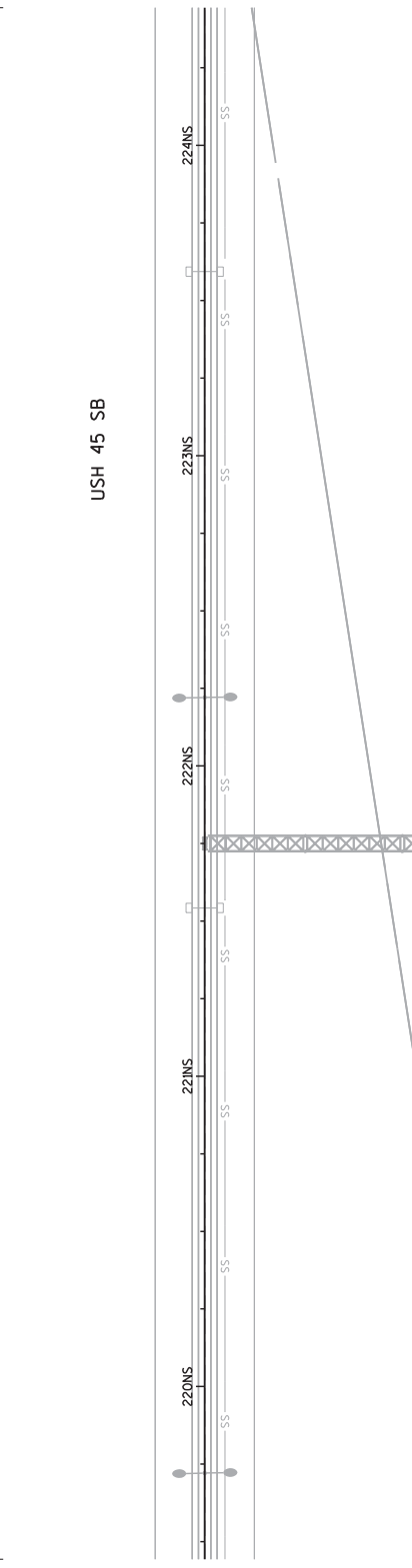
Addendum No. 01
ID 1060-34-88
Revised Sheet 52
December 14, 2017

NO.	DATE	REVISION	BY
STATE OF WISCONSIN DEPARTMENT OF TRANSPORTATION			
STRUCTURE N-40-65			
DRAWN BY	CLM	PLANS	YES
CHECKED BY	CLM	PLANS	YES
UTILITY PLAN (3 OF 5)			SHEET 4 OF 13
			52

STATE PROJECT NUMBER
1060-34-88



USH 45 SB



UTILITY LEGEND

- ① EXISTING WISDOT LIGHTING TO REMAIN
- ② EXISTING CHARTER COMMUNICATIONS TV TO REMAIN
- ③ EXISTING WISDOT STORM SEWER TO REMAIN
- ④ EXISTING WISDOT FTMS TO REMAIN
- ⑤ EXISTING WE ENERGIES OH ELECTRIC TO REMAIN
- ⑥ EXISTING WE ENERGIES ELECTRIC TO REMAIN
- ⑦ EXISTING WISDOT SIGNALS TO REMAIN
- ⑧ EXISTING CITY OF WEST ALLIS WATER LINE TO REMAIN
- ⑨ EXISTING AT&T WISCONSIN TELEPHONE LINE TO REMAIN

Addendum No. 01
ID 1060-34-88
Revised Sheet 53
December 14, 2017

NO.	DATE	REVISION	BY
STATE OF WISCONSIN DEPARTMENT OF TRANSPORTATION			
STRUCTURE N-40-65			
DRAWN BY	CLM	PLANS DES	YES
UTILITY			SHEET 5 OF 13
PLAN (4 OF 5)			53

PILOT SCALE : 40:1

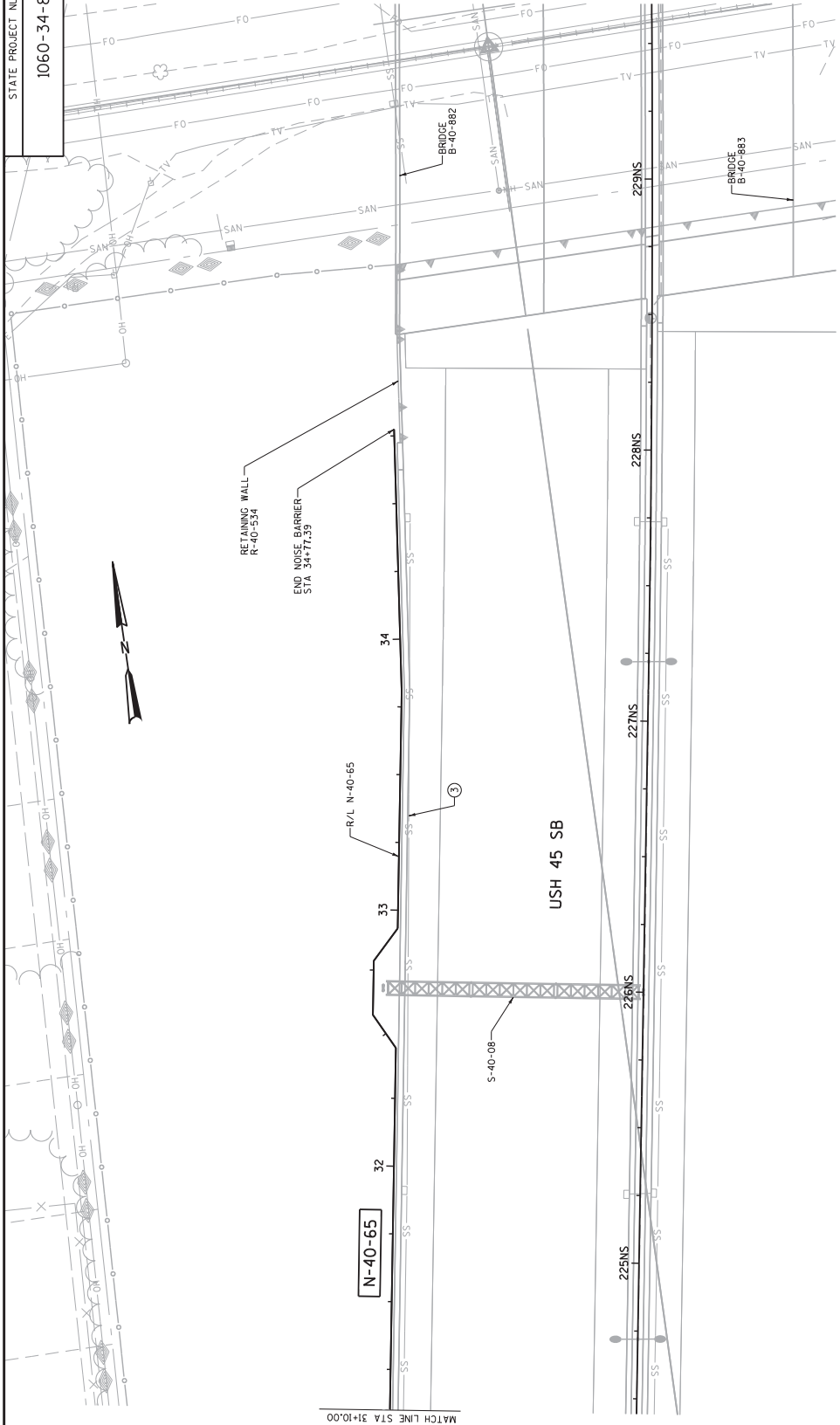
PILOT NAME : N65_080105.dgn

PILOT BY : msc68m

PILOT DATE : 18-APR-2017 11:45

FILE NAME : W:\Cadd\VF\proj\10603488_NMS\STRUCTS\N-40-65\cadd\N65_080105.dgn

STATE PROJECT NUMBER
1060-34-88



Addendum No. 01
ID 1060-34-88
Revised Sheet 54
December 14, 2017

UTILITY LEGEND

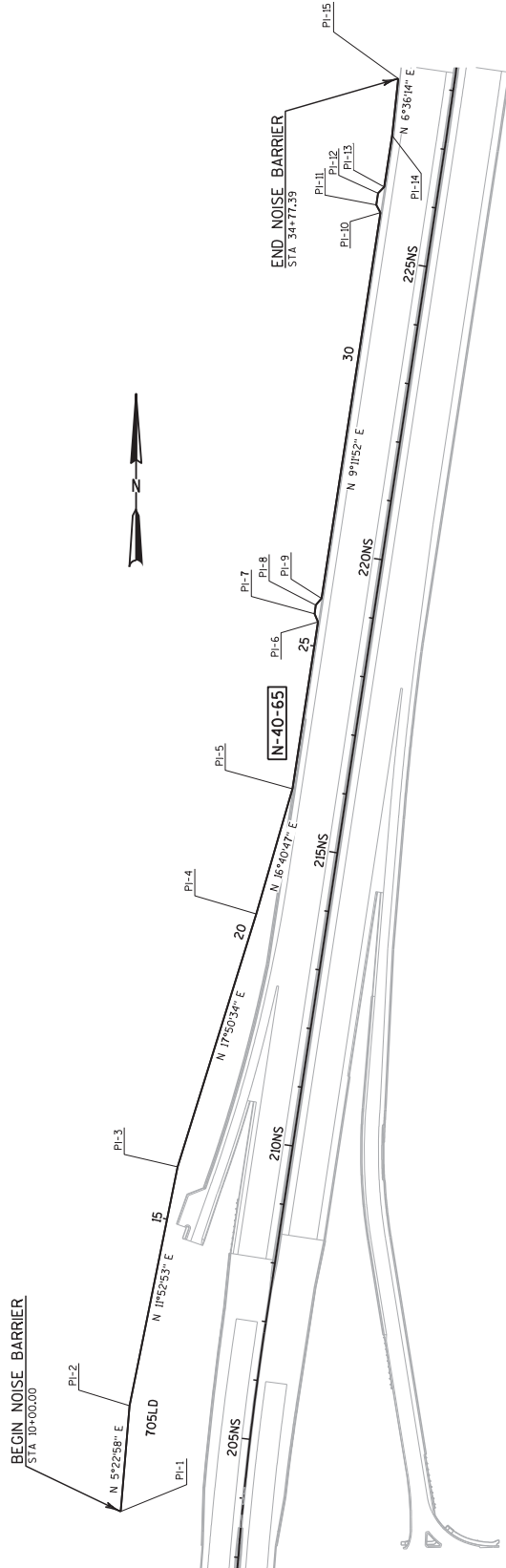
- ① EXISTING WISDOT LIGHTING TO REMAIN
- ② EXISTING CHARTER COMMUNICATIONS TV TO REMAIN
- ③ EXISTING WISDOT STORM SEWER TO REMAIN
- ④ EXISTING WISDOT FTMS TO REMAIN
- ⑤ EXISTING WE ENERGIES OH ELECTRIC TO REMAIN
- ⑥ EXISTING WE ENERGIES ELECTRIC TO REMAIN
- ⑦ EXISTING WISDOT SIGNALS TO REMAIN
- ⑧ EXISTING CITY OF WEST ALLIS WATER LINE TO REMAIN
- ⑨ EXISTING AT&T WISCONSIN TELEPHONE LINE TO REMAIN

NO.	DATE	REVISION	BY
STATE OF WISCONSIN DEPARTMENT OF TRANSPORTATION			
STRUCTURE N-40-65			
DRAWN BY	CLM	PLANS	YES
		CHKD.	YES
UTILITY PLAN (5 OF 5)			SHEET 6 OF 13
			54

FILE NAME : W:\Cadd\VF\real\10603488_NMS\Structs\N-40-65\cadd\N65_080106.dgn PLOT DATE : 18-APR-2017 11:45 PLOT BY : msc68m PLOT NAME : N65_080106.dgn

STATE PROJECT NUMBER

1060-34-88



ALIGNMENT DATA

PI NO	STATION	X	Y
PI-1	10+00.00	571326.30	286586.90
PI-2	11+79.09	571343.10	286765.20
PI-3	15+89.99	571421.70	287167.30
PI-4	20+36.78	571564.60	287592.60
PI-5	22+56.37	571627.63	287802.94
PI-6	25+41.07	571673.13	288083.99
PI-7	25+55.90	571667.41	288097.67
PI-8	25+70.90	571669.81	288112.48
PI-9	25+85.74	571679.56	288123.66
PI-10	32+43.60	571784.71	288773.06
PI-11	32+58.43	571776.08	288786.33
PI-12	32+78.43	571781.28	288806.08
PI-13	32+93.26	571791.76	288816.57
PI-14	33+80.99	571805.78	288930.17
PI-15	34+77.39	571816.87	288998.97

Addendum No. 01
 ID 1060-34-88
 Revised Sheet 55
 December 14, 2017

NO.	DATE	REVISION	BY
STATE OF MICHIGAN DEPARTMENT OF TRANSPORTATION			
STRUCTURE N-40-65			
DRWN	BT	GLM	PLANS
			DES
ALIGNMENT PLAN			SHEET 7 OF 13
			55

PLOT SCALE : 200:1

PLOT NAME : N65_080107.dwg

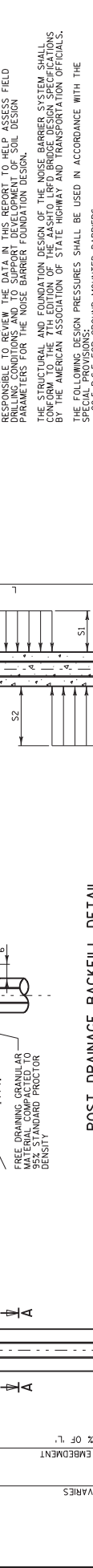
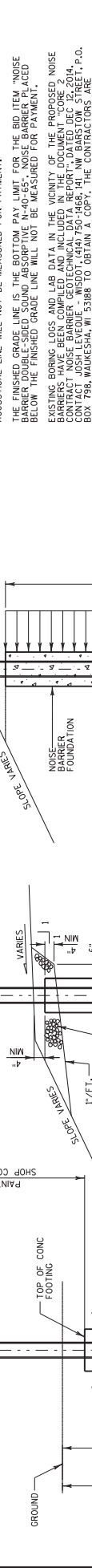
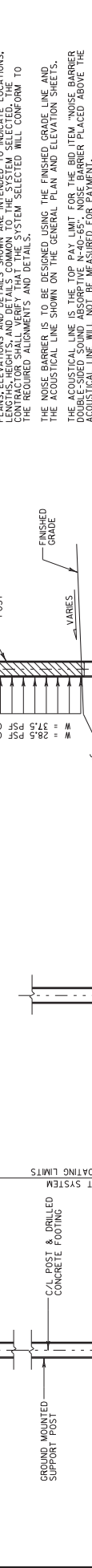
PLOT BY : msc68m

PLOT DATE : 18-APR-2017 11:45

FILE NAME : I:\Cadd\VF\proj\10603488_NMS\STRUCTS\N-40-65\Cad\N65_080107.dwg

STATE PROJECT NUMBER	1060-34-88
----------------------	------------

GENERAL NOTES
 DRAWINGS SHALL NOT BE SCALED.
 THE CONTRACTOR SHALL PROVIDE COMPLETE DESIGN PLANS, DETAILS, SPECIFICATIONS, AND SHOP DRAWINGS FOR THE NOISE BARRIER IN ACCORDANCE WITH THE SPECIAL PROVISIONS. THE NOISE BARRIER MANUFACTURER SHALL PROVIDE TECHNICAL INFORMATION TO THE CONTRACTOR TO DETERMINE THE APPROPRIATE SOUNDING SOUND ABSORPTIVE N-40-65".
 PLANS, ELEVATIONS AND DETAILS SHOWN ARE INTENDED TO INDICATE LOCATIONS, LENGTHS, HEIGHTS, AND DETAILS COMMON TO THE SYSTEM SELECTED. THE CONTRACTOR SHALL VERIFY THAT THE SYSTEM SELECTED WILL CONFORM TO THE REQUIRED ALIGNMENTS AND DETAILS.
 THE NOISE BARRIER IS TO BE DESIGNED USING THE FINISHED GRADE LINE AND THE ACOUSTICAL LINE SHOWN ON THE GENERAL PLAN AND ELEVATION SHEETS.
 THE ACOUSTICAL LINE IS THE TOP PAY LIMIT FOR THE BID ITEM "NOISE BARRIER DOUBLE-SIDED SOUND ABSORPTIVE N-40-65". THE FINISHED GRADE LINE IS THE FINISHED GRADE LINE. THE BOTTOM PAY LIMIT FOR THE BID ITEM "NOISE BARRIER DOUBLE-SIDED SOUND ABSORPTIVE N-40-65" SHALL BE MEASURED FOR PAYMENT.
 EXISTING BORING LOGS AND LAB DATA IN THE VICINITY OF THE PROPOSED NOISE BARRIERS HAVE BEEN COMPILED AND INCLUDED IN THE DOCUMENT "CORE 2 CONTRACT NOISE BARRIER GEOTECHNICAL DATA REPORT", DATED DEC 12, 2014, BY THE CONSULTING ENGINEER, MRS. J. L. WILSON, INC., 1000 WEST 10TH STREET, P.O. BOX 798, WALKESHA, WI 53888. THE CONTRACTOR SHALL REVIEW THIS REPORT, INCLUDING CONDITIONS AND TO SUPPORT DEVELOPMENT OF SOIL DESIGN PARAMETERS FOR THE NOISE BARRIER FOUNDATION DESIGN.
 THE STRUCTURAL AND FOUNDATION DESIGN OF THE NOISE BARRIER SYSTEM SHALL BE THE RESPONSIBILITY OF THE CONTRACTOR AND SHALL BE APPROVED BY THE AMERICAN ASSOCIATION OF STATE HIGHWAY AND TRANSPORTATION OFFICIALS. SPECIAL PROVISIONS:
 28.5 P.S.F. FOR GROUND MOUNTED BARRIERS
 37.5 P.S.F. FOR STRUCTURE MOUNTED BARRIERS
 REINFORCING STEEL IN THE CONCRETE CORE OF THE NOISE BARRIER PANELS SHALL HAVE A MINIMUM CLEARANCE OF 1 INCH. THE CONCRETE CORE SHALL BE DESIGNED TO BE FREE OF CRACKS, INCLUDING CRACKS CONSIDERING ANY COMPOSITE ACTION FROM OTHER MATERIAL IN THE PANEL.
 BOTTOM NOISE BARRIER PANELS SHALL BE DESIGNED TO SUPPORT THE DEAD LOAD WEIGHT OF THE PANELS DIRECTLY ABOVE IT AND ITS OWN DEAD LOAD. THE DEAD LOAD SHALL BE DISTRIBUTED UNIFORMLY ASSUMING SIMPLE BEAM ACTION WITH PERMISSIBLE DEFLECTIONS. BOTTOM PANELS SHALL HAVE A MINIMUM AROUND THE CORNERS.
 A COMPRESSIBLE BEARING PAD OF 1/4" THICK SHALL BE PROVIDED BETWEEN THE FOUNDATION AND THE BOTTOM PANELS. THE BEARING PADS SHALL BE PERFORMED EPDM RUBBER CONFORMING TO ASTM D-2000, GRADE 2, TYPE A, CLASS A, WITH A MINIMUM TENSILE STRENGTH OF 100 PSI. THE BEARING PADS SHALL BE INCIDENTAL TO THE BID ITEM "NOISE BARRIER DOUBLE-SIDED SOUND ABSORPTIVE N-40-65".
 PRECAST CONCRETE PREFORMS PLACED BETWEEN THE FOUNDATION AND BOTTOM PANELS SHALL BE REINFORCED IF OVER 10' HIGH.
 INCLUDE THE COST OF THE STONE PATTERN SURFACE TREATMENT, REVEALS, COATING AND FINISHES TO THE NOISE BARRIER DOUBLE-SIDED SOUND ABSORPTIVE N-40-65".
 LOCATE HYDRANT ACCESS HOLES IN NOISE BARRIERS WITH COVER SIGNS AT LOCATIONS SHOWN ON THE GENERAL PLAN & ELEVATION SHEETS. PROVIDING HYDRANT ACCESS HOLES IS INCIDENTAL TO THE BID ITEM "NOISE BARRIER DOUBLE-SIDED SOUND ABSORPTIVE N-40-65".
 INSTALL FREE DRAINING GRANULAR MATERIAL AT THE BOTTOM OF NOISE BARRIERS AS SHOWN IN THE NOISE BARRIER PLANS. FREE DRAINING GRANULAR MATERIAL IS INCIDENTAL TO THE BID ITEM "NOISE BARRIER DOUBLE-SIDED SOUND ABSORPTIVE N-40-65".
 ALL CONCRETE MASONRY FOR NOISE BARRIER FOUNDATIONS IS SUBJECT TO THE REQUIREMENTS OF SECTION 716 OF THE STANDARD SPECIFICATIONS FOR CONSTRUCTION WITH SECTION 716 OF THE STANDARD SPECIFICATIONS FOR CLASS II ANGLICULAR CONCRETE. CONCRETE MASONRY FOR NOISE BARRIER FOUNDATIONS IS INCIDENTAL TO THE BID ITEM "NOISE BARRIER DOUBLE-SIDED SOUND ABSORPTIVE N-40-65".



TOTAL ESTIMATED QUANTITIES

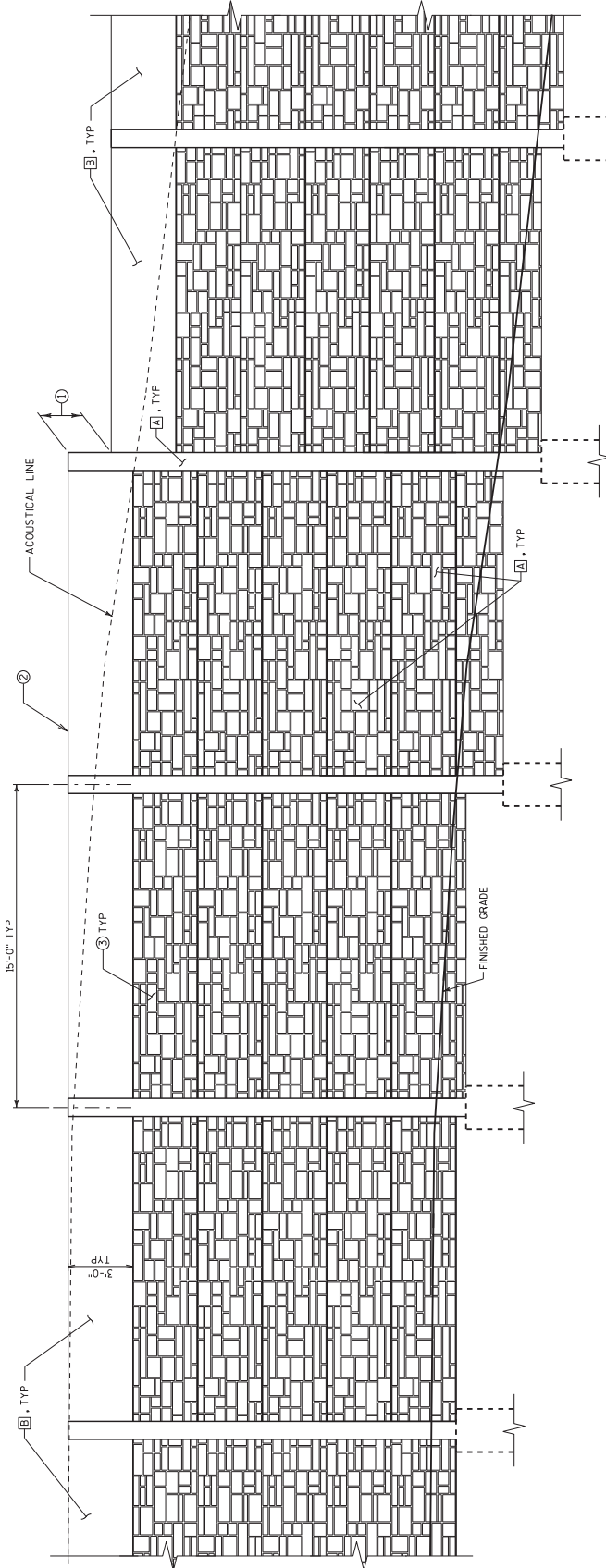
ITEM NUMBER	BID ITEM	UNIT	TOTAL
5310300.S.0001	NOISE BARRIER DOUBLE-SIDED SOUND ABSORPTIVE N-40-65	SF	53,860

ALL ITEMS ARE CATEGORY ID 9000

FILE NAME : W:\Cadd\VF\Proj\10603488_NMS\Struct\N-40-65\cadd\N65_080108.dgn
 PLOT DATE : 18-APR-2017 11:45
 PLOT BY : msc68m
 PLOT NAME : N65_080108.dgn

NO.	DATE	REVISION	BY
STATE SECTION			
DEPARTMENT OF TRANSPORTATION			
STRUCTURE N-40-65			
DRAWN BY	GLM	PLANS	YES
QUANTITIES & CONSTRUCTION DETAILS			
SHEET 8 OF 13			56

Addendum No. 01
ID 1060-34-88
Revised Sheet 56
December 14, 2017



ELEVATION VIEW - RESIDENTIAL SIDE

LEGEND

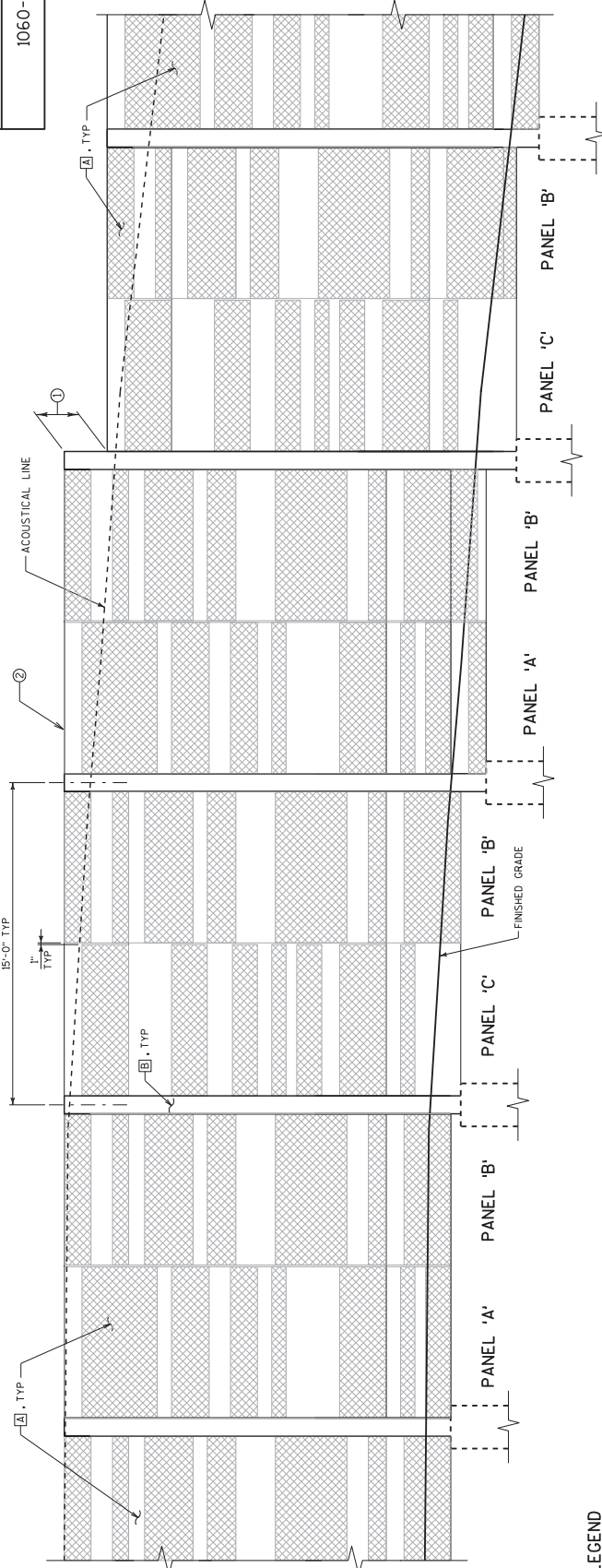
- 1 BASE COLOR
- 2 ACCENT COLOR NO. 1
- 1 STEP PANELS IN INCREMENTS OF 2'-0"; STEP INCREMENTS LESS THAN 2'-0" SHALL NOT BE PERMITTED UNLESS APPROVED BY THE ENGINEER.
- 2 ADJUST VERTICAL PLACEMENT OF PANELS TO MAXIMIZE HORIZONTAL RUNS, KEEPING THE TOP OF PANELS AT THE SAME ELEVATION.
- 3 THE RESIDENTIAL SIDE WALL PATTERN SHALL BE A "RANDOM SPLIT EDGE ASHLAR" PATTERN. THE PATTERN SHALL CONSIST OF RANDOM SIZED PIECES RANGING FROM A MINIMUM OF 1/2" HIGH BY 4" LONG TO A MAXIMUM OF 10" HIGH BY 31" LONG WITH A MAXIMUM RELIEF OF 1/2". AESTHETIC PATTERNS SHALL MATCH THE AS-BUILT AESTHETIC PATTERN OF THE NOISE BARRIER N-40-86 CONSTRUCTED IN PREVIOUS PROJECT ID 1060-33-81.

STAIN COLORS

THE FINAL COLORS OF THE NOISE BARRIER FOLLOWING APPLICATION OF THE STAIN SYSTEM SHALL MATCH THE FEDERAL STANDARD COLOR SYSTEM LISTED BELOW:
 BASE COLOR - 33564
 ACCENT COLOR NO. 1 - 33448

Addendum No. 01
 ID 1060-34-88
 Revised Sheet 57
 December 14, 2017

NO.	DATE	REVISION	BY
STATE OF MICHIGAN DEPARTMENT OF TRANSPORTATION			
STRUCTURE N-40-65			
DRAWN BY	GLM	PLANS	RES
AESTHETIC WALL		SHEET 9 OF 13	
TREATMENT DETAILS		RESIDENTIAL SIDE	
			57



ELEVATION VIEW - FREEWAY SIDE

LEGEND

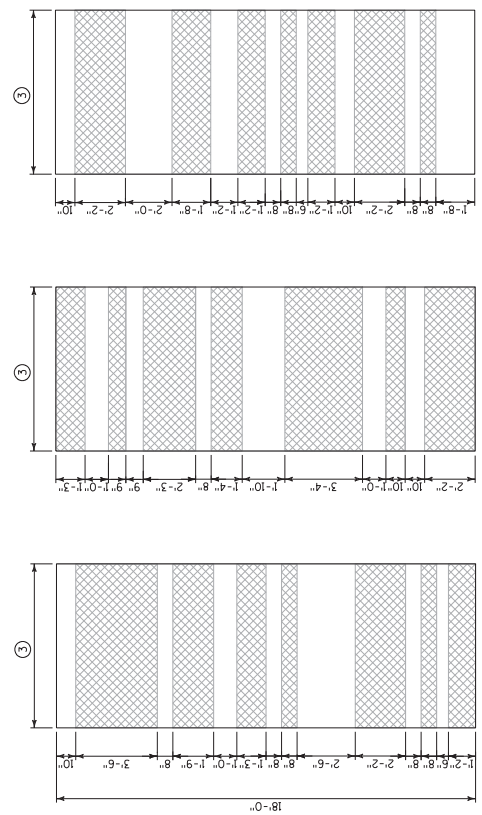
- ① BASE COLOR
- ② ACCENT COLOR NO. 1
- ③ STEP PANELS IN INCREMENTS OF 2'-0". STEP INCREMENTS LESS THAN 2'-0" SHALL NOT BE PERMITTED UNLESS APPROVED BY THE ENGINEER.
- ④ ADJUST VERTICAL PLACEMENT OF PANELS TO MAXIMIZE HORIZONTAL RUNS, KEEPING THE TOP OF PANELS AT THE SAME ELEVATION.
- ⑤ 0.5 X (POST SPA - POST FLANGE WIDTH - 1")
- ⑥ PANEL THICKNESS + 0"
- ⑦ PANEL THICKNESS - 3/4" MIN, 1" MAX

STAIN COLORS

THE FINAL COLORING OF THE NOISE BARRIER FOLLOWING APPLICATION OF THE STAIN SYSTEM SHALL MATCH THE FEDERAL STANDARD COLOR SYSTEM LISTED BELOW:
ACCENT COLOR NO. 1 - 33448

NOTES

ALTERNATE PANEL PATTERNS AS SHOWN, DO NOT PLACE SAME PATTERN HORIZONTALLY ADJACENT TO EACH OTHER.
THE PATTERNS SHALL REPEAT VERTICALLY STARTING FROM THE BOTTOM CORNER WORKING DOWNWARD IF WALL HEIGHT GREATER 18'-0" IS REQUIRED.



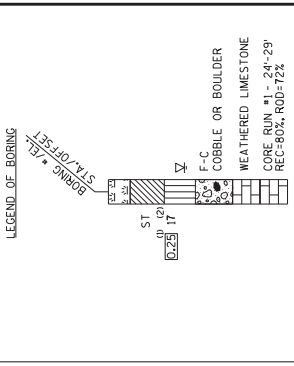
Addendum No. 01
ID 1060-34-88
Revised Sheet 58
December 14, 2017

NO.	DATE	REVISION	BY
STATE OF MICHIGAN DEPARTMENT OF TRANSPORTATION			
STRUCTURE N-40-65			
DRWN	BT	CLM	PLANS
AESTHETIC WALL		SHEET 10 OF 13	
TREATMENT DETAILS		FREEWAY SIDE	
			58

STATE PROJECT NUMBER
1060-34-88

MATERIAL SYMBOLS

	ASPHALT		TOPSOIL		PEAT
	CONCRETE		FILL		GRAVEL
	SAND		CLAY		SILT
	BOULDERS OR COBBLES		LIMESTONE		BEDROCK (UNKNOWN)
	SHALE		SANDSTONE		(IRONOUS/META)



¹⁾ UNCONFINED STRENGTH, AS DETERMINED BY A POCKET PENETROMETER (TSF).

²⁾ IN LESS, OTHERWISE SPECIFIED, THE SPT 'N' VALUE IS BASED ON A SHOTO T-206 STANDARD PENETRATION TEST. THE SPT 'N' VALUE PRESENTED HAS NOT BEEN CORRECTED FOR OVERBURDEN PRESSURE OR HAMMER EFFICIENCY.

GROUND WATER ELEVATION

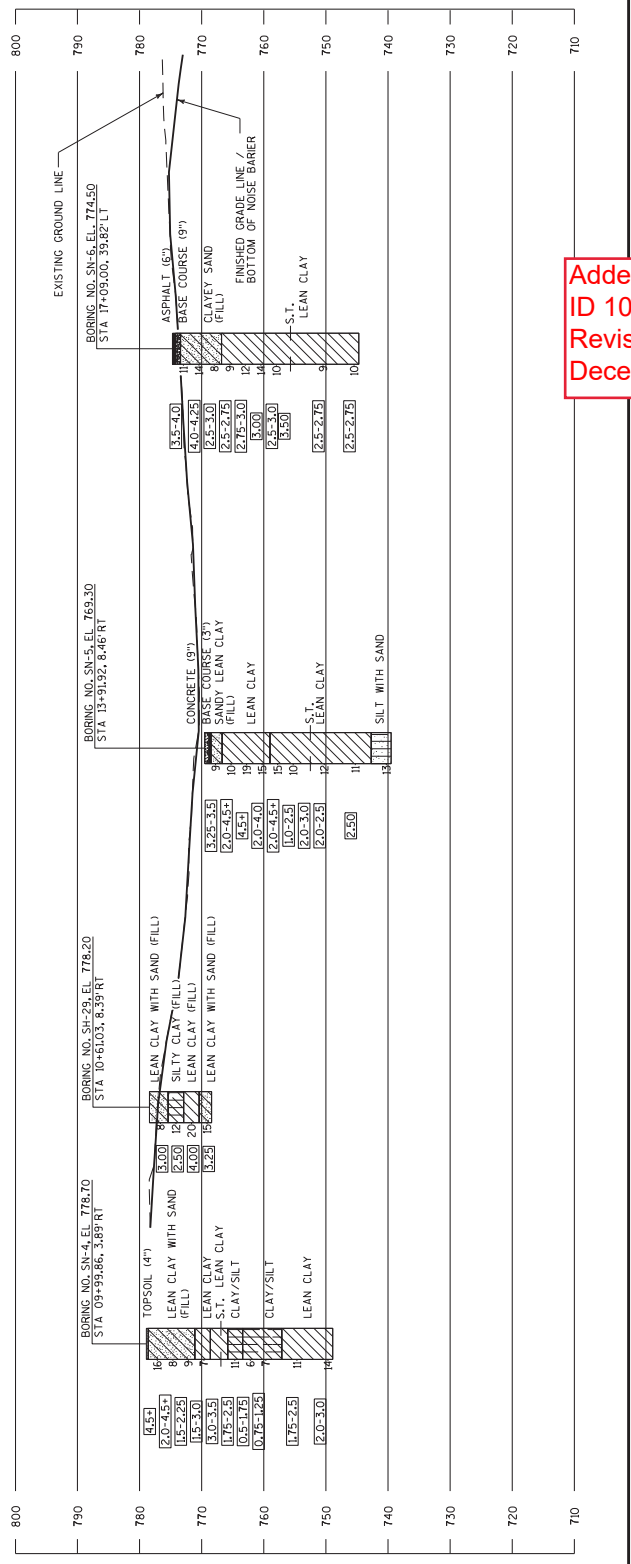
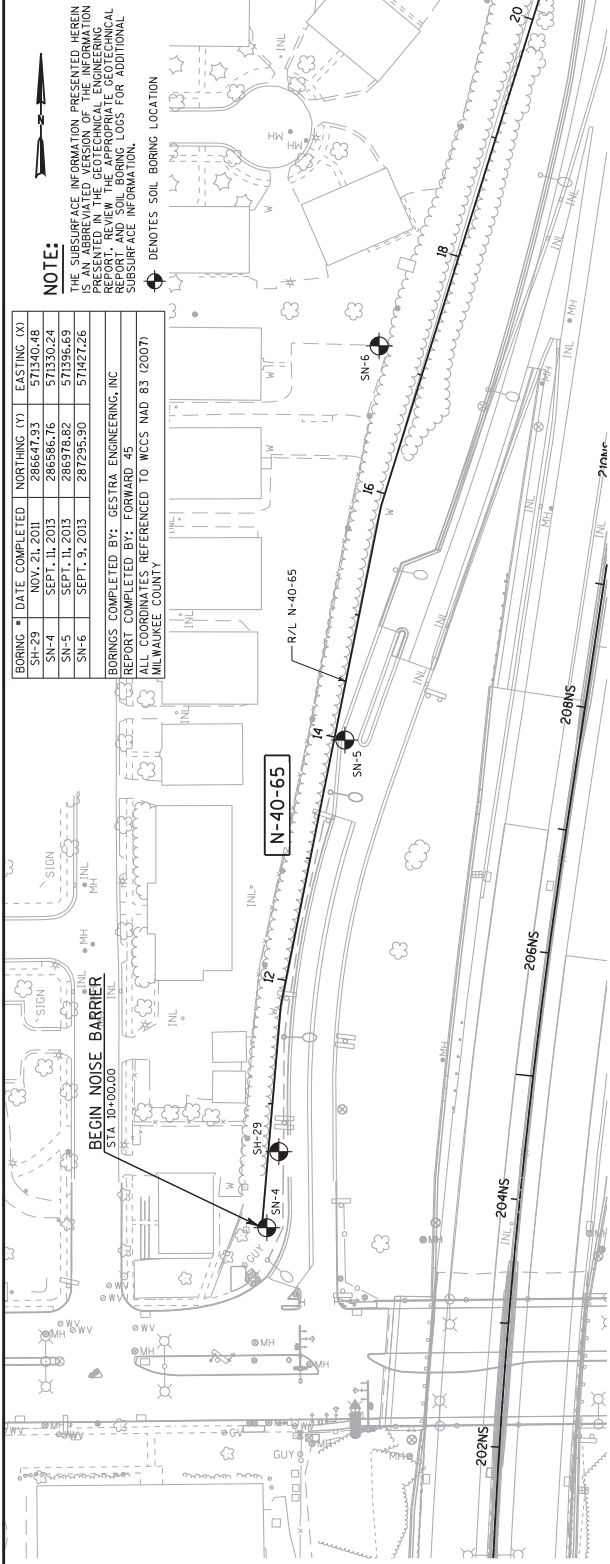
▽ AT TIME OF DRILLING
▽ AFTER DRILLING

ABBREVIATIONS
F-FINE M-MEDIUM C-COARSE ST-SHELBY TUBE

SUBSURFACE EVALUATION FOR FOUNDATION DESIGN AND SURFACE INFORMATION
BORINGS WERE COMPLETED AT THE POINTS INDICATED ON THIS DRAWING TO OBTAIN INFORMATION CONCERNING THE CHARACTER OF SUBSURFACE MATERIALS FOUND AT THE SITE. BECAUSE THE INVESTIGATED SITE IS VERY SMALL IN RELATION TO THE ENTIRE SITE, THE WISCONSIN DEPARTMENT OF TRANSPORTATION DOES NOT WARRANT SIMILAR SUBSURFACE CONDITIONS BELOW. SOIL CONDITIONS SHOULD BE EXPECTED AND FLUCTUATIONS IN GROUNDWATER LEVELS MAY OCCUR.

NO. DATE	REVISION	BY
	STATE OF WISCONSIN DEPARTMENT OF TRANSPORTATION	
STRUCTURE N-40-65		
DRAWN BY	EXAM	PLANS YES
SUBSURFACE EXPLORATION (1 OF 3)		59

PLAT SCALE : 100:1



Addendum No. 01
ID 1060-34-88
Revised Sheet 59
December 14, 2017

FILE NAME : W:\Cadd\VF\final\10603488_NMS\STRUCTS\N-40-65\cadd\N65_080111.dwg.dgn

STATE PROJECT NUMBER
1060-34-88

MATERIAL SYMBOLS

ASPHALT
CONCRETE
SAND
BOULDERS OR COBBLES
SHALE

TOPSOIL
FILL
CLAY
LIMESTONE
SANDSTONE

PEAT
GRAVEL
SILT
BEDROCK (UNKNOWN)
(ONEOUS/META)

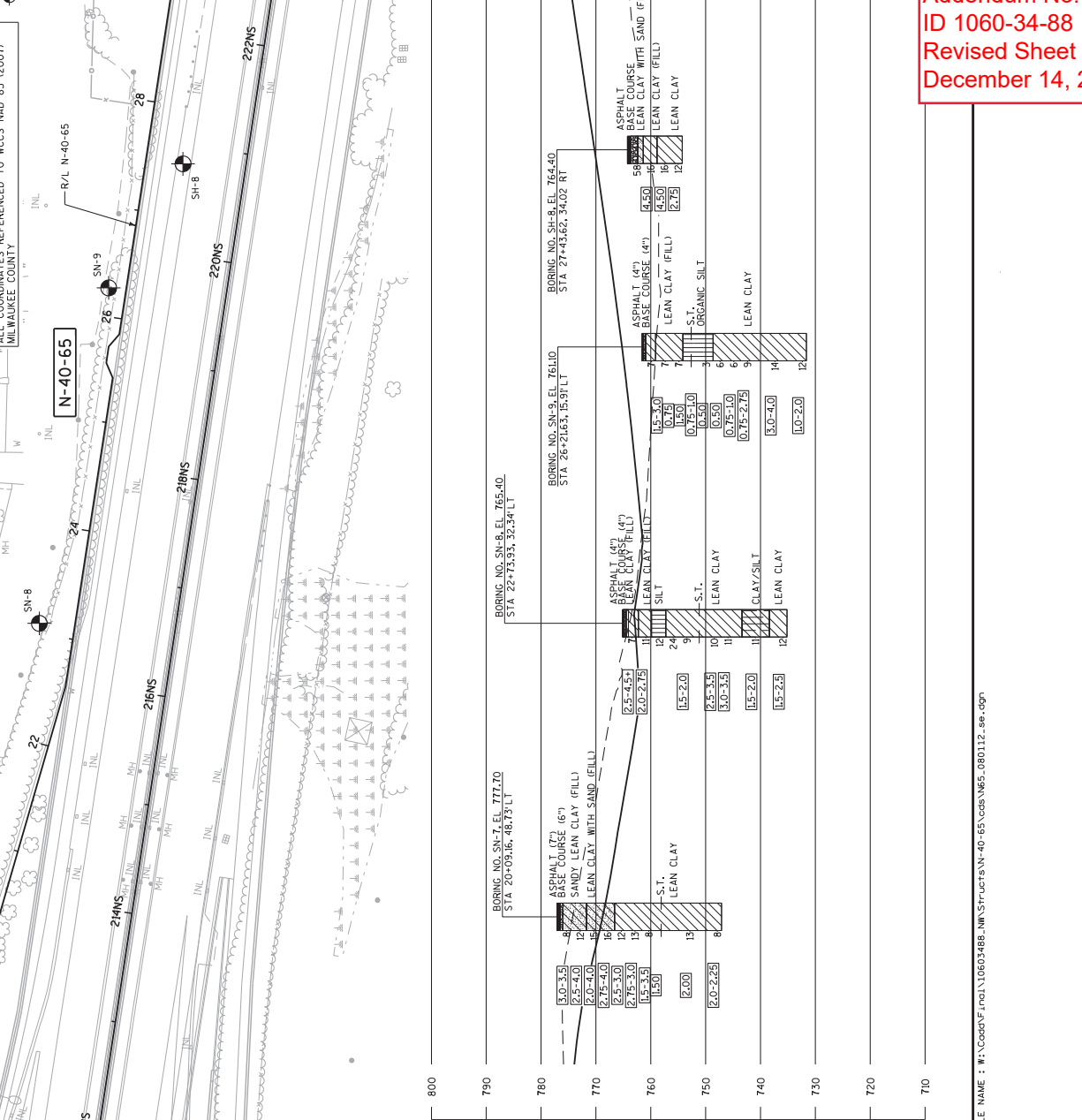
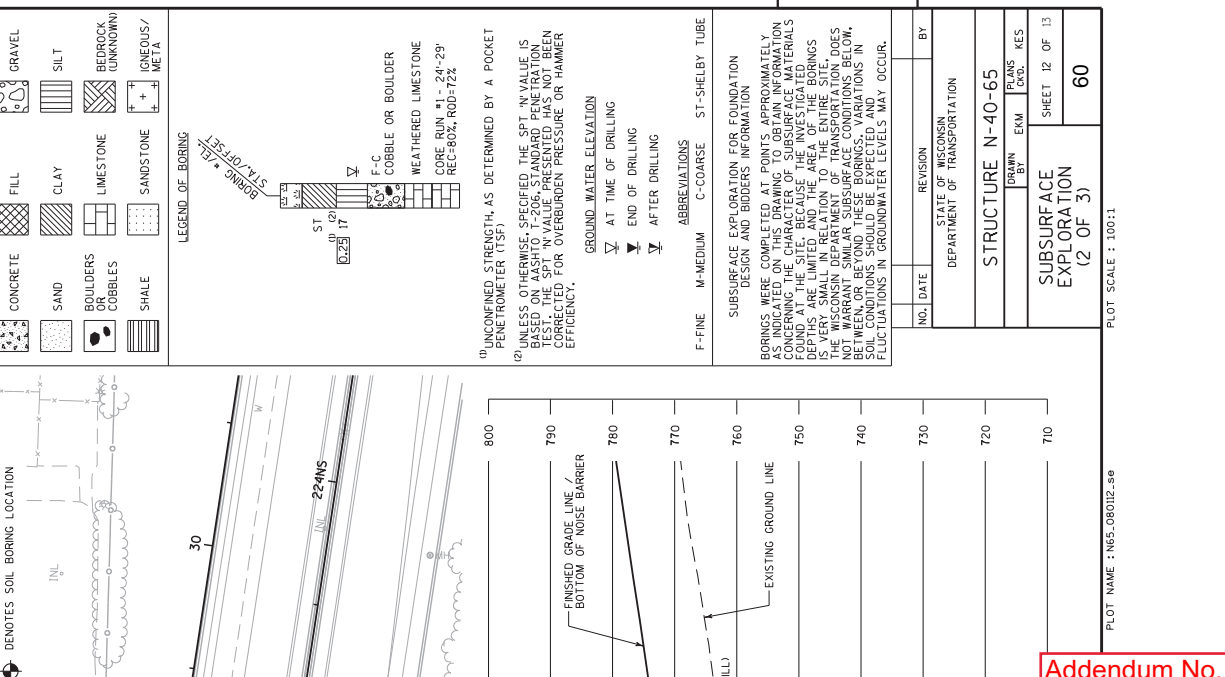
LEGEND OF BORING
BRING *REEL
STA/OFFSET

NOTE:
THE SUBSURFACE INFORMATION PRESENTED HEREIN IS AN ABBREVIATED VERSION OF THE INFORMATION PRESENTED IN THE GEOTECHNICAL ENGINEERING REPORT AND SOIL BORING LOGS FOR ADDITIONAL SUBSURFACE INFORMATION.

BORING # DATE COMPLETED NORTHING (Y) EASTING (X)
SH-8 OCT. 24, 2011 288276.49 571739.09
SN-7 SEPT. 9, 2013 287656.06 571514.52
SN-8 SEPT. 9, 2013 287860.83 571604.24
SN-9 SEPT. 11, 2013 288166.05 571670.30

BORINGS COMPLETED BY: GESTRA ENGINEERING, INC
REPORT COMPLETED BY: FORWARD 45
ALL COORDINATES REFERENCED TO WCCS NAD 83 (2007)
MILWAUKEE COUNTY

LEGEND OF BORING
BRING *REEL
STA/OFFSET



UNCONFINED STRENGTH, AS DETERMINED BY A POCKET PENETROMETER (TSF)
1) UNLESS OTHERWISE SPECIFIED THE SPT 'N' VALUE IS BASED ON A SHSHTO T-206 STANDARD PENETRATION TEST. THE SPT 'N' VALUE PRESENTED HAS NOT BEEN CORRECTED FOR OVERBURDEN PRESSURE OR HAMMER EFFICIENCY.

GROUND WATER ELEVATION
▽ AT TIME OF DRILLING
▽ AFTER DRILLING

ABBREVIATIONS
F-FINE M-MEDIUM C-COARSE ST-SHELBY TUBE

SUBSURFACE EXPLORATION FOR FOUNDATION DESIGN AND BORING INFORMATION
BORINGS WERE COMPLETED AT POINTS APPROXIMATELY INDICATED ON THIS DRAWING TO OBTAIN INFORMATION CONCERNING THE CHARACTER OF SUBSURFACE MATERIALS FOUND AT THE SITE. BECAUSE THE INVESTIGATED AREA IS VERY SMALL IN RELATION TO THE ENTIRE SITE, THE WISCONSIN DEPARTMENT OF TRANSPORTATION DOES NOT WARRANT SIMILAR SUBSURFACE CONDITIONS BELOW. SOIL CONDITIONS SHOULD BE EXPECTED AND FLUCTUATIONS IN GROUNDWATER LEVELS MAY OCCUR.

NO. DATE REVISION
STATE OF WISCONSIN
DEPARTMENT OF TRANSPORTATION

STRUCTURE N-40-65

DRAWN BY ERM
CHECKED BY KES

SUBSURFACE EXPLORATION
(2 OF 3)

60

FILE NAME: W:\Code\VF\real\10603488_NMS\Structs\N-40-65\cadd\N65_080112.dwg

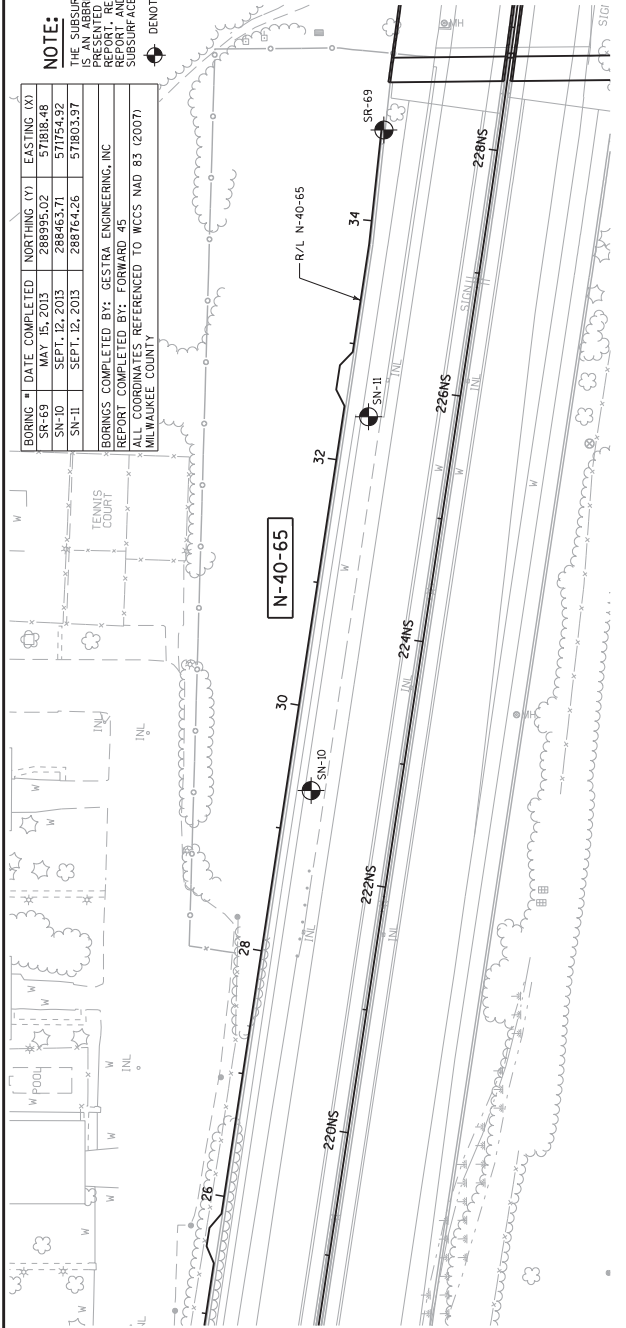
PLOT NAME: N65_080112.dwg

Addendum No. 01
ID 1060-34-88
Revised Sheet 60
December 14, 2017

BORING #	DATE COMPLETED	NORTHING (Y)	EASTING (X)
SN-69	SEPT. 15, 2013	288934.02	571884.46
SN-11	SEPT. 12, 2013	288463.71	571803.57
SN-11	SEPT. 12, 2013	288764.26	571803.57

BORINGS COMPLETED BY: GESTRA ENGINEERING, INC
 REPORT COMPLETED BY: FORWARD 45
 ALL COORDINATES REFERENCED TO WCCS NAD 83 (2007)
 MILWAUKEE COUNTY

NOTE:
 THE SUBSURFACE INFORMATION PRESENTED HEREIN IS AN ABBREVIATED VERSION OF THE INFORMATION PRESENTED IN THE GEOTECHNICAL ENGINEERING REPORT AND SOIL BORING LOGS FOR ADDITIONAL SUBSURFACE INFORMATION.
 DENOTES SOIL BORING LOCATION



Addendum No. 01
 ID 1060-34-88
 Revised Sheet 61
 December 14, 2017

STATE PROJECT NUMBER
1060-34-88

MATERIAL SYMBOLS

ASPHALT	TOPSOIL	PEAT
CONCRETE	FILL	GRAVEL
SAND	CLAY	SILT
BOULDERS OR COBBLES	LIMESTONE	BEDROCK (UNKNOWN)
SHALE	SANDSTONE	(IGNEOUS/META)

LEGEND OF BORING

BRING *EL. STA./FEET

ST 10
 0.25
 1T

F-C
 COBBLE OR BOULDER

WEATHERED LIMESTONE

UNCONFINED STRENGTH, AS DETERMINED BY A POCKET PENETROMETER (TSF)

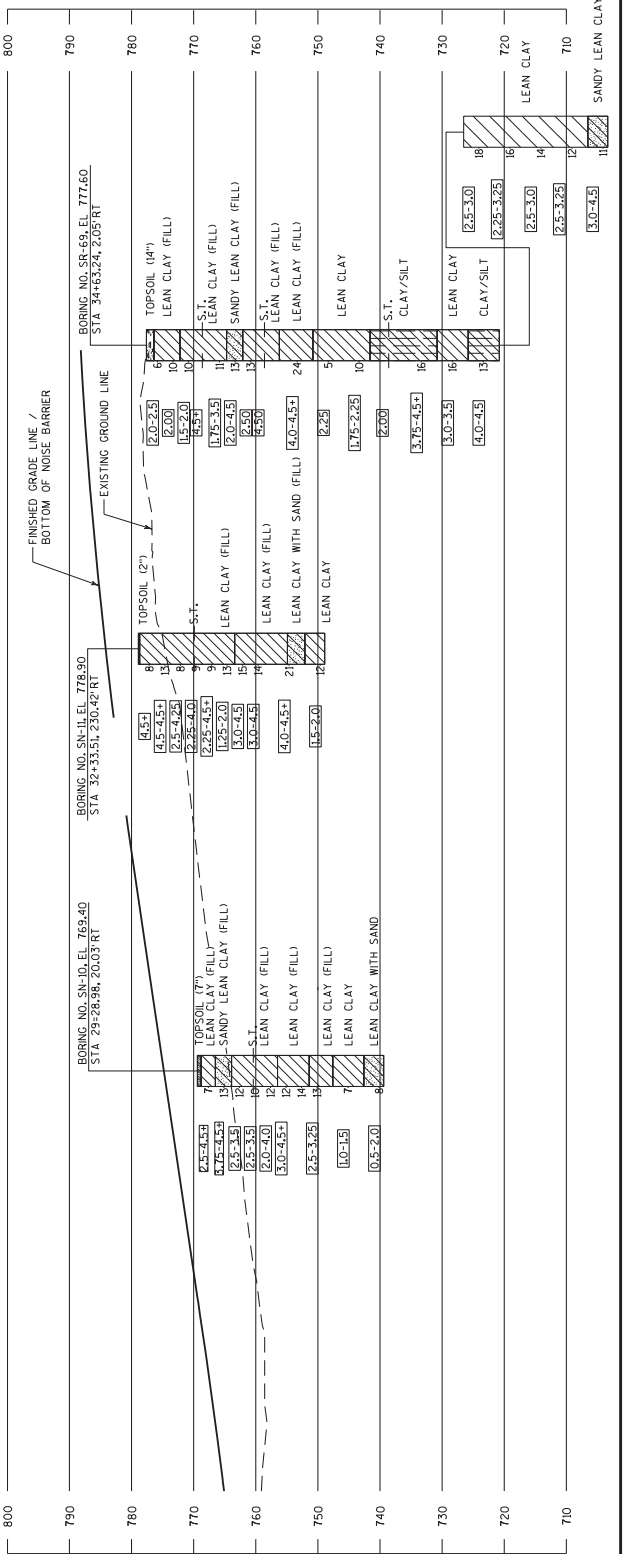
(2) UNLESS OTHERWISE SPECIFIED THE SPT 'N' VALUE IS BASED ON A SHOTO T-206 STANDARD PENETRATION TEST. THE SPT 'N' VALUE PRESENTED HAS NOT BEEN CORRECTED FOR OVERBURDEN PRESSURE OR HAMMER EFFICIENCY.

GROUND WATER ELEVATION

▽ AT TIME OF DRILLING
 ▼ AFTER DRILLING

ABBREVIATIONS
 F-FINE M-MEDIUM C-COARSE ST-SHELBY TUBE

SUBSURFACE EXPLORATION FOR FOUNDATION DESIGN AND SURFACE INFORMATION
 BORINGS WERE CONDUCTED TO OBTAIN INFORMATION CONCERNING THE CHARACTER OF SUBSURFACE MATERIALS FOUND AT THE SITE. BECAUSE THE INVESTIGATED SITE IS VERY SMALL IN RELATION TO THE ENTIRE SITE, THE WISCONSIN DEPARTMENT OF TRANSPORTATION DOES NOT WARRANT SIMILAR SUBSURFACE CONDITIONS BELOW. SOIL CONDITIONS SHOULD BE EXPECTED AND FLUCTUATIONS IN GROUNDWATER LEVELS MAY OCCUR.



NO.	DATE	REVISION	BY
1		STATE PROJECT NUMBER	
2		DEPARTMENT OF TRANSPORTATION	
3		STRUCTURE N-40-65	
4		DRAWN BY	
5		PLANS	YES
6		EXAM	YES
7		SHEET	13 OF 13
8		SUBSURFACE EXPLORATION	
9		(3 OF 3)	
10		61	

FILE NAME: W:\Code\VF\real\10603488_NMS\Structs\N-40-65\cadd\N65_080113.dwg

PLOT NAME: N65_080113.dwg

