



Wisconsin Department of Transportation

March 12, 2018

Division of Transportation Systems Development

Bureau of Project Development
4802 Sheboygan Avenue, Rm 601
P O Box 7916
Madison, WI 53707-7916

Telephone: (608) 266-1631
Facsimile (FAX): (608) 266-8459

NOTICE TO ALL CONTRACTORS:

**Proposal #13: 1693-32-74, WISC 2018 143
Cross-Town Connector Bridge
Over STH 100
Non-Hwy
Milwaukee County**

Letting of March 13, 2018

This is Addendum No. 01, which provides for the following:

Special Provisions:

Revised Special Provisions	
Article No.	Description
7	Utilities

Added Special Provisions	
Article No.	Description
25	Utility Line Opening

Schedule of Items:

Revised Bid Item Quantities					
Bid Item	Item Description	Unit	Old Quantity	Revised Quantity	Proposal Total
603.8125	Concrete Barrier Temporary Precast Installed	LF	375	375	750

Added Bid Item Quantities					
Bid Item	Item Description	Unit	Old Quantity	Revised Quantity	Proposal Total
SPV.0060.07	Utility Line Opening	1	N/A	1	1

Plan Sheets:

Revised Plan Sheets	
Plan Sheet	Plan Sheet Title (brief description of changes to sheet)
21	Traffic Control Stage 2 – Added Concrete Barrier Temporary Precast to protect median during bridge pier construction
47	Miscellaneous Quantities – Added additional quantity for Item 603.8125 Concrete Barrier Temporary Precast Installed, added SPV.0060.07 Utility Line Opening
49	Plan & Profile – Labeled utility lines with name of owners
50	Plan & Profile – Labeled utility lines with name of owners

The responsibility for notifying potential subcontractors and suppliers of these changes remains with the prime contractor.

Sincerely,

Mike Coleman

Proposal Development Specialist
Proposal Management Section

ADDENDUM NO. 01

1693-32-74

March 12, 2018

Special Provisions

7. Utilities

*Replace paragraph seven under section titled **WE Energies – Gas** with the following:*

The contractor shall be responsible and be equipped to support the exposed and suspended gas main as necessary. An Operations Engineer must be notified once the excavation size limits are determined to evaluate the need and requirements to support the pipe and to answer any related questions. We Energies field personnel and GDAM engineers will work with the contractor to determine the best method and manner to support the gas main at the time of construction. The We Energies – Gas area Operations Engineer is Nasir Barud. Nasir's direct number is 414-221-5591.

*Replace entire section titled **WisDOT** with the following:*

WisDOT has a multi-cell fiber optic ITS communication facility running along the STH 100 median. MWFN also utilizes this median conduit. Use caution when constructing the center pier as well as when installing and removing the temporary crossovers in the STH 100 median. Pothole the fiber optic conduit prior to excavating in the vicinity of the conduit. Potholing the fiber optic conduit will be paid under bid item SPV.0060.07 Utility Line Opening. Contact both WisDOT ITS and MWFN 21 days prior to pier excavation. Adjustments to be performed by utility owner. For WisDOT ITS contact John Mittelstadt, (414) 227-4665 office / (608) 205-7859 cell. For MWFN, contact Cheri Grainger at (414) 459-3550 office or (414) 349-0750 cell.

26. Utility Line Opening , Item SPV.0060.07.

A Description

Excavate to uncover utilities for the purpose of determining elevation and potential conflicts as shown on the plans or as directed by the engineer.

B (Vacant)

C Construction

It is recommended the contractor use "pot holing" technology to perform this work.

Excavate in such a manner that the utility in question is not damaged and the safety of the workers is not compromised.

Perform the utility line openings (ULO) as soon as possible and at least 10 days in advance of proposed utility construction to allow any conflicts to be resolved with minimal disruption. Where utilities are within 6 feet of each other at a potential conflict location, only one utility line opening shall be called for. In these cases, a single utility line opening will be considered full payment to locate multiple utilities. Utility line openings shall include a trench up to 10 feet long as measured at the trench bottom, and of any depth required to locate the intended utility.

All utility line openings shall be approved and coordinated with the engineer. Notify the utility field engineers or their agents of this work a minimum of 3 days prior to the work so they may be present when the work is completed. The need for performing ULO's as shown on the plans shall be verified since some of the utilities may have been relocated prior to the start of construction.

D Measurement

The department will measure Utility Line Opening as each individual ULO acceptably completed. There shall be only one unit paid per ULO.

E Measurement

The department will pay for measured quantities at the contract unit price under the following bid item:

ITEM NUMBER	DESCRIPTION	UNIT	
SPV.0060.07	Utility Line Opening		Each

Payment is full compensation for the excavation required to expose the utility line, backfilling with existing material removed from the excavation, compacting the backfill material, restoring the site, and cleanup.

Existing pavement, concrete curb, gutter, and sidewalk removals necessary to facilitate utility line openings shall not be considered part of or paid for under Utility Line Openings, but shall be considered separate and measured and paid for separately as removal items. Replacement pavement, concrete curb, gutter, and sidewalk items shall also be considered separate from Utility Line Openings and will be measured and paid for separately.

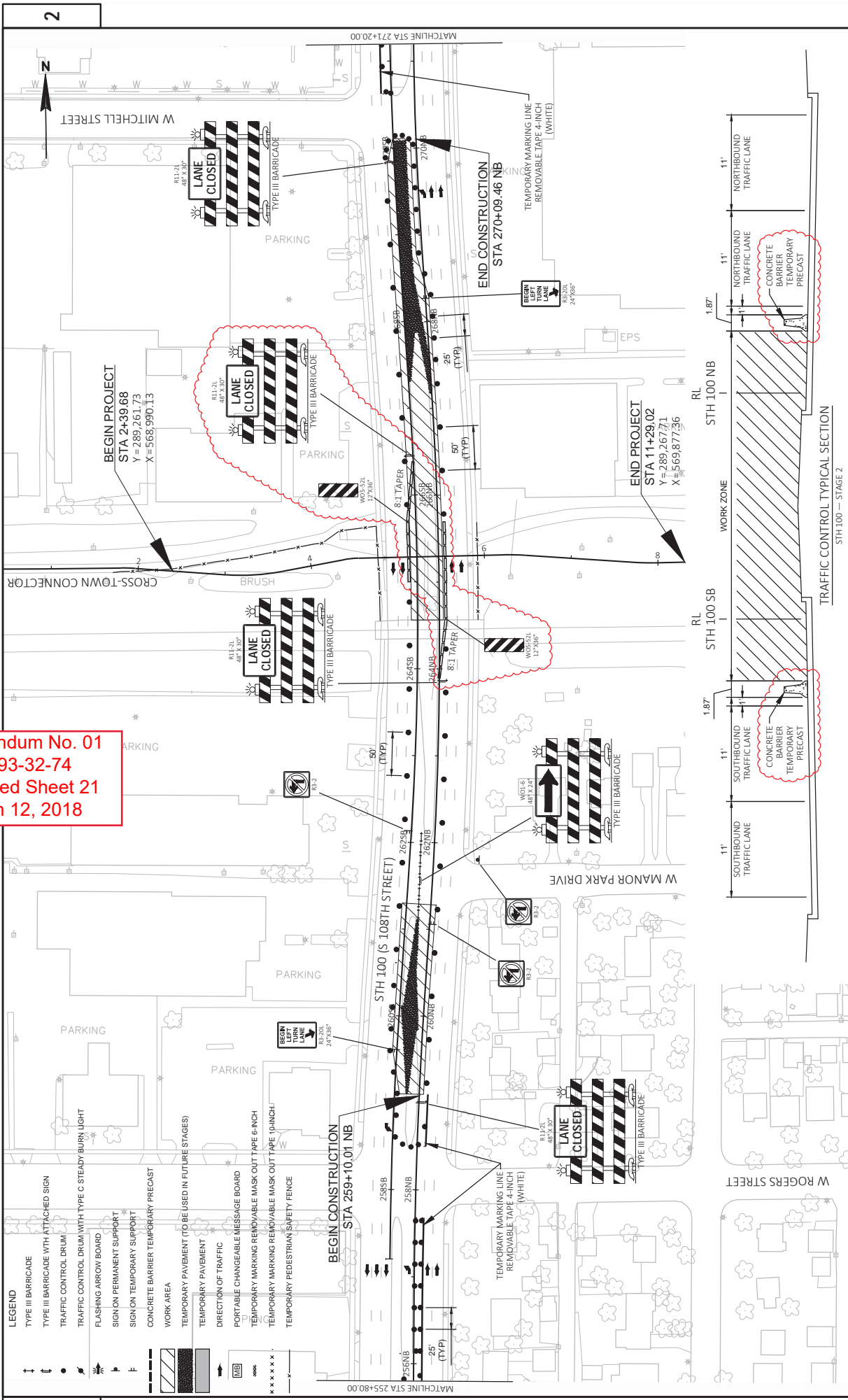
Schedule of Items

Attached, dated March 12, 2018, are the revised Schedule of Items Pages 3 and 8.

Plan Sheets

The following 8½ x 11-inch sheets are attached and made part of the plans for this proposal:
Revised: 21, 47, 49, and 50.

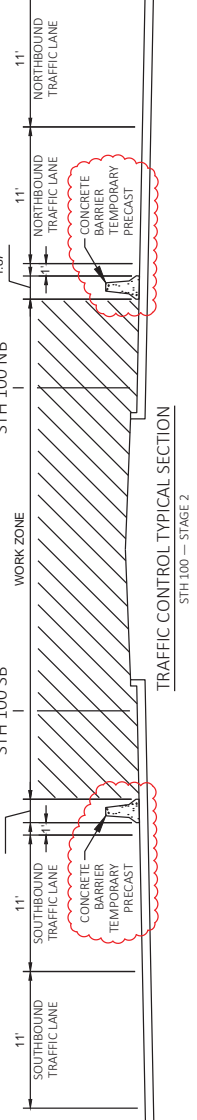
END OF ADDENDUM



Addendum No. 01
 ID 1693-32-74
 Revised Sheet 21
 March 12, 2018

LEGEND

	TYPE III BARRICADE
	TYPE III BARRICADE WITH ATTACHED SIGN
	TRAFFIC CONTROL DRUM
	TRAFFIC CONTROL DRUM WITH TYPE C STEADY BURN LIGHT
	FLASHING ARROW BOARD
	SIGN ON PERMANENT SUPPORT
	SIGN ON TEMPORARY SUPPORT
	CONCRETE BARRIER TEMPORARY PRECAST
	WORK AREA
	TEMPORARY PAVEMENT (TO BE USED IN FUTURE STAGES)
	DIRECTION OF TRAFFIC
	PORTABLE CHANGEABLE MESSAGE BOARD
	TEMPORARY MARKING REMOVABLE MASK OUT TAPE 6-INCH
	TEMPORARY MARKING REMOVABLE MASK OUT TAPE 10-INCH
	TEMPORARY PEDESTRIAN SAFETY FENCE



Addendum No. 01
ID 1693-32-74
Revised Sheet 47
March 12, 2018

PAVING ITEMS

CATEGORY LOCATION	STA	TO	STA	BASE AGGREGATE		CONCRETE		DRILLED BARS		TIE		DOWEL		ASPHALTIC SURFACE		TEMPORARY		30-INCH INTEGRAL		30-INCH TYPE A		CONCRETE CURB & GUTTER		CONCRETE	
				TON	SY	1/4-INCH	1/2-INCH	EACH	EACH	EACH	EACH	TON	TON	30-INCH	30-INCH	FLANGE	LF	LF	LF	LF	LF	LF	LF	LF	LF
0010 CROSS-TOWN CONNECTOR	1+80.50 TO 6+10.92		4+58.42 TO 11+29.02																						
				14	131									73											
				42	273								141												
STH-100 NB	259+93.00 TO 270+09.46					21	212	11							60	47	453	60							
STH-100 SB	259+11.00 TO 270+08.27					54	192	32						60	40	359	157	54							
SOUTH TEMPORARY CROSSOVER													49												
NORTH TEMPORARY CROSSOVER													102												
TOTALS				56	1,057	75	404	43		214		151	120	87	812	217	54								

TRAFFIC CONTROL

CATEGORY LOCATION	STA	TO	STA	BARRICADES		ARROW LIGHTS		WARNING SIGNS		TRAFFIC CONTROL		CURB RAMP		PEDESTRIAN SAFETY FENCE		TEMPORARY MARKING	
				TYPE III	TYPE I	TYPE C	TYPE B	TYPE A	TYPE B	EA	EA	EA	EA	EA	EA	EA	EA
603.8000 CONCRETE BARRIER	603.8125	643.0420	643.0715	643.0800	643.0900	643.5000	644.1601.S	644.1616.S	649.0150	649.0960	649.0970						
TEMPORARY PRECAST																	
DELIVERED INSTALLED																	
STAGE 1	375.0	375.0	54	756	6	84	20	280	2	28	24	336	2	736	1,142	150	
STAGE 2			134	4,690	12	420	36	1,260	2	70	27	945		167	1,161	163	87
STAGE 3A			141	846	28	168	79	474	4	24	35	210					317
STAGE 3B			167	1,002	28	168	65	390	5	30	39	234		112			58
STAGE 4			134	5,226	12	468	36	1,404	2	78	27	1,053			1,161	163	87
UNDISTRIBUTED																	
TOTALS	375.0	750.0	12,520	1,308		230	3,808		2,778	1	2	1,015	3,464	476	549		

SAWCUTS

CATEGORY LOCATION	STA	TO	STA	CONCRETE SAWING	
				LF	LF
0010 CROSS-TOWN CONNECTOR	1480.50 TO 6+10.92		4+58.42 TO 11+29.02		
				140	
STH-100	259+10.01 NB TO 270+09.46 NB				
TOTALS				140	1,124

EROSION CONTROL ITEMS

CATEGORY LOCATION	STA	TO	STA	RIPRAP		SILT FENCE		SILT FENCE		EROSION CONTROL		INLET PROTECTION		TEMPORARY DITCH	
				CY	SY	LF	LF	EA	EA	EA	EA	EA	EA	EA	EA
606.0200	645.0120	628.1504	628.1520	628.1905	628.1910	628.7005	628.7010	628.7020							
STAGE 1	2	3	260			1	1	3	10						
STAGE 2	2	3	635			1	1	3	10						
STAGE 3															
STAGE 4															
UNDISTRIBUTED															
TOTALS	4	6	895	895	5	5	2	4	18	20					

CONSTRUCTION STAKING

CATEGORY LOCATION	STA	TO	STA	STRUCTURE LAYOUT		SLOPE CONTROL		SUPPLEMENTAL CONTROL	
				LF	LS	LF	LS	LF	LS
650.4500	650.5000	650.6500.01	650.6500.02	650.6500.03	650.9910	650.9920			
STAGE 1	278	278							
STAGE 2	518	518							
STAGE 3									
STAGE 4									
UNDISTRIBUTED									
TOTALS	796	796	1	1	1	1	1	796	

UTILITY LINE OPENING

CATEGORY LOCATION	STA	TO	STA	SPV.0060.07	
				EACH	EACH
0010 CROSS-TOWN CONNECTOR	1480.50 TO 6+10.92		4+58.42 TO 11+29.02		
				1	
TOTALS				1	1

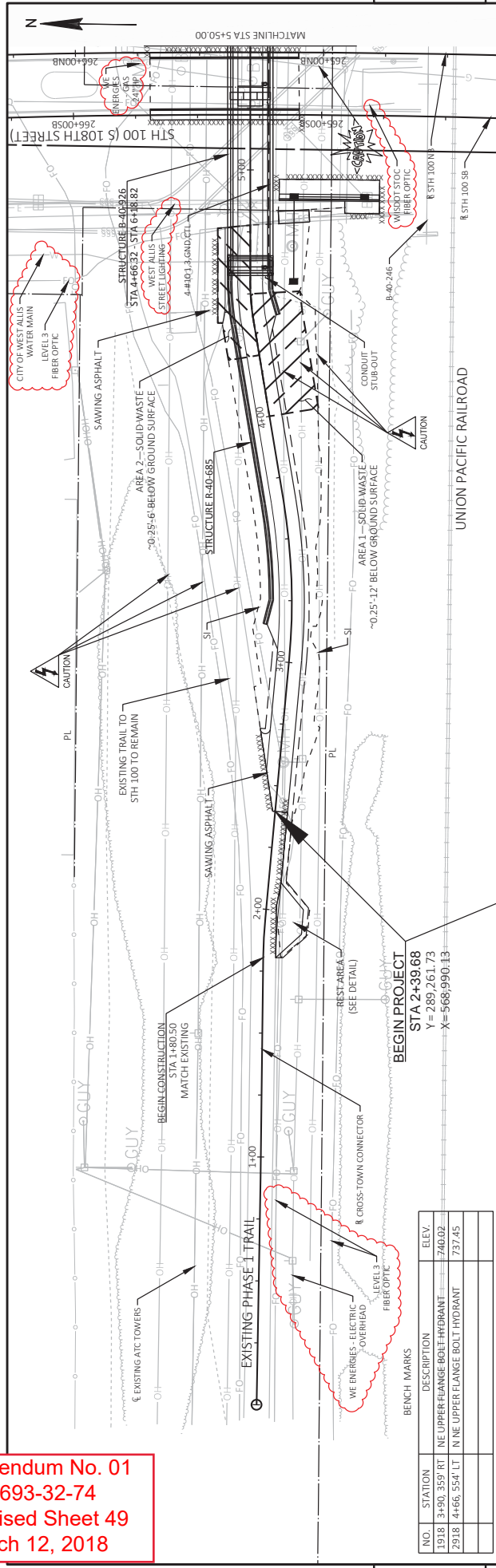
MANAGEMENT OF SOLID WASTE

CATEGORY LOCATION	STA	TO	STA	SPV.0195.01	
				TONS	TONS
0010 CROSS-TOWN CONNECTOR	4+00 TO 4+50		0 RT TO 20 RT		
				4	
4+25 TO 7+50			20 LT TO 0 LT		
6+30 TO 6+65			0 RT TO 40 RT		
TOTALS				4	

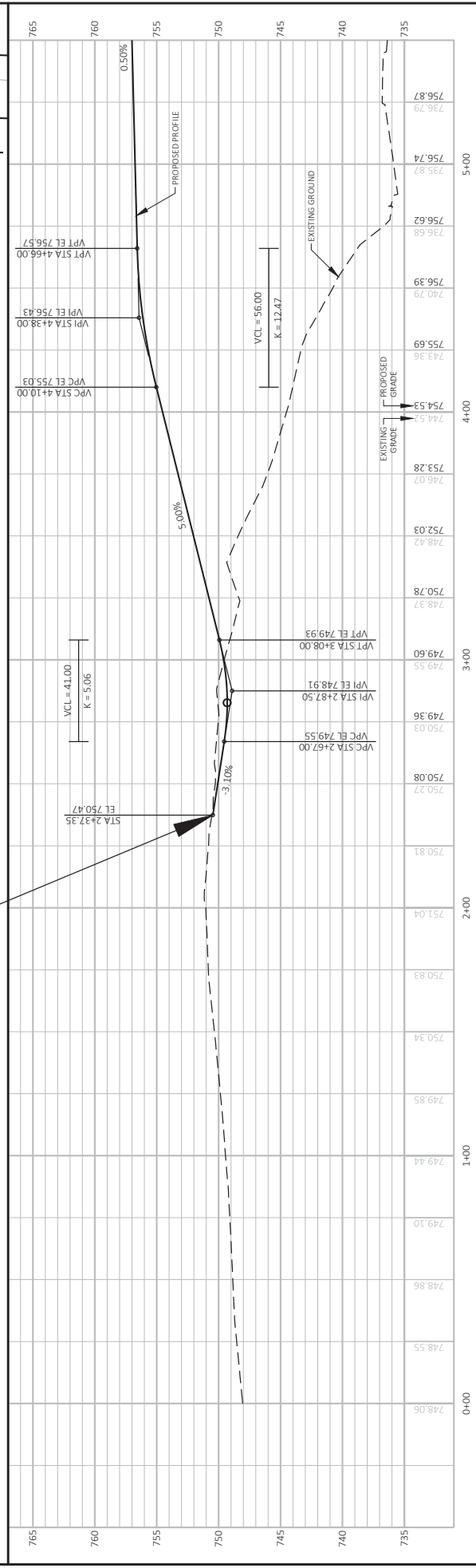
MISCELLANEOUS QUANTITIES

CATEGORY LOCATION	STA	TO	STA	MISCELLANEOUS QUANTITIES	
				EA	EA
0010 CROSS-TOWN CONNECTOR	1480.50 TO 6+10.92		4+58.42 TO 11+29.02		
TOTALS					

Addendum No. 01
ID 1693-32-74
Revised Sheet 49
March 12, 2018

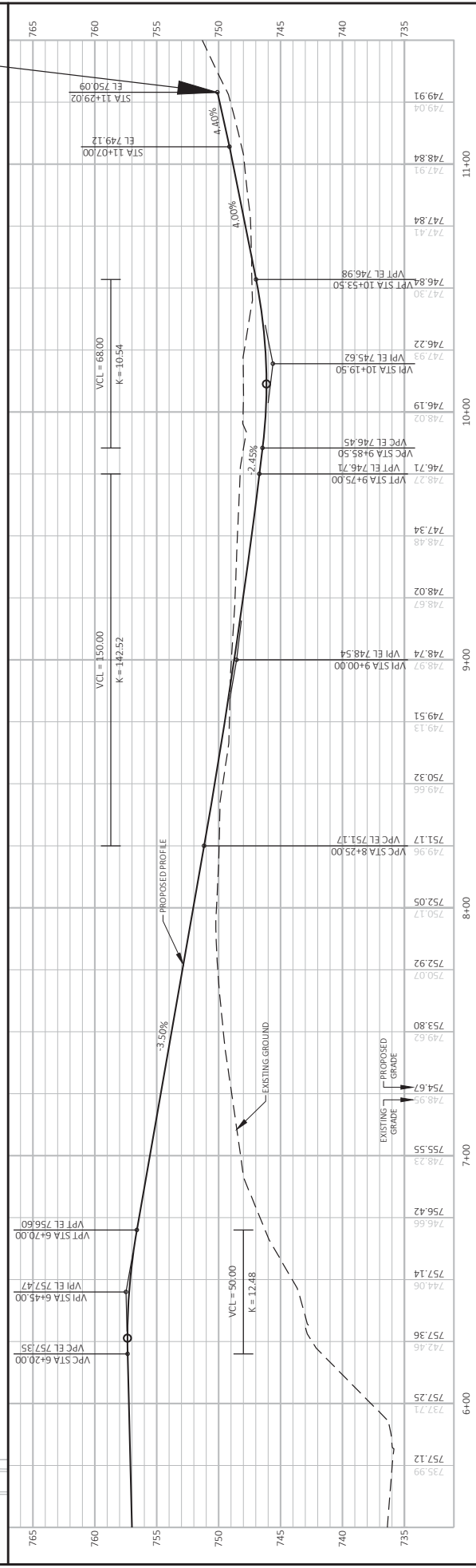
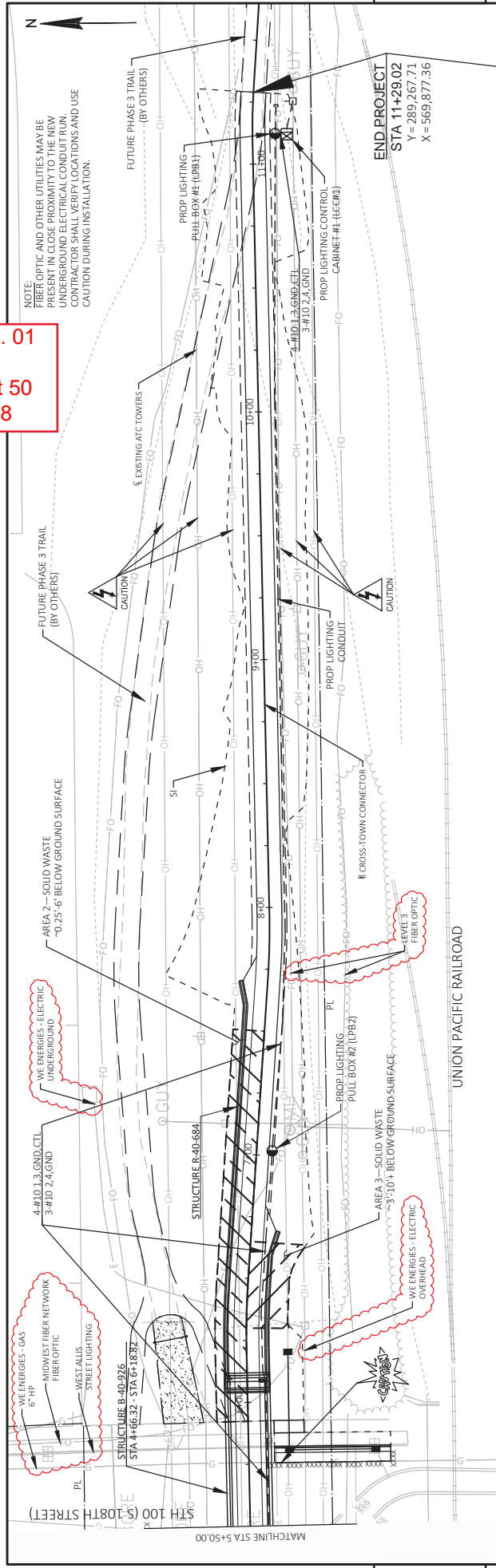


NO.	STATION	DESCRIPTION	ELEV.
1918	3+90.359 RT	NE UPPER FLANGE BOLT HYDRANT	740.02
2918	4+66.554 LT	N NE UPPER FLANGE BOLT HYDRANT	737.45



STATION	ELEVATION
748.06	0+00
749.10	1+00
749.44	1+400
749.85	1+800
750.34	2+000
750.83	2+400
751.04	2+800
750.81	3+000
750.27	3+400
750.08	3+800
750.03	4+000
749.36	4+400
749.55	4+800
749.60	5+000
748.37	5+400
750.78	5+800
748.42	6+000
752.03	6+400
746.07	6+800
753.28	7+000
754.53	7+400
743.36	7+800
755.69	8+000
740.79	8+400
756.39	8+800
756.74	9+000
756.87	9+400
756.79	9+800
756.87	10+000

Addendum No. 01
 ID 1693-32-74
 Revised Sheet 50
 March 12, 2018



PROJECT NO:	1693-32-74	HWY:	NON-HWY	COUNTY:	MILWAUKEE COUNTY	PLAN AND PROFILE:	STA 5+50.00 - STA 10+42.09	SHEET:	50	
FILE NAME:	P:\6516 WEST ALLE CROSS CONNECTOR BRIDGE\TRANSPORTATION\CADD\516 WA\ASHEET\PLAN\050001_PP.DWG									
LAYOUT NAME:	050102									
PLOT DATE:	3/9/2018 10:25 AM			PLOT NAME:	VINCENT DFRANCES		PLOT SCALE:	1 IN=40 FT		
WISDOT/CADD/SHEET 44										



Proposal Schedule of Items

Proposal ID: 20180313013 Project(s): 1693-32-74

Federal ID(s): WISC 2018143

SECTION: 0001

Contract Items

Alt Set ID:

Alt Mbr ID:

Proposal Line Number	Item ID Description	Approximate Quantity and Units	Unit Price	Bid Amount
0064	602.0410 Concrete Sidewalk 5-Inch	217.000 SF	_____.	_____.
0066	603.8000 Concrete Barrier Temporary Precast Delivered	375.000 LF	_____.	_____.
0068	603.8125 Concrete Barrier Temporary Precast Installed	750.000 LF	_____.	_____.
0070	604.0400 Slope Paving Concrete	72.000 SY	_____.	_____.
0072	606.0200 Riprap Medium	4.000 CY	_____.	_____.
0074	608.0512 Storm Sewer Pipe Reinforced Concrete Class V 12-Inch	137.000 LF	_____.	_____.
0076	611.0642 Inlet Covers Type MS	2.000 EACH	_____.	_____.
0078	611.2006 Manholes 6-FT Diameter	1.000 EACH	_____.	_____.
0080	611.3003 Inlets 3-FT Diameter	1.000 EACH	_____.	_____.
0082	611.3220 Inlets 2x2-FT	2.000 EACH	_____.	_____.
0084	611.3901 Inlets Median 1 Grate	2.000 EACH	_____.	_____.
0086	612.0406 Pipe Underdrain Wrapped 6-Inch	713.000 LF	_____.	_____.
0088	618.0100 Maintenance And Repair of Haul Roads (project) 01. 1693-32-74	1.000 EACH	_____.	_____.
0090	619.1000 Mobilization	1.000 EACH	_____.	_____.
0092	620.0300 Concrete Median Sloped Nose	54.000 SF	_____.	_____.
0094	625.0500 Salvaged Topsoil	2,209.000 SY	_____.	_____.



Proposal Schedule of Items

Proposal ID: 20180313013 Project(s): 1693-32-74

Federal ID(s): WISC 2018143

SECTION: 0001

Contract Items

Alt Set ID:

Alt Mbr ID:

Proposal Line Number	Item ID Description	Approximate Quantity and Units	Unit Price	Bid Amount
0216	SPV.0090 Special 08. Concrete Curb & Gutter 30-Inch Type A 12-Inch Flange	812.000 LF	_____.	_____.
0218	SPV.0165 Special 01. Wall Concrete Panel Mechanically Stabilized Earth R-40-0684	2,850.000 SF	_____.	_____.
0220	SPV.0165 Special 02. Wall Concrete Panel Mechanically Stabilized Earth R-40-0685	2,065.000 SF	_____.	_____.
0222	SPV.0195 Special 01. Management of Solid Waste	161.000 TON	_____.	_____.
0224	SPV.0060 Special 07. Utility Line Opening	1.000 EACH	_____.	_____.
Section: 0001			Total:	_____.
			Total Bid:	_____.