



# Wisconsin Department of Transportation

March 6, 2018

## Division of Transportation Systems Development

Bureau of Project Development  
4802 Sheboygan Avenue, Rm 601  
P O Box 7916  
Madison, WI 53707-7916

Telephone: (608) 266-1631  
Facsimile (FAX): (608) 266-8459

### NOTICE TO ALL CONTRACTORS:

**Proposal #20: 2505-00-73, WISC 2018 151**  
**South 13<sup>th</sup> Street**  
**W Drexel Ave To W Rawson Ave**  
**CTH V**  
**Milwaukee County**

### Letting of March 13, 2018

This is Addendum No. 01, which provides for the following:

#### Special Provisions:

| Revised Special Provisions |  |
|----------------------------|--|
| Article No.                | Description  |
| 51                         | Traffic Signal Cabinet 16-Phase, Item SPV.0105.02. |

| Deleted Special Provisions |  |
|----------------------------|--|
| Article No.                | Description                                  |
| 21                         | QMP Base Aggregate                           |
| 22                         | QMP Base Aggregate Dense 1 ¼-inch Compaction |

#### Schedule of Items:

| Revised Bid Item Quantities |                         |      |              |                  |                |
|-----------------------------|-------------------------|------|--------------|------------------|----------------|
| Bid Item                    | Item Description        | Unit | Old Quantity | Revised Quantity | Proposal Total |
| 455.0605                    | Tack Coat               | GAL  | 100          | 40               | 140            |
| 460.6224                    | HMA Pavement 4MT 58-28S | TON  | 450          | 180              | 630            |

| Added Bid Item Quantities |                                    |      |              |                  |                |
|---------------------------|------------------------------------|------|--------------|------------------|----------------|
| Bid Item                  | Item Description                   | Unit | Old Quantity | Revised Quantity | Proposal Total |
| 204.0120                  | Removing Asphaltic Surface Milling | SY   | 0            | 1480             | 1480           |
| 611.3225                  | Inlets 2 x 2.5-FT                  | EACH | 0            | 12               | 12             |

| Deleted Bid Item Quantities |  |      |              |                  |                |
|-----------------------------|--|------|--------------|------------------|----------------|
| Bid Item                    | Item Description                             | Unit | Old Quantity | Revised Quantity | Proposal Total |
| 371.1000.S                  | QMP Base Aggregate Dense 1 ¼-inch Compaction | TON  | 16,500       | -16,500          | 0              |
| 611.3230                    | Inlets 2 x 3-FT                              | EACH | 10           | -10              | 0              |

**Plan Sheets:**

| Revised Plan Sheets |   |
|---------------------|---|
| Plan Sheet          | Plan Sheet Title (brief description of changes to sheet)  |
| 13                  | TYPICAL SECTION: The sheet is revised to show the area of Removing Asphaltic Surface Milling and HMA Pavement 4MT 58-28S.   |
| 36 - 37             | PLAN DETAILS: These sheets are revised to show the area of Removing Asphaltic Surface Milling and HMA Pavement 4MT 58-28S.  |
| 67                  | STORM SEWER: The sheet is revised to show the removal of Inlets 2x3-FT, the addition of Inlets 2x2.5-FT, and the addition of a storm sewer line to pick up three sump discharges. |
| 68                  | STORM SEWER: The sheet is revised to show the removal of Inlets 2x3-FT, and the addition of Inlets 2x2.5-FT.  |
| 69                  | STORM SEWER: The sheet is revised to show the removal of Inlets 2x3-FT, the addition of Inlets 2x2.5-FT, and the addition of an underdrain line to pick up a sump discharge.      |
| 154                 | MISCELLANEOUS QUANTITIES: The sheet is revised to show the addition of Item 204.0125 removing Asphaltic Surface Milling.  |
| 155                 | MISCELLANEOUS QUANTITIES: The sheet is revised to show the removal QMP Base Aggregate Dense 1 ¼-inch Compaction.  |
| 163                 | MISCELLANEOUS QUANTITIES: The sheet is revised to show the removal of Inlets 2x3-FT and the addition of Inlets 2x2.5-FT.  |
| 197-198             | PLAN AND PROFILE: These sheets are revised to show the area of Removing Asphaltic Surface Milling and the area of HMA Pavement 4MT 58-28S.  |
| 301                 | EARTHWORK: Missing table for W. Drexel Ave added  |

**Other**

Use a 2x2.5-FT catch basin cover opening for all Catch Basins 4-FT Diameter.

Article 18, QMP Base Aggregate was duplicated with Article 22. Article 22 is being deleted to remove the duplication. Article 18 was not shown in the Table of Contents, but is located on pages 21 – 29 of the special provisions.

The responsibility for notifying potential subcontractors and suppliers of these changes remains with the prime contractor.

Sincerely,

*Mike Coleman*

Proposal Development Specialist  
Proposal Management Section

**ADDENDUM NO. 01**

**2505-00-73**

**March 6, 2018**

**Special Provisions**

- 21. DELETED.**
- 22. DELETED.**
- 51. Traffic Signal Cabinet 16-Phase, Item SPV.0105.02**

*Replace entire section titled **B.3 General Peripheral Equipment Notes** with the following:*

**B.3 General Peripheral Equipment Notes**

The control cabinet is peripheral to the traffic signal controller and MMU and shall be fully compatible with NEMA TS2 the latest version. The equipment items included shall be, but not necessarily limited to, cabinet, MMU, BIUs, shelf-mounted detector racks, detector amplifiers as needed, power supply, load switches, flash relays, power distribution panel, fiber optic communication components necessary to communicate via ethernet, interior cabinet wiring, and other associated electrical and electronic equipment interior to the control cabinet that is necessary to provide the type of operation described in these specifications. The intersection cabinet shall be fully wired for phases 1 through 8; pedestrian phases 2, 4, 6 and 8; 4 overlaps and ready for operation. All functions as specified by TS2 – 2003 shall be wired and ready for use.

**Schedule of Items**

Attached, dated March 6, 2018, are the revised Schedule of Items Pages 1 – 14.

**Plan Sheets**

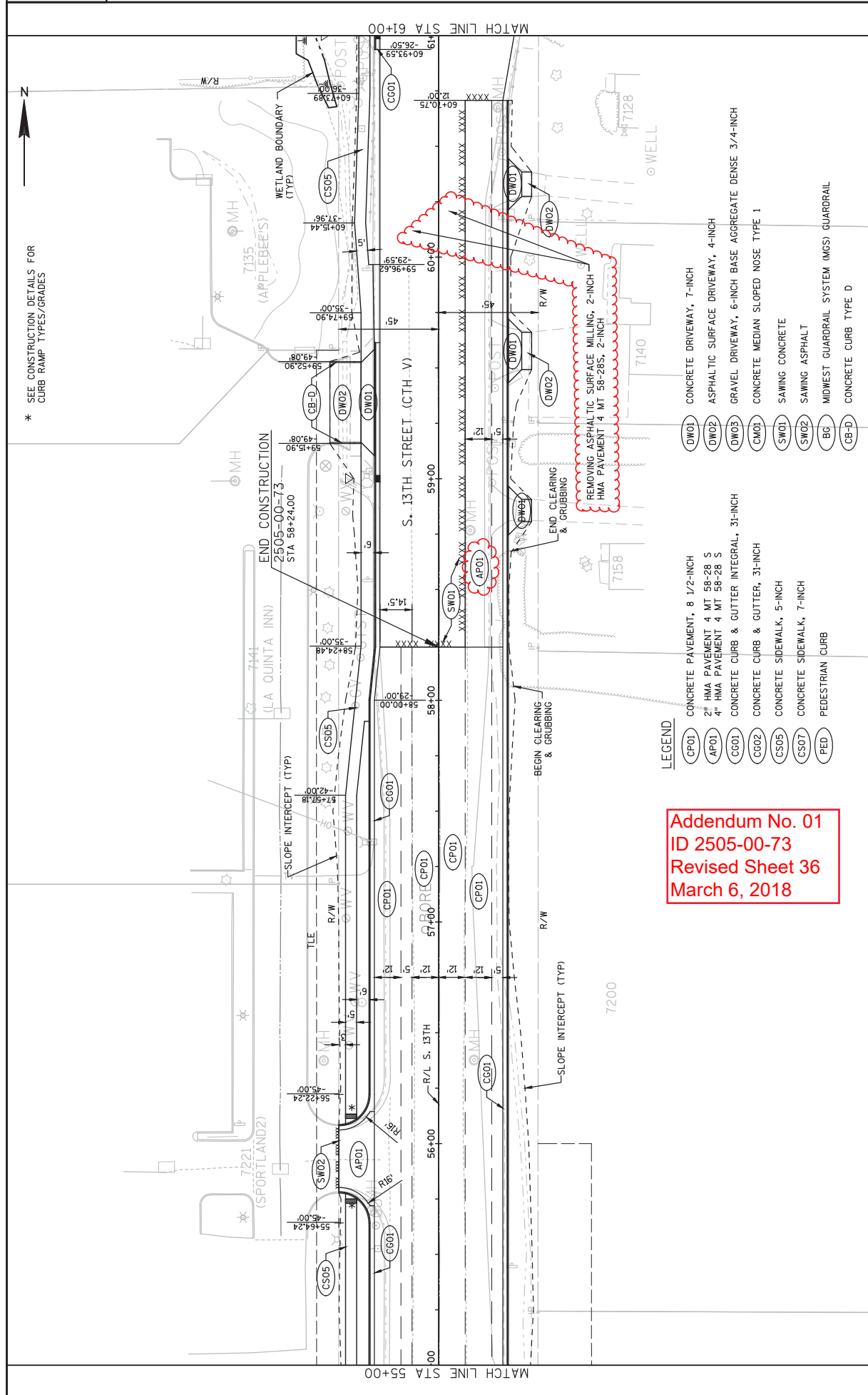
The following 8½ x 11-inch sheets are attached and made part of the plans for this proposal:

Revised: 13, 36, 37, 67, 68, 69, 154, 155, 163, 197, 198, and 301.

END OF ADDENDUM

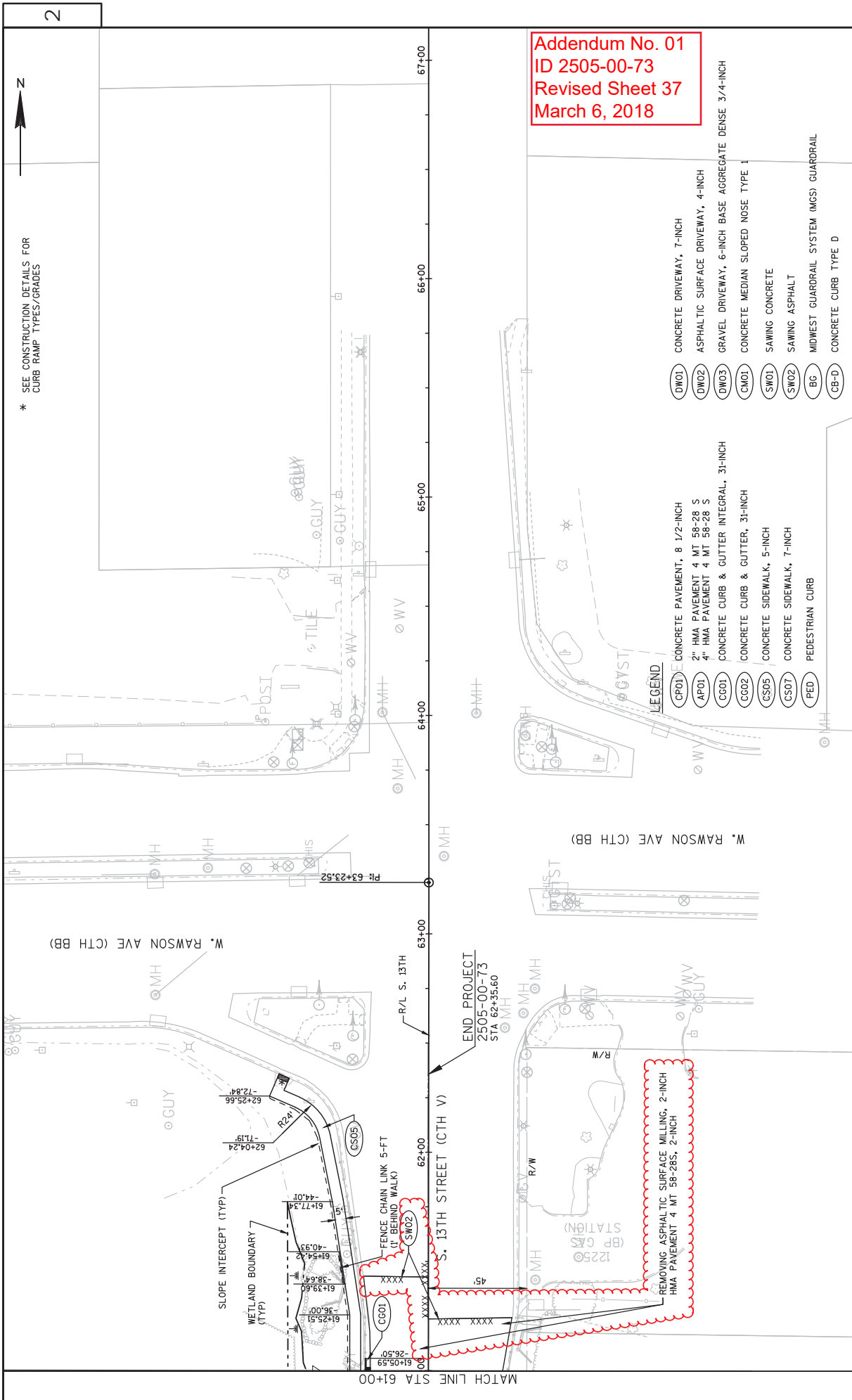


\* SEE CONSTRUCTION DETAILS FOR CURB RAMP TYPES/GRADES



**Addendum No. 01**  
**ID 2505-00-73**  
**Revised Sheet 36**  
**March 6, 2018**

- LEGEND**
- (CP01) CONCRETE PAVEMENT, 8 1/2-INCH
  - (AP01) 2" HMA PAVEMENT 4 MT 58-28 S
  - (CG01) 4" HMA PAVEMENT 4 MT 58-28 S
  - (CG02) CONCRETE CURB & GUTTER INTEGRAL, 31-INCH
  - (CS05) CONCRETE CURB & GUTTER, 31-INCH
  - (CS07) CONCRETE SIDEWALK, 5-INCH
  - (PED) CONCRETE SIDEWALK, 7-INCH
  - (DW01) CONCRETE DRIVEWAY, 7-INCH
  - (DW02) ASPHALTIC SURFACE DRIVEWAY, 4-INCH
  - (DW03) GRAVEL DRIVEWAY, 6-INCH BASE AGGREGATE DENSE 3/4-INCH
  - (CM01) CONCRETE MEDIAN SLOPED NOSE TYPE 1
  - (SW01) SAWING CONCRETE
  - (SW02) SAWING ASPHALT
  - (MG) MIDWEST GUARDRAIL SYSTEM (MGS) GUARDRAIL
  - (CB-D) CONCRETE CURB TYPE D



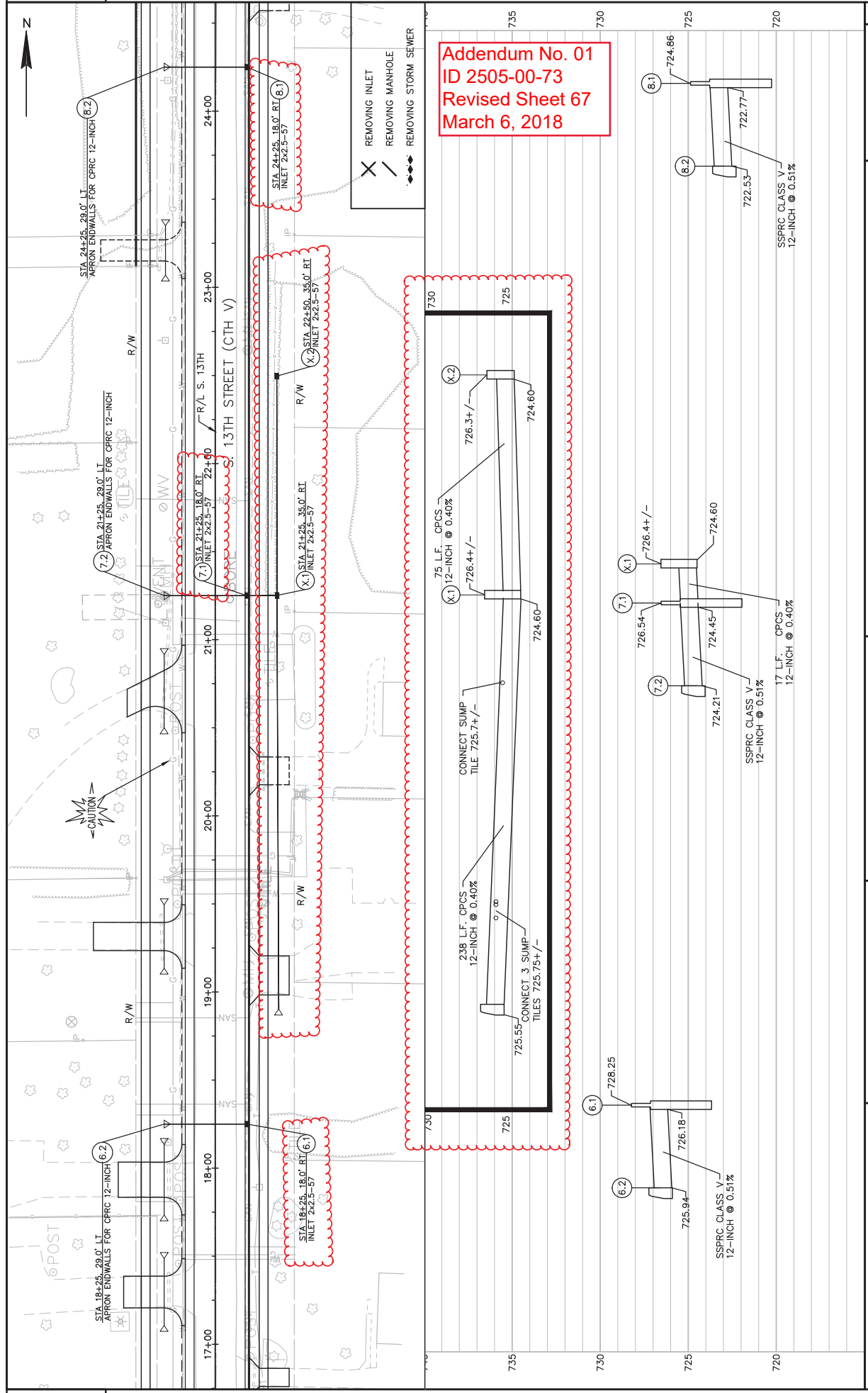
2

2

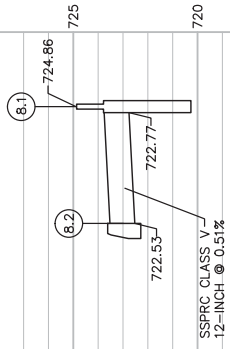
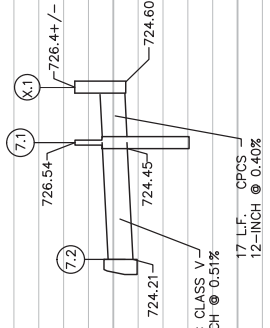
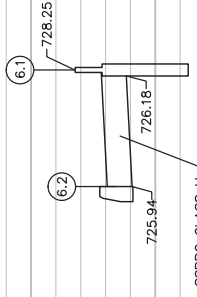
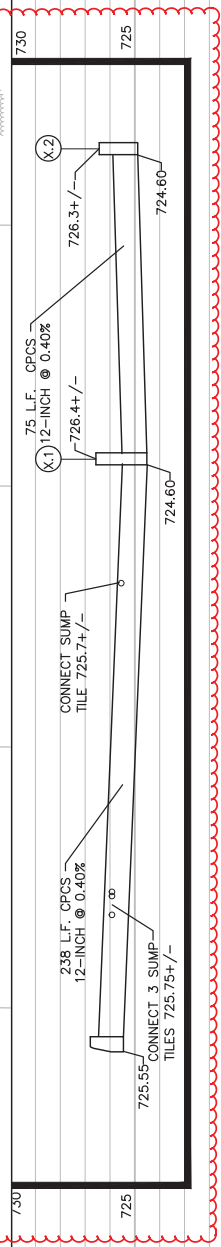
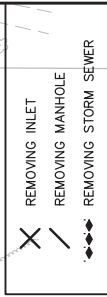
\* SEE CONSTRUCTION DETAILS FOR CURB RAMP TYPES/GRADES

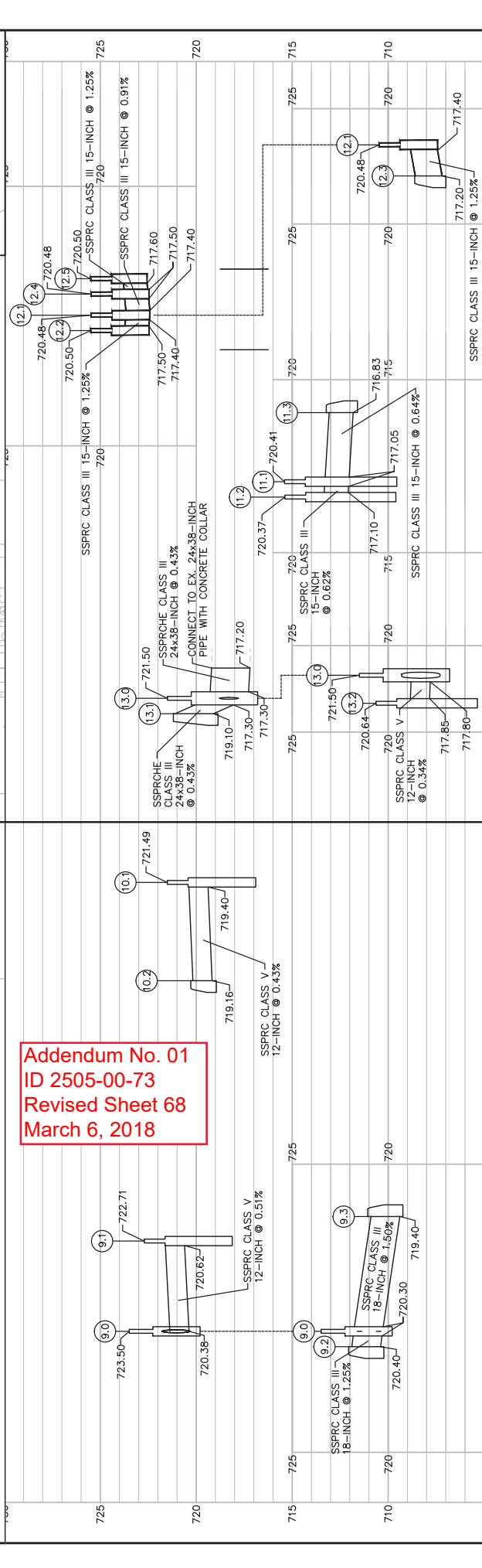
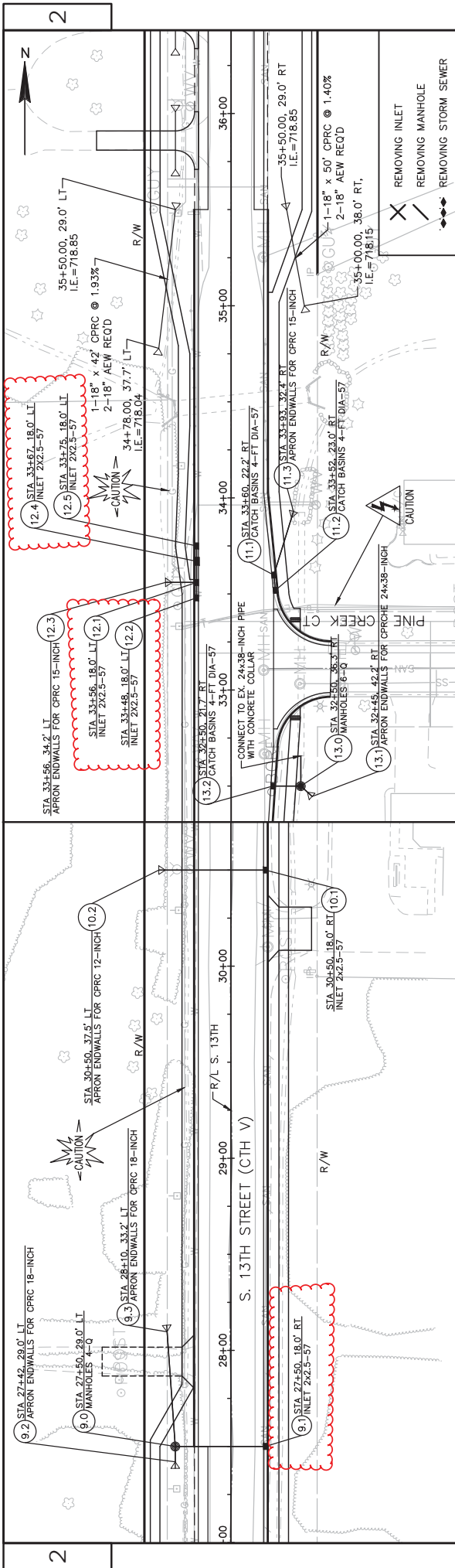
Addendum No. 01  
 ID 2505-00-73  
 Revised Sheet 37  
 March 6, 2018

- LEGEND**
- (CP01) CONCRETE PAVEMENT, 8 1/2-INCH
  - (AP01) 2" HMA PAVEMENT 4 MT 56-28 S
  - (AP02) 4" HMA PAVEMENT 4 MT 56-28 S
  - (CG01) CONCRETE CURB & GUTTER INTEGRAL, 3I-INCH
  - (CG02) CONCRETE CURB & GUTTER, 3I-INCH
  - (CS05) CONCRETE SIDEWALK, 5-INCH
  - (CS07) CONCRETE SIDEWALK, 7-INCH
  - (PED) PEDESTRIAN CURB
  - (DW01) CONCRETE DRIVEWAY, 7-INCH
  - (DW02) ASPHALTIC SURFACE DRIVEWAY, 4-INCH
  - (DW03) GRAVEL DRIVEWAY, 6-INCH BASE AGGREGATE DENSE 3/4-INCH
  - (CM01) CONCRETE MEDIAN SLOPED NOSE TYPE 1
  - (SW01) SAWING CONCRETE
  - (SW02) SAWING ASPHALT
  - (BG) MIDWEST GUARDRAIL SYSTEM (MGS) GUARDRAIL
  - (CB-D) CONCRETE CURB TYPE D



**Addendum No. 01**  
**ID 2505-00-73**  
**Revised Sheet 67**  
**March 6, 2018**

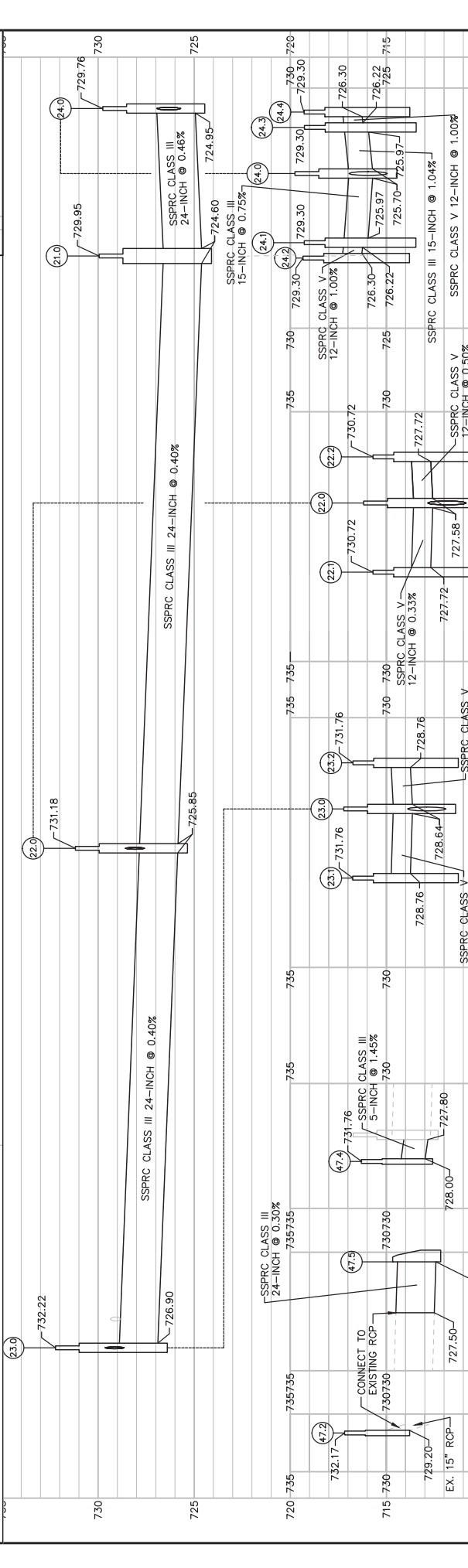
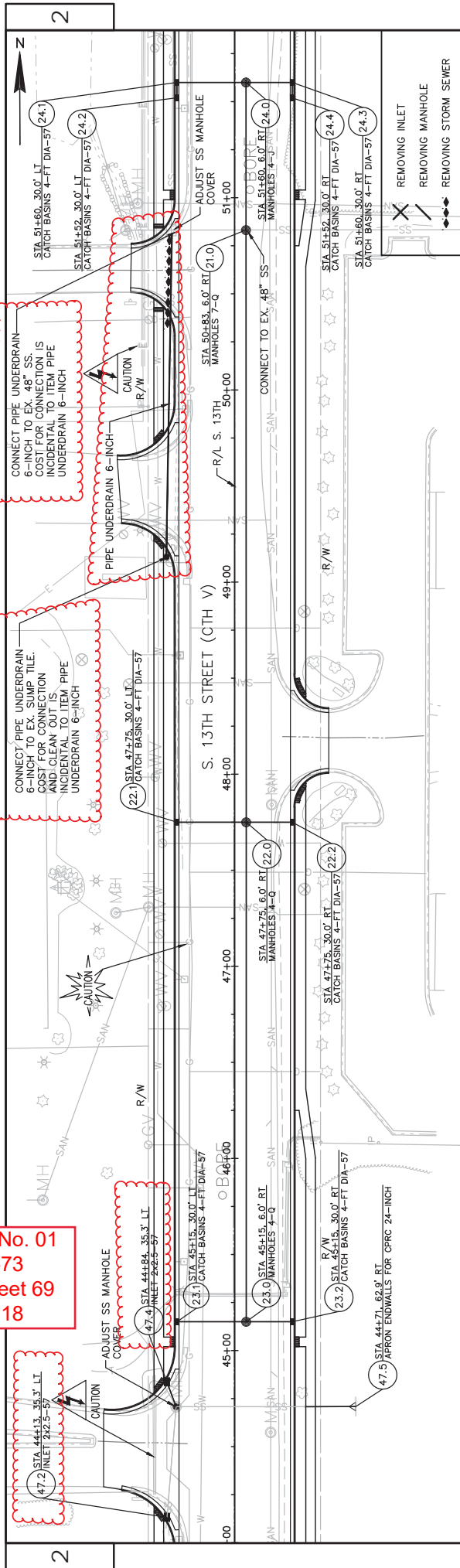




Addendum No. 01  
 ID 2505-00-73  
 Revised Sheet 68  
 March 6, 2018



Addendum No. 01  
ID 2505-00-73  
Revised Sheet 69  
March 6, 2018



REMOVING CURB & GUTTER

| LOCATION             | STATION         | LF      |         |             |
|----------------------|-----------------|---------|---------|-------------|
|                      |                 | STAGE 1 | STAGE 2 | STAGE 3     |
| S. 13TH ST           | 2+25 - 7+00     | -       | 90      | -           |
|                      | 7+00 - 13+00    | -       | -       | 279         |
|                      | 13+00 - 19+00   | -       | -       | -           |
|                      | 19+00 - 25+00   | -       | -       | -           |
|                      | 25+00 - 31+00   | -       | -       | -           |
|                      | 31+00 - 37+00   | -       | 92      | -           |
|                      | 37+00 - 43+00   | -       | -       | -           |
|                      | 43+00 - 49+00   | -       | 84      | 104         |
|                      | 49+00 - 55+00   | -       | -       | 588         |
|                      | 55+00 - 61+00   | -       | 248     | 467         |
| 61+00 - 62+35        | -               | -       | -       |             |
| W. DREXEL AVE        | 201+45 - 208+59 | -       | 709     | 283         |
| <b>SUBTOTAL</b>      |                 | 0       | 1223    | 1721        |
| <b>UNDISTRIBUTED</b> |                 | 0       | 28      | 28          |
| <b>TOTAL</b>         |                 |         |         | <b>3000</b> |
| CATEGORY 0010        |                 |         |         |             |

REMOVING ASPHALTIC SURFACE MILLING

| STATION                 | SY          |
|-------------------------|-------------|
|                         |             |
| <b>SUBTOTAL STAGE 2</b> |             |
|                         | 960         |
| 55+00 - 62+50           | 520         |
| <b>SUBTOTAL STAGE 3</b> |             |
|                         | 520         |
| <b>TOTAL</b>            | <b>1480</b> |
| CATEGORY 0010           |             |

REMOVING CONCRETE BASES

| LOCATION             | BASE NO. | EACH      |
|----------------------|----------|-----------|
| 13TH & DREXEL SIGNAL | SB1      | 1         |
|                      | SB2      | 1         |
|                      | SB3      | 1         |
|                      | SB4      | 1         |
|                      | SB5      | 1         |
|                      | SB6      | 1         |
|                      | SB7      | 1         |
|                      | SB8      | 1         |
|                      | SB9      | 1         |
|                      | SB10     | 1         |
| CB1                  | 1        |           |
| <b>TOTAL</b>         |          | <b>11</b> |
| CATEGORY 0010        |          |           |

Addendum No. 01  
ID 2505-00-73  
Revised Sheet 154  
March 6, 2018

REMOVING CONCRETE SIDEWALK

| LOCATION             | STATION         | SY      |         |            |
|----------------------|-----------------|---------|---------|------------|
|                      |                 | STAGE 2 | STAGE 3 |            |
| S. 13TH ST           | 2+25 - 7+00     | -       | -       | -          |
|                      | 7+00 - 13+00    | 67      | -       | -          |
|                      | 13+00 - 19+00   | -       | -       | -          |
|                      | 19+00 - 25+00   | -       | -       | -          |
|                      | 25+00 - 31+00   | -       | -       | -          |
|                      | 31+00 - 37+00   | -       | -       | -          |
|                      | 37+00 - 43+00   | -       | -       | -          |
|                      | 43+00 - 49+00   | -       | -       | -          |
|                      | 49+00 - 55+00   | -       | -       | -          |
|                      | 55+00 - 61+00   | -       | -       | -          |
| 61+00 - 62+35        | -               | -       | -       |            |
| W. DREXEL AVE        | 201+45 - 208+59 | 124     | 42      | 42         |
| <b>SUBTOTAL</b>      |                 | 191     | 42      | 42         |
| <b>UNDISTRIBUTED</b> |                 | 33      | 34      | 34         |
| <b>TOTAL</b>         |                 |         |         | <b>300</b> |
| CATEGORY 0010        |                 |         |         |            |

REMOVING STORM SEWER

| LOCATION                | STATION         | STATION | OFFSET | EACH              |                 | LF         |
|-------------------------|-----------------|---------|--------|-------------------|-----------------|------------|
|                         |                 |         |        | REMOVING MANHOLES | REMOVING INLETS |            |
| S. 13TH ST              | 8+90 - 9+00     |         | 30'RT  | --                | --              | 22         |
|                         | 9+08            |         | 27'RT  | 1                 | 1               | --         |
|                         | 11+52           |         | 33'RT  | --                | 1               | 56         |
| W. DREXEL AVE           | 206+20 - 207+33 |         | LT     | --                | --              | 88         |
|                         | 206+47          |         | 58'LT  | 1                 | 1               | --         |
|                         | 207+33          |         | 41'LT  | --                | 1               | --         |
|                         | 207+33          |         | 17'LT  | 1                 | 1               | --         |
| <b>SUBTOTAL STAGE 2</b> |                 |         |        | 0                 | 5               | 166        |
| S. 13TH ST              | 10+41           |         | 53'LT  | --                | 1               | --         |
|                         | 10+64           |         | 28'LT  | --                | 1               | --         |
|                         | 10+10 - 11+20   |         | LT-RT  | --                | --              | 116        |
|                         | 50+25 - 50+75   |         | LT     | --                | --              | 50         |
|                         | 52+50           |         | 30'LT  | 1                 | --              | --         |
| W. DREXEL AVE           | 204+32          |         | 41'RT  | --                | 1               | --         |
| <b>SUBTOTAL STAGE 3</b> |                 |         |        | 1                 | 2               | 166        |
| <b>TOTAL</b>            |                 |         |        | 1                 | 7               | <b>332</b> |
| CATEGORY 0010           |                 |         |        |                   |                 |            |

Addendum No. 01  
ID 2505-00-73  
Revised Sheet 155  
March 6, 2018

AGGREGATE ITEMS

305.0120\*  
BASE  
AGGREGATE  
DENSE  
1 1/4 -INCH

371.1000.S  
OMP BASE  
AGGREGATE  
DENSE  
1 1/4 -INCH COMPACTION

| LOCATION      | STATION | STATION | STAGE 1 | STAGE 2 | STAGE 3      |
|---------------|---------|---------|---------|---------|--------------|
| S. 13TH ST    | 2+25    | 7+00    | 870     | 152     | -            |
|               | 7+00    | 13+00   | 152     | 454     | 592          |
|               | 13+00   | 19+00   | 445     | 397     | 547          |
|               | 19+00   | 25+00   | 485     | 400     | 518          |
|               | 25+00   | 31+00   | 471     | 400     | 461          |
|               | 31+00   | 37+00   | 168     | 510     | 412          |
|               | 37+00   | 43+00   | 578     | 550     | 531          |
|               | 43+00   | 49+00   | -       | 694     | 740          |
|               | 49+00   | 55+00   | -       | 667     | 821          |
|               | 55+00   | 61+00   | -       | 525     | 383          |
|               | 61+00   | 62+35   | -       | -       | -            |
| W. DREXEL AVE | 201+45  | 208+59  | -       | 176     | 114          |
| SUBTOTAL      |         |         | 3169    | 4925    | 5119         |
| UNDISTRIBUTED |         |         | 991     | 1145    | 1151         |
| <b>TOTAL</b>  |         |         |         |         | <b>16500</b> |

| LOCATION      | STATION | STATION | STAGE 1 | STAGE 2 | STAGE 3      |
|---------------|---------|---------|---------|---------|--------------|
| S. 13TH ST    | 2+25    | 7+00    | 870     | 152     | -            |
|               | 7+00    | 13+00   | 152     | 454     | 592          |
|               | 13+00   | 19+00   | 445     | 397     | 547          |
|               | 19+00   | 25+00   | 485     | 400     | 518          |
|               | 25+00   | 31+00   | 471     | 400     | 461          |
|               | 31+00   | 37+00   | 168     | 510     | 412          |
|               | 37+00   | 43+00   | 578     | 550     | 531          |
|               | 43+00   | 49+00   | -       | 694     | 740          |
|               | 49+00   | 55+00   | -       | 667     | 821          |
|               | 55+00   | 61+00   | -       | 525     | 383          |
|               | 61+00   | 62+35   | -       | -       | -            |
| W. DREXEL AVE | 201+45  | 208+59  | -       | 176     | 114          |
| SUBTOTAL      |         |         | 3169    | 4925    | 5119         |
| UNDISTRIBUTED |         |         | 991     | 1145    | 1151         |
| <b>TOTAL</b>  |         |         |         |         | <b>16500</b> |

CATEGORY 0010  
\*ADDITIONAL QUANTITIES LISTED ELSEWHERE

Addendum No. 01  
ID 2505-00-73  
Revised Sheet 163  
March 6, 2018

STORM SEWER STRUCTURES

| STR. NO.    | STATION | OFFSET   | 611.0555                    |                              | 611.0645                    |                         | 611.1004                |                         | 611.2004           |                 | 611.2006                       |                                | 611.2007               |                                 | 611.3225 |   | 611.3903 |   | 611.8110* |   | 650.4000* |   | 520.8000 |   |
|-------------|---------|----------|-----------------------------|------------------------------|-----------------------------|-------------------------|-------------------------|-------------------------|--------------------|-----------------|--------------------------------|--------------------------------|------------------------|---------------------------------|----------|---|----------|---|-----------|---|-----------|---|----------|---|
|             |         |          | MANHOLE<br>COVERS<br>TYPE Q | INLET<br>COVERS<br>TYPE MS-A | CATCH<br>BASINS<br>4-FT DIA | MANHOLES<br>4-FT<br>DIA | MANHOLES<br>6-FT<br>DIA | MANHOLES<br>7-FT<br>DIA | INLETS<br>24.25-FT | INLETS<br>30-FT | ADJUSTING<br>MANHOLE<br>COVERS | CONSTRUCTION<br>STORM<br>SEWER | INLET COVER<br>TYPE 57 | CONCRETE<br>COLLARS<br>FOR PIPE |          |   |          |   |           |   |           |   |          |   |
| S. 13TH ST  |         |          |                             |                              |                             |                         |                         |                         |                    |                 |                                |                                |                        |                                 |          |   |          |   |           |   |           |   |          |   |
| 1.0         | 8+15    | 23' RT   | 1                           |                              |                             | 1                       |                         |                         |                    |                 |                                |                                |                        |                                 |          |   |          |   |           |   |           |   |          |   |
| 1.1         | 8+15    | 30' LT   |                             |                              | 1                           |                         |                         |                         |                    |                 |                                |                                |                        |                                 |          |   |          |   |           |   |           |   |          |   |
| 1.2         | 8+15    | 30' RT   |                             |                              |                             |                         |                         |                         |                    |                 |                                |                                |                        |                                 |          |   |          |   |           |   |           |   |          |   |
| 1.3         | 8+15    | 48' RT   |                             |                              | 1                           |                         |                         |                         |                    |                 |                                |                                |                        |                                 |          |   |          |   |           |   |           |   |          |   |
| 2.1         | 9+43    | 71.1' LT |                             |                              |                             |                         |                         |                         |                    |                 |                                |                                |                        |                                 |          |   |          |   |           |   |           |   |          |   |
| 3.0         | 10+09   | 6' RT    | 1                           |                              |                             | 1                       |                         |                         |                    |                 |                                |                                |                        |                                 |          |   |          |   |           |   |           |   |          |   |
| 3.1         | 10+40   | 71.1' LT |                             |                              | 1                           |                         |                         |                         |                    |                 |                                |                                |                        |                                 |          |   |          |   |           |   |           |   |          |   |
| 4.0         | 10+71   | 6' RT    | 1                           |                              |                             | 1                       |                         |                         |                    |                 |                                |                                |                        |                                 |          |   |          |   |           |   |           |   |          |   |
| 4.1         | 10+71   | 40' LT   |                             |                              |                             |                         |                         |                         |                    |                 |                                |                                |                        |                                 |          |   |          |   |           |   |           |   |          |   |
| 4.2         | 10+71   | 28.8' RT |                             |                              | 1                           |                         |                         |                         |                    |                 |                                |                                |                        |                                 |          |   |          |   |           |   |           |   |          |   |
| 5.0         | 13+75   | 6' RT    | 1                           |                              |                             | 1                       |                         |                         |                    |                 |                                |                                |                        |                                 |          |   |          |   |           |   |           |   |          |   |
| 5.1         | 13+75   | 33' LT   |                             |                              |                             |                         |                         |                         |                    |                 |                                |                                |                        |                                 |          |   |          |   |           |   |           |   |          |   |
| 5.2         | 13+75   | 18' RT   |                             |                              |                             |                         |                         |                         |                    |                 |                                |                                |                        |                                 |          |   |          |   |           |   |           |   |          |   |
| 5.3         | 14+00   | 34.3' RT |                             |                              |                             | 1                       |                         |                         |                    |                 |                                |                                |                        |                                 |          |   |          |   |           |   |           |   |          |   |
| 6.1         | 18+25   | 18' RT   |                             |                              |                             |                         |                         |                         |                    |                 |                                |                                |                        |                                 |          |   |          |   |           |   |           |   |          |   |
| 7.1         | 21+25   | 18' RT   |                             |                              |                             |                         |                         |                         |                    |                 |                                |                                |                        |                                 |          |   |          |   |           |   |           |   |          |   |
| 8.1         | 24+25   | 18' RT   |                             |                              |                             |                         |                         |                         |                    |                 |                                |                                |                        |                                 |          |   |          |   |           |   |           |   |          |   |
| 9.0         | 27+50   | 29' LT   | 1                           |                              |                             | 1                       |                         |                         |                    |                 |                                |                                |                        |                                 |          |   |          |   |           |   |           |   |          |   |
| 9.1         | 27+50   | 18' RT   |                             |                              |                             |                         |                         |                         |                    |                 |                                |                                |                        |                                 |          |   |          |   |           |   |           |   |          |   |
| 10.1        | 30+50   | 18' RT   |                             |                              |                             | 1                       |                         |                         |                    |                 |                                |                                |                        |                                 |          |   |          |   |           |   |           |   |          |   |
| 11.1        | 33+72   | 21' RT   |                             |                              |                             |                         |                         |                         |                    |                 |                                |                                |                        |                                 |          |   |          |   |           |   |           |   |          |   |
| 11.2        | 33+64   | 21.8' RT |                             |                              |                             | 1                       |                         |                         |                    |                 |                                |                                |                        |                                 |          |   |          |   |           |   |           |   |          |   |
| 12.1        | 33+56   | 18' LT   |                             |                              |                             |                         |                         |                         |                    |                 |                                |                                |                        |                                 |          |   |          |   |           |   |           |   |          |   |
| 12.2        | 33+48   | 18' LT   |                             |                              |                             |                         |                         |                         |                    |                 |                                |                                |                        |                                 |          |   |          |   |           |   |           |   |          |   |
| 12.4        | 33+67   | 18' LT   |                             |                              |                             |                         |                         |                         |                    |                 |                                |                                |                        |                                 |          |   |          |   |           |   |           |   |          |   |
| 12.5        | 33+75   | 18' LT   |                             |                              |                             |                         |                         |                         |                    |                 |                                |                                |                        |                                 |          |   |          |   |           |   |           |   |          |   |
| 13.0        | 32+50   | 36.3' RT | 1                           |                              |                             | 1                       |                         |                         |                    |                 |                                |                                |                        |                                 |          |   |          |   |           |   |           |   |          |   |
| 13.2        | 32+50   | 21.7' RT |                             |                              |                             |                         |                         |                         |                    |                 |                                |                                |                        |                                 |          |   |          |   |           |   |           |   |          |   |
| 21.0        | 50+83   | 6' RT    | 1                           |                              |                             |                         |                         |                         |                    |                 |                                |                                |                        |                                 |          |   |          |   |           |   |           |   |          |   |
| 22.0        | 47+75   | 6' RT    | 1                           |                              |                             | 1                       |                         |                         |                    |                 |                                |                                |                        |                                 |          |   |          |   |           |   |           |   |          |   |
| 22.1        | 47+75   | 30' LT   |                             |                              |                             |                         |                         |                         |                    |                 |                                |                                |                        |                                 |          |   |          |   |           |   |           |   |          |   |
| 22.2        | 47+75   | 30' RT   |                             |                              |                             | 1                       |                         |                         |                    |                 |                                |                                |                        |                                 |          |   |          |   |           |   |           |   |          |   |
| 23.0        | 45+15   | 6' RT    | 1                           |                              |                             |                         |                         |                         |                    |                 |                                |                                |                        |                                 |          |   |          |   |           |   |           |   |          |   |
| 23.1        | 45+15   | 30' LT   |                             |                              |                             |                         |                         |                         |                    |                 |                                |                                |                        |                                 |          |   |          |   |           |   |           |   |          |   |
| 23.2        | 45+15   | 30' RT   |                             |                              |                             | 1                       |                         |                         |                    |                 |                                |                                |                        |                                 |          |   |          |   |           |   |           |   |          |   |
| 24.0        | 51+60   | 6' RT    | 1                           |                              |                             | 1                       |                         |                         |                    |                 |                                |                                |                        |                                 |          |   |          |   |           |   |           |   |          |   |
| 24.1        | 51+60   | 30' LT   |                             |                              |                             |                         |                         |                         |                    |                 |                                |                                |                        |                                 |          |   |          |   |           |   |           |   |          |   |
| 24.2        | 51+52   | 30' LT   |                             |                              |                             |                         |                         |                         |                    |                 |                                |                                |                        |                                 |          |   |          |   |           |   |           |   |          |   |
| 24.3        | 51+60   | 30' RT   |                             |                              |                             | 1                       |                         |                         |                    |                 |                                |                                |                        |                                 |          |   |          |   |           |   |           |   |          |   |
| 24.4        | 51+52   | 30' RT   |                             |                              |                             |                         |                         |                         |                    |                 |                                |                                |                        |                                 |          |   |          |   |           |   |           |   |          |   |
| 25.1        | 54+50   | 30' LT   |                             |                              |                             | 1                       |                         |                         |                    |                 |                                |                                |                        |                                 |          |   |          |   |           |   |           |   |          |   |
| 25.2        | 54+50   | 30' RT   |                             |                              |                             |                         |                         |                         |                    |                 |                                |                                |                        |                                 |          |   |          |   |           |   |           |   |          |   |
| 30.1        | 59+00   | 27.5' LT |                             |                              |                             |                         |                         |                         |                    |                 |                                |                                |                        |                                 |          |   |          |   |           |   |           |   |          |   |
| 31.1        | 61+00   | 27.5' LT |                             |                              |                             | 1                       |                         |                         |                    |                 |                                |                                |                        |                                 |          |   |          |   |           |   |           |   |          |   |
| 47.2        | 44+13   | 35.3' LT |                             |                              |                             |                         |                         |                         |                    |                 |                                |                                |                        |                                 |          |   |          |   |           |   |           |   |          |   |
| 47.4        | 44+84   | 35.3' LT |                             |                              |                             |                         |                         |                         |                    |                 |                                |                                |                        |                                 |          |   |          |   |           |   |           |   |          |   |
| EX. MH      | 44+71   | 30.7' LT |                             |                              |                             |                         |                         |                         |                    |                 |                                |                                |                        |                                 |          |   |          |   |           |   |           |   |          |   |
| EX. MH      | 50+83   | 32.5' LT |                             |                              |                             |                         |                         |                         |                    |                 |                                |                                |                        |                                 |          |   |          |   |           |   |           |   |          |   |
| EX. MH      | 54+14   | 30' LT   |                             |                              |                             |                         |                         |                         |                    |                 |                                |                                |                        |                                 |          |   |          |   |           |   |           |   |          |   |
| EX. MH      | 55+78   | 36' RT   |                             |                              |                             |                         |                         |                         |                    |                 |                                |                                |                        |                                 |          |   |          |   |           |   |           |   |          |   |
| X.1         | 35+25   | 35.0' RT |                             |                              |                             |                         |                         |                         |                    |                 |                                |                                |                        |                                 |          |   |          |   |           |   |           |   |          |   |
| X.2         | 22+50   | 35.0' RT |                             |                              |                             |                         |                         |                         |                    |                 |                                |                                |                        |                                 |          |   |          |   |           |   |           |   |          |   |
| W-DRENELINE |         |          |                             |                              |                             |                         |                         |                         |                    |                 |                                |                                |                        |                                 |          |   |          |   |           |   |           |   |          |   |
| 40.1        | 207+33  | 46.7' LT |                             |                              |                             | 1                       |                         |                         |                    |                 |                                |                                |                        |                                 |          |   |          |   |           |   |           |   |          |   |
| EX. INL     | 207+33  | 17.0' LT |                             |                              |                             |                         |                         |                         |                    |                 |                                |                                |                        |                                 |          |   |          |   |           |   |           |   |          |   |
| TOTAL       |         |          | 10                          | 1                            | 26                          | 8                       | 1                       | 1                       | 1                  | 1               | 1                              | 1                              | 1                      | 1                               | 1        | 1 | 1        | 1 | 1         | 1 | 1         | 1 | 1        | 1 |

\*ADDITIONAL QUANTITIES LISTED ELSEWHERE

PROJECT NO: 2505-00-73

HWY: CTH V

COUNTY: MILWAUKEE

MISCELLANEOUS QUANTITIES

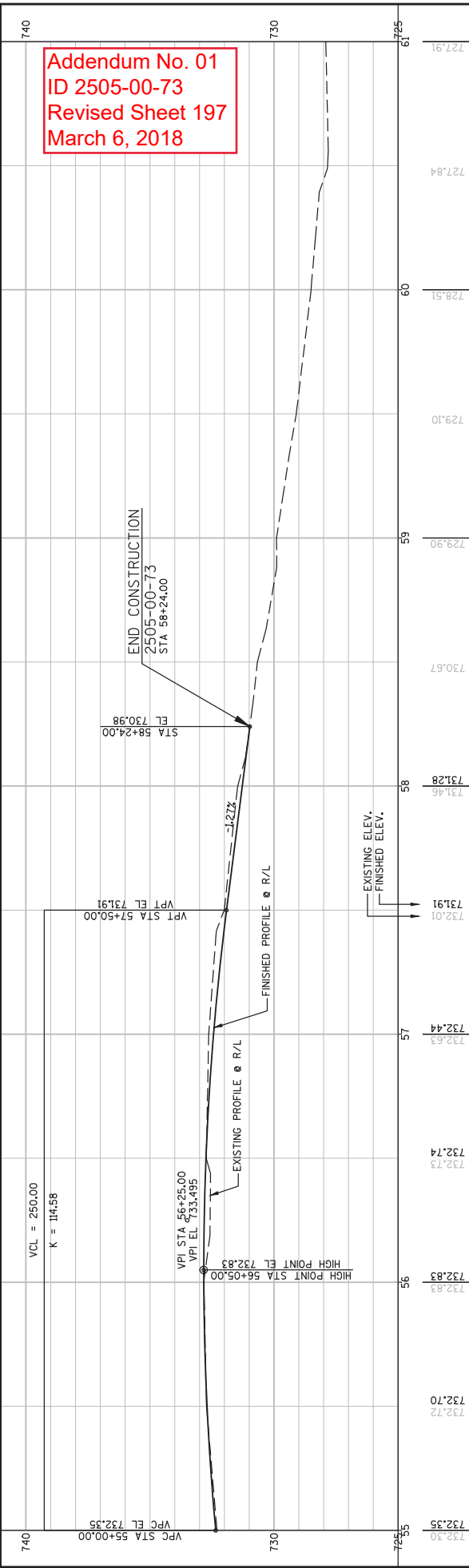
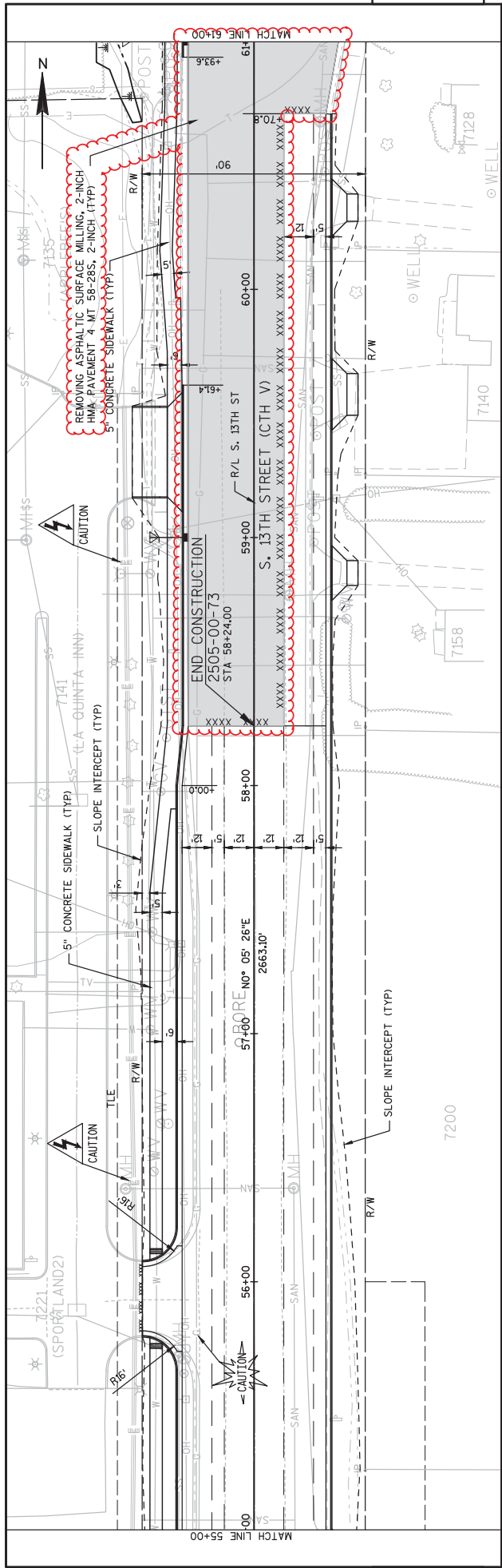
SHEET 163

E

PLOT DATE: 2/26/2018

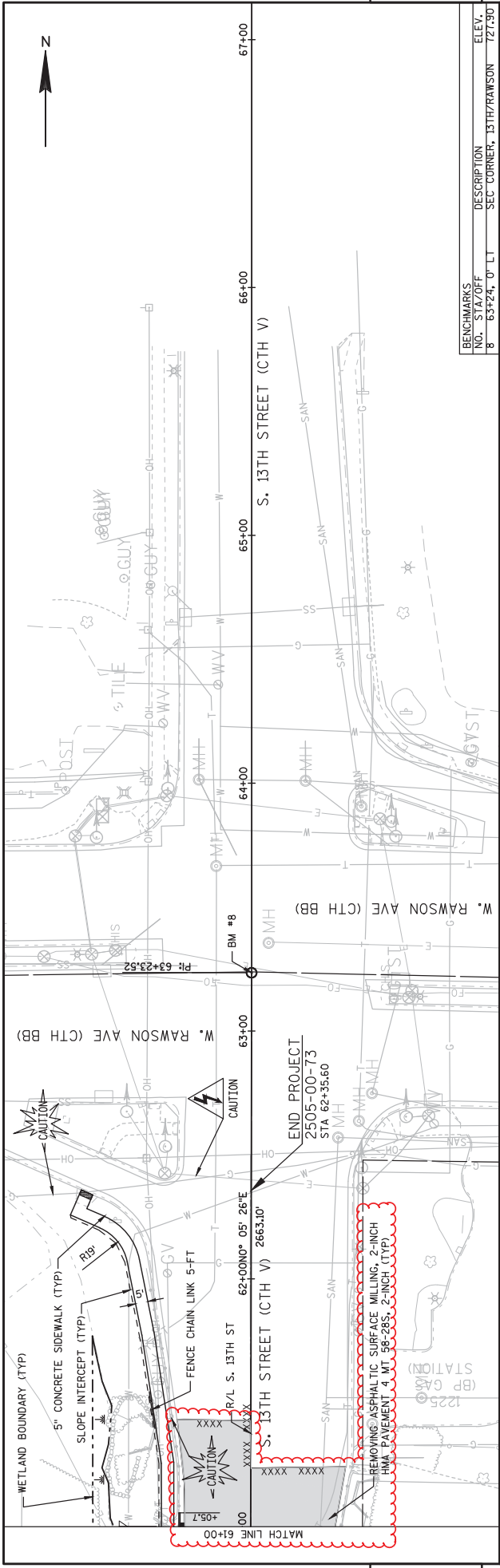
PLOT BY: DMW

PLOT SCALE: 1:1



**Addendum No. 01**  
**ID 2505-00-73**  
**Revised Sheet 197**  
**March 6, 2018**

|  |                   |                                  |       |     |   |
|--|-------------------|----------------------------------|-------|-----|---|
| PROJECT NO: 2505-00-73   | COUNTY: MILWAUKEE | PLAN AND PROFILE: S. 13TH STREET | SHEET | 197 | E |
| FILE NAME : 0:\HIGHWAY OPERATIONS CONTROL FILE\CENTRAL FILES\2010-2014\CTH V - S. 13TH STS - DREXEL TO RAMSON - 2505-00-03.DWG; 2010-03-28\BURNSEN\KALBEREIBRAH\ROAD\22_PLAN\PROF\8505\COMPTERS\DWG\AREA |                   |                                  |       |     |   |
| PLOT SCALE : 1" = 40' .XREF : LAYOUT NAME - SHEET - (11)   |                   |                                  |       |     |   |



| BENCHMARK NO. | STA/OFF     | DESCRIPTION             | ELEV.  |
|---------------|-------------|-------------------------|--------|
| 8             | 63+24.0' LT | SEC CORNER, 13TH/RAWSON | 727.90 |

NO PROFILE THIS SHEET

Addendum No. 01  
 ID 2505-00-73  
 Revised Sheet 198  
 March 6, 2018

|   |            |                   |                                  |       |     |   |
|---|------------|-------------------|----------------------------------|-------|-----|---|
| PROJECT NO: 2505-00-73  | HWY: CTH V | COUNTY: MILWAUKEE | PLAN AND PROFILE: S. 13TH STREET | SHEET | 198 | E |
| FILE NAME : 0:\HIGHWAY OPERATIONS CONTROL FILES\CENTRAL FILES\2010-2014\CTH V - S. 13TH ST. - DREXEL TO RAWSON - 2505-00-03.dwg; PLOT NAME : 0:\HIGHWAY OPERATIONS CONTROL FILES\CENTRAL FILES\2010-2014\CTH V - S. 13TH ST. - DREXEL TO RAWSON - 2505-00-03.dwg; PLOT SCALE : 1" = 40' .XREF |            |                   |                                  |       |     |   |
| LAYOUT NAME - SHEET - (10)  |            |                   |                                  |       |     |   |

5

5

STAGE 2 (CONTINUED)

| STATION       | Distance | Cut     |         | Fill    |         | EBS     |         | Cut     | Salvaged/Unusable Pavement Material | Note 2 | Note 3 | EBS    | Cut    | Expanded Fill | Expanded EBS Backfill | Reduced EBS In Fill | Mass Ordinate |
|---------------|----------|---------|---------|---------|---------|---------|---------|---------|-------------------------------------|--------|--------|--------|--------|---------------|-----------------------|---------------------|---------------|
|               |          | Note 1  | Note 2  | Note 3  | Note 4  | Note 5  | Note 6  |         |                                     |        |        |        |        |               |                       |                     |               |
| 47+50         | 50.0     | 55.64   | 8.8     | 11.42   | 16.7    | 102.5   | 16.2    | 18.8    | 30.8                                | 5359.1 | 1005.8 | 1908.7 | 1174.6 | 3254.5        |                       |                     |               |
| 48+00         | 50.0     | 60.13   | 8.8     | 0.59    | 18.0    | 107.2   | 16.2    | 11.1    | 32.2                                | 5466.3 | 988.3  | 1950.5 | 1200.3 | 3363.0        |                       |                     |               |
| 48+50         | 50.0     | 61.06   | 8.8     | 0       | 18.3    | 112.2   | 16.2    | 0.5     | 33.7                                | 5578.5 | 956.6  | 1994.2 | 1227.2 | 3490.7        |                       |                     |               |
| 49+00         | 50.0     | 53.43   | 8.8     | 0.03    | 16.0    | 106.0   | 16.2    | 0.0     | 31.8                                | 5684.6 | 926.1  | 2035.6 | 1252.7 | 3611.0        |                       |                     |               |
| 49+50         | 50.0     | 44.87   | 8.8     | 9.82    | 13.5    | 91.0    | 16.2    | 9.1     | 27.3                                | 5775.6 | 910.8  | 2071.1 | 1274.5 | 3701.1        |                       |                     |               |
| 50+00         | 50.0     | 45.89   | 8.8     | 15.72   | 13.8    | 84.0    | 16.2    | 23.6    | 25.2                                | 5859.6 | 915.0  | 2103.9 | 1294.7 | 3764.7        |                       |                     |               |
| 50+50         | 50.0     | 57.23   | 8.8     | 6.34    | 17.2    | 95.5    | 16.2    | 20.4    | 28.6                                | 5955.1 | 912.0  | 2141.1 | 1317.6 | 3847.0        |                       |                     |               |
| 51+00         | 50.0     | 63.7    | 8.8     | 5.88    | 19.1    | 112.0   | 16.2    | 11.3    | 33.6                                | 6067.1 | 893.4  | 2184.8 | 1344.5 | 3961.4        |                       |                     |               |
| 51+50         | 50.0     | 64.15   | 8.8     | 12.19   | 19.2    | 118.4   | 16.2    | 16.7    | 35.5                                | 6185.4 | 879.4  | 2230.9 | 1372.9 | 4077.6        |                       |                     |               |
| 52+00         | 50.0     | 67.67   | 8.8     | 16.57   | 20.3    | 122.1   | 16.2    | 26.6    | 36.6                                | 6307.5 | 876.2  | 2278.5 | 1402.2 | 4186.7        |                       |                     |               |
| 52+50         | 50.0     | 64.75   | 8.8     | 28.29   | 19.4    | 122.6   | 16.2    | 41.5    | 36.8                                | 6430.1 | 890.7  | 2326.4 | 1431.6 | 4278.5        |                       |                     |               |
| 53+00         | 50.0     | 53.53   | 8.8     | 25.43   | 16.1    | 109.5   | 16.2    | 49.7    | 32.9                                | 6539.6 | 918.8  | 2369.1 | 1457.9 | 4343.7        |                       |                     |               |
| 53+50         | 50.0     | 48.85   | 8.8     | 18.77   | 14.7    | 94.8    | 16.2    | 40.9    | 28.4                                | 6634.4 | 940.6  | 2406.0 | 1480.6 | 4400.5        |                       |                     |               |
| 54+00         | 50.0     | 47.66   | 8.8     | 17.25   | 14.3    | 89.4    | 16.2    | 33.4    | 26.8                                | 6723.8 | 954.9  | 2440.9 | 1502.1 | 4459.4        |                       |                     |               |
| 54+50         | 50.0     | 45.32   | 8.8     | 1.53    | 13.6    | 86.1    | 16.2    | 17.4    | 25.8                                | 6809.9 | 951.0  | 2474.5 | 1522.7 | 4533.2        |                       |                     |               |
| 55+00         | 50.0     | 42.3    | 8.8     | 1.03    | 12.7    | 81.1    | 16.2    | 2.4     | 24.3                                | 6891.0 | 930.5  | 2506.1 | 1542.2 | 4618.6        |                       |                     |               |
| 55+50         | 50.0     | 39.94   | 8.8     | 1.98    | 11.8    | 75.6    | 16.2    | 2.8     | 22.7                                | 6966.6 | 912.1  | 2535.6 | 1560.4 | 4696.4        |                       |                     |               |
| 56+00         | 50.0     | 36.17   | 8.8     | 2.31    | 10.9    | 69.9    | 16.2    | 4.0     | 21.0                                | 7036.5 | 896.7  | 2562.9 | 1577.1 | 4765.5        |                       |                     |               |
| 56+50         | 50.0     | 33.61   | 8.8     | 1.89    | 10.1    | 64.6    | 16.2    | 3.9     | 19.4                                | 7101.1 | 882.7  | 2588.1 | 1592.6 | 4827.9        |                       |                     |               |
| 57+00         | 50.0     | 45.43   | 8.8     | 0       | 13.6    | 73.2    | 16.2    | 1.8     | 22.0                                | 7174.3 | 863.8  | 2616.6 | 1610.2 | 4903.8        |                       |                     |               |
| 57+50         | 50.0     | 50.61   | 8.8     | 0       | 15.2    | 88.9    | 16.2    | 0.0     | 26.7                                | 7263.2 | 838.2  | 2651.3 | 1631.6 | 4982.2        |                       |                     |               |
| 58+00         | 50.0     | 54.9    | 8.8     | 0       | 16.5    | 97.7    | 16.2    | 0.0     | 29.3                                | 7360.9 | 810.0  | 2689.4 | 1655.0 | 5111.8        |                       |                     |               |
| 58+50         | 50.0     | 33.69   | 8.8     | 0       | 10.1    | 82.0    | 16.2    | 0.0     | 24.6                                | 7443.0 | 786.4  | 2721.4 | 1674.7 | 5201.2        |                       |                     |               |
| 59+00         | 50.0     | 29.91   | 2.3     | 0       | 9.0     | 58.9    | 10.2    | 0.0     | 17.7                                | 7501.9 | 769.4  | 2744.3 | 1688.8 | 5266.9        |                       |                     |               |
| 59+50         | 50.0     | 26.96   | 2.3     | 0       | 8.1     | 52.7    | 4.2     | 0.0     | 15.8                                | 7554.5 | 754.3  | 2764.9 | 1701.5 | 5330.6        |                       |                     |               |
| 60+00         | 50.0     | 24.81   | 2.3     | 0       | 7.4     | 47.9    | 4.2     | 0.0     | 14.4                                | 7602.4 | 740.5  | 2783.6 | 1713.0 | 5388.1        |                       |                     |               |
| 60+50         | 50.0     | 24.29   | 2.3     | 0       | 7.3     | 45.5    | 4.2     | 0.0     | 13.6                                | 7647.9 | 727.4  | 2801.3 | 1723.9 | 5442.5        |                       |                     |               |
| 60+71 BK      | 21.0     | 23.08   | 2.3     | 0       | 6.9     | 18.4    | 1.8     | 0.0     | 5.5                                 | 7666.3 | 722.1  | 2808.5 | 1728.3 | 5464.5        |                       |                     |               |
| Column totals |          | 7201.23 | 1014.68 | 2330.02 | 2160.37 | 7201.23 | 1014.68 | 2330.02 | 2160.37                             |        |        |        |        |               |                       |                     |               |

Column totals

|               |       |        |      |      |       |        |      |      |       |       |       |       |      |       |      |       |       |
|---------------|-------|--------|------|------|-------|--------|------|------|-------|-------|-------|-------|------|-------|------|-------|-------|
| 205+55 AH     | 21.12 | 0.0    | 0    | 0    | 6.3   | 0.0    | 0.0  | 0.0  | 0.0   | 0.0   | 0.0   | 0.0   | 0.0  | 0.0   | 0.0  | 0.0   | 0.0   |
| 206+00        | 21.6  | 0.0    | 0    | 0    | 6.5   | 35.6   | 0.0  | 0.0  | 10.7  | 0.0   | 0.0   | 13.9  | 8.5  | 0.0   | 0.0  | 0.0   | 0.0   |
| 206+19        | 19.0  | 40.62  | 0.0  | 0.68 | 12.2  | 21.9   | 0.0  | 0.2  | 57.5  | 0.0   | -6.0  | 22.4  | 13.8 | 27.9  | 13.8 | 8.5   | 27.9  |
| 206+50        | 31.0  | 42.59  | 0.0  | 0    | 12.8  | 47.8   | 0.0  | 0.4  | 14.3  | 105.3 | -19.3 | 41.1  | 25.3 | 89.0  | 25.3 | 89.0  | 89.0  |
| 207+00        | 50.0  | 56.62  | 0.0  | 0    | 17.0  | 91.9   | 0.0  | 0.0  | 27.6  | 197.1 | -45.8 | 76.9  | 47.3 | 207.3 | 47.3 | 207.3 | 207.3 |
| 207+50        | 50.0  | 9.62   | 0.0  | 0    | 2.9   | 61.3   | 0.0  | 0.0  | 18.4  | 258.5 | -63.4 | 100.8 | 62.0 | 286.3 | 62.0 | 286.3 | 286.3 |
| 208+00        | 50.0  | 1.5    | 0.0  | 0    | 0.5   | 10.3   | 0.0  | 0.0  | 3.1   | 268.8 | -66.4 | 104.8 | 64.5 | 299.5 | 64.5 | 299.5 | 299.5 |
| 208+50        | 50.0  | 0      | 0.0  | 0    | 0.0   | 1.4    | 0.0  | 0.0  | 0.4   | 270.1 | -66.8 | 105.4 | 64.8 | 301.3 | 64.8 | 301.3 | 301.3 |
| 208+60 BK     | 10.0  | 0      | 0.0  | 0    | 0.0   | 0.0    | 0.0  | 0.0  | 0.0   | 270.1 | -66.8 | 105.4 | 64.8 | 301.3 | 64.8 | 301.3 | 301.3 |
| Column totals |       | 270.14 | 0.00 | 0.63 | 81.04 | 270.14 | 0.00 | 0.63 | 81.04 |       |       |       |      |       |      |       |       |

Addendum No. 01  
ID 2505-00-73  
Revised Sheet 301  
March 6, 2018



Proposal Schedule of Items

Proposal ID: 20180313020 Project(s): 2505-00-73

Federal ID(s): WISC 2018151

SECTION: 0001 Contract Items

Alt Set ID: Alt Mbr ID:

| Proposal Line Number | Item ID Description  | Approximate Quantity and Units | Unit Price | Bid Amount |
|----------------------|--|--------------------------------|------------|------------|
| 0002                 | 201.0105<br>Clearing                                       | 25.000<br>STA                  | _____.     | _____.     |
| 0004                 | 201.0120<br>Clearing                                       | 600.000<br>ID                  | _____.     | _____.     |
| 0006                 | 201.0205<br>Grubbing                                       | 25.000<br>STA                  | _____.     | _____.     |
| 0008                 | 201.0220<br>Grubbing                                       | 600.000<br>ID                  | _____.     | _____.     |
| 0010                 | 203.0100<br>Removing Small Pipe Culverts                   | 30.000<br>EACH                 | _____.     | _____.     |
| 0012                 | 204.0100<br>Removing Pavement                              | 22,500.000<br>SY               | _____.     | _____.     |
| 0014                 | 204.0150<br>Removing Curb & Gutter                         | 3,000.000<br>LF                | _____.     | _____.     |
| 0016                 | 204.0155<br>Removing Concrete Sidewalk                     | 300.000<br>SY                  | _____.     | _____.     |
| 0018                 | 204.0195<br>Removing Concrete Bases                        | 11.000<br>EACH                 | _____.     | _____.     |
| 0020                 | 204.0210<br>Removing Manholes                              | 1.000<br>EACH                  | _____.     | _____.     |
| 0022                 | 204.0220<br>Removing Inlets                                | 7.000<br>EACH                  | _____.     | _____.     |
| 0024                 | 204.0245<br>Removing Storm Sewer (size) 01. 12-<br>INCH    | 332.000<br>LF                  | _____.     | _____.     |
| 0026                 | 205.0100<br>Excavation Common                              | 32,000.000<br>CY               | _____.     | _____.     |
| 0028                 | 213.0100<br>Finishing Roadway (project) 01. 2505-<br>00-73 | 1.000<br>EACH                  | _____.     | _____.     |
| 0030                 | 305.0110<br>Base Aggregate Dense 3/4-Inch                  | 200.000<br>TON                 | _____.     | _____.     |
| 0032                 | 305.0120<br>Base Aggregate Dense 1 1/4-Inch                | 18,425.000<br>TON              | _____.     | _____.     |





Proposal Schedule of Items

Proposal ID: 20180313020 Project(s): 2505-00-73

Federal ID(s): WISC 2018151

SECTION: 0001 Contract Items

Alt Set ID: Alt Mbr ID:

| Proposal Line Number | Item ID Description                                      | Approximate Quantity and Units | Unit Price | Bid Amount |
|----------------------|--|--------------------------------|------------|------------|
| 0034                 | 311.0110 Breaker Run                                     | 15,000.000 TON                 | _____.     | _____.     |
| 0038                 | 415.0085 Concrete Pavement 8 1/2-Inch                    | 25,000.000 SY                  | _____.     | _____.     |
| 0040                 | 415.0210 Concrete Pavement Gaps                          | 15.000 EACH                    | _____.     | _____.     |
| 0042                 | 415.1085 Concrete Pavement HES 8 1/2-Inch                | 1,200.000 SY                   | _____.     | _____.     |
| 0044                 | 415.5110.S Concrete Pavement Joint Layout                | 1.000 LS                       | _____.     | _____.     |
| 0046                 | 416.0170 Concrete Driveway 7-Inch                        | 500.000 SY                     | _____.     | _____.     |
| 0048                 | 416.0270 Concrete Driveway HES 7-Inch                    | 100.000 SY                     | _____.     | _____.     |
| 0050                 | 416.0610 Drilled Tie Bars                                | 350.000 EACH                   | _____.     | _____.     |
| 0052                 | 416.0620 Drilled Dowel Bars                              | 150.000 EACH                   | _____.     | _____.     |
| 0054                 | 440.4410 Incentive IRI Ride                              | 5,000.000 DOL                  | 1.00000    | 5,000.00   |
| 0056                 | 455.0605 Tack Coat                                       | 140.000 GAL                    | _____.     | _____.     |
| 0058                 | 460.2000 Incentive Density HMA Pavement                  | 5,000.000 DOL                  | 1.00000    | 5,000.00   |
| 0060                 | 460.6223 HMA Pavement 3 MT 58-28 S                       | 850.000 TON                    | _____.     | _____.     |
| 0062                 | 460.6224 HMA Pavement 4 MT 58-28 S                       | 630.000 TON                    | _____.     | _____.     |
| 0064                 | 465.0120 Asphaltic Surface Driveways and Field Entrances | 390.000 TON                    | _____.     | _____.     |
| 0066                 | 465.0125 Asphaltic Surface Temporary                     | 1,000.000 TON                  | _____.     | _____.     |



Proposal Schedule of Items

Proposal ID: 20180313020 Project(s): 2505-00-73

Federal ID(s): WISC 2018151

SECTION: 0001 Contract Items

Alt Set ID: Alt Mbr ID:

| Proposal Line Number | Item ID Description   | Approximate Quantity and Units | Unit Price | Bid Amount |
|----------------------|---|--------------------------------|------------|------------|
| 0068                 | 465.0315 Asphaltic Flumes   | 24.000 SY                      | _____.     | _____.     |
| 0070                 | 520.2012 Culvert Pipe Temporary 12-Inch   | 500.000 LF                     | _____.     | _____.     |
| 0072                 | 520.8000 Concrete Collars for Pipe  | 4.000 EACH                     | _____.     | _____.     |
| 0074                 | 521.1012 Apron Endwalls for Culvert Pipe Steel 12-Inch  | 30.000 EACH                    | _____.     | _____.     |
| 0076                 | 521.3112 Culvert Pipe Corrugated Steel 12-Inch  | 500.000 LF                     | _____.     | _____.     |
| 0078                 | 522.0118 Culvert Pipe Reinforced Concrete Class III 18-Inch                                   | 130.000 LF                     | _____.     | _____.     |
| 0080                 | 522.1012 Apron Endwalls for Culvert Pipe Reinforced Concrete 12-Inch                          | 6.000 EACH                     | _____.     | _____.     |
| 0082                 | 522.1015 Apron Endwalls for Culvert Pipe Reinforced Concrete 15-Inch                          | 4.000 EACH                     | _____.     | _____.     |
| 0084                 | 522.1018 Apron Endwalls for Culvert Pipe Reinforced Concrete 18-Inch                          | 6.000 EACH                     | _____.     | _____.     |
| 0086                 | 522.1024 Apron Endwalls for Culvert Pipe Reinforced Concrete 24-Inch                          | 1.000 EACH                     | _____.     | _____.     |
| 0088                 | 522.2624 Apron Endwalls for Culvert Pipe Reinforced Concrete Horizontal Elliptical 24x38-Inch | 1.000 EACH                     | _____.     | _____.     |
| 0090                 | 601.0110 Concrete Curb Type D   | 40.000 LF                      | _____.     | _____.     |
| 0092                 | 601.0331 Concrete Curb & Gutter 31-Inch   | 9,000.000 LF                   | _____.     | _____.     |
| 0094                 | 602.0410 Concrete Sidewalk 5-Inch   | 48,000.000 SF                  | _____.     | _____.     |



## Proposal Schedule of Items

Proposal ID: 20180313020 Project(s): 2505-00-73

Federal ID(s): WISC 2018151

SECTION: 0001 Contract Items

Alt Set ID: Alt Mbr ID:

| Proposal Line Number | Item ID Description   | Approximate Quantity and Units | Unit Price | Bid Amount |
|----------------------|---|--------------------------------|------------|------------|
| 0096                 | 602.0420<br>Concrete Sidewalk 7-Inch  | 2,200.000<br>SF                | _____.     | _____.     |
| 0098                 | 602.0515<br>Curb Ramp Detectable Warning Field<br>Natural Patina                                      | 250.000<br>SF                  | _____.     | _____.     |
| 0100                 | 602.0615<br>Curb Ramp Detectable Warning Field<br>Radial Natural Patina                               | 170.000<br>SF                  | _____.     | _____.     |
| 0102                 | 606.0200<br>Riprap Medium   | 10.000<br>CY                   | _____.     | _____.     |
| 0104                 | 608.0315<br>Storm Sewer Pipe Reinforced Concrete<br>Class III 15-Inch                                 | 567.000<br>LF                  | _____.     | _____.     |
| 0106                 | 608.0318<br>Storm Sewer Pipe Reinforced Concrete<br>Class III 18-Inch                                 | 68.000<br>LF                   | _____.     | _____.     |
| 0108                 | 608.0324<br>Storm Sewer Pipe Reinforced Concrete<br>Class III 24-Inch                                 | 670.000<br>LF                  | _____.     | _____.     |
| 0110                 | 608.0512<br>Storm Sewer Pipe Reinforced Concrete<br>Class V 12-Inch                                   | 808.000<br>LF                  | _____.     | _____.     |
| 0112                 | 608.2324<br>Storm Sewer Pipe Reinforced Concrete<br>Horizontal Elliptical Class HE-III 24x38-<br>Inch | 20.000<br>LF                   | _____.     | _____.     |
| 0114                 | 611.0420<br>Reconstructing Manholes   | 2.000<br>EACH                  | _____.     | _____.     |
| 0116                 | 611.0555<br>Manhole Covers Type Q   | 10.000<br>EACH                 | _____.     | _____.     |
| 0118                 | 611.0645<br>Inlet Covers Type MS-A  | 1.000<br>EACH                  | _____.     | _____.     |
| 0120                 | 611.1004<br>Catch Basins 4-FT Diameter  | 26.000<br>EACH                 | _____.     | _____.     |
| 0122                 | 611.2004<br>Manholes 4-FT Diameter  | 8.000<br>EACH                  | _____.     | _____.     |



## Proposal Schedule of Items

Proposal ID: 20180313020 Project(s): 2505-00-73

Federal ID(s): WISC 2018151

SECTION: 0001 Contract Items

Alt Set ID: Alt Mbr ID:

| Proposal Line Number | Item ID Description  | Approximate Quantity and Units | Unit Price | Bid Amount |
|----------------------|--|--------------------------------|------------|------------|
| 0124                 | 611.2006<br>Manholes 6-FT Diameter   | 1.000<br>EACH                  | _____.     | _____.     |
| 0126                 | 611.2007<br>Manholes 7-FT Diameter   | 1.000<br>EACH                  | _____.     | _____.     |
| 0130                 | 611.3903<br>Inlets Median 3 Grate  | 1.000<br>EACH                  | _____.     | _____.     |
| 0132                 | 611.8110<br>Adjusting Manhole Covers   | 23.000<br>EACH                 | _____.     | _____.     |
| 0134                 | 612.0106<br>Pipe Underdrain 6-Inch   | 500.000<br>LF                  | _____.     | _____.     |
| 0136                 | 612.0700<br>Drain Tile Exploration   | 500.000<br>LF                  | _____.     | _____.     |
| 0138                 | 614.0920<br>Salvaged Rail  | 180.000<br>LF                  | _____.     | _____.     |
| 0140                 | 614.0925<br>Salvaged Guardrail End Treatments                                | 3.000<br>EACH                  | _____.     | _____.     |
| 0142                 | 614.2300<br>MGS Guardrail 3  | 75.000<br>LF                   | _____.     | _____.     |
| 0144                 | 614.2610<br>MGS Guardrail Terminal EAT                                       | 2.000<br>EACH                  | _____.     | _____.     |
| 0146                 | 616.0205<br>Fence Chain Link 5-FT  | 100.000<br>LF                  | _____.     | _____.     |
| 0148                 | 618.0100<br>Maintenance And Repair of Haul Roads<br>(project) 01. 2505-00-73 | 1.000<br>EACH                  | _____.     | _____.     |
| 0150                 | 619.1000<br>Mobilization   | 1.000<br>EACH                  | _____.     | _____.     |
| 0152                 | 620.0100<br>Concrete Corrugated Median                                       | 600.000<br>SF                  | _____.     | _____.     |
| 0154                 | 620.0300<br>Concrete Median Sloped Nose                                      | 100.000<br>SF                  | _____.     | _____.     |
| 0156                 | 621.0100<br>Landmark Reference Monuments                                     | 5.000<br>EACH                  | _____.     | _____.     |



Proposal Schedule of Items

Proposal ID: 20180313020 Project(s): 2505-00-73

Federal ID(s): WISC 2018151

SECTION: 0001 Contract Items

Alt Set ID: Alt Mbr ID:

| Proposal Line Number | Item ID Description                                 | Approximate Quantity and Units | Unit Price | Bid Amount |
|----------------------|---|--------------------------------|------------|------------|
| 0158                 | 623.0200<br>Dust Control Surface Treatment          | 500.000<br>SY                  | _____.     | _____.     |
| 0160                 | 624.0100<br>Water                                   | 250.000<br>MGAL                | _____.     | _____.     |
| 0162                 | 625.0100<br>Topsoil                                 | 18,000.000<br>SY               | _____.     | _____.     |
| 0164                 | 628.1104<br>Erosion Bales                           | 200.000<br>EACH                | _____.     | _____.     |
| 0166                 | 628.1504<br>Silt Fence                              | 4,000.000<br>LF                | _____.     | _____.     |
| 0168                 | 628.1520<br>Silt Fence Maintenance                  | 4,000.000<br>LF                | _____.     | _____.     |
| 0170                 | 628.1905<br>Mobilizations Erosion Control           | 4.000<br>EACH                  | _____.     | _____.     |
| 0172                 | 628.1910<br>Mobilizations Emergency Erosion Control | 4.000<br>EACH                  | _____.     | _____.     |
| 0174                 | 628.2023<br>Erosion Mat Class II Type B             | 14,000.000<br>SY               | _____.     | _____.     |
| 0176                 | 628.7010<br>Inlet Protection Type B                 | 48.000<br>EACH                 | _____.     | _____.     |
| 0178                 | 628.7015<br>Inlet Protection Type C                 | 15.000<br>EACH                 | _____.     | _____.     |
| 0180                 | 628.7504<br>Temporary Ditch Checks                  | 40.000<br>LF                   | _____.     | _____.     |
| 0182                 | 628.7555<br>Culvert Pipe Checks                     | 30.000<br>EACH                 | _____.     | _____.     |
| 0184                 | 628.7570<br>Rock Bags                               | 100.000<br>EACH                | _____.     | _____.     |
| 0186                 | 629.0210<br>Fertilizer Type B                       | 8.500<br>CWT                   | _____.     | _____.     |
| 0188                 | 630.0110<br>Seeding Mixture No. 10                  | 250.000<br>LB                  | _____.     | _____.     |
| 0190                 | 631.0300<br>Sod Water                               | 25.000<br>MGAL                 | _____.     | _____.     |



Proposal Schedule of Items

Proposal ID: 20180313020 Project(s): 2505-00-73

Federal ID(s): WISC 2018151

SECTION: 0001 Contract Items

Alt Set ID: Alt Mbr ID:

| Proposal Line Number | Item ID Description                                       | Approximate Quantity and Units | Unit Price | Bid Amount |
|----------------------|---|--------------------------------|------------|------------|
| 0192                 | 631.1000<br>Sod Lawn                                      | 4,000.000<br>SY                | _____.     | _____.     |
| 0194                 | 633.5200<br>Markers Culvert End                           | 18.000<br>EACH                 | _____.     | _____.     |
| 0196                 | 634.0805<br>Posts Tubular Steel 2x2-Inch X 5-FT           | 2.000<br>EACH                  | _____.     | _____.     |
| 0198                 | 634.0810<br>Posts Tubular Steel 2x2-Inch X 10-FT          | 19.000<br>EACH                 | _____.     | _____.     |
| 0200                 | 634.0812<br>Posts Tubular Steel 2x2-Inch X 12-FT          | 12.000<br>EACH                 | _____.     | _____.     |
| 0202                 | 637.2210<br>Signs Type II Reflective H                    | 166.180<br>SF                  | _____.     | _____.     |
| 0204                 | 637.2215<br>Signs Type II Reflective H Folding            | 44.760<br>SF                   | _____.     | _____.     |
| 0206                 | 637.2230<br>Signs Type II Reflective F                    | 91.500<br>SF                   | _____.     | _____.     |
| 0208                 | 638.2102<br>Moving Signs Type II                          | 2.000<br>EACH                  | _____.     | _____.     |
| 0210                 | 638.2602<br>Removing Signs Type II                        | 30.000<br>EACH                 | _____.     | _____.     |
| 0212                 | 638.3000<br>Removing Small Sign Supports                  | 20.000<br>EACH                 | _____.     | _____.     |
| 0214                 | 643.0300<br>Traffic Control Drums                         | 42,000.000<br>DAY              | _____.     | _____.     |
| 0216                 | 643.0420<br>Traffic Control Barricades Type III           | 11,000.000<br>DAY              | _____.     | _____.     |
| 0218                 | 643.0500<br>Traffic Control Flexible Tubular Marker Posts | 100.000<br>EACH                | _____.     | _____.     |
| 0220                 | 643.0600<br>Traffic Control Flexible Tubular Marker Bases | 80.000<br>EACH                 | _____.     | _____.     |
| 0222                 | 643.0705<br>Traffic Control Warning Lights Type A         | 13,000.000<br>DAY              | _____.     | _____.     |



Proposal Schedule of Items

Proposal ID: 20180313020 Project(s): 2505-00-73

Federal ID(s): WISC 2018151

SECTION: 0001 Contract Items

Alt Set ID: Alt Mbr ID:

| Proposal Line Number | Item ID Description                                   | Approximate Quantity and Units | Unit Price | Bid Amount |
|----------------------|---|--------------------------------|------------|------------|
| 0224                 | 643.0715<br>Traffic Control Warning Lights Type C     | 7,200.000<br>DAY               | _____.     | _____.     |
| 0226                 | 643.0800<br>Traffic Control Arrow Boards              | 550.000<br>DAY                 | _____.     | _____.     |
| 0228                 | 643.0900<br>Traffic Control Signs                     | 28,300.000<br>DAY              | _____.     | _____.     |
| 0230                 | 643.0920<br>Traffic Control Covering Signs Type II    | 2.000<br>EACH                  | _____.     | _____.     |
| 0232                 | 643.1000<br>Traffic Control Signs Fixed Message       | 504.500<br>SF                  | _____.     | _____.     |
| 0234                 | 643.1050<br>Traffic Control Signs PCMS                | 56.000<br>DAY                  | _____.     | _____.     |
| 0236                 | 643.5000<br>Traffic Control                           | 1.000<br>EACH                  | _____.     | _____.     |
| 0238                 | 644.1420.S<br>Temporary Pedestrian Surface Plywood    | 700.000<br>SF                  | _____.     | _____.     |
| 0240                 | 644.1601.S<br>Temporary Curb Ramp                     | 4.000<br>EACH                  | _____.     | _____.     |
| 0242                 | 644.1616.S<br>Temporary Pedestrian Safety Fence       | 320.000<br>LF                  | _____.     | _____.     |
| 0244                 | 645.0111<br>Geotextile Type DF Schedule A             | 500.000<br>SY                  | _____.     | _____.     |
| 0246                 | 645.0120<br>Geotextile Type HR                        | 20.000<br>SY                   | _____.     | _____.     |
| 0248                 | 645.0220<br>Geogrid Type SR                           | 1,000.000<br>SY                | _____.     | _____.     |
| 0250                 | 646.1040<br>Marking Line Grooved Wet Ref Epoxy 4-Inch | 24,750.000<br>LF               | _____.     | _____.     |
| 0252                 | 646.3040<br>Marking Line Grooved Wet Ref Epoxy 8-Inch | 3,000.000<br>LF                | _____.     | _____.     |
| 0254                 | 646.5020<br>Marking Arrow Epoxy                       | 12.000<br>EACH                 | _____.     | _____.     |



Proposal Schedule of Items

Proposal ID: 20180313020 Project(s): 2505-00-73

Federal ID(s): WISC 2018151

SECTION: 0001 Contract Items

Alt Set ID: Alt Mbr ID:

| Proposal Line Number | Item ID Description  | Approximate Quantity and Units | Unit Price | Bid Amount |
|----------------------|--|--------------------------------|------------|------------|
| 0256                 | 646.5120<br>Marking Word Epoxy   | 12.000<br>EACH                 | _____.     | _____.     |
| 0258                 | 646.6120<br>Marking Stop Line Epoxy 18-Inch  | 200.000<br>LF                  | _____.     | _____.     |
| 0260                 | 646.7120<br>Marking Diagonal Epoxy 12-Inch   | 400.000<br>LF                  | _____.     | _____.     |
| 0262                 | 646.7420<br>Marking Crosswalk Epoxy Transverse Line 6-Inch                         | 200.000<br>LF                  | _____.     | _____.     |
| 0264                 | 646.9000<br>Marking Removal Line 4-Inch  | 28,000.000<br>LF               | _____.     | _____.     |
| 0266                 | 646.9100<br>Marking Removal Line 8-Inch  | 1,000.000<br>LF                | _____.     | _____.     |
| 0268                 | 649.0150<br>Temporary Marking Line Removable Tape 4-Inch                           | 35,500.000<br>LF               | _____.     | _____.     |
| 0270                 | 649.0850<br>Temporary Marking Stop Line Removable Tape 18-Inch                     | 300.000<br>LF                  | _____.     | _____.     |
| 0272                 | 650.4000<br>Construction Staking Storm Sewer                                       | 61.000<br>EACH                 | _____.     | _____.     |
| 0274                 | 650.4500<br>Construction Staking Subgrade  | 14,400.000<br>LF               | _____.     | _____.     |
| 0276                 | 650.5000<br>Construction Staking Base  | 4,000.000<br>LF                | _____.     | _____.     |
| 0278                 | 650.5500<br>Construction Staking Curb Gutter and Curb & Gutter                     | 700.000<br>LF                  | _____.     | _____.     |
| 0280                 | 650.6000<br>Construction Staking Pipe Culverts                                     | 2.000<br>EACH                  | _____.     | _____.     |
| 0282                 | 650.7000<br>Construction Staking Concrete Pavement                                 | 10,900.000<br>LF               | _____.     | _____.     |
| 0284                 | 650.8500<br>Construction Staking Electrical Installations (project) 01. 2505-00-73 | LS                             | LUMP SUM   | _____.     |





Proposal Schedule of Items

Proposal ID: 20180313020 Project(s): 2505-00-73

Federal ID(s): WISC 2018151

SECTION: 0001 Contract Items

Alt Set ID: Alt Mbr ID:

| Proposal Line Number | Item ID Description  | Approximate Quantity and Units | Unit Price | Bid Amount |
|----------------------|--|--------------------------------|------------|------------|
| 0286                 | 650.9000<br>Construction Staking Curb Ramps                                    | 29.000<br>EACH                 | _____.     | _____.     |
| 0288                 | 650.9910<br>Construction Staking Supplemental Control (project) 01. 2505-00-73 | LS                             | LUMP SUM   | _____.     |
| 0290                 | 650.9920<br>Construction Staking Slope Stakes                                  | 14,400.000<br>LF               | _____.     | _____.     |
| 0292                 | 652.0225<br>Conduit Rigid Nonmetallic Schedule 40 2-Inch                       | 110.000<br>LF                  | _____.     | _____.     |
| 0294                 | 652.0235<br>Conduit Rigid Nonmetallic Schedule 40 3-Inch                       | 360.000<br>LF                  | _____.     | _____.     |
| 0296                 | 652.0605<br>Conduit Special 2-Inch   | 130.000<br>LF                  | _____.     | _____.     |
| 0298                 | 652.0615<br>Conduit Special 3-Inch   | 730.000<br>LF                  | _____.     | _____.     |
| 0300                 | 653.0140<br>Pull Boxes Steel 24x42-Inch  | 7.000<br>EACH                  | _____.     | _____.     |
| 0302                 | 653.0145<br>Pull Boxes Steel 24x48-Inch  | 4.000<br>EACH                  | _____.     | _____.     |
| 0304                 | 653.0905<br>Removing Pull Boxes  | 7.000<br>EACH                  | _____.     | _____.     |
| 0306                 | 654.0101<br>Concrete Bases Type 1  | 1.000<br>EACH                  | _____.     | _____.     |
| 0308                 | 654.0102<br>Concrete Bases Type 2  | 4.000<br>EACH                  | _____.     | _____.     |
| 0310                 | 654.0217<br>Concrete Control Cabinet Bases Type 9 Special                      | 1.000<br>EACH                  | _____.     | _____.     |
| 0312                 | 655.0210<br>Cable Traffic Signal 3-14 AWG                                      | 800.000<br>LF                  | _____.     | _____.     |
| 0314                 | 655.0230<br>Cable Traffic Signal 5-14 AWG                                      | 500.000<br>LF                  | _____.     | _____.     |
| 0316                 | 655.0240<br>Cable Traffic Signal 7-14 AWG                                      | 500.000<br>LF                  | _____.     | _____.     |



Proposal Schedule of Items

Proposal ID: 20180313020 Project(s): 2505-00-73

Federal ID(s): WISC 2018151

SECTION: 0001 Contract Items

Alt Set ID: Alt Mbr ID:

| Proposal Line Number | Item ID Description  | Approximate Quantity and Units | Unit Price | Bid Amount |
|----------------------|--|--------------------------------|------------|------------|
| 0318                 | 655.0270<br>Cable Traffic Signal 15-14 AWG   | 1,400.000<br>LF                | _____.     | _____.     |
| 0320                 | 655.0515<br>Electrical Wire Traffic Signals 10 AWG                                 | 2,000.000<br>LF                | _____.     | _____.     |
| 0322                 | 655.0900<br>Traffic Signal EVP Detector Cable                                      | 700.000<br>LF                  | _____.     | _____.     |
| 0324                 | 656.0200<br>Electrical Service Meter Breaker Pedestal (location) 01. 13TH & DREXEL | LS                             | LUMP SUM   | _____.     |
| 0326                 | 657.0100<br>Pedestal Bases   | 1.000<br>EACH                  | _____.     | _____.     |
| 0328                 | 657.0255<br>Transformer Bases Breakaway 11 1/2-Inch Bolt Circle                    | 4.000<br>EACH                  | _____.     | _____.     |
| 0330                 | 657.0315<br>Poles Type 4   | 4.000<br>EACH                  | _____.     | _____.     |
| 0332                 | 657.0430<br>Traffic Signal Standards Aluminum 10-FT                                | 1.000<br>EACH                  | _____.     | _____.     |
| 0334                 | 657.0614<br>Luminaire Arms Single Member 4-Inch Clamp 8-FT                         | 4.000<br>EACH                  | _____.     | _____.     |
| 0336                 | 658.0173<br>Traffic Signal Face 3S 12-Inch   | 10.000<br>EACH                 | _____.     | _____.     |
| 0338                 | 658.0174<br>Traffic Signal Face 4S 12-Inch   | 8.000<br>EACH                  | _____.     | _____.     |
| 0340                 | 658.0175<br>Traffic Signal Face 5S 12-Inch   | 2.000<br>EACH                  | _____.     | _____.     |
| 0342                 | 658.0416<br>Pedestrian Signal Face 16-Inch   | 8.000<br>EACH                  | _____.     | _____.     |
| 0344                 | 658.0500<br>Pedestrian Push Buttons  | 8.000<br>EACH                  | _____.     | _____.     |
| 0346                 | 658.5069<br>Signal Mounting Hardware (location) 01. 13TH & DREXEL                  | LS                             | LUMP SUM   | _____.     |
| 0348                 | 659.1125<br>Luminaires Utility LED C   | 6.000<br>EACH                  | _____.     | _____.     |



Proposal Schedule of Items

Proposal ID: 20180313020 Project(s): 2505-00-73

Federal ID(s): WISC 2018151

SECTION: 0001 Contract Items

Alt Set ID: Alt Mbr ID:

| Proposal Line Number | Item ID Description  | Approximate Quantity and Units | Unit Price | Bid Amount |
|----------------------|--|--------------------------------|------------|------------|
| 0350                 | 661.0200<br>Temporary Traffic Signals for Intersections (location) 01. 13TH & DREXEL | LS                             | LUMP SUM   | _____.     |
| 0352                 | 678.0200<br>Fiber Optic Splice Enclosure   | 1.000<br>EACH                  | _____.     | _____.     |
| 0354                 | 678.0300<br>Fiber Optic Splice   | 4.000<br>EACH                  | _____.     | _____.     |
| 0356                 | 678.0400<br>Fiber Optic Termination  | 4.000<br>EACH                  | _____.     | _____.     |
| 0358                 | 690.0150<br>Sawing Asphalt   | 4,600.000<br>LF                | _____.     | _____.     |
| 0360                 | 690.0250<br>Sawing Concrete  | 6,600.000<br>LF                | _____.     | _____.     |
| 0362                 | 715.0415<br>Incentive Strength Concrete Pavement                                     | 5,000.000<br>DOL               | 1.00000    | 5,000.00   |
| 0364                 | ASP.1T0A<br>On-the-Job Training Apprentice at \$5.00/HR                              | 1,400.000<br>HRS               | 5.00000    | 7,000.00   |
| 0366                 | ASP.1T0G<br>On-the-Job Training Graduate at \$5.00/HR                                | 2,400.000<br>HRS               | 5.00000    | 12,000.00  |
| 0368                 | SPV.0035<br>Special 01. BACKFILL SLURRY  | 250.000<br>CY                  | _____.     | _____.     |
| 0370                 | SPV.0060<br>Special 01. INLET COVERS TYPE 57   | 36.000<br>EACH                 | _____.     | _____.     |
| 0372                 | SPV.0060<br>Special 02. CONCRETE BASES TYPE 10 MODIFIED                              | 4.000<br>EACH                  | _____.     | _____.     |
| 0374                 | SPV.0060<br>Special 03. POLES TYPE 12 MODIFIED                                       | 2.000<br>EACH                  | _____.     | _____.     |
| 0376                 | SPV.0060<br>Special 04. POLES TYPE 13 MODIFIED                                       | 2.000<br>EACH                  | _____.     | _____.     |
| 0378                 | SPV.0060<br>Special 05. MONOTUBE ARMS 40-FT MODIFIED                                 | 4.000<br>EACH                  | _____.     | _____.     |



Proposal Schedule of Items

Proposal ID: 20180313020 Project(s): 2505-00-73

Federal ID(s): WISC 2018151

SECTION: 0001 Contract Items

Alt Set ID: Alt Mbr ID:

| Proposal Line Number | Item ID Description  | Approximate Quantity and Units | Unit Price | Bid Amount |
|----------------------|--|--------------------------------|------------|------------|
| 0380                 | SPV.0060<br>Special 06. LUMINAIRE ARMS 6-FT  | 2.000<br>EACH                  | _____.     | _____.     |
| 0382                 | SPV.0060<br>Special 07. ETHERNET RADIO 5.8 GHz   | 4.000<br>EACH                  | _____.     | _____.     |
| 0384                 | SPV.0060<br>Special 08. INTERNAL SANITARY MANHOLE SEALS                                | 21.000<br>EACH                 | _____.     | _____.     |
| 0386                 | SPV.0060<br>Special 09. UTILITY LINE OPENING   | 13.000<br>EACH                 | _____.     | _____.     |
| 0388                 | SPV.0060<br>Special 10. REMOVING LANDMARK REFERENCE MONUMENT                           | 2.000<br>EACH                  | _____.     | _____.     |
| 0390                 | SPV.0060<br>Special 11. ADJUSTING WATER VALVE BOXES                                    | 39.000<br>EACH                 | _____.     | _____.     |
| 0392                 | SPV.0060<br>Special 12. Hydro Excavation   | 3.000<br>EACH                  | _____.     | _____.     |
| 0394                 | SPV.0060<br>Special 13. Field Facilities Office Space                                  | 1.000<br>EACH                  | _____.     | _____.     |
| 0396                 | SPV.0060<br>Special 14. Remove And Reinstall Mailboxes                                 | 29.000<br>EACH                 | _____.     | _____.     |
| 0398                 | SPV.0090<br>Special 01. FURNISH AND INSTALL 12SM/12MM FIBER OPTIC COMMUNICATIONS CABLE | 380.000<br>LF                  | _____.     | _____.     |
| 0400                 | SPV.0090<br>Special 02. TRACER WIRE 12AWG  | 200.000<br>LF                  | _____.     | _____.     |
| 0402                 | SPV.0090<br>Special 03. STAKING CONCRETE SIDEWALK                                      | 9,600.000<br>LF                | _____.     | _____.     |
| 0404                 | SPV.0105<br>Special 01. BATTERY BACK UP SYSTEM   | LS                             | LUMP SUM   | _____.     |
| 0406                 | SPV.0105<br>Special 02. TRAFFIC SIGNAL CABINET 16-PHASE                                | LS                             | LUMP SUM   | _____.     |



Proposal Schedule of Items

Proposal ID: 20180313020 Project(s): 2505-00-73

Federal ID(s): WISC 2018151

SECTION: 0001 Contract Items

Alt Set ID: Alt Mbr ID:

| Proposal Line Number | Item ID Description   | Approximate Quantity and Units | Unit Price    | Bid Amount               |
|----------------------|---|--------------------------------|---------------|--------------------------|
| 0408                 | SPV.0105<br>Special 03. EMERGENCY VEHICLE PREEMPTION SYSTEM         | LS                             | LUMP SUM      | _____.                   |
| 0410                 | SPV.0105<br>Special 04. VEHICULAR VIDEO DETECTION SYSTEM (4 CAMERA) | LS                             | LUMP SUM      | _____.                   |
| 0412                 | SPV.0105<br>Special 05. REMOVE TRAFFIC SIGNAL EQUIPMENT             | LS                             | LUMP SUM      | _____.                   |
| 0414                 | SPV.0105<br>Special 06. ACCESSIBLE PEDESTRIAN PUSH BUTTON SYSTEM    | LS                             | LUMP SUM      | _____.                   |
| 0416                 | SPV.0105<br>Special 07. PAVEMENT CLEAN-UP PROJECT 2505-00-73        | LS                             | LUMP SUM      | _____.                   |
| 0418                 | SPV.0105<br>Special 09. Abandon Fire Cistern                        | LS                             | LUMP SUM      | _____.                   |
| 0420                 | SPV.0105<br>Special 10. Temporary Mailboxes                         | LS                             | LUMP SUM      | _____.                   |
| 0422                 | SPV.0170<br>Special 01. TEST ROLLING                                | 120.000<br>STA                 | _____.        | _____.                   |
| 0424                 | 204.0120<br>Removing Asphaltic Surface Milling                      | 1,480.000<br>SY                | _____.        | _____.                   |
| 0426                 | 611.3225<br>Inlets 2x2.5-FT   | 12.000<br>EACH                 | _____.        | _____.                   |
| <b>Section: 0001</b> |   |                                | <b>Total:</b> | _____.                   |
|                      |   |                                |               | <b>Total Bid:</b> _____. |

