



Wisconsin Department of Transportation

Division of Transportation Systems Development

Bureau of Project Development
4822 Madison Yards Way, 4th Floor South
Madison, WI 53705

December 4, 2018

Telephone: (608) 266-1631
Facsimile (FAX): (608) 266-8459

NOTICE TO ALL CONTRACTORS:

**Proposal #14: 2350-09-71, WISC 2019 007
Racine to Milwaukee Road
5 Mile Road to STH 31
STH 32
Racine County**

Letting of December 11, 2018

This is Addendum No. 01 which provides for the following:

Special Provisions:

Revised Special Provisions	
Article No.	Description
3	Prosecution and Progress
19	Fly Ash Subgrade Stabilization, Item 208.2110.S

Schedule of Items:

Revised Bid Item Quantities					
Bid Item	Item Description	Unit	Old Quantity	Revised Quantity	Proposal Total
646.5020	Marking Arrow Epoxy	Each	64	-21	43
646.5220	Marking Symbol Epoxy	Each	8	-2	6

Plan Sheets:

Revised Plan Sheets	
Plan Sheet	Plan Sheet Title (brief description of changes to sheet)
128	Updated legend label for Marking Arrow Epoxy, Type 5.
130	Updated legend for correct labels of marking and added labels to bike lane marking.
132	Updated legend for correct labels of marking and added labels to bike lane marking.
133	Updated legend for correct labels of marking and added labels to bike lane marking.
134	Updated construction stage notes to clarify operations.

136	Added not calling out the location of the temporary signal.
137	Updated construction stage notes to clarify operations.
165	Revised quantities for Marking Arrow Epoxy and Marking Symbol Epoxy.

Other

Revise the contract time for completion from 115 working days to a completion date of September 30, 2019.

The responsibility for notifying potential subcontractors and suppliers of these changes remains with the prime contractor.

Sincerely,

Mike Coleman

Proposal Development Specialist
Proposal Management Section

ADDENDUM NO. 01

2350-09-71

December 4, 2018

Special Provisions

3. Prosecution and Progress

Replace paragraphs 1 – 3 with the following:

Provide the start date to the engineer in writing within a month after executing the contract but at least 14 calendar days before the preconstruction conference. Upon approval, the engineer will issue the notice to proceed within ten calendar days before the approved start date.

To revise the start date, submit a written request to the engineer at least two weeks before the intended start date. The engineer will approve or deny that request based on the conditions cited in the request and its effect on the department's scheduled resources.

Complete Stage 1 construction operations on STH 31 to the stage necessary to reopen it to through traffic prior to 12:01 AM June 15, 2019. Do not reopen until completing the following work: pavement marking, driveways, sidewalk, landscaping, permanent signing and installation of temporary signal at the intersection of STH 31 and Six Mile Road.

If the contractor fails to complete the work necessary to reopen STH 31 to through traffic prior to 12:01 AM June 15, 2019, the department will assess the contractor \$3,000 in interim liquidated damages for each calendar day that the roadway remains closed after 12:01 AM, June 15, 2019. An entire calendar day will be charged for any period of time within a calendar day that the road remains closed beyond 12:01 AM.

Work on Stage 2 shall not begin until Stage 1 is complete. The department will provide written approval to commence Stage 2 operations.

Complete the construction of the box culverts on STH 32, during Stage 2, to the stage necessary to reopen STH 32 to local traffic prior to 12:01 AM August 17, 2019. Do not reopen until it is safe for local traffic to drive over the box culverts. The department will provide written approval that the box culvert crossings can be open to local traffic.

If the contractor fails to complete the work necessary to reopen STH 32 to local traffic prior to 12:01 AM August 17, 2019, the department will assess the contractor \$3,000 in interim liquidated damages for each calendar day that the roadway remains closed after 12:01 AM, August 17, 2019. An entire calendar day will be charged for any period of time within a calendar day that the road remains closed beyond 12:01 AM.

Supplement standard spec 108.10 with the following:

The department will not grant time extensions for the following:

1. Severe weather as specified in standard spec 108.10.2.2.
2. Labor disputes that are not industry wide.
3. Delays in material deliveries.

If contract time expires prior to completing all work specified in the contract, additional liquidated damages will be affixed according to standard spec 108.11.

19. Fly Ash for Subgrade Stabilization, Item 208.2110.S

Replace entire section titled B.1 Fly Ash with the following:

B.1 Fly Ash

Furnish fly ash that complies with the physical requirements of ASTM D-5239 6.4 and the chemical requirements of ASTM C-618, Table 1 for Class C fly ash. The engineer may approve other fly ash materials that do not meet these requirements if the fly ash is determined to be self-cementing, has a sulfur trioxide content that does not exceed 10%, and the required degree of stabilization can be achieved using that fly ash.

Identify all sources of fly ash materials to be used for this work and provide the department with samples for the development of mix design parameters. Deliver samples, weighing at least 50 lbs., of each of the fly ash materials to the Truax Center, 3502 Kinsman Blvd., Madison, Wisconsin, 53704, or to a site as the engineer directs.

Schedule of Items

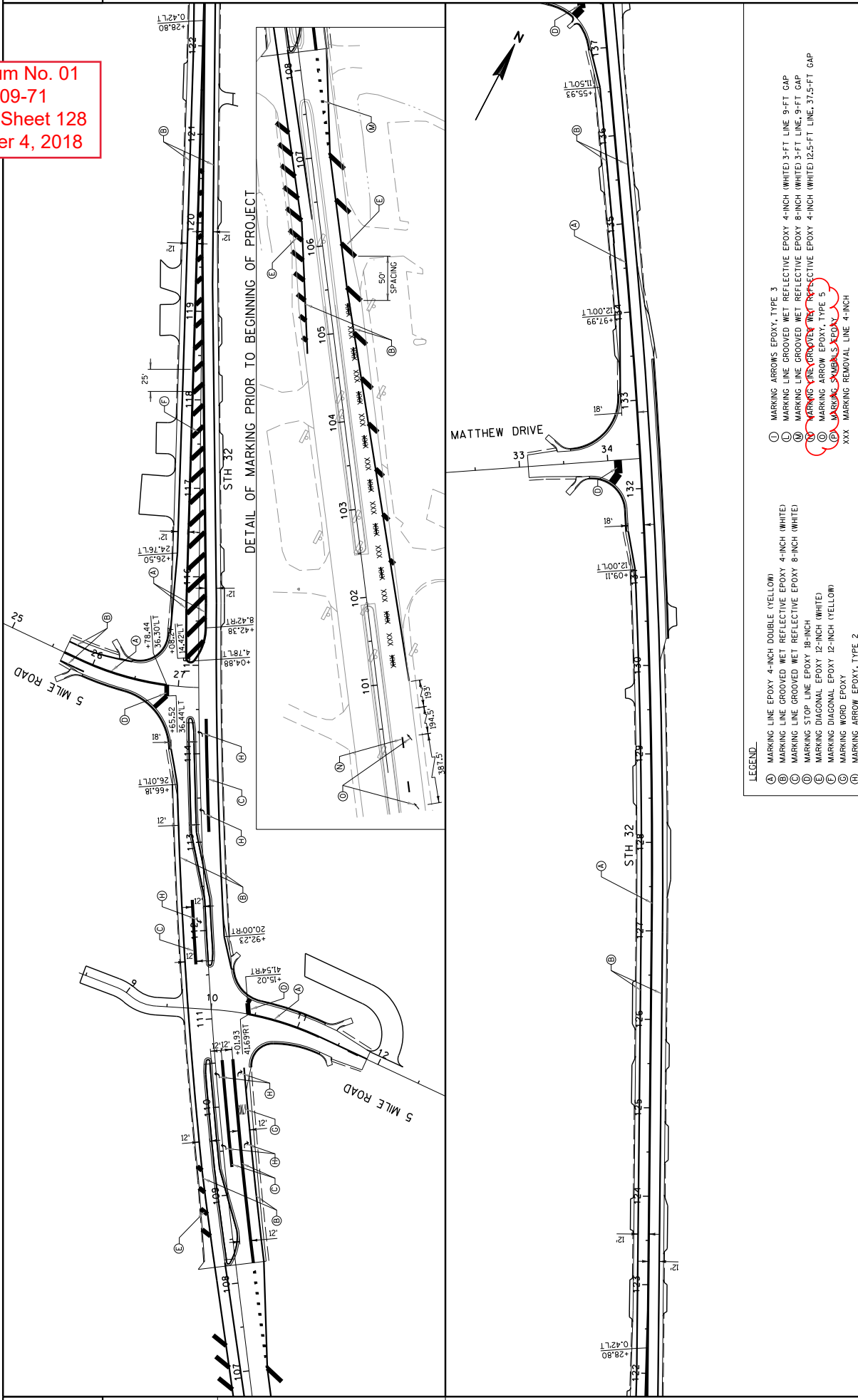
Attached, dated December 4, 2018, are the revised Schedule of Items Page 9.

Plan Sheets

The following 8½ x 11-inch sheets are attached and made part of the plans for this proposal:
Revised: 128, 130, 132, 133, 134, 136, 137 and 165.

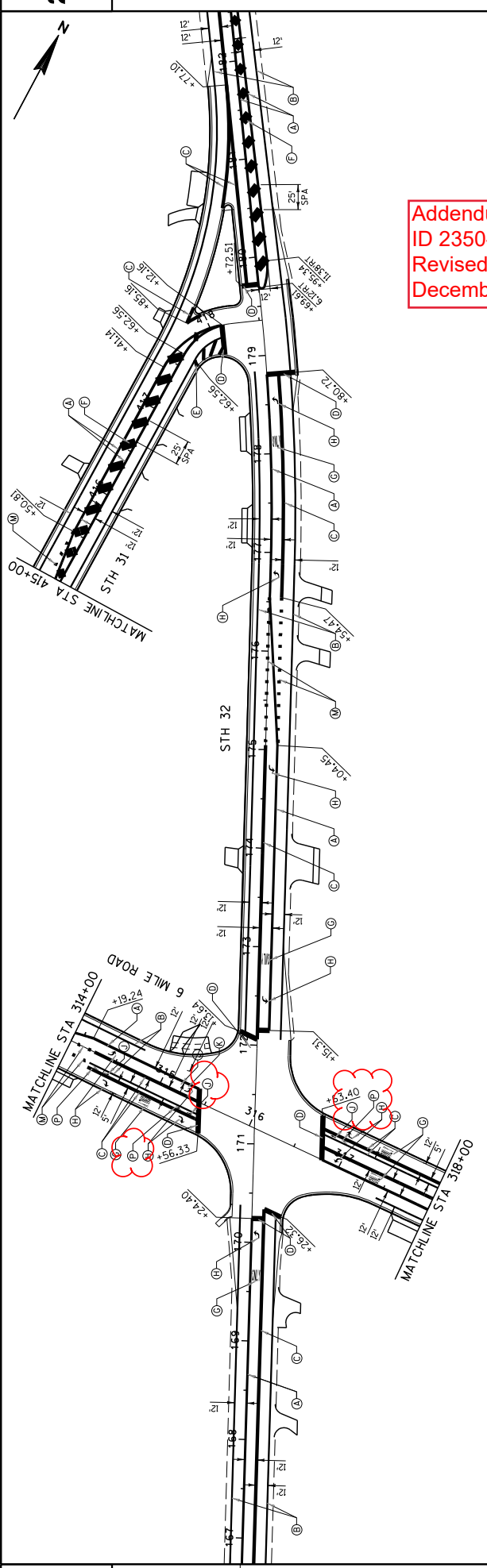
END OF ADDENDUM

Addendum No. 01
 ID 2350-09-71
 Revised Sheet 128
 December 4, 2018

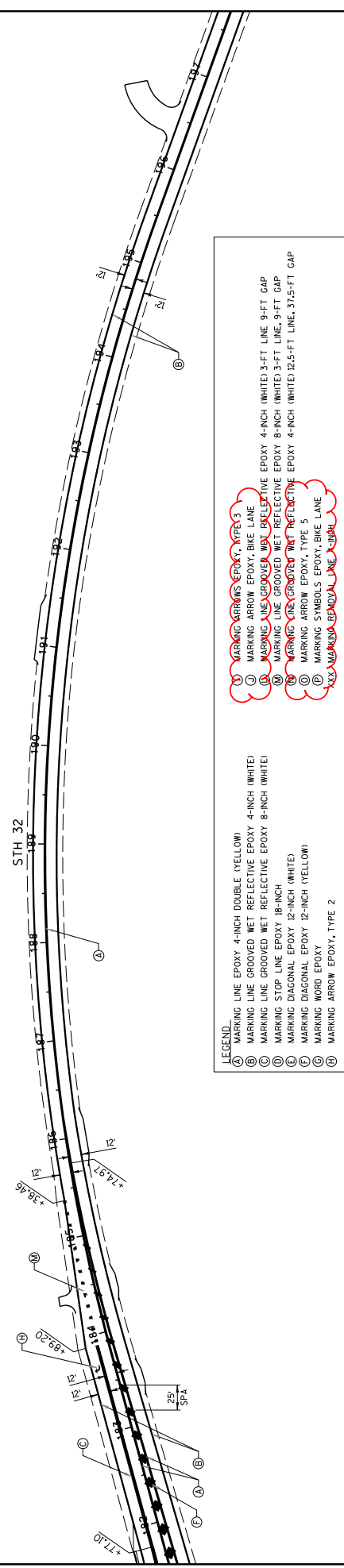


- LEGEND
- (A) MARKING LINE EPOXY 4-INCH DOUBLE (YELLOW)
 - (B) MARKING LINE GROOVED WET REFLECTIVE EPOXY 4-INCH (WHITE)
 - (C) MARKING LINE GROOVED WET REFLECTIVE EPOXY 8-INCH (WHITE)
 - (D) MARKING STOP LINE EPOXY 18-INCH
 - (E) MARKING DIAGONAL EPOXY 12-INCH (WHITE)
 - (F) MARKING WORD EPOXY
 - (G) MARKING ARROW EPOXY, TYPE 2
 - (H) MARKING ARROWS EPOXY, TYPE 3
 - (I) MARKING LINE GROOVED WET REFLECTIVE EPOXY 4-INCH (WHITE) 3-FT LINE 9-FT GAP
 - (J) MARKING LINE GROOVED WET REFLECTIVE EPOXY 8-INCH (WHITE) 3-FT LINE 9-FT GAP
 - (K) MARKING LINE GROOVED WET REFLECTIVE EPOXY 4-INCH (WHITE) 12.5-FT LINE 31.5-FT GAP
 - (L) MARKING ARROW EPOXY, TYPE 5
 - (M) MARKING WORD EPOXY
 - (N) MARKING REMOVAL LINE 4-INCH

PROJECT NO: 2350-09-71	HWY: STH 32	COUNTY: RACINE	PAVEMENT MARKING	SHEET 128	E
FILE NAME : P:\WT - SE Region\2350-09-01_STH 32-Racine County\500_CADD\502-MS\024501.dwg					
PLOT DATE : 11/14/2018					
PLOT BY : CORRE, Inc.					
PLOT SCALE : 100.0000 SF / 1" =					
PLOT NAME :					



Addendum No. 01
 ID 2350-09-71
 Revised Sheet 130
 December 4, 2018



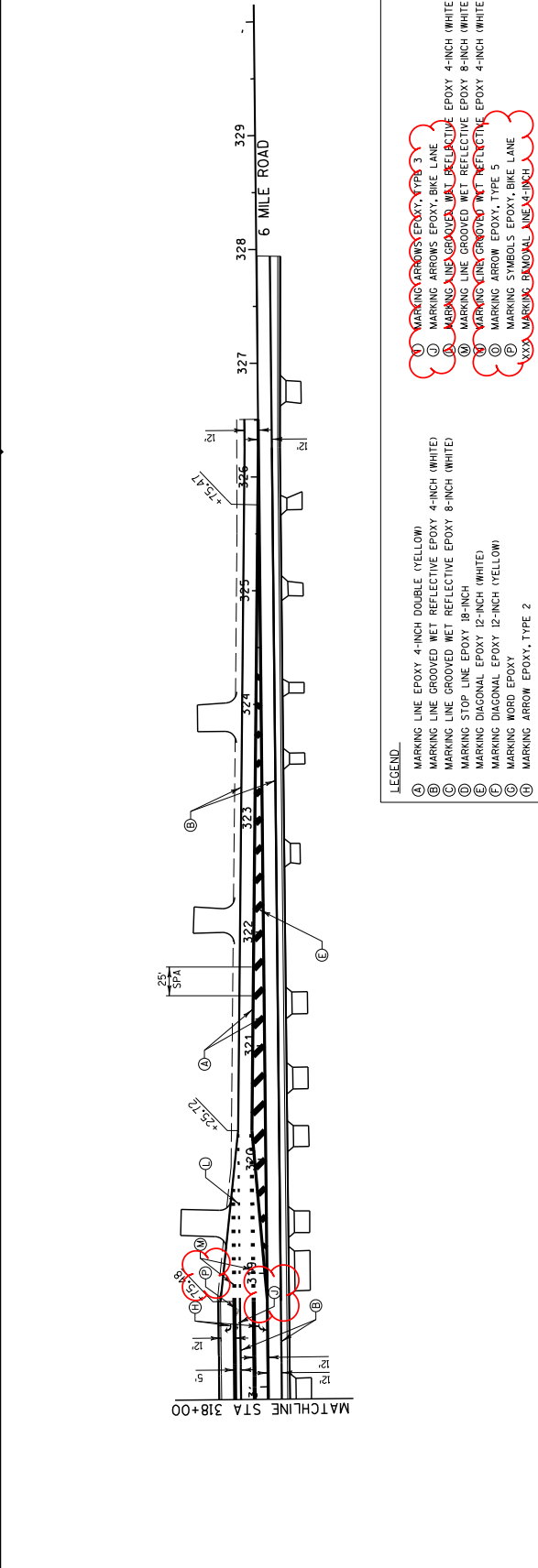
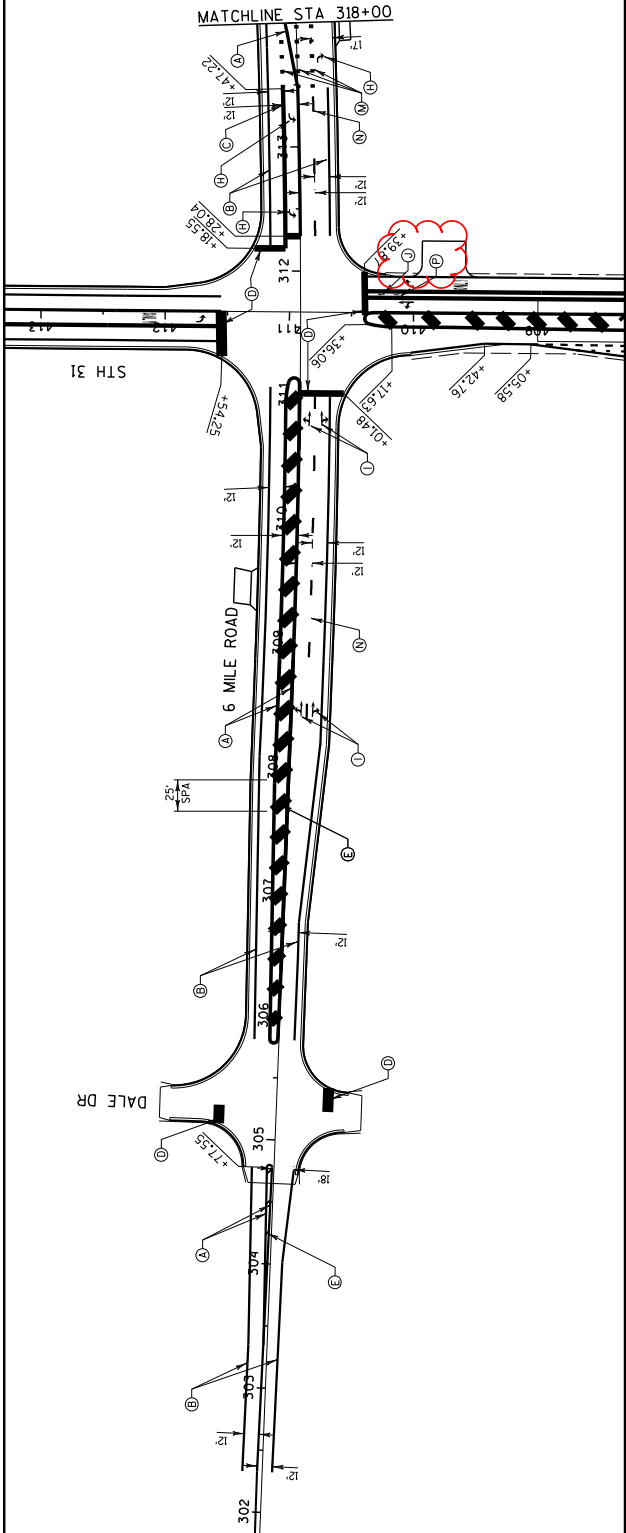
LEGEND:

(A)	MARKING LINE EPOXY, 4-INCH DOUBLE (YELLOW)	(G)	MARKING LINE GROOVED WET REFLECTIVE EPOXY, 4-INCH (WHITE)
(B)	MARKING LINE GROOVED WET REFLECTIVE EPOXY, 4-INCH (WHITE)	(H)	MARKING STOP LINE EPOXY, 18-INCH
(C)	MARKING STOP LINE EPOXY, 18-INCH	(I)	MARKING DIAGONAL EPOXY, 12-INCH (WHITE)
(D)	MARKING DIAGONAL EPOXY, 12-INCH (WHITE)	(J)	MARKING DIAGONAL EPOXY, 12-INCH (YELLOW)
(E)	MARKING DIAGONAL EPOXY, 12-INCH (YELLOW)	(K)	MARKING WORD EPOXY
(F)	MARKING WORD EPOXY	(L)	MARKING ARROW EPOXY, TYPE 2
(M)	MARKING ARROW EPOXY, TYPE 2	(N)	MARKING ARROW EPOXY, TYPE 3
(O)	MARKING ARROW EPOXY, TYPE 3	(P)	MARKING LINE GROOVED WET REFLECTIVE EPOXY, 4-INCH (WHITE) 5-FT LINE, 9-FT GAP
(Q)	MARKING LINE GROOVED WET REFLECTIVE EPOXY, 4-INCH (WHITE) 5-FT LINE, 9-FT GAP	(R)	MARKING LINE GROOVED WET REFLECTIVE EPOXY, 8-INCH (WHITE) 5-FT LINE, 9-FT GAP
(S)	MARKING LINE GROOVED WET REFLECTIVE EPOXY, 8-INCH (WHITE) 5-FT LINE, 9-FT GAP	(T)	MARKING LINE GROOVED WET REFLECTIVE EPOXY, 4-INCH (WHITE) 12.5-FT LINE, 37.5-FT GAP
(U)	MARKING LINE GROOVED WET REFLECTIVE EPOXY, 4-INCH (WHITE) 12.5-FT LINE, 37.5-FT GAP	(V)	MARKING SYMBOLS EPOXY, BIKE LANE
(V)	MARKING SYMBOLS EPOXY, BIKE LANE	(W)	MARKING SYMBOLS EPOXY, BIKE LANE
(W)	MARKING SYMBOLS EPOXY, BIKE LANE	(X)	MARKING SYMBOLS EPOXY, BIKE LANE
(X)	MARKING SYMBOLS EPOXY, BIKE LANE	(Y)	MARKING SYMBOLS EPOXY, BIKE LANE
(Y)	MARKING SYMBOLS EPOXY, BIKE LANE	(Z)	MARKING SYMBOLS EPOXY, BIKE LANE
(Z)	MARKING SYMBOLS EPOXY, BIKE LANE		

PROJECT NO: 2350-09-71	COUNTY: RACINE	HWY: STH 32	SHEET 130	E
FILE NAME : P:\WT - SE Region\2350-09-01_STH 32-Racine County\500_CADD\502-MS\024503.pm.dgn				
PLOT DATE : 11/14/2018				
PLOT BY : CORRE, Inc.				
PLOT NAME :				
PLOT SCALE : 100.0000 SF / 1" =				



Addendum No. 01
 ID 2350-09-71
 Revised Sheet 132
 December 4, 2018



LEGEND

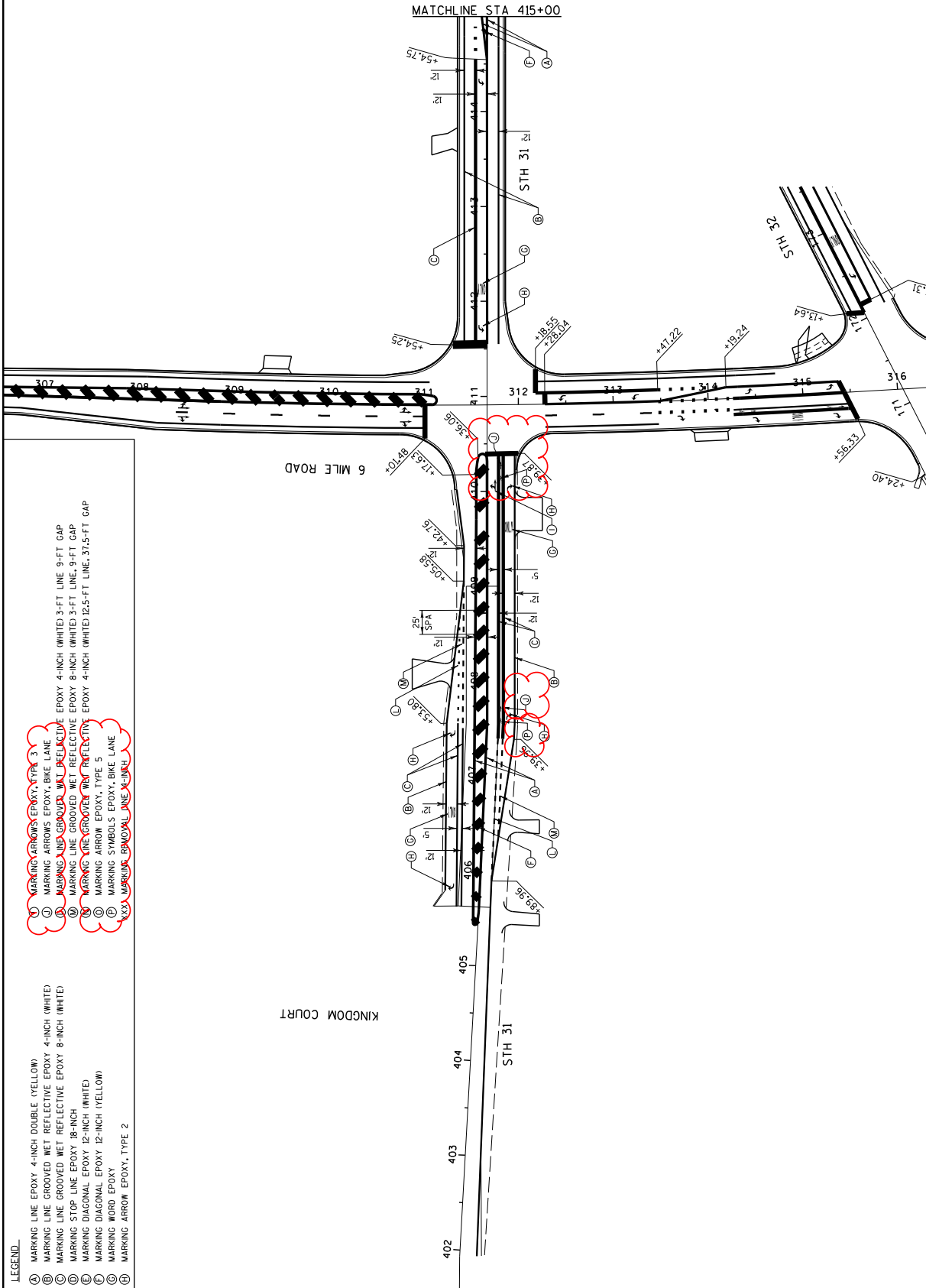
- (A) MARKING LINE EPOXY, 4-INCH DOUBLE (YELLOW)
- (B) MARKING LINE GROOVED WET REFLECTIVE EPOXY, 4-INCH (WHITE)
- (C) MARKING LINE GROOVED WET REFLECTIVE EPOXY, 8-INCH (WHITE)
- (D) MARKING STOP LINE EPOXY, 18-INCH
- (E) MARKING DIAGONAL EPOXY, 12-INCH (WHITE)
- (F) MARKING DIAGONAL EPOXY, 12-INCH (YELLOW)
- (G) MARKING WORD EPOXY
- (H) MARKING ARROW EPOXY, TYPE 2
- (I) MARKING ARROW EPOXY, TYPE 3
- (J) MARKING ARROWS EPOXY, BIKE LANE
- (K) MARKING LINE GROOVED WET REFLECTIVE EPOXY, 4-INCH (WHITE) 3-FIT LINE, 9-FIT GAP
- (L) MARKING LINE GROOVED WET REFLECTIVE EPOXY, 8-INCH (WHITE) 3-FIT LINE, 9-FIT GAP
- (M) MARKING LINE GROOVED WET REFLECTIVE EPOXY, 4-INCH (WHITE) 12.5-FIT LINE, 37.5-FIT GAP
- (N) MARKING LINE GROOVED WET REFLECTIVE EPOXY, 4-INCH (WHITE) 12.5-FIT LINE, 37.5-FIT GAP
- (O) MARKING ARROW EPOXY, TYPE 5
- (P) MARKING SYMBOLS EPOXY, BIKE LANE
- (Q) MARKING BENDOWN LINE, 4-INCH

PROJECT NO: 2350-09-71	COUNTY: RACINE	PAVEMENT MARKING - 6 MILE ROAD	SHEET 132	E
FILE NAME : P:\WT - SE Region\2350-09-01_STH_32-Racine County\500_CADD\502-MS\024505_pm.dgn				
PLOT DATE : 11/14/2018				
PLOT BY : CORRE, Inc.				
PLOT SCALE : 100.0000 SF / IN.				

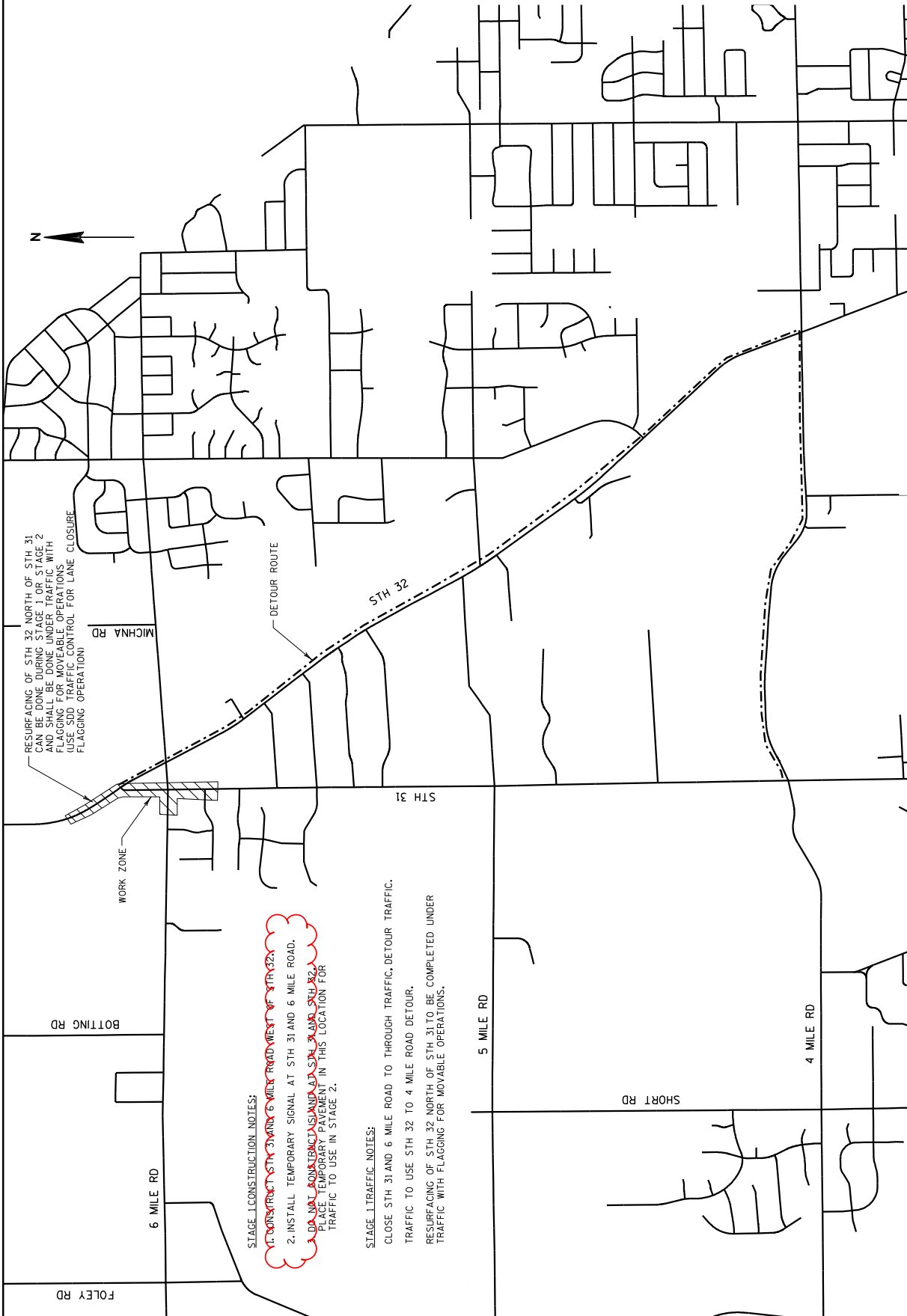


Addendum No. 01
ID 2350-09-71
Revised Sheet 133
December 4, 2018

- LEGEND:**
- (A) MARKING LINE EPOXY 4-INCH DOUBLE (YELLOW)
 - (B) MARKING LINE GROOVED WET REFLECTIVE EPOXY 4-INCH (WHITE)
 - (C) MARKING LINE GROOVED WET REFLECTIVE EPOXY 8-INCH (WHITE)
 - (D) MARKING STOP LINE EPOXY 18-INCH
 - (E) MARKING DIAGONAL EPOXY 12-INCH (WHITE)
 - (F) MARKING DIAGONAL EPOXY 12-INCH (YELLOW)
 - (G) MARKING WORD EPOXY
 - (H) MARKING ARROW EPOXY, TYPE 2
 - (I) MARKING ARROW'S EPOXY, TYPE 3
 - (J) MARKING LINE GROOVED WET REFLECTIVE EPOXY 4-INCH (WHITE) 3-FT LINE 9-FT GAP
 - (K) MARKING LINE GROOVED WET REFLECTIVE EPOXY 8-INCH (WHITE) 3-FT LINE 9-FT GAP
 - (L) MARKING LINE GROOVED WET REFLECTIVE EPOXY 4-INCH (WHITE) 12.5-FT LINE 37.5-FT GAP
 - (M) MARKING STOP LINE EPOXY 12-INCH (WHITE)
 - (N) MARKING STOP LINE EPOXY 12-INCH (YELLOW)
 - (O) MARKING SYMBOLS EPOXY, BIKE LINE
 - (P) MARKING ARROW EPOXY, BIKE LINE
 - (Q) MARKING LINE GROOVED WET REFLECTIVE EPOXY 4-INCH (WHITE) 12.5-FT LINE 37.5-FT GAP
 - (R) MARKING LINE GROOVED WET REFLECTIVE EPOXY 4-INCH (WHITE) 12.5-FT LINE 37.5-FT GAP



Addendum No. 01
 ID 2350-09-71
 Revised Sheet 134
 December 4, 2018



RESURFACING OF STH 32 NORTH OF STH 31 CAN BE DONE DURING STAGE 1 OR STAGE 2. THIS SHALL BE DETERMINED BY THE FLAGGING OPERATIONS. USE SDD TRAFFIC CONTROL FOR LANE CLOSURE FLAGGING OPERATIONS.

WORK ZONE

STAGE 1 CONSTRUCTION NOTES:

1. ~~CONSTRUCT STH 31 AND 6 MILE ROAD WEST OF STH 32.~~
2. INSTALL TEMPORARY SIGNAL AT STH 31 AND 6 MILE ROAD.
3. ~~DO NOT RESURFACE MICHA STH 31 AND STH 32. PLACE TEMPORARY PAVEMENT IN THIS LOCATION FOR TRAFFIC TO USE IN STAGE 2.~~

STAGE 1 TRAFFIC NOTES:

CLOSE STH 31 AND 6 MILE ROAD TO THROUGH TRAFFIC + DETOUR TRAFFIC.
 TRAFFIC TO USE STH 32 TO 4 MILE ROAD DETOUR.
 RESURFACING OF STH 32 NORTH OF STH 31 TO BE COMPLETED UNDER TRAFFIC WITH FLAGGING FOR MOVABLE OPERATIONS.

PROJECT NO: 2350-09-71

HWY: STH 32

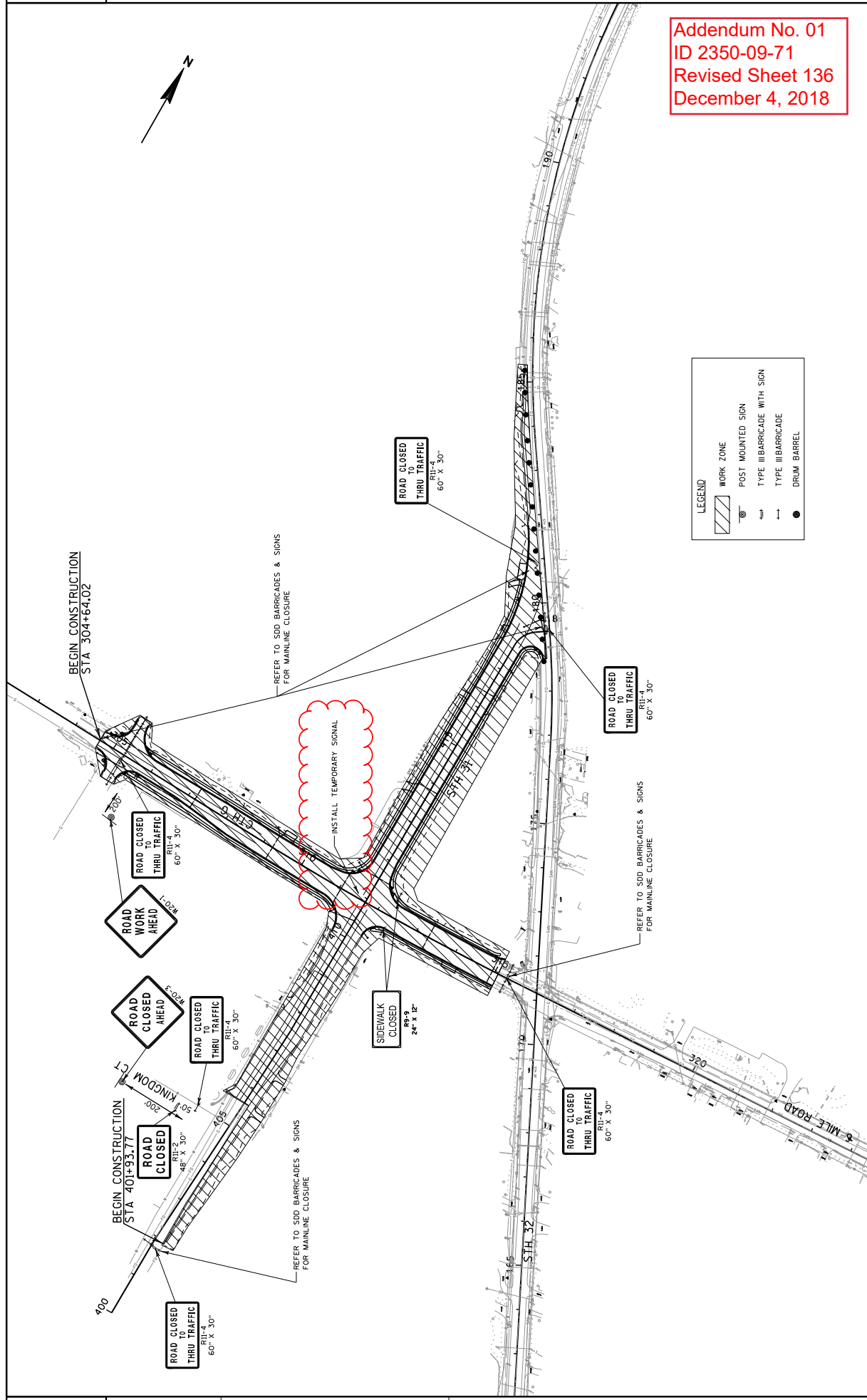
COUNTY: RACINE

PLOT DATE: 11/28/2018

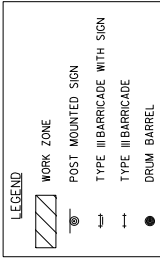
TRAFFIC CONTROL OVERVIEW - STAGE 1

SHEET 134

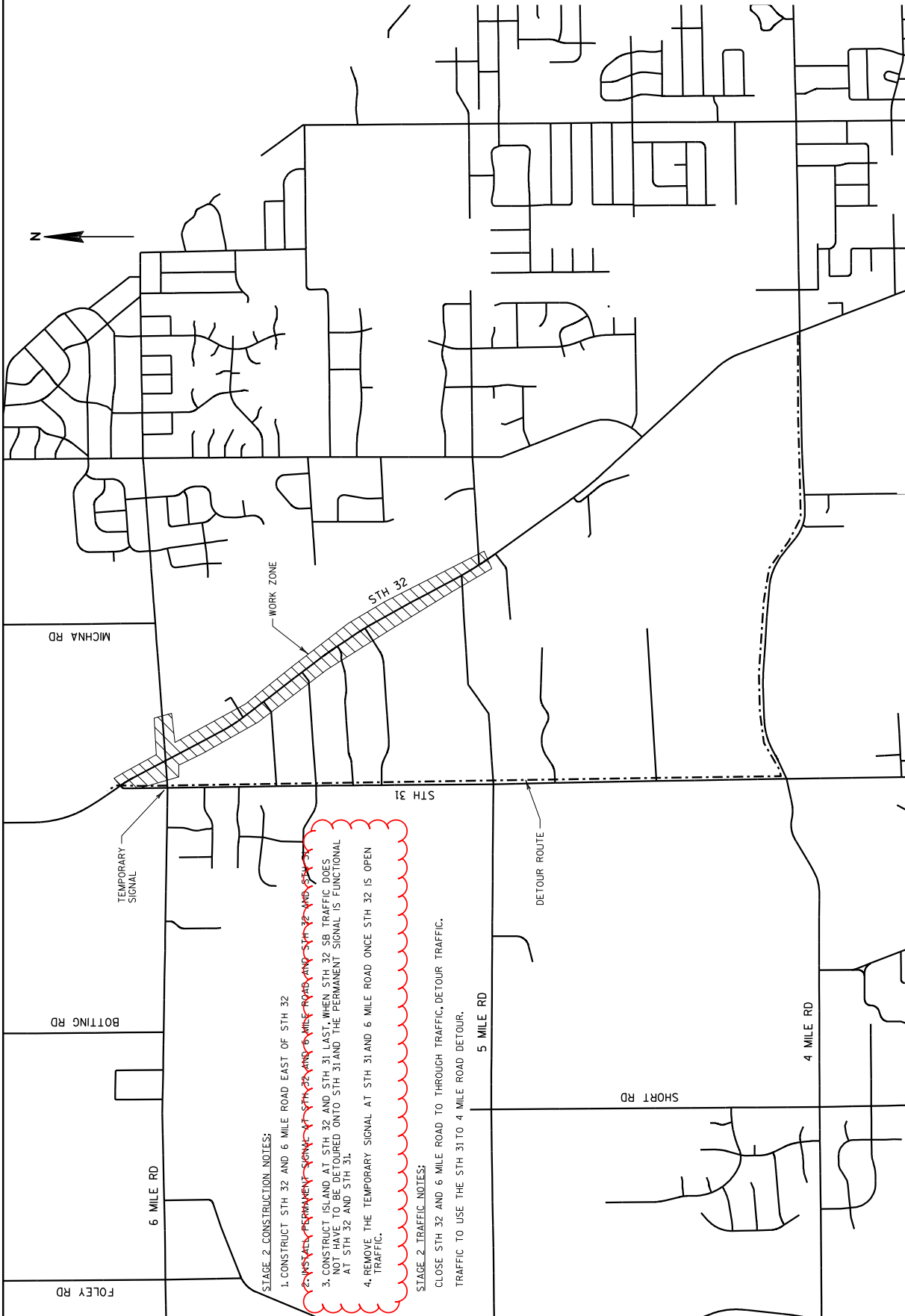
E



Addendum No. 01
 ID 2350-09-71
 Revised Sheet 136
 December 4, 2018



Addendum No. 01
ID 2350-09-71
Revised Sheet 137
December 4, 2018



STAGE 2 CONSTRUCTION NOTES:

1. CONSTRUCT STH 32 AND 6 MILE ROAD EAST OF STH 32
2. ~~INSTALL PERMANENT SIGNAL AT STH 32 AND 6 MILE ROAD AND STH 32 AND STH 31~~
3. CONSTRUCT ISLAND AT STH 32 AND STH 31 LAST. WHEN STH 32 SB TRAFFIC DOES NOT HAVE TO BE DETOURED ONTO STH 31 AND THE PERMANENT SIGNAL IS FUNCTIONAL AT STH 32 AND STH 31.
4. REMOVE THE TEMPORARY SIGNAL AT STH 31 AND 6 MILE ROAD ONCE STH 32 IS OPEN TRAFFIC.

STAGE 2 TRAFFIC NOTES:

CLOSE STH 32 AND 6 MILE ROAD TO THROUGH TRAFFIC, DETOUR TRAFFIC TO USE THE STH 31 TO 4 MILE ROAD DETOUR.

PROJECT NO: 2350-09-71

HWY: STH 32

COUNTY: RACINE

PLOT DATE : 11/28/2018

TRAFFIC CONTROL OVERVIEW - STAGE 2

SHEET 137

E

Addendum No. 01
ID 2350-09-71
Revised Sheet 165
December 4, 2018

PAVEMENT MARKING

CATEGORY	STAGE ROADWAY	STATION TO STATION	O/S	646.1020		646.3040		646.5020		646.5120		646.5220		646.7120		646.8120		646.8220		646.9000			
				MARKING LINE	MARKING LINE	MARKING	MARKING	MARKING	MARKING	MARKING	MARKING	MARKING	MARKING	MARKING	MARKING	MARKING	MARKING	MARKING	MARKING	MARKING	MARKING	MARKING	MARKING
				LINE	GROOVED WET REF	GROOVED WET REF	GROOVED WET REF	ARROW	STOP LINE	DIAGONAL	DIAGONAL	DIAGONAL	DIAGONAL	DIAGONAL	DIAGONAL	DIAGONAL	DIAGONAL	DIAGONAL	DIAGONAL	DIAGONAL	DIAGONAL		
				EPOXY 4-INCH YELLOW	EPOXY 4-INCH WHITE	EPOXY 4-INCH	EPOXY 8-INCH	TYPE 2	TYPE 3	TYPE 5	BKELANE	BKELANE	BKELANE	12-INCH	CURB	ISLAND	NOSE	ISLAND	NOSE	ISLAND	NOSE		
				LF	LF	LF	LF	EA	EA	EA	EA	EA	EA	EA	EA	EA	EA	EA	EA	EA	EA		
				LF	LF	LF	LF	EA	EA	EA	EA	EA	EA	EA	EA	EA	EA	EA	EA	EA	EA		
0010	2	STH 32	93+25 - 115+00	L/RT	2,700	583	7	2	2	2	2	2	2	2	2	2	2	2	2	2	2	2	
			115+00 - 171+16	L/RT	13,800	445	2	2	2	2	2	2	2	2	2	2	2	2	2	2	2	2	2
			171+16 - 205+76	L/RT	7,730	1,190	5	5	5	5	5	5	5	5	5	5	5	5	5	5	5	5	5
				SUBTOTAL	21,530	2,218	14	14	14	14	14	14	14	14	14	14	14	14	14	14	14	14	14
2	5 MILE RD EAST	10+25 - 12+02	L/RT	276	--	--	--	--	--	--	--	--	--	--	--	--	--	--	--	--	--	--	
			SUBTOTAL	276	--	--	--	--	--	--	--	--	--	--	--	--	--	--	--	--	--	--	--
2	5 MILE RD WEST	25+74 - 26+65	L/RT	244	104	--	--	--	--	--	--	--	--	--	--	--	--	--	--	--	--	--	
			SUBTOTAL	244	104	--	--	--	--	--	--	--	--	--	--	--	--	--	--	--	--	--	--
1	6 MILE RD	302+32 - 315+83	L/RT	3,670	416	7	4	--	--	--	--	--	--	--	--	--	--	--	--	--	--	--	
		316+40 - 327+95	L/RT	3,320	470	4	4	--	--	--	--	--	--	--	--	--	--	--	--	--	--	--	
			SUBTOTAL	6,990	886	11	4	--	--	--	--	--	--	--	--	--	--	--	--	--	--	--	
1	STH 31	400+00 - 410+62	L/RT	2,000	1,340	3	1	--	--	--	--	--	--	--	--	--	--	--	--	--	--	--	
		411+22 - 418+35	L/RT	2,020	334	2	2	--	--	--	--	--	--	--	--	--	--	--	--	--	--	--	
			SUBTOTAL	4,020	1,674	5	3	--	--	--	--	--	--	--	--	--	--	--	--	--	--	--	
			TOTALS	33,080	30,454	43	43	43	43	43	43	43	43	43	43	43	43	43	43	43	43	43	



Proposal Schedule of Items

Proposal ID: 20181211014 Project(s): 2350-09-71

Federal ID(s): WISC 2019007

SECTION: 0001 Contract Items

Alt Set ID: Alt Mbr ID:

Proposal Line Number	Item ID Description	Approximate Quantity and Units	Unit Price	Bid Amount
0246	643.0900 Traffic Control Signs	22,284.000 DAY	_____.	_____.
0248	643.0920 Traffic Control Covering Signs Type II	9.000 EACH	_____.	_____.
0250	643.1050 Traffic Control Signs PCMS	810.000 DAY	_____.	_____.
0252	643.5000 Traffic Control	1.000 EACH	_____.	_____.
0254	645.0105 Geotextile Type C	350.000 SY	_____.	_____.
0256	645.0111 Geotextile Type DF Schedule A	1,858.000 SY	_____.	_____.
0258	645.0120 Geotextile Type HR	150.000 SY	_____.	_____.
0260	645.0130 Geotextile Type R	59.000 SY	_____.	_____.
0262	645.0140 Geotextile Type SAS	28.000 SY	_____.	_____.
0264	646.1020 Marking Line Epoxy 4-Inch	33,060.000 LF	_____.	_____.
0266	646.1040 Marking Line Grooved Wet Ref Epoxy 4-Inch	30,454.000 LF	_____.	_____.
0268	646.3040 Marking Line Grooved Wet Ref Epoxy 8-Inch	4,528.000 LF	_____.	_____.
0270	646.5020 Marking Arrow Epoxy	43.000 EACH	_____.	_____.
0272	646.5120 Marking Word Epoxy	10.000 EACH	_____.	_____.
0274	646.5220 Marking Symbol Epoxy	6.000 EACH	_____.	_____.
0276	646.6120 Marking Stop Line Epoxy 18-Inch	601.000 LF	_____.	_____.

