



# Wisconsin Department of Transportation

## Division of Transportation Systems Development

Bureau of Project Development  
4822 Madison Yards Way, 4<sup>th</sup> Floor South  
Madison, WI 53705

Telephone: (608) 266-1631  
Facsimile (FAX): (608) 266-8459

December 3, 2018

### NOTICE TO ALL CONTRACTORS:

**Proposal #24: 6999-07-89, WISC 2019 013**  
**C Wisconsin Rapids, E Grand Avenue**  
**3rd Street To 8th Street**  
**LOC STR**  
**Wood County**

### Letting of December 11, 2018

This is Addendum No. 01, which provides for the following:

#### Special Provisions:

Revised Special Provisions	
Article No.	Description
35	Light Unit Wisconsin Rapids, Item SPV.0060.005

#### Plan Sheets:

Revised Plan Sheets	
Plan Sheet	Plan Sheet Title (brief description of changes to sheet)
16	Revised "Light Unit Wisconsin Rapids Detail"

The responsibility for notifying potential subcontractors and suppliers of these changes remains with the prime contractor.

Sincerely,

*Mike Coleman*

Proposal Development Specialist  
Proposal Management Section

**ADDENDUM NO. 01**

**6999-07-89**

**December 3, 2018**

**Special Provisions**

**35. Light Unit Wisconsin Rapids, Item SPV.0060.005**

*Add the following paragraph to the end of section titled **B.1 Material Qualifications**:*

Provide the following part number manufactured by Sternberg Lighting:

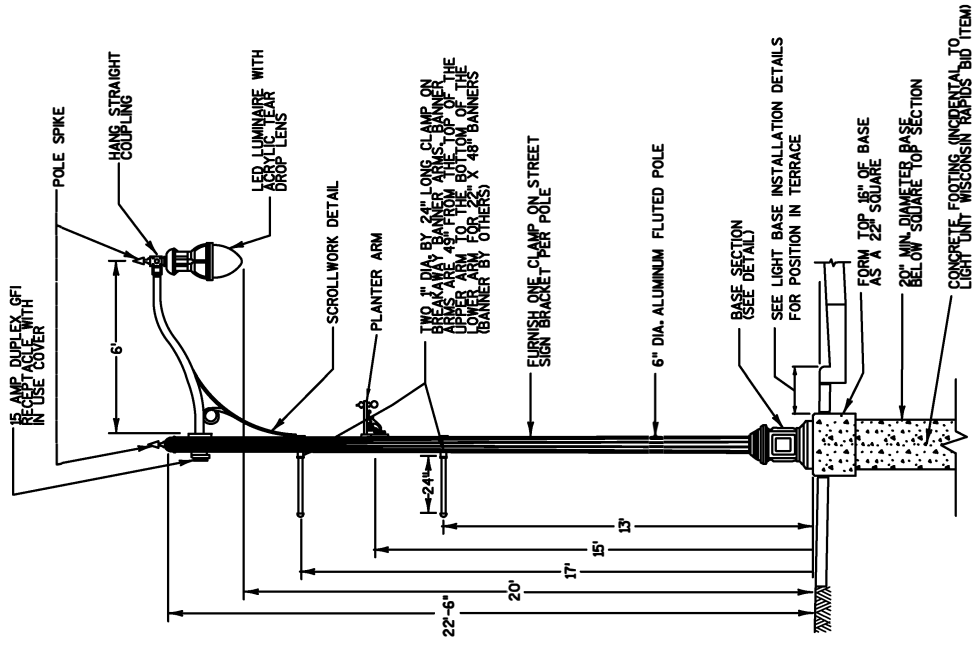
1A-1914LED-1L40T3-MDL16-A-HSHS/CAS6/8222.5FP6-.250/SSCC/1-GFI LPIUC/1-CDBA/1-PA478PM/BK

**Plan Sheets**

The following 8½ x 11-inch sheets are attached and made part of the plans for this proposal:

Revised: 16.

END OF ADDENDUM



**LIGHT UNIT WISCONSIN RAPIDS DETAIL**  
NO SCALE

NOTE: ADJUST POSITION OF RECEPTACLE AND BANNER ARMS 90 DEGREES FOR TWIN ARM LUMINAIRE UNIT.

PROJECT NO: 5999-07-89

HWY: EAST GRAND AVENUE

COUNTY: WOOD

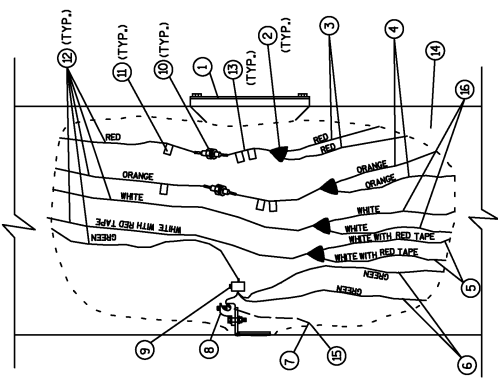
CONSTRUCTION DETAILS

SHEET 16

SEE SDD'S "HIGH FREEWAY LIGHTING UNIT POLE WIRING" FOR ADDITIONAL INFORMATION NOT SHOWN ON THIS DETAIL

- 1 HANDHOLE AND COVER
- 2 APPROVED INSULATED MULTIPUR TERMINAL BLOCK TYPE CONNECTORS. COMPRESSION, CRIMP OR WIRE NUT CONNECTORS ARE NOT ALLOWED.
- 3 INSULATED UNGROUNDED LIGHTING CKT CONDUCTORS FROM SYSTEM RACEWAY
- 4 INSULATED UNGROUNDED RECEPTACLE CKT CONDUCTORS FROM SYSTEM RACEWAY
- 5 LIGHTING CKT GROUNDED CONDUCTORS FROM SYSTEM RACEWAY (MARK WITH RED TAPE AT BOTH ENDS OF WIRE)
- 6 EQUIPMENT GROUNDED CONDUCTORS FROM SYSTEM RACEWAY
- 7 #4 BARE EQUIPMENT GROUNDED CONDUCTOR TO GROUND ROD (SEE S.D.D. FOR ADDITIONAL INFORMATION)
- 8 TYPICAL GROUNDED CONNECTION STAINLESS STEEL BOLT, NUT AND WASHERS 1/2" X 3/4" X 13 TH
- 9 APPROVED MECHANICAL TYPE CONNECTOR FOR EQUIPMENT GROUNDED CONDUCTORS. COMPRESSION, CRIMP OR WIRE NUT CONNECTORS ARE NOT ALLOWED.
- 10 FUSE ASSEMBLY, (SEE S.D.D. FOR ADDITIONAL INFORMATION)
- 11 CIRCUIT TAG, BOTH SIDES OF ALL FUSES (TYP.)
- 12 #12 AWG CONDUCTORS TO LUMINAIRE(S)/RECEPTACLE (SEE S.D.D. FOR ADDITIONAL INFORMATION)
- 13 18" PIGTAIL BETWEEN SPLICE AND FUSE
- 14 TWO ADDITIONAL BLACK CONDUCTORS FOR FUTURE USE IN SYSTEM RACEWAY (NOT SHOWN)
- 15 EXOTHERMICALLY WELDED TO GROUNDING ELECTRODE RECEPTACLE CIRCUIT GROUNDED CONDUCTORS FROM SYSTEM RACEWAY

FUSE RATING  
15A - RECEPTACLES  
5A - LUMINAIRES



**POLE WIRING DETAIL**  
NO SCALE

Addendum No. 01  
ID 6999-07-89  
Revised Sheet 16  
December 2, 2018

