



Wisconsin Department of Transportation

Division of Transportation Systems Development

Bureau of Project Development
4822 Madison Yards Way, 4th Floor South
Madison, WI 53705

December 6, 2018

Telephone: (608) 266-1631
Facsimile (FAX): (608) 266-8459

NOTICE TO ALL CONTRACTORS:

**Proposal #34: 8949-04-78, WISC 2019 024
Baldwin - Menomonie
Dry Run Bridge B-55-0287
USH 12
St Croix County**

Letting of December 11, 2018

This is Addendum No. 01, which provides for the following:

Special Provisions:

Added Special Provisions	
Article No.	Description
27	Removing Old Structure Over Waterway Station 130+20
28	Removing Old Structure Over Waterway Station 216+15
29	Removing Old Structure Over Waterway Station 295+10
30	Removing Old Structure Over Waterway Station 430+22

Schedule of Items:

Revised Bid Item Quantities					
Bid Item	Item Description	Unit	Old Quantity	Revised Quantity	Proposal Total
203.0100	Removing Small Pipe Culverts	EACH	4	-2	2

Added Bid Item Quantities					
Bid Item	Item Description	Unit	Old Quantity	Revised Quantity	Proposal Total
203.0500.S.04	Removing Old Structure Over Waterway Station 130+20	EACH	0	1	1
203.0500.S.05	Removing Old Structure Over Waterway Station 216+15	EACH	0	1	1
203.0500.S.06	Removing Old Structure Over Waterway Station 295+10	EACH	0	1	1
203.0500.S.07	Removing Old Structure Over Waterway Station 430+22	EACH	0	1	1

Deleted Bid Item Quantities					
Bid Item	Item Description	Unit	Old Quantity	Revised Quantity	Proposal Total
203.0200	Removing Old Structure 01. 130+20	EACH	1	-1	0
203.0200	Removing Old Structure 02. 303+17	EACH	1	-1	0

Plan Sheets:

Revised Plan Sheets	
Plan Sheet	Plan Sheet Title (brief description of changes to sheet)
24	Revised Item 203.0100 Quantity, Removed Item 203.0200, and revised Item 203.0500.S Quantity
25	Corrected stationing for Items 504.0900 & 505.0400
31	Changed Removing Small Pipe Culverts to Removing Old Structure Over Waterway
33	Changed Removing Small Pipe Culverts to Removing Old Structure Over Waterway

The responsibility for notifying potential subcontractors and suppliers of these changes remains with the prime contractor.

Sincerely,

Mike Coleman

Proposal Development Specialist
Proposal Management Section

ADDENDUM NO. 01

8949-04-78

December 6, 2018

Special Provisions

27. Removing Old Structure Over Waterway Station 130+20, Item 203.0500.S.04.

Conform to standard spec 203 as modified in this special provision.

Add the following to standard spec 203:

203.3.6 Removals Over Waterways and Wetlands

203.3.6.1 Removing Old Structure Over Waterway

- (1) Remove the right end section of the existing box culvert apron endwall over the drainage way tributary to Carr Creek conforming to the contractor's approved structure removal and clean-up plan. Remove all reinforcing steel, all concrete, and all other debris that falls into the waterway or wetland. Remove large pieces of the structure within 36 hours. The contractor may leave limited amounts of small concrete pieces scattered over the waterway floor or wetland only if the engineer allows.
- (2) Submit a structure removal and clean-up plan as part of the erosion control implementation plan required under standard spec 107.20. Do not start work under the structure removal and clean-up plan without the department's written approval of the plan. Include the following information in the structure removal and clean-up plan:
 1. Methods and schedule to remove the structure.
 2. Methods to control potentially harmful environmental impacts.
 3. Methods for removing piers and abutments. If blasting in water, include restrictions that regulatory agencies and the contract require.
 4. Methods for cleaning the waterway or wetlands.
- (3) If stockpiling spoil material, place it on an upland site an adequate distance from the waterway, wetland, or any open water created by excavation. Install silt fence between the spoil pile and the waterway, wetland, or excavation site.

Add the following Removing Old Structure bid item to standard spec 203.5.1:

ITEM NUMBER	DESCRIPTION	UNIT
203.0500.S.04	Removing Old Structure Over Waterway Station 130+20	LS
stp-203-015 (20090105)		

28. Removing Old Structure Over Waterway Station 216+15, Item 203.0500.S.05.

Conform to standard spec 203 as modified in this special provision.

Add the following to standard spec 203:

203.3.6 Removals Over Waterways and Wetlands

203.3.6.1 Removing Old Structure Over Waterway

- (1) Remove the left header of the existing box culvert over the drainage way tributary to Carr Creek conforming to the contractor's approved structure removal and clean-up plan. Remove all reinforcing steel, all concrete, and all other debris that falls into the waterway or wetland. Remove large pieces of the structure within 36 hours. The contractor may leave limited amounts of small concrete pieces scattered over the waterway floor or wetland only if the engineer allows.

- (2) Submit a structure removal and clean-up plan as part of the erosion control implementation plan required under standard spec 107.20. Do not start work under the structure removal and clean-up plan without the department's written approval of the plan. Include the following information in the structure removal and clean-up plan:
1. Methods and schedule to remove the structure.
 2. Methods to control potentially harmful environmental impacts.
 3. Methods for removing piers and abutments. If blasting in water, include restrictions that regulatory agencies and the contract require.
 4. Methods for cleaning the waterway or wetlands.
- (3) If stockpiling spoil material, place it on an upland site an adequate distance from the waterway, wetland, or any open water created by excavation. Install silt fence between the spoil pile and the waterway, wetland, or excavation site.

Add the following Removing Old Structure bid item to standard spec 203.5.1:

ITEM NUMBER	DESCRIPTION	UNIT
203.0500.S.05 stp-203-015 (20090105)	Removing Old Structure Over Waterway Station 216+15	LS

29. Removing Old Structure Over Waterway Station 295+10, Item 203.0500.S.06.

Conform to standard spec 203 as modified in this special provision.

Add the following to standard spec 203:

203.3.6 Removals Over Waterways and Wetlands

203.3.6.1 Removing Old Structure Over Waterway

- (1) Remove the box culvert over the drainage way tributary to Eau Galle River conforming to the contractor's approved structure removal and clean-up plan. Remove all reinforcing steel, all concrete, and all other debris that falls into the waterway or wetland. Remove large pieces of the structure within 36 hours. The contractor may leave limited amounts of small concrete pieces scattered over the waterway floor or wetland only if the engineer allows.
- (2) Submit a structure removal and clean-up plan as part of the erosion control implementation plan required under standard spec 107.20. Do not start work under the structure removal and clean-up plan without the department's written approval of the plan. Include the following information in the structure removal and clean-up plan:
1. Methods and schedule to remove the structure.
 2. Methods to control potentially harmful environmental impacts.
 3. Methods for removing piers and abutments. If blasting in water, include restrictions that regulatory agencies and the contract require.
 4. Methods for cleaning the waterway or wetlands.
- (3) If stockpiling spoil material, place it on an upland site an adequate distance from the waterway, wetland, or any open water created by excavation. Install silt fence between the spoil pile and the waterway, wetland, or excavation site.

Add the following Removing Old Structure bid item to standard spec 203.5.1:

ITEM NUMBER	DESCRIPTION	UNIT
203.0500.S.06 stp-203-015 (20090105)	Removing Old Structure Over Waterway Station 295+10	LS

30. Removing Old Structure Over Waterway Station 430+22, Item 203.0500.S.07.

Conform to standard spec 203 as modified in this special provision.

Add the following to standard spec 203:

203.3.6 Removals Over Waterways and Wetlands

203.3.6.1 Removing Old Structure Over Waterway

- (1) Remove the existing box culvert apron over the drainage way tributary to Eau Galle River conforming to the contractor's approved structure removal and clean-up plan. Remove all reinforcing steel, all concrete, and all other debris that falls into the waterway or wetland. Remove large pieces of the structure within 36 hours. The contractor may leave limited amounts of small concrete pieces scattered over the waterway floor or wetland only if the engineer allows.
- (2) Submit a structure removal and clean-up plan as part of the erosion control implementation plan required under standard spec 107.20. Do not start work under the structure removal and clean-up plan without the department's written approval of the plan. Include the following information in the structure removal and clean-up plan:
 - 1. Methods and schedule to remove the structure.
 - 2. Methods to control potentially harmful environmental impacts.
 - 3. Methods for removing piers and abutments. If blasting in water, include restrictions that regulatory agencies and the contract require.
 - 4. Methods for cleaning the waterway or wetlands.
- (3) If stockpiling spoil material, place it on an upland site an adequate distance from the waterway, wetland, or any open water created by excavation. Install silt fence between the spoil pile and the waterway, wetland, or excavation site.

Add the following Removing Old Structure bid item to standard spec 203.5.1:

ITEM NUMBER	DESCRIPTION	UNIT
203.0500.S.07 stp-203-015 (20090105)	Removing Old Structure Over Waterway Station 430+22	LS

Schedule of Items

Attached, dated December 6, 2018, are the revised Schedule of Items Pages 1 – 7.

Plan Sheets

The following 8½ x 11-inch sheets are attached and made part of the plans for this proposal:
Revised: 24, 25, 31, and 33.

END OF ADDENDUM

Addendum No. 1
 ID 8949-04-78
 Revised Sheet 24
 December 6, 2018

3

*ALL ITEMS ARE CATEGORY 0010 UNLESS OTHERWISE NOTED

CLEANING AND GRUBBING			
STATION	TO STATION	LOCATION	STA
430+00	TO 431+00	LT	1
ITEM TOTAL			1

REMOVING SMALL PIPE CULVERTS			
STATION	TO STATION	LOCATION	EACH
168+95	TO 169+00	MAINLINE	2
ITEM TOTAL			2

ITEM 203.0200, REMOVING OLD STRUCTURE IS DELETED

REMOVING OLD STRUCTURE OVER WATERWAY (STATION)			
DESCRIPTION	LOCATION	STATION	EACH
01. 90+88	SECTION 2		1
02. 303+17	SECTION 3		1
04. 130+20	END SECTION OF AEW - RT		1
05. 216+15	CONC MASONRY HEADER - LT		1
06. 295+10	MAINLINE BOX CULVERT CROSSDRAIN		1
07. 430+22	MAINLINE BOX CULVERT CROSSDRAIN		1
ITEM TOTAL			6

REMOVING ASPHALTIC SURFACE			
STATION	TO STATION	LOCATION	SY
50+00	TO 56+75	SECTION 1	2255
90+00	TO 92+35	SECTION 2	785
168+80	TO 169+10	MAINLINE	100
295+05	TO 295+15	MAINLINE	70
304+25	TO 304+37	SECTION 3	1045
430+10	TO 430+35	MAINLINE	85
ITEM TOTAL			4340

REMOVING FENCE			
STATION	TO STATION	LOCATION	LF
304+35	TO 305+75	RT	140
ITEM TOTAL			140

REMOVING OL APRON ENDWALLS			
STATION	TO STATION	LOCATION	EACH
261+95	TO 262+00	X-PIPE	2
ITEM TOTAL			2

PREPARE FOUNDATION FOR ASPHALTIC PAVING (PROJECT) 8949-04-78			
STATION	TO STATION	LOCATION	EACH
22+00	TO 432+00	MAINLINE	1
ITEM TOTAL			1

PREPARE FOUNDATION FOR BASE AGGREGATE			
STATION	TO STATION	LOCATION	STA
22+00	TO 432+00	SECTION 3	1
ITEM TOTAL			1

FINISHING ROADWAY (PROJECT) 8949-04-78			
STATION	TO STATION	LOCATION	EACH
22+00	TO 432+00	MAINLINE	1
ITEM TOTAL			1

USH 12 EARTHWORK SUMMARY

Division	From/To Station	Common Excavation (1) (Item #205.0100) Cut (2)	Salvaged/Unusable Pavement Material (4)	Available Material (5)	Unexpanded Fill		Mass Ordinate +/- (14)	Waste	Borrow
					Expanded Fill (13)	Factor 1.25			
Division 1	Section 1 - West	109	55	109	347	434	-324	0	324
Division 2	Section 1 - East	187	153	187	580	725	-538	0	538
Division 3	Section 2	184	88	184	1,036	1,295	-110	0	110
Division 4	Culvert Replacement 1	168+50 / 169+50	0	3	134	167	-164	0	164
Division 5	Culvert Replacement 2	294+50/295+50	0	1	87	109	-108	0	108
Division 6	Section 3	325+00/306+00	110	254	1,361	1,701	-1,447	0	1,447
Division 7	Culvert Replacement 3	423+50/431+00	0	0	241	301	-301	0	301
Grand Total			406	738	3,785	4,731	-3,993	0	4,000
Total Common Exc		740							

- Excavation Common is the sum of the Cut and EBS Excavation columns. Item number 205.0100
- Salvaged/Unusable Pavement Material is NOT included in Cut.
- EBS Excavation to be backfilled with Select Borrow material. Note: this is designers choice, can be backfilled with Borrow.
- Salvaged/Unusable Pavement Material
- Available Material = Cut - Salvaged/Unusable Pavement Material
- Marsh Excavation - To be backfilled with Select Borrow Material. Note: this is designers choice, can be backfilled with Borrow.
- Rock Excavation - To be backfilled with Select Borrow Material. Note: this is designers choice, can be backfilled with Borrow.
- Rock Excavation Item number 205.0200
- Reduced Marsh in Fill - Excavated Marsh material is usable in Fills outside the 1:1 slope. Marsh in Fill Reduction Factor = 0.6
- Reduced EBS in Fill - Excavated EBS material is usable in Fills outside the 1:1 slope. EBS in Fill Reduction Factor = 0.8
- Expanded EBS in Fill - This is to be filled with Select Borrow material. Marsh Backfill Factor = 1.5. Item number 208.11
- Expanded EBS in Fill - This is to be filled with Select Borrow material. EBS Backfill Factor = 1.5. Item number 208.11
- Expanded Rock - Factor = 1.1
- Expanded Fill. Factor = 1.25
- Depending on selections:
 - Expanded Fill = (Unexpanded Fill - Rock * Rock Factor - Reduced Marsh - Reduced EBS) * Fill Factor
 - Expanded Fill = (Unexpanded Fill - Rock * Rock Factor - Reduced EBS) * Fill Factor
 - Expanded Fill = (Unexpanded Fill - Rock * Rock Factor - Reduced Marsh) * Fill Factor
- The Mass Ordinate +/- indicates a surplus or shortage of material within the Division. Minus indicates a shortage of material within the Division.

PROJECT NO: 8949-04-78

HWY: USH 12

COUNTY: ST. CROIX

MISCELLANEOUS QUANTITIES

SHEET

24

FILE NAME : F:\DRAWINGS\2014\114\0006\89490408\SHEETSP\AN\030201.MG.DWG

PLOT DATE : 12/6/2018 12:04 PM

PLOT BY : MATT GUNDRY

PLOT SCALE : *****

WSDOT/CADD SHEET 42

3

*ALL ITEMS ARE CATEGORY (0010) UNLESS OTHERWISE NOTED

STATION	TO	STATION	LOCATION	TON
BASE AGGREGATE DENSE 3/4-INCH				
49+50	TO	56+75	SECTION 1	220
88+23	TO	93+78	SECTION 2	170
168+80	TO	169+10	MAINLINE	13
295+05	TO	295+15	MAINLINE	8
300+25	TO	306+05	SECTION 3	175
430+10	TO	430+35	MAINLINE	14
ITEM TOTAL				600

STATION	TO	STATION	LOCATION	TON
BASE AGGREGATE DENSE 1 1/4-INCH				
50+00	TO	56+75	SECTION 1	185
90+00	TO	92+35	SECTION 2	30
168+80	TO	169+10	MAINLINE	125
295+05	TO	295+15	MAINLINE	65
301+25	TO	304+37	SECTION 3	150
430+10	TO	430+35	MAINLINE	125
ITEM TOTAL				780

STATION	TO	STATION	LOCATION	GAL
TACK COAT				
50+00	TO	56+75	SECTION 1	140
90+00	TO	92+35	SECTION 2	65
168+80	TO	169+10	MAINLINE	7
295+05	TO	295+15	MAINLINE	5
301+25	TO	304+37	SECTION 3	75
430+10	TO	430+35	MAINLINE	8
ITEM TOTAL				300

STATION	TO	STATION	LOCATION	TON
ASPHALTIC SURFACE				
50+00	TO	56+75	SECTION 1	1070
90+00	TO	92+35	SECTION 2	480
168+80	TO	169+10	MAINLINE	55
295+05	TO	295+15	MAINLINE	30
301+25	TO	304+37	SECTION 3	590
430+10	TO	430+35	MAINLINE	55
ITEM TOTAL				2280

STATION	TO	STATION	LOCATION	LF
FENCE WOVEN WIRE (4.5-FEET), BARBED				
304+35	TO	305+75	RT	140
ITEM TOTAL				140

STATION	TO	STATION	LOCATION	EACH
MAINTENANCE AND REPAIR OF HALL ROADS (PROJECT) 8949-04-78				
22+00	TO	432+00	PROJECT	1
ITEM TOTAL				1

STATION	TO	STATION	LOCATION	EACH	CATEGORY
MOBILIZATION					
22+00	TO	432+00	ROADWAY	0.7	010
51+33	TO	B-55-0287	B-55-0287	0.3	020
ITEM TOTAL				1	

STATION	TO	STATION	LOCATION	EACH
CLEANING CULVERT PIPES				
216+15	TO		MAINLINE	1
246+95	TO		MAINLINE	2
ITEM TOTAL				3

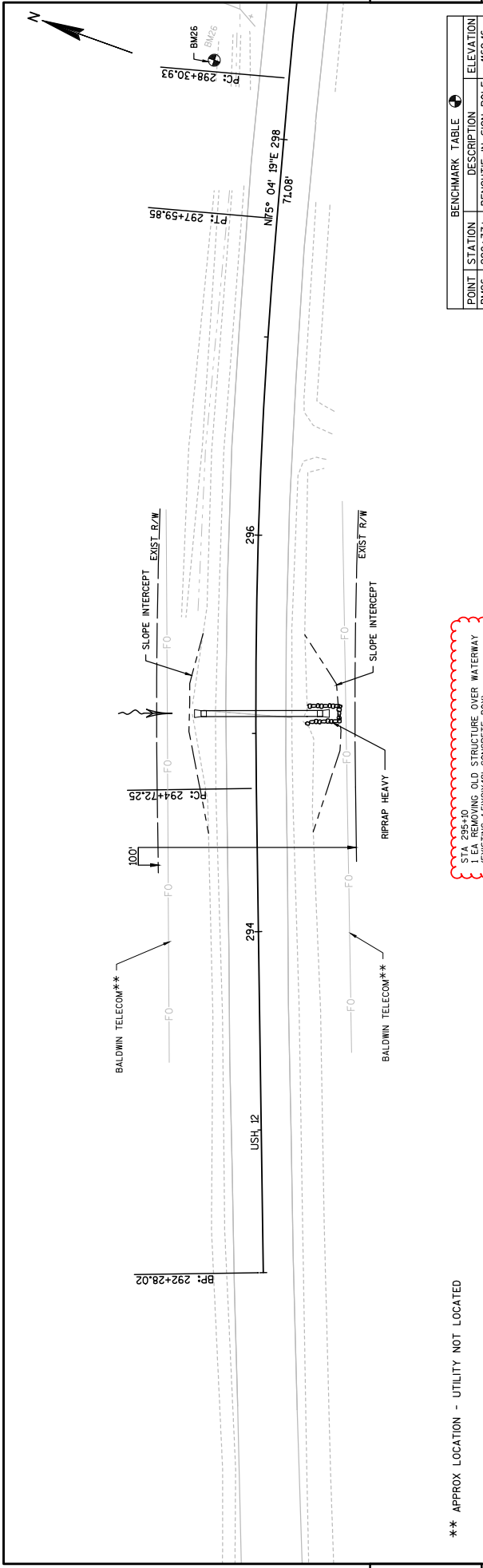
STATION	TO	STATION	LOCATION	CY
RIPRAP HEAVY				
51+84	TO		SECTION 1	400
90+98	TO		SECTION 2	236
168+98	TO		PIPE RT	40
295+05	TO		PIPE LT & RT	250
303+17	TO		SECTION 3	250
430+29	TO		PIPE LT	30
ITEM TOTAL				985

3

3

Addendum No. 1
ID 8949-04-78
Revised Sheet 25
December 6, 2018

STATION	LOCATION	520.9700.S CULVERT PIPE 168-INCH 0.4 30-INCH VERIFICATION EACH	520.9750.S CP FOR EACH	521.0316 APRON ENDWALLS FOR CP SLOPE DRAIN STEEL EACH	521.0342 APRON ENDWALLS FOR CP SLOPE DRAIN STEEL EACH	521.0350 APRON ENDWALLS FOR CULVERT STEEL EACH	522.0336 CLASS III 36-INCH LF	522.0339 CLASS III 19X30-INCH LF	522.042 CLASS III 42-INCH LF	522.2319 CLASS III 19X30-INCH LF	522.2334 CLASS III 38X60-INCH LF	522.2338 CLASS III 38X60-INCH LF	522.2348 CLASS III 48X76-INCH LF	522.2619 APRON ENDWALLS FOR CP SLOPE DRAIN STEEL EACH	522.2634 APRON ENDWALLS FOR CP SLOPE DRAIN STEEL EACH	522.2648 APRON ENDWALLS FOR CP SLOPE DRAIN STEEL EACH
90+90.2	SECTION 2	---	---	---	---	---	---	---	---	---	---	---	---	---	---	---
91+06.3	MAINLINE	---	---	---	---	---	---	---	---	---	---	---	---	---	---	---
168+87	MAINLINE	---	---	---	---	---	---	---	---	---	---	---	---	---	---	---
261+95	MAINLINE	59	1	6	6	2	---	---	---	---	---	---	---	---	---	---
295+10	MAINLINE	---	---	---	---	---	---	---	---	---	---	---	---	---	---	---
303+07.5	SECTION 3	---	---	---	---	---	---	---	---	---	---	---	---	---	---	---
303+16.5	MAINLINE	---	---	---	---	---	---	---	---	---	---	---	---	---	---	---
303+25.5	MAINLINE	---	---	---	---	---	---	---	---	---	---	---	---	---	---	---
430+29	MAINLINE	---	---	---	---	---	---	---	---	---	---	---	---	---	---	---
ITEM TOTAL		59	1	4	6	2	116	112	147	56	58	58	56	2	4	2



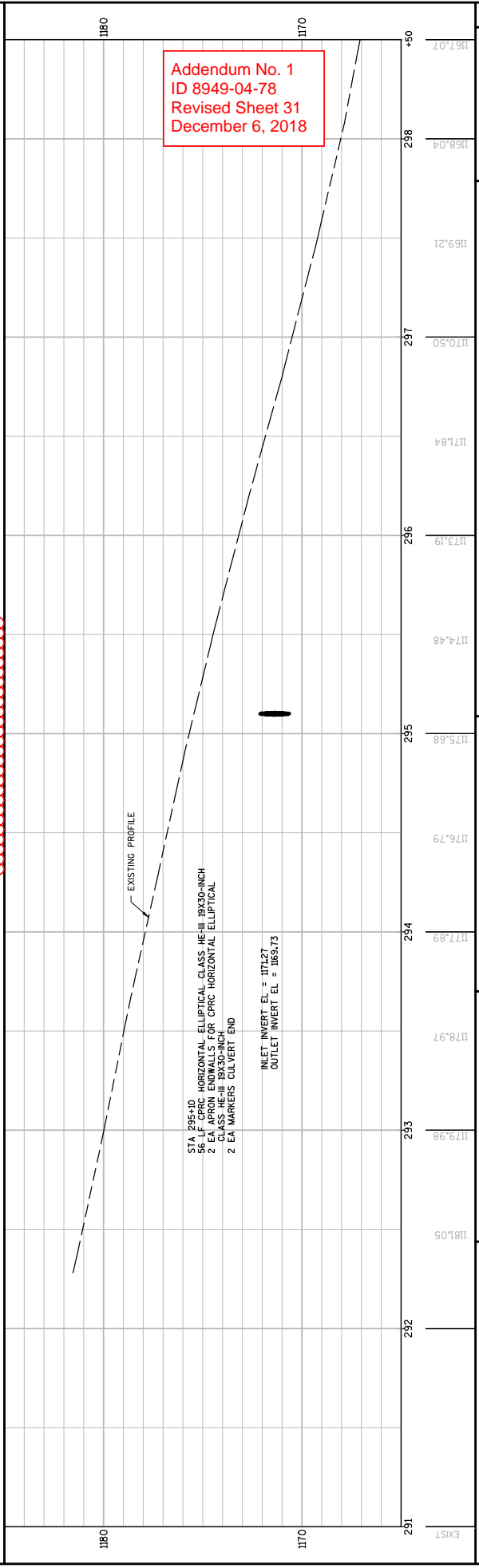
5

5

** APPROX LOCATION - UTILITY NOT LOCATED

STA 295+10 STRUCTURE OVER WATERWAY
(EXISTING 15'X24' CONCRETE BOX)

POINT	STATION	DESCRIPTION	ELEVATION
BM26	298+37±	BENCHMARK IN SIGN POLE	1169.16

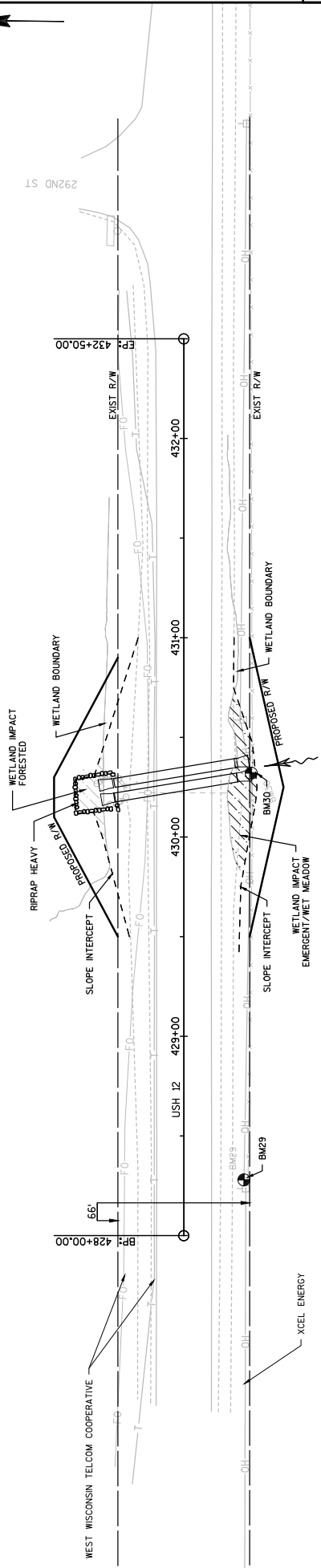


STATION	ELEVATION
291	1181.05
292	1179.98
293	1178.97
294	1177.89
295	1176.79
295	1175.68
295	1174.48
296	1173.19
296	1171.84
297	1170.50
298	1169.21
298	1168.04
298	1167.07

PROJECT NO: 8949-04-78
 COUNTY: ST. CROIX
 HWY: USH 12
 PLAN AND PROFILE: CULVERT REPLACEMENT
 SHEET 31
 PLOT BY: MATT GUNDRY
 PLOT DATE: 12/6/2018 10:23 AM
 PLOT SCALE: 1 IN=50 FT
 PLOT NAME: WSDOT/CADD SHEET 44

FILE NAME: F:\DRAWINGS\2014-114\0006\89490408\SHEETS\PLAN\050101_PP.DWG
 LAYOUT NAME: 050104_PP

** APPROX LOCATION - UTILITY NOT LOCATED



5

POINT	STATION	DESCRIPTION	ELEVATION
BM29	428+08.4	BENCHMARK IN PWR POLE	1227.08
BM30	430+32.4	BENCHMARK IN PWR POLE	1216.24

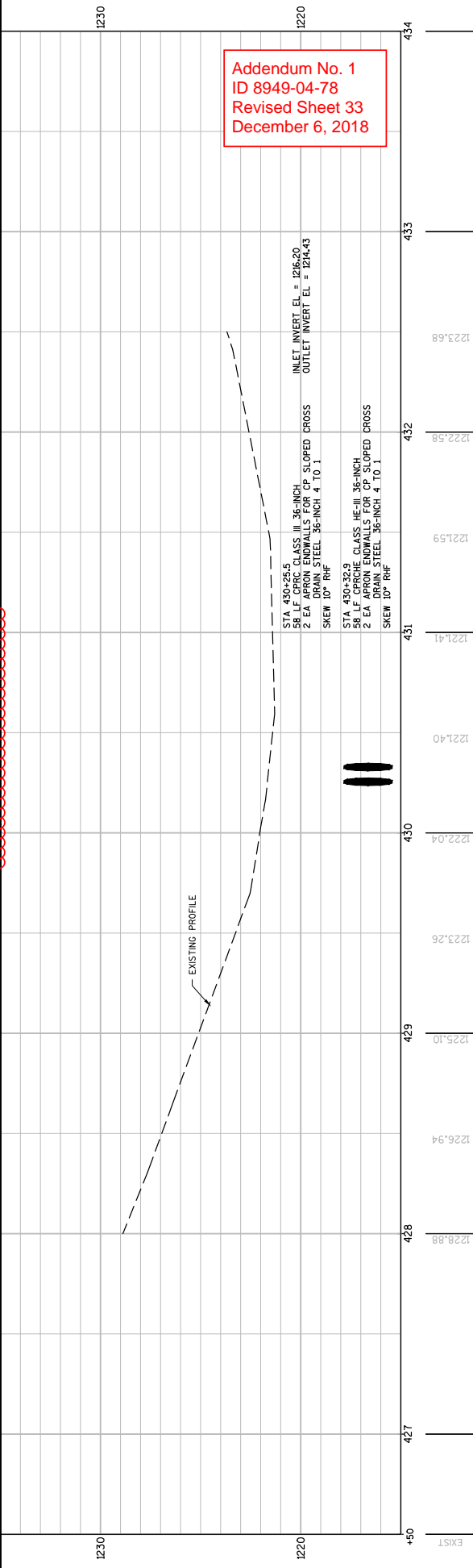
STA 430+22
1 EA REMOVING OLD STRUCTURE OVER WATERWAY
(EXISTING 3'x2'x4' CONCRETE BOX)

Addendum No. 1
ID 8949-04-78
Revised Sheet 33
December 6, 2018

5

SHEET TOTALS

WETLAND IMPACT EMERGENT/WET MEADOW	- 0.018 AC
WETLAND IMPACT FORESTED	- 0.008 AC



STA 430+25.5	58 LF CP ROCHE GLASS HE-III 36-INCH	INLET INVERT EL = 1216.20
2 EA APRON ENDWALLS FOR CP SLOPED CROSS	DRAIN STEEL 36-INCH 4 TO 1	OUTLET INVERT EL = 1214.43
SKEW 10° RH		
STA 430+32.9	58 LF CP ROCHE GLASS HE-III 36-INCH	
2 EA APRON ENDWALLS FOR CP SLOPED CROSS	DRAIN STEEL 36-INCH 4 TO 1	
SKEW 10° RH		



Proposal Schedule of Items

Proposal ID: 20181211034 Project(s): 8949-04-78

Federal ID(s): WISC 2019024

SECTION: 0001 Contract Items

Alt Set ID: Alt Mbr ID:

Proposal Line Number	Item ID Description	Approximate Quantity and Units	Unit Price	Bid Amount
0002	201.0105 Clearing	1.000 STA	_____.	_____.
0004	201.0205 Grubbing	1.000 STA	_____.	_____.
0006	203.0100 Removing Small Pipe Culverts	2.000 EACH	_____.	_____.
0012	203.0210.S Abatement of Asbestos Containing Material (structure) 01. C-55-9001	LS	LUMP SUM	_____.
0014	203.0500.S Removing Old Structure Over Waterway (station) 01. 90+98	LS	LUMP SUM	_____.
0016	203.0500.S Removing Old Structure Over Waterway (station) 02. 303+17	LS	LUMP SUM	_____.
0018	203.0500.S Removing Old Structure Over Waterway (station) 03. 51+84	LS	LUMP SUM	_____.
0020	204.0110 Removing Asphaltic Surface	4,340.000 SY	_____.	_____.
0022	204.0170 Removing Fence	140.000 LF	_____.	_____.
0024	204.9060.S Removing (item description) 01. Apron Endwalls	2.000 EACH	_____.	_____.
0026	205.0100 Excavation Common	740.000 CY	_____.	_____.
0028	206.2000 Excavation for Structures Culverts (structure) 01. B-55-0287	LS	LUMP SUM	_____.
0030	208.0100 Borrow	4,000.000 CY	_____.	_____.
0032	210.2500 Backfill Structure Type B	420.000 TON	_____.	_____.
0034	211.0100 Prepare Foundation for Asphaltic Paving (project) 01. 8949-04-78	LS	LUMP SUM	_____.



Proposal Schedule of Items

Proposal ID: 20181211034 Project(s): 8949-04-78

Federal ID(s): WISC 2019024

SECTION: 0001 Contract Items

Alt Set ID: Alt Mbr ID:

Proposal Line Number	Item ID Description	Approximate Quantity and Units	Unit Price	Bid Amount
0036	211.0500 Prepare Foundation for Base Aggregate	1.000 STA	_____.	_____.
0038	213.0100 Finishing Roadway (project) 01. 8949-04-78	1.000 EACH	_____.	_____.
0040	305.0110 Base Aggregate Dense 3/4-Inch	600.000 TON	_____.	_____.
0042	305.0120 Base Aggregate Dense 1 1/4-Inch	780.000 TON	_____.	_____.
0044	311.0115 Breaker Run	90.000 CY	_____.	_____.
0046	455.0605 Tack Coat	300.000 GAL	_____.	_____.
0048	465.0105 Asphaltic Surface	2,280.000 TON	_____.	_____.
0050	502.3200 Protective Surface Treatment	160.000 SY	_____.	_____.
0052	504.0100 Concrete Masonry Culverts	154.000 CY	_____.	_____.
0054	504.0900 Concrete Masonry Endwalls	1.000 CY	_____.	_____.
0056	505.0400 Bar Steel Reinforcement HS Structures	8,275.000 LB	_____.	_____.
0058	505.0600 Bar Steel Reinforcement HS Coated Structures	7,650.000 LB	_____.	_____.
0060	509.1500 Concrete Surface Repair	10.000 SF	_____.	_____.
0062	513.4061 Railing Tubular Type M 01. B-55-0287	50.000 LF	_____.	_____.
0064	516.0500 Rubberized Membrane Waterproofing	12.000 SY	_____.	_____.
0066	520.8700 Cleaning Culvert Pipes	2.000 EACH	_____.	_____.



Proposal Schedule of Items

Proposal ID: 20181211034 Project(s): 8949-04-78

Federal ID(s): WISC 2019024

SECTION: 0001 Contract Items

Alt Set ID: Alt Mbr ID:

Proposal Line Number	Item ID Description	Approximate Quantity and Units	Unit Price	Bid Amount
0068	520.9700.S Culvert Pipe Liners (size) 01. 30-Inch	59.000 LF	_____.	_____.
0070	520.9750.S Cleaning Culvert Pipes for Liner Verification	1.000 EACH	_____.	_____.
0072	521.0336 Apron Endwalls for Culvert Pipe Sloped Cross Drains Steel 36-Inch 4 to 1	4.000 EACH	_____.	_____.
0074	521.0342 Apron Endwalls for Culvert Pipe Sloped Cross Drains Steel 42-Inch 4 to 1	6.000 EACH	_____.	_____.
0076	521.1030 Apron Endwalls for Culvert Pipe Steel 30-Inch	2.000 EACH	_____.	_____.
0078	522.0136 Culvert Pipe Reinforced Concrete Class III 36-Inch	116.000 LF	_____.	_____.
0080	522.0142 Culvert Pipe Reinforced Concrete Class III 42-Inch	147.000 LF	_____.	_____.
0082	522.2319 Culvert Pipe Reinforced Concrete Horizontal Elliptical Class HE-III 19x30-Inch	56.000 LF	_____.	_____.
0084	522.2329 Culvert Pipe Reinforced Concrete Horizontal Elliptical Class HE-III 29x45-Inch	116.000 LF	_____.	_____.
0086	522.2334 Culvert Pipe Reinforced Concrete Horizontal Elliptical Class HE-III 34x53-Inch	112.000 LF	_____.	_____.
0088	522.2338 Culvert Pipe Reinforced Concrete Horizontal Elliptical Class HE-III 38x60-Inch	58.000 LF	_____.	_____.
0090	522.2348 Culvert Pipe Reinforced Concrete Horizontal Elliptical Class HE-III 48x76-Inch	56.000 LF	_____.	_____.



Proposal Schedule of Items

Proposal ID: 20181211034 Project(s): 8949-04-78

Federal ID(s): WISC 2019024

SECTION: 0001 Contract Items

Alt Set ID: Alt Mbr ID:

Proposal Line Number	Item ID Description	Approximate Quantity and Units	Unit Price	Bid Amount
0092	522.2619 Apron Endwalls for Culvert Pipe Reinforced Concrete Horizontal Elliptical 19x30-Inch	2.000 EACH	_____.	_____.
0094	522.2629 Apron Endwalls for Culvert Pipe Reinforced Concrete Horizontal Elliptical 29x45-Inch	4.000 EACH	_____.	_____.
0096	522.2634 Apron Endwalls for Culvert Pipe Reinforced Concrete Horizontal Elliptical 34x53-Inch	4.000 EACH	_____.	_____.
0098	522.2638 Apron Endwalls for Culvert Pipe Reinforced Concrete Horizontal Elliptical 38x60-Inch	2.000 EACH	_____.	_____.
0100	522.2648 Apron Endwalls for Culvert Pipe Reinforced Concrete Horizontal Elliptical 48x76-Inch	2.000 EACH	_____.	_____.
0102	606.0300 Riprap Heavy	1,070.000 CY	_____.	_____.
0104	614.0920 Salvaged Rail	1,350.000 LF	_____.	_____.
0106	614.2300 MGS Guardrail 3	350.000 LF	_____.	_____.
0108	614.2330 MGS Guardrail 3 K	200.000 LF	_____.	_____.
0110	614.2340 MGS Guardrail 3 L	450.000 LF	_____.	_____.
0112	614.2500 MGS Thrie Beam Transition	150.000 LF	_____.	_____.
0114	614.2610 MGS Guardrail Terminal EAT	12.000 EACH	_____.	_____.
0116	616.0100 Fence Woven Wire (height) 01. 4-ft Barbed	140.000 LF	_____.	_____.



Proposal Schedule of Items

Proposal ID: 20181211034 Project(s): 8949-04-78

Federal ID(s): WISC 2019024

SECTION: 0001 Contract Items

Alt Set ID: Alt Mbr ID:

Proposal Line Number	Item ID Description	Approximate Quantity and Units	Unit Price	Bid Amount
0118	618.0100 Maintenance And Repair of Haul Roads (project) 01. 8949-04-78	1.000 EACH	_____.	_____.
0120	619.1000 Mobilization	1.000 EACH	_____.	_____.
0122	624.0100 Water	28.000 MGAL	_____.	_____.
0124	625.0500 Salvaged Topsoil	3,700.000 SY	_____.	_____.
0126	627.0200 Mulching	5,150.000 SY	_____.	_____.
0128	628.1504 Silt Fence	2,000.000 LF	_____.	_____.
0130	628.1520 Silt Fence Maintenance	2,000.000 LF	_____.	_____.
0132	628.1905 Mobilizations Erosion Control	6.000 EACH	_____.	_____.
0134	628.1910 Mobilizations Emergency Erosion Control	4.000 EACH	_____.	_____.
0136	628.2004 Erosion Mat Class I Type B	8,500.000 SY	_____.	_____.
0138	628.7504 Temporary Ditch Checks	960.000 LF	_____.	_____.
0140	628.7555 Culvert Pipe Checks	50.000 EACH	_____.	_____.
0142	629.0210 Fertilizer Type B	3.000 CWT	_____.	_____.
0144	630.0120 Seeding Mixture No. 20	100.000 LB	_____.	_____.
0146	633.5200 Markers Culvert End	22.000 EACH	_____.	_____.
0148	634.0612 Posts Wood 4x6-Inch X 12-FT	3.000 EACH	_____.	_____.



Proposal Schedule of Items

Proposal ID: 20181211034 Project(s): 8949-04-78

Federal ID(s): WISC 2019024

SECTION: 0001 Contract Items

Alt Set ID: Alt Mbr ID:

Proposal Line Number	Item ID Description	Approximate Quantity and Units	Unit Price	Bid Amount
0150	637.2230 Signs Type II Reflective F	21.000 SF	_____.	_____.
0152	638.2602 Removing Signs Type II	15.000 EACH	_____.	_____.
0154	638.3000 Removing Small Sign Supports	15.000 EACH	_____.	_____.
0156	642.5001 Field Office Type B	1.000 EACH	_____.	_____.
0158	643.0420 Traffic Control Barricades Type III	2,050.000 DAY	_____.	_____.
0160	643.0705 Traffic Control Warning Lights Type A	3,600.000 DAY	_____.	_____.
0162	643.0900 Traffic Control Signs	21,200.000 DAY	_____.	_____.
0164	643.0920 Traffic Control Covering Signs Type II	12.000 EACH	_____.	_____.
0166	643.5000 Traffic Control	1.000 EACH	_____.	_____.
0168	645.0105 Geotextile Type C	260.000 SY	_____.	_____.
0170	645.0120 Geotextile Type HR	1,605.000 SY	_____.	_____.
0172	646.1020 Marking Line Epoxy 4-Inch	5,085.000 LF	_____.	_____.
0174	650.4500 Construction Staking Subgrade	1,255.000 LF	_____.	_____.
0176	650.5000 Construction Staking Base	1,255.000 LF	_____.	_____.
0178	650.6000 Construction Staking Pipe Culverts	12.000 EACH	_____.	_____.
0180	650.6500 Construction Staking Structure Layout (structure) 01. B-55-0287	LS	LUMP SUM	_____.



Proposal Schedule of Items

Proposal ID: 20181211034 Project(s): 8949-04-78

Federal ID(s): WISC 2019024

SECTION: 0001 Contract Items

Alt Set ID: Alt Mbr ID:

Proposal Line Number	Item ID Description	Approximate Quantity and Units	Unit Price	Bid Amount
0182	650.9910 Construction Staking Supplemental Control (project) 01. 8949-04-78	LS	LUMP SUM	_____.
0184	650.9920 Construction Staking Slope Stakes	1,255.000 LF	_____.	_____.
0186	690.0150 Sawing Asphalt	360.000 LF	_____.	_____.
0188	715.0502 Incentive Strength Concrete Structures	948.000 DOL	1.00000	948.00
0190	ASP.1T0A On-the-Job Training Apprentice at \$5.00/HR	300.000 HRS	5.00000	1,500.00
0192	ASP.1T0G On-the-Job Training Graduate at \$5.00/HR	1,200.000 HRS	5.00000	6,000.00
0194	SPV.0090 Special 01. Ditch Cleaning	400.000 LF	_____.	_____.
0196	203.0500.S Removing Old Structure Over Waterway (station) 04. 130+20	LS	LUMP SUM	_____.
0198	203.0500.S Removing Old Structure Over Waterway (station) 05. 216+15	LS	LUMP SUM	_____.
0200	203.0500.S Removing Old Structure Over Waterway (station) 06. 295+10	LS	LUMP SUM	_____.
0202	203.0500.S Removing Old Structure Over Waterway (station) 07. 430+22	LS	LUMP SUM	_____.
Section: 0001			Total:	_____.
			Total Bid:	_____.