



Wisconsin Department of Transportation

January 10, 2019

Division of Transportation Systems Development

Bureau of Project Development
4822 Madison Yards Way, 4th Floor South
Madison, WI 53705

Telephone: (608) 266-1631
Facsimile (FAX): (608) 266-8459

NOTICE TO ALL CONTRACTORS:

Proposal #17: 4394-03-71
CTH E , CTH FF – Beardsley St
Recreation Trail Bridge & Approach
CTH E
Kewaunee County

Letting of January 15, 2019

This is Addendum No. 01, which provides for the following:

Special Provisions:

Added Special Provisions	
Article No.	Description
11	Steel Thrie Beam Structure Approach, 614.0200
12	Steel Plate Beam Guard Short Radius, 614.0345

Plan Sheets:

Revised Plan Sheets	
Plan Sheet	Plan Sheet Title (brief description of changes to sheet)
8	Note added to the placement of beam guard posts in the NE Abutment
24	Note added to the placement of beam guard posts in the NE Abutment

The responsibility for notifying potential subcontractors and suppliers of these changes remains with the prime contractor.

Sincerely,

Mike Coleman

Proposal Development Specialist
Proposal Management Section

ADDENDUM NO. 01

4394-03-71

January 10, 2019

Special Provisions

11. Steel Thrie Beam Structure Approach, Item 614.0200.

Replace standard spec 614.3.2.1 (1) with the following

- (1) Set posts at the required plan locations with the front faces in a straight line or, if on a curve, at a uniform distance from the centerline. Ensure that they are installed plumb, to the required depth, and with adequate lateral stability. The contractor shall not drive posts or set them in excavated post holes. The contractor shall set posts concurrent with placement of Geosynthetic Reinforced Soil Abutment. The contractor shall submit plans for installation of posts to the engineer for approval prior one week prior to the start of work.

Add the following under standard spec 614.5 Payment

- (18) Payment for the Steel Thrie Beam Structure Approach is full compensation for providing forms and falsework for placement of posts.

12. Steel Plate Beam Guard Short Radius, Item 614.0345.

Replace standard spec 614.3.2.1 (1) with the following

- (1) Set posts at the required plan locations with the front faces in a straight line or, if on a curve, at a uniform distance from the centerline. Ensure that they are installed plumb, to the required depth, and with adequate lateral stability. The contractor shall not drive posts or set them in excavated post holes. The contractor shall set posts concurrent with placement of Geosynthetic Reinforced Soil Abutment. The contractor shall submit plans for installation of posts to the engineer for approval prior one week prior to the start of work.

Add the following under standard spec 614.5 Payment

- (18) Payment for the Steel Plate Beam Guard Short Radius is full compensation for providing forms and falsework for placement of posts.

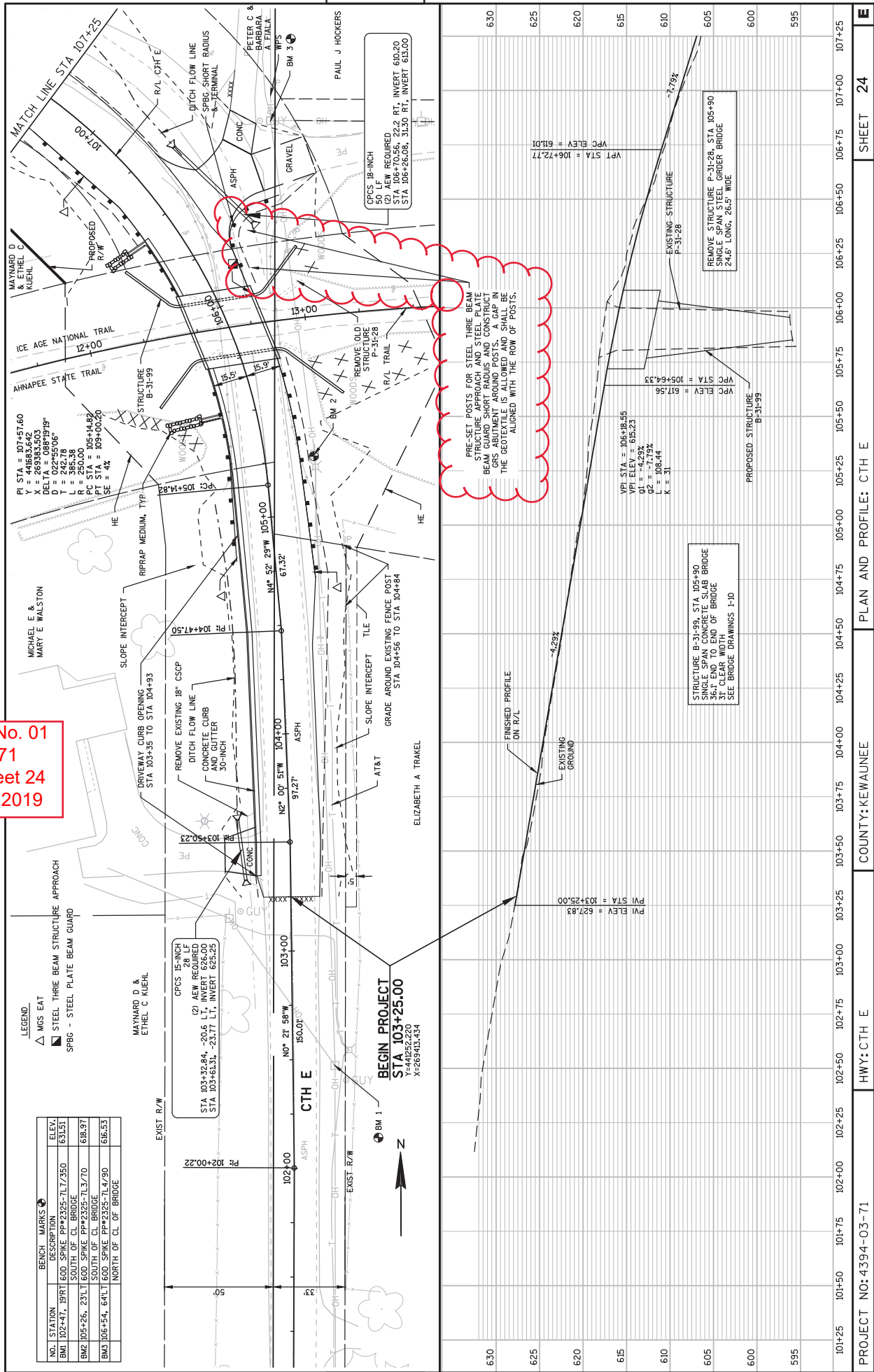
Plan Sheets

The following 8½ x 11-inch sheets are attached and made part of the plans for this proposal:

Revised: 8 and 24.

END OF ADDENDUM

Addendum No. 01
 ID 4394-03-71
 Revised Sheet 24
 January 10, 2019



NO. STATION	BENCH MARKS	DESCRIPTION	ELEV.
BMI 102+47	19RT	60D SPIKE PP-2325-7L7/350	631.51
BW2 105+26	23LT	60D SPIKE PP-2325-7L3/70	688.97
BW3 106+54	64LT	60D SPIKE PP-2325-7L4/90	616.53
		NORTH OF CL OF BRIDGE	

- LEGEND:
- M/S EAT
 - STEEL THREE BEAM STRUCTURE APPROACH
 - SPBG - STEEL PLATE BEAM GUARD

MAYNARD D. & ETHEL C. KUEHL

CPCS 15-INCH
 28 LF
 (2) AEW REQUIRED
 STA 103+32.84, -20.6 L.T., INVERT 625.25
 STA 103+61.31, -23.7 L.T., INVERT 625.25

CPCS 18-INCH
 50 LF
 (2) AEW REQUIRED
 STA 106+10.56, -22.6 RT, INVERT 610.00
 STA 106+63.05, -35.30 RT, INVERT 610.00

BEGIN PROJECT
 STA 103+25.00
 Y=440282.220
 X=269461.464

PROJECT NO: 4394-03-71

HWY: CTH E

COUNTY: KEWAUNEE

PLAN AND PROFILE: CTH E

SHEET 24

E