



Wisconsin Department of Transportation

Division of Transportation Systems Development

Bureau of Project Development
4822 Madison Yards Way, 4th Floor South
Madison, WI 53705

Telephone: (608) 266-1631
Facsimile (FAX): (608) 266-8459

February 4, 2019

NOTICE TO ALL CONTRACTORS:

**Proposal #02: 6085-02-74, WISC 2019 117
Waunakee – Sun Prairie
Broadway Drive Intersection
STH 19
Dane County**

Letting of February 12, 2019

This is Addendum No. 01, which provides for the following:

Plan Sheets:

Added Plan Sheets	
Plan Sheet	Plan Sheet Title (brief description of why sheet was added)
85A	Staging Plans – Stage 3 (South Broadway Drive Open) This sheet was added to show the Stage 3 traffic control when Broadway Drive south of STH 19 is open to right turning vehicles.

Plan Sheets

The following 8½ x 11-inch sheets are attached and made part of the plans for this proposal:
Added: 85A

The responsibility for notifying potential subcontractors and suppliers of these changes remains with the prime contractor.

Sincerely,

Mike Coleman

Proposal Development Specialist
Proposal Management Section

END OF ADDENDUM

TRAFFIC CONTROL NOTES:

- THE EXACT NUMBER, LOCATION, AND SPACING OF ALL SIGNS AND DEVICES SHALL BE ADJUSTED TO FIT FIELD CONDITIONS AS APPROVED BY THE ENGINEER.
- ALL SIGNS ARE 48"x48" UNLESS OTHERWISE NOTED.
- PAVEMENT MARKING WHICH MAY CONFLICT WITH TRAFFIC CONTROL "IN USE" SHALL BE REMOVED AS DIRECTED BY THE ENGINEER.
- ALL DRUM SPACING IS 25', UNLESS OTHERWISE NOTED.
- ALL FLEXIBLE TUBULAR MARKER POST AND BASE SPACING IS 25', UNLESS OTHERWISE NOTED.

TRAFFIC CONTROL PAVEMENT MARKING LEGEND

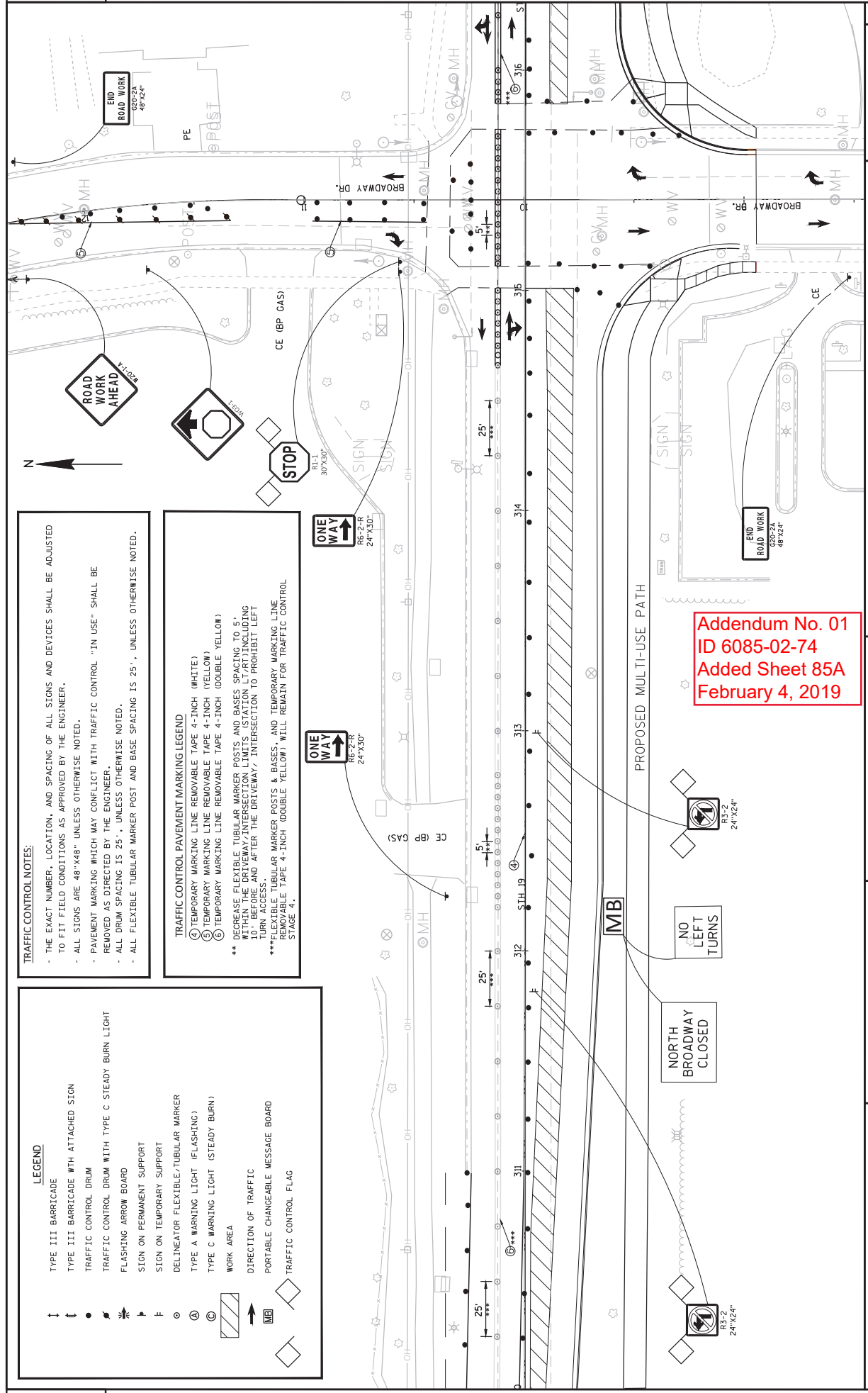
- ① TEMPORARY MARKING LINE REMOVABLE TAPE 4-INCH (WHITE)
- ② TEMPORARY MARKING LINE REMOVABLE TAPE 4-INCH (YELLOW)
- ③ TEMPORARY MARKING LINE REMOVABLE TAPE 4-INCH (DOUBLE YELLOW)

** DECREASE FLEXIBLE TUBULAR MARKER POSTS AND BASES SPACING TO 5' WITHIN THE DRIVEWAY/INTERSECTION LIMITS (STATION LY/RT) INCLUDING TURN ACCESS.

** FLEXIBLE TUBULAR MARKER POSTS & BASES, AND TEMPORARY MARKING LINE REMOVABLE TAPE 4-INCH (DOUBLE YELLOW) WILL REMAIN FOR TRAFFIC CONTROL STAGE 4.

LEGEND

- ↑ TYPE III BARRICADE
- ↓ TYPE III BARRICADE WITH ATTACHED SIGN
- TRAFFIC CONTROL DRUM
- ⊙ TRAFFIC CONTROL DRUM WITH TYPE C STEADY BURN LIGHT
- ⊙ FLASHING ARROW BOARD
- ⊙ SIGN ON PERMANENT SUPPORT
- ⊙ SIGN ON TEMPORARY SUPPORT
- DELINEATOR FLEXIBLE/TUBULAR MARKER
- ⊙ TYPE A WARNING LIGHT (FLASHING)
- ⊙ TYPE C WARNING LIGHT (STEADY BURN)
- ▨ WORK AREA
- DIRECTION OF TRAFFIC
- ⊠ PORTABLE CHANGEABLE MESSAGE BOARD
- ◇ TRAFFIC CONTROL FLAG



Addendum No. 01
ID 6085-02-74
Added Sheet 85A
February 4, 2019