



Wisconsin Department of Transportation

February 28, 2019

Division of Transportation Systems Development

Bureau of Project Development
 4802 Sheboygan Avenue, Rm 601
 P O Box 7916
 Madison, WI 53707-7916

Telephone: (608) 266-1631
 Facsimile (FAX): (608) 266-8459

NOTICE TO ALL CONTRACTORS:

Proposal #01: ID 1005-10-78, WISC 2019 200
Illinois State Line – Madison
Kennedy Road to Knutson Road
IH 39
Rock County

ID 1005-10-89, WISC 2019 201
Janesville – Madison
Safety Rest Area 17
IH 39
Rock County

Letting of March 12, 2019

This is Addendum No. 01, which provides for the following:

Special Provisions:

Revised Special Provisions	
Article No.	Description
91	Apron Endwalls for Culvert Pipe Salvaged 19x30-Inch, Item SPV.0060.102
140	Fire Protection Electric Service Meter and Control Panels, Item SPV.0105.006

Added Special Provisions	
Article No.	Description
152	Native American Hiring

Schedule of Items:

Revised Bid Item Quantities					
Bid Item	Item Description	Unit	Old Quantity	Revised Quantity	Proposal Total
522.0124	Culvert Pipe Reinforced Concrete Class III 24-Inch	LF	2,169	-103	2066
522.0130	Culvert Pipe Reinforced Concrete Class III 30-Inch	LF	260	141	401
522.0530	Culvert Pipe Reinforced Concrete Class V 30-Inch	LF	305	23	328
522.1024	Apron Endwalls for Culvert Pipe Reinforced Concrete 24-Inch	EACH	54	-2	52
522.1030	Apron Endwalls for Culvert Pipe Reinforced Concrete 30-Inch	EACH	14	2	16

522.2424	Culvert Pipe Reinforced Concrete Horizontal Elliptical Class HE-IV 24x38-Inch	LF	432	103	535
522.2624	Apron Endwalls for Culvert Pipe Reinforced Concrete Horizontal Elliptical 24x38-Inch	EACH	6	2	8
524.0624	Apron Endwalls for Culvert Pipe Salvaged 24-inch	EACH	4	-2	2
611.9800.S	Pipe Grates 004. 48-Inch	EACH	2	-1	1
633.5200	Markers Culvert End	EACH	116	2	118

Added Bid Item Quantities					
Bid Item	Item Description	Unit	Old Quantity	Revised Quantity	Proposal Total
522.0536	Culvert Pipe reinforced Concrete Class V 36-Inch	LF	0	88	88
628.1920	Cleaning Sediment Basins	CY	0	50	50
SPV.0060	Special 103. Apron Endwalls for Culvert Pipe Horizontal Elliptical Salvaged 24x38-Inch	EACH	0	2	2

Deleted Bid Item Quantities					
Bid Item	Item Description	Unit	Old Quantity	Revised Quantity	Proposal Total
522.0136	Culvert Pipe Reinforced Concrete Class III 36-Inch	LF	88	-88	0

Plan Sheets:

Revised Plan Sheets	
Plan Sheet	Plan Sheet Title (brief description of changes to sheet)
2	General Notes: update contact
85	Construction Details: remove temporary pipe extension
854-861, 870	Miscellaneous Quantities: update culvert pipe quantities
1426, 1648	Cross Sections: update culvert pipe notes
1458, 1462, 1651, 1657	Cross Sections: update apron endwall notes to clarify use of salvaged endwalls

The responsibility for notifying potential subcontractors and suppliers of these changes remains with the prime contractor.

Sincerely,

Mike Coleman

Proposal Development Specialist
Proposal Management Section

ADDENDUM NO. 01
1005-10-78, 1005-10-89
February 28, 2019

Special Provisions

91. Apron Endwalls for Culvert Pipe Salvaged 19x30-Inch, Item SPV.0060.102.

Revise the title to the following:

Apron Endwalls for Culvert Pipe Salvaged 19x30-Inch, Item SPV.0060.102, 24x38-Inch, Item SPV.0060.103.

Replace section D Measurement with the following:

The department will measure Apron Endwalls for Culvert Pipe Salvaged (Size) as each individual unit, acceptably completed.

Replace section E Payment with the following:

The department will pay for measured quantities at the contract unit price under the following bid item:

ITEM NUMBER	DESCRIPTION	UNIT
SPV.0060.102	Apron Endwalls for Culvert Pipe Salvaged 19x30-inch	Each
SPV.0060.103	Apron Endwalls for Culvert Pipe Salvaged 24x38-inch	Each

Payment is full compensation for removing existing apron endwalls; for cleaning, transporting, and installing apron endwalls, including bands or connectors; for all excavating including forming bedding; for joint ties if required; for backfilling; and for furnishing all labor, tools, equipment, and incidentals necessary to complete the contract work.

140. Fire Protection Electric Service Meter and Control Panels, Item SPV.0105.006.

Add the following to section C Construction:

The contractor shall be responsible for coordination with the Rock County Energy Cooperative to provide a 3-phase, 400A, 277/480V service lateral from the utility's transformer to the electrical service meter location as shown on the plans and indicated in the field.

152. Native American Hiring.

Pre-Bid,

Before bid submittal, contact the Ho-Chunk Nation Department of Labor to provide information on hiring procedures and future employment opportunities, and gather information on the tribal work force.

Ho-Chunk Nation Department of Labor contact information:

Tracy Thundercloud
Executive Director of Labor
PO Box 667
Black River Fall, WI 54615
(715) 284-9343 ext. 1140
tracy.thundercloud@ho-chunk.com

Maintain documentation of all efforts made to communicate with the Ho-Chunk Nation. Pre-bid, submit documentation to the Bureau of Project Development at DOTDTSDDHighwayConstructionContractors@dot.wi.gov in conjunction with the Proposal Request Form. The Eligible Bidders list will not be updated until this documentation is received. Include the following information in documentation:

- Proposal number/route number/termini/county
- Person(s) contacted
- Method of communication (phone, email, written, in person)
- Information exchanged (hiring procedures, available positions, referrals received, employee performance, etc)

After Execution

At a minimum of three days before the tribal coordination meeting, contact the Ho-Chunk Nation Tribal Workforce Development Manager to provide the following information regarding available employment opportunities for prime and subcontractors:

- Job classification/trade
- Job qualifications and required skills
- Employment period
- Wage
- Copy of job application

After receiving employment opportunities, the Ho-Chunk Nation Workforce Training and Development office will within two business days provide employment referrals, or provide other recruitment sources to obtain qualified referrals.

Document all efforts made to communicate job opportunities and the results of hiring activities throughout the life of the contract. At any time during the life of the contract, provide Ho-Chunk Nation communication documentation within five business days of request by the department.

Tribal Coordination Meeting

Between execution of contract and the project preconstruction conference, setup and coordinate a meeting with the Tribal officials and leaders at Ho-Chunk Nation and notify and invite WisDOT Statewide Tribal Liaison, 4822 Madison Yards Way, 4th Floor South, P.O. Box 7965, Madison, WI 53707-7965, ryan.greendeer@dot.wi.gov, (608) 347-1873. The prime contractor and all subcontractors shall attend this meeting. Discuss available employment opportunities and other tribal areas of interest such as scope of work, Tribal regulations, borrow sites, waste sites, and available aggregate.

Project Completion

As a part of the document submittals required under standard spec 109.7, submit documentation summarizing communications regarding job opportunities throughout the life of the contract. Provide final report to the tribe and Statewide Tribal Affairs compiling the results of hiring activities for the prime contractor as well as for subcontractors at all tiers.

107-200 (20140630)

Schedule of Items

Attached, dated February 28, 2019, are the revised Schedule of Items Pages 1 – 34.

Plan Sheets

The following 8½ x 11-inch sheets are attached and made part of the plans for this proposal:

Revised: 2, 85, 854-861, 870, 1426, 1458, 1462, 1648, 1651, 1657

END OF ADDENDUM

ABBREVIATIONS

BAD BASE AGGREGATE DENSE
 BM BENCH MARK
 BLDG. BUILDING
 CTR CENTER
 C/L CENTERLINE
 CONC. CONCRETE
 CSW CONCRETE SIDEWALK
 CMCP CORRUGATED METAL CULVERT PIPE
 CP CULVERT PIPE
 CPSC CULVERT PIPE CORRUGATED STEEL
 CPRC CULVERT PIPE REINFORCED CONCRETE
 CPCHC CULVERT PIPE REINFORCED CONCRETE
 HORIZONTAL ELLIPTICAL
 CONSTRUCTION PERMIT
 CPT CENTER
 CTR CENTER
 EAT EATING TERMINAL
 ELEC ELECTRICAL
 ELEC ELECTRIC
 EX. OR EXIST EXISTING
 FO FIBER OPTIC
 F.E. FIELD ENTRANCE
 GAS GAS
 HMA HOT MIX ASPHALT
 HSE. HOUSE
 LHF LEFT HAND FORWARD
 MH MANHOLE
 MAX. MAXIMUM
 MIN. MINIMUM
 NB NORTHBOUND
 NOR. NORMAL
 NTS NOT TO SCALE
 P.E. PERMANENT LIMITED EASEMENT
 P.L. PRIVATE ENTRANCE
 PRW PROPERTY LINE
 PROPOSED LINE
 RAD OR R RADIUS
 R/L REFERENCE LINE
 R/L REQUIRED
 RHF RIGHT HAND FORWARD
 RW RIGHT-OF-WAY LINE
 SAN SANITARY SEWER
 SB SOUTHBOUND
 SHLD SHOULDER
 SHD SIDEWALK
 SW SQUARE FEET
 SY SQUARE YARD
 S.D.D. STANDARD DETAIL DRAWING
 STA STATION
 SS STORM SEWER
 TEL TELEPHONE
 TLE TEMPORARY LIMITED EASEMENT
 TYP TYPICAL
 WAT WATER
 WB WESTBOUND

DIGGERS HOTLINE
 Dial 811 or (800) 242-8511
 www.DiggersHotline.com

UTILITY CONTACTS

ELECTRIC
 TONY HAFFELDER
 ROCK ENERGY COOPERATIVE
 2815 KENNEDY ROAD
 P.O. BOX 1758
 JOHNSTON, IA 50131
 (402) 530-2011
 Jason.Gould@engco.com

GAS
 JASON GOULD
 NORTHERN NATURAL GAS COMPANY
 123 E DELAVAN DR
 JANESVILLE, WI 53546
 (608) 373-3471
 thliesenhusenc@ci.janesville.wi.us

SEWER
 CRAIG THIESENHUSEN
 CITY OF JANESVILLE
 430 E. HIGH STREET, SUITE 3
 MILTON, WI 53563
 (608) 868-6314
 tr@omisonemiltron-wi.gov

LIGHTING
 GRAHAM HEITZ
 WISDOT
 2101 WRIGHT STREET, 12
 MADISON, WI 53704
 (608) 246-5362
 Graham.Heitz@dot.wi.gov

COMMUNICATIONS
 KEVIN ZICKER
 CENTURYLINK
 224 INDUSTRIAL DR
 NORTH PRAIRIE, WI 53153
 (262) 352-5200
 Kevin.Zicker@centurylink.com

RAILROAD
 ROGER SCHAALE
 WISCONSIN & SOUTHERN RAILROAD
 SUPERINTENDANT OF MAINTENANCE
 1890 E. JOHNSON STREET
 MADISON, WI 53704
 (608) 620-2044
 r.schaale@wattco.companies.com

ITS
 KYLE HEMP
 WISDOT
 2101 WRIGHT STREET, 7F
 MADISON, WI 53704
 (608) 246-5367
 Kyle.Hemp@dot.wi.gov

Addendum No. 01
 ID 1005-10-78/89
 Revised Sheet 2
 February 28, 2019

ORDER OF DETAIL SHEETS

PROJECT OVERVIEW
 EXISTING TYPICAL SECTIONS
 IH 39/90
 REST AREA RAMPS
 SIDEROADS
 FINISHED TYPICAL SECTIONS
 IH 39/90
 REST AREA RAMPS
 SIDEROADS
 TEMPORARY TYPICAL SECTIONS
 CONSTRUCTION DETAILS
 BASE DETAILS
 REMOVAL PLAN
 PLAN DETAILS
 PERMANENT
 TEMPORARY
 PAVING DETAILS
 EROSION CONTROL PLAN
 STORM SEWER PLAN
 TEMPORARY DRAINAGE PLAN
 UTILITY PLAN (FORCE MAIN)
 PLANTING DETAILS
 SIGNING REMOVAL/PERMANENT PLAN
 PAVEMENT MARKING PLAN
 ELECTRICAL PLANS
 LIGHTING
 ITS
 TRAFFIC CONTROL PLAN
 DETOUR PLAN
 FENCING PLAN
 ALIGNMENT DIAGRAM
 SUPER ELEVATION TABLES
 BENCHMARKS, CONTROL POINTS, & BORINGS

DESIGN CONTACT

BRAD HALVENSEN, P.E.
 KL ENGINEERING, INC.
 5400 KING JAMES WAY
 SUITE 200
 MADISON, WI 53711
 bhalvensen@klengineering.com

DESIGN CONTACT

DEREK POTTER, P.E.
 WISCONSIN DEPARTMENT OF TRANSPORTATION
 III INTERSTATE BLVD
 EDGERTON, WI 53534
 (608) 884-7135
 Derek.Potter@dot.wi.gov

WISDOT ROADSIDE FACILITIES

BIREN PATEL
 WISDOT BUREAU OF HIGHWAY MAINTENANCE
 PO BOX 7986
 JANESVILLE, WI 53545
 (608) 757-5450
 b.patel@dot.wi.gov

ROCK COUNTY HIGHWAY

DUANE JORGENSEN, P.E.
 3715 NEWVILLE ROAD
 JANESVILLE, WI 53545
 (608) 757-5450
 djorgense@rock.wi.us

DNR LIAISON

ERIC HEGGELUND
 DEPARTMENT OF NATURAL RESOURCES
 DNR SOUTH CENTRAL REGION HEADQUARTERS
 3911 FISH HATCHERY ROAD
 FITCHBURG, WI 53711
 (608) 275-3301
 eric.heggelund@wisconsin.gov

TRAFFIC MANAGEMENT CENTER (TMC)

DEAN BEEKMAN
 WISDOT TMC
 433 W. ST. PAUL STREET #300
 MILWAUKEE, WI 53203
 (414) 227-2154
 dean.beekman@dot.wi.gov

PROJECT NO: 1005-10-78, 1005-10-89 HWY: IH 39/90

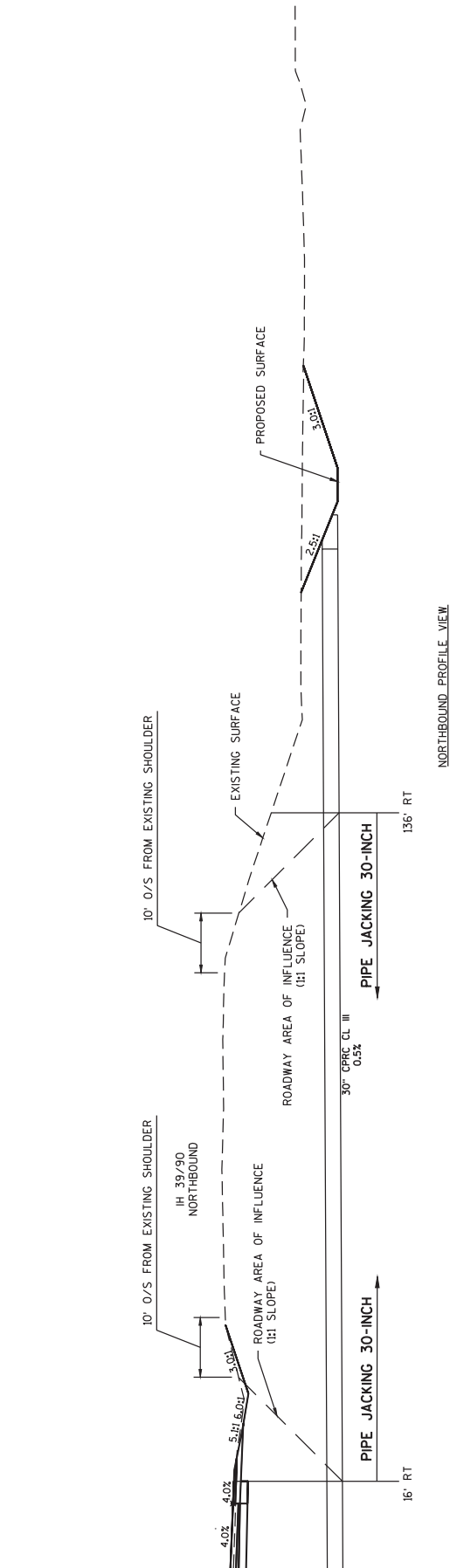
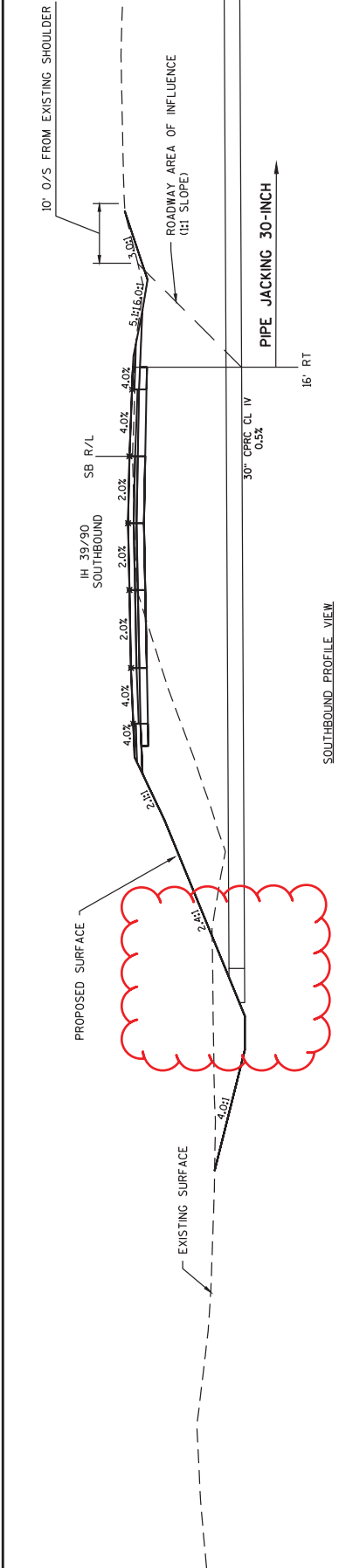
COUNTY: ROCK

GENERAL NOTES

SHEET

2

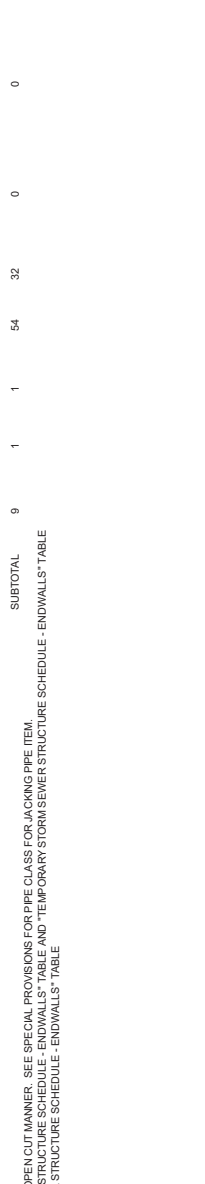
Addendum No. 01
 ID 1005-10-78/89
 Revised Sheet 85
 February 28, 2019



PIPE JACKING 30-INCH - STA 1296+25'SB'
 STAGE 2 CONSTRUCTION LIMITS

Addendum No. 01
ID 1005-10-78/89
Revised Sheet 854
February 28, 2019

PROJECT 1005-10-78 CATEGORY 1000	CULVERT PIPE										APRON ENDWALLS FOR CULVERT PIPE SLOPED SIDE 19-INCH TO 24-INCH (EACH)	APRON ENDWALLS FOR CULVERT PIPE SLOPED SIDE 24-INCH TO 1 24-INCH (EACH)				
	ROADWAY	STATION	INLET	STATION	OUTLET	STATION	OFFSET	ELEVATION	SKEW	%			SLOPE	PIPE THICKNESS	CONCRETE COLLARS	APRON ENDWALLS FOR CULVERT PIPE SLOPED SIDE 18-INCH TO 24-INCH (EACH)
STAGE 1, PHASE 1	EXISTING SB IH 39/90	1058+75.7WSB	57.2' LT	928.06	1058+73.7WSB	48.3' LT	927.65	9+44.43' LHF	5.10	III	-	1	0	0	0	0
STAGE 1, PHASE 2	EXISTING SB IH 39/90	1059+45.7WSB	40.5' RT	922.85	1059+47.7WSB	60.0' RT	921.37	9+44.43' LHF	5.10	III	-	1	0	0	0	0
STAGE 1, PHASE 2 SUBTOTAL	CROSSOVER 'XA'	1074+23.3XA	47.8' RT	908.21	1074+23.3XA	81.9' RT	907.90	10'000' RHF	0.91	III	-	1	0	0	0	0
STAGE 1, PHASE 2 SUBTOTAL	CROSSOVER 'XA'	1085+91.3XA	40.7' LT	927.80	1083+85.3XA	49.6' RT	926.50	68'36'36" LHF	0.59	V	-	2	0	0	0	0
STAGE 2, PHASE 2	TOWAINE ROAD	121+10.1EITL	26.7' RT	930.00	144+15.1EITL	26.2' RT	928.91	-	0.53	III	-	-	-	-	-	-
STAGE 2, PHASE 2	TOWAINE ROAD	121+15.1EITL	26.2' LT	930.00	144+15.1EITL	26.8' LT	928.90	-	0.55	III	-	-	-	-	-	-
STAGE 2, PHASE 2	SB IH 39/90	1135+75.5SB	68.0' LT	928.15	1135+75.5SB	33.0' RT	927.84	-	0.21	III	-	-	-	-	-	-
STAGE 2, PHASE 2	SB IH 39/90	1141+50.5SB	65.0' LT	924.29	1141+50.5SB	35.0' RT	924.11	-	0.18	IV	-	-	-	-	-	-
STAGE 2, PHASE 2	SB IH 39/90	1141+50.5SB	65.0' LT	924.29	1141+50.5SB	35.0' RT	924.11	-	0.18	IV	-	-	-	-	-	-
STAGE 2, PHASE 2	SB IH 39/90	1142+39.5SB	46.8' RT	923.70	-	-	-	-	-	-	-	-	-	-	-	-
STAGE 2, PHASE 2	SB IH 39/90	1142+39.5SB	46.8' RT	923.70	-	-	-	-	-	-	-	-	-	-	-	-
STAGE 2, PHASE 2	SB IH 39/90	1154+50.5SB	63.0' LT	914.77	1154+50.5SB	33.6' RT	914.26	-	1.22	V	-	-	-	-	-	-
STAGE 2, PHASE 2	SB IH 39/90	1177+00.5SB	63.0' LT	879.83	1177+00.5SB	81.0' LT	875.03	-	4.32	V	-	-	-	-	-	-
STAGE 2, PHASE 2	SB IH 39/90	1144+38.5SB	92.4' LT	838.92	1144+38.5SB	138.3' LT	838.84	-	0.17	-	-	1	0	0	0	0
STAGE 2, PHASE 2	CTHM	1145+35.5CHM	27.4' RT	855.75	1177+00.5SB	3.5' RT	854.10	-	1.16	III	-	-	-	-	-	-
STAGE 2, PHASE 2	CTHM	1145+35.5CHM	27.4' RT	855.75	1177+00.5SB	3.5' RT	854.10	-	1.16	III	-	-	-	-	-	-
STAGE 2, PHASE 2	SB IH 39/90	123+06.5SB	28.8' LT	864.89	123+06.5SB	28.8' LT	864.72	-	0.18	V	-	-	-	-	-	-
STAGE 2, PHASE 2	SB IH 39/90	123+06.5SB	28.8' LT	864.89	123+06.5SB	28.8' LT	864.72	-	0.18	V	-	-	-	-	-	-
STAGE 2, PHASE 2	SB IH 39/90	1232+00.5SB	21.1' RT	870.47	1232+00.5SB	67.9' LT	870.02	-	0.50	IV	-	-	-	-	-	-
STAGE 2, PHASE 2	SB IH 39/90	1241+98.5SB	33.9' RT	871.93	1242+00.5SB	71.7' LT	871.40	-	0.50	III	-	-	-	-	-	-
STAGE 2, PHASE 2	SB IH 39/90	1244+00.5SB	35.8' RT	871.78	1244+00.5SB	68.9' LT	872.84	-	0.50	III	-	-	-	-	-	-
STAGE 2, PHASE 2	SB IH 39/90	1264+00.5SB	51.0' RT	875.88	1264+00.5SB	73.4' LT	875.10	-	0.60	III	-	-	-	-	-	-
STAGE 2, PHASE 2	SB IH 39/90	1275+00.5SB	33.2' RT	882.42	1275+00.5SB	64.9' LT	880.71	-	1.70	IV	-	-	-	-	-	-
STAGE 2, PHASE 2	SB IH 39/90	1288+25.5SB	182.9' RT	863.09	1288+25.5SB	91.8' RT	863.05	-	0.50	III	-	-	-	-	-	-
STAGE 2, PHASE 2	SB IH 39/90	1305+54.5SB	48.2' LT	860.26	1305+54.5SB	79.7' LT	860.02	-	0.80	-	-	1	0	0	0	0
STAGE 2, PHASE 2	SB IH 39/90	1334+53.5SB	42.1' RT	872.01	1334+54.5SB	50.1' RT	871.90	-	0.084	IV	-	-	8	0	0	0
STAGE 2, PHASE 2 SUBTOTAL	NEWVILLE ROAD	11+50.0NR	15.2' RT	863.29	11+50.0NR	20.2' LT	863.21	-	0.50	IV	-	5	1	1	54	32
STAGE 2, PHASE 2 SUBTOTAL																
STAGE 4, PHASE 1	SB IH 39/90	1037+55.5SB	138.9' LT	864.29	1038+38	159.2' RT	849.49	-	3.92	V	-	-	-	-	-	-
STAGE 4, PHASE 1	SB IH 39/90	1041+50	19.0' LT	900.80	1041+50	65.7' RT	897.53	-	4.00	IV	-	-	-	-	-	-
STAGE 4, PHASE 1	SB IH 39/90	1073+02.7XB	58.0' LT	900.00	1073+00	109.0' RT	897.50	-	1.59	III	-	-	-	-	-	-
STAGE 4, PHASE 1 SUBTOTAL																
STAGE 4, PHASE 2	SB IH 39/90	1078+30.7XB	38.8' LT	916.61	1078+25	78.0' RT	914.00	-	2.42	V	-	-	-	-	-	-
STAGE 4, PHASE 2 SUBTOTAL																



* PIPE CLASS NOTED FOR PIPES INSTALLED IN AN OPEN CUT MANNER. SEE SPECIAL PROVISIONS FOR PIPE CLASS FOR JACKING PIPE ITEM.
 **ADDITIONAL QUANTITY FOUND IN "STORM SEWER STRUCTURE SCHEDULE - ENDWALLS" TABLE
 ***ADDITIONAL QUANTITY FOUND IN "STORM SEWER STRUCTURE SCHEDULE - ENDWALLS" TABLE

CULVERT PIPE (CONTINUED)

PROJECT 1005-10-78 CATEGORY 1000	ROADWAY	STATION	OFFSET	ELEVATION	STATION	OFFSET	ELEVATION	SKREW	%	CLASS	PIPE THICKNESS (IN)	PIPE STEEL (LN)	MARKERS FOR CULVERT PIPE END (EACH)	APRON ENDWALLS FOR CULVERT PIPE SALVAGED 19X39-INCH (EACH)	PIPE FOR CULVERT PIPE SALVAGED 24X38-INCH (EACH)	PIPE FOR CULVERT PIPE SALVAGED 19-INCH (LF)	PIPE FOR CULVERT PIPE SALVAGED 60-INCH (LF)	
		10887+751WSB'	57.2' LT	928.08	10887+731WSB'	49.3' LT	927.65	9'4443" LHF	5.10	III	-	-	0	0	0	0	0	
		STAGE 1 PHASE 1 SUBTOTAL																
		1085+581WSB'	40.9' RT	922.85	1085+531WSB'	68.0' RT	921.37	9'4443" LHF	5.10	III	-	-	-	-	-	-	-	
		1085+581WSB'	40.9' RT	922.85	1085+531WSB'	68.0' RT	921.37	9'4443" LHF	5.10	III	-	-	-	-	-	-	-	
		1095+411XA'	40.7' LT	927.60	1093+482XA'	48.6' RT	926.50	8'3639" LHF	0.59	V	-	-	-	-	-	-	-	
		STAGE 1 PHASE 2 SUBTOTAL																
		1142+395SB'	65.0' LT	924.29	1141+560SB'	35.0' RT	924.11	-	0.18	IV	-	-	1	-	-	-	-	
		1142+395SB'	65.0' LT	924.29	1141+560SB'	35.0' RT	924.11	-	0.18	IV	-	-	1	-	-	-	-	
		1154+505SB'	48.6' RT	914.25	1154+505SB'	33.6' RT	914.26	-	1.72	V	-	-	-	-	-	-	-	
		1177+078SB'	30.0' RT	879.83	1177+078SB'	30.0' RT	879.83	-	4.32	V	-	-	2	-	-	-	-	
		1184+385SB'	32.4' LT	838.92	1184+385SB'	38.3' LT	838.84	-	0.17	V	-	-	2	-	-	-	-	
		1245+CHM'	27.4' RT	855.75	134+CHM'	26.5' RT	854.10	-	1.16	III	-	-	1	-	-	-	-	
		1245+CHM'	27.4' RT	855.75	134+CHM'	26.5' RT	854.10	-	1.16	III	-	-	1	-	-	-	-	
		1263+065SB'	26.8' LT	864.89	1263+065SB'	26.8' LT	864.72	8'5922" RHF	0.18	V	-	-	2	-	-	-	-	
		1213+065SB'	28.9' LT	864.89	1213+065SB'	64.8' LT	864.72	8'5922" RHF	0.18	V	-	-	2	-	-	-	-	
		1241+085SB'	33.9' RT	871.93	1242+005SB'	71.7' LT	871.40	3'95118" LHF	0.50	III	-	-	1	-	-	-	-	
		1244+005SB'	35.9' RT	871.78	1244+005SB'	68.9' LT	872.94	-	0.50	III	-	-	2	-	-	-	-	
		1264+005SB'	51.0' RT	875.88	1264+005SB'	73.4' LT	875.10	-	0.60	III	-	-	2	-	-	-	-	
		1275+005SB'	33.2' RT	882.42	1275+005SB'	64.9' LT	880.71	-	1.70	IV	-	-	2	-	-	-	-	
		1288+005SB'	42.9' LT	881.09	1288+005SB'	177.3' RT	880.05	-	0.40	III	-	-	1	-	-	-	-	
		1305+545SB'	48.2' RT	860.26	1305+545SB'	70.7' LT	860.00	-	0.96	IV	-	-	2	-	-	-	-	
		1334+545SB'	42.1' RT	872.01	1334+545SB'	50.1' RT	871.90	5'936" RHF	1.30	IV	-	-	2	-	-	-	-	
		11+50'NR'	15.2' RT	863.29	11+50'NR'	20.2' LT	863.21	-	0.50	IV	-	-	2	-	-	-	-	
		STAGE 2 PHASE 2 SUBTOTAL																
		1037+565SB'	138.0' LT	864.29	1038+338	158.2' RT	849.49	18'3530" RHF	3.92	V	-	-	2	-	-	-	-	
		1041+50	19.0' LT	900.80	1041+50	65.7' RT	897.53	-	4.00	IV	-	-	2	-	-	-	-	
		1073+027XB'	58.0' LT	900.00	1073+00	109.0' RT	897.50	-	1.59	III	-	-	2	-	-	-	-	
		1078+307XB'	38.8' LT	916.61	1078+25	78.0' RT	914.00	-	2.42	V	-	-	2	-	-	-	-	
		STAGE 4 PHASE 1 SUBTOTAL																
		1260+00	33.5' LT	875.30	1260+00	82.9' RT	874.93	-	0.50	III	-	-	2	-	-	-	-	
		1268+00	45.0' LT	876.16	1268+00	95.7' RT	873.27	-	2.10	III	-	-	2	-	-	-	-	
		1301+00	54.0' LT	-	-	-	-	-	-	III	-	-	2	-	-	-	-	
		STAGE 4 PHASE 2 SUBTOTAL																
		SUBTOTAL										40	0	0	221	267		

* PIPE CLASS NOTED FOR PIPES INSTALLED IN AN OPEN CUT MANNER. SEE SPECIAL PROVISIONS FOR PIPE CLASS FOR JACKING PIPE ITEM.
 **ADDITIONAL QUANTITY FOUND IN "STORM SEWER STRUCTURE SCHEDULE - ENDWALLS" TABLE AND "TEMPORARY STORM SEWER STRUCTURE SCHEDULE - ENDWALLS" TABLE
 ***ADDITIONAL QUANTITY FOUND IN "STORM SEWER STRUCTURE SCHEDULE - ENDWALLS" TABLE

Addendum No. 01
 ID 1005-10-78/89
 Revised Sheet 857
 February 28, 2019

CULVERT PIPE (CONTINUED)

PROJECT 1005-10-78 CATEGORY 1000	ROADWAY	INLET	STATION	OFFSET	ELEVATION	STATION	OFFSET	ELEVATION	SKEW	SLOPE	PIPE THICKNESS (IN)	PIPE CLASS	%	APRON ENDWALLS		CULVERT PIPE		APRON ENDWALLS								
														FOR PIPE	COLLARS	CONCRETE	FOR PIPE	COLLARS	CONCRETE	FOR PIPE	COLLARS	CONCRETE				
														18"XCHT 24"NGHT	18"XCHT 24"NGHT	18"XCHT 24"NGHT	18"XCHT 24"NGHT	18"XCHT 24"NGHT	18"XCHT 24"NGHT	18"XCHT 24"NGHT	18"XCHT 24"NGHT	18"XCHT 24"NGHT	18"XCHT 24"NGHT			
														(EACH)	(EACH)	(EACH)	(EACH)	(EACH)	(EACH)	(EACH)	(EACH)	(EACH)	(EACH)			
														(LF)	(LF)	(LF)	(LF)	(LF)	(LF)	(LF)	(LF)	(LF)	(LF)			
														0	1	1	54	32	0	0	0	0	0			
														SUBTOTAL						0	1	1	86	112	2	2
STAGE 4, PHASE 3																										
NB IH 3960		1098+50	57.0 LT	941.00		1098+50	101.0 RT	932.28			5.52	III														
TOWNLINER ROAD		14+18EITL	25.8 RT	928.91		15+66EITL	25.7 RT	928.10			0.53	III														
NB IH 3960		1100+95	51.0 LT	942.40		1100+76	100.0 RT	935.00	7°07'15" LHF		4.90	III														
NB IH 3960		1120+50	26.0 LT	925.74		1120+50	62.0 RT	925.35			0.14	V														
NB IH 3960		1135+50	32.0 LT	927.89		1135+50	71.0 RT	927.61			0.23	IV														
NB IH 3960		1141+50	48.0 LT	924.11		1141+50	67.0 RT	923.84			0.18	IV														
NB IH 3960		1150+80	25.0 RT	915.39		1150+87	62.0 RT	917.85			0.18	V														
NB IH 3960		1204+37	30.0 LT	874.38		1204+97	67.0 RT	870.00			4.56	V														
CTH M		1377CHM	26.5 RT	854.10		15+14CHM	25.7 RT	852.50			1.16	III														
NB IH 3960		1377CHM	26.6 LT	854.10		15+14CHM	27.0 LT	852.50			1.16	III														
NB IH 3960		1213+25	55.0 RT	865.69		1213+08	25.0 LT	864.99	8°13'03" RHF		0.36	V														
NB IH 3960		1213+25	55.0 RT	865.69		1213+12	25.0 LT	864.99	8°13'03" RHF		0.36	V														
STAGE 4, PHASE 3 SUBTOTAL														0	0	0	0	0	0	0	0	0	0			
STAGE 5, PHASE 1																										
MAINTENANCE CROSSOVERS																										
STAGE 5, PHASE 1 SUBTOTAL																										
STAGE 6, PHASE 2																										
MAINTENANCE CROSSOVERS																										
STAGE 6, PHASE 2 SUBTOTAL																										
STAGE 5, PHASE 2																										
SB IH 3960		1058+50SB	60.0 LT	931.00		1058+50SB	44.0 RT	935.00			5.71	IV														
SB IH 3960		1074+68SB	98.0 LT	912.10		1079+00SB	80.0 RT	906.25	15°14'41" LHF		3.18	III														
SB IH 3960		1079+00SB	72.0 LT	926.53		1079+00SB	39.0 RT	925.50			0.93	III														
SB IH 3960		1284+00SB	44.3 RT	875.64		1282+00SB	68.5 LT	870.07																		
SB IH 3960		1288+00SB	77.0 LT	881.07																						
MAINTENANCE CROSSOVER		12469NR	100.1 LT	863.94		12447NR	77.2 LT	863.75			0.64	V														
STAGE 5, PHASE 2 SUBTOTAL														0	0	0	32	0	2	2	0	0				
1005-10-78 PROJECT TOTAL																										
PROJECT TOTALS														9	1	1	86	112	2	2	0	0				
PROJECT 1005-10-89																										
CATEGORY 1000																										
STAGE 2, PHASE 2																										
REST AREA PARKING		1121+50RAA	62.0 RT	922.26		1121+50RAA	37.0 LT	919.41			2.88	III														
REST AREA PARKING		65+03RAS	39.4 LT	921.79		64+54RAS	151.4 LT	921.04	33°06'00" RHF		0.60	V														
STAGE 2, PHASE 2 SUBTOTAL														1	0	0	0	0	0	0	0	0				
1005-10-89 PROJECT TOTAL																										
PROJECT TOTALS														10	1	1	86	112	2	2	0	0				

* PIPE CLASS NOTED FOR PIPES INSTALLED IN AN OPEN CUT MANNER. SEE SPECIAL PROVISIONS FOR PIPE CLASS FOR JACKING PIPE ITEM.
 ** ADDITIONAL QUANTITY FOUND IN STORM SEWER STRUCTURE SCHEDULE - ENDWALLS TABLE AND TEMPORARY STORM SEWER STRUCTURE SCHEDULE - ENDWALLS TABLE
 *** ADDITIONAL QUANTITY FOUND IN STORM SEWER STRUCTURE SCHEDULE - ENDWALLS TABLE

Addendum No. 01
 ID 1005-10-78/89
 Revised Sheet 858
 February 28, 2019

Addendum No. 01
 ID 1005-10-78/89
 Revised Sheet 860
 February 28, 2019

CULVERT PIPE (CONTINUED)

ROADWAY	INLET		STATION		OFFSET ELEVATION	STATION	OFFSET ELEVATION	SKEW	PIPE CLASS	PIPE THICKNESS	PIPE STEEL	CULVERT PIPE CLASS	REINFORCED CONCRETE HORIZONTAL ELLIPTICAL CLASS	CULVERT PIPE CLASS	APRON ENDWALLS FOR CULVERT PIPE REINFORCED CONCRETE HORIZONTAL ELLIPTICAL	APRON ENDWALLS FOR CULVERT PIPE SALVAGED	APRON ENDWALLS FOR CULVERT PIPE	PIPE GRATES 36" X 36" (EACH)	PIPE GRATES 48" X 36" (EACH)	PIPE GRATES 48" X 48" (EACH)	PIPE GRATES 36" X 36" (EACH)	PIPE GRATES 48" X 36" (EACH)	PIPE GRATES 48" X 48" (EACH)	PIPE GRATES 36" X 36" (EACH)			
	STATION	OFFSET ELEVATION	STATION	OFFSET ELEVATION																							
PROJECT 1005-10-78 CATEGORY 1000																											
STAGE 4, PHASE 3																											
NB H 3960	1089+50	57.0' LT	941.00	1089+50	101.0' RT	932.28			III																		
TOWNLINER ROAD	14+15' ETL	26.2' RT	928.91	15+60' ETL	25.7' RT	928.10			0.53																		
NB H 3960	1100+85	51.0' LT	942.40	1100+76	100.0' RT	935.00		7'07'15" LHF	4.90																		
NB H 3960	1110+00	45.0' LT	950.98	1110+00	84.0' RT	925.69			3.77																		
NB H 3960	1124+50	39.0' LT	925.74	1124+50	92.0' RT	925.35			0.34																		
NB H 3960	1138+50	39.0' LT	924.11	1141+50	67.0' RT	923.94			0.16																		
NB H 3960	1141+56	49.0' LT	924.11	1141+56	67.0' RT	923.94			0.16																		
NB H 3960	1150+50	25.0' LT	918.39	1150+87	62.0' RT	917.85		23'18'03" RHF	0.55																		
NB H 3960	1158+50	50.4' LT	914.28	1154+50	70.0' RT	913.59			1.22																		
NB H 3960	1204+39	30.0' LT	874.38	1204+39	67.0' RT	870.00			4.58																		
NB H 3960	1207+50	30.0' LT	874.38	1207+50	67.0' RT	870.00			4.58																		
CTHM	1277' CHW	20' RT	854.10	15+14' CHW	27' 0" LT	852.50			1.18																		
NB H 3960	1213+23	58.0' RT	865.69	1213+08	25.0' LT	864.99			0.36																		
NB H 3960	1213+23	58.0' RT	865.69	1213+12	25.0' LT	864.99			0.36																		
STAGE 4, PHASE 3 SUBTOTAL																											
STAGE 5, PHASE 1																											
MAINTENANCE CROSSOVERS																											
STAGE 5, PHASE 1 SUBTOTAL																											
STAGE 5, PHASE 2																											
NB H 3960	1059+50'SB	60.0' LT	931.00	1039+50'SB	44.0' RT	925.00			5.77																		
NB H 3960	1079+00'SB	72.0' LT	926.53	1079+00'SB	39.0' RT	925.60			3.18																		
NB H 3960	1264+00'SB	44.3' RT	875.84	1232+00'SB	59.5' LT	870.07		15'14'41" LHF	0.85																		
NB H 3960	1286+00'SB	77.0' LT	881.07																								
NEWVILLE RD	1286+00'SB	77.0' LT	881.07																								
NB H 3960	1286+00'SB	77.0' LT	881.07	12+47' NR	77.3' LT	863.75			0.60																		
NB H 3960	1286+00'SB	77.0' LT	881.07	12+47' NR	77.3' LT	863.75			0.60																		
STAGE 5, PHASE 2 SUBTOTAL																											
1005-10-78 PROJECT TOTAL																											
PROJECT 1005-10-89																											
CATEGORY 1000																											
STAGE 2, PHASE 2																											
REST AREA PARKING	1121+50' PAS	62.0' RT	922.26	1121+50' PAS	37.0' LT	919.41			2.88																		
REST AREA PARKING	65+03' PAS	39.4' LT	921.79	64+50' PAS	151.4' LT	921.04			0.60																		
STAGE 2, PHASE 2 SUBTOTAL																											
1005-10-89 PROJECT TOTAL																											
PROJECT TOTALS																											
SUBTOTAL																											
TOTAL																											

* PIPE CLASS NOTED FOR PIPES INSTALLED IN AN OPEN CUT MANNER. SEE SPECIAL PROVISIONS FOR PIPE CLASS FOR JACKING PIPE ITEM.
 **ADDITIONAL QUANTITY FOUND IN "STORM SEWER STRUCTURE SCHEDULE - ENDWALLS" TABLE AND "TEMPORARY STORM SEWER STRUCTURE SCHEDULE - ENDWALLS" TABLE
 ***ADDITIONAL QUANTITY FOUND IN "STORM SEWER STRUCTURE SCHEDULE - ENDWALLS" TABLE

CULVERT PIPE (CONTINUED)

ROADWAY	STATION	INLET	STATION	OFFSET ELEVATION	STATION	OUTLET	STATION	OFFSET ELEVATION	SKEW	PIPE CLASS	PIPE THICKNESS (IN)	PIPE STEEL END (EACH)	MARKERS FOR CULVERT PIPE (EACH)	APRON ENDWALLS FOR CULVERT PIPE SALVAGED (EACH)	19X30X30CH (EACH)	24X38X30CH (EACH)	PIPE JACKING 30-INCH (LF)	PIPE JACKING 60-INCH (LF)	SPV.0060.103	SPV.0060.103	SPV.0060.103
STAGE 4, PHASE 3																					
NB IH 39/90	1098+50	57.0' LT	1098+50	641.00	1098+50	101.0' RT	925.28			III		40	0	0	0	0	221	0	0	0	267
TOWNLINER ROAD	14+15FT/L	26.2' RT	928.91	15+48E1/L	25.7' RT	928.10				III		2									
NB IH 39/90	1100+95	51.0' LT	942.40	1100+76	100.0' RT	935.00	7'07'15" LHF	4.90		III		2									
NB IH 39/90	1110+00	45.0' LT	930.86	1110+00	94.0' RT	925.69				III		2									
NB IH 39/90	1120+50	26.0' LT	925.74	1120+50	62.0' RT	925.35				V		2									
NB IH 39/90	1135+50	35.0' LT	927.89	1135+50	71.0' RT	927.61				V		2									
NB IH 39/90	1141+56	49.0' LT	924.11	1141+56	67.0' RT	923.94				V		2									
NB IH 39/90	1150+00	25.0' LT	918.39	1150+00	62.0' RT	917.85	23'18'09" RHF	0.15		V		2									
NB IH 39/90	1164+50	50.4' LT	914.26	1154+50	70.0' RT	913.59				V		1									
NB IH 39/90	1204+97	39.0' LT	874.38	1204+97	67.0' RT	870.00				V		2									
CTHM	3+77'CHM	26.5' RT	854.10	15+14'CHM	25.7' RT	852.50				III		1									
NB IH 39/90	1213+23	58.0' RT	865.69	1213+08	25.0' LT	864.99	8'13'03" RHF	0.38		V		2									
NB IH 39/90	1213+27	58.0' RT	865.69	1213+12	25.0' LT	864.99	8'13'03" RHF	0.38		V		2									
STAGE 4, PHASE 3 SUBTOTAL																					
SUBTOTAL																					
STAGE 5, PHASE 1																					
MAINTENANCE CROSSOVERS																					
STAGE 5, PHASE 1 SUBTOTAL																					
STAGE 5, PHASE 2																					
NEWVILLE RD																					
STAGE 5, PHASE 2 SUBTOTAL																					
1005-10-78 PROJECT TOTAL																					
PROJECT 1005-10-89																					
CATEGORY 1000																					
STAGE 2, PHASE 2																					
REST AREA PARKING																					
STAGE 2, PHASE 2 SUBTOTAL																					
1005-10-89 PROJECT TOTAL																					
PROJECT TOTALS																					

Addendum No. 01
 ID 1005-10-78/89
 Revised Sheet 861
 February 28, 2019

INLET PROTECTION

628.7005 628.7010 628.7015 628.7020

LOCATION	STATION - STATION	INLET PROTECTION			EACH	(EACH)	(EACH)
		TYPE A	TYPE B	TYPE C			
KENNEDY ROAD - TOWNLINE ROAD	1032+00'SB' - 1100+00'SB'	1	0	0	0	0	0
STAGE 1, PHASE 2 SUBTOTAL							
KENNEDY ROAD - TOWNLINE ROAD	1032+00'SB' - 1100+00'SB'	1	-	-	-	-	-
TOWNLINE ROAD - MANGOUE ROAD	1100+00'SB' - 1153+00'SB'	2	2	-	-	-	-
MANGOUE ROAD - WISOR	1153+00'SB' - 1196+50'SB'	3	3	-	-	-	-
CTH M - STA 1230+00	1206+00'SB' - 1220+00'SB'	2	2	-	-	-	-
STA 1230+00 - NEWVILLE ROAD	1230+00'SB' - 1293+50'SB'	1	-	-	-	-	-
NEWVILLE ROAD - KRUTSON ROAD	1293+50'SB' - 1342+82'SB'	6	-	-	-	-	-
STAGE 2, PHASE 2 SUBTOTAL							
PROJECT 1005-10-78 TOTAL							
PROJECT 1005-10-89 TOTAL							

MOBILIZATIONS EROSION CONTROL

628.1905 628.1910

PROJECT	EMERGENCY (EACH)	(EACH)	(EACH)
STAGE 1, PHASE 1	1	1	1
STAGE 1, PHASE 2	2	1	1
STAGE 2, PHASE 1	8	4	4
STAGE 2, PHASE 2	2	1	1
STAGE 4, PHASE 1			
STAGE 4, PHASE 2	8	4	4
STAGE 4, PHASE 3	4	2	2
STAGE 4, PHASE 4	1	1	1
STAGE 5, PHASE 1	2	1	1
STAGE 5, PHASE 2	2	1	1
PROJECT 1005-10-78 TOTAL			
PROJECT 1005-10-89 TOTAL			

Addendum No. 01
ID 1005-10-78/89
Revised Sheet 870
February 28, 2019

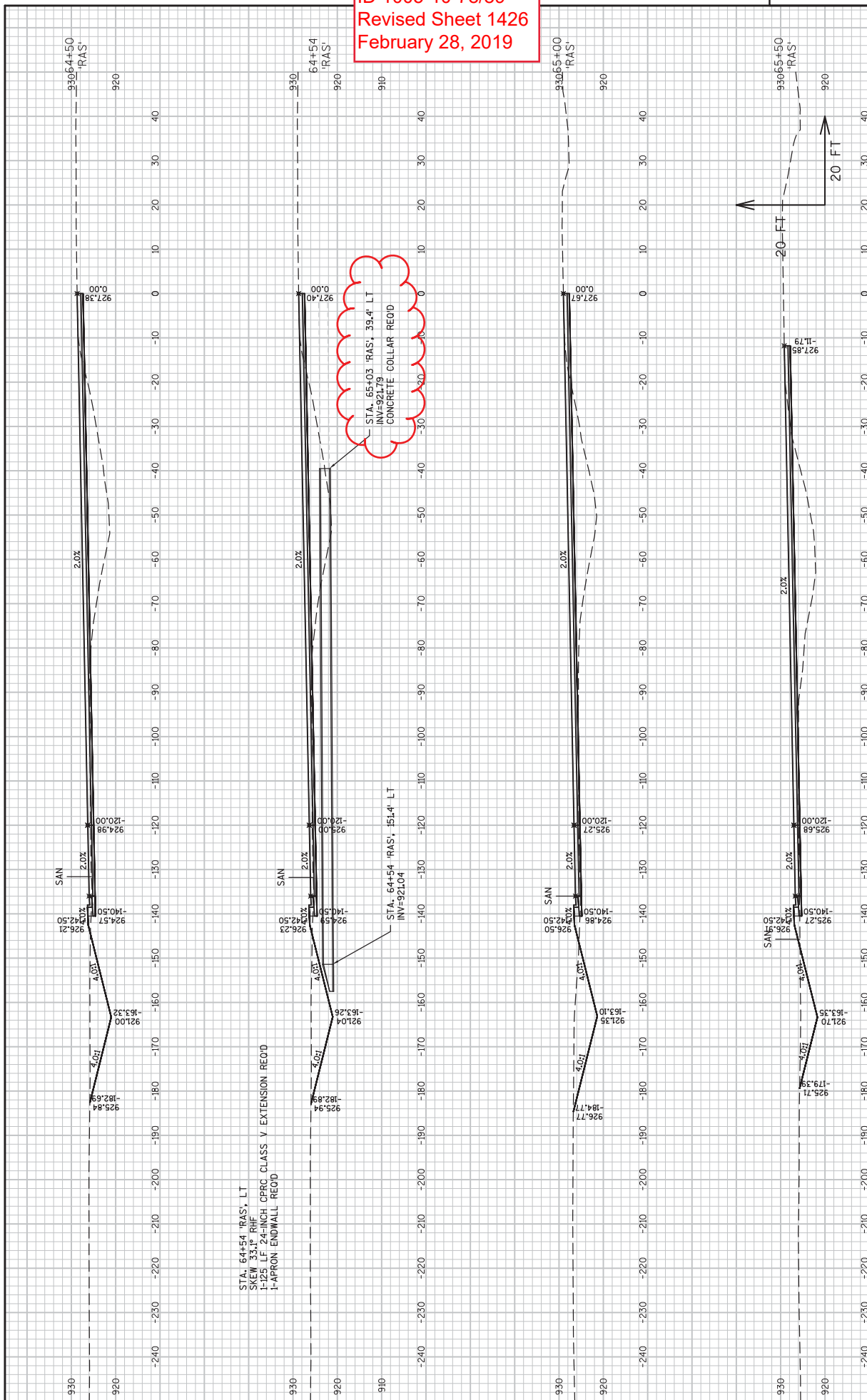
CLEANING SEDIMENT BASINS	628.1905 (CY)
PROJECT 1005-10-78 CATEGORY 1000	50
PROJECT 1005-10-78 TOTAL	50

WATER

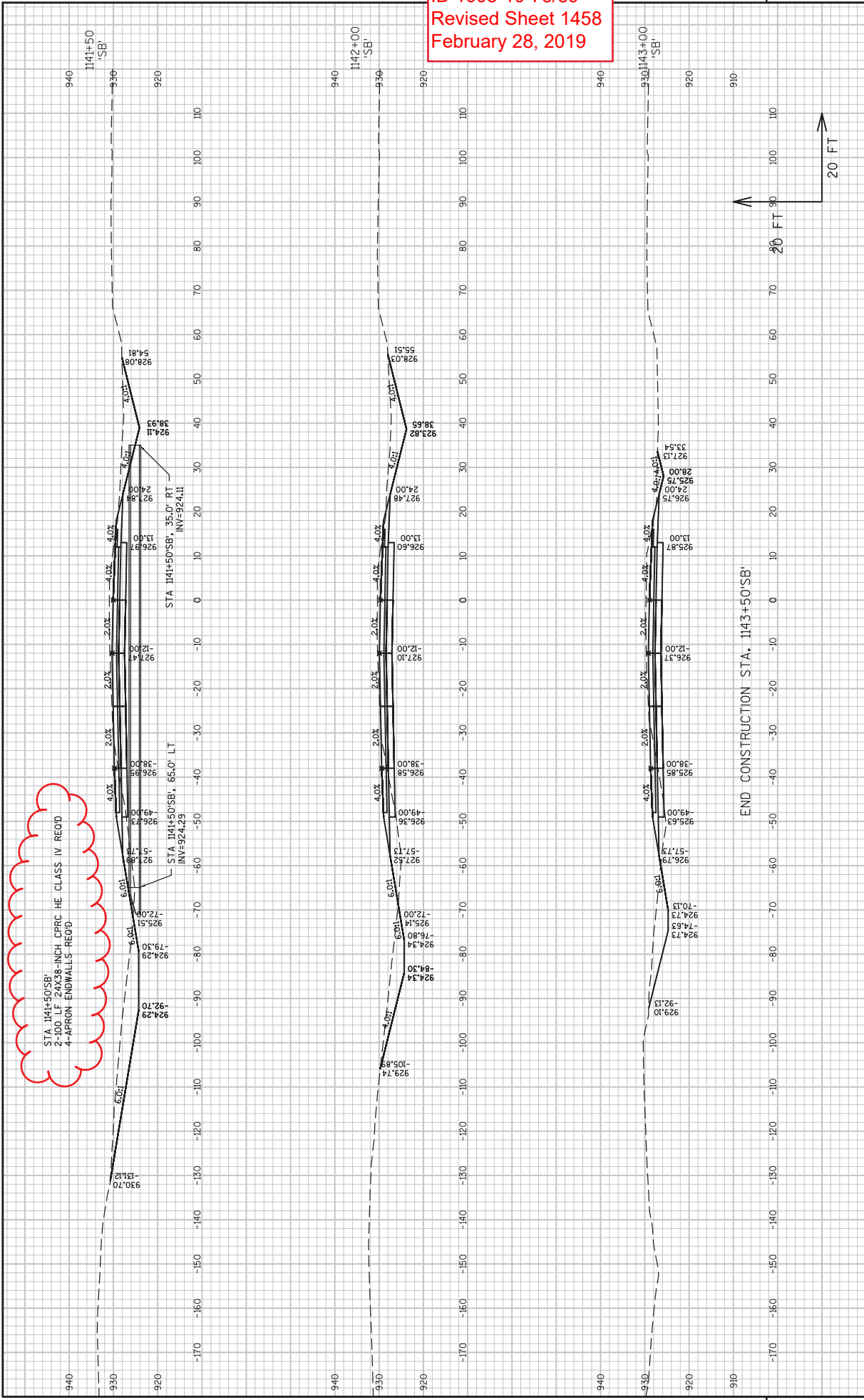
624.0100 WATER (MGAL)

STAGE	TASK	624.0100 WATER (MGAL)
PROJECT 1005-10-78 CATEGORY 1000		
STAGE 1, PHASE 1		
DUST CONTROL COMPACTION		29
STAGE 1, PHASE 1 SUBTOTAL		58
STAGE 1, PHASE 2		
DUST CONTROL COMPACTION		375
STAGE 1, PHASE 2 SUBTOTAL		750
STAGE 2, PHASE 2		
DUST CONTROL COMPACTION		1,768
STAGE 2, PHASE 2 SUBTOTAL		3,536
STAGE 4, PHASE 1		
DUST CONTROL COMPACTION		393
STAGE 4, PHASE 1 SUBTOTAL		786
STAGE 4, PHASE 2		
DUST CONTROL COMPACTION		21
STAGE 4, PHASE 2 SUBTOTAL		42
STAGE 4, PHASE 3		
DUST CONTROL COMPACTION		1,493
STAGE 4, PHASE 3 SUBTOTAL		2,986
STAGE 5, PHASE 1		
DUST CONTROL COMPACTION		83
STAGE 5, PHASE 1 SUBTOTAL		166
STAGE 5, PHASE 2		
DUST CONTROL COMPACTION		418
STAGE 5, PHASE 2 SUBTOTAL		836
1005-10-78 CATEGORY 1000 PROJECT TOTAL		9,160
CATEGORY 1800		
STAGE 2, PHASE 2		
DUST CONTROL COMPACTION		15
STAGE 2, PHASE 2 SUBTOTAL		30
1005-10-78 CATEGORY 1000 PROJECT TOTAL		30
PROJECT 1005-10-89 CATEGORY 1000		
STAGE 2, PHASE 2		
DUST CONTROL COMPACTION		110
STAGE 2, PHASE 2 SUBTOTAL		220
1005-10-89 PROJECT TOTAL		220
PROJECT TOTALS		9,410

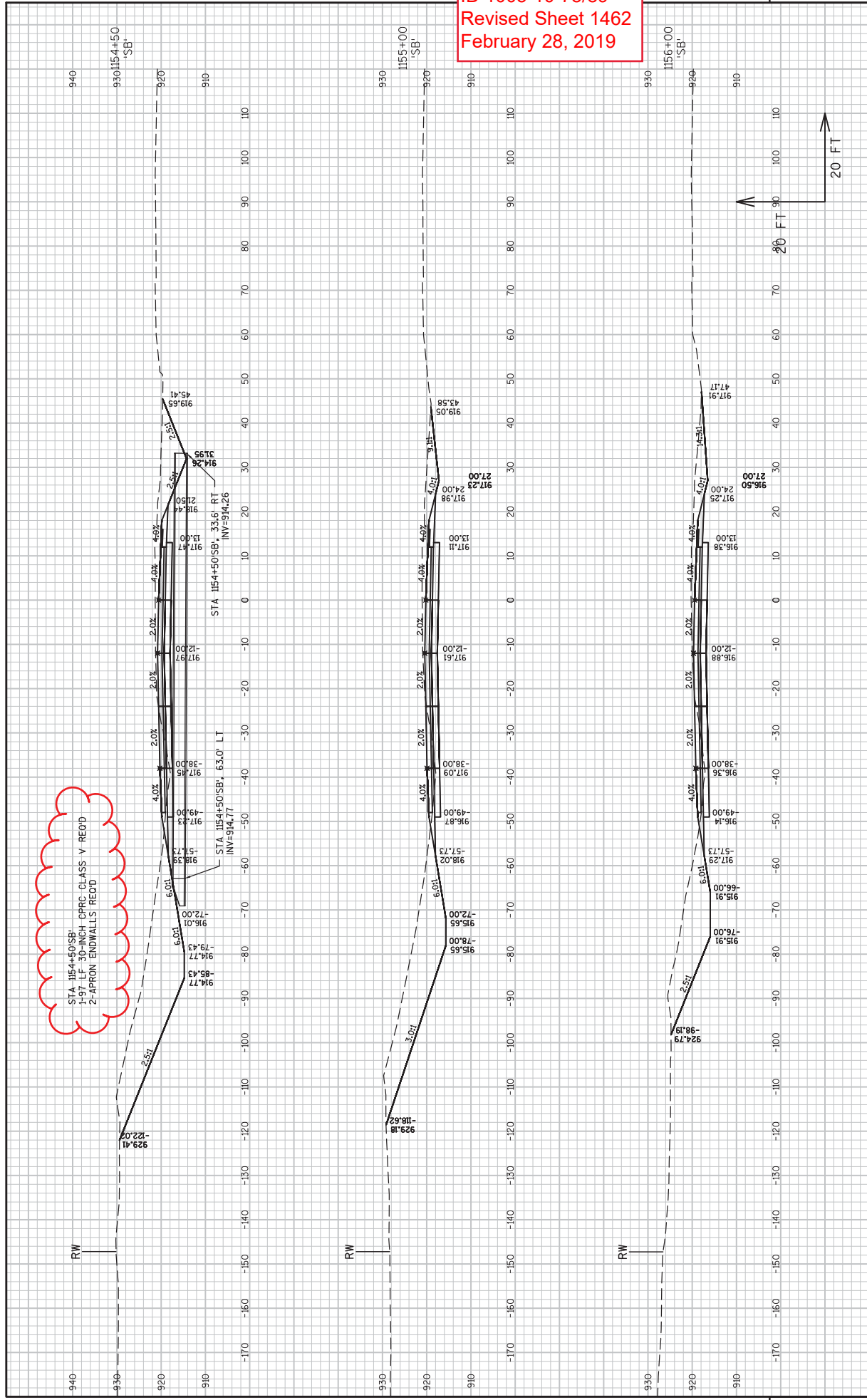
Addendum No. 01
 ID 1005-10-78/89
 Revised Sheet 1426
 February 28, 2019



Addendum No. 01
 ID 1005-10-78/89
 Revised Sheet 1458
 February 28, 2019

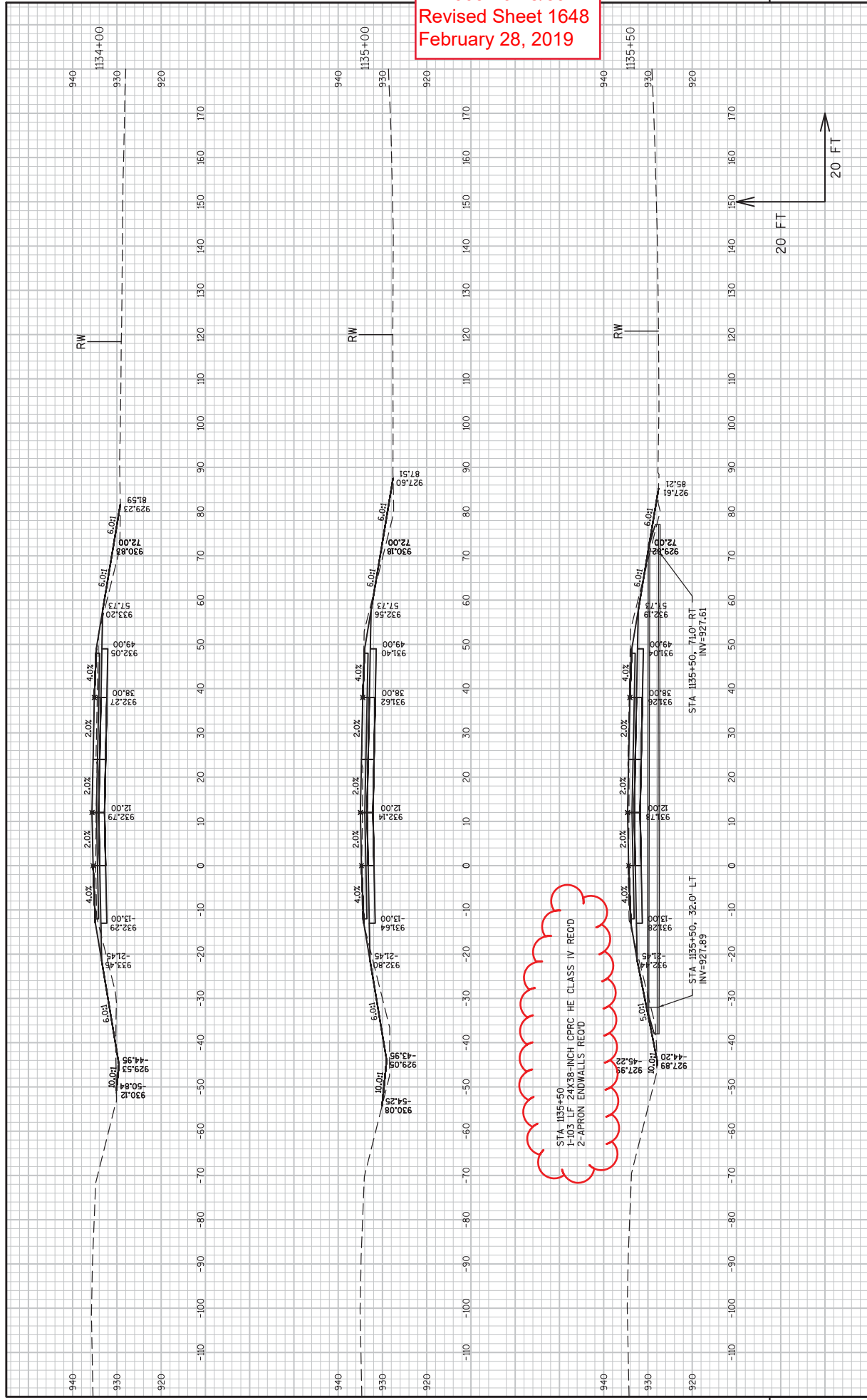


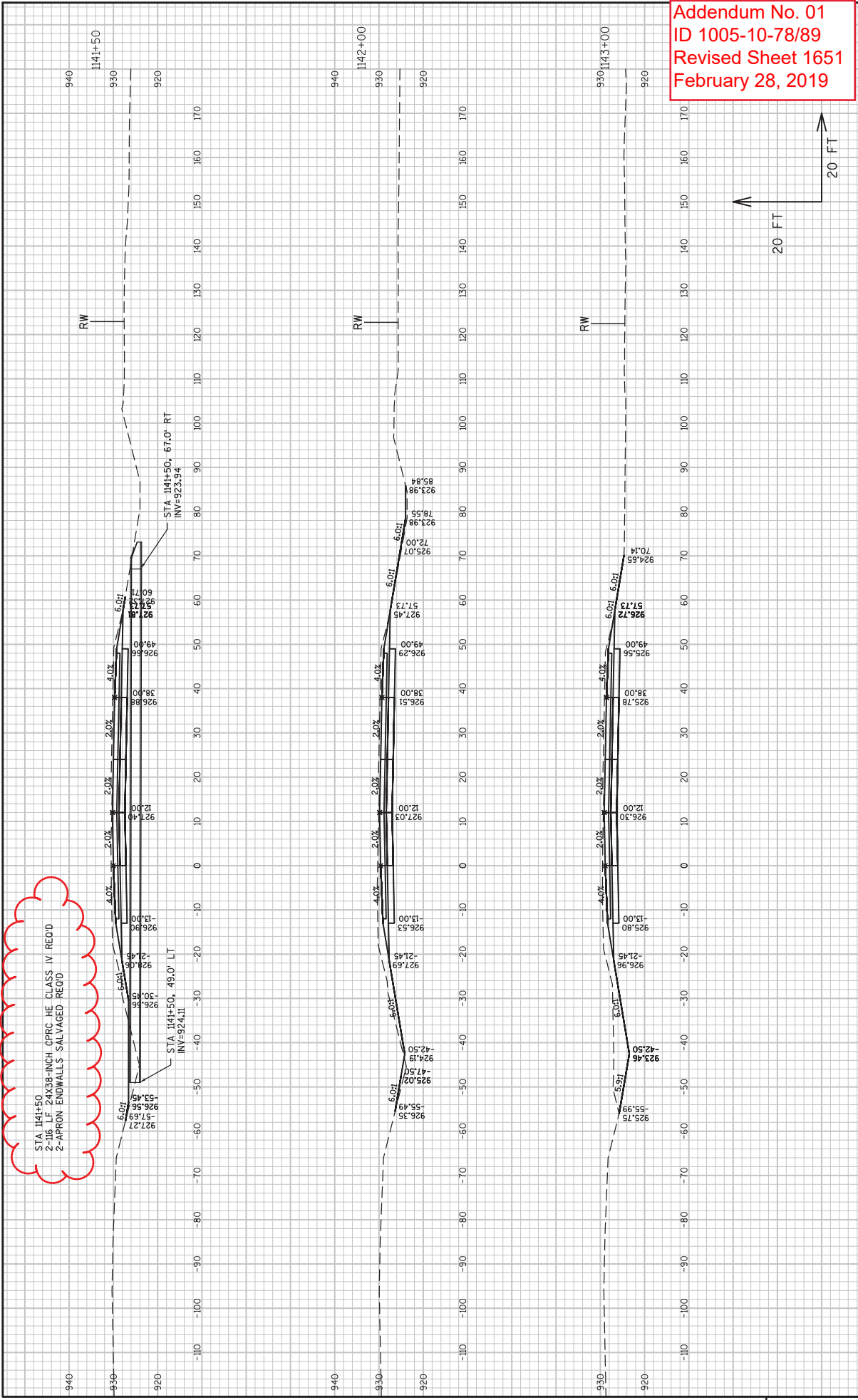
Addendum No. 01
 ID 1005-10-78/89
 Revised Sheet 1462
 February 28, 2019



STA 1154+50 SB
 1'-9" LF 30" NCH CPRC CLASS V REDD
 2' APRON ENDWALLS REDD

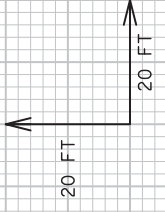
Addendum No. 01
 ID 1005-10-78/89
 Revised Sheet 1648
 February 28, 2019



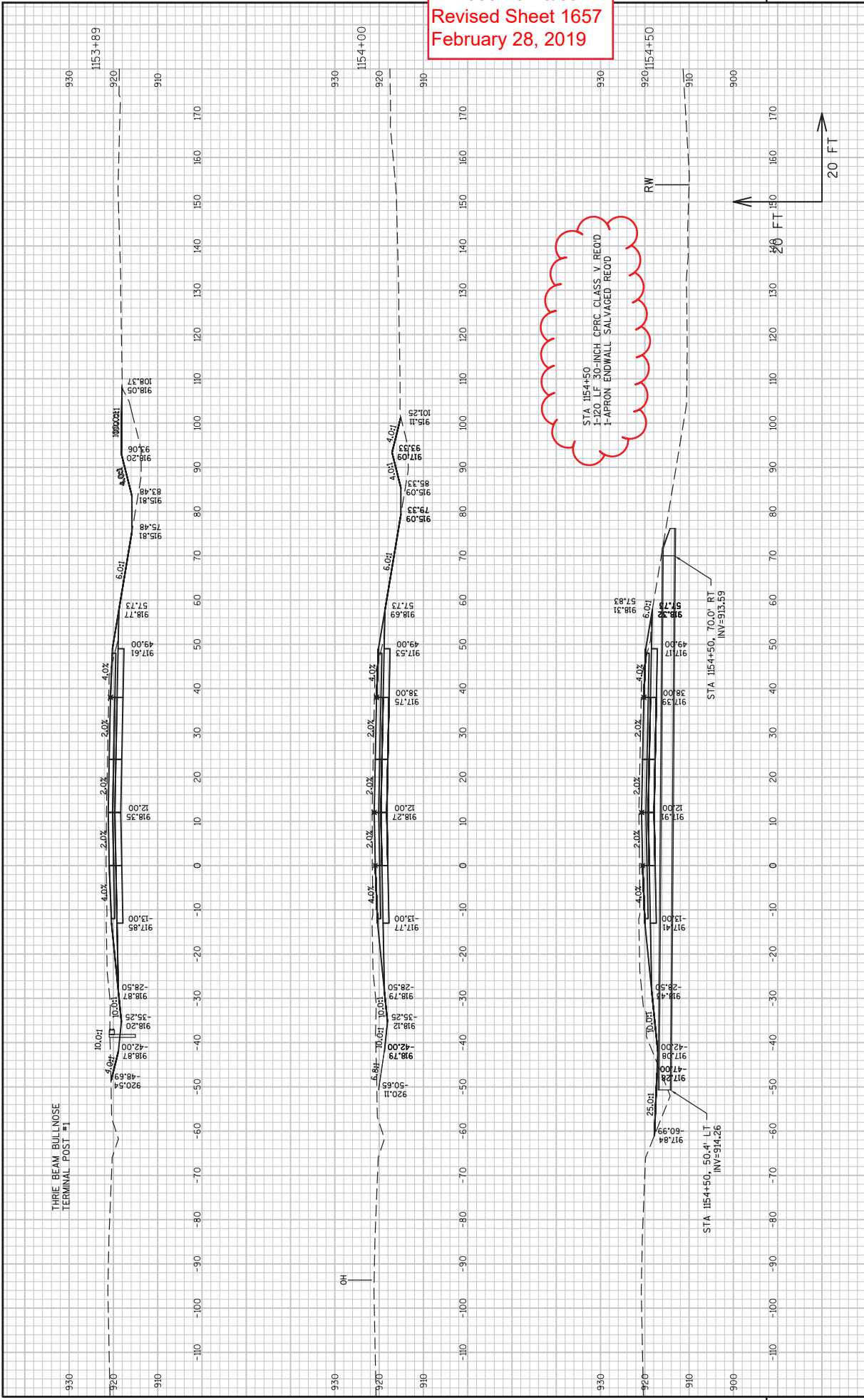


STA 1141+50
 2-1/8 LF 24X38-INCH CPVC HE CLASS IV REOD
 2-APRON ENDWALLS SALVAGED REOD

Addendum No. 01
 ID 1005-10-78/89
 Revised Sheet 1651
 February 28, 2019



Addendum No. 01
 ID 1005-10-78/89
 Revised Sheet 1657
 February 28, 2019





Proposal Schedule of Items

Proposal ID: 20190312001 Project(s): 1005-10-78, 1005-10-89

Federal ID(s): WISC 2019200, WISC 2019201

SECTION: 0001 Contract Items

Alt Set ID: Alt Mbr ID:

Proposal Line Number	Item ID Description	Approximate Quantity and Units	Unit Price	Bid Amount
0002	201.0105 Clearing	415.000 STA	_____.	_____.
0004	201.0205 Grubbing	415.000 STA	_____.	_____.
0006	203.0100 Removing Small Pipe Culverts	61.000 EACH	_____.	_____.
0008	203.0200 Removing Old Structure (station) 001. STA 1099+61.00'SB'	LS	LUMP SUM	_____.
0010	203.0200 Removing Old Structure (station) 002. STA 1099+31.12'NB'	LS	LUMP SUM	_____.
0012	203.0200 Removing Old Structure (station) 003. STA 1196+35'SB'	LS	LUMP SUM	_____.
0014	203.0200 Removing Old Structure (station) 004. STA 1196+20	LS	LUMP SUM	_____.
0016	203.0200 Removing Old Structure (station) 005. STA 1206+00'SB'	LS	LUMP SUM	_____.
0018	203.0200 Removing Old Structure (station) 006. STA 1206+00'NB'	LS	LUMP SUM	_____.
0020	203.0200 Removing Old Structure (station) 007. STA 1293+50'SB'	LS	LUMP SUM	_____.
0022	203.0200 Removing Old Structure (station) 008. STA 1294+30'NB'	LS	LUMP SUM	_____.
0024	203.0200 Removing Old Structure (station) 009. STA 1037+30, LT	LS	LUMP SUM	_____.
0026	203.0200 Removing Old Structure (station) 010. STA 1038+25, RT	LS	LUMP SUM	_____.
0028	203.0210.S Abatement of Asbestos Containing Material (structure) 001. B-53-79	LS	LUMP SUM	_____.



Proposal Schedule of Items

Proposal ID: 20190312001 Project(s): 1005-10-78, 1005-10-89

Federal ID(s): WISC 2019200, WISC 2019201

SECTION: 0001 Contract Items

Alt Set ID: Alt Mbr ID:

Proposal Line Number	Item ID Description	Approximate Quantity and Units	Unit Price	Bid Amount
0030	203.0225.S Debris Containment (structure) 001. B-53-76	LS	LUMP SUM	_____.
0032	203.0225.S Debris Containment (structure) 002. B-53-77	LS	LUMP SUM	_____.
0034	204.0100 Removing Pavement	263,257.000 SY	_____.	_____.
0036	204.0110 Removing Asphaltic Surface	400.000 SY	_____.	_____.
0038	204.0120 Removing Asphaltic Surface Milling	9,500.000 SY	_____.	_____.
0040	204.0157 Removing Concrete Barrier	35.000 LF	_____.	_____.
0042	204.0165 Removing Guardrail	5,919.000 LF	_____.	_____.
0044	204.0170 Removing Fence	47,100.000 LF	_____.	_____.
0046	204.0180 Removing Delineators and Markers	165.000 EACH	_____.	_____.
0048	204.0185 Removing Masonry	6.000 CY	_____.	_____.
0050	204.0195 Removing Concrete Bases	12.000 EACH	_____.	_____.
0052	204.0210 Removing Manholes	11.000 EACH	_____.	_____.
0054	204.0220 Removing Inlets	19.000 EACH	_____.	_____.
0056	204.0235 Removing Buildings (parcel) 001. Parcel 28	LS	LUMP SUM	_____.
0058	204.0245 Removing Storm Sewer (size) 001. 12-Inch	138.000 LF	_____.	_____.



Proposal Schedule of Items

Proposal ID: 20190312001 Project(s): 1005-10-78, 1005-10-89

Federal ID(s): WISC 2019200, WISC 2019201

SECTION: 0001 Contract Items

Alt Set ID: Alt Mbr ID:

Proposal Line Number	Item ID Description	Approximate Quantity and Units	Unit Price	Bid Amount
0060	204.0245 Removing Storm Sewer (size) 002. 15-Inch	113.000 LF	_____.	_____.
0062	204.0245 Removing Storm Sewer (size) 003. 18-Inch	666.000 LF	_____.	_____.
0064	204.0245 Removing Storm Sewer (size) 004. 24-Inch	1,853.000 LF	_____.	_____.
0066	204.0245 Removing Storm Sewer (size) 005. 36-Inch	200.000 LF	_____.	_____.
0068	204.0270 Abandoning Culvert Pipes	2.000 EACH	_____.	_____.
0070	204.0291.S Abandoning Sewer	174.000 CY	_____.	_____.
0072	204.9060.S Removing (item description) 001. Gates Pipe Single Leaf	5.000 EACH	_____.	_____.
0074	204.9060.S Removing (item description) 002. Cover Plate	4.000 EACH	_____.	_____.
0076	204.9060.S Removing (item description) 200. Crash Cushions	6.000 EACH	_____.	_____.
0078	204.9090.S Removing (item description) 001. Electrical Conductors From Existing Conduit	4,655.000 LF	_____.	_____.
0080	204.9090.S Removing (item description) 002. Removing or Abandoning Conduit	2,525.000 LF	_____.	_____.
0082	204.9105.S Removing (item description) 001. Electrical Equipment	LS	LUMP SUM	_____.
0084	204.9180.S Removing (item description) 001. Concrete Flumes	1,340.000 SY	_____.	_____.



Proposal Schedule of Items

Proposal ID: 20190312001 Project(s): 1005-10-78, 1005-10-89

Federal ID(s): WISC 2019200, WISC 2019201

SECTION: 0001 Contract Items

Alt Set ID: Alt Mbr ID:

Proposal Line Number	Item ID Description	Approximate Quantity and Units	Unit Price	Bid Amount
0086	205.0100 Excavation Common	758,068.000 CY	_____.	_____.
0088	205.0200 Excavation Rock	150.000 CY	_____.	_____.
0090	206.1000 Excavation for Structures Bridges (structure) 001. B-53-348	LS	LUMP SUM	_____.
0092	206.1000 Excavation for Structures Bridges (structure) 002. B-53-349	LS	LUMP SUM	_____.
0094	206.1000 Excavation for Structures Bridges (structure) 005. B-53-353	LS	LUMP SUM	_____.
0096	206.1000 Excavation for Structures Bridges (structure) 006. B-53-354	LS	LUMP SUM	_____.
0098	206.1000 Excavation for Structures Bridges (structure) 007. B-53-355	LS	LUMP SUM	_____.
0100	206.1000 Excavation for Structures Bridges (structure) 008. B-53-356	LS	LUMP SUM	_____.
0102	208.1100 Select Borrow	100,811.000 CY	_____.	_____.
0104	209.1500 Backfill Granular Grade 1	950.000 TON	_____.	_____.
0106	210.1500 Backfill Structure Type A	4,114.000 TON	_____.	_____.
0108	211.0400 Prepare Foundation for Asphaltic Shoulders	11.500 STA	_____.	_____.
0110	213.0100 Finishing Roadway (project) 001. 1005-10-78	1.000 EACH	_____.	_____.
0112	213.0100 Finishing Roadway (project) 002. 1005-10-89	1.000 EACH	_____.	_____.



Proposal Schedule of Items

Proposal ID: 20190312001 Project(s): 1005-10-78, 1005-10-89

Federal ID(s): WISC 2019200, WISC 2019201

SECTION: 0001 Contract Items

Alt Set ID: Alt Mbr ID:

Proposal Line Number	Item ID Description	Approximate Quantity and Units	Unit Price	Bid Amount
0114	305.0110 Base Aggregate Dense 3/4-Inch	29,140.000 TON	_____.	_____.
0116	305.0120 Base Aggregate Dense 1 1/4-Inch	266,108.000 TON	_____.	_____.
0118	305.0130 Base Aggregate Dense 3-Inch	1,950.000 TON	_____.	_____.
0120	310.0110 Base Aggregate Open-Graded	100.000 TON	_____.	_____.
0122	312.0110 Select Crushed Material	404,352.000 TON	_____.	_____.
0124	415.0090 Concrete Pavement 9-Inch	25,735.000 SY	_____.	_____.
0126	415.0100 Concrete Pavement 10-Inch	17,495.000 SY	_____.	_____.
0128	415.0120 Concrete Pavement 12-Inch	399,120.000 SY	_____.	_____.
0130	415.0410 Concrete Pavement Approach Slab	1,410.000 SY	_____.	_____.
0132	415.6000.S Rout and Seal	3,145.000 LF	_____.	_____.
0134	416.0160 Concrete Driveway 6-Inch	28.000 SY	_____.	_____.
0136	416.0610 Drilled Tie Bars	1,104.000 EACH	_____.	_____.
0138	416.0620 Drilled Dowel Bars	118.000 EACH	_____.	_____.
0140	416.1010 Concrete Surface Drains	83.000 CY	_____.	_____.
0142	416.1110 Concrete Shoulder Rumble Strips	105,179.000 LF	_____.	_____.
0144	416.1715 Concrete Pavement Repair SHES	80.000 SY	_____.	_____.
0146	450.4000 HMA Cold Weather Paving	6,284.000 TON	_____.	_____.



Proposal Schedule of Items

Proposal ID: 20190312001 Project(s): 1005-10-78, 1005-10-89

Federal ID(s): WISC 2019200, WISC 2019201

SECTION: 0001 Contract Items

Alt Set ID: Alt Mbr ID:

Proposal Line Number	Item ID Description	Approximate Quantity and Units	Unit Price	Bid Amount
0148	455.0605 Tack Coat	847.000 GAL	_____.	_____.
0150	460.2000 Incentive Density HMA Pavement	9,501.000 DOL	1.00000	9,501.00
0152	460.5223 HMA Pavement 3 LT 58-28 S	802.000 TON	_____.	_____.
0154	460.5224 HMA Pavement 4 LT 58-28 S	6,421.000 TON	_____.	_____.
0156	460.7222 HMA Pavement 2 HT 58-28 S	3,809.000 TON	_____.	_____.
0158	460.7624 HMA Pavement 4 HT 58-28 V	3,797.000 TON	_____.	_____.
0160	465.0105 Asphaltic Surface	21.000 TON	_____.	_____.
0162	465.0120 Asphaltic Surface Driveways and Field Entrances	3.000 TON	_____.	_____.
0164	465.0125 Asphaltic Surface Temporary	78.000 TON	_____.	_____.
0166	465.0315 Asphaltic Flumes	54.000 SY	_____.	_____.
0168	501.1000.S Ice Hot Weather Concreting	36,774.000 LB	_____.	_____.
0170	502.0100 Concrete Masonry Bridges	1,507.000 CY	_____.	_____.
0172	502.3200 Protective Surface Treatment	5,024.000 SY	_____.	_____.
0174	502.3210 Pigmented Surface Sealer	1,138.000 SY	_____.	_____.
0176	503.0137 Prestressed Girder Type I 36W-Inch	3,048.000 LF	_____.	_____.
0178	503.0146 Prestressed Girder Type I 45W-Inch	2,220.000 LF	_____.	_____.



Proposal Schedule of Items

Proposal ID: 20190312001 Project(s): 1005-10-78, 1005-10-89

Federal ID(s): WISC 2019200, WISC 2019201

SECTION: 0001 Contract Items

Alt Set ID: Alt Mbr ID:

Proposal Line Number	Item ID Description	Approximate Quantity and Units	Unit Price	Bid Amount
0180	503.0155 Prestressed Girder Type I 54W-Inch	1,856.000 LF	_____.	_____.
0182	505.0400 Bar Steel Reinforcement HS Structures	77,150.000 LB	_____.	_____.
0184	505.0600 Bar Steel Reinforcement HS Coated Structures	610,645.000 LB	_____.	_____.
0186	505.0800.S Bar Steel Reinforcement HS Stainless Structures	18,270.000 LB	_____.	_____.
0188	506.2605 Bearing Pads Elastomeric Non-Laminated	144.000 EACH	_____.	_____.
0190	506.4000 Steel Diaphragms (structure) 001. B-53-348	18.000 EACH	_____.	_____.
0192	506.4000 Steel Diaphragms (structure) 002. B-53-349	18.000 EACH	_____.	_____.
0194	506.4000 Steel Diaphragms (structure) 003. B-53-351	6.000 EACH	_____.	_____.
0196	506.4000 Steel Diaphragms (structure) 004. B-53-352	6.000 EACH	_____.	_____.
0198	506.4000 Steel Diaphragms (structure) 005. B-53-353	14.000 EACH	_____.	_____.
0200	506.4000 Steel Diaphragms (structure) 006. B-53-354	14.000 EACH	_____.	_____.
0202	506.4000 Steel Diaphragms (structure) 007. B-53-355	20.000 EACH	_____.	_____.
0204	506.4000 Steel Diaphragms (structure) 008. B-53-356	20.000 EACH	_____.	_____.
0206	509.5100.S Polymer Overlay	6,322.000 SY	_____.	_____.



Proposal Schedule of Items

Proposal ID: 20190312001 Project(s): 1005-10-78, 1005-10-89

Federal ID(s): WISC 2019200, WISC 2019201

SECTION: 0001 Contract Items

Alt Set ID: Alt Mbr ID:

Proposal Line Number	Item ID Description	Approximate Quantity and Units	Unit Price	Bid Amount
0208	511.1200 Temporary Shoring (structure) 001. R-53-37	530.000 SF	_____.	_____.
0210	511.1200 Temporary Shoring (structure) 002. R-53-50	980.000 SF	_____.	_____.
0212	511.1200 Temporary Shoring (structure) 003. R-53-60	300.000 SF	_____.	_____.
0214	511.1200 Temporary Shoring (structure) 004. R-53-61	295.000 SF	_____.	_____.
0216	516.0500 Rubberized Membrane Waterproofing	278.000 SY	_____.	_____.
0218	520.8000 Concrete Collars for Pipe	10.000 EACH	_____.	_____.
0220	520.8700 Cleaning Culvert Pipes	2.000 EACH	_____.	_____.
0222	521.1012 Apron Endwalls for Culvert Pipe Steel 12-Inch	12.000 EACH	_____.	_____.
0224	521.1018 Apron Endwalls for Culvert Pipe Steel 18-Inch	4.000 EACH	_____.	_____.
0226	521.1024 Apron Endwalls for Culvert Pipe Steel 24-Inch	1.000 EACH	_____.	_____.
0228	521.1518 Apron Endwalls for Culvert Pipe Sloped Side Drains Steel 18-Inch 6 to 1	2.000 EACH	_____.	_____.
0230	521.1624 Apron Endwalls for Culvert Pipe Sloped Side Drains Steel 24-Inch 10 to 1	2.000 EACH	_____.	_____.
0232	521.3118 Culvert Pipe Corrugated Steel 18-Inch	86.000 LF	_____.	_____.
0234	521.3124 Culvert Pipe Corrugated Steel 24-Inch	112.000 LF	_____.	_____.



Proposal Schedule of Items

Proposal ID: 20190312001 Project(s): 1005-10-78, 1005-10-89

Federal ID(s): WISC 2019200, WISC 2019201

SECTION: 0001 Contract Items

Alt Set ID: Alt Mbr ID:

Proposal Line Number	Item ID Description	Approximate Quantity and Units	Unit Price	Bid Amount
0236	522.0118 Culvert Pipe Reinforced Concrete Class III 18-Inch	558.000 LF	_____.	_____.
0238	522.0124 Culvert Pipe Reinforced Concrete Class III 24-Inch	2,066.000 LF	_____.	_____.
0240	522.0130 Culvert Pipe Reinforced Concrete Class III 30-Inch	401.000 LF	_____.	_____.
0244	522.0142 Culvert Pipe Reinforced Concrete Class III 42-Inch	341.000 LF	_____.	_____.
0246	522.0148 Culvert Pipe Reinforced Concrete Class III 48-Inch	71.000 LF	_____.	_____.
0248	522.0424 Culvert Pipe Reinforced Concrete Class IV 24-Inch	98.000 LF	_____.	_____.
0250	522.0430 Culvert Pipe Reinforced Concrete Class IV 30-Inch	155.000 LF	_____.	_____.
0252	522.0524 Culvert Pipe Reinforced Concrete Class V 24-Inch	976.000 LF	_____.	_____.
0254	522.0530 Culvert Pipe Reinforced Concrete Class V 30-Inch	328.000 LF	_____.	_____.
0256	522.0560 Culvert Pipe Reinforced Concrete Class V 60-Inch	111.000 LF	_____.	_____.
0258	522.1015 Apron Endwalls for Culvert Pipe Reinforced Concrete 15-Inch	3.000 EACH	_____.	_____.
0260	522.1018 Apron Endwalls for Culvert Pipe Reinforced Concrete 18-Inch	11.000 EACH	_____.	_____.
0262	522.1024 Apron Endwalls for Culvert Pipe Reinforced Concrete 24-Inch	52.000 EACH	_____.	_____.



Proposal Schedule of Items

Proposal ID: 20190312001 Project(s): 1005-10-78, 1005-10-89

Federal ID(s): WISC 2019200, WISC 2019201

SECTION: 0001 Contract Items

Alt Set ID: Alt Mbr ID:

Proposal Line Number	Item ID Description	Approximate Quantity and Units	Unit Price	Bid Amount
0264	522.1030 Apron Endwalls for Culvert Pipe Reinforced Concrete 30-Inch	16.000 EACH	_____.	_____.
0266	522.1036 Apron Endwalls for Culvert Pipe Reinforced Concrete 36-Inch	6.000 EACH	_____.	_____.
0268	522.1042 Apron Endwalls for Culvert Pipe Reinforced Concrete 42-Inch	5.000 EACH	_____.	_____.
0270	522.1048 Apron Endwalls for Culvert Pipe Reinforced Concrete 48-Inch	3.000 EACH	_____.	_____.
0272	522.1060 Apron Endwalls for Culvert Pipe Reinforced Concrete 60-Inch	2.000 EACH	_____.	_____.
0274	522.2419 Culvert Pipe Reinforced Concrete Horizontal Elliptical Class HE-IV 19x30-Inch	125.000 LF	_____.	_____.
0276	522.2424 Culvert Pipe Reinforced Concrete Horizontal Elliptical Class HE-IV 24x38-Inch	535.000 LF	_____.	_____.
0278	522.2434 Culvert Pipe Reinforced Concrete Horizontal Elliptical Class HE-IV 34x53-Inch	104.000 LF	_____.	_____.
0280	522.2619 Apron Endwalls for Culvert Pipe Reinforced Concrete Horizontal Elliptical 19x30-Inch	4.000 EACH	_____.	_____.
0282	522.2624 Apron Endwalls for Culvert Pipe Reinforced Concrete Horizontal Elliptical 24x38-Inch	8.000 EACH	_____.	_____.
0284	522.2634 Apron Endwalls for Culvert Pipe Reinforced Concrete Horizontal Elliptical 34x53-Inch	2.000 EACH	_____.	_____.
0286	524.0624 Apron Endwalls for Culvert Pipe Salvaged 24-Inch	2.000 EACH	_____.	_____.



Proposal Schedule of Items

Proposal ID: 20190312001 Project(s): 1005-10-78, 1005-10-89

Federal ID(s): WISC 2019200, WISC 2019201

SECTION: 0001 Contract Items

Alt Set ID: Alt Mbr ID:

Proposal Line Number	Item ID Description	Approximate Quantity and Units	Unit Price	Bid Amount
0288	524.0630 Apron Endwalls for Culvert Pipe Salvaged 30-Inch	2.000 EACH	_____.	_____.
0290	550.2106 Piling CIP Concrete 10 3/4 X 0.365-Inch	3,960.000 LF	_____.	_____.
0292	550.2126 Piling CIP Concrete 12 3/4 X 0.375-Inch	10,060.000 LF	_____.	_____.
0294	601.0409 Concrete Curb & Gutter 30-Inch Type A	782.000 LF	_____.	_____.
0296	601.0551 Concrete Curb & Gutter 4-Inch Sloped 36-Inch Type A	120.000 LF	_____.	_____.
0298	601.0557 Concrete Curb & Gutter 6-Inch Sloped 36-Inch Type D	931.000 LF	_____.	_____.
0300	601.0590 Concrete Curb & Gutter 4-Inch Sloped 36-Inch Type TBTT	330.000 LF	_____.	_____.
0302	602.0410 Concrete Sidewalk 5-Inch	2,660.000 SF	_____.	_____.
0304	603.1142 Concrete Barrier Type S42	3,160.000 LF	_____.	_____.
0306	603.8000 Concrete Barrier Temporary Precast Delivered	117,425.000 LF	_____.	_____.
0308	603.8125 Concrete Barrier Temporary Precast Installed	127,800.000 LF	_____.	_____.
0310	604.0400 Slope Paving Concrete	424.000 SY	_____.	_____.
0312	604.0500 Slope Paving Crushed Aggregate	2,833.000 SY	_____.	_____.
0314	606.0200 Riprap Medium	1,145.000 CY	_____.	_____.
0316	606.0300 Riprap Heavy	500.000 CY	_____.	_____.



Proposal Schedule of Items

Proposal ID: 20190312001 Project(s): 1005-10-78, 1005-10-89

Federal ID(s): WISC 2019200, WISC 2019201

SECTION: 0001 Contract Items

Alt Set ID: Alt Mbr ID:

Proposal Line Number	Item ID Description	Approximate Quantity and Units	Unit Price	Bid Amount
0318	606.0400 Riprap Extra-Heavy	1,350.000 CY	_____.	_____.
0320	608.0315 Storm Sewer Pipe Reinforced Concrete Class III 15-Inch	409.000 LF	_____.	_____.
0322	608.0318 Storm Sewer Pipe Reinforced Concrete Class III 18-Inch	1,100.000 LF	_____.	_____.
0324	608.0324 Storm Sewer Pipe Reinforced Concrete Class III 24-Inch	573.000 LF	_____.	_____.
0326	608.0330 Storm Sewer Pipe Reinforced Concrete Class III 30-Inch	617.000 LF	_____.	_____.
0328	608.0336 Storm Sewer Pipe Reinforced Concrete Class III 36-Inch	272.000 LF	_____.	_____.
0330	608.0342 Storm Sewer Pipe Reinforced Concrete Class III 42-Inch	146.000 LF	_____.	_____.
0332	608.0524 Storm Sewer Pipe Reinforced Concrete Class V 24-Inch	277.000 LF	_____.	_____.
0334	608.2424 Storm Sewer Pipe Reinforced Concrete Horizontal Elliptical Class HE-IV 24x38- Inch	134.000 LF	_____.	_____.
0336	611.0530 Manhole Covers Type J	8.000 EACH	_____.	_____.
0338	611.0535 Manhole Covers Type J-Special	4.000 EACH	_____.	_____.
0340	611.0610 Inlet Covers Type BW	11.000 EACH	_____.	_____.
0342	611.0642 Inlet Covers Type MS	20.000 EACH	_____.	_____.
0344	611.0654 Inlet Covers Type V	12.000 EACH	_____.	_____.



Proposal Schedule of Items

Proposal ID: 20190312001 Project(s): 1005-10-78, 1005-10-89

Federal ID(s): WISC 2019200, WISC 2019201

SECTION: 0001 Contract Items

Alt Set ID: Alt Mbr ID:

Proposal Line Number	Item ID Description	Approximate Quantity and Units	Unit Price	Bid Amount
0346	611.2004 Manholes 4-FT Diameter	4.000 EACH	_____.	_____.
0348	611.2006 Manholes 6-FT Diameter	2.000 EACH	_____.	_____.
0350	611.2008 Manholes 8-FT Diameter	1.000 EACH	_____.	_____.
0352	611.2044 Manholes 4x4-FT	1.000 EACH	_____.	_____.
0354	611.2055 Manholes 5x5-FT	1.000 EACH	_____.	_____.
0356	611.3004 Inlets 4-FT Diameter	4.000 EACH	_____.	_____.
0358	611.3220 Inlets 2x2-FT	12.000 EACH	_____.	_____.
0360	611.3225 Inlets 2x2.5-FT	6.000 EACH	_____.	_____.
0362	611.3901 Inlets Median 1 Grate	6.000 EACH	_____.	_____.
0364	611.3902 Inlets Median 2 Grate	7.000 EACH	_____.	_____.
0366	611.8120.S Cover Plates Temporary	3.000 EACH	_____.	_____.
0368	611.9800.S Pipe Grates 001. 24x38-Inch	2.000 EACH	_____.	_____.
0370	611.9800.S Pipe Grates 002. 36-Inch	6.000 EACH	_____.	_____.
0372	611.9800.S Pipe Grates 003. 42-Inch	5.000 EACH	_____.	_____.
0374	611.9800.S Pipe Grates 004. 48-Inch	1.000 EACH	_____.	_____.
0376	611.9800.S Pipe Grates 005. 34x53-Inch	2.000 EACH	_____.	_____.
0378	611.9800.S Pipe Grates 006. 60-Inch	2.000 EACH	_____.	_____.



Proposal Schedule of Items

Proposal ID: 20190312001 Project(s): 1005-10-78, 1005-10-89

Federal ID(s): WISC 2019200, WISC 2019201

SECTION: 0001 Contract Items

Alt Set ID: Alt Mbr ID:

Proposal Line Number	Item ID Description	Approximate Quantity and Units	Unit Price	Bid Amount
0380	612.0106 Pipe Underdrain 6-Inch	1,800.000 LF	_____.	_____.
0382	612.0212 Pipe Underdrain Unperforated 12-Inch	482.000 LF	_____.	_____.
0384	612.0218 Pipe Underdrain Unperforated 18-Inch	120.000 LF	_____.	_____.
0386	612.0406 Pipe Underdrain Wrapped 6-Inch	2,838.000 LF	_____.	_____.
0388	613.1100.S Cable Barrier Type 1	1,230.000 LF	_____.	_____.
0390	613.1200.S Cable Barrier End Terminal Type 1	2.000 EACH	_____.	_____.
0392	614.0150 Anchor Assemblies for Steel Plate Beam Guard	25.000 EACH	_____.	_____.
0394	614.0220 Steel Thrie Beam Bullnose Terminal	2.000 EACH	_____.	_____.
0396	614.0230 Steel Thrie Beam	1,150.000 LF	_____.	_____.
0398	614.0905 Crash Cushions Temporary	31.000 EACH	_____.	_____.
0400	614.2300 MGS Guardrail 3	6,712.500 LF	_____.	_____.
0402	614.2500 MGS Thrie Beam Transition	719.000 LF	_____.	_____.
0404	614.2610 MGS Guardrail Terminal EAT	15.000 EACH	_____.	_____.
0406	614.2620 MGS Guardrail Terminal Type 2	4.000 EACH	_____.	_____.
0408	616.0100 Fence Woven Wire (height) 001. 4-Ft	44,363.000 LF	_____.	_____.
0410	616.0206 Fence Chain Link 6-FT	1,354.000 LF	_____.	_____.



Proposal Schedule of Items

Proposal ID: 20190312001 Project(s): 1005-10-78, 1005-10-89

Federal ID(s): WISC 2019200, WISC 2019201

SECTION: 0001 Contract Items

Alt Set ID: Alt Mbr ID:

Proposal Line Number	Item ID Description	Approximate Quantity and Units	Unit Price	Bid Amount
0412	616.0329 Gates Chain Link (width) 001. 2'-6"	8.000 EACH	_____.	_____.
0414	616.0329 Gates Chain Link (width) 002. 3-Ft.	4.000 EACH	_____.	_____.
0416	616.0360.S Gates Pipe Single Leaf (length) 001. 12-Ft	5.000 EACH	_____.	_____.
0418	616.0700.S Fence Safety	2,000.000 LF	_____.	_____.
0420	618.0100 Maintenance And Repair of Haul Roads (project) 001. 1005-10-78	1.000 EACH	_____.	_____.
0422	618.0100 Maintenance And Repair of Haul Roads (project) 002. 1005-10-89	1.000 EACH	_____.	_____.
0424	619.1000 Mobilization	1.000 EACH	_____.	_____.
0426	621.0100 Landmark Reference Monuments	25.000 EACH	_____.	_____.
0428	624.0100 Water	9,410.000 MGAL	_____.	_____.
0430	625.0100 Topsoil	500.000 SY	_____.	_____.
0432	625.0500 Salvaged Topsoil	669,000.000 SY	_____.	_____.
0434	627.0200 Mulching	467,000.000 SY	_____.	_____.
0436	628.1104 Erosion Bales	3,500.000 EACH	_____.	_____.
0438	628.1504 Silt Fence	42,500.000 LF	_____.	_____.
0440	628.1520 Silt Fence Maintenance	170,000.000 LF	_____.	_____.
0442	628.1905 Mobilizations Erosion Control	38.000 EACH	_____.	_____.



Proposal Schedule of Items

Proposal ID: 20190312001 Project(s): 1005-10-78, 1005-10-89

Federal ID(s): WISC 2019200, WISC 2019201

SECTION: 0001 Contract Items

Alt Set ID: Alt Mbr ID:

Proposal Line Number	Item ID Description	Approximate Quantity and Units	Unit Price	Bid Amount
0444	628.1910 Mobilizations Emergency Erosion Control	20.000 EACH	_____.	_____.
0446	628.2004 Erosion Mat Class I Type B	226,300.000 SY	_____.	_____.
0448	628.2008 Erosion Mat Urban Class I Type B	167,100.000 SY	_____.	_____.
0450	628.2023 Erosion Mat Class II Type B	5,000.000 SY	_____.	_____.
0452	628.6505 Soil Stabilizer Type A	6.000 ACRE	_____.	_____.
0454	628.6510 Soil Stabilizer Type B	11.000 ACRE	_____.	_____.
0456	628.7005 Inlet Protection Type A	57.000 EACH	_____.	_____.
0458	628.7010 Inlet Protection Type B	28.000 EACH	_____.	_____.
0460	628.7015 Inlet Protection Type C	5.000 EACH	_____.	_____.
0462	628.7020 Inlet Protection Type D	5.000 EACH	_____.	_____.
0464	628.7504 Temporary Ditch Checks	8,700.000 LF	_____.	_____.
0466	628.7515.S Stone or Rock Ditch Checks	110.000 CY	_____.	_____.
0468	628.7555 Culvert Pipe Checks	345.000 EACH	_____.	_____.
0470	628.7560 Tracking Pads	30.000 EACH	_____.	_____.
0472	628.7570 Rock Bags	690.000 EACH	_____.	_____.
0474	629.0205 Fertilizer Type A	625.000 CWT	_____.	_____.
0476	630.0120 Seeding Mixture No. 20	23,230.000 LB	_____.	_____.



Proposal Schedule of Items

Proposal ID: 20190312001 Project(s): 1005-10-78, 1005-10-89

Federal ID(s): WISC 2019200, WISC 2019201

SECTION: 0001 Contract Items

Alt Set ID: Alt Mbr ID:

Proposal Line Number	Item ID Description	Approximate Quantity and Units	Unit Price	Bid Amount
0478	630.0130 Seeding Mixture No. 30	3,155.000 LB	_____.	_____.
0480	630.0200 Seeding Temporary	40.000 LB	_____.	_____.
0482	630.0300 Seeding Borrow Pit	1,000.000 LB	_____.	_____.
0484	631.0300 Sod Water	25.000 MGAL	_____.	_____.
0486	631.1000 Sod Lawn	1,000.000 SY	_____.	_____.
0488	632.0101 Trees (species) (size) (root) 001. Oak, Eastern White, B&B, 2-Inch Cal.	20.000 EACH	_____.	_____.
0490	632.0101 Trees (species) (size) (root) 002. Oak, Bur, B&B, 2-Inch Cal.	56.000 EACH	_____.	_____.
0492	632.0101 Trees (species) (size) (root) 003. Oak, Red, B&B, 2-Inch Cal.	29.000 EACH	_____.	_____.
0494	632.0101 Trees (species) (size) (root) 004. Oak, Northern Pin, B&B, 2-Inch Cal.	18.000 EACH	_____.	_____.
0496	632.0101 Trees (species) (size) (root) 005. Oak, Swamp White, B&B, 2 1/2-Inch Cal.	6.000 EACH	_____.	_____.
0498	632.0101 Trees (species) (size) (root) 006. Oak, Chinkapin, B&B, 2-Inch Cal.	28.000 EACH	_____.	_____.
0500	632.0101 Trees (species) (size) (root) 007. Maple, Freeman Marmo, B&B, 2 1/2-Inch Cal.	11.000 EACH	_____.	_____.
0502	632.0101 Trees (species) (size) (root) 008. Maple, Sugar, B&B, 2 1/2-Inch Cal.	10.000 EACH	_____.	_____.
0504	632.0101 Trees (species) (size) (root) 009. Linden, American, B&B, 2 1/2-Inch Cal.	25.000 EACH	_____.	_____.



Proposal Schedule of Items

Proposal ID: 20190312001 Project(s): 1005-10-78, 1005-10-89

Federal ID(s): WISC 2019200, WISC 2019201

SECTION: 0001 Contract Items

Alt Set ID: Alt Mbr ID:

Proposal Line Number	Item ID Description	Approximate Quantity and Units	Unit Price	Bid Amount
0506	632.0101 Trees (species) (size) (root) 010. Elm, Princeton American, B&B, 2 1/2-Inch Cal.	50.000 EACH	_____.	_____.
0508	632.0101 Trees (species) (size) (root) 011. Sycamore, American, B&B, 2-Inch Cal.	5.000 EACH	_____.	_____.
0510	632.0101 Trees (species) (size) (root) 012. Honeylocust, Skyline, B&B, 2 1/2-Inch Cal.	18.000 EACH	_____.	_____.
0512	632.0101 Trees (species) (size) (root) 013. Aspen, Quaking, B&B, 2 1/2-Inch Cal.	39.000 EACH	_____.	_____.
0514	632.0101 Trees (species) (size) (root) 014. Hackberry, Common, B&B, 2 1/2-Inch Cal.	4.000 EACH	_____.	_____.
0516	632.0101 Trees (species) (size) (root) 015. Pine, Austrian, B&B, 8-Foot Ht.	15.000 EACH	_____.	_____.
0518	632.0101 Trees (species) (size) (root) 016. Pine, Eastern White, B&B, 8-Foot Ht.	46.000 EACH	_____.	_____.
0520	632.0101 Trees (species) (size) (root) 017. Spruce, White, B&B, 6-Foot Ht.	32.000 EACH	_____.	_____.
0522	632.0101 Trees (species) (size) (root) 018. Baldcypress, Shawnee Brave, B&B, 2 1/2-Inch Cal.	21.000 EACH	_____.	_____.
0524	632.0101 Trees (species) (size) (root) 019. Hawthorn, Thornless Cockspur, B&B, 6-Foot Ht.	22.000 EACH	_____.	_____.
0526	632.0101 Trees (species) (size) (root) 020. Hawthorn, Winter King, B&B, 8-Foot Ht.	12.000 EACH	_____.	_____.
0528	632.0101 Trees (species) (size) (root) 021. Ash, Showy Mountain, B&B, 6-Foot Ht.	6.000 EACH	_____.	_____.



Proposal Schedule of Items

Proposal ID: 20190312001 Project(s): 1005-10-78, 1005-10-89

Federal ID(s): WISC 2019200, WISC 2019201

SECTION: 0001 Contract Items

Alt Set ID: Alt Mbr ID:

Proposal Line Number	Item ID Description	Approximate Quantity and Units	Unit Price	Bid Amount
0530	632.0101 Trees (species) (size) (root) 022. Musclewood, B&B, 2-Inch Cal.	23.000 EACH	_____.	_____.
0532	632.0101 Trees (species) (size) (root) 023. Crabapple, Prairie, B&B, 6-Foot Ht.	12.000 EACH	_____.	_____.
0534	632.0101 Trees (species) (size) (root) 024. Crabapple, Donald Wyman, B&B, 8-Foot Ht.	3.000 EACH	_____.	_____.
0536	632.0101 Trees (species) (size) (root) 025. Redbud, Eastern, B&B, 7-Foot Ht.	10.000 EACH	_____.	_____.
0538	632.0101 Trees (species) (size) (root) 026. Birch, Paper, B&B, 7-Foot Ht.	20.000 EACH	_____.	_____.
0540	632.0101 Trees (species) (size) (root) 027. Serviceberry, Allegheny, B&B, 6-Foot Ht.	29.000 EACH	_____.	_____.
0542	632.0201 Shrubs (species) (size) (root) 001. Juniper, Oldfield Common, Container, 3-Foot Ht. #5	164.000 EACH	_____.	_____.
0544	632.0201 Shrubs (species) (size) (root) 002. Sumac, Smooth, Container, 3-Foot Ht. #5	238.000 EACH	_____.	_____.
0546	632.0201 Shrubs (species) (size) (root) 003. Sumac, Gro-Low, Container, 24-Inch Ht. #3	89.000 EACH	_____.	_____.
0548	632.0201 Shrubs (species) (size) (root) 004. Snowberry, White, Container, 3-Foot Ht. #5	43.000 EACH	_____.	_____.
0550	632.0201 Shrubs (species) (size) (root) 006. Viburnum, Blue Muffin Arrowwood, Container, 3-Foot Ht. #5	70.000 EACH	_____.	_____.



Proposal Schedule of Items

Proposal ID: 20190312001 Project(s): 1005-10-78, 1005-10-89

Federal ID(s): WISC 2019200, WISC 2019201

SECTION: 0001 Contract Items

Alt Set ID: Alt Mbr ID:

Proposal Line Number	Item ID Description	Approximate Quantity and Units	Unit Price	Bid Amount
0552	632.0201 Shrubs (species) (size) (root) 007. Dogwood, Redtwig, Container, 3-Foot Ht. #5	63.000 EACH	_____.	_____.
0554	632.0201 Shrubs (species) (size) (root) 008. Ninebark, Little Devil, Container, 3-Foot Ht. #5	152.000 EACH	_____.	_____.
0556	632.0201 Shrubs (species) (size) (root) 009. Dogwood, Silky, Container, 3-Foot Ht. #5	31.000 EACH	_____.	_____.
0558	632.9101 Landscape Planting Surveillance and Care Cycles	26.000 EACH	_____.	_____.
0560	633.0100 Delineator Posts Steel	139.000 EACH	_____.	_____.
0562	633.0500 Delineator Reflectors	154.000 EACH	_____.	_____.
0564	633.5200 Markers Culvert End	118.000 EACH	_____.	_____.
0566	634.0612 Posts Wood 4x6-Inch X 12-FT	2.000 EACH	_____.	_____.
0568	634.0614 Posts Wood 4x6-Inch X 14-FT	73.000 EACH	_____.	_____.
0570	634.0616 Posts Wood 4x6-Inch X 16-FT	51.000 EACH	_____.	_____.
0572	634.0618 Posts Wood 4x6-Inch X 18-FT	19.000 EACH	_____.	_____.
0574	634.0620 Posts Wood 4x6-Inch X 20-FT	2.000 EACH	_____.	_____.
0576	635.0200 Sign Supports Structural Steel HS	8,560.000 LB	_____.	_____.
0578	636.0100 Sign Supports Concrete Masonry	15.000 CY	_____.	_____.
0580	636.0500 Sign Supports Steel Reinforcement	870.000 LB	_____.	_____.



Proposal Schedule of Items

Proposal ID: 20190312001 Project(s): 1005-10-78, 1005-10-89

Federal ID(s): WISC 2019200, WISC 2019201

SECTION: 0001 Contract Items

Alt Set ID: Alt Mbr ID:

Proposal Line Number	Item ID Description	Approximate Quantity and Units	Unit Price	Bid Amount
0582	637.1220 Signs Type I Reflective SH	941.000 SF	_____.	_____.
0584	637.2210 Signs Type II Reflective H	1,452.130 SF	_____.	_____.
0586	637.2230 Signs Type II Reflective F	161.000 SF	_____.	_____.
0588	638.2601 Removing Signs Type I	10.000 EACH	_____.	_____.
0590	638.2602 Removing Signs Type II	138.000 EACH	_____.	_____.
0592	638.3000 Removing Small Sign Supports	146.000 EACH	_____.	_____.
0594	638.3100 Removing Structural Steel Sign Supports	16.000 EACH	_____.	_____.
0596	638.3610 Erecting State Owned Signs Type I	4.000 EACH	_____.	_____.
0598	642.5401 Field Office Type D	1.000 EACH	_____.	_____.
0600	643.0300 Traffic Control Drums	66,800.000 DAY	_____.	_____.
0602	643.0420 Traffic Control Barricades Type III	3,850.000 DAY	_____.	_____.
0604	643.0705 Traffic Control Warning Lights Type A	2,600.000 DAY	_____.	_____.
0606	643.0715 Traffic Control Warning Lights Type C	33,300.000 DAY	_____.	_____.
0608	643.0800 Traffic Control Arrow Boards	20.000 DAY	_____.	_____.
0610	643.0900 Traffic Control Signs	56,900.000 DAY	_____.	_____.
0612	643.0910 Traffic Control Covering Signs Type I	1.000 EACH	_____.	_____.
0614	643.0920 Traffic Control Covering Signs Type II	12.000 EACH	_____.	_____.



Proposal Schedule of Items

Proposal ID: 20190312001 Project(s): 1005-10-78, 1005-10-89

Federal ID(s): WISC 2019200, WISC 2019201

SECTION: 0001 Contract Items

Alt Set ID: Alt Mbr ID:

Proposal Line Number	Item ID Description	Approximate Quantity and Units	Unit Price	Bid Amount
0616	643.1000 Traffic Control Signs Fixed Message	263.000 SF	_____.	_____.
0618	643.1050 Traffic Control Signs PCMS	1,410.000 DAY	_____.	_____.
0620	643.5000 Traffic Control	1.000 EACH	_____.	_____.
0622	645.0111 Geotextile Type DF Schedule A	812.000 SY	_____.	_____.
0624	645.0120 Geotextile Type HR	5,775.000 SY	_____.	_____.
0626	645.0140 Geotextile Type SAS	1,100.000 SY	_____.	_____.
0628	645.0220 Geogrid Type SR	30,243.000 SY	_____.	_____.
0630	646.1020 Marking Line Epoxy 4-Inch	288,300.000 LF	_____.	_____.
0632	646.1040 Marking Line Grooved Wet Ref Epoxy 4-Inch	92,000.000 LF	_____.	_____.
0634	646.1555 Marking Line Grooved Contrast Permanent Tape 4-Inch	23,000.000 LF	_____.	_____.
0636	646.3020 Marking Line Epoxy 8-Inch	3,115.000 LF	_____.	_____.
0638	646.3555 Marking Line Grooved Contrast Permanent Tape 8-Inch	2,220.000 LF	_____.	_____.
0640	646.5020 Marking Arrow Epoxy	3.000 EACH	_____.	_____.
0642	646.5220 Marking Symbol Epoxy	5.000 EACH	_____.	_____.
0644	646.6120 Marking Stop Line Epoxy 18-Inch	35.000 LF	_____.	_____.
0646	646.6464 Cold Weather Marking Epoxy 4-Inch	114,200.000 LF	_____.	_____.



Proposal Schedule of Items

Proposal ID: 20190312001 Project(s): 1005-10-78, 1005-10-89

Federal ID(s): WISC 2019200, WISC 2019201

SECTION: 0001 Contract Items

Alt Set ID: Alt Mbr ID:

Proposal Line Number	Item ID Description	Approximate Quantity and Units	Unit Price	Bid Amount
0648	646.6468 Cold Weather Marking Epoxy 8-Inch	335.000 LF	_____.	_____.
0650	646.7020 Marking Diagonal Epoxy 6-Inch	575.000 LF	_____.	_____.
0652	646.7420 Marking Crosswalk Epoxy Transverse Line 6-Inch	32.000 LF	_____.	_____.
0654	646.8120 Marking Curb Epoxy	435.000 LF	_____.	_____.
0656	646.8320 Marking Parking Stall Epoxy	8,800.000 LF	_____.	_____.
0658	646.9010 Marking Removal Line Water Blasting 4-Inch	342,700.000 LF	_____.	_____.
0660	646.9110 Marking Removal Line Water Blasting 8-Inch	2,030.000 LF	_____.	_____.
0662	646.9310 Marking Removal Special Marking Water Blasting	3.000 EACH	_____.	_____.
0664	649.0120 Temporary Marking Line Epoxy 4-Inch	164,500.000 LF	_____.	_____.
0666	649.0150 Temporary Marking Line Removable Tape 4-Inch	70,450.000 LF	_____.	_____.
0668	649.0220 Temporary Marking Line Epoxy 8-Inch	1,470.000 LF	_____.	_____.
0670	649.0760 Temporary Marking Raised Pavement Marker Type I	1,430.000 EACH	_____.	_____.
0672	652.0125 Conduit Rigid Metallic 2-Inch	352.000 LF	_____.	_____.
0674	652.0225 Conduit Rigid Nonmetallic Schedule 40 2-Inch	8,714.000 LF	_____.	_____.
0676	652.0235 Conduit Rigid Nonmetallic Schedule 40 3-Inch	255.000 LF	_____.	_____.



Proposal Schedule of Items

Proposal ID: 20190312001 Project(s): 1005-10-78, 1005-10-89

Federal ID(s): WISC 2019200, WISC 2019201

SECTION: 0001 Contract Items

Alt Set ID: Alt Mbr ID:

Proposal Line Number	Item ID Description	Approximate Quantity and Units	Unit Price	Bid Amount
0678	652.0605 Conduit Special 2-Inch	1,170.000 LF	_____.	_____.
0680	652.0700.S Install Conduit into Existing Item	5.000 EACH	_____.	_____.
0682	653.0164 Pull Boxes Non-Conductive 24x42-Inch	34.000 EACH	_____.	_____.
0684	653.0222 Junction Boxes 18x12x6-Inch	16.000 EACH	_____.	_____.
0686	654.0105 Concrete Bases Type 5	1.000 EACH	_____.	_____.
0688	654.0106 Concrete Bases Type 6	20.000 EACH	_____.	_____.
0690	654.0230 Concrete Control Cabinet Bases Type L30	1.000 EACH	_____.	_____.
0692	654.1150 Concrete Bases Camera Pole 50-FT	2.000 EACH	_____.	_____.
0694	655.0610 Electrical Wire Lighting 12 AWG	3,654.000 LF	_____.	_____.
0696	655.0620 Electrical Wire Lighting 8 AWG	1,413.000 LF	_____.	_____.
0698	655.0625 Electrical Wire Lighting 6 AWG	31,983.000 LF	_____.	_____.
0700	655.0635 Electrical Wire Lighting 2 AWG	1,497.000 LF	_____.	_____.
0702	656.0200 Electrical Service Meter Breaker Pedestal (location) 001. Rest Area #17	LS	LUMP SUM	_____.
0704	656.0200 Electrical Service Meter Breaker Pedestal (location) 002. M-H Townline Road	LS	LUMP SUM	_____.
0706	657.0255 Transformer Bases Breakaway 11 1/2-Inch Bolt Circle	21.000 EACH	_____.	_____.



Proposal Schedule of Items

Proposal ID: 20190312001 Project(s): 1005-10-78, 1005-10-89

Federal ID(s): WISC 2019200, WISC 2019201

SECTION: 0001 Contract Items

Alt Set ID: Alt Mbr ID:

Proposal Line Number	Item ID Description	Approximate Quantity and Units	Unit Price	Bid Amount
0708	657.0322 Poles Type 5-Aluminum	1.000 EACH	_____.	_____.
0710	657.0327 Poles Type 6-Aluminum	8.000 EACH	_____.	_____.
0712	657.0715 Luminaire Arms Truss Type 4 1/2-Inch Clamp 15-FT	8.000 EACH	_____.	_____.
0714	659.0400 Luminaires High Mast Lighting LED	8.000 EACH	_____.	_____.
0716	659.1120 Luminaires Utility LED B	20.000 EACH	_____.	_____.
0718	659.1125 Luminaires Utility LED C	20.000 EACH	_____.	_____.
0720	659.2130 Lighting Control Cabinets 120/240 30- Inch	1.000 EACH	_____.	_____.
0722	670.0100 Field System Integrator 001. 1005-10-78	LS	LUMP SUM	_____.
0724	670.0100 Field System Integrator 002. 1005-10-89	LS	LUMP SUM	_____.
0726	670.0200 ITS Documentation 001. 1005-10-78	LS	LUMP SUM	_____.
0728	670.0200 ITS Documentation 002. 1005-10-89	LS	LUMP SUM	_____.
0730	671.0132 Conduit HDPE 3-Duct 2-Inch	29,530.000 LF	_____.	_____.
0732	671.0232 Conduit HDPE Directional Bore 3-Duct 2- Inch	850.000 LF	_____.	_____.
0734	673.0110 Communication Vault Type Round	23.000 EACH	_____.	_____.
0736	673.0200 Tracer Wire Marker Posts	23.000 EACH	_____.	_____.
0738	673.0225.S Install Pole Mounted Cabinet	2.000 EACH	_____.	_____.



Proposal Schedule of Items

Proposal ID: 20190312001 Project(s): 1005-10-78, 1005-10-89

Federal ID(s): WISC 2019200, WISC 2019201

SECTION: 0001 Contract Items

Alt Set ID: Alt Mbr ID:

Proposal Line Number	Item ID Description	Approximate Quantity and Units	Unit Price	Bid Amount
0740	674.0300 Remove Cable	190.000 LF	_____.	_____.
0742	675.0300 Install Mounted Controller Microwave Detector Assembly	6.000 EACH	_____.	_____.
0744	677.0150 Install Camera Pole 50-FT	2.000 EACH	_____.	_____.
0746	677.0200 Install Camera Assembly	2.000 EACH	_____.	_____.
0748	678.0012 Install Fiber Optic Cable Outdoor Plant 12-CT	2,940.000 LF	_____.	_____.
0750	678.0072 Install Fiber Optic Cable Outdoor Plant 72-CT	86,770.000 LF	_____.	_____.
0752	678.0200 Fiber Optic Splice Enclosure	11.000 EACH	_____.	_____.
0754	678.0300 Fiber Optic Splice	528.000 EACH	_____.	_____.
0756	678.0400 Fiber Optic Termination	72.000 EACH	_____.	_____.
0758	678.0500 Communication System Testing	LS	LUMP SUM	_____.
0760	678.0600 Install Ethernet Switches	7.000 EACH	_____.	_____.
0762	690.0150 Sawing Asphalt	2,525.000 LF	_____.	_____.
0764	690.0250 Sawing Concrete	7,130.000 LF	_____.	_____.
0766	715.0415 Incentive Strength Concrete Pavement	266,256.000 DOL	1.00000	266,256.00
0768	715.0502 Incentive Strength Concrete Structures	29,382.000 DOL	1.00000	29,382.00
0770	740.0440 Incentive IRI Ride	68,929.000 DOL	1.00000	68,929.00



Proposal Schedule of Items

Proposal ID: 20190312001 Project(s): 1005-10-78, 1005-10-89

Federal ID(s): WISC 2019200, WISC 2019201

SECTION: 0001 Contract Items

Alt Set ID: Alt Mbr ID:

Proposal Line Number	Item ID Description	Approximate Quantity and Units	Unit Price	Bid Amount
0772	801.0117 Railroad Flagging Reimbursement	75,000.000 DOL	1.00000	75,000.00
0774	ASP.1T0A On-the-Job Training Apprentice at \$5.00/HR	3,200.000 HRS	5.00000	16,000.00
0776	ASP.1T0G On-the-Job Training Graduate at \$5.00/HR	6,000.000 HRS	5.00000	30,000.00
0778	SPV.0005 Special 500. Subsoiling	3.000 ACRE	_____.	_____.
0780	SPV.0005 Special 501. Pre-Planting Vegetation Treatment	112.300 ACRE	_____.	_____.
0782	SPV.0005 Special 502. Seed Bed Preparation	6.000 ACRE	_____.	_____.
0784	SPV.0005 Special 514. Organic Fiber Matrix Mulch	1.200 ACRE	_____.	_____.
0786	SPV.0035 Special 001. Roadway Embankment	538,435.000 CY	_____.	_____.
0788	SPV.0035 Special 002. Roadside Infiltration Ditch Granular Backfill Sand	6,500.000 CY	_____.	_____.
0790	SPV.0035 Special 500. Topsoil Special	3,363.000 CY	_____.	_____.
0792	SPV.0035 Special 700. High Performance Concrete (HPC) Masonry Structures	3,388.000 CY	_____.	_____.
0794	SPV.0060 Special 001. Baseline CPM Progress Schedule	1.000 EACH	_____.	_____.
0796	SPV.0060 Special 002. CPM Progress Schedule Updates and Accepted Revisions	25.000 EACH	_____.	_____.
0798	SPV.0060 Special 003. Access Gate 6-Foot	8.000 EACH	_____.	_____.
0800	SPV.0060 Special 004. Test Pits	24.000 EACH	_____.	_____.



Proposal Schedule of Items

Proposal ID: 20190312001 Project(s): 1005-10-78, 1005-10-89

Federal ID(s): WISC 2019200, WISC 2019201

SECTION: 0001 Contract Items

Alt Set ID: Alt Mbr ID:

Proposal Line Number	Item ID Description	Approximate Quantity and Units	Unit Price	Bid Amount
0802	SPV.0060 Special 006. Removing Billboard Sign and Sign Structure	3.000 EACH	_____.	_____.
0804	SPV.0060 Special 007. Cover Plates Permanent	1.000 EACH	_____.	_____.
0806	SPV.0060 Special 008. Salvage Terminal High-Tension Cable TL-3, Safence	2.000 EACH	_____.	_____.
0808	SPV.0060 Special 100. Moving Inlets	2.000 EACH	_____.	_____.
0810	SPV.0060 Special 101. Covering Storm Sewer	1.000 EACH	_____.	_____.
0812	SPV.0060 Special 102. Apron Endwalls for Culvert Pipe Salvaged 19x30-Inch	1.000 EACH	_____.	_____.
0814	SPV.0060 Special 200. Fixed Message Sign Portable Support	2.000 EACH	_____.	_____.
0816	SPV.0060 Special 201. Crash Cushion Temporary Low Maintenance	1.000 EACH	_____.	_____.
0818	SPV.0060 Special 202. Install Department Furnished Crash Cushion Low Maintenance	1.000 EACH	_____.	_____.
0820	SPV.0060 Special 203. Emergency Response to Traffic Incident Involving Conc Barrier Temp Precast	10.000 EACH	_____.	_____.
0822	SPV.0060 Special 204. Emergency Response to Traffic Incident Involving Crash Cushion	3.000 EACH	_____.	_____.
0824	SPV.0060 Special 205. Emergency Response to Traffic Incident Involving Guardrail or EAT	3.000 EACH	_____.	_____.
0826	SPV.0060 Special 206. Repair State Owned Crash Cushion	1.000 EACH	_____.	_____.



Proposal Schedule of Items

Proposal ID: 20190312001 Project(s): 1005-10-78, 1005-10-89

Federal ID(s): WISC 2019200, WISC 2019201

SECTION: 0001 Contract Items

Alt Set ID: Alt Mbr ID:

Proposal Line Number	Item ID Description	Approximate Quantity and Units	Unit Price	Bid Amount
0828	SPV.0060 Special 207. Repair State Owned Crash Cushion Low Maintenance	1.000 EACH	_____.	_____.
0830	SPV.0060 Special 209. Roadway Cleanup	15.000 EACH	_____.	_____.
0832	SPV.0060 Special 210. Temporary Concrete Barrier Gate	8.000 EACH	_____.	_____.
0834	SPV.0060 Special 350. Salvage Street Light Unit	12.000 EACH	_____.	_____.
0836	SPV.0060 Special 351. Reinstall Salvaged Street Light Unit	12.000 EACH	_____.	_____.
0838	SPV.0060 Special 352. Retro-Fit Street Light	33.000 EACH	_____.	_____.
0840	SPV.0060 Special 353. Retro-Fit High Mast LED	8.000 EACH	_____.	_____.
0842	SPV.0060 Special 354. Retro-Fit Walkway LED	24.000 EACH	_____.	_____.
0844	SPV.0060 Special 355. Luminaires Utility LED C Photocontrol	1.000 EACH	_____.	_____.
0846	SPV.0060 Special 400. Remove Wireless Traffic Sensor	4.000 EACH	_____.	_____.
0848	SPV.0060 Special 401. Remove Wireless Traffic Sensor Repeater	2.000 EACH	_____.	_____.
0850	SPV.0060 Special 402. Install Wireless Traffic Sensor	4.000 EACH	_____.	_____.
0852	SPV.0060 Special 403. Install Wireless Traffic Sensor Repeater	2.000 EACH	_____.	_____.
0854	SPV.0060 Special 404. Install Wireless Mesh Radio Assembly	2.000 EACH	_____.	_____.



Proposal Schedule of Items

Proposal ID: 20190312001 Project(s): 1005-10-78, 1005-10-89

Federal ID(s): WISC 2019200, WISC 2019201

SECTION: 0001 Contract Items

Alt Set ID: Alt Mbr ID:

Proposal Line Number	Item ID Description	Approximate Quantity and Units	Unit Price	Bid Amount
0856	SPV.0060 Special 405. Install Radio	5.000 EACH	_____.	_____.
0858	SPV.0060 Special 406. Install Solar Power System-Microwave Detector	1.000 EACH	_____.	_____.
0860	SPV.0060 Special 407. Install Hardwired Bluetooth Sensor	1.000 EACH	_____.	_____.
0862	SPV.0060 Special 408. Remove Poles Wood	2.000 EACH	_____.	_____.
0864	SPV.0060 Special 409. Salvage Wireless Mesh Radio Assembly	2.000 EACH	_____.	_____.
0866	SPV.0060 Special 410. Salvage Cellular Modem	6.000 EACH	_____.	_____.
0868	SPV.0060 Special 500. Planting Living Snow Fence	15,703.000 EACH	_____.	_____.
0870	SPV.0060 Special 501. Native Seed Surveillance and Care Cycles	16.000 EACH	_____.	_____.
0872	SPV.0060 Special 502. Delineator Post Steel Modified	238.000 EACH	_____.	_____.
0874	SPV.0060 Special 650. Utility Line Opening	5.000 EACH	_____.	_____.
0876	SPV.0060 Special 651. Air Valve in Valve Manhole	4.000 EACH	_____.	_____.
0878	SPV.0060 Special 652. Double Cleanout Manhole	7.000 EACH	_____.	_____.
0880	SPV.0075 Special 001. Street Sweeping	100.000 HRS	_____.	_____.
0882	SPV.0075 Special 002. Construction Site Maintenance - Mowing	750.000 HRS	_____.	_____.
0884	SPV.0085 Special 500. Seeding Native Mix N1	161.000 LB	_____.	_____.



Proposal Schedule of Items

Proposal ID: 20190312001 Project(s): 1005-10-78, 1005-10-89

Federal ID(s): WISC 2019200, WISC 2019201

SECTION: 0001 Contract Items

Alt Set ID: Alt Mbr ID:

Proposal Line Number	Item ID Description	Approximate Quantity and Units	Unit Price	Bid Amount
0886	SPV.0085 Special 501. Seeding Native Mix N2	919.000 LB	_____.	_____.
0888	SPV.0085 Special 502. Seeding Native Mix N3	45.000 LB	_____.	_____.
0890	SPV.0085 Special 503. Seeding Native Mix N4	115.000 LB	_____.	_____.
0892	SPV.0090 Special 001. Concrete Pavement Joint Sealing	3,160.000 LF	_____.	_____.
0894	SPV.0090 Special 002. Fire Protection Water Supply Well	290.000 LF	_____.	_____.
0896	SPV.0090 Special 003. Salvage High-Tension Cable TL-3, Socketed, Safence	1,520.000 LF	_____.	_____.
0898	SPV.0090 Special 100. Pipe Jacking 30-Inch	221.000 LF	_____.	_____.
0900	SPV.0090 Special 101. Pipe Jacking 60-Inch	267.000 LF	_____.	_____.
0902	SPV.0090 Special 150. Compost Tube	5,750.000 LF	_____.	_____.
0904	SPV.0090 Special 201. Maint and Removal of Concrete Barrier Temp Precast Left in Place	8,575.000 LF	_____.	_____.
0906	SPV.0090 Special 202. Traffic Control Gawk Screen Furnished	3,500.000 LF	_____.	_____.
0908	SPV.0090 Special 203. Traffic Control Gawk Screen Installed	5,325.000 LF	_____.	_____.
0910	SPV.0090 Special 204. Traffic Control Glare Screen Furnished	10,450.000 LF	_____.	_____.
0912	SPV.0090 Special 205. Traffic Control Glare Screen Installed	18,025.000 LF	_____.	_____.



Proposal Schedule of Items

Proposal ID: 20190312001 Project(s): 1005-10-78, 1005-10-89

Federal ID(s): WISC 2019200, WISC 2019201

SECTION: 0001 Contract Items

Alt Set ID: Alt Mbr ID:

Proposal Line Number	Item ID Description	Approximate Quantity and Units	Unit Price	Bid Amount
0914	SPV.0090 Special 401. Pre-Terminated Fiber Optic Cable 24-CT	870.000 LF	_____.	_____.
0916	SPV.0090 Special 650. Sanitary Sewer Forcemain 6-Inch	5,164.000 LF	_____.	_____.
0918	SPV.0105 Special 001. Survey Project 1005-10-78 with Optional AMG for Conc Pavt and Base Course	LS	LUMP SUM	_____.
0920	SPV.0105 Special 002. Survey Project 1005-10-89 with Optional AMG for Conc Pavt and Base Course	LS	LUMP SUM	_____.
0922	SPV.0105 Special 003. Concrete Pavement Joint Layout Project 1005-10-78	LS	LUMP SUM	_____.
0924	SPV.0105 Special 004. Concrete Pavement Joint Layout Project 1005-10-89	LS	LUMP SUM	_____.
0926	SPV.0105 Special 005. Fire Protection Well Equipment	LS	LUMP SUM	_____.
0928	SPV.0105 Special 006. Fire Protection Electrical Service Meter and Control Panels	LS	LUMP SUM	_____.
0930	SPV.0105 Special 007. Removing DMS Conduit and Wire	LS	LUMP SUM	_____.
0932	SPV.0105 Special 350. Disconnect From Existing Lighting Control	LS	LUMP SUM	_____.
0934	SPV.0105 Special 401. Salvage ITS Equipment (M-H Townline Road)	LS	LUMP SUM	_____.
0936	SPV.0105 Special 402. Salvage ITS Equipment (WSOR Crossing)	LS	LUMP SUM	_____.
0938	SPV.0105 Special 403. Relocate Solar-Powered Bluetooth Sensor	LS	LUMP SUM	_____.



Proposal Schedule of Items

Proposal ID: 20190312001 Project(s): 1005-10-78, 1005-10-89

Federal ID(s): WISC 2019200, WISC 2019201

SECTION: 0001 Contract Items

Alt Set ID: Alt Mbr ID:

Proposal Line Number	Item ID Description	Approximate Quantity and Units	Unit Price	Bid Amount
0940	SPV.0165 Special 700. Longitudinal Grooving Bridge Deck	19,220.000 SF	_____.	_____.
0942	SPV.0165 Special 850. Temporary Wall Wire Faced Mechanically Stabilized Earth	1,125.000 SF	_____.	_____.
0944	SPV.0165 Special 851. Temporary Shoring Railroad	1,350.000 SF	_____.	_____.
0946	SPV.0165 Special 852. Wall Concrete Panel Mechanically Stabilized Earth R-53-37	4,620.000 SF	_____.	_____.
0948	SPV.0165 Special 853. Wall Concrete Panel Mechanically Stabilized Earth R-53-50	5,300.000 SF	_____.	_____.
0950	SPV.0165 Special 854. Wall Concrete Panel Mechanically Stabilized Earth R-53-60	4,800.000 SF	_____.	_____.
0952	SPV.0165 Special 855. Wall Concrete Panel Mechanically Stabilized Earth R-53-61	4,020.000 SF	_____.	_____.
0954	SPV.0180 Special 001. Compost	5,000.000 SY	_____.	_____.
0956	SPV.0180 Special 500. Weed Barrier Fabric	27,975.000 SY	_____.	_____.
0958	SPV.0195 Special 700. Excavation, Hauling, and Disposal of Contaminated Soil	614.000 TON	_____.	_____.
0960	522.0536 Culvert Pipe Reinforced Concrete Class V 36-Inch	88.000 LF	_____.	_____.
0962	628.1920 Cleaning Sediment Basins	50.000 CY	_____.	_____.
0964	SPV.0060 Special 103. Apron Endwalls for Culvert Pipe Horizontal Elliptical Salvaged 24x38-Inch	2.000 EACH	_____.	_____.
Section: 0001			Total:	_____.

Total Bid: _____.

