



Wisconsin Department of Transportation

Division of Transportation Systems Development

Bureau of Project Development
4822 Madison Yards Way, 4th Floor South
Madison, WI 53705

March 1, 2019

Telephone: (608) 266-1631
Facsimile (FAX): (608) 266-8459

NOTICE TO ALL CONTRACTORS:

Proposal #08: 5516-00-70, WISC 2019 153
Village of Kendall, White Street
Br Baraboo River Bridge B-41-0306
CTH W
Monroe County

Letting of March 12, 2019

This is Addendum No. 01, which provides for the following:

Special Provisions:

Revised Special Provisions	
Article No.	Description
3	Prosecution and Progress

Schedule of Items:

Revised Bid Item Quantities					
Bid Item	Item Description	Unit	Old Quantity	Revised Quantity	Proposal Total
606.0300	Riprap Heavy	CY	240	-67	173
645.0120	Geotextile Type HR	SY	450	-129	321

Plan Sheets:

Revised Plan Sheets	
Plan Sheet	Plan Sheet Title (brief description of changes to sheet)
9	Removed Grading Detail/Riprap Layout Detail
11	Changed limits of TLE and RW on the parcel of Lance Elliot, moved location of storm sewer pipe 104 and endwall 1, removed the riprap located at the old outfall location of storm sewer pipe 104, and updated the slope intercepts to reflect these changes.
12	Changed limits of TLE and RW on the parcel of Lance Elliot, moved location of storm sewer pipe 104 and endwall 1, removed the riprap located at the old outfall location of storm sewer pipe 104, and updated the slope intercepts to reflect these changes. Changed the station and offset of endwall 1 as well as the slope of pipe 104 and the invert elevation of storm

	sewer pipe 104. Lowered the existing pipe that falls below pipe 103 to reflect its correct elevation.
13	Moved location of storm sewer pipe 104 and endwall 1, removed the riprap located at the old outfall location of storm sewer pipe 104, and updated the slope intercepts and silt fence to reflect these changes.
14	Changed limits of TLE and RW on the parcel of Lance Elliot.
20	Under the STORM SEWER PIPES table, the slope of pipe 104 and the invert elevation of storm sewer pipe 104 were changed. Under the STORM SEWER STRUCTURES table the station and offset of endwall 1 were changed. Under the RIPRAP HEAVY/GEOTEXTILE TYPE HR table the riprap and fabric located from station 12+73-13+10 was removed.
23	The RW Plat has been revised and replaced in the plans
24	The RW Plat has been revised and replaced in the plans
25	Changed limits of TLE and RW on the parcel of Lance Elliot, moved location of storm sewer pipe 104 and endwall 1, removed the riprap located at the old outfall location of storm sewer pipe 104, and updated the slope intercepts to reflect these changes.

The responsibility for notifying potential subcontractors and suppliers of these changes remains with the prime contractor.

Sincerely,

Mike Coleman

Proposal Development Specialist
Proposal Management Section

ADDENDUM NO. 01

5516-00-70

March 1, 2019

Special Provisions

3. Prosecution and Progress.

Add the following after paragraph 1:

It is anticipated that the notice to proceed will be issued no later than June 3, 2019.

Schedule of Items

Attached, dated March 1, 2019, are the revised Schedule of Items Pages 3 and 5.

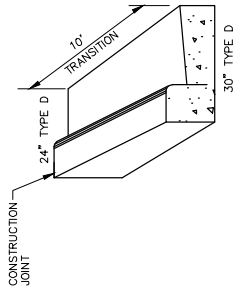
Plan Sheets

The following 8½ x 11-inch sheets are attached and made part of the plans for this proposal:

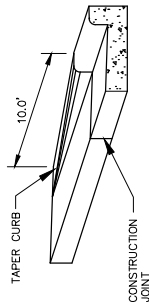
Revised: 9, 11, 12, 13, 14, 20, 23, 24, 25

END OF ADDENDUM

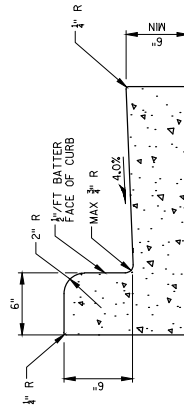
Addendum No. 01
ID 5516-00-70
Revised Sheet 9
March 1, 2019



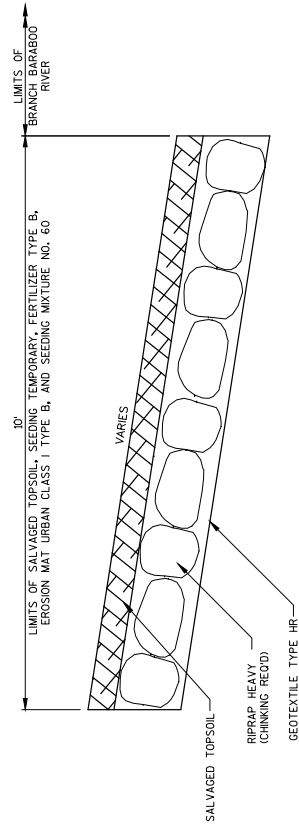
CURB & GUTTER TRANSITION DETAIL
PAID FOR AS CONCRETE CURB & GUTTER 30-INCH TYPE D



DETAIL OF CURB & GUTTER TERMINI

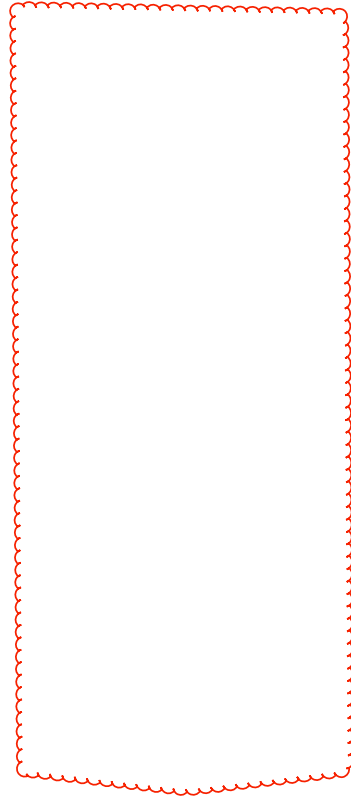


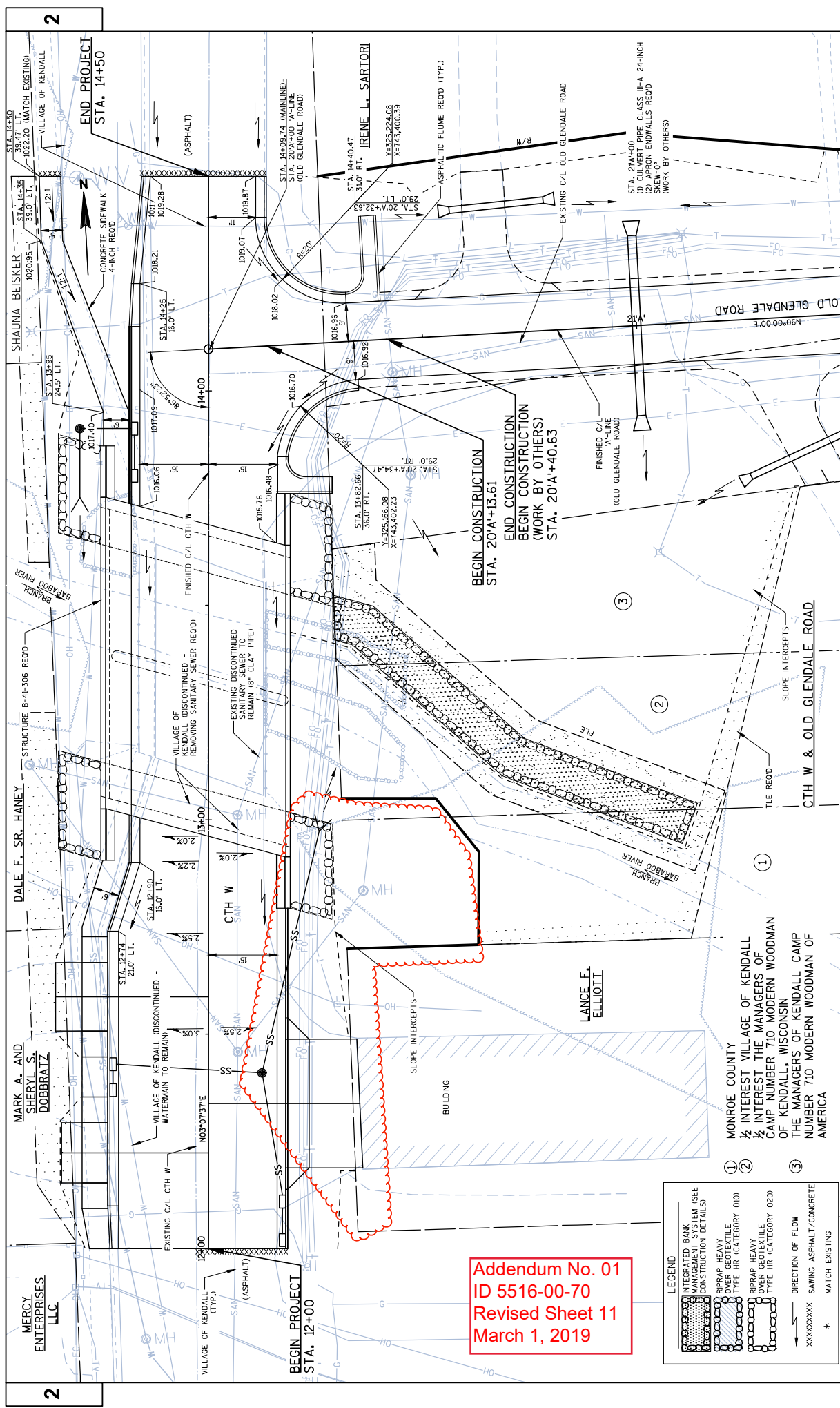
CONCRETE CURB & GUTTER 24-INCH TYPE D



INTEGRATED BANK MANAGEMENT SYSTEM DETAIL

(STA. 20'+0.26 - STA. 20'+40.63, RT.)
(STA. 20'+40.63 - STA. 21'+08, RT. - WORK BY OTHERS)





2

MERCY ENTERPRISES LLC

MARK A. AND SHERYL S. DOBBRATZ

DALE F. SR. HANEY

SHAUNA BEISKER

2

END PROJECT STA. 14+50

BEGIN PROJECT STA. 12+00

IRENE L. SARTORI

LANCE F. ELLIOTT

MONROE COUNTY

INTEREST VILLAGE OF KENDALL 1/2 INTEREST THE MANAGERS OF CAMP NUMBER 710 MODERN WOODMAN OF KENDALL, WISCONSIN

INTEREST VILLAGE OF KENDALL 1/2 THE MANAGERS OF KENDALL CAMP NUMBER 710 MODERN WOODMAN OF AMERICA

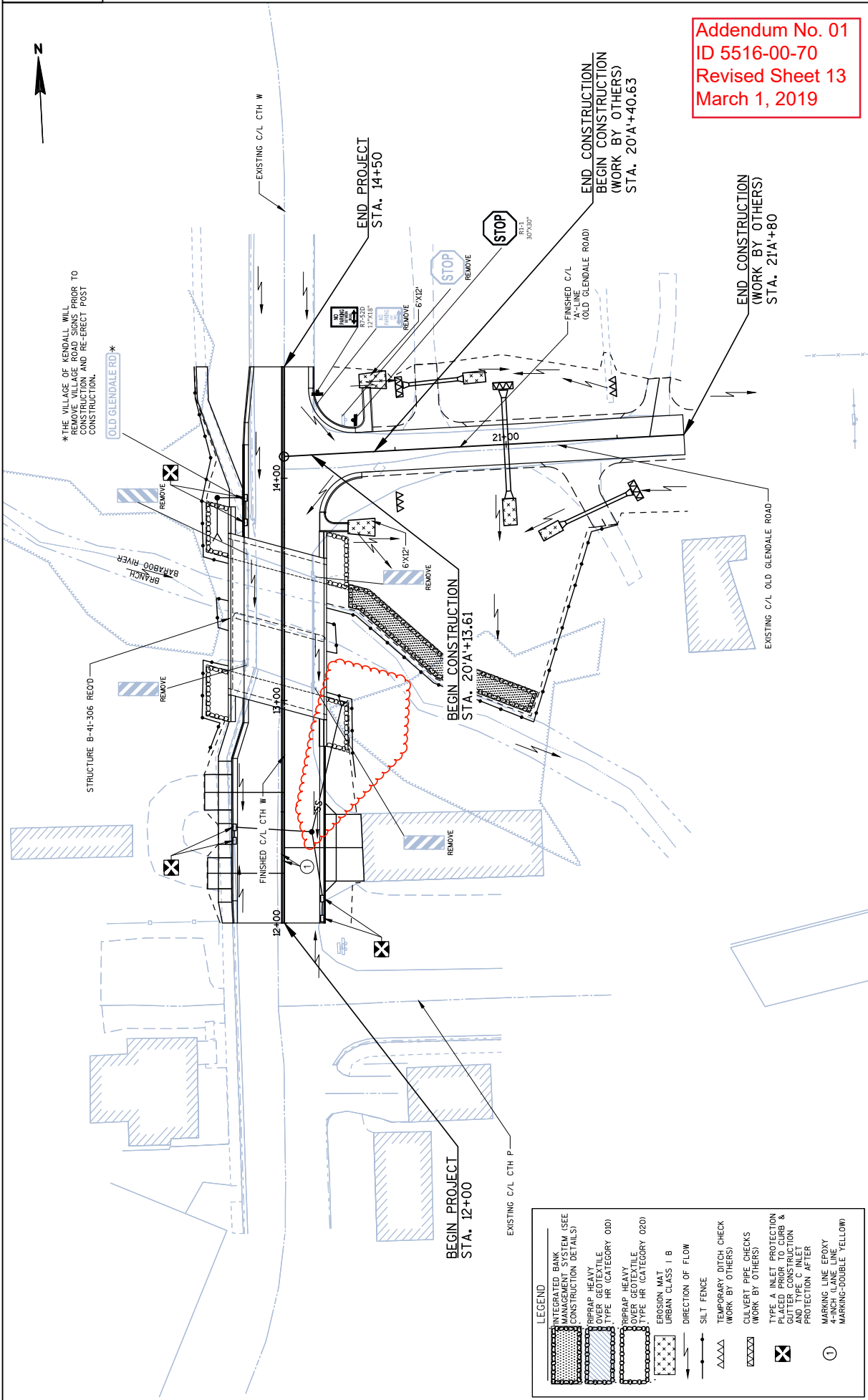
PROJECT NO: 5516-00-70

Addendum No. 01
 ID 5516-00-70
 Revised Sheet 11
 March 1, 2019

LEGEND

[Symbol]	INTEGRATED BANK MANAGEMENT SYSTEM (SEE CONSTRUCTION DETAILS)
[Symbol]	RIPRAP HEAVY OVER GEOTEXTILE TYPE HR (CATEGORY 010)
[Symbol]	RIPRAP HEAVY OVER GEOTEXTILE TYPE HR (CATEGORY 020)
[Symbol]	DIRECTION OF FLOW
[Symbol]	SAWING ASPHALT/CONCRETE
[Symbol]	MATCH EXISTING

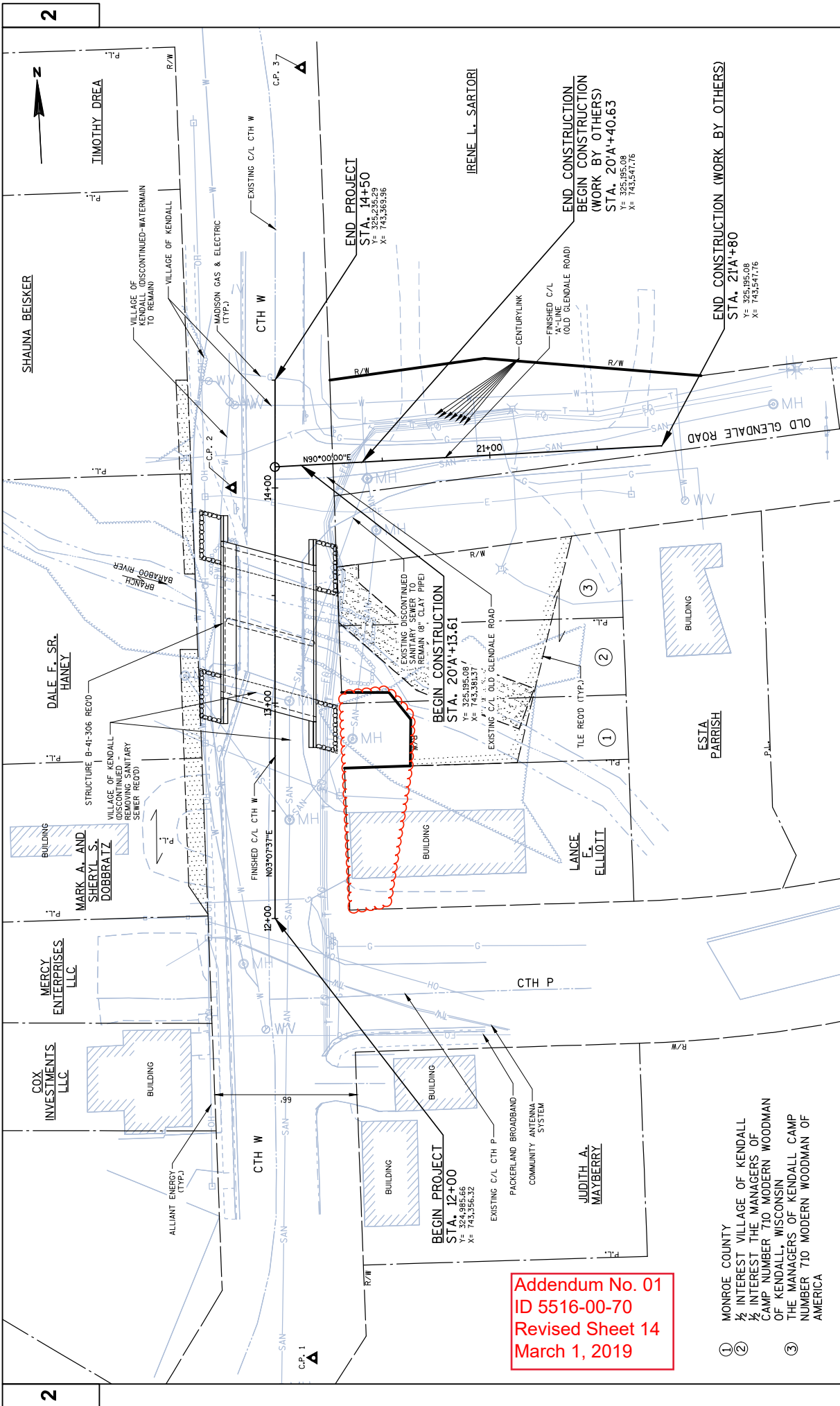
FILE NAME : S:\PROJECTS\55160060 MONROE CO CTH W BRIDGE\SHEET\PLAN\DETAILS\INTERSECTION DETAILS.DWG
 LAYOUT : LAYOUT
 COUNTY: MONROE
 HWY: CTH W
 INTERSECTION DETAILS
 SHEET 11 E
 PLOT DATE : 2/28/2019
 PLOT BY : JULIA ZENNER
 PLOT SCALE : 1" = 1'
 POST TIME : 3:15:54 PM



Addendum No. 01
 ID 5516-00-70
 Revised Sheet 13
 March 1, 2019

LEGEND

	INTEGRATED BANK MANAGEMENT SYSTEM (SEE CONSTRUCTION DETAILS)
	RIPRAP HEAVY OVER GEOTEXTILE TYPE HR (CATEGORY 01D)
	RIPRAP HEAVY OVER GEOTEXTILE TYPE HR (CATEGORY 02D)
	EROSION MAT URBAN CLASS I B
	DIRECTION OF FLOW
	SILT FENCE
	TEMPORARY DITCH CHECK (WORK BY OTHERS)
	CULVERT PIPE CHECKS (WORK BY OTHERS)
	TYPE A INLET PROTECTION AFTER CONSTRUCTION AND TYPE C INLET PROTECTION AFTER
	MARKING LINE EPOXY 4-INCH LANE LINE MARKING-DOUBLE YELLOW



2

2



TIMOTHY DREA

SHALINA BEISKER

DALE F. SR. HANEY

MERCY ENTERPRISES LLC

COX INVESTMENTS LLC

MARK A. AND SHERYL S. DOBBRAITZ

JUDITH A. MAYBERRY

LANCE F. ELLIOTT

ESTA PARRISH

IRENE L. SARTORI

END PROJECT
STA. 14+50
Y= 325,235.29
X= 743,369.96

BEGIN CONSTRUCTION
STA. 20'A+13.61
Y= 325,195.08
X= 743,381.37

BEGIN PROJECT
STA. 12+00
Y= 324,985.66
X= 743,356.32

END CONSTRUCTION
(WORK BY OTHERS)
STA. 20'A+40.63
Y= 325,195.08
X= 743,547.16

END CONSTRUCTION (WORK BY OTHERS)
STA. 21A+80
Y= 325,195.08
X= 743,547.16

Addendum No. 01
ID 5516-00-70
Revised Sheet 14
March 1, 2019

- ① MONROE COUNTY
- ② 1/2 INTEREST VILLAGE OF KENDALL
- ③ 1/2 INTEREST THE MANAGERS OF CAMP NUMBER 710 MODERN WOODMAN OF KENDALL, WISCONSIN
- ④ THE MANAGERS OF KENDALL CAMP NUMBER 710 MODERN WOODMAN OF AMERICA

PROJECT NO: 5516-00-70	HWY: CTH W	COUNTY: MONROE	ALIGNMENT & TIES DETAIL	SHEET 14	E
------------------------	------------	----------------	-------------------------	----------	---

FILE NAME: S:\PROJECTS\551600 MONROE CO CTH W BRIDGE\551600 PLAN\DETAILS\ALIGNMENT & TIES.DWG
 PLOT DATE: 2/26/2019
 PLOT TIME: 3:28:26 PM
 PLOT BY: JULIA ZENNER
 PLOT SCALE: 1" = 1'

Addendum No. 01
ID 5516-00-70
Revised Sheet 20
March 1, 2019

CONCRETE CURB & GUTTER

STATION-SECTION	LOCATION	601.0415 CONCRETE CURB & GUTTER 30-INCH TYPED (LF)	SPV/0090.02 CONCRETE CURB & GUTTER 24-INCH TYPED D (LF)	650.5500 CONSTRUCTION STAKING CURB & GUTTER (LF)	CATEGORY	010	010	010
12+00 - 12+74	MAINLINE, LT.	74	-	74	-	-	-	-
12+00 - 12+92	MAINLINE, RT.	92	-	92	-	-	-	-
12+74 - 12+90	MAINLINE, LT.	16	-	16	-	-	-	-
12+90 - 13+01	MAINLINE, LT.	11	-	11	-	-	-	-
13+64 - 14+50	MAINLINE, RT.	66	-	66	-	-	-	-
13+73 - 14+25	MAINLINE, LT.	52	-	52	-	-	-	-
14+25 - 14+50	MAINLINE, LT.	25	-	25	-	-	-	-
TOTALS =		295	16	336	-	-	-	-

CULVERT PIPE

STATION	LOCATION	520.1018 APRON ENDWALLS FOR CULVERT PIPE 18-INCH (EACH)	520.1024 APRON ENDWALLS FOR CULVERT PIPE 24-INCH (EACH)	520.3318 CULVERT PIPE CLASS III/A 18-INCH (LF)	520.3324 CULVERT PIPE CLASS III/A 24-INCH (LF)	628.7555 CULVERT PIPE CHECKS (EACH)	633.5200 MARKERS CULVERT END CHECKS (EACH)	650.6000 CONSTRUCTION STAKING PIPE CULVERTS WORK BY OTHERS
20A+66	'A'-LINE, LT. (P.E.)	2	-	22	-	2	-	1
21A+00	'A'-LINE	-	2	-	42	3	2	1
21A+24	'A'-LINE, RT. (P.E.)	2	-	30	-	2	-	1
-	UNDISTRIBUTED	-	-	-	-	1	-	-
TOTALS =		4	2	52	42	8	2	3

*MORE LISTED ELSEWHERE

CONCRETE SIDEWALK 4-INCH

STATION-SECTION	LOCATION	602.0405 CONCRETE SIDEWALK 4-INCH (SF)	SPV/0090.03 CONSTRUCTION STAKING SIDEWALK (LF)	CATEGORY	010	010
12+00 - 13+03	MAINLINE, LT.	607	104	-	-	-
13+74 - 14+50	MAINLINE, LT.	413	76	-	-	-
TOTALS =		1020	180	-	-	-

STORM SEWER PIPES

STATION	LOCATION	REINFORCED CONCRETE CULVERT PIPE (EACH)	REINFORCED CONCRETE PIPE CLASS III STORM SEWER (LF)	608.0312 12-INCH (LF)	608.0318 18-INCH (LF)	608.0324 24-INCH (LF)	608.0324 24-INCH JOINTS (EACH)	INFORMATIONAL PURPOSES CATEGORY
523.1016	18-INCH	1	-	9	-	-	-	-
523.1021	24-INCH	-	-	6	-	31	-	-
523.1024	24-INCH	-	-	-	-	38	-	-
523.1024	24-INCH	1	-	27	-	58	6	-
1012.36	6.0	-	-	11	-	-	-	-
1011.52	6.0	-	-	-	14	-	-	-
1010.06	6.0	1	-	-	16	-	-	-
TOTALS =		1	1	26	30	125	12	-

STORM SEWER STRUCTURES

STRUCTURE NUMBER	STATION	LOCATION	MANHOLE TYPE	COVERS	INLETS	PROTECTION TYPE A	INLET PROTECTION TYPE C	CONSTRUCTION STAKING
I-100	12+02.00	MAINLINE: 16.50' RT.	I-101	1013.25	1	1	1	1
I-101	12+11.00	MAINLINE: 16.50' RT.	I-101	1013.29	1	1	1	1
I-102	12+37.00	MAINLINE: 21.50' LT.	I-101	1013.11	1	1	1	1
I-103	12+43.00	MAINLINE: 21.50' LT.	I-101	1013.14	1	1	1	1
STMH1	12+44.00	MAINLINE: 12.50' RT.	I-101	1013.47	1	1	1	1
EW-1	12+97.00	MAINLINE: 26.00' RT.	I-101	1016.30	1	1	1	1
I-104	13+00.00	MAINLINE: 5.00' LT.	I-101	1016.72	1	1	1	1
I-105	13+91.21	MAINLINE: 16.50' LT.	I-101	1016.52	1	1	1	1
STMH2	13+91.21	MAINLINE: 30.00' LT.	I-101	1016.52	1	1	1	1
EW-2	13+75.16	MAINLINE: 30.00' LT.	I-101	1016.52	1	1	1	1
TOTALS =				2	5	1	2	1

NOTES:
STATION AND OFFSET OF MANHOLE STRUCTURES ARE MEASURED FROM CENTER OF STRUCTURE.
STATION AND OFFSET OF INLET STRUCTURES ARE MEASURED TO FLANGE OF INLET.
ALL RIM ELEVATIONS ARE MEASURED TO THE FLANGE OF THE INLET.
STRUCTURE DEPTH (INLET 2X3-FT) = RIM ELEVATION - INVERT LOWEST PIPE - 6 INCHES (CASTING HEIGHT).
STRUCTURE DEPTH (INLET 4-FT DIAMETER) = RIM ELEVATION - INVERT LOWEST PIPE - 6 INCHES (RINGS) - 7 INCHES (CASTING HEIGHT).
STRUCTURE DEPTH (MANHOLE 4-FT DIAM) = RIM ELEVATION - INVERT LOWEST PIPE - 6 INCHES (RINGS) - 9 INCHES (CASTING HEIGHT).

*MORE LISTED ELSEWHERE

PROJECT NO: 5516-00-70

HWY: CTH W

COUNTY: MONROE

MISCELLANEOUS QUANTITIES

SHEET 20

E

FILE NAME : S:\PROJECTS\MORNO MONROE CO CTH W BRIDGE\SHEETPLAN\DETAILS\MISCELLANEOUS

PLOT DATE : 2/26/2019

PLOT BY : JULIA ZENNER

PLOT SCALE : 1" = 1'

R/W PROJECT NUMBER	5516-00-00	SHEET TOTAL NUMBER SHEETS	2
FEDERAL PROJECT NUMBER	4.01		
PLAT OF RIGHT-OF-WAY REQUIRED FOR VILLAGE OF KENDALL, WHITE STREET (BRANCH OF BARABOO RIVER BRIDGE B-41-0306)			
CTH W	MONROE COUNTY		
CONSTRUCTION PROJECT NUMBER	5516-00-70		

END RELOCATION ORDER
STA. 14+50
 159.61' NORTH AND 1326.98' EAST OF THE WEST & CORNER OF SECTION 10, T15N, R1E, TOWN OF GLENDALE, MONROE COUNTY, WI
 Y = 325,235.29
 X = 743,359.36

BEGIN RELOCATION ORDER
STA. 12+00
 90.02' SOUTH AND 1313.34' EAST OF THE WEST & CORNER OF SECTION 10, T15N, R1E, TOWN OF GLENDALE, MONROE COUNTY, WI
 Y = 324,985.66
 X = 743,356.32

JEWELL
 associates engineers, inc.
 Engineers - Architects - Surveyors
 560 SUNRISE DRIVE
 SPRING GREEN, WI 53588
 PHONE : 608.866.7484
 www.jewellassoc.com

I HEREBY CERTIFY THAT THIS PLAT WAS MADE FOR THE VILLAGE OF KENDALL, MONROE COUNTY, WISCONSIN AND IS CORRECT TO THE BEST OF MY KNOWLEDGE AND BELIEF.



APPROVED FOR MONROE COUNTY
 DATE: 09/13/18
 (NAME/TITLE)
 Hwy Commis. Planner
 23

Addendum No. 01
 ID 5516-00-70
 Revised Sheet 23
 March 1, 2019

REVISION DATE
 02-20-2019 (N.C.)

CONVENTIONAL ABBREVIATIONS

AP	PROPERTY LINE	PL	(100')
AR	RECORDED AS	ROB	
AC	ACCESS RIGHTS	REM.	R/W
ET.AL.	AND OTHERS	SEC.	SECTION
B.A.	BOUNDARY LINE	STA.	STATION
CSA	CERTIFIED SURVEY MAP	TLE	TEMPORARY LIMITED EASEMENT
CDR.	CORNER	V.	VOLUME
CR	CONVEYANCE OF RIGHTS	LOH	LONG CHORD
GR	GRANT	LOB	LONG CHORD BEARING
ES	EASEMENT	R	RADIUS
CLSE.	EASE	H.C.	HORIZONTAL CURVE
G.	GARAGE	MON.	MONUMENT
H.E.	HIGHWAY EASEMENT	P.	PERMANENT LIMITED EASEMENT
H.	HOUSE		TANGENT
T.	TRAILER		
L.C.	LAND CONTRACT		
DELTA	DELTA		
L	LENGTH OF CURVE		
TAN	TANGENT		

CONVENTIONAL SYMBOLS

o 1040	PROPOSED R/W LINE
o • (SET)	EXISTING H.E. LINE
Δ (SET)	PROPERTY LINE
ISGN	LOT & TIE LINES
⊕	SLOPE INTERCEPTS
⊗	CORPORATE LIMITS
⊙	NO ACCESS (BY PREVIOUS ACQUISITION/CONTROL)
⊚	NO ACCESS (BY STATUTORY AUTHORITY)
⊛	SECTION LINE
⊜	QUARTER LINE
⊝	SIXTEENTH LINE
⊞	EXISTING CENTERLINE
⊟	PROPOSED REFERENCE LINE
⊠	PARALLEL OFFSET
⊡	ENCROACHMENT

CONVENTIONAL UTILITY SYMBOLS

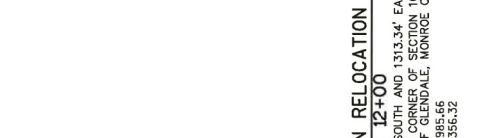
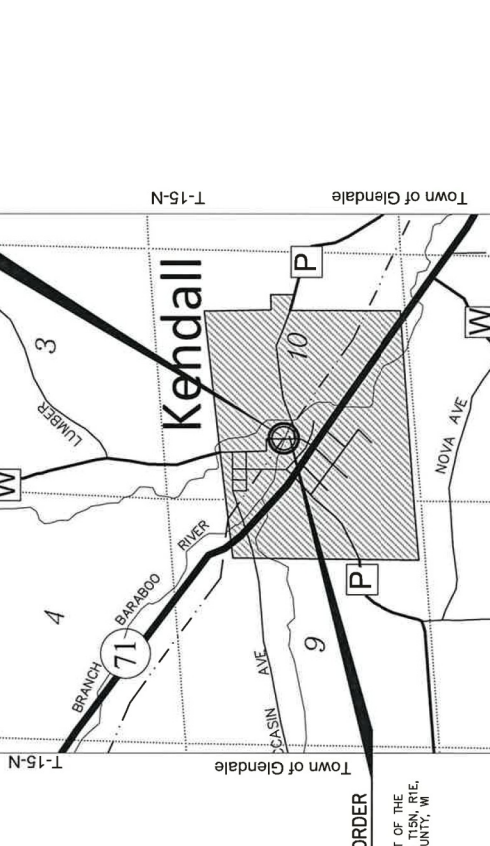
W	WATER	SA	SANITARY SEWER	SS	STORM SEWER	NON	NON COMPENSABLE
T	TELEPHONE	OH	OVERHEAD TRANSMISSION LINES	E	ELECTRIC	⊕	TELEPHONE POLE
TV	CABLE TELEVISION	⊗	ELECTRIC TOWER	⊘	FIBER OPTIC	⊙	TELEPHONE TOWER

NOTES

POSITIONS SHOWN ON THIS PLAT ARE WISCONSIN COORDINATE REFERENCE SYSTEM (WCSORS) COORDINATES, MONROE COUNTY, NAD 83 (2011) IN U.S. SURVEY FEET. VALUES SHOWN ARE GRID COORDINATES, GRID BEARINGS, AND GRID DISTANCES. GRID DISTANCES MAY BE USED AS GROUND DISTANCES.

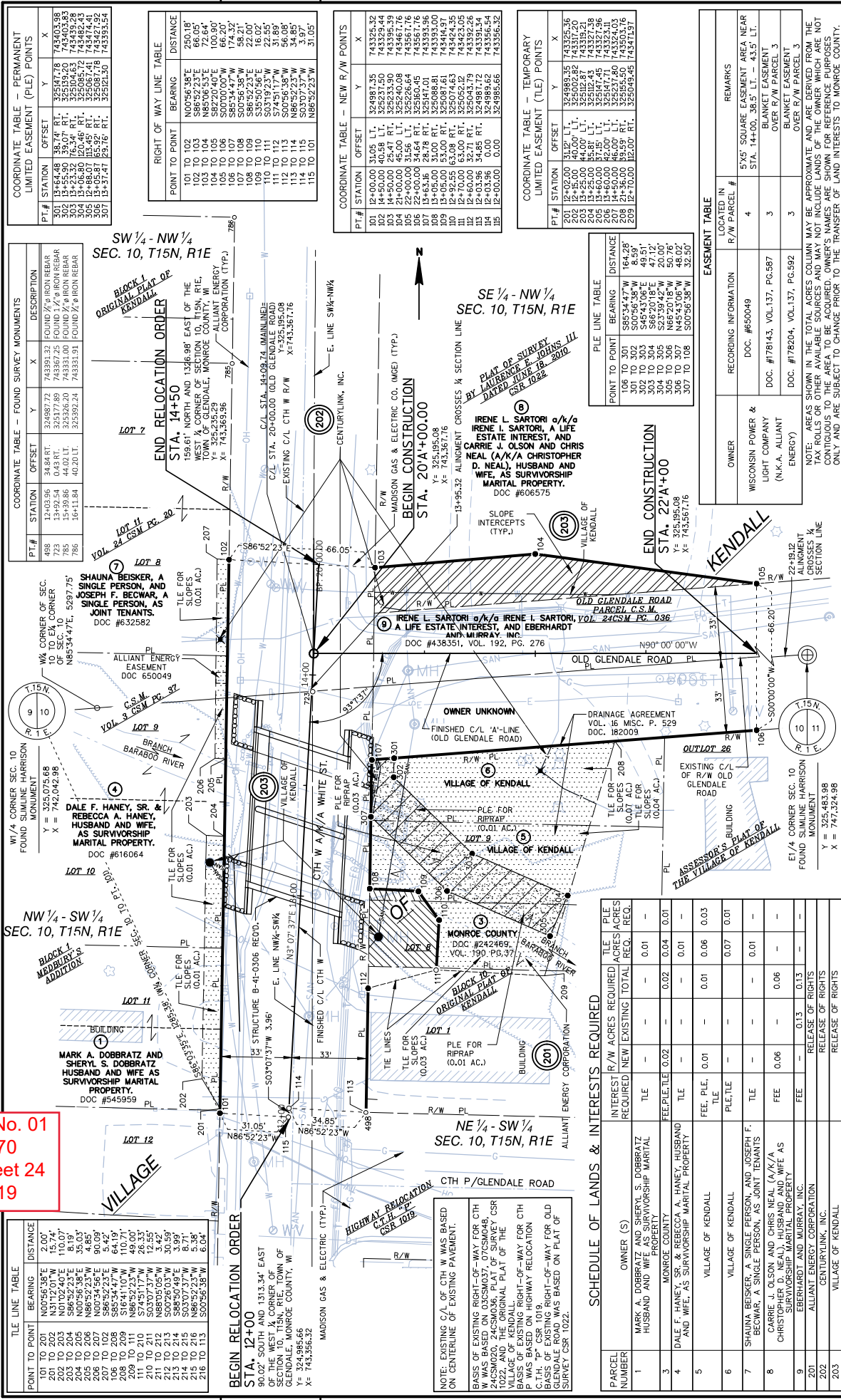
RIGHT-OF-WAY MONUMENTS ARE TYPE 2 MONUMENTS (TYPICALLY 3/4" X 24" REBAR) AND WILL BE PLACED PRIOR TO THE COMPLETION OF THE PROJECT.

RIGHT-OF-WAY BOUNDARIES ARE DEFINED WITH COURSES OF THE PERIMETER OF THE HIGHWAY LANDS REFERENCED TO THE U.S. PUBLIC LAND SURVEY SYSTEM OR OTHER "SURVEYS OF PUBLIC RECORD."



TOTAL NET LENGTH OF CENTERLINE = 0.047 MI.
 SCALE 0 1/2 MI.
 LAYOUT

Addendum No. 01
ID 5516-00-70
Revised Sheet 24
March 1, 2019



TLR LINE TABLE

POINT TO POINT	BEARING	DISTANCE
101 TO 201	N00°56'38"E	2.00'
201 TO 202	N31°12'01"W	15.74'
202 TO 203	N01°02'40"E	110.07'
203 TO 204	N02°53'38"E	45.03'
204 TO 205	N02°53'38"E	45.03'
205 TO 206	N86°52'23"W	4.80'
206 TO 207	N00°34'56"E	90.09'
207 TO 208	S86°52'23"E	5.42'
208 TO 209	S16°41'10"W	110.71'
209 TO 210	N86°52'23"W	49.00'
210 TO 211	S74°51'17"W	26.33'
211 TO 212	N86°52'23"W	5.35'
212 TO 213	S00°26'03"W	30.59'
213 TO 214	S86°52'23"E	3.99'
214 TO 215	S03°07'37"W	8.38'
215 TO 216	S00°56'38"W	6.04'
216 TO 217	S00°56'38"W	6.04'

RIGHT OF WAY LINE TABLE

POINT TO POINT	BEARING	DISTANCE
101 TO 102	N00°56'38"E	250.18'
102 TO 103	S86°52'23"E	95.05'
103 TO 104	S00°26'03"W	100.90'
104 TO 105	S86°52'23"E	66.20'
105 TO 106	S00°26'03"W	174.32'
106 TO 107	S86°52'23"E	22.00'
107 TO 108	S03°07'37"W	16.02'
108 TO 109	S32°50'56"E	22.55'
109 TO 110	S03°07'37"W	22.55'
110 TO 111	N86°52'23"W	56.08'
111 TO 112	N86°52'23"W	34.85'
112 TO 113	S03°07'37"W	3.97'
113 TO 114	N86°52'23"W	31.05'
114 TO 115	N86°52'23"W	31.05'
115 TO 116	N86°52'23"W	31.05'

COORDINATE TABLE - PERMANENT LIMITED EASEMENT (PLE) POINTS

PT.#	STATION	OFFSET	Y	X
301	13+464.64	38.74'	32547.78	74303.98
302	13+555.90	39.07'	32519.20	74340.83
303	13+23.32	76.34'	32506.63	74349.28
304	13+188.01	113.45'	32506.63	74349.28
305	13+05.81	65.52'	32508.78	74342.92
306	13+174.71	29.16'	32521.50	74393.54

COORDINATE TABLE - NEW R/W POINTS

PT.#	STATION	OFFSET	Y	X
101	12+00.00	31.05	74325.32	32498.735
102	14+50.00	40.58	74329.44	32537.50
103	14+00.00	25.00	74325.32	32498.735
104	22+00.00	31.56	74356.16	32526.64
105	22+00.00	31.56	74356.16	32526.64
106	22+00.00	34.64	74356.16	32516.76
107	13+63.86	28.78	74356.16	32516.76
108	13+05.00	53.00	74394.91	32508.81
109	13+05.00	53.00	74394.91	32508.81
110	12+92.55	63.08	74324.35	32508.81
111	12+70.00	63.08	74324.35	32508.81
112	12+03.96	34.86	74394.91	32498.735
113	12+03.96	34.86	74394.91	32498.735
114	12+00.00	0.00	74356.54	32498.735
115	12+00.00	0.00	74356.54	32498.735

COORDINATE TABLE - TEMPORARY LIMITED EASEMENT (TLE) POINTS

PT.#	STATION	OFFSET	Y	X
201	12+02.00	31.21	32498.35	74325.36
202	12+45.00	40.00	32500.82	74337.20
203	13+25.00	65.80	32502.43	74332.38
204	13+25.00	65.80	32502.43	74332.38
205	13+40.00	67.15	32504.45	74327.36
206	14+50.00	40.00	32502.43	74337.20
207	14+50.00	40.00	32502.43	74337.20
208	12+36.00	89.59	32506.50	74350.16
209	12+70.00	12.00	32509.45	74347.197

EASEMENT TABLE

OWNER	RECORDING INFORMATION	LOCATED IN R/W PARCEL #	REMARKS
WISCONSIN POWER & LIGHT COMPANY (N.K.A. ALLIANT ENERGY)	DOC. #78143, VOL. 137, PG. 587	4	5X3 SQUARE EASEMENT AREA NEAR STA. 14+00.00, 302' EASEMENT OVER R/W PARCEL 3
WISCONSIN POWER & LIGHT COMPANY (N.K.A. ALLIANT ENERGY)	DOC. #78204, VOL. 137, PG. 592	3	BLANKET EASEMENT OVER R/W PARCEL 3

SCHEDULE OF LANDS & INTERESTS REQUIRED

PARCEL NUMBER	OWNER (S)	INTEREST REQUIRED	R/W ACRES REQUIRED	TLE ACRES REQUIRED	NEW EXISTING TOTAL REQ.
1	MARK A. DOBRATZ AND SHERYL S. DOBRATZ HUSBAND AND WIFE AS SURVIVORSHIP MARITAL PROPERTY	TLE	-	-	-
3	DALE F. HANEY, SR. & REBECCA A. HANEY, HUSBAND AND WIFE, AS SURVIVORSHIP MARITAL PROPERTY	FE, PLE, TLE	0.02	0.04	0.01
4	VILLAGE OF KENDALL	FE, PLE, TLE	0.01	0.06	0.03
6	VILLAGE OF KENDALL	PLE, TLE	-	0.07	0.01
7	SHAUNA BEISKER, A SINGLE PERSON, AND JOSEPH F. BECWAR, A SINGLE PERSON, AS JOINT TENANTS	TLE	-	-	0.01
8	CARRIE J. OLSON AND CHRIS NEAL (A/K/A CHRISTOPHER D. NEAL), HUSBAND AND WIFE AS SURVIVORSHIP MARITAL PROPERTY	FEE	0.06	-	0.06
9	EBERHARDT AND MURRAY, INC.	FEE	-	0.13	0.13
201	ALLIANT ENERGY CORPORATION	RELEASE OF RIGHTS	-	-	-
202	CENTURYLINK, INC.	RELEASE OF RIGHTS	-	-	-
203	VILLAGE OF KENDALL	RELEASE OF RIGHTS	-	-	-

REVISION DATE
02-20-2019

DATE
09-13-2018

GRID FACTOR
N/A

DATE
09-13-2018

SCALE, FEET
0 20 40

HWY: CTH W

COUNTY: MONROE

R/W PROJECT NUMBER: 5516-00-00

CONSTRUCTION PROJECT NUMBER: 5516-00-70

PLAT SHEET
4.02

PS&E SHEET
24

PLAT SHEET
4.02

FILE NAME : S:\Projects\W08060 Monroe Co CTH W Bridge\W 55160070_Plot Sheets Rev.dwg
FILE DATE : 2/25/2019 11:13 AM
PLOT BY : Scott Warner
PLOT SCALE : 1:1
WSDOT/CADDIS SHEET 75



Proposal Schedule of Items

Proposal ID: 20190312008 Project(s): 5516-00-70

Federal ID(s): WISC 2019153

SECTION: 0001

Contract Items

Alt Set ID:

Alt Mbr ID:

Proposal Line Number	Item ID Description	Approximate Quantity and Units	Unit Price	Bid Amount
0066	601.0411 Concrete Curb & Gutter 30-Inch Type D	295.000 LF	_____.	_____.
0068	601.0415 Concrete Curb & Gutter 6-Inch Sloped 30-Inch Type J	16.000 LF	_____.	_____.
0070	602.0405 Concrete Sidewalk 4-Inch	1,020.000 SF	_____.	_____.
0072	606.0300 Riprap Heavy	173.000 CY	_____.	_____.
0074	608.0312 Storm Sewer Pipe Reinforced Concrete Class III 12-Inch	26.000 LF	_____.	_____.
0076	608.0318 Storm Sewer Pipe Reinforced Concrete Class III 18-Inch	30.000 LF	_____.	_____.
0078	608.0324 Storm Sewer Pipe Reinforced Concrete Class III 24-Inch	125.000 LF	_____.	_____.
0080	611.0420 Reconstructing Manholes	1.000 EACH	_____.	_____.
0082	611.0535 Manhole Covers Type J-Special	2.000 EACH	_____.	_____.
0084	611.0603 Inlet Covers Type A-S	1.000 EACH	_____.	_____.
0086	611.0639 Inlet Covers Type H-S	5.000 EACH	_____.	_____.
0088	611.2004 Manholes 4-FT Diameter	2.000 EACH	_____.	_____.
0090	611.3004 Inlets 4-FT Diameter	1.000 EACH	_____.	_____.
0092	611.3230 Inlets 2x3-FT	5.000 EACH	_____.	_____.
0094	611.8110 Adjusting Manhole Covers	1.000 EACH	_____.	_____.
0096	612.0406 Pipe Underdrain Wrapped 6-Inch	200.000 LF	_____.	_____.



Proposal Schedule of Items

Proposal ID: 20190312008 Project(s): 5516-00-70

Federal ID(s): WISC 2019153

SECTION: 0001

Contract Items

Alt Set ID:

Alt Mbr ID:

Proposal Line Number	Item ID Description	Approximate Quantity and Units	Unit Price	Bid Amount
0130	633.5100 Markers Row	10.000 EACH	_____.	_____.
0132	633.5200 Markers Culvert End	2.000 EACH	_____.	_____.
0134	634.0816 Posts Tubular Steel 2x2-Inch X 16-FT	2.000 EACH	_____.	_____.
0136	637.2210 Signs Type II Reflective H	6.680 SF	_____.	_____.
0138	638.2602 Removing Signs Type II	6.000 EACH	_____.	_____.
0140	638.3000 Removing Small Sign Supports	6.000 EACH	_____.	_____.
0142	642.5001 Field Office Type B	1.000 EACH	_____.	_____.
0144	643.0420 Traffic Control Barricades Type III	1,560.000 DAY	_____.	_____.
0146	643.0705 Traffic Control Warning Lights Type A	2,500.000 DAY	_____.	_____.
0148	643.0900 Traffic Control Signs	1,330.000 DAY	_____.	_____.
0150	643.5000 Traffic Control	1.000 EACH	_____.	_____.
0152	645.0111 Geotextile Type DF Schedule A	110.000 SY	_____.	_____.
0154	645.0120 Geotextile Type HR	321.000 SY	_____.	_____.
0156	646.1020 Marking Line Epoxy 4-Inch	500.000 LF	_____.	_____.
0158	650.4000 Construction Staking Storm Sewer	10.000 EACH	_____.	_____.
0160	650.4500 Construction Staking Subgrade	205.000 LF	_____.	_____.
0162	650.5000 Construction Staking Base	205.000 LF	_____.	_____.